



(19) **United States**

(12) **Patent Application Publication** (10) **Pub. No.: US 2003/0119058 A1**

Qvist et al.

(43) **Pub. Date:**

Jun. 26, 2003

(54) **METHOD OF ASSAYING TYPE III COLLAGEN DEGRADATION**

Publication Classification

(75) Inventors: **Per Qvist**, Klampenborg (DK); **Martin Bonde**, Lyngby (DK)

(51) **Int. Cl.⁷** **G01N 33/53**; C07K 14/78;
 G01N 33/537; G01N 33/543;
 C07K 2/00; C07K 4/00; C07K 5/00;
 C07K 7/00; C07K 14/00;
 C07K 16/00; C07K 17/00;
 A61K 38/00; A61K 38/04;
 C07K 1/00; C09H 1/00; A61K 38/17;
 G01N 33/545

(52) **U.S. Cl.** **435/7.1**; 530/356; 435/7.92;
 435/7.93; 435/975; 436/518;
 436/531; 530/328; 530/300

Correspondence Address:
PENNIE & EDMONDS LLP
1667 K STREET NW
SUITE 1000
WASHINGTON, DC 20006

(73) Assignee: **Osteometer A/S**

(57) **ABSTRACT**

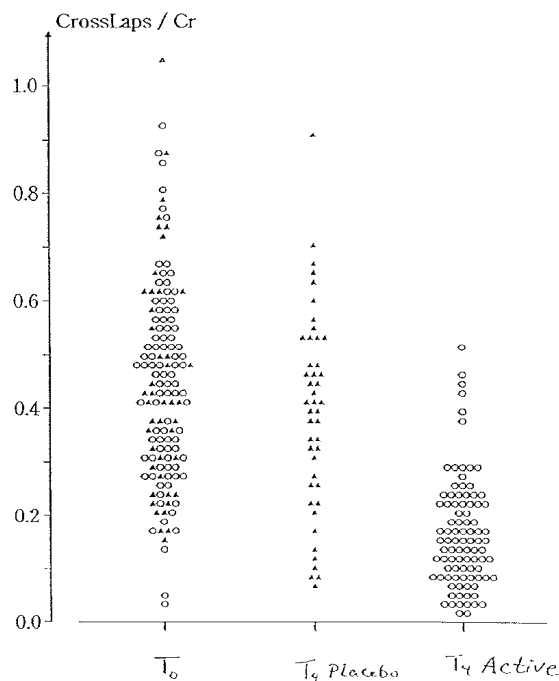
(21) Appl. No.: **10/058,124**

A method of assaying collagen fragments in body fluids, including bringing a sample of body fluid in contact with at least one immunological binding partner for the collagen fragments, said binding partner being immunoreactive with synthetic peptides, the sequences of which are essentially derived from collagen and containing potential sites for cross-linking. The immunological binding partners are incorporated, either as whole antibodies or as immunologically active fragments thereof, in an assay for quantitative determination of collagen fragments in the sample. In addition to being contacted with the immunological binding partner(s), the sample may be brought into direct contact with the corresponding synthetic peptide. The invention further comprises a test kit and specific means for carrying out the method. The structure of specific peptides is also described.

(22) Filed: **Jan. 29, 2002**

Related U.S. Application Data

(60) Division of application No. 09/570,573, filed on May 12, 2000, now Pat. No. 6,342,361, which is a division of application No. 08/963,825, filed on Nov. 4, 1997, now Pat. No. 6,110,689, which is a continuation of application No. 08/187,319, filed on Jan. 21, 1994, now abandoned.



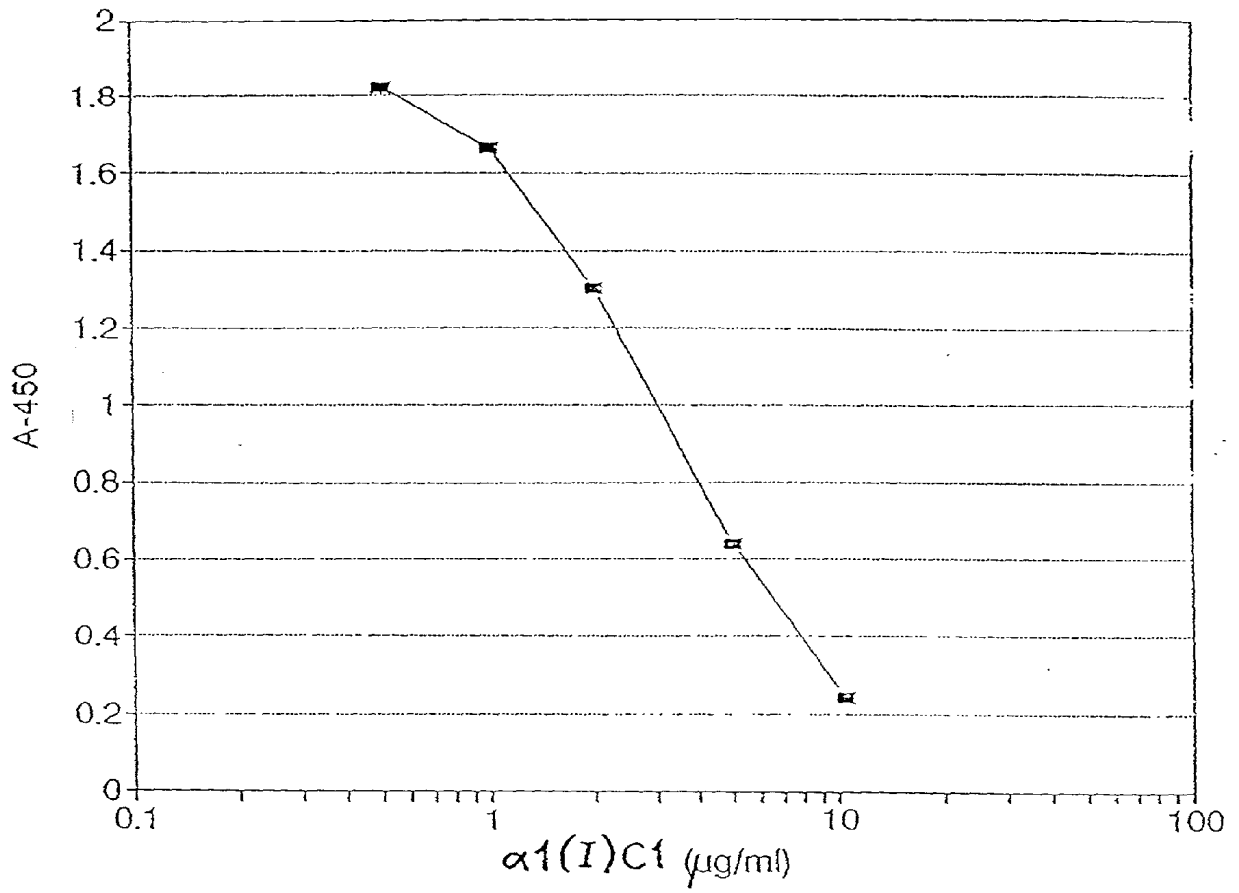


FIG. 1

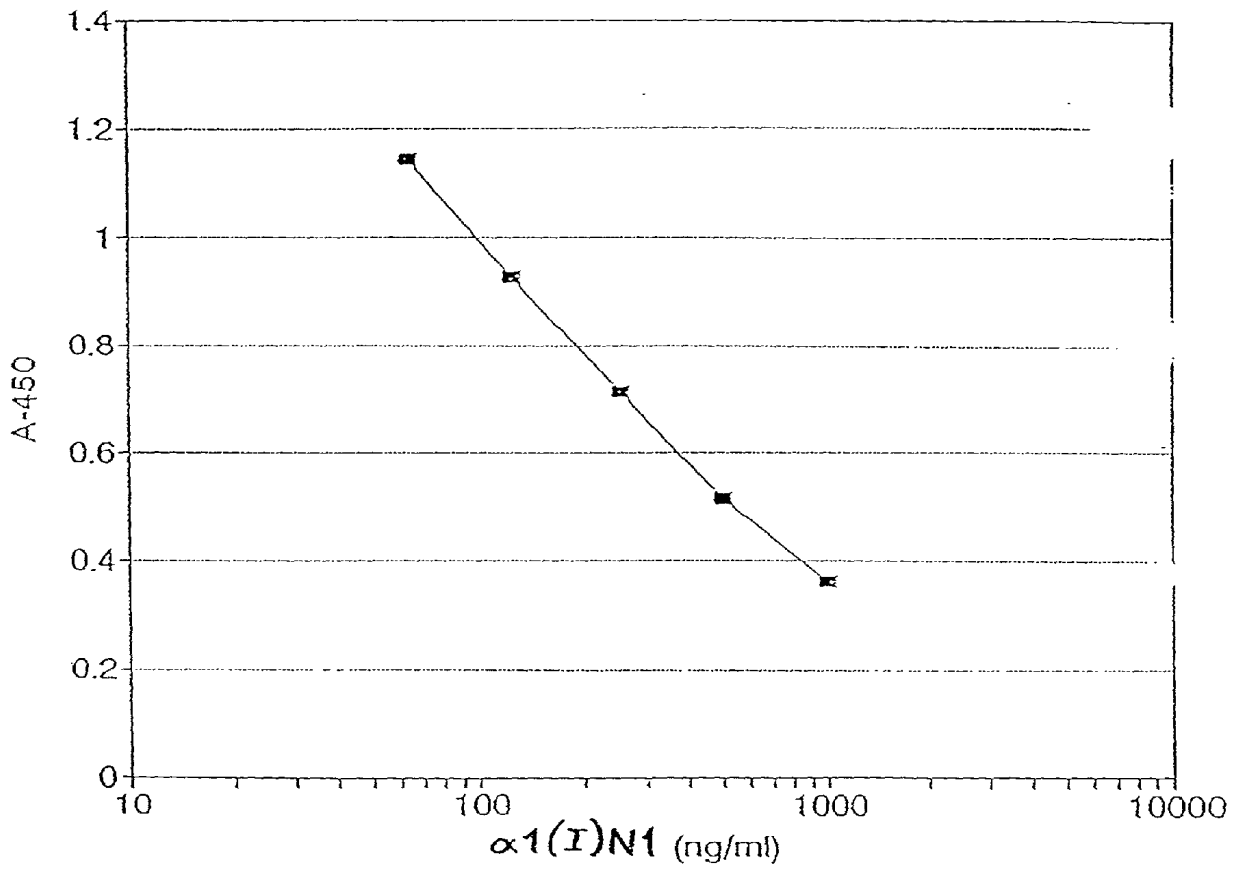


FIG. 2

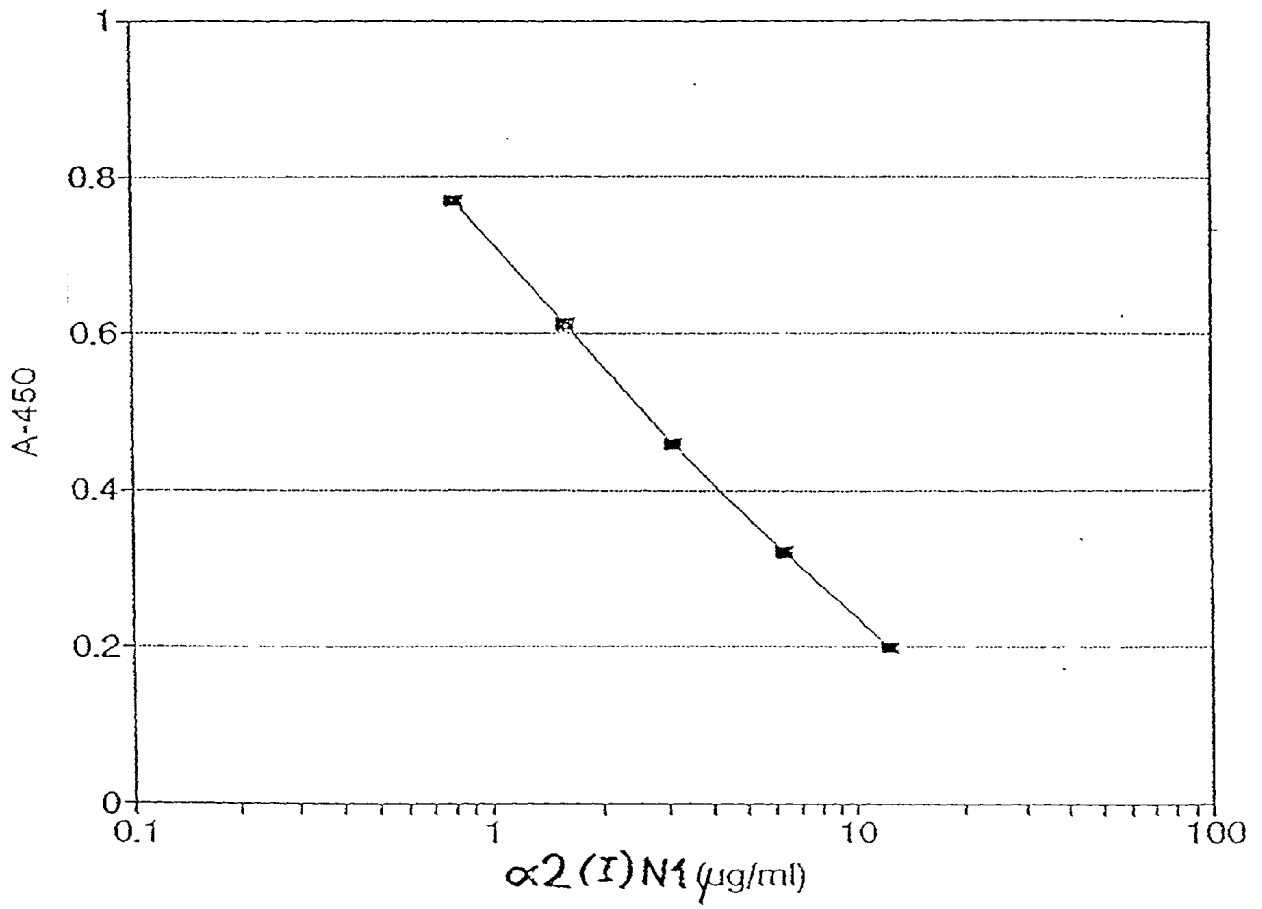


FIG. 3

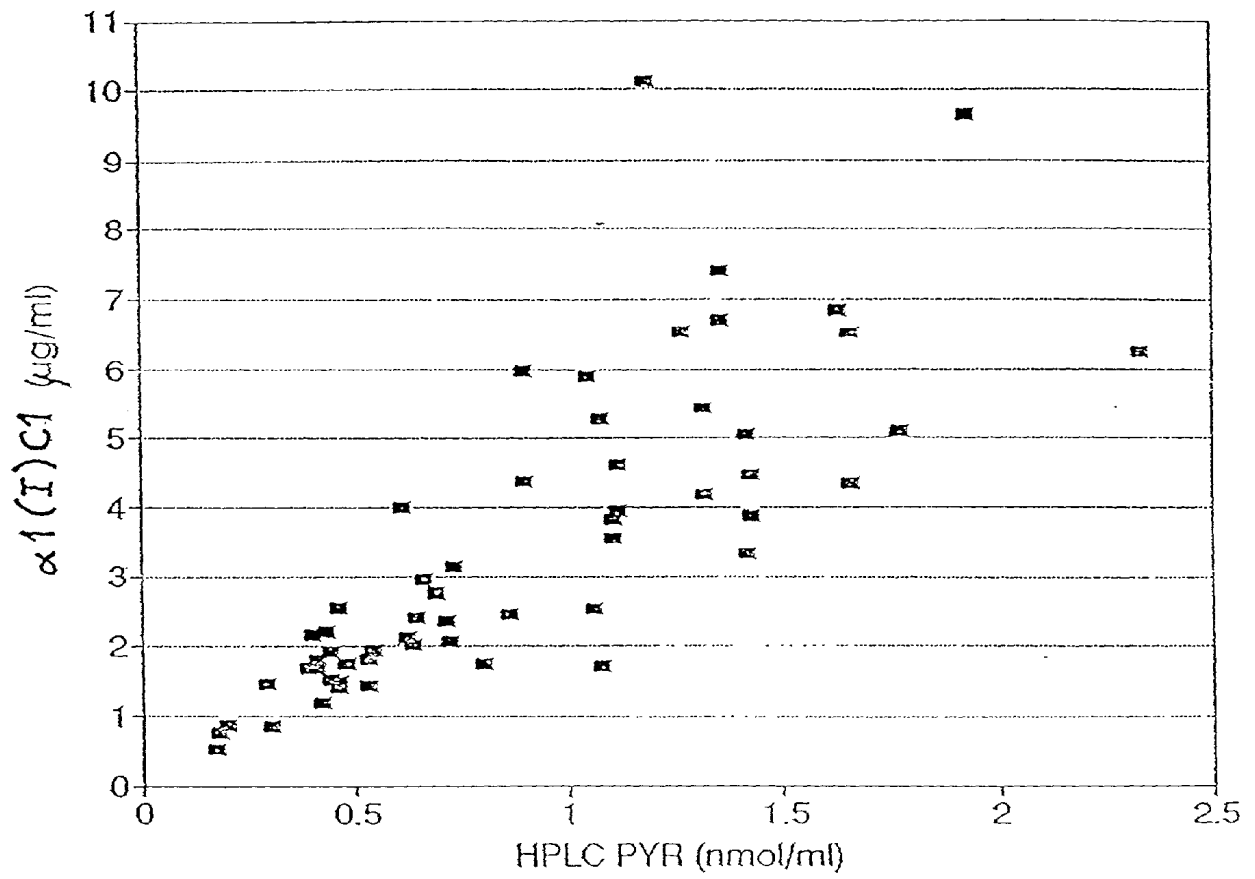


FIG. 4

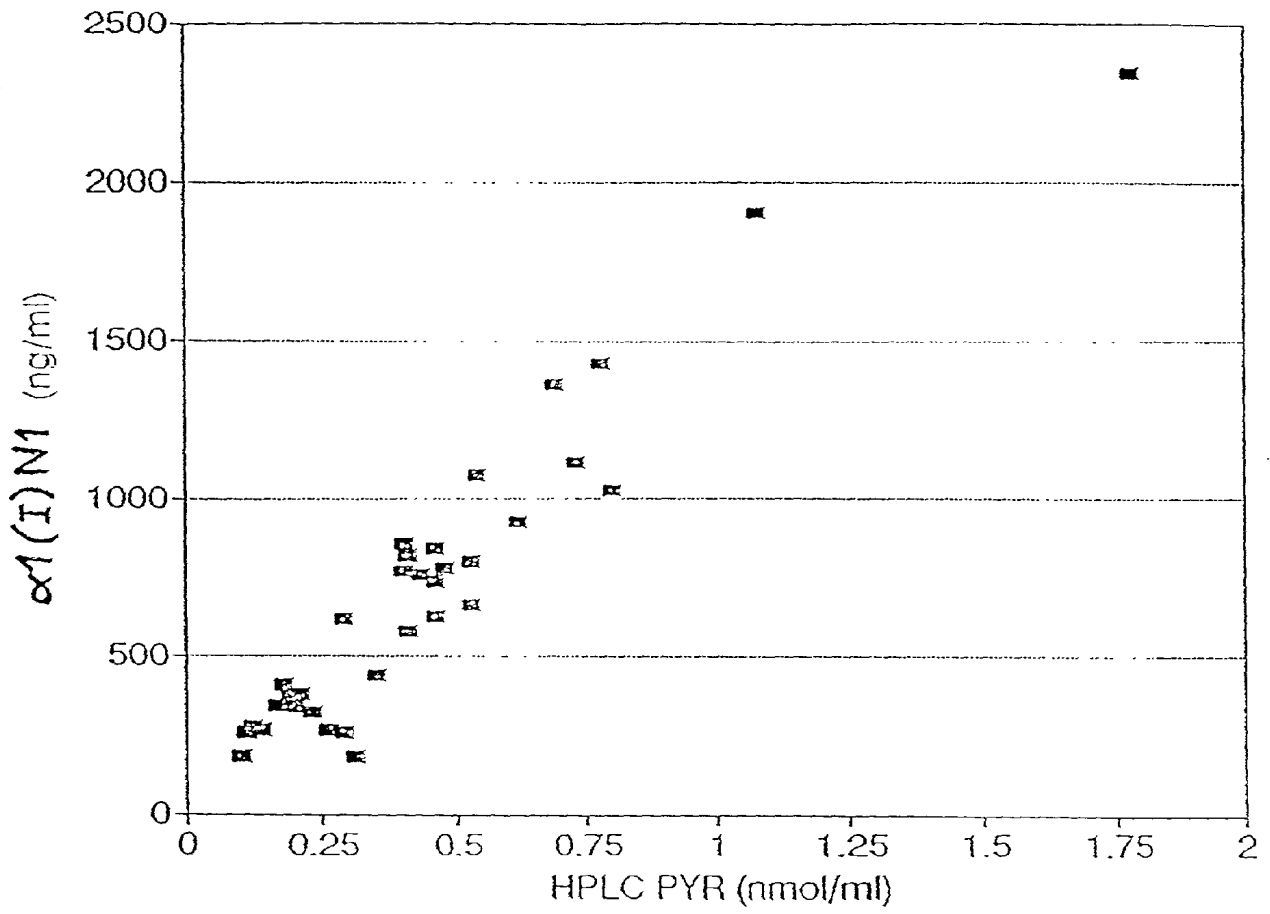


FIG. 5

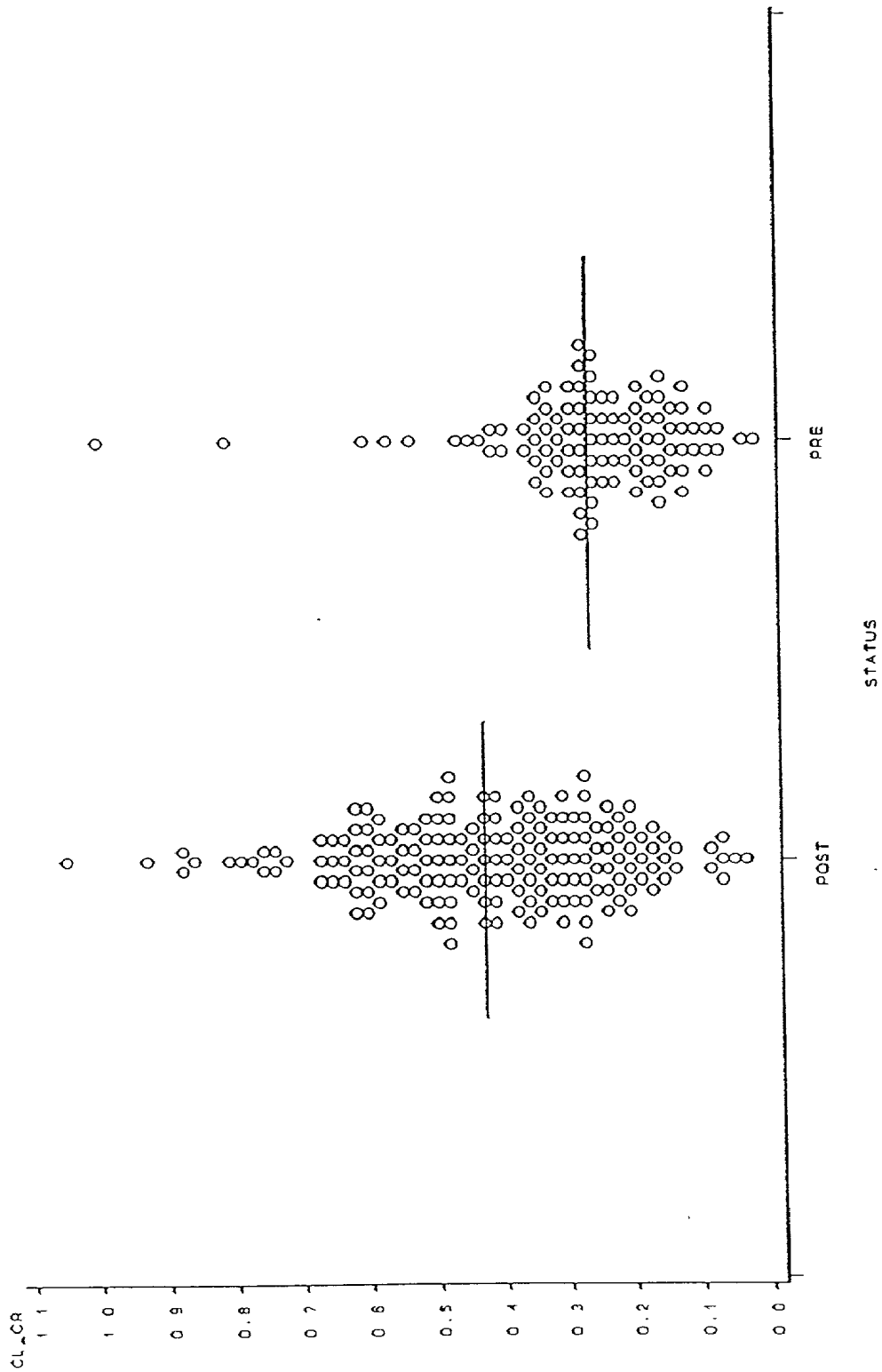
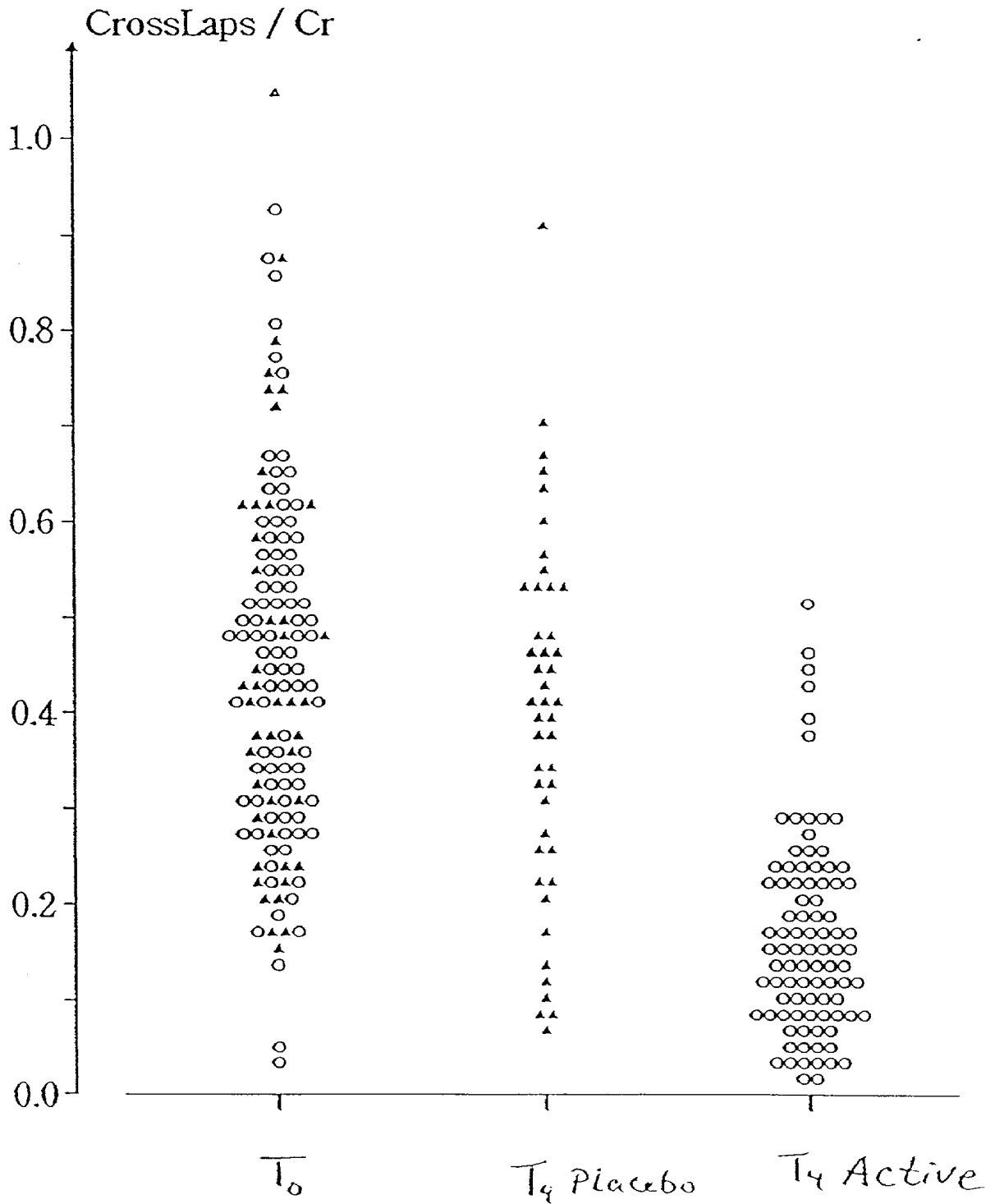


FIG. 6

FIG. 7



METHOD OF ASSAYING TYPE III COLLAGEN DEGRADATION

[0001] The present invention relates to a method of determining collagen fragments in body fluids. The invention further relates to means, including synthetic peptides, monoclonal and polyclonal antibodies and cell lines, for use in carrying out the method of the invention. Still further, the invention relates to the use of the above method to diagnose the presence of disorders associated with the metabolism of collagen, especially osteoporosis.

BACKGROUND OF THE INVENTION

[0002] Collagens and Disorders of Collagen Metabolism

[0003] Osteoporosis is the most common bone disease in humans. Primary osteoporosis, accompanied by increased susceptibility to fractures, results from a progressive reduction in skeletal bone mass. It is estimated to affect 15-20 million individuals in the USA alone. Its basis is an age-dependent imbalance in bone remodeling, i.e., in the rates of formation and resorption of bone tissue.

[0004] In the USA about 1.2 million osteoporosis-related fractures occur in the elderly each year including about 538,000 compression fractures of the spine, about 227,000 hip fractures and a substantial number of early fractured peripheral bones. Between 12 and 20% of the hip fractures are fatal because they cause severe trauma and bleeding, and half of the surviving patients require nursing home care. Total costs from osteoporosis-related injuries now amount to at least \$10 billion annually in the USA (Riggs, *New England Journal of Medicine* 327:620-627 (1992)).

[0005] Osteoporosis is most common in postmenopausal women who, on average, lose 15% of their bone mass in the 10 years after menopause. This disease also occurs in men as they get older and in young amenorrheic women athletes. Despite the major, and growing, social and economic consequences of osteoporosis, the availability of reliable assays for measuring bone resorption rates in patients or in healthy subjects is very limited. Other disorders entailing (and correlated with) abnormalities in collagen metabolism include Paget's disease, Marfan's syndrome, osteogenesis imperfecta neoplastic growth in collagenous tissue, dwarfism, rheumatoid arthritis, osteoarthritis and vasculitis syndrome.

[0006] Three known classes of human collagen have been described to date. The Class I collagens, subdivided into types I, II, III, V, and XI, are known to form fibrils. Their full amino-acid sequence (to the extent they have been elucidated) are attached in Appendix A.

[0007] Collagen type I accounts for more than 90% of the organic matrix of bone. Therefore, in principle, it is possible to estimate the rate of bone resorption by monitoring the degradation of collagen type I. Likewise, a number of other disease states involving connective tissue can be monitored by determining the degradation of collagen. Examples are collagen type II degradation associated with rheumatoid arthritis and osteoarthritis and collagen type III degradation in vasculitis syndrome.

[0008] Amino acid sequences of human type III collagen, human pro 1(II) collagen, and the entire prepro 1(III) chain of human type III collagen and corresponding cDNA clones

have been investigated and determined by several groups of researchers; see Loil et al., *Nucleic Acids Research* 12:9383-9394 (1984); Sangiorgi et al., *Nucleic Acids Research* 13:2207-2225 (1985); Baldwin et al., *Biochem J.* 262:521-528 (1989); and Ala-Kokko et al., *Biochem. J.* 260:509-516 (1989).

[0009] Type I, II, and III collagens are all formed in the organism as procollagen molecules, comprising N-terminal and C-terminal propeptide sequences, which are attached to the core collagen molecules. After removal of the propeptides, which occur naturally in vivo during collagen synthesis, the remaining core of the collagen molecules consists largely of a triple-helical domain having terminal telopeptide sequences which are non-triple-helical. These telopeptide sequences have an important function as sites of intermolecular cross-linking of collagen fibrils extracellularly. The alpha-helical region also includes crosslinkable sites. Peptides from this region are part of the present invention.

[0010] Intermolecular cross-links provide collagen fibrils with biomechanical stability. The formation of these cross-links is initiated by modification of lysine and hydroxylysine residues to the corresponding aldehydes. Several of these residues located on adjacent chains of collagen will spontaneously form different intermolecular cross-links. The exact position of the sites for cross-linking on collagen telopeptides and from the helical region has been previously described. See, for example, Kuhn, K., in *Immunochemistry of the Extracellular Matrix* 1:1-29, CRC Press, Inc., Boca Raton, Fla. (1982), Eyre, D. R., *Ann. Rev. Biochem.* 53:717-48 (1984) or U.S. Pat. No. 5,140,103. Furthermore, the amino acid sequences of some potential sites for cross-linking in type I, II, and III collagen are given in Table 1 below.

[0011] The fibrous proteins, collagen and elastin, are cross-linked by a unique mechanism based on aldehyde formation from lysine or hydroxylysine side chains. Four homologous loci of cross-linking are evident in molecules of type I, II and III collagens (for review see Kuhn, K., in *Immunochemistry of the Extracellular Matrix* 1:1-29 (1982)). Two are aldehyde sites, one in each telopeptide region. The other two sites are hydroxylysine symmetrically placed at about 90 residues from each end of the molecule. When collagen molecules pack into fibrils, these latter sites in the helical region align and react with telopeptide aldehydes in adjacent molecules. There is now strong evidence that 3-hydroxypyridinium residues are the mature cross-link coming from hydroxylysine-derived aldehydes. The mature cross-linking residues of the other pathway, i.e. from aldehyde formation of lysine residues, is, however, still unknown.

[0012] Prior Art Assays for Collagen Degradation

[0013] In the past, assays have been developed for monitoring degradation of collagen in vivo by measuring various biochemical markers, some of which have been degradation products of collagen. However, none of these methods are based upon the use of immunological binding partners in the form of antibodies which are immunoreactive with synthetic peptides having a sequence essentially derived from collagen fragments having crosslinkable sites.

[0014] For example, hydroxyproline, an amino acid largely restricted to collagen, and the principal structural

protein in bone and all other connective tissues, is excreted in urine. Its excretion rate is known to be increased in certain conditions, notably Paget's disease, a metabolic bone disorder in which bone turnover is greatly increased, as discussed further below.

[0015] For this reason, urinary hydroxyproline has been used extensively as an amino acid marker for collagen degradation; Singer, F. R. et al., *Metabolic Bone Disease, Vol. II* (eds. Avioli, L. V., and Kane, S. M.), 489-575 (1978), Academic Press, New York.

[0016] U.S. Pat. No. 3,600,132 discloses a process for the determination of hydroxyproline in body fluids such as serum, urine, lumbar fluid and other intercellular fluids in order to monitor deviations in collagen metabolism. The patent states that hydroxyproline correlates with increased collagen anabolism or catabolism associated with pathological conditions such as Paget's disease, Marfan's syndrome, osteogenesis imperfecta, neoplastic growth in collagen tissues and in various forms of dwarfism.

[0017] Bone resorption associated with Paget's disease has also been monitored by measuring small peptides containing hydroxyproline, which are excreted in the urine following degradation of bone collagen; Russell et al., *Metab. Bone Dis. and Rel. Res.* 4 and 5:255-262 (1981), and Singer, F. R., et al., supra.

[0018] In the case of Paget's disease, the increased urinary hydroxyproline probably comes largely from bone degradation; hydroxyproline, however, generally cannot be used as a specific index for bone degradation. Much of the hydroxyproline in urine may come from new collagen synthesis (considerable amounts of the newly made protein are degraded and excreted without ever becoming incorporated into tissue fabric), and from turnover of certain blood proteins as well as other proteins that contain hydroxyproline.

[0019] Furthermore, about 80% of the free hydroxyproline derived from protein degradation is metabolized in the liver and never appears in the urine. Kiviriko, K. I., *Int. Rev. Connect. Tissue Res.* 5:93 (1970), and Weiss, P. H. and Klein, L., *J. Clin. Invest.* 48:1 (1969). Hydroxyproline is a good marker for osteoporosis, but it is troublesome to handle. It is specific for collagen in bones.

[0020] Hydroxylysine and its glycoside derivatives, both peculiar to collagenous proteins, have been considered to be more accurate than hydroxyproline as markers of collagen degradation. However, for the same reasons described above for hydroxyproline, hydroxylysine and its glycosides are probably equally non-specific markers of bone resorption; Krane, S. M. and Simon, L. S. *Develop. Biochem.* 22:185 (1981).

[0021] Other researchers have measured the cross-linking compound 3-hydroxypyridinium in urine as an index of collagen degradation in joint diseases. See, for background and as examples, Wu and Eyre, *Biochemistry* 23:1850 (1984); Black et al., *Annals of the Rheumatic Diseases* 48:641-644 (1989); Robins et al.; *Annals of the Rheumatic Diseases* 45:969-973 (1986); and Seibel et al., *The Journal of Dermatology* 16:964 (1989). In contrast to the present invention, these prior researchers have hydrolyzed peptides from body fluids and then looked for the presence of individual 3-hydroxypyridinium residues.

[0022] Assays for determination of the degradation of type I, II, and III collagen are disclosed in U.S. Pat. Nos. 4,973,666 and 5,140,103. However, both these patents are restricted to collagen fragments containing the cross-linker 3-hydroxypyridinium, whereas the present invention does not rely on the presence or absence of this particular cross-linking structure. Furthermore, the above-mentioned assays require tedious and complicated purifications from urine of collagen fragments containing 3-hydroxypyridinium to be used for the production of antibodies and for antigens in the assays.

[0023] At present very few clinical data using the approach described in U.S. Pat. Nos. 4,973,666 and 5,140,103 are available. Particularly, no data concerning the correlation between the urinary concentration (as determined by methods described in the above-mentioned patents) of 3-hydroxypyridinium containing telopeptides of type I collagen and the actual bone loss (as determined by repeated measurements by bone densitometry) are published. The presence of 3-hydroxypyridinium containing telopeptides in urine requires the proper formation in bone tissue of this specific cross-linking structure at various times before the bone resorbing process. Very little information on these processes is available and the present invention seeks to circumvent this dependence of the correct formation of the cross-linking structure. Furthermore, preliminary data indicate that in one embodiment of the present invention a major fraction of the molecules reactive in the assay has a molecular weight of more than 4,000 daltons. On the contrary, only molecules with a molecular weight below 2,000 daltons are identified in urine with the monoclonal antibody used in the assay; Hanson et al., *Journal of Bone and Mineral Research* 7:1251-1258 (1992). This demonstrates that the method according to the present invention has a very different profile of reactivities, i.e. it detects very different molecules, compared to methods described in the two above-mentioned U.S. patents.

[0024] None of the above researchers have reported specifically assaying a crosslinkable collagen fragment that is naturally produced in vivo upon collagen degradation, as in the present invention.

[0025] GB patent application No. 2,205,643 reports that the degradation of type III collagen in the body can be quantitatively determined by measuring the concentration of an N-terminal telopeptide from type III collagen in a body fluid. This method does not relate to methods employing antibodies reactive with specific, low molecular weight sequences around crosslinkable structures. Instead, the method uses antibodies generated to N-terminal telopeptides released by bacterial collagenase degradation of type III collagen, said telopeptides being labelled and used in the assay.

[0026] There are a number of reports indicating that collagen degradation can be measured by quantitating certain procollagen peptides. Propeptides are distinguished from telopeptides and alpha-helical region of the collagen core by their location in the procollagen molecule and the timing of their cleavage in vivo; see U.S. Pat. Nos. 4,504,587; 4,312,853; Pierard et al., *Analytical Biochemistry* 141:127-136 (1984); Niemela, *Clin. Chem.* 31/8:1301-1304 (1985); and Rohde et al., *European Journal of Clinical Investigation* 9:451-459 (1979).

[0027] U.S. Pat. No. 4,778,768 relates to a method of determining changes occurring in articular cartilage involving quantifying proteoglycan monomers or antigenic fragments thereof in a synovial fluid sample. This US patent does not relate to detecting collagen fragments derived from degraded collagen.

[0028] Dodge, *J. Clin. Invest.* 83:647-661 (1981) discloses methods for analyzing type II collagen degradation utilizing a polyclonal antiserum that specifically reacts with unwound alpha-chains and cyanogen bromide-derived peptides of human and bovine type II collagens. Contrary to the present invention the degradation products of collagen were not detected in a body fluid, but histochemically by staining of cell cultures, i.e. by "in situ" detection. The main difference between Dodge and the present invention is that Dodge measures type II collagen degradation in situ. By "in situ" is meant a determination carried out in the cells or tissue in which the degradation takes place. There is quite a fundamental difference between this determination and a method based upon tracing a marker in vitro, e.g. in the urine.

[0029] None of these references specify the structures of particular telopeptide or alpha-helical degradation products that could be measured to determine the amount of degraded fibrillar collagen in vivo.

SUMMARY OF THE INVENTION

[0030] The present invention is based on the discovery of the presence of particular collagen fragments in body fluids of patients and normal human subjects. The collagen fragments are generated upon collagen degradation and are partly characterized by the presence of potential sites for cross-linking, e.g. by the presence of lysine or hydroxylysine (Kühn, K., *Immunochimistry of the Extracellular Matrix* 1:1-29 (1982)). It is believed that a fraction of the collagen fragments measured by the assays embodied in the present invention are normally covalently linked in vivo to other peptide fragments through different, unidentified or already identified cross-links.

[0031] The method of the present invention may be used for determination of the degradation of human collagen of type I, II, and III.

[0032] The present invention provides a method of assessing the degradation of collagen based on a determination of the presence and quantity of a particular class of collagen fragments produced in vivo upon collagen degradation; and a comparison of the detected collagen fragments to those of a predetermined standard developed by measuring the same class of collagen fragments in normal individuals, i.e. individuals not afflicted with a disorder affecting collagen metabolism, said individuals being sex- and age-matched with the subjects being tested.

[0033] The present invention uses antibodies immunoreactive with synthetic peptides without these cross-linking structures. Accordingly, it is believed that collagen fragments (corresponding to the synthetic peptides) with or without actual cross-links, but with crosslinkable sites, are measured in the assays embodied in the present invention.

[0034] In a preferred embodiment, the method is based on the competitive binding of collagen fragments in body fluids and of synthetic peptides essentially derived from collagen to immunological binding partners.

[0035] The present invention provides new and very simple procedures for the detection (qualitative and quantitative) of collagen fragments generated upon collagen degradation.

[0036] For purposes of the present invention, as disclosed and claimed herein, the following terms are as defined below:

[0037] "Antibody": A monoclonal or polyclonal antibody or immunoreactive fragment thereof (i.e. capable of binding the same antigenic determinant), including—but not limited to—Fab, Fab', and F(ab')₂ fragments.

[0038] "Crosslinkable sites": loci in collagen telopeptide or helix amino acid sequences containing lysine or hydroxylysine residues which can form cross-links with telopeptides or helical amino acid sequences of other collagen molecules in vivo.

[0039] "Crosslinkable peptides": peptides containing a fragment of the collagen sequence including at least one crosslinkable site.

[0040] Test kit: A combination of reagents and instructions for use in conducting an assay.

[0041] "Essentially derived" (about structures): Structures with similar antigenicity, i.e. with an ability, above the level of a non-related peptide, to inhibit the binding of any of the mentioned synthetic peptides to an antibody immunoreactive with said synthetic peptide.

[0042] It is contemplated that the method may also be used for assaying collagen fragments in animal body fluids, e.g. for determination of the collagen metabolism. It also can be used during clinical testing of new drugs to assess the impact of these drugs on collagen metabolism.

[0043] More specifically, the present invention relates to methods for assaying collagen fragments by the use of synthetic peptides corresponding to the above-mentioned sequences of collagen. Generally, these synthetic peptides will have fewer amino acid residues than the entire collagen molecule, often they will have fewer than 10 amino acids. Also, the synthetic peptides, corresponding to molecules present in body fluids, e.g. urine, will have potential sites for cross-linking, preferably lysine or hydroxylysine, incorporated in the structure.

[0044] The present invention comprises the determination of collagen fragments by the use of antibodies which are immunoreactive with the above-mentioned synthetic peptides, said peptides each having a sequence derived from collagen fragments having crosslinkable sites.

[0045] The invention also includes cell lines (e.g. hybridomas) that produce monoclonal antibodies immunoreactive with the above-mentioned synthetic peptides. The invention further includes monoclonal antibodies produced by the fused cell hybrids, and those antibodies (as well as binding fragments thereof, e.g. Fab) coupled to a detectable marker. Examples of detectable markers include, but are not limited to, enzymes, chromophores, fluorophores, coenzymes, enzyme inhibitors, chemiluminescent materials, paramagnetic metals, spin labels and radioisotopes.

[0046] The methods of the invention involve quantitating in a body fluid the concentration of particular collagen fragments derived from collagen degradation. In a represen-

tative assay, collagen fragments in the patient's body fluid and a synthetic peptide immobilized on a solid surface are contacted with an immunological binding partner which is immunoreactive with the synthetic peptide. Suitable body fluids are e.g. human urine, blood, serum, plasma and synovial fluid. It is contemplated that the method may also be used e.g. on saliva and sweat. The body fluid may be used as it is, or it may be purified prior to the contacting step. This purification step may be accomplished using a number of standard procedures, including, but not limited to, cartridge adsorption and elution, molecular sieve chromatography, dialysis, ion exchange, alumina chromatography, hydroxyapatite chromatography, and combinations thereof.

[0047] The present invention is based on the discovery of simple procedures for quantitation of collagen fragments in body fluids. In a representative procedure, synthetic peptides containing potential sites for cross-linking, are used for the raising of antibodies and subsequently incorporated in the assay for quantitation of collagen fragments generated in vivo by collagen degradation.

[0048] The invention also includes test kits useful for quantitating in a body fluid the amount of collagen fragment derived from the degradation of collagen. The kits comprise at least one immunological binding partner, e.g. a monoclonal or polyclonal antibody specific for a peptide derived from the degradation of collagen. If desired, the immunological binding partner of the test kit may be coupled to detectable markers such as the ones described above.

[0049] The invention is described in more detail below. Reference is made to the appended drawings.

BRIEF DESCRIPTION OF THE DRAWINGS

[0050] FIGS. 1, 2 and 3 are typical standard curves for the $\alpha 1(I)C1$ immunoassay (FIG. 1), the $\alpha 1(I)N1$ immunoassay (FIG. 2) and the $\alpha 2(I)N1$ immunoassay (FIG. 3) to be described in more detail in the examples;

[0051] FIG. 4 shows the correlation between total pyridinolin (HPLC) and the $\alpha 1(I)C1$ immunoassay,

[0052] FIG. 5 shows the correlation between total pyridinolin (HPLC) and the $\alpha 1(I)N1$ immunoassay,

[0053] FIG. 6 shows the individual values of the measurement of $\alpha 1(I)C1$ peptide in urine samples from normal, age-matched women, and

[0054] FIG. 7 shows the individual values of the measurement of urine samples from women on a hormone replacement therapy and placebo in the $\alpha 1(I)C1$ immunoassay.

DETAILED DESCRIPTION AND BEST MODE OF CARRYING OUT THE INVENTION

[0055] In a preferred embodiment of the method according to the invention, the assaying of type I, II and III collagen fragments in urine is performed by an inhibition ELISA (enzyme linked immunosorbent assay) by metering off a sample of urine and contacting the sample with a synthetic peptide having a sequence derived from collagen and with an antibody, which is immunoreactive with the synthetic peptide. The synthetic peptide is immobilized on a solid support. The antibody is raised against the synthetic peptide.

[0056] The combined reagents and sample are incubated, and a peroxidase-conjugated (revealing) antibody is added. After another incubation, a peroxidase substrate solution is added. Following short final incubation, the enzyme reaction is stopped, and the absorbance is measured at 450 nm and compared with a standard curve obtained with standard solutions by the same procedure.

[0057] Synthetic peptides are used for the preparation of standards. The concentration of synthetic peptide in a stock solution of the relevant synthetic peptide is determined by quantitative amino acid determination. A two-fold dilution of the stock solution is prepared and subsequently used for the construction of the standard curve in the inhibition ELISA.

[0058] Preparation of Synthetic Peptides

[0059] The preparation of synthetic peptides may be performed according to procedures well known in the art, e.g. by solid-phase peptide synthesis techniques commonly described as "Merrifield synthesis". Also classical solution phase techniques may be used. Sequences of interest include potential sites for cross-linking (see for example Kühn, K., in *Immunochemistry of the Extracellular Matrix* 1:1-29 (1982), Eyre, D. R., *Ann. Rev. Biochem.* 53:717-48 (1984), or U.S. Pat. No. 5,140,103). Examples of such peptide sequences are given in table 1 below.

[0060] Regarding the synthetic peptides, it is possible to omit (or add) one or more amino acid residues from (or to) the crosslinkable site sequences without substantial loss of the ability to (a) raise antibodies recognizing the corresponding native collagen fragment or (b) inhibit the bindings of such antibodies to the native fragment. It is possible to use longer collagen fragments and/or chimeric peptides to raise the antibodies and, in principle, it is not necessary to use the same peptide as the immunogen and the competitor in the assay.

Table 1

[0061] Examples of Amino acid sequences with potential sites for cross-linking in various types of collagen to be used as a basis for synthetic peptides according to the present invention

[0062] Collagen type I

[0063] Potential sites in telopeptides: N C

[0064] $\alpha 1(I)$ N-term. Asp-Glu-Lys-Ser-Thr-Gly-Gly ($\alpha 1(I)N1$)

[0065] $\alpha 1(I)$ C-term. Glu-Lys-Ala-His-Asp-Gly-Gly-Arg ($\alpha 1(I)C1$)

[0066] $\alpha 2(I)$ N-term. Gln-Tyr-Asp-Gly-Lys-Gly-Val-Gly ($\alpha 2(I)N1$)

[0067] $\alpha 2(I)$ C-term. no potential sites

[0068] Potential sites in helix:

[0069] $\alpha 1(I)$ (near N) Gly-Met-Lys-Gly-His-Arg

[0070] $\alpha 1(I)$ (near C) Gly-Ile-Lys-Gly-His-Arg

[0071] $\alpha 2(I)$ (near N) Gly-Phe-Lys-Gly-Ile-Arg

[0072] $\alpha 2(I)$ (near C) Gly-Leu-Pro-Gly-Leu-Lys-Gly-His-Asn

[0073] Collagen Type II**[0074]** Potential sites in telopeptides: N C**[0075]** $\alpha 1$ (II) N-term. Pro-Gly-Pro-Lys-Gly-Glu Gly-Gln-Lys-Gly-Glu-Pro Gly-Asp-Ile-Lys-Asp-Ile-Val**[0076]** $\alpha 1$ (II) C-term. Glu-Lys-Gly-Pro-Asp**[0077]** Potential sites in helix:**[0078]** $\alpha 1$ (II) (near N) Gly-Val-Lys Pro-Gly-Val-Lys-Gly**[0079]** Collagen Type III**[0080]** Potential sites in telopeptides: N C**[0081]** $\alpha 1$ (III) N-term. Asp-Val-Lys-Ser-Gly-Val**[0082]** $\alpha 1$ (III) C-term. Glu-Lys-Ala-Gly-Gly-Phe-Ala**[0083]** Potential sites in helix:**[0084]** $\alpha 1$ (III) (near N) Gly-Phe-Pro-Gly-Met-Lys-Gly-His-Arg**[0085]** $\alpha 1$ (III) (near C) Gly-Ala-Ala-Gly-Ile-Lys-Gly-His-Arg**[0086]** Preparation of Antibodies

[0087] The methods for preparation of both monoclonal and polyclonal antibodies are well known in the art. For example, see Campbell, A. M., *Laboratory Techniques in Biochemistry and Molecular Biology*, Vol. 13 (1986). It is possible to produce antibodies to synthetic peptides by immunization. However, because of the relatively small molecular weight of these compounds it is preferred that the hapten be conjugated to a carrier molecule. Suitable carrier molecules include, but are not limited to, bovine serum albumin, thyroglobulin, ovalbumin, tetanus toxoid, and keyhole limpet hemocyanin. The preferred carrier is bovine serum albumin. To present the hapten in its most immunogenic form to the antibody producing cells of the immunized animal a number of alternative coupling protocols can be used. Suitable procedures include, but are not limited to, glutaraldehyde, carbodiimide, and periodate. Preferred binding agents are glutaraldehyde and carbodiimide.

[0088] The preparation of antibodies is carried out by conventional techniques including immunization with collagen fragments or synthetic peptides conjugated to a carrier. To improve the immunogenicity it is preferred that the immunogen be mixed with an adjuvant before injection. Examples of adjuvants include, but are not limited to, aluminum hydroxide, Freund's adjuvant, and immune-stimulating complexes (ISCOMs). ISCOMs can be made according to the method described by Morein, B. et al., *Nature* 308:457-460 (1984).

[0089] Either monoclonal or polyclonal antibodies to the hapten carrier molecule can be produced. For the production of monoclonal antibodies it is preferred that mice are immunized. Spleen cells from the immunized mouse are harvested, homogenized, and thereafter fused with cancer cells in the presence of polyethylene glycol to produce a cell hybrid which produces monoclonal antibodies specific for peptide fragments derived from collagen. Suitable cancer cells include, but are not limited to, myeloma, hepatoma,

carcinoma, and sarcoma cells. Detailed descriptions of the production of monoclonal antibodies are provided in Goding, J. W., in *Monoclonal Antibodies: Principles and Practice*, (1986). A preferred preliminary screening protocol comprises the use of synthetic peptides conjugated to a carrier and coated onto the solid surface of a microtitre plate.

[0090] For the preparation of polyclonal antibodies, which are reactive with peptide fragments derived from collagen, different animal species can be immunized. Suitable species include, but are not limited to, chicken, rabbit and goat. Chicken and rabbit are preferred.

[0091] Antibody fragments are prepared by methods known in the art (see E. Ishikawa, *J. of Immunoassay* 3:209-327, 1983).

[0092] Conduct of Immunoassays

[0093] Accordingly, by utilization of an immunoassay with the antibodies prepared as above it is possible to assay a biological fluid sample without prior fractionation or hydrolysis. The specificity for the desired collagen in the biological fluid is supplied by the antibody in combination with the use of a synthetic peptide (against which the antibody was raised or in any event with which the antibody is immunochemically reactive) in the assay construction.

[0094] The immunoassays themselves are conducted using any procedure selected from the variety of standard assay protocols generally known in the art. As it is generally understood, the assay is constructed so as to rely on the interaction between the specific immunological binding partner and the desired analyte for specificity and to utilize some means to detect the complex formed by the analyte and the immunological binding partner. The immunological binding partner may be complexed to a solid support and used as a capture immunological binding partner for the analyte. This protocol may be run in a direct form, wherein the formation of analyte/immunological binding partner complex is detected, e.g. by a fluorescent, radioactive or enzymatic label, or it may be run in a competitive format wherein a labelled standard competes with the analyte for the immunological binding partner. The format may also be constructed as an agglutination assay or the complex may be precipitated by addition of a suitable precipitant to the reaction mixture. The specific design of the immunoassay protocol is open to a wide variety of choice, and the number of clinical assay devices and protocols available in the art is multitudinous. For a variety of such protocols, see U.S. Pat. No. 5,001,225.

[0095] The antibodies and revealing reagents for the conduct of an immunoassay using standard detection protocols, for example radioisotope labelling, fluorescent labelling or ELISA, either in a direct or competitive format, may conveniently be supplied as kits which include the necessary components and instructions for the assay. In one embodiment of the invention such a kit includes a microtiter plate coated with a relevant synthetic peptide, standard solutions for preparation of standard curve, a urine control for quality testing of the analytical run, rabbit antibodies reactive with the above-mentioned synthetic peptide, anti-rabbit immunoglobulins conjugated to peroxidase, a substrate solution, a stopping solution, a washing buffer and an instruction manual.

[0096] Since immunoassays can be constructed using antibodies and specific synthetic peptides, the ratios of the

corresponding collagen fragment sequences in an appropriate biological fluid can be determined as well as their individual levels and their total. Thus, the assay can be designed to include antibodies which will result in determination of several native peptide sequences or determination of a single peptide sequence, or any desired combination thereof.

[0097] In addition to the use of the herein specified peptides as indicators of bone resorption, bone metabolic balance is advantageously determined by the substantially simultaneous determination of a marker of the formation of bone in the same or other appropriate biological fluid from the same individual. "Substantially simultaneous" means the same day, preferably within 4 hours. For example such markers include osteocalcin (also known as bone GLA protein of BGP), procollagen type I, bone alkaline phosphatase and total alkaline phosphatase. Suitable methods for the determination of these markers can be found, for example, in Delmas, P. D., et al., *J. Bone Min. Res.* 1:333-337 (1986).

[0098] The assay of the present invention which provides an index to determination of the metabolic status of tissues, which generate collagen-derived peptides when degradation occurs, are useful in a variety of contexts. First, when considering the degradation of type I collagen, the assays are methods to assess an abnormal condition of a subject by indicating, for example, excessive bone resorption. This may show the presence of an osteoporotic condition or the metastatic progress of a malignancy. Other conditions characterized by excessive bone resorption include Paget's disease and hyperparathyroidism. Likewise, a number of other disease states involving connective tissue may be monitored by determination of the degradation of collagen. Examples are collagen type II degradation associated with rheumatoid arthritis and osteoarthritis and collagen type III degradation in vasculitis syndrome. Since the condition of the subject can be monitored continuously, application of these assays can also be used to monitor the progress of therapy administered to treat these or other conditions. Further, the assays can be used as a measure of toxicity, since the administration of toxic substances often results in tissue degradation.

[0099] Thus the assays may be applied in any situation wherein the metabolic condition of collagen tissues can be used as an index of the condition, treatment, or effect of substances directly administered to the subject or to which the subject is exposed in the environment.

[0100] The following examples are intended to illustrate, but not to limit the invention.

EXAMPLE 1

[0101] Immunoassays for Specific Peptide Sequences in Urine

[0102] Three peptides ($\alpha 1(I)C1$, $\alpha 1(I)N1$, and $\alpha 2(I)N1$) (see Table 1, p. 13) prepared by solid-phase techniques are used for the preparation of immunogens. For immunization, the peptides are covalently attached to bovine serum albumin using glutaraldehyde reagents and methods well known in the art. Both monoclonal and polyclonal antibodies are raised against the peptides. For production of monoclonal antibodies, Balb/c mice are immunized with peptide-BSA conjugates, and hybridoma cell lines are prepared using

standard techniques after fusion of cells from the spleen or lymph nodes with Ag8 myeloma cells. Polyclonal antibodies are raised in rabbits and chicken. Screening of both antisera and hybridoma cell media were performed by ELISA using microtiter plates coated with the appropriate peptide-gelatin conjugate prepared using carbodiimide reagents and methods well known in the art.

[0103] Assays for three of the peptide sequences ($\alpha 1(I)C1$, $\alpha 1(I)N1$, and $\alpha 2(I)N1$) in urine are performed by an inhibition ELISA as follows:

[0104] Urine samples (10 or 25 l) possibly containing collagen fragments or solutions containing 0.05-15 g peptide/ml as reference standards, respectively, are added to 75 l of immunological binding partners for the peptides diluted 1:5,000-1:20,000 in phosphate buffered saline containing 0.1% Tween-20 detergent (PBS-T) and including 0.1% (w/v) of BSA. Each sample is prepared in duplicate in flat-bottomed, 96-well microtiter plates previously coated with gelatine conjugate containing the appropriate peptide. After 60 minutes, the plates are washed with PBS-T (3 times) and the bound antibodies are detected by standard techniques with a horse radish peroxidase labelled antibody prepared against the species of the primary antibody. Peroxidase substrate is added and the color development is measured at 450 nm in an automated microtiter plate reader after stopping the enzyme reaction using 1 M H_3PO_4 . Samples containing the analyte decrease the binding of primary antibody to the immobilized peptide in the plate and thus have a reduced color concentration. The amount of analyte in the sample is quantified with reference to previously established curves from standards included on each plate computed using log-lin plots. FIGS. 1, 2 and 3 show typical standard curves for the $\alpha 1(I)C1$ immunoassay (FIG. 1), $\alpha 1(I)N1$ immunoassay (FIG. 2), and $\alpha 2(I)N1$ immunoassay (FIG. 3).

EXAMPLE 2

[0105] Correlation to Pyridinolin Determination on HPLC

[0106] On a number of unselected urine samples the concentration of total pyridinolin (HPLC method, see for example Uebelhart, D., *Bone and Mineral* 8:87-96 (1990)) was measured. Values obtained in this HPLC system were correlated to the values obtained in two immunoassays ($\alpha 1(I)C1$ peptide and $\alpha 1(I)N1$ peptide).

[0107] FIG. 4 shows the correlation between total pyridinolin (HPLC) and $\alpha 1(I)C1$ immunoassay (n=59). The correlation calculated by linear regression analysis is $r=0.80$.

[0108] FIG. 5 shows the correlation between total pyridinolin (HPLC) and $\alpha 1(I)N1$ immunoassay (n=36). The correlation calculated by linear regression analysis is $r=0.95$.

EXAMPLE 3

[0109] Clinical Results

[0110] The immunoassay procedure (using the $\alpha 1(I)C1$ peptide) set forth in Example 1 was applied to urine samples from different individuals, and the amount of analyte was quantitated. The values obtained were related to the level of urinary creatinine in the urine sample as is commonly done for urine assays. The values obtained for normal, age-matched women (premenopausal and postmenopausal) are shown in Table 2.

TABLE 2

Measurement of $\alpha 1(I)C1$ peptide in urine samples from normal, age-matched women (premenopausal and postmenopausal)	
Group	$\alpha 1(T)C1$ peptide (g/mol creatinine)
Premenopausal (n = 104)	0.263 \pm 0.143
Postmenopausal (n = 180)	0.426 \pm 0.190

[0111] For individual values see FIG. 6.

[0112] The difference between the premenopausal and the post-menopausal values is highly significant (P<0.0001).

[0113] The z-score of a quantitative test procedure shows the ability of the procedure to distinguish between two populations. Table 3 below shows the z-score of the IC1 immunoassay and the state of the art measurement of pyridinolin on HPLC when applied to the same set of urine samples from normal, age-matched premenopausal (n=104) and postmenopausal women (n=180).

TABLE 3

Z-scores obtained for two different test procedures (total pyridinolin (HPLC) and $\alpha 1(I)C1$ immunoassay) when applied to urine samples from normal, age-matched women (premenopausal and postmenopausal)	
Test procedure	Z-score
$\alpha 1(I)C1$ immunoassay	1.14
Total pyridinolin (HPLC)	1.25

[0114] As can be seen from Table 3, the abilities of the two methods to distinguish between patient populations are approximately alike.

[0115] For an assay to be used as an index of bone resorption it is very important to be able to measure the impact of a hormone replacement therapy (HRT). Table 4 shows the results from the $\alpha 1(I)C1$ immunoassay in such a study.

TABLE 4

Measurement of urine samples from women on a hormone replacement therapy and placebo in the $\alpha 1(I)C1$ immunoassay. Values given as percent of t = 0		
Group	$\alpha 1(I)C1$ peptide t = 0	(μ g/mol creatinine) t = 12 months
HRT (n = 92)	0.457 \pm 0.176	0.176 \pm 0.103
Placebo (n = 45)	0.459 \pm 0.209	0.402 \pm 0.187

[0116] For individual values see FIG. 7.

[0117] A highly significant drop in the group receiving HRT is seen after 12 months (P<0.001).

[0118] All cited patents, patent applications and literature are incorporated by reference in their entirety. In case of conflict, however, the present disclosure controls.

[0119] The invention has been described above by reference to specific embodiments It will be apparent to those skilled in the art, however, that many additions, deletions and modifications are possible without departing from the spirit of the invention as claimed below.

[0120] Collagen alpha 1(I) chain precursor—Human (fragments) Homo sapiens (man) Number of residues=1341

```

1      M F S F V D L R L L L L L A A T A L L T H G Q E E G Q V E G
5
10
15
20
25
30
31     Q D E D I P P I T C V Q N G L R Y H D R D V W K P E P C Q I
61     C V C D N G K V L C D D V I C D E T K N C P G A E V P E G E
91     C C P V C P D G S E S P T D Q E T T G V E G P K G D T G P R
121    G P R G P A G P P G R D G I P G Q P G L P G P P G P P G P P
151    G P P G L G G N F A P Q L S Y G Y D E K S T G G I S V P G P
181    M(G P S G P R G L P G P P G A P G P Z G F Z G P P G Z P G Z
211    P G A S G P)M(G P R G P P G P P G K B G B B G Z A G K P G R
241    P G Z R G P P G P Z G A R G L P G T A G L P)G M K G H R(G F
271    S G L B G A K G B A G P A G P K G Z P G S P G Z B G A P G Z)
301    M\G P P G P K G N S G E P G A P G S K G D T G A K G E P G P
331    V G V Q G P P G P A G E E G K R G A R G E P G P T G L P G P
361    P G E R G G P G S R G F P G A D G V A G P K G P A G E R G S
391    P G P A G P K G S P G E A G R P G E A G L P G A K G L T G S
421    P G S P G P D G K T G P P G P A G Q D G R P G P P G P P G A
    
```

-continued

451 R G Q A G V M G F P G P K G A A G E P G K A G E R G V P G P
 481 P G A V G P A G K D G E A G A Q G P P G P A G P A G E R G E
 511 Q G P A G S P G F Q G L P G P A G P P G E A G K P G E Q G V
 541 P G D L G A P G P S G A R G E R G F P G E R G V Q G P P G P
 571 A G P R G A N G A P G N D G A K G D A G A P G A P G S Q G A
 601 P G L Q G M P G E R G A A G L P G P K G D R G D A G P K G A
 631 D G S P G K D G V R G L T G P I G P P G P A G A P G D K G E
 661 S G P S G P A G P T G A R G A P G D R G E P G P P G P A G F
 691 A G P P G A D G Q P G A K G E P G D A G A K G D A G P P G P
 721 A G P A G P P G P I G N V G A P G A K G A R G S A G P P G A
 751 T G F P G A A G R V G P P G P S G N A G P P G P P G P A G K
 781 E G G K G P R G E T G P A G R P G E V G P P G P P G P A G E
 811 K G S P G A D G P A G A P G T P G P Q G I A G Q R G V V G L
 841 P G Q R G E R G F P G L P G P S G E P G K Q G P S G A S G E
 871 R G P P G P M G P P G L A G P P G E S G R E G A P G A E G S
 901 P G R D G S P G A K G D R G E T G P A G P P G A X G A X G A
 931 P G P V G P A G K S G D R G E T G P A G P A G P V G P A G A
 961 R G P A G P Q G P R G D K G E T G E Q G D R G I K G H R G F
 991 S G L Q G P P G P P G S P G E Q G P S G A S G P A G P R G P
 1021 P G S A G A P G K D G L N G L P G P I G P P G P R G R T G D
 1051 A G P V G P P G P P G P P G P P S A G F D F S F L P Q
 1081 P P Q E K A H D G G R Y Y R A D D A N V V R D R D L E V D T
 1111 T L K S L S Q Q I E N I R S P E G X R K N P A R T C R D L K
 1141 M C H S D W K S G E Y W I D P N Q G C N L D A I K V F C N M
 1171 E T G E T C V Y P T Q P S V A Q K N W Y I S K N P K D K R H
 1201 V W F G E S M T D G F Q F E Y G G Q G S D P A D V A I Q L T
 1231 F L R L M S T E A S Q N I T Y H C K N S V A Y M D Q Q T G N
 1261 L K K A L L L X G S N E I E I R A E G N S R F T Y S V T V D
 1291 G C T S H T G A W G K T V I E Y K T T K S S R L P I I D V A
 1321 P L D V G A P D Q E F G F D V G P V C F L

[0121] Sequence of collagen alpha 1(I) chain precursor prepared from:

[0122] Chu, M. L., de Wet, W., Bernard, M., Ding, J. F., Morabito, M., Myers, J., Williams, C., and Ramirez, F., Nature 310, 337-340, 1984 (Human, sequence of residues 1-181 translated from the DNA sequence)

[0123] Click, E. M., and Bornstein, P., Biochemistry 9, 4699-4706, 1970 (Human skin, CNBr0-1, CNBr2, CNBr4, CNBr5, partial sequence of residues 162-301)

[0124] Morgan, P. H., Jacobs, H. G., Segrest, J. P., and Cunningham, L. W., J. Biol. Chem. 245, 5042-5048, 1970 (Human skin, sequence of residues 263-268)

[0125] Bernard, M. P., Chu, M. L., Myers, J. C., Ramirez, F., Eikenberry, E. F., and Prockop, D. J., Biochemistry 22, 5213-5223, 1983 (Sequence of residues 302-1341 translated from the mRNA sequence)

[0126] Procollagen alpha 2(I) chain precursor Homo sapiens (man) Number of residues=1366

1 M L S F V D T R T L L L L A V T L C L A T C Q S L Q E E T V
5 10 15 20 25 30
31 R K G P A G D R G P R G E R G P P G P P G R D G E D G P T G
61 P P G P P G P P G P P G L G G N F A A Q Y D G K G V G L G P
91 G P M G L M G P R G P P G A A G A P G P Q G F Q G P A G E P
121 G E P G Q T G P A G A R G P A G P P G K A G E D G H P G K P
151 G R P G E R G V V G P Q G A R G F P G T P G L P G F K G I R
181 G H N G L D G L K G Q P G A P G V K G E P G A P G E N G T P
211 G Q T G A R G L P G E R G R V G A P G P A G A R G S D G S V
241 G P V G P A G P N G S A G P P G F P G A P G P K G E I G A V
271 G N A G P T G P A G P R G E V G L P G L S G P V G P P G N P
301 G A N G L T G A K G A A G L P G V A G A P G L P G P R G I P
331 G P P G A A G T T G A R G L V G E P G P A G S K G E S G N K
361 G E P G S A G P Q G P P G P S G E E G K R G P N G E A G S A
391 G P P G P P G L R G S P G S R G L P G A D G R A G V M G P P
421 G S R G A S G P A G V R G P N G D A G R P G E P G L M G P R
451 G L P G S P G N I G P A G K E G P V G L P G I D G R P G P I
481 G P V G A R G E P G N I G F P G P K G P T G D P G K N G D K
511 G H A G L A G A R G A P G P D G N N G A Q G P P G P Q G V Q
541 G G K G E Q G P A G P P G F Q G L P G P S G P A G E V G K P
571 G E R G L H G E F G L P G P A G P R G E R G P P G E S G A A
601 G P T G P I G S R G P S G P P G P D G N K G E P G V V G A V
631 G T A G P S G P S G L P G E R G A A G I P G G K G E K G E P
661 G L R G E I G N P G R D G A R G A H G A V G A P G P A G A T
691 G D R G E A G A A G P A G P A G P R G S P G E R G E V G P A
721 G P N G F A G P A G A A G Q P G A K G E R G G K G P K G E N
751 G V V G P T G P V G A A G P A G P N G P P G P A G S R G D G
781 G P P G M T G F P G A A G R T G P P G P S G I S G P P G P P
811 G P A G K E G L R G P R G D Q G P V G R T G E V G A V G P P
841 G F A G E K G P S G E A G T A G P P G T P G P Q G L L G A P
871 G I L G L P G S R G E R G L P G V A G A V G E P G P L G I A
901 G P P G A R G P P G A V G S P G V N G A P G E A G R D G N P
931 G N D G P P G R D G Q P G H K G E R G Y P G N I G P V G A A
961 G A P G P H G P V G P A G K H G N R G E T G P S G P V G P A
991 G A V G P R G P S G P Q G I R G D K G E P G E K G P R G L P
1021 G F K G H N G L Q G L P G I A G H H G D Q G A P G S V G P A
1051 G P R G P A G P S G P A G K D G R T G H P G T V G P A G I R
1081 G P Q G H Q G P A G P P G P P G P P G P P G V S G G G Y D F
1111 G Y D G D F Y R A D Q P R S A P S L R P K D Y E V D A T L K

-continued

1141 S L N N Q I E T L L T P E G S R K N P A R T C R D L R L S H
 1171 P E W S S G Y Y W I D P N Q G C T M E A I K V Y C D F P T G
 1201 E T C I R A Q P E N I P A K N W Y R S S K D K K H V W L G E
 1231 T I N A G S Q F E Y N V E G V T S K E M A T Q L A F M R L L
 1261 A N Y A S Q N I T Y H C K N S I A Y M D E E T G N L K K A V
 1291 I L Q G S N D V E L V A E G N S R F T Y T V L V D G C S K K
 1321 T N E W G K T I I E Y K T N K P S R L P F L D I A P L D I G
 1351 G A D H E F F V D I G P V C F K

[0127] Sequence of procollagen alpha 2(I) chain precursor prepared from:

lated from the mRNA sequence) Title: Organization of the human pro-alpha-2(I) collagen gene.

[0128] de Wet, W., Bernard, M., Benson-Chanda, V., Chu, M. L., Dickson, L., Weil, D., and Ramirez, F., J. Biol. Chem. 262, 16032-16036, 1987 (Sequence trans-

[0129] Collagen alpha 1(II) chain precursor Homo sapiens (man) Number of residues=1418

1 M I R L G A P Q S L V L L T L L V A A V L R C Q G Q D V R Q P G P K G Q K G E P G D I K D I V G P K
 51 G P P G P Q G P A G E Q G P R G D R G D K G E K G A P G P R G R D G E P G T L G N P G P P G P P G P
 101 P G P P L G G N F A A Q M A G G F D E K A G G A Q L G V M Q G P M G M G P R G P P G P A G A P G
 151 P Q G F Q G N P G E P G E P G V S G P M G P R G P P G P P G K P G D D G E A G K P G K A G E R G P P
 201 G P Q G A R G F P G T P G L P G V K G H R G Y P G L D G A K G E A G A P G V K G E S G S P G E N G S
 251 P G P M G P R G L P G E R G R T G P A G A A G A R G N D G Q P G P A G P P G P V G P A G G P G F P G
 301 A P G A K G E A G P T G A R G P E G A Q G P R G E P G T P G S P G P A G A S G N P G T D G I P G A K
 351 G S A G A P G I A G A P G F P P R G P P D P Q G A T G P L G P K G Q T G K P G I A G F K G E Q G P
 401 K G E P G P A G P Q G A P G A G E E G K R G A R G E P G G V G P I G P P G E R G A P G N R G F P G
 451 Q D G L A G P K G A P G E R G P S G L A G P K G A N G D P G R P G E P G L P G A R G L T G R P G D A
 501 G E Q G K V G P S G A P G E D G R P G P P G P Q G A R G Q P G V M G F P G P K G A N G E P G K A G E
 551 K G L P G A P G L R G L P G K D G E T G A E G P P G P A G P A G E R G E Q G A P G P S G F Q G L P G
 601 P P G P P G E G G K P G D Q G V P G E A G A P G L V G P R G E R G F P G E R G S P G A Q G L Q G P R
 651 G L P G T P G T D G P K G A S G P A G P P G A Q G P P G L Q G M P G E R G A A G I A G P K G R G D
 701 V G E K G P E G A P G K D G G R G L T G P I G P P G P A G A N G E K G E V G P P G P A G S A G A R G
 751 A P G E R G E T G P P G T S G I A G P P G A D G Q P G A K G E Q G E A G Q K G D A G A P G P Q G P S
 801 G A P G P Q G P T G V T G P K G A R G A Q G P P G A T G F P G A A G R V G P P G S N G N P G P P G P
 851 P G P S G K D G P K G A R G D S G P P G R A G E P G L Q G P A G P P G E K G E P G D D G P S G A E G
 901 P P G P Q G L A G Q R G I V G L P G Q R G E R G F P G L P G P S G E P G Q Q G A P G A S G D R G P P
 951 G P V G P P G L T G P A G E P G R E G S P G A D G P P G R D G A A G V K G D R G E T G A V G A P G A
 1001 P G P P G S P G P A G P T G K Q G D R G E A G A Q G P M G P S G P A G A R G I Q G P Q G P R G D K G
 1051 E A G E P G E R G L K G H R G F T G L Q G L P G P P G P S G D Q G A S G P A G P S G P R G P P G P V
 1101 G P S G K D G A N G I P G P I G P P G P R G R S G E T G P A G P P G N P G P P G P P G P P G I D
 1151 M S A F A G L G P R E K G P D P L Q Y M R A D Q A A G G L R Q H D A E V D A T L K S L N N Q I E S I
 1201 R S P E G S R K N P A R T C R D L K L C H P E W K S G D Y W I D P N Q G C T L D A M K V F C N M E T

-continued

1251 GETCVYPNPA NVPKKNWSS KSKEKKHIWF GETINGGFHF SYGDDNLAPN
 1301 TANVQMTFLR LLSTEGSQNI THYCKNSIAY LDEAAGNLKK ALLIQGSNDV
 1351 EIRAEGNSRF TYTALKDGCT KHTGKWGKTIV IEYRSQKTSR LPIIDIAPMD
 1401 IGGPEQEFQV DIGVCFL

[0130] Sequence of collagen alpha 1(II) chain precursor prepared from:

[0131] Su, M. W., Lee, B., Ramirez, F., Machado, M., and Horton, W. Nucleic Acids Res 17, 9473, 1989 Nucleotide sequence of the full length cDNA encoding for human type II procollagen.

[0132] Baldwin, C. T., Reginato, A. M., Smith, C., Jimenez, S. A., and Prockop, D. J., Biochem. J. 262, 521-528, 1989 Structure of cDNA clones coding for human type II procollagen The alpha-1(II) chain is more similar to the alpha-1(I) chain than two other alpha chains of fibrillar collagens.

[0133] Ala-Kokko, L., Baldwin, C. T., Moskowitz, R. W., and Prockop, D. J. Proc. Natl. Acad. Sci. U.S.A. 87, 6565-6568, 1990 Single base mutation in the type II procollagen gene (COL2A1) as a cause of primary osteoarthritis associated with a mild chondrodysplasia.

[0134] Ramirez, F. submitted to the EMBL Data Library, December 1988 Reference number: S04892

[0135] Vikkula, M., and Peltonen, L. FEBS Lett. 250, 171-174, 1989 Structural analyses of the polymorphic area in type II collagen gene.

[0136] Collagen alpha 1(III) chain precursor Homo sapiens (man) Number of residues=1078

	5	10	15	20	25	30
1	\Q N Y S P Q Y D S Y D V K S G G V A V G G L A G Y P G P A G					
31	P P G P P G P P G T S G H P G S P G S P G Y Q G P P G E P G					
61	Q A G P S G P P G P P G A I G P S G P A G K D G E S G R P C					
91	R P G D R G L P G P P G I K G P A G I P G F P G M K G H R G					
121	F D G R N G E K G E T G A P G L K G E N G L P G E N G A P G					
151	P M G P R G A P G E R G R P G L P G A A G A R G N D G A R G					
181	S D G Q P G P P G P P G T A G F P G S P G A K G E F G P A G					
211	S P G S N G A P G Q R G E P G P Q G H A G A Q G P P G P P G					
241	I N G S P G G K G E M G P A G I P G A P G L M G A R G P P G					
271	P A G A N G A P G L R G G A G E P G K N G A K G E P G P R G					
301	E R G E A G I P G V P G A K G E D G K D G S P G D P G A N G					
331	L P G A A G E R G A L G S R G P A G P N G I P G E K G P A G					
361	E R G A P G P A G P R G A A G E P G R D G V P G G P G M R G					
391	M P G S P G G P G S D G K P G P P G S Q G E S G R P G P P G					
421	P S G P R G Q P G V M G F P G P K G N D G A P G K N G E R G					
451	G P G G P G P Q G P P G K N G E Y G P Q G P P G P T G P G P					
481	D K G D T G P R G P Q G L Q G L P G T G G P P G E N G K P G					
511	E P G P K G E A G A P G A P G G K G D A G A P G E R G P P G					
541	L A G A P G L R G G A G P P G P E G G K G A A G P P G P P G					
571	A A G T P G L Q G M P G E R G G L G S P G P K G D K G E P G					
601	G P G A D G V P G K D G P R G P T G P I G P P G P A G Q P G					
631	D K G E G G A P G L P G I A G P R G S P G E R G E T G P P G					
661	P A G F P G A P G Q N G E P G G K G E R G A P G E K G E G G					

-continued

691 P P G V A G P P G G S G P A G P P G P Q G V K G E R G S P G
721 G P G A A G F P G A R G L P G P P G S N G N P G P P G P S G
751 S P G K D G P P G P A G N T G A P G S P G V S G P K G D A G
781 Q P G E K G S P G A Q G P P G A P G P L G I A G I T G A R G
811 L A G P P G M P G P R G S P G P Q G V K G E S G K P G A N G
841 L S G E R G P P G P Q G L P G L A G T A G E P G R D G N P G
871 S D G L P G R D G S P G G K G D R G E N G S P G A P G A P G
901 H P G P P G P V G P A G K S G D R G E S G P A G P A G A P G
931 P A G S R G A P G P Q G P R G D K G E T G E R G A A G I K G
961 H R G F P G N P G A P G S P G P A G Q Q G A I G S P G P A G
991 P R G P V G P S G P P G K D G T S G H P G P I G P P G P R G
1021 N R G E R G S E G S P G H P G Q S G P P G P P G A P G P C C
1051 G G V G A P A I A G I G A E K A G G F A P Y Y G D E P M\

[0137] Sequence of collagen alpha 1(III) chain precursor prepared from:

[0138] Janeczko, R. A., and Ramirez, F., *Nucleic Acids Res.* 17, 6742, 1989 Nucleotide and amino acid sequences of the entire human alpha-1 (III) collagen.

 SEQUENCE LISTING

(1) GENERAL INFORMATION:

(iii) NUMBER OF SEQUENCES: 21

(2) INFORMATION FOR SEQ ID NO: 1:

(i) SEQUENCE CHARACTERISTICS:

(A) LENGTH: 7 amino acids
 (B) TYPE: amino acid
 (D) TOPOLOGY: linear

(ii) MOLECULE TYPE: peptide

(v) FRAGMENT TYPE: N-terminal

(vi) ORIGINAL SOURCE:

(A) ORGANISM: Homo sapiens

(vii) IMMEDIATE SOURCE:

(B) CLONE: COLLAGEN TYPE I-alpha 1 -N term

(xi) SEQUENCE DESCRIPTION: SEQ ID NO: 1:

Asp Glu Lys Ser Thr Gly Gly
 1 5

(2) INFORMATION FOR SEQ ID NO: 2:

(i) SEQUENCE CHARACTERISTICS:

(A) LENGTH: 8 amino acids
 (B) TYPE: amino acid
 (D) TOPOLOGY: linear

(ii) MOLECULE TYPE: peptide

-continued

(v) FRAGMENT TYPE: C-terminal

(vi) ORIGINAL SOURCE:

(A) ORGANISM: Homo sapiens

(vii) IMMEDIATE SOURCE:

(B) CLONE: COLLAGEN TYPE I -ALPHA 1- c TERMINAL

(xi) SEQUENCE DESCRIPTION: SEQ ID NO: 2:

Glu Lys Ala His Asp Gly Gly Arg

1 5

(2) INFORMATION FOR SEQ ID NO: 3:

(i) SEQUENCE CHARACTERISTICS:

(A) LENGTH: 8 amino acids

(B) TYPE: amino acid

(D) TOPOLOGY: linear

(ii) MOLECULE TYPE: peptide

(v) FRAGMENT TYPE: N-terminal

(vi) ORIGINAL SOURCE:

(A) ORGANISM: Homo sapiens

(vii) IMMEDIATE SOURCE:

(B) CLONE: COLLAGEN TYPE I - ALPHA 2- N TERMINAL

(xi) SEQUENCE DESCRIPTION: SEQ ID NO: 3:

Gln Tyr Asp Gly Lys Gly Val Gly

1 5

(2) INFORMATION FOR SEQ ID NO: 4:

(i) SEQUENCE CHARACTERISTICS:

(A) LENGTH: 6 amino acids

(B) TYPE: amino acid

(D) TOPOLOGY: linear

(ii) MOLECULE TYPE: peptide

(v) FRAGMENT TYPE: internal

(vi) ORIGINAL SOURCE:

(A) ORGANISM: Homo sapiens

(vii) IMMEDIATE SOURCE:

(B) CLONE: COLLAGEN TYPE I -ALPHA 1- NEAR N

(xi) SEQUENCE DESCRIPTION: SEQ ID NO: 4:

Gly Met Lys Gly His Arg

1 5

(2) INFORMATION FOR SEQ ID NO: 5:

(i) SEQUENCE CHARACTERISTICS:

(A) LENGTH: 6 amino acids

(B) TYPE: amino acid

(D) TOPOLOGY: linear

(ii) MOLECULE TYPE: peptide

(v) FRAGMENT TYPE: C-terminal

(vi) ORIGINAL SOURCE:

(A) ORGANISM: Homo sapiens

(vii) IMMEDIATE SOURCE:

-continued

- (ii) MOLECULE TYPE: peptide
- (v) FRAGMENT TYPE: internal
- (vi) ORIGINAL SOURCE:
 - (A) ORGANISM: Homo sapiens
- (vii) IMMEDIATE SOURCE:
 - (B) CLONE: COLLAGEN TYPE II - ALPHA 1 - NEAR N
- (xi) SEQUENCE DESCRIPTION: SEQ ID NO: 12:

Gly Val Lys

1

(2) INFORMATION FOR SEQ ID NO: 13:

- (i) SEQUENCE CHARACTERISTICS:
 - (A) LENGTH: 5 amino acids
 - (B) TYPE: amino acid
 - (D) TOPOLOGY: linear
- (ii) MOLECULE TYPE: peptide
- (v) FRAGMENT TYPE: internal
- (vi) ORIGINAL SOURCE:
 - (A) ORGANISM: Homo sapiens
- (vii) IMMEDIATE SOURCE:
 - (B) CLONE: COLLAGEN TYPE II - ALPHA 1 - NEAR N2
- (xi) SEQUENCE DESCRIPTION: SEQ ID NO: 13:

Pro Gly Val Lys Gly

1

5

(2) INFORMATION FOR SEQ ID NO: 14:

- (i) SEQUENCE CHARACTERISTICS:
 - (A) LENGTH: 6 amino acids
 - (B) TYPE: amino acid
 - (D) TOPOLOGY: linear
- (ii) MOLECULE TYPE: peptide
- (v) FRAGMENT TYPE: N-terminal
- (vi) ORIGINAL SOURCE:
 - (A) ORGANISM: Homo sapiens
- (vii) IMMEDIATE SOURCE:
 - (B) CLONE: COLLAGEN TYPE III -ALPHA 1 - N TERM
- (xi) SEQUENCE DESCRIPTION: SEQ ID NO: 14:

Asp Val Lys Ser Gly Val

1

5

(2) INFORMATION FOR SEQ ID NO: 15:

- (i) SEQUENCE CHARACTERISTICS:
 - (A) LENGTH: 7 amino acids
 - (B) TYPE: amino acid
 - (D) TOPOLOGY: linear
- (ii) MOLECULE TYPE: peptide
- (v) FRAGMENT TYPE: C-terminal
- (vi) ORIGINAL SOURCE:
 - (A) ORGANISM: Homo sapiens

-continued

(vii) IMMEDIATE SOURCE:
 (B) CLONE: COLLAGEN TYPE III - ALPHA 1 - C TERM

(xi) SEQUENCE DESCRIPTION: SEQ ID NO: 15:

Glu Lys Ala Gly Gly Phe Ala
 1 5

(2) INFORMATION FOR SEQ ID NO: 16:

(i) SEQUENCE CHARACTERISTICS:
 (A) LENGTH: 9 amino acids
 (B) TYPE: amino acid
 (D) TOPOLOGY: linear

(ii) MOLECULE TYPE: peptide

(v) FRAGMENT TYPE: internal

(vi) ORIGINAL SOURCE:
 (A) ORGANISM: Homo sapiens

(vii) IMMEDIATE SOURCE:
 (B) CLONE: COLLAGEN TYPE III - ALPHA 1 - NEAR N

(xi) SEQUENCE DESCRIPTION: SEQ ID NO: 16:

Gly Phe Pro Gly Met Lys Gly His Arg
 1 5

(2) INFORMATION FOR SEQ ID NO: 17:

(i) SEQUENCE CHARACTERISTICS:
 (A) LENGTH: 9 amino acids
 (B) TYPE: amino acid
 (D) TOPOLOGY: linear

(ii) MOLECULE TYPE: peptide

(v) FRAGMENT TYPE: internal

(vi) ORIGINAL SOURCE:
 (A) ORGANISM: Homo sapiens

(vii) IMMEDIATE SOURCE:
 (B) CLONE: COLLAGEN TYPE III - ALPHA 1 - NEAR C

(xi) SEQUENCE DESCRIPTION: SEQ ID NO: 17:

Gly Ala Ala Gly Ile Lys Gly His Arg
 1 5

(2) INFORMATION FOR SEQ ID NO: 18:

(i) SEQUENCE CHARACTERISTICS:
 (A) LENGTH: 1341 amino acids
 (B) TYPE: amino acid
 (D) TOPOLOGY: linear

(ii) MOLECULE TYPE: protein

(vi) ORIGINAL SOURCE:
 (A) ORGANISM: Homo sapiens

(vii) IMMEDIATE SOURCE:
 (B) CLONE: COLLAGEN ALPHA 1 (I)

(xi) SEQUENCE DESCRIPTION: SEQ ID NO: 18:

Met Phe Ser Phe Val Asp Leu Arg Leu Leu Leu Leu Ala Ala Thr
 1 5 10 15

-continued

Ala Leu Leu Thr His Gly Gln Glu Glu Gly Gln Val Glu Gly Gln Asp
 20 25 30

Glu Asp Ile Pro Pro Ile Thr Cys Val Gln Asn Gly Leu Arg Tyr His
 35 40 45

Asp Arg Asp Val Trp Lys Pro Glu Pro Cys Gln Ile Cys Val Cys Asp
 50 55 60

Asn Gly Lys Val Leu Cys Asp Asp Val Ile Cys Asp Glu Thr Lys Asn
 65 70 75 80

Cys Pro Gly Ala Glu Val Pro Glu Gly Glu Cys Cys Pro Val Cys Pro
 85 90 95

Asp Gly Ser Glu Ser Pro Thr Asp Gln Glu Thr Thr Gly Val Glu Gly
 100 105 110

Pro Lys Gly Asp Thr Gly Pro Arg Gly Pro Arg Gly Pro Ala Gly Pro
 115 120 125

Pro Gly Arg Asp Gly Ile Pro Gly Gln Pro Gly Leu Pro Gly Pro Pro
 130 135 140

Gly Pro Pro Gly Pro Pro Gly Pro Pro Gly Leu Gly Gly Asn Phe Ala
 145 150 155 160

Pro Gln Leu Tyr Gly Tyr Asp Glu Lys Ser Thr Gly Gly Ile Ser Val
 165 170 175

Pro Gly Pro Met Gly Pro Ser Gly Pro Arg Gly Leu Pro Gly Pro Pro
 180 185 190

Gly Ala Pro Gly Pro Glx Gly Phe Glx Gly Pro Pro Gly Glx Pro Gly
 195 200 205

Glx Pro Gly Ala Ser Gly Pro Met Gly Pro Arg Gly Pro Pro Gly Pro
 210 215 220

Pro Gly Lys Asx Gly Asx Asx Gly Glx Ala Gly Lys Pro Gly Arg Pro
 225 230 235 240

Gly Glx Arg Gly Pro Pro Gly Pro Glx Gly Ala Arg Gly Leu Pro Gly
 245 250 255

Thr Ala Gly Leu Pro Gly Met Lys Gly His Arg Gly Phe Ser Gly Leu
 260 265 270

Asx Gly Ala Lys Gly Asx Ala Gly Pro Ala Gly Pro Lys Gly Glx Pro
 275 280 285

Gly Ser Pro Gly Glx Asx Gly Ala Pro Gly Glx Met Gly Pro Pro Gly
 290 295 300

Pro Lys Gly Asn Ser Gly Glu Pro Gly Ala Pro Gly Ser Lys Gly Asp
 305 310 315 320

Thr Gly Ala Lys Gly Glu Pro Gly Pro Val Gly Val Gln Gly Pro Pro
 325 330 335

Gly Pro Ala Gly Glu Glu Gly Lys Arg Gly Ala Arg Gly Glu Pro Gly
 340 345 350

Pro Thr Gly Leu Pro Gly Pro Pro Gly Glu Arg Gly Gly Pro Gly Ser
 355 360 365

Arg Gly Phe Pro Gly Ala Asp Gly Val Ala Gly Pro Lys Gly Pro Ala
 370 375 380

Gly Glu Arg Gly Ser Pro Gly Pro Ala Gly Pro Lys Gly Ser Pro Gly
 385 390 395 400

Glu Ala Gly Arg Pro Gly Glu Ala Gly Leu Pro Gly Ala Lys Gly Leu
 405 410 415

Thr Gly Ser Pro Gly Ser Pro Gly Pro Asp Gly Lys Thr Gly Pro Pro

-continued

420				425				430							
Gly	Pro	Ala	Gly	Gln	Asp	Gly	Arg	Pro	Gly	Pro	Pro	Gly	Pro	Pro	Gly
	435						440					445			
Ala	Arg	Gly	Gln	Ala	Gly	Val	Met	Gly	Phe	Pro	Gly	Pro	Lys	Gly	Ala
	450					455					460				
Ala	Gly	Glu	Pro	Gly	Lys	Ala	Gly	Glu	Arg	Gly	Val	Pro	Gly	Pro	Pro
	465				470					475					480
Gly	Ala	Val	Gly	Pro	Ala	Gly	Lys	Asp	Gly	Glu	Ala	Gly	Ala	Gln	Gly
				485					490					495	
Pro	Pro	Gly	Pro	Ala	Gly	Pro	Ala	Gly	Glu	Arg	Gly	Glu	Gln	Gly	Pro
			500					505				510			
Ala	Gly	Ser	Pro	Gly	Phe	Gln	Gly	Leu	Pro	Gly	Pro	Ala	Gly	Pro	Pro
		515					520					525			
Gly	Glu	Ala	Gly	Lys	Pro	Gly	Glu	Gln	Gly	Val	Pro	Gly	Asp	Leu	Gly
	530					535					540				
Ala	Pro	Gly	Pro	Ser	Gly	Ala	Arg	Gly	Glu	Arg	Gly	Phe	Pro	Gly	Glu
	545				550					555					560
Arg	Gly	Val	Gln	Gly	Pro	Pro	Gly	Pro	Ala	Gly	Pro	Arg	Gly	Ala	Asn
				565					570					575	
Gly	Ala	Pro	Gly	Asn	Asp	Gly	Ala	Lys	Gly	Asp	Ala	Gly	Ala	Pro	Gly
			580					585				590			
Ala	Pro	Gly	Ser	Gln	Gly	Ala	Pro	Gly	Leu	Gln	Gly	Met	Pro	Gly	Glu
		595					600					605			
Arg	Gly	Ala	Ala	Gly	Leu	Pro	Gly	Pro	Lys	Gly	Asp	Arg	Gly	Asp	Ala
	610					615					620				
Gly	Pro	Lys	Gly	Ala	Asp	Gly	Ser	Pro	Gly	Lys	Asp	Gly	Val	Arg	Gly
	625				630					635					640
Leu	Thr	Gly	Pro	Ile	Gly	Pro	Pro	Gly	Pro	Ala	Gly	Ala	Pro	Gly	Asp
				645					650					655	
Lys	Gly	Glu	Ser	Gly	Pro	Ser	Gly	Pro	Ala	Gly	Pro	Thr	Gly	Ala	Arg
			660					665				670			
Gly	Ala	Pro	Gly	Asp	Arg	Gly	Glu	Pro	Gly	Pro	Pro	Gly	Pro	Ala	Gly
		675					680					685			
Phe	Ala	Gly	Pro	Pro	Gly	Ala	Asp	Gly	Gln	Pro	Gly	Ala	Lys	Gly	Glu
	690					695					700				
Pro	Gly	Asp	Ala	Gly	Ala	Lys	Gly	Asp	Ala	Gly	Pro	Pro	Gly	Pro	Ala
	705				710					715					720
Gly	Pro	Ala	Gly	Pro	Gly	Pro	Ile	Gly	Asn	Val	Gly	Ala	Pro	Gly	
				725					730					735	
Ala	Lys	Gly	Ala	Arg	Gly	Ser	Ala	Gly	Pro	Pro	Gly	Ala	Thr	Gly	Phe
			740					745				750			
Pro	Gly	Ala	Ala	Gly	Arg	Val	Gly	Pro	Pro	Gly	Pro	Ser	Gly	Asn	Ala
		755				760						765			
Gly	Pro	Pro	Gly	Pro	Pro	Gly	Pro	Ala	Gly	Lys	Glu	Gly	Gly	Lys	Gly
	770					775					780				
Pro	Arg	Gly	Glu	Thr	Gly	Pro	Ala	Gly	Arg	Pro	Gly	Glu	Val	Gly	Pro
	785				790					795					800
Pro	Gly	Pro	Pro	Gly	Pro	Ala	Gly	Glu	Lys	Gly	Ser	Pro	Gly	Ala	Asp
				805					810					815	
Gly	Pro	Ala	Gly	Ala	Pro	Gly	Thr	Pro	Gly	Pro	Gln	Gly	Ile	Ala	Gly
			820					825					830		

-continued

Arg Leu Met Ser Thr Glu Ala Ser Gln Asn Ile Thr Tyr His Cys Lys
 1235 1240 1245

Asn Ser Val Ala Tyr Met Asp Gln Gln Thr Gly Asn Leu Lys Lys Ala
 1250 1255 1260

Leu Leu Leu Xaa Gly Ser Asn Glu Ile Glu Ile Arg Ala Glu Gly Asn
 1265 1270 1275 1280

Ser Arg Phe Thr Tyr Ser Val Thr Val Asp Gly Cys Thr Ser His Thr
 1285 1290 1295

Gly Ala Trp Gly Lys Thr Val Ile Glu Tyr Lys Thr Thr Lys Ser Ser
 1300 1305 1310

Arg Leu Pro Ile Ile Asp Val Ala Pro Leu Asp Val Gly Ala Pro Asp
 1315 1320 1325

Gln Glu Phe Gly Phe Asp Val Gly Pro Val Cys Phe Leu
 1330 1335 1340

(2) INFORMATION FOR SEQ ID NO: 19:

(i) SEQUENCE CHARACTERISTICS:

- (A) LENGTH: 1366 amino acids
- (B) TYPE: amino acid
- (D) TOPOLOGY: linear

(ii) MOLECULE TYPE: protein

(vi) ORIGINAL SOURCE:

- (A) ORGANISM: Homo sapiens

(vii) IMMEDIATE SOURCE:

- (B) CLONE: collagen alpha 2- type I

(xi) SEQUENCE DESCRIPTION: SEQ ID NO: 19:

Met Leu Ser Phe Val Asp Thr Arg Thr Leu Leu Leu Leu Ala Val Thr
 1 5 10 15

Leu Cys Leu Ala Thr Cys Gln Ser Leu Gln Glu Glu Thr Val Arg Lys
 20 25 30

Gly Pro Ala Gly Asp Arg Gly Pro Arg Gly Glu Arg Gly Pro Pro Gly
 35 40 45

Pro Pro Gly Arg Asp Gly Glu Asp Gly Pro Thr Gly Pro Pro Gly Pro
 50 55 60

Pro Gly Pro Pro Gly Pro Pro Gly Leu Gly Gly Asn Phe Ala Ala Gln
 65 70 75 80

Tyr Asp Gly Lys Gly Val Gly Leu Gly Pro Gly Pro Met Gly Leu Met
 85 90 95

Gly Pro Arg Gly Pro Pro Gly Ala Ala Gly Ala Pro Gly Pro Gln Gly
 100 105 110

Phe Gln Gly Pro Ala Gly Glu Pro Gly Glu Pro Gly Gln Thr Gly Pro
 115 120 125

Ala Gly Ala Arg Gly Pro Ala Gly Pro Pro Gly Lys Ala Gly Glu Asp
 130 135 140

Gly His Pro Gly Lys Pro Gly Arg Pro Gly Glu Arg Gly Val Val Gly
 145 150 155 160

Pro Gln Gly Ala Arg Gly Phe Pro Gly Thr Pro Gly Leu Pro Gly Phe
 165 170 175

Lys Gly Ile Arg Gly His Asn Gly Leu Asp Gly Leu Lys Gly Gln Pro
 180 185 190

Gly Ala Pro Gly Val Lys Gly Glu Pro Gly Ala Pro Gly Glu Asn Gly

-continued

195			200			205									
Thr	Pro	Gly	Gln	Thr	Gly	Ala	Arg	Gly	Leu	Pro	Gly	Glu	Arg	Gly	Arg
210						215					220				
Val	Gly	Ala	Pro	Gly	Pro	Ala	Gly	Ala	Arg	Gly	Ser	Asp	Gly	Ser	Val
225					230					235					240
Gly	Pro	Val	Gly	Pro	Ala	Gly	Pro	Asn	Gly	Ser	Ala	Gly	Pro	Pro	Gly
				245					250					255	
Phe	Pro	Gly	Ala	Pro	Gly	Pro	Lys	Gly	Glu	Ile	Gly	Ala	Val	Gly	Asn
			260					265					270		
Ala	Gly	Pro	Thr	Gly	Pro	Ala	Gly	Pro	Arg	Gly	Glu	Val	Gly	Leu	Pro
		275					280					285			
Gly	Leu	Ser	Gly	Pro	Val	Gly	Pro	Pro	Gly	Asn	Pro	Gly	Ala	Asn	Gly
	290					295					300				
Leu	Thr	Gly	Ala	Lys	Gly	Ala	Ala	Gly	Leu	Pro	Gly	Val	Ala	Gly	Ala
305					310					315					320
Pro	Gly	Leu	Pro	Gly	Pro	Arg	Gly	Ile	Pro	Gly	Pro	Pro	Gly	Ala	Ala
				325					330					335	
Gly	Thr	Thr	Gly	Ala	Arg	Gly	Leu	Val	Gly	Glu	Pro	Gly	Pro	Ala	Gly
			340					345					350		
Ser	Lys	Gly	Glu	Ser	Gly	Asn	Lys	Gly	Glu	Pro	Gly	Ser	Ala	Gly	Pro
		355					360					365			
Gln	Gly	Pro	Pro	Gly	Pro	Ser	Gly	Glu	Glu	Gly	Lys	Arg	Gly	Pro	Asn
	370					375					380				
Gly	Glu	Ala	Gly	Ser	Ala	Gly	Pro	Pro	Gly	Pro	Pro	Gly	Leu	Arg	Gly
385					390					395					400
Ser	Pro	Gly	Ser	Arg	Gly	Leu	Pro	Gly	Ala	Asp	Gly	Arg	Ala	Gly	Val
				405					410					415	
Met	Gly	Pro	Pro	Gly	Ser	Arg	Gly	Ala	Ser	Gly	Pro	Ala	Gly	Val	Arg
		420						425					430		
Gly	Pro	Asn	Gly	Asp	Ala	Gly	Arg	Pro	Gly	Glu	Pro	Gly	Leu	Met	Gly
		435					440					445			
Pro	Arg	Gly	Leu	Pro	Gly	Ser	Pro	Gly	Asn	Ile	Gly	Pro	Ala	Gly	Lys
	450					455					460				
Glu	Gly	Pro	Val	Gly	Leu	Pro	Gly	Ile	Asp	Gly	Arg	Pro	Gly	Pro	Ile
465					470					475					480
Gly	Pro	Val	Gly	Ala	Arg	Gly	Glu	Pro	Gly	Asn	Ile	Gly	Phe	Pro	Gly
				485				490					495		
Pro	Lys	Gly	Pro	Thr	Gly	Asp	Pro	Gly	Lys	Asn	Gly	Asp	Lys	Gly	His
		500						505					510		
Ala	Gly	Leu	Ala	Gly	Ala	Arg	Gly	Ala	Pro	Gly	Pro	Asp	Gly	Asn	Asn
		515					520					525			
Gly	Ala	Gln	Gly	Pro	Pro	Gly	Pro	Gln	Gly	Val	Gln	Gly	Gly	Lys	Gly
	530					535					540				
Glu	Gln	Gly	Pro	Ala	Gly	Pro	Pro	Gly	Phe	Gln	Gly	Leu	Pro	Gly	Pro
545					550					555					560
Ser	Gly	Pro	Ala	Gly	Glu	Val	Gly	Lys	Pro	Gly	Glu	Arg	Gly	Leu	His
				565				570						575	
Gly	Glu	Phe	Gly	Leu	Pro	Gly	Pro	Ala	Gly	Pro	Arg	Gly	Glu	Arg	Gly
		580						585					590		
Pro	Pro	Gly	Glu	Ser	Gly	Ala	Ala	Gly	Pro	Thr	Gly	Pro	Ile	Gly	Ser
		595				600						605			

-continued

Arg Gly Pro Ser Gly Pro Pro Gly Pro Asp Gly Asn Lys Gly Glu Pro
 610 615 620
 Gly Val Val Gly Ala Val Gly Thr Ala Gly Pro Ser Gly Pro Ser Gly
 625 630 635 640
 Leu Pro Gly Glu Arg Gly Ala Ala Gly Ile Pro Gly Gly Lys Gly Glu
 645 650 655
 Lys Gly Glu Pro Gly Leu Arg Gly Glu Ile Gly Asn Pro Gly Arg Asp
 660 665 670
 Gly Ala Arg Gly Ala His Gly Ala Val Gly Ala Pro Gly Pro Ala Gly
 675 680 685
 Ala Thr Gly Asp Arg Gly Glu Ala Gly Ala Ala Gly Pro Ala Gly Pro
 690 695 700
 Ala Gly Pro Arg Gly Ser Pro Gly Glu Arg Gly Glu Val Gly Pro Ala
 705 710 715 720
 Gly Pro Asn Gly Phe Ala Gly Pro Ala Gly Ala Ala Gly Gln Pro Gly
 725 730 735
 Ala Lys Gly Glu Arg Gly Gly Lys Gly Pro Lys Gly Glu Asn Gly Val
 740 745 750
 Val Gly Pro Thr Gly Pro Val Gly Ala Ala Gly Pro Ala Gly Pro Asn
 755 760 765
 Gly Pro Pro Gly Pro Ala Gly Ser Arg Gly Asp Gly Gly Pro Pro Gly
 770 775 780
 Met Thr Gly Phe Pro Gly Ala Ala Gly Arg Thr Gly Pro Pro Gly Pro
 785 790 795 800
 Ser Gly Ile Ser Gly Pro Pro Gly Pro Pro Gly Pro Ala Gly Lys Glu
 805 810 815
 Gly Leu Arg Gly Pro Arg Gly Asp Gln Gly Pro Val Gly Arg Thr Gly
 820 825 830
 Glu Val Gly Ala Val Gly Pro Pro Gly Phe Ala Gly Glu Lys Gly Pro
 835 840 845
 Ser Gly Glu Ala Gly Thr Ala Gly Pro Pro Gly Thr Pro Gly Pro Gln
 850 855 860
 Gly Leu Leu Gly Ala Pro Gly Ile Leu Gly Leu Pro Gly Ser Arg Gly
 865 870 875 880
 Glu Arg Gly Leu Pro Gly Val Ala Gly Ala Val Gly Glu Pro Gly Pro
 885 890 895
 Leu Gly Ile Ala Gly Pro Pro Gly Ala Arg Gly Pro Pro Gly Ala Val
 900 905 910
 Gly Ser Pro Gly Val Asn Gly Ala Pro Gly Glu Ala Gly Arg Asp Gly
 915 920 925
 Asn Pro Gly Asn Asp Gly Pro Pro Gly Arg Asp Gly Gln Pro Gly His
 930 935 940
 Lys Gly Glu Arg Gly Tyr Pro Gly Asn Ile Gly Pro Val Gly Ala Ala
 945 950 955 960
 Gly Ala Pro Gly Pro His Gly Pro Val Gly Pro Ala Gly Lys His Gly
 965 970 975
 Asn Arg Gly Glu Thr Gly Pro Ser Gly Pro Val Gly Pro Ala Gly Ala
 980 985 990
 Val Gly Pro Arg Gly Pro Ser Gly Pro Gln Gly Ile Arg Gly Asp Lys
 995 1000 1005

-continued

Gly Glu Pro Gly Glu Lys Gly Pro Arg Gly Leu Pro Gly Phe Lys Gly
 1010 1015 1020
 His Asn Gly Leu Gln Gly Leu Pro Gly Ile Ala Gly His His Gly Asp
 1025 1030 1035 1040
 Gln Gly Ala Pro Gly Ser Val Gly Pro Ala Gly Pro Arg Gly Pro Ala
 1045 1050 1055
 Gly Pro Ser Gly Pro Ala Gly Lys Asp Gly Arg Thr Gly His Pro Gly
 1060 1065 1070
 Thr Val Gly Pro Ala Gly Ile Arg Gly Pro Gln Gly His Gln Gly Pro
 1075 1080 1085
 Ala Gly Pro Pro Gly Pro Pro Gly Pro Pro Gly Val Ser
 1090 1095 1100
 Gly Gly Gly Tyr Asp Phe Gly Tyr Asp Gly Asp Phe Tyr Arg Ala Asp
 1105 1110 1115 1120
 Gln Pro Arg Ser Ala Pro Ser Leu Arg Pro Lys Asp Tyr Glu Val Asp
 1125 1130 1135
 Ala Thr Leu Lys Ser Leu Asn Asn Gln Ile Glu Thr Leu Leu Thr Pro
 1140 1145 1150
 Glu Gly Ser Arg Lys Asn Pro Ala Arg Thr Cys Arg Asp Leu Arg Leu
 1155 1160 1165
 Ser His Pro Glu Trp Ser Ser Gly Tyr Tyr Trp Ile Asp Pro Asn Gln
 1170 1175 1180
 Gly Cys Thr Met Glu Ala Ile Lys Val Tyr Cys Asp Phe Pro Thr Gly
 1185 1190 1195 1200
 Glu Thr Cys Ile Arg Ala Gln Pro Glu Asn Ile Pro Ala Lys Asn Trp
 1205 1210 1215
 Tyr Arg Ser Ser Lys Asp Lys Lys His Val Trp Leu Gly Glu Thr Ile
 1220 1225 1230
 Asn Ala Gly Ser Gln Phe Glu Tyr Asn Val Glu Gly Val Thr Ser Lys
 1235 1240 1245
 Glu Met Ala Thr Gln Leu Ala Phe Met Arg Leu Leu Ala Asn Tyr Ala
 1250 1255 1260
 Ser Gln Asn Ile Thr Tyr His Cys Lys Asn Ser Ile Ala Tyr Met Asp
 1265 1270 1275 1280
 Glu Glu Thr Gly Asn Leu Lys Lys Ala Val Ile Leu Gln Gly Ser Asn
 1285 1290 1295
 Asp Val Glu Leu Val Ala Glu Gly Asn Ser Arg Phe Thr Tyr Thr Val
 1300 1305 1310
 Leu Val Asp Gly Cys Ser Lys Lys Thr Asn Glu Trp Gly Lys Thr Ile
 1315 1320 1325
 Ile Glu Tyr Lys Thr Asn Lys Pro Ser Arg Leu Pro Phe Leu Asp Ile
 1330 1335 1340
 Ala Pro Leu Asp Ile Gly Gly Ala Asp His Glu Phe Phe Val Asp Ile
 1345 1350 1355 1360
 Gly Pro Val Cys Phe Lys
 1365

(2) INFORMATION FOR SEQ ID NO: 20:

(i) SEQUENCE CHARACTERISTICS:

- (A) LENGTH: 1418 amino acids
- (B) TYPE: amino acid
- (D) TOPOLOGY: linear

-continued

(ii) MOLECULE TYPE: protein

(vi) ORIGINAL SOURCE:

(A) ORGANISM: Homo sapiens

(vii) IMMEDIATE SOURCE:

(B) CLONE: COLLAGEN -ALPHA 1 (II)

(xi) SEQUENCE DESCRIPTION: SEQ ID NO: 20:

Met Ile Arg Leu Gly Ala Pro Gln Ser Leu Val Leu Leu Thr Leu Leu
1 5 10 15

Val Ala Ala Val Leu Arg Cys Gln Gly Gln Asp Val Arg Gln Pro Gly
20 25 30

Pro Lys Gly Gln Lys Gly Glu Pro Gly Asp Ile Lys Asp Ile Val Gly
35 40 45

Pro Lys Gly Pro Pro Gly Pro Gln Gly Pro Ala Gly Glu Gln Gly Pro
50 55 60

Arg Gly Asp Arg Gly Asp Lys Gly Glu Lys Gly Ala Pro Gly Pro Arg
65 70 75 80

Gly Arg Asp Gly Glu Pro Gly Thr Leu Gly Asn Pro Gly Pro Pro Gly
85 90 95

Pro Pro Gly Pro Pro Gly Pro Pro Gly Leu Gly Gly Asn Phe Ala Ala
100 105 110

Gln Met Ala Gly Gly Phe Asp Glu Lys Ala Gly Gly Ala Gln Leu Gly
115 120 125

Val Met Gln Gly Pro Met Gly Pro Met Gly Pro Arg Gly Pro Pro Gly
130 135 140

Pro Ala Gly Ala Pro Gly Pro Gln Gly Phe Gln Gly Asn Pro Gly Glu
145 150 155 160

Pro Gly Glu Pro Gly Val Ser Gly Pro Met Gly Pro Arg Gly Pro Pro
165 170 175

Gly Pro Pro Gly Lys Pro Gly Asp Asp Gly Glu Ala Gly Lys Pro Gly
180 185 190

Lys Ala Gly Glu Arg Gly Pro Pro Gly Pro Gln Gly Ala Arg Gly Phe
195 200 205

Pro Gly Thr Pro Gly Leu Pro Gly Val Lys Gly His Arg Gly Tyr Pro
210 215 220

Gly Leu Asp Gly Ala Lys Gly Glu Ala Gly Ala Pro Gly Val Lys Gly
225 230 235 240

Glu Ser Gly Ser Pro Gly Glu Asn Gly Ser Pro Gly Pro Met Gly Pro
245 250 255

Arg Gly Leu Pro Gly Glu Arg Gly Arg Thr Gly Pro Ala Gly Ala Ala
260 265 270

Gly Ala Arg Gly Asn Asp Gly Gln Pro Gly Pro Ala Gly Pro Pro Gly
275 280 285

Pro Val Gly Pro Ala Gly Gly Pro Gly Phe Pro Gly Ala Pro Gly Ala
290 295 300

Lys Gly Glu Ala Gly Pro Thr Gly Ala Arg Gly Pro Glu Gly Ala Gln
305 310 315 320

Gly Pro Arg Gly Glu Pro Gly Thr Pro Gly Ser Pro Gly Pro Ala Gly
325 330 335

Ala Ser Gly Asn Pro Gly Thr Asp Gly Ile Pro Gly Ala Lys Gly Ser
340 345 350

-continued

Ala Gly Ala Pro Gly Ile Ala Gly Ala Pro Gly Phe Pro Gly Pro Arg
355 360 365

Gly Pro Pro Asp Pro Gln Gly Ala Thr Gly Pro Leu Gly Pro Lys Gly
370 375 380

Gln Thr Gly Lys Pro Gly Ile Ala Gly Phe Lys Gly Glu Gln Gly Pro
385 390 395 400

Lys Gly Glu Pro Gly Pro Ala Gly Pro Gln Gly Ala Pro Gly Pro Ala
405 410 415

Gly Glu Glu Gly Lys Arg Gly Ala Arg Gly Glu Pro Gly Gly Val Gly
420 425 430

Pro Ile Gly Pro Pro Gly Glu Arg Gly Ala Pro Gly Asn Arg Gly Phe
435 440 445

Pro Gly Gln Asp Gly Leu Ala Gly Pro Lys Gly Ala Pro Gly Glu Arg
450 455 460

Gly Pro Ser Gly Leu Ala Gly Pro Lys Gly Ala Asn Gly Asp Pro Gly
465 470 475 480

Arg Pro Gly Glu Pro Gly Leu Pro Gly Ala Arg Gly Leu Thr Gly Arg
485 490 495

Pro Gly Asp Ala Gly Pro Gln Gly Lys Val Gly Pro Ser Gly Ala Pro
500 505 510

Gly Glu Asp Gly Arg Pro Gly Pro Pro Gly Pro Gln Gly Ala Arg Gly
515 520 525

Gln Pro Gly Val Met Gly Phe Pro Gly Pro Lys Gly Ala Asn Gly Glu
530 535 540

Pro Gly Lys Ala Gly Glu Lys Gly Leu Pro Gly Ala Pro Gly Leu Arg
545 550 555 560

Gly Leu Pro Gly Lys Asp Gly Glu Thr Gly Ala Glu Gly Pro Pro Gly
565 570 575

Pro Ala Gly Pro Ala Gly Glu Arg Gly Glu Gln Gly Ala Pro Gly Pro
580 585 590

Ser Gly Phe Gln Gly Leu Pro Gly Pro Pro Gly Pro Pro Gly Glu Gly
595 600 605

Gly Lys Pro Gly Asp Gln Gly Val Pro Gly Glu Ala Gly Ala Pro Gly
610 615 620

Leu Val Gly Pro Arg Gly Glu Arg Gly Phe Pro Gly Glu Arg Gly Ser
625 630 635 640

Pro Gly Ala Gln Gly Leu Gln Gly Pro Arg Gly Leu Pro Gly Thr Pro
645 650 655

Gly Thr Asp Gly Pro Lys Gly Ala Ser Gly Pro Ala Gly Pro Pro Gly
660 665 670

Ala Gln Gly Pro Pro Gly Leu Gln Gly Met Pro Gly Glu Arg Gly Ala
675 680 685

Ala Gly Ile Ala Gly Pro Lys Gly Asp Arg Gly Asp Val Gly Glu Lys
690 695 700

Gly Pro Glu Gly Ala Pro Gly Lys Asp Gly Gly Arg Gly Leu Thr Gly
705 710 715 720

Pro Ile Gly Pro Pro Gly Pro Ala Gly Ala Asn Gly Glu Lys Gly Glu
725 730 735

Val Gly Pro Pro Gly Pro Ala Gly Ser Ala Gly Ala Arg Gly Ala Pro
740 745 750

-continued

Gly Glu Arg Gly Glu Thr Gly Pro Pro Gly Thr Ser Gly Ile Ala Gly
 755 760 765

Pro Pro Gly Ala Asp Gly Gln Pro Gly Ala Lys Gly Glu Gln Gly Glu
 770 775 780

Ala Gly Gln Lys Gly Asp Ala Gly Ala Pro Gly Pro Gln Gly Pro Ser
 785 790 800

Gly Ala Pro Gly Pro Gln Gly Pro Thr Gly Val Thr Gly Pro Lys Gly
 805 810 815

Ala Arg Gly Ala Gln Gly Pro Pro Gly Ala Thr Gly Phe Pro Gly Ala
 820 825 830

Ala Gly Arg Val Gly Pro Pro Gly Ser Asn Gly Asn Pro Gly Pro Pro
 835 840 845

Gly Pro Pro Gly Pro Ser Gly Lys Asp Gly Pro Lys Gly Ala Arg Gly
 850 855 860

Asp Ser Gly Pro Pro Gly Arg Ala Gly Glu Pro Gly Leu Gln Gly Pro
 865 870 875 880

Ala Gly Pro Pro Gly Glu Lys Gly Glu Pro Gly Asp Asp Gly Pro Ser
 885 890 895

Gly Ala Glu Gly Pro Pro Gly Pro Gln Gly Leu Ala Gly Gln Arg Gly
 900 905 910

Ile Val Gly Leu Pro Gly Gln Arg Gly Glu Arg Gly Phe Pro Gly Leu
 915 920 925

Pro Gly Pro Ser Gly Glu Pro Gly Gln Gln Gly Ala Pro Gly Ala Ser
 930 935 940

Gly Asp Arg Gly Pro Pro Gly Pro Val Gly Pro Pro Gly Leu Thr Gly
 945 950 955 960

Pro Ala Gly Glu Pro Gly Arg Glu Gly Ser Pro Gly Ala Asp Gly Pro
 965 970 975

Pro Gly Arg Asp Gly Ala Ala Gly Val Lys Gly Asp Arg Gly Glu Thr
 980 985 990

Gly Ala Val Gly Ala Pro Gly Ala Pro Gly Pro Pro Gly Ser Pro Gly
 995 1000 1005

Pro Ala Gly Pro Thr Gly Lys Gln Gly Asp Arg Gly Glu Ala Gly Ala
 1010 1015 1020

Gln Gly Pro Met Gly Pro Ser Gly Pro Ala Gly Ala Arg Gly Ile Gln
 1025 1030 1035 1040

Gly Pro Gln Gly Pro Arg Gly Asp Lys Gly Glu Ala Gly Glu Pro Gly
 1045 1050 1055

Glu Arg Gly Leu Lys Gly His Arg Gly Phe Thr Gly Leu Gln Gly Leu
 1060 1065 1070

Pro Gly Pro Pro Gly Pro Ser Gly Asp Gln Gly Ala Ser Gly Pro Ala
 1075 1080 1085

Gly Pro Ser Gly Pro Arg Gly Pro Pro Gly Pro Val Gly Pro Ser Gly
 1090 1095 1100

Lys Asp Gly Ala Asn Gly Ile Pro Gly Pro Ile Gly Pro Pro Gly Pro
 1105 1110 1115 1120

Arg Gly Arg Ser Gly Glu Thr Gly Pro Ala Gly Pro Pro Gly Asn Pro
 1125 1130 1135

Gly Pro Pro Gly Pro Pro Gly Pro Pro Gly Pro Gly Ile Asp Met Ser
 1140 1145 1150

Ala Phe Ala Gly Leu Gly Pro Arg Glu Lys Gly Pro Asp Pro Leu Gln

-continued

1155	1160	1165
Tyr Met Arg Ala Asp Gln Ala Ala Gly Gly Leu Arg Gln His Asp Ala 1170 1175 1180		
Glu Val Asp Ala Thr Leu Lys Ser Leu Asn Asn Gln Ile Glu Ser Ile 1185 1190 1195 1200		
Arg Ser Pro Glu Gly Ser Arg Lys Asn Pro Ala Arg Thr Cys Arg Asp 1205 1210 1215		
Leu Lys Leu Cys His Pro Glu Trp Lys Ser Gly Asp Tyr Trp Ile Asp 1220 1225 1230		
Pro Asn Gln Gly Cys Thr Leu Asp Ala Met Lys Val Phe Cys Asn Met 1235 1240 1245		
Glu Thr Gly Glu Thr Cys Val Tyr Pro Asn Pro Ala Asn Val Pro Lys 1250 1255 1260		
Lys Asn Trp Trp Ser Ser Lys Ser Lys Glu Lys Lys His Ile Trp Phe 1265 1270 1275 1280		
Gly Glu Thr Ile Asn Gly Gly Phe His Phe Ser Tyr Gly Asp Asp Asn 1285 1290 1295		
Leu Ala Pro Asn Thr Ala Asn Val Gln Met Thr Phe Leu Arg Leu Leu 1300 1305 1310		
Ser Thr Glu Gly Ser Gln Asn Ile Thr Tyr His Cys Lys Asn Ser Ile 1315 1320 1325		
Ala Tyr Leu Asp Glu Ala Ala Gly Asn Leu Lys Lys Ala Leu Leu Ile 1330 1335 1340		
Gln Gly Ser Asn Asp Val Glu Ile Arg Ala Glu Gly Asn Ser Arg Phe 1345 1350 1355 1360		
Thr Tyr Thr Ala Leu Lys Asp Gly Cys Thr Lys His Thr Gly Lys Trp 1365 1370 1375		
Gly Lys Thr Val Ile Glu Tyr Arg Ser Gln Lys Thr Ser Arg Leu Pro 1380 1385 1390		
Ile Ile Asp Ile Ala Pro Met Asp Ile Gly Gly Pro Glu Gln Glu Phe 1395 1400 1405		
Gly Val Asp Ile Gly Pro Val Cys Phe Leu 1410 1415		

(2) INFORMATION FOR SEQ ID NO: 21:

(i) SEQUENCE CHARACTERISTICS:

- (A) LENGTH: 1078 amino acids
- (B) TYPE: amino acid
- (D) TOPOLOGY: linear

(ii) MOLECULE TYPE: protein

(vi) ORIGINAL SOURCE:

- (A) ORGANISM: Homo sapiens

(vii) IMMEDIATE SOURCE:

- (B) CLONE: COLLAGEN ALPHA 1 (III)

(xi) SEQUENCE DESCRIPTION: SEQ ID NO: 21:

Gln Asn Tyr Ser Pro Gln Tyr Asp Ser Tyr Asp Val Lys Ser Gly Gly 1 5 10 15
Val Ala Val Gly Gly Leu Ala Gly Tyr Pro Gly Pro Ala Gly Pro Pro 20 25 30
Gly Pro Pro Gly Pro Pro Gly Thr Ser Gly His Pro Gly Ser Pro Gly 35 40 45

-continued

Ser Pro Gly Tyr Gln Gly Pro Pro Gly Glu Pro Gly Gln Ala Gly Pro
 50 55 60

Ser Gly Pro Pro Gly Pro Pro Gly Ala Ile Gly Pro Ser Gly Pro Ala
 65 70 75 80

Gly Lys Asp Gly Glu Ser Gly Arg Pro Gly Arg Pro Gly Asp Arg Gly
 85 90 95

Leu Pro Gly Pro Pro Gly Ile Lys Gly Pro Ala Gly Ile Pro Gly Phe
 100 105 110

Pro Gly Met Lys Gly His Arg Gly Phe Asp Gly Arg Asn Gly Glu Lys
 115 120 125

Gly Glu Thr Gly Ala Pro Gly Leu Lys Gly Glu Asn Gly Leu Pro Gly
 130 135 140

Glu Asn Gly Ala Pro Gly Pro Met Gly Pro Arg Gly Ala Pro Gly Glu
 145 150 155 160

Arg Gly Arg Pro Gly Leu Pro Gly Ala Ala Gly Ala Arg Gly Asn Asp
 165 170 175

Gly Ala Arg Gly Ser Asp Gly Gln Pro Gly Pro Pro Gly Pro Pro Gly
 180 185 190

Thr Ala Gly Phe Pro Gly Ser Pro Gly Ala Lys Gly Glu Val Gly Pro
 195 200 205

Ala Gly Ser Pro Gly Ser Asn Gly Ala Pro Gly Gln Arg Gly Glu Pro
 210 215 220

Gly Pro Gln Gly His Ala Gly Ala Gln Gly Pro Pro Gly Pro Pro Gly
 225 230 235 240

Ile Asn Gly Ser Pro Gly Gly Lys Gly Glu Met Gly Pro Ala Gly Ile
 245 250 255

Pro Gly Ala Pro Gly Leu Met Gly Ala Arg Gly Pro Pro Gly Pro Ala
 260 265 270

Gly Ala Asn Gly Ala Pro Gly Leu Arg Gly Gly Ala Gly Glu Pro Gly
 275 280 285

Lys Asn Gly Ala Lys Gly Glu Pro Gly Pro Arg Gly Glu Arg Gly Glu
 290 295 300

Ala Gly Ile Pro Gly Val Pro Gly Ala Lys Gly Glu Asp Gly Lys Asp
 305 310 315 320

Gly Ser Pro Gly Asp Pro Gly Ala Asn Gly Leu Pro Gly Ala Ala Gly
 325 330 335

Glu Arg Gly Ala Leu Gly Ser Arg Gly Pro Ala Gly Pro Asn Gly Ile
 340 345 350

Pro Gly Glu Lys Gly Pro Ala Gly Glu Arg Gly Ala Pro Gly Pro Ala
 355 360 365

Gly Pro Arg Gly Ala Ala Gly Glu Pro Gly Arg Asp Gly Val Pro Gly
 370 375 380

Gly Pro Gly Met Arg Gly Met Pro Gly Ser Pro Gly Gly Pro Gly Ser
 385 390 395 400

Asp Gly Lys Pro Gly Pro Pro Gly Ser Gln Gly Glu Ser Gly Arg Pro
 405 410 415

Gly Pro Pro Gly Pro Ser Gly Pro Arg Gly Gln Pro Gly Val Met Gly
 420 425 430

Phe Pro Gly Pro Lys Gly Asn Asp Gly Ala Pro Gly Lys Asn Gly Glu
 435 440 445

-continued

Arg	Gly	Gly	Pro	Gly	Gly	Pro	Gly	Pro	Gln	Gly	Pro	Pro	Gly	Lys	Asn
450						455					460				
Gly	Glu	Tyr	Gly	Pro	Gln	Gly	Pro	Pro	Gly	Pro	Thr	Gly	Pro	Gly	Gly
465					470					475					480
Asp	Lys	Gly	Asp	Thr	Gly	Pro	Arg	Gly	Pro	Gln	Gly	Leu	Gln	Gly	Leu
				485					490					495	
Pro	Gly	Thr	Gly	Gly	Pro	Pro	Gly	Glu	Asn	Glu	Lys	Pro	Gly	Glu	Pro
			500					505					510		
Gly	Pro	Lys	Gly	Glu	Ala	Gly	Ala	Pro	Gly	Ala	Pro	Gly	Gly	Lys	Gly
		515					520					525			
Asp	Ala	Gly	Ala	Pro	Gly	Glu	Arg	Gly	Pro	Pro	Gly	Leu	Ala	Gly	Ala
530						535					540				
Pro	Gly	Leu	Arg	Gly	Gly	Ala	Gly	Pro	Pro	Gly	Pro	Glu	Gly	Gly	Lys
545					550					555					560
Gly	Ala	Ala	Gly	Pro	Gly	Pro	Pro	Gly	Ala	Ala	Gly	Thr	Pro	Gly	
				565				570					575		
Leu	Gln	Gly	Met	Pro	Gly	Glu	Arg	Gly	Gly	Leu	Gly	Ser	Pro	Gly	Pro
			580					585					590		
Lys	Gly	Asp	Lys	Gly	Glu	Pro	Gly	Gly	Pro	Gly	Ala	Asp	Gly	Val	Pro
		595					600					605			
Gly	Lys	Asp	Gly	Pro	Arg	Gly	Pro	Thr	Gly	Pro	Ile	Gly	Pro	Pro	Gly
	610					615					620				
Pro	Ala	Gly	Gln	Pro	Gly	Asp	Lys	Gly	Glu	Gly	Gly	Ala	Pro	Gly	Leu
625					630					635					640
Pro	Gly	Ile	Ala	Gly	Pro	Arg	Gly	Ser	Pro	Gly	Glu	Arg	Gly	Glu	Thr
				645					650					655	
Gly	Pro	Pro	Gly	Pro	Ala	Gly	Phe	Pro	Gly	Ala	Pro	Gly	Gln	Asn	Gly
			660					665					670		
Glu	Pro	Gly	Gly	Lys	Gly	Glu	Arg	Gly	Ala	Pro	Gly	Glu	Lys	Gly	Glu
		675					680					685			
Gly	Gly	Pro	Pro	Gly	Val	Ala	Val	Pro	Pro	Gly	Gly	Ser	Gly	Pro	Ala
	690					695					700				
Gly	Pro	Pro	Gly	Pro	Gln	Gly	Val	Lys	Gly	Glu	Arg	Gly	Ser	Pro	Gly
705					710					715					720
Gly	Pro	Gly	Ala	Ala	Gly	Phe	Pro	Gly	Ala	Arg	Gly	Leu	Pro	Gly	Pro
				725					730					735	
Pro	Gly	Ser	Asn	Gly	Asn	Pro	Gly	Pro	Pro	Gly	Pro	Ser	Gly	Ser	Pro
			740					745					750		
Gly	Lys	Asp	Gly	Pro	Pro	Gly	Pro	Ala	Gly	Asn	Thr	Gly	Ala	Pro	Gly
		755					760					765			
Ser	Pro	Gly	Val	Ser	Gly	Pro	Lys	Gly	Asp	Ala	Gly	Gln	Pro	Gly	Glu
770						775						780			
Lys	Gly	Ser	Pro	Gly	Ala	Gln	Gly	Pro	Pro	Gly	Ala	Pro	Gly	Pro	Leu
785					790					795					800
Gly	Ile	Ala	Gly	Ile	Thr	Gly	Ala	Arg	Gly	Leu	Ala	Gly	Pro	Pro	Gly
				805					810					815	
Met	Pro	Gly	Pro	Arg	Gly	Ser	Pro	Gly	Pro	Gln	Gly	Val	Lys	Gly	Glu
			820					825					830		
Ser	Gly	Lys	Pro	Gly	Ala	Asn	Gly	Leu	Ser	Gly	Glu	Arg	Gly	Pro	Pro
		835					840					845			
Gly	Pro	Gln	Gly	Leu	Pro	Gly	Leu	Ala	Gly	Thr	Ala	Gly	Glu	Pro	Gly

-continued

850	855	860
Arg Asp Gly Asn Pro Gly Ser Asp Gly Leu Pro Gly Arg Asp Gly Ser		
865	870	875
Pro Gly Gly Lys Gly Asp Arg Gly Glu Asn Gly Ser Pro Gly Ala Pro		
	885	890
Gly Ala Pro Gly His Pro Gly Pro Pro Gly Pro Val Gly Pro Ala Gly		
	900	905
Lys Ser Gly Asp Arg Gly Glu Ser Gly Pro Ala Gly Pro Ala Gly Ala		
	915	920
Pro Gly Pro Ala Gly Ser Arg Gly Ala Pro Gly Pro Gln Gly Pro Arg		
	930	935
Gly Asp Lys Gly Glu Thr Gly Glu Arg Gly Ala Ala Gly Ile Lys Gly		
945	950	955
His Arg Gly Phe Pro Gly Asn Pro Gly Ala Pro Gly Ser Pro Gly Pro		
	965	970
Ala Gly Gln Gln Gly Ala Ile Gly Ser Pro Gly Pro Ala Gly Pro Arg		
	980	985
Gly Pro Val Gly Pro Ser Gly Pro Pro Gly Lys Asp Gly Thr Ser Gly		
	995	1000
His Pro Gly Pro Ile Gly Pro Pro Gly Pro Arg Gly Asn Arg Gly Glu		
	1010	1015
Arg Gly Ser Glu Gly Ser Pro Gly His Pro Gly Gln Ser Gly Pro Pro		
1025	1030	1035
Gly Pro Pro Gly Ala Pro Gly Pro Cys Cys Gly Gly Val Gly Ala Pro		
	1045	1050
Ala Ile Ala Gly Ile Gly Ala Glu Lys Ala Gly Gly Phe Ala Pro Tyr		
	1060	1065
Tyr Gly Asp Glu Pro Met		
	1075	

What is claimed is:

1. A method of determining collagen fragments in a body fluid, wherein a sample of said body fluid is brought into contact with at least one immunological binding partner for the collagen fragments, said binding partner being an antibody immunoreactive with synthetic peptides the sequences of which are essentially derived from collagen and containing potential sites for cross-linking, said immunological binding partners being incorporated, either as whole antibodies or as immunologically active fragments thereof, in an assay for quantitative determination of collagen fragments in the sample.

2. A method according to claim 1, wherein the sample of body fluid in addition to the contacting with the immunological binding partner(s) is brought into direct contact with the corresponding synthetic peptide containing potential sites for cross-linking.

3. A method according to claim 1, wherein the immunological binding partner has been raised by immunization with the corresponding synthetic peptide containing potential sites for cross-linking.

4. A method according to claim 2, wherein the immunological binding partner has been raised by immunization with the corresponding synthetic peptide containing potential sites for cross-linking.

5. A method according to claim 1, wherein the potential sites for cross-linking comprise lysine or hydroxylysine residues incorporated in the peptide sequence.

6. A method according to claim 1, wherein the sequence of the synthetic peptide is derived from the sequence of human collagen type I and consisting essentially of one of the following structures

Asp-Glu-Lys-Ser-Thr-Gly-Gly

Glu-Lys-Ala-His-Asp-Gly-Gly-Arg

Gln-Tyr-Asp-Gly-Lys-Gly-Val-Gly

Gly-Met-Lys-Gly-His-Arg

Gly-Ile-Lys-Gly-His-Arg

Gly-Phe-Lys-Gly-Ile-Arg

or Gly-Leu-Pro-Gly-Leu-Lys-Gly-His-Asn.

7. A method according to claim 2, wherein the sequence of the synthetic peptide is derived from the sequence of human collagen type I and consisting essentially of one of the following structures

Asp-Glu-Lys-Ser-Thr-Gly-Gly

Glu-Lys-Ala-His-Asp-Gly-Gly-Arg

Gln-Tyr-Asp-Gly-Lys-Gly-Val-Gly

Gly-Met-Lys-Gly-His-Arg

Gly-Ile-Lys-Gly-His-Arg

Gly-Phe-Lys-Gly-Ile-Arg

or Gly-Leu-Pro-Gly-Leu-Lys-Gly-His-Asn.

8. A method according to claim 1, wherein the sequence of the synthetic peptide is derived from the sequence of human collagen type II and consisting essentially of one of the following structures

Glu-Lys-Gly-Pro-Asp

Gly-Val-Lys

Pro-Gly-Val-Lys-Gly

Pro-Gly-Pro-Lys-Gly-Glu

Gly-Gln-Lys-Gly-Glu-Pro

or Gly-Asp-Ile-Lys-Asp-Ile-Val.

9. A method according to claim 2, wherein the sequence of the synthetic peptide is derived from the sequence of human collagen type II and consisting essentially of one of the following structures

Glu-Lys-Gly-Pro-Asp

Gly-Val-Lys

Pro-Gly-Val-Lys-Gly

Pro-Gly-Pro-Lys-Gly-Glu

Gly-Gln-Lys-Gly-Glu-Pro

or Gly-Asp-Ile-Lys-Asp-Ile-Val.

10. A method according to claim 1, wherein the sequence of the synthetic peptide is derived from the sequence of human collagen type III and consisting essentially of one of the following structures:

Asp-Val-Lys-Ser-Gly-Val

Glu-Lys-Ala-Gly-Gly-Phe-Ala

Gly-Phe-Pro-Gly-Met-Lys-Gly-His-Arg

or Gly-Ala-Ala-Gly-Ile-Lys-Gly-His-Arg.

11. A method according to claim 2, wherein the sequence of the synthetic peptide is derived from the sequence of human collagen type III and consisting essentially of one of the following structures:

Asp-Val-Lys-Ser-Gly-Val

Glu-Lys-Ala-Gly-Gly-Phe-Ala

Gly-Phe-Pro-Gly-Met-Lys-Gly-His-Arg

or Gly-Ala-Ala-Gly-Ile-Lys-Gly-His-Arg.

12. A method according to claim 1, wherein the body fluid is human urine, blood, serum or synovial fluid.

13. A cell line that produces a monoclonal antibody binding to any of the synthetic peptides used in the method according to claim 1.

14. A cell line that produces a monoclonal antibody binding to any of the synthetic peptides used in the method according to claim 2.

15. A monoclonal antibody produced by the cell line according to claim 13.

16. An immunological binding partner raised by immunization with synthetic peptides selected from the group consisting of sequences derived from the sequence of human collagen type I and consisting essentially of one of the following structures

Asp-Glu-Lys-Ser-Thr-Gly-Gly

Glu-Lys-Ala-His-Asp-Gly-Gly-Arg

Gln-Tyr-Asp-Gly-Lys-Gly-Val-Gly

Gly-Met-Lys-Gly-His-Arg

Gly-Ile-Lys-Gly-His-Arg

Gly-Phe-Lys-Gly-Ile-Arg

and Gly-Leu-Pro-Gly-Leu-Lys-Gly-His-Asn,

sequences derived from the sequence of human collagen type II and consisting essentially of one of the following structures

Glu-Lys-Gly-Pro-Asp

Gly-Val-Lys

Pro-Gly-Val-Lys-Gly

Pro-Gly-Pro-Lys-Gly-Glu

Gly-Gln-Lys-Gly-Glu-Pro

and Gly-Asp-Ile-Lys-Asp-Ile-Val, and

sequences derived from the sequence of human collagen type III and consisting essentially of one of the following structures:

Asp-Val-Lys-Ser-Gly-Val

Glu-Lys-Ala-Gly-Gly-Phe-Ala

Gly-Phe-Pro-Gly-Met-Lys-Gly-His-Arg

and Gly-Ala-Ala-Gly-Ile-Lys-Gly-His-Arg,

and said polyclonal antibody being used for the preparation of an immunological binding partner.

17. A test kit for quantitating the amount of collagen fragments in a body fluid, said kit comprising at least one immunological binding partner immunoreactive with a synthetic peptide having a sequence essentially derived from collagen and containing one or more potential sites for cross-linking.

18. A method of diagnosing the presence of disorders associated with the metabolism of collagen in a patient, said method comprising the steps of:

- (a) contacting a sample of body fluid collected from said patient with at least one immunological binding partner for collagen fragments, said binding partner being an antibody or a fragment thereof which is immunoreactive with synthetic peptides the sequences of which are essentially derived from collagen and containing potential sites for cross-linking,
- (b) detecting the quantity of said antibody bound to collagen fragments in the sample, and
- (c) comparing said quantity to a previously established standard based on binding of said antibody in samples originating from control subjects not suffering from any disorder associated with the metabolism of collagen.

19. A method according to claim 18, wherein the antibody has been raised by immunization with the corresponding synthetic peptide containing potential sites for cross-linking.

20. The method according to claim 18, which includes combining the determination of collagen fragments with other markers of the metabolism of bone tissue, connective tissue and other tissues in order to diagnose a given disorder.

21. A method for determining whether a susceptible subject is suffering from collagen degradation comprising the steps of:

- (a) contacting a sample of body fluid collected from said subject with an antibody that is specifically immunochemically reactive with an antigenic determinant of said collagen, said antigenic determinant consisting essentially of (i) a potentially crosslinkable site of the molecule of said collagen or (ii) an antigenic determinant essentially immediately adjacent to a potentially crosslinkable site on said collagen molecule;
- (b) detecting the quantity of said antibody bound to collagen fragments in said sample; and

- (c) comparing said quantity to a previously established standard based on binding of said antibody in samples from control subjects not suffering from collagen degradation.

22. A method for determining the presence of collagen degradation products in a body fluid comprising the steps of:

- (a) contacting a sample of said body fluid with an antibody that is specifically immunochemically reactive with an antigenic determinant of said collagen, said antigenic determinant consisting essentially of (i) a potentially crosslinkable site of the molecule of said collagen or (ii) an antigenic determinant essentially immediately adjacent to a potentially crosslinkable site on said collagen molecule; and
- (b) detecting the quantity of said antibody bound to collagen fragments in said sample.

* * * * *

专利名称(译)	测定III型胶原降解的方法		
公开(公告)号	US20030119058A1	公开(公告)日	2003-06-26
申请号	US10/058124	申请日	2002-01-29
[标]申请(专利权)人(译)	OSTEOMETER		
申请(专利权)人(译)	OSTEOMETER A / S		
当前申请(专利权)人(译)	OSTEOMETER A / S		
[标]发明人	QVIST PER BONDE MARTIN		
发明人	QVIST, PER BONDE, MARTIN		
IPC分类号	C07K16/18 G01N33/68 G01N33/53 C07K14/78 G01N33/537 G01N33/543 C07K2/00 C07K4/00 C07K5/00 C07K7/00 C07K14/00 C07K16/00 C07K17/00 A61K38/00 A61K38/04 C07K1/00 C09H1/00 A61K38/17 G01N33/545		
CPC分类号	C07K16/18 G01N33/6887 Y10S436/815 Y10S435/975 G01N2800/108		
外部链接	Espacenet USPTO		

摘要(译)

一种测定体液中胶原蛋白片段的方法，包括使体液样品与至少一种免疫结合配偶体接触胶原片段，所述结合配偶体与合成肽具有免疫反应性，其序列基本上来自胶原蛋白和包含潜在的交联位点。免疫结合配偶体作为完整抗体或作为其免疫活性片段掺入用于定量测定样品中胶原片段的测定中。除了与免疫结合配偶体接触外，还可以使样品与相应的合成肽直接接触。本发明还包括测试试剂盒和实施该方法的具体方法。还描述了特定肽的结构。

