



US 20110008786A1

(19) **United States**

(12) **Patent Application Publication**
Yu et al.

(10) **Pub. No.: US 2011/0008786 A1**

(43) **Pub. Date: Jan. 13, 2011**

(54) **METHODS OF DETECTING AND CONTROLLING MUCOID PSEUDOMONAS BIOFILM PRODUCTION**

Publication Classification

(75) Inventors: **Hongwei D. Yu**, Huntington, WV (US); **Dongru Qiu**, Huntington, WV (US)

(51) Int. Cl.	
<i>C12Q 1/68</i>	(2006.01)
<i>G01N 33/53</i>	(2006.01)
<i>C07K 16/00</i>	(2006.01)
<i>C07H 21/04</i>	(2006.01)
<i>C12N 1/21</i>	(2006.01)
<i>C12N 1/19</i>	(2006.01)
<i>C12N 5/10</i>	(2006.01)

Correspondence Address:
STITES & HARBISON, PLLC
400 W MARKET ST, SUITE 1800
LOUISVILLE, KY 40202-3352 (US)

(52) **U.S. Cl.** **435/6**; 436/94; 436/501; 530/387.9; 536/23.1; 435/252.3; 435/254.2; 435/419; 435/325

(73) Assignee: **MARSHALL UNIVERSITY RESEARCH CORPORATION**, Huntington, WV (US)

(57) **ABSTRACT**

(21) Appl. No.: **12/819,770**

Compositions and methods for detecting and controlling the conversion to mucoidy in *Pseudomonas aeruginosa* are disclosed. The present invention provides for detecting the switch from nonmucoid to mucoid state of *P. aeruginosa* by measuring mucE expression or MucE protein levels. The interaction between MucE and AlgW controls the switch to mucoidy in wild type *P. aeruginosa*. Also disclosed is an alginate biosynthesis heterologous expression system for use in screening candidate substances that inhibit conversion to mucoidy.

(22) Filed: **Jun. 21, 2010**

Related U.S. Application Data

(63) Continuation of application No. 11/730,186, filed on Mar. 29, 2007, now Pat. No. 7,781,166.

(60) Provisional application No. 60/787,497, filed on Mar. 31, 2006.

ATGGGTTTCCGGCCAGTTAGCCAACGTTTGCGTGACATCAACCTGCAGGCCCTCGGC
AAGTTTTCCTGCCCTTGCCCTGGTCCTCGGCCTGGAATCGGTAAGCCATCCGGCCGGC
CCGGTCCAGGCCCCCTCGTTTCAGCCAGGGCACCGCCAGCCCGTCTTCGCTACTCCG
CTCGGCCTCGACGGCCCGGCCCGCGCCAGGGCCGAGATGTGGAACGTCGGCCTGTC
CGGCGCCGTCAGCGTGCGTGACGAGTTGCGCTGGGTGTTTTGA

ATGGGTTTCCGGCCAGTTAGCCAACGTTTGC GTGACATCAACCTGCAGGCCCTCGGC
AAGTTTCCTGCCTTGCCCTGGTCCTCGGCCTGGAATCGGTAAGCCATCCGGCCGGC
CCGGTCCAGGCCCCCTCGTTCAGCCAGGGCACCGCCAGCCCGTCCTTCGCTACTCCG
CTCGGCCTCGACGGCCCGGCCCGGCCAGGGCCGAGATGTGGAACGTCGGCCTGTC
CGGCGCCGTCAGCGTGCGTGACGAGTTGCGCTGGGTGTTTTGA

FIGURE 1

MGFRPVSQRLRDINLQALGKFSCLALVLGLESVSHYPAGPVQAPSFSQGTASPSFATPLGL
DGPARARAEMWNVGLSGAVSVRDELRWVF

FIGURE 2

ATGGGGAACCTGCTCAGGAAAGGCCAGGTCGCGCTTGTGAGAATATTCAGCGGCGA
TGATCCGGTGCGTCTTCTCAGTTTGATGCTGGCGGCTTATCTGGGAATCAGTGCCTGT
ACCGTGCCAGCGTCCACAGCGGGCTGCTGTCAGCCCTCCGGCATAGGGCAATACCC
GGCGTCTGCCCTGCCCGCTGGCAGTGACTCCAACCTGACCCTGGACGCCGAGCCCGT
GATCGGTCCGACAGCGCTACCCACGAACCTGCAGCCACCGGCCCCGCGCTGGGTGT
TCTAG

FIGURE 3

MGNLLRKGQVALVRIFSGDDPVRLLSMLAAYLGISACTVPASTAGCCQPSGIGQYPAS
ALPAGSDSNLTLDAEPVIGRTALPTNLQPPAPRWVF

FIGURE 4

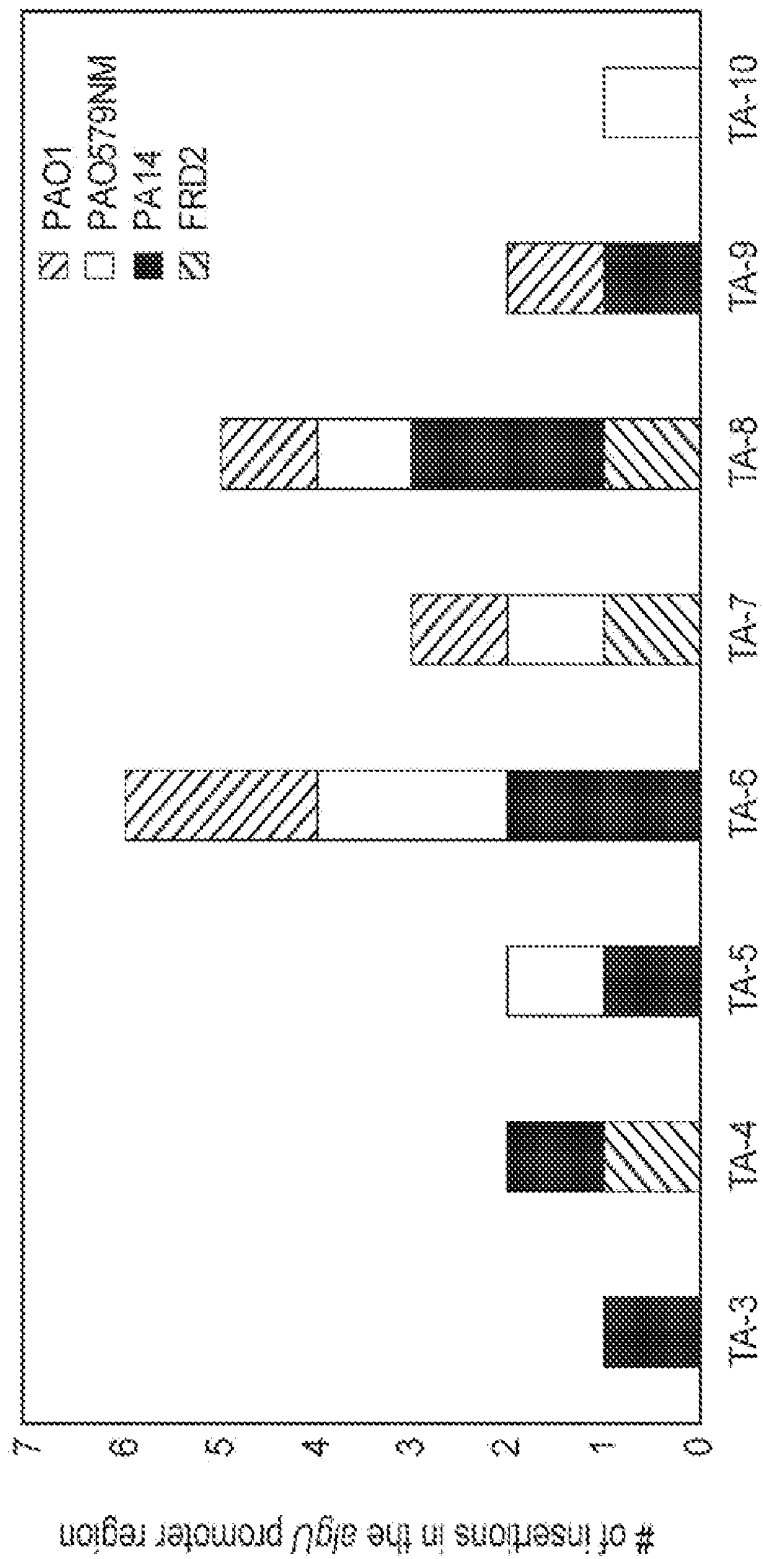


FIGURE 5A

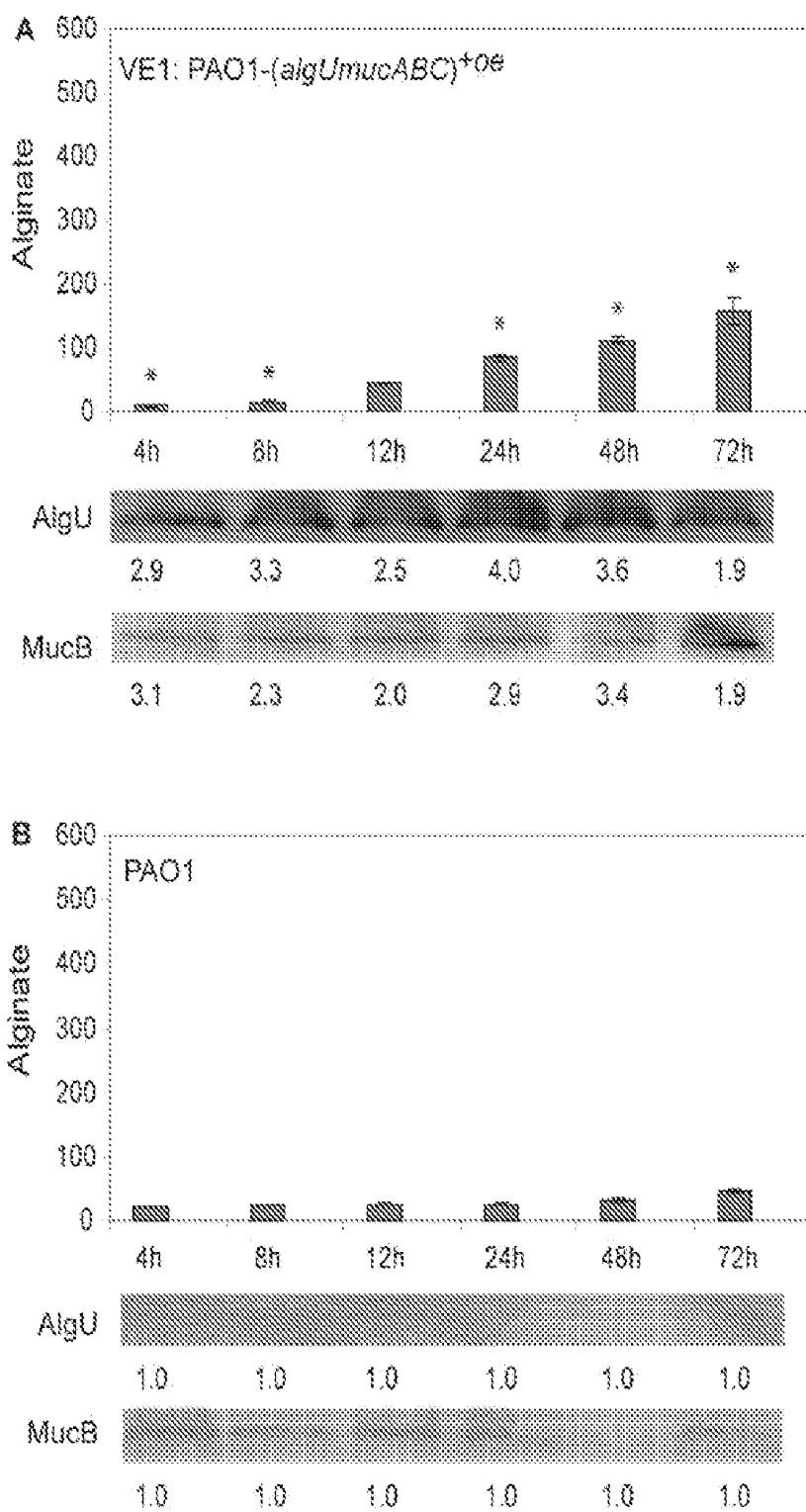


FIGURE 6

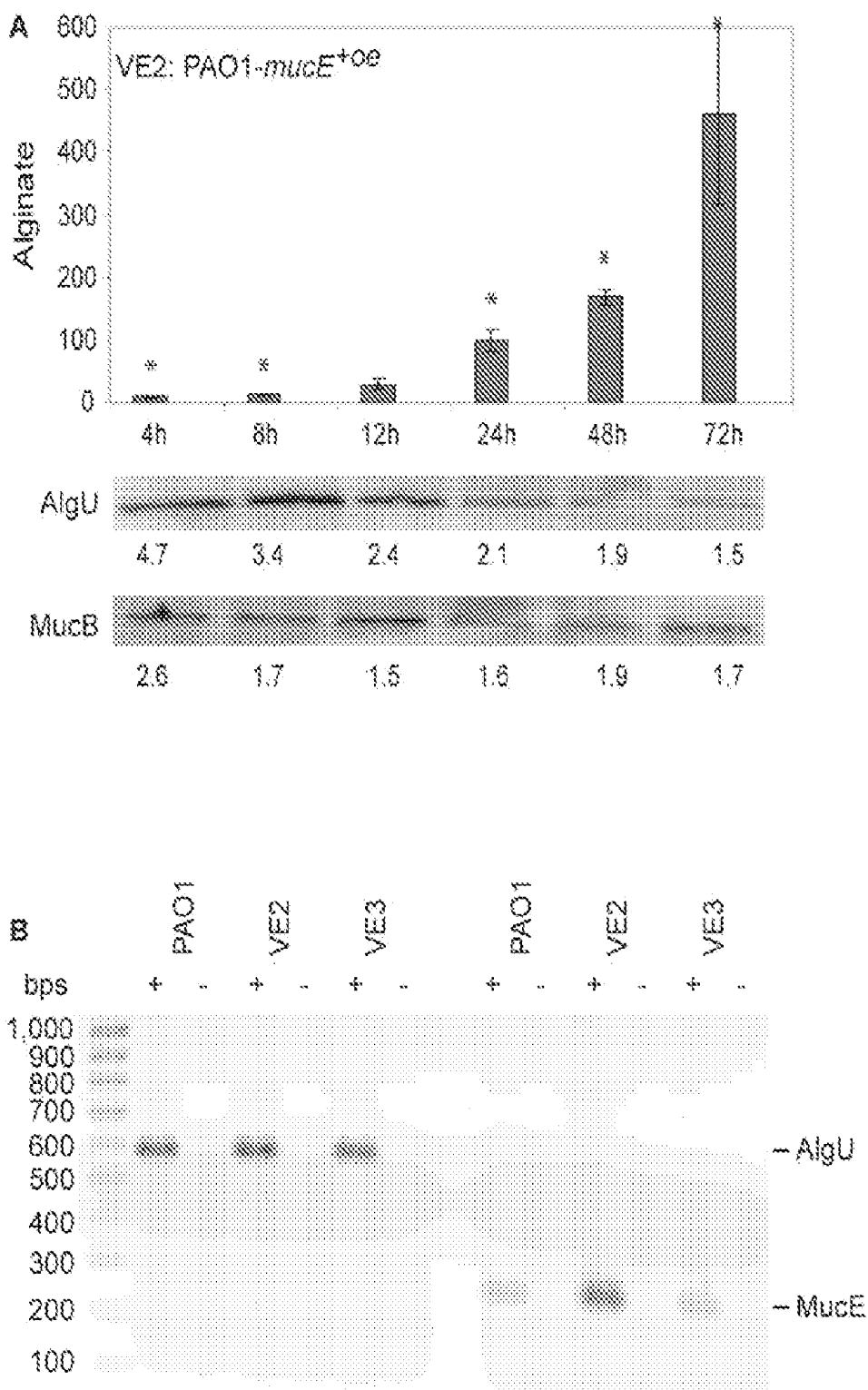


FIGURE 7

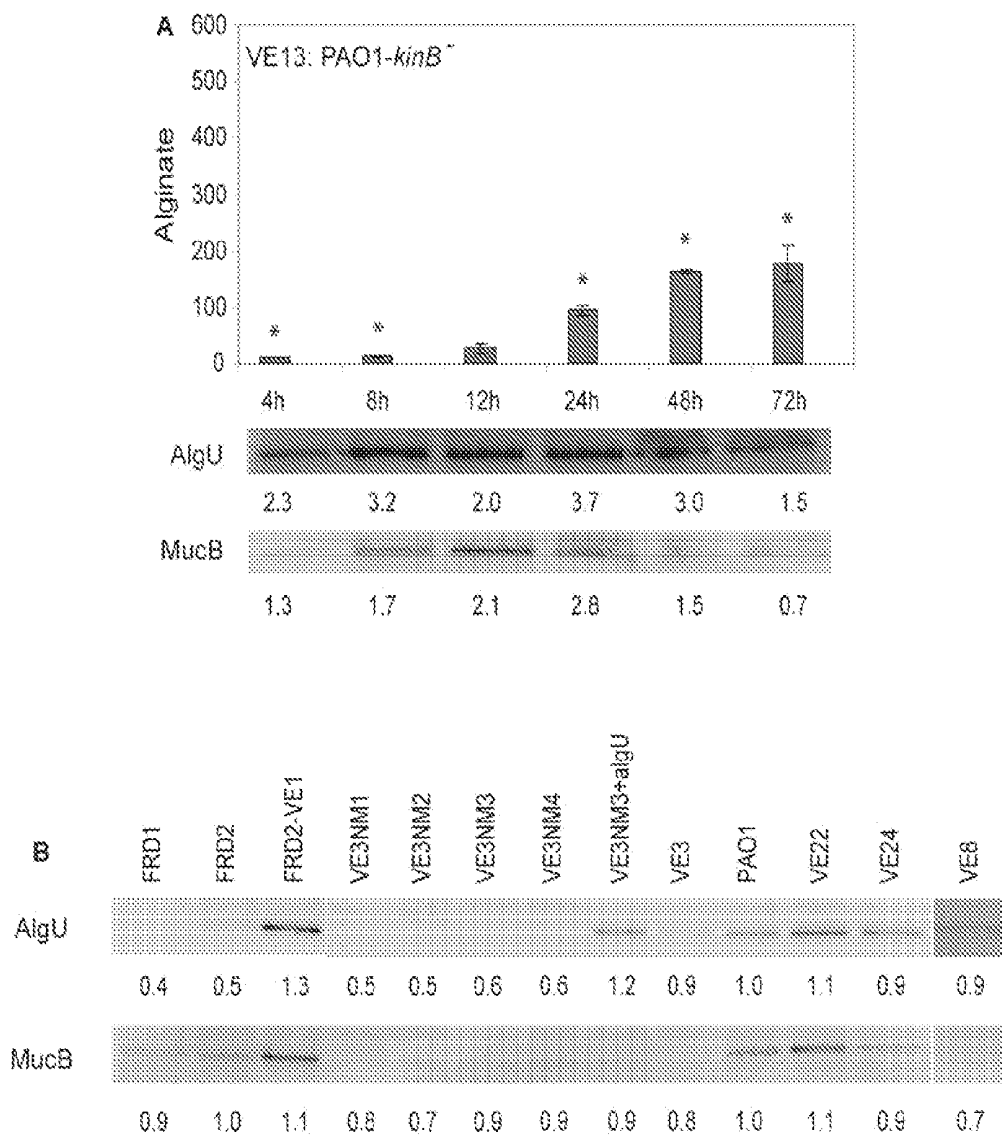


FIGURE 8

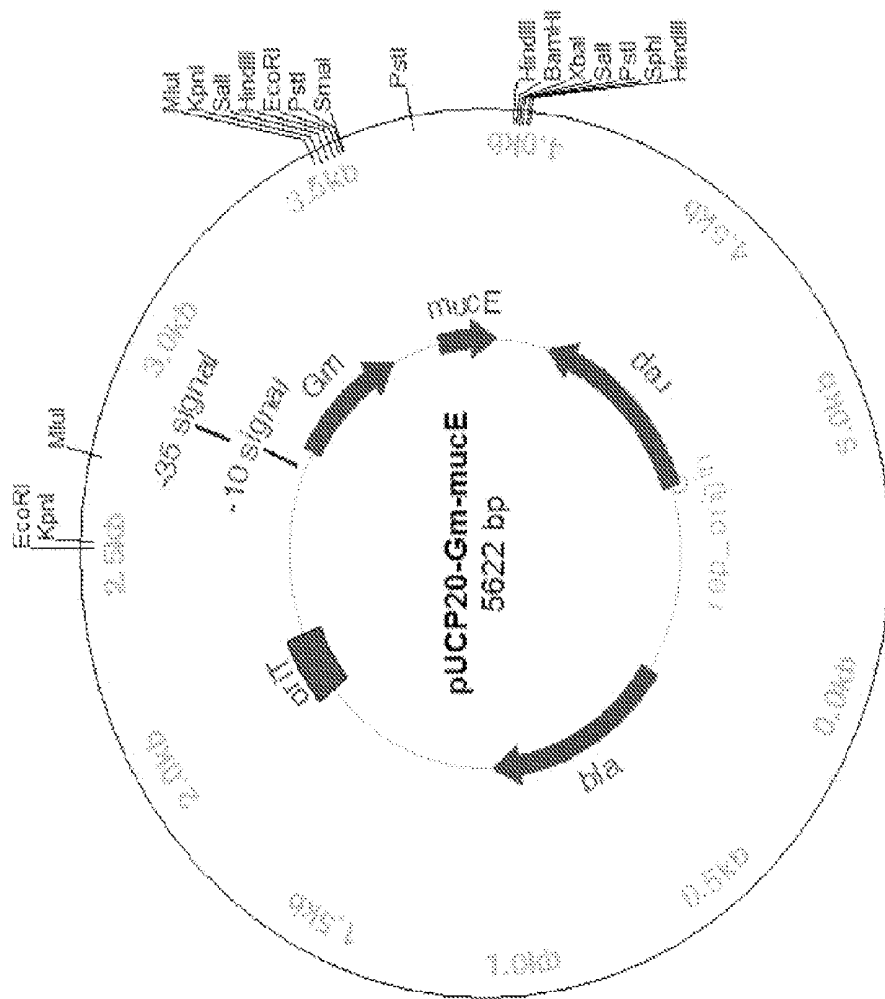


FIGURE 10

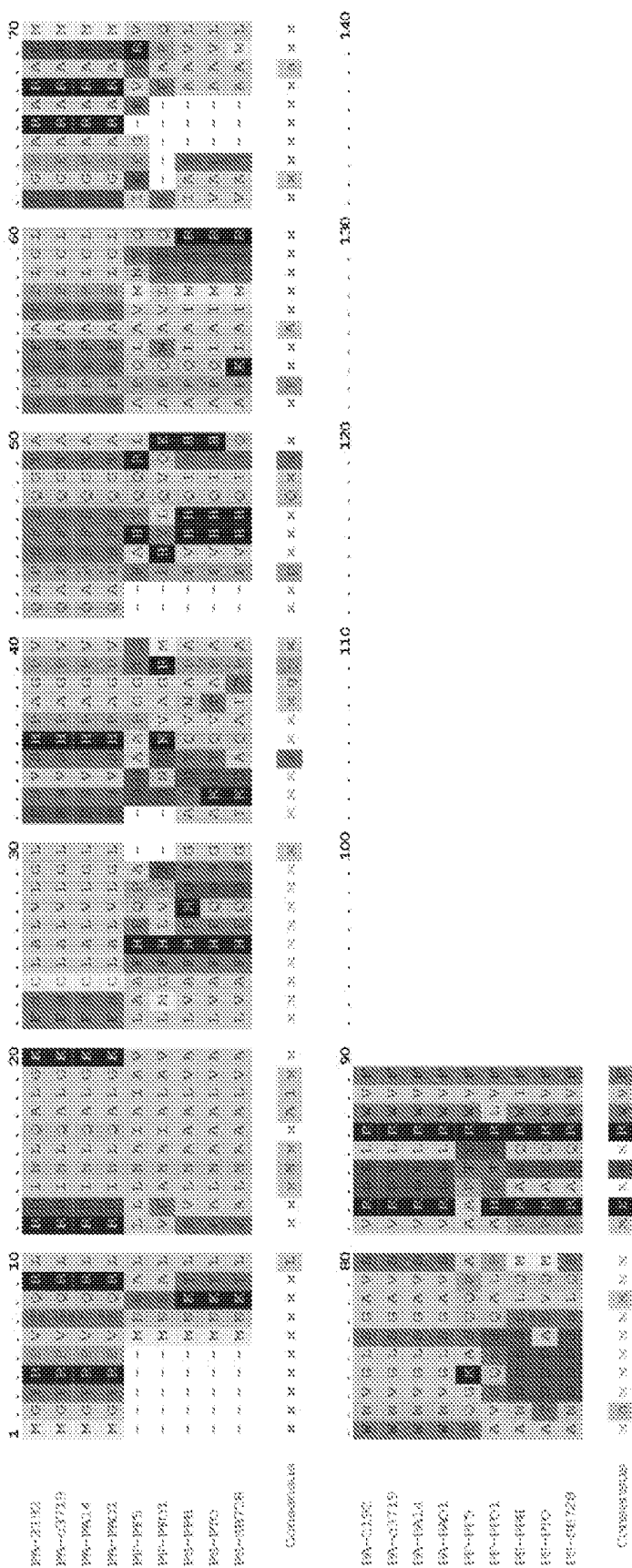


FIGURE 11

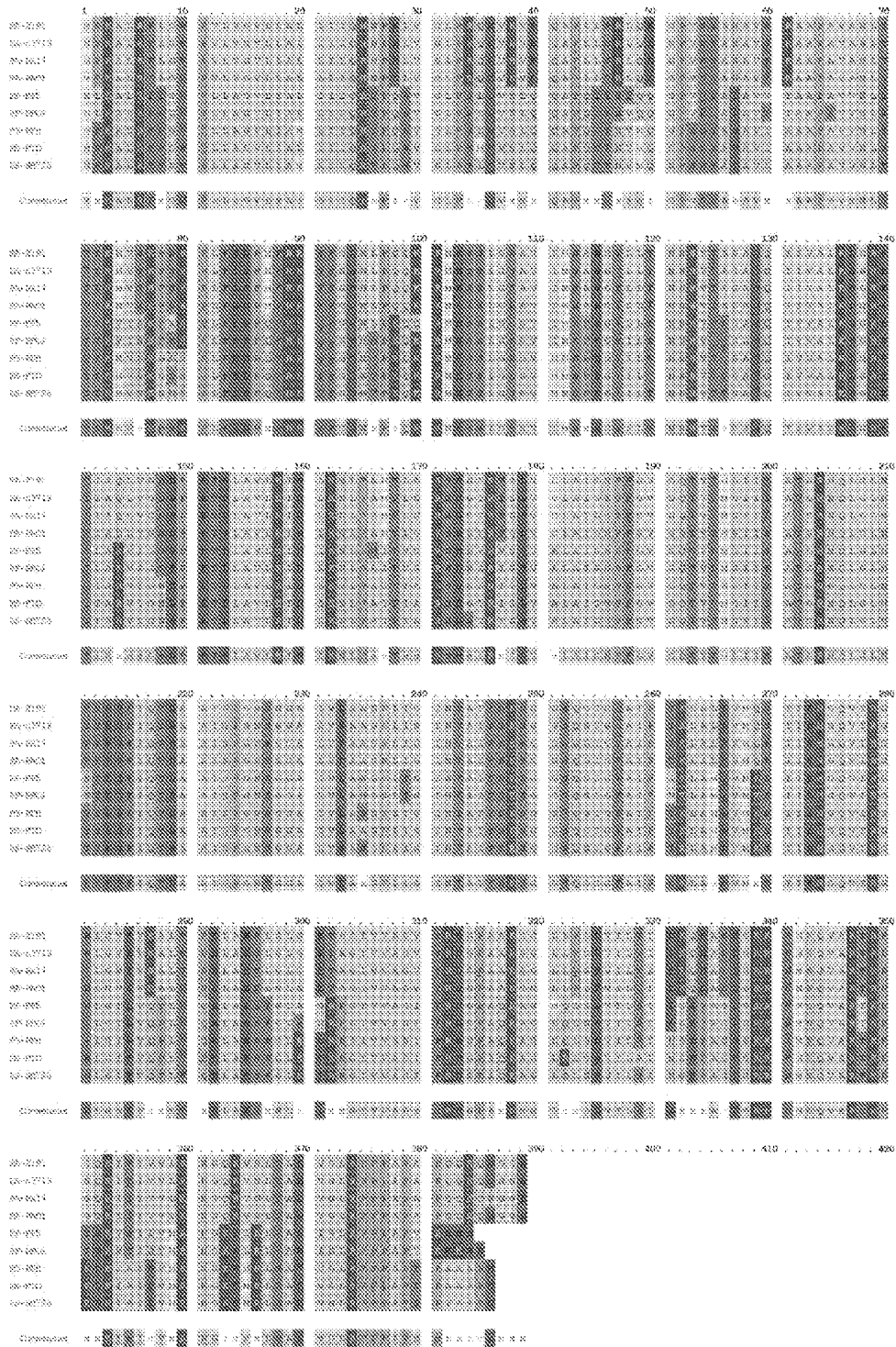


FIGURE 12

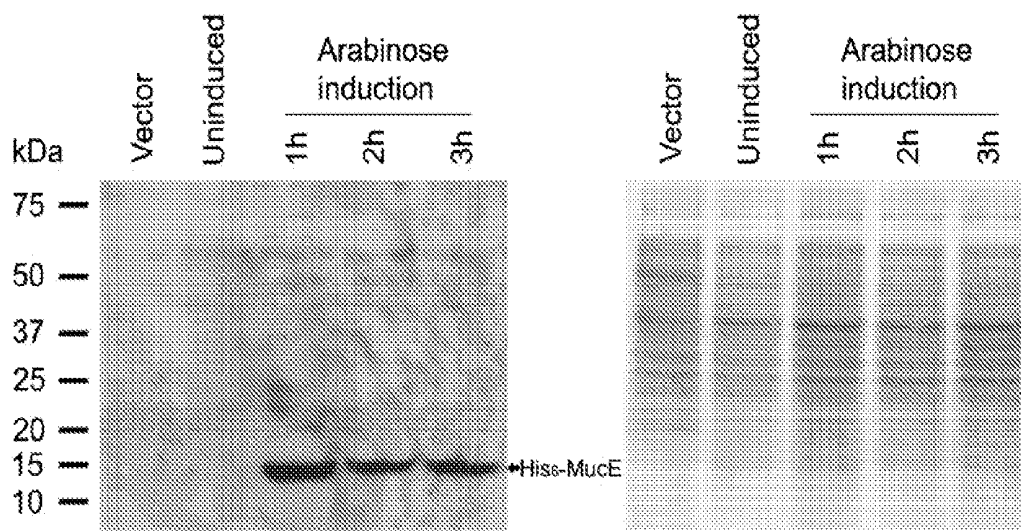


FIGURE 13

^{4,514,045}
 AGCGCCAGCCTGACCTA-Gm^f (acc C1)-TATCAAGGAGTGGTAGCC ATG GGT TTC CGG CCA
 M G F R P
 SD
 GTT AGC CAA CGT TTG CGT GAC ATC AAC CTG CAG GCC CTC GGC AAG TTT TCC TGC CTT
 V S Q R L R D I N L Q A L G K F S C L
 5 → 4 → 6 →
 GCC CTG GTC CTC GGC CTG GAA TCG GTA AGC CAT CCG GCC GGC CCG GTC CAG GCC CCC
 A L V L G L E S V S H P A G P V Q A P
 TCG TTC AGC CAG GGC ACC GCC AGC CCG TCC TTC GCT ACT CCG CTC GGC CTC GAC GGC
 S F S Q G T A S P S F A T P L G L D G
 CCG GCC CGC GCC AGG GCC GAG ATG TGG AAC GTC GGC CTG TCC GGC GCC GTC AGC GTG
 P A R A R A E M W N V G L S G A V S V
 3 → ^{4,514,347}
 CGT GAC GAG TTG CGC TGG GTG TTT TGA
 R D E L R W V F

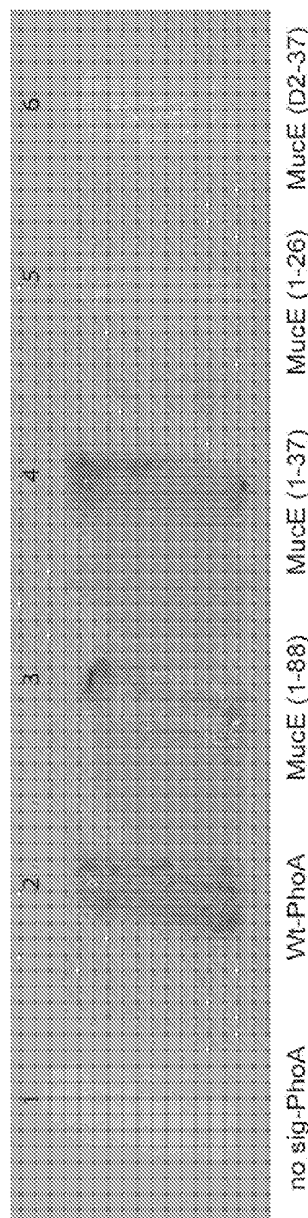


FIGURE 14

**METHODS OF DETECTING AND
CONTROLLING MUCOID PSEUDOMONAS
BIOFILM PRODUCTION**

**CROSS REFERENCE TO RELATED
APPLICATIONS**

[0001] The present application is a continuation of U.S. patent application Ser. No. 11/730,186, filed on Mar. 29, 2007, and claims the benefit of the filing date of U.S. Provisional Patent Application No. 60/787,497, filed Mar. 31, 2006, which is incorporated herein by reference in its entirety.

**STATEMENT REGARDING
FEDERALLY-SPONSORED RESEARCH AND
DEVELOPMENT**

[0002] Statement under MPEP 310. The U.S. government has a paid-up license in this invention and the right in limited circumstances to require the patent owner to license others on reasonable terms as provided for by the terms of NNA04CC74G awarded by the National Aeronautics and Space Administration (NASA).

[0003] Part of the work performed during development of this invention utilized U.S. Government funds. The U.S. Government has certain rights in this invention.

**NAMES OF THE PARTIES TO A JOINT
RESEARCH AGREEMENT**

[0004] Not Applicable.

BACKGROUND OF THE INVENTION

[0005] 1. Field of the Invention

[0006] The present invention relates to the identification and use of positive regulators of alginate production in *Pseudomonas aeruginosa*. One aspect of the invention provides compositions and methods for the early detection and diagnosis of the conversion to mucoidy of *Pseudomonas aeruginosa*. The present invention also provides a molecular mechanism for detecting the conversion from the nonmucoid to the mucoid state, including molecular probes for the early detection of this disease state.

[0007] 2. Background Art

[0008] Cystic Fibrosis (CF) is the most common inheritable lethal disease among Caucasians. The leading cause of high morbidity and mortality in CF patients are the chronic respiratory infections caused by *Pseudomonas aeruginosa*. *Pseudomonas aeruginosa* is an aerobic, motile, gram-negative bacterium with a simple metabolic demand that allows it to thrive in diverse environments. *P. aeruginosa* normally inhabits soil, water, and vegetation. Although it seldom causes disease in healthy people, *P. aeruginosa* is an opportunistic pathogen associated with fatal pneumonia in patients with CF, as well as patients with compromised immune systems and chronic infections such as non-cystic fibrosis bronchiectasis and urinary tract infections.

[0009] In CF patients, the initially colonizing *P. aeruginosa* strains are nonmucoid but in the CF lung, after a variable period, often one or two years, they inevitably convert into the mucoid form. Mucoid strains of *P. aeruginosa* grow as biofilms in the airways of CF patients (Yu, H., and N. E. Head, *Front Biosci.* 7:D442-57 (2002)). Biofilms refer to surface-attached bacterial communities encased in a glycocalyx matrix (Costerton, J. W., et al., *Science* 284:1318-22 (1999)). Mucoid *P. aeruginosa* biofilms are microcolonies embedded

in a capsule composed of copious amounts of alginate, an exopolysaccharide (Govan, J. R., and V. Deretic, *Microbiol. Rev.* 60:539-74 (1996)) and are resistant to host defenses (Ramsey, D. M., and D. J. Wozniak, *Mol. Microbiol.* 56:309-22 (2005)).

[0010] The emergence of mucoid strains of *P. aeruginosa* in CF lungs signals the beginning of the chronic phase of infection and is associated with further disease deterioration and poor prognosis (Lyczak, J. B., et al., *Clin. Microbiol. Rev.* 15:194-222 (2002)). The chronic phase of infection due to *P. aeruginosa* is characterized by pulmonary exacerbations (fever, elevated white blood cell count, increased sputum production, and decreased pulmonary function) that require antimicrobial therapy (Miller, M. B., and Gilligan, P. H., *J. Clin. Microbiol.* 41:4009-4015 (2003)). CF exacerbations are typically interspersed with intervening periods of relative quiescence, with each phase lasting various lengths of time (Miller, M. B., and Gilligan, P. H., *J. Clin. Microbiol.* 41:4009-4015 (2003)). However, lung function continuously declines, the infecting strains become increasingly resistant, and inevitably, the patient succumbs to cardiopulmonary failure (Miller, M. B., and Gilligan, P. H., *J. Clin. Microbiol.* 41:4009-4015 (2003)).

[0011] There is a growing consensus that the lung pathology that occurs during chronic *P. aeruginosa* infection is due to a large extent to the immune response directed against pseudomonal biofilms (Miller, M. B., and Gilligan, P. H., *J. Clin. Microbiol.* 41:4009-4015 (2003)). High levels of cytokines and leukocyte-derived proteases can be detected in airway fluid from CF patients and are believed to be responsible for much of the lung damage that occurs in this patient population (Miller, M. B., and Gilligan, P. H., *J. Clin. Microbiol.* 41:4009-4015 (2003)). Alginate appears to protect *P. aeruginosa* from the consequences of this inflammatory response as it scavenges free radicals released by activated macrophages (Simpson, J. A., et al., *Free Rad. Biol. Med.* 6:347-353 (1989)). The alginate mucoid coating also leads to the inability of patients to clear the infection, even under aggressive antibiotic therapies, most probably because it provides a physical and chemical barrier to the bacterium (Govan and Deretic, *Microbiol. Rev.* 60:539-574 (1996)).

[0012] Early aggressive antibiotic treatment of the initial colonizing non-mucoid *P. aeruginosa* population might prevent or at least delay chronic pulmonary infection. However, questions still remain as to whether such treatment should be performed routinely or only during pulmonary exacerbation, and whether the regimen could potentially lead to the emergence of resistant strains (Ramsey and Wozniak, *Mol. Microbiol.* 56:309-322 (2005)). Since *P. aeruginosa* is inherently resistant to many antibiotics at concentrations that can be achieved in vivo, with the exception of ciprofloxacin, those to which it is sensitive need to be given intravenously (Wilson and Dowling, *Thorax* 53:213-219 (1998)). However, long-term, aggressive antibiotic treatment is not without side effects. Therefore, it would be more beneficial to place the emphasis on aggressive treatment strategies before the in vivo switch to mucoidy since once chronic infection is established, it is rarely possible to eradicate it even with intensive, antibiotic therapy. Thus, early detection of conversion to mucoidy in patients is desired to allow aggressive therapy, thereby preventing further disease deterioration.

[0013] Synthesis of alginate and its regulation has been the object of numerous studies (Govan, J. R., and V. Deretic, *Microbiol. Rev.* 60:539-74 (1996); Ramsey, D. M., and D. J.

Wozniak, *Mol. Microbiol.* 56:309-22 (2005)). Alginate production is positively and negatively regulated in wild-type cells.

[0014] Three tightly linked genes *algU*, *mucA*, and *mucB* have been previously identified with a chromosomal region shown by genetic means to represent the site where mutations cause conversion to mucoidy (see U.S. Pat. Nos. 6,426,187, 6,083,691, 5,591,838, and 5,573,910, incorporated herein by reference in their entireties).

[0015] Positive regulation centers on the activation of the alginate biosynthetic operon (Govan, J. R., and V. Deretic, *Microbiol. Rev.* 60:539-74 (1996)). Positive regulators include the alternative stress-related sigma factor AlgU (Martin, D. W., et al., *Proc. Natl. Acad. Sci.* 90:8377-81 (1993)), also called AlgT (DeVries, C. A., and D. E. Ohman, *J. Bacteriol.* 176:6677-87 (1994)), and transcriptional activators AlgR and AlgB, which belong to a bacterial two component signaling system. The cognate kinase of AlgB is KinB (Ma, S., et al., *J. Biol. Chem.* 272:17952-60 (1997)) while AlgZ (Yu, H., et al., *J. Bacteriol.* 179:187-93 (1997)) may be the kinase that phosphorylates AlgR. However, unlike a typical two-component system, alginate overproduction is independent of phosphorylation of AlgR or AlgB (Ma, S., et al., *J. Bacteriol.* 180:956-68 (1998)).

[0016] Negative regulation of alginate has focused on the post-translational control of AlgU activity. In alginate regulation, the master regulator is AlgU and the signal transducer is MucA, a trans-inner membrane protein whose amino terminus interacts with AlgU to antagonize the activity of AlgU, and the carboxyl terminus with MucB, another negative regulator of alginate biosynthesis. The *algUmucABC* cluster is conserved among many Gram-negative bacteria. AlgU belongs to the family of extracytoplasmic function (ECF) sigma factors that regulate cellular functions in response to extreme stress stimuli. The action of ECF sigma factors is negatively controlled by MucA, MucB and MucC. This set of proteins forms a signal transduction system that senses and responds to envelope stress.

[0017] MucA is the anti-sigma factor that binds AlgU and antagonizes its transcriptional activator activity (Schurr, M. J., et al., *J. Bacteriol.* 178:4997-5004 (1996)). Consequently, inactivation of *mucA* in *P. aeruginosa* strain PAO1 results in the mucoid phenotype (Alg+) (Martin, D. W., et al., *Proc. Natl. Acad. Sci. USA* 90:8377-81 (1993); Mathee, K., et al., *Microbiology* 145:1349-57 (1999)). Clinical mucoid isolates of *P. aeruginosa* carry recessive mutations in *mucA* (Anthony, M., et al., *J. Clin. Microbiol.* 40:2772-8 (2002); Boucher, J. C., et al., *Infect. Immun.* 65:3838-46 (1997)). The transition from a non-mucoid to mucoid variant occurs in concurrence with the *mucA22* allele after exposure to hydrogen peroxide, an oxidant in neutrophils (Mathee, K., et al., *Microbiology* 145:1349-57 (1999)).

[0018] MucB is located in the periplasm in association with the periplasmic portion of MucA (Mathee, K., et al., *J. Bacteriol.* 179:3711-20 (1997); Rowen, D. W., and V. Deretic, *Mol. Microbiol.* 36:314-27 (2000)). MucC is a mild negative regulator whose action is in synergy with MucA or MucB (Boucher, J. C., et al., *Microbiology* 143:3473-80 (1997)). MucD is a negative regulator whose dual functions include periplasmic serine protease and chaperone activities that are thought to help remove misfolded proteins of the cell envelope for quality control (Boucher, J. C., et al., *J. Bacteriol.* 178:511-23 (1996); Yorgey, P., et al., *Mol. Microbiol.* 41:1063-76 (2001)).

[0019] Overproduction of alginate is an important virulence factor for bacterial biofilm formation in vivo. Alginate protects the bacterium from oxidative stress by scavenging the reactive oxygen species (Learn, D. B., et al., *Infect. Immun.* 55:1813-8 (1987); Simpson, J. A., et al., *Free Radic. Biol. Med.* 6:347-53 (1989)).

[0020] There is a significant and urgent need in hospitals and clinical laboratories for a rapid, sensitive and accurate diagnostic test for detection of potential conversion to mucoidy of *P. aeruginosa* prior to the detection of the emergence of a mucoid colony morphology on a growth plate in a laboratory.

BRIEF SUMMARY OF THE INVENTION

[0021] The present invention describes the identification and use of *mucE*, a positive regulator of alginate production in *P. aeruginosa*. Induction of *mucE* causes mucoid conversion in *P. aeruginosa*.

[0022] One object of this invention is to provide compositions for the early detection and diagnosis of the conversion to mucoidy of *Pseudomonas aeruginosa*. The present invention also provides molecular probes to detect the conversion from the nonmucoid to the mucoid state, via Northern blot, RT-PCR, or real-time RT-PCR, including diagnostic kits for the early detection of this disease state.

[0023] Another object of this invention is to provide methods for the early detection and diagnosis of the conversion to mucoidy of *Pseudomonas aeruginosa*. One method for detecting a cell converted to mucoidy involves obtaining a cell sample suspected of conversion to mucoidy, contacting messenger RNA from the cell sample with a *mucE* nucleic acid segment, and detecting the presence of increased hybridized complexes, wherein the presence of increased hybridized complexes is indicative of conversion to mucoidy. A six fold increase of *mucE* messenger RNA is sufficient to cause conversion to mucoidy in *mucA+* wild type cells. Thus, early detection of conversion to mucoidy is possible by detecting and measuring *mucE* expression as compared to the baseline expression level of *mucE* in non-mucoid cells.

[0024] Early detection for the trend of increased expression of the *mucE* message in various samples, including the sputum samples from patients with cystic fibrosis, samples from patients carrying endotracheal tubes, and urinary tract catheters would provide an indication that the colonizing bacteria has started to enter the biofilm mode of growth, thereby requiring immediate administration of aggressive antibiotic therapy.

[0025] A further embodiment of this invention are the use of MucE antibodies and methods of using MucE antibodies for detecting the conversion to mucoidy of *P. aeruginosa*.

[0026] A further embodiment of this invention is a method for preventing the conversion to mucoidy of *P. aeruginosa* by blocking *mucE* expression or MucE activity. Mucoid *P. aeruginosa* biofilms can be formed via two means: the mutations in *mucA* (see U.S. Pat. Nos. 6,426,187, 6,083,691, and 5,591,838), and increased expression of *mucE*. *mucE* acts upstream of *mucA*, thus, the control of mucoidy mediated by *mucE* occurs before the *mucA* mutation. Therefore, inhibition of MucE activity provides a means to prevent conversion to mucoidy during the early stage of bacterial colonization.

[0027] In still further embodiments, the present invention concerns a method for identifying new compounds that inhibit *mucE* gene expression or MucE function, which may be termed "candidate substances." Such compounds may

include anti-sense oligonucleotides or molecules that block or repress the mucE promoter, or molecules that directly bind to MucE to block the activity of MucE.

[0028] The present invention also provides for a method for screening a candidate substance for preventing *P. aeruginosa* conversion to mucoidy comprising contacting *E. coli* bacteria with an effective amount of a candidate substance; and assaying for reporter gene activity, wherein a decrease in the expression of the reporter gene indicates inhibition of mucE promoter activity.

[0029] Another object of the present invention is AlgW, a positive regulator for alginate production, and the use of AlgW as a potential drug target.

BRIEF DESCRIPTION OF THE DRAWINGS/FIGURES

[0030] The following drawings form part of the present specification and are included to further demonstrate certain aspects of the present invention. The invention may be better understood by reference to one or more of these drawings in combination with the detailed description of specific embodiments presented herein.

[0031] FIG. 1 shows the nucleotide sequence of mucE in *P. aeruginosa* (SEQ ID NO:1). The mucE gene is an unclassified ORF (PA4033) in the genomes of PAO1 and PA14. It encodes a small peptide of 89 amino acids with a molecular mass of 9.5 kDa.

[0032] FIG. 2 shows the amino acid sequence of MucE in *P. aeruginosa* (SEQ ID NO:2). MucE has a predicted N-terminal leader peptide of 36 amino acids, which is likely to direct the native peptide of MucE to the inner membrane for processing and export to the periplasm or outer membrane of *P. aeruginosa*. The WVF at the C-terminus is the signal for alginate induction.

[0033] FIG. 3 shows the nucleotide sequence of the homolog of mucE in *P. fluorescens* Pf-5 (SEQ ID NO:3).

[0034] FIG. 4 shows the amino acid sequence of the homolog of MucE in *P. fluorescens* Pf-5 (SEQ ID NO:4).

[0035] FIG. 5 shows the number of mariner transposon insertions per TA site in the algU promoter region of four strains of *P. aeruginosa*. FIG. 5A shows the frequency of the insertions in each *P. aeruginosa* strain. FIG. 5B shows the sequence of the algU promoter region (SEQ ID NO: 16) containing all TA sites with an assigned number matching to FIG. 5A.

[0036] FIG. 6 shows the levels of alginate, AlgU and MucB in *P. aeruginosa* mucoid mutants caused by induction of algUmucABC in comparison with the wild type PAO1 (B). FIG. 6A shows the amounts of alginate (ng alginate/mg protein) that were measured for 4-72 h. Asterisk indicates significant differences at $P < 0.05$ in comparison with the same time point in PAO1. FIG. 6B is a Western blot analysis of the total protein extracts from the same cells as above were probed by anti-AlgU (Schorr, M. J., et al., *J. Bacteriol.* 178: 4997-5004 (1996)) and anti-MucB (Boucher, J. C., et al., *J. Bacteriol.* 178:511-23 (1996)) monoclonal antibodies. The genotype of each mutant is shown. The number below each blot was the ratio of internally normalized protein relative to the level of PAO1 at the same time point. The +oe superscript used in FIG. 6A refers to the overexpression of the algU mucABC operon.

[0037] FIG. 7 shows the levels of alginate, the expression of AlgU and MucB in VE2 (PAO1 mucE^{+oe}) as detected by Western blots (FIG. 7A) and RT-PCR (FIG. 7B). Bacterial

cells were grown under the same conditions as described in Methods, and were subjected to the same treatments as in FIG. 6. Asterisk in alginate production indicates significant differences compared with PAO1 at the same time point as in FIG. 6. The ratio of internally normalized AlgU and MucB to those of PAO1 is shown.—in FIG. 7B indicates the RT minus controls.

[0038] FIG. 8 shows upregulation of AlgU in VE13 (PAO1 kinB⁻) (FIG. 8A) in association with increased alginate production. FIG. 8B: Western blots showing the levels of AlgU and MucB in various mutants after 24 h growth. FRD2 carries the algT18 suppressor mutant while FRD2-VE1 is like VE1 with the insertion in the algU promoter. VE3-NM1 to -NM4 are the spontaneous nonmucoid mutants with suppressors inactivating algU. VE3NM3+algU: pUCP20-algU in trans. VE22: cupB5^{+oe} and VE24: oprL⁺ but with reduced expression of oprL due to production of the antisense RNA.

[0039] FIG. 9 shows the regulatory cascade of alginate production in *P. aeruginosa*. AlgU is the alginate-specific sigma factor, whose activity is antagonized by anti-sigma factor, MucA. MucA is an inner membrane protein with its C-terminus in the periplasm, and its N-terminus interacting with AlgU in cytoplasm. The alginate operon consists of 12 genes encoding biosynthetic enzymes, thus collectively termed “alginate engine.” The enzymes AlgI, AlgJ, and AlgF are involved in O-acetylation of alginate. AlgK is needed for formation of the alginate polymer and AlgE for the export of alginate across the membrane.

[0040] FIG. 10 is a map of the expression vector pUCP20-Gm-mucE. The expression vector contains the coding region of the mucE gene driven by a promoter derived from the gentamicin (Gm) cassette of pFAC. This promoter is highly expressive in *P. aeruginosa*. This construct can render the nonmucoid PAO1 mucoid while the control backbone vector without mucE has no effect on the phenotype.

[0041] FIG. 11 shows an alignment of the mucE homologs identified from the completed and partially completed genomes of three species within the genus of *Pseudomonas*. The three species are PA: *Pseudomonas aeruginosa*; PF: *Pseudomonas fluorescens*; and PS: *Pseudomonas syringae*. The strains shown are: PA-PAO1 (SEQ ID NO: 23), *Pseudomonas aeruginosa* PAO1 (causes opportunistic infections in humans); PA-PA14 (SEQ ID NO: 22), *Pseudomonas aeruginosa* UCBPP PA14 (human clinical isolate); PA-2192 (SEQ ID NO: 20), *Pseudomonas aeruginosa* 2192 (CF patient isolate); PA-C3719 (SEQ ID NO: 21), *Pseudomonas aeruginosa* C3719 (unknown source but probably clinical origin); PS-PPH (SEQ ID NO: 26), *Pseudomonas syringae* pv. *phaseolicola* 1448A (causes halo blight on beans); PS-PTO (SEQ ID NO: 27), *Pseudomonas syringae* pv. tomato DC3000 (bacterial speck disease on tomato plants); PS-SB728 (SEQ ID NO: 28), *Pseudomonas syringae* pv. *syringae* B728a (brown spot disease on beans); PF-PF5 (SEQ ID NO: 24), *Pseudomonas fluorescens* Pf-5 (Saprophyte) (the production of a number of antibiotics as well as the production of siderophores by this strain can inhibit phytopathogen growth); and PF-PFO1 (SEQ ID NO: 25), *Pseudomonas fluorescens* PfO-1 (microorganism of putrefaction and well adapted to soil environments).

[0042] FIG. 12 shows an alignment of the algal homologs identified from the completed and partially completed genomes of three species within the genus of *Pseudomonas*. The three species are PA: *Pseudomonas aeruginosa*; PF: *Pseudomonas fluorescens*; and PS: *Pseudomonas syringae*.

All these species have the capacity to overproduce alginate. The strains shown are the same as for FIG. 11, and include AlgW homologs for PA-2192 (SEQ ID NO: 29), PA-C3719 (SEQ ID NO: 30), PA-PA14 (SEQ ID NO: 31), PA-PAO1 (SEQ ID NO: 32), PF-PF5 (SEQ ID NO: 33), PF-PFO1 (SEQ ID NO: 34), PS-PPH (SEQ ID NO: 35), PS-PTO (SEQ ID NO: 36), and PS-SB728 (SEQ ID NO: 37). The predicted functional domains of AlgW include an N-terminal signal peptide sequence at amino acids 1-27, a trypsin domain (peptidase activity, serine at AlgW 227 is conserved) at amino acids 114-260, and a PDZ domain at amino acids 270-380.

[0043] FIG. 13 shows the detection of N-terminal His-tag labeled MucE protein via Western Blot with anti-penta-his monoclonal antibody and SDS-PAGE with Coomassie blue.

[0044] FIG. 14 shows the sequence of mucE (SEQ ID NO: 2; amino acid sequence of mucE) and the phenotypes of the different translational mucE-phoA fusions (SEQ ID NO: 17; nucleic acid sequence of the full-length mucE-phoA fusion). The location of the mariner transposon bearing the *aacC1* gene conferring *Gm^r* in the chromosome of the mucoid mutants PAO1VE2 and PA14DR4 is shown. Different lengths of mucE sequences were fused with *phoA* without the leader signal peptide sequence to demonstrate the effect of the signal sequence on translocation across the inner membrane to the periplasm. 1. Negative control, no 5' leader peptide sequence (no sig *phoA*); 2. Positive control, the wild-type *E. coli* *phoA* leader sequence restored in the construct by directly fusing it with *phoA* (*Ec wt-phoA*); 3. Full-length mucE-*phoA*; 4. mucE with the predicted N-terminal leader sequence fused with *phoA*; 5. partial mucE N-terminal leader sequence fused with *phoA*; 6. C-terminal mucE with ATG fused with *phoA*. The exact *phoA* fusion sites are as indicated in the mucE sequence. The leader sequence of mucE with max cleavage site is between pos. 36 (P) and 37 (A) (box).

[0045] FIG. 15 shows an alignment of MucP (SEQ ID NO: 19) and the *Escherichia coli* orthologue RseP (SEQ ID NO: 18). Identical amino acids are marked by an asterisk (*). The two terminal protease domains are shown in light gray and the two PDZ domains are shown in medium gray. The overlapping region containing both a portion of the protease domain and a portion of the PDZ domain is shown in dark gray.

DETAILED DESCRIPTION OF THE INVENTION

[0046] Infections due to *P. aeruginosa* are recognized by the medical community as particularly difficult to treat. In particular, the emergence of a mucoid phenotype of *P. aeruginosa* in CF lungs is associated with further disease deterioration and poor prognosis. A patient's prognosis for recovery from an infection caused by mucoid *P. aeruginosa* is enhanced when the diagnosis is made and appropriate treatment initiated as early in the course of infection as possible before the number of bacteria in the host becomes overwhelming and much more difficult to bring under control. Thus, early detection of *P. aeruginosa* conversion to mucoidy in patients is particularly desired to allow aggressive therapy, thereby preventing further disease deterioration.

[0047] The present application describes the identification of a positive regulator involved in alginate and biofilm production in *P. aeruginosa*, termed mucE (SEQ ID NOs:1-2) (GenBank accession numbers DQ352561 (PAO1 mucE) and DQ352562 (PA14 mucE)). Induction of mucE causes mucoid conversion in *P. aeruginosa*.

[0048] One object of this invention is to provide compositions for the early detection and diagnosis of the conversion to

mucooidy of *Pseudomonas aeruginosa* in biological specimens. By "early detection" is meant detecting *P. aeruginosa* conversion to mucooidy using certain assay methods, including but not limited to, methods involving the use of a nucleic acid probe or antibodies, 1 to 14 days, specifically 1 to 10 days, more specifically 1 to 7 days, and most specifically 6 days, 5 days, 4 days, 3 days, 2 days, 24 hours, 18 hours, 12 hours or 8 hours before detecting the emergence of a mucoid colony morphology on a growth plate in a laboratory.

[0049] The present invention also provides molecular probes to detect the conversion from the nonmucooid to the mucooid state, including via Northern blot, RT-PCR, or real-time RT-PCR, including diagnostic kits for the early detection of this disease state.

[0050] The present invention is also directed to algW and the use of AlgW as a potential drug target. Contrary to previous findings, AlgW is a positive regulator for alginate production. The *algW* gene and AlgW protein, the *algW* homologs, and the uses thereof as described above for the *P. aeruginosa* mucE gene and MucE protein are also part of the present invention.

[0051] Another object of this invention are mucA mucoid mutants and the use of these mutants to screen for suppressors and potential toxin genes. Mucoid mutants with mucA mutations (see U.S. Pat. Nos. 6,426,187, 6,083,691, and 5,591,838) have been previously detected from clinical specimens. The presence of these mutations is a poor prognosticator and represents the onset of chronic infection. Since the elevation of mucE can cause the emergence of mucoid *P. aeruginosa* before mucA mutations occur, the involvement of mucE in alginate induction is upstream of mucA.

[0052] Another object of this invention is to provide methods for the early detection and diagnosis of the conversion to mucooidy of *Pseudomonas aeruginosa*. One method for detecting a cell converted to mucooidy involves obtaining a biological specimen suspected of conversion to mucooidy, contacting messenger RNA from the specimen with a mucE nucleic acid segment, and detecting the presence of increased hybridized complexes, wherein the presence of increased hybridized complexes over baseline is indicative of conversion to mucooidy.

[0053] The biological specimen to be assayed for the presence of mucoid *P. aeruginosa* can be prepared in a variety of ways, depending on the source of the specimen. The specimen may be obtained from the following: patients with debilitated immune systems, sputum samples from patients with pneumonia, endotracheal samples from intubating patients under intensive care, samples from urinary catheters, samples from wounds, and especially from patients suffering from cystic fibrosis. Specimens may be a sample of human blood, sputum, wound exudate, endotracheal samples, respiratory secretions, human tissues (e.g., lung) or a laboratory culture thereof, and urine. Since alginate induction is synonymous with biofilm formation in vivo, the increased expression of mucE may also be used to monitor the biofilm formation in a confined environment during space travel (astronauts).

[0054] A further embodiment of this invention is the use of MucE antibodies and methods of using MucE antibodies for detecting the conversion to mucooidy of *P. aeruginosa* via ELISA or other immunoassays.

[0055] A further embodiment of this invention is a method for preventing the conversion to mucooidy of *P. aeruginosa*. In particular, the present invention concerns methods for identifying new compounds that inhibit mucE gene expression or

MucE function, which may be termed “candidate substances.” Such compounds may include anti-sense oligonucleotides or molecules that block or repress the mucE promoter.

[0056] Specifically, when the last three amino acids of MucE are changed from WVF to other combinations, the majority of altered signals are ineffective to induce mucoid biofilm production, indicating the specificity of this signal in mucoid conversion. Thus, WVF is an important signal for mucoid biofilm formation in *P. aeruginosa*. This WVF signal plays a role in the bacterium’s ability to overproduce alginate and enter a biofilm mode of growth via regulated proteolysis as depicted in FIG. 9. The present invention provides for methods to employ the signal as a drug target. Diagnostic kits to screen for the presence of the signal in patients with chronic *P. aeruginosa* infections are contemplated. In addition, methods to screen for compounds that inhibit the function of this signal are also contemplated. Such compounds will have a specific anti-biofilm function.

[0057] The present invention also provides for a method for screening a candidate substance for preventing *P. aeruginosa* conversion to mucoidy comprising contacting *E. coli* bacteria with an effective amount of a candidate substance; and assaying for reporter gene activity, wherein a decrease in the expression of the reporter gene indicates inhibition of mucE promoter activity.

[0058] MucE homologs from other *Pseudomonas* species or strains are also contemplated (see FIG. 11). These *Pseudomonas* species and strains include PA-PAO1, *Pseudomonas aeruginosa* PAO1 (causes opportunistic infections in humans); PA-PA14, *Pseudomonas aeruginosa* UCBPP PA14 (human clinical isolate); PA-2192, *Pseudomonas aeruginosa* 2192 (CF patient isolate); PA-C3719, *Pseudomonas aeruginosa* C3719 (unknown source but probably clinical origin); PS-PPH, *Pseudomonas syringae* pv. *phaseolicola* 1448A (causes halo blight on beans); PS-PTO, *Pseudomonas syringae* pv. tomato DC3000 (bacterial speck disease on tomato plants); PS-SB728, *Pseudomonas syringae* pv. *syringae* B728a (brown spot disease on beans); PF-PF5, *Pseudomonas fluorescens* Pf-5 (Saprophyte) (the production of a number of antibiotics as well as the production of siderophores by this strain can inhibit phytopathogen growth); and PF-PFO1, *Pseudomonas fluorescens* PfO-1 (microorganism of putrefaction and well adapted to soil environments). The mucE homologs and the use thereof as described above for the *P. aeruginosa* mucE gene and MucE protein are also part of the present invention.

[0059] Isolated polynucleotides comprising fragments containing one or more mucE consensus regions are also contemplated. The consensus regions are shown in FIG. 11.

[0060] By “isolated” polynucleotide is intended a nucleic acid molecule, DNA or RNA, circular or linear, which has been removed from its native environment. For example, recombinant DNA molecules contained in a vector are considered isolated for the purposes of the present invention. Further examples of isolated DNA molecules include recombinant DNA molecules maintained in heterologous host cells or purified (partially or substantially) DNA molecules in solution.

[0061] The term “positive regulator” as used herein, means that the induction of expression and/or activity of such a gene encoding a functional protein causes alginate overproduction. Examples of positive regulators include algU, mucE, and algal.

[0062] The term “negative regulator” as used herein, means that the absence of such a gene encoding a functional protein causes alginate overproduction. Examples of negative regulators include kinB, mucA, mucB, and mucD.

[0063] The term “recombinant,” as used herein, means that a protein is derived from recombinant (e.g., microbial) expression systems. The term “microbial” refers to recombinant proteins made in bacterial or fungal. (e.g., yeast) expression systems. As a product, the term “recombinant microbial” defines a protein produced in a microbial expression system which is essentially free of native endogenous substances. Protein expressed in most bacterial cultures, e.g., *E. coli*, will be free of glycan.

[0064] The term “DNA sequence” refers to a DNA polymer, in the form of a separate fragment or as a component of a larger DNA construct. Preferably, the DNA sequences are in a quantity or concentration enabling identification, manipulation, and recovery of the sequence and its component nucleotide sequences by standard biochemical methods, for example, using a cloning vector. Such sequences are preferably provided in the form of an open reading frame uninterrupted by internal nontranslated sequences. Genomic DNA containing the relevant sequences could also be used. Sequences of non-translated DNA may be present 5' or 3' from the open reading frame, where the same do not interfere with manipulation or expression of the coding regions.

[0065] The term “nucleotide sequence” refers to a heteropolymer of deoxyribonucleotides. DNA sequences encoding the proteins of this invention can be assembled from fragments and short oligonucleotide linkers, or from a series of oligonucleotides, to provide a synthetic gene which is capable of being expressed in a recombinant transcriptional unit.

[0066] The term “recombinant expression vector” refers to a replicable DNA construct used either to amplify or to express DNA which encodes the recombinant proteins of the present invention and which includes a transcriptional unit comprising an assembly of (1) a genetic element or elements having a regulatory role in gene expression, for example, promoters or enhancers, (2) a structure or coding sequence which is transcribed into mRNA and translated into protein, and (3) appropriate transcription and translation initiation and termination sequences. Structural elements intended for use in yeast expression systems preferably include a leader sequence enabling extracellular secretion of translated protein by a host cell. Alternatively, where recombinant protein is expressed without a leader or transport sequence, it may include an N-terminal methionine residue. This residue may optionally be subsequently cleaved from the expressed recombinant protein to provide a final product.

[0067] As used herein, the term “expression vector” refers to a construct made up of genetic material (i.e., nucleic acids). Typically, an expression vector contains an origin of replication which is functional in bacterial host cells, e.g., *Escherichia coli*, and selectable markers for detecting bacterial host cells comprising the expression vector. Expression vectors of the present invention contain a promoter sequence and include genetic elements as described herein arranged such that an inserted coding sequence can be transcribed and translated in prokaryotes or eukaryotes. In certain embodiments described herein, an expression vector is a closed circular DNA molecule.

[0068] The term “expression” refers to the biological production of a product encoded by a coding sequence. In most

cases, a DNA sequence, including the coding sequence, is transcribed to form a messenger-RNA (mRNA). The messenger-RNA is then translated to form a polypeptide product which has a relevant biological activity. Also, the process of expression may involve further processing steps to the RNA product of transcription, such as splicing to remove introns, and/or post-translational processing of a polypeptide product.

[0069] The term “recombinant microbial expression system” means a substantially homogeneous monoculture of suitable host microorganisms, for example, bacteria such as *E. coli* or yeast such as *S. cerevisiae*, which have stably integrated a recombinant transcriptional unit into chromosomal DNA or carry the recombinant transcriptional unit as a component of a resident plasmid. Generally, cells constituting the system are the progeny of a single ancestral transformant. Recombinant expression systems as defined herein will express heterologous protein upon induction of the regulatory elements linked to the DNA sequence or synthetic gene to be expressed.

[0070] One embodiment of the present invention is a method of detecting conversion to mucoidy in *Pseudomonas aeruginosa* in a biological specimen comprising detecting MucE expression. A preferred embodiment is a method of detecting conversion to mucoidy in *Pseudomonas aeruginosa* having an active mucE gene product comprising the detection of the mucE messenger RNA in a sample suspected of conversion to mucoidy. In this case, the sequence encodes an active gene product and the sequence is detected by hybridization with a complementary oligonucleotide, to form hybridized complexes. The presence of increased hybridized complexes is indicative of conversion to mucoidy in *Pseudomonas aeruginosa*. The complementary oligonucleotides may be 5'-TCAAAACACCCAGCGCAACTCGT-CACG-3', (SEQ ID NO:5) 5'-AGTAGCGAAG-GACGGGCTGGCGGT-3', (SEQ ID NO:6) or 5'-TTGGCTAACTGGCCGAAACCCAT-3' (SEQ ID NO:7).

[0071] A further embodiment of the present invention is the use of MucE antibodies and methods of using MucE antibodies for detecting the conversion to mucoidy of *P. aeruginosa* or for inhibiting MucE function.

[0072] In still further embodiments, the present invention concerns a method for identifying new compounds that inhibit transcription from the mucE promoter, which may be termed as “candidate substances.” Such compounds may include anti-sense oligonucleotides or molecules that encourage repression of the mucE promoter. The present invention provides for a method for screening a candidate substance for preventing *P. aeruginosa* conversion to mucoidy comprising: contacting *E. coli* bacteria with an effective amount of a candidate substance; and assaying for reporter gene activity, wherein a decrease in the expression of the reporter gene indicates inhibition of MucE promoter activity.

[0073] In additional embodiments, the present invention also concerns a method for detecting mucoid *Pseudomonas aeruginosa* bacterium in a biological sample. The method comprises reacting a sample suspected of containing *P. aeruginosa* with a detergent, EDTA, and a monoclonal antibody or fragment thereof capable of specifically binding to MucE expressed by *P. aeruginosa*, separating the sample from unbound monoclonal antibody; and detecting the pres-

ence or absence of immune complexes formed between the monoclonal antibody and MucE.

Polynucleotides

[0074] The DNA sequences disclosed herein will also find utility as probes or primers in nucleic acid hybridization embodiments. Nucleotide sequences of between about 10 nucleotides to about 20 or to about 30 nucleotides, complementary to SEQ ID NOs:1-4, will find particular utility, with even longer sequences, e.g., 40, 50, 100, even up to full length, being more preferred for certain embodiments. The ability of such nucleic acid probes to specifically hybridize to mucE-encoding sequences will enable them to be of use in a variety of embodiments. For example, the probes can be used in a variety of assays for detecting the presence of complementary sequences in a given sample. However, other uses are envisioned, including the use of the sequence information for the preparation of mutant species primers, or primers for use in preparing other genetic constructions.

[0075] Nucleic acid molecules having stretches of 10, 15, 20, 30, 50, or even of 100 nucleotides or so, complementary to SEQ ID NOs:1 and 3, will have utility as hybridization probes. These probes will be useful in a variety of hybridization embodiments, such as Southern and Northern blotting in connection with analyzing the complex interaction of structural and regulatory genes in diverse microorganisms and in clinical isolates from patients, including CF patients. The total size of fragment, as well as the size of the complementary stretch(es), will ultimately depend on the intended use or application of the particular nucleic acid segment. Smaller fragments will generally find use in hybridization embodiments, wherein the length of the complementary region may be varied, such as between about 10 and about 100 nucleotides, according to the complementary sequences one wishes to detect.

[0076] The use of a hybridization probe of about 10 nucleotides in length allows the formation of a duplex molecule that is both stable and selective. Molecules having complementary sequences over stretches greater than 10 bases in length are generally preferred, though, in order to increase stability and selectivity of the hybrid, and thereby improve the quality and degree of specific hybrid molecules obtained. One will generally prefer to design nucleic acid molecules having gene-complementary stretches of 15 to 20 nucleotides, or even longer where desired. Such fragments may be readily prepared by, for example, directly synthesizing the fragment by chemical means, by application of nucleic acid reproduction technology, such as the Polymerase Chain Reaction (PCR) technology of U.S. Pat. No. 4,603,102 (herein incorporated by reference) or by introducing selected sequences into recombinant vectors for recombinant production.

[0077] Accordingly, the nucleotide sequences of the invention may be used for their ability to selectively form duplex molecules with complementary stretches of homologous, or heterologous genes or cDNAs. Depending on the application envisioned, one will desire to employ varying conditions of hybridization to achieve varying degrees of selectivity of probe towards target sequence. For applications requiring high selectivity, one will typically desire to employ relatively stringent conditions to form the hybrids, e.g., one will select relatively low salt and/or high temperature conditions, such as provided by 0.02 M-0.15 M NaCl at temperatures of 50° C. to 70° C. Such selective conditions tolerate little, if any, mis-

match between the probe and the template or target strand, and would be particularly suitable for isolating functionally related genes.

[0078] In certain instances, for example, where one desires to prepare mutants employing a mutant primer strand hybridized to an underlying template or where one seeks to isolate specific mutant nucleic acid encoding sequences from related species, functional equivalents, or the like, less stringent hybridization conditions will typically be needed in order to allow formation of the heteroduplex. In these circumstances, one may desire to employ conditions such as 0.15 M-0.9 M salt, at temperatures ranging from 20° C. to 55° C. Cross-hybridizing species can thereby be readily identified as positively hybridizing signals with respect to control hybridizations. In any case, it is generally appreciated that conditions can be rendered more stringent by the addition of increasing amounts of formamide, which serves to destabilize the hybrid duplex in the same manner as increased temperature. Thus, hybridization conditions can be readily manipulated, and thus will generally be a method of choice depending on the desired results.

[0079] In certain embodiments, it will be advantageous to employ nucleic acid sequences of the present invention in combination with an appropriate means, such as a label, for determining hybridization. A wide variety of appropriate indicator means are known in the art, including fluorescent, radioactive, enzymatic, biotinylated, and chemiluminescent labels, which are capable of giving a detectable signal. Fluorophores, luminescent compounds, radioisotopes and particles can also be employed. In preferred embodiments, one will likely desire to employ a fluorescent label or an enzyme tag, such as urease, alkaline phosphatase or peroxidase, instead of radioactive or other environmental undesirable reagents. In the case of enzyme tags, calorimetric indicator substrates are known which can be employed to provide a means visible to the human eye or spectrophotometrically, to identify specific hybridization with complementary nucleic acid-containing samples.

[0080] In general, it is envisioned that the hybridization probes described herein will be useful both as reagents in solution hybridization as well as in embodiments employing a solid phase. In embodiments involving a solid phase, the test DNA (or RNA) is adsorbed or otherwise affixed to a selected matrix or surface. This fixed, single-stranded nucleic acid is then subjected to specific hybridization with selected probes under desired conditions. The selected conditions will depend on the particular circumstances based on the particular criteria required (depending, for example, on the G+C contents, type of target nucleic acid, source of nucleic acid, size of hybridization probe, etc.). Following washing of the hybridized surface so as to remove nonspecifically bound probe molecules, specific hybridization is detected, or even quantified, by means of the label.

[0081] Longer DNA segments will often find particular utility in the recombinant production of peptides or proteins. DNA segments which encode peptide antigens from about 15 to about 50 amino acids in length, or more preferably, from about 15 to about 30 amino acids in length are contemplated to be particularly useful. DNA segments encoding peptides will generally have a minimum coding length in the order of about 45 to about 150, or to about 90 nucleotides.

[0082] The nucleic acid segments of the present invention, regardless of the length of the coding sequence itself, may be combined with other DNA sequences, such as promoters,

additional restriction enzyme sites, multiple cloning sites, other coding segments, and the like, such that their overall length may vary considerably. It is contemplated that a nucleic acid fragment of almost any length may be employed, with the total length preferably being limited by the ease of preparation and use in the intended recombinant DNA protocol. For example, nucleic acid fragments may be prepared in accordance with the present invention which are up to 10,000 base pairs in length, with segments of 5,000, 3,000, 2,000 or 1,000 base pairs being preferred and segments of about 500 base pairs in length being particularly preferred.

[0083] It will be understood that this invention is not limited to the particular nucleic acid and amino acid sequences of SEQ ID NOs:1 and 3. Therefore, DNA segments prepared in accordance with the present invention may also encode biologically functional equivalent proteins or peptides which have variant amino acid sequences. Such sequences may arise as a consequence of codon redundancy and functional equivalency which are known to occur naturally within nucleic acid sequences and the proteins thus encoded. Alternatively, functionally equivalent proteins or peptides may be created via the application of recombinant DNA technology, in which changes in the protein structure may be engineered, based on considerations of the properties of the amino acids being exchanged.

[0084] Further embodiments of the invention include vectors comprising polynucleotides, which comprise a nucleotide sequence at least 95% identical, and more preferably at least 96%, 97%, 98% or 99% identical, to any of the nucleotide sequences of the vectors comprising polynucleotides described above.

[0085] Other embodiments of the invention include polynucleotides, which comprise a nucleotide sequence at least 95% identical, and more preferably at least 96%, 97%, 98% or 99% identical, to any of the nucleotide sequences of the polynucleotides described above.

[0086] As a practical matter, whether any particular vector or polynucleotide is at least 95%, 96%, 97%, 98% or 99% identical to a nucleotide sequence according to the present invention, can be determined conventionally using known computer programs such as the Bestfit program (Wisconsin Sequence Analysis Package, Version 8 for Unix, Genetics Computer Group, University Research Park 575 Science Drive, Madison, Wis. 53711). Bestfit uses the local homology algorithm of Smith and Waterman, *Advances in Applied Mathematics* 2:482-489 (1981), to find the best segment of homology between two sequences. When using Bestfit or any other sequence alignment program to determine whether a particular sequence is, for instance, 95% identical to a reference sequence according to the present invention, the parameters are set, of course, such that the percentage of identity is calculated over the full length of the reference nucleotide sequence and that gaps in homology of up to 5% of the total number of nucleotides in the reference sequence are allowed.

Codon Optimization

[0087] As used herein, the term "codon optimization" is defined as modifying a nucleic acid sequence for enhanced expression in the cells of the vertebrate of interest, e.g., human, by replacing at least one, more than one, or a significant number, of codons of the native sequence with codons that are more frequently or most frequently used in the genes of that vertebrate. Various species exhibit particular bias for certain codons of a particular amino acid.

[0088] In one aspect, the present invention relates to polynucleotide expression constructs or vectors, and host cells comprising nucleic acid fragments of codon-optimized coding regions which encode therapeutic polypeptides, and fragments, variants, or derivatives thereof, and various methods of using the polynucleotide expression constructs, vectors, host cells to treat or prevent disease in a vertebrate.

[0089] As used herein the term “codon-optimized coding region” means a nucleic acid coding region that has been adapted for expression in the cells of a given vertebrate by replacing at least one, or more than one, or a significant number, of codons with one or more codons that are more frequently used in the genes of that vertebrate.

[0090] Deviations in the nucleotide sequence that comprise the codons encoding the amino acids of any polypeptide chain allow for variations in the sequence coding for the gene. Since each codon consists of three nucleotides, and the nucleotides comprising DNA are restricted to four specific bases, there are 64 possible combinations of nucleotides, 61 of which encode amino acids (the remaining three codons encode signals ending translation). Many amino acids are designated by more than one codon. For example, the amino acids alanine and proline are coded for by four triplets, serine and arginine by six, whereas tryptophan and methionine are coded by just one triplet. This degeneracy allows for DNA base composition to vary over a wide range without altering the amino acid sequence of the proteins encoded by the DNA.

Consensus Sequences

[0091] The present invention is further directed to expression plasmids that contain chimeric genes which express therapeutic fusion proteins with specific consensus sequences, and fragments, derivatives and variants thereof. A “consensus sequence” is, e.g., an idealized sequence that represents the amino acids most often present at each position of two or more sequences which have been compared to each other. A consensus sequence is a theoretical representative amino acid sequence in which each amino acid is the one which occurs most frequently at that site in the different sequences which occur in nature. The term also refers to an actual sequence which approximates the theoretical consensus. A consensus sequence can be derived from sequences which have, e.g., shared functional or structural purposes. It can be defined by aligning as many known examples of a particular structural or functional domain as possible to maximize the homology. A sequence is generally accepted as a consensus when each particular amino acid is reasonably predominant at its position, and most of the sequences which form the basis of the comparison are related to the consensus by rather few substitutions, e.g., from 0 to about 100 substitutions. In general, the wild-type comparison sequences are at least about 50%, 75%, 80%, 90%, 95%, 96%, 97%, 98% or 99% identical to the consensus sequence. Accordingly, polypeptides of the invention are about 50%, 75%, 80%, 85%, 90%, 91%, 92%, 93%, 94%, 95%, 96%, 97%, 98%, 99% or 100% identical to the consensus sequence.

[0092] A “consensus amino acid” is an amino acid chosen to occupy a given position in the consensus protein. A system which is organized to select consensus amino acids can be a computer program, or a combination of one or more computer programs with “by hand” analysis and calculation. When a consensus amino acid is obtained for each position of the

aligned amino acid sequences, then these consensus amino acids are “lined up” to obtain the amino acid sequence of the consensus protein.

[0093] As mentioned above, modification and changes may be made in the structure of the mucE coding region and still obtain a molecule having like or otherwise desirable characteristics. As used herein, the term “biological functional equivalent” refers to such proteins. For example, certain amino acids may be substituted for other amino acids in a protein structure without appreciable loss of interactive binding capacity with structures such as, for example, antigen-binding regions of antibodies or binding sites on substrate molecules. Since it is the interactive capacity and nature of a protein that defines that protein’s biological functional activity, certain amino acid sequence substitutions can be made in the DNA coding sequence and nevertheless obtain a protein with like or even countervailing properties (e.g., antagonistic v. agonistic). It is thus contemplated by the inventors that various changes may be made in the DNA sequence of mucE (or MucE proteins or peptides) without appreciable loss of their biological utility or activity.

Polypeptides

[0094] Further embodiments of the invention include polypeptides, which comprise amino acid sequences at least 95% identical, and more preferably at least 96%, 97%, 98% or 99% identical, to any of the amino acid sequences of the polypeptides described above.

[0095] As a practical matter, whether any particular polypeptide is at least 95%, 96%, 97%, 98% or 99% identical to, for instance, the amino acid sequence shown in SEQ ID NOs:2 and 4 can be determined conventionally using known computer programs such as the Bestfit program (Wisconsin Sequence Analysis Package, Version 8 for Unix, Genetics Computer Group, University Research Park 575 Science Drive, Madison, Wis. 53711). Bestfit uses the local homology algorithm of Smith and Waterman, *Advances in Applied Mathematics* 2:482-489 (1981), to find the best segment of homology between two sequences. When using Bestfit or any other sequence alignment program to determine whether a particular sequence is, for instance, 95% identical to a reference sequence according to the present invention, the parameters are set, of course, such that the percentage of identity is calculated over the full length of the reference amino acid sequence and that gaps in homology of up to 5% of the total number of amino acids in the reference sequence are allowed.

[0096] Even though the invention has been described with a certain degree of particularity, it is evident that many alternatives, modifications, and variations will be apparent to those skilled in the art in light of the foregoing disclosure. Accordingly, it is intended that all such alternatives, modifications, and variations which fall within the spirit and the scope of the invention be embraced by the defined claims.

[0097] The following examples are included for purposes of illustration only and are not intended to limit the scope of the present invention, which is defined by the appended claims. It should be appreciated by those of skill in the art that the techniques disclosed in the examples which follow, represent techniques discovered by the inventors to function well in the practice of the invention, and thus can be considered to constitute preferred modes for its practice. However, those of skill in the art should, in light of the present disclosure, appreciate that many changes can be made in the specific

embodiments which are disclosed and still obtain a like or similar result without departing from the spirit and scope of the invention.

Antibodies

[0098] Further embodiments of the invention include MucE and AlgW monoclonal antibodies and methods of using MucE and AlgW antibodies for the detection and diagnosis of mucoid *P. aeruginosa* in biological specimens. The methods comprise reacting a specimen suspected of containing mucoid *P. aeruginosa* with a MucE or AlgW monoclonal antibody or fragment thereof, separating the specimen from unbound antibody, and detecting the presence of immune complexes formed between the monoclonal antibody and the MucE or AlgW protein, as compared to non-mucoid control cells and therefrom determining the presence of mucoid *P. aeruginosa*. Novel hybrid cell lines are also provided which produce the monoclonal antibodies capable of specifically binding to the MucE or AlgW protein expressed in *P. aeruginosa*. When the monoclonal antibodies are labeled and combined with a solubilizing reagent, a specific and rapid direct test for mucoid *P. aeruginosa* is achieved.

[0099] The monoclonal antibodies of this invention can be prepared by immortalizing the expression of nucleic acid sequences which code for antibodies specific for MucE or AlgW of *P. aeruginosa*. This may be accomplished by introducing such sequences, typically cDNA encoding for the antibody, into a host capable of cultivation and culture. The immortalized cell line may be a mammalian cell line that has been transformed through oncogenesis, by transfection, mutation, or the like. Such cells include myeloma lines, lymphoma lines, or other cell lines capable of supporting the expression and secretion of the antibody in vitro. The antibody may be a naturally occurring immunoglobulin of a mammal other than human, produced by transformation of a lymphocyte, by means of a virus or by fusion of the lymphocyte with a neoplastic cell, e.g., a myeloma, to produce a hybrid cell line. Typically, the lymphoid cell will be obtained from an animal immunized against MucE or a fragment thereof containing an epitopic site.

[0100] Monoclonal antibody technology was pioneered by the work of Kohler and Milstein, *Nature* 256:495 (1975). Monoclonal antibodies can now be produced in virtually unlimited quantities consistently and with a high degree of purity. These qualities facilitate the reproducibility and standardization of performance of diagnostic tests which are required in hospitals and other clinical settings.

[0101] Immunization protocols are well known and can vary considerably yet remain effective. See Golding, *Monoclonal Antibodies: Principles and Practice*, (1983) which is incorporated herein by reference. Immunogenic amounts of antigenic MucE preparations are injected, generally at concentrations in the range of 1 μ g to 20 mg/kg of host. Administration of the antigenic preparations may be one or a plurality of times, usually at one to four week intervals. Immunized animals are monitored for production of antibody to the desired antigens, the spleens are then removed and splenic B lymphocytes isolated and transformed or fused with a myeloma cell line. The transformation or fusion can be carried out in conventional ways, the fusion technique being described in an extensive number of patents, e.g., U.S. Pat. Nos. 4,172,124; 4,350,683; 4,363,799; 4,381,292; and 4,423,147. See also Kennett et al., *Monoclonal Antibodies* (1980) and references therein.

[0102] The biological sample suspected of containing *P. aeruginosa* is combined with the primary antibody under conditions conducive to immune complex formation. If the test is a one-step immunofluorescence assay, the primary antibody will be labeled. Typically, the specimen is first fixed or adhered to a glass slide by heat and/or ethanol treatment, although other fixatives or adherents are known by those skilled in the art. The specimen is then contacted with the solubilizing agent for a sufficient period, usually from 1 to 30 minutes and more usually about 10 minutes, and the solubilizer is then washed from the slide. Alternatively, as described above, the solubilizing agent and the primary antibody may be combined and added as one step. The primary antibody should be incubated with the specimen for approximately 30 minutes at room temperature, although the conditions may be varied somewhat. The slide is rinsed to remove unbound antibody. If the primary antibody has been labeled with FITC, the reacted sample may be viewed under a fluorescence microscope equipped with standard fluorescein filters (excitation=490 nm; emission=520 nm) and a 40 \times oil immersion lens. The quantitation of fluorescence is based on visual observation of the brightness or relative contrast of the specifically stained antigen. Appropriate positive and negative controls make interpretation more accurate. A counterstain, such as Evans blue, may be employed to more easily visualize the fluorescent organisms.

[0103] The antibodies of the invention may be a chimeric antibody or fragment thereof, a humanized antibody or fragment thereof, a single chain antibody; or a Fab fragment.

[0104] For use in diagnostic assays, the antibodies of the present invention may be directly labeled. A wide variety of labels may be employed, such as radionuclides, fluorescence, enzymes, enzyme substrates, enzyme cofactors, enzyme inhibitors, ligands (particularly haptens), etc. When unlabeled, the antibodies may find use in agglutination assays. In addition, unlabeled antibodies can be used in combination with other labeled antibodies (second antibodies) that are reactive with the monoclonal antibody, such as antibodies specific for the immunoglobulin. Numerous types of immunoassays are available and are well known to those skilled in the art.

[0105] Immunofluorescence staining methods can be divided into two categories, direct and indirect. In the direct staining method, a fluorophore is conjugated to an antibody (the "primary antibody") which is capable of binding directly to the cellular antigen of interest. In the indirect staining mode, the primary antibody is not fluorescently labeled; rather, its binding is visualized by the binding of a fluorescently labeled second-step antibody, which second-step antibody is capable of binding to the primary antibody. Typically, the second-step antibody is an anti-immunoglobulin antibody. In some instances the second-step antibody is unlabeled and a third-step antibody which is capable of binding the second-step antibody is fluorescently labeled.

[0106] Indirect immunofluorescence is sometimes advantageous in that it can be more sensitive than direct immunofluorescence because for each molecule of the primary antibody which is bound, several molecules of the labeled second-step antibody can bind. However, it is well known that indirect immunofluorescence is more prone to nonspecific staining than direct immunofluorescence, that is, staining which is not due to the specific antigen-antibody interaction of interest (Johnson et al., in *Handbook of Experimental Immunology*, D. M. Weir, ed., Blackwell Publications Oxford

(1979); and *Selected Methods in Cellular Immunology*, Mishell et al., ed., W. H. Freeman, San Francisco (1980)). In addition, the multiple steps involved in performing the indirect tests makes them slow, labor intensive, and more susceptible to technician error.

[0107] Various immunoassays known in the art can be used to detect binding of MucE or AlgW to antibodies, including but not limited to, competitive and non-competitive assay systems using techniques such as radioimmunoassays, ELISA (enzyme linked immunosorbent assay), “sandwich” immunoassays, immunoradiometric assays, gel diffusion precipitation reactions, immunodiffusion assays, in situ immunoassays (using colloidal gold, enzyme or radioisotope labels, for example), western blots, precipitation reactions, agglutination assays (e.g., gel agglutination assays, hemagglutination assays), complement fixation assays, immunofluorescence assays, protein A assays, and immunoelectrophoresis assays, etc.

[0108] Kits can also be supplied for use with the subject antibodies in the detection of mucoid *P. aeruginosa* in specimens, wherein the kits comprise compartments containing a MucE and/or AlgW monoclonal antibody capable of reacting with essentially all serotypes and immunotypes of *P. aeruginosa*, and labels and necessary reagents for providing a detectable signal. Thus, the monoclonal antibody composition of the present invention may be provided, usually in a lyophilized form, either alone or in conjunction with additional antibodies specific for other antigens of *P. aeruginosa*. The antibodies, which may be conjugated to a label, are included in the kits with buffers, such as Tris, phosphate, carbonate, etc., stabilizers, biocides, inert proteins, e.g., bovine serum albumin, or the like. Generally, these materials will be present in less than about 5% weight based on the amount of active antibody, and usually present in a total amount of at least about 0.001% weight based on the antibody concentration. Frequently, it will be desirable to include an inert extender or excipient to dilute the active ingredients, where the excipient may be present in from about 1% to 99% weight of the total composition. Where a second antibody capable of binding to the monoclonal antibody is employed, this will usually be present in a separate vial. The second antibody may be conjugated to a label and formulated in a manner analogous to the antibody formulations described above.

Cystic Fibrosis (CF) Risk Assessment

[0109] Further embodiments of the invention include methods for Cystic Fibrosis (CF) disease assessment in an individual which comprise detecting the presence or absence of MucE and/or AlgW in a sample from an individual. Further embodiments include methods for Cystic Fibrosis (CF) disease assessment in an individual which comprise detecting the presence or absence of MucE or AlgW antibodies in a sample from an individual.

[0110] Additional embodiments include methods for treating *P. aeruginosa* biofilms in Cystic Fibrosis (CF) disease in an individual which comprise the steps of detecting the presence of MucE and/or AlgW in a sample from an individual; and selecting a therapy regimen for the individual based on the presence of MucE and/or AlgW. The *P. aeruginosa* biofilms in Cystic Fibrosis (CF) disease are treated by the therapy regimen. Also contemplated are methods for treating *P. aeruginosa* biofilms in Cystic Fibrosis (CF) disease in an individual which comprise the steps of detecting the presence

of MucE and/or AlgW antibodies in a sample from an individual; and selecting a therapy regimen for the individual based on the presence of MucE and/or AlgW antibodies. The *P. aeruginosa* biofilms in Cystic Fibrosis (CF) disease are treated by the therapy regimen.

[0111] As used herein, “individual” is intended to refer to a human, including but not limited to, children and adults. One skilled in the art will recognize the various biological samples available for detecting the presence or absence of MucE or AlgW in an individual, any of which may be used herein. Samples include, but are not limited to, airway surface liquid, sputa, or combinations thereof, human blood, wound exudate, respiratory secretions, human tissues (e.g., lung) or a laboratory culture thereof, and urine. Moreover, one skilled in the art will recognize the various samples available for detecting the presence or absence of MucE or AlgW antibodies in an individual, any of which may be used herein. Samples include, but are not limited to, airway surface liquid, sputa, or combinations thereof, human blood, wound exudate, respiratory secretions, human tissues (e.g., lung) or a laboratory culture thereof, urine, and other body fluids, or combinations thereof.

[0112] As used herein, “assessment” is intended to refer to the prognosis, monitoring, delaying progression, delaying early death, staging, predicting progression, predicting response to therapy regimen, tailoring response to a therapy regimen, of Cystic Fibrosis disease based upon the presence or absence of MucE, AlgW, MucE antibodies, or AlgW antibodies in a biological sample.

[0113] As used herein, “therapy regimen” is intended to refer to a procedure for delaying progression, or delaying early death associated with Cystic Fibrosis disease and/or *Pseudomonas aeruginosa* in a Cystic Fibrosis individual. In one embodiment, the therapy regimen comprises administration of agonists and/or antagonists of MucE and/or AlgW. In another embodiment, the therapy regimen comprises agonists and/or antagonists of *Pseudomonas aeruginosa*.

[0114] One skilled in the art will appreciate the various known direct and/or indirect techniques for detecting the presence or absence of MucE or AlgW, any of which may be used herein. These techniques include, but are not limited to, amino acid sequencing, antibodies, Western blots, 2-dimensional gel electrophoresis, immunohistochemistry, autoradiography, or combinations thereof.

[0115] All references cited in the Examples are incorporated herein by reference in their entireties.

EXAMPLES

Materials and Methods

[0116] The following materials and methods apply generally to all the examples disclosed herein. Specific materials and methods are disclosed in each example, as necessary.

[0117] The practice of the present invention will employ, unless otherwise indicated, conventional techniques of cell biology, cell culture, molecular biology (including PCR), vaccinology, microbiology, recombinant DNA, and immunology, which are within the skill of the art. Such techniques are explained fully in the literature. See, for example, *Molecular Cloning A Laboratory Manual*, 2d Ed., Sambrook et al., ed., Cold Spring Harbor Laboratory Press (1989); *DNA Cloning, Volumes I and II*, D. N. Glover ed., (1985); *Oligonucleotide Synthesis*, M. J. Gait ed., (1984); Mullis et al. U.S. Pat. No. 4,683,195; *Nucleic Acid Hybridization*, B. D. Hames &

S. J. Higgins eds. (1984); *Transcription And Translation*, B. D. Hames & S. J. Higgins, eds. (1984); Freshney, R. L., *Culture Of Animal Cells*, Alan R. Liss, Inc. (1987); *Immobilized Cells And Enzymes*, IRL Press (1986); Perbal, B., *A Practical Guide To Molecular Cloning* (1984); the treatise, *Methods In Enzymology*, Academic Press, Inc., N.Y.; *Gene Transfer Vectors For Mammalian Cells*, J. H. Miller and M. P. Calos eds., Cold Spring Harbor Laboratory (1987); *Methods In Enzymology*, Vols. 154 and 155, Wu et al. eds.; *Immunochemical Methods In Cell And Molecular Biology*, Mayer and Walker, eds., Academic Press, London, (1987); and in Ausubel et al., *Current Protocols in Molecular Biology*, John Wiley and Sons, Baltimore, Md. (1989). Each of the references cited in this paragraph is incorporated herein by reference in its entirety.

Bacterial Strains, Plasmids, Transposons and Growth Conditions

[0118] *P. aeruginosa* strains were grown at 37° C. in Lennox broth (LB), on LB agar or *Pseudomonas* Isolation Agar (PIA, DIFCO) plates. When required, PIA plates were supplemented with carbenicillin, tetracycline, or gentamicin at a concentration of 300 ng/ml. *E. coli* strains were grown in LB broth, or LB agar supplemented with carbenicillin (100 ng/ml), tetracycline (15 ng/ml), gentamicin (13 ng/ml), or kanamycin (40 ng/ml), when required.

Transposon Mutagenesis

[0119] A standard *Pseudomonas* conjugation protocol was followed with the following modifications. *E. coli* SM10 λ pir carrying pFAC and *P. aeruginosa* strains were grown in 2 ml LB broth overnight at 37° C. and 42° C., respectively. The cell

density of the cultures was measured by optical density at 600 nm and adjusted to a ratio of 1:1, which was equivalent to 8×10^8 cells for matings. The mixed cultures were incubated on LB plates for 6 h at 37° C. The cells were harvested and washed in LB broth. The final cell mixtures in a volume of 1 ml were spread on 8 PIA plates (50 ml each) supplemented with gentamicin. The conjugal pairs were incubated at 37° C. for 24 h for selection and screening exconjugants with a mucoid colony morphology. Such mutants were isolated and purified a minimum of 3 times. Mutants were frozen in 10% skim milk in a -80° C. freezer.

DNA Manipulations.

[0120] Two steps of polymerase chain reaction (PCR)-based cloning were used for general cloning purposes. First, the target genes were amplified by high-fidelity PCR using the appropriate primer sets containing the built-in restriction sites followed by cloning into pCR4-TOPO. The DNA fragments were digested by restriction enzymes, gel-purified, and transferred to the shuttle vector pUCP20. All recombinant plasmids were sequenced to verify the absence of mutations with M13 universal forward and reverse primers using an ABI 3130 Genetic Analyzer at the Marshall University School of Medicine Genomics Core Facility. PCR reactions were performed with MasterAmp™ Taq DNA Polymerase (Epicentre) in 50 μ l EasyStart PCR tubes (Molecular BioProducts) as previously described (Head, N. E., and H. Yu, *Infect. Immun.* 72:133-44 (2004)).

Inverse PCR (iPCR)

[0121] The mariner transposon and its junction region in pFAC were sequenced. The sequence of the junction region including the inverted repeats in pFAC (SEQ ID NO:8) is as follows:

```

accacacccg cccgcttaa tgcgcccga cagggcggc cccattcgc actcaaccaa gtcattctga
gaatagtgtg tgcggcgacc gagttgctct tgcceggcgt caatacggga taataccgcg ccacataaca
ggttggctga taagtccccg gtctaacaaa gaaaacaca tttttttgtg aaaattcgtt tttattatc aacatagttc
ccttcaagag cगतaccct cgaattgacg cgtcaattct cgaattgaca taagcctgtt cggttcgtaa actgtaatgc
aagtagcgtg tgcgctcacg caactggctc agaacctga ccgaacgcag cgggtgtaac ggcgcagtgg
cggttttcat ggcttggtat gaactgtttt ttgtacagtc tatgcctcgg gcattccaagc agcaagcggc ttacgcccgtg
ggtcgatggt tgatggtatg ggcagcaac gatgttacgc agcagcaacg atgttacgca gcagggcagt
cgccctaaaa caaagttagg tggctcaagt atgggcatca ttcgcacatg taggctcggc cctgaccaag
tcaaatccat gcgggctgct cttgatcttt tcggtcgtga gttcggagac gtagccacct actccaaca
tcagccggac tccgattacc tcgggaactt gctccgtagt aagacattca tcgcgcttgc tgccttcgac
caagaagcgg ttggtggcgc tctcgcggct tacgttctgc ccaggtttga gcagccggcgt agtgagatct
atatctatga tctcgcagtc tccggcgagc accggaggca gggcattgcc accgctcga tcaatctcct
caagcatgag gccaacgcgc ttggtgctta tgtgatctac gtgcaagcag attacgggtga cgatcccgca
gtggctctct atacaaagtt gggcataccg gaagaagtga tgcactttga tatcgaccaca agtaccgcca
cctacaatt cgttcaagcc gagatcggct tcccggccga cgcgtcctcg gtaccgggccc cccctcggag
gtcgacggta tcgataagct tgatatcgaa ttccctgcagc ccgggaatca tttgaaggtt ggtactatat aaaaataata
tgcatttaat actagcgagc ccatctatgt gtcagaccgg ggacttatca gccaacctgt tagcagaact
ttaaagtgct tcatcattgg aaaaaggctg cgcgaactgt gggaaaggcg atcggtcggg gcctcttcgc

```

-continued

tattacgccca gctggcgaaa gggggatgtg ctgcaaggcg attaagttgg gtaacgccag gggtttccca
 gtcacgacgt tgtaaaacga cggccagtgta gcgcgcgtaa tacactcact atagggcgaa ttggaggatc
 cggcttaaca aagaaaacac attttttggg aaa

[0122] A multiple cloning site (MCS) was identified immediately outside the 3' end of the gentamicin cassette within the transposon. To map the insertion site, an iPCR protocol was developed to utilize this convenient MCS. *Pseudomonas* genomic DNA was purified using a QIAamp genomic DNA kit. The DNA concentration was measured using the NanoDrop® ND-1000 spectrophotometer (NanoDrop Technologies). Two µg DNA was digested by restriction enzymes Sall or PstI at 37° C. overnight followed by gel purification. The fragmented DNA was ligated to form the circularly closed DNA using the Fast-Link™ DNA ligation kit (Epicentre). A volume of 1 µl ligated DNA was used as template for PCR using GM5OUT and GM3OUT according to the condition as follows, 94° C. for 1 min, 34 cycles consisting of 94° C. for 1 min, 58° C. for 2 min, and 72° C. for 2 min, and a final extension step consisting of 72° C. for 8 min. After PCR, the products were analyzed on a 1% agarose gel. The PCR products were purified using the QIAquick PCR purification kits and sequenced using GM5OUT as described above.

Alginate and Protein Assays

[0123] The alginate assay was based on a previously published method (Knutson, C. A., and A. Jeanes, *Anal. Biochem.* 24:470-481 (1968)) with the following modifications. *P. aeruginosa* and mutants were grown on 50 ml PIA plates in triplicate for a period of 72 h. At various time points, bacterial growth was removed from plates and re-suspended in 40 ml phosphate-buffered saline (PBS; pH 7.4). The optical density at 600 nm (OD₆₀₀) was recorded. The alginate standard curve was made using D-mannuronic acid lactone (Sigma) in the range of 0-100 µg/ml. To measure the protein concentration, the cells in PBS were lysed in 1:1 ratio with 1M NaOH for 15 min. The protein assay was performed using the Bio-Rad D_c Protein Assay kit. The range for protein standard (bovine serum albumin) curve was from 0.2 to 1.2 mg/ml.

β-Galactosidase Activity Assay

[0124] The assay was based on the method as originally described by Miller (In *Experiments in Molecular Genetics*, J. H. Miller, ed., Cold Spring Harbor Laboratory, Cold Spring Harbor, N.Y. (1972), pp. 352-355) with the following modification. The cells of NH1-3 were grown on PIA plates in triplicate for 24 h at 37° C. The cells were harvested in PBS and cell density was measured by OD₆₀₀. Samples were assayed after SDS/chloroform permeabilization of the cells.

Alkaline Phosphatase A-Fusion Assay

[0125] The entire open reading frame and different portion of mucE were translationally fused with the *E. coli* phoA gene with deletion of the sequence encoding the N-terminal signal sequence. These mucE-phoA fusions were cloned into pUCP20 vector for alkaline phosphatase A-fusion assay as previously described (Lewenza, S. et al., *Genome Res.* 15:321-329 (2005); Manoil, C. et al., *J. Bacteriol.* 172:515-518 (1990)) and the transformants were plated on the LB plate

containing 40 µg/ml BCIP. The construct pUCP20-phoA expressing full-length PhoA was used as a positive control and the pUCP20-phoA expressing the truncated PhoA without N-terminal signal leader sequence as a negative control.

RNA Isolation and RT-PCR

[0126] *P. aeruginosa* strains PAO1, VE2 and VE3 were grown on 50 ml PIA plates for 24 h at 37° C. The cells were harvested in 40 ml PBS and re-suspended based on OD₆₀₀ to produce a cell population of 10⁹ to 10¹⁰. Total RNA was isolated using a RiboPure™-Bacteria Kit (Ambion) followed by DNase treatment as supplied. The quality of RNA was evaluated on an Agilent 2100 bioanalyzer. RT-PCR was performed using a One-Step RT-PCR kit (Qiagen). One µg bacterial RNA was reverse-transcribed into cDNA at 50° C. for 30 min followed by PCR amplification: 94° C. for 15 min, 34 cycles consisting of 94° C. for 1 min, 58° C. for 2 min, and 72° C. for 2 min. The PCR products were analyzed on 1% agarose gel, and the intensity of bands was analyzed on a Typhoon 8600 Variable Mode Imager (Molecular Dynamics) with the ImageQuant (v. 5.2) Software.

Monoclonal Antibodies

[0127] The AlgU and MucB monoclonal antibodies used in the Examples are from previously published sources (Boucher et al., *J. Bacteriol.* 178:511-523 (1996); Schurr et al., *J. Bacteriol.* 178:4997-5004 (1996)) with a low level of cross-reactivity. The specificities of these antibodies are appropriate because the algU and mucB negative strains failed to display the respective AlgU and MucB proteins (FIG. 8). Furthermore, two non-specific proteins of 50 kDa and 75 kDa from MucB and AlgU blots respectively were used as convenient internal controls to normalize the protein levels.

Southern Hybridization

[0128] A 754 bp PCR product was amplified from accI of pUCP30T using GM-F and GM-R primers, which was purified via gel extraction and labeled with digoxigenin as described by the manufacturer (Roche Molecular Biochemicals). Agarose gels were soaked in 0.25 N HCl for 30 min, rinsed in H₂O, soaked in 1.5 M NaCl/0.5 M NaOH for 30 min and 1.5 M NaCl/0.5 M Tris-Cl, pH 8.0 for 30 min. A blotting apparatus (BIO-RAD Vacuum Blotter) was used with a filter paper wick, a Hybond-N+ membrane (Amersham Pharmacia Biotech), and transferred with 10×SSC transfer buffer for 2 h. After transfer, the membrane was rinsed in transfer buffer and UV cross-linked. Hybridization was done using the DIG High Prime DNA Labeling and Detection Starter Kit II (Roche Applied Science) and labeled probe described above.

Western Blot Analysis.

[0129] Forty µg of total protein was prepared by bead-beating 3× for 1 min with 5 min intervals on ice. The proteins

were mixed with 2×SDS-PAGE sample buffer. A Precision Plus Protein Standard (Bio-Rad) was used as molecular mass ranging from 10 to 250 kD. Protein and standard were loaded into a Criterion pre-cast gel of linear gradient (10-15% Tris-HCl gel) (Bio-Rad) and was run in a Criterion Cell (Bio-Rad) at 60V for 4 h. The transfer onto a PVDF membrane was done in a Criterion Blotter (Bio-Rad) with CAPS buffer at 50V for 1 h. Primary antibodies were obtained using standard techniques. Horseradish Peroxidase-labeled secondary antibodies, goat anti-mouse IgG (H+L) and goat anti-rabbit IgG (H+L), were obtained from Peirce Biotechnologies and Kirkegaard & Perry Laboratories, respectively. Primary antibodies were diluted 1:1000 and secondary antibodies 1:5000 in TBS/Tween before application. ECL Western Blotting Detection System (Amersham Biosciences) was used to detect the protein of interest. X-ray film was exposed, and developed on an Alphatek AX390SE developer. The protein intensity was analyzed using a ChemiDoc XRS system (Bio-Rad) and Quantity One software (Bio-Rad). These results were normalized against an internal protein within each sample. The relative expression level for each protein was then compared.

Statistical Analysis

[0130] Analysis of alginate production β -galactosidase activity was done with one-way analysis of variance (ANOVA) followed by pairwise multiple comparisons with Holm-Sidak method. Analysis of normalized protein intensity was carried out with the means of each group in comparison with that of PAO1 using t test assuming unequal variance or ANOVA if multiple groups were compared. All analyses were performed with SigmaStat (v. 3.1, Systat Software) and SigmaPlot (v. 9.0, Systat Software) software.

Example 1

Mariner-Based Transposon Mutagenesis Approach to Identify Mucoid Mutants in *P. aeruginosa*

[0131] To investigate alginate regulation in *P. aeruginosa*, the versatile Tc1/mariner himar1 transposon carried on pFAC (GenBank Accession number DQ366300), a *Pseudomonas*

suicide plasmid, was used to mutagenize the non-mucoid strains of *P. aeruginosa* coupled with a genetic screen for mucoid mutants.

[0132] The transposition efficiency of this transposon is high and has been shown to cause high-density insertions in *P. aeruginosa* (Wong, S. M. and Mekalanos, J. J., *Proc Natl Acad Sci US* 97:10191-10196 (2000)). Moreover, this transposon can knockout, knockdown or induce expression of the target gene depending on the nature of its insertion. The mariner transposon himar1 can jump onto the TA dinucleotides in non-essential genes. These sites are abundant in the genomes of *P. aeruginosa* strains. Based on the two completed genomes, there are 94,404 and 100,229 such sites in PAO1 (Stover et al., *Nature* 406:959-964 (2000)) and PA14 respectively, which gives rise to 17-18 per ORF. In addition, pFAC can cause increased or reduced expression of the target gene by inserting into the intergenic region.

[0133] Four non-mucoid strains were subject to transposon mutagenesis. Only three regions were targeted in this background: i) 6× in the algU promoter region, ii) 1× in mucA, and iii) 3× in the intergenic region between algU and mucA (Table 1). The algU promoter mutants caused increased expression of AlgU while the mucA and the algU-mucA intergenic mutants affected the activity of AlgU. These results indicate that AlgU has a key role in alginate overproduction in PAO579NM.

[0134] A total of 370,000 clones were screened from 13 conjugations (Table 1). Eighty-five mucoid mutants were isolated with 90% carrying single insertions as verified by Southern blot analysis (data not shown). To map the site of transposon insertions, iPCR was performed with 90% of PCR reactions producing single products. The iPCR results displayed a 100% correlation with Southern blots. The iPCR products were used as templates for DNA sequencing. Seventy-eight mutants with single insertions were mapped. We next created the criteria of differentiating the independent mutational events. Independent and non-sibling mutants were defined as those carrying a transposon at different sites, or at the same sites but were obtained through different matings. Using these criteria, a collection of 45 independent mucoid mutants was obtained and classified in 9 different functional groups (Table 1). The mutagenesis approach used here was at a saturating level because multiple insertions at the same sites were repeatedly targeted (FIG. 5).

TABLE I

Transposon mutagenesis analysis of alginate regulators in four non-mucoid strains of <i>P. aeruginosa</i>						
	PAO1	PAO579NM	PA14	FRD2	Sum	Freq
# matings	4	3	3	3	13	
# mutants screened	81,280	88,800	126,000	75,000	371,080	
# mucoid obtained	3218	31	4	85		
# independent mutants	21	10	11	3	45	
mutation freq	3.9×10^{-4}	2.0×10^{-4}	2.5×10^{-4}	5.3×10^{-5}		
Induction ^a						
PA0762-algUpromoter	5 (23.8)	6 (60.0)	8 (72.7)	3 (100.0)	22	49
PA4033-mucE	1 (4.8)		1 (9.1)		2	4
PA4082-cupB5	1 (4.8)				1	2
Knockdown ^b						
PA0762-algU	2 (9.5)	3 (30.0)			5	11
PA0973-oprL	1 (4.8)				1	2

TABLE I-continued

Transposon mutagenesis analysis of alginate regulators in four non-mucoid strains of <i>P. aeruginosa</i>						
	PAO1	PAO579NM	PA14	FRD2	Sum	Freq
Knockout^c						
PA0763-mucA		1 (10.0)			1	2
PA0764-mucB	1 (4.8)		1 (9.1)		2	4
PA0766-mucD	9 (42.9)		1 (9.1)		10	22
PA5484-kinB	1 (4.8)				1	2

^{a,b,c}The number of mutants obtained from each strain of *P. aeruginosa* is shown. Number inside a bracket denotes the percentage of a mutation in the total number of mutants within a strain.

[0135] Similar to another himar1 transposon vector of the same lineage but constructed for *M. tuberculosis* studies (Rubin, E. J., et al., *Proc Natl Acad Sci USA* 96:1645-1650 (1999)), the transposon end in pFAC has no termination sequences. Therefore, three types of mutations can be caused by the transposon in this vector depending on how and where it is inserted on the genome. As shown in Table 1, when inserted in the algU, mucE or cupB5 promoter region, the transposon used its σ^{70} promoter (P_{Gm}) (Wohlleben, W., et al., *Mol Gen Genet.* 217:202-208 (1989)) to direct the expression of the downstream genes. Reduced (knockdown) expression occurred when the transposon was inserted in the intergenic region of algUmucA or immediately downstream of oprL with P_{Gm} in the opposite direction with regard to the upstream algU or oprL. When the transposon was within the coding sequences, this produced stop codons away from insertion sites due to frameshift mutations, producing gene knockouts for mucA, mucB, mucD and kinB.

[0136] The mucoid phenotype poses a great demand for energy from the cells. The amount of alginate in mucoid mutants was initially lower than that of the wild-type strain PAO1 (FIG. 6A-8A), suggesting that mucoid mutants may grow slower than the non-mucoid counterparts to compensate for the energy demand.

Example 2

The Majority of Insertions are within algUmucABC and Result in Upregulation of AlgU

[0137] While all pFAC insertions were within five clusters (data not shown), the most frequent sites (49%) were in the algU promoters with the transposons situated in the induction configuration. Since the algUmucABC genes are co-transcribed (DeVries, C. A. & Ohman, D. E., *J Bacteriol* 176: 6677-6687 (1994); Firoved, A. M. & Deretic, V., *J Bacteriol* 185:1071-1081 (2003)), the levels of AlgU and MucB were measured in these mutants. VE1, one of the representative promoter mutants as shown in FIG. 5, was grown on PIA plates for quantification of alginate and the protein levels of AlgU and MucB.

[0138] As the results show, compared to PAO1, VE1 produced increased amounts of alginate from 24 to 72 h in concurrence with increased levels of AlgU and MucB (FIG. 6). The level of AlgU was higher than that of MucB ($P=0.005$). AlgU and MucB reached the steady-state level at 4 h and remained so for the rest of the time points. The algU mutants in PAO579NM, PA14 and FRD2 were mucoid and displayed the same trend as VE1 regarding alginate production and protein levels of AlgU and MucB. These results indicate that

the algU promoter mutations were gain-of-function and associated with an elevated level of AlgU.

[0139] Twenty eight percent of mucoid mutants had insertions in the coding regions of mucA, mucB and mucD (Table 1). The Alg⁺ phenotype of the mucD⁻ mutants (DR8, VE19, VE14 23 and VE12) was complemented to Alg⁻ by mucD or mucBCD in trans. VE3 and V1, the equivalent of a triple knockout of mucA⁻B⁻C⁻ in PAO1 and PAO579NM respectively, were complemented to Alg⁻ by mucA, but not by mucBC or mucBCD, in trans. The Alg⁺ phenotype in mucB⁻ mutants of PAO1 (VE8) and PA14 (DR1) was complemented to Alg⁻ by mucB, mucBC and mucBCD, in trans. These results suggest that the insertions in mucA, mucB and mucD are loss-of-function (null) mutations.

Example 3

mucE and cupB5 Encode Two Novel Positive Regulators of Alginate

[0140] Alginate is regulated by a signal transduction pathway. While ample information is available on the interaction between the sigma factor AlgU and trans-inner membrane anti-sigma factor MucA, it is unclear what and how periplasmic signals activate the AlgU pathway leading to alginate overproduction. MucE and CupB5 identified here are two candidates for such signals. VE2 and DR4 had two identical insertions 16 bps upstream of ATG of PA4033 in PAO1 and PA14, respectively (data not shown). The transposon in both mutants was in the induction configuration (Table 1). PA4033 belongs to a class of unclassified open reading frames (ORF) in the annotated genome of PAO1, and encodes a hypothetical peptide (89 aa) with a predicted molecular mass of 9.5 kDa.

[0141] The protein has a leader sequence of 36 aa with the mature MucE protein exported to periplasm. In *E. coli*, the σ^E pathway is activated via a similar signal transduction system in which an outer membrane porin, OmpC serves as an inducing signal. The carboxy-terminal signal of MucE (WVF) has a three consensus aa sequence as does OmpC (YQF) (Walsh, N. P., et al., *Cell* 113:61-71 (2003)) and CupB5 (NIW).

[0142] The results show that alginate production in VE2 was increased after 24 h (FIG. 7A) in association with the increased levels of AlgU and MucB compared with PAO1 at all time points (FIG. 7A vs. FIG. 6B). The wild-type and mucoid mutation alleles of PA4033 plus its upstream region were cloned into pUCP20. The resultant plasmid was named pUCP20-Gm-MucE (5622 bp) and has the following nucleotide sequence (SEQ ID NO:9):

GACGAAAGGGCCTCGTGATACGCCTATTTTTATAGGTTAATGTCAT
GATAATAATGGTTTCTTAGACGTCAGGTGGCACTTTTCGGGGAAATGTGC
GCGGAACCCCTATTGTTTATTTTTCTAAATACATTCAAATATGTATCC
GCTCATGAGACAATAACCCGTGATAAATGCTTCAATAATATGAAAAAG
GAAGGATATGAGTATTCAACATTTCCGTGTCGCCCTTATCCCTTTTTTG
CGGCATTTTGCCCTTCTGTTTTGCTCACCCAGAAAACGCTGGTGAAAGT
AAAAGATGCTGAAGATCAGTTGGGTGCACGAGTGGGTTACATCGAACT
GGATCTCAACAGCGGTAAGATCCTTGAGAGTTTTTCGCCCGAAGAAGC
TTTTCCAATGATGAGCACTTTTAAAGTTCTGCTATGTGGCGCGGTATTAT
CCCGTATTGACGCCGGGCAAGAGCAACTCGGTGCGCCGATACACTATT
CTCAGAATGACTGGTTGAGTACTCACCGTACAGAAAAAGCATCTTAC
GGATGGCATGACAGTAAGAGAATTATGACAGTGTGCATAACCATGAGT
GATAAACTGCGGCCAACTTACTTCTGACACGATCGGAGGACCGAAG
GAGCTAACCGCTTTTTTGCACAACATGGGGGATCATGTAACCTGCGCTTGA
TCGTTGGGAACCGGAGCTGAATGAAGCCATACCAAACGACGAGCGTGA
CACCACGATGCTGTAGCAATGGCAACAACGTTGCGCAAACTATTAAC
GGCGAACTACTTACTCTAGCTTCCCGGCAACAATTAATAGACTGGATGGA
GGCGGATAAAGTTGACGACCACCTTCTGCGCTCGGCCCTTCCGCGCTG
CTGGTTTATTGCTGATAAATCTGGAGCCGGTGAGCGTGGGTCTCGCGGTA
TCATGACGACTGGGCCAGATGGTAAGCCCTCCCGTATCGTAGTTATC
TACACGACGGGGAGTACGGCAACTATGGATGAACGAAATAGACAGATCG
CTGAGATAGGTGCCTCACTGATTAAGCATTGGTAACGTGACAGCAAGT
TTACTCATATATACTTTAGATTGATTTAAAACCTCATTTTTTAATTTAA
GGATCTAGGTGAAGATCCTTTTTGATAATCTCATGACCAAAATCCCTT
AACGTGAGTTTTTCGTTCCACTGAGCGTACAGCCCGTAGAAAAGATC
AAAGGATCTTCTGAGATCCTTTTTTCTGCGCGTAATCTGCTGCTTGC
AAACAAAAAACCCAGCTACCAGCGGTGGTTGTTTGGCCGATCAA
GAGCTACCAACTCTTTTTCCGAAGGTAACCTGGCTTACGAGAGCGCA
GATAACAAATACTGTCTTCTAGTGTAGCCGTAGTTAGGCCACCACTT
CAAGAACTCTGTAGCACCGCTACATACCTCGCTCTGCTAATCCTGTT
ACCAAGTGGCTGCTGCCAGTGGCGATAAGTCTGTCTTACCAGGTTGGA
CTCAAGACGATAGTTACCGGATAAGGCGCAGCGGTGCGGCTGAACGG
GGGTTCTGTGACACAGCCAGCTTGAGAGCAACGACCTACACCGAAG
TGAGATACTACAGCGTGAAGCTATGAGAAAAGCGCCACGCTTCCGGAAG
GGAGAAAGCGGACAGGTATCCGGTAAGCGGCGAGGTCGGAACAGGA
GAGCGACGAGGGAGCTTCCAGGGGAAACGCTGGTATCTTTATAGT
CCTGTCGGGTTTCGCCACCTCTGACTTGAGCGTGCATTTTTGTGATGCT
CGTACGGGGGCGGAGCTATGGAAAAACGCCAGCAACGCGCCCTTT
TTACGGTTCCTGGCCTTTTGTGCGCTTTTGTCAACATAAGCTAGCTTAT

-continued

CGGCCAGCCTCGCAGAGCAGGATTCCCGTTGAGCACCGCCAGGTGCG
AATAAGGGACAGTGAAGAAGGAACACCCGCTCGCGGTGGGCTACTT
CACCTATCCTGCCCGGTGACGCCGTTGGATACACCAAGGAAAGTCTAC
ACGAACCCCTTTGGCAAATCCTGTATATCGTGCGAAAAAGGATGGATATA
CCGAAAAAATCGCTATAATGACCCGAGCAGGGTTATGACGCGGAAAG
TATAACCTTAAGGAATCCCATGTTCTTCCCTGCGTTATCCCTGATTTCT
GCGTGGATAACCGTATTACCGCTTTGAGTGAGCTGATAACCGCTCGCCG
CACGAACGACCGAGCGCAGCGAGTCACTGAGCGAGGAAGCGGAAGAGCG
CCCAATACGCAAAACCGCTCTCCCGCGCGTTGGCCGATTCTAATAATGC
AGCTGGCACGACAGGTTTCCGACTGGAAAAGCGGGCAGTGAAGCGAAC
GCAATTAATGTGAGTTAGCTCACTCATTAGGCACCCAGGCTTTACAC
TTTATGCTTCCGGCTCGTATGTTGTGTGGAATGTGAGCGGATAACAATT
ATCACAGGAAACAGCTATGACCATGATTACGAATTCGAGCTCGGTA
CCCTAGCTGATTTCAAATAGCCATTAAGCGGACGAAGAGCCCGT
GAGCCAGCGCCAGCTGACCTAACAGGTTGGCTGATAAGTCCCCGG
TCTAACAAAGAAAAACATTTTTTTGTGAAAATTCGTTTTTATTATTCA
ACATAGTTCCTTCAAGAGCGATACCCTCGAATTGACGCGTCAATT
CTCGAATTGACATAAGCCTGTTCGGTTCGTAAACTGTAATGAAGTAG
CGTATGCGCTCACGCAACTGGTCCAGAACCTTGACCGAACGACGCG
GTGGTAACGGCGCAGTGGCGGTTTTTCATGGCTTGTATGACTGTTTTTT
TGACAGTCTATGCCTCGGCATCCAAGCAGCAAGCGCTTACGCC
GTGGGTGATGTTTGTATGTTATGGAGCAGCAAGATGTTACGACGACG
CAACGATGTTACGACGAGGGCAGTCCGCCATAAAACAAAGTTAGGTG
GCTCAAGTATGGGATCATTCGCACATGTAGGCTCGGCCCTGACCAA
GTCAAATCCATGCGGGCTGCTCTTGATCTTTTCGGTTCGTGAGTTCGGA
GACGTAGCCACCTACTCCCAACATACGCGGACTCCGATTACCTCG
GGAACCTGCTCCGTAGTAAGACATTCATCGCGCTTGTGCTTTCGAC
CAAGAAGCGGTTGTTGGCGCTCTCGCGGCTTACGTTCTGCCAGGTT
TGAGCAGCCGCTAGTGAATCTATATCTATGATCTCGCAGTCTCCG
GCGAGCACCGGAGGCGAGGCTTCCACCGCGCTCATCAATCTCC
TCAAGCATGAGGCAACGCGCTTGGTCTTATGTGATCTACGTGCA
GCAGATTACGGTGACGATCCCGCAGTGGCTCTCTATACAAAGTTGG
GCATACGGGAAGAAGTATGCACTTTGATATCGACCCAAAGTACCGC
CACCTAACAAATTCGTTCAAGCGGAGTTCGGCTTCCCGGCGCAGC
GTCTCGGTACCGGGCCCCCTCGAGGTCGACGGTATCGATAAG
CTTGATATCGAATTCCTGACGCCGGGAATCATTTGAAGGTTGGTAC
TATATAAAAAATAATGCAATTTAATACTAGCGACGCCATCTATGTGTC
AGACCGGGACTTATCAGCCAACCTGTTATCAAGGAGTCTAGCCAT

-continued

GGGTTTCCGGCCAGTTAGCCAACGTTTGCCTGACATCAACCTGCAGG
 CCTCGGCAAGTTTTCTGCCTTGCCCTGGTCTCGGCCTGGAATCG
 GTAAGCCATCCGGCCGGCCCGGTCCAGGCCCTCGTTACGCCAGG
 GCACCGCCAGCCGCTCCTCGCTACTCCGCTCGGCCTCGACGGCCC
 GGCCCGCCAGGGCCGAGATGTGGAACGTCCGCTCGTCCGGCCG
 CGTCAGCGTGCCTGACGAGTTGCCTGGGTGTTTTGAACGCGAAGCTT
 AGGGGATCCTCTAGAGTCGACCTGCAGGCATGCAAGCTTGGCACTGG
 CCGTCTTTTTACAACGTCGTGACTGGGAAAACCTGGCGTTACCCAAC
 TTAATCGCCTTGCAGCACATCCCCCTTTCGCCAGCTGGCGTAATAGCG
 AAGAGGCCCGCACCAGTCCGCTTCCCAACAGTTGCGCAGCCTGAAA
 GGCAGGCCGGCCGCTGGTGGCCACGGCCTTAGGCCAGATCCAGCG
 GCATCTGGGTAGTCGAGCGGGCCGCTTCCCATGTCTACCAGGG
 CGAGCCTGTTTCGCGATCTCAGCATCTGAAATCTTCCCGCCTTGCCG
 TTCGCTGGGGCCTTACCACCGCCTTGGCGGGCTTCTTCGTTCCAAA
 CTGAACAACAGATGTGTGACCTTGCGCCGGTCTTTCGCTGCGCCAC
 TCCACCTGTAGCGGGCTGTCTCGTTGATCTGCGTCACGGCTGGATCAA
 GCACTCGCAACTTGAAGTCTTGATCGAGGGATACCGCCTTCCAGTTG
 AAACCACTTTCGACGCTGGTCAATTTCTATTTTCGCGCTGGCCGATGCTGT
 CCCATTGCATGAGCAGCTCGTAAAGCCTGATCGCGTGGGTGCTGTCCAT
 CTTGGCCACGTCAGCCAAGCGTATTTGGTGAAGTGTGGTGGTGGTCCG
 TCAGGTACGGCAGCATGTCTTGGTGAACCTGAGTTCTACACGGCCCTC
 ACCCTCCCGTAGATGATTGTTGACCCAGCCGGTAATCATCACACTC
 GGTCTTTCCCTTGCATTTGGCTCTGGGTAAACGGACTTCCCGCCG
 TTTACGGCGCAGGGCCGCTTCTTTGAGCTGGTTGAGGAAGATTCGATAG
 GGACACCCGCCATCGTGCCTATGTCCTCCGCGCTCACTGAATACATCAC
 TTCATCGGTGACAGGCTCGTCTCTTCACTGGCTAATACAGGCAGAA
 CGATCCGCTGTTCTGAACACTGAGCGGATACCGGCCTCGACCAGGG
 CATTGCTTTTGTAAACCATTTGGGGTGGAGCCAGTTTCGACATTCTTGT
 TGTATAAGGGGACACTGTATCTGCGTCCCAATAACAACAAATCCGTC
 CCTTTACAACAACAATCCGTCCTTCTTAAACAACAATCCGTCCTT
 AATGGCAACAATCCGTCCTTTTAAACTCTACAGGCCACGGATTAC
 GTGCCCTGTAGACGTCCTAAAAGGTTTAAAAGGGAAAAGAAAGAAA
 GGTGAAAACGCAAAAACGCAACCACTACGTGGCCCGTTGGGGCCG
 CATTGTGCCCTGAAGGGGGGGGGAGGCGTCTGGGCAATCCCGCT
 TTTACAGTCCCTATCGCCGCTGAGAGGGCGCAGGAAGCGAGTAA
 TCAGGGTATCGAGCGGATTCACCTTGGCGTCCAACAGCGGCACC
 AGCGCGCCTGAGAGGTATGGTGCACCTCTCAGTACAATCTGCTCTGAT
 GCCGCATAGTTAAGCCAGCCCGGACACCCGCCAACACCCGCTGACGC
 GCCCTGACGGGCTTGTCTGCTCCCGCATCCGCTTACAGACAAGCTGT

-continued

GACCGTCTCCGGGAGCTGCATGTGTGTCAGAGGTTTTACCGTCATCACCG
 AAACGCGCGA

[0143] The PA4033 (VE2) but not wild-type PA4033 allele caused mucoid conversion in PAO1 and PA14 in association with an elevated level of AlgU in comparison with the parent (data not shown). Because the insertional mutation was dominant over the wild-type allele, we suspected that VE2 was overproducing the mucE product. Using RT-PCR, we determined that the levels of mucE and algU mRNA were 7-fold and 1.2-fold higher in VE2 (PAO1 mucE^{+oe}) than in PAO1 respectively (FIG. 7B). Because of the positive effect on alginate regulation, PA4033 was named mucE.

[0144] We also tested whether introduction of pUCP20-Gm^r-mucE or pUCP20-P_{Gm}-mucE plasmids could cause mucoid conversion in other non-mucoid *P. aeruginosa* strains. We observed the emergence of a mucoid phenotype in the environmental isolate ERC-1 and non-mucoid clinical CF isolates including CF149 (Head, N. H. et al., *Infect. Immun.* 72:133-144 (2004)) and early colonizing strains (C0746C, C0126C, C0686C, C1207C, C3715C, C4009C, C7406C and C8403C) (data not shown). Therefore, the extracytoplasmic stress signals may play an important role in the initial lung colonization and mucoid conversion of *P. aeruginosa*.

[0145] Induction of MucE initiates a regulatory cascade causing an increased level of AlgU. It appears that induction of AlgU is the major pathway that governs alginate overproduction. The mutants that operate via this pathway include VE1 (algU promoter mutants), VE2 (mucE^{+oe}), and VE22 (cupB5^{+oe}), and VE13 (kinB⁻). One common feature is that an elevated level of MucB did not seem to match with that of AlgU (FIGS. 6A-8A). As the algUmucA-D genes are an operon, this suggests that the level of MucA in these mutants may not be the same as that of AlgU. The excess AlgU could escape from the antagonistic interaction with MucA, thus causing mucoid conversion.

[0146] Another mutant, VE22, which had a dominant effect on alginate overproduction, carried an insertion at 96 bp before ATG of cupB5 (PA4082) (Table 1). The cupB5 gene encodes a probable adhesive protein (1,018 aa) with a predicted molecular mass of 100 kDa. This protein has a signal peptide of 53 aa, suggesting that the mature protein is bound for the extracellular milieu. The protein shares consensus motifs of the filamentous hemagglutinin and IgA1-specific metalloendopeptidases (GLUG) at the N- and C-terminus, respectively. The cupB5 gene sits within a genetic cluster encoding fimbrial subunits and CupB5, which have been proposed to be the chaperone/usher pathway involved in biofilm formation (Vallet, I., et al., *Proc Natl Acad Sci USA* 98:6911-6916 (2001)). Induction of cupB5 in VE22 caused upregulation of AlgU and MucB (FIG. 8B).

Example 4

KinB is a Negative Regulator of Alginate in PAO1

[0147] As a sensor-kinase, KinB is responsible for responding to some environmental signals and phosphorylating a response regulator, AlgB, via signal transduction. One mutant, VE13, displayed a stable mucoid phenotype (Table 1). The mutation of VE13 was mapped to 788 bps after ATG of kinB. This insertion caused a frameshift mutation with a

stop codon created at 54 bps after the insertion site. To ensure that inactivation of kinB was causal for the phenotype, PAO1 kinB was cloned into pUCP20. Introduction of wild-type kinB in trans into VE13 reversed the phenotype from Alg⁺ to Alg⁻. Alginate production in VE13 was significantly higher than that in PAO1, which was associated with the increased amount of AlgU (P=0.005) while the level of MucB remained unchanged (P=0.07) compared with PAO1 (FIGS. 8A and 6A).

[0148] The results show that the kinase activity inhibits overproduction of alginate, thereby formally establishing the role of KinB as a negative regulator of alginate. AlgB is a well-known transcriptional activator for alginate biosynthesis. VE13 is a kinB null mutant of PAO1, and the Alg⁺ phenotype has been complemented to Alg⁻ by pUCP-kinB in trans. Inactivation of kinB in PAO1 increased the levels of AlgU (FIG. 8A), suggesting that KinB may inhibit the expression of algU via an AlgB-independent fashion. Alternatively, since AlgB in VE13 is probably in an un-phosphorylated or under-phosphorylated state, it is possible that this form of AlgB serves as the transcriptional activator for alginate.

Example 5

Reduced Expression of oprL Causes Mucoic Conversion in PAO1

[0149] One mutant, VE24, had an insertion at the stop codon (TAA) of oprL (PA0973) in the knockdown configu-

ration. The oprL gene encodes a homolog of the peptidoglycan associated lipoprotein precursor (168 aa) with a predicted molecular mass of 18 kDa. OprL has a leader sequence of 24 aa which probably directs the mature protein to the outer membrane. Reduced expression of oprL in VE24 caused mucoid conversion in PAO1, and was associated with a reduced level of AlgU and MucB (FIG. 8B).

Example 6

Nonmucoic Revertants in AlgU-Hyperactive Mutants were Caused by Suppressor Mutations Inactivating algU

[0150] Eleven percent of insertions were in the intergenic region between algU and mucA in the knockdown configuration (Table 1). The mutants of this category were hyper mucoic. The level of AlgU in VE3 was slightly reduced compared with that in PAO1 (FIG. 8B). The abundance of algU mRNA in VE3 was 84% of that in PAO1 based on RT-PCR (FIG. 7B). Four random spontaneous non-mucoic revertants of VE3, PAO1-VE3-NM1-4, were isolated (GenBank accession numbers DQ352563, DQ352564, DQ352565, and DQ352566). Sequencing the algU gene in VE3-NM1, -NM2, -NM3 and -NM4 revealed that all carried a completely inactivated algU gene due to tandem duplications or a nonsense mutation. The nucleotide sequences of these four algU mutants are:

VE3-NM1 (SEQ ID NO: 10):

```
cgattcgtcg ggacgctcga agctcctcca ggttcgaaga ggagctttca tgctaaccga ggaacaggat
cagcaactgg ttgaacgggt acagcgcgga gacaagcggg ctttcgatct gctggtactg aaataaccagc
acaagatact gggattgatc gtgcggttcg tgcacgacgc ccaggaagcc caggacgtag cgcaggaagc
cttcatcaag gcataaccgtg cgtcggcga tttccggcgc gatagtgcct ttataacctg gctgtatcgg atcgccatca
acaccgcgaa gaaccacctg gtcgctcgcg ggcgctggcc accggacagc gatgtgaccg cagaggatgc
ggagttcttc gagggcgacc acgccctgaa ggacatcgag tcgccggaac gggcgatgtt gcgggatgag
atcgaggcca ccgtgcacca gaccatccag cagttgcccg aggatttgcg cagggccctg acctgcgcg
agttcgaagg tttgagttac gaagatatcg ccaccgtgat gcagtgtccg gtggggacgg tgtccggtgg
ggacggtacg gtcgcggtac ttcgcgctc gtgaagcaat cgacaaagct ctgcagcctt tgttgcgaga
agcctgacac agcggcaaat gccaaagag gttta
```

VE3-NM2 (SEQ ID NO: 11):

```
cttggcagac gattcgtcgg gacgctcga gctcctccag gttcgaagag gagctttcat gtaaacccag
gaacaggatc agcaactggt tgaacggga cagcgcgag acaagcggc tttcgtatcg ctggtactga
aataccagca caagatactg ggattgatcg tgcggttcgt gcacgacgc caggaagccc aggacgtagc
gcaggaagcc ttcatacaag cataccgtgc gctcggcaat ttcgcgcgcg atagtgcctt ttataacctg
ctgtatcgga tcgcatcaa caccgcgaag aaccacctgg tcgctcggcg gcgctggcca ccggacagcg
atgtgaccgc agaggatgag gaggttctcg agggcgacca cgcctgaag gacatcgagt cgcggaaacg
ggcgatggtt cgggatgaga tcgaggccac cgtgcaccag accatccagc agttgcccga ggatttgccg
acggccctga cctctgccc gagttcgaag gtttgagtta cgaagatgc gccaccgtga tgcagtgccc
gggtgggagc gtaecggtcg ggatcttcg cgtcgtgaa gcaatcgaca aagctctgca gcctttgttg
cgagaagcct gacacagcgg caaatgcca gagaggta
```

-continued

VE3-NM3 (SEQ ID NO: 12):

tatcttggca agacgattcg ctgggacgct cgaagctcct ccaggttcga agaggagctt tcatgctaac
 ccaggaacag gatcagcaac tgggtgaacg ggtacagcgc ggagacaagc gggctttcga tctgctggta
 ctgaaatacc agcacaagat actgggattg atcgtgcggt tcgtgcacga cgcccaggaa gcccaggacg
 tagcgcagga agccttcac aagcacaacc gtgcgctcgg caatttcgc ggcgatagtg ctttttatac
 ctgactgtat cggatcgcca tcaacacgcg gaagaaccac ctggctcgtc gggggcgtcg gccaccggac
 agcagatgta ccgacagagga tgcggagtgc ttcgagggcg accacgcctt gaaggacatc gactcgcggg
 aacgggcat gttgcccgat gagatcgagg ccaccgtgca ccagaccatc cagcagttgc ccgaggattt
 gcgcacggcc ctgacctcgc gcgagttcga aggtttgagt tacgaagata tcgccaccgt gatgcagtg
 ccggtgggga cggtagcgtc gcgcatcttc cgcgctcgtg aagcaatcga caaagctctg cagcctttgt
 tgcgagaagc ctgacacagc ggcaaatgcc aagagagta

VE3-NM4 (SEQ ID NO: 13):

gattcgctgg gacgctcgaa gtcctccag gttcgaagag gagctttcat gctaaccag gaacagatc
 agcaactggt tgaacgggta cagcgcggag acaagcgggc tttcgatctg ctggtactga aataccagca
 caagatactg ggattgatcg tgcggttcgt gcacgacgcc caggaagccc aggacgtagc gcaggaagcc
 ttcatacaag cataccgtgc gctcggcaat ttcgcgggc atagtgttt ttatacctgg ctgtatcgga tcgccatcaa
 caccgcgaag aaccacctgg tcgctcgcgg gcgctcgcca ccggacagcg atgtgaccgc agaggatgcg
 gagttcttcg agggcgacca cgccctgaag gacatcgagt cgccggaacg ggcgatggtg cgggatgaga
 tcgaggccac cgtgcaccag accatccagc agttgcccga ggatttgcgc acggccctga ccctgcgcga
 gttcgaaggt ttgagttacg aagatatacg caccgtgatg cagtgtccgg tggggacggt gtccggtggg
 gacggtacgg tcgcgatct tccgctcgcg tgaagcaatc gacaaagctc tcgagccttt gttgcgagaa
 gcctgacaca gcggcaaatg ccaagagagg ta

[0151] These mutations resulted in the disappearance of AlgU and MucB in these mutants (FIG. 8B). The suppressor mutants were complemented to Alg⁺ by algU in trans. The complemented mutants, which restored the mucoid phenotype, caused the re-appearance of AlgU (FIG. 8B). We also measured the AlgU-dependent P1 promoter activity by fusing the P_{algUP1} to the lacZ gene on the chromosome (DeVries, C. A. & Ohman, D. E., *J Bacteriol* 176:6677-6687 (1994); Schurr, M. J., et al., *J Bacteriol* 176:3375-3382 (1995)). Assay of the β-galactosidase activity indicated that the P_{algUP1} activity was 2348±156 units in NH1 (algU⁺) and 16.0±5.5 units in NH3 (algU⁻) while that of the promoterless control in NH2 was 146±34 units (P=1.2×10⁻⁵) (data not shown).

[0152] PAO579 is a relatively unstable mucoid mutant of PAO1 origin with an undefined muc-23 mutation. A spontaneous non-mucoid revertant, PAO579NM, was isolated which had an unknown suppressor mutation. The algUmucA alleles in PAO579 and PAO579NM were sequenced but no mutations were detected. To discern the pathway that regulated the mucoid phenotype in this strain, PAO579NM was mutagenized to screen for mucoid mutants. Three sites, the algU promoter, the algUmucA intergenic region and mucA, were targeted that reversed the phenotype to Alg⁺ (Table 1). The highest frequency of mutations (60% within the strain) occurred in the algU promoters causing increased levels of AlgU and MucB in the same fashion as in VE1 in FIG. 5A (data not shown).

[0153] The results show that inactivation of mucA and mucB did not cause a marked induction in the amounts of AlgU and MucB to the same extent as the kinB, mucE and cupB5 mutants (FIG. 8B vs. 6A-8A). This supports the notion that the mucAB and oprL genes negatively regulate the activity of AlgU (Firoved, A. M. & Deretic, V., *J Bacteriol* 185: 1071-1081 (2003); Mathee, K., et al., *J Bacteriol* 179:3711-3720 (1997)).

Example 7

Upregulation of AlgU (AlgT) Causes Mucoid Conversion

[0154] The mucoid phenotype in clinical isolates of *P. aeruginosa* is unstable, and non-mucoid revertants arise spontaneously in the laboratory. Suppressor mutations in algT were the main cause of mucoid suppression in *P. aeruginosa* (DeVries, C. A. & Ohman, D. E., *J Bacteriol* 176:6677-6687 (1994); Schurr, M. J., et al., *J Bacteriol* 176:3375-3382 (1994)). FRD2 is a CF isolate which has a suppressor mutation in algT18 (DeVries, C. A. & Ohman, D. E., *J Bacteriol* 176:6677-6687 (1994)). Three rare mucoid mutants were identified in FRD2 (Table 1). They all had an insertion in front of algU, in the same manner as the algU promoter mutants in PAO1 (VE1), PA14, and PAO579NM, which resulted in increased transcription of the algT18mucA22mucBC operon as confirmed by Western blots (FIG. 8B).

[0155] The rare FRD2 mucoid mutants coupled with the upregulation of AlgU support the notion that AlgU is the only sigma factor controlling the expression of algD in *P. aeruginosa* (FIG. 8). The results indicate that a suppressor nonmucoid mutant (FRD2) can revert back to a mucoid phenotype (FRD2-VE1) in *P. aeruginosa*. This observation may help to explain why the algU suppressors are prevalent in clinical isolates.

[0156] Analysis of the suppressor mutations in algU indicate that AlgU is required for alginate overproduction but is not an essential protein in *P. aeruginosa*.

Example 8

The Carboxyl Terminus of MucE Affects Mucoid Induction

[0157] The carboxyl-terminal signal of MucE (WVF) has a similar three consensus aa sequence as OmpC (YQF) (Walsh et al., 2003). Searching for this motif in the known outer membrane protein database from PAO1 did not identify any obvious *E. coli* OmpC homologs, indicating that MucE encodes a protein specific for induction of alginate. Other protein signals with such a function also exist. The C-terminal CupB5 carries the three amino acid motif NIW. NIW and WVF are not interchangeable in MucE (unpublished observation), indicating that MucE and CupB5 work on different effector proteins in the periplasm. Table II shows the effect of altering the carboxyl terminus of MucE on mucoid induction in *P. aeruginosa*.

TABLE II

Alteration of C-terminal signal moiety of MucE and mucoidy induction in <i>Pseudomonas aeruginosa</i> PAO1.		
Carboxyl terminal sequences	Mucoidy induction	Outer membrane proteins with the same C-terminal peptide
WVF (Wild-type)	M	MucE
YVF	M	OprP, OprQ
LVF	M	MucE orthologue (<i>P. fluorescens</i>)
WIF	M	MucE orthologue (<i>P. syringae</i>)
WVW	M	
WQF	NM*	
YQF	NM*	OptS, HasR, OmpC and OmpF of <i>E. coli</i> .
WLF	NM	
DRF	NM	AlgE
YYF	NM	Strongest signal in <i>E. coli</i>
YKF	NM	OprH (PA1178)
FQF	NM	AlgI
WWW	NM	
WVA	NM	
WVY	NM	
ELR (Δ WVF)	NM	
RWV (Δ F)	NM	

M: mucoid.; NM: Non-mucoid;

*Slightly mucoid after 1 day of incubation

[0158] The results in Table II show that the last three carboxyl-terminal amino acids of MucE, WVF, are critical for the ability of MucE to induce mucoid induction.

[0159] Similarly, the WVF signal induced mucoidy in *P. fluorescens*. The WVF and YVF carboxyl terminal sequences significantly induced mucoidy, while the YQF carboxyl terminal sequence did not (data not shown). The envelope signal

is well conserved among Pseudomonads. Therefore, *P. fluorescens* is an alternative producer when alginate will be used for human consumption.

Example 9

MucE Interacts with AlgW Resulting in Alginate Overproduction

[0160] AlgW (GenBank accession number (U29172) is a periplasmic serine protease in *P. aeruginosa*. Inactivation of algW on the chromosome of PAO1-VE2 causes this strain to become nonmucoid (Boucher, J. C., et al., *J. Bacteriol.* 178: 511-523 (1996)). Reversion back to the mucoid state occurs when a functional copy of algW is brought into the cells. Similarly, the disruption of algW in PAO1 (PAO1 Δ algW) prevents mucoid induction even when plasmid-borne mucE (pUCP20-Gm^r-mucE) was in a state of overexpression. MucE is found to interact with AlgW causing alginate overproduction by increasing the expression and/or activity of AlgU.

[0161] Normally, AlgW is inactive because the functional domain (the trypsin domain) is covered with a PDZ domain of its own. Interaction between MucE and AlgW results in the release of the PDZ domain of AlgW. This interaction occurs via the carboxyl terminus of MucE, specifically the terminal amino acids WVF, resulting in the activation of AlgW. Activated AlgW degrades the carboxyl terminus of anti-sigma factor MucA. This action causes the release of AlgU into the cytoplasm, thereby activating alginate biosynthesis (see FIG. 9). AlgU is the sigma factor that drives alginate biosynthesis. Therefore, MucE is an inducing signal for alginate overproduction and the periplasmic target of MucE is AlgW (see Table III).

TABLE III

MucE-mediated induction of mucoidy in the mucA ⁺ wild type <i>P. aeruginosa</i> is via AlgW.		
Bacterial strains	Genotype	Phenotype
PAO1	Wild type	NM
VE2	PAO1 over-expressing mucE	M
VE2 algW KO	VE2 algW knockout	NM
VE2 algW KO + pUCP20algW	VE2 algW KO + pUCP20 algW	M

[0162] The nucleotide sequence of algW (SEQ ID NO:14) is as follows:

```

ATGCCCAAGGCCCTGCCTTCTCCGGCTGGCCCGTCTGGTCGGCG
TGCTGCTGGCCCTGCTGATCATCCAGCACAAACCCGAGCTGGTCGGCCTG
CCACGCCAGGAGGTGCACGTCGAGCAGGCGCCTCTGCTCAGCCGCTGCA
GGAAGGCCCGGTGCTCTATGCCAACGCGGTGAGTCGAGCGGCTCCGGCAG
TGGCCAACCTGTACACCACCAAGATGGTCAGCAAGCCCTCCACCCCTG
TTCGACGACCCGATGTTCCGCGCTTCTTCCGCGACAACCTGCCGAACA
GAAGCGCATGGAGTCGAGCCTCGGCTCGGCGGTGATCATGAGCGCGAAG
GCTACCTGCTGACCAACAACCACGTGACCGCTGGCGCCGACGATCATC
GTGGCCTTGC GCGACGGCCGGAACCATCGCCAGTGGTCGGCAGCGA

```

-continued

CCCCGAAACCGACCTGGCCGTGCTGAAGATCGACCTTAAGAACCTGCCGG
 CGATGACCTCGGCCGCTCCGACGGCATTTCGCACCGGCACGTCTGCCTC
 GCCATCGGCAACCCGTTTCGGCGTCGGCCAGACCGTGACCATGGGCATCAT
 CAGCGCCACCGGACGCAACCAGCTCGGCCCTGAACACCTACGAAGACTTCA
 TTCAGACCGACGCGGCATCAACCCCGGCAACTCCGGCGGCAGCTGGTG
 GACGCTGCCGGCAACCTGATCGGCATCAACACGGCGATCTTCTCCAAGTC
 CGCGGGCTCCAGGGTATCGGCTTCGCCATCCCGACCAAGCTGGCCCTGG
 AGGTATGTCAGTCGATCATCGAGCACGGCCAGGTGATCCGCGGCTGGCTC
 GCGTCGAGGTCAAGGCGCTGACCCCGAACTGGCGGAGTCGCTGGGCCT
 CGGGCAACCGCCGGGATCGTCGTCGCGCGCTCTATCGCAGCGTCCGG
 CGGCACGCGCGGCTGCTGCCGGCGATGTGATCCTGACCATCGACAAG
 CAGGAAGCCAGCGCGCCCGCTCGATGAACAGGTGGCGCGCACCC
 GTCCGGGACAGAAGATCAGCATCTGGTGTGCGCAACGGACAGAAGGT
 CAACCTGACCGCCGAGTCCGGCTGCGTCCGCGCGCACCGGCTCCAC
 AGCAGAAACAGGACGGCGCGAGTGA

[0163] The amino acid sequence of AlgW (SEQ ID NO:15) is as follows:

MPKALRFLGWVPLVGVLLALLLI IQHNPELVGLPRQEVHVEQAPLLSRL
 QEGPVSYANAVSRAAPAVANLYTTKVMVSKPSHPLFDDPMFRFPFGDNL
 QQKRMESLSGSAVIMSAEGYLLTNHVHTAGAQI IVALRDGRETI AQLV
 SDPETDLAVLKIIDLKLNPLPAMTLGRSDGIRTDVCLAIGNPFGVQTVTMG
 AIIISTGRNQLGLNTYEDFIQTDAAINPGENSGGALVDAAGNLIGINTAIFS
 KQSGSGIGFAIPTKLALVEMQSIIEHGQVIRGWLGVKALTPELAESL
 GLGETAGIVVAGVYRDGPAARGGLLPDGVILITDKQEASDGRRSMNVQ
 GARTRPQKISIVVLRNGQKVNLTAEVGLRPPAPAPQKQDGG

[0164] The homolog of AlgW is DegS in *E. coli* (see also FIG. 12). The interaction between DegS and OmpC, an outer membrane porin protein, has been shown to activate the signal transduction pathway for the activation of RpoE, the AlgU homolog in *E. coli*. It has been shown that interaction between OmpC and DegS in the periplasm activates the signal transduction pathway that controls the expression and/or activity of RpoE, a homolog of AlgU (Walsh, N. P., et al., *Cell* 113: 61-71 (2003)).

[0165] The results suggest that MucE functions upstream of the anti-sigma factor MucA.

Example 10

The MucE Gene Encodes a Small Periplasmic or Outer Membrane Protein

[0166] The mucE gene is predicted to encode a polypeptide of 89 amino acids with a probable transmembrane helix and a cleavable N-terminal signal sequence. (Stover, C. K., et al., *Nature* 406:959-964 (2000)). Homologues of MucE are found in other species of pseudomonads capable of producing alginate (FIG. 11). We confirmed that mucE encodes a protein

by detecting an approximately 10 kD protein in Western blots of cell extracts of *E. coli* and *P. aeruginosa* expressing His-tagged MucE (FIG. 13). PseudoCAP and Signal IP servers predicted that MucE is likely to be located in the periplasm. To test the localization of MucE, we constructed a series of deletions of mucE-phoA translational fusions. We observed phosphatase activity when phoA was fused to sequence corresponding to the full-length MucE or the N-terminus after P36 but not after A25. The MucE C-terminus-PhoA fusion did not show apparent phosphatase activity (FIG. 14). These results indicate that MucE is a small protein of about 9.5 kDa located in the periplasm or outer membrane, with an N-terminal signal sequence that is required for translocation across the cytoplasmic membrane.

Example 11

MucP is Essential for MucE-Induced Conversion to Mucoidy

[0167] In *E. coli*, the degradation of RseA requires another protease called RseP (also known as YaeL) to cleave the anti-sigma factor RseA after it is cleaved by DegS (Alba, B. M., et al., *Genes Dev* 16:2156-2168 (2002); Kanehara, K., et al., *Embo J* 22:6389-6398 (2003)). The *P. aeruginosa* genome also contains a homolog of RseP (PA3649, designated as MucP) (FIG. 15). The role of MucP in the degradation of MucA and activation of AlgU activity was examined. Inactivation of mucP in PAO1VE2 caused a loss of mucoidy. Furthermore, the plasmid pUCP20 (pUCP20-mucP) restored the mucoid phenotype in PAO1VE2ΔmucP. Similarly, disruption of mucP in PAO1 prevented mucoid conversion when a high level of MucE was present from plasmid pUC20-Gmr-mucE. In addition, a higher level of MucA and a lower level of AlgU in PAO1VE2ΔmucP as compared to PAO1VE2 (data not shown) was seen. These results indicate that MucP is required for MucE activation of AlgU activity.

Example 12

MucE-Induced Mucoidy does not Require the Prc Protease

[0168] The gene prc (PA3257) was recently identified as a regulator of alginate synthesis in *P. aeruginosa* and is predicted to encode a PDZ domain-containing periplasmic protease similar to a *E. coli* protease called Prc or Tsp (Reiling S. A., et al., *Microbiology* 151:2251-2261 (2005)). Prc appears to act to promote mucoidy in mucA mutants by degrading truncated forms of MucA found in mucoid mucA mutants (Reiling S. A., et al., *Microbiology* 151:2251-2261 (2005)). To test whether Prc plays a role in the activation of alginate production mediated by MucE, MucE was overexpressed in a strain lacking Prc and examined for mucoidy. Cells of the prc null mutant PAO1-184 (prc::tetR) carrying either MucE overexpression plasmid pUCP20-Gmr-mucE or pUCP20-PGm-mucE were as mucoid as PAO1 cells carrying pUCP20-Gmr-mucE or pUCP20-PGm-mucE. These results suggest that Prc is not required for mucoidy induced by MucE and is consistent with Prc only acting against truncated forms of MucA.

Example 13

MucD Eliminates Signal Proteins that Activate AlgU and Other Proteases to Cleave MucA

[0169] The mucD gene (PA0766) is a member of the algU mucABCD operon and is predicted to encode a serine pro-

tease similar to HtrA in *E. coli* (Boucher, C. J., et al., *J. Bacteriol.* 178:511-523 (1996)). MucD appears to be a negative regulator of mucoidy and AlgU activity (Boucher, C. J., et al., *J. Bacteriol.* 178:511-523 (1996)). The mariner transposon library screen confirmed this result because several mucoid mutants were isolated that had transposons inserted within the coding region of mucD. HtrA in *E. coli* has been hypothesized to regulate the σ^E stress response system by removing misfolded proteins in the periplasm that can activate the DegS protease via the degradation of the anti-sigma factor RseA (Alba, B. M., et al., *Genes Dev.* 16:2156-2168 (2002); Kanehara, K., et al., *Embo J.* 22:6389-6398 (2003)). Therefore, it was determined whether MucD of *P. aeruginosa* acted in a similar manner as HtrA of *E. coli*. To test this, overexpression of MucD in a strain overexpressing MucE

was examined. Overexpression of mucD from the plasmid pUCP20-mucD partially suppressed the mucoid phenotype of the mucE-overexpressing strain PAO1VE2. This result is consistent with the notion that MucD can aid in the elimination of mis-folded OMPs including MucE. In addition, disruption of mucP in the mucoid mucD mutant PAO1VE19 caused the loss of the mucoid phenotype. The mucoid phenotype of PAO1VE19 Δ mucP was restored when mucP was in trans. Loss of the mucoid phenotype from the mucD mutant PAO1VE19 after the disruption of algW was not observed. The results suggest that MucD can act to remove misfolded proteins that activate proteases for degradation of MucA and that at least under certain conditions other proteases independent of AlgW can also initiate the cleavage of MucA.

 SEQUENCE LISTING

<160> NUMBER OF SEQ ID NOS: 37

<210> SEQ ID NO 1

<211> LENGTH: 270

<212> TYPE: DNA

<213> ORGANISM: *Pseudomonas aeruginosa*

<400> SEQUENCE: 1

```

atgggtttcc ggccagtttag ccaacgtttg cgtgacatca acctgcaggc cctcggcaag      60
ttttctctgcc ttgccctggt cctcggcctg gaatcggtaa gccatccggc cggcccggtc      120
caggccccct cgttcagcca gggcaccgcc agcccgtcct tcgctactcc gctcggcctc      180
gacggcccgg cccgcgccag ggccgagatg tggaacgtcg gcctgtccgg cgccgtcagc      240
gtgcgtgacg agttgcgctg ggtgttttga                                     270
  
```

<210> SEQ ID NO 2

<211> LENGTH: 89

<212> TYPE: PRT

<213> ORGANISM: *Pseudomonas aeruginosa*

<400> SEQUENCE: 2

```

Met Gly Phe Arg Pro Val Ser Gln Arg Leu Arg Asp Ile Asn Leu Gln
 1           5           10           15
Ala Leu Gly Lys Phe Ser Cys Leu Ala Leu Val Leu Gly Leu Glu Ser
           20           25           30
Val Ser His Pro Ala Gly Pro Val Gln Ala Pro Ser Phe Ser Gln Gly
 35           40           45
Thr Ala Ser Pro Ser Phe Ala Thr Pro Leu Gly Leu Asp Gly Pro Ala
 50           55           60
Arg Ala Arg Ala Glu Met Trp Asn Val Gly Leu Ser Gly Ala Val Ser
 65           70           75           80
Val Arg Asp Glu Leu Arg Trp Val Phe
           85
  
```

<210> SEQ ID NO 3

<211> LENGTH: 288

<212> TYPE: DNA

<213> ORGANISM: *Pseudomonas fluorescens*

<400> SEQUENCE: 3

```

atggggaacc tgctcaggaa aggccaggtc gcgcttgcga gaatattcag eggcgatgat      60
  
```

-continued

```

coggtgctc ttctcagttt gatgctggcg gcttatctgg gaatcagtc ctgtaccgtg 120
ccagcgtcca cagcgggctg ctgtcagccc tccggcatag ggcaataccc ggcgtctgcc 180
ctgcccctg gacgtgactc caacctgacc ctggacgcc agcccgtgat cggtcggaca 240
gcgtacccca cgaacctgca gccaccggcc cgcgctggg tgttctag 288

```

```

<210> SEQ ID NO 4
<211> LENGTH: 95
<212> TYPE: PRT
<213> ORGANISM: Pseudomonas fluorescens

```

```

<400> SEQUENCE: 4

```

```

Met Gly Asn Leu Leu Arg Lys Gly Gln Val Ala Leu Val Arg Ile Phe
1           5           10          15

Ser Gly Asp Asp Pro Val Arg Leu Leu Ser Leu Met Leu Ala Ala Tyr
          20          25          30

Leu Gly Ile Ser Ala Cys Thr Val Pro Ala Ser Thr Ala Gly Cys Cys
          35          40          45

Gln Pro Ser Gly Ile Gly Gln Tyr Pro Ala Ser Ala Leu Pro Ala Gly
          50          55          60

Ser Asp Ser Asn Leu Thr Leu Asp Ala Glu Pro Val Ile Gly Arg Thr
65          70          75          80

Ala Leu Pro Thr Asn Leu Gln Pro Pro Ala Pro Arg Trp Val Phe
          85          90          95

```

```

<210> SEQ ID NO 5
<211> LENGTH: 27
<212> TYPE: DNA
<213> ORGANISM: Artificial Sequence
<220> FEATURE:
<223> OTHER INFORMATION: Synthetic complementary oligonucleotide
sequence designed to form hybridized complexes

```

```

<400> SEQUENCE: 5

```

```

tcaaaacacc cagcgcaact cgtcacg 27

```

```

<210> SEQ ID NO 6
<211> LENGTH: 24
<212> TYPE: DNA
<213> ORGANISM: Artificial Sequence
<220> FEATURE:
<223> OTHER INFORMATION: Synthetic complementary oligonucleotide
sequence designed to form hybridized complexes

```

```

<400> SEQUENCE: 6

```

```

agtagcgaag gacgggctgg cggt 24

```

```

<210> SEQ ID NO 7
<211> LENGTH: 24
<212> TYPE: DNA
<213> ORGANISM: Artificial Sequence
<220> FEATURE:
<223> OTHER INFORMATION: Synthetic complementary oligonucleotide
sequence designed to form hybridized complexes

```

```

<400> SEQUENCE: 7

```

```

ttggctaact ggccggaaac ccat 24

```

```

<210> SEQ ID NO 8

```

-continued

```

<211> LENGTH: 1473
<212> TYPE: DNA
<213> ORGANISM: Artificial Sequence
<220> FEATURE:
<223> OTHER INFORMATION: Synthetic sequence of mariner transposon's
      junction region

<400> SEQUENCE: 8
accacacccg ccgcgcttaa tgcgccgcta cagggcgcggt cccattcgcc actcaaccaa    60
gtcattctga gaatagtgta tgcggcgacc gagttgctct tgcccggcgt caatacggga    120
taataccgcg ccacataaca ggttggtgta taagtccccg gtctaacaaa gaaaaacaca    180
ttttttgtg aaaattcggt tttattattc aacatagttc cttcaagag cgatacccct    240
cgaattgacg cgtaattctc cgaattgaca taagcctggt cggttcgtaa actgtaatgc    300
aagtagcgta tgcgctcacg caactggtcc agaaccttga ccgaacgcag cggtggtaac    360
ggcgcagtg cggttttcat ggcttggtat gactgttttt ttgtacagtc tatgcctcgg    420
gcaccaagc agcaagcgcg ttacgccgtg ggtcgatggt tgatggtatg gagcagcaac    480
gatgttacgc agcagcaacg atgttacgca gcagggcagt cgcctaataa caaagttagg    540
tggctcaagt atgggcatca ttcgcacatg taggctcggc cctgaccaag tcaaatccat    600
cggggctgct cttgatcttt tcggtcgtga gttcggagac gtagccacct actcccaaca    660
tcagccggac tccgattacc tcgggaactt gctccgtagt aagacattca tcgctcttgc    720
tgcttcgcac caagaagcgg ttgttggcgc tctcgcggct tacgttctgc ccaggtttga    780
gcagcccgct agtgagatct atatctatga tctcgcagtc tccggcgagc accggaggca    840
gggcattgcc accgcgctca tcaatctcct caagcatgag gccaacgcgc ttggtgctta    900
tgtgatctac gtgcaagcag attacgggtg cgatccccga gtggctctct atacaaagt    960
gggcatacgg gaagaagtga tgcactttga tatcgacca agtaccgcca cctaacaatt    1020
cgttcaagcc gagatcggct tcccggcga cgcgtctctg gtaccgggcc ccccctcgag    1080
gtcgacggta tcgataagct tgatatacga ttcctgcagc ccgggaatca tttgaaggt    1140
ggactatat aaaaataata tgcatttaat actagcgcgc ccactatgt gtcagaccgg    1200
ggacttatca gccaacctgt tagcagaact ttaaaagtgc tcatcattgg aaaaaggctg    1260
cgcaactggt ggaagggcg atcgggtcgg gcctcttcgc tattacgcca gctggcgaaa    1320
gggggatggt ctgcaagcgt attaagttgg gtaacgccag ggttttccca gtcacgagct    1380
tgtaaacga cggccagtga gcgcgcgtaa tacactcact atagggcgaa ttggaggatc    1440
cggctcaaca aagaaaacac atttttgtg aaa                                1473

```

```

<210> SEQ ID NO 9
<211> LENGTH: 5622
<212> TYPE: DNA
<213> ORGANISM: Artificial Sequence
<220> FEATURE:
<223> OTHER INFORMATION: Synthetic sequence of pUCP20-Gm-MucE plasmid

```

```

<400> SEQUENCE: 9
gacgaaagg cctcgtgata cgcctatfff tataggtaa tgcacgata ataatggttt    60
cttagacgtc aggtggcact tttcggggaa atgtgcgcgg aaccctatt tgtttatfff    120
tctaaataca ttcaaatatg tatccgctca tgagacaata accctgataa atgcttcaat    180
aatattgaaa aaggaagagt atgagtattc aacatttccg tgcgcctctt attccctfff    240

```

-continued

ttgcggcatt ttgccttctt gtttttgctc acccagaaac gctggtgaaa gtaaaagatg	300
ctgaagatca gttgggtgca cgagtgggtt acatcgaact ggatctcaac agcggtaaga	360
tccttgagag ttttcgcccc gaagaacggt ttccaatgat gagcactttt aaagttctgc	420
tatgtggcgc ggtattatcc cgtattgacg cegggcaaga gcaactcggc cgccgcatac	480
actattctca gaatgacttg gttgagtact caccagtcac agaaaagcat cttacggatg	540
gcatgacagt aagagaatta tgcagtgctg ccataaccat gagtgataac actgcccga	600
acttacttct gacaacgato ggaggaccga aggagctaac cgcttttttg cacaacatgg	660
gggatcatgt aactcgcctt gatcgttggg aaccggagct gaatgaagcc ataccaaacg	720
acgagcgtga caccacgatg cctgtagcaa tggcaacaac gttgcgcaa ctattaactg	780
gcgaactact tactctagct tcccggcaac aattaataga ctggatggag gcgataaaag	840
ttgcaggacc acttctgcgc tcggcccttc cggctggctg gtttattgct gataaatctg	900
gagccggtga gcgtgggtct cgcggtatca ttgcagcact ggggccagat ggttaagcct	960
cccgtatcgt agttatctac acgacgggga gtcaggcaac tatggatgaa cgaatagac	1020
agatcgctga gataggctgc tcaactgatta agcattggta actgtcagac caagtttact	1080
catatatact ttgattgat ttaaaacttc atttttaatt taaaaggatc taggtgaaga	1140
tcctttttga taatctcatg accaaaatcc cttaacgtga gttttcgttc cactgagcgt	1200
cagaccccgat agaaaagatc aaaggatcct cttgagatcc tttttttctg cgcgtaactc	1260
gctgcttgca aacaaaaaaaa ccaccgctac cagcgggtgg ttgtttgccg gatcaagagc	1320
taccaactct ttttccgaag gtaactggct tcagcagagc gcagatacca aatactgtcc	1380
ttctagtgta gccgtagtta ggccaccact tcaagaactc tgtagcaccg cctacatacc	1440
tcgctctgct aatcctgtta ccagtggctg ctgccagtg cgataagtgc tgtcttaccg	1500
ggttggactc aagacgatag ttaccggata aggcgcagcg gtcgggctga acggggggtt	1560
cgtgcacaca gccagcctg gagcgaacga cctacaccga actgagatac ctacagcgtg	1620
agctatgaga aagcgcacg cttcccgaag ggagaaagc ggacaggtat ccggaagcgc	1680
gcagggtcgg aacaggagag gcacagagg agcttccagg gggaaacgcc tggatcttt	1740
atagtcctgt cgggtttcgc cacctctgac ttgagcgtgc atttttgtga tgctcgtcag	1800
gggggaggag cctatggaaa aacgccagca acgcggcctt tttacggttc ctggcctttt	1860
gctggccttt tgetcacata agctagctta tcggccagcc tcgcagagca ggattcccgt	1920
tgagcaccgc caggtgcgaa taaggacag tgaagaagga acaccgctc gcgggtgggc	1980
ctacttcacc tatcctgccc ggctgacgcc gttggatata ccaaggaaag tctacacgaa	2040
ccctttggca aaatctgtta tatcgtgcga aaaaggatgg atataccgaa aaaatcgtta	2100
taatgacccc gaagcagggt tatgcagcgg aaagtatacc ttaaggaatc cccatgttct	2160
ttcctgcgtt atcccctgat tctgtggata accgtattac cgcctttgag tgagctgata	2220
ccgctcgcgc cagccgaacg accgagcga gcgagtcagt gagcaggaa gcggaagagc	2280
goccaatagc caaacgcct ctcccgcgc gttggccgat tcattaatgc agctggcacg	2340
acaggtttcc cgactgaaa gcgggcagtg agcgcacgc aattaatgtg agttagctca	2400
ctcattagc acccaggct ttacacttta tgcttccggc tcgtatgttg tgtggaattg	2460
tgagcggata acaatttca acaggaaca gctatgacca tgattacgaa ttcgagctcg	2520

-continued

gtaccctagc ctgattccaa atagccatta agcgggacga agagcccgtg agccagcgcc	2580
agcctgacct aacaggttgg ctgataagtc cccggtctaa caaagaaaa cacatttttt	2640
tgtgaaaatt cgtttttatt attcaacata gttcccttca agagcgatac ccctcgaatt	2700
gacgcgtcaa ttctegaatt gacataagcc tgttcgggtc gtaaaactgta atgcaagtag	2760
cgtatgcgct caecgaactg gtccagaacc ttgaccgaac gcagcgggtg taacggcgca	2820
gtggcggttt tcattggctt ttatgactgt tttttgtac agtctatgcc tcgggcatcc	2880
aagcagcaag cgcgttacgc cgtgggtcga tgtttgatgt tatggagcag caacgatgtt	2940
acgcagcagc aacgatgta cgcagcaggc cagtccctc aaaacaaagt taggtggctc	3000
aagtatgggc atcattcgca catgtaggct cggccctgac caagtcaaat ccatgcgggc	3060
tgtcttgat cttttcggc gtgagttcgg agacgtagcc acctactcc aacatcagcc	3120
ggactccgat tacctcggga acttgcctcg tagtaagaca ttcattcgcg ttgctgcctt	3180
cgaccaagaa gcggttgttg gcgctctcgc ggcttacgtt ctgccaggt ttgagcagcc	3240
gcgtagttag atctatatct atgatctcgc agtctccggc gagcaccgga ggcaggcat	3300
tgccaccgcg ctcatcaatc tctcaagca tgaggccaac gcgcttgggt cttatgtgat	3360
ctactgcaa gcagattacg gtgacgatcc cgcagtggt ctctatacaa agttgggcat	3420
acgggaagaa gtgatgcaat ttgatatcga cccaagtacc gccacctaac aattcgttca	3480
agccgagatc ggttcccg cgcagcgcgc ctccgtaccg gggccccctc cgaggtcagc	3540
ggatcagata agcttgatat cgaattcctg cagcccggga atcattttaa ggttggtagt	3600
atataaaaat aatgatcatt taactactagc gacgccatct atgtgtcaga ccggggactt	3660
atcagccaac ctgttatcaa ggagtcgtag ccatgggttt ccggccagtt agccaacggt	3720
tgcgtgacat caacctgcag gccctcggca agttttcctg ccttgccctg gtctcggcc	3780
tggaaatcgg aagccatcgc gccggcccg tccaggcccc ctcggtcagc cagggcaaccg	3840
ccagcccgc ctctcgtact ccgctcggcc tcgacggccc gggccgcgcc agggccgaga	3900
tgtggaacgt cggcctgtcc ggcgcctca gcgtgcgtga cgagttgcgc tgggtgtttt	3960
gaacgcgaag cttaggggat cctctagagt cgacctgcag gcatgcaagc ttggcactgg	4020
ccgtcgtttt acaacgtcgt gactgggaaa accctggcgt tacccaactt aatgccttg	4080
cagcacatcc ccttttcgcc agctggcgta atagcgaaga ggccgcacc gatcgcctt	4140
cccaacagtt gcgcagcctg aaaggcagc cgggcctggt tggccacggc ctctaggcca	4200
gatccagcgg catctgggtt agtcgagcgc gggccgctc ccatgtctca ccagggcgag	4260
cctgtttcgc gatctcagca tctgaaatct tcccgcctt gcgcttcgct ggggccttac	4320
ccaccgcctt gggggcctc ttcgggtcaa aactgaacaa cagatgtgtg accttgccgc	4380
cggtctttcg ctgcgcccac tccacctgta ggggctgtg ctcggtgac tgctcagcg	4440
ctggatcaag cactcgcaac ttgaagtct tgatcgagg ataccggcct tccagttgaa	4500
accactttcg cagctgggtc atttctattt cgcgctggcc gatgctgtcc cattgcatga	4560
gcagctcgta aagcctgatc gcgtgggtgc tgtccatctt ggccacgtca gccaaaggct	4620
atttgggtgaa ctgtttggtg agttccgtca ggtacggcag catgtctttg gtgaacctga	4680
gttctacacg gccctcacc tcccggtaga tgattgttg caccagcgc gtaatcatca	4740
cactcggctt tttcccctg ccattgggct cttgggttaa ccggacttcc cgcgctttca	4800

-continued

```

ggcgcagggc cgcttctttg agctggttgt aggaagattc gatagggaca cccgccatcg 4860
tcgctatgtc ctccgccgtc actgaatata tcacttcato ggtgacaggc tcgctcctct 4920
tcacctggct aatacaggcc agaacgatcc gctgttctctg aacctgagg cgatacgcgg 4980
cctcgaccag ggcattgctt ttgtaaacca ttgggggtga ggccacgttc gacattcctt 5040
gtgtataagg ggacactgta tctgcgtccc acaatacaac aaatccgtcc ctttacaaca 5100
acaaatccgt cccttcttaa caacaaatcc gtcccttaat ggcaacaaat ccgtcccttt 5160
ttaaactcta caggccacgg attactgtgc ctgtagacgt cctaaaaggt taaaaggga 5220
aaaggaagaa aagggtgaa acgcaaaaaa cgcaccacta cgtggccccg ttggggccgc 5280
atgtgtgcc ctgaaggggc gggggaggcg tctgggcaat ccccgttta ccagtcctct 5340
atcgccgct gagaggcgc aggaagcgag taatcagggt atcgaggcg attcaccctt 5400
ggcgtccaac cagcggcacc agcggcgct gagaggtatg gtgcactctc agtacaatct 5460
gctctgatgc cgcatagtta agccagcccc gacaccgcc aacaccgct gacgcgccct 5520
gacgggcttg tctgctcccg gcacccgctt acagacaagc tgtgaccgct tccgggagct 5580
gcatgtgtca gaggttttca ccgtcatcac cgaaacgcgc ga 5622

```

```

<210> SEQ ID NO 10
<211> LENGTH: 674
<212> TYPE: DNA
<213> ORGANISM: Artificial Sequence
<220> FEATURE:
<223> OTHER INFORMATION: Synthetic sequence of algU mutant, VE3-NM1

```

```

<400> SEQUENCE: 10

```

```

cgattcgtg ggacgctcga agctcctcca ggttcgaaga ggagcttca tgctaaccba 60
ggaacaggat cagcaactgg ttgaacgggt acagcgcgga gacaagcggg ctttcgatct 120
gctggtactg aaataccagc acaagatact gggattgatc gtgcggttcg tgcacgacgc 180
ccaggaagcc caggacgtag cgcaggaagc cttcatcaag gcataccgtg cgctcggcaa 240
tttcgcggc gatagtgtt tttatactg gctgtatcgg atcgcctca acaccgcgaa 300
gaaccactg gtcgctcgcg ggcgtcggcc accggacagc gatgtgaccg cagaggatgc 360
ggagttcttc gagggcgacc acgcccgtga ggacatcgag tcgccggaac gggcgatgtt 420
gcgggatgag atcgaggcca ccgtgcacca gaccatccag cagttgccg aggattgctg 480
cacggcctg accctgcgcg agttcgaagg tttgagttac gaagatatcg ccaccgtgat 540
gcagtgtccg gtggggacgg tgtccggtg ggacggtacg gtcgcgatc ttccgcgctc 600
gtgaagcaat cgacaagct ctgcagcctt tgttgcgaga agcctgacac agcggcaaat 660
gccaagagag gtta 674

```

```

<210> SEQ ID NO 11
<211> LENGTH: 668
<212> TYPE: DNA
<213> ORGANISM: Artificial Sequence
<220> FEATURE:
<223> OTHER INFORMATION: Synthetic sequence of algU mutant, VE3-NM2

```

```

<400> SEQUENCE: 11

```

```

cttggcagac gattcgtggt gacgctcga gctcctccag gttcgaagag gagctttcat 60
gctaaccag gaacaggatc agcaactggt tgaacgggta cagcgcggag acaagcgggc 120

```

-continued

```

tttcgatctg ctggtactga aataccagca caagatactg ggattgatcg tgcggttcgt 180
gcacgacgcc caggaagccc aggacgtagc gcaggaagcc ttcatacaagg cataccgtgc 240
gctcggcaat ttccgcgcg atagtgcctt ttatacctgg ctgtatcgga tcgccatcaa 300
caccgcgaag aaccacctgg tcgctcgcgg gcgteggcca cgggacagcg atgtgaccgc 360
agaggatgcg gagttcttcg agggcgacca cgcctgaag gacatcgagt cgcggaaacg 420
ggcgatgttg cgggatgaga tcgaggccac cgtgcaccag accatccagc agttgcccga 480
ggatttcgac acggccctga cctctgcgc gagttcgaag gtttgagta cgaagatctc 540
gccaccgtga tgcagtgtcc ggtggggacg gtacggtcgc ggatcttcg cgcctcgtgaa 600
gcaatcgaca aagctctgca gcctttgttg cgagaagcct gacacagcgg caaatgccc 660
gagaggta 668

```

```

<210> SEQ ID NO 12
<211> LENGTH: 669
<212> TYPE: DNA
<213> ORGANISM: Artificial Sequence
<220> FEATURE:
<223> OTHER INFORMATION: Synthetic sequence of algU mutant, VE3-NM3

```

```

<400> SEQUENCE: 12

```

```

tatcttgca agacgattcg ctgggacgct cgaagctcct ccaggttcga agaggagctt 60
tcatgctaac ccaggaacag gatcagcaac tggttgaacg ggtacagcgc ggagacaagc 120
gggctttcga tctgctggta ctgaaatacc agcacaagat actgggattg atcgtgcggt 180
tcgtgcacga cgcccaggaa gccacggacg tagcgcagga agccttcac aaggcatacc 240
gtgcgctcgg caatttccgc ggcgatagtg ctttttatac ctgactgtat cggatcgcca 300
tcaacaccgc gaagaaccac ctggtcgcctc gggggcgctg gccaccggac agcgatgtga 360
ccgcagagga tgcggagtto ttcgagggcg accacgcccct gaaggacatc gagtcgccgg 420
aacgggcgat gttgcgggat gagatcgagg ccaccgtgca ccagaccatc cagcagttgc 480
ccgaggattt gcgcacggcc ctgaccctgc gcgagttcga aggtttgagt tacgaagata 540
tcgccaccgt gatgcagtgt ccggtgggga cggtaacggtc gcggatcttc cgcgctcgtg 600
aagcaatcga caaagctctg cagcctttgt tgcgagaagc ctgacacagc ggcaaatgcc 660
aagagagta 669

```

```

<210> SEQ ID NO 13
<211> LENGTH: 672
<212> TYPE: DNA
<213> ORGANISM: Artificial Sequence
<220> FEATURE:
<223> OTHER INFORMATION: Synthetic sequence of algU mutant, VE3-NM4

```

```

<400> SEQUENCE: 13

```

```

gattcgtcgg gacgctcga gctcctccag gttcgaagag gagctttcat gctaaccag 60
gaacaggatc agcaactggt tgaacgggta cagcgcggag acaagcgggc tttcgatctg 120
ctggtactga aataccagca caagatactg ggattgatcg tgcggttcgt gcacgacgcc 180
caggaagccc aggacgtagc gcaggaagcc ttcatacaagg cataccgtgc gctcggcaat 240
ttccgcgcg atagtgcctt ttatacctgg ctgtatcgga tcgccatcaa caccgcgaag 300
aaccacctgg tcgctcgcgg gcgtcggcca cgggacagcg atgtgaccgc agaggatgcg 360

```

-continued

```

gagttcttcg agggcgacca cgcctgaag gacatcgagt cgccggaacg ggcgatggtg 420
cgggatgaga tcgaggccac cgtgcaccag accatccagc agttgcccga ggatttgccg 480
acggccctga cctgcgcga gttcgaaggt ttgagttacg aagatatcgc caccgtgatg 540
cagtgtccgg tggggacggt gtccgggtgg gacggtaecg tcgcggatct tccgcgctcg 600
tgaagcaate gacaaagctc tgcagccttt gttgcgagaa gcctgacaca gcggcaaatg 660
ccaagagagg ta 672

```

```

<210> SEQ ID NO 14
<211> LENGTH: 1170
<212> TYPE: DNA
<213> ORGANISM: Pseudomonas aeruginosa

```

```

<400> SEQUENCE: 14

```

```

atgcccagg cctgcggtt cctcggtgg cccgtgctgg tcggcgtgct gctggccctg 60
ctgatcatcc agcacaacc cgagctggtc ggccctgccac gccaggaggt gcacgtcgag 120
caggcgctc tgctcagccg cctgcaggaa ggcccgggtg cctatgcaa cgcggtgagt 180
cgagcggctc cggcagtgga caacctgtac accaccaaga tggtcagcaa gccctccac 240
cccctgttcg acgaccgat gttcgcgcgc ttcttcggcg acaacctgcc gcaacagaag 300
cgcatggagt cgagcctcgg ctccggcggg atcatgagcg cggaaggcta cctgctgacc 360
aacaaccacg tgaccgctgg cgccgaccag atcatcgtgg ccttgccga cggcccgaa 420
accatcgccc agttggtcgg cagcgaccgg gaaaccgacc tggccgtgct gaagatcgac 480
cttaagaacc tgccggcgat gaccctcggc cgctccgacg gcattcgac cggcgacgct 540
tgccctcgca tcggcaacc gttcggcgtc ggccagaccg tgaccatggg catcatcagc 600
gccaccggac gcaaccagct cggcctgaac acctacgaag acttcatcca gaccgacgct 660
gcatcaacc cggcaactc cggcggcggc ctggtggacg ctgcccggaa cctgatcggc 720
atcaaacagg cgatcttctc caagtccggc ggctcccagg gtatcggctt cgccatcccg 780
accaagctgg ccttgaggt catgcagtc atcatcgagc acggccaggt gatcccgggc 840
tggctcggcg tcgaggtcaa ggcgctgacc ccggaactgg cggagtcgct gggcctcggc 900
gaaaccgccc ggcagctcgt gcgccggctc tatecgcagc gtcggcgggc acgcccggc 960
ctgctgcccg gcgatgtgat cctgaccatc gacaagcagg aagccagcga cggcccgccg 1020
tcgatgaacc agtgggcggc caccgctccg ggacagaaga tcagcatcgt ggtgctgccc 1080
aacggacaga aggtcaacct gaccgcccag gtcggcctgc gtcggcccgc ggcaccggct 1140
ccacagcaga aacaggacgg cggcgagtga 1170

```

```

<210> SEQ ID NO 15
<211> LENGTH: 389
<212> TYPE: PRT
<213> ORGANISM: Pseudomonas aeruginosa

```

```

<400> SEQUENCE: 15

```

```

Met Pro Lys Ala Leu Arg Phe Leu Gly Trp Pro Val Leu Val Gly Val
1           5           10          15
Leu Leu Ala Leu Leu Ile Ile Gln His Asn Pro Glu Leu Val Gly Leu
20          25          30
Pro Arg Gln Glu Val His Val Glu Gln Ala Pro Leu Leu Ser Arg Leu

```

-continued

35			40			45									
Gln	Glu	Gly	Pro	Val	Ser	Tyr	Ala	Asn	Ala	Val	Ser	Arg	Ala	Ala	Pro
50						55					60				
Ala	Val	Ala	Asn	Leu	Tyr	Thr	Thr	Lys	Met	Val	Ser	Lys	Pro	Ser	His
65					70					75					80
Pro	Leu	Phe	Asp	Asp	Pro	Met	Phe	Arg	Arg	Phe	Phe	Gly	Asp	Asn	Leu
			85						90					95	
Pro	Gln	Gln	Lys	Arg	Met	Glu	Ser	Ser	Leu	Gly	Ser	Ala	Val	Ile	Met
			100						105				110		
Ser	Ala	Glu	Gly	Tyr	Leu	Leu	Thr	Asn	Asn	His	Val	Thr	Ala	Gly	Ala
			115					120				125			
Asp	Gln	Ile	Ile	Val	Ala	Leu	Arg	Asp	Gly	Arg	Glu	Thr	Ile	Ala	Gln
	130					135					140				
Leu	Val	Gly	Ser	Asp	Pro	Glu	Thr	Asp	Leu	Ala	Val	Leu	Lys	Ile	Asp
145					150					155					160
Leu	Lys	Asn	Leu	Pro	Ala	Met	Thr	Leu	Gly	Arg	Ser	Asp	Gly	Ile	Arg
			165						170					175	
Thr	Gly	Asp	Val	Cys	Leu	Ala	Ile	Gly	Asn	Pro	Phe	Gly	Val	Gly	Gln
			180						185				190		
Thr	Val	Thr	Met	Gly	Ile	Ile	Ser	Ala	Thr	Gly	Arg	Asn	Gln	Leu	Gly
		195						200				205			
Leu	Asn	Thr	Tyr	Glu	Asp	Phe	Ile	Gln	Thr	Asp	Ala	Ala	Ile	Asn	Pro
	210					215					220				
Gly	Asn	Ser	Gly	Gly	Ala	Leu	Val	Asp	Ala	Ala	Gly	Asn	Leu	Ile	Gly
225					230					235					240
Ile	Asn	Thr	Ala	Ile	Phe	Ser	Lys	Ser	Gly	Gly	Ser	Gln	Gly	Ile	Gly
			245						250					255	
Phe	Ala	Ile	Pro	Thr	Lys	Leu	Ala	Leu	Glu	Val	Met	Gln	Ser	Ile	Ile
			260					265					270		
Glu	His	Gly	Gln	Val	Ile	Arg	Gly	Trp	Leu	Gly	Val	Glu	Val	Lys	Ala
	275						280					285			
Leu	Thr	Pro	Glu	Leu	Ala	Glu	Ser	Leu	Gly	Leu	Gly	Glu	Thr	Ala	Gly
	290					295					300				
Ile	Val	Val	Ala	Gly	Val	Tyr	Arg	Asp	Gly	Pro	Ala	Ala	Arg	Gly	Gly
305					310					315					320
Leu	Leu	Pro	Gly	Asp	Val	Ile	Leu	Thr	Ile	Asp	Lys	Gln	Glu	Ala	Ser
			325						330					335	
Asp	Gly	Arg	Arg	Ser	Met	Asn	Gln	Val	Ala	Arg	Thr	Arg	Pro	Gly	Gln
			340					345					350		
Lys	Ile	Ser	Ile	Val	Val	Leu	Arg	Asn	Gly	Gln	Lys	Val	Asn	Leu	Thr
	355							360				365			
Ala	Glu	Val	Gly	Leu	Arg	Pro	Pro	Pro	Ala	Pro	Ala	Pro	Gln	Gln	Lys
	370						375					380			
Gln	Asp	Gly	Gly	Glu											
385															

<210> SEQ ID NO 16

<211> LENGTH: 547

<212> TYPE: DNA

<213> ORGANISM: Artificial Sequence

<220> FEATURE:

<223> OTHER INFORMATION: Synthetic algU promoter region

-continued

```

<400> SEQUENCE: 16
agtaggtcga gccctgcgac agttcgcctt tgctgaggac ggcatgccc aggtgttccg    60
gaagggtcaa gccagactc aggccggcgg cgcctgctgc gatgaccagt acatcgtgtt    120
gataatggtg gctcatgccc gcatttcccc gtggtggagc cctagtatat agaaggcct    180
ggcggcacia tagcgcaccc ccgctgcccg tccggcggat gagctgcccg cctgtcatcg    240
gcaggcgtca tcagagcggg cogatgtagt gctggaactt tcttagacgc atcggttcca    300
aagcaggatg cctgaagacc tcgtccgggt ggctaccca gcggcacaga gcccgggccc    360
tgagcccgat gcaatccatt ttccgggggc ccggacacga tgcgggggc cgcacgtcac    420
gagcggaggaa aaaactcgtg acgcatgctt ggaggggaga acttttcaa gaagcccag    480
tctatcttgg caagacgatt cgctgggacg ctcgaagctc ctccaggttc gaagaggagc    540
tttcatg                                           547

```

```

<210> SEQ ID NO 17
<211> LENGTH: 306
<212> TYPE: DNA
<213> ORGANISM: Artificial Sequence
<220> FEATURE:
<223> OTHER INFORMATION: Synthetic mucE gene
<220> FEATURE:
<221> NAME/KEY: misc_feature
<222> LOCATION: (18)..(18)
<223> OTHER INFORMATION: n is a, c, g, or t

```

```

<400> SEQUENCE: 17
agcggcagcc tgacctanta tcaaggagtc gtagccatgg gtttccggcc agttagccaa    60
cgtttgctgt acatcaacct gcaggccctc ggcaagtttt cctgcttgc cctggtcctc    120
ggcctggaat cgtaagcca tccggccggc ccggtccagg cccctcgtt cagccagggc    180
accggcagcc cgtccttcgc tactccctc ggctcgcag gcccgggccc cggcagggcc    240
gagatgtgga acgtcggcct gtccggcgcc gtcagcgtgc gtgacgagtt gcgctgggtg    300
ttttga                                           306

```

```

<210> SEQ ID NO 18
<211> LENGTH: 450
<212> TYPE: PRT
<213> ORGANISM: Artificial Sequence
<220> FEATURE:
<223> OTHER INFORMATION: Synthetic E. coli orthologue RseP peptide

```

```

<400> SEQUENCE: 18
Met Leu Ser Phe Leu Trp Asp Leu Ala Ser Phe Ile Val Ala Leu Gly
1           5           10          15
Val Leu Ile Thr Val His Glu Phe Gly His Phe Trp Val Ala Arg Arg
          20          25          30
Cys Gly Val Arg Val Glu Arg Phe Ser Ile Gly Phe Gly Lys Ala Leu
          35          40          45
Trp Arg Arg Thr Asp Lys Leu Gly Thr Glu Tyr Val Ile Ala Leu Ile
          50          55          60
Pro Leu Gly Gly Tyr Val Lys Met Leu Asp Glu Arg Ala Glu Pro Val
65          70          75          80
Val Pro Glu Leu Arg His His Ala Phe Asn Asn Lys Ser Val Gly Gln
          85          90          95

```

-continued

```

Arg Ala Ala Ile Ile Ala Ala Gly Pro Val Ala Asn Phe Ile Phe Ala
      100                      105                      110

Ile Phe Ala Tyr Trp Leu Val Phe Ile Ile Gly Val Pro Gly Val Arg
      115                      120                      125

Pro Val Val Gly Glu Ile Ala Ala Asn Ser Ile Ala Ala Glu Ala Gln
      130                      135                      140

Ile Ala Pro Gly Thr Glu Leu Lys Ala Val Asp Gly Ile Glu Thr Pro
      145                      150                      155                      160

Asp Trp Asp Ala Val Arg Leu Gln Leu Val Asp Lys Ile Gly Asp Glu
      165                      170                      175

Ser Thr Thr Ile Thr Val Ala Pro Phe Gly Ser Asp Gln Arg Arg Asp
      180                      185                      190

Val Lys Leu Asp Leu Arg His Trp Ala Phe Glu Pro Asp Lys Glu Asp
      195                      200                      205

Pro Val Ser Ser Leu Gly Ile Arg Pro Arg Gly Pro Gln Ile Glu Pro
      210                      215                      220

Val Leu Glu Asn Val Gln Pro Asn Ser Ala Ala Ser Lys Ala Gly Leu
      225                      230                      235                      240

Gln Ala Gly Asp Arg Ile Val Lys Val Asp Gly Gln Pro Leu Thr Gln
      245                      250                      255

Trp Val Thr Phe Val Met Leu Val Arg Asp Asn Pro Gly Lys Ser Leu
      260                      265                      270

Ala Leu Glu Ile Glu Arg Gln Gly Ser Pro Leu Ser Leu Thr Leu Ile
      275                      280                      285

Pro Glu Ser Lys Pro Gly Asn Gly Lys Ala Ile Gly Phe Val Gly Ile
      290                      295                      300

Glu Pro Lys Val Ile Pro Leu Pro Asp Glu Tyr Lys Val Val Arg Gln
      305                      310                      315                      320

Tyr Gly Pro Phe Asn Ala Ile Val Glu Ala Thr Asp Lys Thr Trp Gln
      325                      330                      335

Leu Met Lys Leu Thr Val Ser Met Leu Gly Lys Leu Ile Thr Gly Asp
      340                      345                      350

Val Lys Leu Asn Asn Leu Ser Gly Pro Ile Ser Ile Ala Lys Gly Ala
      355                      360                      365

Gly Met Thr Ala Glu Leu Gly Val Val Tyr Tyr Leu Pro Phe Leu Ala
      370                      375                      380

Leu Ile Ser Val Asn Leu Gly Ile Ile Asn Leu Phe Pro Leu Pro Val
      385                      390                      395                      400

Leu Asp Gly Gly His Leu Leu Phe Leu Ala Ile Glu Lys Ile Lys Gly
      405                      410                      415

Gly Pro Val Ser Glu Arg Val Gln Asp Phe Cys Tyr Arg Ile Gly Ser
      420                      425                      430

Ile Leu Leu Val Leu Leu Met Gly Leu Ala Leu Phe Asn Asp Phe Ser
      435                      440                      445

Arg Leu
      450

```

<210> SEQ ID NO 19

<211> LENGTH: 450

<212> TYPE: PRT

<213> ORGANISM: Artificial Sequence

<220> FEATURE:

<223> OTHER INFORMATION: Synthetic MucP peptide

-continued

<400> SEQUENCE: 19

```

Met Ser Ala Leu Tyr Met Ile Val Gly Thr Leu Val Ala Leu Gly Val
1      5      10      15
Leu Val Thr Phe His Glu Phe Gly His Phe Trp Val Ala Arg Arg Cys
20      25      30
Gly Val Lys Val Leu Arg Phe Ser Val Gly Phe Gly Thr Pro Leu Val
35      40      45
Arg Trp His Asp Arg His Gly Thr Glu Phe Val Val Ala Ala Ile Pro
50      55      60
Leu Gly Gly Tyr Val Lys Met Leu Asp Glu Arg Glu Ala Glu Val Pro
65      70      75      80
Ala His Leu Leu Glu Gln Ser Phe Asn Arg Lys Thr Val Arg Gln Arg
85      90      95
Ile Ala Ile Val Ala Ala Gly Pro Ile Ala Asn Phe Leu Leu Ala Ile
100     105     110
Leu Phe Phe Trp Val Val Ala Leu Leu Gly Ser Gln Gln Val Arg Pro
115     120     125
Val Ile Gly Ser Val Ala Pro Glu Ser Leu Ala Ala Gln Ala Gly Leu
130     135     140
Glu Ala Gly Gln Glu Leu Leu Ala Val Asp Gly Glu Pro Val Thr Gly
145     150     155     160
Trp Asn Gly Val Asn Leu Gln Leu Val Arg Arg Leu Gly Glu Ser Gly
165     170     175
Thr Leu Glu Val Arg Val Gln Glu Lys Gly Ser Asn Val Asp Ser Thr
180     185     190
His Gln Val Arg Leu Asp Gly Trp Leu Lys Gly Glu Asp Asn Pro Asp
195     200     205
Pro Ile Ala Ser Leu Gly Ile Arg Pro Trp Arg Pro Ala Leu Pro Pro
210     215     220
Val Leu Ala Glu Leu Asp Pro Lys Gly Pro Ala Gln Ala Ala Gly Leu
225     230     235     240
Lys Leu Gly Asp Arg Leu Gln Ser Ile Asp Gly Ile Ala Val Asp Asp
245     250     255
Trp Gln Gln Val Val Asp Ser Val Arg Ala Arg Pro Gly Gln Arg Val
260     265     270
Gln Leu Lys Val Leu Arg Asp Gly Glu Val Leu Asp Val Ala Leu Glu
275     280     285
Leu Ala Val Arg Gly Glu Gly Lys Ala Arg Ser Gly Tyr Met Gly Ala
290     295     300
Gly Val Ala Gly Thr Glu Trp Pro Ala Glu Met Leu Arg Glu Val Ser
305     310     315     320
Tyr Gly Pro Leu Glu Ala Val Gly Gln Ala Leu Ser Arg Thr Trp Thr
325     330     335
Met Ser Leu Leu Thr Leu Asp Ser Ile Lys Lys Met Leu Leu Gly Glu
340     345     350
Leu Ser Val Lys Asn Leu Ser Gly Pro Ile Thr Ile Ala Lys Val Ala
355     360     365
Gly Ala Ser Ala Gln Ser Gly Val Gly Asp Phe Leu Asn Phe Leu Ala
370     375     380
Tyr Leu Ser Ile Ser Leu Gly Val Leu Asn Leu Leu Pro Ile Pro Val

```

-continued

```

385              390              395              400
Leu Asp Gly Gly His Leu Leu Phe Tyr Leu Val Glu Trp Val Arg Gly
      405              410              415
Arg Pro Leu Ser Glu Arg Val Gln Ala Trp Gly Met Gln Ile Gly Ile
      420              425              430
Ser Leu Val Val Gly Val Met Leu Leu Ala Leu Val Asn Asp Leu Ser
      435              440              445
Arg Leu
      450

```

```

<210> SEQ ID NO 20
<211> LENGTH: 89
<212> TYPE: PRT
<213> ORGANISM: Pseudomonas aeruginosa

```

```

<400> SEQUENCE: 20

```

```

Met Gly Phe Arg Pro Val Ser Gln Arg Leu Arg Asp Ile Asn Leu Gln
1              5              10              15
Ala Leu Gly Lys Phe Ser Cys Leu Ala Leu Val Leu Gly Leu Glu Ser
      20              25              30
Val Ser His Pro Ala Gly Pro Val Gln Ala Pro Ser Phe Ser Gln Gly
      35              40              45
Thr Ala Ser Pro Ser Phe Ala Thr Pro Leu Gly Leu Asp Gly Pro Ala
      50              55              60
Arg Ala Arg Ala Glu Met Trp Asn Val Gly Leu Ser Gly Ala Val Ser
      65              70              75              80
Val Arg Asp Glu Leu Arg Trp Val Phe
      85

```

```

<210> SEQ ID NO 21
<211> LENGTH: 89
<212> TYPE: PRT
<213> ORGANISM: Pseudomonas aeruginosa

```

```

<400> SEQUENCE: 21

```

```

Met Gly Phe Arg Pro Val Ser Gln Arg Leu Arg Asp Ile Asn Leu Gln
1              5              10              15
Ala Leu Gly Lys Phe Ser Cys Leu Ala Leu Val Leu Gly Leu Glu Ser
      20              25              30
Val Ser His Pro Ala Gly Pro Val Gln Ala Pro Ser Phe Ser Gln Gly
      35              40              45
Thr Ala Ser Pro Ser Phe Ala Thr Pro Leu Gly Leu Asp Gly Pro Ala
      50              55              60
Arg Ala Arg Ala Glu Met Trp Asn Val Gly Leu Ser Gly Ala Val Ser
      65              70              75              80
Val Arg Asp Glu Leu Arg Trp Val Phe
      85

```

```

<210> SEQ ID NO 22
<211> LENGTH: 89
<212> TYPE: PRT
<213> ORGANISM: Pseudomonas aeruginosa

```

```

<400> SEQUENCE: 22

```

```

Met Gly Phe Arg Pro Val Ser Gln Arg Leu Arg Asp Ile Asn Leu Gln
1              5              10              15

```

-continued

Ala Leu Gly Lys Phe Ser Cys Leu Ala Leu Val Leu Gly Leu Glu Ser
 20 25 30

Val Ser His Pro Ala Gly Pro Val Gln Ala Pro Ser Phe Ser Gln Gly
 35 40 45

Thr Ala Ser Pro Ser Phe Ala Thr Pro Leu Gly Leu Asp Gly Pro Ala
 50 55 60

Arg Ala Arg Ala Glu Met Trp Asn Val Gly Leu Ser Gly Ala Val Ser
 65 70 75 80

Val Arg Asp Glu Leu Arg Trp Val Phe
 85

<210> SEQ ID NO 23
 <211> LENGTH: 89
 <212> TYPE: PRT
 <213> ORGANISM: Pseudomonas aeruginosa

<400> SEQUENCE: 23

Met Gly Phe Arg Pro Val Ser Gln Arg Leu Arg Asp Ile Asn Leu Gln
 1 5 10 15

Ala Leu Gly Lys Phe Ser Cys Leu Ala Leu Val Leu Gly Leu Glu Ser
 20 25 30

Val Ser His Pro Ala Gly Pro Val Gln Ala Pro Ser Phe Ser Gln Gly
 35 40 45

Thr Ala Ser Pro Ser Phe Ala Thr Pro Leu Gly Leu Asp Gly Pro Ala
 50 55 60

Arg Ala Arg Ala Glu Met Trp Asn Val Gly Leu Ser Gly Ala Val Ser
 65 70 75 80

Val Arg Asp Glu Leu Arg Trp Val Phe
 85

<210> SEQ ID NO 24
 <211> LENGTH: 79
 <212> TYPE: PRT
 <213> ORGANISM: Pseudomonas fluorescens

<400> SEQUENCE: 24

Met Asn Ser Ala Leu Leu Leu Leu Asn Ala Ile Ala Ile Ala Val Leu
 1 5 10 15

Ala Ala Phe His Phe Gln Pro Ala Asp Asp Ala Ala Pro Gly Gly Thr
 20 25 30

Ser Phe Ala His Tyr Gln Gln Arg Leu Ala Pro Gln Leu Ala Val Met
 35 40 45

Asn Thr Gln Ile Glu Pro Gly Ser Val Thr Arg Val Thr Gln Gly Lys
 50 55 60

Ala Ser Gln Gln Pro Ala Ala Ala Pro Thr Glu Arg Trp Val Phe
 65 70 75

<210> SEQ ID NO 25
 <211> LENGTH: 75
 <212> TYPE: PRT
 <213> ORGANISM: Pseudomonas fluorescens

<400> SEQUENCE: 25

Met Asn Ser Ala Leu Val Phe Ala Asn Ala Ile Ala Leu Ala Val Leu
 1 5 10 15

-continued

```

Met Gly Phe His Leu Val Pro Glu Asp Asn Glu Lys Val Ala Gly Arg
      20                      25                      30

Met Pro His Tyr Leu Gln Val Gln Lys Ala Pro Gln Trp Ala Val Leu
      35                      40                      45

Ser Asp Gln Ser Phe Ala Pro Gln Ala Val Ser Gln Ser Glu Gln Ala
      50                      55                      60

Leu Pro Ala His Ser Thr Glu Arg Leu Val Phe
65                      70                      75

```

```

<210> SEQ ID NO 26
<211> LENGTH: 79
<212> TYPE: PRT
<213> ORGANISM: Pseudomonas syringae

```

```

<400> SEQUENCE: 26

```

```

Met Asn Lys Thr Leu Ser Val Leu Asn Ala Ala Ala Leu Val Ala Leu
1                      5                      10                      15

Val Ala Phe His Phe His Asp Ser Gly Ala Ser Asp Thr Gln Val Asn
      20                      25                      30

Ala Pro Ala Pro Val His His Gln Ile Ser His Ala Pro Gln Leu Ala
      35                      40                      45

Ile Met Thr Asp Arg Ile Ala Ser Ala Ala Val Leu Ala Asn Asp Asp
      50                      55                      60

Asp Asp Ser Leu Gln Met Pro Arg Ala Glu Gln Arg Trp Ile Phe
65                      70                      75

```

```

<210> SEQ ID NO 27
<211> LENGTH: 79
<212> TYPE: PRT
<213> ORGANISM: Pseudomonas syringae

```

```

<400> SEQUENCE: 27

```

```

Met Asn Lys Thr Leu Ser Ala Leu Asn Ala Ala Ala Leu Val Ala Leu
1                      5                      10                      15

Val Ala Phe His Phe Gln Asp Ser Gly Ala Lys Asp Thr Gln Val Thr
      20                      25                      30

Ala Pro Ala Pro Val His His Gln Ile Ser His Ala Pro Gln Leu Ala
      35                      40                      45

Ile Met Thr Asp Arg Val Ala Ser Ala Ala Val Leu Ala Thr Asp Asp
      50                      55                      60

Asp Ala Ser Val Gln Met Pro Arg Ala Glu Gln Arg Trp Val Phe
65                      70                      75

```

```

<210> SEQ ID NO 28
<211> LENGTH: 79
<212> TYPE: PRT
<213> ORGANISM: Pseudomonas syringae

```

```

<400> SEQUENCE: 28

```

```

Met Asn Lys Thr Leu Ser Ala Leu Asn Ala Ala Ala Leu Val Ala Leu
1                      5                      10                      15

Val Ala Phe His Phe Gln Asp Ser Gly Ile Lys Asp Ala Gln Ala Ile
      20                      25                      30

Thr Pro Ala Pro Val His His Gln Ile Ser Gln Ala Pro Lys Leu Ala
      35                      40                      45

Ile Met Thr Asp Arg Val Ala Ser Ala Ala Met Leu Ala Asn Asp Asp

```


-continued

```

Asp Gly Arg Arg Ser Met Asn Gln Val Ala Arg Thr Arg Pro Gly Gln
    340                                345                                350

Lys Ile Ser Ile Val Val Leu Arg Asn Gly Gln Lys Val Asn Leu Thr
    355                                360                                365

Ala Glu Val Gly Leu Arg Pro Pro Pro Ala Pro Ala Pro Gln Gln Lys
    370                                375                                380

Gln Asp Gly Gly Glu
385

<210> SEQ ID NO 30
<211> LENGTH: 389
<212> TYPE: PRT
<213> ORGANISM: Pseudomonas aeruginosa

<400> SEQUENCE: 30

Met Pro Lys Ala Leu Arg Phe Leu Gly Trp Pro Val Leu Val Gly Val
 1      5      10      15

Leu Leu Ala Leu Leu Ile Ile Gln His Asn Pro Glu Leu Val Gly Leu
 20     25     30

Pro Arg Gln Glu Val His Val Glu Gln Ala Pro Leu Leu Ser Arg Leu
 35     40     45

Gln Glu Gly Pro Val Ser Tyr Ala Asn Ala Val Ser Arg Ala Ala Pro
 50     55     60

Ala Val Ala Asn Leu Tyr Thr Thr Lys Met Val Ser Lys Pro Ser His
 65     70     75     80

Pro Leu Phe Asp Asp Pro Met Phe Arg Arg Phe Phe Gly Asp Asn Leu
 85     90     95

Pro Gln Gln Lys Arg Met Glu Ser Ser Leu Gly Ser Ala Val Ile Met
 100    105    110

Ser Ala Glu Gly Tyr Leu Leu Thr Asn Asn His Val Thr Ala Gly Ala
 115    120    125

Asp Gln Ile Ile Val Ala Leu Arg Asp Gly Arg Glu Thr Ile Ala Gln
 130    135    140

Leu Val Gly Ser Asp Pro Glu Thr Asp Leu Ala Val Leu Lys Ile Asp
 145    150    155    160

Leu Lys Asn Leu Pro Ala Met Thr Leu Gly Arg Ser Asp Gly Ile Arg
 165    170    175

Thr Gly Asp Val Cys Leu Ala Ile Gly Asn Pro Phe Gly Val Gly Gln
 180    185    190

Thr Val Thr Met Gly Ile Ile Ser Ala Thr Gly Arg Asn Gln Leu Gly
 195    200    205

Leu Asn Thr Tyr Glu Asp Phe Ile Gln Thr Asp Ala Ala Ile Asn Phe
 210    215    220

Gly Asn Ser Gly Gly Ala Leu Val Asp Ala Ala Gly Asn Leu Ile Gly
 225    230    235    240

Ile Asn Thr Ala Ile Phe Ser Lys Ser Gly Gly Ser Gln Gly Ile Gly
 245    250    255

Phe Ala Ile Pro Thr Lys Leu Ala Leu Glu Val Met Gln Ser Ile Ile
 260    265    270

Glu His Gly Gln Val Ile Arg Gly Trp Leu Gly Val Glu Val Lys Ala
 275    280    285

Leu Thr Pro Glu Leu Ala Glu Ser Leu Gly Leu Gly Glu Thr Ala Gly
 290    295    300

```

-continued

```

Ile Val Val Ala Gly Val Tyr Arg Asp Gly Pro Ala Ala Arg Gly Gly
305                310                315                320

Leu Leu Pro Gly Asp Val Ile Leu Thr Ile Asp Lys Gln Glu Ala Ser
                325                330                335

Asp Gly Arg Arg Ser Met Asn Gln Val Ala Arg Thr Arg Pro Gly Gln
                340                345                350

Lys Ile Ser Ile Val Val Leu Arg Asn Gly Gln Lys Val Asn Leu Thr
                355                360                365

Ala Glu Val Gly Leu Arg Pro Pro Pro Ala Pro Ala Pro Gln Gln Lys
370                375                380

Gln Asp Gly Gly Glu
385

```

```

<210> SEQ ID NO 31
<211> LENGTH: 389
<212> TYPE: PRT
<213> ORGANISM: Pseudomonas aeruginosa

```

```

<400> SEQUENCE: 31

```

```

Met Pro Lys Ala Leu Arg Phe Leu Gly Trp Pro Val Leu Val Gly Val
1          5          10          15

Leu Leu Ala Leu Leu Ile Ile Gln His Asn Pro Glu Leu Val Gly Leu
20          25          30

Pro Arg Gln Glu Val His Val Glu Gln Ala Pro Leu Leu Ser Arg Leu
35          40          45

Gln Glu Gly Pro Val Ser Tyr Ala Asn Ala Val Ser Arg Ala Ala Pro
50          55          60

Ala Val Ala Asn Leu Tyr Thr Thr Lys Met Val Ser Lys Pro Ser His
65          70          75          80

Pro Leu Phe Asp Asp Pro Met Phe Arg Arg Phe Phe Gly Asp Asn Leu
85          90          95

Pro Gln Gln Lys Arg Met Glu Ser Ser Leu Gly Ser Ala Val Ile Met
100         105         110

Ser Ala Glu Gly Tyr Leu Leu Thr Asn Asn His Val Thr Ala Gly Ala
115         120         125

Asp Gln Ile Ile Val Ala Leu Arg Asp Gly Arg Glu Thr Ile Ala Gln
130         135         140

Leu Val Gly Ser Asp Pro Glu Thr Asp Leu Ala Val Leu Lys Ile Asp
145         150         155         160

Leu Lys Asn Leu Pro Ala Met Thr Leu Gly Arg Ser Asp Gly Ile Arg
165         170         175

Thr Gly Asp Val Cys Leu Ala Ile Gly Asn Pro Phe Gly Val Gly Gln
180         185         190

Thr Val Thr Met Gly Ile Ile Ser Ala Thr Gly Arg Asn Gln Leu Gly
195         200         205

Leu Asn Thr Tyr Glu Asp Phe Ile Gln Thr Asp Ala Ala Ile Asn Phe
210         215         220

Gly Asn Ser Gly Gly Ala Leu Val Asp Ala Ala Gly Asn Leu Ile Gly
225         230         235         240

Ile Asn Thr Ala Ile Phe Ser Lys Ser Gly Gly Ser Gln Gly Ile Gly
245         250         255

Phe Ala Ile Pro Thr Lys Leu Ala Leu Glu Val Met Gln Ser Ile Ile

```


-continued

Thr Val Thr Met Gly Ile Ile Ser Ala Thr Gly Arg Asn Gln Leu Gly
 195 200 205
 Leu Asn Asn Tyr Glu Asp Phe Ile Gln Thr Asp Ala Ala Ile Asn Pro
 210 215 220
 Gly Asn Ser Gly Gly Ala Leu Val Asp Ala Asn Gly Asn Leu Thr Gly
 225 230 235 240
 Ile Asn Thr Ala Ile Phe Ser Lys Ser Gly Gly Ser Gln Gly Ile Gly
 245 250 255
 Phe Ala Ile Pro Ile Lys Leu Ala Met Glu Val Met Lys Ser Ile Ile
 260 265 270
 Glu His Gly Gln Val Ile Arg Gly Trp Leu Gly Ile Glu Val Gln Pro
 275 280 285
 Leu Thr Gln Glu Leu Ala Glu Ser Phe Gly Leu Ala Gly Arg Pro Gly
 290 295 300
 Ile Val Val Ala Gly Ile Phe Arg Asp Gly Pro Ala Gln Lys Ala Gly
 305 310 315 320
 Met Gln Leu Gly Asp Val Ile Leu Ser Ile Asp Gly Glu Pro Ala Gly
 325 330 335
 Asp Gly Arg Arg Ser Met Asn Gln Val Ala Arg Ile Lys Pro Thr Asp
 340 345 350
 Lys Val Ser Ile Leu Val Met Arg Asn Gly Lys Glu Leu Lys Leu Thr
 355 360 365
 Ala Glu Ile Gly Leu Arg Pro Pro Ala Pro Val Lys Glu Glu Glu
 370 375 380

<210> SEQ ID NO 34
 <211> LENGTH: 385
 <212> TYPE: PRT
 <213> ORGANISM: Pseudomonas fluorescens

<400> SEQUENCE: 34

Met Leu Lys Ala Leu Arg Phe Phe Gly Trp Pro Leu Leu Ala Gly Val
 1 5 10 15
 Leu Ile Ala Leu Leu Ile Ile Gln Arg Tyr Pro Gln Trp Val Gly Leu
 20 25 30
 Pro Ser Leu Asp Val Asn Leu Gln Gln Ala Pro Gln Thr Thr Ser Val
 35 40 45
 Gln Gln Gly Pro Val Ser Tyr Ala Asp Ala Val Thr Ile Ala Ala Pro
 50 55 60
 Ser Val Val Asn Leu Tyr Thr Thr Lys Val Ile Asn Lys Pro Ser His
 65 70 75 80
 Pro Leu Phe Glu Asp Pro Gln Phe Arg Arg Phe Phe Gly Asp Asn Ser
 85 90 95
 Pro Lys Gln Lys Arg Met Glu Ser Ser Leu Gly Ser Gly Val Ile Met
 100 105 110
 Ser Pro Glu Gly Tyr Ile Leu Thr Asn Asn His Val Thr Ser Gly Ala
 115 120 125
 Asp Gln Ile Val Val Ala Leu Lys Asp Gly Arg Glu Thr Leu Ala Arg
 130 135 140
 Val Ile Gly Ser Asp Pro Glu Thr Asp Leu Ala Val Leu Lys Ile Asp
 145 150 155 160
 Leu Lys Asn Leu Pro Ala Ile Thr Val Gly Arg Ser Asp Asn Ile Arg

-continued

Asp Gln Ile Val Val Ala Leu Lys Asp Gly Arg Glu Thr Ile Ala Arg
 130 135 140
 Val Ile Gly Asn Asp Pro Glu Thr Asp Leu Ala Val Leu Lys Ile Asp
 145 150 155 160
 Leu Lys Asn Leu Pro Ala Ile Thr Ile Ala Arg Ser Asp Gly Ile Arg
 165 170 175
 Ile Gly Asp Val Ala Leu Ala Ile Gly Asn Pro Phe Gly Val Gly Gln
 180 185 190
 Thr Val Thr Met Gly Ile Ile Ser Ala Thr Gly Arg Asn Gln Leu Gly
 195 200 205
 Leu Asn Thr Tyr Glu Asp Phe Ile Gln Thr Asp Ala Ala Ile Asn Pro
 210 215 220
 Gly Asn Ser Gly Gly Ala Leu Val Asp Ala Ser Gly Asn Leu Ile Gly
 225 230 235 240
 Ile Asn Thr Ala Ile Phe Ser Lys Ser Gly Gly Ser Gln Gly Ile Gly
 245 250 255
 Phe Ala Ile Pro Thr Lys Leu Ala Met Asp Val Met Lys Ser Ile Ile
 260 265 270
 Glu His Gly Gln Val Ile Arg Gly Trp Leu Gly Ile Glu Val Gln Pro
 275 280 285
 Leu Thr Gln Glu Leu Ala Glu Ser Phe Gly Leu Lys Asp Arg Pro Gly
 290 295 300
 Ile Val Val Ala Gly Ile Phe Arg Asp Gly Pro Ala Gln Lys Ala Gly
 305 310 315 320
 Leu Gln Leu Gly Asp Val Ile Leu Ser Ile Asn Gly Glu Pro Ala Gly
 325 330 335
 Asp Gly Arg Arg Ser Met Asn Gln Val Ala Arg Thr Lys Pro Lys Asp
 340 345 350
 Lys Ile Ala Ile Asp Val Met Arg Asn Gly Lys Glu Met Arg Leu Ser
 355 360 365
 Ala Glu Val Gly Leu Arg Pro Pro Pro Ala Pro Thr Pro Ala Ala Ala
 370 375 380
 Pro Glu
 385

<210> SEQ ID NO 36

<211> LENGTH: 386

<212> TYPE: PRT

<213> ORGANISM: Pseudomonas syringae

<400> SEQUENCE: 36

Met Phe Lys Ala Leu Arg Phe Phe Gly Trp Pro Leu Leu Ala Gly Val
 1 5 10 15
 Leu Ile Ala Leu Leu Ile Ile Gln Arg Tyr Pro Gln Trp Val Gly Leu
 20 25 30
 Pro Ser Met Asp Val Asn Leu Gln Gln Ala Pro Gln Thr Thr Asn Val
 35 40 45
 Met Gln Gly Pro Ser Ser Tyr Ala Asp Ala Val Ile Ala Ala Ala Pro
 50 55 60
 Ala Val Val Asn Leu Tyr Thr Thr Lys Met Val Asn Lys Gly Thr Asn
 65 70 75 80
 Pro Leu Phe Glu Asp Pro Gln Phe Arg Arg Phe Phe Gly Asp Asn Thr
 85 90 95

-continued

Pro Lys Gln Lys Arg Met Glu Ser Ser Leu Gly Ser Gly Val Met Met
 100 105 110
 Ser Pro Glu Gly Tyr Ile Leu Thr Asn Asn His Val Thr Thr Gly Ala
 115 120 125
 Asp Gln Ile Val Val Ala Leu Lys Asp Gly Arg Glu Thr Ile Ala Arg
 130 135 140
 Val Ile Gly Asn Asp Pro Glu Thr Asp Leu Ala Val Leu Lys Ile Asp
 145 150 155 160
 Leu Lys Asn Leu Pro Ala Ile Thr Ile Ala Arg Ser Asp Gly Ile Arg
 165 170 175
 Ile Gly Asp Val Ala Leu Ala Ile Gly Asn Pro Phe Gly Val Gly Gln
 180 185 190
 Thr Val Thr Met Gly Ile Ile Ser Ala Thr Gly Arg Asn Gln Leu Gly
 195 200 205
 Leu Asn Thr Tyr Glu Asp Phe Ile Gln Thr Asp Ala Ala Ile Asn Pro
 210 215 220
 Gly Asn Ser Gly Gly Ala Leu Val Asp Ala Ala Gly Asn Leu Ile Gly
 225 230 235 240
 Ile Asn Thr Ala Ile Phe Ser Lys Ser Gly Gly Ser Gln Gly Ile Gly
 245 250 255
 Phe Ala Ile Pro Thr Lys Leu Ala Met Asp Val Met Lys Ser Ile Ile
 260 265 270
 Glu His Gly Gln Val Ile Arg Gly Trp Leu Gly Ile Glu Val Gln Pro
 275 280 285
 Leu Thr Pro Glu Leu Ala Glu Ser Phe Gly Leu Lys Asp Arg Pro Gly
 290 295 300
 Ile Val Val Ala Gly Ile Phe Arg Asp Gly Pro Ala Gln Lys Ala Gly
 305 310 315 320
 Leu Arg Leu Gly Asp Val Ile Leu Ala Ile Asn Gly Glu Pro Ala Gly
 325 330 335
 Asp Gly Arg Arg Ser Met Asn Gln Val Ala Arg Thr Lys Pro Lys Asp
 340 345 350
 Lys Ile Ala Ile Asp Val Met Arg Asn Gly Lys Glu Met Arg Leu Ser
 355 360 365
 Ala Glu Val Gly Leu Arg Pro Pro Pro Ala Pro Thr Pro Ala Ala Ala
 370 375 380
 Pro Glu
 385

<210> SEQ ID NO 37

<211> LENGTH: 386

<212> TYPE: PRT

<213> ORGANISM: Pseudomonas syringae

<400> SEQUENCE: 37

Met Phe Lys Ala Leu Arg Phe Phe Gly Trp Pro Leu Leu Ala Gly Val
 1 5 10 15
 Leu Ile Ala Met Leu Ile Ile Gln Arg Tyr Pro Gln Trp Val Gly Leu
 20 25 30
 Pro Ser Leu Asp Val Asn Leu Gln Gln Ala Pro Gln Thr Thr Asn Val
 35 40 45
 Met Gln Gly Pro Ser Ser Tyr Ala Asp Ala Val Ile Ala Ala Ala Pro

47. The method of claim **46**, wherein the antibody or fragment thereof comprises a detectable label.

48. The method according to claim **42**, further comprising selecting or modifying a therapy regimen based on the MucE expression measured in the sample.

49. The method according to claim **42**, wherein measuring MucE expression comprises determining the presence of absence of MucE in the sample.

50. The method according to claim **42**, wherein said sample is selected from the group consisting of: blood, sputum, wound exudate, airway surface liquid, respiratory secretions, tissue or a laboratory culture thereof, and urine.

51. An isolated antibody or fragment thereof that specifically binds to a protein selected from the group consisting of: (a) a protein whose amino acid sequence is 95% identical to an amino acid sequence consisting of amino acid residues -36 to 53 of SEQ ID NO: 2; (b) a protein whose amino acid sequence is 95% identical to an amino acid sequence consisting of amino acid residues 1 to 53 of SEQ ID NO: 2; and (c) a protein whose amino acid sequence is 95% identical to an amino acid sequence consisting of a portion of SEQ ID NO: 2, wherein said portion is at least 30 contiguous amino acid residues in length.

52. The isolated antibody or fragment thereof of claim **51**, wherein the antibody or fragment thereof specifically binds to a protein selected from the group consisting of: (a) a protein whose amino acid sequence consists of amino acid residues

-36 to 53 of SEQ ID NO: 2; (b) a protein whose amino acid sequence consists of amino acid residues 1 to 53 of SEQ ID NO: 2; and (c) a protein whose amino acid sequence consists of a portion of SEQ ID NO: 2, wherein said portion is at least 30 contiguous amino acid residues in length.

53. The isolated antibody or fragment thereof of claim **51**, wherein the isolated antibody or fragment thereof specifically binds a MucE protein purified from a cell culture, and wherein said MucE protein is encoded by a polynucleotide encoding amino acids -36 to 53 of SEQ ID NO: 2.

54. An isolated polynucleotide, comprising a nucleic acid sequence at least 95% identical to a nucleic acid sequence selected from the group consisting of SEQ ID NOS: 9-13.

55. The isolated polynucleotide of claim **54**, where the nucleic acid sequence comprises SEQ ID NO: 9.

56. The isolated polynucleotide of claim **54**, where the nucleic acid sequence comprises SEQ ID NO: 10.

57. The isolated polynucleotide of claim **54**, where the nucleic acid sequence comprises SEQ ID NO: 11.

58. The isolated polynucleotide of claim **54**, where the nucleic acid sequence comprises SEQ ID NO: 12.

59. The isolated polynucleotide of claim **54**, where the nucleic acid sequence comprises SEQ ID NO: 13.

60. A host cell, comprising the polynucleotide of claim **54**.

61. The host cell of claim **60**, wherein the host cell is a bacterial, yeast, animal, or plant cell.

* * * * *

专利名称(译)	检测和控制粘液假单胞菌生物膜产生的方法		
公开(公告)号	US20110008786A1	公开(公告)日	2011-01-13
申请号	US12/819770	申请日	2010-06-21
[标]申请(专利权)人(译)	MARSHALL UNIV RES		
申请(专利权)人(译)	马歇尔大学研究公司		
当前申请(专利权)人(译)	马歇尔大学研究公司		
[标]发明人	YU HONGWEI D QIU DONGRU		
发明人	YU, HONGWEI D. QIU, DONGRU		
IPC分类号	C12Q1/68 G01N33/53 C07K16/00 C07H21/04 C12N1/21 C12N1/19 C12N5/10		
CPC分类号	G01N33/56911 Y10T436/143333 G01N2333/21		
优先权	60/787497 2006-03-31 US		
其他公开文献	US8399649		
外部链接	Espacenet USPTO		

摘要(译)

公开了用于检测和控制铜绿假单胞菌中转化为粘液病的组合物和方法。本发明提供了通过测量mucE表达或MucE蛋白水平来检测从铜绿假单胞菌的非粘液状态到粘液状态的转换。MucE和AlgW之间的相互作用控制着野生型铜绿假单胞菌中粘液的转变。还公开了藻酸盐生物合成异源表达系统，其用于筛选抑制转化为粘液病的候选物质。

```

ATGGGTTTCCGGCCAGTTAGCCAACGTTTGCCTGACATCAACCTGCAGGCCCTCGGC
AAGTTTTCTGCCTTGCCCTGGTCTCTGGCCCTGGAATCGGTAAGCCATCCGGCCGGC
CCGGTCCAGGCCCTCGTTCAGCCAGGGCACCGCCAGCCCGTCTTCGCTACTCGG
CTCGGCCTCGACGGCCCGCCCGCCAGGGCCGAGATGTGGAACGTCGGCCCTGTC
CGGCCCGTCAAGCGTGCCTGACGAGTTGCGCTGGGTGTTTGA

```