



US009791458B2

(12) **United States Patent**
Ghahary et al.

(10) **Patent No.:** **US 9,791,458 B2**
(45) **Date of Patent:** **Oct. 17, 2017**

(54) **DISSOLVED PROTEIN ARTHRITIS MARKERS**

WO WO 97/38315 10/1997
WO WO 98/26293 6/1998
WO WO 99/46401 9/1999
WO PCT/EP99/01545 11/1999

(75) Inventors: **Aziz Ghahary**, Vancouver (CA);
Wolodymyr Walter Peter Maksymowych, Edmonton (CA);
Ruhangiz Taghi Kilani, Vancouver (CA)

OTHER PUBLICATIONS

Van Everbroeck et al. 2005. J. Neurol Neurosurg Psychiatry. 76:100-102.*
Kilani et al. 2007. J. Rheumatol. 34:1650-1657.*
Leite J. Invitrogen Protein Analysis, www.invitrogen.com/piq, downloaded Jan. 4, 2013.*
14-3-3 eta antibodies, Santa Cruz Biotech, downloaded, Mar. 31, 2015.*
Furst et al 2005. Ann. Rheum Dis. 64:iv2-iv14.*
Scheiman et al. 2005. Arth. Res and Therap. 7(suppl 4):S23-S29.*
Da Siva et al. 2005. Ann. Rheum Dis. 2006. 65:285-293.*
<https://www.scbt.com/scbt/product/14-3-3-eta-antibody-6a12>, downloaded Apr. 17, 2017.*

(73) Assignee: **UNIVERSITY OF BRITISH COLUMBIA**, Vancouver, British Columbia (CA)

(*) Notice: Subject to any disclaimer, the term of this patent is extended or adjusted under 35 U.S.C. 154(b) by 89 days.

(21) Appl. No.: **12/637,730**

(22) Filed: **Dec. 14, 2009**

(65) **Prior Publication Data**

US 2012/0003665 A1 Jan. 5, 2012

Related U.S. Application Data

(63) Continuation of application No. 12/300,118, filed as application No. PCT/CA2007/000817 on May 9, 2007, now abandoned.

(60) Provisional application No. 60/798,712, filed on May 9, 2006.

(51) **Int. Cl.**

A61K 49/00 (2006.01)
A61K 38/00 (2006.01)
G01N 33/53 (2006.01)
G01N 33/68 (2006.01)

(52) **U.S. Cl.**

CPC ... **G01N 33/6893** (2013.01); **G01N 2800/102** (2013.01)

(58) **Field of Classification Search**

None
See application file for complete search history.

(56) **References Cited**

U.S. PATENT DOCUMENTS

5,998,149 A * 12/1999 Hsich et al. 435/7.1
7,171,311 B2 * 1/2007 Dai et al. 702/19
7,396,654 B2 * 7/2008 Hayes et al. 435/7.92
7,919,262 B2 * 4/2011 Yacoubian et al. 435/7.1
7,939,272 B2 * 5/2011 Buck 435/7.1
2005/0009094 A1 1/2005 Mueller et al.
2005/0042681 A1 * 2/2005 Van Eyk et al. 435/7.1
2008/0220013 A1 * 9/2008 Hochstrasser et al. 424/198.1
2009/0093005 A1 * 4/2009 Smalley et al. 435/7.92
2010/0016173 A1 * 1/2010 Nagalla et al. 506/9
2011/0052573 A1 * 3/2011 Marrotta 424/133.1
2012/0077695 A1 * 3/2012 Ostroff et al. 506/9
2012/0101002 A1 * 4/2012 Riel-Mehan et al. 506/9
2014/0121127 A1 * 5/2014 Speicher et al. 506/9

FOREIGN PATENT DOCUMENTS

EP 07719741 5/2009
WO WO 97/33601 9/1997

Ahrens, D. et al (1996) "Expression of Matrix Metalloproteinase 9 (96-kd Gelatinase B) in Human Rheumatoid Arthritis", Arthritis & Rheumatism, 39-9:1576-1587.

Ausubel, F., et al (1999) "Short Protocols in Molecular Biology", Ch. 11 Immunology, pp. 11-4-11-5, John Wiley & Sons, New York.
Ausubel, F., et al (2008) "Current Protocols in Molecular Biology", Ch. 1 Immunoassays, pp. 11.0.1-11.3.6, John Wiley & Sons, New York.

Bombara, M., et al (1993) "Cell Contact Between T Cells and Synovial Fibroblasts Causes Induction of Adhesion Molecules Arid Cytokines", J. Leukocyte Biology, 54:399-406.

Boston, P., et al (1982) "Human 14-3-3 Protein: Radioimmunoassay, Tissue Distribution, and Cerebrospinal Fluid Levels in Patients With Neurological Disorders", J. N. Chem 38:1475-82.

Burger, D., et al (1998) "Imbalance Between Interstitial Collagenase and Tissue Inhibitor . . .", Arthritis & Rheumatism, 41-10:1748-1759.

Chan, T., et al (1999) "14-3-3 α is Required to Prevent Mitotic Catastrophe After DNA Damage", Nature, 401:616-620.

Cho, M., et al (2004) "Effector Function of Type II Collagen-Stimulated T Cells From Rheumatoid Arthritis Patients", Arthritis & Rheumatism, 50-3:776-784.

Craparo, A., et al (1997) "14-3-3(e) Interacts With the Insulin-Like Growth Factor I Receptor and Insulin Receptor Substrate . . .", J. Biol. Chem. 272:116633-1166.

Du, X., et al (1994) "Association of a Phospholipase A2(14-3-3 Protein) With the Platelet Glycoprotein Ib-IX Complex", J. Biol. Chem. 269:18287-18290.

Firestein, G. S., (1997) "Rheumatoid Synovitis and Pannus", Rheumatology, pp. 5/13.1-5/13.5, Mosby, London.

Fu, H., et al ((2000) "14-3-3 Proteins: Structure, Function and Regulation", Annu. Rev. Pharmacol. Toxicol, 40:617-47.

Ghaffari, A., et al (2006) "Fibroblast Extracellular Matrix Gene Expression in Response to Keratinocyte-Releasable Stratifin", J. Cell Biochem. 98:383-393.

Ghahary, A., et al (2004) "Keratinocyte-Releasable Stratifin Functions as a Potent Collagenase-Stimulating Factor in Fibroblasts", J. Invest. Dermatol. 122:1188-1197.

(Continued)

Primary Examiner — Shulamith H Shafer

(74) Attorney, Agent, or Firm — Todd A. Lorenz

(57) **ABSTRACT**

Methods and kits for diagnosing arthritis are provided. The methods may involve detection of 14-3-3 eta or gamma proteins in a sera or synovial fluid sample.

9 Claims, 7 Drawing Sheets

(56)

References Cited

OTHER PUBLICATIONS

- Gilbert M. R., (2004) "Neurological Complications" in Abeloff MD, et al., *Clinical Oncology*, 3rd Ed., pp. 1213-1246, Churchill Livingstone/Elsevier Press, New York.
- Harlow, E., and Lane, D., (1988) *Antibodies: A Laboratory Manual*, pp. 553-612, Cold Spring Harbor Laboratory Press, Cold Spring Harbor.
- Hermeking, H., et al., (1997) "14-3-3 α is a p53-Regulated Inhibitor of G2/M Progression", *Mol Cell*, 1:3-11.
- Hsich, G., et al. (1996) "The 14-3-3 Brain Protein in Cerebrospinal Fluid as a Marker for Transmissible Spongiform Encephalopathies", *N Engl J. Med.* 335:924-930.
- Ichimura, T., et al., (1987) "Brain 14-3-3 Protein is an Activator Protein That Activates Tryptophan 5-Monooxygenase and Tyrosine . . .", *FEBS Lett.* 04877, 219:79-82.
- Ichimura, T., et al., (1988) "Molecular Cloning of cDNA Coding for Brain-Specific 14-3-3 Protein, A Protein Kinase-Dependent Activator . . . Proc. Natl Acad. Sci. 85:7084-7088.
- Jamal, O. S., et al (1998) "Increased Expression of Human Type IIa Secretory Phospholipase A2 Antigen in Arthritic Synovium", *Ann. Rheum Dis.* 57:550-558.
- Jasser, M. Z., et al., (1994) "Induction of Stromelysin-1 and Collagenase Synthesis in Fibrochondrocytes by Tumor Necrosis Factor- α ", *Matrix Biology* 14:241-249.
- Katrib, A., et al., (2002) "What Can We Learn From the Synovium in Early Rheumatoid Arthritis", *Inflamm. Res.* 51:170-175.
- Katz, A. B., et al., (1999) "A Partial Catalog of Proteins Secreted by Epidermal Keratinocytes in Culture". *J. Invest Dermatol* 112:818-821.
- Kilani, R. T., et al., (2007) "Detection of High Levels of 2 Specific Isoforms of 14-3-3 Proteins in Synovial Fluid From Patients With Joint Inflammation", *J. Rheu.* 34:1650-7.
- Kim, Y. S., et al., (2005) "Role of 14-3-3 η as a Positive Regulator of the Glucocorticoid Receptor Transcriptional Activation", *Endocrinology* 146:3133-3140.
- Kontinen, Y. T., et al., (1998) "New Collagenolytic Enzymes/Cascade Identified at the Pannus-Hard Tissue Junction in Rheumatoid Arthritis . . .", *Matrix Biology* 17:585-601.
- Kontinen, Y. T., et al., (1999) "Analysis of 16 Different Matrix Metalloproteinases (MMP-1 to MMP-20) in the Synovial Membrane . . .", *Ann. Rheum. Dis.* 58:691-697.
- Kresky, A. M., et al., (2001) "Immunomodulators: Immunosuppressive Agents, Tolerogens, and Immunostimulants", in *Hardman—10th Ed.* pp. 1461-1483, McGraw Hill, New York.
- Laronga, C., et al., (2000) Association of the Cyclin-Dependent Kinases and 14-3-3 Sigma Negatively Regulates Cell Cycle Progression, *J. Biol. Chem* 275-30:2:3106-23112.
- Lindy, O., et al., (1997) "Matrix Metalloproteinase 13 (Collagenase 3) In Human Rheumatoid Synovium", *Arthritis & Rheumatism*, 40-8:1391-1399.
- Lipsky, P. E., et al., (2001) "Rheumatoid Arthritis", in *Braunwald—Harrison's Principles of Internal Medicine*, 15th Ed., pp. 1928-1937, McGraw Hill, New York.
- Martin, H., et al., (1993) "Antibodies Against the Major Brain Isoforms of 14-3-3 Protein an Antibody Specific for the N-Acetylated . . .", *FEBS* 13058—331-3:296-303.
- McInnes, I. B., et al., (2000) "Cell-Cell Interactions in Synovitis Interactions Between T Lymphocytes and Synovial Cells", *Arthritis Res.* 2:374-378.
- Miranda-Carus, M., et al., (2004) IL-15 and the Initiation of Cell Contact-Dependent Synovial Fibroblast-T Lymphocyte Cross-Talk . . . *J. Immunol.* 173:1463-1476.
- Moore, B. W., et al., (1967) "Specific Acidic Proteins of the Nervous System", in *Carson FD*, pp. 343-359.
- Neeck, G., et al., (2005) "Involvement of the Glucocorticoid Receptor in the Pathogenesis of Rheumatoid Arthritis", *Ann. N.Y. Acad. Sci* 966:491-495.
- Pap, T., et al., (2000) "Differential Expression Pattern of Membrane-Type Matrix Metalloproteinases in Rheumatoid Arthritis", *Arthritis Rheum.* 43:1226-1232.
- Poole, A. R. (2001) *Cartilage in Health and Disease*, in *Koopman WJ—Arthritis and Allied Conditions*, 14th Ed. pp. 226-284, Williams & Wilkins, Baltimore.
- Sambrook, J., (2001) *Molecular Cloning—Protein Interaction Technologies—A Laboratory Manual*, pp. 655-688, Cold Spring Harbor Laboratory Press.
- Smeets, TJM., et al., (2000) "The Effects of Interferon- β Treatment of Synovial Inflammation and Expression of Metalloproteinases . . .", *Arthritis & Rheumatism* 43-2:270-274.
- Sorsa, T., et al., (1992) "Collagenase in Synovitis of Rheumatoid Arthritis", *Seminars in Arthritis and Rheumatism*, 22-1:44-53.
- Takahashi, S., et al., (2000) "Functional Interaction of the Immunosuppressant Mizoribine With the 14-3-3 Protein", *Biochemical & Biophysical Res. Comm.* 274:87-92.
- Tohyama, C. T., et al., "Localization of Human Glucocorticoid Receptor in Rheumatoid Synovial Tissue of the Knee Joint", *Scand. J. Rheumatology*, 22:44-53.
- Toker, A., et al., (1990) "Protein Kinase C Inhibitor Proteins . . .", *Eur. J. Biochem.* 191:421-429.
- Tolboom, TCA., et al., (2002) "Invasive Properties of Fibroblast-like Synoviocytes: Correlation With Growth Characteristics . . .", *Ann. Rheum. Dis.* 61:975-980.
- Skogh, T., et al., (2003) "Twenty Eight Joint Count Disease Activity Score in Recent Onset Rheumatoid Arthritis Using C Reactive Protein . . ." *Ann. Rheum Dis.* 62:681-682.
- Wilker, E., et al., (2004) "14-3-3 Proteins—A Focus on Cancer and Human Disease", *J. Mol. Cell.* 37:633-642.
- Yaffe, M.B., et al., (2002) "How Do 14-3-3 Proteins Work?", *FEBS Letters* 513:53-57.
- Yamamura, Y., et al., (2001) "Effector Function of Resting T Cells: Activation of Synovial Fibroblasts", *J. Immunol.* 166:2270-2275.
- Xiao, et al (2005) "An Approach to Studying Lung Cancer-Related Proteins in Human Blood", *Molecular & Cellular Proteomics* 4:1480-1486, 2005.
- Wakabayashi et al., "Increased concentrations of 14-3-3 ϵ , γ and ζ isoforms in cerebrospinal fluid of AIDS patients with neuronal destruction," *Clinica Chimica Acta*, 312(1-2): pp. 97-105 (2001).
- Ahrens D, Koch A E, Pope R M. *Arthritis Rheum.* 39:1576-1587, 1996.
- Bombara M P, Webb D L, Conrad P. *J. Leukocyte Biol.* 54: 399-406, 1993.
- Boston P F, Jackson P, Thompson R J. *J. Neurochem.* 38, 1475-82, 1982.
- Burger D, Rezzonico R, Li J M, Modoux C, Pierce R A, Welgus H G, Dayer J M. *Arthritis Rheum.* 41(10):1748-59, 1998.
- Chan T A, Hermeking H, Lengauer C, Kinzler K W, Vogelstein B. *Nature* 401:616-620, 1999.
- Cho M L, Yoon C H, Hwang C Y. *Arthritis Rheum.* 50:776-784, 2004.
- Craparo A, Freund R, Gustafson T (1997). *J Biol Chem* 272:11663-69.
- F U H, Subramanian R R, Masters S C: *Annu Rev Pharmacol Toxicol* 40:617-647, 2000.
- Firestein G S. (1997). *Rheumatoid synovitis and pannus*. In: J. H. Klippel and P. A. Dieppe, Editors, *Rheumatology*, Mosby, London, pp. 5/13.1-5/13.5, 1997.
- Ghaffari A, Li Y, Karami A, Ghaffari M, Tredget E E, Ghahary A. *J. Cell. Biochem.* Jan. 2006.
- Ghahary A, Karimi-Busheri F, Marcoux Y, Li Y, Tredget E E, Kilani R T, Li L, Zheng J, Karami A, Keller B, Weinfeld M. *J. Invest. Dermatol.* 122(5): 1188-1197, 2004.
- Harris E D Jr., *Cytokines, Lymphokines, Growth Factors, and Chemokines*. In: *Rheumatoid Arthritis*. Philadelphia: W.B. Saunders Company, 1997: 105-125.
- Harris E D Jr., *History and Epidemiology of Rheumatoid Arthritis: How long has it affected us, and who is at risk?* In: *Rheumatoid Arthritis*. Philadelphia: W.B. Saunders Company, 1997: 21-27.
- Harris E D Jr., *Introduction*. In: *Rheumatoid Arthritis*. Philadelphia: W.B. Saunders Company, 1997: xix-xxiii.

(56)

References Cited

OTHER PUBLICATIONS

Harris E D Jr., Rheumatoid Synovium: Complex, and More Than the Sum of its Parts. In: Rheumatoid Arthritis. Philadelphia: W.B. Saunders Company, 1997: 126-149.

Hermeking H, Lengauer C, Polyak K, He T C, Zhang L, Thiagalingam S, Kinzler K W, Vogelstein B. Mol Cell 1:3-11, 1997.

Hsich G, Kenney K, Gibbs C J, Lee K H, Harrington M G: N Engl J Med 335:924-30, 1996.

Ichimura T, Isobe T, Okuyama T, Yamauchi T, Fujisawa H (1987) FEBS Lett. 219:79-82.

Ichimura T, Isobe T, Okuyama T, Takahashi N, Araki K, Kuwano R, Akahashi Y (1988). Proc Natl Acad Sci USA, 85:7084-8.

Jasser, M. Z., Mitchell P. G. and Cheung, H. S.: Induction of stomelysin-1 and collagenases synthesis in fibrochondrocytes by TNF-alpha. Matrix Biology 14: 241, 1994.

Katib. A, McNeil H P, Youssef P P: Inflamm. Res. 51: 170-175, 2002.

Katz A B, Taichman, L. B. J Invest Dermatol 112:818-821, 1999.

Konttinen Y T, Ceponis A, Takagi M, Ainola M, Sorsa T, Sutinen M, et al. Matrix Biol. 17:585-601, 1998.

Laronga C, Yang H Y, Neal C, Lee M H (2000). J. Biol. Chem. 275:23106-23112.

Lindy O, Konttinen Y T, Sorsa T. Arthritis Rheum. 40:1391-1399, 1997.

McInnes I B, Leung B P, Liew F Y. Arthritis Res. 2(5):374-8.34, 2000.

Miranda-Carus M E, Balsa A, Benito-Miguel M, Perez de Ayala C, Martin-Mola E. J. Immunol. 173:1463-1476, 2004.

Moore et al. 1967, in Carlson FD (ed) Physiol. and Biochem Aspects of Nervous INteg 343-359.

Pap T, Shigeyama Y, Kuchen S. (2000). Arthritis Rheum. 43: 1226-1232.

Poole A R; Cartilage in health and disease. In: Koopman W J. Ed. Arthritis and Allied conditions. A textbook of rheumatology. 14th ed. Baltimore: Williams and Wilkins, 2001: 226-284.

Smeets T J M, Dayer J M, Karan M C. Arthritis Rheum. 43:270-274, 2000.

Sorsa T, Konttinen Y T, Lindy O. Arthritis Rheum. 22: 44-53, 1992.

Toker A, Ellis C A, Sellers L A, Atiken A 1990. Eur J Biochem 191:421-429.

Tolboom T C A, Pieterman E, van der Laan W E. Ann. Rheum. Dis. 61: 975-980, 2002.

Wilker E, Yaffe M B: J Mol Cell Cardiol 37: 633-642, 2004.

Y. Yamamura, R. Gupta, Y. Morit, X. He, R. Pai, J. Endres, A. Freiberg, K. Chung and D. A. Fox. J. Immunol. 166 (2001), pp. 2270-2275.

Yaffe M B (2002). FEBS Lett 513(1):53-57.

* cited by examiner

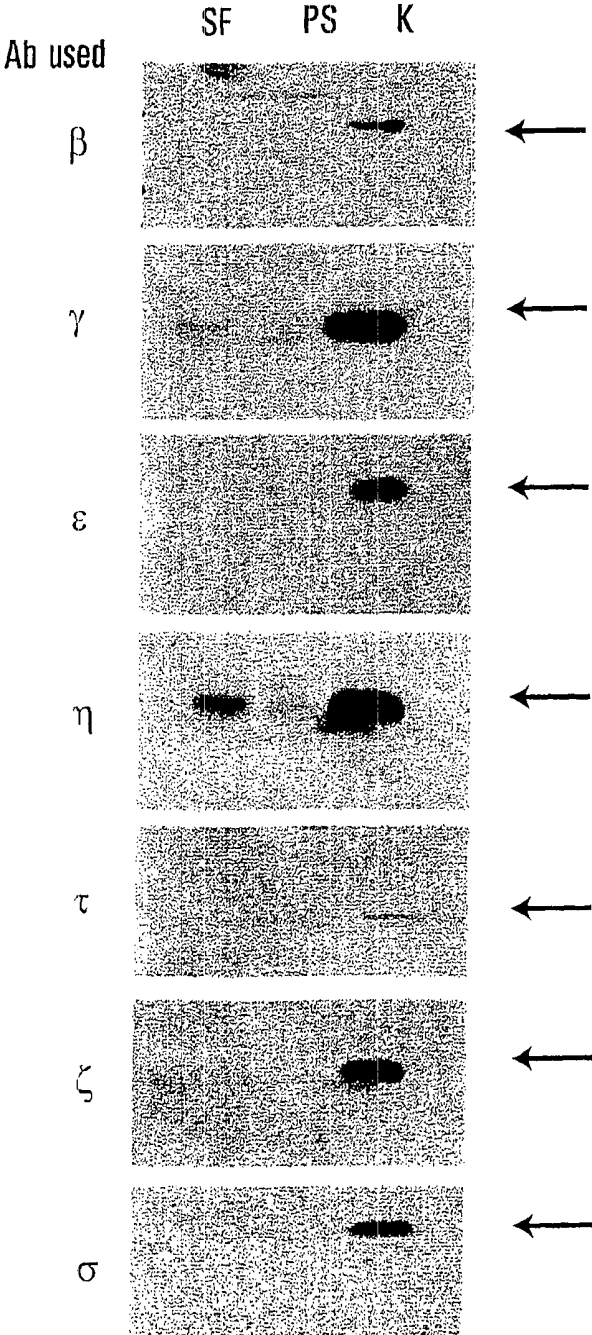


FIG. 1

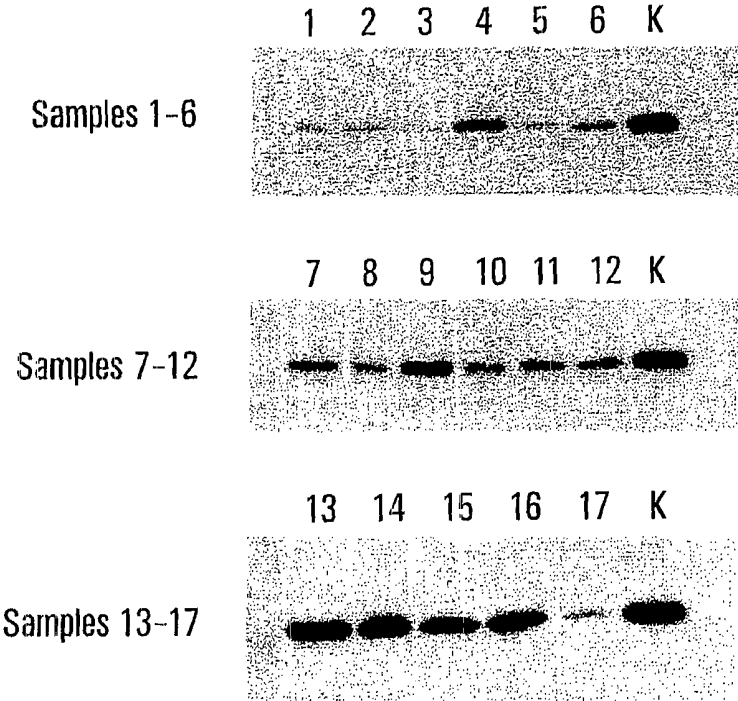


FIG. 2

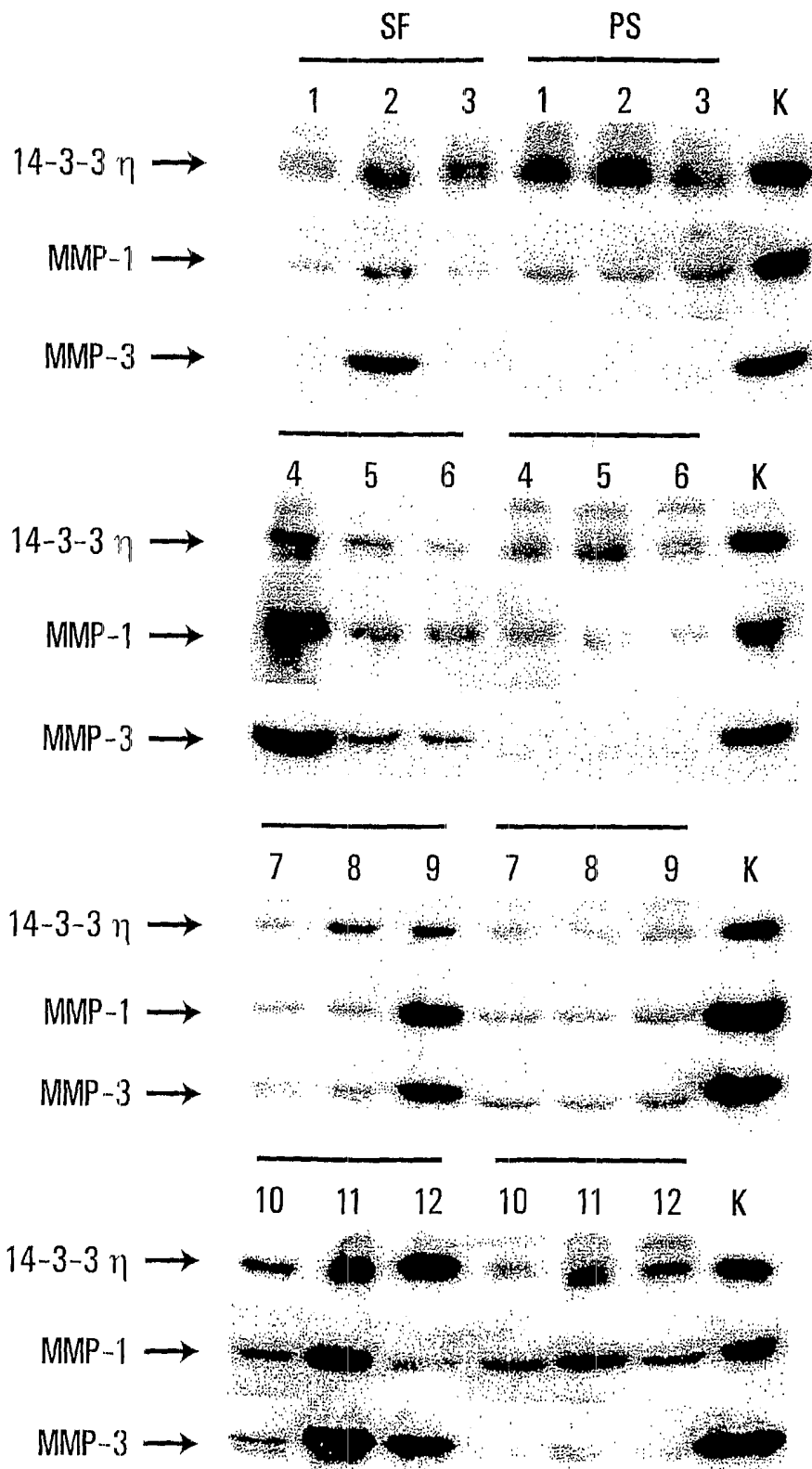


FIG. 3

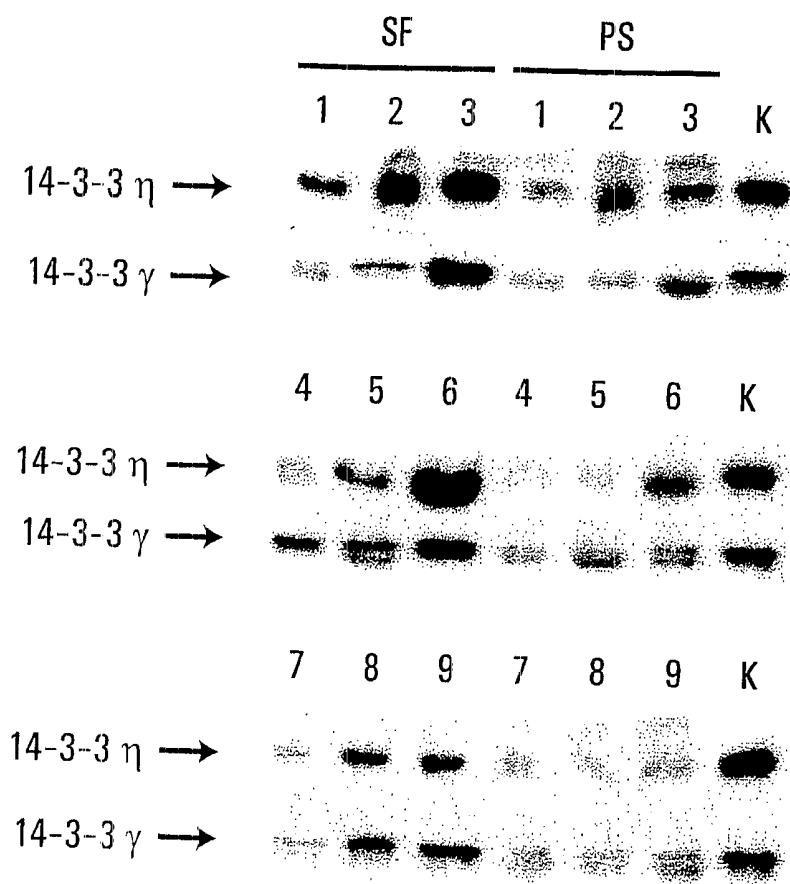


FIG. 4

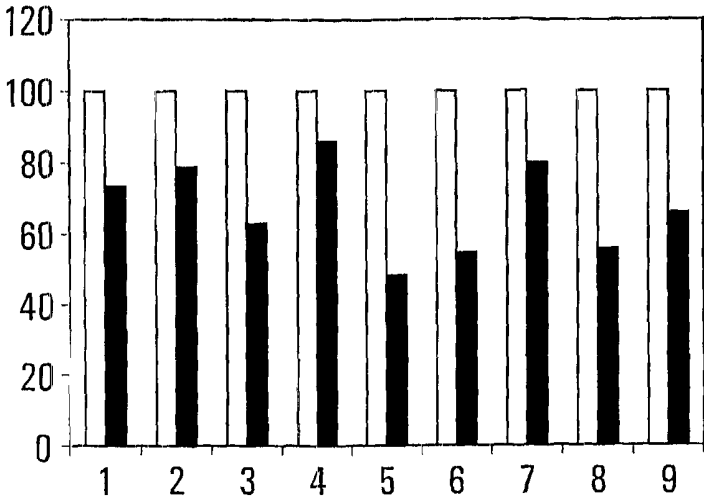


FIG. 5

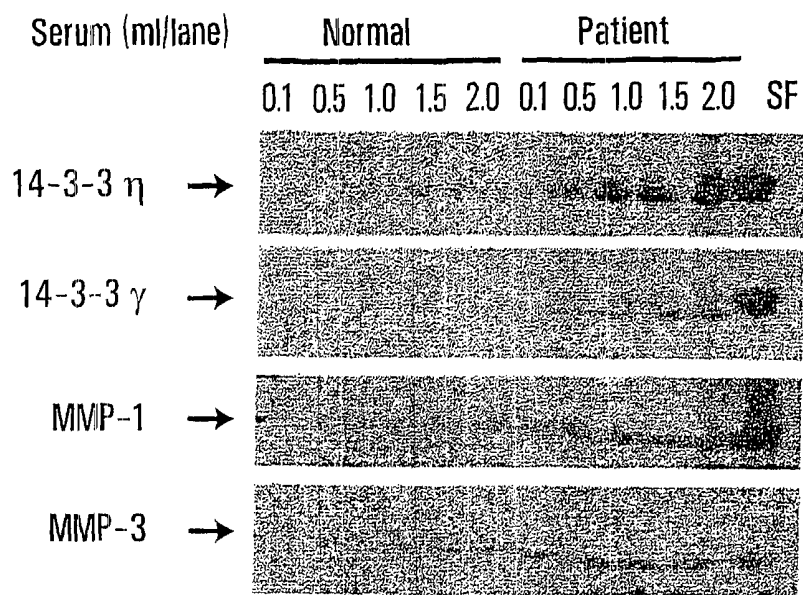


FIG. 6A

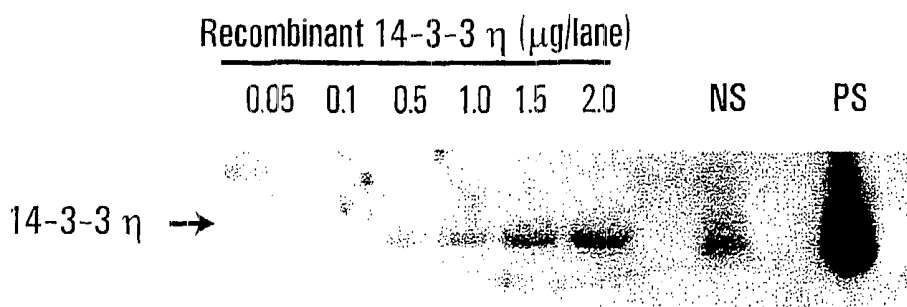


FIG. 6B



14-3-3 η →

FIG. 7

DISSOLVED PROTEIN ARTHRITIS MARKERS

CROSS REFERENCES TO RELATED APPLICATIONS

This application claims priority under all applicable laws, to U.S. patent application Ser. No. 12/300,118, filed Nov. 6, 2008 now abandoned; International Application PCT/CA2007/000817 (WO 2007/128132), filed on May 9, 2007, designating the United States, which claims priority to United States Provisional patent application Ser. No. 60/798,712, filed May 9, 2006, each of which priority disclosures is incorporated herein by reference in its entirety.

SEQUENCE LISTING

The instant application contains a Sequence Listing which has been submitted in ASCII format via EFS-Web and is hereby incorporated by reference in its entirety. Said ASCII copy, created on Oct. 11, 2010, is named SMAR1202.txt and is 40,522 bytes in size.

FIELD OF THE INVENTION

The invention relates to assays for selected protein isoforms that are diagnostic biomarkers for arthritis when those proteins are found in extracellular fluids.

BACKGROUND OF THE INVENTION

Arthritis or arthralgia generally refers to inflammatory disorders of the joints of the body, and is usually accompanied by pain, swelling and stiffness. Arthritis may result from any of several causes including infection, trauma, degenerative disorders, metabolic disorders or disturbances or other unknown etiologies. Arthritis may be more specifically described as, for example, rheumatoid arthritis, osteoarthritis, bacterial or infectious arthritis. Arthritis may further accompany other identified disorders, including gout, ankylosing spondylitis, inflammatory bowel disease or psoriasis.

In normal joints, a small amount of synovial fluid (SF) lubricates cartilage and the synovium, and acts as a reservoir for solutes and a few resting mononuclear and synovial cells (3). During chronic inflammation, SF volume and the concentration of immune cells and soluble proteins increase (4).

For some forms of arthritis, such as rheumatoid arthritis (RA), the specific cause may not be known. RA is regarded as a "multifactorial threshold model", in which many genetic and environmental influences must act on the same person in order for the disease to manifest (1). As a specific target is lacking, current therapies are primarily aimed at suppression of the inflammatory response (2). A hallmark of RA is synovial hyperplasia, characterized by fibroblast-like synoviocyte (FLS) proliferation and inflammatory cell infiltration into the subintima, or outer layer of the synovium (5). The FLS, which comprise about two-thirds of the synovium population, have a well-defined secretory system (5) and secrete large amounts of destructive matrix metalloproteinases (MMPs) in RA (6), specifically MMP-1, 3, 8, 9, 10, 11 and 13 (7-11). Numerous researchers have shown that MMP-1 and MMP-3 play important roles in RA (12) and that the collagenase (MMP-1) is the most abundant (6). Both MMP-1 and MMP-3 are biomarkers that have been shown to have predictive validity for structural damage in RA. Local expression of MMPs in arthritis, especially MMP-1, is

particularly prominent in the joint pannus adjacent to the site of cartilage and bone destruction (13). The collagenases, particularly MMP-1, cleave native collagen molecules at neutral pH, rendering the collagen susceptible to further enzymatic degradation (14).

Known factors that activate FLS to produce MMP-1 include pro-inflammatory cytokines such as interleukin-1 (IL-1) and tumour necrosis factor alpha (TNF-alpha), and both are involved in RA (15). IL-1alpha and TNF-alpha are capable of stimulating the production of other MMPs and stromelysins in synovial fibroblasts and chondrocytes in vitro (16). The interactions of FLS with TNF-alpha or IL-1 alpha from activated T cells induces expression of MMP-1 (17). T-cells can also activate FLS to produce an array of inflammatory mediators (18). This cyclical feedback loop between FLS and T cells and their respective cytokines lead to activation and proliferation of T cells and favours the persistent inflammation observed in RA (19-21). It has been suggested that therapeutic anti-TNF alpha antibodies neutralize TNF alpha and block the T cell activation that leads to this persistent state (22).

14-3-3 proteins are a family of dimeric proteins involved in a range of functions (23-24). There are seven mammalian 14-3-3 isoforms: beta (β), gamma (γ), epsilon (ϵ), eta (η), sigma (σ), tau (τ) and zeta (ζ). Since the discovery of the first 14-3-3 protein in 1967 (26), the members of the 14-3-3 protein family have been repeatedly re-discovered based on their new biological activities, primarily in signal transduction pathways. They have been identified as activators of tryptophan and tyrosine hydroxylase (27-28) and PKC inhibitors (29). Subsequent studies identified the 14-3-3 proteins as molecules that interact with PKCs, Raf family members and now more than 200 other intracellular proteins with critical biological functions (30-31) including cellular response to DNA damage and cell cycle regulation (32-34).

SUMMARY OF THE INVENTION

The invention is based in part on the surprising discovery that particular isoforms of the 14-3-3 protein, 14-3-3 eta and gamma, are present at increased levels in the serum and synovial fluid of arthritis patients, compared to normal patients.

In accordance with one aspect of the invention, there is provided a method for predicting responsiveness of a subject to a therapeutic regimen, the subject having, or suspected of having arthritis, the method comprising determining a presence, absence, amount or relative levels of a protein 14-3-3 eta or gamma in a sample, wherein the presence, absence, amount or relative level of the isoform is indicative of a sensitivity of the subject's arthritis to the therapeutic regimen.

In accordance with another aspect of the invention, there is provided a kit for detecting a 14-3-3 eta or gamma protein in a patient sample, such as a sample of sera or synovial fluid from a patient having, or at risk of having, an arthritis. The kit may comprise at least one antibody specific for detecting at least one of these isoforms of the 14-3-3 protein. The kit may further comprise at least one antibody specific for detecting at least one matrix metalloproteinase.

In accordance with another aspect of the invention, there is provided a method for selecting a group of subjects for determining the efficacy of a therapeutic regimen known or suspected of being useful for the treatment of arthritis, the method comprising detecting a presence, absence, amount or relative levels of a 14-3-3 eta or gamma protein in a patient sera or synovial fluid sample, wherein said presence,

absence, amount or relative level of one or more of these isoforms of the 14-3-3 protein in that fluid is indicative of a sensitivity of the subject's arthritis to the therapeutic regimen.

In accordance with another aspect of the invention, there is provided a method of treating arthritis in a mammalian subject in need thereof, the method comprising administering to the subject a therapeutic regimen, wherein the presence, absence, amount or relative level of a 14-3-3 eta or gamma protein isoform in sera or synovial fluid from that subject is indicative of sensitivity to the therapeutic regimen.

In accordance with another aspect of the invention, there is provided a method of treating arthritis in a mammalian subject in need thereof, the method comprising: selecting a subject having a presence, absence, amount or relative level of 14-3-3 eta or gamma protein in sera or synovial fluid that is indicative of sensitivity to a therapeutic regimen; and administering to the subject the therapeutic regimen.

In accordance with another aspect of the invention, there is provided a method of identifying a mammalian subject with an increased sensitivity to a therapeutic regimen for treating arthritis, comprising the step of screening a population of subjects for the presence, absence, amount or relative level of 14-3-3 eta or gamma protein in sera or synovial fluid, and identifying subjects sensitive to the therapeutic regimen based at least in part on the presence, absence, amount or relative level of the protein in the fluid.

In selected embodiments, the invention may involve assays for other arthritis markers in the sera or synovial fluids of subjects, in conjunction with assays for the presence, absence, amount or relative level of 14-3-3 eta or gamma proteins. For example, assays of the invention may additionally involve determining the presence, absence, amount or relative levels of one or more matrix metalloproteinases, such as MMP-1 or MMP-3, in sera or synovial fluid samples.

BRIEF DESCRIPTION OF THE DRAWINGS

In drawings which illustrate embodiments of the invention,

FIG. 1

Detection of various isoforms of 14-3-3 in the synovial fluid (SF) and serum (PS) of arthritic patients by western blot. Keratinocyte lysates (K) was used as a positive control.

FIG. 2

Detection of 14-3-3 η in the synovial fluid of 17 arthritic patients. Synovial fluid samples (2 μ l/lane) were taken from 17 RA patients who had active synovitis and analyzed by western blot, using an isoform-specific antibody for the 14-3-3 η isoform. Keratinocyte lysate (K) was used as a positive control. Levels of 14-3-3 η vary in the patient population surveyed, but is reliably detected in all synovial fluid samples.

FIG. 3

14-3-3 η , MMP-1 and MMP-3 expression in patient sera and synovial fluid. 12 patients' matched synovial fluid and serum samples examined by western blot. Keratinocyte cell lysate (K) was used as a positive control. SF: synovial fluid; PS: patient serum; MMP-1: matrix metalloproteinase 1; MMP-3: matrix metalloproteinase 3.

FIG. 4

Detection and comparison of the levels of 14-3-3 η and γ in 9 matched patient serum and synovial fluid samples. Patients' synovial fluid or serum (2 μ l/lane) was analyzed by

western blot using anti 14-3-3 η or γ antibody. Keratinocyte cell lysate (K) was used as a positive control. SF, synovial fluid; PS, patient serum.

FIG. 5

Levels of 14-3-3 η in matched patient serum and synovial fluid samples were quantified by densitometry and depicted in lower panel. Solid bars show the level of 14-3-3 η in serum normalized to a synovial fluid sample from the same patient (open bars).

FIG. 6

Detection of 14-3-3 η , γ , MMP-1 and MMP-3 in different volumes of normal and patients sera.

A) Pooled samples of 12 normal or patient sera were prepared and a range of volumes (0.1-2.0 μ l/lane) were analyzed by western blot, using specific antibodies for 14-3-3 η , γ , MMP-1 or MMP-3. 2 μ l of a pooled of synovial fluid (SF) from affected patients was included as a positive control. B) Recombinant 14-3-3 η isoform (0.01-2.0 μ g/lane) was analyzed by western blot in parallel with 2 μ l of normal (NS) or patient serum (PS).

FIG. 7

Illustrates detection of 14-3-3 η before and after anti-TNF therapy: Levels of 14-3-3 eta protein in 4 ml of serum samples from RA patients before (U) and after anti-TNF-a (T) Treatment. N=negative control which is 4 ml of a pooled serum sample prepared from 12 serum samples taken from 12 healthy individuals. P=positive control which is 4 mg of keratinocyte cell lysate total protein.

DETAILED DESCRIPTION

A "Disease Activity Score" (DAS) refers to a measure of the activity or state of rheumatoid arthritis in a patient. DAS is one of several standards or scores used in clinical practice. A calculation of a DAS may include the following parameters: Number of joints tender to the touch (TEN), number of swollen joints (SW), erythrocyte sedimentation rate (ESR) and patient assessment of disease activity (VAS). Alternatively, a DAS may include C-reactive protein marker assessment (CRP) (Skogh T et al 2003. Ann Rheum Dis 62:681-682).

A patient or test subject, as used herein, includes a human patient undergoing, or about to undergo, treatment for arthritis. A test subject includes non-human mammals undergoing, or about to undergo, treatment for arthritis. In the case of a test subject, the arthritis may be deliberately induced or implanted, or may develop spontaneously. The patient or test subject may have been previously diagnosed using methods described herein, for example, or other diagnostic methods known in the art, or may be selected as part of general population (a 'control' patient or 'control' test subject). Patients and test subjects, whether control or not, may be generally referred to as a subject. Patients may be selected or differentiated on the basis of disease severity, gender, age, or suitability for a particular treatment or assay method.

As used herein, an 'isoform' refers to any two or more of functionally similar proteins that have a similar but not identical amino acid sequence and are either encoded by different genes or by RNA transcripts from the same gene which have had different exons removed.

It will be appreciated by a person of skill in the art that the numerical designations of the positions of nucleotides or amino acids within a sequence are relative to the specific sequence. Also, the same positions may be assigned different numerical designations depending on the way in which the sequence is numbered and the sequence chosen. Furthermore, sequence variations such as insertions or deletions,

may change the relative position and subsequently the numerical designations of particular nucleotides or amino acids at or around a particular site.

The terms 'peptide', 'polypeptide' and protein' may be used interchangeably, and refer to a compound comprised of at least two amino acid residues covalently linked by peptide bonds or modified peptide bonds, for example peptide isosteres (modified peptide bonds) that may provide additional desired properties to the peptide, such as increased half-life. A peptide may comprise at least two amino acids. The amino acids comprising a peptide or protein described herein may also be modified either by natural processes, such as posttranslational processing, or by chemical modification techniques which are well known in the art. Modifications can occur anywhere in a peptide, including the peptide backbone, the amino acid side-chains and the amino or carboxyl termini. It is understood that the same type of modification may be present in the same or varying degrees at several sites in a given peptide.

Nomenclature used to describe the peptide compounds of the present invention follows the conventional practice where the amino group is presented to the left and the carboxy group to the right of each amino acid residue. In the sequences representing selected specific embodiments of the present invention, the amino- and carboxy-terminal groups, although not specifically shown, will be understood to be in the form they would assume at physiologic pH values, unless otherwise specified. In the amino acid structure formulae, each residue may be generally represented by a one-letter or three-letter designation, corresponding to the trivial name of the amino acid.

The term 'antibody' as used herein includes polyclonal and monoclonal antibodies, chimeric, single chain, or humanized antibodies, as well as Fab or F(ab)² fragments, including the products of an Fab or other immunoglobulin expression library. Methods of making such antibodies or fragments are known in the art and may be found in, for example HARLOW, E and LANE D. *Antibodies: A Laboratory Manual*. 1988. Cold Spring Harbor Laboratory Press. Selection or identification of specific peptides for use as epitopes for production of antibodies that differentiate between proteins, or isoforms of proteins may be made using sequence comparisons—one of skill in the art will be able to identify suitable peptide or protein sequences that may be useful for producing antibodies with the desired selectivities. Examples of sequences that may be useful to one of skill may include SEQ ID NOS: 1-7.

As used herein, 'arthritis' or 'arthralgia' refer to an inflammatory disorder of the joints of the body. Pain, swelling, stiffness and difficulty of movement are frequently associated with arthritis diseases. Arthritis may result from any of several causes including infection, trauma, degenerative disorders, metabolic disorders or disturbances or other unknown etiologies. Arthritis may be more specifically described as, for example, rheumatoid arthritis, osteoarthritis, bacterial or infectious arthritis. Arthritis may further accompany other identified disorders, including gout, ankylosing spondylitis, inflammatory bowel disease or psoriasis. 14-3-3 proteins, particularly the eta and gamma isoforms, may be readily detected in synovial fluid or serum of patients affected with arthritis, for example rheumatoid arthritis. In one embodiment of the invention, detection of these signal transduction proteins in the site of inflammation may have application in early or more simplified diagnosis of arthritis, or differentiation between the various types of arthritis in a patient. Alternatively, the presence or relative levels of isoforms of 14-3-3 proteins may be a prognostic indicator of

early-stage arthritis, before it progresses to a debilitating form. An advantage of early prognosis or diagnosis is earlier implementation of a treatment regimen. Alternatively, the presence or relative levels of isoforms of 14-3-3 in a patient sample may be useful to determine patient suitability for a particular treatment regimen.

Treatment regimens for various types of arthritis are known in the art. Therapeutic approaches to arthritis may for example be generally characterized as disease modifying therapy for arthritis, or remittive therapies. For example, a patient diagnosed with rheumatoid arthritis may be prescribed non-steroidal anti-inflammatory medications (NSAIDs) initially, to ease the discomfort and reduce the inflammation. Other treatment regimens may include, for example cyclooxygenase 2 specific inhibitors (CSIs), glucocorticoids, disease-modifying anti-rheumatic drugs (DMARDs), anti-TNF alpha neutralizing agents or immunosuppressive or cytotoxic drugs. Details on dosage or examples of particular drugs will be known to those of skill in the art, and may be found in, for example Harrison's *Principles of Internal Medicine* 15th ed. BRAUNWALD et al eds. McGraw-Hill or "The Pharmacological basis of therapeutics", 10th edition. HARDMAN H G., LIMBIRD L E. editors. McGraw-Hill, New York, and in "Clinical Oncology", 3rd edition. Churchill Livingstone/Elsevier Press, 2004. ABELOFF, M D. editor.

In another embodiment of the invention, the presence or relative levels of 14-3-3 eta or gamma proteins may correlate with the presence or relative levels of other proteins in the patient sample, for example matrix metalloproteinases (MMPs), such as MMP-1 or MMP-3. MMPs are zinc-binding endopeptidases that degrade components of the extracellular matrix. MMPs have different substrate specificities and are encoded by different genes. At least 25 different MMPs have been identified. Detection of 14-3-3 eta or gamma proteins in combination with at least one MMP in a patient sample may have application in early or more simplified diagnosis of arthritis, or differentiation between the various types of arthritis in a patient. Alternatively, the presence or relative levels of eta or gamma isoforms of 14-3-3 proteins in combination with at least one MMP in a patient sample may be a prognostic indicator of early-stage arthritis, before the arthritis progresses to a debilitating form. An advantage of early prognosis or diagnosis may include earlier implementation of a treatment regimen. Alternatively, the presence or relative levels of eta or gamma isoforms of 14-3-3 in combination with at least one MMP in a patient sample may be useful to determine patient suitability for a particular treatment regimen.

In another embodiment of the invention, a kit for detecting the presence of 14-3-3 eta or gamma proteins or particular MMPs in a patient sample, the kit being suitable for use in providing a diagnostic or prognostic result suitable for diagnosing or differentiating various types of arthritis. A kit may include, for example, antibodies specific for eta or gamma isoforms of 14-3-3 proteins. Such a kit may further include antibodies specific for particular MMPs. The kit may further include other reagents necessary for the detection of 14-3-3 eta or gamma or MMPs immunologically, such as labelled secondary antibodies, chromogenic or fluorogenic reagents, polymerization agents and/or instructions for using the kit for diagnostic or prognostic purposes.

General Methods

Once a subject is identified as being at risk for developing or having arthritis, information useful for assessing the disease state of the diagnosed arthritis, response to a therapeutic treatment regimen for arthritis, or prognosis of arthri-

tis, or the type of arthritis may be obtained from the patient or test subject. Various methods for obtaining biological samples from a subject that contain protein or peptides that may be useful as biomarkers are known in the art. For example, tissue samples may be obtained by curettage, needle aspiration biopsy or needle (core) biopsy, incisional biopsy for sampling a tumor, or excisional biopsy, which may entail total removal of the tissue of interest. Alternatively, other bodily samples that contain genetic material, such as synovial fluid, hair, sputum, urine, stool, semen, plasma, serum or blood may be collected using methods known in the art.

The presence of specific proteins or peptides in a biological sample, or the relative levels of specific proteins or peptides in a biological sample may be detected by any of several methods known in the art. Examples of such methods include mass spectroscopy, immunological-based techniques such as western blotting, ELISA, immunohistochemistry, FACS, surface plasmon resonance or chromatography. Methods for these and other techniques may be found in, for example AUSUBEL et al., Current Protocols in Molecular Biology, John Wiley & Sons, New York, N.Y., 1998; ABELOFF, Clinical Oncology, 3rd edition. Churchill Livingstone/Elsevier Press, 2004; HARLOW, E and LANE D. Antibodies: A Laboratory Manual. 1988. Cold Spring Harbor Laboratory Press; SAMBROOK J and RUSSELL D W. Molecular cloning: A Laboratory Manual 2001 Cold Spring Harbor Laboratory Press; Harrison's Principles of Internal Medicine 15th ed. BRAUNWALD et al eds. McGraw-Hill. 14-3-3 detection methods are described for example in WO 99/46401, US 2005/9094, WO 97/38315 and WO 97/33601, all of which are incorporated herein by reference.

Western Blotting

Synovial fluid or serum (2 μ l of each) was subjected to SDS-PAGE analysis with 12% (wt/vol) acrylamide gel, and electrotransferred onto PVDF membranes (Millipore Corporation). Non-specific proteins on membranes were blocked in 5% skim milk powder in PBS-0.1% Tween-20 overnight. Immunoblotting was performed using 2 μ g/ml of 7 isoforms specific rabbit anti-human 14-3-3 polyclonal antibodies (Martin H, Patel Y, Jones D, Howell S, Robinson K and Aitken A 1993. *Antibodies against the major brain isoforms of 14-3-3 protein. An antibody specific for the N-acetylated amino-terminus of a protein. FEBS Letters.* 331:296-303). The membranes were then incubated with the appropriate secondary horseradish peroxidase conjugated anti-rabbit IgG (Sigma, St Louis, USA) or anti-mouse IgG (Bio-Rad Laboratories, Hercules, USA) antibodies (1:2500 dilution). Immunoreactive proteins were then visualized using the ECL+plus western blotting detection system (Amersham Biosciences, Buckinghamshire, England). Keratinocyte cell lysate (K) was used as a positive control. SF: synovial fluid; PS: patient serum.

Patient Samples

Synovial fluid was obtained from the knee joints of patients with active synovitis prior to the institution of anti-TNF therapeutics. All patients had a DAS score >6.0. Matched blood samples were obtained by standard venipuncture procedures. The clot was removed by centrifugation.

Recombinant 14-3-3 Eta

cDNA for keratinocyte-derived 14-3-3 eta was prepared from total RNA extracted from human keratinocytes, cloned and expressed in *E. coli*, and affinity purified, following the methods described in Ghahary et al 2004 J Invest Dermatol 122:1188-1197. Primers used for PCR amplification of the 14-3-3 eta cDNA were SEQ ID NO: 15 (GCGAATTCCT-

GCAGCGGGCGCGGCTGGCCGA) and SEQ ID NO: 16 (GCTCGAGCCTGAAGGATCTTCAGTTGCCTTC).

Example 1

14-3-3 Expression in Synovial Fluid and Serum of RA Affected Patients

The levels of the different isoforms of 14-3-3 proteins— β , γ , ϵ , η , τ , σ , and ζ —in pooled patient synovial fluid (SF) and serum (PS) samples were analyzed by western analysis using keratinocyte cell lysate (K) as a positive control. Only the η and γ isoforms were detected in SF samples, and stained with greater intensity compared to PS. Articular joint synovial fluid samples from 17 RA patients who presented with active synovitis, but had not yet received anti-TNF therapies also exhibited consistent expression of the η isoform of 14-3-3 (FIG. 2). All patients had a disease activity score (DAS) greater than 6.0.

Example 2

MMP Expression in Patient Synovial Fluid Serum

To determine if these variations were correlated to those of MMP-1 and MMP-3 in the same synovial samples, a total of 12 RA synovial fluid samples and their matched serum samples were simultaneously evaluated for 14-3-3 η and γ as well as for MMP-1 and MMP-3 proteins (FIG. 3). 14-3-3 η was detected in all samples. MMP-1 was detected in all samples, both SF and PS, while MMP-3 was more variable in the levels detected. The 14-3-3 γ isoform was also detected in patient synovial fluid and serum samples (FIG. 4, 5).

The expression of MMP-1 and MMP-3 demonstrate significant correlation with the expression of the 14-3-3 η and γ isoforms in both synovial fluid and serum (Table 1).

TABLE 1

Correlation of MMP and 14-3-3 protein levels in serum and synovial fluid

	14-3-3 η serum	14-3-3 η synovium	14-3-3 γ serum	14-3-3 γ synovium
MMP-1	r = 0.62; p = 0.02	r = 0.83; p = 0.03	r = 0.77; p = 0.02	r = 0.65; p = 0.03
MMP-3	r = 0.68; p = 0.01	r = 0.77; p = 0.003	r = 0.80; p = 0.03	r = 0.76; p = 0.04

Example 3

Sensitivity of Western Blot Detection of 14-3-3 Protein in Patient Serum and Synovial Fluid Samples

To determine the detection level of 14-3-3 η in synovial fluid and serum samples, samples from 12 RA-affected or normal patients were pooled, and limiting dilutions of the pooled samples were analyzed by western blot. 14-3-3 η was detectable over a range of dilutions—as low as 0.1 μ l effective volume of synovial fluid and 1.0 μ l effective volume of serum (FIG. 6A).

2 μ l of pooled normal serum (NS) or patient serum (PS) was run alongside known concentrations of recombinant 14-3-3 η , ranging from 0.05-2.0 μ g. The 2 μ l volume of NS and PS samples was estimated to have approximately 1-1.5

and 15-20 µg of 14-3-3 η, respectively (FIG. 6B). This suggests that the level of 14-3-3 η occurs in about a 10-fold excess in the serum of RA affected patients, compared to normal patients.

Example 4

Detection of 14-3-3 η Before and after Anti-TNF Therapy

FIG. 7 illustrates the sequential detection of levels of 14-3-3 eta protein in 4 ml of serum samples from RA patients before (U) and after anti-TNF-a (T) Treatment. N=negative control which is 4 ml of a pooled serum sample prepared from 12 serum samples taken from 12 healthy individuals. P=positive control which is 4 mg of keratinocyte cell lysate total protein.

REFERENCES

The following documents are incorporated herein by reference:

1. Harris E D Jr., History and Epidemiology of Rheumatoid Arthritis: How long has it affected us, and who is at risk? In: Rheumatoid Arthritis. Philadelphia: W.B. Saunders Company, 1997: 21-27.
2. Harris E D Jr., Introduction. In: Rheumatoid Arthritis. Philadelphia: W.B. Saunders Company, 1997: xix-xxiii.
3. Harris E D Jr., Rheumatoid Synovium: Complex, and More Than the Sum of its Parts. In: Rheumatoid Arthritis. Philadelphia: W.B. Saunders Company, 1997: 127-149.
5. Firestein G S. (1997). Rheumatoid synovitis and pannus. In: J. H. Klippel and P. A. Dieppe, Editors, Rheumatology, Mosby, London, pp. 5/13.1-5/13.5, 1997.
6. Pap T, Shigeyama Y, Kuchen S. (2000). Arthritis Rheum. 43: 1226-1232.
7. Tolboom T C A, Pieterman E, van der Laan W E. Ann. Rheum. Dis. 61: 975-980, 2002.
8. Sorsa T, Konttinen Y T, Lindy O. Arthritis Rheum. 22: 44-53, 1992.
9. Lindy O, Konttinen Y T, Sorsa T. Arthritis Rheum. 40:1391-1399, 1997.
10. Ahrens D, Koch A E, Pope R M. Arthritis Rheum. 39:1576-1587, 1996.
11. Smeets T J M, Dayer J M, Karan M C. Arthritis Rheum. 43:270-274, 2000.
12. Poole A R; Cartilage in health and disease. In: Koopman W J. Ed. Arthritis and Allied conditions. A textbook of rheumatology. 14th ed. Baltimore: Williams and Wilkins, 2001: 226-284.
13. Konttinen Y T, Ceponis A, Takagi M, Ainola M, Sorsa T, Sutinen M, et al. Matrix Biol. 17:585-601, 1998.
14. Katrib. A, McNeil H P, Youssef P P: Inflamm. Res. 51: 170-175, 2002.
15. Harris E D Jr., Cytokines, Lymphokines, Growth Factors, and Chemokines. In: Rheumatoid Arthritis. Philadelphia: W.B. Saunders Company, 1997: 105-125.

16. Jasser, M. Z., Mitchell P. G. and Cheung, H. S.: induction of stomelysin-1 and collagenases synthesis in fibrochondrocytes by TNF-alpha. Matrix Biology 14: 241, 1994.
 17. Burger D, Rezzonico R, Li J M, Modoux C, Pierce R A, Welgus H G, Dayer J M. Arthritis Rheum. 41(10):1748-59, 1998
 18. Y. Yamamura, R. Gupta, Y. Morit, X. He, R. Pai, J. Endres, A. Freiberg, K. Chung and D. A. Fox. J. Immunol. 166 (2001), pp. 2270-2275
 19. Miranda-Carus M E, Balsa A, Benito-Miguel M, Perez de Ayala C, Martin-Mola E. J. Immunol. 173:1463-1476, 2004
 20. Cho M L, Yoon C H, Hwang C Y. Arthritis Rheum. 50:776-784, 2004
 21. Bombara M P, Webb D L, Conrad P. J. Leukocyte Biol. 54: 399-406, 1993.
 22. McInnes I B, Leung B P, Liew F Y. Arthritis Res. 2(5):374-8.34, 2000.
 23. F U H, Subramanian R R, Masters S C: Annu Rev Pharmacol Toxicol 40:617-647, 2000.
 24. Hsich G, Kenney K, Gibbs C J, Lee K H, Harrington M G: N Engl J Med 335:924-30, 1996
 25. Wilker E, Yaffe M B: J Mol Cell Cardiol 37: 633-642, 2004.
 26. Moore et al. 1967.
 27. Ichimura T, Isobe T, Okuyama T, Yamauchi T, Fujisawa H (1987) FEBS Lett. 219:79-82.
 28. Ichimura T, Isobe T, Okuyama T, Takahashi N, Araki K, Kuwano R, Akahashi Y (1988). Proc Natl Acad Sci USA, 85:7084-8.
 29. Toker A, Ellis C A, Sellers L A, Atiken A 1990. Eur J Biochem 191:421-429.
 30. Craparo A, Freund R, Gustafson T (1997). J Biol Chem 272:11663-69.
 31. Yaffe M B (2002). FEBS Lett 513(1):53-57.
 32. Hermeking H, Lengauer C, Polyak K, He T C, Zhang L, Thiagalingam S, Kinzler K W, Vogelstein B. Mol Cell 1:3-11, 1997.
 33. Chan T A, Hermeking H, Lengauer C, Kinzler K W, Vogelstein B. Nature 401:616-620, 1999.
 34. Laronga C, Yang H Y, Neal C, Lee M H (2000). J. Biol. Chem. 275:23106-23112.
 35. Boston P F, Jackson P, Thompson R J. J. Neurochem. 38, 1475-82, 1982.
 36. Katz A B, Taichman, L B. J Invest Dermatol 112:818-821, 1999.
 37. Ghahary A, Karimi-Busheri F, Marcoux Y, Li Y, Tredget E E, Kilani R T, Li L, Zheng J, Karami A, Keller B, Weinfeld M. J. Invest. Dermatol. 122(5): 1188-1197, 2004.
 38. Ghaffari A, Li Y, Karami A, Ghaffari M, Tredget E E, Ghahary A. J. Cell. Biochem. January 2006.
- While specific embodiments of the invention have been described and illustrated, such embodiments should be considered illustrative of the invention only and not as limiting the invention as construed in accordance with the accompanying claims.

SEQUENCE LISTING

<160> NUMBER OF SEQ ID NOS: 16

<210> SEQ ID NO 1

<211> LENGTH: 242

<212> TYPE: PRT

-continued

<213> ORGANISM: Homo sapiens
 <220> FEATURE:
 <223> OTHER INFORMATION: 14-3-3 beta protein; brain protein 14-3-3 beta isoform
 <220> FEATURE:
 <223> OTHER INFORMATION: Alternate nomenclature: Tyrosine 3-monooxygenase/tryptophan 5-monooxygenase activation protein, beta isoform, YWHAB

<400> SEQUENCE: 1

Met Thr Met Asp Lys Ser Glu Leu Val Gln Lys Ala Lys Leu Ala Glu
 1 5 10 15
 Gln Ala Glu Arg Tyr Asp Asp Met Ala Ala Ala Met Lys Ala Val Thr
 20 25 30
 Glu Gln Gly His Glu Leu Ser Asn Glu Glu Arg Asn Leu Leu Ser Val
 35 40 45
 Ala Tyr Lys Asn Val Val Gly Ala Arg Arg Ser Ser Trp Arg Val Ile
 50 55 60
 Ser Ser Ile Glu Gln Lys Thr Glu Arg Asn Glu Lys Lys Gln Gln Met
 65 70 75 80
 Gly Lys Glu Tyr Arg Glu Lys Ile Glu Ala Glu Leu Gln Asp Ile Cys
 85 90 95
 Asn Asp Val Leu Glu Leu Leu Asp Lys Tyr Leu Ile Pro Asn Ala Thr
 100 105 110
 Gln Pro Glu Ser Lys Val Phe Tyr Leu Lys Met Lys Gly Asp Tyr Phe
 115 120 125
 Arg Tyr Leu Ser Glu Val Ala Ser Gly Asp Asn Lys Gln Thr Thr Val
 130 135 140
 Ser Asn Ser Gln Gln Ala Tyr Gln Glu Ala Phe Glu Ile Ser Lys Lys
 145 150 155 160
 Glu Met Gln Pro Thr His Pro Ile Arg Leu Gly Leu Ala Leu Asn Phe
 165 170 175
 Ser Val Phe Tyr Tyr Glu Ile Leu Asn Ser Pro Glu Lys Ala Cys Ser
 180 185 190
 Leu Ala Lys Thr Ala Phe Asp Glu Ala Ile Ala Glu Leu Asp Thr Leu
 195 200 205
 Asn Glu Glu Ser Tyr Lys Asp Ser Thr Leu Ile Met Gln Leu Leu Arg
 210 215 220
 Asp Asn Leu Thr Leu Trp Thr Ser Glu Asn Gln Gly Asp Glu Gly Asp
 225 230 235 240
 Ala Gly

<210> SEQ ID NO 2
 <211> LENGTH: 246
 <212> TYPE: PRT
 <213> ORGANISM: Homo sapiens
 <220> FEATURE:
 <223> OTHER INFORMATION: 14-3-3 gamma protein
 <220> FEATURE:
 <223> OTHER INFORMATION: Alternate nomenclature: Tyrosine 3-monooxygenase/tryptophan 5-monooxygenase activation protein, gamma isoform, YWHAG

<400> SEQUENCE: 2

Met Val Asp Pro Glu Gln Leu Val Gln Lys Ala Arg Leu Ala Glu Gln
 1 5 10 15
 Ala Glu Gly Tyr Asp Asp Met Ala Ala Ala Met Lys Asn Val Thr Glu
 20 25 30
 Leu Asn Glu Pro Leu Ser Asn Glu Glu Arg Asn Leu Leu Ser Val Ala

-continued

```

      35              40              45
Tyr Lys Asn Val Val Gly Ala Arg Arg Ser Ser Trp Arg Val Ile Ser
 50              55              60
Ser Ile Glu Gln Lys Thr Ser Ala Asp Gly Asn Glu Lys Ile Glu Met
65              70              75              80
Val Arg Ala Tyr Arg Glu Lys Val Glu Lys Glu Leu Glu Ala Val Cys
      85              90              95
Gln Asp Val Leu Ser Leu Val Asp Asn Tyr Leu Tyr Lys Asn Cys Ser
      100              105              110
Glu Thr Gln Tyr Glu Arg Lys Asp Leu Tyr Leu Lys Met Lys Gly Asp
      115              120              125
Tyr Tyr Arg Tyr Leu Ala Glu Val Ala Thr Gly Glu Lys Arg Gly Asp
      130              135              140
Val Val Glu Ser Ser Glu Lys Ala Tyr Ser Glu Arg Glu Ile Ser Lys
      145              150              155              160
Glu His Met Gln Pro Thr His Pro Ile Arg Leu Gly Leu Ala Leu Asn
      165              170              175
Tyr Ser Val Phe Tyr Tyr Glu Ile Gln Asn Ala Pro Glu Gln Ala Cys
      180              185              190
His Leu Ala Lys Thr Glu Phe Glu Asp Ala Ile Ala Glu Leu Asp Thr
      195              200              205
Leu Asn Glu Glu Ser Tyr Lys Asp Ser Thr Leu Ile Met Gln Leu Leu
      210              215              220
Arg Asp Asn Leu Thr Leu Trp Thr Ser Asp Gln Gln Asp Asp His Asp
      225              230              235              240
Gly Gly Glu Gly Asn Asn
      245

```

```

<210> SEQ ID NO 3
<211> LENGTH: 244
<212> TYPE: PRT
<213> ORGANISM: Homo sapiens
<220> FEATURE:
<223> OTHER INFORMATION: 14-3-3 eta protein
<220> FEATURE:
<223> OTHER INFORMATION: Alternate nomenclature: Tyrosine
3-monooxygenase/tryptophan 5-monooxygenase activation protein,
eta isoform, YWHAH;
<220> FEATURE:
<223> OTHER INFORMATION: brain protein 14-3-3, eta isoform tyrosine
3-monooxygenase/tryptophan 5-monooxygenase activation
protein 1; YWHA1
<400> SEQUENCE: 3

```

```

Met Gly Asp Arg Glu Gln Leu Leu Gln Arg Ala Arg Leu Ala Glu Gln
 1              5              10              15
Ala Glu Arg Tyr Asp Asp Met Ala Ser Ala Met Lys Ala Val Thr Glu
      20              25              30
Leu Asn Glu Pro Leu Ser Asn Glu Asp Arg Asn Leu Leu Ser Val Ala
      35              40              45
Tyr Lys Asn Val Val Gly Ala Arg Arg Ser Ser Trp Arg Val Ile Ser
      50              55              60
Ser Ile Glu Gln Lys Thr Met Ala Asp Gly Asn Glu Lys Lys Leu Glu
      65              70              75              80
Lys Val Lys Ala Tyr Arg Glu Lys Ile Glu Lys Glu Leu Glu Thr Val
      85              90              95
Cys Asn Asp Val Leu Ser Leu Leu Asp Lys Phe Leu Ile Lys Asn Cys
      100              105              110

```


-continued

Leu Ser Glu Glu Ser Tyr Lys Asp Ser Thr Leu Ile Met Gln Leu Leu
 210 215 220

Arg Asp Asn Leu Thr Leu Trp Thr Ser Asp Met Gln Gly Asp Gly Glu
 225 230 235 240

Glu Gln Asn Lys Glu Ala Leu Gln Asp Val Glu Asp Glu Asn Gln
 245 250 255

<210> SEQ ID NO 5
 <211> LENGTH: 247
 <212> TYPE: PRT
 <213> ORGANISM: Homo sapiens
 <220> FEATURE:
 <223> OTHER INFORMATION: 14-3-3 sigma protein
 <220> FEATURE:
 <223> OTHER INFORMATION: Alternate nomenclature: stratifin

<400> SEQUENCE: 5

Met Glu Arg Ala Ser Leu Ile Gln Lys Ala Lys Leu Ala Glu Gln Ala
 1 5 10 15

Glu Arg Tyr Glu Asp Met Ala Ala Phe Met Lys Gly Ala Val Glu Lys
 20 25 30

Gly Glu Glu Leu Ser Cys Glu Glu Arg Asn Leu Leu Ser Val Ala Tyr
 35 40 45

Lys Asn Val Val Gly Gly Gln Arg Ala Ala Trp Arg Val Leu Ser Ser
 50 55 60

Ile Glu Gln Lys Ser Asn Glu Glu Gly Ser Glu Glu Lys Gly Pro Glu
 65 70 75 80

Val Arg Glu Tyr Arg Glu Lys Val Glu Thr Glu Leu Gln Gly Val Cys
 85 90 95

Asp Thr Val Leu Gly Leu Leu Asp Ser His Leu Ile Lys Glu Ala Gly
 100 105 110

Asp Ala Glu Ser Arg Val Phe Tyr Leu Lys Met Lys Gly Asp Tyr Tyr
 115 120 125

Arg Tyr Leu Ala Glu Val Ala Thr Gly Asp Asp Lys Lys Arg Ile Ile
 130 135 140

Asp Ser Ala Arg Ser Ala Tyr Gln Glu Ala Met Asp Ile Ser Lys Lys
 145 150 155 160

Glu Met Pro Pro Thr Asn Pro Ile Arg Leu Gly Leu Ala Leu Asn Phe
 165 170 175

Ser Val Phe His Tyr Glu Ile Ala Asn Ser Pro Glu Glu Ala Ile Ser
 180 185 190

Leu Ala Lys Thr Thr Phe Asp Glu Ala Met Ala Asp Leu His Thr Leu
 195 200 205

Ser Glu Asp Ser Tyr Lys Asp Ser Thr Leu Ile Met Gln Leu Leu Arg
 210 215 220

Asp Asn Leu Thr Leu Trp Thr Ala Asp Asn Ala Gly Glu Glu Gly Gly
 225 230 235 240

Glu Ala Pro Gln Glu Pro Gln
 245

<210> SEQ ID NO 6
 <211> LENGTH: 245
 <212> TYPE: PRT
 <213> ORGANISM: Homo sapiens
 <220> FEATURE:
 <223> OTHER INFORMATION: 14-3-3 tau protein
 <220> FEATURE:
 <223> OTHER INFORMATION: Alternate nomenclature: Tyrosine

-continued

3-monooxygenase/tryptophan 5-monooxygenase activation protein, tau isoform, YWHAQ 14-3-3 protein, T-cell 14-3-3-theta HS1

<400> SEQUENCE: 6

```

Met Glu Lys Thr Glu Leu Ile Gln Lys Ala Lys Leu Ala Glu Gln Ala
1           5           10           15
Glu Arg Tyr Asp Asp Met Ala Thr Cys Met Lys Ala Val Thr Glu Gln
          20           25           30
Gly Ala Glu Leu Ser Asn Glu Glu Arg Asn Leu Leu Ser Val Ala Tyr
          35           40           45
Lys Asn Val Val Gly Gly Arg Arg Ser Ala Trp Arg Val Ile Ser Ser
          50           55           60
Ile Glu Gln Lys Thr Asp Thr Ser Asp Lys Lys Leu Gln Leu Ile Lys
65           70           75           80
Asp Tyr Arg Glu Lys Val Glu Ser Glu Leu Arg Ser Ile Cys Thr Thr
          85           90           95
Val Leu Glu Leu Leu Asp Lys Tyr Leu Ile Ala Asn Ala Thr Asn Pro
          100          105          110
Glu Ser Lys Val Phe Tyr Leu Lys Met Lys Gly Asp Tyr Phe Arg Tyr
          115          120          125
Leu Ala Glu Val Ala Cys Gly Asp Asp Arg Lys Gln Thr Ile Asp Asn
          130          135          140
Ser Gln Gly Ala Tyr Gln Glu Ala Phe Asp Ile Ser Lys Lys Glu Met
145          150          155          160
Gln Pro Thr His Pro Ile Arg Leu Gly Leu Ala Leu Asn Phe Ser Val
          165          170          175
Phe Tyr Tyr Glu Ile Leu Asn Asn Pro Glu Leu Ala Cys Thr Leu Ala
          180          185          190
Lys Thr Ala Phe Asp Glu Ala Ile Ala Glu Leu Asp Thr Leu Asn Glu
          195          200          205
Asp Ser Tyr Lys Asp Ser Thr Leu Ile Met Gln Leu Leu Arg Asp Asn
210          215          220
Leu Thr Leu Trp Thr Ser Asp Ser Ala Gly Glu Glu Cys Asp Ala Ala
225          230          235          240
Glu Gly Ala Glu Asn
          245

```

<210> SEQ ID NO 7

<211> LENGTH: 245

<212> TYPE: PRT

<213> ORGANISM: Homo sapiens

<220> FEATURE:

<223> OTHER INFORMATION: 14-3-3 zeta protein

<220> FEATURE:

<223> OTHER INFORMATION: Alternate nomenclature: Tyrosine
3-monooxygenase/tryptophan 5-monooxygenase activation protein,
zeta isoform, YWHAZ; brain protein 14-3-3, zeta isoform

<400> SEQUENCE: 7

```

Met Asp Lys Asn Glu Leu Val Gln Lys Ala Lys Leu Ala Glu Gln Ala
1           5           10           15
Glu Arg Tyr Asp Asp Met Ala Ala Cys Met Lys Ser Val Thr Glu Gln
          20           25           30
Gly Ala Glu Leu Ser Asn Glu Glu Arg Asn Leu Leu Ser Val Ala Tyr
          35           40           45
Lys Asn Val Val Gly Ala Arg Arg Ser Ser Trp Arg Val Val Ser Ser
          50           55           60

```

-continued

Ile Glu Gln Lys Thr Glu Gly Ala Glu Lys Lys Gln Gln Met Ala Arg
 65 70 75 80

Glu Tyr Arg Glu Lys Ile Glu Thr Glu Leu Arg Asp Ile Cys Asn Asp
 85 90 95

Val Leu Ser Leu Leu Glu Lys Phe Leu Ile Pro Asn Ala Ser Gln Ala
 100 105 110

Glu Ser Lys Val Phe Tyr Leu Lys Met Lys Gly Asp Tyr Tyr Arg Tyr
 115 120 125

Leu Ala Glu Val Ala Ala Gly Asp Asp Lys Lys Gly Ile Val Asp Gln
 130 135 140

Ser Gln Gln Ala Tyr Gln Glu Ala Phe Glu Ile Ser Lys Lys Glu Met
 145 150 155 160

Gln Pro Thr His Pro Ile Arg Leu Gly Leu Ala Leu Asn Phe Ser Val
 165 170 175

Phe Tyr Tyr Glu Ile Leu Asn Ser Pro Glu Lys Ala Cys Ser Leu Ala
 180 185 190

Lys Thr Ala Phe Asp Glu Ala Ile Ala Glu Leu Asp Thr Leu Ser Glu
 195 200 205

Glu Ser Tyr Lys Asp Ser Thr Leu Ile Met Gln Leu Leu Arg Asp Asn
 210 215 220

Leu Thr Leu Trp Thr Ser Asp Thr Gln Gly Asp Glu Ala Glu Ala Gly
 225 230 235 240

Glu Gly Gly Glu Asn
 245

<210> SEQ ID NO 8
 <211> LENGTH: 3015
 <212> TYPE: DNA
 <213> ORGANISM: Homo sapiens
 <220> FEATURE:
 <223> OTHER INFORMATION: 14-3-3 beta cDNA (NM_139323) 3015 nt

<400> SEQUENCE: 8

gcggaagtgg agctaccgcc accgccgccg ccgattccgg agccggggta gtcgccgccg 60
 ccgccgccgc tgcagccact gcaggcaacc ctgccgccgc ctgagtagtg ggcttaggaa 120
 ggaagaggtc atctcgctcg gagcttcgct cggaagggtc tttgttcctt gcagccctcc 180
 cacgggaatg acaatggata aaagtgagct ggtacagaaa gccaaactcg ctgagcaggc 240
 tgagcgatat gatgatattg ctgcagccat gaaggcagtc acagaacagg ggcattgaat 300
 ctccaacgaa gagagaaatc tgctctctgt tgcttacaag aatgtggtag ggcgccgccg 360
 ctcttctctg cgtgtcatct ccagcattga gcagaaaaca gagaggaatg agaagaagca 420
 gcagatgggc aaagagtacc gtgagaagat agaggcagaa ctgcaggaca tctgcaatga 480
 tgttctggag ctgttggaaca aatatcttat tcccaatgct acacaaccag aaagtaaggt 540
 gttctacttg aaaatgaaaag gagattatct taggtatctt tctgaagtgg catctggaga 600
 caacaaacaa accactgtgt cgaactccca gcaggcttac caggaagcat ttgaaattag 660
 taagaaagaa atgcagccta cacacccaat tegtcttggc ctggcactaa atttctcagt 720
 cttttactat gagattctaa actctcctga aaaggcctgt agcctggcaa aaacggcatt 780
 tgatgaagca attgctgaat tggatacgtt gaatgaagag tcttataaag acagcactct 840
 gatcatgcag ttacttaggg acaatctcac tctgtggaca tcggaaaacc agggagacga 900
 aggagacgct ggggagggag agaactaatg tttctcgtgc tttgtgatct gttcagtgct 960
 actctgtacc ctcaacatat atcccttggt cgataaaaaa aaaaaaaaaa aaaaaaagag 1020

-continued

```

aatcgtacgt cgactttcga tttttcacag cctcagccta ggaaaaatgg ttcattgggat 1080
aaacagctgg tatttgtatc taaaactcag attggtcaca taaatgccac ggcatcccca 1140
agttttgatt ttgattaaca ttgacaggat tactgtgtgt ttaatttttt aaaaactgaa 1200
cactgtgatt atgggggttt gtaattttagc agaactctta ctggtagaaa aaatagacct 1260
gaattatgtg taactttttg gaaggtttaa tctgatataa aaataatcat tgaatacaaa 1320
ttccattgta aagttgtaca gaaagttata gagattatat tgtgatgctg gaacttggag 1380
tgagacacac atcatttggc atttgagttg aatggtaatt cacagtaatg ctgccgttgt 1440
tcgggactta aagacacttg acctgtttgg gctgttgcca cttaaaagt catgaccaca 1500
aatgtccaca gtgtcttctc ctgaggaaac tcgaatcctg aaatggaaat tctttgtggc 1560
agataactgg cttatgacac cttgaaaagt tcaagtgtc atataacaca ccacactgaa 1620
cccccttcc tacagcaata tgttccatg gttaccaatt tgcaactgtg gcttcaatag 1680
tggaatctac tttcattgtt aacctgagc taaagaaaa aagccgtgtg ttttatgaat 1740
gaccttatct gtttctgga taataccttt aagaataatg tctgagtcg gccgtgggtg 1800
tgcgtgcatc tagtcccaac tatttgggag gctgaggcag gaggatcgtc tgagcccagg 1860
agtttaaagc tgcagtgccc tgtgggtgca cctgtgaata actgcactcc agcctgggca 1920
acatagcgag acctcatctc caaaaaagaa aacaaaaaac aaaaaagga atgatgttct 1980
gtagagatgg cctttcactt gaggagactc cagttttcag gttcttcta gctcggggct 2040
tttaaathtt gaaatctaaa cattctttcc caccatcctt tttgactgtt gaecttgggt 2100
ttctcttcta agtttctgtc cctctgttc cttacttttt ttcctttttg aattctatct 2160
ttatctgtct tttgttcaat ttttaagtct atatatgggc aggggtgaga gacattactg 2220
agcaccttgg tgagcaagcc tggctttaa gattggagaa gagcttctgg caccagaacc 2280
ctgtcttctc ccagttctca acacgggtgt gctcttcagt cataccgaa tctgaatcaa 2340
aaaagtatht taaatatcc atgatttctc cctgtattga ggtagccct gatcatgctt 2400
tttgtgctg tcaccaggtc tccaagtgc actcatccag gtcagtgctc agatgtgttt 2460
aaggagacc tatattcagg gaagttgcgt gaacactgca gtggggagaa ttgagaatag 2520
tcaggcctat cagtctcaca gaatcaccct tctacctttg atattccact tagctgtaga 2580
gtccatctgt ttgtccatct gctgaaatga gaaaagaaaa atttatgac tgatttaaaa 2640
caaaccaaaa aaaaagaaaa aaacaaaaaa aaaaatccct cctttctagc tgaacaaaa 2700
tgtgcagtta atacttgccg cttgaaaatg cagtagtgaa tgggaacca agcctgtctg 2760
tatactgggt agctcttttc ttgctttgtt tttcttacc agtattctgc ctaacgtttg 2820
cttctgtgat ggttatattg cctagcaagc acaccgtgg ttgtgaaaat agtatagcaa 2880
aaaagaaaa tccccgggta ttgatgtact agatttgtgt atgtcttta aacagttcta 2940
gtttcacctt acacagaata atcaggaaaa gtgtaaaaat tcaaaagtga aataaaaatt 3000
ttatcagtta aaaaa 3015

```

<210> SEQ ID NO 9

<211> LENGTH: 3747

<212> TYPE: DNA

<213> ORGANISM: Homo sapiens

<220> FEATURE:

<223> OTHER INFORMATION: 14-3-3 gamma cDNA (NM_012479) 3747 nt

<400> SEQUENCE: 9

-continued

cagcagccgc agccgectcg egcccgggtcc cgcgggtcgca gctccagccg cctcctccgc	60
gcagccgccc cctcagctgc tcgctctgtg ggtcggtcct ctcggcact tgggctccag	120
tcgcccctc caagcccttc agggccccc agtgtcctcc tccttctccg gccagacca	180
gccccgcgaa gatggtggac cgcgagcaac tgggtcagaa agcccgctg gccgagcagg	240
cggagcgcta cgacgacatg gcccgggcca tgaagaacgt gacagagctg aatgagccac	300
tgtcgaatga ggaacgaaac cttctgtctg tggcctacaa gaacgttggtg ggggcacgcc	360
gctcttctcg gaggtcatc agtagcattg agcagaagac atctgcagac ggcaatgaga	420
agaagattga gatggtccgt gcgtaccggg agaagataga gaaggagtgt gaggtgtgt	480
gccaggatgt gctgagcctg ctggataact acctgatcaa gaattgcagc gagaccagt	540
acgagagcaa agtgttctac ctgaagatga aaggggacta ctaccgtac ctggctgaag	600
tggccaccgg agagaaaagg gcgacggtgg tggagtcttc cgagaaggcc tacagcgaag	660
cccacgagat cagcaaagag cacatgcagc ccaccaccc catccgatta ggctggctc	720
ttaactactc cgtcttctac tatgagatcc agaacgcccc agagcaagcg tgccacttgg	780
ccaagaccgc gttcgacgac gccatcgccc agcttgacac cctcaacgag gactcctaca	840
aggactccac gtcctcatg cagctcctcc gcgacaacct cacgctctgg acgagcgacc	900
agcaggacga cgatggcggc gaaggcaaca attaaggccc caggggaact ggcagcgac	960
gcggatgcta ctactgcagt ctttatTTTT ttcccatgag ttgggggtcg ggtgggggag	1020
ggaaaaggag ggtgatcctt cccagggaga aaccacgac ctgtcctgtc tttgatgcc	1080
tccttgacat ttttgccaaa ataccactag tggaaagtca ggctagctgt gctggtattg	1140
gaatagcagc ctcacactgg cgtctggact gttctgtaga ttcattgcaag tggagctgtc	1200
tgtcttaaat ttaacttatt gctagataat agggTTTTca gatgaaaaga aaacttaaag	1260
aggaatggcc ctcattcagt aagtctgtg gttccagtaa ggatttttat gtacatacgc	1320
tctcgtctct cgttttgggt actttctatc tcatctgtct cggtctgca tgttttccag	1380
gggtagcct acagacatgg aacagtgtaa atcccagact gacagactta gaacctgagg	1440
tctcattcat ccttatggtt taggccttgc cagttttccg aagtctctga ttagttgaca	1500
gtattaacac taaattgcag tttacagtat ttctacatta cagccatag taacatcaag	1560
ccatcgattg tgaacttttc ctttgctagt tgtttgggct ttaacatcct tattcagcct	1620
tatccagggt ggttttgcgt ttgatcggtc tcttaggcta aatgagaatg aaagcgactt	1680
caggTTTTtg gttcataggt gctcggcagg tggctgtggg attTTTTTT tttttggctc	1740
ttctttcctc ttaacgtaaa tccaccacca aaattattaa tcctcttgag agaaacgtga	1800
aacgccacaa aaatagagaa aattcaggtc tgtatgtcat ggatcgtgtt ggtattttca	1860
gagaacatcc cgcttctgaa gctgctgcag ctccctcctc agggatcaca ctgccgtcac	1920
ccactctgca ctggggcggt tcctactgcg cctcgtgctg gcggacgcag ctgggtgcag	1980
aagctgtggg gtcggagagg cgtttggaga aggtctgtgg tgcagtgtgt gaaaattcag	2040
gtgctagaag cctactggta gaaaaaccca aaaggaagag ctatatecct aaccattctg	2100
tccaatttct ggagccttct cagtgtgtca gtttttctc cccgaagaca ctcttcccc	2160
aagtaattgt aggaagataa aaaaactggt accagataac aaacactgaa ctctatttg	2220
accagaactt tttcctctcg agatagtttt ttctttttaa tgaaaaaagc ataggaattg	2280
gagattggct tgtctcaagc agccagtgca cttttggaat tgacggaaac aacgttgcta	2340
tttccacca tttgtttctg gcagccttaa ggccctcatt ctcatctcgg gtgaatctgt	2400

-continued

```

ctatctgtga acgtggcccc catgtgcatt ctttttttta tatatataaa gtcagtgacg 2460
aggaactccc gagacgtgta atgacaccac acttgtttcc tttgtttcct tgtttttatt 2520
aggcaagaag aggtgtgagt aattgaggaa aaactgacag atgcttttgc taataccaaa 2580
attgagctta caattaggaa ctgagtatgt gtaacaggat acaggtgaca gtgaagatag 2640
aagaaccacg atgaccacag actcaatgtg ctctgtaaca tcgcacagtt taccagcat 2700
gactttcctt aggaggcccc ctctcacgc tagagtaaaa gtcccagtta agtgaagcct 2760
accagaagaa ctagtagaag aagctttgcc gcttttgtgc ctctcacagg cgcttaaagt 2820
cattgccatg ggaggaagac gatttggggg gggagggggg gggcagggtta ggtggggcct 2880
tcctaattt atcttcattg ccagtgagca gtgttgcgtt tttccttga gcatttgaa 2940
atgatttact ggaattacaa aacctatttt tcctttaaat ttcagctttg gctctggctg 3000
cttttagaa taatgcaaga taaaatcac acctgagggc tgaaaacgga gagggaatgg 3060
gagacttgat atttaagcag cttgaatggt tttcttttcc tttattttta aagaaatgca 3120
cttgccatg atactgtctc tccagtgaaa tgattactcc tccattactc tattgataca 3180
atattgtgca tgcagtgtgt gtatttctat acagtagctt gaaattgatt aacttatact 3240
gtaggtgtta tgtattccta tgacaaaaaa aattaagtct tcaaattttt taaaggtttt 3300
ttttttttaa ttttaatttt ccttttgggg gtaaagtgtg ctctaccaa tagtgattgt 3360
aacaattga tctgttttgg atgttgctat agtgacatgc agttatata tttgttttta 3420
aaaggggggg agcaaaagaa acaccagtgt tagcttaato ttaatgtctg gtgtttgtca 3480
tggtgaaatt ataactatta cagtgttggg gaacaacaaa tatgttctct gaatgagcct 3540
ttgtgctttt tgtcatgtta tgcagtgaac tatttttaag gtctaactcag tgattatttt 3600
tccagctccg tgtttctcta aggaattatt tcacacacgg accatcttta gcagtttctt 3660
cagtgatgga atatcatgaa tgtgagtcac tatgtagctg tcgtacattg agcaataaa 3720
cttacagatc tgaaaaaaaa aaaaaaa 3747

```

```

<210> SEQ ID NO 10
<211> LENGTH: 1810
<212> TYPE: DNA
<213> ORGANISM: Homo sapiens
<220> FEATURE:
<223> OTHER INFORMATION: 14-3-3 epsilon cDNA (NM_006761) 1810 nt
<400> SEQUENCE: 10

```

```

cggattgagg cgccgccatt tttgctgccc ggacgcggag cgagaggctg agagagtcgg 60
agacactatc cgcttccatc cgtcgcgcag acctgcccgg agccgctgcc gctatggatg 120
atcgagagga tctggtgtac caggcgaagc tggccgagca ggctgagcga tacgacgaaa 180
tggtggagtc aatgaagaaa gtagcagggg ttgatgtgga gctgacagtt gaagaaagaa 240
acctcctatc tgttgcatat aagaatgtga ttggagctag aagagcctcc tggagaataa 300
tcagcagcat tgaacagaaa gaagaaaaca agggaggaga agacaagcta aaaatgattc 360
gggaatatcg gcaaatggtt gagactgagc taaagttaat ctgttgtgac attctggatg 420
tactggacaa acacctcatt ccagcagcta aactggcga gtccaagggt ttctattata 480
aatgaaagg ggactaccac aggtatctgg cagaatttgc cacaggaac gacaggaagg 540
aggctgcgga gaacagccta gtggcttata aagctgctag tgatattgca atgacagaac 600
ttccaccaac gcactctatt cgcttaggtc ttgctctcaa tttttccgta ttctactacg 660

```

-continued

```

aaattcttaa ttcccctgac cgtgcctgca ggttgcaaaa agcagctttt gatgatgcaa 720
ttgcagaact ggatacgtcg agtgaagaaa gctataagga ctctacactt atcatgcagt 780
tgttacgtga taactctgaca ctatggactt cagacatgca gggtgacggt gaagagcaga 840
ataaagaagc gctgcaggac gtggaagacg aaaatcagtg agacataagc caacaagaga 900
aaccatctct gaccaccccc tccctcccat cccacccttt ggaaactccc cattgtcact 960
gagaaccacc aaactctgact tttacatttg gtctcagaat ttaggttcct gccctgttgg 1020
tttttttttt tttttttttt aaacagtttt caaaagtctt taaaggcaag agtgaatttc 1080
tgtggatttt actggtccca gcttttaggt tctttaagac actaacagga ctacatagag 1140
gctttttcag cattactgtg tcgtctccgt gccagatgtg gcaagatcac cattagcaaa 1200
tggaaattac atttgaaagc cattagactt ataggtgatg caagcatcta agagagaggt 1260
taatcacact atagaggcat aagtggatc agttttcatt tttetaattg tttaaactgt 1320
gttttatacc agtgtttgca agtaattggg tgtagcttg agatggtaa agtggtttg 1380
gggagggact tcgttgtaat ggttttgctg taaaaaatgt ttccaactcc gctgaaatgt 1440
tgctgaaaag catggtgctg gtaacagttc aacaatccgt ggctgctcat tctgcctac 1500
ttactctcc cactgaagca ggttagcgtt gaagtggtta tggaaaagcc tgcagcctg 1560
ttcaattctt ttgtttcttc tccctcccc tccccctacc tccctccct cactcctccc 1620
ctccttegct cgctcaacct cttttgttca gtatgtgtaa cttgaagcta atttgtacta 1680
ctggatatct gactggagcc acagatacag aatctgtatt gttcttactg aaacacagca 1740
tggaaattaac attaaactta aataaaacaa acctaaatta aaaaaaaaaa aaaaaaaaaa 1800
aaaaaaaaaa 1810

```

```

<210> SEQ ID NO 11
<211> LENGTH: 1807
<212> TYPE: DNA
<213> ORGANISM: Homo sapiens
<220> FEATURE:
<223> OTHER INFORMATION: 14-3-3 eta cDNA (NM_003405) 1807 nt

```

```

<400> SEQUENCE: 11

```

```

gcggccgct ctccctccc ggcgttgtcc gcggcgcgag ccacagcgcg cggggcgcg 60
cagcgagagg gcgcgagcgc cggcgctgcc tgcagcctgc agcctgcagc ctccggcccg 120
ccggcgagcc agtgcgcgtg cgcggcggcg gcctccgcag cgaccgggga ggggactgac 180
cggcgggagg gctagcgagc cagcgggtgt aggcgcgagg cgaggccgag ccgcgagcga 240
catgggggac cgggagcagc tgcctgcagc ggcgcggctg gccgagcagg cggagcctca 300
cgacgacatg gcctccgcta tgaaggcggg gacagagctg aatgaacctc tctccaatga 360
agatcgaaat ctctctctct tggcctacaa gaatgtggtt ggtgccaggc gatcttctg 420
gagggtcatt agcagcattg agcagaaaaa catggctgat ggaaacgaaa agaaattgga 480
gaaagttaaa gcttaccggg agaagattga gaaggagctg gagacagttt gcaatgatgt 540
cctgtctctg cttgacaagt tccctgatcaa gaactgcaat gatttccagt atgagagcaa 600
gggtttttac ctgaaaatga agggtgatta ctaccgctac ttagcagagg tcgcttctg 660
ggagaagaaa aacagtgtgg tcgaagcttc tgaagctgcc tacaaggaag cctttgaaat 720
cagcaaagag cagatgcaac ccacgcctcc catccggctg ggctggccc tcaacttctc 780
cgtgttctac tatgagatcc agaatgcacc tgagcaagcc tgcctcttag ccaacaagc 840
cttcgatgat gccatagctg agctggacac actaaacgag gattcctata aggactccac 900

```

-continued

```

gctgatcatg cagttgctgc gagacaacct caccctctgg acgagcgacc agcaggatga 960
agaagcagga gaaggcaact gaagatcctt caggteccct ggcccttccct tcaccaccca 1020
ccccatcat caccgattct tccttgccac aatcactaaa tatctagtgc taaacctatc 1080
tgtattggca gcacagctac tcagatctgc actcctgtct cttgggaagc agtttcagat 1140
aatcatggg cattgctgga ctgatggttg ctttgagccc acaggagctc cctttttgaa 1200
ttgtgtggag aagtgtgttc tgatgaggca ttttactatg cctgttgatc tatgggaaat 1260
ctaggcgaaa gtaatgggga agattagaaa gaattagcca accaggctac agttgatatt 1320
taaaagatcc atttaaaaca agctgatagt gtttcgtaa gcagtacatc ttgtgcatgc 1380
aaaaatgaat tcaccctcc cacctcttcc ttcaattaat ggaaaactgt taagggaagc 1440
tgatacagag agacaacttg ctcccttcca tcagctttat aataaactgt ttaacgtgag 1500
gtttcagtag ctccctgggt ttgcctcttt aaattatgac gtgcacaaac cttcttttca 1560
atgcaatgca tctgaaagt ttgatacttg taactttttt tttttttgg ttgcaattgt 1620
ttaagaatca tggatttatt ttttgtaact ctttggtat tgctccttg taccctgaca 1680
gcgccatgty tgtcagccca tgtcaatcaa gatgggtgat tatgaaatgc cagacttcta 1740
aaataaatgt tttggaatc aatgggtaaa taaatgctgc tttggggata ttaaaaaaaa 1800
aaaaaaa 1807

```

```

<210> SEQ ID NO 12
<211> LENGTH: 2166
<212> TYPE: DNA
<213> ORGANISM: Homo sapiens
<220> FEATURE:
<223> OTHER INFORMATION: 14-3-3 tau cDNA (NM_006826) 2166 nt

```

```

<400> SEQUENCE: 12

```

```

gtggtgggac tcgctgctgc gcccgggaga cgtgaagctc tcgaggetcc tcccgtgctg 60
ggtcggcget cgcctcctct ctctcctccc tccgccccgg ccccgcccc gcgcccccca 120
tggagaagac tgagctgac cagaaggcca agctggccga gcaggccgag cgctacgacg 180
acatggccac ctgcatgaag gcagtgaacc agcagggcgc cgagctgtcc aacgaggagc 240
gcaacctgct ctccgtggcc tacaagaacg tggctggggg ccgaggtcc gcttgagggg 300
tcatctctag catcgagcag aagaccgaca cctccgacaa gaagttgcag ctgattaagg 360
actatcggga gaaagtggag tccgagctga gatccatctg caccacggtg ctggaattgt 420
tggataaata ttaatagcc aatgcaacta atccagagag taaggtcttc tatctgaaaa 480
tgaaggtgta ttacttccgg taccttgctg aagttgctg tggatgatgat cgaaaacaaa 540
cgatagataa ttoccaagga gcttaccagg aggcatttga tataagcaag aaagagatgc 600
aaccacaca cccaatccgc ctggggcttg ctcttaactt ttctgtattt tactatgaga 660
ttcttaataa cccagagctt gctcgcacgc tggctaaaac ggcttttgat gaggccattg 720
ctgaacttga tacaactgaat gaagactcat acaaagacag caccctcctc atgcagttgc 780
ttagagacaa cctaactctt tggacatcag acagtgcagg agaagaatgt gatgcggcag 840
aaggggctga aactaaatc catacaggtg gtcaccttc tttccttcaa gaaacctttt 900
tacacatctc cattccttat tccacttggg tttcctatag caaagaaacc cattcatgtg 960
tatggaatca actgtttata gtcttttcc actgcagctt tgggaaaact tcattccttg 1020
atgtgtgttt gtcttggcct tcctgggtg cagtactgct gtagaaaagt attaatagct 1080

```

-continued

```

tcatttcata taaacataag taactcccaa acacttatgt agaggactaa aaatgtatct 1140
ggattttaag taactctaac cagttctgca agtgactgtg ttttgattta ctgtgaaaat 1200
aagaaaatgt agttaattac aatttaaaga gtattccaca taacttctta atttctacat 1260
tccctccctt actcttcggg ggtttccttt cagtaagcaa cttttccatg ctcttaatgt 1320
attccttttt agtaggaatc cggaagtatt agattgaatg gaaaagcact tgccatctct 1380
gtctaggggt cacaaattga aatggctcct gtatcacata cggaggtcct gtgtatctgt 1440
ggcaacaggg agtttccctt ttcactcttt atttgetgct gtttaagtgg ccaacctccc 1500
ctcccaataa aaattcactt acacctcctg cctttgtagt tctggattc actttactat 1560
gtgatagaag tagcatgttg ctgccagaat acaagcattg cttttggcaa attaaagtgc 1620
atgtcatttc ttaatacact agaagggga aataaattaa agtacacaag tccaagtcta 1680
aaactttagt acttttccat gcagatttgt gcacatgtga gaggggtgcc agtttgtcta 1740
gtgattgtta ttagagagt tggaccacta ttgtgtgttg ctaatcattg actgtagtcc 1800
caaaaaagcc ttgtgaaaat gttatgcoct atgtaacagc agagtaacat aaaataaaag 1860
tacattttat aaaccattta ctatggcttt gtaacaattg cataccata ttttaaggga 1920
caggtgaatt tactactttc taaagtttat tgatacttcc cttttatgta aaatgtagta 1980
gtgataccta tatttccaca ttgtgcattg tgacacactt gtctagggat gcctggaagt 2040
gtataaaaatt ggactgcatt tcttagagtg ttttactata gatcagtctc atgggccatc 2100
tcttctcag atgtaaatga tatctggtta agtgttatat ggaataaagt ggacatttta 2160
aaacta 2166

```

<210> SEQ ID NO 13

<211> LENGTH: 1329

<212> TYPE: DNA

<213> ORGANISM: Homo sapiens

<220> FEATURE:

<223> OTHER INFORMATION: 14-3-3 sigma cDNA (NM_006142) 1336 nt

<400> SEQUENCE: 13

```

gagagacaca gagtccggca ttggtcccag gcagcagtta gcccgccgcc cgcctgtgtg 60
tccccagagc catggagaga gccagtctga tccagaaggc caagctggca gagcaggccg 120
aacgctatga ggacatggca gccttcatga aaggcgcctg ggagaagggc gagggagctct 180
cctgcgaaga gcgaaacctg ctctcagtag cctataagaa cgtgggtgggc ggccagaggg 240
ctgcctggag ggtgctgtcc agtattgagc agaaaagcaa cgaggagggc tccgaggaga 300
agggggccga ggtgcgtgag taccgggaga aggtggagac tgagctccag ggcgtgtgag 360
acaccgtgct gggcctgctg gacagccacc tcatcaagga ggccggggac gccgagagcc 420
gggtcttcta cctgaagatg aagggtgact actaccgcta cctggccgag gtggccaccg 480
gtgacgacaa gaagcgcctc attgactcag cccggtcagc ctaccaggag gccatggaca 540
tcagcaagaa ggagatgccg cccaccaacc ccatccgcct gggcctggcc ctgaaacttt 600
ccgtcttcca ctacgagatc gccaacagcc ccgaggagcc catctctctg gccaaagacca 660
ctttcgacga ggccatggct gatctgcaca ccctcagcga ggactcctac aaagacagca 720
ccctcatcat gcagctgctg cgagacaacc tgacactgtg gacggccgac aacgcggggg 780
aagagggggg cgaggctccc caggagcccc agagctgagt gttgcccgcc accgccccgc 840
cctgccccct ccagtcccc accctgccga gaggactagt atgggggtggg aggccccacc 900
cttctccccct aggcctgttt cttgctccaa agggctccgt ggagagggac tggcagagct 960

```

-continued

```

gaggccacct ggggctgggg atcccactct tcttgacgt gttgagcgca cctaaccact 1020
ggtcacgccc ccaccctgc tctccgcacc cgcttctctc cgaccccagg accaggctac 1080
tttccccctc ctcttgccct cctcctgccc ctgctgcctc tgatcgtagg aattgaggag 1140
tgtcccgctc tgtggtgag aactggacag tggcaggggc tggagatggg tgtgtgtgtg 1200
tgtgtgtgtg tgtgtgtgtg tgtgcccgcg cgccagtgca agaccgagat tgagggaaaag 1260
catgtctgct ggggtgtgacc atgtttcttc tcaataaagt tcccctgtga cactcaaaaa 1320
aaaaaaaaa 1329

```

```

<210> SEQ ID NO 14
<211> LENGTH: 2876
<212> TYPE: DNA
<213> ORGANISM: Homo sapiens
<220> FEATURE:
<223> OTHER INFORMATION: 14-3-3 zeta cDNA (NM_145690) 2876 nt

```

```

<400> SEQUENCE: 14

```

```

gcctgtgagc agcgagatcc agggacagag tctcagcctc gccgctgctg ccgcccggc 60
cgcccagaga ctgctgagcc cgtccgtccg ccgccaccac cactccgga cacagaacat 120
ccagtcacgg ataaaaatga gctggttcag aaggccaaac tggccgagca ggtgagcga 180
tatgatgaca tggcagcctg catgaagtct gtaactgagc aaggagctga attatccaat 240
gaggagagga atcttctctc agttgcttat aaaaatgttg taggagccc taggtcatct 300
tggagggctc tctcaagat tgaacaaaag acggaagggtg ctgagaaaa acagcagatg 360
gctcgagaat acagagagaa aattgagacg gagctaagag atatctgcaa tgatgtactg 420
tctcttttgg aaaagtctt gatccccaat gcttcacaag cagagagcaa agtcttctat 480
ttgaaaatga aaggagatta ctaccgttac ttggctgagg ttgccgctgg tgatgacaag 540
aaagggattg tcgatcagtc acaacaagca taccaagaag cttttgaaat cagcaaaaag 600
gaaatgcaac caacacatcc tatcagactg ggtctggccc ttaacttctc tgtgttctat 660
tatgagattc tgaactcccc agagaaaagg tgctctcttg caaagacagc ttttgatgaa 720
gccattgctg aacttgatac attaatgaa gagtcataca aagacagcac gctaataatg 780
caattactga gagacaactt gacattgtgg acatcggata cccaaggaga cgaagctgaa 840
gcaggagaag gaggggaaaa ttaaccggcc ttccaacttt tgtctgcctc attctaaaat 900
ttcacagta gaccatttgt catccatgct gtcccacaaa tagttttttg tttacgattt 960
atgacagggt tatgttactt ctatttgaat ttctatattt cccatgtggt ttttatgttt 1020
aatattaggg gagtagagcc agttaacatt tagggagtta tctgttttca tcttgagggtg 1080
gccaatatgg gtagtgtaa tttttatata agttataagt gtttggcata gtacttttgg 1140
tacattgtgg cttcaaaaagg gccagtgtaa aactgcttcc atgtctaagc aaagaaaact 1200
gcctacatac tgggttctcc tggcggggaa taaaagggat cattggttcc agtcacaggt 1260
gtagtaattg tgggtacttt aaggtttgga gcacttaca ggctgtggta gaatcatacc 1320
ccatggatac cacatattaa accatgtata tctgtggaat actcaatgtg tacacctttg 1380
actacagctg cagaagtgtt ccttagaca aagttgtgac ccattttact ctggataagg 1440
gcagaaaagg ttcacattcc attatttga aagttacctg ctgttagctt tcattatttt 1500
tgctacactc attttatttg tatttaaatg ttttaggcaa cctaagaaca aatgtaaaag 1560
taaagatgca gaaaaatga attgcttgggt attcattact tcatgtatat caagcacagc 1620

```

-continued

```

agtaaaacaa aaacccatgt atttaacttt ttttttaggat ttttgctttt gtgatttttt 1680
tttttttttt ttgatacttg cctaacatgc atgtgctgta aaaatagtta acagggaaat 1740
aacttgagat gatggctagc tttgtttaat gtcttatgaa attttcatga acaatccaag 1800
cataattggt aagaacacgt gtattaaatt catgtaagtg gaataaaagt tttatgaatg 1860
gacttttcaa ctactttctc tacagctttt catgtaaatt agtcttggtt ctgaaacttc 1920
tctaaaggaa attgtacatt ttttgaaatt tttccttat tccctctgg cagctaattg 1980
gctcttacca agtttaacaa caaaatttat cataacaaaa atactactaa tataactact 2040
gtttccatgt cccatgatcc cctctcttcc tccccacct gaaaaaaatg agttcttatt 2100
ttttctggga gaggggggga ttgattagaa aaaaatgtag tgtgttccat ttaaaatttt 2160
ggcatatggc attttctaac ttaggaagcc acaatgttct tggcccatca tgacattggg 2220
tagcattaac tgtaagtttt gtgcttccaa atcacttttt ggtttttaag aatttcttga 2280
tactcttata gctgccttc aattttgatc ctttattctt tctatttgc agtgacaaa 2340
gattaccttc ctgttttagc cttctgtctt gtcaccaacc attcttactt ggtggccatg 2400
tacttgaaa aagcccgcat gatctttctg gctccactca gtgtctaagg caccctgctt 2460
ccttgcttg catcccacag actatctccc tcatctatt tactgcagca aatctctcct 2520
tagttgatga gactgtgttt atctcccttt aaaacccctac ctatctgaa tggctctgca 2580
ttgtctgctt ttaaaatcct tctctttctt tctctctcta ttctctaaat aatgatgggg 2640
ctaagttata cccaaagctc actttacaaa atatttctc agtactttgc agaaaacacc 2700
aaacaaaaat gccattttaa aaaaggtgta ttttttcttt tagaatgtaa gctcctcaag 2760
agcagggaca atgtttcttg tatgttctat tgtgcctagt aactgtaaa tgctcaataa 2820
atattgatga tgggagggcg tgagtcttga tgataaggg gagaaactga aatccc 2876

```

```

<210> SEQ ID NO 15
<211> LENGTH: 31
<212> TYPE: DNA
<213> ORGANISM: Artificial Sequence
<220> FEATURE:
<223> OTHER INFORMATION: Description of Artificial Sequence: Synthetic
        primer used for PCR amplification of the 14-3-3 eta cDNA

```

```
<400> SEQUENCE: 15
```

```
gcgaattcct gcagcgggcy cggctggccg a 31
```

```

<210> SEQ ID NO 16
<211> LENGTH: 31
<212> TYPE: DNA
<213> ORGANISM: Artificial Sequence
<220> FEATURE:
<223> OTHER INFORMATION: Description of Artificial Sequence: Synthetic
        primer used for PCR amplification of the 14-3-3 eta cDNA

```

```
<400> SEQUENCE: 16
```

```
gctcgagcct gaaggatctt cagttgcctt c 31
```

The invention claimed is:

1. A method for determining the efficacy of a therapeutic regimen in an arthritic patient, comprising:

administering a therapeutic approach to a patient diagnosed with arthritis;

obtaining a test biological sample from said patient, wherein said test sample is selected from the group consisting of blood, serum, plasma, and synovial fluid;

detecting the presence or relative amount of the eta isoform of the 14-3-3 protein in the test sample; wherein said detection step comprises contacting the test sample with a non-human anti-human 14-3-3 protein antibody that is isoform specific for the 14-3-3 eta protein; and

using the presence or relative amount of the 14-3-3 eta protein to establish the efficacy of the therapeutic regimen in said arthritic patient; wherein a decreased

39

level of said 14-3-3 eta protein in said test sample in comparison with a previous sample from said patient is indicative of the efficacy of an ongoing therapeutic regimen.

2. The method according to claim 1, wherein said 14-3-3 eta isoform comprises the amino acid sequence of SEQ ID NO: 3.

3. The method according to claim 1, further comprising detection of at least one additional arthritis marker in said test sample useful for detecting and/or diagnosing arthritis in the test subject.

4. The method according to claim 3, wherein said at least one additional arthritis marker is a matrix metalloproteinase.

5. The method according to claim 1, wherein the arthritis is rheumatoid arthritis.

6. The method of claim 1, wherein the arthritis is early stage arthritis.

40

7. The method of claim 1, wherein the therapeutic approach is the use of non-steroidal anti-inflammatory medications (NSAIDs).

8. The method of claim 1, wherein the therapeutic approach consists of any one of the cyclooxygenase2 specific inhibitors (CSIs), glucocorticoids, disease-modifying anti-rheumatic drugs (DMARDs), anti-TNF alpha neutralizing agents and immunosuppressive or cytotoxic drugs.

9. A method of detecting the eta isoform of the 14-3-3 protein in a patient, said method comprising:

- a. obtaining a test sample from a patient at risk or suspected of having arthritis, wherein the test sample is selected from the group consisting of blood, serum, plasma, and synovial fluid; and
- b. detecting whether 14-3-3 eta protein is present in the test sample by contacting the test sample with an anti-14-3-3 eta protein antibody and detecting binding between 14-3-3 eta protein and the antibody.

* * * * *

专利名称(译)	溶解蛋白质关节炎标志物		
公开(公告)号	US9791458	公开(公告)日	2017-10-17
申请号	US12/637730	申请日	2009-12-14
[标]申请(专利权)人(译)	GHAHARY·阿齐兹 MAKSYMOWYCH WOLODYMYR WALTER PETER KILANI RUHANGIZ TAGHI		
申请(专利权)人(译)	GHAHARY·阿齐兹 MAKSYMOWYCH WOLODYMYR WALTER PETER KILANI RUHANGIZ TAGHI		
当前申请(专利权)人(译)	英属哥伦比亚大学		
[标]发明人	GHAHARY AZIZ MAKSYMOWYCH WOLODYMYR WALTER PETER KILANI RUHANGIZ TAGHI		
发明人	GHAHARY, AZIZ MAKSYMOWYCH, WOLODYMYR WALTER PETER KILANI, RUHANGIZ TAGHI		
IPC分类号	A61K49/00 A61K38/00 G01N33/53 G01N33/68		
CPC分类号	G01N33/6893 G01N2800/102		
优先权	PCT/CA2007/000817 2007-05-09 WO 60/798712 2006-05-09 US		
其他公开文献	US20120003665A1		
外部链接	Espacenet USPTO		

摘要(译)

提供了用于诊断关节炎的方法和试剂盒。该方法可涉及检测血清或滑液样品中的14-3-3 η 或 γ 蛋白。

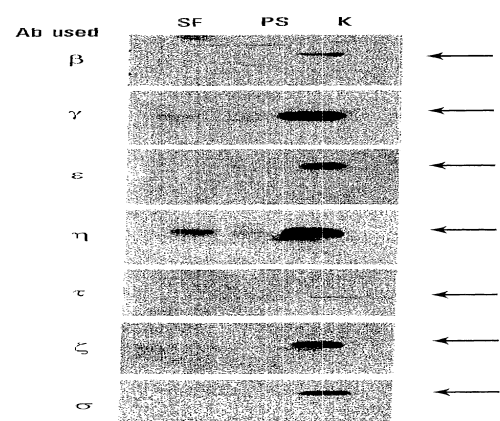


FIG. 1