



(19) **United States**

(12) **Patent Application Publication**  
**Castro et al.**

(10) **Pub. No.: US 2012/0190041 A1**  
(43) **Pub. Date: Jul. 26, 2012**

(54) **METHODS, IMMUNOASSAYS AND DEVICES FOR DETECTION OF ANTI-LIPOIDAL ANTIBODIES**

(60) Provisional application No. 60/693,120, filed on Jun. 21, 2005.

(75) Inventors: **Arnold R. Castro**, Atlanta, GA (US); **Robert W. George**, Conyers, GA (US)

**Publication Classification**

(51) **Int. Cl.**  
**G01N 33/53** (2006.01)  
**C12M 1/00** (2006.01)

(73) Assignees: **Department of Health and Human Services; The Government of the United States of America as represented by the Secretary of the**

(52) **U.S. Cl.** ..... **435/7.1; 435/287.2**

(57) **ABSTRACT**

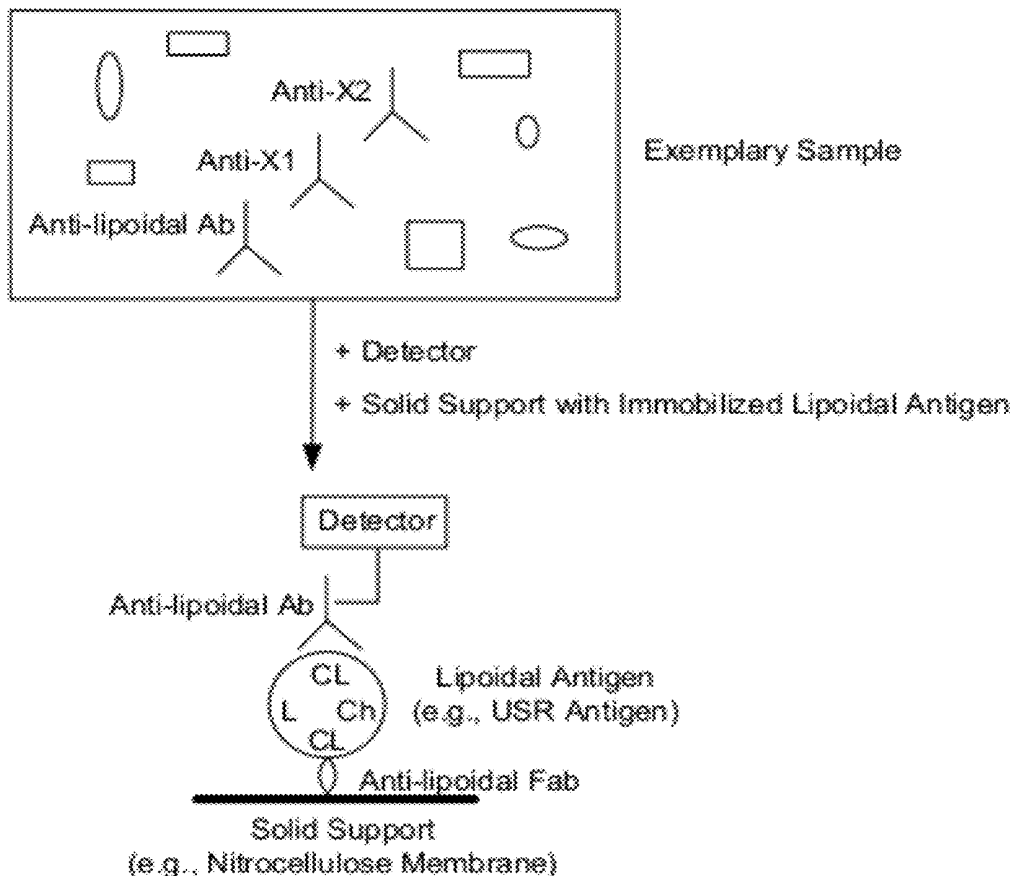
Compositions, methods and devices for the detection of anti-lipoidal antibodies and the diagnosis of disease, for example, syphilis, are described. In particular, a method for immobilizing a lipoidal antigen, comprising cardiolipin, lecithin, and cholesterol, on a solid support (such as a nitrocellulose membrane) is described. The ability to immobilize a lipoidal antigen on a membrane satisfies a long-felt need for membrane-based assay for the detection of anti-lipoidal antibodies. Also described are immunoassay devices for concurrently performing treponemal and non-treponemal tests for syphilis.

(21) Appl. No.: **13/421,681**

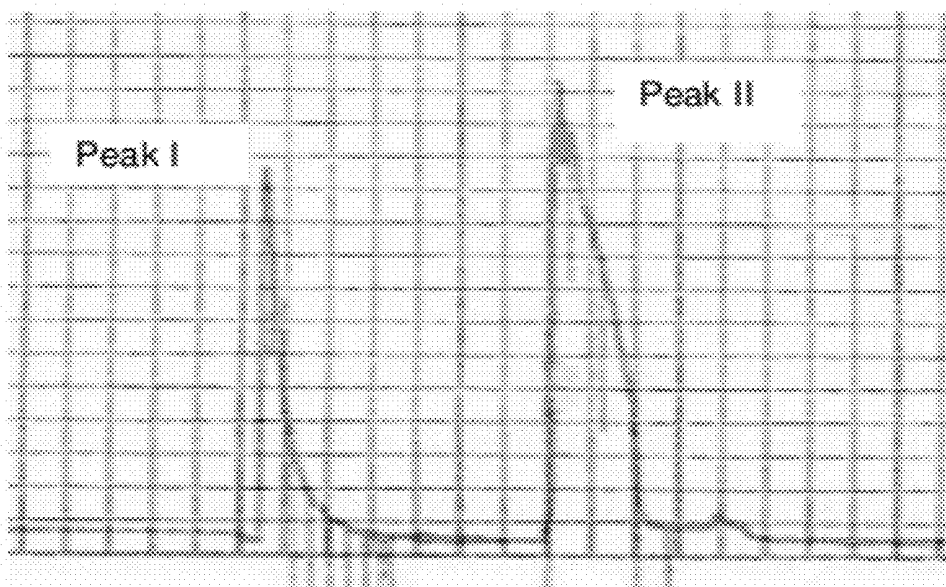
(22) Filed: **Mar. 15, 2012**

**Related U.S. Application Data**

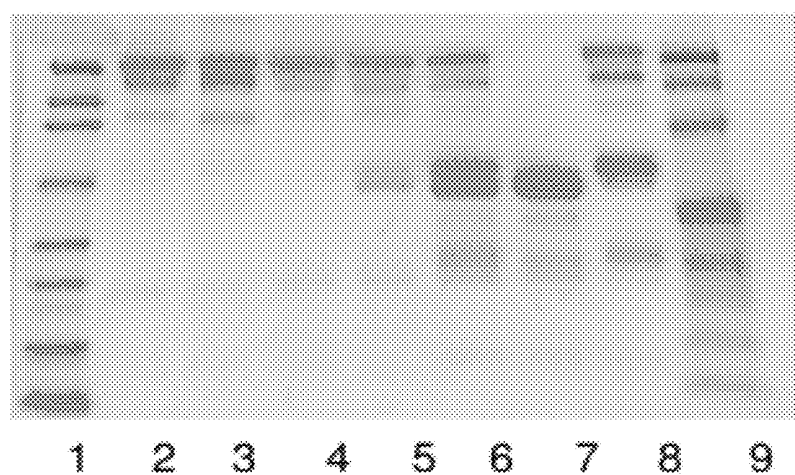
(63) Continuation of application No. 11/993,213, filed on Jan. 11, 2008, now abandoned, filed as application No. PCT/US06/24117 on Jun. 20, 2006.



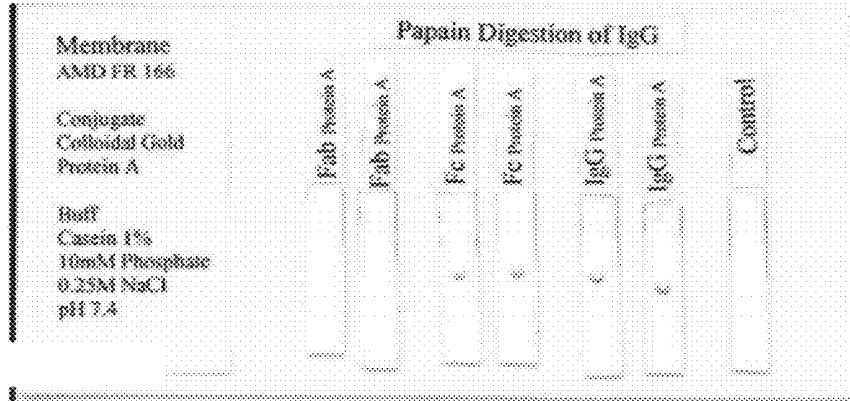
**FIG. 1**



**FIG. 2**



**FIG. 3**



**FIG. 4**

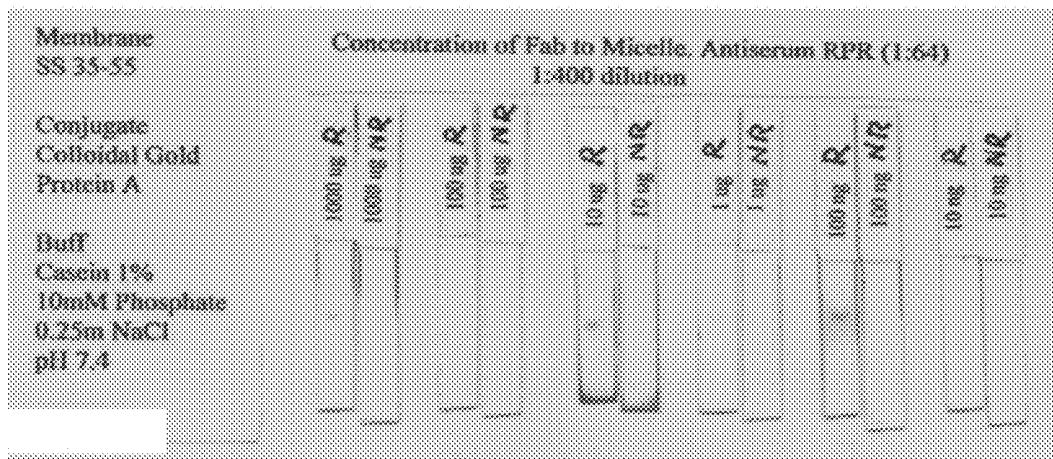


FIG. 5

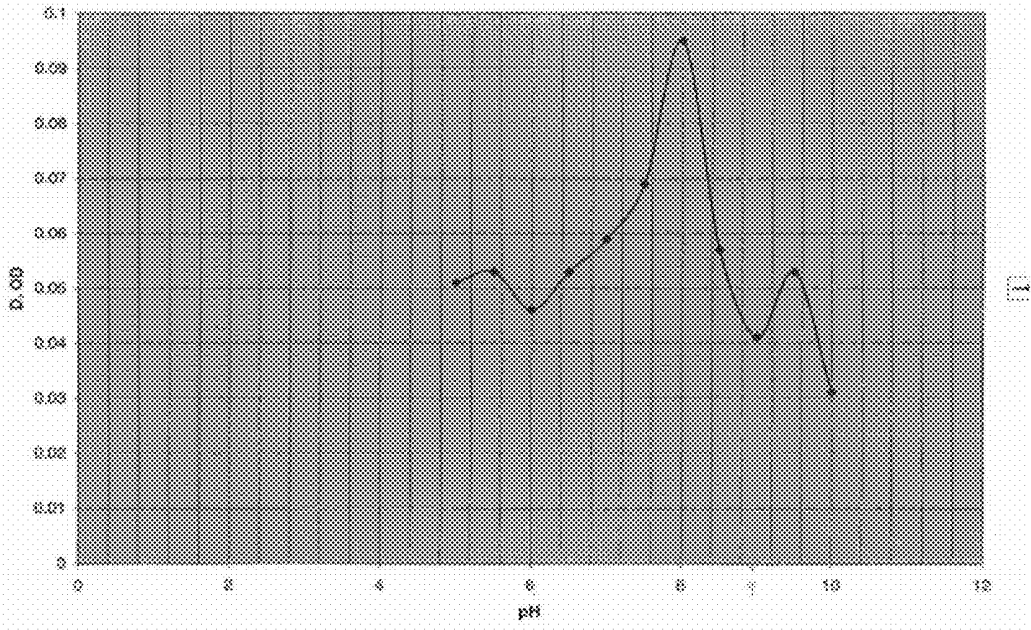


FIG. 6

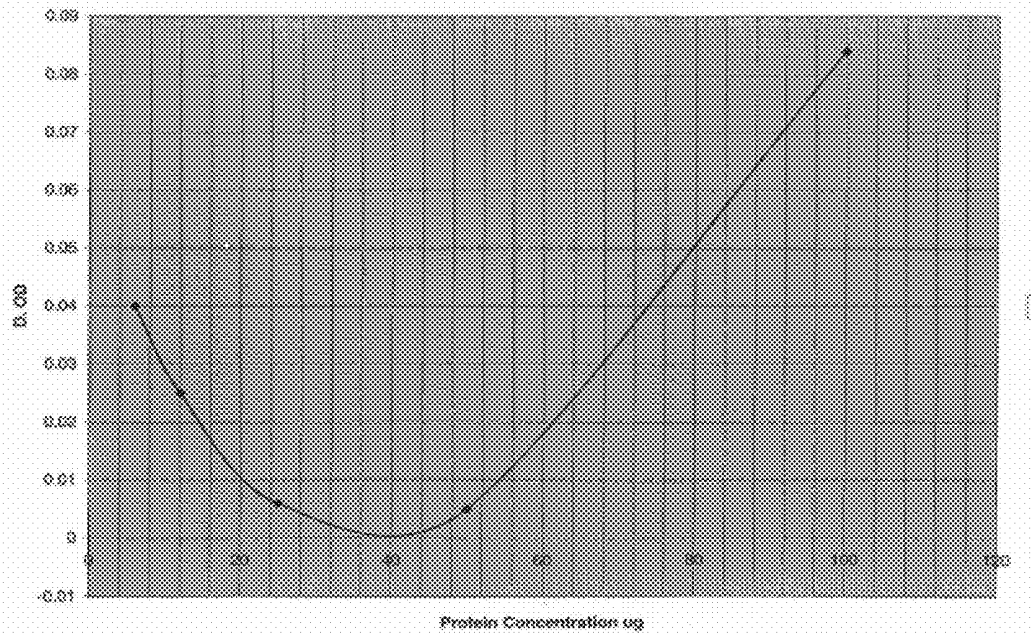
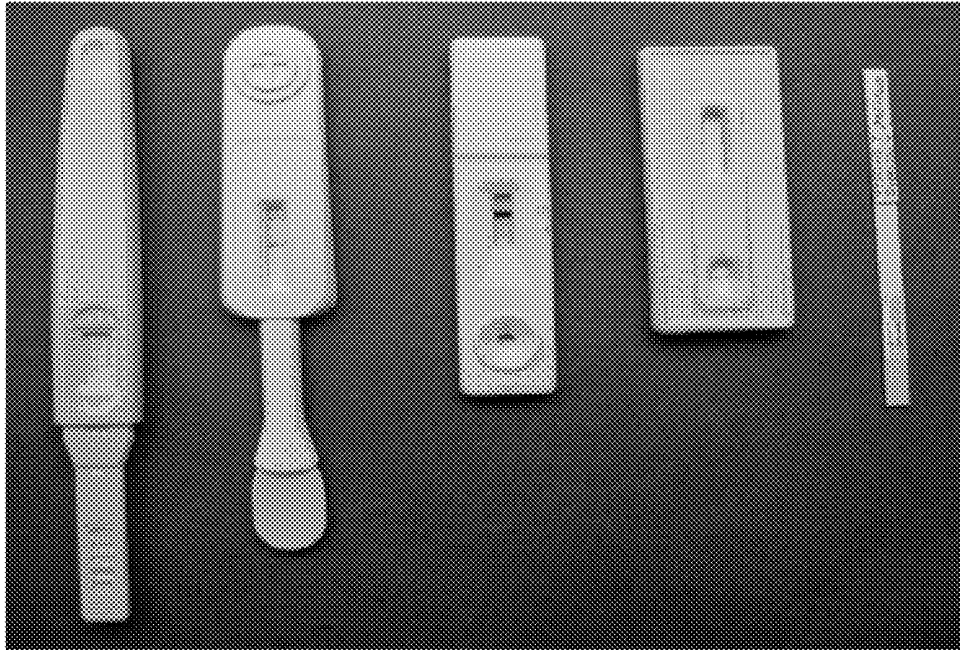


FIG. 7



A.

B.

C.

D.

E.

FIG. 8

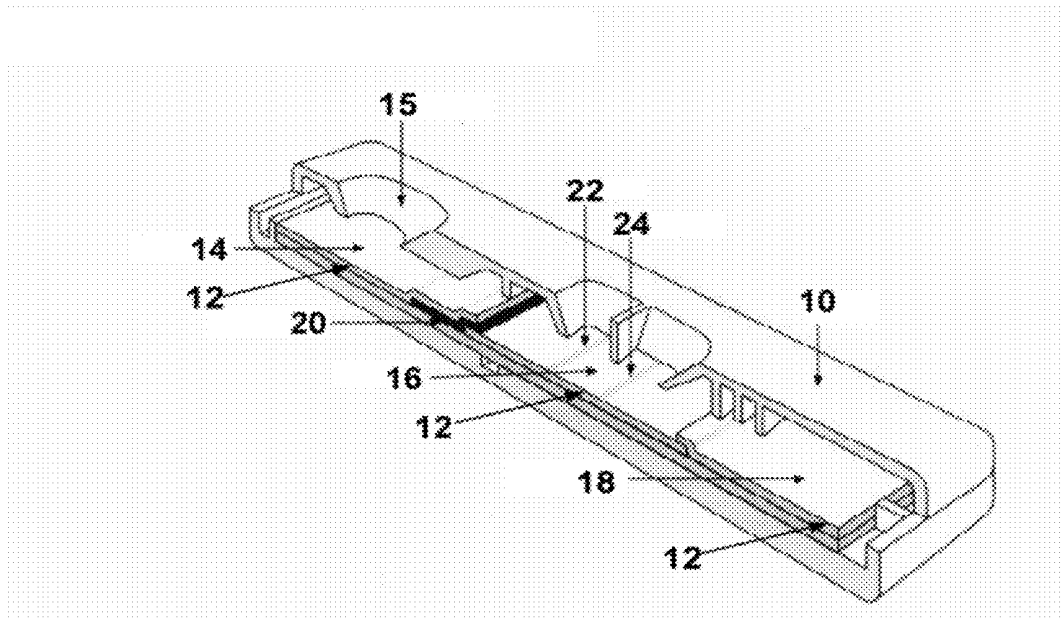


FIG. 9

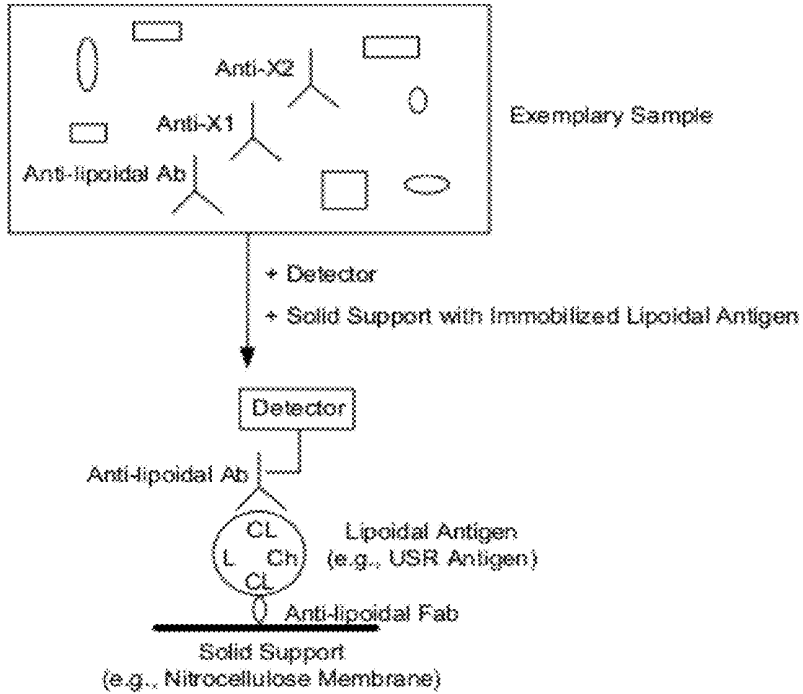
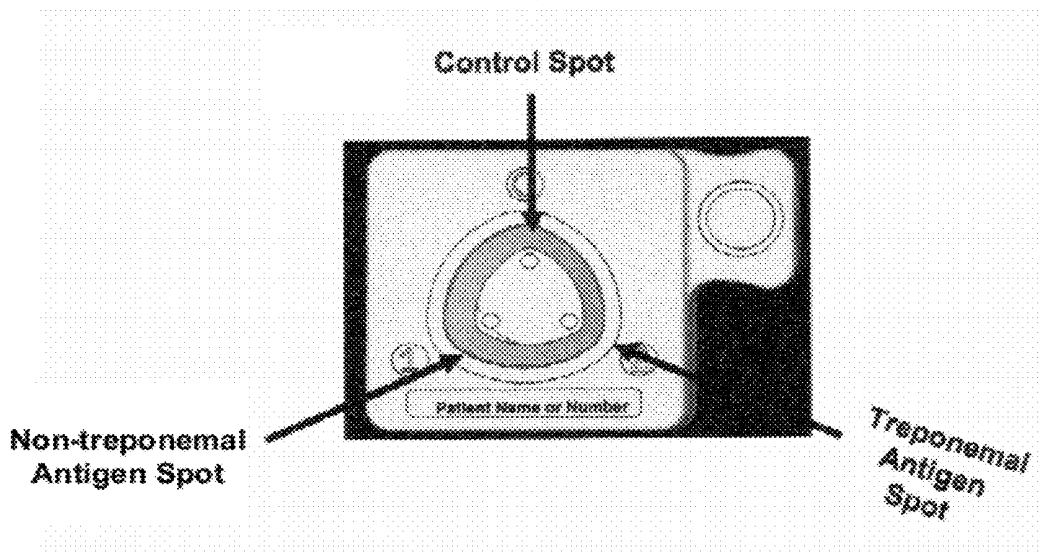


FIG. 10



## METHODS, IMMUNOASSAYS AND DEVICES FOR DETECTION OF ANTI-LIPOIDAL ANTIBODIES

### CROSS REFERENCE TO RELATED APPLICATIONS

**[0001]** This is a continuation of U.S. application Ser. No. 11/993,213, filed on Jan. 11, 2008, which is a §371 U.S. National Stage of PCT/US2006/024117, filed on June 20, 2006, which was published in English under PCT Article 21(2), which in turn claims the benefit of U.S. Provisional Application No. 60/693,120, filed on Jun. 21, 2005. Each of these is incorporated herein by reference in its entirety.

### ACKNOWLEDGMENT OF GOVERNMENT SUPPORT

**[0002]** This invention was made by the National Center for HIV, STD, and TB Prevention, Division of AIDS, STD, and TB Laboratory Research, Laboratory Reference and Research Branch, Centers for Disease Control and Prevention, an agency of the United States Government.

### FIELD

**[0003]** This disclosure concerns methods of immobilizing a lipoidal antigen to a solid support and related immunoassays and immunoassay devices (such as, test strips, flow-through devices, or lateral flow devices), which assays and devices are useful, for example, for detection of anti-lipoidal antibodies and/or diagnosis of disease (such as, syphilis).

### BACKGROUND

**[0004]** Syphilis is a sexually transmitted disease (STD) caused by the spirochete bacterium *Treponema pallidum*. Over 100,000 cases of adult syphilis are reported worldwide each year. In addition, the disease is transmitted congenitally and affects 3,000 or more infants annually. The course of syphilis infection spans many years and may lead to a variety of clinical presentations, which are characterized by four stages.

**[0005]** The primary stage of syphilis infection occurs 10-100 days after bacterial infection, and is characterized by the appearance of one or more chancres (red, bloodless, painless ulcers typically less than 1 cm in diameter). The chancres may appear on the genitalia or elsewhere on the body. A chancre lasts 3-6 weeks and heals without treatment, leaving a small scar. Infected persons are contagious during this stage.

**[0006]** The secondary stage of syphilis infection is characterized by rash-like skin lesions that can cover part or all of the body. The skin lesions are generally painless and appear 1-6 months after the onset of the initial chancre(s). The skin lesions can resemble warts, pustules, or ulcers. Left untreated, they heal in 2-12 weeks without scarring. Fever, sore throat, weakness, weight loss, swelling of the lymph nodes, and loss of the eyelashes and/or part of the eyebrows can also occur during this stage of infection. In addition, the symptoms may progress to meningovascular syphilis, which is characterized by inflammation of the covering of the brain and spinal cord and/or changes in the vasculature of the brain. Infected persons are also contagious in the secondary phase.

**[0007]** The next stage of this disease is latent syphilis or the hidden stage. During this stage, the infected person appears to have recovered and is asymptomatic. This stage lasts for life

in approximately two-thirds of persons who are not treated for syphilis. During the first year of latency, relapses of secondary stage symptoms may occur. Except during a relapse, infected persons are not contagious during this latent stage; however, children born to latently infected mothers within four years of the appearance of the primary chancre may contract congenital syphilis.

**[0008]** Tertiary or late syphilis is the final stage of untreated infection. This stage may occur as early as one year after infection or anytime thereafter with 10 to 20 years being most common. Benign syphilis, characterized by lesions called gummas, can occur in the bone, skin, and internal organs. Death is rare, but severe disfigurement and pain can occur. Cardiovascular syphilis is characterized by aortic aneurisms as well as other cardiovascular problems and frequently results in death. Neurologic involvement may occur in the early stages of syphilis as well as manifest as late stage symptoms. In the late stage disease, neurosyphilis may be asymptomatic or the patient may have severe neurologic problems such as possible dementia, insanity, impairment of mobility, blindness, deafness, or even death.

**[0009]** The immune response in syphilis involves production of (i) treponemal antibodies, which are specific for *T. pallidum* antigens, and (ii) anti-lipoidal antibodies, which recognize lipoidal material released from damaged host cells, lipoprotein-like material and possibly cardiolipin released from the treponemes. The mainstay of syphilis screening and diagnosis is serological testing for either or both of these two types of antibodies.

**[0010]** Tests for anti-lipoidal antibodies (often called "non-treponemal tests") are typically based on an antigen composed of naturally occurring cardiolipin, cholesterol and lethicin. The widely used non-treponemal tests (e.g., Venereal Disease Research Laboratory (VDRL) test and Rapid Plasma Reagin (RPR) test) monitor, either microscopically (e.g., VDRL test) or macroscopically (e.g., RPR test), the formation of a flocculent comprised of antigen-antibody complexes. Non-treponemal tests have the advantage of being widely available, inexpensive and convenient to perform on large numbers of specimens. Moreover, because anti-lipoidal antibody titers decrease with successful treatment for syphilis, eventually disappearing in most patients, while treponemal antibodies titers remain high for years or even a lifetime, non-treponemal tests are considered the better choice for monitoring treatment or testing for reinfection.

**[0011]** Treponemal tests are based on antigens derived from *T. pallidum* and include the *T. pallidum* particle agglutination (TP-PA), the fluorescent treponemal antibody-adsorbed test (FTA-Abs) and enzyme immunoassays. Treponemal tests are used primarily to verify reactivity in non-treponemal tests. The treponemal test may also be used to confirm a clinical impression of syphilis in which the non-treponemal test is nonreactive. Treponemal tests are technically more difficult, time consuming, and expensive to perform and cannot be used to monitor treatment because the test will remain reactive for years or a lifetime in approximately 85% of persons successfully treated for syphilis.

**[0012]** Each of the above-described antibody tests is performed using a serum sample that is obtained in a clinical setting and sent to a laboratory for analysis. Therefore, test results are typically not available for several days after the sample is collected. Because of the frequent difficulty of tracing patients with STDs, the development of a rapid, point-

of-care test is needed to aid the clinician in making a judgment, preferably on the day of testing.

**[0013]** Immunoassay devices (such as test strips, flow-through devices, or lateral flow devices), which offer rapid, on-site results, are available to qualitatively test serum levels of treponemal antibodies (e.g., DiaSys Corporation; ACON Laboratories, Inc.; Biokit, S.A.; Genix Technology; Standard Diagnostics; Cortez Diagnostics, Inc.; and Phoenix Bio-Tech Corp). However, analogous tests for anti-lipoidal antibodies have been more difficult to develop at least in part because the hydrophobic antigens of the anti-lipoidal antibodies (e.g., VDRL,USR or RPR antigens, or cardiolipin) resist attachment to solid supports, which is one element of an immunoassay device.

**[0014]** According to some experts, syphilis detection would be further aided by a combination of a non-treponemal test and a treponemal test for screening and diagnostic purposes. This is an approach advocated by the World Health Organization, Treponemal Infections, Technical Report Series 674, Geneva: WHO, 1982. An easy-to-use, rapid, point-of-care test capable of concurrently detecting both non-treponemal and treponemal antibodies would help address this long-felt need.

#### SUMMARY

**[0015]** Efforts to develop non-solution immunoassays for non-treponemal testing (or combined non-treponemal and treponemal testing) have been frustrated by the difficulty of attaching antigens specifically recognized by anti-lipoidal antibodies (referred to as “lipoidal antigens”), such as cardiolipin, VDRL antigen,USR antigen and the like, to a solid substrate, such as a nitrocellulose strip. For instance, the very small size of the cardiolipin molecule has resulted in poor localization of this molecule on a solid substrate. Although the size of the cardiolipin molecule could be increased by conjugating cardiolipin to larger molecules (such as proteins), such conjugations have resulted in the loss of cardiolipin antigenicity. More generally, the high degree of hydrophobicity of lipoidal antigens makes it difficult to bind such antigens to many solid surfaces, such as nitrocellulose and other microporous membranes.

**[0016]** The present disclosure provides an approach for reliably attaching lipoidal antigens (which are made up of, at least, cardiolipin, phosphatidylcholine (also referred to as “lecithin”), and cholesterol) to a solid substrate (such as, a microporous membrane) while maintaining the antigenicity and specificity of the antigen for anti-lipoidal antibodies. Using methods described herein, it is now possible to attach lipoidal antigen to a variety of solid supports. The ability to attach the lipoidal antigen in this manner allows it to be used, for instance, in immunoassay devices for rapid, on-site testing of non-treponemal antibodies. In certain embodiments, disclosed immunoassay devices also incorporate *T. pallidum* antigens that are recognized by treponemal antibodies, such that the device conveniently and concurrently detects both non-treponemal (i.e., anti-lipoidal) and treponemal (i.e., anti-*T. pallidum*) antibodies.

**[0017]** In one particular example, a lipoidal antigen comprising cardiolipin, lecithin and cholesterol is contacted with a population of Fab fragments specific for the lipoidal antigen to provide a lipoidal antigen-Fab complex, which complex is readily attachable to a solid support, such as a permeable substrate of a flow-through or lateral flow device.

**[0018]** The foregoing and other features and advantages will become more apparent from the following detailed description of several embodiments, which proceeds with reference to the accompanying drawings.

#### BRIEF DESCRIPTION OF THE DRAWINGS

**[0019]** FIG. 1 is a tracing of the absorbance at 280 nm of the eluant from a Protein A column loaded with papain-digested purified IgG. An ISCO UA-5 Absorbance/Fluorescence Detector set to sensitivity 2 and chart speed 1.5 was used to collect the data. Glycine elution buffer was added to the column when the absorbance at 280 nm of the eluant returned to baseline after elution of Peak I.

**[0020]** FIG. 2 shows a digital image of an SDS gradient gel. Lanes (1) molecular weight standards (from top: 203, 135, 83, 41, 31, 17, and 7 kD); (2) ammonium sulfate precipitate from human syphilitic serum; (3) ammonium sulfate precipitated proteins not retained by Protein A (peak I); (4) Protein A-purified IgG from ammonium sulfate precipitate (peak II); (5) Protein A-purified IgG before papain digestion; (6) Protein A-purified IgG after papain digestion; (7) proteins from papain IgG digestion that were not retained by Protein A (peak I) (predominantly Fab fragments); (8) Protein A-retained proteins from papain IgG digestion (including Fc fragments); and (9) molecular weight standards (from top: 207, 116, 98, 55, 37, 30, 20 and 7 kD).

**[0021]** FIG. 3 shows a series of nitrocellulose dipsticks prepared as described in Example 7. The dipsticks were spotted with IgG or Fab or Fc fragments as indicated, and later dipped into a solution containing gold-conjugated Protein A.

**[0022]** FIG. 4 shows a series of nitrocellulose dipsticks prepared as described in Example 8. The dipsticks were spotted with a USR antigen coated with the indicated amount of Fab fragment, and later dipped into a solution containing gold-conjugated Protein A and reactive syphilis serum (R) or non-reactive syphilis serum (NR).

**[0023]** FIG. 5 is a graph of OD<sub>580</sub> for mixtures of rabbit anti-human IgG (Fc) with colloidal gold as a function of pH. As described in Example 9, a useful pH at which to obtain a stable gold conjugate for these reactants is the pH corresponding to the lowest OD<sub>580</sub>.

**[0024]** FIG. 6 is a graph of OD<sub>580</sub> for mixtures of rabbit anti-human IgG (Fc) with colloidal gold as a function of rabbit anti-human IgG (Fc) concentration. As described in Example 10, the protein concentration producing the lowest OD<sub>580</sub> represents a useful concentration of rabbit anti-human IgG (Fc) to associated with gold particles.

**[0025]** FIGS. 7A-E shows a digital image of five different physical embodiments of lateral flow devices that could be used with the disclosed methods. The device embodiments shown in (A), (B) and (E) are configured so that each may be dipped into, or partially submerged in, the sample or a sample-containing solution. The device embodiments shown in (C) and (D) are configured so as to receive a volume of the sample (or a sample-containing solution) dropwise into a sample introduction port.

**[0026]** FIG. 8 is a perspective view of a physical embodiment of a lateral flow device, with a portion of the housing broken away to show the basic components of the device and their relationship to each other.

**[0027]** FIG. 9 is a schematic representation of one embodiment of an immobilized lipoidal antigen and the capture of an anti-lipoidal antibody analyte.

[0028] FIG. 10 provides an illustration of an exemplary flow-through device for simultaneous detection of treponemal and non-treponemal antibodies in syphilis. The device is configured to receive a volume of the sample dropwise into a sample introduction port (located in the center of the device).

#### DETAILED DESCRIPTION

##### I. Introduction

[0029] Disclosed herein are immunoassay devices for determining the presence and/or amount of an anti-lipoidal antibody in a fluid sample, such as human sera. Such devices include a microporous substrate (such as nitrocellulose, nylon, polyvinylidene fluoride (PVDF), polyethersulfone, polycarbonate, polyester, cellulose acetate, mixed cellulose esters, or combinations thereof). The substrate includes, among other things, an anti-lipoidal capture area in which is immobilized a lipoidal antigen-anchor antibody complex. Such complex has an anchor antibody component, which is immobilized on the substrate, and a lipoidal antigen component, which is specifically bound by the anchor antibody and is thereby anchored to the substrate. The lipoidal antigen component includes cardiolipin, lecithin and cholesterol and can be specifically bound by anti-lipoidal antibodies (such as reagin antibodies present in *T. pallidum*-infected subjects).

[0030] Other device embodiments further include a sample application area and a flow path from the sample application area to the anti-lipoidal capture area. The sample application area is in fluid-continuous contact with the anti-lipoidal capture area such that a fluid sample placed in the sample application area can flow through or along the membrane (for example by capillary action or chromatographic flow) to the anti-lipoidal antibody capture area. The presence and/or amount of an anti-lipoidal antibody in the fluid sample can be detected by formation of a complex between the anti-lipoidal antibody and the immobilized lipoidal antigen-anchor antibody complex. Some disclosed devices also include an absorbent pad, which is in contact with the membrane and serves as a reservoir for the sample after it contacts the capture area(s). In particular examples, a disclosed device is a lateral flow device or a flow-through device.

[0031] In some embodiments, the anchor antibody is a Fab fragment specific for cardiolipin. In other cases, a plurality of Fab fragments produced from immunoglobulins isolated from one or more *T. pallidum*-infected subjects serve as anchor antibodies. Some device embodiments include a lipoidal antigen that is a USR antigen, a VDRL antigen, or a synthetic VDRL antigen. In some cases (for example, for a flow-through device), a substrate (such as a nitrocellulose membrane) has a pore size from about 0.2  $\mu\text{m}$  to about 8  $\mu\text{m}$ . In other instances (for example, for a lateral-flow device), a substrate (such as a nitrocellulose membrane) has a pore size up to about 12  $\mu\text{m}$ . In still other device embodiments, the anti-lipoidal antibody capture area comprises one or more lines, which, in some examples, can have a width from about 8 mm to about 15 mm.

[0032] In exemplary devices, the lipoidal antigen-anchor antibody complex is immobilized on the membrane by a method involving (a) contacting the lipoidal antigen with one or more anchor antibodies specific for at least one of cardiolipin, lecithin, or cholesterol to form the lipoidal antigen-anchor antibody complex; and (b) applying the lipoidal antigen-anchor antibody complex to the membrane. In more specific examples, the lipoidal antigen-anchor antibody com-

plex is immobilized on the membrane by a method involving (i) immobilizing an anchor antibody specific for at least one of cardiolipin, lecithin, or cholesterol on the membrane; (ii) blocking non-specific binding sites on the membrane; (iii) contacting the immobilized anchor antibody with lipoidal antigen to form a lipoidal antigen-anchor antibody complex; and (iv) washing the membrane to remove any unbound lipoidal antigen.

[0033] Disclosed examples of the device provide an anchor antibody bound to an epitope naturally occurring in a component of the lipoidal antigen (e.g., cardiolipin or cholesterol) and not to a derivative group introduced into the antigen for the purposes of providing a binding site for the anchor antibody. For example, the anchor antibody does not bind to a biotinylated component of the lipoidal antigen (such as biotinylated lecithin or cardiolipin).

[0034] In some embodiments, a disclosed immunoassay device further includes a treponemal capture area having either (a) an immobilized treponemal antigen capable of being specifically bound by an anti-*T. pallidum* antibody, or (b) an immobilized anti-*T. pallidum* antibody that specifically binds a mobile treponemal antigen. In these embodiments, a fluid sample applied in the sample application area can flow through or along the membrane to the anti-lipoidal antibody capture area and to the treponemal capture area.

[0035] Also disclosed herein are lateral flow devices for determining the presence and/or amount of an anti-lipoidal antibody in a fluid sample. These devices typically include a sample application area and a separate anti-lipoidal antibody capture area in which an immobilized anchor antibody-lipoidal antigen complex is provided which complex has a specific binding affinity for a mobile-phase anti-lipoidal antibody. Any liquid (such as a fluid biological sample) applied in the sample application area flows along a path of flow from the sample application area to the anti-lipoidal antibody capture area. The path of flow may continue to a downstream absorbent pad associated with the lateral flow device, which acts, at least in part, as a liquid reservoir. Formation of a complex between the anti-lipoidal antibody and the immobilized lipoidal antigen complex can be detected to determine the presence and/or amount of the anti-lipoidal antibody in a fluid sample.

[0036] In some embodiments of the lateral flow device, a conjugate pad is placed in the path of flow from the sample application area to the anti-lipoidal antibody capture area. The conjugate pad includes a mobile or mobilizable detector reagent for an anti-lipoidal antibody, such that flow of liquid through the pad moves the detector reagent to the anti-lipoidal antibody capture area. Formation of a complex among the detector reagent, anti-lipoidal antibody, and the anchor antibody-lipoidal antigen complex provides a visible or otherwise detectable indicator of the presence of the anti-lipoidal antibody in a biological specimen. In alternative embodiments, the detector reagent is not supplied in a conjugate pad, but is instead applied to the microporous membrane, for example from a developer bottle.

[0037] Examples of a detector reagent include a labeled Protein A, Protein G, or anti-human antibody, in which the label is one or more of an enzyme, colloidal gold particle, colored latex particle, protein-adsorbed silver particle, protein-adsorbed iron particle, protein-adsorbed copper particle, protein-adsorbed selenium particle, protein-adsorbed sulfur particle, protein-adsorbed tellurium particle, protein-adsorbed carbon particle, or protein-coupled dye sac.

**[0038]** Certain embodiments of the lateral flow device also include a treponemal capture area in the flow path from the sample application area. Such treponemal capture area may include, for example, an immobilized treponemal antigen having a binding affinity for a mobile anti-*T. pallidum* antibody or an immobilized anti-*T. pallidum* antibody having a binding affinity for a mobile *T. pallidum* organism or *T. pallidum* antigen. The lateral flow device may also have a mobile or mobilizable detector reagent specific for the treponemal antibody in the conjugate pad. The detector reagent for the treponemal antibody may be in the same or a different pad than the detector reagent for the anti-lipoidal antibody. In particular embodiments, a detector reagent specific for an anti-*T. pallidum* antibody comprises gold-conjugated Protein A, gold-conjugated Fc-specific Protein G, or gold-conjugated anti-human antibody (Fc portion). In other embodiments, a treponemal capture area can include an anti-treponemal antibody for capture of a mobile treponemal antigen present in a fluid sample. In such embodiments, a detector reagent for the mobile treponemal antigen can be a gold-labeled anti-treponemal antigen antibody.

**[0039]** The disclosed immunoassay devices (e.g., flow-through or lateral-flow device) can be used in methods for detecting anti-lipoidal antibodies and/or diagnosing syphilis in a subject by applying a biological sample (such as, blood, serum, skin ulcer exudate, urine, saliva, or sputum) from a subject to a disclosed device and detecting formation of a complex among the anti-lipoidal antibody, the anchor antibody-lipoidal antigen complex, and an anti-lipoidal antibody detector reagent in the capture area. Detection of the formation of the complex in the capture area detects an anti-lipoidal antibody associated with *T. pallidum* infection or the disease syphilis. In those embodiments in which the device includes a conjugate pad in the path of flow from the sample application area to the cardiolipin capture area, the detected complex includes the mobile or mobilizable detector. In other embodiments in which the detector reagent is applied to the device from an external source, the detected complex includes the externally applied detector. In some embodiments, a detector reagent is labeled Protein A, Fc-specific Protein G, or anti-human antibody.

**[0040]** In particularly advantageous embodiments of the method, the disclosed device is capable of detecting both the anti-lipoidal antibodies (which, for example, are an indicator of active infection) and anti-treponemal antibodies (which, for example, verify reactivity of the non-treponemal test). In those embodiments of the device which include the treponemal antigen, the method includes detecting formation of a complex between the anti-*T. pallidum* antibody, the immobilized treponemal antigen, and a detector reagent in the capture area. As with the detector reagent used for anti-lipoidal antibodies, the detector reagent for the treponemal antibodies can be provided on the device or applied from an external source.

**[0041]** Also disclosed herein are methods for immobilizing immunoreactive cardiolipin on a solid support (such as, nitrocellulose). Such methods involve (a) contacting a lipoidal antigen, comprising immunoreactive cardiolipin, with one or more antibodies specific for at least one component of the lipoidal antigen to form a lipoidal antigen-antibody complex; and (b) applying the lipoidal antigen-antibody complex to a solid support; wherein applying the lipoidal antigen-antibody complex to the solid support immobilizes the immunoreactive cardiolipin on the solid support. In particular examples, the lipoidal antigen is a USR antigen, a VDRL antigen, or a

synthetic VDRL antigen. In other examples, the antibody is an antibody fragment that will not substantially react with Protein A, Fc-specific Protein G, or anti-human antibody (Fc portion) (such as, a Fab fragment). In still other examples, the antibody is isolated from serum of a *T. pallidum*-infected or *T. pallidum*-inoculated subject.

**[0042]** Other exemplary methods for immobilizing immunoreactive cardiolipin on a solid support, involve (a) immobilizing one or more antibodies specific for cardiolipin, lecithin and/or cholesterol on a solid support; (b) blocking non-specific binding sites on the solid support; (c) applying a lipoidal antigen, comprising immunoreactive cardiolipin, lecithin and/or cholesterol, to the solid support to form lipoidal antigen-immobilized antibody complexes; and (d) washing the solid support to remove any lipoidal antigen that is not specifically bound by the one or more immobilized antibodies.

**[0043]** Also disclosed herein are kits for the diagnosis of syphilis. These kits include a disclosed device (such as a flow-through or lateral-flow device) and instructions for applying the biological sample to the sample application area or the device. The kit may also include instructions for interpreting results of the test.

**[0044]** The disclosed devices can be also used in methods for diagnosing lupus in a subject by analyzing a biological sample from the subject, by applying the biological sample to the device and detecting formation of a complex among the anti-lipoidal antibody, the anchor antibody-lipoidal antigen complex, and a detector reagent in the capture area. Detection of the formation of the complex in the capture area detects an anti-lipoidal antibody associated with lupus. In some instances, one or more co-factors (such as  $\beta_2$ -glycoprotein I) are present (such as, added to a sample) for the detection of lupus.

## II. Abbreviations and Terms

**[0045]** Ab antibody

**[0046]** HPLC high pressure liquid chromatography

**[0047]** LFD Lateral flow device

**[0048]** PEG polyethylene glycol

**[0049]** PVA polyvinyl alcohol

**[0050]** PVDF polyvinylidene fluoride

**[0051]** PVP polyvinyl pyrrolidone

**[0052]** SDS sodium dodecyl sulfate

**[0053]** USR unheated serum regain

**[0054]** Unless otherwise noted, technical terms are used according to conventional usage. Definitions of common terms in molecular biology may be found in Benjamin Lewin, *Genes V*, published by Oxford University Press, 1994 (ISBN 0-19-854287-9); Kendrew et al. (eds.), *The Encyclopedia of Molecular Biology*, published by Blackwell Science Ltd., 1994 (ISBN 0-632-02182-9); and Robert A. Meyers (ed.), *Molecular Biology and Biotechnology: a Comprehensive Desk Reference*, published by VCH Publishers, Inc., 1995 (ISBN 1-56081-569-8).

**[0055]** In order to facilitate review of the various embodiments of the invention, the following explanations of specific terms are provided:

**[0056]** Analyte: A target, such as an atom, molecule, group of molecules or compound of natural or synthetic origin (e.g., drug, hormone, enzyme, growth factor antigen, antibody, hapten, lectin, apoprotein, or cofactor) sought to be detected or measured that is capable of binding specifically to immobilized lipoidal antigens described herein. Analytes may

include, but are not limited to biological analytes, antibodies, drugs, hormones, antigens, haptens, lectins, apoproteins, or cofactors. In some embodiments, the analyte includes antibodies, such as anti-lipoidal antibodies (e.g., anti-cardiolipin antibodies), produced in response to infection by *T. pallidum*. In other embodiments, the analyte includes anti-lipoidal antibodies produced in response to any of (i) an autoimmune disease, such as lupus, (ii) various venous and arterial thrombotic disorders, including cerebral infarction, (iii) deep venous thrombosis, (iv) thrombocytopenia

**[0057]** Antibody: A protein consisting of one or more polypeptides substantially encoded by immunoglobulin genes or fragments of immunoglobulin genes. The recognized immunoglobulin genes include the kappa, lambda, alpha, gamma, delta, epsilon and mu constant region genes, as well as the myriad of immunoglobulin variable region genes. Light chains are classified as either kappa or lambda. Heavy chains are classified as gamma, mu, alpha, delta, or epsilon, which in turn define the immunoglobulin classes, IgG, IgM, IgA, IgD and IgE, respectively.

**[0058]** The basic immunoglobulin (antibody) structural unit is generally a tetramer. Each tetramer is composed of two identical pairs of polypeptide chains, each pair having one "light" (about 25 kD) and one "heavy" chain (about 50-70 kD). The N-terminus of each chain defines a variable region of about 100 to 110 or more amino acids primarily responsible for antigen recognition. The terms "variable light chain" ( $V_L$ ) and "variable heavy chain" ( $V_H$ ) refer, respectively, to these light and heavy chains

**[0059]** Antibodies are naturally produced in plants and animals in response to antigens presented to the immune system. Naturally produced antibodies may be found, for example, in the serum of an animal. For example, a person infected with *T. pallidum* typically will produce antibodies at least against *T. pallidum* antigens and antibodies against lipoidal material that results from the treponemal infection (e.g., anti-lipoidal antibodies), for example, from host cells damaged by the infection.

**[0060]** Antibodies may exist as intact immunoglobulins or as a number of well-characterized fragments produced by digestion with various peptidases or by recombinant DNA methods. Exemplary antibody fragments include, for example, Fab, Fab', F(ab')<sub>2</sub>, Fv, Fd, dAb, complementarity determining regions (CDR), and single-chain antibodies (scFv). A Fab fragment is a monovalent fragment consisting of the VL, VH, CL and CH1 domains; an F(ab')<sub>2</sub> fragment is a bivalent fragment comprising two Fab fragments linked by a disulfide bridge at the hinge region; an Fd fragment consists of the VH and CH1 domains; an Fv fragment consists of the VL and VH domains of a single arm of an antibody; and a dAb fragment consists of a VH domain (see, e.g., Ward et al., *Nature*, 341: 544-546, 1989; *Fundamental Immunology*, W. E. Paul, ed., Raven Press, N.Y., 1993).

**[0061]** While certain antibody fragments are defined in terms of the digestion of an intact antibody, it will be appreciated that Fab fragments or other antibody fragments may be synthesized de novo either chemically or by utilizing recombinant DNA methodology. Thus, the term antibody as used herein also includes antibody fragments either produced by the modification of whole antibodies or synthesized de novo using recombinant DNA methodologies.

**[0062]** Antigen: A chemical or biochemical compound, composition, structure, determinant, antigen or portion thereof that can stimulate the production of antibodies or a

T-cell response in an animal, including compositions that are injected or absorbed into an animal. An antigen reacts with the products of specific humoral or cellular immunity, including those induced by heterologous immunogens. The term "antigen" includes all related antigenic epitopes.

**[0063]** [Antigen-specific] Hyperimmune serum: Polyclonal antiserum having specificity for a particular antigen (such as, a lipoidal antigen and/or cardiolipin), which antiserum is produced in a subject in response to repeated challenge (e.g., by injection, infection or other route) with the antigen of interest (or an organism or other composition containing or producing the antigen of interest).

**[0064]** Anti-lipoidal antibody: An antibody (such as IgM or IgG) having specificity for a lipoidal antigen (see below). In some instances, anti-lipoidal antibodies are produced by the immune system of a subject (such as a human) in response to a disease state, such as a microbial (e.g., bacterial) infection. For example, this term contemplates anti-lipoidal antibodies produced as a consequence of *T. pallidum* infection. Although not bound by theory, it is thought that anti-lipoidal antibodies in subjects infected with *T. pallidum* are produced as the result of lipids released from host cells and/or lipoprotein-like material and possibly cardiolipin released from treponemes. Anti-lipoidal antibodies may also be produced in response to non-treponemal diseases, including, for example (i) an autoimmune disease, such as lupus (Harris et al., *Clin. Rheum. Dis.*, 11:591-609, 1985), (ii) various venous and arterial thrombotic disorders, including cerebral infarction (Harris et al., *Clin. Exp. Rheumatol.*, 2:47-51, 1984), (iii) deep venous thrombosis (Mueh et al., *Ann. Intern. Med.*, 92:156-159, 1980), (iv) thrombocytopenia (Harris et al., *Clin. Rheum. Dis.*, 11:591-609, 1985), (v) pulmonary embolism (Anderson and Ali, *Ann. Rheum. Dis.*, 43:760-763, 1984), or (vi) recurrent fetal loss with placental infarction (Derue et al., *J. Obstet. Gynaecol.*, 5:207-209, 1985). Anti-lipoidal antibodies found in non-treponemal diseases may specifically bind a lipoidal antigen in the presence of one or more co-factors (such as  $\beta_2$ -glycoprotein I).

**[0065]** Anti-lipoidal antibodies for use in some embodiments of the methods and compositions (e.g., devices) disclosed herein can be of any derivation, but often will be found in the serum of a subject.

**[0066]** Binding affinity: A term that refers to the strength of binding of one molecule to another at a site on the molecule. If a particular molecule will bind to or specifically associate with another particular molecule, these two molecules are said to exhibit binding affinity for each other. Binding affinity is related to the association constant and dissociation constant for a pair of molecules, but it is not critical to the invention that these constants be measured or determined. Rather, affinities as used herein to describe interactions between molecules of the described methods and devices are generally apparent affinities (unless otherwise specified) observed in empirical studies, which can be used to compare the relative strength with which one molecule (e.g., an antibody or other specific binding partner) will bind two other molecules (e.g., an analyte and an analyte-tracer conjugate). The concepts of binding affinity, association constant, and dissociation constant are well known.

**[0067]** Biological Sample: Any sample that may be obtained directly or indirectly from a subject, including whole blood, plasma, serum, tears, mucus, saliva, urine, pleural fluid, spinal fluid, gastric fluid, sweat, semen, vaginal secretion, sputum, fluid from ulcers and/or other surface

eruptions (such as blisters, or abscesses), amniotic fluid, synovial fluid, cerebrospinal fluid, and/or extracts of tissues, cells or organs. The biological sample may also be a laboratory research sample such as a cell culture supernatant. The sample is collected or obtained using methods well known to those skilled in the art.

**[0068]** Capture area: A region of an immunoassay device (such as a flow-through device or lateral flow device) where a capture reagent (such as an anchor antibody-lipoidal antigen complex) is immobilized. An immunoassay device may have more than one capture area, for example, a "primary capture area," a "secondary capture area," and so on. Often a different capture reagent will be immobilized in the primary, secondary, or other capture areas. Multiple capture areas may have any orientation with respect to each other on the substrate; for example, a primary capture area may be distal or proximal to a secondary (or other) capture area and visa versa. Alternatively, a primary capture area and a secondary (or other) capture area may be oriented perpendicularly to each other such that the two (or more) capture areas form a cross or a plus sign or other symbol.

**[0069]** Anti-lipoidal Antibody Capture Area: A capture area wherein an antigen capable of being specifically bound by an anti-lipoidal antibody (such as a lipoidal antigen-anchor antibody complex) is immobilized as the capture reagent.

**[0070]** Conjugate: When used in the verb form, the term "conjugate" means the coupling of one molecule (e.g., Protein A, Protein G, or anti-human IgG (Fc) antibody) to another molecule (e.g., colloidal gold). Such coupling may involve covalent or non-covalent (such as electrostatic or other) interactions between the components of the conjugate. Such coupling may be achieved by chemical means, either with or without the use of a linking group. When used in the noun form, the term "conjugate" means a coupled molecular complex formed by conjugation.

**[0071]** Detecting or Detection: Refers to quantitatively or qualitatively determining the presence of the analyte(s) under investigation (e.g., anti-lipoidal antibodies and/or anti-*T. pallidum* antibodies or treponemal antigens). "Detecting Formation of a Complex" refers to detecting a complex comprising a detector reagent by any method suitable for observing the particular label associated with the detector reagent; for instance, visual observation of a colored (or otherwise visible) label, measurement or visual detection of a fluorescent, chemiluminescent or radioactive label.

**[0072]** Detector Reagent (or Detection Agent): A reagent (or series of reagents) that permits the specific detection of a complex between an analyte (such as an anti-lipoidal antibody) and a capture reagent (such as anchor antibody-lipoidal antigen complexes). Further description of detector reagents and specific exemplary detector reagents are provided below.

**[0073]** Emulsion: A mixture of two immiscible fluids in which one phase is present as a colloidal dispersion in the other phase, which is referred to as the continuous, dispersing or solvent phase. Some emulsions will readily separate when they are allowed to stand undisturbed. Other emulsions may remain mixed for considerable lengths of time.

**[0074]** Epitope (or antigenic determinant): A site on the surface of an antigen molecule to which an antibody molecule binds; generally an antigen has several or many different antigenic determinants and reacts with antibodies of many different specificities. An "exogenous epitope" is an epitope that is not naturally found in an antigen molecule of interest

and which is typically added to the antigen molecule to serve as a binding site for an antibody specific for (or other specific binding partner of) the exogenous epitope. An antigen molecule can be chemically or otherwise modified to include an exogenous epitope. For example, an antigen molecule can be biotinylated (i.e., derivatized with biotin) thereby producing an exogenous biotin epitope that can be specifically bound by an anti-biotin antibody or other biotin-specific binding partner (such as, avidin or streptavidin). In some instances, an exogenous epitope is an "epitope tag." Epitope tags include peptide sequences (typically less than about 15 amino acids, but can be even full-length protein sequences) to which an antibody can specifically bind. Commonly known epitope tags include hexa-His, octa-His, FLAG, HA, and numerous others.

**[0075]** Immunogenicity: The property of being able to evoke an immune response within an organism. For example, cardiolipin retains immunogenicity when an anti-lipoidal antibody has the ability to bind an epitope present in the cardiolipin.

**[0076]** Label: Any molecule or composition bound to an analyte, analyte analog, detector reagent, or binding partner that is detectable by spectroscopic, photochemical, biochemical, immunochemical, electrical, optical or chemical means. Examples of labels, including enzymes, colloidal gold particles, colored latex particles, have been disclosed (U.S. Pat. Nos. 4,275,149; 4,313,734; 4,373,932; and 4,954,452, each incorporated by reference herein). Additional examples of useful labels include, without limitation, radioactive isotopes, co-factors, ligands, chemiluminescent or fluorescent agents, protein-adsorbed silver particles, protein-adsorbed iron particles, protein-adsorbed copper particles, protein-adsorbed selenium particles, protein-adsorbed sulphur particles, protein-adsorbed tellurium particles, protein-adsorbed carbon particles, and protein-coupled dye sacs. The attachment of a compound (e.g., a detector reagent) to a label can be through covalent bonds, adsorption processes, hydrophobic and/or electrostatic bonds, as in chelates and the like, or combinations of these bonds and interactions and/or may involve a linking group.

**[0077]** Lipoidal Antigen: An antigen including (but not limited to) cardiolipin, lecithin and cholesterol that is capable of being specifically bound by anti-lipoidal antibodies. The nature of cardiolipin, lecithin and cholesterol as contemplated by the term "lipoidal antigen" is discussed in detail elsewhere in the specification.

**[0078]** Microporous membrane: A thin film or structure having microscopic-sized pores. Microporous membranes at least permit fluids and soluble analytes to travel along or through the membrane, for example by capillary action. Membranes are made of a wide variety of materials or composites of materials, including, for example, polyethersulfone, nylon, polycarbonate, polyester, cellulose acetate, mixed cellulose esters, polyvinylidene fluoride, and/or nitrocellulose. Non-limiting suitable pore sizes can be up to about 0.22 micron, from about 0.22 micron to about 0.45 micron, from about 0.22 micron to about 0.65 micron, from about 0.22 micron to about 0.8 micron, from about 0.22 micron to about 1.2 micron, from about 0.65 micron to about 3 micron, from about 0.65 micron to about 5 micron, from about 0.65 micron to about 8 micron, from about 5 micron to about 10 micron, or from about 5 micron to about 20 micron. In particular instances, pore size can be about 0.22 micron, about 0.45 micron, about 0.65 micron, about 0.8 micron, about 1.2

micron, about 3 micron, about 5 micron, about 8 micron, about 10 micron, or about 20 micron. Any membrane known to those of ordinary skill in the art to be suitable for lateral-flow or flow-through devices is envisioned to be within the scope of the term “microporous membrane.”

**[0079]** Protein A and Protein G: Protein A is a protein isolated from *Staphylococcus aureus*. Protein G is a protein isolated from a *Streptococcus* species. Both proteins have binding sites for the Fc portion of mammalian IgG. Native Protein G also contains binding sites for albumin, the Fab region of Igs, and membrane binding regions, which can lead to nonspecific binding; however, recombinant Protein G has been engineered to eliminate the albumin, Fab, and membrane binding sites while retaining the Fc binding site, which makes it specific for the Fc portion of IgG. As used herein “Protein G” refers to the Fc-specific recombinant form of Protein G (also referred to as “Fc-specific Protein G”).

**[0080]** Specific binding partner (or binding partner): A molecule or composition capable of recognizing and binding to a specific structural aspect of another molecule or composition. Typical pairs of specific binding partners include antigen/antibody, hapten/antibody, hormone/receptor, nucleic acid strand/complementary nucleic acid strand, substrate/enzyme, inhibitor/enzyme, carbohydrate/lectin, biotin/(strept)avidin, and virus/cellular receptor.

**[0081]** The phrase “specifically binds to” refers to the ability of a first molecular species (such as an antibody) to preferentially bind to a second molecular species (such as an antigen recognized by the antibody) in comparison to other non-specific molecular species. Accordingly, the phrase “capable of being specifically bound by” refers to the ability of a first molecular species (such as an antigen) to be preferentially recognized and bound by a second molecular species (such as an antibody specific for the antigen) in comparison to other non-specific molecular species.

**[0082]** Subject: Living multi-cellular organisms, including vertebrate organisms, a category that includes both human and non-human mammals.

**[0083]** Unless otherwise explained, all technical and scientific terms used herein have the same meaning as commonly understood by one of ordinary skill in the art to which this invention belongs. The singular terms “a,” “an,” and “the” include plural referents unless context clearly indicates otherwise. Similarly, the word “or” is intended to include “and” unless the context clearly indicates otherwise. Hence “comprising A or B” means “including A or B,” or “including A and B.” It is further to be understood that all molecular weight or molecular mass values are approximate and are provided solely for description. Suitable methods and materials used in the practice or testing of the disclosed subject matter are described below; however such materials and methods are illustrative only and not intended to be limiting. Methods and materials similar or equivalent to those described herein also can be used. All publications, patent applications, patents, and other references mentioned herein are incorporated by reference in their entirety to the extent permitted by applicable rules. In case of conflict, the present specification, including explanations of terms, will control.

### III. Lipoidal Antigen

**[0084]** A lipoidal antigen is any antigen containing (with-out limitation) cardiolipin, lecithin and cholesterol, which antigen is capable of specifically binding an anti-lipoidal antibody. In some examples, a lipoidal antigen specifically

binds an anti-lipoidal antibody (e.g., an anti-cardiolipin antibody) present in a *T. pallidum*-infected subject (such as, a human). Lipoidal antigens comprising cardiolipin (CL), lecithin (L) and cholesterol (Ch) have long been used in solution assays to detect anti-lipoidal antibodies in serum (see, e.g., prior discussion of “non-treponemal tests” for syphilis diagnosis). Specific exemplary CL/L/Ch-containing lipoidal antigens previously used in solution assays include the commonly known VDRL, RPR, and USR antigens (e.g., Venereal Disease Research Laboratory (VDRL) Slide Test, In: Larsen et al. (ed.), *A Manual of Tests for Syphilis*, 9th Edition, Washington D.C.: American Public Health Association, 1998, pp. 157-178; Pettit et al., “Unheated serum reagin [USR] test as a quantitative test for syphilis,” *J. Clin. Microbiol.*, 15(2): 238-242, 1982), and a synthetic form of the VDRL antigen (“Synthetic VDRL”) described by Castro et al. (*Clin. Diagn. Lab. Immunol.*, 7(4):658-661, 2000). Unfortunately, the lipoidal nature of such antigens has made it difficult to reliably attach any of these antigens to a solid support, such as a bibulous (e.g., microporous) membrane, like nitrocellulose or others. Accordingly, there has been a long-felt (but previously unmet) need to provide membrane-based assays (such as, flow-through or lateral flow immunoassay devices) for detection of anti-lipoidal antibodies, for instance, in biological samples. Such immunoassay devices would revolutionize, for example, point-of-care diagnosis of syphilis and other diseases characterized by the presence of anti-lipoidal antibodies. This disclosure describes, among other things, a method for immobilizing lipoidal antigens, such as the VDRL, USR, or Synthetic VDRL antigens, to membranous supports; thus, providing a means to satisfy a long-felt need in the art.

**[0085]** As discussed above, methods and compositions described herein contemplate a lipoidal antigen that includes (e.g., comprises or consists essentially of) cardiolipin, cholesterol and lecithin. These exemplary components of a lipoidal antigen are described in more detail below.

#### A. Cardiolipin

**[0086]** Cardiolipin is diphosphatidyl glycerol (specifically, 1,3-diphosphatidylglycerol), which has a backbone consisting of three molecules of glycerol joined by two phosphodiester bridges. The four hydroxyl groups of cardiolipin’s external glycerol moieties are each esterified with a saturated or unsaturated fatty acid chain (typically from 14 to 18 carbons in length). As used herein, the term “cardiolipin” contemplates 1,3-diphosphatidylglycerol having any distribution of fatty acid side chains. Thus, the four fatty acid side chains of cardiolipin can independently vary in length (e.g., from about 14 to about 25 carbons, from about 14 to about 22 carbons, from about 14 to about 20 carbons, from about 14 to about 18 carbons, or from about 14 to about 16 carbons) and/or degree of saturation (e.g., from completely saturated to having about 6 double bonds, from completely saturated to having about 4 double bonds, or from completely saturated to having about 2 double bonds). Exemplary fatty acid side chains of cardiolipin, as contemplated herein, independently include myristoyl (14:0); palmitoyl (16:0); stearoyl (18:0); oleoyl (18:1); myristoleoyl (14:1); palmitoleoyl (16:1); petroselinoyl (18:1); linoleoyl (18:2); linolenoyl (18:3); eicosenoyl (20:1); arachidonoyl (20:4); erucoyl (22:1); DHA (22:6); or nervonoyl (24:1).

**[0087]** In some embodiments, cardiolipin is a naturally occurring form of cardiolipin. The fatty acid composition of naturally occurring cardiolipin is generally distributed

according to a wide variety of natural occurring fatty acids such as palmitoyl (16:0); stearoyl (18:0); oleoyl (18:1); and linoleoyl (18:2). The most abundant fatty acid molecular species in naturally occurring forms of cardiolipin are linoleic acid at 90%, followed by oleic acid at 5%, and palmitric acid at 1%. In other embodiments, cardiolipin is a non-naturally occurring form (also referred to as “synthetic cardiolipin”). Non-limiting examples of synthetic cardiolipin include, for example, tetramyristoyl cardiolipin, tetraoleoyl cardiolipin, tetramyristoyl-bis-(L- $\alpha$ -glyceryl) phosphoric acid, bis (dipalmitoyl D,L- $\alpha$ -glycerylphosphoryl)-1,3 glycerol benzyl ether disodium salt, bis (dipalmitoyl D,L- $\alpha$ -glycerylphosphoryl)-1,5 pentanediol disodium salt, bis (dipalmitoyl D,L- $\alpha$ -glycerylphosphoryl)-1,3 propanediol disodium salt, bis (dipalmitoyl D,L- $\alpha$ -glycerylphosphoryl)-1,4 butanediol disodium salt, bis (dipalmitoyl D,L- $\alpha$ -glycerylphosphoryl)-1,2 ethanediol disodium salt, bis (dipalmitoyl D,L- $\alpha$ -glycerylphosphoryl)-methanediol disodium salt, bis (dipalmitoyl D,L- $\alpha$ -glycerylphosphoryl)-1,3 glycerol disodium salt, bis (benzylphosphoryl)-1,3-propanediol disodium salt, or D,L- $\alpha$ -dipalmitoyl bis-phosphatidic acid.

**[0088]** “Immunoreactive cardiolipin” is any form of cardiolipin (e.g., naturally occurring or synthetic cardiolipin) that specifically reacts with anti-lipoidal antibodies, such as anti-lipoidal antibodies present in a subject having syphilis or infected with *T. pallidum*.

#### B. Lethicin

**[0089]** Lecithin is the common name for phosphatidylcholine. Phosphatidylcholine is a glycerophospholipid, which is usually the most abundant phospholipid in animal and plants. It is a key building block of membrane bilayers, and is also the principal phospholipid circulating in the plasma. Phosphatidylcholine contains two fatty acid side chains. As used herein, the term “lecithin” contemplates phosphatidylcholine having any distribution of fatty acid side chains. Thus, the two fatty acid side chains of cardiolipin can independently vary in length (e.g., from about 14 to about 25 carbons, from about 14 to about 22 carbons, from about 14 to about 20 carbons, from about 14 to about 18 carbons, or from about 14 to about 16 carbons) and/or degree of saturation (e.g., from completely saturated to having about 6 double bonds, from completely saturated to having about 4 double bonds, or from completely saturated to having about 2 double bonds). Exemplary fatty acid side chains of lecithin, as contemplated herein, independently include myristoyl (14:0); palmitoyl (16:0); stearoyl (18:0); oleoyl (18:1); myristoleoyl (14:1); palmitoleoyl (16:1); petroselinoyl (18:1); linoleoyl (18:2); linolenoyl (18:3); eicosenoyl (20:1); arachidonoyl (20:4); erucoyl (22:1); DHA (22:6); or nervonoyl (24:1).

**[0090]** In some embodiments, lecithin is a naturally occurring form of lecithin. The fatty acid composition of naturally occurring lecithin includes palmitoyl (16:0), palmitoleoyl (16:1), linoleoyl (18:2), stearoyl (18:0), arachidonoyl (20:4), myristoyl (14:0), oleoyl (18:1), and linolenoyl (18:3). The relative percentages of fatty acids in naturally occurring lecithin vary depending upon the source of the lecithin (e.g., Balint et al., *J. Lipid Res.*, 6(1):96, 1965). For example, lecithin in human gallbladder bile is reported to be about 45% 16:0, 4% 16:1, 4% 18:0, 16% 18:1, 23% 18:2, 4% 20:4 with traces of 18:3 and 14:0; and lecithin in human plasma is reported to be about 35% 16:0, 1% 16:1, 14% 18:0, 17% 18:1, 17% 18:2, 14% 20:4 with traces of 18:3 and 14:0. In other

embodiments, lecithin is a non-naturally occurring form (also referred to as “synthetic lecithin”).

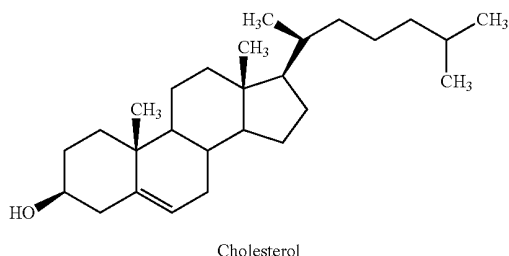
**[0091]** Non-limiting examples of lecithin include, for example:

Carbon Number	1-Acyl	2-Acyl
14:0-14:0	Myristoyl	Myristoyl
14:0-16:0	Myristoyl	Palmitoyl
14:0-18:0	Myristoyl	Stearoyl
16:0-14:0	Palmitoyl	Myristoyl
16:0-16:0	Palmitoyl	Palmitoyl
16:0-18:0	Palmitoyl	Stearoyl
16:0-18:1	Palmitoyl	Oleoyl
16:0-18:2	Palmitoyl	Linoleoyl
16:0-20:4	Palmitoyl	Arachidonoyl
16:0-22:6	Palmitoyl	Docosahexaenoyl
18:0-14:0	Stearoyl	Myristoyl
18:0-16:0	Stearoyl	Palmitoyl
18:0-18:0	Stearoyl	Stearoyl
18:0-18:1	Stearoyl	Oleoyl
18:0-18:2	Stearoyl	Linoleoyl
18:0-20:4	Stearoyl	Arachidonoyl
18:0-22:6	Stearoyl	Docosahexaenoyl
18:1-14:0	Oleoyl	Myristoyl
18:1-16:0	Oleoyl	Palmitoyl
18:1-18:0	Oleoyl	Stearoyl
14:1-14:1	Myristoleoyl	Myristoleoyl
14:1-14:1	Myristelaidoyl	Myristelaidoyl
16:1-16:1	Palmitoleoyl	Palmitoleoyl
16:1-16:1	Palmitelaidoyl	Palmitelaidoyl
18:1-18:1	Petroselinoyl	Petroselinoyl
18:1-18:1	Oleoyl	Oleoyl
18:1-18:1	Elaidoyl	Elaidoyl
18:2-18:2	Linoleoyl	Linoleoyl
18:3-18:3	Linolenoyl	Linolenoyl
20:1-20:1	Eicosenoyl	Eicosenoyl
20:4-20:4	Arachidonoyl	Arachidonoyl
22:1-22:1	Erucoyl	Erucoyl
22:6-22:6	DHA	DHA
24:1-24:1	Nervonoyl	Nervonoyl

**[0092]** Other particular lecithin examples include, without limitation, DL- $\alpha$ -dimyristoyl lecithin, L- $\alpha$ -dimyristoyl cephalin, L- $\alpha$ -dipalmitoyl lecithin, dipalmitoyl L- $\alpha$ -glycerophosphoric acid monocholine salt, L- $\alpha$ -dimyristoyl lecithin, D- $\alpha$ -dimyristoyl lecithin, L- $\alpha$ -distearoyl lecithin, stearoyl glycollecithin, 1,2-dioleoyl-sn-glycero-3-phosphocholine (18:1), 1,2-dilinoleoyl-sn-glycero-3-phosphocholine (18:2), 1,2-dimyristoyl-sn-glycero-3-phosphocholine (14:0), 1,2-dipentadecanoyl-sn-glycero-3-phosphocholine (15:0), 1,2-diphytanoyl-sn-glycero-3-phosphocholine (16:0), 1,2-dipalmitoyl-sn-glycero-3-phosphocholine (16:0), and 1-palmitoyl-2-oleoyl-sn-glycero-3-phosphocholine.

## C. Cholesterol

**[0093]** Cholesterol is a steroid having, in one embodiment, the following structure:



Cholesterol is known to interact with phospholipids (such as, cardiolipin and lecithin) in membranes or membrane-like structures (such as liposomes or micelles). In these circumstances, the cholesterol molecule is believed to be oriented parallel to the fatty acid chains of the phospholipids, and the cholesterol hydroxyl group interacts with the phospholipid head groups.

**[0094]** In the formation of the lipoidal antigens disclosed herein, cholesterol is believed to stabilize the emulsion (e.g., micelle). Thus, for the purposes of this disclosure, the term "cholesterol" includes any form of cholesterol or other cholesterol derivative that is capable of stabilizing an emulsion which contains a lipoidal antigen. In some examples, stabilizing a lipoidal-antigen-containing emulsion refers to extending the time an emulsified lipoidal antigen remains in solution. For example, addition of cholesterol to a lipoidal antigen may extend the time such an antigen remains dispersed in a continuous phase of an emulsion (such as, in an ethanolic solution) by 5%, 10%, 15% or 25% as compared to a comparable antigen containing relatively less or no cholesterol.

**[0095]** Non-limiting examples of cholesterol derivatives include cholest-5-en-3 beta-yl-6-aminohexyl ether (AH-Chol; Zimmer et al., *Eur. J. Pharm. Biopharm.*, 47(2):175-8, 1999); poly(ethylene glycol) cholesteryl ethers (PEG(n)-Chols; Baba et al., *Traffic*, 2(7):501-12, 2001; Ishiwata et al., *Biochim. Biophys. Acta*, 1359(2):123-35, 1997); a cationic cholesterol derivative with a hydroxyethyl amino head group described by Nakanishi and Noguchi (*Adv. Drug Deliv. Rev.*, 52(3):197-207, 2001); cholesterol hemisuccinate (Meuillet et al., *Eur. J. Pharmacol.*, 377(2-3):241-52, 1999); dehydroergosterol (DHE), which differs from cholesterol in having three additional double bonds and an extra methyl group (Mukherjee, *Biophys. J.*, 75(4):1915-1925, 1998); cationic derivatives of cholesterol which contain a tertiary amino head group with a different spacer arm (Takeuchi et al., *FEBS Lett.*, 397(2-3):207-9, 1996); cholesteryl-3beta-carboxyamidoethylenedimethylamine (Noguchi et al., *FEBS Lett.*, 433(1-2):169-173, 1998); and N-[tris [(beta-D-galactopyranosyloxy) methyl]methyl]-N alpha-[4-(5-cholesten-3 beta-yloxy) succinyl]glycinamide (Kempen et al., *J. Medicin. Chem.*, 27:1306-1312, 1984). Further examples of cholesterol derivatives useful in the formation of membrane and membrane-like (e.g., liposomal or micellar) structures (like a disclosed lipoidal antigen) are described in U.S. Pat. Nos. 5,888,

821; 5,043,164; 4,900,549; 4,442,037; 4,157,391; and 4,544,545, and European Pat. No. EP0606613.

## D. Preparation of Lipoidal Antigen

**[0096]** In CL/L/Ch lipoidal antigen embodiments, cardiolipin, lecithin and cholesterol can be combined in any proportion that forms an antigen capable of being specifically bound by an anti-lipoidal antibody (such as, anti-cardiolipin antibody). In some instances, the lipoidal antigen will take the form of a micelle, liposome, membrane raft, or other membrane-like structure. In these structures, hydrophobic interactions cause the non-polar components (such as, the fatty acid chains) to aggregate and exclude water molecules from the "core." As one of ordinary skill in the art will appreciate, a micelle is a substantially spherical (or otherwise closed) non-bilayer structure having a hydrophobic interior composed of fatty acid chains (and not including an aqueous center). In comparison, a liposome is a substantially spherically arranged bilayer structure that is larger than a micelle and encloses an aqueous center. The type of structure formed by a CL/L/Ch mixture will depend, for example, on the length and degree of saturation of the fatty acid chains of cardiolipin and lecithin, on the temperature, on the ionic composition of the aqueous medium, and on the mode of dispersal of the phospholipids in the solution. In particular embodiments, a CL/L/Ch lipoidal antigen (such as, a VDRL, RPR, USR, or synthetic VDRL antigen) forms a micelle in an aqueous solution (such as an ethanolic solution). In more particular embodiments, a lipoidal antigen forms a micelle and does not form a liposome in an aqueous solution (such as an ethanolic solution).

**[0097]** A lipoidal antigen for use in a disclosed composition or method can be commercially obtained (e.g., Fisher (Cat. No. B40765), Fisher (Cat. No. 22-415-132), Fisher (Cat. No. 23-038010), True-Medix, IPX Overseas Corporation (Miami, Fla., USA), Cenogenics Corporation (Morganville, N.J., USA), Nova Century Scientific (Niagara Falls, N.Y., USA) as well as other suppliers) or produced by any method commonly known in the art. In one embodiment, a lipoidal antigen is produced as described in Example 1.

**[0098]** In some embodiments, a non-aqueous solution containing cardiolipin, lecithin and cholesterol (CL/L/Ch) is mixed with an aqueous solution to form an emulsion. Any non-aqueous solution in which cardiolipin, lecithin and cholesterol are each soluble (or partially soluble) can be used, including, for example, ethanol (such as absolute ethanol, 95% ethanol, or 70% ethanol), chloroform, hexane:ethanol (e.g., 9:1), toluene (e.g., 95%), dichloromethane, or benzene. In one example, a CL/L/Ch is prepared in absolute ethanol.

**[0099]** In some embodiments, a CL/L/Ch solution useful for preparing a lipoidal antigen can include from about 0.001% to about 0.1% cardiolipin (such as from about 0.005% to about 0.07%, from about 0.008% to about 0.05%, from about 0.01% to about 0.04%, or from about 0.025% to about 0.035%); from about 0.05% to about 0.5% lecithin (such as from about 0.07% to about 0.4%, from about 0.09% to about 0.3%, from about 0.1% to about 0.25%, or from about 0.14% to about 0.21%); and/or from about 0.2% to about 5% cholesterol (such as from about 0.4% to about 3%, from about 0.7% to about 2%, from about 0.8% to about 1%). In particular examples, a CL/L/Ch solution useful for preparing a lipoidal antigen includes about 0.03% cardiolipin (such as, naturally occurring cardiolipin), about 0.21% lecithin (such as, naturally occurring lecithin), and about 0.9% cho-

lesterol. In another example, a CL/L/Ch solution useful for preparing a lipoidal antigen includes about 0.03% tetramyristoyl cardiolipin, about 0.14% 1-palmitoyl-2-oleoyl-sn-glycero-3-phosphocholine and about 0.9% cholesterol.

**[0100]** A CL/L/Ch solution useful for preparing a lipoidal antigen is mixed with an aqueous solution to form an emulsion of lipoidal antigen. The aqueous solution can include any solution in which a CL/L/Ch solution is immiscible, such as a saline solution (e.g., including 0.1-1.0 M NaCl, such as about 0.55 M NaCl). One exemplary aqueous solution includes 0.55 M NaCl, 0.05% (v/v) formaldehyde, 0.26 mM, 0.35 mM to 0.66 mM disodium hydrogen phosphate (for the dodecahydrate (12-H<sub>2</sub>O), heptahydrate (7-H<sub>2</sub>O), or anhydrous forms, respectively), and 1.2 mM potassium.

**[0101]** The ratio of CL/L/Ch solution to aqueous solution can be any ratio that will result in the formation of a lipoidal antigen emulsion (such as, CL/L/Ch-containing micelles). In some examples, the ratio of CL/L/Ch solution to aqueous solution ratio is about 1:10, about 1:15, about 2:33, or about 1:20. In other examples, the percentage of CL/L/Ch solution in an emulsion is about 3% (v/v), about 5% (v/v), about 8% (v/v), about 10% (v/v), or about 12% (v/v).

#### IV. Methods of Immobilizing Lipoidal Antigen

**[0102]** It is known that anti-lipoidal antibodies (e.g., reagent) in human serum will react with cardiolipin, lecithin and cholesterol-containing lipid antigens (such as, the RPR, VDRL, USR, or synthetic VDRL antigens). As discussed above, this knowledge formed the basis for solution-based, non-treponemal serological tests. Despite a long-felt need for membrane-based assays for syphilis testing, no one had previously recognized that a CL/L/Ch-containing lipoidal antigen could be immobilized on a membrane (or other solid support) using, as one example, the anti-lipoidal antibodies the antigen was specifically designed to detect. Unlike many other antigens, which have only one binding site for the antibody to be detected, the lipoidal antigen has many binding sites for anti-lipoidal antibodies. Thus, as disclosed herein, a non-saturating amount of anti-lipoidal antibody or other antibody that can specifically bind a lipoidal antigen (or, in particular examples, fragments of such antibodies, such as Fab fragments) can be used to anchor a lipoidal antigen to a solid support, such as a membranous surface (including, nitrocellulose, nylon and others) without adversely affecting the ability of the immobilized lipoidal antigen to further specifically bind anti-lipoidal antibodies present in a mobile phase (such as a biological sample).

##### A. Anchor Antibody

**[0103]** Antibodies useful to immobilize a lipoidal antigen to a solid support (such as a microporous membrane) in the disclosed compositions and methods include any antibody that is capable of specifically binding a lipoidal antigen, including, for example, anti-lipoidal antibodies from a *T. pallidum*-infected or *T. pallidum*-inoculated subject (such as, a human or a rabbit), anti-cholesterol antibodies, anti-cardiolipin antibodies, or anti-lecithin antibodies. As discussed in more detail below, antigen-binding fragments (such as, Fab fragments) of antibodies having the foregoing specificities can also serve as an anchor antibody in the disclosed compositions and methods. Anchor antibodies may be monoclonal or polyclonal. In specific embodiments, anchor antibodies are

polyclonal (such as those antibodies isolated from hyperimmune serum from *T. pallidum*-infected humans or rabbits).

**[0104]** Polyclonal anti-lipoidal antibodies from *T. pallidum*-infected or *T. pallidum*-inoculated subjects can be obtained, for example, by isolating such antibodies from commercially available serum or by producing and isolating such polyclonal antibodies using methods commonly known in the art. Commercial suppliers of blood products (such as, serum) from *T. pallidum*-infected humans include New York Blood Center (New York, N.Y., USA); Biomedical Resources (Hatboro, Pa., USA); Life Diagnostics, a division of Life Therapeutics (formerly Serologicals) (Clarkston, Ga., USA); and Teragenix (formerly Millennium Biotech, Inc) (Ft. Lauderdale, Fla., USA). In other embodiments, polyclonal antisera containing anti-lipoidal antibodies can be produced by immunizing host animals (such as rabbits, mice, horses, goats and others) with *T. pallidum* and/or a lipoidal antigen (such as a VDRL antigen). Detailed procedures for monoclonal or polyclonal antibody production are described in Harlow and Lane (*Antibodies, A Laboratory Manual*, CSHL, New York, 1988). Specific non-limiting procedures for producing antibodies in a host animal using a CL/L/Ch-containing immunogen have been described by, e.g., Inoue and Nojima (*Biochim. Biophys. Acta*, 144(2):409-414, 1967). Specific non-limiting protocols are available for producing anti-lipoidal antibodies by infection of a host animal with *T. pallidum* (see, e.g., Perine et al., *Infect. Immun.*, 8(5):787-790, 1973). Moreover, custom antibody production services are commercially available (see, e.g., Spring Valley Laboratories (Woodbine, Md., USA); Maine Biotechnology Services (Portland, Me., USA); CovalAb UK (Cambridge, United Kingdom); 21st Century Biochemicals (Marlboro, Mass., USA) and numerous others). Such commercial services could be used to produce lipoidal-antigen-specific polyclonal or monoclonal antibodies.

**[0105]** In embodiments involving antiserum containing anti-lipoidal antibodies, an antibody fraction can be isolated from the serum using well known methods. Commercially available kits are suitable for use in isolating antibodies (including anti-lipoidal antibodies) from serum. Such kits are available from, for example, Millipore (Billerica, Mass., USA), Pierce (Rockford, Ill., USA); BioRad (Hercules, Calif., USA), and many others. One specific non-limiting method for isolating anti-lipoidal antibodies from serum is described in Examples 2-3.

**[0106]** Other exemplary anchor antibodies that can be used in the disclosed compositions and methods, include anti-cholesterol antibodies and anti-cardiolipin antibodies. Anti-cholesterol antibodies are present in human sera and can be isolated as described above for anti-lipoidal antibodies. Specific anti-cholesterol antibodies and/or protocols for producing and/or isolating anti-cholesterol antibodies can be found in Kruth et al. (*J. Lipid Res.*, 42:1492-1500, 2001), Alving et al. (*Biochem. Soc. Trans.*, 17:637-639, 1989), Swartz et al. (*Proc. Natl. Acad. Sci. USA*, 85:1902, 1988), Stollar et al. (*Mol. Immunol.*, 26(1):73-79, 1989), and PCT Publication Nos. WO 00/06200, WO 97/21099, and WO 02/083100. Purified anti-cardiolipin antibodies are commercially available, for instance, from United States Biological (Swampscott, Mass., USA; e.g., Cat. No. C1375).

**[0107]** An anchor antibody for use in the present compositions and methods preferably (i) does not agglutinate with other antigen-bound anchor antibodies, and (ii) does not substantially bind to (or react with) a reagent (or series of

reagents) used to detect an analyte of interest (such as, an anti-lipoidal antibody present in sample).

**[0108]** Agglutination is a process whereby multivalent antibodies form a cross-linked network bridged by their corresponding antigens, which must at least two binding sites for the antibody of interest (referred to as a “multivalent antigen”). Under these circumstances, a single antibody can bind to two different antigens and two different antibodies can bind to the same antigen. Agglutination occurs at certain concentrations of multivalent antibody with multivalent antigen. One exemplary way to avoid agglutination of an anchor antibody with lipoidal antigens (which are multivalent by nature), is to use Fab (or other monovalent) antibody fragments to anchor a lipoidal antigen. A monovalent antibody fragment cannot bind two antigens and, thereby, cannot serve to crosslink two different antigens. Methods of making monovalent antibody fragments are well known in the art. One non-limiting method for making and isolating Fab fragments is provided in Example 5.

**[0109]** An alternative, non-limiting method for avoiding agglutination is to apply anchor antibodies (regardless of valency) to a solid surface (such as, a membrane of a membrane-based immunoassay device) in the absence of lipoidal antigen; then, bind the lipoidal antigen to the immobilized antibody. In this alternative method, the antibodies and antigens are physically constrained from substantial crosslinking

#### B. Solid Support

**[0110]** A solid support (or substrate) is any material which is insoluble, or can be made insoluble by a subsequent reaction. The methods of immobilizing a lipoidal antigen disclosed herein can be used with any solid support to which an anchor antibody will attach in a manner that substantially resists detachment when washed with an aqueous solution, such as when contacted with a fluid sample (such as a biological sample). Preferred solid support embodiments for disclosed immunoassay devices involve microporous membranes, such as nitrocellulose, nylon, polyvinylidene fluoride (PVDF), polyethersulfone, polycarbonate, polyester, cellulose acetate, mixed cellulose esters, or combinations thereof.

**[0111]** The surface of a solid support may be activated by chemical processes that cause covalent linkage of an agent (e.g., an anchor antibody or anchor antibody-lipoidal antigen complex) to the support. However, any other suitable method may be used for immobilizing an agent (e.g., an anchor antibody or anchor antibody-lipoidal antigen complex) to a solid support including, without limitation, ionic interactions, hydrophobic interactions, covalent interactions and the like. The particular forces that result in immobilization of an agent on a solid phase are not determinative for the methods and devices described herein.

**[0112]** A solid phase can be chosen for its intrinsic ability to attract and immobilize an agent, such as a capture reagent. Alternatively, the solid phase can possess a factor that has the ability to attract and immobilize an agent, such as an anchor antibody or anchor antibody-lipoidal antigen complex. The factor can include a charged substance that is oppositely charged with respect to, for example, an anchor antibody or anchor antibody-lipoidal antigen complex or to a charged substance conjugated to the anchor antibody or anchor antibody-lipoidal antigen complex.

**[0113]** Numerous and varied solid supports are known to those in the art and include, without limitation, bibulous or microporous membranes (such as, nitrocellulose, nylon or

PVDF), the walls of wells of a reaction tray, test tubes, polystyrene beads, magnetic beads, and microparticles (such as latex particles). With regard to certain membrane embodiments, the porous structure of nitrocellulose has excellent absorption and adsorption qualities for a wide variety of reagents, for instance, anchor antibodies or anchor antibody-lipoidal antigen complexes. Nylon possesses similar characteristics and is also suitable. Microporous structures are useful, as are materials with gel structure in the hydrated state.

**[0114]** Further examples of useful solid supports include: natural polymeric carbohydrates and their synthetically modified, cross-linked or substituted derivatives, such as agar, agarose, cross-linked alginic acid, substituted and cross-linked guar gums, cellulose esters, especially with nitric acid and carboxylic acids, mixed cellulose esters, and cellulose ethers; natural polymers containing nitrogen, such as proteins and derivatives, including cross-linked or modified gelatins; natural hydrocarbon polymers, such as latex and rubber; synthetic polymers which may be prepared with suitably porous structures, such as vinyl polymers, including polyethylene, polypropylene, polystyrene, polyvinylchloride, polyvinylacetate and its partially hydrolyzed derivatives, polyacrylamides, polymethacrylates, copolymers and terpolymers of the above polycondensates, such as polyesters, polyamides, and other polymers, such as polyurethanes or polyepoxides; porous inorganic materials such as sulfates or carbonates of alkaline earth metals and magnesium, including barium sulfate, calcium sulfate, calcium carbonate, silicates of alkali and alkaline earth metals, aluminum and magnesium; and aluminum or silicon oxides or hydrates, such as clays, alumina, talc, kaolin, zeolite, silica gel, or glass (these materials may be used as filters with the above polymeric materials); and mixtures or copolymers of the above classes, such as graft copolymers obtained by initializing polymerization of synthetic polymers on a pre-existing natural polymer.

**[0115]** Except as otherwise physically constrained, a solid support may be used in any suitable shape, such as films, sheets, strips, or plates, or it may be coated onto or bonded or laminated to appropriate inert carriers, such as paper, glass, plastic films, or fabrics.

#### C. Immobilizing Anchor Antibody-Lipoidal Antigen Complexes

**[0116]** In some embodiments, lipoidal antigens are immobilized on a solid support by contacting in solution the lipoidal antigen with anchor antibodies specific for the lipoidal antigen (e.g., anti-lipoidal antibodies, anti-cholesterol antibodies, anti-lecithin antibodies, and/or anti-cardiolipin antibodies, and/or antigen-binding fragments of any of the foregoing) to form a lipoidal antigen-anchor antibody complex (or complex). In particular embodiments, lipoidal antigen is contacted in solution with a Fab fragment specific for the lipoidal antigen (e.g., a Fab fragment isolated from immunoglobulins in syphilitic human serum or serum from other *T. pallidum*-infected or-inoculated subject).

**[0117]** A lipoidal antigen-anchor antibody complex has a polypeptide component (i.e., an anchor antibody) and a lipid component (i.e., a lipoidal antigen). In contrast to lipids, it is well known in the art that polypeptides (e.g., proteins) will strongly adhere (via incompletely characterized interactions) to many types of solid supports and, in particular, to membranous supports (like nitrocellulose, nylon or PVDF) (see, e.g., Harvey, *Optimization of Nitrocellulose Membrane Based Immunoassays*, Keene, N H: Schleicher and Schuell,

1991; Wallis et al., *Ann. Rev. Microbiol.*, 33:413-437, 1979; Presswood, *Membrane Filtration: Applications and Problems*, New York, N.Y.: Marcel Dekker, 1981; Farrah et al., *Proc. Natl. Acad. Sci. USA*, 78:1229-1232, 1981; Batteiger et al., *J. Immunol. Meth.*, 55:297-307, 1982; Tijssen, *Practice and Theory of Immunoassays*, 8th ed, Amsterdam: The Netherlands Elsevier, 1993). Thus, via its association with a polypeptide component (e.g., anchor antibody) it is also now possible to strongly adhere (e.g., immobilize) a lipoidal antigen to a solid support (such as, nitrocellulose, nylon, or PVDF). Accordingly, the disclosed methods (and methods of making the disclosed compositions) contemplate contacting a solid support (such as a microporous membrane) with a solution of antigen-antibody complex wherein, through such contact, the antigen-antibody complex becomes substantially immobilized on the solid support. In some examples, an anchor antibody-lipoidal antigen complex is substantially immobilized on a solid support when no more than about 1%, no more than about 2%, no more than about 5%, no more than about 10%, or no more than about 25% of the antigen-antibody complex becomes detached from the solid support when the support is contacted with a fluid sample for a time sufficient for the fluid sample to wet the solid support (e.g., for a time sufficient for a fluid sample to migrate along a membranous strip and contact an area where a lipoidal antigen is immobilized).

**[0118]** To immobilize a lipoidal antigen to a solid surface, it is also contemplated that a solid surface (such as, nitrocellulose, nylon or PVDF) can be contacted with anchor antibody (e.g., in solution) in the absence of lipoidal antigen. The polypeptide anchor antibody strongly adheres to the solid surface, as discussed above, and is immobilized. Thereafter, the immobilized anchor antibody is contacted with lipoidal antigen (e.g., in solution). Specific binding of the lipoidal antigen by the immobilized anchor antibody serves to also immobilize the antigen. As discussed above, this antigen immobilization technique can be used to avoid agglutination in circumstances where the anchor antibody is multivalent and capable of mediating agglutination in the presence of a multivalent antigen.

**[0119]** Under circumstances where it is desirable to detect a lipoidal-antigen-binding analyte (such as, anti-lipoidal antigens) using an immobilized lipoidal antigen, it is advantageous for the immobilized antigen to have exposed binding sites for the analyte. Accordingly, in the foregoing situations, amounts of anchor antibody that will not saturate (e.g., block) the majority (or predominantly all) of the analyte binding sites on a lipoidal antigen are used to form an anchor antibody-lipoidal antigen complex. A non-saturating amount of anchor antibody in an anchor antibody-lipoidal antigen complex is any amount of such antibody that will permit an analyte (e.g., anti-lipoidal antibodies in a mobile phase) to detectably bind the lipoidal antigen component of the complex. In some examples, no more than about 1%, no more than about 5%, no more than about 10%, no more than about 25%, no more than about 30% of the available anti-lipoidal antibody binding sites are blocked by the anchor antibody. In other examples, from 10 ng to about 1000 ng of anchor antibody in a 1  $\mu$ l volume are reacted with an equal volume of lipoidal antigen prepared, for example, as described in Example 1. In particular examples, from 25 ng to about 750 ng, from 50 ng to about 600 ng, from about 100 ng to about

500 ng, or from about 150 ng to about 400 ng anchor antibody are used to prepare an anchor antibody-lipoidal antigen complex.

**[0120]** FIG. 9 illustrates one particular embodiment of a lipoidal antigen (e.g., a USR antigen) attached to a solid support (e.g., a nitrocellulose membrane) via an anchor antibody (e.g., an anti-lipoidal Fab). The figure further illustrates the capture by the immobilized lipoidal antigen of an anti-lipoidal antibody from an exemplary sample (such as, a serum sample) and a relationship between a detector, the captured anti-lipoidal antibody, the antigen, and the anchor antibody.

**[0121]** Particular examples exclude anchoring a lipoidal antigen to a substrate using an anchor antibody specific for a derivative group (such as, biotin, hexa-His, FLAG, or other epitope tag) which has been added to a lipoidal antigen component with the purpose of serving as an epitope for an anchor antibody. Such examples do not exclude including derivatized cardiolipin, derivatized lecithin and/or derivatized cholesterol as components of a lipoidal antigen; however, in such examples, the derivative groups of such derivatized components do not serve as epitopes for an anchor antibody.

**[0122]** 1. Application of Anchor Antibody-Lipoidal Antigen Complex to Microporous Membranes

**[0123]** Some disclosed methods and compositions contemplate an anchor antibody-lipoidal antigen complex (also referred to as a "capture reagent") to be attached to a microporous membrane (such as nitrocellulose, nylon or PVDF). The membrane serves to immobilize the capture reagent and to provide a surface across or through which an applied sample will flow or pass. Nitrocellulose (whether pure or modified in any manner known in the art) is a preferred membrane for the disclosed devices and methods. Nitrocellulose is thought to bind proteins by hydrogen bonding, hydrophobic interactions, and by electrostatic mechanisms (see, e.g., Millipore Corporation, *A Short Guide Developing Immunochromatographic Test Strips*, 2nd Edition, pp. 1-40, 1999, available by request at (800) 645-5476).

**[0124]** For protein-containing capture reagents, such as an anchor antibody-lipoidal antigen complex, the dipole of the nitrate ester of nitrocellulose is believed to interact with the strong dipole of the peptide bonds of the protein. Salts at high concentrations, detergents, and water in an application solution may weaken and destabilize electrostatic interactions between a nitrocellulose membrane and a protein to be applied to the membrane. Thus, it is preferable, although not required, to use a low molarity buffer, for example, 2-10 mM phosphate, borate or carbonate buffers, to solubilize protein-containing capture reagents for immobilization onto nitrocellulose.

**[0125]** The pH of an application solution may, but need not, be adjusted to increase binding of the capture reagent to a nitrocellulose membrane. For example, the solubility of a protein-containing capture reagent in an application solution is at a minimum when the pH of the application solution is within about  $\pm$ 1 pH unit of the pI of the protein-containing capture reagent.

**[0126]** Optionally, 1 to 5% methanol, ethanol or isopropanol may be added to an application solution. An application solution may be applied to a membrane manually or in an automated manner. For example, a reagent dispensing module (e.g., Matrix 1600, Kinematic Automation, Twain Harte, Calif.) may be used to apply capture reagent to a microporous membrane (such as, nitrocellulose).

**[0127]** Typically, blocking of a microporous membrane in the disclosed methods and devices is not necessary. For example, proteins that are present in the sample and other blocking agents, which may be added, e.g., to a sample pad or conjugate pad of a lateral flow device, are generally sufficient to prevent an analyte from being non-specifically adsorbed onto the membrane. If optional blocking a membrane is desired for a particular application, useful blocking agents include, for example, gelatin (0.1%-0.5%), nonfat dry milk (0.5%-2%), casein (1%-2%), BSA (1%-2%), IgG (1%-2%), PVP 8-10 kD (0.5%-1.0%), and PVA 8-10 kD (0.5%-1.0%).

#### V. Immunoassay Devices

**[0128]** The discovery herein of a method to immobilize a lipoidal antigen (such as, a VDRL and/or USR antigen) to a solid support (such as, a microporous membrane, like nitrocellulose, nylon or PVDF) enables the production of immunoassay devices for the detection of lipoidal-antigen-binding analytes (such as, anti-lipoidal antibodies in biological samples from *T. pallidum*-infected subjects). In some examples, a disclosed immunoassay device permits detection of the presence (or absence) of anti-lipoidal antibodies in a biological sample for diagnosis of syphilis.

#### A. Representative Immunoassay Device Formats and Related Information

**[0129]** Immunoassay devices permit the performance of relatively inexpensive, disposable, membrane-based assays for the visual identification of the presence (or absence) of an analyte in a liquid sample. Such devices are usually formatted as freestanding dipsticks (e.g., test strips) or as devices having some sort of housing. Typically, an immunoassay device can be used with as little as about 200  $\mu$ l of liquid sample, and detection of an analyte in the sample can (but need not) be complete within 2-5 minutes. In clinical assays, the sample may be urine, blood, serum, saliva, or other body fluids. In nonclinical tests, the sample may be a small volume of solution prepared from soil, dust, plants, or food, and similarly applied directly to the membrane test strip. In most instances, no ancillary instrumentation is required to perform such tests, and such devices easily can be used in clinics, laboratories, field locations, and the home even by inexperienced persons.

**[0130]** Immunoassay devices have been developed for the routine identification or monitoring of physiological and pathological conditions (e.g., infectious diseases, pregnancy, cancer, endocrine disorders) using different biological samples (e.g., urine, serum, plasma, blood, saliva), and for analysis of environmental samples (e.g., natural fluids and industrial plant effluents) for instance for contamination. Many of these tests are based on the highly specific interactions between specific binding pairs. Examples of such binding pairs include antigen/antibody, hapten/antibody, lectin/carbohydrate, apoprotein/cofactor and biotin/(strept)avidin. Furthermore, many of these tests involve devices (e.g., solid phase, lateral flow test strips, flow-through tests) with one or more of the members of a binding pair attached to a mobile or immobile solid phase material such as latex beads, glass fibers, glass beads, cellulose strips or nitrocellulose membranes (U.S. Pat. Nos. 4,703,017; 4,743,560; 5,073,484).

**[0131]** One principle category of immunoassay is the "sandwich" assay. In general, sandwich immunoassay procedures call for mixing a sample, which may contain an analyte of interest (for example, anti-lipoidal antibody), with a detec-

tor reagent that specifically recognizes the analyte, for example, gold-conjugated Protein A, gold-conjugated Protein G, or gold-conjugated secondary antibody specific for anti-lipoidal antibody (e.g., anti-human Ab or anti-human Ab(Fc) secondary antibody). The detector reagent is mobile and typically is linked to a label or another signaling reagent, such as dyed latex, a colloidal metal sol, or a radioisotope. This mixture is then applied to a chromatographic medium (such as a microporous or bibulous membrane, like nitrocellulose, nylon or PVDF) containing a band or zone of immobilized antigens recognized by the analyte antibody of interest. The chromatographic medium often is in the form of a strip that resembles a dipstick or which can be incorporated into a housing, such as in a lateral flow device or flow-through device. When the complex of the molecule to be assayed and the detector reagent reaches the zone of the immobilized antigens on the chromatographic medium, binding occurs and the detector reagent complex is localized at the zone. This indicates the presence of the molecule to be assayed. This technique can be used to obtain quantitative or semi-quantitative results. Examples of sandwich immunoassays performed on test strips are described in, for example, U.S. Pat. Nos. 4,168,146 and 4,366,241.

**[0132]** In other common forms of membrane-based immunoassays, as typified by some home pregnancy and ovulation detection kits, a test strip (or dipstick) is "dipped" into a sample suspected of containing the subject analyte. Enzyme-labeled detector reagent is then added, either simultaneously or after an incubation period. The device next is washed and then inserted into a second solution containing a substrate for the enzyme. The enzyme label, if present, interacts with the substrate, causing the formation of colored products, which either deposit as a precipitate onto the solid phase or produce a visible color change in the substrate solution. EP-A 0 125 118 describes such a sandwich type dipstick immunoassay. EP-A 0 282 192 describes a dipstick device for use in competition type assays.

**[0133]** Flow-through type immunoassay devices were designed, in part, to obviate the need for incubation and washing steps associated with dipstick assays. Flow-through immunoassay devices involve a capture reagent (such as an anchor antibody-lipoidal antigen complex) bound to a porous membrane or filter to which a liquid sample is added. As the liquid flows through the membrane, target analyte (such as, anti-lipoidal antibody) binds to the capture reagent. The addition of sample is followed by addition of detector reagent (such as, gold-conjugated Protein A or gold-conjugate anti-human IgG(Fc)). Alternatively, the detector reagent may be placed on the membrane in a manner that permits the detector to mix with the sample and thereby label the analyte. The visual detection of detector reagent provides an indication of the presence of target analyte in the sample. Representative flow-through immunoassay devices are described in U.S. Pat. Nos. 4,246,339; 4,277,560; 4,632,901; 4,812,293; 4,920,046; and 5,279,935; and U.S. Pat. Appl. Nos. 20030049857 and 20040241876.

**[0134]** Migration assay devices usually incorporate within them reagents that have been attached to colored labels, thereby permitting visible detection of the assay results without addition of further substances. See, for example, U.S. Pat. No. 4,770,853; PCT Publication No. WO 88/08534 and European Patent No. EP-A 0 299 428.

**[0135]** There are a number of commercially available lateral flow type tests and patents disclosing methods for the

detection of large analytes (MW greater than 1,000 Daltons). U.S. Pat. No. 5,229,073 describes a semiquantitative competitive immunoassay lateral flow method for measuring plasma lipoprotein levels. This method utilizes a plurality of capture zones or lines containing immobilized antibodies to bind both the labeled and free lipoprotein to give a semi-quantitative result.

**[0136]** U.S. Pat. No. 5,591,645 provides a chromatographic test strip with at least two portions. The first portion includes a movable tracer and the second portion includes an immobilized binder capable of binding to the analyte. Additional examples of lateral flow tests for large analytes are disclosed in the following patent documents: U.S. Pat. Nos. 4,168,146; 4,366,241; 4,855,240; 4,861,711; and 5,120,643; European Patent No. 0296724; WO 97/06439; and WO 98/36278.

**[0137]** There are also lateral flow type tests for the detection of small-analytes (MW 100-1,000 Daltons). Generally, these small analyte tests involve "typical" competitive inhibition to produce negative or indirect reporting results (i.e., reduction of signal with increasing analyte concentration), as exemplified by U.S. Pat. No. 4,703,017. However, several approaches have been developed for detecting small analytes using lateral flow tests that produce positive or direct reporting results (i.e., increase in signal with increasing analyte concentration). These include, for instance, U.S. Pat. Nos. 5,451,504; 5,451,507; 5,798,273; and 6,001,658.

**[0138]** U.S. Pat. No. 5,451,504 provides a method with three specific zones (mobilization, trap and detection) each containing a different latex conjugate to yield a positive signal. The mobilization zone contains labeled antibody to bind the analyte in the sample. In the trap zone, unbound, labeled antibody is then trapped by immobilized analyte analog. The detection zone captures the labeled analyte-antibody complex.

**[0139]** U.S. Pat. No. 5,451,507 describes a two-zone, disconnected immunoassay method. The first zone has non-diffusively bound reagent that binds with a component, for example, an analyte analog bound to, or capable of becoming bound to, a member of a signal producing system. The second zone binds to the component only when the analyte to be tested is present. The distance the component migrates into the second zone is directly related to the concentration of analyte.

**[0140]** U.S. Pat. No. 5,798,273 discloses a lateral flow device that includes a capture zone with immobilized analyte analog and one or more read-out zones to bind labeled analyte-analog.

**[0141]** U.S. Pat. No. 6,001,658 discloses a test strip device with a diffusible, labeled binding partner that binds with analyte, an immobilized analyte, and a detection area containing an immobilized antibody.

**[0142]** Devices described herein generally include a strip of absorbent material (such as a microporous membrane), which, in some instances, can be made of different substances each joined to the other in zones, which may be abutted and/or overlapped. In some examples, the absorbent strip can be fixed on a supporting non-interactive material (such as non-woven polyester), for example, to provide increased rigidity to the strip. Zones within each strip may differentially contain the specific binding partner(s) and/or other reagents required for the detection and/or quantification of the particular analyte being tested for, for example, an anti-lipoidal antibody. Thus these zones can be viewed as functional sectors or functional regions within the test device.

**[0143]** In general, a fluid sample (or a sample suspended in a fluid) is introduced to the strip at the proximal end of the strip, for instance by dipping or spotting. A sample is collected or obtained using methods well known to those skilled in the art. The sample containing the anti-lipoidal antibodies to be detected may be obtained from any biological source. Examples of biological sources include blood serum, blood plasma, urine, spinal fluid, saliva, fermentation fluid, lymph fluid, tissue culture fluid and ascites fluid of a human or animal. The sample may be diluted, purified, concentrated, filtered, dissolved, suspended or otherwise manipulated prior to immunoassay to optimize the immunoassay results. The fluid migrates distally through all the functional regions of the strip. The final distribution of the fluid in the individual functional regions depends on the adsorptive capacity and the dimensions of the materials used.

**[0144]** In some embodiments, porous solid supports, such as nitrocellulose, described hereinabove are preferably in the form of sheets or strips. The thickness of such sheets or strips may vary within wide limits, for example, from about 0.01 to 0.5 mm, from about 0.02 to 0.45 mm, from about 0.05 to 0.3 mm, from about 0.075 to 0.25 mm, from about 0.1 to 0.2 mm, or from about 0.11 to 0.15 mm. The pore size of such sheets or strips may similarly vary within wide limits, for example from about 0.025 to 15 microns, or more specifically from about 0.1 to 3 microns; however, pore size is not intended to be a limiting factor in selection of the solid support. The flow rate of a solid support, where applicable, can also vary within wide limits, for example from about 12.5 to 90 sec/cm (i.e., 50 to 300 sec/4 cm), about 22.5 to 62.5 sec/cm (i.e., 90 to 250 sec/4 cm), about 25 to 62.5 sec/cm (i.e., 100 to 250 sec/4 cm), about 37.5 to 62.5 sec/cm (i.e., 150 to 250 sec/4 cm), or about 50 to 62.5 sec/cm (i.e., 200 to 250 sec/4 cm). In specific embodiments of devices described herein, the flow rate is about 62.5 sec/cm (i.e., 250 sec/4 cm). In other specific embodiments of devices described herein, the flow rate is about 37.5 sec/cm (i.e., 150 sec/4 cm).

**[0145]** Another common feature to be considered in the use of immunoassay devices is a means to detect the formation of a complex between an analyte (such as an anti-lipoidal antibody) and a capture reagent (such as anchor antibody-lipoidal antigen complexes). A detector (also referred to as detector reagent) serves this purpose. A detector may be integrated into an immunoassay device (for example included in a conjugate pad, as described below), or may be applied to the device from an external source.

**[0146]** A detector may be a single reagent or a series of reagents that collectively serve the detection purpose. In some instances, a detector reagent is a labeled binding partner specific for the analyte (such as, gold-conjugated Protein A for an antibody analyte, or gold-labeled anti-human Ab(Fc) for a human antibody analyte). In other instances, a detector reagent collectively includes an unlabeled first binding partner specific for the analyte and a labeled second binding partner specific for the first binding partner and so forth. In each instance, a detector reagent specifically detects bound analyte of an analyte-capture reagent complex and, therefore, a detector reagent preferably does not substantially bind to or react with the capture reagent or other components localized in the analyte capture area. Such non-specific binding or reaction of a detector may provide a false positive result. Optionally, a detector reagent can specifically recognize a positive control molecule (such as a non-specific human IgG

for a labeled Protein A detector, or a labeled Protein G detector, or a labeled anti-human Ab(Fc) that is present in a secondary capture area.

**[0147]** Preferably, a detector reagent for use in the disclosed methods or devices does not substantially bind to or react with an immobilized anchor antibody-lipoidal antigen complex. One of ordinary skill in the art can easily determine combinations of particular detector reagents and particular anchor antibody-lipoidal antigen complexes that will satisfy this preference for the detection of particular analytes. For example, for the detection of human anti-lipoidal antibodies, some non-limiting exemplary combinations include:

Lipoidal Antigen	Anchor Antibody	Detector Reagent
CL/L/Ch	human, anti-lipoidal antigen-binding fragment (e.g., Fab)	Protein A, Protein G, or anti-human Ab(Fc)
CL/L/Ch	human, anti-cholesterol antigen-binding fragment (e.g., Fab)	Protein A, Protein G, or anti-human Ab(Fc)
CL/L/Ch	human, anti-cardiolipin antigen-binding fragment (e.g., Fab)	Protein A, Protein G, or anti-human Ab(Fc)
CL/L/Ch	non-human, anti-lipoidal full-length Ab	anti-human Ab (any specificity)
CL/L/Ch	non-human, anti-cholesterol full-length Ab	anti-human Ab (any specificity)
CL/L/Ch	non-human, anti-cardiolipin full-length Ab	anti-human Ab (any specificity)
CL/L/Ch	non-human (mammalian), anti-lipoidal antigen-binding fragment (e.g., Fab)	Protein A, Protein G, anti-human Ab (any specificity)
CL/L/Ch	non-human (mammalian), anti-cholesterol antigen-binding fragment (e.g., Fab)	Protein A, Protein G, anti-human Ab (any specificity)
CL/L/Ch	non-human (mammalian), anti-cardiolipin antigen-binding fragment (e.g., Fab)	Protein A, Protein G, anti-human Ab (any specificity)

#### B. Flow-Through Device Construction and Design

**[0148]** A flow-through device involves a capture reagent (such as an anchor antibody-lipoidal antigen complex) immobilized on a solid support, typically, a membrane (such as, nitrocellulose, nylon, or PVDF). Characteristics of useful membrane have been previously described; however, it is useful to note that in a flow-through assay capillary rise is not a particularly important feature of a membrane as the sample moves vertically through the membrane rather than across it as in a lateral flow assay. In a simple representative format, the membrane of a flow-through device is placed in functional or physical contact with an absorbent layer (see, e.g., description of "absorbent pad" below), which acts as a reservoir to draw a fluid sample through the membrane. Optionally, following immobilization of a capture reagent, any remaining protein-binding sites on the membrane can be blocked (either before or concurrent with sample administration) to minimize nonspecific interactions. An exemplary physical embodiment of a flow-through device is shown in FIG. 10.

**[0149]** In operation of a flow-through device, a fluid sample (such as a bodily fluid sample) is placed in contact with the membrane. Typically, a flow-through device also includes a sample application area (or reservoir) to receive and temporarily retain a fluid sample of a desired volume. The sample passes through the membrane matrix. In this process, an analyte in the sample (such as an anti-lipoidal antibody) can specifically bind to the immobilized capture reagent (such as anchor antibody-lipoidal antigen complex). Where detection of an analyte-capture reagent complex is desired, a detector reagent (such as labeled Protein A, labeled Protein G, or labeled anti-human IgG(Fc)) can be added with the sample or a solution containing a detector reagent can be added subse-

quent to application of the sample. If an analyte is specifically bound by capture reagent, a visual representative attributable to the particular detector reagent can be observed on the surface of the membrane. Optional wash steps can be added at any time in the process, for instance, following application of the sample, and/or following application of a detector reagent.

#### C. Lateral Flow Device Construction and Design

**[0150]** Lateral flow devices are commonly known in the art. Briefly, a lateral flow device is an analytical device having as

its essence a test strip, through which flows a test sample fluid that is suspected of containing an analyte of interest. The test fluid and any suspended analyte can flow along the strip to a detection zone in which the analyte (if present) interacts with a capture agent and a detection agent to indicate a presence, absence and/or quantity of the analyte.

**[0151]** Numerous lateral flow analytical devices have been disclosed, and include those shown in U.S. Pat. Nos. 4,313,734; 4,435,504; 4,775,636; 4,703,017; 4,740,468; 4,806,311; 4,806,312; 4,861,711; 4,855,240; 4,857,453; 4,943,522; 4,945,042; 4,496,654; 5,001,049; 5,075,078; 5,126,241; 5,451,504; 5,424,193; 5,712,172; 6,555,390; and 6,368,876; EP 0810436; and WO 92/12428; WO 94/01775; WO 95/16207; and WO 97/06439, each of which is incorporated by reference.

**[0152]** Many lateral flow devices are one-step lateral flow assays in which a biological fluid is placed in a sample area on a bibulous strip (though, non-bibulous materials can be used, and rendered bibulous by applying a surfactant to the material), and allowed to migrate along the strip until the liquid comes into contact with a specific binding partner that interacts with an analyte in the liquid. Once the analyte interacts with the binding partner, a signal (such as a fluorescent or otherwise visible dye) indicates that the interaction has occurred. Multiple discrete binding partners can be placed on the strip (for example in parallel lines) to detect multiple analytes in the liquid. The test strips can also incorporate control indicators, which provide a signal that the test has adequately been performed, even if a positive signal indicating the presence (or absence) of an analyte is not seen on the strip.

**[0153]** The construction and design of lateral flow devices is very well known in the art, as described, for example, in Millipore Corporation, *A Short Guide Developing Immuno-chromatographic Test Strips*, 2nd Edition, pp. 1-40, 1999, available by request at (800) 645-5476; and Schleicher & Schuell, *Easy to Work with BioScience, Products and Protocols* 2003, pp. 73-98, 2003, 2003, available by request at Schleicher & Schuell BioScience, Inc., 10 Optical Avenue, Keene, NH 03431, (603) 352-3810; both of which are incorporated herein by reference in their entireties.

**[0154]** Lateral flow devices have a wide variety of physical formats that are equally well known in the art. Any physical format that supports and/or houses the basic components of a lateral flow device in the proper function relationship is contemplated by this disclosure. FIG. 7 shows several examples of lateral flow devices. These examples demonstrate some of the physical embodiments that may be useful in the construction of a lateral flow device.

**[0155]** The basic components of a particular embodiment of a lateral flow device are illustrated in FIG. 8, which shows a particular embodiment in which an elongated housing 10 contains a bibulous lateral flow strip 12 that extends substantially the entire length of housing 10. Lateral flow strip 12 is divided into a proximal sample application pad 14 positioned below a sample introduction port 15, an intermediate test result membrane 16, and a distal absorbent pad 18. Flow strip 12 is interrupted by a conjugate pad 20 that contains labeled conjugate (such as gold-conjugated Protein A, gold-conjugated Protein G, gold-conjugated anti-human Ab). A flow path along strip 12 passes from proximal pad 14, through conjugate pad 20, into test result membrane 16, for eventual collection in absorbent pad 18. Selective binding agents (such as an anchor antibody-lipoidal antigen complex) are positioned on a proximal test line 22 in test result membrane 16. A control line 24 is provided in test result membrane 16 slightly distal to test line 22.

**[0156]** In operation of the particular embodiment of a lateral flow device illustrated in FIG. 8, a fluid sample containing an analyte of interest, such as an anti-lipoidal antibody, is applied to the sample pad 14 through the sample introduction port 15. In some examples, the sample may be applied to the sample introduction port 15 dropwise or, less preferably, by dipping the end of the device containing the sample introduction port 15 into the sample. In other examples where a sample is whole blood, an optional developer fluid is added to the blood sample to cause hemolysis of the red blood cells and, in some cases, to make an appropriate dilution of the whole blood sample. From the sample pad 14, the sample passes, for instance by capillary action, to the conjugate pad 20. In the conjugate pad 20, the analyte of interest may bind (or be bound by) a mobilized or mobilizable detector reagent. For example, an anti-lipoidal antibody analyte may bind to a gold-conjugated Protein A detector reagent contained in the conjugate pad. The analyte complexed with the detector reagent may subsequently flow to the test result membrane 16 where the complex may further interact with an analyte-specific binding partner (such as an anchor antibody-lipoidal antigen complex), which is immobilized at the proximal test line 22. In some examples, an anti-lipoidal antibody complexed with a detector reagent (such as, gold-conjugated Protein A, gold-conjugated Protein G, or gold-conjugated anti-human Ab) may further bind to unlabeled, anchor antibody-lipoidal antigen complexes immobilized at the proximal test line 22. The formation of the immunocomplex between anti-

lipoidal antibody, labeled (e.g., gold-conjugated) detector reagent, and immobilized anchor antibody-lipoidal antigen complex can be detected by the appearance of a visible line at the proximal test line 22, which results from the accumulation of the label (e.g., gold) in the localized region of the proximal test line 22. The control line 24 may contain an immobilized, detector-reagent-specific binding partner, which can bind the detector reagent in the presence or absence of the analyte. Such binding at the control line 24 indicates proper performance of the test, even in the absence of the analyte of interest.

**[0157]** In another embodiment of a lateral flow device, there may be a second test line located parallel or perpendicular (or in any other spatial relationship) to test line 22 in test result membrane 16. The operation of this particular embodiment is similar to that described in the immediately preceding paragraph with the additional considerations that (i) a second detector reagent specific for a second analyte, such as an anti-*T. pallidum* antibody, may also be contained in the conjugate pad, and (ii) the second test line will contain a second specific binding partner having affinity for a second analyte in the sample. For example, the second test line may contain immobilized treponemal antigens that will specifically bind anti-*T. pallidum* antibodies present in the sample.

**[0158]** Some of the materials that may be useful for the components of a lateral flow device are shown in Table 1. However, one of skill in the art will recognize that the particular materials used in a particular lateral flow device will depend on a number of variables, including, for example, the analyte to be detected, the sample volume, the desired flow rate and others, and can routinely select the useful materials accordingly. Table 1.

Component	Useful Material
Sample Pad	Glass fiber Woven fibers Screen Non-woven fibers Cellulosic filters Paper
Conjugate Pad	Glass fiber Polyester Paper
Membrane	Surface modified polypropylene Nitrocellulose (including pure nitrocellulose and modified nitrocellulose) Nitrocellulose direct cast on polyester support Polyvinylidene fluoride Nylon
Absorbent Pad	Cellulosic filters Paper

**[0159]** 1. Sample Pad

**[0160]** The sample pad (such as sample pad 14 in FIG. 8) is an optional component of a lateral flow device that initially receives the sample, and may serve to remove particulates from the sample. Among the various materials that may be used to construct a sample pad (see Table 1), a cellulose sample pad may be beneficial if a large bed volume (e.g., 250  $\mu\text{l}/\text{cm}^2$ ) is a factor in a particular application. Sample pads may be treated with one or more release agents, such as buffers, salts, proteins, detergents, and surfactants. Such release agents may be useful, for example, to promote resolubilization of conjugate-pad constituents, and to block non-specific binding sites in other components of a lateral flow

device, such as a nitrocellulose membrane. Representative release agents include, for example, trehalose or glucose (1%-5%), PVP or PVA (0.5%-2%), Tween 20 or Triton X-100 (0.1%-1%), casein (1%-2%), SDS (0.02%-5%), and PEG (0.02%-5%).

**[0161]** 2. Membrane and Application Solution:

**[0162]** The types of membranes useful in a lateral flow device (such as nitrocellulose, nylon and PVDF), and considerations for applying a capture reagent to such membranes have been discussed previously.

**[0163]** 3. Conjugate Pad

**[0164]** The conjugate pad (such as conjugate pad **20** in FIG. **8**) serves to, among other things, hold a detector reagent. In some embodiments, a detector reagent may be applied externally, for example, from a developer bottle, in which case a lateral flow device need not contain a conjugate pad (see, for example, U.S. Pat. No. 4,740,468).

**[0165]** Detector reagent(s) contained in a conjugate pad is released into solution upon application of the test sample. A conjugate pad may be treated with various substances to influence release of the detector reagent into solution. For example, the conjugate pad may be treated with PVA or PVP (0.5% to 2%) and/or Triton X-100 (0.5%). Other release agents include, without limitation, hydroxypropylmethyl cellulose, SDS, Brij and  $\beta$ -lactose. A mixture of two or more release agents may be used in any given application. In the particular disclosed embodiment, the detector reagent in conjugate pad **20** is labeled Protein A, Protein G, or anti-human IgG(Fc).

**[0166]** 4. Absorbent Pad

**[0167]** The use of an absorbent pad **18** in a lateral flow device is optional. The absorbent pad acts to increase the total volume of sample that enters the device. This increased volume can be useful, for example, to wash away unbound analyte from the membrane. Any of a variety of materials is useful to prepare an absorbent pad, see, for example, Table 1. In some device embodiments, an absorbent pad can be paper (i.e., cellulosic fibers). One of skill in the art may select a paper absorbent pad on the basis of, for example, its thickness, compressibility, manufacturability, and uniformity of bed volume. The volume uptake of an absorbent made may be adjusted by changing the dimensions (usually the length) of an absorbent pad.

#### D. Combination Devices

**[0168]** Each of the immunoassay devices discussed above (e.g., dipstick, flow-through device or lateral flow device) can be, in some embodiments, formatted to detect multiple analytes by the addition of secondary, tertiary or more capture areas containing capture reagents specific for the other analytes of interest. In particular, this disclosure contemplates immunoassay devices that concurrently detect anti-lipoidal antibody and treponemes or anti-treponemal antibodies in fluid samples (such as, human serum). Such combination devices further include a treponemal capture area involving (a) an immobilized treponemal antigen capable of being specifically bound by an anti-*T. pallidum* antibody, or (b) an immobilized anti-*T. pallidum* antibody that specifically binds a mobile treponemal antigen. As used herein, a "treponemal antigen" is an antigen containing at least one antigenic determinant that specifically binds anti-*T. pallidum* antibodies. Numerous treponemal antigens have been described in the art; see, for example, U.S. Pat. Nos. 6,479,248; 6,248,331; 5,681,934; 5,578,456; 4,868,118; and 4,740,467. For

instance, polypeptides of at least the following apparent molecular weights have been described as *T. pallidum* antigens: 16-20 kDa, 18 kDa, 18-23 kDa, 25 kDa, 35 kDa, 37 kDa, 37-46 kDa, 38 kDa, 39 kDa, 41 kDa, 43 kDa, 44 kDa, 46 kDa, 47 kDa, 58 kDa, 150 kDa; and 180 kDa (for more particular detail, see U.S. Pat. No. 4,846,118).

**[0169]** Treponemal antigens and anti-*T. pallidum* antibodies are polypeptides; thus, when used as capture reagents, these molecules can be directly adhered to a solid support (such as, nitrocellulose, nylon or PVDF). Nonetheless, it is contemplated that treponemal antigens or anti-*T. pallidum* antibodies can be immobilized (directly or indirectly) on a solid support by any available method.

**[0170]** A detector reagent can be used to detect the formation of a complex between a treponemal capture reagent and treponeme-specific analyte (such as, a treponeme, a treponemal antigen, or an anti-treponemal antibody). In some embodiments, a detector reagent (such as an anti-human Ab(Fc)) can specifically detect a bound treponeme-specific analyte (e.g., a human anti-treponemal antibody) and a bound anti-lipoidal antibody analyte (e.g., a human anti-lipoidal antibody). In other instances, two separate detector reagents for specific detection of a bound treponeme-specific analyte (e.g., anti-treponemal antibody or treponemal antigen) or a bound anti-lipoidal antibody analyte are envisioned.

**[0171]** The operation of an immunoassay device useful for performing concurrent treponemal and non-treponemal tests is substantially similar to devices described elsewhere in this specification. One particular feature of a combination device is that a fluid sample applied to a sample application area is able to contact (e.g., flow to or flow through) each of an anti-lipoidal antibody capture area and to a treponemal capture area.

#### VI. Kits

**[0172]** Disclosed herein are kits for use in detecting anti-lipoidal antibodies in a sample (such as, a biological sample). Such kits can also be used, for example, in the diagnosis of diseases in which the presence of anti-lipoidal antibodies is symptomatic of the disease (such as, syphilis or lupus). Certain embodiments of the disclosed kits are generally portable and provide a simple, rapid, and/or cost-effective way to detect anti-lipoidal antibodies and/or diagnose disease (such as syphilis) without the need for laboratory facilities, such as in a point-of-care facility.

**[0173]** Kits include one or more immunoassay devices as disclosed herein and a carrier means, such as a box, a bag, a satchel, plastic carton (such as molded plastic or other clear packaging), wrapper (such as, a sealed or sealable plastic, paper, or metallic wrapper), or other container. In some examples, kit components will be enclosed in a single packaging unit, such as a box or other container, which packaging unit may have compartments into which one or more components of the kit can be placed. In other examples, a kit includes one or more containers, for instance vials, tubes, and the like that can retain, for example, one or more biological samples to be tested, positive and/or negative control samples or solutions (such as, a positive control serum containing anti-lipoidal or treponemal antibodies), diluents (such as, phosphate buffers, or saline buffers), detector reagents (e.g., for external application to a kit device), substrate reagents for visualization of detector reagent enzymes (such as, 5-bromo-4-chloro-

3-indolyl phosphate, nitroblue tetrazolium in dimethyl formamide), and/or wash solutions (such as, Tris buffers, saline buffer, or distilled water).

[0174] Other kit embodiments include syringes, finger-prick devices, alcohol swabs, gauze squares, cotton balls, bandages, latex gloves, incubation trays with variable numbers of troughs, adhesive plate sealers, data reporting sheets, which may be useful for handling, collecting and/or processing a biological sample. Kits may also optionally contain implements useful for introducing samples into a sample chamber of an immunoassay device, including, for example, droppers, Dispo-pipettes, capillary tubes, rubber bulbs (e.g., for capillary tubes), and the like. Still other kit embodiments may include disposal means for discarding a used immunoassay device and/or other items used with the device (such as patient samples, etc.). Such disposal means can include, without limitation, containers that are capable of containing leakage from discarded materials, such as plastic, metal or other impermeable bags, boxes or containers.

[0175] In some examples, a disclosed kit will include instructions for the use of an immunoassay device. The instructions may provide direction on how to apply sample to the test device, the amount of time necessary or advisable to wait for results to develop, and details on how to read and interpret the results of the test. Such instructions may also include standards, such as standard tables, graphs, or pictures for comparison of the results of a test. These standards may optionally include the information necessary to quantify analyte using the test device, such as a standard curve relating intensity of signal or number of signal lines to an amount of analyte therefore present in the sample.

#### EXAMPLES

[0176] The following examples are provided to illustrate certain particular features and/or embodiments. These examples should not be construed to limit the invention to the particular features or embodiments described.

##### Example 1

###### Preparation of a USR Lipoidal Antigen

[0177] This Example describes the preparation of an exemplar lipoidal antigen, a USR antigen, which can be attached to a solid support, such as nitrocellulose, using the disclosed methods. Approximately 100 ml of a USR antigen can be prepared as described in this Example; however, those of ordinary skill in the art will appreciate that this described protocol can be scaled upward or downward to produce more or less, respectively, USR antigen. Moreover, unless expressly stated otherwise, all method steps, reactions, etc. in this and the following examples were performed at room temperature (e.g., from about 20° C. to about 25° C.).

[0178] Eight (8) ml of VDRL buffered saline (10 grams NaCl, 0.5 ml formaldehyde, 0.093 grams disodium hydrogen phosphate, and 0.170 grams potassium dihydrogen phosphate in 1 liter of distilled water) was added to a 250 ml round, glass-stoppered bottle. Over a period of 40 to 60 seconds, 10 ml VDRL antigen (0.9% cholesterol, 0.03% bovine heart cardiolipin, and about 0.21% lethicin in ethanol) was added directly onto the buffered saline with continuous rotation of the bottle. Rotation of the bottle was continued for approximately 10 seconds following the addition of the VDRL antigen. Then, 82 ml VDRL buffered saline was added to the reaction mixture. With the top placed on the bottle, the bottle

was shaken from bottom to top and back approximately 30 times in 10 seconds. Approximately 19 ml aliquots of the shaken mixture were centrifuged in stainless steel tubes in an angle centrifuge (Sorvall SS-3) at room temperature at a relative centrifugal force of approximately 2000×g for 15 minutes (measured from when the centrifuge reached the desired speed). The supernatant fluid was carefully decanted by inverting the tube away from the side containing the sedimented material. After removing the supernatant, the centrifuge tube was inverted and wiped with cotton gauze without disturbing the sediment. The sediment was then resuspended with gentle shaking in a volume of resuspending solution (3.72% EDTA, 40% choline chloride (v/v), phosphate buffered saline pH 6.9±0.1) equal to that of the antigen suspension centrifuged (in this case, 19 ml). All resuspended sediments were recombined in a glass-stoppered bottle and gently swirled to mix to form the antigen preparation. The antigen preparation was then placed in a refrigerator (from about 2° C. to about 8° C.) for approximately one week to stabilize.

##### Example 2

###### Ammonium Sulfate Fractionation of *T. pallidum*-Infected Human Serum

[0179] This Example describes one method for separating an immunoglobulin-containing fraction from serum. The method of this Example (as well as other immunoglobulin isolation methods that are commonly known in the art) can be used to partially purify immunoglobulins from any source of blood serum, including serum from non-human subjects (such as, rabbits).

[0180] Serum from human patients infected with *T. pallidum* (referred to throughout this and the following examples as "hyperimmune antiserum") was obtained from Biomedical Resources (Hatboro, Pa.). A desired volume of hyperimmune antiserum was placed in a container that held more than twice the volume of serum. With stiffing, an amount of 70% saturated ammonium sulfate equal to the volume of serum was slowly added dropwise to the serum. This mixture was stirred for approximately 4 hours at room temperature prior to centrifugation at approximately 3000 rcf for 30 minutes. Following centrifugation, the supernatant was discarded and the precipitated immunoglobulin-containing fraction was resuspended in a volume of distilled water equal to the original volume of serum. Then, an equal amount of 70% saturated ammonium sulfate solution was added dropwise to the resuspended immunoglobulin-containing fraction with stiffing, the mixture was centrifuged, the supernatant decanted, and the precipitate resuspended as above. This procedure was then repeated one more time. The final immunoglobulin-containing precipitate was resuspended with distilled water to one-tenth the original serum volume. The resuspended immunoglobulin-containing fraction was dialyzed against three 100x volumes of 0.85% sodium chloride pH 8.0 overnight at 2-8° C. Total protein concentration in the dialysis retentate was determined by the Bio-Rad™ Bradford Protein Assay according to the manufacturer's instructions.

##### Example 3

###### Purification of IgG Using a Protein A Affinity Column

[0181] IgGs were isolated from the immunoglobulin-containing fraction of Example 2 using Protein A agarose chro-

matography. As is known in the art, Protein A specifically binds to the Fc region of IgG from a variety of mammalian species.

**[0182]** A buffer reservoir containing 1000 ml of 20 mM sodium phosphate buffer, pH 7.4 ("phosphate buffer") was connected to a 10 ml Protein A Sepharose CL-4B column (Pharmacia). The column was washed with 200 ml of the phosphate buffer, and the pH of the eluant measured. The column was not loaded with the immunoglobulin-containing sample until the pH of the eluant was in the range of 7.3±0.2.

**[0183]** After disconnecting the buffer reservoir, the immunoglobulin-containing dialysis retentate from Example 2 was applied to the column taking care not to disturb the surface of the column matrix. Then, 20 ml of phosphate buffer was added to the column, the buffer reservoir was reattached to the column, and fractions were collected using a fraction collector loaded with 80-12×125 mm diameter tubes. The absorbance at 280 nm of the column eluant was monitored. When the absorbance at 280 nm of the eluant returned to baseline (indicating the substantially complete elution of non-specific protein), a second buffer reservoir containing 500 ml of 100 mM glycine pH 2.7 was connected to the column. Again, fractions were collected while monitoring the absorbance of the eluant at 280 nm. All fractions eluted in the glycine buffer having an absorbance<sub>280 nm</sub> of 0.1 or greater were combined. Such fractions included proteins specifically bound by Protein A, i.e., IgGs, that were present in the *T. pallidum*-infected human serum. The pH of the combined solution was adjusted to 7.2±0.2 using 2.0 M Tris buffer, and total protein concentration was determined as described previously.

#### Example 4

##### Specific Binding of Protein A-Purified IgG to USR Antigen in Solution

**[0184]** The endpoint titer of the Protein A-purified IgGs obtained as described in Example 3 was determined. Serial dilutions of the IgG sample (from 1:2 to 1:512) in 0.9% saline were made. Fifty (50) µl of each dilution was placed in each of 10 circles (14 mm) on a 2×3 inches glass slide.

**[0185]** The USR antigen, prepared as described in Example 1, was gently resuspended and drawn into a dispensing needle and syringe in a vertical position. Several drops were dispensed and discarded to clear the needle of air. Then, 1 free-falling drop (approximately 22 µL) of antigen suspension was added to each circle containing IgG. The slide was placed on the mechanical rotator for 4 minutes at 180±2 rpm. When performing this test in a dry climate where evaporation may be a problem, it may be advantageous to place the slides under a moist humidifying cover during the rotation step. Immediately after rotation, the slide was viewed microscopically using 10× oculars and a 10× objective to determine in which reactions flocculation occurred. The IgG titer was determined to be the highest dilution that gives a weak (or weakly) positive reaction.

**[0186]** An original volume of Protein A-purified IgG sample was diluted in a first dilution volume of phosphate buffered saline pH 7.2±0.2 ("PBS") to an effective antibody titer of 1:2048. Thus, in one situation where the endpoint titer of the sample was 1:32, one volume of sample was diluted with 64 volumes of phosphate buffered saline pH 7.2±0.2 ("PBS") (In other examples, a serum having a 1:16 endpoint titer will be diluted with 128 volumes PBS, and a serum having a 1:64 endpoint titer will be diluted with 32 volumes

PBS, etc.). Then, a volume of USR micelle (prepared as described in Example 1) equal to the original volume of purified IgG was added to the diluted IgG sample with gentle mixing. The mixture was allowed to settle at 2-8° C. for several days until the supernatant cleared. Then, the supernatant was removed and replaced with a volume of PBS equal to the first dilution volume (e.g., 64 volumes of PBS in the above-described situation). The foregoing steps were repeated until the supernatant was clear. After removing the final supernatant, the volume of precipitated material (containing USR micelle-antibody (IgG) complexes; also referred to as IgG-coated micelles) was measured with a cylinder, and the protein concentration of the IgG-coated micelle was determined by the Bradford method.

#### Example 5

##### Preparation and Isolation of Fab Fragments

**[0187]** Protein A-purified IgG (prepared as described in Example 3) was concentrated to approximately 20 mg/ml using a Centricon™ centrifugal filter (Millipore) and dialyzed against 2×1000 ml Sample Buffer (20 mM sodium phosphate, 10 mM EDTA, pH 7.0).

**[0188]** Papain immobilized on 6% cross-linked beaded agarose in a 50% slurry in 50% glycerol, 0.1 M sodium acetate (pH 4.4) and 0.05% sodium azide (Pierce) was mixed by inversion or gentle shaking to obtain an even suspension. Then, 2.5 ml of the slurry was added to a glass test tube or other suitable reaction vessel. To equilibrate the gel, 20 ml of freshly prepared Digestion Buffer (20 mM sodium phosphate, 10 mM EDTA, 20 mM cysteine-HCl, pH 7.0) was added the slurry. Then, the gel was separated from the buffer by centrifugation, and this procedure was repeated with another 20 ml of Digestion Buffer. The equilibrated gel was resuspended in 2.5 ml of Digestion Buffer.

**[0189]** Protein A-purified IgG (2.5 ml of a 10 mg/ml solution) was diluted with 2.5 ml of Digestion Buffer. The IgG solution was added to the tube or vessel containing the immobilized papain, and the mixture was incubated from five hours to overnight in a shaker water bath at 37° C. at high speed. A constant mixing of the gel was maintained during the incubation.

**[0190]** Following the incubation, 7.5 ml of 10 mM Tris-HCl, pH 7.5 was added to the reaction mixture, and mixture was separated by centrifugation at 300 rpm for 25 minutes. The supernatant (which contains immunoglobulin fragments) was removed from the sedimented immobilized papain.

**[0191]** The supernatant was run on a Protein A column as described in Example 3. As shown in FIG. 1, two protein peaks were recovered. Peak I, which did not specifically bind Protein A, was the Fab fraction of immunoglobulin fragments, and Peak II, which did specifically bind Protein A, was the Fc fraction. The protein concentrations of Fab and Fc fractions were determined as previously described.

#### Example 6

##### Polyacrylamide SDS Gradient Gel Analysis of Immunoglobulin-Containing Samples

**[0192]** This Example illustrates the protein content of various samples produced in Examples 2, 3 and 5. A Bio-Rad™ pre-cast 10-20% linear polyacrylamide gradient gel with 4% stacking gel was used to separate, by size, the protein bands present in the ammonium sulfate immunoglobulin fraction

(see Example 2), Protein A peaks I and II (see Example 3), Protein A-purified IgG before and after papain digestion (see Example 5), and IgG peaks I (Fab fraction) and II (Fc fraction) after papain digestion (see Example 5).

**[0193]** Samples (2.5  $\mu\text{g}/\mu\text{l}$ ) were diluted 1:1 in Laemmli sample buffer (62.5 mM Tris-HCl, 2% SDS, pH 6.8, 2% SDS and 25% glycerol (with no  $\beta$ -mercaptoethanol)). Samples were heated and loaded in the respective wells. The tank buffer was Tris-glycine-SDS (25 mM Tris-HCl, pH 8.3, 192 mM glycine, 0.1% SDS). The gel was run for 45 minutes at 200 volts. Following three washes with  $\text{H}_2\text{O}$ , the gels were stained for 30 minutes with Pierce Gel Code Blue™ and then cleared by repeated washing with water.

**[0194]** As shown in FIG. 2, the ammonium sulfate-precipitated fraction of human hyperimmune (syphilitic) serum (lane 2) contained a mixture of predominantly high molecular weight protein bands. As shown in FIG. 2, lane 4, a relatively pure IgG fraction was bound by and eluted from a Protein A column. Papain digestion of the Protein A-purified IgG produced a mixture of proteins (lane 6), which were separable into two protein populations by fractionation over a Protein A column. FIG. 2, lane 7 shows that one predominant papain-digested IgG fragment of approximately 54 kD was not retained by the Protein A column. This apparent molecular weight is the expected size of Fab fragments. There were substantially no higher molecular weight protein bands (representing, for example, Fab<sub>2</sub> or Fc fragments or undigested IgG) observed in lane 7. Proteins having the expected molecular weights of Fc fragments and undigested IgG were retained by the Protein A column (lane 8).

#### Example 7

##### Protein A Colloidal Gold Conjugate Does Not Detect Fab Fragments

**[0195]** One (1)  $\mu\text{l}$  of the papain digestion fractions of IgG (prepared as described in Example 5) were spotted on a 5 mm $\times$ 4 cm nitrocellulose membrane and dried overnight. One hundred (100)  $\mu\text{l}$  of 1% casein in 10 mM phosphate buffer with 0.25M sodium chloride, pH 7.4 were placed into corresponding wells of a microtiter plate. Two (2)  $\mu\text{l}$  of Protein A conjugated to colloidal gold were mixed into each well and the corresponding strips were placed into each well.

**[0196]** As shown in FIG. 3, colloidal gold Protein A conjugate detected the IgG and Fc fractions but not the Fab fractions.

#### Example 8

##### Determination of a Useful Amount of Fab to Attach to USR Micelle

**[0197]** Fab fragments prepared as described in Example 5 were diluted in PBS to 1000  $\mu\text{g}/\mu\text{l}$ , 100  $\mu\text{g}/\mu\text{l}$ , 10  $\mu\text{g}/\mu\text{l}$ , 1  $\mu\text{g}/\mu\text{l}$ , 100 ng/ $\mu\text{l}$  and 10 ng/ $\mu\text{l}$ . Each Fab fraction dilution was mixed with an equal volume of a USR micelle solution prepared as described in Example 1. One (1)  $\mu\text{l}$  of this Fab-USR micelle mixture was spotted on a 5 mm $\times$ 4 cm nitrocellulose membrane and dried overnight at room temperature.

**[0198]** A human antiserum (which was reactive in the RPR test at a 1:64 dilution) was diluted 1:400 in a buffer consisting of 1% casein, 10 mM phosphate, 0.25M sodium chloride pH 7.4. A similarly diluted RPR-non-reactive human serum was used as a negative control. One hundred (100)  $\mu\text{l}$  antiserum (or non-reactive serum) and 2  $\mu\text{l}$  colloidal gold Protein A were

combined in each of several wells of a microtiter plate. A single nitrocellulose strips containing dried Fab-reacted lipoidal antigen was placed into each well at room temperature for a time sufficient for the components placed in the wells to migrate along the membrane to the location where the Fab-USR micelle mixture was spotted.

**[0199]** As shown in FIG. 4, nitrocellulose strips having 1000, 10 or 0.1  $\mu\text{g}$  Fab bound to USR antigen gave a positive reaction with RPR-reactive (R) human serum. No reaction was observed for any of the samples containing RPR-non-reactive (NR) serum.

**[0200]** This Example demonstrates that, at least, from about 100 ng to about 1 mg Fab fragments (such as from about 100 ng to about 450 ng) can be reacted with a USR antigen preparation (see Example 1) to facilitate attachment of the lipoidal antigen to a nitrocellulose membrane without substantial adverse effect on the reactivity of the USR antigen with serum anti-lipoidal antibodies in an immunoassay assay (such as, test strips, and flow-through and/or lateral flow devices). One non-limiting useful amount of Fab fragment to use as described in this Example is about 10  $\mu\text{g}$ .

#### Example 9

##### Determination of a Useful pH for Conjugation of Affinity Purified Rabbit Anti-Human IgG (Fc) to Colloidal Gold

**[0201]** This Example illustrates a representative method for determining a useful pH for conjugating affinity purified rabbit anti-human IgG (Fc) (Rockland, Gilbertsville, Pa.) with colloidal gold. The rabbit anti-human IgG (Fc) specifically binds only the Fc portion of human IgG, and does not bind to the Fab or other non-Fc regions of a human IgG. Antibodies with this specificity may also be referred to as "anti-human Fc." Colloidal gold preparations such as those described in this and other examples can be used as detector reagents in disclosed immunoassays (including, for example, test strips, and flow-through and/or lateral flow devices).

**[0202]** Approximately 25 ml of 10 mM phosphate buffer was placed in a 50 ml beaker, and adjusted to pH 5.0 with 0.2 M phosphoric acid. Two 0.5 ml aliquots of the buffer at pH 5.0 were transferred to two 12 $\times$ 75 mm test tubes, one labeled "test" and the other labeled "control." Then, the pH of the phosphate buffer remaining in the beaker was sequentially adjusted to 5.5, 6.0, 6.5, 7.0, 7.5, 8.0, 8.5, 9.0, 9.5, and 10.0 using 0.2 M potassium carbonate. At each pH, two 0.5 ml aliquots were transferred to a "test" and "control" test tube as described for the pH 5.0 sample. Then, 30  $\mu\text{g}$  of affinity purified rabbit anti-human IgG (Fc) was added to each of the "test" and "control" tubes, and the tube contents were mixed well. Approximately 25 ml of 40 nm colloidal gold (1% solution) (British Biocell International, London, England) was placed in a separate 50 ml beaker, and a series of "control" and "test" colloidal gold samples at pH 5.0, 5.5, 6.0, 6.5, 7.0, 7.5, 8.0, 8.5, 9.0, 9.5, and 10.0 was produced as described above.

**[0203]** One (1) ml of colloidal gold at each pH was added to the "test" and "control" solutions having the corresponding pH. The gold/rabbit anti-human IgG (Fc) solutions were mixed well, and incubated for 20 minutes at room temperature. Then, 200  $\mu\text{l}$  of 2M NaCl was added to the set of tubes labeled "test" and 200  $\mu\text{l}$  of distilled water was added to the set of tubes labeled "control." The contents of both sets of tubes were allowed to incubate for 30 minutes at room temperature.

**[0204]** The optical density at 580 nm ( $OD_{580}$ ) of each “test” sample was read against the corresponding “control” sample. The pH of the sample with the lowest  $OD_{580}$  was determined to be a favorable pH for formation of a gold conjugate preparation. Colloidal gold particles have a negatively charged surface due to the layer of negative ions adsorbed onto the gold particle surface during the manufacturing process. Proteins, such as IgG will be attracted to negatively charged gold particles through ionic, hydrophobic, and dative interactions. These interactions are believed to underlie the formation of colloidal gold-protein conjugates. At the pI of a protein conjugated to a gold particle (i.e., the pH where the protein has a net zero charge), the conjugate will be the most stable.

**[0205]** The addition of NaCl to unconjugated colloidal gold particles will disrupt the layer of negatively charged ions adsorbed to the gold’s surface. As a result, the gold particle will dissociate and ultimately release gold ions (i.e.,  $Au^+$ ) into solution. The free gold ions may be measured at  $OD_{580}$ . In contrast, a protein-gold conjugate is resistant to disruption by NaCl at the pI of the protein component of the conjugate. Accordingly, the pH of the sample with the lowest  $OD_{580}$  is a useful pH at which to perform gold conjugation reactions to obtain a stable gold conjugate.

**[0206]** As shown in FIG. 5, a useful pH for conjugation of 30  $\mu$ g rabbit anti-human IgG (Fc) with to 10  $\mu$ g colloidal gold (i.e., 1 ml of a 1% solution) is approximately pH 9.5. The method described in this Example is broadly applicable to any number of other proteins that may be conjugated to gold for use in a disclosed immunoassay (such as, Protein A or Protein G). In addition, it is believed that the described reactions are scalable to other amounts of protein and gold conjugate.

#### Example 10

##### Determination of a Useful Protein Concentration for Colloidal Gold Conjugation

**[0207]** This Example illustrates an exemplary method for determining a useful protein concentration for conjugation reactions with colloidal gold. Colloidal gold preparations such as those described in this and other examples can be used as detector reagents in disclosed immunoassays (including, for example, test strips, and flow-through and/or lateral flow devices).

**[0208]** One-half (0.5) ml of 10 mM phosphate buffer (adjusted to the pH giving the lowest  $OD_{580}$  as described in Example 9) was added to 2 sets of 5 tubes. One set of tubes was labeled “test” and the other set was labeled “control.” Thirty (30)  $\mu$ g, 20  $\mu$ g, 10  $\mu$ g, 5  $\mu$ g, or 2.5  $\mu$ g of rabbit anti-human IgG (Fc) was then added to each in the series of tubes, and mixed well. One (1) ml of 40 nm colloidal gold (1% solution adjusted to the same pH as the phosphate buffer) was added to each tube. The samples were incubated for 20 minutes at room temperature. Then, 200  $\mu$ l of 2M NaCl was added to the samples labeled “test” and 200  $\mu$ l of distilled water was added to the samples labeled “control.” Following incubation for 30 minutes at room temperature, the  $OD_{580}$  of the test samples were read against the corresponding control samples. The lowest concentration of rabbit anti-human IgG (Fc) producing the lowest  $OD_{580}$  indicates a useful concentration (or concentration range) for formation of a protein-gold conjugate preparation.

**[0209]** In this Example, the lowest concentration of rabbit anti-human IgG (Fc) producing the lowest  $OD_{580}$  represents the concentration where a useful amount of rabbit anti-human

IgG (Fc) was associated with gold particles. Higher concentrations of rabbit anti-human IgG (Fc), although useful, are less preferred because excess rabbit anti-human IgG (Fc) may form weaker associations with the gold particles, for example, by layering upon a layer of rabbit anti-human IgG (Fc) molecules that previously associated with the gold particles.

**[0210]** As shown in FIG. 6, approximately 30  $\mu$ g is a useful amount of rabbit anti-human IgG (Fc) to conjugate to 10  $\mu$ g colloidal gold (i.e., 1 ml of a 1% solution). The method described in this Example is broadly applicable to any number of other proteins that may be conjugated to gold for use in a disclosed immunoassay (such as, Protein A or Protein G). In addition, it is believed that the described reactions are scalable to other amounts of protein and gold conjugate.

#### A. Preparation of a Gold Conjugate “Mini-Preparation”

**[0211]** A rabbit anti-human Fc gold conjugate mini preparation was prepared by adding 5 ml of 10 mM borate buffer to an amount of rabbit anti-human IgG (Fc) necessary to achieve a useful protein concentration (such as, 30  $\mu$ g) as described above. This protein solution was then adjusted to a useful pH (such as, pH 9.5) as also described above. Ten (10) ml of 40 nm colloidal gold (1% solution adjusted to the useful pH) was added to the pH-adjusted protein solution with thorough mixing. The mixture was incubated for 20 minutes at room temperature. Then, 1.6 ml of 10% casein was added to a final concentration of 1% casein, and the incubation continued an additional 20 minutes at room temperature. The reaction mixture was centrifuged at 6500 $\times$ g for 10 minutes, and the supernatant was removed and discarded. The pellet was resuspended in 0.5 ml of resuspension buffer (150 mM NaCl, 20 mM Trizma base, 10% sucrose, 5% Trehalose, 0.1% casein, 0.05% sodium azide).

**[0212]** The resuspended pellet containing gold conjugated rabbit anti-human IgG (Fc) may be used for a variety of purposes, including without limitation, as a detector reagent for human anti-lipoidal antibodies in a lateral flow device.

#### Example 11

##### Detection of Anti-Lipoidal Antibodies in Human Serum

**[0213]** This Example demonstrates that anti-lipoidal antibodies in syphilitic serum may be detected by using a nitrocellulose immobilized Fab-USR antigen complex capture reagent in concert with a mobile rabbit anti-human IgG (Fc) or Protein A gold conjugate detector reagent.

**[0214]** One (1)  $\mu$ l of the Fab-USR antigen complex was applied to separate nitrocellulose membranes and allowed to dry overnight at room temperature as described in Example 8. A colloidal gold conjugate was prepared as described in Example 10. Reactive human syphilitic sera and a non-reactive (non-syphilitic) human serum were diluted 1:100, 1:200 or 1:400 in 1% casein, 10 mM phosphate, 0.5M sodium chloride pH 7.4. One hundred (100)  $\mu$ l of each serum dilution was placed in an appropriate number of separate wells of a microtitre plate. Two (2)  $\mu$ l of gold-conjugated Protein A (prepared in a manner analogous to Example 10) was then added to each well. One nitrocellulose strip containing immobilized Fab-USR antigen complex capture reagent was then placed into each well containing the antibody and detector reagent solutions. The solution in the wells flowed up the strip by capillary action.

[0215] As shown in Table 2, many of the sixty reactive human syphilitic sera reacted with the immobilized Fab-USR antigen preparations. A positive reaction was characterized by a visible dot of various shades of intensity, from very faint (VF), faint (F), weak (W) and strong (S). No visible reaction was indicated by "N." There was no reaction observed for the non-reactive (non-syphilitic) human serum at any tested serum dilution.

TABLE 2

Reactivity of Immobilized Lipoidal Antibody with Human Syphilitic Sera				
Serum No.	RPR Titer <sup>a</sup>	Serum Dilutions		
		100	200	400
1	R4	VF	VF	N
2	R8	N	VF	F
3	R2	N	N	N
4	R16	VF	N	W
5	R32	S	S	S
6	NR	N	N	N
7	R64	VF	F	W
8	R128	S	S	S
9	R4	VF	VF	N
10	R64	W	W	W
11	R256	S	S	S
12	NR	N	N	N
13	R512	S	S	S
14	R16	VF	W	W
15	R8	W	W	F
16	R1024	S	S	S
17	NR	N	N	N
18	R512	S	S	S
19	R64	F	W	W
20	R256	S	S	S
21	R8	VF	VF	F
22	R1024	S	S	S
23	NR	N	N	N
24	R32	W	S	S
25	R16	VF	F	W
26	R8	W	W	W
27	R32	W	W	S
28	R4	N	N	VF
29	NR	N	N	N
30	R1024	S	S	S
31	R32	S	S	S
32	R16	VF	W	W
33	NR	N	N	N
34	NR	N	N	N
35	R32	W	W	S
36	R64	F	W	W
37	R8	VF	F	W
38	NR	N	N	N
39	R4	N	N	VF
40	R32	W	S	S
41	R8	F	W	W
42	R128	W	S	S
43	R2	N	N	N
44	R512	S	S	S
45	R16	VF	W	W
46	R1024	S	S	S
47	NR	N	N	N
48	R64	VF	F	W
49	R512	S	S	S
50	NR	N	N	N
51	R256	S	S	S
52	R4	VF	F	N
53	R128	S	S	S
54	R32	W	W	S
55	R2	N	N	N
56	R256	S	S	S
57	NR	N	N	N
58	R64	W	W	S

TABLE 2-continued

Reactivity of Immobilized Lipoidal Antibody with Human Syphilitic Sera				
Serum No.	RPR Titer <sup>a</sup>	Serum Dilutions		
		100	200	400
59	R8	W	W	F
60	R128	S	S	S

<sup>a</sup>RPR titer is highest dilution of reactive syphilitic serum which gives a visible reaction in the standard rapid plasma reagin (RPR) test.

Example 12

Simultaneous Detection of Non-Treponemal and Treponemal Antibodies in Human Serum or Plasma

[0216] This Example demonstrates a flow-through test device that allows the simultaneous detection in a biological sample (such as, human serum or plasma) of antibodies specific for treponemal or non-treponemal (lipoidal) antigens. Such device is useful, for instance, in the diagnosis of syphilis in a subject.

[0217] The flow-through test device used in this Example included a membrane spotted with recombinant treponemal antigen, VDRL antigen (immobilized as described in the foregoing Examples) and a control. The prototype device was provided by Span Diagnostics Ltd. (173-B, New Industrial Estate, Udhna, Surat-394 210, India). The recombinant treponemal antigen, immobilized VDRL antigen, and control were arranged in a triangular configuration along the edges of the membrane (see, e.g., FIG. 10). The studies were performed with the test device resting on a horizontal surface to ensure equal distribution of the reagents during the test.

[0218] One hundred (100) µl of wash buffer was added to the center of the test device and allowed to soak in for at least 30 seconds. The wash buffer was void of organic solvents and detergents. One hundred (100) µl of a human serum or plasma was then added to the center of the test device membrane and allowed to react with the surface for at least 30 seconds. If the samples were to be kept for a short period of time, the samples were stored at 2-8° C. For longer storage, the specimens were stored at -20° C. or lower. Prior to assaying previously frozen samples, the samples were completely thawed, gently mixed and subjected to centrifugation at 2,000×g for 10 minutes. The resulting clear supernatant was then tested. The test device was subsequently washed with wash buffer (150 µl for at least 30 seconds, which allowed for solution absorption). To determine if antibodies specific for treponemal and/or non-treponemal (lipoidal) antigen(s) were present in the sample, 200 µl of SIGNAL REAGENT (Colloidal Gold Protein A Reagent) was added and allowed to soak in. For the earliest interpretation, results were read after about 2 minutes. For a final interpretation the results were read after about 10 minutes.

[0219] If a colored spot appeared only in the control area, then the sample was considered to be non-reactive for antibodies specific for either treponemal or non-treponemal (lipoidal) antigens. Reactivity in the control area alone indicated that the device was functioning properly, and further indicated a negative diagnosis for syphilis (or *T. pallidum* infection) for the subject from which the sample was obtained. If the control spot and either or both of the treponemal and/or non-treponemal antigen spots were reactive (i.e.,

turned color), a positive diagnosis of syphilis (or *T. pallidum* infection) in the subject was further considered (as discussed below in more detail). If, upon completion of the test, none of the control, treponemal antigen or non-treponemal antigen spots appeared reactive, then the test was considered invalid. [0220] Table 3 illustrates the results obtaining from processing 150 samples obtained from healthy donors that had not previously been infected with *T. pallidum*.

TABLE 3

Sample Qty	VDRL Test	TPHA Test	Flow-Through Test	
			Treponemal Spot	Non-treponemal Spot
150	+ve: 2 -ve: 148	-ve: 150	-ve: 150	+ve: 2 -ve: 148

The VDRL and TPHA tests are solution-based tests for detecting in subject samples antibodies specific for non-treponemal (lipoidal) antigens and treponemal antigens, respectively. As shown in Table 3, the membrane-based (flow-through) test for the detection of each type of antibody in patient samples provided the identical result as the solution-based test for the corresponding antibody. Advantageously, the dual-detection flow-through test allowed both anti-treponemal and anti-non-treponemal (anti-lipoidal) antibodies to be detected in a single assay. Only two samples (1.3%) from a healthy subject showed a positive reaction with the VDRL test and the non-treponemal (lipoidal) antigen of the flow-through device. Thus, both tests had identical and low incidence of false positive results and identical and no incidence of false negative results when testing serum from subjects not infected with *T. pallidum*.

[0221] The test device was then used to analyze serum from nine patients known to be (or have been) infected with *T. pallidum* (serum from such patients is also referred to as syphilitic serum). As demonstrated in Table 4A, the membrane-based (flow-through) assay provided identical results as the solution-based tests for each sample; that is, each sample had the same reactivity in the solution-based VDRL test as for the membrane-bound non-treponemal antigen, and in the solution-based TPHA test as for the membrane-bound treponemal antigen. As described above for the "healthy" subject serum samples, the advantage of the flow-through test was the ability to use a single assay to simultaneously test patient serum for reactivity to treponemal and non-treponemal (lipoidal) antigens.

TABLE 4A

Sample No.	VDRL Test	TPHA Test	Flow-through		
			Control	Treponemal Antigen	Non-treponemal Antigen
1	+	+	+	+	+
2	+	+	+	+	+
3	+	+	+	+	+
4	+	+	+	+	+
5	+	+	+	+	+
6	+	+	+	+	+
7	+	-	+	-	+
8	+	-	+	-	+
9	+	-	+	-	+

[0222] To compare the sensitivity of the solution-based VDRL and TPHA assays to the flow-through test device,

serum from sample 6 above was selected, serially diluted, and each dilution tested as above. As demonstrated in Table 4B, the sensitivity of the flow-through device for simultaneous detection of anti-non-treponemal (anti-lipoidal) and anti-treponemal antibodies in syphilitic serum was similar to the single detection solution assay for each type of the antibody.

TABLE 4B

Dilution	VDRL Test	TPHA Test	Flow-through		
			Control	Treponemal	Non-treponemal
1:10	+	+	+	+	+
1:20	+/-	+	+	+	-
1:40	-	+	+	+	-
1:80	-	+/-	+	+	-
1:160	-	-	+	+/-	-
1:320	-	-	+	-	-
1:640	-	-	+	-	-

[0223] Forty-two (42) patient samples were screened for anti-treponemal and anti-non-treponemal (anti-lipoidal) antibodies using the dual-detection flow-through device and the TPHA and RPR solution-based assays. In traditional testing for syphilis, patient serum often is first screened for reactivity with a non-treponemal (lipoidal antigen) antigen, for example, using the RPR test. The RPR test typically is performed in a laboratory and may take several days to complete; meanwhile, the tested patient is released from the testing facility. If the RPR test is positive, a subsequent test to determine reactivity of patient serum with treponemal antigen(s) (such as, the TPHA test) would be recommended for a positive diagnosis of syphilis. Often is it difficult to recall a patient to perform a subsequent TPHA test, which test also typically is performed in a laboratory and may take days to complete. Testing patient samples only for reactivity to treponemal antigen(s) (e.g., using the TPHA test) also has limitations because once a patient has been infected with *T. pallidum* (i.e., has had syphilis), his/her titer for anti-treponemal antibodies typically stays high even after successful treatment. Hence, a positive test for treponemal antigen alone may not be fully informative.

[0224] The performance characteristics of the flow-through device as compared to the TPHA or RPR solution-based assays in the testing of a population of 42 patients are presented in Table 5A and 5B, respectively.

TABLE 5A

Treponemal Spot	TPHA		Total
	+	-	
+	20	4	24
-	1	17	18
	21	21	42

The sensitivity of the flow-through device for detecting anti-treponemal antibodies was 95% and the specificity was 81%.

TABLE 5B

Non-Treponemal Spot	RPR		Total
	+	-	
+	13	0	13
-	1	28	29
	14	28	42

The sensitivity of the flow-through device for detecting anti-non-treponemal (anti-lipoidal) antibodies was 93% and the specificity was 100%.

[0225] Of 42 patients screened, 13 patients were found to be both RPR- and non-treponemal spot-positive (Table 5B, top left number), and 20 were found to be both TPHA- and treponemal spot-positive (Table 5A, top left number). All 13 patients who were both RPR- and non-treponemal spot-positive were also TPHA- and treponemal spot-positive. Thus, based on the results of the flow-through device alone, these 13 patients would have been treated for syphilis immediately with no need for subsequent testing.

[0226] In the use of the flow-through test device described in this Example, one, non-limiting set of clinical management recommendations are:

Treponemal Spot	Non- treponemal Spot	Clinical Recommendation
-	-	No action to be taken; repeat flow-through test after about 3 months, especially in populations at high-risk for syphilis
-	+	No syphilis treatment; investigate alternative causes for elevated anti-lipoidal antibody titer (e.g., lupus)
+	+	Take blood for quantitative RPR test and obtain baseline measurement; treat patient for syphilis; and repeat quantitative RPR test in 6 months to determine efficacy of treatment
+	-	No syphilis treatment; repeat flow-through test after about 3 months to detect active infection

[0227] While this disclosure has been described with an emphasis upon particular embodiments, it will be obvious to those of ordinary skill in the art that variations of the particular embodiments may be used and it is intended that the disclosure may be practiced otherwise than as specifically described herein. Accordingly, this disclosure includes all modifications encompassed within the spirit and scope of the disclosure as defined by the following claims.

1. An immunoassay device comprising an anti-lipoidal antibody capture area, comprising:

a microporous substrate;

a lipoidal antigen, comprising cardiolipin, lecithin, and cholesterol, wherein the lipoidal antigen recognizes non-treponemal anti-lipoidal antibodies present in a patient infected with *Treponema pallidum*; and

an anchor antibody fragment, wherein the anchor antibody fragment is (i) an Fab fragment specific for cardiolipin, lecithin, or cholesterol, or (ii) a plurality of Fab fragments produced from an immunoglobulin fraction from a subject infected with *T. pallidum*,

wherein the lipoidal antigen is attached to the substrate by the anchor antibody fragment, thereby forming the immunoassay device comprising an anti-lipoidal antibody capture area.

2. The immunoassay device of claim 1, wherein the substrate is a microporous membrane.

3. The immunoassay device of claim 1, wherein the lipoidal antigen comprises a micelle and not a liposome.

4. The immunoassay device of claim 1 for determining at least one of the presence or amount of an anti-lipoidal antibody in a fluid sample, further comprising a sample application area and a flow path from the sample application area to the anti-lipoidal antibody capture area; wherein the at least one of the presence or amount of an anti-lipoidal antibody in a fluid sample can be detected by formation of a complex between an anti-lipoidal antibody in a fluid sample and the immobilized lipoidal antigen-anchor antibody complex.

5. The immunoassay device of claim 1, further comprising a treponemal capture area comprising:

an immobilized treponemal antigen capable of being specifically bound by an anti-*T. pallidum* antibody.

6. The immunoassay device of claim 1, wherein the substrate comprises nitrocellulose, nylon, polyvinylidene fluoride (PVDF), polyethersulfone, polycarbonate, polyester, cellulose acetate, mixed cellulose esters, or combinations thereof.

7. The immunoassay device of claim 1, wherein the lipoidal antigen is a USR antigen, a VDRL antigen, or a synthetic VDRL antigen.

8. The immunoassay device of claim 1, wherein the anti-lipoidal antibody capture area comprises one or more lines.

9. The immunoassay device of claim 8, wherein the one or more lines have a width from about 8 mm to about 15 mm.

10. The immunoassay device of claim 1, wherein the device is a flow-through device.

11. The immunoassay device of claim 10, further comprising an absorbent pad, which is in contact with the substrate.

12. The immunoassay device of claim 10, wherein the substrate has a pore size from about 0.2  $\mu\text{m}$  to about 8  $\mu\text{m}$ .

13. The immunoassay device of claim 1, wherein the device is a lateral flow device.

14. The immunoassay device of claim 13, wherein the substrate has a pore size up to about 12  $\mu\text{m}$ .

15. The immunoassay device of claim 13, wherein the lateral flow device further comprises a conjugate pad located in the flow path, wherein the conjugate pad comprises a mobile or mobilizable detector reagent specific for the anti-lipoidal antibody.

16. The immunoassay device of claim 15, wherein the detector reagent comprises gold-conjugated Protein A, gold-conjugated Fc-specific Protein G, or gold-conjugated anti-human antibody (Fc portion).

17. The immunoassay device of claim 15, wherein the conjugate pad further comprises a detector reagent specific for an anti-*T. pallidum* antibody.

18. The immunoassay device of claim 17, wherein the detector reagent specific for the anti-*T. pallidum* antibody comprises gold-conjugated Protein A, gold-conjugated Fc-specific Protein G, or gold-conjugated anti-human antibody (Fc portion).

19. The immunoassay device of claim 1, wherein the lipoidal antigen is immobilized on the substrate by a method comprising:

contacting the lipoidal antigen with the anchor antibody fragment to form a lipoidal antigen-anchor antibody complex; and

- applying the lipoidal antigen-anchor antibody complex to the substrate.
- 20.** The immunoassay device of claim **1**, wherein the lipoidal antigen is immobilized on the substrate by a method, comprising:
- immobilizing the anchor antibody fragment on the substrate;
  - blocking non-specific binding sites on the substrate;
  - contacting the immobilized anchor antibody fragment with the lipoidal antigen to form a lipoidal antigen-anchor antibody complex; and
  - washing the substrate to remove any lipoidal antigen not specifically bound by the anchor antibody.
- 21.** A method for detecting anti-lipoidal antibodies in a subject, comprising:
- applying a biological sample from a subject to the immunoassay device of claim **1**; and
  - detecting the formation of a complex between an anti-lipoidal antibody present in the biological sample and the lipoidal antigen attached to the substrate, wherein detection of the formation of the complex detects the anti-lipoidal antibody in the subject.
- 22.** The method of claim **21**, wherein detection of the anti-lipoidal antibody is used to diagnose syphilis in the subject.
- 23.** The method of claim **21**, wherein the biological sample is blood or serum.
- 24.** The method of claim **21**, further comprising applying to the immunoassay device a detector reagent specific for the anti-lipoidal antibody.
- 25.** The method of claim **21**, further comprising adding a detector reagent specific for the anti-lipoidal antibody to the biological sample prior to or concurrent with applying the sample to the immunoassay device.
- 26.** The method of claim **23**, wherein the detector reagent is labeled Protein A, Fc-specific Protein G, or anti-human antibody.
- 27.** The method of claim **26**, wherein the label is an enzyme, colloidal gold particles, colored latex particles, a chemiluminescent agent, or a fluorescent agent.
- 28.** A method for diagnosing syphilis in a subject, comprising:
- applying a biological sample to the device of claim **5**;
  - detecting in the anti-lipoidal antibody capture area the formation of a first complex between an anti-lipoidal antibody present in the biological sample and the lipoidal antigen attached to the substrate; and
  - detecting in the treponemal capture area the formation of a second complex between:
    - (a) an anti-*T. pallidum* antibody present in the biological sample and the immobilized treponemal antigen, or
    - (b) a treponemal antigen present in the biological sample and the immobilized anti-*T. pallidum* antibody,
 wherein detection of the formation of the first complex and the second complex is used to diagnose syphilis in the subject.
- 29.** The method of claim **28**, wherein the biological sample is a human blood sample.
- 30.** The method of claim **29**, wherein the human blood sample is whole blood or serum.
- 31.** An immunoassay device for determining at least one of presence or amount of an anti-lipoidal antibody in a fluid sample comprising:
- a microporous membrane;
  - a sample application area;
- an anti-lipoidal antibody capture area comprising a lipoidal antigen-anchor antibody complex, which complex comprises an anchor antibody fragment and a lipoidal antigen specifically bound by the anchor antibody fragment, and which complex is immobilized on the membrane by the anchor antibody fragment; wherein the lipoidal antigen comprises cardiolipin, lecithin and cholesterol and recognizes non-treponemal anti-lipoidal antibodies present in a patient infected with *Treponema pallidum*, and wherein the anchor antibody fragment is an Fab fragment specific for cardiolipin or is a plurality of Fab fragments produced from an immunoglobulin fraction from a subject infected with *T. pallidum*; and
- a flow path from the sample application area to the anti-lipoidal antibody capture area; wherein the presence and/or amount of an anti-lipoidal antibody in a fluid sample applied to the sample application area can be detected by formation of a complex between the anti-lipoidal antibody and the immobilized lipoidal antigen-anchor antibody complex.
- 32.** An immunoassay device, comprising:
- a microporous substrate;
  - an Fab fragment immobilized on the substrate; and
  - a lipoidal antigen, comprising cardiolipin, lecithin, and cholesterol, wherein the lipoidal antigen recognizes non-treponemal anti-lipoidal antibodies present in a patient infected with *Treponema pallidum*, wherein the lipoidal antigen comprises a micelle and not a liposome, and wherein the immobilized Fab fragment is specifically bound to the cardiolipin component of the lipoidal antigen thereby forming an immobilized Fab fragment-lipoidal antigen complex.
- 33.** The immunoassay device of claim **32**, wherein the substrate is a microporous membrane.
- 34.** The immunoassay device of claim **32**, wherein the substrate comprises nitrocellulose, nylon, polyvinylidene fluoride (PVDF), polyethersulfone, polycarbonate, polyester, cellulose acetate, mixed cellulose esters, or combinations thereof.
- 35.** The immunoassay device of claim **32**, further comprising a treponemal capture area comprising:
- an immobilized treponemal antigen capable of being specifically bound by an anti-*T. pallidum* antibody.
- 36.** The immunoassay device of claim **32**, wherein the Fab fragment comprises a plurality of Fab fragments produced from an immunoglobulin fraction from a subject infected with *T. pallidum*.
- 37.** The immunoassay device of claim **1**, wherein the lipoidal antigen comprises:
- 0.001% to 0.1% cardiolipin;
  - 0.05% to 0.5% lecithin; and
  - 0.2% to 5% cholesterol.
- 38.** The immunoassay device of claim **1**, wherein the lipoidal antigen comprises:
- 0.03% cardiolipin;
  - 0.21% lecithin; and
  - 0.9% cholesterol.
- 39.** The immunoassay device of claim **1**, wherein the lipoidal antigen comprises:
- 0.03% tetramyristoyl cardiolipin,
  - 0.14% 1-palmitoyl-2-oleoyl-sn-glycero-3-phosphocholine; and
  - 0.9% cholesterol.

\* \* \* \* \*

专利名称(译)	用于检测抗类脂抗体的方法，免疫测定和装置		
公开(公告)号	<a href="#">US20120190041A1</a>	公开(公告)日	2012-07-26
申请号	US13/421681	申请日	2012-03-15
[标]申请(专利权)人(译)	卫生署及人性化的服务 美国证券交易委员会的政府		
申请(专利权)人(译)	卫生和人类服务部 美利坚合众国政府是代表的司		
当前申请(专利权)人(译)	卫生和人类服务部 美利坚合众国政府是代表的司		
[标]发明人	CASTRO ARNOLD R GEORGE ROBERT W		
发明人	CASTRO, ARNOLD R. GEORGE, ROBERT W.		
IPC分类号	G01N33/53 C12M1/00		
CPC分类号	G01N33/92 G01N33/571		
优先权	60/693120 2005-06-21 US PCT/US2006/024117 2006-06-20 WO		
其他公开文献	US8389229		
外部链接	<a href="#">Espacenet</a> <a href="#">USPTO</a>		

摘要(译)

描述了用于检测抗类脂抗体和疾病诊断的组合物，方法和装置，例如梅毒。特别地，描述了在固体支持物（例如硝酸纤维素膜）上固定包含心磷脂，卵磷脂和胆固醇的脂质抗原的方法。将脂质抗原固定在膜上的能力满足了对用于检测抗类脂抗体的基于膜的测定的长期需求。还描述了用于同时进行梅毒的密螺旋体和非密螺旋体试验的免疫测定装置。

