



US 20070148686A1

(19) **United States**

(12) **Patent Application Publication** (10) **Pub. No.: US 2007/0148686 A1**

Kirszenbaum et al.

(43) **Pub. Date: Jun. 28, 2007**

(54) **PROTEIN PRESENT AT THE SURFACE OF HEMATOPOIETIC STEM CELLS OF THE LYMPHOID LINE AND OF NK CELLS, AND USES THEREOF**

(75) Inventors: **Marek Kirszenbaum**, Paris (FR);
Magali Le Discorde, Paris (FR);
Stephane Prost, Pantin (FR)

Correspondence Address:
ALSTON & BIRD LLP
BANK OF AMERICA PLAZA
101 SOUTH TRYON STREET, SUITE 4000
CHARLOTTE, NC 28280-4000 (US)

(73) Assignee: **Commissariat A L'Energie Atomique**

(21) Appl. No.: **11/682,085**

(22) Filed: **Mar. 5, 2007**

Related U.S. Application Data

(62) Division of application No. 10/129,873, filed on Jun. 24, 2002, filed as 371 of international application No. PCT/FR00/03137, filed on Nov. 10, 2000.

(30) **Foreign Application Priority Data**

Nov. 12, 1999 (FR)..... 99/14241

Publication Classification

(51) **Int. Cl.**
C12Q 1/68 (2006.01)
G01N 33/567 (2006.01)
C07H 21/04 (2006.01)
C12P 21/06 (2006.01)
(52) **U.S. Cl.** **435/6**; 435/7.2; 435/69.1;
435/320.1; 435/372; 530/350;
536/23.5

(57) **ABSTRACT**

The invention concerns a protein present at the surface of hematopoietic stem cells of the lymphoid cell line and mature NK cells, the corresponding isolated cDNA sequence and their uses as marker of said cells and for preparing antibodies directed against said protein. The invention also concerns the uses of said antibodies for selecting cells expressing at their surface said protein. Said isolated protein has a structure (a) comprising an extracellular domain located between positions 21 and 152, five transmembrane domains located between positions 153 and 295 and a cytoplasmic domain located between positions 296 and 350, with reference to the sequence SEQ ID NO:2; an apparent molecular weight of about 36 to 38 kDa, and its precursor, which comprises in N-terminal of structure (a), a signal sequence of 20 amino acids, is selected in the group consisting of the protein of SEQ ID NO:2, and the proteins having an amino acid sequence having at least 70% identity or at least 85% similarity and preferably at least 95% identity or at least 99% similarity with the sequence SEQ ID NO:2.

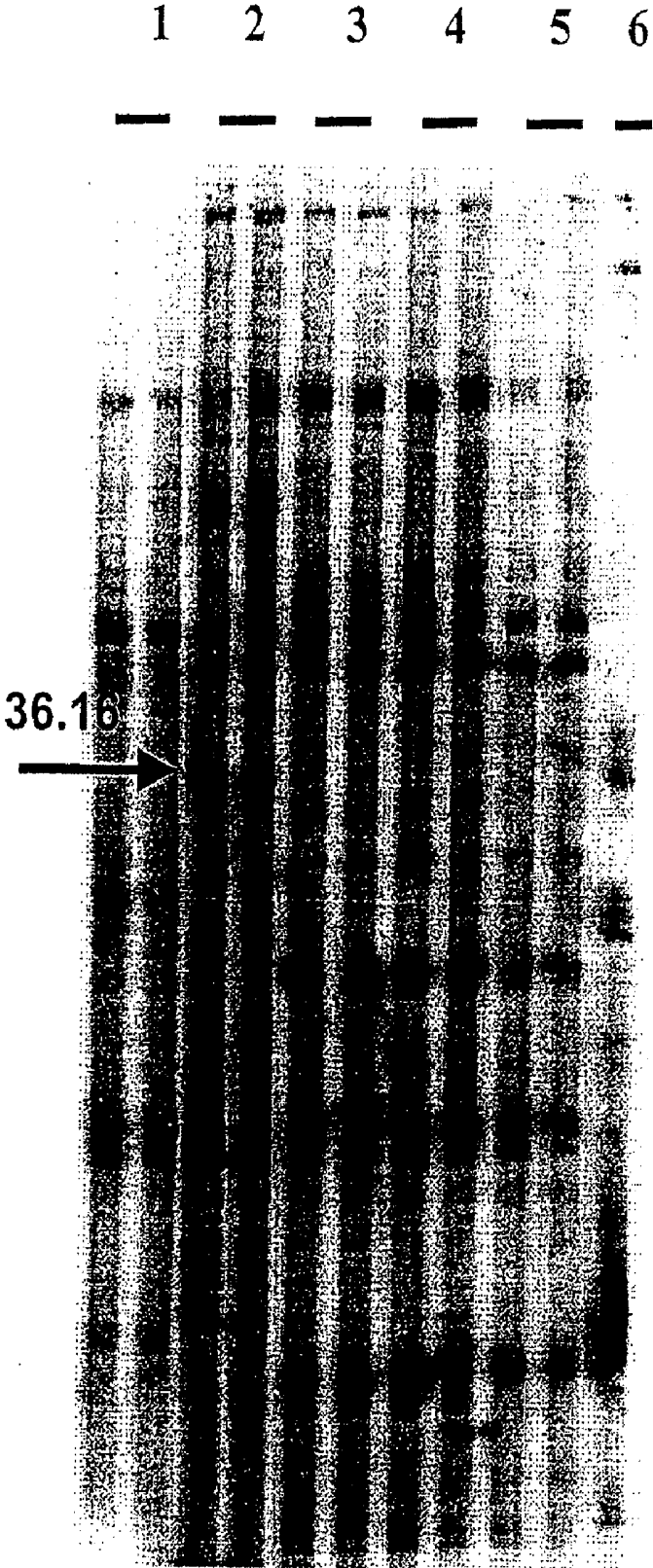


FIGURE 1

CGCGGGCCGCTCGACCTCTCCTCGACCCTGGACGTCTACCTTCCGGAGGCCACATCTTGCCCACTCCGGC 71

M A T T A A P 7

CGCGGGGCTAGCGCGGGTTTCAGCGACGGGAGCCCTCAAGGGAC ATG GCA ACT ACA GCG GCG CCG 136

A G G A R N G A G P E W G G F E E N 25
 GCG GGC GGC GCC CGA AAT GGA GCT GGC CCG GAA TGG GGA GGG TTC GAA GAA AAC 190

I Q G G G S A V I D M E N M D D T S 43
 ATC CAG GGC GGA GGC TCA GCT GTG ATT GAC ATG GAG AAC ATG GAT GAT ACC TCA 244

G S S F E D M G E L H Q R L R E E E 61
 GGC TCT AGC TTC GAG GAT ATG GGT GAG CTG CAT CAG CGC CTG CGC GAG GAA GAA 298

V D A D A A D A A A A E E E D G E F 79
 GTA GAC GCT GAT GCA GCT GAT GCA GCT GCT GCT GAA GAG GAG GAT GGA GAG TTC 352

L G M K G F K G Q L S R Q V A D Q M 97
 CTG GGC ATG AAG GGC TTT AAG GGA CAG CTG ACC CGG CAG GTG GCA GAT CAG ATG 406

W Q A G K R Q A S R A F S L Y A N I 115
 TGG CAG GCT GGG AAA AGA CAA GCC TCC AGG GCC TTC AGC TTG TAC GCC AAC ATC 460

D I L R P Y F D V E P A Q V R S R L 133
 GAC ATC CTC AGA CCC TAC TTT GAT GTG GAG CCT GCT CAG GTG CGA AGC AGG CTC 514

L E S M I P I K M V N F P Q K I A G 151
 CTG GAG TCC ATG ATC CCT ATC AAG ATG GTC AAC TTC CCC CAG AAA ATT GCA GGT 568

E L Y G P L M L V L T L V A I L L H 169
 GAA CTC TAT GGA CCT CTC ATG CTG GTC CTC ACT CTG GTT GCT ATC CTA CTC CAT 622

G M K T S D T I I R E G T L M G T A 187
 GGG ATG AAG ACG TCT GAC ACT ATT ATC CGG GAG GGC ACC CTG ATG GGC ACA GCC 676

I G T C F G Y W L G V S S F I Y F L 205
 ATT GGC ACC TGC TTC GGC TAC TGG CTG GGA GTC TCA TCC TTC ATT TAC TTC CTT 730

A Y L C N A Q I T M L Q M L A L L G 223
 GCC TAC CTG TGC AAC GCC CAG ATC ACC ATG CTG CAG ATG TTG GCA CTG CTG GGC 784

Y G L F G H C I V L F I T Y N I H L 241
 TAT GGC CTC TTT GGG CAT TGC ATT GTC CTG TTC ATC ACC TAT AAT ATC CAC CTC 838

H A L F Y L F W L L V G G L S T L R 259
 CAC GCC CTC TTC TAC CTC TTC TGG CTG TTG GTG GGT GGA CTG TCC ACA CTG CGC 892

M V A V L V S R T V G P T Q R L L L 277
 ATG GTA GCA GTG TTG GTG TCT CGG ACC GTG GGC CCC ACA CAG CGG CTG CTC CTC 946

C G T L A A L H M L F L L Y L H F A 295
 TGT GGC ACC CTG GCT GCC CTA CAC ATG CTC TTC CTG CTC TAT CTG CAT TTT GCC 1000

Y H K V V E G I L D T L E G P N I P 313
 TAC CAC AAA GTG GTA GAG GGG ATC CTG GAC ACA CTG GAG GGC CCC AAC ATC CCG 1054

P I Q R V P R D I P A M L P A A R L 331
 CCC ATC CAG AGG GTC CCC AGA GAC ATC CCT GCC ATG CTC CCT GCT GCT CGG CTT 1108

P T T V L N A T A K A V A V T L Q S 349
 CCC ACC ACC GTC CTC AAC GCC ACA GCC AAA GCT GTT GCG GTG ACC CTG CAG TCA 1162

H * 350
 CAC TGA CCCACCTGAAATTCTTGGCCAGTCTCTTTCCCGCAGCTGCAGAGAGGAGGAAGACTATTAA 1231

AGGACAGTCCTGATGACATGTTTCGTAGATGGGGTTTGACAGCTGCCACTGAGCTGTAGCTGCGTAAGTACC 1302
 TCCTTGATGCTGTGGGCACTTCTGAAAGGCACAAGGCCAAGAAGTCTGAGCTGCAAGGCTCTGC 1373
 AGCCAATGCAGAAAATGGGTCAGGTCCCTTTGAGAACCCTCCACCTACCCCTTCTCTCTTATCTC 1444
 TCCCACATTGCTTGGTAAATATAGACTTGGTAATTAATAATGTTGATTGAAGTCTGG 1501

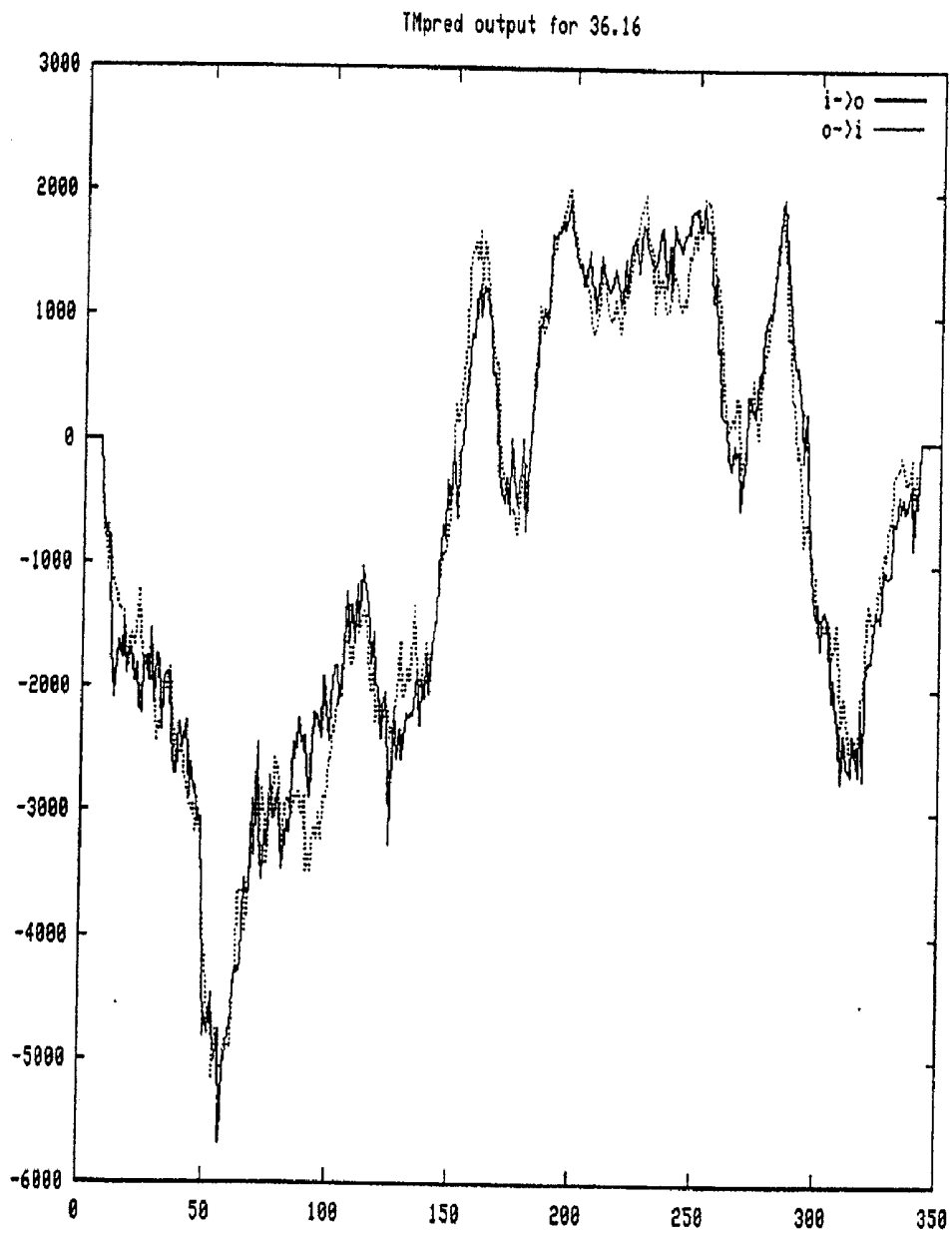


FIGURE 2'

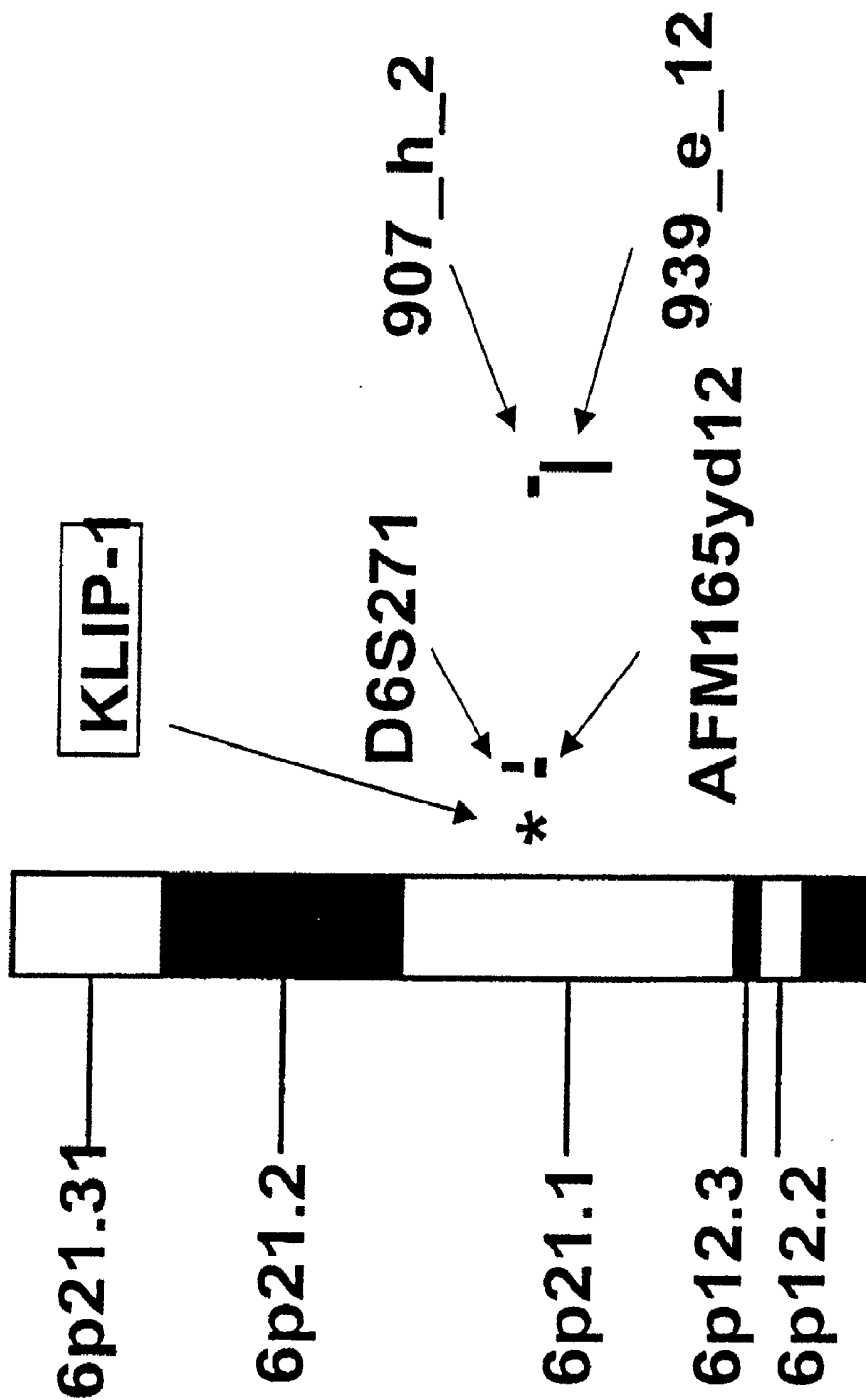


FIGURE 3

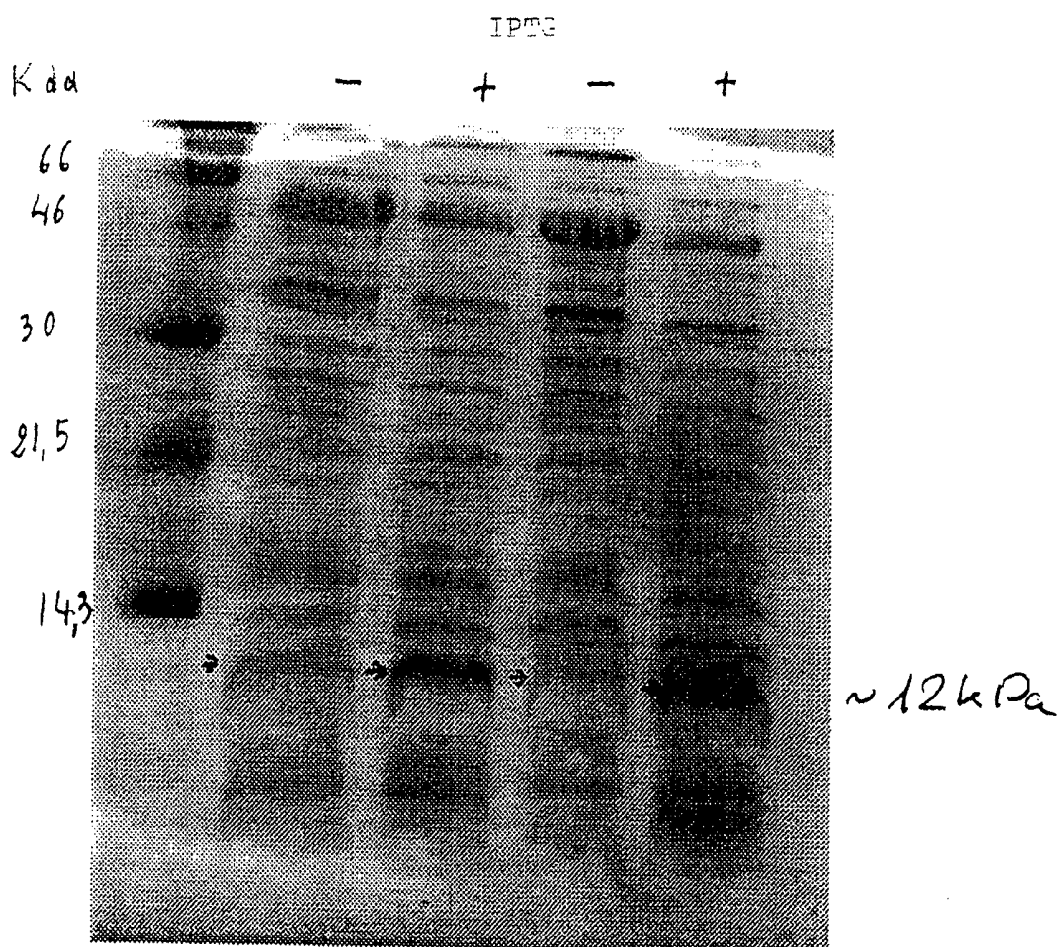
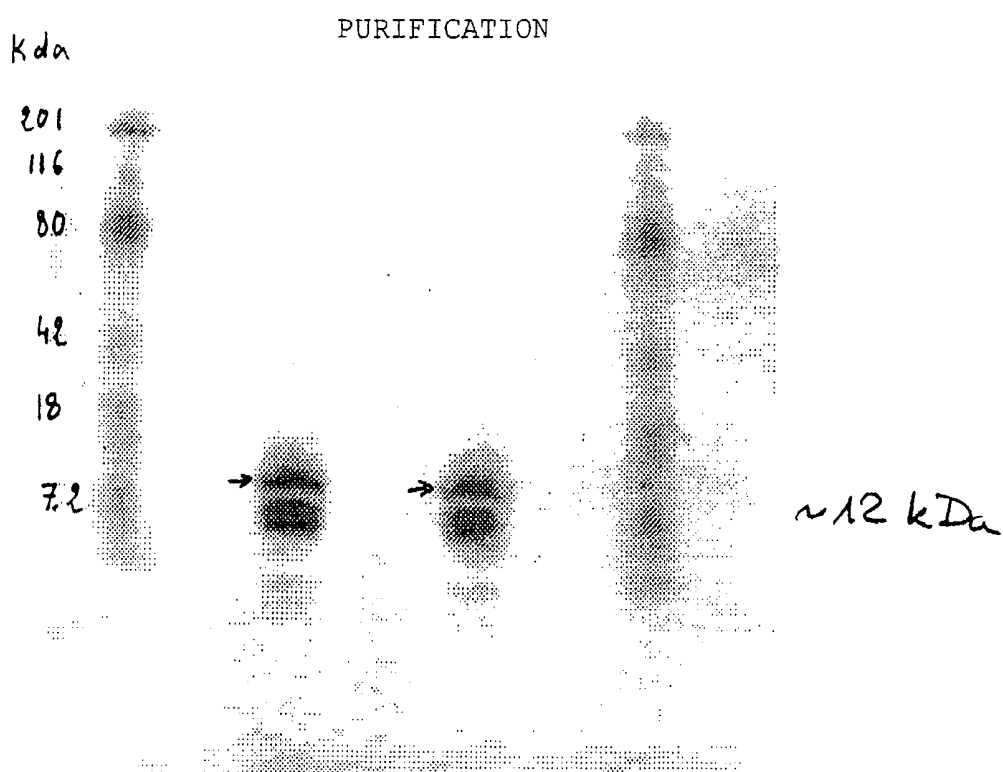


FIGURE 4A



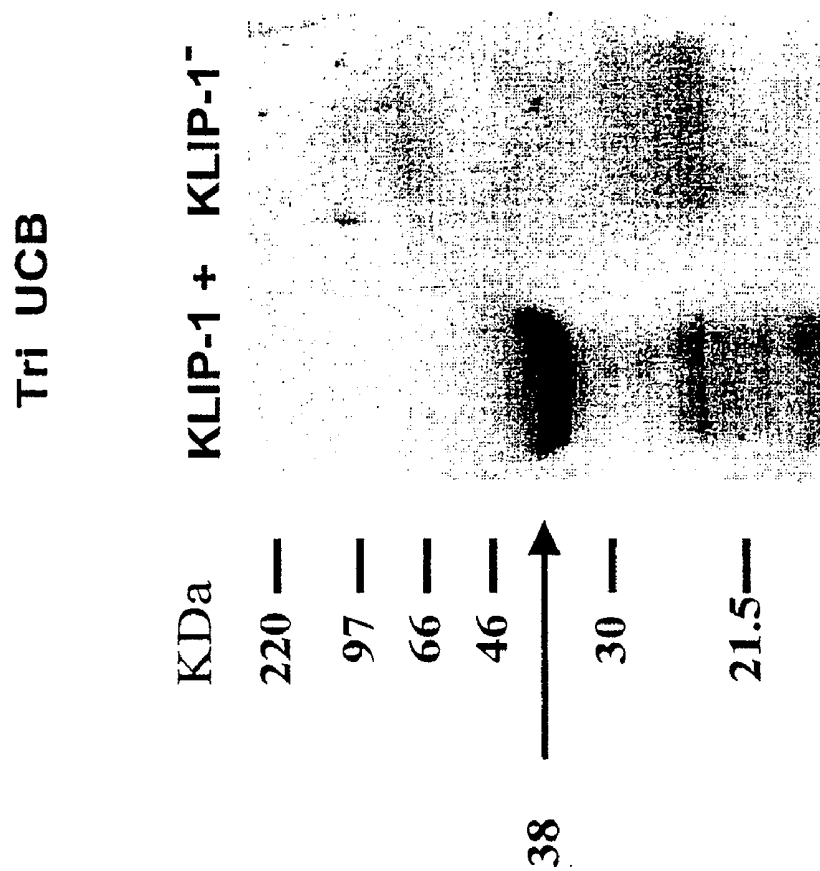


FIGURE 5

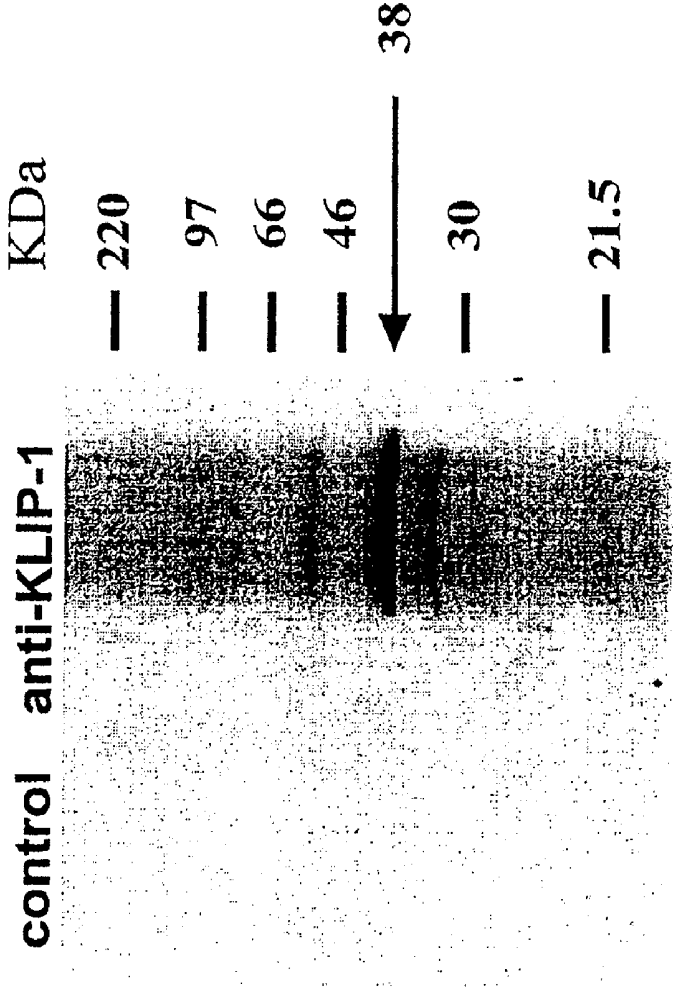


FIGURE 6

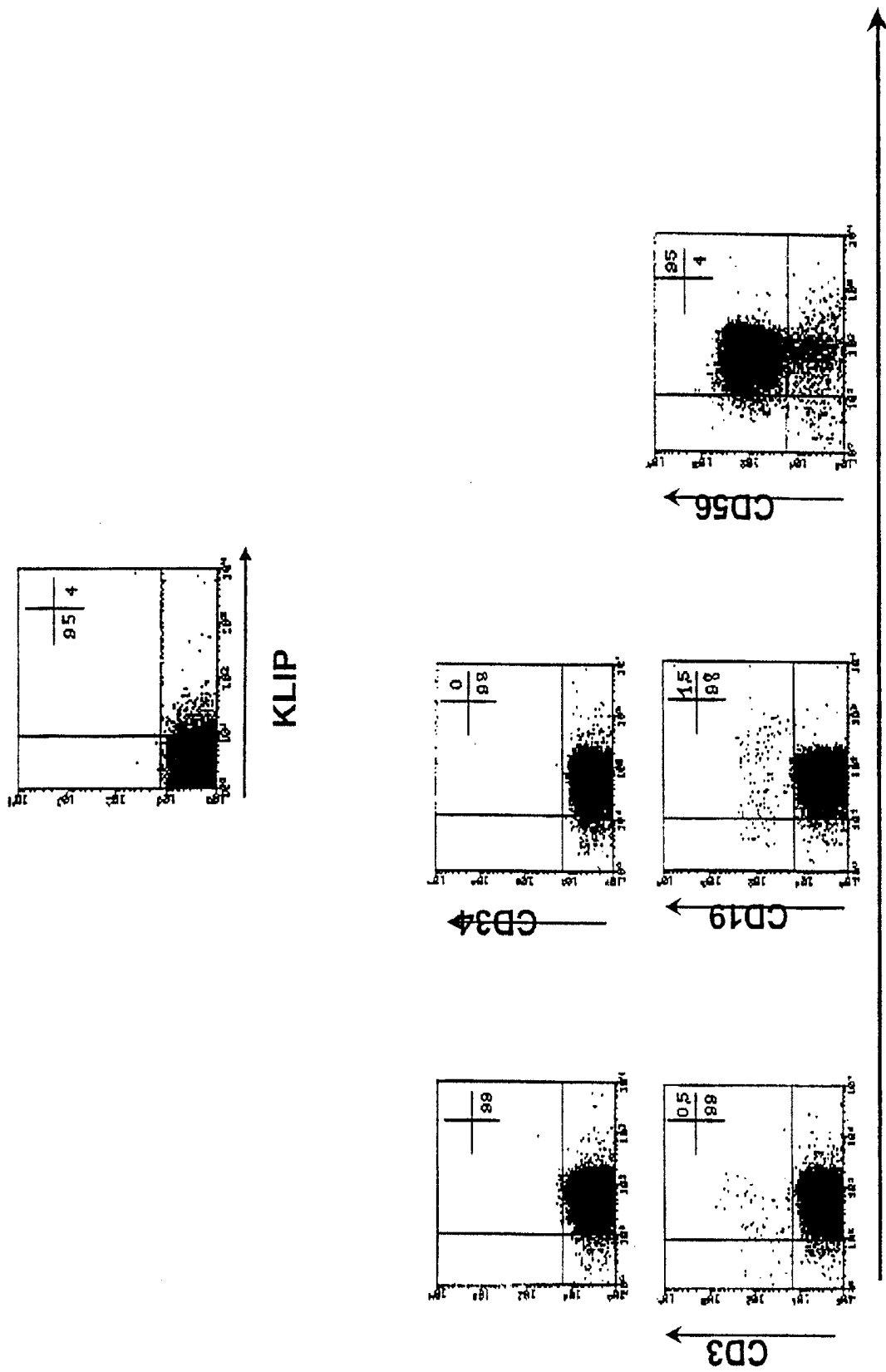
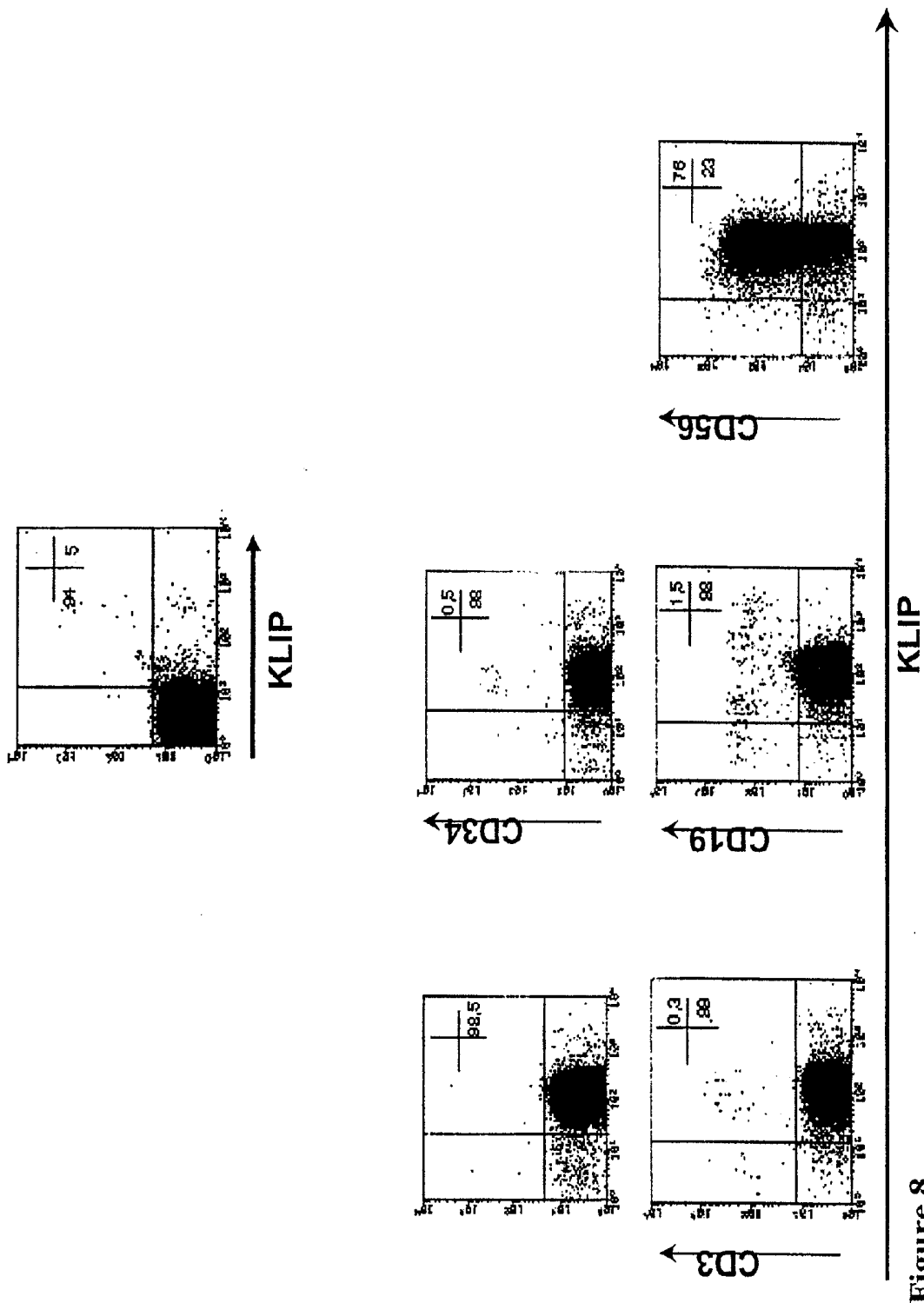


Figure 7



KLIP

Figure 8

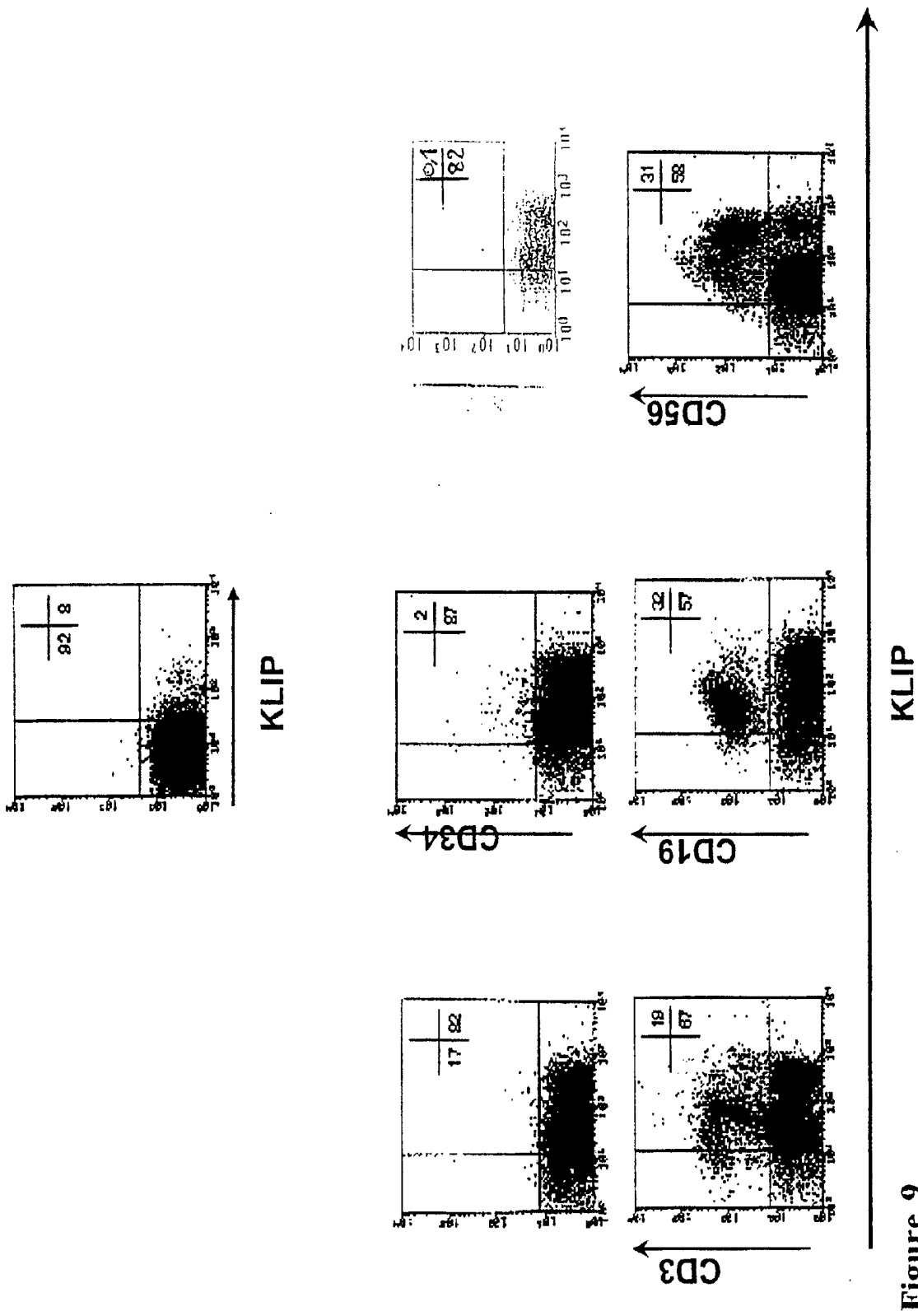


Figure 9

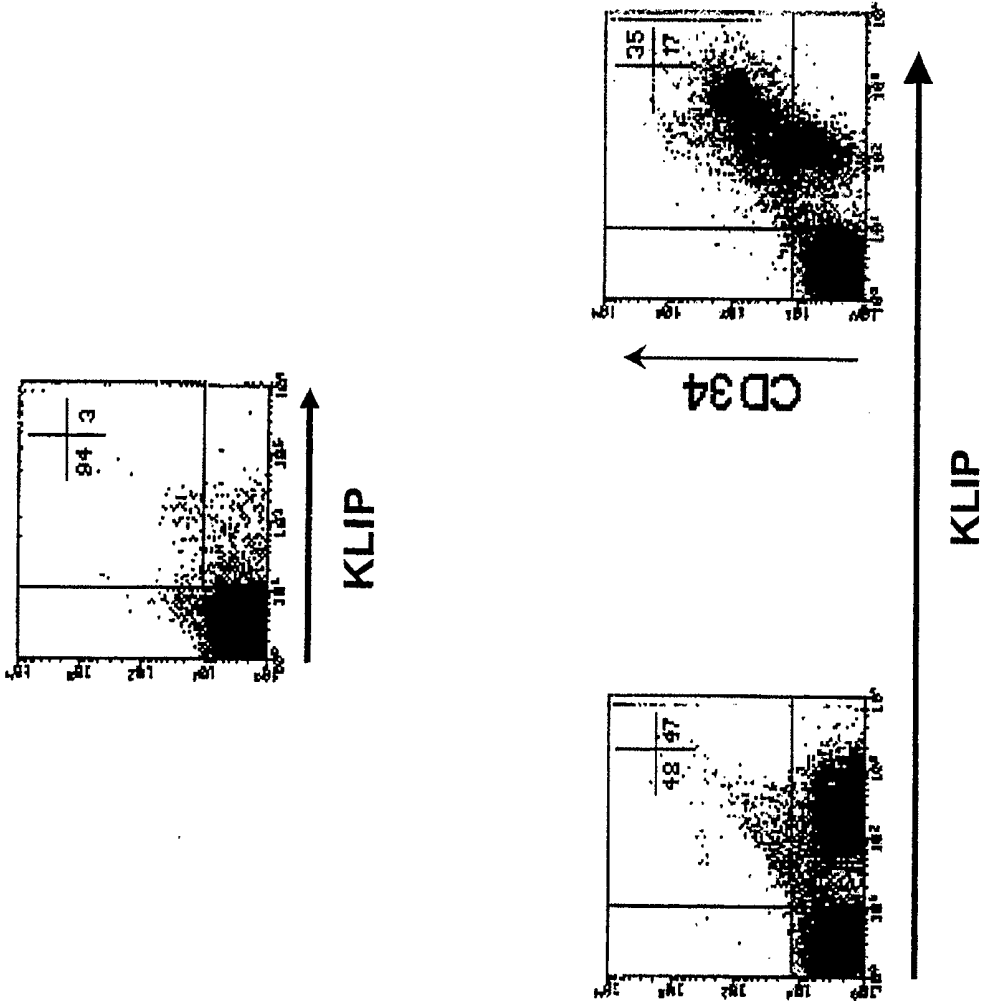


Figure 10

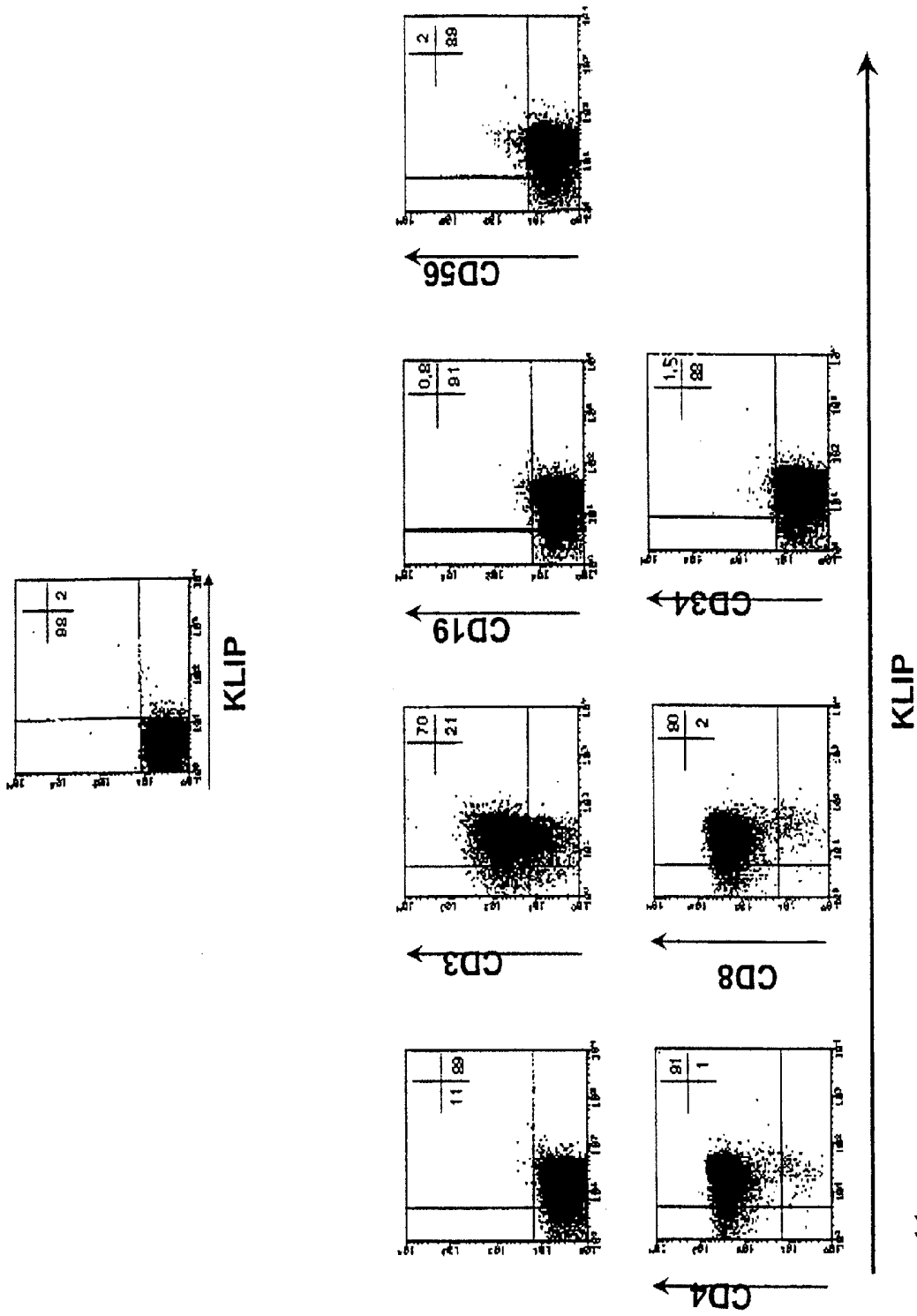


Figure 11

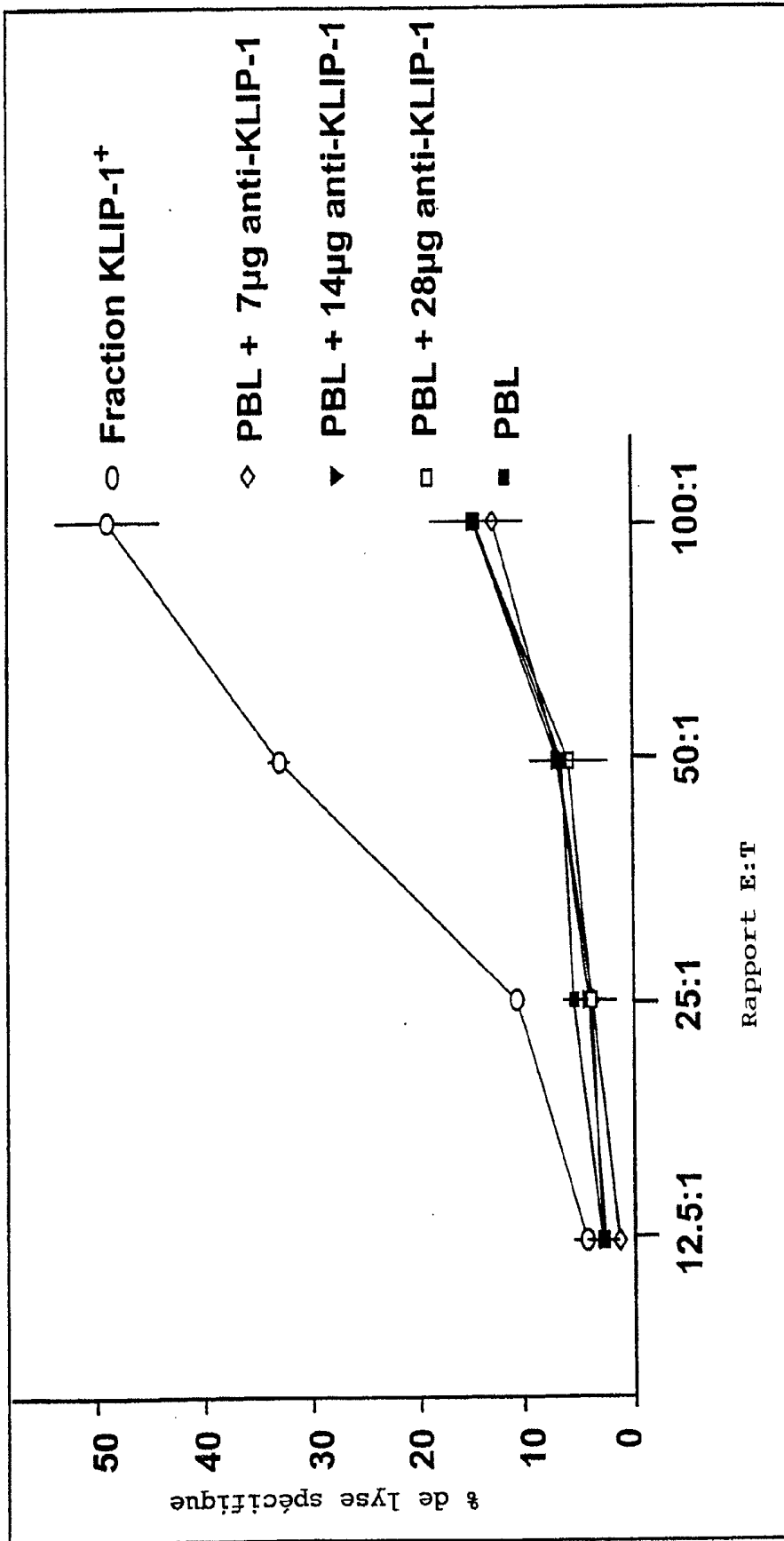


Figure 12

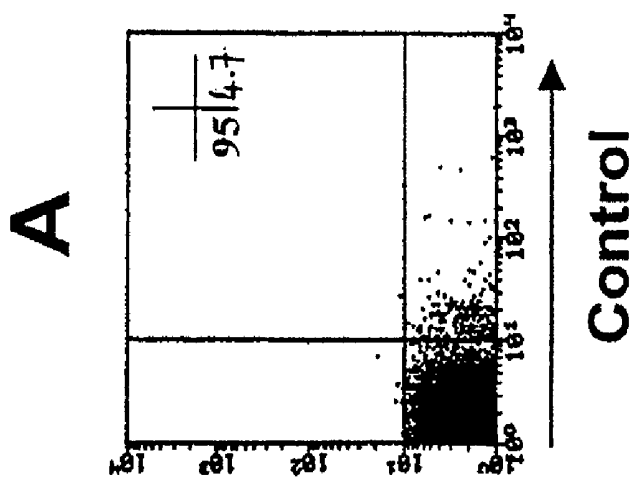
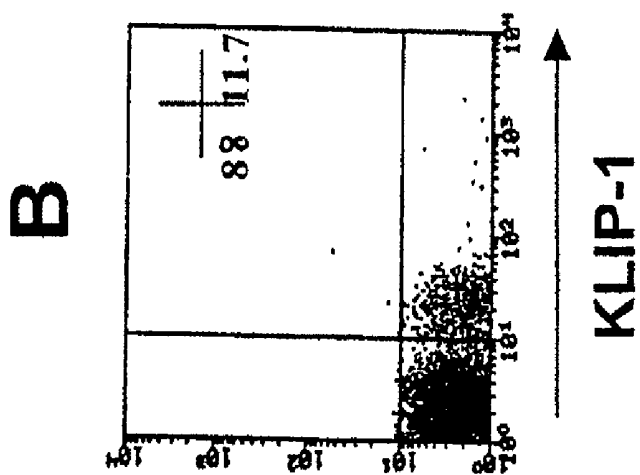


Figure 13

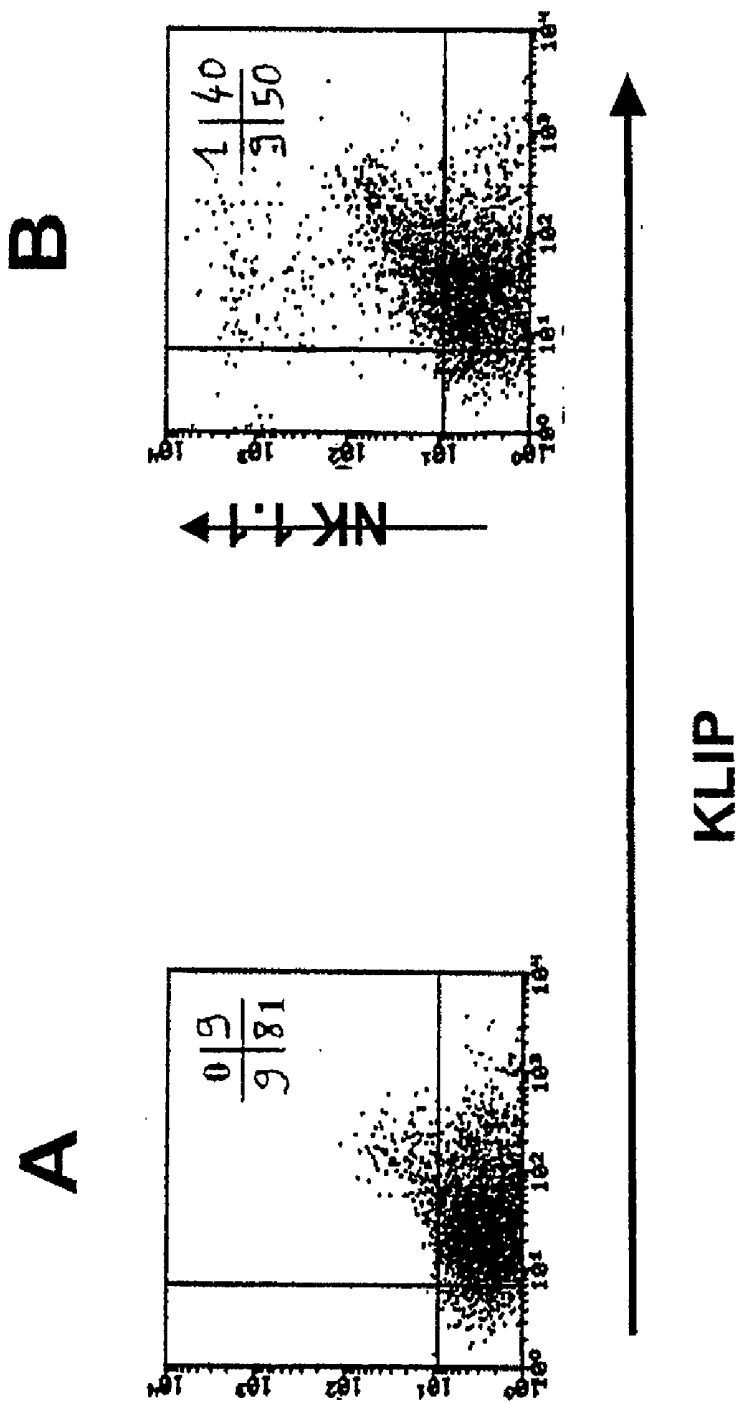


FIGURE 14

**PROTEIN PRESENT AT THE SURFACE OF
HEMATOPOIETIC STEM CELLS OF THE
LYMPHOID LINE AND OF NK CELLS, AND USES
THEREOF**

CROSS-REFERENCE TO RELATED
APPLICATION

[0001] This application is a divisional of U.S. application Ser. No. 10/129,873, filed Jun. 24, 2002, which in turn is a national phase of PCT/FR00/03137, filed Nov. 10, 2000 and claiming priority from French Application No. 99/14241, filed Nov. 12, 1999.

FIELD AND BACKGROUND OF THE
INVENTION

[0002] The present invention relates to a protein present at the surface of hematopoietic stem cells of the lymphoid line (pre-T cells, pre-B cells and pre-NK cells) and of mature NK cells, to the corresponding isolated cDNA sequence, and also to uses thereof as a marker for said cells and for preparing antibodies directed against said protein; the present invention also relates to the uses of said antibodies in selecting cells expressing said protein at their surface.

[0003] Such antibodies are in particular of use in depleting bone marrow or umbilical cord blood of NK cells, before a bone marrow transplant, for the purpose of reducing rejection of the latter and GVHD.

[0004] NK cells represent 10 to 15% of peripheral blood mononuclear cells. It is accepted that they constitute a third lymphocytic line alongside B and T cells; they are defined as large granular lymphocytes (LGLs) which express at their surface neither the CD3 molecular complex nor the α, β, γ chains of the T receptor, bear the CD16 and CD56 markers in humans, NK1.1/NK2.1 in mice, and exert a cytolytic action which does not require the expression of class I or II MHC antigens at the surface of the target cells.

[0005] No surface antigen is known which is expressed only by lymphoid line progenitors (pre-T cells, pre-B cells and pre-NK cells) and mature NK cells. Two markers are used to distinguish, in practice, NK cells from the other lymphocyte populations. They are the CD56 antigen and the low-affinity receptor for the immunoglobulin Fc fragment, or CD16.

[0006] Although most NK cells may be considered to be CD3⁻, CD16⁺, CD56⁺, a great phenotypical and functional heterogeneity exists in this cell population; most peripheral blood CD56⁺ lymphocytes also express the CD16 molecule; approximately 10% of peripheral blood NK cells are CD16⁻, while at the same time expressing CD56 at high density. It has been suggested that CD16⁻, CD56^{strong} lymphocytes may be the precursors of CD16⁺, CD56^{weak} NK lymphocytes.

[0007] However, since some T cells express both the CD16 molecule and the CD56 molecule, these two molecules are not specific for the peripheral blood NK cell population.

[0008] NK cells exhibit a natural cytolytic activity which is exerted directly, without the need for prior immunization, and does not require the presence, on the target cell, of major histocompatibility complex antigens, and antibody-depen-

dent cell-mediated cytotoxicity (ADCC). The ADCC is initiated by the binding of the antibody attached to the target cell with the Fc receptor (CD16) of the effector cell. NK cells therefore play an important role in the host's defence against viral infections and in immune surveillance with respect to tumor cells.

[0009] NK cells may induce a primitive form of allorecognition which contributes to rejection of the graft in an allogenic transplant and also to graft versus host disease (GVHD). For these reasons, reliable identification of NK cells in the mononuclear cell population, as well as of all of the lymphoid line precursor cells, is important.

[0010] A certain number of documents propose methods for depleting bone marrow of NK cells; in these various methods, NK cells are selected using markers such as CD56, CD16, PEN5 or NKB1:

[0011] PCT International Application WO 95/20604 describes an antigen present on NK cells and T cells. This antigen was named NKB1. A monoclonal antibody directed against this antigen is also described (DX9 antibody). This NKB1 marker has the following properties:

[0012] it binds specifically to the DX9 antibody,

[0013] it has a molecular weight of about 50 kDa,

[0014] it is a glycosylated protein; the molecular weight of the glycosylated protein is approximately 70 kDa,

[0015] the natural form of the protein contains sialic acid residues and is in particular phosphorylated,

[0016] the NKB1 markers are expressed by a subset of NK cells and by a subset of T cells.

[0017] PCT International Application WO 95/06247 describes an NK cell-specific antigen in the form of a pair of glycoproteins, designated PEN5 α and PEN5 β having an apparent molecular weight of 120-150 and 210-245 kDa, respectively.

[0018] The unique epitopes of the PEN5 α /PEN5 β pair of glycoproteins are preferably expressed by a subpopulation of peripheral blood NK cells of phenotype CD16⁺, CD56^{dim}; they are not present on CD3⁺ T lymphocytes or CD20⁺ B lymphocytes.

[0019] These methods result in the depletion of CD56⁺, CD16⁺ mature NK cells or PEN5, NKB1 premature NK cells, but do not deplete the progenitors which, after transplant, may differentiate into mature cells which will cause graft rejection.

[0020] Other documents confirm this lack of specific markers; for example, in the article by E. Dominguez et al. (Immunol., 1998, 94, 109-114), it is specified that no unique marker for NK cells has yet been identified, and that they are distinguished, conventionally, by the fact that they express CD56.

[0021] It emerges from this set of documents that no markers exist which are specific, firstly, for NK cells or, secondly, for all lymphoid line progenitors.

[0022] The Applicant has therefore given itself the aim of providing a marker specific for mature NK cells and also for all undifferentiated cells of the lymphoid line, in order to make it possible in particular to deplete the bone marrow of

lymphoid line precursor cells (pre-NK, pre-T and pre-B cells) and of mature NK cells, in particular before a bone marrow transplant, for the purpose of reducing rejection of the latter and GVHD.

[0023] In fact, surprisingly, the Inventors have now found that a marker exists which is specific both for all lymphoid progenitor lines (pre-T, pre-B and pre-NK lines) and for mature NK cells.

[0024] A subject of the present invention is an isolated protein, characterized:

[0025] in that it is present at the surface of all lymphoid progenitor cells and all mature NK cells,

[0026] in that it has a structure (a) comprising an extracellular domain located between positions 21 and 152, five transmembrane domains located between positions 153 and 295 and a cytoplasmic domain located between positions 296 and 350, with reference to the sequence SEQ ID NO:2,

[0027] in that it has an apparent molecular weight of approximately 36-38 kDa, and

[0028] in that its precursor, which comprises, at the N-terminal of the structure (a), a 20 amino acid signal sequence, is selected from the group consisting of the protein of SEQ ID NO:2, and the proteins which have an amino acid sequence having at least 70% identity or at least 85% similarity, and preferably at least 95% identity or at least 99% similarity, with the sequence SEQ ID NO:2.

[0029] The term "precursor" is intended to mean the protein including the signal sequence.

[0030] "The identity" of a sequence relative to a reference sequence is assessed as a function of the percentage of amino acid residues, which are identical, when the two sequences are aligned so that they correspond to one another to a maximum.

[0031] A protein which has an amino acid sequence having at least X % identity with a reference sequence is defined, in the present invention, as a protein the sequence of which may include up to 100-X modifications per 100 amino acids of the reference sequence. For the purpose of the present invention, the term "modifications" includes consecutive or dispersed deletions, substitutions or insertions of amino acids in the reference sequence.

[0032] "The similarity" of a sequence relative to a reference sequence is assessed as a function of the percentage of amino acid residues which are identical or which differ by conservative substitutions, when the two sequences are aligned so as to correspond to one another to a maximum. For the purpose of the present invention, the term "conservative substitution" is intended to mean the substitution of one amino acid with another which has similar chemical properties (size, charge or polarity), which does not generally modify the functional properties of the protein.

[0033] A protein which has an amino acid sequence having at least X % similarity with a reference sequence is defined, in the present invention, as a protein the sequence of which may include up to 100-X nonconservative modifications per 100 amino acids of the reference sequence. For the purpose of the present invention, the term "nonconservative modifications" includes consecutive or dispersed

deletions, nonconservative substitutions or insertions of amino acids in the reference sequence.

[0034] A certain number of documents describe proteins having a certain homology with the proteins according to the invention:

[0035] PCT Application WO 98/39448 (Human Genome Sciences Inc) describes gene 177, clone HE9CM64 which potentially encodes a secreted protein (nucleic acid sequence: SEQ ID NO:187, peptide sequence: SEQ ID NO:489); however, only the mRNA has been detected in the brain and, to a lesser degree, in the kidney, the placenta, the smooth muscle, the heart and the lung. The protein potentially encoded by said mRNA has never been isolated and no real function is associated with this protein, which is not clearly defined at its N- and C-terminal ends, which may vary.

[0036] PCT International Applications WO 98/25959 (Chiron Corp.) and WO 99/31236 (Genset), and also the information relating to the sequences accessible in the SWALL DATABASE under the No. Q9Y3U9, or the information relating to the sequences accessible in the EMEST DATABASE, under the No. AW106427, describe sequence fragments having homology with a fragment of the sequence SEQ ID NO:2; however, in the application pending, the homology is clearly defined relative to the complete sequence SEQ ID NO:2; in addition, none of those documents discloses proteins which are surface markers for early lymphoid line progenitors and for mature NK cells.

[0037] Specifically, the protein according to the invention has the following properties:

[0038] it is present at the surface of the cells of the NK cell differentiation line, from the very early progenitors to the mature cytotoxic cells, and of the other early progenitors of the lymphoid line (pre-B and pre-T),

[0039] it has an apparent molecular weight of approximately 36-38 kDa, measured by SDS-PAGE electrophoresis on a 12% gel under reducing conditions,

[0040] it comprises an extracellular domain which has at least the sequence SEQ ID NO:6, 7 or 24, and

[0041] it has a structure comprising an extra cellular domain, five transmembrane domains and a cytoplasmic domain; it is preferably selected from the group consisting of the protein having the formula SEQ ID NO:25 (human protein which comprises 330 amino acids) and the proteins of other mammals, the extra-cellular domain of which consists of the fragments of sequence SEQ ID NO:6, 7 or 24.

[0042] Said surface molecule or protein, named KLIP-1 antigen, is therefore specifically present on the NK cell differentiation line, from the very early progenitors to the cytotoxic mature cells, and also on the other early progenitors of the lymphoid line (pre-B and pre-T).

[0043] With reference to human SEQ ID NO:2, amino acids 1-20 correspond to the signal sequence; amino acids 21-152 (human SEQ ID NO:7; murine SEQ ID NO:24; porcine SEQ ID NO:6) correspond to the extracellular domain; amino acids 153-295 (SEQ ID NO:8) correspond to the five transmembrane domains (143 amino acids) and amino acids 296-350 (SEQ ID NO:9) correspond to the cytoplasmic domain (54 amino acids).

[0044] The following cells are KLIP-1+:

[0045] .CD34+, CD38- early hematopoietic progenitors of the bone marrow, of umbilical cord and of fetal liver

[0046] .CD34+, CD38+ differentiated progenitors

[0047] .CD4+, CD8+ pre-T progenitors (neonatal thymus)

[0048] .CD19+, CD10-, CD20- pre-B progenitors

[0049] .CD56+, CD16+, CD19-, CD3-, CD33- mature NK cells.

[0050] The fact that this KLIP-1 antigen is present both on the earliest progenitors and on the differentiated progenitors and mature NK cells makes it possible to obtain an NK cell-depletion of the bone marrow in the presence of anti-KLIP-1 antibodies, which constitutes a better prevention of graft rejection and a potential treatment for autoimmune diseases.

[0051] The KLIP-1 antigen as described above may be considered to be a marker specific for NK cells (early and mature) and, in particular, a marker for mature cells since, in peripheral blood, no other cell of the lymphoid line (mature B cells and T cells) exhibits such an antigen.

[0052] A subject of the present invention is also fragments of said protein, characterized in that they are selected from the group consisting of fragments comprising between 7 consecutive amino acids and 132 consecutive amino acids of the extracellular domain of said protein, fragments comprising between 7 consecutive amino acids and 143 consecutive amino acids included within the transmembrane domains of said protein and fragments comprising between 7 consecutive amino acids and 54 consecutive amino acids included within the cytoplasmic domain of said protein and the fragment of sequence SEQ ID NO:4; among said fragments, mention may be made of the sequences SEQ ID NO:6, 7, 8, 9 and 24.

[0053] A subject of the present invention is also the isolated nucleic acid sequences (in particular cDNA sequences) encoding said protein or fragments thereof, as defined above, of human or animal origin, and also the complementary nucleic acid sequences.

[0054] Among these sequences, mention may be made of:

[0055] the cDNA encoding the human KLIP-1 antigen, which has the sequence SEQ ID NO:1 and comprises 1501 bp; it is obtained from the *klip-1* gene located on chromosome 6, in the region 6p21.2-6p21.1;

[0056] the sequence encoding the human KLIP-1 protein, which is between base 116 and base 1165 of the sequence SEQ ID NO:1 (SEQ ID NO:10);

[0057] the sequence encoding the extracellular domain of the human (SEQ ID NO:11), murine (SEQ ID NO:3 and SEQ ID NO:23) or porcine (SEQ ID NO:5) KLIP-1 protein;

[0058] the sequence encoding the transmembrane domains of the human KLIP-1 protein (SEQ ID NO:12); the positions of the 5 transmembrane helices are as follows: 153-169, 181-209; 218-237, 243-261 and 275-295; and

[0059] the sequence encoding the cytoplasmic domain of the human KLIP-1 protein (SEQ ID NO:13).

[0060] A subject of the present invention is also nucleic acid fragments, characterized in that they comprise at least 8 bp of the various cDNA sequences as defined above. Such fragments may in particular be used as probes or as primers for amplification or for reverse transcription, for example the sequences SEQ ID NO:16-20.

[0061] A subject of the present invention is also antibodies, characterized in that they specifically recognize the KLIP-1 surface antigen according to the invention, which is specific for the NK cell differentiation line, from the very early progenitors to the cytotoxic mature cells, and for the other early progenitors of the lymphoid line (pre-B and pre-T), or a fragment of this antigen.

[0062] According to an advantageous embodiment of said antibodies, they are directed against one of the abovementioned regions of the KLIP-1 antigen, preferably against the extracellular domain of the KLIP-1 protein.

[0063] In accordance with the invention, said antibodies are either polyclonal antibodies or monoclonal antibodies.

[0064] In addition, the anti-KLIP-1 antibodies also make it possible to obtain depletion of lymphoid progenitor cells (pre-B and pre-T).

[0065] In bone marrow transplantation, the antibodies, fragments and derivatives according to the invention may be used to deplete the bone marrow of KLIP-1+ cells *ex vivo*, before transplanting the donor's marrow into the recipient's marrow.

[0066] At the current time, no marker exists for early NK cells: KLIP-1 thus constitutes the first marker present both on the entire NK cell differentiation line and on the other early lymphoid lines.

[0067] A subject of the present invention is also a method for selectively removing the KLIP-1+ cells from a biological sample comprising a heterogeneous population of cells, which method comprises:

[0068] bringing said biological sample into contact with an antibody directed against a surface molecule according to the invention, which is specific for the NK cell differentiation line, from the very early progenitors to the cytotoxic mature cells, and for the other early progenitors of the lymphoid line (pre-B and pre-T), or a fragment of this molecule, and

[0069] removing the cells which bind to said antibody.

[0070] According to an advantageous embodiment of said method, said antibody is attached to a solid support, such as magnetic beads or other immunoadsorbent supports (CNBr Sepharose, for example).

[0071] In accordance with said embodiment, in order to deplete the biological sample, and in particular the bone marrow, umbilical cord blood or fetal liver, of cells comprising the KLIP-1 antigen at their surface, these cells are attached to immunomagnetic beads covered with anti-KLIP-1 antibodies, preferably antibodies directed against the extracellular domain of the KLIP-1 protein.

[0072] Advantageously, said method may be carried out in order to enrich a biological sample in human mature or progenitor NK cells using mixtures of human cells originat-

ing from fetal liver, from umbilical cord blood, from fetal, neonatal or adult bone marrow or from peripheral blood.

[0073] A subject of the present invention is also the use of the cells of the bone marrow, of umbilical cord blood, of fetal liver or of any other fetal or adult hematopoietic tissue, depleted of NK cells and/or of lymphoid progenitors, obtained using the method as defined above, for preparing a product which can be transplanted.

[0074] A subject of the present invention is also a method for detecting and/or quantifying and/or isolating the NK cells and/or the lymphoid cell progenitors (pre-B, pre-T and pre-NK) in a heterogeneous population of cells, which method is characterized in that it comprises:

[0075] bringing a biological sample comprising a heterogeneous population of cells into contact with an antibody directed against the KLIP-1 protein or a fragment of this protein, according to the invention, and

[0076] detecting the formation of the cell-antibody complex, in particular using a standard immunological method.

[0077] According to an advantageous embodiment of said method, when said sample consists of bone marrow, of umbilical cord blood, of fetal liver or of any other hematopoietic tissue (fetal or adult), it may also comprise bringing the cells which have formed a complex with said antibody into contact with an antibody specific for pre-B cells (anti-CD19 antibody or anti-CD10 antibody) and/or for pre-T cells (anti-CD3 antibody, anti-CD4 antibody or anti-CD8 antibody).

[0078] A subject of the present invention is also the use of the antibodies as defined above, in the treatment of autoimmune diseases.

[0079] A subject of the present invention is also a method for diagnosing malignant and benign hemopathies, characterized in that it comprises detecting a nucleic acid sequence as defined above, in a biological sample.

[0080] Specifically, determination of the modulation of the expression of the KLIP-1 gene and/or of the mutations of the sequence of said gene make it possible to diagnose a hemopathy.

[0081] A subject of the present invention is also a kit for detecting and/or quantifying and/or isolating the NK cells and/or the lymphoid cell progenitors (pre-B, pre-T and pre-NK), characterized in that it comprises, besides useful amounts of buffers suitable for carrying out said detection, suitable doses of an antibody directed against the KLIP-1 antigen or a fragment of this antigen according to the invention, optionally conjugated to an immunoadsorbent solid support, and suitable doses of a reagent for revealing the cell-antibody complex possibly formed.

[0082] A subject of the present invention is also the use of the protein fragments according to the invention comprising at least 7 consecutive amino acids of the extracellular domain as defined above, as a reagent for detecting NK cells.

[0083] Besides the arrangements above, the invention also comprises other arrangements, which will emerge from the following description, which refers to examples of implementation of the method which is the subject of the present invention and also to the attached drawings in which:

[0084] FIG. 1 represents an RNA differential display (RDD); in this figure, the lanes 1 correspond to the yolk sac, the lanes 2-5 correspond to fetal liver and lane 6 corresponds to a control;

[0085] FIG. 2 represents the human KLIP-1 nucleotide and protein sequences; FIG. 2' represents a model for the transmembrane portion;

[0086] FIG. 3 represents the chromosomal location of the KLIP-1 gene;

[0087] FIG. 4 illustrates the induction of expression of a fusion protein comprising the extra cellular domain of the human KLIP-1 protein (12 kDa);

[0088] FIG. 5 illustrates a Western blot on the KLIP-1+ and KLIP-1- populations;

[0089] FIG. 6 illustrates an immunoprecipitation of the protein transcribed and translated in vitro;

[0090] FIG. 7 represents the distribution of KLIP-1+ cells in peripheral blood, containing only mature blood cells;

[0091] FIG. 8 represents the distribution of KLIP-1+ cells in umbilical cord blood, containing mostly mature blood cells but also a small fraction of immature cells;

[0092] FIG. 9 represents the distribution of KLIP-1+ cells in the bone marrow, a site of hematopoiesis at which the differentiation of blood cells takes place;

[0093] FIG. 10 represents the distribution of KLIP-1 + cells in embryonic liver (6 weeks);

[0094] FIG. 11 represents the distribution of KLIP-1+ cells in neonatal thymus;

[0095] FIG. 12 illustrates the cytolytic properties of NK cells and of the NK population purified with KLIP-1+ (target cells);

[0096] FIG. 13 illustrates the distribution of KLIP-1+ cells in the peripheral blood of pigs; and

[0097] FIG. 14 illustrates the distribution of KLIP-1+ cells in mouse splenocytes considered to be NK cells (formation of complexes with NK 1.1 antibodies (Pharming)).

[0098] It should be clearly understood, however, that these examples are given purely by way of illustration of the subject of the invention, of which they in no way constitute a limitation.

EXAMPLE

[0099] Cell and Tissue Methods

[0100] Human embryonic tissues were obtained from voluntary terminations of pregnancy, in accordance with French legislation. The project was approved by the local committee for ethics, and prior informed consent was obtained from all the mothers. The stage of development (of gestation) of each embryo was determined by anatomical criteria. The yolk sac, the dorsal aorta with the splanchnopleure (AGM region) and the liver were dissected under a binocular lens and were immediately prepared for extraction of the RNA or were frozen in liquid nitrogen and stored at -80° C. Because of the various developmental stages of the embryos, the dissected tissues were treated separately and not mixed.

[0101] Umbilical cord blood was collected from full-term newborn babies in good health (healthy), immediately after birth, with the agreement of the mother.

[0102] Bone marrow and peripheral blood were collected from normal adult donors, in accordance with the institutional guidelines. Mononuclear cells were obtained by centrifugation in a Ficoll-Hypaque gradient under standard conditions. The normal postnatal thymocytes were isolated by elution from pieces of thymus taken during heart-correcting operations. For the cytofluorometric analysis, the mononuclear cells were used fresh or frozen.

[0103] RNA Differential Display (RDD), Cloning and Sequencing

[0104] The total mRNA was extracted from the tissues examined (fresh or frozen) using the RNA NOW reagent (Ozyme, France), in accordance with the manufacturer's recommendations, and treated with RNase-free DNaseI (Boehringer Mannheim, Meylan, France) for 1 hour at 37° C., and then precipitated with ethanol. The quality of the RNA was verified by electrophoresis on a 1.5% agarose denaturing gel. The cDNAs were prepared from 5 µg of total RNA, in the presence of 5'T₁₁XY (X=A, G or C; Y=A, T, G or C) (SEQ ID NO:14) as the 3' anchoring primer and of M-MLV reverse transcriptase (GIBCO-BRL, Life Technologies, Cergy, France), at 42° C. for 1 hour. The amplifications by reverse PCR were performed with the same 3' anchoring primer (antisense primer) and 10 arbitrary nucleotides in 5' (sense primer), in the presence of 5 µCi of [α ³²P]-dCTP (Amersham France, Les Ulis, France). The results illustrated in FIG. 1 were obtained with the following primers: 5'-T₁₁GG (SEQ ID NO:14) and 5'-GTTGCGATCC (SEQ ID NO:15). The PCR products were heat-denatured for 3 minutes at 80° C. in a sequencing stop buffer and separated by electrophoresis on a 6% polyacrylamide denaturing gel. The gels were dried, without fixing, on 3MM Whatman filter paper and exposed for 16 hours on Kodak Biomax films (Amersham France, Les Ulis, France).

[0105] The bands which regularly appeared as being differential in two independent amplifications were excised, eluted from the gel, reamplified under the same reaction conditions (35 cycles), analyzed on 2% agarose gel and cloned into a vector pCRII (TA Cloning Kit, Invitrogen, Leek, The Netherlands). A minimum of 40 individual recombinant (white) colonies were recovered and the presence of the inserts was tested by PCR with flanking primers from the vector. Several recombinant plasmids were amplified by miniprep, purified using the Qiagen kit (Qiagen, Courtabouef, France) and then radiolabeled with [α ³²P]-dCTP. These plasmids were used as probes to eliminate the similar clones. The nonredundant clones were sequenced manually using the enzymatic method with dideoxynucleotides (Sanger method) in the presence of Sequanase® 2.0 and flanking primers from the vector, according to the manufacturer's protocols (US Biochemicals, Cleveland, Ohio). Sequence homology searches were performed, via INFOBIOGEN/BLAST (<http://www.infobiogen.fr>), on GenBank and on the EMBL databases.

[0106] Isolation of the KLIP-1 cDNA (Clone No. 36-16) from Embryonic Hematopoietic Tissues by PCR-RDD

[0107] The profile expression of the gene during human embryogenesis was studied. The transcripts expressed dif-

ferentially at day 32 YS (yolk sac) and from day 27 to day 49 FL (fetal liver) were examined using the PCR-RDD technique. Clone 36-16 was isolated from the RDD gel and its differential expression was confirmed by the strong expression at day 25 (yolk sac), weak expression at day 32 (yolk sac) and strong expression at day 28 [AGM (aorta-gonad-mesonephros region)], as at day 28 (fetal liver), followed by the decrease in expression at the late stages (fetal liver).

[0108] Cloning of the Complete cDNA and Analysis of the Deduced Protein

[0109] A human lung cDNA library (Plasmid MATCH-MAKER Library, Clontech, Paris, France) in the vector pACT2 was used. The 36-16 cDNA clones were obtained by screening 1×10⁶ colonies of the cDNA library, using a ³²P-labeled 255 bp 36-16 insert as a probe for the hybridization on Hybond N+Nylon membranes. The positive clones were tested by PCR with the flanking primers from the vector and were confirmed by hybridization with the radiolabeled 36-16 insert. Two clones exhibited a positive hybridization signal and an appropriate size of approximately 1600 pb, in agreement with the Northern blotting results. One of them was sequenced by the Sanger method, using fluorescent terminators and an Applied Biosystems ABI sequencer (Pharmacia, Orsay, France).

[0110] Characterization of the Complete KLIP-1 cDNA (36-16) and Deduced Protein

[0111] The complete cDNA comprises 1501 bp and has a single open reading frame of 1050 bp with a 5' UTR of 115 bp and a 3' UTR of 333 bp, which predicts a 350 amino acid protein, named KLIP-1, with a molecular weight of 38.2 kDa (FIG. 2). Analysis of the hydrophobicity of the KLIP-1 sequence suggests 5 strong TM helices (FIG. 2'). The KLIP-1 protein thus has a signal peptide from amino acid (aa) 1 to 20, an extracellular domain of 132 aa (aa 21 to 152), 5 TM domains of 143 aa (aa 153-295) and a C-terminal cytoplasmic tail of 54 aa (aa 296 to 350).

[0112] RH (Radiation Hybrid) Chromosomal Mapping

[0113] The cDNA clones were screened by PCR, against the GeneBridge4 whole genome radiation hybrid (RH) panel (Research Genetics, Huntsville, Ala.), which contains 93 clones from hamster-human chimeras. Each clone was tested individually in two independent PCR amplifications with two primers specific for the 3' UTR: 1265F (5'-ACCCACCTGAAATCTTGG) (SEQ ID NO:16) and 1522R (5'-GAGATAAAGAGGAAGGAAGG) (SEQ ID NO:17) under the following conditions: 94° C., 45 sec; 61° C., 1 min; 72° C., 45 sec, for 10 cycles, and then 94° C., 45 sec; 58° C., 1 min; 72° C., 45 sec, for 30 cycles, terminated by a 10-min incubation at 72° C. The Southern blots containing the PCR products and the human (positive) or hamster (negative) control DNAs were hybridized with a ³²P-labeled specific internal probe and washed under stringent conditions, 0.2×SSC+0.2% SDS at 60° C., and were then exposed for 16 hours to Kodak Biomax films. A single specific human band was observed at the expected size of 257 bp. The hybridization data derived from the screening profile were submitted to the Whitehead Institute/MIT Center for Genome Research RH Mapper Server ([http://www-genome.wi.mit.edu](http://www.genome.wi.mit.edu)) and the KLIP-1 gene was linked to physical markers. The GeneMap'98 physical map (

www.ncbi.nlm.nih.gov/genemap) was used to produce therefrom the cytogenetic location of the band corresponding to the RH mapping results. In order to confirm the location of the KLIP-1 gene, PCR amplifications with the primers 1265F (SEQ ID NO:16) and 1522R (SEQ ID NO:17), specific for the 3' UTR of KLIP-1, hybridized with the ³²P-labeled internal probe 5'-CTGTGGGCACTTC-T-GAAAGG (SEQ ID NO:18), were carried out on YAC clones 907_H_2 and 939_E_12 (Centre d'Etudes du Polymorphisme Humain [Center for Studies on Human Polymorphism], Paris, France) containing, respectively, the markers D6S271 and D6S459. These markers surround the region of KLIP-1 on chromosome 6 and the marker AFM136YD12. The genomic DNA and the YAC clone 979_B_3, located on chromosome 1 (D1S444), were used as a positive and negative control, respectively.

[0114] Chromosomal Location of the KLIP-1 Gene (36-16) by Typing of the RH Chimera Panel

[0115] The mapping analysis positions the KLIP-1 sequence between the structural markers D6S271 and AFM165YD12 of GeneBridge4, respectively 5.66 cR from D6S271 and 2.84 cR from AFM65YD12 at LOD 1.08.

[0116] The GeneMap'98 physical map, linked to the cytogenetic band location, located the KLIP-1 gene at 6p21.1-6p21.2 of chromosome 6. PCR amplification, with the primers used for the RH chimeras, of CEPH YAC clones No. 907_h_2 and No. 939_e_12, containing the markers D6S271 and AFM165YD12, respectively, confirms this location (FIG. 3).

[0117] Generation of the Recombinant KLIP-1 Protein

[0118] The cDNA, obtained after PCR amplification with the primers 180F: 5'-TCGAAGAAAACATCCAGGGC (SEQ ID NO:19) and 556R: 5'-AGAGGTCCATAGAGT-TCCACC (SEQ ID NO:20), encodes an extracellular protein of 134 aa from positions 22 to 156. The PCR product was ligated to the His6x-tagged pQE-31 expression vector (Q1Aexpress System, Qiagen, Courtaboeuf, France), and was then transformed into the M15 strain carrying the repressor plasmid pREP4. The construct and the positive transformant were screened, by direct sequencing, for correct insertion and in-frame conservation. The 12 kDa His6X-tagged protein, induced with IPTG (FIG. 4A) was purified on Ni-NTA agarose under denaturing conditions and was visualized by Coomassie blue staining on an SDS/PAGE gel at 12% (FIG. 4B).

[0119] Generation and Purification of the KLIP-1 Polyclonal Antibody

[0120] Antibodies (Ab) were generated by immunizing White New Zealand rabbits, on a monthly basis, with 100 µl of purified 12 kDa recombinant extracellular protein in an incomplete Freund's adjuvant. After 3 injections, the serum was collected and then all the IgGs were purified using Hitrap protein G affinity columns (Pharmacia Biotech, Orsay, France) and the nonspecific anti-*E. coli* rabbit antibodies were removed using an immobilized *E. coli* lysate (Pierce, Rockford, Ill.).

[0121] Revelation by Western Blotting

[0122] Total bone marrow or bone marrow enriched in KLIP-1+ cells, and cord blood mononuclear cells, were lysed for 10 minutes at 100° C. in buffer containing 50 mM

Tris (pH 6.8), 10% glycerol, 2% SDS, 5% 2-mercaptoethanol and 0.02% bromophenol blue. The proteins (equivalent of 3×10⁵ cells) were separated by SDS-PAGE on a 12% gel and electrotransferred onto Hybond C-Extra nitrocellulose membranes (Amersham, Les Ulis, France). The membranes were blocked with low-fat powdered milk in 1×PBS, 0.2% Tween 20, for 1 hour at room temperature, and were incubated with the antiKLIP-1 antibody, 1:5000 in PBS, 0.2% Tween 20. After washing, the blots were incubated with horseradish peroxidase-conjugated goat anti-rabbit antibodies; the coloration is obtained using an ECL system (Amersham, Les Ulis, France), in accordance with the manufacturer's recommendations. The results given in FIG. 5 show the presence of the band for the KLIP molecule at 38 kDa in the KLIP+ umbilical cord cell fraction.

[0123] In Vitro Transcription and Translation of the KLIP-1 Protein and Immunoprecipitation

1. Preparation of the Matrix

[0124] The translated matrix comes from the PCR amplification of the KLIP-1 gene cDNA, obtained by reverse transcription (MMLV RT, Gibco BRL, France) of RNA (RNA NOW, Biogentex, France) from cord blood mononuclear cells. The PCR is carried out in a total volume of 100 µl under the following conditions:

[0125] 300 nM of sense +T7 primer (5'-AgATC-CTAATACGACTCACTATAgggAggAgg-gACATggCCAACCTAAgC-3') (SEQ ID NO:21) and 300 nM antisense or reverse primer (5'AAGAggAAAg-gAAGgggTAgg3') (SEQ ID NO:22).

[0126] PCR amplification over 35 cycles (thermocycler 9600, PERKIN ELMER), 94° C., 1 minute; 55° C., 1 minute; 72° C., 2 minutes. Final elongation at 72° C., 10 minutes. The amplification product was purified by centrifugation (500 g for 20 minutes) on MICROCON 100 (AMICON, USA), and then taken up in H₂O.

2. In Vitro Transcription and Translation

[0127] The in vitro transcription and translation of the matrix were carried out using:

[0128] 1 µg of matrix

[0129] 40 µl of TnT Quick Master Mix (Promega Biotech, France)

[0130] 2 µl of 10 mCi/ml ³⁵S-methionine (Amersham, France)

[0131] H₂O, QS 50 µl

[0132] The reagents are incubated for 90 minutes at 30° C.

3. Immunoprecipitation

[0133] 5 µl of the translation product and 2 µl of the rabbit polyclonal anti-KLIP-1 antibody are incubated in 50 µl of 1×PBS for 1 hour at 4° C. with agitation.

[0134] 60 µl of protein A-sepharose are added and the mixture is incubated on a wheel for 30 minutes at 4° C.

[0135] Washing is carried out with buffer: 0.1% NP 40, 20 mM Tris-HCl, pH 7.5, 150 mM NaCl and 0.05% sodium azide.

[0136] The samples are analyzed by electrophoresis on an SDS-PAGE gel at 12%; the result is visualized by autorad-

igraphy. FIG. 6 shows the presence of a band, corresponding to the KLIP molecule, of approximately 38 kDa, detected with the anti-KLIP antibody, whereas the control pre-immune serum does not detect the KLIP protein. This shows the specificity of the anti-KLIP antibody.

[0137] Immunoselection of KLIP-1+ Cells

[0138] Approximately 2.5×10^8 mononuclear cells from peripheral or umbilical cord blood, from bone marrow or from thymus and from fetal liver are incubated in 20% human AB serum in PBS, for 30 minutes at room temperature. After washing in PBS containing 2% SVF, the cells are incubated with 90 μ l of rabbit antiKLIP-1 serum (in accordance with the invention) for 30 minutes at 4° C., then incubated with 50 μ l of FITClabeled anti-rabbit IgG anti-swine (Dako, France) for 30 minutes at 4° C., and then incubated with 200 μ l of anti-FITC magnetic microbeads (Miltenyi-Biotech, Paris, France) for 30 minutes at 4° C.

[0139] The KLIP-1+ cells are subsequently isolated by successive passages over LS+ magnetic columns (Miltenyi-Biotech, Paris, France) and then RS+ magnetic columns in a magnetic field using the VarioMACS machine (Miltenyi-Biotech, Paris, France).

[0140] The resulting populations were analyzed by FACS-Vantage (Becton Dickinson, France) and the purity of the populations used in this study ranged between 90 and 99%.

[0141] Immunophenotyping by FACS

[0142] A 1-, 2-, and 3-color immunofluorescence analysis of the KLIP-1+ cell population was performed using a FACS-Vantage (Becton Dickinson, France).

[0143] Suitable conjugated fluorochromes, unrelated to the control Igs appropriate to the isotype, were also used in all the experiments. The results are given per hematopoietic tissue:

[0144] FIGS. 7-11 (human cells):

[0145] FIG. 7: Peripheral Blood: Containing Only Mature Blood Cells

[0146] In total blood, 4% of the mononuclear cells are KLIP-1+. In the 99% pure KLIP-1+ sorted fraction, 0% CD34+, 95% CD56+ (mature NK cells), 1.5% CD19+ (B cells) and 0.5% CD3+ (T cells) are found, these last two values being due to the background noise.

[0147] FIG. 8: Umbilical Cord Blood, Contains Mostly Mature Blood Cells but also a Small Fraction of Immature Cells

[0148] In total cord blood, 5% of the mononuclear cells are KLIP-1+.

[0149] In the 98.5% pure KLIP-1+ sorted fraction, 0.5% CD34+, 76% CD56+ (mature NK cells), 1.5% CD19+ (B cells) and 0.3% CD3+ (T cells) are found.

[0150] FIG. 9: Bone Marrow: Site of Hematopoiesis at Which Blood Cell Differentiation Takes Place; It Therefore Contains All the Immature Blood Cells

[0151] In total bone marrow, 8% of the mononuclear cells are KLIP-1+.

[0152] In the 99% pure KLIP-1+ sorted fraction, two subpopulations "low intensity and high intensity" namely

17% KLIP-1 low+82% KLIP-1 high+, and 32% CD19 KLIP-1 low (B cells), 19% CD3 KLIP-1 low (pre-T cells), 31% CD56+ KLIP-1 high+(NK), are found.

[0153] FIG. 10: Embryonic Liver (6 Weeks)

[0154] In the mononuclear cells of total liver, 3% of the cells are KLIP-1+.

[0155] Since few cells are obtained, yield was favored over purity.

[0156] Of the 47% of KLIP-1+ cells, 35% are CD34+ (very early hematopoietic progenitors).

[0157] FIG. 11: Neonatal Thymus

[0158] The thymus is an organ for immunological maturation of T cells.

[0159] In total thymus, 2% of the mononuclear cells are KLIP-1+.

[0160] In the 98% pure KLIP-1+ sorted fraction, 1.5% CD34+, 2% CD56+, 0.8% CD19+ (B cells) and 70% CD3+ (T cells or, at this maturation stage, T/NK cells) are found. However, the KLIP-1+ CD3+ population is made up of more than 91% CD4+CD8+ (pre-T) cells.

[0161] These results clearly show that the KLIP-1 marker (antigen or molecule) is specifically present on NK cells throughout their hematopoietic differentiation, since it is present on the CD34+ early progenitors of the marrow and cord. It is always present on CD56- immature NK cells and CD56+ mature NK cells and on immature pre-B and pre-T cells. In neonatal thymus, the presence of the KLIP antigen is observed on CD3+CD4+CD8+ cells, which are immature T cells, since mature T cells, which are CD3+CD4-CD8+ or CD3+CD4+CD8-, are KLIP-1-.

[0162] FIGS. 13-14 (Animal Cells)

[0163] FIG. 13 (pigs): in total blood, 7% of the mononuclear cells are KLIP-1+: difference between the negative control (FIG. 13A), obtained by incubating pig total blood with a nonimmunized rabbit serum, and the positive control, obtained with an immunized rabbit serum.

[0164] FIG. 14 (mice): FIG. 14A: in the KLIP-1+ sorted fraction: 98% purity (9% background noise); FIG. 14B: in the presence of anti-murine NK cell antibodies (NK1.1), it is noted that 40% of the KLIP-1+ cells are NK cells.

[0165] Cell-Mediated Cytotoxicity

[0166] Spontaneous cytotoxicity and antibody-dependent cell-mediated cytotoxicity (ADCC) were measured in a standard 4-hour ^{51}Cr radioisotope-release experiment. NK-sensitive K562 erythroleukemia cells (American Type Culture Collection, Rockville, Md.) were used as the target. The targeted cells were labeled with 200 μCi of ^{51}Cr -sodium chromate (Amersham, Les Ulis, France) for 2 h. A varying number of effector cells, not mixed and originating from various donors (<50 years old), in 100 μl , were added to the target cells and incubated for 4 h at 37° C. To measure the ADCC, the cells were preincubated with the pig anti-rabbit anti-Fc receptor, 1:50. All determinations were made in triplicate.

- [0167] The results obtained, given in FIG. 12, show that:
- [0168] 1. the anti-KLIP-1 antibody has no effect on the cytotoxicity of the NK cells, and therefore the KLIP antigen is neither an inhibitor nor an activator of NKs;
- [0169] 2. sorting (separation or selection) of the KLIP-1+ cells increases the cytotoxicity, probably due to a concentration effect, and this nevertheless proves that the

cells in the peripheral blood which are sorted by anti-KLIP-1 are indeed NK cells with cytotoxic functions.

[0170] As emerges from the above, the invention is in no way limited to its methods of implementation, preparation and application which have just been described more explicitly; on the contrary, it encompasses all the variants thereof which may occur to a person skilled in the art, without departing from the context or the scope of the present invention.

SEQUENCE LISTING

```

<160> NUMBER OF SEQ ID NOS: 25

<210> SEQ ID NO 1
<211> LENGTH: 1501
<212> TYPE: DNA
<213> ORGANISM: Homo sapiens
<220> FEATURE:
<221> NAME/KEY: CDS
<222> LOCATION: (116)...(1168)

<400> SEQUENCE: 1

cgcgccgcgcg tgcacctctc ctcgaccctg gacgtctacc ttccggaggc ccacatcttg      60
cccactccgc gcgcggggct agcgcggggtt tcagcgaagg gagccctcaa gggac atg      118
                                         Met
                                         1

gca act aca gcg gcg ccg gcg ggc ggc gcc cga aat gga gct ggc ccg      166
Ala Thr Thr Ala Ala Pro Ala Gly Gly Ala Arg Asn Gly Ala Gly Pro
                    5                      10                      15

gaa tgg gga ggg ttc gaa gaa aac atc cag ggc gga ggc tca gct gtg      214
Glu Trp Gly Gly Phe Glu Glu Asn Ile Gln Gly Gly Gly Ser Ala Val
                20                      25                      30

att gac atg gag aac atg gat gat acc tca ggc tct agc ttc gag gat      262
Ile Asp Met Glu Asn Met Asp Asp Thr Ser Gly Ser Ser Phe Glu Asp
                35                      40                      45

atg ggt gag ctg cat cag cgc ctg cgc gag gaa gaa gta gac gct gat      310
Met Gly Glu Leu His Gln Arg Leu Arg Glu Glu Glu Val Asp Ala Asp
                50                      55                      60                      65

gca gct gat gca gct gct gct gaa gag gag gat gga gag ttc ctg ggc      358
Ala Ala Asp Ala Ala Ala Ala Glu Glu Glu Asp Gly Glu Phe Leu Gly
                    70                      75                      80

atg aag ggc ttt aag gga cag ctg agc cgg cag gtg gca gat cag atg      406
Met Lys Gly Phe Lys Gly Gln Leu Ser Arg Gln Val Ala Asp Gln Met
                85                      90                      95

tgg cag gct ggg aaa aga caa gcc tcc agg gcc ttc agc ttg tac gcc      454
Trp Gln Ala Gly Lys Arg Gln Ala Ser Arg Ala Phe Ser Leu Tyr Ala
                100                      105                      110

aac atc gac atc ctc aga ccc tac ttt gat gtg gag cct gct cag gtg      502
Asn Ile Asp Ile Leu Arg Pro Tyr Phe Asp Val Glu Pro Ala Gln Val
                115                      120                      125

cga agc agg ctc ctg gag tcc atg atc cct atc aag atg gtc aac ttc      550
Arg Ser Arg Leu Leu Glu Ser Met Ile Pro Ile Lys Met Val Asn Phe
                130                      135                      140                      145

ccc cag aaa att gca ggt gaa ctc tat gga cct ctc atg ctg gtc ctc      598
Pro Gln Lys Ile Ala Gly Glu Leu Tyr Gly Pro Leu Met Leu Val Leu
                    150                      155                      160

act ctg gtt gct atc cta ctc cat ggg atg aag acg tct gac act att      646
Thr Leu Val Ala Ile Leu Leu His Gly Met Lys Thr Ser Asp Thr Ile
    
```

-continued

165	170	175	
atc cgg gag ggc acc ctg atg ggc aca gcc att ggc acc tgc ttc ggc Ile Arg Glu Gly Thr Leu Met Gly Thr Ala Ile Gly Thr Cys Phe Gly 180 185 190			694
tac tgg ctg gga gtc tca tcc ttc att tac ttc ctt gcc tac ctg tgc Tyr Trp Leu Gly Val Ser Ser Phe Ile Tyr Phe Leu Ala Tyr Leu Cys 195 200 205			742
aac gcc cag atc acc atg ctg cag atg ttg gca ctg ctg ggc tat ggc Asn Ala Gln Ile Thr Met Leu Gln Met Leu Ala Leu Leu Gly Tyr Gly 210 215 220 225			790
ctc ttt ggg cat tgc att gtc ctg ttc atc acc tat aat atc cac ctc Leu Phe Gly His Cys Ile Val Leu Phe Ile Thr Tyr Asn Ile His Leu 230 235 240			838
cac gcc ctc ttc tac ctc ttc tgg ctg ttg gtg ggt gga ctg tcc aca His Ala Leu Phe Tyr Leu Phe Trp Leu Leu Val Gly Gly Leu Ser Thr 245 250 255			886
ctg cgc atg gta gca gtg ttg gtg tct cgg acc gtg ggc ccc aca cag Leu Arg Met Val Ala Val Leu Val Ser Arg Thr Val Gly Pro Thr Gln 260 265 270			934
cgg ctg ctc ctc tgt ggc acc ctg gct gcc cta cac atg ctc ttc ctg Arg Leu Leu Leu Cys Gly Thr Leu Ala Ala Leu His Met Leu Phe Leu 275 280 285			982
ctc tat ctg cat ttt gcc tac cac aaa gtg gta gag ggg atc ctg gac Leu Tyr Leu His Phe Ala Tyr His Lys Val Val Glu Gly Ile Leu Asp 290 295 300 305			1030
aca ctg gag ggc ccc aac atc ccg ccc atc cag agg gtc ccc aga gac Thr Leu Glu Gly Pro Asn Ile Pro Pro Ile Gln Arg Val Pro Arg Asp 310 315 320			1078
atc cct gcc atg ctc cct gct gct cgg ctt ccc acc acc gtc ctc aac Ile Pro Ala Met Leu Pro Ala Ala Arg Leu Pro Thr Thr Val Leu Asn 325 330 335			1126
gcc aca gcc aaa gct gtt gcg gtg acc ctg cag tca cac tga Ala Thr Ala Lys Ala Val Ala Val Thr Leu Gln Ser His * 340 345 350			1168
ccccacctga aattcttggc cagtcctctt tcccgcagct gcagagagga ggaagactat			1228
taaaggacag tcctgatgac atgtttcgta gatggggttt gcagctgcca ctgagctgta			1288
gctgcgtaag tacctccttg atgcctgtgg gcacttctga aaggcacaag gccaaagaact			1348
cctggccagg actgcaaggc tctgcagcca atgcagaaaa tgggtcaggt cctttgagaa			1408
cccctcccca cctaccctt ccttctctt tatctctccc acattgtctt ggtaaatata			1468
gacttggtaa ttaaaatggt gattgaagtc tgg			1501

<210> SEQ ID NO 2
 <211> LENGTH: 350
 <212> TYPE: PRT
 <213> ORGANISM: Homo sapiens

<400> SEQUENCE: 2

Met Ala Thr Thr Ala Ala Pro Ala Gly Gly Ala Arg Asn Gly Ala Gly
 1 5 10 15
 Pro Glu Trp Gly Gly Phe Glu Glu Asn Ile Gln Gly Gly Gly Ser Ala
 20 25 30
 Val Ile Asp Met Glu Asn Met Asp Asp Thr Ser Gly Ser Ser Phe Glu
 35 40 45
 Asp Met Gly Glu Leu His Gln Arg Leu Arg Glu Glu Glu Val Asp Ala

-continued

50	55	60	
Asp Ala Ala Asp	Ala Ala Ala Ala	Glu Glu Glu Asp	Gly Glu Phe Leu
65	70	75	80
Gly Met Lys Gly	Phe Lys Gly Gln	Leu Ser Arg Gln	Val Ala Asp Gln
	85	90	95
Met Trp Gln Ala	Gly Lys Arg Gln	Ala Ser Arg Ala	Phe Ser Leu Tyr
	100	105	110
Ala Asn Ile Asp	Ile Leu Arg Pro	Tyr Phe Asp Val	Glu Pro Ala Gln
	115	120	125
Val Arg Ser Arg	Leu Leu Glu Ser	Met Ile Pro Ile	Lys Met Val Asn
	130	135	140
Phe Pro Gln Lys	Ile Ala Gly Glu	Leu Tyr Gly Pro	Leu Met Leu Val
	145	150	155
Leu Thr Leu Val	Ala Ile Leu Leu	His Gly Met Lys	Thr Ser Asp Thr
	165	170	175
Ile Ile Arg Glu	Gly Thr Leu Met	Gly Thr Ala Ile	Gly Thr Cys Phe
	180	185	190
Gly Tyr Trp Leu	Gly Val Ser Ser	Phe Ile Tyr Phe	Leu Ala Tyr Leu
	195	200	205
Cys Asn Ala Gln	Ile Thr Met Leu	Gln Met Leu Ala	Leu Leu Gly Tyr
	210	215	220
Gly Leu Phe Gly	His Cys Ile Val	Leu Phe Ile Thr	Tyr Asn Ile His
	225	230	235
Leu His Ala Leu	Phe Tyr Leu Phe	Trp Leu Leu Val	Gly Gly Leu Ser
	245	250	255
Thr Leu Arg Met	Val Ala Val Leu	Val Ser Arg Thr	Val Gly Pro Thr
	260	265	270
Gln Arg Leu Leu	Leu Cys Gly Thr	Leu Ala Ala Leu	His Met Leu Phe
	275	280	285
Leu Leu Tyr Leu	His Phe Ala Tyr	His Lys Val Val	Glu Gly Ile Leu
	290	295	300
Asp Thr Leu Glu	Gly Pro Asn Ile	Pro Pro Ile Gln	Arg Val Pro Arg
	305	310	315
Asp Ile Pro Ala	Met Leu Pro Ala	Ala Arg Leu Pro	Thr Thr Val Leu
	325	330	335
Asn Ala Thr Ala	Lys Ala Val Ala	Val Thr Leu Gln	Ser His
	340	345	350

<210> SEQ ID NO 3
 <211> LENGTH: 507
 <212> TYPE: DNA
 <213> ORGANISM: Mus musculus
 <220> FEATURE:
 <221> NAME/KEY: CDS
 <222> LOCATION: (1)...(507)

<400> SEQUENCE: 3

aac atc cag ggc ggg ggt tcg gct gtg att gat atg gag aac atg gac	48
Asn Ile Gln Gly Gly Gly Ser Ala Val Ile Asp Met Glu Asn Met Asp	
1 5 10 15	
gat acc tca ggc tcc agc ttc gag gac atg ggt gag ctg cac cag cgc	96
Asp Thr Ser Gly Ser Ser Phe Glu Asp Met Gly Glu Leu His Gln Arg	
20 25 30	
ctg cgg gag gaa gaa gta gat gct gat gca gct gct gca gaa gaa gag	144

-continued

```

Leu Arg Glu Glu Glu Val Asp Ala Asp Ala Ala Ala Ala Glu Glu Glu
      35                40                45

gat ggg gag ttt ctt ggc atg aaa ggc ttt aaa gga caa ctg agc cgg      192
Asp Gly Glu Phe Leu Gly Met Lys Gly Phe Lys Gly Gln Leu Ser Arg
      50                55                60

cag gta gca gat cag atg tgg cag gca ggg aag aga cag gct tcc agg      240
Gln Val Ala Asp Gln Met Trp Gln Ala Gly Lys Arg Gln Ala Ser Arg
      65                70                75                80

gcc ttc agc ttg tat gcc aac att gac atc ctc aga ccc tac ttt gat      288
Ala Phe Ser Leu Tyr Ala Asn Ile Asp Ile Leu Arg Pro Tyr Phe Asp
      85                90                95

gtg gag cct gcc cag gtc cga agc agg ctc ctg gag tcc atg atc cct      336
Val Glu Pro Ala Gln Val Arg Ser Arg Leu Leu Glu Ser Met Ile Pro
      100                105                110

atc aag atg gtc aac ttc ccc cag aaa gtc gcg ggc gag ctc tac gga      384
Ile Lys Met Val Asn Phe Pro Gln Lys Val Ala Gly Glu Leu Tyr Gly
      115                120                125

ccg ctc atg ctg gtc ttc aca ctg gtg gcc atc ctc ctg cat gga atg      432
Pro Leu Met Leu Val Phe Thr Leu Val Ala Ile Leu Leu His Gly Met
      130                135                140

aag act tct gac acc att atc cgg gag ggc acc ctc atg ggc aca gcc      480
Lys Thr Ser Asp Thr Ile Ile Arg Glu Gly Thr Leu Met Gly Thr Ala
      145                150                155                160

ata ggc acc tgc ttt gga tac tgg ctg      507
Ile Gly Thr Cys Phe Gly Tyr Trp Leu
      165
  
```

```

<210> SEQ ID NO 4
<211> LENGTH: 169
<212> TYPE: PRT
<213> ORGANISM: Mus musculus
  
```

<400> SEQUENCE: 4

```

Asn Ile Gln Gly Gly Gly Ser Ala Val Ile Asp Met Glu Asn Met Asp
  1                5                10                15

Asp Thr Ser Gly Ser Ser Phe Glu Asp Met Gly Glu Leu His Gln Arg
      20                25                30

Leu Arg Glu Glu Glu Val Asp Ala Asp Ala Ala Ala Ala Glu Glu Glu
      35                40                45

Asp Gly Glu Phe Leu Gly Met Lys Gly Phe Lys Gly Gln Leu Ser Arg
      50                55                60

Gln Val Ala Asp Gln Met Trp Gln Ala Gly Lys Arg Gln Ala Ser Arg
      65                70                75                80

Ala Phe Ser Leu Tyr Ala Asn Ile Asp Ile Leu Arg Pro Tyr Phe Asp
      85                90                95

Val Glu Pro Ala Gln Val Arg Ser Arg Leu Leu Glu Ser Met Ile Pro
      100                105                110

Ile Lys Met Val Asn Phe Pro Gln Lys Val Ala Gly Glu Leu Tyr Gly
      115                120                125

Pro Leu Met Leu Val Phe Thr Leu Val Ala Ile Leu Leu His Gly Met
      130                135                140

Lys Thr Ser Asp Thr Ile Ile Arg Glu Gly Thr Leu Met Gly Thr Ala
      145                150                155                160

Ile Gly Thr Cys Phe Gly Tyr Trp Leu
      165
  
```

-continued

```

<210> SEQ ID NO 5
<211> LENGTH: 471
<212> TYPE: DNA
<213> ORGANISM: Sus sp.
<220> FEATURE:
<221> NAME/KEY: CDS
<222> LOCATION: (1)...(471)
<220> FEATURE:
<221> NAME/KEY: misc_feature
<222> LOCATION: (1)...(60)
<223> OTHER INFORMATION: Signal peptide 1-60
<220> FEATURE:
<221> NAME/KEY: misc_feature
<222> LOCATION: (61)...(456)

<400> SEQUENCE: 5

atg gca act aca gcg gcg ccg gcg ggc gcc cga aat gga gct ggc      48
Met Ala Thr Thr Ala Ala Pro Ala Gly Gly Ala Arg Asn Gly Ala Gly
  1          5          10          15

ccg gaa tgg gga ggg ttc gaa gaa aac atc cag ggc gga ggc tca gct      96
Pro Glu Trp Gly Gly Phe Glu Glu Asn Ile Gln Gly Gly Gly Ser Ala
  20          25          30

gtg att gac atg gag aac atg gat gat acc tca ggc tct agc ttc gag     144
Val Ile Asp Met Glu Asn Met Asp Asp Thr Ser Gly Ser Ser Phe Glu
  35          40          45

gat atg ggt gag ctg cat cag cgc ctg cgc gag gaa gaa gta gac gct     192
Asp Met Gly Glu Leu His Gln Arg Leu Arg Glu Glu Glu Val Asp Ala
  50          55          60

gat gca gct gat gca gct gct gct gaa gag gag gat gga gag ttc ctg     240
Asp Ala Ala Asp Ala Ala Ala Ala Glu Glu Glu Asp Gly Glu Phe Leu
  65          70          75          80

ggc atg aag ggc ttt aag gga cag ctg agc cgg cag gtg gca gat cag     288
Gly Met Lys Gly Phe Lys Gly Gln Leu Ser Arg Gln Val Ala Asp Gln
  85          90          95

atg tgg cag gct ggg aaa aga caa gcc tcc agg gcc ttc agc ttg tac     336
Met Trp Gln Ala Gly Lys Arg Gln Ala Ser Arg Ala Phe Ser Leu Tyr
 100          105          110

gcc aac atc gac atc ctc aga ccc tac ttt gat gtg gag cct gct cag     384
Ala Asn Ile Asp Ile Leu Arg Pro Tyr Phe Asp Val Glu Pro Ala Gln
 115          120          125

gtg cga agc agg ctc ctg gag tcc atg atc cct atc aag atg gtc aac     432
Val Arg Ser Arg Leu Leu Glu Ser Met Ile Pro Ile Lys Met Val Asn
 130          135          140

ttc ccc cag aaa att gca ggt gaa ctc tat gga cct ctc                 471
Phe Pro Gln Lys Ile Ala Gly Glu Leu Tyr Gly Pro Leu
 145          150          155

```

```

<210> SEQ ID NO 6
<211> LENGTH: 157
<212> TYPE: PRT
<213> ORGANISM: Sus sp.

```

```

<400> SEQUENCE: 6

```

```

Met Ala Thr Thr Ala Ala Pro Ala Gly Gly Ala Arg Asn Gly Ala Gly
  1          5          10          15

Pro Glu Trp Gly Gly Phe Glu Glu Asn Ile Gln Gly Gly Gly Ser Ala
  20          25          30

Val Ile Asp Met Glu Asn Met Asp Asp Thr Ser Gly Ser Ser Phe Glu
  35          40          45

Asp Met Gly Glu Leu His Gln Arg Leu Arg Glu Glu Glu Val Asp Ala

```

-continued

```

      50              55              60
Asp Ala Ala Asp Ala Ala Ala Ala Glu Glu Glu Asp Gly Glu Phe Leu
65              70              75              80

Gly Met Lys Gly Phe Lys Gly Gln Leu Ser Arg Gln Val Ala Asp Gln
85              90

Met Trp Gln Ala Gly Lys Arg Gln Ala Ser Arg Ala Phe Ser Leu Tyr
100            105            110

Ala Asn Ile Asp Ile Leu Arg Pro Tyr Phe Asp Val Glu Pro Ala Gln
115            120            125

Val Arg Ser Arg Leu Leu Glu Ser Met Ile Pro Ile Lys Met Val Asn
130            135            140

Phe Pro Gln Lys Ile Ala Gly Glu Leu Tyr Gly Pro Leu
145            150            155

```

```

<210> SEQ ID NO 7
<211> LENGTH: 132
<212> TYPE: PRT
<213> ORGANISM: Homo sapiens

```

```

<400> SEQUENCE: 7

```

```

Gly Phe Glu Glu Asn Ile Gln Gly Gly Gly Ser Ala Val Ile Asp Met
1              5              10              15

Glu Asn Met Asp Asp Thr Ser Gly Ser Ser Phe Glu Asp Met Gly Glu
20            25            30

Leu His Gln Arg Leu Arg Glu Glu Glu Val Asp Ala Asp Ala Ala Asp
35            40            45

Ala Ala Ala Ala Glu Glu Glu Asp Gly Glu Phe Leu Gly Met Lys Gly
50            55            60

Phe Lys Gly Gln Leu Ser Arg Gln Val Ala Asp Gln Met Trp Gln Ala
65            70            75            80

Gly Lys Arg Gln Ala Ser Arg Ala Phe Ser Leu Tyr Ala Asn Ile Asp
85            90            95

Ile Leu Arg Pro Tyr Phe Asp Val Glu Pro Ala Gln Val Arg Ser Arg
100           105           110

Leu Leu Glu Ser Met Ile Pro Ile Lys Met Val Asn Phe Pro Gln Lys
115           120           125

Ile Ala Gly Glu
130

```

```

<210> SEQ ID NO 8
<211> LENGTH: 143
<212> TYPE: PRT
<213> ORGANISM: Homo sapiens

```

```

<400> SEQUENCE: 8

```

```

Leu Tyr Gly Pro Leu Met Leu Val Leu Thr Leu Val Ala Ile Leu Leu
1              5              10              15

His Gly Met Lys Thr Ser Asp Thr Ile Ile Arg Glu Gly Thr Leu Met
20            25            30

Gly Thr Ala Ile Gly Thr Cys Phe Gly Tyr Trp Leu Gly Val Ser Ser
35            40            45

Phe Ile Tyr Phe Leu Ala Tyr Leu Cys Asn Ala Gln Ile Thr Met Leu
50            55            60

Gln Met Leu Ala Leu Leu Gly Tyr Gly Leu Phe Gly His Cys Ile Val

```

-continued

65		70		75		80
Leu Phe Ile Thr Tyr Asn Ile His Leu His Ala Leu Phe Tyr Leu Phe						
		85		90		95
Trp Leu Leu Val Gly Gly Leu Ser Thr Leu Arg Met Val Ala Val Leu						
		100		105		110
Val Ser Arg Thr Val Gly Pro Thr Gln Arg Leu Leu Leu Cys Gly Thr						
		115		120		125
Leu Ala Ala Leu His Met Leu Phe Leu Leu Tyr Leu His Phe Ala						
		130		135		140

<210> SEQ ID NO 9
 <211> LENGTH: 55
 <212> TYPE: PRT
 <213> ORGANISM: Homo sapiens

<400> SEQUENCE: 9

Tyr His Lys Val Val Glu Gly Ile Leu Asp Thr Leu Glu Gly Pro Asn						
1		5		10		15
Ile Pro Pro Ile Gln Arg Val Pro Arg Asp Ile Pro Ala Met Leu Pro						
		20		25		30
Ala Ala Arg Leu Pro Thr Thr Val Leu Asn Ala Thr Ala Lys Ala Val						
		35		40		45
Ala Val Thr Leu Gln Ser His						
		50		55		

<210> SEQ ID NO 10
 <211> LENGTH: 1053
 <212> TYPE: DNA
 <213> ORGANISM: Homo sapiens

<400> SEQUENCE: 10

```

atggcaacta cagcggcgcc ggcggggcgc gcccgaaatg gagctggccc ggaatgggga    60
gggttcgaag aaaacatcca ggcgggagcc tcagctgtga ttgacatgga gaacatggat    120
gatacctcag gctctagctt cgaggatatg ggtgagctgc atcagcgccct gcgcgaggaa    180
gaagtagacg ctgatgcagc tgatgcagct gctgctgaag aggaggatgg agagttcctg    240
ggcatgaagg gctttaaggg acagctgagc cggcagggtg cagatcagat gtggcaggct    300
gggaaaagac aagcctccag ggccttcagc ttgtacgcca acatcgacat cctcagaccc    360
tactttgatg tggagcctgc tcaggtgoga agcaggctcc tggagtccat gatccctatc    420
aagatggtca acttccccca gaaaattgca ggtgaactct atggacctct catgctggtc    480
ctcactctgg ttgctatcct actccatggg atgaagacgt ctgacactat tatccgggag    540
ggcaccctga tgggcacagc cattggcacc tgetteggct actggctggg agtctcatcc    600
ttcatttact tccttgcta cctgtgcaac gccagatca ccatgctgca gatgttgca    660
ctgctgggct atggcctctt tgggcattgc attgtcctgt tcatcaccta taatatccac    720
ctccacgccc tctttacct cttctggctg ttggtgggtg gactgtccac actgcgcatg    780
gtagcagtgt tgggtctctg gaccgtgggc cccacacagc ggctgctcct ctgtggcacc    840
ctggctgccc tacacatgct cttcctgctc tatctgcatt ttgctacca caaagtggta    900
gaggggatcc tggacacact ggagggcccc aacatcccgc ccatocagag ggtccccaga    960
gacatcccctg ccatgctccc tgetgctcgg cttcccacca cgtctctcaa cgccacagcc   1020
    
```

-continued

aaagctgttg cggtagaccct gcagtcacac tga 1053

<210> SEQ ID NO 11
 <211> LENGTH: 456
 <212> TYPE: DNA
 <213> ORGANISM: Homo sapiens

<400> SEQUENCE: 11

atggcaacta cagcggcgcc ggcggcgcc gcccgaaatg gagctggccc ggaatgggga 60
 gggttcgaag aaaacatcca ggcgggagcc tcagctgtga ttgacatgga gaacatggat 120
 gatacctcag gctctagcct cgaggatatt ggtgagctgc atcagcgccct gcgcgaggaa 180
 gaagtagacg ctgatgcagc tgatgcagct gctgctgaag aggaggatgg agagttcctg 240
 ggcattgaag gctttaaggc acagctgagc cggcagggtg cagatcagat gtggcaggct 300
 gggaaaagac aagcctccag ggccttcagc ttgtacgcca acatcgacat cctcagacct 360
 tactttgatg tggagcctgc tcaggtgcga agcaggtcc tggagtccat gatccctatc 420
 aagatggtca acttccccca gaaaattgca ggtgaa 456

<210> SEQ ID NO 12
 <211> LENGTH: 429
 <212> TYPE: DNA
 <213> ORGANISM: Homo sapiens

<400> SEQUENCE: 12

ctctatggac ctctcatgct ggtcctcact ctggttgcta tctactcca tgggatgaag 60
 acgtctgaca ctattatccg ggagggcacc ctgatgggca cagccattgg cacctgcttc 120
 ggctactggc tgggagtctc atccttcatt tacttccctg cctacctgtg caacgccag 180
 atcacatgct tgcagatgct ggcactgctg ggctatggcc tctttgggca ttgcattgtc 240
 ctgttcatca cctataatat ccacctccac gcctcttctt acctctctg gctgttgggtg 300
 ggtggactgt ccactctgcg catggtagca gtgttgggtg ctcggaccgt gggccccaca 360
 cagcggctgc tctctgtggt caccctggct gcctacaca tgctcttctt gctctatctg 420
 cattttgcc 429

<210> SEQ ID NO 13
 <211> LENGTH: 168
 <212> TYPE: DNA
 <213> ORGANISM: Homo sapiens

<400> SEQUENCE: 13

taccacaaag tggtagaggg gatcctggac aactggagg gccccaacat cccgccatc 60
 cagaggttcc ccagagacat ccctgccatg ctccctgtg ctccgcttcc caccaccgtc 120
 ctcaacgccca cagccaaagc tgttgccgtg accctgcagt cacactga 168

<210> SEQ ID NO 14
 <211> LENGTH: 13
 <212> TYPE: DNA
 <213> ORGANISM: Homo sapiens

<400> SEQUENCE: 14

ttttttttt tgg 13

<210> SEQ ID NO 15

-continued

<211> LENGTH: 10
<212> TYPE: DNA
<213> ORGANISM: Homo sapiens

<400> SEQUENCE: 15
gttgcatcc 10

<210> SEQ ID NO 16
<211> LENGTH: 20
<212> TYPE: DNA
<213> ORGANISM: Homo sapiens

<400> SEQUENCE: 16
acccacctg aaattcttgg 20

<210> SEQ ID NO 17
<211> LENGTH: 20
<212> TYPE: DNA
<213> ORGANISM: Homo sapiens

<400> SEQUENCE: 17
gagataaaga ggaaggaagg 20

<210> SEQ ID NO 18
<211> LENGTH: 20
<212> TYPE: DNA
<213> ORGANISM: Homo sapiens

<400> SEQUENCE: 18
ctgtggcac ttctgaaagg 20

<210> SEQ ID NO 19
<211> LENGTH: 20
<212> TYPE: DNA
<213> ORGANISM: Homo sapiens

<400> SEQUENCE: 19
tcgaagaaa catccagggc 20

<210> SEQ ID NO 20
<211> LENGTH: 21
<212> TYPE: DNA
<213> ORGANISM: Homo sapiens

<400> SEQUENCE: 20
agaggtccat agagttccac c 21

<210> SEQ ID NO 21
<211> LENGTH: 49
<212> TYPE: DNA
<213> ORGANISM: Homo sapiens

<400> SEQUENCE: 21
agatccta at acgactcact atagggagga gggacatggc caactaagc 49

<210> SEQ ID NO 22
<211> LENGTH: 20
<212> TYPE: DNA
<213> ORGANISM: Homo sapiens

<400> SEQUENCE: 22

-continued

aagaggaagg aaggggtagg 20

<210> SEQ ID NO 23
 <211> LENGTH: 387
 <212> TYPE: DNA
 <213> ORGANISM: Mus musculus
 <220> FEATURE:
 <221> NAME/KEY: CDS
 <222> LOCATION: (1)...(387)

<400> SEQUENCE: 23

ggg ttc gaa gaa aac atc cag ggc ggg ggt tcg gct gtg att gat atg 48
 Gly Phe Glu Glu Asn Ile Gln Gly Gly Gly Ser Ala Val Ile Asp Met
 1 5 10 15

gag aac atg gac gat acc tca ggc tcc agc ttc gag gac atg ggt gag 96
 Glu Asn Met Asp Asp Thr Ser Gly Ser Ser Phe Glu Asp Met Gly Glu
 20 25 30

ctg cac cag cgc ctg cgg gag gaa gaa gta gat gct gat gca gct gct 144
 Leu His Gln Arg Leu Arg Glu Glu Val Asp Ala Asp Ala Ala Ala
 35 40 45

gca gaa gaa gag gat ggg gag ttt ctt ggc atg aaa ggc ttt aaa gga 192
 Ala Glu Glu Glu Asp Gly Glu Phe Leu Gly Met Lys Gly Phe Lys Gly
 50 55 60

caa ctg agc cgg cag gta gca gat cag atg tgg cag gca ggg aag aga 240
 Gln Leu Ser Arg Gln Val Ala Asp Gln Met Trp Gln Ala Gly Lys Arg
 65 70 75 80

cag gct tcc agg gcc ttc agc ttg tat gcc aac att gac atc ctc aga 288
 Gln Ala Ser Arg Ala Phe Ser Leu Tyr Ala Asn Ile Asp Ile Leu Arg
 85 90 95

ccc tac ttt gat gtg gag cct gcc cag gtc cga agc agg ctc ctg gag 336
 Pro Tyr Phe Asp Val Glu Pro Ala Gln Val Arg Ser Arg Leu Leu Glu
 100 105 110

tcc atg atc cct atc aag atg gtc aac ttc ccc cag aaa gtc gcg ggc 384
 Ser Met Ile Pro Ile Lys Met Val Asn Phe Pro Gln Lys Val Ala Gly
 115 120 125

gag 387
 Glu

<210> SEQ ID NO 24
 <211> LENGTH: 129
 <212> TYPE: PRT
 <213> ORGANISM: Mus musculus

<400> SEQUENCE: 24

Gly Phe Glu Glu Asn Ile Gln Gly Gly Gly Ser Ala Val Ile Asp Met
 1 5 10 15

Glu Asn Met Asp Asp Thr Ser Gly Ser Ser Phe Glu Asp Met Gly Glu
 20 25 30

Leu His Gln Arg Leu Arg Glu Glu Glu Val Asp Ala Asp Ala Ala Ala
 35 40 45

Ala Glu Glu Glu Asp Gly Glu Phe Leu Gly Met Lys Gly Phe Lys Gly
 50 55 60

Gln Leu Ser Arg Gln Val Ala Asp Gln Met Trp Gln Ala Gly Lys Arg
 65 70 75 80

Gln Ala Ser Arg Ala Phe Ser Leu Tyr Ala Asn Ile Asp Ile Leu Arg
 85 90 95

Pro Tyr Phe Asp Val Glu Pro Ala Gln Val Arg Ser Arg Leu Leu Glu
 100 105 110

-continued

Ser Met Ile Pro Ile Lys Met Val Asn Phe Pro Gln Lys Val Ala Gly
 115 120 125

Glu

<210> SEQ ID NO 25

<211> LENGTH: 330

<212> TYPE: PRT

<213> ORGANISM: Homo sapiens

<400> SEQUENCE: 25

Gly Phe Glu Glu Asn Ile Gln Gly Gly Gly Ser Ala Val Ile Asp Met
 1 5 10 15

Glu Asn Met Asp Asp Thr Ser Gly Ser Ser Phe Glu Asp Met Gly Glu
 20 25 30

Leu His Gln Arg Leu Arg Glu Glu Glu Val Asp Ala Asp Ala Ala Asp
 35 40 45

Ala Ala Ala Ala Glu Glu Glu Asp Gly Glu Phe Leu Gly Met Lys Gly
 50 55 60

Phe Lys Gly Gln Leu Ser Arg Gln Val Ala Asp Gln Met Trp Gln Ala
 65 70 75 80

Gly Lys Arg Gln Ala Ser Arg Ala Phe Ser Leu Tyr Ala Asn Ile Asp
 85 90 95

Ile Leu Arg Pro Tyr Phe Asp Val Glu Pro Ala Gln Val Arg Ser Arg
 100 105 110

Leu Leu Glu Ser Met Ile Pro Ile Lys Met Val Asn Phe Pro Gln Lys
 115 120 125

Ile Ala Gly Glu Leu Tyr Gly Pro Leu Met Leu Val Leu Thr Leu Val
 130 135 140

Ala Ile Leu Leu His Gly Met Lys Thr Ser Asp Thr Ile Ile Arg Glu
 145 150 155 160

Gly Thr Leu Met Gly Thr Ala Ile Gly Thr Cys Phe Gly Tyr Trp Leu
 165 170 175

Gly Val Ser Ser Phe Ile Tyr Phe Leu Ala Tyr Leu Cys Asn Ala Gln
 180 185 190

Ile Thr Met Leu Gln Met Leu Ala Leu Leu Gly Tyr Gly Leu Phe Gly
 195 200 205

His Cys Ile Val Leu Phe Ile Thr Tyr Asn Ile His Leu His Ala Leu
 210 215 220

Phe Tyr Leu Phe Trp Leu Leu Val Gly Gly Leu Ser Thr Leu Arg Met
 225 230 235 240

Val Ala Val Leu Val Ser Arg Thr Val Gly Pro Thr Gln Arg Leu Leu
 245 250 255

Leu Cys Gly Thr Leu Ala Ala Leu His Met Leu Phe Leu Leu Tyr Leu
 260 265 270

His Phe Ala Tyr His Lys Val Val Glu Gly Ile Leu Asp Thr Leu Glu
 275 280 285

Gly Pro Asn Ile Pro Pro Ile Gln Arg Val Pro Arg Asp Ile Pro Ala
 290 295 300

-continued

Met	Leu	Pro	Ala	Ala	Arg	Leu	Pro	Thr	Thr	Val	Leu	Asn	Ala	Thr	Ala
305					310					315					320

Lys	Ala	Val	Ala	Val	Thr	Leu	Gln	Ser	His
					325				330

1. An antibody, characterized in that it is directed against a surface protein having a structure comprising an extracellular domain, five transmembrane domains and a cytoplasmic domain, located, respectively, between positions 21 and 152, 153 and 295, and 296 and 350, with reference to the sequence SEQ ID NO:2, which surface protein has an apparent molecular weight of approximately 36-38 kD, is expressed at the surface of all lymphoid progenitor cells and all mature NK cells, has an amino acid sequence selected from the group consisting of the sequence SEQ ID NO:2 and the sequences which have at least 70% identity or at least 85% similarity with said sequence SEQ ID NO:2, over the entire said sequence SEQ ID NO:2, excluding the sequences which have the accession numbers SWALL EBI Q9Y3U9, GENESEQ W 63688, and GENESEQ W 74904 and the 321 amino acid C-terminal fragment of the sequence GENESEQ W 74904.

2. An antibody, characterized in that it is directed against a fragment of the surface protein as claimed in claim 1 which is selected from the group consisting of:

the fragments defined by the sequences SEQ ID NO:4, 6, 7, 8, 9 and 24,

the fragments of at least 7 amino acids of the sequence corresponding to that located between positions 153 and 295 with reference to the sequence SEQ ID NO:2, and

the fragments of at least 7 amino acids of the sequence corresponding to that located between positions 296 and 350 with reference to the sequence SEQ ID NO:2.

3. The antibody as claimed in claim 2, characterized in that it is directed against the fragment of sequence SEQ ID NO:7.

4. The antibody as claimed in claim 1, characterized in that it is selected from monoclonal antibodies and polyclonal antibodies.

5. An antibody, characterized in that it is directed against a human cell surface protein wherein said protein:

consists of the sequence SEQ ID NO:25,

is derived from a human precursor of the sequence SEQ ID NO:2 that comprises a 20 amino acid N-terminal signal sequence,

is expressed at the surface of human lymphoid progenitor cells and mature NK cells,

has an apparent molecular weight of approximately 36-38 kDa, and

has a structure comprising an extracellular domain, five transmembrane domains and a cytoplasmic domain, located, respectively, between positions 21 and 152, 153 and 295, and 296 and 350, with reference to the sequence SEQ ID NO:2.

6. An isolated and purified cDNA, which encodes a surface protein having a structure comprising an extracellular domain, five transmembrane domains and a cytoplasmic domain, located, respectively, between positions 21 and 152, 153 and 295, and 296 and 350, with reference to the sequence SEQ ID NO:2, which surface protein has an apparent molecular weight of approximately 36-38 kD, is expressed at the surface of all lymphoid progenitor cells and all mature NK cells, has an amino acid sequence from the group consisting of the sequence SEQ ID NO:2 and the sequences which have a least 70% identity or at least 85% similarity with said sequence SEQ ID NO:2, over the entire said sequence SEQ ID NO:2, excluding the sequences which have the accession numbers SWALL EBI Q9Y3U9, GENESEQ W 63688, and GENESEQ W 74904 and the 321 amino acid C-terminal fragment of the sequence GENESEQ W 74904, or a fragment of this protein.

7. The isolated and purified cDNA as claimed in claim 6, which is selected from the group consisting of the sequences SEQ ID NO:1, 3, 5, 10, 11, 12, 13 and 23 and SEQ ID NO:16-20.

8. A method for selectively removing the cells expressing a surface protein from a biological sample comprising a heterogeneous population of cells, which method comprises:

bringing said biological sample into contact with an antibody as claimed in claim 1, and

removing the cells which bind to said antibody.

9. The removal method as claimed in claim 8, wherein said antibody is attached to a solid support.

10. A method for detecting and/or quantifying and/or isolating the NK cells and/or the lymphoid cell progenitors in a heterogeneous population of cells, said method comprising:

bringing a sample comprising a heterogeneous population of cells into contact with an antibody as claimed in claim 1, and

detecting the formation of the cell-antibody complex.

11. The method as claimed in claim 10, wherein, when said sample consists of bone marrow, of umbilical cord blood, of fetal liver or of any other fetal or adult hematopoietic tissue, the method also comprises bringing the cells which have formed a complex with said antibody into contact with an antibody specific for pre-B cells (anti-cD19 antibody or anti-CD10 antibody) and/or for pre-T cells (anti-CD3 antibody, anti-CD4 antibody or anti-CD8 antibody).

12. A medicinal product for the treatment of autoimmune diseases containing the antibody as claimed in claim 1.

13. A method for preparing a product which can be transplanted, which comprises using the cells of bone marrow, of umbilical cord blood, of fetal liver or of any other fetal or adult hematopoietic tissue, depleted of NK cells

and/or of lymphoid progenitors, and obtained using the method as claimed in claim 11.

14. A method for diagnosing malignant and benign hemopathies, characterized in that it comprises detecting a nucleic acid sequence as claimed in claim 6 in a biological sample.

15. A kit for detecting and/or quantifying and/or isolating the NK cells and/or the lymphoid cell progenitors (pre-B, pre-T and pre-NK), characterized in that it comprises, besides useful amounts of buffers suitable for carrying out said detection, suitable doses of an antibody as claimed in claim 1, and suitable doses of a reagent for revealing the cell-antibody complex possibly formed.

16. An isolated and purified cDNA, which encodes a fragment of the surface protein as defined in claim 6 which is selected from the group consisting of:

the fragments defined by the sequences SEQ ID NO:4, 6, 7, 8, 9 and 24,

the fragments of at least 7 amino acids of the sequence corresponding to that located between positions 153 and 295 with reference to the sequence SEQ ID NO:2, and

the fragments of at least 7 amino acids of the sequence corresponding to that located between positions 296 and 350 with reference to the sequence SEQ ID NO:2.

17. A medicinal product for the treatment of autoimmune diseases containing the antibody as claimed in claim 2.

18. A reagent for detecting NK cells which includes fragments of a surface protein as defined in claim 1, comprising at least 7 consecutive amino acids of the extracellular domain.

* * * * *

专利名称(译)	存在于淋巴系和NK细胞的造血干细胞表面的蛋白质及其用途		
公开(公告)号	US20070148686A1	公开(公告)日	2007-06-28
申请号	US11/682085	申请日	2007-03-05
[标]申请(专利权)人(译)	原子能委员会		
申请(专利权)人(译)	粮食A L'的原子能		
当前申请(专利权)人(译)	粮食A L'的原子能		
[标]发明人	KIRSZENBAUM MAREK LE DISCORDE MAGALI PROST STEPHANE		
发明人	KIRSZENBAUM, MAREK LE DISCORDE, MAGALI PROST, STEPHANE		
IPC分类号	C12Q1/68 G01N33/567 C07H21/04 C12P21/06 G01N33/53 A61K35/12 A61K39/00 A61K39/395 A61L27/00 A61P7/00 A61P37/00 A61P37/02 C07K14/705 C07K16/28 C12N5/0783 C12N15/09 C12N15/12 C12P21/08 C12Q1/02 C12Q1/6881 G01N33/566		
CPC分类号	A61K2035/124 A61K2039/505 C07K14/705 C07K16/28 C12N5/0646 C12Q1/6881 C12Q2600/158		
优先权	1999014241 1999-11-12 FR 10/129873 2002-06-24 US PCT/FR2000/003137 2000-11-10 WO		
外部链接	Espacenet USPTO		

摘要(译)

本发明涉及存在于淋巴细胞系和成熟NK细胞的造血干细胞表面的蛋白质，相应的分离的cDNA序列及其作为所述细胞标记物和用于制备针对所述蛋白质的抗体的用途。本发明还涉及所述抗体用于选择在其表面表达所述蛋白质的细胞的用途。所述分离的蛋白质具有结构(a)，其包含位于位置21和152之间的细胞外结构域，位于位置153和295之间的五个跨膜结构域和位于位置296和350之间的细胞质结构域，参考序列SEQ ID NO: 2；表观分子量为约36至38kDa，其前体(包含在结构(a)的N-末端，20个氨基酸的信号序列)选自SEQ ID NO: 2的蛋白质。和具有与序列SEQ ID NO: 2具有至少70%同一性或至少85%相似性，优选至少95%同一性或至少99%相似性的氨基酸序列的蛋白质。

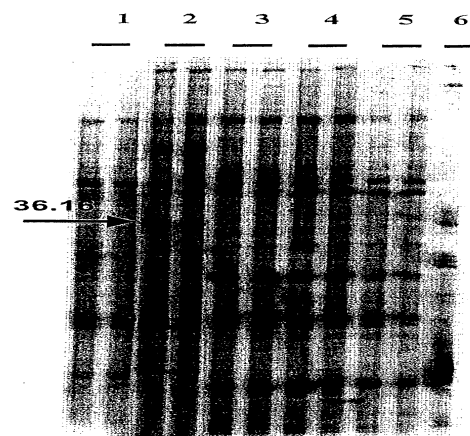


FIGURE 1