



US006750021B2

(12) **United States Patent**
Polyak et al.

(10) **Patent No.:** **US 6,750,021 B2**
(45) **Date of Patent:** ***Jun. 15, 2004**

(54) **SUBTLE MITOCHONDRIAL MUTATIONS AS TUMOR MARKERS**

(75) Inventors: **Kornelia Polyak**, Brookline, MA (US);
Bert Vogelstein, Baltimore, MD (US);
Kenneth W. Kinzler, BelAir, MD (US)

(73) Assignee: **The Johns Hopkins University**,
Baltimore, MD (US)

(*) Notice: Subject to any disclaimer, the term of this patent is extended or adjusted under 35 U.S.C. 154(b) by 0 days.

This patent is subject to a terminal disclaimer.

(21) Appl. No.: **10/053,611**

(22) Filed: **Jan. 24, 2002**

(65) **Prior Publication Data**

US 2002/0164622 A1 Nov. 7, 2002

Related U.S. Application Data

(63) Continuation of application No. 09/377,856, filed on Aug. 20, 1999, now Pat. No. 6,344,322.

(60) Provisional application No. 60/097,307, filed on Aug. 20, 1998.

(51) **Int. Cl.**⁷ **C12Q 1/68**; C07H 21/04;
C12P 21/04

(52) **U.S. Cl.** **435/6**; 435/91.1; 435/91.2;
536/23.1; 536/24.33; 536/24.3

(58) **Field of Search** 435/6, 91.2, 366,
435/91.1, 71, 72, 5; 536/23.1, 24.3, 24.33;
514/44, 12; 436/504

(56) **References Cited**

U.S. PATENT DOCUMENTS

5,683,877 A	11/1997	Lu-Chang et al.	
5,879,890 A	3/1999	Laken et al.	
5,935,787 A *	8/1999	Sidransky	435/6
6,025,127 A *	2/2000	Sidransky	435/6
6,344,322 B1 *	2/2002	Polyak et al.	435/6

OTHER PUBLICATIONS

Alonso et al., "Detection of somatic mutations in the mitochondrial DNA control region of colorectal and gastric tumors . . . conformation analysis", *Electrophoresis*, vol. 18, pp. 682-685, (1997).*

Chee et al., "Accessing Genetic Information with High-Density DNA Arrays", *Science*, vol. 274, pp. 610-614, (1996).*

Hopgood et al. "Strategies for Automated Sequencing of Human Mitochondrial DNA Directly from PCR Products" *Biotechniques*, vol. 13, No. 1, pp. 82-92 (1992).

Ivanova et al. "Mitochondrial DNA Sequence Variation in Human Leukemic Cells" *In. J. Cancer*: 76 495-498 (1998).

Alonso et al. "Detection of somatic mutations in the mitochondrial DNA control region of colorectal and gastric tumors by heteroduplex and single-strand conformation analysis" *Electrophoresis*, vol. 18 (5) pp. 682-685 (1997).

Khrapko et al. *Proc. Natl. Acad. Sci. USA*, vol. 94, pp. 13798-13803, Dec. 1997.

Casali et al. "Mitochondrial G8363 A mutation presenting as cerebellar staxia and lipomas in an Italian family" *Neurology—American academy of Neurology*, vol. 52 (5) pp. 1103-1104 Mar. 1999.

Tanaka et al. "Automated Sequencing of Mitochondrial DNA" *Methods in Enzymology*, vol. 264, pp. 407-421 (1996).

Taira et al. "Tumor-associated mutations of rat mitochondrial transfer RNA genes" *Nucleic Acids Research*, vol. 11 (6), pp. 1635-1643 (1983).

Ladanyi et al. "Analysis of nuclear and mitochondrial DNA alterations in thyroid and renal oncoeytic tumors" *Cytogenet Cell Genet* 66:253-259 (1994).

Burgart et al. "Somatic Mitochondrial Mutation in Gastric Cancer" *American Journal fo Pathology*, vol. 147, No. 4 Oct. 1995 pp. 1105-1111.

Wallace "Mitochondrial DNA sequence variation in human evolution and disease" *Proc. Natl Acad. Sci USA* vol. 91, pp. 8739-8746 Sep. 1994.

Corral et al. "RNAs containing mitochondrial ND6 and CO1 sequences present an abnormal structure in chemically induced rat hepatomas" *Nucleic Acids Research*, vol. 17(13) pp. 5191-5206.

Heerdt et al. "Polymorphisms, but Lack of Mutations or Instability, in the Promoter Region of the Mitochondrial Genome in Human Colonic Tumors" *Cancer Research* 54, 3912-3915 Jul. 15, 1994 pp. 3912-3915.

Yamamoto et al. "Significant Existence of Deleted Mitochondrial DNA in Cirrhotic Liver Surrounding Hepatic Tumors" *Biochemical amd Biophysical Research Communications*, vol. 182, No. 2, pp. 913-920 Jan. 31, 1992.

Wallace "Mitochondrial Diseases in Man and Mouse" *Science*, vol. 283, Mar. 5, 1999, pp. 1482-1488.

Welter et al. "Alteration of Mitochondrial DNA in Human Oncocytomas" *Genes, Chromosomes & Cancer* 1:79-82 (1989).

Burgart et al. "Somatic mitochondrial mutation in gastric cancer" *American Journal of Pathology*, vol. 147, No. 4, 1995, pp. 1105-1111.

Welter et al. "Alteration of mitochondrial DNA in human oncocytomas" *Genes, Chromosomes and Cancer*, vol.1, 1989 pp. 79-82.

Tallini et al. "Analysis fo nuclear and mitochondrial DNA alterations in thyroid and renal oncoeytic tumors" *Cytogenetics and Cell Genetics*, vol. 66, 1994, pp. 253-259.

(List continued on next page.)

Primary Examiner—Kenneth R. Horlick

Assistant Examiner—Cynthia Wilder

(74) *Attorney, Agent, or Firm*—Banner & Witcoff, Ltd.

(57) **ABSTRACT**

The accumulation of homoplasmic somatic mutations has been observed in the mitochondrial DNA of certain tumor cells. The presence or recurrence of a tumor can be detected by determining the presence of single basepair mutations in the mitochondrial genome from a cell sample of a patient.

36 Claims, 2 Drawing Sheets

OTHER PUBLICATIONS

Yamamoto et al. "Significant existence of deleted mitochondrial DNA in cirrhotic liver surrounding hepatic tumor". *Biochemical and biophysical research Communications*, vol. 182, No. 2, 1992, pp. 913-920.

Khrapko et al. "Mitochondrial mutations spectra in human cells and tissues" *Proceedings of the National Academy of Sciences USA*, vol. 94, 1997, pp. 13798-13803.

D.C. Wallace "Mitochondrial DNA sequence variation in human evolution and disease" *Proceedings of the National Academy of Sciences USA*, vol. 91, 1994, pp. 8739-8746.

Ivanova et al. "Mitochondrial DNA sequence variation in human leukemic cells" *International Journal of Cancer*, vol. 76, 1998, pp. 495-498.

Nakamura et al. "A novel homoplasmic point mutation at mitochondria DNA (mtDNA) nucleotide 3308 in a family with a typical diabetes mellitus (ADM) of african americans (AA)" *Diabetes*, vol. 46, No. Supp, 1997, pp. 175A.

* cited by examiner

FIG. 1

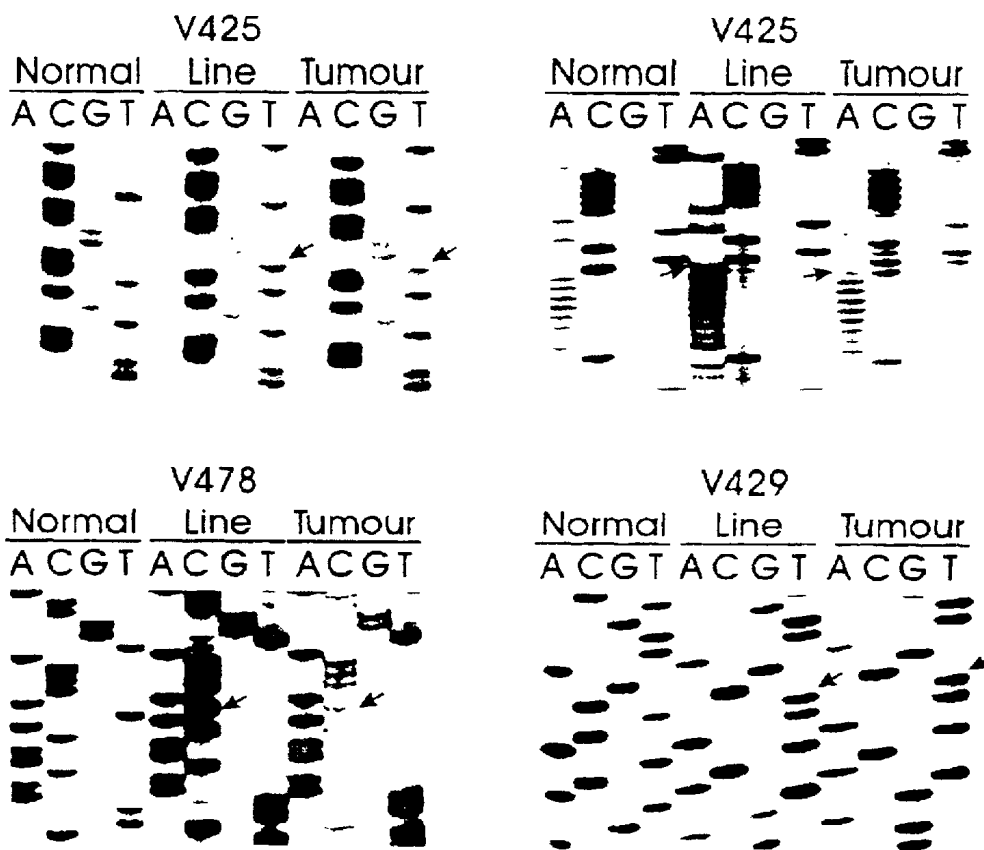


FIG. 2A

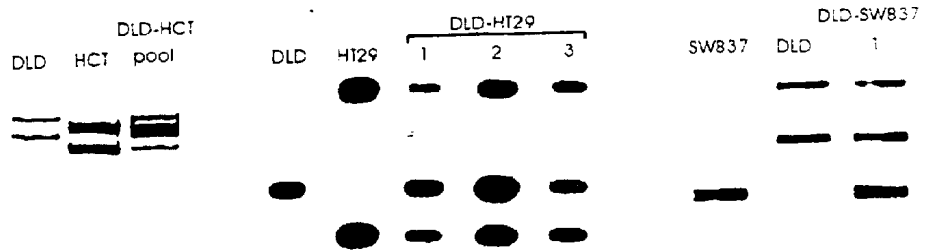


FIG. 2B

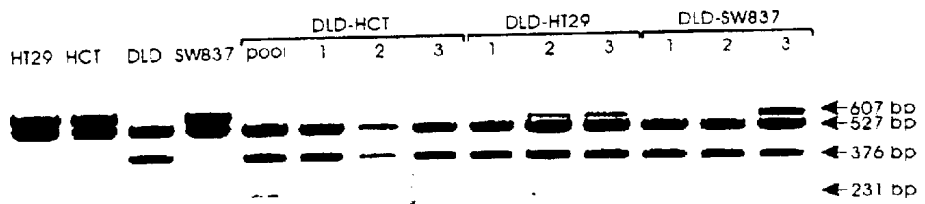
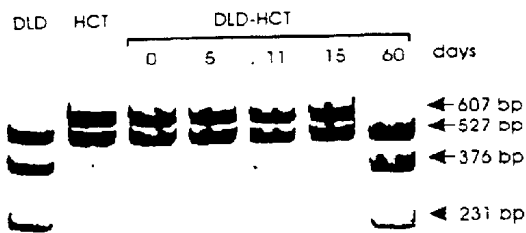


FIG. 2C



1

SUBTLE MITOCHONDRIAL MUTATIONS AS TUMOR MARKERS

This application claims the priority of provisional U.S. Application Ser. No. 60/097,307, filed Aug. 20, 1998, and is a continuation of U.S. application Ser. No. 09/377,856, filed Aug. 20, 1999 now U.S. Pat. No. 6,344,322.

The U.S. Government retains certain rights in this invention due to funding as provided by grant CA43460 awarded by the National Institutes of Health.

TECHNICAL FIELD OF THE INVENTION

The invention is related to the area of cancer genetics. In particular it is related to somatic mutations associated with cancer.

BACKGROUND OF THE INVENTION

The human mitochondrial genome is a 16 kilobase circular, double stranded DNA that encodes 13 polypeptides of the mitochondrial respiratory chain, 22 transfer RNAs, and two ribosomal RNAs required for protein synthesis. The mitochondrial genome is particularly susceptible to mutations because of the high level of reactive oxygen species generated in the organelle coupled with a low level of DNA repair (7-10). Surprisingly, there has been little detailed analysis of alterations in human mitochondrial DNA in cancer, although there are indications that mitochondria may be involved in neoplasia and apoptosis (2-6) as well as cancerous growth (1). Thus, there remains a need in the art to identify a correlation of alterations in human mitochondrial DNA with cancer.

SUMMARY OF THE INVENTION

It is an object of the invention to provide a method to aid in detecting the presence of tumor cells in a patient. This and other objects of the invention are provided by one or more of the embodiments described below.

One embodiment of the invention provides a method of screening patients for the presence of tumor cells. The method comprises a step for determining the presence of a single basepair mutation in a mitochondrial genome of a cell sample of a patient. If a single basepair substitution is found in a cell sample of the patient which is not in normal tissue of the patient, the patient is identified as having a tumor.

The invention thus provides the art with new methods of detecting and tracing tumors by examining mitochondrial DNA for the appearance of somatic mutations.

BRIEF DESCRIPTION OF THE DRAWINGS

FIG. 1 shows examples of mitochondrial DNA mutations. The sequence of the mitochondrial genome was determined in normal cells, primary tumors, and tumor cell lines from the same patients. Arrows indicate the G-to-A transition (antisense strand) at codon 121 of the COX subunit I gene in line V425, an A insertion within the (A)₈ tract of the ND5 gene in line V425, a T-to-C transition at codon 1 of the NDI gene in line 478, and a G-to-A transition (antisense strand) at codon 142 of the COX subunit II gene in line V429.

FIG. 2A to FIG. 2C depict somatic cell fusions. FIG. 2A. Confirmation of successful nuclear fusion using nuclear genomic DNA polymorphisms from the indicated lines. FIG. 2B. Analysis of the mitochondrial DNA utilizing the T-to-C variant at nucleotide 4,216 that creates a recognition site for Nla III (CATG). The C variant, giving rise to 376 and 231 fragments following restriction digest of a 1,140 bp

2

PCR product, is present only in DLD-1 cells. FIG. 2C. Time course over which replicative advantage of DLD-1 mitochondria is evident. Initially, HCT 116 cell mitochondria were slightly over represented in the fusions, but a shift towards DLD-1 mitochondria was evident within five days and this process was complete between 15 and 60 days. DNA was isolated and the mitochondria were analyzed by Nla III digestion on the indicated days after cell fusion.

DETAILED DESCRIPTION OF THE INVENTION

The inventors have found that the presence of subtle mutations in the mitochondrial genome can be used as a means to trace the presence, spread, metastasis, growth, or recurrence of a tumor in a patient. Such subtle mutations include single basepair substitutions, single basepair insertions, and single basepair deletions. Single basepair substitutions can be either transitions or transversions, although the former are more frequent. Detection of such mutations can be useful to screen for the initial appearance of a tumor as well as the recurrence of a previously identified tumor. The methods are particularly suited to monitor anti-cancer therapy, recurrence, metastasis, and completeness of surgical removals.

A single basepair substitution is the substitution of a single nucleotide base with a different nucleotide base at the same position, with the corresponding substitution of the complementary base on the other strand of the DNA. While any single basepair substitution is conceivable within the scope of the invention, the most frequently encountered substitutions are those which are consistent with oxidative damage, such as T to C or G to A transitions. The mutations can appear in protein coding regions or in regions which encode ribosomal or transfer RNAs.

The homoplasmic property of most mutant mitochondrial genomes from tumors permits the ready detection of such mutations within a sample of mitochondrial DNA from a patient. Homoplasmic mutations are those which appear in essentially all of the copies of the mitochondrial genome within a given cell or tissue. However, heteroplasmic mutations, which are those appearing in only a fraction of the mitochondrial genomes of a cell or tissue, are also suitable for use with the invention.

Any cell sample can be tested from a patient who has cancer or is suspected of having cancer. Suitable cell samples include, but are not limited to, tissue from a growth suspected or known to be cancerous, tissue adjacent to a resection of a tumor, and tissue distant from the site of a tumor, such as lymph nodes which are suspected of bearing metastatic cells. Cells can also be obtained from bodily fluids or secretions, e.g., blood, urine, sputum, saliva, or feces, which may contain cancerous cells or metastatic cells. Cell samples can also be collected from other bodily secretions and tissues as is known in the art. A cell sample can be collected from suspected or known cancerous tissue or from bodily fluids or secretions harboring cancer cells as well as from suspected or known normal tissue or bodily fluids or secretions harboring normal cells.

In order to detect mutations of the mitochondrial genome from a cell sample of a patient, mitochondrial DNA can be isolated from the cell sample using any method known in the art. One way of identifying subtle mutations involves sequencing the mitochondrial DNA. This can be done according to any method known in the art. For example, isolated mitochondrial DNA can be cleaved using endonucleases into overlapping fragments of appropriate size for

sequencing, e.g., about 1–3 kilobases in length, followed by polymerase chain reaction (PCR) amplification and sequencing of the fragments. Examples of DNA sequencing methods are found in Brumley, R. L. Jr., and Smith, L. M., 1991, Rapid DNA sequencing by horizontal ultrathin gel electrophoresis, *Nucleic Acids Res.* 19:4121–4126 and Luckey, J. A., Drossman, H., Kostihka, T.; and Smith, L. M., 1993, High-speed DNA sequencing by capillary gel electrophoresis, *Methods Enzymol.* 218:154–172. Amplification methods such as PCR can be applied to samples as small as a single cell and still yield sufficient DNA for complete sequence analysis. The combined use of PCR and sequencing of mitochondrial DNA is described in Hopgood, R., Sullivan, K. M., and Gill, P., 1992, Strategies for automated sequencing of human mitochondrial DNA directly from PCR products, *Biotechniques* 13:82–92 and Tanaka, M., Hayakawa, M., and Ozawa, T., 1996, Automated sequencing of mitochondrial DNA, *Methods Enzymol.* 264:407–21.

Mutations can first be identified by comparison to sequences present in public databases for human mitochondrial DNA, e.g., at the URL address: [http file type, www host server, gen.emory.edu domain name, mitomap.html](http://file.type.www.host.server/gen.emory.edu/domain.name/mitomap.html) directory. Any single basepair substitution identified in the sample DNA compared to a normal sequence from a database can be confirmed as being a somatic mutation as opposed to a polymorphic variant by comparing the sample mitochondrial DNA or sequences obtained from it to control cell mitochondrial DNA from the same individual or sequences obtained from it. Control cells are isolated from other apparently normal tissues, i.e., tissues which are phenotypically normal and devoid of any visible, histological, or immunological characteristics of cancer tissue. A difference between the sample and the control identifies a somatic mutation which is associated with the tumor.

An alternative to serially sequencing the entire mitochondrial genome in order to identify a single basepair substitution is to use hybridization of the mitochondrial DNA to an array of oligonucleotides. Hybridization techniques are available in the art which can rapidly identify mutations by comparing the hybridization of the sample to matched and mismatched sequences which are based on the human mitochondrial genome. Such an array can be as simple as two oligonucleotide probes, one of whose sequence matches the wild-type or mutant region containing the single base substitution (matched probe) and another whose sequence includes a single mismatched base (mismatch control probe). If the sample DNA hybridizes to the matched probe but not the mismatched probe, it is identified as having the same sequence as the matched probe. Larger arrays containing thousands of such matched/mismatched pairs of probes on a glass slide or microchip (“microarrays” or “gene chips”) are available which are capable of sequencing the entire mitochondrial genome very quickly. Such arrays are commercially available. Review articles describing the use of microarrays in genome and DNA sequence analysis and links to their commercial suppliers are available at the URL address: [www host server, gene-chips.com domain name](http://www.host.server/gene-chips.com/domain.name).

The invention can be used to screen patients suspected of having cancer for the presence of tumor cells. A cell sample is first obtained from a suspected tumor of the patient, or is obtained from another source such as blood or lymph tissue, for example, if metastasis is suspected. The cell sample is tested to determine the presence of a single basepair mutation in mitochondrial DNA from the cell sample using the techniques outlined above. Optionally, a cell sample from normal, non-cancerous cells or tissue of the patient is also

obtained and is tested for the presence or absence of a single basepair mutation in mitochondrial DNA. If a single basepair mutation is determined which is not present in a cell sample from normal tissue of the patient, then the mutation is a somatic mutation and the presence of tumor cells in the patient is indicated. If one or more single basepair mutations are determined in the mitochondrial genome of the cell sample of the patient, then the patient is identified as having a tumor. As in any diagnostic technique for cancer, to confirm or extend the diagnosis, further diagnostic techniques may be warranted. For example, conventional histological examination of a biopsy specimen can be performed to detect the presence of tumor cells, or analysis of a tumor-specific antigen in a blood or tissue sample can be performed.

The method outlined above can be practiced either in the situation where the somatic mutation is previously known or previously unknown. Based on the inventors’ findings, the identification of a previously unknown somatic mutation in a mitochondrial genome of a cell of a patient is likely to indicate the presence of tumor cells in the patient. Therefore, the method can be practiced even in the absence of prior knowledge about any particular somatic mutation. The method can also be carried out subsequent to the discovery of a somatic mutation in a mitochondrial genome of a cell of the patient or of another patient. In this case, a previous association of the somatic mutation with the presence of a tumor in the patient or in another patient strongly indicates the presence of tumor cells in the patient. It may also indicate the recurrence of a tumor or the incomplete prior removal of cancerous tissue from the patient.

The effectiveness of therapy can be evaluated when a tumor has already been identified and found to contain a single basepair substitution in the mitochondrial genome. Once a single basepair mutation has been identified in the mitochondrial DNA of a tumor of the patient, further tumor cells can be detected in tissue surrounding a resection or at other sites, if metastasis has occurred. Using the methods outlined above, the recurrence of the tumor or its incomplete removal can be assessed. Similarly, if a tumor has been treated using a non-surgical method such as chemotherapy or radiation, then the success of the therapy can be evaluated at later times by repeating the analysis. The step for determining the presence of a single basepair mutation in a mitochondrial genome of a cell sample of a patient can be performed 1, 2, 3, 4, 5, 6, 8, 10, or more times in order to monitor the development or regression of a tumor or to monitor the progress or lack of progress of therapy undertaken to eliminate the tumor.

Upon repeated analyses, the step for determining the presence of a single basepair mutation is simplified, because only a well defined and limited region of the genome need be sequenced. Using the hybridization method, for example, it is possible to evaluate the presence of the mutation with only a single matched/mismatched pair of oligonucleotide probes in the array. In the event that a mixture of genotypes is observed, it is possible to obtain quantitative information about the relative amount of each mitochondrial genotype using techniques known to the art, e.g., hybridization. Quantitative analysis can reveal changes in the relative proportion of tumor to normal cells in a tissue over time or in response to therapy.

The methods described above were used to study somatic mutations in mitochondrial DNA from human colorectal tumor cells (see Examples 1 and 2). The mutations observed generally were transitions, affecting G residues, which are the preferred targets for oxidative damage to DNA in general

and mitochondrial DNA in particular (at least in vitro) (12, 13, 17, 18). This mutational spectrum supports the idea that the mitochondrial DNA mutations resulted from the reactive oxygen species continually generated in mitochondria. Sequence analyses of nuclear genes from the same ten cell lines studied for mitochondrial DNA mutations indicated that the prevalence of mutations is at least ten-fold higher in the mitochondrial genome than in the nuclear genome of those cells. Previous experiments have demonstrated large deletions in the mitochondrial DNA of some tumors (19–23), rather than the subtle mutations observed here. No deletions were observed in the cell lines studied here, despite several attempts to find them using multiple primer pairs in PCR-based strategies. The literature reveals no previous attempts to search for subtle mutations of mitochondrial genomes by complete sequencing.

The mutations reported in Table 1 were mostly homoplasmic, while the deletions previously observed in tumor cells or normal cells of aging individuals were generally heteroplasmic, present only in a small proportion of the mitochondrial population (19–24). The results presented here are not at variance with a previous study in which no somatic mutations in 200 bp of D-loop sequence were found. This D loop sequence contains promoter elements for transcription of the mitochondrial genome, while the mutations discovered by the inventors were confined to regions encoding mitochondrial proteins or rRNA.

The striking and unexpected homoplasmy of the mutations identified by the inventors indicates significant selection at several levels. First, the somatically mutant mitochondrial genome must be replicated better than that present in the germ-line. Previous experiments have indicated that replication of mitochondria can be controlled individually, in that signals from aberrantly functioning mitochondria induce their overreplication, perhaps in a compensating effort (25). The fusion experiments of Example 2 demonstrate that the process of mitochondrial selection in tumor cells can take place rapidly (FIG. 2C). Over the thousands of generations required for tumorigenesis in vivo, this process could easily result in the replacement of all mitochondrial genomes within the cell with a mutant form. This cell could then overtake the population through clonal growth, either because the aberrant mitochondria themselves endowed the cell with a selective growth advantage or because that cell sustained a nuclear gene mutation providing such an advantage.

This explanation invokes the idea that the mitochondrial mutations may themselves have a functional effect. It is unlikely that most of the observed somatic mutations result in major perturbations of mitochondrial function, as oxygen consumption and the respiratory chain enzymatic activities of several of the lines listed in Table 1 were largely normal. Instead, these mutations, perhaps in concert with polymorphic variations in mitochondrial DNA, probably result in subtle changes which might generate slightly higher levels of ROS. It has been shown that low levels of ROS are highly mitogenic, while high ROS levels are toxic (9). Regardless of the mechanism for their selection, however, the mutations that have been identified represent a previously unrecognized alteration in tumor cells that could have significant effects on the cellular processes controlled by mitochondria. Their homoplasmy raises fascinating questions about the control of mitochondrial DNA at the intramitochondrial, intracellular, and cellular population levels. It indicates that a single cell with a mutant mitochondrial genome had acquired a selective growth advantage during tumor evolution, allowing it to become the predominant cell type

within the tumor cell population. Furthermore, it is important to appreciate that cells, including the colorectal cancer cell lines used here, each contain hundreds of mitochondria, and each mitochondrion contains one to ten DNA molecules (14). The homoplasmy therefore additionally indicates that each mutant mitochondrial genome had a replicative advantage within the particular mitochondrion in which it occurred, and that this mitochondrion had selectively proliferated over other mitochondria in the same cell. Alterations of tumor mitochondrial DNA may also provide clues to their environmental or genetic background, a hypothesis that can be tested in the future using DNA chip technologies (26).

The above disclosure generally describes the present invention. A more complete understanding can be obtained by reference to the following specific examples, which are provided herein for purposes of illustration only and are not intended to limit the scope of the invention.

EXAMPLE 1

Identification of Somatic Mutations in Mitochondrial DNA of Human Colorectal Cancer Cells

To determine whether mutations of the mitochondrial DNA were present in human colorectal tumors, the entire mitochondrial genome was PCR-amplified from ten human colorectal cancer cell lines in 1–3 kb overlapping fragments and the PCR products completely sequenced. The use of large PCR products excluded the possibility that nuclear pseudogenes would complicate this analysis (11).

Cell Lines and Tumors Derivation and maintenance of the VACO lines has been previously described (27). The DLD-1, HCT116, SW837 and HT29 human colorectal cancer cell lines were obtained from ATCC and maintained in McCoy's medium (Gibco, BRL) supplemented with 10% fetal bovine serum (Hyclone) and antibiotics (Gibco, BRL).

DNA Purification, PCR Amplification and Sequencing Cellular DNA from cell lines, from primary tumors, and from normal colonic mucosa was isolated as previously described (28). Overlapping fragments (1–3 kb each) of the mitochondrial genome were amplified by PCR using this DNA as template. The sequencing method allowed the detection of any mutation present in >25% of the mitochondrial DNA molecules within a given sample. In selected cases, the validity of the sequence data was confirmed using purified mitochondrial DNA as templates. To confirm the mutations in the primary tumors, smaller PCR fragments were generated from the DNA purified from microdissected, paraffin-embedded samples. Manual sequencing of the DNA fragments was performed using Thermosequenase (Amersham) and a Genomyx electrophoresis apparatus (Beckman).

Sequence analysis. The sequences obtained were first compared to those recorded in the mitochondrial databank at www.gen.emory.edu/mitomap.html the URL address: www.host.server.gen.emory.edu domain name, mitomap.html directory. Eighty-eight sequence variants were identified (4–31 per tumor) that were not recorded in this databank. These included 27 variants which were predicted to alter the amino acid sequence of the encoded protein, 48 variants which were in protein coding regions but predicted to be silent, and 13 which affected rRNA or tRNA genes.

The database search provided only preliminary evidence for mutations, however, as it could not distinguish somatic mutations from rare germ-line variants. To make this

distinction, mitochondrial DNA sequences were determined from normal colons from the same patient. This analysis showed that at least seven of the lines contained true somatic mutations. Three of the lines contained a single mutation, while four others contained two or three mutations (Table 1).

Each of the 27 sequence variants predicted to result in amino acid changes was evaluated to determine its somatic nature; of these, eight were found to be somatic and 19 were found in the germline of the same patient. Of the 13 variants in rRNA or tRNA genes, nine were evaluated in this way and four were found to be somatic. Twenty-five of the 48 silent mutations were also evaluated, and none of these were found to be somatic.

Of the 12 somatic mutations identified, eight were in protein encoding genes and four were in rRNA genes (Table 1). Eleven were nucleotide substitutions and one was a single bp insertion. Of the eight mutations in protein-encoding genes, one was a nonsense mutation, one was a 1-bp insertion, and six were missense mutations (Table 1). All but one of the 11 nt substitutions were T to C or G to A transitions. This mutational spectrum is fully consistent with the known mutagenic spectra of oxidative damage (12, 13).

To determine whether these mutations arose in vivo rather than during the process of cell culture, DNA was purified from five of the primary tumors from which the lines were derived (in two cases, no primary tumors were available). In every evaluable case, the mutation was found in the primary tumor as well as in the cell line (examples in FIG. 1).

Surprisingly, each of the 12 mutations was present in a major portion of the mitochondrial DNA molecules, and in ten of the 12 cases, the mutations were homoplasmic, i.e., apparently present in every mitochondrial genome (Table 1). This homoplasmy was observed both in the primary tumors as well as in the cell lines (FIG. 1).

EXAMPLE 2

Proliferation of Mitochondria Harboring Somatic Mutations

Cell fusion experiments have indicated that mitochondria from tumor cells can selectively proliferate when such cells are fused to normal cells (15). The inventors sought to determine whether a similar mitochondrial dominance could be observed upon fusion between two colorectal cancer cell lines. Attempts to fuse the lines studied for mitochondrial mutations were unsuccessful for technical reasons. Therefore, more commonly used colorectal cancer cell lines were employed in which intercellular fusions are possible (16).

Geneticin-resistant DLD-1 cells were fused to hygromycin-resistant subclones of each of three different colorectal cancer cell lines CACTI 16, HT29, and SW837). Geneticin- or hygromycin-resistant clones were derived through transfection of appropriate plasmid vectors. Approximately 106 hygromycin-resistant cells were mixed with an equal number of neomycin-resistant cells and fused by PEG treatment as described (16). Hybrids were selected in standard growth medium containing 1 mg/ml geneticin and 0.25 mg/ml hygromycin (DLD-1-HCT116 fusion), 1.5 mg/ml geneticin and 0.6 mg/ml hygromycin (D)LD-HT29 fusion) and 1 mg/ml geneticin and 0.25 mg/ml hygromycin (DLD-SW837 fusion). Successful fusions were verified by nuclear genotyping. Allelotyping was carried out as described (29) using the primer pair wglg5 A/wglg5B or MapPair primers for D19S591 and D16S764 (Research Genetics). Amplified fragments were resolved by electro-

phoresis in 8% polyacrylamide gels. Reactions using radioactively labeled primers were separated on a 4.5% sequencing gel (Genomyx), while reactions using fluorescence labeled primers were analyzed on an ABI Sequencing System (Perkin-Elmer).

The success of fusion was demonstrated using nuclear genomic polymorphisms (FIG. 2A). Complete sequencing of the mitochondrial genomes revealed 3–7 potential variants in each line; it could not be determined which of these were somatic, as normal cells derived from the individuals from whom the cell lines were derived were not available. However, these variants provided a convenient method to trace the fate of the mitochondrial DNA in the fusions. In particular, a T to C variant at nucleotide 4,216 was used that creates a restriction endonuclease recognition site for Nla III (FIG. 2B). The C variant was present in DLD-1 cells but not in any of the other three lines. As shown in FIG. 2B, the DLD-1 mitochondria were “dominant” over the other mitochondria in each of the fusions. All three tested clones derived from DLD-IAHCT116 fusions contained mitochondria exclusively of DLD-1 origin. A pool of over 100 stable clones from this fusion also contained only mitochondria from DLD-1 cells. DLD-1 mitochondria were also dominant to those from HT29 and SW837 cells, contributing either all or the majority of mitochondrial genomes in the clones tested (FIG. 2B).

To determine the time course over which the replicative advantage of DLD-1 mitochondria occurred, pooled clones from DLD-1HCT116 fusions were followed. At the initiation of this experiment, there was a mixture of mitochondrial genomes, with a slight excess of the mitochondria from HCT116 cells. Within five days, a skewing towards DLD-1 mitochondria was evident, and a major shift occurred between 15 and 60 days after fusion, by which time only DLD-1 mitochondria remained in the hybrids (FIG. 2C). Whether it was strictly the mitochondria, or a combination of nuclear and mitochondrial factors, that was responsible for the selection of DLD-1 mitochondria could not be determined. However, these experiments clearly documented that tumor mitochondria of one type can have a significant replicative advantage over other types, and are consistent with other experiments documenting the potential for mitochondrial dominance (15).

REFERENCES

1. Warburg, O. On the origin of cancer cells. *Science* 123, 309–314 (1956).
2. Kroemer, G., Zamzami, N. & Susin, S. A. Mitochondrial control of apoptosis. *Immun. Today* 18, 45–51 (1997).
3. Korsmeyer, S. J., Yin, X. M., Oltvai, Z. N. Veis-Novack, D. J. & Linette, G. P. Reactive oxygen species and the regulation of cell death by the Bcl-2 gene family. *Biochim. Biophys. Acta* 1271, 63–66 (1995).
4. Rudin, C. M. & Thompson, C. B. Apoptosis and disease: regulation and clinical relevance of programmed cell death. *Annu. Rev. Med.* 48, 267–281 (1997).
5. Wang, H. G. & Reed, J. C. Mechanisms of Bcl-2 protein function. *Histol. Histopathol.* 13, 521–530 (1998).
6. Cavalli, L. R. & B. C., L. Mutagenesis, tumorigenicity, and apoptosis: are the mitochondria involved? *Muta. Res.* 398, 19–26 (1998).
7. Lightowers R N, C. P., Turnbull D M, Howell N. Mammalian mitochondrial genetics: heredity, heteroplasmy and disease. *Trends Genet.* 13, 450–455 (1997).

8. Beal, M. Mitochondria, free radical, and neurodegeneration. *Curr. Opin. Neurobiol.* 6, 661–666 (1996).
9. Li, Y., Zhou, H., Stansbury, K. & Trush, M. Role of reactive oxygen species in multistage carcinogenesis. in *Oxygen radicals ad the disease process* (eds. Thomas, C. & Kalyanaraman, B.) 237–277 (Harwood Academic Publishers, 1997).
10. Croteau, D. L. & Bohr, V. A. Repair of oxidative damage to nuclear and mitochondrial DNA in mammalian cells. *J. Biol. Chem.* 272, 25409–25412 (1997).
11. Parfait B. R. P., Munnich A, Rotig A. Co-amplification of nuclear pseudogenes and assessment of heteroplasmy of mitochondrial DNA mutations. *Biochem. Biophys. Res. Commun.* 247, 57–59 (1998).
12. Beckman, K. B. & Ames, B. N. Oxidative decay of DNA. *J. Biol. Chem.* 272, 19633–6 (1997).
13. Cadet, J., Berger, M. Douki, T. & Ravanat, J. L. Oxidative damage to DNA: formation measurement, and biological significance. *Rev. Physiol. Biochem. Pharmacol.* 131, 1–87 (1997).
14. Wallace, D. C., Brown, M. D., Melov, S., Graham, B. & Lott, M. Mitochondrial biology degenerative diseases and aging. *Biofactors* 7, 187–190 (1998).
15. Shay, J. & Ishii, S. Unexpected nonrandom mitochondrial DNA segregation in human cell hybrids. *Anticancer. Res.* 10, 279–284 (1990).
16. Lengauer, C., Kinzler, K. W. & Vogelstein, B. Genetic instability in colorectal cancers. *Nature* 386, 623–627 (1997).
17. Khrapko, K. et al. Mitochondrial mutational spectra in human cells and tissues. *Proc. Natl. Acad. Sci. U.S.A.* 94, 13798–13803 (1997).
18. Beckman, K. & Ames, B. Detection and quantification of oxidative adducts of mitochondrial DNA. *Methods Enzymol.* 264, 442–153 (1996).
19. Welter, C., Kovacs, G., Seitz, G. & Blin, N. Alteration of mitochondrial DNA in human oncocyomas. *Genes Chromosomes Cancer* 1, 79–82 (1989).
20. Yamamoto, H. et al. Significant existence of deleted mitochondrial DNA in cirrhotic liver surrounding hepatic tumor. *Biochem. Biophys. Res. Commun.* 182, 913–920 (1992).
21. Burgart, L. J. Zheng, J., Shu, Q., Strickler, J. G. & Shibata, D. Somatic mitochondrial mutation in gastric cancer. *Am. J. Pathol.* 147, 1105–1111 (1995).
22. Tallini, G. Ladanyi, M., Roasi, J. & Thanwar, S. Analysis of nuclear and mitochondrial DNA alterations in thyroid and renal oncocyctic tumour. *Cytogenet. Cell Genet.* 66, 253–259 (1994).
23. Heerdt, G. G., Chen, J., Stewart, L. R. & Augenlicht, L. H. Polymorphisms, but lack of mutations or

- instability, the promotor region of the mitochondrial genome in human colonic tumors. *Cancer Res.* 54, 3912–3915 (1994).
24. Wallace, D. C. Mitochondrial DNA sequence variation in human evolution and disease. *Proc Natl. Acad. Sci. U.S.A.* 91, 87–3946 (1994).
25. Attardi, g., Yoneda, M. & Chomyn, A. Complementation and segregation behavior of disease-causing mitochondrial DNA mutation in cellular model systems. *Biochim. Biophys. Acta* 1271, 241–248 (1995).
26. Chee, M. et al. Accessing genetic information with high-density DNA arrays. *Science* 274, 610–614 (1996).
27. Parsons, R. et al. Microsatellite instability and mutations of the transforming growth factor beta type 11 Receptor gene in colorectal cancer. *Cancer Res.* 55, 5548–5550 (1995).
28. Jen, J. et al. Allelic loss of chromosome 18q and prognosis in colorectal cancer. *N. England. J. Med.* 331, 213–221 (1994).
29. Armour, J. A., Neumann, R., Gobert, S. & Jeffreys, A. J. Isolation of human simple repeat loci by hybridization selection. *Hum. Mol. Genet.* 3, 599–565 (1994).

TABLE 1

Summary of mtDNA mutations				
Tumor*	Position	DNA	Protein	Gene
V478	710	T→C	—	12S rRNA
"	1738	T→C	—	16S rRNA
"	3308	T→C	M1T	ND1
V429	8009	G→A	V142M	COX subunit II
"	14985	G→A	R80H	CYT b
"	15572	T→C	F276L	CYT b
V441	9949	G→A	V2481	COX subunit III
V456	10563	T→C	C32R	ND4L
V425	6264	G→A	G121trun	COX subunit I
"	12418	insA	K28frameshift	ND5
V451	1967	T→C	—	16S rRNA
V410	2299	T→A	—	16S rRNA

*All the mutations were homoplasmic except V451 T11967C and V410 T2299A, which were present in ~50% of the mitochondrial DNA molecules.

SEQUENCE LISTING

<160> NUMBER OF SEQ ID NOS: 1

<210> SEQ ID NO 1

<211> LENGTH: 16569

<212> TYPE: DNA

<213> ORGANISM: Homo sapiens

-continued

<400> SEQUENCE: 1

gatcacaggt ctatcacccct attaacccact cacgggagct ctccatgcat ttggatattt	60
cgtctggggg gtatgcacgc gatagcattg cgagacgctg gagccggagc accctatgtc	120
gcagtatctg tctttgattc ctgcctcadc ctattattta tcgcacctac gttcaatatt	180
acaggcgaac atacttacta aagtgtgtta attaattaat gctttagtagga cataataata	240
acaattgaat gtctgcacag ccactttcca cacagacatc ataacaaaaa atttccacca	300
aacccccct cccccgcttc tggccacagc acttaaacac atctctgcca aacccccaaa	360
acaaagaacc ctaacaccag cctaaccaga tttcaaattt tatcttttgg cggtagtcac	420
ttttaacagt cccccccaa ctaacacatt attttccct cccactocca tactactaat	480
ctcatcaata caacccccgc ccacccctacc cagcacacac acaccgctgc taaccccata	540
ccccgaacca accaaacccc aaagacaccc cccacagttt atgtagotta cctcctcaaa	600
gcaatacact gaaaatgttt agacgggctc acatcacccc ataaacaaat aggtttggtc	660
ctagcctttc tattagctct tagtaagatt acacatgcaa gcatccccgt tccagttagt	720
tcaccctcta aatcaccacg atcaaaaggg acaagcatca agcacgcagc aatgcagctc	780
aaaacgctta gcctagccac acccccacgg gaaacagcag tgattaacct ttagcaataa	840
acgaaagttt aactaagcta tactaacccc agggttggtc aatttcgctc cagccaccgc	900
ggtcacacga ttaaccacaag tcaatagaag cggcgtaaa gagtgtttta gatcaccccc	960
tccccataa agctaaaact cacctgagtt gtaaaaaact ccagttgaca caaaatagac	1020
tacgaaagtg gctttaacat atctgaacac acaatagcta agaccacaaac tgggattaga	1080
taccocacta tgcttagccc taaacctcaa cagttaaatc aacaaaactg ctgcacagaa	1140
cactacgagc cacagcttaa aactcaaagg acctggcggg gcttcatatc cctctagagg	1200
agcctgttct gtaatcgata aaccccgatc aacctcacca cctcttgctc agcctatata	1260
ccgccatctt cagcaaaccc tgatgaaggc tacaagtaa gcgcaagtac ccacgtaaag	1320
acgttaggtc aagggttagc ccatgaggtg gcaagaaatg ggctacattt tctaccccag	1380
aaaactacga tagcccttat gaaacttaag ggtcgaaggt ggatttagca gtaaaactaag	1440
agtagagtgc ttagttgaac agggccctga agcgcgtaca caccgcccgt cacccctctc	1500
aagtatactt caaaggacat ttaactaaaa cccctacgca tttatataga ggagacaagt	1560
cgtaacatgg taagtgtact ggaaagtgca cttggacgaa ccagagtgta gcttaacaca	1620
aagcacccaa cttacactta ggagatttca acttaacttg accgctctga gctaaaccta	1680
gccccaaacc cactccacct tactaccaga caaccttagc caaacattt acccaaataa	1740
agtataggcg atagaaattg aaacctggcg caatagatat agtaccgcaa gggaaagatg	1800
aaaaattata accaagcata atatagcaag gactaacccc tataccttct gcataatgaa	1860
ttaactagaa ataactttgc aaggagagcc aaagctaaga cccccgaaac cagacgagct	1920
acctaaagac agctaaaaga gcacaccctg ctatgtagca aaatagtggg aagatttata	1980
ggtagaggcg acaaacctac cgagcctggg gatagctggg tgtccaagat agaactttag	2040
ttcaacttta aatttgccca cagaaccctc taaatccct tgtaaattta actgtagtc	2100
caaagaggaa cagctctttg gacactagga aaaaaccttg tagagagagt aaaaaattta	2160
acaccatag taggcctaaa agcagccacc aattaagaaa gcgttcaagc tcaacacca	2220
ctacctaata aatccccaac atataactga actcctcaca cccaattgga ccaatctatc	2280
acctataga agaactaatg ttagtataag taacatgaaa acattctcct ccgcataagc	2340

-continued

ctgcgtcaga	ttaaaacact	gaactgacaa	ttaacagccc	aatatctaca	atcaaccaac	2400
aagtcattat	taccctcact	gtcaacccaa	cacaggcatg	ctcataagga	aagggtaaaa	2460
aaagtaaaag	gaactcggca	aatcttacc	cgctgttta	ccaaaaacat	cacctctagc	2520
atcaccagta	ttagaggcac	cgctgccc	gtgacacatg	tttaacggcc	gcggtaccct	2580
aaccgtgcaa	aggtagcata	atcacttggt	ccttaaatag	ggacctgtat	gaatggctcc	2640
acgaggggtc	agctgtctct	tacttttaac	cagtgaaatt	gacctgccc	tgaagaggcg	2700
ggcataaac	agcaagcga	gaagacccta	tggagcttta	atttattaat	gcaaacagta	2760
cctaacaaac	ccacaggtcc	taaactacca	aacctgcatt	aaaaatttcg	gttggggcga	2820
cctcggagca	gaacccaacc	tccgagcagt	acatgctaag	acttcaccag	tcaaagcga	2880
ctactatact	caattgatcc	aataacttga	ccaacggaac	aagttaccct	agggataaca	2940
gcgcaatcct	attctagagt	ccatatcaac	aatagggttt	acgacctcga	tgttgatca	3000
ggacatccc	atggtgcagc	cgctatttaa	ggttcgttg	ttcaacgatt	aaagtcctac	3060
gtgatctgag	ttcagaccgg	agtaatccag	gtcggtttct	atctacctc	aaattcctcc	3120
ctgtacgaaa	ggacaagaga	aataaggcct	acttcacaaa	gcgccttccc	ccgtaaata	3180
tatcatctca	acttagtatt	ataccacac	ccaccaaga	acagggtttg	ttaagatggc	3240
agagcccgt	aatcgcataa	aacttaaac	tttacagtca	gaggttcaat	tcctcttctt	3300
aacaacatac	ccatggccaa	cctcctactc	ctcattgtac	ccattcta	cgcaatggca	3360
ttcctaatac	ttaccgaacg	aaaaattcta	ggctatatac	aactacgcaa	aggcccaac	3420
gtttagggcc	cctacgggct	actacaacc	ttcgtgacg	ccataaaact	cttcacaaa	3480
gagccctaa	aaccgccac	atctaccatc	accctctaca	tcaccgccc	gaccttagct	3540
ctcaccatcg	ctcttctact	atgaaccccc	ctccccatac	ccaacccct	ggtcaacctc	3600
aacctaggcc	tcctatttat	tctagccacc	tctagcctag	ccgtttactc	aatcctctga	3660
tcagggtag	catcaaactc	aaactacgcc	ctgatcggcg	cactgcgagc	agtagcccaa	3720
acaatctcat	atgaagtca	cctagccatc	attctactat	caacattact	aataagtggc	3780
tcctttaacc	tctccaccct	tatcacaaca	caagaacacc	tctgattact	cctgccatca	3840
tgacccttgg	ccataatgat	atctatctcc	acaactagcag	agaccaaccg	aaccccttc	3900
gaccttgccg	aaggggagtc	cgaactagtc	tcaggcttca	acatcgaata	cgccgcaggc	3960
cccttcgccc	tattcttcat	agccgaatac	acaacatta	ttataataaa	cacctcacc	4020
actacaatct	tcctaggaac	aacatatgac	gcactctccc	ctgaactcta	cacaacatat	4080
tttgcacca	agaccctact	tctaacctcc	ctgttcttat	gaattcgaac	agcatacccc	4140
cgattccgct	acgaccaact	catacacctc	ctatgaaaa	acttcctacc	actcacccta	4200
gcattactta	tatgatatgt	ctccataccc	attacaatct	ccagcattcc	ccctcaaacc	4260
taagaaat	gtctgataaa	agagttactt	tgatagagta	aataatagga	gcttaaacc	4320
ccttatttct	aggactatga	gaatcgaacc	catccctgag	aatccaaaat	tctcctgccc	4380
acctatcaca	ccccatccta	aagtaaggtc	agctaaataa	gctatcgggc	ccataccccg	4440
aaaatggttg	ttataccctt	cccgtactaa	ttaatcccct	ggccaaccc	gtcatctact	4500
ctaccatctt	tgaggcaca	ctcatcacag	cgctaagctc	gcaactgattt	tttacctgag	4560
taggcctaga	aataaacatg	ctagctttta	ttccagttct	aacccaaaaa	ataaaccttc	4620
gttccacaga	agctgccatc	aagtatttcc	tcacgcaagc	aaccgcatcc	ataatccttc	4680

-continued

taatagctat	cctcttcaac	aatatactct	cggacaatg	aaccataacc	aatactacca	4740
atcaatactc	atcattaata	atcataatag	ctatagcaat	aaaactagga	atagcccct	4800
ttcacttctg	agtcccagag	gttacccaag	gcaccctct	gacatccggc	ctgcttcttc	4860
tcacatgaca	aaaactagcc	cccactctca	tcatatacca	aatctctccc	tcactaaacg	4920
taagccttct	cctcactctc	tcaatcttat	ccatcatagc	aggcagttga	ggtggattaa	4980
accagaccca	gtacgcaaa	atcttagcat	actcctcaat	taccacata	ggatgaataa	5040
tagcagttct	accgtacaac	cctaacataa	ccattcttaa	tttaactatt	tatattatcc	5100
taactactac	cgcatccta	ctactcaact	taaactccag	caccacgacc	ctactactat	5160
ctgcacctg	aaacaagcta	acatgactaa	cacccttaat	tccatccacc	ctcctctccc	5220
taggaggcct	gccccgcta	accggctttt	tgcccaaatg	ggcattatc	gaagaattca	5280
caaaaaaaca	tagcctcatc	atccccacca	tcatagccac	catcacctc	cttaacctct	5340
actttacct	acgcctaate	tactccacct	caatcacact	actcccata	tctaacaacg	5400
taaaaataaa	atgacagttt	gaacatacaa	aaccacccc	attcctccc	acactcatcg	5460
cccttaccac	gtactccta	cctatctccc	cttttatact	aataatotta	tagaaattta	5520
ggttaaatac	agaccaagag	ccttcaaagc	cctcagtaag	ttgcaatact	taatttctgt	5580
aacagctaag	gactgcaaaa	cccactctg	catcaactga	acgcaaatca	gccactttaa	5640
ttaagctaag	cccttactag	accaatggga	cttaaaccca	caaacactta	gttaacagct	5700
aagcacccta	atcaactggc	ttcaatctac	ttctcccgc	gcccggaaaa	aaggcgggag	5760
aagccccgpc	aggtttgaag	ctgcttcttc	gaatttgcaa	ttcaatatga	aatcacctc	5820
ggagctggta	aaaagaggcc	taaccctgt	ctttagattt	acagtccaat	gcttactca	5880
gccattttac	ctcaccocca	ctgatgttcg	cgcaccgttg	actattctct	acaaaccaca	5940
aagacattgg	aacactatac	ctattattcg	gpcatgagc	tggagtcta	ggcacagctc	6000
taagcctcct	tattcgagcc	gagctgggpc	agccaggcaa	ccttctaggt	aacgaccaca	6060
tctacaacgt	tatcgtcaca	gcccattgat	ttgtaataat	cttcttcata	gtaataacca	6120
tcataatcgg	aggctttggc	aactgactag	ttccccta	aatcgggtgc	cccgatatgg	6180
cgtttccccg	cataaacaac	ataagcttct	gactcttacc	tcctctctc	ctactcctgc	6240
tcgcatctgc	tatagtgagc	gcccggagcag	gaacagggtg	aacagtctac	cctcccttag	6300
cagggaacta	ctcccacct	ggagcctccg	tagacctaac	catctctctc	ttacacctag	6360
cagggtgtctc	ctctatctta	ggggccatca	atttcatcac	aacaattatc	aatataaaac	6420
cccctgccat	aacccaatac	caaacgcccc	tctctgtctg	atccgtcta	atcacagcag	6480
tcctacttct	cctatctctc	ccagtcctag	ctgctggcat	cactatacta	ctaacagacc	6540
gcaacctcaa	caccactctc	ttcgacccc	cggaggagg	agacccatt	ctataccaac	6600
acctattctg	attttctcgt	caccctgaag	tttatattct	tatcctacca	ggcttcggaa	6660
taatctccca	tattgtaact	tactactccg	gaaaaaaga	accatttggc	tacataggtc	6720
tggctgagc	tatgatatac	attggcttcc	tagggtttat	cgtgtgagca	caccatatac	6780
ttacagtagg	aatagacgta	gacacacgag	catatttcac	ctccgtacc	ataatcatcg	6840
ctatccccac	cggcgtcaaa	gtatttagct	gactcggcac	actccacgga	agcaatatga	6900
aatgatctgc	tgagtgctc	tgagccctag	gattcatctt	tcttttcacc	gtaggtggcc	6960
tgactggcat	tgtattagca	aactcatcac	tagacatcgt	actacacgac	acgtactacg	7020
ttgtagccca	cttccactat	gtcctatcaa	taggagctgt	atttgcctc	ataggaggct	7080

-continued

tcattcactg	atitccccta	ttctcaggct	acaccctaga	ccaaacctac	gccaaaatcc	7140
atitcactat	catattcadc	ggcgtaaadc	taactttctt	cccacaacac	tttctcggcc	7200
tatccggaat	gccccgacgt	tactcggact	accccgatgc	atacaccaca	tgaaacatcc	7260
tatcatctgt	aggctcattc	atitctctaa	cagcagtaat	attaataatt	ttcatgattt	7320
gagaagcctt	cgcttcgaag	cgaaaagtcc	taatagtaga	agaacctcc	ataaacctgg	7380
agtgactata	tgatgcccc	ccacctacc	acacattcga	agaacctgta	tacataaaat	7440
ctagacaaaa	aaggaaggaa	tcgaaccccc	caaagctggt	ttcaagccaa	ccccatggcc	7500
tccatgactt	tttcaaaaag	gtattagaaa	aaccatttca	taactttgtc	aaagttaaatt	7560
tataggctaa	atcctatata	tcttaatggc	acatgcagcg	caagtaggtc	tacaagacgc	7620
tacttcccct	atcatagaag	agcttatcac	ctttcatgat	cacgccctca	taatcatttt	7680
ccttatctgc	ttcctagtcc	tgatgcccc	tttcccaaca	ctcacaacaa	aactaactaa	7740
tactaacatc	tcagacgctc	aggaaataga	aaccgtctga	actatcctgc	ccgccatcat	7800
cctagtcctc	atcgcccccc	catccctacg	catcctttac	ataacagacg	aggtaacga	7860
tcccctccctt	accatcaaat	caattggcca	ccaatggtac	tgaacctacg	agtacaccga	7920
ctacggggga	ctaattctca	actcctacat	acttccccca	ttattcctag	aaccaggcga	7980
cctgcgactc	cttgacgttg	acaatcgagt	agtactcccg	attgaagccc	ccattcgtat	8040
aataattaca	tcacaagacg	tcttgccactc	atgagctgtc	cccacattag	gcttaaaaac	8100
agatgcaatt	cccgacgctc	taaaccaaac	cactttcacc	gctacacgac	cggggtata	8160
ctacgggtcaa	tgctctgaaa	tctgtggagc	aaaccacagt	ttcatgcca	tcgtcctaga	8220
attaattccc	ctaaaaatct	ttgaaatagg	gcccgtatit	acctatagc	accccctcta	8280
ccccctctag	agccccctgt	aaagctaact	tagcattaac	cttttaagtt	aaagattaag	8340
agaaccaaca	cctctttaca	gtgaaatgcc	ccaactaaat	actaccgtat	ggcccaccat	8400
aattaccccc	atactcctta	cactattcct	catcacccaa	ctaaaaatat	taaacacaaa	8460
ctaccaccta	cctccctcac	caaagcccat	aaaaataaaa	aattataaca	aacctgaga	8520
accaaataga	acgaaaatct	gttcgcttca	ttcattgccc	ccacaatcct	aggcctacc	8580
gccgcagtac	tgatcattct	atitccccct	ctattgatcc	ccacctocaa	atatctcatc	8640
aacaaccgac	taatcaccac	ccaacaatga	ctaataaac	taacctcaa	acaaatgata	8700
accatacaca	acactaaagg	acgaacctga	tctcttatac	tagtatoctt	aatcattttt	8760
attgcccaca	ctaacctcct	cggactcctg	cctcactcat	ttacaccaac	cacccaacta	8820
tctataaacc	tagccatggc	catccccctta	tgagcgggca	cagtgattat	aggctttcgc	8880
tctaagatta	aaaatgcctt	agcccacttc	ttaccacaag	gcacacctac	acctctatc	8940
cccatactag	ttattatcga	aaccatcagc	ctactcattc	aaccaatagc	cctggccgta	9000
cgcccaaccg	ctaacattac	tgacggccac	ctactcatgc	acctaatgg	aagcgccacc	9060
ctagcaatat	caaccattaa	ccttccccct	acacttatca	tcttcacaat	tctaattcta	9120
ctgactatcc	tagaaatcgc	tgctgcctta	atccaagcct	acgttttcac	acttctagta	9180
agcctctacc	tgacgacaa	cacataatga	cccaccaato	acatgcctat	catatagtaa	9240
aacccagccc	atgaccacct	acaggggccc	tctcagccct	cctaatagacc	tccggcctag	9300
ccatgtgatt	tcacttccac	tccataacgc	tcttcatact	aggcctacta	accaacacac	9360
taaccatata	ccaatgatgg	cgcgatgtaa	cacgagaaag	cacataccaa	ggccaccaca	9420

-continued

caccacctgt	caaaaaggc	cttcgatacg	ggataaatcct	atltattacc	tcagaagttt	9480
ttttcttcgc	aggatttttc	tgagcctttt	accactccag	cctagcccct	accccccaat	9540
taggagggca	ctggccccc	acaggcatca	ccccgctaaa	tcccctagaa	gtcccactcc	9600
taaacacatc	cgtattactc	gcatcaggag	tatcaatcac	ctgagctcac	catagtctaa	9660
tagaaaaaa	cggaaaccaa	ataattcaag	cactgcttat	tacaatttta	ctgggtctct	9720
atlttaccct	cctacaagcc	tcagagtact	tcgagtctcc	cttcaccatt	tccgacggca	9780
tctacggctc	aacatttttt	gtagccacag	gcttccacgg	acttcaogtc	attattggct	9840
caactttcct	cactatctgc	ttcatccgcc	aactaatatt	tcactttaca	tccaaacatc	9900
actttggcct	cgaagccgcc	gcctgatact	ggcattttgt	agatgtgggt	tgactatttc	9960
tgatgtctc	catctattga	tgagggtctt	actcttttag	tataaatagt	accgttaact	10020
tccaattaac	tagttttgac	aacattcaaa	aaagagtaat	aaacttggcc	ttaattttaa	10080
taatcaacac	cctcctagcc	ttactactaa	taattattac	atlttgacta	ccacaactca	10140
acggctacat	agaaaaatcc	accocctacg	agtgccggctt	cgaccctata	tccccgccc	10200
gcgtcccttt	ctccataaaa	ttcttcttag	tagctattac	cttcttatta	ttgatctag	10260
aaattgcctt	ccttttacc	ctaccatgag	ccctacaaac	aactaacctg	ccactaatag	10320
ttatgtcatc	cctcttatta	atcatcatcc	tagccctaag	tctggcctat	gagtgactac	10380
aaaaaggatt	agactgaacc	gaattgggat	atagtttaaa	caaacgaat	gatttcgact	10440
cattaaatta	tgataatcat	atltaccaaa	tgcccctcat	ttacataaat	attatactag	10500
catttaccat	ctcacttcta	ggaatactag	tatatcgctc	acacctoata	tcctccctac	10560
tatgcctaga	aggaataata	ctatcgctgt	tcattatagc	tactctcata	accctcaaca	10620
cccactccct	cttagccaat	attgtgccta	ttgccatact	agtctttgcc	gcctgcgaag	10680
cagcggggg	cctagcccta	ctagtctcaa	tctccaacac	atatggccta	gactacgtac	10740
ataacctaaa	cctactccaa	tgctaaaact	aatcgtccca	acaattatat	tactaccact	10800
gacatgactt	tccaaaaaac	acataatttg	aatcaacaca	accaccaca	gcctaattat	10860
tagcatcatc	cctctactat	tttttaacca	aatcaacaac	aacctattta	gctgttcccc	10920
aaccttttcc	tccgaccccc	taacaacccc	cctcctaata	ctaactacct	gactcctacc	10980
cctcacaatc	atggcaagcc	aacgccactt	atccagtcaa	ccactatcac	gaaaaaac	11040
ctacctctct	atactaactc	ccctacaaat	ctccttaatt	ataacattca	cagccacaga	11100
actaatcata	ttttatatct	tcttcgaaac	cacacttatc	cccaccttgg	ctatcatcac	11160
ccgatgaggc	aaccagccag	aacgcctgaa	cgcaggcaca	tacttccctat	tctacacct	11220
agtaggctcc	cttcccctac	tcatcgcact	aatttacct	cacaacaccc	taggctcact	11280
aaacattcta	ctactcactc	tactgcccc	agaactatca	aactcctgag	ccaataactt	11340
aatatgacta	gcttacacaa	tagcttttat	agtaaagata	cctctttacg	gactccaact	11400
atgactccct	aaagcccatg	tcgaagcccc	catcgctggg	tcaatagtac	ttgccgcagt	11460
actcttaaaa	ctaggcggct	atggtataat	acgcctcaca	ctcattotca	accccctgac	11520
aaaacacata	gcctaccctc	tcctgttact	atccctatga	ggcataatta	taacaagctc	11580
catctgccta	cgacaaacag	acctaaaatc	gctcattgca	tactcttcaa	tcagccacat	11640
agccctcgta	gtaacagcca	ttctcatcca	aaccccctga	agcttcaccg	gcgcagtcac	11700
tctcataatc	gcccacgggc	ttacatcctc	attactattc	tgcttagcaa	actcaaac	11760
cgaacgcact	cacagtcgca	tcataatcct	ctctcaagga	cttcaaac	tactcccact	11820

-continued

aatagctttt	tgatgacttc	tagcaagcct	cgctaacctc	gccttacccc	ccactattaa	11880
cctactggga	gaactctctg	tgctagtaac	cacgttctcc	tgatcaaata	tcactctcct	11940
acttacagga	ctcaacatac	tagtcacagc	cctatactcc	ctctacatat	ttaccacaaac	12000
acaatggggc	tactcacc	accacattaa	caacataaaa	ccctcattca	cacgagaaaa	12060
caccctcatg	ttcatacacc	tatcccccat	tctcctccta	tcctcaacc	ccgacatcat	12120
taccgggttt	tcctctgtga	aatatagttt	aaccaaaca	tcagattgtg	aatctgacaa	12180
cagaggctta	cgacccttta	tttaccgaga	aagctcacia	gaactgctaa	ctcatgcccc	12240
catgtctaac	aacatggctt	tctcaacttt	taaaggataa	cagctatcca	ttggtcttag	12300
gccccaaaa	ttttggtgca	actccaaata	aaagtaataa	ccatgcacac	tactataacc	12360
accctaacc	tgacttccct	aattcccccc	atccttacca	ccctcgtaa	ccctaacaaa	12420
aaaaactcat	acccccatta	tgtaaaatcc	attgtcgc	ccacctttat	tatcagtctc	12480
ttccccacaa	caatattcat	gtgcctagac	caagaagtta	ttatctcgaa	ctgacactga	12540
gccacaacc	aaacaacca	gctctcccta	agcttcaaac	tagactactt	ctccataata	12600
ttcatcccctg	tagcattgtt	cgttacatgg	tccatcatag	aattctcact	gtgatataata	12660
aactcagacc	caaacattaa	tcagttcttc	aaatatctac	tcactcttct	aattaccata	12720
ctaactcttag	ttaccgctaa	caacctattc	caactgttca	tcggctgaga	ggcgtagga	12780
attatacct	tcttgctcat	cagttgatga	tacgcccag	cagatgcaa	cacagcagcc	12840
attcaagcaa	tcctatacaa	ccgtatcggc	gatatcgtt	tcactcctgc	cttagcatga	12900
tttactctac	actccaactc	atgagaccca	caacaatatag	cccttctaaa	cgctaatcca	12960
agcctcacc	cactactag	cctcctccta	gcagcagcag	gcaaatcagc	ccaattaggt	13020
ctccaccct	gactcccctc	agccatagaa	ggccccacc	cagtctcagc	cctactccac	13080
tcaagcacta	tagttgtagc	aggaatcttc	ttactcatcc	gcttccacc	cctagcagaa	13140
aatagcccac	taatccaaac	tctaacacta	tgcttagggc	ctatcaccac	tctgttcgca	13200
gcagtctg	cccttacaca	aatgacatc	aaaaaatcg	tagccttctc	cacttcaagt	13260
caactaggac	tcataatagt	tacaatcggc	atcaaccaac	cacacctagc	attcctgcac	13320
atctgtacc	acgccttctt	caaagccata	ctatttatgt	gctccgggtc	catcatccac	13380
aaccttaaca	atgaacaaga	tattcgaaaa	ataggaggac	tactcaaac	catacctctc	13440
acttcaacct	ccctcaccat	tgccagccta	gcattagcag	gaataccttt	cctcaccaggt	13500
ttctactcca	aagaccacat	catcgaaacc	gcaaacatat	catacaciaa	cgctgagcc	13560
ctatctatta	ctctcatcgc	tacctccctg	acaagcgct	atagcactcg	aataattctt	13620
ctcaccctaa	caggtcaacc	tcgcttcccc	acccttacta	acattaacga	aaataacccc	13680
accctactaa	acccattaa	acgcctggca	gccggaagcc	tattcgcag	atttctcatt	13740
actaacaaca	ttccccccgc	atcccccttc	caacaacaa	tccccctcta	cctaaaactc	13800
acagcccctg	ctgtcacttt	cctaggactt	ctaacagccc	tagacctcaa	ctacctaacc	13860
aacaaactta	aaataaaatc	cccactatgc	acattttatt	tctccaacat	actoggattc	13920
taccctagca	tcacacaccg	cacaatcccc	tatctaggcc	ttottacgag	ccaaaacctg	13980
cccctactcc	tcctagacct	aactgacta	gaaaagctat	tacctaaaac	aatttcacag	14040
caccaaactc	ccacctccat	catcacctca	acccaaaaag	gcataattaa	actttacttc	14100
ctctctttct	tcttcccact	catcctaacc	ctactcctaa	tcacataacc	tattcccccg	14160

-continued

agcaatctca	attacaatat	atacaccaac	aaacaatggt	caaccagtaa	ctactactaa	14220
tcaacgcccc	taatcataca	aagccccgc	accaatagga	tcctcccgaa	tcaaccctga	14280
cccctctcct	tcataaatta	ttcagcttcc	tacactatta	aagtttacca	caaccaccac	14340
cccatcatac	tctttcacc	acagcaccaa	tcctacctcc	atcgctaacc	ccactaaaac	14400
actcaccaag	acctcaaccc	ctgaccccc	tgctcagga	tactcctcaa	tagccatcgc	14460
tgtagtatat	ccaaagacaa	ccatcattcc	ccctaaataa	attaaaaaaa	ctattaaac	14520
catataacct	ccccaaaat	tcagaataat	aacacaccgc	accacaccgc	taacaatcaa	14580
tactaaaccc	ccataaatag	gagaaggctt	agaagaaaac	cccacaaacc	ccattactaa	14640
accacacact	aacagaaaca	aagcatacat	cattattctc	gcacggacta	caaccacgac	14700
caatgatatg	aaaaaccatc	gttgatttcc	aactacaaga	acaccaatga	ccccaatcgc	14760
caaaattaac	cccctaataa	aattaattaa	ccactcattc	atcgacctcc	ccaaccctac	14820
caacatctcc	gcatgatgaa	actcggctc	actccttggc	gcctgcctga	tcctccaaat	14880
caccacagga	ctattcctag	ccatgcacta	ctcaccagac	gcctcaaccg	ccttttctac	14940
aatcgccac	atcactcgag	acgtaaatta	tggtggaatc	atccgctacc	ttcacgcaa	15000
tgggcctca	atattcttta	tctgcctctt	cctacacatc	ggcgaggcc	tatattacgg	15060
atcatttctc	tactcagaaa	cctgaaacat	cggcattatc	ctcctgcttg	caactatagc	15120
aacagccttc	ataggctatg	tcctcccggt	aggccaaata	tcattctgag	gggccacagt	15180
aattacaaac	ttactatccg	ccatcccata	cattgggaca	gacctagttc	aatgaatctg	15240
aggaggctac	tcagtagaca	gtcccacct	cacacgattc	tttacctttc	acttcatctt	15300
gcccttcatt	attgcagccc	tagcaacact	ccacctccta	ttcttgccag	aaacgggatc	15360
aaacaacccc	ctaggaatca	cctcccattc	cgataaaaac	accttccacc	cttactacac	15420
aatcaaagac	gccctcggtc	tacttctctt	ccttctctcc	ttaatgacat	taaacactatt	15480
ctcaccagac	ctcctaggcg	accagacaaa	ttatacccta	gccaacccct	taaacacccc	15540
tccccacatc	aagcccgaat	gatatttctc	attcgcctac	acaattctcc	gatccgtccc	15600
taacaaacta	ggaggcgtcc	ttgccttatt	actatocato	ctcatcctag	caataatccc	15660
catctccat	atatccaaac	aacaaagcat	aatatttctc	ccactaagcc	aatcacttta	15720
ttgactccta	gccgcagacc	tcctcattct	aacctgaatc	ggaggacaac	cagtaagcta	15780
cccttttacc	atcattggac	aagtagcctc	cgtactatac	ttcacaacaa	tcctaatoct	15840
aataccaact	atctccctaa	ttgaaaacaa	aatactcaaa	tgggcctgtc	cttgtagtat	15900
aaactaatac	accagtcttg	taaaccggag	atgaaaacct	ttttccaagg	acaatcaga	15960
gaaaaagtct	ttaactccc	cattagcacc	caaagctaag	attctaattt	aaactattct	16020
ctgttctttc	atggggaagc	agatttgggt	accaccaag	tattgactca	cccatcaaca	16080
accgctatgt	atttcgtaca	ttactgccag	ccaccatgaa	tattgtacgg	taccataaat	16140
acttgaccac	ctgtagtaca	taaaaaccca	atccacatca	aaacccctc	cccatgctta	16200
caagcaagta	cagcaatcaa	ccctcaacta	tcacacatca	actgcaactc	caaagccacc	16260
cctcaccac	taggatacca	acaaacctac	ccacccttaa	cagtacatag	tacataaagc	16320
catttaccgt	acatagcaca	ttacagtcaa	atcccttctc	gtcccctatg	atgaccccc	16380
tcagataggg	gtcccttgac	caccatctc	cgtgaaatca	atatcccgca	caagagtgtc	16440
actctcctcg	ctccgggccc	ataacacttg	gggtagctca	aagtgaactg	tatccgacat	16500

-continued

ctggttccta cttcagggtc ataaagccta aatagccac acgttcccct taaataagac 16560
atcacgatg 16569

We claim:

1. A method to aid in detecting the presence of tumor cells in a patient, comprising the steps of:

determining the presence of a homoplasmic single basepair substitution in a mitochondrial genome of a cell sample of a patient, wherein the substitution is found in a tumor of the patient but not in normal tissue of the patient; and

identifying the patient as having a tumor if one or more single basepair substitutions are determined in the mitochondrial genome of the cell sample of the patient.

2. The method of claim 1 wherein, prior to the step of determining the presence of a single basepair substitution, the substitution has been identified in a tumor.

3. The method of claim 1 wherein the cell sample is from a tissue suspected of harboring a metastasis.

4. The method of claim 1 wherein the cell sample is from blood.

5. The method of claim 1 wherein the cell sample is from urine.

6. The method of claim 1 wherein the cell sample is from sputum.

7. The method of claim 1 wherein the cell sample is from saliva.

8. The method of claim 1 wherein the cell sample is from feces.

9. The method of claim 1 wherein the step of determining comprises amplifying mitochondrial DNA.

10. The method of claim 1 wherein the step of determining comprises sequencing mitochondrial DNA.

11. The method of claim 1 wherein the step of determining comprises hybridization of DNA amplified from the mitochondrial genome of the cell sample to an array of oligonucleotides which comprises matched and mismatched sequences to human mitochondrial genomic DNA.

12. The method of claim 2 wherein the substitution was identified previously in a tumor of the patient.

13. The method of claim 12 wherein the patient has received anti-cancer therapy and the step of determining is performed at least three times to monitor progress of the anti-cancer therapy.

14. The method of claim 1 further comprising the step of testing a normal tissue of the patient to determine the absence of the substitution in the normal tissue.

15. The method of claim 1 wherein the cell sample is from a tumor.

16. The method of claim 1 wherein the substitution is a T to a C mutation.

17. The method of claim 1 wherein the substitution is a G to an A mutation.

18. A method to aid in detecting the presence of tumor cells in a patient, comprising the steps of:

determining the presence of a single basepair mutation in a mitochondrial genome of a cell sample of a patient,

wherein the mutation is found in a tumor of the patient but not in normal tissue of the patient, and wherein the mutation has previously been identified as a somatic mutation in a tumor, and

identifying the patient as having a tumor if one or more single basepair mutations are determined in the mitochondrial genome of the cell sample of the patient.

19. The method of claim 18 wherein the cell sample is from a tissue suspected of harboring a metastasis.

20. The method of claim 18 wherein the cell sample is from blood.

21. The method of claim 18 wherein the cell sample is from urine.

22. The method of claim 18 wherein the cell sample is from sputum.

23. The method of claim 18 wherein the cell sample is from saliva.

24. The method of claim 18 wherein the cell sample is from feces.

25. The method of claim 18 wherein the step of determining comprises amplifying mitochondrial DNA.

26. The method of claim 18 wherein the step of determining comprises sequencing mitochondrial DNA.

27. The method of claim 18 wherein the step of determining comprises hybridization of DNA amplified from the mitochondrial genome of the cell sample to an array of oligonucleotides which comprises matched and mismatched sequences to human mitochondrial genomic DNA.

28. The method of claim 18 wherein the single basepair mutation is a substitution mutation.

29. The method of claim 18 wherein the single basepair mutation is a one basepair insertion.

30. The method of claim 18 wherein the single basepair mutation is a one basepair deletion.

31. The method of claim 18 wherein the single basepair mutation is a transition mutation.

32. The method of claim 18 wherein the single basepair mutation is a homoplasmic mutation.

33. The method of claim 18 wherein the mutation has previously been identified as a somatic mutation in a tumor of the patient.

34. The method of claim 33 wherein the patient has received anti-cancer therapy and the step of determining is performed at least three times to monitor progress of the anti-cancer therapy.

35. The method of claim 18 further comprising the step of testing a normal tissue of the patient to determine the absence of the mutation in the normal tissue.

36. The method of claim 18 wherein the cell sample is from a tumor.

* * * * *

专利名称(译)	细微的线粒体突变作为肿瘤标志物		
公开(公告)号	US6750021	公开(公告)日	2004-06-15
申请号	US10/053611	申请日	2002-01-24
[标]申请(专利权)人(译)	约翰霍普金斯大学		
申请(专利权)人(译)	约翰·霍普金斯大学		
当前申请(专利权)人(译)	约翰·霍普金斯大学		
[标]发明人	POLYAK KORNELIA VOGELSTEIN BERT KINZLER KENNETH W		
发明人	POLYAK, KORNELIA VOGELSTEIN, BERT KINZLER, KENNETH W.		
IPC分类号	C12Q1/68 G01N33/53 C12N5/08 C12N15/09 C12Q1/6809 C12Q1/6886 G01N33/566 C07H21/04 C12P21/04		
CPC分类号	C12Q1/6809 C12Q1/6886 C12Q2600/156		
审查员(译)	霍利克, 肯尼斯R.		
其他公开文献	US20020164622A1		
外部链接	Espacenet USPTO		

摘要(译)

已经在某些肿瘤细胞的线粒体DNA中观察到同质体细胞突变的积累。可以通过确定来自患者细胞样品的线粒体基因组中单个碱基对突变的存在来检测肿瘤的存在或复发。

FIG. 1

