



US 20120052517A1

(19) **United States**

(12) **Patent Application Publication**  
**WARREN et al.**

(10) **Pub. No.: US 2012/0052517 A1**  
(43) **Pub. Date: Mar. 1, 2012**

(54) **METHODS FOR TESTING AN IMMUNE RESPONSE USING CULTURES OF T CELLS, B CELLS AND DENDRITIC CELLS**

(75) Inventors: **William L. WARREN**, Orlando, FL (US); **Donald DRAKE, III**, Orlando, FL (US); **Janice MOSER**, Orlando, FL (US); **Inderpal SINGH**, Orlando, FL (US); **Haifeng SONG**, Oviedo, FL (US); **Eric MISHKIN**, Winter Springs, FL (US); **John G. TEW**, Mechanicsville, VA (US)

(73) Assignees: **VIRGINIA COMMONWEALTH UNIVERSITY**, Richmond, VA (US); **SANOFI PASTEUR VAXDESIGN CORPORATION**, Orlando, FL (US)

(21) Appl. No.: **13/288,401**

(22) Filed: **Nov. 3, 2011**

**Related U.S. Application Data**

(60) Division of application No. 11/453,046, filed on Jun. 15, 2006, now Pat. No. 8,071,373, which is a continu-

ation-in-part of application No. 11/116,234, filed on Apr. 28, 2005, now Pat. No. 7,855,074.

(60) Provisional application No. 60/565,846, filed on Apr. 28, 2004, provisional application No. 60/643,175, filed on Jan. 13, 2005.

(30) **Foreign Application Priority Data**

Apr. 28, 2005 (US) ..... PCT/US05/14444

**Publication Classification**

(51) **Int. Cl.**  
**C12Q 1/02** (2006.01)  
**G01N 33/53** (2006.01)

(52) **U.S. Cl.** ..... **435/7.92; 435/29**

(57) **ABSTRACT**

The present invention relates to methods for preparing an artificial immune system. The artificial immune system comprises a cell culture comprising T cells, B cells and antigen-primed dendritic cells. The artificial immune system of the present invention can be used for in vitro testing of vaccines, adjuvants, immunotherapy candidates, cosmetics, drugs, biologics and other chemicals.

Figure 1

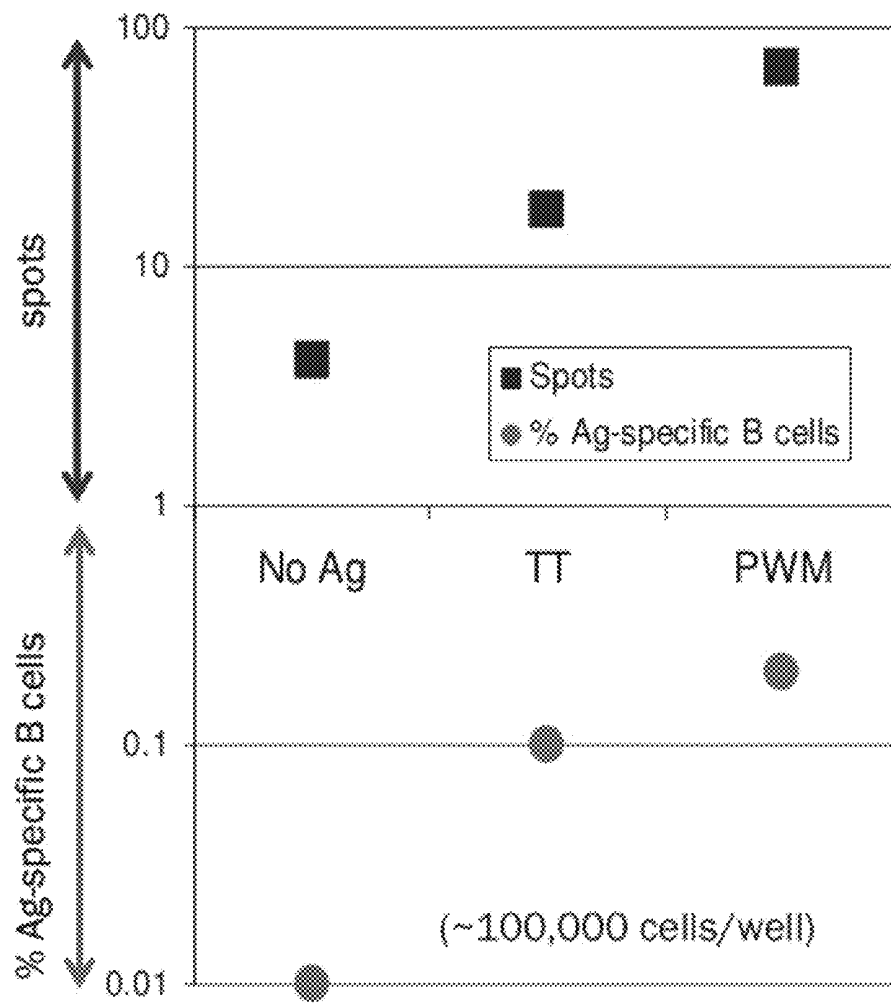


Figure 2

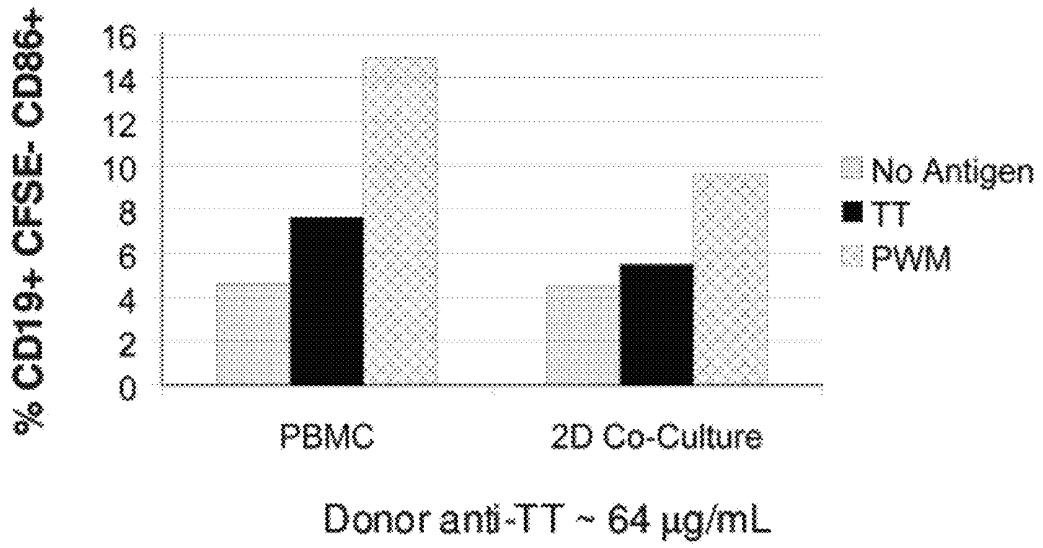
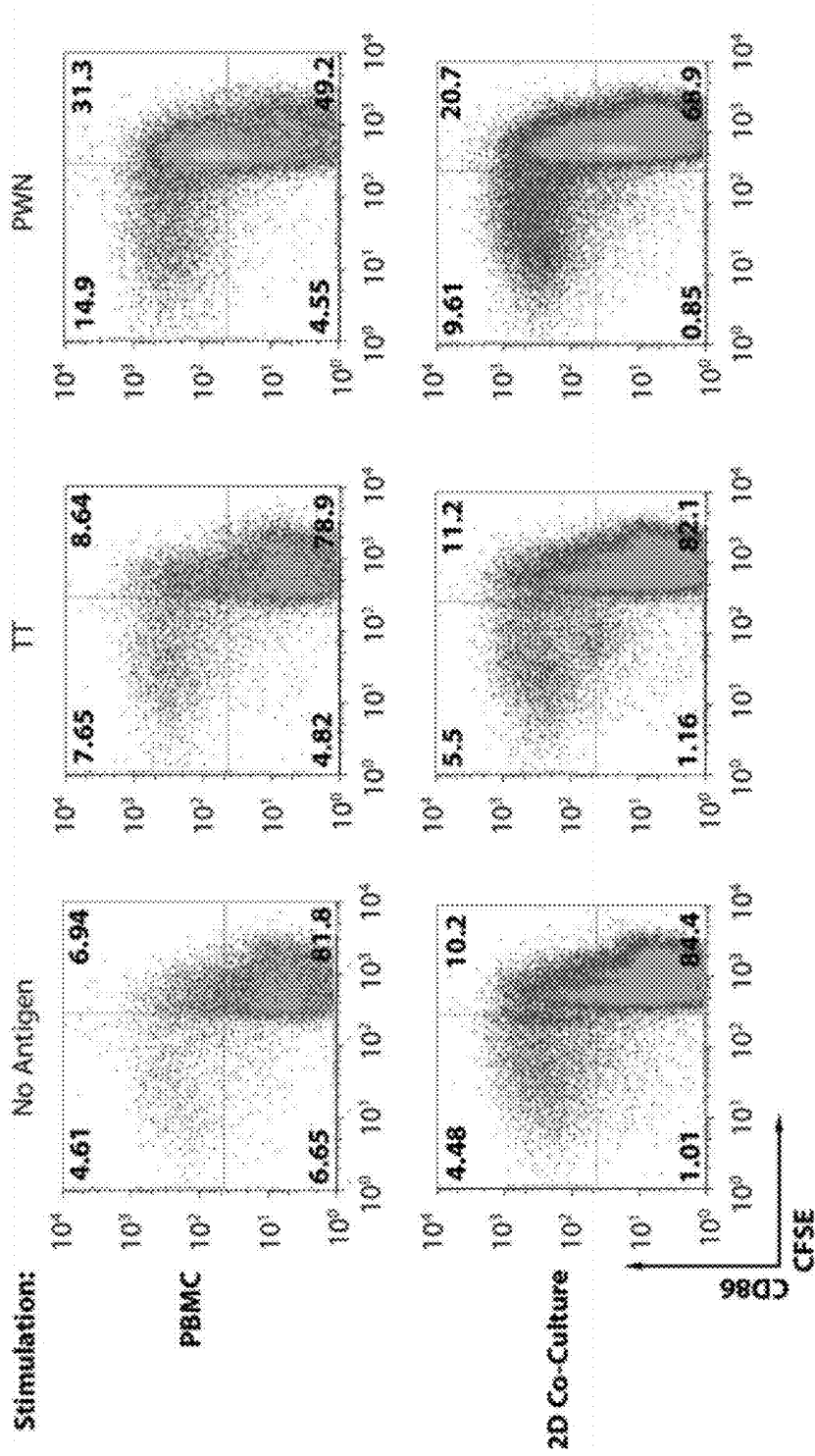
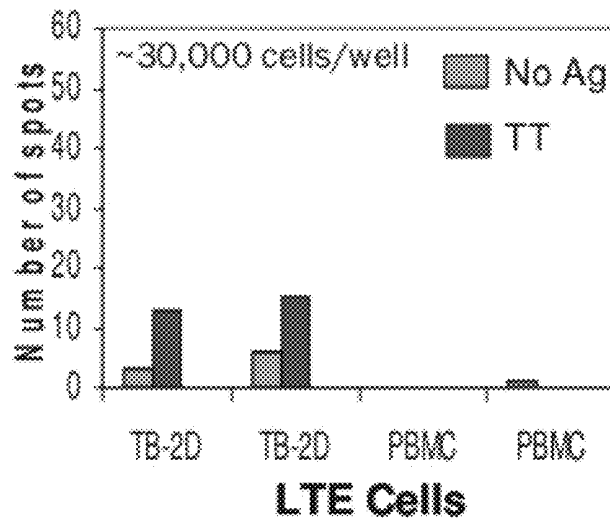
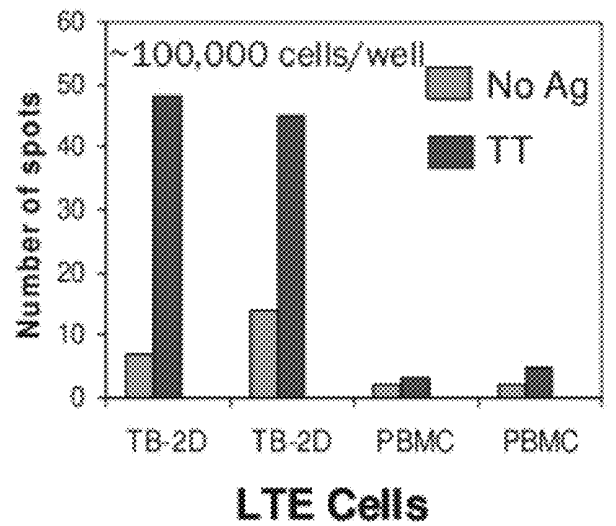


Figure 3



Donor anti-TT ~ 64 mg/mL  
 Plots are gated on CD19+ Lymphocytes

Figure 4



Improved tetanus toxoid-specific antibody responses in T and B cell co-culture LTE, as compared to PBMC cultures

Figure 5A

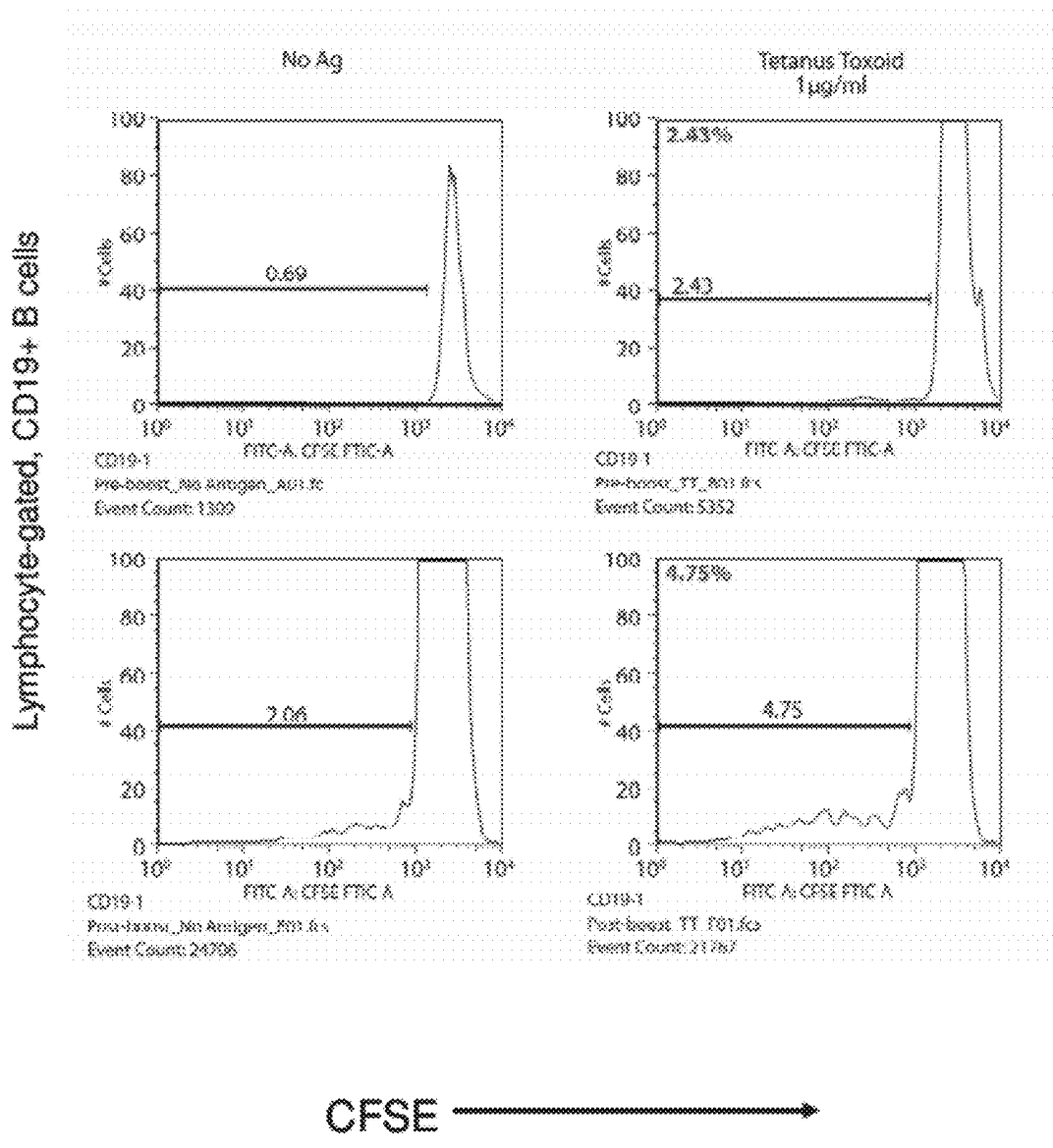
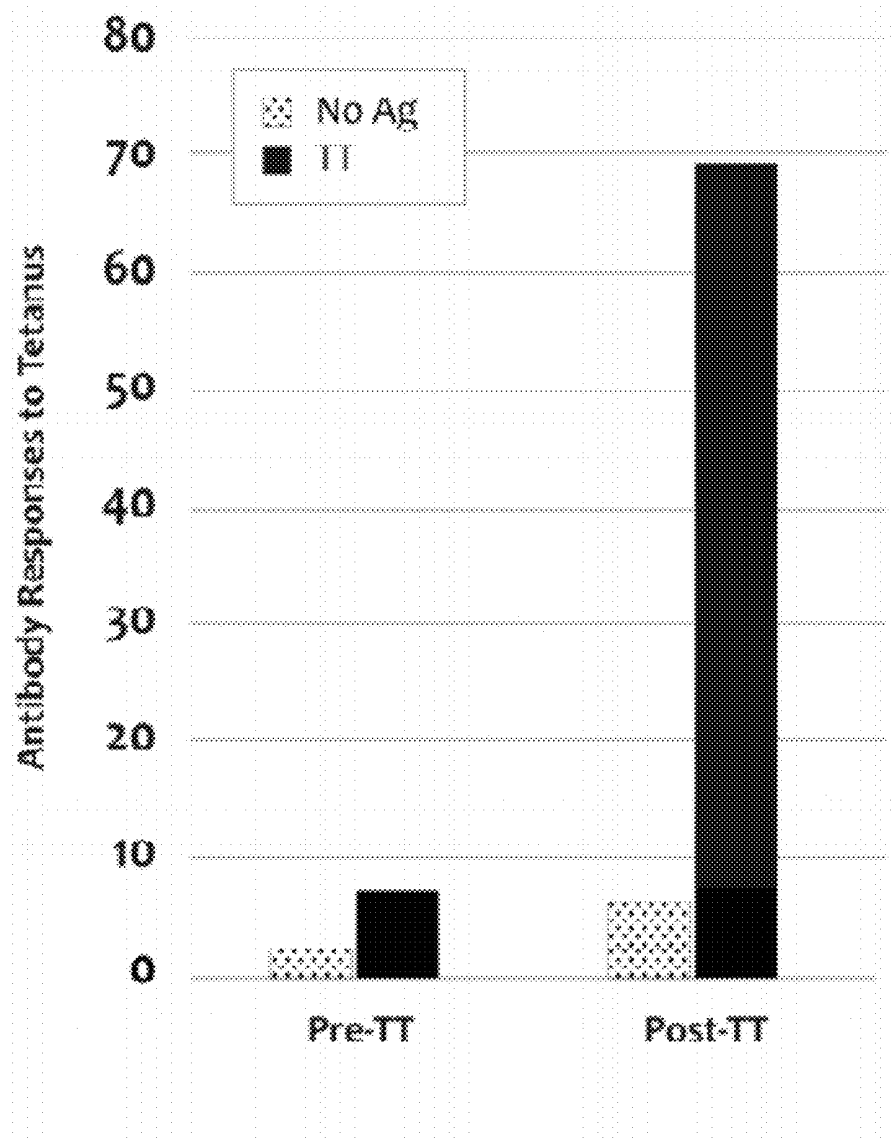


Figure 5B



T. B. DC co-culture conditions

T:B ratio = ~1:1.

~500,000 lymphocytes.

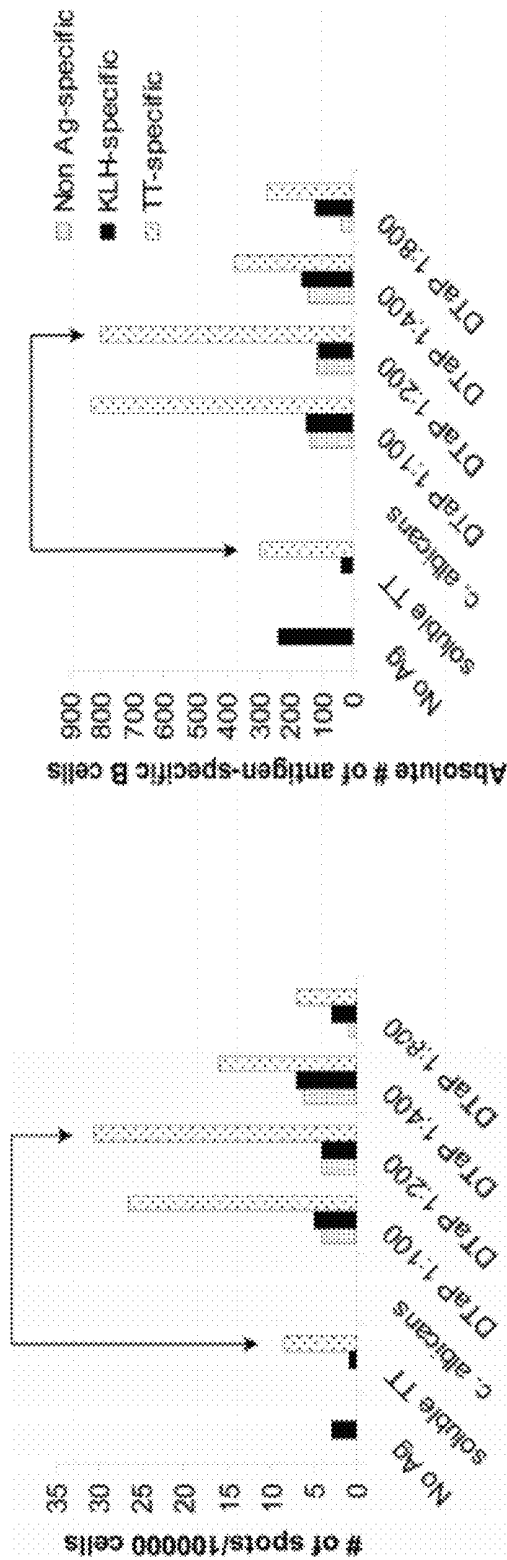
DC:T ratio: ~1:60.

X-VIVO media.

Cells harvested after 7 days.

Performed in duplicate.

Figure 6



- No apparent adverse effects due to thimerosal.
- DTaP vaccine induced more T/B cell activation and antibody responses than TT alone.

T, B, DC co-culture conditions  
 ~500,000 lymphocytes  
 T:B ratio = ~1:1  
 DC:T ratio: ~1:60  
 Cells harvested after 7 days  
 X-VIVO media  
 Donor ~25 µg/mL anti-TT  
 Performed in duplicate.

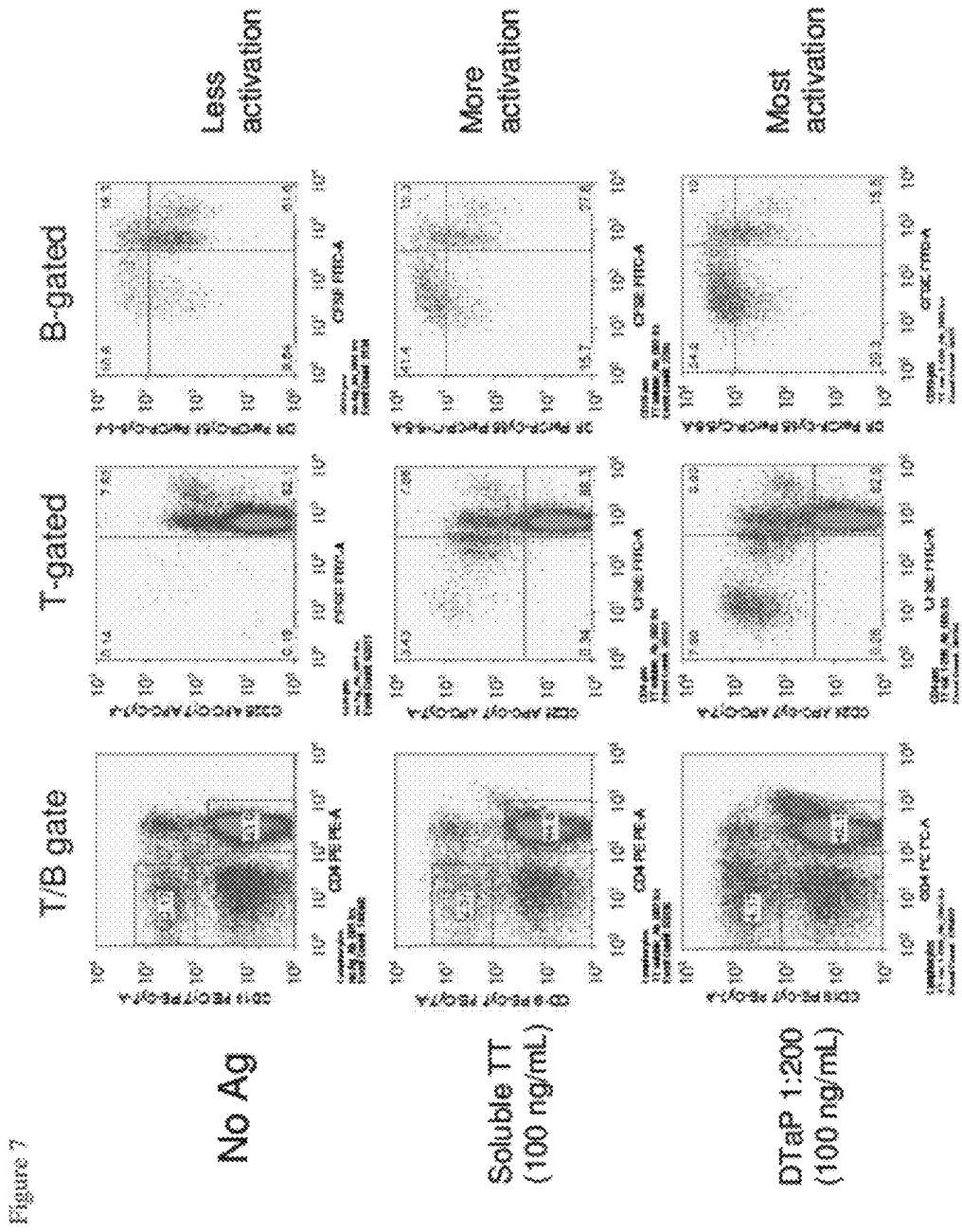


Figure 8A

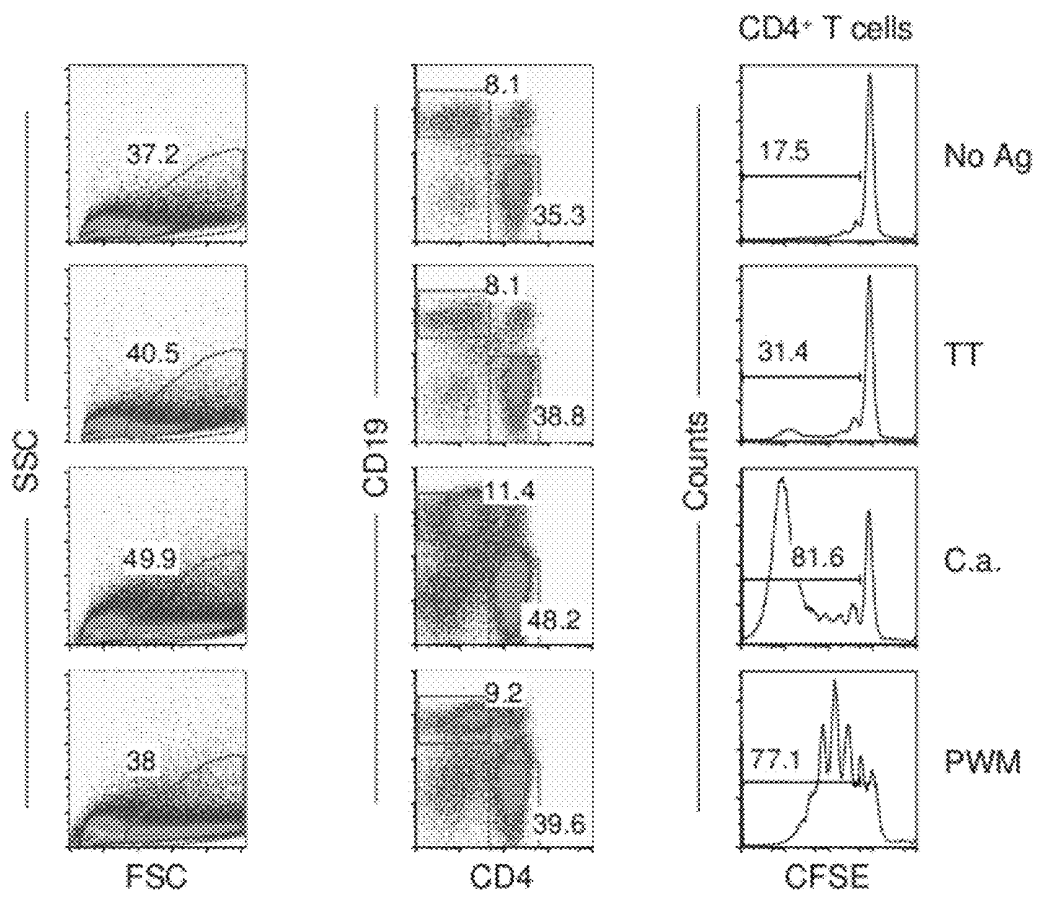
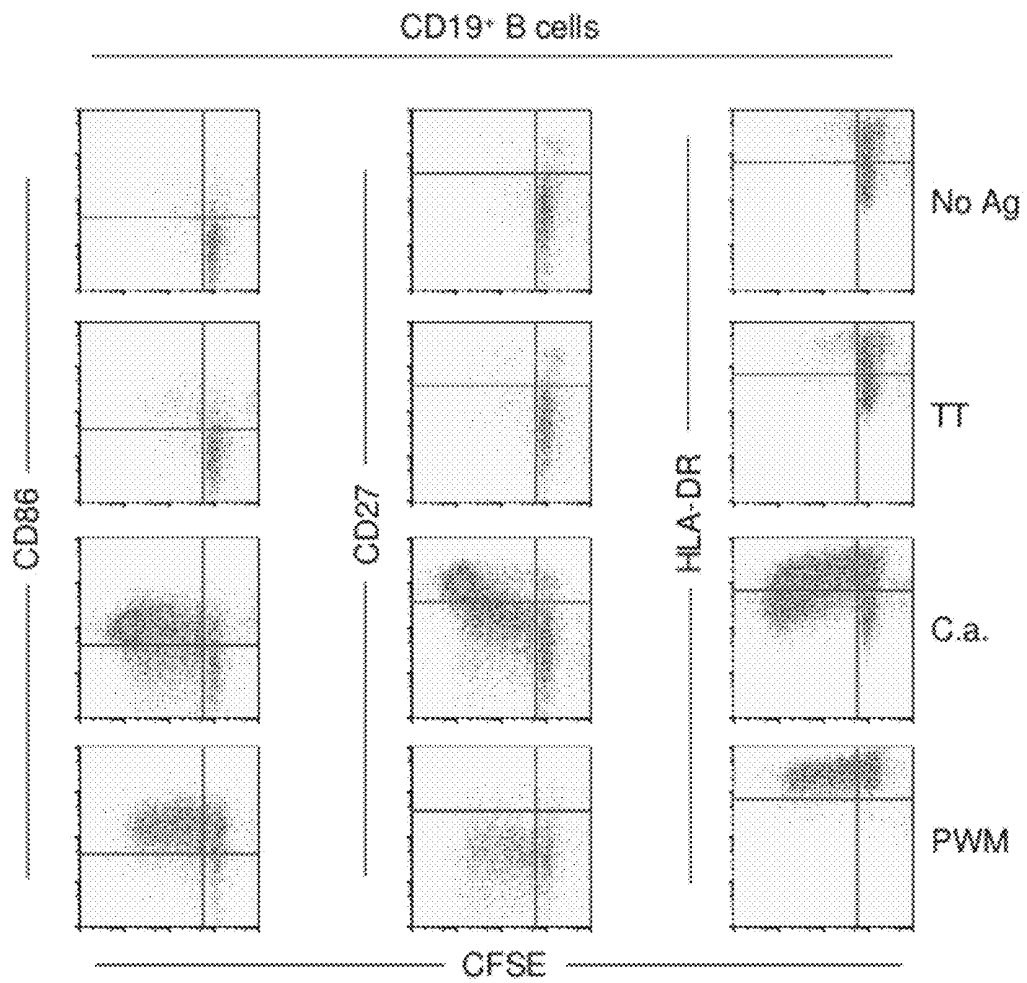


Figure 8B



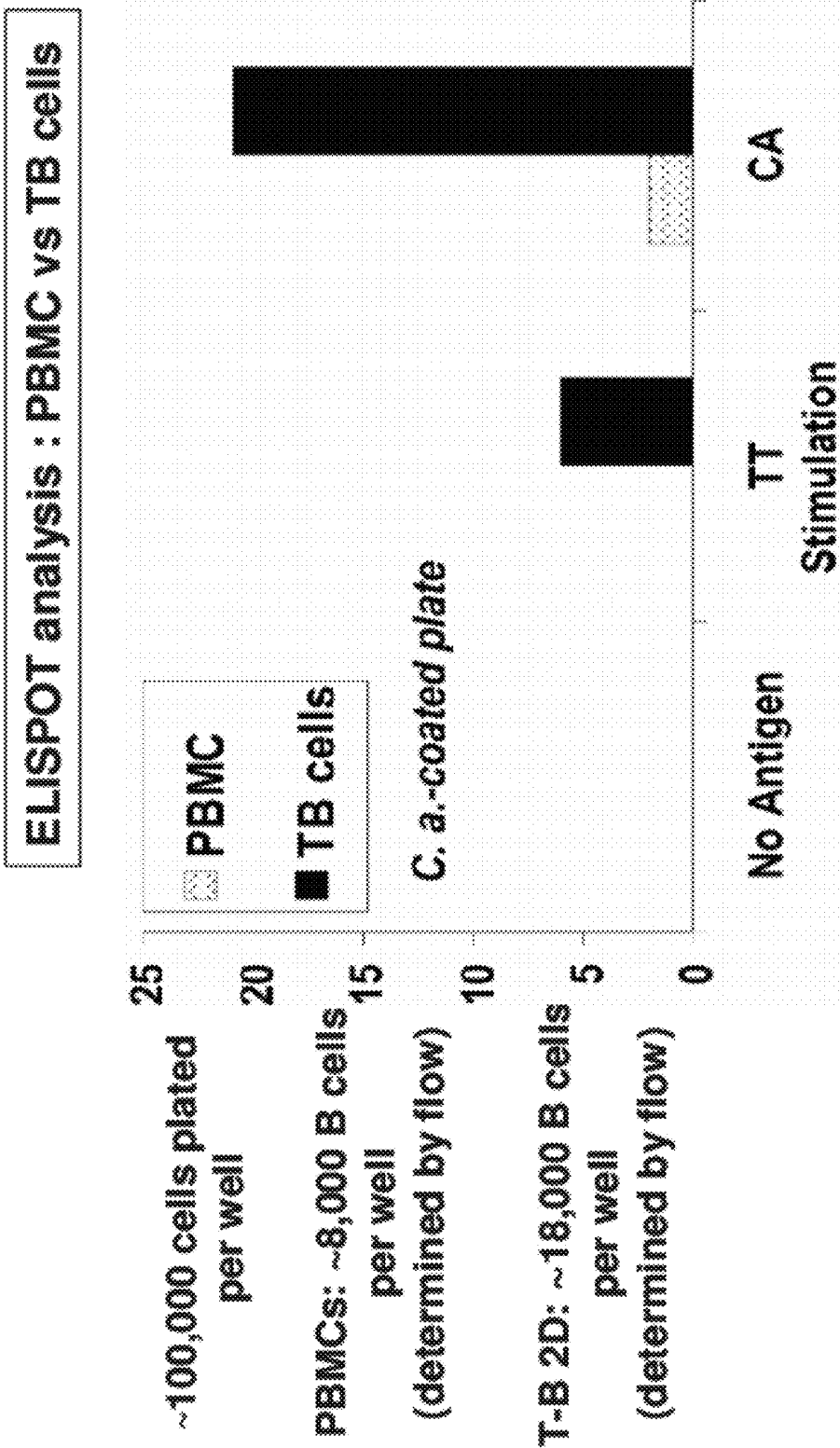


Figure 9

Figure 10

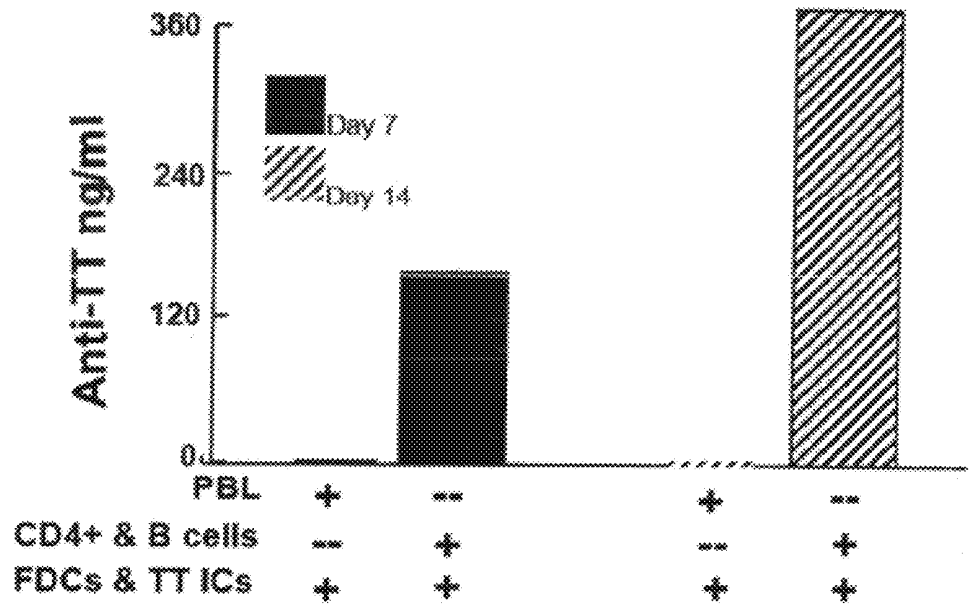
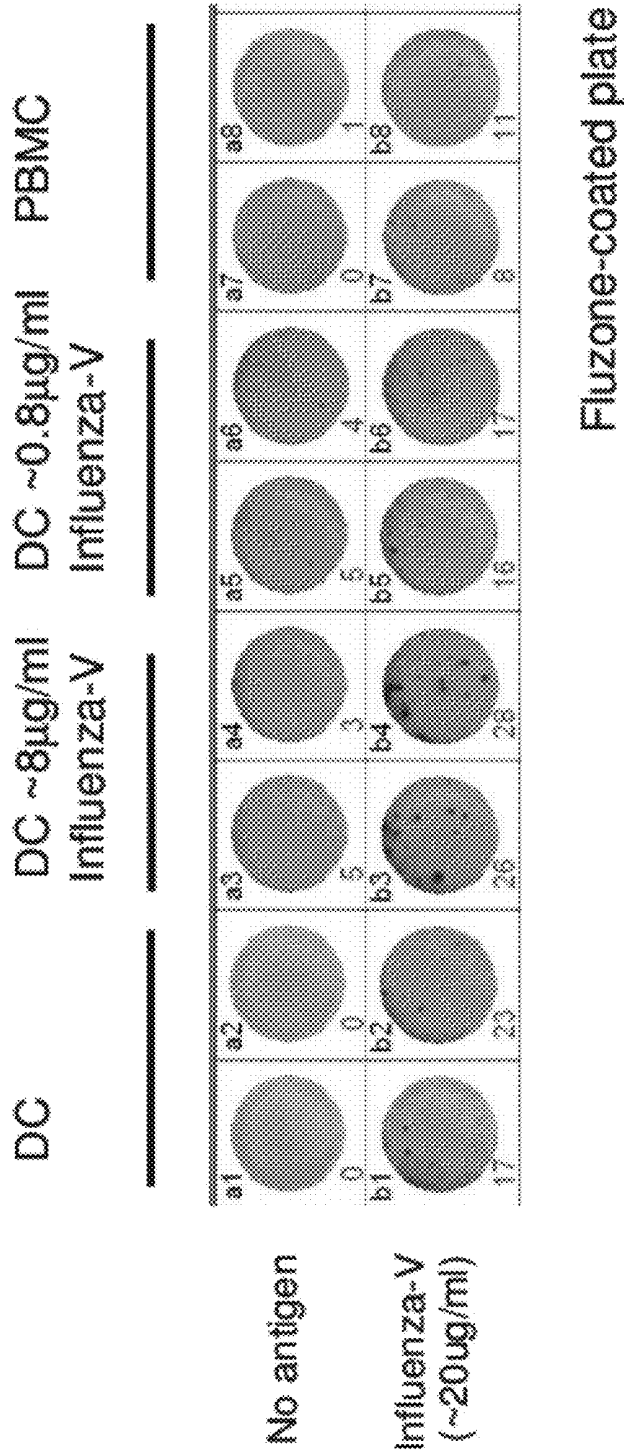


Figure 11



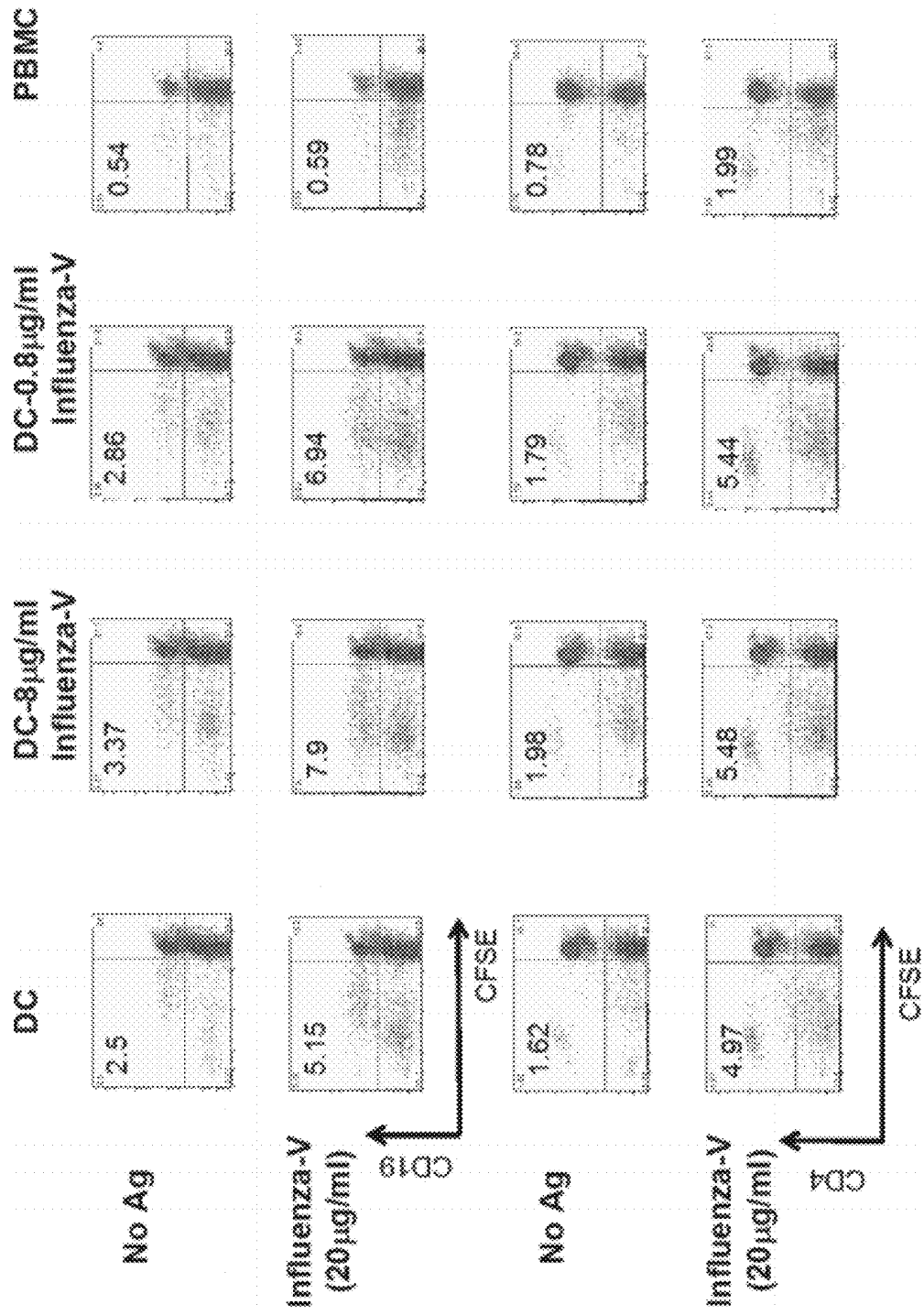


Figure 12

## METHODS FOR TESTING AN IMMUNE RESPONSE USING CULTURES OF T CELLS, B CELLS AND DENDRITIC CELLS

### CROSS REFERENCE TO RELATED CASES

**[0001]** This application is a divisional of U.S. application Ser. No. 11/453,046, filed Jun. 15, 2006, which is a continuation-in-part of U.S. application Ser. No. 11/116,234, filed Apr. 28, 2005, which claims the benefit of priority of U.S. Provisional Application Ser. No. 60/565,846, filed Apr. 28, 2004 and 60/643,175, filed Jan. 13, 2005. This application also claims the benefit of priority of International Application No. PCT/US2005/014444, filed Apr. 28, 2005. Each of these applications is hereby incorporated by reference in their entirety.

### STATEMENT REGARDING FEDERALLY SPONSORED RESEARCH

**[0002]** This invention was made with government support under contract number NBCHC060058, awarded by the Defense Advanced Research Projects Agency, issued by the U.S. Army Medical Research Acquisition Activity, and administered by the U.S. Department of the Interior-National Business Center. The government has certain rights in the invention.

### BACKGROUND OF THE INVENTION

**[0003]** 1. Field of the Invention

**[0004]** The present invention is directed to a method for constructing an integrated artificial human tissue construct system and, in particular, construction of an integrated human immune system for in vitro testing of vaccines, adjuvants, immunotherapy candidates, cosmetics, drugs, biologics, and other chemicals. The artificial immune system of the present invention is useful for assessing the interaction of substances with the immune system, and thus can be used to accelerate and improve the accuracy and predictability of, for example, vaccine, drug, biologic, immunotherapy, cosmetic, and chemical development.

**[0005]** 2. Background of the Technology

**[0006]** Despite the advent and promise of recent technologies, including combinatorial chemistry, high-throughput screening, genomics, and proteomics, the number of new drugs and vaccines reaching the market has not increased. In fact, the attrition rate within drug discovery programs exceeds 90%.

**[0007]** The introduction of these new (and expensive) technologies has not reduced the lost opportunity costs associated with immunotherapy development; rather, these costs have increased. Indeed, it is now estimated that almost \$1 billion is required to bring a new drug to the market.

**[0008]** The development and biological testing of human vaccines has traditionally relied on small animal models (e.g., mouse and rabbit models) and then non-human primate models. However, such small animal models are expensive and non-human primate models are both expensive and precious. Furthermore, there are many issues regarding the value of such animal studies in predicting outcomes in human studies.

**[0009]** A major problem remains the translation from test systems to human immunology. Successful transfer between traditional testing systems and human biology requires an intricate understanding of disease pathogenesis and immunological responses at all levels. Given worldwide health prob-

lems caused by known and emerging infectious agents and even potential biological warfare pathogens, it is time for a fresh approach to understanding disease pathogenesis, the development and rapid testing of vaccines, and insights gathered from such work.

**[0010]** The body's distributed immune system can be roughly divided into four distinct compartments: tissues and blood, mucosal tissues, body cavities, and skin. Because of ease of study, most is known about the tissue and blood compartment and its lymphoid tissues, the spleen and lymph nodes.

**[0011]** The mammalian immune system uses two general adaptive mechanisms to protect the body against environmental pathogens. When a pathogen-derived molecule is encountered, the immune response becomes activated to ensure protection against that pathogenic organism.

**[0012]** The first immune system mechanism is the non-specific (or innate) inflammatory response. The innate immune system appears to recognize specific molecules that are present on pathogens but not within the body itself.

**[0013]** The second immune system mechanism is the specific or acquired (or adaptive) immune response. Innate responses are fundamentally the same for each injury or infection; in contrast, acquired responses are custom-tailored to the pathogen in question. The acquired immune system evolves a specific immunoglobulin (antibody) response to many different molecules, or antigens, derived from the pathogen. In addition, a large repertoire of T cell receptors (TCR) is sampled for their ability to bind processed peptides from the antigens that are bound by major histocompatibility complex (MHC) class I and II proteins on the surface of antigen-presenting cells (APCs), such as dendritic cells (DCs). Acquired immunity is mediated by specialized immune cells called B and T lymphocytes (or simply B and T cells). Acquired immunity has specific memory for specific antigens; repeated exposure to the same antigen increases the memory response, which increases the level of induced protection against that particular pathogen.

**[0014]** B cells produce and mediate their functions through the actions of antibodies. B cell-dependent immune responses are referred to as "humoral immunity" because antibodies are found in body fluids.

**[0015]** T cell-dependent immune responses are referred to as "cell-mediated immunity," because effector activities are mediated directly by the local actions of effector T cells. The local actions of effector T cells are amplified through synergistic interactions between T cells and secondary effector cells, such as activated macrophages. The result is that the pathogen is killed and prevented from causing diseases.

**[0016]** The functional element of a mammalian lymph node is the follicle, which develops a germinal center (GC) when stimulated by an antigen. The GC is an active area within a lymph node, where important interactions occur in the development of an effective humoral immune response. Upon antigen stimulation, follicles are replicated and an active human lymph node may have dozens of active follicles, with functioning GCs. Interactions between B cells, T cells, and FDCs take place in GCs.

**[0017]** Various studies of GCs in vivo indicate that the many important events occur there, including immunoglobulin (Ig) class switching, rapid B cell proliferation (GC dark zone), production of B memory cells, accumulation of select populations of antigen-specific T cells and B cells, hypermutation, selection of somatically mutated B cells with high

affinity receptors, apoptosis of low affinity B cells, affinity maturation, induction of secondary antibody responses, and regulation of serum immunoglobulin G (IgG) with high affinity antibodies. Similarly, data from in vitro GC models indicate that FDCs are involved in stimulating B cell proliferation with mitogens and it can also be demonstrated with antigen (Ag), promoting production of antibodies including recall antibody responses, producing chemokines that attract B cells and certain populations of T cells, and blocking apoptosis of B cells.

**[0018]** Similar to pathogens, vaccines function by initiating an innate immune response at the vaccination site and activating antigen-specific T and B cells that can give rise to long term memory cells in secondary lymphoid tissues. The precise interactions of the vaccine with cells at the vaccination site and with T and B cells of the lymphoid tissues are important to the ultimate success of the vaccine.

**[0019]** Almost all vaccines to infectious organisms were and continue to be developed through the classical approach of generating an attenuated or inactivated pathogen as the vaccine itself. This approach, however, fails to take advantage of the recent explosion in our mechanistic understanding of immunity. Rather, it remains an empirical approach that consists of making variants of the pathogen and testing them for efficacy in non-human animal models.

**[0020]** Advances in the design, creation and testing of more sophisticated vaccines have been stalled for several reasons. First, only a small number of vaccines can be tested in humans, because, understandably, there is little societal tolerance for harmful side effects in healthy people, especially children, exposed to experimental vaccines. With the exception of cancer vaccine trials, this greatly limits the innovation that can be allowed in the real world of human clinical trials. Second, it remains challenging to predict which immunodominant epitopes are optimal for induction of effective CD4<sup>+</sup> and CD8<sup>+</sup> T cell responses and neutralizing B cell responses. Third, small animal testing, followed by primate trials, has been the mainstay of vaccine development; such approaches are limited by intrinsic differences between human and non-human species, and ethical and cost considerations that restrict the use of non-human primates. Consequently, there has been a slow translation of basic knowledge to the clinic, but equally important, a slow advance in the understanding of human immunity in vivo.

**[0021]** The artificial immune system (AIS) of the present invention can be used to address this inability to test many novel vaccines in human trials by instead using human tissues and cells in vitro. The AIS enables rapid vaccine assessment in an in vitro model of human immunity. The AIS provides an additional model for testing vaccines in addition to the currently used animal models.

**[0022]** Attempts have been made in modulating the immune system. See, for example, U.S. Pat. No. 6,835,550 B1, U.S. Pat. No. 5,008,116, WO 2004/101773 A1, Suematsu et al., [*Nat Biotechnol*, 22, 1539-1545, (2004)] and U.S. Patent Application No. 2003/0109042.

**[0023]** Nevertheless, none of these publications describe or suggest an artificial (ex vivo) human cell-based, immune-responsive system comprising a vaccination site (VS) and a lymphoid tissue equivalent (LTE). The present invention comprises such a system and its use in assessing the interaction of substances with the immune system.

#### SUMMARY OF THE INVENTION

**[0024]** The present invention is directed to artificial immune systems comprising cell cultures of B cells, T cells and antigen-primed dendritic cells.

**[0025]** The present invention is also directed to methods for detecting an immune response to an antigen using the cell cultures of the present invention.

#### BRIEF DESCRIPTION OF THE DRAWINGS

**[0026]** FIG. 1: Shows the detection of tetanus-specific antibody responses by ELISPOT and determination of the percentage of antigen-specific B cells using a 2D T and B cell co-culture.

**[0027]** FIG. 2: Depicts tetanus toxoid: B cell proliferation and comparison between PBMC and 2D T and B cell co-culture.

**[0028]** FIG. 3: Shows the flow cytometry data indicating B cell proliferation between PBMC and 2D T and B cell co-culture for the same cell donor shown in FIG. 2.

**[0029]** FIG. 4: Depicts tetanus toxoid-specific ELISPOT comparing PBMC to 2D T and B cell co-culture for the same cell donor shown in FIGS. 2 and 3.

**[0030]** FIG. 5: Shows an in vitro system representative of the physiological state promotes stronger B cell proliferative and tetanus toxoid-specific antibody responses, using a 2D co-culture of T and B cells and TT-pulsed DCs.

**[0031]** FIG. 6: Depicts tetanus-specific antibody responses to a DTaP (diphtheria and tetanus and acellular pertussis vaccine, adsorbed) vaccine and a simple tetanus toxoid Antigen, using a 2D co-culture of T and B cells and TT-pulsed DCs.

**[0032]** FIG. 7: Shows the influence of vaccine versus antigen in a lymphoid tissue equivalent (LTE) for the same cell donor shown in FIG. 6.

**[0033]** FIG. 8: Depicts Strong B cell and T cell proliferative responses seen against *C. albicans*, associated with potent activation (HLA-DR<sup>high</sup>, CD86<sup>high</sup>) of the dividing B cells using a 2D co-culture of T and B cells and TT-pulsed DCs.

**[0034]** FIG. 9: Shows specificity of the *C. albicans*-stimulated B cells demonstrated by ELISPOT for the same donor in FIG. 8. *C. albicans*-specific ELISPOT data comparing compares the 2D co-culture of T and B cells with PBMCs.

**[0035]** FIG. 10: Depicts antibody responses when some of the leukocytes are removed.

**[0036]** FIG. 11: Shows in vitro antigen-specific antibody response to influenza.

**[0037]** FIG. 12: Shows T and B cell proliferation induced by H1N1 influenza.

#### DETAILED DESCRIPTION OF THE INVENTION

**[0038]** The present invention concerns the development of accurate, predictive in vitro models to accelerate vaccine testing, allow collection of more informative data that will aid in redesigning and optimizing vaccine formulations before animal or clinical trials, and raise the probability that a vaccine candidate will be successful in human trials. More specifically, the present invention comprises controlling the nature and state of the cells in the lymphoid tissue equivalent (LTE, artificial lymph node) of the artificial immune system (AIS).

**[0039]** The AIS can be used to test vaccines and other pharmaceuticals for immune reactivity in a manner that is more predictive than animal experiments. Consequently, it can provide valuable pre-clinical data earlier in the research and development process. Antigenic molecules introduced to the AIS are acquired by dendritic cells (DCs) at the vaccination site (VS). The DCs are then transferred to the lymphoid

tissue equivalent (LTE), where they present the antigen to T cells, activating their immune function. Activated helper T cells co-stimulate B cells to induce antibody production, while activated cytotoxic T cells lyse antigen-bearing cells. Solubilized antigen(s) can also be introduced into the LTE to directly activate B cells for subsequent antibody production.

**[0040]** While a number of published reports have demonstrated antigen-specific B cell responses (to *C. albicans*, TT, and other antigens) in vitro, these results are typically achieved by stimulating and restimulating cultures of whole PBMCs with antigen and exogenous factors to boost B cell proliferation and/or activation.

**[0041]** The present invention comprises the detection of antibody responses using defined cultures of B cells, T cells, and DCs and optionally follicular dendritic cells (FDCs), in 2-dimensional construct assay. The presence of secondary cells provides a more physiological environment for B cell activation and differentiation, such that artificial factors in the cultures are not necessary to detect specific antibody responses.

**[0042]** Using embodiments of the present invention, we have generated antigen-specific B cell responses using a 2-dimensional (2D) co-culture system comprising T cells, B cells, and antigen-pulsed DCs. In the examples, responses were generated against tetanus toxoid (TT) and a whole protein extract of *Candida albicans* (*C. albicans*). The results from these examples show that culturing human T and B cells together in vitro at a ~1:1 ratio, versus the ratio of T and B cells naturally found in the blood, gave stronger antigen responses, by both analysis of activation and proliferation (flow cytometry) and antibody production (ELISPOT). Although the preferred ratio of T cells:B cells is ~1:1, the ratio of T cells:B cells can range from ~1:10 to ~10:1. In the cultures of the examples, "T cells" included both CD4<sup>+</sup> and CD8<sup>+</sup> T cells. In peripheral blood, the T (total T cells):B cell ratio is ~7:1. In the lymph node, the T (total T cells):B cell ratio is ~1:1.6. In the germinal center, the T cell:B cell ratio is ~1:8, and there the T cells are primarily CD4<sup>+</sup> T cells.

**[0043]** In the results of the experiments shown, engineered serum-free media (X-VIVO) was used, though we have also used serum (e.g., human, bovine) in other experiments (data not shown). Dendritic cells (DCs) were generated from CD14-purified monocytes that were cultured for ~7 days in X-VIVO 15 media, supplemented with GM-CSF (~100 ng/ml) and IL-4 (~25 ng/ml). The cytokine-derived DCs were pulsed with antigen or vaccine and then cocultured with T and B cells. After adding the antigen-prepulsed dendritic cells to the cell culture, further soluble antigen can also be added to the cell culture. For PBMC cultures, either the antigen was added to the assay, or antigen-pulsed DCs were added to the assay. In FIGS. 1 to 9, antigen-pulsed DCs were added to the co-culture of T and B cells, while soluble antigen was added to the PBMC cultures. FIG. 9 shows a comparison of the co-culture to PBMCs, with antigen-pulsed DCs added to both systems.

#### EXAMPLES

**[0044]** These experiments provide a direct comparison of PBMCs versus a co-culture of negatively selected T and B cells that were plated at a ~1:1 ratio in—in these examples—a 96-well, round bottom plate. All assays were harvested on day 7 of in vitro culture. All experiments were analyzed by ELISPOT for antibody production and by flow cytometry for proliferation, as determined by loss of CFSE. In the ELISPOT

assays because there were different ratios of T and B cells in the PBMC culture compared with the TB-2D cultures, there were fewer B cells plated into the ELISPOT wells. However, in the experiment in FIG. 4, the numbers of B cells used in the ELISPOT experiments for both the PBMC and co-culture assays were approximately equal. We determined the approximate number of B cells in the ELISPOT wells by flow cytometry to enable comparisons.

**[0045]** These results show that culturing human T and B cells together in vitro at a ~1:1 ratio compared to the ratio of T and B cells naturally found in the blood give stronger antigen responses, by both analysis of activation and proliferation (flow cytometry) and antibody production (ELISPOT).

#### Example 1

**[0046]** B and T cell co-culture with tetanus toxoid, showing the ability to detect tetanus-specific antibody responses (FIG. 1).

#### Example 2a

**[0047]** PBMC versus co-culture, using a tetanus toxoid antigen. Even though similar B cell proliferation responses were seen in PBMC and 2D T and B cell co-cultures (FIGS. 2, 3), an improved tetanus toxoid-specific antibody response was observed in a T and B cell co-culture LTE, as compared with PBMC cultures (FIG. 4).

#### Example 2b

**[0048]** PBMC versus co-culture, using *Candida albicans* antigens. FIG. 9 shows *C. albicans*-specific ELISPOT data, comparing TB-2D to PBMCs. In this experiment, DCs were pulsed with TT antigen only, but the ELISPOT was conducted on both TT- and *C. albicans*-coated plates.

#### Example 2c

**[0049]** PBMC versus co-culture (FIG. 10). In this example we addressed the question of what happens if we take cells from an apparent "non-responder" and use only the GC cells from the leukocytes. Note the response when some of the leukocytes are removed (FIG. 10); non-responders in vitro now show an antibody response.

**[0050]** Here, we used human CD4<sup>+</sup> T and B cells with FDCs and formed GCs in vitro and then examined whether IgG production could be obtained against a recall antigen. Specifically, we used tetanus toxoid (TT) in these experiments and isolated human B cells and CD4<sup>+</sup> T cells from peripheral blood.

**[0051]** We observed IgG recall responses using only the T cells, B cells, and FDCs that are typically found in GCs. In contrast, in the presence of PBL cells not normally found in GCs, no antibody response was detectable in cells from some donors. These results show that removing (not including) other cells, such as NK cells, monocytes, and CD8<sup>+</sup> T cells, improved the IgG response.

#### Example 3

**[0052]** In vitro system representative of the physiological state promotes higher B cell proliferative and tetanus toxoid-specific antibody responses following tetanus vaccination (FIG. 5). The post tetanus toxoid experiment was conducted 5 weeks following vaccination. The tetanus antibody titer

before vaccination was  $\sim 40$   $\mu\text{g}/\text{mL}$ ; after vaccination it was  $\sim 300$   $\mu\text{g}/\text{mL}$ . T cells represent both  $\text{CD4}^+$  and  $\text{CD8}^+$  T cells. Peripheral blood has a T:B ratio of  $\sim 7:1$  (total T cells). The lymph node has a T:B ratio of  $\sim 1:1.6$  (total T cells). The germinal center has a T:B ratio of  $\sim 1:8$  (primarily  $\text{CD4}^+$  T cells).

#### Example 4

**[0053]** Use of a vaccine to elicit in vitro immune responses in a co-culture of T and B cells (FIGS. 6 and 7). DCs were pulsed with the vaccine or the tetanus toxoid antigen and were then added to the co-culture of T and B cells. Tripedia® (diphtheria and tetanus toxoids and acellular pertussis vaccine, adsorbed; DTaP), for intramuscular use, is a sterile preparation of diphtheria and tetanus toxoids adsorbed, with acellular pertussis vaccine in an isotonic sodium chloride solution containing thimerosal (preservative) and sodium phosphate (to control pH). After shaking, the vaccine is a homogeneous white suspension. Tripedia® vaccine is distributed by Aventis Pasteur Inc.

#### Example 5

**[0054]** To detect antigen-specific antibody responses, we developed an ELISPOT approach to quantify B cell responses (antigen specificity) on a per cell basis. In this example, T cells were cultured with B cells at a  $\sim 1:1$  ratio, with cytokine-derived DCs included at a DC:T and B (total) cell ratio of  $\sim 1:60$ . Soluble TT ( $\sim 1$   $\mu\text{g}/\text{ml}$ ) or *C. albicans* ( $\sim 10$   $\mu\text{g}/\text{ml}$ ) was included for the entire 7-day culture, while other wells received pokeweed mitogen (PWM; a strong, non-specific lymphocyte stimulator) for the final 3 days of the culture.

**[0055]** On the seventh day, the lymphocytes were examined for marker expression and CFSE profiles by flow cytometry and the frequency of TT and *C. albicans*-specific B cells was calculated by ELISPOT. Briefly,  $\sim 30 \times 10^3$  total lymphocytes were plated in duplicate wells of an ELISPOT plate that had been pre-coated with TT, *C. albicans*, or anti-immunoglobulin (Ig, to gauge total antibody production).

**[0056]** The cells were then serially diluted five times at a  $\sim 1:3$  ratio and PWM was added to all wells to trigger antibody production. The cells were then incubated for  $\sim 5$  hr at  $37^\circ\text{C}$ . in a 5%  $\text{CO}_2$  incubator and washed away. Plate-bound antibody was detected using techniques similar to those required for ELISA.

**[0057]** The results in FIG. 8 demonstrate strong B cell and T cell proliferative responses against *C. albicans*, associated with potent activation ( $\text{HLA-DR}^{\text{high}}$ ,  $\text{CD86}^{\text{high}}$ ) of the dividing B cells. Furthermore, a subset of the most divided B cells appears to have acquired a memory phenotype, indicated by increased CD27 expression.

**[0058]** The lack of a robust response against TT was consistent with the weak serum TT titer for this donor ( $\sim 4$   $\mu\text{g}/\text{ml}$ ). As expected, PWM triggered potent T and B cell proliferative responses, though not as many divisions were seen as with specific antigen stimulation, likely because the cells were only cultured with the mitogen for 3 days.

**[0059]** The specificity of the *C. albicans*-stimulated B cells was demonstrated by ELISPOT (FIG. 2). This experiment suggests that a  $1 \times$  stimulation with *C. albicans* did give rise to a small population of antibody-producing cells ( $\sim 0.2\%$  of total B cells) that was not detected in untreated cultures or those stimulated with TT (left and middle wells). This discrepancy between the frequency of proliferating cells and *C.*

*albicans*-specific B cells detected by ELISPOT could be the result of several factors. A likely explanation is that we used a crude *C. albicans* whole antigen extract containing  $\sim 19\%$  carbohydrates (by weight). While *C. albicans* polysaccharides are strong inducers of B cell responses, only protein antigen-specific responses would be detected in the ELISPOT assay.

#### Example 6

**[0060]** Tetanus-specific antibodies were detected in another ELISPOT experiment where the cell donor's serum anti-tetanus level was higher (63  $\mu\text{g}/\text{ml}$ ), and DCs were cultivated in XVIVO-15 medium. All other components, concentrations and ratios were left unchanged, except that of the number of cells deposited per ELISPOT well was increased; the higher number used was  $\sim 1 \times 10^5$  cells/well.

**[0061]** In this experiment, both TT- and *C. albicans*-specific antibodies were observed (up to 48 and 33 spots per well, respectively), although a high level of non-specific response, especially in the presence of CCL21/anti-CD40 additives, did not allow a firm conclusion in favor of antigen-specific versus mitogenic activity.

#### Example 7

**[0062]** The specificity of the *C. albicans*-stimulated B cells was demonstrated by ELISPOT (FIG. 2) for both PBMC and 2D co-culture of T and B cells with *C. albicans*-pulsed DCs added to both systems. This experiment indicates that even if the PBMC cultures have antigen-pulsed DCs added that the co-culture system shows a stronger antibody response, as determined by ELISPOT.

#### Example 8

**[0063]** In vitro antigen-specific antibody response to influenza (FIG. 11) and T and B cell proliferation induced by H1N1 influenza (FIG. 12). DCs were treated (or not) with H1N<sub>1</sub> (New Caledonia) influenza. 2D cultures of DCs and T and B cells were stimulated (or not) with 'soluble' H1N1 influenza. As can be seen, there was antigen-specific proliferation of T and B lymphocytes and generation of antigen-specific antibody secreting B lymphocytes (ELISPOT data). Note the largest (apparently synergistic) response was observed when we pulsed the DCs with antigen and then added soluble antigen to the DC/T and B cell cultures, to activate the B cells, which are antigen-presenting cells (APCs). Again, the T and B cell co-culture is superior to PBMC cultures.

**[0064]** While the foregoing specification teaches the principles of the present invention, with examples provided for the purpose of illustration, it will be appreciated by one skilled in the art from reading this disclosure that various changes in form and detail can be made without departing from the true scope of the invention.

What is claimed is:

1. A method for testing an immune response to an antigen comprising:
  - a) preparing a cell culture consisting of:
    - an enriched population of blood-derived T cells,
    - an enriched population of blood-derived B cells, and
    - dendritic cells primed with a selected antigen; and
  - b) assaying for T cell and/or B cell activity in the cell culture of a), thereby testing an immune response to an antigen.

2. The method of claim 1, further comprising adding the selected antigen to the cell culture of a) prior to the assaying of b).

3. The method of claim 1, wherein the T cells and B cells are present in the cell culture in an approximately 1:1 ratio, and the ratio of dendritic cells:(T cells+B cells) is approximately 1:60.

4. The method of claim 2, wherein the T cells and B cells are present in the cell culture in an approximately 1:1 ratio, and the ratio of dendritic cells:(T cells+B cells) is approximately 1:60.

5. The method of claim 1, wherein the media of the cell culture is serum-free cell culture media.

6. The method of claim 2, wherein the media of the cell culture is serum-free cell culture media.

7. The method of claim 3, wherein the media of the cell culture is serum-free cell culture media.

8. The method of claim 1, wherein said assaying for T cell and/or B cell activity is measuring one or more of (i) T cell and/or B cell activation, (ii) T cell and/or B cell proliferation, and (iii) antibody production by B cells.

9. The method of claim 2, wherein said assaying for T cell and/or B cell activity is measuring one or more of (i) T cell and/or B cell activation, (ii) T cell and/or B cell proliferation, and (iii) antibody production by B cells.

10. The method of claim 3, wherein said assaying for T cell and/or B cell activity is measuring one or more of (i) T cell and/or B cell activation, (ii) T cell and/or B cell proliferation, and (iii) antibody production by B cells.

11. The method of claim 4, wherein said assaying for T cell and/or B cell activity is measuring one or more of (i) T cell and/or B cell activation, (ii) T cell and/or B cell proliferation, and (iii) antibody production by B cells.

12. The method of claim 1, wherein said antigen is selected from the group consisting of a vaccine, an adjuvant, an immunotherapy candidate, a cosmetic, a drug, a biologic, and a chemical compound.

13. The method of claim 2, wherein said antigen is selected from the group consisting of a vaccine, an adjuvant, an immunotherapy candidate, a cosmetic, a drug, a biologic, and a chemical compound.

14. The method of claim 3, wherein said antigen is selected from the group consisting of a vaccine, an adjuvant, an immunotherapy candidate, a cosmetic, a drug, a biologic, and a chemical compound.

15. The method of claim 4, wherein said antigen is selected from the group consisting of a vaccine, an adjuvant, an immunotherapy candidate, a cosmetic, a drug, a biologic, and a chemical compound.

16. The method of claim 8, wherein said antigen is selected from the group consisting of a vaccine, an adjuvant, an immunotherapy candidate, a cosmetic, a drug, a biologic, and a chemical compound.

17. The method of claim 9, wherein said antigen is selected from the group consisting of a vaccine, an adjuvant, an immunotherapy candidate, a cosmetic, a drug, a biologic, and a chemical compound.

18. The method of claim 10, wherein said antigen is selected from the group consisting of a vaccine, an adjuvant, an immunotherapy candidate, a cosmetic, a drug, a biologic, and a chemical compound.

19. The method of claim 11, wherein said antigen is selected from the group consisting of a vaccine, an adjuvant, an immunotherapy candidate, a cosmetic, a drug, a biologic, and a chemical compound.

\* \* \* \* \*

专利名称(译)	使用t细胞，b细胞和树突细胞的培养物测试免疫应答的方法		
公开(公告)号	<a href="#">US20120052517A1</a>	公开(公告)日	2012-03-01
申请号	US13/288401	申请日	2011-11-03
[标]申请(专利权)人(译)	弗吉尼亚联邦大学 赛诺菲巴斯德维思设计公司		
申请(专利权)人(译)	弗吉尼亚联邦大学 赛诺菲巴斯德VAXDESIGN CORPORATION		
当前申请(专利权)人(译)	弗吉尼亚联邦大学 赛诺菲巴斯德VAXDESIGN CORPORATION		
[标]发明人	WARREN WILLIAM L DRAKE III DONALD MOSER JANICE SINGH INDERPAL SONG HAIFENG MISHKIN ERIC TEW JOHN G		
发明人	WARREN, WILLIAM L. DRAKE, III, DONALD MOSER, JANICE SINGH, INDERPAL SONG, HAIFENG MISHKIN, ERIC TEW, JOHN G.		
IPC分类号	C12Q1/02 G01N33/53 C12N5/071 C12N5/0781 C12N5/0783 C12N5/0784 C12Q1/00 G01N33/50		
CPC分类号	C12N5/0635 G01N33/5088 C12N5/0639 C12N5/0697 C12N2500/90 C12N2501/21 C12N2502/1107 C12N2502/1114 C12N2502/1121 C12N2502/28 C12N2503/04 C12N2510/04 C12N2531/00 C12N2533 /50 C12N2533/54 C12N2535/10 G01N33/505 G01N33/5052 C12N5/0636		
优先权	PCT/US2005/014444 2005-04-28 WO 60/643175 2005-01-13 US 60/565846 2004-04-28 US		
其他公开文献	US8697371		
外部链接	<a href="#">Espacenet</a> <a href="#">USPTO</a>		

#### 摘要(译)

本发明涉及制备人工免疫系统的方法。人工免疫系统包括细胞培养物，其包含T细胞，B细胞和抗原引发的树突细胞。本发明的人工免疫系统可用于疫苗，佐剂，免疫疗法候选物，化妆品，药物，生物制剂和其他化学品的体外测试。

Figure 1

