



US006942978B1

(12) **United States Patent**
O'Brien

(10) **Patent No.:** **US 6,942,978 B1**
(45) **Date of Patent:** **Sep. 13, 2005**

(54) **TRANSMEMBRANE SERINE PROTEASE
OVEREXPRESSED IN OVARIAN
CARCINOMA AND USES THEREOF**

(75) Inventor: **Timothy J. O'Brien**, Little Rock, AR
(US)

(73) Assignee: **The Board of Trustees of the
University of Arkansas**, Little Rock,
AR (US)

(*) Notice: Subject to any disclaimer, the term of this
patent is extended or adjusted under 35
U.S.C. 154(b) by 596 days.

(21) Appl. No.: **09/650,371**

(22) Filed: **Aug. 28, 2000**

Related U.S. Application Data

(60) Division of application No. 09/518,046, filed on Mar. 2,
2000, now Pat. No. 6,294,663, which is a continuation-in-
part of application No. 09/261,416, filed on Mar. 3, 1999,
now Pat. No. 6,291,663.

(51) **Int. Cl.**⁷ **G01N 33/53**; G01N 33/536;
G01N 33/537; G01N 33/48; G01N 33/50

(52) **U.S. Cl.** **435/7.1**; 435/7.2; 435/7.23;
435/7.4; 435/7.94; 436/64; 436/501; 436/503

(58) **Field of Search** 436/64, 813, 501,
436/503; 435/7.1, 7.2, 7.23, 7.4, 7.94

(56) **References Cited**

U.S. PATENT DOCUMENTS

6,294,344 B1 * 9/2001 O'Brien

FOREIGN PATENT DOCUMENTS

WO WO 98/41656 * 9/1998

OTHER PUBLICATIONS

Stenman et al, Biological Chemistry Hoppe-Seyler, 1998,
vol. 369, Suppl. pp. 9-14 (abstract).*

* cited by examiner

Primary Examiner—Anthony C. Caputa

Assistant Examiner—Karen A. Canella

(74) *Attorney, Agent, or Firm*—Benjamin Aaron Adler

(57) **ABSTRACT**

The present invention provides a TADG-12 protein and a
DNA fragment encoding such protein. Also provided is a
vector/host cell capable of expressing the DNA. The present
invention further provides various methods of early detec-
tion of associated ovarian and other malignancies, and of
interactive therapies for cancer treatment utilizing the DNA
and/or protein disclosed herein.

7 Claims, 12 Drawing Sheets

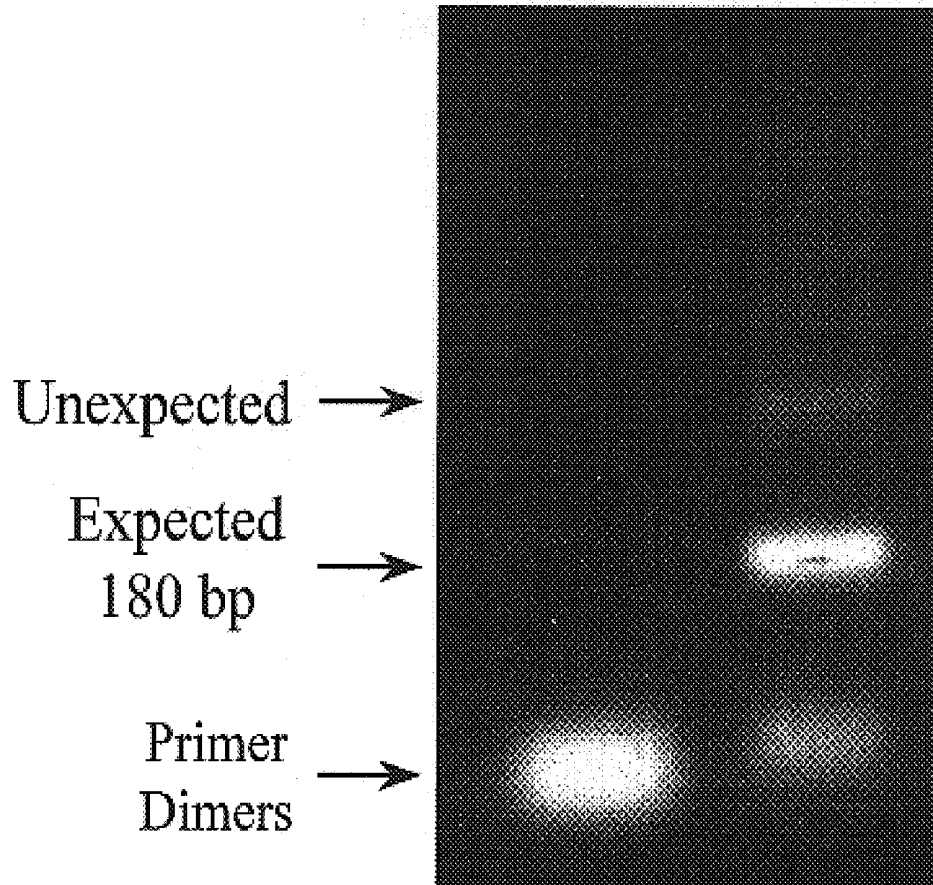


Fig. 1A

TADG12 ▼

1 TGGGTGGTGACGGCGGCGCACTGTGTTTATGACTTGTACCTCCCCAAGTCATGGACCATC
W V V T A A (H) C V Y D L Y L P K S W T I

61 CAGGTGGGCTAGTTTCCCTGTGGACAATCCAGCCCATCCCACTTGGTGAGAAAGATT
Q V G L V S L L D N P A P S H L V E K I

(SEQ ID NO. 5)

121 GTCTACCACAGCAAGTACAAGCCAAAGAGGCTGGGCAACGACATCGCCCTCCTA
V Y H S K Y K P K R L G N D I A L L

(SEQ ID NO. 6)

TADG12-V ▼

1 GGGTGGTGACGGCGGCGCACTGTGTTTATGAGATTGTAGCTCCTAGAGAAAGGGCAGACA
V V T A A H C V Y E I V A P R E R A D R

61 GAAGAGGAAGGAAAGCTCCTGTGCTGGAGAAACCCACAAAATGAAAGGACCTAGACCTT
R G R K L L C W R K P T K M K G P R P S

121 CCCATAGCTAATTCCAGTGGACCATGTTATGGCAGATACAGGCTTGTACCTCCCCAAGTC
H S * (SEQ ID NO. 8)

181 ATGGACCATCCAGGTGGGTCTAGTTTCCCTGTGGACAATCCAGCCCATCCCACTTGGT
241 GGAGAAGATTGTCTACCACAGCAAGTACAAGCCAAAGAGGCTGGGCAACGACATCGCCCT
301 CCTAATCACTAGTGGCGCCCTGCAGG (SEQ ID NO. 7)

Fig. 1B

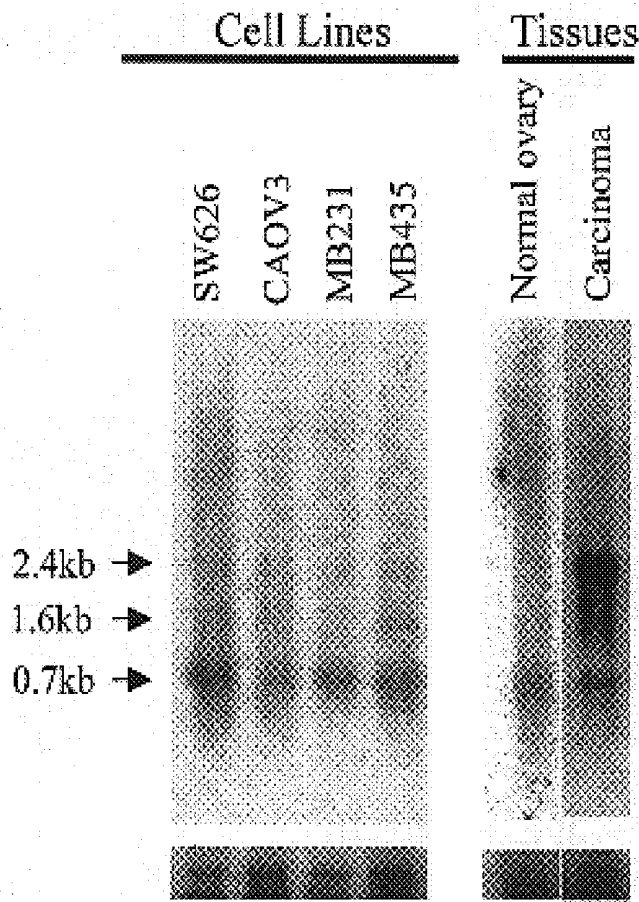


Fig. 2

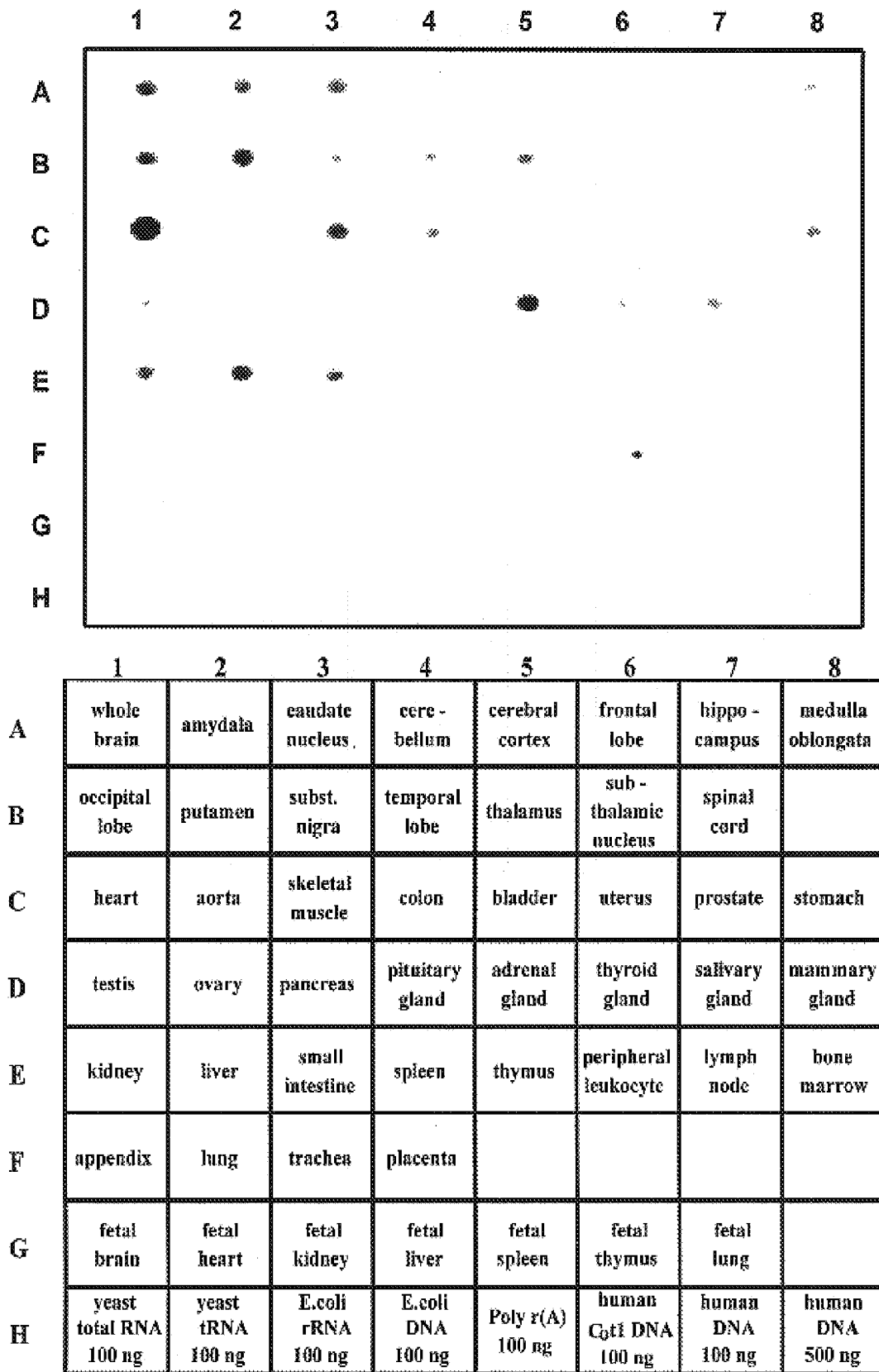


Fig. 3

1 CCGGAAAGGGCTGTGTTTATGGGAAGCCAGTAACACTGTGGCCACTACTATCTTCCGTGG
61 TGCATCTACATTTTGGGACTAGGGAATTATGAGGTAGAGGTGGAGCGGAGCCGGATG
121 TCAGAGTCCGTGAAATAGTCACCATGGGGAAATGATCCGCCCTGCTGTTGAAGCCCCCT
M G E N D P P A V E A P F
181 TCTCATTCGGATCGCTTTTGGCCTTGATGATTTGAAAATAAGTCCTGTGCACCCAGATG
S F R S L F G L DD L K I S P V A P D A
241 CAGATGCTGTTGCTGCACAGATCCTGTCACTGCTGCCAATTTGAAGTTTTCCCAATCAT
D A V A A Q I L S L L P F E V F S. Q S S
301 CGTCATTGGGGATCATTTGCATTTGATATTAGCACTGGCCATTGGTCTGGCATCCACTTCG
S L G I I A L I L A L A I G L G I H F D
361 ACTGCTCAGGGAAGTACAGATGTCGCTCATCCTTTAAGTGTATCGAGCTGATAACTCGAT
C S G K Y R C R S S F K C I E L I T R C
421 GTGACGGAGTCTCGGATTGCAAAGACGGGGAGGACGAGTACCGCTGTGTCCGGGTGGTG
D G V S D C K D G E D E Y R C V R V G G
481 GTCAGAAATGCCGTGCTCCAGGTGTTACACAGCTGCTTCGTGGAAGACCATGTGTCCGATG
Q N A V L Q V F T A A S W K T M C S D D
541 ACTGGAAAGGGTCACTACGCAAATGTGCCCTGTGCCCAACTGGGTTTCCCAAGCTATGTGA
W K G H Y A N V A C A Q L G F P S Y V S
601 GTTCAGATAACCTCAGAGTGAGCTCGCTGGAGGGCAGTTCCGGGAGGAGTTTGTGTCCA
S D N L R V S S L E G Q F R E E F V S I
661 TCGATCACCTCTTGCCAGATGACAAGGTGACTGCATTACACCACTCAGTATATGTGAGGG
D H L L P D D K V T A L H H S V Y V R E
721 AGGGATGTGCCTCTGGCCACGTGGTTACCTTGCAAGTGCACAGCCTGTGGTCATAGAAGGG
G C A S G H V V T L Q C T A C G H R R G
.....

Fig. 4A

781 GCTACAGCTCAGCCATCGTGGTGGGAAACATGTCCCTTGTCTCGCAGTGGCCCTGGCAGG
Y S S R I V G G N M S L L S Q W P W Q A 233
841 CCAGCCTTCCAGGGCTACCACCTGTGCGGGGCTCTGTCTCATCAGCCCTGTGGA
S L Q F Q G Y H L C G S V I T P L W I 253
901 TCATCACTGCTGCACACTGTGTTATGACTTGTACCTCCCAAGTCAATGGACCATCCAGG
I T A (A) H C V Y D L Y L P K S Q T I Q V 273
961 TGGGTCTAGTTTCCCTGTTGGACAATCCAGCCCACTCCACTTGGTGAGAAAGATTGTCT
G L V S L L D N P A P S H L V E K I V Y 293
1021 ACCACAGCAAGTACAAGCCAAAGAGGCTGGGCAATGACATCGCCCTTATGAAGCTGGCCG
H S K Y K P K R L G (N) D I A L M K L A G 313
1081 GGCCACTCACGTTCAATGAAATGATCCAGCCTGTGTGCTGCCCACTCTGAAGAACT
P L T F N E M I Q P V C L P N S E E N F 333
1141 TCCCCGATGGAAAAGTGTGCTGGACGTGAGGATGGGGGCCACAGAGGATGGAGGTGACG
P D G K V C W T S G W G A T E D G G D A 353
1201 CCTCCCCTGTCCCTGAACCCAGCGCCGTCCTCCCTTTGATTTCCAAACAAGATCTGCAACCACA
S P V L N H A A V P L I S N K I C N H R 373
1261 GGGACGTGTACGGTGGCATCATCTCCCTCCATGCTCTGCGCGGGCTACCTGACGGGTG
D V Y G G I I S P S M L C A G Y L T G G 393
1321 GCGTGGACAGCTGCCAGGGGACAGCGGGGGCCCTGGTGTCAAGAGAGGAGGCTGT
V D S C Q G (D) S G G P L V C Q E R R L W 413
1381 GGAAGTTAGTGGAGCGACCCAGCTTTGGCATCGGCTGCGCAGAGGTGAACAAGCCCTGGGG
K L V G A T S F G I G C A E V N K P G V 433
1441 TGTACACCCGTGTCACCTCCTTCCCTGGACTGGATCCACGAGCAGATGGAGAGACCTAA
Y T R V T S F L D W I H E Q M E R D L K 453
1501 AAACCTGAAGAGGAAAGGGGACAAGTAGCCACCTGAGTTCCCTGAGGTGATGAAGACAGCCC
T * (SEQ ID NO. 2)

Fig. 4B

1561 GATCCTCCCCTGGACTCCCGGTAGGAACCTGCACACGAGCAGACACCCCTTGGAGCTCTG
1621 AGTTCGGCACCCAGTAGCGGGCCCGAAAGAGGCACCCCTTCCATCTGATTCACGACACAACC
1681 TTCAAGCTGCTTTTGTGTTTTTGTGAGGTGGAGTCTCGCTCTGTTGCCCCAGGCT
1741 GGAGTGCAGTGGCGAAATACCCCTGCTCACTGCAGCCTCCGCTTCCCTGGTTCAAGCGATT
1801 CTCCTGCCCTCAGCTTCCCAGTAGCTGGGACCACAGGTGCCCGCCACACACCCAACTAA
1861 TTTTGTATTTTAGTAGAGACAGGTTTCACCATGTTGGCCAGGCTGCTCTCAAACCCCC
1921 TGACCTCAAATGATGTGCTTCAAGCTTCCACAGTGGCTGGGATTACAGGCATGGGCC
1981 ACCACGCTAGCCTCAGCTCCTTTCTGATCTTCACTAAGAACAAAAAGAGCAGCAACTT
2041 GCAAGGGCGCCTTCCCACCTGGTCCATCTGGTTTTCTCTCCAGGGTCTTGCAAAATTC
2101 TGACGAGATAAGCAGTTATGTGACCTCACGTGCAAGCCACCAAGCCACTCAGAAAAG
2161 ACGCACCCAGCCAGAAAGTGCAGAACTGCAGTCACTGCACGTTTTCATCTTTAGGGACCAG
2221 AACCAAACCCACCCTTCTACTTCCAAGACTATTTTCACATCTGGGGAGGTTAATCTAG
2281 GAATGACTCGTTAAGGCCATAATTTTCATGATTTCTTTGTAGCATTTGGTGTGCTTGACGTAT
2341 TATTGTCCCTTGTATTC~~CAAAATA~~AATATGTTTCCCTTCCCTCAAAAAAAAAAAAAAAAAAAAA
2401 AAAAAAAAAAAAAA (SEQ ID NO. 1)

Fig. 4C

```

Comp8      CEG..FVE AQTGRCVNRRL LLCNGDND CG DQSDEAN.C (SEQ ID NO: 9)
Matr       CPG.QFTC .RTGRCIRKE LRCDGWADCT DHSDELN.C (SEQ ID NO: 10)
Gp300-1    CQQGYFKC QSEGQCIPSS WVCDQDQDCD DGSDERQDC (SEQ ID NO: 11)
Gp300-2    CSSHQITC .SNGQCIPSE YRDDHVRCDCP DGADE.NDC (SEQ ID NO: 12)
TADG12     CSGK.YRC RSSFKCIELI TRCDGVSDCK DGEDEYR.C (SEQ ID NO: 13)
Tmprss2    CSNSGIEC DSSGTCINPS NWCDGVSHCP GGEDENR.C (SEQ ID NO: 14)
Cons       C      C      C      C      C      DE      C
    
```

Fig. 5A

```

BovEntk    VRLVGGSGPH EGRVEI.FHE GQWGTVCDDR WELRGGLVVC RSLGYKGVQS
MacSR      VRLVGGSGPH EGRVEI.LHS GQWGTICDDR WEVRVGQVVC RSLGYPGVQA
TADG12     VRVGG...QN AVLQVF... ASWKTMCSD WKGHYANVAC AQLGFT.SYV
Tmprss2    VRLYG...PN FILQMYSSQR KSWHPVCQDD WNENYGRAAC RDMGYKNNFY
HumEntk    VRFFNGTTNN NGLVRFRIQ. SIWHTACAEN WTTGISNDVC QLLGLGSG..
Cons       VR                               W      C                               C
    
```

```

BovEntk    VHKRAYFGKG TGPIWLNEVF CFGK..ESSI EECRIRQWGV R.ACSHDEDA
MacSR      VHKAHFGQG TGPIWLNEVF CFGR..ESSI EECKIRQWGT R.ACSHSEDA
TADG12     SSDNLRVSSL EGQFREEFVS I.DHLLPDDK VTALHHSVYV REGCASGHVV
Tmprss2    SSQIVDDSG STSFMKLNTS A.GNV...DI YKKLYHS... .DACSSKAVV
HumEntk    NSSKPIFSTD GGPVFKLNTA PDGHLILTPS Q..... .CLQDSLII
Cons                               C
    
```

```

BovEntk    GVTCT      (SEQ ID NO: 15)
MacSR      GVTCT      (SEQ ID NO: 16)
TADG12     TLQCT      (SEQ ID NO: 17)
Tmprss2    SLRCL      (SEQ ID NO: 18)
HumEntk    RLQC.      (SEQ ID NO: 19)
Cons       C
    
```

Fig. 5B

ProM	LWVLTAAHCKKPNL	QVFLGKHNL	QRESSQEQSS	VVRAVIHPDY
Try1	QWVVSAGHCYKSRI	QVRLGEHNIE	VLEGNEQFIN	AAKIIRHPQY
Ka1	QWVLTAAHCF	D.GLPLQDVW	RIYSGILNLS	DITKDTPFWQ	IKEIIHQNY
TADG12	LWIITAACHV	.YDLYLPKSW	TIQVGLV..S	LLDNPAPSHL	VEKIVYHSKY
Tmprss2	EWIVTAAHCV	IKPLNPNPWH	TAFAGILRQS	FMFYGA.GYQ	VQKVISHPNY
Heps	DWVLTAAHCF	PERNRVLSRW	RVFAGAVAQA	SPHGLQLG..	VQAVVYHGGY
Cons	W	A HC	G		H Y

ProMDAAS	HDQDIMLLRL	ARPAKLSELI	QPLPLERDCS	ANT..TSCHI
Try1DRKT	LNNDIMLIK	SSRAVINARV	STISLPTAPP	ATG..TKCLI
Ka1KVSE	GNHDIALIK	QAPLNYTEFQ	KPICLPSKGD	TSTIYTNCWV
TADG12KPKR	LGNDIALMK	AGPLTFNEMI	QPVCLPNSEE	NFPDGKVCWT
Tmprss2DSKT	KNNDIALMK	QKPLTFNDLV	KPVCLPNPGM	MLQPEQLCWI
Heps	LPRFRDPNSEE	NSNDIALVHL	SSPLPLTEYI	QPVCLPAAGQ	ALVDGKICTV
Cons		DI L L		L	C

ProM	LGWGKTAD..	GDFPDTIQCA	YIHLVSREEC	EHA..YPGQI	TQNMLCAGDE
Try1	SGWGNTASSG	ADYPDELQCL	DAPVLSQAKC	EAS..YPGKI	TSNMFCVGFL
Ka1	TGWGTFKEK.	GEIQNILQKV	NIPLVTNEEC	QKR.YQDYKI	TQRMVCAGYK
TADG12	SGWGAT.EDG	GDASPVLNHA	AVPLISNKIC	NHRDVYGGII	SPSMLCAGYL
Tmprss2	SGWGAT.EEK	GKTSEVLNAA	KVLLIETQRC	NSRYVYDNLI	TPAMICAGFL
Heps	TGWGNT.QYY	GQQAGVLQEA	RVPIISNDVC	NGADFYGNQI	KPKMFCAGYP
Cons	GWG		C	I	M C G

ProM	KYGKDSCQGD	SGGPLVC	(SEQ ID NO: 20)
Try1	EGGKDSCQGD	SGGPVVC	(SEQ ID NO: 21)
Ka1	EGGKDACKGD	SGGPLVC	(SEQ ID NO: 22)
TADG12	TGGVDSCQGD	SGGPLVC	(SEQ ID NO: 23)
Tmprss2	QGNVDSCQGD	SGGPLVT.	(SEQ ID NO: 24)
Heps	EGGIDACQGD	SGGPFVC	(SEQ ID NO: 25)
Cons	D C GD	SGGP V	

Fig. 5C

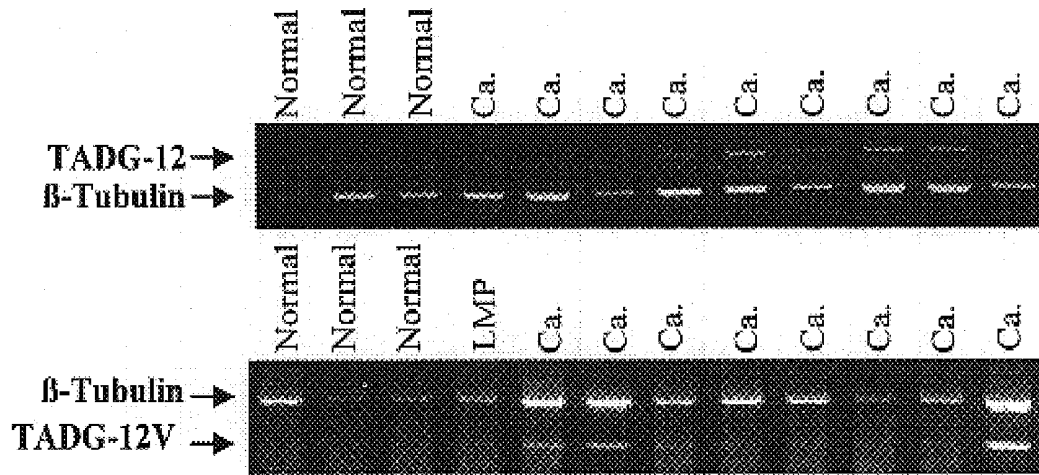


Fig. 6

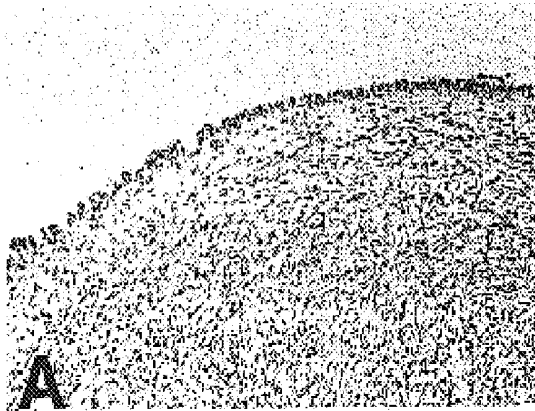


Fig. 7A

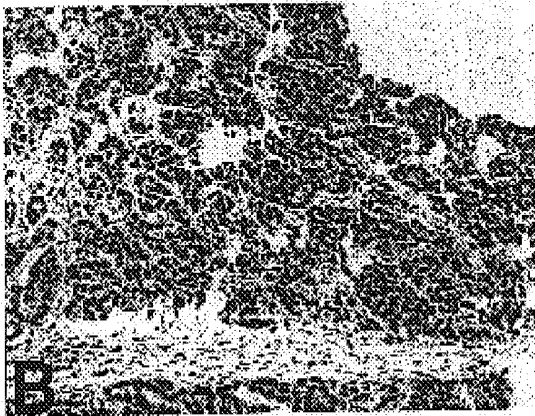


Fig. 7B

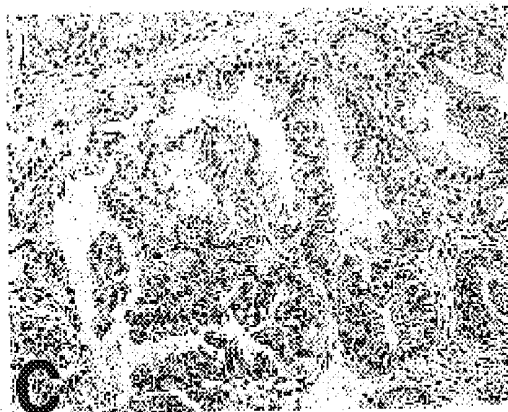


Fig. 7C

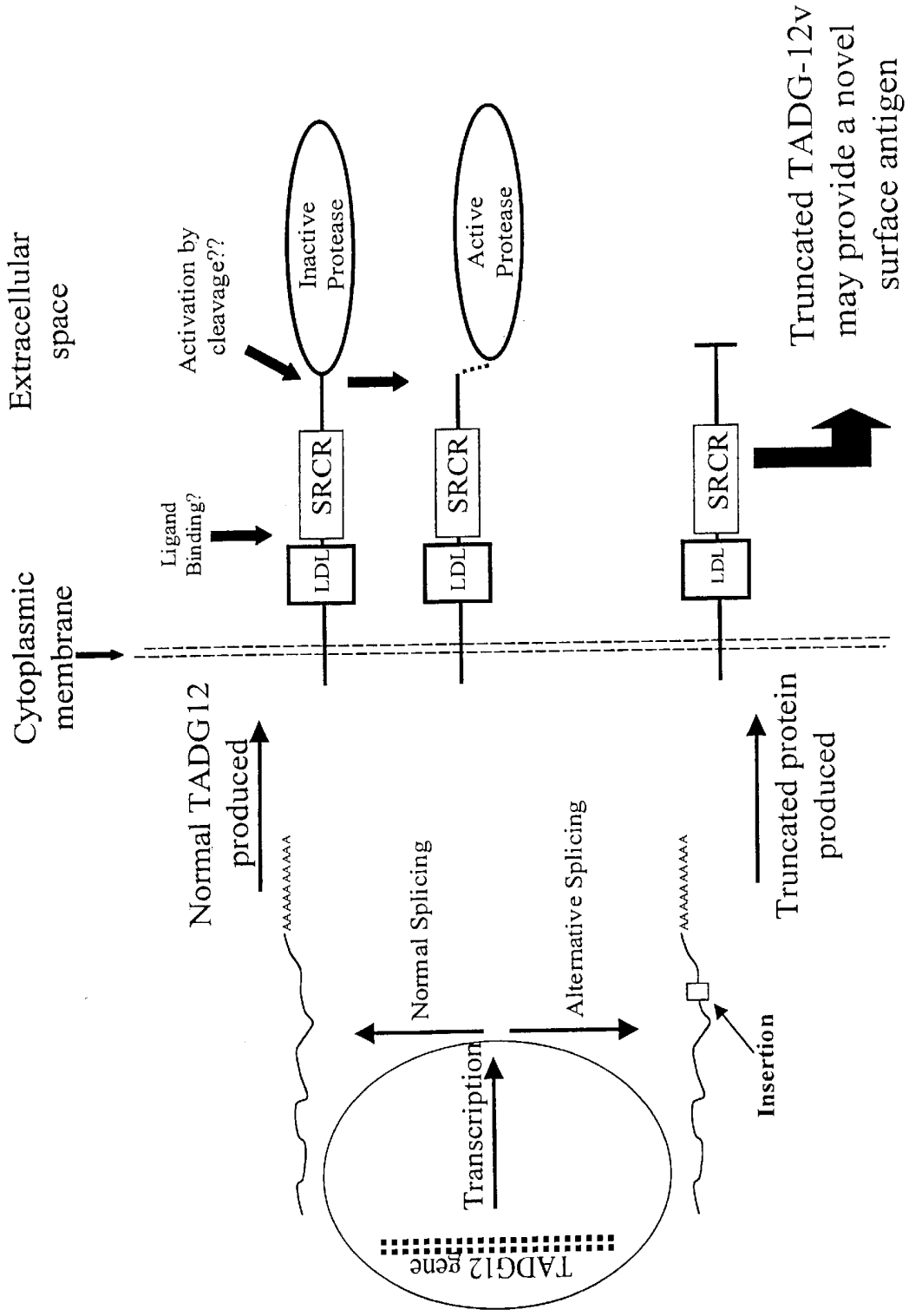


Fig. 8

**TRANSMEMBRANE SERINE PROTEASE
OVEREXPRESSED IN OVARIAN
CARCINOMA AND USES THEREOF**

**CROSS-REFERENCE TO RELATED
APPLICATIONS**

This is a divisional application of U.S. Ser. No. 09/518, 046, filed on Mar. 2, 2000, now U.S. Pat. No. 6,294,663, which is a continuation-in-part patent application and claims the benefit of priority under 35 USC §120 of U.S. Ser. No. 09/261,416, filed Mar. 3, 1999 now U.S. Pat. No. 6,291,663.

BACKGROUND OF THE INVENTION

1. Field of the Invention

The present invention relates generally to the fields of cellular biology and diagnosis of neoplastic disease. More specifically, the present invention relates to a transmembrane serine protease termed Tumor Associated Differentially-Expressed Gene-12 (TADG-12), which is overexpressed in ovarian carcinoma.

2. Description of the Related Art

Tumor cells rely on the expression of a concert of proteases to be released from their primary sites and move to distant sites to inflict lethality. This metastatic nature is the result of an aberrant expression pattern of proteases by tumor cells and also by stromal cells surrounding the tumors [1-3]. For most tumors to become metastatic, they must degrade their surrounding extracellular matrix components, degrade basement membranes to gain access to the bloodstream or lymph system, and repeat this process in reverse fashion to settle in a secondary host site [3-6]. All of these processes rely upon what now appears to be a synchronized protease cascade. In addition, tumor cells use the power of proteases to activate growth and angiogenic factors that allow the tumor to grow progressively [1]. Therefore, much research has been aimed at the identification of tumor-associated proteases and the inhibition of these enzymes for therapeutic means. More importantly, the secreted nature and/or high level expression of many of these proteases allows for their detection at aberrant levels in patient serum, e.g. the prostate-specific antigen (PSA), which allows for early diagnosis of prostate cancer [7].

Proteases have been associated directly with tumor growth, shedding of tumor cells and invasion of target organs. Individual classes of proteases are involved in, but not limited to (1) the digestion of stroma surrounding the initial tumor area, (2) the digestion of the cellular adhesion molecules to allow dissociation of tumor cells; and (3) the invasion of the basement membrane for metastatic growth and the activation of both tumor growth factors and angiogenic factors.

For many forms of cancer, diagnosis and treatment has improved dramatically in the last 10 years. However, the five year survival rate for ovarian cancer remains below 50% due in large part to the vague symptoms which allow for progression of the disease to an advanced stage prior to diagnosis [8]. Although the exploitation of the CA125 antigen has been useful as a marker for monitoring recurrence of ovarian cancer, it has not proven to be an ideal marker for early diagnosis. Therefore, new markers that may be secreted or released from cells and which are highly expressed by ovarian tumors could provide a useful tool for the early diagnosis and for therapeutic intervention in patients with ovarian carcinoma.

The prior art is deficient in the lack of the complete identification of the proteases overexpressed in carcinoma,

therefore, deficient in the lack of a tumor marker useful as an indicator of early disease, particularly for ovarian cancers. Specifically, TADG-12, a transmembrane serine protease, has not been previously identified in either nucleic acid or protein form. The present invention fulfills this long-standing need and desire in the art.

SUMMARY OF THE INVENTION

The present invention discloses TADG-12, a new member of the Tumor Associated Differentially-Expressed Gene (TADG) family, and a variant splicing form of TADG-12 (TADG-12V) that could lead to a truncated protein product. TADG-12 is a transmembrane serine protease overexpressed in ovarian carcinoma. The entire cDNA of TADG-12 has been identified (SEQ ID No. 1). This sequence encodes a putative protein of 454 amino acids (SEQ ID No. 2) which includes a potential transmembrane domain, an LDL receptor like domain, a scavenger receptor cysteine rich domain, and a serine protease domain. These features imply that TADG-12 is expressed at the cell surface, and it may be used as a molecular target for therapy or a diagnostic marker.

In one embodiment of the present invention, there is provided a DNA fragment encoding a TADG-12 protein selected from the group consisting of: (a) an isolated DNA fragment which encodes a TADG-12 protein; (b) an isolated DNA fragment which hybridizes to isolated DNA fragment of (a) above and which encodes a TADG-12 protein; and (c) an isolated DNA fragment differing from the isolated DNA fragments of (a) and (b) above in codon sequence due to the degeneracy of the genetic code, and which encodes a TADG-12 protein. Specifically, the DNA fragment has a sequence shown in SEQ ID No. 1 or SEQ ID No. 3.

In another embodiment of the present invention, there is provided a vector/host cell capable of expressing the DNA of the present invention.

In yet another embodiment of the present invention, there is provided an isolated and purified TADG-12 protein encoded by DNA selected from the group consisting of: (a) isolated DNA which encodes a TADG-12 protein; (b) isolated DNA which hybridizes to isolated DNA of (a) above and which encodes a TADG-12 protein; and (c) isolated DNA differing from the isolated DNAs of (a) and (b) above in codon sequence due to the degeneracy of the genetic code, and which encodes a TADG-12 protein. Specifically, the TADG-12 protein has an amino acid sequence shown in SEQ ID No. 2 or SEQ ID No. 4.

In still yet another embodiment of the present invention, there is provided a method for detecting expression of a TADG-12 protein, comprising the steps of: (a) contacting mRNA obtained from the cell with the labeled hybridization probe; and (b) detecting hybridization of the probe with the mRNA.

The present invention further provides methods for diagnosing a cancer or other malignant hyperplasia by detecting the TADG-12 protein or mRNA disclosed herein.

In still another embodiment of the present invention, there is provided a method of inhibiting expression of endogenous TADG-12 mRNA in a cell by introducing a vector into the cell, wherein the vector comprises a DNA fragment of TADG-12 in opposite orientation operably linked to elements necessary for expression.

In still yet another embodiment of the present invention, there is provided a method of inhibiting expression of a TADG-12 protein in a cell by introducing an antibody directed against a TADG-12 protein or fragment thereof.

In still yet another embodiment of the present invention, there is provided a method of targeted therapy by adminis-

tering a compound having a targeting moiety specific for a TADG-12 protein and a therapeutic moiety. Specifically, the TADG-12 protein has an amino acid sequence shown in SEQ ID No. 2 or SEQ ID No. 4.

The present invention still further provides a method of vaccinating an individual against TADG-12 by inoculating the individual with a TADG-12 protein or fragment thereof. Specifically, the TADG-12 protein has an amino acid sequence shown in SEQ ID No. 2 or SEQ ID No. 4. The TADG-12 fragment includes the truncated form of TADG-12V peptide having a sequence shown in SEQ ID No. 8, and a 9-residue up to 12-residue fragment of TADG-12 protein.

In yet another embodiment of the present invention, there is provided an immunogenic composition, comprising an immunogenic fragment of a TADG-12 protein and an appropriate adjuvant. The TADG-12 fragment includes the truncated form of TADG-12V peptide having a sequence shown in SEQ ID No. 8, and a 9-residue up to 12-residue fragment of TADG-12 protein.

Other and further aspects, features, and advantages of the present invention will be apparent from the following description of the presently preferred embodiments of the invention given for the purpose of disclosure.

BRIEF DESCRIPTION OF THE DRAWINGS

So that the matter in which the above-recited features, advantages and objects of the invention, as well as others which will become clear, are attained and can be understood in detail, more particular descriptions of the invention briefly summarized above may be had by reference to certain embodiments thereof which are illustrated in the appended drawings. These drawings form a part of the specification. It is to be noted, however, that the appended drawings illustrate preferred embodiments of the invention and therefore are not to be considered limiting in their scope.

FIG. 1A shows that the expected PCR product of approximately 180 bp and the unexpected PCR product of approximately 300 bp using the redundant serine protease primers were not amplified from normal ovary cDNA (Lane 1) but were found in abundance from ovarian tumor cDNA (Lane 2). The primer sequences for the PCR reactions are indicated by horizontal arrows. FIG. 1B shows that TADG-12 was subcloned from the 180 bp band while the larger 300 bp band was designated TADG-12V. The sequences were found to overlap for 180 bp (SEQ ID No. 5 for nucleotide sequence, SEQ ID No. 6 for deduced amino acid sequence) with the 300 bp TADG-12V (SEQ ID No. 7 for nucleotide sequence, SEQ ID No. 8 for deduced amino acid sequence) having an additional insert of 133 bases. This insertion (vertical arrow) leads to a frame shift, which causes the TADG-12V transcript to potentially produce a truncated form of TADG-12 with a variant amino acid sequence.

FIG. 2 shows that Northern blot analysis for TADG-12 revealed three transcripts of 2.4, 1.6 and 0.7 kilobases. These transcripts were found at significant levels in ovarian tumors and cancer cell lines, but the transcripts were found only at low levels in normal ovary.

FIG. 3 shows an RNA dot blot (CLONTECH) probed for TADG-12. The transcript was detectable (at background levels) in all 50 of the human tissues represented with the greatest abundance of transcript in the heart. Putamen, amygdala, kidney, liver, small intestine, skeletal muscle, and adrenal gland were also found to have intermediate levels of TADG-12 transcript.

FIG. 4 shows the entire cDNA sequence for TADG-12 (SEQ ID No. 1) with its predicted open reading frame of 454

amino acids (SEQ ID No. 2). Within the nucleotide sequence, the Kozak's consensus sequence for the initiation of translation and the poly-adenylation signal are underlined. In the protein sequence, a potential transmembrane domain is boxed. The LDLR-A domain is underlined with a solid line. The SRCR domain is underlined with a broken line. The residues of the catalytic triad of the serine protease domain are circled, and the beginning of the catalytic domain is marked with an arrow designated as a potential proteolytic cleavage site. The * represents the stop codon that terminates translation.

FIG. 5A shows the 35 amino acid LDLR-A domain of TADG-12 (SEQ ID No. 13) aligned with other LDLR-A motifs from the serine protease TMPRSS2 (U75329, SEQ ID No. 14), the complement subunit C8 (P07358, SEQ ID No. 9), two LDLR-A domains of the glycoprotein GP300 (P98164, SEQ ID Nos. 11-12), and the serine protease matriptase (AF118224, SEQ ID No. 10). TADG-12 has its highest similarity with the other serine proteases for which it is 54% similar to TMPRSS2 and 53% similar to matriptase. The highly conserved cysteine residues are shown in bold type. FIG. 5B shows the SRCR domain of TADG-12 (SEQ ID No. 17) aligned with other domain family members including the human macrophage scavenger receptor (P21757, SEQ ID No. 16), human enterokinase (P98073, SEQ ID No. 19), bovine enterokinase (P21758, SEQ ID No. 15), and the serine protease TMPRSS2 (SEQ ID No. 18). Again, TADG-12 shows its highest similarity within this region to the protease TMPRSS2 at 43%. FIG. 5C shows the protease domain of TADG-12 (SEQ ID No. 23) in alignment with other human serine proteases including protease M (U62801, SEQ ID No. 20), trypsinogen I (P07477, SEQ ID No. 21), plasma kallikrein (P03952, SEQ ID No. 22), hepsin (P05981, SEQ ID No. 25), and TMPRSS2 (SEQ ID No. 24). Cons represents the consensus sequence for each alignment.

FIG. 6 shows semi-quantitative PCR analysis that was performed for TADG-12 (upper panel) and TADG-12V (lower panel). The amplification of TADG-12 or TADG-12V was performed in parallel with PCR amplification of β -tubulin product as an internal control. The TADG-12 transcript was found to be overexpressed in 41 of 55 carcinomas. The TADG-12V transcript was found to be overexpressed in 8 of 22 carcinomas examined. Note that the samples in the upper panel are not necessarily the same as the samples in the lower panel.

FIG. 7 shows immunohistochemical staining of normal ovary and ovarian tumors which were performed using a polyclonal rabbit antibody developed to a TADG-12 specific peptide. No significant staining was detected in normal ovary (FIG. 7A). Strong positive staining was observed in 22 of 29 carcinomas examined. FIGS. 7B and 7C represent a serous and mucinous carcinoma, respectively. Both show diffuse staining throughout the cytoplasm of tumor cells while stromal cells remain relatively sustained.

FIG. 8 is a model to demonstrate the progression of TADG-12 within a cellular context. In normal circumstances, the TADG-12 transcript is appropriately spliced and the resulting protein is capable of being expressed at the cell surface where the protease may be cleaved to an active form. The role of the remaining ligand binding domains has not yet been determined, but one can envision their potential to bind other molecules for activation, internalization or both. The TADG-12V transcript, which occurs in some tumors, may be the result of mutation and/or poor mRNA processing may be capable of producing a truncated form of TADG-12 that does not

have a functional protease domain. In addition, this truncated product may present a novel epitope at the surface of tumor cells.

DETAILED DESCRIPTION OF THE INVENTION

To examine the serine proteases expressed by ovarian cancers, a PCR based differential display technique was employed utilizing redundant PCR primers designed to the most highly conserved amino acids in these proteins [9]. As a result, a novel cell-surface, multi-domain serine protease, named Tumor Associated Differentially-expressed Gene-12 (TADG-12) was identified. TADG-12 appears to be overexpressed in many ovarian tumors. The extracellular nature of TADG-12 may render tumors susceptible to detection via a TADG-12 specific assay. In addition, a splicing variant of TADG-12, named TADG-12V, was detected at elevated levels in 35% of the tumors that were examined. TADG-12V encodes a truncated form of TADG-12 with an altered amino acid sequence that may be a unique tumor specific target for future therapeutic approaches.

The TADG-12 cDNA is 2413 base pairs long (SEQ ID No. 1) encoding a 454 amino acid protein (SEQ ID No. 2). A variant form, TADG-12V (SEQ ID No. 3), encodes a 294 amino acid protein (SEQ ID No. 4). The availability of the TADG-12 and/or TADG-12V gene opens the way for a number of studies that can lead to various applications. For example, the TADG-12 and/or TADG-12V gene can be used as a diagnostic or therapeutic target in ovarian carcinoma and other carcinomas including breast, prostate, lung and colon.

In accordance with the present invention there may be employed conventional molecular biology, microbiology, and recombinant DNA techniques within the skill of the art. Such techniques are explained fully in the literature. See, e.g., Maniatis, Fritsch & Sambrook, "Molecular Cloning: A Laboratory Manual" (1982); "DNA Cloning: A Practical Approach," Volumes I and II (D. N. Glover ed. 1985); "Oligonucleotide Synthesis" (M. J. Gait ed. 1984); "Nucleic Acid Hybridization" [B. D. Hames & S. J. Higgins eds. (1985)]; "Transcription and Translation" [B. D. Hames & S. J. Higgins eds. (1984)]; "Animal Cell Culture" [R. I. Freshney, ed. (1986)]; "Immobilized Cells And Enzymes" [IRL Press, (1986)]; B. Perbal. "A Practical Guide To Molecular Cloning" (1984).

Therefore, if appearing herein, the following terms shall have the definitions set out below.

As used herein, the term "cDNA" shall refer to the DNA copy of the mRNA transcript of a gene.

As used herein, the term "derived amino acid sequence" shall mean the amino acid sequence determined by reading the triplet sequence of nucleotide bases in the cDNA.

As used herein the term "screening a library" shall refer to the process of using a labeled probe to check whether, under the appropriate conditions, there is a sequence complementary to the probe present in a particular DNA library. In addition, "screening a library" could be performed by PCR.

As used herein, the term "PCR" refers to the polymerase chain reaction that is the subject of U.S. Pat. Nos. 4,683,195 and 4,683,202 to Mullis, as well as other improvements now known in the art.

The amino acid described herein are preferred to be in the "L" isomeric form. However, residues in the "D" isomeric form can be substituted for any L-amino acid residue, as

long as the desired functional property of immunoglobulin-binding is retained by the polypeptide. NH₅₁₄₂ refers to the free amino group present at the amino terminus of a polypeptide. COOH refers to the free carboxy group present at the carboxy terminus of a polypeptide. In keeping with standard polypeptide nomenclature, *J Biol. Chem.*, 243:3552-59 (1969), abbreviations for amino acid residues are known in the art.

It should be noted that all amino-acid residue sequences are represented herein by formulae whose left and right orientation is in the conventional direction of amino-terminus to carboxy-terminus. Furthermore, it should be noted that a dash at the beginning or end of an amino acid residue sequence indicates a peptide bond to a further sequence of one or more amino-acid residues.

A "replicon" is any genetic element (e.g., plasmid, chromosome virus) that functions as an autonomous unit of DNA replication *in vivo*; i.e., capable of replication under its own control.

A "vector" is a replicon, such as plasmid, phage or cosmid, to which another DNA segment may be attached so as to bring about the replication of the attached segment.

A "DNA molecule" refers to the polymeric form of deoxyribonucleotides (adenine, guanine, thymine, or cytosine) in its either single stranded form, or a double-stranded helix. This term refers only to the primary and secondary structure of the molecule, and does not limit it to any particular tertiary forms. Thus, this term includes double-stranded DNA found, *inter alia*, in linear DNA molecules (e.g., restriction fragments), viruses, plasmids, and chromosomes. In discussing the structure herein according to the normal convention of giving only the sequence in the 5' to 3' direction along the nontranscribed strand of DNA (i.e., the strand having a sequence homologous to the mRNA).

An "origin of replication" refers to those DNA sequences that participate in DNA synthesis.

A DNA "coding sequence" is a double-stranded DNA sequence which is transcribed and translated into a polypeptide *in vivo* when placed under the control of appropriate regulatory sequences. The boundaries of the coding sequence are determined by a start codon at the 5' (amino) terminus and a translation stop codon at the 3' (carboxyl) terminus. A coding sequence can include, but is not limited to, prokaryotic sequences, cDNA from eukaryotic mRNA, genomic DNA sequences from eukaryotic (e.g., mammalian) DNA, and even synthetic DNA sequences. A polyadenylation signal and transcription termination sequence will usually be located 3' to the coding sequence.

Transcriptional and translational control sequences are DNA regulatory sequences, such as promoters, enhancers, polyadenylation signals, terminators, and the like, that provide for the expression of a coding sequence in a host cell.

A "promoter sequence" is a DNA regulatory region capable of binding RNA polymerase in a cell and initiating transcription of a downstream (3' direction) coding sequence. For purposes of defining the present invention, the promoter sequence is bounded at its 3' terminus by the transcription initiation site and extends upstream (5' direction) to include the minimum number of bases or elements necessary to initiate transcription at levels detectable above background. Within the promoter sequence will be found a transcription initiation site, as well as protein binding domains (consensus sequences) responsible for the binding of RNA polymerase. Eukaryotic promoters often, but not always, contain "TATA" boxes and "CAT" boxes.

Prokaryotic promoters contain Shine-Dalgarno sequences in addition to the -10 and -35 consensus sequences.

An "expression control sequence" is a DNA sequence that controls and regulates the transcription and translation of another DNA sequence. A coding sequence is "under the control" of transcriptional and translational control sequences in a cell when RNA polymerase transcribes the coding sequence into mRNA, which is then translated into the protein encoded by the coding sequence.

A "signal sequence" can be included near the coding sequence. This sequence encodes a signal peptide, N-terminal to the polypeptide, that communicates to the host cell to direct the polypeptide to the cell surface or secrete the polypeptide into the media, and this signal peptide is clipped off by the host cell before the protein leaves the cell. Signal sequences can be found associated with a variety of proteins native to prokaryotes and eukaryotes.

The term "oligonucleotide", as used herein in referring to the probe of the present invention, is defined as a molecule comprised of two or more ribonucleotides, preferably more than three. Its exact size will depend upon many factors which, in turn, depend upon the ultimate function and use of the oligonucleotide.

The term "primer" as used herein refers to an oligonucleotide, whether occurring naturally as in a purified restriction digest or produced synthetically, which is capable of acting as a point of initiation of synthesis when placed under conditions in which synthesis of a primer extension product, which is complementary to a nucleic acid strand, is induced, i.e., in the presence of nucleotides and an inducing agent such as a DNA polymerase and at a suitable temperature and pH. The primer may be either single-stranded or double-stranded and must be sufficiently long to prime the synthesis of the desired extension product in the presence of the inducing agent. The exact length of the primer will depend upon many factors, including temperature, source of primer and use the method. For example, for diagnostic applications, depending on the complexity of the target sequence, the oligonucleotide primer typically contains 15-25 or more nucleotides, although it may contain fewer nucleotides.

The primers herein are selected to be "substantially" complementary to different strands of a particular target DNA sequence. This means that the primers must be sufficiently complementary to hybridize with their respective strands. Therefore, the primer sequence need not reflect the exact sequence of the template. For example, a non-complementary nucleotide fragment may be attached to the 5' end of the primer with the remainder of the primer sequence being complementary to the strand. Alternatively, non-complementary bases or longer sequences can be interspersed into the primer, provided that the primer sequence has sufficient complementary with the sequence or hybridize therewith and thereby form the template for the synthesis of the extension product.

As used herein, the terms "restriction endonucleases" and "restriction enzymes" refer to enzymes, each of which cut double-stranded DNA at or near a specific nucleotide sequence.

A cell has been "transformed" by exogenous or heterologous DNA when such DNA has been introduced inside the cell. The transforming DNA may or may not be integrated (covalently linked) into the genome of the cell. In prokaryotes, yeast, and mammalian cells for example, the transforming DNA may be maintained on an episomal element such as a plasmid. With respect to eukaryotic cells,

a stably transformed cell is one in which the transforming DNA has become integrated into a chromosome so that it is inherited by daughter cells through chromosome replication. This stability is demonstrated by the ability of the eukaryotic cell to establish cell lines or clones comprised of a population of daughter cells containing the transforming DNA. A "clone" is a population of cells derived from a single cell or ancestor by mitosis. A "cell line" is a clone of a primary cell that is capable of stable growth in vitro for many generations.

Two DNA sequences are "substantially homologous" when at least about 75% (preferably at least about 80%, and most preferably at least about 90% or 95%) of the nucleotides match over the defined length of the DNA sequences. Sequences that are substantially homologous can be identified by comparing the sequences using standard software available in sequence data banks, or in a Southern hybridization experiment under, for example, stringent conditions as defined for that particular system. Defining appropriate hybridization conditions is within the skill of the art. See, e.g. Maniatis et al., supra; DNA Cloning. Vols. I & II, supra; Nucleic Acid Hybridization, supra.

A "heterologous" region of the DNA construct is an identifiable segment of DNA within a larger DNA molecule that is not found in association with the larger molecule in nature. Thus, when the heterologous region encodes a mammalian gene, the gene will usually be flanked by DNA that does not flank the mammalian genomic DNA in the genome of the source organism. In another example, coding sequence is a construct where the coding sequence itself is not found in nature (e.g., a cDNA where the genomic coding sequence contains introns, or synthetic sequences having codons different than the native gene). Allelic variations or naturally-occurring mutational events do not give rise to a heterologous region of DNA as defined herein.

The labels most commonly employed for these studies are radioactive elements, enzymes, chemicals which fluoresce when exposed to ultraviolet light, and others. A number of fluorescent materials are known and can be utilized as labels. These include, for example, fluorescein, rhodamine, auramine, Texas Red, AMCA blue and Lucifer Yellow. A particular detecting material is anti-rabbit antibody prepared in goats and conjugated with fluorescein through an isothiocyanate.

Proteins can also be labeled with a radioactive element or with an enzyme. The radioactive label can be detected by any of the currently available counting procedures. The preferred isotope may be selected from ^3H , ^{14}C , ^{32}P , ^{35}S , ^{36}Cl , ^{51}Cr , ^{57}Co , ^{58}Co , ^{59}Fe , ^{90}Y , ^{125}I , ^{131}I , and ^{186}Re .

Enzyme labels are likewise useful, and can be detected by any of the presently utilized calorimetric, spectrophotometric, fluorospectrophotometric, amperometric or gasometric techniques. The enzyme is conjugated to the selected particle by reaction with bridging molecules such as carbodiimides, diisocyanates, glutaraldehyde and the like. Many enzymes which can be used in these procedures are known and can be utilized. The preferred are peroxidase, β -glucuronidase, β -D-glucosidase, β -D-galactosidase, urease, glucose oxidase plus peroxidase and alkaline phosphatase. U.S. Pat. Nos. 3,654,090, 3,850,752, and 4,016,043 are referred to by way of example for their disclosure of alternate labeling material and methods.

A particular assay system developed and utilized in the art is known as a receptor assay. In a receptor assay, the material to be assayed is appropriately labeled and then certain cellular test colonies are inoculated with a quantity of both

the label after which binding studies are conducted to determine the extent to which the labeled material binds to the cell receptors. In this way, differences in affinity between materials can be ascertained.

An assay useful in the art is known as a "cis/trans" assay. Briefly, this assay employs two genetic constructs, one of which is typically a plasmid that continually expresses a particular receptor of interest when transfected into an appropriate cell line, and the second of which is a plasmid that expresses a reporter such as luciferase, under the control of a receptor/ligand complex. Thus, for example, if it is desired to evaluate a compound as a ligand for a particular receptor, one of the plasmids would be a construct that results in expression of the receptor in the chosen cell line, while the second plasmid would possess a promoter linked to the luciferase gene in which the response element to the particular receptor is inserted. If the compound under test is an agonist for the receptor, the ligand will complex with the receptor, and the resulting complex will bind the response element and initiate transcription of the luciferase gene. The resulting chemiluminescence is then measured photometrically, and dose response curves are obtained and compared to those of known ligands. The foregoing protocol is described in detail in U.S. Pat. No. 4,981,784.

As used herein, the term "host" is meant to include not only prokaryotes but also eukaryotes such as yeast, plant and animal cells. A recombinant DNA molecule or gene which encodes a human TADG-12 protein of the present invention can be used to transform a host using any of the techniques commonly known to those of ordinary skill in the art. Especially preferred is the use of a vector containing coding sequences for the gene which encodes a human TADG-12 protein of the present invention for purposes of prokaryote transformation. Prokaryotic hosts may include *E. coli*, *S. typhimurium*, *Serratia marcescens* and *Bacillus subtilis*. Eukaryotic hosts include yeasts such as *Pichia pastoris*, mammalian cells and insect cells.

In general, expression vectors containing promoter sequences which facilitate the efficient transcription of the inserted DNA fragment are used in connection with the host. The expression vector typically contains an origin of replication, promoter(s), terminator(s), as well as specific genes which are capable of providing phenotypic selection in transformed cells. The transformed hosts can be fermented and cultured according to means known in the art to achieve optimal cell growth.

The invention includes a substantially pure DNA encoding a TADG-12 protein. A strand of which DNA will hybridize at high stringency to a probe containing a sequence of at least 15 consecutive nucleotides of the sequence shown in SEQ ID No. 1 or SEQ ID No. 3. The protein encoded by the DNA of this invention may share at least 80% sequence identity (preferably 85%, more preferably 90%, and most preferably 95%) with the amino acids listed in SEQ ID No. 2 or SEQ ID No. 4. More preferably, the DNA includes the coding sequence of the nucleotides of FIG. 4 (SEQ ID No. 1), or a degenerate variant of such a sequence.

The probe to which the DNA of the invention hybridizes preferably consists of a sequence of at least 20 consecutive nucleotides, more preferably 40 nucleotides, even more preferably 50 nucleotides, and most preferably 100 nucleotides or more (up to 100%) of the coding sequence of the nucleotides listed in FIG. 4 (SEQ ID No. 1) or the complement thereof. Such a probe is useful for detecting expression of TADG-12 in a human cell by a method including the steps

of (a) contacting mRNA obtained from the cell with the labeled hybridization probe; and (b) detecting hybridization of the probe with the mRNA.

This invention also includes a substantially pure DNA containing a sequence of at least 15 consecutive nucleotides (preferably 20, more preferably 30, even more preferably 50, and most preferably all) of the region from nucleotides 1 to 2413 of the nucleotides listed in SEQ ID No. 1, or of the region from nucleotides 1 to 2544 of the nucleotides listed in SEQ ID No. 3. The present invention also comprises antisense oligonucleotides directed against this novel DNA. Given the teachings of the present invention, a person having ordinary skill in this art would readily be able to develop antisense oligonucleotides directed against this DNA.

By "high stringency" is meant DNA hybridization and wash conditions characterized by high temperature and low salt concentration, e.g., wash conditions of 65° C. at a salt concentration of approximately 0.1×SSC, or the functional equivalent thereof. For example, high stringency conditions may include hybridization at about 42° C. in the presence of about 50% formamide; a first wash at about 65° C. with about 2×SSC containing 1% SDS; followed by a second wash at about 65° C. with about 0.1×SSC.

By "substantially pure DNA" is meant DNA that is not part of a milieu in which the DNA naturally occurs, by virtue of separation (partial or total purification) of some or all of the molecules of that milieu, or by virtue of alteration of sequences that flank the claimed DNA. The term therefore includes, for example, a recombinant DNA which is incorporated into a vector, into an autonomously replicating plasmid or virus, or into the genomic DNA of a prokaryote or eukaryote; or which exists as a separate molecule (e.g., a cDNA or a genomic or cDNA fragment produced by polymerase chain reaction (PCR) or restriction endonuclease digestion) independent of other sequences. It also includes a recombinant DNA which is part of a hybrid gene encoding additional polypeptide sequence, e.g., a fusion protein. Also included is a recombinant DNA which includes a portion of the nucleotides shown in SEQ ID No. 3 which encodes an alternative splice variant of TADG-12 (TADG-12V).

The DNA may have at least about 70% sequence identity to the coding sequence of the nucleotides listed in SEQ ID No. 1 or SEQ ID No. 3, preferably at least 75% (e.g. at least 80%); and most preferably at least 90%. The identity between two sequences is a direct function of the number of matching or identical positions. When a subunit position in both of the two sequences is occupied by the same monomeric subunit, e.g., if a given position is occupied by an adenine in each of two DNA molecules, then they are identical at that position. For example, if 7 positions in a sequence 10 nucleotides in length are identical to the corresponding positions in a second 10-nucleotide sequence, then the two sequences have 70% sequence identity. The length of comparison sequences will generally be at least 50 nucleotides, preferably at least 60 nucleotides, more preferably at least 75 nucleotides, and most preferably 100 nucleotides. Sequence identity is typically measured using sequence analysis software (e.g., Sequence Analysis Software Package of the Genetics Computer Group, University of Wisconsin Biotechnology Center, 1710 University Avenue, Madison, Wis. 53705).

The present invention comprises a vector comprising a DNA sequence which encodes a human TADG-12 protein and the vector is capable of replication in a host which comprises, in operable linkage: a) an origin of replication; b)

a promoter; and c) a DNA sequence coding for said protein. Preferably, the vector of the present invention contains a portion of the DNA sequence shown in SEQ ID No. 1 or SEQ ID No. 3. A "vector" may be defined as a replicable nucleic acid construct, e.g., a plasmid or viral nucleic acid. Vectors may be used to amplify and/or express nucleic acid encoding a TADG-12 protein. An expression vector is a replicable construct in which a nucleic acid sequence encoding a polypeptide is operably linked to suitable control sequences capable of effecting expression of the polypeptide in a cell. The need for such control sequences will vary depending upon the cell selected and the transformation method chosen. Generally, control sequences include a transcriptional promoter and/or enhancer, suitable mRNA ribosomal binding sites, and sequences which control the termination of transcription and translation. Methods which are well known to those skilled in the art can be used to construct expression vectors containing appropriate transcriptional and translational control signals. See for example, the techniques described in Sambrook et al., 1989, *Molecular Cloning: A Laboratory Manual* (2nd Ed.), Cold Spring Harbor Press, N.Y. A gene and its transcription control sequences are defined as being "operably linked" if the transcription control sequences effectively control the transcription of the gene. Vectors of the invention include, but are not limited to, plasmid vectors and viral vectors. Preferred viral vectors of the invention are those derived from retroviruses, adenovirus, adeno-associated virus, SV40 virus, or herpes viruses.

By a "substantially pure protein" is meant a protein which has been separated from at least some of those components which naturally accompany it. Typically, the protein is substantially pure when it is at least 60%, by weight, free from the proteins and other naturally-occurring organic molecules with which it is naturally associated in vivo. Preferably, the purity of the preparation is at least 75%, more preferably at least 90%, and most preferably at least 99%, by weight. A substantially pure TADG-12 protein may be obtained, for example, by extraction from a natural source, by expression of a recombinant nucleic acid encoding an TADG-12 polypeptide; or by chemically synthesizing the protein. Purity can be measured by any appropriate method, e.g., column chromatography such as immunoaffinity chromatography using an antibody specific for TADG-12, polyacrylamide gel electrophoresis, or HPLC analysis. A protein is substantially free of naturally associated components when it is separated from at least some of those contaminants which accompany it in its natural state. Thus, a protein which is chemically synthesized or produced in a cellular system different from the cell from which it naturally originates will be, by definition, substantially free from its naturally associated components. Accordingly, substantially pure proteins include eukaryotic proteins synthesized in *E. coli*, other prokaryotes, or any other organism in which they do not naturally occur.

In addition to substantially full-length proteins, the invention also includes fragments (e.g., antigenic fragments) of the TADG-12 protein. As used herein, "fragment," as applied to a polypeptide, will ordinarily be at least 10 residues, more typically at least 20 residues, and preferably at least 30 (e.g., 50) residues in length, but less than the entire, intact sequence. Fragments of the TADG-12 protein can be generated by methods known to those skilled in the art, e.g., by enzymatic digestion of naturally occurring or recombinant TADG-12 protein, by recombinant DNA techniques using an expression vector that encodes a defined fragment of TADG-12, or by chemical synthesis. The ability

of a candidate fragment to exhibit a characteristic of TADG-12 (e.g., binding to an antibody specific for TADG-12) can be assessed by methods described herein. Purified TADG-12 or antigenic fragments of TADG-12 can be used to generate new antibodies or to test existing antibodies (e.g., as positive controls in a diagnostic assay) by employing standard protocols known to those skilled in the art. Included in this invention are polyclonal antisera generated by using TADG-12 or a fragment of TADG-12 as the immunogen in, e.g., rabbits. Standard protocols for monoclonal and polyclonal antibody production known to those skilled in this art are employed. The monoclonal antibodies generated by this procedure can be screened for the ability to identify recombinant TADG-12 cDNA clones, and to distinguish them from known cDNA clones.

Further included in this invention are TADG-12 proteins which are encoded at least in part by portions of SEQ ID No. 1 or SEQ ID No. 3 e.g., products of alternative mRNA splicing or alternative protein processing events, or in which a section of TADG-12 sequence has been deleted. The fragment, or the intact TADG-12 polypeptide, may be covalently linked to another polypeptide, e.g. which acts as a label, a ligand or a means to increase antigenicity.

The invention also includes a polyclonal or monoclonal antibody which specifically binds to TADG-12. The invention encompasses not only an intact monoclonal antibody, but also a non-immunologically-active antibody fragment, e.g., a Fab or (Fab)₂ fragment; an engineered single chain Fv molecule; or a chimeric molecule, e.g., an antibody which contains the binding specificity of one antibody, e.g., of murine origin, and the remaining portions of another antibody, e.g., of human origin.

In one embodiment, the antibody, or a fragment thereof, may be linked to a toxin or to a detectable label, e.g. a radioactive label, non-radioactive isotopic label, fluorescent label, chemiluminescent label, paramagnetic label, enzyme label, or colorimetric label. Examples of suitable toxins include diphtheria toxin, *Pseudomonas* exotoxin A, ricin, and cholera toxin. Examples of suitable enzyme labels include malate hydrogenase, staphylococcal nuclease delta-5-steroid isomerase, alcohol dehydrogenase, alpha-glycerol phosphate dehydrogenase, triose phosphate isomerase, peroxidase, alkaline phosphatase, asparaginase, glucose oxidase, beta-galactosidase, ribonuclease, urease, catalase, glucose-6-phosphate dehydrogenase, glucoamylase, acetylcholinesterase, etc. Examples of suitable radioisotopic labels include ³H, ¹²⁵I, ¹³¹I, ³²P, ³⁵S, ¹⁴C, etc.

Paramagnetic isotopes for purposes of in vivo diagnosis can also be used according to the methods of this invention. There are numerous examples of elements that are useful in magnetic resonance imaging. For discussions on in vivo nuclear magnetic resonance imaging, see, for example, Schaefer et al., (1989) *JACC* 14, 472-480; Shreve et al., (1986) *Magn. Reson. Med.* 3, 336-340; Wolf, G. L. (1984) *Physiol. Chem. Phys. Med. NMR* 16, 93-95; Wesbey et al., (1984) *Physiol. Chem. Phys. Med. NMR* 16, 145-155; Runge et al., (1984) *Invest. Radiol.* 19, 408-415. Examples of suitable fluorescent labels include a fluorescein label, an isothiocyanate label, a rhodamine label, a phycoerythrin label, a phycocyanin label, an allophycocyanin label, an ophthaldehyde label, a fluorescamine label, etc. Examples of chemiluminescent labels include a luminal label, an isoluminal label, an aromatic acridinium ester label, an imidazole label, an acridinium salt label, an oxalate ester label, a luciferin label, a luciferase label, an aequorin label, etc.

Those of ordinary skill in the art will know of other suitable labels which may be employed in accordance with

the present invention. The binding of these labels to antibodies or fragments thereof can be accomplished using standard techniques commonly known to those of ordinary skill in the art. Typical techniques are described by Kennedy et al., (1976) *Clin. Chim. Acta* 70, 1-31; and Schurs et al., (1977) *Clin. Chim. Acta* 81, 1-40. Coupling techniques mentioned in the latter are the glutaraldehyde method, the periodate method, the dimaleimide method, the m-maleimidobenzyl-N-hydroxy-succinimide ester method. All of these methods are incorporated by reference herein.

Also within the invention is a method of detecting TADG-12 protein in a biological sample, which includes the steps of contacting the sample with the labeled antibody, e.g., radioactively tagged antibody specific for TADG-12, and determining whether the antibody binds to a component of the sample.

As described herein, the invention provides a number of diagnostic advantages and uses. For example, the TADG-12 protein disclosed in the present invention is useful in diagnosing cancer in different tissues since this protein is highly overexpressed in tumor cells. Antibodies (or antigen-binding fragments thereof) which bind to an epitope specific for TADG-12, are useful in a method of detecting TADG-12 protein in a biological sample for diagnosis of cancerous or neoplastic transformation. This method includes the steps of obtaining a biological sample (e.g., cells, blood, plasma, tissue, etc.) from a patient suspected of having cancer, contacting the sample with a labeled antibody (e.g., radioactively tagged antibody) specific for TADG-12, and detecting the TADG-12 protein using standard immunoassay techniques such as an ELISA. Antibody binding to the biological sample indicates that the sample contains a component which specifically binds to an epitope within TADG-12.

Likewise, a standard Northern blot assay can be used to ascertain the relative amounts of TADG-12 mRNA in a cell or tissue obtained from a patient suspected of having cancer, in accordance with conventional Northern hybridization techniques known to those of ordinary skill in the art. This Northern assay uses a hybridization probe, e.g., radiolabelled TADG-12 cDNA, either containing the full-length, single stranded DNA having a sequence complementary to SEQ ID No. 1 or SEQ ID No. 3, or a fragment of that DNA sequence at least 20 (preferably at least 30, more preferably at least 50, and most preferably at least 100 consecutive nucleotides in length). The DNA hybridization probe can be labeled by any of the many different methods known to those skilled in this art.

Antibodies to the TADG-12 protein can be used in an immunoassay to detect increased levels of TADG-12 protein expression in tissues suspected of neoplastic transformation. These same uses can be achieved with Northern blot assays and analyses.

The present invention is directed to DNA fragment encoding a TADG-12 protein selected from the group consisting of: (a) an isolated DNA fragment which encodes a TADG-12 protein; (b) an isolated DNA fragment which hybridizes to isolated DNA fragment of (a) above and which encodes a TADG-12 protein; and (c) an isolated DNA fragment differing from the isolated DNA fragments of (a) and (b) above in codon sequence due to the degeneracy of the genetic code, and which encodes a TADG-12 protein. Preferably, the DNA has the sequence shown in SEQ ID No. 1 or SEQ ID No. 3. More preferably, the DNA encodes a TADG-12 protein having the amino acid sequence shown in SEQ ID No. 2 or SEQ ID No. 4.

The present invention is also directed to a vector and/or a host cell capable of expressing the DNA of the present

invention. Preferably, the vector contains DNA encoding a TADG-12 protein having the amino acid sequence shown in SEQ ID No. 2 or SEQ ID No. 4. Representative host cells include bacterial cells, yeast cells, mammalian cells and insect cells.

The present invention is also directed to an isolated and purified TADG-12 protein coded for by DNA selected from the group consisting of: (a) isolated DNA which encodes a TADG-12 protein; (b) isolated DNA which hybridizes to isolated DNA of (a) above and which encodes a TADG-12 protein; and (c) isolated DNA differing from the isolated DNAs of (a) and (b) above in codon sequence due to the degeneracy of the genetic code, and which encodes a TADG-12 protein. Preferably, the isolated and purified TADG-12 protein has the amino acid sequence shown in SEQ ID No. 2 or SEQ ID No. 4.

The present invention is also directed to a method of detecting expression of the TADG-12 protein described herein, comprising the steps of: (a) contacting mRNA obtained from the cell with the labeled hybridization probe; and (b) detecting hybridization of the probe with the mRNA.

A number of potential applications are possible for the TADG-12 gene and gene product including the truncated product TADG-12V.

In one embodiment of the present invention, there is provided a method for diagnosing a cancer by detecting a TADG-12 protein in a biological sample, wherein the presence or absence of a TADG-12 protein indicates the presence or absence of a cancer. Preferably, the biological sample is selected from the group consisting of blood, urine, saliva, tears, interstitial fluid, ascites fluid, tumor tissue biopsy and circulating tumor cells. Still preferably, the detection of TADG-12 protein is by means selected from the group consisting of Northern blot, Western blot, PCR, dot blot, ELISA sandwich assay, radioimmunoassay, DNA array chips and flow cytometry. Such method is used for detecting an ovarian cancer, breast cancer, lung cancer, colon cancer, prostate cancer and other cancers in which TADG-12 is overexpressed.

In another embodiment of the present invention, there is provided a method for detecting malignant hyperplasia by detecting a TADG-12 protein or TADG-12 mRNA in a biological sample. Further by comprising the TADG-12 protein or TADG-12 mRNA to reference information, a diagnosis or a treatment can be provided. Preferably, PCR amplification is used for detecting TADG-12 mRNA, wherein the primers utilized are selected from the group consisting of SEQ ID Nos. 28-31. Still preferably, detection of a TADG-12 protein is by immunoaffinity to an antibody directed against a TADG-12 protein.

In still another embodiment of the present invention, there is provided a method of inhibiting expression of endogenous TADG-12 mRNA in a cell by introducing a vector comprising a DNA fragment of TADG-12 in opposite orientation operably linked to elements necessary for expression. As a result, the vector produces TADG-12 antisense mRNA in the cell, which hybridizes to endogenous TADG-12 mRNA, thereby inhibiting expression of endogenous TADG-12 mRNA.

In still yet another embodiment of the present invention, there is provided a method of inhibiting expression of a TADG-12 protein by introducing an antibody directed against a TADG-12 protein or fragment thereof. As a result, the binding of the antibody to the TADG-12 protein or fragment thereof inhibits the expression of the TADG-12 protein.

TADG-12 gene products including the truncated form can be used for targeted therapy. Specifically, a compound having a targeting moiety specific for a TADG-12 protein and a therapeutic moiety is administered to an individual in need of such treatment. Preferably, the targeting moiety is selected from the group consisting of an antibody directed against a TADG-12 protein and a ligand or ligand binding domain that binds a TADG-12 protein. The TADG-12 protein has an amino acid sequence shown in SEQ ID No. 2 or SEQ ID No. 4. Still preferably, the therapeutic moiety is selected from the group consisting of a radioisotope, a toxin, a chemotherapeutic agent, an immune stimulant and a cytotoxic agent. Such method can be used for treating an individual having a disease selected from the group consisting of ovarian cancer, lung cancer, prostate cancer, colon cancer and other cancers in which TADG-12 is overexpressed.

In yet another embodiment of the present invention, there is provided a method of vaccinating, or producing an immune response in, an individual against TADG-12 by inoculating the individual with a TADG-12 protein or fragment thereof. Specifically, the TADG-12 protein or fragment thereof lacks TADG-12 activity, and the inoculation elicits an immune response in the individual, thereby vaccinating the individual against TADG-12. Preferably, the individual has a cancer, is suspected of having a cancer or is at risk of getting a cancer. Still preferably, TADG-12 protein has an amino acid sequence shown in SEQ ID No. 2 or SEQ ID No. 4, while TADG-12 fragment has a sequence shown in SEQ ID No. 8, or is a 9-residue fragment up to a 20-residue fragment. Examples of 9-residue fragment are shown in SEQ ID Nos. 35, 36, 55, 56, 83, 84, 97, 98, 119, 120, 122, 123 and 136.

In still yet another embodiment of the present invention, there is provided an immunogenic composition, comprising an immunogenic fragment of a TADG-12 protein and an appropriate adjuvant. Preferably, the immunogenic fragment of the TADG-12 protein has a sequence shown in SEQ ID No. 8, or is a 9-residue fragment up to a 20-residue fragment. Examples of 9-residue fragment are shown in SEQ ID Nos. 35, 36, 55, 56, 83, 84, 97, 98, 119, 120, 122, 123 and 136.

The following examples are given for the purpose of illustrating various embodiments of the invention and are not meant to limit the present invention in any fashion.

EXAMPLE 1

Tissue Collection and Storage

Upon patient hysterectomy, bilateral salpingo-oophorectomy, or surgical removal of neoplastic tissue, the specimen is retrieved and placed on ice. The specimen was then taken to the resident pathologist for isolation and identification of specific tissue samples. Finally, the sample was frozen in liquid nitrogen, logged into the laboratory record and stored at -80° C. Additional specimens were frequently obtained from the Cooperative Human Tissue Network (CHTN). These samples were prepared by the CHTN and shipped on dry ice. Upon arrival, these specimens were logged into the laboratory record and stored at -80° C.

EXAMPLE 2

mRNA Extraction and cDNA Synthesis

Sixty-nine ovarian tumors (4 benign tumors, 10 low malignant potential tumors and 55 carcinomas) and 10 normal ovaries were obtained from surgical specimens and frozen in liquid nitrogen. The human ovarian carcinoma cell lines SW 626 and Caov 3, the human breast carcinoma cell

lines MDA-MB-231 and MDA-MB-435S were purchased from the American Type Culture Collection (Rockville, Md.). Cells were cultured to sub-confluency in Dulbecco's modified Eagle's medium, supplemented with 10% (v/v) fetal bovine serum and antibiotics.

Extraction of mRNA and cDNA synthesis were carried out by the methods described previously [14-16]. mRNA was isolated by using a RiboSep mRNA isolation kit (Becton Dickinson Labware). In this procedure, poly A+ mRNA was isolated directly from the tissue lysate using the affinity chromatography media oligo(dT) cellulose. cDNA was synthesized with 5.0 μ g of mRNA by random hexamer priming using 1st strand cDNA synthesis kit (CLONTECH).

EXAMPLE 3

PCR with Redundant Primers and Cloning of TADG-12 cDNA

Redundant primers, forward 5'-TGGGTIGTACIGCIGCICA (CT)TG -3' (SEQ ID No. 26) and reverse 5'-A(AG)IA(AG)IGCIATTCI TTICC-3' (SEQ ID No. 27), for the consensus sequences of amino acids surrounding the catalytic triad for serine proteases were used to compare the PCR products from normal and carcinoma cDNAs. The appropriate bands were ligated into Promega T-vector plasmid and the ligation product was used to transform JM109 cells (Promega) grown on selection media. After selection of individual colonies, they were cultured and plasmid DNA was isolated by means of the Wizard miniprep DNA purification system (Promega). Nucleotide sequencing was performed using PRISM Ready Reaction Dye Deoxy terminator cycle sequence kit (Applied Biosystems). Applied Biosystems Model 373A DNA sequencing system was used for direct cDNA sequence determination.

The original TADG-12 subclone was randomly labeled and used as a probe to screen an ovarian tumor cDNA library by standard hybridization techniques [11,15]. The library was constructed in λ ZAP using mRNA isolated from the tumor cells of a stage III/grade III ovarian adenocarcinoma patient. Three overlapping clones were obtained which spanned 2315 nucleotides. The final 99 nucleotides encoding the most 3' sequence including the poly A tail was identified by homology with clones available in the GenBank EST database.

EXAMPLE 4

Quantitative PCR

The mRNA overexpression of TADG-12 was determined using a quantitative PCR. Quantitative PCR was performed according to the procedure as previously reported [16]. Oligonucleotide primers were used for: TADG-12, forward 5'-GAAACATGTCCTTGCTC TCG-3' (SEQ ID No. 28) and reverse 5'-ACTAACTTCCACAGCCTCCT-3' (SEQ ID No. 29); the variant TADG-12, forward 5'-TCCAGGTGGGTCTAGTTTCC-3' (SEQ ID No. 30), reverse 5'-CTCTTTGG CTTGTACTTGCT-3' (SEQ ID No. 31); β -tubulin, forward 5'-CGCATCAACGTGTACTACAA -3' (SEQ ID No. 32) and reverse 5'-TACGAGCTGGTGGACTGAGA -3' (SEQ ID No. 33). β -tubulin was utilized as an internal control. The PCR reaction mixture consists of cDNA derived from 50 ng of mRNA, 5 pmol of sense and antisense primers for both the TADG-12 gene and the β -tubulin gene, 200 μ mol of dNTPs, 5 μ Ci of α - 32 PdCTP and 0.25 unit of Taq DNA polymerase with reaction buffer (Promega) in a final volume of 25 μ l. The target sequences were amplified in parallel with the β -tubulin gene. Thirty cycles of PCR were carried out in a Thermal Cycler (Perkin-Elmer Cetus). Each cycle of PCR

included 30 seconds of denaturation at 94% C. 30 seconds of annealing at 60% C and 30 seconds of extension at 72% C. The PCR products were separated on 2% agarose gels and the radioactivity of each PCR product was determined by using a Phospho Imager (Molecular Dynamics). The present study used the expression ratio (TADG-12/ β -tubulin) as measured by phosphoimager to evaluate gene expression and defined the value at mean +2SD of normal ovary as the cut-off value to determine overexpression. The student's t test was used for comparison of the mean values of normal ovary and tumors.

EXAMPLE 5

Sequencing of TADG-12/TADG-12V

Utilizing a plasmid specific primer near the cloning site, sequencing reactions were carried out using PRISM™ Ready Reaction Dye Deoxy™ terminators (Applied Biosystems cat#401384) according to the manufacturer's instructions. Residual dye terminators were removed from the completed sequencing reaction using a Centri-sep™ spin column (Princeton Separation cat.#CS-901). An Applied Biosystems Model 373A DNA Sequencing System was available and was used for sequence analysis.

EXAMPLE 6

Antibody Production

Polyclonal rabbit antibodies were generated by immunization of white New Zealand rabbits with a poly-lysine linked multiple antigen peptide derived from the TADG-12 carboxy-terminal protein sequence NH₂-WIHEQMERDLKT-COOH (WIHEQMERDLKT, SEQ ID No. 34). This peptide is present in full length TADG-12, but not TADG-12V. Rabbits were immunized with approximately 100 μ g of peptide emulsified in Ribi adjuvant. Subsequent boost immunizations were carried out at 3 and 6 weeks, and rabbit serum was isolated 10 days after the boost inoculations. Sera were tested by dot blot analysis to determine affinity for the TADG-12 specific peptide. Rabbit pre-immune serum was used as a negative control.

EXAMPLE 7

Northern Blot Analysis

10 μ g of mRNA were loaded onto a 1% formaldehyde-agarose gel, electrophoresed and blotted on a Hybond-N+ nylon membrane (Amersham). ³²P-labeled cDNA probes were made by Prime-a-Gene Labeling System (Promega). The PCR products amplified by the same primers as above were used for probes. The blots were prehybridized for 30 min and hybridized for 60 min at 68% C with ³²P-labeled cDNA probe in ExpressHyb Hybridization Solution (CLONTECH). Control hybridization to determine relative gel loading was performed with the β -tubulin probe.

Normal human tissues; spleen, thymus, prostate, testis, ovary, small intestine, colon and peripheral blood leukocyte, and normal human fetal tissues; brain, lung, liver and kidney (Human Multiple Tissue Northern Blot; CLONTECH) were also examined by same hybridization procedure.

EXAMPLE 8

Immunohistochemistry

Immunohistochemical staining was performed using a Vectastain Elite ABC Kit (Vector). Formalin fixed and paraffin embedded specimens were routinely deparaffinized and processed using microwave heat treatment in 0.01 M sodium citrate buffer (pH 6.0). The specimens were incubated with normal goat serum in a moist chamber for 30 minutes. TADG-12 peptide antibody was allowed to incubate with the specimens in a moisture chamber for 1 hour.

Excess antibody was washed away with phosphate buffered saline. After incubation with biotinylated anti-rabbit IgG for 30 minutes, the sections were then incubated with ABC reagent (Vector) for 30 minutes. The final products were visualized using the AEC substrate system. (DAKO) and sections were counterstained with hematoxylin before mounting. Negative controls were performed by using normal serum instead of the primary antibody.

EXAMPLE 9

Isolation of Catalytic Domain Subclones of TADG-12 and TADG-12 Variant

To identify serine proteases that are expressed in ovarian tumors, redundant PCR primers designed to the conserved regions of the catalytic triad of these enzymes were employed. A sense primer designed to the region surrounding the conserved histidine and an anti-sense primer designed to the region surrounding the conserved aspartate were used in PCR reactions with either normal ovary or ovarian tumor cDNA as template. In the reaction with ovarian tumor cDNA, a strong product band of the expected size of approximately 180 bp was observed as well as an unexpected PCR product of approximately 300 bp which showed strong expression in some ovarian tumor cDNA's (FIG. 1A). Both of these PCR products were subcloned and sequenced. The sequence of the subclones from the 180 bp band (SEQ ID No. 5) was found to be homologous to the sequence identified in the larger, unexpected band (SEQ ID No. 7) except that the larger band had an additional insert of 133 nucleotides (FIG. 1B). The smaller product of the appropriate size encoded for a protein sequence (SEQ ID No. 6) homologous to other known proteases while the sequence with the insertion (SEQ ID No. 8) encoded for a frame shift from the serine protease catalytic domain and a subsequent premature translational stop codon. TADG-12 variants from four individual tumors were also subcloned and sequenced. It was found that the sequence and insert to be identical. The genomic sequences for these cDNA derived clones were amplified by PCR, examined and found to contain potential AG/GT splice sites that would allow for the variant transcript production (data not shown).

EXAMPLE 10

Northern Blot Analysis of TADG-12 Expression

To examine transcript size and tissue distribution, the catalytic domain subclone was randomly labeled and used to probe Northern blots representing normal ovarian tissue, ovarian tumors and the cancer cell lines SW626, CAO3, HeLa, MD-MBA-435S and MD-MBA-231 (FIG. 2). Three transcripts of 2.4, 1.6 and 0.7 kilobases were observed. In blots of normal and ovary tumor the smallest transcript size 0.7 kb was lowly expressed in normal ovary while all transcripts (2.4, 1.6 and 0.7 kb) were abundantly present in serous carcinoma. In addition, Northern blots representing the normal human tissues spleen, thymus, prostate, testis, ovary, small intestine, colon and peripheral blood leukocyte, and normal human fetal tissues of brain, lung, liver and kidney were examined. The same three transcripts were found to be expressed weakly in all of these tissues (data not shown). A human β -tubulin specific probe was utilized as a control for relative sample loading. In addition, an RNA dot blot was probed representing 50 human tissues and determined that this clone is weakly expressed in all tissues represented (FIG. 3). It was found most prominently in heart, with intermediate levels in putamen, amygdala, kidney, liver, small intestine, skeletal muscle, and adrenal gland.

EXAMPLE 11

Sequencing and Characterization of TADG-12

An ovarian tumor cDNA library constructed in λ ZAP was screened by standard hybridization techniques using the catalytic domain subclone as a probe. Two clones that overlapped with the probe were identified and sequenced and found to represent 2316 nucleotides. The 97 nucleotides at the 3' end of the transcript including the poly-adenylation signal and the poly (A) tail were identified by homology with clones available in GenBank's EST database. This brought the total size of the transcript to 2413 bases (SEQ ID No. 1, FIG. 4). Subsequent screening of GenBank's Genomic Database revealed that TADG-12 is homologous to a cosmid from chromosome 17. This cosmid has the accession number AC015555.

The identified cDNA includes an open reading frame that would produce a predicted protein of 454 amino acids (SEQ ID No. 2) named Tumor Associated Differentially-Expressed Gene 12 (TADG-12). The sequence has been submitted to the GenBank database and granted the accession #AF201380. Using homology alignment programs, this protein contains several domains including an amino-terminal cytoplasmic domain, a potential Type II transmembrane domain followed by a low-density lipoprotein receptor-like class A domain (LDLR-A), a scavenger receptor cysteine rich domain (SRCR), and an extracellular serine protease domain.

As predicted by the TMPred program, TADG-12 contains a highly hydrophobic stretch of amino acids that could serve as a potential transmembrane domain, which would retain the amino terminus of the protein within the cytoplasm and expose the ligand binding domains and protease domain to the extracellular space. This general structure is consistent with other known transmembrane proteases including hepsin [17], and TMPRSS2 [18], and TADG-12 is particularly similar in structure to the TMPRSS2 protease.

The LDLR-A domain of TADG-12 is represented by the sequence from amino acid 74 to 108 (SEQ ID No. 13). The LDLR-A domain was originally identified within the LDL Receptor [19] as a series of repeated sequences of approximately 40 amino acids, which contained 6 invariant cysteine residues and highly conserved aspartate and glutamate residues. Since that initial identification, a host of other genes have been identified which contain motifs homologous to this domain [20]. Several proteases have been identified which contain LDLR-A motifs including matriptase, TMPRSS2 and several complement components. A comparison of TADG-12 with other known LDLR-A domains is shown in FIG. 5A. The similarity of these sequences range from 44 to 54% of similar or identical amino acids.

In addition to the LDLR-A domain, TADG-12 contains another extracellular ligand binding domain with homology to the group A SRCR family. This family of protein domains typically is defined by the conservation of 6 cysteine residues within a sequence of approximately 100 amino acids [23]. The SRCR domain of TADG-12 is encoded by amino acids 109 to 206 (SEQ ID No. 17), and this domain was aligned with other SRCR domains and found to have between 36 and 43% similarity (FIG. 5B). However, TADG-12 only has 4 of the 6 conserved cysteine residues. This is similar to the SRCR domain found in the protease TMPRSS2.

The TADG-12 protein also includes a serine protease domain of the trypsin family of proteases. An alignment of the catalytic domain of TADG-12 with other known proteases is shown in FIG. 5C. The similarity among these sequence ranges from 48 to 55%, and TADG-12 is most similar to the serine protease TMPRSS2 which also contains

a transmembrane domain, LDLR-A domain and an SRCR domain. There is a conserved amino acid motif (RIVGG) downstream from the SRCR domain that is a potential cleavage/activation site common to many serine proteases of this family [25]. This suggests that TADG-12 is trafficked to the cell surface where the ligand binding domains are capable of interacting with extracellular molecules and the protease domain is potentially activated. TADG-12 also contains conserved cysteine residues (amino acids 208 and 243) which in other proteases form a disulfide bond capable of linking the activated protease to the other extracellular domains.

EXAMPLE 12

15 Quantitative PCR Characterization of the Alternative Transcript

The original TADG-12 subclone was identified as highly expressed in the initial redundant-primer PCR experiment. The TADG-12 variant form (TADG-12V) with the insertion of 133 bp was also easily detected in the initial experiment. To identify the frequency of this expression and whether or not the expression level between normal ovary and ovarian tumors was different, a previously authenticated semi-quantitative PCR technique was employed [16]. The PCR analysis co-amplified a product β -tubulin with either a product specific to TADG-12 or TADG-12V in the presence of a radiolabelled nucleotide. The products were separated by agarose gel electrophoresis and a phosphorimager was used to quantitate the relative abundance of each PCR product. Examples of these PCR amplification products are shown for both TADG-12 and TADG-12V in FIG. 6. Normal expression was defined as the mean ratio of TADG-12 (or TADG-12V) to β -tubulin \pm 2SD as examined in normal ovarian samples. For tumor samples, overexpression was defined as $>2SD$ from the normal TADG-12/ β -tubulin or TADG-12V/ β -tubulin ratio. The results are summarized in Table 1 and Table 2. TADG-12 was found to be overexpressed in 41 of 55 carcinomas examined while the variant form was present at aberrantly high levels in 8 of 22 carcinomas. As determined by the student's test, these differences were statistically significant ($p < 0.05$).

TABLE 1

Frequency of Overexpression of TADG-12 in Ovarian Carcinoma	
Histology Type	TADG-12 (%)
Normal	0/16 (0%)
LMP-Serous	3/6 (50%)
LMP-Mucinous	0/4 (0%)
Serous Carcinoma	23/29 (79%)
Mucinous Carcinoma	7/12 (58%)
Endometrioid Carcinoma	8/8 (100%)
Clear Cell Carcinoma	3/6 (50%)
Benign Tumors	3/4 (75%)

Overexpression = more than two standard deviations above the mean for normal ovary
LMP = low malignant potential tumor

TABLE 2

Frequency of Overexpression of TADG-12V in Ovarian Carcinoma	
Histology Type	TADG-12V (%)
Normal	0/10 (0%)
LMP-Serous	0/5 (0%)

TABLE 2-continued

Frequency of Overexpression of TADG-12V in Ovarian Carcinoma	
Histology Type	TADG-12V (%)
LMP-Mucinous	0/3 (0%)
Serous Carcinoma	4/14 (29%)
Mucinous Carcinoma	3/5 (60%)
Endometrioid Carcinoma	1/3 (33%)
Clear Cell Carcinoma	N/D

Overexpression = more than two standard deviations above the mean for normal ovary
LMP = low malignant potential tumor

EXAMPLE 13

Immunohistochemical Analysis of TADG-12 in Ovarian Tumor Cells

In order to examine the TADG-12 protein, polyclonal rabbit anti-sera a peptide located in the carboxy-terminal amino acid sequence was developed. These antibodies were used to examine the expression level of the TADG-12 protein and its localization within normal ovary and ovarian tumor cells by immuno-localization. No staining was observed in normal ovarian tissues (FIG. 7A) while significant staining was observed in 22 of 29 tumors studied. Representative tumor samples are shown in FIGS. 7B and 7C. It should be noted that TADG-12 is found in a diffuse pattern throughout the cytoplasm indicative of a protein in a trafficking pathway. TADG-12 is also found at the cell surface in these tumor samples as expected. It should be noted that the antibody developed and used for immunohistochemical analysis would not detect the TADG-12V truncated protein.

The results of the immunohistochemical staining are summarized in Table 3. 22 of 29 ovarian tumors showed positive staining of TADG-12, whereas normal ovarian surface epithelium showed no expression of the TADG-12 antigen. 8 of 10 serous adenocarcinomas, 8 of 8 mucinous adenocarcinomas, 1 of 2 clear cell carcinomas, and 4 of 6 endometrioid carcinomas showed positive staining.

TABLE 3

Case	Stage	Histology	Grade	LN*	TADG12	Prognosis
1		Normal ovary			0-	
2		Normal ovary			0-	
3		Normal ovary			0-	
4		Mucinous B		ND	0-	Alive
5		Mucinous B		ND	1+	Alive
6	1a	Serous LMP	G1	ND	1+	Alive
7	1a	Mucinous LMP	G1	ND	1+	Alive
8	1a	Mucinous CA	G1	ND	1+	Alive
9	1a	Mucinous CA	G2	ND	1+	Alive
10	1a	Endometrioid CA	G1	ND	0-	Alive
11	1c	Serous CA	G1	N	1+	Alive
12	1c	Mucinous CA	G1	N	1+	Alive
13	1c	Mucinous CA	G1	N	2+	Alive
14	1c	Clear cell CA	G2	N	0-	Alive
15	1c	Clear cell CA	G2	N	0-	Alive
16	2c	Serous CA	G3	N	2+	Alive
17	3a	Mucinous CA	G2	N	2+	Alive
18	3b	Serous CA	G1	ND	1+	Alive
19	3c	Serous CA	G1	N	0-	Dead
20	3c	Serous CA	G3	P	1+	Alive
21	3c	Serous CA	G2	P	2+	Alive
22	3c	Serous CA	G1	P	2+	Unknown
23	3c	Serous CA	G3	ND	2+	Alive
24	3c	Serous CA	G2	N	0-	Dead
25	3c	Mucinous CA	G1	P	2+	Dead

TABLE 3-continued

Case	Stage	Histology	Grade	LN*	TADG12	Prognosis	
5	26	3c	Mucinous CA	G2	ND	1+	Unknown
	27	3c	Mucinous CA	G2	N	1+	Alive
	28	3c	Endometrioid CA	G1	P	1+	Dead
	29	3c	Endometrioid CA	G2	N	0-	Alive
	30	3c	Endometrioid CA	G2	P	1+	Dead
	31	3c	Endometrioid CA	G3	P	1+	Alive
10	32	3c	Clear Cell CA	G3	P	2+	Dead

LN* = Lymph Node; B = Benign; N = Negative; P = Positive; ND = Not Done

EXAMPLE 14

Peptide Ranking

For vaccine or immune stimulation, individual 9-mers to 11-mers of the TADG-12 protein were examined to rank the binding of individual peptides to the top 8 haplotypes in the general population [Parker et al., (1994)]. The computer program used for this analysis can be found at <http://www-bimas.dert.nih.gov/molbio/hla_bind/>. Table 4 shows the peptide ranking based upon the predicted half-life of each peptide's binding to a particular HLA allele. A larger half-life indicates a stronger association with that peptide and the particular HLA molecule. The TADG-12 peptides that strongly bind to an HLA allele are putative immunogens, and are used to inoculate an individual against TADG-12.

TABLE 4

TADG-12 peptide ranking				
HLA Type & Ranking	Start	Peptide	Predicted Dissociation _{1/2}	SEQ ID No.
HLA A0201				
	1	40 ILSLLPFEV	685.783	35
	2	144 AQLGFPSYV	545.316	36
	3	225 LLSQWPWQA	63.342	37
	4	252 WIITAAHCV	43.992	38
	5	356 VLNHAAVPL	36.316	39
	6	176 LLPDDKVTA	34.627	40
	7	13 FFSRSLFGL	31.661	41
	8	151 YVSSDNLRV	27.995	42
	9	436 RVTSFLDWI	21.502	43
	10	234 SLQFQGYHL	21.362	44
	11	181 KVTALHHSV	21.300	45
	12	183 TALHHSVYV	19.658	46
	13	411 RLWKLVGAT	18.494	47
	14	60 LILALAIGL	18.476	48
	15	227 SQWPWQASL	17.977	49
	16	301 RLGNIDIALM	11.426	50
	17	307 ALMKLAGPL	10.275	51
	18	262 DLYLPKSWT	9.837	52
	19	416 LVGATSFGL	9.001	53
	20	54 SLGHIALIL	8.759	54
HLA A0205				
	1	218 IVGGNMSLL	47.600	55
	2	60 LILALAIGL	35.700	48
	3	35 AVAAQILSL	28.000	56
	4	307 ALMKLAGPL	21.000	51
	5	271 IQVGLVSL	19.040	57
	6	397 CQGDSGGPL	16.800	58
	7	227 SQWPWQASL	16.800	49
	8	270 TIQVGLVSL	14.000	59
	9	56 GHIALILAL	14.000	60
	10	110 RVGGQNAVL	14.000	61
	11	181 KVTALHHSV	12.000	45
	12	151 YVSSDNLRV	12.000	42
	13	356 VLNHAAVPL	11.900	39
	14	144 AQLGFPSYV	9.600	36
	15	13 FFSRSLFGL	7.560	41

TABLE 4-continued

TADG-12 peptide ranking				
HLA Type & Ranking	Start	Peptide	Predicted Dissociation½	SEQ ID No.
16	54	SLGHIALIL	7.000	54
17	234	SLQFQGYHL	7.000	44
18	217	RIVGGNMSL	7.000	62
19	411	RLWKLVGAT	6.000	47
20	252	WIITAAHCV	6.000	38
HLA A1				
1	130	CSDDWKGGHY	37.500	63
2	8	AVEAPFSFR	9.000	64
3	328	NSEENFPDG	2.700	65
4	3	ENDPPAVEA	2.500	66
5	98	DCKDGEDEY	2.500	67
6	346	ATEDGGDAS	2.250	68
7	360	AAVPLISNK	2.000	69
8	153	SSDNLRVSS	1.500	70
9	182	VTALHHSVY	1.250	71
10	143	CAQLGFPSY	1.000	72
11	259	CVYDLYLPK	1.000	73
12	369	ICNHRDVYV	1.000	74
13	278	LLDNPAESH	1.000	75
14	426	CAEVNKPGEV	1.000	76
15	32	DADAVAAQI	1.000	77
16	406	VQEQERRLWK	1.000	78
17	329	SEENFPDGK	0.900	79
18	303	GNDIALMKL	0.625	80
19	127	KTMCSDDDWK	0.500	81
20	440	FLDWIHEQM	0.500	82
HLA A24				
1	433	VYTRVTSFL	280.000	83
2	263	LKLPKSWTI	90.000	84
3	169	EFVSDHLL	42.000	85
4	217	RIVGGNMSL	12.000	62
5	296	KYKPKRLGN	12.000	86
6	16	RSLFGLDDL	12.000	87
7	267	KSWTIQVGL	11.200	88
8	81	RSSFKEICEL	8.800	89
9	375	VYGGIISPS	8.800	90
10	110	RVGGQNAVL	8.000	91
11	189	VYVREGCAS	7.500	92
12	60	LILALAIGL	7.200	48
13	165	QFREEFVSI	7.200	93
14	271	IQVGLVSL	7.200	57
15	56	GHIALILAL	7.200	60
16	10	EAPFSFRSL	7.200	94
17	307	ALMKLAGPL	7.200	51
18	407	CQERRLWKL	6.600	95
19	356	VLNHAAPVL	6.000	39
20	381	SPSMLCAGY	6.000	96
HLA B7				
1	375	VYGGIISPS	200.000	97
2	381	SPSMLCAGY	80.000	98
3	362	VPLISNKIC	80.000	99
4	35	AVAAQILSL	60.000	56
5	373	RDVYGGIIS	40.000	100
6	307	ALMKLAGPL	36.000	51
7	283	APSHLVEKI	24.000	101
8	177	LPDDKVTAL	24.000	102
9	47	EVFSQSSSL	20.000	103
10	110	RVGGQNAVL	20.000	91
11	218	IVGGNMSLL	20.000	55
12	36	VAAQILSLL	12.000	104
13	255	TAHCVYDYL	12.000	105
14	10	EAPFSFRSL	12.000	94
15	138	YANVACAQL	12.000	106
16	195	CASGHVVTL	12.000	107
17	215	SSRIVGGNM	10.000	108
18	298	KPKRLGNDI	8.000	109
19	313	GPLTFNEMI	8.000	110
20	108	CVRVGGQNA	5.000	111
HLA B8				
1	294	HSKYKPKRL	80.000	112

TABLE 4-continued

TADG-12 peptide ranking				
HLA Type & Ranking	Start	Peptide	Predicted Dissociation½	SEQ ID No.
2	373	RDVYGGIIS	16.000	100
3	177	LPDDKVTAL	4.800	102
4	265	LPKSWITQV	2.400	113
5	88	ELITRCDGV	2.400	114
6	298	KPKRLGNDI	2.000	109
7	81	RSSFKEICEL	2.000	89
8	375	VYGGIISPS	2.000	97
9	79	RCRSSFKCI	2.000	115
10	10	EAPFSFRSL	1.600	94
11	215	SSRIVGGNM	1.000	108
12	36	VAAQILSLL	0.800	104
13	255	TAHCVYDYL	0.800	116
14	381	SPSMLCAGY	0.800	98
15	195	CASGHVVTL	0.800	107
16	362	VPLISNKIC	0.800	99
17	138	YANVACAQL	0.800	106
18	207	ACGHRRGYS	0.400	117
19	154	SDNLRVSSL	0.400	118
20	47	EVFSQSSSL	0.400	103
HLA B2702				
1	300	KRLGNDIAL	180.000	119
2	435	TRVTSFLDW	100.000	120
3	376	YGGIISPSM	100.000	121
4	410	RRLWKLVGA	60.000	122
5	210	HRRGYSSRI	60.000	123
6	227	SQWPWQASL	30.000	49
7	109	VRVGGQNAV	20.000	124
8	191	VREGCASGH	20.000	125
9	78	YRCRSSFKC	20.000	126
10	113	GQNAVLQVF	20.000	127
11	91	TRCDGVSDC	20.000	128
12	38	AQILSLLPF	20.000	129
13	211	RRGYSSRIV	18.000	130
14	216	SRIVGGNMS	10.000	131
15	118	LQVFTAASW	10.000	132
16	370	CNHRDVYGG	10.000	133
17	393	GVDSQCQGS	10.000	134
18	235	LQFQGYHLC	10.000	135
19	271	IQVGLVSL	6.000	57
20	408	CQERRLWKL	6.000	95
HLA B4403				
1	427	AEVNKPGVY	90.000	136
2	162	LEGQFREEF	40.000	137
3	9	VEAPFSFRS	24.000	138
4	318	NEMIQPVCL	12.000	139
5	256	AAHCVYDLY	9.000	140
6	98	DCKDGEDEY	9.000	67
7	46	FEVFSQSSS	8.000	141
8	38	AQILSLLPF	7.500	129
9	64	LAIGLGIHF	7.500	142
10	192	REGCASGHV	6.000	143
11	330	EENFPDGKV	6.000	144
12	182	VTALHHSVY	6.000	145
13	408	QERRLWKL	6.000	146
14	206	TACGHRRGY	4.500	147
15	5	DPPAVEAPF	4.500	148
16	261	YDLYLPKSW	4.500	149
17	33	ADAVAAQIL	4.500	150
18	168	EEFVSDIHL	4.000	151
19	304	NDIALMKLA	3.750	152
20	104	DEYRCVRVG	3.600	153

Conclusion

In this study, a serine protease was identified by means of a PCR based strategy. By Northern blot, the largest transcript for this gene is approximately 2.4 kb, and it is found to be expressed at high levels in ovarian tumors while found at minimal levels in all other tissues examined. The full-length cDNA encoding a novel multi-domain, cell-surface serine protease was cloned, named TADG-12. The 454 amino acid protein contains a cytoplasmic domain, a type II transmem-

brane domain, an LDLR-A domain, an SRCR domain and a serine protease domain. Using a semi-quantitative PCR analysis, it was shown that TADG-12 is overexpressed in a majority of tumors studied. Immunohistochemical staining corroborates that in some cases this protein is localized to the cell-surface of tumor cells and this suggests that TADG-12 has some extracellular proteolytic functions. Interestingly, TADG-12 also has a variant splicing form that is present in 35% of the tumors studied. This variant mRNA would lead to a truncated protein that may provide a unique peptide sequence on the surface of tumor cells.

This protein contains two extracellular domains which might confer unusual properties to this multidomain molecule. Although the precise role of LDLR-A function with regard to proteases remains unclear, this domain certainly has the capacity to bind calcium and other positively charged ligands [21,22]. This may play an important role in the regulation of the protease or subsequent internalization of the molecule. The SRCR domain was originally identified within the macrophage scavenger receptor and functionally described to bind lipoproteins. Not only are SRCR domains capable of binding lipoproteins, but they may also bind to molecules as diverse as polynucleotides [23]. More recent studies have identified members of this domain family in proteins with functions that vary from proteases to cell adhesion molecules involved in maturation of the immune system [24]. In addition, TADG-12, like Tmprss2 has only four of six cysteine residues conserved within its SRCR domain. This difference may allow for different structural features of these domains that confer unusual ligand binding properties. At this time, only the function of the CD6 encoded SRCR is well documented. In the case of CD6, the SRCR domain binds to the cell adhesion molecule ALCAM [23]. This mediation of cell adhesion is a useful starting point for future research on newly identified SRCR domains, however, the possibility of multiple functions for this domain can not be overlooked. SRCR domains are certainly capable of cell adhesion type interactions, but their capacity to bind other types of ligands should be considered.

At this time, the precise role of TADG-12 remains unclear. Substrates have not been identified for the protease domain, nor have ligands been identified for the extracellular LDLR-A and SRCR domains. FIG. 8 presents a working model of TADG-12 with the information disclosed in the present invention. Two transcripts are produced which lead to the production of either TADG-12 or the truncated TADG-12V proteins. Either of these proteins is potentially targeted to the cell surface. TADG-12 is capable of becoming an activated serine protease while TADG-12V is a truncated protein product that if at the cell surface may represent a tumor specific epitope.

The problem with treatment of ovarian cancer today remains the inability to diagnose the disease at an early stage. Identifying genes that are expressed early in the disease process such as proteases that are essential for tumor cell growth [26] is an important step toward improving treatment. With this knowledge, it may be possible to design assays to detect the highly expressed genes such as the TADG-12 protease described here or previously described proteases to diagnose these cancers at an earlier stage. Panels of markers may also provide prognostic information and could lead to therapeutic strategies for individual patients. Alternatively, inhibition of enzymes such as proteases may be an effective means for slowing progression of ovarian cancer and improving the quality of patient life. Other features of TADG-12 and TADG-12V must be considered important to future research too. The extracellular

ligand binding domains are natural targets for drug delivery systems. The aberrant peptide associated with the TADG-12V protein may provide an excellent target drug delivery or for immune stimulation.

The following references were cited herein.

1. Duffy, M. J. *Clin. Exp. Metastasis*, 10: 145-155, 1992.
2. Monsky, W. L., et al., *Cancer Res.*, 53: 3159-3164, 1993.
3. Powell, W. C., et al., *Cancer Res.*, 53: 417-422, 1993.
4. Neurath, H. *The Diversity of Proteolytic Enzymes*, In: R. J. Beynon and J. S. Bond (eds.), pp. 1-13, *Proteolytic enzymes*, Oxford: IRL Press. 1989.
5. Liotta, L. A., et al., *Cell*, 64: 327-336, 1991.
6. Tryggvason, K., et al., *Biochem. Biophys. Acta.*, 907: 191-217, 1987.
7. McCormack, R. T., et al., *Urology*, 45:729-744, 1995.
8. Landis, S. H., et al., *CA Cancer J. Clin.*, 48: 6-29, 1998.
9. Tanimoto, H., et al., *Cancer Res.*, 57: 2884-2887, 1997.
10. Tanimoto, H., et al., *Cancer*, 86: 2074-2082, 1999.
11. Underwood, L. J., et al., *Cancer Res.*, 59:4435-4439, 1999.
12. Tanimoto, H., Underwood, L. J., Shigemasa, K., Parmley T. H., and O'Brien, T. J. *Increased Expression of Protease M in Ovarian Tumors*. *Tumor Biology*, In Press, 2000.
13. Tanimoto, H., et al., *Proc. Of the Amer. Assoc. for Canc. Research* 39:648. 1998.
14. Tanimoto, H., et al., *Tumor Biology*, 20: 88-98, 1999.
15. Maniatis, T., Fritsch, E. F. & Sambrook, J. *Molecular Cloning*, p. 309-361 Cold Spring Harbor Laboratory, New York, 1982.
16. Shigemasa, K., et al., *J. Soc. Gynecol. Invest.*, 4:95-102, 1997.
17. Leytus S. P., et al., *Biochemistry*, 27: 1067-1074, 1988.
18. Paoloni-Giacobino, A., et al., *Genomics*, 44: 309-320, 1997.
19. Sudhof, T. C., et al., *Science*, 228: 815-822, 1985.
20. Daly, N. L., et al., *Proc. Natl. Acad. Sci. USA* 92: 6334-6338, 1995.
21. Mahley, R. W., *Science* 240: 622-630, 1988.
22. Van Driel, I. R., et al., *J. Biol. Chem.* 262: 17443-17449, 1987.
23. Freeman, M., et al., *Proc. Natl. Acad. Sci. USA* 87: 8810-8814, 1990.
24. Aruffo, A., et al., *Immunology Today* 18(10): 498-504, 1997.
25. Rawlings, N. D., and Barrett, A. J., *Methods Enzymology* 244: 19-61, 1994.
26. Torres-Rosado, A., et al., *Proc. Natl. Acad. Sci. USA*, 90: 7181-7185. 1993.

Any patents or publications mentioned in this specification are indicative of the levels of those skilled in the art to which the invention pertains. These patents and publications are herein incorporated by reference to the same extent as if each individual publication was specifically and individually indicated to be incorporated by reference.

One skilled in the art will readily appreciate that the present invention is well adapted to carry out the objects and obtain the ends and advantages mentioned, as well as those inherent therein. The present examples along with the methods, procedures, treatments, molecules, and specific compounds described herein are presently representative of preferred embodiments, are exemplary, and are not intended as limitations on the scope of the invention. Changes therein and other uses will occur to those skilled in the art which are encompassed within the spirit of the invention as defined by the scope of the claims.

SEQUENCE LISTING

<160> NUMBER OF SEQ ID NOS: 153

<210> SEQ ID NO 1

<211> LENGTH: 2413

<212> TYPE: DNA

<213> ORGANISM: Homo sapiens

<220> FEATURE:

<221> NAME/KEY: CDS

<223> OTHER INFORMATION: entire cDNA sequence of TADG-12 gene

<400> SEQUENCE: 1

```

cgggaaaagg ctgtgtttat ggggaagccag taacactgtg gcctactatc      50
tcttccgtgg tgccatctac atttttggga ctcggaatt atgaggtaga      100
gggtggggcg gagccggatg tcagagggcc tgaatatgac accatggggg      150
aaaatgatcc gcctgctggt gaagcccct tctcattccg atcgcttttt      200
ggccttgatg atttgaaaat aagtctggtt gcaccagatg cagatgctgt      250
tgctgcacag atcctgtcac tgctgccatt tgaagttttt tcccaatcat      300
cgctattggg gatcattgca ttgatattag cactggccat tggctctggc      350
atccacttcg actgctcagg gaagtacaga tgcgctcat cctttaagtg      400
tatacgagctg ataactcgat gtgacggagt ctcgattgc aaagacgggg      450
aggacgagta ccgctgtgtc cgggtgggtg gtcagaatgc cgtgctccag      500
gtgttcacag ctgcttctgt gaagaccatg tgctccgatg actggaaggg      550
tcactacgca aatgttgcct gtgcccaact gggtttccca agctatgtga      600
gttcagataa cctcagagtg agctcgtgag aggggcagtt ccgggagggag      650
tttgtgtcca tcgatcacct cttgccagat gacaagggtga ctgcattaca      700
ccactcagta tatgtgaggg agggatgtgc ctctggccac gtggttacct      750
tgcagtgcac agcctgtggt catagaaggg gctacagctc acgcatcgtg      800
ggtggaaca tgccttctct ctccagtggt ccctggcagg ccagccttca      850
gttcacgggc taccacctgt gcgggggctc tgcctcagc cccctgtgga      900
tcctcactgc tgcacactgt gtttatgact tgtacctccc caagtcattg      950
accatccagg tgggtctagt ttccctgttg gacaatccag ccccatccca     1000
cttggtggag aagattgtct accacagcaa gtacaagcca aagaggctgg     1050
gcaatgacat cgccttatg aagctggccg ggccactcac gttcaatgaa     1100
atgatccagc ctgtgtgcct gcccaactct gaagagaact tccccgatgg     1150
aaaagtgtgc tggacgtcag gatggggggc cacagaggat ggagggtgacg     1200
cctcccctgt cctgaaccac gcggcctgct ctttgatttc caacaagatc     1250
tgcaaccaca gggacgtgta cgggtggcatc atctcccctc ccatgctctg     1300
cgcgggctac ctgacgggtg cgtgtaacag ctgccagggg gacagcgggg     1350
ggcccctggt gtgtcaagag aggaggctgt ggaagttagt gggagcggacc     1400
agctttggca tcggctgcgc agaggtgaac aagcctgggg tgtacacccg     1450
tgtcacctcc ttctgggact ggatccacga gcagatggag agagacctaa     1500
aaacctgaag aggaagggga caagtagcca cctgagttcc tgagggtgatg     1550
aagacagccc gatcctcccc tggactcccc tgtaggaacc tgcacacgag     1600

```

-continued

```

cagacaccct tggagctctg agttccggca ccagtagcgg gcccgaaaga      1650
ggcacccttc catctgattc cagcacaacc ttcaagctgc tttttgtttt      1700
ttgttttttt gaggtggagt ctcgctctgt tgcccaggct ggagtgcagt      1750
ggcgaaatac cctgctcact gcagcctcgg cttccctggt tcaagcgatt      1800
ctcttgccctc agcttcccga gtagctggga ccacaggtgc cggccaccac      1850
acccaactaa tttttgtatt tttagtagag acagggtttc accatggttg      1900
ccaggtgctc ctcaaaccgc tgacctcaaa tgatgtgcct gcttcagcct      1950
cccacagtgc tgggattaca ggcattgggc accacgccta gcctcacgct      2000
cctttctgat cttcactaag aacaaaagaa gcagcaactt gcaagggcgg      2050
cctttcccac tggtcacatc ggttttctct ccaggttctt gcaaaattcc      2100
tgacgagata agcagttatg tgacctcacg tgcaaagcca ccaacagcca      2150
ctcagaaaag acgcaccagc ccagaagtgc agaactgcag tcaactgcag      2200
ttttcatctt tagggaccag aaccaaacc accctttcta cttccaagac      2250
ttattttcac atgtggggag gtaaatctag gaatgactcg ttaaggcct      2300
attttcatga tttctttgta gcatttggtg cttgacgtat tattgtcctt      2350
tgattccaaa taatatgttt ccttcctca aaaaaaaaa aaaaaaaaaa      2400
aaaaaaaaaa aaa                                             2413

```

```

<210> SEQ ID NO 2
<211> LENGTH: 454
<212> TYPE: PRT
<213> ORGANISM: Homo sapiens
<220> FEATURE:
<223> OTHER INFORMATION: complete amino acid sequence of TADG-12
                        protein

```

```

<400> SEQUENCE: 2

```

```

Met Gly Glu Asn Asp Pro Pro Ala Val Glu Ala Pro Phe Ser Phe
      5              10
Arg Ser Leu Phe Gly Leu Asp Asp Leu Lys Ile Ser Pro Val Ala
      20              25
Pro Asp Ala Asp Ala Val Ala Ala Gln Ile Leu Ser Leu Leu Pro
      35              40
Phe Glu Val Phe Ser Gln Ser Ser Ser Leu Gly Ile Ile Ala Leu
      50              55              60
Ile Leu Ala Leu Ala Ile Gly Leu Gly Ile His Phe Asp Cys Ser
      65              70              75
Gly Lys Tyr Arg Cys Arg Ser Ser Phe Lys Cys Ile Glu Leu Ile
      80              85              90
Thr Arg Cys Asp Gly Val Ser Asp Cys Lys Asp Gly Glu Asp Glu
      95              100
Tyr Arg Cys Val Arg Val Gly Gly Gln Asn Ala Val Leu Gln Val
      110             115             120
Phe Thr Ala Ala Ser Trp Lys Thr Met Cys Ser Asp Asp Trp Lys
      125             130             135
Gly His Tyr Ala Asn Val Ala Cys Ala Gln Leu Gly Phe Pro Ser
      140             145             150
Tyr Val Ser Ser Asp Asn Leu Arg Val Ser Ser Leu Glu Gly Gln
      155             160             165
Phe Arg Glu Glu Phe Val Ser Ile Asp His Leu Leu Pro Asp Asp

```

-continued

	170		175		180
Lys Val Thr Ala	Leu His His Ser Val Tyr Val Arg Glu Gly Cys				
	185		190		195
Ala Ser Gly His	Val Val Thr Leu Gln Cys Thr Ala Cys Gly His				
	200		205		210
Arg Arg Gly Tyr	Ser Ser Arg Ile Val Gly Gly Asn Met Ser Leu				
	215		220		225
Leu Ser Gln Trp	Pro Trp Gln Ala Ser Leu Gln Phe Gln Gly Tyr				
	230		235		240
His Leu Cys Gly	Gly Ser Val Ile Thr Pro Leu Trp Ile Ile Thr				
	245		250		255
Ala Ala His Cys	Val Tyr Asp Leu Tyr Leu Pro Lys Ser Trp Thr				
	260		265		270
Ile Gln Val Gly	Leu Val Ser Leu Leu Asp Asn Pro Ala Pro Ser				
	275		280		285
His Leu Val Glu	Lys Ile Val Tyr His Ser Lys Tyr Lys Pro Lys				
	290		295		300
Arg Leu Gly Asn	Asp Ile Ala Leu Met Lys Leu Ala Gly Pro Leu				
	305		310		315
Thr Phe Asn Glu	Met Ile Gln Pro Val Cys Leu Pro Asn Ser Glu				
	320		325		330
Glu Asn Phe Pro	Asp Gly Lys Val Cys Trp Thr Ser Gly Trp Gly				
	335		340		345
Ala Thr Glu Asp	Gly Gly Asp Ala Ser Pro Val Leu Asn His Ala				
	350		355		360
Ala Val Pro Leu	Ile Ser Asn Lys Ile Cys Asn His Arg Asp Val				
	365		370		375
Tyr Gly Gly Ile	Ile Ser Pro Ser Met Leu Cys Ala Gly Tyr Leu				
	380		385		390
Thr Gly Gly Val	Asp Ser Cys Gln Gly Asp Ser Gly Gly Pro Leu				
	395		400		405
Val Cys Gln Glu	Arg Arg Leu Trp Lys Leu Val Gly Ala Thr Ser				
	410		415		420
Phe Gly Ile Gly	Cys Ala Glu Val Asn Lys Pro Gly Val Tyr Thr				
	425		430		435
Arg Val Thr Ser	Phe Leu Asp Trp Ile His Glu Gln Met Glu Arg				
	440		445		450

Asp Leu Lys Thr

<210> SEQ ID NO 3
 <211> LENGTH: 2544
 <212> TYPE: DNA
 <213> ORGANISM: Homo sapiens
 <220> FEATURE:
 <221> NAME/KEY: CDS
 <223> OTHER INFORMATION: entire cDNA sequence of TADG-12 variant gene

<400> SEQUENCE: 3

cgggaaaggg ctgtgtttat ggggaagccag taacactgtg gcctactatc	50
tcttccgtgg tgccatctac atttttggga ctcggaatt atgaggtaga	100
ggtggaggcg gagccggatg tcagaggtcc tgaatatgac accatggggg	150
aaaatgatcc gcctgctgtt gaagcccct tctcattccg atcgcttttt	200
ggccttgatg atttggaaat aagtctgtt gcaccagatg cagatgctgt	250

-continued

tgctgcacag atcctgtcac tgctgccatt tgaagttttt toccaatcat	300
cgtcattggg gatcattgca ttgatattag cactggccat tggctcgggc	350
atccacttcg actgctcagg gaagtacaga tgtcgtcat cctttaagtg	400
tatcgagctg ataactcgat gtgacggagt ctcggattgc aaagacgggg	450
aggacgagta ccgctgtgtc cgggtgggtg gtcagaatgc cgtgctccag	500
gtgttcacag ctgcttcgtg gaagaccatg tgctccgatg actggaagg	550
tcactacgca aatggtgcct gtgcccact gggtttcca agctatgtaa	600
gttcagataa cctcagagtg agctcgtg aggggcagtt ccgggaggag	650
tttgtgtcca tcgatcacct cttgccagat gacaaggta ctgcattaca	700
ccactcagta tatgtgaggg agggatgtgc ctctggccac gtggttacct	750
tgcagtgcac agcctgtggt catagaaggg gctacagctc acgcatcgtg	800
ggtggaaaca tgccttgct ctcgcagtgg ccttggcagg ccagccttca	850
gttccagggc taccacctgt gcgggggctc tgtcatcacg cccctgtgga	900
tcactactgc tgcacactgt ttttatgaga ttgtagctcc tagagaaagg	950
gcagacagaa gaggaaggaa gctcctgtgc tggaggaaac ccacaaaaat	1000
gaaaggacct agaccttccc atagetaatt ccagtggacc atgttatggc	1050
agatacaggc ttgtacctcc ccaagtcatg gacctccag gtgggtctag	1100
tttccctggt ggacaatcca gcccctccc acttgggtgga gaagattgtc	1150
taccacagca agtacaagcc aaagaggctg ggcaatgaca tcgcccttat	1200
gaagctggcc gggccactca cgttcaatga aatgatccag cctgtgtgcc	1250
tgcccaactc tgaagagaac ttccccgatg gaaaagtgtg ctggacgtca	1300
ggatgggggg ccacagagga tggagggtgac gcctcccctg tcctgaacca	1350
cgcgccgctc cctttgattt ccaacaagat ctgcaaccac agggacgtgt	1400
acgggtgcat catctcccc tccatgctct gcgcgggcta cctgacgggt	1450
ggcgtggaca gctgccaggg ggacagcggg gggcccctgg tgtgtcaaga	1500
gaggaggctg tggaaagttag tgggagcgac cagctttggc atcggtgctg	1550
cagaggtgaa caagcctggg gtgtacaccc gtgtcacctc cttcctggac	1600
tggatccacg agcagatgga gagagacctc aaaaacctgaa gaggaagggg	1650
acaagtagcc acctgagttc ctgaggtgat gaagacagcc cgatcctccc	1700
ctggactccc gtgtaggaac ctgcacacga gcagacaccc ttggagctct	1750
gagttccggc accagtagcg gggccgaaag aggcaccctt coactctgatt	1800
ccagcacaac cttcaagctg ctttttgttt tttgtttttt tgagggtggag	1850
tctcgtctctg ttgccaggc tggagtgcag tggcgaata ccctgctcac	1900
tgcagcctcc gcttccctgg ttcaagcgat tctcttgctc cagcttcccc	1950
agtagctggg accacaggtg cccgccacca caccacta atttttgtat	2000
ttttagtaga gacagggttt caccatgttg gccaggctgc tctcaaacc	2050
ctgaactcaa atgatgtgcc tgcttcagcc tcccacagtg ctgggattac	2100
aggcatgggc caccacgctc agcctcacgc tcctttctga tottactaa	2150
gaacaaaaga agcagcaact tgcaaggcg gcctttcca ctggtccatc	2200
tggttttctc tccagggtct tgcaaaattc ctgacgagat aagcagttat	2250

-continued

```

gtgacctcac gtgcaaagcc accaacagcc actcagaaaa gacgcaccag      2300
cccagaagtg cagaactgca gtcactgcac gttttcatct ttagggacca      2350
gaaccaaacc caccctttct acttccaaga cttattttca catgtgggga      2400
ggttaatcta ggaatgactc gtttaaggcc tattttcatg atttctttgt      2450
agcatttggg gcttgacgta ttattgtcct ttgattccaa ataatatgtt      2500
tccttccttc aaaaaaaaaa aaaaaaaaaa aaaaaaaaaa aaaa          2544

```

```

<210> SEQ ID NO 4
<211> LENGTH: 294
<212> TYPE: PRT
<213> ORGANISM: Homo sapiens
<220> FEATURE:
<223> OTHER INFORMATION: complete amino acid sequence of TADG-12
variant protein

```

```

<400> SEQUENCE: 4

```

```

Met Gly Glu Asn Asp Pro Pro Ala Val Glu Ala Pro Phe Ser Phe
      5              10
Arg Ser Leu Phe Gly Leu Asp Asp Leu Lys Ile Ser Pro Val Ala
      20              25              30
Pro Asp Ala Asp Ala Val Ala Ala Gln Ile Leu Ser Leu Leu Pro
      35              40              45
Phe Glu Val Phe Ser Gln Ser Ser Ser Leu Gly Ile Ile Ala Leu
      50              55              60
Ile Leu Ala Leu Ala Ile Gly Leu Gly Ile His Phe Asp Cys Ser
      65              70              75
Gly Lys Tyr Arg Cys Arg Ser Ser Phe Lys Cys Ile Glu Leu Ile
      80              85              90
Thr Arg Cys Asp Gly Val Ser Asp Cys Lys Asp Gly Glu Asp Glu
      95              100
Tyr Arg Cys Val Arg Val Gly Gly Gln Asn Ala Val Leu Gln Val
      110             115             120
Phe Thr Ala Ala Ser Trp Lys Thr Met Cys Ser Asp Asp Trp Lys
      125             130             135
Gly His Tyr Ala Asn Val Ala Cys Ala Gln Leu Gly Phe Pro Ser
      140             145             150
Tyr Val Ser Ser Asp Asn Leu Arg Val Ser Ser Leu Glu Gly Gln
      155             160             165
Phe Arg Glu Glu Phe Val Ser Ile Asp His Leu Leu Pro Asp Asp
      170             175             180
Lys Val Thr Ala Leu His His Ser Val Tyr Val Arg Glu Gly Cys
      185             190             195
Ala Ser Gly His Val Val Thr Leu Gln Cys Thr Ala Cys Gly His
      200             205             210
Arg Arg Gly Tyr Ser Ser Arg Ile Val Gly Gly Asn Met Ser Leu
      215             220             225
Leu Ser Gln Trp Pro Trp Gln Ala Ser Leu Gln Phe Gln Gly Tyr
      230             235             240
His Leu Cys Gly Gly Ser Val Ile Thr Pro Leu Trp Ile Ile Thr
      245             250             255
Ala Ala His Cys Val Tyr Glu Ile Val Ala Pro Arg Glu Arg Ala
      260             265             270
Asp Arg Arg Gly Arg Lys Leu Leu Cys Trp Arg Lys Pro Thr Lys

```


-continued

<220> FEATURE:
 <223> OTHER INFORMATION: deduced amino acid sequence of the 300 bp band
 from the PCR product for TADG-12 variant, which is
 a truncated form of TADG-12

<400> SEQUENCE: 8

Val Val Thr Ala Ala His Cys Val Tyr Glu Ile Val Ala Pro Arg
 5 10 15
 Glu Arg Ala Asp Arg Arg Gly Arg Lys Leu Leu Cys Trp Arg Lys
 20 25 30
 Pro Thr Lys Met Lys Gly Pro Arg Pro Ser His Ser
 35 40

<210> SEQ ID NO 9
 <211> LENGTH: 34
 <212> TYPE: PRT
 <213> ORGANISM: Homo sapiens
 <220> FEATURE:
 <221> NAME/KEY: DOMAIN
 <223> OTHER INFORMATION: LDLR-A domain of the complement subunit C8
 (Comp8)

<400> SEQUENCE: 9

Cys Glu Gly Phe Val Cys Ala Gln Thr Gly Arg Cys Val Asn Arg
 5 10 15
 Arg Leu Leu Cys Asn Gly Asp Asn Asp Cys Gly Asp Gln Ser Asp
 20 25 30
 Glu Ala Asn Cys

<210> SEQ ID NO 10
 <211> LENGTH: 34
 <212> TYPE: PRT
 <213> ORGANISM: Homo sapiens
 <220> FEATURE:
 <221> NAME/KEY: DOMAIN
 <223> OTHER INFORMATION: LDLR-A domain of the serine protease
 matriptase (Matr)

<400> SEQUENCE: 10

Cys Pro Gly Gln Phe Thr Cys Arg Thr Gly Arg Cys Ile Arg Lys
 5 10 15
 Glu Leu Arg Cys Asp Gly Trp Ala Asp Cys Thr Asp His Ser Asp
 20 25 30
 Glu Leu Asn Cys

<210> SEQ ID NO 11
 <211> LENGTH: 37
 <212> TYPE: PRT
 <213> ORGANISM: Homo sapiens
 <220> FEATURE:
 <221> NAME/KEY: DOMAIN
 <223> OTHER INFORMATION: LDLR-A domain of the glycoprotein GP300
 (Gp300-1)

<400> SEQUENCE: 11

Cys Gln Gln Gly Tyr Phe Lys Cys Gln Ser Glu Gly Gln Cys Ile
 5 10 15
 Pro Ser Ser Trp Val Cys Asp Gln Asp Gln Asp Cys Asp Asp Gly
 20 25 30
 Ser Asp Glu Arg Gln Asp Cys
 35

<210> SEQ ID NO 12

-continued

<211> LENGTH: 35
 <212> TYPE: PRT
 <213> ORGANISM: Homo sapiens
 <220> FEATURE:
 <221> NAME/KEY: DOMAIN
 <223> OTHER INFORMATION: LDLR-A domain of the glycoprotein GP300
 (Gp300-2)

<400> SEQUENCE: 12

Cys Ser Ser His Gln Ile Thr Cys Ser Asn Gly Gln Cys Ile Pro
 5 10 15
 Ser Glu Tyr Arg Cys Asp His Val Arg Asp Cys Pro Asp Gly Ala
 20 25 30
 Asp Glu Asn Asp Cys
 35

<210> SEQ ID NO 13
 <211> LENGTH: 35
 <212> TYPE: PRT
 <213> ORGANISM: Homo sapiens
 <220> FEATURE:
 <221> NAME/KEY: DOMAIN
 <222> LOCATION: 74...108
 <223> OTHER INFORMATION: LDLR-A domain of TADG-12

<400> SEQUENCE: 13

Cys Ser Gly Lys Tyr Arg Cys Arg Ser Ser Phe Lys Cys Ile Glu
 5 10 15
 Leu Ile Thr Arg Cys Asp Gly Val Ser Asp Cys Lys Asp Gly Glu
 20 25 30
 Asp Glu Tyr Arg Cys
 35

<210> SEQ ID NO 14
 <211> LENGTH: 36
 <212> TYPE: PRT
 <213> ORGANISM: Homo sapiens
 <220> FEATURE:
 <221> NAME/KEY: DOMAIN
 <223> OTHER INFORMATION: LDLR-A domain of the serine protease TMPRSS2
 Tmprss2

<400> SEQUENCE: 14

Cys Ser Asn Ser Gly Ile Glu Cys Asp Ser Ser Gly Thr Cys Ile
 5 10 15
 Asn Pro Ser Asn Trp Cys Asp Gly Val Ser His Cys Pro Gly Gly
 20 25 30
 Glu Asp Glu Asn Arg Cys
 35

<210> SEQ ID NO 15
 <211> LENGTH: 101
 <212> TYPE: PRT
 <213> ORGANISM: Bos taurus
 <220> FEATURE:
 <221> NAME/KEY: DOMAIN
 <223> OTHER INFORMATION: SRCR domain of bovine enterokinase (BovEntk)

<400> SEQUENCE: 15

Val Arg Leu Val Gly Gly Ser Gly Pro His Glu Gly Arg Val Glu
 5 10 15
 Ile Phe His Glu Gly Gln Trp Gly Thr Val Cys Asp Asp Arg Trp
 20 25 30
 Glu Leu Arg Gly Gly Leu Val Val Cys Arg Ser Leu Gly Tyr Lys

-continued

	35		40		45
Gly Val Gln Ser	Val His Lys Arg Ala Tyr Phe Gly Lys Gly Thr				
	50		55		60
Gly Pro Ile Trp	Leu Asn Glu Val Phe Cys Phe Gly Lys Glu Ser				
	65		70		75
Ser Ile Glu Glu	Cys Arg Ile Arg Gln Trp Gly Val Arg Ala Cys				
	80		85		90
Ser His Asp Glu	Asp Ala Gly Val Thr Cys Thr				
	95		100		

<210> SEQ ID NO 16
 <211> LENGTH: 101
 <212> TYPE: PRT
 <213> ORGANISM: Homo sapiens
 <220> FEATURE:
 <221> NAME/KEY: DOMAIN
 <223> OTHER INFORMATION: SRCR domain of human macrophage scavenger receptor (MacSR)

<400> SEQUENCE: 16

Val Arg Leu Val	Gly Gly Ser Gly Pro His Glu Gly Arg Val Glu				
	5		10		15
Ile Leu His Ser	Gly Gln Trp Gly Thr Ile Cys Asp Asp Arg Trp				
	20		25		30
Glu Val Arg Val	Gly Gln Val Val Cys Arg Ser Leu Gly Tyr Pro				
	35		40		45
Gly Val Gln Ala	Val His Lys Ala Ala His Phe Gly Gln Gly Thr				
	50		55		60
Gly Pro Ile Trp	Leu Asn Glu Val Phe Cys Phe Gly Arg Glu Ser				
	65		70		75
Ser Ile Glu Glu	Cys Lys Ile Arg Gln Trp Gly Thr Arg Ala Cys				
	80		85		90
Ser His Ser Glu	Asp Ala Gly Val Thr Cys Thr				
	95		100		

<210> SEQ ID NO 17
 <211> LENGTH: 98
 <212> TYPE: PRT
 <213> ORGANISM: Homo sapiens
 <220> FEATURE:
 <221> NAME/KEY: DOMAIN
 <222> LOCATION: 109...206
 <223> OTHER INFORMATION: SRCR domain of TADG-12 (TADG12)

<400> SEQUENCE: 17

Val Arg Val Gly	Gly Gln Asn Ala Val Leu Gln Val Phe Thr Ala				
	5		10		15
Ala Ser Trp Lys	Thr Met Cys Ser Asp Asp Trp Lys Gly His Tyr				
	20		25		30
Ala Asn Val Ala	Cys Ala Gln Leu Gly Phe Pro Ser Tyr Val Ser				
	35		40		45
Ser Asp Asn Leu	Arg Val Ser Ser Leu Glu Gly Gln Phe Arg Glu				
	50		55		60
Glu Phe Val Ser	Ile Asp His Leu Leu Pro Asp Asp Lys Val Thr				
	65		70		75
Ala Leu His His	Ser Val Tyr Val Arg Glu Gly Cys Ala Ser Gly				
	80		85		90
His Val Val Thr	Leu Gln Cys Thr				
	95				

-continued

<210> SEQ ID NO 18
 <211> LENGTH: 94
 <212> TYPE: PRT
 <213> ORGANISM: Homo sapiens
 <220> FEATURE:
 <221> NAME/KEY: DOMAIN
 <223> OTHER INFORMATION: SRCR domain of the serine protease TMPRSS2
 (Tmprss2)

<400> SEQUENCE: 18

Val Arg Leu Tyr Gly Pro Asn Phe Ile Leu Gln Met Tyr Ser Ser
 5 10 15
 Gln Arg Lys Ser Trp His Pro Val Cys Gln Asp Asp Trp Asn Glu
 20 25 30
 Asn Tyr Gly Arg Ala Ala Cys Arg Asp Met Gly Tyr Lys Asn Asn
 35 40 45
 Phe Tyr Ser Ser Gln Gly Ile Val Asp Asp Ser Gly Ser Thr Ser
 50 55 60
 Phe Met Lys Leu Asn Thr Ser Ala Gly Asn Val Asp Ile Tyr Lys
 65 70 75
 Lys Leu Tyr His Ser Asp Ala Cys Ser Ser Lys Ala Val Val Ser
 80 85 90
 Leu Arg Cys Leu

<210> SEQ ID NO 19
 <211> LENGTH: 90
 <212> TYPE: PRT
 <213> ORGANISM: Homo sapiens
 <220> FEATURE:
 <221> NAME/KEY: DOMAIN
 <223> OTHER INFORMATION: SRCR domain of human enterokinase (HumEntk)

<400> SEQUENCE: 19

Val Arg Phe Phe Asn Gly Thr Thr Asn Asn Asn Gly Leu Val Arg
 5 10 15
 Phe Arg Ile Gln Ser Ile Trp His Thr Ala Cys Ala Glu Asn Trp
 20 25 30
 Thr Thr Gln Ile Ser Asn Asp Val Cys Gln Leu Leu Gly Leu Gly
 35 40 45
 Ser Gly Asn Ser Ser Lys Pro Ile Phe Ser Thr Asp Gly Gly Pro
 50 55 60
 Phe Val Lys Leu Asn Thr Ala Pro Asp Gly His Leu Ile Leu Thr
 65 70 75
 Pro Ser Gln Gln Cys Leu Gln Asp Ser Leu Ile Arg Leu Gln Cys
 80 85 90

<210> SEQ ID NO 20
 <211> LENGTH: 149
 <212> TYPE: PRT
 <213> ORGANISM: Homo sapiens
 <220> FEATURE:
 <221> NAME/KEY: DOMAIN
 <223> OTHER INFORMATION: protease domain of protease M (ProM)

<400> SEQUENCE: 20

Leu Trp Val Leu Thr Ala Ala His Cys Lys Lys Pro Asn Leu Gln
 5 10 15
 Val Phe Leu Gly Lys His Asn Leu Arg Gln Arg Glu Ser Ser Gln
 20 25 30

-continued

Glu Gln Ser Ser Val Val Arg Ala Val Ile His Pro Asp Tyr Asp
 35 40 45
 Ala Ala Ser His Asp Gln Asp Ile Met Leu Leu Arg Leu Ala Arg
 50 55 60
 Pro Ala Lys Leu Ser Glu Leu Ile Gln Pro Leu Pro Leu Glu Arg
 65 70 75
 Asp Cys Ser Ala Asn Thr Thr Ser Cys His Ile Leu Gly Trp Gly
 80 85 90
 Lys Thr Ala Asp Gly Asp Phe Pro Asp Thr Ile Gln Cys Ala Tyr
 95 100 105
 Ile His Leu Val Ser Arg Glu Glu Cys Glu His Ala Tyr Pro Gly
 110 115 120
 Gln Ile Thr Gln Asn Met Leu Cys Ala Gly Asp Glu Lys Tyr Gly
 125 130 135
 Lys Asp Ser Cys Gln Gly Asp Ser Gly Gly Pro Leu Val Cys
 140 145

<210> SEQ ID NO 21
 <211> LENGTH: 151
 <212> TYPE: PRT
 <213> ORGANISM: Homo sapiens
 <220> FEATURE:
 <221> NAME/KEY: DOMAIN
 <223> OTHER INFORMATION: protease domain of trypsinogen I (Try1)

<400> SEQUENCE: 21

Gln Trp Val Val Ser Ala Gly His Cys Tyr Lys Ser Arg Ile Gln
 5 10 15
 Val Arg Leu Gly Glu His Asn Ile Glu Val Leu Glu Gly Asn Glu
 20 25 30
 Gln Phe Ile Asn Ala Ala Lys Ile Ile Arg His Pro Gln Tyr Asp
 35 40 45
 Arg Lys Thr Leu Asn Asn Asp Ile Met Leu Ile Lys Leu Ser Ser
 50 55 60
 Arg Ala Val Ile Asn Ala Arg Val Ser Thr Ile Ser Leu Pro Thr
 65 70 75
 Ala Pro Pro Ala Thr Gly Thr Lys Cys Leu Ile Ser Gly Trp Gly
 80 85 90
 Asn Thr Ala Ser Ser Gly Ala Asp Tyr Pro Asp Glu Leu Gln Cys
 95 100 105
 Leu Asp Ala Pro Val Leu Ser Gln Ala Lys Cys Glu Ala Ser Tyr
 110 115 120
 Pro Gly Lys Ile Thr Ser Asn Met Phe Cys Val Gly Phe Leu Glu
 125 130 135
 Gly Gly Lys Asp Ser Cys Gln Gly Asp Ser Gly Gly Pro Val Val
 140 145 150

Cys

<210> SEQ ID NO 22
 <211> LENGTH: 158
 <212> TYPE: PRT
 <213> ORGANISM: Homo sapiens
 <220> FEATURE:
 <221> NAME/KEY: DOMAIN
 <223> OTHER INFORMATION: protease domain of plasma kallikrein (Kal)

<400> SEQUENCE: 22

Gln Trp Val Leu Thr Ala Ala His Cys Phe Asp Gly Leu Pro Leu

-continued

Gln Ile Lys Pro Lys Met Phe Cys Ala Gly Tyr Pro Glu Gly Gly
 140 145 150

Ile Asp Ala Cys Gln Gly Asp Ser Gly Gly Pro Phe Val Cys
 155 160

<210> SEQ ID NO 26

<211> LENGTH: 23

<212> TYPE: DNA

<213> ORGANISM: Artificial sequence

<220> FEATURE:

<221> NAME/KEY: primer_bind

<222> LOCATION: 6, 9, 12, 15, 18

<223> OTHER INFORMATION: forward redundant primer for the consensus
 sequences of amino acids surrounding the catalytic
 triad for serine proteases, n = inosine

<400> SEQUENCE: 26

tgggtngtna cngcngcnca ytg

23

<210> SEQ ID NO 27

<211> LENGTH: 20

<212> TYPE: DNA

<213> ORGANISM: Artificial sequence

<220> FEATURE:

<221> NAME/KEY: primer_bind

<222> LOCATION: 3, 6, 9, 12, 15, 18

<223> OTHER INFORMATION: reverse redundant primer for the consensus
 sequences of amino acids surrounding the catalytic
 triad for serine proteases, n = inosine

<400> SEQUENCE: 27

arnarngcna tntcntncc

20

<210> SEQ ID NO 28

<211> LENGTH: 20

<212> TYPE: DNA

<213> ORGANISM: Artificial sequence

<220> FEATURE:

<221> NAME/KEY: primer_bind

<223> OTHER INFORMATION: forward oligonucleotide primer for TADG-12
 used for quantitative PCR

<400> SEQUENCE: 28

gaaacatgtc cttgctctcg

20

<210> SEQ ID NO 29

<211> LENGTH: 20

<212> TYPE: DNA

<213> ORGANISM: Artificial sequence

<220> FEATURE:

<221> NAME/KEY: primer_bind

<223> OTHER INFORMATION: reverse oligonucleotide primer for TADG-12
 used for quantitative PCR

<400> SEQUENCE: 29

actaacttcc acagctcct

20

<210> SEQ ID NO 30

<211> LENGTH: 20

<212> TYPE: DNA

<213> ORGANISM: Artificial sequence

<220> FEATURE:

<221> NAME/KEY: primer_bind

<223> OTHER INFORMATION: forward oligonucleotide primer for TADG-12
 variant (TADG-12V) used for quantitative PCR

<400> SEQUENCE: 30

tccagtgagg tctagtttcc

20

-continued

<210> SEQ ID NO 31
 <211> LENGTH: 20
 <212> TYPE: DNA
 <213> ORGANISM: Artificial sequence
 <220> FEATURE:
 <221> NAME/KEY: primer_bind
 <223> OTHER INFORMATION: reverse oligonucleotide primer for TADG-12
 variant (TADG-12V) used for quantitative PCR

<400> SEQUENCE: 31
 ctctttggct tgtacttgct 20

<210> SEQ ID NO 32
 <211> LENGTH: 20
 <212> TYPE: DNA
 <213> ORGANISM: Artificial sequence
 <220> FEATURE:
 <221> NAME/KEY: primer_bind
 <223> OTHER INFORMATION: forward oligonucleotide primer for (-tubulin
 used as an internal control for quantitative PCR

<400> SEQUENCE: 32
 cgcatcaacg tgtactacaa 20

<210> SEQ ID NO 33
 <211> LENGTH: 20
 <212> TYPE: DNA
 <213> ORGANISM: Artificial sequence
 <220> FEATURE:
 <221> NAME/KEY: primer_bind
 <223> OTHER INFORMATION: reverse oligonucleotide primer for (-tubulin
 used as an internal control for quantitative PCR

<400> SEQUENCE: 33
 tacgagctgg tggactgaga 20

<210> SEQ ID NO 34
 <211> LENGTH: 12
 <212> TYPE: PRT
 <213> ORGANISM: Artificial sequence
 <220> FEATURE:
 <223> OTHER INFORMATION: a poly-lysine linked multiple antigen peptide
 derived from the TADG-12 carboxy-terminal protein
 sequence, present in full length TADG-12, but not
 in TADG-12V

<400> SEQUENCE: 34
 Trp Ile His Glu Gln Met Glu Arg Asp Leu Lys Thr
 5 10

<210> SEQ ID NO 35
 <211> LENGTH: 9
 <212> TYPE: PRT
 <213> ORGANISM: Homo sapiens
 <220> FEATURE:
 <222> LOCATION: 40...48
 <223> OTHER INFORMATION: TADG-12 peptide

<400> SEQUENCE: 35
 Ile Leu Ser Leu Leu Pro Phe Glu Val
 5

<210> SEQ ID NO 36
 <211> LENGTH: 9
 <212> TYPE: PRT
 <213> ORGANISM: Homo sapiens
 <220> FEATURE:

-continued

<222> LOCATION: 144...152
<223> OTHER INFORMATION: TADG-12 peptide

<400> SEQUENCE: 36

Ala Gln Leu Gly Phe Pro Ser Tyr Val
5

<210> SEQ ID NO 37
<211> LENGTH: 9
<212> TYPE: PRT
<213> ORGANISM: Homo sapiens
<220> FEATURE:
<222> LOCATION: 225...233
<223> OTHER INFORMATION: TADG-12 peptide

<400> SEQUENCE: 37

Leu Leu Ser Gln Trp Pro Trp Gln Ala
5

<210> SEQ ID NO 38
<211> LENGTH: 9
<212> TYPE: PRT
<213> ORGANISM: Homo sapiens
<220> FEATURE:
<222> LOCATION: 252...260
<223> OTHER INFORMATION: TADG-12 peptide

<400> SEQUENCE: 38

Trp Ile Ile Thr Ala Ala His Cys Val
5

<210> SEQ ID NO 39
<211> LENGTH: 9
<212> TYPE: PRT
<213> ORGANISM: Homo sapiens
<220> FEATURE:
<222> LOCATION: 356...364
<223> OTHER INFORMATION: TADG-12 peptide

<400> SEQUENCE: 39

Val Leu Asn His Ala Ala Val Pro Leu
5

<210> SEQ ID NO 40
<211> LENGTH: 9
<212> TYPE: PRT
<213> ORGANISM: Homo sapiens
<220> FEATURE:
<222> LOCATION: 176...184
<223> OTHER INFORMATION: TADG-12 peptide

<400> SEQUENCE: 40

Leu Leu Pro Asp Asp Lys Val Thr Ala
5

<210> SEQ ID NO 41
<211> LENGTH: 9
<212> TYPE: PRT
<213> ORGANISM: Homo sapiens
<220> FEATURE:
<222> LOCATION: 13...21
<223> OTHER INFORMATION: TADG-12 peptide

<400> SEQUENCE: 41

Phe Ser Phe Arg Ser Leu Phe Gly Leu
5

-continued

<210> SEQ ID NO 42
<211> LENGTH: 9
<212> TYPE: PRT
<213> ORGANISM: Homo sapiens
<220> FEATURE:
<222> LOCATION: 151...159
<223> OTHER INFORMATION: TADG-12 peptide

<400> SEQUENCE: 42

Tyr Val Ser Ser Asp Asn Leu Arg Val
5

<210> SEQ ID NO 43
<211> LENGTH: 9
<212> TYPE: PRT
<213> ORGANISM: Homo sapiens
<220> FEATURE:
<222> LOCATION: 436...444
<223> OTHER INFORMATION: TADG-12 peptide

<400> SEQUENCE: 43

Arg Val Thr Ser Phe Leu Asp Trp Ile
5

<210> SEQ ID NO 44
<211> LENGTH: 9
<212> TYPE: PRT
<213> ORGANISM: Homo sapiens
<220> FEATURE:
<222> LOCATION: 234...242
<223> OTHER INFORMATION: TADG-12 peptide

<400> SEQUENCE: 44

Ser Leu Gln Phe Gln Gly Tyr His Leu
5

<210> SEQ ID NO 45
<211> LENGTH: 9
<212> TYPE: PRT
<213> ORGANISM: Homo sapiens
<220> FEATURE:
<222> LOCATION: 181...189
<223> OTHER INFORMATION: TADG-12 peptide

<400> SEQUENCE: 45

Lys Val Thr Ala Leu His His Ser Val
5

<210> SEQ ID NO 46
<211> LENGTH: 9
<212> TYPE: PRT
<213> ORGANISM: Homo sapiens
<220> FEATURE:
<222> LOCATION: 183...191
<223> OTHER INFORMATION: TADG-12 peptide

<400> SEQUENCE: 46

Thr Ala Leu His His Ser Val Tyr Val
5

<210> SEQ ID NO 47
<211> LENGTH: 9
<212> TYPE: PRT
<213> ORGANISM: Homo sapiens
<220> FEATURE:
<222> LOCATION: 411...419
<223> OTHER INFORMATION: TADG-12 peptide

<400> SEQUENCE: 47

-continued

Arg Leu Trp Lys Leu Val Gly Ala Thr
5

<210> SEQ ID NO 48
<211> LENGTH: 9
<212> TYPE: PRT
<213> ORGANISM: Homo sapiens
<220> FEATURE:
<222> LOCATION: 60...68
<223> OTHER INFORMATION: TADG-12 peptide

<400> SEQUENCE: 48

Leu Ile Leu Ala Leu Ala Ile Gly Leu
5

<210> SEQ ID NO 49
<211> LENGTH: 9
<212> TYPE: PRT
<213> ORGANISM: Homo sapiens
<220> FEATURE:
<222> LOCATION: 227...235
<223> OTHER INFORMATION: TADG-12 peptide

<400> SEQUENCE: 49

Ser Gln Trp Pro Trp Gln Ala Ser Leu
5

<210> SEQ ID NO 50
<211> LENGTH: 9
<212> TYPE: PRT
<213> ORGANISM: Homo sapiens
<220> FEATURE:
<222> LOCATION: 301...309
<223> OTHER INFORMATION: TADG-12 peptide

<400> SEQUENCE: 50

Arg Leu Gly Asn Asp Ile Ala Leu Met
5

<210> SEQ ID NO 51
<211> LENGTH: 9
<212> TYPE: PRT
<213> ORGANISM: Homo sapiens
<220> FEATURE:
<222> LOCATION: 307...315
<223> OTHER INFORMATION: TADG-12 peptide

<400> SEQUENCE: 51

Ala Leu Met Lys Leu Ala Gly Pro Leu
5

<210> SEQ ID NO 52
<211> LENGTH: 9
<212> TYPE: PRT
<213> ORGANISM: Homo sapiens
<220> FEATURE:
<222> LOCATION: 262...270
<223> OTHER INFORMATION: TADG-12 peptide

<400> SEQUENCE: 52

Asp Leu Tyr Leu Pro Lys Ser Trp Thr
5

<210> SEQ ID NO 53
<211> LENGTH: 9
<212> TYPE: PRT
<213> ORGANISM: Homo sapiens

-continued

<220> FEATURE:
<222> LOCATION: 416...424
<223> OTHER INFORMATION: TADG-12 peptide

<400> SEQUENCE: 53

Leu Val Gly Ala Thr Ser Phe Gly Ile
5

<210> SEQ ID NO 54
<211> LENGTH: 9
<212> TYPE: PRT
<213> ORGANISM: Homo sapiens
<220> FEATURE:
<222> LOCATION: 54...62
<223> OTHER INFORMATION: TADG-12 peptide

<400> SEQUENCE: 54

Ser Leu Gly Ile Ile Ala Leu Ile Leu
5

<210> SEQ ID NO 55
<211> LENGTH: 9
<212> TYPE: PRT
<213> ORGANISM: Homo sapiens
<220> FEATURE:
<222> LOCATION: 218...226
<223> OTHER INFORMATION: TADG-12 peptide

<400> SEQUENCE: 55

Ile Val Gly Gly Asn Met Ser Leu Leu
5

<210> SEQ ID NO 56
<211> LENGTH: 9
<212> TYPE: PRT
<213> ORGANISM: Homo sapiens
<220> FEATURE:
<222> LOCATION: 35...43
<223> OTHER INFORMATION: TADG-12 peptide

<400> SEQUENCE: 56

Ala Val Ala Ala Gln Ile Leu Ser Leu
5

<210> SEQ ID NO 57
<211> LENGTH: 9
<212> TYPE: PRT
<213> ORGANISM: Homo sapiens
<220> FEATURE:
<222> LOCATION: 271...279
<223> OTHER INFORMATION: TADG-12 peptide

<400> SEQUENCE: 57

Ile Gln Val Gly Leu Val Ser Leu Leu
5

<210> SEQ ID NO 58
<211> LENGTH: 9
<212> TYPE: PRT
<213> ORGANISM: Homo sapiens
<220> FEATURE:
<222> LOCATION: 397...405
<223> OTHER INFORMATION: TADG-12 peptide

<400> SEQUENCE: 58

Cys Gln Gly Asp Ser Gly Gly Pro Leu
5

-continued

<210> SEQ ID NO 59
<211> LENGTH: 9
<212> TYPE: PRT
<213> ORGANISM: Homo sapiens
<220> FEATURE:
<222> LOCATION: 270...278
<223> OTHER INFORMATION: TADG-12 peptide

<400> SEQUENCE: 59

Thr Ile Gln Val Gly Leu Val Ser Leu
5

<210> SEQ ID NO 60
<211> LENGTH: 9
<212> TYPE: PRT
<213> ORGANISM: Homo sapiens
<220> FEATURE:
<222> LOCATION: 56...64
<223> OTHER INFORMATION: TADG-12 peptide

<400> SEQUENCE: 60

Gly Ile Ile Ala Leu Ile Leu Ala Leu
5

<210> SEQ ID NO 61
<211> LENGTH: 9
<212> TYPE: PRT
<213> ORGANISM: Homo sapiens
<220> FEATURE:
<222> LOCATION: 110...118
<223> OTHER INFORMATION: TADG-12 peptide

<400> SEQUENCE: 61

Arg Val Gly Gly Gln Asn Ala Val Leu
5

<210> SEQ ID NO 62
<211> LENGTH: 9
<212> TYPE: PRT
<213> ORGANISM: Homo sapiens
<220> FEATURE:
<222> LOCATION: 217...225
<223> OTHER INFORMATION: TADG-12 peptide

<400> SEQUENCE: 62

Arg Ile Val Gly Gly Asn Met Ser Leu
5

<210> SEQ ID NO 63
<211> LENGTH: 9
<212> TYPE: PRT
<213> ORGANISM: Homo sapiens
<220> FEATURE:
<222> LOCATION: 130...138
<223> OTHER INFORMATION: TADG-12 peptide

<400> SEQUENCE: 63

Cys Ser Asp Asp Trp Lys Gly His Tyr
5

<210> SEQ ID NO 64
<211> LENGTH: 9
<212> TYPE: PRT
<213> ORGANISM: Homo sapiens
<220> FEATURE:
<222> LOCATION: 8...16
<223> OTHER INFORMATION: TADG-12 peptide

-continued

<400> SEQUENCE: 64

Ala Val Glu Ala Pro Phe Ser Phe Arg
5

<210> SEQ ID NO 65

<211> LENGTH: 9

<212> TYPE: PRT

<213> ORGANISM: Homo sapiens

<220> FEATURE:

<222> LOCATION: 328...336

<223> OTHER INFORMATION: TADG-12 peptide

<400> SEQUENCE: 65

Asn Ser Glu Glu Asn Phe Pro Asp Gly
5

<210> SEQ ID NO 66

<211> LENGTH: 9

<212> TYPE: PRT

<213> ORGANISM: Homo sapiens

<220> FEATURE:

<222> LOCATION: 3...11

<223> OTHER INFORMATION: TADG-12 peptide

<400> SEQUENCE: 66

Glu Asn Asp Pro Pro Ala Val Glu Ala
5

<210> SEQ ID NO 67

<211> LENGTH: 9

<212> TYPE: PRT

<213> ORGANISM: Homo sapiens

<220> FEATURE:

<222> LOCATION: 98...106

<223> OTHER INFORMATION: TADG-12 peptide

<400> SEQUENCE: 67

Asp Cys Lys Asp Gly Glu Asp Glu Tyr
5

<210> SEQ ID NO 68

<211> LENGTH: 9

<212> TYPE: PRT

<213> ORGANISM: Homo sapiens

<220> FEATURE:

<222> LOCATION: 346...354

<223> OTHER INFORMATION: TADG-12 peptide

<400> SEQUENCE: 68

Ala Thr Glu Asp Gly Gly Asp Ala Ser
5

<210> SEQ ID NO 69

<211> LENGTH: 9

<212> TYPE: PRT

<213> ORGANISM: Homo sapiens

<220> FEATURE:

<222> LOCATION: 360...368

<223> OTHER INFORMATION: TADG-12 peptide

<400> SEQUENCE: 69

Ala Ala Val Pro Leu Ile Ser Asn Lys
5

<210> SEQ ID NO 70

<211> LENGTH: 9

<212> TYPE: PRT

-continued

<213> ORGANISM: Homo sapiens
<220> FEATURE:
<222> LOCATION: 153...161
<223> OTHER INFORMATION: TADG-12 peptide

<400> SEQUENCE: 70

Ser Ser Asp Asn Leu Arg Val Ser Ser
5

<210> SEQ ID NO 71
<211> LENGTH: 9
<212> TYPE: PRT
<213> ORGANISM: Homo sapiens
<220> FEATURE:
<222> LOCATION: 182...190
<223> OTHER INFORMATION: TADG-12 peptide

<400> SEQUENCE: 71

Val Thr Ala Leu His His Ser Val Tyr
5

<210> SEQ ID NO 72
<211> LENGTH: 9
<212> TYPE: PRT
<213> ORGANISM: Homo sapiens
<220> FEATURE:
<222> LOCATION: 143...151
<223> OTHER INFORMATION: TADG-12 peptide

<400> SEQUENCE: 72

Cys Ala Gln Leu Gly Phe Pro Ser Tyr
5

<210> SEQ ID NO 73
<211> LENGTH: 9
<212> TYPE: PRT
<213> ORGANISM: Homo sapiens
<220> FEATURE:
<222> LOCATION: 259...267
<223> OTHER INFORMATION: TADG-12 peptide

<400> SEQUENCE: 73

Cys Val Tyr Asp Leu Tyr Leu Pro Lys
5

<210> SEQ ID NO 74
<211> LENGTH: 9
<212> TYPE: PRT
<213> ORGANISM: Homo sapiens
<220> FEATURE:
<222> LOCATION: 369...377
<223> OTHER INFORMATION: TADG-12 peptide

<400> SEQUENCE: 74

Ile Cys Asn His Arg Asp Val Tyr Gly
5

<210> SEQ ID NO 75
<211> LENGTH: 9
<212> TYPE: PRT
<213> ORGANISM: Homo sapiens
<220> FEATURE:
<222> LOCATION: 278...286
<223> OTHER INFORMATION: TADG-12 peptide

<400> SEQUENCE: 75

Leu Leu Asp Asn Pro Ala Pro Ser His
5

-continued

<210> SEQ ID NO 76
<211> LENGTH: 9
<212> TYPE: PRT
<213> ORGANISM: Homo sapiens
<220> FEATURE:
<222> LOCATION: 426...434
<223> OTHER INFORMATION: TADG-12 peptide

<400> SEQUENCE: 76

Cys Ala Glu Val Asn Lys Pro Gly Val
5

<210> SEQ ID NO 77
<211> LENGTH: 9
<212> TYPE: PRT
<213> ORGANISM: Homo sapiens
<220> FEATURE:
<222> LOCATION: 32...40
<223> OTHER INFORMATION: TADG-12 peptide

<400> SEQUENCE: 77

Asp Ala Asp Ala Val Ala Ala Gln Ile
5

<210> SEQ ID NO 78
<211> LENGTH: 9
<212> TYPE: PRT
<213> ORGANISM: Homo sapiens
<220> FEATURE:
<222> LOCATION: 406...414
<223> OTHER INFORMATION: TADG-12 peptide

<400> SEQUENCE: 78

Val Cys Gln Glu Arg Arg Leu Trp Lys
5

<210> SEQ ID NO 79
<211> LENGTH: 9
<212> TYPE: PRT
<213> ORGANISM: Homo sapiens
<220> FEATURE:
<222> LOCATION: 329...337
<223> OTHER INFORMATION: TADG-12 peptide

<400> SEQUENCE: 79

Ser Glu Glu Asn Phe Pro Asp Gly Lys
5

<210> SEQ ID NO 80
<211> LENGTH: 9
<212> TYPE: PRT
<213> ORGANISM: Homo sapiens
<220> FEATURE:
<222> LOCATION: 303...311
<223> OTHER INFORMATION: TADG-12 peptide

<400> SEQUENCE: 80

Gly Asn Asp Ile Ala Leu Met Lys Leu
5

<210> SEQ ID NO 81
<211> LENGTH: 9
<212> TYPE: PRT
<213> ORGANISM: Homo sapiens
<220> FEATURE:
<222> LOCATION: 127...135
<223> OTHER INFORMATION: TADG-12 peptide

-continued

<400> SEQUENCE: 81

Lys Thr Met Cys Ser Asp Asp Trp Lys
5

<210> SEQ ID NO 82

<211> LENGTH: 9

<212> TYPE: PRT

<213> ORGANISM: Homo sapiens

<220> FEATURE:

<222> LOCATION: 440...448

<223> OTHER INFORMATION: TADG-12 peptide

<400> SEQUENCE: 82

Phe Leu Asp Trp Ile His Glu Gln Met
5

<210> SEQ ID NO 83

<211> LENGTH: 9

<212> TYPE: PRT

<213> ORGANISM: Homo sapiens

<220> FEATURE:

<222> LOCATION: 433...441

<223> OTHER INFORMATION: TADG-12 peptide

<400> SEQUENCE: 83

Val Tyr Thr Arg Val Thr Ser Phe Leu
5

<210> SEQ ID NO 84

<211> LENGTH: 9

<212> TYPE: PRT

<213> ORGANISM: Homo sapiens

<220> FEATURE:

<222> LOCATION: 263...271

<223> OTHER INFORMATION: TADG-12 peptide

<400> SEQUENCE: 84

Leu Tyr Leu Pro Lys Ser Trp Thr Ile
5

<210> SEQ ID NO 85

<211> LENGTH: 9

<212> TYPE: PRT

<213> ORGANISM: Homo sapiens

<220> FEATURE:

<222> LOCATION: 169...177

<223> OTHER INFORMATION: TADG-12 peptide

<400> SEQUENCE: 85

Glu Phe Val Ser Ile Asp His Leu Leu
5

<210> SEQ ID NO 86

<211> LENGTH: 9

<212> TYPE: PRT

<213> ORGANISM: Homo sapiens

<220> FEATURE:

<222> LOCATION: 296...304

<223> OTHER INFORMATION: TADG-12 peptide

<400> SEQUENCE: 86

Lys Tyr Lys Pro Lys Arg Leu Gly Asn
5

<210> SEQ ID NO 87

<211> LENGTH: 9

-continued

<212> TYPE: PRT
<213> ORGANISM: Homo sapiens
<220> FEATURE:
<222> LOCATION: 16...24
<223> OTHER INFORMATION: TADG-12 peptide

<400> SEQUENCE: 87

Arg Ser Leu Phe Gly Leu Asp Asp Leu
5

<210> SEQ ID NO 88
<211> LENGTH: 9
<212> TYPE: PRT
<213> ORGANISM: Homo sapiens
<220> FEATURE:
<222> LOCATION: 267...275
<223> OTHER INFORMATION: TADG-12 peptide

<400> SEQUENCE: 88

Lys Ser Trp Thr Ile Gln Val Gly Leu
5

<210> SEQ ID NO 89
<211> LENGTH: 9
<212> TYPE: PRT
<213> ORGANISM: Homo sapiens
<220> FEATURE:
<222> LOCATION: 81...89
<223> OTHER INFORMATION: TADG-12 peptide

<400> SEQUENCE: 89

Arg Ser Ser Phe Lys Cys Ile Glu Leu
5

<210> SEQ ID NO 90
<211> LENGTH: 9
<212> TYPE: PRT
<213> ORGANISM: Homo sapiens
<220> FEATURE:
<222> LOCATION: 375...383
<223> OTHER INFORMATION: TADG-12 peptide

<400> SEQUENCE: 90

Val Tyr Gly Gly Ile Ile Ser Pro Ser
5

<210> SEQ ID NO 91
<211> LENGTH: 9
<212> TYPE: PRT
<213> ORGANISM: Homo sapiens
<220> FEATURE:
<222> LOCATION: 110...118
<223> OTHER INFORMATION: TADG-12 peptide

<400> SEQUENCE: 91

Arg Val Gly Gly Gln Asn Ala Val Leu
5

<210> SEQ ID NO 92
<211> LENGTH: 9
<212> TYPE: PRT
<213> ORGANISM: Homo sapiens
<220> FEATURE:
<222> LOCATION: 189...197
<223> OTHER INFORMATION: TADG-12 peptide

<400> SEQUENCE: 92

Val Tyr Val Arg Glu Gly Cys Ala Ser

-continued

5

<210> SEQ ID NO 93
<211> LENGTH: 9
<212> TYPE: PRT
<213> ORGANISM: Homo sapiens
<220> FEATURE:
<222> LOCATION: 165...173
<223> OTHER INFORMATION: TADG-12 peptide

<400> SEQUENCE: 93

Gln Phe Arg Glu Glu Phe Val Ser Ile
5

<210> SEQ ID NO 94
<211> LENGTH: 9
<212> TYPE: PRT
<213> ORGANISM: Homo sapiens
<220> FEATURE:
<222> LOCATION: 10...18
<223> OTHER INFORMATION: TADG-12 peptide

<400> SEQUENCE: 94

Glu Ala Pro Phe Ser Phe Arg Ser Leu
5

<210> SEQ ID NO 95
<211> LENGTH: 9
<212> TYPE: PRT
<213> ORGANISM: Homo sapiens
<220> FEATURE:
<222> LOCATION: 407...415
<223> OTHER INFORMATION: TADG-12 peptide

<400> SEQUENCE: 95

Cys Gln Glu Arg Arg Leu Trp Lys Leu
5

<210> SEQ ID NO 96
<211> LENGTH: 9
<212> TYPE: PRT
<213> ORGANISM: Homo sapiens
<220> FEATURE:
<222> LOCATION: 381...389
<223> OTHER INFORMATION: TADG-12 peptide

<400> SEQUENCE: 96

Ser Pro Ser Met Leu Cys Ala Gly Tyr
5

<210> SEQ ID NO 97
<211> LENGTH: 9
<212> TYPE: PRT
<213> ORGANISM: Homo sapiens
<220> FEATURE:
<222> LOCATION: 375...383
<223> OTHER INFORMATION: TADG-12 peptide

<400> SEQUENCE: 97

Val Tyr Gly Gly Ile Ile Ser Pro Ser
5

<210> SEQ ID NO 98
<211> LENGTH: 9
<212> TYPE: PRT
<213> ORGANISM: Homo sapiens
<220> FEATURE:
<222> LOCATION: 381...389

-continued

<223> OTHER INFORMATION: TADG-12 peptide

<400> SEQUENCE: 98

Ser Pro Ser Met Leu Cys Ala Gly Tyr
5

<210> SEQ ID NO 99

<211> LENGTH: 9

<212> TYPE: PRT

<213> ORGANISM: Homo sapiens

<220> FEATURE:

<222> LOCATION: 362...370

<223> OTHER INFORMATION: TADG-12 peptide

<400> SEQUENCE: 99

Val Pro Leu Ile Ser Asn Lys Ile Cys
5

<210> SEQ ID NO 100

<211> LENGTH: 9

<212> TYPE: PRT

<213> ORGANISM: Homo sapiens

<220> FEATURE:

<222> LOCATION: 373...381

<223> OTHER INFORMATION: TADG-12 peptide

<400> SEQUENCE: 100

Arg Asp Val Tyr Gly Gly Ile Ile Ser
5

<210> SEQ ID NO 101

<211> LENGTH: 9

<212> TYPE: PRT

<213> ORGANISM: Homo sapiens

<220> FEATURE:

<222> LOCATION: 283...291

<223> OTHER INFORMATION: TADG-12 peptide

<400> SEQUENCE: 101

Ala Pro Ser His Leu Val Glu Lys Ile
5

<210> SEQ ID NO 102

<211> LENGTH: 9

<212> TYPE: PRT

<213> ORGANISM: Homo sapiens

<220> FEATURE:

<222> LOCATION: 177...185

<223> OTHER INFORMATION: TADG-12 peptide

<400> SEQUENCE: 102

Leu Pro Asp Asp Lys Val Thr Ala Leu
5

<210> SEQ ID NO 103

<211> LENGTH: 9

<212> TYPE: PRT

<213> ORGANISM: Homo sapiens

<220> FEATURE:

<222> LOCATION: 47...55

<223> OTHER INFORMATION: TADG-12 peptide

<400> SEQUENCE: 103

Glu Val Phe Ser Gln Ser Ser Ser Leu
5

<210> SEQ ID NO 104

-continued

<211> LENGTH: 9
<212> TYPE: PRT
<213> ORGANISM: Homo sapiens
<220> FEATURE:
<222> LOCATION: 36...44
<223> OTHER INFORMATION: TADG-12 peptide

<400> SEQUENCE: 104

Val Ala Ala Gln Ile Leu Ser Leu Leu
5

<210> SEQ ID NO 105
<211> LENGTH: 9
<212> TYPE: PRT
<213> ORGANISM: Homo sapiens
<220> FEATURE:
<222> LOCATION: 255...263
<223> OTHER INFORMATION: TADG-12 peptide

<400> SEQUENCE: 105

Thr Ala Ala His Cys Val Tyr Asp Leu
5

<210> SEQ ID NO 106
<211> LENGTH: 9
<212> TYPE: PRT
<213> ORGANISM: Homo sapiens
<220> FEATURE:
<222> LOCATION: 138...146
<223> OTHER INFORMATION: TADG-12 peptide

<400> SEQUENCE: 106

Tyr Ala Asn Val Ala Cys Ala Gln Leu
5

<210> SEQ ID NO 107
<211> LENGTH: 9
<212> TYPE: PRT
<213> ORGANISM: Homo sapiens
<220> FEATURE:
<222> LOCATION: 195...203
<223> OTHER INFORMATION: TADG-12 peptide

<400> SEQUENCE: 107

Cys Ala Ser Gly His Val Val Thr Leu
5

<210> SEQ ID NO 108
<211> LENGTH: 9
<212> TYPE: PRT
<213> ORGANISM: Homo sapiens
<220> FEATURE:
<222> LOCATION: 215...223
<223> OTHER INFORMATION: TADG-12 peptide

<400> SEQUENCE: 108

Ser Ser Arg Ile Val Gly Gly Asn Met
5

<210> SEQ ID NO 109
<211> LENGTH: 9
<212> TYPE: PRT
<213> ORGANISM: Homo sapiens
<220> FEATURE:
<222> LOCATION: 298...306
<223> OTHER INFORMATION: TADG-12 peptide

<400> SEQUENCE: 109

-continued

Lys Pro Lys Arg Leu Gly Asn Asp Ile
5

<210> SEQ ID NO 110
<211> LENGTH: 9
<212> TYPE: PRT
<213> ORGANISM: Homo sapiens
<220> FEATURE:
<222> LOCATION: 313...321
<223> OTHER INFORMATION: TADG-12 peptide

<400> SEQUENCE: 110

Gly Pro Leu Thr Phe Asn Glu Met Ile
5

<210> SEQ ID NO 111
<211> LENGTH: 9
<212> TYPE: PRT
<213> ORGANISM: Homo sapiens
<220> FEATURE:
<222> LOCATION: 108...116
<223> OTHER INFORMATION: TADG-12 peptide

<400> SEQUENCE: 111

Cys Val Arg Val Gly Gly Gln Asn Ala
5

<210> SEQ ID NO 112
<211> LENGTH: 9
<212> TYPE: PRT
<213> ORGANISM: Homo sapiens
<220> FEATURE:
<222> LOCATION: 294...302
<223> OTHER INFORMATION: TADG-12 peptide

<400> SEQUENCE: 112

His Ser Lys Tyr Lys Pro Lys Arg Leu
5

<210> SEQ ID NO 113
<211> LENGTH: 9
<212> TYPE: PRT
<213> ORGANISM: Homo sapiens
<220> FEATURE:
<222> LOCATION: 265...273
<223> OTHER INFORMATION: TADG-12 peptide

<400> SEQUENCE: 113

Leu Pro Lys Ser Trp Thr Ile Gln Val
5

<210> SEQ ID NO 114
<211> LENGTH: 9
<212> TYPE: PRT
<213> ORGANISM: Homo sapiens
<220> FEATURE:
<222> LOCATION: 88...96
<223> OTHER INFORMATION: TADG-12 peptide

<400> SEQUENCE: 114

Glu Leu Ile Thr Arg Cys Asp Gly Val
5

<210> SEQ ID NO 115
<211> LENGTH: 9
<212> TYPE: PRT
<213> ORGANISM: Homo sapiens
<220> FEATURE:

-continued

<222> LOCATION: 79...87
<223> OTHER INFORMATION: TADG-12 peptide

<400> SEQUENCE: 115

Arg Cys Arg Ser Ser Phe Lys Cys Ile
5

<210> SEQ ID NO 116
<211> LENGTH: 9
<212> TYPE: PRT
<213> ORGANISM: Homo sapiens
<220> FEATURE:
<222> LOCATION: 255...263
<223> OTHER INFORMATION: TADG-12 peptide

<400> SEQUENCE: 116

Thr Ala Ala His Cys Val Tyr Asp Leu
5

<210> SEQ ID NO 117
<211> LENGTH: 9
<212> TYPE: PRT
<213> ORGANISM: Homo sapiens
<220> FEATURE:
<222> LOCATION: 207...215
<223> OTHER INFORMATION: TADG-12 peptide

<400> SEQUENCE: 117

Ala Cys Gly His Arg Arg Gly Tyr Ser
5

<210> SEQ ID NO 118
<211> LENGTH: 9
<212> TYPE: PRT
<213> ORGANISM: Homo sapiens
<220> FEATURE:
<222> LOCATION: 154...162
<223> OTHER INFORMATION: TADG-12 peptide

<400> SEQUENCE: 118

Ser Asp Asn Leu Arg Val Ser Ser Leu
5

<210> SEQ ID NO 119
<211> LENGTH: 9
<212> TYPE: PRT
<213> ORGANISM: Homo sapiens
<220> FEATURE:
<222> LOCATION: 300...308
<223> OTHER INFORMATION: TADG-12 peptide

<400> SEQUENCE: 119

Lys Arg Leu Gly Asn Asp Ile Ala Leu
5

<210> SEQ ID NO 120
<211> LENGTH: 9
<212> TYPE: PRT
<213> ORGANISM: Homo sapiens
<220> FEATURE:
<222> LOCATION: 435...443
<223> OTHER INFORMATION: TADG-12 peptide

<400> SEQUENCE: 120

Thr Arg Val Thr Ser Phe Leu Asp Trp
5

-continued

<210> SEQ ID NO 121
<211> LENGTH: 9
<212> TYPE: PRT
<213> ORGANISM: Homo sapiens
<220> FEATURE:
<222> LOCATION: 376...384
<223> OTHER INFORMATION: TADG-12 peptide

<400> SEQUENCE: 121

Tyr Gly Gly Ile Ile Ser Pro Ser Met
5

<210> SEQ ID NO 122
<211> LENGTH: 9
<212> TYPE: PRT
<213> ORGANISM: Homo sapiens
<220> FEATURE:
<222> LOCATION: 410...418
<223> OTHER INFORMATION: TADG-12 peptide

<400> SEQUENCE: 122

Arg Arg Leu Trp Lys Leu Val Gly Ala
5

<210> SEQ ID NO 123
<211> LENGTH: 9
<212> TYPE: PRT
<213> ORGANISM: Homo sapiens
<220> FEATURE:
<222> LOCATION: 210...218
<223> OTHER INFORMATION: TADG-12 peptide

<400> SEQUENCE: 123

His Arg Arg Gly Tyr Ser Ser Arg Ile
5

<210> SEQ ID NO 124
<211> LENGTH: 9
<212> TYPE: PRT
<213> ORGANISM: Homo sapiens
<220> FEATURE:
<222> LOCATION: 109...117
<223> OTHER INFORMATION: TADG-12 peptide

<400> SEQUENCE: 124

Val Arg Val Gly Gly Gln Asn Ala Val
5

<210> SEQ ID NO 125
<211> LENGTH: 9
<212> TYPE: PRT
<213> ORGANISM: Homo sapiens
<220> FEATURE:
<222> LOCATION: 191...199
<223> OTHER INFORMATION: TADG-12 peptide

<400> SEQUENCE: 125

Val Arg Glu Gly Cys Ala Ser Gly His
5

<210> SEQ ID NO 126
<211> LENGTH: 9
<212> TYPE: PRT
<213> ORGANISM: Homo sapiens
<220> FEATURE:
<222> LOCATION: 78...86
<223> OTHER INFORMATION: TADG-12 peptide

<400> SEQUENCE: 126

-continued

Tyr Arg Cys Arg Ser Ser Phe Lys Cys
5

<210> SEQ ID NO 127
<211> LENGTH: 9
<212> TYPE: PRT
<213> ORGANISM: Homo sapiens
<220> FEATURE:
<222> LOCATION: 113...121
<223> OTHER INFORMATION: TADG-12 peptide

<400> SEQUENCE: 127

Gly Gln Asn Ala Val Leu Gln Val Phe
5

<210> SEQ ID NO 128
<211> LENGTH: 9
<212> TYPE: PRT
<213> ORGANISM: Homo sapiens
<220> FEATURE:
<222> LOCATION: 91...99
<223> OTHER INFORMATION: TADG-12 peptide

<400> SEQUENCE: 128

Thr Arg Cys Asp Gly Val Ser Asp Cys
5

<210> SEQ ID NO 129
<211> LENGTH: 9
<212> TYPE: PRT
<213> ORGANISM: Homo sapiens
<220> FEATURE:
<222> LOCATION: 38...46
<223> OTHER INFORMATION: TADG-12 peptide

<400> SEQUENCE: 129

Ala Gln Ile Leu Ser Leu Leu Pro Phe
5

<210> SEQ ID NO 130
<211> LENGTH: 9
<212> TYPE: PRT
<213> ORGANISM: Homo sapiens
<220> FEATURE:
<222> LOCATION: 211...219
<223> OTHER INFORMATION: TADG-12 peptide

<400> SEQUENCE: 130

Arg Arg Gly Tyr Ser Ser Arg Ile Val
5

<210> SEQ ID NO 131
<211> LENGTH: 9
<212> TYPE: PRT
<213> ORGANISM: Homo sapiens
<220> FEATURE:
<222> LOCATION: 216...224
<223> OTHER INFORMATION: TADG-12 peptide

<400> SEQUENCE: 131

Ser Arg Ile Val Gly Gly Asn Met Ser
5

<210> SEQ ID NO 132
<211> LENGTH: 9
<212> TYPE: PRT
<213> ORGANISM: Homo sapiens

-continued

<220> FEATURE:
<222> LOCATION: 118...126
<223> OTHER INFORMATION: TADG-12 peptide

<400> SEQUENCE: 132

Leu Gln Val Phe Thr Ala Ala Ser Trp
5

<210> SEQ ID NO 133
<211> LENGTH: 9
<212> TYPE: PRT
<213> ORGANISM: Homo sapiens
<220> FEATURE:
<222> LOCATION: 370...378
<223> OTHER INFORMATION: TADG-12 peptide

<400> SEQUENCE: 133

Cys Asn His Arg Asp Val Tyr Gly Gly
5

<210> SEQ ID NO 134
<211> LENGTH: 9
<212> TYPE: PRT
<213> ORGANISM: Homo sapiens
<220> FEATURE:
<222> LOCATION: 393...401
<223> OTHER INFORMATION: TADG-12 peptide

<400> SEQUENCE: 134

Gly Val Asp Ser Cys Gln Gly Asp Ser
5

<210> SEQ ID NO 135
<211> LENGTH: 9
<212> TYPE: PRT
<213> ORGANISM: Homo sapiens
<220> FEATURE:
<222> LOCATION: 235...243
<223> OTHER INFORMATION: TADG-12 peptide

<400> SEQUENCE: 135

Leu Gln Phe Gln Gly Tyr His Leu Cys
5

<210> SEQ ID NO 136
<211> LENGTH: 9
<212> TYPE: PRT
<213> ORGANISM: Homo sapiens
<220> FEATURE:
<222> LOCATION: 427...435
<223> OTHER INFORMATION: TADG-12 peptide

<400> SEQUENCE: 136

Ala Glu Val Asn Lys Pro Gly Val Tyr
5

<210> SEQ ID NO 137
<211> LENGTH: 9
<212> TYPE: PRT
<213> ORGANISM: Homo sapiens
<220> FEATURE:
<222> LOCATION: 162...170
<223> OTHER INFORMATION: TADG-12 peptide

<400> SEQUENCE: 137

Leu Glu Gly Gln Phe Arg Glu Glu Phe
5

-continued

<210> SEQ ID NO 138
<211> LENGTH: 9
<212> TYPE: PRT
<213> ORGANISM: Homo sapiens
<220> FEATURE:
<222> LOCATION: 9...17
<223> OTHER INFORMATION: TADG-12 peptide

<400> SEQUENCE: 138

Val Glu Ala Pro Phe Ser Phe Arg Ser
5

<210> SEQ ID NO 139
<211> LENGTH: 9
<212> TYPE: PRT
<213> ORGANISM: Homo sapiens
<220> FEATURE:
<222> LOCATION: 318...326
<223> OTHER INFORMATION: TADG-12 peptide

<400> SEQUENCE: 139

Asn Glu Met Ile Gln Pro Val Cys Leu
5

<210> SEQ ID NO 140
<211> LENGTH: 9
<212> TYPE: PRT
<213> ORGANISM: Homo sapiens
<220> FEATURE:
<222> LOCATION: 256...264
<223> OTHER INFORMATION: TADG-12 peptide

<400> SEQUENCE: 140

Ala Ala His Cys Val Tyr Asp Leu Tyr
5

<210> SEQ ID NO 141
<211> LENGTH: 9
<212> TYPE: PRT
<213> ORGANISM: Homo sapiens
<220> FEATURE:
<222> LOCATION: 46...54
<223> OTHER INFORMATION: TADG-12 peptide

<400> SEQUENCE: 141

Phe Glu Val Phe Ser Gln Ser Ser Ser
5

<210> SEQ ID NO 142
<211> LENGTH: 9
<212> TYPE: PRT
<213> ORGANISM: Homo sapiens
<220> FEATURE:
<222> LOCATION: 64...72
<223> OTHER INFORMATION: TADG-12 peptide

<400> SEQUENCE: 142

Leu Ala Ile Gly Leu Gly Ile His Phe
5

<210> SEQ ID NO 143
<211> LENGTH: 9
<212> TYPE: PRT
<213> ORGANISM: Homo sapiens
<220> FEATURE:
<222> LOCATION: 192...200
<223> OTHER INFORMATION: TADG-12 peptide

-continued

<400> SEQUENCE: 143

Arg Glu Gly Cys Ala Ser Gly His Val
5

<210> SEQ ID NO 144

<211> LENGTH: 9

<212> TYPE: PRT

<213> ORGANISM: Homo sapiens

<220> FEATURE:

<222> LOCATION: 330...338

<223> OTHER INFORMATION: TADG-12 peptide

<400> SEQUENCE: 144

Glu Glu Asn Phe Pro Asp Gly Lys Val
5

<210> SEQ ID NO 145

<211> LENGTH: 9

<212> TYPE: PRT

<213> ORGANISM: Homo sapiens

<220> FEATURE:

<222> LOCATION: 182...190

<223> OTHER INFORMATION: TADG-12 peptide

<400> SEQUENCE: 145

Val Thr Ala Leu His His Ser Val Tyr
5

<210> SEQ ID NO 146

<211> LENGTH: 9

<212> TYPE: PRT

<213> ORGANISM: Homo sapiens

<220> FEATURE:

<222> LOCATION: 408...416

<223> OTHER INFORMATION: TADG-12 peptide

<400> SEQUENCE: 146

Gln Glu Arg Arg Leu Trp Lys Leu Val
5

<210> SEQ ID NO 147

<211> LENGTH: 9

<212> TYPE: PRT

<213> ORGANISM: Homo sapiens

<220> FEATURE:

<222> LOCATION: 206...214

<223> OTHER INFORMATION: TADG-12 peptide

<400> SEQUENCE: 147

Thr Ala Cys Gly His Arg Arg Gly Tyr
5

<210> SEQ ID NO 148

<211> LENGTH: 9

<212> TYPE: PRT

<213> ORGANISM: Homo sapiens

<220> FEATURE:

<222> LOCATION: 5...13

<223> OTHER INFORMATION: TADG-12 peptide

<400> SEQUENCE: 148

Asp Pro Pro Ala Val Glu Ala Pro Phe
5

<210> SEQ ID NO 149

<211> LENGTH: 9

<212> TYPE: PRT

-continued

<213> ORGANISM: Homo sapiens
 <220> FEATURE:
 <222> LOCATION: 261...269
 <223> OTHER INFORMATION: TADG-12 peptide

<400> SEQUENCE: 149

Tyr Asp Leu Tyr Leu Pro Lys Ser Trp
 5

<210> SEQ ID NO 150
 <211> LENGTH: 9
 <212> TYPE: PRT
 <213> ORGANISM: Homo sapiens
 <220> FEATURE:
 <222> LOCATION: 33...41
 <223> OTHER INFORMATION: TADG-12 peptide

<400> SEQUENCE: 150

Ala Asp Ala Val Ala Ala Gln Ile Leu
 5

<210> SEQ ID NO 151
 <211> LENGTH: 9
 <212> TYPE: PRT
 <213> ORGANISM: Homo sapiens
 <220> FEATURE:
 <222> LOCATION: 168...176
 <223> OTHER INFORMATION: TADG-12 peptide

<400> SEQUENCE: 151

Glu Glu Phe Val Ser Ile Asp His Leu
 5

<210> SEQ ID NO 152
 <211> LENGTH: 9
 <212> TYPE: PRT
 <213> ORGANISM: Homo sapiens
 <220> FEATURE:
 <222> LOCATION: 304...312
 <223> OTHER INFORMATION: TADG-12 peptide

<400> SEQUENCE: 152

Asn Asp Ile Ala Leu Met Lys Leu Ala
 5

<210> SEQ ID NO 153
 <211> LENGTH: 9
 <212> TYPE: PRT
 <213> ORGANISM: Homo sapiens
 <220> FEATURE:
 <222> LOCATION: 104...112
 <223> OTHER INFORMATION: TADG-12 peptide

<400> SEQUENCE: 153

Asp Glu Tyr Arg Cys Val Arg Val Gly
 5

What is claimed is:

1. A method for diagnosing cancer in an individual comprising the steps of:

- (a) obtaining a biological sample from said individual;
- (b) detecting a TADG-12 protein in said sample, wherein a TADG-12 protein is selected from the group consisting of SEQ ID NO:2, SEQ ID NO:4 and SEQ ID NO:8, and wherein the presence of said TADG-12 protein in said sample is indicative of the presence of a cancer in said individual, and wherein the absence of said

TADG-12 protein in said sample is indicative of the absence of a cancer in said individual.

60 2. The method of claim 1, wherein said biological sample is selected from the group consisting of blood, urine, saliva, tears, interstitial fluid, ascites fluid, tumor tissue biopsy and circulating tumor cells.

3. The method of claim 1, wherein said detection of a TADG-12 protein is by means selected from the group consisting of Western blot, dot blot, ELISA sandwich assay, radioimmunoassay and flow cytometry.

99

4. The method of claim 1, wherein said cancer is selected from the group consisting of ovarian cancer, breast cancer, lung cancer, colon cancer, prostate cancer and other cancers in which TADG-12 is overexpressed.

5. A method for detecting malignant hyperplasia in a biological sample, comprising the steps of:

- (a) isolating protein from said sample;
- (b) detecting a TADG-12 protein in said sample, wherein a TADG-12 protein is selected from the group consisting of SEQ ID NO:2, SEQ ID NO:4 and SEQ ID NO:8, and wherein the presence of said TADG-12 protein in said sample is indicative of the presence of malignant

100

hyperplasia, and wherein the absence of said TADG-12 protein in said sample is indicative of the absence of malignant hyperplasia.

6. The method of claim 5, wherein said detection is by immunoaffinity to an antibody, wherein said antibody is directed against a TADG-12 protein.

7. The method of claim 5, wherein said biological sample is selected from the group consisting of blood, urine, saliva, tears, interstitial fluid, ascites fluid, tumor tissue biopsy and circulating tumor cells.

* * * * *

专利名称(译)	跨膜丝氨酸蛋白酶在卵巢癌中过表达及其用途		
公开(公告)号	US6942978	公开(公告)日	2005-09-13
申请号	US09/650371	申请日	2000-08-28
申请(专利权)人(译)	阿肯色大学的董事会		
当前申请(专利权)人(译)	生物仿制药, LLC		
[标]发明人	OBRIEN TIMOTHY J		
发明人	O'BRIEN, TIMOTHY J.		
IPC分类号	C07K14/435 C07K14/705 C07K14/47 C12N9/64 C12Q1/68 G01N33/574 A61K38/00 A61K39/00 A61K48/00 G01N33/53 G01N33/536 G01N33/537 G01N33/48 G01N33/50		
CPC分类号	C07K14/4748 C07K14/705 C07K16/3069 C12N9/6424 C12N9/6472 C12Q1/6886 G01N33/574 A61K38/00 A61K39/00 A61K48/00 C12Q2600/106 C12Q2600/158 C12Q2600/16 C12Q2600/112 C12Q2600/118 C12Q2600/136 C07K2317/34		
代理机构(译)	ADLER, BENJAMIN AARON		
审查员(译)	CAPUTA, ANTHONY C.		
外部链接	Espacenet USPTO		

摘要(译)

本发明提供TADG-12蛋白质和编码这种蛋白质的DNA片段。还提供了能够表达DNA的载体/宿主细胞。本发明进一步提供了早期检测相关卵巢和其他恶性肿瘤的各种方法, 以及利用本文公开的DNA和/或蛋白质进行癌症治疗的相互作用疗法。

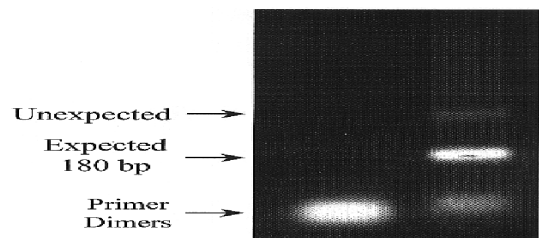


Fig. 1A