



US 20020155445A1

(19) **United States**

(12) **Patent Application Publication** (10) **Pub. No.: US 2002/0155445 A1**

**Jarvik** (43) **Pub. Date: Oct. 24, 2002**

(54) **METHODS AND PRODUCTS FOR PEPTIDE  
BASED DNA SEQUENCE IDENTIFICATION  
AND ANALYSIS**

**Publication Classification**

(76) Inventor: **Jonathan W. Jarvik**, Pittsburgh, PA  
(US)

(51) **Int. Cl.<sup>7</sup>** ..... **C12Q 1/68**; G01N 33/53;  
G01N 33/537; G01N 33/543;  
C12P 21/02

Correspondence Address:  
**Barbara E. Johnson**  
**WEBB ZIESENHEIM LOGSDON ORKIN &  
HANSON, P.C.**  
**700 Koppers Building**  
**436 Seventh Avenue**  
**Pittsburgh, PA 15219-1818 (US)**

(52) **U.S. Cl.** ..... **435/6**; 435/7.5; 435/7.92;  
435/69.1

(57) **ABSTRACT**

(21) Appl. No.: **09/788,268**

(22) Filed: **Feb. 16, 2001**

**Related U.S. Application Data**

(63) Continuation-in-part of application No. PCT/US99/  
30104, filed on Dec. 16, 1999.

(60) Provisional application No. 60/182,816, filed on Feb.  
16, 2000. Provisional application No. 60/189,310,  
filed on Mar. 14, 2000.

A nucleic acid fragment of interest is incorporated into a hybrid artificial gene and expressed in one or more reading frames to produce one or more hybrid polypeptides. The polypeptides are examined with respect to one or more physical parameters, such as mass or amino acid composition. The observed parameter values are used to search a data set of predicted parameter values generated by hypothetical translation of a larger reference nucleic acid sequence so as to determine whether or not the fragment is contained within the reference sequence, and, if it is contained therein, to determine its sequence and/or coding capacity.

## METHODS AND PRODUCTS FOR PEPTIDE BASED DNA SEQUENCE IDENTIFICATION AND ANALYSIS

### RELATED APPLICATION

[0001] This is a continuation-in-part application is based on priority Patent Cooperation Treaty Application Serial No. PCT/US99/30104, filed Dec. 16, 1999, Provisional Application Serial No. 60/182,816, filed Feb. 16, 2000 and Provisional Application Serial No. 60/189,310, filed Mar. 14, 2000.

### FIELD OF INVENTION

[0002] This invention relates to the fields of Molecular Biology and Genetics, with particular reference to the identification and analysis of DNA molecules.

### BACKGROUND

[0003] In biology and medicine, there is frequently a need to determine the sequence of a DNA fragment. The fragment may be derived from genomic DNA of viral, prokaryotic or eucaryotic origin, or it may be a derived from cDNA. In many cases, the fragment derives from a larger DNA molecule, or set of molecules, whose sequence (here defined as the reference sequence) is already known. Such cases are not rare and will become increasingly common as more and more natural DNA and cDNA sequences are deposited in available databases.

[0004] A number of methods presently exist for determining the nucleotide sequence of a DNA fragment. The most commonly applied method involves cloning the fragment in a plasmid vector of known sequence, purifying the plasmid DNA, annealing a primer complementary to a portion of the known sequence to one strand of the molecule, extending the primer with DNA polymerase, terminating the polymerization with dideoxy nucleotides, and comparing the lengths of the various terminated molecules to reveal the nucleotide sequence 3' to the primer. Other DNA sequencing methods exist, such as selective cleavage or sequencing by hybridization to biochips. All of these methods are based solely on in vitro DNA chemistry and biochemistry. Other well-developed methods, such as SSCP (single strand conformational polymorphism analysis), heteroduplex sensitivity to nuclease analysis (EMD), and allele-specific oligonucleotide hybridization, (ASO) exist for detecting mutations or sequence polymorphisms in DNA fragments. These methods, too, are based solely on in vitro DNA chemistry and biochemistry.

[0005] Rather than examining a DNA molecule by analyzing the DNA itself, in the invention described here the DNA is incorporated into a hybrid artificial gene that is transcribed and translated to produce a hybrid peptide. Physical analysis of the peptide, in conjunction with informatic analysis of the reference sequence, allows one to identify the sequence of the DNA molecule.

[0006] The analysis of peptide size as a means to infer information about a gene goes back to at least 1965, when it was reported that phage T4 amber mutants made truncated proteins and that the size of the peptide made in an amber mutant was approximately proportional to the distance of the mutation from the 3' end of the gene. In recent years, this

phenomenon has provided the basis for the protein truncation assay for identifying nonsense and frameshift mutations in mammalian genes. In the protein truncation assay, an exon is assayed for chain termination mutations by PCR-amplifying the exon, expressing it in a cell free transcription/translation system, and examining the expressed polypeptide by SDS polyacrylamide gel electrophoresis to determine if it is smaller than a non-mutant control polypeptide. While the protein truncation assay can reveal the presence of a nonsense or frameshift mutation, it is important to note that the assay does not reveal the molecular nature or exact location of the mutation—one does not know if it is a TAG, TGA, TAA or frameshift mutation, and one only knows the approximate location of the mutation within the exon.

[0007] There presently exists well-developed art by which “unknown” proteins are identified by means of coupled physical and informatic analysis. In these cases, one begins with a naturally occurring protein (or sometimes a fusion protein containing a natural amino sequences) and uses the coupled analysis to determine the protein's identity—for example, by mass spectrometric analysis of tryptic fragment masses followed by search of a database of in silico-generated tryptic fragments, in which the sequences that are the sources of the tryptic fragment data may be taken from existing protein sequence databases or may be created by in silico translation of existing nucleic acid databases. In other cases, mass analysis of peptides derived from known proteins has been used to identify sequence deviations from previously determined protein sequences.

[0008] Whereas the database search activities in the prior art (examples of which are referred to above) are aimed at protein identification and/or analysis, in the instant invention the search activity is aimed at DNA identification or analysis. Thus the two are distinctly different in concept and practice. The artificial hybrid peptides that are analyzed in the instant invention are not naturally occurring, nor are they necessarily biologically active. And yet they have distinct utility as reporters that carry information about the nucleic acids that encode them.

[0009] The analysis of peptide reporters provides a number of clear advantages over analysis of the DNA sequences that encode them. One advantage derives from the fact that a peptide is considerably smaller than the DNA that encodes it (individual amino acids averages about 110 Da each whereas the trinucleotides (triplets) that encode them average over N Daltons each. Another advantage derives from the fact that peptides are much more diverse in composition than nucleic acids, as they are composed of combinations of 20 different amino acids instead of combinations of 4 different nucleotides. Thus, by way of illustration, two random DNA fragments of identical composition (e.g., with 10 adenines, 10 thymines, 15 guanines, and 15 cytosines) are extremely unlikely to encode peptides of identical composition, and so, whereas the two nucleic acids have identical masses and cannot be distinguished on the basis of mass, the peptides that they encode will, except in statistically very rare cases, have different masses and can be readily distinguished on the basis of mass.

### SUMMARY OF THE INVENTION

[0010] In the invention described here the DNA to be analyzed is incorporated into a hybrid artificial gene that is

then transcribed and translated to produce a hybrid peptide. Analysis of the peptide, rather than analysis of the DNA, is used to gain sequence data about the DNA.

[0011] Specifically, the mass and/or composition and/or partial or complete amino acid sequence of the hybrid peptide is determined, and the data are used to search for matches in data sets produced by in silico transcription and translation of hybrid artificial genes created in silico using the reference sequence, or using transformations of the reference sequence such as single nucleotide deletions or substitutions thereof. This peptide-based approach to DNA sequence-determination is fundamentally different from all other methods in the art, none of which employs transcription, translation and peptide analysis, as does the instant invention.

[0012] It is important to emphasize that the peptides that are produced and analyzed in the course of practicing the invention are not derived from naturally occurring proteins, nor did they exist anywhere prior to their production from the hybrid artificial genes. Likewise the hybrid artificial genes of the invention never existed in nature prior to their production in the course of practicing the invention.

[0013] Expected Properties of Peptides Translated from Unknown Nucleotide Sequences

[0014] The invention depends on means to translate a portion of the unknown sequence as part of a fusion peptide whose synthesis originates in the known sequence and extends into the unknown sequence that is being characterized. The unknown sequence need not comprise actual protein-coding sequence in the cell from which it originates, although it may in some cases, and so the invention is of general applicability and not confined to coding sequences. The invention also depends on means to accurately measure the mass and/or composition and/or partial or complete amino acid sequence of the fusion peptide. Many methods for making such measurements are known in the art, and a number of them will be discussed later in this specification. But first, let us consider the issue of the expected sizes, masses, and amino acid sequences of the peptides that can be translated from an unknown sequence. For the purpose of this analysis, we will make the simplifying assumption that the unknown sequence is statistically random. Later in this specification, specific examples using natural DNA sequences will be provided.

[0015] Of the 64 codons, 3 (UAA, UAG, UGA) are nonsense codons that terminate translation. Thus, in any reading frame of a random nucleotide sequence, approximately 1 of 21 codons ( $\sim 3/64$ ) will be nonsense and approximately 20 of 21 ( $\sim 61/64$ ) will be sense codons.

[0016] We now ask the question: if translation begins at an arbitrary nucleotide in a random DNA sequence, how large will the resulting peptide be? The answer can be given in the form of a distribution that can be calculated as follows. The likelihood that the first codon in the sequence is a nonsense codon (and that the peptide will thus be zero amino acids in length) is  $1/21$ , or  $\sim 4.7\%$ . The likelihood that the first codon is not a nonsense codon and the second codon is a nonsense codon (and that the peptide will thus be one amino acid in length) is  $20/21 \times 1/21$ , or  $\sim 4.5\%$ . The likelihood that the first and second codons are not nonsense codons and the third codon is a nonsense codon (and that the peptide will thus be

two amino acids in length) is  $20/21 \times 20/21 \times 1/21$ , or  $\sim 4.3\%$ , and so on. Thus the likelihood that a peptide will have exactly length  $N$  is given by the expression  $(20/21)^N \times 1/21$ . Also, since the chance that a peptide will reach at least length  $N$  is  $(20/21)^N$ , we can readily calculate the likelihood of a peptide having a given length or less from the expression  $1 - (20/21)^N$ .

[0017] The table below shows the calculated probabilities, for the first 24 codons of a random DNA sequence, that a given peptide will be of a given length or less. The table indicates that, for example, 0.705 (approximately 70%) of all peptides will be 24 or fewer amino acids in length, and that 0.216 (approximately 20%) of all peptides will be 4 or fewer amino acids in length. In other words, about half of all peptides will be between 5 and 24 amino acids in length.

Peptide length (N)	Per cent of length N or less $(1 - (20/21)^N)$
0	4.7
1	9.3
2	13.6
3	17.7
4	21.6
5	25.4
6	28.9
7	32.3
8	35.5
9	38.6
10	41.5
11	44.3
12	47.0
13	49.5
14	51.9
15	54.2
16	56.4
17	58.4
18	60.0
19	62.3
20	64.1
21	65.8
22	67.4
23	69.0
24	70.5

[0018] These expectations were tested by taking the 10,942 base pair sequence that includes the entire human nucleolin gene (Genbank accession number gb JO5584) and translating it in silico beginning at number of arbitrarily chosen positions. In particular, translation was begun at every 50th nucleotide beginning at position 2001 and ending at position 4001. The lengths of the encoded peptides, translated from the indicated position to the first in-frame nonsense codon encountered, are listed below. Those between 5 and 24 amino acids are marked with an asterisk. 17 out of the 40 peptides are between 4 and 24 amino acids in length, very close to the 20 out of 40 predicted on theoretical grounds, as described above.

Start	Peptide length (amino acids)
2001	24*
2051	2
2101	21*
2151	20*
2201	45

-continued

Start	Peptide length (amino acids)
2251	2
2301	20*
2351	37
2401	16*
2451	21*
2501	25
2551	30
2601	0
2651	20*
2701	13*
2751	11*
2801	0
2851	4*
2901	21*
2951	16*
3001	14*
3051	0
3101	69
3151	1
3201	26
3251	19*
3301	211
3351	107
3401	86
3451	161
3501	79
3551	36
3601	111
3651	7*
3701	42
3751	61
3801	0
3851	38
3901	11*
3951	40
4001	18*

[0019] If the nucleotide sequence is random, the probability that a sequence of a given length translated from it will have a particular amino acid sequence can be calculated simply by multiplying together the frequencies in the genetic code of the codons encoding each amino acid in the sequence. Since some amino acids have as many as six codons and others as few as one, the predicted frequency will vary depending on the amino acid sequence itself. Thus the sequence LRLLLR, made up entirely of six-codon amino acids, will appear at a frequency of 1 in  $(6/61)^6$ , or approximately once in one million codons, and the sequence MWWMMW, made up entirely of one-codon amino acids, will appear at a frequency of 1 in  $(1/61)^6$ , or approximately once in fifty billion codons. The frequencies of other sequences will fall between these two extremes. The important point for us is that even a relatively short sequence will appear very rarely, and so if we can determine the amino acid sequence of a peptide translated from unknown sequence, we can match it to a portion of the reference sequence with high specificity.

[0020] Let us now address the issue of the degree of specificity that can be obtained in a search of the reference sequence if we know only the mass, but not the amino acid sequence or composition, of a peptide that is translated from an unknown portion of it? For the sake of this discussion, we will assume that the mass of the peptide is determined with such accuracy as to distinguish each amino acid combination from all others. The number of distinct amino acid combinations and their frequencies is represented by the poly-

mial expansion  $(a+b+c+d+\dots+q+r+s)^N$ , where the letters "a" through "s" (19 letters) represent the frequencies in the genetic code of each amino acid (there are 19 instead of 20 letters because two amino acids, leucine and isoleucine, have the same mass and must be treated as a group) and N represents the length of the peptide. The number of terms in the expansion represents the number of composition classes, and the value of each term divided by the sum of the values of all of the terms gives the frequency of any given class. It should be clear to the reader that for all but very small values of N, the frequency of any given class will be very low.

[0021] Depending on the size and sequence of the reference sequence, there may be just one peptide encoded in it of a given mass, or there may be more than one.

#### [0022] Generation of Fusion Peptides

[0023] The operation of the invention depends upon the presence of a specially engineered DNA sequence adjacent to the unknown DNA. The engineered sequence contains at minimum the following elements: (1) a promoter sequence oriented to promote transcription into the unknown sequence, and (2) a translation initiation sequence, and (3) a coding sequence comprises at minimum a start codon. Transcription from the promoter, followed by translation of the transcript beginning at the start codon, yields a fusion peptide with an N-terminal portion of known amino acid composition followed by a portion of unknown sequence encoded by the unknown DNA. A second known sequence may, in some embodiments, be incorporated into the C-terminal portion of the fusion peptide.

#### [0024] Analysis of Fusion Peptides

[0025] Once a fusion peptide has been produced as described above, it must be analyzed to determine its mass and/or its composition and/or its amino acid sequence. (Mass Spectrometry is one preferred analytical method because it is fast and highly accurate. A number of specific examples of the application of mass spectrometric analysis to fusion peptides are given later in this specification.) The data are compared with the data set generated in silico that contains all possible fusion peptides generated by fusing the known sequence to the reference sequence at all possible positions in the reference sequence and calculating the masses and/or compositions and/or amino acid sequences of the resulting peptides. Absence of a match, which will occur in the great majority of the positions, allows one to exclude that portion of the reference sequence from consideration, whereas a match indicates that it may indeed be the actual sequence coding for the unknown portion of the fusion peptide. If there is only one such match, and if the entire reference sequence has been scanned, then the unknown sequence has been identified. If there are multiple matches, additional data are needed to narrow the conclusion to a single site. Such data can come in a number of forms, including the generation and analysis of more than one fusion peptide from the same region the reference sequence, or the generation and analysis of peptides translated from different reading frames of the same nucleic acid sequence. Specific examples of multiple peptide analysis from nearby, adjacent or overlapping nucleotides are given below and in the claims. But it is important to state that the invention has utility even if it narrows down, but does not absolutely define, the identity of the unknown sequence.

**[0026]** Purification of Fusion Proteins Prior to Analysis

**[0027]** In some cases it may be desirable to purify the fusion peptide prior to analysis. One well established means for doing this is to include a predetermined amino acid sequence (epitope tag) in the known portion of the fusion peptide that binds to a known molecule (e.g., an antibody) or other reagent (immobilized nickel, for example). The antibody or other reagent is then used to capture and purify the peptide by immunoaffinity chromatography or immobilized metal affinity chromatography (IMAC) prior to analysis. Or a larger known sequence suitable for affinity purification such as glutathione-S-transferase (GST), thioredoxin, or maltose binding protein (MBP), may be incorporated at the N or C-terminus of the peptide. A single affinity element (tag) may be incorporated within the N or C terminal portion of the peptide, or multiple tags may be incorporated within one or both portions. When the tag is incorporated in the C-terminal portion, peptides that result from premature translation termination do not carry the tag and are not affinity purified, thereby eliminating a potential source of noise in the analysis. When different tags are incorporated within both the N and C terminal portions of the peptide, the peptide may be purified by sequential affinity capture using first one, and then the other, tag. In this case only full-length peptide is purified, eliminating potential sources of noise in the analysis due to premature translation termination, inappropriate translation initiation, or post-translational proteolysis of the peptide. Many means for separating and/or purifying peptides or proteins are also well known and may be applied in certain embodiments of the invention. These include gel electrophoresis, capillary electrophoresis, liquid chromatography (LC), capillary liquid chromatography, high performance liquid chromatography (HPLC), differential centrifugation, filtration, gel filtration, membrane chromatography, affinity purification, biomolecular interaction analysis (BIA), ligand affinity purification, glutathione-S-transferase affinity chromatography, cellulose binding protein affinity chromatography, maltose binding protein affinity chromatography, avidin/streptavidin affinity chromatography, S-tag affinity chromatography, thioredoxin affinity chromatography, metal-chelate affinity chromatography, immobilized metal affinity chromatography, epitope-tag affinity chromatography, immunoaffinity chromatography, immunoaffinity capture, capture using bioreactive mass spectrometer probes, mass spectrometric immunoassay, and immunoprecipitation.

**[0028]** Detection and Characterization of Mutations and DNA Polymorphisms

**[0029]** Certain embodiments of the invention can be used to detect and characterize naturally occurring mutations and DNA polymorphisms, including single nucleotide polymorphisms (SNPs). This is done by comparing the coding capacity of subsets of the reference sequence with the coding capacity of equivalent subsets of the sequence derived from it by specific nucleotide changes, as follows. (By coding capacity is meant the set of the amino acids encoded in at least one reading frame of a sequence; a change in the coding capacity would be due, at minimum, to a change in amino acid composition of at least one encoded peptide.) For every peptide generated in silico by translation of a sequence containing a portion of the reference sequence as described previously in this specification, an additional related set of peptides is generated by generating, also in

silico, a set of transformed DNA sequences derived from the same portion of the reference DNA sequence, each member of the set containing a different sequence alteration. Each member of the transformed set is then translated in silico to give a transformed set of peptide sequences. In the case of single nucleotide substitutions, for example, since there are exactly three nucleotide changes that can be made at each position in the relevant portion of the reference DNA sequence, the expanded set of peptides will contain 3N members, where N is the length of the relevant portion of the reference nucleotide sequence. (In most cases, some of the members of the new set will be identical due to the degeneracy of the genetic code.) When the transformed data set is searched with the experimentally determined peptide data, as described previously in this specification, single nucleotide departures from the reference sequence are revealed as matches to members of the transformed data set.

**[0030]** In another embodiment of the invention, mutations or DNA polymorphisms are detected and quantified, by first producing a PCR amplicon representing a distinct portion of the reference sequence, such as a single exon in a gene of interest. The amplicon is expressed as part of a fusion peptide as described previously. In one embodiment, the exon is expressed in frame with respect to the translation initiation codon in the vector, with the result that the peptide comprises the entire amino acid sequence encoded in the exon. If the PCR template contains a point mutation that alters the amino acid sequence, this will be observed as, for example, a distinct change in the mass of the peptide relative to the mass of the peptide from the non-mutant exon. A large number of diseases are known to be caused by mutations in known genes, and the mutations in these genes that are responsible for dominant or recessive genetic disease may be examined using the instant invention. These include: Ataxia talangietasia (ATM), Familial adenomatous polyposis (APC), Hereditary breast/ovarian cancer (BRCA1, BRCA2), Hereditary melanoma (CDK2, CDKN2), Hereditary non-polypsosis colon cancer (hMSH2, hMLH1, hPMS1, hPMS2), Hereditary retinoblastoma (RB1), Hereditary Wilm's Tumor (WT1), Li-Fraumeni syndrome (p53), Multiple endocrine neoplasia (MEN1, MEN2), Von Hippel-Lindau syndrome (VHL), Congenital adrenal hyperplasia, Androgen Receptor Mutation, Tetrahydrobiopterin deficiency, X-Linked agammaglobulinemia, Cystic Fibrosis (CFTR), Muscular Dystrophy (DMD, BMD), Factor X deficiency, Mitochondrial gene deficiency, Factor VII deficiency, Glucose-6-Phosphate deficiency, Pompe Disease, Hemophilia A, Hexosaminidase A deficiency, Human Type I and Type III Collagen deficiency X-linked SCID, Retinitis pigmentosa (RP) LIACAM deficiency, MCAD deficiency, LDL Receptor deficiency, Ornithine Transcarbamylase deficiency, PAX6 Mutation, Phenylketonuria, Tuberos Sclerosis, von Willebrand Factor Disease, Werner Syndrome.

## DESCRIPTION OF PREFERRED EMBODIMENTS

## SPECIFIC EXAMPLES

**[0031]** In examples 1-6 to follow, the masses of the peptides encoded in the various nucleotide sequences were calculated using the table of mass values shown below. Peptide masses calculated using these values were rounded off to the nearest Dalton.

Amino Acid	Mass
Alanine	71.0 Da
Arginine	156.1
Asparagine	114.0
Aspartic acid	115.0
Cysteine	103.0
Glutamic acid	129.0
Glutamine	128.1
Glycine	57.0
Histidine	137.1
Isoleucine	113.1
Leucine	113.1
Lysine	128.1
Methionine	131.0
Phenylalanine	147.1
Proline	97.1
Serine	87.0
Threonine	101.0
Tryptophan	186.1
Tyrosine	163.1
Valine	99.1

#### Example 1

**[0032]** Identification of a Subcloned EcoRI Fragment of a Cloned Human Gene

**[0033]** The EMBL3 clone HG3 contains a 10942 base pair insert containing the human nucleolin gene as well as surrounding intergenic sequences (Srivistava, Genbank accession number gb JO5584). Purified HG3 DNA is digested to completion with the restriction endonuclease EcoRI and a plasmid mini-library is constructed by cloning the fragments into the EcoRI site of the vector pUC19 using standard methods. The library is transformed into competent *E. coli* BLR cells. Ampicillin resistant colonies are selected on LB ampicillin plates, and a single colony is picked and used to prepare a plasmid miniprep. A 250 ml liquid culture of cells from this colony is grown in LB-ampicillin medium at 25 degrees to a density of  $2 \times 10^8$  cells per ml, induced with 1 mM IPTG for 2 hours, concentrated to a volume of 10 ml by centrifugation, and lysed by sonication in the presence of the protease inhibitors AEBSF, bestatin, E-64 and pepstatin A. A second 250 ml control culture with nonrecombinant pUC19 vector is prepared in parallel. All of the above steps follow standard methods well known in the art.

**[0034]** A 10  $\mu$ l aliquot of each cell lysate is subjected to capillary liquid chromatography (LC) followed by electrospray ionization mass spectrometry (ESI/MS) using methods and procedures well known in the art. The spectrum of the lysate from the induced cells is observed to contain a distinct peak, at a position corresponding to a mass of  $5253 \pm 2$  Daltons that is not observed in the control cell lysate.

**[0035]** To identify the nucleotide sequence responsible for the 5253 peak, the JO5584 sequence is scanned to identify each EcoRI site. 5 such sites are identified. Each EcoRI fragment is ligated, in silico, to the EcoRI site in the pUC19 vector, producing 10 possible recombinant plasmids, one for each of the two possible orientations of each insert in the vector. The predicted amino acid sequence and molecular mass of each IPTG-inducible hybrid translation product (translated from the mRNA transcribed from the lac pro-

motor in the vector) is calculated, and the masses of the ten possible polypeptides are tabulated, as shown in the table below.

Position of EcoRI site	Orientation in pUC19	Predicted Peptide Mass	
3190	forward	7070	Daltons
3190	reverse	5253	
4028	forward	3998	
4028	reverse	5268	
6066	forward	4969	
6066	reverse	2726	
9241	forward	8485	
9241	reverse	3109	
9543	forward	2840	
9543	reverse	3878	

**[0036]** The mass values above were computed by translating each hypothetical fusion polypeptide and removing the N-terminal methionine.

**[0037]** Comparison of the experimental results with the values in the table reveals a match to the predicted mass value for one of the ten candidates—specifically the sequence that begins at position 3190 of the reference sequence and proceeds from right to left. Retrieval of the reference sequence beginning at position 3190 indicates that the cloned sequence begins with "GAATTCCTTACACCT-CATACTTTCCCAAGCCCCAACTTTCTCATCTGAAAATGGTAAATAGTATCATCCTTACATGTTTAAAGGTCATGAAITGCTATGTGTA . . . (1st 100 nucleotides shown). The identification is confirmed by dideoxy sequencing from a primer 150 nucleotides upstream of the junction between the pUC10 sequence and the EcoRI fragment.

**[0038]** In this example the starting material was a cloned gene. If one begins instead with a cloned cDNA library and uses identical procedures in an iterative manner, the identity of multiple members of the library are ascertained.

#### Example 2

**[0039]** Identification of a Subcloned EcoRI Fragment of a Cloned Human Gene using Peptide Affinity Capture

**[0040]** The peptide TMITPSLHACRSTLED, representing the N-terminal 16 amino acids of the alpha-complementing factor of beta-galactosidase encoded in pUC19 (and also representing the 16 constant N-terminal amino acids in all of the peptides described in Example 1 above) is used to raise a polyclonal rabbit antibody using standard procedures.

**[0041]** A single ampicillin resistant *E. coli* colony derived from the mini-library transformation described in Example 1 is picked and induced lysates are prepared as described in Example 1. A control lysate from cells with nonrecombinant vector is prepared in parallel. Immunoreactive proteins are precipitated from the lysates by incubation of 1 ml aliquots with a 1:100 dilution of antiserum followed by precipitation with Protein-A using standard methods. The immunoprecipitate is suspended in 50  $\mu$ l H<sub>2</sub>O, and a 10  $\mu$ l aliquot is suspended in 40  $\mu$ l of MALDI-matrix ( $\alpha$ -cyano-4-hydroxycinnamic acid dissolved in 1:2 acetonitrile:1.5% trifluoroacetic acid (ACCA), and 100 nL applied to the MS probe, air dried, and subjected to matrix assisted laser desorption

ionization time-of-flight (MALDI-TOF) mass spectrometry using methods and procedures well known in the art.

[0042] The mass spectrum of the immunoprecipitate from the induced cell lysate of the clone under examination is observed to contain a distinct peak, at a position corresponding to a mass of  $8485 \pm 3$  Daltons, that is not observed in the control. Comparison of the experimental results with the values in the table in example 1 above indicates that the insert begins at position 9241 of the reference sequence and proceeds from left to right in the Genbank sequence. Retrieval of the reference sequence beginning at position 9241 indicates that the cloned sequence begins with GAATTCACATAAAATCGCAAATTTTTTTTTTCCTTCCCAGAGCC ATCCAAAACCTCTGTTTGTCAAAGGCCTGTCTGAGGATACCACTGAAGAGACATTAAG . . . (1st 100 nucleotides shown). The identification is confirmed by dideoxy sequencing as described in Example 1.

#### Example 3

[0043] Identification of a Subcloned EcoRI Fragment of a Cloned Human Gene: Analysis of Peptides from Multiple Reading Frames

[0044] The vector pTriplEx is digested with the restriction endonuclease BglII and the ends of the linearized plasmid are backfilled using Klenow fragment of *E. coli* DNA polymerase I. The plasmid is treated with the restriction endonuclease SmaI, blunt end ligated with DNA ligase and transformed into competent *E. coli* BLR cells. Ampicillin resistant colonies are selected on LB ampicillin plates, and a single colony is picked and used to prepare a plasmid miniprep. The plasmid, here named pTriplEx', is linearized with EcoRI and a mini library is prepared using as inserts the set of fragments produced by complete digestion of the insert in EMBL3 human nucleolin clone described in example 1. Competent *E. coli* TOPP-1 cells are transformed with the mini library and a single ampicillin resistant colony is isolated. A 250 ml liquid culture of cells from this colony is grown in LB-ampicillin medium at 25 degrees to a density of  $2 \times 10^8$  cells per ml, induced with 1 mM IPTG for 2 hours, concentrated to a volume of 10 ml by centrifugation, and lysed by sonication on ice with six intermittent 30 second sonication pulses. Control cells with nonrecombinant plasmid are prepared in parallel. Immunoprecipitates of both lysates are prepared as in Example 2.

[0045] An 10  $\mu$ l aliquot of each immunoprecipitate is suspended in 40  $\mu$ l of MALDI-matrix and subjected to MALDI-TOF mass spectrometry. The spectrum of the lysate from the plasmid-containing cells is observed to contain two distinct peaks not present in the control lysate, one at a mass of  $4254 \pm 2$  Daltons and the other at a mass of  $2635 \pm 2$  Daltons.

[0046] To identify the nucleotide sequence adjacent to the pTriplEx' vector, each EcoRI site in the JO5584 sequence is identified and ligated, in silico, to the EcoRI site in the pTriplEx' vector. For each such in silico construct, the amino acid sequences of the two expected hybrid translation products (from each of the start codons in the vector to the first in frame stop codons encountered in the insert) are calculated. The mass of each peptide is calculated and all 10 peptide pairs are tabulated, as shown in the table below. Comparison of the experimental results (i.e., peptides of

4255 and 2635 Da.) with the values predicted in the table indicates that the insert begins at position 4028 of the reference sequence and proceeds in the forward direction. It is concluded that the 5' end of the sequence joined to the vector is GAATTCTCTTGGGTT TTGTGGTGTGCTAGACTTAATTACCCATGAATGATTT TGCCTCTTCA-GAAAATTTCAATAGCACATCTATTAGTGTTTTTTAT . . . (1st 100 nucleotides shown). The identification is confirmed by dideoxy sequencing from the plasmid using a primer 150 nucleotides 3' to the pTriplEx' EcoRI site.

Position of EcoRI site	Orientation in pTriplEx'	Start Codon	Predicted Peptide Mass
3190	forward	1st	6137
3190	forward	2nd	5707
3190	reverse	1st	6278
3190	reverse	2nd	3891
4208	forward	1st	4255
4208	forward	2nd	2635
4208	reverse	1st	19748
4208	reverse	2nd	3905
6066	forward	1st	3595
6066	forward	2nd	3606
6066	reverse	1st	6401
6066	reverse	2nd	1363
9241	forward	1st	3583
9241	forward	2nd	7122
9241	reverse	1st	4582
9241	reverse	2nd	1746
9543	forward	1st	5306
9543	forward	2nd	1477
9543	reverse	1st	9906
9543	reverse	2nd	2516

[0047] The mass values above are computed by translating each hypothetical fusion polypeptide without the N-terminal methionine that is removed in vivo in *E. coli*.

#### Example 4

[0048] Identification of a Specific Mutation in a Human Gene

[0049] Blood is drawn from a man and wife and from their three children, and DNA is prepared from blood leukocytes of each using standard methods. Two 20-nucleotide PCR primers—one representing nucleotides 3190-3210 of the nucleolin sequence described previously (the forward primer) and the other representing the reverse complement of nucleotides 4008-4028 (the reverse primer)—are used to generate an 838 nucleotide PCR amplicon using high fidelity thermostable proofreading DNA polymerase. The amplicon is cloned into the pTriplEx' vector described previously, and 1000 transformant colonies from each amplification are pooled to create five bacterial cultures, two derived from the parents and three derived from their offspring. Each bacterial culture is treated as described in the previous example to produce five lysates and five MALDI-TOF mass spectra. The spectrum from the father shows two prominent peaks at positions corresponding to 6137 and 5707 Daltons. The same peaks are observed for the peptides derived from two of the offspring. The mother and the third child show not two peaks but three, two at 6137 and 5707 Da and a new one at 6169 Da. The new peak is 32 Da bigger than the 6137 peak, consistent with a change from valine to methionine with respect to the reference sequence. The fact that there is no

new peak derived from the 5707 Da peak indicates that the base change(s) responsible for the valine-to-methionine substitution in the larger peptide is silent with respect to the reading frame encoding the 5707 Da. peptide. Of the six valine codons in the 6137 Da. peptide, only one, the GTG codon at position 3223, can be changed to give this result, the change being a G to A transition (to ATG) at position 3223. It is concluded that the mother and third child are heterozygous carriers for a single nucleotide polymorphism, a G to A transition, at position 3223. Dideoxy sequencing across the relevant region confirms this conclusion.

#### Example 5

**[0050]** Identification of a Specific Mutations in a Human Gene; Analysis of Pooled Samples

**[0051]** In this example known portions of the reference sequence are used to design PCR primers, which are then used to generate PCR products that are cloned, expressed in fusion peptides, and analyzed in a parallel fashion. The reference sequence predicts a peptide of a particular mass and composition; deviations from the prediction indicate differences in sequence from the reference sequence, in this example single nucleotide polymorphisms.

**[0052]** Two oligonucleotide primers are synthesized using standard methods. In one, CCCGAATTCAGCAGG-TAAAAATCAAGG, the first 10 nucleotides contain an EcoRI site (underlined) and last 17 nucleotides correspond to the first 17 nucleotides of exon 2 of the human nucleolin gene. The other, GGGGAATTCTTACTCTTCTCCACT-GCTAT, the last 17 nucleotides correspond to the reverse complement of the last 17 nucleotides of exon 2, followed immediately (in the sense orientation of the oligonucleotide) by the stop codon TAA and a sequence that includes an EcoRI site (underlined).

**[0053]** Blood is drawn from twenty individuals and PCR amplicons are produced as described in the previous example, using the two primers just described. The amplicons are pooled and cloned into the EcoRI site of pUC19 as described in example 2 above, and the bacterial cultures are treated as described in Example 2 above to produce a single MALDI-TOF mass spectrum derived from all twenty pooled samples. The spectrum shows a major peak at  $6873 \pm 3$  Da., corresponding the predicted mass of the fusion peptide encoded by the exon 2 reference sequence fused to the vector peptide sequence, and two smaller peaks at  $6862 \pm 3$  Da. and  $6915 \pm 3$  Da. The amplitude of the 6862 peak is approximately 1/20 of the 6872 peak, and the amplitude of the 6916 peak is approximately 1/40 that of the 6872 peak. The -10 Da. shift in the 6862 peak relative to the 6872 peak is that predicted for a single nucleotide polymorphism (SNP) that produces a proline to serine substitution in exon 2 that is already known to exist in the human population at a frequency of approximately 5%, and so it is concluded that in the 40 haploid genomes present in the twenty individuals, two copies of this polymorphism are very likely present. The +44 Da shift in the 6916 peak indicates an alanine to aspartic acid substitution in exon 2 that was not previously known, and that is present in one copy in the sample of 40 haploid genomes.

**[0054]** In this example the sample was heterogeneous because amplicons from a number of individual individuals were pooled prior to analysis. But the heterogeneity could, in other cases, be intrinsic to a single sample. For example, the sample could be a tumor biopsy containing, for example, a mixture of cells that are heterogeneous with respect to mutations in oncogenes or tumor suppressor genes, and so PCR amplification of the oncogene or tumor suppressor gene would yield a heterogeneous amplicon.

#### Example 7

**[0055]** Application of a Computer Program to Generate a Data Set of Mass Shifts for all Possible Single Nucleotide Substitutions in a Nucleotide Sequence

**[0056]** A computer program was written to compute the mass shifts for all single nucleotide substitutions in a nucleotide sequence. The program uses the amino acid mass values given in the table below. The input to the program is (1) a nucleotide sequence, and (2) a choice by the user of which of the six possible reading frames (3 forward and 3 reverse) to be considered. The program translates the input sequence and computes the masses of the encoded peptides. It then generates all possible single nucleotide substitutions of the sequence, computes a new set of peptides, compares them to the original peptide(s), and lists all of the mass differences between the mutant and non-mutant peptides. The program output is a listing of the peptide mass changes for all possible single nucleotide substitutions in the input sequence. The program then accepts input representing the mass-shift threshold for detection, i.e., the mass shift below which the shift is treated as not detectable. Output is a listing of all mutations in the sequence that are not detectable at the set threshold.

Amino Acid	Symbol	Mass
Alanine	A	71.08 Da
Arginine	R	156.19
Asparagine	N	114.10
Aspartic acid	D	115.09
Cysteine	C	103.14
Glutamic acid	E	129.12
Glutamine	Q	128.13
Glycine	G	57.05
Histidine	H	137.14
Isoleucine	I	113.16
Leucine	L	113.16
Lysine	K	128.17
Methionine	M	131.19
Phenylalanine	F	147.18
Proline	P	97.12
Serine	S	87.08
Threonine	T	101.10
Tryptophan	W	186.21
Tyrosine	Y	163.18
Valine	V	99.13
Nonsense	Z	—

**[0057]** The program was run with the 24 nucleotide input sequence CAACTAGAAGAGGTAAGAACTAT. Two reading frames were selected; the forward reading frame beginning with the first nucleotide (F1) and the reverse (antisense) reading frame beginning with the second antisense nucleotide (R2). The results are shown below.

[0058] [begin]

[0059] Enter Sequence:

[0060] [input] CAACTAGAAGAGGTAAGAACTAT

[0061] [output] Protein: QLEEVRY

[0062] Which reading frames would you like to examine?

[0063] 1: Forward (F1)

[0064] 2: Forward; first base removed (F2)

[0065] 3: Forward; second base removed (F2)

[0066] 4: Reverse (R1)

[0067] 5: Reverse first base removed (R2)

[0068] 6: Reverse second removed (R3)

[0069] [input] 1,5

[0070] [output] MASS DIFFERENCES

Location	Mutation	Frame F1	Frame R2
	None	1032.13	722.89
	/A(K)	0.04	0.00
1	C- { G(E)	0.99	0.00
	\T(Z)	-1032.13	0.00
	/G(R)	28.06	0.00
2	(Q) A- { T(L)	-14.97	0.00
	\C(P)	-31.01	0.00
	/G(Q)	0.00	0.00
3	A- { T(H)	9.01	0.00
	\C(H)	9.01	0.00
	/A(I)	0.00	276.34
4	C- { G(V)	-14.03	276.34
	\T(L)	0.00	0.00
	/C(P)	-16.04	299.37
5	(L) T- { A(Q)	14.97	226.32
	/G(R)	43.03	200.24
	/G(L)	0.00	241.29
6	A- { T(L)	0.00	241.33
	\C(L)	0.00	242.28
	/T(Z)	-790.84	-34.02
7	G- { C(Q)	-0.99	-34.02
	\A(K)	-0.95	0.00
	/G(G)	-72.07	-60.10
8	(E) A- { T(V)	-29.99	16.00
	\C(A)	-58.04	-44.04
	/G(E)	0.00	-34.02
9	A- { T(D)	-14.03	-34.02
	\C(D)	-14.03	-48.05
	/T(Z)	-661.72	0.00
10	G- { C(Q)	-0.99	0.00
	\A(K)	-0.95	0.00
	/G(G)	-72.07	-16.04
11	(E) A- { T(V)	-29.99	23.98
	\C(A)	-58.04	43.03
	/T(D)	-14.03	0.00
12	G- { C(D)	-14.03	-14.03
	\A(E)	0.00	34.02
	/T(L)	14.03	-423.52
13	G- { C(L)	14.03	-423.52
	\A(I)	14.03	0.00
	/C(A)	-28.05	-60.04
14	(V) T- { A(E)	29.99	-16.00
	/G(G)	-42.08	-76.10
	/G(V)	0.00	-26.04
15	A- { T(V)	0.00	-49.08
	\C(V)	0.00	-48.09
	/G(G)	-99.14	0.00
16	A- { T(Z)	-433.47	0.00
	\C(R)	0.00	0.00
	/T(I)	-43.03	76.10

-continued

Location	Mutation	Frame F1	Frame R2
17	(R) G- { C(T)	-55.09	16.06
	\A(K)	-28.02	60.10
	/G(R)	0.00	10.04
18	A- { T(S)	-69.11	14.02
	\C(S)	-69.11	-16.00
	/G(D)	0.99	0.00
19	A- { T(Y)	49.08	0.00
	\C(H)	23.04	0.00
	/G(S)	-27.02	-28.05
20	(N) A- { T(I)	-0.94	15.96
	\C(T)	-13.00	-42.08
	/A(K)	14.07	48.05
21	C- { G(K)	14.07	14.03
	\T(N)	0.00	14.03
	/C(H)	-26.04	18.03
	/G(D)	-49.08	0.00
22	T- { A(N)	-48.09	0.00
	/G(C)	-60.04	-12.06
23	(Y) A- { T(F)	-16.00	15.01
	\C(S)	-76.10	43.03
	/C(Y)	0.00	-14.03
24	T- { A(Z)	-163.18	0.00
	\G(Z)	-163.18	0.00

[0071] Enter the detection threshold:

[0072] [output] 0.8 Dalton.

[0073] [output] Undetectable amino acid substitutions:  
1.(Q)C-A(K)

[0074] The numbers in the first column denote each nucleotide in the sequence. Note that for each nucleotide in the input sequence there are three possible substitutions, so that the number of lines in the output data set is 72 (3x24). The amino acids encoded in each F1 codon are shown in the second column, followed by all possible single nucleotide substitutions at each position in the fourth column. The fifth column shows the amino acids encoded by the new codons, and the sixth column shows the mass change (if any) due to the amino acid substitution (if any) or translation termination (if any) due to the nucleotide substitution. The last column shows the mass changes due to the same substitutions when translation is in the R2 reading frame. The detection threshold value of 0.8 Daltons was entered; the program output indicated that only one substitution, at position 1 in the encoded peptide, would go undetected at this threshold value.

[0075] Note also that the expression of polypeptides from two reading frames makes the analysis significantly more robust than if just one reading frame is used. For example, if just reading frame 1 is used, a shift of -14.03 Daltons could be due to an E-to-D substitution at amino acid 3, or to an E-to-D substitution at amino acid 4, or to an L-to-V substitution at amino acid 2. When the additional reading frame data are considered, however, each of these possibilities is distinguished from the others and the ambiguity is thereby eliminated. Indeed, when up to six reading frames are considered, there is little or no ambiguity for the great majority of substitutions, even for sequences as long as several hundred nucleotides.

[0076] A data set/database such as that generated above can have great utility in the practice of the instant invention



part of the first proline codon (CCT) in the sequence. It is concluded that a proline-to-arginine substitution is present at this proline. It is further concluded that the codon very likely suffered a transversion at the second position to create the arginine codon CGG. Dideoxy sequencing across the exon 2 sequence in both constructs confirms these conclusions.

#### Example 9

[0091] In Vitro Analysis of Exon 2 of Human rds/peripherin

[0092] The amplicons described in the previous example are reamplified using the upstream primer 5'GGATCCTAATACGACTCACTATAGGGAGACCA-CATGCATCACCATCAT CACCATCACCACTCTC-CAGCTGTCTGTTTCCCTTTAAG and the downstream primer 5' CTTAGTCATTATACCCCGAGCTGCCAGGGCCTAC. The upstream primer contains a T7 promoter followed by a translation initiation sequence (start codon underlined) followed by a sequence encoding eight histidines followed by sequence identical to the red/peripherin sequence immediately 5' to rds/peripherin exon 2. The downstream primer contains two stop codons (in antisense orientation) preceding the sequence complementary to the sequence just 3' to red/peripherin exon 2.

[0093] The reamplification products are transcribed and translated in a coupled cell free system (transcription by T7 polymerase; translation by rabbit reticulocyte lysate) using established methods and procedures. Immobilized metal affinity chromatography is used to purify the translation products, and the translation products are analyzed by MALDI-TOF mass spectroscopy as in the previous example. The two major translation products are observed to differ by  $59.1 \pm 0.8$  Da, indicative of a substitution of arginine for proline in the polypeptide. By logic identical to that presented in the previous example, it is concluded that that

at least one member of the pool differs by as little as a single nucleotide from the other members.

[0095] One liability of the pooling activities described previously is that one cannot be certain that peptides are present representing each and every individual who contributed template DNA. For example, if template is contributed by 20 individuals but amplicons are only present from 19 of them, one cannot tell that the peptide is absent.

[0096] A second liability of the pooling activity described previously is that, if one individual contributes an amplicon and peptide of a different sequence, as would be the case for an individual heterozygous for a mutation in the DNA region of interest, having observed a peptide difference, one cannot infer which of the 20 individuals contributed it.

[0097] The above liabilities can be overcome by using different primer sets for each individual. The primers are identical in their 3' portions and therefore all prime DNA synthesis at the same sequence. They differ, however, at their 5' ends, and therefore yield amplicons of different terminal sequences and/or lengths. The amplicons are therefore physically distinguishable, as are the peptides that they encode. As a result, one can readily determine that an amplicon, or peptide derived therefrom, from each individual is present in a mixture of a number of amplicons or peptides. Further, if one individual contributes an amplicon or peptide of a different sequence, one can infer which individual carries the mutation.

#### Example 10

[0098] Leukocyte DNA from 5 individuals is PCR amplified using Taq polymerase by the primers shown below that hybridize at the 5' and 3' ends of intron 2 of the human CFTR gene (REF). The forward primers are identical over their 3' 22 nucleotides (which correspond to the 22 nucleotides immediately 5' to exon 2), but differ at their 5' ends as shown in underlined type.

#### PCR primers used to amplify CFTR exon 2.

	5' (forward) primer	3' (reverse) primer
Individual 1	ttcctcctctctttatatttag	actaaacaatgtacatgaacatac
Individual 2	<u>t</u> atttctcctcctctctttatatttag	actaaacaatgtacatgaacatac
Individual 3	<u>tattt</u> ctcctcctcctctctttatatttag	actaaacaatgtacatgaacatac
Individual 4	<u>tactattt</u> atttctcctcctcctctctttatatttag	actaaacaatgtacatgaacatac
Individual 5	<u>tactatttata</u> cttctcctcctcctctctttatatttag	actaaacaatgtacatgaacatac

the polypeptides differ by a proline-to-arginine substitution at the position of the first proline of the exon-encoded sequence.

[0094] As described above, analysis of peptides translated from a cloned, amplified or otherwise isolated region of a DNA molecule provides a powerful means of DNA sequence analysis. In a number of the examples above, I described the parallel analysis of a set of peptides translated from multiple amplicons made using a single pair of primers. Using such a pooling approach, it can be determined that

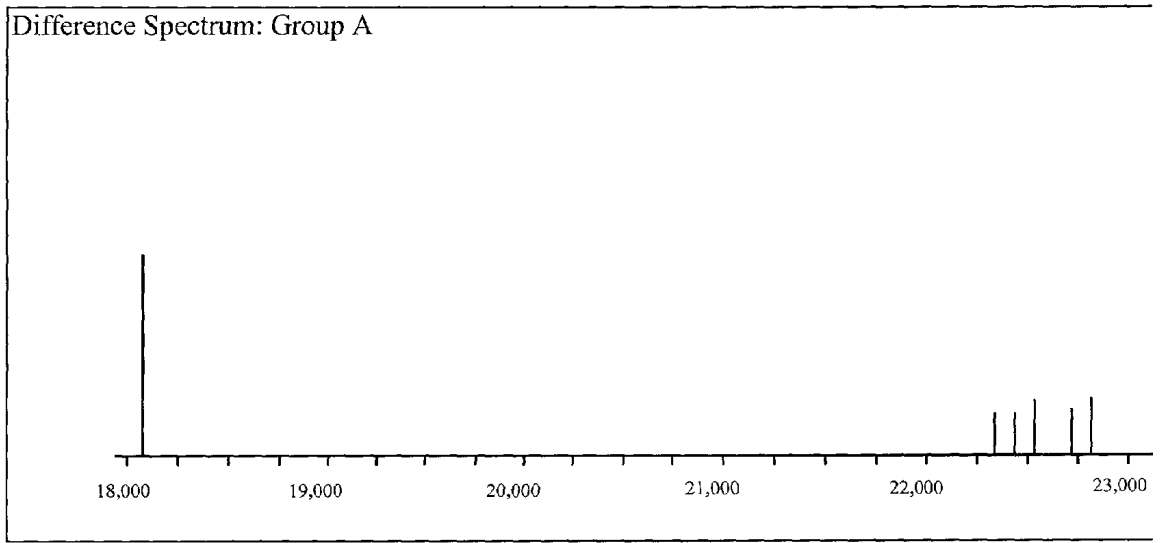
[0099] The primers used for individual 1 amplify a DNA of the sequence shown below. (The exon 2 sequence is shown in bold type.) ttcctcctctctttatatttagCTGGAC-CAGACCAATTTGAGGAAAGGATACAGACAGCG CCTGGAATTGTCAGACATATACAAATC-CCTTCTGTTGATTCTGCTGACAA TCTATCT-GAAAAATTGGAAGgtatgtcatgtacattgttagt

[0100] The primers used for individuals 2 through 5 amplify DNAs that are longer by 3, 6, 9 and 12 nucleotides respectively, as determined by their forward primer sequences. Specifically, amplicon from individual 2 has an

additional thr codon (TAT). The amplicon from individual 3 has two additional thr codons (TAT, TAC). The amplicon from individual 4 has two additional thr codons (TAT,TAC) and an additional leu codon (TTA). And the amplicon from individual 5 has two additional thr codons (TAT,TAC), a leu codon (TTA) and a third thr codon (TAC).

**[0101]** The amplicons from all five individuals are pooled and cloned into the TOPO cloning site in the vector pBAD/

Thio-TOPO (Invitrogen), and following the method of the December 16 patent application, fusion proteins are expressed in *E coli*, affinity purified using anti-thioredoxin antibody, and analyzed by MALDI-TOF mass spectrometry. Cells with an empty vector are used as a negative control. The difference spectrum between the experimental spectrum and the negative control is shown in the figure below.



[0102] Six distinct new peaks—of masses 18,098, 22,347, 22,460, 22,561, 22,724 and 22,825 Da—are present in the difference spectrum. From these values, it is concluded that none of the five individuals in group A carries a mutation that changes the coding capacity of CFTR exon 2. The logic behind this conclusion is as follows.

[0103] The predicted mass of the thioredoxin fusion protein containing C-terminal sequence coded by an individual 1 amplicon whose template was wild type CFTR intron 2 is 22,347—exactly the observed value. Likewise the predicted mass of the thioredoxin fusion protein containing C-terminal sequence coded by an individual 2 amplicon whose template was wild type CFTR intron 2 is 22,460 (equal to the mass from individual 1 plus a single threonine)—exactly the observed value. And so on for the other 3 individuals. If, on the other hand, any of the individuals had carried an alteration in exon 2, either in the heterozygous or the homozygous state, that changed its amino acid coding capacity, a fusion protein with a different mass would have been synthesized and appeared as a new peak in the mass spectrum. Because peaks with each predicted mass, and no additional peaks with new masses, were observed, it is concluded that none of the 5 individuals in Group A is mutant in CFTR exon 2.

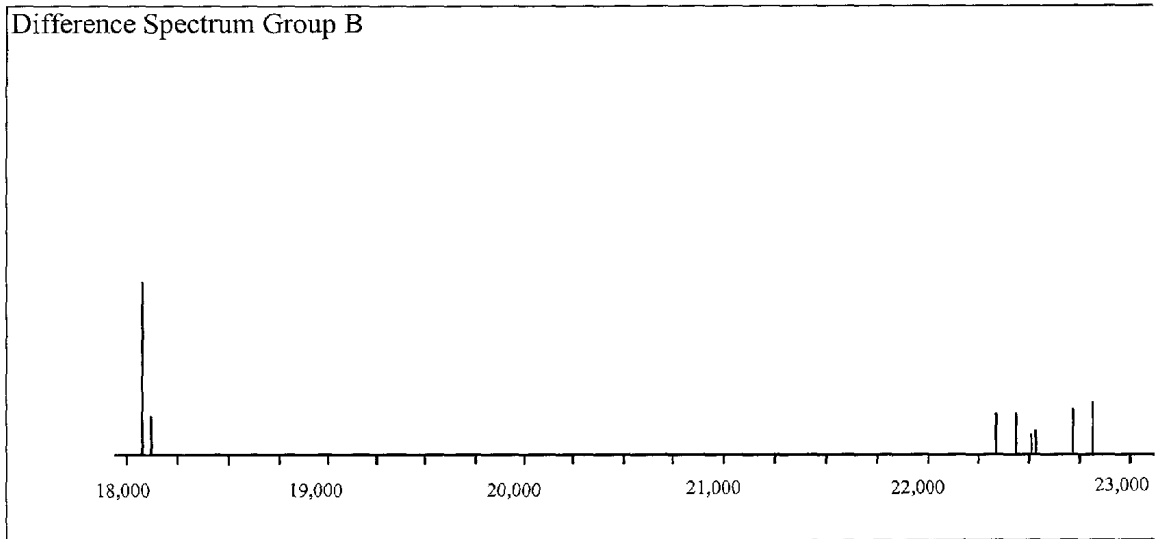
[0104] Substantiating evidence for the above conclusion comes from the 18,098 peak. This is the exact mass value predicted for thioredoxin fusion proteins derived from cloning of the amplicon in the antisense orientation in the vector. There is one large peak, instead of five smaller ones, because in the antisense orientation, the 5' primer contains an in-

frame TAA stop codon that terminates translation before the variable portions of the sequence are reached. The predicted values discussed above are tabulated in the following table.

Predicted and observed thioredoxin fusion proteins from group A individuals		
	Number of amino acids	Mass
Sense Orientation:		
1	204	22,347
2 (+ thr)	205	22,460
3 (+ thr,thr)	206	22,561
4 (+ thr,thr,leu)	207	22,724
5 (+ thr,thr,leu,thr)	208	22,825
Antisense Orientation:		
1	169	18,098
2	169	18,098
3	169	18,098
4	169	18,098
5	169	18,098

#### Example 11

[0105] A second group of five individuals, group B, is tested exactly as in Example 10. The difference spectrum, shown below, resembles that of example 10 but with two additional peaks, one at 18,151 Da and the other at 22,547 Da.



Observed thioredoxin fusion proteins from group B individuals

Mass
18,098
18,151
22,347
22,460
22,547
22,561
22,724
22,825

Observed thioredoxin fusion proteins from group B individuals	
	Mass
	18,098
	18,151
	22,347
	22,460
	22,547
	22,561
	22,724
	22,825

[0106] From this spectrum, it is concluded that individual 3 in group B is heterozygous for an A-to-G transition mutation at nucleotide 56 of CFTR exon 2. The logic is as follows. The new 22,547 Da peak is 14 Da less massive than the 22,561 peak, consistent with a change from isoleucine to valine in the sense fusion protein. The new 18,161 peak is 53 Da. larger than the 18,098 peak, consistent with a change from cysteine to arginine in the antisense fusion protein. Only one nucleotide change, from A to G at position 56 in the exon, will produce changes of these values.

[0107] Use of Nonsense Suppressors to Improve Performance of Peptide Based DNA Sequence Analysis

[0108] Additional functionality can be added to the invention through the use of nonsense suppressors, either ochre (TAA suppressors), amber (TGA suppressors) or opal (UGA suppressors). When translation is effected in a nonsense suppressing environment, nonsense codons are read as sense, and reading frames are correspondingly extended. In the present context, this often results in a region of DNA being covered by more peptides than otherwise; as discussed previously this adds additional information to the analysis. Many different nonsense suppressors, which generally are mutant tRNAs, have been described in the literature. The variety of known nonsense suppressors is such that the practitioner can not only choose the nonsense codon that is to be read but also can choose between a number of specific amino acids that can be inserted at the position of the nonsense codon. A nonsense suppressing environment can be, for example, a living cell containing a nonsense-suppressor gene, an extract of such a cell, or an extract of a nonsuppressing cell that has been supplemented with one or more suppressor tRNA species.

[0109] Consider, for example, carrier screening for missense mutations in exon 7 of the human CFTR gene. The exon is amplified by PCR and expressed and analyzed by MALDI-TOF MS as described previously. In this case

carrier status is indicated by the detection of a normal peak and a shifted peak in the MALDI spectrum.

[0110] Exon 7 is 247 nucleotides in length, and so there are 741 (247×3) possible single nucleotide substitutions in the exon. The sequence of exon 7 is shown below. The first complete codon in the sequence begins with the second A in the sequence.

```
AACAGAACTGAAACTGACTCGGAAGGCAGCCTATGTGAGATACTTCAATA
GCTCAGCCTTCTTCTTCTCAGGGTTCTTTGTGGTGTTTTATCTGTGCTTCC
CTATGCACTAATCAAAGGAATCATCCTCCGGAAAATATTCACCACCATCTC
ATTCTGCATTGTTCTGCGCATGGCGGTCACTCGGCAATTTCCCTGGGCTGT
ACAAACATGGTATGACTCTCTTGGAGCAATAAACAAAATACAG
```

[0111] A modified version of the computer program described in Example 7 was employed to determine the resolution of peptide-based DNA sequence analysis of CFTR exon 7. The modifications allowed the user to examine the consequences of having any of the three nonsense codons read as sense. The program was also modified to output all non-synonymous mutations that could not be detected at any set detection threshold. (A synonymous mutation is defined as one that does not change the amino acid encoded in the initial, or in the case of an exon the natural, reading frame. The detection threshold is of significance because in practice it will vary depending on the particular instrument and experimental protocols that are used. Clearly, the higher a threshold one can use, the more robust the peptide-based DNA sequence analysis process will be.

[0112] The modified program was used to ask a number of specific questions. The first was: if one cannot reliably detect a peak shift of less than 10 Daltons in the presence of the non-mutant peak (i.e., if the detection threshold is 10 Da), and if only the natural reading frame of the exon is examined, of all possible mutations how many will be missed?

[0113] Application of the program revealed the number to be 60—i.e., 60 different point mutations would go undetected. These mutations are listed below. For each member of the list, the location within the exon is shown at the left; the mutation is shown in the middle, and the wild type and mutant amino acids are shown in the parentheses. Thus, for example “2. (T)A-C(P)” indicates that an A-to-C mutation at position 2 in the DNA sequence results in a proline-to-threonine substitution in the encoded peptide.

2. (T)A-C(P)	5.(E)G-A(K)
5. (E)G-C(Q)	11.(K)A-C(Q)
11.(K)A-G(E)	

-continued

17.(T)A-C(P)	
23.(K)A-G(E)	23.(K)A-C(Q)
24.(K)A-T(M)	
47.(N)A-G(D)	
48.(N)A-T(I)	
89.(L)T-A(I)	
98.(L)C-A(I)	
101.(P)C-A(T)	
110.(L)C-A(I)	
113.(I)A-C(L)	
114.(I)T-A(N)	
116.(K)A-G(E)	116.(K)A-C(Q)
122.(I)A-C(L)	
123.(I)T-A(N)	
125.(I)A-C(L)	
126.(I)T-A(N)	
128.(L)C-A(I)	
134.(K)A-G(E)	134.(K)A-C(Q)
137.(I)A-T(L)	137.(I)A-C(L)
143.(T)A-C(P)	
146.(T)A-C(P)	
149.(I)A-C(L)	
150.(I)T-A(N)	
161.(I)A-C(L)	
162.(J)T-A(N)	
174.(M)T-A(K)	
182.(T)A-C(P)	
188.(Q)C-A(K)	188.(Q)C-G(E)
190.(Q)A-T(H)	190.(Q)A-C(H)
196.(P)C-A(T)	
206.(Q)C-A(K)	206.(Q)C-G(E)
208.(Q)A-T(H)	208.(Q)A-C(H)
209.(T)A-C(P)	
218.(D)G-A(N)	
224.(L)C-A(I)	
233.(I)A-T(L)	233.(I)A-C(L)
236.(N)A-G(D)	
237.(N)A-T(I)	
239.(K)A-G(E)	239.(K)A-C(Q)
242.(I)A-T(L)	242.(I)A-C(L)
245.(Q)C-A(K)	245.(Q)C-G(E)
247.(Q)G-T(H)	247.(Q)G-C(H)

[0114] When the threshold was set at 0.8 Daltons, 21 mutations remained undetectable, as shown below.

11.(K)A-C(Q)	
23.(K)A-C(Q)	
89.(L)T-A(I)	
98.(L)C-A(I)	
101.(P)C-A(T)	
116.(K)A-C(Q)	
122.(I)A-C(L)	
125.(I)A-C(L)	
128.(L)C-A(I)	
134.(K)A-C(Q)	
149.(I)A-C(L)	
162.(I)A-C(L)	
188.(Q)C-A(K)	
206.(Q)C-A(K)	
224.(L)C-A(I)	
233.(I)A-T(L)	233.(I)A-C(L)
239.(K)A-C(Q)	
242.(I)A-T(L)	244.(I)A-C(L)
245.(Q)C-A(K)	

[0115] As expected from previous results described in this specification, extending the analysis to all six reading frames led to fewer mutations being missed. Output of the program

run for all six reading frames at detection threshold values of 10 Da and 0.8 Da gave the outputs shown below.

[0116] 10 Da threshold

[0117] 48. (N)A-T(I)

[0118] 89. (L)T-A(I)

[0119] 98. (L)C-A(I)

[0120] 101.(P)C-A(T)

[0121] 137.(I)A-T(L)

[0122] 0.8 Da threshold

[0123] 89. (L)T-A(I)

[0124] 98.(L)C-A(I)

[0125] Finally, the program was run with nonsense suppression included. Specifically, with the sequence TGA read as W, all nonsynonymous mutations were detected at both thresholds.

[0126] It is clear from this example that addition of nonsense suppression improves the resolution of the peptide-based DNA sequence analysis process. Suppression can be effected by, for example, expressing fusion peptides in vivo in nonsense suppressing hosts, or by expressing them in vitro in extracts derived from suppressor-carrying strains, or by expressing them in extracts to which, for example, suppressor extracts or suppressor tRNAs have been added.

[0127] Additional embodiments employ more than one suppressor in the same in vivo or in vitro translation reaction. In some embodiments this is effected by using a host that expresses more than one suppressor, with suppressor expression coming from inducible promoters, so that the host cell need not be grown in the presence of more than one suppressor, which lethal or deleterious to viability. Indeed, if translation is effected in the presence of TGA, TAA and TAG suppressors, each reading frame crosses the entire sequence. The information content in these peptides considered together is impressive. For example, analysis of the longest CFTR exon (exon 13, 724 nt) at 10 Da resolution with all three nonsense codons suppressed revealed that no synonymous mutations were missed.

[0128] Nonsense suppression is known to be incomplete in many cases, with chain termination readily detected at the nonsense codon in the suppressing background. This circumstance does not lessen the value of the approach, and it can even be an advantage, since the result is a second peak in the spectrum that can be used to cross-verify any mass shifts that may be present in the both the chain-terminated and the suppressed peptides.

[0129] In a related set of embodiments, peptides are expressed in a missense-suppressing environment. Missense suppressors effectively change the genetic code, and this can be used to alter the mass shifts produced by certain mutations. For example codons AIT, ATC and ATA normally encode isoleucine. Mutations that change leucine codons to isoleucine codons (e.g., CTT to AIT) do not normally produce peptide mass shifts because leucine and isoleucine have identical masses. By contrast, in the presence of a missense suppressor (e.g., a missense suppressor tRNA) that incorporates cysteine in response to the isoleucine codon, the mutation does produce a significant mass shift (leucine-

to-cysteine: -10.02 Daltons). Missense suppression can be effected in vivo or in vitro. A missense suppressing environment can be, for example, a living cell containing a missense-suppressor gene, an extract of such a cell, or an extract of a nonsuppressing cell that has been supplemented with one or more missense suppressor tRNA species.

[0130] In the examples given above, the only physical parameter whose value was measured was polypeptide mass. It should be clear to the reader, however, that assessing certain other polypeptide properties, such as amino acid composition or amino acid sequence, may also serve to locate an unknown sequence with respect to the reference sequence. Such data might be obtained, for example, by partial or complete digestion of the peptide, prior to spectrometry, with endopeptidases such as trypsin, chymotrypsin, or pepsin, or with aminopeptidases or carboxypeptidases. Analysis can be performed with a variety of spectrometric methods besides MALDI-TOF and ESI, such as tandem mass spectrometry (MS/MS), quadripole time of flight spectrometry (Q-TOF), or Fourier transform ion cyclotron resonance (FTICR) mass spectrometry. Other analytical methods well known in the art can also be used to analyze the fusion peptides, such as gel or capillary electrophoresis or high performance liquid chromatography (HPLC). It should also be clear that the instant invention has utility even if it does not unambiguously assign an unknown sequence to just one place in the reference sequence. For example, a search might eliminate all but four positions in the reference sequence, each on a different chromosome; if the chromosomal location of the unknown sequence were known from some independent determination, such as fluorescence in situ hybridization (FISH), then the assignment could be made unambiguous. Likewise, there may be circumstances where the reference sequence is complex, representing, for example, an annotated combination of sequences derived from more than one individual, strain or species, which could be viral, procaryotic or eucaryotic. In such circumstances, the instant invention could be used, in medical, forensic or population biology contexts for example, to determine the individual, strain, or species from which the unknown DNA originated, or, conversely, it could be used to rule out an individual, strain or species as the source of origin of the unknown DNA.

[0131] Some embodiments of the invention include multiplex or pooled-sample analysis wherein peptides encoded in more than one DNA fragment are co-analyzed. For example, peptides encoded in more than one exon of a gene may be combined and analyzed in concert, or samples from multiple individuals may be pooled and analyzed together.

[0132] Some embodiments of the invention include methods for determining the sequence of a polynucleotide, comprising providing a nucleic acid fragment having homology to a known reference sequence; expressing at least one polypeptide from said fragment; and assessing at least one physical property of said at least one polypeptide to determine the sequence of said fragment by comparing said at least one property to the predicted properties of polypeptides encoded in said known reference sequence. The method also includes wherein said nucleic acid fragment contains a difference with respect to the reference sequence wherein said difference is selected from the group consisting of single nucleotide polymorphism, single nucleotide substitution, single nucleotide deletion, single nucleotide insertion,

multiple nucleotide substitution, multiple nucleotide deletion, multiple nucleotide insertion, DNA duplication, DNA inversion, DNA translocation, and DNA deletion/substitution. The method further includes embodiments wherein said nucleic acid fragment comprises an exon or a cDNA. The method further includes embodiments wherein the polypeptide(s) contain heterologous epitope tags and expressed in living cells or expressed in a cell free systems such as an *E. coli* extract, rabbit reticulocyte extract, or wheat germ extract. The invention further includes embodiments wherein the peptides are purified by a variety of methods including gel electrophoresis, capillary electrophoresis, liquid chromatography (LC), capillary liquid chromatography, high performance liquid chromatography (HPLC), differential centrifugation, filtration, gel filtration, membrane chromatography, affinity purification, biomolecular interaction analysis (BIA), ligand affinity purification, glutathione-S-transferase affinity chromatography, cellulose binding protein affinity chromatography, maltose binding protein affinity chromatography, avidin/streptavidin affinity chromatography, S-tag affinity chromatography, thioredoxin affinity chromatography, metal-chelate affinity chromatography, immobilized metal affinity chromatography, epitope-tag affinity chromatography, immunoaffinity chromatography, immunoaffinity capture, capture using bioactive mass spectrometer probes, mass spectrometric immunoassay, and immunoprecipitation. The method further includes embodiments wherein the physical property that is determined is mass, and wherein mass is determined by a variety of methods including mass spectrometry, MALDI-TOF mass spectrometry, electrospray ionization mass spectrometry (ESI) tandem mass spectrometry (MS/MS), quadripole time of flight spectrometry (Q-TOF), Fourier transform ion cyclotron resonance (FTICR) mass spectrometry, gel electrophoresis, capillary electrophoresis, and high performance liquid chromatography (HPLC). The method further includes embodiments wherein the physical property that is assessed is partial or complete amino acid composition or sequence.

[0133] In another embodiment the present invention includes a method for genetic analysis comprising providing a nucleic acid fragment, expressing at least one polypeptide from the fragment, and assessing at least one physical property of said at least one polypeptide to determine the coding capacity of said fragment by comparing said at least one property to the predicted properties of polypeptides encoded in a known reference sequence. In a further embodiment the invention includes method for analyzing fragments that contain a differences with respect to the reference sequence that include of single nucleotide polymorphisms, single nucleotide substitutions, single nucleotide deletions, single nucleotide insertions, multiple nucleotide substitutions, multiple nucleotide deletions, multiple nucleotide insertions, DNA duplications, DNA inversions, DNA translocations, and DNA deletion/substitutions. In further embodiments the invention includes methods for analyzing nucleic acid fragment representing exons or cDNAs, for examining polypeptides that carry epitope tags, for examining polypeptides expressed in living cells or in cell free systems such *E. coli* extracts, rabbit reticulocyte extracts, and wheat germ extracts. The invention further includes embodiments wherein the peptides are purified by a variety of methods including gel electrophoresis, capillary electrophoresis, liquid chromatography (LC), capillary liq-

uid chromatography, high performance liquid chromatography (HPLC), differential centrifugation, filtration, gel filtration, membrane chromatography, affinity purification, biomolecular interaction analysis (BIA), ligand affinity purification, glutathione S transferase affinity chromatography, cellulose binding protein affinity chromatography, maltose binding protein affinity chromatography, avidin/streptavidin affinity chromatography, S-tag affinity chromatography, thioredoxin affinity chromatography, metal-chelate affinity chromatography, immobilized metal affinity chromatography, epitope-tag affinity chromatography, immunoaffinity chromatography, immunoaffinity capture, capture using bioreactive mass spectrometer probes, mass spectrometric immunoassay, and immunoprecipitation. The method further includes embodiments wherein the physical property that is determined is mass, and wherein mass is determined by a variety of methods including mass spectrometry, MALDI-TOF mass spectrometry, electrospray ionization mass spectrometry (ESI) tandem mass spectrometry (MS/MS), quadrupole time of flight spectrometry (Q-TOF), Fourier transform ion cyclotron resonance (FTICR) mass spectrometry, gel electrophoresis, capillary electrophoresis, and high performance liquid chromatography (HPLC). The method further includes embodiments wherein the physical property that is assessed is partial or complete amino acid composition or sequence.

**[0134]** In additional embodiments, the invention includes methods for assessing a disease, condition, genotype, or phenotype comprising providing a nucleic acid fragment from a biological sample, and expressing at least one polypeptide from said fragment, and assessing at least one physical property of said at least one polypeptide to determine the sequence of said fragment by comparing said at least one property to the predicted properties of polypeptides encoded in a known reference sequence, and correlating said determined sequence with said disease, condition, genotype or phenotype. The biological sample may be obtained from a virus, organelle, cell, tissue, body part, exudate, excretion, elimination, or secretion of a healthy, diseased or deceased microorganism, protist, alga, fungus, animal or plant.

**[0135]** Other embodiments include diagnostic or prognostic tests for diseases, conditions, genotypes, or phenotypes comprising providing a nucleic acid fragment from a biological sample, and expressing at least one polypeptide from the fragment, and assessing at least one physical property of one or more of the polypeptides to determine the sequence of the fragment by comparing the property or properties to the predicted properties of polypeptides encoded in a known reference sequence. The sample may be obtained from a virus, organelle, cell, tissue, body part, exudate, excretion, elimination, or secretion of a healthy, diseased or deceased microorganism, protist, alga, fungus, animal or plant. In further embodiments, the test may detect heterozygote status, and it may indicate responses to drug or therapeutic treatments. The test may be for a genetic disease such as Alzheimer's disease, Ataxia talangietasia (ATM), Familial adenomatous polyposis (APC), Hereditary breast/ovarian cancer (BRCA1, BRCA2), Hereditary melanoma (CDK2, CDKN2), Hereditary non-polypsosis colon cancer (hMSH2, hMLH1, hPMS1, hPMS2), Hereditary retinoblastoma (RB1), Hereditary Wilm's Tumor (WT1), Li-Fraumeni syndrome (p53), Multiple endocrine neoplasia (MEN1, MEN2), Von Hippel-Lindau syndrome (VHL), Congenital adrenal hyperplasia, Androgen receptor deficiency, Tetrahydrobiopterin deficiency, X-Linked agammaglobulinemia, Cystic Fibrosis (CFTR), Diabetes, Muscular Dystrophy (DMD, BMD), Factor X deficiency, Mitochondrial gene deficiency, Factor VII deficiency, Glucose-6-Phosphate deficiency, Pompe Disease, Hemophilia A, Hexosaminidase A deficiency, Human Type I and Type III Collagen deficiency X-linked SCID, Retinitis pigmentosa (RP) LIACAM deficiency, MCAD deficiency, LDL Receptor deficiency, Orni-

terin deficiency, X-Linked agammaglobulinemia, Cystic Fibrosis (CFTR), Diabetes, Muscular Dystrophy (DMD, BMD), Factor X deficiency, Mitochondrial gene deficiency, Factor VII deficiency, Glucose-6-Phosphate deficiency, Pompe Disease, Hemophilia A, Hexosaminidase A deficiency, Human Type I and Type III Collagen deficiency X-linked SCID, Retinitis pigmentosa (RP) LIACAM deficiency, MCAD deficiency, LDL Receptor deficiency, Ornithine Transcarbamylase deficiency, PAX6 Mutation Phenylketonuria, RB1 Gene Mutation, Tuberous Sclerosis, von Willebrand Factor Disease, Werner syndrome, cancer, or an infectious disease.

**[0136]** Further embodiments include methods for assessing a disease, condition, genotype, or phenotype providing a nucleic acid fragment from a biological sample, and expressing at least one polypeptide from the fragment, assessing at least one physical property of one or more of the polypeptides to determine the coding capacity of the nucleic acid fragment by comparing said at least one property of the polypeptide(s) to the predicted properties of polypeptides encoded in a known reference sequence, and correlating said determined sequence with said disease, condition, genotype or phenotype. The biological sample may be obtained from a virus, organelle, cell, tissue, body part, exudate, excretion, elimination, or secretion of a healthy, diseased or deceased microorganism, protist, alga, fungus, animal or plant. The particular original source may be blood, sweat, tears, urine, semen, saliva, sweat, feces, skin or hair, or it may come from the environment that the living inhabits or has inhabited, such as air, soil or water.

**[0137]** Further embodiments include diagnostic or prognostic tests for a disease, condition, genotype, or phenotype selecting a nucleic acid fragment taken from a virus, organelle, cell, tissue, body part, exudate, excretion, elimination, or secretion of a healthy, diseased or deceased microorganism, protist, alga, fungus, animal or plant, expressing at least one polypeptide from the fragment, assessing at least one physical property of the polypeptide(s) to determine the coding capacity of the fragment by comparing the property or properties to the predicted properties of polypeptides encoded in a known reference sequence. The particular original source of the nucleic acid may be blood, sweat, tears, urine, semen, saliva, sweat, feces, skin or hair, or it may come from the environment that the living inhabits or has inhabited, such as air, soil or water. The test may detect heterozygote status or indicate or response to a therapeutic drug or treatment. It may detect genetic disease, such as Alzheimer's disease, Ataxia talangietasia (ATM), Familial adenomatous polyposis (APC), Hereditary breast/ovarian cancer (BRCA1, BRCA2), Hereditary melanoma (CDK2, CDKN2), Hereditary non-polypsosis colon cancer (hMSH2, hMLH1, hPMS1, hPMS2), Hereditary retinoblastoma (RB1), Hereditary Wilm's Tumor (WT1), Li-Fraumeni syndrome (p53), Multiple endocrine neoplasia (MEN1, MEN2), Von Hippel-Lindau syndrome (VHL), Congenital adrenal hyperplasia, Androgen receptor deficiency, Tetrahydrobiopterin deficiency, X-Linked agammaglobulinemia, Cystic Fibrosis (CFTR), Diabetes, Muscular Dystrophy (DMD, BMD), Factor X deficiency, Mitochondrial gene deficiency, Factor VII deficiency, Glucose-6-Phosphate deficiency, Pompe Disease, Hemophilia A, Hexosaminidase A deficiency, Human Type I and Type III Collagen deficiency X-linked SCID, Retinitis pigmentosa (RP) LIACAM deficiency, MCAD deficiency, LDL Receptor deficiency, Orni-

thine Transcarbamylase deficiency, PAX6 Mutation Phenylketonuria, RB1 Gene Mutation, Tuberous Sclerosis, von Willebrand Factor Disease, and Werner Syndrome, cancer, or infectious disease.

[0138] The invention further includes various polypeptides that are created in the embodiments described above.

[0139] Further embodiments of the invention take the form of data useful for detecting and analyzing DNA mutations and polymorphisms stored in a physical medium in computer readable form a plurality of DNA sequence fragments contained within a reference DNA sequence, and the sequences of the polypeptides encoded in said DNA sequence fragments, the predicted sequences of a plurality of polypeptides encoded in a set of transformed DNA sequence fragments, each member of said set comprised of a DNA sequence related to said DNA sequence fragment by a specific change selected from the group consisting of single nucleotide polymorphism, single nucleotide substitution, single nucleotide deletion, single nucleotide insertion, multiple nucleotide substitution, multiple nucleotide deletion, multiple nucleotide insertion, DNA duplication, DNA inversion, DNA translocation, and DNA deletion/substitution; b. means for comparing the predicted sequences of said plurality of polypeptides with a test sequence to determine identity of the test sequence with a predicted sequence.

[0140] Additional embodiments include computer data structures, comprising: data storage media; and data sets in computer readable form on the data storage media representing a plurality of polypeptide fragments of polypeptides encoded by a reference polynucleotide sequence; and second data sets in computer readable form on the data storage media representing physical properties of each of the polypeptide fragments; and means for correlating empirically derived physical properties of test polypeptides with second data sets to determine the identity of the test polypeptides. The data structures may further comprising third data sets in computer readable form on said data storage media representing polynucleotide fragments encoding the polypeptide fragments; and means for correlating the identity of the test polypeptides with polynucleotide fragments represented in the third data sets. In these data the physical properties may include mass or partial or complete amino acid composition or sequence.

[0141] In yet additional embodiments, the invention includes data structures in which reference polynucleotides have a reading frame, and wherein one data set represents polypeptide fragments encoded in frame and polypeptide fragments encoded out of frame with respect to said reference polynucleotide.

[0142] Further embodiments include computer implemented methods for ascertaining the identity of nucleic acid fragments encoding polypeptides, wherein the nucleic acid fragments are fragments of known reference sequences, comprising the steps of measuring a physical property of a polypeptide comparing, in a computer, the measured physical property with a data set representing the predicted corresponding physical properties of possible polypeptides that are encoded by fragments of the reference sequence within a predetermined size range; and identifying a match between the measured physical property and a predicted physical property in the data set; and displaying or recording the results of the identifying step. The data set may include

physical properties of polypeptides encoded by in-frame and any of six out-of-frame fragments of said reference polynucleotide.

[0143] Additional embodiments of the invention include relational data sets useful for detecting and analyzing DNA mutations and polymorphisms comprising a plurality of DNA sequence fragments contained within a reference DNA sequence, the sequences of the polypeptides encoded in said DNA sequence fragments, and the predicted sequences of a plurality of polypeptides encoded in a set of transformed DNA sequence fragments, each member of said set comprised of a DNA sequence related to said DNA sequence fragment by a specific change selected from the group consisting of single nucleotide polymorphism, single nucleotide substitution, single nucleotide deletion, single nucleotide insertion, multiple nucleotide substitution, multiple nucleotide deletion, multiple nucleotide insertion, DNA duplication, DNA inversion, DNA translocation, and DNA deletion/substitution. Further embodiments include computer programs that search of these data sets.

[0144] The computer-implemented methods of the present invention can be carried out on a general purpose computer, such as, for example, a PC running the Windows, NT, Unix, or Linux operating systems, or a Macintosh personal computer. For some embodiments of the invention, a more powerful computer mainframe would be desirable. Suitable computers typically have a central processor, computer memory (such as RAM), and a storage medium, such as a floppy disk, a fixed disk or hard drive, a tape drive, an optical storage medium such as a CD, DVD, or WORM drive, a removable disk, or the like, which can store data in computer-readable form. Such computers typically have a means, such as a monitor, for displaying data or information, and are capable of storing program-generated data in RAM or in the storage medium. Such computers can also advantageously be connected to a printer, for providing a fixed record of information generated by the program.

[0145] A general purpose computer utilized in the present invention could be programmed with a specific program of the type described herein. In particular, this program would generate data sets of all possible nucleotide fragments, in all possible frames and in both orientations. It would predict and store data sets reflecting the translation products of those fragments. It would also store, in a correlatable manner, a data set reflecting a physical property (such as molecular weight) of each of those fragments. One program that could be used in the present invention would compare an empirically determined physical property of a polypeptide translated from a polynucleotide fragment from a biological sample with the data set to determine, for example, which possible polypeptide fragment or which possible polynucleotide fragment corresponds to the sample. In this manner, the identity of DNA in the sample can be determined.

[0146] In one embodiment, information directly or indirectly related to the identity of the polynucleotide fragment from the sample can be displayed, printed, and/or stored. This can include the exact identity or sequence of the polynucleotide, or a tag, label, or name associated therewith. It could also be a diagnosis of a disease, condition, genotype, or phenotype associated with that particular polynucleotide.

### Conclusion, Ramifications and Scope of Invention

[0147] In conclusion, the invention specified here provides a novel method for analyzing DNA and for identifying and/or assaying known or new polymorphisms or mutations in DNA. The method has unique and highly useful advantages over all other methods the prior art.

[0148] The specific description of my invention presented above should not be construed as limiting its scope but rather as exemplification of certain embodiments thereof. Many other variations and applications are possible and can be practiced by one skilled in the art. For the purpose of expression, multiple promoters and translation start sites can be placed in the known sequence, on one or both sides thereof, so that the unknown sequence is translated in up to six different reading frames. Or the unknown sequence can be a PCR amplicon that is cloned into a vector in both orientations, thereby yielding a mixture of clones, some translated from one strand and some from the other. Or promoters and translation start signals can be incorporated near one or both ends of a transposable element, such as Tn3, Tn5, Tn7, Tn10, Ty, P-element, and Mariner; of a virus such as herpes virus, adenovirus, adeno-associated virus; or of a retrovirus. Fusion protein expression need not take place in bacteria, as in the examples given here, but may take place in eucaryotic cells such as yeast or mammalian cells, and cell free expression need not take place in a rabbit reticulocyte lysate, as in the example, but in other cell free systems. Other modalities for peptide capture can be used, such as incorporating biotinylated lysine in the peptides and capturing with avidin or streptavidin. Additionally, protease recognition sites may be incorporated into the known sequence to aid in fragment preparation, such as placing an enterokinase cleavage site and a poly-histidine sequence upstream of the junction to the unknown sequence so that a peptide for analysis can be released by enterokinase treatment of an affinity captured polypeptide. Further, the DNA polymorphisms that are identified and/or detected need not be limited to single nucleotide polymorphisms, as in the examples, but could be of many other kinds such as micro-satellite repeats of different lengths or specific single nucleotide deletions, single nucleotide insertions, multiple nucle-

otide substitutions, multiple nucleotide deletions, multiple nucleotide insertions, DNA duplications, DNA inversions, DNA translocations, DNA deletion/substitutions or other chromosomal rearrangements.

[0149] A central element disclosed in this specification is a "peptide mass-signature" derived by translation of a nucleotide sequence in multiple reading frames. It should now be apparent to the reader that a characteristic peptide mass signature can be derived from any nucleic acid molecule using the methods taught in this specification. The peptide mass signature is, by itself, a distinct and classifiable derived property of any nucleic acid molecule—and as such it has unambiguous utility.

[0150] The peptide mass signature has utility in determining the sequence or coding capacity of the polynucleotide by reference to a known polynucleotide sequence, as described in numerous specific examples given in this specification. But the reader should recognize that even when the reference sequence is incompletely known, application of the operations described here can allow the reference sequence to be progressively determined, augmented and enlarged. In particular, if a polynucleotide yields a mass signature that is not predicted by the reference sequence, that polynucleotide may be sequenced by direct means such as dideoxy sequencing, and the new sequence may be added to the reference sequence database. In the extreme case, one could begin with no knowledge of the reference sequence and progressively fill it in by this approach.

[0151] It should also be apparent that using the methods disclosed in this specification, diverse nucleic acid molecules may be characterized and classified on the basis of their individual peptide mass signatures alone, since the peptide mass signature is, by itself, a distinct and classifiable derived property of each nucleic acid molecule. Thus peptide mass signatures may be used, for example, to examine the complexity of a DNA or mRNA/cDNA sample and to examine the relative concentrations of its components with no consideration given in the analysis to nucleic acid sequence. Thus the peptide mass signature itself, when obtained as taught in this specification, represents a novel and non-obvious invention with distinct utility.

---

### SEQUENCE LISTING

<160> NUMBER OF SEQ ID NOS: 28

<210> SEQ ID NO 1

<211> LENGTH: 6

<212> TYPE: PRT

<213> ORGANISM: Artificial Sequence

<220> FEATURE:

<223> OTHER INFORMATION: Example of sequence made up entirely of six-codon amino acids

<400> SEQUENCE: 1

Leu Arg Arg Leu Leu Arg  
1 5

<210> SEQ ID NO 2

<211> LENGTH: 6

<212> TYPE: PRT

-continued

---

<213> ORGANISM: Artificial Sequence  
 <220> FEATURE:  
 <223> OTHER INFORMATION: Example of sequence made up entirely of  
 one-codon amino acids

<400> SEQUENCE: 2

Met Trp Trp Met Met Trp  
 1 5

<210> SEQ ID NO 3  
 <211> LENGTH: 100  
 <212> TYPE: DNA  
 <213> ORGANISM: Homo sapiens

<400> SEQUENCE: 3

gaattctttac acctcactact ttccaagcc ccaactttct catctgaaaa tggtaatagt 60  
 atcatcctta catgtttaag gtcatgaatt gctatgtgta 100

<210> SEQ ID NO 4  
 <211> LENGTH: 16  
 <212> TYPE: PRT  
 <213> ORGANISM: Homo sapiens

<400> SEQUENCE: 4

Thr Met Ile Thr Pro Ser Leu His Ala Cys Arg Ser Thr Leu Glu Asp  
 1 5 10 15

<210> SEQ ID NO 5  
 <211> LENGTH: 100  
 <212> TYPE: DNA  
 <213> ORGANISM: Homo sapiens

<400> SEQUENCE: 5

gaattccatc aaatcgcaaa tttttttttc cttcccagag ccatcctaaa ctctgtttgt 60  
 caaaggcctg tctgaggata ccaactgaaga gacattaaag 100

<210> SEQ ID NO 6  
 <211> LENGTH: 99  
 <212> TYPE: DNA  
 <213> ORGANISM: Homo sapiens

<400> SEQUENCE: 6

gaattctctt gggttttgtg ggtgtgtaga cttaattacc catgaatgat tttgtcctct 60  
 tgagaaaatt tcaatagcac atctattagt gttttttat 99

<210> SEQ ID NO 7  
 <211> LENGTH: 27  
 <212> TYPE: DNA  
 <213> ORGANISM: Artificial Sequence  
 <220> FEATURE:  
 <221> NAME/KEY: SITE  
 <222> LOCATION: (4)..(9)  
 <223> OTHER INFORMATION: Oligonucleotide primer containing EcoRI site

<400> SEQUENCE: 7

cccgaattca gcaggtaaaa atcaagg 27

<210> SEQ ID NO 8  
 <211> LENGTH: 29  
 <212> TYPE: DNA  
 <213> ORGANISM: Artificial Sequence

-continued

---

```

<220> FEATURE:
<221> NAME/KEY: SITE
<222> LOCATION: (4)..(9)
<223> OTHER INFORMATION: Oligonucleotide primer containing EcoRI site

<400> SEQUENCE: 8

ggggaattct tactcttctc cactgctat                29

<210> SEQ ID NO 9
<211> LENGTH: 24
<212> TYPE: DNA
<213> ORGANISM: Artificial Sequence
<220> FEATURE:
<223> OTHER INFORMATION: Nucleotide input sequence used to demonstrate
        computer program capabilities

<400> SEQUENCE: 9

caactagaag aggtaagaaa ctat                    24

<210> SEQ ID NO 10
<211> LENGTH: 8
<212> TYPE: PRT
<213> ORGANISM: Artificial Sequence
<220> FEATURE:
<223> OTHER INFORMATION: Computer program output of encoded peptides

<400> SEQUENCE: 10

Gln Leu Glu Glu Val Arg Asn Tyr

<210> SEQ ID NO 11
<211> LENGTH: 326
<212> TYPE: DNA
<213> ORGANISM: Homo sapiens
<220> FEATURE:
<221> NAME/KEY: exon
<222> LOCATION: (37)..(283)

<400> SEQUENCE: 11

gggaaagccca tctccagctg tctgtttccc tttaagtoga atcaagagca acgtggatgg        60
gcggtacctg gtggacggcg tccctttcag ctgctgcaat cctagctcgc cacggccctg        120
catccagtat cagatcacca acaactcagc acactacagt tacgaccacc agacggagga        180
gctcaacctg tgggtgctg gctgcagggc tgccctgctg agctactaca gcagcctcat        240
gaactccatg ggtgtcgtca cgctcctcat ttggtcttcc gaggtaggcc ctgggcagct        300
gggggtagag ggtaaggaga gcctcc                326

<210> SEQ ID NO 12
<211> LENGTH: 36
<212> TYPE: DNA
<213> ORGANISM: Artificial sequence
<220> FEATURE:
<223> OTHER INFORMATION: Primer synthesized and used to PCR amplify
        rds/peripherin exon 2 from an individual known to carry a wild
        type allele of rds/peripherin.

<400> SEQUENCE: 12

ggcccggaat tctccagctg tctgtttccc tttaag                36

<210> SEQ ID NO 13
<211> LENGTH: 37
<212> TYPE: DNA
<213> ORGANISM: Artificial sequence

```

-continued

&lt;220&gt; FEATURE:

&lt;223&gt; OTHER INFORMATION: Primer synthesized and used to PCR amplify rds/peripherin exon 2 from an individual known to carry a wild type allele of rds/peripherin.

&lt;400&gt; SEQUENCE: 13

aatttactcg agctaccccc agctgccag ggcctac

37

&lt;210&gt; SEQ ID NO 14

&lt;211&gt; LENGTH: 364

&lt;212&gt; TYPE: PRT

&lt;213&gt; ORGANISM: Artificial sequence

&lt;220&gt; FEATURE:

&lt;223&gt; OTHER INFORMATION: Fusion protein

&lt;400&gt; SEQUENCE: 14

Met Ser Pro Ile Leu Gly Tyr Trp Lys Ile Lys Gly Leu Val Gln Pro  
1 5 10 15Thr Arg Leu Leu Leu Glu Tyr Leu Glu Glu Lys Tyr Glu Glu His Leu  
20 25 30Tyr Glu Arg Asp Glu Gly Asp Lys Trp Arg Asn Lys Lys Phe Glu Leu  
35 40 45Gly Leu Glu Phe Pro Asn Leu Pro Tyr Tyr Ile Asp Gly Asp Val Lys  
50 55 60Leu Thr Gln Ser Met Ala Ile Ile Arg Tyr Ile Ala Asp Lys His Asn  
65 70 75 80Met Leu Gly Gly Cys Pro Lys Glu Arg Ala Glu Ile Ser Met Leu Glu  
85 90 95Gly Ala Val Leu Asp Ile Arg Tyr Gly Val Ser Arg Ile Ala Tyr Ser  
100 105 110Lys Asp Phe Glu Thr Leu Lys Val Asp Phe Leu Ser Lys Leu Pro Glu  
115 120 125Met Leu Lys Met Phe Glu Asp Arg Leu Cys His Lys Thr Tyr Leu Asn  
130 135 140Gly Asp His Val Thr His Pro Asp Phe Met Leu Tyr Asp Ala Leu Asp  
145 150 155 160Val Val Leu Tyr Met Asp Pro Met Cys Leu Asp Ala Phe Pro Lys Leu  
165 170 175Val Cys Phe Lys Lys Arg Ile Glu Ala Ile Pro Gln Ile Asp Lys Tyr  
180 185 190Leu Lys Ser Ser Lys Tyr Ile Ala Trp Pro Leu Gln Gly Trp Gln Ala  
195 200 205Thr Phe Gly Gly Gly Asp His Pro Pro Lys Ser Asp Leu Ile Glu Gly  
210 215 220Arg Gly Ile Gln Asp Leu Val Pro His Thr Thr Pro His His Thr Thr  
225 230 235 240Pro His His Thr Thr Pro His His Thr Thr Pro Gln Asp Leu Asn Ser  
245 250 255Pro Ala Val Cys Phe Pro Leu Ser Arg Ile Lys Ser Asn Val Asp Gly  
260 265 270Arg Tyr Leu Val Asp Gly Val Pro Phe Ser Cys Cys Asn Pro Ser Ser  
275 280 285Pro Arg Pro Cys Ile Gln Tyr Gln Ile Thr Asn Asn Ser Ala His Tyr  
290 295 300



---

-continued

---

<211> LENGTH: 24  
<212> TYPE: DNA  
<213> ORGANISM: Homo sapiens

<400> SEQUENCE: 20

actaaacaat gtacatgaac atac 24

<210> SEQ ID NO 21  
<211> LENGTH: 27  
<212> TYPE: DNA  
<213> ORGANISM: Homo sapiens  
<220> FEATURE:  
<221> NAME/KEY: variation  
<222> LOCATION: (1)..(6)

<400> SEQUENCE: 21

tattacttcc tcctctcttt attttag 27

<210> SEQ ID NO 22  
<211> LENGTH: 24  
<212> TYPE: DNA  
<213> ORGANISM: Homo sapiens

<400> SEQUENCE: 22

actaaacaat gtacatgaac atac 24

<210> SEQ ID NO 23  
<211> LENGTH: 30  
<212> TYPE: DNA  
<213> ORGANISM: Homo sapiens  
<220> FEATURE:  
<221> NAME/KEY: variation  
<222> LOCATION: (1)..(9)

<400> SEQUENCE: 23

tactatattat tcctcctctc tttattttag 30

<210> SEQ ID NO 24  
<211> LENGTH: 24  
<212> TYPE: DNA  
<213> ORGANISM: Homo sapiens

<400> SEQUENCE: 24

actaaacaat gtacatgaac atac 24

<210> SEQ ID NO 25  
<211> LENGTH: 33  
<212> TYPE: DNA  
<213> ORGANISM: Homo sapiens  
<220> FEATURE:  
<221> NAME/KEY: variation  
<222> LOCATION: (1)..(12)

<400> SEQUENCE: 25

tactatattat acttcctcct ctctttattt tag 33

<210> SEQ ID NO 26  
<211> LENGTH: 24  
<212> TYPE: DNA  
<213> ORGANISM: Homo sapiens

<400> SEQUENCE: 26

actaaacaat gtacatgaac atac 24

-continued

---

```

<210> SEQ ID NO 27
<211> LENGTH: 156
<212> TYPE: DNA
<213> ORGANISM: Homo sapiens
<220> FEATURE:
<221> NAME/KEY: exon
<222> LOCATION: (22)..(132)

<400> SEQUENCE: 27

ttctctctct ctttatttta gctggaccag accaattttg aggaaaggat acagacagcg      60
cctggaattg tcagacatat accaaatccc ttctgttgat tctgctgaca atctatctga      120
aaaattgaa aggtatgttc atgtacattg tttagt                                  156

<210> SEQ ID NO 28
<211> LENGTH: 247
<212> TYPE: DNA
<213> ORGANISM: Homo sapiens

<400> SEQUENCE: 28

aacagaactg aaactgactc ggaaggcagc ctatgtgaga tacttcaata gctcagcctt      60
cttcttctca gggttctttg tgggtttttt atctgtgctt ccctatgcac taatcaaagg      120
aatcatcctc cgaaaaatat tcaccaccat ctcatctctgc attggtctgc gcatggcggt      180
cactcggcaa ttccctggg ctgtacaaac atggtatgac tctcttgag caataaacia      240
aatacag                                           247

```

---

I claim:

1. A method for determining the sequence of a polynucleotide, comprising

- a. providing a nucleic acid fragment having homology to a known reference sequence, and
- b. expressing at least one polypeptide from said fragment, and
- c. assessing at least one physical property of said at least one polypeptide to determine the sequence of said fragment by comparing said at least one property to the predicted properties of polypeptides encoded in said known reference sequence.

2. The method of claim 1 wherein said nucleic acid fragment contains a difference with respect to the reference sequence wherein said difference is selected from the group consisting of single nucleotide polymorphism, single nucleotide substitution, single nucleotide deletion, single nucleotide insertion, multiple nucleotide substitution, multiple nucleotide deletion, multiple nucleotide insertion, DNA duplication, DNA inversion, DNA translocation, and DNA deletion/substitution.

3. The method of claim 1 wherein said nucleic acid fragment comprises an exon.

4. The method of claim 1 wherein said nucleic acid fragment comprises a cDNA.

5. The method of claim 1 wherein said at least one polypeptide comprises a fragment homologous to said reference sequence and at least one predetermined heterologous epitope tag.

6. The method of claim 1 wherein said at least one polypeptide is expressed in a living cell.

7. The method of claim 1 wherein said at least one polypeptide is expressed in a cell free system.

8. The method of claim 7 wherein said cell free system is selected from the group consisting of *E. coli* extract, rabbit reticulocyte extract, and wheat germ extract.

9. The method of claim 1 further comprising purifying said peptide in conjunction with assessing the physical property.

10. The method of claim 9 wherein said purification comprises a method selected from the group consisting of gel electrophoresis, capillary electrophoresis, liquid chromatography (LC), capillary liquid chromatography, high performance liquid chromatography (HPLC), differential centrifugation, filtration, gel filtration, membrane chromatography, affinity purification, biomolecular interaction analysis (BIA), ligand affinity purification, glutathione-S-transferase affinity chromatography, cellulose binding protein affinity chromatography, maltose binding protein affinity chromatography, avidin/streptavidin affinity chromatography, S-tag affinity chromatography, thioredoxin affinity chromatography, metal-chelate affinity chromatography, immobilized metal affinity chromatography, epitope-tag affinity chromatography, immunoaffinity chromatography, immunoaffinity capture, capture using bioreactive mass spectrometer probes, mass spectrometric immunoassay, and immunoprecipitation.

11. The method of claim 1 wherein the physical property that is determined is mass.

12. The method of claim 11 wherein said mass is determined by a method selected from the group consisting of mass spectrometry, MALDI-TOF mass spectrometry, electrospray ionization mass spectrometry (ESI) tandem mass spectrometry (MS/MS), quadrupole time of flight spectrometry (Q-TOF), Fourier transform ion cyclotron resonance (FTICR) mass spectrometry, gel electrophoresis, capillary electrophoresis, and high performance liquid chromatography (HPLC).

13. The method of claim 1 wherein the physical property that is assessed is partial or complete amino acid composition.

14. The method of claim 1 wherein the physical property that is assessed is partial or complete amino acid sequence.

15. A method for genetic analysis, comprising

a. providing a nucleic acid fragment having homology to a known reference sequence, and

b. expressing at least one polypeptide from said fragment, and

c. assessing at least one physical property of said at least one polypeptide to determine the coding capacity of said fragment by comparing said at least one physical property to the predicted properties of polypeptides encoded in a known reference sequence.

16. The method of claim 15 wherein said nucleic acid fragment contains a difference with respect to the reference sequence selected from the group consisting of single nucleotide polymorphism, single nucleotide substitution, single nucleotide deletion, single nucleotide insertion, multiple nucleotide substitution, multiple nucleotide deletion, multiple nucleotide insertion, DNA duplication, DNA inversion, DNA translocation, and DNA deletion/substitution.

17. The method of claim 15 wherein said nucleic acid fragment comprises an exon.

18. The method of claim 15 wherein said nucleic acid fragment comprises a cDNA.

19. The method of claim 15 wherein said at least one polypeptide contains at least one epitope tag.

20. The method of claim 15 wherein said at least one polypeptide is expressed in a living cell.

21. The method of claim 15 wherein said at least one polypeptide is expressed in a cell free system.

22. The method of claim 21 wherein said cell free system is selected from the group consisting of *E. coli* extract, rabbit reticulocyte extract, and wheat germ extract.

23. The method of claim 15 further comprising purification of said peptide in conjunction with assessing the physical property.

24. The method of claim 23 wherein said purification comprises a method selected from the group consisting of gel electrophoresis, capillary electrophoresis, liquid chromatography (LC), capillary liquid chromatography, high performance liquid chromatography (HPLC), differential centrifugation, filtration, gel filtration, membrane chromatography, affinity purification, biomolecular interaction analysis (BIA), ligand affinity purification, glutathione-S-transferase affinity chromatography, cellulose binding protein affinity chromatography, maltose binding protein affinity chromatography, avidin/streptavidin affinity chromatography, S-tag affinity chromatography, thioredoxin affinity chromatography, metal-chelate affinity chromatography, immobilized metal affinity chromatography, epitope-tag affinity chromatography, immunoaffinity chromatogra-

phy, immunoaffinity capture, capture using bioreactive mass spectrometer probes, mass spectrometric immunoassay, and immunoprecipitation.

25. The method of claim 15 wherein the physical property that is determined is mass.

26. The method of claim 25 wherein said mass is determined by a method selected from the group consisting of mass spectrometry, MALDI-TOF mass spectrometry, electrospray ionization mass spectrometry (ESI) tandem mass spectrometry (MS/MS), quadrupole time of flight spectrometry (Q-TOF), Fourier transform ion cyclotron resonance (FTICR) mass spectrometry, gel electrophoresis, capillary electrophoresis, and high performance liquid chromatography (HPLC).

27. The method of claim 15 wherein the physical property that is assessed is partial or complete amino acid composition.

28. The method of claim 15 wherein the physical property that is assessed is partial or complete amino acid sequence.

29. A method for assessing a disease, condition, genotype, or phenotype, comprising

a. providing a nucleic acid fragment from a biological sample, and

b. expressing at least one polypeptide from said fragment, and

c. assessing at least one physical property of said at least one polypeptide to determine the sequence of said fragment by comparing said at least one property to the predicted properties of polypeptides encoded in a known reference sequence, and

d. correlating said determined sequence with said disease, condition, genotype or phenotype.

30. The method of claim 29 wherein the original source of said biological sample is obtained from a virus, organelle, cell, tissue, body part, exudate, excretion, elimination, secretion, blood, sweat, urine, tears, semen, saliva, feces, skin, hair or milk of a healthy, diseased or deceased microorganism, protist, alga, fungus, animal or plant.

31. A diagnostic or prognostic test for a disease, condition, genotype, or phenotype, comprising

a. providing a nucleic acid fragment from a biological sample,

b. expressing at least one polypeptide from said fragment, and

c. assessing at least one physical property of said at least one polypeptide to determine the sequence of said fragment by comparing said at least one property to the predicted properties of polypeptides encoded in said known reference sequence.

32. The method of claim 31 wherein the original source of said biological sample is a virus, organelle, cell, tissue, body part, exudate, excretion, elimination, secretion, blood, sweat, urine, tears, semen, saliva, feces, skin, hair or milk of a healthy, diseased or deceased microorganism, protist, alga, fungus, animal or plant.

33. The diagnostic or prognostic test of claim 31 wherein said test detects heterozygote status.

34. The diagnostic or prognostic test of claim 31 wherein said phenotype is response to a drug or therapeutic treatment.

35. The diagnostic or prognostic test of claim 31 wherein said disease is a genetic disease.

36. The diagnostic or prognostic test of claim 31 wherein the genetic disease is selected from the group consisting of Alzheimer's disease, Ataxia talangietasia (ATM), Familial adenomatous polyposis (APC), Hereditary breast/ovarian cancer (BRCA1, BRCA2), Hereditary melanoma (CDK2, CDKN2), Hereditary non-polyposis colon cancer (hMSH2, hMLH1, hPMS1, hPMS2), Hereditary retinoblastoma (RB1), Hereditary Wilm's Tumor (WT1), Li-Fraumeni syndrome (p53), Multiple endocrine neoplasia (MEN1, MEN2), Von Hippel-Lindau syndrome (VHL), Congenital adrenal hyperplasia, Androgen receptor deficiency, Tetrahydrobiopterin deficiency, X-Linked agammaglobulinemia, Cystic Fibrosis (CFTR), Diabetes, Muscular Dystrophy (DMD, BMD), Factor X deficiency, Mitochondrial gene deficiency, Factor VII deficiency, Glucose-6-Phosphate deficiency, Pompe Disease, Hemophilia A, Hexosaminidase A deficiency, Human Type I and Type III Collagen deficiency X-linked SCID, Retinitis pigmentosa (RP) LIACAM deficiency, MCAD deficiency, LDL Receptor deficiency, Ornithine Transcarbamylase deficiency, PAX6 Mutation Phenylketonuria, RB1 Gene Mutation, Tuberous Sclerosis, von Willebrand Factor Disease, and Werner Syndrome.

37. The diagnostic or prognostic test of claim 31 wherein said disease is cancer.

38. The diagnostic or prognostic test of claim 31 wherein said disease is an infectious disease.

39. A method for assessing a disease, condition, genotype, or phenotype, comprising

- a. providing a nucleic acid fragment from a biological sample,
- b. expressing at least one polypeptide from said fragment, and
- c. assessing at least one physical property of said at least one polypeptide to determine the coding capacity of said fragment by comparing said at least one property to the predicted properties of polypeptides encoded in a known reference sequence.
- d. correlating said determined sequence with said disease, condition, genotype or phenotype.

40. The method of claim 39 wherein the original source of said biological sample is a virus, organelle, cell, tissue, body part, exudate, excretion, elimination, secretion, blood, sweat, urine, tears, semen, saliva, feces, skin, hair or milk of a healthy, diseased or deceased microorganism, protist, alga, fungus, animal or plant.

41. A diagnostic or prognostic test for a disease, condition, genotype, or phenotype, comprising

- a. providing a nucleic acid fragment from a biological sample,
- b. expressing at least one polypeptide from said fragment, and
- c. assessing at least one physical property of said at least one polypeptide to determine the coding capacity of said fragment by comparing said at least one property to the predicted properties of polypeptides encoded in a known reference sequence.

42. The test of claim 41 wherein the original source of said biological sample is a virus, organelle, cell, tissue, body part, exudate, excretion, elimination, secretion, blood,

sweat, urine, tears, semen, saliva, feces, skin, hair or milk of a healthy, diseased or deceased microorganism, protist, alga, fungus, animal or plant.

43. The diagnostic or prognostic test of claim 41 wherein said test detects heterozygote status.

44. The diagnostic or prognostic test of claim 41 wherein said phenotype is response to a therapeutic drug or treatment.

45. The diagnostic or prognostic test of claim 41 wherein said disease is a genetic disease.

46. The diagnostic or prognostic test of claim 41 wherein the genetic disease is selected from the group consisting of Alzheimer's disease, Ataxia talangietasia (ATM), Familial adenomatous polyposis (APC), Hereditary breast/ovarian cancer (BRCA1, BRCA2), Hereditary melanoma (CDK2, CDKN2), Hereditary non-polyposis colon cancer (hMSH2, hMLH1, hPMS1, hPMS2), Hereditary retinoblastoma (RB1), Hereditary Wilm's Tumor (WT1), Li-Fraumeni syndrome (p53), Multiple endocrine neoplasia (MEN1, MEN2), Von Hippel-Lindau syndrome (VHL), Congenital adrenal hyperplasia, Androgen receptor deficiency, Tetrahydrobiopterin deficiency, X-Linked agammaglobulinemia, Cystic Fibrosis (CFTR), Diabetes, Muscular Dystrophy (DMD, BMD), Factor X deficiency, Mitochondrial gene deficiency, Factor VII deficiency, Glucose-6-Phosphate deficiency, Pompe Disease, Hemophilia A, Hexosaminidase A deficiency, Human Type I and Type III Collagen deficiency X-linked SCID, Retinitis pigmentosa (RP) LIACAM deficiency, MCAD deficiency, LDL Receptor deficiency, Ornithine Transcarbamylase deficiency, PAX6 Mutation Phenylketonuria, RB1 Gene Mutation, Tuberous Sclerosis, von Willebrand Factor Disease, and Werner Syndrome.

47. The diagnostic or prognostic test of claim 41 wherein said disease is cancer.

48. The diagnostic or prognostic test of claim 41 wherein said disease is an infectious disease.

49. Said at least one polypeptide of claim 1.

50. Said at least one polypeptide of claim 15.

51. Said at least one polypeptide of claim 29.

52. Said at least one polypeptide of claim 31.

53. Said at least one polypeptide of claim 39.

54. Said at least one polypeptide of claim 41.

55. A data structure useful for detecting and analyzing DNA mutations and polymorphisms, comprising:

- a. data representing the following stored in a physical medium in computer readable form:
  - i. a plurality of DNA sequence fragments contained within a reference DNA sequence, and
  - ii. the sequences of the polypeptides encoded in said DNA sequence fragments, and
  - iii. the predicted sequences of a plurality of polypeptides encoded in a set of transformed DNA sequence fragments, each member of said set comprised of a DNA sequence related to said DNA sequence fragment by a specific change selected from the group consisting of single nucleotide polymorphism, single nucleotide substitution, single nucleotide deletion, single nucleotide insertion, multiple nucleotide substitution, multiple nucleotide deletion, multiple nucleotide insertion, DNA duplication, DNA inversion, DNA translocation, and DNA deletion/substitution;

b. means for comparing the predicted sequences of said plurality of polypeptides with a test sequence to determine identity of the test sequence with a predicted sequence.

**56.** A computer data structure, comprising:

a data storage medium;

a first data set in computer readable form on said data storage medium representing a plurality of polypeptide fragments of a polypeptide encoded by a reference polynucleotide sequence;

a second data set in computer readable form on said data storage medium representing a physical property of each of said polypeptide fragments; and

means for correlating an empirically derived physical property of a test polypeptide with the second data set to determine the identity of the test polypeptide.

**57.** The data structure of claim 56 further comprising a third data set in computer readable form on said data storage medium representing polynucleotide fragments encoding said polypeptide fragments; and means for correlating the identity of the test polypeptide with a polynucleotide fragment represented in said third data set.

**58.** The data structure of claim 56 wherein said physical property is mass.

**59.** The data structure of claim 56 wherein said reference polynucleotide has a reading frame, and wherein said first data set represents polypeptide fragments encoded in frame and polypeptide fragments encoded out of frame with respect to said reference polynucleotide.

**60.** A computer implemented method for ascertaining the identity of a nucleic acid fragment encoding a polypeptide, wherein the nucleic acid fragment is a fragment of a known reference sequence, comprising the steps of:

measuring a physical property of said polypeptide;

comparing, in a computer, the measured physical property with a data set representing the predicted corresponding physical properties of possible polypeptides that are encoded by fragments of said reference sequence within a predetermined size range;

identifying a match between said measured physical property and a predicted physical property in the data set; and

displaying or recording the results of the identifying step.

**61.** The method of claim 60 wherein said reference polynucleotide has a frame, and said data set includes physical properties of polypeptides encoded by out-of-frame fragments of said reference polynucleotide.

**62.** The method of claim 60 wherein said reference polynucleotide has six possible frames, and said data set includes physical properties of polypeptides encoded by fragments having at least one of said possible frames.

**63.** A relational data set useful for detecting and analyzing DNA mutations and polymorphisms comprising,

a. a plurality of DNA sequence fragments contained within a reference DNA sequence,

b. the sequences of the polypeptides encoded in said DNA sequence fragments, and

c. the predicted sequences of a plurality of polypeptides encoded in a set of transformed DNA sequence frag-

ments, each member of said set comprised of a DNA sequence related to said DNA sequence fragment by a specific change selected from the group consisting of single nucleotide polymorphism, single nucleotide substitution, single nucleotide deletion, single nucleotide insertion, multiple nucleotide substitution, multiple nucleotide deletion, multiple nucleotide insertion, DNA duplication, DNA inversion, DNA translocation, and DNA deletion/substitution.

**64.** A computer program comprising a search of the data set of claim 63.

**65.** A method for genetic analysis, comprising:

providing two or more nucleic acid samples derived from two or more biological samples, said biological samples being heterogeneous;

expressing polypeptides from each of said nucleic acid samples;

subjecting said polypeptides, in combination, to physical property assessment; and

comparing the results of said physical property assessment to predicted properties of polypeptides encoded in at least one known reference sequence.

**66.** The method according to claim 65 wherein said nucleic acid fragments are derived by PCR.

**67.** The method according to claim 66 wherein a different PCR primer is selected for each biological specimen.

**68.** The method according to claim 67 wherein each different PCR primer is identical in its 3' portion and differs at its 5' portion.

**69.** The method The method according to claim 67 wherein each different PCR primer is identical in its 5' portion and differs at its 3' portion.

**70.** The method according to claim 66 wherein said PCR amplicons are physically distinguishable, as are the peptides that they encode.

**71.** The method according to claim 65 wherein the heterogeneity of said biological sample is attributable to said samples having derived from different individuals.

**72.** The method according to claim 65 wherein the heterogeneity of said biological samples is attributable to said samples having derived from heterogeneous tissue from a single individual.

**73.** The method according to claim 65 wherein the heterogeneity of said biological samples is attributable to said samples having derived from a heterozygous cell or individual.

**74.** The method according to claim 1, wherein the step of expressing at least one polypeptide from said fragment is performed in a nonsense-suppressing environment.

**75.** The method according to claim 1, wherein the step of expressing at least one polypeptide from said fragment is performed in a missense-suppressing environment.

**76.** The method according to claim 15, wherein the step of expressing at least one polypeptide from said fragment is performed in a nonsense-suppressing environment.

77. The method according to claim 15, wherein the step of expressing at least one polypeptide from said fragment is performed in a missense-suppressing environment.

78. The method of claim 9 wherein said peptide is purified by sequential affinity capture by means of more than one distinct affinity element.

79. The method of claim 78 wherein one affinity element resides in the N-terminal portion of said peptide and a second affinity element resides in the C-terminal portion of said peptide.

80. Providing a nucleic acid molecule;  
expressing polypeptides from two or more reading frames of said nucleic acid sample; and  
determining the masses of said polypeptides to create a peptide mass signature characteristic of said nucleic acid molecule.

\* \* \* \* \*

专利名称(译)	用于基于肽的DNA序列鉴定和分析的方法和产品		
公开(公告)号	<a href="#">US20020155445A1</a>	公开(公告)日	2002-10-24
申请号	US09/788268	申请日	2001-02-16
[标]申请(专利权)人(译)	加维科JONATHAN W		
申请(专利权)人(译)	加维科JONATHAN W.		
[标]发明人	JARVIK JONATHAN W		
发明人	JARVIK, JONATHAN W.		
IPC分类号	C12Q1/68 G01N33/53 G01N33/537 G01N33/543 C12P21/02		
CPC分类号	C12Q1/6809 C12Q1/6869 C12Q2525/149		
优先权	60/182816 2000-02-16 US 60/189310 2000-03-14 US		
外部链接	<a href="#">Espacenet</a> <a href="#">USPTO</a>		

摘要(译)

将目的核酸片段掺入杂合人工基因中并在一个或多个阅读框中表达以产生一种或多种杂合多肽。检测多肽的一种或多种物理参数，例如质量或氨基酸组成。观察到的参数值用于搜索由较大参考核酸序列的假设翻译产生的预测参数值的数据集，以便确定该片段是否包含在参考序列内，并且如果其包含在其中，确定其序列和/或编码能力。

