



US008029764B2

(12) **United States Patent**
Buckhaults et al.

(10) **Patent No.:** **US 8,029,764 B2**
(45) **Date of Patent:** **Oct. 4, 2011**

(54) **METHODS FOR DETECTION OF
COLORECTAL CANCER**

(75) Inventors: **Phillip Buckhaults**, Columbia, SC (US);
Kenneth W. Kinzler, Baltimore, MD
(US); **Bert Vogelstein**, Baltimore, MD
(US)

(73) Assignee: **The Johns Hopkins University**,
Baltimore, MD (US)

(*) Notice: Subject to any disclaimer, the term of this
patent is extended or adjusted under 35
U.S.C. 154(b) by 1529 days.

(21) Appl. No.: **10/487,934**

(22) PCT Filed: **Sep. 9, 2002**

(86) PCT No.: **PCT/US02/28518**

§ 371 (c)(1),
(2), (4) Date: **Aug. 23, 2004**

(87) PCT Pub. No.: **WO03/022863**

PCT Pub. Date: **May 3, 2003**

(65) **Prior Publication Data**

US 2004/0265824 A1 Dec. 30, 2004

Related U.S. Application Data

(60) Provisional application No. 60/317,494, filed on Sep.
7, 2001, provisional application No. 60/383,805, filed
on May 30, 2002.

(51) **Int. Cl.**
A61K 49/00 (2006.01)
C12Q 1/37 (2006.01)

(52) **U.S. Cl.** **424/9.1; 435/23**

(58) **Field of Classification Search** None
See application file for complete search history.

(56) **References Cited**

U.S. PATENT DOCUMENTS

6,333,152 B1 12/2001 Vogelstein et al.

FOREIGN PATENT DOCUMENTS

WO WO 98/53319 11/1998

OTHER PUBLICATIONS

Fukumura et al, Behaviour of urinary dipeptidase in patients with
chronic renal failure. *Ann Clin Biochem.* Mar. 1999;36 (Pt 2):221-
5.*

USPTO in house search of Medline, EMBASE, Biosis, and Caplus
via STN. Performed Apr. 30, 2008.*

Chen et al, Discordant protein and mRNA expression in lung
adenocarcinomas. *Mol Cell Proteomics.* Apr. 2002;1(4):304-13.*
Buckhaults et al. Secreted and Cell Surface Genes Expressed in
Benign and Malignant Colorectal Tumors. *Cancer Research.* Oct. 1,
2001, vol. 61, pages.

Ishigami et al. Predictive value of vascular endothelial growth factor
(VEGF) in metastasis and prognosis of human colorectal cancer.
British Journal of Cancer, 1998, vol. 78, No. 10, pp. 1379-1384.

Otte et al. Expression of keratinocyte growth factor and its receptor in
colorectal cancer. *European Journal of Clinical Investigation.* 2000,
vol. 30, pp. 222-229.

Mciver, CM, et al., "Dipeptidase 1: a candidate tumor-specific
molecular marker in colorectal carcinoma," *Cancer Letters,* 209
(2004) 67-74.

* cited by examiner

Primary Examiner — Sheridan Swope

(74) *Attorney, Agent, or Firm* — Banner & Witcoff, Ltd.

(57) **ABSTRACT**

Particular genes are aberrantly and consistently expressed in
both adenomas and carcinomas of the colon. Products of such
genes provide stool and serum markers for colorectal neoplasia.
One particular tumor marker, Renal Dipeptidase (RDP),
is expressed at high levels in tumors and at greatly reduced
levels in normal tissues. The elevated expression of RDP
occurs early and remains elevated during the neoplastic process.
RDP may therefore be especially useful as a diagnostic
tool for the early detection of colorectal neoplasia, even of
presymptomatic colorectal neoplasia.

18 Claims, 9 Drawing Sheets

FIG. 1A

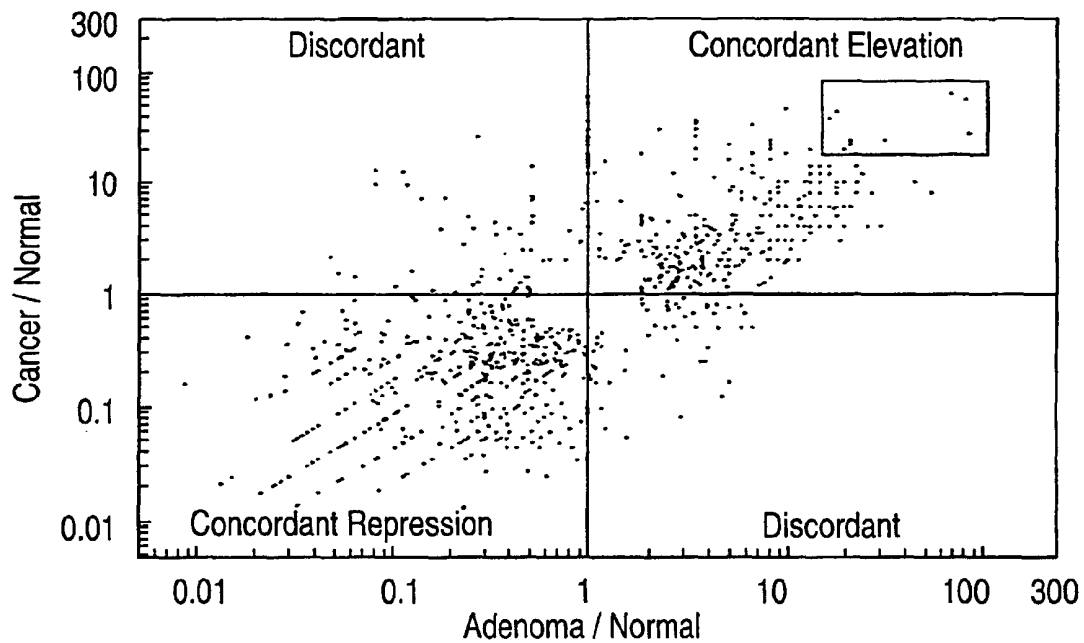


FIG. 1B

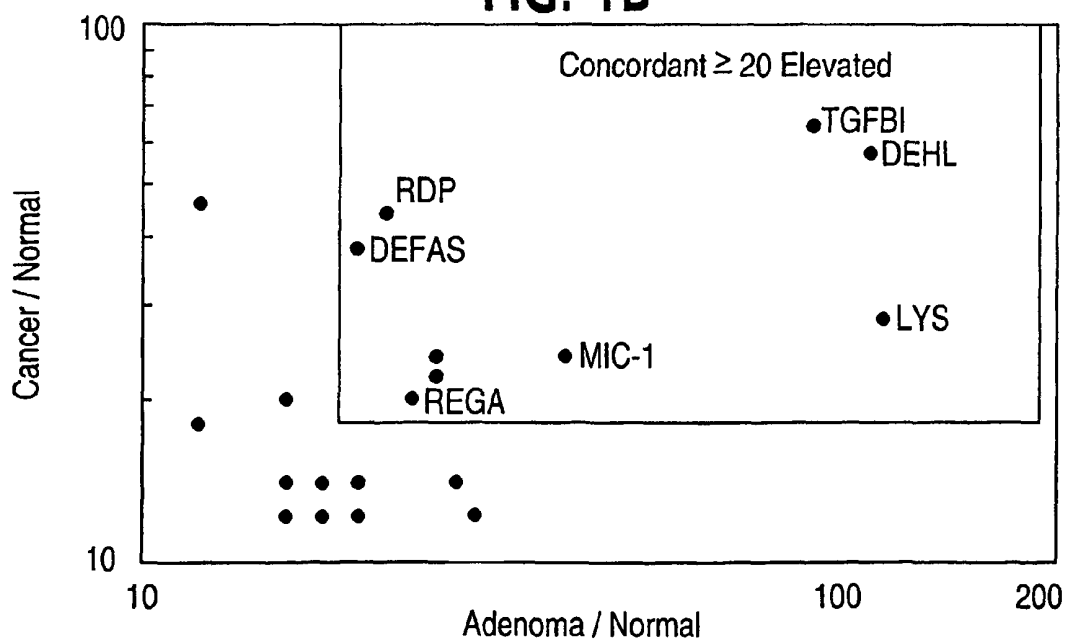


FIG. 2

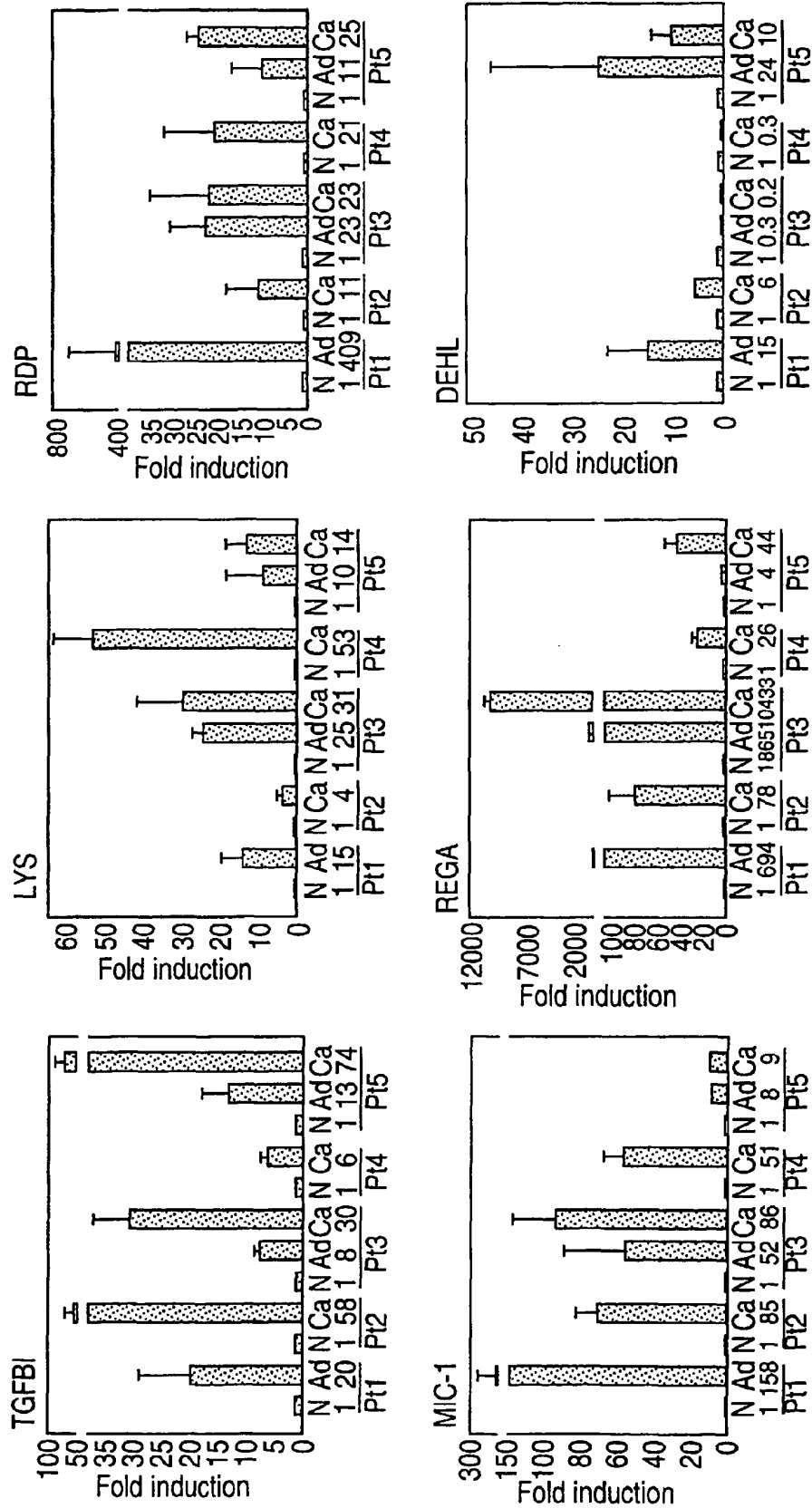


FIG. 3

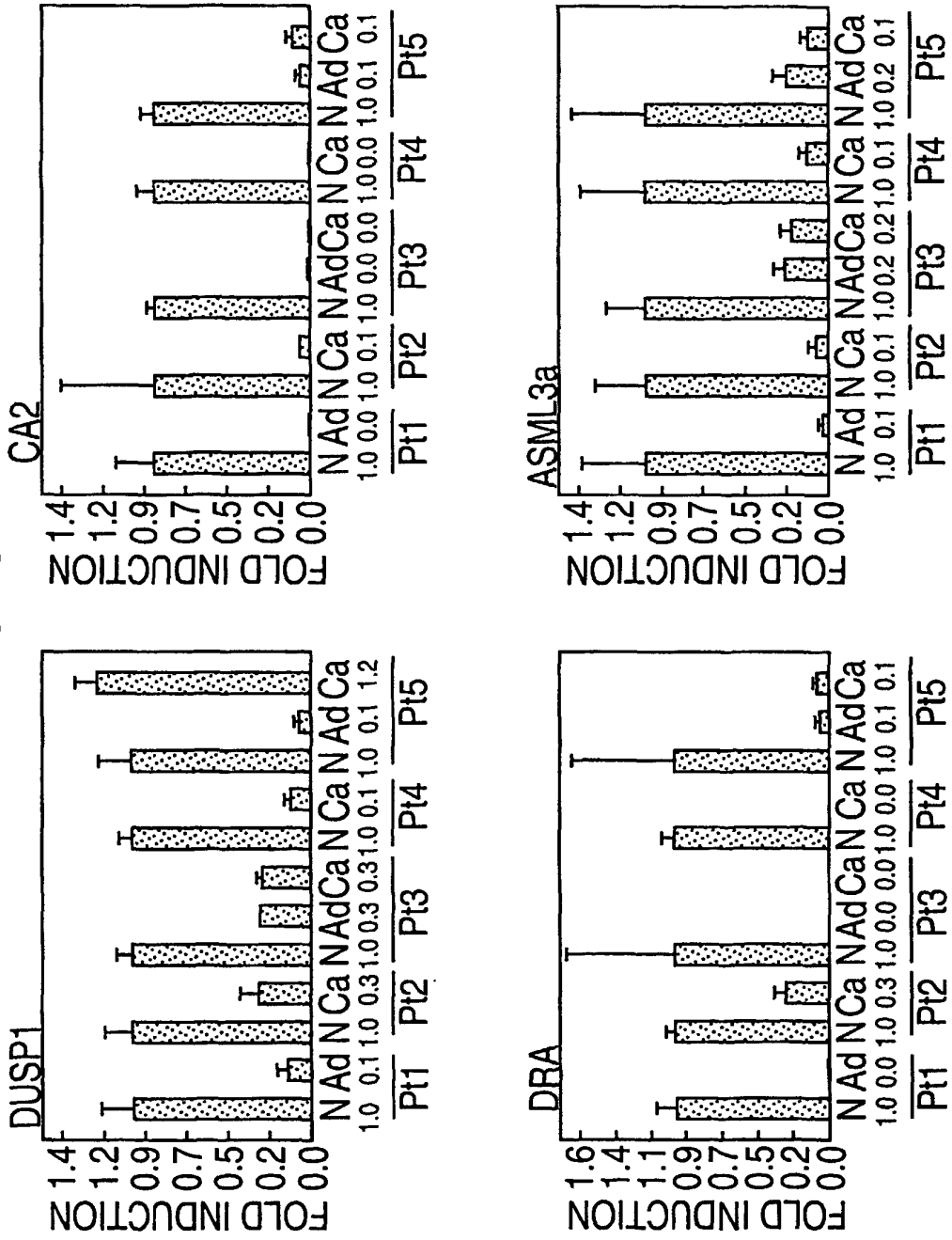


FIG. 4

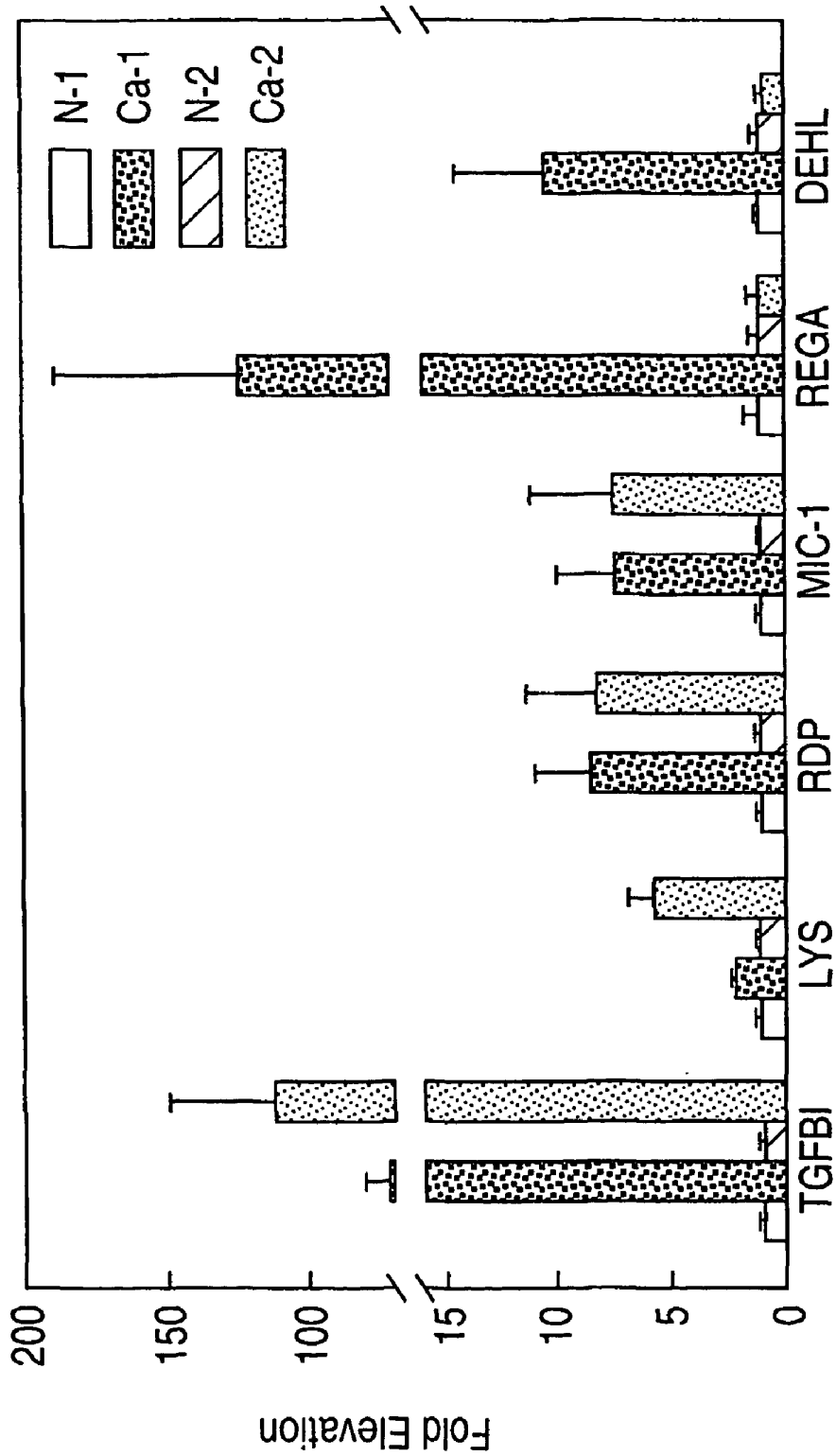


FIG. 5C



FIG. 5B

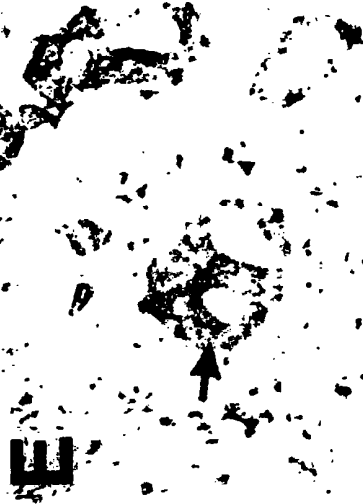


FIG. 5E

FIG. 5A

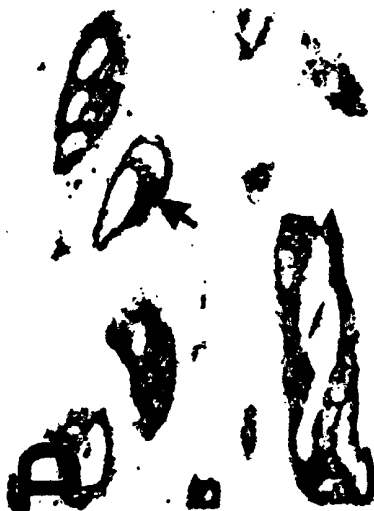


FIG. 5D

FIG. 6

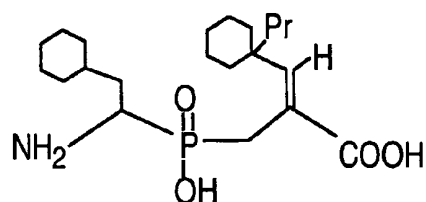
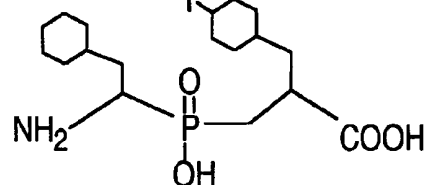
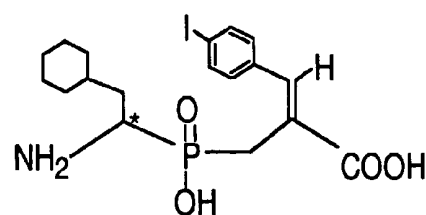
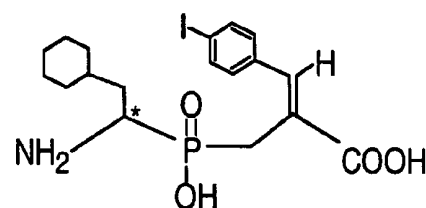
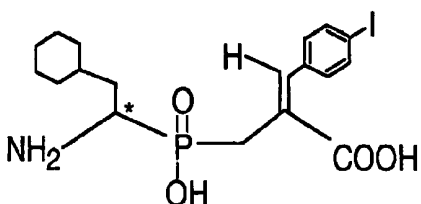
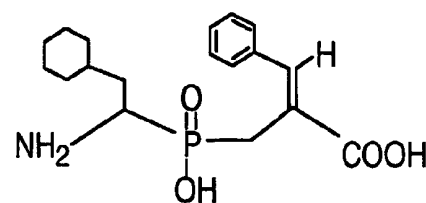
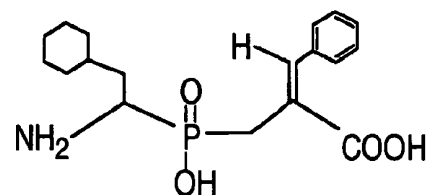
G-89 \equiv 10 nMG-90 \equiv 17.6 nMG-132 \equiv 0.8nM
*(RACEMATE)G-133 \equiv 0.6nM
*(PURE STEREOISOMER)
(L?)G-136 \equiv 2.3nM
*(RACEMATE)G-110 \equiv 1.2nMG-111 \equiv 19.5nM

FIG. 7
Compare Inhibs

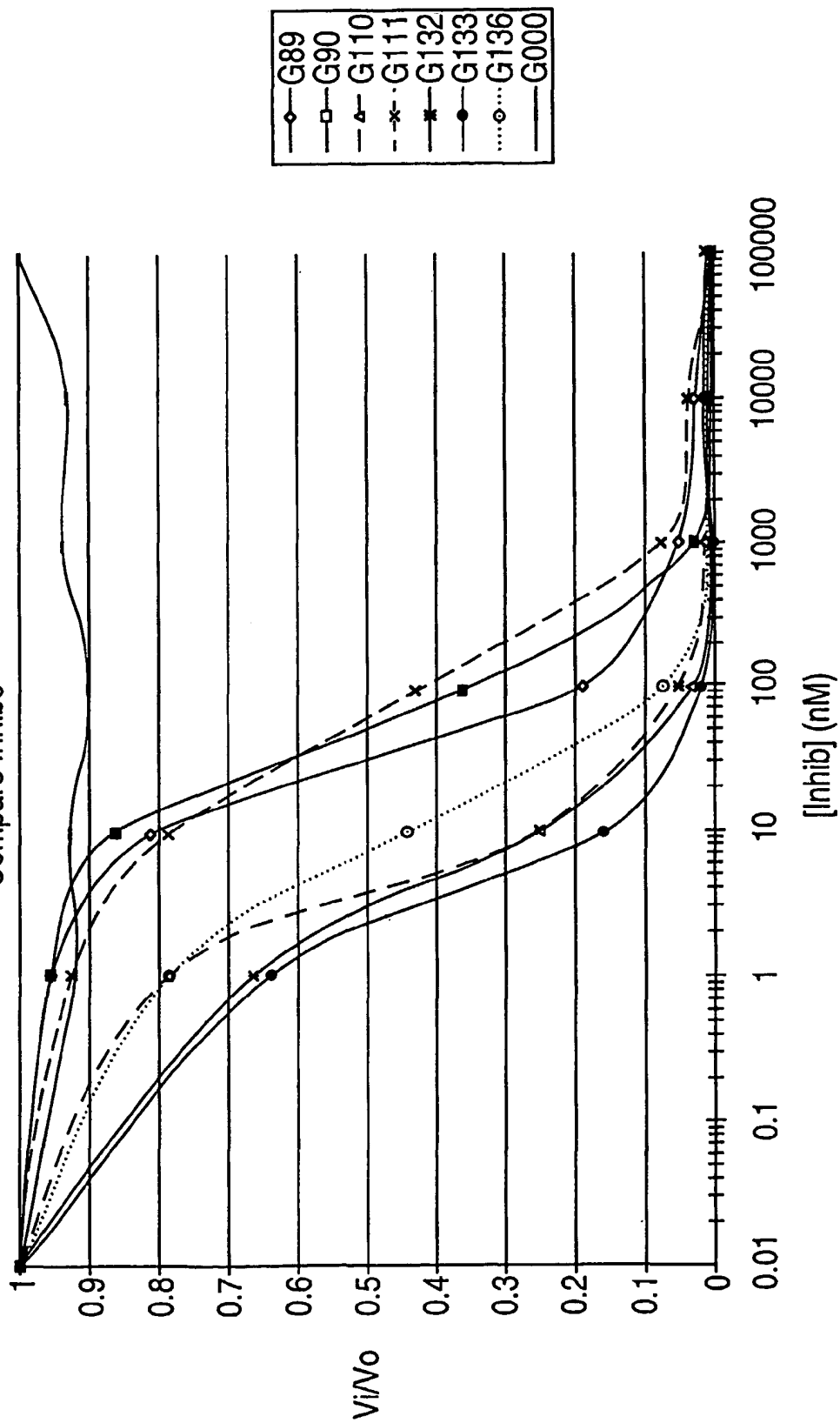


FIG. 8

Renal Dipeptidase Substrates

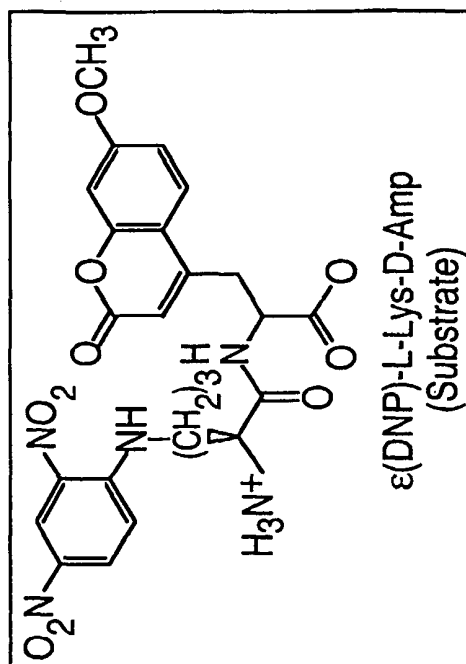
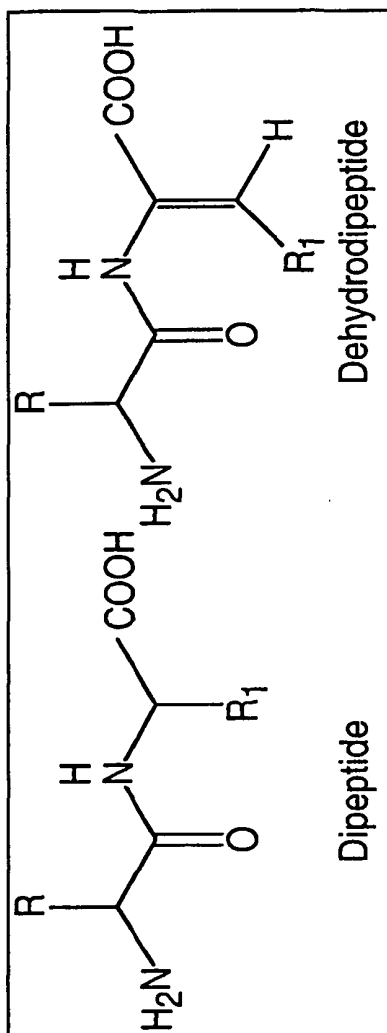
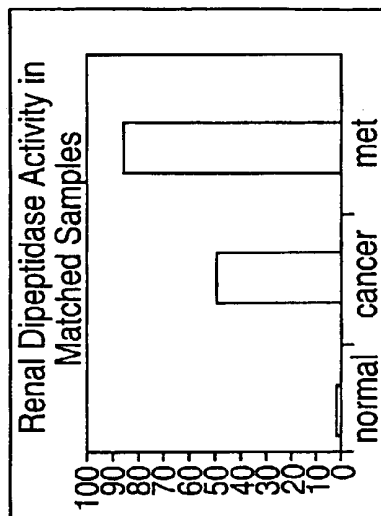
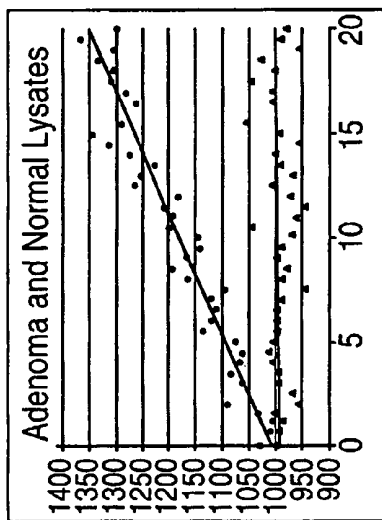
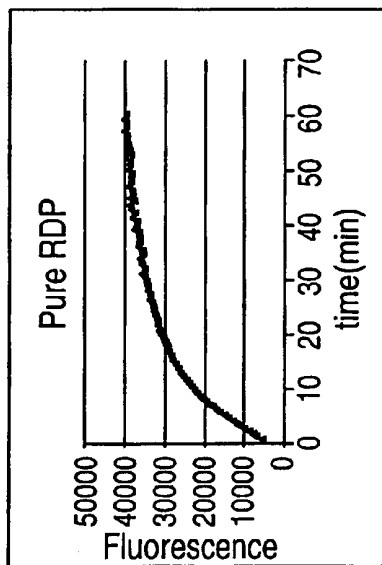


FIG. 9
Renal Dipeptidase Enzyme
Activity in Human Tumors



METHODS FOR DETECTION OF COLORECTAL CANCER

BACKGROUND OF THE INVENTION

1. Technical Field of the Invention

The invention relates to the early detection of colorectal adenoma and carcinoma. In particular it relates to the detection of secreted or cell surface markers in easily collectible bodily samples.

2. Background of the Art

Colorectal cancer is the second leading cause of cancer death in the United States, with ~130,000 patients diagnosed each year and ~50,000 ultimately succumbing to the disease (1). Most colorectal cancers develop slowly, beginning as small benign colorectal adenomas which progress over several decades to larger and more dysplastic lesions which eventually become malignant. This gradual progression provides multiple opportunities for prevention and intervention. Indeed, benign adenomas can be detected and removed by simple colonoscopy and polypectomy, precluding the need for radical surgical and adjuvant treatments. It is therefore believed that early detection and removal of these benign neoplasms provides the best hope for minimizing morbidity and mortality from colorectal cancer. Various screening methods for detecting early colorectal tumors are available, such as fecal occult blood testing, sigmoidoscopy, and colonoscopy (reviewed in 2). However, none of these methods are optimal, and new approaches are needed.

BRIEF SUMMARY OF THE INVENTION

In a first embodiment a method is provided for detection of colorectal adenoma and carcinoma. An mRNA sample is isolated from feces of a subject. Renal dipeptidase mRNA in said mRNA sample is detected. The amount of renal dipeptidase mRNA in said mRNA sample is compared to amounts of renal dipeptidase mRNA in normal subjects. An elevated amount of renal dipeptidase mRNA in said mRNA sample is an indicator of colorectal adenoma or carcinoma in the subject.

According to another embodiment of the invention a method is provided for detection of colorectal adenoma or carcinoma. Epithelial cells are isolated from blood of a subject. An mRNA sample is isolated from the epithelial cells. Renal dipeptidase mRNA in said mRNA sample is detected. The amount of renal dipeptidase mRNA in said mRNA sample is compared to amounts of renal dipeptidase mRNA in normal subjects. An elevated amount of renal dipeptidase mRNA in said mRNA sample is an indicator of colorectal adenoma or carcinoma in the subject.

A third embodiment of the invention provides a method for detection of colorectal adenoma or carcinoma. Blood of a subject is contacted with a renal dipeptidase substrate. Activity of renal dipeptidase in said blood is determined by detection of increased reaction product or decreased renal dipeptidase substrate. The amount of activity of renal dipeptidase in blood of the subject is compared to that in normal subjects. An elevated amount of activity of renal dipeptidase in the blood of the subject is an indicator of colorectal adenoma or carcinoma in the subject.

According to another embodiment of the invention a method for detection of colorectal adenoma or carcinoma is provided. Feces of a subject is contacted with a renal dipeptidase substrate. Activity of renal dipeptidase in said feces is determined by detection of increased reaction product or decreased renal dipeptidase substrate.

The amount of activity of renal dipeptidase in feces of the subject is compared to that in normal subjects, wherein an elevated amount of activity of renal dipeptidase in the feces of the subject is an indicator of colorectal adenoma or carcinoma in the subject.

Another embodiment of the invention provides a method for detection of colorectal adenoma or carcinoma. An antibody is administered to a subject. The antibody specifically binds to renal dipeptidase and is labeled with a moiety which is detectable from outside of the subject. The moiety in the subject is detected from outside of the subject. An area of localization of the moiety within the subject but outside the proximal tubules of the kidney identifies colorectal adenoma or carcinoma.

Another method is also provided for detection of colorectal adenoma or carcinoma. An inhibitor of renal dipeptidase is administered to a subject. The inhibitor is labeled with a moiety which is detectable from outside of the subject. The moiety in the subject is detected from outside of the subject. An area of localization of the moiety within the subject but outside the proximal tubules of the kidney identifies colorectal adenoma or carcinoma.

According to yet another method for detection of colorectal adenoma or carcinoma, a substrate for renal dipeptidase is administered to a subject. The substrate is labeled with a detectable moiety. Feces are isolated from the subject. Renal dipeptidase reaction product or renal dipeptidase substrate with the detectable moiety is detected in the feces. An increased reaction product or decreased reaction substrate in the feces indicates colorectal adenoma or carcinoma in the subject.

Still another method for detection of colorectal adenoma or carcinoma is provided by the present invention. A substrate for renal dipeptidase is administered to a subject. The substrate is labeled with a detectable moiety. Blood from the subject is subsequently isolated. Renal dipeptidase reaction product or renal dipeptidase substrate with the detectable moiety is detected in the blood. An increased product or decreased substrate in the blood indicates colorectal adenoma or carcinoma in the subject.

Still another embodiment of the invention is a method for detection of colorectal adenoma or carcinoma. Renal dipeptidase in blood of a subject is detected and compared to the amount of renal dipeptidase in normal subjects. An elevated amount of renal dipeptidase in the blood of the subject is an indicator of colorectal adenoma or carcinoma in the subject.

Still another embodiment of the invention is a method for detection of colorectal adenoma or carcinoma. Renal dipeptidase in feces of a subject is detected and compared to the amount of renal dipeptidase in normal subjects. An elevated amount of renal dipeptidase in the feces of the subject is an indicator of colorectal adenoma or carcinoma in the subject.

Yet another embodiment of the invention is a method for detection of colorectal adenoma or carcinoma. An mRNA sample is isolated from feces of a subject. Macrophage inhibitory cytokine mRNA is detected in the mRNA sample. The amount of macrophage inhibitory cytokine mRNA in said mRNA sample is compared to amounts of macrophage inhibitory cytokine mRNA in normal subjects. An elevated amount of macrophage inhibitory cytokine mRNA in said mRNA sample is an indicator of colorectal adenoma or carcinoma in the subject.

Another embodiment of the invention is a method for detection of colorectal adenoma or carcinoma. Epithelial cells are isolated from blood of a subject. An mRNA sample is isolated from the epithelial cells. Macrophage inhibitory cytokine mRNA is detected in said mRNA sample. The

amount of macrophage inhibitory cytokine mRNA in said mRNA sample is compared to amounts of macrophage inhibitory cytokine mRNA in normal subjects. An elevated amount of macrophage inhibitory cytokine mRNA in said mRNA sample is an indicator of colorectal adenoma or carcinoma in the subject.

Still another embodiment of the invention is a method for detection of colorectal adenoma or carcinoma. Macrophage inhibitory cytokine in blood of a subject is detected and compared to the amount of macrophage inhibitory cytokine in normal subjects. An elevated amount of macrophage inhibitory cytokine in the blood of the subject is an indicator of colorectal adenoma or carcinoma in the subject.

Still another embodiment of the invention is a method for detection of colorectal adenoma or carcinoma. Macrophage inhibitory cytokine in feces of a subject is detected and compared to the amount of macrophage inhibitory cytokine in normal subjects. An elevated amount of macrophage inhibitory cytokine in the feces of the subject is an indicator of colorectal adenoma or carcinoma in the subject.

BRIEF DESCRIPTION OF THE DRAWINGS

FIG. 1.A, Distribution of the fold changes of differentially expressed transcript tags. Transcripts in which the significance criterion was met ($p < 0.05$, a total of 957 tags) in the comparisons between normal and adenoma or normal and cancer are plotted in the figure. The ratios of adenoma to normal and cancer to normal were plotted on a log scale. The shaded box in (FIG. 1.A) and enlarged in (FIG. 1.B) encloses the transcript tags detailed in Table 3. The two unlabeled dots correspond to tags whose differential expression could not be confirmed by quantitative PCR suggesting that the tags were derived from different transcripts than the ones indicated in Table 3.

FIG. 2. Quantitative PCR analysis of genes elevated in both adenomas and cancers. Quantitation of expression of genes in tumors and matched normal tissues from five patients (Pt) are shown as fold elevation over that in matched normal colonic mucosa. Each bar represents the average of three independent measurements. TGFBI, LYS, RDP, MIC-1, REGA, and DEHL are as described in Table 3.

FIG. 3. Quantitative PCR analysis of genes decreased in both adenomas and cancers. Quantitation of expression of genes in tumors and matched normal tissue from five patients (Pt) are shown as a fraction of matched normal. Each bar represents the average of three independent measurements. CA2 and DRA are described in Table 4. Dual Specificity Phosphatase (DUSP1), and Acid Sphingomyelinase-like phosphodiesterase (ASML3a) represented transcripts that were repressed but did not meet the stringent criteria required for inclusion in Table 4. SAGE data indicated that DUSP1 was 5- and 76-fold repressed in adenomas and cancers, respectively. ASML3a was 15-fold repressed in both adenoma and cancer.

FIG. 4. Quantitative PCR analysis of mRNA from purified epithelial cells of genes elevated in both adenomas and cancers. Quantitation of expression of genes in the purified normal (N) or cancer (Ca) epithelial cells taken from two patients are shown as fold elevation over matched normal. Genes examined were the same as in FIG. 2.

FIG. 5A-FIG. 5E. In-situ hybridization analyses of elevated genes. Genes examined were REGA (FIG. 5A), TGFBI (FIG. 5B), LYS (FIG. 5C), RDP (FIG. 5D), and MIC-1 (FIG. 5E). Positive cells appear red, arrows point to clusters of malignant epithelial cells, and arrow heads point to macrophages.

FIG. 6. Inhibitors of renal dipeptidase demonstrate inhibition constants ranging from 0.6 nM to 19.5 nM.

FIG. 7. A comparison of the inhibitors shown in FIG. 6, compares the inhibition rate as a function of concentration of inhibitor.

FIG. 8. Substrates of renal dipeptidase are shown.

FIG. 9 shows the difference in activity of renal dipeptidase found in adenomas, cancer, and metastases compared to normal colonic tissue.

DETAILED DESCRIPTION OF THE INVENTION

It is a finding of the present invention that particular genes are aberrantly and consistently expressed in both adenomas and carcinomas of the colon. Products of such genes provide cellular and serum markers for colorectal neoplasia. The ideal tumor marker would be expected to have several characteristics. First, it should be expressed at high levels in tumors and at greatly reduced levels in normal tissues. Second the elevated expression should occur early and remain elevated during the neoplastic process. Third, such a marker should be elevated in the majority of clinical samples. Fourth, the marker should be cell surface or secreted to facilitate its detection. We have identified several genes that appear to meet all of these criteria and may therefore be especially useful as diagnostic tools for the early detection of colorectal neoplasia, even of presymptomatic colorectal neoplasia. Any of the markers identified in Tables 3 and 5 can be used, particularly Renal Dipeptidase and Macrophage Inhibitory Cytokine.

Serum markers can be found and detected in whole blood, serum, plasma, or fractions thereof. These are collectively referred to as "blood" herein. Markers can also be found in stool. Samples for testing can be feces or processed or fractionated feces. All such samples are referred to herein as "feces."

Inhibitors of markers which are enzymes, such as Renal Dipeptidase, can be used as affinity reagents for labeling the marker. Preferably the inhibitors are those which bind irreversibly. Alternatively they are ones which bind and release, but release at a slow rate. Inhibitors with suitably slow release rates are those which have a binding half-life of greater than 30 minutes, or 1, 2, 3, 5, 8, or 10 hours. Many inhibitors of Renal Dipeptidase are known, including the commercially available Cilastatin, and phosphinic acid inhibitors. See Parsons et al., "A new class of potent, slowly reversibly dehydropeptidase inhibitors," *Biochemistry International*, vol. 23, pp. 1107-1115, 1991. Inhibitors which covalently bind to and/or modify Renal Dipeptidase are also known and can be used. See Wu and Mobashery, "Targeting renal dipeptidase (dehydropeptidase I) for inactivation by mechanism-based inactivators," *J. Med. Chem.*, vol. 34, pp. 1914-1916, 1991. Some inhibitors mimic transition states between substrates and product. Some useful inhibitors are shown in FIG. 6. These include inhibitors having halogen substitutions. Such inhibitors can be readily made using radioactive halogens for ready labeling of renal dipeptidase and easy detection. Similar inhibitors of other enzymes are also known in the art and can be used. Inhibitors can be labeled using any detectable moiety known in the art, including but not limited to fluors and radioactive atoms.

RNA for any of the markers can be detected using any of the known techniques in the art. Preferably an amplification step will be used, because the amount of RNA for the marker is expected to be very small from the sources contemplated.

Suitable techniques include RT-PCR, hybridization of copy mRNA (cRNA) to an array of nucleic acid probes, and Northern blotting.

Protein forms of the markers can be detected using any techniques known in the art. These include activity assays, immunological assays, binding to specific ligands, etc. Particularly suitable assays for Renal Dipeptidase include using L-L amino acid dipeptide substrates and L-D amino acid dipeptide substrates. Substrates which can be used for assaying renal dipeptidase are shown in FIG. 8, and include the generic structures for dipeptides and dehydrodipeptides. ϵ (DNP)-L-Lysine-D-Amp can also be used as a substrate, yielding a colored product. Substrates for other enzymes can be used similarly to assess the presence of the tumor marker enzyme in the body or in a body sample. Such substrates can be labeled with detectable moieties, including but not limited to fluors and radioactive atoms. One particularly useful labeling scheme employs a substrate which is labeled with two moieties on opposite sides of the substrate cleavage site. One of the moieties is fluorescent and one of the moieties is a quencher. When the two moieties are close, as in an intact substrate, the fluorescence of the fluorescent moiety is quenched. Upon cleavage the quenching is released and an increase in fluorescence is observed.

As mentioned above, inhibitors can also be labeled and used for detecting suitable markers. In addition, antibodies can be used to label protein forms of the markers. The antibodies can be labeled as is known in the art. Suitable radioactive atoms for use in labeling inhibitors, substrates, and antibodies include In-111, I-123, Tc-99m, Re-186, Re-188, Ga-67, Ga-68, Tl-201, Fe-52, Pb-203, Co-58, Cu-64, I-124, I-125, I-131, At-210, Br-76, Br-77, and F-18 and others known in the art for such purposes. Contrast enhancement agents can also be attached to the substrates, inhibitors, or antibodies. Such agents include gadolinium. Moreover, imaging techniques can be used to detect such labels within the body. An example of an imaging technique which can be used is spiral computer tomography. For this technique, the detecting agent, such as inhibitor or antibody can be linked to a contrast enhancing agent. Other detection means that can be used include gamma cameras, magnetic resonance imaging, planar scintigraphic imaging, SPECT imaging, PET imaging, and ultrasound imaging. Thus markers can be detected both in situ in the body or in vitro in an isolated body sample.

Epithelial cells can be isolated from blood or other tissue samples to enrich for the markers or their mRNAs. Epithelial cells can be isolated, inter alia, by immunoaffinity techniques. Such a technique is described in more detail below.

Substrates of enzymic markers can be administered to subjects and the reaction products measured in body samples. Inhibitors can be administered to subjects and the subject can be imaged to detect the inhibitor bound to the marker. Such markers are preferably those which are not secreted proteins, but rather are those which are anchored to a tumor. Typical modes of administration of such agents can be any which is suitable, including but not limited to per os, intravenous, intramuscular, intraarterial, subdermal, transdermal, and rectal.

A high background of certain markers may obscure detection of increased expression. In such a situation, one can use tumor-specific glycoforms as a means of distinguishing between the background marker and the marker that is due to the tumor. Tumor-specific glycoforms of Renal Dipeptidase and MIC-1 bind to LPHA, an L lectin from *Phaseolus vulgaris* hemagglutinin, and thus can be distinguished on that basis. Other lectins such as with similar specificity for tumor-

specific glycoforms, such as *Sambucus Nigra* Lectin isolated from *Sambucus nigra* (elderberry) bark can be used as well.

Normal subjects are used as a comparison to the test subjects to determine whether the amounts of markers observed in the feces or blood are elevated. Preferably the normal subjects have been confirmed as tumor-free by colonoscopy. More preferably several samples are pooled or their individual values are averaged to arrive at a normal value.

Some of the most highly overexpressed genes found in colorectal adenomas and colorectal cancers are discussed below. Regenerating Islet Derived Pancreatic Stone Protein, encoded by the REGA gene, is a secreted polypeptide first found in pancreatic precipitates and stones from patients suffering from chronic pancreatitis (7). The cDNA encoding this protein was isolated from a random screen of genes highly expressed in a regenerating-islet derived cDNA library (8) and subsequently shown to be elevated in colorectal cancers (9). More recently, REGA was isolated in a hybridization-based screen for genes elevated in colorectal cancers and shown to be elevated in many colorectal adenocarcinomas (10). Consistent with these published observations, we observed a strong elevation in expression of REGA in unpurified tumors, and a similar elevation in one purified tumor. In situ hybridization experiments demonstrated REGA to be strongly expressed in the epithelial cells of the tumors, with no expression evident in the stroma (FIG. 5A).

TGF β -induced gene (TGFB1) encodes a small polypeptide of unknown function initially isolated through a differential display screen for genes induced in response to treatment with TGF β (11). The protein is expressed in the keratinocytes of the cornea (12) and, interestingly, germline mutations of this gene cause familial corneal dystrophies (13). TGFB1 was previously shown to be among the most significantly elevated genes in colorectal cancers (4), and our new data show that it is expressed at high levels in adenomas as well. Quantitative PCR results demonstrated strong elevation both in unpurified tumors and purified tumor epithelial cells. Accordingly, in situ hybridization experiments revealed TGFB1 to be expressed in many cell types, in both the stromal and epithelial compartments (FIG. 5B).

Lysozyme (LYS, 1,4- β -N-acetylmuramidase, EC 3.2.1.17) is an enzyme with bacteriolytic activity (14) capable of cleaving β -1,4 glycosidic bonds found in the cell walls of gram-positive bacteria. The enzyme is expressed in the secretory granules of monocytes, macrophages and leukocytes, as well as in the Paneth cells of the gastrointestinal tract. Fecal lysozyme levels are dramatically elevated in patients with inflammatory bowel disease (15, 16), and serum lysozyme activity is significantly elevated in patients with sarcoidosis (17), both of which are diseases characterized by aberrant chronic inflammation. Furthermore, lysozyme immunoreactivity has been observed in the epithelial cells of both adenomas and carcinomas of the large intestine (18). In our study, the degree of elevation of expression of LYS varied from 4-fold to 55-fold in the unpurified samples. In contrast, the degree of elevation of expression of LYS observed in purified epithelial cells was only 2-5 fold. This suggested that a substantial portion of the expression for this gene in the tumors could have been derived from non-epithelial cells. Consistent with this hypothesis, in situ hybridization experiments revealed that the majority of LYS mRNA was present in a stromal component that appeared to be macrophages (FIG. 5C). The expression of LYS in the macrophage compartment of colorectal tumors was also supported by its high representation in a SAGE library constructed from hematopoietic cells (CD45+, CD64+, CD14+) purified from colorectal tumors (602 LYS tags/56,643 total tags) (6).

One interesting gene identified in the current study is renal dipeptidase (RDP). RDP is a GPI-anchored enzyme whose major site of expression is the epithelial cells of the proximal tubules of the kidney (reviewed in (19)). The enzyme has been extensively analyzed with respect to its catalytic mechanism and inhibition kinetics by a variety of synthetic inhibitors. RDP is unique among the dipeptidases in that it can cleave amide bonds in which the C-terminal partner is a D amino acid, providing excellent opportunity for the development of specific probes for its detection in vivo. Quantitative PCR revealed RDP to be markedly elevated in both unpurified and purified tumor epithelial cells, and in situ hybridization experiments showed that RDP was exclusively localized to epithelial cells of colorectal tumors (FIG. 5D).

Macrophage Inhibitory Cytokine (MIC-1) is a small polypeptide of 16 kDa first isolated from a differential screen for genes that were induced upon macrophage activation (20). Concurrently, it was identified in the IMAGE database by a search for molecules homologous to the Bone Morphogenic Protein/TGF β family of growth and differentiation factors (21). In addition to being highly expressed in activated macrophages, MIC-1 has been noted to be highly expressed in placenta and the epithelial cells of normal prostate. In the current study, we found MIC-1 expression to be elevated between 7 and 133 fold in the unpurified tumors. As observed for LYS, the purified tumor cells demonstrated significant but less elevation of expression of MIC-1 (5 to 7-fold) indirectly implicating stromal expression to be partly responsible for the dramatic elevation seen in some tumors. Consistent with this hypothesis, in situ hybridization experiments revealed expression in both the epithelium of the tumor, and in a cell type resembling infiltrating macrophages (FIG. 5E).

EXAMPLES

Example 1

SAGE

In an effort to identify potential molecular markers of early colorectal tumors, we have here analyzed gene expression in benign and malignant colorectal tumors in an unbiased and comprehensive fashion. We used SAGE to analyze global gene expression in normal, benign and malignant colorectal tissue. SAGE is a gene expression profiling method that associates individual mRNA transcripts with 15-base tags derived from specific positions near their 3' termini (3). The abun-

gene expression profiles. For the current study, SAGE libraries derived from two samples of normal colonic epithelium, two colorectal adenomas, and two colorectal cancers were analyzed. These libraries contained a combined total of 290,394 transcript tags representing 21,343 different transcripts (Table 1).

TABLES 1

Summary of SAGE data		
SAGE Library	Total number of tags observed	Number of different transcripts observed*
Normal Colorectal Epithelium		
NC-1	49,610	9,359
NC-2	48,479	9,610
Adenomas		
Ad-A	52,573	11,167
Ad-B	42,661	9,483
Cancers		
Tu-98	41,371	9,780
Tu-102	55,700	11,039
Total	290,394	21,343

*To minimize the effect of potential sequencing errors, only tags observed more than once in a given SAGE library were counted to give a conservative estimate of the minimum number of different transcripts analyzed.

Two comparisons were performed, one between the adenoma and normal samples, and one between the cancer and normal samples. These comparisons revealed 957 transcript tags that were differentially expressed more than 2-fold between normal and tumor tissue (Table 2). A comparison of the fold change in adenomas versus cancers revealed that many transcripts were similarly elevated or repressed in both adenomas and cancers although the magnitude often varied (FIG. 1A). Indeed the majority (79%) of comparisons were in quadrants of the plot indicative of concordant elevation.

TABLE 2

Differentially expressed transcripts in benign and malignant tumor colorectal tissue							
Fold change in expression	Elevated in adenomas ^a	Elevated in cancers ^a	Elevated in both adenomas and cancer ^a	Repressed in adenomas ^b	Repressed in cancers ^b	Repressed in both adenomas and cancers ^b	Total transcripts differentially expressed
2	346	170	50	313	380	192	957
4	263	119	23	225	270	117	735
10	160	79	10	134	157	58	462
20	49	40	9	72	52	23	181

^aElevated transcripts showed a significantly different ($P < 0.05$) tag count between normal and tumor tissue, were expressed in both tumor tissues analyzed, and had an expression level that was higher in the tumors than in the normals by the fold indicated in column one. For the purposes of calculation, 0.5 was substituted for the denominator when no tags were detected in the normal samples.

^bRepressed transcripts showed a significantly different ($P < 0.05$) tag count between normal and tumor tissue, were expressed in both normal tissues analyzed and had an expression level that was lower in the tumors than in the normals by the fold indicated in column one.

dance of each tag provides a quantitative measure of the transcript level present within the mRNA population studied. SAGE is not dependent on pre-existing databases of expressed genes, and therefore provides an unbiased view of

From both practical and biological perspectives, those changes showing the greatest magnitude were deemed the most interesting. In this regard, 49 tags were identified to be elevated by ≥ 20 -fold in the adenomas and 40 were elevated

by ≥ 20 -fold in the cancers (Table 2). Conversely, there were 72 transcripts that were decreased by ≥ 20 -fold in adenomas and 52 decreased by ≥ 20 -fold in the cancers (Table 2).

There were nine transcripts that were elevated by ≥ 20 -fold in both adenomas and cancers (FIG. 1B and Table 3) and 23 that were repressed by ≥ 20 -fold (Table 4). Other elevated and repressed transcripts are shown in Table 5. Tags for the transcripts shown in Table 5 are listed as SEQ ID NO: 33-334. We

were especially interested in genes whose products were predicted to be secreted or displayed on the cell surface, as these would be particularly suitable for the development of serologic or imaging tests for presymptomatic neoplasia, respectively. We were able to identify six such genes (TGFB1, LYS, RDP, MIC-1, REGA and DEHL) from among those whose transcript tags were elevated in both adenoma and carcinoma SAGE libraries.

TABLE 3

Transcripts most elevated in adenomas and cancers ^a							
Tag Sequence	Normal		Adenomas		Cancers		Transcript name
	NC-1	NC-2	AD-A1	AD-B2	Tu-98	Tu-102	
ATGTAATAAAA	0	0	26	32	2	12	Lysozyme (LYS)
TAATTTTTC	0	1	99	12	20	37	Differentially Expressed in Hematopoietic Lineages (DEHL)
GTGTGTTTGT	0	0	17	29	17	15	Transforming Growth Factor, Beta-Induced (TGFB1)
GTGCTCATT	0	0	13	7	2	10	Macrophage Inhibitory Cytokine, 1 (MIC-1)
TTCCAGCTGC	0	0	7	6	2	9	Adaptor-related Protein Complex 2, alpha 2 subunit ^b
ACCATTGGAT	0	0	3	10	3	9	Interferon Induced Transmembrane Protein 1 (9-27) ^b
TTCCACTAA	0	0	8	4	4	6	Regenerating Islet-Derived 1 alpha (REGA)
CAAGGACCAG	0	0	5	6	10	12	Renal Dipeptidase (RDP)
AGGACCATCG	0	0	8	2	1	18	Defensin, Alpha 5, Paneth cell-specific ^c

^aThese tags (SEQ ID NOS: 1-9) displayed at least twenty fold elevation in both neoplastic states. The numbers given are the raw tag counts for each tag observed in each library. Transcript name provides a description of matching UniGene cluster (Build Mar. 13, 2001). Rows shown in bold are genes confirmed by quantitative PCR to be differentially expressed.

^bDifferential expression could not be confirmed by quantitative PCR suggesting that the tag was derived from a different transcript than the one indicated.

^cNot tested.

TABLE 4

Transcripts most repressed in adenomas and cancers ^a								
Tag Sequence	Normal		Adenoma		Cancer		UNI ID	Transcript name
	NC-1	NC2	AD-A1	AD-B	Tu-981	Tu-102		
GTCATCACCA	35	22	0	0	0	0	32966	Guanylate Cyclase Activator 2B
CCTTCAAATC	29	17	0	0	1	0	23118	Carbonic Anhydrase I
TCTGAATTAT	24	16	0	0	1	0	50964	Carcinoembryonic Antigen-Related Cell Adhesion Molecule 1
TTAIGGTGTG	11	17	0	0	0	0	271499	ESTs
CTGGCAAAGG	14	22	1	0	0	0	72789	hypothetical protein FLJ20217
AGGTGACTGG	10	14	0	0	0	0		No Match
CTTATGGTCC	36	11	0	1	1	0	179608	Retinol Dehydrogenase Homolog
ATGATGGCAC	12	32	1	0	1	0	84072	Transmembrane 4 Superfamily Member 3
GTCCGAGTGC	17	3	0	0	0	0	3337	Transmembrane 4 Superfamily Member 1
ATTTCAAGAT	35	21	0	2	1	0	155097	Carbonic Anhydrase II (CA2)
CAAGAGTTTC	14	2	0	0	0	0	183617	ESTs
GCCATCCTCC	9	13	0	1	0	0		No Match
ACCCAAGTGC	12	3	0	0	0	0	232604	<i>Homo sapiens</i> cDNA: FLJ22675 fis, clone HSI10553
GCCACGTCA	7	8	0	0	0	0		No Match
TTTGGTTTCA	2	13	0	0	0	0		No Match
CTCAGAACTT	18	3	1	0	0	0	194710	N-acetylglucosaminyl transferase 3, mucin type
CCAACACCAG	9	19	1	0	0	1	181165	Eukaryotic Translation Elongation Factor 1 Alpha 1
GCCACATACT	3	9	0	0	0	0	4984	KIAA0828 protein
GTATTGGGGC	5	7	0	0	0	0		No Match
CCGGCTTGAG	7	4	0	0	0	0	2722	Inositol 1,4,5-trisphosphate 3-Kinase A
GATATGTAA	1	10	0	0	0	0	227059	Chloride Channel, Calcium Activated, Family Member 4
CATAGGTTTA	66	39	4	1	5	0	1650	Solute Carrier Family 26, member 3 (DRA)
GTCTGAACA	7	3	0	0	0	0	78546	ATPase, Ca ⁺⁺ Transporting, Plasma Membrane 1

^aThese tags (SEQ ID NOS: 10-32) displayed at least twenty fold decrease in both neoplastic states. The numbers given are the raw tag counts for each tag observed in each library. Transcript name provides a description of matching UniGene cluster (Build Mar. 13, 2001). Rows shown in bold are genes that were tested and confirmed by quantitative PCR to be differentially expressed.

SAGE. For the initial SAGE³ of benign tumors, fresh adenomas were obtained from surgical specimens derived from FAP patients. Adenomas from FAP patients were employed because of the ready availability of small lesions and the certainty of inactivation of the APC pathway which initiates the formation of the majority of sporadic tumors. After histopathological verification of the neoplastic nature of the lesion (>70% neoplastic cells), total RNA was isolated by solubilizing the tissue in RNAgents Lysis Buffer (Promega, Madison, Wis.) followed by ultracentrifugation over a cesium chloride gradient. mRNA selection was performed from the purified total RNA using oligo(dT) cellulose (Life Technologies, Gaithersburg, Md.). Two adenoma SAGE libraries were prepared as described (3, 4) and sequenced to a total depth of over 90,000 transcript tags. For SAGE of normal and malignant tissues, four previously described normal (NC-1 and NC-2) and primary cancer (Tu-98 and Tu-102) SAGE libraries were employed (4). In collaboration with the Cancer Genome Anatomy Project (CGAP) (5), the analyses of these libraries was extended from a total of 123,046 transcripts in the previously published work to 195,160 transcripts in the current work. Tags were extracted from the raw sequence data and, after excluding repeated ditags, linker sequences, and tags from the polymorphic Major Histocompatibility loci, the resulting tag libraries were compared and statistical analysis performed using SAGE software, version 4.0. Data from the libraries are publicly available at the Uniform Resource Locator (URL) address for the http file type found on the www host server that has a domain name of ncbi.nlm.nih.gov, and a path to the directory SAGE, and detailed SAGE protocols are available at the Uniform Resource Locator (URL) address for the http file type found on the www host server that has a domain name of sagenet.org, and file name of sage_protocol.htm.

Example 2

RT-PCR

To verify the increased expression of these six genes, we used quantitative RT-PCR techniques to analyze the expression in seven colorectal neoplasms (three sporadic adenomas and four sporadic cancers) and matched normal colonic mucosa. For these assays, specific primers were developed that resulted in amplification from cDNA but not genomic DNA. Controls were provided by similar quantitative PCR assays of a gene whose expression was found to be very similar in the SAGE libraries of normal and neoplastic colon (β -amyloid precursor protein). The quantitative PCR experiments verified that five of the six selected genes (TGFBI, LYS, RDP, MIC-1, REGA) were expressed at significantly higher levels in every neoplastic sample analyzed compared to patient-matched normal mucosa (FIG. 2). Several tumors exhibited ≥ 20 -fold higher levels of the studied transcripts compared to their patient-matched normal colonic mucosa, as predicted by SAGE. Another control was provided by the quantitative PCR analysis of four genes whose expression was observed to be reduced in the SAGE libraries prepared from adenomas and cancers compared to those from normal colonic mucosa. As shown in FIG. 3, the quantitative PCR confirmed the lower levels of expression of each of these genes, emphasizing that the dramatic elevations in expression observed in FIG. 2 represented gene-specific phenomena. Quantitative PCR. Tumors were collected, snap frozen, and stored at -80° C. They were verified to be predominantly composed of neoplastic cells by histopathological analysis, mRNA was isolated from tumors and patient-matched normal

colonic mucosa using QuickPrep reagents (Amersham Pharmacia Biotech UK, Buckinghamshire, England), and single-stranded cDNA was synthesized using Superscript II (Life Technologies, Gaithersburg, Md.). Quantitative PCR was performed using an iCycler (Bio-Rad, Hercules, Calif.), and threshold cycle numbers determined using iCycler software, version 2.1. Reactions were performed in triplicate and threshold cycle numbers averaged. All genes examined were normalized to a control gene (β -amyloid precursor protein, shown by SAGE to be expressed at equivalent levels in all colorectal samples), and fold induction calculated according to the formula $2^{(Rt-Et)}/2^{(Rn-En)}$ where Rt is the threshold cycle number for the Reference gene observed in the tumor, Et is the threshold cycle number for the Experimental gene observed in the tumor, Rn is the threshold cycle number for the Reference gene observed in the normal, and En is the threshold cycle number for the Experimental gene observed in the normal. The primers used for quantitative PCR were obtained from GeneLink (Hawthorne, N.Y.), and their sequences are available upon request.

Example 3

Expression in Isolated Epithelial Cells

The quantitative PCR data obtained from mRNA isolated from whole tumors provided independent evidence that SAGE provided an accurate indication of gene expression changes in colorectal neoplasia. However, neither analysis identified the cell types responsible for the increased expression. Non-neoplastic stromal cells within tumors may be considerably different than those in normal colonic mucosa (6), and the epithelial derivation of gene expression differences cannot reliably be concluded without direct supporting evidence. We therefore sought to determine if the epithelial cells of cancers express elevated levels of the six genes depicted in FIG. 2. First, we affinity-purified cancerous and patient-matched normal epithelial cells from fresh surgical specimens using immunomagnetic beads directed to the pan epithelial marker Ber-EP4, prepared cDNA and performed quantitative PCR analysis to determine the expression levels of the elevated genes as above. Elevated expression was observed in the purified tumor epithelial cells for each of the six genes examined (FIG. 4), demonstrating that at least some of the increased expression was derived from epithelial cells. However, relative expression of LYS was not as prominent or reproducible in the purified epithelial cells as in the mRNA from the unfractionated tumors, suggesting that other cell types might have contributed transcripts from this gene.

Epithelial cell immunoaffinity purification. Tumor epithelial cells were purified using a modification of the procedure previously developed for the isolation of tumor endothelial cells (6). In brief, fresh surgical specimens of tumor and matched normal tissue were obtained and digested with collagenase and the resulting material filtered through a nylon mesh to obtain single cell suspensions. The cells were then bound to a mixture of anti-CD14 and anti-CD45 immunomagnetic beads (Dyna, Oslo, Norway) to deplete the population of hematopoietic cells (negative selection). The remaining cell suspension was then incubated with anti-Ber-EP4 immunomagnetic beads to isolate epithelial cells (positive selection). Purified cells were lysed directly on the beads and mRNA purified using QuickPrep reagents (Amersham Pharmacia Biotech UK, Buckinghamshire, England).

In situ Hybridization in Multiple Tumors

We performed in situ hybridization to RNA in frozen sections of tumors for five of the genes showing the most consistent elevation. DEHL was found to be elevated in only five of the nine tumors examined and was not investigated further. To increase the sensitivity of detection, we generated several RNA probes for each tested gene using in vitro transcription techniques. The results obtained are discussed below in conjunction with brief overviews of each of the five genes of interest.

In situ Hybridization. Non-radioactive in situ hybridization was performed as described (6). For each gene analyzed, a cocktail of anti-sense probes made through in vitro transcription were employed to increase sensitivity. The primers used to generate templates for the synthesis of the in situ riboprobes were obtained from GeneLink (Hawthorne, N.Y.), and their sequences are available upon request.

The results summarized above show that although a large number of tags are observed in the colorectal tissues analyzed, only a small fraction (957/21,343, <5%) were

expressed differentially in benign or malignant neoplastic tissues. A similarly small fraction of genes (66/4000, 1.7%) were found to be aberrantly expressed in colorectal neoplasms using oligonucleotide arrays (22). Analysis of these differentially expressed genes not only has the potential to provide insights into the biology of human neoplasia but also may have clinically useful applications. One of the most exciting potential applications concerns the identification of genes whose products provide cellular and serum markers for colorectal neoplasia. In the current study, we identified several genes that appeared to meet all of these criteria and may therefore be especially useful as diagnostic tools for the early detection of presymptomatic colorectal neoplasia. Indeed, the product of one of these genes (MIC-1), has recently been found to be elevated in the serum of patients with colorectal and other cancers, providing further validation of this approach (24).

While the invention has been described with respect to specific examples including presently preferred modes of carrying out the invention, those skilled in the art will appreciate that there are numerous variations and permutations of the above described systems and techniques that fall within the spirit and scope of the invention as set forth in the appended claims.

TABLE 5

Tag_Sequence	NC1	NC2	AD1	AD2	CA1	CA2	UNI ID	Description
AAAAGAACT	1	3	33	52	7	16	172182	poly(A)-binding protein, cytoplasmic 1
AACGAGGAAT	8	0	24	26	17	23		
AAGAAGATAG	6	6	28	25	21	34	184776	ribosomal protein L23a
AATAGGTCCA	12	9	32	36	22	22	113029	ribosomal protein S25
ACAACTCAAT	1	1	7	7	8	6	244125	EST
ACAACTCAAT	1	1	7	7	8	6	75922	brain protein 13
ACATCATCGA	10	18	50	66	34	46	182979	ribosomal protein L12
ACCATTTGGAT	0	0	3	10	3	9	146360	interferon induced transmembrane protein 1 (9-27)
ACCTGTATCC	5	3	20	6	26	35	182241	interferon induced transmembrane protein 3 (1-80)
ACTCCAAAAA	9	12	21	65	21	37	133230	ribosomal protein S15
AGCACCTCCA	37	37	108	81	57	108	75309	eukaryotic translation elongation factor 2
AGGACCATCG	0	0	8	2	1	18		
AGGGCTTCCA	26	41	74	108	50	85	29797	ribosomal protein L10
ATGGCTGGTA	18	46	79	75	81	136	182426	ribosomal protein S2
ATGTAAAAAA	0	0	26	32	2	12	178112	DNA segment, single copy probe LNS-CAI/LNS-CAII (deleted in polyposis)
ATGTAAAAAA	0	0	26	32	2	12	234734	lysozyme (renal amyloidosis)
ATGTAAAAAA	0	0	26	32	2	12	83715	Sjogren syndrome antigen B (autoantigen La)
ATTCTCCAGT	8	20	20	48	43	28	234518	ribosomal protein L23
CAAGGACCAG	0	0	5	6	10	12	109	dipeptidase 1 (renal)
CAATAAATGT	8	6	40	76	33	67	179779	ribosomal protein L37
CAGCTCACTG	4	17	9	35	21	24	158675	ribosomal protein L14
CATTTGTAAT	48	27	102	57	36	125		
CCTAGCTGGA	16	27	58	45	48	66	182937	peptidylprolyl isomerase A (cyclophilin A)
CCTTCGAGAT	6	12	13	29	7	41	76194	ribosomal protein S5
CTCCTCACTC	7	13	38	36	24	75	242908	lecithin-cholesterol acyltransferase
CTGACTTGTG	0	0	1	20	9	2	77961	major histocompatibility complex, class I, B
CTGGGTTAAT	14	24	84	83	42	112	126701	ribosomal protein S19
CTGTTGATTG	13	3	60	38	32	27	249495	heterogeneous nuclear ribonucleoprotein A1
CTGTTGGTGA	9	19	37	59	31	61	3463	ribosomal protein S23
GAAAAAATGGT	7	12	49	47	25	27	181357	laminin receptor 1 (67 kD, ribosomal protein SA)
GAGTCAGGAG	2	0	8	6	9	7	181271	CGI-120 protein
GCATAATAGG	11	16	22	54	50	21	184108	ribosomal protein L21 (gene or pseudogene)
GCATTTAAAT	1	2	10	18	12	7	261802	eukaryotic translation elongation factor 1 beta 1
GCATTTAAAT	1	2	10	18	12	7	275959	eukaryotic translation elongation factor 1 beta 2
GCATTTGACA	2	5	27	17	9	20	172129	<i>Homo sapiens</i> cDNA: FLJ21409 fis, clone COL03924
GCTTTTAAGG	2	8	14	32	16	17	8102	ribosomal protein S20
GGACCACTGA	18	39	76	57	48	83	119598	ribosomal protein L3
GGGGGTAACT	1	2	8	11	14	13	99969	fusion, derived from t(12;16) malignant liposarcoma
GTGCGTGAG	0	0	75	0	20	18	277477	major histocompatibility complex, class I, C
GTGCTCATTG	0	0	13	7	2	10	116577	prostate differentiation factor
GTGCTCATTG	0	0	13	7	2	10	25945	ESTs
GTGTGTTTGT	0	0	17	29	17	15	118787	transforming growth factor, beta-induced, 68 kD
GTTGCGTGCCA	1	13	18	43	24	18	179606	nuclear RNA helicase, DECD variant of DEAD box family
GTTGCGTGCCA	1	13	18	43	24	18	179666	uncharacterized hypothalamus protein HSMNP1
TAATAAAGGT	4	11	37	62	24	27	151604	ribosomal protein S8
TAATTTTTCG	0	1	99	12	20	37	273321	differentially expressed in hematopoietic lineages
TCACAAGCAA	10	7	17	21	13	38	146763	nascent-polypeptide-associated complex alpha polypeptide

TABLE 5-continued

Tag_Sequence	NC1	NC2	AD1	AD2	CA1	CA2	UNI ID	Description
TCAGATCTTT	14	32	37	108	31	87	75344	ribosomal protein S4, X-linked
TCCTGCCCA	1	5	10	14	7	16	171814	parathyrosin
TGAAATAAAA	0	2	2	14	13	11	173205	nucleophosmin (nucleolar phosphoprotein B23, numatrin)
TGAAATAAAA	0	2	2	14	13	11	192822	Human DNA sequence from clone RP5-1179L24 on chromosome 6q24.3-25.3. Contains the 3' end of the gene for a novel protein similar to mouse phospholipase C neighboring protein PNG, ESTs, STSs and GSSs
TGATGTCTGG	0	0	2	6	8	2	83883	transmembrane, prostate androgen induced RNA
TGTAATCAAT	2	3	13	11	8	11	249495	heterogeneous nuclear ribonucleoprotein A1
TTACCATATC	10	5	22	30	26	22	300141	ribosomal protein L39.
TTATGGGATC	6	4	24	37	36	47	5662	guanine nucleotide binding protein (G protein), beta polypeptide 2-like 1
TTCATAAAA	8	14	79	111	36	50	177592	ribosomal protein, large, P1
TTCCAGCTGC	0	0	7	6	2	9	112442	ESTs, Weakly similar to
TTCCAGCTGC	0	0	7	6	2	9	19121	adaptor-related protein complex 2, alpha 2 subunit
TTCCAGCTGC	0	0	7	6	2	9	227277	sine oculis homeobox (<i>Drosophila</i>) homolog 3
TTTCCACTAA	0	0	8	4	4	6	1032	regenerating islet-derived 1 alpha (pancreatic stone protein, pancreatic thread protein)
TTTCCACTAA	0	0	8	4	4	6	289088	heat shock 90 kD protein 1, alpha
TTTTAATGT	0	2	12	18	6	7	161307	H3 histone, family SA

TABLE 6

Tag_Sequence	NC1	NC2	AD1	AD2	CA1	CA2	UNI ID	Description
AAATCTGGCA	16	15	2	4	2	0	430	plastin 1 (I isoform)
AACGTGCAGG	29	31	13	6	7	8	160786	argininosuccinate synthetase
AAGAAAGCTC	20	6	0	2	1	5	25264	DKFZP434N126 protein
AAGAAAGCTC	20	6	0	2	1	5	91011	anterior gradient 2 (<i>Xenopus laevis</i>) homolog
AAGAAGCAGG	8	16	3	4	1	3	11441	chromosome 1 open reading frame 8
AAGGTAGCAG	15	16	2	4	2	4	104125	adenylyl cyclase-associated protein
AATAAAGGCT	25	11	3	7	3	4	179735	ras homolog gene family, member C
AATAGTTTCC	7	16	2	3	6	1	272620	pregnancy specific beta-1-glycoprotein 9
AATCACAAAT	18	45	1	4	14	3	74466	carcinoembryonic antigen-related cell adhesion molecule 7
AATGAGAAGG	11	3	0	0	1	0	198248	UDP-Gal:betaGlcNAc beta 1,4-galactosyltransferase, polypeptide 1
ACAATGGTTC	0	10	0	0	0	0	155097	carbonic anhydrase II
ACACCCATCA	2	27	1	0	5	3	110445	CGI-97 protein
ACAGGGTGAC	25	13	1	8	7	6	174050	endothelial differentiation-related factor 1
ACATTGGGTG	377	334	67	34	96	33	275086	PR domain containing 10
ACATTGGGTG	377	334	67	34	96	33	5241	fatty acid binding protein 1, liver
ACCCAACTGC	12	3	0	0	0	0	232604	<i>Homo sapiens</i> cDNA: FLJ22675 fis, clone HSI10553
ACCCACGTCA	22	10	3	5	3	1	198951	jun B proto-oncogene
ACCCCCCGC	44	38	7	13	16	6	229413	ESTs
ACCCCCCGC	44	38	7	13	16	6	2780	jun D proto-oncogene
ACCTGCATCC	0	12	0	0	0	0	0	0
ACCTGGGGAG	35	11	1	3	4	3	131748	ESTs, Moderately similar to
ACCTGGGGAG	35	11	1	3	4	3	209119	1-acylglycerol-3-phosphate O-acyltransferase 2 (lysophosphatidic acid acyltransferase, beta)
ACGGTCCAGG	5	12	0	0	0	1	72924	cytidine deaminase
ACTCTGTGTTG	7	2	0	0	0	0	5378	spondin 1, (f-spondin) extracellular matrix protein
ACTGTGGCGG	17	34	9	12	9	4	112242	ESTs
AGAATAGCTT	44	67	3	9	11	30	24133	ESTs
AGCAGGAGCA	50	14	6	3	7	6	178292	KLAA0180 protein
AGCAGGAGCA	50	14	6	3	7	6	738	early growth response 1
AGCCCGACCA	16	8	2	4	1	3	104114	<i>H. sapiens</i> HCG 1 mRNA
AGGATGGTCC	34	19	5	3	6	8	71779	<i>Homo sapiens</i> DNA from chromosome 19, cosmid F21856
AGGCCAAGGG	21	6	3	1	3	4	76057	galactose-4-epimerase, UDP
AGGTGACTGG	10	14	0	0	0	0	0	0
AGTGGGCTCA	3	8	0	1	0	0	0	0
ATACTCCACT	82	59	0	0	10	3	778	guanylate cyclase activator 1B (retina)
ATATAATCTG	18	14	1	4	5	5	621	lectin, galactoside-binding, soluble, 3 (galectin 3)
ATCGTGGCGG	193	92	19	25	20	10	5372	claudin 4
ATGACGCTCA	22	18	6	5	3	4	8254	hypothetical protein PRO0899
ATGATGCCAC	12	32	1	0	1	0	84072	transmembrane 4 superfamily member 3
ATGCGGAGTC	14	13	5	3	2	4	25527	tight junction protein 3 (zona occludens 3)
ATGCGGGAGA	38	39	15	22	5	6	109748	<i>Homo sapiens</i> CAC-1 mRNA, partial cds
ATGGCACGGA	6	21	1	1	3	0	81097	cytochrome C oxidase subunit VIII
ATGGTCTACG	10	5	0	0	1	0	96593	hypothetical protein
ATGGTGGGGG	25	30	11	9	1	2	1665	zinc finger protein homologous to Zfp-36 in mouse
ATGTGCGTGG	38	8	11	3	7	7	56937	suppression of tumorigenicity 14 (colon carcinoma, matriptase, epithin)
ATGTGGGCTC	7	2	0	0	0	0	151641	glycoprotein A repetitions predominant
ATGTGGGCTC	7	2	0	0	0	0	27018	Ris
ATTGGAGTGC	136	85	15	36	37	19	220529	carcinoembryonic antigen-related cell adhesion molecule 5
ATTCAAGAT	35	21	0	2	1	0	155097	carbonic anhydrase II
ATTCAAGAT	35	21	0	2	1	0	24453	ESTs
CAAATAAAAG	9	12	2	0	1	1	185055	BENE protein
CAAGAGTTTC	14	2	0	0	0	0	183617	ESTs

TABLE 6-continued

Tag_Sequence	NC1	NC2	AD1	AD2	CA1	CA2	UNI ID	Description
CACCCCTGAT	73	169	58	58	13	36	173724	creatine kinase, brain
CAGTGC GTTC	12	3	0	0	3	0	8302	four and a half LIM domains 2
CATAGGTTTA	66	39	4	1	5	0	1650	solute carrier family 26, member 3
CCAAAGCTAT	42	16	14	12	6	11	84072	transmembrane 4 superfamily member 3
CCAACACCAG	9	19	1	0	0	1	181165	eukaryotic translation elongation factor 1 alpha 1
CCACTGCACC	21	19	5	5	6	14		
CCAGGGGAGA	45	66	24	22	10	20	278613	interferon, alpha-inducible protein 27
CCATTCCACT	13	1	2	0	0	0		
CCCAACGCGC	106	1	3	5	0	2	272572	hemoglobin, alpha 2
CCCCCGAAGC	25	27	3	15	4	8	61265	ESTs, Weakly similar to
CCCCCGCGGA	33	25	6	11	4	12	95697	liver-specific bHLH-Zip transcription factor
CCCCCTGCAT	5	4	0	0	0	0		
CCCGCTCTTT	0	40	3	3	16	1	mito	Tag matches mitochondrial sequence
CCCTCCCGAA	89	54	9	14	18	7	5940	hypothetical protein FLJ20063
CCGCTGCACT	127	102	55	46	37	30		
CCGGCTTGAG	7	4	0	0	0	0	2722	inositol 1,4,5-trisphosphate 3-kinase A
CCTCCAGCTA	715	458	142	125	131	147	242463	keratin 8
CCTCCAGTAC	20	8	2	3	2	4		
CCTGCCCCCC	20	30	6	3	11	4	861	mitogen-activated protein kinase 3
CCTGCTGCAG	7	34	0	1	6	9	102482	mucin 5, subtype B, tracheobronchial
CCTGCTTGTC	20	23	0	3	0	5	268171	ESTs, Weakly similar to
CCTGCTTGTC	20	23	0	3	0	5	2719	epididymis-specific, whey-acidic protein type, four-disulfide core; putative ovarian carcinoma marker
CCTGGAAGAG	30	26	11	4	12	16	75655	procollagen-proline, 2-oxoglutarate 4-dioxygenase (proline 4-hydroxylase), beta polypeptide (protein disulfide isomerase; thyroid hormone binding protein p55)
CCTGTCTGCC	14	22	0	1	1	1	107139	hypothetical protein
CCTGTGACAG	22	27	0	4	3	1	120	anti-oxidant protein 2 (non-selenium glutathione peroxidase, acidic calcium-independent phospholipase A2)
CCTTCAAATC	29	17	0	0	1	0	23118	carbonic anhydrase I
CGAGGGGCCA	110	47	18	18	12	32	182485	actinin, alpha 4
CGCTGTGGGG	58	53	19	8	8	6	7486	protein expressed in thyroid
CGGACTCACT	20	45	5	14	14	10	284134	serologically defined colon cancer antigen 28
CGGACTCACT	20	45	5	14	14	10	84700	similar to phosphatidylcholine transfer protein 2
CGGGAGTCGG	28	30	13	2	9	1	236720	ESTs, Weakly similar to
CGGTGGGACC	7	14	1	1	3	3	99175	<i>Homo sapiens</i> cDNA: FLJ21606 fis, clone COL07302
CGTGGGTGGG	1	10	1	0	0	1	202833	heme oxygenase (decycling) 1
CTAGCCTCAC	172	90	30	53	36	58	14376	actin, gamma 1
CTCAGAACTT	18	3	1	0	0	0	194710	glucosaminyl (N-acetyl) transferase 3, mucin type
CTGAACCTCC	5	15	2	0	0	0	4205	hypothetical protein FLJ20124
CTGACCTGIG	88	130	48	18	16	46	77961	major histocompatibility complex, class I, B
CTGGATCTGG	21	21	3	9	5	10	75658	phosphorylase, glycogen; brain
CTGGCAAAGG	14	22	1	0	0	0		
CTGGCCCTCG	186	52	1	3	15	14	1406	trefoil factor 1 (breast cancer, estrogen-inducible sequence expressed in)
CTGGCCCTCG	186	52	1	3	15	14	166184	Intersectin 2
CTGGCCCTCG	186	52	1	3	15	14	7720	dynein, cytoplasmic, heavy polypeptide 1
CTGGCTATCC	7	3	0	0	0	1	10784	hypothetical protein FLJ20037
CTGGGCTCTT	22	22	2	2	3	3	50868	solute carrier family 22 (organic cation transporter), member 1-like
CTGTACTTGT	9	5	1	1	0	0	75678	FBJ murine osteosarcoma viral oncogene homolog B
CTGTGTGGCT	0	12	1	0	0	0	127610	acyl-Coenzyme A dehydrogenase, C-2 to C-3 short chain
CTGTGTGGCT	0	12	1	0	0	0	54277	DNA segment on chromosome X (unique) 9928 expressed sequence
CTTACAAGCA	21	13	2	3	4	3	mito	Tag matches mitochondrial sequence
CTTAGAGGGG	16	22	0	1	1	1	155191	villin 2 (ezrin)
CTTATGGTCC	36	11	0	1	1	0	179608	retinol dehydrogenase homolog
CTTCCAGCTA	64	31	22	20	14	19	217493	annexin A2
CTTCTTGCCC	29	2	2	2	0	1	251577	hemoglobin, alpha 1
CTTGACATAC	18	20	4	4	0	0	171695	dual specificity phosphatase 1
CTTGATCCCC	26	9	5	0	2	5	77266	quiescin Q6
GACATCAAGT	198	87	23	14	47	17	182265	keratin 19
GACCAGCCCA	23	21	3	2	12	5	75799	protease, serine, 8 (prostasin)
GACCAGTGGC	21	44	4	0	2	0	143131	glycoprotein A33 (transmembrane)
GACCGGCGCG	30	47	10	17	12	17	301684	RNA POLYMERASE I AND TRANSCRIPT RELEASE FACTOR
GAGAGCTCCC	5	11	3	0	2	1	mito	Tag matches mitochondrial sequence
GAGCACCCTG	7	4	1	0	0	1		
GATATGTAAG	1	10	0	0	0	0		
GATCCCAACT	9	29	5	7	1	1	118786	metallothionein 2A
GATGAATCCG	12	14	2	2	1	2	283552	ESTs, Weakly similar to
GATGACCCCC	42	49	4	3	3	3	mito	Tag matches mitochondrial sequence
GCAAGAAAGT	48	0	0	4	0	1	155376	hemoglobin, beta
GCACAGGTCA	5	9	1	0	1	1		
GCACCCTTTC	13	5	0	0	1	0		
GCACCTGTCC	2	9	0	0	1	0	109059	mitochondrial ribosomal protein L12
GCACCTGTCC	2	9	0	0	1	0	1239	alanyl (membrane) aminopeptidase (aminopeptidase N, aminopeptidase M, microsomal aminopeptidase, CD13, p150)
GCAGCTCCTG	13	47	3	2	7	3	119257	ems1 sequence (mammary tumor and squamous cell carcinoma-associated p80/85 src substrate)
GCAGGAGGTG	2	13	0	0	0	1	11441	chromosome 1 open reading frame 8
GCAGGAGGTG	2	13	0	0	0	1	78040	KDEL (Lys-Asp-Glu-Leu) endoplasmic reticulum protein retention receptor 1

TABLE 6-continued

Tag_Sequence	NC1	NC2	AD1	AD2	CA1	CA2	UNI ID	Description
GCAGGGCCTC	128	165	41	69	39	51	92323	FXYD domain-containing Ion transport regulator 3
GCCACATACT	3	9	0	0	0	0	4984	KLAA0828 protein
GCCACGTGGA	19	16	5	2	7	1	103665	villin-like
GCCAGACACC	19	9	3	4	1	2	3804	DKFZP564C1940 protein
GCCAGGTTGC	14	5	1	1	1	1	42824	hypothetical protein FLJ10718
GCCAGGTTGC	14	5	1	1	1	1	55682	eukaryotic translation initiation factor 3, subunit 7 (zeta, 66/67 kD)
GCCAGGTTGC	14	5	1	1	1	1	78996	proliferating cell nuclear antigen
GCCATCCTCC	9	13	0	1	0	0		
GCCACACAG	15	0	1	1	0	0	1690	heparin-binding growth factor binding protein
GCCCACGTCA	7	8	0	0	0	0		
GCCCAGGGCC	4	44	2	1	2	1	10326	coatamer protein complex, subunit epsilon
GCCCAGGGCC	4	44	2	1	2	1	229417	EST, Moderately similar to
GCCCAGGGCC	4	44	2	1	2	1	229546	EST
GCCCAGGTCA	519	447	136	128	58	22	154903	ESTs, Weakly similar to
GCCCAGTGGC	51	0	8	15	2	5	143131	glycoprotein A33 (transmembrane)
GCCGACCAGG	46	47	15	8	19	9	75741	amiloride binding protein 1 (amine oxidase (copper-containing))
GCCGGTGGG	207	149	18	24	68	67	74631	basigin
GCCGTGGAGA	32	23	4	11	7	7	80680	major vault protein
GCCTGGCCAT	26	34	4	6	10	14	5662	guanine nucleotide binding protein (G protein), beta polypeptide 2-like 1
GCCTGGCCAT	26	34	4	6	10	14	63042	DKFZp564J157 protein
GCGAAACCTC	167	565	123	43	64	98		
GCGAAACTCG	5	9	1	0	0	0		
GCGCAGAGGT	2	16	1	0	0	1	108124	ribosomal protein L41
GCTCTTCCCC	9	21	1	2	2	0	33455	peptidyl arginine deiminase, type II
GCTGCCTTG	44	6	13	6	6	18	272897	Tubulin, alpha, brain-specific
GCTGCCTTG	44	6	13	6	6	18	278242	tubulin, alpha, ubiquitous
GCTGGCACAT	15	14	1	0	6	0	179704	meprin A, alpha (PABA peptide hydrolase)
GCTGGCCCCG	5	11	0	0	0	1	8185	CGI-44 protein; sulfide dehydrogenase like (yeast)
GCTGTGCCTG	36	42	2	4	11	8	58247	protease, serine, 4 (trypsin 4, brain)
GCTTGGGGAT	11	8	2	0	0	0	5394	myosin, heavy polypeptide-like (110 kD)
GGAACAGGGG	1	13	1	0	0	2	102336	Rho GTPase activating protein 8
GGAACAGGGG	1	13	1	0	0	2	272972	hypothetical protein FLJ20185
GGAACAGGGG	1	13	1	0	0	2	77961	major histocompatibility complex, class I, B
GGAACAGGGG	1	13	1	0	0	2	38972	tetraspan 1
GGAAGAGCAC	21	11	1	1	2	5	75268	sialyltransferase 4C (beta-galactosidase alpha-2,3-sialyltransferase)
GGAGGCGGAG	13	9	5	0	2	5	301342	ESTs, Weakly similar to
GGAGGCGGCTC	5	11	1	1	0	1	33455	peptidyl arginine deiminase, type II
GGATGGCTTA	25	5	2	1	1	1	64179	hypothetical protein
GGCACCGTGC	22	44	8	10	8	4	120912	ESTs
GGCCCTGCAG	14	7	1	0	5	1	105463	sir2-related protein type 6
GGCTCGGGAT	15	11	2	4	3	5	2575	calpain 1, (mu/l) large subunit
GGCTGCCTGC	13	11	4	3	5	2	180958	ESTs
GGCTGCCTGC	13	11	4	3	5	2	197314	ESTs
GGCTGGGCCT	46	25	14	5	10	8	144102	EST
GGCTGGGCCT	46	25	14	5	10	8	14846	<i>Homo sapiens</i> mRNA; cDNA DKFZp564D016 (from clone DKFZp564D016)
GGCTGGGCCT	46	25	14	5	10	8	73919	clathrin, light polypeptide (Lcb)
GGGAAGCAGA	32	17	18	4	8	9		
GGGACGAGTG	20	6	1	3	6	1	3337	transmembrane 4 superfamily member 1
GGGCGTGTG	11	27	3	6	4	5	8372	ubiquinol-cytochrome c reductase (6.4 kD) subunit
GGGGCAGGGC	48	64	27	10	15	31	119140	eukaryotic translation initiation factor 5A
GGTGAAGAGG	16	32	5	3	10	9	233950	serine protease inhibitor, Kunitz type 1
GTAGCAGGTG	24	27	11	7	7	7	140452	cargo selection protein (mannose 6 phosphate receptor binding protein)
GTATTGGGGC	5	7	0	0	0	0		
GTCATCACCA	35	22	0	0	0	0	107382	KLAA1517 protein
GTCATCACCA	35	22	0	0	0	0	257045	<i>Homo sapiens</i> cDNA: FLJ23415 fis, clone HEP20738
GTCATCACCA	35	22	0	0	0	0	32966	guanylate cyclase activator 2B (uroguanylin)
GTCATCACCA	35	22	0	0	0	0	68877	cytochrome b-245, alpha polypeptide
GTCCGAGTGC	17	3	0	0	0	0	3337	transmembrane 4 superfamily member 1
GTCCTGAACA	7	3	0	0	0	0	78546	ATPase, Ca++ transporting, plasma membrane 1
GTCTGAACA	7	3	0	0	0	0	8258	DKFZP434D1335 protein
GTGCACTGAG	118	48	14	7	12	13	181244	major histocompatibility complex, class I, A
GTGCACTGAG	118	45	14	7	12	13	277477	major histocompatibility complex, class I, C
GTGCCTGAGA	18	15	2	6	7	3	77886	lamin A/C
GTGGCGGGAA	3	15	1	0	4	0		
GTGGGGGGCG	5	22	2	0	1	0	254105	enolase 1, (alpha)
GTGGTGGCAG	29	11	1	1	10	3	194691	retinoic acid induced 3
GTGGTTCACG	4	5	0	0	0	0	272088	ESTs, Moderately similar to
GTGGTTCACG	4	5	0	0	0	0	62192	coagulation factor III (thromboplastin, tissue factor)
GTGTTGGGGG	21	19	8	6	1	3	55016	hypothetical protein FLJ21935
GTTTAGAGGG	5	16	0	0	2	1	181874	interferon-induced protein with tetratricopeptide repeats 4
TAAATTGCAA	103	59	8	17	5	3	56205	Insulin induced gene 1
TAAGCCTTT	6	9	1	0	0	1	20149	deleted in lymphocytic leukemia, 1
TAAGCCTTT	6	9	1	0	0	1	42945	acid sphingomyelinase-like phosphodiesterase
TAATCCCAGC	37	33	8	7	16	13		
TAATTGCAT	25	2	1	1	2	0	79368	epithelial membrane protein 1
TACGGTGTGG	7	13	2	2	1	0	105460	DKFZP56400823 protein
TACTCGGCCA	10	5	0	0	1	0	79474	tyrosine 3-monooxygenase/tryptophan 5-monooxygenase activation protein, epsilon polypeptide

TABLE 6-continued

Tag_Sequence	NC1	NC2	AD1	AD2	CA1	CA2	UNI ID	Description
TACTGTGGAT	4	11	0	2	2	1	21537	protein phosphatase 1, catalytic subunit, beta isoform
TAGACTAGCA	31	27	6	6	22	4	100090	tetraspan 3
TAGGATGGGG	24	30	4	7	6	1	76941	ATPase, Na ⁺ /K ⁺ transporting, beta 3 polypeptide
TATGATGAGC	13	21	2	2	1	5	205126	<i>Homo sapiens</i> cDNA: FLJ22667 fis, clone HSI08385
TCACAGTGCC	26	7	3	1	3	4	81008	filamin B, beta (actin-binding protein-278)
TCACGGTCA	118	75	10	10	5	6	290070	gelsolin (amyloidosis, Finnish type)
TCAGAGCGCT	5	21	0	7	0	1	92323	FXYD domain-containing ion transport regulator 3
TCAGCTGCAA	56	16	0	0	9	3	284199	mucin 12
TCAGCTGCAA	56	16	0	0	9	3	301888	<i>Homo sapiens</i> cDNA FLJ11205 fis, clone PLACE1007843
TCGGAGCTGT	21	20	9	6	3	0	4055	G protein-coupled receptor kinase-interactor 1
TCTGAATTAT	24	16	0	0	1	0	50964	carcinoembryonic antigen-related cell adhesion molecule 1 (biliary glycoprotein)
TGACTAATTG	7	9	2	0	0	3	293380	ESTs
TGAGTGACAG	9	68	0	6	3	7	205126	<i>Homo sapiens</i> cDNA: FLJ22667 fis, clone HSI08385
TGAGTGACAG	9	68	0	6	3	7	271888	ESTs
TGATCTCTGT	6	7	1	0	1	1	30738	hypothetical protein FLJ10407
TGCAGCACGA	6	185	5	30	24	16	110309	major histocompatibility complex, class I, F
TGCAGCGCCT	16	9	1	1	1	1	77573	uridine phosphorylase
TGCCGCCCGC	14	5	2	2	1	0	202097	procollagen C-endopeptidase enhancer
TGCTCCTACC	140	113	70	22	17	22	111732	Fc fragment of IgG binding protein
TGCTCCTACC	140	113	70	22	17	22	301256	<i>Homo sapiens</i> chromosome 19, cosmid R30669
TGGCCATCTG	30	24	8	7	3	4	184052	PP1201 protein
TGGCGCGTGT	25	8	0	0	9	5	25640	claudin 3
TGGCTACTTA	6	9	1	0	1	2	117950	multifunctional polypeptide similar to SAICAR synthetase and AIR carboxylase
TGGGGAGAGG	43	18	20	7	3	7	288998	S100-type calcium binding protein A14
TTAACCCCTC	34	14	5	9	1	5	78224	ribonuclease, RNase A family, 1 (pancreatic)
TTATGGTGTG	11	17	0	0	0	0	271499	ESTs
TTCCACTAAC	29	9	7	4	5	5	79706	plectin 1, intermediate filament binding protein, 500 kD
TTCCGCGTTC	5	16	0	0	2	2	137274	ESTs, Weakly similar to
TTCTGGTGCG	8	2	0	0	1	0	119251	ubiquinol-cytochrome c reductase core protein 1
TTCTGTAGCC	13	23	4	2	4	2	5541	ATPase, Ca ⁺⁺ transporting, ubiquitous
TTGGACTTGG	33	31	7	18	12	16	89761	ATP synthase, H ⁺ transporting, mitochondrial F1 complex, delta subunit
TTGGGTTTC	111	184	50	81	67	50	62954	ferritin, heavy polypeptide 1
TTTAACGGCC	93	67	36	35	11	30	mito	Tag matches mitochondrial sequence
TTTCCTCTCA	21	8	6	2	4	3	184510	stratifin
TTTCCTCTCA	21	8	6	2	4	3	303400	ESTs
TTTCTGTCG	10	16	2	3	0	2	1686	guanine nucleotide binding protein (G protein), alpha 11 (Gq class)
TTTGGTTTCA	2	13	0	0	0	0		carcinoembryonic antigen-related cell adhesion molecule 1 (biliary glycoprotein)
TTTTCTGCAT	8	7	1	0	1	2	50964	glycoprotein
TTTTCTGCAT	8	7	1	0	1	2	77318	platelet-activating factor acetylhydrolase, isoform 1b, alpha subunit (45 kD)
TTTTTACTGA	32	19	10	10	8	1	111577	integral membrane protein 2C

REFERENCES

- Cancer Facts & FIGS. 1998: American Cancer Society, 1998.
- Inger, D. B. Colorectal cancer screening, *Prim Care*. 26: 179-187, 1999.
- Velculescu, V. E., Zhang, L., Vogelstein, B., and Kinzler, K. W. Serial Analysis Of Gene Expression, *Science*. 270: 484-487, 1995.
- Zhang, L., Zhou, W., Velculescu, V. E., Kern, S. E., Hruban, R. H., Hamilton, S. R., Vogelstein, B., and Kinzler, K. W. Gene Expression Profiles in Normal and Cancer Cells, *Science*. 276: 1268-1272, 1997.
- Lal, A., Lash, A. E., Altschul, S. F., Velculescu, V., Zhang, L., McLendon, R. E., Marra, M. A., Prange, C., Morin, P. J., Polyak, K., Papadopoulos, N., Vogelstein, B., Kinzler, K. W., Strausberg, R. L., and Riggins, G. J. A public database for gene expression in human cancers, *Cancer Res*. 59: 5403-5407, 1999.
- St Croix, B., Rago, C., Velculescu, V., Traverso, G., Romans, K. E., Montgomery, E., Lal, A., Riggins, G. J., Lengauer, C., Vogelstein, B., and Kinzler, K. W. Genes expressed in human tumor endothelium, *Science*. 289: 1197-1202, 2000.
- Guy-Crotte, O., Amouric, M., and Figarella, C. Characterization and N-terminal sequence of a degradation product of 14,000 molecular weight isolated from human pancreatic juice, *Biochem Biophys Res Commun*. 125: 516-523, 1984.
- Terazono, K., Yamamoto, H., Takasawa, S., Shiga, K., Yonemura, Y., Tochino, Y., and Okamoto, H. A novel gene activated in regenerating islets, *J Biol Chem*. 263: 2111-2114, 1988.
- Watanabe, T., Yonekura, H., Terazono, K., Yamamoto, H., and Okamoto, H. Complete nucleotide sequence of human reg gene and its expression in normal and tumoral tissues. The reg protein, pancreatic stone protein, and pancreatic thread protein are one and the same product of the gene, *J Biol Chem*. 265: 7432-7439, 1990.
- Rechreche, H., Montalto, G., Mallo, G. V., Vasseur, S., Marasa, L., Soubeyran, P., Dagorn, J. C., and Iovanna, J. L. pap, reg Ialpha and reg Tbeta mRNAs are concomitantly up-regulated during human colorectal carcinogenesis, *Int J Cancer*. 81: 688-694, 1999.
- Skonier, J., Neubauer, M., Madisen, L., Bennett, K., Plowman, G. D., and Purchio, A. F. cDNA cloning and sequence analysis of beta ig-h3, a novel gene induced in a human adenocarcinoma cell line after treatment with transforming growth factor-beta, *DNA Cell Biol*. 11: 511-522, 1992.
- Escribano, J., Hernando, N., Ghosh, S., Crabb, J., and Coca-Prados, M. cDNA from human ocular ciliary epithelium homologous to beta ig-h3 is preferentially expressed as an extracellular protein in the corneal epithelium, *J Cell Physiol*. 160: 511-521, 1994.
- Munier, F. L., Korvatska, E., Djemai, A., Le Paslier, D., Zografos, L., Pescia, G., and Schorderet, D. F. Kerato-

- epithelin mutations in four 5q31-linked corneal dystrophies, *Nat Genet.* 15: 247-251, 1997.
14. Fleming, A. On a remarkable bacteriolytic element found in tissues and secretions, *Proceedings of the Royal Society.* 93: 306-317, 1922.
 15. Sugi, K., Saitoh, O., Hirata, I., and Katsu, K. Fecal lactoferrin as a marker for disease activity in inflammatory bowel disease: comparison with other neutrophil-derived proteins, *Am J Gastroenterol.* 91: 927-934, 1996.
 16. van der Sluys Veer, A., Brouwer, J., Biemond, I., Bohbouth, G. E., Verspaget, H. W., and Lamers, C. B. Fecal lysozyme in assessment of disease activity in inflammatory bowel disease, *Dig Dis Sci.* 43: 590-595, 1998.
 17. Tomita, H., Sato, S., Matsuda, R., Sugiura, Y., Kawaguchi, H., Niimi, T., Yoshida, S., and Morishita, M. Serum lysozyme levels and clinical features of sarcoidosis, *Lung.* 177: 161-167, 1999.
 18. Ho, S. B., Itzkowitz, S. H., Frieria, A. M., Jiang, S. H., and Kim, Y. S. Cell lineage markers in premalignant and malignant colonic mucosa, *Gastroenterology.* 97: 392404, 1989.
 19. Yamada, R. and Kera, Y. D-amino acid hydrolysing enzymes, *Exs.* 85: 145-155, 1998.
 20. Bootcov, M. R., Bauskin, A. R., Valenzuela, S. M., Moore, A. G., Bansal, M., He, X. Y., Zhang, H. P., Donnellan, M., Mahler, S., Pryor, K., Walsh, B. J., Nicholson, R. C., Fair-

- lie, W. D., Por, S. B., Robbins, J. M., and Breit, S. N. MIC-1, a novel macrophage inhibitory cytokine, is a divergent member of the TGF-beta superfamily, *Proc Natl Acad Sci U S A.* 94: 11514-11519, 1997.
21. Paralkar, V. M., Vail, A. L., Grasser, W. A., Brown, T. A., Xu, H., Vukicevic, S., Ke, H. Z., Qi, H., Owen, T. A., and Thompson, D. D. Cloning and characterization of a novel member of the transforming growth factor-beta/bone morphogenetic protein family, *J Biol Chem.* 273: 13760-13767, 1998.
 22. Notterman, D. A., Alon, U., Sierk, A. J., Levine, A. J., Transcriptional Gene Expression Profiles of Colorectal Adenoma, Adenocarcinoma, and Normal Tissue Examined by Oligonucleotide Arrays, *Cancer Res.* 61: 3124-3130, 2001.
 23. Zhou, W., Sokoll, L. J., Brusek, D. J., Zhang, L., Velculescu, V., Goldin, S. B., Hruban, R. H., Kem, S. E., Hamilton, S. R., Chan, D. W., Vogelstein, B., and Kinzler, K. W. Identifying markers for pancreatic cancer by gene expression analysis, *Can Epid Bio & Prev.* 7: 109-112, 1998.
 24. Brown, D. A., Liu, T., Ward, R. L., Hawkins, N. J., Fairlie, W. D., Bauskin, A. R., Russell, P. J., Quinn, D. I., Grygiel, J. J., Moore, A. G., Sutherland, R. L., Turner, J., Kingsley, E. A., and Breit, S. N. Macrophage Inhibitory Cytokine-1 (MIC-1) in epithelial neoplasia, Submitted., 2001.

SEQUENCE LISTING

<160> NUMBER OF SEQ ID NOS: 334

<210> SEQ ID NO 1

<211> LENGTH: 10

<212> TYPE: DNA

<213> ORGANISM: Homo sapiens

<400> SEQUENCE: 1

atgtaaaaaa

10

<210> SEQ ID NO 2

<211> LENGTH: 10

<212> TYPE: DNA

<213> ORGANISM: Homo sapiens

<400> SEQUENCE: 2

taatttttgc

10

<210> SEQ ID NO 3

<211> LENGTH: 10

<212> TYPE: DNA

<213> ORGANISM: Homo sapiens

<400> SEQUENCE: 3

gtgtgtttgt

10

<210> SEQ ID NO 4

<211> LENGTH: 10

<212> TYPE: DNA

<213> ORGANISM: Homo sapiens

<400> SEQUENCE: 4

gtgctcattc

10

<210> SEQ ID NO 5

<211> LENGTH: 10

<212> TYPE: DNA

-continued

<213> ORGANISM: Homo sapiens
 <400> SEQUENCE: 5
 ttccagctgc 10

<210> SEQ ID NO 6
 <211> LENGTH: 10
 <212> TYPE: DNA
 <213> ORGANISM: Homo sapiens
 <400> SEQUENCE: 6
 accattggat 10

<210> SEQ ID NO 7
 <211> LENGTH: 10
 <212> TYPE: DNA
 <213> ORGANISM: Homo sapiens
 <400> SEQUENCE: 7
 tttccactaa 10

<210> SEQ ID NO 8
 <211> LENGTH: 10
 <212> TYPE: DNA
 <213> ORGANISM: Homo sapiens
 <400> SEQUENCE: 8
 caaggaccag 10

<210> SEQ ID NO 9
 <211> LENGTH: 10
 <212> TYPE: DNA
 <213> ORGANISM: Homo sapiens
 <400> SEQUENCE: 9
 aggaccatcg 10

<210> SEQ ID NO 10
 <211> LENGTH: 10
 <212> TYPE: DNA
 <213> ORGANISM: Homo sapiens
 <400> SEQUENCE: 10
 gtcacacca 10

<210> SEQ ID NO 11
 <211> LENGTH: 10
 <212> TYPE: DNA
 <213> ORGANISM: Homo sapiens
 <400> SEQUENCE: 11
 cttcaaatc 10

<210> SEQ ID NO 12
 <211> LENGTH: 10
 <212> TYPE: DNA
 <213> ORGANISM: Homo sapiens
 <400> SEQUENCE: 12
 tctgaattat 10

<210> SEQ ID NO 13
 <211> LENGTH: 10
 <212> TYPE: DNA

-continued

<213> ORGANISM: Homo sapiens
 <400> SEQUENCE: 13
 ttatggtgtg 10

 <210> SEQ ID NO 14
 <211> LENGTH: 10
 <212> TYPE: DNA
 <213> ORGANISM: Homo sapiens
 <400> SEQUENCE: 14
 ctggcaaagg 10

 <210> SEQ ID NO 15
 <211> LENGTH: 10
 <212> TYPE: DNA
 <213> ORGANISM: Homo sapiens
 <400> SEQUENCE: 15
 aggtgactgg 10

 <210> SEQ ID NO 16
 <211> LENGTH: 10
 <212> TYPE: DNA
 <213> ORGANISM: Homo sapiens
 <400> SEQUENCE: 16
 cttatggtcc 10

 <210> SEQ ID NO 17
 <211> LENGTH: 10
 <212> TYPE: DNA
 <213> ORGANISM: Homo sapiens
 <400> SEQUENCE: 17
 atgatggcac 10

 <210> SEQ ID NO 18
 <211> LENGTH: 10
 <212> TYPE: DNA
 <213> ORGANISM: Homo sapiens
 <400> SEQUENCE: 18
 gtccgagtgc 10

 <210> SEQ ID NO 19
 <211> LENGTH: 10
 <212> TYPE: DNA
 <213> ORGANISM: Homo sapiens
 <400> SEQUENCE: 19
 atttcaagat 10

 <210> SEQ ID NO 20
 <211> LENGTH: 10
 <212> TYPE: DNA
 <213> ORGANISM: Homo sapiens
 <400> SEQUENCE: 20
 caagagtttc 10

 <210> SEQ ID NO 21
 <211> LENGTH: 10
 <212> TYPE: DNA

-continued

<213> ORGANISM: Homo sapiens
 <400> SEQUENCE: 21
 gccatcctcc 10

<210> SEQ ID NO 22
 <211> LENGTH: 10
 <212> TYPE: DNA
 <213> ORGANISM: Homo sapiens
 <400> SEQUENCE: 22
 acccaactgc 10

<210> SEQ ID NO 23
 <211> LENGTH: 10
 <212> TYPE: DNA
 <213> ORGANISM: Homo sapiens
 <400> SEQUENCE: 23
 gccacgtca 10

<210> SEQ ID NO 24
 <211> LENGTH: 10
 <212> TYPE: DNA
 <213> ORGANISM: Homo sapiens
 <400> SEQUENCE: 24
 tttggttca 10

<210> SEQ ID NO 25
 <211> LENGTH: 10
 <212> TYPE: DNA
 <213> ORGANISM: Homo sapiens
 <400> SEQUENCE: 25
 ctcagaactt 10

<210> SEQ ID NO 26
 <211> LENGTH: 10
 <212> TYPE: DNA
 <213> ORGANISM: Homo sapiens
 <400> SEQUENCE: 26
 ccaacaccag 10

<210> SEQ ID NO 27
 <211> LENGTH: 10
 <212> TYPE: DNA
 <213> ORGANISM: Homo sapiens
 <400> SEQUENCE: 27
 gccacatact 10

<210> SEQ ID NO 28
 <211> LENGTH: 10
 <212> TYPE: DNA
 <213> ORGANISM: Homo sapiens
 <400> SEQUENCE: 28
 gtattggggc 10

<210> SEQ ID NO 29
 <211> LENGTH: 10
 <212> TYPE: DNA

-continued

<213> ORGANISM: Homo sapiens
 <400> SEQUENCE: 29
 ccggcttgag 10

 <210> SEQ ID NO 30
 <211> LENGTH: 10
 <212> TYPE: DNA
 <213> ORGANISM: Homo sapiens
 <400> SEQUENCE: 30
 gatatgtaaa 10

 <210> SEQ ID NO 31
 <211> LENGTH: 10
 <212> TYPE: DNA
 <213> ORGANISM: Homo sapiens
 <400> SEQUENCE: 31
 cataggttta 10

 <210> SEQ ID NO 32
 <211> LENGTH: 10
 <212> TYPE: DNA
 <213> ORGANISM: Homo sapiens
 <400> SEQUENCE: 32
 gtcctgaaca 10

 <210> SEQ ID NO 33
 <211> LENGTH: 10
 <212> TYPE: DNA
 <213> ORGANISM: Homo sapiens
 <400> SEQUENCE: 33
 aaaagaaact 10

 <210> SEQ ID NO 34
 <211> LENGTH: 10
 <212> TYPE: DNA
 <213> ORGANISM: Homo sapiens
 <400> SEQUENCE: 34
 aacgaggaat 10

 <210> SEQ ID NO 35
 <211> LENGTH: 10
 <212> TYPE: DNA
 <213> ORGANISM: Homo sapiens
 <400> SEQUENCE: 35
 aagaagatag 10

 <210> SEQ ID NO 36
 <211> LENGTH: 10
 <212> TYPE: DNA
 <213> ORGANISM: Homo sapiens
 <400> SEQUENCE: 36
 aataggtcca 10

 <210> SEQ ID NO 37
 <211> LENGTH: 10
 <212> TYPE: DNA

-continued

<213> ORGANISM: Homo sapiens
 <400> SEQUENCE: 37
 acaactcaat 10

<210> SEQ ID NO 38
 <211> LENGTH: 10
 <212> TYPE: DNA
 <213> ORGANISM: Homo sapiens
 <400> SEQUENCE: 38
 acaactcaat 10

<210> SEQ ID NO 39
 <211> LENGTH: 10
 <212> TYPE: DNA
 <213> ORGANISM: Homo sapiens
 <400> SEQUENCE: 39
 acatcatcga 10

<210> SEQ ID NO 40
 <211> LENGTH: 10
 <212> TYPE: DNA
 <213> ORGANISM: Homo sapiens
 <400> SEQUENCE: 40
 accattggat 10

<210> SEQ ID NO 41
 <211> LENGTH: 10
 <212> TYPE: DNA
 <213> ORGANISM: Homo sapiens
 <400> SEQUENCE: 41
 acctgtatcc 10

<210> SEQ ID NO 42
 <211> LENGTH: 10
 <212> TYPE: DNA
 <213> ORGANISM: Homo sapiens
 <400> SEQUENCE: 42
 actcAAAAA 10

<210> SEQ ID NO 43
 <211> LENGTH: 10
 <212> TYPE: DNA
 <213> ORGANISM: Homo sapiens
 <400> SEQUENCE: 43
 agcacctcca 10

<210> SEQ ID NO 44
 <211> LENGTH: 10
 <212> TYPE: DNA
 <213> ORGANISM: Homo sapiens
 <400> SEQUENCE: 44
 aggaccatcg 10

<210> SEQ ID NO 45
 <211> LENGTH: 10
 <212> TYPE: DNA

-continued

<213> ORGANISM: Homo sapiens
 <400> SEQUENCE: 45
 agggcttcca 10

 <210> SEQ ID NO 46
 <211> LENGTH: 10
 <212> TYPE: DNA
 <213> ORGANISM: Homo sapiens
 <400> SEQUENCE: 46
 atggctgta 10

 <210> SEQ ID NO 47
 <211> LENGTH: 10
 <212> TYPE: DNA
 <213> ORGANISM: Homo sapiens
 <400> SEQUENCE: 47
 atgtaaaaaa 10

 <210> SEQ ID NO 48
 <211> LENGTH: 10
 <212> TYPE: DNA
 <213> ORGANISM: Homo sapiens
 <400> SEQUENCE: 48
 atgtaaaaaa 10

 <210> SEQ ID NO 49
 <211> LENGTH: 10
 <212> TYPE: DNA
 <213> ORGANISM: Homo sapiens
 <400> SEQUENCE: 49
 atgtaaaaaa 10

 <210> SEQ ID NO 50
 <211> LENGTH: 10
 <212> TYPE: DNA
 <213> ORGANISM: Homo sapiens
 <400> SEQUENCE: 50
 attctccagt 10

 <210> SEQ ID NO 51
 <211> LENGTH: 10
 <212> TYPE: DNA
 <213> ORGANISM: Homo sapiens
 <400> SEQUENCE: 51
 caaggaccag 10

 <210> SEQ ID NO 52
 <211> LENGTH: 11
 <212> TYPE: DNA
 <213> ORGANISM: Homo sapiens
 <400> SEQUENCE: 52
 caatattttg t 11

 <210> SEQ ID NO 53
 <211> LENGTH: 10
 <212> TYPE: DNA

-continued

<213> ORGANISM: Homo sapiens
 <400> SEQUENCE: 53
 cagctcactg 10

<210> SEQ ID NO 54
 <211> LENGTH: 10
 <212> TYPE: DNA
 <213> ORGANISM: Homo sapiens
 <400> SEQUENCE: 54
 catttghtaat 10

<210> SEQ ID NO 55
 <211> LENGTH: 10
 <212> TYPE: DNA
 <213> ORGANISM: Homo sapiens
 <400> SEQUENCE: 55
 cctagctgga 10

<210> SEQ ID NO 56
 <211> LENGTH: 10
 <212> TYPE: DNA
 <213> ORGANISM: Homo sapiens
 <400> SEQUENCE: 56
 ccttcgagat 10

<210> SEQ ID NO 57
 <211> LENGTH: 10
 <212> TYPE: DNA
 <213> ORGANISM: Homo sapiens
 <400> SEQUENCE: 57
 ctccctcacct 10

<210> SEQ ID NO 58
 <211> LENGTH: 10
 <212> TYPE: DNA
 <213> ORGANISM: Homo sapiens
 <400> SEQUENCE: 58
 ctgacttgtg 10

<210> SEQ ID NO 59
 <211> LENGTH: 10
 <212> TYPE: DNA
 <213> ORGANISM: Homo sapiens
 <400> SEQUENCE: 59
 ctgggttaat 10

<210> SEQ ID NO 60
 <211> LENGTH: 11
 <212> TYPE: DNA
 <213> ORGANISM: Homo sapiens
 <400> SEQUENCE: 60
 ctgttgtatt g 11

<210> SEQ ID NO 61
 <211> LENGTH: 10
 <212> TYPE: DNA

-continued

<213> ORGANISM: Homo sapiens
 <400> SEQUENCE: 61
 ctgttggtga 10

 <210> SEQ ID NO 62
 <211> LENGTH: 10
 <212> TYPE: DNA
 <213> ORGANISM: Homo sapiens
 <400> SEQUENCE: 62
 gaaaaatggt 10

 <210> SEQ ID NO 63
 <211> LENGTH: 10
 <212> TYPE: DNA
 <213> ORGANISM: Homo sapiens
 <400> SEQUENCE: 63
 gagtcaggag 10

 <210> SEQ ID NO 64
 <211> LENGTH: 10
 <212> TYPE: DNA
 <213> ORGANISM: Homo sapiens
 <400> SEQUENCE: 64
 gcataatagg 10

 <210> SEQ ID NO 65
 <211> LENGTH: 9
 <212> TYPE: DNA
 <213> ORGANISM: Homo sapiens
 <400> SEQUENCE: 65
 gcatttaat 9

 <210> SEQ ID NO 66
 <211> LENGTH: 9
 <212> TYPE: DNA
 <213> ORGANISM: Homo sapiens
 <400> SEQUENCE: 66
 gcatttaat 9

 <210> SEQ ID NO 67
 <211> LENGTH: 10
 <212> TYPE: DNA
 <213> ORGANISM: Homo sapiens
 <400> SEQUENCE: 67
 gcatttgaca 10

 <210> SEQ ID NO 68
 <211> LENGTH: 10
 <212> TYPE: DNA
 <213> ORGANISM: Homo sapiens
 <400> SEQUENCE: 68
 gctttaagg 10

 <210> SEQ ID NO 69
 <211> LENGTH: 10
 <212> TYPE: DNA

-continued

<213> ORGANISM: Homo sapiens
 <400> SEQUENCE: 69
 ggaccactga 10

<210> SEQ ID NO 70
 <211> LENGTH: 10
 <212> TYPE: DNA
 <213> ORGANISM: Homo sapiens
 <400> SEQUENCE: 70
 gggggtaact 10

<210> SEQ ID NO 71
 <211> LENGTH: 10
 <212> TYPE: DNA
 <213> ORGANISM: Homo sapiens
 <400> SEQUENCE: 71
 gtgcgctgag 10

<210> SEQ ID NO 72
 <211> LENGTH: 10
 <212> TYPE: DNA
 <213> ORGANISM: Homo sapiens
 <400> SEQUENCE: 72
 gtgctcattc 10

<210> SEQ ID NO 73
 <211> LENGTH: 10
 <212> TYPE: DNA
 <213> ORGANISM: Homo sapiens
 <400> SEQUENCE: 73
 gtgctcattc 10

<210> SEQ ID NO 74
 <211> LENGTH: 10
 <212> TYPE: DNA
 <213> ORGANISM: Homo sapiens
 <400> SEQUENCE: 74
 gtgtgtttgt 10

<210> SEQ ID NO 75
 <211> LENGTH: 10
 <212> TYPE: DNA
 <213> ORGANISM: Homo sapiens
 <400> SEQUENCE: 75
 gttcgtgcca 10

<210> SEQ ID NO 76
 <211> LENGTH: 10
 <212> TYPE: DNA
 <213> ORGANISM: Homo sapiens
 <400> SEQUENCE: 76
 gttcgtgcca 10

<210> SEQ ID NO 77
 <211> LENGTH: 10
 <212> TYPE: DNA

-continued

<213> ORGANISM: Homo sapiens
 <400> SEQUENCE: 77
 taataaaggt 10

<210> SEQ ID NO 78
 <211> LENGTH: 10
 <212> TYPE: DNA
 <213> ORGANISM: Homo sapiens
 <400> SEQUENCE: 78
 taatttttgc 10

<210> SEQ ID NO 79
 <211> LENGTH: 10
 <212> TYPE: DNA
 <213> ORGANISM: Homo sapiens
 <400> SEQUENCE: 79
 tcacaagcaa 10

<210> SEQ ID NO 80
 <211> LENGTH: 10
 <212> TYPE: DNA
 <213> ORGANISM: Homo sapiens
 <400> SEQUENCE: 80
 tcagatcttt 10

<210> SEQ ID NO 81
 <211> LENGTH: 10
 <212> TYPE: DNA
 <213> ORGANISM: Homo sapiens
 <400> SEQUENCE: 81
 tcctgccccca 10

<210> SEQ ID NO 82
 <211> LENGTH: 10
 <212> TYPE: DNA
 <213> ORGANISM: Homo sapiens
 <400> SEQUENCE: 82
 tgaaataaaa 10

<210> SEQ ID NO 83
 <211> LENGTH: 10
 <212> TYPE: DNA
 <213> ORGANISM: Homo sapiens
 <400> SEQUENCE: 83
 tgaaataaaa 10

<210> SEQ ID NO 84
 <211> LENGTH: 10
 <212> TYPE: DNA
 <213> ORGANISM: Homo sapiens
 <400> SEQUENCE: 84
 tgatgtctgg 10

<210> SEQ ID NO 85
 <211> LENGTH: 10
 <212> TYPE: DNA

-continued

<213> ORGANISM: Homo sapiens
 <400> SEQUENCE: 85
 tgtaatcaat 10

 <210> SEQ ID NO 86
 <211> LENGTH: 10
 <212> TYPE: DNA
 <213> ORGANISM: Homo sapiens
 <400> SEQUENCE: 86
 ttaccatatac 10

 <210> SEQ ID NO 87
 <211> LENGTH: 10
 <212> TYPE: DNA
 <213> ORGANISM: Homo sapiens
 <400> SEQUENCE: 87
 ttatgggatc 10

 <210> SEQ ID NO 88
 <211> LENGTH: 10
 <212> TYPE: DNA
 <213> ORGANISM: Homo sapiens
 <400> SEQUENCE: 88
 ttcaattaa 10

 <210> SEQ ID NO 89
 <211> LENGTH: 9
 <212> TYPE: DNA
 <213> ORGANISM: Homo sapiens
 <400> SEQUENCE: 89
 ttccagctc 9

 <210> SEQ ID NO 90
 <211> LENGTH: 9
 <212> TYPE: DNA
 <213> ORGANISM: Homo sapiens
 <400> SEQUENCE: 90
 ttccagctc 9

 <210> SEQ ID NO 91
 <211> LENGTH: 9
 <212> TYPE: DNA
 <213> ORGANISM: Homo sapiens
 <400> SEQUENCE: 91
 ttccagctc 9

 <210> SEQ ID NO 92
 <211> LENGTH: 10
 <212> TYPE: DNA
 <213> ORGANISM: Homo sapiens
 <400> SEQUENCE: 92
 tttccactaa 10

 <210> SEQ ID NO 93
 <211> LENGTH: 10
 <212> TYPE: DNA

-continued

<213> ORGANISM: Homo sapiens
 <400> SEQUENCE: 93
 tttccactaa 10

 <210> SEQ ID NO 94
 <211> LENGTH: 10
 <212> TYPE: DNA
 <213> ORGANISM: Homo sapiens
 <400> SEQUENCE: 94
 tttttaatgt 10

 <210> SEQ ID NO 95
 <211> LENGTH: 10
 <212> TYPE: DNA
 <213> ORGANISM: Homo sapiens
 <400> SEQUENCE: 95
 aaatctggca 10

 <210> SEQ ID NO 96
 <211> LENGTH: 10
 <212> TYPE: DNA
 <213> ORGANISM: Homo sapiens
 <400> SEQUENCE: 96
 aacgtgcagg 10

 <210> SEQ ID NO 97
 <211> LENGTH: 10
 <212> TYPE: DNA
 <213> ORGANISM: Homo sapiens
 <400> SEQUENCE: 97
 aagaaagctc 10

 <210> SEQ ID NO 98
 <211> LENGTH: 10
 <212> TYPE: DNA
 <213> ORGANISM: Homo sapiens
 <400> SEQUENCE: 98
 aagaaagctc 10

 <210> SEQ ID NO 99
 <211> LENGTH: 10
 <212> TYPE: DNA
 <213> ORGANISM: Homo sapiens
 <400> SEQUENCE: 99
 aagaagcagg 10

 <210> SEQ ID NO 100
 <211> LENGTH: 10
 <212> TYPE: DNA
 <213> ORGANISM: Homo sapiens
 <400> SEQUENCE: 100
 aaggtagcag 10

 <210> SEQ ID NO 101
 <211> LENGTH: 10
 <212> TYPE: DNA

-continued

<213> ORGANISM: Homo sapiens
<400> SEQUENCE: 101
aataaaggct 10

<210> SEQ ID NO 102
<211> LENGTH: 10
<212> TYPE: DNA
<213> ORGANISM: Homo sapiens
<400> SEQUENCE: 102
aatagtttcc 10

<210> SEQ ID NO 103
<211> LENGTH: 10
<212> TYPE: DNA
<213> ORGANISM: Homo sapiens
<400> SEQUENCE: 103
aatcacaat 10

<210> SEQ ID NO 104
<211> LENGTH: 10
<212> TYPE: DNA
<213> ORGANISM: Homo sapiens
<400> SEQUENCE: 104
aatgagaagg 10

<210> SEQ ID NO 105
<211> LENGTH: 10
<212> TYPE: DNA
<213> ORGANISM: Homo sapiens
<400> SEQUENCE: 105
acaattggtc 10

<210> SEQ ID NO 106
<211> LENGTH: 10
<212> TYPE: DNA
<213> ORGANISM: Homo sapiens
<400> SEQUENCE: 106
acacccatca 10

<210> SEQ ID NO 107
<211> LENGTH: 10
<212> TYPE: DNA
<213> ORGANISM: Homo sapiens
<400> SEQUENCE: 107
acagggtgac 10

<210> SEQ ID NO 108
<211> LENGTH: 10
<212> TYPE: DNA
<213> ORGANISM: Homo sapiens
<400> SEQUENCE: 108
acattgggtg 10

<210> SEQ ID NO 109
<211> LENGTH: 10
<212> TYPE: DNA

-continued

<213> ORGANISM: Homo sapiens
 <400> SEQUENCE: 109
 acattgggtg 10

<210> SEQ ID NO 110
 <211> LENGTH: 10
 <212> TYPE: DNA
 <213> ORGANISM: Homo sapiens
 <400> SEQUENCE: 110
 acccaactgc 10

<210> SEQ ID NO 111
 <211> LENGTH: 10
 <212> TYPE: DNA
 <213> ORGANISM: Homo sapiens
 <400> SEQUENCE: 111
 acccactca 10

<210> SEQ ID NO 112
 <211> LENGTH: 10
 <212> TYPE: DNA
 <213> ORGANISM: Homo sapiens
 <400> SEQUENCE: 112
 accccccgc 10

<210> SEQ ID NO 113
 <211> LENGTH: 10
 <212> TYPE: DNA
 <213> ORGANISM: Homo sapiens
 <400> SEQUENCE: 113
 accccccgc 10

<210> SEQ ID NO 114
 <211> LENGTH: 10
 <212> TYPE: DNA
 <213> ORGANISM: Homo sapiens
 <400> SEQUENCE: 114
 acctgcatcc 10

<210> SEQ ID NO 115
 <211> LENGTH: 10
 <212> TYPE: DNA
 <213> ORGANISM: Homo sapiens
 <400> SEQUENCE: 115
 acctggggag 10

<210> SEQ ID NO 116
 <211> LENGTH: 10
 <212> TYPE: DNA
 <213> ORGANISM: Homo sapiens
 <400> SEQUENCE: 116
 acctggggag 10

<210> SEQ ID NO 117
 <211> LENGTH: 10
 <212> TYPE: DNA

-continued

<213> ORGANISM: Homo sapiens
 <400> SEQUENCE: 117
 acggtccagg 10

<210> SEQ ID NO 118
 <211> LENGTH: 10
 <212> TYPE: DNA
 <213> ORGANISM: Homo sapiens
 <400> SEQUENCE: 118
 actcttggtg 10

<210> SEQ ID NO 119
 <211> LENGTH: 10
 <212> TYPE: DNA
 <213> ORGANISM: Homo sapiens
 <400> SEQUENCE: 119
 actgtggcgg 10

<210> SEQ ID NO 120
 <211> LENGTH: 10
 <212> TYPE: DNA
 <213> ORGANISM: Homo sapiens
 <400> SEQUENCE: 120
 agaatagctt 10

<210> SEQ ID NO 121
 <211> LENGTH: 10
 <212> TYPE: DNA
 <213> ORGANISM: Homo sapiens
 <400> SEQUENCE: 121
 agcaggagca 10

<210> SEQ ID NO 122
 <211> LENGTH: 10
 <212> TYPE: DNA
 <213> ORGANISM: Homo sapiens
 <400> SEQUENCE: 122
 agcaggagca 10

<210> SEQ ID NO 123
 <211> LENGTH: 10
 <212> TYPE: DNA
 <213> ORGANISM: Homo sapiens
 <400> SEQUENCE: 123
 agcccgacca 10

<210> SEQ ID NO 124
 <211> LENGTH: 10
 <212> TYPE: DNA
 <213> ORGANISM: Homo sapiens
 <400> SEQUENCE: 124
 aggatggtcc 10

<210> SEQ ID NO 125
 <211> LENGTH: 10
 <212> TYPE: DNA

-continued

<213> ORGANISM: Homo sapiens
 <400> SEQUENCE: 125
 aggccaaggg 10

<210> SEQ ID NO 126
 <211> LENGTH: 10
 <212> TYPE: DNA
 <213> ORGANISM: Homo sapiens
 <400> SEQUENCE: 126
 aggtgactgg 10

<210> SEQ ID NO 127
 <211> LENGTH: 10
 <212> TYPE: DNA
 <213> ORGANISM: Homo sapiens
 <400> SEQUENCE: 127
 agtgggctca 10

<210> SEQ ID NO 128
 <211> LENGTH: 10
 <212> TYPE: DNA
 <213> ORGANISM: Homo sapiens
 <400> SEQUENCE: 128
 atactccact 10

<210> SEQ ID NO 129
 <211> LENGTH: 10
 <212> TYPE: DNA
 <213> ORGANISM: Homo sapiens
 <400> SEQUENCE: 129
 atataatctg 10

<210> SEQ ID NO 130
 <211> LENGTH: 10
 <212> TYPE: DNA
 <213> ORGANISM: Homo sapiens
 <400> SEQUENCE: 130
 atcgtggcgg 10

<210> SEQ ID NO 131
 <211> LENGTH: 10
 <212> TYPE: DNA
 <213> ORGANISM: Homo sapiens
 <400> SEQUENCE: 131
 atgacgctca 10

<210> SEQ ID NO 132
 <211> LENGTH: 10
 <212> TYPE: DNA
 <213> ORGANISM: Homo sapiens
 <400> SEQUENCE: 132
 atgatggcac 10

<210> SEQ ID NO 133
 <211> LENGTH: 10
 <212> TYPE: DNA

-continued

<213> ORGANISM: Homo sapiens
 <400> SEQUENCE: 133
 atgcggagtc 10

<210> SEQ ID NO 134
 <211> LENGTH: 10
 <212> TYPE: DNA
 <213> ORGANISM: Homo sapiens
 <400> SEQUENCE: 134
 atgcgggaga 10

<210> SEQ ID NO 135
 <211> LENGTH: 10
 <212> TYPE: DNA
 <213> ORGANISM: Homo sapiens
 <400> SEQUENCE: 135
 atggcacgga 10

<210> SEQ ID NO 136
 <211> LENGTH: 10
 <212> TYPE: DNA
 <213> ORGANISM: Homo sapiens
 <400> SEQUENCE: 136
 atggtctacg 10

<210> SEQ ID NO 137
 <211> LENGTH: 10
 <212> TYPE: DNA
 <213> ORGANISM: Homo sapiens
 <400> SEQUENCE: 137
 atggtggggg 10

<210> SEQ ID NO 138
 <211> LENGTH: 10
 <212> TYPE: DNA
 <213> ORGANISM: Homo sapiens
 <400> SEQUENCE: 138
 atgtgcgtgg 10

<210> SEQ ID NO 139
 <211> LENGTH: 10
 <212> TYPE: DNA
 <213> ORGANISM: Homo sapiens
 <400> SEQUENCE: 139
 atgtgggctc 10

<210> SEQ ID NO 140
 <211> LENGTH: 10
 <212> TYPE: DNA
 <213> ORGANISM: Homo sapiens
 <400> SEQUENCE: 140
 atgtgggctc 10

<210> SEQ ID NO 141
 <211> LENGTH: 10
 <212> TYPE: DNA

-continued

<213> ORGANISM: Homo sapiens
 <400> SEQUENCE: 141
 attggagtgc 10

<210> SEQ ID NO 142
 <211> LENGTH: 10
 <212> TYPE: DNA
 <213> ORGANISM: Homo sapiens
 <400> SEQUENCE: 142
 atttcaagat 10

<210> SEQ ID NO 143
 <211> LENGTH: 10
 <212> TYPE: DNA
 <213> ORGANISM: Homo sapiens
 <400> SEQUENCE: 143
 atttcaagat 10

<210> SEQ ID NO 144
 <211> LENGTH: 10
 <212> TYPE: DNA
 <213> ORGANISM: Homo sapiens
 <400> SEQUENCE: 144
 caaataaaaag 10

<210> SEQ ID NO 145
 <211> LENGTH: 10
 <212> TYPE: DNA
 <213> ORGANISM: Homo sapiens
 <400> SEQUENCE: 145
 caagagtttc 10

<210> SEQ ID NO 146
 <211> LENGTH: 10
 <212> TYPE: DNA
 <213> ORGANISM: Homo sapiens
 <400> SEQUENCE: 146
 caccctgat 10

<210> SEQ ID NO 147
 <211> LENGTH: 10
 <212> TYPE: DNA
 <213> ORGANISM: Homo sapiens
 <400> SEQUENCE: 147
 cagtgcgttc 10

<210> SEQ ID NO 148
 <211> LENGTH: 10
 <212> TYPE: DNA
 <213> ORGANISM: Homo sapiens
 <400> SEQUENCE: 148
 cataggttta 10

<210> SEQ ID NO 149
 <211> LENGTH: 10
 <212> TYPE: DNA

-continued

<213> ORGANISM: Homo sapiens
 <400> SEQUENCE: 149
 ccaaagctat 10

<210> SEQ ID NO 150
 <211> LENGTH: 10
 <212> TYPE: DNA
 <213> ORGANISM: Homo sapiens
 <400> SEQUENCE: 150
 ccaacaccag 10

<210> SEQ ID NO 151
 <211> LENGTH: 10
 <212> TYPE: DNA
 <213> ORGANISM: Homo sapiens
 <400> SEQUENCE: 151
 ccactgcacc 10

<210> SEQ ID NO 152
 <211> LENGTH: 10
 <212> TYPE: DNA
 <213> ORGANISM: Homo sapiens
 <400> SEQUENCE: 152
 ccaggggaga 10

<210> SEQ ID NO 153
 <211> LENGTH: 10
 <212> TYPE: DNA
 <213> ORGANISM: Homo sapiens
 <400> SEQUENCE: 153
 ccattccact 10

<210> SEQ ID NO 154
 <211> LENGTH: 10
 <212> TYPE: DNA
 <213> ORGANISM: Homo sapiens
 <400> SEQUENCE: 154
 cccaacgcgc 10

<210> SEQ ID NO 155
 <211> LENGTH: 10
 <212> TYPE: DNA
 <213> ORGANISM: Homo sapiens
 <400> SEQUENCE: 155
 cccccgaagc 10

<210> SEQ ID NO 156
 <211> LENGTH: 10
 <212> TYPE: DNA
 <213> ORGANISM: Homo sapiens
 <400> SEQUENCE: 156
 cccccgcgga 10

<210> SEQ ID NO 157
 <211> LENGTH: 10
 <212> TYPE: DNA

-continued

<213> ORGANISM: Homo sapiens
 <400> SEQUENCE: 157
 cccctgcat 10

<210> SEQ ID NO 158
 <211> LENGTH: 10
 <212> TYPE: DNA
 <213> ORGANISM: Homo sapiens
 <400> SEQUENCE: 158
 cccgctctt 10

<210> SEQ ID NO 159
 <211> LENGTH: 10
 <212> TYPE: DNA
 <213> ORGANISM: Homo sapiens
 <400> SEQUENCE: 159
 ccctccgaa 10

<210> SEQ ID NO 160
 <211> LENGTH: 10
 <212> TYPE: DNA
 <213> ORGANISM: Homo sapiens
 <400> SEQUENCE: 160
 ccgctgact 10

<210> SEQ ID NO 161
 <211> LENGTH: 10
 <212> TYPE: DNA
 <213> ORGANISM: Homo sapiens
 <400> SEQUENCE: 161
 ccggcttgag 10

<210> SEQ ID NO 162
 <211> LENGTH: 10
 <212> TYPE: DNA
 <213> ORGANISM: Homo sapiens
 <400> SEQUENCE: 162
 cctccagcta 10

<210> SEQ ID NO 163
 <211> LENGTH: 10
 <212> TYPE: DNA
 <213> ORGANISM: Homo sapiens
 <400> SEQUENCE: 163
 cctccagtac 10

<210> SEQ ID NO 164
 <211> LENGTH: 10
 <212> TYPE: DNA
 <213> ORGANISM: Homo sapiens
 <400> SEQUENCE: 164
 cctgcccccc 10

<210> SEQ ID NO 165
 <211> LENGTH: 10
 <212> TYPE: DNA

-continued

<213> ORGANISM: Homo sapiens
 <400> SEQUENCE: 165
 cctgctgcag 10

<210> SEQ ID NO 166
 <211> LENGTH: 10
 <212> TYPE: DNA
 <213> ORGANISM: Homo sapiens
 <400> SEQUENCE: 166
 cctgcttgtc 10

<210> SEQ ID NO 167
 <211> LENGTH: 10
 <212> TYPE: DNA
 <213> ORGANISM: Homo sapiens
 <400> SEQUENCE: 167
 cctgcttgtc 10

<210> SEQ ID NO 168
 <211> LENGTH: 10
 <212> TYPE: DNA
 <213> ORGANISM: Homo sapiens
 <400> SEQUENCE: 168
 cctggaagag 10

<210> SEQ ID NO 169
 <211> LENGTH: 10
 <212> TYPE: DNA
 <213> ORGANISM: Homo sapiens
 <400> SEQUENCE: 169
 cctgtctgcc 10

<210> SEQ ID NO 170
 <211> LENGTH: 10
 <212> TYPE: DNA
 <213> ORGANISM: Homo sapiens
 <400> SEQUENCE: 170
 cctgtgacag 10

<210> SEQ ID NO 171
 <211> LENGTH: 10
 <212> TYPE: DNA
 <213> ORGANISM: Homo sapiens
 <400> SEQUENCE: 171
 ccttcaaatc 10

<210> SEQ ID NO 172
 <211> LENGTH: 10
 <212> TYPE: DNA
 <213> ORGANISM: Homo sapiens
 <400> SEQUENCE: 172
 cgaggggcca 10

<210> SEQ ID NO 173
 <211> LENGTH: 10
 <212> TYPE: DNA

-continued

<213> ORGANISM: Homo sapiens
 <400> SEQUENCE: 173
 cgctgtgggg 10

<210> SEQ ID NO 174
 <211> LENGTH: 10
 <212> TYPE: DNA
 <213> ORGANISM: Homo sapiens
 <400> SEQUENCE: 174
 cggactcact 10

<210> SEQ ID NO 175
 <211> LENGTH: 10
 <212> TYPE: DNA
 <213> ORGANISM: Homo sapiens
 <400> SEQUENCE: 175
 cggactcact 10

<210> SEQ ID NO 176
 <211> LENGTH: 10
 <212> TYPE: DNA
 <213> ORGANISM: Homo sapiens
 <400> SEQUENCE: 176
 cgggagtcgg 10

<210> SEQ ID NO 177
 <211> LENGTH: 10
 <212> TYPE: DNA
 <213> ORGANISM: Homo sapiens
 <400> SEQUENCE: 177
 cggtgggacc 10

<210> SEQ ID NO 178
 <211> LENGTH: 10
 <212> TYPE: DNA
 <213> ORGANISM: Homo sapiens
 <400> SEQUENCE: 178
 cgtgggtggg 10

<210> SEQ ID NO 179
 <211> LENGTH: 10
 <212> TYPE: DNA
 <213> ORGANISM: Homo sapiens
 <400> SEQUENCE: 179
 ctaccctcac 10

<210> SEQ ID NO 180
 <211> LENGTH: 10
 <212> TYPE: DNA
 <213> ORGANISM: Homo sapiens
 <400> SEQUENCE: 180
 ctcagaactt 10

<210> SEQ ID NO 181
 <211> LENGTH: 10
 <212> TYPE: DNA

-continued

<213> ORGANISM: Homo sapiens
 <400> SEQUENCE: 181
 ctgaacctcc 10

<210> SEQ ID NO 182
 <211> LENGTH: 10
 <212> TYPE: DNA
 <213> ORGANISM: Homo sapiens
 <400> SEQUENCE: 182
 ctgacctgtg 10

<210> SEQ ID NO 183
 <211> LENGTH: 10
 <212> TYPE: DNA
 <213> ORGANISM: Homo sapiens
 <400> SEQUENCE: 183
 ctggatctgg 10

<210> SEQ ID NO 184
 <211> LENGTH: 10
 <212> TYPE: DNA
 <213> ORGANISM: Homo sapiens
 <400> SEQUENCE: 184
 ctggcaaagg 10

<210> SEQ ID NO 185
 <211> LENGTH: 10
 <212> TYPE: DNA
 <213> ORGANISM: Homo sapiens
 <400> SEQUENCE: 185
 ctggccctcg 10

<210> SEQ ID NO 186
 <211> LENGTH: 10
 <212> TYPE: DNA
 <213> ORGANISM: Homo sapiens
 <400> SEQUENCE: 186
 ctggccctcg 10

<210> SEQ ID NO 187
 <211> LENGTH: 10
 <212> TYPE: DNA
 <213> ORGANISM: Homo sapiens
 <400> SEQUENCE: 187
 ctggccctcg 10

<210> SEQ ID NO 188
 <211> LENGTH: 10
 <212> TYPE: DNA
 <213> ORGANISM: Homo sapiens
 <400> SEQUENCE: 188
 ctggctatcc 10

<210> SEQ ID NO 189
 <211> LENGTH: 10
 <212> TYPE: DNA

-continued

<213> ORGANISM: Homo sapiens
 <400> SEQUENCE: 189
 ctgggcctct 10

<210> SEQ ID NO 190
 <211> LENGTH: 10
 <212> TYPE: DNA
 <213> ORGANISM: Homo sapiens
 <400> SEQUENCE: 190
 ctgtacttgt 10

<210> SEQ ID NO 191
 <211> LENGTH: 10
 <212> TYPE: DNA
 <213> ORGANISM: Homo sapiens
 <400> SEQUENCE: 191
 ctgtgtggct 10

<210> SEQ ID NO 192
 <211> LENGTH: 10
 <212> TYPE: DNA
 <213> ORGANISM: Homo sapiens
 <400> SEQUENCE: 192
 ctgtgtggct 10

<210> SEQ ID NO 193
 <211> LENGTH: 10
 <212> TYPE: DNA
 <213> ORGANISM: Homo sapiens
 <400> SEQUENCE: 193
 cttacaagca 10

<210> SEQ ID NO 194
 <211> LENGTH: 10
 <212> TYPE: DNA
 <213> ORGANISM: Homo sapiens
 <400> SEQUENCE: 194
 cttagagggg 10

<210> SEQ ID NO 195
 <211> LENGTH: 10
 <212> TYPE: DNA
 <213> ORGANISM: Homo sapiens
 <400> SEQUENCE: 195
 cttatggtcc 10

<210> SEQ ID NO 196
 <211> LENGTH: 10
 <212> TYPE: DNA
 <213> ORGANISM: Homo sapiens
 <400> SEQUENCE: 196
 cttccagcta 10

<210> SEQ ID NO 197
 <211> LENGTH: 10
 <212> TYPE: DNA

-continued

<213> ORGANISM: Homo sapiens
 <400> SEQUENCE: 197
 cttcttgccc 10

<210> SEQ ID NO 198
 <211> LENGTH: 10
 <212> TYPE: DNA
 <213> ORGANISM: Homo sapiens
 <400> SEQUENCE: 198
 cttgacatac 10

<210> SEQ ID NO 199
 <211> LENGTH: 10
 <212> TYPE: DNA
 <213> ORGANISM: Homo sapiens
 <400> SEQUENCE: 199
 cttgattccc 10

<210> SEQ ID NO 200
 <211> LENGTH: 10
 <212> TYPE: DNA
 <213> ORGANISM: Homo sapiens
 <400> SEQUENCE: 200
 gacatcaagt 10

<210> SEQ ID NO 201
 <211> LENGTH: 10
 <212> TYPE: DNA
 <213> ORGANISM: Homo sapiens
 <400> SEQUENCE: 201
 gaccagccca 10

<210> SEQ ID NO 202
 <211> LENGTH: 10
 <212> TYPE: DNA
 <213> ORGANISM: Homo sapiens
 <400> SEQUENCE: 202
 gaccagtggc 10

<210> SEQ ID NO 203
 <211> LENGTH: 10
 <212> TYPE: DNA
 <213> ORGANISM: Homo sapiens
 <400> SEQUENCE: 203
 gacgcggcgc 10

<210> SEQ ID NO 204
 <211> LENGTH: 10
 <212> TYPE: DNA
 <213> ORGANISM: Homo sapiens
 <400> SEQUENCE: 204
 gagagctccc 10

<210> SEQ ID NO 205
 <211> LENGTH: 10
 <212> TYPE: DNA

-continued

<213> ORGANISM: Homo sapiens
 <400> SEQUENCE: 205
 gagcaccgtg 10

<210> SEQ ID NO 206
 <211> LENGTH: 10
 <212> TYPE: DNA
 <213> ORGANISM: Homo sapiens
 <400> SEQUENCE: 206
 gatatgtaaa 10

<210> SEQ ID NO 207
 <211> LENGTH: 10
 <212> TYPE: DNA
 <213> ORGANISM: Homo sapiens
 <400> SEQUENCE: 207
 gatcccaact 10

<210> SEQ ID NO 208
 <211> LENGTH: 10
 <212> TYPE: DNA
 <213> ORGANISM: Homo sapiens
 <400> SEQUENCE: 208
 gatgaatccg 10

<210> SEQ ID NO 209
 <211> LENGTH: 10
 <212> TYPE: DNA
 <213> ORGANISM: Homo sapiens
 <400> SEQUENCE: 209
 gatgaccccc 10

<210> SEQ ID NO 210
 <211> LENGTH: 10
 <212> TYPE: DNA
 <213> ORGANISM: Homo sapiens
 <400> SEQUENCE: 210
 gcaagaaagt 10

<210> SEQ ID NO 211
 <211> LENGTH: 10
 <212> TYPE: DNA
 <213> ORGANISM: Homo sapiens
 <400> SEQUENCE: 211
 gcacaggtca 10

<210> SEQ ID NO 212
 <211> LENGTH: 10
 <212> TYPE: DNA
 <213> ORGANISM: Homo sapiens
 <400> SEQUENCE: 212
 gcaccctttc 10

<210> SEQ ID NO 213
 <211> LENGTH: 10
 <212> TYPE: DNA

-continued

<213> ORGANISM: Homo sapiens
 <400> SEQUENCE: 213
 gcacctgtcg 10

<210> SEQ ID NO 214
 <211> LENGTH: 10
 <212> TYPE: DNA
 <213> ORGANISM: Homo sapiens
 <400> SEQUENCE: 214
 gcacctgtcg 10

<210> SEQ ID NO 215
 <211> LENGTH: 10
 <212> TYPE: DNA
 <213> ORGANISM: Homo sapiens
 <400> SEQUENCE: 215
 gcagctcctg 10

<210> SEQ ID NO 216
 <211> LENGTH: 10
 <212> TYPE: DNA
 <213> ORGANISM: Homo sapiens
 <400> SEQUENCE: 216
 gcaggagggtg 10

<210> SEQ ID NO 217
 <211> LENGTH: 10
 <212> TYPE: DNA
 <213> ORGANISM: Homo sapiens
 <400> SEQUENCE: 217
 gcaggagggtg 10

<210> SEQ ID NO 218
 <211> LENGTH: 10
 <212> TYPE: DNA
 <213> ORGANISM: Homo sapiens
 <400> SEQUENCE: 218
 gcagggcctc 10

<210> SEQ ID NO 219
 <211> LENGTH: 10
 <212> TYPE: DNA
 <213> ORGANISM: Homo sapiens
 <400> SEQUENCE: 219
 gccacatact 10

<210> SEQ ID NO 220
 <211> LENGTH: 10
 <212> TYPE: DNA
 <213> ORGANISM: Homo sapiens
 <400> SEQUENCE: 220
 gccacgtgga 10

<210> SEQ ID NO 221
 <211> LENGTH: 10
 <212> TYPE: DNA

-continued

<213> ORGANISM: Homo sapiens
<400> SEQUENCE: 221
gccagacacc 10

<210> SEQ ID NO 222
<211> LENGTH: 10
<212> TYPE: DNA
<213> ORGANISM: Homo sapiens
<400> SEQUENCE: 222
gccaggttgc 10

<210> SEQ ID NO 223
<211> LENGTH: 10
<212> TYPE: DNA
<213> ORGANISM: Homo sapiens
<400> SEQUENCE: 223
gccaggttgc 10

<210> SEQ ID NO 224
<211> LENGTH: 10
<212> TYPE: DNA
<213> ORGANISM: Homo sapiens
<400> SEQUENCE: 224
gccaggttgc 10

<210> SEQ ID NO 225
<211> LENGTH: 10
<212> TYPE: DNA
<213> ORGANISM: Homo sapiens
<400> SEQUENCE: 225
gccatcctcc 10

<210> SEQ ID NO 226
<211> LENGTH: 10
<212> TYPE: DNA
<213> ORGANISM: Homo sapiens
<400> SEQUENCE: 226
gcccacacag 10

<210> SEQ ID NO 227
<211> LENGTH: 10
<212> TYPE: DNA
<213> ORGANISM: Homo sapiens
<400> SEQUENCE: 227
gcccacgtca 10

<210> SEQ ID NO 228
<211> LENGTH: 10
<212> TYPE: DNA
<213> ORGANISM: Homo sapiens
<400> SEQUENCE: 228
gcccagggcc 10

<210> SEQ ID NO 229
<211> LENGTH: 10
<212> TYPE: DNA

-continued

<213> ORGANISM: Homo sapiens
 <400> SEQUENCE: 229
 gccagggcc 10

<210> SEQ ID NO 230
 <211> LENGTH: 10
 <212> TYPE: DNA
 <213> ORGANISM: Homo sapiens
 <400> SEQUENCE: 230
 gccagggcc 10

<210> SEQ ID NO 231
 <211> LENGTH: 10
 <212> TYPE: DNA
 <213> ORGANISM: Homo sapiens
 <400> SEQUENCE: 231
 gccaggtca 10

<210> SEQ ID NO 232
 <211> LENGTH: 10
 <212> TYPE: DNA
 <213> ORGANISM: Homo sapiens
 <400> SEQUENCE: 232
 gccagtggc 10

<210> SEQ ID NO 233
 <211> LENGTH: 10
 <212> TYPE: DNA
 <213> ORGANISM: Homo sapiens
 <400> SEQUENCE: 233
 gccgaccagg 10

<210> SEQ ID NO 234
 <211> LENGTH: 10
 <212> TYPE: DNA
 <213> ORGANISM: Homo sapiens
 <400> SEQUENCE: 234
 gccgggtggg 10

<210> SEQ ID NO 235
 <211> LENGTH: 10
 <212> TYPE: DNA
 <213> ORGANISM: Homo sapiens
 <400> SEQUENCE: 235
 gccgtggaga 10

<210> SEQ ID NO 236
 <211> LENGTH: 10
 <212> TYPE: DNA
 <213> ORGANISM: Homo sapiens
 <400> SEQUENCE: 236
 gcctggccat 10

<210> SEQ ID NO 237
 <211> LENGTH: 10
 <212> TYPE: DNA

-continued

<213> ORGANISM: Homo sapiens
 <400> SEQUENCE: 237
 gcctggccat 10

 <210> SEQ ID NO 238
 <211> LENGTH: 10
 <212> TYPE: DNA
 <213> ORGANISM: Homo sapiens
 <400> SEQUENCE: 238
 gcgaaaccct 10

 <210> SEQ ID NO 239
 <211> LENGTH: 10
 <212> TYPE: DNA
 <213> ORGANISM: Homo sapiens
 <400> SEQUENCE: 239
 gcgaaactcg 10

 <210> SEQ ID NO 240
 <211> LENGTH: 10
 <212> TYPE: DNA
 <213> ORGANISM: Homo sapiens
 <400> SEQUENCE: 240
 gcgcagaggt 10

 <210> SEQ ID NO 241
 <211> LENGTH: 10
 <212> TYPE: DNA
 <213> ORGANISM: Homo sapiens
 <400> SEQUENCE: 241
 gcttttcccc 10

 <210> SEQ ID NO 242
 <211> LENGTH: 10
 <212> TYPE: DNA
 <213> ORGANISM: Homo sapiens
 <400> SEQUENCE: 242
 gctgcctttg 10

 <210> SEQ ID NO 243
 <211> LENGTH: 10
 <212> TYPE: DNA
 <213> ORGANISM: Homo sapiens
 <400> SEQUENCE: 243
 gctgcccttg 10

 <210> SEQ ID NO 244
 <211> LENGTH: 10
 <212> TYPE: DNA
 <213> ORGANISM: Homo sapiens
 <400> SEQUENCE: 244
 gctggcacat 10

 <210> SEQ ID NO 245
 <211> LENGTH: 10
 <212> TYPE: DNA

-continued

<213> ORGANISM: Homo sapiens
 <400> SEQUENCE: 245
 gctggcccccg 10

<210> SEQ ID NO 246
 <211> LENGTH: 10
 <212> TYPE: DNA
 <213> ORGANISM: Homo sapiens
 <400> SEQUENCE: 246
 gctgtgcctg 10

<210> SEQ ID NO 247
 <211> LENGTH: 10
 <212> TYPE: DNA
 <213> ORGANISM: Homo sapiens
 <400> SEQUENCE: 247
 gcttggggat 10

<210> SEQ ID NO 248
 <211> LENGTH: 10
 <212> TYPE: DNA
 <213> ORGANISM: Homo sapiens
 <400> SEQUENCE: 248
 ggaacagggg 10

<210> SEQ ID NO 249
 <211> LENGTH: 10
 <212> TYPE: DNA
 <213> ORGANISM: Homo sapiens
 <400> SEQUENCE: 249
 ggaacagggg 10

<210> SEQ ID NO 250
 <211> LENGTH: 10
 <212> TYPE: DNA
 <213> ORGANISM: Homo sapiens
 <400> SEQUENCE: 250
 ggaacagggg 10

<210> SEQ ID NO 251
 <211> LENGTH: 10
 <212> TYPE: DNA
 <213> ORGANISM: Homo sapiens
 <400> SEQUENCE: 251
 ggaactgtga 10

<210> SEQ ID NO 252
 <211> LENGTH: 10
 <212> TYPE: DNA
 <213> ORGANISM: Homo sapiens
 <400> SEQUENCE: 252
 ggaagagcac 10

<210> SEQ ID NO 253
 <211> LENGTH: 10
 <212> TYPE: DNA

-continued

<213> ORGANISM: Homo sapiens
 <400> SEQUENCE: 253
 ggaggccgag 10

<210> SEQ ID NO 254
 <211> LENGTH: 10
 <212> TYPE: DNA
 <213> ORGANISM: Homo sapiens
 <400> SEQUENCE: 254
 ggaggcgctc 10

<210> SEQ ID NO 255
 <211> LENGTH: 10
 <212> TYPE: DNA
 <213> ORGANISM: Homo sapiens
 <400> SEQUENCE: 255
 ggatggctta 10

<210> SEQ ID NO 256
 <211> LENGTH: 10
 <212> TYPE: DNA
 <213> ORGANISM: Homo sapiens
 <400> SEQUENCE: 256
 ggcaccgtgc 10

<210> SEQ ID NO 257
 <211> LENGTH: 10
 <212> TYPE: DNA
 <213> ORGANISM: Homo sapiens
 <400> SEQUENCE: 257
 ggcctgcag 10

<210> SEQ ID NO 258
 <211> LENGTH: 10
 <212> TYPE: DNA
 <213> ORGANISM: Homo sapiens
 <400> SEQUENCE: 258
 ggctcgggat 10

<210> SEQ ID NO 259
 <211> LENGTH: 10
 <212> TYPE: DNA
 <213> ORGANISM: Homo sapiens
 <400> SEQUENCE: 259
 ggctgcctgc 10

<210> SEQ ID NO 260
 <211> LENGTH: 10
 <212> TYPE: DNA
 <213> ORGANISM: Homo sapiens
 <400> SEQUENCE: 260
 ggctgcctgc 10

<210> SEQ ID NO 261
 <211> LENGTH: 10
 <212> TYPE: DNA

-continued

<213> ORGANISM: Homo sapiens
 <400> SEQUENCE: 261
 ggctgggcct 10

<210> SEQ ID NO 262
 <211> LENGTH: 10
 <212> TYPE: DNA
 <213> ORGANISM: Homo sapiens
 <400> SEQUENCE: 262
 ggctgggcct 10

<210> SEQ ID NO 263
 <211> LENGTH: 10
 <212> TYPE: DNA
 <213> ORGANISM: Homo sapiens
 <400> SEQUENCE: 263
 ggctgggcct 10

<210> SEQ ID NO 264
 <211> LENGTH: 10
 <212> TYPE: DNA
 <213> ORGANISM: Homo sapiens
 <400> SEQUENCE: 264
 gggaagcaga 10

<210> SEQ ID NO 265
 <211> LENGTH: 10
 <212> TYPE: DNA
 <213> ORGANISM: Homo sapiens
 <400> SEQUENCE: 265
 gggacgagtg 10

<210> SEQ ID NO 266
 <211> LENGTH: 10
 <212> TYPE: DNA
 <213> ORGANISM: Homo sapiens
 <400> SEQUENCE: 266
 gggcgctgtg 10

<210> SEQ ID NO 267
 <211> LENGTH: 10
 <212> TYPE: DNA
 <213> ORGANISM: Homo sapiens
 <400> SEQUENCE: 267
 ggggcagggc 10

<210> SEQ ID NO 268
 <211> LENGTH: 10
 <212> TYPE: DNA
 <213> ORGANISM: Homo sapiens
 <400> SEQUENCE: 268
 ggtgaagagg 10

<210> SEQ ID NO 269
 <211> LENGTH: 10
 <212> TYPE: DNA

-continued

<213> ORGANISM: Homo sapiens
<400> SEQUENCE: 269
gtagcaggtg 10

<210> SEQ ID NO 270
<211> LENGTH: 10
<212> TYPE: DNA
<213> ORGANISM: Homo sapiens
<400> SEQUENCE: 270
gtattggggc 10

<210> SEQ ID NO 271
<211> LENGTH: 10
<212> TYPE: DNA
<213> ORGANISM: Homo sapiens
<400> SEQUENCE: 271
gtcatcacca 10

<210> SEQ ID NO 272
<211> LENGTH: 10
<212> TYPE: DNA
<213> ORGANISM: Homo sapiens
<400> SEQUENCE: 272
gtcatcacca 10

<210> SEQ ID NO 273
<211> LENGTH: 10
<212> TYPE: DNA
<213> ORGANISM: Homo sapiens
<400> SEQUENCE: 273
gtcatcacca 10

<210> SEQ ID NO 274
<211> LENGTH: 10
<212> TYPE: DNA
<213> ORGANISM: Homo sapiens
<400> SEQUENCE: 274
gtcatcacca 10

<210> SEQ ID NO 275
<211> LENGTH: 10
<212> TYPE: DNA
<213> ORGANISM: Homo sapiens
<400> SEQUENCE: 275
gtccgagtgc 10

<210> SEQ ID NO 276
<211> LENGTH: 10
<212> TYPE: DNA
<213> ORGANISM: Homo sapiens
<400> SEQUENCE: 276
gtcctgaaca 10

<210> SEQ ID NO 277
<211> LENGTH: 10
<212> TYPE: DNA

-continued

<213> ORGANISM: Homo sapiens
 <400> SEQUENCE: 277
 gtcctgaaca 10

 <210> SEQ ID NO 278
 <211> LENGTH: 10
 <212> TYPE: DNA
 <213> ORGANISM: Homo sapiens
 <400> SEQUENCE: 278
 gtgcactgag 10

 <210> SEQ ID NO 279
 <211> LENGTH: 10
 <212> TYPE: DNA
 <213> ORGANISM: Homo sapiens
 <400> SEQUENCE: 279
 gtgcactgag 10

 <210> SEQ ID NO 280
 <211> LENGTH: 10
 <212> TYPE: DNA
 <213> ORGANISM: Homo sapiens
 <400> SEQUENCE: 280
 gtgcctgaga 10

 <210> SEQ ID NO 281
 <211> LENGTH: 10
 <212> TYPE: DNA
 <213> ORGANISM: Homo sapiens
 <400> SEQUENCE: 281
 gtggcgggaa 10

 <210> SEQ ID NO 282
 <211> LENGTH: 10
 <212> TYPE: DNA
 <213> ORGANISM: Homo sapiens
 <400> SEQUENCE: 282
 gtgggggcgc 10

 <210> SEQ ID NO 283
 <211> LENGTH: 10
 <212> TYPE: DNA
 <213> ORGANISM: Homo sapiens
 <400> SEQUENCE: 283
 gtggtggcag 10

 <210> SEQ ID NO 284
 <211> LENGTH: 10
 <212> TYPE: DNA
 <213> ORGANISM: Homo sapiens
 <400> SEQUENCE: 284
 gtggttcacg 10

 <210> SEQ ID NO 285
 <211> LENGTH: 10
 <212> TYPE: DNA

-continued

<213> ORGANISM: Homo sapiens
 <400> SEQUENCE: 285
 gtggttcacg 10

 <210> SEQ ID NO 286
 <211> LENGTH: 10
 <212> TYPE: DNA
 <213> ORGANISM: Homo sapiens
 <400> SEQUENCE: 286
 gtgttggggg 10

 <210> SEQ ID NO 287
 <211> LENGTH: 10
 <212> TYPE: DNA
 <213> ORGANISM: Homo sapiens
 <400> SEQUENCE: 287
 gtttagaggg 10

 <210> SEQ ID NO 288
 <211> LENGTH: 10
 <212> TYPE: DNA
 <213> ORGANISM: Homo sapiens
 <400> SEQUENCE: 288
 taaattgcaa 10

 <210> SEQ ID NO 289
 <211> LENGTH: 10
 <212> TYPE: DNA
 <213> ORGANISM: Homo sapiens
 <400> SEQUENCE: 289
 taaggccttt 10

 <210> SEQ ID NO 290
 <211> LENGTH: 10
 <212> TYPE: DNA
 <213> ORGANISM: Homo sapiens
 <400> SEQUENCE: 290
 taaggccttt 10

 <210> SEQ ID NO 291
 <211> LENGTH: 10
 <212> TYPE: DNA
 <213> ORGANISM: Homo sapiens
 <400> SEQUENCE: 291
 taatcccagc 10

 <210> SEQ ID NO 292
 <211> LENGTH: 10
 <212> TYPE: DNA
 <213> ORGANISM: Homo sapiens
 <400> SEQUENCE: 292
 taatttgcac 10

 <210> SEQ ID NO 293
 <211> LENGTH: 10
 <212> TYPE: DNA

-continued

<213> ORGANISM: Homo sapiens
 <400> SEQUENCE: 293
 tacggtgtgg 10

<210> SEQ ID NO 294
 <211> LENGTH: 10
 <212> TYPE: DNA
 <213> ORGANISM: Homo sapiens
 <400> SEQUENCE: 294
 tactcggcca 10

<210> SEQ ID NO 295
 <211> LENGTH: 10
 <212> TYPE: DNA
 <213> ORGANISM: Homo sapiens
 <400> SEQUENCE: 295
 tactgtggat 10

<210> SEQ ID NO 296
 <211> LENGTH: 10
 <212> TYPE: DNA
 <213> ORGANISM: Homo sapiens
 <400> SEQUENCE: 296
 tagactagca 10

<210> SEQ ID NO 297
 <211> LENGTH: 10
 <212> TYPE: DNA
 <213> ORGANISM: Homo sapiens
 <400> SEQUENCE: 297
 taggatgggg 10

<210> SEQ ID NO 298
 <211> LENGTH: 10
 <212> TYPE: DNA
 <213> ORGANISM: Homo sapiens
 <400> SEQUENCE: 298
 tatgatgagc 10

<210> SEQ ID NO 299
 <211> LENGTH: 10
 <212> TYPE: DNA
 <213> ORGANISM: Homo sapiens
 <400> SEQUENCE: 299
 tcacagtgcc 10

<210> SEQ ID NO 300
 <211> LENGTH: 10
 <212> TYPE: DNA
 <213> ORGANISM: Homo sapiens
 <400> SEQUENCE: 300
 tcaccggtca 10

<210> SEQ ID NO 301
 <211> LENGTH: 10
 <212> TYPE: DNA

-continued

<213> ORGANISM: Homo sapiens
 <400> SEQUENCE: 301
 tcagagcgct 10

<210> SEQ ID NO 302
 <211> LENGTH: 10
 <212> TYPE: DNA
 <213> ORGANISM: Homo sapiens
 <400> SEQUENCE: 302
 tcagctgcaa 10

<210> SEQ ID NO 303
 <211> LENGTH: 10
 <212> TYPE: DNA
 <213> ORGANISM: Homo sapiens
 <400> SEQUENCE: 303
 tcagctgcaa 10

<210> SEQ ID NO 304
 <211> LENGTH: 10
 <212> TYPE: DNA
 <213> ORGANISM: Homo sapiens
 <400> SEQUENCE: 304
 tcggagctgt 10

<210> SEQ ID NO 305
 <211> LENGTH: 10
 <212> TYPE: DNA
 <213> ORGANISM: Homo sapiens
 <400> SEQUENCE: 305
 tctgaattat 10

<210> SEQ ID NO 306
 <211> LENGTH: 10
 <212> TYPE: DNA
 <213> ORGANISM: Homo sapiens
 <400> SEQUENCE: 306
 tgactaattg 10

<210> SEQ ID NO 307
 <211> LENGTH: 10
 <212> TYPE: DNA
 <213> ORGANISM: Homo sapiens
 <400> SEQUENCE: 307
 tgagtgacag 10

<210> SEQ ID NO 308
 <211> LENGTH: 10
 <212> TYPE: DNA
 <213> ORGANISM: Homo sapiens
 <400> SEQUENCE: 308
 tgagtgacag 10

<210> SEQ ID NO 309
 <211> LENGTH: 10
 <212> TYPE: DNA

-continued

<213> ORGANISM: Homo sapiens
 <400> SEQUENCE: 309
 tgatctctgt 10

<210> SEQ ID NO 310
 <211> LENGTH: 10
 <212> TYPE: DNA
 <213> ORGANISM: Homo sapiens
 <400> SEQUENCE: 310
 tgcagcacga 10

<210> SEQ ID NO 311
 <211> LENGTH: 10
 <212> TYPE: DNA
 <213> ORGANISM: Homo sapiens
 <400> SEQUENCE: 311
 tgcagcgctt 10

<210> SEQ ID NO 312
 <211> LENGTH: 10
 <212> TYPE: DNA
 <213> ORGANISM: Homo sapiens
 <400> SEQUENCE: 312
 tgccgcccgc 10

<210> SEQ ID NO 313
 <211> LENGTH: 10
 <212> TYPE: DNA
 <213> ORGANISM: Homo sapiens
 <400> SEQUENCE: 313
 tgctcctacc 10

<210> SEQ ID NO 314
 <211> LENGTH: 10
 <212> TYPE: DNA
 <213> ORGANISM: Homo sapiens
 <400> SEQUENCE: 314
 tgctcctacc 10

<210> SEQ ID NO 315
 <211> LENGTH: 10
 <212> TYPE: DNA
 <213> ORGANISM: Homo sapiens
 <400> SEQUENCE: 315
 tggccatctg 10

<210> SEQ ID NO 316
 <211> LENGTH: 10
 <212> TYPE: DNA
 <213> ORGANISM: Homo sapiens
 <400> SEQUENCE: 316
 tggcgcgtgt 10

<210> SEQ ID NO 317
 <211> LENGTH: 10
 <212> TYPE: DNA

-continued

<213> ORGANISM: Homo sapiens
 <400> SEQUENCE: 317
 tggctactta 10

<210> SEQ ID NO 318
 <211> LENGTH: 10
 <212> TYPE: DNA
 <213> ORGANISM: Homo sapiens
 <400> SEQUENCE: 318
 tggggagagg 10

<210> SEQ ID NO 319
 <211> LENGTH: 10
 <212> TYPE: DNA
 <213> ORGANISM: Homo sapiens
 <400> SEQUENCE: 319
 ttaaccctc 10

<210> SEQ ID NO 320
 <211> LENGTH: 10
 <212> TYPE: DNA
 <213> ORGANISM: Homo sapiens
 <400> SEQUENCE: 320
 ttatggtgtg 10

<210> SEQ ID NO 321
 <211> LENGTH: 10
 <212> TYPE: DNA
 <213> ORGANISM: Homo sapiens
 <400> SEQUENCE: 321
 ttccactaac 10

<210> SEQ ID NO 322
 <211> LENGTH: 10
 <212> TYPE: DNA
 <213> ORGANISM: Homo sapiens
 <400> SEQUENCE: 322
 ttccggttc 10

<210> SEQ ID NO 323
 <211> LENGTH: 10
 <212> TYPE: DNA
 <213> ORGANISM: Homo sapiens
 <400> SEQUENCE: 323
 ttctggtgcg 10

<210> SEQ ID NO 324
 <211> LENGTH: 10
 <212> TYPE: DNA
 <213> ORGANISM: Homo sapiens
 <400> SEQUENCE: 324
 ttctgtagcc 10

<210> SEQ ID NO 325
 <211> LENGTH: 10
 <212> TYPE: DNA

-continued

<213> ORGANISM: Homo sapiens
 <400> SEQUENCE: 325
 ttggacctgg 10

<210> SEQ ID NO 326
 <211> LENGTH: 10
 <212> TYPE: DNA
 <213> ORGANISM: Homo sapiens
 <400> SEQUENCE: 326
 ttggggtttc 10

<210> SEQ ID NO 327
 <211> LENGTH: 10
 <212> TYPE: DNA
 <213> ORGANISM: Homo sapiens
 <400> SEQUENCE: 327
 tttaacggcc 10

<210> SEQ ID NO 328
 <211> LENGTH: 10
 <212> TYPE: DNA
 <213> ORGANISM: Homo sapiens
 <400> SEQUENCE: 328
 tttctctca 10

<210> SEQ ID NO 329
 <211> LENGTH: 10
 <212> TYPE: DNA
 <213> ORGANISM: Homo sapiens
 <400> SEQUENCE: 329
 tttctctca 10

<210> SEQ ID NO 330
 <211> LENGTH: 10
 <212> TYPE: DNA
 <213> ORGANISM: Homo sapiens
 <400> SEQUENCE: 330
 tttctcgtcg 10

<210> SEQ ID NO 331
 <211> LENGTH: 10
 <212> TYPE: DNA
 <213> ORGANISM: Homo sapiens
 <400> SEQUENCE: 331
 tttggtttca 10

<210> SEQ ID NO 332
 <211> LENGTH: 10
 <212> TYPE: DNA
 <213> ORGANISM: Homo sapiens
 <400> SEQUENCE: 332
 ttttctgcat 10

<210> SEQ ID NO 333
 <211> LENGTH: 10
 <212> TYPE: DNA

-continued

<213> ORGANISM: Homo sapiens

<400> SEQUENCE: 333

ttttctgcat

10

<210> SEQ ID NO 334

<211> LENGTH: 10

<212> TYPE: DNA

<213> ORGANISM: Homo sapiens

<400> SEQUENCE: 334

tttttactga

10

We claim:

1. A method for detection of colorectal cancer, comprising the steps of:

detecting renal dipeptidase in blood of a subject; and
 comparing the amount of renal dipeptidase in blood of the subject to the amount of renal dipeptidase in normal subjects;

detecting an elevated amount of renal dipeptidase in the blood of the subject which is an indicator of colorectal cancer in the subject.

2. A method for detection of colorectal cancer, comprising the steps of:

detecting renal dipeptidase in feces of a subject; and
 comparing the amount of renal dipeptidase in feces of the subject to the amount of renal dipeptidase in normal subjects;

detecting an elevated amount of renal dipeptidase in the feces of the subject which is an indicator of colorectal cancer in the subject.

3. The method of claim 1 further comprising: determining if the renal dipeptidase detected in the blood comprises a tumor-specific glycoform of renal dipeptidase.

4. The method of claim 2 further comprising: determining if the renal dipeptidase detected in the feces comprises a tumor-specific glycoform of renal dipeptidase.

5. The method of claim 1 further comprising: determining if the renal dipeptidase detected in the blood binds to L lectin from *Phaseolus vulgaris* hemagglutinin.

6. The method of claim 2 further comprising: determining if the renal dipeptidase detected in the feces binds to L lectin from *Phaseolus vulgaris* hemagglutinin.

7. The method of claim 1 further comprising: determining if the renal dipeptidase detected in the blood binds to L lectin from *Sambucus nigra* hemagglutinin.

8. The method of claim 2 further comprising: determining if the renal dipeptidase detected in the feces binds to L lectin from *Sambucus nigra* hemagglutinin.

9. The method of claim 1 wherein the normal subjects are tumor free.

10. The method of claim 1 wherein the normal subjects are tumor free as determined by colonoscopy.

11. The method of claim 1 further comprising: indicating that the subject has a marker for colorectal cancer.

12. The method of claim 2 wherein the normal subjects are tumor free.

13. The method of claim 2 wherein the normal subjects are tumor free as determined by colonoscopy.

14. The method of claim 2 further comprising: indicating that the subject has a marker for colorectal cancer.

15. The method of claim 1 wherein the subject is presymptomatic.

16. The method of claim 2 wherein the subject is presymptomatic.

17. The method of claim 1 wherein the subject has metastatic colon cancer.

18. The method of claim 2 wherein the subject has metastatic colon cancer.

* * * * *

UNITED STATES PATENT AND TRADEMARK OFFICE
CERTIFICATE OF CORRECTION

PATENT NO. : 8,029,764 B2
APPLICATION NO. : 10/487934
DATED : October 4, 2011
INVENTOR(S) : Phillip Buckhaults et al.

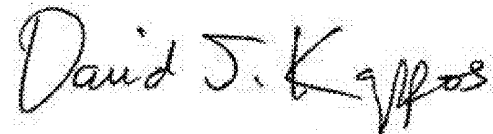
Page 1 of 1

It is certified that error appears in the above-identified patent and that said Letters Patent is hereby corrected as shown below:

Title page, PCT Pub. Date:

Please delete "May 3, 2003" and insert -- March 20, 2003 --

Signed and Sealed this
Twelfth Day of June, 2012

A handwritten signature in black ink that reads "David J. Kappos". The signature is written in a cursive style with a large initial "D".

David J. Kappos
Director of the United States Patent and Trademark Office

专利名称(译)	检测结肠直肠癌的方法		
公开(公告)号	US8029764	公开(公告)日	2011-10-04
申请号	US10/487934	申请日	2002-09-09
[标]申请(专利权)人(译)	buckhaults菲利浦 KINZLER KENNETH W 沃格尔斯坦BERT		
申请(专利权)人(译)	buckhaults菲利浦 KINZLER KENNETH W. 沃格尔斯坦BERT		
当前申请(专利权)人(译)	约翰·霍普金斯大学		
[标]发明人	BUCKHAULTS PHILLIP KINZLER KENNETH W VOGELSTEIN BERT		
发明人	BUCKHAULTS, PHILLIP KINZLER, KENNETH W. VOGELSTEIN, BERT		
IPC分类号	A61K49/00 C12Q1/37 G01N33/53 A61K51/00 C07K14/47 C07K14/495 C07K14/705 C12N9/48 C12N15/09 C12Q1/68 G01N21/78 G01N37/00		
CPC分类号	C07K14/47 C07K14/495 C07K14/705		
优先权	60/317494 2001-09-07 US 60/383805 2002-05-30 US		
其他公开文献	US20040265824A1		
外部链接	Espacenet USPTO		

摘要(译)

特定基因在腺瘤和结肠癌中异常且一致地表达。这些基因的产物为结肠直肠癌形成提供粪便和血清标志物。一种特定的肿瘤标志物肾脏二肽酶 (RDP) 在肿瘤中以高水平表达, 在正常组织中以极低水平表达。RDP 的升高表达早期发生并且在肿瘤过程中保持升高。因此, RDP 可以特别用作早期检测结肠直肠癌形成的诊断工具, 甚至是症状前结直肠肿瘤。

