



US007081334B2

(12) **United States Patent**  
**White et al.**

(10) **Patent No.:** **US 7,081,334 B2**  
(45) **Date of Patent:** **\*Jul. 25, 2006**

(54) **METHOD FOR QUANTIFYING LBP IN BODY FLUIDS**

WO WO 94/25476 11/1994  
WO WO 95/00641 1/1995  
WO WO 95/02414 1/1995

(75) Inventors: **Mark Leslie White**, Antioch, CA (US);  
**Stephen Fitzhugh Carroll**, Walnut  
Creek, CA (US); **Jeremy Kam-kuen  
Ma**, San Ramon, CA (US)

OTHER PUBLICATIONS

(73) Assignee: **Xoma Corporation**, Berkeley, CA (US)

(\* ) Notice: Subject to any disclaimer, the term of this  
patent is extended or adjusted under 35  
U.S.C. 154(b) by 602 days.

This patent is subject to a terminal dis-  
claimer.

(21) Appl. No.: **09/994,185**

(22) Filed: **Nov. 26, 2001**

(65) **Prior Publication Data**

US 2002/0127622 A1 Sep. 12, 2002

**Related U.S. Application Data**

(63) Continuation of application No. 09/286,153, filed on  
Apr. 5, 1999, now abandoned, which is a continuation  
of application No. 08/779,400, filed on Jan. 7, 1997,  
now Pat. No. 5,891,618, which is a continuation-in-  
part of application No. 08/377,391, filed on Jan. 24,  
1995, now Pat. No. 5,804,367, which is a continua-  
tion-in-part of application No. 08/186,811, filed on  
Jan. 24, 1994, now Pat. No. 5,484,705.

(51) **Int. Cl.**  
**G01N 33/50** (2006.01)  
**G01N 33/53** (2006.01)  
**G01N 33/536** (2006.01)

(52) **U.S. Cl.** ..... **435/4**; 435/7.1; 436/63;  
436/536

(58) **Field of Classification Search** ..... 435/4,  
435/7.1; 436/63, 536  
See application file for complete search history.

(56) **References Cited**

U.S. PATENT DOCUMENTS

5,245,013 A 9/1993 Ulevitch  
5,310,879 A 5/1994 Ulevitch  
5,484,705 A 1/1996 White

FOREIGN PATENT DOCUMENTS

WO WO 91/01639 2/1991  
WO WO 93/06228 4/1993  
WO WO 94/21280 9/1994

The abstract of Gardener et al (Journal of Reproductive  
Medicine, 1977, vol. 19, pp. 64-66).\*

The abstract of Grobler et al (Gut, Oct. 1993, vol. 34, pp.  
1384-1388).\*

The abstract of Gelman et al (Radiology, 1977, vol. 122, pp.  
17-23).\*

The abstract of Cohen et al (QJM, 1982, vol. 51, pp. 1-15).\*

The abstract of Allwright et al (Clinical Nuclear Medicine,  
1988, vol. 13, pp. 506-508).\*

The abstract of Hunt (Journal of Immunology, 1989).\*

The abstract of Martin (Immunology, 1991, vol. 73, pp.  
123-125).\*

Dofferhoff et al., "Tumor necrosis factor (cachectin) and  
other cytokines in septic shock: a review of the literature",  
*Netherlands J. Med.*, 39:45-62 (1991).

Elsbach et al., "Separation and Purification of a Potent  
Bactericidal/Permeability-increasing Protein and a Closely  
Associated Phospholipase A<sub>2</sub> from Rabbit  
Polymorphonuclear Leukocytes", *J. Biol. Chem.*,  
254(21):11000-11009 (Nov. 10, 1979).

Erwin and Munford, "Plasma Lipopolysaccharide-Deacylat-  
ing Activity (Acyloxyacyl Hydrolase) Increases After  
Lipopolysaccharide Administration to Rabbits", *Lab.  
Invest.*, 65(2):138-144 (1991).

Gallay et al., "Purification and Characterization of Murine  
Lipopolysaccharide-Binding Protein", *Infect. Immun.*  
61(2):378-383 (Feb. 1993).

Gazzano-Santoro et al., "High-Affinity Binding of the Bac-  
tericidal/Permeability-Increasing Protein and a Recombi-  
nant Amino-Terminal Fragment to the Lipid A Region of  
Lipopolysaccharide", *Infect. Immun.* 60(11):4754-4761  
(Nov. 1992).

Leturcq et al., "Generation of Monoclonal Antibodies to  
Human LBP and Their Use in the Detection of LBP Protein  
in Serum", *J. Cell. Biochem.*, 16C:161 (1992).

(Continued)

*Primary Examiner*—Karen A. Canella

(74) *Attorney, Agent, or Firm*—Marshall, Gerstein & Borun  
LLP

(57) **ABSTRACT**

The present invention provides a method for quantifying the  
presence of extracellular LBP in body fluids including blood  
in a subject comprising conducting an LBP immunoassay on  
plasma obtained from said subject.

**17 Claims, 5 Drawing Sheets**

## OTHER PUBLICATIONS

- Marra et al., "The Role of Bactericidal/Permeability-Increasing Protein as a Natural Inhibitor of Bacterial Endotoxin", *J. Immunol.*, 148(2):532-537 (Jan. 15, 1992).
- Pereira et al., "Quantitation of a cationic antimicrobial granule protein of human polymorphonuclear leukocytes by ELISA", *J. Immunol. Methods*, 117:115-120 (1989).
- Pesce et al., "Cationic antigens Problems associated with measurement by ELISA", *J. Immunol. Methods*, 87:21-27 (1986).
- Schindler et al., "Plasma levels of bactericidal/permeability-increasing protein (BPI) and lipopolysaccharide-binding protein (LBP) during hemodialysis", *Clin. Nephrology*, 40(6):346-351 (1993).
- Schumann et al., "Structure and Function of Lipopolysaccharide Binding Protein", *Science*, 249:1429-1433 (Sep. 21, 1990).
- Spitznagel, "Antibiotic Proteins of Human Neutrophilia", *J. Clin. Invest.*, 86:1381-1386 (1990).
- Taber et al., *Taber's Cyclopedic Medical Dictionary*, pp. 545 (F.A. Davis Co., Philadelphia) (1985).
- Ulevitch, Presentation at the American Society of Microbiology General Meeting in Atlanta, Georgia (May 16-21, 1993).
- von der Mohien et al., Bactericidal/Permeability-Increasing Protein Levels Predict Survival in Patients with Gram-Negative Sepsis, Abstract presented at 13th International Symposium on Intensive Care and Emergency Medicine, (Brussels, Belgium) (Mar. 1993).
- Weiss and Olsson, "Cellular and Subcellular Localization of the Bactericidal/Permeability-Increasing Protein of Neutrophils", *Blood*, 69(2):652-659 (Feb. 1987).
- Weiss et al., "Human Bactericidal/Permeability-Increasing Protein and a Recombinant NH<sub>2</sub>-Terminal Fragment Cause Killing of Serum-resistant Gram-negative Bacteria in Whole Blood and Inhibit Tumor Necrosis Factor Release Induced by the Bacteria", *J. Clin. Invest.* 90:1122-1130 (Sep. 1992).
- Weiss et al., "Purification and Characterization of a Potent Bactericidal and Membrane Active Protein from the Granules of Human Polymorphonuclear Leukocytes" *J. Biol. Chem.*, 253(8):2664-2672 (Apr. 25, 1978).
- White et al., "Measurement of bactericidal/permeability-increasing protein in human body fluids by sandwich ELISA", *J. Immunol. Methods*, 167:227-235 (1994).
- Wright et al., "CD14, a Receptor for Complexes of Lipopolysaccharide (LPS) and LPS Binding Protein", *Science*, 249:1431-1433 (Sep. 21, 1990).
- Ulevitch, Presentation at the American Society of Microbiology General Meeting in Atlanta, Georgia (May 16-21, 1993) (Session 13 Abstract 564).
- Tobias et al., "Lipopolysaccharide Binding Protein" *J. Cell. Biochem.*, 16 C:151 (Abstract (CB006) (1992).
- Ballou et al., "Laboratory Evaluation of Inflammation," *Textbook of Rheumatology*, vol. 1, Ch. 40, pp. 671-679 (1993).
- Baumann et al., "The acute phase response," *Immunology Today*, vol. 15, 1 / 31 2, pp. 74-80 (1994).
- Grube et al., "Lipopolysaccharide Binding Protein Expression in Primary Human Hepatocytes and HepG2 Hepatoma Cells\*," *J. Biol. Chem.*, vol. 269, No. 11, pp. 8477-8482 (1994).
- Raynes, "Carbohydrate Binding Proteins and Immune Responses," Biochemical Immunology Group/Glycobiology Group Joint Colloquium Organized by G.B. Wisdom and M.I. Halliday (The Queen's University, Belfast) and Edited by G.B. Wisdom. 648th Meeting held at the Queen's University, Belfast, Sep. 14-17, 1993, *Biochemical Society Transactions*, vol. 22, pp. 69-74 (1994).
- Meszáros et al., "Immunoreactivity and Bioactivity of Lipopolysaccharide-Binding Protein in Normal and Heat-Inactivated Sera," *Infection and Immunity*, vol. 63, No. 1, pp. 363-366 (1995).
- Pugin et al., "Soluble CD14 and Lipopolysaccharide Binding Protein Mediate Epithelial Cell Responses to Lipopolysaccharides," *FASEB J.*, A142 (1993).
- Geller et al., *Arch. Surg.*, 128:22-28 (1993).
- Tobias, *J. Biol. Chem.*, 263:13479-13481 (1988).
- Schumann, *Science*, 249:1429-1431 (1990).
- Dubin et al., "Asthma and Endotoxin: Lipopolysaccharide-Binding Protein and Soluble CD14 in Bronchoalveolar Compartment," *Am. J. Physiol.*, 270:L736-L744 (1996).
- Froon et al., "Lipopolysaccharide Toxicity—Regulating Proteins in Bacteremia," *J. Infect. Dis.*, 171:1250-1257 (1995).
- Heumann et al., "Radioimmunoassay versus flow cytometric assay to quantify LPS-binding protein (LBP) concentrations in human plasma," *J. Immunol. Meth.*, 171:169-176 (1994).
- Iriye et al., "Differences in the Concentration of an Endotoxin Binding Protein Help Explain Sensitivity to Septic Complications in Pregnancy," *Am. J. Obstetrics Gynecol.*, 174(1 pt. 2):390 (1996).
- Nakayama et al., "Monitoring Both Serum Amyloid Protein A and C-Reactive Proteins as Inflammatory Markers in Infectious Diseases," *Clin. Chem.* 39:293-297 (1993).
- Schumann et al., 36th Int'l Conf. on Antimicrobial Agents and Chemotherapy, New Orleans, LA, Sep. 15-18, (1996).

\* cited by examiner

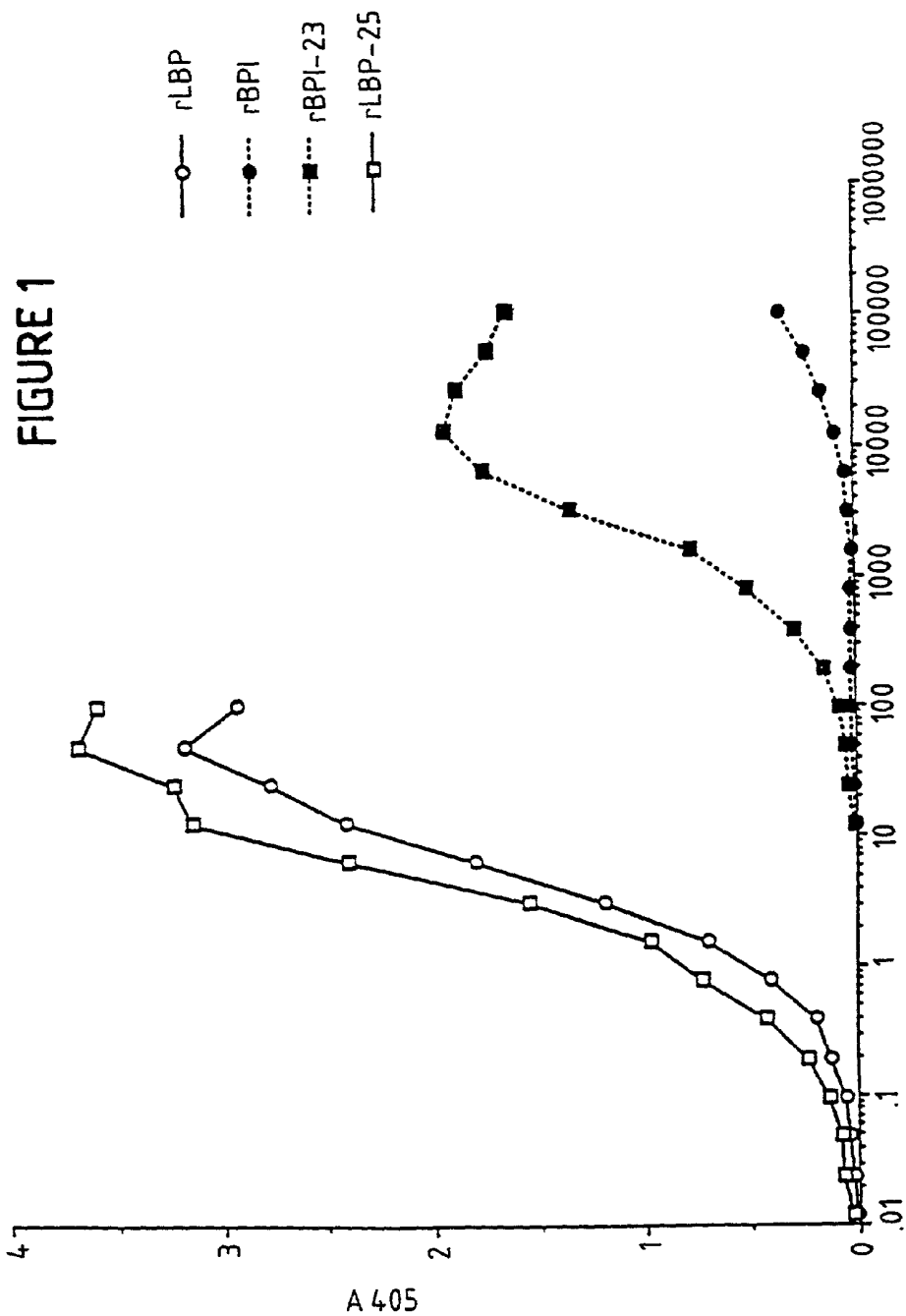


FIGURE 2

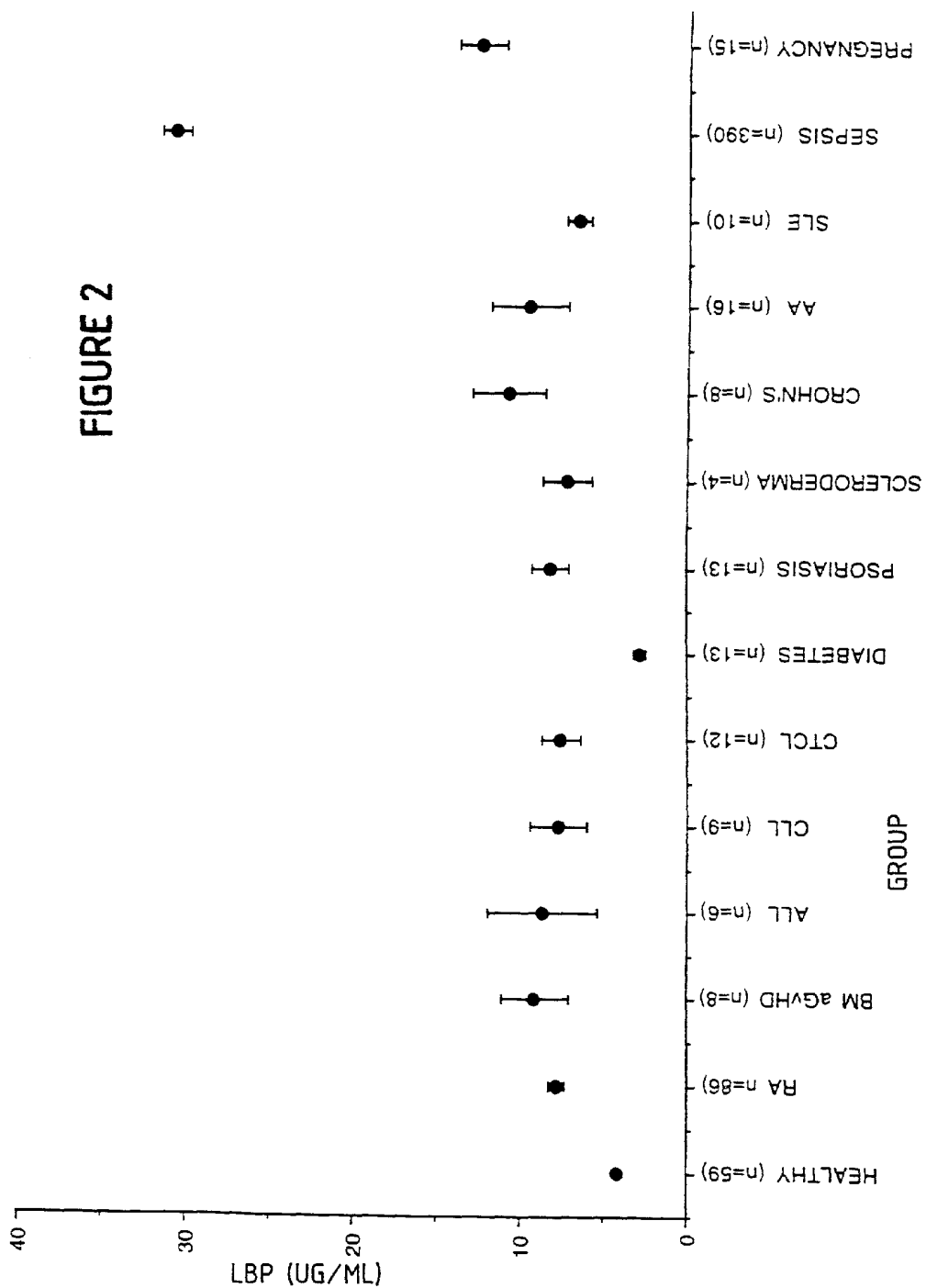
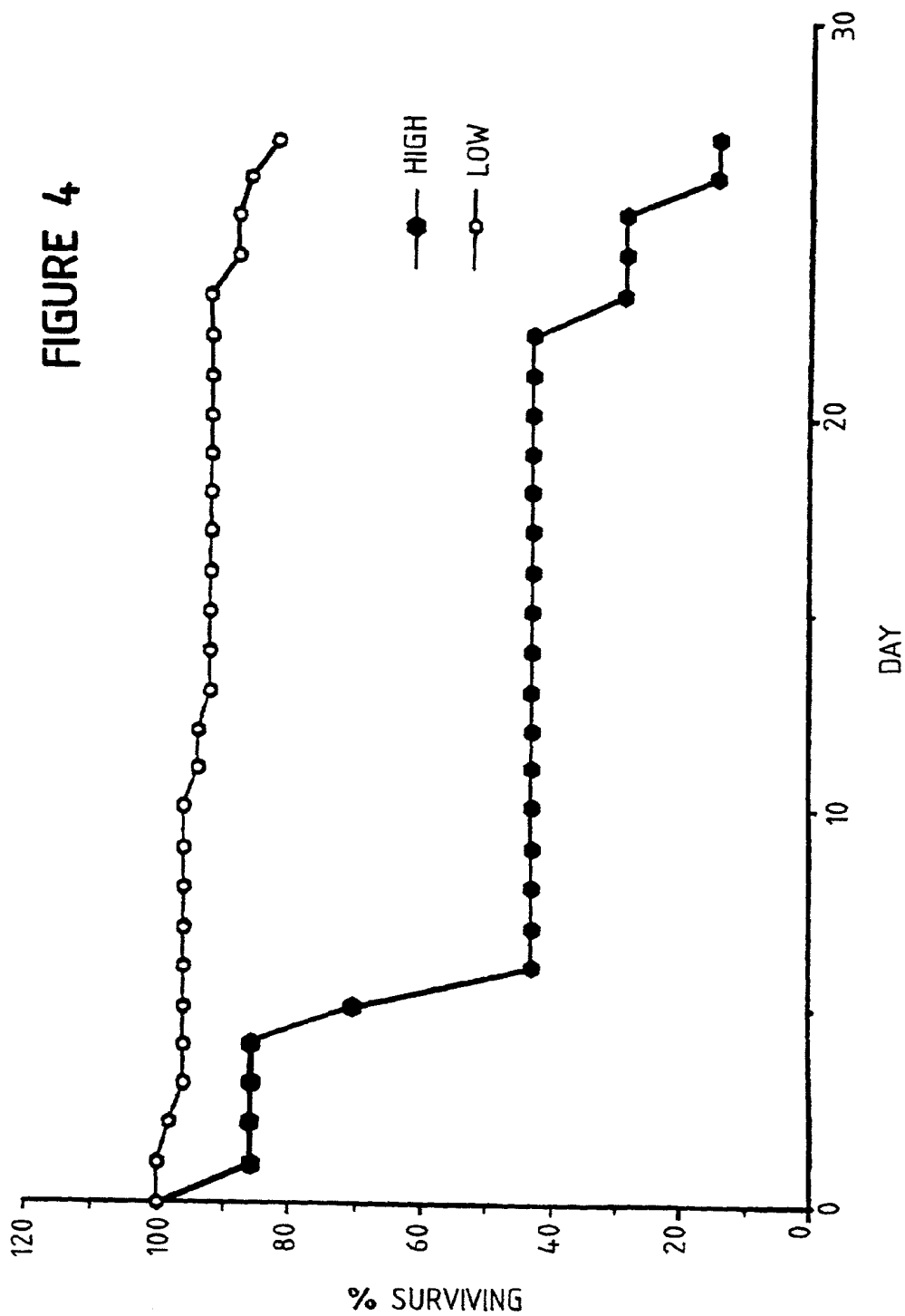
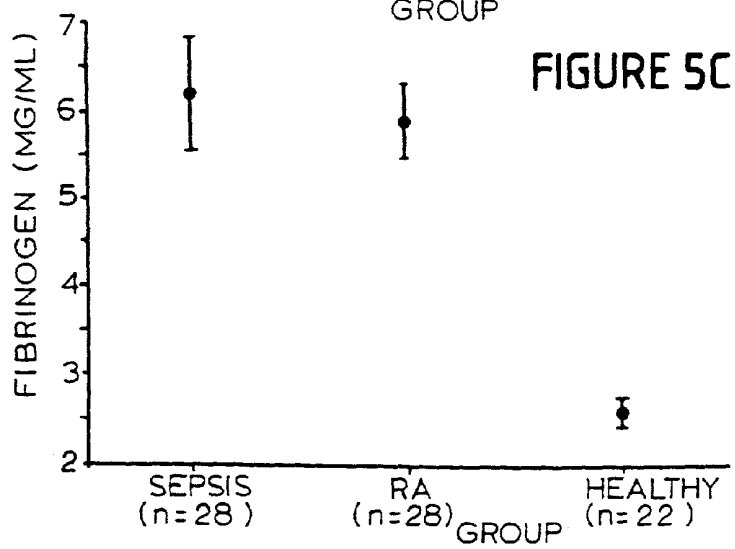
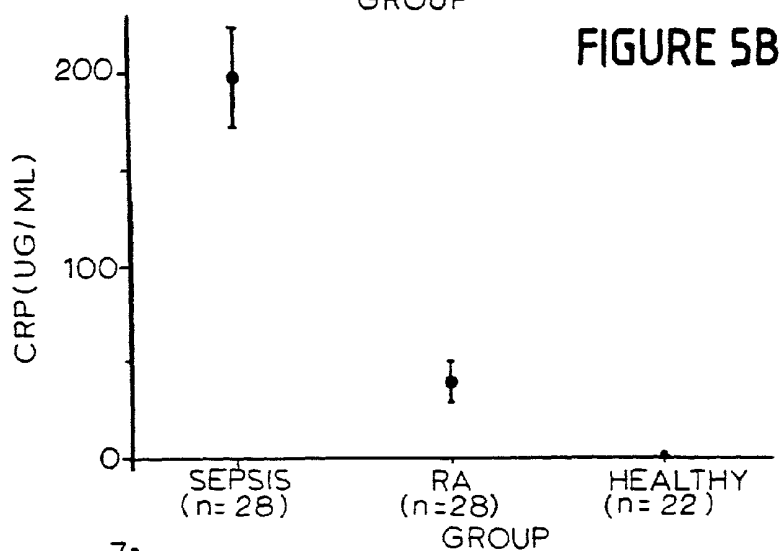
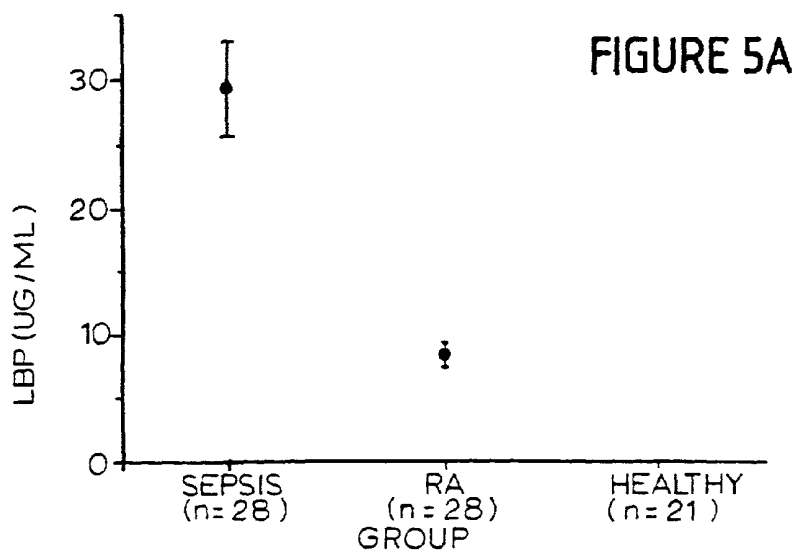




FIGURE 4





## METHOD FOR QUANTIFYING LBP IN BODY FLUIDS

This is a Continuation of U.S. application Ser. No. 09/286, 153, filed Apr. 5, 1999 now abandoned which is a Continuation of Ser. No. 08/779,400, filed Jan. 7, 1997 U.S. Pat. No. 5,891,618, which is a continuation-in-part of Ser. No. 08/377,391, filed Jan. 24, 1995 U.S. Pat. No. 5,804,367, which is a continuation-in-part of Ser. No. 08/186,811, filed Jan. 24, 1994 U.S. Pat. No. 5,484,705.

### BACKGROUND OF THE INVENTION

The present invention relates to methods for determination of the presence of Lipopolysaccharide binding protein (LBP) in body fluid samples including blood samples.

Lipopolysaccharide (LPS) is a common component of the outer membrane of Gram-negative bacteria and is responsible for many of the pathologic effects associated with gram-negative bacterial infection and endotoxemia. Because of the association between bacterial infection and sepsis, attempts have been made to correlate serum/plasma levels of endotoxin with disease. Typically, endotoxin levels have been measured using the *Limulus* ameobocyte lysate (LAL) assay, in which endotoxin initiates a coagulation cascade that can be measured physically, turbidimetrically, or spectrophotometrically. Despite these attempts, however, no reliable correlations between endotoxin levels and sepsis severity or outcome have been identified. This is most likely due to the fact that (i) endotoxin levels in septic patients are very low (>10 pg/L), several serum proteins interfere with the proteolytic LAL cascade, (iii) endotoxin, once in contact with blood, can be "detoxified" by interaction with a variety of blood components, including high-density lipoprotein (HDL) and low-density lipoprotein (LDL) and (iv) endotoxin from different gram-negative organisms varies in its ability to trigger the LAL cascade. Thus, the absolute levels of endotoxin in a patient sample may not correspond to the actual concentrations of bioactive endotoxin present in vivo.

Two related proteins have been identified in humans and other animals that bind LPS with high affinity. These two proteins, Lipopolysaccharide binding protein (LBP), and bactericidal/permeability increasing protein (BPI) have roughly the same molecular weight and share 45% amino acid homology, yet exhibit distinct physiological differences. LBP is a 60 kD glycoprotein synthesized in the liver, while BPI is found in the azurophilic granules of neutrophils. LBP is found in the serum of normal humans at levels of 5–10 µg/mL but can reach levels of 50–100 µg/mL in septic patients. Schumann et al., *Science*, 249:1429 (1990) disclose the amino acid sequences and encoding cDNA of both human and rabbit LBP. Like BPI, LBP has a binding site for lipid A and binds to the LPS from rough (R-) and smooth (S-) form bacteria. Unlike BPI, LBP does not possess significant bactericidal activity. BPI has been observed to neutralize and inhibit the production of TNF resulting from interaction of LBP with LPS and CD14 on monocytes and macrophages. Marra et al., *J. Immunol.* 148: 532 (1992), Weiss et al., *J. Clin. Invest.* 90: 1122 (1992). In contrast, LBP is observed to enhance LPS-induced TNF production. Wright et al., *Science*, 249:1131 (1990). Thus, in contrast to BPI, LBP has been recognized as an immunostimulatory molecule. See, e.g., Seilhamer, PCT International Application WO 93/06228 which discloses a variant form of LBP which it terms LBP-β. Also of interest to the present invention are Ulevitch, PCT International Application WO 91/01639 which discloses, among other things,

anti-LBP antibodies as an anti-sepsis therapeutic agent and U.S. Pat. No. 5,245,013 which relates to LBP and discloses antibodies which immunoreact with a polypeptide having homology to LBP.

LBP has been characterized in the art as an "acute phase protein", that is one of many plasma proteins (such as C-reactive protein, fibrinogen and serum amyloid A) that increase in concentration in response to infectious and non-infectious tissue destructive processes. As such, it would be anticipated that LBP levels would be elevated in samples from patients suffering from a number of autoimmune diseases such as rheumatoid arthritis and lupus erythematosus.

Of interest to the present invention are disclosures related to the assaying of BPI activity in subjects. von der Mohlen et al., Abstract, 13th International Symposium on Intensive Care and Emergency Medicine, Brussels (March 1993) discloses the results of assays for serum levels of BPI in patients with gram-negative sepsis and healthy subjects. The abstract disclosed that no BPI was detectable under the conditions of the assay in the serum of healthy subjects while circulating BPI was detected in all septic patients. Also of interest is the disclosure of co-owned and copending U.S. patent application Ser. No. 08/175,276 filed Dec. 29, 1993 which is a continuation-in-part of application Ser. No. 08/125,677 filed Sep. 22, 1993 the disclosures of which are hereby incorporated by reference. Those patent applications disclose that levels of BPI in blood plasma samples correlate with the presence or absence of sepsis while levels of BPI in blood serum samples do not. The patent applications teach that levels of BPI present in serum are not representative of endogenous extracellular levels of BPI in circulating blood while levels of BPI in plasma are.

Also of interest to the present invention are the disclosures of Leturcq et al., Keystone Tahoe Endotoxin Conference, Mar., 1–7, 1992 (Abstract) in which the generation of monoclonal antibodies to human LBP is reported. Also reported is the screening of normal human serum samples for the presence of LBP. LBP levels for normal serum samples were reported to range from 1 µg/mL to 24 µg/mL with an average of 7 µg/mL. Further of interest is the disclosure of Richard Ulevitch at the American Society for Microbiology General Meeting in Atlanta, Ga. May 16–21 (1993) at which data was presented on LBP and soluble CD14 levels in the serum of septic and healthy individuals. The average soluble CD14 and LBP concentrations in the serum of healthy adults were 1 µg/mL and 7 µg/mL respectively. The average soluble CD14 and LBP concentrations in the serum of septic patients were reported to be 2 µg/mL and 55 µg/mL respectively.

Geller et al., *Arch. Surg.*, 128: 22–28 (1993) disclose experiments in which the induction of LBP mRNA was studied in three models known to induce acute phase responses: (1) LPS injection; (2) *Corynebacterium parvum* injection; and (3) turpentine injection. The publication reports that LBP mRNA is induced during hepatic inflammation and suggest that LBP is an acute-phase protein important in regulating the in vivo response to endotoxin.

Gallay et al., *Infect. Immun.* 61:378–383 (1993) disclose that an acute phase response in mice injected with silver nitrate induced LBP synthesis, and that LBP levels increase approximately 10-fold over normal levels after an acute-phase response.

There exists a desire in the art for methods for determining the exposure of subjects to endotoxin and for distinguishing the effects of exposure to endotoxin from other acute phase physiologic responses. Also desired are methods

for diagnosing the presence or severity of gram-negative sepsis in a subject and for predicting the prognosis of a subject suffering from sepsis.

### SUMMARY OF THE INVENTION

The present invention provides methods for specifically determining exposure of a subject to endotoxin by assaying for LBP. The invention further provides methods for screening for exposure to gram-negative bacterial endotoxin in an acute phase response in humans by assaying for LBP. Specifically, the method comprises the steps of determining the concentration of LBP in a sample of body fluid from the subject and correlating the concentration of LBP with a standard indicative of the exposure to endotoxin. Such standards can include a subjective standard for a given subject determined by LBP levels of that subject in a pretreatment state such as prior to undergoing surgery. Exposure to endotoxin as a consequence of such surgery can be determined by comparing post-surgical LBP levels with the standard established prior to surgery for that subject. Where access to a pretreatment standard level of LBP is not available for a given individual, objective standards based upon population or subpopulation averages may be applied for comparison. One such standard can be a concentration greater than approximately 15  $\mu\text{g/mL}$  in human plasma or serum, as determined herein for LBP values in subjects suffering from numerous disease states. Subjects exhibiting LBP levels above that standard could presumptively be diagnosed as suffering from exposure to endotoxin while those having levels below that standard would not be. It is clear that alternative standards could be established depending upon the desired sensitivity and selectivity of an assay method and upon the subpopulation in which a given subject falls. For example, standards might be established at different levels for different ages, genders, ethnicities and underlying health conditions of various subpopulations. Moreover, it should be understood that standard levels will differ according to the identity of the particular body fluid which is assayed.

The invention further provides methods for diagnosing the presence or severity of sepsis in a subject comprising the steps of determining the concentration of LBP in a sample of body fluid from the subject and correlating the concentration of LBP with a standard indicative of the presence or severity of sepsis. The invention further provides methods for predicting the prognosis of a subject suffering from sepsis comprising the steps of determining the concentration of LBP in a sample of body fluid from the subject and correlating the concentration of LBP with a standard indicative of the prognosis of a subject suffering from sepsis.

### BRIEF DESCRIPTION OF THE DRAWINGS

FIG. 1 depicts the dose-response curves for rLBP, rLBP<sub>25</sub>, rBPI and rBPI<sub>23</sub> in LBP sandwich assays;

FIG. 2 depicts LBP levels (mean $\pm$ standard error) in the plasma of healthy human subjects and human subjects suffering from various disease states;

FIG. 3 depicts LBP levels (mean $\pm$ standard error) in healthy subjects treated with LPS;

FIG. 4 depicts comparative survival in suspected gram-negative sepsis patients classified as having either high or low levels of plasma LBP; and

FIGS. 5a-5c depict LBP, C-reactive protein (CRP) and fibrinogen levels (mean $\pm$ standard error) in healthy, rheumatoid arthritic and septic subjects.

### DETAILED DESCRIPTION OF THE INVENTION

The present invention relates to methods for quantifying the presence of LBP in body fluids including blood. While the assay can be used to determine the presence and quantity of LBP which has been administered therapeutically, it is particularly useful for quantifying the presence of endogenous LBP in circulating blood as an indication of exposure of a subject to endotoxin. Moreover, quantifying the presence of LBP is contemplated to be useful in diagnostic and prognostic methods for evaluating gram-negative sepsis patients.

The present invention provides a sandwich ELISA assay for human LBP which exhibits high assay sensitivity, high specificity, and excellent reproducibility. As used herein "LBP" quantitated according to assay methods includes native LBP, recombinant LBP, LBP fragments and analogs as well as other LBP proteins and protein products.

The amino acid and nucleotide sequence of recombinant LBP are set out in co-owned and copending U.S. patent application Ser. No. 08/029,510 filed Jun. 17, 1993 as shown in SEQ ID NOS: 1 and 2 herein. A recombinant LBP amino-terminal fragment is characterized by the amino acid sequence of the first 197 amino acids of the amino-terminus of LBP as set out in SEQ ID NOS: 3 and 4 the production of which is described in co-owned and copending U.S. patent application Ser. No. 08/079,510 filed Jun. 12, 1993 the disclosure of which is incorporated herein. Such LBP protein products may be readily quantified using assays including immunological assays and bioassays in the sub-nanogram per mL range. Immunological assays capable of quantifying LBP are preferably carried out by enzyme linked immunosorbant (ELISA) sandwich assays but competitive assays and immunological assays utilizing other labelling formats may also be used. Preferred assays of the invention utilize anti-LBP antibodies, including monoclonal antibodies and affinity-purified rabbit polyclonal antibodies. Rabbit polyclonal anti-LBP antibodies may be prepared according to conventional methods using LBP as an immunogen. Non-immunological methods may also be used to assay for LBP. As one example, Ulevitch et al., U.S. Pat. No. 5,245, 013 disclose assay methods comprising binding of LBP to LPS and separating the complex by a centrifugation density gradient method. As another example, Geller et al., *Arch. Surg.* 128: 22-28 (1993) disclose LBP bioactivity assays in which IL-6 and TNF upregulation are measured.

Body fluids which can be assayed for the presence of LBP include whole blood with blood serum and blood plasma being preferred. Because LBP is a serum protein it is contemplated that it could be excreted and that analysis of LBP levels in urine may provide diagnostic and prognostic utility. The LBP immunoassays of the invention may also be used to determine the concentration of LBP in other body fluids including, but not limited to lung lavages, vitreous fluid, crevicular fluid, cerebrospinal fluid, saliva, sputum, ascites, amniotic fluid and synovial fluid.

Because LBP has been characterized as an "acute phase protein" it would be expected that LBP levels would be elevated in subjects suffering from autoimmune diseases. As one aspect of the present invention it has been found that LBP levels are not substantially elevated over normal in subjects with malignancies, immune diseases or syndromes, viral conditions and other conditions, such as, specifically, acute lymphoblastic leukemia (ALL), acute graft versus host disease (aGvHD), chronic lymphocytic leukemia (CLL), cutaneous T-cell lymphoma (CTCL), type 1 diabetes, aplas-

tic anemia (AA), Crohn's Disease, psoriasis, rheumatoid arthritis (RA), scleroderma, systemic lupus erythematosus (SLE), pregnancy and acquired immune deficiency syndrome (AIDS). In these patients with a condition not associated with endotoxin and thus not associated with elevated LBP levels, exposure to endotoxin is expected to produce a rise in LBP levels over the normal baseline LBP values for that condition. Thus, an elevation in LBP levels for these and other patient populations, like healthy subjects (i.e., subjects with no evidence of disease), is expected to be diagnostic of an exposure to endotoxin.

The invention thus contemplates use of the LBP assay for distinguishing conditions associated with endotoxin from conditions (either acute phase or non-acute phase) not associated with endotoxin. The invention also contemplates the detection of exposure to endotoxin in healthy subjects or in patients with a condition not associated with endotoxin. The invention further contemplates multiple determinations of LBP levels of a subject over time, either to monitor for potential development of a condition associated with endotoxin or to monitor a subject for the severity or prognosis of a condition associated with endotoxin.

Certain subjects tentatively identified as suffering from gram-negative sepsis but ultimately identified as suffering from gram-positive sepsis also had elevated LBP levels. It is noted that translocation of bacteria and/or endotoxin from the gut into the bloodstream can occur in any infection. Thus, infections due to gram-positive bacteria or fungi may also lead to the presence of endotoxin or gram-negative bacteria in the blood and, therefore elevated levels of LBP.

The present invention is based in part upon the observation that serum and plasma levels of LBP directly correlate with a subject's exposure to biologically active LPS. Moreover, LBP levels appear to correlate with survival in suspected gram-negative sepsis patients. For example, subjects with levels of circulating LBP below 27.3  $\mu\text{g/mL}$  (the median value for 58 subjects suffering from gram-negative sepsis) tended to have a greater 14 day survival than did those subjects with levels of LBP above that median. Further, for example, when a plasma LBP threshold level was set at 46  $\mu\text{g/mL}$ , those subjects having a pretreatment LBP plasma level less than 46  $\mu\text{g/mL}$  had a significantly greater survival rate ( $p=0.004$ ) over a 27 day period than did those subjects having a pretreatment plasma LBP level greater than 46  $\mu\text{g/mL}$ .

It is further contemplated by the invention that elevated levels of LBP may result from exposure to larger amounts of endotoxin, and may therefore be diagnostic of greater infection and/or endotoxemia severity. Elevated levels of LBP may also be used to indicate the suitability of using antibiotics directed against gram-negative bacteria or other therapeutic agents targeted directly to endotoxin such as BPI or anti-endotoxin antibodies including the monoclonal antibody E5.

Other aspects and advantages of the present invention will be understood upon consideration of the following illustrative examples. Example 1 relates to the preparation of affinity purified rabbit anti-BPI antibodies; Example 2 relates to the biotin labeling of such antibodies; and Example 3 relates to ELISA procedures utilizing such antibodies. Example 4 relates to the comparative immunoreactivity of rLBP, rLBP<sub>25</sub>, rBPI AND rBPI<sub>23</sub>. Example 5 relates to the measurement of rLBP spiked into pooled human plasma; and Example 6 relates to the comparison of LBP levels in human plasma and serum. Example 7 relates to the clinical correlations of endogenous LBP immunoreactivity with sepsis and other disease states in human plasma; and

Example 8 relates to the effect of LPS administration on endogenous LBP levels in healthy subjects. Example 9 relates to clinical correlations between plasma LBP levels and survival in suspected gram-negative sepsis patients; and Example 10 relates to clinical correlations of acute phase proteins in healthy rheumatoid arthritic and septic patients.

#### EXAMPLE 1

##### Preparation of Affinity Purified Rabbit Anti-rLBP Antibody

According to this example affinity purified rabbit anti-rLBP antibody was prepared. Specifically, rLBP (20 mg) produced according to co-owned and copending U.S. patent application Ser. No. 08/079,510 filed Jun. 17, 1993, the disclosure of which is hereby incorporated by reference was coupled to 10 mL of cyanogen bromide-activated Sepharose 4B (Sigma Chemical Co., St Louis, Mo.) in 0.2 M bicarbonate, pH 8.6, containing 0.5 NaCl. Approximately 94% of the rLBP was coupled to the resin. Pooled antisera (125 mL) from two rabbits, immunized initially with rLBP<sub>25</sub> produced according to the methods of U.S. patent application Ser. No. 08/079,510 filed Jun. 17, 1993 and thereafter with rLBP, were diluted with an equal volume of phosphate buffered saline, pH 7.2 (PBS). A portion (50 mL) of the diluted antisera was passed through the 10 mL rLBP-Sepharose column; the column was then washed with PBS and bound antibodies were eluted with 0.1 M glycine, pH 2.5. Collected fractions were immediately neutralized with 1 M phosphate buffer, pH 8.0. Peak fractions were identified by measuring absorbance at 280 nm according to the method of Harlow et al., *Antibodies: A Laboratory Manual*, Cold Springs Harbor Laboratory Press, New York, p. 312 (1988). After several sequential column cycles, the affinity purified rabbit anti-rLBP antibody was dialyzed against PBS-azide pH 7.2.

#### EXAMPLE 2

##### Preparation of Biotin Labeled Rabbit Anti-rLBP Antibody

this example twenty milligrams of affinity purified rabbit anti-rLBP antibody produced according to the method of Example 1 was incubated with 2 mg of biotinamidocaproate N-hydroxysuccinimide ester (Sigma Chemical Co., St. Louis, Mo.) in 11 mL of 0.1 M sodium bicarbonate pH 8.3 for two hours at room temperature. Unconjugated biotin was removed and the alkaline buffer exchanged by fractionating the reaction mixture on a PD-10 column (Pharmacia Biotech Inc., Piscataway, N.J.) equilibrated with PBS containing 0.1% sodium azide.

#### EXAMPLE 3

##### Elisa Procedure

Fifty microliters of affinity purified rabbit anti-rLBP antibody (2  $\mu\text{g/mL}$  in PBS) were incubated overnight at 2–8° C. (or alternatively, 1 hour at 37° C.) in the wells of Immulon 2 (Dynatech Laboratories Inc., Chantilly, Va.) microtiter plates. The antibody solution was removed and 200  $\mu\text{L}$  of 1% non-fat milk in PBS (blocking agent) was added to all wells. After blocking the plates for 1 hour at room temperature, the wells were washed 3 times with 300  $\mu\text{L}$  of wash buffer (PBS/0.05% Tween-20).

Standards, samples and controls were diluted in triplicate with PBS containing 1% bovine serum albumin, 0.05%

Tween 20 (PBS-BSA/Tween) and 10 units/mL of sodium heparin (Sigma Chemical Co., St. Louis, Mo.) in separate 96-well plates. rLBP or rLBP<sub>25</sub> standard solutions were prepared as serial two-fold dilutions from 100 to 0.012 ng/mL. Each replicate and dilution of the standards, samples and controls (50  $\mu$ L) was transferred to the blocked micro-titer plates and incubated for 1 hour at 37° C. After the primary incubation, the wells were washed 3 times with wash buffer. Biotin-labeled rabbit anti-LBP antibody was diluted 1/2000 in PBS-BSA/Tween and 50  $\mu$ L was added to all wells. The plates were then incubated for 1 hour at 37° C. Subsequently, all wells were washed 3 times with wash buffer. Alkaline phosphatase-labeled streptavidin (Zymed Laboratories Inc., San Francisco, Calif.) was diluted 1/2000 in PBS-BSA/Tween and 50  $\mu$ L was added to all wells. After incubation for 15 minutes at 37° C., all wells were washed 3 times with wash buffer and 3 times with deionized water and the chromogenic substrate p-nitrophenylphosphate (1 mg/mL in 10% diethanolamine buffer) was added in a volume of 50  $\mu$ L to all wells. Color development was allowed to proceed for 1 hour at room temperature, after which 50  $\mu$ L of 1 N NaOH was added to stop the reaction. The absorbance at 405 nm was determined for all wells using a Vmax Plate Reader (Molecular Devices Corp., Menlo Park, Calif.).

The mean absorbance at 405 nm ( $A_{405}$ ) for all samples and standards (in triplicate) were corrected for background by subtracting the mean  $A_{405}$  of wells receiving only sample dilution buffer (no LBP) in the primary incubation step. A standard curve was then plotted as  $A_{405}$  versus ng/mL of rLBP or rLBP<sub>25</sub>. The linear range was selected, a linear regression analysis was performed and concentrations were determined for samples and controls by interpolation from the standard curve.

#### EXAMPLE 4

##### Comparative Immunoreactivity of rLBP, rLBP<sub>25</sub>, rBPI AND rBPI<sub>23</sub>

In this example, the immunoreactivity of rLBP, rLBP<sub>25</sub>, rBPI and rBPI<sub>23</sub> were compared in the BPI sandwich ELISA to determine possible immunologic cross-reactivity. Despite considerable sequence homology between LBP and BPI (see, e.g., Schumann et al., *Science*, 249:1429 (1990), the results illustrated in FIG. 1 show that, on a mass basis, rBPI<sub>23</sub> produced a signal which was approximately 3 orders of magnitude lower than that of rLBP<sub>25</sub> and rLBP, while rBPI produced a signal that was approximately 5 orders of magnitude lower than that of rLBP and rLBP<sub>25</sub>. For example, a concentration of 100,000 ng/mL (100  $\mu$ g/mL) of rBPI or 400 ng/mL rBPI<sub>23</sub> generated a signal which was equal to that produced by 0.8 ng/mL of rLBP or 0.4 ng/mL of rLBP<sub>25</sub>. These results demonstrate minimal cross-reactivity of the antibody with BPI and confirm the specificity of the assay for LBP.

#### EXAMPLE 5

##### Measurement of rLBP Spiked into Pooled Human Plasma

In this example, the recovery of rLBP in human blood fluids was evaluated by examining pooled human plasma spiked with different concentrations of rLBP and then frozen and thawed prior to measurement in the sandwich ELISA. Recovery of spiked LBP was defined as the amount of LBP

measured in spiked human plasma samples minus the concentration in the unspiked control, divided by the actual amount spiked in the sample. The fraction recovered was multiplied by 100 and the results were expressed as a percentage of the input concentration. Recovery of different concentrations of rLBP spiked into pooled human plasma samples averaged 68% and ranged from 59% at 42  $\mu$ g/mL to 78% at 168  $\mu$ g/mL. Table I summarizes the recovery data for each LBP spiked plasma sample.

TABLE I

Recovery of rLBP Spiked into Pooled Citrated Human Plasma			
Amount Spiked ( $\mu$ g/mL)	Amount Measured ( $\mu$ g/mL)	Amount Recovered ( $\mu$ g/mL)	Percent Recovery
0	2.47	—	—
10.5	9.85	7.38	70%
21	16.1	13.63	65%
42	27.3	24.83	59%
84	60.8	58.33	69%
168	133	130.53	78%
		Mean Recovery	68%

#### EXAMPLE 6

##### Comparison of Plasma and Serum LBP Levels

According to this example concentrations of LBP in the serum and plasma of healthy subjects were assayed and compared utilizing the sandwich ELISA assay according to Example 3. Plasma concentrations of LBP were found to be essentially the same as serum concentrations for LBP when the plasma volume was corrected for dilution (dividing by a factor of 0.85) resulting from the addition of anticoagulant. Plasma concentrations in normal human subjects were found to be 3.1  $\mu$ g/mL (S.D. 0.9  $\mu$ g/mL) or 3.7  $\mu$ g/mL (S.D. 1.1  $\mu$ g/mL) corrected, compared with 3.7  $\mu$ g/mL (S.D. 0.9  $\mu$ g/mL) for serum.

#### EXAMPLE 7

##### Clinical Correlations of Endogenous LBP Immunoreactivity in Human Plasma

In this example endogenous LBP immunoreactivity was measured in human plasma or serum samples collected from a variety of subjects suffering from gram-negative sepsis and a variety of other clinical conditions. Specifically, plasma samples of healthy individuals (59 subjects), and individuals diagnosed with gram-negative sepsis (390 subjects) were assayed for LBP levels. Serum samples of individuals with acute lymphoblastic leukemia (ALL) (6 subjects); acute graft versus host disease (aGvHD) (8 subjects); chronic lymphocytic leukemia (CLL) (9 subjects); cutaneous T-cell lymphoma (CTCL) (12 subjects); type 1 diabetes (13 subjects); aplastic anemia (AA) (16 subjects); Crohn's Disease (8 subjects); psoriasis (13 subjects); rheumatoid arthritis (RA) (86 subjects); scleroderma (4 subjects), and systemic lupus erythematosus (SLE) (10 subjects) were assayed for LBP levels. The results are shown in FIG. 2.

In another experiment, LBP immunoreactivity was also measured in plasma samples from healthy non-pregnant women (18 subjects) and in plasma samples from age-matched pregnant women in the third trimester of gestation with no evidence of active infection (18 subjects). The mean result for the healthy non-pregnant women was 3.8  $\mu$ g/mL

(ranging from 1.7 to 7.7  $\mu\text{g/mL}$ ), which was comparable to that of the healthy individuals assayed earlier, and the mean result for the pregnant women was 10.5  $\mu\text{g/mL}$  (ranging from 4.6 to 22.7  $\mu\text{g/mL}$ ).

In a further experiment, levels of LBP as well as C-reactive protein (an acute phase protein) were measured in plasma samples from patients diagnosed with AIDS, with no concomitant infection. The mean LBP value was  $5.33 \pm 2.31$   $\mu\text{g/mL}$  (ranging from 2.1 to 10.3  $\mu\text{g/mL}$ ) and the mean CRP level was  $5.34 \pm 6.99$   $\mu\text{g/mL}$  (ranging from 0.25 to 18.3  $\mu\text{g/mL}$ ).

While LBP levels among subjects diagnosed as suffering from gram-negative sepsis were elevated it was found that LBP levels were not substantially elevated over normal in subjects with acute lymphoblastic leukemia, acute graft versus host disease, chronic lymphocytic leukemia, cutaneous T-cell lymphoma, type 1 diabetes, aplastic anemia, Crohn's Disease, psoriasis, rheumatoid arthritis, scleroderma, systemic lupus erythematosus (SLE), pregnancy and AIDS. Accordingly, the LBP assay of the invention is valuable for distinguishing conditions associated with endotoxin from other acute phase conditions or non-acute phase conditions not associated with endotoxin.

#### EXAMPLE 8

##### The Effect of LPS Administration on Endogenous LBP Levels in Healthy Subjects

In this example, the effect of LPS administration on endogenous LBP immunoreactivity in healthy human subjects was determined. Specifically, healthy subjects were monitored utilizing the LBP sandwich assay for changes in LBP plasma levels at various time points after intravenous administration of 4 ng/kg LPS (16 subjects) or in control subjects (2) not receiving LPS. The results illustrated in FIG. 3 show the change in mean plasma LBP concentration with time. For those subjects treated with LPS LBP levels began to rise about 6 hours after LPS administration. Peak LBP plasma levels were observed in most subjects between 10 to 12 hours after the LPS administration. The average increase from baseline to peak LBP level was approximately 3-fold. Over this time period the mean LBP levels in control subjects remained within normal range (approximately 5  $\mu\text{g/mL}$ ).

It is contemplated that additional analysis will illustrate the correlation of LBP levels in body fluids with the symptoms of exposure to endotoxin and that LBP levels will be diagnostic and prognostic of disease states resulting from exposure to endotoxin.

It is contemplated that additional analysis will illustrate the correlation of LBP levels with symptoms of bacterial

infections, endotoxemia and sepsis including conditions associated with sepsis including DIC and ARDS.

#### EXAMPLE 9

##### Clinical Correlations Between Plasma LBP Levels and Survival in Suspected Gram-Negative Sepsis Patients

Correlations between plasma LBP levels and survival in suspected gram-negative sepsis patients were compared using data obtained from the septic subjects described in Example 7. In this case, a standard LBP concentration was set at 46  $\mu\text{g/mL}$  and patients with suspected gram-negative sepsis were classified as having either high ( $>46$   $\mu\text{g/mL}$ ) or low ( $<46$   $\mu\text{g/mL}$ ) LBP plasma levels as measured in pre-treatment samples. As shown in the data presented in FIG. 4, those subjects having low pretreatment plasma levels of LBP had a significantly greater survival rate ( $p=0.004$ ) over a 27 day period than did those subjects having a high pretreatment plasma LBP level. These data show the utility of assaying LBP levels and comparing them to a standard LBP value for predicting the prognosis of subjects suffering from sepsis.

#### EXAMPLE 10

##### Clinical Correlations of Acute Phase Proteins in Healthy, Rheumatoid Arthritic, and Septic Patients

Plasma levels of LBP, C-reactive protein (CRP) and fibrinogen were measured in small groups of healthy, rheumatoid arthritic and septic patients with the results shown in FIGS. 5a (LBP levels), 5b (CRP levels) and 5c (fibrinogen levels). The results show that relative to healthy subjects, mean fibrinogen levels were elevated approximately 2.5 fold for both rheumatoid arthritic and septic subjects. Relative to healthy subjects, mean CRP levels were found to be elevated approximately 40-fold for rheumatoid arthritic subjects and 200-fold for septic subjects. In contrast, and consistent with the results in Example 7, mean LBP levels were only slightly increased (less than 2-fold) for rheumatoid arthritis subjects while the mean LBP levels were increased by more than 6 fold for septic subjects.

Numerous modifications and variations in the practice of the invention are expected to occur to those skilled in the art upon consideration of the foregoing description of the presently preferred embodiments thereof. Consequently, the only limitations which should be placed upon the scope of the present invention are those which appear in the appended claims.

---

#### SEQUENCE LISTING

(1) GENERAL INFORMATION:

(iii) NUMBER OF SEQUENCES: 4

(2) INFORMATION FOR SEQ ID NO: 1:

(i) SEQUENCE CHARACTERISTICS:

(A) LENGTH: 1443 base pairs

(B) TYPE: nucleic acid



-continued

CAG ATG CTG GAG GTG ATG TTT AAG GGT GAA ATC TTT CAT CGT AAC CAC Gln Met Leu Glu Val Met Phe Lys Gly Glu Ile Phe His Arg Asn His 220 225 230	768
CGT TCT CCA GTT ACC CTC CTT GCT GCA GTC ATG AGC CTT CCT GAG GAA Arg Ser Pro Val Thr Leu Leu Ala Ala Val Met Ser Leu Pro Glu Glu 235 240 245	816
CAC AAC AAA ATG GTC TAC TTT GCC ATC TCG GAT TAT GTC TTC AAC ACG His Asn Lys Met Val Tyr Phe Ala Ile Ser Asp Tyr Val Phe Asn Thr 250 255 260	864
GCC AGC CTG GTT TAT CAT GAG GAA GGA TAT CTG AAC TTC TCC ATC ACA Ala Ser Leu Val Tyr His Glu Glu Gly Tyr Leu Asn Phe Ser Ile Thr 265 270 275	912
GAT GAG ATG ATA CCG CCT GAC TCT AAT ATC CGA CTG ACC ACC AAG TCC Asp Glu Met Ile Pro Pro Asp Ser Asn Ile Arg Leu Thr Thr Lys Ser 280 285 290 295	960
TTC CGA CCC TTC GTC CCA CGG TTA GCC AGG CTC TAC CCC AAC ATG AAC Phe Arg Pro Phe Val Pro Arg Leu Ala Arg Leu Tyr Pro Asn Met Asn 300 305 310	1008
CTG GAA CTC CAG GGA TCA GTG CCC TCT GCT CCG CTC CTG AAC TTC AGC Leu Glu Leu Gln Gly Ser Val Pro Ser Ala Pro Leu Leu Asn Phe Ser 315 320 325	1056
CCT GGG AAT CTG TCT GTG GAC CCC TAT ATG GAG ATA GAT GCC TTT GTG Pro Gly Asn Leu Ser Val Asp Pro Tyr Met Glu Ile Asp Ala Phe Val 330 335 340	1104
CTC CTG CCC AGC TCC AGC AAG GAG CCT GTC TTC CGG CTC AGT GTG GCC Leu Leu Pro Ser Ser Ser Lys Glu Pro Val Phe Arg Leu Ser Val Ala 345 350 355	1152
ACT AAT GTG TCC GCC ACC TTG ACC TTC AAT ACC AGC AAG ATC ACT GGG Thr Asn Val Ser Ala Thr Leu Thr Phe Asn Thr Ser Lys Ile Thr Gly 360 365 370 375	1200
TTC CTG AAG CCA GGA AAG GTA AAA GTG GAA CTG AAA GAA TCC AAA GTT Phe Leu Lys Pro Gly Lys Val Lys Val Glu Leu Lys Glu Ser Lys Val 380 385 390	1248
GGA CTA TTC AAT GCA GAG CTG TTG GAA GCG CTC CTC AAC TAT TAC ATC Gly Leu Phe Asn Ala Glu Leu Leu Glu Ala Leu Leu Asn Tyr Tyr Ile 395 400 405	1296
CTT AAC ACC TTC TAC CCC AAG TTC AAT GAT AAG TTG GCC GAA GGC TTC Leu Asn Thr Phe Tyr Pro Lys Phe Asn Asp Lys Leu Ala Glu Gly Phe 410 415 420	1344
CCC CTT CCT CTG CTG AAG CGT GTT CAG CTC TAC GAC CTT GGG CTG CAG Pro Leu Pro Leu Leu Lys Arg Val Gln Leu Tyr Asp Leu Gly Leu Gln 425 430 435	1392
ATC CAT AAG GAC TTC CTG TTC TTG GGT GCC AAT GTC CAA TAC ATG AGA Ile His Lys Asp Phe Leu Phe Leu Gly Ala Asn Val Gln Tyr Met Arg 440 445 450 455	1440
GTT Val	1443

(2) INFORMATION FOR SEQ ID NO: 2:

- (i) SEQUENCE CHARACTERISTICS:  
 (A) LENGTH: 481 amino acids  
 (B) TYPE: amino acid  
 (D) TOPOLOGY: linear

(ii) MOLECULE TYPE: protein

- (ix) FEATURE:  
 (A) NAME/KEY: misc\_feature  
 (D) OTHER INFORMATION: "rLBP"

(xi) SEQUENCE DESCRIPTION: SEQ ID NO: 2:

-continued

---

Met Gly Ala Leu Ala Arg Ala Leu Pro Ser Ile Leu Leu Ala Leu Leu  
 -25 -20 -15 -10

Leu Thr Ser Thr Pro Glu Ala Leu Gly Ala Asn Pro Gly Leu Val Ala  
 -5 1 5

Arg Ile Thr Asp Lys Gly Leu Gln Tyr Ala Ala Gln Glu Gly Leu Leu  
 10 15 20

Ala Leu Gln Ser Glu Leu Leu Arg Ile Thr Leu Pro Asp Phe Thr Gly  
 25 30 35

Asp Leu Arg Ile Pro His Val Gly Arg Gly Arg Tyr Glu Phe His Ser  
 40 45 50 55

Leu Asn Ile His Ser Cys Glu Leu Leu His Ser Ala Leu Arg Pro Val  
 60 65 70

Pro Gly Gln Gly Leu Ser Leu Ser Ile Ser Asp Ser Ser Ile Arg Val  
 75 80 85

Gln Gly Arg Trp Lys Val Arg Lys Ser Phe Phe Lys Leu Gln Gly Ser  
 90 95 100

Phe Asp Val Ser Val Lys Gly Ile Ser Ile Ser Val Asn Leu Leu Leu  
 105 110 115

Gly Ser Glu Ser Ser Gly Arg Pro Thr Val Thr Ala Ser Ser Cys Ser  
 120 125 130 135

Ser Asp Ile Ala Asp Val Glu Val Asp Met Ser Gly Asp Leu Gly Trp  
 140 145 150

Leu Leu Asn Leu Phe His Asn Gln Ile Glu Ser Lys Phe Gln Lys Val  
 155 160 165

Leu Glu Ser Arg Ile Cys Glu Met Ile Gln Lys Ser Val Ser Ser Asp  
 170 175 180

Leu Gln Pro Tyr Leu Gln Thr Leu Pro Val Thr Thr Glu Ile Asp Ser  
 185 190 195

Phe Ala Asp Ile Asp Tyr Ser Leu Val Glu Ala Pro Arg Ala Thr Ala  
 200 205 210 215

Gln Met Leu Glu Val Met Phe Lys Gly Glu Ile Phe His Arg Asn His  
 220 225 230

Arg Ser Pro Val Thr Leu Leu Ala Ala Val Met Ser Leu Pro Glu Glu  
 235 240 245

His Asn Lys Met Val Tyr Phe Ala Ile Ser Asp Tyr Val Phe Asn Thr  
 250 255 260

Ala Ser Leu Val Tyr His Glu Glu Gly Tyr Leu Asn Phe Ser Ile Thr  
 265 270 275

Asp Glu Met Ile Pro Pro Asp Ser Asn Ile Arg Leu Thr Thr Lys Ser  
 280 285 290 295

Phe Arg Pro Phe Val Pro Arg Leu Ala Arg Leu Tyr Pro Asn Met Asn  
 300 305 310

Leu Glu Leu Gln Gly Ser Val Pro Ser Ala Pro Leu Leu Asn Phe Ser  
 315 320 325

Pro Gly Asn Leu Ser Val Asp Pro Tyr Met Glu Ile Asp Ala Phe Val  
 330 335 340

Leu Leu Pro Ser Ser Ser Lys Glu Pro Val Phe Arg Leu Ser Val Ala  
 345 350 355

Thr Asn Val Ser Ala Thr Leu Thr Phe Asn Thr Ser Lys Ile Thr Gly  
 360 365 370 375

Phe Leu Lys Pro Gly Lys Val Lys Val Glu Leu Lys Glu Ser Lys Val  
 380 385 390

Gly Leu Phe Asn Ala Glu Leu Leu Glu Ala Leu Leu Asn Tyr Tyr Ile

-continued

	395		400		405	
Leu	Asn Thr Phe Tyr Pro Lys Phe	Asn Asp Lys Leu Ala Glu Gly Phe				
	410		415		420	
Pro	Leu Pro Leu Leu Lys Arg Val Gln Leu Tyr Asp Leu Gly Leu Gln					
	425		430		435	
Ile	His Lys Asp Phe Leu Phe Leu Gly Ala Asn Val Gln Tyr Met Arg					
440		445		450		455
Val						

(2) INFORMATION FOR SEQ ID NO: 3:

- (i) SEQUENCE CHARACTERISTICS:
  - (A) LENGTH: 591 base pairs
  - (B) TYPE: nucleic acid
  - (C) STRANDEDNESS: single
  - (D) TOPOLOGY: linear

(ii) MOLECULE TYPE: DNA

(ix) FEATURE:

- (A) NAME/KEY: CDS
- (B) LOCATION: 1..591

(ix) FEATURE:

- (A) NAME/KEY: misc\_feature
- (D) OTHER INFORMATION: "rLBP25"

(xi) SEQUENCE DESCRIPTION: SEQ ID NO: 3:

GCC AAC CCC GGC TTG GTC GCC AGG ATC ACC GAC AAG GGA CTG CAG TAT	48
Ala Asn Pro Gly Leu Val Ala Arg Ile Thr Asp Lys Gly Leu Gln Tyr	
1 5 10 15	
GCG GCC CAG GAG GGG CTA TTG GCT CTG CAG AGT GAG CTG CTC AGG ATC	96
Ala Ala Gln Glu Gly Leu Leu Ala Leu Gln Ser Glu Leu Leu Arg Ile	
20 25 30	
ACG CTG CCT GAC TTC ACC GGG GAC TTG AGG ATC CCC CAC GTC GGC CGT	144
Thr Leu Pro Asp Phe Thr Gly Asp Leu Arg Ile Pro His Val Gly Arg	
35 40 45	
GGG CGC TAT GAG TTC CAC AGC CTG AAC ATC CAC AGC TGT GAG CTG CTT	192
Gly Arg Tyr Glu Phe His Ser Leu Asn Ile His Ser Cys Glu Leu Leu	
50 55 60	
CAC TCT GCG CTG AGG CCT GTC CCT GGC CAG GGC CTG AGT CTC AGC ATC	240
His Ser Ala Leu Arg Pro Val Pro Gly Gln Gly Leu Ser Leu Ser Ile	
65 70 75 80	
TCC GAC TCC TCC ATC CGG GTC CAG GGC AGG TGG AAG GTG CGC AAG TCA	288
Ser Asp Ser Ser Ile Arg Val Gln Gly Arg Trp Lys Val Arg Lys Ser	
85 90 95	
TTC TTC AAA CTA CAG GGC TCC TTT GAT GTC AGT GTC AAG GGC ATC AGC	336
Phe Phe Lys Leu Gln Gly Ser Phe Asp Val Ser Val Lys Gly Ile Ser	
100 105 110	
ATT TCG GTC AAC CTC CTG TTG GGC AGC GAG TCC TCC GGG AGG CCC ACA	384
Ile Ser Val Asn Leu Leu Leu Gly Ser Glu Ser Ser Gly Arg Pro Thr	
115 120 125	
GTT ACT GCC TCC AGC TGC AGC AGT GAC ATC GCT GAC GTG GAG GTG GAC	432
Val Thr Ala Ser Ser Cys Ser Ser Asp Ile Ala Asp Val Glu Val Asp	
130 135 140	
ATG TCG GGA GAC TTG GGG TGG CTG TTG AAC CTC TTC CAC AAC CAG ATT	480
Met Ser Gly Asp Leu Gly Trp Leu Leu Asn Leu Phe His Asn Gln Ile	
145 150 155 160	
GAG TCC AAG TTC CAG AAA GTA CTG GAG AGC AGG ATT TGC GAA ATG ATC	528
Glu Ser Lys Phe Gln Lys Val Leu Glu Ser Arg Ile Cys Glu Met Ile	
165 170 175	
CAG AAA TCG GTG TCC TCC GAT CTA CAG CCT TAT CTC CAA ACT CTG CCA	576

-continued

Gln Lys Ser Val Ser Ser Asp Leu Gln Pro Tyr Leu Gln Thr Leu Pro  
 180 185 190  
 GTT ACA ACA GAG ATT 591  
 Val Thr Thr Glu Ile  
 195

- (2) INFORMATION FOR SEQ ID NO: 4:
  - (i) SEQUENCE CHARACTERISTICS:
    - (A) LENGTH: 197 amino acids
    - (B) TYPE: amino acid
    - (D) TOPOLOGY: linear
  - (ii) MOLECULE TYPE: protein
  - (ix) FEATURE:
    - (A) NAME/KEY: misc\_feature
    - (D) OTHER INFORMATION: "rLBP25"
  - (xi) SEQUENCE DESCRIPTION: SEQ ID NO: 4:

Ala Asn Pro Gly Leu Val Ala Arg Ile Thr Asp Lys Gly Leu Gln Tyr  
 1 5 10 15  
 Ala Ala Gln Glu Gly Leu Leu Ala Leu Gln Ser Glu Leu Leu Arg Ile  
 20 25 30  
 Thr Leu Pro Asp Phe Thr Gly Asp Leu Arg Ile Pro His Val Gly Arg  
 35 40 45  
 Gly Arg Tyr Glu Phe His Ser Leu Asn Ile His Ser Cys Glu Leu Leu  
 50 55 60  
 His Ser Ala Leu Arg Pro Val Pro Gly Gln Gly Leu Ser Leu Ser Ile  
 65 70 75 80  
 Ser Asp Ser Ser Ile Arg Val Gln Gly Arg Trp Lys Val Arg Lys Ser  
 85 90 95  
 Phe Phe Lys Leu Gln Gly Ser Phe Asp Val Ser Val Lys Gly Ile Ser  
 100 105 110  
 Ile Ser Val Asn Leu Leu Leu Gly Ser Glu Ser Ser Gly Arg Pro Thr  
 115 120 125  
 Val Thr Ala Ser Ser Cys Ser Ser Asp Ile Ala Asp Val Glu Val Asp  
 130 135 140  
 Met Ser Gly Asp Leu Gly Trp Leu Leu Asn Leu Phe His Asn Gln Ile  
 145 150 155 160  
 Glu Ser Lys Phe Gln Lys Val Leu Glu Ser Arg Ile Cys Glu Met Ile  
 165 170 175  
 Gln Lys Ser Val Ser Ser Asp Leu Gln Pro Tyr Leu Gln Thr Leu Pro  
 180 185 190  
 Val Thr Thr Glu Ile  
 195

What is claimed is:

1. A method for specifically determining exposure of a subject to endotoxin comprising the steps of  
 determining the concentration of lipopolysaccharide binding protein (LBP) in a sample of body fluid from the subject, and  
 correlating the concentration of LBP with a standard indicative of the exposure to endotoxin,  
 wherein LBP concentration above the standard is presumptively diagnostic of exposure of the subject to endotoxin, while a concentration below the standard is not, and

55 wherein said subject has a pathological condition which is not a gram-negative bacterial infection or wherein said subject has a pathological condition in addition to a gram-negative bacterial infection.  
 2. The method of claim 1 wherein said sample is a blood  
 60 sample.  
 3. The method of claim 1 wherein said sample is a plasma or serum sample.  
 4. The method of claim 1 wherein the concentration of lipopolysaccharide binding protein is determined by means of an immunoassay.  
 5. The method of claim 1 wherein the subject has acute lymphoblastic leukemia.

**21**

- 6. The method of claim 1 wherein the subject has acute graft versus host disease.
- 7. The method of claim 1 wherein the subject has chronic lymphocytic leukemia.
- 8. The method of claim 1 wherein the subject has cutaneous T-cell lymphoma.
- 9. The method of claim 1 wherein the subject has type 1 diabetes.
- 10. The method of claim 1 wherein the subject has aplastic anemia.
- 11. The method of claim 1 wherein the subject has Crohn's Disease.
- 12. The method of claim 1 wherein the subject has psoriasis.
- 13. The method of claim 1 wherein the subject has rheumatoid arthritis.
- 14. The method of claim 1 wherein the subject has scleroderma.

**22**

- 15. The method of claim 1 wherein the subject has systemic lupus erythematosus.
- 16. The method of claim 1 wherein the subject has acquired immune deficiency syndrome (ADS).
- 17. A method for specifically determining exposure of a subject to endotoxin comprising the steps of determining the concentration of lipopolysaccharide binding protein (LBP) in a sample of body fluid from the subject, and correlating the concentration of LBP with a standard indicative of the exposure to endotoxin, wherein LBP concentration above the standard is presumptively diagnostic of exposure of the subject to endotoxin, while a concentration below the standard is not, and wherein said subject is pregnant.

\* \* \* \* \*

专利名称(译)	量化体液中LBP的方法		
公开(公告)号	<a href="#">US7081334</a>	公开(公告)日	2006-07-25
申请号	US09/994185	申请日	2001-11-26
[标]申请(专利权)人(译)	爱克斯欧玛公司		
申请(专利权)人(译)	XOMA CORPORATION		
当前申请(专利权)人(译)	XOMA CORPORATION		
[标]发明人	WHITE MARK LESLIE CARROLL STEPHEN FITZHUGH MA JEREMY KAM KUEN		
发明人	WHITE, MARK LESLIE CARROLL, STEPHEN FITZHUGH MA, JEREMY KAM-KUEN		
IPC分类号	G01N33/50 G01N33/53 G01N33/536 G01N33/569 G01N33/68		
CPC分类号	G01N33/50 G01N33/68 G01N33/56911		
优先权	09/286153 1999-04-05 US 08/186811 1994-01-24 US 08/779400 1997-01-07 US 08/377391 1995-01-24 US		
其他公开文献	US20020127622A1		
外部链接	<a href="#">Espacenet</a> <a href="#">USPTO</a>		

摘要(译)

本发明提供了一种用于量化包括受试者血液在内的体液中细胞外LBP的存在的方法，该方法包括对从所述受试者获得的血浆进行LBP免疫测定。

