



US007695919B2

(12) **United States Patent**  
**Apel et al.**

(10) **Patent No.:** **US 7,695,919 B2**  
(45) **Date of Patent:** **Apr. 13, 2010**

(54) **ANTIBODY PROFILING SENSITIVITY THROUGH INCREASED REPORTER ANTIBODY LAYERING**

2006/0115429 A1 6/2006 Afeyan et al.  
2006/0257396 A1 11/2006 Jacobsen et al.

(75) Inventors: **William A. Apel**, Jackson, WY (US);  
**Vicki S Thompson**, Idaho Falls, ID (US)

FOREIGN PATENT DOCUMENTS

(73) Assignee: **Battelle Energy Alliance, LLC**, Idaho Falls, ID (US)

WO	WO 86/02734	5/1986
WO	WO 90/05296	5/1990
WO	WO 97/29206	2/1997
WO	WO 98/31839 A2 *	7/1998
WO	WO 98/38490 A1	9/1998
WO	WO 99/38985	1/1999

(\* ) Notice: Subject to any disclaimer, the term of this patent is extended or adjusted under 35 U.S.C. 154(b) by 0 days.

(21) Appl. No.: **11/691,096**

(22) Filed: **Mar. 26, 2007**

(65) **Prior Publication Data**

US 2007/0190585 A1 Aug. 16, 2007

**Related U.S. Application Data**

(60) Continuation-in-part of application No. 11/101,254, filed on Apr. 6, 2005, which is a division of application No. 10/017,577, filed on Dec. 14, 2001, now Pat. No. 6,989,276.

(60) Provisional application No. 60/290,256, filed on May 10, 2001.

(51) **Int. Cl.**  
**G01N 33/53** (2006.01)

(52) **U.S. Cl.** ..... **435/7.1; 435/7.92; 435/7.93; 435/971; 435/973; 435/975; 436/518; 436/538; 436/540; 422/50; 422/56; 422/57; 422/60; 424/130.1**

(58) **Field of Classification Search** ..... None  
See application file for complete search history.

(56) **References Cited**

U.S. PATENT DOCUMENTS

566,558 A	8/1896	Bell	
4,542,104 A	9/1985	Stryer et al.	
4,880,750 A	11/1989	Francoeur	
5,238,652 A *	8/1993	Sun et al. ....	422/61
5,270,167 A	12/1993	Francoeur	
5,445,934 A	8/1995	Fodor et al.	
5,471,549 A	11/1995	Kurosu et al.	
5,541,113 A	7/1996	Siddigi et al.	
5,605,662 A	2/1997	Heller et al.	
5,744,305 A	4/1998	Fodor et al.	
5,858,801 A	1/1999	Brizzolara	
5,885,780 A	3/1999	Olivera et al.	
6,103,479 A	8/2000	Taylor	
6,553,135 B1	4/2003	Douglass et al.	
6,591,196 B1	7/2003	Yakhini et al.	
6,906,104 B2	6/2005	Schostarez et al.	
6,965,704 B2	11/2005	Kaushikkar et al.	
6,980,677 B2	12/2005	Nites et al.	
6,989,276 B2	1/2006	Thompson et al.	
7,219,016 B2	5/2007	Rimm et al.	
2004/0085443 A1	5/2004	Kallioniemi et al.	
2005/0047678 A1	3/2005	Jones et al.	

OTHER PUBLICATIONS

Caterino-de-Araujo et al. (Diagnostic Microbiology and Infectious Disease, Mar. 1998, vol. 30, No. 3., pp. 173-182).\*

Thompson et al. ("Antibody Profiling Technique for Rapid Identification of Forensic Samples", California Association of Criminalists Fall Seminar, Irvine California, Oct. 8-11, 1997).\*

A M. Francoeur et al., 136 J. Immunol 1648 (1986).

S. Cabilly, Combinatorial Peptide Library Protocols, Humana Press, pp. 129-154 (1997).

G. M. Santangelo et al., Cloning of Open Reading Frames and Promoters from the *Saccharomyces cerevisiae* Genome: Construction of Genomic Libraries of Random Small Fragments, 46 Gene 181-186 (1986).

(Continued)

Primary Examiner—Lisa V Cook

(74) Attorney, Agent, or Firm—TraskBritt

(57) **ABSTRACT**

A method for analyzing a biological sample by antibody profiling for identifying forensic samples or for detecting the presence of an analyte. In an embodiment of the invention, the analyte is a drug, such as marijuana, Cocaine (crystalline tropane alkaloid), methamphetamine, methyltestosterone, or mesterolone. The method comprises attaching antigens to a surface of a solid support in a preselected pattern to form an array wherein locations of the antigens are known; contacting the array with the biological sample such that a portion of antibodies in the sample reacts with and binds to the antigens in the array to form immune complexes; washing away antibodies that do form immune complexes; and detecting the immune complexes, to form an antibody profile. Forensic samples are identified by comparing a sample from an unknown source with a sample from a known source. Further, an assay, such as a test for illegal drug use, can be coupled to a test for identity such that the results of the assay can be positively correlated to the subject's identity.

**30 Claims, 9 Drawing Sheets**

## OTHER PUBLICATIONS

- S.S. Wong, *Chemistry of Protein Conjugation and Cross-Linking* (CRC Press, entire book, 1991).
- N. E. Good & S. Izawa, *Hydrogen Ion Buffers*, 24 *Methods Enzymology* 53-68 (1972).
- D. M. Kemeny & S. J. Challacombe, *ELISA and Other Solid Phase Immunoassays* (1988).
- R. C. Boguslaski et al., *Clinical Immunochemistry: Principles of Methods and Applications* (1984).
- D. P. Stites et al., *Basic and Clinical Immunology* (1994).
- I. Hemmila, *Fluoroimmunoassays and Immunofluorometric Assays*, 31 *Clin. Chem.* 359 (1985).
- W. Schramm, et al., *Drugs of Abuse in Saliva: A Review*, 16 *J. Anal. Toxicology* 1-9 (1992).
- E. J. Cone, *Saliva Testing for Drugs of Abuse*, 694 *Ann. N. Y. Acad. Sci.* 91-127 (1995).
- D. A. Kidwell et al., *Testing for drugs of abuse in saliva and sweat*, 713 *J. Chrom. B* 111-135 (1998).
- V. S. Thompson et al., *Antibody profiling as an identification tool for forensic samples*, 3576 *Investigation and Forensic Science Technologies* 52-59 (1999).
- S. B. Karch, *Drug Abuse Handbook* (CRC Press, 1998).
- Parry, *Tests for HIV and hepatitis viruses*, 694 *Annals N. Y. Acad. Sci.* 221 (1993).
- M. Peat & A.E. Davis, *Drug Abuse Handbook* (CRC Press, Boca Raton, Fla. 1998).
- Larry D. Bowers, Ph.D. *Athletic Drug Testing*, *Sport Pharmacology*, pp. 299-319 (1998).
- Cambridge Healthtech Institute's Fourth Annual, *DNA Forensics* (Brochure).
- Jeffrey Baird, *Forensic DNA in the Trial Court 1990-1992: A Brief History*, pp. 61-75.
- Controversy Over Forensic DNA Analysis*, *Science in the Courtroom*, QC Researcher, pp. 924-925.
- John McCabe, *DNA Fingerprinting: The Failings of Frye*, 16 *N. Ill. U. L. Rev.* 455 (1996).
- International Search Report, dated Feb. 21, 2003.
- Thompson et al., "A Novel Test for Detection of Drugs in the Body That Also Provides the Identity of the Person Being Examined," ONDCP International Technology Symposium, Counterdrug Research and Development: Technologies for the Next Decade, San Diego, Jun. 25-28, 2001.
- Thompson et al., "Forensic Validation Study of Antibody Profiling Identification," FRENZY—Forensic Science and Crime Scene Technology, Conference and Expo, Washington, D.C., May 14-17, 2001.
- Thompson et al., "Novel Assay for Drug and Identity Determination in Body Fluids," American Academy of Forensic Sciences Annual Meeting, Reno, Feb. 22-26, 2000.
- Thompson et al., "Antibody Profiling Technique for Rapid Identification of Forensic Samples," CAT/NWAFS/SWAFS/SAT Combined Professional Training Seminar, Las Vegas, Nov. 3-7, 1997.
- Thompson et al., "Antibody Profiling Technique for Rapid Identification of Forensic Samples," California Association of Criminalists Fall Seminar, Irvine, California, Oct. 8-11, 1997.
- R. M. Bernstein, *Cellular Protein & RNA Antigens in Autoimmune Disease*, 2 *Mol. Biol. Med.*, 105-120 (1984).
- P. S. Fodor, 277 *Science* 393 & 395 (1997).
- S. E. Cwirla et al., *Peptides on Phage: A Vast Library of Peptides for Identifying Ligands*, 87 *Proc. Nat'l Acad. Sci. USA* 6378-6382 (1990).
- K. S. Lam et al., *A New Type of Synthetic Peptide Library for Identifying Ligand-binding Activity*, 354 *Nature* 82-84 (1991).
- R. A. Young & R. W. Davis, *Yeast RNA Polymerase II Genes: Isolation with Antibody Probes*, 222 *Science* 778-782 (1983).
- Thompson and Maragos, *Fiber-Optic Immunosensor for the Detection of Fumonisin B1*, 44 *J. Agric. Food Chem.*, 1041-1046 (1996).
- T. Persoon, *Immunochemical Assays in the Clinical Laboratory*, 5 *Clinical Laboratory Science* 31 (1992).
- J.K. Leland et al., *Electrogenerated Chemiluminescence: An Oxidative-Reduction Type ECL Reactions Sequence Using Tripropyl Amine*, 137 *J. Electrochemical Soc.* 3127-3131 (1990).
- Miragen Antibody Profile Assay Advertisement.
- David P. Ascher and Chester Roberts, *Determination of the Etiology of Seroreversals in HIV Testing by Antibody Fingerprinting*, *Journal of Acquired Immune Deficiency Syndromes*, 6:241-244 (1993) Raven Press, Ltd, NY.
- Ann-Michele Francoeur, *Antibody Fingerprinting: A Novel Method For Identifying Individual People and Animals*, Miragen, Inc., 821-825 (1988).
- Thomas F. Unger, PhD and Arthur Strauss, MD FAAP, *Individual-Specific Antibody Profiles as a Means of Newborn Infant Identification*, *Journal of Perinatology* vol. 15, No. 2, 152-155 (1995).
- James K. Scott and George P. Smith, *Searching for Peptide Ligands with an Epitope Library*, *Science*, vol. 249, 386-390 (1990).
- James J. Devlin, Lucy C. Panganiban, Patricia E. Devlin, *Random Peptide Libraries: A Source of Specific Protein Binding Molecules*, *Science*, vol. 249, 404-406 & 336-337 (1990).
- Agg, Kent M., et al., "Preliminary Investigations into Tris(2,2'-bipyridyl) Ruthenium (III) as a Chemiluminescent Reagent for the Detection of 3,6-Diacetylmorphine (Heroin) on Surfaces," *Journal of Forensic Science*, Sep. 2007, vol. 52, No. 5, pp. 1111-1114.
- International Search Report and Written Opinion of the International Searching Authority, PCT/US08/65339, International Filing Date May 30, 2008.
- International Search Report and Written Opinion of the International Searching Authority, PCT/US08/065321, International Filing Date May 30, 2008.
- Derisi, Joseph L., et al., *Exploring the Metabolic and Genetic Control of Gene Expression on a Genomic Scale*, *Science*, Oct. 24, 1997, pp. 680-686, vol. 278.
- Unlu, Mustafa, et al., *Difference Gel Electrophoresis: A Single Gel Method for Detecting Changes in Protein Extracts*, *Electrophoresis*, 1997, pp. 2071-2077, vol. 18.
- Dow, Alasdair I., et al., *Automatic Multiparameter Fluorescence Imaging for Determining Lymphocyte Phenotype and Activation Status in Melanoma Tissue Sections*, *Cytometry*, 1996, pp. 71-81, vol. 25.
- International Search Report and Written Opinion of the International Searching Authority, PCT/US08/54011, International Filing Date Feb. 14, 2008.
- Bernard et al., "Micromosaic immunoassays," *Analytical Chemistry* 73, 8-12 (2001).
- BioDiscovery, Inc. "ImaGene User Manual," version 7.2006. Retrieved from <http://yfgdb.princeton.edu/ImaGeneUserManual.pdf> on Nov. 6, 2009.
- Eisen, M. "ScanAlyze User Manual," 1999, Retrieved from <http://rana.lbl.gov/manuals/Scan/AlyzeDoc.pdf> on Nov. 6, 2009.
- Parry, *Tests for HIV and hepatitis viruses*, 694 *Annals N. Y. Acad. Sci.* 221 (1993).
- M. Peat & A.E. Davis, *Drug Abuse Handbook* (CRC Press, Boca Raton, Fla. 1998).
- Larry D. Bowers, Ph.D. *Athletic Drug Testing*, *Sport Pharmacology*, pp. 299-319 (1998).
- Cambridge Healthtech Institute's Fourth Annual, *DNA Forensics* (Brochure), date 2000.
- Jeffrey Baird, *Forensic DNA in the Trial Court 1990-1992: A Brief History*, pp. 61-75.
- Controversy Over Forensic DNA Analysis*, *Science in the Courtroom*, QC Researcher, pp. 924-925, date Oct. 22, 1993.
- John McCabe, *DNA Fingerprinting: The Failings of Frye*, 16 *N. Ill. U. L. Rev.* 455 (1996).
- International Search Report, dated Feb. 21, 2003.
- Thompson et al., "A Novel Test for Detection of Drugs in the Body That Also Provides the Identity of the Person Being Examined," ONDCP International Technology Symposium, Counterdrug Research and Development: Technologies for the Next Decade, San Diego, Jun. 25-28, 2001.
- Thompson et al., "Forensic Validation Study of Antibody Profiling Identification," FRENZY—Forensic Science and Crime Scene Technology, Conference and Expo, Washington, D.C., May 14-17, 2001.
- Thompson et al., "Novel Assay for Drug and Identity Determination in Body Fluids," American Academy of Forensic Sciences Annual Meeting, Reno, Feb. 22-26, 2000.

- Thompson et al., "Antibody Profiling Technique for Rapid Identification of Forensic Samples," CAT/NWAFS/SWAFS/SAT Combined Professional Training Seminar, Las Vegas, Nov. 3-7, 1997.
- Thompson et al., "Antibody Profiling Technique for Rapid Identification of Forensic Samples," California Association of Criminalists Fall Seminar, Irvine, California, Oct. 8-11, 1997.
- R. M. Bernstein, Cellular Protein & RNA Antigens in Autoimmune Disease, 2 Mol. Biol. Med., 105-120 (1984).
- P. S. Fodor, 277 Science 393 & 395 (1997).
- S. E. Cwirla et al, Peptides on Phage: A Vast Library of Peptides for Identifying Ligands, 87 Proc. Nat'l Acad. Sci. USA 6378-6382 (1990).
- K. S. Lam et al., A New Type of Synthetic Peptide Library for Identifying Ligand-binding Activity, 354 Nature 82-84 (1991).
- R. A. Young & R. W. Davis, Yeast RNA Polymerase II Genes: Isolation with Antibody Probes, 222 Science 778-782 (1983).
- Thompson and Maragos, Fiber-Optic Immunosensor for the Detection of Fumonisin B1, 44 J. Agric. Food Chem., 1041-1046 (1996).
- T. Persoon, Immunochemical Assays in the Clinical Laboratory, 5 Clinical Laboratory Science 31 (1992).
- J.K. Leland et al., Electrogenerated Chemiluminescence: An Oxidative-Reduction Type ECL Reactions Sequence Using Tripropyl Amine, 137 J. Electrochemical Soc. 3127-3131 (1990).
- Miragen Antibody Profile Assay Advertisement, date 1996, U.S. Appl. No. 60/011,511.
- David P. Ascher and Chester Roberts, Determination of the Etiology of Seroreversals in HIV Testing by Antibody Fingerprinting, Journal of Acquired Immune Deficiency Syndromes, 6:241-244 (1993) Raven Press, Ltd, NY.
- Ann-Michele Francoeur, Antibody Fingerprinting: A Novel Method For Identifying Individual People and Animals, Miragen, Inc., 821-825 (1988).
- Thomas F. Unger, PhD and Arthur Strauss, MD FAAP, Individual-Specific Antibody Profiles as a Means of Newborn Infant Identification, Journal of Perinatology vol. 15, No. 2, 152-155 (1995).
- James K. Scott and George P. Smith, Searching for Peptide Ligands with an Epitope Library, Science, vol. 249, 386-390 (1990).
- James J. Devlin, Lucy C. Panganiban, Patricia E. Devlin, Random Peptide Libraries: A Source of Specific Protein Binding Molecules, Science, vol. 249, 404-406 & 336-337 (1990).
- \* cited by examiner

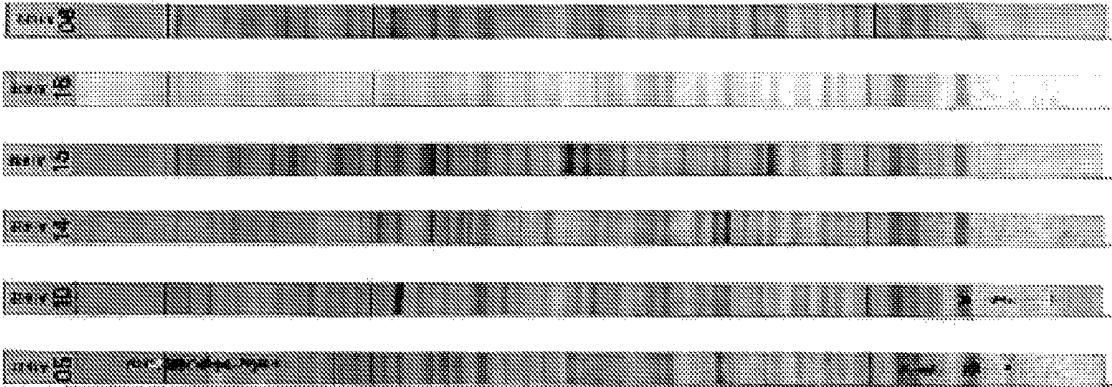


FIG. 1

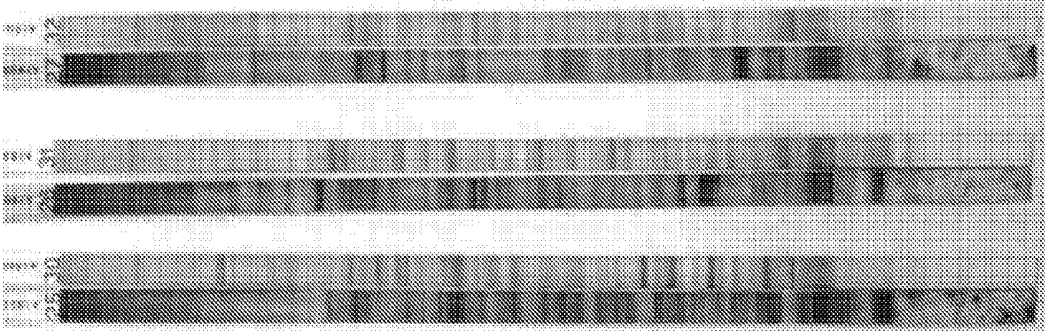


FIG. 2

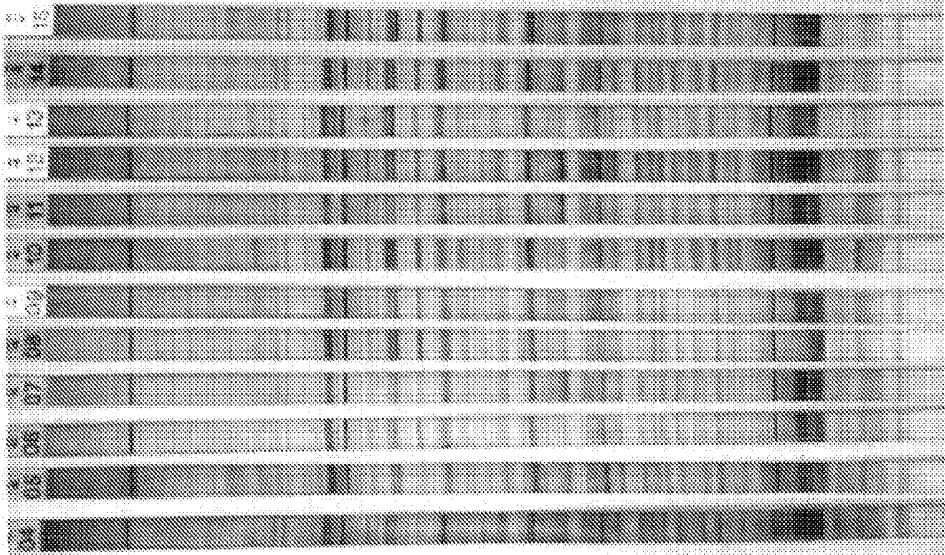


FIG. 3

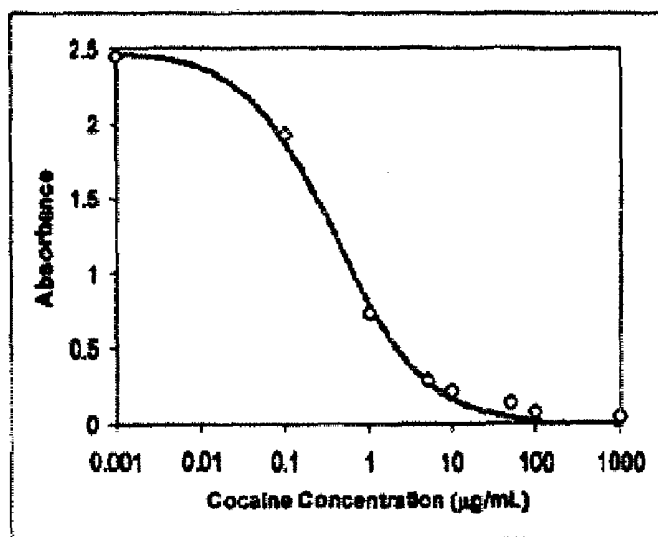


FIG. 4

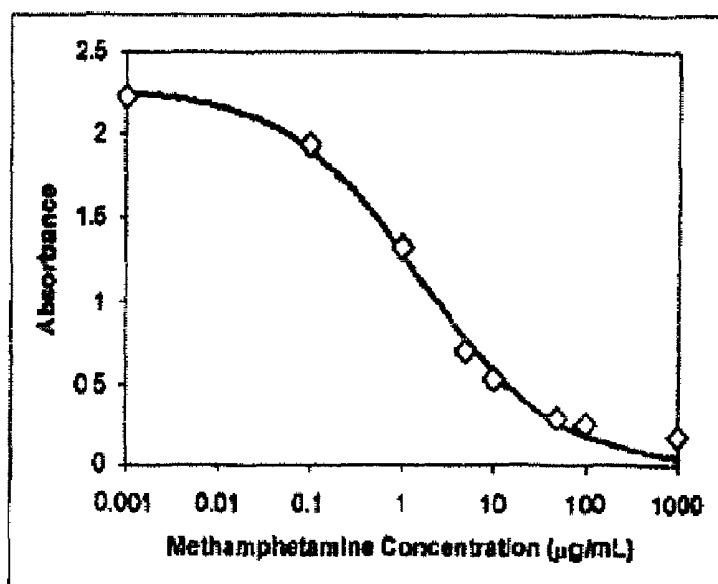


FIG. 5

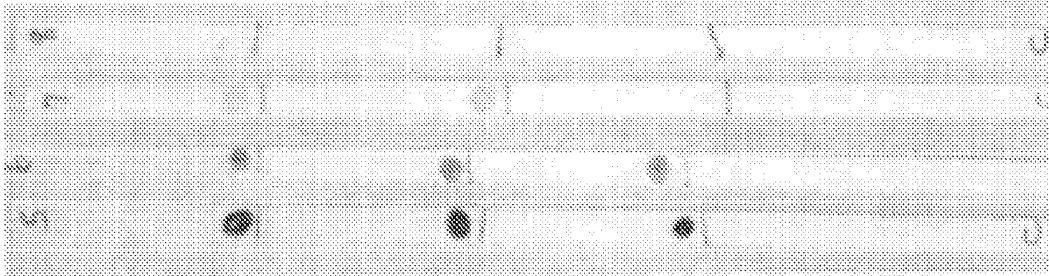


FIG. 6

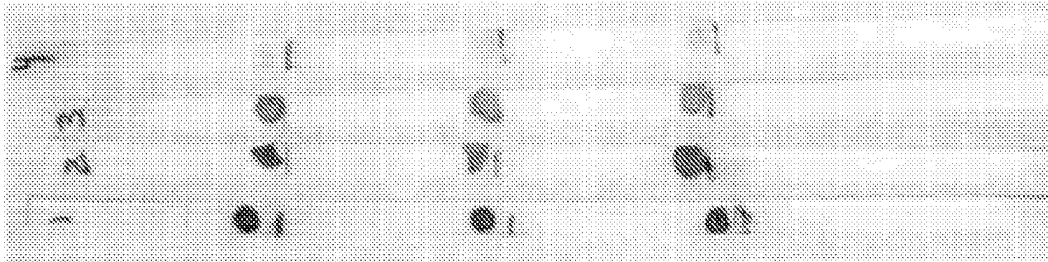
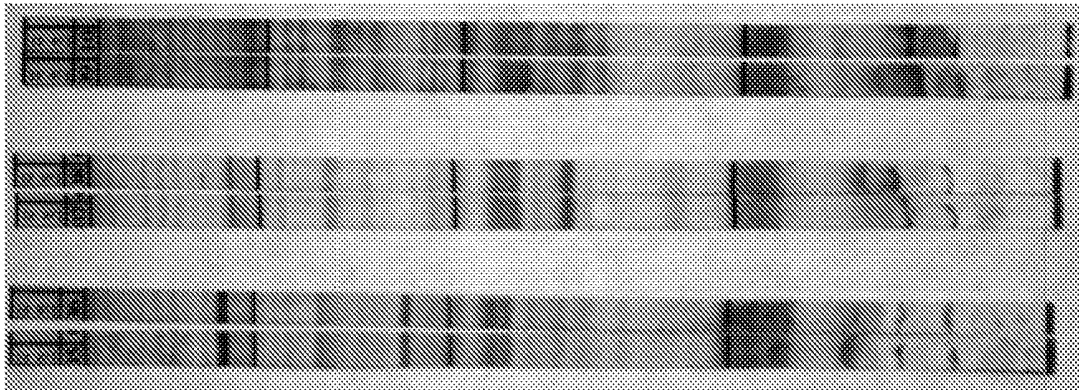
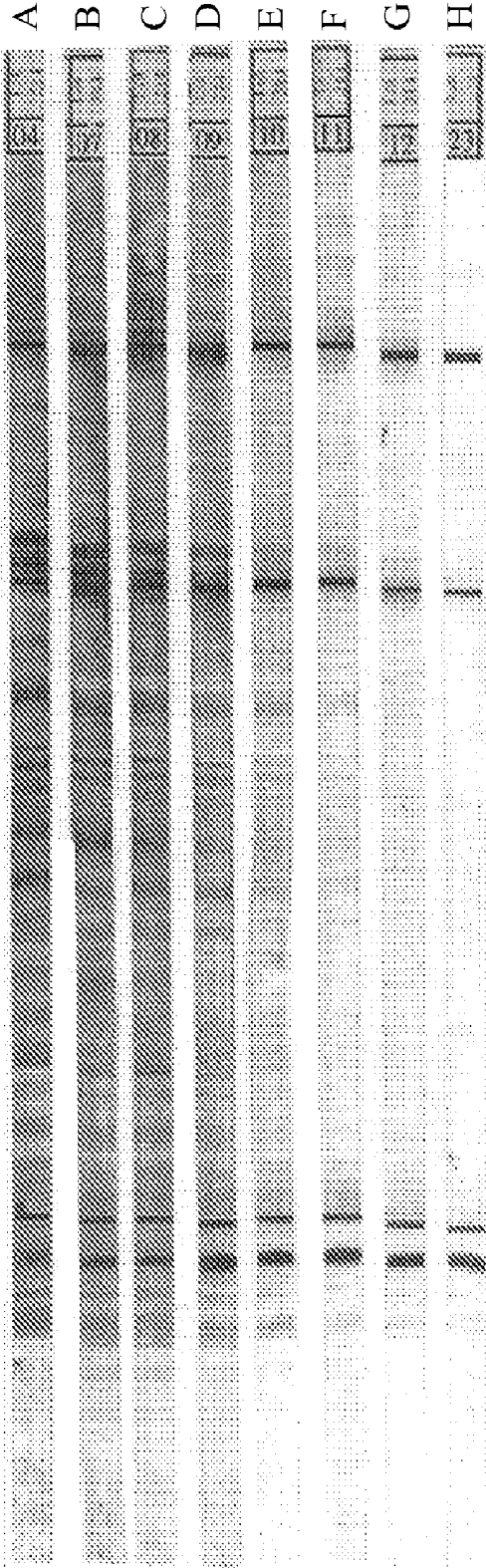


FIG. 7



**FIG. 8**

FIG. 9



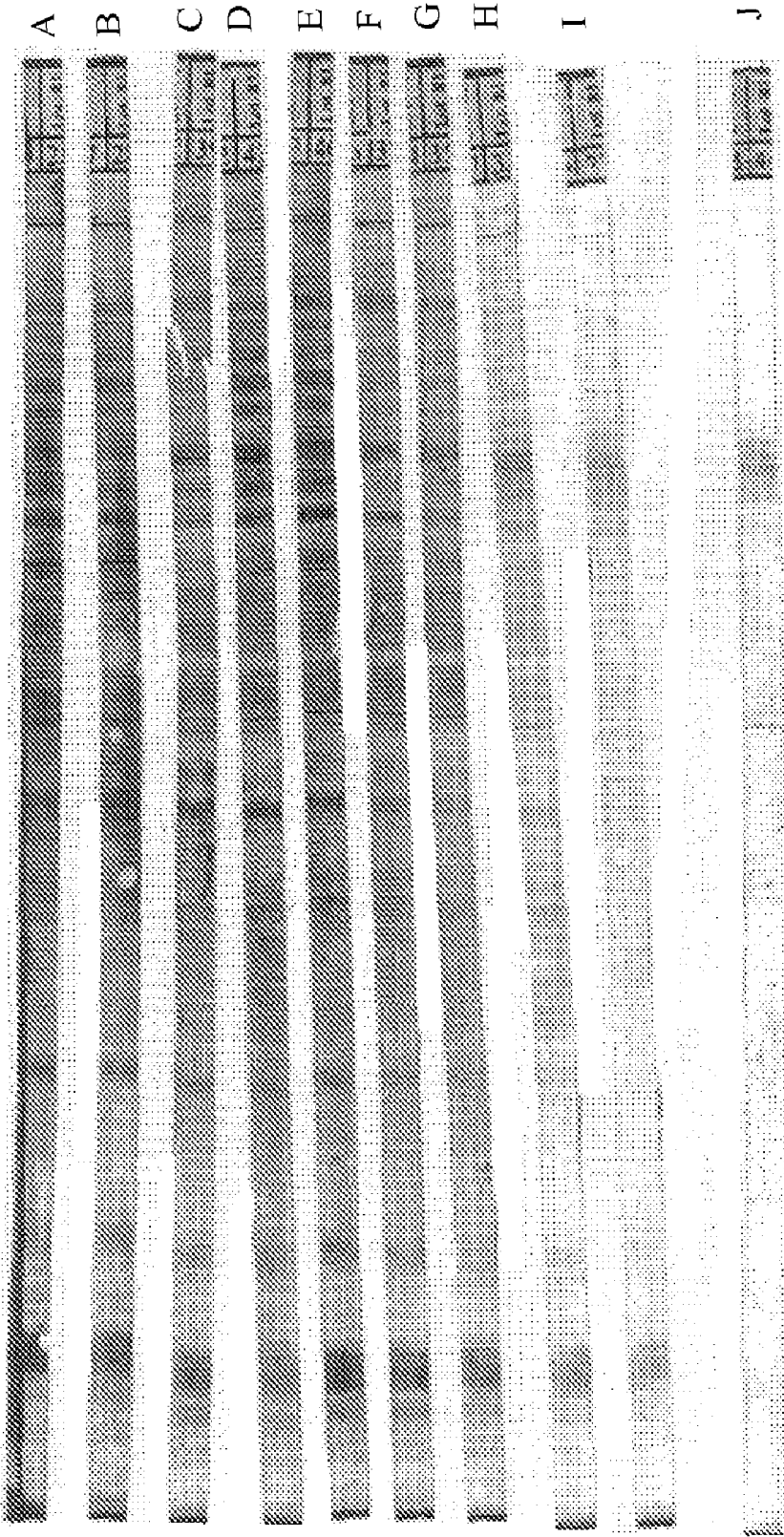


FIG. 10

A B

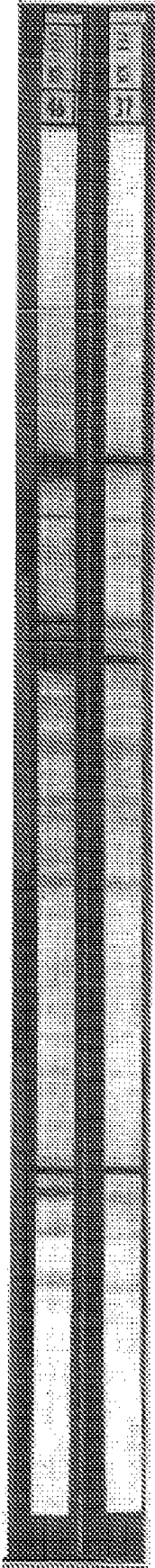
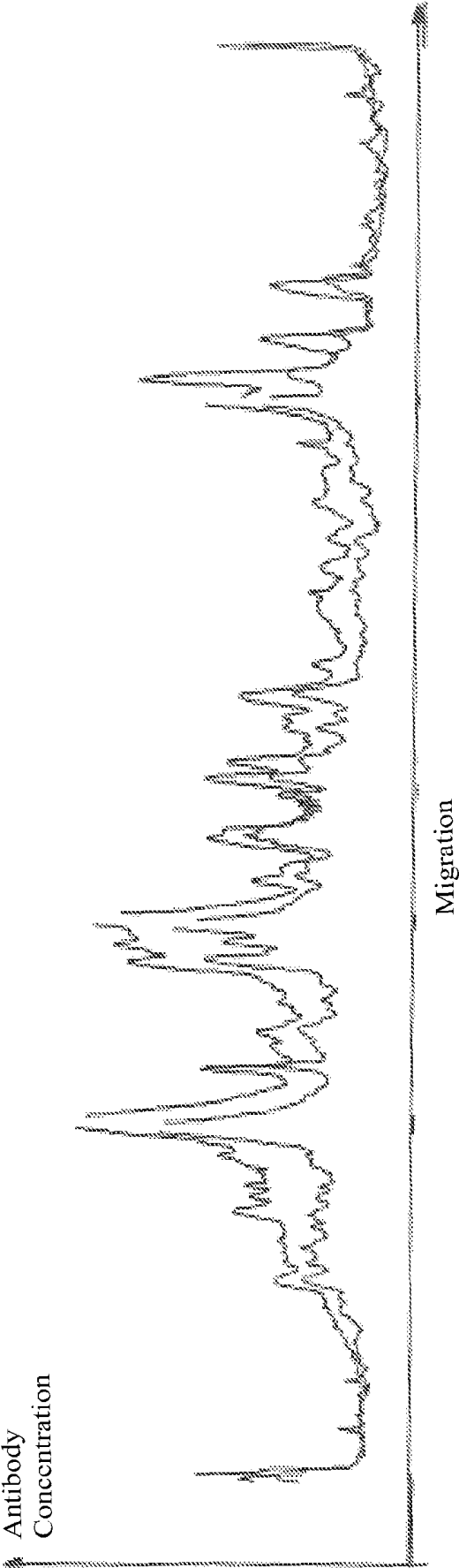


FIG. 11

FIG. 12



# ANTIBODY PROFILING SENSITIVITY THROUGH INCREASED REPORTER ANTIBODY LAYERING

## CROSS-REFERENCE TO RELATED APPLICATIONS

This application is a continuation-in-part of pending U.S. patent application Ser. No. 11/101,254, filed Apr. 6, 2005, which is a divisional of U.S. patent application Ser. No. 10/017,577, filed Dec. 14, 2001, now U.S. Pat. No. 6,989,276, issued Jan. 24, 2006, which claims priority to U.S. Provisional Patent Application Ser. No. 60/290,256, filed May 10, 2001, the entire disclosure of each of which is incorporated by reference herein.

## CONTRACTUAL ORIGIN OF THE INVENTION

This invention was made with government support under Contract No. DE-AC07-94ID13223, Contract No. DE-AC07-99ID13727, and Contract No. DE-AC07-05ID14517 awarded by the United States Department of Energy. The government has certain rights in the invention.

## FIELD OF THE INVENTION

This invention relates to assaying biological samples. More particularly, the invention relates to methods for analyzing biological samples comprising antibody profiling. In an embodiment of the invention, the analyzing of biological samples comprises a combination of antibody profiling for characterizing individual-specific antibodies in the biological samples and simultaneous assay of an analyte in the biological samples.

## BACKGROUND

Many methods are known for identifying individual or biological samples obtained from such individuals. For example, blood typing is based on the existence of antigens on the surface of red blood cells. The ABO system relates to four different conditions with respect to two antigens, A and B. Type A individuals exhibit the A antigen; Type B individuals exhibit the B antigen; Type AB individuals exhibit both the A and B antigens; and Type O individuals exhibit neither the A nor the B antigen. By analyzing a sample of a person's blood, it is possible to classify the blood as belonging to one of these blood groups. While this method may be used to identify one individual out of a small group of individuals, the method is limited when the group of individuals is larger because no distinction is made between persons of the same blood group. For example, the distribution of the ABO blood groups in the U.S. is approximately 45% O, 42% A, 10% B, and 3% AB. Tests based on other blood group antigens or isozymes present in body fluids suffer from the same disadvantages as the ABO blood typing tests. These methods can exclude certain individuals, but cannot differentiate between members of the same blood group.

A variety of immunological and biochemical tests based on genetics are routinely used in paternity testing, as well as for determining the compatibility of donors and recipients involved in transplant or transfusion procedures, and also sometimes as an aid in the identification of humans and animals. For example, serological testing of proteins encoded by the human leukocyte antigen (HLA) gene locus is well known. Although a good deal of information is known concerning the genetic makeup of the HLA locus, there are many

drawbacks to using HLA serological typing for identifying individuals in a large group. Each of the HLA antigens must be tested for in a separate assay, and many such antigens must be assayed to identify an individual, an arduous process when identifying one individual in a large group.

In the past decade, DNA-based analysis techniques, such as restriction fragment length polymorphisms (RFLPs) and polymerase chain reaction (PCR) have rapidly gained acceptance in forensic and paternity analyses for matching biological samples to an individual. RFLP techniques are problematic, however, due to the need for relatively large sample sizes, specialized equipment, highly skilled technicians, and lengthy analysis times. For forensic applications, there is often not enough sample available for this type of assay, and in remote areas the necessary equipment is often not available. In addition, this technique can take from two to six weeks for completion and can result in costly delays in a criminal investigation. Moreover, the cost of RFLP analysis can be prohibitory if screening of many samples is necessary. PCR techniques have advantages over RFLP analysis of requiring much smaller sample sizes and permitting more rapid analysis, but they still require specialized equipment and skilled technicians, and they are also expensive.

U.S. Pat. No. 4,880,750 and U.S. Pat. No. 5,270,167 disclose "antibody profiling," or "AbP," as a method that purportedly overcomes many of the disadvantages associated with DNA analysis. Antibody profiling is based on the discovery that every individual has a unique set of antibodies present in his or her bodily fluids. R. M. Bernstein et al., "Cellular Protein and RNA Antigens in Autoimmune Disease," 2 *Mol. Biol. Med.* 105-120 (1984). These antibodies, termed "individual-specific antibodies" or "ISAs," have been found in blood, serum, saliva, urine, semen, perspiration, tears, and body tissues. A. M. Francoeur, "Antibody Fingerprinting: A Novel Method for Identifying Individual People and Animals," 6 *Bio/Technology* 821-825 (1988). ISAs are not associated with disease and are thought to be directed against cellular components of the body. Every person is born with an antibody profile that matches the mother's antibody profile. T. F. Unger and A. Strauss, "Individual-Specific Antibody Profiles as a Means of Newborn Infant Identification," 15 *J. Perinatology* 152-155 (1995). The child's antibody profile gradually changes, however, until a stable unique pattern is obtained by about two years of age. It has been shown that even genetically identical individuals have different antibody profiles. An individual's profile is apparently stable for life and is not affected by short-term illnesses. A. M. Francoeur, *supra*. Few studies have been conducted on individuals with long-term diseases. Preliminary results, however, indicate that, although a few extra bands may appear, the overall pattern remains intact. This technique has been used in the medical field to track patient samples and avoid sample mix-ups. In addition, the technique has been used in hospitals in cases where switching of infants or abduction has been alleged. The method has a number of advantages over DNA techniques, including low cost, rapid analysis (two hours from the time the sample is obtained), and simplicity (no special equipment or training is necessary). In addition, this method will potentially work on samples that contain no DNA.

WO 97/29206 discloses a method for identifying the source of a biological sample used for diagnostic testing by linking diagnostic test results to an antibody profile of the biological sample. By generating an antibody profile of each biological sample, the origin of the biological sample is identified.

Many assays are now available that use the attachment of specific nucleic acid probes or other biological molecules to surfaces such as glass, silicon, polymethacrylate, polymeric filters, microspheres, resins, and the like. In a configuration where the surface is planar, these assays are sometimes referred to as "biochips." Initially, biochips contained nucleic acid probes attached to glass or silicon substrates in microarrays. These DNA chips are made by microfabrication technologies initially developed for use in computer chip manufacturing. Leading DNA chip technologies include an in situ photochemical synthesis approach, P. S. Fodor, 277 Science 393-395 (1997); U.S. Pat. No. 5,445,934; an electrochemical positioning approach, U.S. Pat. No. 5,605,662; depositing gene probes on the chip using a sprayer that resembles an ink-jet printer; and the use of gels in a solution-based process. Arrays of other types of molecules, such as peptides, have been fabricated on biochips, e.g., U.S. Pat. No. 5,445,934.

While the known methods for using antibody profiling are generally suitable for their limited purposes, they possess certain inherent deficiencies that detract from their overall utility in analyzing, characterizing, and identifying biological samples. For example, the known methods rely on fractionation of antigens by electrophoresis and then transfer of the fractionated antigens to a membrane. Due to differences in conditions from one fractionation procedure to another, there are lot-to-lot differences in the positions of the antigens on the membrane such that results obtained using membranes from one lot cannot be compared with results obtained using membranes from another lot. Further, when colorimetric procedures are used for detecting immune complexes on the membrane, color determination can be subjective such that results may be interpreted differently by different observers.

In view of the foregoing, providing a method for analyzing biological samples, wherein lot-to-lot differences in reagents and subjectivity do not affect interpretation of results, would be a significant advancement in the art. More particularly, it would be advantageous to provide a method for analyzing biological samples by antibody profiling in a biochip format such that analysis would be amenable to automation.

#### BRIEF SUMMARY OF THE INVENTION

One embodiment of the invention comprises a method for analyzing biological material including individual-specific antibodies, comprising: forming an array of multiple antigens by attaching the multiple antigens to the surface of a solid support in a preselected pattern such that the respective locations of the multiple antigens are known; obtaining a sample of the biological material and contacting the array with the sample such that a portion of the individual-specific antibodies contained in the sample reacts with and binds to antigens in the array to form immune complexes; washing the solid support containing the immune complexes such that antibodies in the sample that do not react with and bind to the antigens in the array are removed; and detecting the immune complexes and determining the locations thereof such that an antibody profile is obtained. In one embodiment, detecting the immune complexes may be performed by exposing the immune complexes to a first additional antibody that recognizes and binds to the individual-specific antibodies. In a further embodiment, one more additional antibodies that recognize the first additional antibody or each other may be used.

According to embodiments of the invention, the detecting of the immune complexes comprises treating the solid support having immune complexes attached thereto such that the presence of immune complexes at a location is characterized by a color change as compared to the absence of immune

complexes at the location. In one embodiment, the process of detecting the immune complexes further comprises monitoring the solid support with solid state color detection circuitry for comparing the color patterns before and after contacting the array with the sample. In another embodiment, the process of detecting the immune complexes further comprises obtaining a color camera image before and after contacting the array with the sample and analyzing pixel information obtained therefrom. In still another embodiment of the invention, the solid support is a surface plasmon resonance chip and the detecting of the immune complexes further comprises scanning the surface plasmon resonance chip before and after contacting the array with the sample and comparing data obtained therefrom. In yet another embodiment of the invention, the detecting of immune complexes comprises obtaining an image using a charge-coupled device to detect the color change comprising fluorescence emission.

In yet another embodiment of the invention, the method is used as a test for the use of drugs. Still another embodiment of the invention comprises analysis of an antibody profile obtained from a forensic sample and comparison with an antibody profile obtained from a sample from a criminal suspect or a victim of crime.

#### BRIEF DESCRIPTION OF THE DRAWINGS

FIG. 1 shows illustrative antibody profiles obtained from saliva samples according to the procedure of Example 1.

FIG. 2 shows comparisons of paired saliva and blood antibody profiles from five individuals according to the procedure of Example 1.

FIG. 3 shows antibody profiles obtained from saliva samples from a single individual after contamination with various adulterants according to the procedure of Example 1.

FIG. 4 shows illustrative results obtained from immunoassay of Cocaine (crystalline tropane alkaloid) in saliva samples according to the procedure of Example 1.

FIG. 5 shows illustrative results obtained from immunoassay of methamphetamine in saliva samples according to the procedure of Example 1.

FIG. 6 shows illustrative results of immunodetection of Cocaine (crystalline tropane alkaloid) on a PVDF membrane: strip 5, 0 µg/ml Cocaine (crystalline tropane alkaloid); strip 6, 0.1 µg/ml Cocaine (crystalline tropane alkaloid); strip 7, 10 µg/ml Cocaine (crystalline tropane alkaloid); and strip 8, 1000 µg/ml Cocaine (crystalline tropane alkaloid).

FIG. 7 shows illustrative results of immunodetection of methamphetamine on a PVDF membrane: strip 1, 0 µg/ml methamphetamine; strip 2, 0.1 µg/ml methamphetamine; strip 3, 10 µg/ml methamphetamine; strip 4, 1000 µg/ml methamphetamine.

FIG. 8 shows antibody profiles from three different individuals: one strip of each pair contains no drugs; and the other strip of each pair contains 1000 µg/ml of Cocaine (crystalline tropane alkaloid) and of methamphetamine.

FIG. 9 shows antibody profiles for different amounts of serum using a two-stage antibody layering process. Strip A was exposed to 50 microliters of serum; strip B was exposed to 10 microliters of serum; strip C was exposed to 5 microliters of serum; strip D was exposed to 3 microliters of serum; strip E was exposed to 1 microliter of serum; strip F was exposed to 0.5 microliter of serum; strip G was exposed to 0.1 microliter of serum; and strip H was exposed to 0 microliter of serum.

FIG. 10 shows antibody profiles for different amounts of serum using a three-stage antibody layering process. Strip A was exposed to 50 microliters of serum; strip B was exposed

to 25 microliters of serum; strip C was exposed to 15 microliters of serum; strip D was exposed to 7.5 microliters of serum; strip E was exposed to 10 microliters of serum; strip F was exposed to 2.5 microliters of serum; strip G was exposed to 1 microliter of serum; strip H was exposed to 0.5 microliter of serum; strip I was exposed to 0.1 microliter of serum; and strip J was exposed to 0 microliter of serum.

FIG. 11 shows side-by-side antibody profiles of 3 microliters of serum where strip A is developed with a three-stage antibody layering process and strip B is developed with a two-stage antibody layering process.

FIG. 12 shows densitometry data from strips A and B of FIG. 11. The top line is strip A and the lower line is strip B.

#### DETAILED DESCRIPTION OF THE INVENTION

Before the present methods for analyzing biological samples are described in detail, it is to be understood that this invention is not limited to the particular configurations, process acts, and materials disclosed herein as such configurations, process acts, and materials may vary somewhat. It is also to be understood that the terminology employed herein is used for the purpose of describing particular embodiments only and is not limiting since the scope of the present invention will be limited only by the appended claims and equivalents thereof.

The publications and other reference materials referred to herein to describe the background of the invention and to provide additional detail regarding its practice are hereby incorporated by reference. The references discussed herein are provided solely for their disclosure prior to the filing date of the present application. Nothing herein is to be construed as an admission that the inventors are not entitled to antedate such disclosure by virtue of prior invention.

It must be noted that, as used in this specification and the appended claims, the singular forms "a," "an," and "the" include plural referents unless the context clearly dictates otherwise. Thus, for example, reference to a method for analyzing a biological sample from "an animal" includes reference to two or more of such animals, reference to "a solid support" includes reference to one or more of such solid supports, and reference to "an array" includes reference to two or more of such arrays.

In describing and claiming the present invention, the following terminology will be used in accordance with the definitions set out below.

As used herein, "comprising," "including," "containing," "characterized by," and grammatical equivalents thereof are inclusive or open-ended terms that do not exclude additional, unrecited elements or method steps. "Comprising" is to be interpreted as including the more restrictive terms "consisting of" and "consisting essentially of."

As used herein, "consisting of" and grammatical equivalents thereof exclude any element, step, or ingredient not specified in the claim.

As used herein, "consisting essentially of" and grammatical equivalents thereof limit the scope of a claim to the specified materials or steps and those that do not materially affect the basic and novel characteristic or characteristics of the claimed invention.

As used herein, "solid support" means a generally or substantially planar substrate onto which an array of antigens is disposed. A solid support can comprise any material or combination of materials suitable for carrying the array. Materials used to construct these solid supports need to meet several requirements, such as (1) a presence of surface groups that can be easily derivatized, (2) inertness to reagents used in the

assay, (3) stability over time, and (4) compatibility with biological samples. For example, suitable materials include glass, silicon, silicon dioxide (i.e., silica), plastics, polymers, hydrophilic inorganic supports, and ceramic materials. Illustrative plastics and polymers include poly(tetrafluoroethylene), poly(vinylidene difluoride), polystyrene, polycarbonate, polymethacrylate, and combinations thereof. Illustrative hydrophilic inorganic supports include alumina, zirconia, titania, and nickel oxide. An example of a glass substrate would be a microscope slide. Silicon wafers used to make computer chips have also been used to make biochips. See, for example, U.S. Pat. No. 5,605,662.

As used herein, "array" means an arrangement of locations on the solid support. The locations will generally be arranged in two-dimensional arrays, but other formats are possible. The number of locations can range from several to at least hundreds of thousands. The array pattern and spot density can vary. For example, using a commercially available GMS 417 Arrayer from Genetic MicroSystems, Inc. (Woburn, Mass.), the spot size and density can be selected by the user. With spots of 150  $\mu\text{m}$  diameter and 300  $\mu\text{m}$  center-to-center spacing, more than 1000 spots can be placed in a square centimeter and more than 10,000 spots can be placed on a standard microscope slide. With 200  $\mu\text{m}$  center-to-center spacing, these numbers increase to 2500 per square centimeter and more than 25,000 per slide.

As used herein, "colorigenic" refers to a substrate that produces a colored product upon digestion with an appropriate enzyme. Such colored products include fluorescent and luminescent products.

A first act in the present method is to prepare an array of antigens by attaching the antigens to the surface of the solid support in a preselected pattern such that the locations of antigens in the array are known. As used herein, an antigen is a substance that is bound by an antibody. Antigens can include proteins, carbohydrates, nucleic acids, hormones, drugs, receptors, tumor markers, and the like, and mixtures thereof. An antigen can also be a group of antigens, such as a particular fraction of proteins eluted from a size exclusion chromatography column. Still further, an antigen can also be identified as a designated clone from an expression library or a random epitope library.

In one embodiment of the invention, antigens are isolated from HeLa cells as generally described in A.M. Francoeur et al., 136 J. Immunol. 1648 (1986). Briefly, HeLa cells are grown in standard medium under standard tissue culture conditions. Confluent HeLa cell cultures are then rinsed, preferably with phosphate-buffered saline (PBS), lysed with detergent, and centrifuged to remove insoluble cellular debris. The supernate contains approximately 10,000 immunologically distinct antigens suitable for generating an array.

There is no requirement that the antigens used to generate the array be known. All that is required is that the source of the antigens be consistent such that a reproducible array can be generated. For example, the HeLa cell supernate containing the antigens can be fractionated on a size exclusion column, electrophoretic gel, density gradient, or the like, as is well known in the art. Fractions are collected, and each fraction collected could represent a unique set of antigens for the purpose of generating the array. Thus, even though the antigens are unknown, a reproducible array can be generated if the HeLa cell antigens are isolated and fractionated using the same method and conditions.

Other methods, such as preparation of random peptide libraries or epitope libraries are well known in the art and may be used to reproducibly produce antigens (e.g., J. K. Scott and G. P. Smith, "Searching for Peptide Ligands with an Epitope

Library," 249 *Science* 386 (1990); J. J. Devlin et al., "Random Peptide Libraries: A Source of Specific Protein Binding "Molecules," 249 *Science* 404-406 (1990); S. E. Cwirla et al., "Peptides on Phage: A Vast Library of Peptides for Identifying Ligands," 87 *Proc. Nat'l Acad. Sci. USA* 6378-6382 (1990); K. S. Lam et al., "A New Type of Synthetic Peptide Library for Identifying Ligand-binding Activity," 354 *Nature* 82-84 (1991); S. Cabilly, "Combinatorial Peptide Library Protocols" (Humana Press, 304 pp. 129-154, 1997); and U.S. Pat. No. 5,885,780. Such libraries can be constructed by ligating synthetic oligonucleotides into an appropriate fusion phage. Fusion phages are filamentous bacteriophage vectors in which foreign sequences are cloned into phage gene III and displayed as part of the gene III protein (pIII) at one tip of the virion. Each phage encodes a single random sequence and expresses it as a fusion complex with pIII, a minor coat protein present at about five molecules per phage. For example, in the fusion phage techniques of J. K. Scott and G. P. Smith, *supra*, a library was constructed of phage containing a variable cassette of six amino acid residues. The hexapeptide modules fused to bacteriophage proteins provided a library for the screening methodology that can examine  $>10^{12}$  phages (or about  $10^8$ - $10^{10}$  different clones) at one time, each with a test sequence on the virion surface. The library obtained was used to screen monoclonal antibodies specific for particular hexapeptide sequences. The fusion phage system has also been used by other groups, and libraries containing longer peptide inserts have been constructed. Fusion phage prepared according to this methodology can be selected randomly or non-randomly for inclusion in the array of antigens. The fusion phages selected for inclusion in the array can be propagated by standard methods to result in what is virtually an endless supply of the selected antigens.

Other methods for producing antigens are also known in the art. For example, expression libraries can be prepared by random cloning of DNA fragments or cDNA into an expression vector (e.g., R. A. Young and R. W. Davis, "Yeast RNA Polymerase II Genes: Isolation with Antibody Probes," 222 *Science* 778-782 (1983); G. M. Santangelo et al., "Cloning of Open Reading Frames and Promoters from the *Saccharomyces cerevisiae* Genome: Construction of Genomic Libraries of Random Small Fragments," 46 *Gene* 181-186 (1986)). Expression vectors that could be used for making such libraries are commercially available from a variety of sources. For example, random fragments of HeLa cell DNA or cDNA can be cloned into an expression vector, and then clones expressing HeLa cell proteins can be selected. These clones can then be propagated by methods well known in the art. The expressed proteins are then isolated or purified and can be used in the making of the array.

Alternatively, antigens can be synthesized using recombinant DNA technology well known in the art. Genes that code for many viral, bacterial, and mammalian proteins have been cloned, and thus large quantities of highly pure proteins can be synthesized quickly and inexpensively. For example, the genes that code for many eukaryotic and mammalian membrane-bound receptors, growth factors, cell adhesion molecules, and regulatory proteins have been cloned and are useful as antigens. Many proteins produced by such recombinant techniques, such as transforming growth factor, acidic and basic fibroblast growth factors, interferon, insulin-like growth factor, and various interleukins from different species, are commercially available.

In most instances, the entire polypeptide need not be used as an antigen. For example, any size or portion of the polypeptide that contains at least one epitope, i.e., antigenic determi-

nant or portion of an antigen that specifically interacts with an antibody, will suffice for use in the array.

The antigens, whether selected randomly or non-randomly, are disposed on the solid support to result in the array. The pattern of the antigens on the solid support should be reproducible. That is, the location and identity of each antigen on the solid support should be known. For example, in a  $10 \times 10$  array one skilled in the art might place antigens 1-100 in locations 1-100, respectively, of the array.

The proteins may be placed in arrays on the surface of the solid support using a pipetting device or a machine or device configured for placing liquid samples on a solid support, for example, using a commercially available microarrayer, such as those from Cartesian Technologies, Inc. (Irvine, Calif.); Gene Machines (San Carlos, Calif.); Genetic MicroSystems, Inc. (Woburn, Mass.); GenePack DNA (Cambridge, UK); Genetix Ltd. (Christchurch, Dorset, UK); and Packard Instrument Company (Meriden, Conn.).

Relevant methods to array a series of protein antigens onto a surface include non-contact drop-on-demand dispensing and inkjet technology. Commercially available instruments are available for both methods. Cartesian Technologies offers several nanoliter dispensing instruments that can dispense liquid volumes from 20 nL up to 250  $\mu$ L from 96-, 384-, 1536-, 3456-, and 9600-well microtiter plates and place them precisely on a surface with densities up to 400 spots/cm<sup>2</sup>. The instruments will spot onto surfaces in a variety of patterns. As the name implies, inkjet technology utilizes the same principles as those used in inkjet printers. MicroFab Technologies, Inc. (Plano, Tex.), offers a ten-fluid print head that can dispense picoliter quantities of liquids onto a surface in a variety of patterns. An illustrative pattern for the present application would be a simple array ranging from  $10 \times 10$  up to  $100 \times 100$ .

There are a number of methods that can be used to attach proteins or other antigens to the surface of a solid support. The simplest of these is simple adsorption through hydrophobic, ionic, and van der Waals forces. This method is not optimal, however, since the proteins tend to detach from the surface over time. One suitable attachment chemistry involves the use of bifunctional organosilanes (e.g., Thompson and Maragos, 44 *J. Agric. Food Chem.* 1041-1046 (1996)). One end of the organosilane reacts with exposed —OH groups on the surface of the chip to form a silanol bond. The other end of the organosilane contains a group that is reactive with various groups on the protein surface, such as —NH<sub>2</sub> and —SH groups. This method of attaching proteins to the chip results in the formation of a covalent linkage between the protein and the chip. Other suitable methods that have been used for protein attachment to surfaces include arylazide, nitrobenzyl, and diazirine photochemistry methodologies. Exposure of the above chemicals to UV light causes the formation of reactive groups that can react with proteins to form a covalent bond. The arylazide chemistry forms a reactive nitrene group that can insert into C—H bonds, while the diazirine chemistry results in a reactive carbene group. The nitrobenzyl chemistry is referred to as caging chemistry whereby the caging group inactivates a reactive molecule. Exposure to UV light frees the molecule and makes it available for reaction. Still other methods for attaching proteins to solid supports are well known in the art, (e.g., S. S. Wong, *Chemistry of Protein Conjugation and Cross-Linking* CRC Press, 340, 1991).

Following attachment of the antigens on the solid support in the selected array, the solid support should be washed by rinsing with an appropriate liquid to remove unbound antigens. Appropriate liquids for washing include phosphate buffered saline (PBS) and the like, i.e., relatively low ionic

strength, biocompatible salt solutions buffered at or near neutrality. Many of such appropriate wash liquids are known in the art or can be devised by a person skilled in the art without undue experimentation (e.g., N. E. Good and S. Izawa, "Hydrogen Ion Buffers," 24 *Methods Enzymology* 53-68 (1972)).

The solid support is then processed for blocking of non-specific binding of proteins and other molecules to the solid support. This blocking step prevents the binding of antigens, antibodies, and the like to the solid support wherein such antigens, antibodies, or other molecules are not intended to bind. Blocking reduces the background that might swamp out the signal, thus increasing the signal-to-noise ratio. The solid support is blocked by incubating the solid support in a medium that contains inert molecules that bind to sites where nonspecific binding might otherwise occur. Examples of suitable blockers include bovine serum albumin, human albumin, gelatin, nonfat dry milk, polyvinyl alcohol, TWEEN® 20, and various commercial blockers, such as SEABLOCK™ (trademark of EastCoast Bio, Inc., North Berwick, Me.) and SUPERBLOCK® (trademark of Pierce Chemical Co., Rockford, Ill.) blocking buffers.

Following washing for removal of unbound antigens from the array and blocking, the solid support is contacted with a liquid sample to be tested. The sample can be from any animal that generates individual-specific antibodies. For example, humans, dogs, cats, mice, horses, cows, and rabbits have all been shown to possess ISAs. The sample can be from various bodily fluids and solids, including blood, saliva, semen, serum, plasma, urine, amniotic fluid, pleural fluid, cerebrospinal fluid, and mixtures thereof. These samples are obtained according to methods well known in the art. Depending on the detection method used, it may be required to manipulate the biological sample to attain optimal reaction conditions. For example, the ionic strength or hydrogen ion concentration or the concentration of the biological sample can be adjusted for optimal immune complex formation, enzymatic catalysis, and the like.

As described in detail in U.S. Pat. No. 5,270,167 to Francoeur, when ISAs are allowed to react with a set of random antigens, a certain number of immune complexes form. For example, using a panel of about 1000 unique antigens, about 30 immune complexes between ISAs in a biological sample that has been diluted twenty-fold can be detected. If the biological sample is undiluted, the total number of possible detectable immune complexes that could form would be greater than  $10^{23}$ . The total number of possible immune complexes can also be increased by selecting "larger" antigens, i.e., proteins instead of peptides) that have multiple epitopes. Therefore, it will be appreciated that depending on the antigens and number thereof used, the dilution of the biological sample, and the detection method, one skilled in the art can regulate the number of immune complexes that will form and be detected. The set of unique immune complexes that form and fail to form between the ISAs in the biological sample and the antigens in the array constitute an antibody profile.

Methods for detecting antibody/antigen or immune complexes are well known in the art. The present invention can be modified by one skilled in the art to accommodate the various detection methods known in the art. The particular detection method chosen by one skilled in the art depends on several factors, including the amount of biological sample available, the type of biological sample, the stability of the biological sample, the stability of the antigen, and the affinity between the antibody and antigen. Moreover, as discussed above, depending on the detection methods chosen, it may be required to modify the biological sample.

While these techniques are well known in the art, examples of a few of the detection methods that may be used to practice the present invention are briefly described below.

There are many types of immunoassays known in the art. The most common types of immunoassay are competitive and non-competitive heterogeneous assays, such as enzyme-linked immunosorbent assays (ELISAs). In a non-competitive ELISA, unlabeled antigen is bound to a solid support, such as the surface of the biochip. Biological sample is combined with antigens bound to the reaction vessel, and antibodies (primary antibodies) in the biological sample are allowed to bind to the antigens, forming the immune complexes. After the immune complexes have formed, excess biological sample is removed and the biochip is washed to remove nonspecifically bound antibodies. The immune complexes may then be reacted with an appropriate enzyme-labeled anti-immunoglobulin (secondary antibody). The secondary antibody reacts with antibodies in the immune complexes, not with other antigens bound to the biochip. Secondary antibodies specific for binding antibodies of different species, including humans, are well known in the art and are commercially available, such as from Sigma Chemical Co. (St. Louis, Mo.) and Santa Cruz Biotechnology, Inc. (Santa Cruz, Calif.). After a further wash, the enzyme substrate is added. The enzyme linked to the secondary antibody catalyzes a reaction that converts the substrate into a product. When excess antigen is present, the amount of product is directly proportional to the amount of primary antibodies present in the biological sample. The product may be fluorescent or luminescent, which can be measured using technology and equipment well known in the art. It is also possible to use reaction schemes that result in a colored product, which can be measured spectrophotometrically.

In other embodiments of the invention, the secondary antibody may not be labeled to facilitate detection. Additional antibodies may be layered (i.e., tertiary, quaternary, etc.) such that each additional antibody specifically recognizes the antibody previously added to the immune complex. Any one of these additional (i.e., tertiary, quaternary, etc.) may be labeled so as to allow detection of the immune complex as described herein.

Sandwich or capture assays can also be used to identify and quantify immune complexes. Sandwich assays are a mirror image of non-competitive ELISAs in that antibodies are bound to the solid phase and antigen in the biological sample is measured. These assays are particularly useful in detecting antigens having multiple epitopes that are present at low concentrations. This technique requires excess antibody to be attached to a solid phase, such as the biochip. The bound antibody is then incubated with the biological samples, and the antigens in the sample are allowed to form immune complexes with the bound antibody. The immune complex is incubated with an enzyme-linked secondary antibody, which recognizes the same or a different epitope on the antigen as the primary antibody. Hence, enzyme activity is directly proportional to the amount of antigen in the biological sample. D. M. Kemeny and S. J. Challacombe, "ELISA and Other Solid Phase Immunoassays" (1988).

Typical enzymes that can be linked to secondary antibodies include horseradish peroxidase, glucose oxidase, glucose-6-phosphate dehydrogenase, alkaline phosphatase,  $\beta$ -galactosidase, and urease. Secondary antigen-specific antibodies linked to various enzymes are commercially available from, for example, Sigma Chemical Co. and Amersham Life Sciences (Arlington Heights, Ill.).

Competitive ELISAs are similar to noncompetitive ELISAs except that enzyme linked antibodies compete with unlabeled

beled antibodies in the biological sample for limited antigen binding sites. Briefly, a limited number of antigens are bound to the solid support. Biological sample and enzyme-labeled antibodies are added to the solid support. Antigen-specific antibodies in the biological sample compete with enzyme-labeled antibodies for the limited number of antigens bound to the solid support. After immune complexes have formed, nonspecifically bound antibodies are removed by washing, enzyme substrate is added, and the enzyme activity is measured. No secondary antibody is required. Because the assay is competitive, enzyme activity is inversely proportional to the amount of antibodies in the biological sample.

Another competitive ELISA can also be used within the scope of the present invention. In this embodiment, limited amounts of antibodies from the biological sample are bound to the surface of the solid support as described herein. Labeled and unlabeled antigens are then brought into contact with the solid support such that the labeled and unlabeled antigens compete with each other for binding to the antibodies on the surface of the solid support. After immune complexes have formed, nonspecifically bound antigens are removed by washing. The immune complexes are detected by incubation with an enzyme-linked secondary antibody, which recognizes the same or a different epitope on the antigen as the primary antibody, as described above. The activity of the enzyme is then assayed, which yields a signal that is inversely proportional to the amount of antigen present.

Homogeneous immunoassays can also be used when practicing the method of the present invention. Homogeneous immunoassays may be preferred for detection of low molecular weight compounds, such as hormones, therapeutic drugs, and illegal drugs that cannot be analyzed by other methods, or compounds found in high concentration. Homogeneous assays are particularly useful because no separation step is necessary. R. C. Boguslaski et al., "Clinical Immunochemistry: Principles of Methods and Applications" (1984).

In homogeneous techniques, bound or unbound antigens are enzyme-linked. When antibodies in the biological sample bind to the enzyme-linked antigen, steric hindrances inactivate the enzyme. This results in a measurable loss in enzyme activity. Free antigens (i.e., not enzyme-linked) compete with the enzyme-linked antigen for limited antibody binding sites. Thus, enzyme activity is directly proportional to the concentration of antigen in the biological sample.

Enzymes useful in homogeneous immunoassays include lysozyme, neuraminidase, trypsin, papain, bromelain, glucose-6-phosphate dehydrogenase, and  $\beta$ -galactosidase. T. Persoon, "Immunochemical Assays in the Clinical Laboratory," 5 *Clinical Laboratory Science* 31 (1992). Enzyme-linked antigens are commercially available or can be linked using various chemicals well known in the art, including glutaraldehyde and maleimide derivatives.

Prior antibody profiling technology involves an alkaline phosphatase labeled secondary antibody with 5-bromo-4-chloro-3'-indolylphosphate p-toluidine salt (BCIP) and nitroblue tetrazolium chloride (NBT), both of which are commercially available from a variety of sources, such as from Pierce Chemical Co. (Rockford, Ill.). The enzymatic reaction forms an insoluble colored product that is deposited on the surface of the membrane strips to form bands wherever antigen-antibody complexes occur. This method is suboptimal in a biochip format since it is difficult to quantify and since colorimetric methods are typically less sensitive than assays based on fluorescence or luminescence.

Fluorescent immunoassays can also be used when practicing the method of the present invention. Fluorescent immunoassays are similar to ELISAs except the enzyme is substi-

tuted for fluorescent compounds called fluorophores or fluorochromes. These compounds have the ability to absorb energy from incident light and emit the energy as light of a longer wavelength and lower energy. Fluorescein and rhodamine, usually in the form of isothiocyanates that can be readily coupled to antigens and antibodies, are most commonly used in the art. D. P. Stites et al., "Basic and Clinical Immunology" (1994). Fluorescein absorbs light of 490 nm to 495 nm in wavelength and emits light at 520 nm in wavelength. Tetramethylrhodamine absorbs light of 550 nm in wavelength and emits light at 580 nm in wavelength. Illustrative fluorescence-based detection methods include ELF-97 alkaline phosphatase substrate (Molecular Probes, Inc., Eugene, Oreg.); PBXL-1 and PBXL-3 (phycobilisomes conjugated to streptavidin) (Martek Biosciences Corp., Columbia, Md.); FITC (fluorescein isothiocyanate) and Texas Red labeled goat anti-human IgG (Jackson ImmunoResearch Laboratories, Inc., West Grove, Pa.); and B-Phycoerythrin and R-Phycoerythrin conjugated to streptavidin (Molecular Probes, Inc.). ELF-97 is a nonfluorescent chemical that is digested by alkaline phosphatase to form a fluorescent molecule. Because of turnover of the alkaline phosphatase, use of the ELF-97 substrate results in signal amplification. Fluorescent molecules attached to secondary antibodies do not exhibit this amplification.

Phycobiliproteins isolated from algae, porphyrins, and chlorophylls, which all fluoresce at about 600 nm, are also being used in the art. I. Hemmila, "Fluoroimmunoassays and Immunofluorometric Assays," 31 *Clin. Chem.* 359 (1985); U.S. Pat. No. 4,542,104. Phycobiliproteins and derivatives thereof are commercially available under the names R-phycoerythrin (PE) and QUANTUM RED™ from, for example, Sigma Chemical Co.

In addition, Cy-conjugated secondary antibodies and antigens are useful in immunoassays and are commercially available. Cy3, for example, is maximally excited at 554 nm and emits light at between 568 nm and 574 nm. Cy3 is more hydrophilic than other fluorophores and thus has less of a tendency to bind nonspecifically or aggregate. Cy-conjugated compounds are commercially available from Amersham Life Sciences.

Illustrative luminescence-based detection methods include CSPD® and CDP star alkaline phosphatase substrates (Roche Molecular Biochemicals, Indianapolis, Ind.); and SUPERSIGNAL® horseradish peroxidase substrate (Pierce Chemical Co., Rockford, Ill.).

Chemiluminescence, electroluminescence, and electrochemiluminescence (ECL) detection methods are also attractive means for quantifying antigens and antibodies in a biological sample. Luminescent compounds have the ability to absorb energy, which is released in the form of visible light upon excitation. In chemiluminescence, the excitation source is a chemical reaction; in electroluminescence the excitation source is an electric field; and in ECL an electric field induces a luminescent chemical reaction.

Molecules used with ECL detection methods generally comprise an organic ligand and a transition metal. The organic ligand forms a chelate with one or more transition metal atoms forming an organometallic complex. Various organometallic and transition metal-organic ligand complexes have been used as ECL labels for detecting and quantifying analytes in biological samples. Due to their thermal, chemical, and photochemical stability, their intense emissions and long emission lifetimes, ruthenium, osmium, rhenium, iridium, and rhodium transition metals are favored in the art. The types of organic ligands are numerous and include anthracene and polypyridyl molecules and heterocyclic

organic compounds. For example, bipyridyl, bipyrazyl, terpyridyl, and phenanthrolyl, and derivatives thereof, are common organic ligands in the art. A common organometallic complex used in the art includes tris-bipyridine ruthenium (II), commercially available from IGEN, Inc. (Rockville, Md.) and Sigma Chemical Co.

Advantageously, ECL can be performed under aqueous conditions and under physiological pH, thus minimizing biological sample handling. J. K. Leland et al., "Electrogenerated Chemiluminescence: An Oxidative-Reduction Type ECL Reactions Sequence Using Tripropyl Amine," 137 J. Electrochemical Soc. 3127-3131 (1990); WO 90/05296; and U.S. Pat. No. 5,541,113. Moreover, the luminescence of these compounds may be enhanced by the addition of various cofactors, such as amines.

In practice, a tris-bipyridine ruthenium (II) complex, for example, may be attached to a secondary antibody using strategies well known in the art, including attachment to lysine amino groups, cysteine sulfhydryl groups, and histidine imidazole groups. In a typical ELISA immunoassay, secondary antibodies would recognize ISAs bound to antigens, but not unbound antigens. After washing nonspecific binding complexes, the tris-bipyridine ruthenium (II) complex would be excited by chemical, photochemical, and electrochemical excitation means, such as by applying current to the biochip (e.g., WO 86/02734). The excitation would result in a double oxidation reaction of the tris-bipyridine ruthenium (II) complex, resulting in luminescence that could be detected by, for example, a photomultiplier tube. Instruments for detecting luminescence are well known in the art and are commercially available, for example, from IGEN, Inc. (Rockville, Md.).

Solid state color detection circuitry can also be used to monitor the color reactions on the biochip and, on command, compare the color patterns before and after the sample application. A color camera image can also be used and the pixel information analyzed to obtain the same information.

Still another method involves detection using a surface plasmon resonance (SPR) chip. The surface of the chip is scanned before and after sample application and a comparison is made. The SPR chip relies on the refraction of light when the molecules of interest are exposed to a light source. Each molecule has its own refraction index by which it can be identified. This method requires precise positioning and control circuitry to scan the chip accurately.

Yet another method involves a fluid rinse of the biochip with a fluorescing reagent. The microlocations that combine with the biological sample will fluoresce and can be detected with a charge-coupled device (CCD) array. The output of such a CCD array is analyzed to determine the unique pattern associated with each sample. This approach avoids the problems associated with scanning technologies. Speed is not a factor with any of the methods since the chemical combining of sample and reference takes minutes to occur.

Moreover, array scanners are commercially available, such as from Genetic MicroSystems, Inc. The GMS 418 Array Scanner uses laser optics to rapidly move a focused beam of light over the biochip. This system uses a dual-wavelength system including high-powered, solid-state lasers that generate high excitation energy to allow for reduced excitation time. At a scanning speed of 30 Hz, the GMS 418 can scan a 22x75-mm slide with 10- $\mu$ m resolution in about four minutes.

Software for image analysis obtained with an array scanner is readily available. Available software packages include IMAGENE® (BioDiscovery, Los Angeles, Calif.); ScanAnalyze (available at no charge; developed by Mike Eisen, Stanford University, Palo Alto, Calif.); De-Array (developed by

Yidong Chen and Jeff Trent of the National Institutes of Health; used with IP Lab from Scanalytics, Inc., Fairfax, Va.); Pathways (Research Genetics, Huntsville, Ala.); GEM Tools (Incyte Pharmaceuticals, Inc., Palo Alto, Calif.); and Imaging Research (Amersham Pharmacia Biotech, Inc., Piscataway, N.J.).

Once interactions between the antigens and ISAs have been identified and quantified, the signals may be digitized. The digitized antibody profile serves as a signature that identifies the source of the biological sample. Depending on the biochip used, the digitized data may take numerous forms. For example, the biochip may comprise an array with 10 columns and 10 rows for a total number of 100 microlocations. Each microlocation contains at least one antigen. After the biological sample containing the ISAs is added to each microlocation and allowed to incubate, interactions between antigens and ISAs in the biological sample are identified and quantified. In each microlocation, an interaction between the antigen at that microlocation and the ISAs in the biological sample either do or do not result in a quantifiable signal. In one embodiment, the results of the antibody profile are digitized by ascribing each one of the 100 microlocations a numerical value of either "0," if a quantifiable signal was not obtained, or "1," if a quantifiable signal was obtained. Using this method, the digitized antibody profile comprises a unique set of zeroes and ones.

The numerical values "0" or "1" may, of course, be normalized to signals obtained in internal control microlocations so that digitized antibody profiles obtained at a later time can be properly compared. For example, one or several of the microlocations will contain a known antigen, which will remain constant over time. Therefore, if a subsequent biological sample is more or less dilute than a previous biological sample, the signals can be normalized using the signals from the known antigen.

It will be appreciated by one skilled in the art that other methods of digitizing the antibody profile exist and may be used. For example, rather than ascribing each microlocation with a numerical value of "0" or "1," the numerical value may be incremental and directly proportional to the strength of the signal.

By digitizing the antibody profile signals, the biochemical results can be entered into a computer and quickly accessed and referenced. Within seconds of having the antibody profile digitized, a computer can compare a previously digitized antibody profile to determine whether there is a match. If a matching antibody profile is in the database, a positive identification of the source of the biological sample can be made. Thus, the method of the present invention can both discriminate and positively identify the source of a biological sample.

In an embodiment of the invention, the present method is used for forensic analysis for matching a biological sample to a criminal suspect. Forensic samples obtained from crime scenes are often subject to drying of the samples, small sample sizes, mixing with samples from more than one individual, adulteration with chemicals, and the like. The present method provides the advantages of rapid analysis, simplicity, low cost, and accuracy for matching forensic samples with suspects. For example, the forensic sample and a sample from one or more suspects are obtained according to methods well known in the art. Antibody profiles for each of the samples are prepared, as described herein. The antibody profiles are then compared. A match of antibody profiles means that the forensic sample was obtained from the matching suspect. If no match of antibody profiles is obtained, then none of the suspects was the source of the forensic sample.

In another embodiment of the invention, the present method is used for drug testing of individuals. For example, in many work places it is a condition of obtaining or maintaining employment to be free of illegal drug use. The presence of illegal drugs in the bloodstream of a person can be detected by the present method by antibody capture or similar methods. Moreover, as described in WO 97/29206, the drug test and the identity of the sample can be correlated in a single test. Drug tests are also important in certain animals, such as horses and dogs involved in racing.

The present invention is further described in the following examples, which are offered by way of illustration and are not limiting of the invention in any manner.

#### EXAMPLE 1

The law enforcement community has demonstrated several needs associated with drug testing of suspects including dealing with privacy issues associated with sample collection, maintenance of sample chain of custody, prevention of sample adulteration by the suspect, and facilitating more rapid turnaround time on sample analyses. Current drug testing protocols utilize urine samples and, occasionally, blood samples. Invasion of privacy is a continuing problem with urine samples since it is necessary to observe the individual providing the sample to maintain the chain of custody and eliminate the possibility of sample switching or adulteration. Urine samples are also not a good indicator of the current level of intoxication since many drug metabolites continue to be excreted into urine for days or weeks after the drugs are initially taken. While blood samples do not suffer from these problems, collecting blood is an invasive procedure requiring special facilities and trained personnel that may not always be available when the need arises. It is necessary for law enforcement personnel to maintain strict chain of custody for all samples collected to ensure that mishandling or deliberate tampering do not occur. A break or even a perceived break in the chain of custody can result in evidence being dismissed outright or given little weight.

Embodiments of the present invention solve these issues in several ways. First, incorporation of the antibody profiling identification assay into the drug test makes identification of the sample donor integral to the test and eliminates the need for complex chain of custody procedures. Second, a saliva-based drug test is better than a urine test because drug levels in saliva can be readily correlated with drug levels in blood (W. Schramm et al., "Drugs of Abuse in Saliva: A Review," 16 J. Anal. Toxicology 1-9 (1992); E. J. Cone, "Saliva Testing for Drugs of Abuse," 694 Ann. N.Y. Acad. Sci. 91-127 (1995)), therefore providing a better indicator of current drug use (D. A. Kidwell et al., "Testing for Drugs of Abuse in Saliva and Sweat," 713 J. of Chromatography B: Biomedical Sciences and Applications 111-135 (1998)). Saliva samples from a suspect can also be collected easily in view of a law enforcement officer without invasion of privacy or with invasive methods. Finally, the present test is easy to use and can be quickly performed by law enforcement personnel on site, instead of requiring the days to weeks necessary at distant centralized laboratories. V. S. Thompson et al., "Antibody Profiling as an Identification Tool for Forensic Samples," 3576 Investigation and Forensic Science Technologies 52-59 (1999).

In this example, an antibody-based test is provided for two common illicit drugs (Cocaine (crystalline tropane alkaloid) and methamphetamine). These drugs are among the most commonly abused, and their use is on the rise. S. B. Karch,

*Drug Abuse Handbook* (CRC Press, 1998); L. D. Bowers, "Athletic Drug Testing, 17 Sports Pharmacology," 299-318 (1998).

Materials and Methods. Goat anti-rabbit IgG antibodies conjugated to alkaline phosphatase were obtained from Jackson ImmunoResearch (West Grove, Pa.). Rabbit anti-human IgA antibodies were purchased from U.S. Biological (Swampscott, Mass.). SEABLOCK™, nitro-blue tetrazolium chloride/5-bromo-4-chloro-3'-indolylphosphate p-toluidine salt (NBT/BCIP), p-nitrophenyl phosphate disodium salt (PNPP), EZ-LINK® maleimide activated alkaline phosphatase kits, and FREEZYME™ conjugate purification kits were obtained from Pierce Chemical (Rockford, Ill.). Monoclonal antibodies against benzoylecgonine and methamphetamine, and bovine serum albumin (BSA) conjugates of methamphetamine and benzoylecgonine were purchased from O.E.M. Concepts (Toms River, N.J.). Cocaine (crystalline tropane alkaloid) and methamphetamine hydrochloride salts were obtained from Sigma-Aldrich (St. Louis, Mo.). Antibody Profiling strips were purchased from Miragen, Inc. (Irvine, Calif.). Strips used for the combined drug-AbP test were produced according to the protocol of A. M. Francoeur, "Antibody Fingerprinting: A Novel Method for Identifying Individual People and Animals," 6 Bio/Technology 822-825 (1988). Saliva samplers from Saliva Diagnostic Systems, Inc. (Vancouver, Wash.), OraSure Technologies, Inc. (Bethlehem, Pa.), and Sarstedt, Inc. (Newton, N.C.), were used to collect saliva samples from volunteers.

A saliva-based AbP assay was developed through modification of an earlier protocol designed for processing blood samples. T. F. Unger and A. Strauss, "Individual-Specific Antibody Profiles as a Means of Newborn Infant Identification," 15 J. Perinatology 152-155 (1995). Briefly, 500 µl of saliva sample diluted with 1.0 ml of PBST (50 mM phosphate buffered saline, 0.2% TWEEN® 20) was incubated with an AbP strip overnight for a minimum of 16 hours, and excess sample was washed off with PBST. Next, the strip was incubated successively with 100 ng/ml rabbit anti-human IgA for 1 hour and 100 ng/ml goat anti-rabbit IgG-alkaline phosphatase conjugate for 30 minutes with washes in between incubations. The strip was washed again with PBST and a precipitation substrate for alkaline phosphatase, NBT/BCIP, was added to allow development of bands on the strip.

The SALIVA SAMPLER™ (Saliva Diagnostic Systems) and the SALIVETTE™ (Sarstedt, Inc.) saliva collection systems were examined for compatibility with the AbP assay. The SALIVA SAMPLER™ system comprises a cotton pad attached to a plastic handle. A window in the handle turns blue when sufficient sample has been collected. The pad is placed in a preservative buffer after collection. The SALIVETTE™ is a cotton roll placed in the mouth for about 10 minutes and then centrifuged in a plastic tube to collect a sample. Both types of samplers were placed in the gingival crevice of the mouth for sample collection. The quality of samples as a function of storage time at temperatures of -20° C., 4° C., and 25° C. was assessed by performing AbP on samples collected with both samplers.

Five volunteers participated in studies to compare blood AbP patterns with those obtained from saliva samples. Protocols for use of human subjects were conducted in accordance with the Idaho National Engineering and Environmental Laboratory Institutional Review Board. Blood samples were collected in tubes containing the anticoagulant EDTA and were used immediately. Saliva was collected using the SALIVA SAMPLER™ saliva collection system. Paired

blood and saliva samples were analyzed using the blood protocol of Unger and Strauss, supra, and the saliva AbP test described above.

Four additional volunteers participated in a saliva adulteration study to assess the effects of various foods and beverages on the AbP assay. The volunteers were given butterscotch and lemon hard candy, sugar and sugar-free gum, sugar and sugar-free cola, and milk chocolate. After eating the above, they were asked to collect saliva samples using the provided saliva samplers. Volunteers were also asked to consume alcohol, drink coffee, eat a food of their choice, and brush their teeth prior to giving samples. A volunteer who was a smoker provided a sample after smoking a cigarette. Baseline samples were also collected from the volunteers.

Monoclonal antibodies against methamphetamine and benzoylecgonine were conjugated to alkaline phosphatase using the Pierce EZ-LINK™ maleimide activated alkaline phosphatase kit according to the manufacturer's protocols. Unconjugated antibody was separated from the antibody-enzyme conjugate using the FREEZYME™ conjugate purification kit according to the manufacturer's protocols.

Competitive enzyme linked immunosorbent assays (ELISAs) were developed for both Cocaine (crystalline tropane alkaloid) and methamphetamine. The BSA conjugates of methamphetamine or benzoylecgonine were diluted in 50 mM carbonate buffer, pH 9.6, and 50  $\mu$ l was added to each well of a 96-well microtiter plate. The plate was incubated overnight at 4° C. to allow the conjugates to bind to the well surfaces. The plate was then washed with PBST to remove excess BSA conjugate. Next, 50  $\mu$ l of either Cocaine (crystalline tropane alkaloid) or methamphetamine solution in the concentration range from 0 to 1000  $\mu$ g/ml was added to the plate and 50  $\mu$ l of either monoclonal anti-benzoylecgonine or anti-methamphetamine conjugated with alkaline phosphatase was added. During this step, the immobilized BSA drug conjugate competed with the free drug in solution for binding sites on the antibodies. After the competition reaction was complete, the unbound antibodies and free drug were washed away. Finally, 100  $\mu$ l of soluble alkaline phosphatase substrate (PNPP) solution was added to the wells to react with the alkaline phosphatase bound to the well surfaces through the anti-drug antibodies. The reaction was stopped after 20 to 30 minutes by addition of 25  $\mu$ l of 3 M NaOH, and the absorbance of each well was read at 405 nm using a Tecan Spectra microplate reader.

Polyvinylidene fluoride (PVDF) membrane is used in the manufacture of the Miragen AbP strips, and was used to assess the feasibility of binding the Cocaine (crystalline tropane alkaloid) and methamphetamine-BSA conjugates to its surface. The PVDF membrane was cut into strips the same size as those used in the AbP assay. Four strips were prepared for each drug and 10  $\mu$ l spots of either drug-BSA conjugate were placed at three locations on each strip for analysis in triplicate. The strips were dried at 35° C. for one hour prior to use. Non-specific binding sites on the strips were blocked with PBST containing 1 mg/mL BSA for one hour and then rinsed with PBST. Cocaine (crystalline tropane alkaloid) and methamphetamine solutions were prepared in PBST at concentrations of 0, 0.1, 10, and 1000  $\mu$ g/ml. Next, 750  $\mu$ l of Cocaine (crystalline tropane alkaloid) or methamphetamine solution was added to the strips and another 750  $\mu$ l of anti-benzoylecgonine or anti-methamphetamine antibodies conjugated with alkaline phosphatase were added and allowed to incubate for one hour. During this time a competitive reaction between the free and the immobilized drug for antibody binding sites took place. The strips were washed to remove

unbound antibodies and drugs and the NBT/BCIP substrate was added. The strips were allowed to develop for 15 minutes.

A combined AbP-drug assay was prepared by placing 10  $\mu$ l spots of both methamphetamine and benzoylecgonine-BSA conjugate onto the blank bottom portion of the AbP strip and allowing them to dry for one hour at 35° C. Saliva samples from three individuals were collected using ORASURE® samplers. Half of the saliva sample was spiked with 1000  $\mu$ g/ml of Cocaine (crystalline tropane alkaloid) or methamphetamine. The strips were blocked with PBST containing 1.0 mg/ml BSA for one hour and rinsed with PBST. Next, 500  $\mu$ l of spiked or unspiked saliva was added to the strips along with alkaline phosphatase conjugated anti-benzoylecgonine and anti-methamphetamine antibodies and allowed to incubate over night at room temperature. The strips were washed with PBST and the AbP assay was conducted as described above.

Results and Discussion. The saliva-based AbP assay was optimized through variation of reagent concentrations, sample volumes, and incubation times. Illustrative results of antibody profiles obtained from saliva samples are shown in FIG. 1. Compared to the blood-based AbP assay, the saliva assay takes much longer (18 hours versus two hours) and requires a ten-fold larger amount of sample. This is due to the 100-fold lower levels of total antibody present in saliva as compared to blood. Parry, "Tests for HIV and Hepatitis Viruses," 694 *Annals. N.Y. Acad. Sci.* 221 (1993).

The stability of antibodies present in the saliva samples collected using the SALIVA SAMPLER™ or the SALIVETTE™ systems was determined by storage at -20° C., 4° C., and 25° C. and AbP testing of samples daily over the period of one week to see if there were any changes in the patterns observed. Fresh saliva samples from either sampler gave the best results. The stability over time of samples collected with the SALIVA SAMPLER™ system was superior to samples collected with the SALIVETTE™ system at all temperatures. The preservative storage buffer provided with the SALIVA SAMPLER™ system appears to prevent antibody degradation due to bacterial contamination, while the SALIVETTE™ sampler includes no preservative.

The samples collected with the SALIVA SAMPLER™ system and maintained at room temperature showed no change in pattern over a five-day period. This result is in contrast to the results obtained with samples stored in a refrigerator, which showed marked deterioration even after a few hours of storage. It is not clear why this occurred. Frozen samples also showed some deterioration due to damage caused by freeze-thaw cycles, but prolonged storage at freezing temperatures resulted in no further degradation. Since SALIVA SAMPLER™ saliva collection systems had superior storage properties and were easier to use, they were used for the adulteration studies.

Blood AbP patterns were compared to saliva AbP patterns to determine if the ISAs present in those samples were the same. The results showed that the patterns obtained from the two different samples differed markedly (FIG. 2). This result was somewhat surprising since saliva is a filtrate of blood, and it was expected that the ISAs present in saliva would be the same as those present in blood. The different patterns probably resulted from the isotype of antibody examined in each case. In blood IgG antibodies were analyzed since they are the most prevalent. In saliva, IgA antibodies are more prevalent and were analyzed. After the above result was obtained, saliva samples were also analyzed for IgG antibodies to determine if those patterns would be the same as those from the blood patterns. However, this was unsuccessful due to the extremely low levels of IgG antibodies present in saliva.

The saliva adulteration studies showed that virtually no changes occurred in the antibody profiles when any of the adulterants were present (FIG. 3). In some cases a band might be darker or lighter, but there appeared to be no missing or additional bands present. Since this was a preliminary study, the adulterants examined were easily obtainable items that might be used during the course of ordinary life. However, as a quick search of the Internet reveals, there are many proposed methods to beat urine-based drug tests including ingestion of substances and/or adulteration of samples with various substances that are being sold by these sites. The adulteration results shown here are promising since it appears that the AbP test is not affected by foods that may be commonly consumed before taking a saliva test.

Immunoassay tests for both Cocaine (crystalline tropane alkaloid) and methamphetamine were developed using a direct competitive assay. An anti-benzoyllecgonine antibody was used for the Cocaine (crystalline tropane alkaloid) assay; however, this antibody gave the same response to Cocaine (crystalline tropane alkaloid) as to benzoyllecgonine (the primary metabolite of Cocaine (crystalline tropane alkaloid)) so it did not affect the results of the assay. In this assay, a drug present in a sample competes for binding sites on enzyme labeled antibodies with a BSA-conjugated drug immobilized to the surface of a well of a microtiter plate. In samples with large drug concentrations, most of the antibody-enzyme conjugate will bind to the drug in solution and will be washed away during the final step. Therefore, there will be very little enzyme present in the microtiter plate and the amount of color development will be low. Conversely, if there is no drug in the sample, the antibodies will bind to the immobilized drugs and stay in the wells after the wash step, resulting in strong color development. This results in a signal that is inversely proportional to the drug concentration (FIGS. 4 and 5). The linear range for Cocaine (crystalline tropane alkaloid) detection was from 0.1 to 5 µg/ml and for methamphetamine was from 0.1 to 10 µg/ml. This range covers the cutoff values for these drugs (0.3 and 1.0 µg/ml, respectively) currently set by the Substance Abuse and Mental Health Services Administration. M. Peat and A. E. Davis, *Drug Abuse Handbook* (CRC Press, Boca Raton, Fla. 1998).

Using the optimum concentrations of BSA-drug conjugates determined during the ELISA studies, the drug assays were conducted on the PVDF membranes. Because of the inverse relationship of the immunoassay to drug concentration, a dark spot was observed when the concentration of drugs was low, and spots gradually disappeared as the drug concentration increased (FIGS. 6 and 7).

Since the drug test on the PVDF membranes were promising, the feasibility of combining the two drug tests with the AbP assay was assessed. Antibody profile patterns from the three individuals did not change regardless of whether the drug was present or not (FIG. 8). This result shows that the presence of the drugs did not interfere with the reagents used to perform the antibody profiling assay.

#### EXAMPLE 2

In this example, the procedure of Example 1 is followed except that fractionated HeLa cell antigens are immobilized on a PVDF membrane in a predetermined pattern as a two-dimensional array. Additionally, Cocaine (crystalline tropane alkaloid) and methamphetamine are immobilized on the

membrane as additional spots on the array. After development of color as described, results are substantially similar to those of Example 1.

#### EXAMPLE 3

In this example, the procedure of Example 2 is followed except that the array is immobilized on a glass slide.

#### EXAMPLE 4

Assay strips were prepared as in Example 1 and pre-blocked in PBS. The strips were then exposed to various amounts of serum ranging from 50 µl to 0.1 µl for 20 minutes. The strips were then placed into a bleach solution (0.5% v/v sodium hypochlorite) before washing four times with PBS.

In the case of strips undergoing a two-stage antibody layering process, the strips were exposed to a rabbit anti-human IgG for 12 minutes before being washed four times with PBS. These strips were then exposed to a goat anti-rabbit IgG conjugated to alkaline phosphatase for 12 minutes. The strips were then washed and the color developed as outlined in Example 1. Results of two antibody layers can be seen in FIG. 9 wherein a readable pattern with some bands missing is visible down to 1 microliter of serum and a complete pattern is visible at 3 microliters of serum.

In the case of strips undergoing a three-stage antibody layering process, the strips were exposed to a rabbit anti-human IgG for 12 minutes before being washed four times with PBS. These strips were then exposed to a goat anti-rabbit IgG for 12 minutes. The strips were then exposed to a donkey anti-goat IgG conjugated to alkaline phosphatase for 12 minutes. The strips were then washed and the color developed as outlined in Example 1. Results of two antibody layers can be seen in FIG. 10 wherein a readable pattern with some bands missing is visible down to 0.5 microliter of serum and a complete pattern is visible at 1 microliter of serum.

A comparison of FIGS. 9 and 10 shows that a three-stage antibody layering process has increased sensitivity in providing a readable pattern of individual-specific antibodies over the two-layer process.

#### EXAMPLE 5

Assay strips were prepared as in Example 1 and pre-blocked in PBS. The strips were then exposed to three microliters of serum ranging for 20 minutes. The strips were then placed into a bleach solution (0.5% v/v sodium hypochlorite) before washing four times with PBS.

In the case of the strip undergoing a two-stage antibody layering process, the strips were exposed to a rabbit anti-human IgG for 12 minutes before being washed four times with PBS. These strips were then exposed to a goat anti-rabbit IgG conjugated to alkaline phosphatase for 12 minutes. The strips were then washed and the color developed as outlined in Example 1.

In the case of the strips undergoing a three-stage antibody layering process, the strips were exposed to a goat anti-human IgG for 12 minutes before being washed four times with PBS. These strips were then exposed to a rabbit anti-goat IgG for 12 minutes. The strips were then exposed to a donkey anti-rabbit IgG conjugated to alkaline phosphatase 12 minutes. The strips were then washed and the color developed as outlined in Example 1.

Results of the two-stage and three-stage antibody layering processes can be viewed side by side in FIG. 11. Strip A is the

three-layer strip and strip B is the two-layer strip. As can be seen, a much stronger signal and sensitivity were obtained with the three-layer process.

A densitometry study of the two strips was performed and the results are presented in FIG. 12, where the three-layer strip is the top line and the two-layer strip is the bottom line. The height of the lines indicates the intensity of the bands. As can be seen in FIG. 12, the three-layer process has an increased readout for specific bands without a proportional increase in the background noise. Thus, the three-layer process has increased sensitivity over the two-layer process.

While this invention has been described in certain embodiments, the present invention can be further modified within the spirit and scope of this disclosure. This application is therefore intended to cover any variations, uses, or adaptations of the invention using its general principles. Further, this application is intended to cover such departures from the present disclosure as come within known or customary practice in the art to which this invention pertains and which fall within the limits of the appended claims.

What is claimed is:

1. A method for analyzing biological material comprising individual-specific antibodies, the method comprising:

forming an array comprising multiple antigens attached to a surface of a solid support in a preselected location pattern;

obtaining a sample of a biological material having individual-specific antibodies and contacting the array with the sample to bind at least a portion of the individual-specific antibodies to the multiple antigens of the array, to form immune complexes;

washing the array containing the immune complexes;

detecting the immune complexes by the application to the array of at least three separate antibodies; and

identifying the immune complexes on the array, to obtain an antibody profile.

2. The method of claim 1, wherein forming an array comprises attaching the multiple antigens to the solid support through a covalent bond.

3. The method of claim 1, comprising obtaining a sample of a biological material selected from the group of biological material consisting of tissue, blood, saliva, urine, perspiration, tears, semen, serum, plasma, amniotic fluid, pleural fluid, cerebrospinal fluid, and combinations thereof.

4. The method of claim 1, wherein forming the array comprises attaching multiple antigens to a solid support comprising glass or silica.

5. The method of claim 1, wherein detecting the immune complexes comprises treating the array such that the presence of immune complexes at a location is characterized by a color change at the location.

6. The method of claim 5, wherein detecting the immune complexes comprises obtaining an output using a charge-coupled device and wherein the color change comprises fluorescence or luminescence emission.

7. The method of claim 1, wherein detecting the immune complexes further comprises monitoring the array with solid state color detection circuitry and comparing color patterns before and after detecting the immune complexes.

8. The method of claim 1, wherein detecting the immune complexes further comprises obtaining a color camera image before contacting the array with the sample and after detecting the immune complexes, and analyzing pixel information obtained from the color camera image.

9. The method of claim 1, wherein detecting the immune complexes further comprises scanning the array before and

after contacting the array with the sample, wherein the solid support is a surface plasmon resonance chip.

10. The method of claim 1, wherein forming the array comprises attaching a first subset of antigens configured for obtaining an antibody profile and a second subset of at least one antigen configured for assaying for a selected analyte in the sample.

11. The method of claim 10, wherein attaching the second subset of at least one antigen comprises attaching at least one drug.

12. The method of claim 11, wherein attaching at least one drug comprises attaching a drug selected from the group consisting of marijuana, Cocaine (crystalline tropane alkaloid), methamphetamine, amphetamine, heroin, methyltestosterone, mesterolone and combinations thereof.

13. The method of claim 1, wherein obtaining a sample of a biological material comprises obtaining the biological material from a forensic sample.

14. The method of claim 13, further comprising comparing the antibody profile obtained from the biological material from the forensic sample to an antibody profile prepared from a biological sample obtained from a crime suspect.

15. A method for analyzing biological material comprising individual-specific antibodies, the method comprising:

forming an array comprising multiple antigens attached to a surface of a solid support in a preselected location pattern;

obtaining a sample of a biological material having individual-specific antibodies and contacting the array with the sample to bind at least a portion of the individual-specific antibodies to the multiple antigens of the array, to form immune complexes;

washing the array containing the immune complexes;

contacting the immune complexes with primary antibodies capable of binding the immune complex, wherein the primary antibodies are from a different species than the individual-specific antibodies;

removing primary antibodies not bound to the immune complexes;

contacting the primary antibodies bound to the immune complexes with secondary antibodies capable of binding the primary antibodies, wherein the secondary antibodies are from a different species than the individual-specific antibodies and the primary antibodies;

removing unbound secondary antibodies;

contacting the secondary antibodies bound to the primary antibodies with tertiary antibodies capable of binding the secondary antibodies, wherein the tertiary antibodies are from a different species than the individual-specific antibodies, the primary antibodies, and the secondary antibodies;

removing unbound tertiary antibodies;

detecting the primary, secondary, or tertiary antibodies; and

identifying the immune complexes on the array, to obtain an antibody profile.

16. A method for detecting a selected drug in a biological sample comprising individual-specific antibodies and identifying a source of the biological sample, the method comprising:

immobilizing multiple antigens in a pre-selected pattern on a solid support;

immobilizing a detectable amount of a selected drug on the solid support, to form an array;

providing an antibody-enzyme conjugate comprising an antibody configured to bind the selected drug and an

23

enzyme that is capable of converting a colorigenic substrate into a colored product;

contacting the array with a biological sample, to bind at least some of the multiple antigens with individual-specific antibodies in the biological sample, to form immune complexes;

contacting the array with the antibody-enzyme conjugate, wherein the antibody-enzyme conjugate competitively binds to (i) the selected drug immobilized on the array, to form an immobilized antibody-enzyme conjugate, and (ii) any selected drug that may be present in the biological sample, to form a soluble drug-antibody-enzyme conjugate;

washing the solid support, to remove at least the soluble drug-antibody-enzyme complexes;

contacting the solid support with a colorigenic substrate to convert the colorigenic substrate to a colored product using the immobilized antibody-enzyme conjugate;

determining an amount of the colored product present, wherein the amount of the colored product may be inversely correlated with an amount of the selected drug in the biological sample; and

detecting the immune complexes immobilized on the solid support by the application to the solid support of at least three separate antibodies to form an antibody profile characteristic of the source of the biological sample.

17. The method of claim 16, further comprising comparing the antibody profile to one or more candidate antibody profiles from candidate sources, wherein a match of the antibody profile to the one or more candidate antibody profiles identifies the source of the biological sample.

18. The method of claim 16, wherein immobilizing a detectable amount of the selected drug on the solid support comprises selecting the selected drug from the group consisting of marijuana, Cocaine (crystalline tropane alkaloid), methamphetamine, amphetamine, heroin, methyltestosterone, mesterolone and combinations thereof.

19. The method of claim 16, wherein contacting the array with a biological sample comprises obtaining a biological sample from a source selected from the group consisting of tissue, blood, saliva, urine, perspiration, tears, semen, serum, plasma, amniotic fluid, pleural fluid, cerebrospinal fluid, and combinations thereof.

20. The method of claim 16, comprising obtaining the biological sample from saliva.

21. The method of claim 16, comprising immobilizing multiple antigens from a HeLa cell.

22. The method of claim 16, comprising immobilizing multiple antigens from a random peptide library.

23. The method of claim 16, comprising immobilizing multiple antigens from an epitope library.

24. The method of claim 16, comprising immobilizing multiple antigens from a random cDNA expression library.

24

25. The method of claim 16, comprising immobilizing multiple antigens on the solid support, wherein the solid support comprises at least one substance selected from the group of substances consisting of glass, silicon, silica, polymeric material, poly(tetrafluoroethylene), poly(vinylidene difluoride), polystyrene, polycarbonate, polymethacrylate, ceramic material, and hydrophilic inorganic material.

26. The method of claim 16, comprising immobilizing multiple antigens on the solid support, wherein the solid support comprises a hydrophilic inorganic material selected from the group consisting of at least one of alumina, zirconia, titania, nickel oxide.

27. The method of claim 16, wherein providing the antibody-enzyme conjugate comprises the antibody conjugated to alkaline phosphatase.

28. The method of claim 16, wherein providing the antibody-enzyme conjugate comprises providing the antibody conjugated to horseradish peroxidase.

29. The method of claim 16, wherein detecting the immune complexes immobilized on the solid support by the application to the solid support of at least three separate antibodies comprises:

- contacting the immune complexes with primary antibodies capable of binding the immune complex, wherein the primary antibodies are from a different species than the individual-specific antibodies;
- removing primary antibodies not bound to the immune complexes;
- contacting the primary antibodies bound to the immune complexes with secondary antibodies capable of binding the primary antibodies, wherein the secondary antibodies are from a different species than the individual-specific antibodies and the primary antibodies;
- removing unbound secondary antibodies;
- contacting the secondary antibodies bound to the primary antibodies with enzyme-conjugated tertiary antibodies capable of binding the secondary antibodies, wherein the enzyme-conjugated tertiary antibodies are from a different species than the individual-specific antibodies, the primary antibodies, and the secondary antibodies;
- removing unbound enzyme-conjugated tertiary antibodies; and
- detecting bound enzyme-conjugated tertiary antibodies, to detect the immune complexes on the solid support.

30. The method according to claim 1, wherein the at least three separate antibodies comprise:

- a first antibody capable of binding the immune complex;
- a second antibody capable of binding the first antibody; and
- a third antibody capable of binding the second antibody.

\* \* \* \* \*

专利名称(译)	通过增加报道抗体分层来提供抗体谱分析		
公开(公告)号	<a href="#">US7695919</a>	公开(公告)日	2010-04-13
申请号	US11/691096	申请日	2007-03-26
[标]申请(专利权)人(译)	阿佩尔威廉的一句话 THOMPSON VICKI小号		
申请(专利权)人(译)	阿佩尔威廉的一句话 THOMPSON VICKI小号		
当前申请(专利权)人(译)	BATTELLE ENERGY ALLIANCE , LLC		
[标]发明人	APEL WILLIAM A THOMPSON VICKI S		
发明人	APEL, WILLIAM A. THOMPSON, VICKI S		
IPC分类号	G01N33/53		
CPC分类号	G01N33/946 Y10S435/971 Y10S435/973 Y10S435/975		
优先权	60/290256 2001-05-10 US		
其他公开文献	US20070190585A1		
外部链接	<a href="#">Espacenet</a> <a href="#">USPTO</a>		

摘要(译)

一种通过抗体分析来分析生物样品的方法，用于鉴定法医样品或用于检测分析物的存在。在本发明的一个实施方案中，分析物是药物，例如大麻，可卡因（结晶托烷生物碱），甲基苯丙胺，甲基睾酮或美孕酮。所述方法包括以预选择的模式将抗原附着到固体支持物的表面，以形成阵列，其中抗原的位置是已知的；使所述阵列与所述生物样品接触，使得所述样品中的一部分抗体与所述阵列中的抗原反应并结合所述阵列中的抗原，以形成免疫复合物；洗去形成免疫复合物的抗体；和检测所述免疫复合物，以形成抗体谱。通过将来自未知来源的样品与来自已知来源的样品进行比较来鉴定法医样品。此外，诸如用于非法药物使用的测试的测定可以与同一性测试相结合，使得测定的结果可以与受试者的身份正相关。

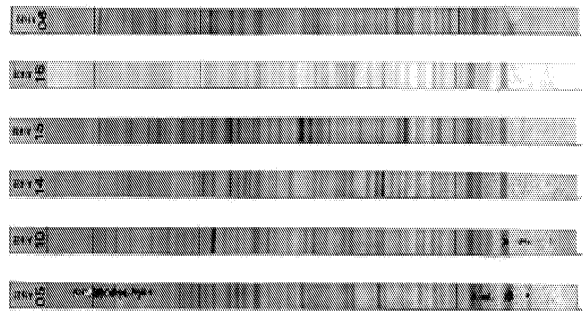


FIG. 1