



US007138255B2

(12) **United States Patent**
Vodyanoy et al.

(10) **Patent No.:** **US 7,138,255 B2**
(45) **Date of Patent:** **Nov. 21, 2006**

(54) **METHOD OF ISOLATION AND SELF-ASSEMBLY OF SMALL PROTEIN PARTICLES FROM BLOOD AND OTHER BIOLOGICAL MATERIALS**

(75) Inventors: **Vitaly J. Vodyanoy**, Auburn, AL (US);
Alexandre M. Samoylov, Auburn, AL (US);
Oleg M. Pustovyy, Auburn, AL (US)

(73) Assignee: **Auburn University**, Auburn, AL (US)

(*) Notice: Subject to any disclaimer, the term of this patent is extended or adjusted under 35 U.S.C. 154(b) by 0 days.

(21) Appl. No.: **10/674,750**

(22) Filed: **Sep. 30, 2003**

(65) **Prior Publication Data**

US 2004/0137523 A1 Jul. 15, 2004

Related U.S. Application Data

(60) Provisional application No. 60/415,108, filed on Sep. 30, 2002.

(51) **Int. Cl.**
C12P 19/34 (2006.01)

(52) **U.S. Cl.** **435/91.2; 530/350; 435/7.1; 435/68.1**

(58) **Field of Classification Search** **435/7.1, 435/68.1, 91.2; 530/350; 514/12, 232**
See application file for complete search history.

(56) **References Cited**

U.S. PATENT DOCUMENTS

5,874,238 A * 2/1999 Potempa et al. 435/69.1

FOREIGN PATENT DOCUMENTS

DE WO 02/073210 9/2002 33/68

OTHER PUBLICATIONS

Otvos JD, Armitage IM., Structure of the metal clusters in rabbit liver metallothionein., Proc Natl Acad Sci U S A. Dec. 1980;77(12):7094-8.*

Watanabe et al., Inhibition against heat coagulation of ovotransferrin by ovalbumin dry-heated at 120 degrees C.J Agric Food Chem. Sep. 2000;48(9):3965-72.*

Aguzzi, A., "Prion diseases, blood and the immune system: concerns and reality," *Haematologica*, Jan. 2000, pp. 3-10, vol. 85, No. 1.

Aguzzi, A., "Blood simple prion diagnostics," *Nature Medicine*, Mar. 2001, pp. 289-290, vol. 7, No. 3.

Aiken III, J. D. & Finke, R. G., "A review of modern transition-metal nanoclusters: their synthesis, characterization, and applications in catalysis," *Journal of Molecular Catalysis A: Chemical*, 1999, pp. 1-44, vol. 145.

Attwood, T. K., "Metals in prion disease," *Trends in Biotechnology*, Jun. 2002, p. 235, vol. 20, No. 6.

Brown, P., et al., "Blood infectivity and the prospects for a diagnostic screening test in Creutzfeldt-Jakob disease," *J. Lab. Clin. Med.*, 2001, pp. 5-13, vol. 137.

Bush, A.I., "Metals and neuroscience," *Current Opinions in Chemical Biology*, 2000, pp. 184-191, vol. 4.

Bush, A. I., et al., "Rapid induction of Alzheimer A beta amyloid formation by zinc," *Science*, Sep. 1994, pp. 1464-1467, vol. 265, No. 5177.

Bush, A. I., "Metal complexing agents as therapies for Alzheimer's disease," *Neurobiology of Aging*, 2002, pp. 1031-1038, vol. 23.

Campbell, A., et al., "Mechanisms by which metals promote events connected to neurodegenerative disease," *Brain Research Bulletin*, 2001, pp. 125-132, vol. 55, No. 2.

Carrel, R.W., & Lomas, D.A., "Conformational disease," *Lancet*, Jul. 12, 1997, pp. 134-138, vol. 350.

Gerner, C., "Biochemische Analyse endobiontischer Strukturen aus dem menschlichen Blut," ["Biochemical Analysis of Endobiontic Structures from Human Blood"] *Curriculum Oncologicum* 01, Jan. 7, 1997.

Harper, J. D. & Lansbury, P. T., Jr., "Models of amyloid seeding in Alzheimer's disease and scrapie: mechanistic truths and physiological consequences of the time-dependent solubility of amyloid proteins," *Ann. Rev. Biochem.*, 1997, pp. 385-407, vol. 66.

Lehmann, S., "Metal ions and prion diseases," *Current Opinion in Chemical Biology*, 2002, pp. 187-192, vol. 6.

Liu, C. & Xu, H., "The metal site as a template for the metalloprotein structure formation," *Journal of Inorganic Biochemistry*, 2002, pp. 77-86, vol. 88.

Rhodes, E., et al., "Aggregation of an amyloidogenic fragment of human islet amyloid polypeptide," *Biochimica et Biophysica Acta*, 2000, pp. 230-238, vol. 1476.

Saborio, G. P., et al., "Sensitive detection of pathological prion protein by cyclic amplification of protein misfolding," *Nature*, Jun. 14, 2001, pp. 810-813, vol. 411.

Soto, C., et al., "Cyclic amplification of protein misfolding: application to prion-related disorders and beyond," *Trends in Neurosciences*, Aug. 2002, pp. 390-394, vol. 25, No. 8.

Thackray, A. M., et al., "Metal imbalance and compromised antioxidant function are early changes in prion disease," *Biochem. J.*, 2002, pp. 253-258, vol. 362.

* cited by examiner

Primary Examiner—Jon Weber

Assistant Examiner—Robert B. Mondesi

(74) *Attorney, Agent, or Firm*—Andrus, Sceales, Starke & Sawall

(57) **ABSTRACT**

Compositions and methods for the isolation and manipulation of misfolded, or partially misfolded, proteins present in blood and other biological materials are provided. In one aspect of the invention, the compositions, hereinafter termed "proteons" are comprised of misfolded proteins. Also provided are compositions and methods for the isolation and manipulation of proteon nucleation centers (PNCs) upon which the proteons of the present in blood and other biological materials form. In another aspect of the invention, the PNCs are comprised of metallic nanoclusters.

Figure 1

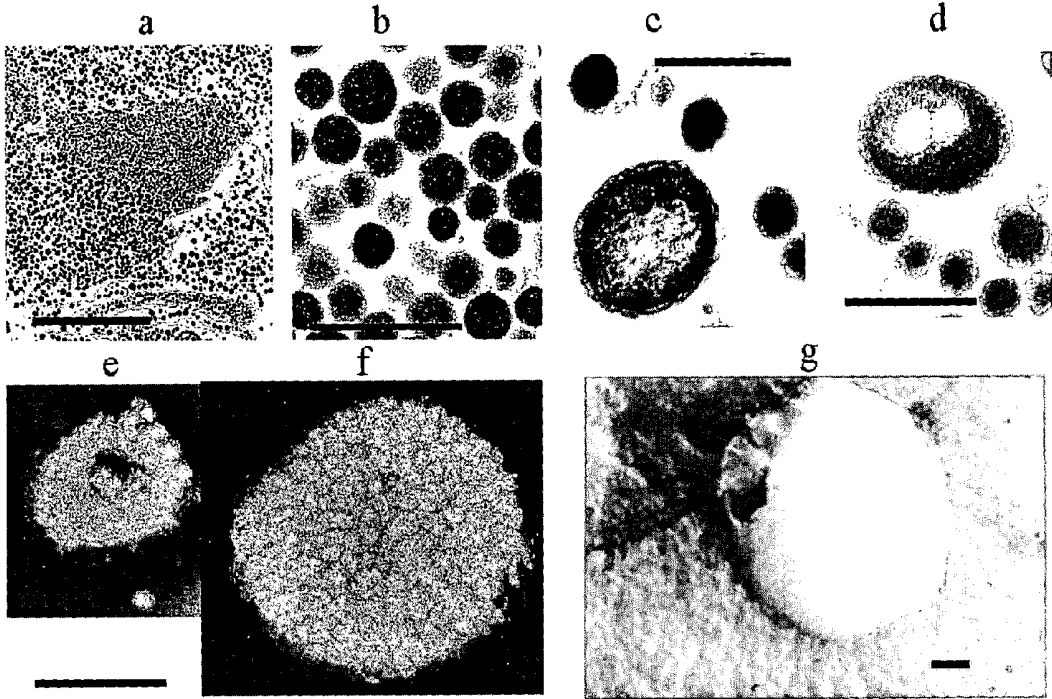


Figure 2

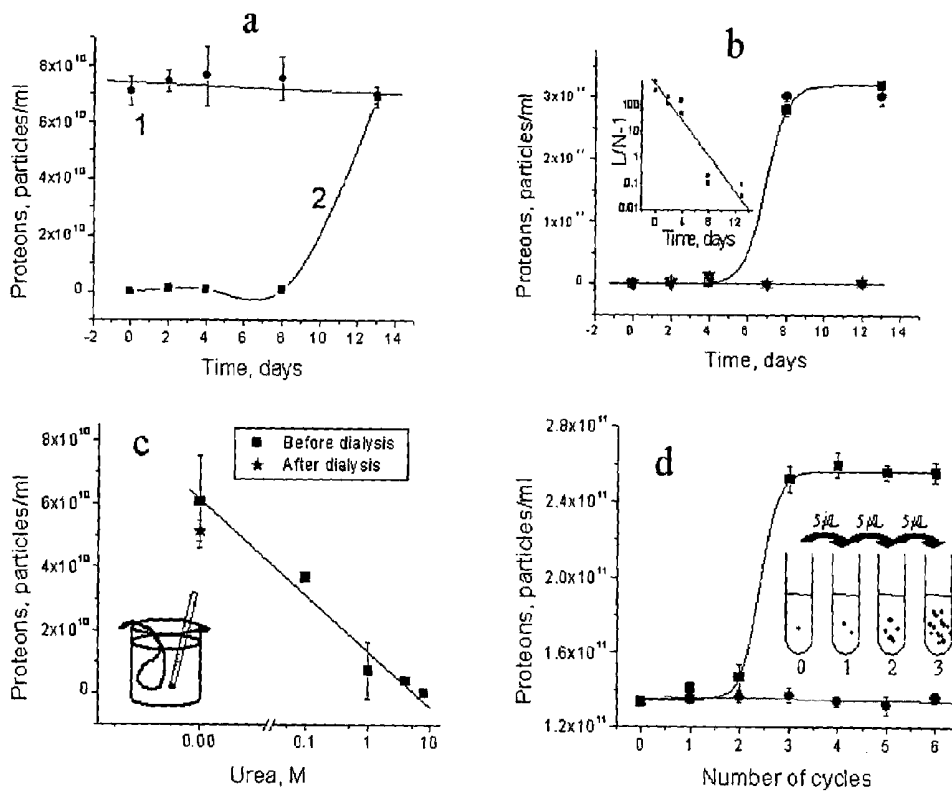


Figure 3

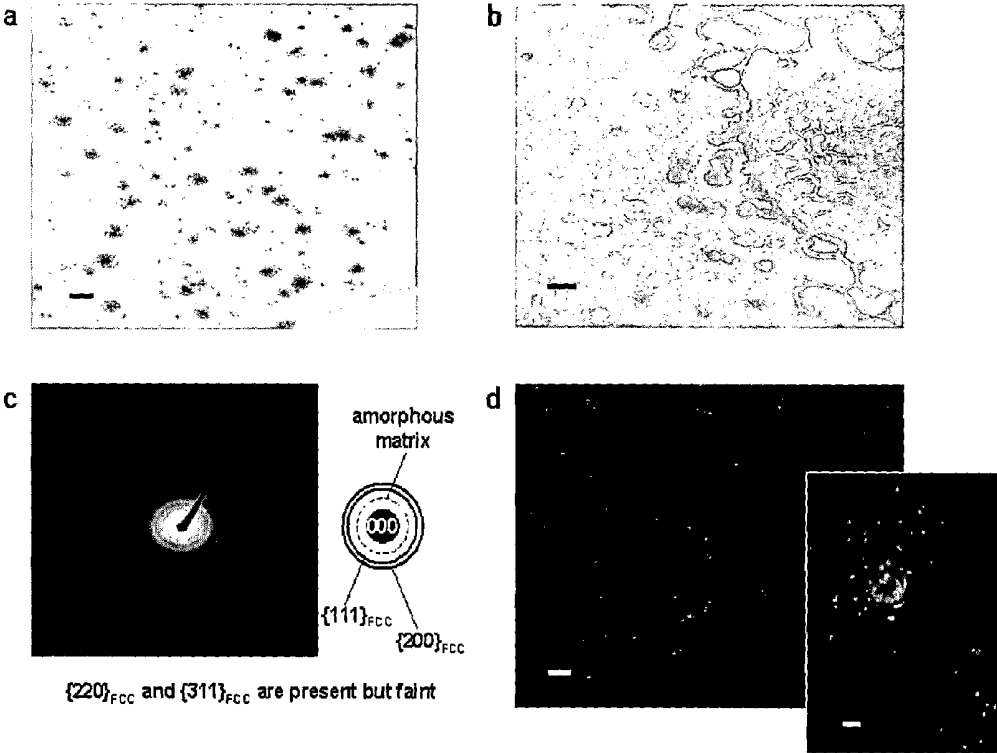
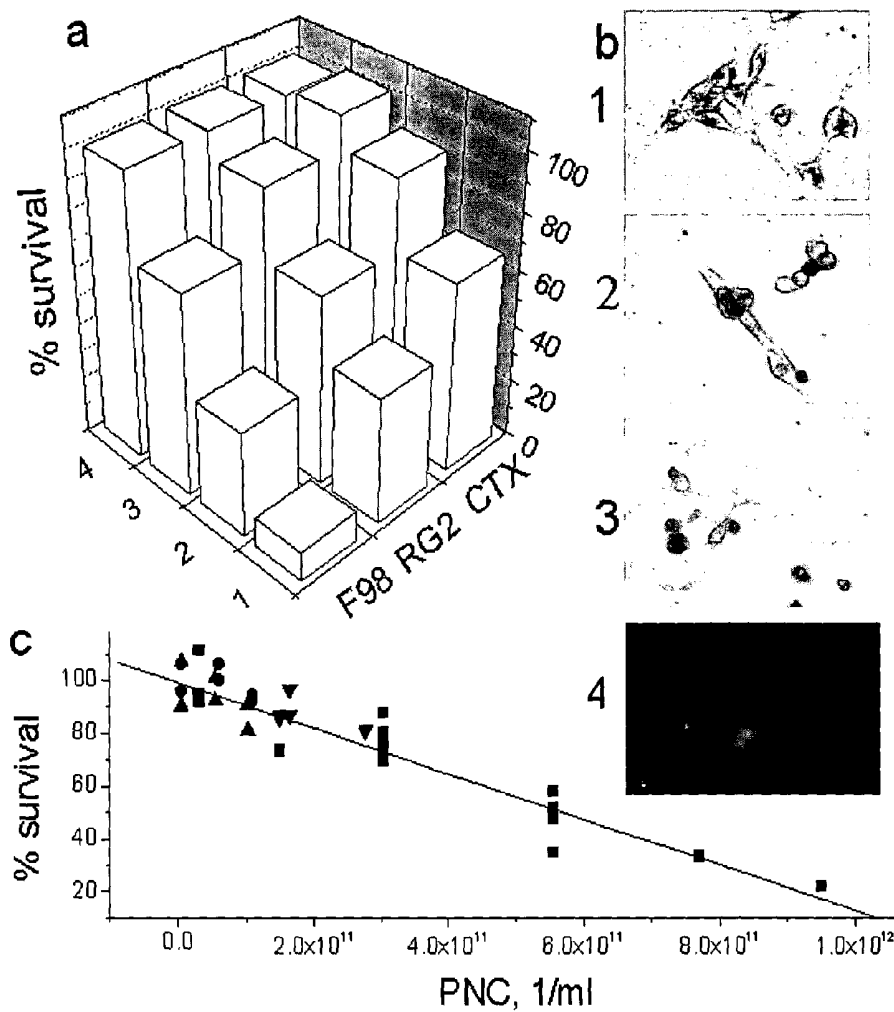


Figure 4



1

METHOD OF ISOLATION AND SELF-ASSEMBLY OF SMALL PROTEIN PARTICLES FROM BLOOD AND OTHER BIOLOGICAL MATERIALS

CROSS-REFERENCE TO RELATED APPLICATION

This application claims the benefit of U.S. Provisional Application Ser. No. 60/415,108 filed on Sep. 30, 2002, which is hereby incorporated in its entirety by reference herein.

FIELD OF THE INVENTION

The present invention relates generally to compositions and methods for the isolation and manipulation of misfolded proteins and their nucleation centers.

BACKGROUND OF THE INVENTION

There are many disorders that are thought to arise from the same general mechanism based upon misfolding and aggregation of underlying proteins, including prion-related disorders, neurodegenerative diseases, and several systemic disorders. See, for example, Schluter et al. (1986) *PNAS* 83:6137-6141; Kannan et al. (1988) *J. Biol. Chem.* 263:3766-13773; Carrell and Lomas (1997) *Lancet* 350:134-138; Carrell and Gooptu (1998) *Curr. Op. Struc. Biol.* 8:799-809; Soto (2001) *FEBS Letters* 498:204-207; Jaikaran and Clark (2001) *Biochimica et Biophysica Acta* 1537:179-203; Ursini et al. (2002) *Trends Mol. Med.* 8:370-374; and Davis et al. (2002) *Lancet* 359:2242-2247.

One of the suggested mechanisms of protein aggregation is seeded polymerization, in which initial seeds nucleate the deposition of monomers. For example, aggregates of denatured hemoglobin called Heinz bodies were found in aged erythrocytes. See Schluter et al. (Supra). Further, Kannan et al. (Supra) described a protein aggregation from sickle erythrocytes that is mostly composed of globin. Particles resembling those described by Enderlein (1925) *Bakterien-Cyclogenie* (Verlag de Gruyter & Co, Berlin), were isolated from the blood of cancer patients and determined to be composed of mainly denatured hemoglobin (Gerner (1997) *Blut. Curr. Onkol.* 7:6P12).

Aggregated proteins associated with disorders are found in other biological materials, as well. For example, proteinaceous particles isolated from brain were identified as causing scrapie (Prusiner (1982) *Science* 216:136-144). Since then, these particles and their structure have represented important areas of study (Prusiner (1991) *Science* 252:1515-1522; Wille et al. (2002) *Biophysical J.* 82:825; Wille et al (2002) *PNAS* 99:3563-3568; Geschwind et al. (2002) *Neurology* 58:A135-A135; Dyson et al. (2002) *Biophysical J.* 82:824), and methods for the sensitive detection of prion-related disorders using ultrasound have been developed. See Saborio (2001) *Nature* 411:810-813. Recently, micrometer-sized particles were identified in the cerebrospinal fluid of patients with schizophrenia (Wetterberg et al. (2002) *Neurosci Lett.* 329:91-5). Accordingly, new compositions and methods for the formation, isolation, and detection of misfolded, aggregated proteins are required.

BRIEF SUMMARY OF THE INVENTION

Compositions and methods for the isolation and manipulation of misfolded, or partially misfolded, proteins present

2

in blood and other biological materials are provided. In one aspect of the invention, the compositions, hereinafter termed "proteons," are comprised of misfolded proteins. Also provided are compositions and methods for the isolation and manipulation of proteon nucleation centers (PNCs), upon which the proteons of the present invention form. The PNCs are comprised of metallic nanoclusters.

Proteons can be visualized by microscopy of biological materials, for example fluids such as blood samples of mammals and homogenates of vegetable matter. As proteons are comprised of misfolded proteins, detection of proteons and identification of the proteins can be used to diagnose and measure progression of disease states. For example, proteons isolated and purified from blood and blood plasma lack detectable nucleic acids, but contain two major polypeptide populations with high homology to the alpha chain of hemoglobin.

Accordingly, methods for the amplification and detection of misfolded protein in a biological sample are provided. Additionally, methods for the clearance of misfolded protein from a sample of biological material are provided. The method can be manipulated by subjecting the sample to heat or pressure, or by carrying out various numbers of seeding steps. Methods for amplification include heat and pressure treatment of a sample. Likewise, subjecting a biological sample to or treating it with metal clusters increases the concentration of proteons.

While the present invention is not bound to any particular mode of action, it is believed that proteons are formed by a mechanism involving the reversible polymerization and aggregation of proteins, particularly misfolded proteins, on a nucleation center. For convenience, the nucleation centers are referred to as "proteon nucleation centers" or "PNCs."

The PNCs of the invention are unexpectedly pro-apoptotic when added to cultured animal cells. Accordingly, pro-apoptotic compositions and methods for their production are also provided herein.

BRIEF DESCRIPTION OF THE SEVERAL VIEWS OF THE DRAWING(S)

FIG. 1 shows various electron micrographs of proteons in thin sections. Transmission electron microscopy (TEM) was used to prepare electron microscopy of type 1 proteons. See FIG. 1A and FIG. 1B. Also shown are TEM of type 2 proteons. See FIG. 1C and FIG. 1D. TEM of negatively stained type 2 proteons are shown in FIG. 1E and FIG. 1F. A electron micrograph of a type 2 proteon prepared using scanning electron microscopy (SEM) is shown in FIG. 1G. Scale bars (in microns): FIG. 1A: 5; FIG. 1B-1F: 0.5; FIG. 1G: 1.

FIG. 1A is an electron micrograph prepared using transmission electron microscopy (TEM) of a type 1 proteon.

FIG. 1B is a TEM electron micrograph of another type 1 proteon.

FIG. 1C is a TEM electron micrograph of a type 2 proteon.

FIG. 1D is a TEM electron micrograph of another type 2 proteon.

FIG. 1E is a TEM electron micrograph of a negatively stained type 2 proteon.

FIG. 1F is a TEM electron micrograph of another negatively stained type 2 proteon.

FIG. 1G is an electron micrograph prepared using scanning electron microscopy (SEM) of a type 2 proteon.

FIG. 2A is a graph illustrating proteon proliferation in purified water and in blood plasma showing the number of proteons visible as a function of time.

FIG. 2B is a graph of proteon proliferation in two different growth mediums showing the number of proteons visible as a function of time.

FIG. 2C is a graph of proteon proliferation in the presence and absence of urea showing the number of proteons visible as a function of urea concentration.

FIG. 2D is a graph illustrating cyclic amplification of proteons in plasma showing the number of proteons visible as a function of the number of amplification cycles.

FIG. 3A is a TEM electron micrograph of clusters of crystalline, metallic copper nanoparticles.

FIG. 3B is a TEM electron micrograph of an amorphous matrix for the copper nanoparticles shown in FIG. 3A.

FIG. 3C is an SAD pattern identifying the copper nanoparticles in FIG. 3A.

FIG. 3D is a DF image of copper nanoparticles prepared using a portion of the FCC ring of FIG. 3C.

FIG. 4A is a three-dimensional bar graph illustrating the viability of three different cultured cells after exposure to proteon nucleation centers (PNCs) obtained from shark blood at four different concentrations of PNC/ml.

FIG. 4B1 shows a dark field photomicrograph of brain glioma cells before exposure to PNCs.

FIG. 4B2 shows a dark field photomicrograph of brain glioma cells after exposure to PNCs.

FIG. 4B3 is a dark field photomicrograph of brain glioma cells after exposure to staurosporine.

FIG. 4B4 is a fluorescence photomicrograph of brain glioma cells exposed to PNCs and stained with propidium iodide.

FIG. 4C is a graph illustrating the viability of brain glioma cells obtained from various animals after exposure to PNCs at different concentrations.

FIG. 2 shows proliferation of proteons. Proteons in purified water and blood plasma incubated at 37° C. in an atmosphere of ambient air, showing the number of proteons visible in the dark-field microscope as a function of time. See FIG. 2A. Proteons and plasma were incubated in tissue culture media. ■—proteons and plasma in culture growth medium, respectively; ▲, ▼—D5648 and D6429 growth medium, respectively. The insert shows a linear fit of the experimental data to the logistic equation $\ln(L/N-1)=k(T_{1/2}-t)$, where L =maximal number of proteons, N =number of proteons at time t , and $T_{1/2}$ =time when $N=L/2$ (Jarman, 1970). See FIG. 2B. Assembly and disassembly of proteons in the presence of urea is shown in FIG. 2C. After the proteons were assembled in the presence of urea, the urea was then removed from the suspension of proteons by dialysis. Cyclic amplification of proteons in plasma is shown in FIG. 2D. The first sample was incubated for 15 minutes at 65° C. and normal pressure. Treated samples of 5 μ l were serially introduced into untreated sample and subjected to a heat cycle, up to 6 cycles.

FIG. 3 shows characterization of Cu nanoparticles using TEM, with a-Fe particles shown for comparison. A BF image showing clusters of crystalline, metallic Cu nanoparticles is shown in FIG. 3A. A BF image of the amorphous matrix is shown in FIG. 3B. A SAD pattern identifying the nanoparticles in FIG. 3A as an FCC phase with a lattice parameter of approximately 360 pm and a random crystallographic orientation is shown in FIG. 3C. Centered DF image prepared using a portion of the {111} FCC ring is shown in FIG. 3D. The nanoparticles appear bright, on a dark background, indicating that the {111} FCC diffraction

maxima originated from the nanoparticles and not the matrix (since the Cu particles are randomly oriented, many of the particles are out of contrast). The inset shows clumped and individual a-Fe particles (DF from a portion of the {110}BCC ring). Scale bars shown in Figs. A, B, and D represent 50 nm. Scale bars in the insert represent 20 nm.

FIG. 4 shows the effect of PNC on cell viability. FIG. 4A shows the viability of cultured cells after 20 hours of exposure to PNC obtained from the shark blood at different concentrations of PNC/ml.: (1)— 1.7×10^{11} ; (2)— 9.1×10^{10} ; (3)— 9.9×10^9 ; (4)—0. (F98, RG2—rat and mouse brain glioma cells, respectively, CTX—rat transfected astrocytes). FIG. 4B shows dark-field photomicrographs of the mouse rat glioma cells. FIGS. 4B1 and 4B2 show cells before and after exposure to 7.7×10^{11} PNC/ml, respectively. FIG. 4B3 shows cells after exposure to 1.0 μ M staurosporine. 4-Fluorescence photomicrograph of RG2 glioma cell exposed to 7.7×10^{11} PNC/ml for 20 h and stained with Annexin V and propidium iodide (400X). FIG. 4C shows viability of RG2 glioma cultured cells after 20 hours of exposure to PNC obtained from the blue shark (Prionace) (■), hound dog, (●), human (▲), and New Zealand white rabbit (Harland Sprague Dawley) (▼) blood at different concentrations. $R=0.95$, $p<0.0001$.

The present invention now will be described more fully hereinafter with reference to the accompanying drawings, in which some, but not all embodiments of the invention are shown. Indeed, the invention may be embodied in many different forms and should not be construed as limited to the embodiments set forth herein; rather, these embodiments are provided so that this disclosure will satisfy applicable legal requirements.

Compositions and methods for identifying and characterizing disease states are provided. The compositions comprise misfolded proteins and misfolded proteins aggregated on a nucleation center. The aggregated proteins are referred to herein as proteons. The nucleation centers are referred to as proteon nucleation centers (PNCs).

Definitions

By "proteons" are intended protein bodies, generally on the order of a few tens of nanometers up to several microns across, comprised of misfolded or partially misfolded proteins surrounding a PNC. In one aspect of the invention, proteons can be isolated from blood, including human, bovine, horse, pig, cat, dog, fish, rabbit, and rat blood. In another aspect of the invention, proteons can be isolated from plasma, including human, bovine, horse, pig, cat, dog, fish, rabbit and rat plasma.

By "PNC" is intended the metallic nucleation centers isolated as described herein. In one aspect of the invention, PNCs can be isolated from the blood, including human, bovine, horse, pig, cat, dog, fish, rabbit, and rat blood. In another aspect of the invention, PNCs can be isolated from plasma, including human, bovine, horse, pig, cat, dog, fish, rabbit, and rat plasma.

By "plasma" is intended the supernatant produced by the centrifugation of blood or other suspension of biological material.

By "seeding" is intended adding an amount of either a PNC or proteon to a biological sample.

The proteons of the invention can be identified and quantified in biological samples. Such samples include serum, blood, other bodily fluids, tissue including brain, other organ tissue, and the like. To identify the proteons in tissue, the tissue is homogenized in a fluid or liquid.

Proteons can be isolated from biological samples of any mammal including but not limited to human, primate,

bovine, cattle, horse, sheep, pig, cat, dog, rabbit, rat, deer, ox, mouse, and the like. They can also be detected in samples from fish, chicken, turkey, duck, and the like.

As indicated, proteons are comprised of misfolded proteins. In one aspect, the proteon compositions of the invention show an apple-green birefringence when stained with congo-red. This staining pattern is analogous to that obtained with prions and other amyloid proteins, all of which are included in the class of congophilic proteins. See Kelly (1996) *Curr. Opin. Struct. Biol.* 6:11-17. These proteins are associated with various disorders or disease states. Thus, the identification of proteons comprised of such proteins is indicative of a disorder or disease state. Likewise, the number of proteons in a sample comprised of such proteins is predictive of the progression of the disease. That is, the number of proteons in a sample correlates with progression of a disease state. Therefore, quantification of proteons in a sample is useful for determining or diagnosing the stage of disease or disorder and can help in planning treatments or therapies for the disease. Examples of disorders involving misfolded proteins and the relevant proteins that can be utilized in the methods of the present invention are set forth in Table 1, below. The disorders associated with congophilic proteins are set forth in Table 2, below.

It is recognized that for proper diagnosis, proteons must not only be identified, but also the misfolded protein in the proteon must be identified. Methods for protein purification and identification include antibody binding, amino acid sequencing, and the like.

TABLE 1

Protein	Disease
	Conformational diseases. See Carrel and Lomas (1997) <i>Lancet</i> 350: 134-138; Carrell and Gooptu (1998) (1998) <i>Curr. Op. Struc. Biol.</i> 8: 799-809.; Soto (2001) <i>FEBS Letters</i> 498: 204-207; Jaikaran and Clark (2001); Ursini et al. (2002) <i>Trends Mol. Med.</i> 8: 370-374; Kannan et al. (1988) <i>J. Biol. Chem.</i> 263: 13766-13773; Schluter and Drenckhahn (1986) <i>PNAS</i> 83: 6137-6141; Gerner et al. (2002); Davis et al. (2002) <i>Lancet</i> 359: 2242-2247; Fernandez et al. (2001) <i>Atherosclerosis</i> 158, 103-111 (atherosclerosis); Papalexis et al. (2001) <i>Mol. Biochem. Parasitology</i> 115: 77-86; Esievo et al. (1984) <i>Veterinary Parasitology</i> 15: 181-185; Igoe et al. (2002) <i>Clin. Microb. Newsletter</i> 24: 69-70; Kreidl et al. (2002) <i>J. Am. Coll. Surgeons</i> 194: 387; Beckers (2001) <i>Netherlands J. Med</i> 58: 204-207 (autoimmune diseases); Ismeno et al. (1999) <i>Int'l J. Cardiology</i> 69: 179-183; Klibansky et al. (1966) <i>Toxicon</i> 3: 213-216; Seibert et al. (2003) <i>Toxicon</i> 41: 831-839; Szabo et al. (2002) <i>Thrombosis Research</i> 107: 357-363; Kaioumova et al. (2001) <i>Chemosphere</i> 43: 801-805.
Hemoglobin	Sickle cell anemia and aggregates Heinz bodies in aged erythrocytes Unstable hemoglobin inclusion body hemolysis Drug induced inclusion body hemolysis Aggregates regulate apoptosis in cancer patients Atherosclerosis Malaria Infections Auto-immune disorders Toxic reactions Internal bleedings
Prion protein	Creutzfeld-Jacob disease (CJD) New variant CJD Bovine spongiform encephalopathy (BSE) Gerstmann-Straussler-Scheinker disease Fatal familial insomnia Kuru

TABLE 1-continued

Protein	Disease
	Conformational diseases. See Carrel and Lomas (1997) <i>Lancet</i> 350: 134-138; Carrell and Gooptu (1998) (1998) <i>Curr. Op. Struc. Biol.</i> 8: 799-809.; Soto (2001) <i>FEBS Letters</i> 498: 204-207; Jaikaran and Clark (2001); Ursini et al. (2002) <i>Trends Mol. Med.</i> 8: 370-374; Kannan et al. (1988) <i>J. Biol. Chem.</i> 263: 13766-13773; Schluter and Drenckhahn (1986) <i>PNAS</i> 83: 6137-6141; Gerner et al. (2002); Davis et al. (2002) <i>Lancet</i> 359: 2242-2247; Fernandez et al. (2001) <i>Atherosclerosis</i> 158, 103-111 (atherosclerosis); Papalexis et al. (2001) <i>Mol. Biochem. Parasitology</i> 115: 77-86; Esievo et al. (1984) <i>Veterinary Parasitology</i> 15: 181-185; Igoe et al. (2002) <i>Clin. Microb. Newsletter</i> 24: 69-70; Kreidl et al. (2002) <i>J. Am. Coll. Surgeons</i> 194: 387; Beckers (2001) <i>Netherlands J. Med</i> 58: 204-207 (autoimmune diseases); Ismeno et al. (1999) <i>Int'l J. Cardiology</i> 69: 179-183; Klibansky et al. (1966) <i>Toxicon</i> 3: 213-216; Seibert et al. (2003) <i>Toxicon</i> 41: 831-839; Szabo et al. (2002) <i>Thrombosis Research</i> 107: 357-363; Kaioumova et al. (2001) <i>Chemosphere</i> 43: 801-805.
β -amyloid	Alzheimer's disease Down's syndrome Familial Alzheimer's
α -Synuclein	Parkinson's disease, Lewy bodies
Tau protein	Frontotemporal dementia, Pick bodies
Serpins	α_1 -antitrypsin deficiency cirrhosis emphysema Antithrombin deficiency thrombosis
Neuroserpin	C ₁ -inhibitor deficiency angioedema Neurodegenerative disease, Collins bodies
Glutamate repeats	Inherited neurodegenerative disorders Huntington's disease
Amylin	Diabetes type II
SOD	Amyotrophic lateral sclerosis
ApoB	Atherosclerosis
CFTR protein	Cystic fibrosis
Immunoglobulin chain	Systemic amyloid light chain amyloidosis Nodular amyloidosis
Serum amyloid A	Reactive systemic amyloid A amyloidoses Chronic inflammatory disease
Transthyretin	Senile systemic amyloidosis Familial amyloid neuropathy Familial cardiac amyloid
β_2 -microglobulin	Hemodialysis amyloidosis Prostatic amyloid
Apolipoprotein AI	Familial amyloid polyneuropathy Familial visceral amyloid
Cystatin C	Hereditary (Icelandic) cerebral angiopathy
Lysozyme	Familial visceral amyloidosis

TABLE 2

	Congophilic disorders. See Kelly (1996) <i>Curr. Opin. Struct. Biol.</i> 6: 11-17. *Homologous to immunoglobulin, thus a predicted paralogous disease. **Also called senile systemic amyloidosis, prealbumin is synonymous with transthyretin. See mad-cow.org/congo.html (the prefix "www" is required).	
Disorder	Disorder	Protein Involved
Acronym		
CJD	Spongiform encephalopathies	Prion protein fragments
APP	Alzheimer	Beta protein fragment 1-40/43
65 HRA	Hemodialysis-Related Amyloidosis	Beta-2 microglobulin*

TABLE 2-continued

Disorder Acronym	Disorder	Protein Involved
PSA	Primary Systematic Amyloidosis	Immunoglobulin light chain and fragments
SAA 1	Secondary Systematic Amyloidosis	Serum amyloid A 78 residue rragment
EAP I**	Familial Amyloid Polyneuropathy I	Transthyretin fragments, 50+ alleles
EAP III	Familial Amyloid Polyneuropathy III	Apolipoprotein A-1 fragments
CAA	Cerebral Amyloid Angiopathy	Cystatin A minus 10 residues
FHSA	Finnish Hereditary Systemic Amyloidosis	Gelsolin 71 residue
IAPP	Type II Diabetes	Islet amyloid polypeptide fragment
ILA	Injection-Localized Amyloidosis	Insulin
CAL	Medullary Thyroid Carcinoma	Calcitonin fragments
ANF	Atrial Amyloidosis	Atrial natriuretic factor
NNSA	Non-Neuropathic Systemic Amyloidosis	Lysozyme and fragments
HRA	Hereditary Renal Amyloidosis	Fibrinogen fragments

Immunohistochemical assays have been developed for the proteins listed in Tables 1 and 2. See, e.g., Hardt et al. (2000) *J. Comp. Path.* 122:43–53 (antibodies for the detection of the prion protein, PrP). However, many of these proteins are only abundant in the late stages of the disease and may be undetectable utilizing standard assay techniques. Thus, in one embodiment, the methods of the present invention may be combined with an immunochemical assay for the protein or proteins selected from Tables 1 and 2. These proteins, or their functional derivatives, may be detectably labeled with any appropriate marker such as a radioisotope, an enzyme, a fluorescent label, a paramagnetic label, or a free radical linked to an antibody capable of binding these proteins.

Methods of making and detecting such detectably labeled antibodies or their functional derivatives are well known to those of ordinary skill in the art, and are described in more detail below. See, for example, Klein (1982) *Immunology: The Science of Self-Nonself Discrimination* (John Wiley & Sons, New York 1982); Kennett et al. (1980) *Monoclonal Antibodies and Hybridomas: A New Dimension in Biological Analyses*, (Plenum Press, New York; Campbell (1984) *Monoclonal Antibody Technology, Laboratory Techniques in Biochemistry and Molecular Biology*, Volume 13, ed. Burdon et al. (Elsevier, Amsterdam; and Eisen (1980) in *Microbiology*, ed. Davis et al. 3d ed.; Harper & Row, Philadelphia. Methods for the generation of polyclonal antibodies are known, as are techniques for the generation of monoclonal antibodies See, e.g., Kohler and Milstein (1975) *Nature* 256:495–497.

Assay techniques useful in the present invention include, but are not limited to, assays comprising incubating a biological sample from a subject suspected of having such a condition in the presence of a detectably labeled binding molecule (e.g., antibody) capable of identifying the relevant protein, and detecting the binding molecule which is bound

in a sample. See, e.g., Work et al. (1978) *Laboratory Techniques and Biochemistry in Molecular Biology* (North Holland Publishing Company, NY).

Alternatively, the proteins contained in a particular sample of proteons can be identified by screening against a panel of phage antibodies in which the displayed peptide is a domain of the antibody molecule that includes the site that binds antigen. Phage-antibody libraries can be constructed including billions of clones, displaying billions of antibodies with different antigen specificities. For a review of this technique, see Petrenko and Vodyanoy (2003) *J. Micro. Meth.* 53:253–262.

The presence of proteons themselves can be detected and quantitated by darkfield microscopy. Under high-resolution dark-field microscopy proteons are visualized as bright spherical shapes. Techniques for dark-field microscopy are known in the art. See, e.g., Bradbury and Bracegirdle (1998), *Introduction to Light Microscopy (Microscopy Handbooks, No 42)*, 2d ed.; (Springer Verlag). In particular, proteons are small, ball-like bodies of different sizes, estimated in the range of 50–250 nm. By contrast, healthy erythrocytes appear as bright void circles of about 7 microns diameter in the dark-field view, whereas neutrophils are roughly 7–15 microns. When a blood sample becomes aged, the morphology and number of the proteons change, with some estimated to be 500 nm in diameter. Some appear attached to the internal surface of the erythrocyte membrane. Proteons are found in fresh blood of species including human, bovine, horse, pig, cat, dog, fish, rabbit, and rat blood.

Dark-field microscopy of proteons can be confirmed by transmission electron microscopy (TEM) and scanning electron microscopy (SEM) methodology. Techniques for electron microscopy are known in the art. See, e.g., Slayter and Slayter (1992) *Light and Electron Microscopy*, (Cambridge University Press).

Proteons can be isolated from blood or plasma, i.e., the supernatant produced by centrifuging a biological material. In one embodiment, proteons can be formed by incubating plasma at 37° C. under sterile conditions over a thirteen day period. At the end of this period, the numbers of proteons observed under dark-field light microscopy are greatly increased.

In another embodiment, large numbers of proteons are produced by subjecting plasma to 120° C. at 20 psi for two hours. The visible number of proteons is amplified by subjecting plasma to a single step of elevated temperature.

Efficiency of proteon production is enhanced by taking a small portion of an amplified sample, adding it to an untreated sample, and heating the untreated sample. These steps can be repeated a number of times, each iteration yielding an increased quantity of proteons. Accordingly, by dividing the sample into a number of subsamples, subjecting the first subsample to heat or pressure, then aliquoting a small amount of the proteons from the first subsample into the second subsample and carrying out the heating step, a greater concentration of proteons can be produced from the second subsample than was produced from the first subsample. These seeding steps can be repeated multiple times until, after several iterations, the concentration of proteons produced per volume of sample eventually plateaus.

Typically, the first two cycles result in a small but significant increase of proteon population, whereas the third cycle brings about a dramatic increase in the number of proteons. Generally, the next three cycles result in saturation of the proteon population.

In one embodiment, a test sample containing a small amount of misfolded proteins is subjected to a single heating step. The amplified proteons are quantitated by dark-field microscopy and verified by immunofluorescent techniques to detect the misfolded protein.

In another embodiment, a small amount of seeds such as the PNCs described above can be added to a test sample to increase the sensitivity of the single step methods. Roughly 5×10^{13} PNC/ml are produced by initial filtration of plasma through a 5 kD filter. This concentration then can be increased by a factor of roughly 100 by evaporation. Thus, in one aspect, addition of 5 ml of 5×10^{13} PNC/ml to a 1 ml sample increases the concentration of PNC in a sample by 2.5×10^{11} PNC/ml. This concentration is increased by a factor of 100 if pre-concentrated PNC are added. If the initial concentration of PNC varies from 10^8 to 10^{11} PNC/ml, the sensitivity can be increased by a factor of between 250 to 250,000.

In another embodiment, the first step amplification described above is carried out, then a small portion of amplified sample is introduced into the untreated sample and subjected to heat again. Then, the small portion of the second amplified sample is added to the third untreated sample, heated, and so on. The number of cycles depends on the initial concentration of misfolded proteins. Suitable numbers of cycles include 1, 2, 3, 4, 5, 6, 7, 8, 9, 10, 15, 20, 25 or more.

In one embodiment, the detection and identification can be done as a single-step method. Apparatus for subjecting a sample to heat and/or pressure are recognized in the art and include without limitation, PCR thermocyclers, autoclaves, etc.

As will be recognized by one of skill in the art, both the single- and multiple-step methods can be manipulated by varying the temperature, pressure, or temporal parameters. Suitable temperatures include 37, 40, 45, 50, 55, 60, 65, 70, 75, 80, 85, 90, 95, 100, 105, 110, 115, or 120° C. Suitable pressures include ambient pressure, as well as 14, 15, 16, 17, 18, 19, 20, 21, 22, 23, 24, or 25 psi. Suitable times of treatment include 1, 5, 10, 15, 20, 25, 30, 25, 40, 45, 50, 55, 60, 65, 70, 75, 80, 85, 90, 95, 100, 105, 110, 115, and 120 minutes.

In another embodiment, these methods can be utilized to clear misfolded proteins from a biological sample such as blood. Because low temperatures can be utilized with long time periods, this can be accomplished without damaging the biological sample.

In another embodiment, these methods can detect misfolded proteins involved in congophilic disorders. See Kelly (1996) *Curr. Op. Struc. Biol.* 6:11-17; Kelly (1996) 8:101-106. For instance, there is a demonstrated structural homology between prion and hemoglobin proteins. Korth et al. (1997) *Nature* 390:74-77. There is evidence that prions are present in lymphoid organs and blood. See, e.g., Brown et al. (2001) *J. Lab. Clin. Med.* 137:5-13; Aguzzi (2000) *Lab. Clin. Med.* 137:5-13; Aguzzi (2001) *Nature Medicine* 7:289-290; Wadsworth et al. (2001) *Lancet* 358:171-180. Accordingly, the methods of the present invention can be utilized for amplification of a congophilic protein, thus allowing early detection of disorders related to these proteins.

PNC of roughly 1-2 nm and containing about 40-300 atoms play an important role in capturing hemoglobin released into blood plasma. While released hemoglobin is normally captured by protein haptoglobin and endocytosed by macrophages, released hemoglobin can be collected by PNCs. Roughly 7×10^{13} PNC are present in each milliliter of

human blood, while only 0.003% of the whole pool of PNC is normally linked to proteins and made into proteons. However, a proteon of medium size of 160 nm can collect about 100,000 protein molecules of similar size to hemoglobin. Thus, the strong protein scavenging properties of metal nanoparticles allow them to collect proteins including misfolded hemoglobin (Kristiansen et al. (2001) *Nature* 409:198).

Thus, in another embodiment, the present methods can be utilized for amplification of proteins involved in intravascular hemolysis and resulting in aggregation of hemoglobin, including, without limitation, sickle cell anemia, atherosclerosis, malaria, infections and their complications, autoimmune disorders, internal bleedings and intravascular hemolysis due to internal prosthetic devices, and toxic reactions. See Kannan et al. (1988) *J. Biol. Chem.* 263:13766-13773; Schluter and Drenckhahn (1986) *PNAS* 83:6137-6141 (sickle cell); Fernandez et al. (2001) *Atherosclerosis* 158, 103-111(atherosclerosis); Papalexis et al. (2001) *Mol. Biochem. Parasitology* 115:77-86; Esievo et al. (1984) *Veterinary Parasitology* 15:181-185; Igoe et al. (2002) *Clin. Microb. Newsletter* 24:69-70; Kreidl et al. (2002) *J. Am. Coll. Surgeons* 194:387; Beckers (2001) *Netherlands J. Med.* 58:204-207 (autoimmune diseases); Ismeno et al. (1999) *Int'l J. Cardiology* 69:179-183; Klibanisky et al. (1966) *Toxicon* 3:213-216; Seibert et al. (2003) *Toxicon* 41:831-839; Szabo et al. (2002) *Thrombosis Research* 107:357-363; Kaioumova et al. (2001) *Chemosphere* 43:801-805.

Using standard techniques, samples for single-step or cyclic amplification can be prepared from homogenates of small tissue fragments, or from biological fluids such as blood, cerebrospinal, lymph, etc. Techniques for the preparation of tissue homogenates and biological fluids from such sources are known. See Sambrook et al. (1989) *Molecular Cloning—A Laboratory Manual*, Vols. 1-3 (2d ed; Cold Spring Harbour Laboratory Press, Plainview, N.Y.); and Ausubel et al., eds. (1994) *Current Protocols in Molecular Biology*, (Greene Publishing Associates, Inc. and John Wiley & Sons, Inc.).

PNCs can be produced from plasma by filtration through an ultrafiltration membrane. In one embodiment, plasma is filtered consecutively through a 30 kD and a 5 kD Centri-con™ filter from Millipore before heat treatment. The centrifuge filtration is carried out using an initial volume of 80 ml centrifuged at 3,500 g for 20 minutes, 20° C.

Filtration of plasma before heat treatment abolishes proteon formation in the retentate. However, recombination of the fractions results in the resumption of proteon formation, and the number of proteons formed is dependent upon the amount of filtrate added back to the retentate. Thus, the PNCs are present in the filtrate.

Adsorption spectra of the filtrate reveals the presence of metals, including copper, zinc, and iron, indicating that PNCs comprise metals. The filtrate was precipitated with 1.2 mM $MgSO_4$ and TEM studies were carried out. Such procedures are known in the art. See, e.g., Shindo and Oikawa, *Analytical Electron Microscopy for Materials Science*, Springer-Verlag (2002). It was found that the precipitated extract contained crystalline metallic nanoparticles of roughly 1-2 nm diameter. Selected area diffraction patterns were consistent with the presence of face centered cubic (FCC) or body centered cubic (BCC) metals or solid-solution alloys such as FCC copper and BCC iron.

For a review of metal clusters, see Aiken and Finke (1998) *J. Mol. Cat. A: Chem.* 145:1-44; Gonzalez-Moraga (1993) *Cluster Chemistry* (Springer-Verlag, New York, N.Y.). High

symmetry is one of the main characteristics of metal clusters (Gonzalez-Moraga (1993) (Supra). In addition, metal clusters bind proteins. See Broun et al. (2002) *J. Mol. Biol.* 321:341–353; Liu and Xu (2002) *J. Inorganic Biochem.* 88:77–86. Thus, in one embodiment, the PNCs of the invention are characterized by small size, a few nm or smaller. Additionally, the PNCs are present in large quantities, about 10^{12} – 10^{13} PNC/cm³ of blood or tissue, are abundant, present binding sites and strong affinity to proteins, exhibit variability to bind different proteins, and resist extreme physical and biochemical conditions.

To test the effects of PNCs isolated from the filtrate upon living cells, various amounts of PNCs obtained by ultrafiltration and sterilized by autoclaving were incubated for four hours with various animal cells in tissue culture. Significant effects upon cell viability were observed. For instance, rat and mouse glioma cells demonstrated marked signs of cell death, as assessed both microscopically and by MTT assay. Accordingly, the PNCs of the invention comprise a novel reagent for use in inducing apoptosis, as well as a process for its production. In one embodiment, aliquots from 1 to 40 μ l containing about 1×10^{12} to 4×10^{13} PNCs were added to 100 μ l wells of 96-well ELISA plate. Such compounds and processes are of great usefulness to those of skill in the art. See, e.g., U.S. Pat. No. 5,344,926 to Murakata et al., titled “Process for producing staurosporine derivatives”; U.S. Pat. No. 4,973,552 to Schroeder et al., titled “Staurosporine fermentation process”; and U.S. Pat. No. 6,518,032 to Fritz et al., titled “Rapid methods for identifying modifiers of cellular apoptosis activity.”

This invention is further illustrated by the following examples that should not be construed as limiting.

EXPERIMENTAL

Example 1

Production of Proteons from Blood and Analysis by Microscopy

A 30 μ l sample of freshly drawn full blood from a healthy human male was obtained and diluted in 1000 μ l of purified water (17 MOhm) in a 1.5-ml plastic vial, and centrifuged at 2200 g (6000 rpm) to obtain plasma. An additional aliquot of the blood was taken and prepared for optical dark-field microscopy. The plasma was transferred to a 4-ml glass vial with a plastic cap and a teflon liner. An aliquot of plasma was again retained for dark-field microscopy. The vial and contents were subjected to heating at a temperature of 120° C. and 20 psi of pressure for two hours. An aliquot of the heat-treated plasma was prepared for dark-field microscopy.

Each aliquot retained for microscopy was analyzed by dark-field microscopy using an Olympus™ microscope fitted with a 100 W mercury lamp, a polarizer, and a Naessens dark-field condenser (COSE Corp., Canada).

After analysis, the fresh full blood sample was found to contain approximately 3×10^8 proteons/ml, whereas the diluted sample contained roughly 9×10^6 proteons/ml. The treated sample contained an estimated 3×10^{11} proteons/ml, a five-order of magnitude increase. Adjusted for the initial dilution of the blood sample, each milliliter of blood yielded roughly 1×10^{13} proteons. Thus, within two hours, the number of proteons increased by approximately 5 orders of magnitude. Assuming exponential growth, then the number

of proteons (N) at any given moment of time (t) can be described by the equation:

$$N = N_0 e^{bt} \quad (1)$$

where N_0 is the initial number of particles, and b is the growth coefficient. If N, N_0 , and t are substituted with the experimental values found in the above experiment, one can estimate that the growth coefficient (b) for this case is equal to 5.2 1/hour, and the proteon population is doubled every 8 minutes.

As a control, a suspension of phospholipids and cholesterol was subjected to the same protocol used for the blood sample. However, no structures resembling proteons were observed under dark-field microscopy.

Electron microscopy analysis was also carried out on samples obtained before and after heat treatment. Transmission electron microscope (TEM) images obtained from pre- and post-heat-treatment samples reveal small proteons appearing as dark discs with a rough and fibrous appearance. An analysis of the TEM images revealed the size distribution of this characteristic small proteon to reach a maximum about 150 nm.

Another characteristic form of proteon was observed, a coconut-shaped particle of about 1–5 microns with a structure resembling one or more nuclei and a cell-like appearance. The nuclei look very similar to the small proteons described above. A cross-sectional view of a larger proteon reveals a very distinctive external membrane-like structure. This membrane-like structure, however, looks very different from the bacterial wall or the mammalian cell membrane, appearing as a curly fibrous shell of 10–12 nm thick. Some fiber-like structures and a few nuclei are visible inside the proteon. Images obtained by scanning electron microscopy (SEM) confirm the presence of both small and large characteristic proteons.

Example 2

Chemical Composition of Proteons

Energy Dispersive Spectroscopy Analysis

The chemical composition was determined by energy dispersive X-ray spectroscopy using a JEOL JSM-840 SEM system using standard procedures for identifying and quantifying elemental composition. Such procedures are known in the art. See, e.g., Shindo and Oikawa (2002) *Analytical Electron Microscopy for Materials Science* (Springer-Verlag).

A sample of proteons suspended in distilled water was deposited on the aluminum SEM mount and dried in a vacuum for 24 hours. The X-ray spectra were obtained with an electron beam size of 200 nm at 80 kV for 90 s. Spectra revealed that the proteons were composed of carbon, oxygen, nitrogen, and sulfur, and the presence of potassium, sodium, chloride, silicon, and copper was also detected. The presence of carbon, nitrogen, and sulfur was confirmed by analytical chemical analysis (Leco Corporation, Michigan, USA). Notably phosphorus, a necessary element of DNA, was never detected in the proteon samples. On the other hand, all the elements needed for amino acids and proteins are available.

Amino Acid Composition

Free amino acid composition of samples before and after heat and highpressure treatment were determined (LPSA, University of Arizona, Tucson, Ariz.). See Table 3.

TABLE 3

Amino acid composition (pmol/50 ul)			
No	Amino acid	Control*	Proteons
1	O-Phosphoserine	98.731	39.878
2	Taurine	191.790	227.739
3	O-Phosphoethanolamine	17.980	15.318
4	Urea	220.811	62.573
5	Aspartic Acid	137.212	123.086
6	Threonine	365.225	214.981
7	Serine	385.160	314.039
8	Asparagine	—	95.908
9	Glutamic Acid	483.645	229.149
10	Glutamine	287.073	3.920
11	Glycine	985.419	922.430
12	Alanine	443.165	448.792
13	Citrulline	81.803	—
14	Valine	188.720	236.126
15	Cystine	4.799	6.367
16	Methionine	—	77.583
17	L-Cystathio-nine	12.301	16.417
18	Isoleucine	82.836	76.302
19	Leucine	121.941	139.060
20	Tyrosine	68.636	75.682
21	Phenylalanine	104.921	79.904
22	γ -Amino-butiric Acid	—	108.022
23	Etanolamine	36.578	35.605
24	L-Ornithine	53.341	23.004
25	Lysine	226.033	208.597
26	Histidine	75.954	103.043
27	Arginine	273.221	166.512

*Pre-heat and high-pressure treatment plasma.

Protein Concentration

The quantitative analysis of proteins in the proteon samples was carried out by two different protein assays obtained from Bio-Rad Laboratories and Sigma Chemical Company according to the manufacturers' protocols. Samples of blood as described in the Example 1 were exposed to different temperatures and pressures. Results of the experiments are shown in Table 4.

TABLE 4

Protein concentrations in proteon samples.		
Sample, Condition	BIO-RAD, Protein concentration, $\mu\text{g/ml}$	SIGMA, Protein concentration, $\mu\text{g/ml}$
Plasma, control, 25° C.	0.67 \pm 0.05	0.85 \pm 0.2
Plasma, 56° C., normal pressure, 10 min	0.72 \pm 0.04	0.98 \pm 0.2
Plasma, 80° C., normal pressure, 10 min	0.68 \pm 0.04	1.0 \pm 0.2
Proteons, 120° C., 20 psi, 2 hours	0.71 \pm 0.04	1.7 \pm 0.2

Gel electrophoresis of plasma and two major protein components of plasma, albumin and hemoglobin, treated with 120° C. heat and 20 psi pressure produce obvious bands of 66,200 D and 14,400 D. These are shared with albumin and hemoglobin, respectively. After the treatment, the albumin has two weak bands of 14,400 D and ~8,000 D, which coincide with the same bands of proteons. The treated hemoglobin conserved only the 8,000 D band. Proteons filtered through a 100 kD filter conserved the 14,400 and ~8,000 bands, while proteons washed from the filter contain practically all bands of plain proteons, indicating that misfolded albumin and hemoglobin may be present in proteons. The confirmation of this fact may be obtained from the immunoblotting analysis.

Proteons from rabbit blood were disassembled by sodium dodecyl sulfate (SDS), a negatively charged detergent. The fragments of proteins were electrophoresed down and made distinctive bands in the polyacrylamide gel. The proteins were identified by N-terminal amino acid sequencing, yielding the partial sequence VLSPA(D/E)(E/K)TN(A/I) that shows 100% homology with the rabbit alpha chain of hemoglobin. Amino acid analysis showed that proteons are enriched by hydrophilic negatively charged amino acids, glutamic and aspartic acids. Proteons stained with congo-red show an apple-green birefringence with polarizing light indicating the anisotropic alignment of the dye molecules.

Congo-red staining is indicative of a common structural feature shared by many amyloids. Specifically, they are stabilized in part by anti-parallel beta sheet extensions from one monomer to another. It is believed that the dye binds to inter-monomer clefts between anti-parallel beta edge strands. See Kelly (1996) *Curr. Op. Struc. Biol.* 6:11-17; Kelly (1996) *Curr. Op. Struc. Biol.* 8:101-106. One protein belonging to the congophilic family is the prion protein associated with the prion diseases. A structural homology between prion and hemoglobin proteins has been demonstrated (Korth et al. (1997) *Nature* 390:74-77). In particular, two prion PrP(121-231) molecules could be superimposed with two β subunits of the crystal lattice of sickle cell hemoglobin1HBS. The superposition included the backbone atoms of residues 145-154, 179-189, and 201-217 of the helices 1, 2, and 3 of PrP(121-231) and of residues 5-14, 106-116, and 125-141 of the helices 1, 6, and 7 of hemoglobin S.

Absence of DNA in Proteons

An aliquot of blood pre- and post-treatment (see Example 1) was purified using the DNeasy™ genomic DNA isolation tissue kit (Qiagen) according to the manufacturer's standard protocols for animal blood and bacteria. After final elution, samples were loaded on 1% agarose gel. DNA bands were visualized with ethidium bromide. DNA was detected in pre-treatment sample and undetected in the post-treatment sample.

Similar results were obtained using a High Pure PCR Template Preparation Kit™ from Roche for isolation of Nucleic Acids followed by fluorometric quantitation of double-stranded DNA using the PicoGreen® dsDNA quantitation reagent from Molecular Probes and a TECAN Spectrafluor Plus equipped with DeltaSOFT software for detecting fluorescence (excitation at 485 nm and emission at 535 nm). See Table 4.

TABLE 5

Fluorometric quantitation of DNA in blood and proteons.	
Sample	DNA concentration, $\mu\text{g/ml}$
Blood	45.1
Blood after dilution and centrifugation	3.0
Proteons, freshly prepared	0.033
Proteons, 3 months old	<0.001

Example 3

Controlled Growth of Proteons

Two identical sets of samples were prepared for this experiment, in which the growth of proteons incubated at 37° C. in an atmosphere of ambient air was compared with

the growth of proteons incubated in an atmosphere of 5% CO₂. Each set included the following numbered groups:

Group 1. Three ml of freshly prepared proteons (as described in Example 1).

Group 2. Three ml of plasma after dilution and centrifugation (as described in Example 1).

Group 3. Ten μ l of freshly prepared proteons added to 3 ml of D6429 tissue culture media (Sigma) with 10% FBS (HyClone).

Group 4. Ten μ l of freshly prepared proteons added to 3 ml of D5648 tissue culture media (Sigma) with 10% FBS (HyClone).

Group 5. Ten μ l of freshly prepared plasma added to 3 ml of D6429 tissue culture media (Sigma) with 10% FBS (HyClone).

Group 6. Ten μ l of freshly prepared plasma added to 3 ml of D5648 tissue culture media (Sigma) with 10% FBS (HyClone).

The experiment was run in duplicate. Uninoculated media were used as a control.

Samples were analyzed by dark-field and scanning electron microscopy at the time points of 0, 2, 4, 8, and 13 days.

Optical observation of proteons was performed with an Olympus™ microscope fitted with a 100-W mercury lamp illumination source, a polarizer, a Naessens dark-field condenser (COSE Corp., Canada) and a 100 \times objective (oil, NA 1.4). The dark-field images were directed to a DEI-470T™ microscope video camera (Optronics Engineering, CA) utilizing the methods described in Vodyanoy et al. (1994) *Langmuir* 10:1354–1357. A direct count of proteons was used to determine their concentrations in liquid samples, and Image Pro™ (Creative Software, Inc.) was used to quantify the number of proteons.

The number of proteons incubated at 37° C. in an atmosphere of ambient air (Group 1) measured by dark-field microscope did not change significantly ($p < 0.01$) during 13 days (FIG. 2A, line 1). The plasma at the same conditions (Group 2) showed a very small increase in population of proteons within 8 days of incubation, but the number increased dramatically and reached the number of proteons in group 1 after 13 days of incubation (FIG. 2A, line 2). Proteons and plasma in tissue culture media (Group 3 and 4, respectively) exhibited the same growth curves and reached the same number of proteons after 13 days of incubation (FIG. 2B). The culture media alone incubated at the same conditions showed no proteons (FIG. 2B, bottom line). No significant ($p < 0.01$) effect of CO₂ was observed.

Example 4

Reversibility of Construction and Deconstruction of Proteons In Vitro

Plasma was prepared as described in Example 1. The samples of plasma were combined with the guanidine hydrochloride or urea to a final concentration of 0, 0.01, 0.1, 1, 4, and 8 M, respectively. These chaotropic compounds are known to unfold and denature proteins.

Samples were subjected to heat of 120° C. and pressure of 20 psi. In the samples to which no chaotropic compounds were added, the numbers of proteons observed by dark-field microscopy was normally high. The number of proteons decreased as the concentration of chaotropic compounds was increased (FIG. 2C).

Samples of proteons grown at the suppressive presence of 8 M Urea were subjected to dialysis using a Pierce Slide-A-Lyser™ 10K dialysis cassette (20 h, 5 L, 20° C.) accord-

ing to the manufacturer's instructions. The number of proteons found by dark-field microscope increased significantly. Samples of plasma treated with 120° C. heat and 20 psi pressure and urea at concentrations of 0.01–8 M were taken. Polyacrylamide gel electrophoresis was carried out on each sample with a 4–20 % Tris-HCl Ready™ precast gel (Bio-Rad) according to the manufacturer's protocol. The control (proteons without chaotropic compounds) showed two characteristic bands of 14,400 and about 8,000 D. The experimental samples (proteons in the presence of a chaotropic compound) displayed a diffuse distribution of proteins or fragments of proteins with no sharp bands of proteins of the high molecular mass range. As the concentration of urea increased, the intensity of the diffusion staining decreased, and almost fully disappeared at the 8 M concentration of urea. The proteon sample displays a 14,400 D band that coincides with a similar band found in plasma. When guanidine hydrochloride or urea was added to proteons produced without the chaotropic compounds, heat of 120° C. and pressure of 20 psi resulted also in a great reduction of number of proteons visible by dark-field microscopy. Dialysis of these samples restored the population of the proteons. Gel electrophoresis of proteons and plasma treated with 120° C. heat and 20 psi pressure at the presence of urea, and then dialyzed, reveals two bands of 14,400 and about 8,000 D in all samples, including those before and after dialysis.

Example 5

Effect of Ultrafiltration on Proteon Formation

PNCs were removed from blood plasma by filtering the plasma through 5 kD Centricon™ filters from Millipore according to the manufacturer's protocol. The protein level in the retentate was quantitated and compared to that of unfiltered plasma. Assay kits were obtained from BIO-RAD Laboratories, and quantitative studies were carried out according to the manufacturer's instructions. The amount of protein in the filtered plasma was the same as that measured in the non-filtered sample. No protein was detected in the filtrate. After filtration, proteons could not be produced until the filtered fraction was returned to the plasma. The number of proteons was dependent on the amount of filtrate returned to the retentate. Addition of 10 mM of the chelating agent, ethylene diamine tetra acetate (EDTA), known to form strong complexes with metals, also prevented the formation of proteons. Adsorption spectra of the filtrate, determined by energy dispersive x-ray spectroscopy (EDS) and inductively coupled plasma—atomic emission spectrometry (GTW Analytical Services, TN), revealed the presence of metals, including Cu, Zn, and Fe.

Example 6

Analysis of PNCs

To characterize the nature of the PNC nanoparticles, transmission electron microscopy (TEM) was utilized. Transmission electron microscopy (TEM) was performed using a JEOL JEM 2010 instrument, operated at 200 kV. Brightfield (BF) imaging was used to provide an overview of the microstructure of the sample. Features of interest were characterized by selected area diffraction (SAD) and nano-beam diffraction (NBD), with the latter set up to produce a narrow (<50 nm diameter), yet near-parallel beam, so that SAD-like patterns were produced. Dark-field (DF) imaging was employed to determine which microstructural features

gave rise to the diffraction maxima. The composition of microstructural features was determined (qualitatively) by means of energy dispersive x-ray spectroscopy (EDS). This work employed an Oxford Instruments' ultra-thin window (UTW) detector, attached to the JEM 2010, together with an Oxford Instruments' ISIS analyzer.

Scanning electron micrographs were obtained using a JEPL JSM-840 SEM system. Plasma from rabbit blood was filtered consecutively through a 30 kD and a 5 kD Centricon™ filter from Millipore before heat treatment. PNCs were precipitated from the filtrate by 1.2 mM MgSO₄ at pH 11.3 and transferred onto 400 mesh Ni/carbon grids (Electron Microscopy Sciences). Proteon samples for TEM were fixed with 3% glutaraldehyde, dehydrated with ethanol, and embedded in Durcupan ASM resin (Fluka).

The bulk of the blood precipitate from rabbit plasma was amorphous. However, this extract was found to contain crystalline metallic nanoparticles, with diameters of around 1–2 nm and above. SAD patterns originating from different regions of the samples were consistent with the presence of both face centered cubic (FCC) and body centered cubic (BCC) metals (or possibly solid-solution alloys), with lattice parameters (a_0) of approximately 360 and 290 pm respectively. These combinations of Bravais lattice and a_0 are close to those of FCC copper ($a_0=361.50$ pm (International Centre Diffraction Data (2001), Powder Diffraction File, ICDD, Newtown Square, Pa.)) and BCC α -iron ("ferrite", $a_0=286.64$ pm (International Centre Diffraction Data (2001)), Powder Diffraction File, ICDD, Newtown Square, Pa.)), respectively. Furthermore, both copper and iron were encountered in EDS spectra acquired from the regions containing the nanoparticles. Centered DF imaging demonstrated that the diffraction maxima in these patterns originated from the nanoparticles. When viewed in BF, the metallic nanoparticles were very difficult to distinguish from the amorphous background in most regions of the samples. Hence, such particles could easily have been overlooked in the BF imaging techniques used conventionally for biological electron microscopy.

The observed crystallography of non-clumped nanoparticles was that of metallic iron and copper, rather than of salts of these metals. Furthermore, the diffraction patterns encountered in this work were not produced by an organo-metallic structure. The production of even nanometer-sized metallic particles implies the assembly of a significant number of metal atoms. For example, a 1 nm diameter Cu particle has the same volume as around 10 Cu, or 20 α -Fe, unit cells. FCC metals have 4 atoms per unit cell and BCC metals 2 atoms per cell, indicating a particle containing around 40 atoms in both cases (similarly, a 3 nm diameter particle would contain over 1,000 atoms).

Individual metallic nanoparticles had a random crystallographic orientation. Thus, in cases where the particles had become clumped (in some cases, this appeared to involve flocculation, in others some of the particles had sintered together), a polycrystalline aggregate was produced. In contrast, within a number of relatively large (around 10 nm diameter or above) clumps of particles, significant (~5–10 nm wide) regions were encountered with a constant crystallographic orientation. However, none of the clumps was a true single crystal. Some of these relatively large clumps contained a number of, as yet unidentified, second phases in addition to α -Fe and Cu.

Both Cu and Fe form stable oxides (for example the Gibbs free energy of formation of even the relatively low stability CuO phase is around -127 kJ mol⁻¹ at 300 K). See Brandes and Brook (1992) *Smithells Metals Reference Book* (7th ed.,

Butterworth-Heinemann, Oxford, UK). Furthermore, the initial stages of oxidation of these metals are rapid, even at room temperature. For example, logarithmic oxidation of initially bare iron, at an oxygen partial pressure of only 10 mPa, results in the growth of around 2 nm of oxide, after less than 20 minutes at 300 K. See Kruger, J and Yolken (1964), cited by Lawless. (1974) *Rep. Prog. Phys.* 37(2):231–316. The presence of non-noble metallic nanoparticles implies that the surrounding organic matrix has either impeded oxygen access to the metallic particles and/or has a significant reducing effect.

Many of the nanoparticles survived coarsening. The surface energy of the particles provides a driving force for larger particles to cannibalize smaller particles (the surface area to volume ratio for a 1-nm particle is 6×10^9 m⁻¹ and this drops by an order of magnitude for a 10-nm particle). Metallic materials have relatively high solid-vapor interfacial energies (γ_{SV}) and those for copper and α -iron are around the middle of the range for metallic materials (at ~2.2 and 3.2 J m⁻², respectively; Murr (1975) *Interfacial Phenomena in Metals and Alloys* (Addison-Wesley; reprinted by TechBooks, Herdon, Va.)). Thus unless the metal-organic matrix interface has an interfacial energy (γ_{SM}) that is such that $\gamma_{SM} \ll \gamma_{SV}$, there would remain a significant thermodynamic driving force for coarsening. Given the kinetics of coarsening, if all that were present were the metallic nanoparticles, room-temperature coarsening would occur at a negligible rate (solid-state sintering involves bulk diffusion, interfacial diffusion, free surface diffusion and evaporation and re-condensation, all of which would be very slow for Cu or α -Fe at room temperature). See Ashby (1974), *Acta Metallurgica* 22(3):275–289. See also, Swinkels and Ashby (1981) *Acta Metallurgica* 29(2):259–281. Although the presence of the organic liquid matrix raises possibilities for mass transport, it appears that the matrix did not provide a path for the rapid transfer of metal atoms since many of the nanoparticles of served in the present work remained extremely fine.

Example 7

In Vitro Effect of PNC on Cultured Cells

The impact of PNCs upon viability of various cultured cells was investigated using the tetrazolium salt (MTT) cell proliferation assay. RG2 (mouse brain glioma), F98 (rat brain glioma), Hs683 (human brain glioma), CTX TNA2 (rat transfected astrocyte), H9c2[2-1] (rat heart myocardium), 27FR (rat skin fibroblast), and SVGP12 (human brain astroglia) cells were obtained from American Type Culture Collection (ATCC) and maintained as recommended by ATCC. MTT cell proliferation assays are commercially available. See, e.g., MTT cell proliferation assay from ATCC.

Cells were plated in Dulbecco's modified Eagle's growth medium (D5648 Sigma Chemical, St. Louis, Mo.)+10% fetal bone serum (FBS)(Hyclone Laboratories, Logan, Utah) in polystyrene 96-well plates at a density 3×10^3 cells per well. Twenty-four hours after plating, the medium was replaced with DMEM with either staurosporine (100 μ l, 1 μ M) or PNC (aliquots, 100 μ l, 5×10^9 – 3×10^{11} PNC/ml). PNCs were isolated from blood obtained from shark, dog, and rabbit using the ultrafiltration protocol described in Example 5. PNCs were autoclaved at 120° C. and 20 psi for 15 minutes before adding to the cell cultures.

After 20 hours of treatment, a 20- μ l aliquot of tetrazolium salt (MTT, 5 mg/ml in PBS) was added to the wells, and

interaction was allowed to proceed for 4 hours at 37° C. MTT was reduced in metabolically active cells to form purple formazan crystals, which were dissolved by DMSO and quantified by a Bio-Rad™ plate reader. For each cell type, a linear relationship between cell number and absorbance is established, enabling accurate, straightforward quantification of changes in proliferation.

In two trials, the effect of PNCs on RG2 cells was studied utilizing the following protocol:

Day 1. Plate out RG2 cells at a density of 3x10³ cells/well in D5648+10% FCS and incubate overnight.

Staurosporine (Sigma S5921), 100 µg, FW 466.5. Dissolve 100 µg staurosporine into 214.3 µl

DMSO to equal a 1 mM stock solution. Store at -200° C.

Dilute stock 1:10 in media to equal 0.1 mM or 100 µM stock.

Dilute as follows:

466.5 gm/1 liter 1 M

100gm/0.214 L=1M

Dilute stock 1:10 10 µl stock+90 µl DMEM

100 µg/2.143 ml=100 µM (frozen stock)

—use 10 µl/well=1 µM

Day 2. Remove media and add DMEM+1% FCS (100 µl/well). TX put on late afternoon.

Add staurosporine, autoclaved shark PNC, and either 10%, 1%, or 0% FCS treatments to cells and incubate overnight.

The results of this study are shown in Tables 6 and 7, below. (Ab. Av.=Absorbance at 550 nm; St. Dv.=Standard Deviation)

TABLE 6

MTT assay on RG2 glioma cells, with 10%, 1% and 0% FCS								
Shark Seeds - autoclaved								
	10% FCS no tx	10% FCS 20 µl	10% FCS 10 µl	10% FCS 1 µl	1% FCS no tx	1% FCS 20 µl	1% FCS 10 µl	1% FCS 1 µl
Shark 3	0.533	0.298	0.404	0.482	0.731	0.408	0.496	0.707
	0.542	0.316	0.414	0.465	0.753	0.433	0.544	0.724
	0.577	0.374	0.425	0.526	0.74	0.394	0.533	0.605
	0.516	0.369	0.409	0.467	0.633	0.365	0.596	0.633
	0.5	0.321	0.431	0.466	0.684	0.411	0.571	0.612
		0.362	0.414		0.693	0.419	0.541	
		0.285	0.373		0.636	0.384	0.573	
		0.297	0.393		0.637	0.431	0.529	
Ab.	0.5336	0.32775	0.407875	0.4812	0.688375	0.405625	0.547875	0.6562
Av								
St.	0.029126	0.035568	0.018349	0.025994	0.049494	0.023482	0.031197	0.055432
Dv.								

Shark Seeds - autoclaved					staurosporine	10%	1%	0%
	0% FCS no tx	0% FCS 20 µl	0% FCS 10 µl	0% FCS 1 µl	10% FCS 1 µM	FCS water 20 µl	FCS water 20 µl	FCS water 20 µl
Shark 3	0.866	0.432	0.739	0.827	0.406	0.436	0.726	0.971
	0.891	0.464	0.653	0.895	0.411	0.462	0.701	0.74
	0.695	0.463	0.713	0.918	0.399	0.394	0.676	0.79
	0.937	0.429	0.618	0.833				
	0.799	0.463	0.638	0.78				
	0.909	0.479	0.677					
	0.928	0.452	0.577					
	0.949	0.551	0.574					
Ab.	0.87175	0.466625	0.648625	0.8506	0.405333	0.430667	0.701	0.833667
Av								
St.	0.085951	0.038049	0.059625	0.055599	0.006028	0.034312	0.025	0.121533
Dv.								

TABLE 7

MTT assay, RG2 cells in 1% FCS, with shark, rabbit and dogs 1 and 2 seeds, autoclaved.						
	20 µl	10 µl	1 µl	20 µl	10 µl	1 µl
no tx	Shark Seeds			Dog 1 seeds		
	0.64	0.342	0.447	0.664	0.675	0.773
	0.694	0.344	0.616	0.596	0.633	0.705
	0.667	0.373	0.407	0.595	0.527	0.662
	0.678	0.322	0.499	0.676	0.57	0.613
	0.675			0.626	0.63	0.625
				0.634	0.728	0.675
						0.639

TABLE 7-continued

MTT assay, RG2 cells in 1% FCS, with shark, rabbit and dogs 1 and 2 seeds, autoclaved.							
				0.689	0.6	0.703	0.688
				0.596	0.719	0.629	0.61
Ab	0.6708	0.34525	0.49225	0.6345	0.63525	0.67375	0.644375
Av.							
St.	0.019817	0.020998016	0.090691326	0.038097619	0.07015035	0.05268437	0.03923168
Dv.							
	20 µl	10 µl Dog 2 seeds	1 µl	20 µl	10 µl Rabbit seeds	1 µl	stauro 1% FCS
	0.555	0.595	0.687	0.503	0.62	0.732	0.108
	0.568	0.642	0.541	0.582	0.577	0.676	0.095
	0.543	0.65	0.601	0.476	0.607	0.589	0.093
	0.529	0.648	0.534	0.512	0.6	0.647	
	0.561	0.53	0.66	0.585	0.564	0.64	
	0.526	0.638	0.623	0.584	0.604	0.61	
	0.498	0.593	0.644	0.565	0.519	0.634	
	0.566	0.658	0.559	0.536	0.554	0.649	
Ab	0.54325	0.61925	0.606125	0.542875	0.580625	0.647125	0.09866667
Av.							
St.	0.024294326	0.04372887	0.05713752	0.0423402	0.03372976	0.0431292	0.00814453
Dv.							

Similar studies were carried out comparing the effect of shark PNCs with staurosporine. See Tables 8–10, below. A significant decrease in cell viability was observed for cultured cells incubated with PNCs for 20 hours (FIG. 4A). The viability of the rat and mouse glioma cells declined by 90% and 75%, respectively, while the viability of the rat astrocytes decreased by only 25% at the same conditions. Post-exposure morphological observations of cells under optical dark-field microscope showed signs of cell death. Cells were shrunk and rounded, nuclei were condensed and showed budding of cell bodies (FIG. 4B-2). Cell damage produced by the shark PNCs compares well with the injury made by 1 µM of staurosporine (a potent apoptosis-inducing reagent)

25

(FIG. 4B-3). A significant effect on cell viability was also observed with Hs683 (human brain glioma), H9c2[2-1] (rat heart myocardium), 27FR (rat skin fibroblast), and SVGP12 (human brain astroglia) cells. Proteons and PNCs obtained from the blood plasma of healthy dog and rabbit also significantly affected the viability of the cultured mammalian cells.

30

35

FIG. 4C shows the viability of RG2 glioma cells exposed to PNCs from different sources. It takes about 1x10¹² PNC/ml to fully suppress these glioma cells. This concentration accounts for not more than 10% of the full concentration of PNCs in a healthy animal.

TABLE 8

MTT assay on various cell lines with shark seeds and 0% FCS												
	RG2				Fibroblast				Myocard			
	No tx	1 µl	10 µl	20 µl	No tx	1 µl	10 µl	20 µl	No tx	1 µl	10 µl	20 µl
Plate 1	1.075	0.964	0.856	0.597	0.658	0.503	0.595	0.342	0.509	0.452	0.496	0.376
0% FCS	1.169	1.014	0.791	0.496	0.603	0.517	0.541	0.36	0.462	0.373	0.471	0.382
	1.103	1.016	0.688	0.523	0.558	0.556	0.492	0.375	0.494	0.438	0.462	0.33
	1.084	1.082	0.739	0.55	0.556	0.569	0.432	0.382	0.449	0.446	0.513	0.309
Ab. Av.	1.10775	1.019	0.7685	0.5415	0.59375	0.53625	0.515	0.36475	0.4785	0.42725	0.4855	0.34925
St. Dv.	0.042469	0.048401	0.07191	0.04307	0.048016	0.031298	0.069508	0.017727	0.027767	0.036619	0.023302	0.035491
	CTX astrocytes				SVG astrocytes				F98 glioma			
	No tx	1 µl	10 µl	20 µl	No tx	1 µl	10 µl	20 µl	No tx	1 µl	10 µl	20 µl
Plate 1	0.622	0.596	0.555	0.429	0.678	0.688	0.441	0.275	1.045	0.914	0.367	0.213
0% FCS	0.603	0.589	0.559	0.489	0.681	0.585	0.439	0.275	0.977	0.697	0.444	0.16
	0.59	0.645	0.561	0.396	0.676	0.587	0.462	0.251	0.966	0.643	0.415	0.196
	0.565	0.6	0.533	0.434	0.656	0.667	0.363	0.244	1.064	0.73	0.504	0.172
Ab. Av.	0.595	0.6075	0.552	0.42725	0.67275	0.63175	0.42625	0.26125	1.013	0.746	0.4325	0.18525
St. Dv.	0.02393	0.02541	0.01291	0.038549	0.011354	0.053525	0.043431	0.016132	0.048751	0.117601	0.057274	0.023796

TABLE 9

MTT assay on various cell lines with shark seeds and 1% FCS												
Plate	RG2				Fibroblast				Myocard			
	No tx	1 µl	10 µl	20 µl	No tx	1 µl	10 µl	20 µl	No tx	1 µl	10 µl	20 µl
2												
1% FCS	0.839	0.606	0.536	0.36	0.503	0.44	0.5	0.307	0.404	0.43	0.317	0.317
	0.734	0.551	0.723	0.419	0.475	0.452	0.44	0.316	0.43	0.444	0.349	0.326
	0.665	0.595	0.551	0.435	0.465	0.518	0.351	0.298	0.408	0.466	0.326	0.289
	0.723	0.656	0.564	0.445	0.457	0.547	0.308	0.371	0.425	0.458	0.321	0.377
Ab	0.74025	0.602	0.5935	0.41475	0.475	0.48925	0.39975	0.323	0.41675	0.4495	0.32825	0.32725
Av												
St	0.072459	0.043135	0.087088	0.038038	0.020067	0.051558	0.086535	0.032833	0.012685	0.015864	0.014315	0.036719
Dv												
Plate 2	CTX astrocytes				SVG astrocytes				F98 glioma			
	No tx	1 µl	10 µl	20 µl	No tx	1 µl	10 µl	20 µl	No tx	1 µl	10 µl	20 µl
1% FCS	0.521	0.501	0.501	0.355	0.602	0.509	0.352	0.248	0.746	0.687	0.376	0.137
	0.507	0.564	0.426	0.415	0.597	0.496	0.37	0.238	0.971	0.524	0.334	0.154
	0.542	0.562	0.42	0.387	0.534	0.488	0.401	0.246	0.91	1.267	0.283	0.141
	0.538	0.641	0.439	0.471	0.48	0.547	0.394	0.26	0.864	0.521	0.309	0.139
Ab Av	0.527	0.567	0.4465	0.407	0.55325	0.51	0.37925	0.248	0.87275	0.74975	0.3255	0.14275
St Dv	0.016145	0.057347	0.037189	0.049207	0.057812	0.026141	0.0225	0.009092	0.095189	0.353447	0.039585	0.007676

TABLE 10

MTT assay on various cell lines with Staurosporine							
Saurosp	RG2				Myocard		CTX astro
	100 nm	RG2	Fibro	Fibro	myocard	myocard	
Shark 7	0.305	0.12	0.257	0.168	0.402	0.154	0.252
	0.301	0.119	0.275	0.166	0.373	0.151	0.518
Plate 3	0.279	0.119	0.275	0.171	0.172	0.159	0.533
1% FCS	0.272	0.149	0.296	0.171	0.185	0.176	0.21
Ab. Av.	0.28925	0.12675	0.27575	0.169	0.283	0.16	0.37825
St. Dv.	0.016215	0.014841	0.015945	0.002449	0.121362	0.011165	0.171002
Saurosp	CTX astro	SVG astro	SVG astro	F98 glioma	F98 glioma		
Shark 7	0.212	0.128	0.067	0.136	0.108		
	0.122	0.12	0.066	0.138	0.108		
Plate 3	0.118	0.128	0.067	0.12	0.109		
1% FCS	0.126	0.136	0.068	0.139	0.109		
Ab. Av.	0.1445	0.128	0.067	0.13325	0.1085		
St. Dv.	0.045118	0.006532	0.000816	0.008921	0.000577		

Example 8

Cyclic Amplification of Proteons

A progressively increased number of proteons can be produced from plasma subjected to increasing temperatures. To examine a method of cyclic amplification, seven 1 ml samples of plasma were prepared for cyclic amplification. After the initial number of proteons was quantitated by a dark-field microscope, the first sample was incubated for 15 minutes at 65° C. and normal pressure. Five µl of the treated first sample was introduced to seed the untreated second sample, and the second sample was incubated for 15 minutes at 65° C. and normal pressure. This step was repeated: 5 µl of the second amplified sample was added to the third untreated sample. This process was repeated up to 6 cycles. A control series was run by adding of five µl of purified water (instead of seeds) to 1 ml of untreated plasma.

The first two cycles resulted in a small but significant (p<0.001) increase of proteon population, whereas the third

cycle brought about a dramatic increase in the number of proteons. The next three cycles resulted in saturation of the proteon population. In contrast, the control samples showed no dramatic increase of the proteon population. See FIG. 2.

Example 9

Comparison with Other Biological Particles

Experiments were carried out to compare the proteons obtained by the procedure described in the Example 1 with the nanobacteria isolated from blood by Kajander et al. (1996) *Mol. Biol. Cell* 7:3007-3007 using the Nanocapture™ enzyme-linked immunosorbent assay (ELISA) kit for detection of nanobacterial antigens (Nanobac OY, Finland). The nanobacteria included in the Nanocapture™ ELISA kit were used as a positive control. Bio-Rad Microplate Manager™ 4.01 software was used to obtain the results of the ELISA. The assay procedure was carried out following the manufacturer's recommendations. The reaction was consid-

ered to be positive when the absorbance was significantly higher than the level of noise. Results of interaction of antibodies grown against nanobacteria with proteons and plasma are summarized in Table 11.

TABLE 11

Interaction of antibodies specific to nanobacteria with proteons and plasma.		
No Sample	Condition	Reaction
1	Proteons, human 1 Freshly prepared at 120° C. and 20 psi, 2 h	-
2	Proteons, human 2 Freshly prepared at 120° C. and 20 psi, 2 h	-
3	Proteons, rabbit Freshly prepared at 120° C. and 20 psi, 2 h	-
4	Proteons, human 1 Incubated 13 days, 37° C. after preparation	-
5	Plasma, human Freshly prepared	-
6	Plasma, human 1 Incubated 13 days, 37° C.	-
7	Proteons, human 1, in D5648 ^a	+
8	Proteons human 1, in D6429 ^b	+
9	Plasma, human 1, in D5648 ^a	+
10	Plasma, human 1, in D6429 ^b	+
11	Proteons, human 1, in D5648 ^a	+
12	Proteons human 1, in D6429 ^b	+
13	Plasma, human 1, in D5648 ^a	+
14	Plasma, human 1, in D6429 ^b	+
15	Proteons, human 1, in D5648 ^a	+
	D5648 ^a	+
	D6429 ^b	+
16	D6429 ^b	-
17	Water ^c	-
18	Broth ^d	-
	Nanobacteria	+

^aD5648 tissue culture media (Sigma) with 10% FBS (HyClone).

^bD6429 tissue culture media (Sigma) with 10% FBS (HyClone).

^cPurified water (Direct QTM, Millipore, 17 MOhm)

^dLB-Medium (BIO 101, Inc.; 10 g Trypton-B, 5 g yeast extract-B, 10 h NaCl in 1 L of water).

Nanobacteria gave a positive signal, while all freshly prepared proteons showed no interaction. Proteons incubated in cell culture media for 13 days, at 37° C. (with and without CO₂) show a positive reaction. However, the culture media alone incubated for 13 days, at 37° C. also gave a positive reaction, while freshly prepared culture media was negative, indicating that nanobacteria antigen appeared from the culture media during the incubation.

Many modifications and other embodiments of the inventions set forth herein will come to mind to one skilled in the art to which these inventions pertain having the benefit of the teachings presented in the foregoing descriptions and the associated drawings. Therefore, it is to be understood that the inventions are not to be limited to the specific embodiments disclosed and that modifications and other embodiments are intended to be included within the scope of the

appended claims. Although specific terms are employed herein, they are used in a generic and descriptive sense only and not for purposes of limitation.

All publications and patent applications mentioned in the specification are indicative of the level of those skilled in the art to which this invention pertains. All publications and patent applications are herein incorporated by reference to the same extent as if each individual publication or patent application was specifically and individually indicated to be incorporated by reference.

Those skilled in the art will recognize, or be able to ascertain using no more than routine experimentation, many equivalents to the specific embodiments of the invention described herein. Such equivalents are intended to be encompassed by the following claims.

The invention claimed is:

1. A method for the cyclic amplification of proteons in a biological sample comprising the steps of:

a) placing an aliquot of a sample containing a proteon nucleation center (PNC) in an unheated subsample, said proteon nucleation center (PNC) comprising a metallic nanoparticle having a diameter of about 1–2 nm and containing about 40–300 metal atoms selected from the group consisting of copper, zinc, iron and alloys of copper, zinc or iron;

b) heating the subsample; and

c) determining the number of proteons in said sample, said proteons comprised of misfolded or partially misfolded proteins surrounding a proteon nucleation center (PNC); and

d) repeating steps (a), (b) and (c) with aliquots taken from the most recently heated subsample for 1 or more cycles until the number of proteons determined to be in each heated subsample no longer increases.

2. The method of claim 1, further comprising correlating the number of proteons in the subsample in which the number of proteons no longer increases to the amount of misfolded proteins present in the biological sample.

3. The method of claim 1, wherein the subsamples are each 1 ml and the aliquot is 5 µl.

4. The method of claim 1, wherein a heating time is selected from the group consisting of 1, 5, 10, 15, 20, 25, 30, 25, 40, 45, 50, 55, 60, 65, 70, 75, 80, 85, 90, 95, 100, 105, 110, 115, and 120 minutes.

5. The method of claim 1, wherein a heating temperature is selected from the group consisting of 37, 40, 45, 50, 55, 60, 65, 70, 75, 80, 85, 90, 95, 100, 105, 110, 115, and 120° C.

6. The method of claim 1, wherein the number of cycles is selected from the group consisting of 1, 2, 3, 4, 5, 6, 7, 8, 9, 10, 15, 20, and 25 cycles.

7. The method of claim 1, further including applying pressure to each heated subsample, and said pressure is selected from the group consisting of 14, 15, 16, 17, 18, 19, 20, 21, 22, 23, 24 and 25 psi.

8. The method of claim 1, wherein the number of cycles is 6, each of said cycles comprising a heating time of 15 minutes at a heating temperature of 60° C.

* * * * *

专利名称(译)	从血液和其他生物材料中分离和自组装小蛋白质颗粒的方法		
公开(公告)号	US7138255	公开(公告)日	2006-11-21
申请号	US10/674750	申请日	2003-09-30
[标]申请(专利权)人(译)	美国·奥本大学		
申请(专利权)人(译)	奥本大学		
当前申请(专利权)人(译)	奥本大学		
[标]发明人	VODYANOY VITAL J SAMOYLOV ALEXANDRE M PUSTOVYY OLEG M		
发明人	VODYANOY, VITALY J. SAMOYLOV, ALEXANDRE M. PUSTOVYY, OLEG M.		
IPC分类号	C12P19/34 A61K C07K14/00 C12P21/06 G01N33/50 G01N33/53		
CPC分类号	G01N33/5002		
优先权	60/415108 2002-09-30 US		
其他公开文献	US20040137523A1		
外部链接	Espacenet USPTO		

摘要(译)

提供了用于分离和操纵血液和其他生物材料中存在的错误折叠或部分错误折叠的蛋白质的组合物和方法。在本发明的一个方面，组合物，下文称为“蛋白质”，由错误折叠的蛋白质组成。还提供了用于分离和操作蛋白质成核中心 (PNC) 的组合物和方法，在其上形成血液和其他生物材料中存在的蛋白质。在本发明的另一个方面，PNCs由金属纳米团簇组成。

Figure 1

