



US007166425B2

(12) United States Patent
Madonna et al.**(10) Patent No.: US 7,166,425 B2**
(45) Date of Patent: Jan. 23, 2007**(54) METHOD FOR DETECTING LOW CONCENTRATIONS OF A TARGET BACTERIUM THAT USES PHAGES TO INFECT TARGET BACTERIAL CELLS****(75) Inventors:** Angelo J. Madonna, Tooele, UT (US);
Kent J. Voorhees, Golden, CO (US);
Jon C. Rees, Golden, CO (US)**(73) Assignee:** Colorado School of Mines, Golden, CO (US)**(*) Notice:** Subject to any disclaimer, the term of this patent is extended or adjusted under 35 U.S.C. 154(b) by 0 days.**(21) Appl. No.: 10/249,452****(22) Filed: Apr. 10, 2003****(65) Prior Publication Data**

US 2004/0224359 A1 Nov. 11, 2004

Related U.S. Application Data**(60)** Provisional application No. 60/319,184, filed on Apr. 12, 2002.**(51) Int. Cl.****C12Q 1/02** (2006.01)
C12Q 1/04 (2006.01)
C12Q 1/70 (2006.01)
G01N 33/53 (2006.01)
A01N 63/00 (2006.01)**(52) U.S. Cl.** **435/5**; 435/4; 435/7.1;
435/7.2; 435/7.32; 435/7.5; 424/93.1; 424/93.6;
424/93.3**(58) Field of Classification Search** 435/4,
435/5, 7.2, 7.32, 7.33, 7.34, 7.35, 7.37, 7.5,
435/29, 34, 36, 39, 69.1, 69.8, 243, 252.3,
435/259, 320.1, 235.1, 239; 424/93.1, 93.2,
424/93.6

See application file for complete search history.

(56) References Cited**U.S. PATENT DOCUMENTS**4,104,126 A 8/1978 Young 195/103.5 A
4,797,363 A 1/1989 Teodorescu et al. 435/235
4,861,709 A 8/1989 Ulitzur et al. 435/6
5,085,982 A 2/1992 Keith 435/5
5,168,037 A 12/1992 Entis et al. 435/5
5,498,525 A * 3/1996 Rees et al. 435/29
5,620,845 A * 4/1997 Gould et al. 435/5
5,656,424 A 8/1997 Jurgensen et al. 435/5
5,679,510 A 10/1997 Ray et al. 435/5
5,723,330 A 3/1998 Rees et al. 435/252.3
5,824,468 A 10/1998 Scherer et al. 435/5
5,888,725 A 3/1999 Sanders 435/5
5,914,240 A 6/1999 Sanders 435/7.32
5,958,675 A 9/1999 Wicks et al. 435/5
5,985,596 A * 11/1999 Wilson 435/39
6,037,118 A 3/2000 Thomas et al. 435/5
6,090,541 A 7/2000 Wicks et al. 435/5
6,265,169 B1 7/2001 Cortese et al. 435/6
6,300,061 B1 10/2001 Jacobs, Jr. et al. 435/66,355,445 B1 3/2002 Cherwonogrodzky
et al. 435/7.32
6,428,976 B1 8/2002 Chang et al. 435/38
6,436,652 B1 8/2002 Cherwonogrodzky
et al. 435/7.32
6,436,661 B1 8/2002 Adams et al. 435/34
6,461,833 B1 10/2002 Wilson 435/34
6,524,809 B1 2/2003 Wilson 435/39
6,544,729 B1 4/2003 Sayler et al. 435/5
6,555,312 B1 4/2003 Nakayama 435/5
6,660,437 B1 12/2003 Friedrich et al. 430/5
6,660,470 B1 12/2003 Sanders 435/5
2002/0045195 A1 4/2002 Hubscher et al. 435/7.9
2002/0127547 A1 9/2002 Miller 435/5
2002/0192676 A1 12/2002 Madonna et al. 435/6
2003/0027241 A1 2/2003 Sayler et al. 435/29
2004/0137430 A1 * 7/2004 Anderson et al. 435/5**FOREIGN PATENT DOCUMENTS**DE 43 14998 * 11/1994
EP 0228975 * 7/1987

(Continued)

OTHER PUBLICATIONS

Chatterjee et al., FEMS Microbiology Letters, vol. 188 No. 1, pp. 47-53 (Jul. 2000).*

(Continued)

Primary Examiner—Bruce H. Campbell*Assistant Examiner*—Zachariah Lucas**(74) Attorney, Agent, or Firm**—Holland & Hart LLP;
Christopher J. Kulish, Esq.**(57) ABSTRACT**

The invention is directed to a method for detecting low concentrations of bacteria in liquid solution that may or may not be complex liquid solutions. In one embodiment, immunomagnetic separation (IMS) is used to separate target bacterium that may be in a liquid mixture from other constituents in the mixture. A low concentration of a bacteriophage for the target bacteria is subsequently used to infect target bacterial cells that have been captured using the IMS technique. If at least a certain concentration of target bacterium are present, the bacteriophage will multiply to a point that is detectable. Matrix assisted laser desorption ionization/time-of-flight-mass spectrometry (MALDI/TOF-MS) is then used to produce a mass spectrum that is analyzed to determine if one or more proteins associated with the bacteriophage are present, thereby indirectly indicating that target bacterium were present in the liquid mixture.

20 Claims, 5 Drawing Sheets

FOREIGN PATENT DOCUMENTS

| | | | |
|----|--------------|----|---------|
| EP | 0439354 | A2 | 7/1991 |
| EP | 1300082 | A2 | 4/2003 |
| WO | WO-93/17129 | A1 | 9/1993 |
| WO | WO-94/06931 | | 3/1994 |
| WO | WO-95/05483 | A1 | 2/1995 |
| WO | WO-98/18962 | A1 | 5/1998 |
| WO | WO-02/061117 | A1 | 8/2002 |
| WO | WO-03/087772 | A2 | 10/2003 |
| WO | WO-03/087772 | A3 | 10/2003 |

OTHER PUBLICATIONS

Olsvik et al., *Clinical Microbiology Reviews*, vol. 7 No. 1, pp. 43-54 (Jan. 1994).*

Sun et al., *Journal of Industrial Microbiology & Biotechnology*, vol. 27 No. 2, pp. 126-128 (Aug. 2001).*

Nakamura et al., *Biophysical and Biophysical Research Communications*, vol. 289 No. 1, pp. 252-256 (Nov. 2001).*

R. Bordner and J. Winter, *Microbiological Methods for Monitoring the Environment: Water and Wastes*, Dec. 1978, pp. i-xvi, 1-338, Environmental Monitoring and Support Laboratory, USEPA, Cincinnati, USA.

D.T. Kingsbury and S. Falkow (eds), *Rapid Detection and Identification of Infectious Agents*, papers given at an International Symposium held in Berkeley, CA, 1985, pp. i-xii, 1-296, Academic Press, Inc., Orlando, USA.

G.M. Wyatt, M.R.A. Morgan and H.A. Lee, *Immunoassays for Food-Poisoning Bacteria and Bacterial Toxins*, Nov. 1992, pp. i-xiii, 1-129, James & James and Chapman Hall, Windsor, London, England.

H. Yu and J. Bruno, "Immunomagnetic-Electrochemiluminescent Detection of *Escherichia coli* O157 and *Salmonella Typhimurium* in Foods and Environmental Water Samples", *Applied and Environmental Microbiology*, Feb. 1996, pp. 587-592, 62-#2, American Society for Microbiology, Washington, DC, USA.

J.M. Van Der Wolf, L.J. Hyman, D.A.C. Jones, C. Grevesse, J.R.C.M. Van Beckhoven, J.W.L. Vuurde and M.C.M. Perombelon, "Immunomagnetic Separation of *Erwinia Caratovora* Subsp. *Astrosepica* from Potato Peel Extracts to Improve Detection Sensitivity on a Crystal Violet Pectate Medium or by PCR", *Journal of Applied Bacteriology*, May 1996, pp. 487-495, 80-#5, Blackwell Science, United Kingdom.

D. Dziadkowiec, L.P. Mansfield and S.J. Forsythe, "The Detection of *Salmonella* in Skimmed Milk Powder Enrichments Using Conventional Methods and Immunomagnetic Separation", *Letters in Applied Microbiology*, 1995, pp. 361-364, 20, The Society for Applied Bacteriology—published by Blackwell Science, United Kingdom.

I.R. Grant, H.J. Ball and M.T. Rowe, "Isolation of *Mycobacterium Paratuberculosis* from Milk by Immunomagnetic Separation", *Applied and Environmental Microbiology*, Sep. 1998, pp. 3153-3158, 64-#9, American Society for Microbiology, Washington, DC, USA.

K.S. Cudjoe, T. Hagtvædt and R. Dainty, "Immunomagnetic Separation of *Salmonella* from Foods and Their Detection Using Immunomagnetic Particle (IMP)-ELISA", *International Journal of Food Microbiology*, Sep. 1995, pp. 11-25, 27-#1, Elsevier Science, Amsterdam, The Netherlands.

E. Skjerve, L.M. Rorvik and O. Olsvik, "Detection of *Listeria Monocytogenes* in Foods by Immunomagnetic Separation", *Applied and Environmental Microbiology*, Nov. 1990, pp. 3478-3481, 56-#11, American Society for Microbiology, Washington, DC, USA.

B.H. Pyle, S.C. Broadaway and G.A. McFeters, "Sensitive Detection of *Escherichia coli* O157:H7 in Food and Water by Immunomagnetic Separation and Solid-Phase Laser Cytometry", *Applied and Environmental Microbiology*, May 1999, pp. 1966-1972, 65-#5, American Society for Microbiology, Washington, DC, USA.

A.J. Madonna, F. Basile, E. Furlong and K.J. Voorhees, "Detection of Bacteria from Biological Mixtures Using Immunomagnetic Separation Combined with Matrix-Assisted Laser Desorption/Ionization Time-of-Flight Mass Spectrometry", *Rapid Communications in Mass Spectrometry*, 2001, pp. 1068-1074, 15-#13, John Wiley & Sons, Ltd., Hoboken, USA.

M.S. Dubow, "Bacterial Identification—Use of Phages", section in *Encyclopedia of Virology 2e*, (R.G. Webster and A. Granoff (eds.)), 1999, Academic Press, San Diego, USA.

D.W. Hirsch and L.D. Martin, "Rapid Detection of *Salmonella* spp. by Using Felix-O1 Bacteriophage and High-Performance Liquid Chromatography", *Applied and Environmental Microbiology*, Jan. 1983, pp. 260-264, 45-#1, American Society for Microbiology, Washington, DC, USA.

S.J. Pugh, J.L. Griffiths, M.L. Arnott and C.S. Gutteridge, "A Complete Protocol Using Conductance for Rapid Detection of *Salmonellas* in Confectionary Materials", *Letters in Applied Microbiology*, 1988, pp. 23-27, 7, The Society for Applied Microbiology—published by Blackwell Science, United Kingdom.

G.S.A.B. Stewart, S.A.A. Jassim, S.P. Denyer, P. Newby, K. Linley and V.K. Dhir, "The Specific and Sensitive Detection of Bacterial Pathogens With 4h Using Bacteriophage Amplification", *Journal of Applied Microbiology*, 1988, pp. 777-783, 84, The Society for Applied Microbiology—published by Blackwell Science, United Kingdom.

G.S.A.B. Stewart, "A Review *In Vivo* Bioluminescence: New Potentials for Microbiology", *Letters in Applied Microbiology*, 1990, pp. 1-8, 10, The Society for Applied Microbiology—published by Blackwell Science, United Kingdom.

C.P. Kodikara, H.H. Crew and G.S.A.B. Stewart, "Near On-Line Detection of Enteric Bacteria Using Lux Recombinant Bacteriophage", *FEMS Microbiology Letter*, 1991, pp. 261-265, 83, Federation of European Microbiological Societies—published by Elsevier, The Netherlands.

S.J. Favrin, S.A. Jassim and M.W. Griffiths, "Development and Optimization of a Novel Immunomagnetic Separation-Bacteriophage Assay for Detection of *Salmonella Enterica* Serovar Enteritidis in Broth", *Applied and Environmental Microbiology*, Jan. 2001, pp. 217-224, 67-#1, American Society for Microbiology, Washington, DC, USA.

J.H. Strauss, Jr. and R.L. Sinsheimer, "Purification and Properties of Bacteriophage MS2 and of Its Ribonucleic Acid", *Journal of Molecular Biology*, 1963, pp. 43-54, 7, Elsevier Science, Amsterdam, The Netherlands.

Z. Wang, L. Russon, L. Liang, D.C. Roser and S.R. Long, "Investigation of Spectral Reproducibility in Direct Analysis of Bacteria by Matrix-Assisted Laser Desorption/Ionization Time-of-Flight Mass Spectrometry", *Rapid Communications in Mass Spectrometry*, 1998, pp. 456-464, 12-#8, John Wiley & Sons, Ltd., Hoboken, USA.

V. Ryzhov and C. Fenselau, "Characterization of the Protein Subset Desorbed by MALDI from Whole Bacterial Cells", *Analytical Chemistry*, Feb. 15, 2001, pp. 746-750, 73-#4, American Chemical Society, Washington, DC, USA.

E.C. Lynn, M.C. Chung, W.C. Tsai and C.C. Han, "Identification of *Enterobacteriaceae* Bacteria by Direct Matrix-Assisted Laser Desorption/Ionization Mass Spectrometric Analysis of Whole Cells", *Rapid Communications in Mass Spectrometry*, 1999, pp. 2022-2027, 13-#20, John Wiley & Sons, Ltd., Hoboken, USA.

D.N. Dickinson, D.H. Powell, J.D. Winefordner, M.J. Kempf and K.J. Venkateswaran, "New and Improved Strategies for the Rapid Detection and Differential Identification of Microbial Spores Using MALDI-TOFMS", *Proceedings of the 50th ASMS Conference on Mass Spectrometry and Allied Topics*, Jun. 2-6, 2002, Orlando, USA.

S.L. Gantt, N.B. Valentine, A.J. Saenz, M.T. Kingsley and K.L. Wahl, "Use of an Internal Control for Matrix-Assisted Laser Desorption/Ionization Time-of-Flight Mass Spectrometry Analysis of Bacteria", *Journal of the American Society of Mass Spectrometry*, Nov. 1999, pp. 1131-1137, 10-#11, American Society for Mass Spectrometry—published by Elsevier Science, Inc., The Netherlands.

S.W.-L. Tan, S.-M. Wong, and R.M. Kini, "Rapid Simultaneous Detection of Two Orchid Viruses Using LC- and/or MALDI-mass Spectrometry," *Journal of Virological Methods*, 2000, pp. 93-99, vol. 85, Elsevier Science B.V.

W. Sun, L. Brovko, and M. Griffiths, "Use of Bioluminescent Salmonella for Assessing the Efficiency of Constructed Phage-Based Biosorbent," *Journal of Industrial Microbiology & Biotechnology*, 2000, pp. 273-275, vol. 25, Nature Publishing Group.

G. Siuzdak, "Probing Viruses With Mass Spectrometry," *Journal of Mass Spectrometry*, pp. 203-211, 1998, vol. 33, John Wiley & Sons, Ltd.

R. Jenison, H. La, A. Haeberli, R. Ostroff and B. Polisky, "Silicon-Based Biosensor for Rapid Detection of Protein or Nucleic Acid Targets," *Clinical Chemistry*, Oct. 2001, pp. 1894-1900, vol. 47, No. 10, American Association for Clinical Chemistry, Inc.

R. Jenison, A. Haeberli, S. Yang, B. Polisky, and R. Ostroff, "Thin Film Biosensor for Rapid Detection of mecA from Methicillin-

resistant *Staphylococcus aureus*," *Clinical Chemistry*, Sep. 2000; pp. 1501-1504, vol. 46, No. 9, American Association for Clinical Chemistry, Inc.

A.J. Madonna, S. Van Cuyk, and K.J. Voorhees, "Detection of *Escherichia coli* Using Immunomagnetic Separation and Bacteriophage Amplification Coupled with Matrix-assisted laser Desorption/Ionization Time-of-Flight Mass Spectrometry," *Rapid Communications in Mass Spectrometry*, published online Dec. 24, 2002, pp. 257-263, vol. 17, John Wiley & Sons, Ltd.

U.S. Provisional Application No. 60/418,822, Anderson et al., Oct. 15, 2002.*

Thomas et al., Viral characterization by direct analysis of capsid proteins, *Analytical Chemistry*, vol. 90 No. 18, 18 pages 3863-3867 (Sep. 1998).*

* cited by examiner

FIGURE 1

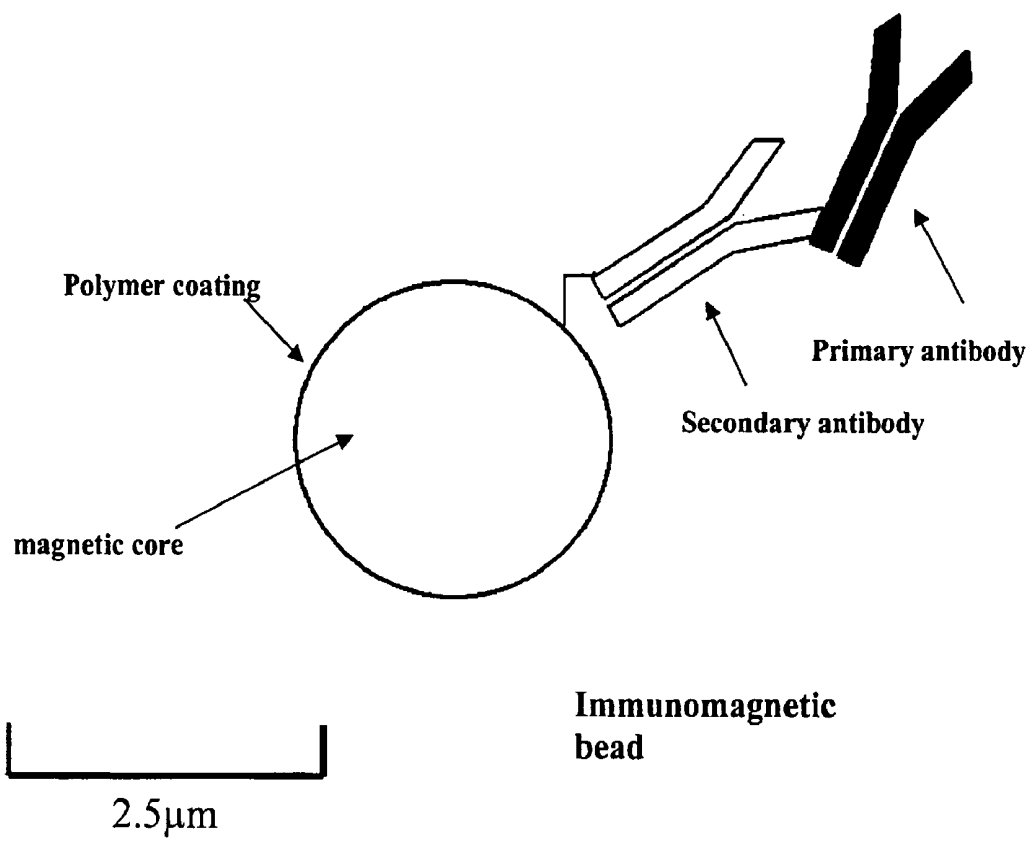


FIGURE 2

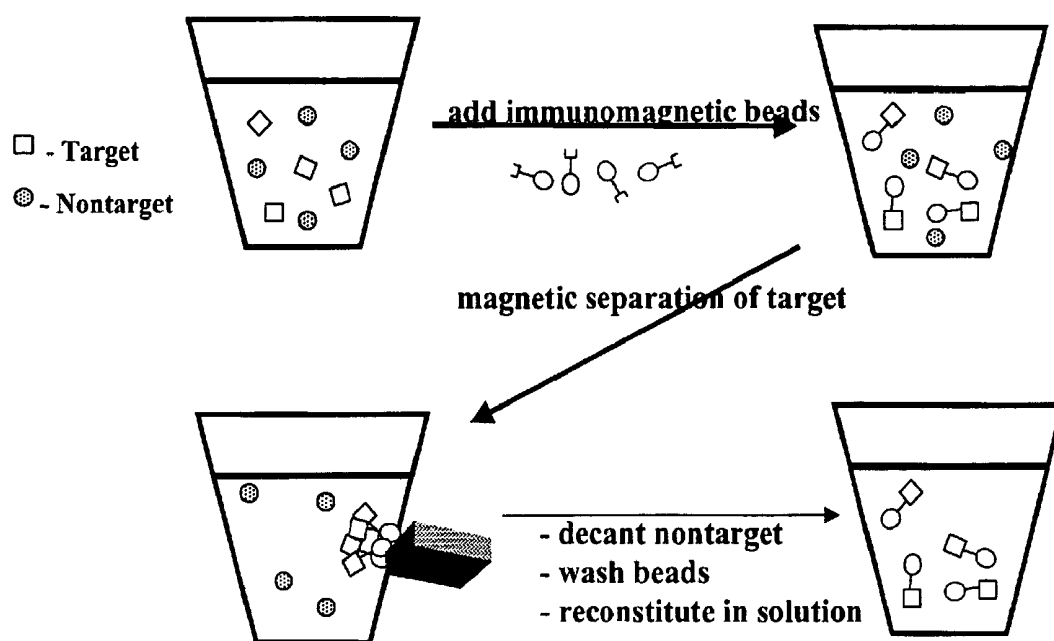


FIGURE 3

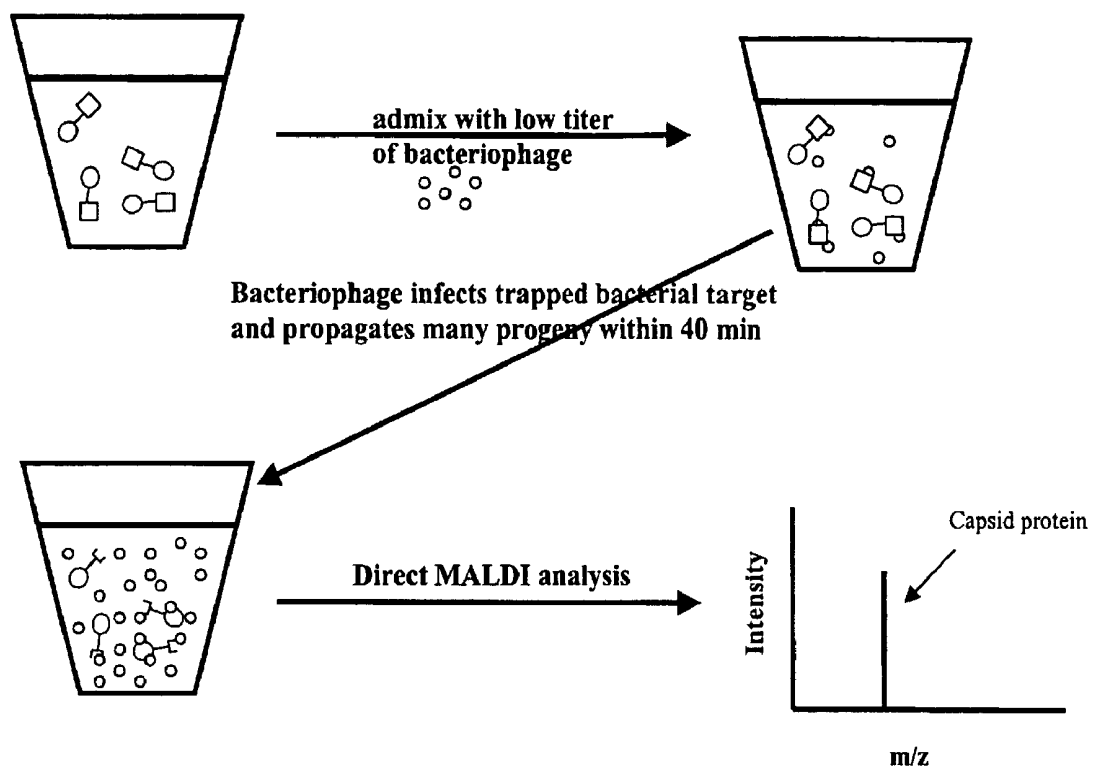


FIGURE 4

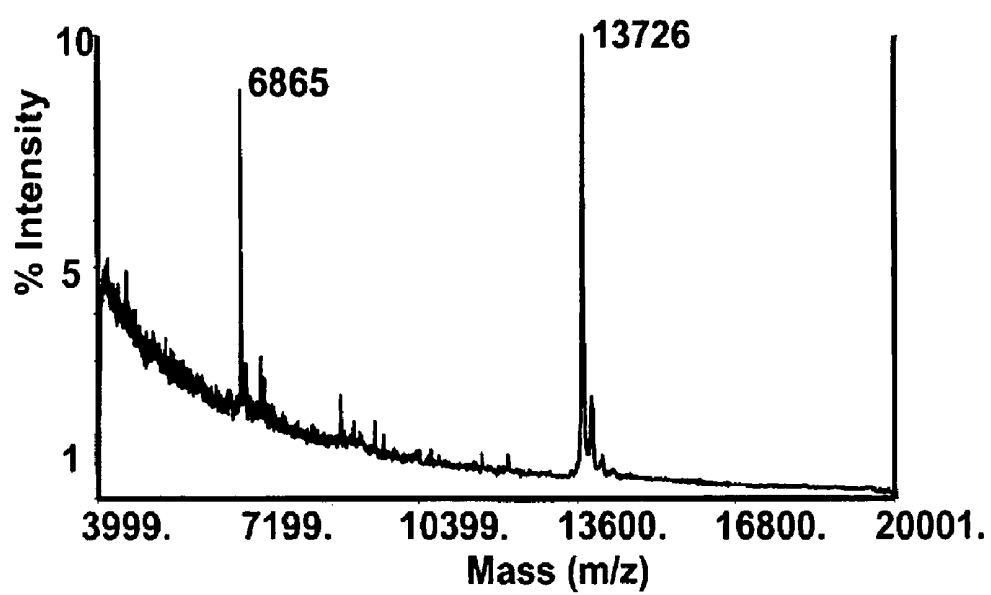
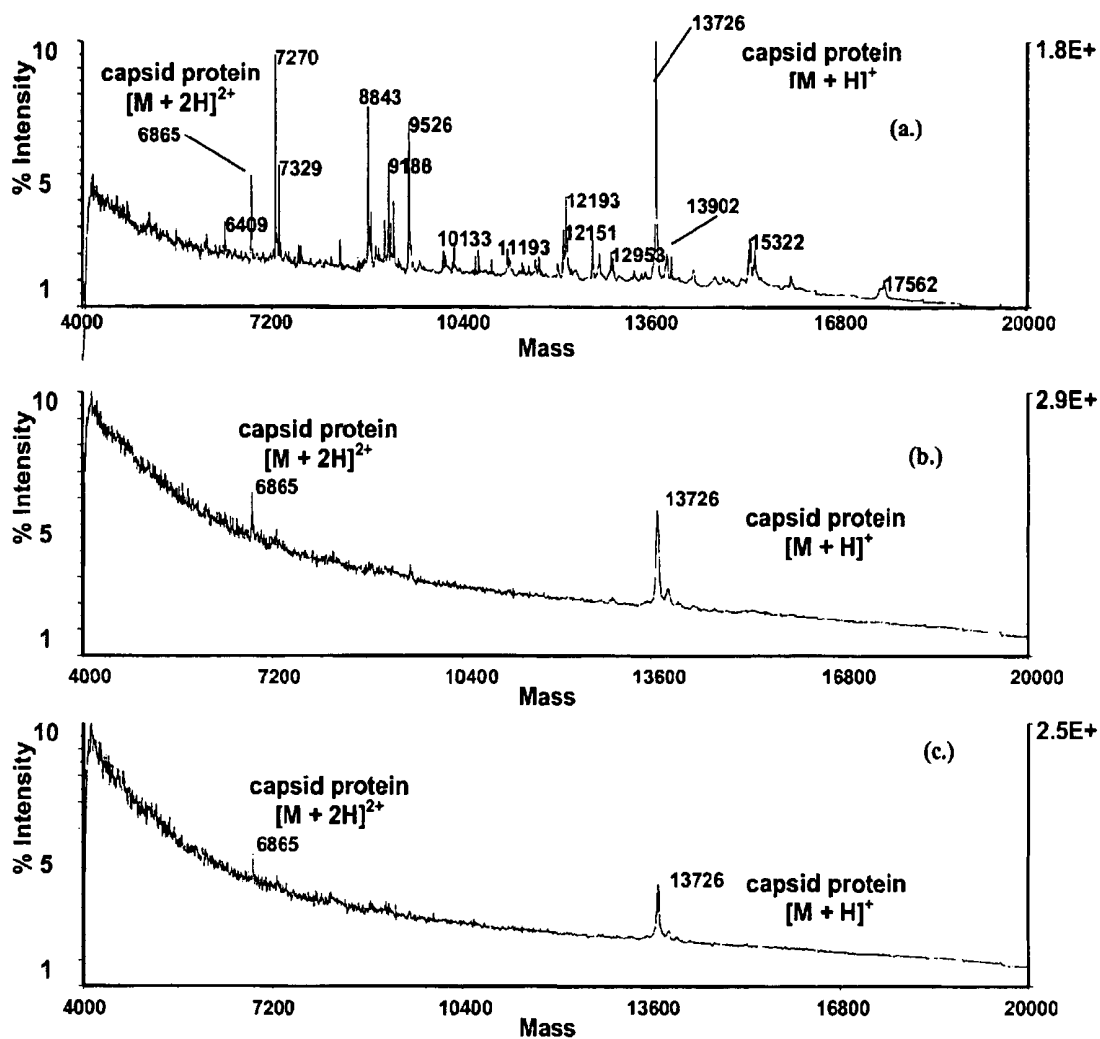


FIGURE 5



METHOD FOR DETECTING LOW CONCENTRATIONS OF A TARGET BACTERIUM THAT USES PHAGES TO INFECT TARGET BACTERIAL CELLS

CROSS REFERENCE TO RELATED APPLICATIONS

This application claims the benefit of U.S. Provisional Application No. 60/319,184, entitled "METHOD OF DETECTING LOW CONCENTRATIONS OF A TARGET BACTERIA THAT USES PHAGES TO INFECT TARGET BACTERIAL CELLS" and filed by Angelo J. Madonna and Kent J. Voorhees on Apr. 12, 2002, which application is incorporated by reference into this application in its entirety.

FIELD OF THE INVENTION

The present invention relates to a method for detecting low concentrations of a target bacterium in a liquid mixture that uses bacteriophages to infect target bacterial cells.

BACKGROUND OF THE INVENTION

Standard microbiological methods have relied on substrate-based assays to test for the presence of specific organisms (Bordner, et al. 1978). These techniques offer very high levels of selectivity but are hindered by the requirement to first grow or cultivate pure cultures of the targeted organism, which can take 24 hours or longer. This time constraint severely limits the effectiveness to provide a rapid response to the presence of virulent strains of microorganisms.

Molecular biology techniques are quickly gaining acceptance as valuable alternatives to standard microbiological tests. In particular, serological methods have been widely employed to evaluate a host of matrices for targeted microorganisms (Kingsbury & Falkow 1985; Wyatt et al. 1992). These tests focus on using antibodies to first trap and then separate targeted organisms from other constituents in complicated biological mixtures. Once isolated, the captured organism can be concentrated and detected by a variety of different techniques that do not require cultivating the biological analyte.

One very popular approach, termed immunomagnetic separation (IMS), involves immobilizing antibodies to spherical, micro-sized paramagnetic beads and using the antibody-coated beads to trap targeted microorganisms from liquid media. The beads are easily manipulated under the influence of a magnetic field facilitating the retrieval and concentration of targeted organisms. Moreover, the small size and shape of the beads allow them to become evenly dispersed in the sample, accelerating the rate of interaction between bead and target. These favorable characteristics lead to reductions in assay time and help streamline the analytical procedure making it more applicable for higher sample throughput and automation.

Downstream detection methods previously used with IMS include ELISA (Cudjoe, et al. 1995), dot blot assay (Skjerve et al. 1990), electrochemiluminescence (Yu and Bruno 1996), and flow cytometry (Pyle, et al. 1999). Although these tests provide satisfactory results, they are laborious to perform and give binary responses (yes/no) that are highly susceptible to false-positive results due to cross-reactivity with non-target analytes. Recently reported is a rapid method for identifying specific bacteria from complex biological mixtures using IMS coupled to matrix-assisted laser

desorption/ionization (MALDI) time-of-flight (TOF) mass spectrometry (MS)(Madonna et al. 2001). This approach allowed a variety of matrices to be evaluated for the presence of a *Salmonella* species within a total analysis time of 1 hour. Moreover, the developed procedure required little sample processing, was relatively easy to perform, and the molecular weight information obtained made it possible to discriminate between signals from the target bacteria and signals from cross-reacted constituents.

MALDI-TOF-MS is a proven technique for identifying whole cellular microorganisms (Holland et al (1996); van Barr 2000; Madonna et al. 2000). In principle, MALDI is a 'fingerprinting' technique where mass spectra featuring varying distributions of protein signals are generated. The signature profiles that are produced, due to inherent differences in microbial proteomes, make it possible to discriminate between organisms down to the strain level (Arnold and Reilly 1998). The MALDI-TOF technique coupled with IMS includes, in one embodiment, mixing immunomagnetic beads specific to the target bacteria with the liquid mixture that may contain the target bacteria for a short incubation period (e.g., 20 min). Any target bacteria captured by the beads are washed twice, re-suspended in deionized H₂O, and directly applied onto a MALDI sample probe. The target bacteria-bead complex is then overlaid with a micro-volume of matrix solution and dried at room temperature. Irradiation of the resulting crystalline mass with a high intensity laser promotes the liberation and ionization of intact cellular proteins that are subsequently detected by a TOF mass spectrometer. The resulting mass spectrum is then interrogated for definitive mass peaks that signify the presence of the target bacteria.

SUMMARY OF THE INVENTION

The invention is directed to a method for determining if a target bacterium is present in a liquid solution when the target bacterium is or may be present in a low concentration that is at or near the detection limit for a particular detection technology. As used herein, the term "target bacterium" refers to a specie of species of bacteria. In turn, the invention is applicable to situations in which it is desirable to determine whether a target bacterium (e.g., *E. coli*) is present in a liquid solution when the number of target bacterium per unit volume of solution (i.e., the concentration of the target bacterium) is or may be below the detection limit for a particular detection technology. In some instances, a plurality of target bacterium may be referred to as the target bacteria.

In one embodiment, the process comprises using a biological amplification procedure in which bacteriophages for the target bacterium are applied to the liquid solution. (Bacteriophages are viruses that infect bacteria and in the process produce many progeny. Structurally, the bacteriophage consists of a protein shell (capsid) that encapsulates the viral nucleic acid. The capsid is constructed from repeating copies of the same protein. Bacteriophages are able to infect specific bacterial cells and because of the multiplication of the genetic material, the cells eventually burst releasing millions of copies of the original phage.) The bacteriophages and any of the target bacterium present in the liquid solution are allowed to incubate. During the incubation period, the bacteriophages will multiply by infecting target bacterium present in the solution. More specifically, the bacteriophage replicates numerous copies of itself in an infected target bacterium. Eventually, the infected target bacterium lyses and the replicated or progeny bacteriophages are released

into the liquid solution. The solution is then analyzed to determine if a biomarker for the bacteriophage is present, thereby indirectly indicating that the target bacterium is present in the liquid solution. Possible analysis techniques comprise mass spectrometry techniques, such as MALDI-MS and electro-spray ionization-MS techniques.

To assure that the detection of a biomarker for the bacteriophage indicates that the target bacterium is present in the liquid solution, a concentration of the bacteriophage is applied to the liquid solution that is below the detection limit for the biomarker for the bacteriophage for whatever analysis technique is employed. This assures that if the biomarker for the bacteriophage is detected by the analysis technique, the detectable concentration of the biomarker is attributable to the replication of the bacteriophage by the target bacterium present in the liquid solution. In certain situations, the use of such a concentration of bacteriophage has a multiplicity of infection ("MOI") (i.e., ratio of infecting bacteriophages to target bacterium) that is too low to rapidly produce a sufficient concentration of bacteriophages or biomarkers for the bacteriophage for detection.

Another embodiment of the process addresses this problem by adding a very high concentration of the bacteriophage to the liquid solution, thereby assuring a high MOI. In this case, the concentration of the bacteriophage added to the solution may exceed the detection limit of whatever analysis technique is employed to detect the bacteriophage or biomarker of the bacteriophage. Consequently, the process applies parent bacteriophage to the solution that can distinguish from any progeny bacteriophage resulting from the infection of target bacterium in the mixture. If the distinguishable progeny bacteriophage or a distinguishable biomarker of the progeny bacteriophage are present, this indicates that the target bacterium is present in the solution.

In one embodiment, the parent bacteriophage (i.e., the bacteriophage initially applied to the solution) are "tagged" so that whatever analysis technique is employed is inherently capable of distinguishing the parent bacteriophage or parent bacteriophage biomarkers from the progeny bacteriophage or biomarkers for the progeny bacteriophage. For example, if a mass spectral analysis technique is employed, the parent bacteriophage are "tagged" with a substance that alters or shifts the mass spectrum of the parent bacteriophage relative to the progeny bacteriophage, which will not inherit the "tag" from the parent bacteriophage. For example, a biotinylated bacteriophage can be employed as a parent bacteriophage and will have a different mass spectrum than the progeny bacteriophage produced by the biotinylated bacteriophage infecting target bacterium present in the solution. Other "tags" can be employed for other types of analytical techniques.

In another embodiment, the parent bacteriophage possesses a characteristic that allows the parent bacteriophage to be separated from the progeny bacteriophage in the liquid solution prior to analysis, thereby assuring that most, if not all of the bacteriophages present in the liquid solution after separation are progeny bacteriophage resulting from the replication of the parent bacteriophage by target bacteria present in the liquid solution. In one embodiment, the parent bacteriophages initially applied to the liquid solution are biotinylated bacteriophages. Biotinylated bacteriophages are highly attracted to streptavidin. This attraction is exploited to separate the biotinylated bacteriophage from progeny bacteriophage resulting from replication of the biotinylated bacteriophage by target bacterium present in the mixture.

In one embodiment, the biotinylated bacteriophage are attached to a streptavidin coated probe. Consequently, separation of the biotinylated bacteriophage from the liquid

solution after the incubation period is accomplished by removing the probe from the liquid solution. In another embodiment, streptavidin-coated magnetic beads are applied to the liquid solution. The beads are used to pick up the biotinylated bacteriophage. The beads are then separated from the liquid solution using a magnet. In yet another, embodiment a streptavidin coated probe (e.g., a slide) is applied to the liquid solution after the incubation period. The biotinylated bacteriophage adhere to the probe and then the probe is separated from the liquid solution.

Yet a further embodiment of the invention recognizes that the liquid solution in which the target bacterium may be present is or may be a complex mixture that includes biological material that makes the detection of the bacteriophage or biomarker for the bacteriophage more difficult or reduces the reliability of the information provided by the detection technology employed. For instance, when a mass spectrometry detection methodology is employed, the complex mixture may produce a signal in which the biomarker associated with the bacteriophage is obscured or, stated differently, has a low signal-to-noise ratio. To address this possibility, the liquid solution is subject to a purification step in which target bacterium that are present in the liquid solution are separated from the remainder of the solution. In one embodiment, immuno-magnetic separation ("IMS") is utilized to separate target bacterium present in the liquid solution from the remainder of the solution. In one particular embodiment, magnetic beads are coated with an antibody for the target bacterium. The antibodies pick up the target bacterium present in the liquid mixture and then a magnet is used to separate the beads from the remainder of the liquid solution. The beads and any adhering target bacterium are then subjected to the biological amplification process and analysis. It should be appreciated this purification step also addresses the possibility that feral versions of the bacteriophage may be present in the liquid solution and that such versions could produce a false positive if the liquid solution was not subjected to a purification step.

If feral versions of the bacteriophage are not of concern, the purification step can be implemented after the biological amplification process. In this embodiment, the purification step involves separating the bacteriophages and the liquid solution, rather than separating the target bacterium and the liquid solution. In one embodiment, an IMS is used in which magnetic beads are coated with an antibody for the bacteriophage. The beads pick up the bacteriophages present in the solution and then a magnet is used to separate the beads from the remainder of the solution.

In another embodiment of the invention, the analysis step comprises using MS/MS analysis to determine if a biomarker for the target bacterium is present. The use of MS/MS analysis produces a highly reliable indication of the presence of a biomarker for a target bacterium. As a consequence, at least in some cases, the use of MS/MS analysis renders the need for a purification step unnecessary.

In yet another embodiment, the invention is directed to a process for detecting low concentrations of a target bacterium in complex mixtures. In one embodiment, the process comprises using an IMS procedure to isolate at least some of a target bacterium that may be present in a liquid mixture. The process further includes employing a biological amplification procedure in which a low titer or concentration of bacteriophages for the target bacterium are applied to at least some of the target bacterium that has been isolated by the IMS procedure. The mixture of bacteriophages and any of the target bacterium that has been isolated is allowed to

incubate. If at least a certain concentration of the target bacterium is present, the bacteriophages will multiply during the incubation period such that a high titer or concentration of bacteriophages will be present in the mixture and detectable by MALDI-TOF-MS analysis. If no or only a small number of the target bacterium is present, there will be a low concentration of bacteriophages present in the mixture that will not be reasonably detectable by MALDI-TOF-MS analysis. Following incubation, a MALDI-TOF-MS analysis is performed on the incubated mixture of bacteriophages and target bacterium. The resulting mass spectrum is analyzed to determine if a protein that is associated with the bacteriophages is present. If the protein for the bacteriophage is detected, then it can be concluded that at least a low concentration of the target bacterium is present in the mixture.

It should also be appreciated that the method of the invention is capable of detecting low concentration of a target bacterium regardless of the manner in which the bacterium was grown or propagated.

BRIEF DESCRIPTION OF THE DRAWINGS

FIG. 1 depicts, for one embodiment of the invention, an immunomagnetic bead that is used to isolate the target microorganism (antibodies not drawn to scale);

FIG. 2 is a schematic representation of the immunomagnetic purification step used to isolate a target antigen (*Escherichia coli*) in one embodiment of the invention;

FIG. 3 is a schematic representation of the bacteriophage amplification step for one embodiment of the invention;

FIG. 4 shows a typical MALDI-TOF mass spectrum obtained from a high titer sample of MS2 in PBS; and

FIGS. 5A-5C illustrate how an embodiment of the invention was able to detect a biomarker of the bacteriophage indicative of presence of *E. coli* for decreasing concentrations of *E. coli*.

DETAILED DESCRIPTION

Generally, the invention relates to the use of a bacteriophage to indirectly detect the presence of a target bacterium in a liquid solution where the concentration of the target bacterium is or is likely to be near or below the detection limit for the particular detection technology employed.

Bacteriophages are viruses that infect bacteria and in the process of infecting the bacteria produce many progeny. Structurally, the bacteriophage consists of a protein shell (capsid) that encapsulates the viral nucleic acid. The capsid is constructed from repeating copies of the same protein(s). Bacteriophages are able to infect specific bacterial cells and because of the multiplication of the number of progeny, the cells eventually burst releasing millions of copies of the original phage. This infection process has been utilized to serve as a biomarker amplification step for detecting low concentrations of target bacterial cells. For example, the capsid of the MS2 bacteriophage contains 180 copies of a 13 kDa protein. This particular virus specifically infects strains of *Escherichia coli* and is able to produce between 10,000 to 20,000 copies of itself within 40 min after attachment to the target bacterial cell. Essentially, one *E. coli* could be infected with MS2 resulting in the replication of the capsid protein(s) by a factor of 1.8×10^6 .

The results from matrix assisted laser desorption ionization/mass spectrometry (MALDI/TOF) can be used to show the utility of the amplification step. MALDI-TOF-MS is a proven technique for identifying whole cellular microorgan-

isms (Holland et al 1996; van Barr 2000; Madonna et al. 2000). In principle, MALDI is a 'fingerprinting' technique where mass spectra featuring varying distributions of protein signals are generated. The signature profiles are produced due to inherent differences in microbial proteomes that make it possible to discriminate between organisms down to the strain level (Arnold and Reilly 1998).

In an experiment where the protein MALDI signal from target bacterial cells was too weak for detection, the addition of low levels (too low to detect by MALDI) of the appropriate phage to the target bacterial cells after about thirty minutes produced a detectable protein MALDI signal attributable to the phage capsid protein. Bacteriophages specific for other bacterial species typically have capsid proteins of different molecular weight and therefore give a different MALDI signal. Therefore, the procedure is applicable to a multitude of different bacterial species. Other detection technologies, such as ion mobility spectrometry, optical spectroscopy, immuno techniques, chromatographic techniques and aptamer processes, are also feasible.

Generally, the process for detecting low concentrations of a target bacterium in a complex liquid mixture that contains or is likely to contain biological material other than the target bacterium comprises processing the mixture or a portion thereof to produce a liquid mixture, solution or sample for analysis that, if at least a certain concentration of the target bacterium is present in the mixture, a discernable signal or indication thereof is produced. It should be understood that the terms "liquid solution" and "liquid mixture" refer to the original solution or mixture that is the subject of the test and any liquid solutions or mixtures that, as a result of the application of the method, contain a portion of the original solution or mixture.

In one embodiment, the process comprises making a determination if a low concentration of a target bacterium is present in the liquid solution. This determination can be made by assuming that any of the target bacterium that are present in the liquid solution are present in a low concentration. Alternatively, an assay can be performed to determine if the target bacterium is present in a concentration that reliably exceeds the detection limit of whatever detection technology is being utilized. For instance, a mass spectrometry technique can be utilized. If the mass spectrometry technique provides a reliable signal indicative of the presence of the target bacterium in the liquid solution, no further steps need to be taken. If, however, the mass spectrometry technique does not provide a reliable signal indicative of the presence of the target bacterium in the liquid solution, then it can be concluded that the target bacterium may be present in the liquid solution but in a concentration that below or near the detection limit of the mass spectrometry technique. In this case, further steps are taken to determine whether the target bacterium is present in the liquid solution in a concentration that is under the detection limit of the mass spectrometry technique.

The process involves a purification step that involves capturing the target bacterium that may be present in the mixture and separating any of the captured bacterium from other biological material that may be present in the mixture. By separating any of the captured target bacterium from other biological material that may be present in the mixture, the portion of the subsequently produced mass spectrum signal associated with other biological material present in the mixture is reduced. In one embodiment, an immunomagnetic separation (IMS) technique is used to capture and separate the target bacterium.

The process further comprises subjecting at least some of any of the captured and separated target bacterium to an amplification step in which the target bacterium are infected with a bacteriophage that is specific to the target bacterium. If there is at least a certain concentration of the target bacterium present, the bacteriophage will multiply to a point that a biomarker associated with the bacteriophage will be detectable using an analysis technique, such as MALDI/TOF-MS. In the case of MALDI/TOF-MS, a portion of the subsequently produced mass spectral signal indicative of the presence of the bacteriophage will be increased. If there is less than a particular concentration of the target bacterium present, the bacteriophage will not multiply sufficiently to be detectable in the mass spectrum produced using MALDI/TOF-MS. In essence, provided there is at least a certain concentration of the target bacterium present in the mixture, the purification and amplification steps serve to increase the signal-to-noise ratio for the portion of the subsequently produced mass spectrum that is associated with the bacteriophage.

After amplification, at least a portion of the amplified mixture is subjected to analysis to determine if a biomarker for the target bacterium is present. For example, MALDI/TOF-MS analysis can be used to produce a mass spectrum. The mass spectrum is analyzed to determine if one or more biomarkers for the bacteriophage are present. If such biomarkers are present, this is an indirect indication that at least a certain concentration of the target bacterium was present in the originally sampled mixture.

It should be appreciated that the need for the purification step may not be necessary in situations in which the portion of the signal associated with other biological materials can be filtered, eliminated or otherwise ignored and/or in situations in which the amplification step has a gain such that the portion of the mass spectrum associated with the bacteriophage is likely to exceed any background signal associated with other biological materials and/or situations in which a false positive is considered to be remote. Further, it should also be appreciated that one of the other biological materials that can make it difficult to determine if the biomarker for the bacteriophage is present is a wild version of the bacteriophage that is present in the liquid solution that is being tested. The purification step addresses the presence of a wild bacteriophage.

If the presence or possible presence of a wild bacteriophage in the solution or mixture being tested is not a concern, it is also possible to perform a purification step after the amplification step. However, in this case, the bacteriophage is separated from the remainder of the liquid solution. The previously noted IMS technique can be employed. However, the magnetic bead is coated with an antibody for the bacteriophage, rather than an antibody for the target bacterium.

It is also possible in certain cases to eliminate the need for a purification step by utilizing a highly specific analysis technique, such as MS/MS, in which the biomarker for the bacteriophage is so highly specific to the bacteriophage that there is little likelihood of a false positive. Currently, the use of MS/MS is limited to capsid proteins that are less than 7000 Da.W

With reference to FIG. 1, the immunomagnetic separation (IMS) technique for capturing the target bacterium in a mixture and separating any captured target bacterium from other biological material in the mixture is described. Micro-size beads are constructed from an iron oxide core coated with a polymeric surface. Secondary antibodies raised against the Fc region of the primary antibodies are

covalently attached via a linker to the polymer surface. The primary antibody (raised against a targeted microorganism) is attached to the beads by strong noncovalent interactions with the secondary antibody, which holds the primary antibody in the proper orientation for reaction with the targeted antigen.

With reference to FIG. 2, the immunomagnetic beads are added to the bacterial or biological mixture that is the subject of the analysis and incubated for 20 minutes at room temperature. The beads are then isolated to the side of the reaction tube using a magnet. This process allows the extraneous (non-targeted) material to be removed by aspiration. At this stage, the beads can be washed several times prior to re-suspending them in PBS.

With reference to FIG. 3, the bead-bacterial target complex is admixed with a low titer suspension of bacteriophage specific to the targeted bacterium. The titer is held low so that the mass spectrometry signal from the virus is non-detectable. After a 40-minute incubation, the bacteriophage have completed a propagation cycle of attachment, insertion, self-assembly, and cell lysis resulting in the production of many progeny that are released into the reaction milieu. The milieu is then analyzed to determine if a biomarker for the bacteriophage is present that indirectly indicates that the target bacterium was present. For instance, the milieu can be analyzed by MALDI-TOF-MS using a sandwich sample preparation technique with a ferulic acid matrix. Other MALDI matrices known in the art are also feasible. The resulting mass spectrum shows the presence of the bacteriophage capsid protein, which would not have been present if the target bacterium was not also present.

An IMS technique for capturing target bacterium in a mixture and separating any captured target bacterium from other biological material in the mixture and subsequent MALDI-TOF/MS analysis are described in U.S. patent application Ser. No. 10/063,346, entitled "Method for Determining if a Type of Bacteria is Present in a Mixture," filed on Apr. 12, 2002, which is incorporated herein, in its entirety, by reference.

EXAMPLE

As described hereinafter, an embodiment of the method has been used to reduce the detection limit for *E. coli* to less than 5.0×10^4 cells mL^{-1} . The method used immunomagnetic beads coated with antibodies against *E. coli*, hereinafter referred to as the target-bead complex, to isolate the bacterium from solution. The target-bead complex was then re-suspended in a solution containing MS2, a bacteriophage that is specific for *E. coli*. The MS2 bacteriophage concentration was adjusted so that the ion signal from the capsid protein of the MS2 bacteriophage was below the detection limit of the mass spectrometer. After a 40-minute incubation period, an aliquot of the solution was removed and analyzed by the on-probe MALDI-TOF-MS procedure for the 13 kDa capsid protein. The $[\text{M}+\text{H}]^+$ (m/z 13,726) and $[\text{M}+2\text{H}]^{+2}$ (m/z 6865) ion signals for the MS2 capsid protein were detected (FIG. 4).

With reference to FIG. 5A, application of the process to a mixture that contains a concentration of 5.0×10^5 *E. coli* cells mL^{-1} yields a mass spectrum with protein signals for both *E. coli* and the MS2 bacteriophage. The process was repeated for decreasing concentrations of *E. coli*. Specifically, with reference to FIG. 5B, the process was repeated for a concentration of $\sim 5.0 \times 10^5$ *E. coli* cells mL^{-1} . In this case, the mass spectrum fails to definitively show any protein signals for the *E. coli* cells, but does show the protein signals

for the MS2 bacteriophage capsid protein. With reference to FIG. 5C, the process was repeated for an *E. coli* concentration of $\sim 5.0 \times 10^4$ cells mL^{-1} . In this case, the mass spectrum fails to definitively show any protein signals for the *E. coli* cells but still show protein signals for the MS2 bacteriophage capsid protein. These results indicate that *E. coli* was trapped by the immunomagnetic beads and then infected by the MS2 virus, which was able to multiply and increase the concentration of the capsid protein to a detectable level. Presently, target bacterium concentrations of as low as $\sim 1.0 \times 10^3$ cells mL^{-1} have been indirectly detected using this process.

The following describes various aspects of the embodiment of the method implemented with respect to the example of the detection of *E. coli*.

E. coli Preparation

The *E. coli* bacteria were grown in trypticase soy broth (TSB) (Difco, Detroit, Mich.) with incubation at 37° C. using standard microbial methods.

Bacteriophage Propagation

Bacteriophage propagation was performed in accordance to the Adams agar-overlay method as described in M. H. Adams' Bacteriophages (Interscience Publishers, Inc., New York, 1959). Briefly, a soft-agar/host covering was prepared by overlaying agar plates (trypticase soy agar, Difco) with a 2.5 mL of melted 0.5% agar (same medium), which contained two drops of a 20 hr host in TSB. The soft-agar covering was allowed to harden before the addition of a 0.5 mL overlay of a concentrated suspension of MS2, prepared by re-hydrating freeze-dried MS2 in TSB. After 24 hours, the soft agar was scraped off the surface of the agar plates and centrifuged (1000 G) for 25 min to sediment the cellular debris and agar. The supernatant was conserved, passed through 0.22 μm Millipore filters, and stored by refrigeration at 4–8° C.

Immunomagnetic Bead Preparation R

Rabbit anti-*E. coli* IgG antibodies (Cortex Biochem, San Leandro, Calif.) were attached to the immunomagnetic beads (MagaBeads, Goat anti-Rabbit IgG F(c), Cortex Biochem) using the manufacturer's suggested protocol.

Immunomagnetic Separation (IMS) *E. coli* E

Escherichia coli were isolated from aqueous suspensions by affinity capture using the immunomagnetic beads. Suspensions of bacteria were prepared in 1.5 mL microcentrifuge tubes (Brinkmann Instruments, Inc., Westbury, Ny) by combining 100 μL of broth media with 900 μL of phosphate buffer saline (PBS, 0.01 M Na_2HPO_4 , 0.15M NaCl titrated to pH 7.35 with HCl). Cell concentrations were determined using a Petroff-Hausser counting chamber (Hauser Scientific, Horsham, Pa.).

The immunomagnetic separation (IMS) procedure developed in this investigation involved the following steps: In the first step, a 30 μL aliquot of the immunomagnetic beads were added to the bacterial sample solution and incubated for 20 minutes at room temperature with continuous shaking. The second step involved concentrating the beads to the side of the sample tube using a magnetic particle concentrator (Dynal, Lake Success, N.Y.) and removing the supernatant using a 1 mL pipette. In the third step, the magnet was removed and the beads were re-suspended in 1 mL of fresh PBS with vigorous shaking for 20 sec to wash away any nonspecifically adhering components. The bead suspension was then transferred to a new tube and steps 2 and 3 repeated one more time. In the fourth and final step, the beads were isolated with the magnet followed by decanting the buffer wash to waste and re-suspending the beads in 500 μL of deionized water. Subsequently, the bead-*E. coli* complexes

were admixed with a low titer (below the detection limit of the mass spectrometer) of the MS2 bacteriophage and incubated at room temperature with gentle shaking for 40 minutes. An aliquot of the suspension was then removed and analyzed for the MS2 capsid protein using a sandwich sample preparation with a ferulic acid matrix (12.5 mg of ferulic acid in 1 mL of 17% formic acid: 33% acetonitrile: 50% deionized H_2O).

MALDI-TOF MS

All mass spectra were generated on a Voyager-DE STR+ (AB Applied Biosystems, Framingham, Mass.) MALDI-TOF mass spectrometer, operating in the positive linear mode. The following parameters were used: accelerating voltage 25 kV, grid voltage 92% of accelerating voltage, extraction delay time of 350 nsec, and low mass ion gate set to 4 kDa. The laser intensity (N_2 , 337 nm) was set just above the ion generation threshold and pulsed every 300 ns. Mass spectra were acquired from each sample by accumulating 100 laser shots from five different sample spots (final spectrum=average of 5×100 laser shots).

It should be appreciated that to assure that the detection of a biomarker for the bacteriophage indicates that the target bacterium is present in the liquid solution, a concentration of "parent" bacteriophage is applied to the liquid solution that is below the detection limit for the bacteriophage or biomarker for the bacteriophage for whatever analysis technique is employed. This assures that if the bacteriophage or the biomarker for the bacteriophage is detected by the analysis technique, the detectable concentration of the bacteriophage or biomarker is attributable to progeny bacteriophage, i.e., bacteriophage resulting from the replication of the bacteriophage by the target bacterium present in the liquid solution. In certain situations, the use of such a concentration of "parent" bacteriophage has a multiplicity of infection ("MOI") (i.e., the ratio of the number of parent bacteriophage to the number of target bacterium) that is too low to produce a sufficient concentration of bacteriophages or biomarkers for the bacteriophage for detection.

To overcome the drawbacks associated with a low MOI, a sufficiently high concentration of "parent" bacteriophage is added to the liquid solution. In this case, the concentration of the "parent" bacteriophage added to the solution may exceed the detection limit of whatever analysis technique is employed to detect the bacteriophage or biomarker of the bacteriophage. Consequently, analysis of a liquid solution treated in this manner could detect the "parent" bacteriophages that were added to the solution, rather than the progeny bacteriophage resulting from replication by the target bacteria.

Consequently, another embodiment of the process applies a concentration of "parent" bacteriophage to the solution that is capable of being distinguished from any progeny bacteriophage. In one embodiment, the parent bacteriophage (i.e., the bacteriophage initially applied to the solution) are "tagged" so that whatever analysis technique is employed is inherently capable of distinguishing the parent bacteriophage or parent bacteriophage biomarkers from the progeny bacteriophage or biomarkers for the progeny bacteriophage. For example, if a mass spectral analysis technique is employed, the parent bacteriophage are "tagged" with a substance that alters or shifts the mass spectrum of the parent bacteriophage relative to the progeny bacteriophage, which will not inherit the "tag" from the parent bacteriophage. For example, a biotinylated bacteriophage is employed as a parent bacteriophage and has a different mass spectrum than the progeny bacteriophage produced by the biotinylated

11

bacteriophage infecting target bacterium present in the solution. Other “tags” can be employed for other types of analytical techniques.

In another embodiment, the parent bacteriophage possesses a characteristic that allows the parent bacteriophage to be separated from any of the progeny bacteriophage in the liquid solution prior to analysis, thereby assuring that most, if not all of the bacteriophage present in the liquid solution after separation are progeny bacteriophage resulting from the replication of the parent bacteriophage by target bacteria present in the liquid solution. In one embodiment, biotinylated bacteriophage are initially applied to the liquid solution. Biotinylated bacteriophage are highly attracted to streptavidin. Consequently, to separate the biotinylated bacteriophage from the liquid solution a streptavidin probe is utilized. In one embodiment, the biotinylated bacteriophage are attached to a streptavidin coated probe and the probe is placed in the liquid solution. In this case, separation of the biotinylated bacteriophage from the liquid solution after the incubation period is accomplished by removing the probe from the liquid solution. In another embodiment, streptavidin-coated magnetic beads are applied to the liquid solution. The biotinylated bacteriophages are attached to the streptavidin-coated magnetic beads prior to the application of the beads to the solution. Alternatively, the beads are used to pick up biotinylated bacteriophages that were previously added to the solution and then separated from the liquid solution using a magnet. In yet another, embodiment a streptavidin coated probe (e.g., a slide) is applied to the liquid solution after the incubation period. The biotinylated bacteriophages adhere to the probe and then the probe is separated from the liquid solution. Regardless of the manner in which the biotinylated bacteriophages are separated from the liquid mixture, at least a portion of the solution is then subjected to analysis to determine if the bacteriophage or a biomarker for the bacteriophage is present, which indirectly indicates that the target bacteria was present in the solution.

The invention claimed is:

1. A method for determining if a target bacterium is present in a liquid suspension comprising:
 - providing a liquid suspension that might contain a target bacterium;
 - commingling a first quantity of a bacteriophage and said liquid suspension to provide said bacteriophage with an opportunity to infect at least some of any target bacterium that are present in said liquid suspension and multiply the number of bacteriophage in said liquid suspension, wherein said first quantity of said bacteriophage is below the detection limit of a detection technology; and
 - analyzing, following said step of commingling, at least a portion of said liquid suspension using said detection technology to determine if a biomarker for said bacteriophage is present that indirectly indicates that said target bacterium was present in said liquid suspension.
2. A method, as claimed in claim 1, wherein: said step of analyzing comprises performing a mass spectrum analysis.
3. A method, as claimed in claim 1, wherein: said step of analyzing comprises performing a MALDI analysis.
4. A method, as claimed in claim 1, wherein: said step of analyzing comprises performing a MALDI-TOF analysis.
5. A method, as claimed in claim 1, wherein: said step of analyzing comprises performing an electrospray ionization mass spectrometry analysis.

12

6. A method, as claimed in claim 1, wherein: said step of analyzing comprises performing an ion mobility spectrometry analysis.
7. A method, as claimed in claim 1, wherein: said step of analyzing comprises performing an optical spectroscopy analysis.
8. A method, as claimed in claim 1, wherein: said step of analyzing comprises performing an immunoanalysis.
9. A method, as claimed in claim 1, wherein: said step of analyzing comprises performing a chromatographic analysis.
10. A method, as claimed in claim 1, wherein: said step of analyzing comprises performing an aptamer analysis.
11. A method, as claimed in claim 1, further comprising: determining whether said liquid suspension is likely to contain a biological element with a biomarker that could create a false positive for a biomarker for said bacteriophage.
12. A method, as claimed in claim 11, wherein: said step of determining comprises assuming that a biological element is present in said liquid suspension that has a biomarker that could create a false positive for a biomarker for said bacteriophage.
13. A method, as claimed in claim 11, wherein: said step of determining comprises performing an assay to determine if a biomarker is present that could create a false positive for a biomarker for said bacteriophage.
14. A method, as claimed in claim 11, further comprising: after a determination has been made that said biological element is likely to be present, separating said target bacterium from said liquid suspension.
15. A method, as claimed in claim 14, wherein: said step of separating comprises using immuno-magnetic beads coated with antibodies for said target bacterium.
16. A method, as claimed in claim 14, further comprising: after a determination has been made, said step of separating is performed prior to said step of commingling.
17. A method, as claimed in claim 14, wherein: after a determination has been made that said biological element is likely to be present and after said step of commingling, separating said bacteriophage from said liquid suspension.
18. A method, for determining if a target bacterium is present in a liquid suspension comprising:
 - providing a liquid suspension that might contain a target bacterium;
 - commingling a first quantity of a biotinylated bacteriophage and said liquid suspension to provide said biotinylated bacteriophage with an opportunity to infect at least some of any target bacterium that are present in said liquid suspension and produce progeny bacteriophage in said liquid suspension;
 - isolating, using a streptavidin coated surface, a substantial portion of said biotinylated bacteriophage from at least some of any of said progeny bacteriophage produced during said step of commingling and thereby produce an isolated liquid suspension that is substantially free of said biotinylated bacteriophage; and
 - analyzing, following said step of isolating, at least a portion of said isolated liquid suspension to determine if a biomarker for said progeny bacteriophage is present that indirectly indicates that said target bacterium was present in said liquid suspension;

13

said step of isolating comprises bringing said strepavidin coated surface and said liquid suspension into contact with one another to capture biotinylated bacteriophage in said liquid suspension.

19. A method, as claimed in claim **18**, wherein:

said step of isolating comprises separating said strepavidin coated surface with attached biotinylated bacte-

14

riophage and a sample of said isolated liquid suspension.

20. A method, as claimed in claim **19**, wherein:

said step of assaying comprises performing a mass spectrum analysis.

* * * * *

| | | | |
|----------------|--|---------|------------|
| 专利名称(译) | 检测使用噬菌体感染靶细菌细胞的低浓度靶细菌的方法 | | |
| 公开(公告)号 | US7166425 | 公开(公告)日 | 2007-01-23 |
| 申请号 | US10/249452 | 申请日 | 2003-04-10 |
| [标]申请(专利权)人(译) | MADONNA ANGELO J. 沃里斯KENT J. REES JON C. | | |
| 申请(专利权)人(译) | MADONNA ANGELO J. 沃里斯KENT J. REES JON C. | | |
| 当前申请(专利权)人(译) | 科罗拉多矿业学院 | | |
| [标]发明人 | MADONNA ANGELO J. VOORHEES KENT J. REES JON C. | | |
| 发明人 | MADONNA, ANGELO J. VOORHEES, KENT J. REES, JON C. | | |
| IPC分类号 | C12Q1/02 C12Q1/04 C12Q1/70 G01N33/53 A01N63/00 G01N27/62 G01N21/27 G01N30/88 G01N33/543 G01N33/569 | | |
| CPC分类号 | C12Q1/04 G01N33/56911 G01N33/54326 | | |
| 优先权 | 60/319184 2002-04-12 US | | |
| 其他公开文献 | US20040224359A1 | | |
| 外部链接 | Espacenet USPTO | | |

摘要(译)

本发明涉及一种用于检测液体溶液中低浓度细菌的方法，该方法可以是或不是复杂的液体溶液。在一个实施方案中，免疫磁性分离（IMS）用于将可能在液体混合物中的靶细菌与混合物中的其他成分分离。随后使用针对靶细菌的低浓度噬菌体来感染使用IMS技术捕获的靶细菌细胞。如果存在至少一定浓度的靶细菌，则噬菌体将繁殖至可检测的点。然后使用基质辅助激光解吸电离/飞行时间质谱（MALDI / TOF-MS）产生质谱，分析该谱以确定是否存在与噬菌体相关的一种或多种蛋白质，从而间接表明目标细菌存在于液体混合物中。

FIGURE 1

