

(19)



(11)

EP 2 333 116 B1

(12)

EUROPEAN PATENT SPECIFICATION

(45) Date of publication and mention of the grant of the patent:
06.05.2015 Bulletin 2015/19

(51) Int Cl.:
G01N 33/569 ^(2006.01) **C12Q 1/68** ^(2006.01)
G01N 33/53 ^(2006.01) **G01N 33/68** ^(2006.01)

(21) Application number: **11155053.9**

(22) Date of filing: **05.09.2007**

(54) Markers of renal transplant rejection and renal damage

Marker für Nierentransplantatabstoßung und Nierenschäden

Marqueurs de rejet de greffe de rein et de lésions rénales

(84) Designated Contracting States:
AT BE BG CH CY CZ DE DK EE ES FI FR GB GR HU IE IS IT LI LT LU LV MC MT NL PL PT RO SE SI SK TR

(30) Priority: **05.09.2006 GB 0617429**

(43) Date of publication of application:
15.06.2011 Bulletin 2011/24

(62) Document number(s) of the earlier application(s) in accordance with Art. 76 EPC:
07253514.9 / 1 905 846

(73) Proprietor: **Electrophoretics Limited Cobham Surrey KT11 3EP (GB)**

(72) Inventors:
 • **Kienle, Stefan D-60438, Frankfurt (DE)**
 • **Joubert, Richard D-60438, Frankfurt (DE)**

(74) Representative: **Gill-Carey, Daniela Proteome Sciences plc Coveham House Downside Bridge Road GB-Cobham, Surrey KT11 3EP (GB)**

(56) References cited:
WO-A2-2004/088276 US-A- 4 731 326
US-A1- 2003 003 588

- **CHAKRABORTY JOANA ET AL: "Tamm-Horsfall protein in patients with kidney damage and diabetes.", UROLOGICAL RESEARCH MAY 2004, vol. 32, no. 2, May 2004 (2004-05), pages 79-83, XP002467281, ISSN: 0300-5623**
- **TROF RONALD J ET AL: "Biomarkers of acute renal injury and renal failure", SHOCK (PHILADELPHIA): INJURY, INFLAMMATION, AND SEPSIS: LABORATORY AND CLINICAL APPROACHES, LIPPINCOTT WILLIAMS & WILKINS, US, vol. 26, no. 3, 1 September 2006 (2006-09-01), pages 245-253, XP009122654, ISSN: 1073-2322**
- **HONG C Y ET AL: "Markers of diabetic nephropathy.", JOURNAL OF DIABETES AND ITS COMPLICATIONS 1998 JAN-FEB LNKD-PUBMED:9442815, vol. 12, no. 1, January 1998 (1998-01), pages 43-60, XP002633600, ISSN: 1056-8727**
- **VOSHOL HANS ET AL: "Evaluation of biomarker discovery approaches to detect protein biomarkers of acute renal allograft rejection", JOURNAL OF PROTEOME RESEARCH, ACS, WASHINGTON, DC, US, vol. 4, no. 4, 1 July 2005 (2005-07-01), pages 1192-1199, XP002520052, ISSN: 1535-3893, DOI: DOI:10.1021/PR050060+**
- **CLARKE W ET AL: "CHARACTERIZATION OF RENAL ALLOGRAFT REJECTION BY URINARY PROTEOMIC ANALYSIS", ANNALS OF SURGERY, J.B. LIPPINCOTT COMPANY, PHILADELPHIA, US, vol. 237, no. 5, 1 May 2003 (2003-05-01), pages 660-665, XP009066802, ISSN: 0003-4932, DOI: DOI: 10.1097/00000658-200305000-00008**

EP 2 333 116 B1

Note: Within nine months of the publication of the mention of the grant of the European patent in the European Patent Bulletin, any person may give notice to the European Patent Office of opposition to that patent, in accordance with the Implementing Regulations. Notice of opposition shall not be deemed to have been filed until the opposition fee has been paid. (Art. 99(1) European Patent Convention).

Description**Field of the Invention**

5 [0001] The present invention relates to methods of detecting renal transplant rejection and other forms of renal damage.

Background to the Invention

10 [0002] Allograft rejection constitutes the major impediment to the success of renal transplantation. Chronic rejection is currently the most prevalent cause of renal transplant failure. Clinically, chronic rejection presents by chronic transplant dysfunction, characterized by a slow loss of function, often in combination with proteinuria and hypertension. Chronic rejection develops in grafts that undergo intermittent or persistent damage from cellular and humoral responses resulting from indirect recognition of alloantigens. The most effective option to prevent renal failure from chronic rejection is to avoid graft injury from both immune and nonimmune mechanism together with nonnephrotoxic maintenance immuno-suppression. Currently available diagnostic methods, including clinical presentation and biochemical organ function parameters, often fail to detect rejection until late stages of progression.

Summary of the Invention

20 [0003] The inventors have identified biomarkers for detection of renal allograft rejection and other forms of renal damage. The invention relates to diagnosis and treatment of renal damage, including renal transplant allograft rejection, using these biomarkers. Use of the biomarkers includes use or detection of the proteins identified or fragments thereof, nucleic acids encoding said proteins or the complement thereof, and antibodies binding to said proteins

25 [0004] Thus, the invention provides a method for the diagnosis and/or prognosis of renal damage, the method comprising determining the presence or amount of a plurality of marker proteins, or a plurality of nucleic acids encoding said proteins, selected from AMBP protein precursor (α_1 -microglobulin), adiponectin, C4b-binding protein α -chain precursor, ceruloplasmin precursor, complement C3 precursor, complement component C9 precursor, complement factor D precursor, α_{1B} -glycoprotein, β_2 -glycoprotein I precursor, heparin cofactor II precursor, Ig μ Chain C region protein, Leucine-rich α_2 -glycoprotein precursor, pigment epithelium-derived factor precursor, plasma retinol-binding protein precursor and translation initiation factor 3 subunit 10, N-acetylmuramoyl-L-alanine amidase precursor; or a fragment thereof, or antibodies against said proteins, in a sample from a patient.

30 [0005] In some embodiments, prognosis and/or diagnosis is prognosis and/or diagnosis of chronic rejection following renal transplantation, also known as chronic allograft nephropathy (CAN). In other embodiments, prognosis and /or diagnosis may be prognosis and/or diagnosis of renal damage caused by disease or toxicity, for example

35 [0006] In one embodiment, the method comprises the steps of: -

- (a) contacting a sample from a patient with a solid support having immobilised thereon a binding agent having binding sites which are capable of specifically binding to the marker protein, antibody or nucleic acid with a sample from a patient under conditions in which the marker protein, antibody or nucleic acid bind to the binding agent; and,
40 (b) determining the presence or amount of the marker protein, antibody or nucleic acid bound to the binding agent.

[0007] Step (b) may comprise (i) contacting the solid support with a developing agent which is capable of binding to occupied binding sites, unoccupied binding sites or the marker protein, antibody or nucleic acid, the developing agent comprising a label and (ii) detecting the label to obtain a value representative of the presence or amount of the marker protein, antibody or nucleic acid in the sample.

[0008] The label may be, for example, a radioactive label, a fluorophor, a phosphor, a laser dye, a chromogenic dye, a macromolecular colloidal particle, a latex bead which is coloured, magnetic or paramagnetic, an enzyme which catalyses a reaction producing a detectable result or the label is a tag.

50 [0009] In some embodiments, the binding agent is a protein set out in Table 4 or Table 5, or a fragment thereof. In other embodiments, the binding agent is an antibody which is capable of binding to a protein set out in Table 4 or Table 5, or a fragment thereof. In other embodiments, the binding agent may be a nucleic acid which is complementary to the sequence of the nucleic acid to be detected.

[0010] In an alternative embodiment, the method comprises detecting a marker protein or marker proteins in a sample from a patient using mass spectroscopy. The proteins in the sample may be immobilised on a solid support. Optionally, the proteins may be subjected to proteolytic digestion prior to analysis. Suitable analytical methods include SELDI-TOF and MRM.

55 [0011] In some embodiments, the method comprises determining the presence or amount of a plurality of marker proteins, antibodies or nucleic acids associated with renal damage in a single sample. For example, a plurality of binding

agents may be immobilised as predefined locations on the solid support.

[0012] Also provided is a kit for use in the diagnosis or prognosis of renal damage by determining the presence or amount of a plurality of analytes selected from AMBP protein precursor (α_1 -microglobulin), adiponectin, C4b-binding protein α -chain precursor, ceruloplasmin precursor, complement C3 precursor, complement component C9 precursor, complement factor D precursor, α_{1B} -glycoprotein, β_2 -glycoprotein I precursor, heparin cofactor II precursor, Ig μ Chain C region protein, Leucine-rich α_2 -glycoprotein precursor, pigment epithelium-derived factor precursor, plasma retinol-binding protein precursor and translation initiation factor 3 subunit 10, N-acetylmuramoyl-L-alanine amidase precursor; or a fragment thereof, or antibodies against these proteins, or nucleic acids encoding these proteins, in a sample from a patient, the kit comprising:

- (a) a solid support having binding agents capable of binding to the plurality of analytes immobilised thereon;
- (b) a developing agent comprising a label; and,
- (c) one or more components selected from the group consisting of washing solutions, diluents and buffers. The binding agent may be as described above. In particular, for detection of an autoantibody, the binding agent may be a protein set out in Table 4 or Table 5, or a fragment thereof. For detection of a marker protein, the binding agent may be an antibody which is capable of binding to a protein set out in Table 4 or Table 5, or a fragment thereof. For detection of a nucleic acid, the binding agent may be a nucleic acid which is complementary to the sequence of the nucleic acid to be detected.

[0013] Also described herein is a kit for use in the diagnosis or prognosis of renal damage by determining the presence or amount of an analyte selected from a protein set out in Table 4 or Table 5, in a sample from a patient, the kit comprising one or more MRM peptides, as described below, in an assay-compatible format.

[0014] Also described herein is the use of a protein set out in Table 4 or Table 5, or a fragment thereof, or antibodies capable of specifically binding these proteins, for the preparation of a medicament for the treatment of renal damage.

[0015] Further described is the use of the presence or amount of a nucleic acid encoding any one of the proteins set out in Table 4 or Table 5 or a fragment thereof as a marker for the diagnosis and/or prognosis of renal damage.

[0016] In one embodiment, the invention provides a method for the diagnosis and/or prognosis of renal damage, the method comprising determining the presence or amount of a nucleic acid encoding any one of the proteins set out in Table 4 or Table 5, or a fragment thereof, in a sample from a patient.

[0017] Also provided is a kit as described above for use in the diagnosis or prognosis of chronic renal transplant rejection.

[0018] Renal damage may include chronic rejection following renal transplantation, also known as chronic allograft nephropathy, or renal damage caused by disease or toxicity.

[0019] The methods of the invention are in most cases in vitro methods carried out on a sample from a patient. The sample used in the methods described herein may be a tissue or body fluid sample, for example a renal tissue sample, a blood or blood product (such as serum or plasma) sample or a urine sample. In a preferred embodiment, the sample is a depleted sample, i.e. a sample from which highly abundant proteins have been removed or depleted.

[0020] In preferred embodiments, said marker protein is any one of N-acetylmuramoyl-L-alanine amidase precursor, adiponectin, AMBP protein precursor (α_1 -microglobulin), C4b-binding protein α -chain precursor, ceruloplasmin precursor, complement C3 precursor, complement component C9 precursor, complement factor D precursor, α_{1B} -glycoprotein, β_2 -glycoprotein I precursor, heparin cofactor II precursor, Ig μ Chain C region protein, Leucine-rich α_2 -glycoprotein precursor, pigment epithelium-derived factor precursor, plasma retinol-binding protein precursor and translation initiation factor 3 subunit 10.

Brief Description of the Drawings

[0021]

Figure 1 Analytical 2D-gel of serum sample C51-1 (comparison C1 vs. C3)

Figure 2 Analytical 2D-gel of serum sample C51-1 (comparison C1 vs. C3)

Figure 3 Analytical 2D-gel of serum sample D12-1 (comparison D1 vs. D3)

Figure 4 Preparative 2D-gel of pooled control samples of *study group*

Figure 5 Preparative 2D-gel of pooled disease samples of *study group*

Figure 6 Histograms of the time course of protein regulations from disease (dark grey) and control (light grey)

EP 2 333 116 B1

samples of table 4 at timepoints 1, 2 and 3. Vertical axis: normalised spot volume. Horizontal axis: timepoints 1, 2 and 3.

5	A	Spot 61 Plasminogen precursor
	B	Spot 210 Ig μ chain C region
	C	Spot 213 Ig μ chain C region
	D	Spot 214 Ig μ chain C region
	E	Spot 445 b2-glycoprotein I precursor
10	F	Spot 453 Complement C1R subcomponent precursor
	G	Spot 461 b2 glycoprotein I precursor
	H	Spot 466 b2-glycoprotein I precursor
	I	Spot 553 Pigment epithelium-derived factor precursor
	J	Spot 557 Pigment epithelium-derived factor precursor
15	K	Spot 559 Pigment epithelium-derived factor precursor
	L	Spot 563 Pigment epithelium-derived factor precursor
	M	Spot 570 Pigment epithelium-derived factor precursor
	N	Spot 673
	O	Spot 712 Transthyretin precursor
	P	Spot 722 a1-microglobulin
20	Q	Spot 728 a1-microglobulin
	R	Spot 730 a1-microglobulin
	S	Spot 734 a1-microglobulin
	T	Spot 735 a1-microglobulin
	U	Spot 741 a1-microglobulin
25	V	Spot 760 Complement factor H-related protein 2 precursor
	W	Spot 771 Complement C3 precursor, a chain
	X	Spot 781 Complement C3 precursor, a chain/Complement C4 precursor
	Y	Spot 785 Complement factor D precursor
	Z	Spot 760 Complement D precursor
30	AA	Spot 825 Plasma retinol-binding protein precursor
	BB	Spot 826 Plasma retinol-binding protein precursor
	CC	Spot 847 b2-glycoprotein precursor

Figure 7 Histograms of the time course of protein regulations from disease (dark grey) and control (light grey) samples of table 4 at timepoints 1, 2 and 3. Vertical axis: normalised spot volume. Horizontal axis: timepoints 1, 2 and 3.

40	A	Spot 56 Ceruloplasmin precursor (Ferroxidase)
	B	Spot 113 Complement factor B precursor
	C	Spot 149 a2-macroglobulin precursor
	D	Spot 150 a2-macroglobulin precursor
	E	Spot 238 Inter-a-trypsin inhibitor heavy chain H1 precursor
	F	Spot 242 Inter-a-trypsin inhibitor heavy chain H1 precursor
	G	Spot 243 Inter-a-trypsin inhibitor heavy chain H1 precursor
45	H	Spot 463 Complement C1r subcomponent precursor
	I	Spot 464 Complement C1r subcomponent precursor
	J	Spot 498
	K	Spot 510 Hemopexin precursor (b1B-glycoprotein)
	L	Spot 515 Hemopexin precursor (b1B-glycoprotein)
50	M	Spot 551 Hemopexin precursor (b1B-glycoprotein)
	N	Spot 562 Leucine-rich a2-glycoprotein precursor
	O	Spot 622 Apolipoprotein A-IV precursor
	P	Spot 657 Translation initiation factor 3 subunit 10/Ceruloplasmin precursor
	Q	Spot 711 Complement C4-pre/Complemen C4-b pre
55	R	Spot 854 a1B-glycoprotein precursor

Fig 9 PCA scores plot of the control data set containing all gels.

Fig 10 PCA scores plot of the control data set without the outliers gels.

Fig 11 PCA scores plot of the disease data set containing all gels.

5 **Fig 12** PLS-DA scores plot of the Control/1 and Control/3 groups.

Fig 13 PLS-DA loading plots (spot numbers) of the Control_1 and Control_3 groups. In lighter type are indicated numbers of spots which have been selected through the 2D gel approach.

10 **Fig 14** PLS scores plots of the Disease/1 and Disease/3 groups.

Fig 15 PLS-DA loading plots (spot numbers) of the Disease/1 and Disease/3 groups. In lighter type are indicated numbers of spots which have been selected through the 2D gel approach.

15 **Fig 16** PCA score plots of the control/1 and disease/1 groups.

Fig 17 PLS scores plots of the sample/1 data set.

20 **Fig 18** PLS loadings plots of the sample/1 groups. In lighter type are indicated numbers of spots which have been selected through the 2D gel approach.

Fig 19 PCA score plots of the control/3 and disease/3 groups.

25 **Fig 20** PLS score plots of gels from the sample/3 data set.

Detailed description

Renal damage

30 **[0022]** Renal damage may arise from, for example, transplant rejection, disease, toxicity and ischemic injury.

[0023] Renal transplant rejection is preferably chronic rejection, usually defined as rejection occurring six months or more after the transplant. Rejection may also be acute rejection, usually defined as rejection occurring up to six months after the transplant.

35 **[0024]** Disease may include Alport's Syndrome, Amyloidosis, Diabetes and the kidney, Fabry Disease, Focal and segmental Glomerulosclerosis (FSGS), Henoch-Schonlein purpura, Iga nephropathy (Berger's disease), Infantile Polycystic Disease, Kidney Stones, Haematuria Syndrome, Lupus and Lupus Kidney Disease, Membranoproliferative Glomerulonephritis (MPGN), Microscopic Polyarteris, Minimal Change Nephropathy, Reflux nephropathy, Renal artery stenosis, Vasculitis, Vesico-Ureteric Reflux and Wegeners granulomatosis

[0025] Toxicity may be, for example, a side effect of drug treatment.

40

Marker protein

[0026] The marker proteins disclosed herein may find use in diagnosis, prognosis or treatment in a variety of ways. The proteins themselves, or fragments thereof, may be detected in a diagnostic or prognostic assay as described below.

45 **[0027]** Marker proteins may be selected from any of the proteins shown in Table 4 or Table 5. Preferred marker proteins are N-acetylmuramoyl-L-alanine amidase precursor, adiponectin, AMBP protein precursor (α_1 -microglobulin), C4b-binding protein α -chain precursor, ceruloplasmin precursor, complement C3 precursor, complement component C9 precursor, complement factor D precursor, α_{1B} -glycoprotein, β_2 -glycoprotein I precursor, heparin cofactor II precursor, Ig μ Chain C region protein, Leucine-rich α_2 -glycoprotein precursor, pigment epithelium-derived factor precursor, plasma retinol-binding protein precursor and translation initiation factor 3 subunit 10.

50 **[0028]** The term "marker protein" or "biomarker" includes all biologically relevant forms of the protein identified, including post-translationally modified forms. For example, the marker protein can be present in the body tissue in a glycosylated, phosphorylated, multimeric or precursor form.

55 **[0029]** Fragments of proteins to be detected or used for detection may be 10 or more, 20 or more, 30 or more, 40 or more, 60 or more, 70 or more, 80 or more, 100 or more, 150 or more, 200 or more, 250 or more, 300 or more, 350 or more, 400 or more or 500 or more amino acids in length.

[0030] Fragments of nucleic acids to be detected or used for detection may be 10 or more, 20 or more, 30 or more, 40 or more, 60 or more, 70 or more, 80 or more, 100 or more, 150 or more, 200 or more, 250 or more, 300 or more, 350

or more, 400 or more, 500 or more, 600 or more, 700 or more, 800 or more, 900 or more or 1000 or more basis in length.

Detection

5 **[0031]** A marker protein may have its expression modulated, i.e. quantitatively increased or decreased, in patients with renal damage. The degree to which expression differs in normal versus damage states need only be large enough to be visualised via standard characterisation techniques, such as silver staining of 2D-electrophoretic gels or immunological detection methods including Western blotting or radioimmunoassay. Other such standard characterisation techniques by which expression differences may be visualised are well known to those skilled in the art. These include
10 successive chromatographic separations of fractions and comparisons of the peaks, capillary electrophoresis, separations using micro-channel networks, including on a micro-chip, and mass spectrometry methods including SELDI_TOF and MRM.

[0032] Chromatographic separations can be carried out by high performance liquid chromatography as described in Pharmacia literature, the chromatogram being obtained in the form of a plot of absorbance of light at 280 nm against
15 time of separation. The material giving incompletely resolved peaks is then re-chromatographed and so on.

[0033] Capillary electrophoresis is a technique described in many publications, for example in the literature "Total CE Solutions" supplied by Beckman with their P/ACE 5000 system. The technique depends on a applying an electric potential across the sample contained in a small capillary tube. The tube has a charged surface, such as negatively charged silicate glass. Oppositely charged ions (in this instance, positive ions) are attracted to the surface and then migrate to
20 the appropriate electrode of the same polarity as the surface (in this instance, the cathode). In this electroosmotic flow (EOF) of the sample, the positive ions move fastest, followed by uncharged material and negatively charged ions. Thus, proteins are separated essentially according to charge on them.

[0034] Micro-channel networks function somewhat like capillaries and can be formed by photoablation of a polymeric material. In this technique, a UV laser is used to generate high energy light pulses that are fired in bursts onto polymers
25 having suitable UV absorption characteristics, for example polyethylene terephthalate or polycarbonate. The incident photons break chemical bonds with a confined space, leading to a rise in internal pressure, mini-explosions and ejection of the ablated material, leaving behind voids which form microchannels. The micro-channel material achieves a separation based on EOF, as for capillary electrophoresis. It is adaptable to micro-chip form, each chip having its own sample injector, separation column and electrochemical detector: see J.S.Rossier et al., 1999, Electrophoresis 20: pages
30 727-731.

[0035] Other methods include performing a binding assay for the marker protein. Any reasonably specific binding agent can be used. Preferably the binding agent is labelled.

[0036] Preferably the assay is an immunoassay, especially between the marker and an antibody that recognises the protein, especially a labelled antibody. It can be an antibody raised against part or all of the marker protein, for example
35 a monoclonal antibody or a polyclonal anti-human antiserum of high specificity for the marker protein.

[0037] Where the binding assay is an immunoassay, it may be carried out by measuring the extent of the protein/antibody interaction. Any known method of immunoassay may be used. A sandwich assay is preferred. In an exemplary sandwich assay, a first antibody to the marker protein is bound to the solid phase such as a well of a plastics microtitre plate, and incubated with the sample and with a labelled second antibody specific to the protein to be assayed. Alternatively, an antibody capture assay can be used. Here, the test sample is allowed to bind to a solid phase, and the anti-marker protein antibody is then added and allowed to bind. After washing away unbound material, the amount of antibody bound to the solid phase is determined using a labelled second antibody, anti- to the first.
40

[0038] In another embodiment, a competition assay is performed between the sample and a labelled marker protein or a peptide derived therefrom, these two antigens being in competition for a limited amount of anti-marker protein antibody bound to a solid support. The labelled marker protein or peptide thereof can be pre-incubated with the antibody on the solid phase, whereby the marker protein in the sample displaces part of the marker protein or peptide thereof bound to the antibody.
45

[0039] In yet another embodiment, the two antigens are allowed to compete in a single co-incubation with the antibody. After removal of unbound antigen from the support by washing, the amount of label attached to the support is determined and the amount of protein in the sample is measured by reference to standard titration curves established previously.
50

[0040] The binding agent in the binding assay may be a labelled specific binding agent, which may be an antibody or other specific binding agent. The binding agent will usually be labelled itself, but alternatively it may be detected by a secondary reaction in which a signal is generated, e.g. from another labelled substance.

[0041] The label may be an enzyme. The substrate for the enzyme may be, for example, colour-forming, fluorescent or chemiluminescent.
55

[0042] An amplified form of assay may be used, whereby an enhanced "signal" is produced from a relatively low level of protein to be detected. One particular form of amplified immunoassay is enhanced chemiluminescent assay. Conveniently, the antibody is labelled with horseradish peroxidase, which participates in a chemiluminescent reaction with

luminol, a peroxide substrate and a compound which enhances the intensity and duration of the emitted light, typically 4-iodophenol or 4-hydroxycinnamic acid.

[0043] Another form of amplified immunoassay is immuno-PCR. In this technique, the antibody is covalently linked to a molecule of arbitrary DNA comprising PCR primers, whereby the DNA with the antibody attached to it is amplified by the polymerase chain reaction. See E. R. Hendrickson et al., *Nucleic Acids Research* 23: 522-529 (1995). The signal is read out as before.

[0044] The time required for the assay may be reduced by use of a rapid microparticle-enhanced turbidimetric immunoassay such as the type embodied by M. Robers et al., "Development of a rapid microparticle-enhanced turbidimetric immunoassay for plasma fatty acid-binding protein, an early marker of acute myocardial infarction", *Clin. Chem.* 1998;44:1564-1567.

[0045] The full automation of any immunoassay contemplated in a widely used clinical chemistry analyser such as the COBAS™ MIRA Plus system from Hoffmann-La Roche, described by M. Robers *et al. supra*, or the AxSYM™ system from Abbott Laboratories, should be possible and applied for routine clinical diagnosis of kidney damage including kidney transplant rejection.

[0046] Alternatively, the diagnostic sample can be subjected to two dimensional gel electrophoresis to yield a stained gel and the increased or decreased concentration of the protein detected by an increased or decreased intensity of a protein-containing spot on the stained gel, compared with a corresponding control or comparative gel. The invention includes such a method, independently of the marker protein identification given above.

[0047] In another method, the diagnostic sample can be subjected to Surface-Enhanced Laser Desorption Ionisation - Time of Flight mass spectrometry (SELDI-TOF). In this method the sample is typically a body fluid and is added to the surface of a SELDI-TOF ProteinChip prior to analysis in the SELDI-TOF mass spectrometer. General methods of SELDI-TOF analysis for human tissue samples are provided in international patent application WO 01/25791. The ProteinChip system consists of aluminium chips to which protein samples can be selectively bound on the surface chemistry of the chip (eg. anionic, cationic, hydrophobic, hydrophilic etc). Bound proteins are then co-crystallised with a molar excess of small energy-absorbing molecules. The chip is then analysed by short intense pulses of N2 320nm UV laser with protein separation and detection being by time of flight mass spectrometry. Spectral profiles of each group within an experiment are compared and any peaks of interest can be further analysed using techniques as described below to establish the identity of the protein.

[0048] The diagnostic sample can be subjected to analysis by multiple reaction monitoring (MRM) on an ion-trap mass spectrometer. Based on the mass spectrometry profiles of the marker proteins described below single tryptic peptides with specific known mass and amino acid sequences are identified that possess good ionising characteristics. The mass spectrometer is then programmed to specifically survey for peptides of the specific mass and sequence and report their relative signal intensity. Using MRM it is possible to survey for up to 5, 10, 15, 20, 25, 30, 40, 50 or 100 different marker proteins in a single LC-MS run. The intensities of the MRM peptides of the marker proteins in the diagnostic sample are compared with those found in samples from subjects without kidney damage and/or kidney transplant rejection allowing the diagnosis of kidney damage and/or kidney transplant rejection to be made.

[0049] The MRM assay can be made more truly quantitative by the use of internal reference standards consisting of synthetic absolute quantification (AQUA) peptides corresponding to the MRM peptide of the marker protein wherein one or more atoms have been substituted with a stable isotope such as carbon-14 or nitrogen-15 and wherein such substitutions cause the AQUA peptide to have a defined mass difference to the native MRM peptide derived from the diagnostic sample. By comparing the relative ion intensity of the native MRM and AQUA peptides the true concentration of the parent protein in the diagnostic sample can thus be determined. General methods of absolute quantitation are provided in Gerber, Scott A, et al. "Absolute quantification of proteins and phosphoproteins from cell lysates by tandem MS" *PNAS*, June 10, 2003. Vol 100. No 12. p 6940-6945.

[0050] Alternatively, antibodies to marker proteins may be detected in a patient sample, using marker proteins or fragments thereof as a detection agent, for example in an ELISA. An altered concentration of marker proteins may be detected by detecting the presence or an altered amount of autoantibody thereto, compared with the level of autoantibody in a control sample. The level of autoantibody can be detected by Western blot (from 1D or 2D electrophoresis) against kidney tissue obtained from biopsy or surgical removal, or kidney-derived cell lines grown in vitro, or by enzyme-linked immunosorbent assay (ELISA), protein microarray or bead suspension array using purified proteins.

[0051] By way of example, detection of autoantibodies to proteins differentially increased in kidney damage and/or kidney rejection patients can be carried out as follows. Recombinant proteins are expressed in baculovirus infected insect cells and used to coat the surface of microtitre plates. A sample from patients suspected of having kidney damage and/or kidney rejection is added to duplicate wells of each microtitre plate and incubated at 37 °C for 1 hour. Plates are aspirated and washed prior to the addition of a horse-radish peroxidase (HRP) labelled anti-human IgG antiserum and incubated for 1 hour at 37 °C. Finally, binding of the antihuman antiserum is revealed by aspirating the plates, washing, and then adding tetra-methylbenzidine (TMB) which in the presence of HRP produces a coloured product the intensity of which is measured by reading the plates at 450 nm. An identical set of plates is tested with the exception that the

second antibody is a HRP labelled anti-human IgM antiserum. The levels of IgG and/or IgM autoantibodies to each of the kidney damage and/or kidney rejection marker proteins is altered when compared to the levels found in samples from healthy individuals.

[0052] It is contemplated within the invention to use (i) an antibody chip or array of chips, or a bead suspension array capable of detecting one or more proteins that interact with that antibody; or (ii) a protein chip or array of chips, or bead suspension array capable of detecting one or more autoantibodies that interact with the marker proteins; or (iii) a combination of both antibody arrays and protein arrays.

[0053] An "antibody array" or "antibody microarray" is an array of unique addressable elements on a continuous solid surface whereby at each unique addressable element an antibody with defined specificity for an antigen is immobilised in a manner allowing its subsequent capture of the target antigen and subsequent detection of the extent of such binding. Each unique addressable element is spaced from all other unique addressable elements on the solid surface so that the binding and detection of specific antigens does not interfere with any adjacent such unique addressable element.

[0054] A "bead suspension array" is an aqueous suspension of one or more identifiably distinct particles whereby each particle contains coding features relating to its size and colour or fluorescent signature and to which all of the beads of a particular combination of such coding features is coated with an antibody with a defined specificity for an antigen in a manner allowing its subsequent capture of the target antigen and subsequent detection of the extent of such binding. Examples of such arrays can be found at www.luminexcorp.com where application of the xMAP® bead suspension array on the Luminex® 100™ System is described.

[0055] Alternatively, differential expression of nucleic acids encoding marker proteins may be used as a detection method.

[0056] Expression of nucleic acid may be detected by methods known in the art, such as RT-PCR, Northern blotting or in situ hybridisation such as FISH.

[0057] The diagnosis can be based on the differential expression of one, two, three or more of the marker proteins, or of one, two, three or more autoantibodies raised against such proteins, or a combination of both. Further, it can be part of a wider diagnosis in which two or more different diseases are diagnosed. Renal damage and kidney transplant rejection can be diagnosed together with at least one other disease, which may or may not be a renal disease, in the same sample of body tissue, by a method which includes detecting a change in concentration of another protein in the diagnostic sample, compared with a sample of a control, normal human subject. These other disease(s) can be any which are diagnosable in a body tissue.

Diagnosis and prognosis

[0058] The term "diagnosis", as used herein, includes the provision of any information concerning the existence, non-existence or probability of renal damage, disease or renal transplant rejection in a patient. It further includes the provision of information concerning the type or classification of the disorder or of symptoms which are or may be experienced in connection with it. It encompasses prognosis of the medical course of the condition.

[0059] The methods described herein are useful for both the diagnosis and/or prognosis of renal damage, including chronic renal transplant rejection. Renal damage or rejection may be indicated if one or more markers is present at increased or decreased concentration. For some markers, both an increased or a decreased concentration may be indicative of damage or rejection.

[0060] The invention can be used to determine the stage of progression of kidney damage including kidney transplant rejection, if desired, with reference to results obtained earlier from the same patient or by reference to standard values that are considered typical of the stage of the disease. In this way, the invention can be used to determine whether, for example after treatment of the patient with a drug or candidate drug, the disease has progressed or not. The result can lead to a prognosis of the outcome of the disease.

[0061] The methods typically employ a biological sample from patient such as blood, serum, tissue, plasma, urine or other suitable body fluids. A preferred patient sample is blood or blood products such as serum or plasma. Plasma or other sample fluids may be depleted of high abundance proteins prior to testing, as described below. Alternatively, the diagnostic sample may be a tissue section which is fixed, e.g. by freezing or embedding in paraffin.

[0062] The diagnostic methods and uses of the invention may comprise the steps of (i) detecting marker protein, nucleic acid or antibody expression in a test sample or samples, (ii) detecting marker protein, nucleic acid or antibody expression in a control sample or samples, and (iii) comparing the level of expression on the control and test samples to establish whether the marker is differentially expressed in the test sample. Alternatively, a pre-existing control may be used for comparison. Preferably, the control sample is from the same tissue or body fluid type as the test sample.

[0063] In general, the term "control" refers to a normal human subject, i.e. one not suffering from renal damage, or to healthy tissue of the same human subject as the diagnostic sample. In some cases, particularly when the stages of renal transplant rejection are being monitored progressively, or when a course of treatment is being monitored, a comparison may instead be made with the concentration previously seen in the same subject at an earlier stage of progression of

the disease, or at an earlier time point.

[0064] The step of comparing with a control sample may not always be necessary, since in many cases it will be obvious to the skilled practitioner that the concentration is abnormally high or low.

[0065] "Differential expression", as used above, refers to at least one recognisable difference in protein or nucleic acid expression. It may be a quantitatively measurable, semi-quantitatively estimatable or qualitatively detectable difference in tissue or body fluid p expression. Thus, a differentially expressed protein or nucleic acid may be strongly expressed in tissue or body fluid in the normal state and less strongly expressed or not expressed at all in the damaged state. Conversely, it may be strongly expressed in tissue or body fluid in the damage state and less strongly expressed or not expressed at all in the normal state. Further, expression may be regarded as differential if the protein or nucleic acid undergoes any recognisable change between the two states under comparison.

[0066] Samples may be taken daily, weekly, monthly or bimonthly after transplant. Daily or weekly samples may be appropriate for detection of acute rejection, while monthly or bimonthly samples are more appropriate for detection of chronic rejection.

Treatment

[0067] It will be understood that where treatment is concerned, treatment includes any measure taken by the physician to alleviate the effect of renal damage or transplant rejection on a patient. Thus, although reversal of the damage or elimination of the damage or effects of rejection is a desirable goal, effective treatment will also include any measures capable of achieving reduction in the degree of damage or severity of the effects.

[0068] In one aspect, a method of treatment is by the use of an agent that will restore the expression of one or more differentially expressed proteins in the kidney damage and/or kidney transplant rejection state towards that found in the normal state in order to prevent the development or progression of kidney damage and/or organ transplant rejection. Preferably, the expression of the protein is restored to that of the normal state.

[0069] In a further aspect, a method whereby the pattern of differentially expressed proteins in a sample from an individual with kidney damage and/or kidney transplant rejection is used to predict the most appropriate and effective therapy to alleviate the kidney damage and/or kidney transplant rejection

Assay methods

[0070] Also provided is a method of screening an agent to determine its usefulness in treating a kidney damage and/or kidney transplant rejection, the method comprising:

- (a) obtaining a sample of from, or representative of, a subject having kidney damage and/or kidney transplant rejection symptoms, who or which has been treated with the agent being screened;
- (b) determining the presence, absence or degree of expression of a marker protein or proteins as disclosed herein in the sample from, or representative of, the treated subject; and,
- (c) selecting or rejecting the agent according to the extent to which it changes the expression, activity or amount of the marker protein or proteins in the treated subject having kidney damage and/or kidney transplant rejection symptoms.

[0071] Preferably, the agent is selected if it converts the expression of the differentially expressed protein towards that of a normal subject. More preferably, the agent is selected if it converts the expression of the protein or proteins to that of the normal subject.

[0072] Also described is a method of screening an agent to determine its usefulness in treating kidney damage and/or kidney transplant rejection, the method comprising:

- (a) obtaining over time samples from, or representative of, a subject having kidney damage and/or kidney transplant rejection symptoms, who or which has been treated with the agent being screened;
- (b) determining the presence, absence or degree of expression of a marker protein or proteins as disclosed herein in said samples; and,
- (c) determining whether the agent affects the change over time in the expression of the marker protein in the treated subject having kidney damage and/or kidney transplant rejection symptoms.

[0073] Samples taken over time may be taken at intervals of weeks, months or years. For example, samples may be taken at monthly, two-monthly, three-monthly, four-monthly, six-monthly, eight-monthly or twelve-monthly intervals.

[0074] A change in expression over time may be an increase or decrease in expression, compared to the initial level of expression in samples from the subject and/or compared to the level of expression in samples from normal subjects. The agent is selected if it slows or stops the change of expression over time.

[0075] In the screening methods described above, subjects having differential levels of protein expression comprise:

- (a) normal subjects and subjects having kidney damage and/or kidney transplant rejection symptoms; and,
- (b) subjects having kidney damage and/or kidney transplant rejection symptoms which have not been treated with the agent and subjects having kidney damage and/or kidney transplant rejection symptoms which have been treated with the agent.

Compositions

[0076] The markers or antibodies thereto described herein may be formulated into compositions, in particular therapeutic compositions. The preparation of therapeutic compositions which contain polypeptides or proteins as active ingredients is well understood in the art. Therapeutic compositions may be liquid solutions or suspensions, solid forms suitable for solution in, or suspension in a liquid prior to ingestion may also be prepared. The therapeutic may also be emulsified. The active therapeutic ingredient is typically mixed with inorganic and/or organic carriers which are pharmaceutically acceptable and compatible with the active ingredient. The carriers are typically physiologically acceptable excipients comprising more or less inert substances when added to the therapeutic composition to confer suitable consistencies and form to the composition. Suitable carriers are for example, water, saline, dextrose, glycerol, and the like and combinations thereof. In addition, if desired the composition can contain minor amounts of auxiliary substances such as wetting or emulsifying agents and pH buffering agents which enhance the effectiveness of the active ingredient. Therapeutic compositions containing carriers that have nutritional value are also contemplated.

[0077] A composition may be administered alone or in combination with other treatments, either simultaneously or sequentially dependent upon the condition to be treated.

[0078] Liquid pharmaceutically administrable compositions can, for example, be prepared by dissolving, dispersing, etc, a fusion protein of the invention optional pharmaceutical adjuvants in a carrier, such as, for example, water, saline aqueous dextrose, glycerol, ethanol, and the like, to thereby form a solution or suspension. If desired, the composition to be administered may also auxiliary substances such as pH buffering agents and the like. Actual methods of preparing such dosage forms are known, or will be apparent, to those skilled in this art; for example, see Remington's Pharmaceutical Sciences, 20th Edition, 2000, pub. Lippincott, Williams & Wilkins.

Administration

[0079] The pharmaceutical compositions may be administered in a number of ways depending upon whether local or systemic treatment is desired and upon the area to be treated. Administration may be topical (including ophthalmic, vaginal, rectal, intranasal, epidermal and transdermal), oral or parenteral. Parenteral administration includes intravenous drip, subcutaneous, intraperitoneal or intramuscular injection, pulmonary administration, e.g., by inhalation or insufflation, or intracranial, e.g., intrathecal or intraventricular, administration. For oral administration, it has been found that oligonucleotides with at least one 2'-substituted ribonucleotide are particularly useful because of their absorption and distribution characteristics. U.S. Pat. No. 5,591,721 issued to Agrawal et al. Oligonucleotides with at least one 2'-O-methoxyethyl modification are believed to be particularly useful for oral administration.

[0080] Where a composition as described herein is to be administered to an individual, administration is preferably in a "prophylactically effective amount" or a "therapeutically effective amount" (as the case may be, although prophylaxis may be considered therapy), this being sufficient to show benefit to the individual.

[0081] Administration may be, for example, daily, weekly or monthly. The actual amount administered, and rate and time-course of administration, will depend on the nature and severity of what is being treated. It will also depend upon toxicity of the therapeutic agent, as determined by pre-clinical and clinical trials. Prescription of treatment, e.g. decisions on dosage etc, is within the responsibility of general practitioners and other medical doctors.

Dosing

[0082] Dosing is dependent on severity and responsiveness of the condition to be treated, with course of treatment lasting from several days to several months or until a reduction in viral titre (routinely measured by Western blot, ELISA, RT-PCR, or RNA (Northern) blot, for example) is effected or a diminution of disease state is achieved. Optimal dosing schedules are easily calculated from measurements of drug accumulation in the body. Persons of ordinary skill can easily determine optimum dosages, dosing methodologies and repetition rates. Therapeutically or prophylactically effective amounts (dosages) may vary depending on the relative potency of individual compositions, and can generally

be routinely calculated based on molecular weight and EC50s in in vitro and/or animal studies. For example, given the molecular weight of drug compound (derived from oligonucleotide sequence and chemical structure) and an experimentally derived effective dose such as an IC₅₀, for example, a dose in mg/kg is routinely calculated. In general, dosage is from 0.001 .mu.g to 100 g and may be administered once or several times daily, weekly, monthly or yearly, or even every 2 to 20 years.

Nucleic acids

[0083] Nucleic acid may of course be double- or single-stranded, cDNA or genomic DNA, or RNA. The nucleic acid may be wholly or partially synthetic, depending on design. Naturally, the skilled person will understand that where the nucleic acid according to the invention includes RNA, reference to the sequence shown should be construed as reference to the RNA equivalent, with U substituted for T.

[0084] Many known techniques and protocols for manipulation of nucleic acid, for example in preparation of nucleic acid constructs, mutagenesis, sequencing, introduction of DNA into cells and gene expression, and analysis of proteins, are described in detail in Current Protocols in Molecular Biology, Ausubel et al. eds., Wiley, 1994, and in summary in Short Protocols in Molecular Biology, Fifth Edition, Ausubel et al. eds., Current Protocols, 2002.

Antibodies

[0085] Antibodies against the marker proteins disclosed herein can be produced using known methods. These methods of producing antibodies include immunising a mammal (e.g. mouse, rat, rabbit, horse, goat, sheep or monkey) with the protein. Antibodies may be obtained from immunised animals using any of a variety of techniques known in the art, and screened, preferably using binding of antibody to antigen of interest. Isolation of antibodies and/or antibody-producing cells from an animal may be accompanied by a step of sacrificing the animal.

[0086] As an alternative or supplement to immunising a mammal with a protein, an antibody specific for the protein may be obtained from a recombinantly produced library of expressed immunoglobulin variable domains, e.g. using lambda bacteriophage or filamentous bacteriophage which display functional immunoglobulin binding domains on their surfaces; for instance see WO92/01047. The library may be naive, that is constructed from sequences obtained from an organism which has not been immunised with the protein, or may be one constructed using sequences obtained from an organism which has been exposed to the antigen of interest.

[0087] The antibodies may bind or be raised against any biologically relevant state of the protein. Thus, for example, they can be raised against the unglycosylated form of a protein which exists in the body in a glycosylated form, against a more mature form of a precursor protein, e.g. minus its signal sequence, or against a peptide carrying a relevant epitope of the marker protein.

[0088] Antibodies may be polyclonal or monoclonal, and may be multispecific (including bispecific), chimeric or humanised antibodies. Antibodies may be modified in a number of ways. Indeed the term "antibody" should be construed as covering any binding substance having a binding domain with the required specificity. Thus, it covers antibody fragments, derivatives, functional equivalents and homologues of antibodies, including synthetic molecules and molecules whose shape mimics that of an antibody enabling it to bind an antigen or epitope.

[0089] Examples of antibody fragments, capable of binding an antigen or other binding partner, are the Fab fragment consisting of the VL, VH, C1 and CH1 domains; the Fd fragment consisting of the VH and CH1 domains; the Fv fragment consisting of the VL and VH domains of a single arm of an antibody; the dAb fragment which consists of a VH domain; isolated CDR regions and F(ab')₂ fragments, a bivalent fragment including two Fab fragments linked by a disulphide bridge at the hinge region. Single chain Fv fragments are also included.

[0090] Antibody fragments, which recognise specific epitopes, may be generated by known techniques. For example, such fragments include, but are not limited to, the F(ab')₂ fragments which can be produced by pepsin digestion of the antibody molecule and the Fab fragments which can be generated by reducing the disulfide bridges of the F(ab')₂ fragments. Alternative, Fab expression libraries may be constructed (Huse, et al., 1989, Science 246: 1275-1281) to allow rapid and easy identification of monoclonal Fab fragments with the desired specificity.

[0091] The term "monoclonal antibody" as used herein refers to an antibody obtained from a substantially homogenous population of antibodies, i.e. the individual antibodies comprising the population are identical apart from possible naturally occurring mutations that may be present in minor amounts. Monoclonal antibodies can be produced by the method first described by Kohler and Milstein, Nature, 256:495, 1975 or may be made by recombinant methods, see Cabilly et al, US Patent No. 4,816,567, or Mage and Lamoyi in Monoclonal Antibody Production Techniques and Applications, pages 79-97, Marcel Dekker Inc, New York, 1987.

[0092] In the hybridoma method, a mouse or other appropriate host animal is immunised with the antigen by subcutaneous, intraperitoneal, or intramuscular routes to elicit lymphocytes that produce or are capable of producing antibodies that will specifically bind to the nanoparticles used for immunisation. Alternatively, lymphocytes may be immunised in

vitro. Lymphocytes then are fused with myeloma cells using a suitable fusing agent, such as polyethylene glycol, to form a hybridoma cell, see Goding, *Monoclonal Antibodies: Principles and Practice*, pp. 59-103 (Academic Press, 1986).

[0093] The hybridoma cells thus prepared can be seeded and grown in a suitable culture medium that preferably contains one or more substances that inhibit the growth or survival of the unfused, parental myeloma cells. For example, if the parental myeloma cells lack the enzyme hypoxanthine guanine phosphoribosyl transferase (HGPRT or HPRT), the culture medium for the hybridomas typically will include hypoxanthine, aminopterin, and thymidine (HAT medium), which substances prevent the growth of HGPRT-deficient cells.

[0094] Preferred myeloma cells are those that fuse efficiently, support stable high level expression of antibody by the selected antibody producing cells, and are sensitive to a medium such as HAT medium.

[0095] Culture medium in which hybridoma cells are growing is assayed for production of monoclonal antibodies directed against the protein. Preferably, the binding specificity is determined by enzyme-linked immunoabsorbance assay (ELISA). The monoclonal antibodies of the invention are those that specifically bind to the protein.

[0096] In a preferred embodiment the monoclonal antibody will have an affinity which is greater than micromolar or greater affinity (i.e. an affinity greater than 10^{-6} mol) as determined, for example, by Scatchard analysis, see Munson & Pollard, *Anal. Biochem.*, 107:220, 1980.

[0097] After hybridoma cells are identified that produce neutralising antibodies of the desired specificity and affinity, the clones can be subcloned by limiting dilution procedures and grown by standard methods. Suitable culture media for this purpose include Dulbecco's Modified Eagle's Medium or RPM1-1640 medium. In addition, the hybridoma cells may be grown in vivo as ascites tumours in an animal.

[0098] The monoclonal antibodies secreted by the subclones are suitably separated from the culture medium, ascites fluid, or serum by conventional immunoglobulin purification procedures such as, for example, protein A-Sepharose, hydroxylapatite chromatography, gel electrophoresis, dialysis, or affinity chromatography.

[0099] Nucleic acid encoding the monoclonal antibodies is readily isolated and sequenced using procedures well known in the art, e.g. by using oligonucleotide probes that are capable of binding specifically to genes encoding the heavy and light chains of murine antibodies. The hybridoma cells are a preferred source of nucleic acid encoding the antibodies or fragments thereof. Once isolated, the nucleic acid is ligated into expression or cloning vectors, which are then transfected into host cells, which can be cultured so that the monoclonal antibodies are produced in the recombinant host cell culture.

[0100] A hybridoma producing a monoclonal antibody may be subject to genetic mutation or other changes. It will further be understood by those skilled in the art that a monoclonal antibody can be subjected to the techniques of recombinant DNA technology to produce other antibodies, humanised antibodies or chimeric molecules which retain the specificity of the original antibody. Such techniques may involve introducing DNA encoding the immunoglobulin variable region, or the complementarity determining regions (CDRs), of an antibody to the constant regions, or constant regions plus framework regions, of a different immunoglobulin. See, for instance, EP 0 184 187 A, GB 2 188 638 A or EP 0 239 400 A. Cloning and expression of chimeric antibodies are described in EP 0 120 694 A and EP 0 125 023 A.

[0101] An antibody against a marker protein described herein will bind to said protein. Preferably, said antibody specifically binds said protein. By "specific" is meant that the antibody binds to said protein with an affinity significantly higher than it displays for other molecules.

[0102] The invention will now be described in more detail with reference to the following examples, which are provided for illustrative purposes only, and are not intended to limit the scope of the invention.

Experimental

[0103] In order to discover novel biomarker candidates for renal allograft rejection, 240 serum samples of kidney transplant recipients from the Oxford Transplant Centre were analyzed by expression proteomics. These high-quality serum samples were depleted of six high-abundant proteins and analyzed by 2D-electrophoresis. Image analysis and peptide mass fingerprinting (PMF) of one half of the serum samples resulted in a set of 29 regulated proteins 20 of which are related to immune and inflammatory response as well as other processes during renal rejection or renal disease. The remaining 9 proteins have not been described in the context of renal rejection or renal disease so far. A group of 16 proteins of the total number of 29 regulated proteins may serve as independent indicators for renal allograft rejection. These findings were confirmed by a validation study run with the second half of the serum samples.

Methods

Renal rejection serum samples

[0104] 240 serum samples were received from the Oxford Transplant Centre. 120 *disease* serum samples came from 40 kidney transplant recipients with biopsy proven chronic allograft nephropathy CAN and another 120 *control* serum

EP 2 333 116 B1

samples came from 40 recipients with a functioning graft without evidence of CAN, three different points in time each. Classification of samples is shown in table 1 and 2.

Table 1 Classification of renal rejection disease serum samples.

Point in time	Description	Disease samples #
Time 1	Pre-transplant, close to the time of transplant.	1-1 to 40-1
Time 2	Before the development of CAN, but at a time when potential mediators of the process may be circulating (generally at 1 year post transplant). If CAN was diagnosed at 1 year, then serum selected at a suitable time point within the first year.	1-2 to 40-2
Time 3	As near as possible to the time of biopsy diagnosis of CAN	1-3 to 40-3

Table 2 Classification of renal rejection control serum samples.

Point in time	Description	Control samples #
Time 1	Pre-transplant, close to the time of transplant.	41-1 to 80-1
Time 2	Approximately 1 year post transplant	41-2 to 80-2
Time 3	Approximately 3 years post transplant	41-3 to 80-3

[0105] Samples were divided into two groups: *study group* and *validation group*. Each group contained samples from 20 disease patients and 20 control patients (three different points in time each) which were randomly chosen. For classification of samples see table 3 and 4.

Table 3 Classification of renal rejection serum samples for study group.

	Disease-1	Disease-2	Disease-3	Control-1	Control-2	Control-3
1	-1	1	-2	1	-3	41
5	-1	5	-2	5	-3	42
8	-1	8	-2	8	-3	45
12	-1	12	-2	12	-3	47
15	-1	15	-2	15	-3	50
16	-1	16	-2	16	-3	51
17	-1	17	-2	17	-3	53
18	-1	18	-2	18	-3	54
19	-1	19	-2	19	-3	58
20	-1	20	-2	20	-3	59
21	-1	21	-2	21	-3	64
22	-1	22	-2	22	-3	65
23	-1	23	-2	23	-3	68
24	-1	24	-2	24	-3	69
26	-1	26	-2	26	-3	70
28	-1	28	-2	28	-3	71
29	-1	29	-2	29	-3	76
30	-1	30	-2	30	-3	78
35	-1	35	-2	35	-3	79
39	-1	39	-2	39	-3	80

Table 3 Classification of renal rejection serum samples for validation group.

	Disease-1		Disease-2		Disease-3		Control-1		Control-2		Control-3	
5	2	-1	2	-2	2	-3	43	-1	43	-2	43	-3
	3	-1	3	-2	3	-3	44	-1	44	-2	44	-3
	4	-1	4	-2	4	-3	46	-1	46	-2	46	-3
	6	-1	6	-2	6	-3	48	-1	48	-2	48	-3
	7	-1	7	-2	7	-3	49	-1	49	-2	49	-3
10	9	-1	9	-2	9	-3	52	-1	52	-2	52	-3
	10	-1	10	-2	10	-3	55	-1	55	-2	55	-3
	11	-1	11	-2	11	-3	56	-1	56	-2	56	-3
	13	-1	13	-2	13	-3	57	-1	57	-2	57	-3
	14	-1	14	-2	14	-3	60	-1	60	-2	60	-3
15	25	-1	25	-2	25	-3	61	-1	61	-2	61	-3
	27	-1	27	-2	27	-3	62	-1	62	-2	62	-3
	31	-1	31	-2	31	-3	63	-1	63	-2	63	-3
	32	-1	32	-2	32	-3	66	-1	66	-2	66	-3
20	33	-1	33	-2	33	-3	67	-1	67	-2	67	-3
	34	-1	34	-2	34	-3	72	-1	72	-2	72	-3
	36	-1	36	-2	36	-3	73	-1	73	-2	73	-3
	37	-1	37	-2	37	-3	74	-1	74	-2	74	-3
	38	-1	38	-2	38	-3	75	-1	75	-2	75	-3
25	40	-1	40	-2	40	-3	77	-1	77	-2	77	-3

Study Design

30 [0106] Two types of image analysis were performed: (1) time course study of control and disease patients and (2) control vs. disease patients. 2D-gels of samples of the *study group* were compared as follows:

35 disease-1 vs. disease-3, control-1 vs. control-3,
disease-1 vs. control-1, disease-3 vs. control-3
disease-1 vs. disease-2, disease-2 vs. disease-3,
control-1 vs. control-2, control-2 vs. control-3.

40 [0107] Again, numbers 1, 2 and 3 refer to the three different points in time samples were taken. Then the outcome of analytical 2D-gels of the *validation group* was compared with that of the *study group* to validate regulated protein spots and potential biomarker candidates of the *study group*. For preparative 2D-gels, 6 to 7 serum samples of disease and control samples of the *study* and the *validation group* were pooled, respectively.

Proteomics procedure

45 [0108] The proteomics procedure was done according to standard procedures of Proteome Sciences R&D. In brief, 240 renal rejection serum samples were depleted of 6 high-abundant proteins by means of the MARS (Multiple Affinity Removal System) column (Agilent). Depleted serum samples (100 µg) were analyzed by analytical 2-DE (pH 3-10NL, 10% SDS-PAGE). Silver-stained analytical 2D-gels were quantitatively analyzed by Progenesis software (v2005) including spot detection, matching, background subtraction and normalization. After detection and matching of protein spots, the spot data was exported to MS Excel and a macro developed in-house was used to calculate the coefficient of variation (CV%), Mann-Whitney Test and regulation factor. Regulated spots were identified by the following selection criteria: spots have to be found in at least 60% of all gels of a group, up/down regulation at least 1.5-fold or at most 0.667-fold and significance value $p < 0.005$. In order to identify the corresponding proteins, regulated spots were picked from preparative, CBB-stained 2D-gels of depleted disease and control samples (350 µg, 6 to 7 individual samples each) and trypsinated by means of a Spot Handling Workstation (GE Healthcare). Resulting peptides were analyzed by MALDI-MS. The proteins were identified by comparing the obtained MALDI-MS-spectra with in-silico digests of proteins from databases (PMF Peptide Mass Fingerprinting).

Results

Identification of regulated proteins

5 **[0109]** Identification of regulated protein spots is shown in table 4 and table 5. Histograms of the time course of protein
regulations from disease and control samples of point in time 1, 2 and 3 are listed in supplement B.

10

15

20

25

30

35

40

45

50

55

Table 4 Identification of regulated protein spots in study group/validation group.

Spot no	Protein name	Swiss-Prot	EMBL Acc No	Expression ratio or trend of regulation in comparison			
		Acc. No.		C1 vs. C3	D1 vs. D3	C1 vs. D1	C3 vs. D3
	Plasminogen precursor	P00747		1,76/1,14	+	+	-
	Ig μ chain C region	P01871	X17115	3,72/2,32	+	-	-
	Ig μ chain C region	P01871	X17115	3,75/2,35	+	+	-
	Ig μ chain C region	P01871	X17115	3,12/2,01	+	-	-
	C4b-binding protein alpha chain precursor 2	M31452; M31452; BC02231	BC02231				1,86/0,8
	Heparin cofactor II precursor		2	+	+	+	4
	N-acetylmuramoyl-L-alanine amidase		M12849; X03498				1,52/0,8
	Complement component C9 precursor, chain a or b	P05546	AF38485	+	-	1	+
	β_2 -glycoprotein I precursor (Apolipoprotein)		6				2,17/0,8
	Complement component C9 precursor, chain a or b	Q96PD5	BC02072	+	-	6	+
	β_2 -glycoprotein I precursor (Apolipoprotein)	P02748	1; K02766	+	-	1,51/1,5	+
	β_2 -glycoprotein I precursor (Apolipoprotein)	P02749	X53595; X57847;	0,46/0,53	+	-	+

Spot no	Protein name	Swiss-	EMBL	Expression ratio or trend of regulation in comparison			
		Prot	Acc No	D1 vs. C1 vs. C3	D3	D1	D3
	H)		M62839; S80305; BC02070 3; BC02628 3				
	Complement C1R subcomponent precursor, heavy chain β_2 -glycoprotein I precursor (Apolipoprotein	P00736		0,41/0,65	-	-	-
			See above				
	H)	P02749		0,22/0,40	-	-	+
	β_2 -glycoprotein I precursor (Apolipoprotein		See above				
	H)	P02749		0,42/0,59	+	-	+
	Pigment epithelium- derived factor precursor	P36955	M76979; AF40044 2	0,45/0,96	-	-	+
			AF40342 8; BC03438 9;				4,39/1,4
	Leucine-rich α_2 - glycoprotein precursor	P02750	BC07019	-	+	-	0

Spot no	Protein name	Swiss- Prot	EMBL Acc No	Expression ratio or trend of regulation in comparison			
		Acc. No.		D1 vs. C1 vs. C3 D3	C1 vs. D1	C3 vs. D3	
			8				
	Pigment epithelium- derived factor		See above				
557	precursor	P36955		0,51/0,98	-	-	+
	Pigment epithelium- derived factor		See above				
559	precursor	P36955		0,62/0,96	-	-	+
	Pigment epithelium- derived factor		See above				
563	precursor	P36955		0,33/0,55	-	-	+
	Pigment epithelium- derived factor		See above				
570	precursor	P36955		0,32/0,69	-	-	1
	Complement		K02765				0,43/0,5
591	C3 precursor	P01024		-	+	7	+
	Transthyretin precursor, <i>syn</i> :						
712	Prealbumin	P02766		0,37/0,64	0,31/0,27	+	+
	AMBP protein		X04225				
722	precursor	P02760		0,16/0,16	+	-	4,92/2,8
	<i>contains</i> : alpha- 1-microglobulin						9
	AMBP protein		X04225				7,72/9,7
728	precursor (α_1 -	P02760		0,04/0,04	0,24/0,32	+	9

Spot no	Protein name	Swiss-Prot	EMBL Acc No	Expression ratio or trend of regulation in comparison			
		Acc. No.		D1 vs. C1 vs. C3 vs.	D3	D1	D3
	microglobulin)						
	AMBP protein precursor (α_1 -microglobulin)	P02760	X04225	0,07/0,64	0,37/0,21 +		6,55/4,3
730	AMBP protein precursor (α_1 -microglobulin)	P02760	X04225	0,14/0,16	0,54/0,33 +		3,82/2,0
734	AMBP protein precursor (α_1 -microglobulin)	P02760	X04225	0,23/0,04	-	-	0
735	AMBP protein precursor (α_1 -microglobulin)	P02760	X04225	0,44/0,57	0,29/0,56 +		-
741	Adiponectin	Q15848	D45371	-	+	-	6,89/4,2
742	Complement factor H-related protein 2 precursor	P36980		0,20/0,44	-	-	+
760	Complement C3 precursor, α chain	P01024		-	0,43/0,54 +		-
771	Complement C3 precursor, α -chain	P01024	K02765	0,51/0,75	-	-	-
781	Complement C4 precursor, α -chain	P01028		0,51/0,75	-	-	-

Spot no	Protein name acidic or basic C4	Swiss- Prot	EMBL Acc No	Expression ratio or trend of regulation in comparison			
		Acc. No.		D1 vs. C1 vs. C3	D3	D1	D3
	Complement factor D		M84526				
785	precursor	P00746		0,31/0,56	0,53/0,54	-	+
	Complement factor D		M84526				
786	precursor	P00746		-	0,18/0,21	-	+
	Plasma retinol- binding protein		X00129; BC02063				
825	precursor	P02753	3	0,26/0,40	-	+	+
	Plasma retinol- binding protein		See above				
826	precursor	P02753		0,27/0,18	0,33/0,47	+	+
	β_2 -glycoprotein I precursor (Apolipoprotein H)		See above				
847	H)	P02749		0,39/0,71	-	-	+
<hr/>							
no. up-regulated spots			4			-	9
no. down-regulated spots			22			9	-
total no. of regulated spots			26			9	9

Table 5 Identification of regulated protein spots in study group.

Spot no.	Protein name	Swiss-Prot/[EMBL] Acc. No.	Expression ratio in comparison			
			C1 vs. C2	C3	D1 vs. D2	D3
		P00450				
56	Ceruloplasmin precursor (Ferroxidase)	[M13699; M13536]	--	--	--	1,53
67	Plasminogen precursor		1,74	--	1,74	--
113	Complement factor B precursor	P00751	--	--	2,02	--
149	α_2 -macroglobulin precursor	P01023	--	--	1,68	--
150	α_2 -macroglobulin precursor	P01023	--	--	1,97	--
226	NO PROTEIN FOUND		--	--	--	2,59
232	NO PROTEIN FOUND		--	--	--	0,35
238	Inter- α -trypsin inhibitor heavy chain H1 precursor	P19827	--	--	--	0,31
242	Inter- α -trypsin inhibitor heavy chain H1 precursor	P19827	--	--	--	0,24
243	Inter- α -trypsin inhibitor heavy chain H1 precursor	P19827	--	--	4,09	0,12
249	NO PROTEIN FOUND		2,40	--	--	--
288	NO PROTEIN FOUND		--	--	0,49	--
291	Complement component C9 precursor	P02748	--	--	0,61	--
352	Hemopexin precursor (β_{1B} -glycoprotein)	P02790	--	1,57	--	--
381	Hemopexin precursor (β_{1B} -glycoprotein)	P02790	--	0,60	--	--
418	NO PROTEIN FOUND		--	0,38	--	--
430	NO PROTEIN FOUND		--	0,31	--	--

5 10 15 20 25 30 35 40 45 50 55	Spo t no	Protein name	Swiss-	Expression ratio in			
			Prot/[EMB L]	comparison	C1 vs. C2	C2 vs. C3	D1 vs. D2
			Acc. No.	C2	C3	D2	D3
	442	Kininogen-1 precursor	P01042	--	0,64	--	--
	448	NO PROTEIN FOUND		--	--	0,57	--
		Complement C1r subcomponent					
	463	precursor	P00736	--	--	--	0,31
		Complement C1r subcomponent					
	464	precursor	P00736	--	--	20,64	0,04
		β_2 -glycoprotein I precursor					
	466	(Apolipoprotein H)	P02749	0,31	--	--	--
	498	NO PROTEIN FOUND		--	--	3,20	0,33
		Hemopexin precursor (β_{1B} -					
	510	glycoprotein)	P02790	--	--	2,02	0,65
		Hemopexin precursor (β_{1B} -					
	515	glycoprotein)	P02790	--	--	--	0,42
		Hemopexin precursor (β_{1B} -					
	551	glycoprotein)	P02790	--	--	1,96	--
		Pigment epithelium-derived					
	557	factor precursor	P36955	0,66	--	--	--
		Leucine-rich α_2 -glycoprotein					
	562	precursor	P02750	--	--	--	2,73
		Pigment epithelium-derived					
	570	factor precursor	P36955	0,54	--	--	--
	575	NO PROTEIN FOUND		--	--	0,27	3,17
	599	NO PROTEIN FOUND		5,65	--	--	--
	622	Apolipoprotein A-IV precursor	P06727	--	--	0,25	2,42
			Q14152				
	657	Eukar. translation initiation factor	[U58046;	--	--	--	1,68
		3-subunit 10	U78311]				

Spot no	Protein name	Swiss- Prot/[EMBL Accession No.]	Expression ratio in comparison			
			C1 vs. C2	C2 vs. C3	D1 vs. D2	D2 vs. D3
657	Ceruloplasmin precursor	P00450	--	--	--	1,68
658	Ceruloplasmin precursor	P00450	2,97	0,33	--	--
667	NO PROTEIN FOUND		--	0,14	--	--
672	NO PROTEIN FOUND		--	--	--	1,88
673	130 kDa leucine-rich protein	P42704	--	0,08	--	--
702	NO PROTEIN FOUND		0,61	--	--	--
711	Complement C4-A precursor	P0C0L4	--	--	1,94	--
711	Complement C4-B precursor	P0C0L5	--	--	1,94	--
722	AMBP protein precursor (α_1 - microglobulin)	P02760	0,36	0,43	0,17	6,28
728	AMBP protein precursor (α_1 - microglobulin)	P02760	0,26	0,15	0,06	4,30
730	AMBP protein precursor (α_1 - microglobulin)	P02760	0,27	0,24	0,32	--
734	AMBP protein precursor (α_1 - microglobulin)	P02760	0,46	0,31	0,20	2,72
735	AMBP protein precursor (α_1 - microglobulin)	P02760	0,40	--	0,27	3,19
771	Complement C3 precursor	P01024	--	--	--	0,32
785	Complement factor D precursor	P00746	0,42	--	0,27	--
786	Complement factor D precursor	P00746	0,10	--	0,06	--
825	Plasma retinol-binding protein precursor	P02753	--	--	0,27	--
826	Plasma retinol-binding protein precursor	P02753	0,40	--	0,23	--
849	NO PROTEIN FOUND		--	0,30	--	--
854	α_{1B} -glycoprotein precursor	P04217	--	--	--	1,51

Spot no	Protein name	Swiss-Prot/[EMBL] Acc. No.	Expression ratio in comparison			
			C1 vs. C2	C2 vs. C3	D1 vs. D2	D2 vs. D3
	no. up-regulated spots		4	1	10	12
	no. down-regulated spots		12	12	15	10
	total no. of regulated spots		16	13	25	22

[0110] Spot nos. 657, 711 and 781 were assigned to two different proteins (highlighted in grey). 'Spot number' is the spot number assigned in the reference gel from Progenesis. 'Expression ratio' is the quotient of mean normalized spot

volumes. C₁ vs. C₂ means ratio $\frac{C_2}{C_1}$ and C₁ vs. C₃ means ratio $\frac{C_3}{C_1}$. The ratio is given for statistically significant regulations with significance value p<0.005. If the regulation did not meet this value, the trend of regulation is indicated by +/- standing for up-/down-regulation.

[0111] Taking all comparisons of the *study group* in table 4 and 5 together, a total number of 73 individual spots and a total number of 29 individual proteins were identified as regulated. Expression ratio was between 0.04 and 20.64. Coverage of regulated proteins, i.e. percentage of the primary protein sequence which was covered by tryptic peptides found by PMF, was 3%-66% with a mean value of 29%.

Validation of the results of the study group with the validation group

[0112] An independent set of 120 plasma samples (*validation group*) has been analyzed with the same strategy. For each spot found to be regulated in the *study group* (see table 4 and 5), the regulation was compared with the *validation group* as presented in table 6. The mean validation rate was 74%.

Table 6 Number of regulated spots in study and validation group and validation rate.

Comparison	Study group	Validation group	Validation rate [%]
C1 vs. C3	26	20	77
C1 vs. C2	16	13	81
C2 vs. C3	13	7	54
Control (total)	55	40	73
D1 vs. D3	10	10	100
D1 vs. D2	25	19	76
D2 vs. D3	22	12	55
Disease (total)	57	41	72
C1 vs. D1	4	2	50
C3 vs. D3	9	8	89
Inter (total)	13	10	77

Functions and properties of the regulated proteins

[0113] Below functions and properties of identified proteins are listed according to the Swiss-Prot protein knowledge-base [1].

*Inflammatory and immune-related proteins in alphabetical order***N-acetylmuramoyl-L-alanine amidase precursor PGRP2_HUMAN Q96PD5**

5 [0114] May play a scavenger role by digesting biologically active peptidoglycan (PGN) into biologically inactive fragments. Has no direct bacteriolytic activity. Strongly expressed in liver and fetal liver, and secreted into serum. Expressed to a much lesser extent in transverse colon, lymph nodes, heart, thymus, pancreas, descending colon, stomach and testis. Isoform 2 is not detected in the liver or serum. PGRP2_HUMAN is involved in the immune response.

C4b-binding protein α -chain precursor C4BP_HUMAN P04003

10 [0115] Controls the classical pathway of complement activation. It binds as a cofactor to C3b/C4b inactivator (C3bINA), which then hydrolyzes the complement fragment C4b. It also accelerates the degradation of the C4bC2a complex (C3 convertase) by dissociating the complement fragment C2a. Alpha chain binds C4b. It interacts also with anticoagulant protein S and with serum amyloid P component. Found in chylomicrons (large lipoprotein particles) in plasma. C4BP_HUMAN is involved in the complement pathway, which is part of the innate immune system.

Complement C1R subcomponent precursor C1R_HUMAN P00736

20 [0116] C1r B chain is a serine protease that combines with C1q and C1s to form C1, the first component of the classical pathway of the complement system. C1R_HUMAN is a component of the complement pathway. It contains a heavy chain and a light chain.

Complement C3 precursor CO3_HUMAN P01024

25 [0117] C3 plays a central role in the activation of the complement system. Its processing by C3 convertase is the central reaction in both classical and alternative complement pathways. After activation C3b can bind covalently, via its reactive thiolester, to cell surface carbohydrates or immune aggregates. Derived from proteolytic degradation of complement C3, C3a anaphylatoxin is a mediator of local inflammatory process. It induces the contraction of smooth muscle, increases vascular permeability and causes histamine release from mast cells and basophilic leukocytes. CO3_HUMAN is involved in inflammatory response¹. Processing of CO3_HUMAN by the removal of 4 Arg residues forms two chains, beta and alpha, linked by a disulfide bond.

Complement C4 precursor CO4A_HUMAN, CO4B_HUMAN P01028

35 [0118] C4 plays a central role in the activation of the classical pathway of the complement system. It is processed by activated C1 which removes from the alpha chain the C4a anaphylatoxin. The remaining alpha chain fragment C4b is the major activation product and is an essential subunit of the C3 convertase (C4b2a) and the C5 convertase (C3bC4b2a) enzymes of the classical complement pathway. Derived from proteolytic degradation of complement C4, C4a anaphylatoxin is a mediator of local inflammatory process. It induces the contraction of smooth muscle, increases vascular permeability and causes histamine release from mast cells and basophilic leukocytes. Human complement component C4 is polymorphic at two loci, C4A and C4B. 13 alleles of C4A and 22 alleles of C4B have been detected. The allele shown here is C4A4. The C4A alleles carry the Rodgers (Rg) while the C4B alleles carry the Chido (Ch) blood group antigens. C4A allotypes react more rapidly with the amino group of peptide antigens while C4B allotypes react more rapidly with the hydroxyl group of carbohydrate antigens. CO4_HUMAN is a component of the complement pathway and the inflammatory response.

Complement component C9 precursor CO9_HUMAN P02748

50 [0119] CO9_HUMAN is the final component of the complement system to be added in the assembly of the membrane attack complex. It is able to enter lipid bilayers, forming transmembrane channels. Component of the membrane attack complex which groups the complement plasma glycoproteins C5b, C6, C7, C8 and polymeric C9 on biological membranes. CO9_HUMAN is a component of the complement alternative pathway² and the membrane attack complex³. Thrombin cleaves CO9_HUMAN to produce C9a and C9b.

Complement factor B precursor CFAB_HUMAN P00751

55 [0120] Factor B which is part of the alternate pathway of the complement system is cleaved by factor D into 2 fragments:

EP 2 333 116 B1

Ba and Bb. Bb, a serine protease, then combines with complement factor 3b to generate the C3 or C5 convertase. It has also been implicated in proliferation and differentiation of preactivated B-lymphocytes, rapid spreading of peripheral blood monocytes, stimulation of lymphocyte blastogenesis and lysis of erythrocytes. Ba inhibits the proliferation of preactivated B-lymphocytes.

5

Complement factor D precursor CFAD_HUMAN P00746

[0121] Factor D cleaves factor B when the latter is complexed with factor C3b, activating the C3bbb complex, which then becomes the C3 convertase of the alternate pathway. Its function is homologous to that of C1s in the classical pathway. CFAD_HUMAN is involved in the complement alternate pathway.

10

Ig μ chain C region MUC_HUMAN P01871

Other proteins in alphabetical order

15

130 kDa leucine-rich protein LPPRC_HUMAN P42704

[0122] Unknown function. Expressed ubiquitously. Expression is highest in heart, skeletal muscle, kidney and liver, intermediate in brain, nonmucosal colon, spleen and placenta, and lowest in small intestine, thymus, lung and peripheral blood leukocytes.

20

Adiponectin ADIPO_HUMAN Q15848

[0123] Important negative regulator in hematopoiesis and immune systems; may be involved in ending inflammatory responses through its inhibitory functions. Inhibits endothelial NF-kappa-B signaling through a cAMP-dependent pathway. Inhibits TNF-alpha-induced expression of endothelial adhesion molecules. Involved in the control of fat metabolism and insulin sensitivity. Synthesized exclusively by adipocytes and secreted into plasma.

25

AMBP protein precursor (α_1 -microglobulin) AMBP_HUMAN P02760

[0124] AMBP_HUMAN contains 2 chains, α_1 -microglobulin and inter- α -trypsin inhibitor light chain. α_1 -microglobulin occurs in many physiological fluids including plasma, urine, and cerebrospinal fluid. It appears not only as a free monomer but also in complexes with IgA and albumin. It is an immunomodulatory protein with a broad spectrum of possible clinical applications and seems a promising marker for evaluation of tubular function. AMBP might be a valuable complement to serum creatinine levels in the evaluation of renal function in renal transplant recipients. Expressed by the liver and secreted in plasma.

30

35

Apolipoprotein A-IV precursor APOA4_HUMAN P06727

[0125] May have a role in chylomicrons and VLDL secretion and catabolism. Required for efficient activation of lipoprotein lipase by ApoC-II; potent activator of LCAT. ApoA-IV is a major component of HDL and chylomicrons. Synthesized primarily in the intestine and secreted in plasma.

40

Ceruloplasmin precursor CERU_HUMAN P00450

[0126] Ceruloplasmin is a blue, copper-binding (6-7 atoms per molecule) glycoprotein. It has ferroxidase activity oxidizing iron(II) to iron(III) without releasing radical oxygen species. It is involved in iron transport across the cell membrane.

45

Complement factor H-related protein 2 precursor FHR2_HUMAN P36980

[0127] Might be involved in complement regulation. Can associate with lipoproteins and may play a role in lipid metabolism. Expressed by the liver and secreted in plasma.

50

Eukaryotic translation initiation factor 3 subunit 10 IF3A_HUMAN Q14152

[0128] Binds to the 40S ribosome and promotes the binding of methionyl-tRNA_i and mRNA.

55

α_{1B} -glycoprotein precursor ALBG_HUMAN P04217

[0129] Function not known.

5 **β_2 -glycoprotein I precursor (Apolipoprotein H) APOH_HUMAN P02749**

[0130] Binds to various kinds of negatively charged substances such as heparin, phospholipids, and dextran sulfate. May prevent activation of the intrinsic blood coagulation cascade by binding to phospholipids on the surface of damaged cells. It is expressed by the liver and secreted in plasma.

10

Hemopexin precursor (β_{1B} -glycoprotein) HEMO_HUMAN P02790

[0131] Binds heme and transports it to the liver for breakdown and iron recovery, after which the free hemopexin returns to the circulation. Expressed by the liver and secreted in plasma.

15

Heparin cofactor II precursor HEP2_HUMAN P05546

[0132] Thrombin inhibitor activated by the glycosaminoglycans, heparin or dermatan sulfate. In the presence of the latter, HC-II becomes the predominant thrombin inhibitor in place of antithrombin III (AT-III). Also inhibits chymotrypsin, but in a glycosaminoglycan-independent manner. Expressed predominantly in liver.

20

Inter- α -trypsin inhibitor heavy chain H1 precursor ITIH1_HUMAN P19827

[0133] May act as a carrier of hyaluronan in serum or as a binding protein between hyaluronan and other matrix protein, including those on cell surfaces in tissues to regulate the localization, synthesis and degradation of hyaluronan which are essential to cells undergoing biological processes. Contains a potential peptide which could stimulate a broad spectrum of phagocytotic cells.

25

Kininogen-1 precursor KNG1_HUMAN P01042

30

[0134]

(1) Kininogens are inhibitors of thiol proteases; (2) HMW-kininogen plays an important role in blood coagulation by helping to position optimally prekallikrein and factor XI next to factor XII; (3) HMW-kininogen inhibits the thrombin- and plasmin-induced aggregation of thrombocytes; (4) the active peptide bradykinin that is released from HMW-kininogen shows a variety of physiological effects: (4A) influence in smooth muscle contraction, (4B) induction of hypotension, (4C) natriuresis and diuresis, (4D) decrease in blood glucose level, (4E) it is a mediator of inflammation and causes (4E1) increase in vascular permeability, (4E2) stimulation of nociceptors (4E3) release of other mediators of inflammation (e.g. prostaglandins), (4F) it has a cardioprotective effect (directly via bradykinin action, indirectly via endothelium-derived relaxing factor action); (5) LMW-kininogen inhibits the aggregation of thrombocytes; (6) LMW-kininogen is in contrast to HMW-kininogen not involved in blood clotting. It is a secreted protein

35

40

Leucine-rich α_2 -glycoprotein precursor A2GL_HUMAN P02750

[0135] It is a protein secreted in plasma.

45

α_2 -macroglobulin precursor A2MG_HUMAN P01023

[0136] Is able to inhibit all four classes of proteinases by a unique 'trapping' mechanism. This protein has a peptide stretch, called the 'bait region' which contains specific cleavage sites for different proteinases. When a proteinase cleaves the bait region, a conformational change is induced in the protein which traps the proteinase. The entrapped enzyme remains active against low molecular weight substrates (activity against high molecular weight substrates is greatly reduced). Following cleavage in the bait region a thioester bond is hydrolyzed and mediates the covalent binding of the protein to the proteinase

50

Pigment epithelium-derived factor precursor PEDF_HUMAN P36955

Neurotrophic protein; induces extensive neuronal differentiation in retinoblastoma cells. Potent inhibitor of angiogenesis. As it does not undergo the S (stressed) to R (relaxed) conformational transition characteristic of active serpins, it exhibits no serine protease inhibitory activity. It is a secreted protein and is found in retinal pigment epithelial cells and blood

55

plasma.

Plasma retinol-binding protein precursor RETBP_HUMAN P02753

5 [0137] Delivers retinol from the liver stores to the peripheral tissues. In plasma, the RBP-retinol complex interacts with transthyretin, this prevents its loss by filtration through the kidney glomeruli. It is a secreted protein.

Plasminogen precursor PLMN_HUMAN P00747

10 [0138] Plasmin, formed by conversion from plasminogen, dissolves the fibrin of blood clots and acts as a proteolytic factor in a variety of other processes including embryonic development, tissue remodeling, tumor invasion, and inflammation; involution it weakens the walls of the Graafian follicle. It activates the urokinase-type plasminogen activator, collagenases and several complement zymogens, such as C1 and C5. It cleaves fibrin, fibronectin, thrombospondin, laminin and von Willebrand factor. Its role in tissue remodeling and tumor invasion may be modulated by CSPG4. It is a secreted protein and is present in plasma and many other extracellular fluids. It is synthesized in the kidney.

Transthyretin precursor TTHY_HUMAN (*syn* Prealbumin) P02766

20 [0139] Thyroid hormone-binding protein. Probably transports thyroxine from the bloodstream to the brain. It is a secreted protein. Most abundant in the choroid plexus and also present in the liver. About 40% of plasma transthyretin circulates in a tight protein-protein complex with the plasma retinol-binding protein (RBP). The formation of the complex with RBP stabilizes the binding of retinol to RBP and decreases the glomerular filtration and renal catabolism of the relatively small RBP molecule.

25 *Conclusion*

[0140] In this study a set of proteins was identified as biomarker candidates. Results from the *study group* and the *validation group* showed an excellent correlation in protein regulation which proves the high quality of the serum sample set and the proteomics procedure.

30

Time course of protein regulations

35 [0141] Histograms of the time course of protein regulations from disease and control samples of point in time 1, 2 and 3 show three striking regulations, namely Ig μ chain C region (spot no. 210, 213 and 214), pigment epithelium-derived factor precursor (spot no. 570) and AMBP protein precursor (α_1 -microglobulin) (spot no. 722, 728, 730 and 735). Ig μ level steadily increases in healthy recipients whereas it increases from point in time 1 to 2 and decreases again from point in time 2 to 3 in rejecting recipients. Pigment epithelium-derived factor precursor and α_1 -microglobulin levels steadily decrease in healthy recipients whereas they decrease from point in time 1 to 2 and increase again from point in time 2 to 3 in rejecting recipients. The same expression profile is observed with spots no. 445, 461, 562, 657, 734, 785, 825, 826, 854 and 862 (see table 4 and 5).

40

Biomarker candidates

45 [0142] From the individual comparisons and the time course regulations 16 biomarker candidates could be identified (Swiss-Prot/EMBL protein/nucleic acid database accession numbers are given):

N-acetylmuramoyl-L-alanine amidase precursor

Q96PD5/AF384856

Adiponectin Q15848/D45371

50 AMBP protein precursor (α_1 -microglobulin) P02760/X04225

C4b-binding protein α -chain precursor P04003/M31452; BC022312

Ceruloplasmin precursor P00450/M13699; M13536

Complement C3 precursor P01024/K02765

Complement component C9 precursor P02748/BC020721; K02766

55 Complement factor D precursor P00746/M84526

α_1 B-glycoprotein P04217/AF414429; BC035719

β_2 -glycoprotein I precursor P02749/X58100; X53595; X57847; M62839; S80305; BC020703; BC026283

Heparin cofactor II precursor P05546/M12849; X03498

EP 2 333 116 B1

Ig μ Chain C region protein P01871/X17115
 Leucine-rich α_2 -glycoprotein precursor P02750/AF403428; BC034389; BC070198
 Pigment epithelium-derived factor precursor
 P36955/M76979; AF400442
 5 Plasma retinol-binding protein precursor P02753/X00129; BC020633
 Translation initiation factor 3 subunit 10
 Q14152/U58046; U78311

Conclusion

[0143] 240 serum samples of kidney transplant recipients were submitted to 2DE proteomic procedure in order to identify novel biomarker candidates for early detection of renal rejection. The clear correlation of the results of the *study group* and the *validation group* shows the robustness and reproducibility of our proteomics procedure, especially serum sample preparation by chromatographic immunoaffinity depletion of six high abundant proteins which is commercially available only since 2003, as well as the high quality of the serum sample set. 29 proteins were found regulated between the three selected conditions of renal transplant recipients, 20 of which are related to inflammatory and immune response during renal rejection or renal disease. As a result, 16 proteins could be identified as novel biomarker candidates.

Statistical analysis of the 2D gel data with SIMCA-P.

Data pre-processing

[0144] The normalised and background-corrected spot data were exported from ProGenesis to Excel and automatically arranged into a format suitable by an in house-developed programme for further analysis. For each comparison of control and treated data, the number of spots in each group, the mean value, the coefficient of variation and two-tailed Student's t-test and Mann-Whitney Test computed by *StatistiXL* (Version 1.5) were automatically generated. In parallel, the data were imported into SIMCA-P software (version 11; Umetrics) and the spot data assessed to determine whether any spots required pre-processing prior to further analysis. For the spot data (variables), two different scaling methods were evaluated ; Unit variance (UV) and Pareto (Par). UV is the default scaling method and Pareto scaling is in between no scaling and UV scaling and gives the variable a variance equal to its standard deviation instead of unit variance. Three different transformation methods were evaluated ; no transformation, automatic transformation and Log₁₀ transformation. By default, there is no transformation, the automatic transformation is performed by the software which checks if variables need a log transformation and if so it applies it. The Log₁₀ transformation is applied to spots that are positively skewed (>0.7) to give distributions closer to normal. The optimal goodness-of-fit (R²) and cumulative goodness-of-prediction (Q² [cum]) parameters were obtained with the combination of the UV scaling method with an automatic transformation for the control (C gels) and disease gels (C gels) as shown in Table 7.

Table 7 Scaling and transformation methods tested for the variables.

Model	number of component	Transformation	Scaling	R2X	R2Y	Q2(cum)
PCA with C gels	4	no transformation	UV	0,354	x	0,0682
PCA with C gels	3	no transformation	Pareto	0,322	X	0,0456
PCA with C gels	4	Automatic	UV	0,398	X	0,0846
PCA with C gels	3	Log10	UV	0,336	X	0,0923
PCA with C -2 gels	5	Automatic	UV	0,439	X	0,0838
PCA with D gels	3	no transformation	UV	0,303	X	0,08
PCA with D gels	3	no transformation	Pareto	0,339	X	0,0705
PCA with D gels	4	Automatic	UV	0,41	X	0,127
PCA with D gels	4	Automatic	Pareto	0.41	X	0,0951
PCA with D gels	4	Log10	Pareto	0,402	X	0,0852

[0145] There were two kinds of analysis performed. Initially, an unsupervised method called principal components analysis (PCA) was applied to all experimental groups. Then secondly, a supervised method called partial least squares - discriminant analysis (PLS-DA) was applied to the four data sets comparing the Control -1 *versus* Control -3 ; Disease -1 *versus* Disease -3 ; Control -1 *versus* Disease -1 and Control -3 *versus* Disease -3 to find out whether any differences could be found to distinguish between sample groups.

PCA analysis of the Control data set

[0146] Principal component Analysis (PCA) is a multivariate projection method designed to extract and display the systematic variation in the data matrix (gels and spot volumes in our case). With PCA analysis, a number of diagnostic and interpretation tools are available.

[0147] A four component model was auto-fitted to the control data set. The model parameters were as follows: goodness-of-fit (R^2) = 0,398 and the cumulative goodness-of-prediction (Q^2 [cum]) = 0,0846. Figure 8 shows the observations scores of the model.

[0148] We can observe in the Figure 8 that two gels are located outside the ellipse and could be considered as strong outliers (C45_1 and C46_3). We removed these two gels and a new model with five components was fitted (see Table 7). The model parameters were as follows: R^2 = 0,439 and Q^2 [cum] = 0,0838. Figure 9 shows the observations scores of the model.

[0149] Although the goodness-of-fit (R^2) parameter indicates that 44% of the total variance in the data are explained, the low value for the Q^2 suggests that the model is not very robust. As shown in Figure 9, it is clear that the model does not display clusters between the gels in the group. A typical clustering model may display two groups, one corresponding to the control_1 gels and the second to the control_3 gels.

PCA analysis of the Disease data set

[0150] A four component model was auto-fitted to the control data set. The model parameters were as follows: goodness-of-fit (R^2) = 0,41 and the cumulative goodness-of-prediction (Q^2 [cum]) = 0,127. Figure 10 shows the observations of the model.

[0151] Although the goodness-of-fit (R^2) parameter indicates that 41% of the total variance in the data are explained, the low value for the Q^2 suggests that the model is not very robust. As shown in Figure 10, we do not observe outliers, nor does the model display clusters between the gels in the group.

[0152] For the two models, we observe low values for R^2 and near-zero values for Q^2 leading us to conclude that these models are not well explained or predicted. Even if low values are already observed for 2D gel data, especially related to human sample analysis, potential explanations are the samples themselves (high biological heterogeneity) and/or sample treatments (freeze-thaw cycles, depletion, 2D gel electrophoresis).

PLS-DA of the control data set

[0153] The Partial Least Squares - Discriminant Analysis (PLS-DA) is a method for relating two data matrices, X (gels) and Y (spot volume), to each other by a linear multivariate model. This type of analysis is appropriate to determine whether any differences could be found to discriminate between the control_1 group (blood taken during transplantation) and control_3 group (blood taken when the transplantation has been validated).

[0154] A two component model was auto-fitted to the control gels data set. The parameters were as follows: $R^2X=0,185$; $R^2Y=0,898$ and $Q^2=0,431$. The additional parameter R^2Y described the goodness-of-fit to the Y-data containing the class of observations. The observations of the scores in the two PLS components of the model are displayed in Figure 11. The value of Q^2 close to 0.5 could be considered as good. As seen in Figure 11, the separation of the groups appears excellent.

[0155] The loading plots of this PLS model are displayed in Figure 12. In lighter type are indicated the number of spots selected through the univariate approach. The plots at the extremes of the horizontal axis describe the differences between the groups. We can observe in Figure 12 that the lighter type numbers are located at the extremes of the axis which reinforces the fact that these spots may reflect a significant discrimination between the two groups compared. This observation shows a good correlation between the univariate and multivariate approaches as well.

PLS-DA of the disease data set

[0156] We applied this type of analysis to determine whether any differences could be found to discriminate between the disease_1 group (blood taken during transplantation) and disease_3 group (blood taken when the transplantation has been rejected).

[0157] A two component model was auto-fitted to the control gels data set. The parameters were as follows: $R^2X=0,143$; $R^2Y=0,902$ and $Q^2=0,301$. The observations of the scores in the two PLS components of the model are displayed in Figure 13. As seen in Figure 13, the separation of the groups appears excellent.

[0158] The loading plots of this PLS model are displayed in Figure 14. In lighter type are indicated the number of spots selected through the 2D gel approach. We can observe in Figure 14 that the lighter type numbers are located at the extremes of the axis which reinforces the fact that these spots may reflect a significant discrimination between the two

groups compared. This observation shows a good overlap between the univariate and multivariate approaches as well.

Analysis of the data set containing Control_1 and Disease_1 ("sample_1") groups

5 *PCA analysis of the sample_1 data set*

[0159] A six component model was auto-fitted to the control data set. The model parameters were as follows: goodness-of-fit (R^2) = 0,481 and the cumulative goodness-of-prediction (Q^2 [cum]) = 0,0519. Figure 15 shows the observations plots of the model.

10 **[0160]** Although the goodness-of-fit (R^2) parameter indicates that 48% of the total variance in the data are explained, the low value for the Q^2 suggests that the model is not very robust. As shown in Figure 15, we do not observe strong outliers, nor does the model display clusters between the gels in the group.

PLS-DA analysis of the sample_1 data set

15 **[0161]** A two component model was auto-fitted to the data set. The parameters were as follows: $R^2X=0,199$; $R^2Y=0,828$ and $Q^2=0,148$. The observations of the scores in the two PLS components of the model are displayed in Figure 16. As seen in Figure 16, the separation of the groups appears excellent.

20 **[0162]** The loading plots of this PLS model are displayed in Figure 17. In lighter type are indicated the number of spots selected through the 2D gel approach. We can observe in Figure 17 that the lighter type numbers are located at the extremes of the axis which reinforces the fact that these spots may reflect a significant discrimination between the two groups compared. This observation shows a good overlap between the statistical and 2D gel electrophoresis approaches as well.

25 *Analysis of the data set containing Control_3 and Disease_3 ("sample_3") groups*

PCA analysis of the sample_3 data set

30 **[0163]** During a preliminary analysis with all gels from sample_3 set, we observed a strong outlier (gel D12_3, data not shown). Consequently, we removed the gel from the analysis and performed a new one. A six component model was auto-fitted to the sample_3 data set. The model parameters are $R^2=0,488$ and $Q^2=0,0757$. The observation scores for the two PCA components of this model are displayed in Figure 18.

35 **[0164]** The low values for R^2 and Q^2 suggest that the model is not particularly robust. It is clear from the examining the positions of the gels in the first two components that there is no pattern of clustering between observations in this data set.

PLS-DA analysis of the sample_3 data set

40 **[0165]** A four component model was auto-fitted to the data set. The parameters were as follows: $R^2X=0,302$; $R^2Y=0,992$ and $Q^2=0,725$. Generally, a $Q^2 > 0.7$ is regarded as very good. The observations of the scores in the two PLS components of the model are displayed in Figure 12. As seen in Figure 19, the separation of the groups appears excellent.

45 **[0166]** The loading plots of this PLS model are displayed in Figure 20. In lighter type are indicated the number of spots selected through the 2D gel approach. We can observe in Figure 20 that the lighter type numbers are located at the extremes of the axis which reinforces the fact that these spots may reflect a significant discrimination between the two groups compared. This observation shows a good overlap between the statistical and 2D gel electrophoresis approaches as well.

Paragraphs

50 **[0167]**

1. Use of the presence or amount of a protein set out in Table 4 or Table 5 or a fragment thereof, or antibodies against said proteins, as a marker for the diagnosis and/or prognosis of renal damage.

55 2. Use of the presence or amount of a nucleic acid encoding any one of the proteins set out in Table 4 or Table 5 or a fragment thereof as a marker for the diagnosis and/or prognosis of renal damage.

3. A method for the diagnosis and/or prognosis of renal damage, the method comprising determining the presence

or amount of a protein set out in Table 4 or Table 5, or a fragment thereof, or antibodies against said proteins, in a sample from a patient.

5 4. A method for the diagnosis and/or prognosis of renal damage, the method comprising determining the presence or amount of a nucleic acid encoding any one of the proteins set out in Table 4 or Table 5, or a fragment thereof, in a sample from a patient.

10 5. The use of paragraph 1 or paragraph 2 or the method of paragraph 23 or paragraph 4, wherein the renal damage is caused by chronic transplant rejection following renal transplantation.

6. The use or method of paragraph 5, wherein the renal damage is caused by chronic allograft nephropathy

15 7. The use of paragraph 1 or paragraph 2 or the method of paragraph 3 or paragraph 4, wherein the renal damage is caused by disease or toxicity.

8. The use or method of any one of paragraphs 1 to 7, wherein the sample is a renal tissue sample, a blood sample, a serum sample, a plasma sample or a urine sample.

20 9. The use or method of any one of paragraphs 1 to 8, wherein said marker protein is any one of N-acetylmuramoyl-L-alanine amidase precursor, adiponectin, AMBP protein precursor (α_1 -microglobulin), C4b-binding protein α -chain precursor, ceruloplasmin precursor, complement C3 precursor, complement component C9 precursor, complement factor D precursor, α_{1B} -glycoprotein, β_2 -glycoprotein I precursor, heparin cofactor II precursor, Ig μ Chain C region protein, Leucine-rich α_2 -glycoprotein precursor, pigment epithelium-derived factor precursor, plasma retinol-binding protein precursor and translation initiation factor 3 subunit 10.

25 10. The method of any one of paragraphs 3 to 9, wherein the method comprises the steps of:

- 30 (a) contacting a sample from a patient with a solid support having immobilised thereon a binding agent having binding sites which are capable of specifically binding to the protein, antibody or nucleic acid with a sample from a patient under conditions in which the protein, antibody or nucleic acid bind to the binding agent; and,
(b) determining the presence or amount of the protein, antibody or nucleic acid bound to the binding agent.

35 11. The method of paragraph 10, wherein step (b) comprises (i) contacting the solid support with a developing agent which is capable of binding to occupied binding sites, unoccupied binding sites or the protein, antibody or nucleic acid, the developing agent comprising a label and (ii) detecting the label to obtain a value representative of the presence or amount of the protein, antibody or nucleic acid in the sample.

40 12. The method of any one of paragraphs 3 to 9, wherein the method comprises detecting said marker protein or proteins by mass spectroscopy.

13. The method of paragraph 12, wherein the protein is immobilised on a solid support.

45 14. A kit for use in the diagnosis or prognosis of renal damage by determining the presence or amount of an analyte selected from a protein set out in Table 4 or Table 5, or a fragment thereof, or antibodies against these proteins, or nucleic acids encoding these proteins, in a sample from a patient, the kit comprising:

- 50 (a) a solid support having a binding agent capable of binding to the analyte immobilised thereon;
(b) a developing agent comprising a label; and,
(c) one or more components selected from the group consisting of washing solutions, diluents and buffers.

15. A kit according to paragraph 14 which is for diagnosis of chronic transplant rejection following renal transplantation.

16. A kit according to paragraph 15 which is for diagnosis of chronic allograft nephropathy

55 17. A kit according to paragraph 14 which is for diagnosis of renal damage caused by disease or toxicity.

18. A kit according to any one of paragraphs 14 to 17 wherein the marker protein is one of N-acetylmuramoyl-L-alanine amidase precursor, adiponectin, AMBP protein precursor (α_1 -microglobulin), C4b-binding protein α -chain

precursor, ceruloplasmin precursor, complement C3 precursor, complement component C9 precursor, complement factor D precursor, α_{1B} -glycoprotein, β_2 -glycoprotein I precursor, heparin cofactor II precursor, Ig μ Chain C region protein, Leucine-rich α_2 -glycoprotein precursor, pigment epithelium-derived factor precursor, plasma retinol-binding protein precursor and translation initiation factor 3 subunit 10.

5

19. The method of paragraph 10 or paragraph 11, or the kit of any one of paragraphs 14 to 18, wherein the label is a radioactive label, a fluorophor, a phosphor, a laser dye, a chromogenic dye, a macromolecular colloidal particle, a latex bead which is coloured, magnetic or paramagnetic, an enzyme which catalyses a reaction producing a detectable result or the label is a tag.

10

20. The method of paragraph 10, paragraph 11 or paragraph 19, or the kit of any one of paragraphs 14 to 19, wherein the binding agent immobilised on the solid support is a protein set out in Table 4 or Table 5, or a fragment thereof.

15

21. The method of paragraph 10, paragraph 11 or paragraph 19, or the kit of any one of paragraphs 14 to 19, wherein the binding agent immobilised on the solid support is an antibody which is capable of binding to a protein set out in Table 4 or Table 5, or a fragment thereof.

20

22. The method of paragraph 10, paragraph 11 or paragraph 19, or the kit of any one of paragraphs 14 to 19, wherein the binding agent immobilised on the solid support is a nucleic acid which is a nucleic acid encoding a protein set out in Table 4 or table 5, or the complement thereof, or a fragment thereof

23. The method of any one of paragraphs 10, 11 or 19, wherein the method comprising determining the presence or amount of a plurality of protein markers or antibodies associated with chronic rejection in a single sample.

25

24. The method of paragraph 23, wherein the method employs a plurality of binding agents which are immobilised at predefined locations on the solid support.

Claims

30

1. A method for the diagnosis and/or prognosis of renal damage, the method comprising determining the presence or amount of a plurality of marker proteins, or a plurality of nucleic acids encoding said proteins, selected from AMBP protein precursor (α_1 -microglobulin), adiponectin, C4b-binding protein α -chain precursor, ceruloplasmin precursor, complement C3 precursor, complement component C9 precursor, complement factor D precursor, α_{1B} -glycoprotein, β_2 -glycoprotein I precursor, heparin cofactor II precursor, Ig μ Chain C region protein, Leucine-rich α_2 -glycoprotein precursor, pigment epithelium-derived factor precursor, plasma retinol-binding protein precursor and translation initiation factor 3 subunit 10, N-acetylmuramoyl-L-alanine amidase precursor; or a fragment thereof, or antibodies against said proteins, in a sample from a patient.

35

2. The method of claim 1, wherein the renal damage is caused by chronic transplant rejection following renal transplantation.

40

3. The method of claim 2, wherein the renal damage is caused by chronic allograft nephropathy

45

4. The method of claim 1, wherein the renal damage is caused by disease or toxicity.

5. The method of any one of claims 1 to 4, wherein the sample is a renal tissue sample, a blood sample, a serum sample, a plasma sample or a urine sample.

50

6. The method according to any one of the preceding claims wherein said plurality of marker proteins includes AMBP protein precursor (α_1 -microglobulin), adiponectin, C4b-binding protein α -chain precursor, ceruloplasmin precursor, complement C3 precursor, complement component C9 precursor, complement factor D precursor, α_{1B} -glycoprotein, β_2 -glycoprotein I precursor, heparin cofactor II precursor, Ig μ Chain C region protein, Leucine-rich α_2 -glycoprotein precursor, pigment epithelium-derived factor precursor, plasma retinol-binding protein precursor and translation initiation factor 3 subunit 10, N-acetylmuramoyl-L-alanine amidase precursor.

55

7. The method of any one of claims 1 to 6, wherein the method comprises the steps of:

(a) contacting a sample from a patient with a solid support having immobilised thereon a plurality of binding agents having binding sites which are capable of specifically binding to the said plurality of proteins, antibodies or nucleic acids under conditions in which the proteins, antibodies or nucleic acids bind to the binding agents; and,
 (b) determining the presence or amount of the proteins, antibodies or nucleic acids bound to the binding agent.

8. The method of claim 7, wherein step (b) comprises (i) contacting the solid support with a developing agent which is capable of binding to occupied binding sites, unoccupied binding sites or the proteins, antibodies or nucleic acids, the developing agent comprising a label and (ii) detecting the label to obtain a value representative of the presence or amount of the proteins, antibodies or nucleic acids in the sample.

9. The method of any one of claims 1 to 6, wherein the method comprises detecting said marker proteins by mass spectroscopy.

10. The method of claim 9, wherein the proteins are immobilised on a solid support.

11. A kit for use in the diagnosis or prognosis of renal damage by determining the presence or amount of a plurality of analytes selected from AMBP protein precursor (α_1 -microglobulin), adiponectin, C4b-binding protein α -chain precursor, ceruloplasmin precursor, complement C3 precursor, complement component C9 precursor, complement factor D precursor, α_{1B} -glycoprotein, β_2 -glycoprotein I precursor, heparin cofactor II precursor, Ig μ Chain C region protein, Leucine-rich α_2 -glycoprotein precursor, pigment epithelium-derived factor precursor, plasma retinol-binding protein precursor and translation initiation factor 3 subunit 10, N-acetylmuramoyl-L-alanine amidase precursor; or a fragment thereof, or antibodies against these proteins, or nucleic acids encoding these proteins, in a sample from a patient, the kit comprising:

- (a) a solid support having binding agents capable of binding to the plurality of analytes immobilised thereon;
- (b) a developing agent comprising a label; and,
- (c) one or more components selected from the group consisting of washing solutions, diluents and buffers.

12. A kit according to claim 11 which is for diagnosis of:

- i) chronic transplant rejection following renal transplantation, in particular of chronic allograft nephropathy; or
- ii) renal damage caused by disease or toxicity.

13. A kit according to any one of claims 11 or 12 wherein the plurality of analytes includes AMBP protein precursor (α_1 -microglobulin), adiponectin, C4b-binding protein α -chain precursor, ceruloplasmin precursor, complement C3 precursor, complement component C9 precursor, complement factor D precursor, α_{1B} -glycoprotein, β_2 -glycoprotein I precursor, heparin cofactor II precursor, Ig μ Chain C region protein, Leucine-rich α_2 -glycoprotein precursor, pigment epithelium-derived factor precursor, plasma retinol-binding protein precursor and translation initiation factor 3 subunit 10, N-acetylmuramoyl-L-alanine amidase precursor.

14. The method of claim 7 or claim 8, or the kit of any one of claims 11 or 12, wherein the label is a radioactive label, a fluorophor, a phosphor, a laser dye, a chromogenic dye, a macromolecular colloidal particle, a latex bead which is coloured, magnetic or paramagnetic, an enzyme which catalyses a reaction producing a detectable result or the label is a tag.

15. The method of any one of claims 7, 8 or the kit of any one of claims 11 or 12, wherein determining the presence or amount of a plurality of protein markers or antibodies associated with chronic rejection is performed in a single sample.

Patentansprüche

1. Verfahren zur Diagnose und/oder Prognose von Nierenschaden, wobei das Verfahren das Bestimmen der Anwesenheit oder Menge einer Vielzahl von Markerproteinen oder einer Vielzahl von Nukleinsäuren, die für diese Proteine kodieren, ausgewählt aus AMBP-Proteinvorläufer (α_1 -Mikroglobulin), Adiponectin, α -Kettenvorläufer von C4b-bindendem Protein, Vorläufer von Ceruloplasmin, Vorläufer von Komplement-C3, Vorläufer von Komplement-Komponente-C9, Vorläufer von Komplement-Faktor D, α_{1B} -Glycoprotein, Vorläufer von β_2 -Glycoprotein I, Vorläufer von Heparin Cofaktor II, Ig μ -Kette C-Region-Protein, Vorläufer von leucinreichem α_2 -Glycoprotein, Vorläufer von Pigmentepithel-abgeleitetem Faktor, Vorläufer von Plasma-Retinol-bindendem Protein und Translationsinitiationsfaktor

EP 2 333 116 B1

tor 3-Untereinheit 10, Vorläufer von N-Acetylmuramoyl-L-alaninamidase, oder einem Fragment davon oder Antikörper gegen diese Proteine in einer Probe von einem Patienten umfasst.

- 5 2. Verfahren nach Anspruch 1, wobei der Nierenschaden durch chronische Transplantatabstoßung nach Nierentransplantation verursacht ist.
3. Verfahren nach Anspruch 2, wobei der Nierenschaden durch chronische Transplantatnephropathie verursacht ist.
- 10 4. Verfahren nach Anspruch 1, wobei der Nierenschaden durch Erkrankung oder Toxizität verursacht ist.
5. Verfahren nach einem der Ansprüche 1 bis 4, wobei die Probe eine Nierengewebeprobe, eine Blutprobe, eine Serumprobe, eine Plasmaprobe oder eine Urinprobe ist.
- 15 6. Verfahren nach einem der vorhergehenden Ansprüche, wobei die Vielzahl von Markerproteinen Vorläufer von AMBP-Protein (α_1 -Mikroglobulin), Adiponectin, α -Kettenvorläufer von C4b-bindendem Protein, Vorläufer von Ceruloplasmin, Vorläufer von Komplement-C3, Vorläufer von Komplement-Komponente-C9, Vorläufer von Komplement-Faktor D, α_{1B} -Glycoprotein, Vorläufer von β_2 -Glycoprotein I, Vorläufer von Heparin Cofaktor II, Ig μ -Kette C-Region-Protein, Vorläufer von leucinreichem α_2 -Glycoprotein, Vorläufer von Pigmentepithel-abgeleitetem Faktor, Vorläufer von Plasma-Retinol-bindendem Protein und Translationsinitiierungsfaktor 3-Untereinheit 10, Vorläufer von N-Acetylmuramoyl-L-alaninamidase einschließt.
20
7. Verfahren nach einem der Ansprüche 1 bis 6, wobei das Verfahren folgende Schritte umfasst:
 - 25 (a) Kontaktieren einer Probe von einem Patienten mit einem festen Träger, auf dem eine Vielzahl von Bindungsmitteln mit Bindungsstellen immobilisiert sind, die in der Lage sind, an die Vielzahl von Proteinen, Antikörpern oder Nukleinsäuren unter Bedingungen spezifisch zu binden, unter denen die Proteine, Antikörper oder Nukleinsäuren an die Bindungsmittel binden; und
 - (b) Bestimmen der Anwesenheit oder Menge der Proteine, Antikörper oder Nukleinsäuren, die an das Bindungsmittel gebunden sind.
30
8. Verfahren nach Anspruch 7, wobei Schritt (b) (i) Kontaktieren des festen Trägers mit einem Entwicklungsmittel, das in der Lage ist, an besetzte Bindungsstellen, unbesetzte Bindungsstellen oder die Proteine, Antikörper oder Nukleinsäuren zu binden, wobei das Entwicklungsmittel eine Markierung umfasst, und (ii) Detektieren der Markierung umfasst, um einen Wert zu erhalten, der für die Anwesenheit oder Menge der Proteine, Antikörper oder Nukleinsäuren in der Probe repräsentativ ist.
35
9. Verfahren nach einem der Ansprüche 1 bis 6, wobei das Verfahren das Detektieren der Markerproteine durch Massenspektroskopie umfasst.
- 40 10. Verfahren nach Anspruch 9, wobei die Proteine auf einem festen Träger immobilisiert sind.
11. Kit zur Verwendung in der Diagnose und/oder Prognose von Nierenschaden durch Bestimmen der Anwesenheit oder Menge einer Vielzahl von Analyten ausgewählt aus Vorläufer von AMBP-Protein (α_1 -Mikroglobulin), Adiponectin, α -Kettenvorläufer von C4b-bindendem Protein, Vorläufer von Ceruloplasmin, Vorläufer von Komplement-C3, Vorläufer von Komplement-Komponente-C9, Vorläufer von Komplement-Faktor D, α_{1B} -Glycoprotein, Vorläufer von β_2 -Glycoprotein I, Vorläufer von Heparin Cofaktor II, Ig μ -Kette C-Region-Protein, Vorläufer von leucinreichem α_2 -Glycoprotein, Vorläufer von Pigmentepithel-abgeleitetem Faktor, Vorläufer von Plasma-Retinol-bindendem Protein und Translationsinitiierungsfaktor 3-Untereinheit 10, Vorläufer von N-Acetylmuramoyl-L-alaninamidase, oder einem Fragment davon oder Antikörper gegen diese Proteine oder Nukleinsäuren, die für diese Proteine kodieren, in einer Probe von einem Patienten, wobei das Kit umfasst:
45
50
 - (a) einen festen Träger mit einem Bindungsmittel, das an die Vielzahl von Analyten binden kann, die darauf immobilisiert sind;
 - (b) ein Entwicklungsmittel, das eine Markierung umfasst; und
 - 55 (c) eine oder mehrere Komponenten ausgewählt aus der Gruppe bestehend aus Waschlösungen, Verdünnungsmitteln und Puffern.
12. Kit nach Anspruch 11, das zur Diagnose von

- i) chronischer Transplantatabstoßung nach Nierentransplantation, insbesondere von chronischer Transplantatnephropathie; oder
- ii) Nierenschaden, der durch Erkrankung oder Toxizität verursacht ist, dient.

- 5 13. Kit nach einem der Ansprüche 11 oder 12, wobei die Vielzahl von Analyten Vorläufer von AMBP-Protein (α_1 -Mikroglobulin), Adiponectin, α -Kettenvorläufer von C4b-bindendem Protein, Vorläufer von Ceruloplasmin, Vorläufer von Komplement-C3, Vorläufer von Komplement-Komponente-C9, Vorläufer von Komplement-Faktor D, α_{1B} -Glycoprotein, Vorläufer von β_2 -Glycoprotein I, Vorläufer von Heparin Cofaktor II, Ig μ -Kette C-Region-Protein, Vorläufer von leucinreichem α_2 -Glycoprotein, Vorläufer von Pigmentepithel-abgeleitetem Faktor, Vorläufer von Plasma-Retinolbindendem Protein und Translationsinitiierungsfaktor 3-Untereinheit 10, Vorläufer von N-Acetylmuramoyl-L-alaninamidase einschließt.
- 10
14. Verfahren nach Anspruch 7 oder Anspruch 8, oder Kit nach einem der Ansprüche 11 oder 12, wobei die Markierung eine radioaktive Markierung, ein Fluorophor, ein Leuchtstoff, ein Laserfarbstoff, ein chromogener Farbstoff, ein makromolekulares kolloidales Partikel, eine Latexperle, die gefärbt, magnetisch oder paramagnetisch ist, ein Enzym ist, das eine Reaktion katalysiert, die ein detektierbares Ergebnis produziert, oder wobei die Markierung ein Tag ist.
- 15
15. Verfahren nach einem der Ansprüche 7, 8, oder Kit nach einem der Ansprüche 11 oder 12, wobei das Bestimmen der Anwesenheit oder Menge einer Vielzahl von Proteinmarkern oder Antikörpern im Zusammenhang mit chronischer Abstoßung in einer einzelnen Probe durchgeführt wird.
- 20

Revendications

- 25 1. Procédé pour le diagnostic et/ou le pronostic d'une lésion rénale, le procédé comprenant la détermination de la présence, ou d'une quantité, d'une pluralité de protéines marqueurs, ou d'une pluralité d'acides nucléiques codant pour lesdites protéines, choisis parmi le précurseur de la protéine AMBP (α_1 -microglobuline), l'adiponectine, le précurseur de la chaîne α de la protéine de liaison au C4b, le précurseur de la céruloplasmine, le précurseur du complément C3, le précurseur du composant C9 du complément, le précurseur du facteur D du complément, le précurseur de l' α_{1B} -glycoprotéine, le précurseur de la β_2 -glycoprotéine I, le précurseur du cofacteur II de l'héparine, la protéine de la région C de la chaîne μ d'Ig, le précurseur de l' α_2 -glycoprotéine riche en leucine, le précurseur du facteur du pigment dérivé de l'épithélium, le précurseur de protéine liant le rétinol plasmatique et la sous-unité 10 du facteur 3 d'initiation de la traduction, le précurseur de N-acétylmuramoyl-L-alanine amidase ; ou un fragment de ceux-ci, ou des anticorps dirigés contre lesdites protéines, dans un échantillon issu d'un patient.
- 30
- 35 2. Procédé selon la revendication 1, dans lequel la lésion rénale est causée par le rejet chronique d'une transplantation, suite à une transplantation rénale.
- 40 3. Procédé selon la revendication 2, dans lequel la lésion rénale est causée par une néphropathie chronique d'allogreffe.
- 45 4. Procédé selon la revendication 1, dans lequel la lésion rénale est due à une maladie ou à une toxicité.
- 50 5. Procédé selon l'une quelconque des revendications 1 à 4, dans lequel l'échantillon est un échantillon de tissu rénal, un échantillon de sang, un échantillon de sérum, un échantillon de plasma ou un échantillon d'urine.
- 55 6. Procédé selon l'une quelconque des revendications précédentes, dans lequel ladite pluralité de protéines marqueurs inclut le précurseur de la protéine AMBP (α_1 -microglobuline), l'adiponectine, le précurseur de la chaîne α de la protéine de liaison au C4b, le précurseur de la céruloplasmine, le précurseur du complément C3, le précurseur du composant C9 du complément, le précurseur du facteur D du complément, le précurseur de l' α_{1B} -glycoprotéine, le précurseur de la β_2 -glycoprotéine I, le précurseur du cofacteur II de l'héparine, la protéine de la région C de la chaîne μ d'Ig, le précurseur de l' α_2 -glycoprotéine riche en leucine, le précurseur du facteur du pigment dérivé de l'épithélium, le précurseur de protéine liant le rétinol plasmatique et la sous-unité 10 du facteur 3 d'initiation de la traduction, le précurseur de N-acétylmuramoyl-L-alanine amidase.
7. Procédé selon l'une quelconque des revendications 1 à 6, dans lequel le procédé comprend les étapes de :
- (a) la mise en contact d'un échantillon issu d'un patient avec un support solide ayant, immobilisée sur celui-ci, une pluralité d'agents de liaison ayant des sites de liaison qui sont susceptibles de se lier spécifiquement à

EP 2 333 116 B1

ladite pluralité de protéines, d'anticorps ou d'acides nucléiques dans des conditions dans lesquelles les protéines, les anticorps ou les acides nucléiques se lient aux agents de liaison ; et,
(b) la détermination de la présence ou d'une quantité de protéines, d'anticorps ou d'acides nucléiques liée à l'agent de liaison.

5

8. Procédé selon la revendication 7, dans lequel l'étape (b) comprend

10

(i) la mise en contact du support solide avec un agent de développement qui est susceptible de se lier aux sites de liaison occupés, aux sites de liaison non occupés ou les protéines, les anticorps ou les acides nucléiques, l'agent de développement comprenant une étiquette et (ii) la détection de l'étiquette pour obtenir une valeur représentative de la présence, ou d'une quantité, de protéines, d'anticorps ou d'acides nucléiques dans l'échantillon.

15

9. Procédé selon l'une quelconque des revendications 1 à 6, dans lequel le procédé comprend la détection desdites protéines marqueurs par spectroscopie de masse.

10. Procédé selon la revendication 9, dans lequel les protéines sont immobilisées sur un support solide.

20

11. Trousse destinée à être utilisée pour le diagnostic ou le pronostic d'une lésion rénale en déterminant la présence, ou une quantité, d'une pluralité d'analytes choisis parmi le précurseur de la protéine AMBP (α_1 -microglobuline), l'adiponectine, le précurseur de la chaîne α de la protéine de liaison au C4b, le précurseur de la céruloplasmine, le précurseur du complément C3, le précurseur du composant C9 du complément, le précurseur du facteur D de complément, le précurseur de l' α_{1B} -glycoprotéine, le précurseur de la β_2 -glycoprotéine I, le précurseur du cofacteur II de l'héparine, la protéine de la région C de la chaîne μ d'Ig, le précurseur de l' α_2 -glycoprotéine riche en leucine, le précurseur du facteur du pigment dérivé de l'épithélium, le précurseur de protéine liant le rétinol plasmatique et la sous-unité 10 du facteur 3 d'initiation de la traduction, le précurseur de N-acétylmuramoyl-L-alanine amidase ; ou un fragment de ceux-ci, ou des anticorps dirigés contre ces protéines, ou des acides nucléiques codant pour ces protéines, dans un échantillon issu d'un patient, la trousse contenant :

30

(a) un support solide ayant un agent de liaison susceptible de se lier à la pluralité d'analytes immobilisés sur celui-ci ;
(b) un agent de développement comprenant une étiquette ; et
(c) un ou plusieurs composant(s) choisi(s) dans le groupe constitué de solutions de lavage, de diluants et de tampons.

35

12. Trousse selon la revendication 11, laquelle est destinée au diagnostic :

40

i) du rejet chronique d'une transplantation suite à une transplantation rénale, en particulier une néphropathie chronique d'allogreffe ; ou
ii) d'une lésion rénale due à une maladie ou à une toxicité.

45

13. Trousse selon l'une quelconque des revendications 11 ou 12, dans laquelle la pluralité d'analytes inclut un précurseur de la protéine AMBP (α_1 -microglobuline), l'adiponectine, le précurseur de la chaîne α de la protéine de liaison au C4b, le précurseur de la céruloplasmine, le précurseur du complément C3, le précurseur du composant C9 du complément, le précurseur du facteur D du complément, le précurseur de l' α_{1B} -glycoprotéine, le précurseur de la β_2 -glycoprotéine I, le précurseur du cofacteur II de l'héparine, la protéine de la région C de la chaîne μ d'Ig, le précurseur de l' α_2 -glycoprotéine riche en leucine, le précurseur du facteur du pigment dérivé de l'épithélium, le précurseur de protéine liant le rétinol plasmatique et la sous-unité 10 du facteur 3 d'initiation de la traduction, le précurseur de N-acétylmuramoyl-L-alanine amidase.

50

14. Procédé selon la revendication 7 ou la revendication 8, ou la trousse de l'une quelconque des revendications 11 ou 12, dans lequel l'étiquette est un traceur radioactif, un fluorophore, un phosphore, un colorant laser, un colorant chromogène, une particule colloïdale macromoléculaire, une bille en latex colorée, magnétique ou paramagnétique, une enzyme qui catalyse une réaction aboutissant à un résultat détectable, ou l'étiquette est un marquage.

55

15. Procédé selon l'une quelconque des revendications 7, 8, ou la trousse de l'une quelconque des revendications 11 ou 12, dans lequel la détermination de la présence, ou d'une quantité, d'une pluralité de protéines marqueurs ou d'anticorps associés à un rejet chronique est effectuée dans un échantillon unique.

FIG. 1

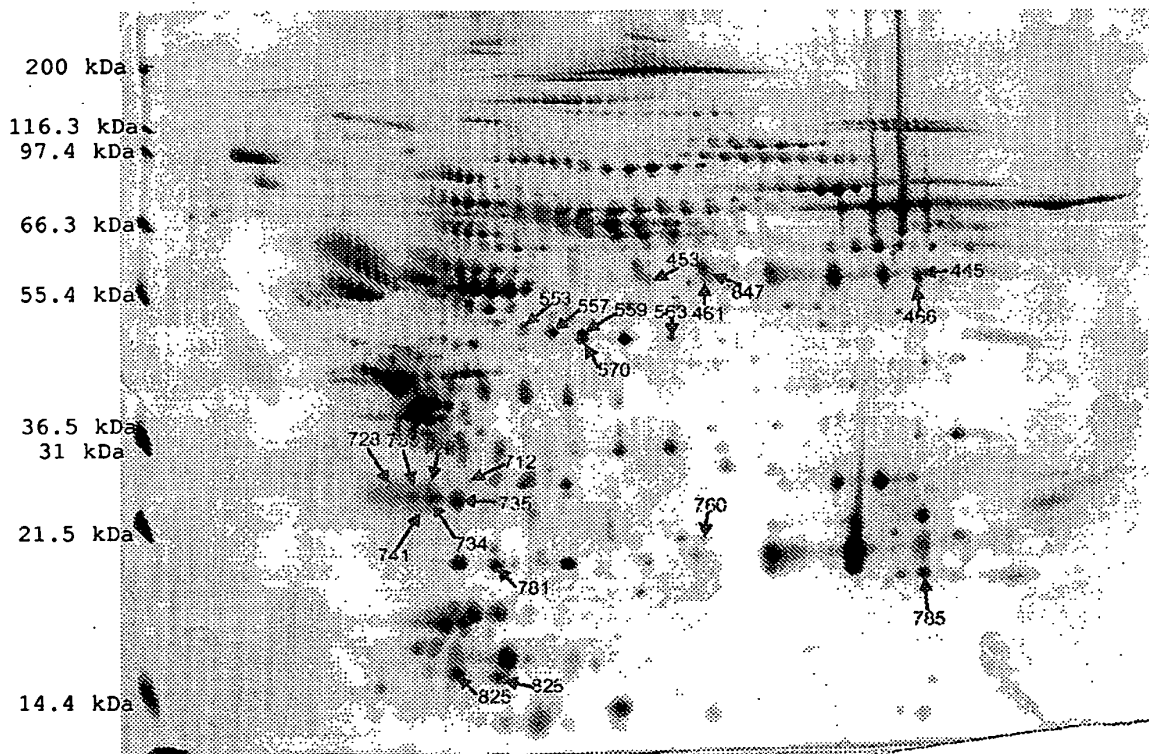


FIG. 2

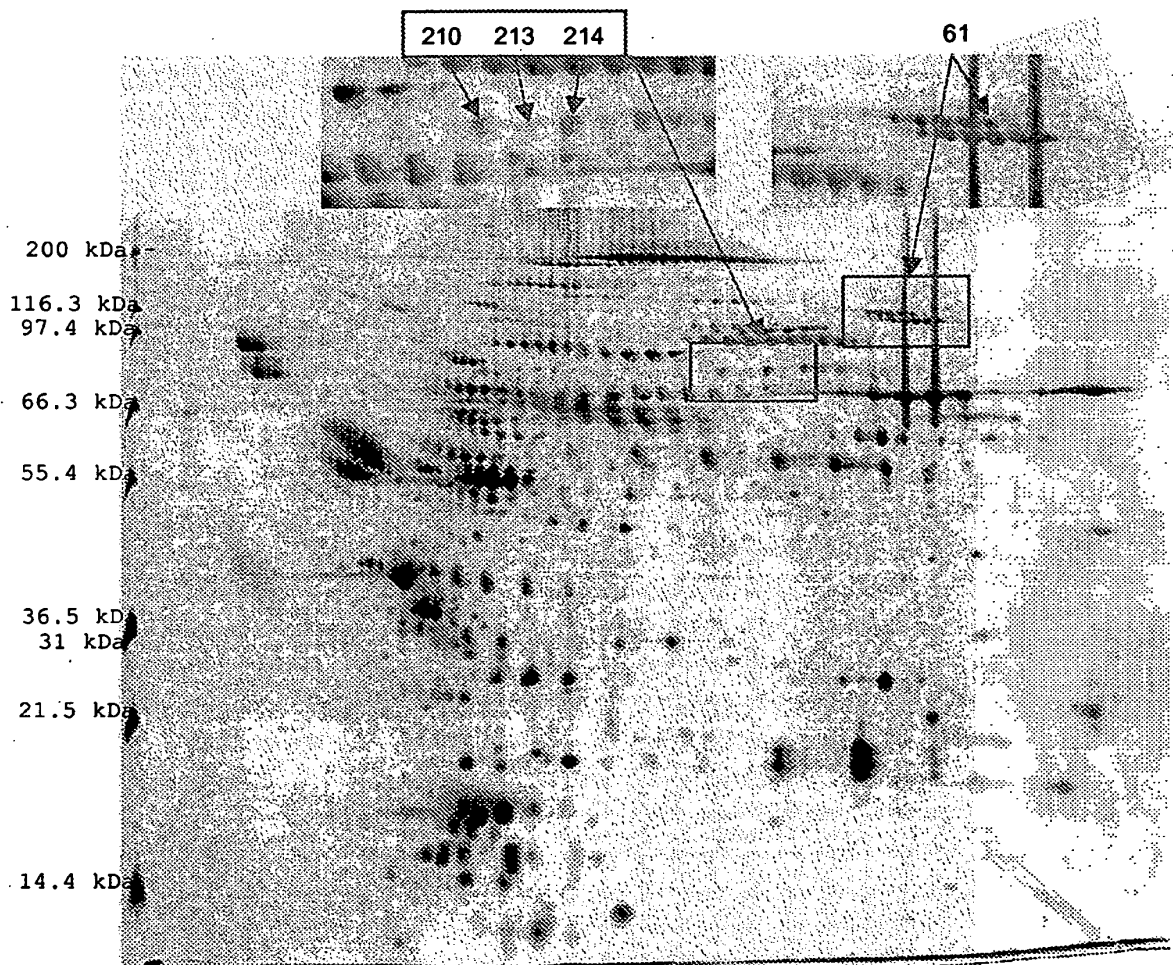


FIG. 3

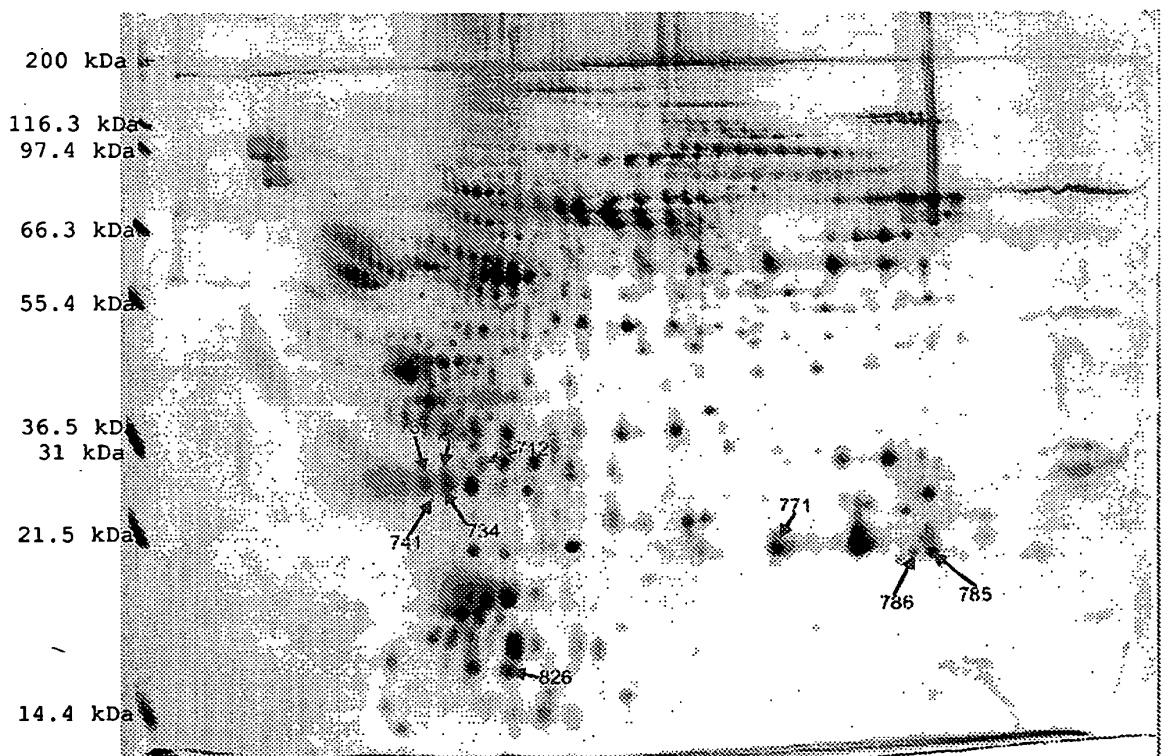


FIG. 4

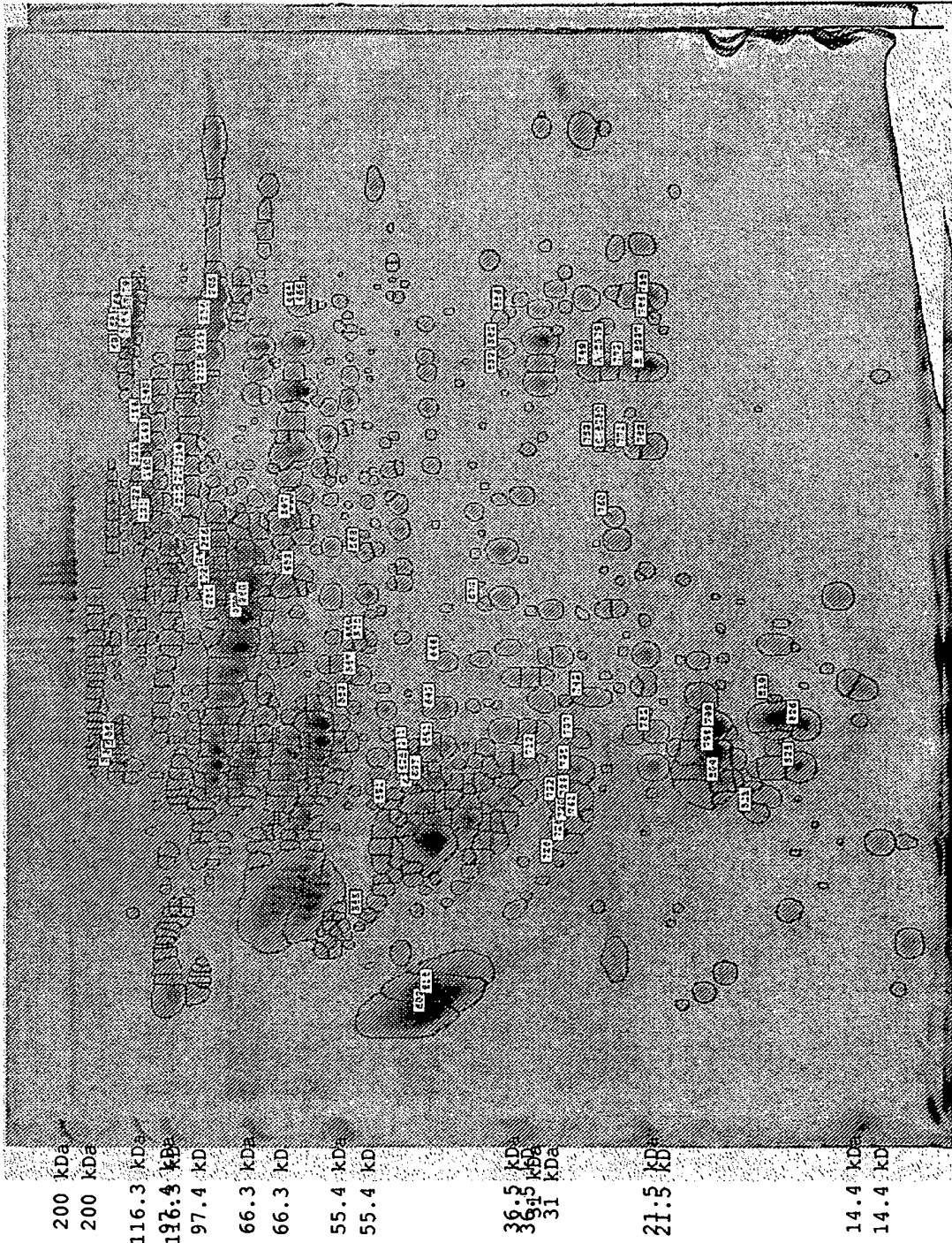




FIG. 6

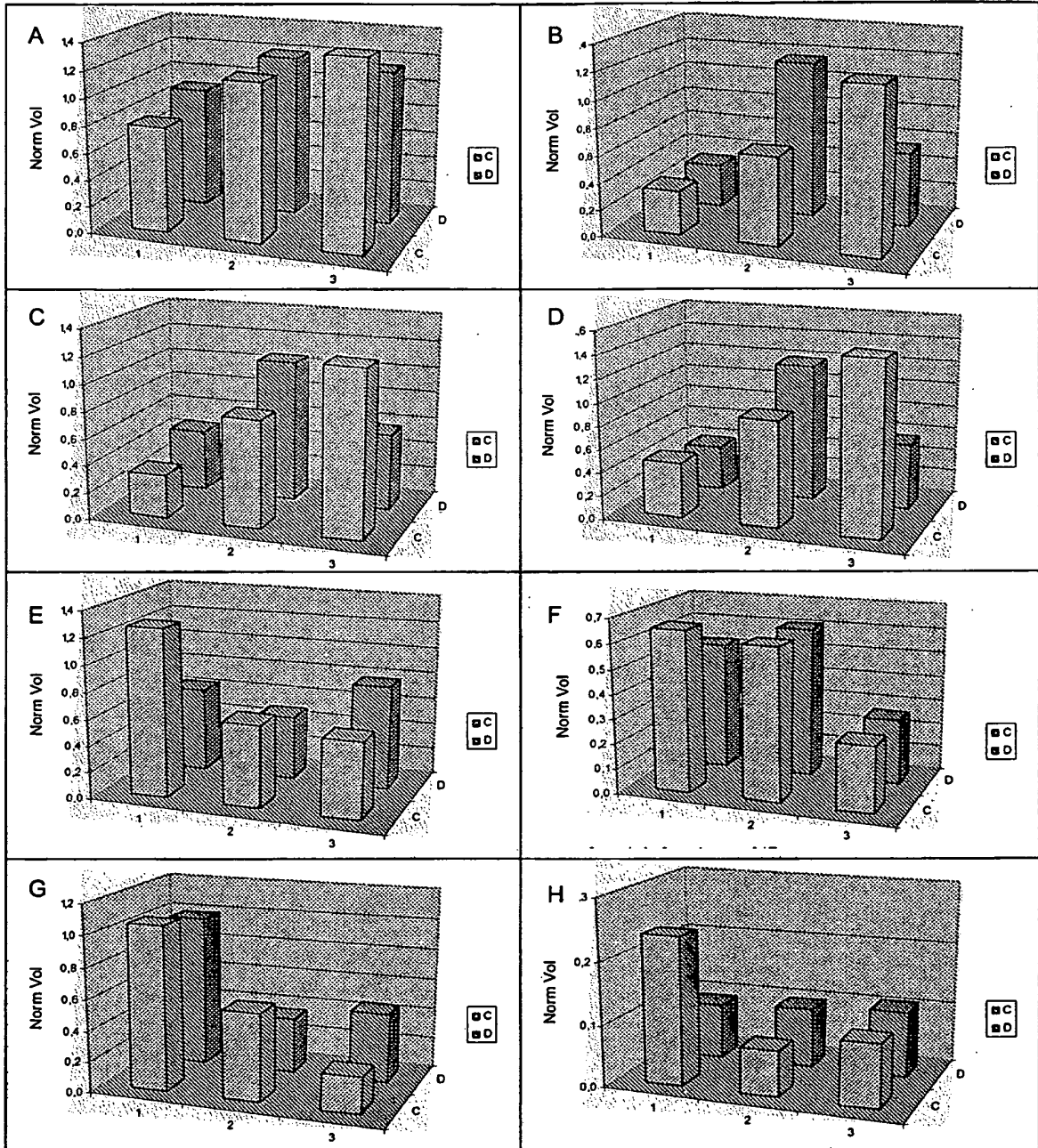


Figure 7

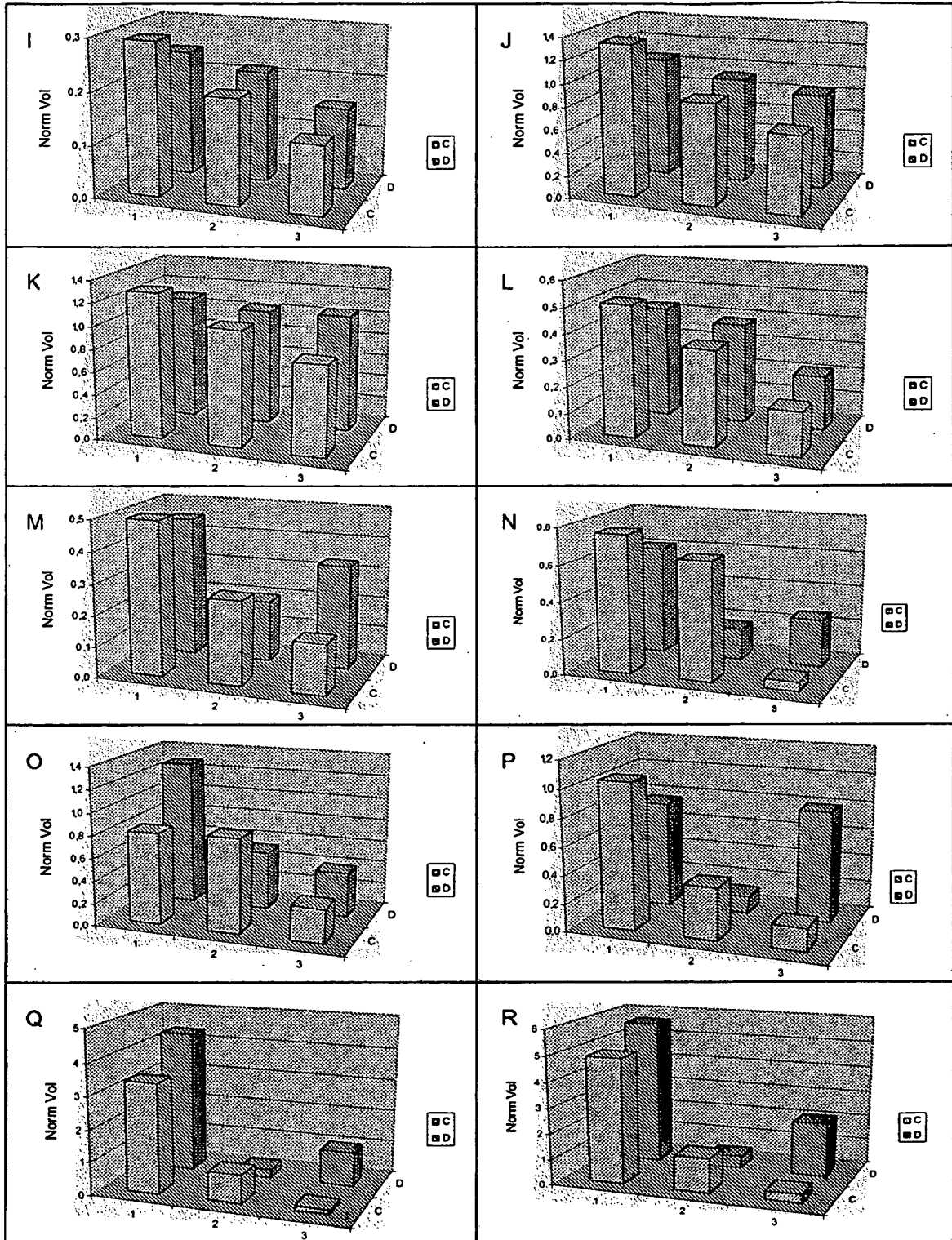


Figure 8

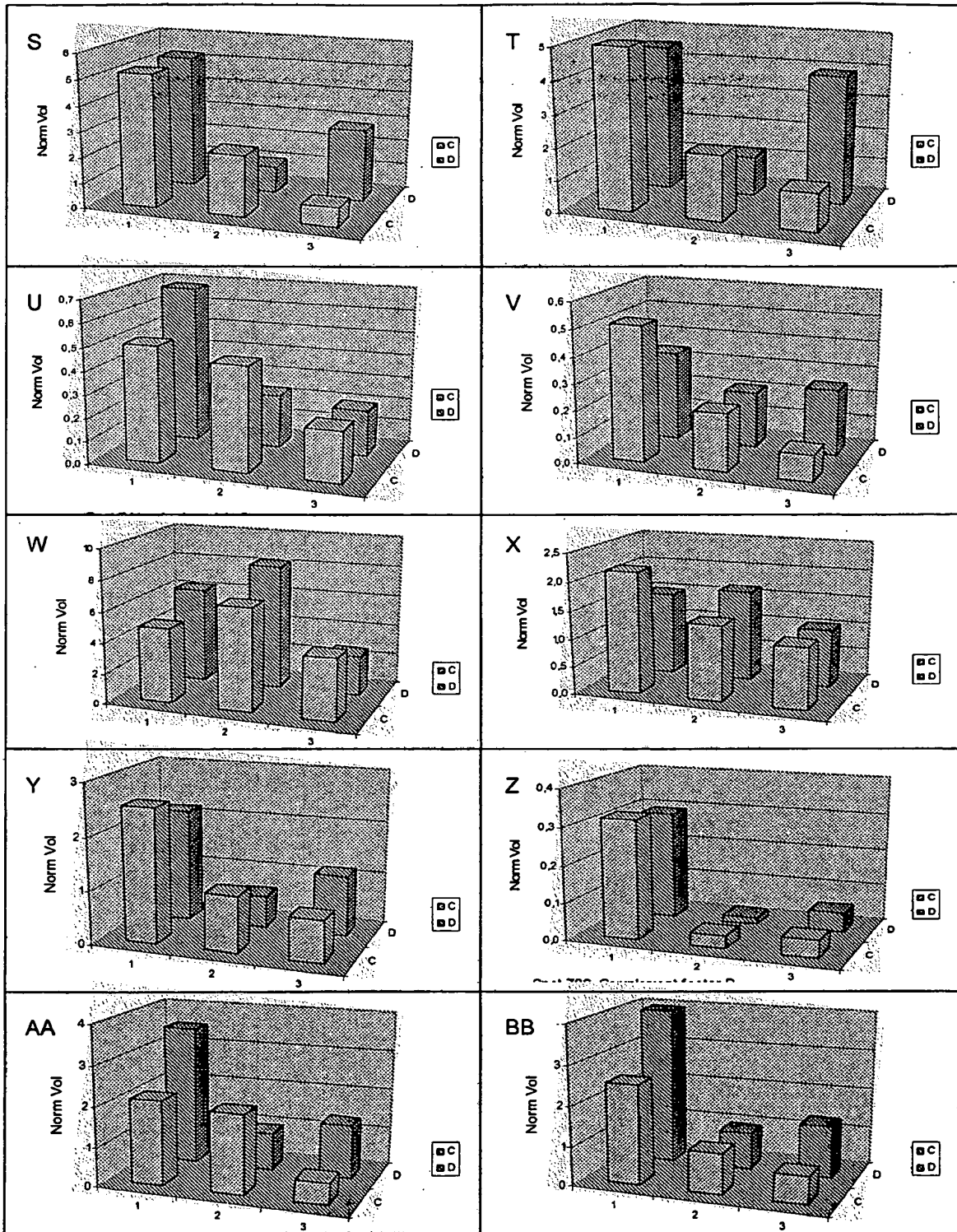


Figure 9

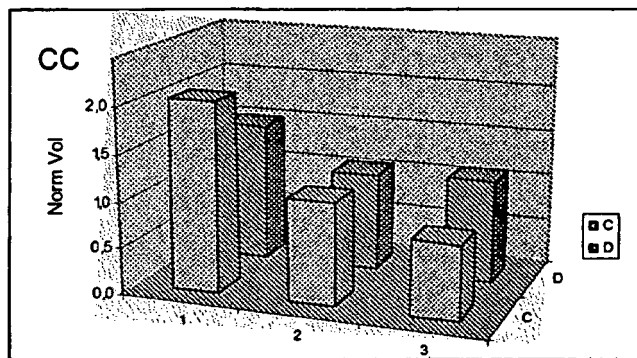


Figure 10

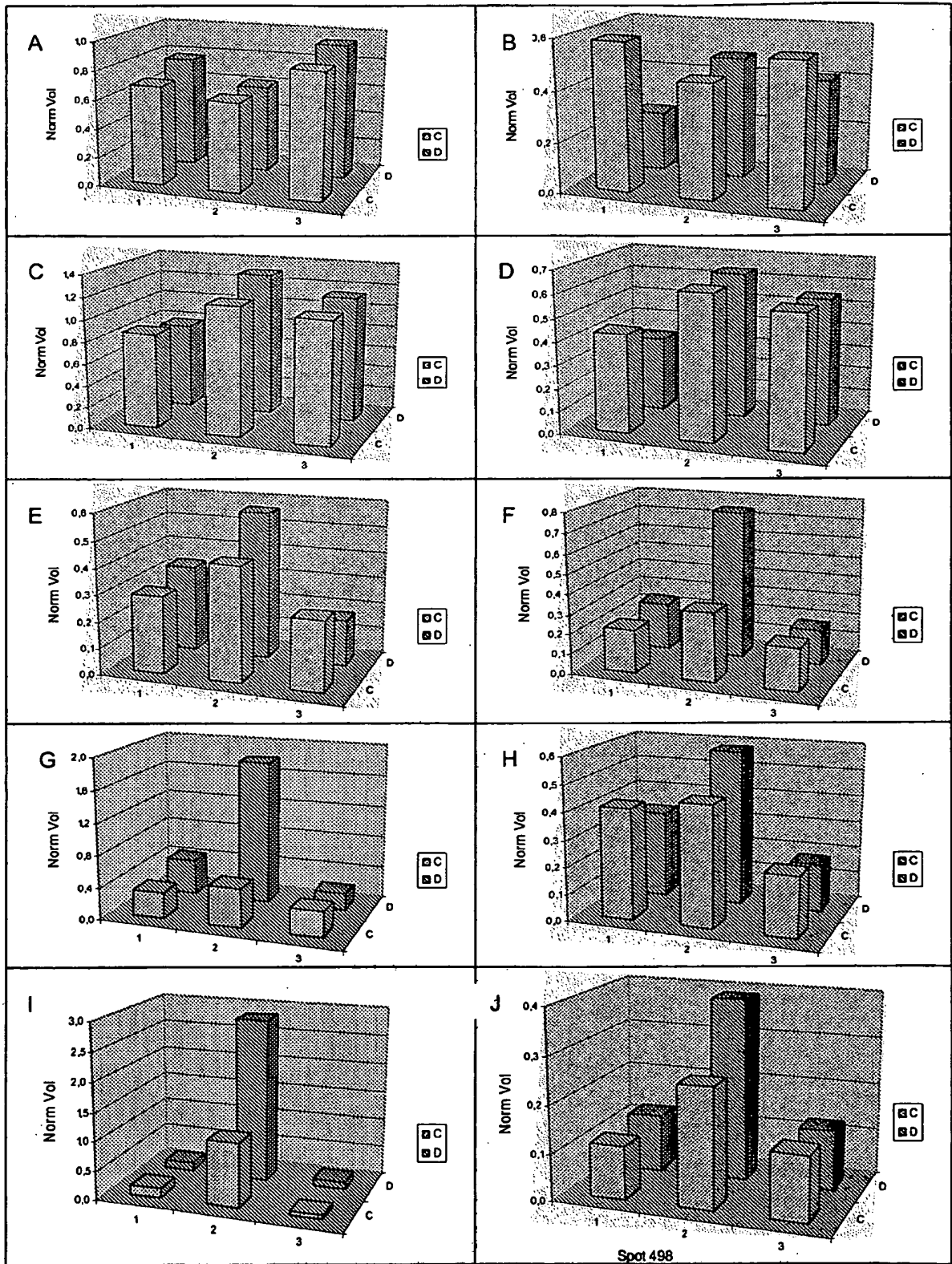
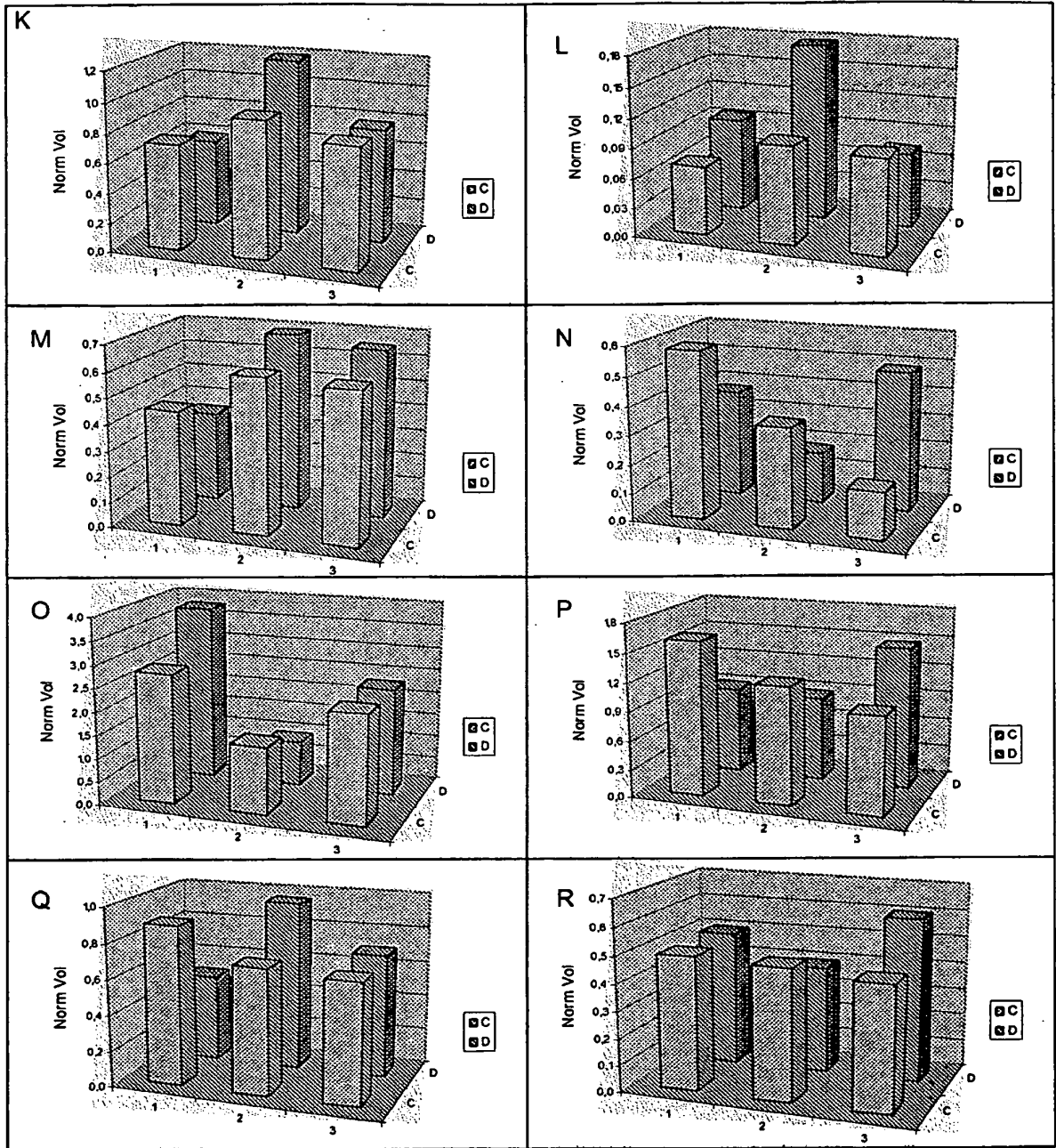


Figure 11



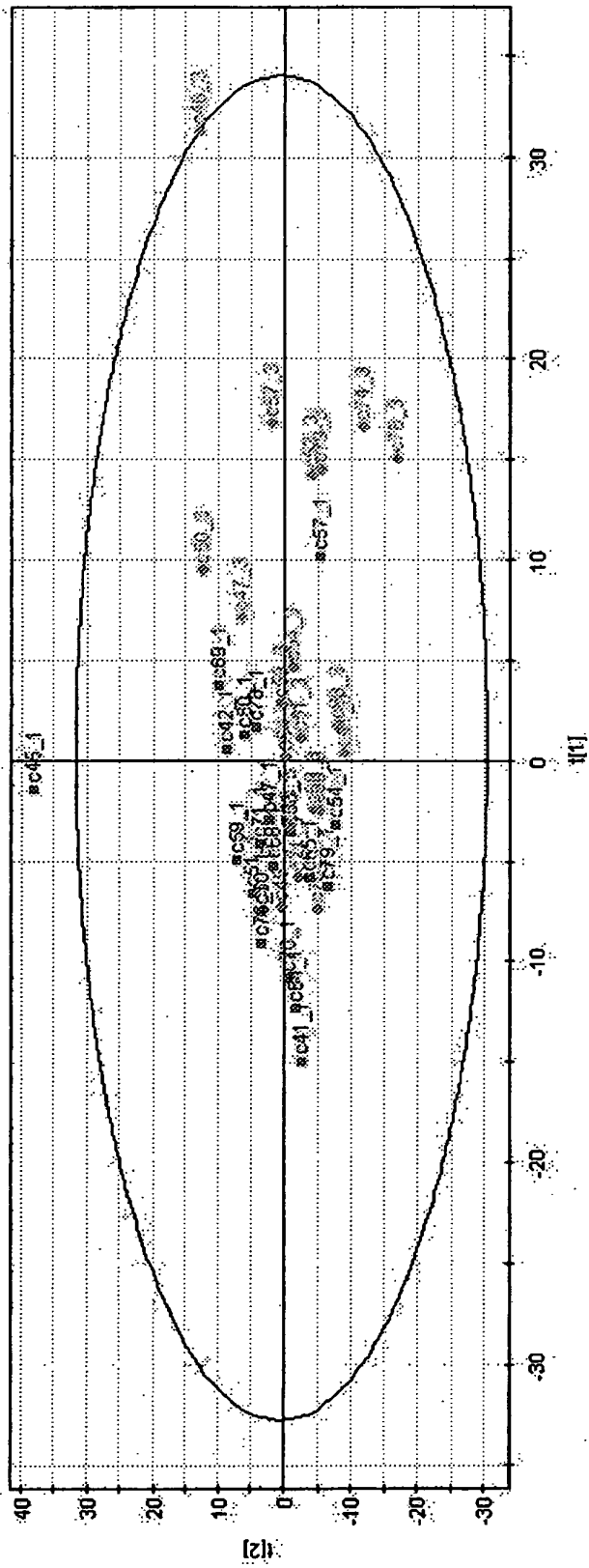


Figure 12

Figure 13

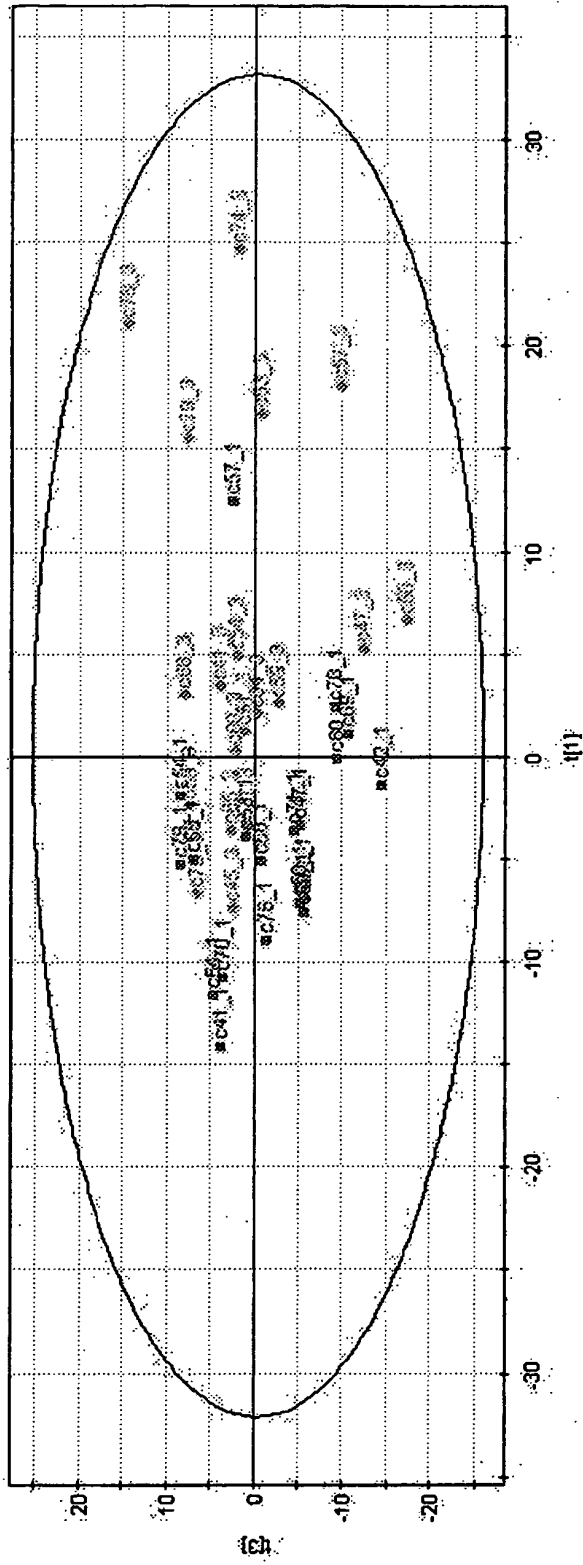


Figure 14

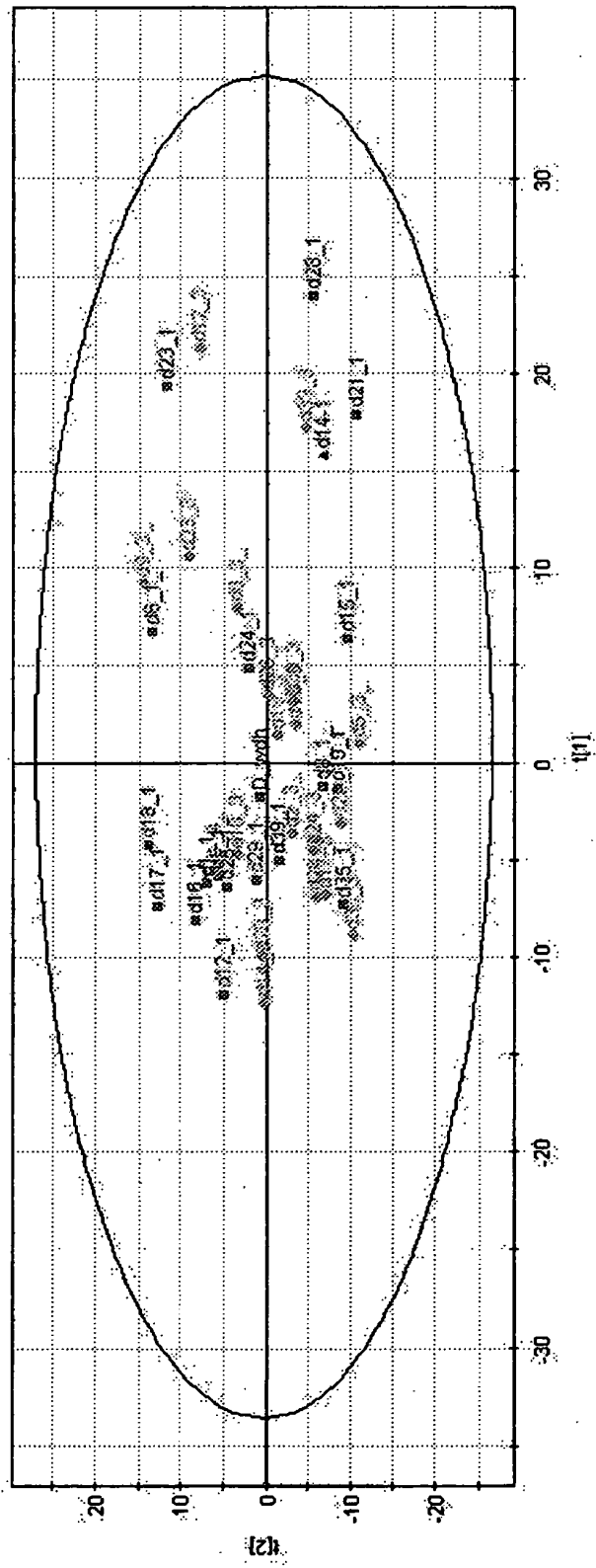


Figure 15

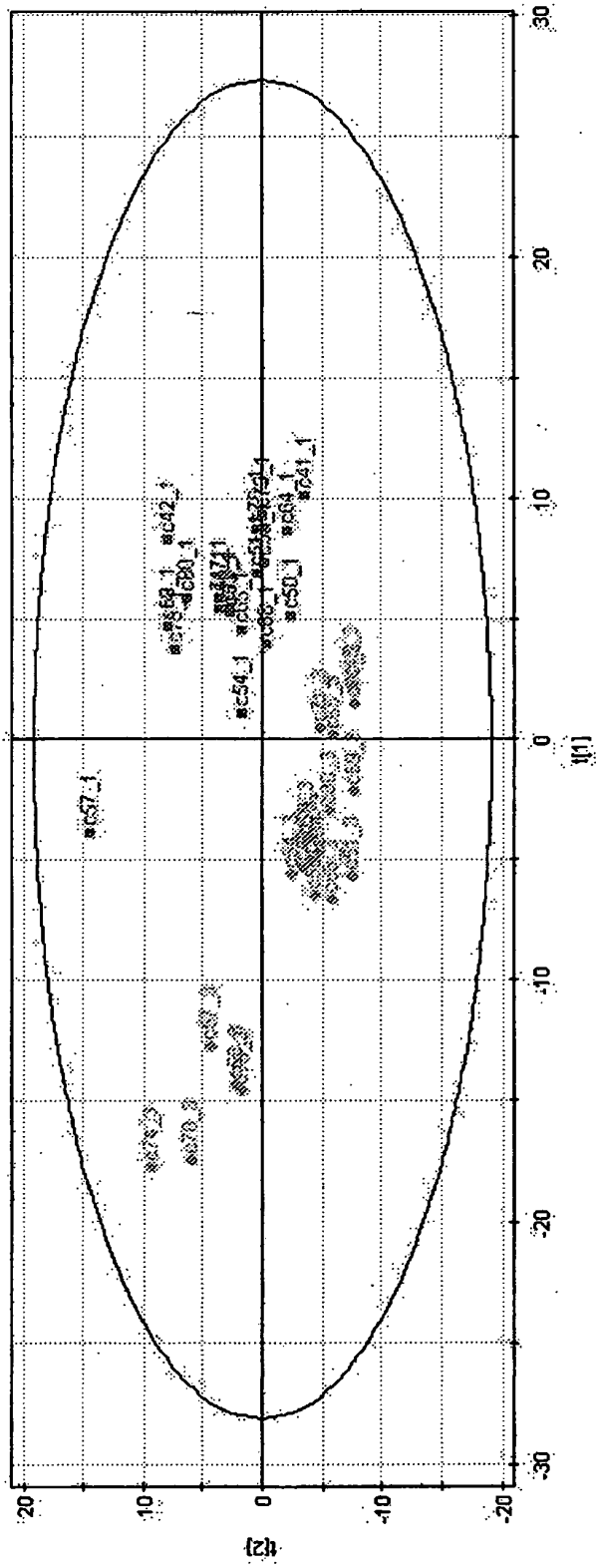


Figure 16

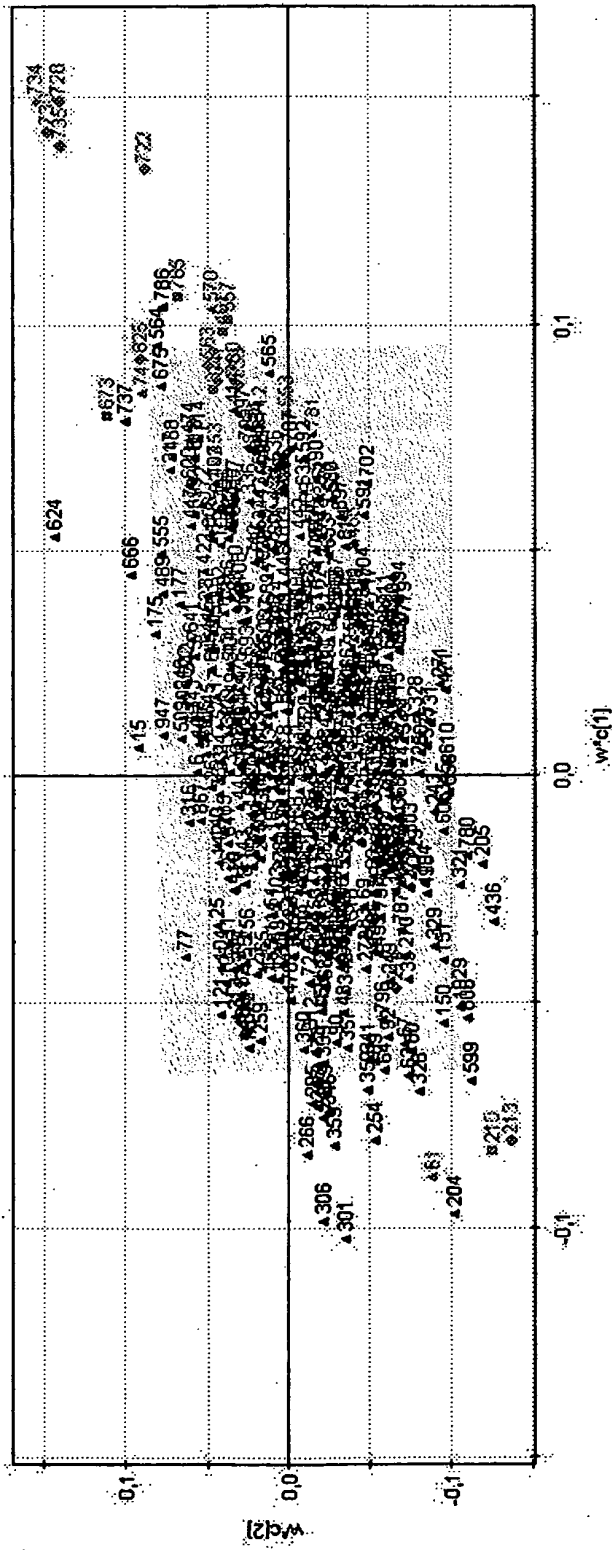


Figure 17

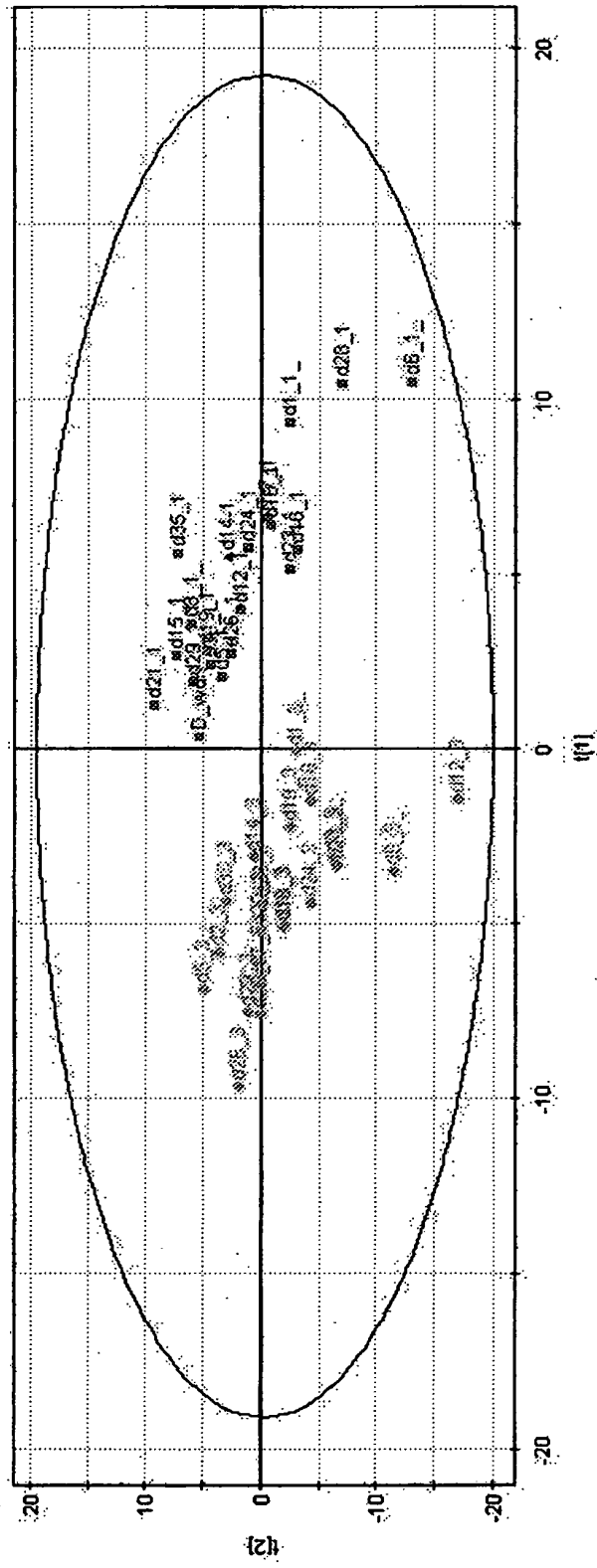


Figure 18

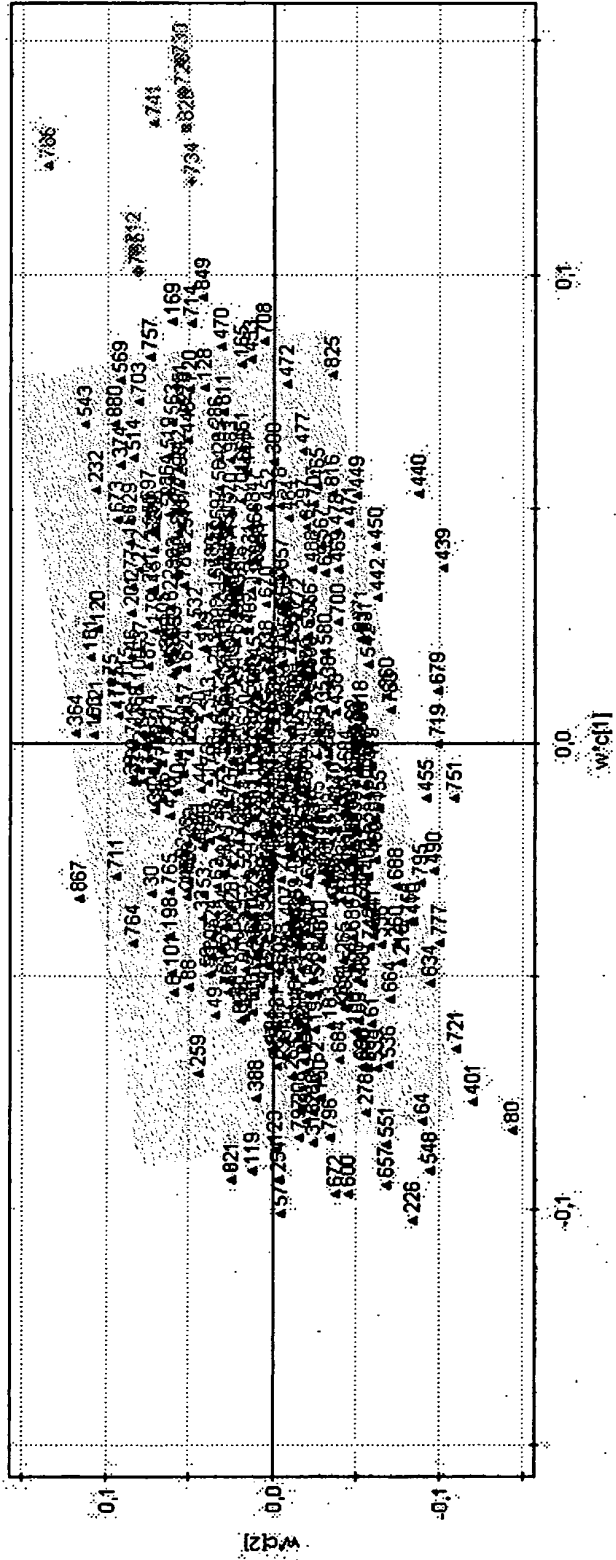


Figure 19

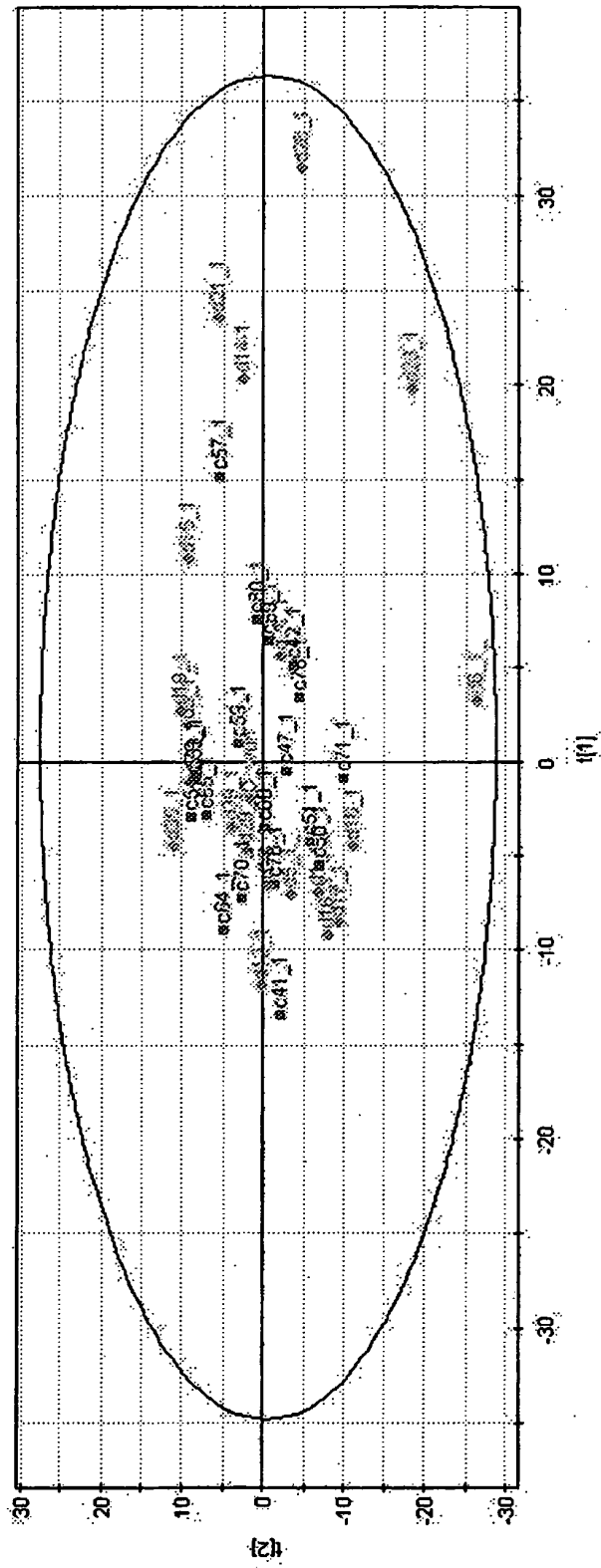


Figure 20

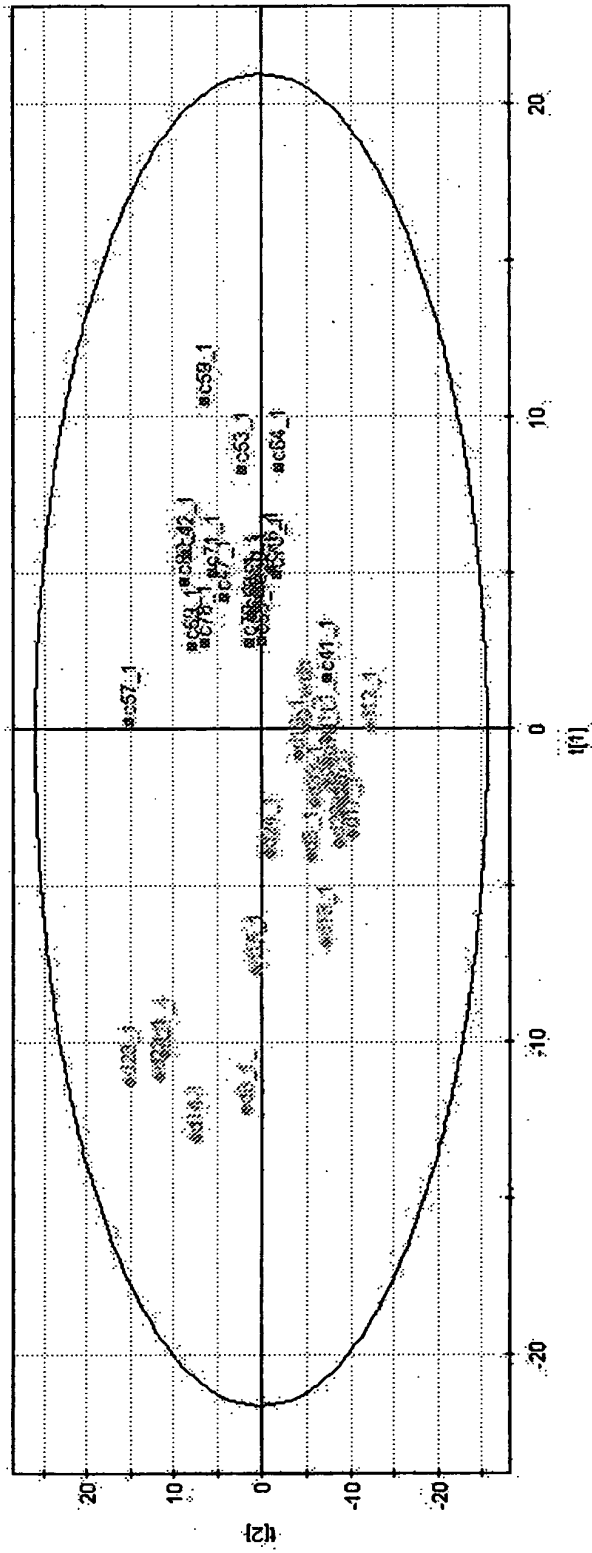


Figure 21

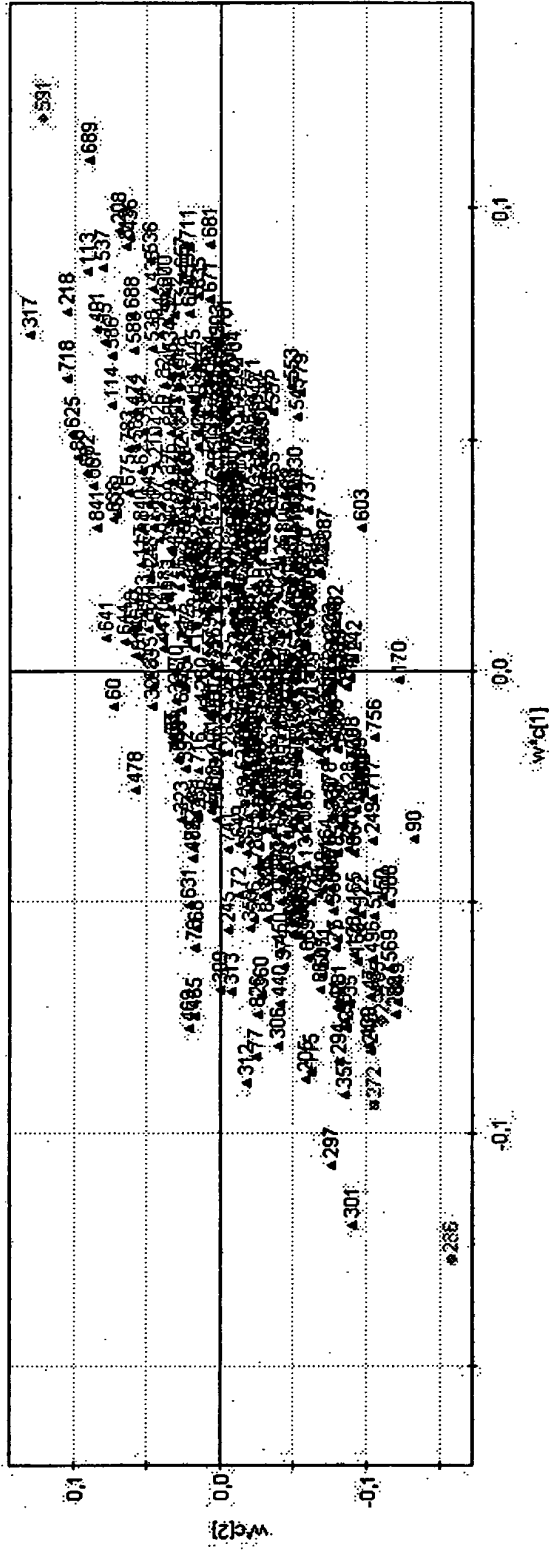


Figure 22

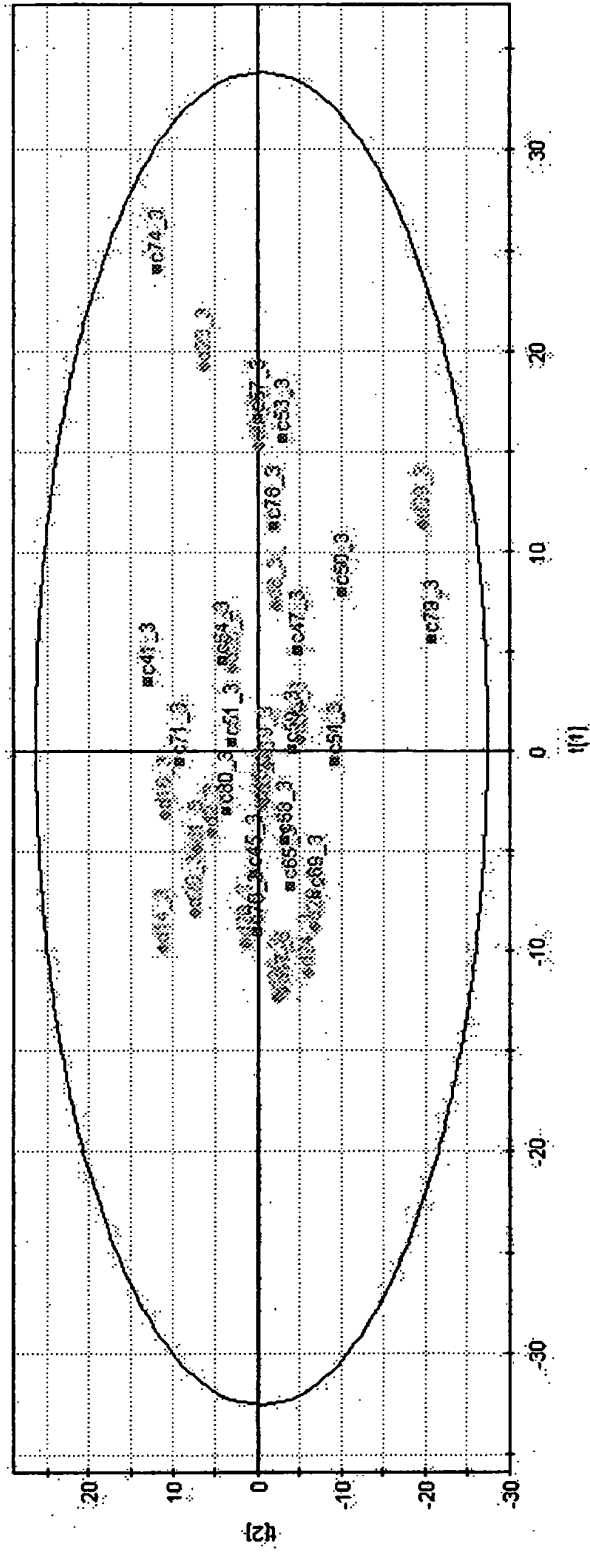


Figure 23

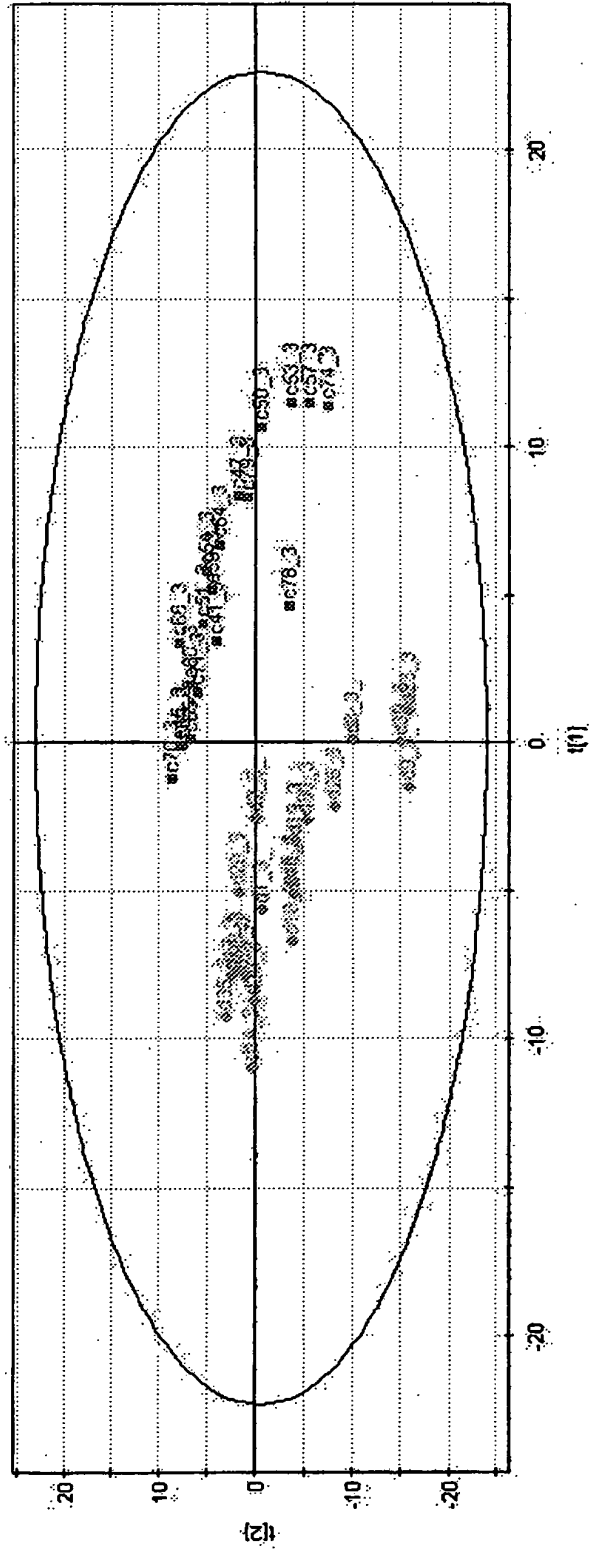
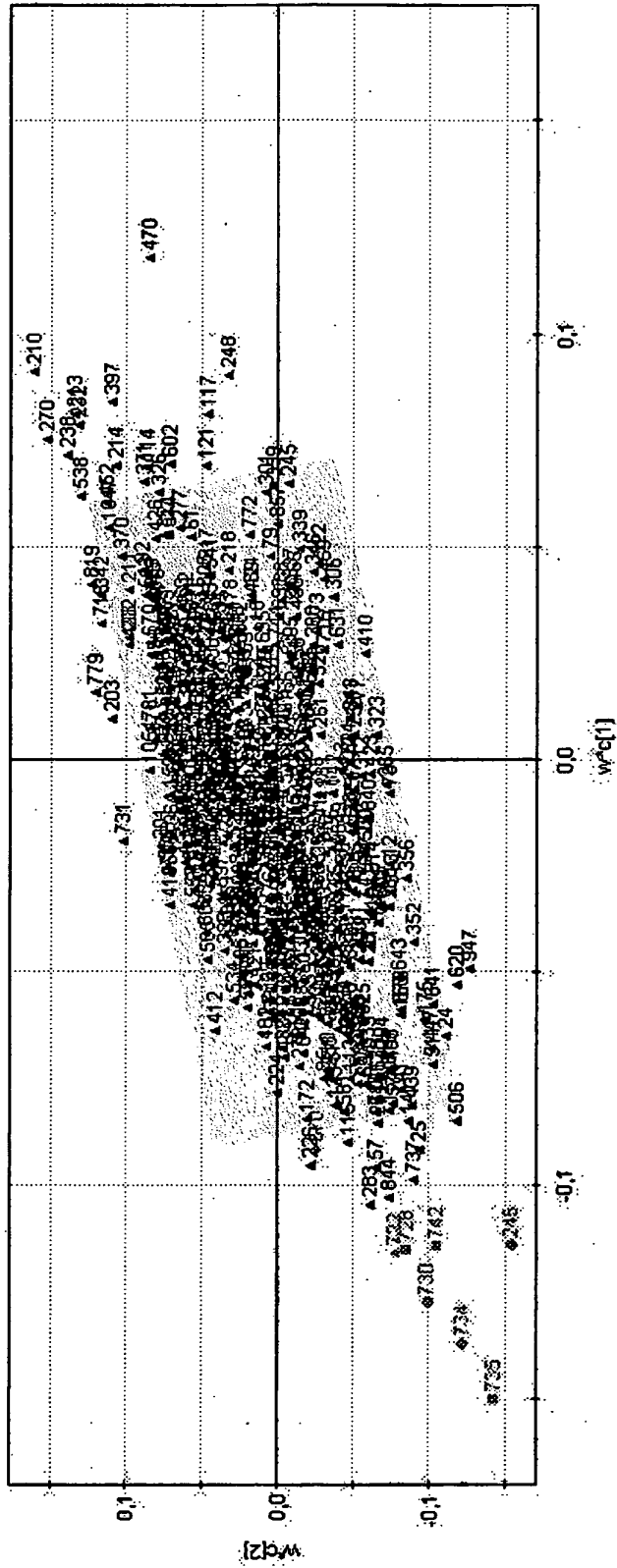


Figure 24



REFERENCES CITED IN THE DESCRIPTION

This list of references cited by the applicant is for the reader's convenience only. It does not form part of the European patent document. Even though great care has been taken in compiling the references, errors or omissions cannot be excluded and the EPO disclaims all liability in this regard.

Patent documents cited in the description

- WO 0125791 A [0047]
- US 5591721 A, Agrawal [0079]
- WO 9201047 A [0086]
- US 4816567 A, Cabilly [0091]
- EP 0184187 A [0100]
- GB 2188638 A [0100]
- EP 0239400 A [0100]
- EP 0120694 A [0100]
- EP 0125023 A [0100]

Non-patent literature cited in the description

- **J.S.ROSSIER et al.** *Electrophoresis*, 1999, vol. 20, 727-731 [0034]
- **E. R. HENDRICKSON et al.** *Nucleic Acids Research*, 1995, vol. 23, 522-529 [0043]
- **M. ROBERS et al.** Development of a rapid microparticle-enhanced turbidimetric immunoassay for plasma fatty acid-binding protein, an early marker of acute myocardial infarction. *Clin. Chem.*, 1998, vol. 44, 1564-1567 [0044]
- **GERBER, SCOTT A et al.** Absolute quantification of proteins and phosphoproteins from cell lysates by tandem MS. *PNAS*, 10 June 2003, vol. 100 (12), 6940-6945 [0049]
- Remington's Pharmaceutical Sciences. Lippincott, Williams & Wilkins, 2000 [0078]
- Current Protocols in Molecular Biology. Wiley, 1994 [0084]
- Short Protocols in Molecular Biology. Current Protocols, 2002 [0084]
- **HUSE et al.** *Science*, 1989, vol. 246, 1275-1281 [0090]
- **KOHLER ; MILSTEIN.** *Nature*, 1975, vol. 256, 495 [0091]
- **MAGE ; LAMOYI.** Monoclonal Antibody Production Techniques and Applications. Marcel Dekker Inc, 1987, 79-97 [0091]
- **GODING.** Monoclonal Antibodies: Principles and Practice. Academic Press, 1986, 59-103 [0092]
- **MUNSON ; POLLARD.** *Anal. Biochem.*, 1980, vol. 107, 220 [0096]

专利名称(译)	肾移植排斥反应和肾损伤的标志物		
公开(公告)号	EP2333116B1	公开(公告)日	2015-05-06
申请号	EP2011155053	申请日	2007-09-05
[标]申请(专利权)人(译)	电泳有限公司		
申请(专利权)人(译)	ELECTROPHORETICS有限公司		
当前申请(专利权)人(译)	ELECTROPHORETICS有限公司		
[标]发明人	KIENLE STEFAN JOUBERT RICHARD		
发明人	KIENLE, STEFAN JOUBERT, RICHARD		
IPC分类号	G01N33/569 C12Q1/68 G01N33/53 G01N33/68		
CPC分类号	G01N33/53 C12Q1/6883 C12Q2600/136 C12Q2600/158 G01N33/56911 G01N33/6893 G01N2800/245 G01N2800/347 Y10S436/811		
优先权	2006017429 2006-09-05 GB		
其他公开文献	EP2333116A3 EP2333116A2		
外部链接	Espacenet		

摘要(译)

本发明涉及检测肾移植排斥和其他形式的肾损伤的方法。提供蛋白质标记物或肾损伤，以及用于检测所述标记物的测定法。还提供了用于鉴定肾损伤标志物的方法。

Table 4 Identification of regulated protein spots in study group/validation group.

Spot no	Protein name	Swiss-Prot Acc. No.	EMBL Acc No	Expression ratio or trend of regulation in comparison			
				C1 vs. C3	D3	C1 vs. D1	C3 vs. D3
61	Plasminogen precursor	P00747		1,76/1,14	+	+	-
210	Ig μ chain C region	P01871	X17115	3,72/2,32	+	-	-
213	Ig μ chain C region	P01871	X17115	3,75/2,35	+	+	-
214	Ig μ chain C region	P01871	X17115	3,12/2,01	+	-	-
246	C4b-binding protein alpha chain precursor 2	M31452; BC02231	M31452; BC02231		+	+	1,86/0,84
272	Heparin cofactor II precursor	M12849; P05546	X03498		+	-	1,52/0,81
286	N-acetyl/muramoyl-L-alanine amidase precursor	Q96PD5			+	-	2,17/0,86
291	Complement component C9 precursor, chain a or b	P02748	BC02072; K02766		+	-	1,51/1,50
445	β 2-glycoprotein I precursor (Apolipoprotein)	P02748	X58100; X53595; X57847;	0,46/0,53	+	-	+