



(11) **EP 2 090 889 B1**

(12) **EUROPEAN PATENT SPECIFICATION**

(45) Date of publication and mention
of the grant of the patent:
04.01.2012 Bulletin 2012/01

(51) Int Cl.:
G01N 33/537^(2006.01)

(21) Application number: **09250366.3**

(22) Date of filing: **13.02.2009**

(54) **Method and apparatus for imaging target components in a biological sample using permanent magnets**

Verfahren und Vorrichtung zur Abbildung von Zielkomponenten in einer biologischen Probe unter Verwendung von Permanentmagneten

Procédé et appareil pour imagerie de composants cibles dans un échantillon biologique utilisant des aimants permanents

(84) Designated Contracting States:
**AT BE BG CH CY CZ DE DK EE ES FI FR GB GR
HR HU IE IS IT LI LT LU LV MC MK MT NL NO PL
PT RO SE SI SK TR**

(30) Priority: **15.02.2008 US 31807**

(43) Date of publication of application:
19.08.2009 Bulletin 2009/34

(73) Proprietor: **Veridex, LLC
Raritan, NJ 08869 (US)**

(72) Inventors:
• **Tibbe, Arjan G.J.
7424 BL Deventer (NL)**

• **Terstappen, Leon W.M.M.
Huntingdon Valley, PA 19006 (US)**

(74) Representative: **Goodfellow, Hugh Robin et al
Carpmaels & Ransford
One Southampton Row
London
WC1B 5HA (GB)**

(56) References cited:
**WO-A-2006/102233 GB-A- 2 123 706
US-A- 4 465 377**

EP 2 090 889 B1

Note: Within nine months of the publication of the mention of the grant of the European patent in the European Patent Bulletin, any person may give notice to the European Patent Office of opposition to that patent, in accordance with the Implementing Regulations. Notice of opposition shall not be deemed to have been filed until the opposition fee has been paid. (Art. 99(1) European Patent Convention).

Description• Field of the Invention

5 **[0001]** The invention relates generally to imaging target components in a fluidic (biological) sample. More specifically, methods and apparatus are described that provide for the positive selection of target cells in a blood sample. Small permanent magnets are added directly to a blood sample containing CD4 immunomagnetic labeled fluorescently stained Acridine Orange (AO) whole blood.

10 • Background Art

[0002] The use of immunomagnetic separation technology provides greater sensitivity and specificity in the detection of target entities in blood for example, but not limited to, intact circulating cancer cells and endothelial cells. This simple and sensitive diagnostic tool, as described (US6,365,362; US6,551,843; US6,623,982; US6,620,627; US6,645,731; WO 02/077604; WO03/065042; and WO 03/019141) can be used in the present invention to correlate the statistical survivability of an individual patient based on a threshold level.

15 **[0003]** A prior diagnostic tool incorporates a blood sample from a cancer patient (WO 03/018757) incubated with magnetic beads, coated with antibodies directed against an epithelial cell surface antigen as for example EpCAM. After labeling with anti-EpCAM-coated magnetic nanoparticles, the magnetically labeled cells are then isolated using a magnetic separator. The immunomagnetically enriched fraction is further processed for downstream immunocytochemical analysis or image cytometry, for example, in the CellSpotter or CellTracks® System (Immunicon Corp., USA). The magnetic fraction can also be used for downstream immunocytochemical analysis, RT-PCR, PCR, FISH, flowcytometry, or other types of image cytometry.

20 **[0004]** The CellSpotter or CellTracks® System utilizes immunomagnetic selection and separation to highly enrich and concentrate any epithelial cells present in whole blood samples. The captured cells are detectably labeled with a leukocyte specific marker and with one or more tumor cell specific fluorescent monoclonal antibodies to allow identification and enumeration of the captured CTC's as well as instrumental or visual differentiation from contaminating non-target cells. At an sensitivity of 1 or 2 epithelial cells per 7.5 ml of blood, this assay allows tumor cell detection even in the early stages of low tumor mass.

25 **[0005]** EasyCount® system (PCT/US03/04468) is a fluorescent imaging system, designed to make a distinction between lymphocytes, granulocytes and monocytes. The system includes a compact electronic optical instruments, analytical methods, image acquisition, and data reduction algorithms for the detection and enumeration of magnetically labeled target cells or particles. Using whole blood as an example, blood cells are fluorescently labeled using one or more target specific fluorescent dyes, such as a DNA staining dye. The cells of interest or target cells in the blood sample are labeled by incubation with monoclonal antibodies conjugated to ferromagnetic particles. The sample is then placed into an appropriate optical detection chamber or covet, which in turn is placed into a magnetic field gradient that selectively causes the magnetically labeled cells to move towards the planar viewing surface of the chamber. The target cells are collected and immobilized substantially uniformly on the optically transparent surface of the chamber. A segment of this surface and the labeled target cells thereon are illuminated by means of one or more LED (light emitting diodes). Subsequently, the light emitted by individual target cells is captured by a CCD (charge coupled device). Image acquisition methods, processing methods, and algorithms, disclosed herein, are used to count the number of captured light-emitting cells and to relate the data output to the target cells per microliter of the analysis sample in the chamber and ultimately to the original specimen.

30 **[0006]** Currently available methods do not provide a rapid, low cost and consistently reliable means for assessing a target population of cells by flow or image cytometry. Thus, there is a clear need for quick and accurate detection of target components in blood such as cancer or endothelial cells.

Summary of the Invention

35 **[0007]** The present invention is a method and means for positive selecting and imaging target entities. This includes a coated permanent magnetic device for magnetic manipulation in the system of the present invention. The system immunomagnetically concentrates the target entity, fluorescently labels, identifies and quantifies target cells by positive enumeration. Subsequent statistical analysis enables the clinician to obtain potential diagnostic information.

40 **[0008]** More specifically, the present invention provides the apparatus, methods, and kits for diagnosing disease disorders after immunomagnetic imaging. After obtaining a whole blood sample from a patient, a small permanent magnet is added to the whole blood sample. Unlike previously described CellSpotter Magnet configuration, a small NdFeB magnet is directly added to a sample container, for example the CellTracks® cartridge US 6,861,259 and US 7,011,794 with 100 µl of CD4 immunomagnetically labeled and fluorescently stained AO whole blood. After 10 minutes the small

permanent magnet is pulled out of the sample using an iron rod or another magnet. The magnet is positioned within the container to allow for image analysis.

[0009] The present invention has the magnet fixed to a floatation device (floaters) within the reaction chamber. After addition of the reagents, blood and floaters, the immunomagnetically labeled target cells are positioned along a single imaging plane for analysis, all within the reaction chamber.

Brief Description of the Drawings

[0010]

Figure 1: Steps in the immunomagnetic imaging of target cells using the CellSpotter cartridge as the imaging container.

Figure 2: Schematic representation of one embodiment of the small magnet. Panel 1 shows the target entity (cells). Panel 2 shows the target entity oriented on the PDMS silicone rubber coated magnet.

Figure 3: (A) shows the design of the floaters with the permanent magnet affixed to one face. (B) shows the floaters inside a tube chamber having a flat optically transparent window for imaging.

Figure 4: (A) is an image of fluorescent beads on the face of the floaters. The face has a thickness of 0.17 millimeters. (B) is an image of magnetic beads on the face of the floaters. The face has a thickness of 0.7 millimeters.

Figure 5: (A) shows an image of CD14-FF selected cells after staining with Acridine Orange (shown in green) and CD45-APC (shown in red). (B) From left to right, the floaters, the tube with chamber having a line to mark the volume, and the cap of the chamber.

Figure 6: Fluorescent images acquired using three different objectives. (A) Image acquired using 5x NA 0.12 objective. (B) images acquired using 10x, NA 0.25 and a (C) image using 40x, NA 0.6 objective. Blue color represent DAPI, green is CD8-PE and red is CD4-APC.

Figure 7: Images obtained from two methods. (A) shows results obtained after 40 rotations using method 1. (B) shows the results from method 2, obtained after 500 rotations.

Figure 8: Images obtained with a 5x and 40x objective with the addition of 20, 40, 60, and 80 microliters of EpCam ferrofluid (20mg/ml).

Figure 9: Graph representing the number of cells collected as a function of time with small (1.6 mm (1/16") x 6.35 mm (1/4")) and large magnets (1.6 mm (1/16") x 12.7 mm (1/2)).

Detailed Description of the Invention

[0011] Described herein is a method for detecting and enumerating a target population within a biological specimen, comprising:

- (a) labeling said target population within said biological specimen with a fluorescent marker wherein said marker is specific for said target population;
- (b) coupling said target population to a magnetic particle;
- (c) adding a small permanent magnet directly to said specimen;
- (d) isolating said labeled target population wherein said isolating includes removing said magnet containing said target population from said specimen;
- (e) acquiring an image of said target population, and
- (f) analyzing said image to detect and enumerate said labeled target population.

[0012] The invention provides a method for detecting and enumerating a target population within a biological specimen, comprising:

- (a) labeling said target population within said biological specimen with a fluorescent marker wherein said marker is specific for said target population;
- (b) coupling said target population to a magnetic particle;

- (c) adding a floater containing a small permanent magnet directly to said specimen;
- (d) allowing the floater to stabilize along the viewing window of the chamber;
- (e) acquiring an image of said target population, and
- (f) analyzing said image to detect and enumerate said labeled target population

5

[0013] Immunomagnetic isolation, enrichment, and analysis in blood combines immunomagnetic enrichment technology and immunofluorescent labeling technology with an appropriate analytical platform after initial blood draw. The associated test has the sensitivity and specificity to detect rare cells in a sample of whole blood with the utility to investigate their role in the clinical course of the disease such as malignant tumors of epithelial origin.

10 **[0014]** With this type of technology, circulating tumor cells (CTC) have been shown to exist in the blood in detectable amounts.

[0015] Image cytometric analysis such that the immunomagnetically enriched sample is analyzed by the CellSpotter and CellTracks® System utilizes a fluorescence-based microscope image analysis system, which in contrast with flow-cytometric analysis permits the visualization of events and the assessment of morphologic features to further identify objects (US 6,365,362).

15 **[0016]** The CellSpotter and CellTracks® System refers to an automated fluorescence microscopic system for automated enumeration of isolated cells from blood. The system contains an integrated computer controlled fluorescence microscope and automated stage with a magnetic yoke assembly that will hold a disposable sample cartridge. The magnetic yoke is designed to enable ferrofluid-labeled candidate tumor cells within the sample chamber to be magnetically localized to the upper viewing surface of the sample cartridge for microscopic viewing. Software presents target cells, labeled with antibodies to cytokeratin and having epithelial origin, to the operator for final selection.

20 **[0017]** Isolation of target cells can be accomplished by any means known in the art. After magnetic separation, the cells bound to the immunomagnetic-linked antibodies are magnetically held at the wall of the tube. Unbound sample is then aspirated and an isotonic solution is added to resuspend the sample. A nucleic acid dye, monoclonal antibodies to cytokeratin (a marker of epithelial cells) and CD 45 (a broad-spectrum leukocyte marker) are incubated with the sample. After magnetic separation, the unbound fraction is again aspirated and the bound and labeled cells are resuspended in 0.2 ml of an isotonic solution. The sample is suspended in a cell presentation chamber and placed in a magnetic device whose field orients the magnetically labeled cells for fluorescence microscopic examination. Cells are identified automatically and candidate target entities presented to the operator for checklist enumeration. An enumeration checklist consists of predetermined morphologic criteria constituting a complete cell.

25 **[0018]** The present invention utilizes a floater containing a small permanent magnet added directly to the immunomagnetically labeled target entity in a blood sample. The target is further labeled with imaging nucleic acid dyes, cell membrane, and/or cytoskeletal immunofluorescent labels. For example, Figure 1 depicts a method for imaging CD4 expressing target cells in a whole blood sample. A small neodymium (NdFeB) permanent magnet is added to a whole blood sample after immunomagnetically labeled and fluorescently labeled for CD4. After 10 minutes, the small permanent magnet is separated from the fluid sample and within the sample container to be viewed through a viewing surface.

30 **[0019]** In one embodiment, the small permanent magnet is a disc with a diameter of 1.6 mm and a height of 0.8 mm (see Figure 2). The smaller magnets are more preferred for this invention. Using this magnet, the target entity (cells) attach to only the magnets. The cells are not in a single focal plane and quality images are difficult to obtain. The same method is accomplished using encapsulated magnets with PDMS silicone rubber. The cells attach along a single focal plane. The layer of PDMS on the top of the magnet is approximately 1 mm. The width of the PDMS is approximately 3 mm.

35 **[0020]** There is a further need to design a method for moving the magnet in and out of the cell suspension as the chance of losing the magnets while moving in and out the suspension is large. The magnet must be small enough to reduce the force needed to pull it out of the cell suspension. The friction force between the wall of the chamber and the magnet may be too large to pull the magnet out of the cell suspension as the direction of movement is perpendicular to the magnetic force. Even with the size of the enclosure for the magnet enlarged, cells may move to the pole of the magnet and impede detection.

40 **[0021]** These problems are considered with a further embodiment described in the present invention. Figure 3 shows the basic steps of the present method. A permanent magnet is mounted on the inside of one face of a hollow tube, closed on all sides as shown in Figure 3A. The face, having the magnet mounted, has a defined thickness (d). The surface can be flat or contain structures that facilitate capture and visibility of the objects of interest and limit the influence of interfering components in the fluid, i.e. free unbound magnetic particles.

45 **[0022]** The thickness of the face determines the spread of the cells on the outside. The height/diameter ratio of the floater determines the magnetic field's effect on the outside area of the floater. Consequently, the ratio should limit the influence of the magnetic field to approximately the face of the outside of the floater where the magnet is mounted.

50 **[0023]** A cell suspension is injected into a tube with a flat surface, having an optically transparent window. Immunomagnetic particles are added together with fluorescence labels. After incubation the floater containing the permanent magnet is inserted in the tube with the magnet facing the bottom of the tube and the tube is closed.

[0024] Alternatively, the floater can be inserted at the same time as the other reagents. By putting the test tube upside down the floater rises to the outside the fluid. A small layer of fluid is left in between the test tube and the floater which is neglect able to the total volume. Suspension is incubated with the reagents without interference of the floater or interferences of the magnetic field.

5 **[0025]** After incubation the tube is placed on a test tube rotator or similar device to cause the floater to move up and down through the cell suspension as illustrated in Figure 3B. After enough time to allow complete capture of the magnetically labeled objects (cells), the tube is taken off the rotator and placed up-side down to force the floater to rise to toward the optical window on the flat surface of the tube. Using a standard fluorescence microscope, the cells, presented on the face of the floater are imaged through the bottom of the tube.

10 **[0026]** Figure 4A displays a fluorescence image of magnetic green fluorescent beads (Bangs beads), having a diameter of 8 microns. The beads are collected on the face of a floater using a 0.8 mm (1/32") x 1.6 mm (1/16") neodymium permanent disc magnet with the face having a thickness of 0.17 millimeters. Figure 4B shows the magnetic beads imaged on the face of the floated.

15 **[0027]** Figure 5A displays an overlay image of CD14-FF selected cells that were collected on the face of a floater with an outside diameter of 12 mm using a 1.6 mm x 6.53 mm (1/16" x 1/4") neodymium cylinder magnet and a face thickness of 2 cover slips, approximately 0.34 mm. The intensity of Acridine Orange can be shown as a green signal to distinguish the red color for the CD45-APC label. Figure 5B shows the floater, the chamber, and the cap of the chamber.

20 **[0028]** For each sample preparation, 200 μ l of blood (CellSave Preservative Tube, Immunicon Corporation) was incubated for 10 minutes with 10 μ l CD14-FF (0.88 g/ml), 10 μ l Acridine Orange (1mM) and 10 μ l CD45-APC in a glass chamber, as shown in Figure 5A. Phosphate buffered saline (PBS; 2 ml) was added to fill the chamber to a predetermined amount. The floater is added to the chamber with the side containing the magnet facing the glass bottom of the chamber. The chamber was rotated to ensure complete mixing. After 10 minutes the chamber was inverted and the cells collected on the face of the magnet were fluorescently imaged.

25 **Example 1**

CD-Chex, Capture Efficiency

30 **[0029]** To determine the capture efficiency CD-Chex with known absolute numbers of leukocytes and their phenotypes is used.

[0030] Materials and methods:

CD-Chex (lot # 60650071):

- 35
- CD3+ : 1859 / μ l
 - CD3+/CD4+ : 1221 / μ l
 - CD3+/CD8+ : 576 / μ l

40 **[0031]** To 50 μ l of CD-Chex, add 10 μ l of CD3-FF (clone Cris7), 10 μ l of CD4-APC and 10 μ l of CD8-PE. After 25 minutes of incubation, 10 μ l of this solution is injected into the chamber. PBS (1.8 ml) is added with 100 μ l DAPI. The floater is then inserted. After capping, the chamber is placed on a rocker and rotated overnight (approximately 16 hrs). The chamber is inverted and the images of the floater are acquired.

[0032] Results:

45 For 100% capture efficiency, the floater surface contains:

- 50
- CD3+ : 10328 cells
 - CD3+/CD4+ : 6783 cells
 - CD3+/CD8+ : 3200 cells

55 **[0033]** Images are acquired with different objectives and the resulting over-lay images are presented as shown in Figure 6. Figure 6A displays the image acquired using a 5x NA 0.12 objective. Figures B and C are acquired using a 10X, NA 0.25 and a 40X, NA 0.6 objective, respectively. The blue color represents the DAPI, green is CD8-PE and red is CD4-APC. With the number of CD8-PE (green) labeled cells expected to be 3200 and the actual number of CD8-PE labeled cells equal to approximately 500, the capture efficiency will be 16%.

Example 2Comparison between two methods for using permanent magnets

5 **[0034]** To determine the imaging of control cells after CellTracks® analysis using a method of inserting and removing a magnets from the cell suspension (method 1) and using the method with a permanent magnet fixed to a floater (method 2) as described in the present invention.

10 Materials and methods:

15 **[0035]** After analysis using the CellTracks® System, control cells from the CellTracks® cartridge were transferred to a chamber similar to Figure 5B. The cartridge was washed several times with PBS using a pasteur pipette and all fluid used in the wash (approximately 500 microliters) was transferred to the chamber. Additional PBS was added to the volume to bring the total volume to 2 ml. Vial was placed on the tube rotator. The rotation speed was set so the floater moved through the entire fluid in one rotation. After complete mixing, 1.5 ml of control cells was injected into the vial together with 50µl of Epcam ferrofluid and 10 µl of DAPI reagents (CellSearch™, Veridex LLC). After 30 minutes of incubation images were acquired at multiple points in time.

20 Results:

Method 1.

25 **[0036]** The image in Figure 7A shows results after 40 rotations. Image quality is suitable for cells to be counted easily. The number of green cells corresponds to highs at 556 circulating tumor cells (CTC) and low at 47 CTC. After 100 rotations most of cells become buried under a layer of ferrofluids. At this point, cells are not visible and can not be counted.

Method 2.

30 **[0037]** The image in Figure 7B was acquired after more than 500 rotations. In spite of the lower amount of ferrofluid the image quality is still sufficient to count the cells. Number of cells is the following: High: 209, Low: 25 with expected, high 435, low 23. Accordingly, the recovery is 45% for high and 100% for the low.

Example 335 Amount of ferrofluid

[0038] To determine the quality of image with increasing ferrofluid. As the amount of ferrofluid increases the image quality decreases. Cells become buried under a layer of ferrofluid and are invisible for detection. This results, in part, in the low recoveries.

40 Materials and methods:

45 **[0039]** COMPEL Magnetic Microspheres, Dragon green, 2.914 10⁷/ml, diameter 8.44 microns, lot#6548 (Bangs Laboratories Inc, Catalog code UMC4F) were diluted 1:100. System buffer (1.5 ml) was added to the glass vial and 50 microliters containing 14570 beads were added together with 20, 40, 60 and 80 microliters of EpCam ferrofluid (20 mg/ml). Fluorescence images were acquired after 15 and 30 minutes of rotation. Test tube rotator was set at 10 rpm, resulting in 150 and 300 rotations.

50 Floater is Corning 1.6 mm (1/16") diameter magnet.

Results:

55 **[0040]** Images are acquired with a 5X and 40X objectives. As shown in Figure 8, 5x and 40x objectives were used to image 20, 40, 60 and 80 microliters of EpCam. The missing images shown in Figure 8 were lost during saving.

Example 4

Assessing capture efficiency

5 **[0041]** To determine the capture efficiency of different size magnets.

Materials and methods:

Method A

10

[0042]

15

1. After analysis of a CellTracks cartridge with control cells the contents of the cartridge was emptied. The contents of two cartridges were pooled. Exact number of controls cells that are removed from the cartridge is unknown since some are stuck to the glass. 100 µl of this cell suspension was transferred to the test tube and 1.5 ml of PBS was added.
2. Four test tubes were filled and in two a floater, Corning 1.6 mm (1/16") diameter length 6.35 mm (¼") magnet was used and the other two a Corning 1.6 mm (1/16") diameter length ½" was
3. Tubes were placed a tube rotator for 30 minutes. Rotation speed 10RPM.
4. Floater was removed from test tube were placed in a Quadrupole magnet for 10 minutes. After 10 minutes the fluid was removed and replaced by 300 microliter of PBS. Tube was removed and vortexed.
5. The 300 micoliters were transferred to cartridge and cartridge was rescanned on CellTracks® System to see how many cells remained in the fluid.
6. Efficiency was calculated by dividing the number of cells on the floater by the number of cells found in the rescan of the remaining fluid.

25

Results:

[0043]

30

Magnet	Floater	CellTracks rescan	Cap efficiency
1.6 mm x 6.35 mm (1/16 x ¼ ")	256	1	99.6%
1.6 mm x 6.35 mm (1/16 x ¼ ")	225	na	na
1.6 mm x 12.7 mm (1/16 x 1/2")	230	2	99.1
1.6 mm x 12.7 mm (1/16 x 1/2 ")	218	na	na

35

40

Method B

45

[0044]

50

55

1. After analysis of a CellTracks cartridge with control cells the contents of the cartridge was emptied. Cartridges can be pooled if large number of cells is required. Exact number of controls cells that are removed from the cartridge is unknown since some are stuck to the glass. 100 µl of this cell suspension was transferred to the test tube and 1.5 ml of PBS was added.
2. Two types of floaters, Corning 1.6 mm (1/16") diameter length 6.35 mm (¼") magnet and a Corning 1.6 mm (1/16") diameter length 12.7 mm (½").
3. Tubes were placed a tube rotator for 15 minutes. Rotation speed 10RPM.
4. Floater was removed from the tubes and the tube with the remaining fluid was placed inside the Quadrupole magnet for 10 minutes. After 10 minutes the fluid was removed and replaced by 300 microliter of PBS. Tube was removed from the Quadrupole and vortexed.
5. 300 micoliter was transferred to a CellTracks cartridge and placed inside Magnest and after 15 minutes rescanned on CellTracks.

EP 2 090 889 B1

6. Efficiency was calculated by dividing the number of cells on the floater by the number of cells found in the rescan of the remaining fluid.

Results:

[0045]

Magnet	Floater		CellTracks rescan		Cap efficiency	
	Low	High	Low	High	Low	High
1.6 mm x 6.35 mm (1/16 x 1/4 ")	13	173	0	0	100	100
1.6 mm x 6.35 mm (1/16 x 1/4 ")	31	274	0	13	100	95
1.6 mm x 12.7 mm (1/16 x 1/2")	11	136	0	2	100	98
1.6 mm x 12.7 mm (1/16 x 1/2")	13	318	0	15	100	95

Method C

[0046]

1. After analysis of a CellTracks cartridge with control cells the contents of the cartridge was emptied. Cartridges can be pooled if large number of cells is required. Exact number of controls cells that are removed from the cartridge is unknown since some are stuck to the glass.
2. Cell suspension two fold diluted with Instrument buffer and 100 μ l of this cell suspension was transferred to the test tube and 1.5 ml of PBS was added.
3. Two types of floaters, Corning 1.6 mm (1/16") diameter length 6.35 mm (1/4") magnet and a Corning 1.6 mm (1/16") diameter length 1/2".
4. Tubes were placed a tube rotator. Rotation speed 10RPM.
5. Number of cells collected was determined at 1, 2, 3, 4, 5, 7, 10, and 15 minutes.
6. Cells were identified on DAPI and DIOC.

Results:

[0047] The graph in Figure 9 shows the number of cells collected as a function of time

[0048] While certain of the preferred embodiments of the present invention have been described and specifically exemplified above, it is not intended that the invention be limited to such embodiments.

Claims

1. A method for detecting and enumerating a target population within a biological specimen, comprising:

- (a) labeling said target population within said biological specimen with a fluorescent marker wherein said marker is specific for said target population;
- (b) coupling said target population to a magnetic particle;
- (c) adding a floater containing a small permanent magnet directly to said specimen;
- (d) allowing the floater to stabilize along the viewing window of the chamber;
- (e) acquiring an image of said target population, and
- (f) analyzing said image to detect and enumerate said labeled target population.

2. The method of claim 1 wherein the said target population are CD4 expressing cells.

3. The method of claim 1 wherein the small permanent magnet is neodymium.
4. The method of claim 1 wherein the small permanent magnet is a disc having a diameter of about 1.6 mm and a height of 0.8 mm.
- 5
5. The method of claim 1 wherein the small permanent magnet is coated with PDMS silicone.
6. A device for detecting and enumerating a target population within a biological specimen, comprising:
- 10 (a) a specimen collection tube wherein said tube has a flat surface and wherein the flat surface is configured as an optical viewing surface for imaging a target population using a standard fluorescence microscope;
- (b) a floater containing a permanent magnet within said tube wherein the magnet allows positioning of labeled target cells along a single imaging plane for analysis; and
- (c) a cap for said collection tube.
- 15
7. The device of claim 6, wherein the magnet is a disc having a diameter of about 1.6 mm and a height of 0.8 mm.
8. The method of claim 1 or the device of claim 6, wherein the biological sample is a blood sample.

20

Patentansprüche

1. Verfahren zum Nachweisen und Auszählen einer Zielpopulation in einer biologischen Probe, umfassend:
- 25 (a) Markieren der Zielpopulation in der biologischen Probe mit einem Fluoreszenzmarker, wobei der Marker für die Zielpopulation spezifisch ist;
- (b) Koppeln der Zielpopulation an ein magnetisches Teilchen;
- (c) Zugabe eines Schwimmers, der einen kleinen Permanentmagneten enthält, direkt zu der Probe;
- (d) Stabilisierenlassen des Schwimmers entlang des Sichtfensters der Kammer;
- 30 (e) Aufnehmen eines Bildes der Zielpopulation, und
- (f) Analysieren des Bildes zum Nachweisen und Auszählen der markierten Zielpopulation.
2. Verfahren gemäß Anspruch 1, wobei die Zielpopulation CD4-exprimierende Zellen sind.
- 35 3. Verfahren gemäß Anspruch 1, wobei der kleine Permanentmagnet Neodym ist.
4. Verfahren gemäß Anspruch 1, wobei der kleine Permanentmagnet eine Scheibe mit einem Durchmesser von etwa 1,6 mm und einer Höhe von 0,8 mm ist.
- 40 5. Verfahren gemäß Anspruch 1, wobei der kleine Permanentmagnet mit PDMS-Silicon überzogen ist.
6. Vorrichtung zum Nachweisen und Auszählen einer Zielpopulation in einer biologischen Probe, umfassend:
- 45 (a) ein Probensammelröhrchen, wobei das Röhrchen eine flache Oberfläche aufweist und wobei die flache Oberfläche als optische Sichtfläche zum Abbilden einer Zielpopulation unter Verwendung eines Standard-Fluoreszenzmikroskops gestaltet ist;
- (b) einen Schwimmer, der einen Permanentmagneten enthält, innerhalb des Röhrchens, wobei der Magnet das Positionieren von markierten Zielzellen entlang einer einzigen Abbildungsebene für die Analyse erlaubt; und
- (c) eine Kappe für das Sammelröhrchen.
- 50 7. Vorrichtung gemäß Anspruch 6, wobei der Magnet eine Scheibe mit einem Durchmesser von etwa 1,6 mm und einer Höhe von 0,8 mm ist.
8. Verfahren gemäß Anspruch 1 oder Vorrichtung gemäß Anspruch 6, wobei die biologische Probe eine Blutprobe ist.
- 55

Revendications

1. Procédé pour détecter et énumérer une population cible dans un spécimen biologique, comprenant :

- 5 (a) le marquage de ladite population cible dans ledit spécimen biologique avec un marqueur fluorescent où ledit marqueur est spécifique pour ladite population cible ;
(b) le couplage de ladite population cible à une particule magnétique ;
(c) l'ajout d'un flotteur contenant un petit aimant permanent directement audit spécimen ;
10 (d) l'étape consistant à laisser le flotteur se stabiliser le long de la fenêtre d'observation de la chambre ;
(e) l'acquisition d'une image de ladite population cible, et
(f) l'analyse de ladite image pour détecter et énumérer ladite population cible marquée.

2. Procédé de la revendication 1 dans lequel ladite population cible est constituée de cellules exprimant CD4.

15 3. Procédé de la revendication 1 dans lequel le petit aimant permanent est du néodyme.

4. Procédé de la revendication 1 dans lequel le petit aimant permanent est un disque ayant un diamètre d'environ 1,6 mm et une hauteur de 0,8 mm.

20 5. Procédé de la revendication 1 dans lequel le petit aimant permanent est enrobé avec de la silicone PDMS.

6. Dispositif pour détecter et énumérer une population cible dans un spécimen biologique, comprenant :

- 25 (a) un tube de collecte de spécimen où ledit tube a une surface plate et où la surface plate est configurée sous la forme d'une surface d'observation optique pour l'imagerie d'une population cible en utilisant un microscope à fluorescence standard ;
(b) un flotteur contenant un aimant permanent dans ledit tube où l'aimant permet le positionnement de cellules cibles marquées le long d'un plan d'imagerie unique pour analyse ; et
30 (c) un capuchon pour ledit tube de collecte.

7. Dispositif de la revendication 6, dans lequel l'aimant est un disque ayant un diamètre d'environ 1,6 mm et une hauteur de 0,8 mm.

35 8. Procédé de la revendication 1 ou dispositif de la revendication 6, où l'échantillon biologique est un échantillon de sang.

40

45

50

55

Figure 1

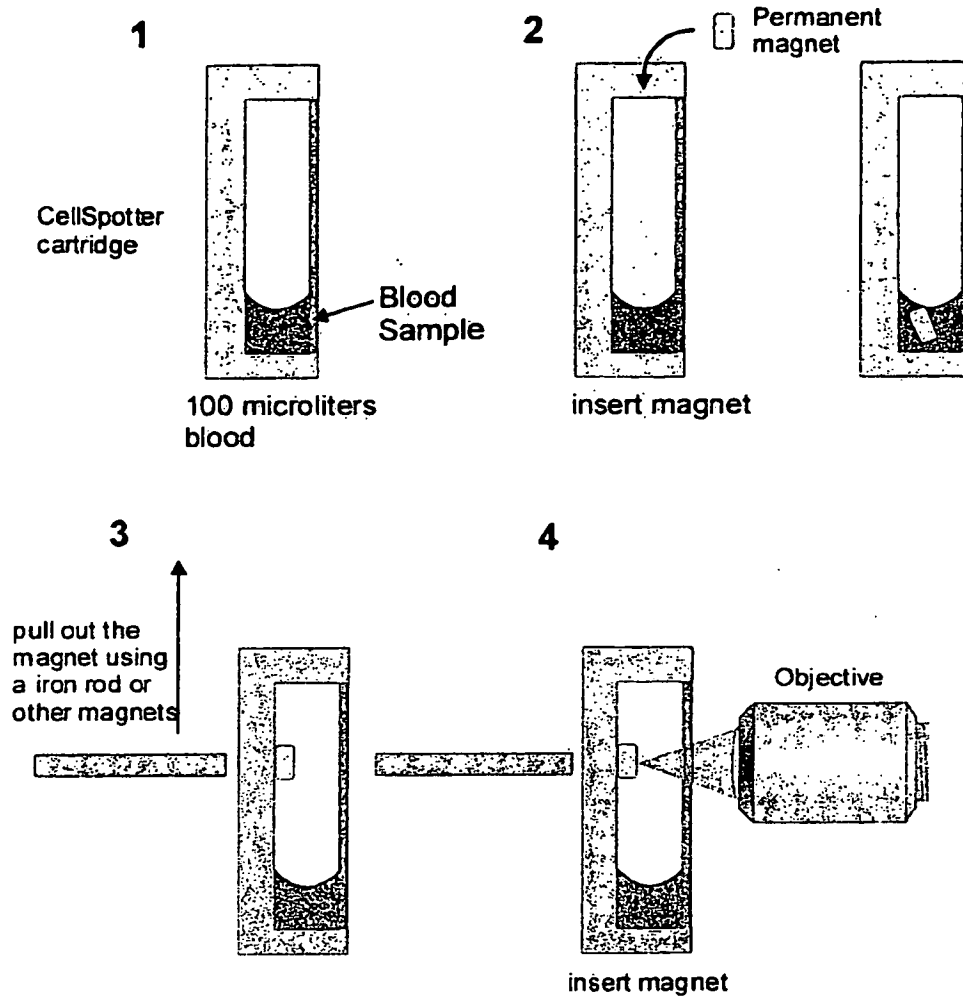


Figure 2

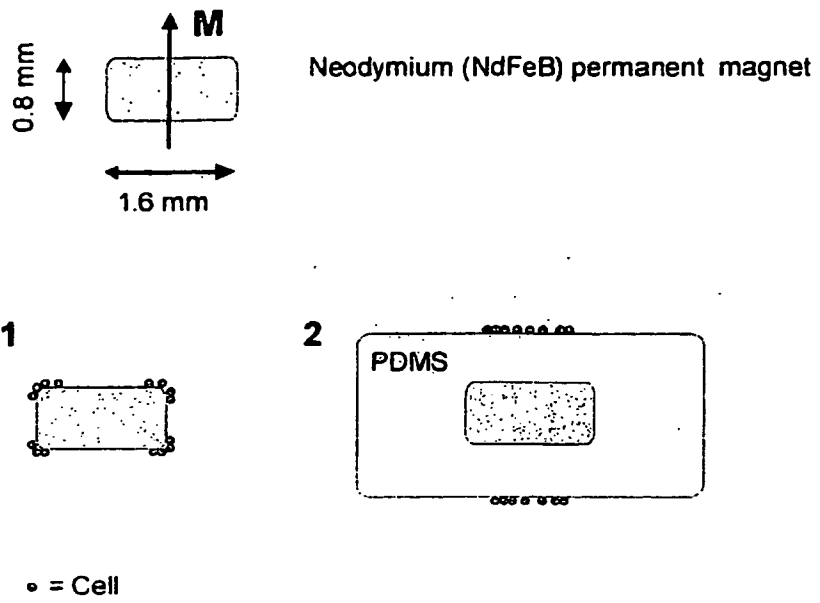


Figure 3

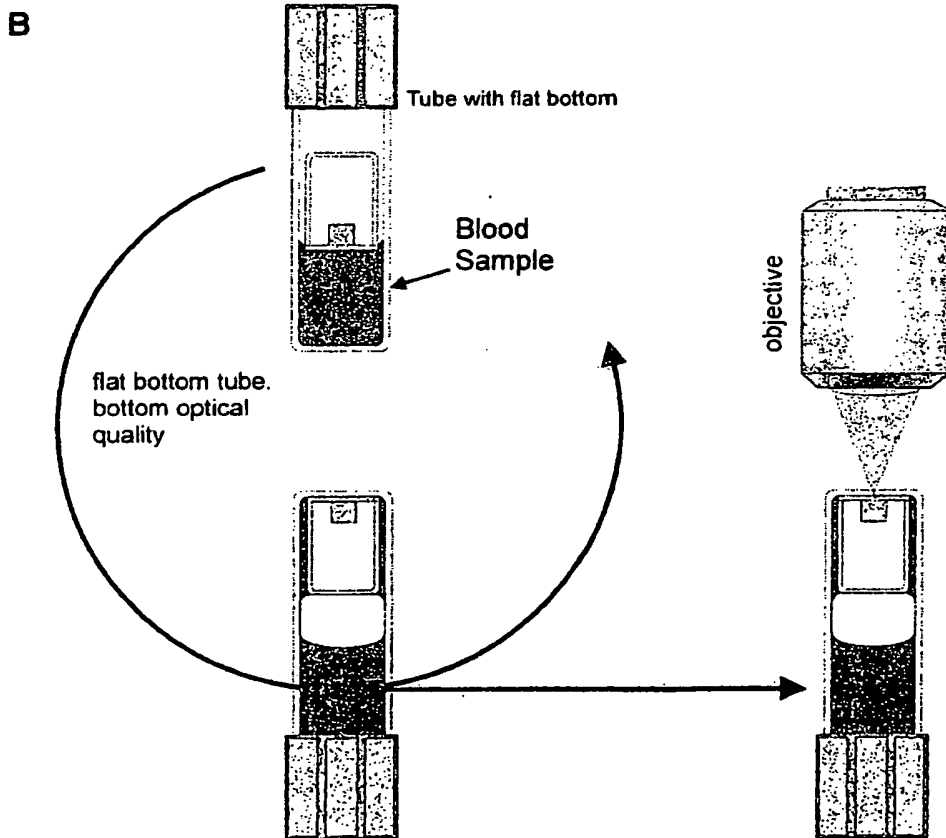
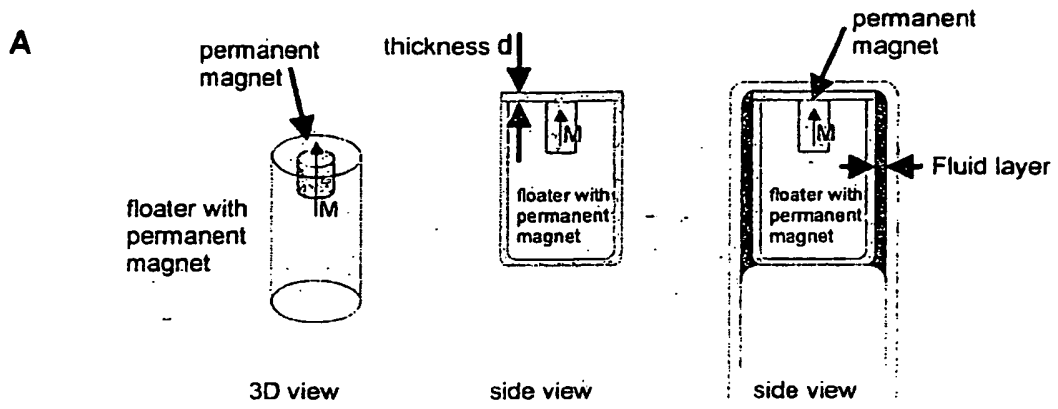


Figure 4

A



B

Magnetic fluorescent beads

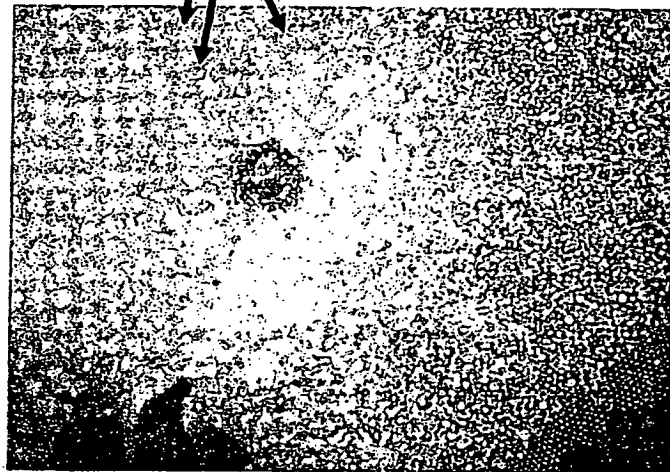
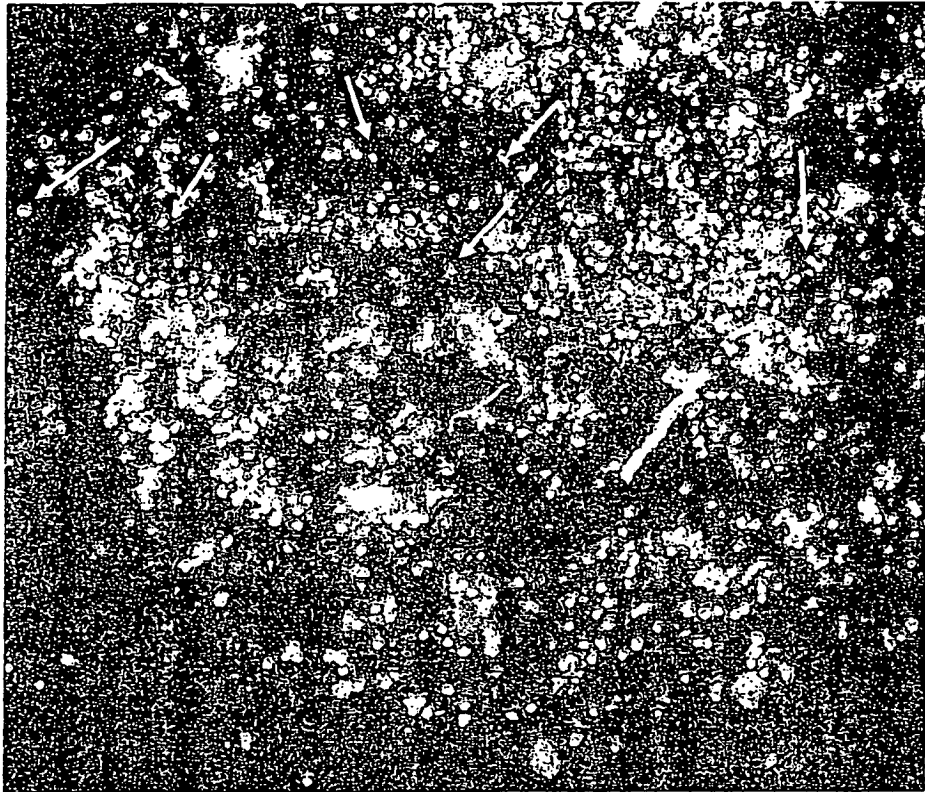


Figure 5

Labeled CD14-FF and Labeled CD45-APC

A



B

Floater

Tube

Cap

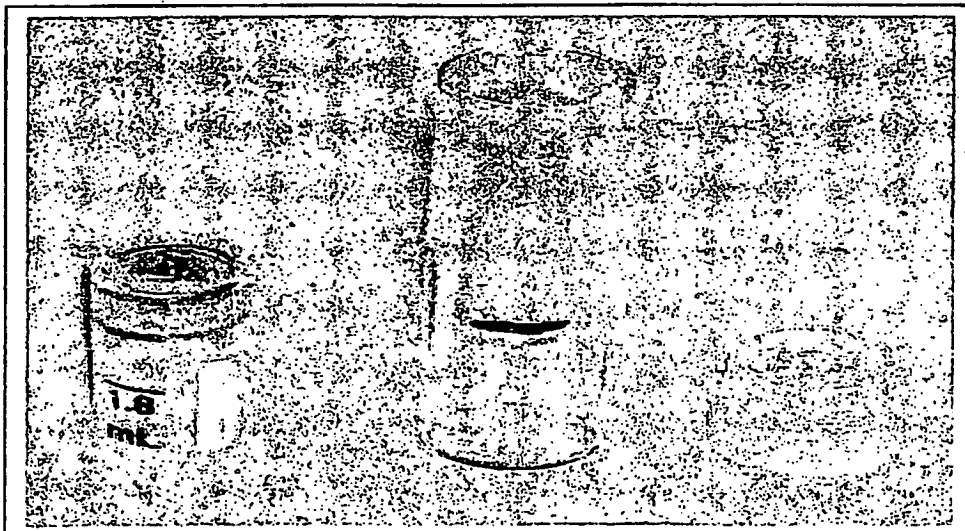
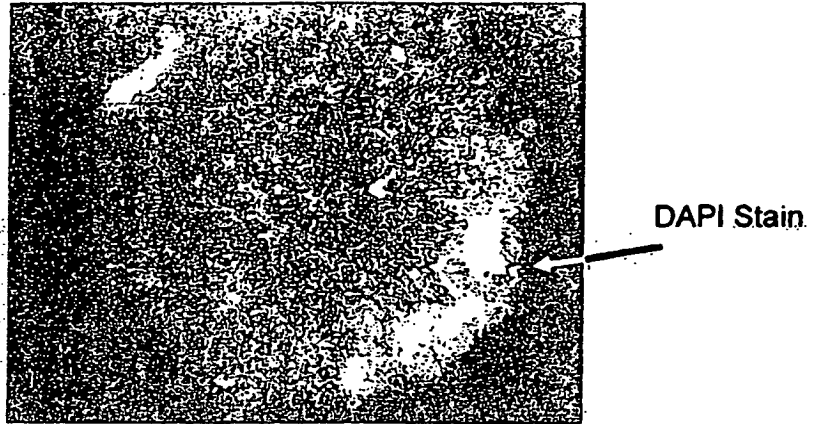
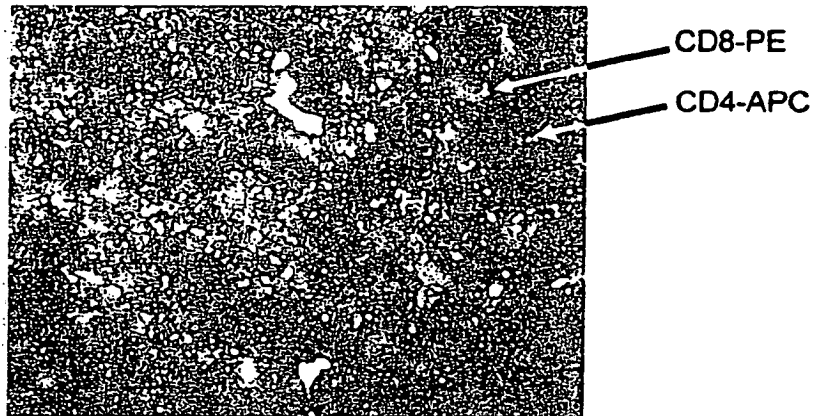


Figure 6

A



B



C

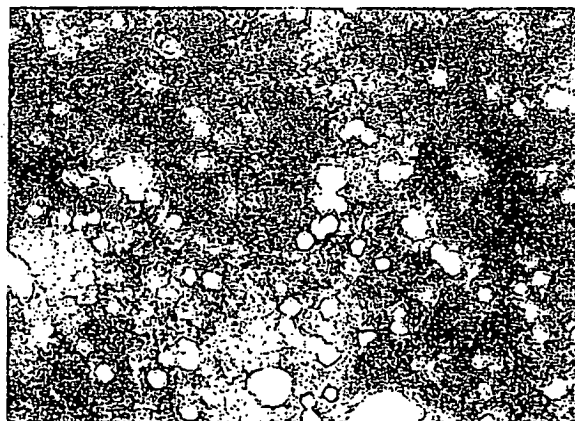
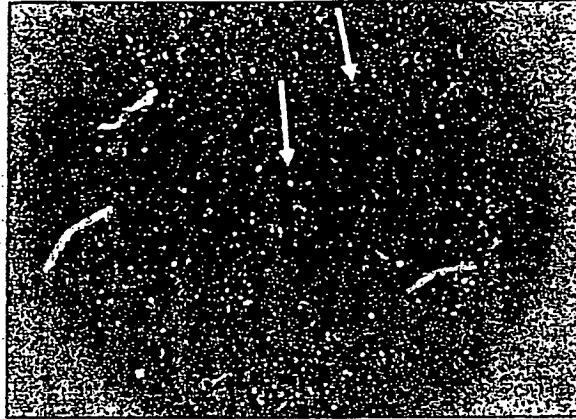


Figure 7

CTC's

A



B

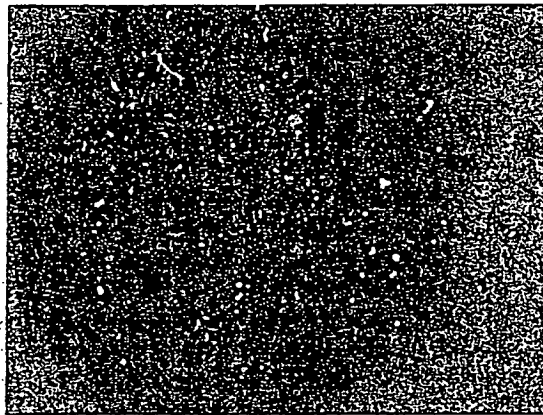
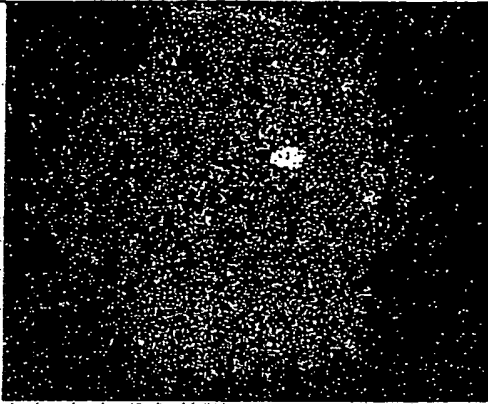
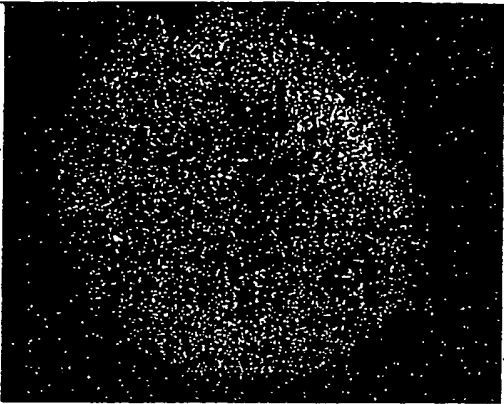
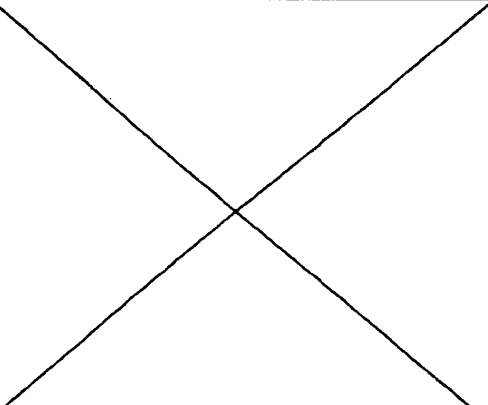
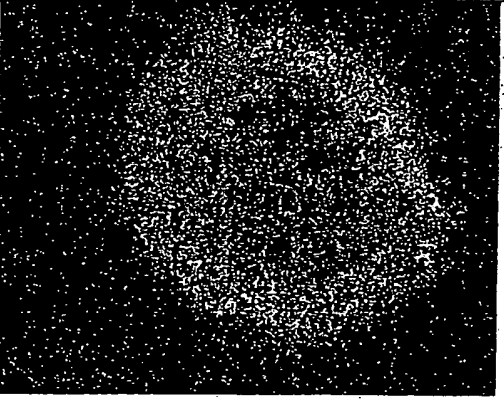
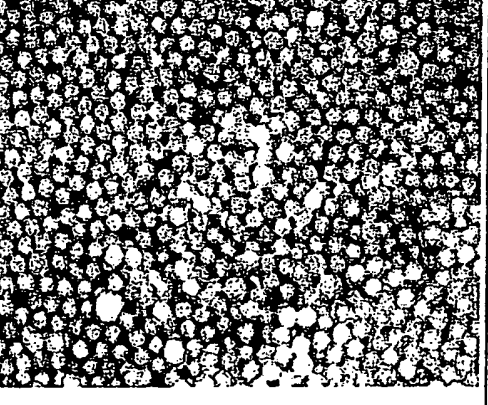
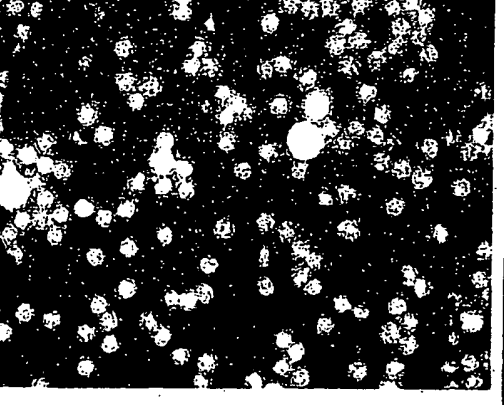


Figure 8

#rot	20 micro liter	40 micro liter
150 5x		
300 5x		
300 40X		

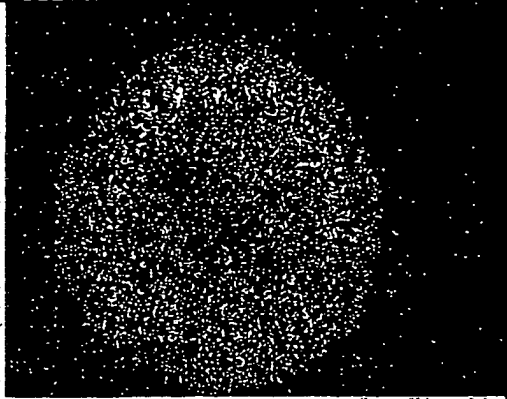
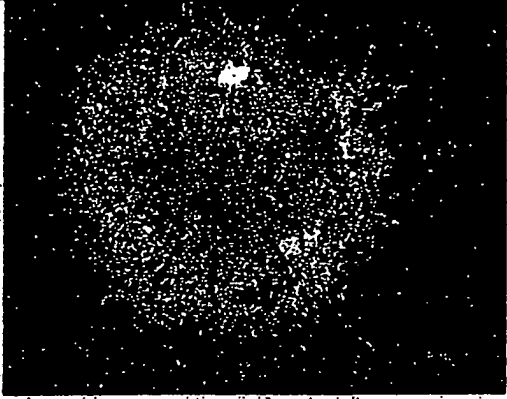
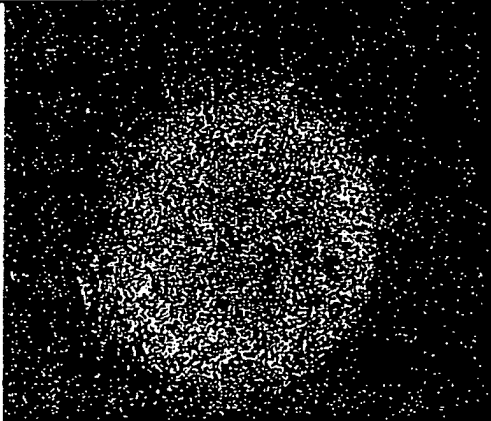
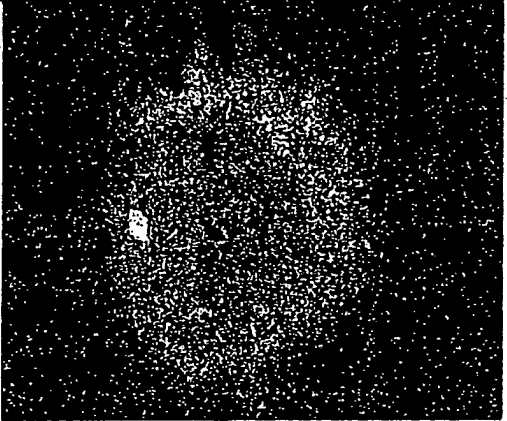
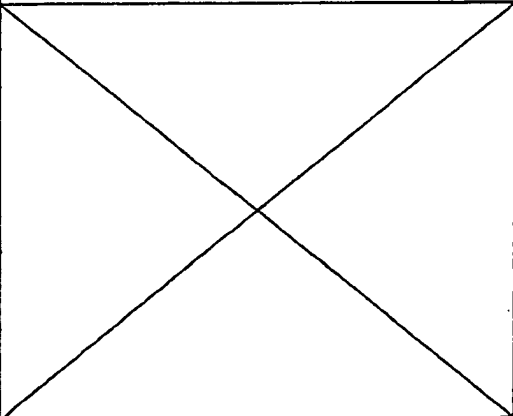
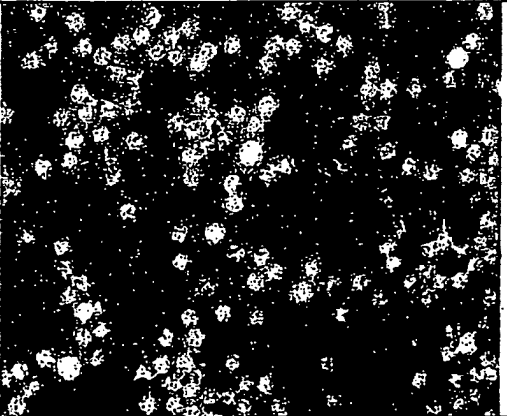
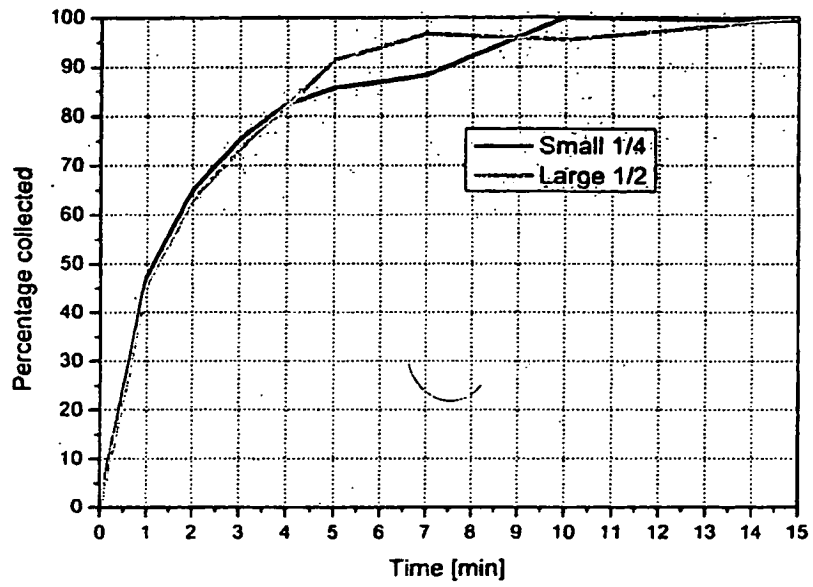
#rot	60 micro liter	80 micro liter
150 10X		
300 10X		
300 40X		

Figure 9



REFERENCES CITED IN THE DESCRIPTION

This list of references cited by the applicant is for the reader's convenience only. It does not form part of the European patent document. Even though great care has been taken in compiling the references, errors or omissions cannot be excluded and the EPO disclaims all liability in this regard.

Patent documents cited in the description

- US 6365362 B [0002] [0015]
- US 6551843 B [0002]
- US 6623982 B [0002]
- US 6620627 B [0002]
- US 6645731 B [0002]
- WO 02077604 A [0002]
- WO 03065042 A [0002]
- WO 03019141 A [0002]
- WO 03018757 A [0003]
- US 0304468 W [0005]
- US 6861259 B [0008]
- US 7011794 B [0008]

专利名称(译)	使用永磁体对生物样品中的目标组分成像的方法和设备		
公开(公告)号	EP2090889B1	公开(公告)日	2012-01-04
申请号	EP2009250366	申请日	2009-02-13
[标]申请(专利权)人(译)	维里德克斯有限责任公司		
申请(专利权)人(译)	VERIDEX, LLC		
当前申请(专利权)人(译)	VERIDEX, LLC		
[标]发明人	TIBBE ARJAN G J TERSTAPPEN LEON W M M		
发明人	TIBBE, ARJAN G.J. TERSTAPPEN, LEON W.M.M.		
IPC分类号	G01N33/537		
CPC分类号	G01N33/582 G01N33/54326 G01N33/56972 G01N2333/70514 G01N2446/00		
优先权	12/031807 2008-02-15 US		
其他公开文献	EP2090889A1		
外部链接	Espacenet		

摘要(译)

描述了一种用于通过图像细胞计数计算流体中细胞的系统，用于评估目标群体，例如不同体液中的白细胞亚群或环境样品，食品和体液中的细菌污染。简而言之，荧光标记的靶细胞与磁性颗粒或珠子连接。在一个实施例中，将小的永磁体直接插入包含标记细胞的腔室中。磁铁涂有PDMS硅橡胶，以提供光滑和均匀的表面，允许在单个焦平面上成像。从样品中取出磁铁，并用CCD照相机捕获的靶细胞发出的荧光照射。在另一个实施例中，具有永磁体的浮子允许靶细胞沿着样品溶液内的单个成像平面排列。可以用新算法进行图像分析，以提供表面上细胞的计数，反映原始样品的靶细胞浓度。

