



(11) **EP 1 881 008 B1**

(12) **EUROPEAN PATENT SPECIFICATION**

(45) Date of publication and mention
of the grant of the patent:
15.06.2011 Bulletin 2011/24

(51) Int Cl.:
C07K 16/18 ^(2006.01) **C07K 7/06** ^(2006.01)
C12N 5/18 ^(2006.01) **G01N 33/53** ^(2006.01)

(21) Application number: **06725836.8**

(86) International application number:
PCT/ES2006/070027

(22) Date of filing: **09.03.2006**

(87) International publication number:
WO 2006/095041 (14.09.2006 Gazette 2006/37)

(54) **METHOD FOR THE IN VITRO DIAGNOSIS OF ALZHEIMER'S DISEASE USING A MONOCLONAL ANTIBODY**

VERFAHREN ZUR IN-VITRO-DIAGNOSE VON ALZHEIMER-KRANKHEIT MIT EINEM
MONOKLONALEN ANTIKÖRPER

METHODE DE DIAGNOSTIC IN VITRO DE LA MALADIE D'ALZHEIMER AU MOYEN D'UN
ANTICORPS MONOCLONAL

(84) Designated Contracting States:
**AT BE BG CH CY CZ DE DK EE ES FI FR GB GR
HU IE IS IT LI LT LU LV MC NL PL PT RO SE SI
SK TR**

WO-A1-90/12871 WO-A1-97/21728
US-A- 4 666 829 US-A- 5 688 651
US-A- 5 958 883

(30) Priority: **09.03.2005 ES 200500550**

(43) Date of publication of application:
23.01.2008 Bulletin 2008/04

(83) Declaration under Rule 32(1) EPC (expert
solution)

(73) Proprietor: **CONSEJO SUPERIOR DE
INVESTIGACIONES CIENTIFICAS
E-28006 Madrid (ES)**

(72) Inventor: **MÉNDEZ, Enrique,
Unidad De Gluten
Cantoblanco, 28049 Madrid (ES)**

(74) Representative: **Illescas, Manuel et al
GONZÁLEZ-BUENO & ILLESCAS
Calle de Recoletos, 13 - 5º Izq.
28001 Madrid (ES)**

(56) References cited:
EP-A1- 0 683 234 WO-A-2004/029630

- **HAMPEL H ET AL: "Core biological marker candidates of Alzheimer's disease: Perspectives for diagnosis, prediction of outcome and reflection of biological activity." JOURNAL OF NEURAL TRANSMISSION, vol. 111, no. 3, March 2004 (2004-03), pages 247-272, XP002547194 ISSN: 0300-9564**
- **GHISO J ET AL: "Alzheimer's soluble amyloid beta is a normal component of human urine." FEBS LETTERS 12 MAY 1997, vol. 408, no. 1, 12 May 1997 (1997-05-12), pages 105-108, XP009123239 ISSN: 0014-5793**
- **BARELLI H ET AL: "CHARACTERIZATION OF NEW POLYCLONAL ANTIBODIES SPECIFIC FOR 40 AND 42 AMINO ACID-LONG AMYLOID BETA PEPTIDES: THEIR USE TO EXAMINE THE CELL BIOLOGY OF PRESENILINS AND THE IMMUNOHISTOCHEMISTRY OF SPORADIC ALZHEIMER'S DISEASE AND CEREBRAL AMYLOID ANGIOPATHY CASES" MOLECULAR MEDICINE, BLACKWELL SCIENCE, CAMBRIDGE, MA, US, vol. 3, no. 10, 1 October 1997 (1997-10-01), pages 695-707, XP001030449 ISSN: 1076-1551**
- **Jiménez-Huete, A. et al (1998) Alzheimer's Reports 1:41-48**

Note: Within nine months of the publication of the mention of the grant of the European patent in the European Patent Bulletin, any person may give notice to the European Patent Office of opposition to that patent, in accordance with the Implementing Regulations. Notice of opposition shall not be deemed to have been filed until the opposition fee has been paid. (Art. 99(1) European Patent Convention).

EP 1 881 008 B1

Description**FIELD OF THE INVENTION**

[0001] The present invention relates to the diagnosis of neurological disorders, especially to the diagnosis of Alzheimer's disease by means of an antibody that is able to interact with specific peptides associated with said disease.

BACKGROUND OF THE INVENTION

[0002] Alzheimer's disease (AD) is a neurological disorder that causes the death of neurons in the brain. Generally it progresses slowly, commencing after age 50 years, and its first symptoms may be attributed to old age or to ordinary forgetfulness. As the disease progresses, there is gradual deterioration of cognitive abilities, including the ability to take decisions and carry out everyday tasks, and there may be changes in personality, as well as behavioral problems. In its advanced stages, AD leads to dementia and finally to death. At present the disease is incurable and constitutes a major cause of mortality.

[0003] At the present time, Alzheimer's disease is normally diagnosed from the clinical picture, since a definitive diagnosis can only be based on histological examination of brain samples (autopsy or biopsy), revealing the presence of its characteristic features in the brain tissue. In view of the risks associated with brain biopsy in live patients, this procedure is very rarely used, and accordingly it is estimated that the error rate in in-vivo diagnosis of this disease is around 20-30%.

[0004] The brains of individuals with Alzheimer's disease show two principal pathological markers: neurofibrillary degeneration (which is identified by the presence of neurofibrillary tangles, dystrophic neurites and neuropil threads) and deposits of amyloid substance (i.e. deposits of so-called β -amyloid peptide, generally abbreviated to A β , both in the form of plaques (diffuse plaques and neuritic plaques, these last-mentioned forms being characteristic of the disease, and being designated as such since they appear between and within the neurons), and in the form of vascular deposits (which occur in the walls of the cerebral blood vessels). Both neurofibrillary degeneration and amyloid deposition constitute degenerative processes that are also associated with normal ageing of the brain. In elderly subjects who are not suffering from dementia, the A β peptide is mainly deposited in the form of diffuse plaques. This type of deposition is especially pronounced in some subjects with normal cognitive abilities, and for some authors constitutes a process of "pathologic ageing", which is regarded as being half-way between normal ageing of the brain and AD [1]. Particularly intensive, premature development of diffuse plaques years before neuritic plaques appear also takes place in Down's syndrome (DS), due to trisomy of chromosome 21 which leads to overexpression of the amyloid precursor protein (β -APP). Although a small number of neuritic plaques may be observed in the brains of subjects with normal cognitive abilities, brains affected by AD as well as those affected by DS in the elderly are characterized by the development of a large quantity of mature neuritic plaques [2, 3]. In contrast to the diffuse plaques, which contain a nonfibrillary form of A β (designated "preamyloid") [4], both the vascular amyloid deposits and the neuritic plaques contain A β peptide in fibrillary form and react with stains of amyloid substance such as Congo Red and Thioflavine T.

[0005] The cognitive decline in AD is correlated linearly with the progression of the neurofibrillary changes and cortical synapse loss [5]. Local synapse loss associated with diffuse plaques has not been observed [6]. In contrast, neuritic plaques are associated with synaptic density loss, neurofibrillary change and activation of the microglia [7]. Both the pure neurofibrillary change and the deposition of A β follow well established sequential patterns of progression in AD [8, 9]. However, although the degree of cognitive decline has better correlation with a succession of stages based on neurofibrillary change [5], the definitive neuropathologic diagnosis of AD is nevertheless based on histological demonstration of a significantly higher density of neuritic plaques in the associative neocortical regions, relative to that expected according to the patient's age group, within a clinical picture of dementia (consensus criteria of CERAD: *Consortium to Establish a Registry for Alzheimer's Disease*) [10]. The formation of neuritic plaques constitutes the central pathogenic process in AD, and the molecular composition of these β -amyloid deposits and the differences from the diffuse plaques in relation to said composition is accordingly one of the main fields of interest in current research into AD.

[0006] Knowledge about the molecular composition of the β -amyloid deposits in the brain tissue of patients with Alzheimer's disease has changed radically during recent years. Various studies employing biochemical or immunohistochemical methods with the aim of identifying different forms of the A β peptide have supplied a fairly consistent picture that permits a molecular interpretation of the classical morphological findings. It was these studies that provided the basis for the unified pathogenic theory of the disease, called the amyloid hypothesis [11], although the original hypothesis has been reformulated recently in order to include the emergent role of the soluble A β oligomers as the principal pathogenic agents [12]. The assumption of a central and primary pathogenic role of the A β peptides in AD is now leading to new therapeutic strategies directed at the prevention or removal of these deposits.

[0007] The topographic distribution and temporal sequence of the deposition of A β peptides known in brains affected by AD have been elucidated by means of antibodies directed at the carboxyl end, the amino end or to internal segments

of the A β molecule, together with the isolation and purification of isoforms of A β by biochemical methods. The tissue distribution of peptides characterized by the features of their carboxyl ends shows a fairly regular, well-defined pattern. Whereas A β_{X-40} is the predominant form in the vascular deposits and is the main form encountered in the CSF (cerebrospinal fluid), A β_{X-42} is the main form detected in the brain tissue deposits (diffuse plaques and neuritic plaques) [13]. In AD, Down's syndrome (DS) [13, 14] and normal ageing [1], A β_{X-42} is the only component of the diffuse plaques and the principal component of the neuritic plaques. The latter may also contain A β_{X-40} , predominantly in the region of their central nucleus. It has also been established that A β_{X-42} is the form that is deposited in the initial stages.

[0008] Although it was believed initially that A β_{X-40} and A β_{X-42} began almost entirely with the amino acid Asp1, it has been well established immunohistochemically and biochemically that a wide variety of heterogeneous isoforms of the A β peptide, modified and truncated at the amino end, participate in the composition of both the diffuse and the neuritic plaques [15]. These isoforms also tend to show a regular pattern of distribution between the diffuse and neuritic plaques, so that a complete picture of the topographical distribution of the various A β peptides has finally begun to emerge. There are, nevertheless, some discrepancies between the studies, particularly with respect to the characteristics of the amino end of the peptides that make up the diffuse plaques, and the relative amount of amyloid deposit each of them represents.

[0009] These discrepancies involve the p3 peptide (A β_{17-42}) in particular. Whereas some studies suggest that A β_{17-42} may be the principal component of the diffuse plaques [16], others have found a relatively larger amount of longer forms (beginning at Asp1, or truncated at the amino end or other modified isoforms) at this level [15]. Since A β_{17-42} is produced by excision of β -APP by α -secretase (the so-called nonamyloidogenic pathway) and displays physicochemical properties quite different from the longer isoforms of A β (the latter being generated by excision of β -APP by γ -secretase), its selective presence in diffuse plaques may be of crucial pathogenic significance in the development of the plaques.

[0010] Gowing *et al.* [17] were the first to isolate the A β_{17-42} peptide as the predominant form recovered from brains affected by AD rich in diffuse plaques. This deposit was not found in vascular amyloid deposits or in neuritic plaques. The commercial monoclonal antibody 6E10, which recognizes A β_{1-17} , did not produce immunostaining of diffuse plaques, neither neocortical nor cerebellar, in a series of brains affected by AD and DS [18]. However, the corpus striatum, where the diffuse plaques are particularly abundant in the absence of neuritic plaques, showed some plaques that are positive for the 6E10 antibody. Using HPLC and immunohistochemical determinations, Lalowski *et al.* [19] demonstrated that A β_{17-42} represents 70% of the total amyloid content in diffuse plaques of the cerebellum, whereas A β_{1-42} represents 12% and other truncated forms of A β_{X-42} represent 5% or less. In brains of elderly persons affected by DS, Saido *et al.* [20] found greater staining of diffuse plaques with a specific anti-A β N3 (pyroGlu) antibody than with an anti-A β N(1) antibody. Iwatsubo *et al.* [15] studied diffuse plaques in a series of brains from elderly persons, affected by AD and affected by DS with a panel of antibodies directed at recognizing forms of A β truncated and modified at the amino end. This study is unique in that the brain tissue employed for the immunohistochemical investigation was fixed either in 70% ethanol, or in 4% formaldehyde, so as to be able to test the effect of routine fixing with formaldehyde on the appearance of artefacts. In all the tissue samples fixed in 70% ethanol, the diffuse plaques were stained intensely by the presence of A β N1 (L-Asp), A β N1 (L-isoAsp), A β N1 (D-Asp), A β N3 (pyroGlu), and A β X-42. Weak immunostaining was obtained with A β N11 (pyroGlu) and A β N 17. However, in the material fixed in formaldehyde some diffuse plaques were stained with A β N1 (L-Asp), and no staining was obtained with A β N1 (L-isoAsp) or A β N1 (D-Asp), whereas the pattern of staining for the carboxyl end was unchanged. Although the authors demonstrated that modification of the amino end can alter the results of immunostaining in tissues fixed in formaldehyde, they obtained weak reactivity for A β N17 even in material fixed in ethanol. Using a monoclonal antibody specific to p3 (A β_{17-42}) [16], they found that deposition of this peptide was largely limited to diffuse plaques, dystrophic neurites and the coronas of neuritic plaques in the regions of the amygdalas, hippocampus and parahippocampus. The authors suggested a specific role of p3 in the initial deposition of amyloid substance and in the origin of the neuritic plaques. Tekirian *et al.* [21] demonstrated, in a series of brains affected by AD and controls, the presence of A β N3 (peptide) > A β N1 (D) > A β N17 (L) > A β N1 (rD) in the diffuse plaques.

[0011] With regard to variability at the carboxyl end, in a study using antibodies directed against A β_{X-40} , A β_{X-42} or A β_{X-43} , Parvathy *et al.* [22] found a subgroup of neuritic plaques that only react to the A β C40 antibody and a larger subgroup of plaques that react both to a A β C40 and to A β C42.

[0012] Earlier studies have thus established that the diffuse plaques show a profile of A β that is highly specific at the carboxyl end and a profile that is fairly specific at the amino end, the latter being subject to some heterogeneity between patients and between different regions of the brain. The presence of A β_{17-42} appears to be limited largely to the diffuse plaques, although there is considerable variation between the studies with respect to the relative contents of this shorter peptide in them. In the studies conducted by Kida *et al.* [18], no staining was obtained for A β peptides that included the sequence 12-16 in diffuse plaques of cortical and subcortical regions.

[0013] Considered overall, the results of the State of the Art (SA) suggest that, as proposed by Lerner [23], the forms of the A β peptide that are specific according to the amino end can play an essential role in the development of the diffuse plaques so that they are converted to neuritic plaques. Therefore antibodies capable of specifically detecting forms with the amino end truncated and, accordingly, clearly differentiating between diffuse plaques and neuritic plaques are extremely useful as tools in the diagnosis of Alzheimer's disease. Among them, those that are able to differentiate subgroups

of neuritic plaques according to the proportion of the different forms of amyloid peptide that differ in the amino acid terminating the carboxyl end would be especially useful, especially if they could be used for defining subsets of plaques that constitute a specific disease marker. The monoclonal antibody of the invention, directed against the sequence constituted of amino acids 12-16 of β -amyloid peptide and with greater affinity for the A β 42 form than the A β 40 form, fulfils both characteristics.

[0014] Another aspect in which the antibodies that are able to detect forms of β -amyloid peptide would be particularly useful would be in the diagnosis of Alzheimer's disease by analysis of the concentration of different forms of this peptide in biological fluids, an aspect that is being investigated both to facilitate diagnosis based on biochemical parameters, and even with a view to identifying preclinical cases or those at particular risk of developing the disease and for monitoring patients enrolled in clinical studies. For this purpose, many studies focus on the cerebrospinal fluid (CSF), with the aim of detecting whether there are variations in the concentrations of soluble forms of β -amyloid peptide present in this fluid that make it possible to differentiate between patients and healthy controls. However, it is rather unlikely that analysis of the CSF, which involves the use of an invasive technique, lumbar puncture, could be applied for the diagnosis and routine monitoring of patients with Alzheimer's disease in clinical practice. Therefore other lines of research have focused on investigation of variations in the concentration in blood and urine of biological markers (which include soluble forms of β -amyloid peptide) which might be correlated with the appearance and development of the disease, although few studies have been published to date. According to these, the plasma levels of A β _{X-42} and A β _{X-40} appear to be increased if there is Down's syndrome and they also increase in normal individuals with age. The plasma levels of A β _{X-42}, but not of A β _{X-40}, are raised in patients with Alzheimer's disease, and decrease as the disease develops [28, 29], although measurement of the concentration of these species in plasma cannot currently be applied in diagnosis. The presence of soluble forms of β -amyloid peptide has also been detected in urine [30], although a comparative study between patients and controls has not yet been carried out. Although the order of magnitude of the concentrations of β -amyloid peptide that are being detected in plasma and urine are making it difficult to define the profiles corresponding to healthy individuals and to patients in different stages of the disease and the possible association of the soluble forms of β -Amyloid peptide with other proteins present in said biological fluids is another difficulty to be overcome, this is an approach being actively pursued, so that the monoclonal antibodies that can interact with forms of β -Amyloid peptide present in biological fluids to make it possible to detect them can represent a very useful tool in the diagnosis of Alzheimer's disease. The antibody of the invention, which is able to interact with soluble forms of β -amyloid peptide and detect their presence in biological fluids such as urine, is one of the antibodies that may be useful for implementing these diagnostic techniques. Moreover, the fact that it is directed specifically against the region close to the amino end of β -amyloid peptide is a characteristic of interest in the differentiation of the forms of β -amyloid peptide that conserve the amino end from those forms in which said end is truncated.

[0015] Other monoclonal antibodies directed specifically against the region close to the amino end of β -amyloid peptide, as well as their use in diagnostic methods connected with AD, have been described. For example, American patent US-4,666,829 describes the production of a monoclonal antibody generated against a portion of the amyloid peptide closest to the amino end. Concretely, a synthetic peptide was prepared comprising the first ten residues of said peptide (Asp-Ala-Glu-Phe-Arg-His-Asp-Ser-Gly-Tyr), represented by SEQ ID NO:1. The epitope recognized by this antibody will be included in these amino acids 1 to 10, whereas the antibody claimed in the present invention recognizes at least the epitope that comprises the amino acids from 12 to 16. As well as differing in the specific sequence that recognizes this monoclonal antibody with respect to that of the present invention, the design of the proposed diagnostic technique is also different, since what is determined is exclusively the binding of the antibodies used to what is considered in this patent to be the peptide that is characteristic of Alzheimer's disease, that constituted by amino acids 1 to 28 of the amyloid peptide, without considering binding to other forms of the peptide of different lengths and/or with variations in the amino and carboxyl ends. Moreover, no experimental proof is given that demonstrates its capacity for detecting forms of the amyloid peptide present in biological fluids.

[0016] Furthermore, patent application PCT WO 90/12871 describes the preparation of the monoclonal antibody designated SV17-6E10. This antibody is generated by immunization with the peptide sequence Asp-Ala-Glu-Phe-Arg-His-Asp-Ser-Gly-Tyr-Gln-Val-His-His-Gln-Lys-Leu, represented by SEQ ID NO:2, which might be considered equivalent to that of amino acids 1 to 17 of the amyloid peptide. Another monoclonal antibody directed against the region that includes amino acids 1 to 17 is the aforementioned commercial monoclonal antibody 6E10 which, as pointed out in the description of the data sheet corresponding to the product, http://www.alexis_corp.com/monoclonal:antibodies-SIG-9320/opfa.1.1.SIG-9320.386.4.1.html, specifically, within amino acids 1 to 17 of β -amyloid peptide, recognizes the epitope comprised between amino acids 3 to 8. This epitope corresponds to a different region, closer to the amino end than that of the EM5 monoclonal antibody of the invention. Although it is capable of producing differential staining of neuritic plaques and vascular deposits, without staining the diffuse plaques, this antibody does not appear to display differences in affinity between peptides A β 42 and A β 40.

[0017] EP 0683234 describes monoclonal antibodies raised against the region containing amino acids 1-16 of the β -amyloid peptide, their use in the diagnosis of Alzheimer's disease and their ability to bind to isoforms A β 40 and A β 42

of the β -amyloid peptide. WO 2004/029630 discloses monoclonal antibodies which bind to the epitope EVHHQKI of β -amyloid peptide, detect the β -amyloid peptide on brain slides and are used to treat or prevent Alzheimer's disease.

[0018] Accordingly, the monoclonal antibody of the invention, which has been designated EM5, constitutes a novel tool, because it recognizes at least one epitope that is not recognized by any of the antibodies described in the known state of the art, in the sequence of β -amyloid peptide. The antibody of the invention is, accordingly, useful for application in the diagnosis of Alzheimer's disease. It detects neuritic plaques specifically without detecting diffuse plaques, which are not specifically associated with the disease. Among the neuritic plaques, the monoclonal antibody of the invention makes it possible to detect a subgroup of neuritic plaques differing in their molecular composition relative to the deposits of β -amyloid peptide. Moreover, the monoclonal antibody of the invention is capable of binding to forms of β -amyloid peptide present in solution, permitting subsequent detection and quantification of said peptides, including if the solution is a biological fluid such as urine.

SUMMARY OF THE INVENTION

[0019] The invention relates to a monoclonal antibody that recognizes, in β -amyloid peptide, the epitope corresponding to the sequence:

Val-His-His-Gln-Lys (SEQ ID NO:3) and is capable of binding to isoforms of β -amyloid peptide that contain said sequence, regardless of whether the peptide is in soluble form, aggregated form or denatured by SDS, although displaying greater affinity for the A β 42 isoform than for the A β 40 isoform.

[0020] The invention also relates to fragments of the aforesaid antibody that are also capable of binding to isoforms of β -amyloid peptide that contain said SEQ ID NO:3.

[0021] The invention also relates to a hybridoma cell line capable of producing the monoclonal antibody previously described and to a method of producing said antibody by obtaining a hybridoma cell line and culture of said cell line in conditions that permit the production of the monoclonal antibody.

[0022] Additionally, the invention relates to a composition comprising the antibody of the invention or at least one fragment thereof capable of binding to SEQ ID NO:3. A possible embodiment of a composition of the invention is that in which the antibody or the fragment thereof is coupled to a substance that enables it to be detected, said substance being a second antibody capable of binding to the antibody of the invention or to the fragment thereof and that is coupled to a substance that can enable it to be detected, such as an enzyme capable of catalyzing the conversion of a particular substance into another that can be detected, for example a chromogen. Another possible embodiment of a composition of the invention is that in which the antibody or a fragment thereof is coupled to some substance or particle that facilitates extraction of isoforms of β -amyloid peptide present in a solution, such as a magnetic particle that will permit separation of the solution of antigen-antibody or antigen-antibody fragment complexes formed if a magnetic field is applied, it thus being possible to concentrate the isoforms of β -Amyloid peptide present in said solution and facilitate their subsequent detection, identification and/or quantification.

[0023] The invention also relates to the use of the monoclonal antibody of the invention or at least one fragment thereof capable of binding to SEQ ID NO:3 for detecting isoforms of β -amyloid peptide that contain SEQ ID NO:3. The isoforms of β -amyloid peptide to be detected can be present in a sample of brain tissue taken from an individual, in a solution such as a sample of a biological fluid or a solution derived therefrom or can even be contained in some other, non-biological type of sample, in which it is similarly desired to detect the possible presence of isoforms of β -amyloid peptide.

[0024] Finally, the invention relates to a method of in-vitro diagnosis of Alzheimer's disease based on the detection of isoforms of β -amyloid peptide by using the antibody of the invention, or of at least one fragment thereof capable of binding to SEQ ID NO:3. In a preferred embodiment of the invention, the isoforms of β -amyloid peptide are detected in a sample of brain tissue taken from an individual. In this case, the compositions of the invention in which the antibody or the fragment thereof is coupled to a substance that is able to permit their detection, said substance possibly being a second antibody capable of binding to the antibody of the invention or to a fragment thereof and is coupled to another substance that is able to permit its detection, can be particularly useful.

[0025] In another preferred embodiment of the diagnostic technique of the invention, the isoforms of β -amyloid peptide are detected in a solution, preferably a sample of a biological fluid such as cerebrospinal fluid, urine or blood, or even a solution derived from a biological fluid, such as plasma. In this second embodiment of the invention, it is preferred to use compositions of the invention in which the antibody or the fragment thereof is coupled to some substance or particle that facilitates the extraction of isoforms of β -amyloid peptide present in solution, such as a magnetic particle that will permit the separation of the antigen-antibody or antigen-antibody fragment complexes formed from the solution, if a magnetic field is applied, it thus being possible to concentrate the isoforms of β -amyloid peptide present in the solution and facilitate their subsequent detection, identification and/or quantification. Accordingly, the method of diagnosis of the invention comprises the stages of:

- a) addition of a composition that comprises the antibody of the invention or at least one fragment thereof capable

of binding to SEQ ID NO:3 coupled to a magnetic particle, to the sample of biological fluid or the solution derived therefrom;

b) waiting a sufficient time for antigen-antibody or antigen-antibody fragment complexes to form between at least one isoform of β -amyloid peptide and the antibody or fragment of antibody contained in the composition;

c) application of a magnetic field for extracting the antigen-antibody or antigen-antibody fragment complexes from the solution;

d) removal of the solution;

e) separation of the antibody or fragment of antibody from the molecules of β -amyloid peptide;

f) identification and quantification of the isoforms of β -amyloid peptide extracted from the sample of biological fluid or solution derived therefrom.

[0026] The solution from which the isoforms of β -Amyloid peptide are extracted is preferably a sample of blood or urine, as they are simpler to obtain than in the case of samples of cerebrospinal fluid, or alternatively a plasma sample derived from a blood sample. Between blood or plasma and urine, it is especially preferred that the sample of biological fluid is a urine sample, which can be obtained without the use of invasive methods. However, it is then essential to use a very sensitive method for identifying and quantifying the isoforms of β -amyloid peptide, such as MALDI-TOF mass spectrometry.

[0027] The polyclonal antibodies EM2 and EM3, which were also developed by the present inventors, can also be used as an additional tool in the method of diagnosis of the invention.

BRIEF DESCRIPTION OF THE DRAWINGS

[0028]

Fig. 1 shows the curves of binding of the antibodies EM5 (top part) and 6E10 (bottom part) to immobilized A β peptides. It shows the results corresponding to different concentrations (abscissa; in concentration nM) of the antibodies both to the A β 40 peptide (filled symbols) and to the A β 42 peptide (empty symbols), in both cases aggregated (Δ) or without aggregation (\square). Each point represents the mean value from experiments carried out in triplicate. The optical density (O.D.) at 450 nm is shown on the ordinate.

Fig. 2 shows the result from immunotransfer analysis of the antibodies EM2, EM3 and EM5 relative to synthetic peptides A β 1-40 and A β 1-42.

Fig. 3 shows, at the top, a bar chart for the reactivity of EM5 to series of synthetic A β peptides by means of ELISA, with the values of absorbance (O.D. at 450 nm) corresponding to 20 μ g/ml of antibody. The bottom part shows the localization of the epitope recognized by EM5 according to the results obtained in this ELISA. 1-28R = rodent A β ₁₋₂₈. In parentheses, various mutations.

Fig. 4 shows the localization of the epitope of the A β peptide recognized by the EM5 monoclonal antibody as determined by analysis by mass spectrometry of immunoprecipitated β -amyloid peptide digested with various proteolytic enzymes given in the table in the description (peptides 1-5). Sequence 6 corresponds to β -amyloid peptide without digestion.

Fig. 5 shows photographs of immunostainings of brain tissue affected by Alzheimer's disease, using EM2, EM3, EM5 and combinations of EM5 with each of the aforementioned. The structures stained are labelled as V (vessels), DP (diffuse plaques) and NP (neuritic plaques). The photographs correspond to:

- (A) and (B): Consecutive serial sections of the same zone of the occipital cortex immunostained with EM5 (A) and EM 3 (B) as primary antibody, using nitroblue tetrazolium (NBT) as chromogen.
- (C): Micrograph at high magnification from a double immunostaining technique using EM3 (chromogen: NBT) and EM5 (chromogen: DAB) as primary antibodies.
- (D) and (E): Consecutive serial sections of the same area of the occipital cortex immunostained either with EM5 (D) or with EM2 (E).
- (F): Microphotograph at high magnification from a double immunostaining technique using EM2 (chromogen: nitroblue tetrazolium, NBT) and EM5 (chromogen: diaminobenzidine, DAB).

Fig. 6 shows graphs obtained in analysis by MALDI-TOF mass spectrometry of forms of β -amyloid peptide of different length. In each case, the ordinate shows the percentage intensity (% Int.) corresponding to each one of the peaks of different mass (Mas.), deduced from the mass/charge ratio (m/z). The top graph, indicated with the letter A and marked "Ctrl." on the right, was obtained from a solution that contained the peptides comprising amino acids 12 to 29 (Pep. A β . 12-29), 1 to 40 (Pep. A β . 1-40) and 1-42 (Pep. A β 1-42) of β -Amyloid peptide. The bottom graph, indicated with the letter B and marked "EM5+PM" on the right, was obtained after concentration of the peptides from

the solution containing them by using the EM5 antibody bound covalently to magnetic particles and separation of the complexes formed by the use of a magnetic field. The drawing at bottom right represents the binding region of the antibody to each of the peptides under consideration.

Fig. 7 shows a graph obtained by analysis by MALDI-TOF mass spectrometry of a urine sample from a healthy individual to which additional quantities of the peptides that comprise amino acids 12 to 28 (peak marked as Pep. 12-28), 1 to 40 (peak marked as Pep. 1-40) and 1-42 (peak marked Pep. 1-42) of β -amyloid peptide had been added, after which the sample was treated with the EM5 antibody bound covalently to magnetic particles and the complexes that formed were separated by applying a magnetic field. The ordinate shows the percentage intensity (% Int.) corresponding to each of the peaks of different mass (Ms.), deduced from the mass/charge ratio (m/z). The peaks corresponding to each of the forms of β -amyloid peptide added to the urine sample are indicated.

DETAILED DESCRIPTION OF THE INVENTION

[0029] As already mentioned, the invention relates to a monoclonal antibody that recognizes, in β -amyloid peptide, the epitope corresponding to the sequence:

Val-His-His-Gln-Lys (SEQ ID NO:3)

[0030] This sequence corresponds to that of residues 12-16 of human β -amyloid peptide. Consequently, it is to be hoped that the aforesaid antibody would be capable of binding to isoforms of β -amyloid peptide that contained said sequence, without recognizing those that lacked it, for example the so-called p3 peptide ($A\beta_{17-42}$) and other forms with the amino end truncated ($A\beta_{17-X}$). In the characterization of the monoclonal antibody referred to as EM5 that is described in detail in the examples given below it is demonstrated that EM5 binds to any peptide containing residues 12 to 16 of the sequence of human $A\beta$, even though it has modifications outside of this region, and it does not recognize peptides which lack said region. If the region is modified, as is the case with peptide $A\beta_{1-28}$ (rodent), which has a change of amino acid in position 13, as well as in positions 5 and 10, the peptide is no longer recognized by EM5.

[0031] Moreover, studies show that the antibody is capable of binding to isoforms of the $A\beta$ peptide that contain residues 12 to 16 regardless of whether they are in soluble form, in aggregated form, or denatured (in SDS). In particular, the tests described in the Examples that are presented below show that the antibody of the invention is capable of binding both to isoforms of β -amyloid peptide that have aggregated, forming a proportion of the plaques present in samples of brain tissue, and to isoforms of β -amyloid peptide that are in solution, including when the solution is a sample of biological fluid such as urine. Therefore, another aspect of the invention relates to a composition that contains the antibody of the invention, or at least one fragment thereof capable of binding to SEQ ID NO:3, coupled to a substance that permits its detection and/or its concentration, and to its use in the diagnosis of Alzheimer's disease.

[0032] When the antibody of the invention or a fragment thereof is coupled to a substance that permits it to be detected, detection of the presence of the isoforms of β -amyloid peptide that have bound to the antibody or a fragment thereof and/or the quantification thereof will be possible by detection and/or quantification of the antibody or fragment thereof bound to isoforms of β -amyloid peptide that contain the specific sequence recognized by the antibody of the invention. In a preferred embodiment of the invention, the substance to which the antibody, or a fragment thereof capable of binding to SEQ ID NO:3, is coupled is a second antibody capable of binding to the monoclonal antibody of the invention, the second antibody being bound to an enzyme capable of catalyzing the conversion of a particular substance to another that possesses characteristics that facilitate detection of its presence. In the most preferred embodiment of the invention, the second antibody bound to an enzyme is part of the Envision system, from Dako Laboratories, the substance whose conversion is catalyzed by the enzyme being a chromogen and the enzyme that catalyzes the reaction being either alkaline phosphatase (in that case using nitroblue tetrazolium as chromogen) or horseradish peroxidase (in that case using diaminobenzidine as chromogen).

[0033] Another possibility is that the antibody of the invention or a fragment thereof is bound to a substance or particle that facilitates concentration of the isoforms of β -amyloid peptide that have become bound to said antibody or a fragment thereof. This embodiment is preferred when the composition of the invention is to be used for the detection and/or quantification of isoforms of β -amyloid peptide that are present in solution, especially in a solution in which their concentration is low, such as blood or plasma, urine or cerebrospinal fluid. The substance or particle will be such as permits easy separation of the antigen-antibody complex from said solution, for example by immunoprecipitation. A preferred example of said particles are magnetic particles which, when coupled to the antibody of the invention or to a fragment thereof capable of binding to isoforms of β -amyloid peptide that contain the specific sequence recognized by the antibody of the invention, will permit the isoforms of β -amyloid peptide bound to the antibody or to a fragment thereof to be extracted from the solution if a suitable magnetic field is applied. Subsequently, the isoforms of β -amyloid peptide can be separated from the antibody or fragment thereof and can then be detected, identified and/or quantified. A method that is suitable is mass spectrometry, especially that known as MALDI-TOF (*Matrix Assisted Laser Desorption Ionization Time-of-flight*).

[0034] As already mentioned, the antibody of the invention or a fragment thereof capable of binding to isoforms of β -

amyloid peptide that contain the specific sequence recognized by the antibody of the invention, as well as the compositions that contain at least one of them, can be used for the in-vitro diagnosis of Alzheimer's disease. The methods of in-vitro diagnosis of Alzheimer's disease that make use of the antibody of the invention or of a fragment thereof capable of binding to isoforms of β -amyloid peptide that contain the specific sequence recognized by the antibody of the invention, as well as those that make use of compositions that include said antibody or said fragment, are within the scope of the invention. Said diagnosis can be carried out on brain tissue, in which the presence of deposits in which isoforms of the amyloid peptide that contain the sequence recognized by the monoclonal antibody of the invention predominate (neuritic plaques and vascular deposits, deposits that are characteristic of the development of Alzheimer's disease) is revealed selectively, detecting the existence of binding, to said deposits, of the monoclonal antibody of the invention, or of a fragment thereof capable of binding to the specific sequence recognized by said antibody, in contrast to what will occur with the deposits in which the predominant isoforms are those that lack the sequence recognized by the monoclonal antibody of the invention (diffuse plaques), the isoforms $A\beta_{17-42}$, which would not exhibit binding of the monoclonal antibody or of fragments thereof. Binding of the antibody to neuritic plaques and vascular deposits is revealed by means of a composition such as one of those that comprise, in addition to the antibody of the invention or a fragment thereof, a second antibody capable of binding to the monoclonal antibody of the invention, the second antibody being bound to an enzyme capable of catalysing the conversion of a defined substance to another that possesses characteristics that facilitate the detection of its presence, such as a chromogen. In the most preferred embodiment of the diagnostic technique on brain tissue hereby described, the method of diagnosis is supplemented with the additional use of the polyclonal antibodies EM2 and EM3, which recognize either $A\beta_{X-42}$ (EM3) or $A\beta_{X-40}$ (EM2), both antibodies also having been developed previously by the group of authors of the invention [24].

[0035] Another embodiment of the method of diagnosis of the invention is carried out on a biological fluid that is known to contain isoforms of β -amyloid peptide, such as cerebrospinal fluid, urine or blood or, in this last-mentioned case, plasma derived therefrom. Since puncture is required to obtain cerebrospinal fluid, it is preferable to use plasma or urine, and especially the latter, which can be obtained without the use of invasive techniques. It is then preferred that the method of diagnosis of the invention should employ compositions that comprise the antibody of the invention or a fragment thereof bound to some substance or particle that facilitates the concentration of the isoforms of β -amyloid peptide that bind to said antibody or to a fragment thereof. As already mentioned, the particles that facilitate the concentration of the isoforms of β -amyloid peptide are preferably magnetic particles coupled to the antibody or to a fragment thereof, so that when the solution that contains the complexes formed with the isoforms of β -amyloid peptide is submitted to the action of a magnetic field, the latter can be extracted from the solution, which can easily be discarded using a method such as aspiration. In the case when a complete antibody is used, it is especially preferable for coupling of the antibody to the magnetic particle to be effected by a covalent bond, to increase its stability, but establishment of said covalent bond in such a way as to avoid, as far as possible, the antigen binding site, so as not to diminish the binding capacity of the antibody, therefore methods are preferred in which binding takes place preferentially in the histidine-rich zone of the Fc fragment of the antibody or in the glycoside chains of said zone. In this connection, the method of binding of the antibodies to magnetic particles described by Fuentes *et al.* [26] is particularly preferred.

[0036] Once the binding complexes of the isoforms of β -amyloid peptide have been separated from the solution, separation of said isoforms of the antibodies or of the fragments thereof is preferable prior to detection and/or quantification of the isoforms of β -amyloid peptide extracted, for which acetonitrile and trifluoroacetic acid can be used. Since the concentration of isoforms of β -amyloid peptide in urine is usually quite low, detection and/or quantification are preferably carried out using a very sensitive method such as MALDI-TOF mass spectrometry.

[0037] Another aspect of the invention is a hybridoma cell line capable of producing the monoclonal antibody of the invention. In a preferred embodiment of the invention, said cell line is obtained by fusion, with the mouse myeloma line P3/X63-Ag.653, of spleen cells from BALB/c mice immunized with peptide $A\beta_{1-40}$ coupled to KLH (keyhole limpet haemocyanin).

[0038] Finally, yet another aspect of the invention is a method of production and purification of the monoclonal antibody of the invention starting from hybridoma cells. In the preferred embodiment of the invention, the method comprises production of a hybridoma cell line as described previously and growing it as ascitic fluid in BALB/c mice treated beforehand with Pristane. The monoclonal antibody is purified from this ascitic fluid by affinity chromatography in a column of Protein A-Sepharose (Pharmacia). In a particularly preferred embodiment of the invention, the hybridoma cells employed are from the line designated "EM5 clone A", deposition of which was requested on 1 March 2006 in the European Collection of Cell Cultures (ECACC), CAMR, Porton Down, Salisbury, Wiltshire, United Kingdom, and was given the access number 06030101.

[0039] The invention and its preferred embodiments are now described in more detail using the following examples.

Examples.-**Example 1.- Production of antibodies**

[0040] The polyclonal antibodies EM2 and EM5 used in this study were produced in the manner reported previously [24].
[0041] The following steps were carried out for production of the EM5 monoclonal antibody:

Production of hybridomas

[0042] BALB/c mice were injected subcutaneously with 40 µg of peptide Aβ₁₋₄₀ coupled to KLH (keyhole limpet hemocyanin) and dissolved in phosphate-buffered saline (PBS) and emulsified with an equal volume of Freund complete adjuvant. The mice received three injections repeated every other week, in Freund incomplete adjuvant. Three days before fusion, the mice received an intraperitoneal injection of 25 µg of Aβ₁₋₄₀-KLH in PBS. On the day of fusion, spleen cells from animals immunized with the mouse myeloma line P3/X63-Ag.653 were fused using polyethylene glycol 1400 (Sigma), following established procedures [25]. The fused cells were distributed in sterile 96-well plates at a density of 105 cells per well and were selected in media containing hypoxanthine, thymidine and aminopterin. The antibody-producing hybridomas were identified by ELISA, described later.

Screening of hybridomas.

[0043] Polystyrene microtitre plates (Maxisorb, Nunc) were covered overnight at 4°C with Aβ₁₋₄₀, at 5 µg/ml in carbonate buffer 50 mM, pH 9.6 (covering buffer). The plates were washed with Tween 20 at 0.05% in PBS (PBS-T) and the nonspecific binding sites were blocked with bovine serum albumin (BSA) at 2% in PBS-T (blocking solution) for 1 hour at 37°C. After washing, the plates were incubated for 1 hour with tissue culture supernatant diluted twice in blocking solution. The plates were washed again and were incubated with goat anti-mouse IgG conjugated with horseradish peroxidase (Sigma) for 1 hour at 37°C. After washing, the substrate (0.05% o-phenylenediamine and 0.015% hydrogen peroxide in citrate buffer 100 mM, pH 5.0) was added to the solution. The reaction was stopped 10 minutes later with 2.5 M sulfuric acid and the absorbance at 492 nm was determined in a microplate reader. The hybridomas whose supernatants produced an absorbance value at least twice that obtained with the supernatant from unrelated hybridomas (anti-gliadin antibodies) were selected. The hybridomas that produced specific antibodies were cloned repeatedly using limiting dilution, and the isotypes of the monoclonal antibodies were determined in cell culture supernatant concentrated by gel immunoprecipitation using a specific antiserum (Sigma). The selected hybridomas were grown as ascitic fluid in BALB/c mice previously treated with Pristane.

Purification of monoclonal antibodies.

[0044] The EM5 monoclonal antibody was purified from the ascitic fluid by affinity chromatography in a column of Protein A-Sepharose (Pharmacia). The purified antibodies were dialyzed profusely in PBS and were stored at -85°C until they were used.

Example 2.- Calculation of the apparent dissociation constant: affinity for peptides Aβ₁₋₄₀ and Aβ₁₋₄₂

[0045] ELISA was used for investigating the affinity of EM5 and 6E10 monoclonal antibodies using recently dissolved, immobilized peptides Aβ₁₋₄₀ and Aβ₁₋₄₂, which had been synthesized in the WM Keck plant of Yale University using the N-t-butyloxycarbonyl methodology.

[0046] Polystyrene microtitre plates (Immulon 2, Dynex Technology Inc., Chantilly, VA) were covered for 16 hours at 4°C with 0.5 µg of peptide Aβ₁₋₄₀ or Aβ₇₋₄₂ recently dissolved or aggregated in carbonate/bicarbonate buffer pH 9.6. After blocking with Superblock (Pierce Chemical Co.), increasing concentrations of purified EM5 (0-0.5 nM in TBS-T, 100 microliters per well) were added to the wells covered with Aβ, incubating for 3 hours at 37°C. The bound EM5 was detected with the F(ab')₂ fragment of goat anti-mouse IgG conjugated with horseradish peroxidase (1:3000, Amersham). The reaction was developed for 15 minutes with 3,3',5,5'-tetramethylbenzidine (TMB) (BioRad, Hercules, CA.), it was stopped with 2M sulfuric acid and was quantified in a microplate reader (Cambridge Technology, Watertown, MA) at 450 nm. The affinity of the commercially available antibody 6E10 (Senetek, PLC) was investigated following a similar protocol using preparations of purified IgG antibodies. Nonlinear regression analysis, estimation of apparent dissociation constants and comparison of protein binding data for finding the statistical significance by calculating the F ratios were evaluated using Prism software from GraphPad (GraphPad, San Diego, CA).

[0047] Fig. 1 shows saturation curves corresponding to binding, in ELISA, of EM5 and 6E10 monoclonal antibodies to recently dissolved and aggregated Aβ peptides. High affinity was observed in all cases, with apparent dissociation

constants in the picomolar range. None of these antibodies displayed differential affinity for recently prepared or aggregated forms of A β . Interestingly, whereas 6E10 displayed equivalent affinity for A β ₁₋₄₀ and A β ₁₋₄₂, EM5 displayed greater affinity for A β 42 than for A β 40 ($p < 0.01$) (13.7 pM and 15.5 pM for recently prepared and aggregated A β 42, respectively; and 37.5 pM and 37.0 pM for recently prepared and aggregated A β 40, respectively).

Example 3.- Immunotransfer analysis

[0048] The specific recognition of A β ₁₋₄₀ and A β ₁₋₄₂ by EM5 was investigated and compared with EM2 and EM3 polyclonal antibodies by means of immunotransfer analysis. For this, A β peptides (0.5 μ g/lane) were submitted to PAGE electrophoresis in 16% acrylamide, tris-tricine-SDS. The peptides were transferred electrophoretically for 1 hour at 400 mA and 4°C to poly(vinylidene fluoride) membranes (Immobilon-P, Millipore) using 3-cyclohexylamino-1-propanesulfonic acid, pH 11, containing 10% methanol. The membranes were blocked for 16 h at 4°C with TBS-T containing 5% powdered skimmed milk and were then incubated for 1 hour at room temperature with 2 μ g/ml of IgGs EM2, EM3 or EM5. A goat anti-rabbit IgG (EM2 and EM3) or goat anti-mouse IgG (EM5) coupled to horseradish peroxidase (Amersham) and diluted 1:2000 was used as the second antibody. Immunotransfer was visualized by means of chemoluminescence (Amersham) following the manufacturer's specifications.

[0049] The results are shown in Fig. 2, where it can be seen that, in the immunotransfer experiments, EM5 displayed immunoreactivity both to A β ₁₋₄₀ and A β ₁₋₄₂ peptides (corroborating the results obtained by ELISA), whereas antibodies EM2 and EM3 were only able to recognize peptides A β ₇₋₄₀ or A β ₁₋₄₂, respectively, as described previously [24]. These results support the notion that the EM5 monoclonal antibody binds to a specific linear epitope common to both peptides, which is conserved in the samples treated with SDS. Overall, our results show that EM5 is able to recognize A β peptides in the soluble form, aggregated form and denatured form (in SDS), with slightly preferential binding to A β 42, probably as a result of the increase in hydrophobicity of the peptide.

Example 4.- Localization of the epitope

[0050] For precise localization of the exact epitope recognized by the EM5 antibody, binding of the antibody to a series of synthetic A β peptides was analyzed. Peptides A β ₁₋₁₆, A β ₁₋₂₈ and A β ₂₅₋₃₅ were obtained from Sigma (San Luis, MO); peptides A β ₁₋₄₂, A β ₁₋₄₂(E22Q), A β ₁₋₄₀, A β ₁₋₄₀(E22G), A β ₁₋₄₀(E22Q), A β ₁₋₂₈(rodent), A β ₁₋₂₈(E22Q), A β ₁₇₋₄₀, A β ₁₆₋₄₂ and A β ₂₅₋₃₅ were synthesized in the WM Keck plant of Yale University using the N-t-butyloxycarbonyl methodology; A β ₂₁₋₂₈, A β ₂₁₋₂₈(E22Q), A β ₃₇₋₄₁ and A β ₃₇₋₄₀ were synthesized in the Peptide Synthesis Unit (National Biotechnology Center, Madrid) using ordinary Fmoc methodology. The design of peptides A β ₃₇₋₄₂ and A β ₃₇₋₄₉ included a tail at the amino end with a cysteine residue for coupling which had the sequence CSGGSGGG (SEQ ID NO:4). All the peptides were purified by high-performance liquid chromatography in inverted-phase mode and their purity was evaluated by MALDI-TOF mass spectrometry.

a) Antibody-capture ELISA

[0051] To carry out the test, flat-bottomed polystyrene microtitre plates (Immulon 2, Dynex Technology Inc., Chantilly, VA) were covered for 16 hours at 4°C with 1 μ g/well of the corresponding A β peptide in carbonate-bicarbonate buffer 0.1 M, pH 9.6. After blocking with NaCl 150 mM, Tris 20 mM, Tween-20 at 0.05%, pH 7.4 (TBST) containing 2% BSA, series dilutions of the EM5 antibody (from 20 to 0.02 mg/ml of the IgG fraction) were incubated for 1 hour at 37°C. Anti-mouse IgG coupled to peroxidase (Sigma, San Luis, MO) and diluted 1:2000 was then applied for 30 minutes at 37°C. The reaction was developed with TMB (BioRad, CA), stopped with 2M sulfuric acid and quantified at 450 nm. Nonspecific binding was determined, omitting the first antibodies.

[0052] The results are presented in Fig. 3, the top part of which shows a bar chart corresponding to the absorbance values obtained corresponding to incubation of 20 μ g/ml of the antibody with each of the peptides. EM5 was shown to bind to any peptide that contained residues 12 to 16 of the sequence of human A β and was unable to recognize peptides lacking this region. Moreover, mutant variants with modifications outside of this region (A β ₁₋₄₂(E22Q), A β ₁₋₄₀(A21G), A β ₁₋₄₀(E22G), A β ₁₋₄₀(E22Q)) displayed similar binding when compared with the wild-type peptide, whereas the A β ₁₋₂₈(rodent) peptide, which shows three changes of amino acids in positions 5, 10 and 13, was not recognized by EM5.

b) Mass spectrometry analysis of digested and immunoprecipitated β -amyloid peptide

[0053] To confirm the results, an additional study was conducted in which a set of peptides derived from A β ₁₋₄₂, generated by digestion with trypsin or α -chymotrypsin, was brought into contact with magnetic particles coated with EM5 antibody, carrying out the following steps:

[0054] For digesting the peptide, 0.5 μ l of trypsin or α -chymotrypsin containing 0.025 μ g of the enzyme was added

to a 10 μ l aliquot of β -amyloid peptide in ammonium bicarbonate 50 mM containing 1 μ g of peptide. Incubation was carried out for 2 hours at 37°C. The digestions carried out are shown schematically in Table I.

[0055] For immobilizing the EM5 monoclonal antibody on magnetic particles, a 5 μ l aliquot (1.1 mg/ml) of EM5 was incubated with 50 μ l of Dynabeads M450 coated with goat anti-mouse IgG at room temperature for 2 hours. The complex was washed 4 times with PBS with bidirectional stirring (in a rotor).

[0056] To perform immunoprecipitation, a 10 μ l aliquot of β -amyloid peptide digested with trypsin (or α -chymotrypsin) with 50 μ l of EM5 immobilized on magnetic particles was incubated in a rotor for 1 hour at 37°C. The magnetic-immunoprecipitate complex was washed 4 times with PBS in the same rotor and the supernatants were aspirated and discarded.

[0057] For mass spectrometry analysis of digested immunoprecipitated β -amyloid peptide, the immunoprecipitated peptides contained in the magnetic complexes were released with 20 μ l of 50% acetonitrile/0.3% trifluoroacetic acid. 5 μ l of this solution was mixed with 5 μ l of saturated α -cyano-4-hydroxycinnamic acid in 0.1% trifluoroacetic acid / acetonitrile (2:1). A volume of 0.5 μ l of this solution was then placed in a pointed stainless steel probe and was left to dry at room temperature. The samples were measured in a MALDI-TOF mass spectrometer Reflex II from Bruker equipped with an ion source with visualization optics and an N₂ laser (337 nm). The mass spectra were recorded in positive linear mode at an accelerating voltage of 28.5 kV and 1.5 kV in the linear detector, accumulating 200 laser single-shot spectra below the irradiance threshold. Only mass signals with good resolution, of high intensity, emitted from 3-5 selected points of incidence, were taken into account. All the MALDI spectra were calibrated externally using a standardized mixture of peptides [angiotensin II (1047.2), 18-39 fragment of adrenocorticotrophic hormone 2466.7) and insulin (5734.6); Sigma].

[0058] The characteristics of the peptides analyzed, as well as the data obtained, are summarized in the following Table I:

Table I.- MALDI-TOF mass spectrometry data for fragments obtained by digestion of β -amyloid peptide

Fragment N°	Amino acids included	Enzyme used	Experimental mass (m/z)	Expected value (m/z)
1	1-16	Trypsin	1956.57	1955.0
2	1-17	α -Chymotrypsin	2067.37	2068.2
3	5-17	α -Chymotrypsin	1606.62	1605.7
4	6-16	Trypsin	1337.12	1336.4
5	11-17	α -Chymotrypsin	888.66	890.0

[0059] The sequences of each of these peptides (1-5) and of the peptide without digestion (6) are shown in Fig. 4, in which the zone that appears to correspond to the epitope recognized by the EM5 antibody according to the results of MALDI-TOF mass spectroscopy of the immunoprecipitated material is shaded.

[0060] As can be seen in said Fig. 4, analysis of the immunoprecipitated material by MALDI-TOF mass spectroscopy shows that EM5 was capable of extracting, from the digestion mixture, each fragment of peptide that contained residues 11-16 (shaded regions). Fragments of peptide outside of this region were not recovered from the solution. These results confirm the data obtained by ELISA and immunotransfer analysis.

[0061] In conclusion, the differential reactivity of the antibody to a series of A β peptides indicates that EM5 recognizes residues 11-16 of A β peptides. Among them, participation of residues 12-16 is fundamental, as is demonstrated by the fact that mutation of residue 12 in the rodent A β ₁₋₂₈ peptide (1-28 R) inhibits its recognition by the antibody; for its part, involvement of residue 11 (E) in the conformation of the epitope cannot be ruled out, although the data obtained do not fully confirm it.

Example 5.- Immunohistochemistry: tissue reactivity of the antibodies

[0062] To demonstrate the validity of the EM5 antibody for revealing deposits that are characteristic of Alzheimer's disease (neuritic plaques and vascular deposits) as opposed to diffuse plaques, immunostaining of sections of brain tissue affected by Alzheimer's disease was performed using the antibodies EM2 (a polyclonal antibody directed at the carboxyl end of the A β 40 peptide), EM3 (a polyclonal antibody directed at the carboxyl end of the A β 42 peptide) and EM5 (a monoclonal antibody with demonstrated specificity for residues 12-16 of the A β peptide). Both EM2 and EM3 were used in an earlier study [24].

Processing of brain tissue and areas selected for immunohistochemistry.

[0063] The brain tissue was supplied by the Tissue Bank for Neurological Investigations, Madrid. Six subjects, 3 men and 3 women, with well-defined AD were included in the study. Their ages ranged from 68 to 75 years. In all cases the diagnosis of AD was based on the clinical-pathological guidelines of CERAD (*Consortium to Establish a Registry for Alzheimer's Disease*) [10]. None of the patients had other relevant neuropathologic findings, for example Parkinson's disease or significant vascular changes. All the brains were processed for histological examination following the protocols for cutting, fixation and embedding of the Brain Bank. The periods post-mortem varied between 10 and 18 hours. Immediately after autopsy one half of the brain (obtained by medio-sagittal section of the cerebral hemispheres, cerebellum and brain stem) was fixed in formaldehyde buffered with 4% phosphate. After fixation for 3-4 weeks, blocks of tissue were obtained from all the cortical and subcortical areas with significant involvement in AD, and were embedded in paraffin after gradual dehydration in ethanol and clarification of the tissue with xylene. In all cases, 5 μ m tissue sections, corresponding to the parieto-occipital lateral cortex, temporal lateral cortex (these last two areas as recommended by the CERAD guidelines [10]), hippocampus, caudatum - putamen (at the head of the caudate nucleus), and cortex of the cerebellar hemisphere, were obtained from the original paraffin blocks for immunohistochemical examination. As control of nonspecific amyloid staining, modified methenamine - silver staining was carried out in sections consecutive to those processed for the amyloid immunohistochemistry.

Antibodies and immunostaining protocols

[0064] The primary antibodies employed were EM2, EM3, and EM5. Both EM2 and EM3 were used in an earlier study [24]. The sections were incubated with primary antibodies at room temperature for 30 minutes. The polyclonal antibodies were detected with the Envision system (Dako Laboratories) with alkaline phosphatase (Aph) using nitroblue tetrazolium (NBT) as chromogen, and EM5 was detected either with the aforementioned system or with the Envision system (Dako Laboratories) with horseradish peroxidase (HRP) using diaminobenzidine (DAB) as chromogen. In the case of colocalization techniques, the polyclonal antibodies were always detected with the Envision system with Aph (using NBT as chromogen), whereas EM5 was detected with the Envision system with HRP (using DAB as chromogen).

Double and single immunostaining.

[0065] Double immunostaining techniques were employed, using EM5 as first primary antibody and EM2 or EM3 as second primary antibody, as a preliminary operation for the purpose of establishing the degree of colocalization of each pair of antibodies, together with the optimum working dilution of each of them. During this phase of the study, which was restricted to tissue sections from the parieto-occipital cortex of two of the cases, it was established that the use of EM5 as first primary antibody ruled out a masking effect of the other two antibodies, when they were employed as first antibody during the double immunostaining technique. In serial sections from both selected paraffin blocks, increasing dilutions (1:50, 1:100, 1:500, 1:1000 and 1:2000) of EM5 were colocalized with decreasing dilutions (1:2000, 1:1000, 1:500, 1:100 and 1:50) of EM2 or of EM3. As it was found that the EM2 antibody was colocalized to a high degree with EM5, the rest of the study aimed to demonstrate the differential pattern of reactivity displayed by EM5 and EM3. For this purpose, subsequent double immunostaining in sections of all the selected areas was limited in all cases to the use of EM5 (at 1:1000 dilution) as first primary antibody and EM3 (at 1:1000 dilution) as second primary antibody. In addition, for more accurate visualization of the pattern of reactivity displayed by each antibody in the same tissue, single immunostaining was carried out in serial sections from each block using EM5, EM2 or EM3 as primary antibody. As the main purpose of this part of the study is to compare qualitatively different patterns of immunoreactivity, rather than quantitative differences between antibodies, the results of the stainings were not quantified.

Results

[0066] The results from one of the cases can be seen in Fig. 5, presented with the distribution mentioned previously, i.e.:

- (A) and (B): Consecutive serial sections from the same zone of the occipital cortex immunostained with EM5 (A) and EM3 (B) as primary antibody, using NBT as chromogen. The vessels (V) are labelled to facilitate localization of the plaques. Whereas EM3 (B) reveals both diffuse plaques (DP) and neuritic plaques (NP), as well as deposits in the blood vessels (V), EM5 (A) gives more intense staining both of blood vessels and of some neuritic plaques, although not diffuse plaques.
- (C) Micrograph at high magnification of a double immunostaining technique using EM3 (using NBT -blue color- as chromogen) and EM5 (using DAB -brown color- as chromogen) as primary antibodies. Double immunostaining of the neuritic plaques and the wall of the vessels is observed.

- (D) and (E): Consecutive serial sections of the same area of the occipital cortex immunostained either with EM5 (D) or with EM2 (E). Once again, the vessels (V) have been labelled to assist in identifying the plaques. It can be seen that both the vessels and the neuritic plaques react with both antibodies. Fewer neuritic plaques are stained with EM2 than with EM5, and no diffuse plaque reacts with either of them.
- (F) Microphotograph at high magnification of a double immunostaining technique using EM2 (using NBT -blue color- as chromogen) and EM5 (using DAB -brown color- as chromogen) as primary antibodies in the same section of tissue from the occipital cortex. Precise colocalization of the reactivity of both antibodies in the vessel wall and the neuritic plaques is observed.

[0067] All cases except one show pronounced leptomeningeal and intracortical vascular amyloid deposits which reacted with all the antibodies tested. In all positive cases the immunoreactivity of the vascular amyloid deposits was more pronounced (more extensive and more intense) both with EM2 (Fig. (5E)) and with EM5 (Fig. (5A) and (5D)) than with EM3 (Fig. (5B)). EM2 and EM5 are colocalized exquisitely at this level (Fig. (5F)). As expected, the neocortical areas and the hippocampus showed a high density of diffuse and neuritic plaques, whereas the cortex of the cerebellum and the corpus striatum only displayed diffuse amyloid deposits. The sections incubated with the EM3 antibody displayed reactivity with diffuse and with neuritic plaques (Fig. (5B)). When they were compared with successive sections stained with the modified methenamine-silver method, it was shown that EM3 stained all the plaques present in each section. Additionally, the EM3 antibody stained some neuronal bodies. Both EM2 and EM5 stained immature neuritic plaques (without nucleus) and mature neuritic plaques (with nucleus), again with a high degree of colocalization (Fig. (5F)). EM2 did not react with any diffuse plaques, neither in the cortical region nor in the subcortical region (Fig. (3E)). Double immunostaining with EM5 and EM3 reveals the colocalization of both antibodies in some neuritic plaques, but not in diffuse plaques (Fig. (5C)), although some colocalization was found at this level when EM5 was incubated at a very low dilution (1:50). Only in one case, which displayed abundant EM3-positive diffuse plaques in sections of the corpus striatum, some of them were stained very slightly with EM5 at the working dilution (1:500). This same case did not show any reactivity of the diffuse plaques as EM5 in the cortex of the cerebellum. In all other cases the sections of the corpus striatum and of the cerebellum showed a variable amount of diffuse plaques, none of them reactive to the EM5 antibody. Neither EM2 nor EM5 appeared to stain all the neuritic plaques present (see Fig. (5A,D)). However, as had been observed in the case of the immunoreactivity of the vascular amyloid deposits, the neuritic plaques reactive to EM2 or EM5 were stained more intensely than with EM3. Apart from negativity of the vessels to all the antibodies in a single case and the slight positivity of some diffuse plaques of the corpus striatum in this same brain, it can be considered that all cases show similar patterns of staining for each antibody tested.

[0068] Thus, in contrast to the more uniform pattern of staining observed in the diffuse plaques, the panel of antibodies detected heterogeneity among the neuritic plaques, which proves relevant for indicating actual stages in the process of development of the diffuse plaques and their transformation to neuritic plaques. The EM5 antibody gave intense staining of all the structures (neuritic plaques and vessel walls) stained by EM2 and stained to a variable degree by EM3. A subset of neuritic plaques was found to have a pattern of staining identical to the vascular amyloid, with high colocalization of reactivity to EM2 and EM5. The invention shows that EM5 ought to react with all the structures that contain either $A\beta_{<11-40}$ or $A\beta_{<11-42}$. In fact, the ELISA results presented here show that the EM5 antibody recognizes both recently dissolved and aggregated forms of the $A\beta$ peptide. However, in tissue sections we found greater variability of staining between the neuritic plaques with EM5 than with the polyclonal antibodies, together with high colocalization of intense reactivity to EM5 with EM2 ($A\beta$ C40). Relatively more intense staining in these positive plaques may reveal a subgroup of neuritic plaques either with a particularly high content of long $A\beta$ peptides, or selectively high content of $A\beta$ C40, or even particular accessibility of the epitope recognized by EM5 in structures (vessels or plaques) that show codeposition of $A\beta_{<11-40}$ and $A\beta_{<11-42}$. The antibody of the invention seems to detect the same subset of neuritic plaques $A\beta$ C40 (+) detected previously by Parvathy *et al.* [22]. This subset of neuritic plaques with particularly high contents of long $A\beta$ peptides may represent important milestones in the progression of the amyloid lesions in AD that the monoclonal antibody of the invention is able to detect. Therefore, the use of EM5 can permit subsets of plaques to be defined that constitute a specific marker of the stage of progression of the disease.

Example 6.- Capacity of the antibodies for reacting with forms of β -amyloid peptide in urine

[0069] To demonstrate the validity of the EM5 antibody for detecting the presence of forms of β -amyloid peptide in biological fluids, a test was carried out for detecting them in urine samples from healthy patients, to which a mixture of synthetic peptides that corresponded to forms of different length of β -amyloid peptide had been added after they were obtained. For this, the monoclonal antibody, bound to magnetic particles, was added to the urine samples, and the bound peptides were detected using MALDI-TOF mass spectrometry. The details of the method employed are presented below.

Binding of the antibody to magnetic particles

[0070] The magnetic particles coupled to the EM5 antibody were prepared following the method described by Fuentes *et al.* [26], based on gentle oxidation of the glycoside residues of the immunoglobulins to generate aldehyde groups, which are reacted with magnetic particles, on the surface of which amino groups have been generated by modification with ethylenediamine. Briefly, oxidation of the EM5 antibody was induced by incubation with sodium periodate 10 mM for 2 hours, after which the oxidized antibody was dialysed in distilled water at 4°C. EM/100-30 magnetic particles (Merck Co, France), which have carboxyl groups on their surface, were modified by incubation, at a concentration of 10 mg/ml, with 1M ethylenediamine pH 4.75, for 90 minutes, after which solid EDCI (1-ethyl-3-(3'-dimethylaminopropyl)carbodiimide hydrochloride) was added to a final concentration of 10 mM and was left to react for 90 minutes, before washing profusely with distilled water.

[0071] The antibody was immobilized on the magnetic particles after adding 10 mg of the oxidized EM5 antibody, dissolved in sodium phosphate buffer 150 mM of pH 7.5, to 2 ml of magnetic particles (10 mg/ml) with amino groups on their surface at 4°C and incubating overnight. The Schiff bases formed and the unreacted aldehyde groups were reduced by adding sodium borohydride until a concentration of 1 mg/ml was reached, at pH 8.5 and 4°C. The preparation was washed with copious amounts of distilled water. The amount of antibody immobilized was determined by quantifying the difference in concentration of proteins in the supernatant before and after immobilization, using Bradford's method [27].

Detection of β -amyloid peptide in solution

[0072] Before verifying its validity for binding to isoforms of β -amyloid peptide present in samples of biological fluids such as urine, we tested the capacity of the antibody of the invention for binding to forms of β -amyloid peptide in solution and whether the antibodies coupled to magnetic particles made it possible to extract forms of β -amyloid peptide from solutions in which they occurred, to proceed to their subsequent identification and/or quantification. Therefore, synthetic peptides that corresponded to the forms of β -amyloid peptide A β ₁₂₋₂₉, A β ₁₋₄₀ and A β ₁₋₄₂, dissolved in distilled water, were mixed together in distilled water to give a mixture with final concentrations of 0.44 μ g/ μ l of A β ₁₂₋₂₉ and A β ₁₋₄₂ and 0.11 μ g/ μ l of A β ₁₋₄₀. 4 μ l of this mixture of peptides was added to 981 μ l of water.

[0073] Next, the forms of β -amyloid peptide present in solution in water were separated using the antibody of the invention, coupled to magnetic particles. Mass spectrometry analysis of the mixtures of peptides separated from the solution is shown in Fig. 6, in which part A corresponds to analysis of the solution without prior treatment with antibodies (Ctrl.) and part B corresponds to the use of the antibody bound to magnetic particles (EM5+PM). As can be seen, the antibody is capable of binding to forms of β -Amyloid peptide in solution and of forming complexes with them, so that they can be separated from said solution.

Preparation of the urine sample

[0074] On separate days, 10-ml samples of urine were collected from a healthy individual and were centrifuged at 3500 rpm at room temperature for 5 minutes. The urine was neutralized to pH 7.0 with 1M NaOH in PBS buffer.

[0075] Synthetic peptides that corresponded to the forms of β -amyloid peptide A β ₁₂₋₂₈, A β ₁₋₄₀ and A β ₁₋₄₂, were mixed together in distilled water to give a mixture with final concentrations of 0.44 μ g/ μ l of A β ₁₂₋₂₈ and A β ₁₋₄₂ and 0.11 μ g/ μ l of A β ₁₋₄₀. 4 μ l of this mixture of peptides was added to 981 μ l of urine.

[0076] The final concentration of forms of β -Amyloid peptide in urine was 1.76 μ g/ml in the case of A β ₁₂₋₁₈ and of A β ₁₋₄₂ and 0.44 μ g/ml in the case of A β ₁₋₄₀.

Immunoprecipitation

[0077] 15 μ l of magnetic particles coated with the EM5 monoclonal antibody (diluted 1:4 in PBS buffer) were incubated for 1 hour at 37°C with 981 μ l of the urine sample described above, which contained the three β -amyloid peptides (A β ₁₂₋₁₈, A β ₁₋₄₀ and A β ₁₋₄₂).

[0078] After incubation, the tube was placed in a magnetized separator of magnetic particles and the urine was extracted carefully using a pipette.

[0079] The magnetic particles with the peptides bound to them, retained by the action of the magnetic field of the separator, were washed 3 times with H₂O.

[0080] The peptides bound to them were separated from the magnetic particles with 12 μ l of a solution of a matrix of α -cyano-4-hydroxycinnamic acid in 30% (v/v) of aqueous acetonitrile containing 0.1% (v/v) of trifluoroacetic acid (TFA) and were analyzed by MALDI-TOF mass spectrometry.

Detection of the immunoprecipitated peptides by mass spectrometry

[0081] 1.5 µl of the sample mixture resulting from immunoprecipitation in the matrix of α -cyano-4-hydroxycinnamic acid was placed in a stainless steel probe with capacity for 100 samples and left to dry at room temperature for 5 minutes.

[0082] The samples were measured in a workstation for MALDI-TOF mass spectrometry Voyager DE-PRO from PE Biosystems using the default configuration of the instrument. The mass spectra were recorded in positive reflector mode at an accelerating voltage of 20 kV and a collector voltage of 75%, 0.002% of guide filament and 150 nanoseconds of lag time, accumulating 200 spectra of individual laser firings below the threshold irradiation. Only mass signals with good resolution, of high intensity, from 3-5 selected points of incidence, were considered. The equipment was calibrated externally using calibration mixture 2, supplied by Applied Biosystems (Tres Cantos, Madrid, Spain), composed of angiotensin (1297 Da), ACTH 1-17 (2094 Da), ACTH 18-39 (2466 Da), ACTH 7-38 (3660 Da) and bovine insulin (2867 Da).

[0083] Fig. 7 shows the graph obtained with one of the samples, which is representative of the others. Peaks can be seen that correspond to the peptides added to the urine sample, which demonstrates the capacity of the antibody of the invention for binding to them in urine samples. As the analysis had been carried out with a sample of a biological fluid, other peaks can also be seen, corresponding to other molecules naturally present in the sample and which also became bound to the antibody coupled to magnetic particles.

Deposition of the hybridoma

[0084] The hybridoma that produces the EM5 antibody was deposited in the European Collection of Cell Cultures (ECACC), CAMR, Salisbury, Wiltshire, United Kingdom. The date of deposition and the access number are as follows:

Designation of the hybridoma	Date of deposition	Access No.
EM5 clone A	03.01.2006	06030101

[0085] As noted previously, these hybridoma cells were obtained by fusion of two types of cells: a) BALB/c mouse spleen lymphocytes, obtained after immunization of the mice using, as immunogen, the form of β -amyloid peptide designated A β ₁₋₄₀, comprising amino acids 1 to 40 of said peptide, coupled to KLH (keyhole limpet haemocyanin); b) cells of the mouse myeloma line P3/X63-Ag653, which acted as the immortal part in the fusion. Various clones were obtained, from which we selected the clone designated "EM5 clone A", which produces the monoclonal antibody designated "EM5", a type IgG1 antibody capable of specifically recognizing the antigen used for immunization, the peptide A β ₁₋₄₀, as verified by antibody capture tests of the ELISA type. This clone was grown in RPMI 1640 culture medium with 10% fetal calf serum, 10% DMSO, glutamine 2 mM and sodium pyruvate 1 mM, at 37°C and in an atmosphere with 5% CO₂, conditions in which 95% of the cells grew in suspension and the remaining 5% adhered to the culture vessel. The cells were cloned twice by means of limiting dilutions, after which aliquots of 4x10⁶ cells were taken, and were placed in vials. After controlling for absence of bacteria, absence of mycoplasmas and absence of fungi, several of these vials were sent to the European Collection of Cell Cultures (ECACC), requesting permission for their deposition.

REFERENCES**[0086]**

1. Dickson DW, Crystal HA, Mattiace LA, Masur DM, Blau AD, Davies P, Yen S. and Aronson MK. Identification of normal and pathological aging in prospectively studied nondemented elderly humans. *Neurobiol Aging* 13: 1-11 (1992).

2. Iwatsubo T, Mann DAM, Odaka A, Suzuki N and Ihara Y. Amyloid β protein (A β) deposition: A β 42(43) precedes A β 40 in Down's syndrome. *Ann Neurol* 37: 294-299 (1995).

3. Fukumoto H, Asami-Okada A, Suzuki N, Shimada H, Ihara Y and Iwatsubo T. Amyloid β protein deposition in normal aging has the same characteristics as that in Alzheimer's disease. *Am J Pathol* 148: 259-265 (1996).

4. Giaccone G, Tagliavini F, Linoli G, Bouras C, Frigerio L, Frangione B and Bugiani O. Down syndrome patients: extracellular preamyloid deposits precede neuritic degeneration and senile plaques. *Neurosci Lett* 97: 232-238 (1989).

5. Terry RD, Masliah E, Salmon DP, Butters N, DeTeresa R, Hill R, Hansen LA, Katzman R. Physical basis of

cognitive alterations in Alzheimer's disease: synapse loss is the major correlate of cognitive impairment. *Ann Neurol* 30: 572-580 (1991).

6. Masliah E, Terry RD, Mallory M, Alford M and Hansen LA. Diffuse plaques do not accentuate synapse loss in Alzheimer Disease. *Am J Path* 137: 1293-97 (1990).

7. Dickson DW. The pathogenesis of senile plaques. *J Neuropathol Exp Neurol* 56: 321-339 (1997).

8. Braak H and Braak E. Neuropathological staging of Alzheimer-related changes. *Acta Neuropathologica (Berl)* 82: 239-259 (1991).

9. Thal DR, Rüb U, Schultz Ch, Sassin I, Ghebremedhin S, Del Tredici K, Braak E and Braak H. Sequence of A β -protein deposition in the human medial temporal lobe. *J Neuropathol Exp Neurol* 59 (8): 733-748 (2000).

10. Mirra, SS, Heyman A, McKeel D, Sumi SM, Crain BJ, Brownlee LM, Vogel FS, Hughes JP, van Belle G and Berg L. The Consortium to Establish a Registry for Alzheimer's Disease (CERAD). Part II. Standardization of the neuropathologic assessment of Alzheimer's disease. *Neurology* 41: 479-486 (1991).

11. Selkoe DJ. Alzheimer's disease: genotypes, phenotype and treatments. *Science* 275(5300):630-1 (1997).

12. Hardy J, and Selkoe DJ. The amyloid hypothesis of Alzheimer's disease: progress and problems on the road to therapeutics. *Science* 297: 353-356 (2002).

13. Vigo-Pelfrey C, Lee D, Keim P, Lieberberg I and Schenk DB. Characterization of β -amyloid peptide from human cerebrospinal fluid. *J. Neurochem* 61: 1965-1968 (1993).

14. Iwatsubo T, Mann DAM, Odaka A, Suzuki N and Ihara Y. Amyloid β protein (A β) deposition: A β 42(43) precedes A β 40 in Down's syndrome. *Ann. Neurol* 37: 294-299 (1995).

15. Iwatsubo T, Saido TC, Mann DMA, Lee V M-Y and Trojanowski JQ. Full-length amyloid- β (1-42(43)) and amino-terminally modified and truncated amyloid- β 42(43) deposit in diffuse plaques. *Am J Pathol* 149: 1823-1830 (1996).

16. Higgins L, Murphy Jr GM, Forno LS, Catalano R and Cordell B. P3 β -amyloid peptide has a unique and potentially pathogenic immunohistochemical profile in Alzheimer's disease brain. *Am J Path* 149: 585-596 (1996).

17. Gowing E, Roher AE, Woods AS, Cotter RJ, Chaney M, Little SP and Ball MJ. Chemical characterization of A β 17-42 peptide, a component of diffuse amyloid deposits of Alzheimer disease. *J Biol Chem* 269: 10987-10990 (1994).

18. Kida E, Wisniewski KE and Wisniewski HM. Early amyloid- β deposits show different immunoreactivity to the amino- and carboxy-terminal regions of β -peptide in Alzheimer's disease and Down's syndrome brain. *Neurosci Lett* 193: 105-108 (1995).

19. Lalowski M, Golabek A, Lemere A, Selkoe DJ, Wisniewski HM, Beavis RC, Frangione B and Wisniewski T. The "nonamyloidogenic" p3 fragment (amyloid β 17-42) is a major constituent of Down's syndrome cerebellar preamyloid. *J Biol Chem* 271: 33623-33631 (1994).

20. Saido TC, Iwatsubo T, Mann DMA, Shimada H, Ihara Y and Kawashima S. Dominant and differential deposition of distinct β -amyloid peptide species, A β N3(peptide) in senile plaques. *Neuron*, 14: 457-466 (1995).

21. Tekirian TL, Saido TC, Markesberry WR, Russell MJ, Wekstein DR, Patel E and Geddes JW. N-terminal heterogeneity of parenchymal and cerebrovascular A β deposits. *J Neuropathol Exp Neurol* 57: 76-94 (1998).

22. Parvathy S, Davis P, Haroutunian V, Purohit DP, Davis KL, Mohs RC, Park H, Moran TM, Chan JY and Buxbaum JD. Correlation between A β x-40-, A β x-42-, and A β x-43-containing amyloid plaques and cognitive decline. *Arch Neurol* 58: 2025-2032 (2001).

23. Lamer AJ. Hypothesis: amyloid β -peptides truncated at the N-terminus contribute to the pathogenesis of Alzheimer's disease. *Neurobiol Aging* 20: 65-69 (1999).

24. Jimenez-Huete A, Alfonso P, Soto C, Alvar JP, Rabano A, Ghiso J, Frangione B and Mendez E. Antibodies directed to the carboxyl terminus of amyloid β -peptide recognize sequence epitopes and distinct immunoreactive deposits in Alzheimer's disease brain. *Alzheimer's Reports* 1: 41-48 (1998).

25. Campbell A. Monoclonal antibody technology In: 'Laboratory Techniques in Biochemistry and Molecular Biology' (Eds: Burdon RH, Knippenberg PH) Elsevier, Amsterdam, p. 120-134 (1984).

26. Fuentes M, Mateo C, Guisan JM, Fernandez-Lafuente R. Preparation of inert magnetic nano-particles for the directed immobilization of antibodies. *Biosensors and Bioelectronics* 20: 1380-1387. (2005)

27. Bradford MM. A rapid and sensitive method for the quantification of microgram quantities of protein using the principle of protein-dye binding. *Anal. Biochem.* 72: 278-254. (1976)

28. Mayeux R, Ong LS, Tang M-X, Manly J, Stern Y, Schupf N, Mehta PD. Plasma A β 40 and A β 42 and Alzheimer disease. Relation to age, mortality and risk. *Neurology* 61: 1185-1190. (2003).

29. Vanderstichele H, van Kerschaver E, Hesse C, Davidsson P, Buyse M, Andreasen N, Minthon L, Tallin A, Blennow K, Vanmechelen E. Standardization of measurement of beta-amyloid (1-42) in cerebrospinal fluid and plasma. *Amyloid* 7: 245-258. (2000).

30. Ghiso J, Calero M, Matsubara E, Governale S, Chuba J, Beavis R, Wisniewski T, Frangione B. Alzheimer's soluble amyloid beta is a normal component of human urine. *FEBS Lett* 408: 105-108 (1997).

SEQUENCE LISTING

[0087]

<110> CONSEJO SUPERIOR DE INVESTIGACIONES CIENTÍFICAS

<120> METHOD OF IN-VITRO DIAGNOSIS OF ALZHEIMER'S DISEASE BY MEANS OF A MONOCLONAL ANTIBODY

<130> PCT-258

<160> 4

<210> 1

<211> 10

< 212> peptide

<213> artificial

<310> US4666829

<311> 15.05.85

<312> 19.05.87

<400>

Asp Ala Glu Phe Arg His Asp Ser Gly Tyr

<210> 2

<211> 17

< 212> peptide

<213> artificial

<220>

<222> 1-17

<223> β -amyloid peptide

<223> 6E10, SV17-6E10

<310> WO 90/12871

<311> 13.04.90

<312> 01.11.90

<400>

Asp Ala Glu Phe Arg His Asp Ser Gly Tyr Gln Val His His Gln Lys Leu

<210> 3

<211> 5

<212> peptide
 <213> human
 <220>
 <222> 12-16
 5 <223> Sequence recognized by EM5 in β -amyloid peptide
 <400>
 Val His His Gln Lys

 <210> 4
 10 <211> 8
 <212> peptide
 <213> artificial
 <220>
 <223> Coupling tail for the design of the amino Terminal end of $A\beta_{37-42}$ y $A\beta_{37-49}$
 15 <400>
 Cys Ser Gly Gly Ser Gly Gly Gly

Claims

1. A monoclonal antibody that recognizes, in β -amyloid peptide (AP), the epitope consisting of the sequence: Val-His-His-Gln-Lys (SEQ ID NO:3), whose binding affinity to $A\beta_{1-42}$ is greater than its binding affinity to $A\beta_{1-40}$, both measured by ELISA, and is capable of selectively binding to neuritic plaques and vascular amyloid deposits of human β -amyloid peptide isoforms comprising said sequence in brain tissue and to soluble forms of human β -amyloid peptide in samples of biological fluids or solutions derived thereof.
2. A monoclonal antibody, according to claim 1, capable of selectively binding to soluble forms of human β -amyloid peptide in samples of biological fluids or solutions derived thereof selected from the group: blood, plasma or urine.
3. The monoclonal antibody as claimed in claims 1 or 2, which is produced by the hybridoma cell line ECACC 06030101.
4. A hybridoma cell line capable of producing the monoclonal antibody as claimed in claims 1 or 2.
5. The hybridoma cell line as claimed in claim 4, obtained by fusion with the mouse myeloma line P3/X63-Ag.653 of spleen cells of BALB/c mice immunized with at least one peptide that contains the sequence Val-His-His-Gln-Lys (SEQ ID NO: 3).
6. The hybridoma cell line as claimed in claim 4, obtained by fusion with the mouse myeloma line P3/X63-Ag.653 of spleen cells of BALB/c mice immunized with the peptide $A\beta_{1-40}$.
7. The hybridoma cell line as claimed in claim 6, obtained by fusion with the mouse myeloma line P3/X63-Ag.653 of spleen cells of BALB/c mice immunized with the peptide $A\beta_{1-40}$ coupled to KLH.
8. The hybridoma cell line as claimed in claim 7, which comprises a substantially pure sample of ECACC 06030101.
9. Use of the monoclonal antibody of anyone of claims 1 to 3 in the in-vitro diagnosis of Alzheimer's disease from a sample of brain tissue taken from an individual suffering from said disease.
10. The use as claimed in claim 9, wherein the stage of progression of the disease is correlated to the presence in the sample of a subset of neuritic plaques revealed due to its binding to the monoclonal antibody.
11. A composition that comprises the monoclonal antibody of anyone of claims 1 to 3 coupled to a substance that permits said antibody or fragment thereof to be detected.
12. The composition as claimed in claim 11, wherein the substance to which the monoclonal antibody is coupled is a second antibody capable of binding to said first antibody, this second antibody being bound to an enzyme capable of catalyzing the conversion of a particular substance to another that can be detected.

13. The composition as claimed in claim 12, wherein the substance whose conversion is catalyzed by the enzyme is a chromogen.
14. The composition as claimed in claims 12 and 13, wherein the second antibody is bound to alkaline phosphatase and the chromogen used is nitroblue tetrazolium.
15. The composition as claimed in claims 12 and 13, wherein the second antibody is bound to radish peroxidase and the chromogen used is diaminobenzidine.
16. The composition as claimed in anyone of claims 11 to 15, that comprises at least one other antibody specific to at least one sequence region different from β -amyloid peptide.
17. The composition as claimed in claim 16, that comprises the monoclonal antibody of anyone of claims 1 to 3 coupled to a substance that can be detected and another antibody or other antibodies specific to one or more different sequence regions of β -amyloid peptide, coupled to different substances that can also be detected.
18. The composition as claimed in claim 17, wherein the monoclonal antibody of anyone of claims 1 to 3 is coupled to a second antibody bound to radish peroxidase, the chromogen diaminobenzidine (DAB) being used as substance for conversion that can be detected.
19. The composition as claimed in claim 17, wherein the monoclonal antibody of anyone of claims 1 to 3 is coupled to a second antibody bound to radish peroxidase, the chromogen nitroblue tetrazolium being used as substance for conversion that can be detected.
20. The use of a composition of any one of claims 11 to 19 in the diagnosis of Alzheimer's disease from a sample of brain tissue taken from an individual who has said disease.
21. A method of in-vitro diagnosis of Alzheimer's disease from a sample of brain tissue taken from an individual suffering from said disease, comprising the detection of the presence of neuritic plaques and vascular amyloid deposits in said sample by means of the antibody of claims 1 to 3.
22. The method as claimed in claim 21, wherein the monoclonal antibody is contained in a composition of anyone of claims 11 to 19.
23. The method as claimed in claim 21, wherein the presence of neuritic plaques detected through the monoclonal antibody of anyone of claims 1 to 3 is correlated with the stage of progression of the disease.
24. The method as claimed in anyone of claims 21 to 23, wherein the presence of the $A\beta_{1-40}$ isoform of the β -amyloid peptide in the neuritic plaques detected through the monoclonal antibody is confirmed through the binding of an antibody specific for the carboxyterminal of the $A\beta_{1-40}$ isoform of the β -amyloid peptide.
25. The method as claimed in anyone of claims 21 to 23, wherein the presence of additional neuritic plaques and/or diffuse plaques is detected through the binding of an antibody specific for the carboxy-terminal of the $A\beta_{1-42}$ isoform of the β -amyloid peptide.
26. A composition that comprises a monoclonal antibody as claimed in claim 1, wherein the antibody is coupled to a substance or particle that facilitates the extraction of antigen-antibody fragment complexes from the solution in which they occur.
27. The composition as claimed in claim 26, wherein the substance or particle that facilitates the extraction of antigen-antibody complexes from the solution in which they occur is a magnetic particle.
28. The composition as claimed in claim 27, wherein the bond between the antibody and the magnetic particle is a covalent bond.
29. Use of the monoclonal antibody as claimed in claim 1 or 2 in the in-vitro diagnosis of Alzheimer's disease from a sample of a biological fluid or of a solution derived therefrom.

30. The use as claimed in claim 29, wherein the monoclonal antibody is contained in a composition of anyone of claims 26 to 28.

31. The use as claimed in claim 30, wherein the composition of claims 26 to 28 is added to the sample of biological fluid or to the solution derived therefrom in order to form antigen-antibody with the forms of the β -amyloid peptide present in the sample of biological fluid or the solution derived therefrom.

32. The use as claimed in claim 31, wherein the extraction of antigen-antibody complexes formed, from the biological fluid or the solution in which they occur, is brought about by the use of a magnetic field.

33. The use as claimed in claim 32, wherein the forms of β -amyloid peptide extracted from a biological fluid or a solution derived therefrom in the form of antigen-antibody complexes are separated from the antibody subsequent to their extraction from the biological fluid or the solution in which they occurred and prior to undertaking their identification and/or quantification.

34. The use as claimed in claim 33, wherein the forms of β -amyloid peptide are identified and/or quantified by means of MALDI-TOF mass spectrometry.

35. The use as claimed in any one of claims 31 to 34, wherein the sample of biological fluid is a sample of urine.

36. The use as claimed in any one of claims 31 to 35, wherein the stage of progression of Alzheimer's disease is correlated to the concentration of the $A\beta_{1-42}$ isoform in the sample.

37. A method of in-vitro diagnosis of Alzheimer's disease from a sample of a biological fluid or of a solution derived thereof, that comprises the stages of:

- a) addition of a composition as claimed in claim 26 to 28 to the sample of biological fluid or the solution derived thereof;
- b) waiting a sufficient time for antigen-antibody complexes to form between at least one isoform of β -amyloid peptide and the antibody contained in the composition;
- c) application of a magnetic field for extracting the antigen-antibody complexes from the solution;
- d) removal of the solution;
- e) separation of the antibody from the molecules of β -amyloid peptide;
- f) identification and quantification of the isoforms of β -amyloid peptide extracted from the sample of biological fluid or solution derived therefrom.

38. The method of in-vitro diagnosis of Alzheimer's disease as claimed in claim 37, wherein the sample of biological fluid is a sample of urine.

39. The method of in-vitro diagnosis of Alzheimer's disease as claimed in claim 37, wherein the composition that is added in stage a) comprises a monoclonal antibody as claimed in claims 1 or 2, bound covalently to the corresponding magnetic particles by modification of one or more residues present in the Ec region of said antibody.

40. The method of in-vitro diagnosis of Alzheimer's disease as claimed in claim 39, wherein the identification and quantification of the isoforms of β -amyloid peptide extracted from the sample of urine are carried out by MALDI-TOE mass spectrometry.

41. The method of in-vitro diagnosis of Alzheimer's disease as claimed in claim 40, wherein stage e) of separation of the antibody or fragment of the antibody from the molecules of β -amyloid peptide is carried out in α -cyano-4-hydroxycinnamic acid in aqueous acetonitrile containing trifluoroacetic acid.

Patentansprüche

1. Ein monoklonaler Antikörper, der im β -Amyloidpeptid (AP) das Epitop, bestehend aus der Sequenz: Val-His-His-Gln-Lys (SEQ ID NO 3) erkennt, deren Bindungsaffinität zu $A\beta_{1-42}$ höher als die Bindungsaffinität zu $A\beta_{1-40}$ ist, wobei beide im ELISA-Verfahren gemessen wurden, und der zur selektiven Bindung an neuritische Plaques und vaskuläre Amyloidablagerungen menschlicher β -Amyloidpeptid-Isoformen in der Lage ist, wobei die besagte Se-

quenz in Hirngewebe enthalten ist, und an lösliche Formen des β -Amyloidpeptids in Proben von biologischen Flüssigkeiten oder daraus abgeleiteten Lösungen.

2. Ein monoklonaler Antikörper nach Anspruch 1, der zur selektiven Bindung an lösliche Formen des β -Amyloidpeptids in Proben von biologischen Flüssigkeiten oder daraus abgeleiteten Lösungen, welche aus der Gruppe: Blut, Plasma oder Urin ausgewählt sind, in der Lage ist.
3. Der monoklonale Antikörper nach den Ansprüchen 1 oder 2, der durch die Hybridoma-Zelllinie ECACC 06030101 gebildet wird,
4. Eine Hybridoma-Zelllinie, die in der Lage ist, den monoklonalen Antikörper nach einem der Ansprüche 1 oder 2 zu bilden.
5. Die Hybridoma-Zelllinie nach Anspruch 4, die erhalten wird, durch die Verbindung mit der Maus-Kyeloma-Zelllinie P3/X63~Ag.653 von Milzzellen einer BALB/c-Maus, die mit mindestens einem Peptid immunisiert wurde, welche die Sequenz Val-His-His-Gln-Lys (SEQ ID NO 3) enthält.
6. Die Hybridoma-Zelllinie nach Anspruch 4, die erhalten wird, durch die Verbindung mit der Maus-Myeloma-Zelllinie P3/X63~Ag.653 von Milzzellen einer BALB/c-Maus, die mit dem Peptid $A\beta_{1-40}$ immunisiert wurde.
7. Die Hybridoma-Zelllinie nach Anspruch 6, die erhalten wird, durch die Verbindung mit der Maus-Myeloma-Zelllinie P3/X63~Ag.653 von Milzzellen einer BALB/c-Maus, die mit dem an KLH gekoppeltem Peptid $A\beta_{1-40}$ immunisiert wurde.
8. Die Hybridoma-Zelllinie nach Anspruch 7, die eine im Wesentlichen reine Probe von ECACC 06030101 enthält.
9. Verwendung des monoklonalen Antikörpers nach einem der Ansprüche 1 bis 3 bei der In-vitro-Diagnose der Alzheimer-Krankheit basierend auf einer Probe Hirngewebe, die einer an dieser Krankheit leidenden Person entnommen wurde,
10. Die Verwendung nach Anspruch 9, wobei das Stadium der Krankheit mit dem Vorhandensein einer Untergruppe von neuritischen Plaques in der Probe korreliert, welche aufgrund ihrer Bindung an den monoklonalen Antikörper angezeigt werden.
11. Eine Zusammensetzung, die den monoklonalen Antikörper nach einem der Ansprüche 1 bis 3 umfasst, welcher an eine Substanz gekoppelt ist, die den Nachweis des besagten Antikörpers oder eines Fragments davon ermöglicht
12. Die Zusammensetzung nach Anspruch 11, wobei die Substanz, an die der monoklonale Antikörper gekoppelt ist, ein zweiter Antikörper ist, der mit dem besagten ersten Antikörper bindungsfähig ist, wobei dieser zweite Antikörper mit einem Enzym verbunden ist, welches in der Lage ist, die Umwandlung einer bestimmten Substanz in eine andere Substanz, die nachweisbar ist, zu katalysieren.
13. Die Zusammensetzung nach Anspruch 12, wobei die Substanz, deren Umwandlung durch das Enzym katalysiert wird, ein Chromogen ist.
14. Die Zusammensetzung nach einem der Ansprüche 12 und 13, wobei der zweite Antikörper mit einer alkalischen Phosphatase verbunden ist, und das verwendete Chromogen Nitroblue-Tetrazolium ist.
15. Die Zusammensetzung nach einem der Ansprüche 12 und 13, wobei der zweite Antikörper mit einer Rettichperoxidase verbunden ist, und das verwendete Chromogen Diaminobenzidin ist.
16. Die Zusammensetzung nach einem der Ansprüche 11 bis 15, die mindestens einen anderen Antikörper umfasst, der für mindestens eine Sequenzregion, die sich vom β -Amyloidpeptid unterscheidet, spezifisch ist.
17. Die Zusammensetzung nach Anspruch 16, die den monoklonalen Antikörper einer der Ansprüche 1 bis 3, welcher an die nachweisbare Substanz gekoppelt ist, und einen anderen Antikörper oder andere Antikörper, die für eine oder mehrere Sequenzregionen, die sich vom β -Amyloidpeptid unterscheiden, spezifisch sind, und welche an unterschiedliche Substanzen gekoppelt sind, die ebenfalls nachweisbar sind, umfasst.

18. Die Zusammensetzung nach Anspruch 17, wobei der monoklonale Antikörper nach einem der Ansprüche 1 bis 3 an einen zweiten Antikörper, der mit Rettichperoxidase verbunden ist, gekoppelt sind, wobei das Chromogen Diaminobenzidin (DAB) als nachweisbare Substanz für die Umwandlung verwendet wird.
- 5 19. Die Zusammensetzung nach Anspruch 17, wobei der monoklonale Antikörper nach einem der Ansprüche 1 bis 3 an einen zweiten Antikörper, der mit Rettichperoxidase verbunden ist, gekoppelt sind, wobei das Chromogen Nitroblue-Tetrazolium als nachweisbare Substanz für die Umwandlung verwendet wird.
- 10 20. Die Verwendung einer Zusammensetzung nach einem der Ansprüche 11 bis 19 bei der Diagnose der Alzheimer-Krankheit basierend auf einer Probe Hirngewebe, die einer Person mit dieser Krankheit entnommen wurde.
- 15 21. Ein Verfahren zur In-vitro-Diagnose der Alzheimer-Krankheit basierend auf einer Probe Hirngewebe, die einer an dieser Krankheit leidenden Person entnommen wurde, welches die Feststellung des Vorhandenseins von neuritischen Plaques und vaskulären Amyloidablagerungen in der besagten Probe mittels des Antikörpers nach den Ansprüchen 1 bis 3 umfasst.
- 20 22. Das Verfahren nach Anspruch 21, wobei der monoklonale Antikörper in einer Zusammensetzung nach einem der Ansprüche 11 bis 19 enthalten ist.
- 25 23. Das Verfahren nach Anspruch 21, wobei das Vorhandensein der neuritischen Plaques, welche durch den monoklonalen Antikörper nach einem der Ansprüche 1 bis 3 nachgewiesen werden, mit dem Stadium der Krankheit korreliert.
- 30 24. Das Verfahren nach einem der Ansprüche 21 bis 23, wobei das Vorhandensein der A β ₁₋₄₀ Isoform des β -Amyloidpeptids in den neuritischen Plaques, welche durch den monoklonalen Antikörper nachgewiesen werden, durch die Bindung des Antikörpers, der für den Carboxy-Terminus der A β ₁₋₄₀ Isoform des β -Amyloidpeptids spezifisch ist, bestätigt wird.
- 35 25. Das Verfahren nach einem der Ansprüche 21 bis 23, wobei das Vorhandensein der zusätzlichen neuritischen Plaques bzw. der diffusen Plaques durch die Bindung des Antikörpers, der für den Carboxy-Terminus der A β ₁₋₄₂ Isoform des β -Amyloidpeptids spezifisch ist, nachgewiesen wird.
- 40 26. Eine Zusammensetzung, die einen monoklonalen Antikörper nach Anspruch 1 umfasst, wobei der Antikörper an eine Substanz oder einen Partikel gekoppelt ist, die bzw. der die Extraktion der Antigen-Antikörper-Fragment-Komplexe aus der Lösung, in der diese auftreten, ermöglicht.
- 45 27. Die Zusammensetzung nach Anspruch 26, wobei die Substanz bzw. der Partikel, die bzw. der die Extraktion der Antigen-Antikörper-Fragment-Komplexe aus der Lösung, in der diese auftreten, ermöglicht, ein magnetischer Partikel ist.
- 50 28. Die Zusammensetzung nach Anspruch 27, wobei die Verbindung zwischen dem Antikörper und dem magnetischen Partikel eine kovalente Verbindung ist.
- 55 29. Verwendung des monoklonalen Antikörpers nach Anspruch 1 oder 2 bei der In-vitro-Diagnose der Alzheimer-Krankheit basierend auf einer Probe einer biologischen Flüssigkeit oder einer daraus abgeleiteten Lösung.
30. Die Verwendung nach Anspruch 29, wobei der monoklonale Antikörper in einer Zusammensetzung nach einem der Ansprüche 26 bis 28 enthalten ist.
31. Die Verwendung nach Anspruch 30, wobei die Zusammensetzung nach den Ansprüchen 26 bis 28 der Probe der biologischen Flüssigkeit oder der daraus abgeleiteten Lösung hinzugefügt wird, um ein Antigen-Antikörper mit den Formen des β -Amyloidpeptids, welches in der Probe der biologischen Flüssigkeit oder der daraus abgeleiteten Lösung vorhanden ist, zu bilden.
32. Die Verwendung nach Anspruch 31, wobei die Extraktion der gebildeten Antigen-Antikörper-Komplexe aus der biologischen Flüssigkeit oder Lösung, in der sie auftreten, durch die Verwendung eines magnetischen Feldes bewirkt wird.

33. Die Verwendung nach Anspruch 32, wobei die Formen des aus einer biologischen Flüssigkeit oder einer daraus abgeleiteten Lösung extrahierten β -Amyloidpeptids, in der Form von Antigen-Antikörper-Komplexen, im Anschluss an ihre Extraktion von der biologischen Flüssigkeit oder der daraus abgeleiteten Lösung, in der sie auftreten, und vor der Durchführung ihrer Bestimmung und/oder Quantifizierung, von dem Antikörper getrennt werden.

34. Die Verwendung nach Anspruch 33, wobei die Formen des β -Amyloidpeptids mittels MALDI-TOF-Massenspektrometrie bestimmt und/oder quantifiziert werden.

35. Die Verwendung nach einem der Ansprüche 31 bis 34, wobei die Probe der biologischen Flüssigkeit eine Urinprobe ist.

36. Die Verwendung nach einem der Ansprüche 31 bis 35, wobei das Stadium der Alzheimer-Krankheit mit der Konzentration der $A\beta_{1-42}$ Isoform in der Probe korreliert.

37. Ein Verfahren zur In-vitro-Diagnose der Alzheimer-Krankheit basierend auf der Probe einer biologischen Flüssigkeit oder einer daraus abgeleiteten Lösung, welches die folgenden Phasen umfasst:

a) Hinzufügung einer Zusammensetzung nach einem der Ansprüche 26 bis 28 zu der Probe der biologischen Flüssigkeit oder der daraus abgeleiteten Lösung;

b) Abwarten eines ausreichend langen Zeitraums, bis sich die Antigen-Antikörper-Komplexe zwischen mindestens einer Isoform des β -Amyloidpeptids und dem in der Zusammensetzung enthaltenen Antikörper bilden;

c) Anwendung eines magnetischen Feldes zur Extraktion der Antigen-Antikörper-Komplexe aus der Lösung;

d) Entfernung der Lösung;

e) Trennung des Antikörpers von den Molekülen des β -Amyloidpeptids;

f) Bestimmung und Quantifizierung der Isoformen des β -Amyloidpeptids, das aus der Probe der biologischen Flüssigkeit oder der daraus abgeleiteten Lösung extrahiert wurde.

38. Das Verfahren zur In-vitro-Diagnose der Alzheimer-Krankheit nach Anspruch 37, wobei die Probe der biologischen Flüssigkeit eine Urinprobe ist.

39. Das Verfahren zur In-vitro-Diagnose der Alzheimer-Krankheit nach Anspruch 37, wobei die Zusammensetzung, die in Phase a) hinzugefügt wird, einen monoklonalen Antikörper nach Anspruch 1 oder 2 umfasst, der in kovalenter Weise mit den entsprechenden magnetischen Partikel verbunden ist, durch die Modifizierung einer oder mehrerer Rückstände, die in der Ec-Region des besagten Antikörpers vorhanden sind.

40. Das Verfahren zur In-vitro-Diagnose der Alzheimer-Krankheit nach Anspruch 39, wobei die Bestimmung und Quantifizierung der Isoformen des aus der Urinprobe extrahierten β -Amyloidpeptids mittels MALDI-TOF-Massenspektrometrie durchgeführt werden.

41. Das Verfahren zur In-vitro-Diagnose der Alzheimer-Krankheit nach Anspruch 40, wobei die Phase e) der Trennung des Antikörpers von den Molekülen des β -Amyloidpeptids in einer α -Cyano-4-Hydroxy-Zimtsäure in wässrigem Acetonitril, das Trifluoressigsäure enthält, durchgeführt wird.

Revendications

1. Un anticorps monoclonal qui reconnaît, dans le peptide β -amyloïde (AP), l'épitope consistant en la séquence: Val-His-His-Gln-Lys (SEQ ID NO:3), dont l'affinité de liaison à $A\beta_{1-42}$ est supérieure à son affinité de liaison à $A\beta_{1-40}$, toutes deux mesurées par ELISA, et qui est capable de se lier sélectivement à des plaques séniles et à des dépôts amyloïdes vasculaires d'isoformes de peptide β -amyloïde humain comprenant ladite séquence dans le tissu cérébral et à des formes solubles de peptide β -amyloïde humain dans des échantillons de fluides biologiques ou des solutions dérivées de ces derniers.

2. Un anticorps monoclonal, selon la revendication 1, capable de se lier sélectivement à des formes solubles de peptide β -amyloïde humain dans des échantillons de fluides biologiques ou des solutions dérivées de ces derniers choisies dans le groupe : sang, plasma ou urine.

3. L'anticorps monoclonal tel que revendiqué dans les revendications 1 ou 2, qui est produit par la lignée cellulaire

hybridome ECACC 06030101.

4. Une lignée cellulaire hybridome capable de produire l'anticorps monoclonal tel que revendiqué dans les revendications 1 ou 2.
- 5 5. La lignée cellulaire hybridome telle que revendiquée dans la revendication 4, obtenue par fusion avec la lignée de myélome de souris P3/X63-Ag.653 de cellules de rate de souris BALB/c immunisées avec au moins un peptide qui contient la séquence Val-His-His-Gln-Lys (SEQ ID NO:3).
- 10 6. La lignée cellulaire hybridome telle que revendiquée dans la revendication 4, obtenue par fusion avec la lignée de myélome de souris P3/X63-Ag.653 de cellules de rate de souris BALB/c immunisées avec le peptide A β ₁₋₄₀.
7. La lignée cellulaire hybridome telle que revendiquée dans la revendication 6, obtenue par fusion avec la lignée de myélome de souris P3/X63-Ag.653 de cellules de rate de souris BALB/c immunisées avec le peptide A β ₁₋₄₀ couplé à KLH
- 15 8. La lignée cellulaire hybridome telle que revendiquée dans la revendication 7, qui comprend un échantillon d'ECACC 06030101 substantiellement pur.
- 20 9. Utilisation de l'anticorps monoclonal de l'une quelconque des revendications 1 à 3 dans le diagnostic in vitro de la maladie d'Alzheimer à partir d'un échantillon de tissu cérébral prélevé chez un individu souffrant de ladite maladie.
10. L'utilisation telle que revendiquée dans la revendication 9, dans laquelle le stade de progression de la maladie est corrélé à la présence dans l'échantillon d'un sous-ensemble de plaques séniles révélé en raison de sa liaison à l'anticorps monoclonal.
- 25 11. Une composition qui comprend l'anticorps monoclonal de l'une quelconque des revendications 1 à 3 couplé à une substance qui permet audit anticorps ou à un fragment de ce dernier d'être détecté.
- 30 12. La composition telle que revendiquée dans la revendication 11, dans laquelle la substance à laquelle l'anticorps monoclonal est couplé est un second anticorps capable de se lier audit premier anticorps, ce second anticorps étant lié à une enzyme capable de catalyser la conversion d'une substance particulière en une autre qui peut être détectée.
- 35 13. La composition telle que revendiquée dans la revendication 12, dans laquelle la substance dont la conversion est catalysée par l'enzyme est un chromogène.
14. La composition telle que revendiquée dans les revendications 12 et 13, dans laquelle le second anticorps est lié à de la phosphatase alcaline et où le chromogène utilisé est du nitro bleu de tétrazolium.
- 40 15. La composition telle que revendiquée dans les revendications 12 et 13, dans laquelle le second anticorps est lié à de la peroxydase de radis et où le chromogène utilisé est de la diaminobenzidine.
16. La composition telle que revendiquée dans l'une quelconque des revendications 11 à 15, qui comprend au moins un autre anticorps spécifique à au moins une région de séquence différente du peptide β -amyloïde.
- 45 17. La composition telle que revendiquée dans la revendication 16, qui comprend l'anticorps monoclonal de l'une quelconque des revendications 1 à 3 couplé à une substance qui peut être détectée et un autre anticorps ou d'autres anticorps spécifiques à une ou plusieurs régions de séquence différentes du peptide β -amyloïde, couplés à différentes substances qui peuvent aussi être détectées.
- 50 18. La composition telle que revendiquée dans la revendication 17, dans laquelle l'anticorps monoclonal de l'une quelconque des revendications 1 à 3 est couplé à un second anticorps lié à de la peroxydase de radis, le chromogène diaminobenzidine (DAB) étant utilisé comme substance pour la conversion qui peut être détectée.
- 55 19. La composition telle que revendiquée dans la revendication 17, dans laquelle l'anticorps monoclonal de l'une quelconque des revendications 1 à 3 est couplé à un second anticorps lié à de la peroxydase de radis, le chromogène nitro bleu de tétrazolium étant utilisé comme substance pour la conversion qui peut être détectée.

20. L'utilisation d'une composition de l'une quelconque des revendications 11 à 19 dans le diagnostic de la maladie d'Alzheimer à partir d'un échantillon de tissu cérébral prélevé chez un individu qui a ladite maladie.
- 5 21. Un procédé de diagnostic in vitro de la maladie d'Alzheimer à partir d'un échantillon de tissu cérébral prélevé chez un individu souffrant de ladite maladie, comprenant la détection de la présence de plaques séniles et de dépôts amyloïdes vasculaires dans ledit échantillon au moyen de l'anticorps des revendications 1 à 3,
- 10 22. Le procédé tel que revendiqué dans la revendication 21, dans lequel l'anticorps monoclonal est contenu dans une composition de l'une quelconque des revendications 11 à 19.
- 15 23. Le procédé tel que revendiqué dans la revendication 21, dans lequel la présence de plaques séniles détectée à travers l'anticorps monoclonal de l'une quelconque des revendications 1 à 3 est corrélée au stade de progression de la maladie.
- 20 24. Le procédé tel que revendiqué dans l'une quelconque des revendications 21 à 23, dans lequel la présence de l'isoforme A β_{1-40} du peptide β -amyloïde dans les plaques séniles détectée à travers l'anticorps monoclonal est confirmée par la liaison d'un anticorps spécifique pour le carboxy-terminal de l'isoforme A β_{1-40} du peptide β -amyloïde.
- 25 25. Le procédé tel que revendiqué dans l'une quelconque des revendications 21 à 23, dans lequel la présence de plaques séniles supplémentaires et/ou de plaques diffuses est détectée à travers la liaison d'un anticorps spécifique pour le carboxy-terminal de l'isoforme A β_{1-42} du peptide β -amyloïde.
- 30 26. Une composition qui comprend un anticorps monoclonal tel que revendiqué dans la revendication 1, dans laquelle l'anticorps est couplé à une substance ou particule qui facilite l'extraction de complexes de fragment antigène-anticorps de la solution dans laquelle ils se produisent.
- 35 27. La composition telle que revendiquée dans la revendication 26, dans laquelle la substance ou particule qui facilite l'extraction de complexes antigène-anticorps de la solution dans laquelle ils se produisent est une particule magnétique.
- 40 28. La composition telle que revendiquée dans la revendication 27, dans laquelle la liaison entre l'anticorps et la particule magnétique est une liaison covalente.
- 45 29. Utilisation de l'anticorps monoclonal tel que revendiqué dans la revendication 1 ou 2 dans le diagnostic in vitro de la maladie d'Alzheimer à partir d'un échantillon d'un fluide biologique ou d'une solution dérivée de ce dernier.
- 50 30. L'utilisation telle que revendiquée dans la revendication 29, dans laquelle l'anticorps monoclonal est contenu dans une composition de l'une quelconque des revendications 26 à 28.
- 55 31. L'utilisation telle que revendiquée dans la revendication 30, dans laquelle la composition des revendications 26 à 28 est ajoutée à l'échantillon de fluide biologique ou à la solution dérivée de ce dernier de façon à former un antigène-anticorps avec les formes du peptide β -amyloïde présent dans l'échantillon de fluide biologique ou de la solution dérivée de ce dernier.
32. L'utilisation telle que revendiquée dans la revendication 31, dans laquelle l'extraction de complexes antigène-anticorps formés, à partir du fluide biologique ou de la solution dans lesquels ils se produisent, est amenée par l'utilisation d'un champ magnétique.
33. L'utilisation telle que revendiquée dans la revendication 32, dans laquelle les formes du peptide β -amyloïde extraites d'un fluide biologique ou d'une solution dérivée de ce dernier sous la forme de complexes antigène-anticorps sont séparées de l'anticorps à la suite de leur extraction du fluide biologique ou de la solution dans lesquels elles se sont produites et avant qu'on procède à leur identification et/ou quantification.
34. L'utilisation telle que revendiquée dans la revendication 33, dans laquelle les formes du peptide β -amyloïde sont identifiées et/ou quantifiées au moyen de la spectrométrie de masse MALDI-TOF,
35. L'utilisation telle que revendiquée dans l'une quelconque des revendications 31 à 34, dans laquelle l'échantillon de fluide biologique est un échantillon d'urine.

36. L'utilisation telle que revendiquée dans l'une quelconque des revendications 31 à 35, dans laquelle le stade de progression de la maladie d'Alzheimer est corrélé à la concentration de l'isoforme A β ₁₋₄₂ dans l'échantillon.

37. Un procédé de diagnostic in vitro de la maladie d'Alzheimer à partir d'un échantillon d'un fluide biologique ou d'une solution dérivée de ce dernier, qui comprend les étapes consistant à :

- a) ajouter une composition telle que revendiquée dans la revendication 26 à 28 à l'échantillon de fluide biologique ou à la solution dérivée de ce dernier;
- b) attendre le temps suffisant pour que des complexes antigène-anticorps se forment entre au moins un isoforme du peptide β -amyloïde et l'anticorps contenu dans la composition;
- c) appliquer un champ magnétique pour extraire les complexes antigène-anticorps de la solution;
- d) éliminer la solution;
- e) séparer l'anticorps des molécules de peptide β -amyloïde,
- f) identifier et quantifier les isoformes du peptide β -amyloïde extraits de l'échantillon de fluide biologique ou de solution dérivée de ce dernier.

38. Le procédé de diagnostic in vitro de la maladie d'Alzheimer tel que revendiqué dans la revendication 37, dans lequel l'échantillon de fluide biologique est un échantillon d'urine.

39. Le procédé de diagnostic in vitro de la maladie d'Alzheimer tel que revendiqué dans la revendication 37, dans lequel la composition qui est ajoutée au cours de l'étape a) comprend un anticorps monoclonal tel que revendiqué dans les revendications 1 ou 2, lié de manière covalente aux particules magnétiques correspondantes par modification d'un ou plusieurs résidus présents dans la région Ec dudit anticorps.

40. Le procédé de diagnostic in vitro de la maladie d'Alzheimer tel que revendiqué dans la revendication 39, dans lequel l'identification et la quantification des isoformes du peptide β -amyloïde extraits de l'échantillon d'urine sont réalisées par spectrométrie de masse MALDI-TOE.

41. Le procédé de diagnostic in vitro de la maladie d'Alzheimer tel que revendiqué dans la revendication 40, dans lequel l'étape e) de séparation de l'anticorps ou du fragment de l'anticorps des molécules du peptide β -amyloïde est réalisée dans de l'acide de α -cyano-4-hydroxycinnamic dans de l'acétonitrile aqueux contenant de l'acide trifluoroacétique.

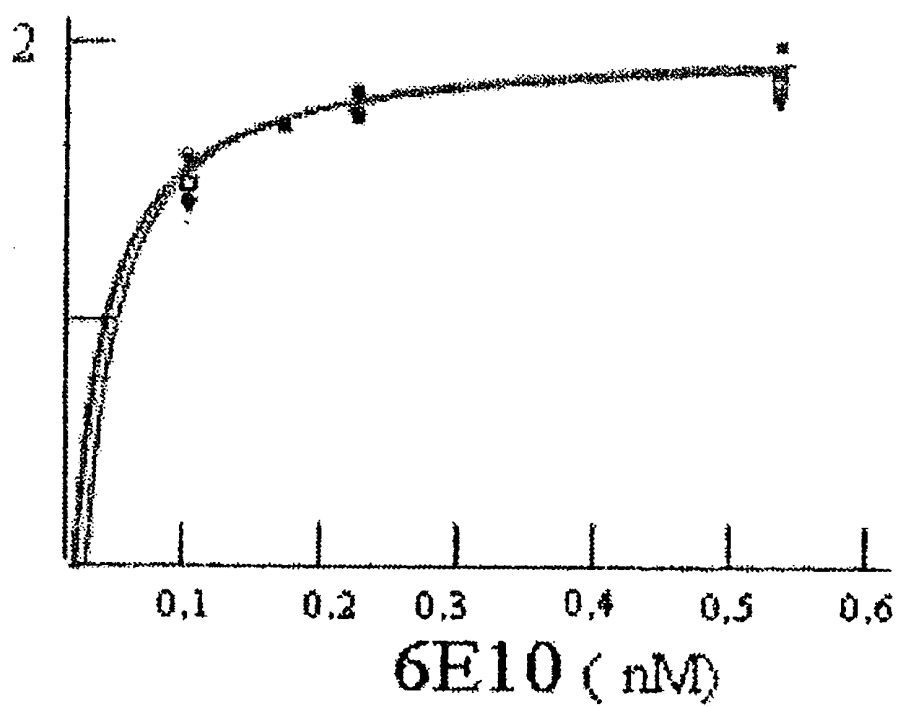
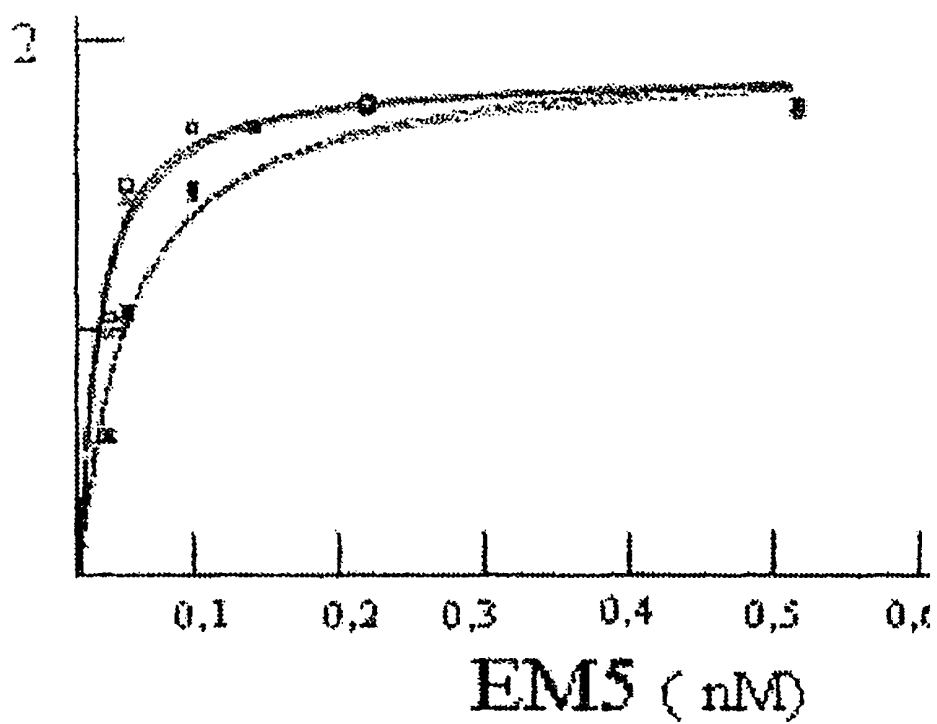


Figure 1

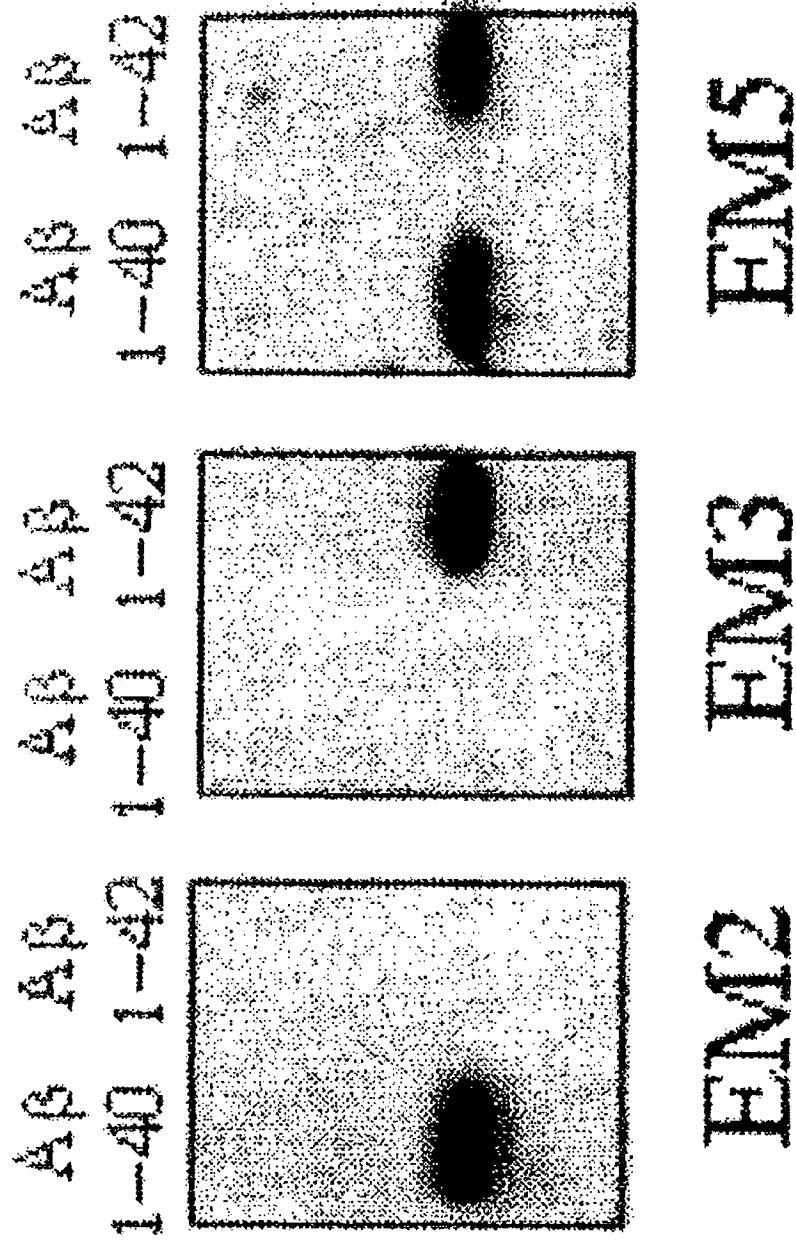


Figure 2

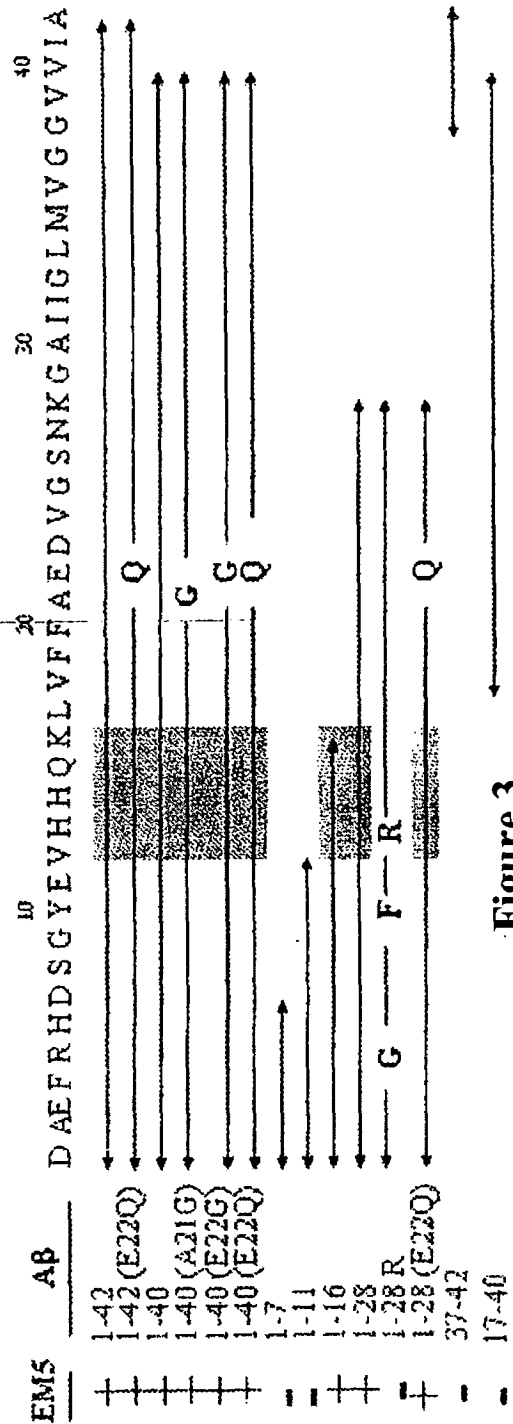
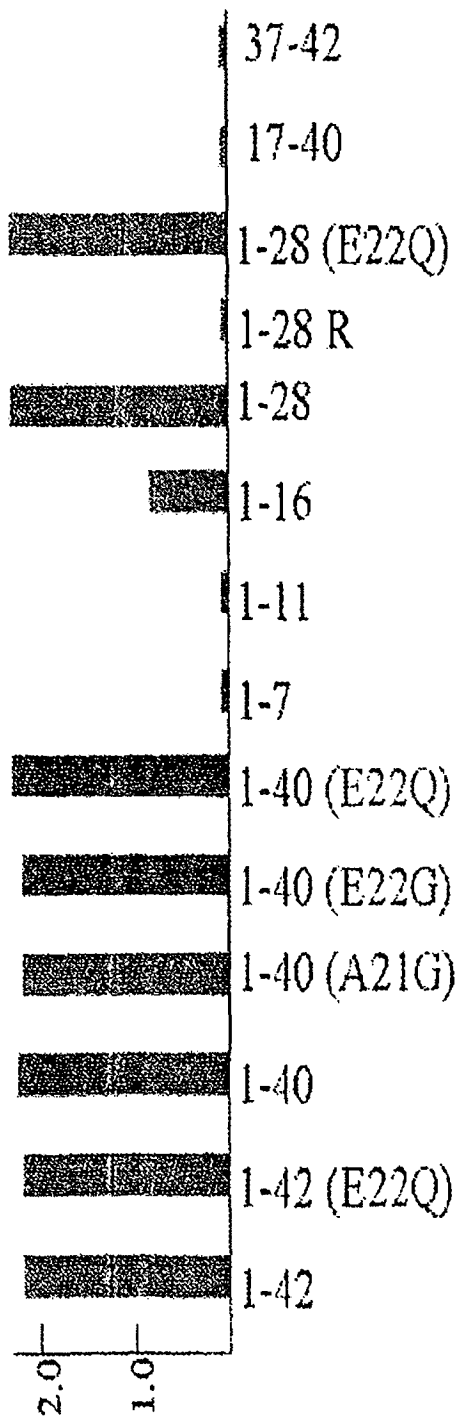


Figure 3

1	DAEFRHDSGYEVHHQK	
2	DAEFRHDSGYEVHHQKL	
3	RHDSGYEVHHQKL	
4	HD SGYEVHHQK	
5	EVHHQKL	
6	DAEFRHDSGYEVHHQKL	VFFAEDVGSNKGAIIGLMVGGVIA

10 20 30 40

Figure 4

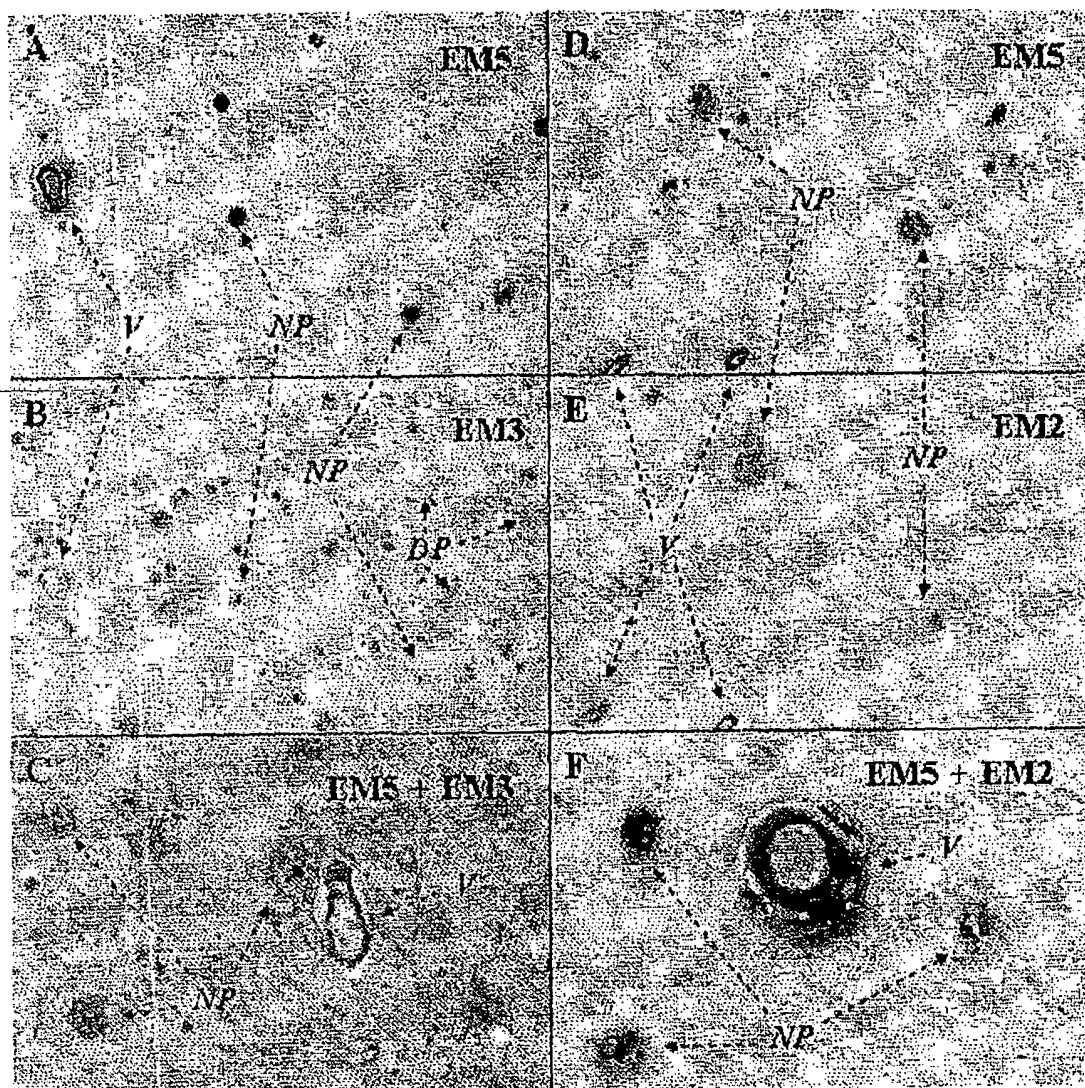


Figure 5

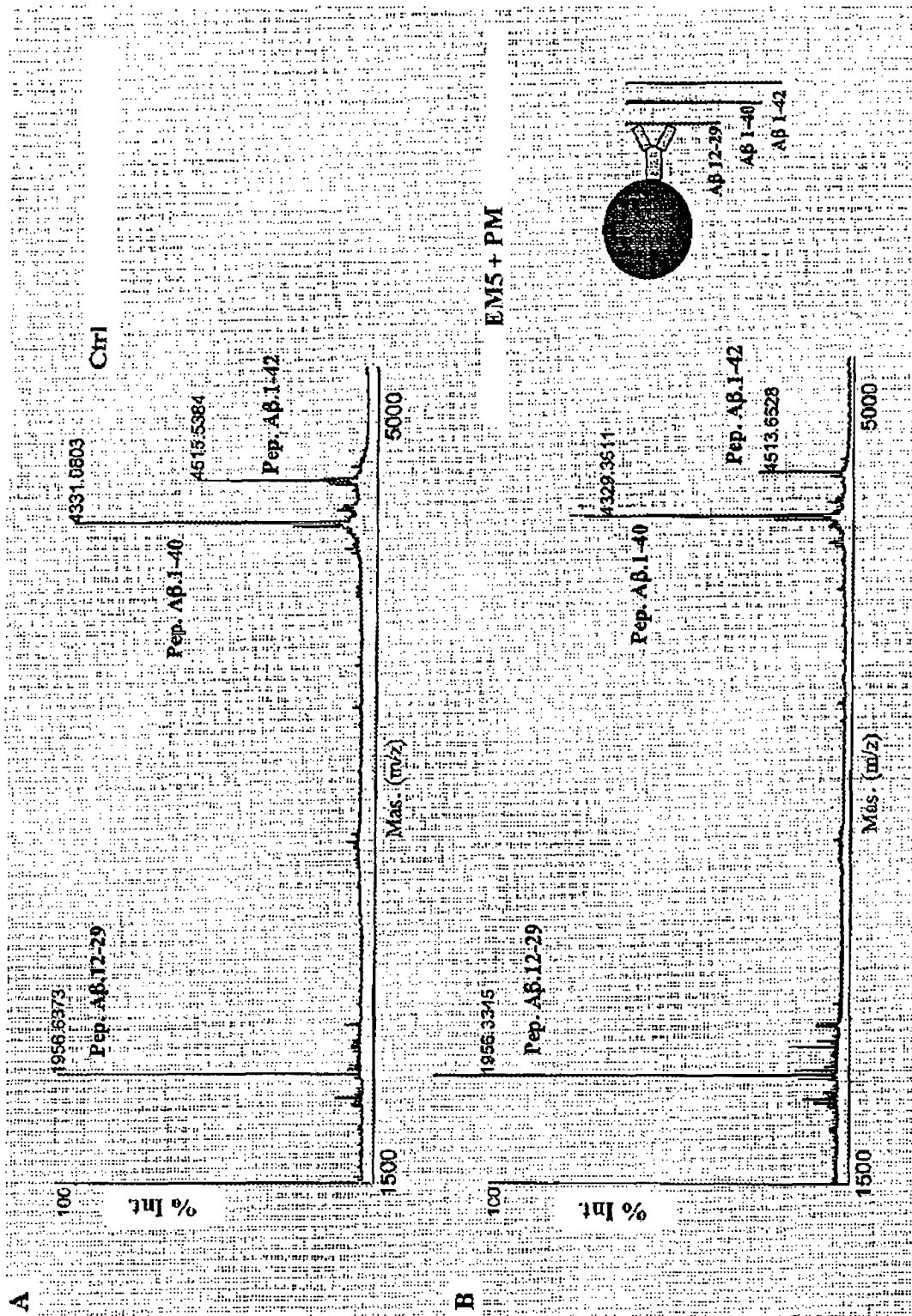


Figure 6

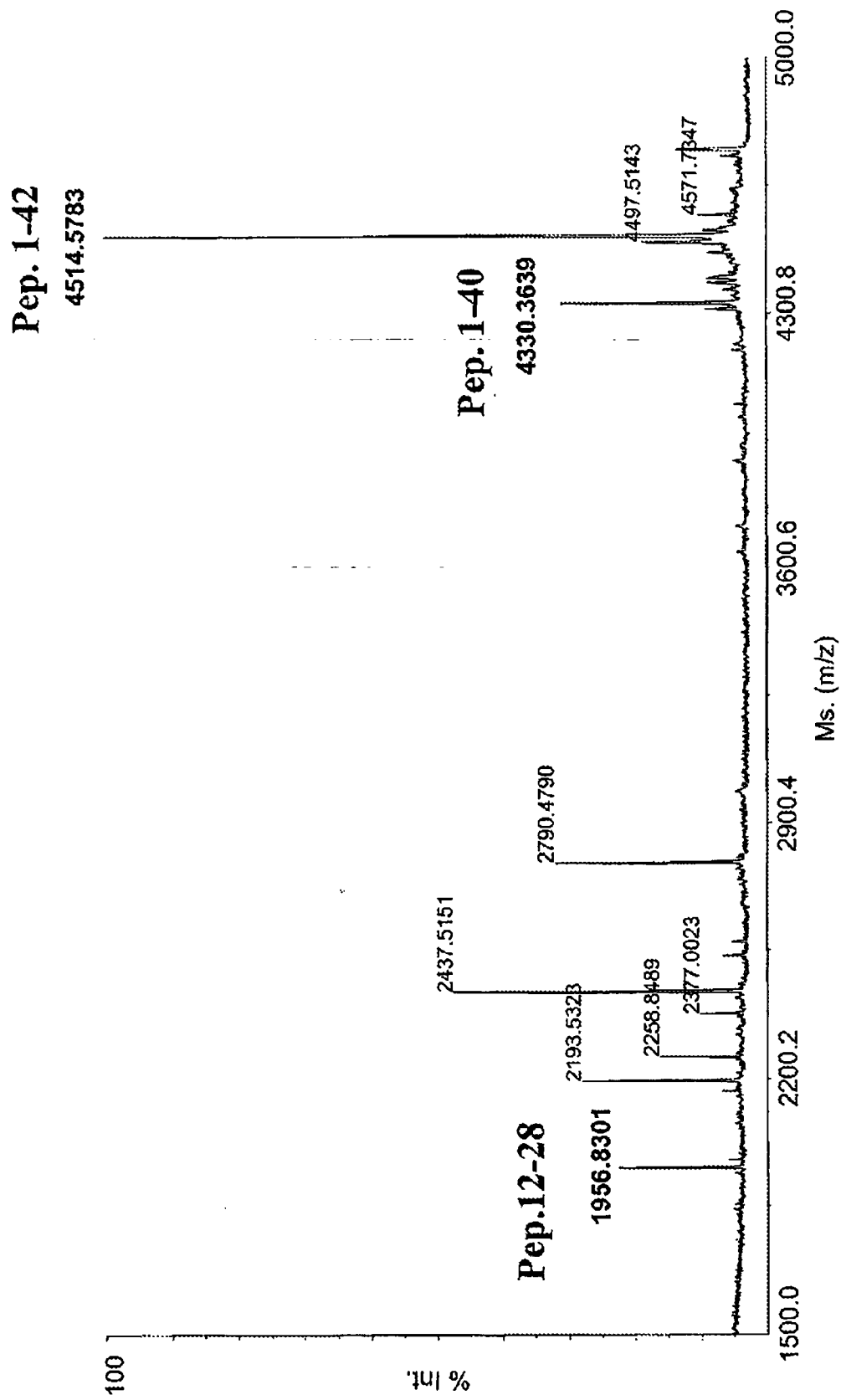


Figure 7

REFERENCES CITED IN THE DESCRIPTION

This list of references cited by the applicant is for the reader's convenience only. It does not form part of the European patent document. Even though great care has been taken in compiling the references, errors or omissions cannot be excluded and the EPO disclaims all liability in this regard.

Patent documents cited in the description

- US 4666829 A [0015] [0087]
- WO 9012871 A [0016] [0087]
- EP 0683234 A [0017]
- WO 2004029630 A [0017]

Non-patent literature cited in the description

- **Dickson DW ; Crystal HA ; Mattiace LA ; Masur DM ; Blau AD ; Davies P ; Yen S. ; Aronson MK.** Identification of normal and pathological aging in prospectively studied nondemented elderly humans. *Neurobiol Aging*, 1992, vol. 13, 1-11 [0086]
- **Iwatsubo T ; Mann DAM ; Odaka A ; Suzuki N ; Ihara Y.** Amyloid β protein ($A\beta$) deposition: $A\beta_{42}(43)$ precedes $A\beta_{40}$ in Down's syndrome. *Ann Neurol*, 1995, vol. 37, 294-299 [0086]
- **Fukamoto H ; Asami-Okada A ; Suzuki N ; Shimada H ; Ihara Y ; Iwatsubo T.** Amyloid β protein deposition in normal aging has the same characteristics as that in Alzheimer's disease. *Am J Pathol*, 1996, vol. 148, 259-265 [0086]
- **Giaccone G ; Tagliavini F ; Linoli G ; Bouras C ; Frigerio L ; Frangione B ; Bugiani O.** Down syndrome patients: extracellular preamyloid deposits precede neuritic degeneration and senile plaques. *Neurosci Lett*, 1989, vol. 97, 232-238 [0086]
- **Terry RD ; Masliah E ; Salmon DP ; Butters N ; DeTeresa R ; Hill R ; Hansen LA ; Katzman R.** Physical basis of cognitive alterations in Alzheimer's disease: synapse loss is the major correlate of cognitive impairment. *Ann Neurol*, 1991, vol. 30, 572-580 [0086]
- **Masliah E ; Terry RD ; Mallory M ; Alford M ; Hansen LA.** Diffuse plaques do not accentuate synapse loss in Alzheimer Disease. *Am J Pathol*, 1990, vol. 137, 1293-97 [0086]
- **Dickson DW.** The pathogenesis of senile plaques. *J Neuropathol Exp Neurol*, 1997, vol. 56, 321-339 [0086]
- **Braak H ; Braak E.** Neuropathological staging of Alzheimer-related changes. *Acta Neuropathologica (Berl)*, 1991, vol. 82, 239-259 [0086]
- **Thal DR ; Rüb U ; Schultz Ch ; Sassini I ; Ghebremedhin S ; Del Tredici K ; Braak E ; Braak H.** Sequence of $A\beta$ -protein deposition in the human medial temporal lobe. *J Neuropathol Exp Neurol*, 2000, vol. 59 (8), 733-748 [0086]
- **Mirra, SS ; Heyman A ; McKeel D ; Sumi SM ; Crain BJ ; Brownlee LM ; Vogel FS ; Hughes JP ; van Belle G ; Berg L.** The Consortium to Establish a Registry for Alzheimer's Disease (CERAD). Part II. Standardization of the neuropathologic assessment of Alzheimer's disease. *Neurology*, 1991, vol. 41, 479-486 [0086]
- **Selkoe DJ.** Alzheimer's disease: genotypes, phenotype and treatments. *Science*, 1997, vol. 275 (5300), 630-1 [0086]
- **Hardy J ; Selkoe DJ.** The amyloid hypothesis of Alzheimer's disease: progress and problems on the road to therapeutics. *Science*, 2002, vol. 297, 353-356 [0086]
- **Vigo-Pelfrey C ; Lee D ; Keim P ; Lieberberg I ; Schenk DB.** Characterization of β -amyloid peptide from human cerebrospinal fluid. *J. Neurochem*, 1993, vol. 61, 1965-1968 [0086]
- **Iwatsubo T ; Mann DAM ; Odaka A ; Suzuki N ; Ihara Y.** Amyloid β protein ($A\beta$) deposition: $A\beta_{42}(43)$ precedes $A\beta_{40}$ in Down's syndrome. *Ann. Neurol*, 1995, vol. 37, 294-299 [0086]
- **Iwatsubo T ; Saido TC ; Mann DMA ; Lee V M-Y ; Trojanowski JQ.** Full-length amyloid- β (1-42(43)) and amino-terminally modified and truncated amyloid- $\beta_{42}(43)$ deposit in diffuse plaques. *Am J Pathol*, 1996, vol. 149, 1823-1830 [0086]
- **Higgins L ; Murphy Jr GM ; Forno LS ; Catalano R ; Cordell B.** P3 β -amyloid peptide has a unique and potentially pathogenic immunohistochemical profile in Alzheimer's disease brain. *Am J Pathol*, 1996, vol. 149, 585-596 [0086]
- **Gowing E ; Roher AE ; Woods AS ; Cotter RJ ; Chaney M ; Little SP ; Ball MJ.** Chemical characterization of $A\beta$ 17-42 peptide, a component of diffuse amyloid deposits of Alzheimer disease. *J Biol Chem*, 1994, vol. 269, 10987-10990 [0086]
- **Kida E ; Wisniewski KE ; Wisniewski HM.** Early amyloid- β deposits show different immunoreactivity to the amino- and carboxy-terminal regions of β -peptide in Alzheimer's disease and Down's syndrome brain. *Neurosci Lett*, 1995, vol. 193, 105-108 [0086]

- **Lalowski M ; Golabek A ; Lemere A ; Selkoe DJ ; Wisniewski HM ; Beavis RC ; Frangione B ; Wisniewski T.** The "nonamyloidogenic" p3 fragment (amyloid β 17-42) is a major constituent of Down's syndrome cerebellar preamyloid. *J Biol Chem*, 1994, vol. 271, 33623-33631 [0086]
- **Saido TC ; Iwatsubo T ; Mann DMA ; Shimada H ; Ihara Y ; Kawashima S.** Dominant and differential deposition of distinct β -amyloid peptide species, A β N3(peptide) in senile plaques. *Neuron*, 1995, vol. 14, 457-466 [0086]
- **Tekirian TL ; Saido TC ; Markesberry WR ; Russell MJ ; Wekstein DR ; Patel E ; Geddes JW.** N-terminal heterogeneity of parenchymal and cerebrovascular A β deposits. *J Neuropathol Exp Neurol*, 1998, vol. 57, 76-94 [0086]
- **Parvathy S ; Davis P ; Haroutunian V ; Purohit DP ; Davis KL ; Mohs RC ; Park H ; Moran TM ; Chan JY ; Buxbaum JD.** Correlation between A β x-40-, A β x-42-, and A β x-43-containing amyloid plaques and cognitive decline. *Arch Neurol*, 2001, vol. 58, 2025-2032 [0086]
- **Lamer AJ.** Hypothesis: amyloid β -peptides truncated at the N-terminus contribute to the pathogenesis of Alzheimer's disease. *Neurobiol Aging*, 1999, vol. 20, 65-69 [0086]
- **Jimenez-Huete A ; Alfonso P ; Soto C ; Alvar JP ; Rabano A ; Ghiso J ; Frangione B ; Mendez E.** Antibodies directed to the carboxyl terminus of amyloid β -peptide recognize sequence epitopes and distinct immunoreactive deposits in Alzheimer's disease brain. *Alzheimer's Reports*, 1998, vol. 1, 41-48 [0086]
- **Monoclonal antibody technology. Campbell A.** Laboratory Techniques in Biochemistry and Molecular Biology. Elsevier, 1984, 120-134 [0086]
- **Fuentes M ; Mateo C ; Guisan JM ; Fernandez-Lafuente R.** Preparation of inert magnetic nano-particles for the directed immobilization of antibodies. *Biosensors and Bioelectronics*, 2005, vol. 20, 1380-1387 [0086]
- **Bradford MM.** A rapid and sensitive method for the quantification of microgram quantities of protein using the principle of protein-dye binding. *Anal. Biochem.*, 1976, vol. 72, 278-254 [0086]
- **Mayeux R ; Ong LS ; Tang M-X ; Manly J ; Stem Y ; Schupf N ; Mehta PD.** Plasma A β 40 and A β 42 and Alzheimer disease. Relation to age, mortality and risk. *Neurology*, 2003, vol. 61, 1185-1190 [0086]
- **Vanderstichele H ; van Kerschaver E ; Hesse C ; Davidsson P ; Buyse M ; Andreasen N ; Minthon L ; Tallin A ; Blennow K ; Vanmechelen E.** Standardization of measurement of beta-amyloid (1-42) in cerebrospinal fluid and plasma. *Amyloid*, 2000, vol. 7, 245-258 [0086]
- **Ghiso J ; Calero M ; Matsubara E ; Governale S ; Chuba J ; Beavis R ; Wisniewski T ; Frangione B.** Alzheimer's soluble amyloid beta is a normal component of human urine. *FEBS Lett*, 1997, vol. 408, 105-108 [0086]

专利名称(译)	使用单克隆抗体体外诊断阿尔茨海默病的方法		
公开(公告)号	EP1881008A4	公开(公告)日	2009-11-11
申请号	EP2006725836	申请日	2006-03-09
[标]申请(专利权)人(译)	科学研究高等机关		
申请(专利权)人(译)	CONSEJO SUPERIOR科学调查DE CIENTIFICAS		
当前申请(专利权)人(译)	CONSEJO SUPERIOR科学调查DE CIENTIFICAS		
[标]发明人	MENDEZ ENRIQUE UNIDAD DE GLUTEN		
发明人	MÉNDEZ, ENRIQUE, UNIDAD DE GLUTEN		
IPC分类号	C07K16/18 C07K7/06 C12N5/18 G01N33/53		
CPC分类号	A61P25/28 C07K14/4711 C07K16/18 C07K2317/34 C07K2317/92 G01N33/6896 G01N2800/2821 C07K7/06 G01N33/53		
优先权	2005000550 2005-03-09 ES		
其他公开文献	EP1881008B1 EP1881008A1 EP1881008A9		
外部链接	Espacenet		

摘要(译)

通过单克隆抗体体外诊断阿尔茨海默氏病的方法。所述抗体能够至少结合β-淀粉样肽的氨基酸12-16，特异性地检测出阿尔茨海默氏病特征性的神经性斑块，而无需检测出不是该疾病指标的弥散性斑块。因此，单克隆抗体可以检测与沉积的β-淀粉样肽的各种同工型的组成不同的亚组，这与疾病的进展阶段有关。此外，该抗体能够与尿液等生物体液中的β-淀粉样肽的同工型结合。因此，本发明的单克隆抗体，产生它的细胞系和包含它的组合物可以用于阿尔茨海默氏病的体外诊断和疾病进展阶段的确定，

Table I.- MALDI-TOF mass spectrometry data for fragments obtained by digestion of β-amyloid peptide

Fragment N°	Amino acids included	Enzyme used	Experimental mass (m/z)	Expected value (m/z)
1	1-16	Trypsin	1956.57	1955.0
2	1-17	α-Chymotrypsin	2067.37	2068.2
3	5-17	α-Chymotrypsin	1606.62	1605.7
4	6-16	Trypsin	1337.12	1336.4
5	11-17	α-Chymotrypsin	888.66	890.0