

(19)



(11)

EP 1 428 023 B1

(12)

EUROPEAN PATENT SPECIFICATION

(45) Date of publication and mention of the grant of the patent:
27.08.2008 Bulletin 2008/35

(51) Int Cl.:
G01N 33/50 (2006.01)

(21) Application number: **02762680.3**

(86) International application number:
PCT/IB2002/003613

(22) Date of filing: **02.09.2002**

(87) International publication number:
WO 2003/021261 (13.03.2003 Gazette 2003/11)

(54) METHODS FOR PREDICTING DRUG SENSITIVITY IN PATIENTS AFFLICTED WITH AN INFLAMMATORY DISEASE

VERFAHREN ZUR ERKENNUNG VON MEDIKAMENTENEMPFLINDLICHKEIT IN PATIENTEN MIT ENTZÜNDUNGSKRANKHEITEN

PROCEDES POUR PREVOIR LA SENSIBILITE A UN MEDICAMENT CHEZ DES PATIENTS ATTEINTS D'UNE MALADIE INFLAMMATOIRE

(84) Designated Contracting States:
AT BE BG CH CY CZ DE DK EE ES FI FR GB GR IE IT LI LU MC NL PT SE SK TR

(30) Priority: **06.09.2001 US 947991**

(43) Date of publication of application:
16.06.2004 Bulletin 2004/25

(73) Proprietor: **Decode Genetics EHF. 101 Reykjavik (IS)**

(72) Inventor: **HAKONARSON, Hakon IS-109 Reykjavik (IS)**

(74) Representative: **Fridriksson, Einar Karl Arnason Faktor Intellectual Property Consulting Gudridarstig 2-4 113 Reykjavik (IS)**

(56) References cited:
• **CLARKE P A ET AL: "GENE EXPRESSION PROFILING OF HUMAN COLON CANCER CELLS FOLLOWING INHIBITION OF SIGNAL TRANSDUCTION BY 17-ALLYLAMINO-17-DEMETHOXYGELDAN AMYCIN, AN INHIBITOR OF THE HSP90 MOLECULAR CHAPERONE" ONCOGENE, BASINGSTOKE, HANTS, GB, vol. 19, no. 36, 24 August 2000 (2000-08-24), pages 4125-4133, XP001094984 ISSN: 0950-9232**

- **HEYINCK ET AL: "The cytokine-inducible zinc finger protein A20 inhibits IL-1-induced NF-kappaB activation at the level of TRAF6" FEBS LETTERS, ELSEVIER SCIENCE PUBLISHERS, AMSTERDAM, NL, vol. 442, no. 2-3, 15 January 1999 (1999-01-15), pages 147-150, XP004259055 ISSN: 0014-5793**
- **KHOOC ET AL: "DIFFERENTIAL EXPRESSION OF CYSTEINE-RICH INTESTINAL PROTEIN IN LIVER AND INTESTINE IN CCL4-INDUCED INFLAMMATION" AMERICAN JOURNAL OF PHYSIOLOGY, AMERICAN PHYSIOLOGICAL SOCIETY, BETHESDA, MD, US, vol. 270, no. 4Pt1, April 1996 (1996-04), pages G613-G618, XP008014444 ISSN: 0002-9513**
- **SABAN MARCIA R ET AL: "Time course of LPS-induced gene expression in a mouse model of genitourinary inflammation." PHYSIOLOGICAL GENOMICS, vol. 5, June 2001 (2001-06), pages 147-160, XP002240639 June, 2001 ISSN: 1094-8341**
- **SUTHERLAND A: "Gene expression analysis in immunomodulatory and inflammatory model systems using Affymetrix GeneChip expression arrays." CELL BIOLOGY INTERNATIONAL, vol. 24, no. 12, 2000, page 975 XP002240640 7th International Congress of Cell Biology; Gold Coast, Queensland, Australia; September 24-28, 2000 ISSN: 1065-6995**

Note: Within nine months of the publication of the mention of the grant of the European patent in the European Patent Bulletin, any person may give notice to the European Patent Office of opposition to that patent, in accordance with the Implementing Regulations. Notice of opposition shall not be deemed to have been filed until the opposition fee has been paid. (Art. 99(1) European Patent Convention).

EP 1 428 023 B1

- **GALON JEROME ET AL: "Gene profiling reveals unknown enhancing and suppressive actions of glucocorticoids on immune cells." FASEB JOURNAL, vol. 16, no. 1, January 2002 (2002-01), pages 61-71, XP002240642 January, 2002 ISSN: 0892-6638**

Description

BACKGROUND OF THE INVENTION

5 [0001] The field of pharmacogenomics measures differences in the effect of medications that are caused by genetic variations. Such differences are manifested by differences in the therapeutic effects or adverse events of drugs. For most drugs, the genetic variations that potentially characterize drug-responsive patients from non-responders remain unknown.

10 SUMMARY OF THE INVENTION

[0002] The present invention relates to methods for determining a patient's responsiveness to treatment for asthma and related inflammatory condition.

15 [0003] In one embodiment, the invention is directed to a method for predicting the efficacy of a drug for treating an inflammatory disease in a human patient, comprising: obtaining a sample of cells from the patient; obtaining a gene expression profile of the sample in the absence and presence of *in vitro* modulation of the cells with specific mediators; and comparing the gene expression profile of the sample with a reference gene expression profile, such that similarities between the sample expression profile and the reference expression profile predicts the efficacy of the drug for treating the inflammatory disease in the patient. The reference gene expression profile can comprise expression levels of one or more informative genes listed in Tables 1, 2A, 2B, 4A, 4B and 5A-5E. The similarity between the sample expression profile and the reference expression profile predicts the efficacy of the drug for treating the inflammatory disease in the patient. In a particular embodiment, the sample is exposed to the drug for treating the inflammatory disease prior to obtaining the gene expression profile of the sample. In a particular embodiment, the sample is exposed to the drug for treating the inflammatory disease prior to obtaining the gene expression profile of the sample. The inflammatory disease can be asthma, atopy, rheumatoid arthritis, juvenile chronic arthritis, psoriasis, inflammatory bowel disease (IBD) and sepsis. The atopic inflammatory disease can be rhinitis, conjunctivitis, dermatitis and eczema. Drugs can be corticosteroids, β 2-agonists and leukotriene antagonists for asthma. In addition, for inflammatory diseases, the drug can be a symptom reliever or anti-inflammatory drug for an inflammatory disease condition. In one embodiment, the sample of cells can be derived from peripheral blood mononuclear cells or neutrophils. In a particular embodiment, the gene expression profile of the sample can be obtained using a hybridization assay to oligonucleotides contained in, for example, a microarray. In another embodiment, the expression profile of the sample can be obtained by detecting the protein product of informative genes. The detection of protein products can include the use of, for example, antibodies capable of specifically binding protein products of the informative genes. The reference expression profile can be, for example, that of cells derived from healthy, non-atopic, non-asthmatic individuals. In another embodiment, the reference expression profile can be that of cells derived from patients that do not have an inflammatory disease. In one embodiment, the cells are treated with the drug candidate before the expression profile is obtained.

30 [0004] In yet another embodiment, the invention is directed to a method of screening for glucocorticoid sensitivity in an asthmatic patient including: obtaining a sample of cells from the patient; obtaining a gene expression profile from the sample in the absence and presence of *in vitro* activation of the cells with specific cytokines (mediators); and comparing the gene expression profile of the sample with a reference gene expression profile, wherein similarity in expression profiles between the sample and reference profiles indicates glucocorticoid sensitivity in the patient from whom the sample was obtained.

35 [0005] In yet another embodiment, the invention is directed to a method for predicting efficacy in a human asthmatic patient of leukotriene antagonists, including: obtaining a sample of cells from the patient; obtaining a gene expression profile from the sample in the absence and presence of *in vitro* modulation of the cells with specific mediators; and comparing the gene expression profile of the sample with a reference gene expression profile, wherein similarity in expression profiles between the sample and reference profiles predicts the efficacy in the human asthmatic patient of leukotriene antagonists.

40 [0006] In another embodiment, the invention is directed to an expression profile comprising expression levels of gene products from one or more genes described in Tables 1, 2A, 2B, 4A, 4B and 5A-5E.

45 [0007] In another embodiment, the invention is directed to a method for predicting the efficacy in a human asthma patient of leukotriene antagonists including, but not limited to, montelukast (a.k.a., SINGULAIR™; Merck, Whitehouse Station, NJ), zafirlukast (a.k.a., ACCOLATE™, AstraZeneca, Wilmington, DE), and zileuton (a.k.a., ZYFLO™; Abbott Laboratories, Chicago, IL), comprising: obtaining a sample of cells from the patient; obtaining a gene expression profile from the sample in the absence and presence of *in vitro* modulation of the cells with specific mediators; and comparing the gene expression profile of the sample with a reference gene expression profile, wherein similarity in expression profiles between the sample and reference profiles predicts the efficacy in the human asthmatic patient of leukotriene antagonists.

5 [0008] In another embodiment, the invention is directed to a kit for predicting the efficacy of a drug for treating an inflammatory disease in a human patient according to the methods described herein comprising hybridization probes capable of hybridizing to polynucleotides corresponding to pre-determined informative genes and reagents for detecting hybridization. In a different embodiment, the invention is directed to a kit for predicting the efficacy of a drug for treating an inflammatory disease in a human patient according to the methods described herein comprising antibodies capable of specifically binding protein products of pre-selected informative genes and reagents for detecting antibody binding.

BRIEF DESCRIPTION OF THE DRAWINGS

10 [0009] The patent or application file contains at least one drawing executed in color. Copies of this patent or patent application publication with color drawings will be provided by the Office upon request and payment of the necessary fee.

[0010] The foregoing and other objects, features and advantages of the invention will be apparent from the following more particular description of preferred embodiments of the invention, as illustrated in the accompanying drawings.

15 [0011] FIG. 1 is a representative Bayesian matrix plot demonstrating the predictive accuracy of a naïve Bayesian classifier in predicting drug response phenotypes of 14 glucocorticoid resistant (GC-R) and 14 glucocorticoid sensitive (GC-S) patients. The 50 genes predicted the correct drug response phenotype with 82% accuracy.

[0012] FIG. 2 is a representative Bayesian matrix plot demonstrating predictive accuracy of a naïve Bayesian classifier in predicting drug response phenotype of GC-R and GC-S patients when all 54 patients were included in training the classifier. Fifty genes were selected that predicted the correct drug response phenotype with 81 % accuracy.

20 [0013] FIG. 3 is a representative Bayesian matrix plot demonstrating the predictive accuracy of a naïve Bayesian classifier in predicting a drug response phenotype of an independent cohort of 14 GC-R patients that were not used in the process of gene selection or in training of the classifier. The 50 genes selected predicted the correct drug response phenotype with 86% accuracy.

25 [0014] FIG. 4 is a representative matrix plot showing the differential expression of 15 genes (see Table 5) that were examined in 88 patients. In addition to the genes listed above, all of which carry a predicted weight, these 15 genes most accurately differentiated a cohort of GC responders from non-responders using the induction time point for the training set. Together, these genes predicted the correct GC response phenotype of an independent patient cohort of equal size with 86% accuracy.

30 [0015] FIG. 5 is a plot demonstrating predictive accuracy of a naïve Bayesian classifier in predicting the drug response phenotype of a cohort of 12 Leukotriene Sensitive (LT-S) and 12 Leukotriene Resistant (LT-R) patients using the "leave one out cross validation" (LOOCV) method. The 12 genes selected predicted the correct drug response phenotype with over 90% accuracy.

DETAILED DESCRIPTION OF THE INVENTION

35 [0016] A description of preferred embodiments of the invention follows.

40 [0017] The present invention is directed to methods for predicting efficacy of drug treatment in asthma patients and to methods for screening drug candidates useful in treating inflammatory diseases. Current methods of treating asthma involve the use of corticosteroids, β 2-agonists or leukotriene antagonists. Although asthma has been treated by these methods for several years, a significant fraction of asthma patients are resistant to treatment. As there are risks associated with methods for treating asthma, identification of patients that will be responsive to treatment is important. Methods described herein are used to identify genes that are differentially expressed in responsive patients when compared to non-responsive patients, thereby allowing for a convenient determination of patients that are responsive to treatment. Described herein are methods for activating in cultured cells obtained from patient samples and methods for utilizing said cultured cells for drug screening and obtaining expression profiles.

45 [0018] Asthma, or Reversible Obstructive Airway Disease (ROAD), is a condition in which the airways of the lungs become either narrowed or completely blocked, impeding normal breathing and leading to potentially more severe health problems. Although normal airways have the potential for constricting in response to allergens or irritants, the asthmatic's airways are oversensitive or hyper-reactive. In response to stimuli, the airways may become obstructed by one of the following: constriction of the muscles surrounding the airway; inflammation and swelling of the airway; or increased mucus production that clogs the airway. Once the airways have become obstructed, it takes more effort to force air through them, so that breathing becomes labored. Because exhaling through the obstructed airways is difficult, too much stale air remains in the lungs after each breath. This accumulation of stale air decreases the amount of fresh air that can be taken in with each new breath, so not only is there less oxygen available for the whole body, the high concentration of carbon dioxide in the lungs causes the blood supply to become acidic as well. This acidity in the blood may rise to toxic levels if the asthma remains untreated.

50 [0019] Although asthma creates difficulties in breathing and can lead to more serious problems, the lung obstruction associated with asthma is reversible, either spontaneously or with medication. Asthmatics can take anti-inflammatory

agents such as corticosteroids, bronchodilators and leukotriene antagonists to reduce inflammation and asthma symptoms.

5 **[0020]** Corticosteroids are sometimes also referred to as "steroids." This type of medication is not related to the anabolic steroids that are misused by some athletes to increase performance. Rather, corticosteroids have been used as a treatment for asthma and allergies since 1948. They decrease airway inflammation and swelling in the bronchial tubes; reduce mucus production by the cells lining the bronchial tubes; decrease the chain of overreaction (hyper-reactivity) in the airways; and help the airway smooth muscle respond to other medications. Corticosteroids can be administered in a variety of ways, such as through the use of an inhaler, topically, orally, or through injection. Topical preparations (on specific surface areas such as skin or the lining of the bronchial tubes) may be applied as creams or sprays (inhalers).
10 Corticosteroid inhalers are recommended for patients with daily, moderate or severe asthma symptoms. Oral corticosteroids and injected corticosteroids are generally only prescribed for those with severe asthma symptoms.

15 **[0021]** Although the use of corticosteroids has been commonplace for several years, they are not always effective and significant side effects do occur. Some people experience minor side effects of hoarseness and thrush (a fungal infection of the mouth and throat) from using corticosteroid inhalers. Also, long-term use of inhaled corticosteroids has been implicated in reduced growth velocity in children. Oral corticosteroids can have more side effects than inhaled corticosteroids. Oral corticosteroids are prescribed for long durations only when other treatments have failed to restore normal lung function and the risks of uncontrolled asthma are greater than the side effects of the steroids. For example, prednisone, one of the most commonly prescribed corticosteroids, can lead to possible side effects of weight gain, increased appetite, menstrual irregularities and cramps, heartburn, and indigestion. Some patients experience side effects such as loss of energy, poor appetite, and severe muscle aches or joint pains when their dosage of cortisone
20 tablets is decreased. Long-term oral corticosteroid use may cause side effects such as ulcers, weight gain, cataracts, weakened bones and skin, high blood pressure, elevated blood sugar, easy bruising and decreased growth in children. Such side effects indicate a need to accurately assess the efficacy of corticosteroid treatment in asthmatic patients.

25 **[0022]** Bronchodilators, also called " β 2-agonists", are non-steroidal anti-inflammatory medications often used as short-term "rescue" medications to immediately relieve asthma symptoms. Bronchodilators include albuterol, bitolterol, pirbuterol and terbutaline. Additionally, salmeterol is a long-acting β 2-agonist that is intended to be used on a long-term basis, along with an anti-inflammatory medication, for controlling asthma. Those using salmeterol should take the medication on a daily basis, even if they are feeling fine, as it prevents symptoms. Although sporadically effective, bronchodilators are not typically useful in cases of severe asthma.

30 **[0023]** Many of the cells involved in causing airway inflammation are known to produce signaling molecules within the body called "leukotrienes." Leukotrienes are responsible for causing the contraction of the airway smooth muscle, increasing leakage of fluid from blood vessels in the lung, and further promoting inflammation by attracting other inflammatory cells into the airways. Oral anti-leukotriene medications have been introduced to fight the inflammatory response typical of allergic disease. These drugs are used in the treatment of chronic asthma. Recent data demonstrates that
35 prescribed anti-leukotriene medications can be beneficial for many patients with asthma, however, a significant number of patients do not respond to anti-leukotriene drugs.

40 **[0024]** The present invention relates to methods for determining the treatment outcome of drugs used to treat inflammatory conditions such as asthma. The methods rely on the identification of genes that are differentially expressed in samples obtained from patients and are associated with clinical responsiveness to the drug under study. The particular genes, herein referred to as "informative genes," are identified in cells that have been induced to mimic the disease condition (e.g., asthma), or in tissue samples from patients diagnosed with asthma or other inflammatory diseases. Informative genes can be identified, for example, by determining the ratio of gene expression in induced versus uninduced cells and comparing the results between patients with variable drug sensitivity. Alternatively, informative genes can be identified based on the ratio of gene expression in disease versus normal tissue samples, or, in the case of informative
45 genes used to identify drug responsiveness, informative genes can be identified by the ratio of gene expression in cells exposed to the drug versus cells not exposed to the drug, in subjects who qualify as responders versus non-responders to the drug. A ratio of 1.0 would indicate the gene is expressed at the same level in both samples. Ratios greater than one indicate increased expression over normal or uninduced cells, whereas ratios less than one indicate reduced expression relative to normal or uninduced cells.

50 **[0025]** A subset or all informative genes can be assayed for gene expression in order to generate an "expression profile" for responsive versus non-responsive patients. As used herein, an "expression profile" refers to the level or amount of gene expression of one or more informative genes in a given sample of cells at one or more time points. A "reference" expression profile is a profile of a particular set of informative genes under particular conditions such that the expression profile is characteristic of a particular condition. For example, a reference expression profile that quantitatively describes the expression of the informative genes listed in Tables 1, 2A, 2B, 4A, 4B and 5A-5E can be used
55 as a reference expression profile for drug treatment responsiveness. In one embodiment, expression profiles are comprised of the fifty informative genes that exhibit differential expression, and provide sufficient power to predict the responsiveness to the drug with high accuracy. Other embodiments can include, for example, expression profiles containing

about 5 informative genes, about 25 informative genes, about 100 informative genes, or any number of genes in the range of about 5 to about 400 informative genes. The informative genes that are used in expression profiles can be genes that exhibit increased expression over normal cells or decreased expression versus normal cells. The particular set of informative genes used to create an expression profile can be, for example, the genes that exhibit the greatest degree of differential expression, or they can be any set of genes that exhibit some degree of differential expression and provide sufficient power to accurately predict the responsiveness to the drug. The genes selected are those that have been determined to be differentially expressed in either a disease, drug-responsiveness, or drug-sensitive cell relative to a normal cell and confer power to predict the response to the drug. By comparing tissue samples from patients with these reference expression profiles, the patient's susceptibility to a particular disease, drug-responsiveness, or drug-resistance can be determined.

[0026] The generation of an expression profile requires both a method for quantitating the expression from informative genes and a determination of the informative genes to be screened. The present invention describes screening specific changes in individuals that affect the expression levels of gene products in cells. As used herein, "gene products" are transcription or translation products that are derived from a specific gene locus. The "gene locus" includes coding sequences as well as regulatory, flanking and intron sequences. Expression profiles are descriptive of the level of gene products that result from informative genes present in cells. Methods are currently available to one of skill in the art to quickly determine the expression level of several gene products from a sample of cells. For example, short oligonucleotides complementary to mRNA products of several thousand genes can be chemically attached to a solid support, *e.g.*, a "gene chip," to create a "microarray." Specific examples of gene chips include Hu95GeneFL (Affymetrix, Santa Clara, CA) and the 6800 human DNA gene chip (Affymetrix, Santa Clara, CA). Such microarrays can be used to determine the relative amount of mRNA molecules that can hybridize to the microarrays (Affymetrix, Santa Clara, CA). This hybridization assay allows for a rapid determination of gene expression in a cell sample. Alternatively, methods are known to one of skill in the art for a variety of immunoassays to detect protein gene expression products. Such methods can rely, for example, on conjugated antibodies specific for gene products of particular informative genes.

[0027] Informative genes can be identified, for example, in samples obtained from individuals identified through database screening to have a particular trait, *e.g.*, glucocorticoid sensitivity (GC-S) or glucocorticoid resistance (GC-R). In addition, informative genes identified in cultured cells can be verified by obtaining expression profiles from samples of known asthma patients that are either responsive or non-responsive to a particular drug treatment. An example of a combination of obtaining samples from patients and searching particular databases for the genealogical and medical history of the individual from whom the sample was obtained is herein described for the genetically isolated population of Iceland.

[0028] The population of Iceland offers a unique opportunity to identify genetic elements associated with particular disorders. The unique opportunity is available due to at least three conditions: 1) the Icelandic population is genetically isolated; 2) detailed genealogical records are available; and 3) detailed medical records have been kept dating back to 1915. The identification of differentially expressed genes in responsive versus non-responsive patients would occur after an examination of a patient's genealogical past as well as the medical records of close relatives in addition to data obtained from samples derived from the individual.

[0029] An examination of genealogical and medical records identifies modern day individuals with a family history of exhibiting a particular trait. For example, individuals can be found that are asthmatic and that respond to a particular asthma drug treatment, and an examination of a genealogical database might confirm that indeed the individual's close relatives exhibit the same traits, on average, more than the rest of the population. Thus, a tentative conclusion can be drawn that the individual in question likely has genetic determinants that could be used to identify responsive and non-responsive patients. Samples obtained from this individual, combined with samples obtained from other such individuals, are genotyped by any of the methods described above in order to identify informative genes that can subsequently be used to generate reference expression profiles.

[0030] Informative genes can also be identified *ex vivo* in cells derived from patient samples. For example, a tissue sample can be obtained from a patient and cells derived from this sample can be cultured *in vitro*. The cells can be cultured in the presence or absence of cytokines, *e.g.*, tumor necrosis factor alpha (hereinafter, "TNF α ") and interleukin 1-beta (hereinafter, "IL-1 β "), or other mediators such as, for example, leukotriene receptor agonists, *e.g.*, LTD₄. As used herein, "mediator" refers to a molecular signal for a particular event. Cytokines are an example of a class of mediators that are low molecular weight, pharmacologically active proteins that are secreted by one cell for the purpose of altering either its own functions (autocrine effect) or those of adjacent cells (paracrine effect). In some instances, cytokines enter the circulation and have one or more of their effects systemically. Expression profiles of informative genes can be obtained from sample-derived cells in the presence and/or absence of cytokines or other mediators, and these profiles can be compared to reference expression profiles to determine sensitivity or resistance to drug treatment. Additionally, cells can be cultured in the presence or absence of the drug itself prior to obtaining the expression profile.

[0031] Once informative genes have been identified, polymorphic variants of informative genes can be determined and used in methods for detecting disorders in patient samples based on which polymorphic variant is present in the

sample (e.g., through hybridization assays or immune detection assays using antibodies specific for gene products of particular polymorphic variants).

5 [0032] Alternatively, the approach described above can be used to verify the utility of informative genes identified in cultured cells. Once identified, informative genes could be verified as to their predictive ability in more genetically diverse populations, thus ensuring the utility of the predictive power of these informative genes in populations in addition to the genetically isolated population of, e.g., Iceland.

10 [0033] The "genetic isolation" of the Icelandic population implies a low degree of allelic variation among individuals. This circumstance reduces the background in screening for differences in a population. In "genetically diverse" populations, many differences appear between individuals that might contribute to the same trait. For example, an examination of individuals responsive for asthma drug treatment might produce a finite yet large number of genetic differences with respect to non-responsive individuals. However, in a genetically diverse population, a great majority of these genetic differences are "artifactual" or background "noise signals" detected because of the diversity of the population. For a genetically isolated population, fewer differences would be expected to be found between the two groups, providing a higher probability that the differences that are discovered are likely to be directly related to the trait in question, in this case, responsiveness to asthma drug treatment. Once determined in a genetically isolated environment, the utility of informative genes and expression profiles based on those informative genes can be verified for more general use in a genetically diverse population.

15 [0034] As elevated levels of both TNF α and IL-1 β are characteristic of asthma and other inflammatory diseases (including, but not limited to, atopy (e.g., rhinitis, conjunctivitis, dermatitis, eczema), rheumatoid arthritis, juvenile chronic arthritis, psoriasis, IBD and sepsis), cells exhibiting elevated cellular levels of these cytokines can be used to determine drug efficacy for related inflammatory diseases. As used herein, "efficacy" describes a range of effectiveness from non-effective (non-responsive) to completely effective, and degrees between the two extremes. The present invention is directed in part to comparing gene expression profiles of activated peripheral blood mononuclear (PBM) cells or neutrophils isolated from patients with asthma or related inflammatory conditions to gene expression profiles of activated control (non-asthmatic) PBM cells or neutrophils. As used herein, "activated" refers to treating cells with cytokines or other mediators of asthma or related inflammatory diseases. Such activation can be achieved by elevating levels of cytokines such as TNF α and IL-1 β . Activated cells derived from patient samples can be used to screen for drug candidates as well as provide for sample and reference expression profiles useful in diagnosing asthma and other inflammatory diseases.

25 [0035] The cellular levels of TNF α and IL-1 β can be increased by a variety of methods known in the art. For example, mammalian cells, such as PBM cells, neutrophils, synovial cells or airway smooth muscle (ASM) cells, grown in culture can be exposed to isolated and purified TNF α and IL-1 β such that these cytokines are taken up by the cells (typically, exposure of about 4 hours of TNF α at a concentration of 5 ng/mL and IL-1 β at a concentration of 1 ng/mL in culture will produce pro-asthma like symptoms in cultured cells). Other methods for expression of cytokines in cells grown in culture, e.g., by transfection of genes cloned into expression vectors, are known in the art.

30 [0036] TNF-related pathologies or diseases, as would be mimicked by the pro-inflammatory like conditions induced in the cells described herein, include, but are not limited to, inflammatory diseases or disorders, infections, neurodegenerative diseases, malignant pathologies, cachectic syndromes and certain forms of hepatitis.

35 [0037] Inflammatory diseases or disorders, include, but are not limited to, acute and chronic immune and autoimmune pathologies, such as, but not limited to, rheumatoid arthritis (RA), juvenile chronic arthritis (JCA), psoriasis, graft versus host disease (GVHD), scleroderma, diabetes mellitus, allergy; asthma, acute or chronic immune disease associated with an allogenic transplantation, such as, but not limited to, renal transplantation, cardiac transplantation, bone marrow transplantation, liver transplantation, pancreatic transplantation, small intestine transplantation, lung transplantation and skin transplantation; chronic inflammatory pathologies such as, but not limited to, sarcoidosis, chronic inflammatory bowel disease, ulcerative colitis, and Crohn's pathology or disease; vascular inflammatory pathologies, such as, but not limited to, disseminated intravascular coagulation, atherosclerosis, Kawasaki's pathology and vasculitis syndromes, such as, but not limited to, polyarteritis nodosa, Wegener's granulomatosis, Henoch-Schönlein purpura, giant cell arthritis and microscopic vasculitis of the kidneys; chronic active hepatitis; Sjögren's syndrome; psoriatic arthritis; enteropathic arthritis; reactive arthritis and arthritis associated with inflammatory bowel disease; and uveitis.

40 [0038] Infections include, but are not limited to, sepsis syndrome, cachexia (e.g., TNF α -mediated effects), circulatory collapse and shock resulting from acute or chronic bacterial infection, acute and chronic parasitic and/or infectious diseases, bacterial, viral or fungal, such as a human immunodeficiency virus (HIV), acquired immunodeficiency syndrome (AIDS) (including symptoms of cachexia, autoimmune disorders, AIDS dementia complex and infections).

45 [0039] Neurodegenerative diseases include, but are not limited to, demyelinating diseases, such as multiple sclerosis and acute transverse myelitis.

50 [0040] Malignant pathologies are associated with TNF α -secreting tumors or other malignancies involving TNF α , such as, for example, leukemias (acute, chronic myelocytic, chronic lymphocytic and/or myelodysplastic syndrome) and lymphomas (Hodgkin's and non-Hodgkin's lymphomas, such as malignant lymphomas (Burkitt's lymphoma or Mycosis

fungoides)).

[0041] Cachectic syndromes and other pathologies and diseases involving excess $\text{TNF}\alpha$, include, but not limited to, cachexia of cancer, parasitic disease and heart failure.

[0042] Elevated levels of $\text{TNF}\alpha$ are also associated with certain types of hepatitis, including, but not limited to, alcohol-induced hepatitis and other forms of chronic hepatitis.

[0043] One of skill in the art will recognize that reagents necessary to utilize the methods described herein can be contained in a kit. Such reagents as described are either commercially available (e.g., buffered solutions, chemical reagents) or produced by methods known in the art (e.g., oligonucleotides, antibodies, ligands for detection). Thus, one of skill in the art would recognize that a kit can be produced containing in appropriate compartments, for example, all reagents, probes, and materials necessary for to allow for the practice of the methods described herein.

[0044] The invention will be further described with reference to the following nonlimiting examples.

EXEMPLIFICATION

Example 1. Predictive value of expression profiles in human patients.

[0045] Asthma is a common complex disease with a variable phenotype. While the cellular and molecular mechanisms that underlie asthma remain largely unknown, elevated levels of the pleiotropic cytokines, $\text{IL-1}\beta$ and $\text{TNF}\alpha$, have been implicated in the pathophysiology of asthma as well as in various other inflammatory disorders (Broide, D. et al., 1992, *J. Allergy Clin. Immunol.* 89:958-967; Arend, W., 2001, *Arthritis Rheum.* 45:101-106).

[0046] It has been widely accepted that diseases such as asthma that are common in the general population and have been demonstrated to have a strong, but complex, genetic component together with variable responsiveness to drugs, present ideal candidate disease targets for pharmacogenetic research. The latter holds great promise in optimization of individual specific therapy as well as providing new targets for drug development. Improved, preferably prophylactic, treatment of asthma patients is desired because the drugs now used are not effective in all patients, allow recurrence of the symptoms in a high percentage of patients, and sometimes have severe adverse side effects. The ability to analyze the expression level of thousands of genes in a single assay, using DNA microarrays, allows for a powerful screen of multiple molecular gene pathways, simultaneously, that may elucidate differential expression in genes encoding enzymes, kinases, ion channels, and other signaling molecules that determine individual's variation in response to drugs.

[0047] Accordingly, using high-density DNA microarray analysis, differences in mRNA expression of PBM cells freshly isolated from GC-S and GC-R asthmatics were identified. The mRNAs were examined at baseline (T0) and to the combined effects of $\text{IL-1}\beta$ and $\text{TNF}\alpha$. Moreover, in an attempt to further elucidate those genes that may contribute to responsiveness of GC, we examined the effects of GC treatment on altered gene expression in cells that were activated by $\text{IL-1}\beta$ and $\text{TNF}\alpha$. The rationale for using this strategy was based on two well-established concepts. First, the symptoms of asthma are mechanistically channeled through the actions of $\text{IL-1}\beta$ and $\text{TNF}\alpha$. Second, glucocorticoids act in asthmatics by altering the expression of genes that are modulated by pro-inflammatory cytokines. The results provide new evidence demonstrating: 1) of 12,600 genes examined, 50 genes selected by algorithms based on the naïve Bayesian classifier predicted the correct GC-R phenotype of the 14 GC-R and 14 GC-S patients that it was trained on with 82% accuracy; 2) when a second cohort of 26 GC-R asthmatics was tested, the predictive accuracy of the classifier was 86%, and; 3) among the genes selected there were several cell signaling molecules, transcription factors and pro-inflammatory molecules potentially associated with regulation of GC responsiveness. This is the first demonstration using gene expression profiles in freshly isolated PBM cells that differentiate between GC-R and GC-S patients that provide sufficient power to predict response to glucocorticoids in asthmatics with high accuracy.

Methods and Materials

[0048] *Patients.* The patient population studied was selected from the private and outpatients clinics of practicing allergists at the Allergy/Immunology Division of the National University Hospital of Iceland. A total of 1185 patient records were screened for phenotypic information and analyzed with respect to the Icelandic Genealogy Database to determine the family connections of the patients. Patients carrying a diagnosis of asthma who were using inhaled glucocorticoid medications were evaluated further. Fifty-four patients age 18-70 years were initially randomly recruited to participate and were divided into two cohorts. The first cohort consisted of 14 GC-S and 14 GC-R patients, together with 14 control subjects who had no evidence of asthma or atopy and were not using inhaled GC or any other medications. Twenty-six additional patients were also collected and used as a second cohort for the predictive classifier. The study was subsequently expanded to include 96 patients (60 GC-S and 36 GC-R), of whom, 88 completed all 3 *in vitro* treatment conditions (baseline, $\text{IL-1}\beta/\text{TNF}\alpha$ in the absence and presence of GC). Each cohort was subsequently randomly split into two subcohorts of equal size. A random split was performed 10 times and the most informative genes that detected GC-R from GC-S patients in the training set were used as predictors for the independent patient set of equal size. Patients

were allowed to use both short and long acting β 2-adrenergic drugs as well as leukotriene antagonists. Medication doses of all drugs were kept unchanged for 2 weeks and the patients had to be off oral GC for minimum of 4 weeks prior to their donation of blood for the PBM cell expression studies. A single physician, who was blinded to the expression array studies, phenotyped all patients. Upon completion of physical examination, confirmation of drug response phenotypes and informed consent authorizing his/her participation in the study, the patients were asked to donate a blood sample for the study. No tests were performed in control subjects. Forty milliliters of EDTA blood was collected and peripheral blood mononuclear (PBM) cells were isolated from the rest of the blood for the experimental studies described below.

Study Inclusion Criteria. The criteria the patients had to fulfill to enter the study, included the following:

[0049] Asthma diagnosed by an allergist/pulmonologist. The approach used to diagnose asthma in Iceland concurs with that of the diagnostic asthma criteria outlined by the NHLB and the American Thoracic Society (National Institutes of Health. 1997. Guidelines for the Diagnosis and Management of Asthma: Expert Panel Report 2, July 1997, U.S. Government Printing Office, Washington, DC. NIH Publication No. 97-4051; American Thoracic Society. Standardization of Spirometry, 1994 (update), Am. J. Resp. Crit. Care. Med. 1995, 152:1107-1136) and include any of the following measures:

Patient having recurrent symptoms of cough and wheezing for more than 2 years and demonstrating clinical response to bronchodilator therapy (as measured by >15% increase in Forced Expiratory Volume in 1 second (FEV1) following bronchodilator)

Patient having reduced FEV1 (FEV1<80) at baseline prior to bronchodilator therapy and showing >15% improvement in FEV1 following bronchodilator therapy

Patient having recurrent symptoms of cough and wheezing and on methacholine challenge test, performed in accordance to ATS guidelines, there occurs >20% drop in FEV1 at methacholine concentrations <8 mg/L

[0050] Methacholine challenge test were obtained in patients with FEV 1 >70. In addition, skin tests to the 12 most common aeroallergens in Iceland and total IgE levels were obtained and history and clinical evidence of rhinitis were recorded. All patients were re-examined by the same allergist who determined the clinical response to GC.

[0051] *Response to inhaled glucocorticoids.* Patients were categorized as either glucocorticoid sensitive (GC-S) or glucocorticoid-resistant (GC-R). Any two or more combinations of the following criteria defined glucocorticoid response in GC-S patients (Barnes, P. et al. Am. J. Resp. Crit. Care. Med., 1998. 157:S1-S53):

Good control of asthma symptoms (cough and wheezing) when taking inhaled GC in recommended therapeutic doses (up to 1000 mg of Fluticasone; up to 800 mg of Budesonide; or up to 1000 mg of Beclomethasone, which were the 3 inhaled GC drugs used by the patients).

Improved exercise tolerance and/or fewer exacerbations following 8 or more weeks of therapeutic doses of inhaled GC.

Improved peak flows and/or spirometry values after 8 or more weeks of inhaled GC.

Improved quality of life/well being as judged by the patient response to a standard questionnaire, after 8 or more weeks of inhaled GC therapy.

[0052] GC-R patients did not experience improvement in the above measures when using inhaled GC in therapeutic doses. The GC-R patients had been tried on >2,000 mg of inhaled Fluticasone (or equivalent dose of Budesonide or Beclomethasone) per day. All GC-R patients studied had either moderate or severe resistance to GC therapy. The GC-R and GC-S patients were randomly split 10 times into two cohorts each, wherein one set was used for training and the other patient set was used to generate predictors for an independent set.

Study Exclusion Criteria. The study exclusion criteria are outlined below:

[0053] Therapies, which could interfere with evaluation of efficacy or the incidence of adverse effects, including:

Other investigational drugs

Concurrent medication (other than β 2-adrenergic agonist or anti-leukotriene drugs).

Diseases or conditions that could interfere with the evaluation of efficacy or the incidence of adverse effects, including:

Pregnancy or lactation

Hypersensitivity or serious adverse experiences to asthma

drugs in the past

Aspirin sensitive asthma
 Occupational asthma
 Sensitivity to the study drug or its components
 Compliance to medication is of question

5

[0054] *Patient protection measures/Informed consent procedures.* The 96 asthmatic patients enrolled were randomly selected from the list of 1185 asthmatic patients who fulfilled the study criteria. The response- and participation rate of the patients exceeded 95%. All patients signed an informed consent, donated blood samples, and completed a questionnaire and all tests necessary for proper phenotyping. The study was approved by the Icelandic Data Protection Commission and the National Bioethics Committee. The Data Protection Commission of Iceland subsequently encrypted personal information about the patients and their family members (Gulcher, J. and Stefansson, K. Clin. Chem. Lab. Med. 1998, 36:523-527). All blood and DNA samples were also coded for protection of patient's privacy.

10

[0055] *Assessment of gene microarray expression.* Ninety-six asthma patients were recruited in accordance with the study inclusion criteria. GC responsiveness was measured by scoring functions taking into account both clinical and laboratory parameters as described above. PBM cells (PBMCs) were isolated by the standardized Ficoll method. PBMCs were counted, and stained with FITC-conjugated anti-CD3 monoclonal antibodies (mAb), PE-conjugated anti-CD19 mAb, and FITC-conjugated anti-CD14 mAb and examined by flow cytometry to determine the relative contributions of each cell type. The cells were then divided into 3 treatment conditions (baseline, IL-1 β /TNF α treatment and IL-1 β /TNF α in the presence of GC treatment) with approximately 6 million cells per condition. Thereafter, multiple gene mRNA expression was examined in isolated PBMCs with gene microarray technology, using the human Hu95-A gene chip containing 12,600 DNA oligonucleotides (Affymetrix, Santa Clara, CA). In brief, cells were exposed for 4 hr to IL-1 β (1 ng/mL) and TNF α (5 ng/mL) combined, or to media alone in the absence and presence of 1 hr pre-treatment with DEX (10⁻⁶ M), and maintained at 37°C in a humidified atmosphere of 5% CO₂/95% air in RPMI-1640 media. Following incubation of cells, total RNA used for the microarray expression analysis was extracted and purified using commercially available reagents recommended by the manufacturer. Total RNA was extracted using Trizol and purified with Qiagen RNAEASY spin columns (Qiagen GmbH, Germany). Approximately 5 μ g of RNA were used for first and second strand cDNA synthesis. After precipitation, cDNAs were transcribed to cRNAs by methods known in the art. The biotinylated cRNA was subsequently hybridized to the Affymetrix gene chips overnight according to the manufacturer (Affymetrix, Santa Clara, CA). Non-bound probes were removed by high-stringency washing. The hybridized chips were developed using a Streptavidin-PE complex and scanned. The scanned images were then analysed with Affymetrix software and the data was examined using commercially available software programs (Asher B. J. Mol. Graph Model. 2000, 18:79-82). AvDiff values were defined by the Affymetrix software output. Fold change is defined as the ratio of AvDiff values of RNA derived from PBMCs treated with cytokines over that of untreated PBMCs. Kinetic PCR was used to correlate the mRNA expression values from the Affymetrix gene chips for several genes.

15

20

25

30

35

[0056] *Normalization of the expression data set.* The raw expression data for all genes were normalized to the trimmed mean (98%) expression values of the chip and the normalized expression value for all chips were set at 500 (Hu, J. et al., 2000. Ann. N.Y. Acad. Sci., 919:9-15). The genes were also normalized to a set of 20 control (housekeeping) genes that were found to be stable during the various treatments of the samples. The analysis focused on all the genes that were expressed in the PBM cells, and, more specifically, on all genes that were significantly upregulated or downregulated by the *in vitro* cytokine stimulation and were subsequently reversed by glucocorticoid treatment. A predictive classifier was then applied to these genes. Three separate approaches were taken to search for predictive gene signals: 1) baseline expression values alone; 2) expression values in response to *in vitro* exposure to cytokines; and 3) expression values in response to cytokines in the presence of GC pre-treatment. To minimize the potential for selection bias, predictions were made for both an independent set and with the cross validation method (Ambrose, C. and McLachlan, G., 2002. Proc. Natl. Acad. Sci. USA, 99:6562-6566).

40

45

[0057] *Classification of drug response phenotypes by naive Bayesian classifier.* A naive Bayesian classifier (with non-informative prior) (Duda, R. and Hart, P., Pattern Classification and Scene Analysis. 1973, New York: John Wiley) was applied to test if the classification of drug response phenotypes can be achieved by expression values for a few informative genes. The classifier is trained by selecting those genes that are deemed relevant in distinguishing between phenotypes (Kellner, A. et al., Bayesian classification of DNA array expression data. Technical report, Department of Computer Science and Engineering, University of Washington, August, 2000). When a new case is presented to the classifier, the observed attribute value x_g for gene g results in the odds that the presented case is glucocorticoid sensitive:

55

$$\frac{P(x_g / GCS)}{P(x_g / GCR)}$$

Combining the probabilities of all genes in the classifier (under the "naïve" assumption of independence) gives the total odds:

$$\frac{P(GCS)}{P(GCR)} = \prod_g \frac{P(x_g / GCS)}{P(x_g / GCR)}$$

The attributes, namely AvDiff values or fold changes, were divided into two categories (low, high) by choosing a threshold value that optimally separates phenotypes in the training set for each gene. The probability, $P(x | C)$, was taken as the fraction of training cases of phenotype C with attribute value x . To avoid singularities due to probabilities of zero, a Laplace estimator was used, *i.e.*, an additional case of each phenotype was added to each attribute category.

[0058] The genes used for phenotype prediction were selected by their power to separate between the phenotypes using the average of

$$\frac{P(x_g | GCS)}{P(x_g | GCR)}$$

over training cases with phenotypes GC-S and GC-R, respectively, as gene score. The n genes with the highest total score (*i.e.*, sum of scores for phenotype GC-S and GC-R) were used in the classifier. As attributes, the fold change value between baseline and cytokine induction was used. To avoid spurious fold change values, only genes with AvgDiff values >70 for baseline and cytokine induction for all individuals were considered.

[0059] *Prediction of an independent patient set using the weighted voting method described by Golub et al.* The GCS and GC-R patient cohorts were each randomly split into two cohorts. The random split procedure was performed 10 times with separate analyses each time. A predictor for the first cohort using a weighted voting algorithm similar to that described previously (Golub, T. et al., 1999., Science, 286:531-537) by selecting genes that are deemed most relevant in distinguishing GC responders from non-responders. The weighted voting algorithm makes a weighted linear combination of relevant "informative" genes obtained in the training set to provide a classification scheme for new samples. A brief description of the algorithm follows. The mean (μ) and standard deviation (ϵ) for each of the two classes (Resistant and Sensitive) in the training set is first calculated. The Euclidean distance between the two classes is then calculated for each gene (x) such that $ED_x = \sqrt{(\mu_R - \mu_S)^2}$. The variance of each class is equal to the standard deviation within that class squared, $V_{R,S} = \epsilon^2$. Next, the metric used to choose the most informative genes and for the calculation of weight, for each gene, is calculated as follows: $Mx = (ED_x^2) / (V_S + V_R)$. To predict the class of a test sample Y , each gene X casts a vote for each class: $W_{XR} = Mx \sqrt{(Y - \mu_R)^2}$ and $W_{XS} = Mx \sqrt{(Y - \mu_S)^2}$. The final class of test Y is found by the lesser of ($\sum W_{XR}$) and ($\sum W_{XS}$). Thus, each gene has a vote based on its metric and the class to which its signal is closest. The class with the smallest vote at the end is the predicted class, *e.g.*, the class the test sample is closest to using the Euclidean distance as the measure, is the predicted class. It was then determined whether an accurate prediction of drug response can be achieved by expression values of this limited set of genes for the independent cohort with no prior information using commercially available software as described previously (Shipp, M. et al., 2002. Nat. Med., 8:68-74; Golub, T. et al., 1999., Science, 286:531-537).

[0060] *Prediction of an independent patient set using the k-Nearest Neighbor algorithm.* The k -Nearest Neighbor (k -NN) algorithm (Cover, T. et al., 1967. IT, 13:21-27) was also implemented to predict the class of a sample by calculating the Euclidean distance of the sample to the k "nearest neighbor" standardized samples in "expression" space in the training set. The class memberships of the neighbors are examined, and the new sample is assigned to the class showing the largest relative proportion among the neighbors after adjusting for the proportion of each class in the training set. The marker gene selection process was performed by feeding the k -NN algorithm only the features with higher correlation to the target class. To select genes for use in the predictor, all genes were examined individually and ranked on their ability to discriminate one class from the other using the information on that gene alone. For each gene and each class, all possible cutoff points on gene expression levels for that gene are considered to predict class membership either above or below that cutoff. Genes were scored on the basis of the best prediction point for that class. The score function is the negative logarithm of the p -value for a hypergeometric test (Fisher's exact test) of predicted versus actual class membership for this class versus all others.

[0061] *Prediction using Leave One Out Cross Validation (LOOCV).* In addition to confirmation in an independent set

of patients, the genes that best separated GC responders from non-responders were selected and tested by cross-validation, wherein one patient was excluded from the data set and then a new predictor was generated from all the genes based on the remaining patients. The new predictor was then used to predict the excluded sample. The gene selection criteria was determined as described above and applied to expression values at baseline or in response to *in vitro* exposure to cytokines and GC.

[0062] *Reagents.* The cDNA Hu95 gene microarray chips and analysis system, including scanner and computer analysis software, were purchased from Affymetrix, CA. The RPM-1640 medium was obtained from Gibco BRL (Gaithersburg, MD). IL-1 β and TNF α were obtained from R&D Systems (Minneapolis, MN). DEX was purchased from Sigma (St Louis, MO).

RESULTS

[0063] *Characteristics of patients.* The patients enrolled were randomly selected from the available family clusters, which included 1185 patients, of whom over 500 were using inhaled glucocorticoids. Of the 96 patients recruited for the study, 60 were determined to be glucocorticoid sensitive and 36 were determined to be glucocorticoid resistant. Each group was split into two cohorts. The first cohort included 46 patients (training set), of whom 30 were GC-S and 18 were GC-R. The additional 46 patients were designated as the independent set, and also included 30 GC-S patients and 18 GC-R patients. The mean maintenance dose of inhaled glucocorticoids in the GC-R group was ~1,600 mg/day (range 1,000-2,000). In contrast, the GC-S patients required only intermittent or low-dose therapy (\leq 800 mg/day of Fluticasone or equivalent drug) of inhaled GC. Demographic information, lung function and methacholine challenge values together with atopy status are presented in Table 3. It should be noted that while the argument could be made that the asthma severity level was higher in the GC-R group, the lung function tests results were only slightly lower in the GC-R-patients as compared to the GC-S patients. As shown in Table 3, the ratio of males/females and the atopy status were lower in the GC-R group, whereas the mean age was higher. Moreover, 54% GC-S and 31% of the GC-R patients were skin test positive to one or more aeroallergens. No differences were observed in the ratio of T cells, B cells and monocytes between the two groups.

[0064] *Performance of the Bayesian classifier with gene score selected genes.* This study examined whether GC-R asthmatic patients can be identified by specific gene expression profiles in white blood cells, which are different from those obtained in patients who are GC-responders, using a naïve Bayesian classifier. The classifier was trained to select genes that best predicted between the GC-R and GC-S patient groups using all genes from the Affymetrix 12,600 Hu95 gene chip that were defined as being present and had an AvgDiff expression values >70 . The latter requirement reduced the total number of genes to 5,011. Thus, the classifier was trained on 5,011 genes with the goal of identifying genes that demonstrated differences between the two groups in either their AvgDiff or fold change expression values at baseline (BL) or in response to cytokine or GC treatment. Fold change mRNA expression values in response to cytokine treatment of 50 genes distinguished a randomly selected subgroup of 14 GC-R and 14 GC-S patients with 82% accuracy. Neither baseline expression values nor fold change expression in response to GC improved the classifier's ability to discriminate between the two patient groups. The prediction of the drug response phenotype was done by the "leave-one-out cross validation" (LOOCV) method, wherein each training case is left out in turn and predicted by a classifier trained on the remaining training cases only. The percentage of the left-out training cases that were predicted correctly is then taken as an estimate of the classifier's accuracy for previously unseen cases. As shown in FIG. 1, 12 of the 14 GC-S and 11 of the 14 GC-R patients are correctly predicted. Moreover, when the classifier was trained on all of the patients, its predictive accuracy of determining the correct GC-response phenotype using the LOOCV method was essentially unchanged or 81 % (FIG. 2).

[0065] Since these 50 genes discriminated between the drug response phenotypes with high accuracy, they may potentially have stronger power to predict the drug response phenotype for individuals within the group itself. Thus, the ability of these genes to predict the drug response phenotype of a separate cohort of patients that was not used to train the classifier was examined. As shown in FIG. 3, when the classifier was trained on the 40 GC-S versus GC-R patients, and then used to predict the an independent patient set, the predictive accuracy obtained rose to 86%.

[0066] Fifty genes contributed to the predictive power that discriminated between GC responders and non-responders. These genes are categorically displayed in Tables 1, 2A and 2B. Data on 14 control subjects with unknown GC-response profile is also included. As shown, the pattern of mRNA expression in the control group was comparable to that of the GC-S patients. This is not surprising since up to 90% of asthma patients in general are GC-responders. The genes in each category (notably CAM/ECMs, cell signaling/metabolism molecules, transcription factors and ESTs) are identified by their GenBank accession numbers, and their respective magnitudes of mean fold change of altered mRNA expression in response to cytokines.

[0067] To ensure that the gene signals that most accurately discriminate between GC responders and non-responders were captured, the groups were expanded to 96 patients (60 GC-S and 36 GC-R) and the weighted voting and k-NN algorithms were applied to both randomly split cohorts of GC-S and GC-R patients with and without cross validation.

[0068] Apart from the genes in Tables 1, 2A and 2B, 15 additional genes shown in Table 4 increased the predictive accuracy for the independent set to 86%, and the accuracy of discriminating GC responders from non-responders amounted to 89% with cross validation in all patients.

5 DISCUSSION

[0069] While drug treatment remains a mainstay of medicine, in most cases a given drug has little or no effect in the majority of patients, or unforeseen serious side effects occur. For the patient this represents a dangerous and potentially life-threatening situation and, at the societal level, adverse drug reactions represent a leading cause of disease and death. Genetic variation often underlies poor response or side effects. Indeed, there already exist several examples of such correlation, including but not limited to patients variability in response to Dicumarol, Warfarin or Isoniazid due to polymorphisms in the Cyt P450 gene that confer rapid versus slow acetylating of these drugs. Given that these genetic variations may be deflected in differences in regulatory functions of these genes, variability in the mRNAs and/or protein expressions of these genes would be expected. Pharmacogenomics holds the promise that one may soon be able to profile variations between individuals' genetic makeup that accurately predict responses to drugs, addressing both efficacy and safety issues. In this connection, the ability to analyze the expression levels of thousands of genes in a single assay by DNA microarray technology provides a powerful screen of multiple molecular gene pathways, simultaneously. Thus, high-throughput gene array assay has the potential of identifying differential expression in genes encoding for various enzymes, kinases, ion channels, and other cell signaling molecules that determine individual's variation in response to drugs.

[0070] To address these issues, this study examined differences in gene expression in freshly isolated PBMCs isolated from GC-R and GC-S asthmatic patients, using high-density DNA microarray analysis. The results demonstrate that glucocorticoid sensitivity can be predicted with 86% accuracy.

[0071] It is widely accepted that glucocorticoids (GCs) are the most effective drugs available in asthma therapy. In individuals who are sensitive, inhaled GC has been shown to have a relatively low capacity to activate transcription within PBMCs at concentrations found in plasma and their action is thought to mainly occur within the lung. This finding is in agreement with the restricted systemic side effects at low or intermittent doses, whereas the relative abilities of GC to trans-repress transcription factor activities, such as AP-1 and NF- κ B, in the airways is in agreement with their relative clinical efficacy. In contrast, GC-resistance has been defined by the lack of a response to a prolonged course of high dose (>1 mg/kg/day) oral glucocorticoid such as prednisone. Since most patients with asthma are being treated with inhaled GC, a new definition referring to GC-dependent/resistant asthma has emerged taking into account the inhalation route in the use of the drug (Leung, D. and Chrousos, G., Am. J. Resp. Crit. Care Med. 2000. 162:1-3). In light of these issues, a recommendation to define GC-resistant asthma as a condition where there is incomplete response to high doses of inhaled GC (i.e., >2,000 mg/day) was followed (Gagliardo, R. et al., Am. J. Resp. Crit. Care Med. 2000. 162: 7-13). While clear separation between patients with high level of GC-dependent versus GC-resistant asthma is not always possible clinically, there is no doubt that both of these groups present a challenging clinical problem that is highly costly to the health care system. Sub-optimal responses to steroids often lead to prolonged courses of high-dose GC therapy accompanied by serious adverse effects together with persistent airway compromise. Patients with GC-resistant asthma present an ongoing inflammation of the airways despite persistent treatment with high doses of GC. This would be consistent with the high degree of airway hyperresponsiveness detected in our GC-R patients as reflected by the low methacholine concentration values in Table 3.

[0072] Given the pathobiologic processes involved in asthma, as a first approximation, it is reasonable to consider GC-insensitive and GC-dependent asthma as a part of the same pathogenic process. Thus, in view of potential heterogeneity and complexity of mechanisms contributing to GC-resistant/dependent asthma and its potential impact on the natural history of chronic asthma, it is noteworthy that no differences in the gene expression profiles of our GC-dependent study patients with moderate to severe GC-resistance, with respect to their GC resistant trait, were found.

[0073] In this study, a gene-scoring approach to identify genes that provide predictive power was used. As shown in Table 1, the 40 genes selected differed in their signal intensities of mRNA expression between the two groups and correlated strongly with the patients response phenotypes to inhaled glucocorticoids. Moreover, as shown in FIG. 1, when a Bayesian classifier was trained on a subset of 14 GC-S and 14 GC-R patients the predictive accuracy of the classifier to discriminate between these two patient groups was 82%. When the classifier was trained on 40, the accuracy of the classifier to predict the remaining independent patients was as high as 86% (FIG. 2). Thus, by almost doubling the number of patients that were used to train the classifier, the predictive power of the study increased further. The latter observation has two important implications: 1) it suggests that the predictive accuracy of the classifier might improve further if additional patients are included; and 2) the approach using the naïve Bayesian classifier when applied to the initial data set of 14 GC-S and 14 GC-R patients, provided sufficient power to predict gene expression profiles of GC-R and GC-S asthmatics with over 80% accuracy. It is noteworthy that among these genes are numerous cytokine/chemokine-related genes, transcription factors and cell signaling molecule genes (Tables 1, 2A and 2B). No doubt many

EP 1 428 023 B1

of these genes may turn out to be critical regulatory genes of GC responsiveness independent of asthma *per se*.

[0074] Genes with predictive power in discriminating between glucocorticoid sensitive and glucocorticoid responsive asthmatics are listed in Table 1. The 40 genes that most accurately discriminate between glucocorticoid-responsive (GC-R) and glucocorticoid-sensitive (GC-S) asthmatics using fold change mRNA expression values following stimulation with cytokines are shown. The values expressed as mean \pm SEM for the groups. Also shown are comparable values in 14 non-asthmatic (control) subjects with unknown GC-response status. Expression profiles including these genes predict GC-R and GC-S patients with over 80% accuracy.

Table 1. Mean Fold change in RNA Expression of Informative Genes

<u>Gene Category</u>	<u>Name/ GenBank</u>	<u>GCR mean \pm sem</u>	<u>GCS mean/ \pm sem</u>	<u>Control mean/ \pm sem</u>	<u>PV</u>
<u>Transcription Factors</u>					
ZincfingerProtein 267	ZNF267/X78925	3.05 \pm 0.45	5.41 \pm 0.99	3.76 \pm 0.30	0.94
ZincfingerProtein 189	ZNF189/ AF025770	2.98 \pm 0.38	4.12 \pm 0.61	2.92 \pm 0.44	0.88
Interferon-stimulated gene factor 3	ISGF-3/M97935	1.50 \pm 0.80	4.38 \pm 0.78	2.28 \pm 0.59	0.82
N-myc and STAT interactor	Nmi/U32849	2.28 \pm 0.25	1.41 \pm 0.20	1.50 \pm 0.09	0.81
Zinc finger helicase	ZFH/U91543	-1.39 \pm 0.20	-2.04 \pm 0.11	-1.25 \pm 0.19	0.79
ZincfingerProtein 145	ZNF145/AF060568	-3.23 \pm 0.88	-7.79 \pm 2.59	-5.94 \pm 1.65	0.71
Interferon-induced leucine zipper protein	IFP35/U72882	2.66 \pm 0.39	3.56 \pm 0.27	2.70 \pm 0.30	0.69
C terminal binding protein	CtBP/U37408	-1.36 \pm 0.20	-1.73 \pm 0.30	-1.43 \pm 0.09	0.64
<u>Cell signaling/ metabolism</u>					
PDGF receptor beta-like tumor suppressor	PRLTS/D37965	0.51 \pm 0.41	2.99 \pm 0.58	0.67 \pm 0.48	0.94
Sterol carrier protein-X; sterol carrier protein-2	SCP-X; SCP-2/ U11313	-2.44 \pm 0.20	-1.61 \pm 0.35	-1.86 \pm 0.11	0.94
G protein-linked receptor gene	GPRG/L42324	4.14 \pm 1.35	8.46 \pm 3.50	3.85 \pm 1.16	0.94
Nuclear Factor kappa B subunit	NFkB/M58603	4.10 \pm 0.26	2.68 \pm 0.25	3.12 \pm 0.19	0.93
Allograft inflammatory factor 1	AIF1/U49392	-4.48 \pm 0.49	-2.24 \pm 0.54	-4.54 \pm 0.50	0.88
c-syn protooncogene	FYN/M14333	1.87 \pm 0.09	1.55 \pm 0.11	1.74 \pm 0.04	0.86

EP 1 428 023 B1

(continued)

	<u>Cell signaling/ metabolism</u>					
5	Small nuclear ribonucleoprotein polypeptide A	SNRPA/M60784	-1.75±0.10	-3.76±1.34	-1.80±0.09	0.86
10	2'5' Oligoadenylate synthetase	none/N487434	2.69±0.35	4.52±0.59	2.56±0.49	0.81
15	Rab GTPase activating protein 1	HSRANGAP1/X82260	2.42±0.13	1.89±0.25	1.94±0.31	0.79
20	Vasoactive intestinal peptide receptor 1	VIPR1/X77777	-3.76±0.52	-11.65±2.37	-6.24±1.02	0.79
25	NADH-ubiquinone dehydrogenase 51 kDa subunit	NDUFV1/AF053070	-1.54±0.10	-1.89±0.31	-1.61±0.16	0.79
30	SH3BGR-like protein	SH3BGRL/AF042081	-2.04±0.20	-1.22±0.29	-1.88±0.09	0.75
35	SRC Kinase associated phosphoprotein 55K	SKAP55/Y11215 -	-6.59±0.48	12.60±2.29	-13.36 ±5.40	0.71
40	Retinal short-chain dehydrogenase/reductase	retSDR1/AF061741	-0.61±0.36	0.24±0.40	0.33±0.70	0.71
45	NAD (H)-specific isocitrate dehydrogenase g	none/Z68907	-1.58±0.05	-1.67±0.30	-1.60±0.06	0.71
50	Lysosome-associated membrane glycoprotein	DCLAMP/AB013924	70.09 ±11.70	128.82 ±24.64	96.54 ±13.97	0.69
55	Aryl carbon receptor	AHR/L19872	-1.96±0.38	-0.82±0.37	-0.24±0.45	0.69
	Ser/Thr kinase 10 -	lok/AB013924	-1.49±0.06	-1.47±0.23	-1.60±0.08	0.64
	Docking protein 2	DOK2/AF034970	-2.08±0.09	-2.24±0.54	-2.55±0.16	0.64
	Ecto-5-prime-nucleotidase	CD73/X55740	-2.38±0.20	-4.22±0.89	-3.16±0.94	0.64
	Signal-induced proliferation-associated gene 1	SIPA1/AB005666	-1.68±0.29	-2.76±0.51	-1.85±0.15	0.57
	Phospholipid Scramblease	hMmTRAIb/AB006746	3.80±0.52	6.66±0.82	3.94±0.44	0.56

EP 1 428 023 B1

(continued)

	<i>Misc</i>					
5	Fc fragment of IgEalpha	FCRER1A/X06948 -	17.64±1.55	-10.44±2.36	-16.43 ±4.08	0.94
	Histone stem-loop binding protein	SLBP/U75679	1.07±0.17	1.21±0.31	0.69±0.36	0.94
10	Interferon induced protein 56	IFI56/M24594	10.63±2.73	23.63±3.73	10.09±2.24	0.88
15	Neuropathytarget esterase	NTE/AJ004832	-1.42±0.25	-2.34±0.13	-1.37±0.24	0.86
	Interferon induced protein 41	IFP41/L22342	1.32±1.32	2.38±0.23	1.44±0.34	0.75
20	Poly A binding protein II	PAPB2/AF026029	-1.36±0.06	-2.02±0.24	0.68±0.31	0.71
	Galectin 2	Gal2/AL022315	-56.71±7.96	-23.46±5.90	-44.87 ±8.65	0.69
25	Actin related protein complex 2/3 subunit 2	ARPC2/U50531	-2.79±0.65	-7.05±1.37	-3.25±1.36	0.57
	CD1c Thymocyte antigen	CD1c/M28827	-5.11±0.62	-3.56±0.34	-4.73±0.74	0.56
30	<i>cDNA</i>					
	clone 24538 mRNA	none/AF055030	0.84±0.28	1.52±0.24	1.42±0.11	0.94

35 **[0075]** Tables 2A and 2B include 45 genes that were either upregulated or downregulated by IL-1β/TNFα therapy and were reversed, at least in part, by pre-treatment with GC, and that most accurately predicted glucocorticoid sensitivity using expression values generated following treatment with cytokines. Table 2A shows expression levels in cells treated with IL-1β/TNFα in the presence of DEX and Table 2B shows expression levels of cells treated with IL-1β/TNFα alone.

40 Table 2A. Genes upregulated by 1L-1 β/TNFα and repressed by DEX

		IL1/TNFα treatment: With DEX			
<i>Gene Category</i>	<i>Name/ GenBank</i>	<i>GCR mean ±sem</i>	<i>GCS mean/ ±sem</i>	<i>P-value</i>	
<i>Inflammatory cell regulators</i>					
45	Interferon-inducible 56 Kd	IFI56/M24594	-816±91	-1920±240	<0.0001
	Interleukin 1β	IL1B/M15330	-3792±501	1605±1339	0
	Interferon gamma treatment inducible mRNA	IFNIND/M26683	-12235±955	-5432±1553	0
50	CD6 antigen	CD6/X60992	-1128±192	58±265	0.001
	Interferon regulatory factor 7B	IRF7/U53831	-908±91	-876±175	0.863
	TNFα receptor associated factor 1	EB16/U19261	-2061±185	-1419+109	0.0133
55	TNFα receptor	CD120b/M32315	-3321±520	-1283±407	0.006
	TNFα receptor superfamily	WSL/Y09392	-3321±506	-1591±402	0.0185

EP 1 428 023 B1

(continued)

IL1/TNF α treatment: With DEX

	<u>Gene Category</u>	<u>Name/ GenBank</u>	<u>GCR mean \pmsem</u>	<u>GCS mean/ \pmsem</u>	<u>P-value</u>
5	<u>Inflammatory cell regulators</u>				
	Leukocyte surface aminopeptidase N	CD13/M22324	-983 \pm 122	-247 \pm 106	0
10	Cytokine (GRO- γ)	SCYB3/M36821	-2135 \pm 345	-672 \pm 59	0.001
	Interferon-inducible peptide (6-16) gene	16-jun/U22970	-1233 \pm 151	-2094 \pm 424	0.041
	Cytokine (GRO- β)	SCYB2/M36820	-2934 \pm 374	-1116 \pm 384	0.003
15	Interferon- β -2a	IL6/X04430	-7784 \pm 683	-4493 \pm 788	0.002
	OX40 cell surface antigen	OX40/S76792	-600 \pm 103	-230 \pm 47	0
	Monocyte/macrophage 1g-related receptor	MIR10/AF00423	-626 \pm 73	-238 \pm 57	0
20	Small inducible cytokine subfamily C2	SCYC2/D63789	-417 \pm 80	-118 \pm 76	0.0156
	Interleukin-1 receptor antagonist	IL1RA/X52015	-10750 \pm 966	-5445 \pm 1457	0.004
25	Urokinase-type plasminogen receptor	CD87/U09937	-3834 \pm 530	-1504 \pm 272	0.002
	Activation mRNA	Act-2/J04130	-4202 \pm 494	-1333 \pm 572	0.001
	Macrophage migration inhibitory factor	MIF/L19686	-1222 \pm 383	-170 \pm 238	0.0365
30	Monocyte secretory protein	JE/M28225	-7380 \pm 860	-4302 \pm 960	0.0331
	Interferon stimulated gene HEM45	HEM45/U88964	-1600 \pm 367	-424 \pm 368	0.039
	Membrane glycoprotein 4F2 antigen heavy chain	CD98/J02939	-687 \pm 115	-301 \pm 124	0.0374
35	Interferon induced protein p78	p78/M33882	-3547 \pm 345	-1491 \pm 346	0
	CD44 isoform RC	CD44/AF098641	-1886 \pm 170	-1019 \pm 134	0.001
	Interferon-induced 17-kDa/15-kDa protein	ISG15/M13755	-5244 \pm 677	-2526 \pm 611	0.008
40	<u>Cell Signaling/Metabolism</u>				
	Plasminogen activator-inhibitor 2	PAI-2/Y00630	-7538 \pm 623	-2683 \pm 648	<0.0001
	PROS-27	PROS-27/X59417	-2771 \pm 318	-361 \pm 402	0
45	Cyclin dependent kinase inhibitor 1A	p21/U03106	-2463 \pm 315	-885 \pm 151	0
	Lymphocyte G0/G1 switch gene	G0S2/M69199	-3788 \pm 420	-1657 \pm 275	0
	Hpast	HPAST/AF001434	-1532 \pm 187	-675 \pm 139	0.002
50	Apoptosis inhibitor/AP homolog B (MIHB)	AP11/U37547	-722 \pm 315	-342 \pm 151	0.002
	Insulin induced protein 1	INSIG 1/U96876	-2778 \pm 273	-1797 \pm 204	0.0117
	pim-1 oncogene	pim-1/ M16750	-1937 \pm 245	-1197 \pm 152	0.0205
55	Cyclic AMP-responsive element modulator	CREM/S68134	-2225 \pm 238	-1435 \pm 149	0.0207

EP 1 428 023 B1

(continued)

<u>Cell Signaling/Metabolism</u>					
5	Glucose transporter-like protein-III	GLUT3/M20681	-3564±801	-1422±512	0.0366
	Human cyclooxygenase-2	hCox-2/ U04636	-1731±222	-2333±389	0.167
<u>CAM/ECM molecules</u>					
	HB14	CD83/ Z11697	-4434±73	-2492±78	0
10	Adhesion molecule ninjurin	NINJ1/U91512 2	-1977±315	-472±249	0.001
	Tissue inhibitor of metalloproteinases 1	TIMP1/D11139	-4723±500	-2237±483	0.002
15	Elastase specific proteinase inhibitor	ELAFIN/L10343	-1448±462	-292±199	0.0449
<u>Transcription Factors</u>					
	Nef-associated factor 1β	Naf1beta/AJ011896	-1523±467	126±512	0.0268
	Thyroid receptor interactor	TRIP14/L40387	-635±67	-798±83	0.1357
20	Basic helix-loop-helix transcription factor	Musculin/AF087036	-1867±177	-1209±116	0.006
	p50-NFκβ	P50-NF-kB/S76638	-890±174	-321±105	0.0122

Table 2B. Genes upregulated by IL-1/TNF-α and repressed by DEX

IL1/TNFα treatment: Without DEX					
<u>Gene Category</u>	<u>Name/ GenBank</u>	<u>GCR mean ±sem</u>	<u>GCS mean/ ±sem</u>	<u>P-value</u>	
<u>Inflammatory cell regulators</u>					
30	Interferon-inducible 56 Kd	IF156/M24594	1283±215	3370±372	<0.0001
	Interleukin 1β	IL1B/M15330	9905±1021	5955±1430	<0.0001
35	Interferon gamma treatment inducible mRNA	IFNIND/M26683	17349±784	11063±998	<0.0001
	CD6 antigen	CD6/X60992	2472±179	806±195	<0.0001
	Interferon regulatory factor 7B	IRF7/U53831	14433±129	3074±187	<0.0001
40	TNFα receptor associated factor 1	EB16/U19261	5191±188	3643±267	0
	TNFα receptor	CD120b/M32315	6742±513	3453±877	0
	TNFα receptor superfamily	WSL/Y09392	6560±462	3452±626	0
45	Leukocyte surface aminopeptidase N	CD13/M22324	29888±304	1523±184	0.001
	Cytokine (GRO-γ)	SCYB3/M36821	3228±392	1431±284	0.001
	Interferon-inducible peptide (6-16) gene	16-jun/U22970	1870±317	3656±362	0.002
50	Cytokine (GRO-β)	SCYB2/M36820	5431±653	2267±509	0.002
	Interferon-β-2a	IL6/ X04430	12870±630	9257±863	0.002
	OX40 cell surface antigen	OX40/S76792	1157±88	588±28	0.002
55	Monocyte/macrophage Ig-related receptor	MIR10/AF004231	1492±147	780±157	0.003

EP 1 428 023 B1

(continued)

IL1/TNF α treatment: Without DEX					
	<u>Gene Category</u>	<u>Name/ GenBank</u>	<u>GCR</u> mean \pm sem	<u>GCS</u> mean/ \pm sem	<u>P-value</u>
5	<u>Inflammatory cell regulators</u>				
	Small inducible cytokine subfamily C2	SCYC2/D63789	483 \pm 115	28 \pm 90	0.006
10	Interleukin-1 receptor antagonist	IL1RA/X52015	13395 \pm 1481	8202 \pm 1598	0.0168
	Urokinase-type plasminogen receptor	CD87/U09937	4180 \pm 663	2054 \pm 414	0.0197
	Activation mRNA	Act-2/J04130	8697 \pm 1013	3900 \pm 1860	0.026
15	Macrophage migration inhibitory factor	MIF/L19686	2250 \pm 705	296 \pm 356	0.0271
	Monocyte secretory protein	JE/M28225	9970 \pm 999	6785 \pm 534	0.0369
	Interferon stimulated gene HEM45	HEM45/U88964	6801 \pm 713	4768 \pm 553	0.0474
20	Membrane glycoprotein 4F2 antigen heavy chain	CD98/J02939	3073 \pm 194	2472 \pm 243	0.0662
	Interferon induced protein p78	p78/M33882	7155 \pm 826	5241 \pm 503	0.0777
	CD44 isoform RC	CD44/AF098641	3651 \pm 264	3121 \pm 195	0.0962
25	Interferon-induced 17-kDa/15-kDa protein	ISG15/M13755	8821 \pm 1574	6128 \pm 993	0.1801
	<u>Cell Signaling/Metabolism</u>				
30	Plasminogen activator-inhibitor 2	PAI-2/Y00630	9427 \pm 717	5832 \pm 531	0.001
	PROS-27	PROS-27/X59417	5853 \pm 316	3557 \pm 443	0
	Cyclin dependent kinase inhibitor 1A	p21/ U03106	3544 \pm 492	1975 \pm 261	0.0123
	Lymphocyte G0/G1 switch gene	G0S2/M69199	1403 \pm 737	1347 \pm 548	0.9539
35	Hpast	HPAST/AF00143 4	2370 \pm 263	1545 \pm 272	0.0418
	Apoptosis inhibitor/AP homolog B (MIHB)	AP11/U37547	1826 \pm 137	1885 \pm 150	0.7754
	Insulin induced protein 1	INSIG1/U96876	4414 \pm 353	3201 \pm 285	0.0175
40	pim-1 oncogene	pim-1/M16750	2347 \pm 411	1947 \pm 511	0.5462
	Cyclic AMP-responsive element modulator	CREM/S68134	4875 \pm 216	4613 \pm 411	0.541
45	Glucose transporter-like protein-III	GLUT3/M20681	5396 \pm 930	2914 \pm 713	0.0476
	Human cyclooxygenase-2	hCox-2/U04636	1735 \pm 302	2683 \pm 513	0.1195
	<u>CAM/ECM molecules</u>				
	HB14	CD83/Z11697	5991 \pm 138	2892 \pm 150	<0.0001
50	Adhesion molecule ninjurin	NINJ1/U91512	4607 \pm 401	2359 \pm 264	0
	Tissue inhibitor of metalloproteinases 1	TIMP1/D11139	9451 \pm 1006	5574 \pm 611	0.005
55	Elastase specific proteinase inhibitor	ELAFIN/L10343	2744 \pm 768	577 \pm 174	0.0166

(continued)

<u>Transcription Factors</u>				
Nef-associated factor 1 β	Naf1beta/AJ011896	6890 \pm 505	3412 \pm 314	<0.0001
Thyroid receptor interactor	TRIP14/L40387	1046 \pm 130	1488 \pm 167	0.0452
Basic helix-loop-helix transcription factor	Musculin/AF08703 6	2832 \pm 297	2145 \pm 109	0.0489
p50-NF κ β	P50-NF-kB/S76638	2394 \pm 169	1995 \pm 206	0.1487

[0076] As shown in Table 3, the ratio of males/females and the atopy status were lower in the GC-R group, whereas the mean age was higher. While several studies have reported association between the X chromosome and the asthma phenotype (Kauppi P. et al., Eur. J. Hum. Genet. 2000. 10:788-92; Heinzmann A. et al., Hum. Mol. Genet. 2000. 9: 549-59; Ahmed S. et al., Exp. Clin. Immunogenet. 2000. 17:18-22), extended epidemiological studies are needed to confirm if such an association exists between the GC-R phenotype and asthma. Likewise, 54% of the GC-S patients in this study were skin test positive to one or more aeroallergens compared to 31 % of the GC-R patients. In addition, the average total IgE levels were higher in the GC-S group. About 70% of patients in some European countries and areas of the United States are atopic (Eggleston P. and Bush R., J. Allergy Clin. Immunol. 2001 107:S403-5) compared to about 50% of asthmatics in Iceland, as determined by positive skin tests or elevated IgE levels (The European Community Respiratory Health Survey Group. Am. J. Resp. Crit. Care Med. 1997. 156:1773-1780). Whether atopic asthmatic patients are less likely to have GC-R asthma compared to non-atopic patients remains to be determined. While interference from these variables on the results cannot be excluded, the predictive power of the patient's age, sex or atopy status was lower (and not statistically significant) when compared to the power developed from the genes under study.

[0077] These results provide the basis for unraveling the mechanisms that contribute to the development of GC-resistance, and can allow for the development of new therapeutic approaches. For example, one of skill in the art can perform linkage studies on patients for GC-R and GC-S clusters using the Icelandic Genealogy Database. By linking patients with GC-R and GC-S asthma into large family pedigrees based on clinical measures of GC-responsiveness, a genome-wide linkage analysis can be performed. Secondly, by searching for mRNAs expression profiles that predict GC-R versus GC-S asthma in a larger cohort of patients using DNA array technology, one of skill in the art can categorize patients with unknown GC profile into GC-S and GC-R patients with high accuracy independent of whether the patient has been taking glucocorticoids or whether the clinical response has been determined based on the expression profile alone (e.g., if similar to the expression profiling of responders versus non-responders, respectively).

Table 3. Demographic, lung function, metacholine challenge and total IgE values in glucocorticoid-sensitive (GC-S) and GC-resistant(R) patients. Values expressed are mean +/- SE for the groups.

Table 3.

	<u>GC-S</u>	<u><Asthma></u>	<u>GC-R</u>
<u>Characteristics</u>			
n	61		35
Mean age (yr)	43 \pm 16		54 \pm 19
Sex ratio (M/F)	30/70		20/80
Mean dose GC (μ g/day)	450 (200-800)		1,610 (1,000-2000)
FVC (% predicted) liters	84 \pm 19 3.8 \pm 1.0		75 \pm 15 2.2 \pm 0.8
FEV1 (% predicted) liters	82 \pm 20 3.2 \pm 1.0		81 \pm 8 3.3 \pm 0.3
FEV1/FVC ratio	70 \pm 10		72 \pm 12
Positive skin tests	54%		31%
MCh challenge (mg/L)	3.4 \pm 1.2		0.7 \pm 1.1
Total IgE (IU/L)	78		38

EP 1 428 023 B1

[0078] To ensure that the gene signals that most accurately discriminate GC responders from non-responders are captured, the study was expanded to include 96 patients (60 GC-S and 36 GC-R) and randomly split cohorts of GC-S and GC-R patients with and without cross validation were analyzed.

[0079] The results demonstrate that apart from genes listed in Tables 1, 2A and 2B, 15 additional genes, listed in Table 4A, were identified with the split cohort method and 4 genes, listed in Table 4B, by the cross validation method, which increased the predictive accuracy to 86% and 89% for the independent set and cross validation method, respectively. These genes play a key role in immune function, signal transduction processes and in apoptosis, all of which are highly relevant functions to the mechanisms of glucocorticoid responsiveness in asthma.

Table 4A

Induction Independent GenBank	Mean Resistant	StdDev	Mean Sensitive	StdDev
Z11697	1.8724782	0.33308947	1.58067	0.37548256
A1950382	1.3549194	0.22042978	1.030298	0.2444671
L78440	1.5259613	0.30956995	1.0863237	0.34783307
U19261	1.7525064	0.4171106	1.3473015	0.3836438
M80244	1.9161059	0.56795007	1.1932454	0.40928963
AB023205	2.1412642	0.9683697	1.55956	0.7753593
M58603	1.6857204	0.40931362	1.2413435	0.41113004
L05424	1.8005482	0.49951264	1.3440721	0.3783
R38263	1.4709008	0.3948905	1.2489537	0.32604253
L03411	1.2816724	0.18822539	1.1264083	0.25873253
D63789	1.6949914	0.78736067	1.2824732	0.57320374
X52425	1.4263631	0.3121133	1.1701844	0.32265002
L11329	1.6712576	0.45524144	1.2668103	0.39379898
U48807	2.149289	1.1046098	1.4393674	0.74329394
D79991	1.2781677	0.26072037	1.1245298	0.2646311

Table 4B

Induction Cross Validation GenBank	Mean Resistant	StdDev	Mean Sensitive	StdDev
AB009010	0.7325509	0.3312249	1.4231814	0.5362498
L78440	1.575848	0.33741876	1.1237841	0.30317423
U43185	2.1323266	0.40701827	1.4901624	0.52416813
AB020630	1.6486217	0.2412822	1.2882963	0.31817988

Example 2.

[0080] Apart from genes that demonstrated predictive accuracy in the around 80%, a large number of genes were found to be differentially expressed between the two patient groups. Of those, the genes listed in Tables 5A-E contributed to the predictive signal that was found. These genes were identified by applying the biological approach of the experimental set up (*i.e.*, genes upregulated or downregulated by IL-1 β /TNF α and reversed, at least in part by GC). The ultimate value of the genes in Tables 5A-5E with respect to glucocorticoid prediction will be known when these genes have been validated in a larger cohort of patients.

Table 5A.

Gene (Genbank, Map)	BASELINE EXPRESSION VALUES				P value
	GC resistant		GC sensitive		
	(n=30)		(n=66)		
	MEAN	SEM	MEAN	SEM	
Perforin 1 (M28393, 10q22)	6085.97	417.13412	5250.672	208.2762	0.026
Tumor necrosis factor receptor 2 (75kD) (M32315, 1p36.3-p36.2)	4043.2695	172.13469	3606.906	126.01189	0.047

EP 1 428 023 B1

(continued)

		BASELINE EXPRESSION VALUES				
		GC resistant		GC sensitive		
		(n=30)		(n=66)		
Gene (Genbank, Map)	MEAN	SEM	MEAN	SEM	P value	
LPS-induced TNF-alpha factor (AF010312, 16p13.3-p12)	4149.5264	339.81314	3394.3865	152.35988	0.018	
Defensin (L12691, 8)	15084.323	1903.8826	10559.057	1213.1726	0.045	
KIAA0542 protein (AB011114, 22q12.2)	4974.1274	1201.7789	8108.8516	872.0196	0.004	
Beta 2-microglobulin (S82297, 15q21-q22.2)	14026.682	3886.1045	28540.09	3071.3684	0.023	
Granzyme B precursor (M57888, 14q11.2)	3153.3257	372.53757	2298.1396	185.16092	0.01	
Thymosin, beta 4 (M17733, Xq21.3-q22)	-21235.469	2459.579	28695.383	2114.4946	0.042	
HLA class I heavy chain (X58536,6p21.3)	23571.922	2747.8547	31607.03	2214.8435	0.042	
Elongation factor EF-1-alpha (J04617,6q14)	18835.99	3337.1677	30409.002	2609.5315	0.034	
EST (AI526078, 20q13.3)	18714.736	1704.359	24808.363	1547.6501	0.043	
CD98 (M80244, 16q24.3)	798.8602	93.80168	642.308	47.76093	ns**	
Nuclear factor kappa-B DNA binding subunit (M58603,4q24)	1118.8152	131.4039	1171.212	94.15151	ns**	
Signal transducer and activator of transcription 4 (L78440, 2q32.2-q32.3)	2115.2861	177.11328	2072.295	94.97464	ns**	
Nef-associated factor 1 (AJ011896, 5q32-q33.1)	2744.2788	242.81891	2588.429	162.65399	ns**	
CD44 antigen (L05424, 11p13)	1856.1018	95.87001	1778.6385	104.54533	ns**	
(2'-5')oligoadenylate synthetase (AJ225089, 12q24.2)	337.42038	18.820648	383.4079	54.559353	ns**	
Interferon regulatory factor 7 isoform a (U53831, 11p15.5)	820.22296	40.891983	803.94714	37.65985	ns**	
Interferon-inducible protein p78 (M33882, 21q22.3)	692.43274	53.86486	769.75037	61.446373	ns**	
interferon inducible 1-8U gene (X57352, 11)	10073.882	1202.4331	10348.615	847.59143	ns**	
Interferon stimulated gene (20kD) (U88964,15q26)	2559.649	120.11462	2733.2332	64.77266	ns**	
Interferon-stimulated protein, 15 kDa (m13755, 1)	2001.0354	107.30703	2131.9282	121.11149	ns**	
CD44 isoform RC (AF098641,11p13)	1635.3041	92.87121	1546.3922	101.99627	ns**	
CD83 antigen (Z1 1697, 6p23)	4003.7795	509.4784	2995.624	343.3428	ns**	

EP 1 428 023 B1

(continued)

		BASELINE EXPRESSION VALUES				
		GC resistant		GC sensitive		
		(n=30)		(n=66)		
Gene (Genbank, Map)		MEAN	SEM	MEAN	SEM	P value
5	Interferon stimutable response element (U22970, 1p36)	1222.6351	87.984886	1198.6647	74.25269	ns**
10	TNF receptor-associated factor 1 (U19621, 9q33-q34)	1024.6047	76.8937	970.14984	68.22721	ns**
15	Adhesion molecule ninjurin 1 (U01512, 9q22)	952.9832	108.31899	819.72675	72.15633	ns**
	TNF receptor-associated factor 1 (U19261, 9q33-q34)	602.10754	55.548782	552.6948	36.47862	ns**
	Transcription factor ISGF-3 (M97936,2q32.2)	1047.2883	84.6747	1043.8727	51.559406	ns**
20	interleukin-7 receptor (AF043129, 5p13)	1293.5005	221.00233	1776.9689	196.31573	ns**
	Interleukin 8 (M28130, 4q13-q21)	9098.902	881.07416	7048.5723	759.5493	ns**
25	GRO2 oncogene (M36820,4q21)	3172.951	401.67627	2370.0527	298.47812	ns**
	Interferon-induced protein with tetratricopeptide repeats 1 (M24594, 10q25-q26)	242.70598	46.875942	299.46494	47.465668	ns**
30	interferon-induced protein with tetratricopeptide repeats 4 (AF026939, 10q24)	335.2246	98.50067	348.74557	38.996685	ns**
	Macrophage colony stimulating factor 1 (M37435, 1p21-p13)	3976.1692	148.23972	4297.3677	118.11726	ns**
35	Ras inhibitor (M37190, 20)	103.64886	51.292507	117.76897	47.070602	ns**
	Small inducible cytokine A2 (M28225, 17q11.2-q21.2)	176.61205	47.855843	356.2777	170.02516	ns**
40	Cyclooxygenase-2 (U04636, 1q25.2-q25.3)	1282.8784	245.26799	976.03503	140.18762	ns**
	Transforming growth factor, beta receptor II (70-80kD) (D50683,3p22)	665.96454	39.320732	684.6929	31.560013	ns**
45	Cyclic AMP-responsive element modulator beta isoform (S68134, 10p12.2-p11.1)	571.4737	76.16772	583.9707	86.563515	ns**
	Interleukin 1 receptor antagonist (X52015, 2q14.2)	2650.151	386.6683	2049.2832	280.7141	ns**
50	Interleukin 6 (X04430, 7p21)	218.93637	79.35666	372.81815	181.83186	ns**
	Nef-associated factor 1 (AJ011896, 5q32-q33.1)	1628.6475	86.34723	1530.4146	92.62164	ns**
55	Small inducible cytokine A7 (X72308, 17q11.2-q12)	121.53884	8.26777	149.0766	20.418268	ns**
	Small inducible cytokine A2 (M26683, 17q11.2-q21.1)	227.42393	82.810646	527.6503	265.94244	ns**

EP 1 428 023 B1

Table 5B.

		IL-1/TNF-INDUCED EXPRESSION VALUES				
		GC resistant		GC sensitive		
		(n=30)		(n=66)		
Gene		MEAN	SEM	MEAN	SEM	P value
5	Perforin 1	5614.334	394.1253	4072.83	214.3326	< 0.0001
10	Tumor necrosis factor receptor 2 (75kD) (M32315, 1p36.3-p36.2)	10050.87	586.6837	7283.63	440.3941	0.0004
15	LPS-induced TNF-alpha factor (AF010312, 16p13.3-p12)	5459.401	351.0782	4387.12	170.5484	0.001
	Defensin (L12691, 8)	8846.362	1376.016	4290.63	844.5093	0.009
	KIAA0542 protein (AB01114, 22q12.2)	2017.074	946.1356	8857.14	1124.027	0.01
	Beta 2-microglobulin (S82297, 15q21-q22.2)	6333.009	3069.832	28707	3191.635	0.01
20	Granzyme B precursor (m57888, 14q11.2)	1746.806	232.9423	957.865	111.5382	0.016
	Thymosin, beta 4 (ml7733, Xq21.3-q22)	18450.77	2309.75	31440.1	2229.507	0.02
	HLA class I heavy chain (X58536, 6p21.3)	17262.1	2654.092	34519.5	2601.363	0.02
25	Elongation factor EF-1-alpha (104617, 6q14)	15154.59	2826.921	35443.6	2869.217	0.03
	EST (AI526078, 20q13.3)	15054.68	1528.611	25434.4	1606.93	0.03
	CD98 (M80244, 16q24.3)	5682.373	365.3485	4127.05	234.5741	< 0.0001
30	Nuclear factor kappa-B DNA binding subunit (MS8603, 4q24)	7222.51	338.3345	5655.56	215.4376	< 0.0001
	Signal transducer and activator of transcription 4 (178440, 2q32.2-q32.3)	7142.53	347.9236	5567.9	216.9498	< 0.0001
	Nef-associated factor 1 (AJ011896, 5q32.q33.1)	10042.95	525.3091	8829.79	312.5778	< 0.0001
35	CD44 antigen (L05424, 11p13)	6209.805	263.4941	5019.8	163.5661	< 0.0001
	(2'-5')oligoadenylate synthetase (AJ225089, 12q24.2)	3611.673	259.3965	1756.89	225.7237	< 0.0001
40	Interferon regulatory factor 7 isoform a (U53831, 11p15.5)	2841.19	237.6626	1681.36	160.3967	< 0.0001
	Interferon-inducible protein p78 (M33882, 21q22.3)	4426.94	533.6766	1780.97	325.196	< 0.0001
	interferon inducible 1-8U gene (X57352, 11)	5763.147	1332.153	425533	398.2605	< 0.0001
45	Interferon stimulated gene (20kD) (U88964, 5q26)	6082.724	624.8853	4290.37	330.7253	< 0.0001
	Interferon-stimulated protein, 15kDa (M13755, 1)	10922.46	1395.841	4956.73	622.4254	< 0.0001
	CD44 isoform RC (AF09861, 11p13)	5146.13	287.7974	3879.53	144.6777	< 0.0001
	CD83 antigen (Z11697, 6p23)	9242.953	350.8769	7918.24	339.6289	< 0.0001
50	Interferon stimutable response element (U22970, 1p36)	3203.982	495.8736	1631.66	281.1401	0.0001
	TNF receptor-associated factor 1 (U19261, 9q33-q34)	5005.59	208.4321	4098.21	179.4619	0.0002
55	Adhesion molecule ninjurin 1 (U91512, 9q22)	3715.181	268.8716	3157.01	122.5063	0.0003
	TNF receptor-associated factor 1 (U19261, 9q33-q34)	2364.498	96.09024	2096.81	78.13522	0.0007
	Transcription factor ISGF-3 (M97936, 2q32.2)	1760.116	279.2687	1217.01	143.1016	0.014

EP 1 428 023 B1

(continued)

		IL-1/TNF-INDUCED EXPRESSION VALUES				
		GC resistant		GC sensitive		
		(n=30)		(n=66)		
Gene		MEAN	SEM	MEAN	SEM	P value
interleukin-7 receptor (AF043129, 5p13)		2027.312	184.3109	2307.75	174.5007	0.02
Interleukin 8 (M28130, 4q13-q21)		13608.48	1609.251	17969.3	1448.031	0.02
GRO2 oncogene (M35820, 4q21)		6961.234	707.7638	5737.08	415.0885	0.001
Interferon-induced protein with tetratricopeptide repeats 1 (M24594, 10q25-q26)		1572.879	319.6902	713.604	178.921	0.009
interferon-induced protein with tetratricopeptide repeats 4 (AF026939, 10q24)		1759.121	304.6315	828.759	214.6707	0.005
Macrophage colony stimulating factor 1 (m37435, 1p21-p13)		3364.842	117.2874	4029.78	110.6731	0.04
Ras inhibitor (m37190, 20)		1611.356	177.1993	860.944	120.8235	0.0003
Small inducible cytokine A2 (M28225, 17q11.2-q21.1)		10048.81	755.9874	8072.22	495.8341	0.007
Cyclooxygenase-2 U04636, 1q25.2-q25.3)		3765.675	255.1504	2568.34	233.2174	<0.0001
Transforming growth factor, beta receptor II (70-80kD) (D50683, 3p22)		740.8099	79.60563	844.935	86.39076	0.04
Cyclic AMP-responsive element modulator beta isoform (S681634, 10p12.1-p11.1)		6531.873	386.0808	5686.2	268.2961	0.017
Interleukin 1 receptor antagonist (X52015, 2q14.2)		13211.16	1126.502	9535.15	642.7608	<0.0001
Interleukin 6 (X04430, 7p21)		13482.49	852.9056	10099.2	625.5049	<0.0001
Nef-associated factor 1 (AJ011896, 5q32-q33.1)		5100.91	671.4467	4788.67	294.8366	0.004
Small inducible cytokine A7 (X72308, 17q11.2-q12)		766.0895	165.4574	686.035	91.85867	0.02
Small inducible cytokine A2 (M26683, 17q11.2-q21.1)		17108.01	1043.492	12566.7	742.7468	0.003

Table 5C.

		L-1/TNF-INDUCED EXPRESSION VALUES WITH GC				
		GC resistant		GC sensitive		
		(n=30)		(n=66)		
Gene (Genbank, Map)		MEAN	SEM	MEAN	SEM	P value
Perforin 1 (M28393, 10q22)		5932.6836	324.4973	4613.415	214.7653	0.0007
Tumor necrosis factor receptor 2 (75kD) (M32315, 1p36.3-p36.2)		7508.2896	451.0622	6416.635	365.9207	0.0731
LPS-induced TNF-alpha factor (AF010312, 16p13.3-p12)		5786.222	306.7707	4946.478	171.3137	0.0127
Defensin (L12691, 8)		11441.772	1372.689	7818.661	922.0382	0.0251
KIAA0542 protein (AB011114, 22q12.2)		5714.3643	1558.592	9333.106	1256.301 1	0.0201
Beta 2-microglobulin (S82297, 1Sq21-q22.2)		13301.895	2780.221	30811.06	3742.183	0.0027
Granzyme B precursor (M57888, 14q11.2)		1877.4227	216.4729	1227.949	107.5656	0.003
Thymosin, beta 4 (M17733, Xq21.3-q22)		19120.795	1911.539	26315.6	1943.828	0.019

EP 1 428 023 B1

(continued)

		L-1/TNF-INDUCED EXPRESSION VALUES WITH GC				
		GC resistant		GC sensitive		
		(n=30)		(n=66)		
Gene (Genbank, Map)		MEAN	SEM	MEAN	SEM	P value
	HLA class I heavy chain (X58536, 6p21.3)	22299.861	2913.894	34067.19	3096.341	0.0145
5	Elongation factor EF-1-alpha (J04617, 6q14)	18670.865	3364.731	33042.49	3553.801	0.0015
10	EST (AI526078, 20q13.3)	17650.287	1587.158	25903.59	1771.242	0.0032
	CD98 (M80244, 16q24.3)	5768.97	406.1578	4463.957	177.7024	0.0011
15	Nuclear factor kappa-B DNA binding subunit (M58603, 4q24)	6144.28	307.2589	5010.971	179.1457	0.0012
	Signal transducer and activator of transcription 4 (L78440, 2q32.2-q32.3)	6800.764	284.0342	5744.643	184.6763	0.0021
20	Nef-associated factor 1 (AJ011896, 5q32-q33.1)	9655.332	495.7066	8075.491	259.7791	0.0026
	CD44 antigen (L05424, 11p13)	4486.082	168.28	3818.656	133.3167	0.0042
25	(2'-5')oligoadenylate synthetase (AJ225089, 12q24.2)	1667.9843	164.3503	1064.525	130.1923	0.0054
	Interferon regulatory factor 7 isoform a (US3831, 11p15.5)	2292.962	205.8358	1611.122	146.0624	0.007
30	Interferon-inducible protein p78 (M33882, 21q22.3)	2946.7205	383.2516	-1801.234	251.7923	0.0099
	interferon inducible 1-8U gene (X57352, 11)	8983.514	1053.469	6070.849	616.6636	0.0109
35	Interferon stimulated gene (20kD) (U88964, 15q26)	6519.748	401.4738	5387.727	239.7823	0.012
	Interferon-stimulated protein, 15kDa (ml3755,1)	6071.2886	915.0679	3757.143	548.3279	0.021
40	CD44 isoform RC (AF09864I,11p13)	3719.6047	178.2906	3236.746	115.0394	0.0225
	CD83 antigen (Z11697, 6p23)	4931.093	295.5049	4274.713	230.1791	0.0354
45	Interferon stimutable response element (U22970,1p36)	2737.275	346.7752	1615.407	174.2281	0.011
	TNF receptor-associated factor 1 (U19621, 9q33-q34)	3581.1409	185.2364	2935.34	116.3565	0.0027
50	Adhesion molecule ninjurin 1 (U01512, 9q22)	3173.9238	222.309	2405.162	110.9695	0.0008
	TNF receptor-associated factor 1 (U19261, 9q33-q34)	1790.2013	89.11578	1506.127	60.22232	0.0085
55	Transcription factor ISGF-3 (M97936, 2q32.2)	1490.314	178.5814	1048.989	102.7824	0.0212
	interleukin-7 receptor (AF043129, 5p13)	3344.87	271.804	4565.661	279.8599	0.0057
	Interleukin 8 (M28130, 4q13-q21)	12848.457	926.3713	14222.37	992.1271	ns**
	GRO2 oncogene (M36820, 4q21)	5052.562	564.9373	4225.244	349.2652	ns**
	Interferon-induced protein with tetratricopeptide repeats 1 (M24594, 10q25-q26)	1094.8508	209.4019	672.1904	127.6253	ns**

EP 1 428 023 B1

(continued)

L-1/TNF-INDUCED EXPRESSION VALUES WITH GC					
		GC resistant		GC sensitive	
		(n=30)		(n=66)	
Gene (Genbank, Map)	MEAN	SEM	MEAN	SEM	P value
interferon-induced protein with tetratricopeptide repeats 4 (AF026939, 10q24) -	1109.5538	162.5891	743.2253	123.5186	ns**
Macrophage colony stimulating factor 1 (M37435, 1p21-p13)	3624.9211	172.8444	3983.53	132.856	ns**
Ras inhibitor (M37190, 20)	1615.0812	183.4838	1285.366	118.4882	ns**
Small inducible cytokine (M28225, 17q11.2-q21.2)	3485.5967	409.9117	2908.787	418.8578	ns**
Cyclooxygenase-2 (U04636, lq25.2-q25.3)	1004.8341	151.2995	1012.272	148.0441	ns**
Transforming growth factor, beta receptor II (70-80kD) (D50683,3p22)	998.71014	94.93384	1135.562	93.18079	ns**
Cyclic AMP-responsive element modulator beta isoform (S68134, 10p12.2-p11.1)	4027.2566	290.9312	4019.365	190.1472	ns**
Interleukin 1 receptor antagonist (X52015, 2q14.2)	4454.89	509.2246	3887.395	543.3725	ns**
Interleukin 6 (X04430, 7p21)	6479.466	737.0165	5473.95	617.1881	ns**
Nef-associated factor 1 (AJ011896, 5q32-q33.1)	5710.245	619.1145	5202.576	322.5588	ns**
Small inducible cytokine A7 (X72308, 17q11.2-q12)	283.77304	23.31367	334.6954	61.4575	ns**
Small inducible cytokine A2 (M26683,17q11.2-q21.1)	5850.6055	630.0103	4954.649	646.567	ns**

Table 5D.

Genbank	Systematic	Common	Description	Map
AL0499 63	40456_at		Source: <i>Homo sapiens</i> mRNA; cDNA DKFZp564A132 (from clone DKFZp564A132)	4
S68134	32066_g_at	CREM	CREM- β	10p12.1-p11.1
M58603	1378_g_at	KBF1	Human nuclear factor kappa-B DNA binding subunit (NF- κ B) mRNA, complete cds	4q24
M13755	1107_s_at	ISG15	17-kDa protein	1
L31584	1097_s_at	EBI1 BLR2 CMKBR7	Source: Human G-protein-coupled receptor (EBI 1) gene exon 3	17q 12-q21.2
AF02237 36	100_at 5	VEGFA	<i>H. sapiens</i> vascular endothelial growth factor mRNA, complete cds.	6p12

EP 1 428 023 B1

(continued)

	SET1/2				
5	Genbank	Systematic	Common	Description	Map
	M58603	1377_at	KBF 1	Human nuclear factor kappa-B DNA binding subunit(NF- κ B) mRNA, complete cds	4q24
10	M58603	38438_at	KBF1	Human nuclear factor kappa-B DNA binding subunit (NF- κ B) mRNA, complete cds	4q24
15	U88964	33304_at	HEM45	low level estrogen- modulated; deduced ORF detected by anti-peptide antisera	15q26
	L08177	931_at	EBI2	Epstein-Barr virus induced gene 2 (lymphocyte-specific G protein-coupled receptor)	13
20	D67031	33102_at	ADDL	Source: <i>H. sapiens</i> ADDL mRNA for adducin-like protein, complete cds.	10q24.2-q24.3
	AL0219	36711_at	HS506A DKFZP586A1024	C22orf5	22q12
25	V01512	1916_s_at	c-fos	Source: Human cellular oncogene c-fos (complete sequence).	14q24.3
	X59417	36122_at	IOTA PROS27	Source: <i>H. sapiens</i> PROS-27 mRNA	14q 13
30					
		HH BASELINE			
		Rest (*)S			
35	Genbank	Systematic	Common	Description	Map
	X02910	1852_at	TNFA DIF TNFSF2	Tumor necros factor	6p21.3
	M15330	39402_at	IL1B	Source: Human interleukin 1- β (IL1B) mRNA, complete cds	2q14
40	J04130	36674_at	MIP-1-BETA	SCYA4, MIP1B	17q21
	M28130	1369_s_at	IL8	Source: Human interleukin 8 (IL8) gene, complete cds	4q13-q21
	D90144	36103_at	MIPA SCYA3	MIP1A	17q11-q21
45	S81914	1237_at	IEX-1	radiation-inducible immediate-early gene	6p21.3
	L11329	1292_at	PAC-1 PAC1	PAC-1; putative	2q11
50	M57888	32370_at	CSPB CTLA1 CCPI	Source: Human (clone lambda B34)	14q11,2
			CGL-1 CSP-B	cytotoxic T-lymphocyte-associated serine esterase 1 (CTLA1) gene complete cds	
55	M16441	259 s at	TNFSF1 TNFB LT	lymphotoxin	6p21.3
	X68277	1005_at	CL 100	Source: <i>H. sapiens</i> CL 100 mRNA for protein tyrosine phosphatase	5q34

EP 1 428 023 B1

(continued)

	SET1/2				
5	Genbank	Systematic	Common	Description	Map
	X78992	32588_s_at	ERF2 TIS11D	Source: <i>H.sapiens</i> ERF-2 mRNA	2
	L12691	31506_s_at	DEF3 HNP-3	defensin	8
10	Z11697	37536_at	CD83	a cell-surface molecule expressed by interdigitating reticulum cells, Langerhans cells and activated lymphocytes. A member of immunoglobulin superfamily	6p23
15	M69199	38326_at	G0S2	Source: Human G0S2 protein gene, complete cds	1q32.2-q41
	M17017	35372_r_at	MDNCF SCYB8 IL8	IL8	4q13-q21
20	U09937	189_s_at	URKR UPAR CD87	Source: Human urokinase-type plasminogen receptor, exon 7	19q13
25	U27467	2002_s_at	BCL2L5 BFL1 GRS HBPA1	Bcl-2 related; similar to mouse hemopoietic-specific early-response protein, Swiss-Prot Accession Number Q07440; similar to mouse transforming protein Bcl-2- β Swiss-Prot Accession Number P10418; Method: conceptual translation	15q24.3
30	AL0223 15	37456_at	dJ 117715.1	supported by predicted exons match: ESTs: Em:AA316883	22q13.1
	M59465	595_at	TNFA1P2 A20	tumor necrosis factor alpha	6
				inducible protein	
35	U04636	1069_at	hCox-2 -	Source: <i>H. sapiens</i> cyclooxygenase-2 (hCox-2) gene, complete cds	1q25.2-q25.3

40

Table 5E.

	Genbank	Common	Product	Keywords	Custom field 2
	AL049963				D4S1572
45	568134	CREM	cyclic AMP-responsive element modulator		D10S208
			beta isoform		
50	M58603	KBF1	nuclear factor kappa-B DNA binding subunit	nuclear factor kappa-B DNA	D4S1572
				binding subunit	
55	M13755	ISG15	interferon-stimulated protein, 15 kDa	interferon; interferon-	D8S264
				inducible protein	
	L31584	EBI1 BLR2 CMKBR7 7	chemokine (C-C motif) receptor 7	G protein-coupled receptor	#N/A

EP 1 428 023 B1

(continued)

	Genbank	Common	Product	Keywords	Custom field 2
5	AF022375	VEGFA	vascular endothelial growth factor		D6S282
	M58603	KBF1	nuclear factor kappa-B DNA binding subunit	nuclear factor kappa-B DNA binding subunit	D4S1572
10	M58603	KBF1	nuclear factor of kappa light polypeptide gene enhancer in B-cells 1 (p105)	nuclear factor kappa-B DNA binding subunit	D4S1572
15	U88964	HEM45	interferon stimulated gene 20kD		#N/A
	L08177	EBI2	Epstein-Barr virus induced gene 2 (lymphocyte-specific G protein-coupled receptor)		D13S129 8
20	D67031	ADDL	adducin 3, isoform a	adducin-like protein; ADDL	D10SS97
25	AL021977	HS506A	chromosome 22 open reading frame 5	HTG; CpG island; MAFF	#N/A
		DKFZP586A 1024			
30	V01512	c-fos	v-fos FBJ murine osteosarcoma viral oncogene homolog	oncogene	#N/A
35	X59417	IOTA PROS27	prosomeal P27K protein	PROS-27 gene; prosomeal consensus; prosomeal protein; rRNA-binding protein	#N/A
	Genbank	Common	Product	Keywords	Custom Field 2
40	X02910	TNFA DIF TNFSF2	tumor necrosis factor (cachectin)	signal peptide; tumor necrosis factor	#N/A
	M1S330	IL1B	interleukin 1 β	interleukin-1 β	D2S160
	J04130	MIP-1-BETA	small inducible cytokine A4 (homologous to mouse Mip-1 β)	act2 gene; immune activation gene	D17S933
45	M28130	IL8	interleukin 8	interleukin 8	#N/A
	D90144	MIPA SCYA3	small inducible cytokine A3 (homologous to mouse Mip-1 α)	LD78; LD78 alpha; cytokine; inducible gene family; secreted peptide	#N/A
50	S81914	IEX-1	immediate early response 3		D6S1660
55	L11329	PAC-1 PAC1	protein tyrosine phosphatase	protein-tyrosine phosphatase; tyrosine phosphatase	D2S2264

(continued)

Genbank	Common	Product	Keywords	Custom field 2
M57888	CSPB CTLA1 CCPI CGL-1 CSP-B	granzyme B precursor	cytotoxic T-lymphocyte-associated serine esterase 1	#N/A
M16441	TNFSF1 TNFB LT	lymphotoxin alpha precursor	lymphotoxin; tumor necrosis factor	#N/A
X68277	CL 100	protein-tyrosine phosphatase	tyrosine phosphatase	#N/A
X78992	ERF2 TIS11D	butyrate response factor 2 (EGF-response factor 2)	ERF-2 gene	D2S2259
L12691	DEF3 HNP-3	defensin, alpha 3, neutrophil-specific		#N/A
Z11697	CD83	CD83 antigen (activated B lymphocytes, immunoglobulin superfamily)	EB15 gene; immunoglobulin superfamily	D6S259
M69199	G0S2	putative lymphocyte G0/G1 switch gene	G0S2 protein	#N/A
M17017	MDNCF SCYB8 IL8	interleukin 8	beta-thromboglobulin	D4S3042
U09937	URKR UPAR CD87	plasminogen activator, urokinase receptor		#N/A
U27467	BCL2L5 BFL1 GRS HMPA1	BCL2-related protein A1		D15S100 5
AL022315	dJ1177I5.1	lectin, galactoside-binding, soluble, 2 (galectin 2)	HTG; CpG island; galectin; lectin LGALS2; MSE55	#N/A
M59465	TNFAIP2 A20	tumor necrosis factor, alpha-induced protein 3		#N/A
U04636	hCox-2	cyclooxygenase-2		#N/A

[0081] While this invention has been particularly shown and described with references to preferred embodiments thereof, it will be understood by those skilled in the art that various changes in form and details may be made therein without departing from the scope of the invention encompassed by the appended claims.

Claims

1. A method for diagnosing responders from non-responders to a glucocorticoid drug for treating an inflammatory disease **characterized by** elevated levels of $TNF\alpha$ and $IL-1\beta$, comprising:

- a) providing a sample of cells from a human patient, wherein the sample is not exposed to the drug;
- b) optionally inducing a pro-inflammatory-like state by treating the sample with specific cytokines/mediators;
- c) obtaining a gene expression profile from the sample; and
- d) comparing the gene expression profile of the sample with a reference gene expression profile indicative of responsiveness to the drug and/or a reference gene expression profile indicative of non-responsiveness to the drug obtained from one or more patients who are non-responsive to the drug,

wherein the expression profile comprises expression values for one or more genes listed in Tables 1, 2A, 2B, 4A, 4B and 5A-5E, and

wherein similarity between the sample expression profile and a reference expression profile predicts whether the patient is a responder or non-responder to the drug for treating said inflammatory disease.

- 5 2. The method of claim 1, wherein the inflammatory disease is selected from the group consisting of asthma, atopy, rheumatoid arthritis, juvenile chronic arthritis, psoriasis, inflammatory bowel disease and sepsis,
3. The method of claim 2, wherein atopy is an atopic inflammatory disease selected from the group consisting of rhinitis, conjunctivitis, dermatitis and eczema.
- 10 4. The method of claim 1, further comprising exposing the sample to the drug for treating the inflammatory disease prior to obtaining the gene expression profile of the sample.
5. The method of claim 1, wherein the sample of cells is derived from peripheral blood mononuclear cells or neutrophils.
- 15 6. The method of claim 1, wherein the sample is obtained via biopsy from synovial membrane or airway smooth muscle.
7. The method of claim 1, wherein the gene expression profile of the sample is obtained using a hybridization assay to oligonucleotides contained in a microarray.
- 20 8. The method of claim 1, wherein the gene expression profile of the sample is obtained by detecting the protein products of the informative genes.
9. The method of claim 1, wherein the reference expression profile is that of cells derived from patients that do not have asthma.
- 25 10. The method of claim 1, wherein the reference expression profile is that of cells derived from patients that do not have an inflammatory disease.

30 Patentansprüche

- 35 1. Verfahren zum Diagnostizieren von Respondern gegenüber Non-Respondern auf ein Glucocorticoid-enthaltendes Arzneimittel zur Behandlung von einer entzündlichen Erkrankung, die durch erhöhte Konzentrationen von $TNF\alpha$ und $IL-1\beta$ **gekennzeichnet** ist, umfassend:
 - a) Bereitstellen einer Probe aus Zellen von einem menschlichen Patienten, wobei die Probe nicht dem Arzneimittel ausgesetzt ist;
 - b) gegebenenfalls Induzieren eines einer Proinflammation ähnlichen Zustandes durch Behandlung der Probe mit spezifischen Cytokinen/Mediatoren;
 - 40 c) Erlangung eines Genexpressionsprofils von der Probe; und
 - d) Vergleich des Genexpressionsprofils von der Probe mit einem Referenz-Genexpressionsprofil, welches als Beispiel für die Reaktionsfähigkeit gegenüber dem Arzneimittel dient und/oder mit einem Referenz-Genexpressionsprofil, das als Beispiel für die Nicht-Reaktionsfähigkeit gegenüber dem Arzneimittel dient, welches von einem oder mehreren Patienten erhalten wurde, die nicht auf das Arzneimittel angesprochen haben.
- 45 wobei das Expressionsprofil die Expressionswerte für eines oder mehrere der in den Tabellen 1, 2A, 2B, 4A, 4B und 5A - 5E aufgelisteten Gene umfasst, und wobei die Ähnlichkeit zwischen dem Expressionsprofil der Probe und einem Referenz-Expressionsprofil voraussagt, ob der Patient ein Responder oder ein Non-Responder für das Arzneimittel zur Behandlung der entzündlichen Erkrankung ist.
- 50 2. Verfahren nach Anspruch 1, wobei die entzündliche Erkrankung ausgewählt ist aus der Gruppe bestehend aus Asthma, Atopie, Rheumatoide Arthritis, juvenile chronische Arthritis, Schuppenflechte, Inflammatory Bowel Disease und Sepsis.
- 55 3. Verfahren nach Anspruch 2, wobei Atopie eine atopische, entzündliche Erkrankung ist, die aus der Gruppe bestehend aus Rhinitis, Konjunktivitis, Dermatitis und Ekzem ausgewählt ist.

EP 1 428 023 B1

4. Verfahren nach Anspruch 1, ferner umfassend das Inkontaktbringen der Probe mit dem Arzneimittel zur Behandlung der entzündlichen Erkrankung vor dem Erhalten des Genexpressionsprofils von der Probe.
- 5 5. Verfahren nach Anspruch 1, wobei die Probe der Zellen aus mononukleären Zellen des peripheren Blutes oder Neutrophilen stammt.
6. Verfahren nach Anspruch 1, wobei die Probe mittels Biopsie aus der Synovialmembran oder der glatten Atemwegsmuskulatur erhalten wurde.
- 10 7. Verfahren nach Anspruch 1, wobei das Genexpressionsprofil von der Probe unter Verwendung von einem Hybridisierungstest an Oligonukleotiden erhalten wird, die in einem Microarray enthalten sind.
8. Verfahren nach Anspruch 1, wobei das Genexpressionsprofil der Probe durch Nachweisen der Proteinprodukte von den informativen Genen erhalten wird.
- 15 9. Verfahren nach Anspruch 1, wobei das Referenz-Genexpressionsprofil dasjenige aus den Zellen von Patienten ist, die kein Asthma aufweisen.
- 20 10. Verfahren nach Anspruch 1, wobei das Referenz-Genexpressionsprofil dasjenige aus den Zellen von Patienten ist, die keine entzündliche Erkrankung aufweisen.

Revendications

- 25 1. Procédé destiné à diagnostiquer les personnes sensibles à un glucocorticoïde des personnes insensibles à un glucocorticoïde pour le traitement d'une maladie inflammatoire **caractérisée par** des niveaux élevés de $\text{TNF}\alpha$ et d' $\text{IL-1}\beta$, qui comprend :
 - 30 a) la fourniture d'un échantillon de cellules d'un patient humain, dans lequel l'échantillon n'est pas exposé au médicament ;
 - b) l'induction facultative d'un état de type pro-inflammatoire par traitement de l'échantillon avec des cytokines/médiateurs spécifiques ;
 - c) l'obtention d'un profil d'expression génique de l'échantillon, et
 - 35 d) la comparaison du profil d'expression génique de l'échantillon à un profil d'expression génique de référence indiquant une sensibilité au médicament et/ou un profil d'expression génique de référence indiquant une insensibilité au médicament obtenu d'un ou plusieurs patients qui sont insensibles au médicament,

dans lequel le profil d'expression comprend des valeurs d'expression pour un ou plusieurs des gènes listés dans les tableaux 1, 2A, 2B, 4A, 4B et 5A à 5E ; et

 - 40 dans lequel une similarité entre le profil d'expression d'un échantillon et un profil d'expression de référence prédit si le patient est sensible ou insensible au médicament destiné au traitement ladite maladie inflammatoire.
- 45 2. Procédé selon la revendication 1, dans lequel la maladie inflammatoire est choisie dans le groupe constitué par : l'asthme, l'atopie, la polyarthrite rhumatoïde, l'arthrite juvénile chronique, le psoriasis, l'affection abdominale inflammatoire et une sepsie.
 3. Procédé selon la revendication 2, dans lequel l'atopie est une maladie inflammatoire atopique choisie dans le groupe constitué par : la rhinite, la conjonctivite, la dermatite et l'eczéma.
 - 50 4. Procédé selon la revendication 1, comprenant en outre l'exposition de l'échantillon au médicament destiné au traitement de la maladie inflammatoire avant l'obtention du profil d'expression génique de l'échantillon.
 5. Procédé selon la revendication 1, dans lequel l'échantillon de cellules est dérivé de cellules mononucléaires du sang périphérique ou de neutrophiles.
 - 55 6. Procédé selon la revendication 1, dans lequel l'échantillon est obtenu par biopsie de la membrane synoviale ou des muscles lisses des voies respiratoires.

EP 1 428 023 B1

7. Procédé selon la revendication 1, dans lequel le profil d'expression génique de l'échantillon est obtenu en utilisant un test d'hybridation aux oligonucléotides contenus dans une micro-puce.

5 8. Procédé selon la revendication 1, dans lequel le profil d'expression génique de l'échantillon est obtenu par détection des produits protéiques des gènes informatifs.

9. Procédé selon la revendication 1, dans lequel le profil d'expression de référence est celui de cellules provenant de patients qui ne souffrent pas d'asthme.

10 10. Procédé selon la revendication 1, dans lequel le profil d'expression de référence est celui de cellules provenant de patients qui ne souffrent pas d'une maladie inflammatoire.

15

20

25

30

35

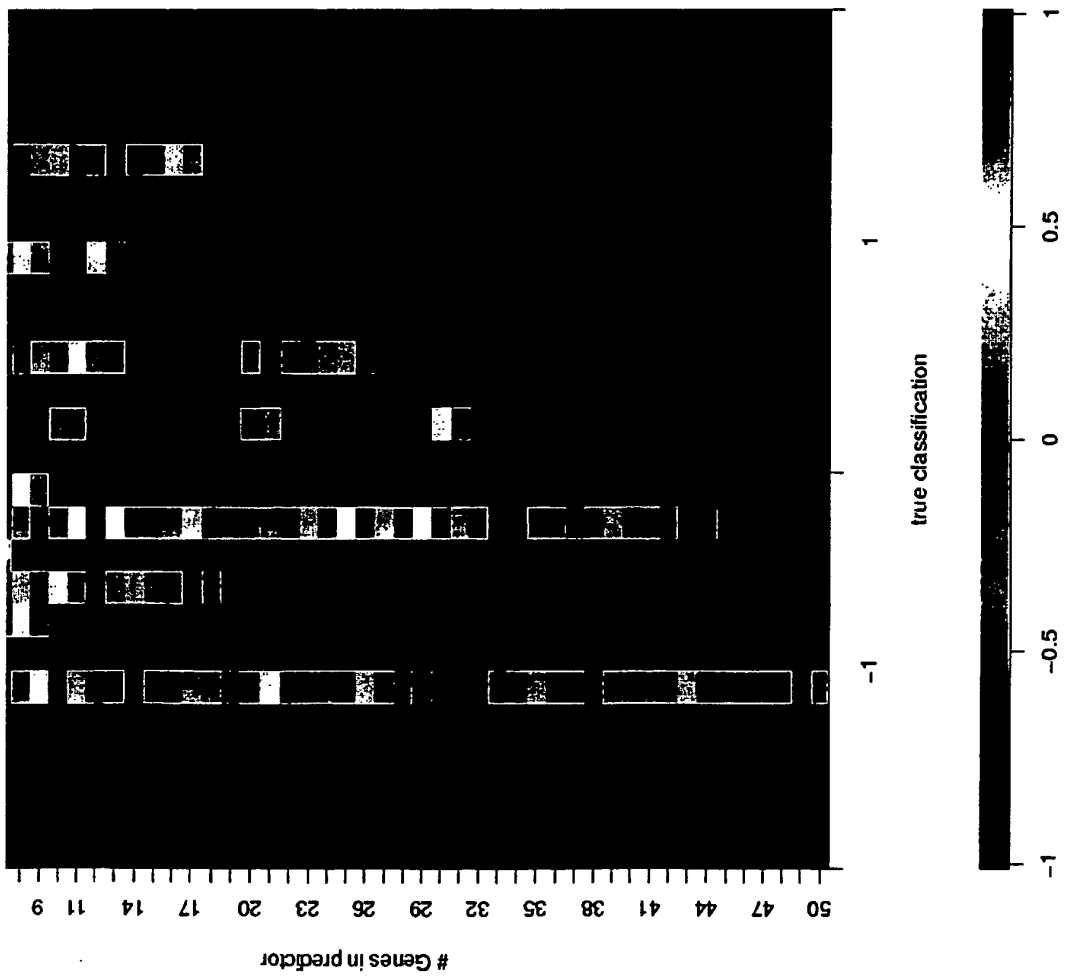
40

45

50

55

Fig. 1



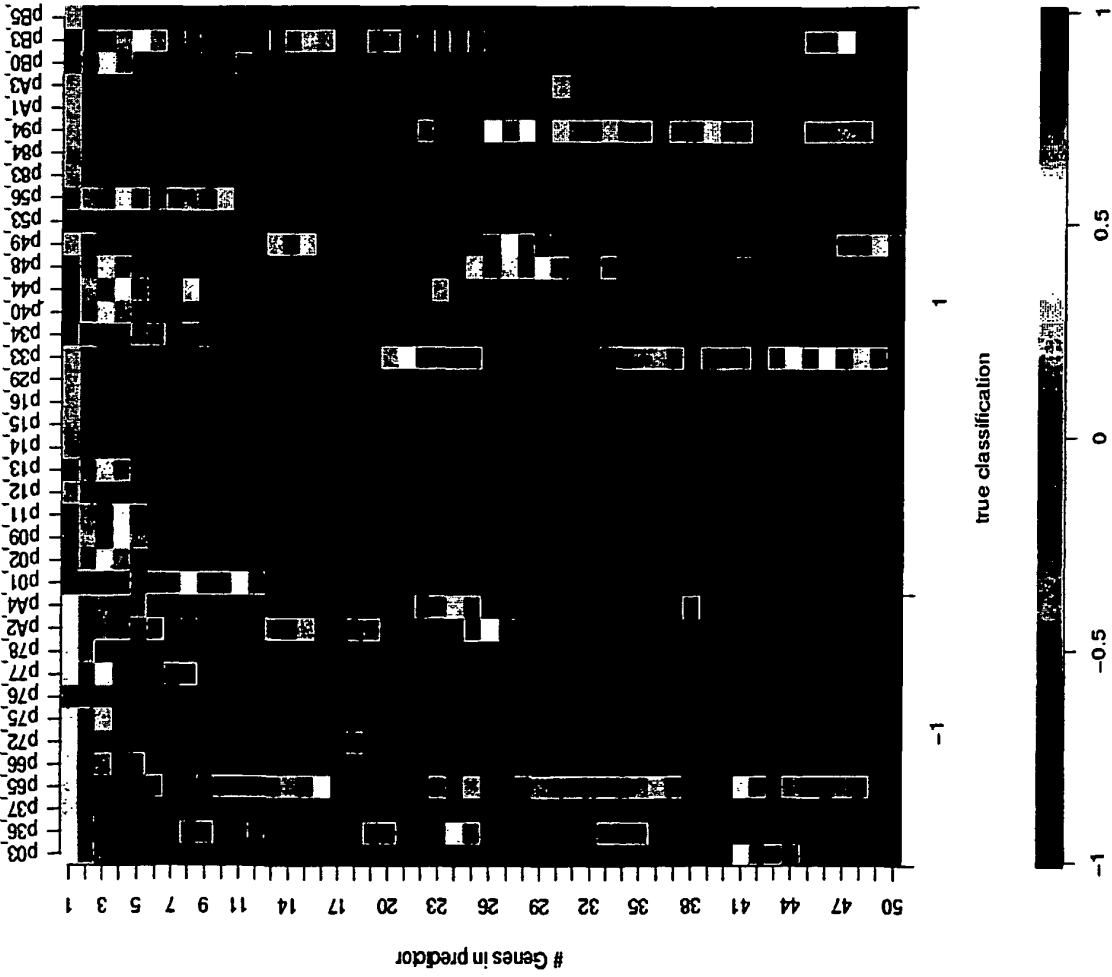
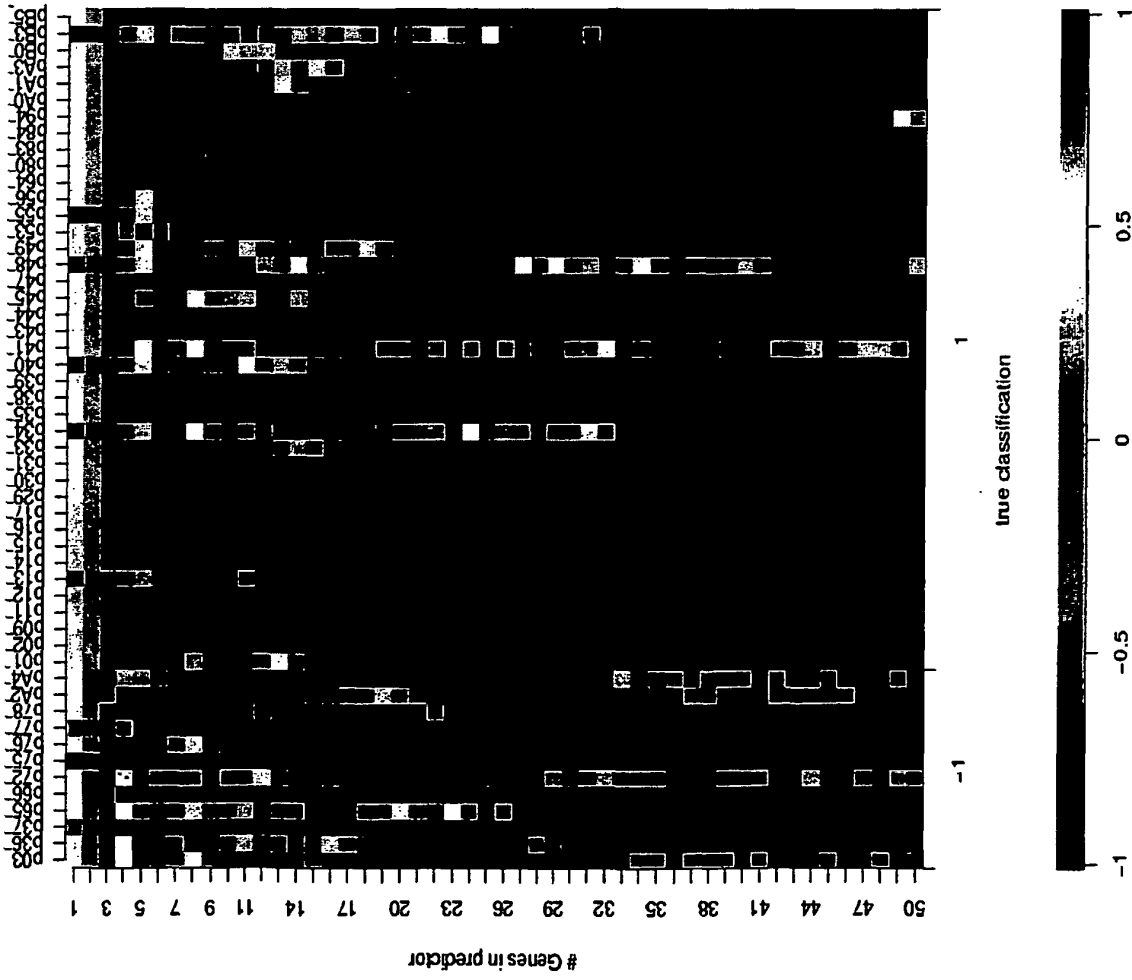


Fig. 2

Fig. 3



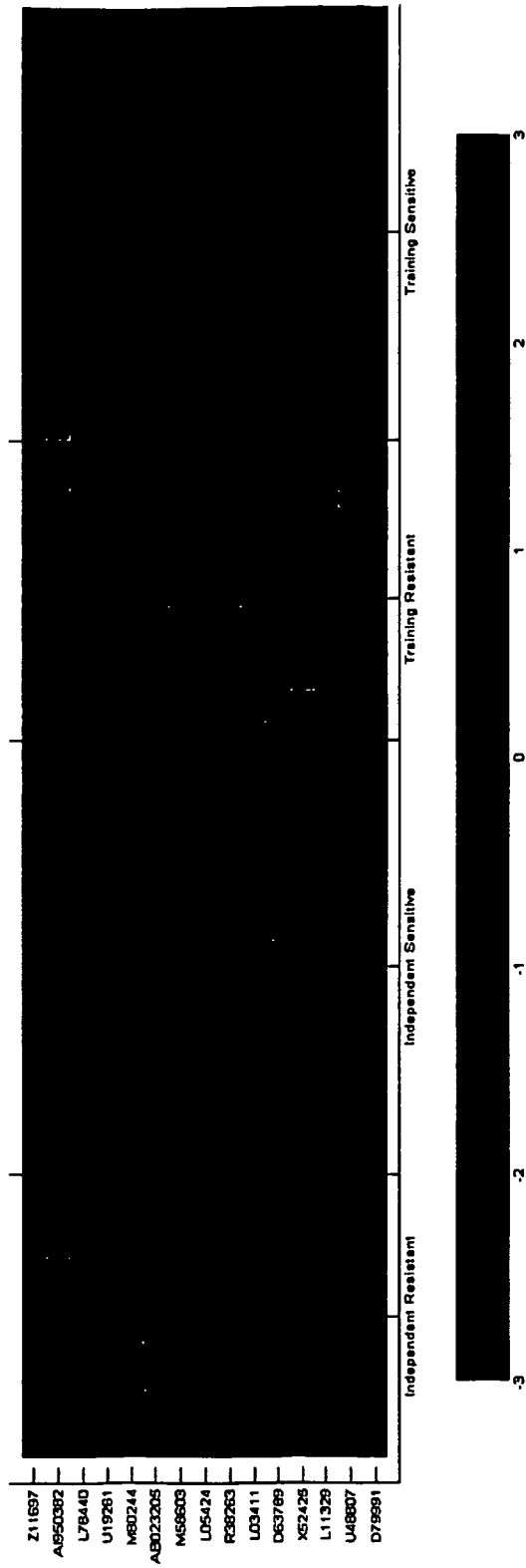


Fig. 4

Prediction of LT-responsiveness

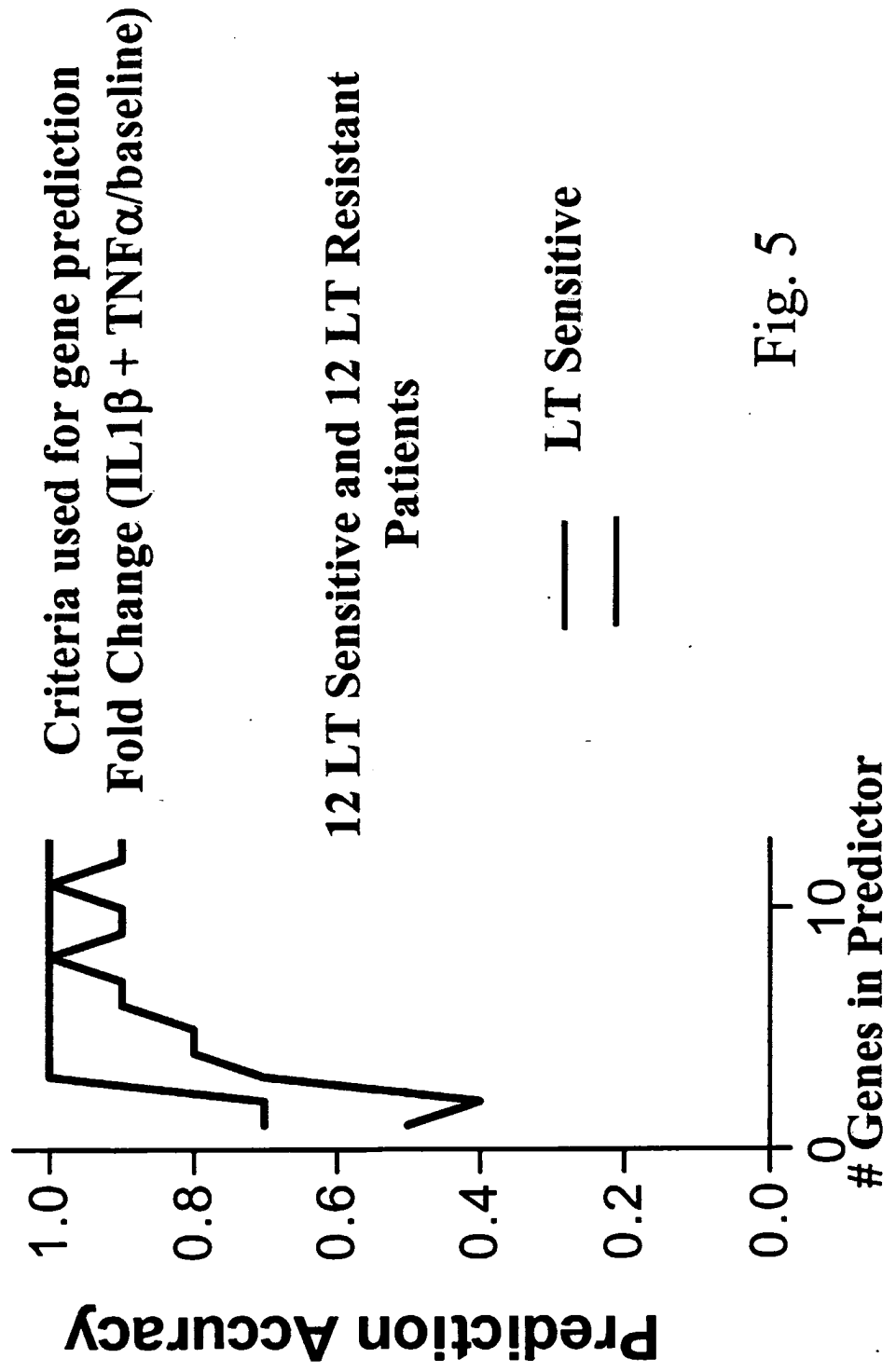


Fig. 5

REFERENCES CITED IN THE DESCRIPTION

This list of references cited by the applicant is for the reader's convenience only. It does not form part of the European patent document. Even though great care has been taken in compiling the references, errors or omissions cannot be excluded and the EPO disclaims all liability in this regard.

Non-patent literature cited in the description

- **BROIDE, D. et al.** *J. Allergy Clin. Immunol.*, 1992, vol. 89, 958-967 [0045]
- **AREND, W.** *Arthritis Rheum.*, 2001, vol. 45, 101-106 [0045]
- Guidelines for the Diagnosis and Management of Asthma: Expert Panel Report 2. NIH Publication No. 97-4051; American Thoracic Society, July 1997 [0049]
- *Am. J. Resp. Crit. Care Med.*, 1995, vol. 152, 1107-1136 [0049]
- **BARNES, P. et al.** *Am. J. Resp. Crit. Care Med.*, 1998, vol. 157, S1-S53 [0051]
- **GULCHER, J. ; STEFANSSON, K.** *Clin. Chem. Lab. Med.*, 1998, vol. 36, 523-527 [0054]
- **ASHER B.** *J. Mol. Graph Model.*, 2000, vol. 18, 79-82 [0055]
- **HU, J. et al.** *Ann. N.Y. Acad. Sci.*, 2000, vol. 919, 9-15 [0056]
- **AMBROISE, C. ; MCLACHLAN, G.** *Proc. Natl. Acad. Sci. USA*, 2002, vol. 99, 6562-6566 [0056]
- **DUDA, R. ; HART, P.** *Pattern Classification and Scene Analysis.* John Wiley, 1973 [0057]
- Bayesian classification of DNA array expression data. **KELLNER, A. et al.** Technical report. Department of Computer Science and Engineering, August 2000 [0057]
- **GOLUB, T. et al.** *Science*, 1999, vol. 286, 531-537 [0059] [0059]
- **SHIPP, M. et al.** *Nat. Med.*, 2002, vol. 8, 68-74 [0059]
- **COVER, T. et al.** *IT*, 1967, vol. 13, 21-27 [0060]
- **LEUNG, D. ; CHROUSOS, G.** *Am. J. Resp. Crit. Care Med.*, 2000, vol. 162, 1-3 [0071]
- **GAGLIARDO, R. et al.** *Am. J. Resp. Crit. Care Med.*, 2000, vol. 162, 7-13 [0071]
- **KAUPPI P. et al.** *Eur. J. Hum. Genet.*, 2000, vol. 10, 788-92 [0076]
- **HEINZMANN A. et al.** *Hum. Mol. Genet.*, 2000, vol. 9, 549-59 [0076]
- **AHMED S. et al.** *Exp. Clin. Immunogenet.*, 2000, vol. 17, 18-22 [0076]
- **EGGLESTON P. ; BUSH R.** *J. Allergy Clin. Immunol.*, 2001, vol. 107, S403-5 [0076]
- The European Community Respiratory Health Survey Group. *Am. J. Resp. Crit. Care Med.*, 1997, vol. 156, 1773-1780 [0076]

专利名称(译)	预测患有炎症疾病的患者的药物敏感性的方法		
公开(公告)号	EP1428023B1	公开(公告)日	2008-08-27
申请号	EP2002762680	申请日	2002-09-02
[标]申请(专利权)人(译)	解码遗传学私营有限责任公司		
申请(专利权)人(译)	deCODE Genetics公司EHF.		
当前申请(专利权)人(译)	deCODE Genetics公司EHF.		
[标]发明人	HAKONARSON HAKON		
发明人	HAKONARSON, HAKON		
IPC分类号	G01N33/50 C12N15/09 C12Q1/68 G01N33/15 G01N33/53 G01N37/00		
CPC分类号	C12Q1/6809 G01N33/5047 G01N2800/52		
优先权	09/947991 2001-09-06 US		
其他公开文献	EP1428023A2		
外部链接	Espacenet		

摘要(译)

公开了用于预测药物治疗人类患者的炎症疾病的功效的方法，包括：从患者获得细胞样品；在不存在和存在具有特异性细胞因子和/或介质的细胞的*i*（体外）调节的情况下获得样品的基因表达谱；并且将样品的基因表达谱与参考基因表达谱进行比较，其中样品表达谱和参考表达谱之间的相似性预测了药物治疗患者炎症疾病的功效。

$$\frac{P(x_g / GCS)}{P(x_g / GCR)}$$