

(19)



(11)

EP 2 732 269 B1

(12)

EUROPEAN PATENT SPECIFICATION

(45) Date of publication and mention of the grant of the patent:
18.10.2017 Bulletin 2017/42

(51) Int Cl.:
G01N 33/531 ^(2006.01) **C12N 15/13** ^(2006.01)
C12Q 1/68 ^(2006.01)

(21) Application number: **12810553.3**

(86) International application number:
PCT/US2012/046098

(22) Date of filing: **10.07.2012**

(87) International publication number:
WO 2013/009767 (17.01.2013 Gazette 2013/03)

(54) **FACS-BASED METHOD FOR OBTAINING AN ANTIBODY SEQUENCE**

FACS-BASIERTES VERFAHREN ZUR ERZEUGUNG EINER ANTIKÖRPERSEQUENZ

PROCÉDÉ SUR LA BASE DE FACS POUR OBTENTION DE SÉQUENCE D'ANTICORPS

(84) Designated Contracting States:
AL AT BE BG CH CY CZ DE DK EE ES FI FR GB GR HR HU IE IS IT LI LT LU LV MC MK MT NL NO PL PT RO RS SE SI SK SM TR

• **VROOM, Karin**
South San Francisco, California 94080 (US)

(30) Priority: **12.07.2011 US 201161506953 P**

(74) Representative: **Williams Powell**
11 Staple Inn
London WC1V 7QH (GB)

(43) Date of publication of application:
21.05.2014 Bulletin 2014/21

(56) References cited:
WO-A1-2007/003041 US-A- 4 510 244
US-A- 4 510 244 US-A1- 2004 067 496
US-A1- 2004 067 496

(73) Proprietor: **Epitomics, Inc.**
Burlingame, CA 94010-1303 (US)

• **PETER O. KRUTZIK ET AL: "Intracellular phospho-protein staining techniques for flow cytometry: Monitoring single cell signaling events", CYTOMETRY, vol. 55A, no. 2, 17 September 2003 (2003-09-17), pages 61-70, XP055179976, ISSN: 0196-4763, DOI: 10.1002/cyto.a.10072**

(72) Inventors:
 • **KE, Yaohuang**
San Francisco, California 94116 (US)
 • **YU, Guo-Liang**
Hillsborough, California 94010 (US)

Note: Within nine months of the publication of the mention of the grant of the European patent in the European Patent Bulletin, any person may give notice to the European Patent Office of opposition to that patent, in accordance with the Implementing Regulations. Notice of opposition shall not be deemed to have been filed until the opposition fee has been paid. (Art. 99(1) European Patent Convention).

EP 2 732 269 B1

Description

INTRODUCTION

- 5 [0001] Antibodies are proteins that bind a specific antigen. Generally, antibodies are specific for their targets, have the ability to mediate immune effector mechanisms, and have a long half-life in serum. Such properties make antibodies powerful therapeutics. Monoclonal antibodies are used therapeutically for the treatment of a variety of conditions including cancer, inflammation, and other diseases. There are currently over two dozen therapeutic antibody products on the market and hundreds in development.
- 10 [0002] Krutzik & Nolan, Cytometry 55A, 61-70 (2003) discloses intracellular phospho-protein staining techniques for flow cytometry for monitoring single cell signalling events.
- [0003] US 4,510,244 discloses cell labelling with antigen-coupled microspheres.
- [0004] There is a constant need for new antibodies and methods for making the same.

15 **SUMMARY**

- [0005] According to a first aspect of the present invention, there is provided a method as specified in claim 1.
- [0006] In certain embodiments, the method can be performed without making hybridomas and, as such, the method provides a highly efficient alternative to conventional hybridoma-based methods for isolating antibody-encoding sequences. Further, in certain cases the method provides a means by which significant portion of the entire antibody repertoire of an animal can be screened to identify and clone the encoding nucleic acid of an antibody with desirable properties. After identification, the antibody may be tested in further assays, and, if it is suitable for use as a therapy, may be humanized, for example.
- 20

25 **BRIEF DESCRIPTION OF THE DRAWINGS**

- [0007] The skilled artisan will understand that the drawings, described below, are for illustration purposes only. The drawings are not intended to limit the scope of the present teachings in any way.
- 30 Fig. 1 schematically illustrates one embodiment of the method.
- Fig. 2 is a scatter plot showing single stained cells that gated within the scatter.
- Fig. 3 is a scatter plot showing FS singlets.
- 35 Fig. 4 is a scatter plot showing SS singlets,
- Fig. 5 is a scatter plot showing stained cells that gated within the P9 gates.
- 40 Fig. 6 is a graph showing results of an IgG ELISA.
- Fig. 7. Is a graph showing results of an antigen ELISA.
- Figs. 8A-8D show nucleotide sequences that encode the heavy chains for 11 antibodies (SEQ ID NOS:1-11).
- 45 Figs. 9A-9D show nucleotide sequences that encode the light chains for 11 antibodies (SEQ ID NOS: 12-22)

DEFINITIONS

- 50 [0008] Before the present subject invention is described further, it is to be understood that this invention is not limited to particular embodiments described, as such may, of course, vary. It is also to be understood that the terminology used herein is for the purpose of describing particular embodiments only, and is not intended to be limiting, since the scope of the present invention will be limited only by the appended claims.
- [0009] Unless defined otherwise, all technical and scientific terms used herein have the same meaning as commonly understood by one of ordinary skill in the art to which this invention belongs. Although any methods and materials similar or equivalent to those described herein can be used in the practice or testing of the present invention, the preferred methods and materials are now described. All publications mentioned herein disclose and describe the methods and/or materials in connection with which the publications are cited.
- 55

[0010] It must be noted that as used herein and in the appended claims, the singular forms "a", "and", and "the" include plural referents unless the context clearly dictates otherwise. Thus, for example, reference to "an antibody" includes a plurality of such antibodies and reference to "a framework region" includes reference to one or more framework regions and equivalents thereof known to those skilled in the art, and so forth.

5 [0011] The publications discussed herein are provided solely for their disclosure prior to the filing date of the present application. Nothing herein is to be construed as an admission that the present invention is not entitled to antedate such publication by virtue of prior invention. Further, the dates of publication provided may be different from the actual publication dates which may need to be independently confirmed.

10 [0012] The term "nucleic acid" encompasses DNA, RNA, single stranded or double stranded and chemical modifications thereof. The terms "nucleic acid" and "polynucleotide" are used interchangeably herein.

[0013] The term "expression", as used herein, refers to the process by which a polypeptide is produced based on the nucleic acid sequence of a gene. The process includes both transcription and translation.

15 [0014] The term "expression cassette" refers to a nucleic acid construct capable of directing the expression of a gene/coding sequence of interest, which is operably linked to a promoter of the expression cassette. Such cassettes can be a linear nucleic acid or can be present in a "vector", "vector construct", "expression vector", or "gene transfer vector", in order to transfer the expression cassette into target cells. Thus, the term includes cloning and expression vehicles, as well as viral vectors.

20 [0015] The term "operably linked" refers to an arrangement of elements wherein the components so described are configured so as to perform their usual function. Thus, a given signal peptide that is operably linked to a polypeptide directs the secretion of the polypeptide from a cell. In the case of a promoter, a promoter that is operably linked to a coding sequence will direct the expression of the coding sequence. The promoter or other control elements need not be contiguous with the coding sequence, so long as they function to direct the expression thereof. For example, intervening untranslated yet transcribed sequences can be present between the promoter sequence and the coding sequence and the promoter sequence can still be considered "operably linked" to the coding sequence.

25 [0016] The term "plurality" refers to more than 1, for example more than 2, more than about 5, more than about 10, more than about 20, more than about 50, more than about 100, more than about 200, more than about 500, more than about 1000, more than about 2000, more than about 5000, more than about 10,000, more than about 20,000, more than about 50,000, more than about 100,000, usually no more than about 200,000. A "population" contains a plurality of items.

30 [0017] The term "introduced" in the context of inserting a nucleic acid sequence into a cell, means "transfection", or "transformation", or "transduction" and includes reference to the incorporation of a nucleic acid sequence into a eukaryotic or prokaryotic cell wherein the nucleic acid sequence may be present in the cell transiently or may be incorporated into the genome of the cell (e.g., chromosome, plasmid, plastid, or mitochondrial DNA), converted into an autonomous replicon.

35 [0018] The terms "antibody" and "immunoglobulin" are used interchangeably herein. These terms are well understood by those in the field, and refer to a protein consisting of one or more polypeptides that specifically binds an antigen. One form of antibody constitutes the basic structural unit of an antibody. This form is a tetramer and consists of two identical pairs of antibody chains, each pair having one light and one heavy chain. In each pair, the light and heavy chain variable regions are together responsible for binding to an antigen, and the constant regions are responsible for the antibody effector functions.

40 [0019] The recognized immunoglobulin polypeptides include the kappa and lambda light chains and the alpha, gamma (IgG₁, IgG₂, IgG₃, IgG₄), delta, epsilon and mu heavy chains or equivalents in other species. Full-length immunoglobulin "light chains" (of about 25 kDa or about 214 amino acids) comprise a variable region of about 110 amino acids at the NH₂-terminus and a kappa or lambda constant region at the COOH-terminus. Full-length immunoglobulin "heavy chains" (of about 50 kDa or about 446 amino acids), similarly comprise a variable region (of about 116 amino acids) and one of the aforementioned heavy chain constant regions, e.g., gamma (of about 330 amino acids).

45 [0020] The terms "antibodies" and "immunoglobulin" include antibodies or immunoglobulins of any isotype, fragments of antibodies which retain specific binding to antigen, including, but not limited to, Fab, Fv, scFv, and Fd fragments, chimeric antibodies, humanized antibodies, single-chain antibodies, and fusion proteins comprising an antigen-binding portion of an antibody and a non-antibody protein. The antibodies may be detectably labeled, e.g., with a radioisotope, an enzyme which generates a detectable product, a fluorescent protein, and the like. The antibodies may be further conjugated to other moieties, such as members of specific binding pairs, e.g., biotin (member of biotin-avidin specific binding pair), and the like. The antibodies may also be bound to a solid support, including, but not limited to, polystyrene plates or beads, and the like. Also encompassed by the term are Fab', Fv, F(ab')₂, and or other antibody fragments that retain specific binding to antigen, and monoclonal antibodies.

55 [0021] Antibodies may exist in a variety of other forms including, for example, Fv, Fab, and (Fab')₂, as well as bi-functional (i.e. bi-specific) hybrid antibodies (e.g., Lanzavecchia et al., Eur. J. Immunol. 17, 105 (1987)) and in single chains (e.g., Huston et al., Proc. Natl. Acad. Sci. U.S.A., 85, 5879-5883 (1988) and Bird et al., Science, 242, 423-426 (1988)). (See, generally, Hood et al., "Immunology", Benjamin, N.Y., 2nd ed., 1984, and Hunkapiller and Hood, Nature,

323, 15-16, 1986).

[0022] An immunoglobulin light or heavy chain variable region consists of a framework region (FR) interrupted by three hypervariable regions, also called "complementarity determining regions" or "CDRs". The extent of the framework region and CDRs have been precisely defined (see, "Sequences of Proteins of Immunological Interest," E. Kabat et al., U.S. Department of Health and Human Services, 1991). The sequences of the framework regions of different light or heavy chains are relatively conserved within a species. The framework region of an antibody, that is the combined framework regions of the constituent light and heavy chains, serves to position and align the CDRs. The CDRs are primarily responsible for binding to an epitope of an antigen.

[0023] The term "chimeric antibodies" refer to antibodies whose light and heavy chain genes have been constructed, typically by genetic engineering, from antibody variable and constant region genes belonging to different species. For example, the variable segments of the genes from a mouse monoclonal antibody may be joined to human constant segments, such as gamma 1 and gamma 3. An example of a therapeutic chimeric antibody is a hybrid protein composed of the variable or antigen-binding domain from a rabbit antibody and the constant or effector domain from a human antibody, although other mammalian species may be used.

[0024] The term "humanized antibody" or "humanized immunoglobulin" refers to a non-human (e.g., mouse or rabbit) antibody containing one or more amino acids (in a framework region, a constant region or a CDR, for example) that have been substituted with a correspondingly positioned amino acid from a human antibody. In general, humanized antibodies produce a reduced immune response in a human host, as compared to a non-humanized version of the same antibody.

[0025] The terms "polypeptide" and "protein", used interchangeably herein, refer to a polymeric form of amino acids of any length, which can include coded and non-coded amino acids, chemically or biochemically modified or derivatized amino acids, and polypeptides having modified peptide backbones.

[0026] The term "natural" antibody refers to an antibody in which the heavy and light chains of the antibody have been made and paired by the immune system of a multicellular organism. Spleen, lymph nodes, bone marrow and blood are examples of tissues that contain cells that produce natural antibodies. For example, the antibodies produced by the antibody producing cells isolated from a first animal immunized with an antigen are natural antibodies. Natural antibodies contain naturally-paired heavy and light chains.

[0027] The terms "lineage-related antibodies", "clonally-related antibodies" and "antibodies that related by lineage" as well as grammatically-equivalent variants there of, are antibodies that are produced by cells that share a common B cell ancestor. Related antibodies produced by related antibody producing cells bind to the same epitope of an antigen and are typically very similar in sequence, particularly in their L3 and H3 CDRs. Both the H3 and L3 CDRs of lineage-related antibodies have an identical length and a near identical sequence (i.e., differ by up to 5, i.e., 0, 1, 2, 3, 4 or 5 residues). In certain cases, the B cell ancestor contains a genome having a rearranged light chain VJ region and a rearranged heavy chain VDJC region, and produces an antibody that has not yet undergone affinity maturation. "naïve" or "virgin" B cells present in spleen tissue, are exemplary B cell common ancestors. Related antibodies are related via a common antibody ancestor, e.g., the antibody produced in the naive B cell ancestor. The term "related antibodies" is not intended to describe a group of antibodies that are not produced by cells that arise from the same ancestor B-cell. A "lineage group" contains a group of antibodies that are related to one another by lineage.

[0028] The terms "treating" or "treatment" of a condition or disease refer to providing a clinical benefit to a subject, and include: (1) preventing at least one symptom of the conditions, i.e., causing a clinical symptom to not significantly develop in a mammal that may be exposed to or predisposed to the disease but does not yet experience or display symptoms of the disease, (2) inhibiting the disease, i.e., arresting or reducing the development of the disease or its symptoms, or (3) relieving the disease, i.e., causing regression of the disease or its clinical symptoms.

[0029] The term "intact cells" includes cells that have been fixed and/or permeabilized. Cells that have been lysed and/or sectioned or not intact cells. Western blots and assays in which either the proteins of a cell lysate or an antibody are affixed to a solid support (e.g., ELISAs) do not involve intact cells.

[0030] The term "blood sample" or grammatical equivalents thereof refer to a sample of whole blood or a sub-population of cells in whole blood. Sub-populations of cells in whole blood include platelets, red blood cells (erythrocytes), platelets and white blood cells (i.e., peripheral blood leukocytes, which are made up of neutrophils, lymphocytes, eosinophils, basophils and monocytes). These five types of white blood cells can be further divided into two groups, granulocytes (which are also known as polymorphonuclear leukocytes and include neutrophils, eosinophils and basophils) and mononuclear leukocytes (which include monocytes and lymphocytes). Lymphocytes can be further divided into T cells, B cells and NK cells. Peripheral blood cells are found in the circulating pool of blood and not sequestered within the lymphatic system, spleen, liver, or bone marrow.

[0031] The term "capture agent" refers to an agent that binds a target molecule through an interaction that is sufficient to permit the agent to bind and concentrate the target molecule from a homogeneous mixture of different molecules. The binding interaction is typically mediated by an affinity region of the capture agent. Typical capture agents include any moiety that can specifically bind to a target molecule. In certain embodiments, a polypeptide, e.g., an antibody, may

be employed.

[0032] Capture agents, e.g., antibodies, "specifically bind" a target molecule. Accordingly, the term "capture agent" refers to a molecule or a multi-molecular complex which can specifically bind a target molecule, e.g., a phosphorylated polypeptide, with a dissociation constant (K_D) of less than about 10^{-6} M (e.g., less than about 10^{-7} M, less than about 10^{-8} M, less than about 10^{-9} M, less than about 10^{-10} M, less than about 10^{-11} M, less than about 10^{-12} M, to as low as 10^{-16} M) without significantly binding to other molecules. The term "specific binding" refers to the ability of a capture agent to preferentially bind to a particular target molecule that is present in a homogeneous mixture of different target molecules. A specific binding interaction will discriminate between desirable (e.g., phosphorylated) and undesirable (e.g., unphosphorylated) target molecules in a sample, typically more than about 10 to 100-fold or more (e.g., more than about 1000- or 10,000-fold).

[0033] As used herein, the term "fluorescence activated cell sorting" or "FACS" refers to a method by which the individual cells of a sample are analyzed and sorted according to their optical properties (e.g., light absorbance, light scattering and fluorescence properties, etc.) as they pass in a narrow stream in single file through a laser beam.

[0034] The term "mixture", as used herein, refers to a combination of elements, e.g., cells, that are interspersed and not in any particular order. A mixture is homogeneous and not spatially separated into its different constituents. Examples of mixtures of elements include a number of different cells that are present in the same aqueous solution in a spatially undressed manner.

[0035] "Isolated" or "purified" refers to isolation of a substance (compound, polynucleotide, protein, polypeptide, polypeptide composition) such that the substance comprises a significant percent (e.g., greater than 2%, greater than 5%, greater than 10%, greater than 20%, greater than 50%, or more, usually up to about 90%-100%) of the sample in which it resides. A substantially purified component comprises at least 50%, 80%-85%, or 90-95% of the sample.

[0036] The term "assessing" includes any form of measurement, and includes determining if an element is present or not. The terms "determining", "measuring", "evaluating", "assessing" and "assaying" are used interchangeably and may include quantitative and/or qualitative determinations. Assessing may be relative or absolute. "Assessing the presence of" includes determining the amount of something present, and/or determining whether it is present or absent.

[0037] The term "using" has its conventional meaning, and, as such, means employing, e.g., putting into service, a method or composition to attain an end. For example, if a program is used to create a file, a program is executed to make a file, the file usually being the output of the program. In another example, if a computer file is used, it is usually accessed, read, and the information stored in the file employed to attain an end. Similarly if a unique identifier, e.g., a barcode is used, the unique identifier is usually read to identify, for example, an object or file associated with the unique identifier.

[0038] As used herein, the term "*in vivo*" refers to the body of a whole living organism, e.g., a living mammal.

[0039] As used herein, the term "*ex vivo*" refers to living tissue that has been removed from the body of a whole living organism, e.g., a living mammal. A sample of blood that has been drawn from a mammal and contains living cells is an example of an *ex vivo* sample.

[0040] As used herein, the term "*in vitro*" refers to cells that have been grown in culture.

[0041] As used herein, the term "cross-linking" in the context of crosslinking cells refers to the cross-linking of the intracellular contents of cells, rather than the cross-linking of cells to one another. "Cross-linking and "fixing" can be used interchangeably.

DETAILED DESCRIPTION OF EXEMPLARY EMBODIMENTS

[0042] One embodiment of the subject method is schematically illustrated in Fig. 1. With reference to Fig. 1, the first step of the method may comprise: contacting a population of cross-linked (i.e., fixed) permeabilized, antibody-producing cells (e.g., lymphocytes or splenocytes, etc.) with a labeled antigen to produce a labeled sample. In this step, only cells that produce an antibody that specifically binds to the labeled antigen are intracellularly labeled. In the next step of the method, fluorescence activated cell sorting (FACS) is employed to isolate cells that are labeled from those that are not labeled to produce labeled cells. The labeled cells are then uncrosslinked, and nucleic acid encoding the heavy and light chain variable domains can be amplified from individual uncrosslinked cells, e.g., by PCR. Nucleic acid that encodes both the heavy and light chain variable domains of a naturally paired antibody that specifically binds to the antigen are thereby obtained.

[0043] Also described herein is use of a labeled antibody (e.g., an antibody that binds to a region that is conserved region in antibodies such as an anti-Fc antibody) instead of the labeled antigen. In these methods, the isolation of the cells can be timed (relative to exposure to an antigen), to provide an antibody-producing cell population that is naturally highly enriched for antigen specific antibody producing cells. Therefore, in these methods, cells labeled solely with a large amount of anti-IgG Fc could also be useful in isolating antigen specific antibody secreting cells. The isolated antibodies may be later screened for antigen specificity using recombinant expression.

Antibody-producing cells

5 [0044] An antibody-producing cell is a cell that produces antibodies. Such cells are typically cells involved in a mammalian immune response (such as a B-lymphocyte and plasma cells) and produce immunoglobulin heavy and light chains that have been "naturally paired" by the immune system of the host. These cells may in certain cases secrete antibodies or maintain antibodies on the surface of the cell without secretion into the cellular environment. Antibody producing cells include hybridoma cells that express antibodies. In one embodiment, permeabilized, cross-linked peripheral blood leukocytes, or a sub-population thereof, e.g. lymphocytes, are employed.

10 [0045] An antibody-producing cell may be obtained from an animal which has been immunized with a selected antigen, e.g., a peptide, an animal which has not been immunized with a selected antigen (e.g., an animal having an autoimmune disease) or which has developed an immune response to an antigen as a result of disease or infection. Animals may be immunized with a selected antigen using any of the techniques well known in the art suitable for generating an immune response (see Handbook of Experimental Immunology D. M. Weir (ed.), Vol 4, Blackwell Scientific Publishers, Oxford, England, 1986). Within the context of the present invention, the phrase "selected antigen" includes any substance to which an antibody may be made, including, among others, proteins, carbohydrates, inorganic or organic molecules, transition state analogs that resemble intermediates in an enzymatic process, nucleic acids, cells, including cancer cells, cell extracts, pathogens, including living or attenuated viruses, bacteria, vaccines and the like. As will be appreciated by one of ordinary skill in the art, antigens which are of low immunogenicity may be accompanied with an adjuvant or hapten in order to increase the immune response (for example, complete or incomplete Freund's adjuvant) or with a carrier such as keyhole limpet hemocyanin (KLH).

15 [0046] Many warm-blooded animals, in particular mammals such as humans, rabbits, mice, rats, sheep, cows or pigs and aves such as chickens and turkeys, may be used in order to obtain antibody-forming cells. Procedures for immunizing animals are well known in the art, and are described in Harlow et al., (Antibodies: A Laboratory Manual, First Edition (1988) Cold Spring Harbor, N.Y.). Antibody-producing cells may also be obtained from a subject that has generated the cells during the course of a selected disease or condition. For instance, antibody-producing cells from a human with a disease of unknown cause, such as rheumatoid arthritis, may be obtained and used in an effort to identify antibodies which have an effect on the disease process or which may lead to identification of an etiological agent or body component that is involved in the cause of the disease. Similarly, antibody-producing cells may be obtained from subjects with disease due to known etiological agents such as malaria or AIDS. These antibody-producing cells may be derived from the blood, lymph nodes or bone marrow, as well as from other diseased or normal tissues. Antibody-producing cells may also be prepared from blood collected with an anticoagulant such as heparin or EDTA. The antibody-producing cells may be further separated from erythrocytes and polymorphs using standard procedures such as centrifugation with Ficoll-Hypaque (Pharmacia, Uppsala, Sweden). Antibody-producing cells may also be prepared from solid tissues such as lymph nodes, tumors or spleen by dissociation with enzymes such as collagenase and trypsin in the presence of EDTA.

20 [0047] Antibody-producing cells may also be obtained by culture techniques such as in vitro immunization. Examples of such methods are described (Reading in Methods in Enzymology (21:18-33 J. J. Langone, H. H. van Vunakis (eds.), Academic Press Inc., N.Y.; 1986). Briefly, a source of antibody-producing cells, such as a suspension of spleen or lymph node cells, or peripheral blood mononuclear cells are cultured in medium such as RPMI 1640 with 10% fetal bovine serum and a source of the substance against which it is desired to develop antibodies. This medium may be additionally supplemented with amounts of substances known to enhance antibody-forming cell activation and proliferation such as lipopolysaccharide or its derivatives or other bacterial adjuvants or cytokines such as IL-1, IL-2, IL-4, IL-5, IL-6, GM-CSF, and IFN-gamma. To enhance immunogenicity, the selected antigen may be coupled to the surface of cells, for example, spleen cells, by conventional techniques such as the use of biotin/avidin.

25 [0048] Once a suitable animal containing an antibody-producing cell has been identified or produced, spleen, lymph node or bone marrow tissue may be removed, and a cell suspension of antibody-producing cells may be prepared using, e.g., techniques well known in the art. In most embodiments, this suspension is a single cell suspension, techniques for the preparation of which are well known in the art, e.g., Harlow et al., (Antibodies: A Laboratory Manual, First Edition (1988) Cold Spring Harbor, N.Y.).

30 [0049] Antibody-producing cells may be enriched from the single cell suspension by methods based upon the size or density of the antibody-forming cells relative to other cells. An example of the use of Percoll to separate cells according to density is described by van Mourik and W. P. Zeilmaker in Methods in Enzymology 121:174-182 (J. J. Langone, H. H. van Vunakis (eds.), Academic Press Inc., N.Y.). Gradients of varying density of solutions of bovine serum albumin can also be used to separate cells according to density. (See N. Moav and T. N. Harris, J. Immunol 105:1512, 1970; see also Raid, D. J. in SELECTED METHODS IN CELLULAR IMMUNOLOGY, B. Mishell and S. Shiigi (eds.), W. H. Freeman and Co., San Francisco, 1987). Antibody-producing cells may also be enriched and plated using other methods.

Intracellular labeling and FACS

5 [0050] While the exact protocol of the intracellular labeling steps may vary, they generally involve: a) cross-linking antibody producing cells so that the contents of the cells stay intact during subsequent manipulations, b) permeabilizing the cross-linked cells, and then c) labeling the permeabilized, cross-linked cells using a labeled antigen. The labeled antigen passes into the cells and is bound by antibody protein that is in the interior of the cell. Only antibody producing cells that contain an antibody that specifically recognizes the antigen will be labeled.

10 [0051] Methods by which cells can be intracellularly labeled using labeled antibody may be adapted from variety of publications, including: Lazarus et al (Cytometry. 1998 32:206-13), Sartor et al (Cytometry. 1994 18:119-22), Gadol et al (Cytometry 1994 15:359-70) and Far et al (Cytometry. 1994 15:327-34), which describe methods by which intracellular proteins are labeled with fluorescent antibodies. Methods for performing flow cytometry on intracellularly labeled proteins are known (see, e.g., Krutzik Cytometry 2003 55: 61-70; Fleisher Clin. Immunol. 1999 90: 425-430; and Krutzik J. Immunol. 2005 175, 2357-2365). Kits for intracellularly labeling cells for FACS analysis include the INTRACYTE™ intracellular FACS kit by Orion BioSolutions, Inc (Vista CA), the INTRASURE™ or FASTIMMUNE™ kits by Becton Dickinson (Franklin Lakes, NJ) and the CYTOFIX™ or CYTOPERM™ Plus kits by PharMingen (San Diego, CA). Depending on the method employed, the red blood cells of the sample may be lysed prior to permeabilizing and labeling of the white blood cells. Such lysis techniques may be adapted from those commonly employed in blood analysis.

20 [0052] The cross-linking agent used for fixing the cells should be reversible. In a particular embodiment, an aldehyde crosslinking agent, e.g., formaldehyde, may be employed. In a particular case, formaldehyde may be used as 10% neutral buffered formalin (NBF), that is approximately 3.7% formaldehyde in phosphate buffered saline. Because formaldehyde is a gas at room temperature, formalin-formaldehyde gas dissolved in water (~37% w/v) is used when making the former fixative. Paraformaldehyde is a polymerised form of formaldehyde, usually obtained as a fine white powder, which depolymerises back to formalin when heated. Formaldehyde fixes tissue by primarily cross-linking the protein in a cell, via lysine residues.

25 [0053] Another aldehyde that may be employed for fixation is glutaraldehyde. Glutaraldehyde operates in a similar way to formaldehyde by causing deformation of the alpha-helix structures in proteins. However, glutaraldehyde is a larger molecule, and so its rate of diffusion across membranes is slower than formaldehyde. One of the advantages of glutaraldehyde fixation is that it may offer a more rigid or tightly linked fixed product-its greater length and two aldehyde groups allow it to 'bridge' and link more distant pairs of protein molecules. Some fixation protocols call for a combination of formaldehyde and glutaraldehyde so that their respective strengths complement one another.

30 [0054] Aldehyde cross-links can be reversed, e.g., by altering the pH, by dilution with an aqueous solution, e.g., water, or by simply by heating the crosslinked sample.

35 [0055] Permeabilization of cells can be achieved using any number of reagents that are well known in the art, including, but not limited to, digitonin, saponin, triton, tween, methanol, ethanol, acetone (or other detergents and alcohols) and the like. Indeed, reagents and kits for permeabilization and fixation of cells for flow cytometric analysis are available from commercial vendors (e.g., CytoFix/CytoPerm buffer; PharMingen, La Jolla, CA).

[0056] Methods for conjugating a fluorescent label to protein, e.g., to a peptide, are well known. In alternative embodiments, the antigen may be labeled indirectly using a secondary antibody that binds to the antigen (without disrupting the binding of the antibody of the antibody-producing cells).

40 [0057] In particular cases, in addition to being labeled with the antigen, the cells may be distinguishably labeled with other probes, including, but not limited to, antibodies to cell surface markers that distinguish one cell type from another CD 19 and CD21, etc. In another embodiment, the cells may be additionally labeled with a second antibody that binds non-specifically to antibodies, e.g., to the Fc region of an antibody. In this embodiment, a labeled anti-IgG Fc antibody may be employed.

45 Once labeled, the intracellularly labeled cells may be isolated by FACS. In some embodiments, the FACS machine may isolate labeled cells singly (i.e., as single cells). In other embodiments, the labeled cells may be isolated as a mixed population, and then diluted into single cells after FACS.

50 [0058] In embodiments in which the cell is labeled with a plurality of different labels, the cells may be selected using a plurality of different properties. For example, if the cell is labeled with a labeled antigen and a labeled anti-IgG Fc antibody, the cell may be isolated as having a high intracellular IgG Fc content in addition to containing antibodies that bind to the labeled antigen.

55 [0059] The general principles of fluorescence activated cell sorting, including methods by which single cell suspensions can be made, methods by which cells can be labeled using, e.g., fluorescently labeled probes, methods by which cells can be separated from one another, as well as hardware that can be employed in flow cytometry, including flow cells, reagents, and computer control systems are known and are reviewed in a variety of publications, including, but not limited to: Orfao et al (Clin. Biochem. 1996 29:5-9), Johnson et al (Curr. Pharm. Biotechnol. 2007 8:133-9), Tung et al (Clin. Lab. Med. 2007 27:453-68), and Dainiak et al (Adv. Biochem. Eng. Biotechnol. 2007 106: 1-18), which disclose those methods and hardware.

Single cell PCR

[0060] Prior to amplifying the antibody-encoding sequences, the labeled cells should be uncrosslinked, i.e., the crosslinking should be reversed. This step can be done using many different methods. However, because the cells are going to be subjected to PCR, in some embodiments the cells may be heated (e.g., an extended period of time at least 50 °C such as 3-10 hrs at 65 °C or 15-60 mins at above 90 °C).

[0061] Sequences encoding heavy and light chains may be amplified from individual cells using techniques well known in the art, such as polymerase chain reaction (PCR). The sequences may be amplified from genomic DNA, or from mRNA (by RT-PCR). In one embodiment, cDNA segments encoding the variable domain of the antibody are exponentially amplified by performing sequential reactions with a DNA polymerase. The reaction is primed by a 5' and a 3' DNA primer. In some embodiments, the 3' antisense primer corresponding to a DNA sequence in the constant (or joining) region of the immunoglobulin chain and the 5' primer (or panel of related primers) corresponding to a DNA sequence in the variable region of the immunoglobulin chain. This combination of oligonucleotide primers has been used in the PCR amplification of murine immunoglobulin cDNAs of unknown sequence (see Sastry et al., Proc Natl. Acad. Sci. 86:5728-5732, 1989 and Orlandi et al., Proc. Natl. Acad. Sci. 86:3833-3837, 1989). Alternatively, an "anchored polymerase chain reaction" may be performed (see Loh et al., Science 243:217-220, 1989). In this procedure, the first strand cDNA is primed with a 3' DNA primer as above, and a poly(dG tail) is then added to the 3' end of the strand with terminal deoxynucleotidyl transferase. The product is then amplified by PCR using the specific 3' DNA primer and another oligonucleotide consisting of a poly(dC) tail attached to a sequence with convenient restriction sites.

[0062] In some embodiments, at least the polynucleotides encoding the variable domains of the heavy and light chains are amplified. Strategies for performing single cell PCR to amplify sequences that encode antibodies for rabbits, mouse and humans, among others, are described in US20040067496, Kantor et al (Ann. N Y Acad. Sci. 1995 764: 224-7), Boekel et al (Immunity. 1997 7:357-68), Yamagami et al (Immunity 1999 11:309-16), Beerli et al (MAbs. 2010 2), Morbach et al (Mol. Immunol. 2008 45:3840-6), Küppers et al (Methods Mol Biol. 2004 271: 225-238) and Seidl et al (Int. Immunol. 1997 9:689-702). Several strategies for cloning antibody sequences by PCR are known and may be readily adapted for use in the instant method (e.g., by using a CDR-specific primer in addition to a disclosed primer). Such strategies include those described by: LeBoeuf (Gene. 1989 82:371-7), Dattamajumdar (Immunogenetics. 1996 43:141-51), Kettleborough Eur. J. Immunol. 1993 23:206-11), Babcook (Proc. Natl. Acad. Sci. 1996 93: 7843-7848) and Williams (Cold Spring Harb. Symp. Quant. Biol. 1989 54:637-47) as well as many others. In certain cases, the second primer may be a mixture of different primers or degenerate primers, for example.

[0063] Suitable restriction sites and other tails may be engineered into the amplification oligonucleotides to facilitate cloning and further processing of the amplification products. Amplification procedures using nested primers may also be used, where such nested primers are well known to one of skill in the art.

[0064] The obtained nucleic acid may be sequenced by any convenient method to obtain a) the sequence of a polynucleotide that encodes the variable domain of the heavy chain of an antibody and b) the sequence of a polynucleotide that encodes the variable domain of the light chain of an antibody, as well as the amino acid sequence of the encoded antibody.

Utility

[0065] In some embodiments, nucleic acid encoding an immunoglobulin heavy chain variable domain is isolated from an antibody producing cell. This nucleic acid may encode a heavy chain variable domain alone, or may encode a larger fragment of an immunoglobulin heavy chain, such as a heavy chain variable domain and part of the heavy chain constant region, or an entire immunoglobulin heavy chain, optionally including the N-terminal methionine and secretion signal of the immunoglobulin heavy chain. The nucleic acid encoding an immunoglobulin light chain variable domain is isolated from the same antibody-producing cell as the immunoglobulin heavy chain-encoding nucleic acid. This light chain-encoding nucleic acid may encode a light chain variable domain alone, or may encode a larger fragment of an immunoglobulin light chain, such as a light chain variable domain and part of the light chain constant region, or an entire immunoglobulin light chain, optionally including the N-terminal methionine and secretion signal of the immunoglobulin light chain.

[0066] The immunoglobulin encoding nucleic acids, once isolated from the cell, can be operably linked to an expression polynucleotide that will allow for expression, and optionally secretion of a functional antibody from a host cell. In particular cases, the expressed antibody may be a single chain antibody. Strategies for producing recombinant antibodies, e.g., in mammalian, bacterial and yeast host cells are well known. Once an antibody molecule of the invention has been produced, it may be purified by any method known in the art for purification of an immunoglobulin molecule, for example, by chromatography (e.g., ion exchange, affinity, particularly by affinity for the specific antigen after Protein A, and sizing column chromatography), centrifugation, differential solubility, or by any other standard technique for the purification of proteins. In many embodiments, antibodies are secreted from the cell into culture medium and harvested from the culture

medium.

[0067] After a recombinant antibody is produced by another host cells, it may be tested in a variety of assays and, depending on how the antibody is going to be used, it may be humanized. For example, an antibody may be tested in a binding assay (e.g., an ELISA, a FACS assay or using immunohistochemistry) or an activity assay (which may be in vivo, in vitro or in a cell-free system), methods for which are well known (see, e.g., US20040067496).

[0068] An antibody produced by the instant methods finds use in, for example, diagnostics, in antibody imaging, and in treating diseases treatable by monoclonal antibody-based therapy. In particular, an antibody humanized by the instant methods may be used for passive immunization or the removal of unwanted cells or antigens, such as by complement mediated lysis or antibody mediated cytotoxicity (ADCC), all without substantial immune reactions (e.g., anaphylactic shock) associated with many prior antibodies.

[0069] In one embodiment, a humanized version of an identified antibody is provided. In certain cases, humanized antibodies may be made by substituting amino acids in the framework regions of a parent non-human antibody to produce a modified antibody that is less immunogenic in a human than the parent non-human antibody. Antibodies can be humanized using a variety of techniques known in the art including, for example, CDR-grafting (EP 239,400; PCT publication WO 91/09967; U.S. Pat. Nos. 5,225,539; 5,530,101; and 5,585,089), veneering or resurfacing (EP 592,106; EP 519,596; Padlan, *Molecular Immunology* 28(4/5):489-498 (1991); Studnicka et al., *Protein Engineering* 7(6):805-814 (1994); Roguska. et al., *PNAS* 91:969-973 (1994)), and chain shuffling (U.S. Pat. No. 5,565,332). In certain embodiments, framework substitutions are identified by modeling of the interactions of the CDR and framework residues to identify framework residues important for antigen binding and sequence comparison to identify unusual framework residues at particular positions (see, e.g., U.S. Pat. No. 5,585,089; Riechmann et al., *Nature* 332:323 (1988)). Additional methods for humanizing antibodies contemplated for use in the present invention are described in U.S. Pat. Nos. 5,750,078; 5,502,167; 5,705,154; 5,770,403; 5,698,417; 5,693,493; 5,558,864; 4,935,496; and 4,816,567, and PCT publications WO 98/45331 and WO 98/45332. In particular embodiments, a subject antibody may be humanized according to the methods set forth in published U.S. patent applications 20040086979 and 20050033031. Accordingly, the antibodies described above may be humanized using methods that are known in the art.

[0070] In one embodiment of particular interest, a subject antibody may be humanized in accordance with the methods set forth in great detail in US 7,462,697. In general, this humanization method involves identifying a substitutable position of an antibody by comparing sequences of antibodies that bind to the same antigen, and replacing the amino acid at that position with a different amino acid that is present at the same position of a similar human antibody. In these methods, the amino acid sequence of a parental antibody is compared to (i.e., aligned with) the amino acid sequences of other antibodies that are clonally related to the parental antibody to identify variation tolerant positions. The amino acid sequence of the variable domain of the parental antibody may be compared to a database of human antibody sequences, and a human antibody that has an amino acid sequence that is similar to that of the parental antibody is selected. The amino acid sequences of the parental antibody and the human antibody are compared (e.g., aligned), and amino acids at one or more of the variation tolerant positions of the parental antibody are substituted by correspondingly positioned amino acids in the human antibody. In this humanization method, the CDR regions of the antibody may be humanized in addition to the framework regions.

[0071] The above-discussed variation tolerant position substitution methods are readily incorporated into any known humanization method and are also readily employed to produce humanized antibodies containing CDR regions that are altered with respect to the CDR regions of the parent antibody. Accordingly humanized antibodies containing altered versions of the CDRs of the above-described antibodies are provided.

[0072] As noted above, the subject antibody may be modified to provide a modified antibody. In particular embodiments, this method include making one or more amino acid substitutions (e.g., one, up to two, up to three, up to four or up to five or more, usually up to 10 or more). An amino acid substitution may be at any position, and the amino acid at that position may be substituted by an amino acid of any identity. In certain embodiments, a modified antibody may have the same general characteristics of the above-described rabbit antibodies. In one embodiment, after a substitutable position has been identified using the methods of U.S. Serial No. 10/984,473, the amino acids at that position may be substituted. In particular embodiments, an amino acid substitution may be a humanizing substitution (i.e., a substitution that make the amino acid sequence more similar to that of a human antibody), a directed substitution (e.g., a substitution that make the amino acid sequence of an antibody more similar to that of a related antibody in the same group), a random substitution (e.g., a substitution with any of the 20 naturally-occurring amino acids) or a conservative substitution (e.g., a substitution with an amino acid having biochemical properties similar to that being substituted).

[0073] Antigens of interest include, but are not limited to, human surface-expressed or soluble proteins or carbohydrate molecules. Further preferred targets are surface-expressed proteins or carbohydrate molecules that are expressed on the surface of bacteria, viruses, and other pathogens, especially of humans. Antigens of interest include cytokines and chemokines, including but not limited to InterLeukin 1beta (IL1beta), IL2, IL4, IL5, IL7, IL8, IL12, IL13, IL15, IL18, IL21, IL23 and chemokines such as, for example, CXC chemokines, CC chemokines, C chemokines (or .gamma. chemokines) such as XCL1 (lymphotactin-.alpha.) and XCL2 (lymphotactin-.beta.), and CX3C chemokines. Further included as pre-

ferred targets are receptor molecules of the cytokines and chemokines, including type I cytokine receptors such as, for example, the IL-2 receptor, type II cytokine receptors such as, for example, interferon receptors, immunoglobulin (Ig) superfamily receptors, tumor necrosis factor receptor family including receptors for CD40, CD27 and CD30, serine/threonine-protein kinase receptors such as TGF beta receptors, G-protein coupled receptors such as CXCR1-CXCR7, and tyrosine kinase receptors such as fibroblast growth factor receptor (FGFR) family members, EGF receptor family members including erbB1 (EGF-R; HER1), erbB2, (HER2), erbB3 (HER3), and erbB4 (HER4), insulin receptor family members including IGF-R1 and IGF-R2, PDGF receptor family members, Hepatocyte growth factor receptor family members including c-Met (HGF-R), Trk receptor family members, AXL receptor family members, LTK receptor family members, TIE receptor family members, ROR receptor family members, DDR receptor family members, KLG receptor family members, RYK receptor family members, MuSK receptor family members, and vascular endothelial growth factor receptor (VEGFR) family members.

[0074] Further preferred targets are targets that are over-expressed or selectively expressed in tumors such as, for example, VEGF, CD20, CD38, CD33, CEA, EpCAM, PSMA, CD54, Lewis Y, CD52, CD40, CD22; CD51/CD61, CD74, MUC-1, CD38, CD19, CD262 (TRAIL-R2), RANKL, CTLA4, and CD30; targets that are involved in chronic inflammation such as, for example, CD25, CD11a, TNF, CD4, CD80, CD23, CD3, CD14, IFNgamma, CD40L, CD50, CD122, TGFbeta and TGFalpha.

Other embodiments

[0075] In certain cases the method described herein can be employed using a reversible non-cross-linking fixative, thereby avoiding the need to uncrosslink the labeled cells prior to amplification. Such non-cross-linking fixatives include alcohols, including methanol and ethanol. As such, the method may in certain cases comprise: a) contacting a population of permeabilized, fixed, non-cross-linked antibody-producing cells with a labeled antigen to produce a labeled sample in which cells that produce an antibody that specifically binds to the antigen are intracellularly labeled; b) using fluorescence activated cell sorting (FACS) to isolate cells that are intracellularly labeled, thereby producing labeled cells; and d) amplifying heavy and light chain-encoding nucleic acid from individual labeled cells, thereby obtaining nucleic acid that encodes the variable domain of antibody that specifically binds to the antigen. Other steps of the method may stay the same.

EXAMPLES

[0076] The following examples are provided in order to demonstrate and further illustrate certain embodiments and aspects of the present invention and are not to be construed as limiting the scope thereof.

Example 1

Exemplary Protocol

[0077]

- A) Isolate peripheral blood mononuclear cells from a fresh blood sample using the density gradient centrifugation method
- B) Resuspend isolated cells in RNase free PBS
- C) Fix cells with 1% paraformaldehyde in RNase free PBS on ice, for 20 minutes
- D) Wash cells one time with RNase free cold PBS
- E) Permeabilize and stain samples for 30 minutes on ice in cold RNase free 0.5% saponin/1% tryptone in PBS containing 10 µg/mL yeast tRNA and an appropriate dilution of a fluorescently labeled antigen
- F) Wash cells one time with cold RNase free 0.1% saponin/1% tryptone in PBS containing 10 µg/mL yeast tRNA
- G) Resuspend the cells in cold RNase free PBS containing 10 µg/mL yeast tRNA and store cells on ice
- H) Sort cells with the desired labeling using FACS into 10 mM Tris solution containing RNase Inhibitor
- I) Place sorted cells immediately on ice
- J) Heat treat cells at 70°C for 45 min to remove the chemical crosslinks
- K) Lyse the cells on ice for 30 min in 10 mM Tris solution containing 0.5% TritonX-100 and RNase Inhibitor
- L) Store cells at -20°C
- M) Thaw cells and perform a single cell RT-PCR reaction to amplify DNA corresponding to an antibody heavy chain and light chain
- N) Perform a nested PCR reaction using the single cell RT-PCR product to separately amplify the antibody heavy chain and light chain DNA

Example 2

[0078] A New Zealand white rabbit was immunized by subcutaneous injection of 0.2mg alphafetoprotein (AFP), dissolved in 0.5 ml of PBS and emulsified with an equal volume of complete Freund adjuvant for priming immunization. The immunogen was divided up and injected into multiple sites along the back and legs. For booster immunization, a smaller total amount (0.1 mg) of immunogen emulsified with an equal volume of incomplete Freund adjuvant was used. Booster immunizations were given at 3-week intervals. Five days before blood collection and PBMC (peripheral blood mononuclear cell) isolation, the rabbit was given an IV boost of 0.2 mg AFP in 1 mL of PBS.

[0079] The isolated PBMCs were fixed with cold 4% paraformaldehyde in PBS, permeabilized with 1% tryptone/0.5% saponin in PBS, and then intracellularly stained with alphafetoprotein labeled with Alexa Fluor 488 (AFP AF488) and anti-rabbit IgG Fc specific - AF647. The stained cells were analyzed by FACS and single stained cells that gated within the scatter (Fig. 2), FS singlets (Fig. 3), SS singlets (Fig. 4), and P9 gates (Fig. 5) were sorted into a well of a 96-well plate containing lysis buffer.

[0080] After reverse crosslink by heat treatment, RT-PCR was performed for the single cells. Among 39 single cells tested, both light and heavy chains were obtained for 11 the cells (see Figs. 8A-D and 9A-D).

[0081] Recombinant antibodies were expressed in HEK 293 cells for the 11 light and heavy chains. The supernatants were tested by IgG and antigen ELISA. Eight of them expressed significant levels of IgG (Fig. 6) and four of them exhibited specificity for the alphafetoprotein antigen (Fig.7).

SEQUENCE LISTING

[0082]

<110> Ke, Yaohuang Yu, Guy-liana Vroom, Karin

<120> FACS-based Method for Obtaining an Antibody Sequence

<130> EPIT-031

<150> 61/506,953

<151> 2011-07-12

<160> 22

<170> PatentIn version 3.5

<210> 1

<211> 448

<212> DNA

<213> Oryctolagus cuniculus

<400> 1

gcttctcctg gtcgctgtgc tcaaaggtgt ccagtgtcag tcggtggagg agcccggggg 60

tcgcctggtc tcgcctggga caccctgac actcacctgc acagtctctg gaatcgacct 120

cagcaactac gacatgaact ggggccgcca ggctccaggg gaggggctgg aatggatcgg 180

tgtcatgtat aattatggca gcgcatacta cgcgaaactgg gcgaaaggcc gattcaccat 240

ctccaaaacc tcgaccacgg tggagctgaa aatcatcagt cgcacaattg aggacacggc 300

cacttatttc tgtgtcagag ggagtggtag tgatcctggg gacatctggg gccagggcac 360

cctggtcacc gtctccttag ggcaacctaa ggctccatca gtcttcccac tggccccctg 420

ctgcgggggac gcacccagct ccacggtg 448

EP 2 732 269 B1

<210> 2
 <211> 460
 <212> DNA
 <213> Oryctolagus cuniculus

5
 <400> 2

gcttctcctg gtcgctgtgc tcaaaggtgt ccagtgctcag tcggaggagg agtccggggg 60
 10 tcgcctgggc acgcctggga caccctgac actcacctgc acggtctctg gattctcctt 120
 cagtaggtac tggatagcct ggggccgcca ggctccaggg gaggggctgg aatatacgg 180
 15 aatcattagt agtactggta ggacatacta cgcgaaactgg gcgaaaggcc gattcaccat 240
 ctccaagtcc tcgccgacca cgggtgattt gaaattgacc agtctgacaa ccgaggacac 300
 gaccacctat ttctgtgcc a gaggaagaga tgctatttat gagcgtgggt ttgatatatg 360
 20 gggcccaggc accctgggtca ccgtctcctt agggcaacct aaggctccat cagtcttccc 420
 actggcccc tgctgcgggg acacaccag ctccacgggtg 460

25
 <210> 3
 <211> 458
 <212> DNA
 <213> Oryctolagus cuniculus

30
 <400> 3

agcttctcct ggtcgtgtg ctcaaaggtg tccagtgctc gtcgggtggag gagtccgggg 60
 gtcgcctggc cacgcctggg acaccctga cagtcacctg caccgtctct ggattctccc 120
 35 tcagtgccaa tgcaataacc tgggtccgtc aggctccagg gaaggggctg gaatggatcg 180
 gaatcattct tactcttgat accacatact acgcgacctg ggcgaaaggc cgattcacca 240
 tctccagaac ctctctgacc acggtggatc tgaaaatcac cagtccgaca accgaggaca 300
 40 cggccaccta tttctgcgcc agagatgatg gtgttggttt ttgggccttt gacatctggg 360
 gcccaggcac cctggtcacc gtctccttgg ggcaacctaa ggctccatca gtcttcccac 420
 45 tggccccctg ctgcggggac acaccagct ccacgggtg 458

50
 <210> 4
 <211> 457
 <212> DNA
 <213> Oryctolagus cuniculus

<400> 4

55

EP 2 732 269 B1

gcttctcctg gtcgctgtgt tcaaaggtgt ccagtgtcag tcggtggagg agtccggggg 60
 tcgcctggta acgcctggga caccctgac actcacctgc acagtctctg gaatcgacct 120
 5 cagtagctct gcaatgagct gggcccgcca ggctccaggg aaggggctgg aatggatcgg 180
 aatcattggc aataatggtg gcacatacta cgcgacttgg gcgaaaggcc gattcaccat 240
 ctccaaaacc tcgaccacgg tggatctgaa aatgaccagt ccgacaaccg aggacacggc 300
 10 cacctatttc tgtgccagag gtgctggtag taagaataat tacaccatgc acccctgggg 360
 cccagggacc ctcgtcaccg tctcttcagg gcaacctaag gctccatcag tcttcccact 420
 15 ggccccctgc tgcggggaca caccagctc cacggtg 457

<210> 5

<211> 457

<212> DNA

20 <213> *Oryctolagus cuniculus*

<400> 5

gcttctcctg gtcgctgtgc tcaaaggtgt ccagtgtcag tcgctggagg agtccggggg 60
 tcgcctggta acgcctggag ggtccctgac actcacctgc acagtctctg gaatcgacct 120
 cagtacctat gaaataagct gggcccgcca ggctccaggg aaggggctgg aatggatcgg 180
 30 aatcattggt actagcgcta acacagtcta cgcgagctgg gcgaaaggcc gattcaccat 240
 ctccaaatcc tcgaccacgg tggatctgag ggtgaccagt ctgacaaccg aggacacggc 300
 cacctatttc tgtgcccgtg cctacgatga atatggtatt catgcttttc atccctgggg 360
 35 cccaggcacc ctggtcaccg tctcctcagg gcaacctaag gctccatcag tcttcccact 420
 ggccccctgc tgcggggaca caccagctc cacggtg 457

<210> 6

<211> 472

<212> DNA

45 <213> *Oryctolagus cuniculus*

<400> 6

50

55

EP 2 732 269 B1

gcttctcctg gtcgctgtgc tcaaaggtgt ccagtgtcag tcgctggagg agtccggggg 60
 tcgctgggtc acgcctggag gatccctgac actcacctgc acagtctctg gaatcgacct 120
 5 cagtacttat gcaatgggct ggggccgcca ggctccaggg aaggggctgg agtggatcgc 180
 atgcatttat ggtggtagta gtggtagcac tcactacgcg cgctgggcga aaggccgagt 240
 caccatctcc aaaacctcga ccacggtgga tctgaaaatc accagtccga cagccgagga 300
 10 cacggccacc tatttctgtg ccagagatat ttattcttat agttactggg gttttggtgc 360
 ttttgatccc tggggcccag gcaccctggt caccgtctcc tcagggcaac ctaaggctcc 420
 15 atcagtcttc ccaactggccc cctgctgctg ggacacaccc agctccacgg tg 472

<210> 7

<211> 463

<212> DNA

20 <213> *Oryctolagus cuniculus*

<400> 7

gcttctcctg gtcgctgtgc tcaaaggtgc ccagtgtcag gagcagctgg tggagtccgg 60
 gggagggctg gtccaggctg agggatccct gacactcacc tgcacagctt ctggattctc 120
 cttcaatggc aactactgga tatgctgggc ccgccaggct ccaggaagg ggctggagtt 180
 30 gatcacatgc attggtacta gtcgtactac cacatggtac gcgagctggg tgaaaggccg 240
 attcaccatc tccagaacct cgaccacggt ggatctgaga atcagcagtc cgacaatcga 300
 ggacacggcc acctatttct gtgccagagg gagttatgct tataatcatg cgcttgctat 360
 35 ctggggccca ggcaccctgg tcaccgtctc cttagggcaa cctaaggctc catcagtctt 420
 cccactggcc ccctgctgctg gggacacacc cagctccacg gtg 463

40 <210> 8

<211> 469

<212> DNA

<213> *Oryctolagus cuniculus*

45 <400> 8

gcttctcctg gtcgctgtgc tcaaaggtgt ccagtgtcag gagcagcggg aggagtccgg 60
 gggaggcctg gtcaagcctg gggcatccct gacactcacc tgccaagtct ctggattcga 120
 50 cttcagttac tactactaca tgtgctgggt ccgccaggct ccaggaagg ggctggagtg 180

55

EP 2 732 269 B1

gatcgggtgt tttactactg gtagtggtag tactgactac gcgaactggg cgaagagccg 240
 attcaccatc tccgaaaccc cgtcgaccac gctgactcta caaatgacca gtctgacagc 300
 5 cgcggacacg gccacctatt tctgtgagag atgcgttagt ggtaatagtt tctatgccat 360
 ggacttctag ggcccaggga ccctcgtcac cgtctcttca gggcaaccta aggctccatc 420
 10 agtcttccca ctggccccct gctgcgggga cacaccagc cccacggtg 469

<210> 9
 <211> 466
 <212> DNA
 <213> *Oryctolagus cuniculus*

15 <400> 9
 20 gcttctcctg gtcgctgtgc tcaaaggtgt ccagtgtcag tcggtggagg agtccggggg 60
 aggcctggtc cagcctgagg gatccctgac actcacctgt acagcctctg gattctcctt 120
 cagtagctac tactacatgt gctgggtccg ccaggctcca ggaaggggc ctgagtggat 180
 25 cggatgtttt actactggca gtgagaccac tgactacgag aactgggcca agagccgatt 240
 caccatctcc aaaacctcgt cgaccacggt gactctacac atgaccagtc tgacagccgc 300
 ggacacggcc acctatttct gtgcgagatg cgtgcctggt aatagtttct acgccatgga 360
 30 cctctggggc ccagggacc cgtcaccgt ctcttcaggg caacctaagg ctccatcagt 420
 cttcccactg gccccctgct gcggggacac acccagctcc acggtg 466

<210> 10
 <211> 469
 <212> DNA
 <213> *Oryctolagus cuniculus*

35 <400> 10
 40 gcttctcctg gtcgctgtgc tcaaaggtgt ccagtgtcag tcggtggagg agtccggggg 60
 agacctggtc aagcctgggg catccctgac actcacctgc acagcctctg gattctcctt 120
 45 cagtaacggc tactacatgt gctgggtccg ccaggctcca ggaaggggc tggaatggat 180
 cgcattgcatt tatgctggtg atagtggtcg cacttactac gcgcgctggg cgaaagaccg 240
 agtcaccatc tccaaagtct cgtcgaccac ggtgactctg catatgacca gtctgacagc 300
 50 cgcggacacg gccacctatt tctgtgagag aagtggctgt atgaatcctt atacatactt 360
 caccttgtgg ggcccaggca ccctggtcac cgtctcctca gggcaaccta aggctccatc 420
 55 agtcttccca ctggccccct gctgcgggga cacaccagc tccacggtg 469

<210> 11
 <211> 469

EP 2 732 269 B1

<212> DNA
 <213> Oryctolagus cuniculus

<400> 11

5
 gcttctcctg gtcgctgtgc tcaaaggtgt ccagtgctcag tcgttggagg ggtccggggg 60
 agacctggtc aagcctgggg cctccctcac actcacctgc aaagtctctg gattctcctt 120
 10 cagtagcggc tactacatgt gctgggtccg ccaggctcca ggaaggggc tggagtggat 180
 cgcatgcatt tatgctggta gtagtggtag tacttactac gcgaactggg cgaaaggccg 240
 attcaccatc tccaaaacct cgtcgcaccac ggtgactctg caaatgacca gtctgacagc 300
 15 cgcgacacg gccacatatt tctgtgagag aggtggtcgt tataatcctt atacatactt 360
 caccttttgg ggcccaggca ccctgggtcac cgtctcctca gggcaaccta aggctccatc 420
 20 agtcttcca ctggcccct gctgcgggga cacaccagc tccacggtg 469

<210> 12
 <211> 682
 <212> DNA
 <213> Oryctolagus cuniculus

<400> 12

30 tcagctgctg gggctcctgc tgctctggct cccaggtgcc agatgtgcat tcgaattgac 60
 ccagactcca tcctccgtgt ctgcagctgt gggagacaca gtcaccatca agtgccaggc 120
 cagtcagagc attagtagct acttagcctg gtatcagcag aaaccagggc agcctcccaa 180
 35 gtcctgatc tacaaggcat ccaactctggc atctggggtc ccatcgcggt tcaaaggcag 240
 tagatctggg acagagttca ctctcacat cagcgacctg gagtgtaccg atgctgccac 300
 ttactactgt caaggtggtt attacagaag tagtagtgat tataactaatg ctttcggcgg 360
 40 agggaccgag gtggtcgtca aaggtgatcc agttgcacct actgtcctca tcttcccacc 420
 atctgctgat cttgtggcaa ctggaacagt caccatcgtg tgtgtggcga ataaatactt 480
 tcccgatgtc accgtcacct gggaggtgga tggcaccacc caaacaactg gcatcgagaa 540
 45 cagtaaaaca ccgcagaatt ctgcagattg tacctacaac ctgagcagca ctctgacact 600
 gaccagcaca cagtacaaca gccacaaaga gtacacctgc aaggtgacct agggcacgac 660
 50 ctcagtcgtc cagagcttca at 682

<210> 13
 <211> 682
 <212> DNA
 <213> Oryctolagus cuniculus

<400> 13

EP 2 732 269 B1

tcagctgctg gggctcctgc tgctctggct cccaggtgcc agatgtgcat tcgagttgac 60
 ccagactcca tcctccgtgg aggcagctgt gggaggcaca gtcacatca agtgccaggc 120
 5 cagtgagagc attggtagct acttagcctg gtatcagcag aaaccagggc agcctcccaa 180
 gctcctgatc tacatggcag ccaactctggc atctggggtc ccatcacggg ttaaaggcag 240
 10 gagatctggg acagacttca ctctcaccat cagcgacctg gagtgtgccg atgctgccac 300
 ttactactgt caaggcggtt attacctag tagtaatgat gttgccaatg ctttcggcgg 360
 agggactgag gtggtcgtca aaggatgatcc agttgcacct actgtcctca tcttcccacc 420
 15 atctgctgat cttgtggcaa ctggaacagt caccatcgtg tgtgtggcga ataaatactt 480
 tcccgatgtc accgtcacct gggaggtgga tggcaccacc caaacaactg gcatcgagaa 540
 cagtaaaaca ccgcagaatt ctgcagattg tacctacaac ctcagcagca ctctgacact 600
 20 gaccagcaca cagtacaaca gccacaaaga gtacacctgc aagggtgacc agggcagcagc 660
 ctcagtcgtc cagagcttca at 682
 25 <210> 14
 <211> 688
 <212> DNA
 <213> *Oryctolagus cuniculus*
 30 <400> 14
 tcagctgctg gggctcctgc tgctctggct cccaggtgcc agatgtgccg aagtagtgat 60
 gacccagact ccagcctccg tggaggcagc tgtgggaggc acagtcacca tcaagtgcc 120
 35 ggcagctcag aggtttgaca ccaathtagc ctggtatcag cagaaaccag ggcagcctcc 180
 caagctcctg atctattctg catccactgt ggcactctggg gtcccatcgc ggttcaaagg 240
 40 cagtggatct gggacacagt tcgctctcac catcagcagc ctggagtgtg ccgatgctgt 300
 cacttactac tgtcaaggct attatgatag tagtaatagt ggtggtgatt cgaatgcttt 360
 cggcggaggg accgaggtgg tcgtcaaagg tgatccagtt gcacctactg tcctcatctt 420
 45 cccaccatct gctgatcttg tggcaactgg aacagtcacc atcgtgtgtg tggcgaataa 480
 atactttccc gatgtcaccg tcacctggga ggtggatggc accacccaaa caactggcat 540
 cgagaacagt aaaacaccgc agaattctgc agattgtacc tacaacctca gcagcactct 600
 50 gacactgacc agcacacagt acaacagcca caaagagtac acctgcaagg tgaccaggg 660
 cacgacctca gtcgtccaga gcttcaat 688
 55 <210> 15
 <211> 688
 <212> DNA
 <213> *Oryctolagus cuniculus*

EP 2 732 269 B1

<400> 15

tcagctgctg gggctcctgc tgctctggct cccaggtgcc agatgtgccg aagtagtgat 60
 5 gaccagact ccagcctccg tggaggcagc tgtgggaggc acagtcacca tcaagtgcc 120
 ggccagtcag agtattgata gtaatttagc ctggtatcag cagaaaccag ggcagcctcc 180
 caagctcctg atctatggtg catccactct ggcatctggg gtcccatcgc ggttcaaagg 240
 10 cagtggatct gggacacagt tcaactctcac catcagcgac ctggagtgtg ccgatgctgc 300
 cacttactac tgtcaaggct attttgatag tagtaatact ggtagtgatt cgaattcttt 360
 15 cggcggaggg accgaggtgg tcgtcaaagg tgatccagtt gcacctactg tcctcatctt 420
 cccaccatct gctgatcttg tggcaactgg aacagtcacc atcgtgtgtg tggcgaataa 480
 atactttccc gatgtcaccg tcacctggga ggtggatggc accacccaaa caactggcat 540
 20 cgagaacagt aaaacaccgc agaattctgc agattgtacc tacaacctca gcagcactct 600
 gacactgacc agcacacagt acaacagcca caaagagtac acctgcaagg tgaccaggg 660
 25 cacgacctca gtcgtccaga gcttcaat 688

<210> 16

<211> 682

<212> DNA

30 <213> *Oryctolagus cuniculus*

<400> 16

tcagctgctg gggctcctgc tgctctggct cccaggtgcc agatgtgccg aagtagtgat 60
 35 gaccagact ccagcctccg tggaggcagt tgtgggaggc acagtcacca tcaagtgcc 120
 ggccagtcag agcattggta gtgccttata ctggtatcag cagaaacctg ggcagcctcc 180
 caagctcctg atctatggta catccactct ggcatctggg gtcccatcgc ggttcaaagg 240
 cagtggatct gggacacagt tcaactctcac catcagcgac ctcgagtgtg ccgatgctgc 300
 cacttactac tgtcaaagta attatgtag tggactaat tatcatcatg gtttcggcgg 360
 45 agggaccgag gtggtcgtca aagtgatcc agttgcacct actgtcctca tcttcccacc 420
 atctgctgat cttgtggcaa ctggaacagt caccatcgtg tgtgtggcga ataaatactt 480
 tccgatgct accgtcacct gggaggtgga tggcaccacc caaacaactg gcatcgagaa 540
 50 cagtaaaaca ccgcagaatt ctgcagattg tacctacaac ctcagcagca ctctgacact 600
 gaccagcaca cagtacaaca gccacaaaga gtacacctgc aaggtgacct agggcacgac 660
 55 ctcagtcgctc cagagcttca at 682

<210> 17

<211> 682

EP 2 732 269 B1

<212> DNA
 <213> Oryctolagus cuniculus

<400> 17

5
 tcagctgctg ggtctcctgc tgctctggct cccaggtgcc agatgtgatg ttgtgatgac 60
 ccagactcca gcctccgtgg aggcggctgt gggaggcaca gtcaccatca attgccaggc 120
 10 cagtgaagat attaatagat acttagcctg gtatcagcag aaaccagggc agcctcccaa 180
 gctcctgatc tacagggcat ccaactctgga atctggggtc ccatcgcggt tcaaaggcag 240
 tagatctggg acagagttca ctctcaccat cagcgacctg gagtgtgccg atgctgccac 300
 15 ttactactgt cagagcaatt attatatgag tgtcagtaat tatgaaaatg ctttcggcgg 360
 agggaccgag gtggtcgtca aaggtgatcc agttgcacct actgtcctca tcttcccacc 420
 20 atctgctgat cttgtggcaa ctggaacagt caccatcgtg tgtgtggcga ataaatactt 480
 tcccgatgtc accgtcacct gggaggtgga tggcaccacc caaacaactg gcatcgagaa 540
 cagtaaaaca ccgcggaatt ctgcagattg tacctacaac ctcagcagca ctctgacact 600
 25 gaccagcaca cagtacaaca gccacaaaga gtacacctgc aaggtgacct agggcacgac 660
 ctcagtcgtc cagagcttca at 682

30 <210> 18
 <211> 676
 <212> DNA
 <213> Oryctolagus cuniculus

<400> 18

35
 tcagctgctg gggctcctgc tgctctggct cccaggtgcc agatgtgatg ttgtgatgac 60
 ccagactcca gcctccgtgt ctgaacctgt gggaggcaca gtcaccatca agtgccaggc 120
 40 cagtgagaat atctacaggt ctttagcctg gcatcagcag aaaccagggc agcctcccaa 180
 gctcccgatc tatggtgcat ctactctggc atctggggtc ccatcgcggt tcaaaggcag 240
 45 tggatctggg acagagttca ctctcaccat cagcggcctg gagtgtgacg atgctgccac 300
 ttattactgt caaaatattt atgttagtga tggatgatggc aatgctttcg gcggcgggac 360
 cgaggtggtc gtcaaaggty atccagttgc acctactgtc ctcatcttcc caccatctgc 420
 50 tgatcttgty gcaactggaa cagtcaccat cgtgtgtgtg gcgaataaat actttcccga 480
 tgtcaccgtc acctgggagg tggatggcac caccctaaaca actggcatcg agaacagtaa 540
 aacaccgcag aattctgcag attgtaccta caacctcagc agcactctga cactgaccag 600
 55 cacacagtac aacagccaca aagagtacac ctgcaaggty acccagggca cgacctcagt 660
 cgtccagagc ttcaat 676

EP 2 732 269 B1

<210> 19
 <211> 682
 <212> DNA
 <213> Oryctolagus cuniculus

5

<400> 19

	tcagctgctg gggctcctgc tgctctggct cccaggtgcc agatgtgccg tcgtgctgac	60
10	ccagactcca tccccctgt ctggacctgt gggaggcaca gtcaccatca agtgccaggc	120
	cagtcagagc attagcaatg cattagcctg gtatcagcag aaaccagggc agcctcccaa	180
15	gctcctgatc ttttttgcac ccaactctggc atctggggtc ccatcgcggt tcagcggcag	240
	tggatctggg acagacttca ctctcacat cagcgacctg gagtgtgccg atgctgccac	300
	ttactactgt caaagttact attatagtag ttatagtgtc gaaagtaatg ctttcggcgg	360
20	agggaccgag gtggtcgtca aaggtgatcc agttgtacct actgtcctca tcttcccacc	420
	atctgctgat cttgtggcaa ctggaacagt caccatcgtg tgtgtggcga ataaatactt	480
25	tcccgatgtc accgtcacct gggaggtgga tggcaccacc caaacaactg gcatcgagaa	540
	cagtaaaaca ccgcagaatt ctgcagattg tacctacaac ctcagcagca ctctgacact	600
	gaccagcaca cagtacaaca gccacaaaga gtacacctgc aaggtgacct agggcacgac	660
30	ctcagtcgtc cagagcttca at	682

35

<210> 20
 <211> 682
 <212> DNA
 <213> Oryctolagus cuniculus

<400> 20

40

45

50

55

EP 2 732 269 B1

tcagctgctg gggctcctgc tgctctggct cccaggtgcc acatttgctc aagtgggtgac 60
ccaggctgaa tcgcccgtgt ctgcacctgt gggaggcaca gtcaccatca attgccaggc 120
5 cagtcagagt cttgatgatg acaactgggt atcctgggtat cagcagaaac cagggcagcc 180
tcccaagctc ctgatctacg aagcatccaa actggcatct ggggtcccat cgcggttcaa 240
aggcagtgga tctgggacac agttcactct caccctcacc gacatgcagt gtgacgatgc 300
10 tgccacttac tactgtcaag ccacttatta tagtagtggg ttgtacaatg gtttcggcgg 360
agggaccgag gtggtcgtca aaggtgatcc agttgcacct actgtcctca tcttcccacc 420
atctgctgat cttgtggcaa ctggaacagt caccatcgtg tgtgtggcga ataaatactt 480
15 tcccgatgtc accgtcacct gggaggtgga tggcaccacc caaacaactg gcacgcagaa 540
cagtaaaaca ccgcagaatt ctgcagattg tacctacaac ctcagcagca ctctgacact 600
20 gaccagcaca cagtacaaca gccacaaaga gtacacctgc aaggtgacc caggcagcagc 660
ctcagtcgtc cagagcttca at 682

25 <210> 21
<211> 679
<212> DNA
<213> *Oryctolagus cuniculus*

30 <400> 21
tcagctgctg gggctcctgc tgctctggct cccaggtgcc agatgtgccg tcgtgatgac 60
ccagactgca tccccctgtgt ctgcagctgt gggaggcaca gtcaccatca attgccaggc 120
35 cagtcagagt attagtagta gctacttatc ctggatcag cagaaaccag ggcagcctcc 180
caagctcctg atctacaag cttccactct ggcactctggg gtcccatcgc ggttcaaagg 240
cagtggatct gggacagagt aactcttac catcagcgat gtgcagtgtg acgatgctgg 300
40 cacttactac tgtctatacg gttcttatag tagtactagt ggcaatgctt tcggcggagg 360
gaccgaggtg gtggtaaag gtgatccagt tgcacctact gtcctcatct tcccaccagc 420
45 tgctgatcag gtggcaactg gaacagtcac catcgtgtgt gtggcgaata aatactttcc 480
cgatgtcacc gtcacctggg aggtggatgg caccacccaa acaactggca tcgagaacag 540
50 taaaacaccg cagaattctg cagattgtac ctacaacctc agcagcactc tgacactgac 600
cagcacacag tacaacagcc acaaagagta cacctgcaag gtgaccagc gcacgacctc 660
agtcgtccag agcttcaat 679

55 <210> 22
<211> 682
<212> DNA
<213> *Oryctolagus cuniculus*

<400> 22

tcagctgctg gggctcctgc tgctctggct cccaggtgcc acatttgcca tcgtgatgac 60
 5 ccagactcca tcttccaagt ctgtccctgt gggagacaca gtcacatca attgccaggc 120
 cactgagagt gtttatagta acaaccgctt agcctggat tagcagaaac caggtcagcc 180
 10 tcccaagctc ctgatctatc tggcatccac tctggcatct ggggtcccat cgcggttcaa 240
 aggcagtgga tctgggacac agttcactct caccatcagc gatgtggtgt gtgacgatgc 300
 tgccacttac tactgtgcag gatatacaga tagaggtagt gatgctggtg ctttcggcgg 360
 15 agggaccgag gtggtggtca agggtgatcc agttgcacct actgtcctca tcttcccacc 420
 agctgctgat caggtggcaa ctggaacagt caccatcgtg tgtgtggcga ataaatactt 480
 tcccgatgtc accgtcacct gggaggtgga tggcaccacc caacaactg gcatcgagaa 540
 20 cagtaaaaca cgcagaatt ctgcagattg tacctacaac ctcagcagca ctctgacact 600
 gaccagcaca cagtacaaca gccacaaaga gtacacctgc aaggtgacct agggcacgac 660
 25 ctcagtcgtc cagagcttca at 682

Claims

1. A method comprising:
- 30 a) contacting a population of permeabilized, cross-linked antibody-producing cells with a labelled antigen to produce a labelled sample in which cells that produce an antibody that specifically binds to said antigen are intracellularly labelled;
- 35 b) using fluorescence activated cell sorting (FACS) to isolate cells that are intracellularly labelled, thereby producing labelled cells;
- c) uncrosslinking said labeled cells to produce uncrosslinked cells; and
- d) amplifying heavy and light chain-encoding nucleic acid from individual uncrosslinked cells, thereby obtaining nucleic acid that encodes the variable domain of antibody that specifically binds to said antigen.
- 40 2. The method of claim 1, wherein said permeabilized, cross-linked antibody-producing cells are from an animal that is mounting an immune response to said antigen.
- 45 3. The method of claim 2, wherein said antigen is an isolated peptide that is produced *in vitro* and administered to said animal.
4. The method of claim 2, wherein said animal has an immune response against an infection.
5. The method of claim 2, wherein said animal has an auto-immune disease.
- 50 6. The method of claim 2, wherein said animal is a rabbit, mouse or human.
7. The method of any previous claim, wherein said population of permeabilized, cross-linked antibody-producing cells are permeabilized, cross-linked peripheral blood leukocytes.
- 55 8. The method any previous claim, wherein said amplifying is by single cell RT-PCR.
9. The method any previous claim, wherein said labeling comprises contacting said permeabilized, cross-linked antibody-producing cells with a fluorescently labelled peptide.

10. The method of any previous claim, further comprising:

5 labeling said permeabilized, cross-linked antibody-producing cells with a labelled secondary antibody that non-specifically binds to antibodies without interfering with antigen binding; and
 using said fluorescence activated cell sorting (FACS) to isolate cells in said labelled sample that are labelled by both said antigen and said secondary antibody.

11. The method of any previous claim, further comprising sequencing said nucleic acid to obtain the nucleotide sequence of said variable domain of said antibody.

Patentansprüche

1. Verfahren, welches folgendes aufweist:

- 15 a) in Kontakt Bringen einer Population permeabilisierter, vernetzter Antikörper erzeugender Zellen mit einem markierten Antigen zum Erzeugen einer Probe, in der Zellen, die einen Antikörper erzeugen, der sich spezifisch an das Antigen bindet, intrazellulär markiert sind,
 b) Benutzen von Sortierung fluoreszenzaktivierter Zellen (FACS) zum Isolieren von Zellen, die intrazellulär
 20 markiert sind, wobei dadurch markierte Zellen erzeugt werden,
 c) Vernetzen der markierten Zellen zum Erzeugen vernetzter Zellen, und
 d) Vervielfältigen von schwerer und leichter ketten-kodierender Nukleinsäure von einzelnen unvernetzten Zellen, wobei dadurch Nukleinsäure erhalten wird, welche die variable Domäne von Antikörper kodiert, der sich spezifisch an das Antigen bindet.

2. Verfahren gemäß Anspruch 1, wobei die permeabilisierten, vernetzten Antikörper erzeugenden Zellen von einem Tier sind, das eine Immunreaktion auf das Antigen aufbaut.

3. Verfahren gemäß Anspruch 2, wobei das Antigen ein isoliertes Peptid ist, das *in vitro* erzeugt wird und dem Tier verabreicht wird.

4. Verfahren gemäß Anspruch 2, wobei das Tier eine Immunreaktion gegen eine Infektion aufweist.

5. Verfahren gemäß Anspruch 2, wobei das Tier eine Autoimmunerkrankung hat.

6. Verfahren gemäß Anspruch 2, wobei das Tier ein Kaninchen, eine Maus oder ein Mensch ist.

7. Verfahren gemäß einem der vorangehenden Ansprüche, wobei die Population permeabilisierter, vernetzter Antikörper erzeugender Zellen permeabilisierte, vernetzte periphere Blut-Leukozyten sind.

8. Verfahren gemäß einem der vorangehenden Ansprüche, wobei das Vervielfältigen durch Einzelzellen-Echtzeit-Polymerase-Kettenreaktion (single cell RT-PCR) geschieht

9. Verfahren gemäß einem der vorangehenden Ansprüche, wobei das Markieren das in Kontakt Bringen der permeabilisierten, vernetzten Antikörper erzeugenden Zellen mit einem fluoreszierend markierten Peptid aufweist.

10. Verfahren gemäß einem der vorangehenden Ansprüche, welches ferner folgendes aufweist:

50 Markieren der permeabilisierten, vernetzten Antikörper erzeugenden Zellen mit einem markierten sekundären Antikörper, der sich unspezifisch an Antikörper bindet, ohne in die Antigenbindung einzugreifen, und
 Benutzen der Sortierung fluoreszenzaktivierter Zellen (FACS) zum Isolieren von Zellen in der markierten Probe, die sowohl mit dem Antigen als auch mit dem sekundären Antikörper markiert sind.

11. Verfahren gemäß einem der vorangehenden Ansprüche, welches ferner das Sequenzieren der Nukleinsäure aufweist, um die Nukleotid-Sequenz der variablen Domäne des Antikörpers zu erhalten.

Revendications

1. Procédé comprenant :

- 5 a) la mise en contact d'une population de cellules perméabilisées, réticulées, productrices d'anticorps avec un antigène marqué pour produire un échantillon marqué, dans lequel les cellules qui produisent un anticorps, qui se lie spécifiquement audit antigène, sont marquées de manière intracellulaire ;
- b) l'utilisation d'un tri de cellules activées par fluorescence (FACS) pour isoler les cellules qui sont marquées de manière intracellulaire, en produisant de ce fait des cellules marquées ;
- 10 c) la dé-réticulation desdites cellules marquées pour produire des cellules non réticulées ; et
- d) l'amplification d'un acide nucléique codant pour des chaînes lourdes et légères provenant de cellules non réticulées individuelles, en obtenant de ce fait un acide nucléique qui code pour le domaine variable d'un anticorps, qui se lie spécifiquement audit antigène.

15 2. Procédé selon la revendication 1, dans lequel lesdites cellules perméabilisées, réticulées, productrices d'anticorps proviennent d'un animal qui développe une réponse immunitaire contre ledit antigène.

3. Procédé selon la revendication 2, dans lequel ledit antigène est un peptide isolé qui est produit *in vitro* et est administré au dit animal.

20 4. Procédé selon la revendication 2, dans lequel ledit animal a une réponse immunitaire contre une infection.

5. Procédé selon la revendication 2, dans lequel ledit animal a une maladie auto-immune.

25 6. Procédé selon la revendication 2, dans lequel ledit animal est un lapin, une souris ou un être humain.

7. Procédé selon l'une quelconque des revendications précédentes, dans lequel ladite population de cellules perméabilisées, réticulées, productrices d'anticorps sont des leucocytes du sang périphérique perméabilisés, réticulés.

30 8. Procédé selon l'une quelconque des revendications précédentes, dans lequel ladite amplification se fait via une RT-PCR avec une seule cellule.

9. Procédé selon l'une quelconque des revendications précédentes, dans lequel ledit marquage comprend la mise en contact desdites cellules perméabilisées, réticulées, productrices d'anticorps avec un peptide marqué par fluorescence.

35

10. Procédé, selon l'une quelconque des revendications précédentes, comprenant en outre les étapes consistant à :

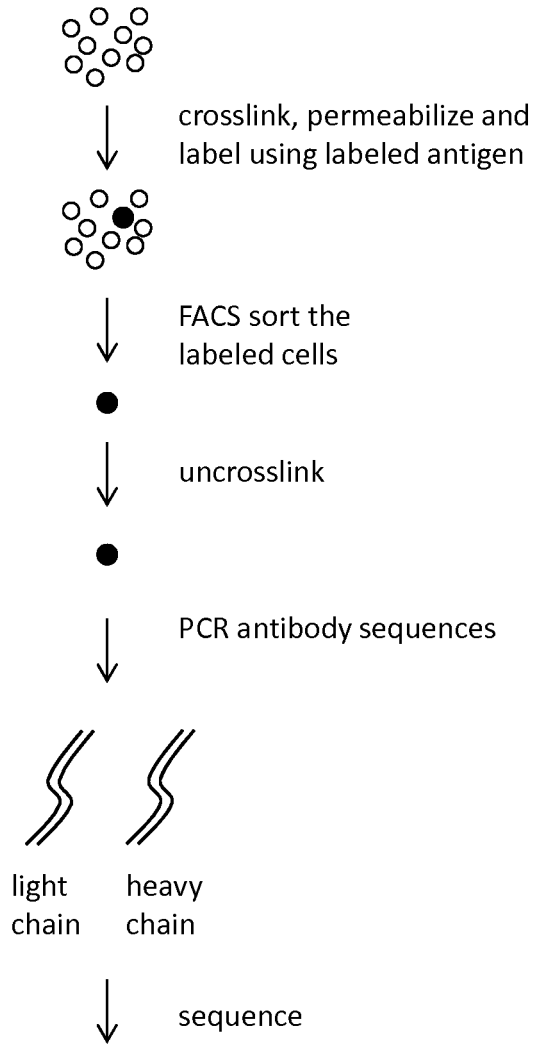
40 marquer lesdites cellules perméabilisées, réticulées, productrices d'anticorps avec un anticorps secondaire marqué qui se lie, de manière non spécifique, à des anticorps sans interférer avec la liaison à l'antigène ; et utiliser ledit tri de cellules activées par fluorescence (FACS) pour isoler des cellules dans ledit échantillon marqué, qui sont marquées à la fois par ledit antigène et ledit anticorps secondaire.

45 11. Procédé, selon l'une quelconque des revendications précédentes, comprenant en outre un séquençage dudit acide nucléique pour obtenir la séquence nucléotidique dudit domaine variable dudit anticorps.

50

55

Antibody producing cells



Heavy chain sequence
Light chain sequence

FIG. 1

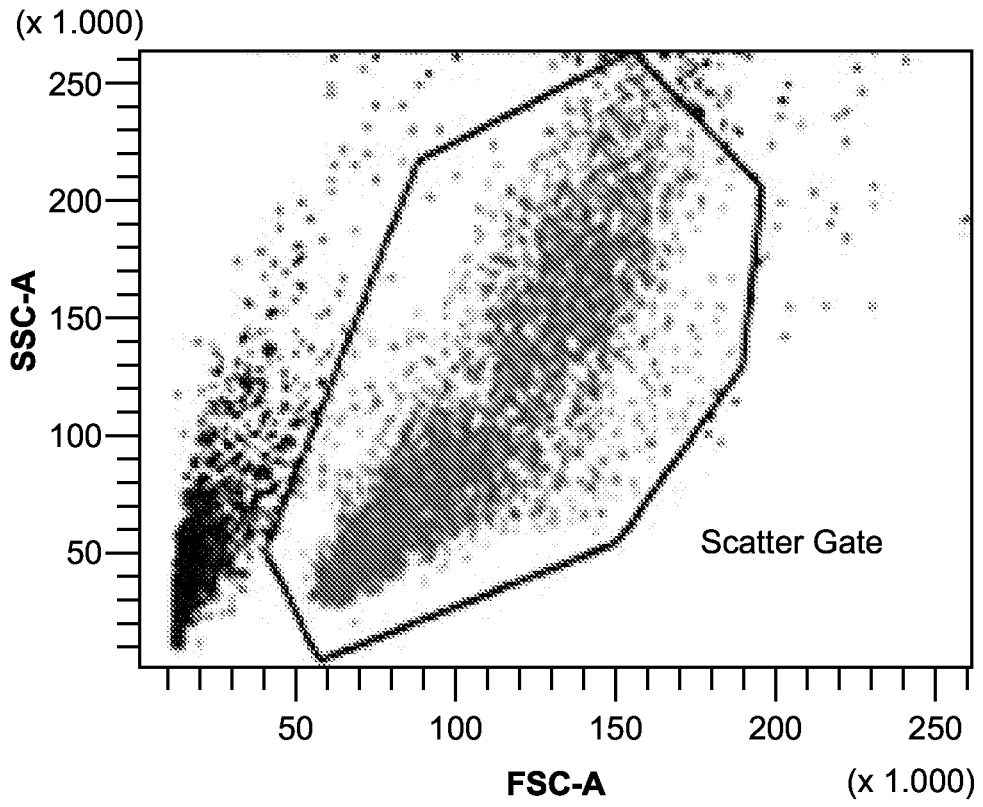


FIG. 2

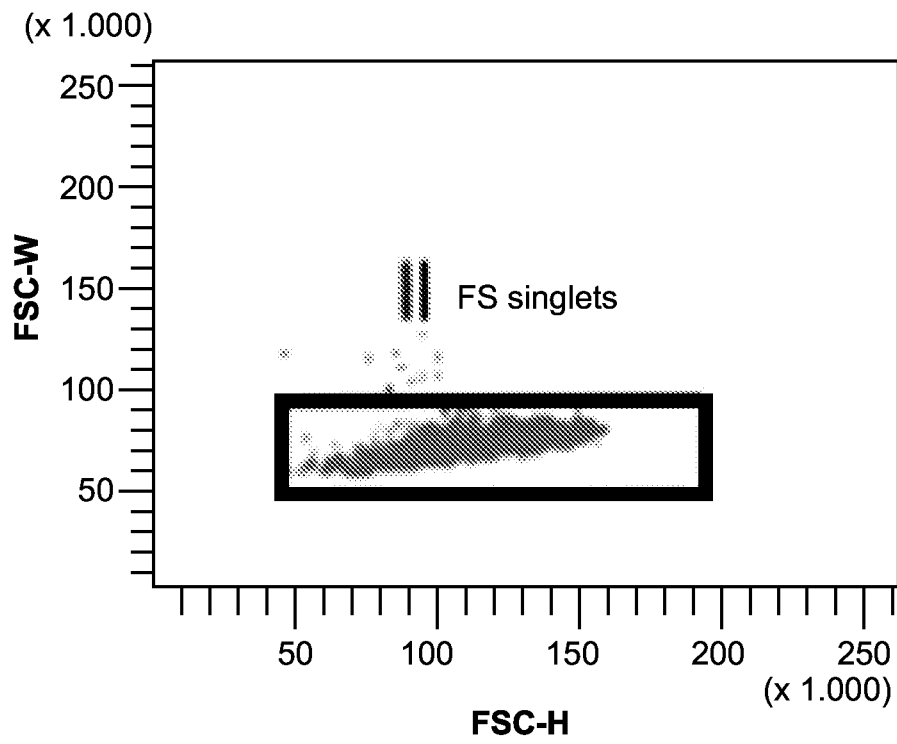


FIG. 3

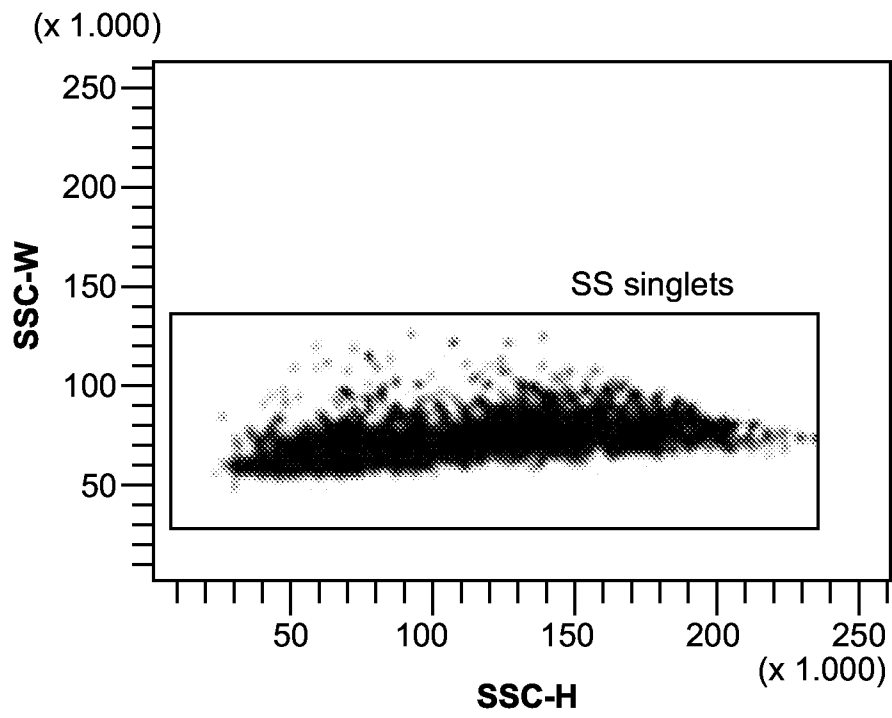


FIG. 4

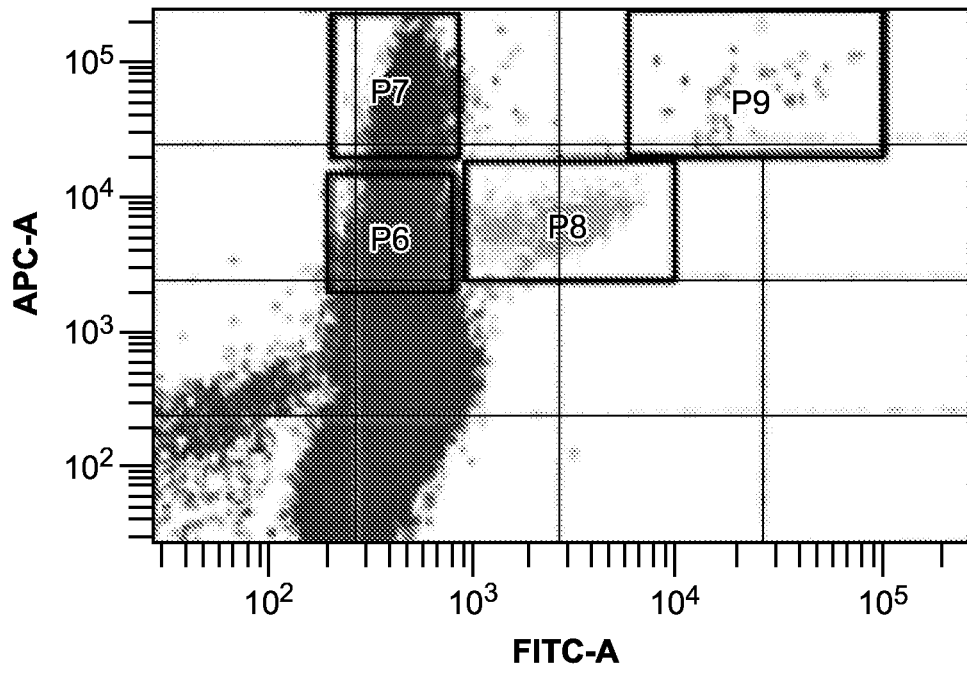


FIG. 5

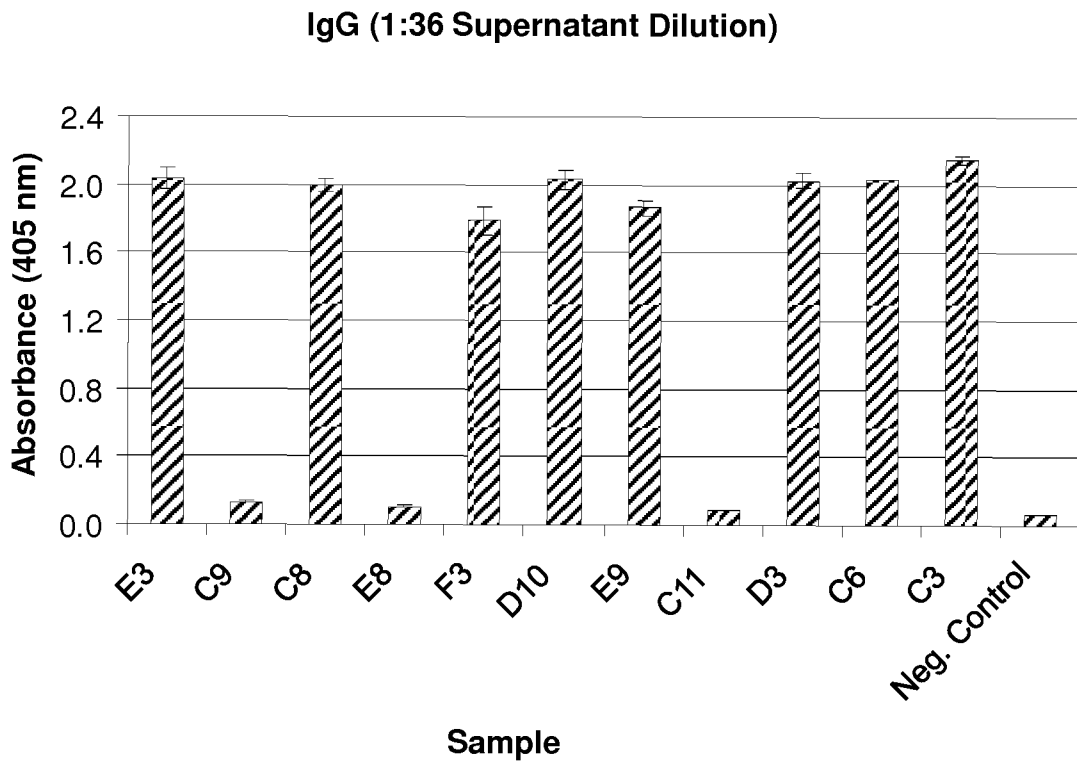


FIG. 6

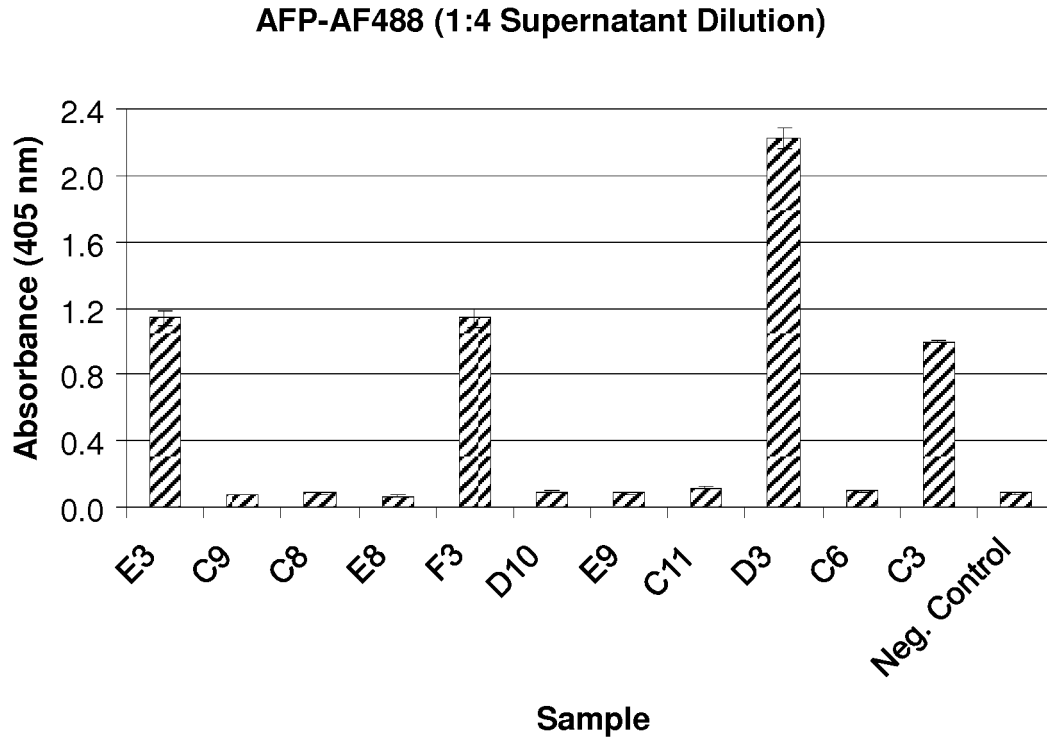


FIG. 7

CDR1

```

gi | E8H-1  ACCTCAGC--AACTACGACATGAACCTGGGTCGCCAGGCTCCAGGGGAGGGGCTGGAAAT
gi | C6H-1  CCTTCAGT--AGGTACTGGATAGCCTGGGTCGCCAGGCTCCAGGGGAGGGGCTGGAAAT
gi | F3H-2  CCTTCAGT--GCCAATGCAATAACCTGGGTCGGTCAGGCTCCAGGGAAGGGGCTGGAAAT
gi | E9H-2  ACCTCAGT--AGCTCTGCAATGAGCTGGGTCGCCAGGCTCCAGGGAAGGGGCTGGAAAT
gi | C9H-1  ACCTCAGT--ACCTATGAAATAAGCTGGGTCGCCAGGCTCCAGGGAAGGGGCTGGAAAT
gi | D10H-1 ACCTCAGT--ACTTATGCAATGGGCTGGGTCGCCAGGCTCCAGGGAAGGGGCTGGAGT
gi | C8H-1  CCTTCAATGGCAACTACTGGATATGCTGGGCCGCCAGGCTCCAGGGAAGGGGCTGGAGT
gi | C11H-1 ACTTCAGTTACTACTACATGTCTGGGTCGCCAGGCTCCAGGGAAGGGGCTGGAGT
gi | D3H-1  CCTTCAGTAGCTACTACATGTCTGGGTCGCCAGGCTCCAGGGAAGGGGCTGGAGT
gi | C3H-1  CCTTCAGTAACGGCTACTACATGTCTGGGTCGCCAGGCTCCAGGGAAGGGGCTGGAAAT
gi | E3H-1  CCTTCAGTAGCGGCTACTACATGTCTGGGTCGCCAGGCTCCAGGGAAGGGGCTGGAGT
*   ***   *   *   *   *   *   *   *   *   *   *   *   *   *   *   *

```

CDR2

```

gi | E8H-1  GGATCGGTGTCATG-----TATAATTAATGGCAGGCATATACTACGGAACTGGGCGAAAG
gi | C6H-1  ATATCGGAATCATT-----AGTAGTACTGGTAGGACATACTACGGAACTGGGCGAAAG
gi | F3H-2  GGATCGGAATCATT-----CTTACTCTTGATACCCACATACTACGGACCTGGGCGAAAG
gi | E9H-2  GGATCGGAATCATT-----GGCAATAATGGTGGCACATACTACGGACITGGGCGAAAG
gi | C9H-1  GGATCGGAATCATT-----GGTACTAGCGCTAACACAGTCTACGGAGCTGGGCGAAAG
gi | D10H-1 GGATCGCATGCATTTATGGTGGTAGTAGTGGTAGCACTCACTACGGCCGCTGGGCGAAAG
gi | C8H-1  TGATCACATGCATT---GGTACTAGTCGTACTACCCACATGGTACGGGAGCTGGGTGAAAG
gi | C11H-1  GGATCGGGTG---TTTACTACTGGTAGTGGTAGTACTGACTACGGCAACTGGGCGAAGA
gi | D3H-1  GGATCGGATG---TTTACTACTGGCAGTGAGACCCTACTGACTACGGCAACTGGGCGAAGA
gi | C3H-1  GGATCGCATGCATTTATGCTGGTGTAGTGGTGGCCTTACTACGGCCGCTGGGCGAAG
gi | E3H-1  GGATCGCATGCATTTATGCTGGTAGTAGTGGTAGTACTACTACGGCAACTGGGCGAAG
*   ***   *   *   *   *   *   *   *   *   *   *   *   *   *   *

```

FIG. 8B

CDR1

```

gi | C11L-1  -----
gi | D3L-1  GGCCAGTCAGAGCAATTAGTAGCTAC-----TTAGCCTGGTATCAGCAGAAACCAGGGCA
gi | C3L-1  GGCCAGTGAGAGCAATTGGTAGCTAC-----TTAGCCTGGTATCAGCAGAAACCAGGGCA
gi | E3L-2  GGCCAGTCAGAGGTTTGACACCAAT-----TTAGCCTGGTATCAGCAGAAACCAGGGCA
gi | F3L-1  GGCCAGTCAGAGTATTGATAGTAAAT-----TTAGCCTGGTATCAGCAGAAACCAGGGCA
gi | C8L-1  GGCCAGTGAAGATATTAATAGATAC-----TTAGCCTGGTATCAGCAGAAACCAGGGCA
gi | E9L-1  GGCCAGTGAGAAATCTACAGGTCT-----TTAGCCTGGCATCAGCAGAAACCAGGGCA
gi | C9L-1  GGCCAGTCAGAGCATTAGCAATGCA-----TTAGCCTGGTATCAGCAGAAACCAGGGCA
gi | C6L-1  GGCCAGTCAGAGTCTTGATGATGACAACCTGGTTATCCTGGTATCAGCAGAAACCAGGGCA
gi | D10L-1 GGCCAGTCAGAGTATTAGTAGTAGTAC---TTATCCTGGTATCAGCAGAAACCAGGGCA
gi | E8L-1  GGCCACTGAGAGTGTTTATAGTAAACAACCGCTTAGCCTGGTATTAGCAGAAACCAGGTCA
***** * * * *
* * * * *

```

CDR2

```

gi | C11L-1  -----
gi | D3L-1  GCCTCCCAAGCTCCTGATCTACAAGGCATCCACTCTGGCATCTGGGTCCCATCGCGGTT
gi | C3L-1  GCCTCCCAAGCTCCTGATCTACATGGCAGCCACTCTGGCATCTGGGTCCCATCACGGTT
gi | E3L-2  GCCTCCCAAGCTCCTGATCTATTCTGCATCCACTGTGGCATCTGGGTCCCATCGCGGTT
gi | F3L-1  GCCTCCCAAGCTCCTGATCTATGGTGCATCCACTCTGGCATCTGGGTCCCATCGCGGTT
gi | C8L-1  GCCTCCCAAGCTCCTGATCTACAGGGCATCCACTCTGGCATCTGGGTCCCATCGCGGTT
gi | E9L-1  GCCTCCCAAGCTCCCGATCTATGGTGCATCTACTCTGGCATCTGGGTCCCATCGCGGTT
gi | C9L-1  GCCTCCCAAGCTCCTGATCTTTTGGCATCCACTCTGGCATCTGGGTCCCATCGCGGTT
gi | C6L-1  GCCTCCCAAGCTCCTGATCTACGAAGCATCCAAACTGGCATCTGGGTCCCATCGCGGTT
gi | D10L-1 GCCTCCCAAGCTCCTGATCTACAAGGTTCCACTCTGGCATCTGGGTCCCATCGCGGTT
gi | E8L-1  GCCTCCCAAGCTCCTGATCTATCTGGCATCCACTCTGGCATCTGGGTCCCATCGCGGTT
***** * * * *
* * * * *

```

FIG. 9B

gi C11L-1	CAAAGGCAGTAGATCTGGGACACAGAGTTCACTCTCACCATCAGCGACCTGGAGTGTACCGA
gi D3L-1	TAAAGGCAGGAGATCTGGGACACAGACTTCACCTCTCACCATCAGCGACCTGGAGTGTGCCGA
gi C3L-1	CAAAGGCAGTGGATCTGGGACACAGTTCGCTCTCACCATCAGCGACCTGGAGTGTGCCGA
gi E3L-2	CAAAGGCAGTGGATCTGGGACACAGTTCACCTCTCACCATCAGCGACCTGGAGTGTGCCGA
gi F3L-1	CAAAGGCAGTGGATCTGGGACACAGTTCACCTCTCACCATCAGCGACCTCGAGTGTGCCGA
gi C8L-1	CAAAGGCAGTAGATCTGGGACACAGAGTTCACCTCTCACCATCAGCGACCTGGAGTGTGCCGA
gi E9L-1	CAAAGGCAGTGGATCTGGGACACAGAGTTCACCTCTCACCATCAGCGGCTGGAGTGTGACGA
gi C9L-1	CAGCGCAGTGGATCTGGGACACAGACTTCACCTCTCACCATCAGCGACCTGGAGTGTGCCGA
gi C6L-1	CAAAGGCAGTGGATCTGGGACACAGTTCACCTCTCACCCTCACCGACATGCAGTGTGACGA
gi D10L-1	CAAAGGCAGTGGATCTGGGACACAGTACACTCTTACCATCAGCGATGTCAGTGTGACGA
gi E8L-1	CAAAGGCAGTGGATCTGGGACACAGTTCACCTCTCACCATCAGCGATGTGGTGTGTGACGA

CDR3

gi C11L-1	----- TGCTGCCACTTACTACTGTCAAGGIGGTTATTACAGAAGTAGTAGTATTAACT---AA
gi D3L-1	TGCTGCCACTTACTACTGTCAAGGCGGTTATTACCGTAGTAGTAATGAI GTTGCC---AA
gi C3L-1	TGCTGTCACTTACTACTGTCAAGGCTATTATGATAGTAGTAATAGTGGTGGTATTGCGAA
gi E3L-2	TGCTGCCACTTACTACTGTCAAGGCTATTTGATAGTAGTAATACTGGTAGTATTGCGAA
gi F3L-1	TGCTGCCACTTACTACTGTCAAGTAATTAATGTTAGTGGTACTAATAATCATCA-----
gi C8L-1	TGCTGCCACTTACTACTGTCAAGCAATTAATATAGAGTGTCAAGTAAATTAAGAA---AA
gi E9L-1	TGCTGCCACTTACTACTGTCAAAAATTTA--TGTAGT---ATGGTAGTGGC---AA
gi C9L-1	TGCTGCCACTTACTACTGTCAAAGTTACTATTAATAGTAGTATTAGTGTGAAAGT---AA
gi C6L-1	TGCTGCCACTTACTACTGTCAAGCCACTTATTATAGTAGTGTG-----GTTGGTAC---AA
gi D10L-1	TGCTGCCACTTACTACTGTCTATACGGTCTTATAGTAGTA-----CTAGTGGC---AA
gi E8L-1	TGCTGCCACTTACTACTGTGCAGGATATACAGATAGAGGTA-----GTGATGCT---GG

FIG. 9C

```

gi | C11L-1
gi | D3L-1
gi | C3L-1
gi | E3L-2
gi | F3L-1
gi | C8L-1
gi | E9L-1
gi | C9L-1
gi | C6L-1
gi | D10L-1
gi | E8L-1
-----
TGCTTTCGGCGGAGGGACCGAGGTGGTGGTTCGTCAA
TGCTTTCGGCGGAGGGACTGAGGTGGTGGTTCGTCAA
TGCTTTCGGCGGAGGGACCGAGGTGGTGGTTCGTCAA
TTCTTTCGGCGGAGGGACCGAGGTGGTGGTTCGTCAA
TGGTTTCGGCGGAGGGACCGAGGTGGTGGTTCGTCAA
TGCTTTCGGCGGAGGGACCGAGGTGGTGGTTCGTCAA
TGCTTTCGGCGGAGGGACCGAGGTGGTGGTTCGTCAA
TGCTTTCGGCGGAGGGACCGAGGTGGTGGTTCGTCAA
TGGTTTCGGCGGAGGGACCGAGGTGGTGGTTCGTCAA
TGGTTTCGGCGGAGGGACCGAGGTGGTGGTTCGTCAA
TGCTTTCGGCGGAGGGACCGAGGTGGTGGTTCGTCAA
TGCTTTCGGCGGAGGGACCGAGGTGGTGGTTCGTCAA
* **** *

```

FIG. 9D

REFERENCES CITED IN THE DESCRIPTION

This list of references cited by the applicant is for the reader's convenience only. It does not form part of the European patent document. Even though great care has been taken in compiling the references, errors or omissions cannot be excluded and the EPO disclaims all liability in this regard.

Patent documents cited in the description

- US 4510244 A [0003]
- US 20040067496 A, Kantor [0062] [0067]
- EP 239400 A [0069]
- WO 9109967 A [0069]
- US 5225539 A [0069]
- US 5530101 A [0069]
- US 5585089 A [0069]
- EP 592106 A [0069]
- EP 519596 A [0069]
- US 5565332 A [0069]
- US 5750078 A [0069]
- US 5502167 A [0069]
- US 5705154 A [0069]
- US 5770403 A [0069]
- US 5698417 A [0069]
- US 5693493 A [0069]
- US 5558864 A [0069]
- US 4935496 A [0069]
- US 4816567 A [0069]
- WO 9845331 A [0069]
- WO 9845332 A [0069]
- US 20040086979 A [0069]
- US 20050033031 A [0069]
- US 7462697 B [0070]
- US 10984473 B [0072]
- WO 61506953 A [0082]

Non-patent literature cited in the description

- KRUTZIK ; NOLAN. *Cytometry*, 2003, vol. 55A, 61-70 [0002]
- LANZAVECCHIA et al. *Eur. J. Immunol.*, 1987, vol. 17, 105 [0021]
- HUSTON et al. *Proc. Natl. Acad. Sci. U.S.A.*, 1988, vol. 85, 5879-5883 [0021]
- BIRD et al. *Science*, 1988, vol. 242, 423-426 [0021]
- HOOD ; BENJAMIN, N.Y. et al. *Immunology*. 1984 [0021]
- HUNKAPILLER ; HOOD. *Nature*, 1986, vol. 323, 15-16 [0021]
- E. KABAT et al. Sequences of Proteins of Immunological Interest. *U.S. Department of Health and Human Services*, 1991 [0022]
- Handbook of Experimental Immunology. Blackwell Scientific Publishers, 1986, vol. 4 [0045]
- HARLOW et al. *Antibodies: A Laboratory Manual*. Cold Spring Harbor, 1988 [0046] [0048]
- Reading in Methods in Enzymology. Academic Press Inc, 1986, vol. 21, 18-33 [0047]
- VAN MOURIK ; W. P. ZEIZLMAKER. *Methods in Enzymology*. Academic Press Inc, vol. 121, 174-182 [0049]
- N. MOAV ; T. N. HARRIS. *J. Immunol*, 1970, vol. 105, 1512 [0049]
- RAID, D. J. SELECTED METHODS IN CELLULAR IMMUNOLOGY. W. H. Freeman and Co, 1987 [0049]
- LAZARUS et al. *Cytometry*, 1998, vol. 32, 206-13 [0051]
- SARTOR et al. *Cytometry*, vol. 199418, 119-22 [0051]
- GADOL et al. *Cytometry*, 1994, vol. 15, 359-70 [0051]
- FAR et al. *Cytometry*, 1994, vol. 15, 327-34 [0051]
- KRUTZIK. *Cytometry*, 2003, vol. 55, 61-70 [0051]
- FLEISHER. *Clin. Immunol.*, 1999, vol. 90, 425-430 [0051]
- KRUTZIK. *J. Immunol.*, vol. 2005175, 2357-2365 [0051]
- ORFAO et al. *Clin. Biochem.*, 1996, vol. 29, 5-9 [0059]
- JOHNSON et al. *Curr. Pharm. Biotechnol.*, 2007, vol. 8, 133-9 [0059]
- TUNG et al. *Clin. Lab. Med.*, 2007, vol. 27, 453-68 [0059]
- DAINIAK. *Adv. Biochem. Eng. Biotechnol.*, 2007, vol. 106, 1-18 [0059]
- SASTRY. *Proc Natl. Acad. Sci.*, 1989, vol. 86, 5728-5732 [0061]
- ORLANDI et al. *Proc. Natl. Acad. Sci.*, 1989, vol. 86, 3833-3837 [0061]
- LOH et al. *Science*, 1989, vol. 243, 217-220 [0061]
- *Ann. N Y Acad. Sci.*, 1995, vol. 764, 224-7 [0062]
- BOEKEL et al. *Immunity.*, 1997, vol. 7, 357-68 [0062]
- YAMAGAMI et al. *Immunity*, 1999, vol. 11, 309-16 [0062]
- BEERLI et al. *MAbs.*, 2010, 2 [0062]
- MORBACH et al. *Mol. Immunol.*, 2008, vol. 45, 3840-6 [0062]
- KÜPPERS et al. *Methods Mol Biol.*, 2004, vol. 271, 225-238 [0062]
- SEIDL et al. *Int. Immunol.*, 1997, vol. 9, 689-702 [0062]

EP 2 732 269 B1

- **LEBOEUF.** *Gene*, 1989, vol. 82, 371-7 [0062]
- **DATTAMAJUMDAR.** *Immunogenetics*, 1996, vol. 43, 141-51 [0062]
- **KETTLEBOROUGH.** *Eur. J. Immunol.*, 1993, vol. 23, 206-11 [0062]
- **BABCOOK.** *Proc. Natl. Acad. Sci.*, 1996, vol. 93, 7843-7848 [0062]
- **WILLIAMS.** *Harb. Symp. Quant. Biol. Cold Spring*, 1989, vol. 54, 637-47 [0062]
- **PADLAN.** *Molecular Immunology*, 1991, vol. 28 (4/5), 489-498 [0069]
- **STUDNICKA et al.** *Protein Engineering*, 1994, vol. 7 (6), 805-814 [0069]
- **ROGUSKA. et al.** *PNAS*, 1994, vol. 91, 969-973 [0069]
- **RIECHMANN et al.** *Nature*, 1988, vol. 332, 323 [0069]

专利名称(译)	用于获得抗体序列的基于FACS的方法		
公开(公告)号	EP2732269B1	公开(公告)日	2017-10-18
申请号	EP2012810553	申请日	2012-07-10
[标]申请(专利权)人(译)	宜康公司		
申请(专利权)人(译)	Epitomics公司, INC.		
当前申请(专利权)人(译)	Epitomics公司, INC.		
[标]发明人	KE YAOHUANG YU GUO LIANG VROOM KARIN		
发明人	KE, YAOHUANG YU, GUO-LIANG VROOM, KARIN		
IPC分类号	G01N33/531 C12N15/13 C12Q1/68		
CPC分类号	G01N33/56972 G01N33/5032 G01N33/5047 G01N33/564 G01N33/6854		
代理机构(译)	WILLIAMS POWELL		
优先权	61/506953 2011-07-12 US		
其他公开文献	EP2732269A4 EP2732269A2		
外部链接	Espacenet		

摘要(译)	gcttctcctg gtcgctgtgc tcaaaggtgt ccagtgtcag tcggtggagg agccccgggg	60
在某些实施方案中, 该方法可以包括: a) 使透化的, 交联的抗体生成细胞群与标记的抗原接触以产生标记的样品, 其中产生特异性结合所述抗原的抗体的细胞被细胞内标记; b) 使用FACS分离细胞内标记的细胞, 从而产生标记的细胞; c) 未交联所述标记的细胞以产生未交联的细胞; d) 从各个未交联的细胞中扩增编码重链和轻链的核酸, 从而获得编码特异性结合所述抗原的抗体可变结构域的核酸。	tcgcttggtc tcgctggga caccctgac actcaactgc acagtctctg gaatcgacct	120
	cagcaactac gacatgaact gggtccgcca ggctccaagg gaggggctgg aatggatcgg	180
	tgtcatgtat aattatggca gcgcatacta gcgcaactgg gcgaaaggcc gattcacat	240
	ctccaaaacc tcgaccacgg tggagctgaa aatcatcagt ccgacaattg aggacacggc	300
	cacttatttc tgtgtcagag ggagtgttag tgatcctggg gacatctggg gccccaggcac	360
	ccctggtcacc gtctccttag ggcaacctaa ggctccatca gtcttccac tggccccctg	420
	ctgcggggac gcaccagct ccacggtg	448