



(11)

EP 2 470 211 B1

(12)

EUROPEAN PATENT SPECIFICATION

(45) Date of publication and mention
of the grant of the patent:
27.01.2016 Bulletin 2016/04

(51) Int Cl.:
C07K 16/18 ^(2006.01) **A61K 39/395** ^(2006.01)
A61P 25/28 ^(2006.01) **G01N 33/68** ^(2006.01)

(21) Application number: **10812710.1**

(86) International application number:
PCT/US2010/047154

(22) Date of filing: **30.08.2010**

(87) International publication number:
WO 2011/026031 (03.03.2011 Gazette 2011/09)

(54) **ANTIBODIES THAT BIND TAU OLIGOMERS**

TAU-OLIGOMERE BINDENDE ANTIKÖRPER

ANTICORPS LIANT LES OLIGOMÈRES DE LA PROTÉINE TAU

(84) Designated Contracting States:
**AL AT BE BG CH CY CZ DE DK EE ES FI FR GB
GR HR HU IE IS IT LI LT LU LV MC MK MT NL NO
PL PT RO SE SI SK SM TR**

(30) Priority: **28.08.2009 US 237861 P**

(43) Date of publication of application:
04.07.2012 Bulletin 2012/27

(73) Proprietor: **The Board of Regents of The University
of Texas
System
Austin, TX 78701 (US)**

(72) Inventor: **KAYED, Rakez
Galveston, TX 77555-1045 (US)**

(74) Representative: **Dehmel, Albrecht
Dehmel & Bettenhausen
Patentanwälte
Herzogspitalstrasse 11
80331 München (DE)**

(56) References cited:
**US-A1- 2007 218 491 US-A1- 2007 218 491
US-A1- 2008 050 383 US-A1- 2008 220 449
US-A1- 2008 220 449 US-A1- 2009 075 984
US-A1- 2009 123 936 US-A1- 2009 123 936
US-A1- 2009 162 336**

- **ROSENMANN HANNA ET AL: "Tauopathy-like abnormalities and neurologic deficits in mice immunized with neuronal tau protein.", ARCHIVES OF NEUROLOGY OCT 2006, vol. 63, no. 10, October 2006 (2006-10), pages 1459-1467, XP002692257, ISSN: 0003-9942**
- **BRETTEVILLE ALEXIS ET AL: "Tau aggregates: toxic, inert, or protective species?", JOURNAL OF ALZHEIMER'S DISEASE : JAD AUG 2008, vol. 14, no. 4, August 2008 (2008-08), pages 431-436, XP009167122, ISSN: 1387-2877**
- **CONGDON ERIN E ET AL: "Is tau aggregation toxic or protective?", JOURNAL OF ALZHEIMER'S DISEASE : JAD AUG 2008, vol. 14, no. 4, August 2008 (2008-08), pages 453-457, XP009167123, ISSN: 1387-2877**
- **KAYED R ET AL: "Prefilament tau species as potential targets for immunotherapy for Alzheimer disease and related disorders", CURRENT OPINION IN IMMUNOLOGY, ELSEVIER, OXFORD, GB, vol. 21, no. 3, 1 June 2009 (2009-06-01), pages 359-363, XP026195066, ISSN: 0952-7915, DOI: 10.1016/J.COI.2009.05.001 [retrieved on 2009-05-30]**
- **YASUMASA YOSHIYAMA ET AL: "Synapse Loss and Microglial Activation Precede Tangles in a P301S Tauopathy Mouse Model", NEURON, vol. 53, no. 3, 1 February 2007 (2007-02-01), pages 337-351, XP055053508, ISSN: 0896-6273, DOI: 10.1016/j.neuron.2007.01.010**

Note: Within nine months of the publication of the mention of the grant of the European patent in the European Patent Bulletin, any person may give notice to the European Patent Office of opposition to that patent, in accordance with the Implementing Regulations. Notice of opposition shall not be deemed to have been filed until the opposition fee has been paid. (Art. 99(1) European Patent Convention).

EP 2 470 211 B1

- NICOLETTE S. HONSON ET AL.: "Tau aggregation and toxicity in tauopathic neurodegenerative diseases", JOURNAL OF ALZHEIMER'S DISEASE, vol. 14, no. 4, 1 August 2008 (2008-08-01), pages 417-422, XP055053619, ISSN: 1387-2877
- T. C. GAMBLIN: "Caspase cleavage of tau: Linking amyloid and neurofibrillary tangles in Alzheimer's disease", PROCEEDINGS OF THE NATIONAL ACADEMY OF SCIENCES, vol. 100, no. 17, 1 January 2003 (2003-01-01), pages 10032-10037, XP055053496, ISSN: 0027-8424, DOI: 10.1073/pnas.1630428100
- NARUHIKO SAHARA ET AL.: "Assembly of tau in transgenic animals expressing P301L tau: alteration of phosphorylation and solubility", JOURNAL OF NEUROCHEMISTRY, vol. 83, no. 6, 1 December 2002 (2002-12-01), pages 1498-1508, XP055053498, ISSN: 0022-3042, DOI: 10.1046/j.1471-4159.2002.01241.x
- MICHAEL DETURE ET AL.: "tau Assembly in Inducible Transfectants Expressing Wild-Type or FTDP-17 tau", THE AMERICAN JOURNAL OF PATHOLOGY, vol. 161, no. 5, 1 November 2002 (2002-11-01), pages 1711-1722, XP055053502, ISSN: 0002-9440
- CARDINALE ET AL.: 'The potential of intracellular antibodies for therapeutic targeting of protein-misfolding diseases.' TRENDS MOL MED. vol. 14, no. 9, September 2008, pages 373 - 80, XP024528989
- MAGUIRE-ZEISS ET AL.: 'Identification of human alpha-synuclein specific single chain antibodies.' BIOCHEM BIOPHYS RES COMMUN. vol. 349, no. 4, 03 November 2006, pages 1198 - 205, XP024924560
- LINDBLAD ET AL.: 'Aluminium compounds for use in vaccines.' IMMUNOL CELL BIOL. vol. 82, no. 5, October 2004, pages 497 - 505, XP008151421
- KAYED ET AL.: 'Conformation-dependent anti-amyloid oligomer antibodies.' METHODS ENZYMOL. vol. 413, 2006, pages 326 - 44, XP009115614
- ASUNI ET AL.: 'Immunotherapy targeting pathological tau conformers in a tangle mouse model reduces brain pathology with associated functional improvements.' J NEUROSCI. vol. 27, no. 34, 22 August 2007, pages 9115 - 29, XP002589887
- BARRANTES ET AL.: 'Tau Aggregation Followed by Atomic Force Microscopy and Surface Plasmon Resonance, and Single Molecule Tau-Tau Interaction Probed by Atomic Force Spectroscopy.' JOURNAL OF ALZHEIMER'S DISEASE vol. 18, no. 1, 2009, pages 141 - 151, XP008151310
- SAHARA ET AL.: 'Tau oligomerization: a role for tau aggregation intermediates linked to neurodegeneration.' CURR ALZHEIMER RES. vol. 5, no. 6, December 2008, pages 591 - 8, XP008151309
- MAEDA ET AL.: 'Granular tau oligomers as intermediates of tau filaments.' BIOCHEMISTRY vol. 46, no. 12, 27 March 2007, pages 3856 - 61, XP008151284
- HAMANO. ET AL.: 'Concentration-dependent Effects of Proteasomal Inhibition on tau Processing in a Cellular Mode.' INT J CLIN EXP PATHOL. vol. 2, no. 6, 15 June 2009, pages 561 - 573, XP008151314
- Invitrogen: "Rabbit (polyclonal) Anti-Oligomer Antibody (A11) UNconjugated: Product Analysis Sheet", Invitrogen, October 2008 (2008-10), Retrieved from the Internet: URL:http://tools.lifetechnologies.com/content/sfs/manuals/AHB0052_Rev1008.pdf [retrieved on 2015-06-04]

Description**BACKGROUND OF THE INVENTION****I. FIELD OF THE INVENTION**

[0001] Embodiments of this invention are directed generally to biology and medicine. In certain aspects, embodiments are directed to compositions and methods related to Tau oligomer specific antibodies.

II. BACKGROUND

[0002] Pathological aggregation of the microtubule-associated protein Tau and accumulation of neurofibrillary tangles (NFT) or other inclusions containing Tau are defining histopathological features of Alzheimer's disease (AD) and many neurodegenerative diseases collectively known as tauopathies, including Pick's disease (PiD), progressive supranuclear palsy (PSP), corticobasal degeneration (CBD), and frontotemporal lobar degeneration (FTLD). The correlation between neurofibrillary tangles (NFT) and disease progression has been studied extensively with conflicting results, and the mechanisms linking the pathological aggregation of Tau with synaptic dysfunction and neurodegeneration are poorly understood.

[0003] In the case of Alzheimer's disease, current pharmaceutical therapies are focused on symptomatic treatment of the loss of cholinergic transmission which results from neurodegeneration (Mayeux *et al.*, 1999). However, although the available treatments delay progression of the disease for up to six to twelve months, they do not prevent it. The discovery of drugs that could prevent the aggregation of Tau which leads to neurodegeneration would provide a more effective strategy for prophylaxis or for inhibiting the progression of the disease, which would not require an immediate knowledge of the diverse upstream events that initiate the aggregation.

[0004] Furthermore, the clinical diagnosis of Alzheimer's disease (AD) is difficult to make, especially in early stages of the disease. Today, the diagnosis is based on a typical medical history combined with the exclusion of other causes of dementia. Certain clinical centers can have a diagnostic accuracy of 85-90% compared with the neuropathological diagnosis. In the early stages of the disease the clinical picture is vague and definite diagnostic markers have not yet been identified (McKhann 1984). The development of biochemical diagnostic markers is important for a number of reasons: to support the clinical diagnosis, to allow clinicians to give adequate information to patients and their relatives, to initiate pharmacological treatment and care-giving, and in various aspects of clinical research.

[0005] Thus, in view of the prior art techniques for preventing and treating tauopathies, there is a need for a technique that enables earlier detection of markers of Alzheimer's disease and other tauopathies. If said markers could be prevented without causing negative side-effects, this would be a means to prevent and treat Alzheimer's disease at an early stage. Any treatment of Alzheimer's disease that would reduce the amount of Tau insoluble aggregates in the brain of AD patients, would be of significant therapeutic value.

SUMMARY OF THE INVENTION

[0006] The invention in its broadest sense is as defined in the independent claims.

[0007] The invention is directed to :

1. A monoclonal antibody or antibody fragment thereof that specifically binds Tau oligomers having spherical morphology and comprising a protein aggregate of about 3 to 24 Tau polypeptides, which monoclonal antibody or antibody fragment does not bind soluble Tau or Tau fibrils at levels that are detectable above background.

2. The antibody of item 1, wherein the antibody is a single chain antibody or wherein the anti-body is a human or a humanized antibody.

3. A composition comprising an antibody of item 1 and a pharmaceutically acceptable excipient, preferably an adjuvant.

4. A method of evaluating a patient suspected of or having a tauopathy, the method comprising the step of detecting binding of a Tau oligomer-specific antibody of item 1 to a component of a biological sample from the patient, wherein the detection of the Tau oligomer in the biological sample is indicative of tauopathy.

5. The method of item 4, wherein the tauopathy is Alzheimer's disease, Pick's disease (PiD), progressive supranuclear palsy (PSP), corticobasal degeneration (CBD), and frontotemporal lobar degeneration (FTLD).

6. The method of item 4, wherein the biological sample comprises plasma, cerebrospinal fluid (CSF), brain tissue, neuronal tissue, or muscle tissue.

7. A Tau oligomer-specific antibody of item 1 for use in a method of treating Alzheimer's disease (AD) or another tauopathy.

8. A Tau oligomer-specific antibody for use of item 7, wherein the Tau oligomer-specific antibody is for administration into the blood or cerebrospinal fluid (CSF).

9. A Tau oligomer-specific antibody for use of item 7, wherein the tauopathy includes PiD, PSP, CBD, and FTLT.

[0008] Evidence indicates that intermediate sized aggregates of neurodegenerative disease associated proteins called oligomers (e.g., Tau oligomers) are the true pathogenic entities, rather than larger aggregates such as neurofibrillary tangles. Aspects described herein are directed to methods and reagents using or directed to Tau oligomers. In certain aspects described herein, passive immunotherapy is used in treating tauopathies. In further aspects described herein, administration of isolated Tau oligomers is used in treating tauopathies. In still other aspects described herein, Tau oligomer monoclonal antibodies (TOMAs) are used in treating or evaluating tauopathies. Compositions and methods described herein can be used to identify pathogenic or potentially pathogenic conditions - for example, the detection of Tau oligomers can be used as an early biomarker for tauopathies. In certain aspects described herein, the compositions can be used as a novel treatment for Tau related conditions. In certain aspects described herein, TOMA can be used to reduce NFTs, or reduce or inhibit the formation of NFTs. In other aspects described herein, Tau oligomers can be used to induce antibodies that reduce NFTs or reduce the formation of NFTs.

[0009] Certain aspects of the invention are directed to a monoclonal antibody or antibody fragment as defined in the claims.

[0010] The distinction between the soluble Tau, Tau oligomers, and Tau fibrils includes differences in conformation and stability. This is similar to amyloid oligomers and protofibrils that display different conformation with amyloid oligomers having a visible spherical like structure under the electron microscope and the atomic force microscope, the size of these structures is typically 2.5 - 20 nm. In contrast, fibrils under the microscope have a smooth appearance. The term "Tau oligomer" refers to a protein aggregate having about 3 to 24 Tau polypeptides or proteins or segments thereof. The term "soluble Tau" refers to a monomer or dimer of Tau proteins. The term "Tau fibrils" refers to insoluble Tau aggregate differing in conformation (e.g., having distinct epitopes as compared to Tau oligomer) and differing in phosphorylation status from Tau oligomers - Tau fibrils are more stable than Tau oligomers. In a further aspect, an antibody of the invention is a single chain antibody. The antibody can be a human antibody or a humanized antibody. In other aspects of the invention, the antibody is comprised in a pharmaceutically acceptable excipient. Tau oligomer monoclonal antibodies (TOMA) can be used to analyze Tau oligomers in animal models and humans, as well as biological fluids from patients with or suspected of having tauopathies such as Alzheimer's disease (AD) and many neurodegenerative diseases, including Pick's disease (PiD), progressive supranuclear palsy (PSP), corticobasal degeneration (CBD), and frontotemporal lobar degeneration (FTLD) using TOMA in ELISA assay.

[0011] Certain embodiments of the disclosure are directed to methods of preparing pathogenic Tau oligomers. These methods of preparing Tau oligomers mimic Tau aggregation *in vivo*. In this method A β oligomers and α -synuclein oligomers are used as promoters to cause Tau aggregation *in vitro*. Certain aspects are directed to methods of preparing Tau oligomers, comprising one or more steps of: (a) contacting an isolated recombinant Tau protein with a nucleation agent comprising preformed oligomers of an amyloid polypeptide, an α -synuclein polypeptide, or a prion polypeptide forming a nucleation mixture; (b) incubating the nucleation mixture under conditions that produce or promote Tau oligomerization; and/or (c) altering the conditions of the nucleation mixture such that Tau oligomerization stops or is reduced significantly. In certain aspects the amyloid polypeptide is A β 42 or A β 40. In a further aspect the prion polypeptide is prion 106-126. In certain aspects preformed oligomer to Tau protein ratio is at least a 1:50, 1:100, 1:120, 1:140, 1:160, 1:180, 1:200, or 1:500 (w/w) ratio, including all values and ranges there between. In further aspects the nucleation mixture is incubated for about or less than about 0.5, 0.75, 1, 1.25, 1.5, 1.75, 2, 2.5, or 3 hrs including all values and ranges there between. In certain aspects the nucleation mixture is incubated for at least 20, 30, 40, 50, 60, 70, 80, 90, 100, 120 minutes and at most 100, 120, 140, 180, 200, 220, 240, 260, 280, 300 minutes, including all values and ranges there between. In certain aspects the nucleation mixture is incubated for at least 50 minutes and at most 120 minutes. Other aspects of the disclosure invention are directed to a Tau oligomer produced by the methods described herein. Tau dimers are approximately 80Kd to 1500 Kd, β -sheet rich, toxic to cells, sensitive to denaturing conditions, urea, guanidine formic acid and strong detergents.

[0012] Further aspects of the disclosure are directed to methods of identifying a Tau oligomer specific antibody comprising: (a) independently contacting antibodies that bind Tau oligomers with Tau oligomers, soluble Tau, or Tau fibrils; and (b) identifying antibodies that specifically bind Tau oligomers and do not bind soluble Tau or Tau fibrils at levels that

are detectable above background. In certain aspects antibodies that specifically bind Tau oligomers and do not bind soluble Tau at levels detectable above background and do not bind Tau fibrils at levels detectable above background are identified by immunoblotting or ELISA assay.

[0013] In yet further aspects, the invention includes methods of evaluating a patient suspected of or having a tauopathy comprising the step of detecting binding of an Tau oligomer specific antibody as recited in the claims to a component of a biological sample from the patient, wherein the detection of Tau oligomer in the biological sample is indicative of tauopathy. The tauopathy can be Alzheimer's disease, Pick's disease (PiD), progressive supranuclear palsy (PSP), corticobasal degeneration (CBD), frontotemporal lobar degeneration (FTLD), or other disease condition that is associated with Tau oligomers. In certain aspects Tau oligomer is detected by immunoassay. A biological sample includes, but is not limited to blood, plasma, serum, cerebrospinal fluid (CSF), brain tissue, neuronal tissue, or muscle tissue. In certain aspects the Tau oligomer specific antibody comprises a detectable agent. The detectable agent can include, but is not limited to a radioactive marker, a nucleic acid, a fluorescent label, or an enzymatic label.

[0014] Yet another aspect of the invention is directed to an antibody as claimed for treating a tauopathy by administration of an effective amount of a Tau oligomer specific antibody as claimed to a subject having or suspected of having AD or other tauopathies. An antibody specific for Tau oligomer can be administered at dose of about, at least, or at most 0.1, 0.5, 1, 2, 3, 4, 5, 6 μg or mg to 5, 6, 7, 8, 9, 10 μg or mg , including all values and ranges there between. The Tau oligomer specific antibody can be administered into the blood or CSF. Tauopathies that can be treated with these methods include, but are not limited to Pick's disease (PiD), progressive supranuclear palsy (PSP), corticobasal degeneration (CBD), and frontotemporal lobar degeneration (FTLD).

[0015] As used herein, the term "antigen" is a molecule capable of being bound by an antibody or T-cell receptor. An antigen is additionally capable of inducing a humoral immune response and/or cellular immune response leading to the production of B- and/or T-lymphocytes. The structural aspect of an antigen, e.g., three dimensional conformation or modification (e.g., phosphorylation), that gives rise to a biological response is referred to herein as an "antigenic determinant" or "epitope." B-lymphocytes respond to foreign antigenic determinants via antibody production, whereas T-lymphocytes are the mediator of cellular immunity. Thus, antigenic determinants or epitopes are those parts of an antigen that are recognized by antibodies, or in the context of an MHC, by T-cell receptors. An antigenic determinant need not be a contiguous sequence or segment of protein and may include various sequences that are not immediately adjacent to one another. In certain aspects, Tau oligomers are utilized as antigens.

[0016] The phrase that a molecule "specifically binds" or "specifically immunoreactive" to a target refers to a binding reaction which is determinative of the presence of the molecule in the presence of a heterogeneous population of other biologics. Thus, under designated immunoassay conditions, a specified molecule binds preferentially to a particular target and does not bind in a significant amount to other biologics present in the sample. Specific binding of an antibody to a target under such conditions requires the antibody be selected for its specificity to the target. A variety of immunoassay formats may be used to select antibodies specifically immunoreactive with a particular protein. For example, solid-phase ELISA immunoassays are routinely used to select monoclonal antibodies specifically immunoreactive with a protein. See, e.g., Harlow and Lane (1988), for a description of immunoassay formats and conditions that can be used to determine specific immunoreactivity. Specific binding between two entities means an affinity of at least 10^6 , 10^7 , 10^8 , 10^9 M^{-1} , or 10^{10} M^{-1} . Affinities greater than 10^8M^{-1} are preferred.

[0017] The term "antibody" or "immunoglobulin" is used to include intact antibodies and binding fragments/segments thereof. Typically, fragments compete with the intact antibody from which they were derived for specific binding to an antigen. Fragments include separate heavy chains, light chains Fab, Fab' F(ab')₂, Fabc, and Fv. Fragments/segments are produced by recombinant DNA techniques, or by enzymatic or chemical separation of intact immunoglobulins. The term "antibody" also includes one or more immunoglobulin chains that are chemically conjugated to, or expressed as, fusion proteins with other proteins. The term "antibody" also includes bispecific antibody. A bispecific or bifunctional antibody is an artificial hybrid antibody having two different heavy/light chain pairs and two different binding sites. Bispecific antibodies can be produced by a variety of methods including fusion of hybridomas or linking of Fab' fragments. See, e.g., Songsivilai & Lachmann (1990); Kostelny *et al.* (1992).

[0018] Other embodiments of the invention are discussed throughout this application. Any embodiment discussed with respect to one aspect of the invention applies to other aspects of the invention as well and vice versa, as defined in the claims. The embodiments in the Example section are understood to be embodiments of the invention that are applicable to all aspects of the invention, as defined in the claims.

[0019] The terms "inhibiting," "reducing," or "prevention," or any variation of these terms, when used in the claims and/or the specification includes any measurable decrease or complete inhibition to achieve a desired result, e.g., a reduced pathogenic activity of Tau oligomers.

[0020] The use of the word "a" or "an" when used in conjunction with the term "comprising" in the claims and/or the specification may mean "one," but it is also consistent with the meaning of "one or more," "at least one," and "one or more than one."

[0021] It is contemplated that any embodiment discussed herein can be implemented with respect to any method or

composition of the invention, and vice versa, as defined in the claims. Furthermore, compositions of the invention can be used to achieve methods of the invention as defined in the claims.

[0022] Throughout this application, the term "about" is used to indicate that a value includes the standard deviation of error for the device or method being employed to determine the value.

[0023] The use of the term "or" in the claims is used to mean "and/or" unless explicitly indicated to refer to alternatives only or the alternatives are mutually exclusive, although the disclosure supports a definition that refers to only alternatives and "and/or." It is also contemplated that anything listed using the term "or" may also be specifically excluded.

[0024] As used in this specification and claim(s), the words "comprising" (and any form of comprising, such as "comprise" and "comprises"), "having" (and any form of having, such as "have" and "has"), "including" (and any form of including, such as "includes" and "include") or "containing" (and any form of containing, such as "contains" and "contain") are inclusive or open-ended and do not exclude additional, unrecited elements or method steps.

[0025] Other objects, features and advantages of the present invention will become apparent from the following detailed description.

DESCRIPTION OF THE DRAWINGS

[0026] The following drawings form part of the present specification and are included to further demonstrate certain aspects of the present invention. The invention may be better understood by reference to one or more of these drawings in combination with the detailed description of specific embodiments presented herein.

FIG. 1. A schematic illustrating the central role of tau oligomers in neurodegenerative diseases. AD and tauopathies are characterized by the deposition of tau or tau and another specific protein. Recently, studies from multiple laboratories have provided compelling evidence for the formation and pathogenic role of a tau species other than soluble monomeric tau or NFTs. This tau intermediate aggregate (tau oligomers) can cause neurodegeneration and memory impairment in the absence of A β ; moreover, its formation may be critical for A β mediated neurotoxicity, thus identifying a target for immunotherapy and other approaches.

Figs. 2A-2G Tau oligomers prepared by seeding with preformed oligomers in PBS, pH 7.4 at a ratio of 1:140 (w/w) oligomers/tau. (A), Western blot of tau oligomers prepared by cross-seeding; 10 μ M recombinant human tau (2N4R tau 1-441) seeded using α -synuclein oligomers (lane 1), A β 42 oligomers (lane 2), probed with Tau5 antibody recognizing total tau. (B-C) EM images of tau oligomers prepared by seeding with A β 42 oligomers. (D-E) AFM images of oligomers prepared by seeding with α -synuclein oligomers. (F) CD confirms that tau oligomers are β -sheet-rich, unlike unordered monomeric tau. (G) FPLC chromatogram of tau oligomers; the main peak is ~150-190 kDa, some larger tau oligomers eluted with the void peak.

Figs. 3A-3B T2286 (Novel tau oligomer specific antibody) detects only tau oligomers but not monomeric tau or tau fibrils; moreover, it does not detect oligomers from other proteins. (A) WB using T2286: (1) Tau monomer. (2) tau oligomers+A β 40 oligomers, (3) tau oligomers+A β 42 oligomers. (4) tau oligomers (same as 3) aged 2 days at R.T (5) A β 40 oligomers. (6) A β 42 oligomers. (7) α -synuclein oligomers. (8) IAPP oligomers. (9) A β 42 fibrils. (10) α -synuclein fibrils (11) IAPP fibrils. (B) T2286 specificity was confirmed by (ELISA). T2286 reacts specifically with tau oligomers; no reactivity with monomeric tau or tau fibrils; nor is there any reactivity with A β oligomers.

Figs. 4A-4B Tau oligomers in AD patients. (A) Western blot of PBS soluble fraction from AD & control brain samples (frontal cortex). It is clear that tau oligomers detected by T-2286 are elevated in AD brain (red) compared to control brain (blue), it is clear that T-2286 doesn't recognize monomeric tau. (B) Tau oligomers levels were elevated in the CSF from AD patients vs. controls, Measured by direct ELISA using 50 μ l of CSF.

Figs. 5A-5E T2286 detects tau oligomers in the PBS fraction of AD brains (A) T2286 only recognizes higher molecular weight species and not monomer. (B) Tau 5 detects total tau including the monomer. (C) To determine the conformational specificity of T2286, almost no signal was detected after urea treatment. Tau oligomers were found in both sarkosyl soluble (S) and insoluble (I) fractions (29). Tau monomer recognized by Tau 5 in the soluble fraction (left arrow) or the NFT in the insoluble fraction (right arrow) (D), is not recognized by T2286 (E).

FIG. 6 Biochemical analysis of Tau oligomers. Alkaline phosphatase has a limited effect on tau oligomer from AD brain as assessed by T2285 signal as compared using 3 phosphoepitopes. PBS brain homogenates analyzed by WB, (1) untreated, (2) treated with 400 U/ml, (3) treated with 800 U/ml phosphatase.

FIG. 7 Detection of Tau oligomers in Lewy Body Dementia (LBD) and Alzheimer's Disease (AD) samples using the

T2286 antibody composition. T2286; recognizes oligomeric tau in immunoblots of LBD cortex, these oligomers were similar to the ones found in AD brains.

FIG. 8 Tau oligomer monoclonal antibodies (TOMA) reduces Tau oligomer toxicity. Tau oligomers are toxic, tested in SY5Y cells. The toxicity can be prevented by TOMA 1-Tau monomer; 2- Tau fibrils; 3- Tau oligomers 4- Tau oligomer+TOMA.

FIG. 9 Tau oligomers are detected in cerebral-spinal fluid (CSF) of AD patients. As shown in Fig. 4B using T2286, this figure using TOMA confirms that tau oligomers are elevated in the CSF of AD patients vs. controls, measured by ELISA

FIG. 10 TOMA single ICV injection reversed phenotypes in 7 months old P301L transgenic mice in four days: Before ICV injection; mice were tested twice one session a day using rotarod, in each session mice were placed four times over the rod. Initial speed of the rod was 4 r.p.m., after 30 seconds at 4 r.p.m., the speed was increasing at 0.1 r.p.m./second. Four days after the injection, mice were tested using same conditions used prior to injection. Control; were injected with 1 μ L of 1mg/ml control mouse monoclonal antibody (Rhodamine mAb (Genetex cat# GTX29093). Treated; were injected with 1 μ L of TOMA-1 (1mg/ml). ** Statistically significant at $P < 0.01$, 5 animals were used in each group.

DETAILED DESCRIPTION OF THE INVENTION

[0027] Pathological aggregation of the microtubule-associated protein Tau and accumulation of neurofibrillary tangles (NFT) or other inclusions containing Tau are defining histopathological features of many neurodegenerative diseases, including Alzheimer's disease (AD), which are collectively known as tauopathies. Tauopathies include, but are not limited to Pick's disease (PiD), progressive supranuclear palsy (PSP), corticobasal degeneration (CBD), and frontotemporal lobar degeneration (FTLD). The correlation between neurofibrillary tangles (NFT) and disease progression has been studied extensively with conflicting results, and the mechanisms linking the pathological aggregation of Tau with synaptic dysfunction and neurodegeneration are poorly understood. An emerging view is that NFT themselves are not the true toxic entity in tauopathies; rather, aggregates of a size intermediate between monomers and NFT - so-called Tau oligomers - are pathogenic. Investigating such oligomers requires new methods and tools. Methods are described herein for the preparation and use of homogenous populations of Tau oligomers. These Tau oligomers are utilized in the production and characterization of monoclonal antibodies that specifically recognize Tau oligomers, Tau Oligomer Monoclonal Antibody (TOMA). Studies on post mortem brain and CSF indicate a surprising and novel role for Tau oligomers in tauopathies. Embodiments of the invention include TOMAs of the invention a composition comprising such an antibody, a method of evaluating a patient suspected of or having a Tauopathy using said antibody, and said antibody for use in a method of treatment of tauopathies.

I. TAU OLIGOMERS AND DISEASE

[0028] The Tau protein exists in alternatively-spliced isoforms, which contain three or four copies of a repeat sequence corresponding to the microtubule-binding domain (Goedert *et al.*, 1989; Goedert *et al.*, 1989). Tau is proteolytically processed to a core domain when it is in the form of paired helical filaments (PHFs) (Wischnik *et al.*, 1988a; Wischnik *et al.*, 1988b); Novak *et al.*, 1993); only three repeats are involved in the stable tau-Tau interaction (Jakes *et al.*, 1991). Once formed, PHF-like Tau aggregates act as seeds for the further capture and provide a template for proteolytic processing of full-length Tau protein (Wischnik *et al.*, 1996).

[0029] In the course of their formation and accumulation, PHFs first assemble to form amorphous aggregates within the cytoplasm, probably from early Tau oligomers which become truncated prior to, or in the course of, PHF assembly (Mena *et al.*, 1995; Mena *et al.*, 1996). These filaments then go on to form classical intracellular neurofibrillary tangles. In this state, the PHFs consist of a core of truncated Tau and a fuzzy outer coat containing full-length Tau (Wischnik *et al.*, 1996). The assembly process is exponential, consuming the cellular pool of Tau and inducing new Tau synthesis to make up the deficit (Lai *et al.*, 1995). Eventually, functional impairment of the neuron progresses to the point of cell death, leaving behind an extracellular tangle. Cell death is highly correlated with the number of extracellular tangles (Wischnik *et al.*, 2000). As tangles are extruded into the extracellular space, there is progressive loss of the fuzzy outer coat of the neuron-PHF with corresponding loss of N-terminal Tau immunoreactivity - with immunoreactivity associated with the PHF core preserved (Bondareff *et al.*, 1994).

[0030] The phase shift which is observed in the repeat domain of Tau incorporated into PHFs suggests that the repeat domain undergoes an induced conformational change during incorporation into the filament. During the onset of Alzheimer's disease, it is envisaged that this conformational change could be initiated by the binding of Tau to a pathological

substrate, such as damaged or mutated membrane proteins (see Wischik *et al.*, 1997).

A. Tau function, phosphorylation and neurofibrillary tangles (NFT) formation.

[0031] The microtubule-associated protein Tau is required for microtubule assembly, axonal transport and neurite outgrowth. Tau serves a crucial function in the cytoskeleton by organizing and stabilizing microtubules. Tau enhances the polymerization of tubulin dimers and stability of microtubules by enhancing the binding of GTP to β -tubulin (Binder *et al.*, 1985). Most of the biological functions of Tau are modulated by site-specific phosphorylation (Drechsel *et al.*, 1992). Tau is encoded by a single gene, but six splice isoforms ranging in size from 352 to 441 amino acids are expressed in the human CNS (SEQ ID NO:1-6) (Goedert *et al.*, 1989). These isoforms differ from each other by the presence of 0, 1, or 2 N-terminal inserts, and 3 or 4 tandemly arranged microtubule-binding repeats; therefore, these isoforms are referred to as ON3R (SEQ ID NO:1), 1N3R (SEQ ID NO:2), 2N3R (SEQ ID NO:3), 0N4R (SEQ ID NO:4), 1N4R (SEQ ID NO:5) and 2N4R (SEQ ID NO:6). Aspects of the invention regard antibodies that bind Tau oligomers comprising one or more of these isoforms or segments thereof, or detection of Tau oligomers comprising one or more of these isoforms or segments thereof.

[0032] Tau undergoes many posttranslational modifications including, glycosylation, ubiquitination, glycation, polyamination, nitrosylation, and truncation. A disease relevant Tau posttranslational modification is hyperphosphorylation. Hyperphosphorylation can alter tau's biological functions and causes Tau self-assembly, aggregation, and accumulation in neurofibrillary tangles (NFT), a hallmark of AD and other neurodegenerative diseases (Alonso *et al.*, 2008; Lee *et al.*, 2001). All Tau isoforms contain at least 30 phosphorylation sites (Buee *et al.*, 2000; Goedert *et al.*, 1992), most of which are believed to be in the de-phospho form in normal tau. Some degree of phosphorylation at many of these sites occurs in normal Tau proteins; nevertheless, many of these sites are abnormally phosphorylated with respect to both location and quantity in NFT (Matsuo *et al.*, 1994; Lee *et al.*, 2001; Morishima-Kawashima *et al.*, 1995). Tau phosphorylation, particularly at specific sites, such as serine 262 (S262), reduces its affinity for microtubules (Biernat *et al.*, 1993), so it is not surprising that considerable attention has been paid to determining which protein kinases and phosphatases control Tau phosphorylation (Avila, 2008). Numerous Tau kinases have been found, including, but not restricted to MAPK (Drewes *et al.*, 1992), GSK3 β (Hanger *et al.*, 1992), MARK (Drewes *et al.*, 1995), cdk2, and cdk5 (Baumann *et al.*, 1993). In contrast, PP2A appears to be the principal Tau phosphatase *in vivo* (Goedert *et al.*, 1995); PP1, PP2B and PP2C are also capable of dephosphorylating Tau *in vitro* (Buee *et al.*, 2000; Johnson *et al.*, 2004).

[0033] A key early finding about Tau in NFT accumulated in AD and non-AD tauopathies was the fact that it is abnormally phosphorylated (Spire-Jones *et al.*, 2009; Grundke-Iqbal *et al.*, 1986). The sequence of early Tau phosphorylation suggests that there are events prior to NFT formation that are specific to particular phosphorylated Tau epitopes, leading to conformational changes and cytopathological alterations. Using phosphorylation dependent Tau antibodies, three stages of NFT development were introduced: (1) pre-NFT, (2) intra-, and (3) extra-neuronal NFT. The pre-NFT state, in which neurons display nonfibrillar, punctate regions in the cytoplasm, dendrites, somata, and nuclei, was observed especially with phospho-Tau antibodies TG3 (pT231), pS262, and pT153. Intraneuronal NFT were homogeneously stained with fibrillar Tau structures, which were most prominently stained with pT175/181, 12E8 (pS262/pS356), pS422, pS46, pS214 antibodies. Extracellular NFT, which contain substantial filamentous tau, are most prominently stained with AT8 (pS199/pS202/pT205), AT100 (pT212/pS214), and PHF-1 (pS396/pS404) antibodies, which also stain intracellular NFT. Moreover, the severity of AD and neuronal loss correlates with the patterns of Tau phosphorylation in NFT (Augustinack *et al.*, 2002; Trinczek *et al.*, 1995).

[0034] Tau hyperphosphorylation is thought to be an early event in the cascade leading from soluble to insoluble Tau protein, but evidence demonstrating that hyperphosphorylation is sufficient for filament formation is lacking. Why does hyperphosphorylation promote aggregation of Tau proteins into abnormal filaments? Not to be limited to any particular theory, one possibility is that the negative charge imparted by phosphorylation neutralizes the basic charges of tau, thus facilitating intermolecular interaction and aggregation (Alonso *et al.*, 2001 a; Alonso *et al.*, 2001b). An alternative explanation is that hyperphosphorylation detaches Tau from microtubules, thus increasing the pool of unbound tau. Unbound, hyperphosphorylated Tau may compete with microtubules for binding to normal Tau and other microtubule associated proteins, thereby sequestering them and enhancing disassembly of microtubules (Alonso *et al.*, 2001a). As compared to microtubule-bound tau, this unbound Tau may be more degradation-resistant and more likely to aggregate. Reduced proteolysis of hyperphosphorylated Tau may also increase the pool of soluble Tau available for formation of paired helical filaments (PHF). Thus, abnormal phosphorylation of Tau may result in an increase in the total cellular pool of tau, and may change its solubility, thus negatively regulating stability of microtubules (Litersky *et al.*, 1992; Litersky *et al.*, 1993).

[0035] One important contributor to Tau phosphorylation and NFT formation may be amyloid. The "amyloid cascade" hypothesis holds that the accumulation of A β peptides in senile plaques results in the formation of NFT and neuronal cell death (Busciglio *et al.*, 1995). In primary neuronal cultures, A β is capable of inducing Tau phosphorylation (Busciglio *et al.*, 1995). A β 42 fibrils induced formation of neurofibrillary tangles in P301L Tau transgenic mice (Gotz *et al.*, 2001), and pre-aggregated A β 42 induced PHF formation mediated by distinct phospho-epitopes of Tau in cells overexpressing

wild-type and mutant forms of human Tau (Ferrari *et al.*, 2003; Pennanen and Gotz, 2005). A β oligomers, but not the soluble or fibrillar forms of A β , induced Tau hyperphosphorylation in cells overexpressing human Tau (De Felice *et al.*, 2008); this phenomenon is not A β -specific, but rather conformation specific, as demonstrated by the ability of soluble oligomers from a nondisease related protein, hen egg white lysozyme, to mimic Tau hyperphosphorylation induced by A β aggregates (Vieira *et al.*, 2007).

[0036] The assembly of Tau aberrant filaments can be reproduced *in vitro* by using a high concentration of Tau protein or, at lower protein concentrations, by adding compounds including polyanions, fatty acids (and derivatives), and others. The methods and conditions reported for *in vitro* Tau polymerization have been the subject of comprehensive reviews (Avila *et al.*, 2004; Avila, 2000). Mechanistic studies of full length Tau protein aggregation and filament formation *in vitro* revealed striking similarities to the *in vitro* aggregation of A β via a nucleation-dependent mechanism (Honson *et al.*, 2009).

B. Tau deposition and its causal role in AD and tauopathies.

[0037] Neuropathological features of tauopathies include filamentous neuronal or neuronal and glial Tau inclusions found in association with focal neurodegeneration. The aggregation of proteins including Tau and their deposition in many aggregated forms in AD and related neurodegenerative diseases have been studied extensively. Despite a strong body of evidence supporting an important role of Tau in AD (Ballatore *et al.*, 2007; Haroutunian *et al.*, 2007; Iqbal *et al.*, 2009), the amyloid hypothesis (Hardy and Allsop, 1991; Hardy and Selkoe, 2002) proposes that A β is the sole cause of AD and that Tau aggregation is one of many downstream events triggered by A β aggregation and deposition. Tau is the main component in neuropil threads and NFT observed in AD; these extremely stable structures accumulate to high density in both axonal and somatodendritic compartments of AD neurons, in addition to extracellular β -amyloid deposits.

[0038] The size, appearance, and distribution pattern of amyloid deposits vary considerably between individual AD brains and correlate poorly with the disease severity. Neurofibrillary pathology, on the other hand, tends to develop at specific sites and follows a characteristic pattern with regard to region and cell types affected. NFT in AD patients are highly correlated with disease progression and can be used to stage AD by post mortem brain histopathology; moreover, Tau pathology appears to be essential for AD, because amyloid pathology in the absence of NFT is not necessarily associated with loss of cognitive function or appreciable neurodegeneration (Braak and Braak, 1991 a; Alafuzoff *et al.*, 2008; Braak and Braak, 1991b; Braak and Braak, 1996).

[0039] Mutations in the Tau gene, MAPT, cause familial frontotemporal dementia with parkinsonism linked to chromosome 17 (FTDP-17, now known as frontotemporal lobar degeneration-Tau (FTLD-Tau)), directly implicating Tau dysfunction in neurodegenerative processes (Clark *et al.*, 1998; Hutton *et al.*, 1998; Pittman *et al.*, 2006). Interestingly, amyloid plaques are not found in individuals with FTLD-Tau. This discovery showed that abnormal forms of Tau are sufficient for neurodegeneration, causing memory loss and other neurological deficits.

[0040] Aged mice expressing non-mutant human Tau in the absence of mouse Tau (h-Tau mice) developed NFT and extensive cell death (Andorfer *et al.*, 2005). Mice that conditionally express a mutant human Tau gene showed accumulation of NFT in neurons; the expression of Tau caused learning deficits and neurodegeneration. However, suppressing expression of the mutant Tau gene improved memory and halted neuronal loss (Santacruz *et al.*, 2005). Hippocampal neurons from Tau knockout mice are resistant to β -amyloid-induced cell death, implicating Tau function in A β -related neurodegeneration in AD (Rapoport *et al.*, 2002). Reducing endogenous Tau ameliorates A β -induced deficits in an AD mouse model; the mice with normal Tau levels showed age-related memory loss, behavioral abnormalities, and deposition of amyloid plaque. The mice with reduced levels of Tau showed a typical pattern of amyloid plaque accumulation but did not have memory loss or behavioral abnormalities (Ashe, 2007; Roberson *et al.*, 2007). Reducing A β burden alone by immunotherapy is inadequate to reverse cognitive deficits in mice (3xTg-AD) that contain both hallmarks of AD, plaques and NFT (Oddo *et al.*, 2006). Taken together, these observations suggest that Tau aggregation is a critical mediator of neurodegeneration and has a causal role in AD and other tauopathies.

II. *IN VITRO* PRODUCTION OF TAU OLIGOMERS

[0041] Tau is a highly soluble and natively unfolded protein dominated by a random coil structure in solution. It is believed that aberrant modifications of tau, including phosphorylation, truncation, and conformational changes induce filamentous aggregation. The importance of pre-filament Tau aggregation intermediates (Tau oligomer) in disease pathogenesis was suggested by recent reports (Congdon and Duff, 2008; Brunden *et al.*, 2008). However, the mechanism underlying the conversion of soluble Tau to soluble and insoluble aggregates remains elusive. The assembly of Tau into filaments could be reproduced *in vitro* by adding some compounds like polyanions, fatty acids (and derivatives), and other known promoters (Kurt *et al.*, 2003). Still, no reliable methods to prepare homogenous population of Tau oligomers are available, hindering the ability to evaluate Tau oligomer toxicity and its possible role in the disease.

[0042] It is known that amyloid fibrils can accelerate the aggregation of the same protein via nucleation-dependent mechanism (seeding). Recently, the inventor observed that amyloid oligomers such as fibrils could seed oligomer for-

mation from the same protein. Moreover, the inventor discovered a surprising phenomena associated with amyloid oligomers - cross-seeding. In cross-seeding preformed oligomers from one protein can cause the aggregation and the formation of oligomers from other proteins having no sequence homology to the preformed oligomers (Kayed and Glabe, The SFN 36th annual meeting 2006, poster# 17.6). Moreover, the inventor discovered that that preformed oligomers from amyloid protein (e.g., A β 42, A β 40), α -synuclein, or prions (e.g., prion 106-126) can promote Tau oligomerization. It is known that aggregated forms of A β are capable of inducing Tau phosphorylation and aggregation both in primary neuronal cultures and Tau animal models (Busciglio *et al.*, 1995; Gotz *et al.*, 2001; Ferrari *et al.*, 2003; Pennanen and Gotz, 2005; De Felice *et al.*, 2008). A recent report demonstrated that this phenomena is not A β specific, but rather conformation specific, since soluble oligomers from a nondisease related protein, hen egg white lysozyme, were able to induce Tau hyperphosphorylation and aggregation in neuronal cultures similar to aggregated A β (Vieira *et al.*, 2007). Studies on the kinetics of Tau aggregation when seeded with preformed oligomers led to the optimization of a reliable protocol for the preparation of homogeneous populations of Tau oligomers *in vitro*, an example of which is described below. Compositions were analyzed by immunoblotting and FPLC. After 1 hr of seeding isolated Tau oligomers had less than about 0.5, 0.75, 1, 1.5, to 2% soluble Tau and less than about 5, 10, to 15 % Tau fibrils and at least, at most or about 80, 85, 90% to 90, 95% Tau oligomers.

[0043] An example of preparing Tau oligomers by cross-seeding includes expressing and purifying recombinant Tau protein (e.g., tau-441 (2N4R) M.W. 45.9 kDa) (Margittai and Langen, 2004; Margittai and Langen, 2006). Amyloid oligomers from A β 42 or α -synuclein are prepared (Kayed and Glabe, 2006; Kayed *et al.*, 2004). In one example, preformed A β 42 oligomers were added to 10 μ M soluble Tau in PBS pH 7.4 or in 10 mM HEPES pH 7.4 at a ratio of 1:140 (w/w) A β 42 oligomers/tau. Control Tau samples are also incubated under the same conditions with A β 42 fibrils, soluble A β 42, and without any A β . Also, A β 42 oligomers diluted 1:140 in both PBS and 10mM HEPES were used to determine the background signal. The formation of soluble Tau oligomers after 1 hr was quantified by ELISA, and the signal of A β 42 oligomers diluted in PBS or HEPES was subtracted. If samples show signs of precipitation they can be centrifuged and the pellet is then washed 3 times with ddH₂O and resuspended in ddH₂O. The sample can be resuspended and applied to electron microscopy (EM) grid or mica for atomic force microscopy (AFM). Portions of the sample can also be applied to nitrocellulose membrane for blotting. Tau oligomers form at 50 min-180 min. After 2 - 3 hrs Tau protofibrils and fibrils start to form. The reaction can be stopped, for example, by raising the pH to 9.5-10.5. Freezing at -80°C can also be employed in stopping the reaction - after thawing oligomers with higher molecular weight can be broken down to smaller oligomers by using water sonication, e.g., sonication 2 times at 30 sec. These samples are stable at room temperature for more than a week. To produce Tau fibrils the cross-seeding was allowed to continue for 2 days. After 2 days fibrils were spun down by centrifugation. The Tau fibrils can then be washed with ddH₂O (resuspension and centrifugation) and the pellet resuspended in PBS.

[0044] Electron microscopic and Atomic Force Microscopic images confirm that Tau oligomers have spherical morphology, similar to oligomers formed by other amyloidogenic proteins (Kayed *et al.*, 2003; Kayed *et al.*, 2004). Tau oligomers are capable of seeding soluble tau, β -sheet rich measured by circular dichroism (CD) spectroscopy, and toxic to cells measured by both MTS and Alamar blue assays. On western blotting they form a ladder with a major band of 110-120 kDa (likely a trimer). After aging for two days at room temperature (in PBS pH 7.4), Tau oligomers convert into a very stable Tau fibrils; this transition is also evident by a disappearance of the trimeric band on western blot, and dramatic reduction in the toxicity. As expected, Tau oligomers prepared by this method are unphosphorylated - they did not react with the phospho-Tau antibody AT8.

III. TAU SPECIFIC ANTIBODIES

[0045] The term "antibody", as used herein, broadly refers to any immunoglobulin (Ig) molecule or Tau oligomer binding peptide derived from an antibody including any functional fragment, mutant, variant, or derivation thereof, which retains the essential epitope binding or Tau oligomer binding features of an Ig molecule that specifically binds Tau oligomer. Such mutant, variant, or derivative antibody formats are known in the art. In certain aspects and antibody is a monoclonal antibody or a single chain antibody. In still further aspects the antibody is a recombinant antibody segment that retains Tau oligomer specific binding.

[0046] Typically, antibodies are comprised of four polypeptide chains, two heavy (H) chains and two light (L) chains. In a full-length antibody, each heavy chain is comprised of a heavy chain variable region (abbreviated herein as HCVR or VH) and a heavy chain constant region. The heavy chain constant region is comprised of three domains, CH1, CH2 and CH3. Each light chain is comprised of a light chain variable region (abbreviated herein as LCVR or VL) and a light chain constant region. The light chain constant region is comprised of one domain, CL. The VH and VL regions can be further subdivided into regions of hypervariability, termed complementarity determining regions (CDR), interspersed with regions that are more conserved, termed framework regions (FR). Each VH and VL is composed of three CDRs and four FRs, arranged from amino-terminus to carboxyterminus in the following order: FRI, CDRI, FR2, CDR2, FR3, CDR3, FR4. Immunoglobulin molecules can be of any type (e.g., IgG, IgE, IgM, IgD, IgA and IgY), class (e.g., IgG1, IgG2, IgG3,

IgG4, IgA1 and IgA2) or subclass.

[0047] An "isolated antibody", as used herein, is intended to refer to an antibody that is substantially free of other antibodies having different antigenic specificities (e.g., an isolated antibody that specifically binds Tau oligomer is substantially free of antibodies that specifically bind antigens other than Tau oligomer). An isolated antibody that specifically binds Tau oligomer may, however, have cross-reactivity to other antigens, such as Tau oligomer from other species. Moreover, an isolated antibody may be substantially free of other cellular material and/or chemicals and/or any other Tau oligomer form that comprises the epitope with which the antibodies of the present invention are reactive.

[0048] The term "human antibody", as used herein, is intended to include antibodies having variable and constant regions derived from human immunoglobulin sequences. The human antibodies of the invention may include amino acid residues from human CDRs and in particular CDR3. However, the term "human antibody", as used herein, is not intended to include antibodies in which CDR sequences from another mammalian species, such as a mouse, have been grafted onto human framework sequences.

[0049] The term "humanized antibody" refers to antibodies which comprise heavy and light chain variable region sequences from a non-human species (e.g., a mouse) but in which at least a portion of the VH and/or VL sequence has been altered to be more "human-like", i.e., more similar to human germline variable sequences. One type of humanized antibody is a CDR-grafted antibody, in which human CDR sequences are introduced into non-human VH and VL sequences to replace the corresponding nonhuman CDR sequences.

[0050] As used herein, the term "humanized antibody" is an antibody or a variant, derivative, analog or segment thereof which immunospecifically binds to an antigen of interest and which comprises a framework (FR) region having substantially the amino acid sequence of a human antibody and a complementary determining region (CDR) having substantially the amino acid sequence of a non-human antibody. As used herein, the term "substantially" in the context of a CDR refers to a CDR having an amino acid sequence at least 80%, preferably at least 85%, more preferably at least 90%, more preferably at least 95%, more preferably at least 98% and most preferably at least 99% identical to the amino acid sequence of a non-human antibody CDR. A humanized antibody comprises substantially all of at least one, and typically two, variable domains (Fab, Fab', F(ab')₂, FabC, Fv) in which all or substantially all of the CDR regions correspond to those of a non-human immunoglobulin (i.e., donor antibody) and all or substantially all of the framework regions are those of a human immunoglobulin consensus sequence. Preferably, a humanized antibody also comprises at least a portion of an immunoglobulin constant region (Fc), typically that of a human immunoglobulin. In some embodiments, a humanized antibody contains both the light chain as well as at least the variable domain of a heavy chain. The antibody also may include the CH1, hinge, CH2, CH3, and CH4 regions of the heavy chain.

[0051] The antibody can be selected from any class of immunoglobulins, including IgM, IgG, IgD, IgA and IgE, and any isotype, including without limitation IgG1, IgG2, IgG3 and IgG4. The antibody may comprise sequences from more than one class or isotype, and particular constant domains may be selected to optimize desired effector functions using techniques well-known in the art.

[0052] The framework and CDR regions of an antibody need not correspond precisely to the parental sequences, e.g., the donor antibody CDR or the consensus framework may be mutagenized by substitution, insertion and/or deletion of at least one amino acid residue so that the CDR or framework residue at that site does not correspond to either the donor antibody or the consensus framework. In a preferred embodiment, such mutations, however, will not be extensive. Usually, at least 80%, preferably at least 85%, more preferably at least 90%, and most preferably at least 95% of the humanized antibody residues will correspond to those of the parental FR and CDR sequences.

IV. DIAGNOSTIC USE OF TAU

[0053] In most cases of Alzheimer's disease (AD), the neurodegenerative process has progressed to an advanced stage with massive cell loss before a diagnosis can be made (Teunissen *et al.*, 2002). The current methods of diagnosing clinical AD rely, in part, upon cognitive tests such as the MMSE (Folstein *et al.*, 1975). Unfortunately, the MMSE has been reported to be insensitive to detecting preclinical or very early AD (Petersen *et al.*, 1999). One of the criteria for an ideal marker for diagnosis is that it be able to detect a fundamental feature of AD neuropathology; the most obvious targets for analysis would therefore be A β , and tau. Several groups have examined levels of these proteins (Borroni *et al.*, 2006; Wiltfang *et al.*, 2005), and others, in blood and urine without success (Borroni *et al.*, 2006; Wiltfang *et al.*, 2005). Tau levels are reported to be elevated in the CSF of AD and MCI patients as compared to normal controls (Andreasen *et al.*, 1999; Galasko *et al.*, 1997; Vandermeeren *et al.*, 1993; Vigo-Pelfrey *et al.*, 1995). In contrast, decreased A β 42 CSF levels have been described (Andreasen *et al.*, 1999; Motter *et al.*, 1995). Further, these studies also determined that total A β levels were not significantly different among the diagnostic groups (Skoog *et al.*, 2003); moreover, in all of these studies; Tau and A β 42 CSF levels individually did not meet the sensitivity or specificity criteria. Further, increased levels of p-Tau have been reported in MCI and AD cases (Zetterberg *et al.*, 2003; Herukka *et al.*, 2005; Buerger *et al.*, 2006; Parnetti *et al.*, 2006). Recent studies did show improved sensitivity and specificity that met or exceeded the criteria for AD detection. The most recent report using a large number of samples with a multiplex immunoassay for measuring

the CSF profile for total tau, p-Tau (threonine 181), and A β 42 achieved 96.4% detection sensitivity for autopsy-confirmed AD (Shaw *et al.*, 2009). This study and two others also identified that increased levels of total Tau and p-tau, decreased A β 42, and the apolipoprotein E gene (APOE) ϵ 4 allele as the CSF biomarker signature of autopsy-confirmed AD. This CSF signature appears to predict conversion from MCI to AD, but did not meet the criteria for correctly diagnosing MCI and predicting preclinical AD cases (Shaw *et al.*, 2009; Li *et al.*, 2007; Blom *et al.*, 2009). Surprisingly, elevated levels of total and p-Tau (threonine 181) were found in the CSF of familial Alzheimer disease (FAD) mutation carriers (presenilin-1 and APP); these levels were reported as sensitive indicators of presymptomatic AD. These authors also demonstrated that the levels of A β in the CSF are not a reliable biomarker for MCI or presymptomatic AD (Ringman *et al.*, 2008).

V. PROTEINACEOUS COMPOSITIONS

[0054] Proteins of the disclosure (e.g., the various isoforms of tau, Tau oligomers,) and antibodies as recited in the claims may be recombinant, or synthesized *in vitro*. Alternatively, a non-recombinant or recombinant protein may be isolated from bacteria or from an organ, e.g., brain. The term "functionally equivalent codon" is used herein to refer to codons that encode the same amino acid, such as the six codons for arginine or serine, and also refers to codons that encode biologically equivalent amino acids (see below).

Codon Table

[0055]

Amino Acids				Codons
Alanine	Ala	A		GCA GCC GCG GCU
Cysteine	Cys	C		UGC UGU
Aspartic acid	Asp	D		GAC GAU
Glutamic acid	Glu	E		GAA GAG
Phenylalanine	Phe	F		UUC UUU
Glycine	Gly	G		GGA GGC GGG GGU
Histidine	His	H		CAC CAU
Isoleucine	Ile	I		AUA AUC AUU
Lysine	Lys	K		AAA AAG
Leucine	Leu	L		UUA UUG CUA CUC CUG CUU
Methionine	Met	M		AUG
Asparagine	Asn	N		AAC AAU
Proline	Pro	P		CCA CCC CCG CCU
Glutamine	Gln	Q		CAA CAG
Arginine	Arg	R		AGA AGG CGA CGC CGG CGU
Serine	Ser	S		AGC AGU UCA UCC UCG UCU
Threonine	Thr	T		ACA ACC ACG ACU
Valine	Val	V		GUA GUC GUG GUU
Tryptophan	Trp	W		UGG
Tyrosine	Tyr	Y		UAC UAU

[0056] It also will be understood that amino acid and nucleic acid sequences may include additional residues, such as additional N- or C-terminal amino acids, or 5' or 3' sequences, respectively, and yet still be essentially as set forth in one of the sequences disclosed herein, so long as the sequence meets the criteria set forth above, including the maintenance of protein activity. The addition of terminal sequences particularly applies to nucleic acid sequences that may, for example, include various non-coding sequences flanking either of the 5' or 3' portions of the coding region.

[0057] The following is a discussion based upon changing of the amino acids of a protein to create an equivalent, or even an improved, second-generation molecule. For example, certain amino acids may be substituted for other amino acids in a protein structure without appreciable loss of interactive binding capacity with structures such as, for example, antigen-binding regions of antibodies or binding sites on substrate molecules (e.g., antigenic determinants or epitopes). Since it is the interactive capacity and nature of a protein that defines that protein's biological functional activity, certain amino acid substitutions can be made in a protein sequence, and in its underlying DNA coding sequence, and nevertheless

produce a protein with like properties. It is thus contemplated by the inventors that various changes may be made in the DNA sequences of genes without appreciable loss of their biological utility or activity.

[0058] In making such changes, the hydropathic index of amino acids may be considered. The importance of the hydropathic amino acid index in conferring interactive biologic function on a protein is generally understood in the art (Kyte and Doolittle, 1982). It is accepted that the relative hydropathic character of the amino acid contributes to the secondary structure of the resultant protein, which in turn defines the interaction of the protein with other molecules, for example, enzymes, substrates, receptors, DNA, antibodies, antigens, and the like.

[0059] It also is understood in the art that the substitution of like amino acids can be made effectively on the basis of hydrophilicity. U.S. Patent 4,554,101 states that the greatest local average hydrophilicity of a protein, as governed by the hydrophilicity of its adjacent amino acids, correlates with a biological property of the protein. It is understood that an amino acid can be substituted for another having a similar hydrophilicity value and still produce a biologically equivalent and immunologically equivalent protein.

[0060] As outlined above, amino acid substitutions generally are based on the relative similarity of the amino acid side-chain substituents, for example, their hydrophobicity, hydrophilicity, charge, size, and the like. Exemplary substitutions that take into consideration the various foregoing characteristics are well known and include: arginine and lysine; glutamate and aspartate; serine and threonine; glutamine and asparagine; and valine, leucine and isoleucine.

[0061] It is contemplated that in compositions of the invention, there is between about 0.001 μ g or mg and about 10 μ g or mg of total polypeptide, peptide, and/or protein per ml. Thus, the concentration of protein in a composition can be about, at least about or at most about 0.001, 0.010, 0.050, 0.1, 0.2, 0.3, 0.4, 0.5, 0.6, 0.7, 0.8, 0.9, 1.0, 1.5, 2.0, 2.5, 3.0, 3.5, 4.0, 4.5, 5.0, 5.5, 6.0, 6.5, 7.0, 7.5, 8.0, 8.5, 9.0, 9.5, 10.0 μ g or mg /ml or more, including all values and ranges there between. Of this, about, at least about, or at most about 1, 2, 3, 4, 5, 6, 7, 8, 9, 10, 11, 12, 13, 14, 15, 16, 17, 18, 19, 20, 21, 22, 23, 24, 25, 26, 27, 28, 29, 30, 31, 32, 33, 34, 35, 36, 37, 38, 39, 40, 41, 42, 43, 44, 45, 46, 47, 48, 49, 50, 51, 52, 53, 54, 55, 56, 57, 58, 59, 60, 61, 62, 63, 64, 65, 66, 67, 68, 69, 70, 71, 72, 73, 74, 75, 76, 77, 78, 79, 80, 81, 82, 83, 84, 85, 86, 87, 88, 89, 90, 91, 92, 93, 94, 95, 96, 97, 98, 99, 100% may be a Tau oligomer or an antibody that binds a Tau oligomers.

A. Polypeptides and Polypeptide Production

[0062] The present disclosure describes polypeptides, peptides, proteins, and segment and fragments thereof for use in various embodiments of the present disclosure. For example, specific antibodies are assayed for specific binding Tau oligomers. In certain embodiments, all or part of the proteins of the disclosure can also be synthesized in solution or on a solid support in accordance with conventional techniques. Various automatic synthesizers are commercially available and can be used in accordance with known protocols. See, for example, Stewart and Young, (1984); Tam *et al.*, (1983); Merrifield, (1986); and Barany and Merrifield (1979). Alternatively, recombinant DNA technology may be employed wherein a nucleotide sequence which encodes a peptide or polypeptide of the disclosure is inserted into an expression vector, transformed or transfected into an appropriate host cell and cultivated under conditions suitable for expression. Soluble Tau proteins, amyloid polypeptide, and antibodies or segments of antibodies can be produced recombinantly.

[0063] One embodiment of the disclosure includes the use of gene transfer to cells, including microorganisms, for the production and/or presentation of proteins. The gene for the protein of interest may be transferred into appropriate host cells followed by culture of cells under the appropriate conditions. A nucleic acid encoding virtually any polypeptide described herein may be employed. The generation of recombinant expression vectors, and the elements included therein, are known to those of skill in the art of molecular biology. Alternatively, the protein to be produced may be an isolated endogenous protein normally synthesized by a cell.

[0064] In a certain aspects an immunogenic composition according to the disclosure comprises a protein which has at least 85% identity, at least 90% identity, at least 95% identity, or at least 97-99% identity, including all values and ranges there between, to a Tau polypeptide (SEQ ID NO:1-6) or segment thereof.

[0065] As discussed above, the compositions and methods of using these compositions can be used in treating a subject (e.g., reducing or ameliorating a symptom of tauopathy) having, suspected of having, or at risk of developing a tauopathy or related disease. One use of the immunogenic compositions of the disclosure is to prophylactically treat a subject in early stages of a tauopathy by inoculating a subject, particularly once a risk of developing a tauopathy has been indicated. In certain aspects a subject may be suspected of having a tauopathy due to symptoms being presented or having a familial history of a tauopathy, i.e. genetic predisposition.

[0066] As used herein the phrase "immune response" or its equivalent "immunological response" refers to a humoral (antibody mediated), cellular (mediated by antigen-specific T cells or their secretion products) or both humoral and cellular response directed against a protein, peptide, or polypeptide of the disclosure in a subject or a donor subject. A donor subject is one in which an antibody is generated and isolated, the isolated antibody is then administered to a second subject. Treatment or therapy can be an active immune response induced by administration of immunogen or a passive therapy effected by administration of antibody, antibody containing material, or primed T-cells.

[0067] As used herein "passive immunity" refers to any immunity conferred upon a subject by administration of immune effectors including cellular mediators or protein mediators (e.g., monoclonal and/or polyclonal antibodies). A monoclonal or polyclonal antibody composition may be used in passive immunization for the treatment of a tauopathy or related disorder. An antibody composition may include antibodies that bind specifically to Tau oligomers. The antibody component can be a polyclonal antiserum. In certain aspects the antibody or antibodies are affinity purified from an animal or second subject that has been challenged with an antigen(s).

[0068] Passive immunity may be imparted to a patient or subject by administering to the patient immunoglobulins (Ig) or segments thereof and/or other immune factors obtained from a donor or other non-patient source having a known immunoreactivity. In other aspects, an antigenic composition of the present disclosure can be administered to a subject who then acts as a source or donor for globulin, produced in response to challenge from the composition ("hyperimmune globulin"), that contains antibodies directed against Tau oligomers. A subject thus treated would donate plasma from which hyperimmune globulin would then be obtained, *via* conventional plasma-fractionation methodology, and administered to another subject in order to impart resistance against or to treat a tauopathy. See U.S. Patents 6,936,258, 6,770,278, 6,756,361, 5,548,066, 5,512,282, 4,338,298, and 4,748,018

for exemplary methods and compositions related to passive immunity.

[0069] For purposes of this specification and the accompanying claims the terms "epitope" and "antigenic determinant" are used interchangeably to refer to a site on an antigen to which B and/or T cells respond or recognize. B-cell epitopes can be formed both from contiguous amino acids or noncontiguous amino acids juxtaposed by tertiary folding of a protein. Epitopes formed from contiguous amino acids are typically retained on exposure to denaturing solvents whereas epitopes formed by tertiary folding are typically lost on treatment with denaturing solvents. An epitope typically includes at least 3, and more usually, at least 5 or 8-10 amino acids in a unique spatial conformation. Methods of determining spatial conformation of epitopes include those methods described in Epitope Mapping Protocols (1996). T cells recognize continuous epitopes of about nine amino acids for CD8 cells or about 13-15 amino acids for CD4 cells. T cells that recognize the epitope can be identified by *in vitro* assays that measure antigen-dependent proliferation, as determined by ³H-thymidine incorporation by primed T cells in response to an epitope (Burke *et al.*, 1994), by antigen-dependent killing (cytotoxic T lymphocyte assay, Tigges *et al.*, 1996) or by cytokine secretion.

[0070] The presence of a cell-mediated immunological response can be determined by proliferation assays (CD4 (+) T cells) or CTL (cytotoxic T lymphocyte) assays. The relative contributions of humoral and cellular responses to the protective or therapeutic effect of an immunogen can be distinguished by separately isolating IgG and T-cells from an immunized syngeneic subject and measuring protective or therapeutic effect in a second subject.

[0071] As used herein and in the claims, the terms "antibody" or "immunoglobulin" are used interchangeably and refer to any of several classes of structurally related proteins that function as part of the immune response of an animal or recipient, which proteins include IgG, IgD, IgE, IgA, IgM and related proteins. Antibodies of the IgG class are made up of four polypeptide chains linked together by disulfide bonds. The four chains of intact IgG molecules are two identical heavy chains referred to as H-chains and two identical light chains referred to as L-chains.

[0072] In order to produce polyclonal antibodies, a host, such as a rabbit or goat or human, is immunized with the antigen or antigen segment, generally with an adjuvant and, if necessary, coupled to a carrier. Antibodies to the antigen are subsequently collected from the sera of the host. The polyclonal antibody can be affinity purified against the antigen rendering it monospecific.

[0073] In order to produce monoclonal antibodies, hyperimmunization of an appropriate donor, generally a mouse, with the antigen is undertaken. Isolation of splenic antibody producing cells is then carried out. These cells are fused to a cell characterized by immortality, such as a myeloma cell, to provide a fused cell hybrid (hybridoma) which can be maintained in culture and which secretes the required monoclonal antibody. The cells are then cultured, in bulk, and the monoclonal antibodies harvested from the culture media for use. By definition, monoclonal antibodies are specific to a single epitope (e.g., Tau oligomers). Monoclonal antibodies often have lower affinity constants than polyclonal antibodies raised against similar antigens for this reason.

[0074] Monoclonal antibodies may also be produced *ex vivo* by use of primary cultures of splenic cells or cell lines derived from spleen (Anavi, 1998). In order to produce recombinant antibody (see generally Huston *et al.*, 1991; Johnson *et al.*, 1991), messenger RNAs from antibody producing B-lymphocytes of animals, or hybridoma are reverse-transcribed to obtain complementary DNAs (cDNAs). Antibody cDNA, which can be full length or partial length, is amplified and cloned into a phage or a plasmid. The cDNA can be a partial length of heavy and light chain cDNA, separated or connected by a linker. The antibody, or antibody fragment, is expressed using a suitable expression system to obtain recombinant antibody. Antibody cDNA can also be obtained by screening pertinent expression libraries.

[0075] As used herein and in the claims, the phrase "an immunological portion of an antibody" include a Fab fragment of an antibody, a Fv fragment of an antibody, a heavy chain of an antibody, a light chain of an antibody, an unassociated mixture of a heavy chain and a light chain of an antibody, a heterodimer consisting of a heavy chain and a light chain of an antibody, a catalytic domain of a heavy chain of an antibody, a catalytic domain of a light chain of an antibody, a variable fragment of a light chain of an antibody, a variable fragment of a heavy chain of an antibody, and a single chain

variant of an antibody, which is also known as scFv. In addition, the term includes chimeric immunoglobulins which are the expression products of fused genes derived from different species, one of the species can be a human, in which case a chimeric immunoglobulin is said to be humanized. Typically, an immunological portion of an antibody competes with the intact antibody from which it was derived for specific binding to an antigen.

[0076] Optionally, an antibody or preferably an immunological portion of an antibody, can be chemically conjugated to, or expressed as, a fusion protein with other proteins. For purposes of this specification and the accompanying claims, all such fused proteins are included in the definition of antibodies or an immunological portion of an antibody.

[0077] The present invention includes an antibody as claimed for use in treatment of a tauopathy or condition caused by a Tau oligomer. Furthermore, in some examples, treatment comprises administration of other agents commonly used to treat tauopathies.

[0078] The therapeutic compositions are administered in a manner compatible with the dosage formulation, and in such amount as will be therapeutically effective. The quantity to be administered depends on the subject to be treated. Precise amounts of active ingredient required to be administered depend on the judgment of the practitioner. Suitable regimes for initial administration and boosters are also variable, but are typified by an initial administration followed by subsequent administrations.

[0079] The manner of application may be varied widely. Any of the conventional methods for administration of a polypeptide therapeutic are applicable. These are believed to include oral application on a solid physiologically acceptable base or in a physiologically acceptable dispersion, parenterally, by injection and the like. The dosage of the composition will depend on the route of administration and will vary according to the size and health of the subject.

[0080] In certain instances, it will be desirable to have multiple administrations of the composition, e.g., 2, 3, 4, 5, 6 or more administrations. The administrations can be at 1, 2, 3, 4, 5, 6, 7, 8, to 5, 6, 7, 8, 9, 10, 11, 12 twelve week intervals, including all ranges there between.

B. Antibodies And Passive Immunization

[0081] Certain aspects are directed to methods of preparing an antibody for use in prevention or treatment of a tauopathy comprising the steps of administering a recipient with a Tau oligomer and isolating antibody from the recipient, or producing a recombinant antibody. An antibody as claimed prepared by these methods and used to treat or prevent a tauopathy are a further aspect of the invention. A pharmaceutical composition comprising antibodies as claimed that specifically bind a Tau oligomer and a pharmaceutically acceptable carrier is a further aspect of the invention which could be used in the manufacture of a medicament for the treatment or prevention of a tauopathy.

[0082] Inocula for polyclonal antibody production are typically prepared by dispersing the antigenic composition (e.g., a Tau oligomer) in a physiologically tolerable diluent such as saline or other adjuvants suitable for human use to form an aqueous composition. An immunostimulatory amount of inoculum is administered to a mammal and the inoculated mammal is then maintained for a time sufficient for the antigenic composition to induce protective antibodies. The antibodies can be isolated to the extent desired by well known techniques such as affinity chromatography (Harlow and Lane, 1988). Antibodies can include antiserum preparations from a variety of commonly used animals e.g., goats, primates, donkeys, swine, horses, guinea pigs, rats or man. The animals are bled and serum recovered.

[0083] An antibody produced in accordance with the present disclosure can include whole antibodies, antibody fragments/segments or subfragments. Antibodies can be whole immunoglobulins of any class (e.g., IgG, IgM, IgA, IgD or IgE), chimeric antibodies, human antibodies, humanized antibodies, or hybrid antibodies with dual specificity to two or more antigens. They may also be fragments (e.g., F(ab')₂, Fab', Fab, Fv and the like including hybrid fragments). An antibody also includes natural, synthetic or genetically engineered proteins that act like an antibody by binding to specific antigens with a sufficient affinity.

[0084] A Tau oligomer of the present disclosure can be administered to a recipient who then acts as a source of antibodies, produced in response to challenge from the Tau oligomer. A subject thus treated would donate plasma from which antibody would be obtained via conventional plasma fractionation methodology. The isolated antibody would be administered to the same or different subject in order to impart resistance against or treat a tauopathy.

[0085] An additional aspect of the invention is a pharmaceutical composition comprising one of more monoclonal antibodies (or fragments thereof; preferably human or humanized) reactive against Tau oligomers, as claimed.

[0086] Methods of making monoclonal antibodies are well known in the art and can include the fusion of splenocytes with myeloma cells (Kohler and Milstein, 1975; Harlow and Lane, 1988). Alternatively, monoclonal Fv fragments can be obtained by screening a suitable phage display library (Vaughan *et al.*, 1998). Monoclonal antibodies may be humanized or part humanized by known methods.

C. Combination Therapy

[0087] The compositions of the present invention, particularly an antibody as claimed for administration to a patient/sub-

ject, may also be for use in combination with traditional therapies. These include, but are not limited to, (1) interference with the splicing machinery to decrease the four-repeat Tau isoforms, (2) activation of proteolytic or proteasomal degradation pathways, (3) prevention/reduction of Tau hyperphosphorylation using inhibitors of Tau kinases, (4) pharmacological stabilization of microtubule networks, (5) inhibition of Tau aggregation by small molecules, and (6) tau-directed immunotherapy.

[0088] In one aspect, it is contemplated that a traditional therapy is used in conjunction with a Tau oligomer or Tau oligomer specific antibody treatment. Alternatively, the therapy may precede or follow the traditional therapy by intervals ranging from minutes to weeks. In embodiments where the other agents and/or a proteins or polynucleotides are administered separately, one would generally ensure that a significant period of time did not expire between the time of each delivery, such that the therapeutic composition would still be able to exert an advantageously combined effect on the subject. In such instances, it is contemplated that one may administer both modalities within about 12-24 h of each other and, more preferably, within about 6-12 h of each other. In some situations, it may be desirable to extend the time period for administration significantly, however, where several days (2, 3, 4, 5, 6 or 7) to several weeks (1, 2, 3, 4, 5, 6, 7 or 8) lapse between the respective administrations.

[0089] Various combinations of therapy may be employed, for example Tau oligomer or Tau oligomer specific antibody therapy is "A" and a traditional tauopathy therapy is "B":

A/B/A B/A/B B/B/A A/A/B A/B/B B/A/A A/B/B/B B/A/B/B

B/B/B/A B/B/A/B A/A/B/B A/B/A/B A/B/B/A B/B/A/A

B/A/B/A B/A/A/B A/A/A/B B/A/A/A A/B/A/A A/A/B/A

[0090] Administration of the antibody compositions of the present invention to a patient/subject will follow general protocols for the administration of such compounds, taking into account the toxicity, if any, of the composition. It is expected that the treatment cycles would be repeated as necessary. It is also contemplated that various standard therapies, such as hydration, may be applied in combination with the described therapy.

[0091] Inhibition of Tau hyperphosphorylation. This approach to treat AD was first introduced in 1998 (Gong and Iqbal, 2008). Although a kinase inhibitor was shown to reduce Tau hyperphosphorylation and the formation of soluble aggregated Tau and to prevent motor deficits in mice expressing mutant human Tau (Iqbal and Grundke-Iqbal, 1998), a major drawback to targeting kinases is that these enzymes are commonly found throughout the body playing normal physiological roles and their inhibition may have unwanted side effects.

[0092] Activation of proteolytic or degradation pathway. Tau was found to be sensitive to calpain proteolysis (Johnson *et al.*, 1989). Recently, puromycin-sensitive aminopeptidase (PSA), which was identified by a genetic screen as a modifier of Tau pathology (Sengupta *et al.*, 2006), was shown to be effective in degrading both recombinant and PHF Tau purified from AD brain (Karsten *et al.*, 2006).

[0093] Stabilization of microtubules. Microtubule-binding drugs that could be beneficial in treating tauopathies by functionally substituting for the MT-binding protein. Tau (Trojanowski *et al.*, 2005). Paclitaxel, a drug known to bind and stabilize microtubule, was tested in transgenic mice and showed to be effective in restoring axonal transport and ameliorating motor impairments (Zhang *et al.*, 2005).

[0094] Inhibition of Tau aggregation by small molecules. The last decade has witnessed a renaissance of interest in inhibitors of Tau aggregation as potential disease-modifying drugs. The search for non-toxic, cell penetrant inhibitors of Tau aggregation capable of crossing the blood-brain barrier (BBB) was performed using a high throughput screen, which resulted in the identification of more than 139 hits (Pickhardt *et al.*, 2005; Larbig *et al.*, 2007). This and the recent report of a phase-II clinical trial with the Tau aggregation inhibitor MTC (methyl ethylene blue derivative) could hold promise for the validation of this concept. The research on Tau aggregation inhibitors was recently reviewed (Bulic *et al.*, 2009).

[0095] Tau clearance by immunotherapy. A novel study used active immunization with a phosphorylated Tau epitope in mice expressing Tau with the P301L mutation showed reduction of aggregated Tau in the brain and slowed progression of the behavioral phenotype. Moreover, this study demonstrated that antibodies against the immunogen used can cross the BBB and bind to phosphorylated Tau (Asuni *et al.*, 2007).

VI. THERAPEUTIC USE OF TAU AND TOMA COMPOSITIONS

[0096] The body of evidence supporting an important role of Tau in neurodegenerative diseases (Ballatore *et al.*, 2007; Haroutunian *et al.*, 2007) supports Tau as a potential target for the development of disease modifying therapeutics. Therapeutic approaches targeting Tau include, (1) interference with the splicing machinery to decrease the four-repeat Tau isoforms, (2) activation of proteolytic or proteasomal degradation pathways, (3) prevention/reduction of Tau hyperphosphorylation using inhibitors of Tau kinases, (4) pharmacological stabilization of microtubule networks, (5) inhibition

of Tau aggregation by small molecules, and (6) tau-directed immunotherapy (Schneider and Mandelkow, 2008). Aspects of the present invention include antibody as claimed for use in a method of treatment of tauopathies.

[0097] The correlation between NFT in the brains of AD patients with the disease progression remains contentious (Bretteville and Planel, 2008; Braak and Braak, 1991; Delacourte and Buee, 2000; Morsch *et al.*, 1999; Congdon and Duff, 2008; Arriagada *et al.*, 1992; Bird *et al.*, 1999; Hernandez and Avila, 2008; Tabaton *et al.*, 1989; Cash *et al.*, 2003). In the last half decade, data are emerging from biochemical, cell-based and transgenic mouse studies that suggest that pre-filament forms of Tau may be the most toxic and pathologically significant form of Tau aggregates (Brunden *et al.*, 2008; Marx, 2007). This evolutionary transition was overdue in the Tau field and similar to the transition witnessed for A β in the last 15 years driven by the characterization of A β intermediate species and their crucial role in A β -mediated toxicity (Harper *et al.*, 1997; Roher *et al.*, 1993; Walsh and Selkoe, 2004; Walsh and Selkoe, 2007).

[0098] Analogous to A β oligomers, Tau oligomers have been shown to be neurotoxic when applied extracellularly to cultured neuronal cells and to provoke an increase in intracellular calcium levels (Demuro *et al.*, 2005; Gomez-Ramos *et al.*, 2006; Gomez-Ramos *et al.*, 2008). Innovative work using animal models suggests that Tau oligomers play a key role in eliciting neurodegeneration and behavioral impairments. These phenotypes are concurrent with accumulation of soluble aggregated Tau species and dissociated from the accumulation of NFT (Brunden *et al.*, 2008). Cell death occurred independently of NFT formation in aged (h-Tau mice) expressing non-mutant human Tau (Andorfer *et al.*, 2005); hippocampal synapse loss, impaired synaptic function and microgliosis precede the formation of NFT in the P301S mutant human Tau transgenic mouse model (P301S Tg) (Yoshiyama *et al.*, 2007). Tau oligomers were biochemically characterized in the JNPL3 mice expressing human Tau with the P301L mutation, and the conditional model (rTg4510) expressing the same P301L human Tau mutant; surprisingly, the accumulation of oligomeric Tau correlated best with neuronal loss and behavioral deficits in these models, whereas NFT did not. These findings suggest that the accumulation of Tau oligomers, behavioral deficits and neuronal loss precede the formation of NFT (Berger *et al.*, 2007; Spires *et al.*, 2006).

[0099] Tau oligomers have been biochemically characterized in post mortem human brain, and a correlation between disease progression and the accumulation of granular Tau oligomers in the brains of AD patients was reported. Moreover, increased levels of Tau oligomers detected in the frontal cortex at very early stage of the disease (Braak stage I), when clinical symptoms of AD and NFT are believed to be absent. This finding suggests that an increase in Tau oligomer levels occurs before NFT formation and before individuals manifest clinical symptoms of AD (Maeda *et al.*, 2007; Maeda *et al.*, 2006). Tau-positive fine granules (TFGs) resembling Tau oligomers were found in the cerebral white matter of post mortem tissue from the parkinsonism-dementia complex of guam (PDC) tauopathy (Yamazaki *et al.*, 2005).

[0100] The data discussed here support the notion that soluble oligomers of amyloid proteins including Tau are the acutely toxic structures of these proteins, rather than insoluble aggregates like plaques and tangles. This concept has become more generally accepted for multiple neurodegenerative diseases including AD and tauopathies (Brunden *et al.*, 2008; Haass and Selkoe, 2007). The resurgence of Tau and Tau oligomers in particular as a potential drug target to combat neurodegeneration (Marx, 2007) led to studies to identify specific reagents to study and target Tau oligomers in AD brain and animal models. The studies described herein indicate that Tau oligomers are the pathological form of Tau and should be exclusively targeted without interfering with soluble functional Tau or the nontoxic NFT. The methods and reagents described herein bypass the disadvantages associated with targeting all forms of Tau indiscriminately. The specific reagents described unexpectedly associate Tau oligomers with AD and tauopathies. Thus, while Tau oligomers may exert general toxic effects in many diseases, they present a novel target for drug development to treat several diseases, and their quantification can serve as reliable biomarker.

[0101] In some embodiments, pharmaceutical compositions are administered to a subject to treat tauopathies. Different aspects of the present disclosure involve administering an effective amount of a composition to a subject. In some embodiments of the present invention, Tau oligomer specific antibody as recited in the claims may be for administration to the patient to treat a tauopathy. Alternatively, an expression vector encoding one or more such antibodies or polypeptides or peptides may be given to a patient as a treatment. Such compositions will generally be dissolved or dispersed in a pharmaceutically acceptable carrier or aqueous medium.

[0102] The phrases "pharmaceutically acceptable" or "pharmacologically acceptable" refer to molecular entities and compositions that do not produce an adverse, allergic, or other untoward reaction when administered to an animal or human. As used herein, "pharmaceutically acceptable carrier" includes any and all solvents, dispersion media, coatings, antibacterial and antifungal agents, isotonic and absorption delaying agents, and the like. The use of such media and agents for pharmaceutical active substances is well known in the art. Except insofar as any conventional media or agent is incompatible with the active ingredients, its use in immunogenic and therapeutic compositions is contemplated. Supplementary active ingredients, such as other anti-infective agents and vaccines, can also be incorporated into the compositions.

[0103] The active compounds of the present invention can be formulated for parenteral administration, e.g., formulated for injection via the intravenous, intramuscular, subcutaneous, or even intraperitoneal routes. Typically, such compositions can be prepared as either liquid solutions or suspensions; solid forms suitable for use to prepare solutions or suspensions upon the addition of a liquid prior to injection can also be prepared; and, the preparations can also be

emulsified.

[0104] The pharmaceutical forms suitable for injectable use include sterile aqueous solutions or dispersions; formulations including sesame oil, peanut oil, or aqueous propylene glycol; and sterile powders for the extemporaneous preparation of sterile injectable solutions or dispersions. In all cases the form must be sterile and must be fluid to the extent that it may be easily injected. It also should be stable under the conditions of manufacture and storage and must be preserved against the contaminating action of microorganisms, such as bacteria and fungi.

[0105] The proteinaceous compositions may be formulated into a neutral or salt form. Pharmaceutically acceptable salts, include the acid addition salts (formed with the free amino groups of the protein) and which are formed with inorganic acids such as, for example, hydrochloric or phosphoric acids, or such organic acids as acetic, oxalic, tartaric, mandelic, and the like. Salts formed with the free carboxyl groups can also be derived from inorganic bases such as, for example, sodium, potassium, ammonium, calcium, or ferric hydroxides, and such organic bases as isopropylamine, trimethylamine, histidine, procaine and the like.

[0106] A pharmaceutical composition can include a solvent or dispersion medium containing, for example, water, ethanol, polyol (for example, glycerol, propylene glycol, and liquid polyethylene glycol, and the like), suitable mixtures thereof, and vegetable oils. The proper fluidity can be maintained, for example, by the use of a coating, such as lecithin, by the maintenance of the required particle size in the case of dispersion, and by the use of surfactants. The prevention of the action of microorganisms can be brought about by various antibacterial and antifungal agents, for example, parabens, chlorobutanol, phenol, sorbic acid, thimerosal, and the like. In many cases, it will be preferable to include isotonic agents, for example, sugars or sodium chloride. Prolonged absorption of the injectable compositions can be brought about by the use in the compositions of agents delaying absorption, for example, aluminum monostearate and gelatin.

[0107] Sterile injectable solutions are prepared by incorporating the active compounds in the required amount in the appropriate solvent with various of the other ingredients enumerated above, as required, followed by filtered sterilization or an equivalent procedure. Generally, dispersions are prepared by incorporating the various sterilized active ingredients into a sterile vehicle which contains the basic dispersion medium and the required other ingredients from those enumerated above. In the case of sterile powders for the preparation of sterile injectable solutions, the preferred methods of preparation are vacuum-drying and freeze-drying techniques, which yield a powder of the active ingredient, plus any additional desired ingredient from a previously sterile-filtered solution thereof.

[0108] Compositions according to the present invention will typically be for administration via any common route. This includes, but is not limited to oral, nasal, or buccal administration. Alternatively, administration may be by orthotopic, intradermal, subcutaneous, intramuscular, intraperitoneal, intranasal, or intravenous injection. In certain aspects a Tau oligomer specific antibody can be administered into the cerebrospinal fluid of the brain or spine. In certain embodiments, a Tau oligomer composition may be inhaled (e.g., U.S. Patent 6,651,655). Such compositions would normally be administered as pharmaceutically acceptable compositions that include physiologically acceptable carriers, buffers or other excipients.

[0109] An effective amount of therapeutic or prophylactic composition is determined based on the intended goal. The term "unit dose" or "dosage" refers to physically discrete units suitable for use in a subject, each unit containing a predetermined quantity of the composition calculated to produce the desired responses discussed above in association with its administration, i.e., the appropriate route and regimen. The quantity to be administered, both according to number of treatments and unit dose, depends on the protection desired.

[0110] Precise amounts of the composition also depend on the judgment of the practitioner and are peculiar to each individual. Factors affecting dose include physical and clinical state of the subject, route of administration, intended goal of treatment (alleviation of symptoms versus cure), and potency, stability, and toxicity of the particular composition.

[0111] Upon formulation, solutions will be administered in a manner compatible with the dosage formulation and in such amount as is therapeutically or prophylactically effective. The formulations are easily administered in a variety of dosage forms, such as the type of injectable solutions described above.

I. EXAMPLES

[0112] The following examples are given for the purpose of illustrating various embodiments of the invention and are not meant to limit the present invention in any fashion. One skilled in the art will appreciate readily that the present invention is well adapted to carry out the objects and obtain the ends and advantages mentioned, as well as those objects, ends and advantages inherent herein. The present examples, along with the methods described herein are presently representative of preferred embodiments, are exemplary, and are not intended as limitations on the scope of the invention.

EXAMPLE 1**METHODS AND USES OF A HOMOGENEOUS POPULATION OF TAU OLIGOMERS.**

[0113] A novel anti Tau oligomer polyclonal antibody (T2286). Immunogenicity of the homogenous population of Tau oligomers was exploited to generate antibodies specific for Tau oligomers. Rabbits were vaccinated with 0.25 mg of Tau oligomers and then boosted 3 times at two weeks intervals. The serum was collected and its reactivity with all forms of Tau and other amyloids was evaluated using pre-immune serum as control. A novel anti Tau oligomer antibody (T2286) was obtained. This novel antibody specifically recognizes Tau oligomers but does not react with soluble or fibrillar tau. Unlike the anti-oligomer antibodies generated in the past, A-11 and 1-11, T2286 reacts only with Tau oligomers, not with oligomers prepared from any other protein (FIG. 3). T2286 can be describes as a sequence conformation antibody not a conformation antibody. The smallest Tau species recognized by T2286 on western is probably a trimer (110-120 KDa); this species is transient in nature and converts to larger aggregates with time (FIG. 3). Moreover, T2286 binding to Tau oligomers eliminates their toxicity (FIG. 7A).

[0114] Tau oligomers in AD brain analyzed using T2286 was motivated by the surprising results obtained from testing *in vitro* samples. T2286 was used to detect Tau oligomers in brain samples. The preliminary data from the biochemical analysis of AD brains and age matched controls showed elevated levels of Tau oligomers in the PBS soluble fraction (FIG. 4) and the Triton soluble fraction (data not shown). No Tau oligomers were detected in the formic acid soluble fraction or the triton insoluble fraction. Moreover, preliminary data suggest that the majority of Tau oligomers in AD brain are unphosphorylated, based on western blot and ELISA analysis using T2286 and AT8 (data not shown). The preliminary data from immunohistochemical analysis of AD showed the presence of Tau oligomers both intra- and extracellularly (data not shown) and very little overlap with both AT8 and PHF-1 confirming the results obtained from the biochemical analysis. Interestingly, Tau oligomers in AD brain were heavily ubiquitinated (data not shown), suggesting that Tau oligomers may play a role in have role in the proteasomal dysfunction in AD.

[0115] Tau oligomers in CSF analyzed using T2286. The levels of both total Tau (t-tau) and phosphorylated Tau specially (p-tau-threonine 181) were found to be elevated in the CSF. A pilot experiment was performed using T2286 to measure Tau oligomers in CSF samples from AD and controls patients by direct ELISA. T2286 largely distinguished between AD and controls and outperformed AT8 and Tau5.

[0116] Tau oligomers in Tg mouse models using T2286. Brain samples from Tg4510 were analyzed, the P301L animals were provided by Dr. Karen Ashe, University of Minnesota. Animal at ages 2, 5, 6, 8, 10 and 11 months were analyzed using the biochemical and immunohistochemical analysis describe above. The results showed a correlation between the presence of Tau oligomers and phenotypes for this model and confirmed published reports describing the formation of Tau oligomers in this model with similar molecular weight to the oligomers detected by T2286. Tau oligomers were also detected in APP/PS-1 mice and other animal models of tauopathies (data not shown).

[0117] Tau Oligomer Monoclonal Antibody (TOMA). While rabbit polyclonal antibodies like T2286 are useful for research, their potential for vaccine development is limited. The data described here prompted the production of monoclonal anti Tau oligomers antibodies (TOMA) using the same antigen described above. For the production standard protocols were used. Screening for TOMA proved challenging; an elaborate screening protocol was used - the screen produced more than thirteen TOMA clones specific for Tau oligomers (including TOMA-1 (clone H12C10 an IgG2a), TOMA-2 (clone B3E7 an IgG1) and TOMA-3 (F3D4 an IgG2a), similar to the specificity described for T2286; moreover the monoclonal antibodies have higher affinity toward Tau oligomers. TOMA clone F3D4 was produced in large quantities. Using TOMA the inventor were able to replicate data generated using T2286. Some of the results obtained using TOMA are described below, including preliminary data from AD brain samples and mouse brains from different models of AD and tauopathy. These results confirmed that TOMA-F3D4 is an anti-tau oligomer specific antibody.

[0118] Tau oligomers in transgenic mouse models using TOMA. Using TOMA, the brains from Tg4510 at 2 and 5 months were analyzed, biochemically elevated levels of Tau oligomers were found at 5 moths compared to 2 months old (data not shown) Tau oligomers were also detectable by IHC; brain from the APP/PS-1 at 3 months old was also analyzed, Tau oligomers were detected.

[0119] Tau oligomers in AD brain using TOMA. Tau oligomers in AD brain were characterized using TOMA. Data using TOMA in combination with other well characterized antibodies revealed elevated levels of Tau oligomers in AD brains compared to age-matched controls, and demonstrated the presence of Tau oligomers both intracellularly and extracellularly in AD brains.

EXAMPLE 2**MATERIAL AND METHODS FOR MAKING AND USING TAU OLIGOMERS**

[0120] One aspect of these studies is to use anti Tau oligomer monoclonal antibodies to elucidate the role of Tau

oligomers and evaluate the benefits of their clearance by passive vaccination. The vast majority of protein aggregates have been reported to be pathologically significant and to co-exist in many diseases. Although the accumulation of Tau oligomers in human brain and transgenic models has been reported, details regarding their distribution and significance in disease phenotypes remain unknown. Thus, evaluation of the role of these structures is needed. Knowledge of the detailed distribution of Tau oligomers can help in understanding the molecular mechanisms of neurodegeneration. Knowledge of the benefits of Tau oligomers clearance may help in the design and evaluation of potential therapeutic strategies to treat AD and other tauopathies.

[0121] Immunohistochemical and biochemical methods using TOMA in combination with other well characterized antibodies are used to make qualitative and quantitative analysis of the levels, localization and post translational modifications of Tau oligomers in well characterized brain samples of AD patients and age-matched controls. The inventor can quantitate Tau oligomers in a large number of CSF samples. These samples can be analyzed biochemically by direct ELISA, immunoprecipitation/western, and sandwich ELISA.

[0122] Tau oligomers can be characterize in transgenic animal models of AD and tauopathy and determine whether their accumulation correlates with the behavioral deficits. Tau oligomers can be studied in brain from the AD models Tg 2576 and APP/PS1 mice, as well as the P301L Tau (JNPL3). Brains/CNS at various ages can be analyzed using the described methods. These experiments will assess the role of Tau oligomer in disease phenotypes and will assist in the design of passive vaccinations using TOMA.

[0123] The efficacy of passive vaccination can be assessed using TOMA in transgenic mouse models. Tau oligomers can be administered to P301 L Tau (JNPL3) model of tauopathy. JNPL3 mice have been used effectively in an active vaccination study directed at targeting Tau aggregates (Asuni *et al.*, 2007). Tg2576 mice can be administered Tau oligomers for the study of therapeutic effects of a polypeptide composition. Mice will be vaccinated at various ages, and comprehensive behavioral assessments will be performed before and after vaccination, including, fear conditioning, object recognition, locomotor activity, rotarod, and traverse beam. Additional models will be added if significant improvement is observed in both or one of these two models. These studies provide valuable information into the dynamics of Tau oligomers, assess the merit of targeting Tau oligomers solely by TOMA and the feasibility for developing a vaccine for therapeutic purposes. FIG. 10 illustrates data that demonstrate a beneficial affect of TOMA in mouse model of neurodegeneration using a rotarod assay.

[0124] Correlation of Tau oligomers with pathology in AD brain and CSF. The presence, distribution and post-translational modifications of Tau oligomers can be measured and analyzed in post mortem brain and CSF samples. Immunohistochemical and biochemical analyses is performed using TOMA and other available antibodies. Unlike previous studies that have focused on Tau modifications, such as truncation and site specific phosphorylation, the inventor will examine Tau oligomers burden first and then analyze its correlation with reported modification.

[0125] Immunohistochemical analysis of Tau oligomers in AD brain. The inventor describes using TOMA in combination with other well characterized antibodies. These studies detail the multiple types of Tau aggregates present in AD brain. NFT in AD brain have been studied extensively, but data describing Tau oligomers in AD brain is unavailable, and their role has not been yet determined. The data obtained from animal models argue that the methods and compositions proposed here are useful in understand Tau oligomers in AD. IHC analysis of brain samples using TOMA in combination with Tau 5, HT7, pThr231, p422, AT100, AT8 and pSer396, produces information about tau oligomers, their phosphorylation state, and their relation with NFT. IHC experiments detail the development of the toxic tau oligomers in AD brains and unveil their role in the disease progression.

[0126] Patient and brain tissue selection: Frozen brain tissues were obtained from the Institute for Brain Aging and Dementia (UC Irvine) and the Brain Resource Center (Johns Hopkins School of Medicine). Tau pathology begins in transentorhinal cortex and progresses to the frontal cortex, based on the progression of Tau deposition over the course of the disease as described by Braak and Braak and others. Tissues are examined from transentorhinal cortex and cerebellum, entorhinal cortex, and hippocampus (Brodmann's Area's 11, 9 and 4).

[0127] Selected patients represent the spectrum seen in AD progression, and only well-characterized samples are used. Sample information should have the clinical and pathological details of the patient, and patients were matched for age, gender and post-mortem index (PMI), mini mental state examination (MMSE) score, clinical dementia rating (CDR) score and cognitive ability screening instrument (CASI) score.

[0128] Antibody selection: Samples are analyzed using the novel Tau oligomers monoclonal antibody TOMA and other antibodies; including A-11 and 1-11, anti-oligomer antibodies (Kayed *et al.*, 2003; Meier *et al.*, 2006), OC and LOC anti-fibril antibodies (Kayed *et al.*, 2007) and Officer, an anti-annular protofibril antibody (Kayed *et al.*, 2009). In addition, commercially available antibodies will be used as necessary: such as, Tau antibodies against neurofibrillary tangles and specific phosphor-Tau epitope, anti-Tau HT7, AT270, AT8, and AT100, Tau-5, PHF-tau, anti-Tau pS199, pS262, and pS422.

[0129] Tissue processing: Brain samples are fixed in a 10% neutral buffered formalin solution under standard conditions for neuropathological purposes. Samples from each brain are processed for paraffin embedding according to conventional methods and for frozen sections. The reason to work with both type of tissue preparation is that some

antibodies work better in paraffin embedded sections than in frozen sections or vice versa. Furthermore, some antibodies react better with the DAB detection method, but not with fluorescent secondary antibodies or vice versa. The reactivity of TOMA on post mortem human brain tissue is evaluated empirically using varying antibody dilution and carefully control staining.

[0130] Immunohistochemistry in paraffin sections, and Immunofluorescence in frozen sections. Working with conformational antibodies is very challenging, especially when used to detect a dynamic and most likely transient species like Tau oligomers. The protocols preserve the conformational epitope while making it accessible to the antibody. For this purpose, the protocols are optimized and tailored.

[0131] Data analysis: Bright-field Images are acquire using a Nikon Eclipse 800 microscope equipped with a Nikon DXM1200 color CCD camera controlled by ACT-1 acquisition software (Nikon Instruments Inc, Melville, NY). The fluorescent images are examined using a confocal microscope Zeiss LSM 510 (Zeiss, Hornwood, NY) equipped with three laser lines. Argon ion laser with 4 lines of excitation: 458, 477, 488, 514 nm, Green He/Ne with excitation at 543nm and Red He/Ne with excitation at 633nm. To quantify the immunoreactivity, the brain samples are analyzed using Stereo Investigator (MBF Bioscience, Williston, VT). A region of interest is outlined and the area fraction fractionator probe is used systematically and randomly, allocated sampling sites 400 μm apart. At each sampling site, 100 x 80 μm counting frame is superposed, containing markers equally spaced from one another at a distance of 15 μm . The markers that co-localize with TOMA immunoreactivity are labeled as positive, whereas remaining markers are labeled negative. The area fraction is calculated as the number of positive markers divided by the total number of markers. The stereological assessment is made in a blinded fashion. The statistical analysis for the area fraction of TOMA immunoreactivity is performed using one-way ANOVA follow by Bonferroni's multiple comparison test to allow for comparisons between groups. All statistical analysis is performed using GraphPAD Prism version 5.00 for Windows, (GraphPAD Software, San Diego, CA).

[0132] Quantification and statistical analysis, to quantify the immunoreactivity, the brain samples are analyzed using Stereo Investigator (MBF Bioscience, Williston, VT). A region of interest is outlined; the fractionator probe is used systematically and randomly, allocated sampling sites 400 μm apart. Tau rabbit antibodies such as, ab64193, and p422 are used as markers with TOMA. TOMA is labeled with the fluorophore (Alexa Fluor488), and double staining is performed in tissue sections using labeled TOMA and other mouse tau antibodies. Briefly, sections are first incubate with the commercial antibody, and then with a secondary antibody goat anti mouse label with Alexa Fluor568 and finally sections are incubated with TOMA label with Alexa Fluor488. For analysis, each sampling site, a 100 x 80 μm counting frame is superposed, containing markers equally spaced from one another at a distance of 15 μm . The markers that co-localize with TOMA immunoreactivity are labeled as positive, whereas the remaining markers are labeled negative. The area fraction is calculated as the number of positive markers divided by the total number of markers. The stereological assessment is made in a blinded fashion. The statistical analysis for the area fraction of TOMA immunoreactivity is performed using one-way ANOVA, follow by Bonferroni's multiple comparison test to allow for comparisons between groups, All statistical analysis are performed using GraphPad Prism program.

EXAMPLE 3

BIOCHEMICAL ANALYSIS OF TAU OLIGOMERS IN AD BRAIN.

[0133] Detailed biochemical analysis of Tau oligomer burden in AD brain is not available, although recent studies reported elegant biochemical analysis of Tau oligomers in tg mouse brain (Berger *et al.*, 2007; Spires *et al.*, 2006). Tau aggregates range between dimer and pre-filament; the biochemical analysis will complement immunohistochemical analysis and provides information about the molecular weight of a specific oligomeric species associated with AD progression. Also, previous work on A β oligomers revealed the presence of more than one type of oligomeric species (Glabe, 2008); the proposed biochemical analysis will help in identifying different types of Tau oligomers in AD brain and their biochemical properties.

[0134] Western blot and dot blot analysis of human brain tissue. To determine if the progression of disease can be observed with TOMA, a large population of brains from patients with a broad range with respect to Mini Mental Status and Braak & Braak changes for the presence of Tau oligomers are analyzed. Frozen tissue from AD, MCI and age matched controls are tested. The regions of interest examined include entorhinal cortex, hippocampus, parietal lobe, olfactory bulb and frontal cortex. Tau oligomers are SDS stable. The PBS fraction, Triton X-100 fraction, and the Triton insoluble fraction are analyzed by western using TOMA, Tau-5, Tau-13, T46, pThr231, pSer396.

[0135] Tissue preparation and initial basic analysis. This procedure is based on experience in isolating different amyloid species from brain samples. The following fractions are analyzed by western and dot blot using TOMA, AT8, Tau-5 and other antibodies as required: the PBS soluble fraction, the Triton X-100 soluble fraction, and the Triton X-100 insoluble fraction. In addition, urea and formic acid denaturing treatments of the Triton insoluble fraction is performed and compared to the signal from the untreated control; this will allow quantification of any large Tau oligomers might

have precipitated during the fractionation protocol.

[0136] Formic Acid and Urea treatment: Urea treatment; Both PBS soluble and Triton soluble human brain fractions are treated with, 0.375 M, 0.75 M, 1.5 M, 3 M and 6 M and 8 M Urea. Samples are incubated overnight at room temperature before being analyzed. Formic acid treatment: PBS soluble human brain fraction is treated with 88%, 40%, 20% and 10% formic acid, mixed and incubated overnight at room temperature. Samples are analyzed by western blot using TOMA, AT8 and tau-5. In some cases additional antibodies are used.

[0137] Detergent treatment. Both PBS soluble and Triton soluble human brain fractions with 2%, 1%, 0.5%, 0.25%, 0.125%, 0.0625%, 0.03125%, and 0.015625% solutions of the detergents SDS, OG, OTG, CHAPS, Triton X100, Nonidet P-40, Tween 20, and BRIJ 58 are used. Samples are mixed and incubated overnight at +4°C, with the exception of SDS due to its propensity to precipitate at +4°C. SDS samples are incubated overnight at room temperature. These samples are analyzed by the dot blot assay using TOMA, AT8 and Tau-5.

[0138] Proteinase K, DNase and RNase treatment. Both PBS soluble and Triton soluble human brain fractions are treated with treated with different concentration of Proteinase K, DNase and RNase and incubated for one hour at 37°C, then analyzed by western blot using TOMA, AT8 and tau-5 antibodies. In all of the experiments *in vitro* prepared Tau oligomers and untreated samples are used as controls.

[0139] Quantitation of Tau oligomers and statistical analysis: In evaluating the correlation between TOMA signal and various parameters (Braak and Braak stage, post mortem index (PMI), gender, age at death and Mini-Mental State Examination (MMSE) score, the blots will be scanned and signal quantitated using Scion Imaging Software. The R_2 value is calculated for TOMA signal from each fraction and correlated with MMSE score. Of greater interest, however, is the correlations between Tau oligomers in the PBS soluble and Triton soluble fractions and MMSE score. Data is statistically analyzed via ANOVA and unpaired two-tailed t-test with the GraphPad Prism program (1SI, Philadelphia, PA). $P < 0.05$ is considered statistically significant.

EXAMPLE 4

TAU OLIGOMERS IN CSF SAMPLES.

[0140] A Simple, non-invasive test for early detection of AD is highly needed. Tau or one of its many species (t-Tau and p-tau, p-tau-181 etc.) is part of all published CSF biomarker signatures for early detection of AD. It is well established that Tau levels are increased in the CSF, while A β levels are decreased in CSF from AD patients. The levels of Tau oligomers in CSF have not been evaluated, and data demonstrate that measuring the levels of Tau oligomers in the CSF by TOMA can be a biomarker for AD. Keep in mind that CSF is in direct contact with the CNS; therefore changes in its biochemical composition, such as an increase in Tau oligomers levels, would be evident in the CSF. Further, CSF is accessible in living patients through lumbar puncture.

[0141] CSF Samples. Frozen CSF samples were obtained from the Institute for Brain Aging and Dementia (UC Irvine), Prof. John Ringman (Mary S. Easton Center for Alzheimer's Disease Research, UCLA), Prof. Martin Ingelsson (Uppsala University) and Prof. Douglas Galasko (Shiley-Marcos Alzheimer's Disease Research Center, UCSD). MMSE scores are available for all patients. CASI scores available for the presymptomatic patients (UCLA).

[0142] Quantification of tau oligomers in CSF samples by direct ELISA: A standard ELISA protocol is used: 20-50 μ l of CSF (16-40 μ g total protein) is used in triplicate for each experiment and is measured in at least two independent experiments, TOMA, Tau-5, HT7 and pThr181 are used.

[0143] Quantification of tau oligomers in CSF samples by IP/western: Standard protocols are used, both TOMA and Tau-5 are used to coat beads. For IP, 0.5-1 ml CSF is used in each experiment. The samples are probed on western using TOMA, T2286, Tau-5, HT7 and pThr181.

[0144] Quantification of tau oligomers in CSF by sandwich ELISA: Solid phase sandwich ELISA is used to detect tau oligomers in CSF. The inventors use Tau-5 antibody to capture all tau species present in the CSF. 20 μ l of CSF is used in each experiment. HT7 and pThr181 are also used as "capture" antibodies. TOMA and pThr181 are used as the detection antibody.

[0145] Data Analysis: Statistical analysis is performed on the ELISA and sandwich ELISA data. Data is statistically analyzed via ANOVA and unpaired two-tailed t-test with the GraphPad Prism program. The differences are considered statistically significant if the p-value ≤ 0.02 . IP/western data is analyzed by scanning the blots and quantitating the signal using. The R_2 value is calculated and correlated with MMSE score. All data shared with the samples provides to further analyze the data and its significance based on the clinical and neuropathological characterization of the patients other than the MMSE.

EXAMPLE 5**TAU OLIGOMERS IN MOUSE MODELS**

[0146] Mouse models of AD are used to investigate the role of tau oligomers in mediating A β toxicity and AD related phenotypes, Tg2576 is one example of such a model; Tg2576 is well-characterized and has been used in numerous studies with great reproducibility. Moreover, it has the same Swedish mutation as the hAPP-J20 mouse model used to discover the role of tau in A β mediated toxicity. The Tg2576 mouse has secondary tauopathy, and the presence of phosphorylated tau species in the brain of these animals has been reported. Moreover, data demonstrate the presence of tau oligomers in this model. The APP/PS1 model is a more aggressive model, amyloid deposits start at 8 weeks; by 4.5 months, it shows deposition of phosphorylated tau, and at 16 months it shows tau PHF- like structures, show tau oligomers in this model at 6 months old.

[0147] Selection of mouse models of tauopathy: The dissociation between NFT formation and phenotypes observed in mouse models of tauopathy indicates that oligomeric assemblies of tau are the most toxic tau species formed. This phenomenon is universal for all tauopathy models, meaning that one can choose any tau model to analyze using TOMA. The inventors analyze brains from the h-tau mice, as this model shows extensive cell death and synaptic lesions independently of NFT formation, as well as the P301L (JNPL3), the latter model was used in the sole published tau active vaccination study and data show abundant tau oligomers at an early age confirmed by IHC, Western, and thus it is the logical choice for passive vaccination study using TOMA. By choosing two well-established models the inventors are able to evaluate the formation of tau oligomers and confirm their role as mediator for A β toxicity.

[0148] IHC and biochemical analysis of tau oligomers in mouse models: Mouse brains are analyzed using the same methods described for the human brain samples. These methods include IHC in paraffin sections, frozen sections, Western blot, and ELISA, primarily using TOMA; in combination with Tau 5, Tau 13, pThr231, p422, AT100, and AT8. The initial analysis includes the following ages for each mouse model; most of these brain samples are extracted from animal colonies, whereas others like the h-tau are provided by collaborators, Dr. K. Duff and others. These time points are selected based on the published literature describing these animals' phenotypes:

Tg2576 model: Brains are analyzed at 5, 6, 8, 9, 10, 12 and 16 months.

APP/PS1 model: Brains are analyzed at 3, 6, 8, and 10 months.

h-tau model: Brains are analyzed from 5, 7, 8, 10 and 16 month old mice.

P301L model: Brains are analyzed at 2½, 3, 4, 5, 6, 7, 8, and 10 months.

[0149] Data Analysis: ELISA measurements are analyzed using ANOVA and unpaired two-tailed t-test with the Graph-Pad Prism program. The differences are considered statistically significant if the p-value ≤ 0.05 . Western and dot blot data is analyzed by scanning the blots and quantitating the signal using Scion Imaging Software. The R² value is calculated and correlated with age.

[0150] P301L (JNPL3) mouse model is vaccinated because it was the model used in the published tau immunotherapy; results will be directly comparable from TOMA passive vaccination with the results of Asuni et al. using active vaccination targeting phosphorylated tau and NFT.

[0151] As an AD model the Tg2576 mouse is vaccinated that expresses the Swedish mutation of hAPP: (1) This model is well-characterized and has been used in numerous passive vaccination studies targeting A β , enabling cross comparison, (2) This mouse model was used to develop the hAPP-J20 mouse model (7), and finally, the inventors are able to detect tau oligomers using TOMA in this model.

[0152] Both intracerebroventricular (i.c.v) and intraperitoneal (i.p.) injections are contemplated to deliver TOMA, the inventors chose to start with i.c.v. as described in well-executed studies that investigated the delivery of anti-A β antibodies into the Tg2576 mouse model and other AD models. These studies demonstrated that i.c.v. injections are effective and minimize the side effects associated with amyloid clearance when compared side by side with i.p. injections, which also require higher doses of antibody. In addition, i.c.v. delivered TOMA engage only central mechanisms for clearing tau oligomers and do not require involvement of the peripheral mechanisms proposed to be involved in the clearance of A β .

[0153] Passive vaccination of the tauopathy model P301L using TOMA. The P301L model develops minor sensorimotor abnormalities by 3 months and NFT at 4 months old. Groups of mice ages 3, 4, 6, 7, and 9 months are vaccinated by a single bolus i.c.v injection of 2 μ g of TOMA in the left hemisphere; control mice are i.c.v. injected with PBS or control IgG. Behavioral analyses are performed 3 days prior to the injection and 4 days after the injection. These tests include Rotarod, and Traverse beam and Object recognition. Animals are terminated 1 week after the injection; brains are extracted and dissected for ICH and biochemical analyses. A longer time between injection and the termination

of the animal is also contemplated; this will help in understanding the dynamics between tau oligomers and other tau aggregates. The IHC analyses from these brain are used to evaluate the relationship between extracellular and intracellular tau oligomers. The behavioral abnormalities in the P301L mouse model are evaluated by performing the following tests, Rotarod, Traverse Beam, and Object recognition.

[0154] Passive vaccination of the AD model Tg2576 using TOMA. The Tg2576 model shows memory decline starting at 6 months, whereas A β amyloid plaques start to deposit at 9 months. These animals show severe memory deficits between 6-12 months old; A β oligomers at 6 months, long before plaque formation, groups of mice ages 6, 8, 10, and 12 months are vaccinated by i.c.v injection of 2 μ g TOMA in the left hemisphere; control mice are i.c.v. injected with PBS or control IgG. Behavioral and memory tests are performed 4 days prior to the injection and 4 days after the injection; these tests include fear-conditioning and locomotor activity. Animals are terminated 1 week after the injection; brains are extracted and dissected for IHC and biochemical analysis. Behavioral and memory tests are performed and include, Fear Conditioning, Morris Water Maze, and Locomotor activity.

[0155] Data Analysis: Tau oligomer levels in the brains of these animals are analyzed as described herein. First, both total tau and tau oligomers levels from these animals before vaccination is quantified by TOMA for tau oligomers and Tau 5 and Tau 13 for total tau. Then tau oligomer and total tau levels before and after the passive vaccination are calculated and compared. Finally, tau oligomer levels are correlated with the results of the behavioral tests. The data from the rotarod, fear conditioning and traverse beam is analyzed by two-way ANOVA repeated measures and a Bonferroni post hoc test using the. Data from the locomotor activity measurements, Morris water maze and object recognition test are analyzed using the unpaired two-tailed t-test. Correlation between behavioral outcome and tau oligomers levels are evaluated and analyzed by Pearson r correlation. The R2 values are calculated.

REFERENCES

[0156]

US 2009 123 936
US 2008 220449
U.S. 4,338,298
U.S. 4,554,101
U.S. 4,748,018
U.S. 5,512,282
U.S. 5,548,066
U.S. 6,651,655
U.S. 6,756,361
U.S. 6,770,278
U.S. 6,936,258

Alafuzoff et al., Brain Pathol., 18(4):484-96, 2008.
Alonso et al., Curr. Alzheimer Res., 5(4):375-84, 2008.
Alonso et al., Proc. Natl. Acad. Sci. USA, 98(12):6923-8, 2001a.
Alonso et al., J. Biol. Chem., 276(41):37967-73, 2001b.
Andorfer et al., J. Neurosci., 25(22):5446-54, 2005.
Andreasen et al., Neurosci. Lett., 273(1):5-8, 1999.
Arriagada et al., Neurology, 42(3 Pt 1):631-9, 1992.
Ashe, N. Engl. J. Med., 357(9):933-5, 2007.
Asuni et al., J. Neurosci., 27(34):9115-29, 2007.
Augustinack et al., Acta Neuropathol., 103(1):26-35, 2002.
Avila et al., Curr. Alzheimer Res., 1(2):97-101, 2004.
Avila, FEBS Lett., 476(1-2):89-92, 2000.
Avila, J. Cell Mol. Med., 12(1):258-9, 2008.
Ballatore et al., Nat. Rev. Neurosci., 8(9):663-72, 2007.
Barany and Merrifield, In: The Peptides, Gross and Meienhofer (Eds.), Academic Press, NY, 1-284, 1979.
Baumann et al., FEBS Lett., 336(3):417-24, 1993.
Berger et al., J. Neurosci., 27(14):3650-62, 2007.
Biernat et al., Neuron., 11(1):153-63, 1993.
Binder et al., J. Cell Biol., 101(4):1371-8, 1985.
Bird et al., Brain., 122 (Pt 4):741-56, 1999.
Blom et al., Dement. Geriatr. Cogn. Disord., 27(5):458-64, 2009.

- Bondareff et al., *J. Neuropath. Exper. Neurol.*, 53(2):158-164, 1994.
- Borroni et al., *Eur. J. Pharmacol.*, 545(1):73-80, 2006.
- Braak and Braak, *Acta Neuropathol.*, 82(4):239-59, 1991a.
- Braak and Braak, *Brain Pathol.*, 1(3):213-6., 1991b.
- 5 Braak and Braak, *Acta Neurol. Scand. Suppl.*, 165:3-12, 1996.
- Bretteville and Planel, *J. Alzheimers Dis.*, 14(4):431-6, 2008.
- Brunden et al., *J. Alzheimers Dis.*, 14(4):393-9, 2008.
- Buee et al., *Brain Res. Brain Res. Rev.*, 33(1):95-130, 2000.
- Buerger et al., *Brain*, 129(Pt 11):3035-41, 2006.
- 10 Bulic et al., *Angew Chem. Int. Ed. Engl.*, 48(10):1740-52, 2009.
- Burke et al., *J. Inf. Dis.*, 170:1110-1119, 1994.
- Busciglio et al., *Neuron.*, 14(4):879-88, 1995.
- Cash et al., *Am. J. Pathol.*, 162(5):1623-7, 2003.
- Clark et al., *Proc. Natl. Acad. Sci. USA*, 95(22):13103-7, 1998.
- 15 Congdon and Duff, *J. Alzheimers Dis.*, 14(4):453-7, 2008.
- De Felice et al., *Neurobiol. Aging*, 29(9):1334-47, 2008.
- Delacourte and Buee, *Curr. Opin. Neurol.*, 13(4):371-6., 2000.
- Demuro et al., *J. Biol. Chem.*, 280(17):17294-300, 2045.
- Drechsel et al., *Mol. Biol. Cell*, 3(10): 1141-54, 1992.
- 20 Drewes et al., *EMBO J.*, 11(6):2131-8, 1992.
- Drewes et al., *J. Biol. Chem.*, 270(13):7679-88., 1995.
- Epitope Mapping Protocols, 1996.
- Ferrari et al., *Biochem. Biophys. Res. Commun.*, 337(4):1097-101, 2003.
- Folstein et al., *J. Psychiatr. Res.*, 12(3):189-98, 1975.
- 25 Galasko et al., *Neurology*, 48(3):632-5, 1997.
- Glabe, *J. Biol. Chem.*, 283(44):29639-43, 2008.
- Goedert et al., *Neuron.*, 8(1): 159-68, 1992.
- Goedert et al., *J. Neurochem.*, 65(6):2804-7, 1995.
- Goedert et al., *EMBO J.*, 8:393-399, 1989.
- 30 Goedert et al., *Neuron.*, 3:519-526, 1989.
- Gomez-Ramos et al., *FEBS Lett.*, 580(20):4842-50, 2006.
- Gomez-Ramos et al., *Mol. Cell Neurosci.*, 37(4):673-81, 2008.
- Gong and Iqbal, *Curr. Med. Chem.*, 15(23):2321-8, 2008.
- Gotz et al., *Science*, 293(5534):1491-5, 2001.
- 35 Grundke-Iqbal et al., *Proc. Natl. Acad. Sci. USA*, 83(13):4913-7, 1986.
- Haass and Selkoe, *Nat. Rev. Mol. Cell Biol.*, 8(2):101-12, 2007.
- Hanger et al., *Neurosci. Lett.*, 147(1):58-62, 1992.
- Hardy and Allsop, *Trends Pharmacol. Sci.*, 12(10):383-8, 1991.
- Hardy and Selkoe, *Science*, 7(5580):353-6, 2002.
- 40 Harlow and Lane, In: *Antibodies: A Laboratory Manual*, Cold Spring Harbor Laboratory, Cold Spring Harbor, NY, 346-348, 1988.
- Haroutunian et al., *Neurobiol. Aging*, 28(1):1-7, 2007.
- Harper et al., *Chem. Biol.*, 4(2): 119-25, 1997.
- Hernandez and Avila, *J. Alzheimers Dis.*, 14(4):449-52, 2008.
- 45 Herukka et al., *Neurology*, 64(7):1294-7, 2005.
- Honson et al., *Neurotox. Res.*, 15(3):274-83, 2009.
- Huston et al., *Methods Enzymol.*, 203:46-88, 1991.
- Hutton et al., *Nature*, 393(6686):702-5, 1998.
- Iqbal and Grundke-Iqbal, *Drug News Perspect.*, 11(1):10-4, 1998.
- 50 Iqbal et al., *Acta Neuropathol.*, 118(1):53-69, 2009.
- Jakes et al., *EMBO J.*, 10:2725-2729, 1991.
- Johnson et al., *Biochem. Biophys. Res. Commun.*, 163(3):1505-11, 1989.
- Johnson et al., *Arch Biochem Biophys.*, 291(2):371-8, 1991.
- Johnson et al., *J. Cell Sci.*, 117(Pt 24):5721-9, 2004.
- 55 Karsten et al., *Neuron.*, 51(5):549-60, 2006.
- Kayed and Glabe, *Methods Enzymol.*, 413:326-44, 2006.
- Kayed et al., *Science*, 300(5618):486-9., 2003.
- Kayed et al., *J. Biol. Chem.*, 279(45):46363-6, 2004.

- Kayed et al, *Mol. Neurodegener.*, 2:18, 2007.
- Kayed et al., *J. Biol. Chem.*, 284(7):4230-7, 2009.
- Kohler and Milstein, *Nature*, 256:495-497, 1975.
- Kostelny et al., *J. Immunol.*, 148:1547-1553, 1992.
- 5 Kurt et al., *Neurobiol. Dis.*, 14(1):89-97, 2003.
- Kyte and Doolittle, *J. Mol. Biol.*, 157(1):105-132, 1982.
- Lai et al., *Neurobiology of Ageing*, 16(3):433-445, 1995.
- Larbig et al., *Curr. Alzheimer Res.*, 4(3):315-23, 2007.
- Lee et al., *Annu. Rev. Neurosci.*, 24:1121-59, 2001.
- 10 Li et al., *Neurology*, 69(7):631-9, 2007.
- Litersky et al., *J. Biol. Chem.*, 267(3):1563-8, 1992.
- Litersky et al., *Brain Res.*, 604(1-2):32-40, 1993.
- Maeda et al. *Neurosci. Res.*, 54(3):197-201, 2006.
- Maeda et al., *Biochemistry*, 46(12):3856-61, 2007.
- 15 Margittai and Langen, *Proc. Natl. Acad. Sci. USA*, 101(28):10278-83, 2004.
- Margittai and Langen, *J. Biol. Chem.*, 281(49):37820-7, 2006.
- Marx, *Science*, 316(5830):1416-7, 2007.
- Matsuo et al., *Neuron.*, 13(4):989-1002, 1994.
- Mayeux et al., *New Eng. J. Med.*, 341:1670-1679, 1999.
- 20 McKhann, *Neuropediatrics*, 15(Suppl):4-10, 1984.
- Meier et al., *Am. J. Physiol. Endocrinol. Metab.*, 291(6):E1317-24, 2006.
- Mena et al., *Acta Neuropathol.*, 89:50-56, 1995.
- Mena et al., *Acta Neuropathol.*, 91:633-641, 1996.
- Merrifield, *Science*, 232(4748):341-347, 1986.
- 25 Morishima-Kawashima et al., *Neurobiol. Aging*, 16(3):365-71, 1995.
- Morsch et al., *J. Neuropathol. Exp. Neurol.*, 58(2):188-97, 1999.
- Motter et al., *Ann. Neurol.*, 38(4):643-8, 1995.
- Novak et al., *EMBO J.*, 12:365-370, 1993.
- Oddo et al., *J. Biol. Chem.*, 281(51):39413-23, 2006.
- 30 Parnetti et al., *Mech. Ageing Dev.*, 127(2):129-32, 2006.
- Pennanen and Gotz, *Biochem. Biophys. Res. Commun.*, 337(4):1097-101, 2005.
- Petersen et al., *Arch. Neurol.*, (3):303-8, 1999.
- Pickhardt et al., *Curr. Alzheimer Res.*, 2(2):219-26, 2005.
- Pittman et al., *Hum. Mol. Genet.*, 15(Spec2):R188-95, 2006.
- 35 Rapoport et al., *Proc. Natl. Acad. Sci. USA*, 99(9):6364-9, 2002.
- Ringman et al., *Neurology*, 71(2):85-92, 2008.
- Roberson et al., *Science*, 316(5825):750-4, 2007.
- Roher et al., *J. Neurochemistry*, 61(5):1916-26, 1993.
- Santacruz et al., *Science*, 309(5733):476-81, 2005.
- 40 Schneider and Mandelkow, *Neurotherapeutics*, 5(3):443-57, 2008.
- Sengupta et al., *Biochemistry*, 45(50):15111-9, 2006.
- Shaw et al., *Ann. Neurol.*, 65(4):403-13, 2009.
- Skoog et al., *Dement. Geriatr. Cogn. Discord.*, 15(3):169-76, 2003.
- Songsivilai & Lachmann, *Clin. Exp. Immunol.*, 79:315-321, 1990.
- 45 Spires et al., *Am. J. Pathol.*, 168(5):1598-607, 2006.
- Spires-Jones et al., *Trends Neurosci.*, 32(3):150-9, 2009.
- Stewart and Young, In: *Solid Phase Peptide Synthesis*, 2d. ed., Pierce Chemical Co., 1984.
- Tabaton et al., *Neurosci. Lett.*, 103(3):259-62, 1989.
- Tam et al., *J. Am. Chem. Soc.*, 105:6442, 1983.
- 50 Teunissen et al., *Neurobiol. Aging*, 23(4):485-508, 2002.
- Tigges et al., *J. Immunol.*, 156(10):3901-3910, 1996.
- Trinczek et al., *Mol. Biol. Cell*, 6(12):1887-902, 1995.
- Trojanowski et al., *Expert Opin. Pharmacother.*, 6(5):683-6, 2005.
- Vandermeeren et al., *J. Neurochem.*, 61(5):1828-34, 1993.
- 55 Vaughan et al., *Nature Biotechnol.*, 16:535-539, 1998.
- Vieira et al., *J. Neurochem.*, 103(2):736-48, 2007.
- Vigo-Pelfrey et al., *Neurology*, 45(4):788-93, 1995.
- Walsh and Selkoe, *Protein Pept. Lett.*, 11(3):213-28, 2004.

Walsh and Selkoe, J. Neurochem., 101(5):1172-84, 2007.
 Wiltfang et al., World J. Biol. Psychiatry, 6(2):69-84, 2005.
 Wischik et al., Proc. Natl. Acad. Sci. USA, 93:11213-11218, 1996.
 Wischik et al. Proc. Natl. Acad. Sci. USA, 85:4506-4510, 1988b.
 5 Wischik et al., Proc. Natl. Acad. Sci. USA, 85:4884-4888, 1998a.
 Wischik et al., In: Microtubule-associated proteins: modifications in disease, Avila et al. (Eds.), Harwood Academic
 Publishers, Amsterdam 185-241, 1997.
 Yamazaki et al., J. Neuropathol. Exp. Neurol., 64(10):839-46, 2005.
 Yoshiyama et al., Neuron., 53(3):337-51, 2007.
 10 Zetterberg et al., Neurosci. Lett., 352(1):67-9, 2003.
 Zhang et al., Proc. Natl. Acad. Sci. USA, 102(1):227-31, 2005.

SEQUENCE LISTING

[0157]

<110> KAYED, RAKEZ

<120> ANTIBODIES THAT BIND TAU OLIGOMERS

<130> UTFG:293WO

<140> UNKNOWN

<141> 2010-08-30

<150> 61/237,861

<151> 2009-08-28

<160> 6

<170> PatentIn version 3.5

<210> 1

<211> 758

<212> PRT

<213> Homo sapiens

<400> 1

EP 2 470 211 B1

	Met	Ala	Glu	Pro	Arg	Gln	Glu	Phe	Glu	Val	Met	Glu	Asp	His	Ala	Gly
	1				5					10					15	
5	Thr	Tyr	Gly	Leu	Gly	Asp	Arg	Lys	Asp	Gln	Gly	Gly	Tyr	Thr	Met	His
				20					25					30		
10	Gln	Asp	Gln	Glu	Gly	Asp	Thr	Asp	Ala	Gly	Leu	Lys	Glu	Ser	Pro	Leu
			35					40					45			
15	Gln	Thr	Pro	Thr	Glu	Asp	Gly	Ser	Glu	Glu	Pro	Gly	Ser	Glu	Thr	Ser
		50					55					60				
20	Asp	Ala	Lys	Ser	Thr	Pro	Thr	Ala	Glu	Asp	Val	Thr	Ala	Pro	Leu	Val
	65					70					75				80	
25	Asp	Glu	Gly	Ala	Pro	Gly	Lys	Gln	Ala	Ala	Ala	Gln	Pro	His	Thr	Glu
					85					90					95	
30	Ile	Pro	Glu	Gly	Thr	Thr	Ala	Glu	Glu	Ala	Gly	Ile	Gly	Asp	Thr	Pro
				100					105					110		
35	Ser	Leu	Glu	Asp	Glu	Ala	Ala	Gly	His	Val	Thr	Gln	Glu	Pro	Glu	Ser
			115					120					125			
40	Gly	Lys	Val	Val	Gln	Glu	Gly	Phe	Leu	Arg	Glu	Pro	Gly	Pro	Pro	Gly
		130					135					140				
45	Leu	Ser	His	Gln	Leu	Met	Ser	Gly	Met	Pro	Gly	Ala	Pro	Leu	Leu	Pro
	145					150					155					160

EP 2 470 211 B1

	Glu	Gly	Pro	Arg	Glu	Ala	Thr	Arg	Gln	Pro	Ser	Gly	Thr	Gly	Pro	Glu	
					165					170					175		
5	Asp	Thr	Glu	Gly	Gly	Arg	His	Ala	Pro	Glu	Leu	Leu	Lys	His	Gln	Leu	
				180					185					190			
	Leu	Gly	Asp	Leu	His	Gln	Glu	Gly	Pro	Pro	Leu	Lys	Gly	Ala	Gly	Gly	
10			195					200					205				
	Lys	Glu	Arg	Pro	Gly	Ser	Lys	Glu	Glu	Val	Asp	Glu	Asp	Arg	Asp	Val	
		210					215					220					
15	Asp	Glu	Ser	Ser	Pro	Gln	Asp	Ser	Pro	Pro	Ser	Lys	Ala	Ser	Pro	Ala	
	225					230					235					240	
	Gln	Asp	Gly	Arg	Pro	Pro	Gln	Thr	Ala	Ala	Arg	Glu	Ala	Thr	Ser	Ile	
20					245					250					255		
	Pro	Gly	Phe	Pro	Ala	Glu	Gly	Ala	Ile	Pro	Leu	Pro	Val	Asp	Phe	Leu	
				260					265					270			
25	Ser	Lys	Val	Ser	Thr	Glu	Ile	Pro	Ala	Ser	Glu	Pro	Asp	Gly	Pro	Ser	
			275					280					285				
	Val	Gly	Arg	Ala	Lys	Gly	Gln	Asp	Ala	Pro	Leu	Glu	Phe	Thr	Phe	His	
30		290					295					300					
	Val	Glu	Ile	Thr	Pro	Asn	Val	Gln	Lys	Glu	Gln	Ala	His	Ser	Glu	Glu	
	305					310					315					320	
35	His	Leu	Gly	Arg	Ala	Ala	Phe	Pro	Gly	Ala	Pro	Gly	Glu	Gly	Pro	Glu	
					325					330					335		
	Ala	Arg	Gly	Pro	Ser	Leu	Gly	Glu	Asp	Thr	Lys	Glu	Ala	Asp	Leu	Pro	
40				340					345					350			
	Glu	Pro	Ser	Glu	Lys	Gln	Pro	Ala	Ala	Ala	Pro	Arg	Gly	Lys	Pro	Val	
			355					360					365				
45	Ser	Arg	Val	Pro	Gln	Leu	Lys	Ala	Arg	Met	Val	Ser	Lys	Ser	Lys	Asp	
		370					375					380					
	Gly	Thr	Gly	Ser	Asp	Asp	Lys	Lys	Ala	Lys	Thr	Ser	Thr	Arg	Ser	Ser	
50		385				390					395					400	
	Ala	Lys	Thr	Leu	Lys	Asn	Arg	Pro	Cys	Leu	Ser	Pro	Lys	His	Pro	Thr	
					405					410					415		
55	Pro	Gly	Ser	Ser	Asp	Pro	Leu	Ile	Gln	Pro	Ser	Ser	Pro	Ala	Val	Cys	

EP 2 470 211 B1

	420	425	430
5	Pro Glu Pro Pro Ser Ser Pro Lys His Val Ser Ser Val Thr Ser Arg 435 440 445		
	Thr Gly Ser Ser Gly Ala Lys Glu Met Lys Leu Lys Gly Ala Asp Gly 450 455 460		
10	Lys Thr Lys Ile Ala Thr Pro Arg Gly Ala Ala Pro Pro Gly Gln Lys 465 470 475 480		
15	Gly Gln Ala Asn Ala Thr Arg Ile Pro Ala Lys Thr Pro Pro Ala Pro 485 490 495		
20	Lys Thr Pro Pro Ser Ser Gly Glu Pro Pro Lys Ser Gly Asp Arg Ser 500 505 510		
	Gly Tyr Ser Ser Pro Gly Ser Pro Gly Thr Pro Gly Ser Arg Ser Arg 515 520 525		
25	Thr Pro Ser Leu Pro Thr Pro Pro Thr Arg Glu Pro Lys Lys Val Ala 530 535 540		
30	Val Val Arg Thr Pro Pro Lys Ser Pro Ser Ser Ala Lys Ser Arg Leu 545 550 555 560		
	Gln Thr Ala Pro Val Pro Met Pro Asp Leu Lys Asn Val Lys Ser Lys 565 570 575		
35	Ile Gly Ser Thr Glu Asn Leu Lys His Gln Pro Gly Gly Gly Lys Val 580 585 590		
40	Gln Ile Ile Asn Lys Lys Leu Asp Leu Ser Asn Val Gln Ser Lys Cys 595 600 605		
	Gly Ser Lys Asp Asn Ile Lys His Val Pro Gly Gly Gly Ser Val Gln 610 615 620		
45	Ile Val Tyr Lys Pro Val Asp Leu Ser Lys Val Thr Ser Lys Cys Gly 625 630 635 640		
50	Ser Leu Gly Asn Ile His His Lys Pro Gly Gly Gly Gln Val Glu Val 645 650 655		
	Lys Ser Glu Lys Leu Asp Phe Lys Asp Arg Val Gln Ser Lys Ile Gly 660 665 670		
55	Ser Leu Asp Asn Ile Thr His Val Pro Gly Gly Gly Asn Lys Lys Ile 675 680 685		

EP 2 470 211 B1

Glu Thr His Lys Leu Thr Phe Arg Glu Asn Ala Lys Ala Lys Thr Asp
 690 695 700
 5
 His Gly Ala Glu Ile Val Tyr Lys Ser Pro Val Val Ser Gly Asp Thr
 705 710 715 720
 10
 Ser Pro Arg His Leu Ser Asn Val Ser Ser Thr Gly Ser Ile Asp Met
 725 730 735
 15
 Val Asp Ser Pro Gln Leu Ala Thr Leu Ala Asp Glu Val Ser Ala Ser
 740 745 750
 20
 Leu Ala Lys Gln Gly Leu
 755
 <210> 2
 <211> 441
 <212> PRT
 <213> Homo sapiens
 25
 <400> 2
 Met Ala Glu Pro Arg Gln Glu Phe Glu Val Met Glu Asp His Ala Gly
 1 5 10 15
 30
 Thr Tyr Gly Leu Gly Asp Arg Lys Asp Gln Gly Gly Tyr Thr Met His
 20 25 30
 35
 Gln Asp Gln Glu Gly Asp Thr Asp Ala Gly Leu Lys Glu Ser Pro Leu
 35 40 45
 40
 Gln Thr Pro Thr Glu Asp Gly Ser Glu Glu Pro Gly Ser Glu Thr Ser
 50 55 60
 45
 Asp Ala Lys Ser Thr Pro Thr Ala Glu Asp Val Thr Ala Pro Leu Val
 65 70 75 80
 50
 Asp Glu Gly Ala Pro Gly Lys Gln Ala Ala Ala Gln Pro His Thr Glu
 85 90 95
 55
 Ile Pro Glu Gly Thr Thr Ala Glu Glu Ala Gly Ile Gly Asp Thr Pro
 100 105 110
 Ser Leu Glu Asp Glu Ala Ala Gly His Val Thr Gln Ala Arg Met Val
 115 120 125
 Ser Lys Ser Lys Asp Gly Thr Gly Ser Asp Asp Lys Lys Ala Lys Gly
 130 135 140

EP 2 470 211 B1

	Ala	Asp	Gly	Lys	Thr	Lys	Ile	Ala	Thr	Pro	Arg	Gly	Ala	Ala	Pro	Pro	
	145					150					155					160	
5	Gly	Gln	Lys	Gly	Gln	Ala	Asn	Ala	Thr	Arg	Ile	Pro	Ala	Lys	Thr	Pro	
					165					170					175		
	Pro	Ala	Pro	Lys	Thr	Pro	Pro	Ser	Ser	Gly	Glu	Pro	Pro	Lys	Ser	Gly	
10				180					185					190			
	Asp	Arg	Ser	Gly	Tyr	Ser	Ser	Pro	Gly	Ser	Pro	Gly	Thr	Pro	Gly	Ser	
			195					200					205				
15	Arg	Ser	Arg	Thr	Pro	Ser	Leu	Pro	Thr	Pro	Pro	Thr	Arg	Glu	Pro	Lys	
	210						215					220					
	Lys	Val	Ala	Val	Val	Arg	Thr	Pro	Pro	Lys	Ser	Pro	Ser	Ser	Ala	Lys	
20	225					230					235					240	
	Ser	Arg	Leu	Gln	Thr	Ala	Pro	Val	Pro	Met	Pro	Asp	Leu	Lys	Asn	Val	
				245						250					255		
25	Lys	Ser	Lys	Ile	Gly	Ser	Thr	Glu	Asn	Leu	Lys	His	Gln	Pro	Gly	Gly	
				260					265					270			
	Gly	Lys	Val	Gln	Ile	Ile	Asn	Lys	Lys	Leu	Asp	Leu	Ser	Asn	Val	Gln	
30			275					280					285				
	Ser	Lys	Cys	Gly	Ser	Lys	Asp	Asn	Ile	Lys	His	Val	Pro	Gly	Gly	Gly	
	290						295					300					
35	Ser	Val	Gln	Ile	Val	Tyr	Lys	Pro	Val	Asp	Leu	Ser	Lys	Val	Thr	Ser	
	305					310					315					320	
	Lys	Cys	Gly	Ser	Leu	Gly	Asn	Ile	His	His	Lys	Pro	Gly	Gly	Gly	Gln	
40					325					330					335		
	Val	Glu	Val	Lys	Ser	Glu	Lys	Leu	Asp	Phe	Lys	Asp	Arg	Val	Gln	Ser	
				340					345					350			
45	Lys	Ile	Gly	Ser	Leu	Asp	Asn	Ile	Thr	His	Val	Pro	Gly	Gly	Gly	Asn	
			355				360						365				
	Lys	Lys	Ile	Glu	Thr	His	Lys	Leu	Thr	Phe	Arg	Glu	Asn	Ala	Lys	Ala	
50		370					375					380					
	Lys	Thr	Asp	His	Gly	Ala	Glu	Ile	Val	Tyr	Lys	Ser	Pro	Val	Val	Ser	
	385					390					395					400	
55	Gly	Asp	Thr	Ser	Pro	Arg	His	Leu	Ser	Asn	Val	Ser	Ser	Thr	Gly	Ser	

EP 2 470 211 B1

405

410

415

5 Ile Asp Met Val Asp Ser Pro Gln Leu Ala Thr Leu Ala Asp Glu Val
 420 425 430

10 Ser Ala Ser Leu Ala Lys Gln Gly Leu
 435 440

15 <210> 3
 <211> 383
 <212> PRT
 <213> Homo sapiens
20
25
30
35
40
45
50
55

EP 2 470 211 B1

	Met	Ala	Glu	Pro	Arg	Gln	Glu	Phe	Glu	Val	Met	Glu	Asp	His	Ala	Gly	
	1				5					10					15		
5	Thr	Tyr	Gly	Leu	Gly	Asp	Arg	Lys	Asp	Gln	Gly	Gly	Tyr	Thr	Met	His	
				20					25					30			
10	Gln	Asp	Gln	Glu	Gly	Asp	Thr	Asp	Ala	Gly	Leu	Lys	Ala	Glu	Glu	Ala	
			35					40					45				
15	Gly	Ile	Gly	Asp	Thr	Pro	Ser	Leu	Glu	Asp	Glu	Ala	Ala	Gly	His	Val	
	50					55						60					
20	Thr	Gln	Ala	Arg	Met	Val	Ser	Lys	Ser	Lys	Asp	Gly	Thr	Gly	Ser	Asp	
	65					70					75					80	
25	Asp	Lys	Lys	Ala	Lys	Gly	Ala	Asp	Gly	Lys	Thr	Lys	Ile	Ala	Thr	Pro	
					85					90					95		
30	Arg	Gly	Ala	Ala	Pro	Pro	Gly	Gln	Lys	Gly	Gln	Ala	Asn	Ala	Thr	Arg	
				100					105					110			
35	Ile	Pro	Ala	Lys	Thr	Pro	Pro	Ala	Pro	Lys	Thr	Pro	Pro	Ser	Ser	Gly	
			115					120					125				
40	Glu	Pro	Pro	Lys	Ser	Gly	Asp	Arg	Ser	Gly	Tyr	Ser	Ser	Pro	Gly	Ser	
		130					135					140					
45	Pro	Gly	Thr	Pro	Gly	Ser	Arg	Ser	Arg	Thr	Pro	Ser	Leu	Pro	Thr	Pro	
	145					150					155					160	
50	Pro	Thr	Arg	Glu	Pro	Lys	Lys	Val	Ala	Val	Val	Arg	Thr	Pro	Pro	Lys	
					165					170					175		
55	Ser	Pro	Ser	Ser	Ala	Lys	Ser	Arg	Leu	Gln	Thr	Ala	Pro	Val	Pro	Met	
				180					185					190			

EP 2 470 211 B1

	Pro	Asp	Leu	Lys	Asn	Val	Lys	Ser	Lys	Ile	Gly	Ser	Thr	Glu	Asn	Leu	
			195					200					205				
5	Lys	His	Gln	Pro	Gly	Gly	Gly	Lys	Val	Gln	Ile	Ile	Asn	Lys	Lys	Leu	
		210					215					220					
10	Asp	Leu	Ser	Asn	Val	Gln	Ser	Lys	Cys	Gly	Ser	Lys	Asp	Asn	Ile	Lys	
	225					230					235					240	
	His	Val	Pro	Gly	Gly	Gly	Ser	Val	Gln	Ile	Val	Tyr	Lys	Pro	Val	Asp	
					245					250					255		
15	Leu	Ser	Lys	Val	Thr	Ser	Lys	Cys	Gly	Ser	Leu	Gly	Asn	Ile	His	His	
				260					265					270			
20	Lys	Pro	Gly	Gly	Gly	Gln	Val	Glu	Val	Lys	Ser	Glu	Lys	Leu	Asp	Phe	
			275					280					285				
	Lys	Asp	Arg	Val	Gln	Ser	Lys	Ile	Gly	Ser	Leu	Asp	Asn	Ile	Thr	His	
25		290					295					300					
	Val	Pro	Gly	Gly	Gly	Asn	Lys	Lys	Ile	Glu	Thr	His	Lys	Leu	Thr	Phe	
	305					310					315					320	
30	Arg	Glu	Asn	Ala	Lys	Ala	Lys	Thr	Asp	His	Gly	Ala	Glu	Ile	Val	Tyr	
					325					330					335		
35	Lys	Ser	Pro	Val	Val	Ser	Gly	Asp	Thr	Ser	Pro	Arg	His	Leu	Ser	Asn	
				340					345					350			
	Val	Ser	Ser	Thr	Gly	Ser	Ile	Asp	Met	Val	Asp	Ser	Pro	Gln	Leu	Ala	
40			355					360					365				
	Thr	Leu	Ala	Asp	Glu	Val	Ser	Ala	Ser	Leu	Ala	Lys	Gln	Gly	Leu		
		370					375					380					
45																	
	<210> 4																
	<211> 352																
	<212> PRT																
	<213> Homo sapiens																
50																	
	<400> 4																
55																	

EP 2 470 211 B1

Met	Ala	Glu	Pro	Arg	Gln	Glu	Phe	Glu	Val	Met	Glu	Asp	His	Ala	Gly
1				5					10					15	

5	Thr	Tyr	Gly	Leu	Gly	Asp	Arg	Lys	Asp	Gln	Gly	Gly	Tyr	Thr	Met	His
			20						25					30		

10	Gln	Asp	Gln	Glu	Gly	Asp	Thr	Asp	Ala	Gly	Leu	Lys	Ala	Glu	Glu	Ala
----	-----	-----	-----	-----	-----	-----	-----	-----	-----	-----	-----	-----	-----	-----	-----	-----

15

20

25

30

35

40

45

50

55

EP 2 470 211 B1

	35	40	45
5	Gly Ile Gly Asp Thr Pro Ser Leu Glu Asp Glu Ala Ala Gly His Val 50 55 60		
10	Thr Gln Ala Arg Met Val Ser Lys Ser Lys Asp Gly Thr Gly Ser Asp 65 70 75 80		
15	Asp Lys Lys Ala Lys Gly Ala Asp Gly Lys Thr Lys Ile Ala Thr Pro 85 90 95		
20	Arg Gly Ala Ala Pro Pro Gly Gln Lys Gly Gln Ala Asn Ala Thr Arg 100 105 110		
25	Ile Pro Ala Lys Thr Pro Pro Ala Pro Lys Thr Pro Pro Ser Ser Gly 115 120 125		
30	Glu Pro Pro Lys Ser Gly Asp Arg Ser Gly Tyr Ser Ser Pro Gly Ser 130 135 140		
35	Pro Gly Thr Pro Gly Ser Arg Ser Arg Thr Pro Ser Leu Pro Thr Pro 145 150 155 160		
40	Pro Thr Arg Glu Pro Lys Lys Val Ala Val Val Arg Thr Pro Pro Lys 165 170 175		
45	Ser Pro Ser Ser Ala Lys Ser Arg Leu Gln Thr Ala Pro Val Pro Met 180 185 190		
50	Pro Asp Leu Lys Asn Val Lys Ser Lys Ile Gly Ser Thr Glu Asn Leu 195 200 205		
55	Lys His Gln Pro Gly Gly Gly Lys Val Gln Ile Val Tyr Lys Pro Val 210 215 220		
	Asp Leu Ser Lys Val Thr Ser Lys Cys Gly Ser Leu Gly Asn Ile His 225 230 235 240		
	His Lys Pro Gly Gly Gly Gln Val Glu Val Lys Ser Glu Lys Leu Asp 245 250 255		
	Phe Lys Asp Arg Val Gln Ser Lys Ile Gly Ser Leu Asp Asn Ile Thr 260 265 270		
	His Val Pro Gly Gly Gly Asn Lys Lys Ile Glu Thr His Lys Leu Thr 275 280 285		
	Phe Arg Glu Asn Ala Lys Ala Lys Thr Asp His Gly Ala Glu Ile Val 290 295 300		

EP 2 470 211 B1

	Tyr	Lys	Ser	Pro	Val	Val	Ser	Gly	Asp	Thr	Ser	Pro	Arg	His	Leu	Ser	
	305					310					315					320	
5	Asn	Val	Ser	Ser	Thr	Gly	Ser	Ile	Asp	Met	Val	Asp	Ser	Pro	Gln	Leu	
					325					330					335		
10	Ala	Thr	Leu	Ala	Asp	Glu	Val	Ser	Ala	Ser	Leu	Ala	Lys	Gln	Gly	Leu	
				340					345					350			
	<210> 5																
	<211> 412																
	<212> PRT																
15	<213> Homo sapiens																
	<400> 5																
20	Met	Ala	Glu	Pro	Arg	Gln	Glu	Phe	Glu	Val	Met	Glu	Asp	His	Ala	Gly	
	1				5					10					15		
25	Thr	Tyr	Gly	Leu	Gly	Asp	Arg	Lys	Asp	Gln	Gly	Gly	Tyr	Thr	Met	His	
				20					25					30			
30	Gln	Asp	Gln	Glu	Gly	Asp	Thr	Asp	Ala	Gly	Leu	Lys	Glu	Ser	Pro	Leu	
			35					40					45				
35	Gln	Thr	Pro	Thr	Glu	Asp	Gly	Ser	Glu	Glu	Pro	Gly	Ser	Glu	Thr	Ser	
		50					55					60					
40	Asp	Ala	Lys	Ser	Thr	Pro	Thr	Ala	Glu	Ala	Glu	Glu	Ala	Gly	Ile	Gly	
	65					70					75					80	
45	Asp	Thr	Pro	Ser	Leu	Glu	Asp	Glu	Ala	Ala	Gly	His	Val	Thr	Gln	Ala	
					85					90					95		
50	Arg	Met	Val	Ser	Lys	Ser	Lys	Asp	Gly	Thr	Gly	Ser	Asp	Asp	Lys	Lys	
				100					105					110			
55	Ala	Lys	Gly	Ala	Asp	Gly	Lys	Thr	Lys	Ile	Ala	Thr	Pro	Arg	Gly	Ala	
			115					120					125				
60	Ala	Pro	Pro	Gly	Gln	Lys	Gly	Gln	Ala	Asn	Ala	Thr	Arg	Ile	Pro	Ala	
		130					135					140					
65	Lys	Thr	Pro	Pro	Ala	Pro	Lys	Thr	Pro	Pro	Ser	Ser	Gly	Glu	Pro	Pro	
	145					150					155				160		
70	Lys	Ser	Gly	Asp	Arg	Ser	Gly	Tyr	Ser	Ser	Pro	Gly	Ser	Pro	Gly	Thr	
					165					170					175		

EP 2 470 211 B1

	Pro	Gly	Ser	Arg	Ser	Arg	Thr	Pro	Ser	Leu	Pro	Thr	Pro	Pro	Thr	Arg	
				180					185					190			
5	Glu	Pro	Lys	Lys	Val	Ala	Val	Val	Arg	Thr	Pro	Pro	Lys	Ser	Pro	Ser	
			195					200					205				
10	Ser	Ala	Lys	Ser	Arg	Leu	Gln	Thr	Ala	Pro	Val	Pro	Met	Pro	Asp	Leu	
		210					215					220					
15	Lys	Asn	Val	Lys	Ser	Lys	Ile	Gly	Ser	Thr	Glu	Asn	Leu	Lys	His	Gln	
	225					230					235					240	
20	Pro	Gly	Gly	Gly	Lys	Val	Gln	Ile	Ile	Asn	Lys	Lys	Leu	Asp	Leu	Ser	
					245					250					255		
25	Asn	Val	Gln	Ser	Lys	Cys	Gly	Ser	Lys	Asp	Asn	Ile	Lys	His	Val	Pro	
				260					265					270			
30	Gly	Gly	Gly	Ser	Val	Gln	Ile	Val	Tyr	Lys	Pro	Val	Asp	Leu	Ser	Lys	
			275					280					285				
35	Val	Thr	Ser	Lys	Cys	Gly	Ser	Leu	Gly	Asn	Ile	His	His	Lys	Pro	Gly	
		290					295					300					
40	Gly	Gly	Gln	Val	Glu	Val	Lys	Ser	Glu	Lys	Leu	Asp	Phe	Lys	Asp	Arg	
	305					310					315					320	
45	Val	Gln	Ser	Lys	Ile	Gly	Ser	Leu	Asp	Asn	Ile	Thr	His	Val	Pro	Gly	
				325						330					335		
50	Gly	Gly	Asn	Lys	Lys	Ile	Glu	Thr	His	Lys	Leu	Thr	Phe	Arg	Glu	Asn	
			340						345					350			
55	Ala	Lys	Ala	Lys	Thr	Asp	His	Gly	Ala	Glu	Ile	Val	Tyr	Lys	Ser	Pro	
		355						360					365				
60	Val	Val	Ser	Gly	Asp	Thr	Ser	Pro	Arg	His	Leu	Ser	Asn	Val	Ser	Ser	
		370					375					380					
65	Thr	Gly	Ser	Ile	Asp	Met	Val	Asp	Ser	Pro	Gln	Leu	Ala	Thr	Leu	Ala	
	385					390					395					400	
70	Asp	Glu	Val	Ser	Ala	Ser	Leu	Ala	Lys	Gln	Gly	Leu					
					405					410							

<210> 6
<211> 776

<212> PRT
<213> Homo sapiens

<400> 6

5

10

15

20

25

30

35

40

45

50

55

EP 2 470 211 B1

	Met	Ala	Glu	Pro	Arg	Gln	Glu	Phe	Glu	Val	Met	Glu	Asp	His	Ala	Gly	
	1				5					10					15		
5	Thr	Tyr	Gly	Leu	Gly	Asp	Arg	Lys	Asp	Gln	Gly	Gly	Tyr	Thr	Met	His	
				20					25					30			
	Gln	Asp	Gln	Glu	Gly	Asp	Thr	Asp	Ala	Gly	Leu	Lys	Glu	Ser	Pro	Leu	
10			35					40					45				
	Gln	Thr	Pro	Thr	Glu	Asp	Gly	Ser	Glu	Glu	Pro	Gly	Ser	Glu	Thr	Ser	
		50					55					60					
15	Asp	Ala	Lys	Ser	Thr	Pro	Thr	Ala	Glu	Asp	Val	Thr	Ala	Pro	Leu	Val	
	65					70					75					80	
	Asp	Glu	Gly	Ala	Pro	Gly	Lys	Gln	Ala	Ala	Ala	Gln	Pro	His	Thr	Glu	
20					85					90					95		
	Ile	Pro	Glu	Gly	Thr	Thr	Ala	Glu	Glu	Ala	Gly	Ile	Gly	Asp	Thr	Pro	
25				100					105					110			
	Ser	Leu	Glu	Asp	Glu	Ala	Ala	Gly	His	Val	Thr	Gln	Glu	Pro	Glu	Ser	
			115					120					125				
30	Gly	Lys	Val	Val	Gln	Glu	Gly	Phe	Leu	Arg	Glu	Pro	Gly	Pro	Pro	Gly	
		130					135					140					
	Leu	Ser	His	Gln	Leu	Met	Ser	Gly	Met	Pro	Gly	Ala	Pro	Leu	Leu	Pro	
35	145					150					155					160	
	Glu	Gly	Pro	Arg	Glu	Ala	Thr	Arg	Gln	Pro	Ser	Gly	Thr	Gly	Pro	Glu	
					165					170					175		
40	Asp	Thr	Glu	Gly	Gly	Arg	His	Ala	Pro	Glu	Leu	Leu	Lys	His	Gln	Leu	
				180					185					190			
	Leu	Gly	Asp	Leu	His	Gln	Glu	Gly	Pro	Pro	Leu	Lys	Gly	Ala	Gly	Gly	
45			195					200					205				
	Lys	Glu	Arg	Pro	Gly	Ser	Lys	Glu	Glu	Val	Asp	Glu	Asp	Arg	Asp	Val	
50		210					215					220					
	Asp	Glu	Ser	Ser	Pro	Gln	Asp	Ser	Pro	Pro	Ser	Lys	Ala	Ser	Pro	Ala	
	225					230					235					240	
55	Gln	Asp	Gly	Arg	Pro	Pro	Gln	Thr	Ala	Ala	Arg	Glu	Ala	Thr	Ser	Ile	
					245					250					255		

EP 2 470 211 B1

	Pro	Gly	Phe	Pro	Ala	Glu	Gly	Ala	Ile	Pro	Leu	Pro	Val	Asp	Phe	Leu	
				260					265					270			
5	Ser	Lys	Val	Ser	Thr	Glu	Ile	Pro	Ala	Ser	Glu	Pro	Asp	Gly	Pro	Ser	
			275					280					285				
10	Val	Gly	Arg	Ala	Lys	Gly	Gln	Asp	Ala	Pro	Leu	Glu	Phe	Thr	Phe	His	
		290					295					300					
15	Val	Glu	Ile	Thr	Pro	Asn	Val	Gln	Lys	Glu	Gln	Ala	His	Ser	Glu	Glu	
	305					310					315					320	
20	His	Leu	Gly	Arg	Ala	Ala	Phe	Pro	Gly	Ala	Pro	Gly	Glu	Gly	Pro	Glu	
					325					330					335		
25	Ala	Arg	Gly	Pro	Ser	Leu	Gly	Glu	Asp	Thr	Lys	Glu	Ala	Asp	Leu	Pro	
				340					345					350			
30	Glu	Pro	Ser	Glu	Lys	Gln	Pro	Ala	Ala	Ala	Pro	Arg	Gly	Lys	Pro	Val	
			355				360						365				
35	Ser	Arg	Val	Pro	Gln	Leu	Lys	Ala	Arg	Met	Val	Ser	Lys	Ser	Lys	Asp	
	370						375					380					
40	Gly	Thr	Gly	Ser	Asp	Asp	Lys	Lys	Ala	Lys	Thr	Ser	Thr	Arg	Ser	Ser	
	385					390					395					400	
45	Ala	Lys	Thr	Leu	Lys	Asn	Arg	Pro	Cys	Leu	Ser	Pro	Lys	His	Pro	Thr	
					405					410					415		
50	Pro	Gly	Ser	Ser	Asp	Pro	Leu	Ile	Gln	Pro	Ser	Ser	Pro	Ala	Val	Cys	
				420					425					430			
55	Pro	Glu	Pro	Pro	Ser	Ser	Pro	Lys	His	Val	Ser	Ser	Val	Thr	Ser	Arg	
			435					440					445				
60	Thr	Gly	Ser	Ser	Gly	Ala	Lys	Glu	Met	Lys	Leu	Lys	Gly	Ala	Asp	Gly	
	450						455					460					
65	Lys	Thr	Lys	Ile	Ala	Thr	Pro	Arg	Gly	Ala	Ala	Pro	Pro	Gly	Gln	Lys	
	465					470					475					480	
70	Gly	Gln	Ala	Asn	Ala	Thr	Arg	Ile	Pro	Ala	Lys	Thr	Pro	Pro	Ala	Pro	
					485					490					495		
75	Lys	Thr	Pro	Pro	Ser	Ser	Ala	Thr	Lys	Gln	Val	Gln	Arg	Arg	Pro	Pro	
				500					505					510			

EP 2 470 211 B1

	Pro	Ala	Gly	Pro	Arg	Ser	Glu	Arg	Gly	Glu	Pro	Pro	Lys	Ser	Gly	Asp
			515					520					525			
5	Arg	Ser	Gly	Tyr	Ser	Ser	Pro	Gly	Ser	Pro	Gly	Thr	Pro	Gly	Ser	Arg
			530				535					540				
	Ser	Arg	Thr	Pro	Ser	Leu	Pro	Thr	Pro	Pro	Thr	Arg	Glu	Pro	Lys	Lys
10			545			550					555					560
	Val	Ala	Val	Val	Arg	Thr	Pro	Pro	Lys	Ser	Pro	Ser	Ser	Ala	Lys	Ser
					565					570					575	
	Arg	Leu	Gln	Thr	Ala	Pro	Val	Pro	Met	Pro	Asp	Leu	Lys	Asn	Val	Lys
15				580					585					590		
	Ser	Lys	Ile	Gly	Ser	Thr	Glu	Asn	Leu	Lys	His	Gln	Pro	Gly	Gly	Gly
20			595					600					605			
	Lys	Val	Gln	Ile	Ile	Asn	Lys	Lys	Leu	Asp	Leu	Ser	Asn	Val	Gln	Ser
		610					615					620				
	Lys	Cys	Gly	Ser	Lys	Asp	Asn	Ile	Lys	His	Val	Pro	Gly	Gly	Gly	Ser
25						630					635					640
	Val	Gln	Ile	Val	Tyr	Lys	Pro	Val	Asp	Leu	Ser	Lys	Val	Thr	Ser	Lys
30					645					650					655	
	Cys	Gly	Ser	Leu	Gly	Asn	Ile	His	His	Lys	Pro	Gly	Gly	Gly	Gln	Val
				660					665					670		
	Glu	Val	Lys	Ser	Glu	Lys	Leu	Asp	Phe	Lys	Asp	Arg	Val	Gln	Ser	Lys
35								680					685			
	Ile	Gly	Ser	Leu	Asp	Asn	Ile	Thr	His	Val	Pro	Gly	Gly	Gly	Asn	Lys
40		690					695					700				
	Lys	Ile	Glu	Thr	His	Lys	Leu	Thr	Phe	Arg	Glu	Asn	Ala	Lys	Ala	Lys
	705					710					715					720
	Thr	Asp	His	Gly	Ala	Glu	Ile	Val	Tyr	Lys	Ser	Pro	Val	Val	Ser	Gly
45					725					730					735	
	Asp	Thr	Ser	Pro	Arg	His	Leu	Ser	Asn	Val	Ser	Ser	Thr	Gly	Ser	Ile
50					740				745					750		
	Asp	Met	Val	Asp	Ser	Pro	Gln	Leu	Ala	Thr	Leu	Ala	Asp	Glu	Val	Ser
			755					760					765			
55	Ala	Ser	Leu	Ala	Lys	Gln	Gly	Leu								

770

775

Claims

1. A monoclonal antibody or antibody fragment thereof that specifically binds Tau oligomers having spherical morphology and comprising a protein aggregate of about 3 to 24 Tau polypeptides, which monoclonal antibody or antibody fragment does not bind soluble TAU or TAU fibrils at levels that are detectable above background.
2. The antibody of claim 1, wherein the antibody is a single chain antibody or wherein the antibody is a human or a humanized antibody.
3. A composition comprising an antibody of claim 1 and a pharmaceutically acceptable excipient, preferably an adjuvant.
4. A method of evaluating a patient suspected of or having a tauopathy, the method comprising the step of detecting binding of a Tau oligomer-specific antibody of claim 1 to a component of a biological sample from the patient, wherein the detection of the Tau oligomer in the biological sample is indicative of tauopathy.
5. The method of claim 4, wherein the tauopathy is Alzheimer's disease, Pick's disease (PiD), progressive supranuclear palsy (PSP), corticobasal degeneration (CBD), and frontotemporal lobar degeneration (FTLD).
6. The method claim 4, wherein the biological sample comprises plasma, cerebrospinal fluid (CSF), brain tissue, neuronal tissue, or muscle tissue.
7. A Tau oligomer-specific antibody of claim 1 for use in a method of treating Alzheimer's disease (AD) or another tauopathy.
8. A Tau oligomer-specific antibody for use of claim 7, wherein the Tau oligomer-specific antibody is for administration into the blood or cerebrospinal fluid (CSF).
9. A Tau oligomer-specific antibody for use of claim 7, wherein the tauopathy includes PiD, PSP, CBD, and FTLD.

Patentansprüche

1. Ein monoklonaler Antikörper oder ein Antikörperfragment davon, der spezifisch Tau-Oligomere bindet, die eine sphärische Morphologie aufweisen und ein Proteinaggregat von ungefähr 3 bis 24 Tau-Polypeptiden umfassen, wobei der monoklonale Antikörper oder das Antikörperfragment nicht lösliches Tau oder Tau-Fibrillen bindet bei Level, die oberhalb des Hintergrunds detektierbar sind.
2. Der Antikörper nach Anspruch 1, wobei der Antikörper ein Einzelkettenantikörper ist, oder wobei der Antikörper ein humaner oder humanisierter Antikörper ist.
3. Eine Zusammensetzung umfassend einen Antikörper nach Anspruch und ein pharmazeutisch verträglicher Hilfsstoff, vorzugsweise ein Adjuvanz.
4. Ein Verfahren zur Evaluierung eines Patienten mit Verdacht auf oder einer bestehenden Tauopathie, wobei das Verfahren die Schritte umfasst von Detektieren des Bindens eines Tau-Oligomer spezifischen Antikörpers nach Anspruch 1 an einen Bestandteil einer biologischen Probe aus dem Patienten, wobei das Detektieren der Tau-Oligomere in der biologischen Probe hinweisend ist auf eine Tauopathie.
5. Das Verfahren nach Anspruch 4, wobei die Tauopathie Alzheimer-Krankheit, Pick-Krankheit (Pick's disease, PiD), progressive supranukleare Blickparese (progressive supranuclear palsy, PSP), kortikobasale Degeneration (corticobasal degeneration, CBD) und frontotemporale lobäre Degeneration (frontotemporal lobar degeneration, FTLD) ist.

6. Das Verfahren nach Anspruch 4, wobei die biologische Probe Plasma, Rückenmarksflüssigkeit (cerebrospinal fluid, CSF), Gehirngewebe, neuronales Gewebe oder Muskelgewebe umfasst.
7. Ein Tau-Oligomer spezifischer Antikörper nach Anspruch 1 zur Verwendung in einem Verfahren zur Behandlung von Alzheimer-Krankheit (Alzheimer's disease, AD) oder eine andere Tauopathie.
8. Ein Tau-Oligomer spezifischer Antikörper zur Verwendung nach Anspruch 7, wobei der Tau-Oligomer spezifische Antikörper zur Verabreichung in Blut oder Rückenmarksflüssigkeit (cerebrospinal fluid, CSF) geeignet ist.
9. Ein Tau-Oligomer spezifischer Antikörper zur Verwendung nach Anspruch 7, wobei die Tauopathie PiD, PSP, CBD und FTLT beinhaltet.

Revendications

1. Anticorps monoclonal ou l'un de ses fragments d'anticorps qui se lie spécifiquement aux oligomères de Tau ayant une morphologie sphérique et comprenant un agrégat protéinique d'environ 3 à 24 polypeptides de Tau, lequel anticorps monoclonal ou fragment d'anticorps ne se lie pas à la Tau soluble ou aux fibrilles de Tau à des taux qui sont détectables au-dessus du bruit de fond.
2. Anticorps selon la revendication 1, dans lequel l'anticorps est un anticorps à chaîne unique ou dans lequel l'anticorps est un anticorps humain ou humanisé.
3. Composition comprenant un anticorps selon la revendication 1 et un excipient pharmaceutiquement acceptable, de préférence un adjuvant.
4. Méthode d'évaluation d'un patient suspecté de souffrir ou souffrant d'une tauopathie, la méthode comprenant l'étape de détection de la liaison d'un anticorps spécifique des oligomères de Tau selon la revendication 1 à un composant d'un échantillon biologique provenant du patient, dans laquelle la détection d'oligomères de Tau dans l'échantillon biologique indique une tauopathie.
5. Méthode selon la revendication 4, dans laquelle la tauopathie est la maladie d'Alzheimer, la maladie de Pick (MPi), la paralysie supranucléaire progressive (PSP), la dégénérescence cortico-basale (DCB), et la dégénérescence lobaire fronto-temporale (DLFT).
6. Méthode selon la revendication 4, dans laquelle l'échantillon biologique comprend le plasma, le liquide céphalo-rachidien (LCR), le tissu cérébral, le tissu neuronal, ou le tissu musculaire.
7. Anticorps spécifique des oligomères de Tau selon la revendication 1 pour une utilisation dans une méthode de traitement de la maladie d'Alzheimer (MA) ou d'une autre tauopathie.
8. Anticorps spécifique des oligomères de Tau pour une utilisation selon la revendication 7, dans lequel l'anticorps spécifique des oligomères de Tau est destiné à une administration dans le sang ou le liquide céphalo-rachidien (LCR).
9. Anticorps spécifique des oligomères de Tau pour une utilisation selon la revendication 7, dans lequel la tauopathie comprend la MPI, la PSP, la DCB, et la DLFT.

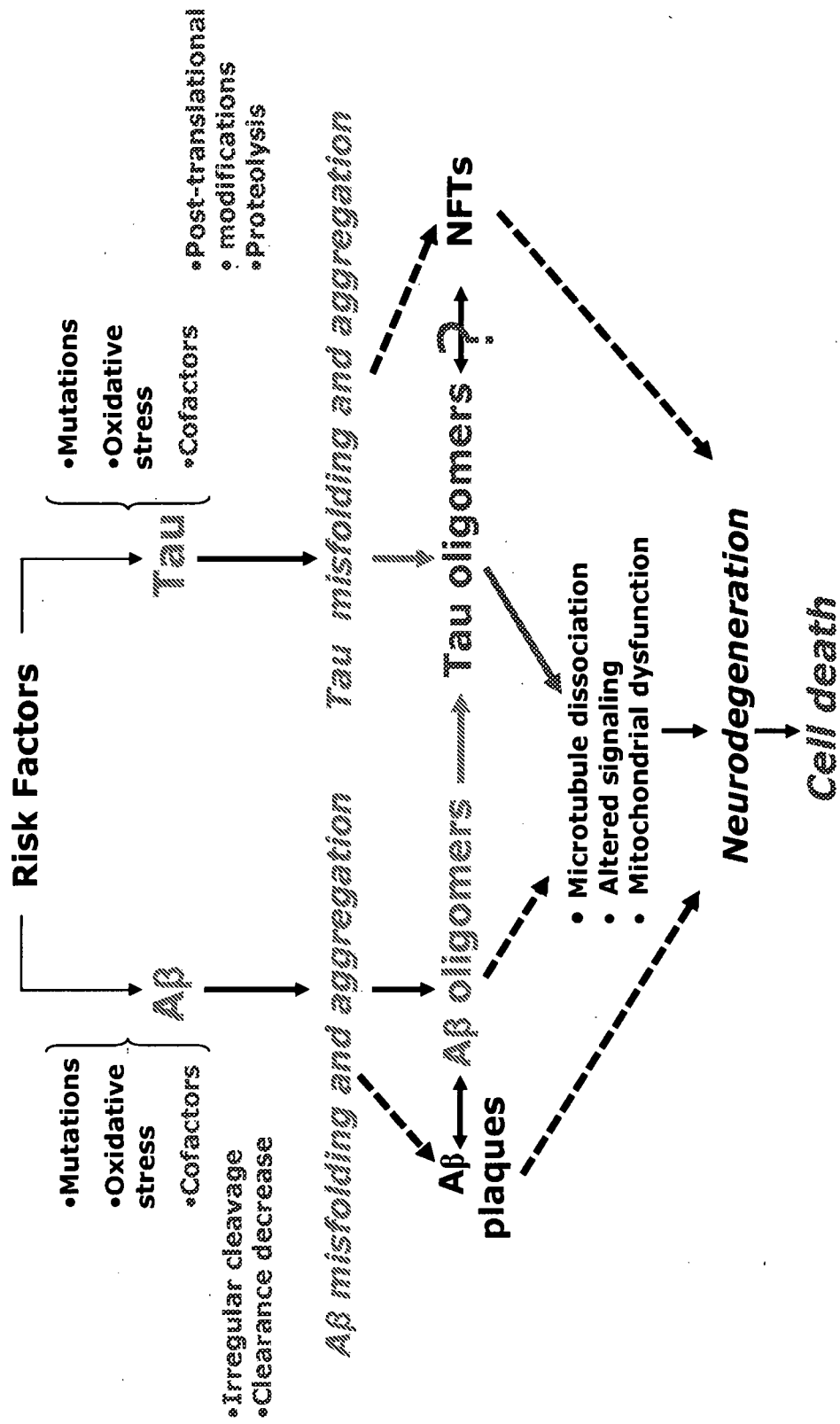
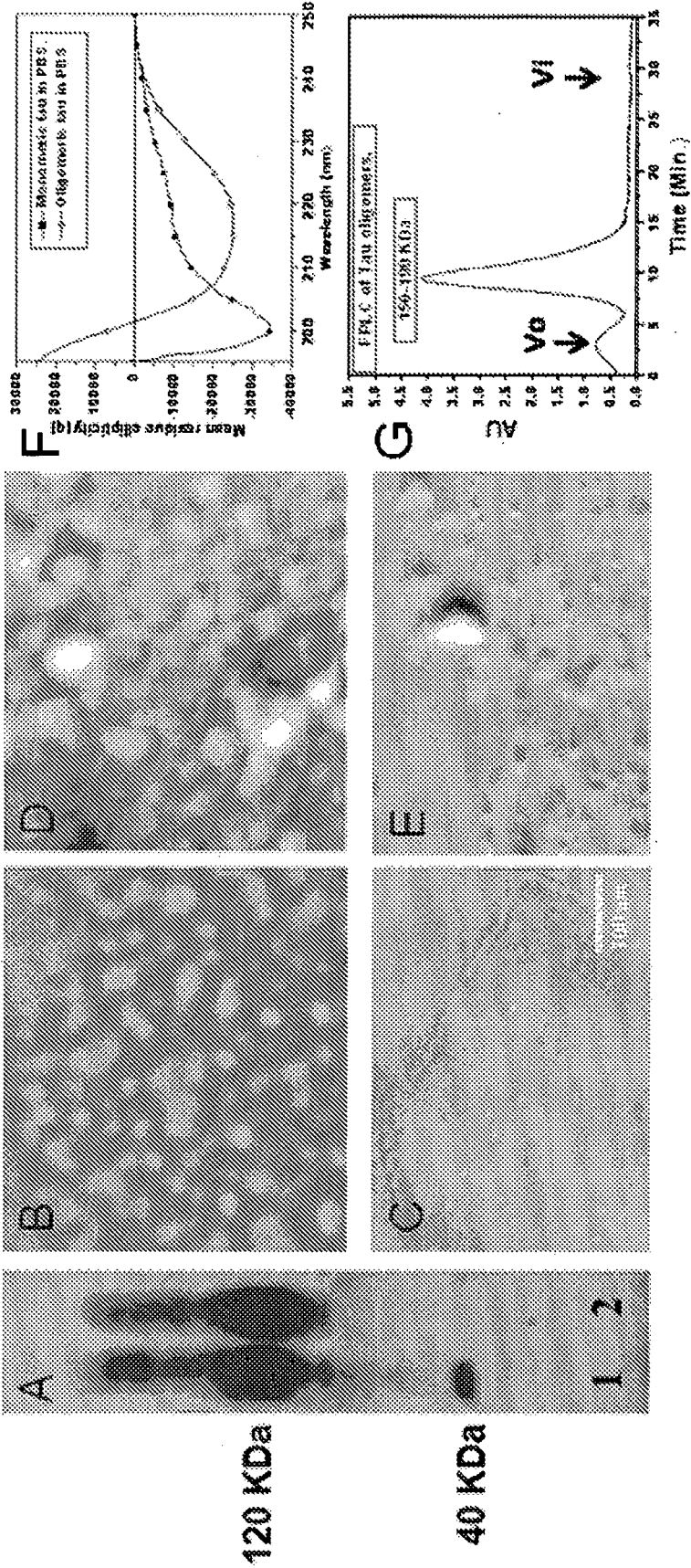
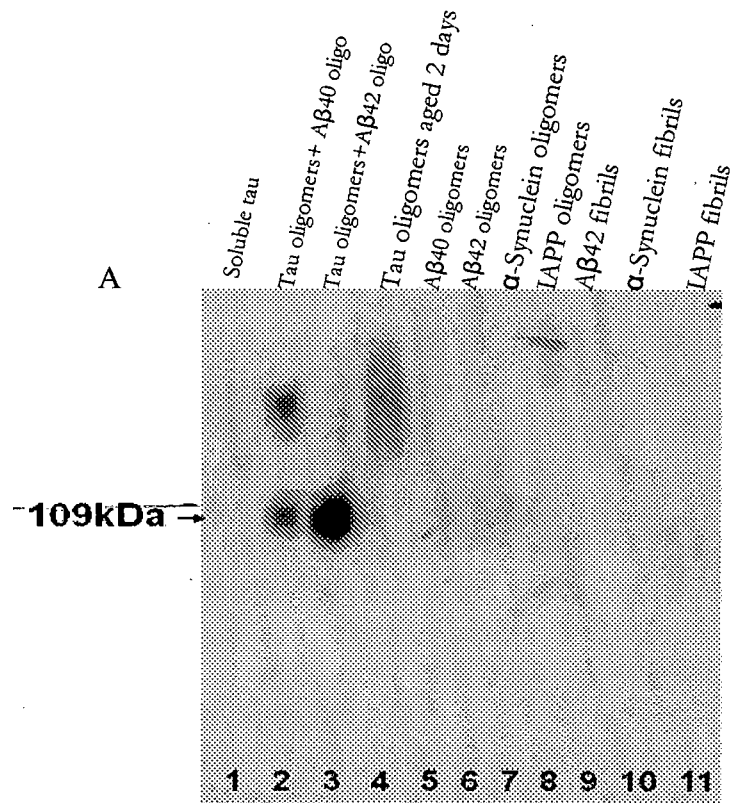


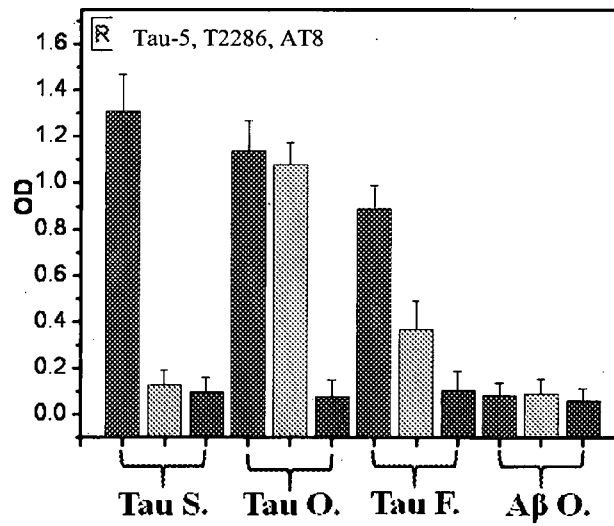
FIG. 1



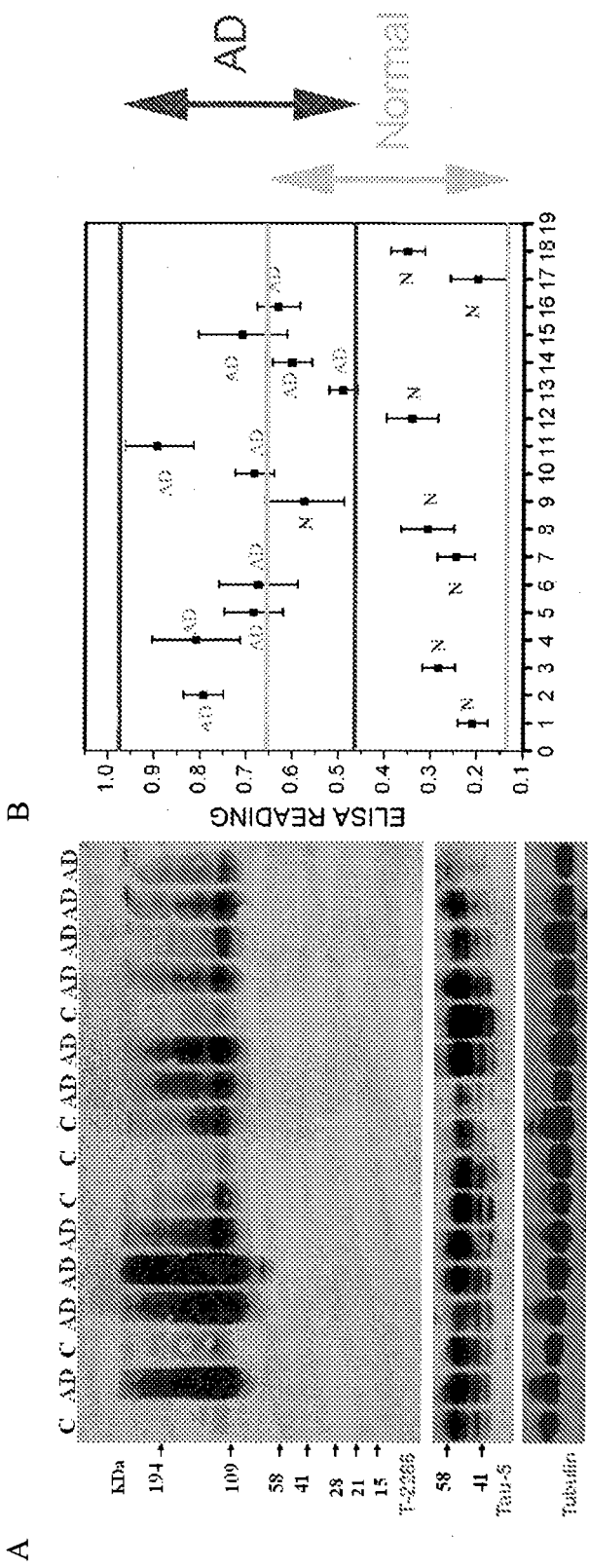
FIGs. 2A-2G



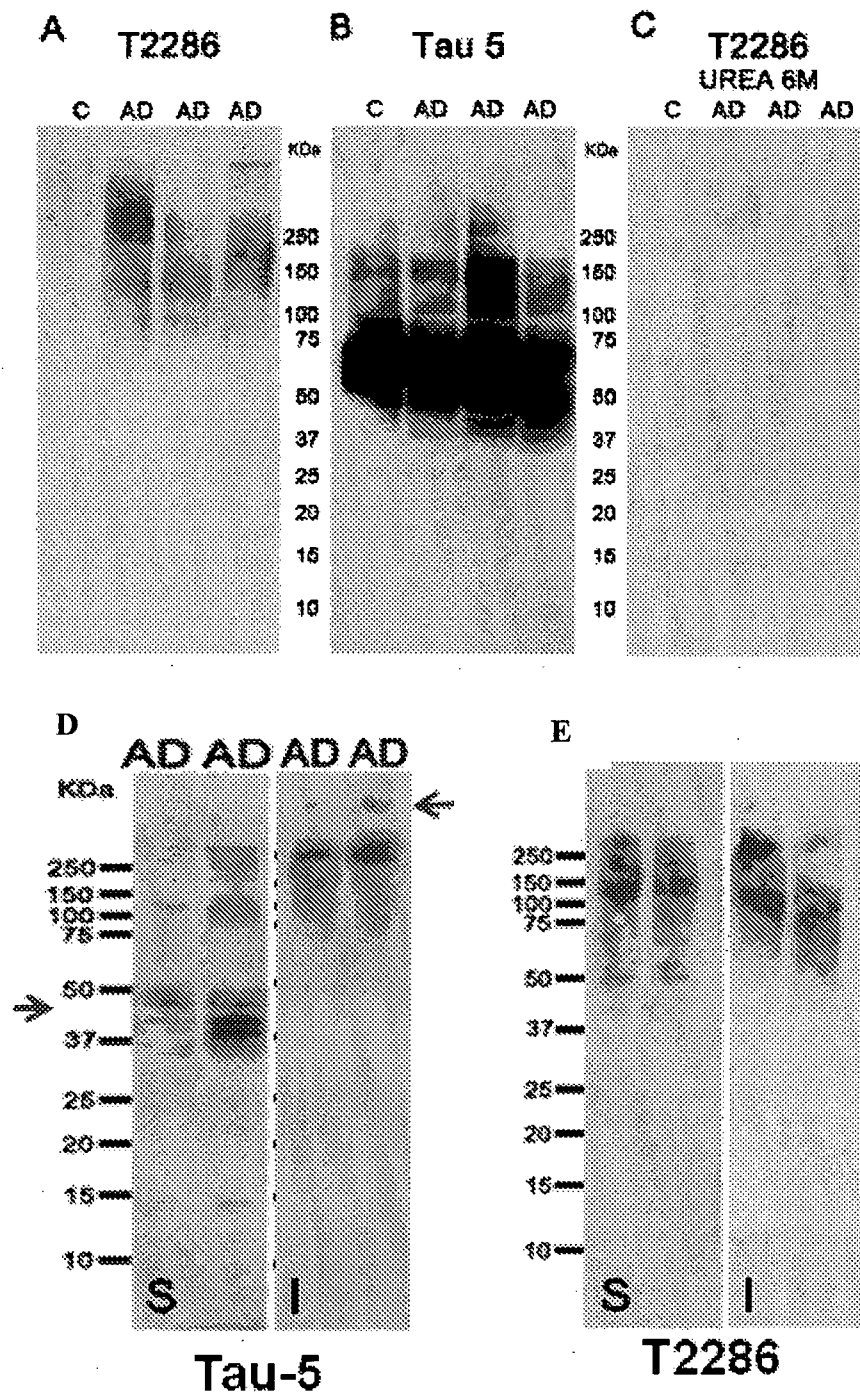
B



FIGs. 3A-3B



FIGs. 4A-4B



FIGs. 5A-5E

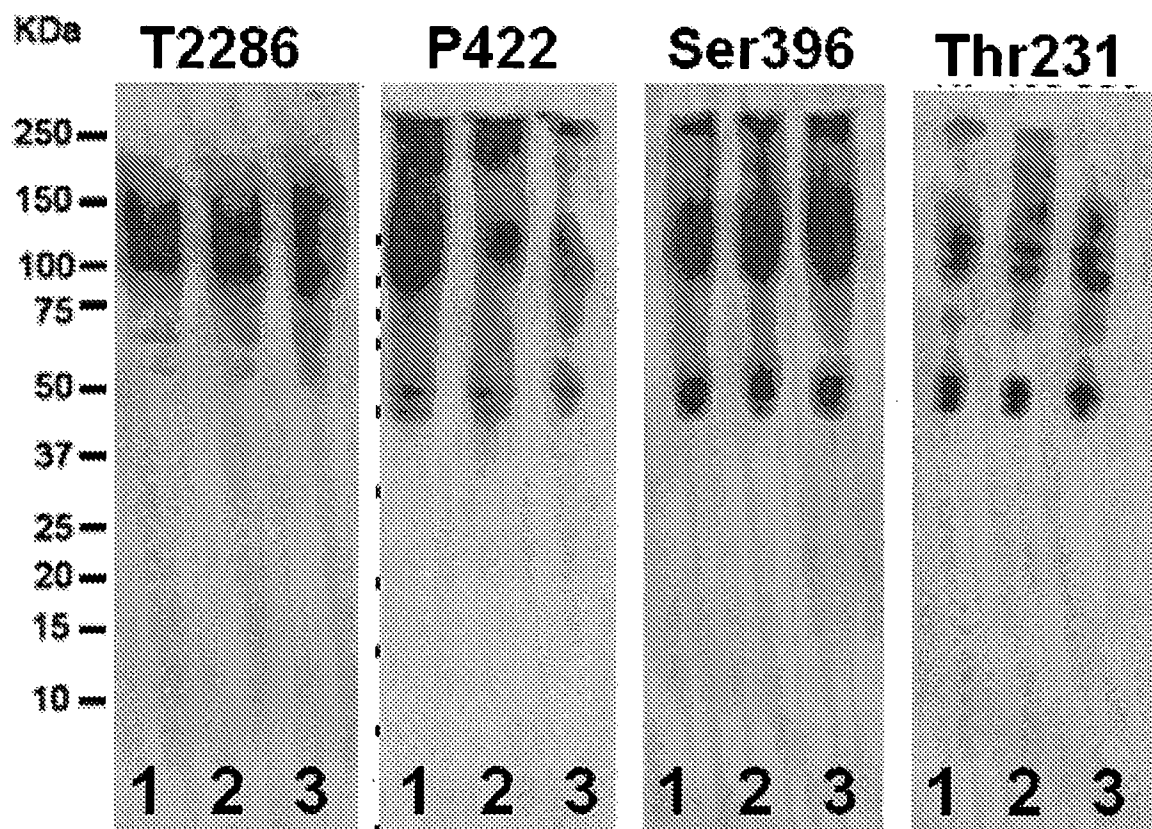


FIG. 6

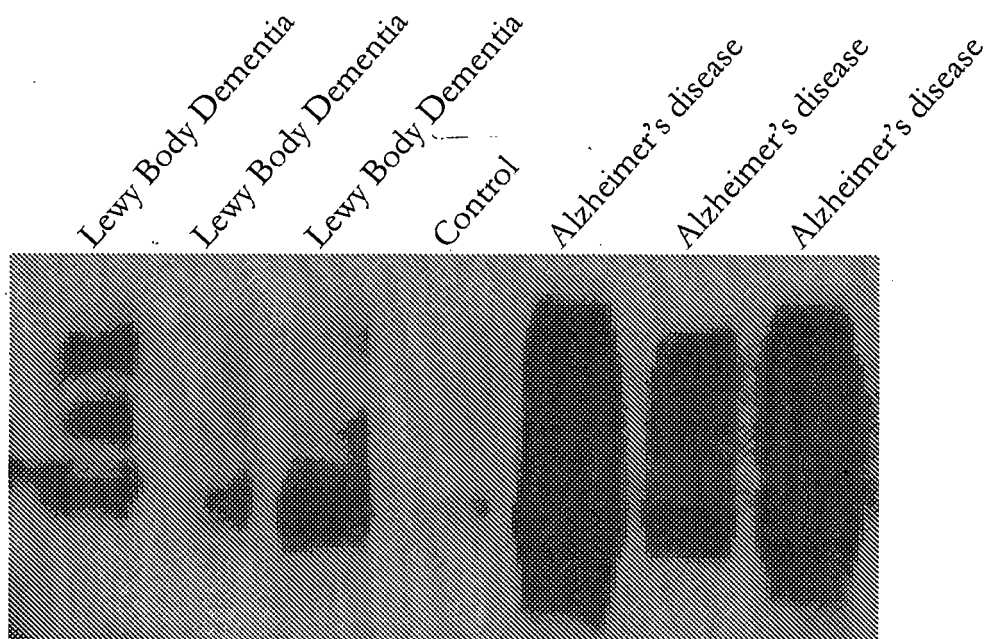


FIG. 7

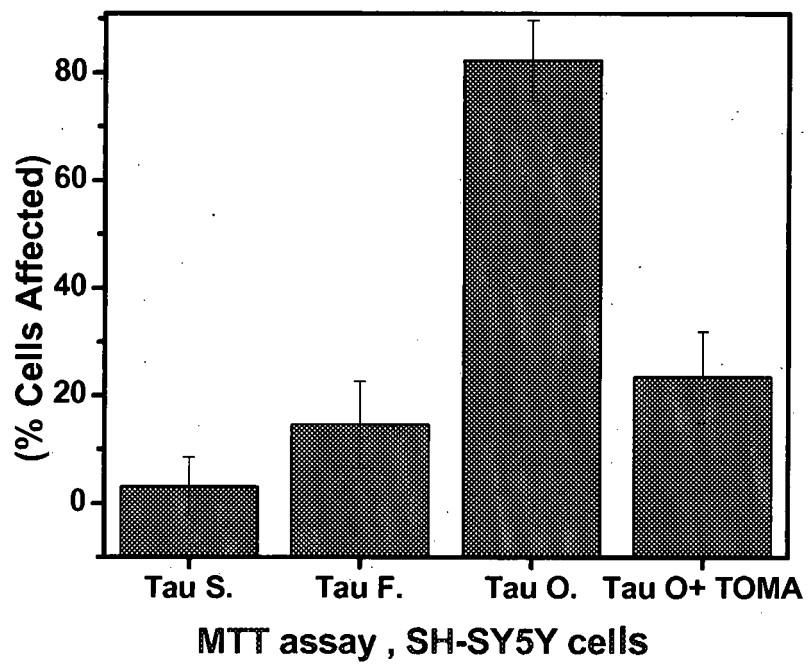


FIG. 8

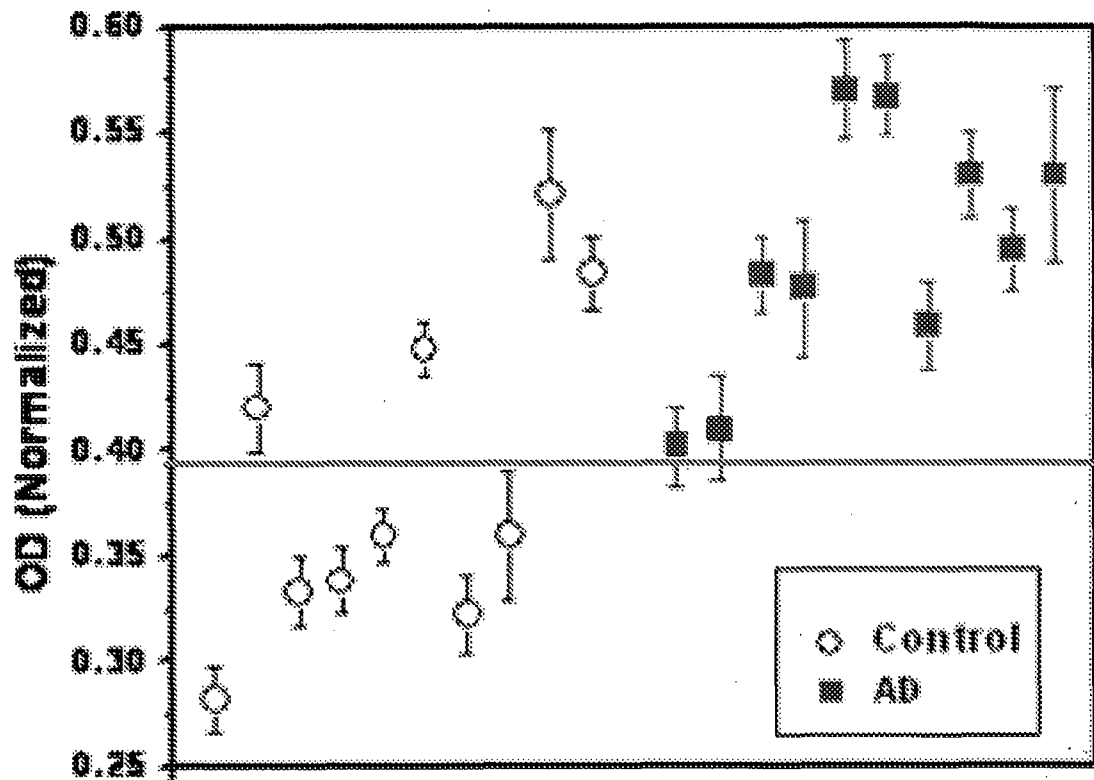
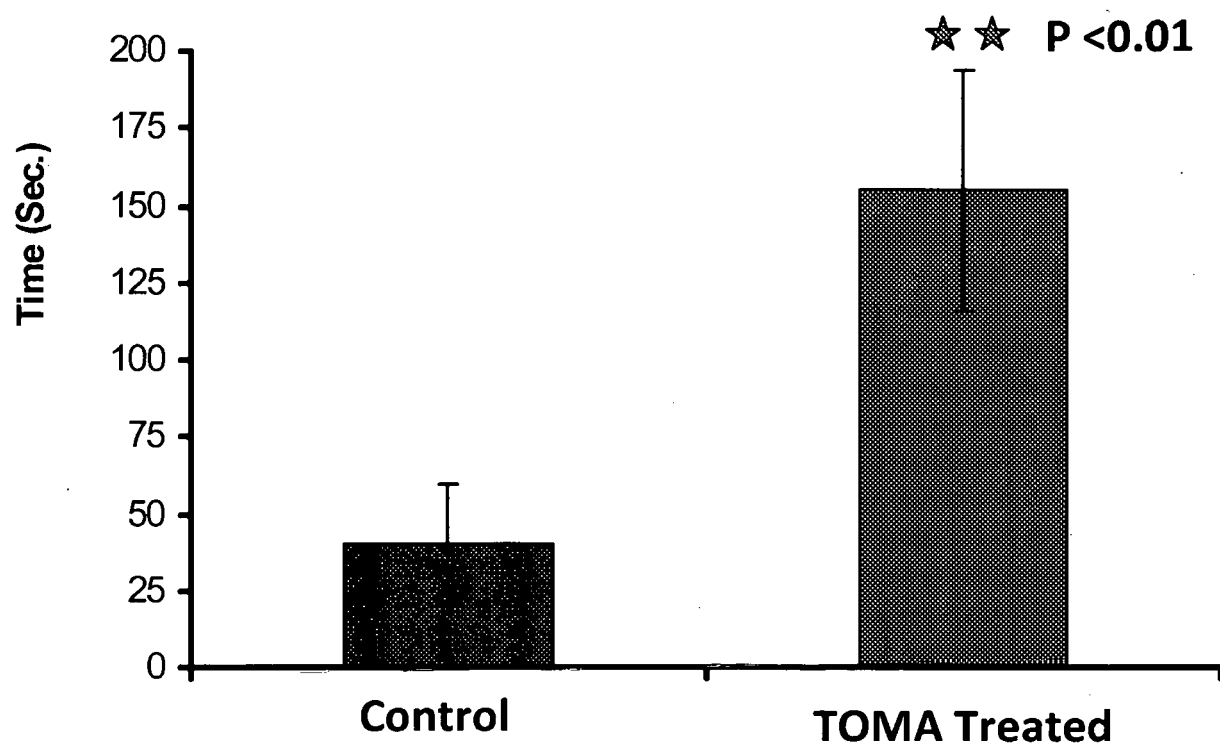


FIG. 9



Control; ICV, 1 μ l of (1 mg/ml) control mouse mAb.
 Treated; 1 μ l of TOMA (1 mg/ml)

FIG. 10

REFERENCES CITED IN THE DESCRIPTION

This list of references cited by the applicant is for the reader's convenience only. It does not form part of the European patent document. Even though great care has been taken in compiling the references, errors or omissions cannot be excluded and the EPO disclaims all liability in this regard.

Patent documents cited in the description

- US 4554101 A [0059] [0156]
- US 6936258 B [0068] [0156]
- US 6770278 B [0068] [0156]
- US 6756361 B [0068] [0156]
- US 5548066 A [0068] [0156]
- US 5512282 A [0068] [0156]
- US 4338298 A [0068] [0156]
- US 4748018 A [0068] [0156]
- US 6651655 B [0108] [0156]
- US 2009123936 A [0156]
- US 2008220449 A [0156]
- WO 61237861 A [0157]

Non-patent literature cited in the description

- **KAYED ; GLABE.** *The SFN 36th annual meeting*, 2006 [0042]
- **ALAFUZOFF et al.** *Brain Pathol.*, 2008, vol. 18 (4), 484-96 [0156]
- **ALONSO et al.** *Curr. Alzheimer Res.*, 2008, vol. 5 (4), 375-84 [0156]
- **ALONSO et al.** *Proc. Natl. Acad. Sci. USA*, 2001, vol. 98 (12), 6923-8 [0156]
- **ALONSO et al.** *J. Biol. Chem.*, 2001, vol. 276 (41), 37967-73 [0156]
- **ANDORFER et al.** *J. Neurosci.*, 2005, vol. 25 (22), 5446-54 [0156]
- **ANDREASEN et al.** *Neurosci. Lett.*, 1999, vol. 273 (1), 5-8 [0156]
- **ARRIAGADA et al.** *Neurology*, 1992, vol. 42, 631-9 [0156]
- **ASHE.** *N. Engl. J. Med.*, 2007, vol. 357 (9), 933-5 [0156]
- **ASUNI et al.** *J. Neurosci.*, 2007, vol. 27 (34), 9115-29 [0156]
- **AUGUSTINACK et al.** *Acta Neuropathol.*, 2002, vol. 103 (1), 26-35 [0156]
- **AVILA et al.** *Curr. Alzheimer Res.*, 2004, vol. 1 (2), 97-101 [0156]
- **AVILA.** *FEBS Lett.*, 2000, vol. 476 (1-2), 89-92 [0156]
- **AVILA.** *J. Cell Mol. Med.*, 2008, vol. 12 (1), 258-9 [0156]
- **BALLATORE et al.** *Nat. Rev. Neurosci.*, 2007, vol. 8 (9), 663-72 [0156]
- **BARANY ; MERRIFIELD.** *The Peptides*. Academic Press, 1979, 1-284 [0156]
- **BAUMANN et al.** *FEBS Lett.*, 1993, vol. 336 (3), 417-24 [0156]
- **BERGER et al.** *J. Neurosci.*, 2007, vol. 27 (14), 3650-62 [0156]
- **BIERNAT et al.** *Neuron.*, 1993, vol. 11 (1), 153-63 [0156]
- **BINDER et al.** *J. Cell Biol.*, 1985, vol. 101 (4), 1371-8 [0156]
- **BIRD et al.** *Brain.*, 1999, vol. 122, 741-56 [0156]
- **BLOM et al.** *Dement. Geriatr. Cogn. Disord.*, 2009, vol. 27 (5), 458-64 [0156]
- **BONDAREFF et al.** *J. Neuropath. Exper. Neurol.*, 1994, vol. 53 (2), 158-164 [0156]
- **BORRONI et al.** *Eur. J. Pharmacol.*, 2006, vol. 545 (1), 73-80 [0156]
- **BRAAK ; BRAAK.** *Acta Neuropathol.*, 1991, vol. 82 (4), 239-59 [0156]
- **BRAAK ; BRAAK.** *Brain Pathol.*, 1991, vol. 1 (3), 213-6 [0156]
- **BRAAK ; BRAAK.** *Acta Neurol. Scand.*, 1996, vol. 165, 3-12 [0156]
- **BRETTEVILLE ; PLANEL.** *J. Alzheimers Dis.*, 2008, vol. 14 (4), 431-6 [0156]
- **BRUNDEN et al.** *J. Alzheimers Dis.*, 2008, vol. 14 (4), 393-9 [0156]
- **BUEE et al.** *Brain Res. Brain Res. Rev.*, 2000, vol. 33 (1), 95-130 [0156]
- **BUERGER et al.** *Brain*, 2006, vol. 129, 3035-41 [0156]
- **BULIC et al.** *Angew Chem. Int. Ed. Engl.*, 2009, vol. 48 (10), 1740-52 [0156]
- **BURKE et al.** *J. Inf. Dis.*, 1994, vol. 170, 1110-1119 [0156]
- **BUSCIGLIO et al.** *Neuron.*, 1995, vol. 14 (4), 879-88 [0156]
- **CASH et al.** *Am. J. Pathol.*, 2003, vol. 162 (5), 1623-7 [0156]
- **CLARK et al.** *Proc. Natl. Acad. Sci. USA*, 1998, vol. 95 (22), 13103-7 [0156]
- **CONGDON ; DUFF.** *J. Alzheimers Dis.*, 2008, vol. 14 (4), 453-7 [0156]
- **DE FELICE et al.** *Neurobiol. Aging*, 2008, vol. 29 (9), 1334-47 [0156]
- **DELACOURTE ; BUEE.** *Curr. Opin. Neurol.*, 2000, vol. 13 (4), 371-6 [0156]
- **DEMURO et al.** *J. Biol. Chem.*, vol. 280 (17), 17294-300 [0156]

- **DRECHSEL et al.** *Mol. Biol. Cell*, 1992, vol. 3 (10), 1141-54 [0156]
- **DREWES et al.** *EMBO J.*, 1992, vol. 11 (6), 2131-8 [0156]
- **DREWES et al.** *J. Biol. Chem.*, 1995, vol. 270 (13), 7679-88 [0156]
- *Epitope Mapping Protocols*, 1996 [0156]
- **FERRARI et al.** *Biochem. Biophys. Res. Commun.*, 2003, vol. 337 (4), 1097-101 [0156]
- **FOLSTEIN et al.** *J. Psychiatr. Res.*, 1975, vol. 12 (3), 189-98 [0156]
- **GALASKO et al.** *Neurology*, 1997, vol. 48 (3), 632-5 [0156]
- **GLABE.** *J. Biol. Chem.*, 2008, vol. 283 (44), 29639-43 [0156]
- **GOEDERT et al.** *Neuron.*, 1992, vol. 8 (1), 159-68 [0156]
- **GOEDERT et al.** *J. Neurochem.*, 1995, vol. 65 (6), 2804-7 [0156]
- **GOEDERT et al.** *EMBO J.*, 1989, vol. 8, 393-399 [0156]
- **GOEDERT et al.** *Neuron.*, 1989, vol. 3, 519-526 [0156]
- **GOMEZ-RAMOS et al.** *FEBS Lett.*, 2006, vol. 580 (20), 4842-50 [0156]
- **GOMEZ-RAMOS et al.** *Mol. Cell Neurosci.*, 2008, vol. 37 (4), 673-81 [0156]
- **GONG ; IQBAL.** *Curr. Med. Chem.*, 2008, vol. 15 (23), 2321-8 [0156]
- **GOTZ et al.** *Science*, 2001, vol. 293 (5534), 1491-5 [0156]
- **GRUNDKE-IQBAL et al.** *Proc. Natl. Acad. Sci. USA*, 1986, vol. 83 (13), 4913-7 [0156]
- **HAASS ; SELKOE.** *Nat. Rev. Mol. Cell Biol.*, 2007, vol. 8 (2), 101-12 [0156]
- **HANGER et al.** *Neurosci. Lett.*, 1992, vol. 147 (1), 58-62 [0156]
- **HARDY ; ALLSOP.** *Trends Pharmacol. Sci.*, 1991, vol. 12 (10), 383-8 [0156]
- **HARDY ; SELKOE.** *Science*, 2002, vol. 7 (5580), 353-6 [0156]
- **HARLOW ; LANE.** *Antibodies: A Laboratory Manual.* Cold Spring Harbor Laboratory, 1988, 346-348 [0156]
- **HAROUTUNIAN et al.** *Neurobiol. Aging*, 2007, vol. 28 (1), 1-7 [0156]
- **HARPER et al.** *Chem. Biol.*, 1997, vol. 4 (2), 119-25 [0156]
- **HERNANDEZ ; AVILA.** *J. Alzheimers Dis.*, 2008, vol. 14 (4), 449-52 [0156]
- **HERUKKA et al.** *Neurology*, 2005, vol. 64 (7), 1294-7 [0156]
- **HONSON et al.** *Neurotox. Res.*, 2009, vol. 15 (3), 274-83 [0156]
- **HUSTON et al.** *Methods Enzymol.*, 1991, vol. 203, 46-88 [0156]
- **HUTTON et al.** *Nature*, 1998, vol. 393 (6686), 702-5 [0156]
- **IQBAL ; GRUNDKE-IQBAL.** *Drug News Perspect.*, 1998, vol. 11 (1), 10-4 [0156]
- **IQBAL et al.** *Acta Neuropathol.*, 2009, vol. 118 (1), 53-69 [0156]
- **JAKES et al.** *EMBO J.*, 1991, vol. 10, 2725-2729 [0156]
- **JOHNSON et al.** *Biochem. Biophys. Res. Commun.*, 1989, vol. 163 (3), 1505-11 [0156]
- **JOHNSON et al.** *Arch Biochem Biophys.*, 1991, vol. 291 (2), 371-8 [0156]
- **JOHNSON et al.** *J. Cell Sci.*, 2004, vol. 117, 5721-9 [0156]
- **KARSTEN et al.** *Neuron.*, 2006, vol. 51 (5), 549-60 [0156]
- **KAYED ; GLABE.** *Methods Enzymol.*, 2006, vol. 413, 326-44 [0156]
- **KAYED et al.** *Science*, 2003, vol. 300 (5618), 486-9 [0156]
- **KAYED et al.** *J. Biol. Chem.*, 2004, vol. 279 (45), 46363-6 [0156]
- **KAYED et al.** *Mol. Neurodegener.*, 2007, vol. 2, 18 [0156]
- **KAYED et al.** *J. Biol. Chem.*, 2009, vol. 284 (7), 4230-7 [0156]
- **KOHLER ; MILSTEIN.** *Nature*, 1975, vol. 256, 495-497 [0156]
- **KOSTELNY et al.** *J. Immunol.*, 1992, vol. 148, 1547-1553 [0156]
- **KURT et al.** *Neurobiol. Dis.*, 2003, vol. 14 (1), 89-97 [0156]
- **KYTE ; DOOLITTLE.** *J. Mol. Biol.*, 1982, vol. 157 (1), 105-132 [0156]
- **LAI et al.** *Neurobiology of Ageing*, 1995, vol. 16 (3), 433-445 [0156]
- **LARBIG et al.** *Curr. Alzheimer Res.*, 2007, vol. 4 (3), 315-23 [0156]
- **LEE et al.** *Annu. Rev. Neurosci.*, 2001, vol. 24, 1121-59 [0156]
- **LI et al.** *Neurology*, 2007, vol. 69 (7), 631-9 [0156]
- **LITERSKY et al.** *J. Biol. Chem.*, 1992, vol. 267 (3), 1563-8 [0156]
- **LITERSKY et al.** *Brain Res.*, 1993, vol. 604 (1-2), 32-40 [0156]
- **MAEDA et al.** *Neurosci. Res.*, 2006, vol. 54 (3), 197-201 [0156]
- **MAEDA et al.** *Biochemistry*, 2007, vol. 46 (12), 3856-61 [0156]
- **MARGITTAI ; LANGEN.** *Proc. Natl. Acad. Sci. USA*, 2004, vol. 101 (28), 10278-83 [0156]
- **MARGITTAI ; LANGEN.** *J. Biol. Chem.*, 2006, vol. 281 (49), 37820-7 [0156]
- **MARX.** *Science*, 2007, vol. 316 (5830), 1416-7 [0156]
- **MATSUO et al.** *Neuron.*, 1994, vol. 13 (4), 989-1002 [0156]
- **MAYEUX et al.** *New Eng. J. Med.*, 1999, vol. 341, 1670-1679 [0156]

- **MCKHANN.** *Neuropediatrics*, 1984, vol. 15, 4-10 [0156]
- **MEIER et al.** *Am. J. Physiol. Endocrinol. Metab.*, 2006, vol. 291 (6), E1317-24 [0156]
- **MENA et al.** *Acta Neuropathol.*, 1995, vol. 89, 50-56 [0156]
- **MENA et al.** *Acta Neuropathol.*, 1996, vol. 91, 633-641 [0156]
- **MERRIFIELD.** *Science*, 1986, vol. 232 (4748), 341-347 [0156]
- **MORISHIMA-KAWASHIMA et al.** *Neurobiol. Aging*, 1995, vol. 16 (3), 365-71 [0156]
- **MORSCH et al.** *J. Neuropathol. Exp. Neurol.*, 1999, vol. 58 (2), 188-97 [0156]
- **MOTTER et al.** *Ann. Neurol.*, 1995, vol. 38 (4), 643-8 [0156]
- **NOVAK et al.** *EMBO J.*, 1993, vol. 12, 365-370 [0156]
- **ODDO et al.** *J. Biol. Chem.*, 2006, vol. 281 (51), 39413-23 [0156]
- **PARNETTI et al.** *Mech. Ageing Dev.*, 2006, vol. 127 (2), 129-32 [0156]
- **PENNANEN ; GOTZ.** *Biochem. Biophys. Res. Commun.*, 2005, vol. 337 (4), 1097-101 [0156]
- **PETERSEN et al.** *Arch. Neurol.*, 1999, 303-8 [0156]
- **PICKHARDT et al.** *Curr. Alzheimer Res.*, 2005, vol. 2 (2), 219-26 [0156]
- **PITTMAN et al.** *Hum. Mol. Genet.*, 2006, vol. 15, R188-95 [0156]
- **RAPOPORT et al.** *Proc. Natl. Acad. Sci. USA*, 2002, vol. 99 (9), 6364-9 [0156]
- **RINGMAN et al.** *Neurology*, 2008, vol. 71 (2), 85-92 [0156]
- **ROBERSON et al.** *Science*, 2007, vol. 316 (5825), 750-4 [0156]
- **ROHER et al.** *J. Neurochemistry*, 1993, vol. 61 (5), 1916-26 [0156]
- **SANTACRUZ et al.** *Science*, 2005, vol. 309 (5733), 476-81 [0156]
- **SCHNEIDER ; MANDELKOW.** *Neurotherapeutics*, 2008, vol. 5 (3), 443-57 [0156]
- **SENGUPTA et al.** *Biochemistry*, 2006, vol. 45 (50), 15111-9 [0156]
- **SHAW et al.** *Ann. Neurol.*, 2009, vol. 65 (4), 403-13 [0156]
- **SKOOG et al.** *Dement. Geriatr. Cogn. Discord.*, 2003, vol. 15 (3), 169-76 [0156]
- **SONGSIVILAI ; LACHMANN.** *Clin. Exp. Immunol.*, 1990, vol. 79, 315-321 [0156]
- **SPIRES et al.** *Am. J. Pathol.*, 2006, vol. 168 (5), 1598-607 [0156]
- **SPIRES-JONES et al.** *Trends Neurosci.*, 2009, vol. 32 (3), 150-9 [0156]
- **STEWART ; YOUNG.** *Solid Phase Peptide Synthesis.* Pierce Chemical Co, 1984 [0156]
- **TABATON et al.** *Neurosci. Lett.*, 1989, vol. 103 (3), 259-62 [0156]
- **TAM et al.** *J. Am. Chem. Soc.*, vol. 105, 6442 [0156]
- **TEUNISSEN et al.** *Neurobiol. Aging*, 2002, vol. 23 (4), 485-508 [0156]
- **TIGGES et al.** *J. Immunol.*, 1996, vol. 156 (10), 3901-3910 [0156]
- **TRINCZEK et al.** *Mol. Biol. Cell*, 1995, vol. 6 (12), 1887-902 [0156]
- **TROJANOWSKI et al.** *Expert Opin. Pharmacother.*, 2005, vol. 6 (5), 683-6 [0156]
- **VANDERMEEREN et al.** *J. Neurochem.*, 1993, vol. 61 (5), 1828-34 [0156]
- **VAUGHAN et al.** *Nature Biotechnol.*, 1998, vol. 16, 535-539 [0156]
- **VIEIRA et al.** *J. Neurochem.*, 2007, vol. 103 (2), 736-48 [0156]
- **VIGO-PELFREY et al.** *Neurology*, 1995, vol. 45 (4), 788-93 [0156]
- **WALSH ; SELKOE.** *Protein Pept. Lett.*, 2004, vol. 11 (3), 213-28 [0156]
- **WALSH ; SELKOE.** *J. Neurochem.*, 2007, vol. 101 (5), 1172-84 [0156]
- **WILTFANG et al.** *World J. Biol. Psychiatry*, 2005, vol. 6 (2), 69-84 [0156]
- **WISCHIK et al.** *Proc. Natl. Acad. Sci. USA*, 1996, vol. 93, 11213-11218 [0156]
- **WISCHIK et al.** *Proc. Natl. Acad. Sci. USA*, 1988, vol. 85, 4506-4510 [0156]
- **WISCHIK et al.** *Proc. Natl. Acad. Sci. USA*, 1998, vol. 85, 4884-4888 [0156]
- **WISCHIK et al.** *Microtubule-associated proteins: modifications in disease.* Harwood Academic Publishers, 1997, 185-241 [0156]
- **YAMAZAKI et al.** *J. Neuropathol. Exp. Neurol.*, 2005, vol. 64 (10), 839-46 [0156]
- **YOSHIYAMA et al.** *Neuron.*, 2007, vol. 53 (3), 337-51 [0156]
- **ZETTERBERG et al.** *Neurosci. Lett.*, 2003, vol. 352 (1), 67-9 [0156]
- **ZHANG et al.** *Proc. Natl. Acad. Sci. USA*, 2005, vol. 102 (1), 227-31 [0156]

专利名称(译)	结合tau寡聚体的抗体		
公开(公告)号	EP2470211A4	公开(公告)日	2013-04-10
申请号	EP2010812710	申请日	2010-08-30
申请(专利权)人(译)	德州大学系统的校董会		
当前申请(专利权)人(译)	德州大学系统的校董会		
[标]发明人	KAYED RAKEZ		
发明人	KAYED, RAKEZ		
IPC分类号	A61K39/395 G01N33/53 C07K16/18 A61P25/28 G01N33/68		
CPC分类号	A61K2039/505 A61P3/00 A61P25/00 A61P25/28 C07K16/18 G01N33/6896 G01N2800/28 G01N2800/2821		
优先权	61/237861 2009-08-28 US		
其他公开文献	EP2470211B1 EP2470211A1		
外部链接	Espacenet		

摘要(译)

本发明的实施方案涉及与Tau寡聚体和Tau寡聚体特异性抗体有关的组合物和方法。