



(11) **EP 2 404 998 A3**

(12) **EUROPEAN PATENT APPLICATION**

(88) Date of publication A3:  
**29.02.2012 Bulletin 2012/09**

(51) Int Cl.:  
**C12N 15/00** (2006.01) **C12N 15/09** (2006.01)  
**C12Q 1/68** (2006.01) **G01N 33/53** (2006.01)  
**G01N 33/574** (2006.01) **C07K 16/00** (2006.01)

(43) Date of publication A2:  
**11.01.2012 Bulletin 2012/02**

(21) Application number: **11175092.3**

(22) Date of filing: **01.09.2006**

(84) Designated Contracting States:  
**AT BE BG CH CY CZ DE DK EE ES FI FR GB GR HU IE IS IT LI LT LU LV MC NL PL PT RO SE SI SK TR**

(30) Priority: **02.09.2005 JP 2005255499**  
**01.11.2005 JP 2005318589**

(62) Document number(s) of the earlier application(s) in accordance with Art. 76 EPC:  
**09177359.8 / 2 154 245**  
**06821799.1 / 1 930 426**

(71) Applicants:  
• **Kyoto University**  
**Kyoto-shi, Kyoto 606-8501 (JP)**  
• **Toray Industries, Inc.**  
**Tokyo, 103-8666 (JP)**

(72) Inventors:  
• **Kozono, Satoko**  
**Kamakura-shi, Kanagawa 248-8555 (JP)**

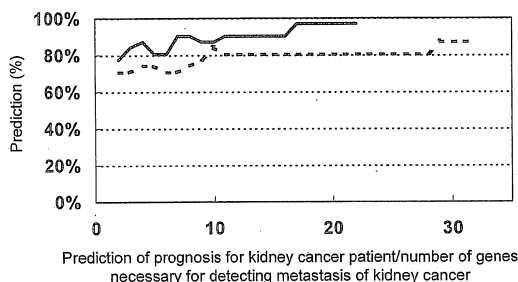
- **Akiyama, Hideo**  
**Kamakura-shi, Kanagawa 248-8555 (JP)**
- **Myomoto, Akira**  
**Kamakura-shi, Kanagawa 248-8555 (JP)**
- **Tanaka, Yoshinori**  
**Kamakura-shi, Kanagawa 248-8555 (JP)**
- **Jung, Gimán**  
**Kamakura-shi, Kanagawa 248-8555 (JP)**
- **Nobumasa, Hitoshi**  
**Kamakura-shi, Kanagawa 248-8555 (JP)**
- **Nomura, Osamu**  
**Kamakura-shi, Kanagawa 248-8555 (JP)**
- **Ogawa, Osamu**  
**Kyoto-shi, Kyoto 606-8501 (JP)**
- **Nakamura, Eijiro**  
**Kyoto-shi, Kyoto 606-8501 (JP)**
- **Tsujimoto, Gozoh**  
**Kyoto-shi, Kyoto 606-8501 (JP)**

(74) Representative: **Prüfer & Partner GbR**  
**European Patent Attorneys**  
**Sohnckestrasse 12**  
**81479 München (DE)**

(54) **Composition and method for diagnosing kidney cancer and for predicting prognosis for kidney cancer patient**

(57) This invention relates to a composition, kit, DNA chip, and use thereof for detecting, diagnosing, and predicting metastasis of kidney cancer and/or for predicting the prognosis for kidney cancer, comprising one or a plurality of polynucleotides selected from the group consisting of polynucleotides, mutants thereof or fragments thereof, the expression levels of which vary in kidney cancer cells from a patient with a poor prognosis when compared with that in kidney cancer cells from a patient with a good prognosis; or antibodies or fragments thereof that bind specifically to polypeptides, mutants thereof or fragments thereof, the expression levels of which vary in the similar manner.

Fig. 2



**EP 2 404 998 A3**



EUROPEAN SEARCH REPORT

Application Number  
EP 11 17 5092

DOCUMENTS CONSIDERED TO BE RELEVANT			
Category	Citation of document with indication, where appropriate, of relevant passages	Relevant to claim	CLASSIFICATION OF THE APPLICATION (IPC)
X	VASSELLI JAMES R ET AL: "Predicting survival in patients with metastatic kidney cancer by gene-expression profiling in the primary tumor.", PROCEEDINGS OF THE NATIONAL ACADEMY OF SCIENCES OF THE UNITED STATES OF AMERICA 10 JUN 2003, vol. 100, no. 12, 10 June 2003 (2003-06-10), pages 6958-6963, XP002520165, ISSN: 0027-8424 * the whole document *	1-18	INV. C12N15/00 C12N15/09 C12Q1/68 G01N33/53 G01N33/574 C07K16/00
X	TAKAHASHI MASAYUKI ET AL: "Gene expression profiling of clear cell renal cell carcinoma: Gene identification and prognostic classification", PROCEEDINGS OF THE NATIONAL ACADEMY OF SCIENCES OF USA, NATIONAL ACADEMY OF SCIENCE, WASHINGTON, DC.; US, vol. 98, no. 17, 14 August 2001 (2001-08-14), pages 9754-9759, XP002318256, ISSN: 0027-8424 * the whole document *	1-18	TECHNICAL FIELDS SEARCHED (IPC) C12N
X	BOER JUDITH M ET AL: "Identification and classification of differentially expressed genes in renal cell carcinoma by expression profiling on a global human 31,500-element cDNA array", GENOME RESEARCH, COLD SPRING HARBOR LABORATORY PRESS, WOODBURY, NY, US, vol. 11, no. 11, 1 November 2001 (2001-11-01), pages 1861-1870, XP002215718, ISSN: 1088-9051 * the whole document *	1-18	
----- -/--			
The present search report has been drawn up for all claims			
Place of search Munich		Date of completion of the search 12 January 2012	Examiner Roscoe, Richard
CATEGORY OF CITED DOCUMENTS X: particularly relevant if taken alone Y: particularly relevant if combined with another document of the same category A: technological background O: non-written disclosure P: intermediate document		T: theory or principle underlying the invention E: earlier patent document, but published on, or after the filing date D: document cited in the application L: document cited for other reasons ..... &: member of the same patent family, corresponding document	

1  
EPO FORM 1503 03.02 (P04C01)



EUROPEAN SEARCH REPORT

Application Number  
EP 11 17 5092

DOCUMENTS CONSIDERED TO BE RELEVANT				
Category	Citation of document with indication, where appropriate, of relevant passages	Relevant to claim	CLASSIFICATION OF THE APPLICATION (IPC)	
X	MIYAKE H ET AL: "Introduction of basic fibroblast growth factor gene into mouse renal cell carcinoma cell line enhances its metastatic potential.", CANCER RESEARCH 15 MAY 1996, vol. 56, no. 10, 15 May 1996 (1996-05-15), pages 2440-2445, XP002520166, ISSN: 0008-5472 * the whole document *	1-18		
X	KITAGAWA ET AL: "EXPRESSION OF MESSENGER RNAs FOR MEMBRANE-TYPE 1, 2, AND 3 MATRIX METALLOPROTEINASES IN HUMAN RENAL CELL CARCINOMAS", JOURNAL OF UROLOGY, BALTIMORE, MD, US, vol. 162, no. 3, 1 September 1999 (1999-09-01), pages 905-909, XP005557829, ISSN: 0022-5347 * the whole document *	1-18		
X	FREEMAN M R ET AL: "Aberrant expression of epidermal growth factor receptor and HER-2 (erbB-2) messenger RNAs in human renal cancers.", CANCER RESEARCH 15 NOV 1989, vol. 49, no. 22, 15 November 1989 (1989-11-15), pages 6221-6225, XP002520167, ISSN: 0008-5472 * the whole document *	1-18		TECHNICAL FIELDS SEARCHED (IPC)
X	WO 2005/003776 A (PROGENIKA BIOPHARMA S A [ES]; GOMEZ ROMAN JOSE JAVIER [ES]; SAENZ JIME) 13 January 2005 (2005-01-13) * the whole document *	1-18		
----- -/--				
The present search report has been drawn up for all claims				
Place of search Munich		Date of completion of the search 12 January 2012	Examiner Roscoe, Richard	
CATEGORY OF CITED DOCUMENTS X : particularly relevant if taken alone Y : particularly relevant if combined with another document of the same category A : technological background O : non-written disclosure P : intermediate document		T : theory or principle underlying the invention E : earlier patent document, but published on, or after the filing date D : document cited in the application L : document cited for other reasons ..... & : member of the same patent family, corresponding document		

1  
EPO FORM 1503 03/82 (P04C01)



EUROPEAN SEARCH REPORT

Application Number  
EP 11 17 5092

DOCUMENTS CONSIDERED TO BE RELEVANT			
Category	Citation of document with indication, where appropriate, of relevant passages	Relevant to claim	CLASSIFICATION OF THE APPLICATION (IPC)
X	WO 98/45432 A (UNIV PITTSBURGH [US]; GETZENBERG ROBERT H [US]) 15 October 1998 (1998-10-15) * the whole document *	1-18	
X	WO 2004/032842 A (ANDEL INST VAN [US]; TEH BIN TEAN [US]; TAKAHASHI MASAYUKI [JP]) ANDEL) 22 April 2004 (2004-04-22) * the whole document *	1-18	
X	WO 2005/036176 A (WYETH CORP [US]; LIU WEI [US]; WHITLEY MARYANN [US]; SLONIM DONNA [US]) 21 April 2005 (2005-04-21) * the whole document *	1-18	
A	UNOKI M ET AL: "Growth-suppressive effects of BPOZ and EGR2, two genes involved in the PTEN signaling pathway", ONCOGENE, NATURE PUBLISHING GROUP, GB, vol. 20, no. 33, 27 July 2001 (2001-07-27), pages 4457-4465, XP002304737, ISSN: 0950-9232, DOI: 10.1038/SJ.ONC.1204608 * the whole document *	1-18	TECHNICAL FIELDS SEARCHED (IPC)
A	NAKAJIMA AKINORI ET AL: "BRPK, a novel protein kinase showing increased expression in mouse cancer cell lines with higher metastatic potential.", CANCER LETTERS 25 NOV 2003 LNKD-PUBMED:14607334, vol. 201, no. 2, 25 November 2003 (2003-11-25), pages 195-201, XP002667004, ISSN: 0304-3835 * the whole document *	1-18	
----- -/--			
The present search report has been drawn up for all claims			
Place of search Munich		Date of completion of the search 12 January 2012	Examiner Roscoe, Richard
CATEGORY OF CITED DOCUMENTS X : particularly relevant if taken alone Y : particularly relevant if combined with another document of the same category A : technological background O : non-written disclosure P : intermediate document		T : theory or principle underlying the invention E : earlier patent document, but published on, or after the filing date D : document cited in the application L : document cited for other reasons & : member of the same patent family, corresponding document	

1  
EPO FORM 1503 03.82 (P04C01)



EUROPEAN SEARCH REPORT

Application Number  
EP 11 17 5092

DOCUMENTS CONSIDERED TO BE RELEVANT			
Category	Citation of document with indication, where appropriate, of relevant passages	Relevant to claim	CLASSIFICATION OF THE APPLICATION (IPC)
A	WO 2004/048933 A2 (WYETH CORP [US]; TWINE NATALIE C [US]; BURCZYNSKI MICHAEL E [US]; TREP) 10 June 2004 (2004-06-10) * Renal cancer marker #955 * -----	1-18	
X	US 2005/186577 A1 (WANG YIXIN [US]) 25 August 2005 (2005-08-25) * Whole document, in particular Seq.31 * -----	1-18	
X	WO 03/039443 A2 (DEUTSCHES KREBSFORSCH [DE]; UNIV MUENCHEN L MAXIMILIANS [DE]; HAFERLAC) 15 May 2003 (2003-05-15) * Whole document, in particular Seq.19 * -----	1-18	
X	WO 2005/040422 A2 (NOVARTIS AG [CH]; NOVARTIS PHARMA GMBH [AT]; CHIBOUT SALAH-DINE [FR];) 6 May 2005 (2005-05-06) * Whole document, in particular Seq.7 - Marker for Coronary Artery Disease Progression. L:Shows technical data casting doubt on functionality of marker. * -----	6-10	
L			
The present search report has been drawn up for all claims			TECHNICAL FIELDS SEARCHED (IPC)
Place of search <b>Munich</b>		Date of completion of the search <b>12 January 2012</b>	Examiner <b>Roscoe, Richard</b>
<b>CATEGORY OF CITED DOCUMENTS</b> X : particularly relevant if taken alone Y : particularly relevant if combined with another document of the same category A : technological background O : non-written disclosure P : intermediate document		T : theory or principle underlying the invention E : earlier patent document, but published on, or after the filing date D : document cited in the application L : document cited for other reasons ..... & : member of the same patent family, corresponding document	

1  
EPO FORM 1503 03.02 (P04C01)

ANNEX TO THE EUROPEAN SEARCH REPORT  
ON EUROPEAN PATENT APPLICATION NO.

EP 11 17 5092

This annex lists the patent family members relating to the patent documents cited in the above-mentioned European search report. The members are as contained in the European Patent Office EDP file on  
The European Patent Office is in no way liable for these particulars which are merely given for the purpose of information.

12-01-2012

Patent document cited in search report	Publication date	Patent family member(s)	Publication date
WO 2005003776 A	13-01-2005	EP 1642133 A2	05-04-2006
		ES 2297953 A1	01-05-2008
		US 2008015143 A1	17-01-2008
		US 2008274968 A1	06-11-2008
		US 2011098191 A1	28-04-2011
		WO 2005003776 A2	13-01-2005
WO 9845432 A	15-10-1998	AU 6789598 A	30-10-1998
		CA 2287778 A1	15-10-1998
		EP 0973894 A1	26-01-2000
		JP 2001523087 A	20-11-2001
		WO 9845432 A1	15-10-1998
WO 2004032842 A	22-04-2004	AU 2003288918 A1	04-05-2004
		CA 2501131 A1	22-04-2004
		EP 1570078 A2	07-09-2005
		JP 2006501849 A	19-01-2006
		US 2006183120 A1	17-08-2006
		WO 2004032842 A2	22-04-2004
WO 2005036176 A	21-04-2005	US 2005282168 A1	22-12-2005
		WO 2005036176 A1	21-04-2005
WO 2004048933 A2	10-06-2004	AU 2003298689 A1	18-06-2004
		BR 0316111 A	13-09-2005
		CA 2505416 A1	10-06-2004
		EP 1588142 A2	26-10-2005
		JP 2006514554 A	11-05-2006
		MX PA05005283 A	25-07-2005
		US 2004110221 A1	10-06-2004
		WO 2004048933 A2	10-06-2004
US 2005186577 A1	25-08-2005	CN 1950701 A	18-04-2007
		EP 2333112 A2	15-06-2011
		US 2005186577 A1	25-08-2005
WO 03039443 A2	15-05-2003	AU 2002351828 A1	19-05-2003
		US 2007072178 A1	29-03-2007
		WO 03039443 A2	15-05-2003
WO 2005040422 A2	06-05-2005	EP 1675962 A2	05-07-2006
		JP 2007515155 A	14-06-2007
		US 2007238124 A1	11-10-2007
		WO 2005040422 A2	06-05-2005

EPO FORM P0459

For more details about this annex : see Official Journal of the European Patent Office, No. 12/82

专利名称(译)	用于诊断肾癌和预测肾癌患者预后的组合物和方法		
公开(公告)号	<a href="#">EP2404998A3</a>	公开(公告)日	2012-02-29
申请号	EP2011175092	申请日	2006-09-01
[标]申请(专利权)人(译)	国立大学法人京都大学 东丽株式会社		
申请(专利权)人(译)	京都大学 TORAY INDUSTRIES , INC.		
当前申请(专利权)人(译)	京都大学 TORAY INDUSTRIES , INC.		
[标]发明人	KOZONO SATOKO AKIYAMA HIDEO MYOMOTO AKIRA TANAKA YOSHINORI JUNG GIMAN NOBUMASA HITOSHI NOMURA OSAMU OGAWA OSAMU NAKAMURA EIJIRO TSUJIMOTO GOZOH		
发明人	KOZONO, SATOKO AKIYAMA, HIDEO MYOMOTO, AKIRA TANAKA, YOSHINORI JUNG, GIMAN NOBUMASA, HITOSHI NOMURA, OSAMU OGAWA, OSAMU NAKAMURA, EIJIRO TSUJIMOTO, GOZOH		
IPC分类号	C12N15/00 C12N15/09 C12Q1/68 G01N33/53 G01N33/574 C07K16/00		
CPC分类号	G01N33/57438 C12Q1/6837 C12Q1/6886 C12Q2600/112 C12Q2600/118		
优先权	2005255499 2005-09-02 JP 2005318589 2005-11-01 JP		
其他公开文献	EP2404998B1 EP2404998A2		
外部链接	<a href="#">Espacenet</a>		

#### 摘要(译)

本发明涉及用于检测，诊断和预测肾癌转移和/或预测肾癌预后的组合物，试剂盒，DNA芯片及其用途，其包含一种或多种选自下组的多核苷酸：多核苷酸，其突变体或其片段，其表达水平在来自预后不良的患者的肾癌细胞中与来自具有良好预后的患者的肾癌细胞中的表达水平不同；或者与多肽，其突变体或其片段特异性结合的抗体或其片段，其表达水平以相似的方式变化。

Fig. 2

