



(11) **EP 2 353 005 B1**

(12) **EUROPEAN PATENT SPECIFICATION**

(45) Date of publication and mention of the grant of the patent:  
**03.10.2018 Bulletin 2018/40**

(51) Int Cl.:  
**G01N 33/68 (2006.01) G01N 33/564 (2006.01)**  
**G01N 33/543 (2006.01)**

(21) Application number: **09830911.5**

(86) International application number:  
**PCT/US2009/065984**

(22) Date of filing: **25.11.2009**

(87) International publication number:  
**WO 2010/065425 (10.06.2010 Gazette 2010/23)**

(54) **METHODS AND COMPOSITIONS FOR DETECTION OF COMPLEMENT FIXING ANTIBODIES**

**VERFAHREN UND ZUSAMMENSETZUNGEN ZUR ERKENNUNG KOMPLEMENTBINDENDER ANTIKÖRPER**

**PROCÉDÉS ET COMPOSITIONS POUR LA DÉTECTION D'ANTICORPS FIXANT LE COMPLÉMENT**

(84) Designated Contracting States:  
**AT BE BG CH CY CZ DE DK EE ES FI FR GB GR HR HU IE IS IT LI LT LU LV MC MK MT NL NO PL PT RO SE SI SK SM TR**

(56) References cited:  
**US-A- 5 035 995 US-A- 5 270 169**  
**US-A1- 2005 282 172 US-A1- 2007 042 414**  
**US-A1- 2007 042 505**

(30) Priority: **01.12.2008 US 118949 P**

(43) Date of publication of application:  
**10.08.2011 Bulletin 2011/32**

(60) Divisional application:  
**18190547.2**

(73) Proprietor: **The Board of Trustees of the Leland Stanford Junior University Palo Alto, CA 94306 (US)**

(72) Inventors:  
• **TYAN, Dolly, B. Palo Alto, CA 94304 (US)**  
• **CHEN, Ge Palo Alto, CA 94304 (US)**

(74) Representative: **Ellis, Katherine Elizabeth Sleight Williams Powell Staple Court 11 Staple Inn Buildings GB-London WC1V 7QH (GB)**

- **SMITH J.D. ET AL.: "C4d fixing, luminex binding antibodies - a new tool for prediction of graft failure after heart transplantation", AM. J. TRANSPLANT., vol. 7, no. 12, December 2007 (2007-12), pages 2809-2815, XP002682797,**
- **WAHRMANN M. ET AL.: "{C4d}FlowPRA screening - A specific assay for selective detection of complement-activating anti-HLA alloantibodies", HUM. IMMUNOL., vol. 66, no. 5, May 2005 (2005-05), pages 526-534, XP027857100,**
- **CHEN G. ET AL.: "Novel C1q assay reveals a clinically relevant subset of human leukocyte antigen antibodies independent of immunoglobulin G strength on single antigen beads", HUM. IMMUNOL., vol. 72, no. 10, October 2011 (2011-10), pages 849-858, XP028295109,**

Note: Within nine months of the publication of the mention of the grant of the European patent in the European Patent Bulletin, any person may give notice to the European Patent Office of opposition to that patent, in accordance with the Implementing Regulations. Notice of opposition shall not be deemed to have been filed until the opposition fee has been paid. (Art. 99(1) European Patent Convention).

**EP 2 353 005 B1**

**Description****BACKGROUND OF THE INVENTION**

5 **[0001]** The complement system is a complex group of proteins in blood that, in concert with antibodies and other factors, plays an important role as a mediator of immune, allergic, immunochemical and immunopathological reactions. Activation of the complement system can result in a wide range of reactions such as opsonization and lysis of various kinds of cells, bacteria and protozoa, inactivation of viruses, and the direct mediation of inflammatory processes. Through the hormone-like activity of several of its components, the complement system can recruit and enlist the participation of other humoral and cellular effector systems. These in turn can induce directed migration of leukocytes, trigger histamine release from mast cells, and stimulate the release of lysosomal constituents from phagocytes.

10 **[0002]** The complement system consists of at least twenty distinct plasma proteins capable of interacting with each other, with antibodies, and with cell membranes. Many of these proteins, when activated, combine with other proteins to form enzymes to cleave and activate still other proteins in the system. The sequential activation of these proteins, known as the complement cascade, follows two main pathways; the classical pathway and the alternative pathway. Both pathways converge at C3 and use a common terminal trunk which leads to cell lysis, bacterial opsonization and lysis, or viral inactivation.

15 **[0003]** The classical pathway can be activated by antigen-antibody complexes, aggregated immunoglobulins and non-immunological substances such as DNA and trypsin-like enzymes. The classical pathway of activation involves, successively, four components denominated C1, C4, C2 and C3. These components can be grouped into two functional units: C1 or recognition unit; and C4, C2, and C3 or activation unit. Five additional components denominated C5, C6, C7, C8, and C9 define the membrane attack complex (MAC) forming the terminal trunk common to both pathways that leads to cell lysis. The alternate pathway utilizes Factor B and bypasses the C1-C4-C2 steps, activating at C3.

20 **[0004]** The classical pathway begins with the C1-complex, which consists of one molecule of C1q and two molecules of both C1r and C1s. Activation of the C1-complex is triggered either by C1q's binding to antibodies from classes M and G, complexed with antigens, or by binding of C1q to the surface of a pathogen. Both C1r and C1s are serine proteases. Binding of C1q leads to conformational changes in the C1q molecule, which in turn leads to the activation of the two C1r molecules, followed by activation of the C1s molecules. In order to prevent spontaneous activation of this cascade, C1r and C1s are inhibited by C1-inhibitor, a serine protease inhibitor. Once activated, the C1-complex binds to and cleaves C2 and C4, producing C2a and C4b. C2a and C4b then bind to form a C4b2a complex, known as C3-convertase. Production of C3-convertase leads to cleavage of C3 into C3a and C3b; the latter joins with C2a and C4b (the C3 convertase) to make C5 convertase, which is the initial component of MAC.

25 **[0005]** Study and measurement of the activation of a complement pathway can provide an indication of many possible biological disorders. The complement pathway has been implicated in the pathogenesis or symptomatology of a broad spectrum of human diseases and pathologic conditions. Such diseases include immune complex diseases of several types, autoimmune diseases, in particular systemic lupus erythematosus, and infectious diseases, such as those found to be involved in infections with gram negative bacteria, viruses, parasites, fungi, and various dermatologic, renal, and hematologic diseases. Some disorders may be due to insufficient complement in the patient.

30 **[0006]** There remains a need in the field for methods for detecting complement fixing antibodies in a patient sample in a manner that is rapid, sensitive, and specific, particularly with respect to the ability to differentiate accurately and definitively among specific antigens.

35 **[0007]** The present invention addresses these needs.

Relevant Literature**[0008]**

45 U.S. Patent Nos. 6,514,714 and 6,150,122; and Wahrmann et al., J. Immunol. Methods. 275(1-2):149-60 (2003).

US 5,035,995 discloses a test method involving substance-conjugated complement component C1q.

50 US 5,270,169 discloses detection of HLA antigen-containing immune complexes.

Smith et al., Am. J. Transplant. 7(12):2809-15 (2007) discloses C4d fixing, Luminex binding antibodies as a tool for prediction of graft failure after heart transplantation.

Wahrmann et al., Hum. Immunol. 66, 526-34 (2005) discloses {C4d}Flow PRA screening as a specific assay for selective detection of complement-activating anti-HLA alloantibodies.

**SUMMARY OF THE INVENTION**

55 **[0009]** Disclosed are methods for sensitive and specific detection of complement fixing antibodies in a biological

sample using complement factor C1q, including autologous complement factor C1q present in the biological sample and a detectably labelled antibody that binds the autologous complement factor C1q, exogenous human complement factor C1q and a detectably labelled antibody that binds the exogenous human complement factor C1q, or a combination of autologous complement factor C1q and exogenous human complement factor C1q. Also disclosed are kits, systems, and devices for use in the methods of the invention.

**[0010]** According to an aspect of the present invention there is provided a method for determining the presence or absence of complement fixing antibodies in a biological sample from a subject that bind specifically to human leukocyte antigens (HLAs) of interest as specified in claim 1.

**[0011]** In some embodiments, the complement factor C1q is autologous complement factor C1q. In other embodiments, the complement factor C1q is exogenous complement factor C1q. In yet other embodiments, the complement factor C1q is a combination of autologous complement factor C1q and exogenous complement factor C1q.

**[0012]** In some embodiments, the microparticle is an agarose bead. In other embodiments, the microparticle is a latex bead. In yet other embodiments, the microparticle is a magnetic bead. In some embodiments, the biological sample is serum, blood, saliva, plasma, or urine. In some embodiments, the detectable label is a fluorochrome, a chromophore, an enzyme, a linker molecule, a biotin molecule, an electron donor, an electron acceptor, a dye, a metal, or a radionuclide. In some embodiments, the detecting is by flow cytometry.

**[0013]** Also disclosed is a method for determining the presence or absence of complement fixing antibodies in a biological sample from a subject that bind specifically to an antigen of interest, by contacting a solid substrate with an antigen of interest (Agl) immobilized thereon with a biological sample from a subject and complement factor C1q, wherein the contacting is for a sufficient time to allow anti-Agl complement fixing antibodies in the sample to bind to the Agl and to allow complement factor C1q to bind the anti-Agl complement fixing antibodies; incubating the solid substrate with at least one detectably labeled ligand capable of specifically binding the complement factor C1q bound to the anti-Agl complement fixing antibodies bound to the Agl; and detecting the presence or absence of the detectably labeled ligand bound to the complement factor C1q to determine the presence or absence of complement fixing antibodies that bind specifically to the Agl in the biological sample.

**[0014]** The complement factor C1q maybe autologous complement factor C1q, exogenous complement factor C1q, or a combination of autologous complement factor C1q and exogenous complement factor C1q.

**[0015]** The solid substrate may be a multiwell plate, a membrane, a microparticle, such as a polystyrene bead, a latex bead, or a magnetic bead, the solid substrate may be a cell or a cell membrane. The biological sample may be serum, blood, saliva, plasma, or urine. The detectably labelled ligand may be a detectably labelled antibody or binding fragment thereof. The detectable label may be a fluorochrome, a chromophore, an enzyme, a linker molecule, a biotin molecule, an electron donor, an electron acceptor, a dye, a metal, or a radionuclide.

**[0016]** Also disclosed is a method for determining the presence or absence of complement fixing antibodies in a biological sample from a subject that bind specifically to an antigen of interest, by contacting a solid substrate with an antigen of interest (Agl) immobilized thereon with a biological sample from a subject and directly labeled exogenous complement factor C1q, wherein the contacting is for a sufficient time to allow anti-Agl complement fixing antibodies in the sample to bind to the Agl and to allow the directly labelled exogenous complement factor C1q to bind to the anti-Agl complement fixing antibodies; and detecting the presence or absence of the directly labeled exogenous C1q bound to the anti-Agl complement fixing antibodies to determine the presence or absence of complement fixing antibodies in the biological sample that bind specifically to the Agl.

**[0017]** The solid substrate may be a multiwell plate, a membrane, a microparticle, such as a polystyrene bead, a latex bead, or a magnetic bead. The solid substrate may be a cell, or a cell membrane. The biological sample may be serum, blood, saliva, plasma, or urine. The directly labelled exogenous C1q may be labelled with a fluorochrome, a chromophore, an enzyme, a linker molecule, a biotin molecule, an electron donor, an electron acceptor, a dye, a metal, or a radionuclide.

**[0018]** Also disclosed is a kit for determining the presence or absence of complement fixing antibodies in a biological sample from a subject that bind specifically to an antigen of interest, including a solid substrate with an antigen of interest (Agl) immobilized thereon; a detectably labelled ligand capable of specifically binding to complement factor C1q; and instructions for determining the presence or absence of complement fixing antibodies in a biological sample from a subject against the antigen of interest.

**[0019]** The solid substrate may be a multiwell plate, a membrane, a microparticle, such as an agarose bead, a polystyrene bead, a latex bead, or a magnetic bead. The solid substrate may be a cell, or a cell membrane. The biological sample may be serum, blood, saliva, plasma, or urine. The detectably labelled ligand may be a detectably labelled antibody or binding fragment thereof. The detectable label may be a fluorochrome, a chromophore, an enzyme, a linker molecule, a biotin molecule, an electron donor, an electron acceptor, a dye, a metal, or a radionuclide.

**[0020]** Also disclosed is a kit for determining the presence or absence of complement fixing antibodies in a biological sample from a subject that bind specifically to an antigen of interest, including a solid substrate with an antigen of interest (Agl) immobilized thereon; a directly labeled exogenous C1q capable of binding to complement fixing antibodies; and instructions for determining the presence or absence of complement fixing antibodies in a biological sample from a

subject against the antigen of interest.

**[0021]** The solid substrate may be a multiwell plate, a membrane or a cell, a microparticle, such as an agarose bead, a polystyrene bead, a latex bead, or a magnetic bead. The solid substrate may be a cell membrane. The biological sample may be serum, blood, saliva, plasma, or urine. The directly labelled exogenous C1q may be labelled with a fluorochrome, a chromophore, an enzyme, a linker molecule, a biotin molecule, an electron donor, an electron acceptor, a dye, a metal, or a radionuclide.

**[0022]** Also disclosed is a kit for determining the presence or absence of complement fixing antibodies in a biological sample from a subject against human leukocyte antigens (HLAs), including a collection of microparticle subtypes wherein each microparticle subtype is coated with different purified HLAs to represent the HLA antigen population of a single cell line or multiple cell lines such that the collection simulates the distribution of HLAs in a normal human population; a detectably labeled ligand capable of specifically binding with a complement factor C1q; and instructions for determining the presence or absence of complement fixing antibodies in a sample from a subject against HLAs.

**[0023]** The microparticle may be an agarose bead, a latex bead, a magnetic bead, or a polystyrene bead. The biological sample may be serum, blood, saliva, plasma, or urine. The detectably labelled ligand may be a detectably labelled antibody or binding fragment thereof. The detectable label may be a fluorochrome, a chromophore, an enzyme, a linker molecule, a biotin, an electron donor, an electron acceptor, a dye, a metal, or a radionuclide.

**[0024]** These and other objects, advantages, and features of the invention will become apparent to those persons skilled in the art upon reading the details of the invention as more fully described below.

## BRIEF DESCRIPTION OF THE DRAWINGS

**[0025]** The invention is best understood from the following detailed description when read in conjunction with the accompanying drawings. It is emphasized that, according to common practice, the various features of the drawings are not to-scale. On the contrary, the dimensions of the various features are arbitrarily expanded or reduced for clarity. Included in the drawings are the following figures.

**[0026] FIG 1** provides a general schematic of one embodiment of the present disclosure. A solid substrate having an antigen or individually distinguishable antigens of interest (Agl) immobilized thereon is contacted with a biological sample suspected of containing anti-Agl complement fixing antibodies (CFAb). As shown in the figures, the sample will also likely include non-complement fixing antibodies (non-CFAB) as well as autologous and/or exogenous C1q that binds specifically to complement fixing antibodies in the same sample. Following incubation, if present, the anti-Agl complement fixing antibodies bind specifically to the immobilized Agl and the C1q binds specifically to the bound anti-Agl complement fixing antibodies. The solid substrate is contacted with detectably labelled anti-human C1q (anti-hC1q) antibodies that bind specifically to human C1q. The presence of the detectable label is then assayed using methods known in the art.

**[0027] FIG 2** provides a general schematic of another embodiment of the present disclosure. In this embodiment, the detectably labelled anti-C1q (anti-hC1q) antibodies are added directly to the biological sample before the solid substrate is contacted with the sample. Alternatively, the anti-hC1q antibodies and the biological sample can be introduced to the solid substrate at the same time.

**[0028] FIG 3** provides a general schematic of another method in which detectably labelled exogenous C1q is added directly to the biological sample before the solid substrate is contacted with the sample. Alternatively, the detectably labelled exogenous C1q and the biological sample can be introduced to the solid substrate at the same time, or the detectably labelled exogenous C1q can be introduced to the solid substrate after the biological sample has been introduced to the substrate. The presence of the detectably labelled exogenous C1q is assayed using methods known in the art.

**[0029] FIG 4** provides a general schematic of another embodiment of the present disclosure. This embodiment is similar to the embodiment described in FIG 1, and functions in a similar manner. In this embodiment, however, the solid substrate having an antigen or individually distinguishable antigens of interest (Agl) immobilized thereon is a bead, microbead, microsphere, microparticle, cell or membrane.

**[0030] FIG 5** provides a schematic of another embodiment of the present disclosure. This embodiment is similar to the embodiment described in FIG 2, and functions in a similar manner. In this embodiment, however, the solid substrate having an antigen or individually distinguishable antigens of interest (Agl) immobilized thereon is a bead, microbead, microsphere, microparticle, cell or membrane.

**[0031] FIG 6** provides a schematic of another method, similar to that described in FIG 3, and which functions in a similar manner. In this method, however, the solid substrate having an antigen or individually distinguishable antigens of interest (Agl) immobilized thereon is a bead, microbead, microsphere, microparticle, cell or membrane.

**[0032] FIG 7** shows a comparison of the ability of one-step vs two step C1q procedure to define expected antibodies.

**[0033] FIG 8** shows the results of intravenous gammagobulin (IVIG) spiking using the usual LMX-IgG assay. The Figure represents testing the negative control serum diluted in buffer vs diluted in IVIG as would be done for the IVIG *in vitro* inhibition assay and using an anti-IgG labelled second step (the current commercial assay).

**[0034] FIG 9** is the same as FIG 8 except a patient serum is spiked. Results show that it would be impossible to detect

inhibition of the patient antibody (visible in the sample diluted in buffer) if IVIG were added to the serum and detected with an anti-IgG.

[0035] FIG 10 shows a comparison of the complement-dependent cytotoxic (CDC) assay and C1q assays for determination of inhibition by IVIG. The CDC assay is the only assay previously available for this determination.

[0036] FIG 11 shows actual IVIG *in vitro* inhibition C1q assay on Adult Heart patient serum suggesting that only the A24 would be able to be inhibited by IVIG if the patient were treated.

[0037] FIGS 12A-12B show a comparison of the LMX-C1q (FIG 12A) and LMX-IgG (FIG 12B) assays in the monitoring change in A24 antibody of Adult Heart patient's serum with each subsequent treatment. (Same patient as FIG 11).

[0038] FIGS 13A-13B show the monitoring of all of the patient's antibodies with subsequent treatments of IVIG the LMX-C1q (FIG 12A) and LMX-IgG (FIG 12B) assays. Note the difficulty in seeing the suppression/disappearance of antibodies using the LMX-IgG assay.

[0039] FIG 14 shows results of an *in vitro* IVIG inhibition C1q assay, similar to FIG 11, but results are for a Pediatric Kidney patient suggesting that the B57, B58 antibodies would be effectively suppressed by IVIG.

[0040] FIG 15 shows a side by side comparison of *in vitro* and *in vivo* results. Left panel (same as FIG 14) shows *in vitro* IVIG inhibition and right panel shows before and after IVIG infusion in the patient for the same serum date.

[0041] FIG 16A-N is a table showing the results of the C1Q validation experiment.

[0042] FIG 17A-J is a table showing the results of the C1Q - IVIG validation experiment.

[0043] FIG 18 provides a general schematic of a directly labeled C1q assay.

[0044] FIG 19A-B provide a comparison between direct and indirect labeling of C1q using an LMX-C1q assay.

[0045] FIG 20A-B provide a comparison between indirect labeling of C1q in an *in vitro* LMX-C1q IVIG inhibition assay (FIG. 20A) and direct labeling of C1q in an *in vitro* LMX-C1q IVIG inhibition assay (FIG. 20B).

## DEFINITIONS

[0046] The term "complement fixing antibody" refers to an antibody that binds specifically to an antigen on a pathogen and initiates the complement cascade of the immune system that provides for clearance of the antigen bearing target (e.g., cell) or pathogen from the organism. In general, a complement fixing antibody is an IgM or an IgG antibody that is recognized and specifically bound by complement factor C1q.

[0047] The C1q complement factor is a subunit of the C1 enzyme complex that activates the serum complement system. It is composed of 9 disulfide-linked dimers of the chains A, B, and C, which share a common structure consisting of an N-terminal non-helical region, a triple helical (collagenous) region, and a C-terminal globular head (Smith et al. Biochem. J. 1994. 301:249-256). C1q is involved in host defense, inflammation, apoptosis, autoimmunity, cell differentiation, organogenesis, hibernation and insulin-resistant obesity. Five strictly conserved residues have been identified in the C1q family (Kishore et al. Trends in Immunology 2004. 25(10):551-561). Each C1q domain exhibits a ten-stranded sandwich fold with a jelly-roll topology, consisting of two five-stranded  $\beta$ -sheets (A', A, H, C, F) and (B', B, G, D, E), each made of antiparallel strands. In general, the C1q complement factor is present in the serum of animals and has both binding specificity and binding affinity for complement fixing antibodies, which are also present in the serum of the animal. Binding of C1q complement factor to complement fixing antibodies activates the complement cascade of the immune system.

[0048] By "autologous" is meant derived from the same patient sample as another element. For example, in reference to autologous C1q is meant that the C1q occurs in the same subject sample as the complement fixing antibodies.

[0049] By "exogenous" is meant an element that is not naturally derived from a particular organism. For example, in reference to exogenous C1q, it is meant that the C1q is derived from an organism or system different from the subject sample having the complement fixing antibodies.

[0050] An "affinity reagent" of the subject invention has an analyte binding domain, moiety, or component that has a high binding affinity for a target analyte. By high binding affinity is meant a binding affinity of at least about  $10^{-4}$  M, usually at least about  $10^{-6}$  M or higher, e.g.,  $10^{-9}$  M or higher. The affinity reagent may be any of a variety of different types of molecules, so long as it exhibits the requisite binding affinity for the target protein when present as tagged affinity ligand.

[0051] As such, the affinity reagent may be a small molecule or large molecule ligand. By small molecule ligand is meant a ligand ranging in size from about 50 to about 10,000 daltons, usually from about 50 to about 5,000 daltons and more usually from about 100 to about 1000 daltons. By large molecule is meant a ligand in size from about 10,000 daltons or greater in molecular weight.

[0052] Of particular interest as large molecule affinity ligands are antibodies, as well as binding fragments and mimetics thereof. Where antibodies are the affinity ligand, they may be derived from polyclonal compositions, such that a heterogeneous population of antibodies differing by specificity are each tagged with the same tag nucleic acid, or monoclonal compositions, in which a homogeneous population of identical antibodies that have the same specificity for the target protein are each tagged with the same tag (e.g., fluorophore). As such, the affinity ligand may be a monoclonal, oligoclonal, and/or polyclonal antibody. In yet other embodiments, the affinity ligand is an antibody binding fragment or mimetic,

where these fragments and mimetics have the requisite binding affinity for the target protein. For example, antibody fragments, such as Fv, (Fab')<sub>2</sub>, and Fab may be prepared by cleavage of the intact protein, e.g. by protease or chemical cleavage. Also of interest are recombinantly produced antibody fragments, such as single chain antibodies or scFvs, where such recombinantly produced antibody fragments retain the binding characteristics of the above antibodies. Such recombinantly produced antibody fragments generally include at least the VH and VL domains of the subject antibodies, so as to retain the binding characteristics of the subject antibodies. These recombinantly produced antibody fragments or mimetics of the subject invention may be readily prepared using any convenient methodology, such as the methodology disclosed in U.S. Patent Nos. 5,851,829 and 5,965,371; the disclosures of which are herein incorporated by reference.

**[0053]** The above described antibodies, fragments and mimetics thereof may be obtained from commercial sources and/or prepared using any convenient technology, where methods of producing polyclonal antibodies, oligoclonal antibodies, monoclonal antibodies, fragments and mimetics thereof, including recombinant derivatives thereof, are known to those of the skill in the art.

**[0054]** By "epitope" is meant a site on an antigen to which specific B cells and T cells respond. The term is also used interchangeably with "antigenic determinant" or "antigenic determinant site." An epitope can comprise 1 or more amino acids, such as three or more amino acids, in a spatial conformation unique to the epitope. Generally, an epitope includes at least 5 such amino acids and, more usually, consists of at least 8-10 such amino acids. Methods of determining spatial conformation of amino acids are known in the art and include, for example, X-ray crystallography and 2-dimensional nuclear magnetic resonance. Furthermore, the identification of epitopes in a given protein is readily accomplished using techniques well known in the art. See, e.g., Geysen et al., Proc. Natl. Acad. Sci. USA (1984) 81:3998-4002 (general method of rapidly synthesizing peptides to determine the location of immunogenic epitopes in a given antigen); U.S. Pat. No. 4,708,871 (procedures for identifying and chemically synthesizing epitopes of antigens); and Geysen et al., Molecular Immunology (1986) 23:709-715 (technique for identifying peptides with high affinity for a given antibody). Antibodies that recognize the same epitope can be identified in a simple immunoassay showing the ability of one antibody to block the binding of another antibody to a target antigen.

**[0055]** By "binds specifically" or "specifically binds" is meant high avidity and/or high affinity binding of an antibody to a specific antigen. Antibody binding to its epitope on a specific antigen is with a greater avidity and/or affinity than binding of the same antibody to different epitopes, particularly different epitopes that may be present in molecules in association with, or in the same sample, as a specific antigen of interest. Complement fixing antibodies may, however, have the same or similar avidity and/or affinity for various epitopes on different antigens of interest. As such, "binds specifically" or "specifically binds" is not meant to preclude a given complement fixing antibody from binding to more than one antigen of interest. Antibodies that bind specifically to a polypeptide of interest may be capable of binding other polypeptides at a weak, yet detectable, level (e.g., 10% or less of the binding shown to the polypeptide of interest). Such weak binding, or background binding, is readily discernible from the specific antibody binding to the polypeptide of interest, e.g., by use of appropriate controls.

**[0056]** By "detectably labeled ligand", or "detectably labeled secondary ligand" is meant a ligand having an attached detectable label, where the ligand is capable of binding specifically to another compound. Examples of ligands include, but are not limited to, and antibody or an antibody fragment that retains binding specificity,. The detectable label may be attached by chemical conjugation, but where the label is a polypeptide, it could alternatively be attached by genetic engineering techniques. Methods for production of detectably labeled proteins are well known in the art. Detectable labels may be selected from a variety of such labels known in the art, but normally are radioisotopes, chromophores, fluorophores, fluorochromes, enzymes (e.g., horseradish peroxidase), linker molecules or other moieties or compounds which either emit a detectable signal (e.g., radioactivity, fluorescence, color) or emit a detectable signal after exposure of the label to its substrate. Various detectable label/substrate pairs (e.g., horseradish peroxidase/diaminobenzidine, avidin/streptavidin, luciferase/luciferin), methods for labeling antibodies, and methods for using labeled secondary antibodies to detect an antigen are well known in the art. [Note: See, e.g., Harlow and Lane, eds. (Antibodies: A Laboratory Manual (1988) Cold Spring Harbor Laboratory Press, Cold Spring Harbor, N.Y.)]

**[0057]** By "directly labeled C1q" is meant an exogenous C1q molecule having an attached detectable label. The detectable label may be attached by chemical conjugation, but where the label is a polypeptide, it could alternatively be attached by genetic engineering techniques. Methods for production of detectably labeled proteins are well known in the art. Detectable labels may be selected from a variety of such labels known in the art, but normally are radioisotopes, chromophores, fluorophores, enzymes (e.g., horseradish peroxidase), linker molecules or other moieties or compounds which either emit a detectable signal (e.g., radioactivity, fluorescence, color) or emit a detectable signal after exposure of the label to its substrate. Various detectable label/substrate pairs (e.g., horseradish peroxidase/diaminobenzidine, avidin/streptavidin, luciferase/luciferin), methods for labeling antibodies, and methods for using labeled secondary antibodies to detect an antigen are well known in the art. [Note: See, e.g., Harlow and Lane, eds. (Antibodies: A Laboratory Manual (1988) Cold Spring Harbor Laboratory Press, Cold Spring Harbor, N.Y.)]

**[0058]** As used herein the term "isolated," when used in the context of an isolated compound, refers to a compound of interest that is in an environment different from that in which the compound naturally occurs. "Isolated" is meant to

include compounds that are within samples that are substantially enriched for the compound of interest and/or in which the compound of interest is partially or substantially purified. The term "isolated" encompasses instances in which compound is unaccompanied by at least some of the material with which it is normally associated in its natural state. For example, the term "isolated" with respect to a polypeptide generally refers to an amino acid molecule devoid, in whole or part, of sequences normally associated with it in nature; or a sequence, as it exists in nature, but having heterologous sequences in association therewith.

[0059] "Purified" as used herein means that the recited material comprises at least about 75% by weight of the total protein, with at least about 80% being preferred, and at least about 90% being particularly preferred. As used herein, the term "substantially pure" refers to a compound that is removed from its natural environment and is at least 60% free, preferably 75% free, and most preferably 90% free from other components with which it is naturally associated.

[0060] As used herein, a "biological sample" refers to a sample of tissue or fluid isolated from a subject, which in the context of the invention generally refers to samples suspected of containing anti-Agl complement fixing antibodies, which samples, after optional processing, can be analyzed in an *in vitro* assay. Typical samples of interest include, but are not necessarily limited to, blood, plasma, serum, blood cells, urine, saliva, and mucous. Samples also include samples of *in vitro* cell culture constituents including but not limited to conditioned media resulting from the growth of cells and tissues in culture medium, e.g., recombinant cells, and cell components.

[0061] As used herein the terms "Human Leukocyte Antigen system" or "HLA" refers to the major histocompatibility complex, which spans approximately 3.5 million base pairs on the short arm of chromosome 6. It is divisible into 3 separate regions which contain the class I, the class II and the class III genes. In humans, the class I HLA complex is about 2000 kb long and contains about 20 genes. Within the class I region exist genes encoding the well characterized class I MHC molecules designated HLA-A, HLA-B and HLA-C. In addition, there are nonclassical class I genes that include HLA-E, HLA-F, HLA-G, HLA-H, HLA-J and HLA-X as well as a new family known as MIC. The class II region contains three genes known as the HLA-DP, HLA-DQ and HLA-DR loci. These genes encode the  $\alpha$  and  $\beta$  chains of the classical class II MHC molecules designated HLA-DR, DP and DQ. In humans, nonclassical genes designated DM, DN and DO have also been identified within class II. The class III region contains a heterogeneous collection of more than 36 genes.

[0062] A "purified HLA subtype" as used herein refers to a substantially purified antigen of an HLA subtype as described in the table below. When used in reference to a microbead coated with "a different HLA subtype" it is meant that each population of a microbead is coated with a different HLA antigen subtype.

[0063] An "HLA antigen population" as used herein refers to a specific population of HLA antigens found in any one collections, that may be naturally occurring or non-naturally occurring, such as in a specific cell or tissue type.

[0064] As used herein "the distribution of HLAs in a normal human population" refers to a specific population of HLA antigens found in a normal human population, such as in a specific cell or tissue type or an individual.

[0065] The term "assessing" includes any form of measurement, and includes determining if an element is present or not. The terms "determining", "measuring", "evaluating", "assessing" and "assaying" are used interchangeably and include quantitative and qualitative determinations. Assessing may be relative or absolute. "Assessing the presence of" includes determining the amount of something present, and/or determining whether it is present or absent. As used herein, the terms "determining," "measuring," and "assessing," and "assaying" are used interchangeably and include both quantitative and qualitative determinations.

[0066] The term "solid substrate" refers to a solid support in which antigens and/or antibodies may be immobilized thereon. Exemplary solid substrates include multiwell plates, membranes including nitrocellulose membranes and polyethylene membranes, cell and cell membranes, beads, microparticles, microspheres and microbeads. The methods of the invention may be carried out with microparticles, microspheres, microbeads, or beads of any material, e.g. silica, gold, latex, polymers such as polystyrene, polysulfone, polyethyl, or hydrogel. In addition, the microparticles, microspheres, beads or microbeads may be a magnetic.

[0067] It is further noted that the claims may be drafted to exclude any optional element. As such, this statement is intended to serve as antecedent basis for use of such exclusive terminology as "solely", "only" and the like in connection with the recitation of claim elements, or the use of a "negative" limitation.

## DETAILED DESCRIPTION OF THE INVENTION

[0068] The invention provides methods for sensitive and specific detection of complement fixing antibodies in a biological sample using complement factor C1q, including autologous complement factor C1q present in the biological sample and a detectably labelled antibody that binds the autologous complement factor C1q, exogenous human complement factor C1q and a detectably labelled antibody that binds the exogenous human complement factor C1q, or a combination of autologous complement factor C1q and exogenous human complement factor C1q. Also disclosed are kits, systems, and devices for use in the methods of the invention.

[0069] Before the present invention is described, it is to be understood that this invention is not limited to particular

embodiments described, as such may, of course, vary. It is also to be understood that the terminology used herein is for the purpose of describing particular embodiments only, and is not intended to be limiting, since the scope of the present invention will be limited only by the appended claims.

5 [0070] Where a range of values is provided, it is understood that each intervening value, to the tenth of the unit of the lower limit unless the context clearly dictates otherwise, between the upper and lower limits of that range is also specifically disclosed. Each smaller range between any stated value or intervening value in a stated range and any other stated or  
10 intervening value in that stated range is encompassed within the invention. The upper and lower limits of these smaller ranges may independently be included or excluded in the range, and each range where either, neither or both limits are included in the smaller ranges is also encompassed within the invention, subject to any specifically excluded limit in the stated range. Where the stated range includes one or both of the limits, ranges excluding either or both of those included limits are also included in the invention.

15 [0071] Unless defined otherwise, all technical and scientific terms used herein have the same meaning as commonly understood by one of ordinary skill in the art to which this invention belongs. Although any methods and materials similar or equivalent to those described herein can be used in the practice or testing of the present invention, some potential and preferred methods and materials are now described. All publications mentioned herein are incorporated herein by reference to disclose and describe the methods and/or materials in connection with which the publications are cited. It is understood that the present disclosure supersedes any disclosure of an incorporated publication to the extent there is a contradiction.

20 [0072] It must be noted that as used herein and in the appended claims, the singular forms "a", "an", and "the" include plural referents unless the context clearly dictates otherwise. Thus, for example, reference to "a cell" includes a plurality of such cells and reference to "the compound" includes reference to one or more compounds and equivalents thereof known to those skilled in the art, and so forth.

25 [0073] The publications discussed herein are provided solely for their disclosure prior to the filing date of the present application. Nothing herein is to be construed as an admission that the present invention is not entitled to antedate such publication by virtue of prior invention. Further, the dates of publication provided may be different from the actual publication dates which may need to be independently confirmed.

#### Detection Methods

30 [0074] As summarized above, the subject invention provides a method of determining the presence or absence of complement fixing antibodies in a biological sample. The methods of the subject invention utilize complement factor C1q (e.g. autologous, or exogenous) to identify the complement fixing antibodies present in the same biological sample that bind specifically to an antigen of interest.

35 [0075] The methods generally include contacting a solid phase support having an antigen of interest (AgI) immobilized thereon with a biological sample suspected of containing complement fixing antibodies that bind specifically to the antigen of interest. If present, the complement fixing antibody will bind specifically to the immobilized antigen on the solid phase support, and C1q will bind to the complement fixing antibody. C1q binding can then be assayed by contacting the solid phase support with a detectably labelled anti-C1q antibody that binds specifically to the bound C1q.

40 [0076] The biological sample will generally include non-complement fixing antibodies as well as complement fixing antibodies. One advantage of the present invention is that it can differentiate between the two different antibodies, either by using C1q present in the same sample, or by using exogenous C1q. By using C1q present in the same sample, the assay provides for sensitive and specific detection of the relevant complement fixing antibodies that would not occur if an exogenous C1q were used, such as one derived from rabbit serum.

45 [0077] As will be readily apparent, design of the assays described herein is subject to a great deal of variation, and many formats are known in the art. The following descriptions are merely provided as guidance and one of skill in the art can readily modify the described protocols, using techniques well known in the art.

#### Antigen of Interest (AgI)

50 [0078] An antigen or antigenic determinant capable of eliciting an antibody is suitable for use in the present invention. Such antigens or antigenic determinants are those derived from normal human [e.g., human leukocyte antigens (HLA)]. In other methods bacterial, viral, parasitic, or fungal sources, or abnormal tissues, such as tumour antigens may be used. An antigen is generally any molecule toward which an antibody can be generated, including molecules which require the presence of an adjuvant or conjugation to another molecule to induce antibody formation. An antigen may  
55 be a peptide or protein, a carbohydrate, a nucleic acid, or a lipid. The term "antigen" also includes portions of naturally occurring molecules, such as, for example, a subunit of a protein, or a fragment of a protein containing a functional domain or biologically relevant motif. Suitable antigens include but are not limited to proteins associated with the cell cycle, tissue-specific proteins, tumor markers, cytokines, major histocompatibility complex proteins, heat shock proteins,

and pathogen-associated proteins (where a pathogen may be a bacterium, a virus, a fungus, a protozoan, a multicellular parasite, or a prion), as well as carbohydrate residues associated with blood transfusion antigens and tissue typing, lipopolysaccharides, sphingolipids, etc. Exemplary antigens are those that elicit an immune response that protects an animal from disease. Examples of such antigens include, but are not limited to, a protozoan parasite antigen, a helminth parasite antigen, an ectoparasite antigen, a fungal antigen, a bacterial antigen, and a viral antigen.

**[0079]** Examples of viral antigens include antigens derived from viruses such as the hepatitis B virus (HBV), human immunodeficiency virus (HIV), influenza A virus, Epstein Barr virus (EBV), herpes simplex virus (HSV), respiratory syncytial virus (RSV), human cytomegalovirus (HCMV), varicella zoster virus (VZV), and measles virus. Examples of bacterial antigens include, but are not limited to, antigens from *Actinomyces*, *Bacillus*, *Bacteroides*, *Bordetella*, *Bartonella*, *Borrelia*, *Brucella*, *Campylobacter*, *Capnocytophaga*, *Clostridium*, *Corynebacterium*, *Coxiella*, *Dermatophilus*, *Enterococcus*, *Ehrlichia*, *Escherichia*, *Francisella*, *Fusobacterium*, *Haemobartonella*, *Helicobacter*, *Klebsiella*, L-form bacteria, *Leptospira*, *Listeria*, *Mycobacteria*, *Mycoplasma*, *Neorickettsia*, *Nocardia*, *Pasteurella*, *Peptococcus*, *Peptostreptococcus*, *Proteus*, *Pseudomonas*, *Rickettsia*, *Rochalimaea*, *Salmonella*, *Shigella*, *Staphylococcus*, *Streptococcus*, and *Yersinia*. Examples of fungal antigens include, but are not limited to, antigens from *Absidia*, *Acremonium*, *Alternaria*, *Aspergillus*, *Basidiobolus*, *Bipolaris*, *Blastomyces*, *Candida*, *Chlamydia*, *Coccidioides*, *Conidiobolus*, *Cryptococcus*, *Curvularia*, *Epidermophyton*, *Exophiala*, *Geotrichum*, *Histoplasma*, *Madurella*, *Malassezia*, *Microsporium*, *Moniliella*, *Mortierella*, *Mucor*, *Paecilomyces*, *Penicillium*, *Phialemonium*, *Phialophora*, *Prototheca*, *Pseudallescheria*, *Pseudomicrodochium*, *Pythium*, *Rhinosporidium*, *Rhizopus*, *Scolecobasidium*, *Sporothrix*, *Stemphylium*, *Trichophyton*, *Trichosporon*, and *Xylohypha*. Example of protozoan and helminth parasite antigens include, but are not limited to, antigens from *Babesia*, *Balantidium*, *Besnoitia*, *Cryptosporidium*, *Eimeria*, *Encephalitozoon*, *Entamoeba*, *Giardia*, *Hammondia*, *Hepatozoon*, *Isospora*, *Leishmania*, *Microsporidia*, *Neospora*, *Nosema*, *Pentatrichomonas*, *Plasmodium*, *Pneumocystis*, *Sarcocystis*, *Schistosoma*, *Theileria*, *Toxoplasma*, and *Trypanosoma*, *Acanthocheilonema*, *Aelurostrongylus*, *Ancylostoma*, *Angiostrongylus*, *Ascaris*, *Brugia*, *Bunostomum*, *Capillaria*, *Chabertia*, *Cooperia*, *Crenosoma*, *Dictyocaulus*, *Dioctophyme*, *Dipetalonema*, *Diphyllobothrium*, *Dipylidium*, *Dirofilaria*, *Dracunculus*, *Enterobius*, *Filaroides*, *Haemonchus*, *Lagochilascaris*, *Loa*, *Mansonella*, *Muellerius*, *Nanophyetus*, *Necator*, *Nematodirus*, *Oesophagostomum*, *Onchocerca*, *Opisthorchis*, *Ostertagia*, *Parafilaria*, *Paragonimus*, *Parascaris*, *Physaloptera*, *Protostrongylus*, *Setaria*, *Spirocerca*, *Spirometra*, *Stephanofilaria*, *Strongyloides*, *Strongylus*, *Thelazia*, *Toxascaris*, *Toxocara*, *Trichinella*, *Trichostrongylus*, *Trichuris*, *Uncinaria*, and *Wuchereria*. Examples of ectoparasite antigens include, but are not limited to, antigens (including protective antigens as well as allergens) from fleas; ticks, including hard ticks and soft ticks; flies, such as midges, mosquitos, sand flies, black flies, horse flies, horn flies, deer flies, tsetse flies, stable flies, myiasis-causing flies and biting gnats; ants; spiders, lice; mites; and true bugs, such as bed bugs and kissing bugs.

**[0080]** Antigens include, but are not limited to, a calicivirus antigen, a coronavirus antigen, a herpesvirus antigen, an immunodeficiency virus antigen, an infectious peritonitis virus antigen, a leukemia virus antigen, a panleukopenia virus antigen, a parvovirus antigen, a rabies virus antigen, a *Bartonella* antigen, a *Yersinia* antigen, a *Dirofilaria* antigen, a *Toxoplasma* antigen, a tumor antigen, a flea antigen, a flea allergen, a midge antigen, a midge allergen, a mite antigen, and a mite allergen. Particularly preferred antigens include a rabies virus glycoprotein G antigen; heartworm PLA2, P39, P4, P22U, Gp29, astacin, cysteine protease, macrophage migration inhibitory factor, venom allergen, TPX-1, TPX-2, transglutaminase, ankyrin, and asparaginase antigens; flea serine protease, cysteine protease, aminopeptidase, serpin, carboxylesterase, juvenile hormone esterase, and epoxide hydrolase antigens; flea salivary antigens; *Yersinia* F1 and V antigens; and *Toxoplasma gondii* antigens.

**[0081]** The antigen used in the present invention may be that which is produced by a gene recombination method or is chemically synthesized on the basis of gene sequence or peptide sequence determined by gene recombination. Thus, it is a recombinant antigen which is prepared by such a manner that already-known genome sequence or DNA sequence obtained by a molecular cloning from natural virus or cell by utilization of gene recombination techniques is treated with enzymes or the like or subjected to chemical synthesis and the resulting DNA sequence or modified DNA sequence is expressed by a microbe, animal, plant, insect or the like to give a recombinant antigen or it is a peptide or a modified peptide which is prepared by means of a peptide chemical synthesis known as a liquid phase method or a solid phase method utilizing the above information. A solid phase synthetic method for peptide may be usually carried out by an automated peptide synthetic apparatus in an advantageous manner.

#### Preabsorption

**[0082]** In some embodiments, the biological sample is optionally first contacted with a cross-reactive antigen. In general, contacting the biological sample with a cross-reactive antigen will result in depletion of cross-reactive antibodies in a biological sample while also not depleting anti-Agl (antigen of interest) specific complement fixing antibodies, which if present, remains in the sample at detectable levels (e.g., by use of an assay to detect specific anti-Agl specific complement fixing antibodies as described herein). Therefore, the cross-reactive antigen used to contact the biological sample will generally not comprise the Agl that will be used to detect the presence or absence of anti-Agl specific complement fixing

antibodies in the preabsorbed biological sample.

**[0083]** Contacting can be accomplished by, for example, contacting the biological sample with one or more cross-reactive antigens as described herein. The biological sample can be contacted with the cross-reactive antigen and then the specific solid support with immobilized AgI in sequential steps. In some embodiments, the biological sample is contacted with a cross-reactive antigen according to the invention to "preabsorb" non-specific antibodies from the sample prior to detection of specific anti-AgI specific complement fixing antibodies in the sample. Unless specifically indicated otherwise, "preabsorption" as used herein does not necessarily imply that the biological sample is contacted with the cross-reactive antigen first, followed by contacting the sample with an AgI, but rather means that specific anti-AgI specific complement fixing antibodies are not detected until after the sample has been exposed to the cross-reactive antigen.

#### Sample Preparation

**[0084]** In practicing the subject methods, a sample from a subject is assayed for the presence of anti-AgI specific complement fixing antibodies. In some embodiments, the sample that is assayed is a sample that is, or is derived from, any initial source that contains complement fixing antibodies that specifically bind to an AgI. In other embodiments, the sample is, or is obtained from, any initial source containing insufficient complement. Such samples include those in which the complement or C1q has been destroyed by heat inactivation, and those in which the C1q is supplied exogenously. Accordingly, a suitable sample source will be derived from fluids into which the complement fixing antibodies that specifically bind to an AgI have been released. Sample sources of interest include, but are not limited to, many different bodily fluids, particularly blood or blood products, e.g., serum, plasma, and whole blood, blood cells, and urine. The sample volume can be any volume that is compatible with the specific assay format. In some embodiments, the sample will be diluted in a suitable solution prior to assaying for the presence or absence of complement fixing antibodies that specifically bind to an AgI. In general, a solution suitable for diluting a biological sample will include a buffer, such as phosphate buffered saline (PBS), and may include additional items, such as, for example, a non-specific blocking agent, such as bovine serum albumin (BSA), a detergent, such as Triton-X-100, and the like.

**[0085]** Appropriate control samples for the assay include, but are not limited to, blood, serum, whole blood, or urine collected from human subjects who do not have anti-AgI specific complement fixing antibodies (i.e., negative control), or samples which contain a known, predetermined amount of anti-AgI specific complement fixing antibodies (i.e., a positive control).

**[0086]** In many embodiments, a suitable initial source for the human sample is a blood sample. As such, the sample employed in the subject assays is generally a blood-derived sample. The blood-derived sample may be derived from whole blood or a fraction thereof, e.g., serum, plasma, etc., where in some embodiments the sample is derived from blood allowed to clot and the serum separated and collected to be used to assay.

**[0087]** In embodiments in which the sample is plasma, serum, or a serum-derived sample, the sample is generally a fluid sample. Any convenient methodology for producing a fluid serum sample may be employed. In many embodiments, the method employs drawing venous blood by skin puncture (e.g., finger stick, venipuncture) into a clotting or serum separator tube, allowing the blood to clot, and centrifuging the serum away from the clotted blood. The serum is then collected and stored until assayed. Similarly, a plasma sample can be collected from the patient by drawing venous blood into a tube and centrifuging the blood so that the blood cells collect at the bottom of the tube. The liquid portion of the sample, which is blood plasma, can then be collected and stored until assayed. Once the patient-derived sample is obtained, the sample is assayed to determine the presence of anti-AgI specific complement fixing antibodies.

**[0088]** The subject sample may be treated in a variety of ways so as to enhance detection of the presence of anti-AgI specific complement fixing antibodies. For example, where the sample is blood, the red blood cells may be removed from the sample (e.g., by centrifugation) prior to assaying. Detection of the presence of anti-AgI specific complement fixing antibodies may also be enhanced by concentrating the sample using procedures well known in the art (e.g. acid precipitation, alcohol precipitation, salt precipitation, hydrophobic precipitation, filtration (using a filter which is capable of retaining molecules greater than 30 kD, e.g. Centrion 30™), affinity purification).

#### Assay Formats

**[0089]** The solid support immobilized AgIs are used herein as diagnostics to detect the presence or absence of reactive anti-AgI specific complement fixing antibodies in a biological sample. Typically, the assays generally involve separation of unbound antibody in a liquid phase from a solid phase support to which antigen-complement fixing antibody complexes are bound. The assay is generally described in FIG 1, FIG 2, and FIG 3 with respect to a substantially flat solid support (e.g., membrane or microtiter well form) and in FIG 4, FIG 5, and FIG 6 with respect to a microbead solid support. Solid supports which can be used in the practice of the invention include substrates such as nitrocellulose (e.g., in membrane or microtiter well form); polyvinylchloride (e.g., sheets or microtiter wells); polystyrene; latex (e.g., beads, microbeads, microparticles, microspheres or microtiter plates); polyvinylidene fluoride; diazotized paper; nylon membranes; polyeth-

ylene membranes, activated beads, magnetically responsive beads, cells, and cell membranes, and the like.

**[0090]** In some embodiments, the biological sample will be diluted in a suitable solution prior to assaying. In general, a solution suitable for diluting a biological sample will include a buffer, such as phosphate buffered saline (PBS), and may include additional items, such as, for example, a non-specific blocking agent, such as bovine serum albumin (BSA), a detergent, such as Triton-X-100, and the like.

**[0091]** In general, a solid support is first reacted with a liquid phase component (e.g., one or more specific antigens of interest (Agl)) under suitable binding conditions such that the component is sufficiently immobilized to the support. Optionally, immobilization of the antigen to the support can be enhanced by first coupling the Agl to a protein with better binding properties. Suitable coupling proteins include, but are not limited to, macromolecules such as serum albumins including bovine serum albumin (BSA), keyhole limpet hemocyanin, immunoglobulin molecules, thyroglobulin, ovalbumin, and other proteins well known to those skilled in the art. Other molecules that can be used to bind the antigens to the support include polysaccharides, polylactic acids, polyglycolic acids, polymeric amino acids, amino acid copolymers, and the like. Such molecules and methods of coupling these molecules to the Agl, are well known to those of ordinary skill in the art. See, e.g., Brinkley, M.A. *Bioconjugate Chem.* (1992) 3:2-13; Hashida et al., *J. Appl. Biochem.* (1984) 6:56-63; and Anjaneyulu and Staros, *International J. of Peptide and Protein Res.* (1987) 30:117-124.

**[0092]** After contacting the solid support with the Agl, any non-immobilized Agl is removed from the support by washing. The support-bound Agl is then contacted with a biological sample suspected of containing anti-Agl complement fixing antibodies under suitable binding conditions. If present, the complement fixing antibodies will bind specifically to the immobilized Agl. C1q (e.g. autologous, or exogenous) present in the sample will bind to the complement fixing antibody bound to the Agl immobilized on the solid phase support. The C1q present in the sample may be autologous C1q from the biological sample itself, or may be exogenous C1q. In some embodiments, the bound C1q is then assayed by contacting the solid phase support with a detectably labeled anti-C1q antibody that binds specifically to the C1q. The presence of the detectably labeled anti-C1q antibody can then be detected using techniques well known in the art.

**[0093]** In some embodiments, the assay is carried out in a sequential manner, first contacting the solid phase support with the biological sample containing anti-Agl complement fixing antibodies and C1q, and then contacting the solid phase support with a detectably labeled anti-C1q antibody. This approach is described in FIG 1. In other embodiments, the solid phase support is contacted with both the biological sample and the detectably labeled anti-C1q antibody at the same time. This approach is described in FIG 2.

**[0094]** In some embodiments, detectably labeled exogenous C1q is used in the assay. In such embodiments, the solid phase support is contacted with both the sample of interest and the detectably labeled exogenous C1q at the same time. Bound C1q is then detected using techniques well known in the art. This approach is described in FIG 3.

**[0095]** More particularly, in some embodiments, an ELISA method can be used, wherein the wells of a microtiter plate are coated with specific Agl (e.g., the specific Agl are immobilized on the surface). A sample containing or suspected of containing anti-Agl complement fixing antibodies and C1q (e.g. autologous, or exogenous) is then added to the coated wells. Optionally, a series of standards, containing known concentrations of anti-Agl complement fixing antibodies can be assayed in parallel with the samples or aliquots thereof to serve as controls. Generally from about 0.001 to 1 ml of sample, diluted or otherwise, is sufficient, usually about 0.01 ml sufficing. Furthermore, in certain embodiments, each sample and standard will be added to multiple wells so that mean values can be obtained for each. The test and control samples are each incubated with the solid support for a time sufficient for binding of an antibody to antigen to occur. Generally, from about 0.1 to 3 hour is sufficient, usually 1 hour sufficing.

**[0096]** Antibody binding to the immobilized Agl and binding of C1q present in the sample to the complement fixing antibody bound to the immobilized Agl is allowed during a sufficient period of incubation.

**[0097]** In an alternative embodiment, a biological sample containing or suspected of containing anti-Agl complement fixing antibodies is first contacted with cross-reactive antigen in a solution to provide a preabsorbed mixture. After a period of incubation sufficient to allow antibody binding to the cross-reactive antigen, the preabsorbed mixture containing "residual" antibody is then added to the wells of a microtitre plate coated with specific Agl. After a period of incubation sufficient to allow "residual" anti-Agl complement fixing antibodies from the preabsorbed mixture to bind to the immobilized Agl and binding of C1q (e.g. autologous, or exogenous) present in the sample to the complement fixing antibody bound to the immobilized Agl, no wash is performed. A detectably labelled secondary binding molecule is added that binds to the C1q bound to the complement fixing antibodies. The secondary binding molecule is allowed to react with any C1q (e.g. autologous or exogenous) bound to anti-Agl complement fixing antibodies (e.g., complement fixing antibodies bound to the specific Agl antigens immobilized on the surface), the plate is optionally washed, and the presence of the secondary binding molecule is detected using methods well known in the art.

**[0098]** Thus, in one particular embodiment, the presence of bound anti-Agl complement fixing antibodies and autologous C1q from a biological sample can be readily detected using a secondary binder comprising an antibody directed against the autologous C1q. In another method, the presence of bound anti-Agl complement fixing antibodies from a biological sample can be readily detected using a secondary binder comprising a directly labelled exogenous C1q. A number of anti-human C1q molecules

are known in the art (e.g., commercially available goat anti-human C1q, sheep anti-human C1q, etc) which can be readily conjugated to a detectable label to facilitate direct, or indirect detection of autologous or exogenous C1q. Examples of labels which permit direct measurement of immunocomplexes include radiolabels, such as <sup>3</sup>H or <sup>125</sup>I, fluorophores, dyes, beads, chemiluminescents, colloidal particles, and the like. Examples of labels which permit indirect measurement of binding include enzymes where the substrate may provide for a colored or fluorescent product. The label may be detected directly (e. g. a radioisotope) or by binding to one or more additional molecules (e. g., an epitope which binds to a labeled antibody). Non-limiting examples of fluorescent compounds which may be used according to the invention include fluorochromes such as Fluorescein (FITC) or Alexa 488, Cy 3, or Cy 5 and green fluorescent protein, as well as phycoerythrin (PE) PE-Cy5, PerCP, ECD, and the like. In some embodiments, the antibody is labeled with a covalently bound enzyme capable of providing a detectable product signal after addition of suitable substrate. Examples of suitable enzymes for use in conjugates include horseradish peroxidase, alkaline phosphatase, malate dehydrogenase and the like. Where not commercially available, such antibody-enzyme conjugates are readily produced by techniques known to those skilled in the art.

**[0099]** In such assays, the concentration of the detectably labeled anti-C1q antibody or the directly labeled C1q will generally be about 0.1 to 500 µg/ml, such as about 150 µg/ml. The solution containing the detectably labeled anti-C1q antibody is generally buffered in the range of about pH 6.5-9.5. The incubation time should be sufficient for the detectably labeled anti-C1q antibody to bind available autologous or exogenous C1q. Generally, from about 0.1 to 3 hours is sufficient, usually 40 minutes sufficing. After non-specifically bound material has been cleared, the signal produced by the bound detectably labeled anti-C1q antibody is detected by conventional means. For example, where the detectable label is a fluorescent compound, the presence of the label can be detected using flow cytometry or other similar techniques, such as the Luminex xMap system. Where an enzyme conjugate is used, an appropriate enzyme substrate is provided so that a detectable product is formed. More specifically, where a peroxidase is the selected enzyme conjugate, a preferred substrate combination is H<sub>2</sub>O<sub>2</sub> and O-phenylenediamine which yields a colored product under appropriate reaction conditions. Appropriate substrates for other enzyme conjugates such as those disclosed above are known to those skilled in the art. Suitable reaction conditions as well as means for detecting the various useful conjugates or their products are also known to those skilled in the art. For the product of the substrate O-phenylenediamine for example, light absorbance at 490-495 nm is conveniently measured with a spectrophotometer.

**[0100]** Assays can also be conducted in solution, such that the AgI and antibodies present in a biological sample form complexes under precipitating conditions. In one particular embodiment, specific AgI can be immobilized to a solid phase particle (e.g., an agarose bead, latex bead, or the like) using coupling techniques known in the art, such as by direct chemical or indirect coupling. The AgI-coated particle and free cross-reactive antigen (e.g., not immobilized to a solid phase particle) are then contacted under suitable binding conditions with a biological sample suspected of containing anti-AgI complement fixing antibodies. Cross-linking between bound anti-AgI complement fixing antibodies and C1q (e.g., autologous or exogenous) causes the formation of particle-antigen-antibody complex aggregates which can be precipitated and separated from the sample using washing and/or centrifugation. The reaction mixture can be analyzed to determine the presence or absence of antibody-antigen complexes using any of a number of standard methods, such as those immunodiagnostic methods described above, including use of a detectably labeled anti-C1q antibody.

**[0101]** In a further embodiment, specific AgI can be immobilized to a first solid phase particle (e.g., an agarose bead or the like) and cross-reactive antigen can be immobilized to a second solid phase particle (e.g., a magnetic bead), where the first solid phase particle and the second solid phase particle are different. In such embodiments, the cross-reactive antigen-coated particle and specific AgI-coated particle are then contacted under suitable binding conditions with a biological sample suspected of containing anti-AgI complement fixing antibodies. Particle-cross-reactive antigen-antibody complexes can then be separated from the sample. For example, where the cross-reactive antigens are attached to a first particle, such as magnetic beads, the particle-cross-reactive antigen-antibody complexes can be separated from the solution using any of a number of standard methods. The reaction mixture can then be analyzed to determine the presence or absence of complement fixing antibody-specific AgI antigen complexes using the methods described above.

**[0102]** In yet another embodiment, a method for diagnosing infection (e.g., bacterial or viral) using the present invention involves the use of an assay device for detecting the presence or absence of anti-AgI complement fixing antibodies in a sample by first optionally contacting the sample with cross-reactive antigens to remove any antibodies that could cross-react with the specific AgI, and then contacting the sample with specific AgI to bind any anti-AgI complement fixing antibodies in the sample. In such embodiments, the assay device comprises at least a sample application region, a preabsorption zone, and a detection zone and will be composed of a membrane capable of conducting fluid flow, such as a nitrocellulose membrane strip. Optionally, the membrane may be provided on a rigid or semi-rigid supporting surface, such as a polyethylene strip. In representative embodiments, the preabsorption zone will be interposed between the sample application region and the detection zone. The location of the zones will be such that lateral flow of fluid along the membrane causes all the components of the sample to come into contact with the preabsorption zone first and then come into contact with the detection zone. As such, fluid flow along the membrane from the sample application region

towards the preabsorption zone and then the detection zone is facilitated by capillary action across the membrane. Exemplary lateral flow assay devices and detection methods employing the lateral flow assay devices are provided in, for example, U.S. Patent No. 6,146,589, the disclosure of which is incorporated herein by reference.

5 [0103] In representative embodiments, cross-reactive antigens are immobilized in the preabsorption zone and specific AgI are immobilized in the detection zone. Detection of the presence or absence of anti-AgI complement fixing antibodies is carried out by first adding the sample to the sample application region and allowing the sample to migrate by capillary action across the membrane strip. As the sample migrates across the membrane strip, the sample first comes into contact with the immobilized cross-reactive antigens in the preabsorption zone to provide a preabsorbed sample. The preabsorbed sample then migrates to the detection zone where it comes into contact with immobilized specific AgI. If present, the anti-AgI complement fixing antibodies bind specifically to the immobilized AgI, and the C1q (e.g., autologous or exogenous) then binds specifically to the bound anti-AgI complement fixing antibodies. A detectably labelled anti-C1q antibody can then be contacted with the detection zone to detect the presence of the C1q and anti-AgI complement fixing antibody complex as described above. The detectably labelled anti-C1q antibody molecule is allowed to react with any captured sample C1q, and the presence of the secondary binding molecule detected using methods described above and well known in the art.

10 [0104] In any of the above described embodiments, from one to six washes may be employed, with sufficient volume to thoroughly wash away any non-specifically bound proteins or other molecules present.

### 15 Kits

20 [0105] Also disclosed are kits that find use in practising the disclosed methods, as described above. The kits for practising the disclosed methods at least include reagents for assaying a sample derived from a human subject for the presence or absence of anti-AgI complement fixing antibodies, where such kits may include: specific AgIs and/or immunoassay devices comprising the specific AgIs, detectably labelled anti-C1q antibodies, directly labelled exogenous C1q, as well as members of a signal producing system, such as enzyme substrates, and the like; various buffers for use in carrying out the subject detection assays; a reference for determining the presence or absence of anti-AgI complement fixing antibodies in a sample; and the like.

25 [0106] In some embodiments, the compositions will be provided in a solution suitable for diluting a biological sample. In general, a solution suitable for diluting a biological sample will include a buffer, such as phosphate buffered saline (PBS), and may include additional items, such as for example, a non-specific blocking agent, such as bovine serum albumin (BSA), a detergent, such as Triton-X-100, and the like.

30 [0107] The kits may further include one or more reagents that may be used in preparation of the patient derived sample, such as heparin, Ficoll-Hypaque, lysing buffer, protease inhibitor, and the like, etc. In addition, the subject kits may further include one or more components employed in fractionation of the sample, such as an electrophoretic medium or precursors thereof, e.g. dried precursors of polyacrylamide gels, one or more buffer mediums or components thereof, and the like.

35 [0108] Certain kits further include at least an information storage and presentation medium that contains reference data with which assay results may be compared in order to diagnose infection, e.g., reference data that positively or negatively correlate to the presence of anti-AgI complement fixing antibodies that bind specifically to an antigen of interest derived from a bacterial or viral source, as described above. The information storage and presentation medium may be in any convenient form, such as printed information on a package insert, an electronic file present on an electronic storage medium, e.g. a magnetic disk, CD-ROM, and the like. Other kits may include alternative means for obtaining reference data, e.g. a website for obtaining the reference data "on-line."

40 [0109] The kits may further include means for obtaining the patient sample, e.g. a syringe. The subject kits further typically include instructions for carrying out the disclosed methods, where these instructions may be present on a package insert and/or the packaging of the kit. Finally, the kit may further include one or more reagents from an additional biochemical assay which is used to detect the presence of anti-AgI complement fixing antibodies.

45 [0110] The kit components may be present in separate containers, or one or more of the components may be present in the same container, where the containers may be storage containers and/or containers that are employed during the assay for which the kit is designed.

### 50 Devices

55 [0111] Also disclosed are devices that find use in practising the disclosed methods, as described above. Devices for practising the disclosed methods at least include reagents for assaying a sample derived from a human subject for presence or absence of anti-AgI complement fixing antibodies, where such devices may include: the specific AgI and optionally cross-reactive antigens, immobilized on the surface of a solid support, such as a microtitre plate or a microbead, such as an agarose or latex bead.

**EP 2 353 005 B1**

**[0112]** In certain devices, a microtitre plate will be provided with a unique AgI immobilized to the surface of each well of the plate. In other devices, a microtitre plate will be provided with the same AgI immobilized to the surface of one or more wells of the plate. In certain devices, a population of microbeads will be provided with an AgI immobilized to the surface of the population of microbeads. In certain devices, a population of microbeads will be provided with a unique AgI immobilized to the surface of each sub-population of microbeads. For example, a population of microbeads will be provided that includes 10 sub-populations, where each sub-population includes a unique immobilized AgI. For example, 30 of the Class I HLA antigens (Table 1 and Table 3) and 30 of the Class II HLA antigens (Table 2 and Table 4) may be immobilized on the surface of microbeads, such as latex beads, in either single antigen form (Tables 1 and 2) or in sub-populations (Table 3 and 4) for use in identifying complement fixing antibodies that bind specifically to one HLA subtype.

**Table 1**

	<b>Bead No.</b>	<b>HLA CLASS I Antigen Typing</b>	<b>Bead No.</b>	<b>HLA CLASS I Antigen Typing</b>
15	1	A1	36	B47
	2	A2	37	B48
	3	A3	38	B49
	4	A11	39	B50
	5	A23	40	B51
20	6	A24	41	B52
	7	A25	42	B53
	8	A26	43	B54
	9	A29	44	B55
25	10	A30	45	B56
	11	A31	46	B57
	12	A32	47	B58
	13	A33	48	B59
	14	A34	49	B60
30	15	A36	50	B61
	16	A43	51	B62
	17	A66	52	B63
	18	A68	53	B64
35	19	A69	54	B65
	20	A74	55	B67
	21	A80	56	B71
	22	B7	57	B72
	23	B8	58	B73
40	24	B13	59	B75
	25	B18	60	B76
	26	B27	61	B78
	27	B35	62	B81
45	28	B37	63	B8201
	29	B38	64	BW4
	30	B39	65	BW6
	31	B41		
	32	B42		
50	33	B44		
	34	B45		
	35	B46		

55

EP 2 353 005 B1

Table 2

Bead No.	HLA CLASS II Antigen Typing
1	DR1
2	DR4
3	DR7
4	DR8
5	DR10
6	DR103
7	DR11
8	DR12
9	DR13
10	DR14
11	DR15
12	DR16
13	DR17
14	DR18
15	DR51
16	DR52
17	DR53
18	DR15, 17
19	DQ2
20	DQ4
21	DQ5
22	DQ6
23	DQ7
24	DQ8
25	DQ9

Table 3

Bead No.	HLA CLASS I Antigen Typing
1	A11 B27,48
2	A2,29 B39,56
3	A1,29 B8,45
4	A2,24 B7,55
5	A2,25 B18,64
6	A26,24 B52,62
7	A31,68 B53
8	A2,11 B13,62
9	A23,33 B45,63
10	A23,34 B44
11	A11,23 B49,52
12	A11,24 B59,60
13	A24,33 B44,51
14	A23,26 B41,72
15	A3,32 B50,56
16	A2,24 B54,67
17	A2 B52,73
18	A26,66 B38,75
19	A11,33 B51,54

**EP 2 353 005 B1**

(continued)

	<b>Bead No.</b>	<b>HLA CLASS I Antigen Typing</b>	
5	20	A30	B13,72
	21	A30,36	B35,71
	22	A69	B35,61
	23	A1,32	B60,64
10	24	A2	B7,46
	25	A30	B42
	26	A2	B8,58
	27	A2,3	B58,65
	28	A1,36	B37,57
15	29	A3,68	B7,65
	30	A33,36	B53,61

**Table 4**

	<b>Bead No.</b>	<b>HLA CLASS II Antigen Typing</b>		
20	1	DR15, 9	53, 51	DQ5, 9
	2	DR4, 15	53, 51	DQ6, 7
25	3	DR16, 4	53, 51	DQ4, 5
	4	DR8, 14	52	DQ4, 5
	5	DR4, 7	53	DQ2, 8
	6	DR15, 18	51, 52	DQ6, 4
	7	DR11, 12	52	DQ5, 7
30	8	DR103, 17	52	DQ5, 2
	9	DR1, 13	52	DQ5, 6
	10	DR9, 10	53	DQ5, 9
	11	DR15, 12	51, 52	DQ5, 7
35	12	DR16, 14	51,52	DQ5
	13	DR13, 8	52	DQ5, 6
	14	DR11, 13	52	DQ5, 6
	15	DR17, 7	52, 53	DQ2, 9
	16	DR15, 8	51	DQ6, 8
40	17	DR15, 4	51, 53	DQ2, 6
	18	DR15, 17	51, 52	DQ6, 2
	19	DR15, 7	51, 53	DQ6, 2
	20	DR1, 7	53	DQ2, 5
45	21	DR15, 11	52	DQ5, 6
	22	DR7, 13	52, 53	DQ6, 9
	23	DR15, 13	51, 52	DQ6, 2
	24	DR9, 14	52, 53	DQ5, 9
	25	DR8, 9	53	DQ2, 7
50	26	DR17, 14	52	DQ2, 5
	27	DR1, 11	52	DQ5, 6
	28	DR17, 4	52, 53	DQ2
	29	DR11, 4	52, 53	DQ7, 8
55	30	DR1, 14	52	DQ5

**[0113]** A number of such devices are known in the art. In one non-limiting example, the device comprises an AgI immobilized to a solid phase particle (e.g., an agarose bead, latex bead, magnetic bead, and the like) using coupling

techniques known in the art, such as by direct chemical or indirect coupling. The particle-Agl complex can then be used in the assays described above. In some embodiments, the Agl is immobilized to the solid phase particle by a linking moiety such as, for example, a polypeptide.

5 [0114] Additional items that are required or desired in the methods to be practiced with the devices may be present, which additional items include, but are not limited to: means for obtaining the patient sample, e.g. a syringe; one or more reagents necessary for preparation of the patient derived sample, such as heparin, Ficoll-Hypaque, lysing buffer, protease inhibitor, and the like; instructions for carrying out the subject methods using the subject devices; one or more reagents from an additional biochemical assay which is used to detect the presence or absence of anti-Agl complement fixing antibodies.

10 [0115] In some embodiments, the devices will also be provided with a solution suitable for diluting a biological sample. In general, a solution suitable for diluting a biological sample will include a buffer, such as phosphate buffered saline (PBS), and may include additional items, such as for example, a non-specific blocking agent, such as bovine serum albumin (BSA), a detergent, such as Triton-X-100, and the like.

15 [0116] In another non-limiting example, the apparatus will generally employ a continuous flow-path of a suitable filter or membrane, such as a nitrocellulose membrane, having at least three regions, a fluid transport region, a sample region, and a measuring region. The sample region is prevented from fluid transfer contact with the other portions of the flow path prior to receiving the sample. After the sample region receives the sample, it is brought into fluid transfer relationship with the fluid transport region (e.g., the sample region is in fluid communication with the fluid transport region). The fluid transfer region may optionally have immobilized cross-reactive antigens in order to bind cross-reactive antibodies. After 20 the fluid transport region receives the sample, it is brought into fluid transfer relationship with the measuring region (e.g., the fluid transport region is in fluid communication with the measuring region). The measuring region may have immobilized to it the specific Agl, and detectably labeled anti-C1q antibodies are then combined with the assayed sample and the assay performed as above.

25 [0117] In yet another non-limiting example, the device is a dipstick, to the surface of which is bound in distinct regions: (1) specific Agl and optionally (2) cross-reactive antigens an affinity reagent. In such an exemplary device, the dipstick is inserted directly into a test sample (e.g., blood, serum, or urine) derived from a human subject under conditions suitable to permit binding of anti-Agl complement fixing antibodies to the specific Agl and subsequent binding of C1q (e.g., autologous or exogenous) to the bound anti-Agl complement fixing antibodies. The dipstick is then withdrawn from the sample and, if necessary, washed to remove nonspecifically bound material. The dipstick is next inserted into a container 30 containing a detectably labeled anti-C1q antibody, or fragment or mimetic thereof, which specifically binds human C1q. After incubation for a time sufficient for binding of the anti-C1q antibody to the human C1q and anti-Agl complement fixing antibody-Agl complexes, the dipstick may be washed and binding of the anti-C1q antibody is detected by standard means. Where necessary for detection of the second antibody, the dipstick may be inserted into a second container containing a reagent which activates the detectable label on the second antibody. Alternatively, similar embodiments 35 may use directly labeled exogenous C1q instead of the anti-C1q antibody. In such embodiments, after the dipstick is withdrawn from the sample, the dipstick may be washed and binding of the directly labeled exogenous C1q can be detected by standard methods.

## 40 EXAMPLES

[0118] The following examples are put forth so as to provide those of ordinary skill in the art with a complete disclosure and description of how to make and use the present invention, and are not intended to limit the scope of what the inventors regard as their invention nor are they intended to represent that the experiments below are all or the only experiments performed. Efforts have been made to ensure accuracy with respect to numbers used (e.g. amounts, 45 temperature, etc.) but some experimental errors and deviations should be accounted for. Unless indicated otherwise, parts are parts by weight, molecular weight is average molecular weight, temperature is in degrees Centigrade, and pressure is at or near atmospheric.

### 50 EXAMPLE 1

#### C1q HLA Antibody Assay

##### Methods and Materials

55 [0119] The following methods and materials were used in the examples below.

Materials

5 [0120] LABScreen Single antigen and PRA kits were purchased from One Lambda (Canoga Park, CA). PE-conjugates of sheep anti-human C1q was purchased from Meridian Life Science, Inc. (Saco, Maine 04072). IVIG (Gamimmune-N); 10% in 0.2 M Glycine; pH 4.4; was provided by Bayer Corporation.

Methods

10 **1. Cytotoxic-Dependent Cytotoxicity (CDC)**

[0121]

15 10-S-150 Cytotoxicity Crossmatch - T Cells.  
10-S-151 Cytotoxicity Crossmatch - B Cells.

**2. CDC *In Vitro* Intravenous Gammaglobulin (IVIG) Inhibition**

[0122]

20 10-S-150 Cytotoxicity Crossmatch - T Cells.  
10-S-151 Cytotoxicity Crossmatch - B Cells

**3. Luminex IgG (Single antigen beads and PRA beads):**

25 [0123] 10-S-127 LUMINEX IgG Single Antigen Bead Assay.

**4. Luminex C1q (Single antigen beads and PRA beads) Experimental Procedure**

30 [0124] The following procedure was used for the Luminex C1q experimental procedure for the single antigen beads and the PRA beads:

- 35 4.1. Incubate 20 ul sera with 2.5 ul of HLA class I and/or II HLA-Ag coated beads (single antigen/mixed antigen beads) at room temperature for 20 minutes on the tray shaker;  
4.2. Without wash; add 10 ul of PE conjugated anti-human C1q and continue to incubate another 20 minutes on a tray shaker;  
4.3. Wash the beads with 200 ul Luminex wash buffer twice and resuspend in 60 ul PBS.  
4.4. Acquire the sample and collect data on a Luminex machine;  
4.5. Proceed to data analysis using LABScreen software.

40 Cutoff Setting

[0125] A positive HLA-Ab specificity has to meet both of following two criteria:

- 45 a. The score should be >4 based on One Lambda provided formula; and  
b. The raw fluorescence signal of PE should be >100;

**5. Sample Preparation for IVIG *In Vitro* Inhibition Luminex C1q Test**

50 [0126] The following three samples were used in the *in vitro* IVIG inhibition test:

- a. Neat serum (of known anti-HLA specificity);  
b. Serum diluted 1:2 in [10% human albumin, 0.2 M Glycine/PBS] buffer; pH 7.4  
c. Serum diluted 1:2 in 10% IVIG (in 0.2 M glycine buffer as carrier); pH~4.4.

55 [0127] An AB negative unsensitized male serum prepared as above to serve as the IVIG inhibition assay control.

## 6. Sample Preparation for *In Vitro* Inhibition CDC Test

5 [0128] Except for 0.2 M Glycine/PBS buffer (pH 7.4) which was used as the diluent, the samples were prepared in the same manner as the above Luminex C1q samples preparation. The above described procedure is the One-Step procedure. The following procedures is multi-step procedure:

- 10
- a). Two-Step-Wash with and without adding extra human C1q
  - b). DTT treat serum prior to performing assay with and without adding extra human C1q.
  - c). Use PE-anti-C3 as secondary antibody.
  - d). Luminex PRA beads with One-Step procedure.
  - e). Heat inactivation of sera with and without C1q addition.

## 7. Validation Experimental Design

15 [0129] All validation experiments were performed based on "Blinded Test" principle. All formal validation samples were simultaneously tested by AHG-CDC, Luminex IgG, and Luminex C1q assays.

## 8. Inter-/Intra-Assay QC Sample

20 [0130] The following pre-defined QC samples were used for method QC monitoring:

### Positive Control for Inter-Assay QC:

25 [0131]

- PPS; broadly specific HLA antibody diluted 1:10 in 3% HBSA (kindly provided by Dr. Robert Bray).

### Positive Control for Intra-assay QC:

30 [0132]

- Harbury; neat; with known HLA antibody specificity (in house typing serum).

### Negative Control for Inter-assay QC:

35 [0133]

- A single AB negative male donor with no history of blood transfusion or transplantation.

40 [0134] All QC samples were pre-tested and frozen in small aliquots. Each aliquot was only used for a single batch assay. For Intra-assay QC, 10 replicates of Harbury serum were tested in a same batch assay; PPS and single AB QC sera were tested in each batch of assays for Inter-Assay QC. Three groups of data in three different fluorescence intensity levels (represented as relative numbers) were used for coefficient of variation (CV %) calculation. Each group contained five fluorescence intensity numbers.

## 9. Sample Resources

50 [0135] A total of 91 blinded samples were used in the Luminex-C1q validation study and compared with the CDC and/or Luminex-IgG results. All validation samples were obtained from the following sources:

1. Predefined HLA typing sera (N=16);
2. Random in house clinical sera (N=42);
3. Random clinical sera from Wisconsin (N=11); and
4. Random male AB sera (N=22).

55 [0136] The IVIG in vitro inhibition test was performed on 30 samples (in vitro samples), eleven Pre-IVIG and Post-IVIG sera (in vivo) were also collected and tested by the CDC, LMX-C1Q and LMX-IgG method.

## Results

[0137] Formation of (Ab-Ag) complex and fixation of complement C1q are the early events of the classical pathway cascade and CDC. The amount of C1q fixation directly correlates with cell death, the terminal step of the classic pathway cascade and CDC. Instead of visually estimating the percent cell death under a microscope, Luminex-C1q was designed to detect C1q fixation by HLA-(Ab-Ag) complexes using a high throughput Luminex technology.

[0138] In the reaction, Luminex beads individually coated with single HLA antigens were incubated with serum to allow HLA-Ab (if any) to bind to the corresponding Ag beads and fix complement C1q from the serum, followed by adding fluorescently labeled anti-human C1q (PE-antiC1q). After an additional incubation, the beads were washed and the PE-fluorescence intensity on the each bead surface was measured by a Luminex machine.

[0139] The PE intensity on each HLA single antigen bead represents the complement fixation capability of the corresponding HLA (Ab-Ag) complex; which proportionately correlates with the CDC effect.

### Luminex-C1q Methodology Design and Optimization

#### Two-Step versus One-Step procedure

[0140] One-Step and Two-Step procedures with/without adding extra human C1q were evaluated. The data showed that the One-Step procedure is much better than the Two-Step procedure with respect to the background noise, detection sensitivity, and method simplicity (FIG 7).

#### Sample Diluent Effects

[0141] Five different diluents were evaluated in the One-Step Luminex- Clq:

- a. 3% HBSA;
- b. 0.2 M Glycine buffer; pH 4.4;
- c. 0.2 M Glycine in PBS; pH 7.2;
- d. 10% human albumin in Glycine buffer; pH 4.4; and
- e. 10% human albumin in 0.2 M Glycine buffer/PBS; pH 7.2.

[0142] It is interesting to note that when the serum was diluted 1:2 in each of the above diluents, only the diluents with glycine dramatically increased the C1q fixing in pre-defined positive sera (2-8 fold increase compared with neat sera results) in the Luminex-C1q assay. The increase of C1q fixation by glycine buffer could result from (a) direct enhancement of C1q fixing and/or (b) indirectly enhancing CFAb binding, thereby increasing C1q fixing. The effect of glycine, 3% HBSA, and PBS on IgG binding was also evaluated in the Luminex-IgG assay. Instead of increasing IgG binding, all diluents proportionately decreased IgG binding. Therefore, glycine buffer directly enhances C1q fixation through an unknown mechanism.

[0143] Based on the results and consideration of both detection sensitivity and method stability, 10% human albumin in 0.2 M Glycine buffer/PBS (pH 7.2) was finally chosen as the best diluent to be used for Luminex-Clq IVIG inhibition assay.

#### C3 Fixation

[0144] Complement C3 fixation to HLA-Abs (Ab-Ag) complexes was also evaluated using PE-conjugated anti-human C3 Abs in both the one-step and two-step procedures. C3 fixation was not detectable in the assay. It is possible that the PE-anti-C3 was not optimized or that the antibody itself had insufficient avidity. If necessary, more C3 antibodies could be tested.

#### Correlation between CDC and Luminex-C1q

[0145] A total of 78 sera were tested by both CDC and Luminex-Clq and the results obtained highly correlated with each other (N=76, 97%; see attached "LMX-C1q Validation Sample-Regular Samples (FIG 16A-N) and LMX-C1q Validation-IVIG Samples (FIG 17A-J)"). Using the LMX-IgG to determine all binding Abs present in the serum, there were 22 sera in which LMX-C1Q identified the CF Abs better than the CDC (N=22; 28%). In all tested samples, the HLA, IgG specificities picked up by CDC were also positive by Luminex-C1q. The Luminex-C1q assay often picks up a limited set of additional CF HLA-Ab specificities not seen by CDC. All of the "extra" specificities detected by Luminex-C1q were also detected in the Luminex IgG assay confirming the higher sensitivity of the LMX-C1Q assay. In cases of sera with broad HLA-Ab specificity, the CDC could not call any specificities; however, Luminex-C1q was able to clearly identify

the specificities (#2, #21, #36, #37, #40, #42, #64; N=7; 9%).

[0146] Another 5 sera (#6, #9, #18, #67, #70; 6.4%) were called "Unclear or undefined HLA-Abs specificity by CDC, but clear specificities were called by Luminex-C1q and Luminex-IgG. Misidentified specificities were called by CDC in samples #7, #10, #11, #27, and #28 (N=5; 6.4%) which were not found in either of the Luminex assays (C1q or IgG).

[0147] Four sera (samples #2, #3, #7, and #10; N=4; 5.1%) identified some specificities in CDC which were negative in the Luminex-C1q. Blinded samples were then retested by CDC and were negative on repeat confirming the wrong calls by CDC. There was one Rituxan treated patient serum in which Luminex-C1q was still able to identify both class I and II specificities but no specificities could be determined by CDC because all B cells were killed by the cytotoxic Rituxan in the serum.

[0148] It was noticed that any IgM specificities (#38, #41, #64, #67, and #76 in FIG 16A-N and #7 in FIG 17A-J) detected in DTT treated serum tested by CDC also had corresponding IgG detected in Luminex-IgG (only #38, #41, #64, and #67 were picked up by Luminex-C1q). This suggests that the coexistence of both IgM and IgG alloantibodies to the same Ag specificities might be a common phenomenon in vivo.

[0149] IgM specificities detected by CDC were negative in the Luminex-C1q assay (#76 in FIG 16A-N and #7 FIG 17A-J). [Subsequent work has confirmed this observation]. C1q might not be able to bind to the IgM (Ab-Ag) complex, or the anti-C1q antibody might be unable to access C1q in the complex because of steric hindrance.

[0150] Another two apparently uncorrelated samples (N=2; 2.6%) were found in the validation. Sample #13 had A23, B57, and B58 Ab detectable by both CDC and Luminex-IgG but not by Luminex-C1q; sample #24 had B54, 55, 56, 61, 81 detectable by CDC and LMX-IgG but not by Luminex-C1q. (Note B61 = wrong call by CDC). These two questionable samples were repeated by "spiking" with exogenous human C1Q and complete concordance was observed. Taken altogether, 27% (N=21) of samples tested by CDC were called broad or wrong and/or had undefined specificities. All had clear specificities by Luminex-C1q.

[0151] While Luminex-C1q detects additional specificities (also observed in the LMX-IgG) compared with CDC, its inclusion correlation (LMX-C1q includes all specificities detected by CDC) was 100% (78/78).

#### Correlation between Luminex-IgG and Luminex-C1q

[0152] The results from the validated samples showed that all HLA-Ab specificities called by Luminex-C1q were also found by Luminex-IgG. In all the samples we tested, Luminex-IgG always defined more specificities than were detected by CDC and/or Luminex-C1q. This is due to the lack of detection of non-CF Abs and of IgM, which are not detectable by CDC and LMX-C1Q, respectively. It is likely that Luminex-IgG picks up non-CF Abs in samples #1, #5, #29, #30, #38, #65, #71, and #77 (N=8; 10%). LMX-IgG also detected specificities in normal unsensitized AB negative male donor sera (#27, #28, and #88), which should theoretically be negative in the assay.

[0153] CDC and Luminex-C1q are based on the same principle, namely detection of complement fixing antibodies, long appreciated to be clinically relevant in the immune response. However, Luminex-IgG is based on the principle of IgG-binding only without regard to the downstream effects of that binding. Therefore, comparisons of method sensitivity, while informative, are not a basis for test validation because the tests differ in principle. The standard to make a judgment for a better assay system is still to clearly identify those clinically relevant alloantibodies which provide reliable information for the best donor-recipient matching, prediction of acute rejection and post transplant monitoring. Since CDC has been well proven in its clinical significance, we mainly focused on the comparison with CDC in our Luminex-C1q validation study; and Luminex-IgG was used to be a reference to further confirm the results.

#### In vitro IVIG Inhibition Testing and In Vivo IVIG Treated Patient Testing

[0154] A total of 11 patient serum samples have been used in the IVIG inhibition study. Parallel experiments of Luminex-C1q, CDC and/or Luminex-IgG were performed simultaneously. The IVIG inhibition test was performed by CDC and Luminex-C1q but not Luminex-IgG, since the latter is not an appropriate assay for this purpose (see IVIG spiking results; FIGS 8-9).

[0155] All results of the Luminex-C1q in vitro IVIG inhibition test perfectly matched the in vivo IVIG effects seen in the post-IVIG samples; even in those samples in which IVIG caused a differential inhibition of certain specificities and not of others (FIG 10). Follow up samples of pre and post-IVIG sera were tested by Luminex-C1q in one patient who was treated multiple times with IVIG. The in vitro IVIG inhibition test exhibited a differential inhibition pattern: A24 was inhibited and A2, 68, 69 were not inhibited. After the patient received the IVIG treatments, follow-up post-IVIG samples were taken for Luminex-C1q assay and confirmed the same inhibition pattern (FIGS 11-13B). In most cases, Luminex-C1q IVIG inhibition results also correlated with, or were better than, the results of the CDC IVIG inhibition test.

[0156] The validation data obtained from the IVIG study group clearly demonstrated the advantages of Luminex-C1q compared with CDC and Luminex-IgG (FIG 16A-N and FIG 17A-J).

## Discussion

[0157] The correct identification of clinically relevant/detrimental HLA alloantibodies existing in the serum of a (potential) graft recipient is a critical step prior to transplantation. It is generally well accepted in the transplantation field that cytotoxic alloantibody (CFAbs) can cause a hyperacute rejection.

[0158] There are two major categories of HLA antibody (HLA-Ab) which could exist in a recipient serum based on their complement fixing characteristics, e.g., CFAbs and non-CFAbs. Only CFAbs are known to be detrimental and clinically relevant but the real immunological function of non-CFAbs is not clear. Flow crossmatch studies suggest that some binding antibodies are irrelevant and some detrimental. No distinction in the flow has heretofore been made with respect to the ability to bind complement. Some non-CF Abs may, in fact, be beneficial antibodies and play an important role in maintaining normal immune homeostasis. Our unpublished IVIG study data suggest that some IgGs naturally exist in normal human sera that can specifically bind to HLA-Ags. Instead of activating the CDC cascade to kill the cells, they exert a protective effect and inhibit CDC effects resulting from cytotoxic HLA alloantibodies. The mechanism is still under investigation. It is very important to differentiate the two types of antibodies in transplant practice.

[0159] Complement C1q is a key component of the classical complement pathway and acts as the first recognition molecule that interacts with antibody-antigen complexes to activate the complement cascade. The binding of C1 to antibody is via C1q and C1q must cross link at least two antibody molecules before it is firmly fixed. Complement 1 (C1) complex comprising three distinct proteins C1q, C1r, and C1s is the key initial activation step of the classical pathway of complement and plays an important role in the initiation of the inflammatory process. Complement C1q is a very stable protein molecule with a high serum concentration (150 ug/ml). In our study, the oldest serum tested was frozen in 1976 and it still had good C1q binding activity. Theoretically, the detection of C1q fixation by HLA alloantibodies is superior to the use of other later downstream complement elements in the classical pathway cascade. The method allows one to know that the screen donor can fix complement to particular antibody-antigen complexes, giving an estimation of risk for activating the sequential steps of the cascade post-transplant. Our presented Luminex-C1q method development and validation data have provided strong evidence for the rationale of this assay design.

[0160] During the Luminex-C1q methodology development and optimization, several different experimental designs for the procedure were evaluated including One-Step, Two-Step (with and without adding additional human C1q), DTT serum treatment, and different diluents. Based on method sensitivity, stability, accuracy, and simplicity, a final optimized One-Step procedure was determined and used in the validation study. For the Luminex C1q *in vitro* IVIG inhibition assay, 10% human albumin in 0.2 M Glycine/PBS buffer (pH: 7.4) was used as a sample diluent control to control for dilution effect.

[0161] This newly developed Luminex-C1q perfectly combines the features from both CDC and Luminex-IgG and, at the same time, eliminates the main drawbacks that exist in those two assays. On the one hand, unlike LMX-IgG but like CDC, it directly detects CFAbs to give a functional test result superior to CDC through a cell-free, solid phase binding system. Since it additionally has high sensitivity, Luminex-C1q is able to pick up low level cytotoxic antibodies missed by CDC. On the other hand, like LMX-IgG but unlike CDC, Luminex-C1q can easily simultaneously identify up to nearly a 100 different HLA-Abs in a single reaction due to the use of the Luminex high throughput multiplex detection system.

[0162] LMX-C1q actually can exclude false positive results from non-cytotoxic Abs that are often called by Luminex-IgG. Since the Luminex-C1q assay detects only CFAbs and has no interference from IVIG (i.e., non CF IgG existing in the serum from an IVIG treated patient.), the LMX-C1q can be reliably used for the *in vitro* IVIG inhibition test. The Luminex-C1q assay has proved its reliability in the prediction and monitoring of IVIG *in vivo* effectiveness. (FIG 17A-J and FIGS 10-15). By analysing and comparing the results of all three methods, the following patterns were found and are consistent with the theoretical principles of each test system:

1. Any specificity (except one due to IgM) called by CDC is included in Luminex-C1q; if not, then CDC was incorrectly interpreted and/or due to non-HLA antibodies;
2. Any specificity called by Luminex-C1q will also be included in the specificities detected by Luminex-IgG, but not necessarily by CDC; and
3. If Luminex-IgG is negative, then Luminex-C1q will be negative and the DTT treated sera in CDC will also be negative.

### EXAMPLE 2 (Comparative Example)

#### Directly-Labelled C1a HLA Assay

[0163] The following provides a method of screening human serum to identify HLA complement fixing antibodies (HLA-CFab) using the Luminex multiplex/single antigen bead technology. However, these methods may be carried out using

any flow cytometry or ELISA system to identify any kind of complement fixing antibodies with any multiplex or single antigen system.

**[0164]** Sera to be tested were incubated with HLA single antigen coated Luminex (LMX) beads, such as the LABscreen Class I and LABscreen Class II single antigen bead mix (One Lambda, Canoga Park, CA) and biotin labelled C1q. Serum A was known to have complement fixing ability by both complement dependent cytotoxicity (CDC) and by the indirect C1q (anti-C1q) assay. It has a limited set of HLA antibody specificities. Serum B was a positive control serum known to have complement fixing ability by both CDC and the indirect C1q (anti-C1q) assay. It has a very broad set of HLA antibody specificities. The negative control was a non-transfused male AB negative (ABO/Rh blood group type) serum that was known not to fix complement in any assay. All sera were heat inactivated to "decomplement" them prior to testing.

**[0165]** As exemplified in FIG 18, HLA antibodies in the test serum (1) bind to the HLA antigens on the corresponding beads and (2) the bound HLA-CFAB fixed biotin labeled C1q (Bio-C1q) to (3) form a complex of HLA-CFAB/Ag/Bio-hC1q. R-Phycoerythrin-conjugated streptavidin (SA-PE) present in the reaction then bound to the Bio-hC1q of the complex. After washes with LABscreen wash buffer, the beads were acquired on a Luminex machine. The PE intensity on each HLA single antigen bead represented the complement fixation capability of the corresponding HLA-Ab/Ag complex, which proportionately correlated with the complement dependent cytotoxicity (CDC) effect of the antibodies.

**[0166]** The reaction pattern of the test serum was then compared to the antigen array worksheet associated with the antigen bead mix used in the assay, and the accompanying analysis program provided data for calculating panel reactive antibody (CPRA) and defining anti-HLA complement fixing antibody specificity.

**[0167]** The specificity of HLA detection using the directly-labelled C1q in the LMX-C1q assay was compared to the specificity of carrying out the LMX-C1q assay using the indirectly-labelled C1q (anti-C1q antibody) as described in the earlier examples. As shown in FIG 19A, detection with the directly-labelled C1q resulted in an increased number of true positives. FIG 19B displays a subset of Serum B which included only the positive antibodies detected by the directly-labelled C1q and this subset is arranged by strength of indirectly labelled C1q reactions. The X axis in each case represents the specificities of the single antigen beads (i.e., each bar is a unique single antigen different than all other bars) The Y axis represents the MFI (mean fluorescence intensity) and is an indication of strength of the reaction.

**[0168]** The *in vitro* IVIG inhibition assay was also carried out with this method to demonstrate the correlation and reproducibility of carrying out the assay with anti-C1q antibody (FIG 20A) and directly-labelled C1q (FIG 20B). The IVIG assay was carried out as described above. As shown in FIG 20B, directly-labelled C1q was similarly effective as the anti-C1q antibody in the IVIG inhibition assay. However, the assays carried out with directly-labelled C1q were more sensitive than the assays carried out with the anti-C1q method.

**[0169]** The above results successfully demonstrated that this newly developed assay is a simple, reliable, sensitive, objective, specific, high throughput multiplex HLA alloantibody test. It will be a replacement for the classic CDC assay. The principle of this assay could be a universal technique platform to be used for any cytotoxic antibody detection.

**[0170]** The preceding merely illustrates the principles of the invention. It will be appreciated that those skilled in the art will be able to devise various arrangements which, although not explicitly described or shown herein, embody the principles of the invention and are included within its scope. Furthermore, all examples and conditional language recited herein are principally intended to aid the reader in understanding the principles of the invention and the concepts contributed by the inventors to furthering the art, and are to be construed as being without limitation to such specifically recited examples and conditions. Moreover, all statements herein reciting principles, aspects, and embodiments of the invention as well as specific examples thereof, are intended to encompass both structural and functional equivalents thereof. Additionally, it is intended that such equivalents include both currently known equivalents and equivalents developed in the future, i.e., any elements developed that perform the same function, regardless of structure. The scope of the present invention, therefore, is not intended to be limited to the exemplary embodiments shown and described herein. Rather, the scope of the present invention is embodied by the appended claims.

## Claims

1. An *in vitro* method for determining the presence or absence of complement fixing antibodies in a biological sample which has been obtained from a subject that bind specifically to human leukocyte antigens (HLAs) of interest, comprising:

(a) incubating a biological sample from a subject with a collection of microparticles of different subtypes and complement factor C1q, wherein each microparticle is coated with a different purified HLA subtype, wherein the different purified HLA subtype is derived from a cell population presenting the HLA subtype, and wherein the incubating is for a sufficient time to allow anti-HLA complement fixing antibodies in the biological sample to bind to the HLAs and to allow complement factor C1q to bind the anti-HLA complement fixing antibodies in the

biological sample;

(b) without washing, incubating the microparticles with a detectably labelled antibody capable of specifically binding with the complement factor C1q bound to the anti-HLA complement fixing antibodies bound to the HLAs; and

(c) detecting the presence or absence of the detectably labelled antibody bound to the complement factor C1q to determine the presence or absence of complement fixing antibodies.

2. A method as claimed in claim 1, wherein the complement factor C1q is autologous complement factor C1q.

3. A method as claimed in claim 1, wherein the complement factor C1q is exogenous complement factor C1q.

4. A method as claimed in claim 1, wherein the complement factor C1q is a combination of autologous complement factor C1q and exogenous complement factor C1q.

5. A method as claimed in claim 1, wherein the microparticle is a polystyrene bead.

6. A method as claimed in claim 1, wherein the microparticle is a latex bead.

7. A method as claimed in claim 1, wherein the microparticle is a magnetic bead.

8. A method as claimed in claim 1, wherein the biological sample is serum, blood, saliva, plasma, or urine.

9. A method as claimed in claim 1, wherein the label is a fluorochrome, a chromophore, an enzyme, a linker molecule, a biotin molecule, an electron donor, an electron acceptor, a dye, a metal, or a radionuclide.

10. A method as claimed in claim 1, wherein the microparticle is an agarose bead.

11. A method as claimed in claim 1, wherein the detecting is by flow cytometry.

## Patentansprüche

1. *In vitro* Verfahren zum Bestimmen der Anwesenheit oder Abwesenheit von Komplement-fixierenden Antikörpern in einer biologischen Probe, welche von einem Subjekt erhalten wurde, die spezifisch an humane Leukozyten Antigene (HLA) von Interesse binden, umfassend:

a. Inkubieren einer biologischen Probe von einem Subjekt mit einer Sammlung von Mikropartikeln von verschiedenen Subtypen und Komplementfaktor C1q, wobei jeder Mikropartikel mit einem unterschiedlichen gereinigten HLA Subtyp beschichtet ist, wobei der unterschiedliche gereinigte HLA Subtyp von einer Zellpopulation erhalten wird, die den HLA Subtyp präsentiert, und wobei das Inkubieren für eine ausreichende Zeit erfolgt, um anti-HLA Komplement-fixierenden Antikörpern in der biologischen Probe zu ermöglichen, an die HLA zu binden, und um dem Komplementfaktor C1q zu ermöglichen, die anti-HLA Komplement-fixierenden Antikörper in der biologischen Probe zu binden;

b. ohne Waschen, Inkubieren der Mikropartikel mit einem detektierbar markierten Antikörper, der in der Lage ist, spezifisch an den Komplementfaktor C1q zu binden, der an die Anti-HLA Komplement-fixierenden Antikörper gebunden ist, die an die HLA gebunden sind; und

c. Detektieren der Anwesenheit oder Abwesenheit des detektierbar markierten Antikörper, der an den Komplementfaktor C1q gebunden ist, um die Anwesenheit oder Abwesenheit von Komplement-fixierenden Antikörpern zu bestimmen.

2. Verfahren nach Anspruch 1, wobei der Komplementfaktor C1q autologer Komplementfaktor C1q ist.

3. Verfahren nach Anspruch 1, wobei der Komplementfaktor C1q exogener Komplementfaktor C1q ist.

4. Verfahren nach Anspruch 1, wobei der Komplementfaktor C1q eine Kombination aus autologem Komplementfaktor C1q und exologem Komplementfaktor C1q ist.

5. Verfahren nach Anspruch 1, wobei der Mikropartikel ein Polystyrol Kügelchen ("bead") ist.

## EP 2 353 005 B1

6. Verfahren nach Anspruch 1, wobei der Mikropartikel ein Latex Kügelchen ist.
7. Verfahren nach Anspruch 1, wobei der Mikropartikel ein magnetisches Kügelchen ist.
- 5 8. Verfahren nach Anspruch 1, wobei die biologische Probe Serum, Blut, Speichel, Plasma oder Urin ist.
9. Verfahren nach Anspruch 1, wobei die Markierung ein Fluorochrom, ein Chromophor, ein Enzym, ein Linkermolekül, ein Biotinmolekül, ein Elektronendonator, ein Elektronenakzeptator, ein Farbstoff, ein Metall oder ein Radionuklid ist.
- 10 10. Verfahren nach Anspruch 1, wobei der Mikropartikel ein Agarose Kügelchen ist.
11. Verfahren nach Anspruch 1, wobei das Detektieren mit Durchflusszytometrie erfolgt.

### 15 **Revendications**

1. Procédé *in vitro* pour déterminer la présence ou l'absence d'anticorps fixant le complément, dans un échantillon biologique qui a été obtenu à partir d'un sujet, qui se lie spécifiquement à des antigènes des leucocytes humains(HLA) d'intérêt, comprenant :  
20  
(a) incuber un échantillon biologique provenant d'un sujet avec une collection de microparticules de différents sous-types et le facteur du complément C1q, chaque microparticule étant enrobée d'un sous-type de HLA purifié différent, le sous-type de HLA purifié différent étant dérivé à partir d'une population de cellules présentant le sous-type de HLA, et l'incubation s'effectuant pendant une durée suffisante pour permettre à des anticorps anti-HLA fixant le complément dans l'échantillon biologique de se lier aux HLA et pour permettre au facteur du complément C1q de se lier aux anticorps anti-HLA fixant le complément dans l'échantillon biologique ;  
25  
(b) sans lavage, incuber les microparticules avec un anticorps marqué de façon détectable capable de se lier spécifiquement avec le facteur du complément C1q lié aux anticorps anti-HLA fixant le complément liés aux HLA ; et  
30  
(c) détecter la présence ou l'absence de l'anticorps marqué de façon détectable lié au facteur du complément C1q pour déterminer la présence ou l'absence d'anticorps fixant le complément.
2. Procédé selon la revendication 1, dans lequel le facteur du complément C1q est un facteur du complément C1q autologue.  
35
3. Procédé selon la revendication 1, dans lequel le facteur du complément C1q est un facteur du complément C1q exogène.
4. Procédé selon la revendication 1, dans lequel le facteur du complément C1q est une combinaison d'un facteur du complément C1q autologue et d'un facteur du complément C1q exogène.  
40
5. Procédé selon la revendication 1, dans lequel la microparticule est une bille de polystyrène.
6. Procédé selon la revendication 1, dans lequel la microparticule est une bille de latex.  
45
7. Procédé selon la revendication 1, dans lequel la microparticule est une bille magnétique.
8. Procédé selon la revendication 1, dans lequel l'échantillon biologique est du sérum, du sang, de la salive, du plasma ou de l'urine.  
50
9. Procédé selon la revendication 1, dans lequel le marqueur est un fluorochrome, un chromophore, une enzyme, une molécule de leur, une molécule de biotine, un donneur d'électron, un accepteur d'électron, un colorant, un métal ou un radionucléide.
- 55 10. Procédé selon la revendication 1, dans lequel la microparticule est une bille d'agarose.
11. Procédé selon la revendication 1, dans lequel la détection s'effectue par cytométrie en flux.

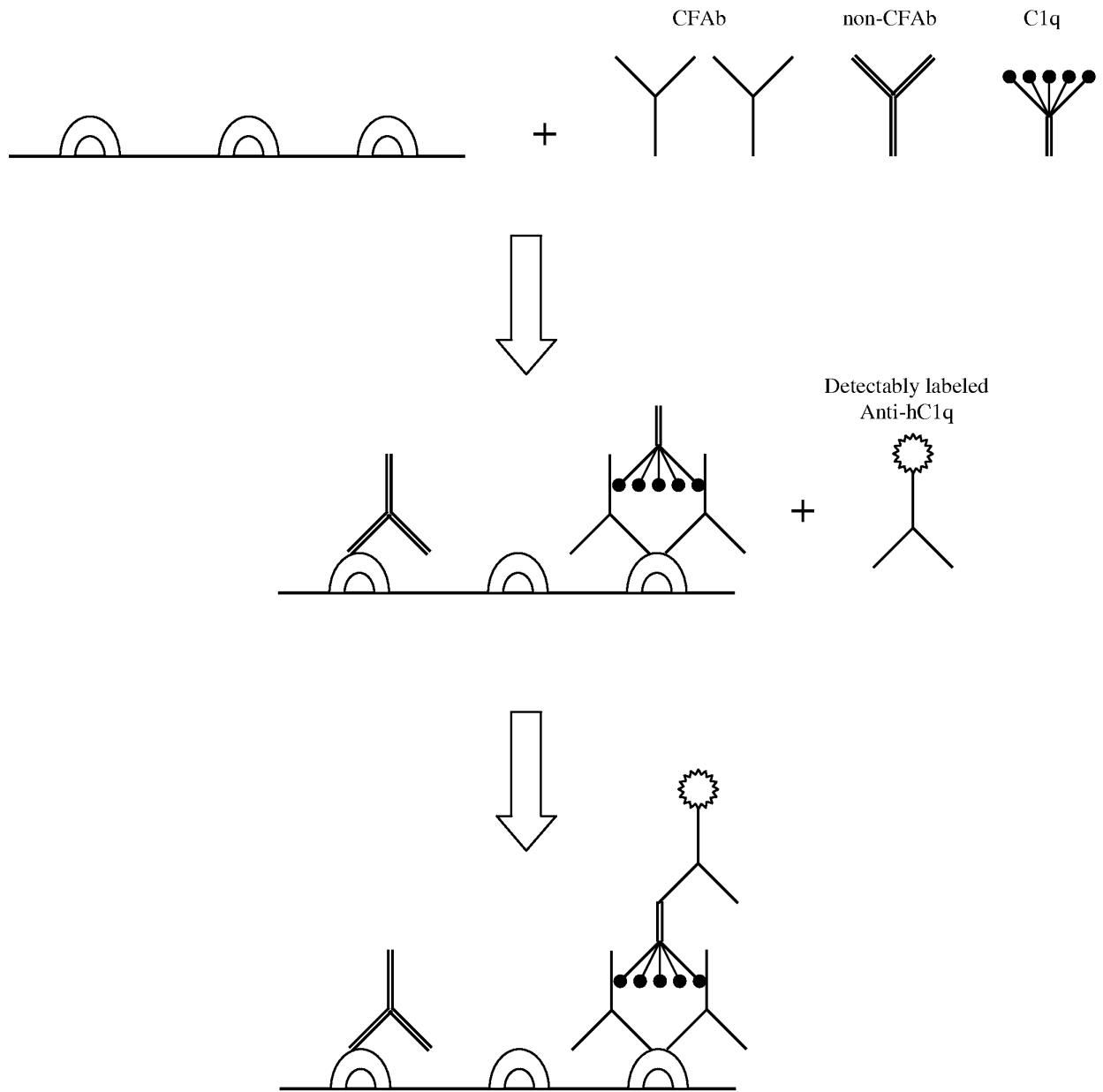


FIG 1

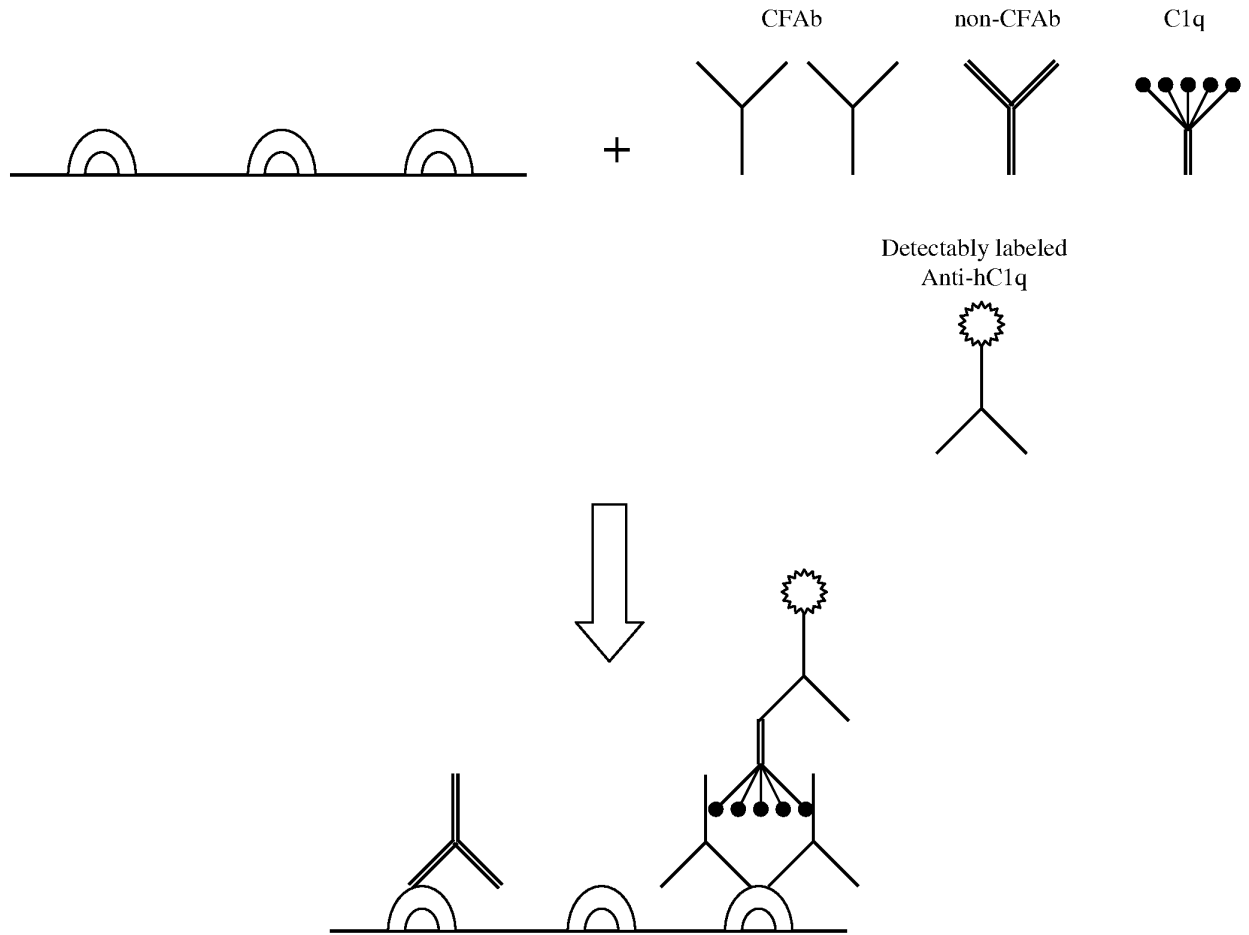


FIG 2

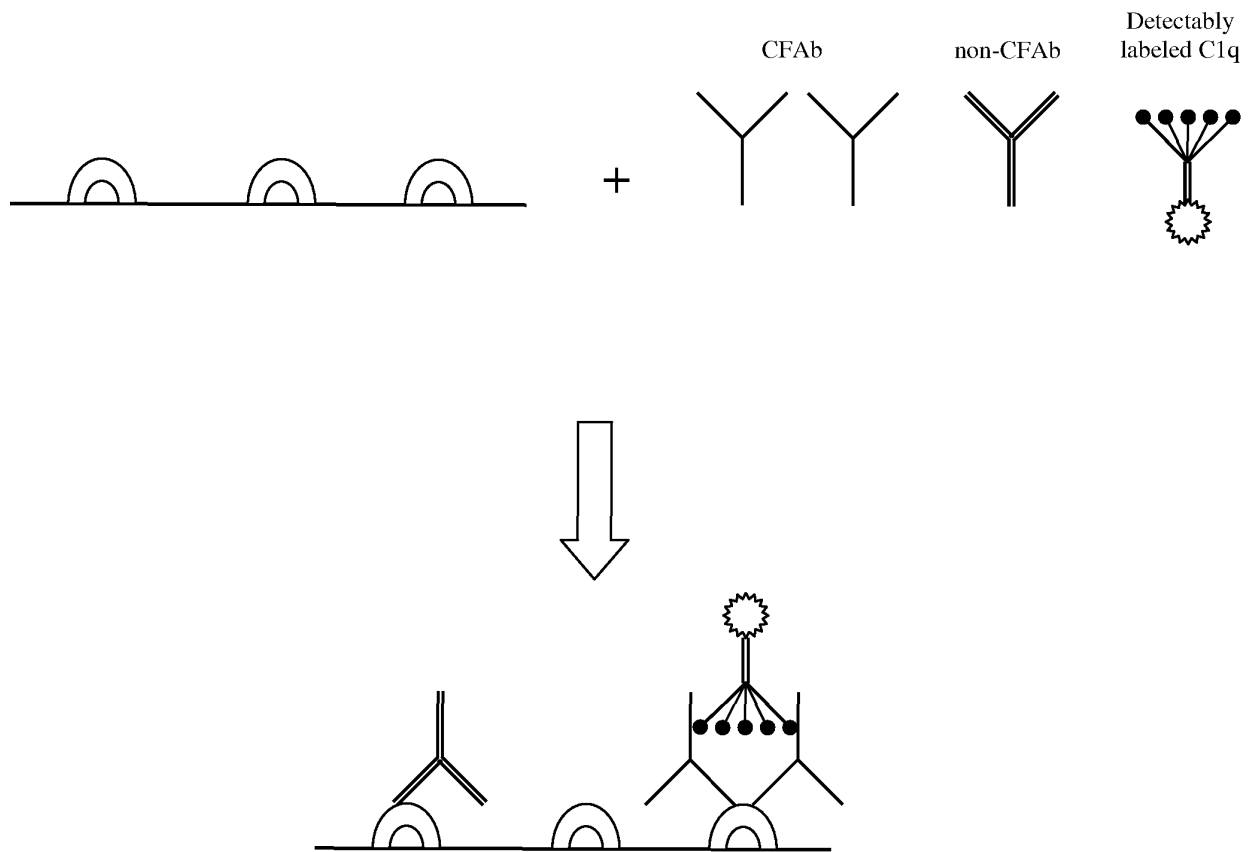


FIG 3

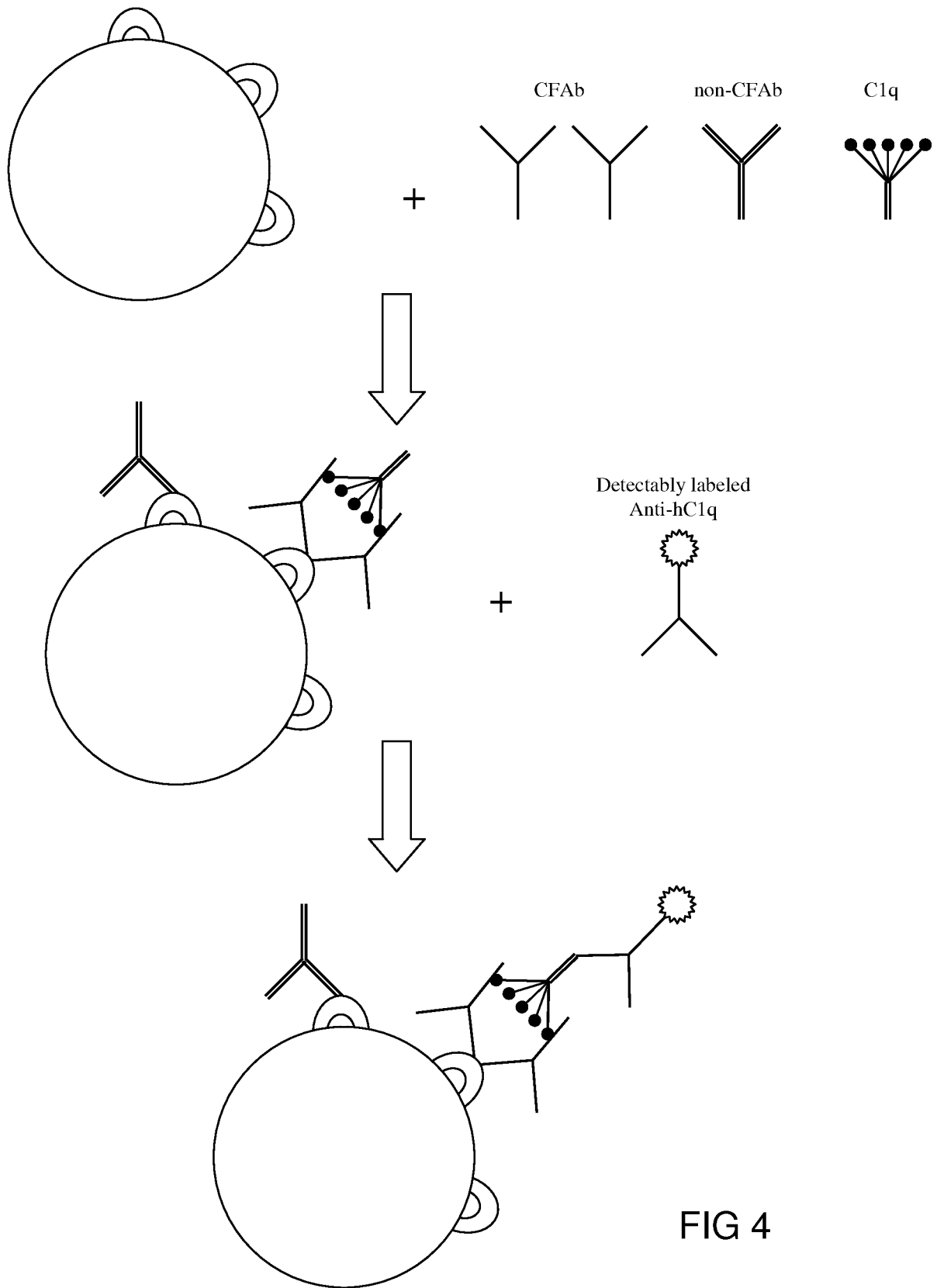


FIG 4

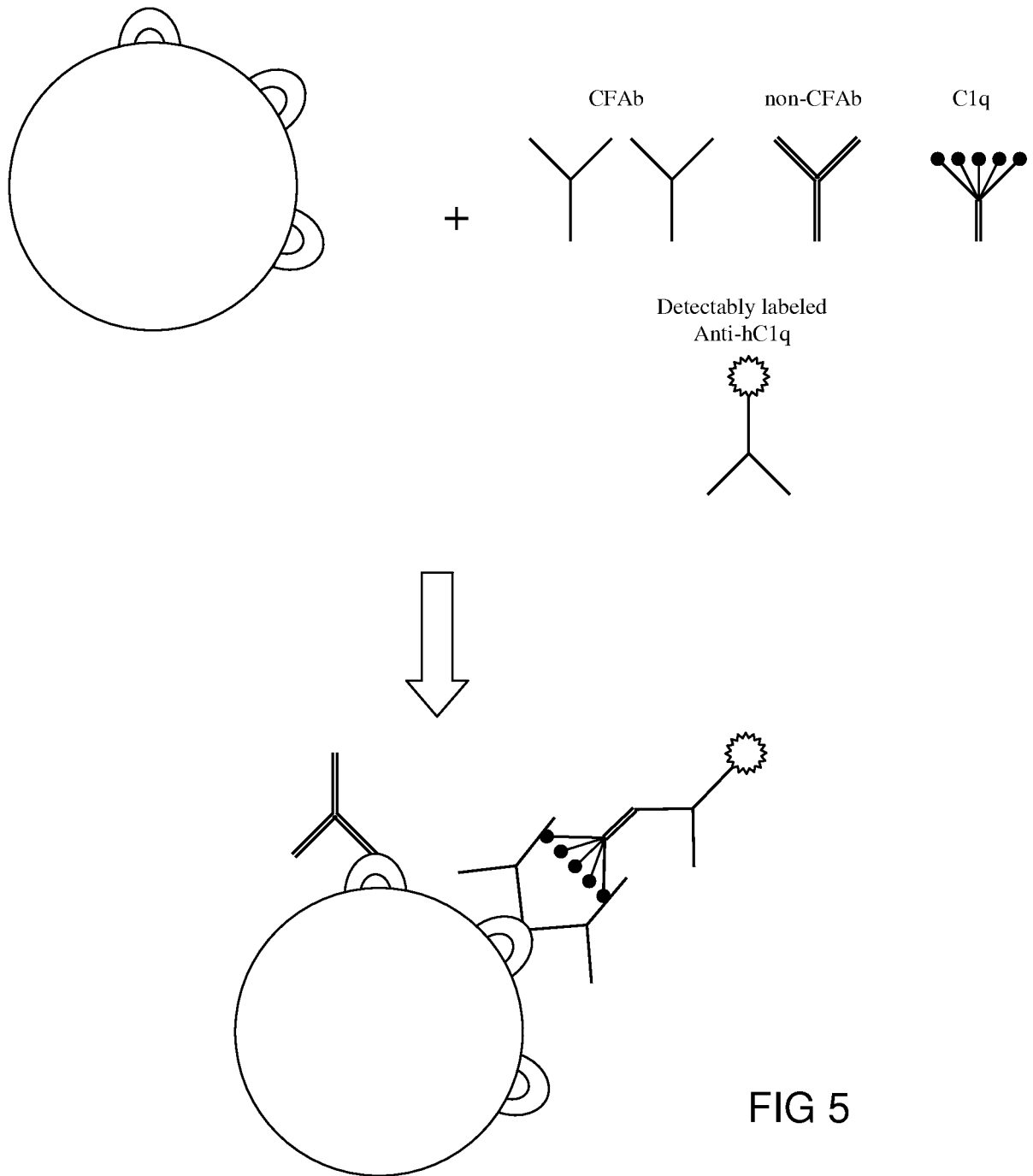
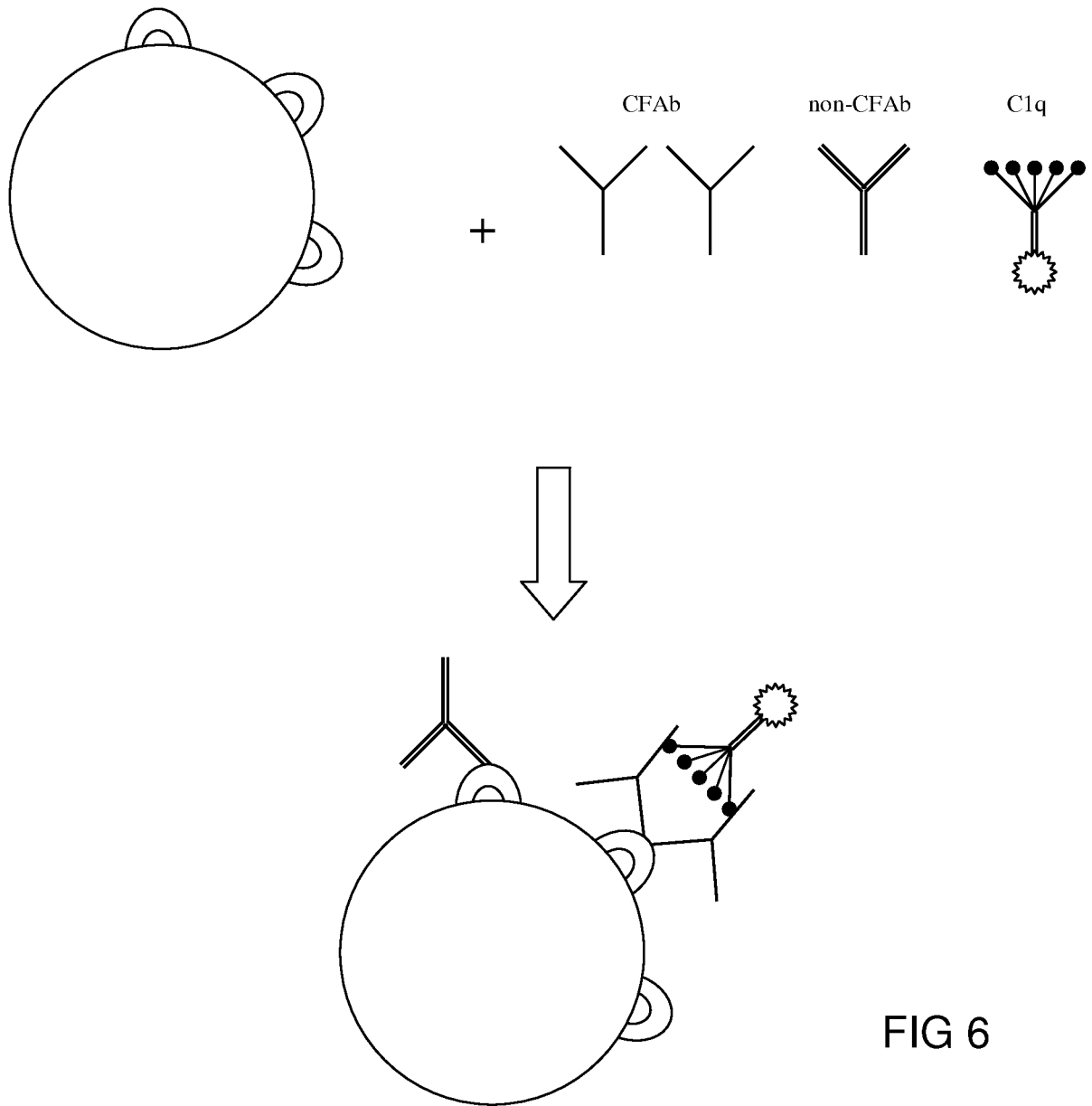


FIG 5



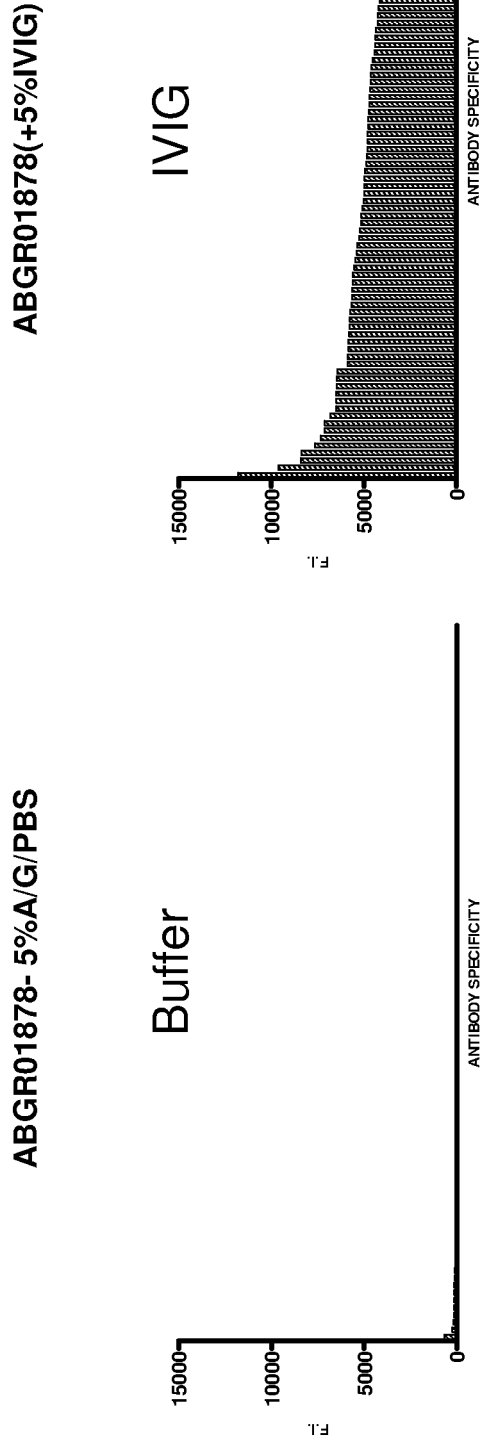
**COMPARISON OF ONE- AND TWO-STEP LUMINEX-C1q**

**Observed/Expected**

<b>SERUM</b>	<b>HLA-Abs Called</b>	
	<b>Two-Step</b>	<b>One-Step</b>
<b>Positive</b>	<b>47/50</b>	<b>50/50</b>
<b>B8,59</b>	<b>0/2</b>	<b>2/2</b>

**FIG 7**

# Luminex-IgG IVIG SPIKING ASSAY (ABO01878)



Negative Control

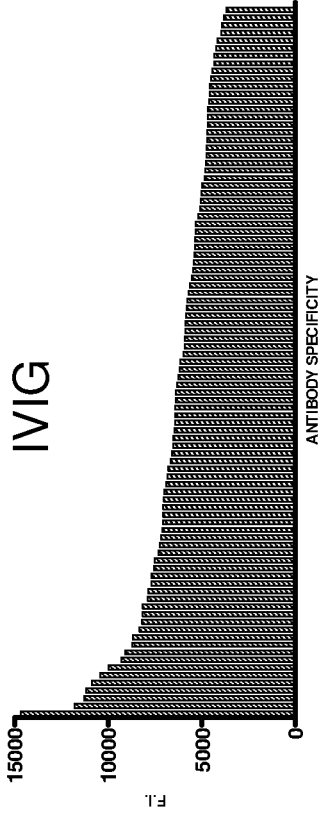
**FIG 8**

# Luminex-IgG IVIG SPIKING ASSAY (Peds Kidney #2)

8/2/07 (5%A/G/PBS)



8/2/07 (+5%IVIG)



Patient Serum

FIG 9

**SUMMARY OF CDC/LUMINEX-C1q IVIG INHIBITION ASSAY**

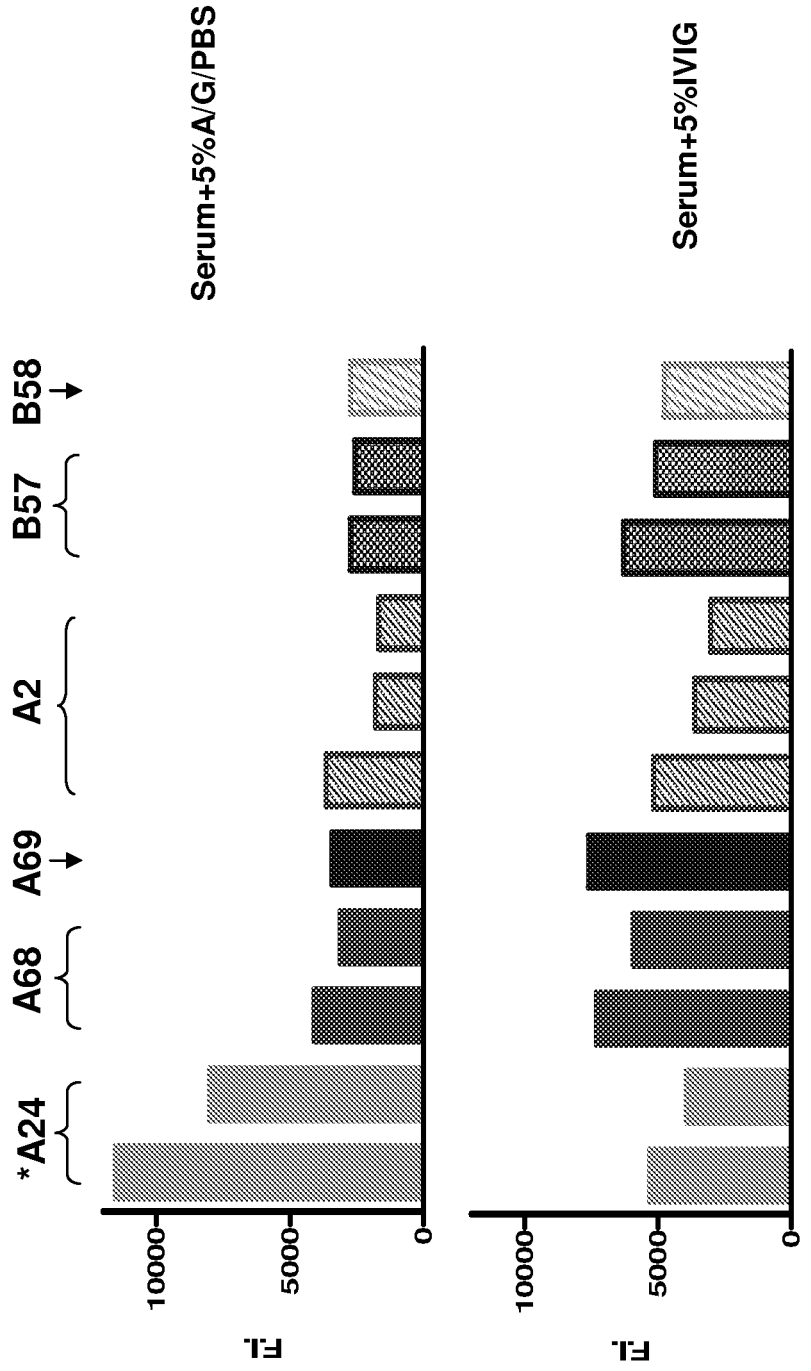
No.	SAMPLE	CDC		In vitro/in vivo Correlation	Luminex-C1q		In vitro/in vivo Correlation
		Pre-IVIG Prediction	Post-IVIG		Pre-IVIG Prediction	Post-IVIG	
1		Unclear	Inhibition	?	Inhibition	Inhibition	Yes
2		Negative	N/A	N/A	C-II Inhibition	C-II Inhibition	Yes
3		w/ Btkx1n C-II unclear	C-I Inhibition	Yes	Inhibition	Inhibition	Yes
4		Unclear	C-I Inhibition	N/A	Inhibition	Inhibition	Yes
5		Negative	N/A	N/A	Negative	N/A	Yes
6		D. Inhibition	D. Inhibition	Yes	D. Inhibition	D. Inhibition	Yes
7		Negative	N/A	N/A	Inhibition	Inhibition	Yes
8		* C-I Negative C-II Inhibition	C-II Inhibition?	Yes	Inhibition	Inhibition	Yes
9		IgM-Abs	N/A	N/A	Inhibition	Inhibition	Yes
10		Undefined IgM-Abs	Negative	N/A	No Inhibition	No Inhibition	Yes
11		Non-Specific Reactivity	N/A	N/A	Negative	Negative	Yes
12		C-I Negative C-II Weak Rx.	N/A	N/A	Inhibition	Inhibition	Yes
13		N/A	N/A	N/A	Inhibition	Inhibition	Yes
14		M. Inhibition	Inhibition	Yes	No Inhibition	No Inhibition	Yes

\*Differential Inhibition

**FIG 10**

# Luminex-C1q IVIG IN VITRO INHIBITION PREDICTION TEST

(Adult Heart #1; 7-7-07)



**CDC:** Serum of 07-07-07 showed that only A2, A68, A69; IVIG does not inhibit A2 but A68 and A69.  
 Serum of 07-22-07 showed that A2 was not inhibited, A68 was gone; and A69 was not inhibited.

\* A24: Donor Specific Antibody (DSA)

**FIG 11**

# IVIG TREATMENT IN VIVO MONITORING

## Luminex-C1q-DSA

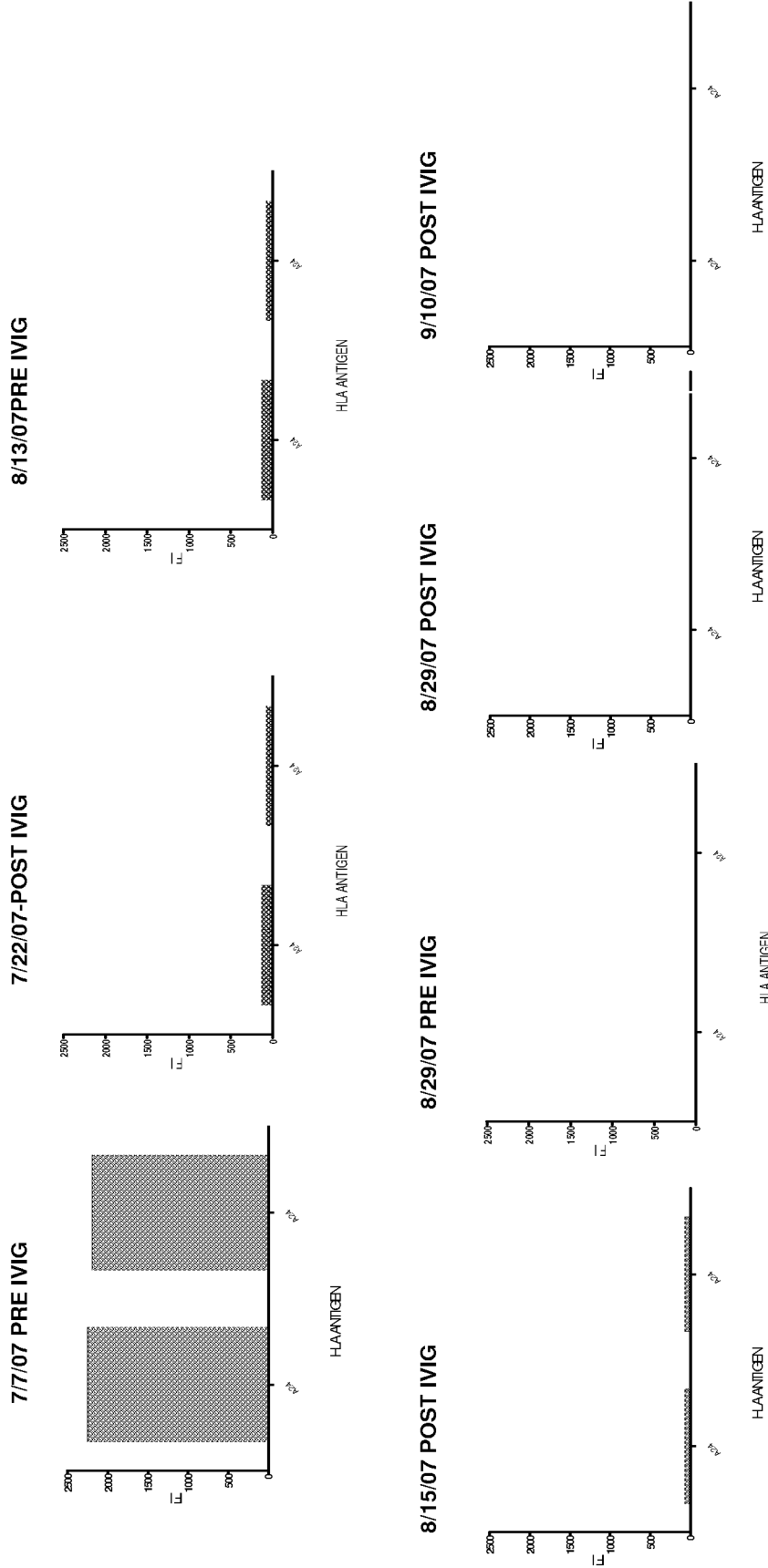


FIG 12A

# IVIG TREATMENT IN VIVO MONITORING

## Luminex-IgG-DSA

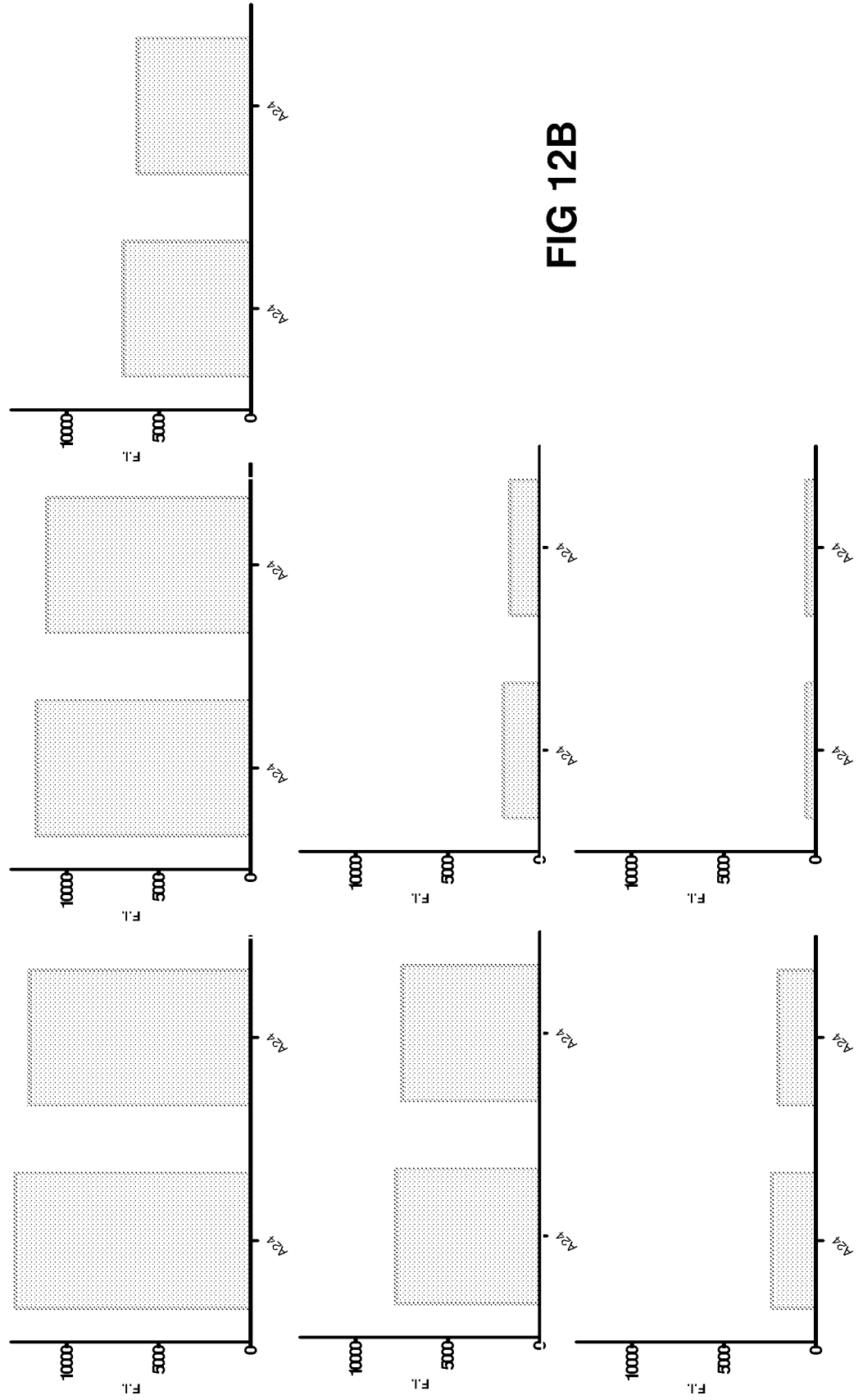
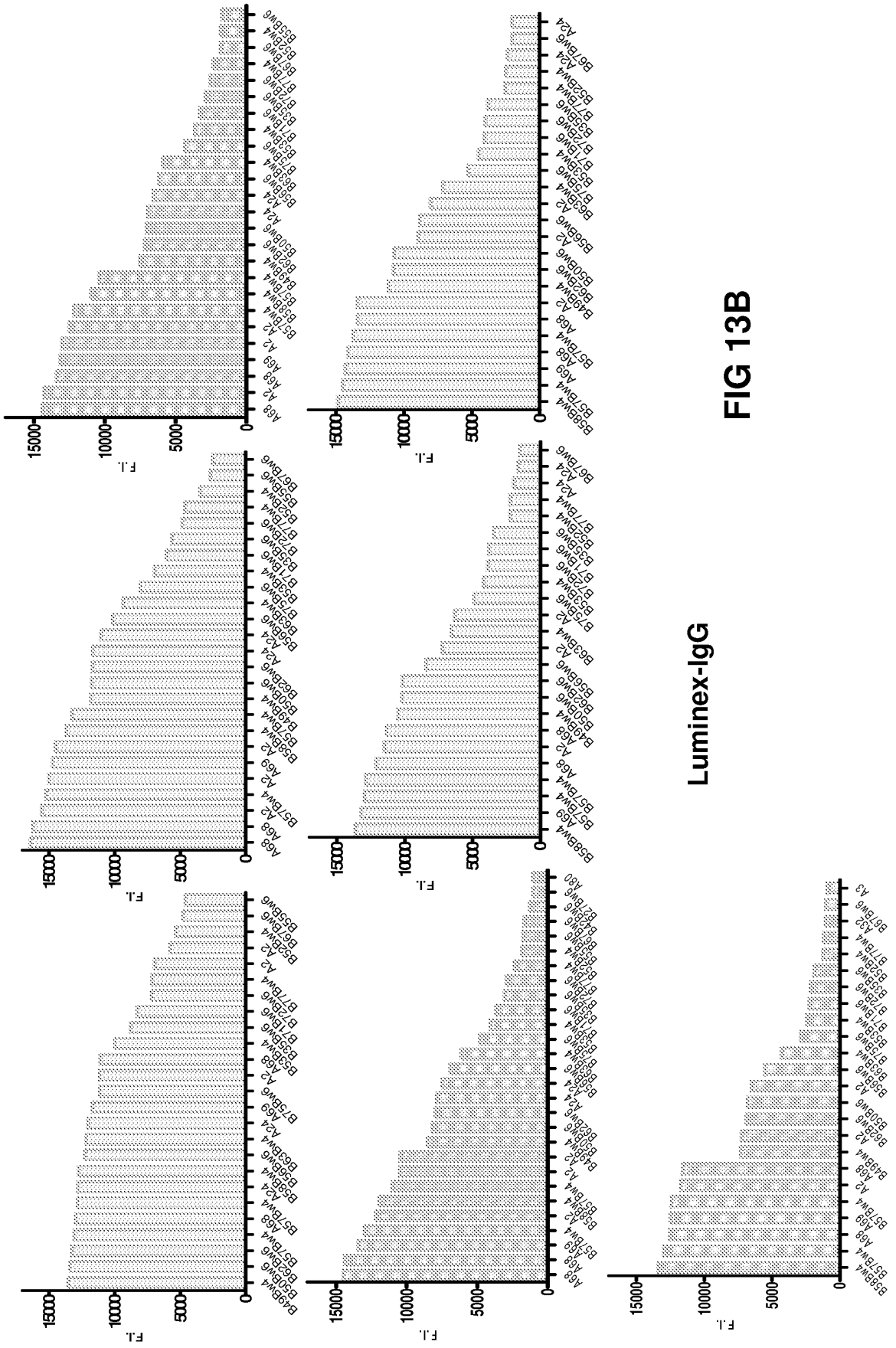


FIG 12B



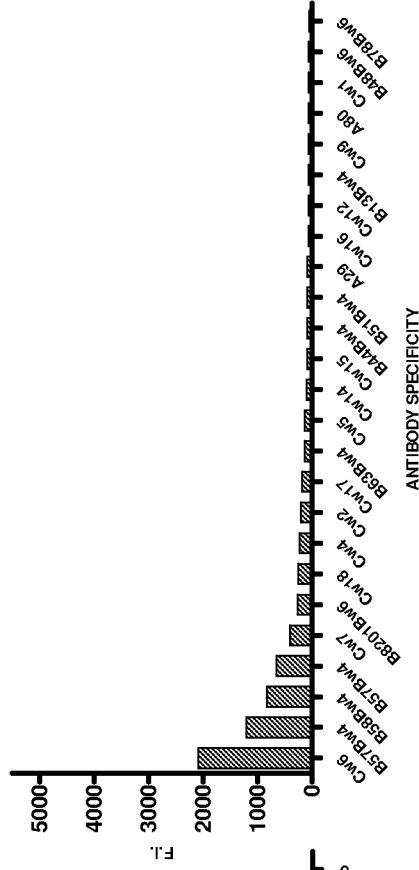
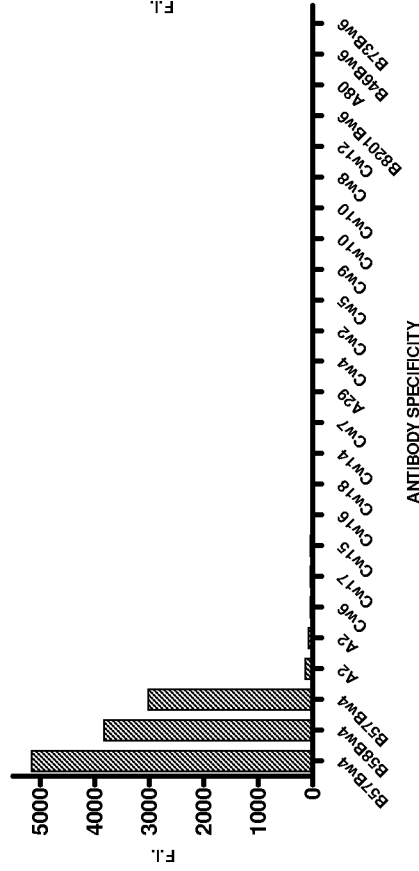
# IVIG TREATMENT IN VIVO MONITORING



# Luminex-C1q IVIG SPIKING ASSAY (Peds Kidney #2)

8/2/07 +5%A/G/PBS

8/2/07 +5%IVIG



\*CDC couldn't call specificities because of Rituxan treatment.

FIG 14

# Luminex-C1qq IVIG INHIBITION TEST

(Peds Kidney #2)

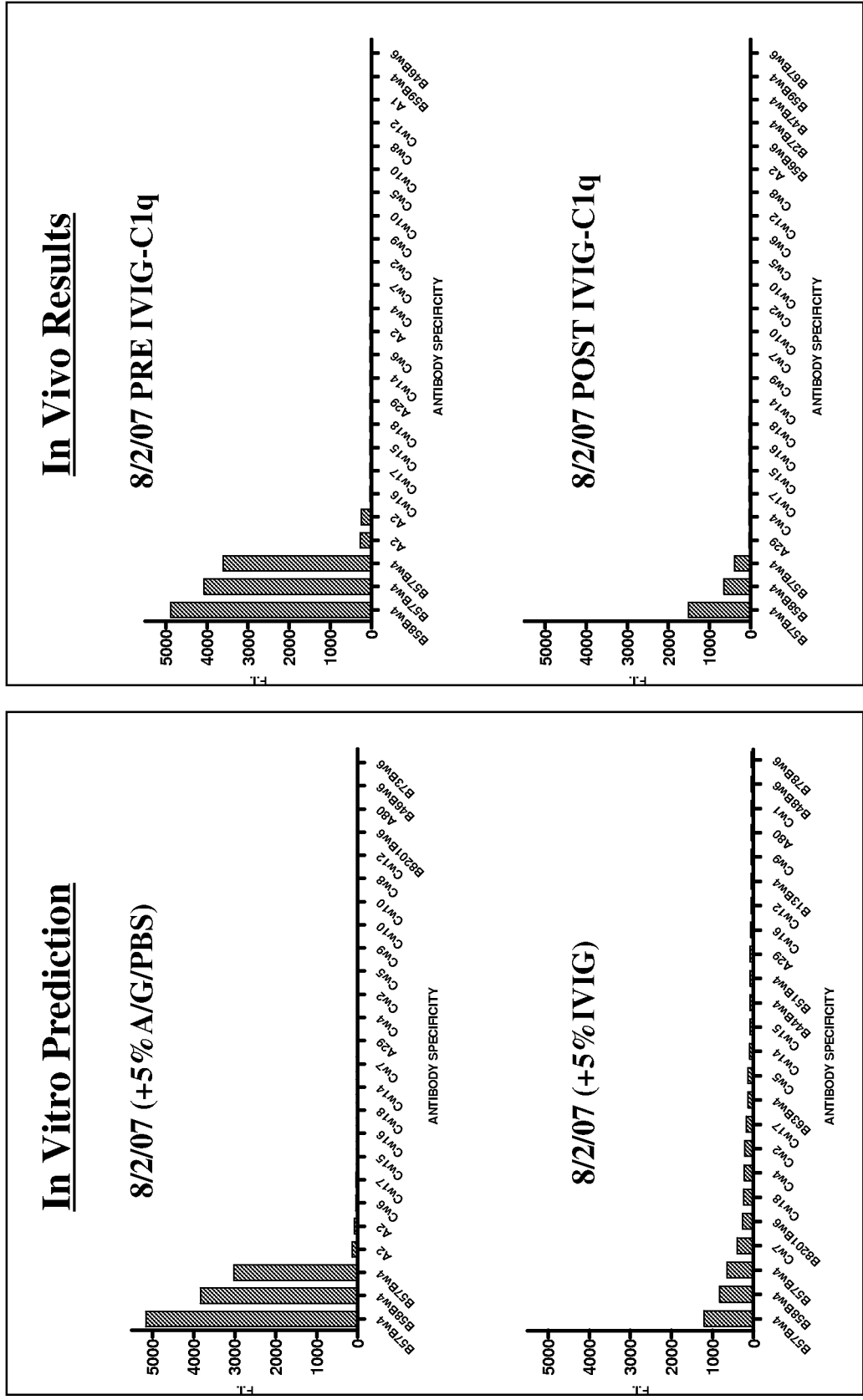


FIG 15

### Luminex-C1Q Validation Experiment Results

PATIENT No.	PRA-CDC	PRA-IgG	CDC	LUMINEX-C1q		LUMINEX-IgG
				NEAT	1:2	
1		CI-20 CII-45	NEG.	DQ7	same	B53,63,51,52,78,49,54 DR51,16 DQ4,7.
2	CI-91	CI-89 CII-89	A1,9,10,11,32 BW4 <b>RPT- BROAD</b>	A24,32,23,25,11,66 BW4, B76,45,82 DR4,53, DQ7,8,9,DP	same	A1,9,10,11,32,80 BW4,12,4005,56,76,82 BROAD
3	CI-29 CII-0	CI-54 CII-0	B7,27,42,54 (Test date?) <b>RPT- negative 10/25/07</b>	NEGATIVE	same	B7,27,22,42,51,54,55, 56,67,73,75,78,81,82. A24,CW1,14.
4	CI-49 CII-81	CI-68 CII-96	A2 DR1,4,8,13,DQ7,8,9.	A2, wk68 DR1,4,wk11,DQ7	same DR11,	A2,68,69,B15,18,57,62,63 75,76,77. DR1,0103,2,4,8,9,10,11,12 13,14,15,16,51,DQ4,5,6,7, 8,9.
5	CI-0 CII-0	CI-58 CII-7	CI-NEGATIVE KILLED ALL B CELLS	NEGATIVE	same	B12,13,21,37,40,41,42, 44,45,47,48,49,50,52,60 61,62,72,75,76,77,DQ8.
6		CI-67 CII-59	UNCLEAR SPECS.	B57,58 DQ7,8,9,	same	A1,2,36, B57,58 DQ7,8,9.
7	CI-49 CII-20	CI-55 CII-39	A2, DR7 <b>RPT- NEGATIVE</b>	NEGATIVE	same	A2,B57,58. DR1,7,9,10.
8	CI-62	CI-71 CII-14	B5,12,15,17,18,21, 35,70,78 <b>RPT-B5,49,-10/25/07</b> CII- NEG.	A30, wk25,B5,15,17, 21,35,53,56. CII- NEG.	B78 enhanced	A2,9,25,28,30,32, BW4 B50,78,62,56,75,35,71,72, 45,46,18,64,54,76,CW6,17, 10,18,9,2,16,14,1,4,5,15 DR7,12,9,53 DQ4,9.

FIG 16A

9	CI-100	CI-100 CI-100	A29,66 B7,27,42,55, 60,61,73. CII- cannot tell.	A29,30,66,74,33,34,31 32,23,43,26 B76,27,7, 12,47,60,61,73,81,82, 13,55,56,42,67. DR7,53,1,4,9,DQ2,7,8, DQ9	same	BROAD
10	CI-30	CI-31 CII-99	A25,26,30,31,32,68 <b>RPT-Negative</b>	NEGATIVE TWICE wk DQ5,6.	same	A10,29,31,32,34,43,66 B46,63,75 DQ4,5,6,7,8,9.
11	CI-0 CII-68	CI-1 CII-86	DR4,17,DQ7,8,9 Rpt-1/16/08MM DR4	CW17,18,5,15,2,6 DR4	same	CW5,2,6,15,17,18 DR4,15,16,11,13,17 DQ7,8,9.
12	CI-84	CI-78 CII-74	B5,15,18,35,53,70	B53,51,35,75,18,78	NT(not enough)	A28,33. B5,14,18,35,53, 75,78. DR3,6,9.
13	CI-56	CI-84 CII-71	A2,68,69,23,24 B57,58. CII-NT( No serum left) A23, B57, B58 in 8/9/07 but not in 8/10/07	A2,24,68,69 CII-NT	same+B57,58	A2,23,24,68,69 B8,12,57,58,37,41,42,45 DR1,9,10,103,51 DQ4,5,6
14	CI-0 CII-63	CI-0 CII-63	DQ1,5,6	DQ1,5,6	same	DR1,4,103 DQ1,5,6,2,8.
15	CI-46 CII-43	CI-98 CII-79	A23,24. B44,57	A23,24,32,25. B45,76, 57,58,75,53,82,44,62 63 DR8,11,13,17 DQ2.		A1,2,23,24,25,28,32,33 B8,14,18,35,39,45,67,62,73 75,76,78,82, BW4 DR3,5,6,7,8,9,11,12,13,14 17,18. DQ2
16	CI-21 CII-0	CI-76 CII-0	A23,24,25,32,Bw4	A23,24,25,32, Bw4	same	A23,24,25,30,32, B50,62,BW4.
17	CI-84	CI-88 CII-34	A2,28 B17,35,49,50 53,62,63,71,72.	A2,68,69,24,B49,56,63 B57,58,49,62,50,75,71	same+ Cw10,12,15	A2,9,11,28. B17,21,35,49 50,53,56,63,70,75,77,62.

FIG 16B

					72,77,35,53.		DR17,DQ2.
18	CI-48 CII-95	CI- NOT CLEAR DQ1,5,6.	CW7 B37,63,65,48,81, 73 DQ5,6,2.	same		A23,24 B7,53,37,48,63,65, 73,81,CW7,8,1,10,12,15, 16,17,18 DR2,3,7,11,12,14,15,16,17 18,103,51 DQ2,5,6.	
19	CI-32 CII-0	CI-84 CII-74	A11,26,29,32,34,36, Possible wrong calls. CII-NEGATIVE	A30,11,25,26,66,43, 31,29,wk34 DQ5,6	same+ A1 enhanced B57added.	A1,3,10,11,19,28,43,66, 74,80 B8,18,64,73 DR15,16,DQ4,5,6,8,9. DP Possibles	
20	CI-23 CII-63	CI-23 CII-68	A1,36. DQ1,5,6; wk <b>RPT-NEGATIVE</b>	NEGATIVE	same	A1,36. DQ4,5,6.	
21			BROAD	ONLY BLOCUS Pos.	NT	BROAD AL & BL	
22			B57,58	B57,58,53,49,27,63.	same	A2,23,24,32 B57, 58,49,53,63,51,27, 77,44,38,52,59,37 13,44. DR17	
23			A25,26,34,29,31,32, 33,74.	A25,32,33,68,74,29, 34,66,31,2,69,26,43 30 CII NEG.	same	A32,34,29,68,74, 29,26,34,66,2,25, 31,33,66,69,43,30, CII NEG.	
24			B7,27,42,48,60 61,81,54,55,56 <b>RPT-B7,60,48,81,54, ?B56</b> DR4,53	B7,27,67,60,81,42,73 48 DR4,53	same	A25,66,26,30,34,43 31,29,11. B7,27,67,60,81,42,47,13,82, 54,55,56,51,64,78,73,48, 63,75. DR4,7,11,53,9,52DQ7,8,9 DP17,3,10,2,14,9.	
25			A2	A2,69 B57,58 CII NEG	same	A2,69,B57,58. DR1,7	

FIG 16C

26			NEG	NEG	NT	NEG
27		A24,25,26,32,66,74	NEG	NEG	NT	A30.
28		A1,2,3,11,29,32,68 ?34,?74.	NEG	NEG	NT	DR4
29		CI NT (No serum). CII-NEG.	CI NEG. DR1	same		A10,28,29,30,33, 34,43,66 B16,42, 55,67. DR1,4,10,103,DQ5
30		CI NT( No serum). DR15.	CI NEG. DR15,16.	same		B7,81 DR 15,16.
31		B8	B8,63. CII-Negative	same		B8,B18,B14,B37,B59, B46,B42,B54,A33,A34 ?DQ2.
32		B51,52,59.	A25,32. B51,63,49,57,53,78,7, 58,67,52,38,77,18, 59,8201,42,13,39,56,8 DQ7,8,9.	same+A24, B81.		A25,A32,A9,A33,A30,A1, B51,B63,B17,B49,B78,B53, B5,18,77,67,59,16,8201,13, 42,14,35,7,8,22,75,81,40,73 46,80.
33		BW4 XTRA RXNS	A32,66,34,26,68,25,43 24,23,29,66,69,11,33, 2,31,30 BW4,CW7,17. DR53,1,4,DQ7,8,9.	same		A25,A9,A32,A10,A28,11,19,2 BW4,B73,B67,B39 CW7,CW17 DQ3,DR53,DR4,DR1,DR103 DQ8,2,4,DR10,11,7,51,9,6,8, DR2 DP17.
34		weak B57	A2,11,80,1,69,29,25,3 24,30,36,66,23,43,68, 26 B57,58,63,73, CW6,17,16,7,9,2,15, 14,10. DQ6,7	same + more specificities bec.of higher		high BG

FIG 16D

35			A30,31,B13	A30,31 B13,75,62,76. DR7,9,53 DQ2, DP17, 3,10.	Same +B47 Same +DP9.	A30,31,25,34,32,29,66,33,74 26,43. B13,62,75,76,47,49, 45,50,63,77,57,44,60,61,41,46. DR7,9,12,11,4,17,13,53,52 DQ2,9,4,7 DP17,3,10,1,5,19 14,2,9,13,11,4.
36	CI-98	CI-99 CII-83	BROAD IgG	A1,2,3,11,25,26,29,30, 31,33,34,43,66,68,69 74,80,B7,8,13,18,27, 35,41,44,45,47,48,49, 50,51,53,56,57,58,60 61,62,63,67,73,76,78 81,8201 CII-NT	NT	BROAD C I. CII-DR11,13,17,14,8,18,52 DQ2,5,6,7,4,DP10,17,3,2,14, 9,4.
37	CI-76	CI-99 CII-75	BROAD IgG	A29,B18,27,35,44,45, 49,50,56,62,71,75,76, 78,8201,67. CII-NT	NT	A2,9,29,30,31,33,34,43,66, 68,69,74,BW6,49,44,63,52, 47,13,51,27. DQ5,6,4,8.
38	CI-62	CI-98 CII-96	IgM-A2,68,69 IgG-wk68	A2,25,26,33,34,68,69 B64 CII-NT	NT	A2,11,25,26,29,30,31,32, 33,34,36,43,66,68,69,74 B7,8,13,18,27,42,47,48,49 51,55,60,61,63,64,65 73,81,CW7,17. DR7,17,11,18,13,8,14,12,16. DQ2,7,4,9,4,5 DP3,19,1,17,5, 13,11,10,14,9,4,.
39	CI-72	CI-98 CII-80	A2,3,11,36,68. <b>RPT-A2,3,11,36</b> B17? <b>wrong called A36!</b>	A2,3,11,68,69 B57,58 CII-NT	NT	A68,11,69,3,11,2,24,30,36,1, 32,24,74,80,31,29, B57,58 CW18,5,17,2,15,6,4, 8. DR1,4,7 DQ5,6,7,4,8.
40	CI-74	CI-96 CII-86	BROAD IgG	A32,25,24,23, BW4,62 45,75,76,50,60,61,	NT	A24,32,23,25,30 BW4,62,75, 76,45,60,61,50,46,35,27,41, 54,39,48,56,73,67,72,8201 81,18.

FIG 16E

				CII-NT		
				CII-NT		DR9,12,7,10,53,52 DQ2,5,9,5,4.
41	CI-56	CI-99	A2,68,69, B7,42,55 IgM-B57,58.	A2,68,69 B7,42,55,56 57,58,67,81,8201. CII-NT(No serum )	NT	BROAD C I.  CII-NT
42	CI-95	CI-95	BROAD IgG  CII-NT	A1,3,11,24,25,26,29, 30,31,32,33,34,36,43 66,74,B -ALL except 46,51,57,58,59,63,65. DR11 DQ5,4 DP2, 17,3,10,9,14.	same	A24,1,32,11,29,31,74,36,3, 30,34,33,80,66,33,26,25,43, 68. BW6,B44,47,27,49,13, 53,77,37,51,38,52,59,63. DR11,4,1,103,13 DQ5,6,4,8 2 DP17,3,10,2,14,9,1,5,19, 13,4,11.
43	CI-63	CI-97	A1,3,11,23,24,25,36. B44  CII-NT	A1,25,36,74,80. B44,45,76,8201. Rpt-A11 pos. 1/17/08 CII-Negative	same+A29,3 B57	A1,2,3,11,25,29,30,31,32 33,36,74,80. B44,45,49,50, 52,56,57,58,63,76,8201. DP17,19,1,5,3,10,13,14,9,11.
44	CI-20		B62,75, Undefined. IVIG inhibition.	BW6, CW9,10 IVIG inhibition. DR11,DQ5,6 DP2,19.	same	A34,80. BW6, B57,63,77,13 49. CW2,6,9,10. DR11,7,15,16,53 DQ5,6,4 DP19,1,4,5,2,10,13,3,11,4.
45	CI-29	CI-99 CII-98	A1,36. A1 no inhibition Rest inhibited.	A1,11,23,24,25,26,29 36,43,66,80,B60,70. CW9,10. A1 no inhibition Rest inhibited in C1q.	same+A30.	A1,11,23,24,25,26,29,30,31 32,33,34,36,43,66,68,74,80 B7,8,13,18,35,38,39,41,42, 44,45,46,47,48,49,50,51,52 53,56,59,60,61,62,63,64,71 72,73,75,76,77,78,81,8201. Cw1,7,8,9,10,12,14,15,16,17 Ser date-6/19/07
46	CI-50	CI-92 CII-89	A1,3,11,36.?B51. A1,3 ? inhibited A11,36likely not inhibited.	A1,3,11,25,36. B18,35,51,53,78. A3,11 not inhibited Rest inhibited.	same	A1,3,11,23,24,25,26,29,30, 31,33,34,36,43,66,68,74,80 B18,35,37,38,39,51,52,53, 64,75,76,77,78.
47			B57,62.	B46,50,56,58,49,77,	same	A1,3,11,23,24,25,26,29,32,

FIG 16F

				35,76,63,53,57,78,51 71,75,72,62. CW9,10.	34,36,43,66. B56,58,50,35, 49,78,46,71,51,53,72,77,57 76,63,52,13,45,75,62,44,67 55,42,8201,59,38,64,18,41, 39,54. CW9,10,7,18,15,2,5 6.
				DQ4,5,6 DP17,19,3,1,5 10,9.	DR1,4,5,2DQ4,5,6,8,9 DP17, 19,1,5,3,10,13,14,9,11.
48	A25,26,34.		A25,66,26,43,34,66 68,33. B45,76,8201.	same	A26,66,25,43,34,68,66,33, 69,1,11,33,36,29,30,24,23 30,80. B45,76,8201,44,50 49,62.
			DR7,11,9,53 DQ2,9,7,4 DP10		DR7,119,10,12,4,17,53 ,52 DQ2,4,7,8,9
49	A25,26,34.		A26,66,43,25,34,68, 30,11,68,29,33,23,29, 69,32,24. BW4 DR4,53 DQ7,8,9,4.	NT	A26,66,34,25,68,43,11,23,33 69,32,30,24,66,29,2,31,74 BW4, B39.
					DR4,1,7,9,11,103,53 DQ7,8, 9,2,4.
50	B7		B67,27,81,7,42,8201, 27,56,55,60,73,61,54 48,38,57,46,8,62.	same	A66,32,24,23,74,25. B67,56,8201,27,42,81,7,27, 55,60,73,61,48,8,54,47,57, 13,63,41,62,78,51,75,58,64 46,71,39,76,37,59,35,52,53 77,38,65.
			CII-Negative.	CII-Negative.	CII-Negative.
51	A1		A1,29,36,26,80,43,24 B76. CII-Negative.	NT	A1,29,36,26,80,43,24,23,30 B76,45,44,8201,27. DR1,103.
52	A2,68,69. CII-Negative.		A2,24,69,68,25,34,66, 33,26,29,30,23,31,30. CII-Negative.	NT	A69,2,34,68,24,25,33,34,66 26,66,29,30,33,31,43,23,32, 11,74,36. B55,67,46,42,63. CII-Negative.

FIG 16G

53			A32 (POSS A25) B51,52,59. B51,B52,B18,B49,B63,B7 B77	A25,32,24, B53,63,49 51,78,57,67,58,52,38, 77,18,59,8201,42,39 13,56,8. DQ7,8,9.	NT	A25,32,24,23,33 B51,63,57 49,53,78,58,52,77,18,67,59, 38,8201,13,42,35,64,7,39,8, 56,65,75,81,61,55,60,46,73 54. DR7,15,16 DQ7,8,9,2,4
54			B57,62.	B76,57,63,75,62,77,46 50,49,56,13,53,35. CW9,10. DR4,53 DQ7,8,9.	same	A23,24,68,69,2 B76,57,75,63 62,57,77,49,50,56,46,13,35, 53,7,81,8201,71,72,27,67,58 78,27,42,51,55,52,73,60,45. CW9,10,8.
55			A26	A26,66,34,11,25,43,1, 36,80,30,29,66. DR7	same	A26,25,11,1,43,34,66,36,30, 80,29,24,66,3,33,68,23,68, 69,31. B76,62,75,45,8201, 44,77,46,50,63,57,49,72,53 35,71,56,58,78,47,13. DR7,11 DQ2,9 DP10,2,17.
56			B13	B13,27,81 CW18,17,2,6,15,5. DR7.	NT	A66,30. B13,27,81,60,7,47, 61,53,73,35,75,48,49,50,77. CW18,17,5,6,2,15,4. DR7,9,53,52 DQ2,4,9.
57			A1. B62	A1,24,3,11,30,80,36, 29,34,25,29,32,23 B77,46,63,50,57,49,56 76,53,35,75,62,58,71, 78,72,45,51. CII-Negative.	same	ALL except A2,68,69. B7,8 48,41,61,60,73,81,42. CW9,10 DR8
58	CI-0 CII-0	CI-26 CII-9	NEGATIVE	NEGATIVE	same	A203 B7,22,42,54,55,56,67, 81,8201 DQ4
59	CI-0 CII-0	CI-71 CII-0	Negative	NEGATIVE	same	A25,26,34,66,2,68,69,29,32, 43,74. B63

FIG 16H

60	CI-0 CII-0	CI-0 CII-0	CI,II-NEGATIVE	CI,II-NEGATIVE	same	CI,II-NEGATIVE
61	CI-0 CII-0	CI-0 CII-51	CI-NEGATIVE CII-Weak reactivity.	CI-NEGATIVE DR53	same	CI-NEGATIVE DR53
62	CI-48 CII-55	CI-95 CII-88	IgM Undefined. DQ2,6, Undefined.	NEGATIVE DQ2,5,6.	A2,25. same	A2,26,50,1,10,11,25,28,30,34 43,66,68,69 B17,21,35,44,49 53,56,57,58,62,63,75. DR7,DQ2,6,4,5,9.
63	CI-34 CII-58	CI-98 CII-91	A24,68,69. In Vitro inhibition. DR15,51,DQ1,5,6.	A24,2,68,69,11,3,34, 36,80. DR51, DQ5,6.	same	A1,2,3,11,24,29,31,33,34,36 66,68,69,80.-Ser.D-3/5/07 DR1,2,9,10,15,16,103,51,53, DQ5,6,8,9.
64	CI-17 CII-40	CI-99 CII-96	IgM, IgG of broad specificity for both CI and CII. Moderate inhibition.	A30,31,34 B49,50,45, 62,75,44,76,13,57,58, 47,60,63,61,53,64,41, 8,8201,27,65,56. DR13,11,17,14,13,12, 8,18,7,15,52 DQ5,6,4	same 66,3,33,11 67,7,71,59,35,81,5 72,37. same	A1,11,26,28,30,31,32,33,34 36,43,66,74,80. B7,8,12,13, 14,15,16,17,21,27,35,40,41, 42,47,48,52,53,55,56,59,67 70,81,2708,4005,8201. DR7,8,11,12,13,14,15,17,18 52 DQ1,4,5,6.
65	CI-0 CII-0	CI-70 CII-67	NEGATIVE	A30 CII-NEGATIVE	same	A1,80. B7,8,22,35,42,50,53, 55,56,62,67,75,76,78,81, 2708,8201 DR8,11,12,13,14,17,18.
66	CI-0 CII-0	CI-0 CII-999	NEGATIVE	A11 CII-NEGATIVE	same	Invalid test. High BG.
67	CI-78 CII-93	CI-99 CII-88	IgG, IgM- A1,3,11 CII- unclear. Significant inhibition.	A24,1,3,36,80,34,23,11 25,66,33,30,43,68 B7,81,27,56,67,42,76, 60,73,53,78,55,35,78, 8,62,51,48,75,13,47,61. DR17,11,13,8,14,18 DQ7,2,9,6,8DQA1*ST456	same	A24,1,3,36,80,34,23,11,26,69 25,66,33,30,43,68,31,32, B7,81,27,56,67,42,76, 60,73,53,78,55,35,78, 8,62,51,48,75,13,47,61. DR17,11,13,8,14,18,7,9,12,52 DQ7,2,9,6,8, DQA1*ST456

FIG 16I

68	CI-0 CII-0	CI-3 CII-0	NEGATIVE	NEGATIVE CII-NT	same	B58 CII-NT
69	CI-33 CII-75	CI-0 CII-0	ALL CELLS LYSED	B8 CII-NEGATIVE	same	B8 CII-NEGATIVE
70	CI-9 CII-32	CI-99 CII-56	IgM; IgG of undefined specificity for both CI and CII. But inhibited.	B57,58  DQ2	same+A1,1,1,24.	A24,11,2,3,25,1,32,80,36,68 23,69,33,29 B57,58,49,53,77 63,51,27,38,52,59,47,37,44 13,76. DQ2,6,9.
71	CI-0 CII-0	CI-12 CII-63	Non specific IgG antibody.	NEGATIVE Possible wh DQ5	same	A30,31 DQ5,6,4.
72	CI-0 CII-0	CI-25 CII-0	NEGATIVE	NEGATIVE	same	A23,24,80.
73	CI-0	CI-0 CII-70	NEGATIVE NEGATIVE	CI-NEGATIVE DR53	High back ground. same	CI-NEGATIVE DR1,9,10,17,53 DQ8,9.
74	CI-64 CII-80	CI-99 CII-52	A3,23,24,11 Significant inhibition. CII-? Rituxan	A24,11,3,80,1,36, 23,32,30,25,B82, 56,67,42,55,7,76 81,54.  DR53,DQ7,8,9 ?DQA3	same  NT	A1,3,23,24,11,25,26, 29,30,31,32,33,34,36 66,68,69,74,80. B44, 7,8,12,14,17,18,22,27 35,37,42,45,51,53,59 63,67,76,78,81,8201. DR53,DQ7,8,9. ?DQA3
75	CI-0 CII-100	CI-0 CII-69	CI-NEGATIVE CII- ?RITUXIMAB	CI NEG. DQ5	same DQ5,6,4	CI NEG. DR15 DQ6,4,5.
76	CI-22 CII-85	CI-23 CII-96	<b>IgM-A11 by Long i.</b> DQ1,5,6. <b>RPT-NEGATIVE BY AHG</b> <b>RPT-DQ2,5,6.</b>	NEGATIVE DR53 Rpt+DQ2,6	same	A11,29,25,6601 DR15,51,53 DQ2,6,5,8. Serum date-8/10/07

FIG 16J

77	CI-0 CII-0	CI-91 CII-20	NEGATIVE	NEGATIVE	same	A23,24,25,26,66,11,30,31,43 BW6 CII- NEG.
78	CI-0 CII-7	CI-13 CII-0	NEGATIVE	NEGATIVE	same	B51,75,78. CII-Negative..
79			NT	NEGATIVE	NT	NEGATIVE
80			NT	NEGATIVE	NT	NEGATIVE
81			NT	NEGATIVE	NT	NEGATIVE
82			NT	NEGATIVE	NT	NEGATIVE
83			NT	NEGATIVE	NT	NEGATIVE
84			NT	NEGATIVE	NT	NEGATIVE
85			NT	NEGATIVE	NT	NEGATIVE
86			NT	NEGATIVE	NT	NEGATIVE
87			NT	NEGATIVE	NT	NEGATIVE
88			NT	NEGATIVE	NT	CI-B27
89			NT	NEGATIVE	NT	NEGATIVE
90			NT	NEGATIVE	NT	NEGATIVE
91			NT	NEGATIVE	NT	NEGATIVE
92			NT	NEGATIVE	NT	NEGATIVE
93			NT	NEGATIVE	NT	NEGATIVE

FIG 16K

94			NT	NEGATIVE	NT	NEGATIVE
95			NT	NEGATIVE	NT	NEGATIVE
96			NT	NEGATIVE	NT	NEGATIVE
97			NT	NEGATIVE	NT	NEGATIVE
98	CI-12 CII-4	CI-33 CII-0	IgM?specificity Inhibition cannot tell.	Negative. CII-Negative	CI-Wk B78	A24,2403,9,23B51,78
99			NEGATIVE	A26,34,66,43,25 DR4		A26,34,66,43,25,68,33 DR4,7,9,53,52 DQ4
100			B18,65	B18,64,65.  DR1,17,103,9,51 DQ5,6,4.		A3,33 B18,64,65,8,78 51,54,35,56,8201,27, 53,67,7,81,42,37,55. DR1,103,9,17,8,12,15, 16,10,13,11,18,7,14,51 52, DQ5,6,4,8.
101			NEGATIVE	A11,25,66,43,1  DR7,11		A11,25,66,1,43,26,34, 36,80,3,30,24,32,30 B73 DR7,11,9 DP10,17,2 3,14,9,4,1,19.
102			NEGATIVE	A25,32 B51,53,78,49,63 52,35,57,58.  CII-Negative		A32,25,23,24 B51,78 53,49,63,52,35,51,18 57,59,75,58,77,67,37 8201,13,38,64. CII-Negative
103	CI-0 CII-33	CI-31 CII-53	NEGATIVE	NEGATIVE	SAME	A28,33,34,28 B8 DR7,10,53.
104	CI-0 CII-29	CI-32 CII-56	CI-NEGATIVE <b>DR11,13-IgM</b>	NEGATIVE	SAME	A23,24,25,32 DR11,13,14,17,18.
105	CI-100	CI-98	BROAD CI ,CII	A69,33,23,80,68,24,29, SAME	SAME	A1,3,23,24,25,26,29,30,31,32,

FIG 16L

	CII-100	CII-96		31,34,36,66,74,43,26,1,32,3 B76,56,8201,47,55 60,8,27,67,61,46,7,57,58 81,42,13,73,54,63,48,41 CW9,10,8,18,14,16,1,7,6  DR11,17,7,13,52 DQ5,6	33,34,36,43,66,68,69,74,80 B7,8,13,27,37,41,42,44,45,46 47,48,49,50,54,55,56,57,58, 60,61,62,63,64,67,73,75,76, 81,2708,8201,CW1,2,3,9,10,6, 14,16,17,18,6,7,8,12, DR7,8,9,11,12,13,14,17,18 DQ5,6,DR52-Possible	
106	CI-0 CII-0	CI-21 CII-0	NEGATIVE	NEGATIVE	SAME	A24 CII-NEGATIVE
107		CI-92 CII-60	B44,45	A1 B76	SAME+B8201,44,	A1,23,24,25,29,32,36,80,2403 B7,13,27,37,41,42,44,45,47, 48,49,50,54,55,56,57,58,60, 61,62,63,67,75,76,77,81,2708 8201,CW1,4,5,14,18, DR7,8,11,12,13,16,103
108			A29, B44 <b>B44-Rechecked wrong call per Tami</b> Rpt1/15/08-No B44	A29,43 B7	SAME	A3,11,23,25,26,29,30,31,32, 33,34,43,66,68,74,B7,8,13,27 42,44,45,47,48,54,55,56,60,61 67,73,76,81,2708,8201,CW2,3 9,10,5,6,15,16,17,18,1 DR8, DQ4
109	CI-0 CII-0	CI-55 CII-64	CI-Negative DR3, DQ7,8	CI-Negative DQ8,7,9,4		A2 B52,57,58 DQ8,4,7,9
110	CI-98 CII-96		A1,36	A1,34,68,33,36,25,69,34 66,26,33,30,3,11,29, BW6		
111	CI-21 CII-0	CI-1 CII-0	<b>A3-IgM</b>	CI, CII- NEGATIVE	SAME	CI, CII- NEGATIVE
112	CI-0 CII-30		CI-NEGATIVE IgM- UNCLEAR	CI-NEGATIVE Wk DR4	SAME	DR4
113	CI-2		CI- NEGATIVE	CI- NEGATIVE	same	CI- NEGATIVE

FIG 16M

	CII-88	CII-DR53, BROAD	DR53 DQ7,8,9	DR53 DQ7,8,9,2,4
114	CI-0 CII-0	CI-NEGATIVE CII-NEGATIVE	CI-NEGATIVE CII-NEGATIVE	A2,203 B7,17,81 DR1,4,DQ3,7,8,9
115	CI-57 CII-38	CDCXM B-DTT NEG CDCXM B-POS	CI-NEGATIVE CII-NEGATIVE	A2,203,210,68,69 B75 DR15,51 DQ6
		CDCXM B-DTT NEG CDCXM B-POS	CI-NEGATIVE CII-NEGATIVE	CI,CII- NEGATIVE

TOTAL:991 SPECS. TOTAL:1034SPE  
75 POSITIVE SAMPLES

FIG 16N

LUMINEX C1Q VALIDATION SUMMARY - IVIG SAMPLES

NO.	SERUM D.	CDC RESULT	C1Q RESULT		LUMINEX IgG	
			NEAT	5%A/G/PBS		
1	8/2/2007	NT	wk A2. B57,58 CII-NT	same	5%IVIG same inhibited	A1,2,36 B57,58. DQ7,8,9.
	8/2/07PRE	UNCLEAR SPEC	B57,58	same		A1,2,36 B57,58. DQ7,8,9.
	8/2/07POST	CII- Rituxan Decreased.	DQ7,8,9 B57 only CII NEG	same		
	8/2/07PRE	NT	B57,58	same		
	8/30/07POST	NT	DQ7,8,9 B57 only CII NEG	same		A1,2,36 B57,58,63 CW2,5,6,15,17,18. DQ7,8,9.
	8/30/07PRE	NT	B57,58	same		A1,2,36 B57,58,63 CW2,5,6,15,17,18 DQ8,7,9
	8/30/07POST	NT	DQ7,8,9 B57 only CII NEG	same		Same as above
	8/30/07PRE	NT	B57,58	same		Same as above
	9/5/07POST	UNCLEAR SPEC	DQ7,8,9 B57,58 DQ7	same		Same as above
	10/25/2007PRE	NT	B57,58	same		A1,2,36 B57,58 Cw2,5,6,15,17,18 DQ7,8,9
	10/25/07POST	NT	Negative	same		Same as above
	11/19/07PRE	NT	Negative	same		A1,2,203 B57,58 CW6,17,18 DQ7,8,9

FIG 17A

11/19/07POST		Negative		same		Same as above	
NO.	SERUM D.	CDC RESULT	NEAT	C1Q RESULT 5%A/G/PBS	5%IVIG	LUMINEX IgG	
2	1/15/2007 ALSO PRE	NT	NEGATIVE	INVALID HIGH BG.	NEGATIVE	CI-Negative	
	8/21/07POST	NT	DR53 CI-Negative DR53	same CI-Negative same	DR53 partial inhibition	DR1,9,10,17,53 DQ8,9. CI-Negative DR1,9,10,17,53 DQ8,9.	
NO.	SERUM D.	CDC RESULT	NEAT	C1Q RESULT 5%A/G/PBS	5%IVIG	LUMINEX IgG	
3	7/20/07PRE	A3,23,24,11	A24,11,3,80,1,36,23,32,30,25,B82,56,67,42,55,7,76,81,54.	same	marked inhibition.	A1,3,23,24,11,25,26,29,30,31,32,33,34,36,66,68,69,74,80. B44,7,8,12,14,17,18,22,27,35,37,42,45,51,53,59,63,67,76,78,81,8201. DR53,DQ7,8,9. ?DQA3	
	8/10/07POST	CI--?Rituxan CI-decreased	DR53,DQ7,8,9 ?DQA3 A3,11,24	NT	NT	A1,3,11,23,24,25,29,30,32,34,36,68,80. B7,8,17,18,22,27,37,42,63,64,67,76,81,82. DR53,DQ7,8,9.	
	11/6/2007PRE	CI--?Rituxan	DR53,DQ8	NT	NT		
	11/7/2007POST		A24,11,3,80,1,36 DR53 DQ7,8 A24,11,3. DR53 DQ8	same	same		
	12/18/07PRE		A24,11,3,1,80,36	same	same		

FIG 17B

	12/18/07POST		B59,38,46,54, DR53 DQ7,8 A24 ONLY DR53 ONLY	same	
<b>NO.</b>	<b>SERUM D.</b>	<b>CDC RESULT</b>	<b>NEAT</b>	<b>C1Q RESULT</b> <b>5%A/G/PBS</b>	<b>LUMINEX IgG</b>
4	8/9/2007	A2,68,69,23,24 B57,58. confusing CDC results	A68,69,2	same+A24, marked inhibition.	A2,23,24,68,69 B8,12 17,37,41,42,45, DR1,9,10,103 DQ4,5,6.
	8/10/07PRE	A2,68,69	A2,68,69,24 B57	NT	A2,23,24,68,69 B42,37,44,41,8,57,58 45 DR1,10,103,51 DQ5,6
	8/12/07POST	CII-NEG	DR1	NT	A2,203,210,68,69,23 24,2403 DR1,10,103,51 DQ5,6.
		A2,69 A68 v. weak	A2,68,69	NT	
			DR1		
<b>NO.</b>	<b>SERUM D.</b>	<b>CDC RESULT</b>	<b>NEAT</b>	<b>C1Q RESULT</b> <b>5%A/G/PBS</b>	<b>LUMINEX IgG</b>
5	8/16/07PRE	waiting for CDC	NEGATIVE	same	B51,75,78. CII-Negative.
	8/16/07POST	NT	NEGATIVE	same	
<b>NO.</b>	<b>SERUM D.</b>	<b>CDC RESULT</b>	<b>NEAT</b>	<b>C1Q RESULT</b> <b>5%A/G/PBS</b>	<b>LUMINEX IgG</b>
6	7/7/2007 ALSO PRE	A2,68,69-Long incu.	A24,2,68,69,11 B49,56,63,50,75, 62,57,58,53,35, 77,71,72.	same-A11, B77,72 partial inhb. A24 inhibited	A2,11,23,24,68,69. B17,21,35,49,50,53, 56,62,63,70,71,72,75, 77

FIG 17C



8/29/07PRE	NT	CI NEG. DQ5,4	DQ5,6,4	A2 B49,17. DR15,8,11,13,17 DQ6,4,5,DQA1-ST456 A2 B49,17. DR15,8,11,13,17 DQ6,4,5
8/30/07POST	NT	CI NEG. DQ5,4	DQ5,6,4	
10/3/07PRE	<b>IgM-A2 B57,58</b> CII-NT	CI NEG. DR11,13 DQ5,6,7	same same +DQ2, 4,DR17.	A2 B57,58,49 DR13,17,11,8,14,103, 15,12,18,52 DQ7,4 6,5.,DQA1-ST456
10/5/074:00 POST	CI-NT (not enough serum) DR15,DQ2,5,6	CI NEG. CII NEG.	same DR11,13 DQ5,6,7.	A2,25,69 B57,58,49, 63,27,7,51CW17,5,18,2 DR13,11,8,17,14,103, 15,12,18,16,7,52,51 DQ7,6,2,5,4,8.DQA1-ST456
10/5/0716:00 POST	CI-NT(not enough serum) DR15,DQ5,6	CI NEG. DR11,13 DQ5,6,7	same same +DQ2, DQ4	A2,25,69,32,24,68,34 B57,58,49,63,51,27,7 47,27,8201CW17,5,18,2 DR13,11,8,17,14,103, 15,12,18,16,7,52,51,1 DQ7,6,5,4,8.DQA1-ST456
10/5/074:00 PRE	NT	CI NEG. CII NEG.	same DR11,13 DQ5,6,7.	A2,25 B57,58,49,63 CW17. DR13,11,8,17,14,103, 15,12,18,16,7,52,51,1 DQ7,6,2,5,4,8.DQA1-ST456
10/13/07POST	NT	CI NEG. DR11,13DQ5,6,4	same +DQ2,7.	A2,25 B57,58,49,63 CW17. DR13,11,8,17,14,103, 15,12,18,16,7,52,51,1 DQ7,6,5,4,8.DP19 DQA1-ST456

FIG 17E

NO.	SERUM D.	CDC RESULT	C1Q RESULT		LUMINEX IgG
			NEAT	5%A/G/PBS 5%IVIG	
	10/15/07POST	NT	CI NEG. DR11,13 DQ5,6.	A29. same	A2,25,32 B59,57,58 63,51,53 CW17. DR13,11,8,17,14,103, 15,12,18,16,7,52,51. DQ7,6,5,4,8. DQA1-ST456
8	9/4/2007	CI NEG DQ5,6- partial inhibition.	B37,63,65,48 CW7,17,8,1,10. DQ5,6,2	same+B81 CW12,15. same inhibited. Rest neg. DQ partial inhib.	A23,24 B7,53,37,48, 63,65,73,81. CW7,8 1,10,12,15,16,17,18. DR9,13,52,1,2,7,11,12 14,17,18,103,51, DQ2,5,6.
	9/24/07PRE	NT	wk CW7	same	B53,37,48,63,65,73,81 CW1,7,8,10,12,15,16 17 DR13 DQ2,5,6. Same as above.
	9/24/07POST	NT	DQ5,6 CI NEG DQ5,6	same same same	
	10/30/07PRE	NT	B63,37 CW7	same	A23,24 B53,7,37,48,63 65,73,81 CW7,17,1,10 12,15,16,18,8 DR13,9,1,7,12,17,18,103 51 DQ2,6,5 Same as above.
	10/30/07POST	NT	Negative B63,37 CW7 DQ5,6,2	DQ5,6,2 same	
	11/19/07PRE	NT	B63,37 CW7 DQ5,6	same	CI- SAME AS ABOVE CII-SAME+DR10,11,14, 15,16. Same as above.
	11/19/07POST	NT	B63,37 CW7 DQ5,6	same	

FIG 17F

NO.	SERUM D.	CDC RESULT	C1Q RESULT		LUMINEX IgG
			NEAT	5%IVIG	
9	8/17/2007	IgM-A11 DQ1,5,6. double doses-wrong call.	NEGATIVE DR53	same	DR53 inhibited.
	9/11/07PRE	NT	NEGATIVE DR53,DQ2,5,6.	same	A11,29,25 CW7 DR15,51,53,1,10 DQ2,6,5,8,9.
	9/12/07POST	NT	NEGATIVE DR53,DQ2,5,6.	same	A11,29,25 CW7,10,17 DR15,51.  DQ2,6,5,8,9.

NO.	SERUM D.	CDC RESULT	C1Q RESULT		LUMINEX IgG
			NEAT	5%IVIG	
10	10/3/2007	IgM Undefined.	A2,25.	same	A25 not inhibited.
	10/12/07PRE	DQ2,6, undefined. Partial inhibition.	DQ2,5,6.	same	DQ2,5,6.
	10/13/2007	NT	Negative DQ2,5,6 Negative DQ2,5,6	same	A2,25,26,66 B57,58, 50,49. DQ2,5,6,4,9. A2,25,26,66 B57,58, 50,49,63,44,62. DR1,7,DQ2,5,6,4,9. DP19.

NO.	SERUM D.	CDC RESULT	C1Q RESULT		LUMINEX IgG
			NEAT	5%IVIG	
11	8/6/2007	Non specific IgG	NEGATIVE	same	NEGATIVE

FIG 17G

	10/11/07PRE 10/12/07POST	antibody. NT NT	NEGATIVE NEGATIVE	same same		DQ5,6,4. A30,31 DQ5,6 A30,31 B76,63,8201, 45 CW7,17,10. DR12,4,1,53,52 DQ5,6 DP19.	
<b>NO.</b>	<b>SERUM D.</b>	<b>CDC RESULT</b>	<b>NEAT</b>	<b>C1Q RESULT</b>	<b>5%A/G/PBS</b>	<b>5%IVIG</b>	<b>LUMINEX IgG</b>
12	9/19/2007 Post 3XPPs 9/27/07PRE 9/28/07POST	CI- NEGATIVE CI-Weak reactivity.	CI- NEGATIVE DR53  NEGATIVE NEGATIVE	same same same	DR53 inhibited.		CI- NEGATIVE DR53  CI- NEGATIVE DR53 CI- NEGATIVE DR53
<b>NO.</b>	<b>SERUM D.</b>	<b>CDC RESULT</b>	<b>NEAT</b>	<b>C1Q RESULT</b>	<b>5%A/G/PBS</b>	<b>5%IVIG</b>	<b>LUMINEX IgG</b>
13	11/5/2007  11/5/2007PRE 11/5/07POST		CI- NEGATIVE DR53 DQ7,8,9  CI- NEGATIVE DR53 DQ7,8,9 CI- NEGATIVE DR53 DQ7,8,9	same same same	Partial inhibition.		CI- NEGATIVE DR53 DQ7,8,9,2,4  CI- NEGATIVE DR53 DQ7,8,9 CI- NEGATIVE DR53 DQ7,8,9,2,4
<b>NO.</b>	<b>SERUM D.</b>	<b>CDC RESULT</b>	<b>NEAT</b>	<b>C1Q RESULT</b>	<b>5%A/G/PBS</b>	<b>5%IVIG</b>	<b>LUMINEX IgG</b>
14	11/7/2007	A29 B44 B44 Wrong called A29 NO INHIBITION	A29,43 B7	same	A29 No inhibition		A29,30,29,43,32,33, 74,31,66,34,23,11,25 26,68 B7,81,27,76,45 27,60,44,61,42,47,82 48,13,67,73,56,55,8,54 CW2,10,16,17,9,18,5

FIG 17H

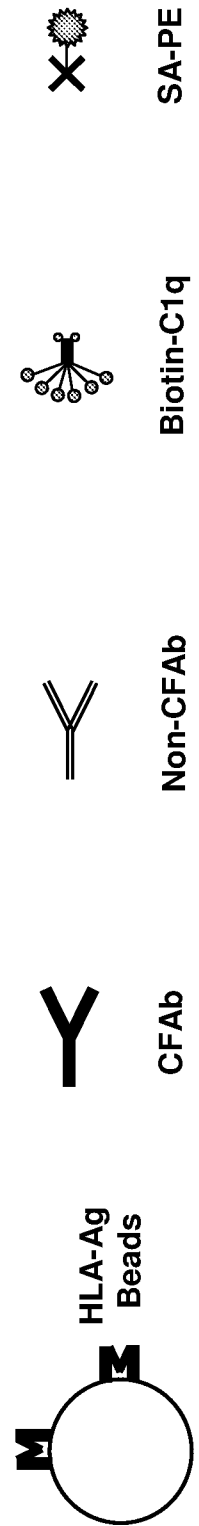
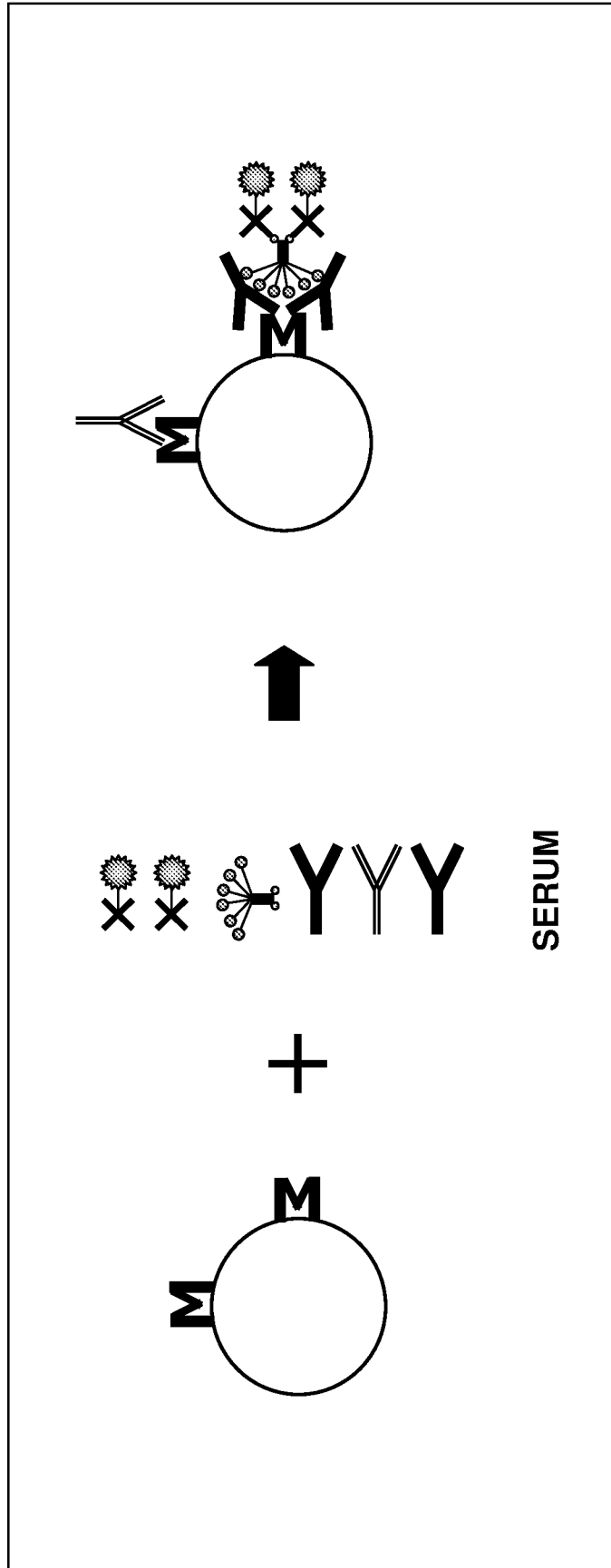
NO.	SERUM D.	CDC RESULT	CII-NEGATIVE	CII-NEGATIVE A29,43 B7 CII-NEGATIVE A29 CII-NEGATIVE	same same	C1Q RESULT		LUMINEX IgG
						NEAT	5%A/G/PBS 5%IVIG	
15	7/31/2007	A23,24,32 B44	CII-NEGATIVE	A23,24,32,25 B76, 45,57,58,75,53,8201, 44,63,62,49,51,77 DR8,11,13,17 DQ2	same	Partial inhibit.	A1,2,9,25,28,32,33, B8,14,18,35,39,45,62,73,75 76,78,8201,BW4 DR7,8,9,11,12,13,14,17,18 DQ2	
	8/30/2007 9/26/2007			Wk A24 Negative	Negative same			
	11/1/07PRE	Weak Non-Specific Abs		CI-Negative CII-Negative	same		A9,25,32; B12,15,17,35,38,49,51,53,67,82; CW7 DR11,12,7,8,13,17 SAME AS ABOVE	
	11/2/07POST	Negative		CI-Negative CII-Negative	same			
	11/16/2007			CI-Negative CII-Negative	same		A9,25,32 B12,15,17,35 38,49,51,53,67,78,8201 CW7 DR5,6,7,8,17,DQ2	
	11/29/07PRE			CI-Negative CII-Negative	same		A9,25,32 B17,35,38,49 51,53,63,75,76,77CW7 DR8,11,13 SAME AS ABOVE	
	11/30/07POST			CI-Negative CII-Negative	same			
NO.	SERUM D.	CDC RESULT	C1Q RESULT		LUMINEX IgG			

FIG 171

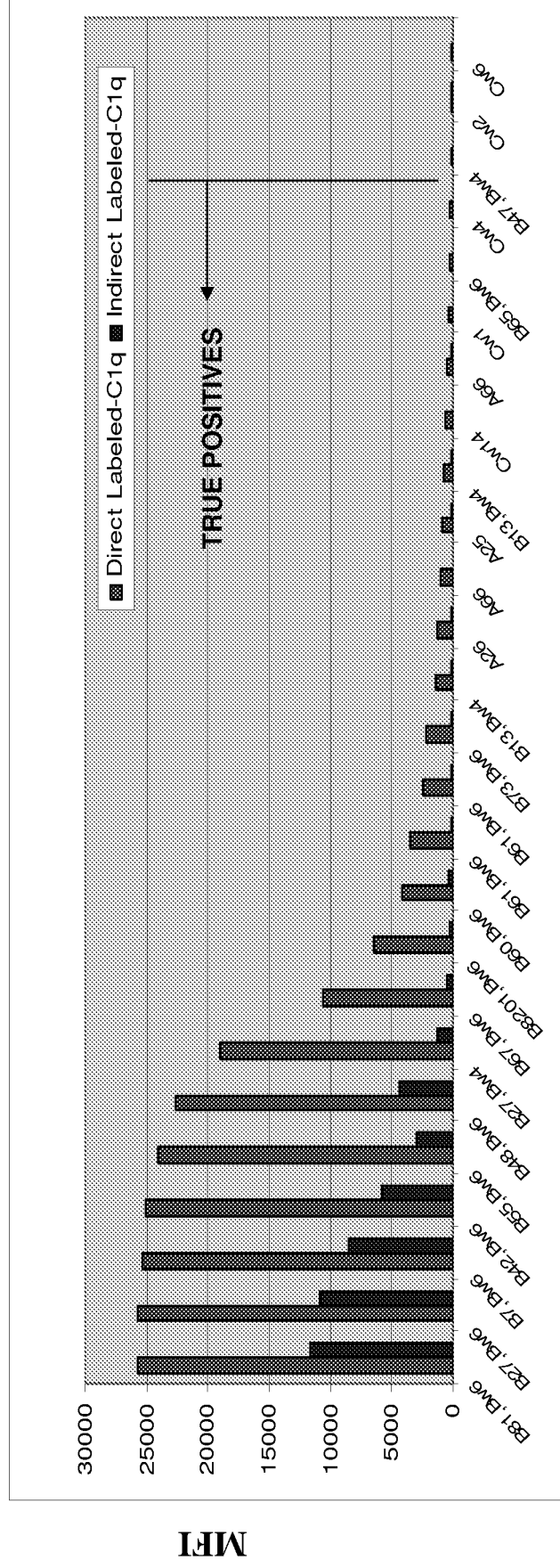
		NEAT	5%A/G/PBS	5%IVIG	
16	12/5/2007	A2,68,69,3 B78, 51,53 DR1	same	A2 no inhibition Rest inhibited	A2,3,9,25,28,2403 B5, 14,18,35,53,71,75,77 78,8201 DR1,4,9,10,14,15,16 17,103,51 DQ5

FIG 17J

FIG 18



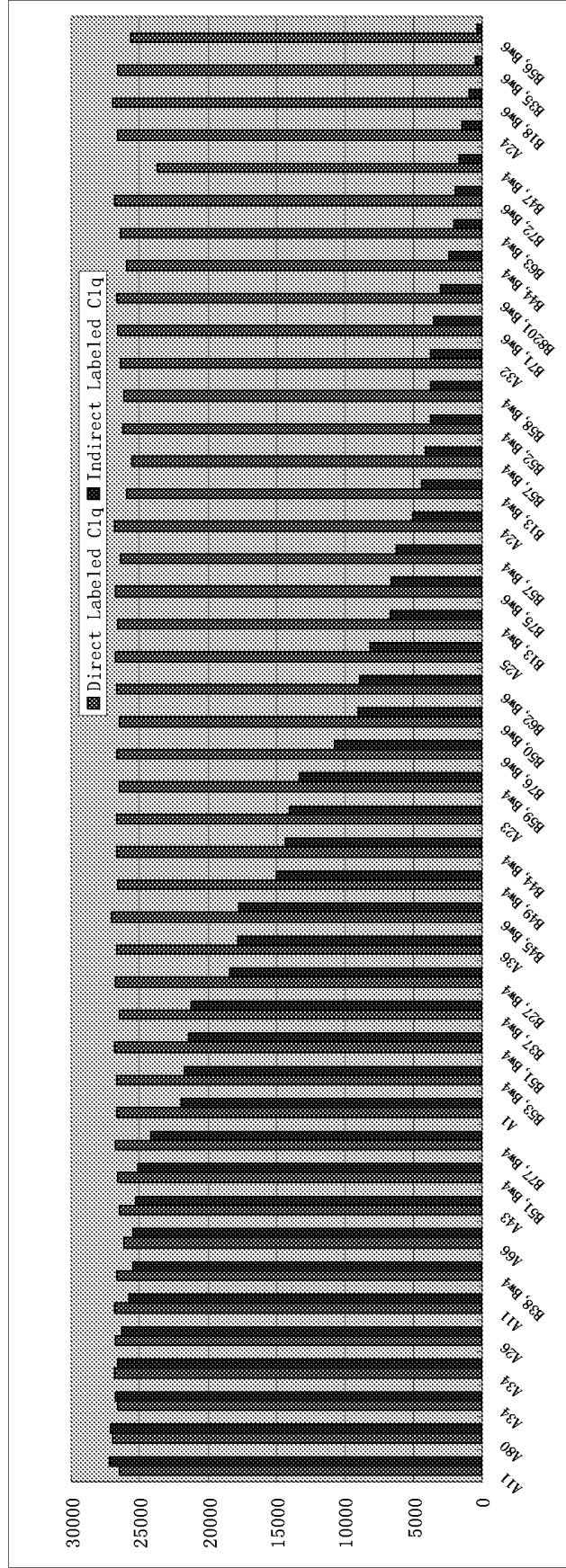
**FIG 19A**  
**COMPARISON OF DIRECT AND INDIRECT LABELING OF C1q ON LMX-C1q ASSAY**



**HLA-SPECIFICITY**

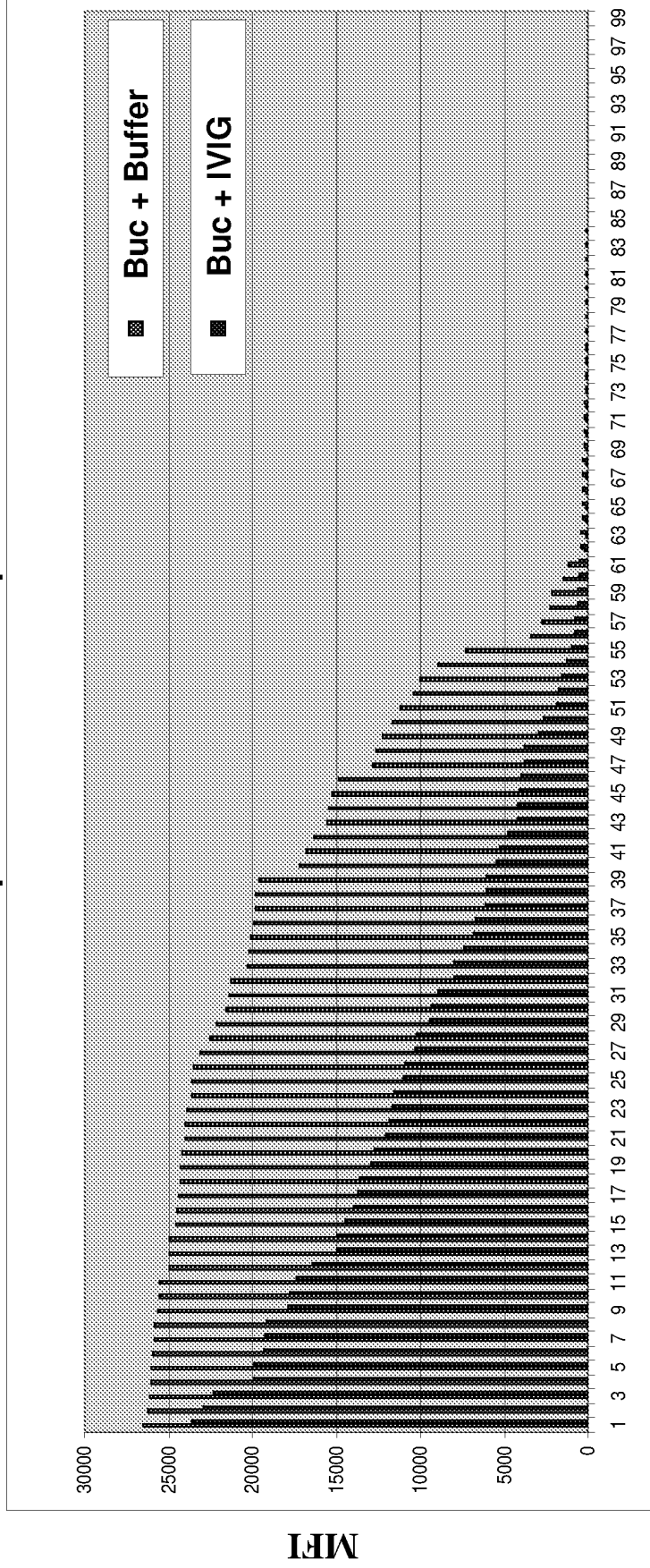
Increased sensitivity using directly labeled C1q compared to indirect detection using anti-C1q antibody. Serum A.

FIG 19B



Subset of only the positive antibodies detected by directly labeled C1q (from slide 2) arranged by strength of indirectly labeled C1q reactions. Serum B.

**FIG 20A**  
**INDIRECT LABELING OF C1q In Vitro LMX-C1q IVIG INHIBITION ASSAY**



**HLA-SPECIFICITY**

IVIG in vitro inhibition assay showing inhibition by the original indirect C1q method using anti-C1q antibody



**REFERENCES CITED IN THE DESCRIPTION**

*This list of references cited by the applicant is for the reader's convenience only. It does not form part of the European patent document. Even though great care has been taken in compiling the references, errors or omissions cannot be excluded and the EPO disclaims all liability in this regard.*

**Patent documents cited in the description**

- US 6514714 B [0008]
- US 6150122 A [0008]
- US 5035995 A [0008]
- US 5270169 A [0008]
- US 5851829 A [0052]
- US 5965371 A [0052]
- US 4708871 A [0054]
- US 6146589 A [0102]

**Non-patent literature cited in the description**

- **WAHRMANN et al.** *J. Immunol. Methods*, 2003, vol. 275 (1-2), 149-60 [0008]
- **SMITH et al.** *Am. J. Transplant.*, 2007, vol. 7 (12), 2809-15 [0008]
- **WAHRMANN et al.** *Hum. Immunol.*, 2005, vol. 66, 526-34 [0008]
- **SMITH et al.** *Biochem. J.*, 1994, vol. 301, 249-256 [0047]
- **KISHORE et al.** *Trends in Immunology*, 2004, vol. 25 (10), 551-561 [0047]
- **GEYSEN et al.** *Proc. Natl. Acad. Sci. USA*, 1984, vol. 81, 3998-4002 [0054]
- **GEYSEN et al.** *Molecular Immunology*, 1986, vol. 23, 709-715 [0054]
- **Antibodies: A Laboratory Manual.** Cold Spring Harbor Laboratory Press, 1988 [0056] [0057]
- **BRINKLEY, M.A.** *Bioconjugate Chem.*, 1992, vol. 3, 2-13 [0091]
- **HASHIDA et al.** *J. Appl. Biochem.*, 1984, vol. 6, 56-63 [0091]
- **ANJANEYULU ; STAROS.** *International J. of Peptide and Protein Res.*, 1987, vol. 30, 117-124 [0091]

专利名称(译)	用于检测补体固定抗体的方法和组合物		
公开(公告)号	<a href="#">EP2353005A1</a>	公开(公告)日	2011-08-10
申请号	EP2009830911	申请日	2009-11-25
[标]申请(专利权)人(译)	斯坦福大学		
申请(专利权)人(译)	THE利兰·斯坦福，齐齐哈尔大学董事会		
当前申请(专利权)人(译)	THE利兰·斯坦福，齐齐哈尔大学董事会		
[标]发明人	TYAN DOLLY B CHEN GE		
发明人	TYAN, DOLLY, B. CHEN, GE		
IPC分类号	G01N33/535 G01N33/68 G01N33/543 G01N33/564		
CPC分类号	G01N33/54313 G01N33/54326 G01N33/564 G01N33/6854 G01N2333/4716 G01N2333/705 G01N33/543		
优先权	61/118949 2008-12-01 US		
其他公开文献	EP2353005A4 EP2353005B1		
外部链接	<a href="#">Espacenet</a>		

#### 摘要(译)

本发明提供了使用补体因子C1q灵敏和特异性检测生物样品中补体固定抗体的方法，包括生物样品中存在的自体补体因子C1q和结合自体补体因子C1q的可检测标记的抗体，外源人补体因子C1q和可检测标记的抗体，其结合外源人补体因子C1q，可检测标记的外源人补体因子C1q，或自体补体因子C1q和外源人补体因子C1q的组合。本发明还涉及用于本发明方法的试剂盒，系统和装置。