

(19) World Intellectual Property Organization
International Bureau



(43) International Publication Date
29 December 2004 (29.12.2004)

PCT

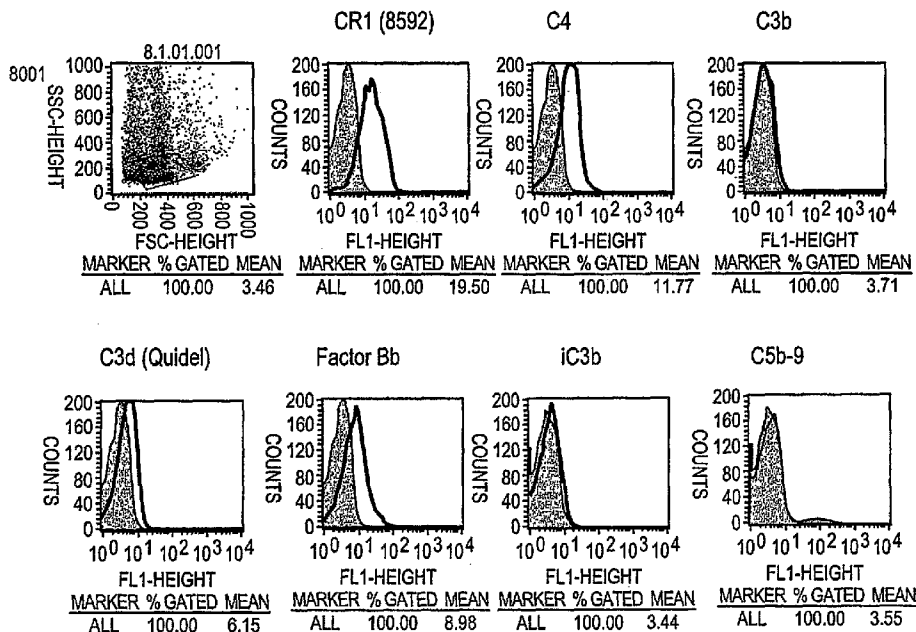
(10) International Publication Number
WO 2004/112572 A2

- (51) International Patent Classification⁷: **A61B**
- (21) International Application Number: PCT/US2004/018552
- (22) International Filing Date: 12 June 2004 (12.06.2004)
- (25) Filing Language: English
- (26) Publication Language: English
- (30) Priority Data: 60/478,493 13 June 2003 (13.06.2003) US
- (71) Applicant (for all designated States except US): **UNIVERSITY OF PITTSBURGH** [US/US]; 200 GSCC, Thackeray and O'Hara Streets, Pittsburgh, PA 15260 (US).
- (72) Inventors; and
- (75) Inventors/Applicants (for US only): **AHEARN, Joseph, M.** [US/US]; 2 Kevin Drive, Sewickley, PA 15143 (US). **MANZI, Susan, M.** [US/US]; 2486 Matterhorn Drive, Wexford, PA 15090 (US).
- (74) Agents: **KELLY, Beth, L.** et al.; Townsend and Townsend and Crew LLP, 2 Embarcadero Center, 8th Floor, San Francisco, CA 94111 (US).
- (81) Designated States (unless otherwise indicated, for every kind of national protection available): AE, AG, AL, AM, AT, AU, AZ, BA, BB, BG, BR, BW, BY, BZ, CA, CH, CN, CO, CR, CU, CZ, DE, DK, DM, DZ, EC, EE, EG, ES, FI, GB, GD, GE, GH, GM, HR, HU, ID, IL, IN, IS, JP, KE, KG, KP, KR, KZ, LC, LK, LR, LS, LT, LU, LV, MA, MD, MG, MK, MN, MW, MX, MZ, NA, NI, NO, NZ, OM, PG, PH, PL, PT, RO, RU, SC, SD, SE, SG, SK, SL, SY, TJ, TM, TN, TR, TT, TZ, UA, UG, US, UZ, VC, VN, YU, ZA, ZM, ZW.
- (84) Designated States (unless otherwise indicated, for every kind of regional protection available): ARIPO (BW, GH, GM, KE, LS, MW, MZ, NA, SD, SL, SZ, TZ, UG, ZM, ZW), Eurasian (AM, AZ, BY, KG, KZ, MD, RU, TJ, TM), European (AT, BE, BG, CH, CY, CZ, DE, DK, EE, ES, FI, FR, GB, GR, HU, IE, IT, LU, MC, NL, PL, PT, RO, SE, SI, SK, TR), OAPI (BF, BJ, CF, CG, CI, CM, GA, GN, GQ, GW, ML, MR, NE, SN, TD, TG).

[Continued on next page]

(54) Title: MONITORING IMMUNOLOGIC, HEMATOLOGIC AND INFLAMMATORY DISEASES

Hepatitis C Virus



(57) Abstract: This invention relates to the diagnosis and/or monitoring of patients with inflammatory diseases or conditions, e.g., immunologic, hematologic, vascular, or infectious diseases or conditions, by determining levels of complement pathway components on erythrocytes. Methods of diagnosing vascular diseases or conditions by determining levels of complement pathway components on platelets are also disclosed.

WO 2004/112572 A2



Declaration under Rule 4.17:

— *of inventorship (Rule 4.17(iv)) for US only*

Published:

— *without international search report and to be republished upon receipt of that report*

For two-letter codes and other abbreviations, refer to the "Guidance Notes on Codes and Abbreviations" appearing at the beginning of each regular issue of the PCT Gazette.

MONITORING IMMUNOLOGIC, HEMATOLOGIC AND INFLAMMATORY DISEASES

CROSS-REFERENCES TO RELATED APPLICATIONS

5 [0001] This application claims the benefit of U.S. Provisional Application No. 60/478,493, filed June 13, 2003, which is herein incorporated by reference for all purposes.

FIELD OF THE INVENTION

[0002] This invention relates to the diagnosis and/or monitoring of patients with inflammatory diseases or conditions, *e.g.*, immunologic, hematologic, vascular, or infectious
10 diseases or conditions, by determining levels of complement pathway components on erythrocytes. Methods of diagnosing vascular diseases or conditions by determining levels of complement pathway components on platelets are also disclosed.

BACKGROUND OF THE INVENTION

[0003] This invention relates to the diagnosis and/or monitoring of patients with
15 immunologic, hematologic, and inflammatory conditions and diseases. Measurement of complement ligand C4d and its receptor CR1 on surfaces of erythrocytes provides a highly sensitive and specific test for diagnosis and measurement of disease activity in patients with systemic lupus erythematosus (SLE) or scleroderma. *See, e.g.*, PCT/US02/28910, which is herein incorporated by reference for all purposes. Patterns of complement ligand and
20 receptor expression that facilitate diagnosis and disease activity monitoring in other human immunologic, hematologic, and inflammatory conditions and diseases have not been identified. The present invention addresses this and other needs.

BRIEF SUMMARY OF THE INVENTION

[0004] The present invention provides a method for diagnosing or monitoring an
25 inflammatory disease or condition in an individual, with the caveat that the inflammatory disease or condition is not systemic lupus erythematosus or scleroderma. The method involves, (a) determining, in a blood sample from the individual containing erythrocytes, a level of a complement pathway component on surface of an erythrocyte in the sample, and
30 (b) comparing the complement pathway component level with a control level of complement pathway component, where a difference from the control level of the complement pathway component indicates that the individual has the inflammatory disease or condition. As an

example, the inflammatory disease or condition can be selected from hepatitis C infection or a complication of the disease, such as cryoglobulinemia; sickle cell anemia, or a complication of the disease, such as a vasoocclusive crisis; a complication of a transplantation procedure; and a complication of pregnancy.

5 [0005] In one embodiment, the inflammatory disease or condition is a hepatitis C infection or a complication of the disease, such as cryoglobulinemia. Exemplary complement pathway components useful to diagnose or monitor a hepatitis C infection or a complication of the disease include complement ligand Bb and complement pathway component C3d. Bb and C3d levels can be determined individually or together to make the diagnosis. Antibodies
10 specific for complement component Bb or complement component C3d can be used to determine their levels. The antibodies can be labeled and polyclonal or monoclonal antibodies can be used. Levels of additional complement pathway components can be determined.

[0006] In one embodiment, the inflammatory disease or condition is sickle cell anemia or a
15 complication of the disease, such as a vasoocclusive crisis. Exemplary complement pathway components useful to diagnose or monitor a sickle cell or a complication of the disease include complement ligand C4d. Antibodies specific for complement component C4d can be used to determine its level. The antibodies can be labeled and polyclonal or monoclonal antibodies can be used. Levels of additional complement pathway components can be
20 determined, as well.

[0007] In one embodiment, the inflammatory disease or condition is a complication of a transplant procedure. Exemplary complement pathway components useful to diagnose or monitor a complication of a transplant procedure include complement pathway component C4d, complement pathway component C3d, and complement pathway component iC3b.
25 C4d, C3d, and iC3b levels can be determined individually or together to make the diagnosis. Antibodies specific for C4d, C3d, and iC3b can be used to determine their levels. The antibodies can be labeled and polyclonal or monoclonal antibodies can be used. Levels of additional complement pathway components can be determined.

[0008] In one embodiment, the inflammatory disease or condition is a complication of
30 pregnancy, such as preeclampsia. Exemplary complement pathway components useful to diagnose or monitor a complication of a pregnancy include complement pathway component C4d and complement pathway component CR1. C4d and CR1 levels can be determined

individually or together to make the diagnosis. Antibodies specific for C4d and CR1 can be used to determine their levels. The antibodies can be labeled and polyclonal or monoclonal antibodies can be used. Levels of additional complement pathway components can be determined.

5 [0009] The present invention also provides a kit for diagnosing or monitoring an inflammatory disease or condition in an individual, with the caveat that the inflammatory disease or condition is not systemic lupus erythematosus or scleroderma. The kit includes an antibody specific for a complement pathway component and a means for comparing a level of the complement pathway component to a control level of complement pathway component.

10 [0010] The present invention also provides a computer readable medium, comprising (a) code for receiving data corresponding to a determination of a complement pathway component deposited on surfaces of erythrocytes (b) code for retrieving a reference value for the complement pathway component deposited on surfaces of erythrocytes of individuals; (c) code for comparing the data in (a) with the reference value in (b), wherein the comparison of
15 data is used to diagnose or monitor an inflammatory disease or condition in an individual, with the caveat that the inflammatory disease or condition is not systemic lupus erythematosus or scleroderma.

[0011] In another aspect, the invention provides method for diagnosing or monitoring a vascular disease or condition in an individual, by (a) determining, in a blood sample from the
20 individual containing platelets, a level of a complement pathway component on surface of an platelet in the sample, and (b) comparing the level to a control level of the complement pathway component, where a difference from the control level of the complement pathway component indicates that the individual has the vascular disease or condition. In some embodiments, the complement pathway component is selected from C1, C4, C2, C3 and
25 fragments thereof, e.g., C1q, C1r, C1s, C4a, C4b, C2a, C2b, C4bC2a, C3a, C3b, C4c, C4d, iC3b, iC4b, C3d, C3i, C3dg. Also included are C5, C5b, C6, C7, C8, C9, C1inh, MASP1, MASP2, MBL, MAC, CR1, DAF, MCP, C4 binding protein (C4BP), protein factor H, Factor B, C3bB, Factor D, Bb, Ba, C3bBb, properdin, C3bBb, CD59, C3aR, C5aR, C1qR, CR2, CR3, and CR4. The diagnosis of vascular disease can be made in normal individuals and in
30 individuals who have already been diagnosed with SLE.

BRIEF DESCRIPTION OF THE DRAWINGS

[0012] Figure 1 provides a complement pathway component profile of erythrocytes from an individual infected with hepatitis C virus (HCV).

[0013] Figure 2 provides a complement pathway component profile of erythrocytes from an individual with sickle cell anemia.

[0014] Figure 3 provides a complement pathway component profile of erythrocytes from a second individual with sickle cell anemia.

[0015] Figure 4 provides a complement pathway component profile of erythrocytes from an individual before a stem cell transplant.

[0016] Figure 5 provides a complement pathway component profile of erythrocytes from the individual shown in Figure 4, after a stem cell transplant.

[0017] Figure 6 provides levels of C4d and CR1 on erythrocytes of a pregnant individual before and after giving birth (month 0).

DETAILED DESCRIPTION OF THE INVENTION

15 Introduction

[0018] This disclosure teaches diagnosis, monitoring, or prediction of inflammatory diseases or conditions by determining a level of a complement pathway component in a sample from an individual and comparing it to a control level of the complement pathway component. While the inflammatory disease SLE is characterized by decreased E-CR1 and increased E-C4d, other inflammatory conditions and diseases can also be characterized by patterns of complement ligand and receptor expression on erythrocytes or other blood products, such as platelets. Such patterns can include one or more of the complement receptors including but not limited to CR1, and ligands generated through activation of the classical (C1, C4, C2), alternative (B, D, P, C3), or terminal (C5, C6, C7, C8, C9) pathways of complement activation. Levels of complement ligand and receptor can be differentially increased or decreased. Patterns can be diagnostic and static or they can be dynamic and used as biomarkers or surrogate markers in monitoring disease activity. These measurements can also be used in efforts to identify subsets of patients with the same general diagnosis and to predict disease course, or response to therapy for individual patients.

[0019] Another use of this invention is to monitor complement activation during the course of human diseases. Current state-of-the-art methods rely on measurement of serum or plasma

levels of soluble complement C3 and/or C4. However there are known inadequacies with this approach. For example, C3 and C4 are parent molecules and they are precursors to activation of the complement cascade. Increased hepatic and extra-hepatic synthesis of C3 and C4 can balance increased C3 and C4 catabolism during activation of the complement cascade resulting in misleading change or lack or change in serum levels. In addition, genetic deficiencies of C4 are well documented and result in abnormally low serum/plasma levels of C4 due to lack of synthetic capacity that can be misinterpreted as being due to increased C4 consumption during complement activation. The invention described herein is based upon measurement of protein products of complement activation such as C3d, C4d, and others that are attached to surfaces of circulating blood cells such as erythrocytes, platelets, lymphocytes, reticulocytes, and others. This enables monitoring levels of activation products as opposed to reactants, and eliminates the weaknesses inherent in measuring C3 and C4 described above.

Definitions

- [0020] As used herein, an "inflammatory disease or condition" refers to any disease or condition that causes increased inflammation in an individual, *e.g.*, immune system disorders, infectious diseases, or cancer. In some embodiments the inflammatory disease or condition is a "chronic inflammatory disease or condition." A chronic inflammatory disease or condition is an inflammatory condition that does not resolve after a period of weeks, months or longer. Chronic inflammatory conditions can follow an acute inflammatory condition, or for some diseases or conditions can occur in the absence of an acute inflammatory disease or condition. An inflammatory disease or condition includes the following: autoimmune system diseases, including systemic lupus erythematosus (lupus or SLE), rheumatoid arthritis, vasculitis (and its specific forms such as Wegener's granulomatosis), scleroderma, myositis, serum sickness, transplant rejection, graft versus host disease, sickle cell anemia, gout, complications of pregnancy such as pre-eclampsia, multiple sclerosis, cardiovascular disease, infectious diseases such as hepatitis virus infection, including hepatitis A, B, C, and D, HIV infection, West Nile virus, Lyme disease, etc. Each of these diseases or conditions can also be described as chronic inflammatory diseases or conditions.
- [0021] Inflammatory disease or condition also refers to cancer, *e.g.*, solid tumors and hematological malignancies. The former includes cancers such as breast, colon, and ovarian cancers. The latter include hematopoietic malignancies including leukemias, lymphomas and myelomas.

[0022] Leukemias are generally neoplastic disorders of hematopoietic stem cells, and include adult and pediatric acute myeloid leukemias (AML), chronic myeloid leukemia (CML), acute lymphocytic leukemia (ALL), chronic lymphocytic leukemia (CLL), hairy cell leukemia and secondary leukemia. Specific leukemias include acute nonlymphocytic
5 leukemia, chronic lymphocytic leukemia, acute granulocytic leukemia, chronic granulocytic leukemia, acute promyelocytic leukemia, adult T-cell leukemia, aleukemic leukemia, a leukocythemetic leukemia, basophylic leukemia, blast cell leukemia, bovine leukemia, chronic myelocytic leukemia, leukemia cutis, embryonal leukemia, eosinophilic leukemia, Gross' leukemia, hairy-cell leukemia, hemoblastic leukemia, hemocytoblastic leukemia, histiocytic
10 leukemia, stem cell leukemia, acute monocytic leukemia, leukopenic leukemia, lymphatic leukemia, lymphoblastic leukemia, lymphocytic leukemia, lymphogenous leukemia, lymphoid leukemia, lymphosarcoma cell leukemia, mast cell leukemia, megakaryocytic leukemia, micromyeloblastic leukemia, monocytic leukemia, myeloblastic leukemia, myelocytic leukemia, myeloid granulocytic leukemia, myelomonocytic leukemia, Naegeli
15 leukemia, plasma cell leukemia, plasmacytic leukemia, promyelocytic leukemia, Rieder cell leukemia, Schilling's leukemia, stem cell leukemia, subleukemic leukemia, and undifferentiated cell leukemia.

[0023] Lymphomas are generally neoplastic transformations of cells that reside primarily in lymphoid tissue. Among lymphomas, there are two major distinct groups: non-Hodgkin's
20 lymphoma (NHL) and Hodgkin's disease. Lymphomas are tumors of the immune system and generally are present as both T cell- and as B cell-associated disease. Other hematological malignancies include myelodysplastic syndromes (MDS), myeloproliferative syndromes (MPS) and myelomas, such as solitary myeloma and multiple myeloma. Multiple myeloma (also called plasma cell myeloma) involves the skeletal system and is characterized by
25 multiple tumorous masses of neoplastic plasma cells scattered throughout that system. It may also spread to lymph nodes and other sites such as the skin. Solitary myeloma involves solitary lesions that tend to occur in the same locations as multiple myeloma.

[0024] Other cancers are also of concern, and include those characterized by solid tumors. Examples of other cancers of concern are skin cancers, including melanomas, basal cell
30 carcinomas, and squamous cell carcinomas. Epithelial carcinomas of the head and neck are also encompassed by the present invention. The present invention also encompasses cancers of the lung. Lung cancers include squamous or epidermoid carcinoma, small cell carcinoma, adenocarcinoma, and large cell carcinoma. Breast cancer is also included, both invasive

breast cancer and non-invasive breast cancer, e.g., ductal carcinoma in situ and lobular neoplasia. The present invention also encompasses gastrointestinal tract cancers.

Gastrointestinal tract cancers include esophageal cancers, gastric adenocarcinoma, primary gastric lymphoma, colorectal cancer, small bowel tumors and cancers of the anus. Pancreatic cancer and cancers that affect the liver are also of concern, including hepatocellular cancer. The present invention also includes treatment of bladder cancer and renal cell carcinoma.

[0025] The present invention also encompasses prostatic carcinoma and testicular cancer.

[0026] Gynecologic malignancies are also encompassed by the present invention including ovarian cancer, carcinoma of the fallopian tube, uterine cancer, and cervical cancer.

10 [0027] Treatment of sarcomas of the bone and soft tissue are encompassed by the present invention. Bone sarcomas include osteosarcoma, chondrosarcoma, and Ewing's sarcoma.

[0028] The present invention also encompasses malignant tumors of the thyroid, including papillary, follicular, and anaplastic carcinomas.

[0029] As used herein, "systemic lupus erythematosus", "SLE", or "lupus" is the prototypic autoimmune disease resulting in multiorgan involvement. This anti-self response is characterized by autoantibodies directed against a variety of nuclear and cytoplasmic cellular components. These autoantibodies bind to their respective antigens, forming immune complexes which circulate and eventually deposit in tissues. This immune complex deposition and consequential activation of the complement system causes chronic inflammation and tissue damage.

[0030] SLE progresses in a series of flares, or periods of acute illness, followed by remissions. The symptoms of a flare, which vary considerably between patients and even within the same patient, include malaise, fever, symmetric joint pain, and photosensitivity (development of rashes after brief sun exposure). Other symptoms of SLE include hair loss, ulcers of mucous membranes and inflammation of the lining of the heart and lungs which leads to chest pain. Red blood cells, platelets and white blood cells can be targeted in lupus, resulting in anemia and bleeding problems. More seriously, immune complex deposition and chronic inflammation in the blood vessels can lead to kidney involvement and occasionally failure requiring dialysis or kidney transplantation. Since the blood vessel is a major target of the autoimmune response in SLE, premature strokes and heart disease are not uncommon. Over time, however, these flares can lead to irreversible organ damage.

[0031] As used herein, "systemic sclerosis or scleroderma" is a chronic disorder of connective tissue characterized by inflammation and fibrosis and by degenerative changes of the blood vessels, skin, gastrointestinal tract, lung, heart and kidney. Scleroderma is a disabling and life-threatening disease. Criteria have been developed for the classification of patients with scleroderma (Masi, *et al. Arth Rheum*; 23:581-590 (1980)). These criteria are intended for description of large series of patients in research studies and not for diagnosis of individual patients. The major criterion is sclerodermatous skin changes (thickening of the skin) in any location proximal to the digits. With the addition of any two or three minor criteria [sclerodactyly (skin thickening involving the digits), digital pitting scars, bibasilar pulmonary interstitial fibrosis] the sensitivity for the diagnosis increases. However, nearly 10% of individuals with definite scleroderma do not satisfy these criteria (Medsger TA Jr. Comment on scleroderma criteria cooperative study. In: Black CM, . Myers AR, eds. Current Topics in Rheumatology: Systemic Sclerosis. New York : Gower Medical Publishing, 1985:16-17).

[0032] The status of a scleroderma patient or "severity" of his/her disease at a given time represents some combination of irreversible changes or "damage" and potentially reversible changes or "activity." Inflammation, early in the course of disease, leads to fibrosis and scarring later. If one could accurately detect the inflammatory activity, early intervention may prevent future irreversible damage. However, it is often difficult for clinicians to distinguish disease damage from disease activity. In part, this may be because clinical evidence of activity can be extremely subtle. In addition, there is no reliable laboratory marker of inflammation. Cross-sectional and longitudinal assessment of disease damage and activity are essential in evaluating the natural history of disease and in measuring the effectiveness of interventions, both in individual patients and in clinical trials. A review of this disorder can be found in Medsger TA Jr. Systemic sclerosis (scleroderma): clinical aspects. In: Koopman WJ, ed. Arthritis and Allied Conditions. 13th ed. Philadelphia: Lea and Febiger, 1997: 1433-1464.

[0033] As used herein, an "erythrocyte" refers to a mature red blood cell. Erythrocytes are usually obtained by taking a blood sample from an individual. In some embodiments, an erythrocyte is isolated from a blood sample of an individual before determining the level of a complement component on the erythrocyte.

[0034] As used herein, the "complement pathway or system" refers to a complex network of more than 30 functionally linked proteins that interact in a highly regulated manner to

provide many of the effector functions of humoral immunity and inflammation, thereby serving as the major defense mechanism against bacterial and fungal infections. This system of proteins acts against invasion by foreign organisms via three distinct pathways: the classical pathway (in the presence of antibody) or the alternative pathway (in the absence of antibody) and the lectin pathway. Once activated, the proteins within each pathway form a cascade involving sequential self-assembly into multimolecular complexes that perform various functions intended to eradicate the foreign antigens that initiated the response. For a review of the complement pathway, *see, e.g.,* Sim and Tsiftoglou, *Biochem. Soc. Trans.* 32:21-27 (2004).

10 [0035] The classical pathway is usually triggered by an antibody bound to a foreign particle. It consists of several components that are specific to the classical pathway and designated C1, C4, C2. Sequentially, binding of C1q to an antigen-antibody complex results in activation of C1r and C1s (both are serine proteases), and activated C1s cleaves C4 and C2 into, respectively, C4a and C4b and C2a and C2b. Fragments C4b and C2a assemble to form C4b2a, which cleaves protein C3 into C3a and C3b, which completes activation of the classical pathway. Fragments C4b and C3b are subject to further degradation by Factor I. This factor cleaves C4b to generate C4d and also cleaves C3b, to generate iC3b followed by C3d. Thus, activation of the classical pathway of complement can lead to deposition of a number of fragments, such as C4d, iC3b, and C3d, on immune complexes or other target surfaces. Such targets include cells circulating in the blood, *e.g.,* lymphocytes and other white blood cells, erythrocytes and platelets.

25 [0036] Activation of the alternative complement pathway begins when C3b (or C3i) binds to *e.g.,* the cell wall or other surface components of a microbe. Alternative pathway protein Factor B then combines with the cell-bound C3b to form C3bB. Factor D then splits the bound Factor B into Bb and Ba, forming C3bBb. A serum protein called properdin then binds to the Bb to form C3bBbP, which functions as a C3 convertase that lyses C3 into C3a and C3b.

30 [0037] The lectin complement pathway is mediated by mannan-binding lectin or mannan-binding protein (MBP). MBP is a protein that binds to the mannose groups found in many microbial carbohydrates. The MBP appears to be functionally equivalent to C1q in the classical complement pathway. Activation of the lectin pathway begins when MBP binds to the mannose groups of microbial carbohydrates. Two more lectin pathway proteins called

MASP1 and MASP2 (functionally equivalent to C1r and C1s of the classical pathway) then bind to the MBP. The MASP1/MASP2/MBL complex forms an enzyme with activity similar to C1 of the classical complement pathway that is able to cleave C4 and C2 to form C4bC2a, a C3 convertase that lyses C3 into C3a and C3b. The C3 convertase cleaves and activates
5 complement pathway components to form a membrane attack complex (MAC) that forms a pore in a bacterial cell wall, lysing the bacterial cell.

[0038] As used herein a "complement pathway component" includes proteins from the classical, alternative, and lectin complement pathways, *e.g.*, C1, C4, C2, C3 and fragments thereof, *e.g.*, C1q, C1r, C1s, C4a, C4b, C2a, C2b, C4bC2a, C3a, C3b, C4c, C4d, iC3b, iC4b,
10 C3d, C3i, C3dg. Also included are C5, C5b, C6, C7, C8, C9, C1inh, MASP1, MASP2, MBL, MAC, CR1, DAF, MCP, C4 binding protein (C4BP), protein factor H, Factor B, C3bB, Factor D, Bb, Ba, C3bBb, properdin, C3bBb, CD59, C3aR, C5aR, C1qR, CR2, CR3, and CR4, as well as other complement pathway components, receptors and ligands not listed specifically herein.

[0039] As used herein, a "control level of the complement pathway component" refers, in
15 some embodiments, to a level of a complement pathway component on a cell from an individual who does not suffer from a chronic inflammatory disease or condition. A control level can also be determined by analysis of a population of individuals. In some
embodiments, the control level of a complement pathway component is from the same
20 individual for whom a diagnosis is sought or whose disease is being monitored, but is obtained at a different time. A control level of a complement pathway component can also be used as a reference value for a complement pathway component in a computer readable
medium.

[0040] As used herein, "a difference from a control level" refers to a statistically significant
25 difference between a control level of a complement pathway component and a level of a complement pathway component from an individual for whom diagnosis or other information is sought, *i.e.*, an experimental level. Those of skill will recognize that many methods are available to determine whether a difference is statistically significant and the particular
method used is not limiting to the invention.

[0041] As used herein, the term "hepatitis" relates generally to a disease or condition
30 characterized by an inflammation of the liver. The term "hepatitis C" relates more specifically to an infection by the hepatitis C virus (HCV). The introduction of the hepatitis

C virus into a host is usually by parenteral means and typically marked by blood to blood contact. In many instances, the infection by HCV is chronic, and can lead to severe liver dysfunction and death. The symptoms of hepatitis C virus infection include, but are not limited to: abdominal pain, loss of appetite, liver cirrhosis, autoimmune complications, liver cancer, cryoglobulinemia, anxiety, arthritis, ascites (swelling in the stomach area), blurred vision, chills, dark urine, decline in sex drive, depression, dizziness, dry skin, edema (swelling of the hands, feet & legs), excessive bleeding, excessive gas, eye or eyesight problems (blurred vision or dry eyes), fatigue, fever, flu like symptoms, gallstones, grey, yellow, white or light colored stools, headaches, hepatalgia (pain or discomfort in liver area), hot flashes, indigestion, inflammation in the joints, insomnia, irritability, itching, jaundice (yellowing of eyes and/or skin), joint pain, kidney disease, lichen planus (a skin disease), mood changes or swings, memory loss, mental confusion, menstrual problems, muscle aches, nausea, neuropathy, rashes/red spots, red palms, rheumatoid symptoms, sensitivity to heat or cold, sleep disturbances, slow healing and recovery, sensitivity to sunlight (porphyria cutanea tarda), sialadenitis (inflammation of the salivary glands), susceptibility to illness/flu, sweating, vertigo, vomiting, water retention, weakness, weight gain, weight loss.

[0042] As used herein, "autoimmune complications" of HCV infection relate to activation of an autoimmune response in a patient. This response generally is directed at the liver, causing fatigue, low-grade fever and jaundice, but may also involve extrahepatic tissues, causing, among other symptoms: amenorrhea (absence of menstrual period), bloody diarrhea (due to ulcerative colitis), abdominal pain, arthritis, rashes, anemia, glomerulonephritis (a form of kidney disease), dry eyes, keratoconjunctivitis sicca, Mooren's ulcer and dry mouth.

[0043] As used herein, "cryoglobulinemia", refers generally to the condition of having the immunoglobulin, cryoglobulin, in the blood. At cool temperatures, these cryoglobulins turn into a gel, and may cause inflammation of the blood vessels. Deposition of circulating immune complexes and complement in cryoglobulinemia can result in systemic vasculitis.

[0044] As used herein, "specific therapy" for hepatitis C infection includes, but is not limited to, the administration of antiviral medications, including interferon, ribavirin and PEG-interferon.

[0045] As used herein, "sickle cell anemia" refers to an inherited disease caused by an abnormality in a hemoglobin protein, e.g., hemoglobin S (sickle hemoglobin), HbC, HbD, and HbO-Arab. The term sickle cell anemia also includes diseases such as sickle cell-b⁰

thalassemia, hemoglobin SC disease, or sickle cell-b⁺ thalassemia. Sickle cell anemia can be diagnosed by sequencing the DNA of a patient for the underlying mutation. Red blood cells in sickle cell anemia become disc shaped, fragile and inflexible, leading to a variety of symptoms of the disease, *e.g.*, joint pain and other bone pain, fatigue, breathlessness, rapid heart rate, delayed growth and puberty, susceptibility to infections, ulcers on the lower legs (in adolescents and adults), jaundice, bone pain, attacks of abdominal pain, and fever.

[0046] Sickle cell anemia can become life-threatening when damaged red blood cells break down (hemolytic crisis), when the spleen enlarges and traps the blood cells (splenic sequestration crisis), or when a certain type of infection causes the bone marrow to stop producing red blood cells (aplastic crisis). Repeated crises can cause damage to the kidneys, lungs, bones, eyes, and central nervous system. Blocked blood vessels and damaged organs can also cause acute painful episodes. These painful crises, which occur in almost all patients at some point in their lives, can last hours to days, affecting the bones of the back, the long bones, and the chest.

[0047] As used herein, "transplantation procedure" refers to transfer of an organ, *e.g.*, heart, lungs, kidney, cornea, or liver, or of cells from a donor to a recipient. In preferred embodiments, the donor is a human and the recipient is a human. In some embodiments, the transplantation procedure is a bone marrow transplant, in which healthy bone marrow is transferred from a donor to a recipient who lacks functioning bone marrow or has a disease associated with blood cells, such as leukemia.

[0048] A "complication of a transplantation procedure" includes transplant rejection, graft versus host disease (GVDH), and infection. Identification of changes in complement pathway components on erythrocytes that are associated with complications of transplant procedures can lead to more effective and targeted therapeutic intervention or be used to predict the outcome of the transplantation procedure.

[0049] As used herein, the term "pregnancy" relates generally to the state of containing unborn young within the body. Normally, pregnancy progresses smoothly from conception to birth. However, pregnancy may include complications which include, but are not limited to, one or more of the following: fetal birth defects, ectopic pregnancy, bleeding, miscarriage, loss of amniotic fluid, gestational diabetes, toxoplasmosis, group B strep association, RH disease, obstetric cholestasis, high blood pressure, uterine prolapse, morning sickness, pregnancy induced hypertension, placenta previa, fetal distress, blighted ovum,

hyperemesis gravidarum, dystocia, fibroids and preeclampsia. The term, "preeclampsia" or "toxemia" or "pregnancy-induced hypertension", as used herein, refers to the development of swelling, elevated blood pressure, and protein in the urine during pregnancy. Symptoms of preeclampsia include, but are not limited to: edema, weight gain in excess of two pounds per week, headache, decreased urine output, nausea, vomiting, facial swelling, high blood pressure, agitation, vision changes and abdominal pain. Preeclampsia has been associated with certain autoimmune disorders including systemic lupus erythematosus (also known as "lupus" or "SLE") and anti-phospholipid syndrome (also known as "antiphospholipid syndrome" or "APS"). As used herein, the term "anti-phospholipid syndrome" or "antiphospholipid syndrome" or "APS" refers to an autoimmune disease where the body recognizes phospholipids as foreign and produces antibodies against them. APS is often associated with fetal loss during pregnancy with antiphospholipid antibodies present in about one in five women with recurrent pregnancy losses. The causes of this are unknown, but may be due to the creation of blood clots in the mother.

15 [0050] The causes of complications during pregnancy are often difficult to diagnose, especially those associated with autoimmune disorders, such as lupus and APS, as they often show similar symptoms. Further, complications associated with lupus pregnancies, in particular, are often difficult to differentiate from other pregnancy complications, due to the vagueness of the disease and the multiple ways the disease presents in patients.

20 [0051] As used herein "vascular disease or condition" refers to a disease or condition that results in abnormal circulation of blood. Vascular disease or condition includes atherosclerosis, a common disorder of the arteries caused by build-up of fats and other substances on artery walls, *e.g.* plaques. Plaques can rupture and lead to heart attack or stroke, also included in vascular diseases or conditions. Clots sometime form around plaques and interfere with blood flow or can also break off and damage the heart, lungs, or brain. Complications of atherosclerosis are also vascular diseases or conditions and include coronary artery disease, heart attack, transient ischemic attack or stroke, insufficient blood supply to the limbs, damage to organs, and atherosclerosis and obstruction of bypass grafts. Vascular disorders (vasculopathic conditions) also include arterial and venous thrombosis, thromboembolism, infarctions, vasospasm, angina, and unstable angina.

30 [0052] As used herein "platelet" is a blood component that recognizes and binds to a damaged area of a blood vessel, forming a clot. Platelets are usually obtained by taking a

blood sample from an individual. In some embodiments, a platelet is isolated from a blood sample of an individual before determining the level of a complement component on the platelet.

[0053] “Antibody” refers to a polypeptide comprising a framework region from an immunoglobulin gene or fragments thereof that specifically binds and recognizes an antigen. The recognized immunoglobulin genes include the kappa, lambda, alpha, gamma, delta, epsilon, and mu constant region genes, as well as the myriad immunoglobulin variable region genes. Light chains are classified as either kappa or lambda. Heavy chains are classified as gamma, mu, alpha, delta, or epsilon, which in turn define the immunoglobulin classes, IgG, IgM, IgA, IgD and IgE, respectively. Typically, the antigen-binding region of an antibody will be most critical in specificity and affinity of binding.

[0054] An exemplary immunoglobulin (antibody) structural unit comprises a tetramer. Each tetramer is composed of two identical pairs of polypeptide chains, each pair having one “light” (about 25 kD) and one “heavy” chain (about 50-70 kD). The N-terminus of each chain defines a variable region of about 100 to 110 or more amino acids primarily responsible for antigen recognition. The terms variable light chain (V_L) and variable heavy chain (V_H) refer to these light and heavy chains respectively.

[0055] Antibodies exist, *e.g.*, as intact immunoglobulins or as a number of well-characterized fragments produced by digestion with various peptidases. Thus, for example, pepsin digests an antibody below the disulfide linkages in the hinge region to produce $F(ab)'_2$, a dimer of Fab which itself is a light chain joined to V_H-C_H1 by a disulfide bond. The $F(ab)'_2$ may be reduced under mild conditions to break the disulfide linkage in the hinge region, thereby converting the $F(ab)'_2$ dimer into an Fab' monomer. The Fab' monomer is essentially Fab with part of the hinge region (*see Fundamental Immunology* (Paul ed., 3d ed. 1993)). While various antibody fragments are defined in terms of the digestion of an intact antibody, one of skill will appreciate that such fragments may be synthesized *de novo* either chemically or by using recombinant DNA methodology. Thus, the term antibody, as used herein, also includes antibody fragments either produced by the modification of whole antibodies, or those synthesized *de novo* using recombinant DNA methodologies (*e.g.*, single chain Fv) or those identified using phage display libraries (*see, e.g., McCafferty et al., Nature* 348:552-554 (1990))

[0056] For preparation of antibodies, *e.g.*, recombinant, monoclonal, or polyclonal antibodies, many techniques known in the art can be used (*see, e.g.*, Kohler & Milstein, *Nature* 256:495-497 (1975); Kozbor *et al.*, *Immunology Today* 4: 72 (1983); Cole *et al.*, pp. 77-96 in *Monoclonal Antibodies and Cancer Therapy*, Alan R. Liss, Inc. (1985); Coligan, *Current Protocols in Immunology* (1991); Harlow & Lane, *Antibodies, A Laboratory Manual* (1988); and Goding, *Monoclonal Antibodies: Principles and Practice* (2d ed. 1986)). The genes encoding the heavy and light chains of an antibody of interest can be cloned from a cell, *e.g.*, the genes encoding a monoclonal antibody can be cloned from a hybridoma and used to produce a recombinant monoclonal antibody. Gene libraries encoding heavy and light chains of monoclonal antibodies can also be made from hybridoma or plasma cells. Random combinations of the heavy and light chain gene products generate a large pool of antibodies with different antigenic specificity (*see, e.g.*, Kuby, *Immunology* (3rd ed. 1997)). Techniques for the production of single chain antibodies or recombinant antibodies (U.S. Patent 4,946,778, U.S. Patent No. 4,816,567) can be adapted to produce antibodies to polypeptides of this invention. Also, transgenic mice, or other organisms such as other mammals, may be used to express humanized or human antibodies (*see, e.g.*, U.S. Patent Nos. 5,545,807; 5,545,806; 5,569,825; 5,625,126; 5,633,425; 5,661,016, Marks *et al.*, *Bio/Technology* 10:779-783 (1992); Lonberg *et al.*, *Nature* 368:856-859 (1994); Morrison, *Nature* 368:812-13 (1994); Fishwild *et al.*, *Nature Biotechnology* 14:845-51 (1996); Neuberger, *Nature Biotechnology* 14:826 (1996); and Lonberg & Huszar, *Intern. Rev. Immunol.* 13:65-93 (1995)). Alternatively, phage display technology can be used to identify antibodies and heteromeric Fab fragments that specifically bind to selected antigens (*see, e.g.*, McCafferty *et al.*, *Nature* 348:552-554 (1990); Marks *et al.*, *Biotechnology* 10:779-783 (1992)). Antibodies can also be made bispecific, *i.e.*, able to recognize two different antigens (*see, e.g.*, WO 93/08829, Traunecker *et al.*, *EMBO J.* 10:3655-3659 (1991); and Suresh *et al.*, *Methods in Enzymology* 121:210 (1986)). Antibodies can also be heteroconjugates, *e.g.*, two covalently joined antibodies, or immunotoxins (*see, e.g.*, U.S. Patent No. 4,676,980, WO 91/00360; WO 92/200373; and EP 03089).

[0057] In one embodiment, the antibody is conjugated to an “effector” moiety. The effector moiety can be any number of molecules, including labeling moieties such as radioactive labels or fluorescent labels for use in diagnostic assays.

[0058] The phrase “specifically (or selectively) binds” to an antibody or “specifically (or selectively) immunoreactive with,” when referring to a protein or peptide, refers to a binding

reaction that is determinative of the presence of the protein, often in a heterogeneous population of proteins and other biologics. Thus, under designated immunoassay conditions, the specified antibodies bind to a particular protein at least two times the background and more typically more than 10 to 100 times background. Specific binding to an antibody under
5 such conditions requires an antibody that is selected for its specificity for a particular protein. For example, polyclonal antibodies raised to a component of the complement pathway or to a marker of a white blood cell, polymorphic variants, alleles, orthologs, and conservatively modified variants, or splice variants, or portions thereof, can be selected to obtain only those polyclonal antibodies that are specifically immunoreactive with the component of the
10 complement pathway or the marker of a white blood cell and not with other proteins. This selection may be achieved by subtracting out antibodies that cross-react with other molecules. A variety of immunoassay formats may be used to select antibodies specifically immunoreactive with a particular protein. For example, solid-phase ELISA immunoassays are routinely used to select antibodies specifically immunoreactive with a protein (*see, e.g.,*
15 Harlow & Lane, *Antibodies, A Laboratory Manual* (1988) for a description of immunoassay formats and conditions that can be used to determine specific immunoreactivity).

[0059] An "antigen" is a molecule that is recognized and bound by an antibody, *e.g.,* peptides, carbohydrates, organic molecules, or more complex molecules such as glycolipids and glycoproteins. The part of the antigen that is the target of antibody binding is an
20 antigenic determinant and a small functional group that corresponds to a single antigenic determinant is called a hapten.

[0060] A "label" is a composition detectable by spectroscopic, photochemical, biochemical, immunochemical, or chemical means. For example, useful labels include ^{32}P , ^{125}I , fluorescent dyes, electron-dense reagents, enzymes (*e.g.,* as commonly used in an
25 ELISA), biotin, digoxigenin, or haptens and proteins for which antisera or monoclonal antibodies are available (*e.g.,* antibody specific for a component of the complement pathway or a marker of a white blood cell can be made detectable, *e.g.,* by incorporating a radiolabel or fluorescent label into the antibody, and used to detect component of the complement pathway or the marker of a white blood cell specifically reactive with the labeled antibody).
30 A labeled secondary antibody can also be used to detect an antibody specific for a component of the complement pathway or a marker of a white blood cell.

[0061] The term “contact” or “contacting” is used herein interchangeably with the following: combined with, added to, mixed with, passed over, incubated with, flowed over, *etc.*

5 [0062] The term “immunoassay” is an assay that uses an antibody to specifically bind an antigen. The immunoassay is characterized by the use of specific binding properties of a particular antibody to isolate, target, and/or quantify the antigen.

[0063] In both instances, when speaking of “determination or determining” and “quantity,” we mean to include both an amount or quantity of material. When more than one complement pathway component is measured, *e.g.*, C4d and C3d “determination or
10 determining” and “quantity,” mean in addition, or alternatively, a ratio of a first complement pathway component to a second complement pathway component, *e.g.*, a ratio of C4d to C3d.

Determination of the level of a complement pathway component on erythrocytes or platelets.

[0064] The invention involves conducting assays on blood components, *e.g.*, erythrocytes
15 or platelets, obtained from patients to determine levels of complement pathway components on the surface of the blood component. The levels of the complement pathway components are then compared to a control and used to diagnose or monitor an inflammatory disease or condition in an individual or to diagnose or monitor a vascular disease or condition in an individual. Cancers can also be monitored or diagnosed using the methods disclosed herein.

20 [0065] Samples of blood are obtained from the patient and are treated with EDTA (ethylenediaminetetraacetate) to inhibit complement activation. The samples are maintained at room temperature or under cold conditions. Assays are run preferably within 24 hours.

[0066] In some embodiments the erythrocytes are isolated from other components of the blood sample. For example, erythrocytes can be isolated from whole blood by centrifugation
25 to remove other blood components. Platelets can be isolated from blood using an antibody specific for platelets, *e.g.*, an anti-CD42b antibody. CD42b antibodies are commercially available, *e.g.*, from BD Immunocytometry Systems, San Jose, CA.

[0067] Isolation of platelets can be done by attaching an antibody or ligand specific to a platelet surface marker to a solid support, then contacting a sample containing platelets with
30 the linked antibody. Contaminating cells are washed away allowing the isolated platelets to

be collected. Erythrocytes can also be isolated using erythrocyte specific ligands or antibodies to a solid support.

[0068] In some embodiments, FACS is used to isolate an erythrocyte or platelet containing fraction of cells. The term "FACS" refers to fluorescence activated cell sorting, a technique
5 used to separate cells according to their content of particular molecules of interest. The molecule of interest can be specific for a type of cell or for particular cell state. The molecule of interest can be fluorescently labeled directly by binding to a fluorescent dye, or by binding to a second molecule, which has been fluorescently labeled, *e.g.*, an antibody, lectin or aptamer that has been fluorescently labeled and that specifically binds to the molecule of
10 interest. Thus, erythrocyte or platelet specific markers can be used to isolate erythrocyte or platelet from other components of a blood sample. For erythrocytes, RNA content can be used to isolate erythrocytes from other cells in a blood sample, in particular, from immature red blood cells. In a preferred embodiment, RNA is detected by staining with a fluorescent dye, and reticulocytes are separated from mature red cells on the basis of fluorescence.
15 Fluorescent dyes for staining RNA can include thiazole orange and auramine O.

[0069] Isolation of erythrocytes or platelets also refers to gating techniques used to assay a particular population of erythrocytes or platelets during flow cytometric analysis. A labeled marker specific for a population of interest is used to analyze the population. A second labeled marker is then used to determine the level of a complement pathway component on
20 the population of interest, *e.g.*, erythrocytes or platelets.

[0070] The determination of the level of a complement pathway component can be done by a number of methods including flow cytometry, ELISA using erythrocyte or platelet lysates, radioimmunoassay, and nephelometry. In one embodiment of this invention, the determination of the levels of a component of the complement pathway is made using flow
25 cytometric methods, with measurements taken by direct or indirect immunofluorescence using polyclonal or monoclonal antibodies specific for the component of the complement pathway. The mean fluorescence channel (MFC) for the white blood cell component of the complement pathway is determined. Determination of complement components, *e.g.*, C4d, CR1, and , on the surface of red blood cells or platelets is described in WO03/022223,
30 published March 20, 2003 and in USSN 60/463,447, filed April 16, 2003, both of which are herein incorporated by reference for all purposes.

[0071] In one embodiment, levels of a complement pathway component are determined on the surface of erythrocytes to diagnose or monitor the progression of an immune disease or condition in individuals or a subpopulation of individuals. The erythrocytes are isolated or detected using erythrocyte specific markers *e.g.*, ligands, antibodies or nucleic acid binding dyes. Determination of complement pathway component levels can be done by a number of methods including flow cytometry, ELISA using erythrocyte lysates, and radioimmunoassay. In one embodiment of the invention, the determination of the levels of a complement pathway component is made using flow cytometric methods, with measurements taken by direct or indirect immunofluorescence using polyclonal or monoclonal antibodies specific for a complement pathway component. The mean fluorescence channel (MFC) for a complement pathway component is determined. The same type of assay may be used for diagnosis or for monitoring disease activity in patients known to have the immune disease or condition.

[0072] In another embodiment, levels of a complement pathway component are determined on the surface of platelets to diagnose or monitor the progression of a vascular disease or condition in individuals. The platelets are isolated or detected using platelet specific markers *e.g.*, ligands, or antibodies such as anti-CD42b antibodies. Determination of complement pathway component levels can be done by a number of methods including flow cytometry, ELISA using platelet lysates, radioimmunoassay, and nephelometry. In one embodiment of the invention, the determination of the levels of a complement pathway component on a platelet is made using flow cytometric methods, with measurements taken by direct or indirect immunofluorescence using polyclonal or monoclonal antibodies specific for a complement pathway component. The mean fluorescence channel (MFC) for a complement pathway component is determined. The same type of assay may be used for diagnosis or for monitoring disease activity in patients known to have the vascular disease or condition. Nephelometry techniques can also be used for the determination.

Diagnostic methods

[0073] In one embodiment, a subset of hepatitis C patients can be identified by determining the level of a complement pathway component on erythrocytes. For example, some hepatitis C patients have elevated levels of complement ligand Bb and/or complement ligand C3d on erythrocytes. The methods described above can be used *e.g.*, to identify subsets of hepatitis C patients with cryoglobulinemia or other hepatitis C complications or to identify patients with hepatitis C that will respond to a particular therapeutic agent for treatment.

[0074] In another embodiment, a subset of sickle cell anemia patients can be identified by determining the level of a complement pathway component on erythrocytes. For example, some sickle cell patients have abnormally low or undetectable levels of complement component C4d on erythrocytes. Other sickle cell patients have a population of erythrocytes with differing levels of complement component C4d (see *e.g.*, Figure 3). The methods described above can be used *e.g.*, to identify subsets of sickle cell patients with vasoocclusive crisis or other sickle cell complications or to identify patients with sickle cell anemia that will respond to a particular therapeutic agent for treatment.

[0075] In another embodiment, a subset of patients with transplant complications can be identified by determining the level of a complement pathway component on erythrocytes. For example, some transplant patients have increased levels of complement component C4d and/or complement component C3d, and/or complement component iC3b on erythrocytes (see *e.g.*, Figure 5). The methods described above can be used *e.g.*, to identify subsets of transplant patients with infections, or suffering from rejection or other transplant complications, or to identify transplant patients that will respond to a particular therapeutic agent for treatment.

[0076] In another embodiment, a subset of patients with pregnancy complications can be identified by determining the level of a complement pathway component on erythrocytes. For example, some pregnant patients have increased levels of complement component C4d and/or decreased levels of complement component CR1 on erythrocytes (see *e.g.*, Figure 6). The methods described above can be used *e.g.*, to identify subsets of pregnant patients with preeclampsia, or other complications of pregnancy, or to identify pregnant patients that will respond to a particular therapeutic agent for treatment. The methods can be used to identify pregnancy complications such as preeclampsia in patients with SLE and patients that do not have SLE.

[0077] In another embodiment, a vascular disease, such as atherosclerosis is diagnosed or monitored by determining the level of a complement pathway component on platelets. For example, some SLE patients have increased levels of complement component C4-derived ligands on platelets. The methods described above can be used *e.g.*, to diagnose or monitor vascular diseases in patients with SLE and patients that do not have SLE. The methods can also be used to identify subsets of patients with particular vascular diseases or to identify patients with a vascular disease or condition that will respond to a particular therapeutic agent

for treatment. Methods of determining the level of a complement pathway component on platelets can also be used to identify patients at risk for infarctions, including *e.g.*, myocardial infarctions, cerebral infarctions, *ect.*

Cancers can also be monitored or diagnosed using the methods disclosed herein.

5 **Kits**

[0078] Kits for conducting the assays for both the diagnosing or monitoring an inflammatory disease or condition are a part of this invention, as are kits for diagnosing or monitoring a vascular disease or condition. Said kits will use any of the various reagents needed to perform the methods described herein. For example using the immunofluorescence
10 assays, the kits will generally comprise a conjugate of a monoclonal or polyclonal antibody specific for complement pathway component (*e.g.*, anti-C4d or C3d antibodies) with a fluorescent moiety, and preferably also a conjugate of a monoclonal or polyclonal antibody specific for an erythrocyte or platelet (*e.g.*, platelets using, *e.g.*, anti-CD42b antibodies) with a different fluorescent moiety. The kit can also include a control level of complement
15 pathway component or a means to determine such a control level. Additionally, the kits can comprise instructional material for the user and such other material as may be needed in carrying out assays of this type, for example, buffers, radiolabelled antibodies, colorimeter reagents etc.

[0079] The antibodies for use in these methods and kits are known. Antibodies specific for
20 CD42b are available from Becton Dickinson Immunocytometry Systems, San Jose, CA. Hybridomas secreting Anti-CR1 antibodies are available from the American Type Culture Collection in Maryland (ATCC #HB 8592). A general reference is U.S. Pat 4,672,044. Anti-C4d, anti-C3d antibodies, anti-Bb antibodies, and anti-iC3b antibody are available from Quidel Corp. in San Diego, California and are generally described in Rogers, J., N. Cooper, *et al.* *PNAS* 89:10016-10020, (1992); Schwab, C. *et al.* *Brain. Res.* 707(2):196 (1996);
25 Gemmell, C. *J. Biomed. Mater. Res.* 37:474-480, (1997); and, Stoltzner, S.E., *et al.* *Am. J. Path.* 156:489-499, (2000).

Automation and computer software

[0080] The determinations of complement pathway components *e.g.*, C4d, C3d, Bb, CR1,
30 and iC3b, and the diagnostic and disease activity monitoring methods described above can be carried out manually, but often are conveniently carried out using an automated system and/or equipment, in which the blood sample is analyzed automatically to make the necessary

determination or determinations, and the comparison with the base or reference value is carried out automatically, using computer software appropriate to that purpose.

[0081] Thus, in one aspect, the invention comprises a method for diagnosing or monitoring an inflammatory disease or condition in an individual comprising (a) automatically
5 determining, in a blood sample from the individual containing an erythrocyte or a platelet, complement pathway components deposited on surfaces of erythrocytes or platelets in the sample, and (b) automatically comparing said determinations with reference values for the same complement pathway components on surfaces of erythrocytes or platelets.

[0082] Computer software, or computer-readable media for use in the methods of this
10 invention include:

(1): a computer readable medium, comprising:

code for receiving data corresponding to a determination of complement pathway
components deposited on surfaces of erythrocytes or platelets;

code for retrieving a reference value for the same complement pathway components

15 deposited on surfaces of erythrocytes or platelets of individuals; and

code for comparing the data in (a) with the reference value of (b).

[0083] In embodiments of the invention, one or more reference values may be stored in a memory associated with a digital computer. After data corresponding to a determination of
20 the level of a complement pathway component is obtained (*e.g.*, from an appropriate analytical instrument), the digital computer may compare the complement pathway component data with one or more appropriate reference values. After this comparison takes place, the digital computer can automatically determine if the data corresponding to the determination of complement pathway component is associated with an inflammatory disease
25 or condition, or a vascular disease or condition.

[0084] Those of skill will recognize that computer programs can be modified to analyze levels of more than one complement pathway component on erythrocytes or platelets for diagnosis or monitoring an inflammatory disease or condition, or a vascular disease or condition.

[0085] Accordingly, some embodiments of the invention may be embodied by computer
30 code that is executed by a digital computer. The digital computer may be a micro, mini or large frame computer using any standard or specialized operating system such as a

Windows™ based operating system. The code may be stored on any suitable computer readable media. Examples of computer readable media include magnetic, electronic, or optical disks, tapes, sticks, chips, etc. The code may also be written by those of ordinary skill in the art and in any suitable computer programming language including, C, C++, etc.

5

EXAMPLES

[0086] The following examples are provided by way of illustration only and not by way of limitation. Those of skill will readily recognize a variety of noncritical parameters that could be changed or modified to yield essentially similar results.

Example 1: Diagnosis and monitoring Hepatitis C Virus infection using complement pathway components

10

[0087] Red blood cells were pelleted, washed with PBSB, and aliquotted for anti-complement component or control antibody staining. Two-color flow cytometric analyses was performed to measure a series of complement components on erythrocytes of patients, *e.g.*, CR1, C4d, C3b, C3d, Bb, iC3b, and C5b-9. Monoclonal antibodies (mAb) were added to red blood cells at a concentration of 10 µg/ml. An RNA binding dye was added to distinguish reticulocytes from erythrocytes. The cells were incubated for 20 min at 4° C, and washed with cold PBSB + 0.2% sodium azide. A secondary antibody, goat anti-mouse IgG conjugated to fluorescein isothiocyanate (FITC) from Jackson Immunoresearch Laboratories (# 115-096-062) was added to cells at a concentration of 10 µg/ml. Cells were incubated and washed, resuspended in PBSB + 0.2% sodium azide, and analyzed by flow cytometry using a FACSCalibur (Becton Dickinson Immunocytometry Systems, San Jose, CA). Erythrocytes were gated for further analysis. Nonspecific binding of immunoglobulins to cells was determined by performing identical assays in parallel using the isotype control antibody MOPC21 (obtained from ATCC). A subset of patients with hepatitis C virus infection had significant levels of complement ligand Bb (E-Bb) and/or complement ligand C3d (E-C3d) on the surfaces of their erythrocytes were found (Figure 1). In contrast to patients with SLE, patients with hepatitis C virus infection have normal levels of E-CR1 and E-C4d. Among patients infected with hepatitis C virus, a subset will develop autoimmune complications of the disease, some will have a disease course complicated by cryoglobulinemia, and some will respond to a specific therapy while others will not. Measurements of complement pathway components on erythrocytes (including but not limited to Bb and C3d) are used to identify such subsets of patients, leading to more effective and targeted therapeutic intervention.

25
30

Example 2: Diagnosis and monitoring Sickle Cell Anemia using complement pathway components

[0088] Complement pathway components were measured on erythrocytes from patients with sickle cell anemia as described above. A subset of patients with sickle cell anemia had abnormally low and/or undetectable levels of complement ligand C4d on the surfaces of their erythrocytes was discovered. See, e.g., Figure 2. One patient with sickle cell anemia had two populations of erythrocytes that differ significantly in levels of E-C4d. See, e.g., Figure 3. In contrast to patients with SLE, the observed population of patients with sickle cell anemia had normal levels of CR1. A subset of patients with sickle cell anemia have significantly more vasoocclusive crises. Measurements of complement ligands, including C4d, and receptors on erythrocytes is used to identify such subsets of patients, leading to more effective and targeted therapeutic intervention.

Example 3: Diagnosis and monitoring transplant complications using complement pathway components

[0089] Complement pathway components were measured on erythrocytes from a patient before and after undergoing a stem cell transplant for hematologic malignancy using techniques described above. Figure 4 provides a complement pathway component profile of a patient before receiving a stem cell transplant. After transplant the patient suffered complications. Figure 5 provides the complement pathway component profile of the same patient nineteen days after receiving the transplant, while suffering from post-transplant complications, and demonstrates that the patient had abnormal levels of complement ligands C4d (increased), C3d (increased), and iC3b (increased) deposited on erythrocytes in the post-transplant period. In contrast to patients with SLE, transplant patients maintain normal levels of E-CR1. This suggests that circulating erythrocytes reflect early stages of transplant rejection, concurrent infection, or other complications of transplantation, through changes in levels of complement ligands and/or receptors on the erythrocyte surface. Measurements of complement ligands and receptors on erythrocytes are used to identify post-transplant complications, leading to more effective and targeted therapeutic intervention.

Example 4: Diagnosis and monitoring complications of pregnancy using complement pathway components

[0090] Measurement of complement pathway components on surfaces of erythrocytes can facilitate diagnosis of complications of pregnancy such as preeclampsia and aid in the differentiation of disease flares in lupus pregnancy vs. complications of pregnancy. Figure 6

shows a complement pathway component profiles on erythrocytes of a pregnant individual before giving birth and 9 months after. Complement pathway component levels were assayed as described above. In the figure, C4d levels are shown as circles and CR1 levels are shown as squares. During pregnancy levels of CR1 began to decrease soon after conception (-9 months), reaching a nadir at delivery (0 months) and gradually increased during the post-partum period, returning to normal 9 months after delivery. In addition, during pregnancy levels of C4d began to increase soon after conception (-9 months), reaching a peak at delivery (0 months) and gradually decreased during the post-partum period, returning to normal 9 months after delivery. These results mimic C4d and CR1 levels in SLE, but are much less pronounced. Thus, analysis of complement pathway component levels during pregnancy can be used to diagnose and monitor pregnancy complications and to distinguish those complications from lupus or lupus flares, particularly in patients with SLE.

[0091] Recent studies by others have demonstrated that fetal loss during pregnancy such as that observed in anti-phospholipid syndrome, is dependent on complement activation. Therefore, measurement of complement ligand and receptor levels on surfaces of erythrocytes can facilitate monitoring and prediction of outcomes of pregnancy.

Example 5: Diagnosis and monitoring vascular diseases and conditions using complement pathway components

[0092] Atherosclerosis is an inflammatory disorder and numerous reports have identified C-reactive protein and other inflammatory proteins as potential biomarkers and prognostic indicators of disease progression. Young women with SLE have a 50-fold increased risk of heart attacks and strokes compared with healthy controls. Some patients with SLE have complement deposited on platelets. Thus, complement deposition on platelets may reflect and contribute to atherosclerosis and its complications, both in patients with SLE and in individuals that do not have SLE. Complement ligands on the surface of platelets were analyzed by flow cytometry and confocal microscopy in three experimental groups: 141 patients with SLE, 116 patients with other diseases, (including other autoimmune diseases, viral infections, and malignancies) and 101 healthy controls. Complement protein C4-derived ligands were detected on platelets from 27% of SLE patients, 2% of patients with other diseases, and 0% of healthy controls ($p=0.0001$). In addition, the presence of C4-derived fragments on platelets from patients with SLE was significantly correlated with history of a neurologic event ($p = 0.006$) and antiphospholipid antibodies ($p = 0.05$). Complement deposition could not be explained by concomitant deposition of

immunoglobulin or by the presence of immune thrombocytopenic purpura (ITP). Patterns of complement deposition on platelet surfaces were captured by confocal microscopy and suggest diffuse rather than focal changes on the platelet membranes. These data support the following conclusions. First, although C4-derived ligands are present on normal
5 erythrocytes, they are absent from normal platelet surfaces. Second, C4-positive platelets appear to be highly specific and diagnostic for patients with SLE. Third, identification of C4-positive platelets in patients with SLE is correlated with cardiovascular disease and vascular events. Fourth, identification of C4-positive platelets in patients with other diseases may identify patients at risk for cardiovascular disease and vascular events.

10 [0093] All publications and patent applications cited in this specification are herein incorporated by reference as if each individual publication or patent application were specifically and individually indicated to be incorporated by reference.

[0094] Although the foregoing invention has been described in some detail by way of illustration and example for purposes of clarity of understanding, it will be readily apparent to
15 those of ordinary skill in the art in light of the teachings of this invention that certain changes and modifications may be made thereto without departing from the spirit or scope of the appended claims.

WHAT IS CLAIMED IS:

- 1 1. A method for diagnosing or monitoring an inflammatory disease or
2 condition in an individual, with the caveat that the inflammatory disease or condition is not
3 systemic lupus erythematosus (SLE) or scleroderma, the method comprising,
4 (a) determining a level of a complement pathway component on an
5 erythrocyte from the individual, and
6 (b) comparing the complement pathway component level with a control level
7 of complement pathway component, wherein a difference from the control level of the
8 complement pathway component indicates that the individual has the inflammatory disease or
9 condition.
- 1 2. The method of claim 1, wherein the inflammatory disease or condition
2 is selected from the group consisting of a hepatitis C infection, sickle cell anemia, a
3 complication of a transplantation procedure, and a complication of pregnancy.
- 1 3. The method of claim 2, wherein the inflammatory disease or condition
2 is a hepatitis C infection.
- 1 4. The method of claim 3, wherein the complement pathway component
2 is complement ligand Bb.
- 1 5. The method of claim 4, wherein the level of complement pathway
2 component Bb is determined using an antibody specific for complement component Bb.
- 1 6. The method of claim 5, wherein the antibody specific for complement
2 pathway component Bb is labeled.
- 1 7. The method of claim 5, wherein the antibody specific for complement
2 pathway component Bb is a monoclonal antibody.
- 1 8. The method of claim 4, wherein the level of at least one other
2 complement pathway component is determined.
- 1 9. The method of claim 8, wherein in the level of complement pathway
2 component C3d is determined.

1 10. The method of claim 3, wherein the complement pathway component
2 is complement ligand C3d.

1 11. The method of claim 10, wherein the level of complement pathway
2 component C3d is determined using an antibody specific for complement component C3d.

1 12. The method of claim 11, wherein the antibody specific for complement
2 pathway component C3d is labeled.

1 13. The method of claim 11, wherein the antibody specific for complement
2 pathway component C3d is a monoclonal antibody.

1 14. The method of claim 10, wherein the level of at least one other
2 complement pathway component is determined.

1 15. The method of claim 2, wherein the inflammatory disease or condition
2 is a sickle cell anemia.

1 16. The method of claim 15, wherein the complement pathway component
2 is complement ligand C4d.

1 17. The method of claim 15, wherein the complement pathway component
2 is complement ligand C4d.

1 18. The method of claim 17, wherein the level of complement pathway
2 component C4d is determined using an antibody specific for complement component C4d.

1 19. The method of claim 18, wherein the antibody specific for complement
2 pathway component C4d is labeled.

1 20. The method of claim 18, wherein the antibody specific for complement
2 pathway component C4d is a monoclonal antibody.

1 21. The method of claim 17, wherein the level of at least one other
2 complement pathway component is determined.

1 22. The method of claim 2, wherein the inflammatory disease or condition
2 is a complication of a transplantation procedure.

1 23. The method of claim 22, wherein the complement pathway component
2 is selected from the group consisting of complement ligand C4d, complement ligand C3d,
3 and complement ligand iC3b.

1 24. The method of claim 2, wherein the inflammatory disease or condition
2 is a complication of pregnancy.

1 25. The method of claim 24, wherein the complement pathway component
2 is selected from the group consisting of C4d and CR1.

1 26. A kit for diagnosing or monitoring an inflammatory disease or
2 condition in an individual, with the caveat that the inflammatory disease or condition is not
3 systemic lupus erythematosus or scleroderma, the kit comprising an antibody specific for a
4 complement pathway component and a means for comparing a level of the complement
5 pathway component to a control level of complement pathway component.

1 27. A computer readable medium, comprising:
2 (a) code for receiving data corresponding to a determination of a complement
3 pathway component deposited on surfaces of erythrocytes;
4 (b) code for retrieving a reference value for the complement pathway
5 component deposited on surfaces of erythrocytes of individuals;
6 (c) code for comparing the data in (a) with the reference value in (b),
7 wherein the comparison of data is used to diagnose or monitor an
8 inflammatory disease or condition in an individual, with the caveat that the inflammatory
9 disease or condition is not systemic lupus erythematosus or scleroderma.

1 28. A method for diagnosing or monitoring a vascular disease or condition
2 in an individual, the method comprising,

3 (a) determining, in a blood sample from the individual containing platelets, a
4 level of a complement pathway component on surface of an platelet in the sample, and
5 (b) comparing said determinations with a control level of the complement
6 pathway component, wherein a difference from the control level of the complement pathway
7 component indicates that the individual has the vascular disease or condition.

1 29. The method of claim 28, wherein the complement pathway component
2 is selected from the group consisting of C1q, C3b, iC3b, C3d, C4b, iC4b, C4d, C5b-9, Bb,
3 and mannose binding lectin (MBL).

1 30. The method of claim 28, wherein the individual has systemic lupus
2 erythamatosus.

Hepatitis C Virus

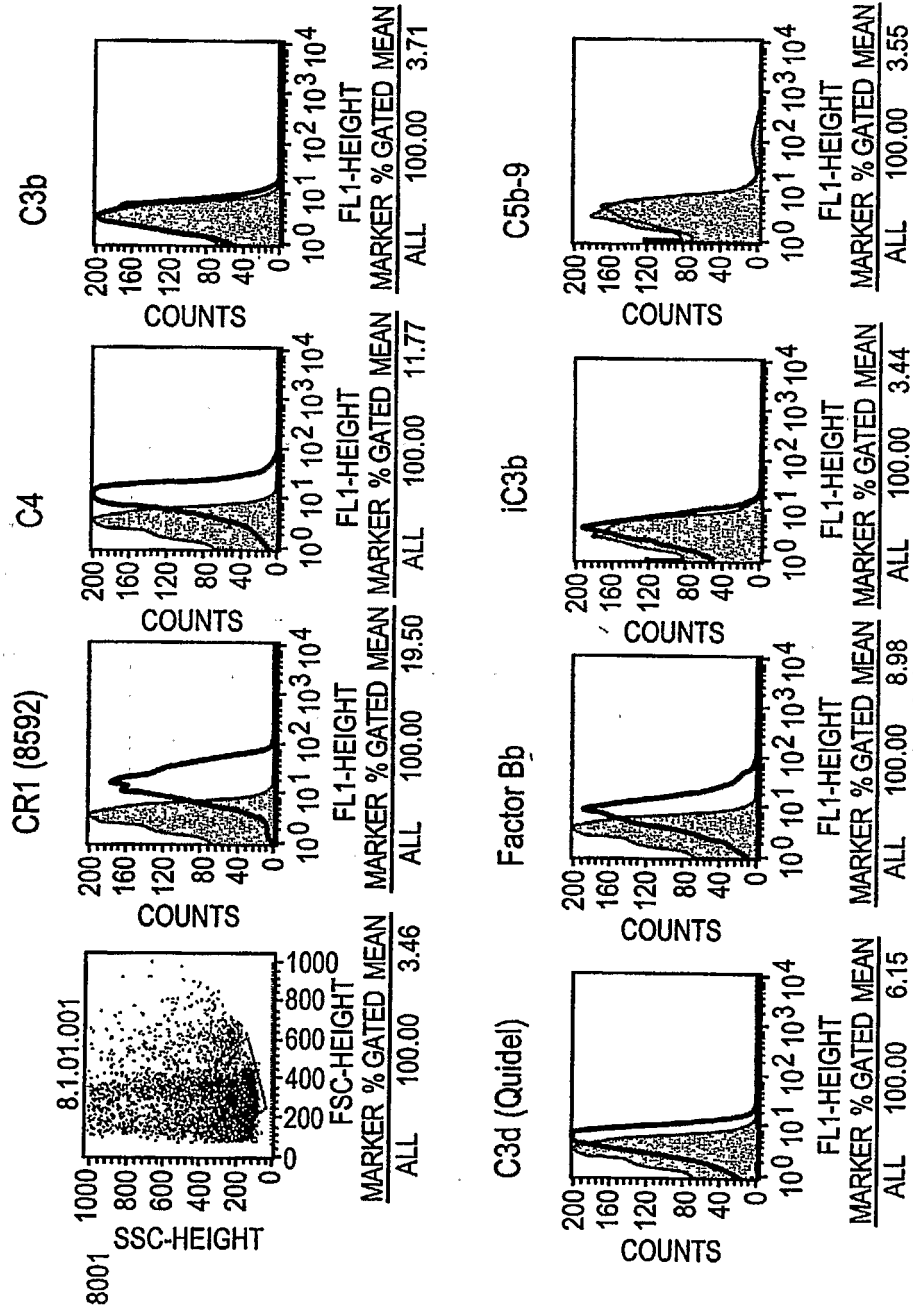


FIG. 1

Sickle Cell Anemia-Patient JH

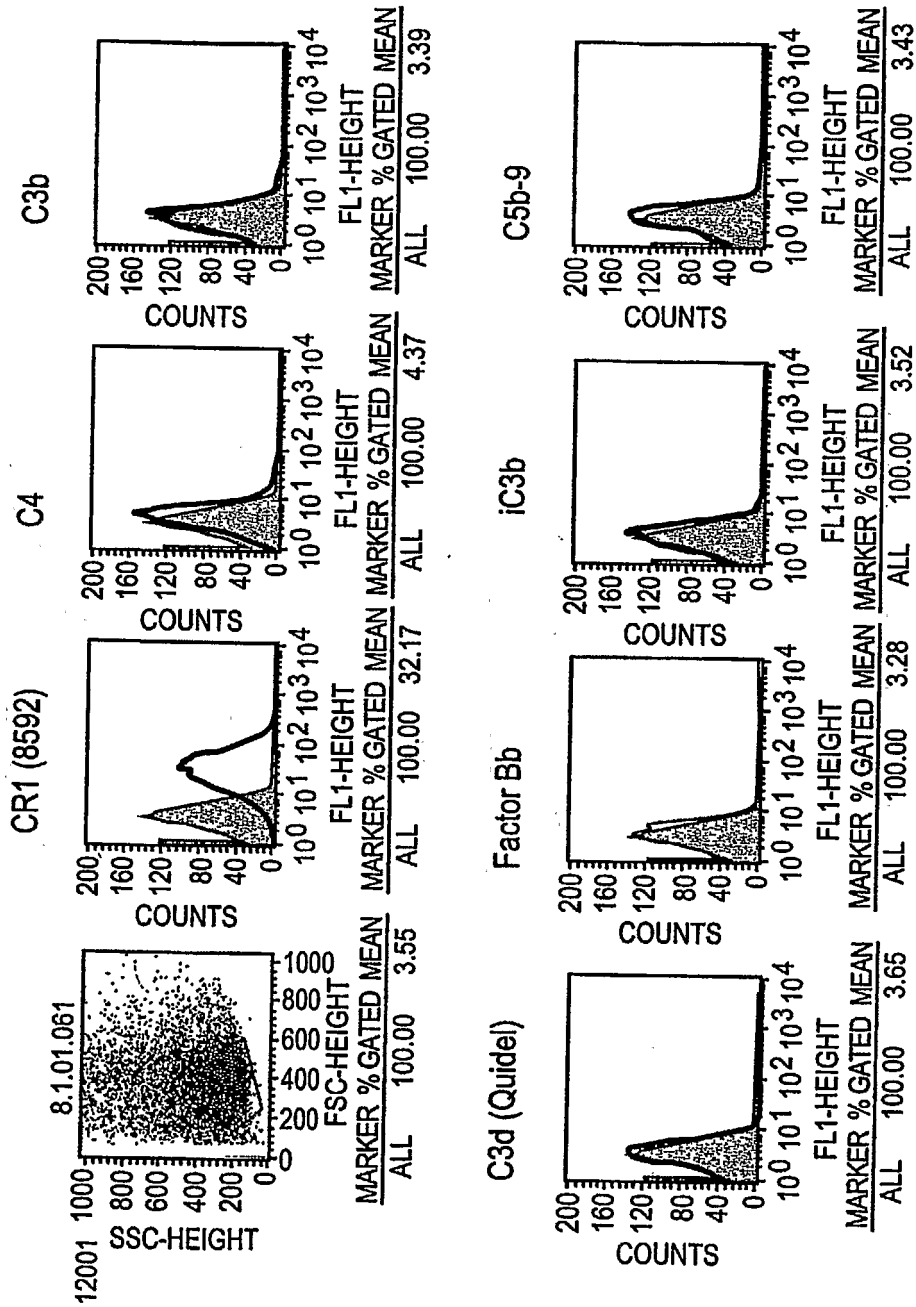


FIG. 2

Sickle Cell Anemia-Patient SN

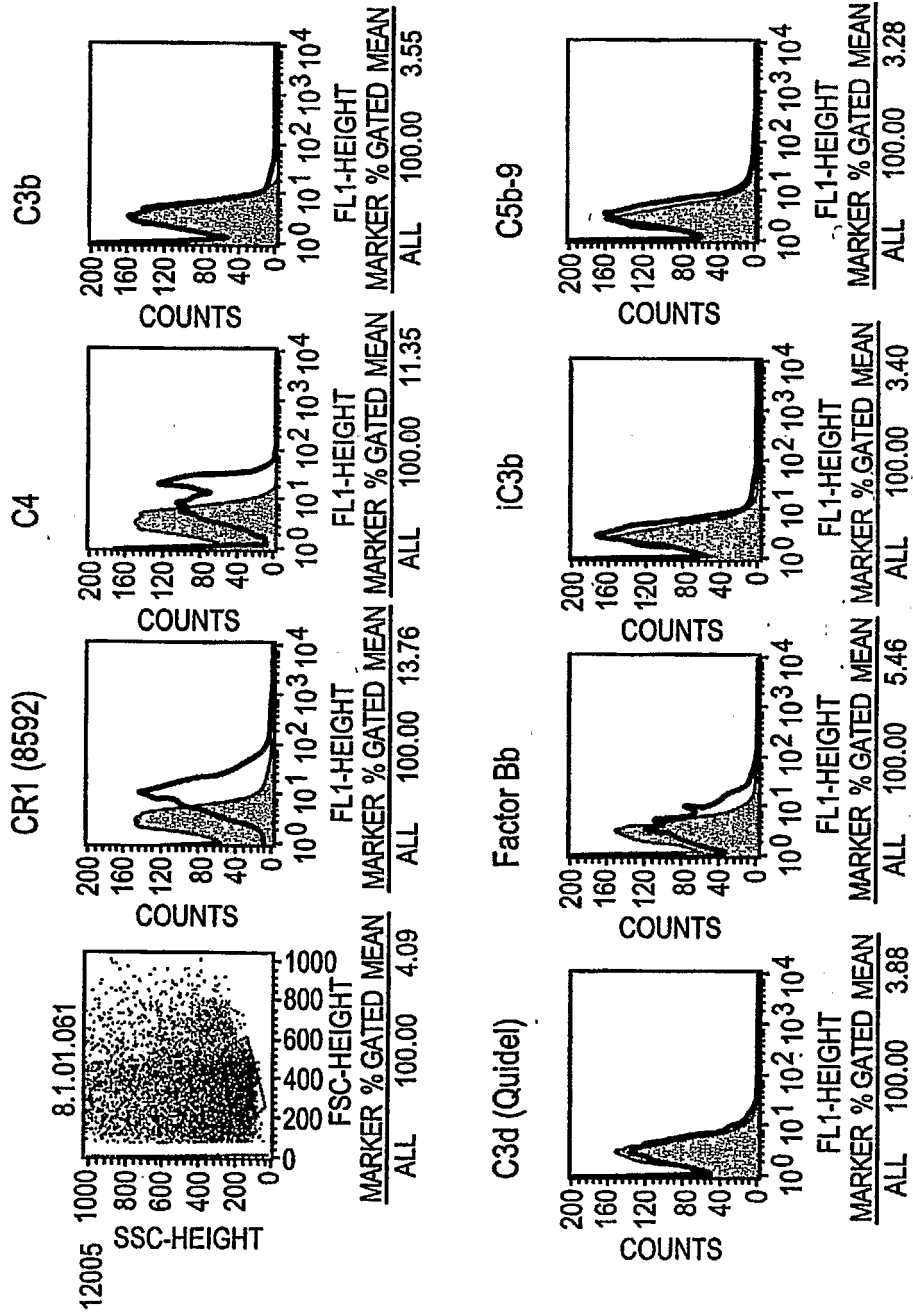


FIG. 3

Transplantation: Pre

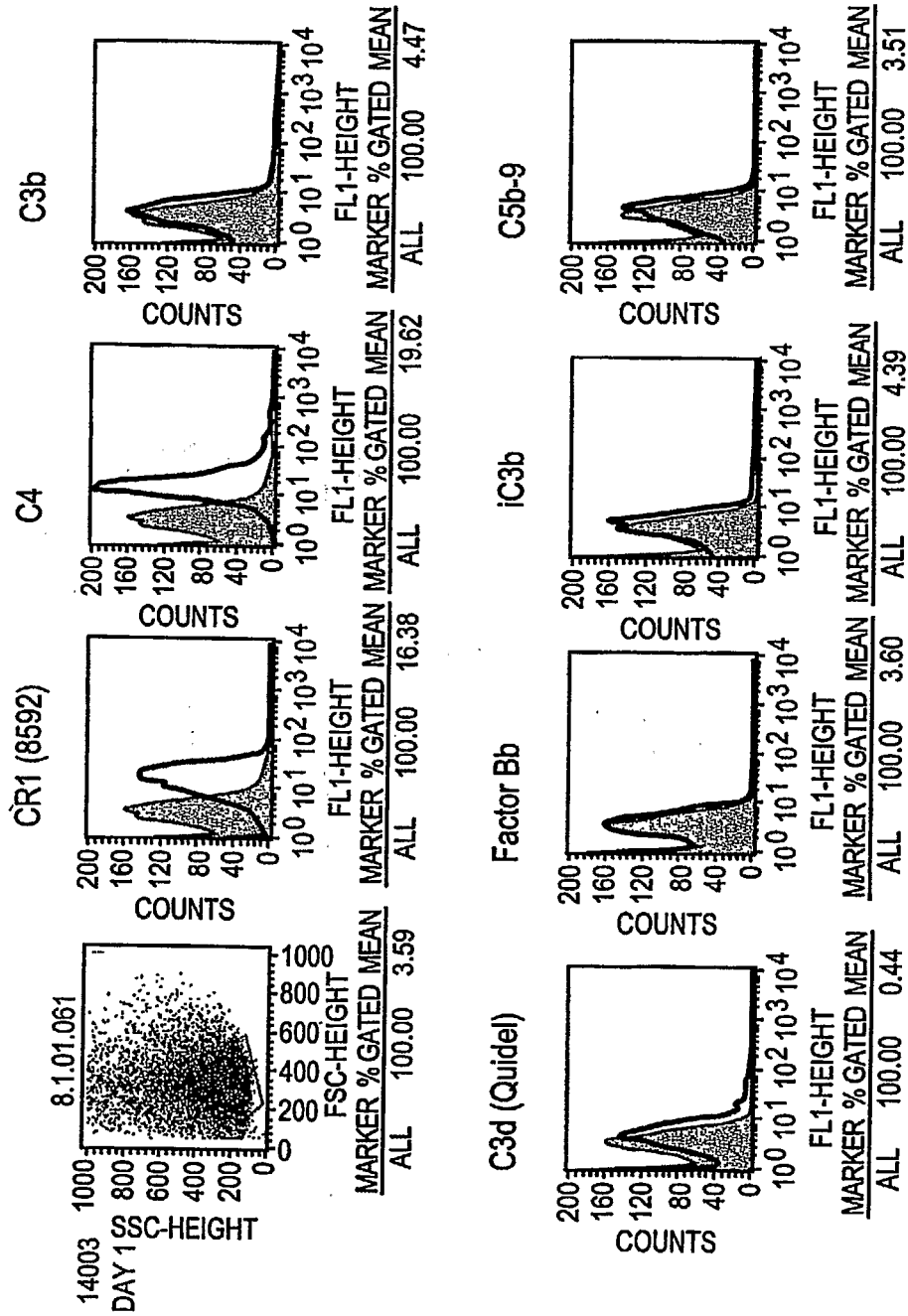


FIG. 4

Transplantation: Post

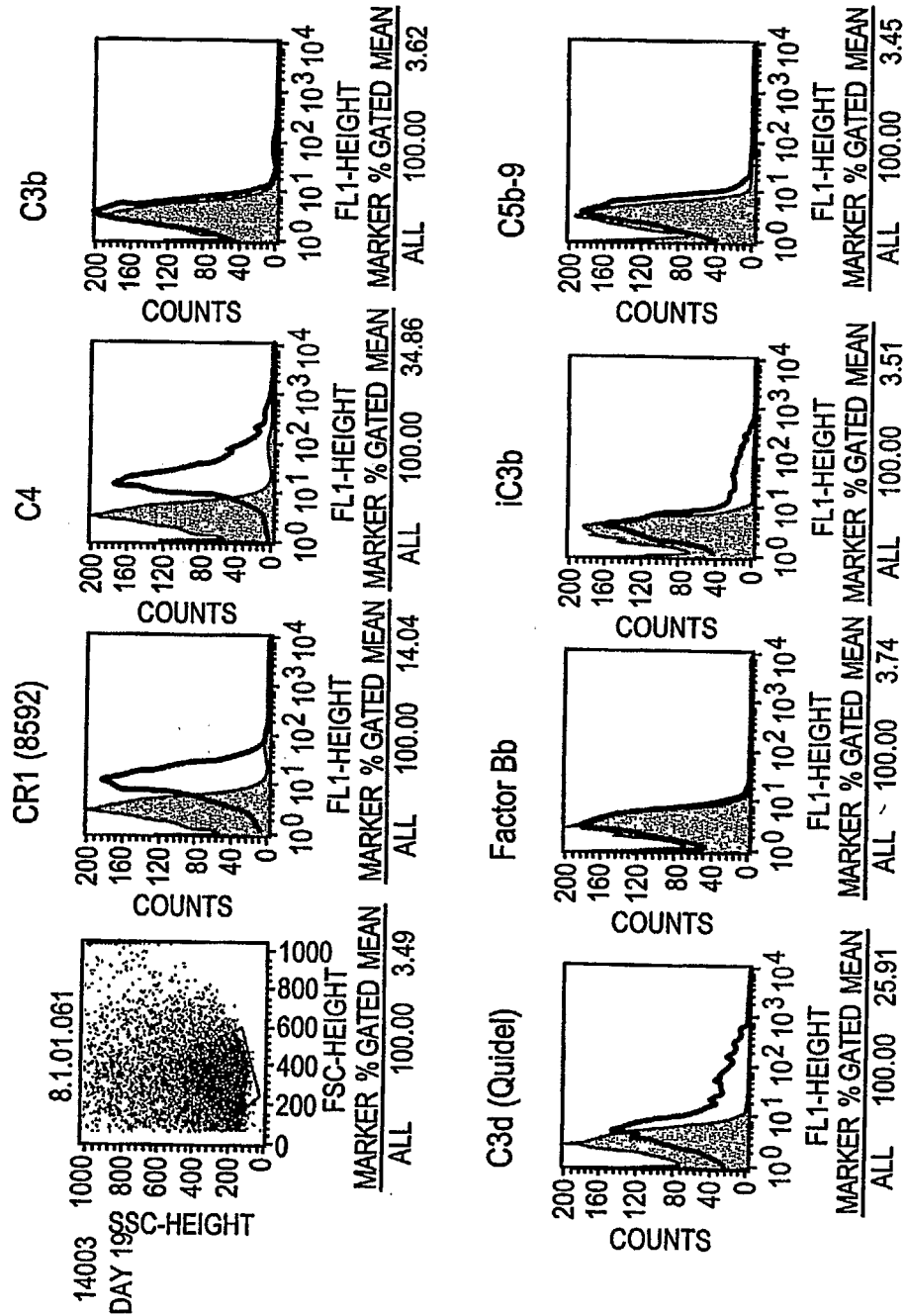


FIG. 5

6/6

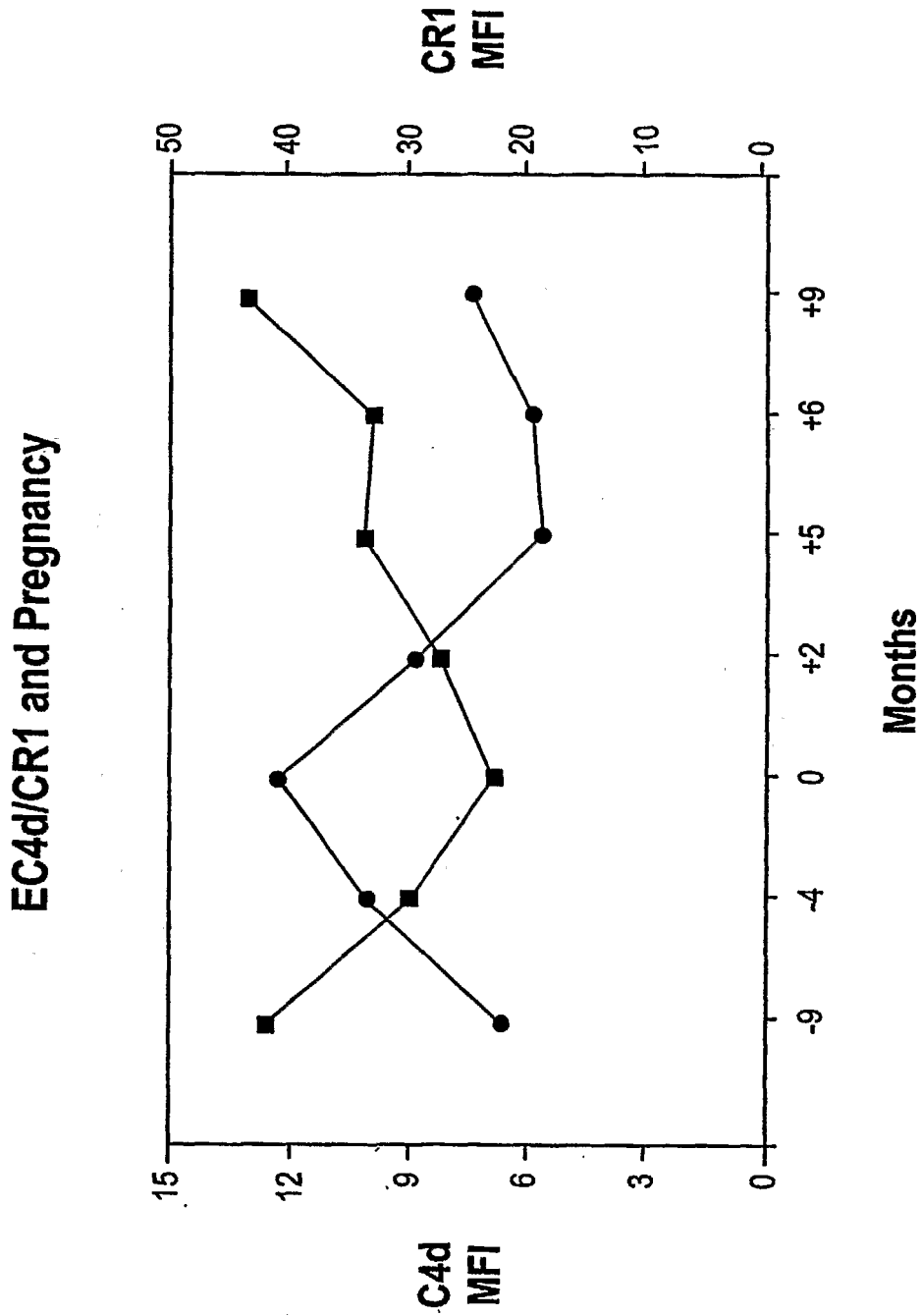


FIG. 6

专利名称(译)	监测免疫，血液和炎症疾病		
公开(公告)号	EP1635692A2	公开(公告)日	2006-03-22
申请号	EP2004776460	申请日	2004-06-12
[标]申请(专利权)人(译)	匹兹堡大学		
申请(专利权)人(译)	匹兹堡大学		
当前申请(专利权)人(译)	英联邦SYSTE的匹兹堡大学		
[标]发明人	AHEARN JOSEPH M MANZI SUSAN M		
发明人	AHEARN, JOSEPH, M. MANZI, SUSAN, M.		
IPC分类号	A61B1/00 C12Q1/70 A61B A61K38/00 C07K2/00 C07K4/00 C07K5/00 C07K7/00 C07K14/00 C07K16/00 C07K17/00 G01N33/53 G01N33/564 G01N33/566 G01N33/68 G01N33/80		
CPC分类号	G01N33/80 G01N2333/18 G01N2333/4716 Y10S436/811		
优先权	60/478493 2003-06-13 US		
其他公开文献	EP1635692A4 EP1635692B1		
外部链接	Espacenet		

摘要(译)

本发明涉及通过测定红细胞上补体途径组分的水平来诊断和/或监测患有炎性疾病或病症(例如免疫,血液,血管或感染性疾病或病症)的患者。还公开了通过测定血小板上补体途径组分水平来诊断血管疾病或病症的方法。