



(11) **EP 3 605 104 A1**

(12) **EUROPEAN PATENT APPLICATION**

(43) Date of publication: **05.02.2020 Bulletin 2020/06** (51) Int Cl.: **G01N 33/68 (2006.01)** **G01N 33/53 (2006.01)**  
**A61P 9/00 (2006.01)**

(21) Application number: **19190278.2**

(22) Date of filing: **16.03.2012**

(84) Designated Contracting States:  
**AL AT BE BG CH CY CZ DE DK EE ES FI FR GB GR HR HU IE IS IT LI LT LU LV MC MK MT NL NO PL PT RO RS SE SI SK SM TR**

(30) Priority: **17.03.2011 US 201161453782 P**

(62) Document number(s) of the earlier application(s) in accordance with Art. 76 EPC:  
**12771826.0 / 2 686 689**

(71) Applicant: **Critical Care Diagnostics, Inc. San Diego, California 92109 (US)**

(72) Inventor: **SNIDER, James V San Diego, CA 92129 (US)**

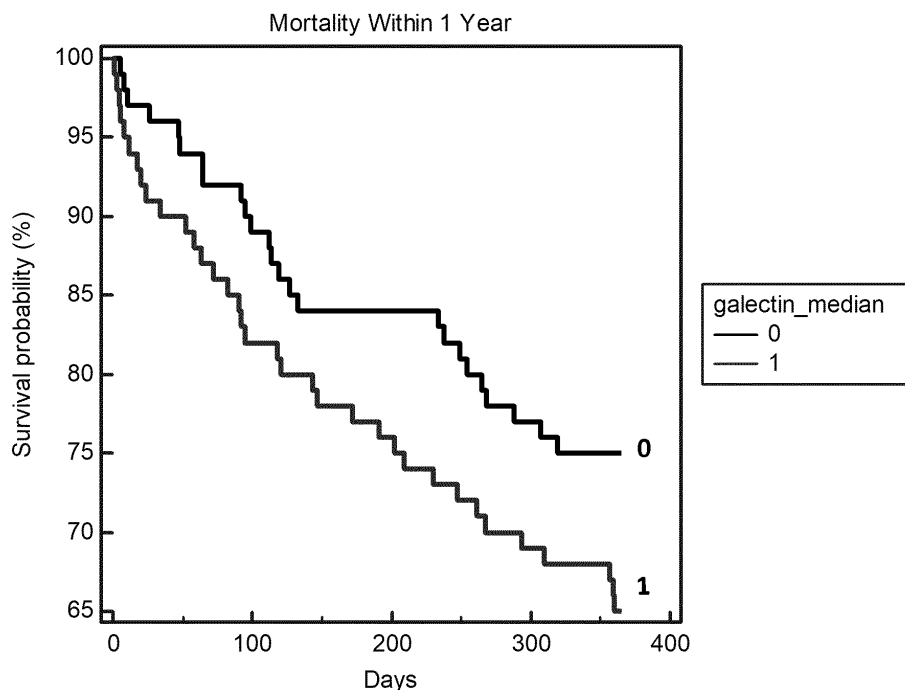
(74) Representative: **Williams, Gareth Owen Marks & Clerk LLP 62-68 Hills Road Cambridge CB2 1LA (GB)**

Remarks:  
 This application was filed on 07-08-2019 as a divisional application to the application mentioned under INID code 62.

(54) **METHODS PREDICITNG RISK OF AN ADVERSE CLINICAL OUTCOME**

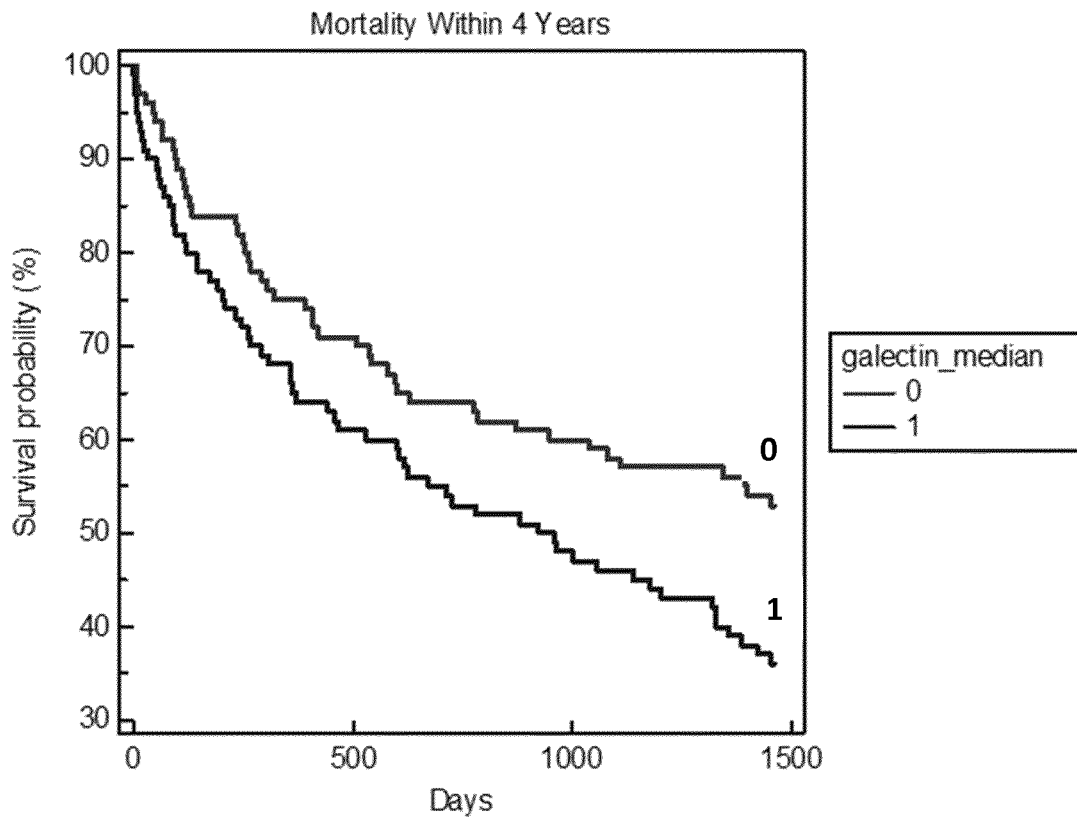
(57) Provided are methods for evaluating the risk of an adverse clinical outcome in a subject, deciding whether to discharge or continue treating a subject (e.g., treatment on an inpatient basis), or to initiate or terminate treatment, selecting a subject for participation in a clinical study, and selecting a therapeutic treatment for a subject that include determining a level of ST2 in a biological sample from the subject and determining a level of galectin-3 in a biological sample from the subject. Kits are also provided that include an antibody that specifically binds to ST2 and an antibody that specifically binds to galectin-3.

**Figure 1A: Galectin-3 K-M Analysis for 1 Year (log rank p=0.1122)**



**EP 3 605 104 A1**

Figure 1B: Galectin-3 K-M Analysis for 4 Years (log rank p=0.020)



**Description****TECHNICAL FIELD**

5 **[0001]** Described herein are methods for the determining the risk of an adverse clinical outcome in a subject, selecting a therapeutic treatment for a subject, and selecting patients for participation in a clinical study.

**SUMMARY**

10 **[0002]** The present invention is based, at least in part, on the surprising discovery that the presence of an elevated level of galectin-3 or the presence of an elevated level of ST2 (also known as Interleukin 1 Receptor Like-1 (IL1RL1)) indicates a subject with an increased risk of an adverse clinical outcome (ACO), and the presence of both an elevated level of galectin-3 and an elevated level of ST2 indicates a subject with a greatly increased risk of an ACO. Thus, in some aspects, the methods described herein include determining the levels of galectin-3 and ST-2 in a subject, and, optionally, determining the levels of one or more (e.g., two, three, or four) of proANP, NT-pro-ANP, ANP, proBNP, NT-proBNP, BNP, troponin, CRP, creatinine, Blood Urea Nitrogen (BUN), liver function enzymes, albumin, and bacterial endotoxin in the subject. These methods can be used to determine the risk of an ACO, decide whether to discharge or to initiate, continue, or terminate treatment of a subject (e.g., treatment on an inpatient basis), select a subject for participation in a clinical study, or select a therapeutic treatment for a subject.

20 **[0003]** Accordingly, provided herein are methods for evaluating the risk of an ACO in a subject that include the steps of: (a) determining a level of ST2 in a biological sample (e.g., serum) from the subject, and (b) determining a level of galectin-3 in a biological sample (e.g., serum) from the subject, where the subject's levels of ST2 and galectin-3 relative to a reference levels of ST2 and galectin-3 indicate the subject's risk of an ACO. In some embodiments of these methods, the presence of an elevated level of ST2 or the presence of an elevated level of galectin-3 indicates an increased risk of an ACO, and the presence of both an elevated level of ST2 and an elevated level of galectin-3 indicates a greatly increased risk of an ACO. In some embodiments of these methods, the presence of both a non-elevated level of ST2 and a non-elevated level of galectin-3 indicates a reduced risk of an ACO. In some embodiments of these methods, the risk of an ACO is within 1 year or within 30 days.

25 **[0004]** Also provided are methods for deciding whether to discharge or initiate, terminate, or continue treating a subject (e.g., treating on an inpatient basis that include the steps of: (a) determining a level of ST2 in a biological sample (e.g., serum) from the subject, and (b) determining a level of galectin-3 in a biological sample (e.g., serum) from the subject, where the subject's levels of ST2 and galectin-3 relative to reference levels of ST2 and galectin-3 determine whether the subject should be discharged, receive continued treatment (e.g., treatment on an inpatient basis), or whether treatment should be initiated or terminated. In some embodiments of these methods, the presence of an elevated level of ST2 or the presence of an elevated level of galectin-3 indicates that the subject should receive continued treatment (e.g., treatment on an inpatient basis) or that treatment should be initiated, and the presence of both an elevated ST2 level and an elevated level of galectin-3 strongly indicates that the subject should receive continued treatment (e.g., treatment on an inpatient basis) or that treatment should be initiated. In some embodiments of these methods, the presence of both a non-elevated level of ST2 and a non-elevated level of galectin-3 indicates that the subject should be discharged, receive treatment on an outpatient basis, or that treatment should be terminated.

35 **[0005]** Also provided are methods of selecting a subject for participation in a clinical study that include the steps of: (a) determining a level of ST2 in a biological sample (e.g., serum) from the subject, and (b) determining a level of galectin-3 in a biological sample (e.g., serum) from the subject, and selecting the subject for participation in a clinical study if the subject's levels of ST2 and galectin-3 relative to reference levels of ST2 and galectin-3 indicate that the subject should be selected for participation in a clinical study. In some embodiments of these methods, the presence of an elevated level of ST2 or the presence of an elevated level of galectin-3 indicates that the subject should be selected for participation in a clinical study, and the presence of both an elevated level of ST2 and an elevated level of galectin-3 strongly indicates that the subject should be selected for participation in a clinical study. In some embodiments of these methods, the presence of a non-elevated level of ST2 and/or the presence of a non-elevated level of galectin-3 indicates that the subject should be excluded from participation in a clinical study.

40 **[0006]** Also provided are methods for selecting a therapeutic treatment for a subject that include the steps of: (a) determining a level of ST2 in a biological sample (e.g., serum) from the subject, and (b) determining a level of galectin-3 in a biological sample (e.g., serum) from the subject, where the subject's levels of ST2 and galectin-3 relative to reference levels of ST2 and galectin-3 are used to select a therapeutic treatment for the subject. In some embodiments of these methods, the presence of an elevated level of ST2 or the presence of an elevated level of galectin-3 is used to select the therapeutic treatment for the subject, and the presence of both an elevated level of ST2 and an elevated level of galectin-3 is predominantly used to select the therapeutic treatment for the subject. In some embodiments of these methods, the presence of a non-elevated level of ST2 and/or the presence of a non-elevated level of galectin-3 is used

to select the therapeutic treatment for the subject. The therapeutic treatment may be selected from the group of: nitrates, calcium channel blockers, diuretics, thrombolytic agents, digitalis, renin-angiotensin-aldosterone system (RAAS) modulating agents (e.g., beta-adrenergic blocking agents (e.g., alprenolol, bucindolol, carteolol, carvedilol, labetalol, nadolol, penbutolol, pindolol, propranolol, sotalol, timolol, cebutolol, atenolol, betaxolol, bisoprolol, celiprolol, esmolol, metoprolol, and nebivolol), angiotensin-converting enzyme inhibitors (e.g., benazepril, captopril, enalapril, fosinopril, lisinopril, moexipril, perindopril, quinapril, ramipril, andtrandolapril), aldosterone antagonists (e.g., spironolactone, eplerenone, canrenone (canrenoate potassium), prorenone (prorenoate potassium), and mexrenone (mexrenoate potassium)), renin inhibitors (e.g., aliskiren, remikiren, and enalkiren), and angiotensin II receptor blockers (e.g., valsartan, telmisartan, losartan, irbesartan, and olmesartan)), and cholesterol-lowering agents (e.g., a statin).

**[0007]** In some embodiments of all of the methods described herein, the ACO may be rehospitalization, recurrence of one or more (e.g., two, three, or four) physical symptoms associated with a disease state, an increase in the severity of one or more (e.g., two, three, or four) physical symptoms associated with a disease state, an increase in the frequency of one or more (e.g., two, three, or four) physical symptoms associated with a disease state, mortality (e.g., mortality due to CVD), admission to a health care facility (e.g., a hospital or assisted care facility), or organ transplant (e.g., heart transplant). In some embodiments, the disease state may be angina, cardiovascular disease, and heart failure. In the above methods, the rehospitalization or admission may be for cardiovascular disease.

**[0008]** In any of the above aspects, the subject may have been diagnosed with a cardiac disease (e.g., heart failure, heart attack, coronary artery disease, cardiovascular disease, acute coronary syndrome, and angina), inflammation, stroke, renal failure, obesity, high cholesterol, and/or dyslipidemia. In some embodiments of the above methods, the subject may be undiagnosed, normal, or apparently healthy. In some examples of all of the above methods, the sample may be serum, blood, or plasma. In some examples of the above methods, the sample in step (a) and the sample in step (b) are obtained from the subject at the same time.

**[0009]** In any of the above aspects, the subject may have an elevated BMI, a BMI of 25-29, a BMI of  $\geq 30$ , or renal insufficiency. In further examples of any of the above methods, the reference level of ST2 is a level of ST2 in a subject that does not have high risk cardiovascular disease; the reference level of ST2 is a threshold level of ST2; the reference level of galectin-3 is a level of galectin-3 in a subject that does not have high risk cardiovascular disease or does not have galectin-3 positive cardiovascular disease; or the reference level of galectin-3 is a level of galectin-3 before or after onset of one or more (e.g., two, three, four, or five) disease (e.g., cardiac disease (e.g., heart failure, coronary artery disease, cardiovascular disease, acute coronary syndrome, and angina), renal insufficiency, stroke, or hypertension) symptoms; before or after diagnosis with disease (e.g., cardiac disease (e.g., heart failure, coronary artery disease, cardiovascular disease, acute coronary syndrome, and angina), renal insufficiency, stroke, or hypertension); before or after therapeutic treatment for a disease ((e.g., cardiac disease (e.g., heart failure, coronary artery disease, cardiovascular disease, acute coronary syndrome, and angina), renal insufficiency, stroke, or hypertension); or at a different time point during therapeutic treatment (e.g., inpatient or outpatient treatment) for a disease (e.g., cardiac disease (e.g., heart failure, coronary artery disease, cardiovascular disease, acute coronary syndrome, and angina), renal insufficiency, stroke, or hypertension); or before and after a cardiac event (e.g., a myocardial infarction).

**[0010]** In some embodiments of all of the above methods, the method further includes determining the level of one or more (e.g., two, three, or four) additional markers in the subject (e.g., proANP, NT-proANP, ANP, proBNP, NT-proBNP, BNP, troponin, CRP, creatinine, Blood Urea Nitrogen (BUN), liver function enzymes, albumin, and bacterial endotoxin).

**[0011]** Also provided are kits containing an antibody that specifically binds to ST2, an antibody that specifically binds to galectin-3, and instructions for using the kit in any of the methods described herein.

**[0012]** By the term "adverse clinical outcome" or "ACO" is meant an increase (e.g., by at least one, two, three, or four) in the number of symptoms or the severity or frequency of one of more (e.g., two, three, four, or five) symptoms in a subject, death, or therapeutic treatment that is necessitated by the increase (e.g., by at least one, two, three, or four) in the number or the severity or frequency of one or more (e.g., two, three, four, or five) symptoms in a subject. Non-limiting examples of an ACO include rehospitalization, recurrence of one or more (e.g., two, three, four, or five) physical symptoms associated with a disease state (e.g., cardiovascular disease), an increase in the severity of one or more (e.g., two, three, four, or five) physical symptoms associated with a disease state, an increase in the frequency of one or more (e.g., two, three, four, or five) physical symptoms associated with a disease state, mortality (e.g., mortality from a cardiovascular disease), admission to a health care facility (e.g., a hospital or assisted care facility), or organ transplant (e.g., heart transplant). The symptoms may be associated with a specific disease state, such a cardiac disease (e.g., heart failure, heart attack, coronary artery disease, cardiovascular disease, acute coronary syndrome, and angina), inflammation, stroke, renal failure, obesity, high cholesterol, or dyslipidemia.

**[0013]** By the term "ST2" or "soluble ST2" is meant a soluble protein containing a sequence at least 90% identical (e.g., at least 95%, 96%, 97%, 98%, 99%, or 100% identical) to NCBI Accession No. NP\_003847.2 (SEQ ID NO: 1) or a nucleic acid containing a sequence at least 90% identical (e.g., at least 95%, 96%, 97%, 98%, 99%, or 100% identical) to NCBI Accession No. NM\_003856.2 (SEQ ID NO: 2).

**[0014]** By the term "galectin-3" or "gal-3" is meant a protein containing a sequence at least 90% identical (e.g., at least

95%, 96%, 97%, 98%, 99%, or 100% identical) to NCBI Accession No. NP\_001170859 (SEQ ID NO: 3), a protein containing a sequence at least 90% identical (e.g., at least 95%, 96%, 97%, 98%, 99%, or 100% identical) to NCBI Accession No. NP\_002297 (SEQ ID NO: 4), a nucleic acid containing a sequence at least 90% identical (e.g., at least 95%, 96%, 97%, 98%, 99%, or 100% identical) to NCBI Accession No. NM\_001177388.1 (SEQ ID NO: 5), a nucleic acid containing a sequence at least 90% identical (e.g., at least 95%, 96%, 97%, 98%, 99%, or 100% identical) to NCBI Accession No. NM\_002306.3 (SEQ ID NO: 6).

**[0015]** By the term "elevated" or "elevation" is meant a statistically significant difference (e.g., an increase of at least 5%, 10%, 20%, 25%, 35%, 40%, 45%, 50%, 55%, 60%, 65%, 70%, 75%, 80%, 85%, 90%, 95%, 100%, 120%, 140%, 160%, 180%, 200%, 220%, 240%, 260%, 280%, or 300% increase) in a determined or measured level (e.g., a galectin-3 or ST2 protein or nucleic acid level) compared to a reference level (e.g., a level of galectin-3 in a subject not having high risk CVD or not having galectin-3 positive cardiovascular disease, a threshold level of galectin-3, a level of ST2 in a subject not having CVD, and a threshold level of ST2). The reference level of ST2 or galectin-3 may be a protein or nucleic acid level. Additional reference levels of ST2 and galectin-3 are described herein.

**[0016]** By the term "health care facility" is meant a location where a subject may receive medical care from a health care professional (e.g., a nurse, a physician, or a physician's assistant). Non-limiting examples of health care facilities include hospitals, clinics, and assisted care facilities (e.g., a nursing home).

**[0017]** By the term "reference level" is meant a threshold level or a level in a control subject or control patient population. A reference level will depend on the assay performed and can be determined by one of ordinary skill in the art. A reference level may be a baseline level or a level in the same patient measured at an earlier or later point in time. Some non-limiting examples of reference levels of ST2 include the level of ST2 in a subject that: does not have high risk CVD, does not have renal failure, or has a BMI under 25. Additional control patient populations are described herein. Additional examples of reference levels of ST2 include threshold levels of ST2. Non-limiting examples of reference levels of ST2 are known in the art and are described herein.

**[0018]** In some embodiments, the ratio of two ST2 levels in a subject is compared to a reference level that is a ratio of ST2 levels measured in a subject (e.g., any of the control subjects described herein or the same subject), for example, a reference level may be a ratio of the levels of ST2 before and after onset of one or more (e.g., two, three, four, or five) disease (e.g., cardiac disease (e.g., heart failure, coronary artery disease, cardiovascular disease, acute coronary syndrome, and angina), renal insufficiency, stroke, or hypertension) symptoms; a ratio of the levels of ST2 before and after diagnosis with disease (e.g., cardiac disease (e.g., heart failure, coronary artery disease, cardiovascular disease, acute coronary syndrome, and angina), renal insufficiency, stroke, or hypertension); a ratio of the levels of ST2 before and after therapeutic treatment for a disease ((e.g., cardiac disease (e.g., heart failure, coronary artery disease, cardiovascular disease, acute coronary syndrome, and angina), renal insufficiency, stroke, or hypertension); a ratio of the ST2 levels at two different time points during therapeutic treatment (e.g., inpatient or outpatient treatment) for a disease (e.g., cardiac disease (e.g., heart failure, coronary artery disease, cardiovascular disease, acute coronary syndrome, and angina), renal insufficiency, stroke, or hypertension); or a ratio of the ST2 levels before and after a cardiac event (e.g., a myocardial infarction).

**[0019]** Non-limiting examples of reference levels of galectin-3 include the level of galectin-3 in a subject that: does not have high risk CVD, does not have galectin-3 positive cardiovascular disease, does not have renal failure, or has a BMI under 25. Further control patient populations and threshold levels for a galectin-3 control are described herein. Additional non-limiting examples of reference levels of galectin-3 include threshold levels of galectin-3. Non-limiting examples of reference levels of galectin-3 are known in the art and are described herein.

**[0020]** Additional examples of a reference level of galectin-3 is a level of galectin-3 before or after onset of one or more (e.g., two, three, four, or five) disease (e.g., cardiac disease (e.g., heart failure, coronary artery disease, cardiovascular disease, acute coronary syndrome, and angina), renal insufficiency, stroke, or hypertension) symptoms; a level of galectin-3 before or after diagnosis with disease (e.g., cardiac disease (e.g., heart failure, coronary artery disease, cardiovascular disease, acute coronary syndrome, and angina), renal insufficiency, stroke, or hypertension); a level of galectin-3 before or after therapeutic treatment for a disease ((e.g., cardiac disease (e.g., heart failure, coronary artery disease, cardiovascular disease, acute coronary syndrome, and angina), renal insufficiency, stroke, or hypertension); or a level of galectin-3 at a different time point during therapeutic treatment (e.g., inpatient or outpatient treatment) for a disease (e.g., cardiac disease (e.g., heart failure, coronary artery disease, cardiovascular disease, acute coronary syndrome, and angina), renal insufficiency, or hypertension); or before and after a cardiac event (e.g., a myocardial infarction).

**[0021]** In some embodiments, the ratio of two galectin-3 levels in a subject is compared to a reference level that is a ratio of galectin-3 levels measured in a subject (e.g., any of the control subjects described herein or the same subject), for example, a reference level may be a ratio of the levels of galectin-3 before and after onset of one or more (e.g., two, three, four, or five) disease (e.g., cardiac disease (e.g., heart failure, coronary artery disease, cardiovascular disease, acute coronary syndrome, and angina), renal insufficiency, stroke, or hypertension) symptoms; a ratio of the levels of galectin-3 before and after diagnosis with disease (e.g., cardiac disease (e.g., heart failure, coronary artery disease,

cardiovascular disease, acute coronary syndrome, and angina), renal insufficiency, stroke, or hypertension); a ratio of the levels of galectin-3 before and after therapeutic treatment for a disease ((e.g., cardiac disease (e.g., heart failure, coronary artery disease, cardiovascular disease, acute coronary syndrome, and angina), renal insufficiency, stroke, or hypertension); a ratio of the galectin-3 levels at two different time points during therapeutic treatment (e.g., inpatient or outpatient treatment) for a disease (e.g., cardiac disease (e.g., heart failure, coronary artery disease, cardiovascular disease, acute coronary syndrome, and angina), renal insufficiency, stroke, or hypertension); or a ratio of the galectin-3 levels before and after a cardiac event (e.g., a myocardial infarction).

**[0022]** By the term "therapeutic treatment" or "treatment" is meant the administration of one or more (e.g., two, three, or four) pharmaceutical agents to a subject or the performance of a medical procedure on the body of a subject (e.g., surgery, such as organ transplant or heart surgery). Non-limiting examples of pharmaceutical agents that may be administered to a subject include nitrates, calcium channel blockers, diuretics, thrombolytic agents, digitalis, renin-angiotensin-aldosterone system (RAAS) modulating agents (e.g., beta-adrenergic blocking agents, angiotensin-converting enzyme inhibitors, aldosterone antagonists, renin inhibitors, and angiotensin II receptor blockers), and cholesterol-lowering agents (e.g., a statin). The term therapeutic treatment also include an adjustment (e.g., increase or decrease) in the dose or frequency of one or more (e.g., two, three, or four) pharmaceutical agents that a subject may be taking, the administration of one or more (e.g., two, three, or four) new pharmaceutical agents to the subject, or the removal of one or more (e.g., two, three, or four) pharmaceutical agents from the subject's treatment plan.

**[0023]** As used herein, a "subject" is a mammal, e.g., a human. In all embodiments, human nucleic acids, human polypeptides, and human subjects can be used.

**[0024]** As used herein, a "biological sample" includes one or more of blood, serum, plasma, urine, and body tissue. In some embodiments, a sample is a serum or blood sample.

**[0025]** By the term "disease state" is meant the manifestation of one or more (e.g., at least two, three, four, or five) symptoms in a subject that indicate either an abnormal decrease in the viability and/or biological activity of one or more (e.g., at least two, three, four, or five) tissues in the body of the subject. Non-limiting examples of disease states in a subject include a cardiac disease (e.g., heart failure, heart attack, coronary artery disease, cardiovascular disease, acute coronary syndrome, and angina), inflammation, stroke, renal failure, obesity, high cholesterol, and dyslipidemia.

**[0026]** By the phrase "physical symptoms associated with a disease state" is meant the one or more (e.g., at least two, three, or four) symptoms that are manifested by a subject having a particular disease state. Physical symptoms associated with several disease states are known in the art by medical health professionals (e.g., physicians). Non-limiting examples of physical symptoms associated with a cardiac disease (e.g., heart failure, coronary artery disease, cardiovascular disease, acute coronary syndrome, and angina) include shortness of breath, heart palpitations, increased heart rate, weakness, dizziness, nausea, sweating, chest discomfort or pressure, chest pain, arm pain, fullness, indigestion, sweating, wheezing, sleep apnea, or anxiety.

**[0027]** Unless otherwise defined, all technical and scientific terms used herein have the same meaning as commonly understood by one of ordinary skill in the art to which this invention belongs. Methods and materials are described herein for use in the present invention; other, suitable methods and materials known in the art can also be used. The materials, methods, and examples are illustrative only and not intended to be limiting. All publications, patent applications, patents, sequences, database entries, and other references mentioned herein are incorporated by reference in their entirety. In case of conflict, the present specification, including definitions, will control.

**[0028]** The details of one or more embodiments of the invention are set forth in the accompanying drawings and the description below. Other features, objects, and advantages of the invention will be apparent from the description and drawings, and from the claims.

## DESCRIPTION OF DRAWINGS

### **[0029]**

Figure 1 is two graphs depicting the data of a galectin-3 Kaplan-Meier (K-M) analysis for 1 year (Figure 1A) or 4 years (Figure 1B), which show the survival probability of subjects having low (below galectin-3 median level, 0) or elevated levels of galectin-3 (greater than or equal to galectin-3 median level, 1).

Figures 2A and 2B, together, are two graphs depicting the data of ST2 K-M analysis for 1 year (Figure 2A) or 4 years (Figure 2B), which show the survival probability of subjects having low (below soluble ST2 median level, 0) or elevated levels of soluble ST2 (greater than or equal to soluble ST2 median level, 1).

Figure 2C is a graph depicting the data of a soluble ST2 K-M analysis, which shows the survival probability of subjects having low (below 35 ng/mL, 0) or elevated levels of soluble ST2 (greater than or equal to 35 ng/mL, 1).

FIG. 3 is a graph depicting the data from a soluble ST2 plus galectin-3 K-M analysis, which shows the survival probability of subjects with both soluble ST2 and galectin-3 levels below median level (1), subjects with a soluble ST2 level below median level and a galectin-3 level greater than or equal to median level (2), subjects with a soluble

ST2 level greater than or equal to soluble ST2 median level and a galectin-3 level below galectin-3 median level (3), and subjects with a soluble ST2 level greater than or equal to median soluble ST2 levels and a galectin-3 level greater than or equal to galectin-3 median level (4).

## 5 DETAILED DESCRIPTION

[0030] Provided are methods for evaluating the risk of an ACO in a subject (e.g., a human), deciding whether to initiate, terminate, or continue treating a subject (e.g., treating on an inpatient basis), selecting a subject (e.g., a human) for participation in a clinical study, and selecting a subject (e.g., a human) for therapeutic treatment including the steps of determining (e.g., by measuring or assaying) a level of ST2 in a biological sample from the subject and determining (e.g., by measuring or assaying) a level of galectin-3 in a biological sample from the subject. Kits for performing these methods are also provided.

### 15 Galectin-3

[0031] Galectin-3 is a member of the galectin family, which consists of animal lectins that bind  $\beta$ -galactosides. Non-limiting examples of galectin-3 protein include a proteins containing a sequence at least 90% identical (e.g., at least 95%, 96%, 97%, 98%, 99%, or 100% identical) to the sequence of NCBI Accession Nos. NP\_001170859 or NP\_002297. Non-limiting examples of galectin-3 nucleic acids include nucleic acids containing a sequence at least 90% identical (e.g., at least 95%, 96%, 97%, 98%, 99%, or 100% identical) to the sequence of NCBI Accession Nos. NM\_001177399.1 or NM\_002306.3.

[0032] Recently, a role for galectin-3 in the pathophysiology of heart failure has been suggested (Sharma et al., Circulation 110:3121-3128 (2004)). It was observed that galectin-3 is specifically upregulated in decompensated heart failure compared with compensated heart failure in animal models of heart failure. Galectin-3 has recently been proposed as a useful biomarker involved in the pathophysiology of heart failure (de Boer et al., Eur. J. Heart Failure 11:811-817 (2009)). Galectin-3 is widely distributed throughout the body, including expression in heart, brain, and vessels (Yang et al., Expert Rev. Mol. Med. 13:e17-e39 (2008)). Specifically, secretion of galectin-3 is associated with activation of fibroblasts and fibrosis (Yang et al., *supra*).

[0033] Heart failure (HF) is a large medical and epidemiological problem, and recent studies, both in acute and chronic HF, indicate that it is associated with a high morbidity and mortality (Jessup et al., Circulation 48:1217-1224 (2009)). Early identification of high-risk patients may favorably affect outcome and biomarkers are increasingly being recognized to have important clinical value in this respect (Jessup et al., *supra*).

[0034] The first clinical study that evaluated the potential role of galectin-3 as a plasma biomarker in acute heart failure was published by van Kimmenade et al. (J. Am. Coll. Cardiol. 48:1217-1224 (2006)). In this study, 599 acutely dyspneic subjects were evaluated with the goal to establish the usefulness of N-terminal prohormone brain natriuretic peptide (NT-proBNP), galectin-3, and apelin in diagnosing heart failure and predicting outcome. A blood sample was collected at baseline, and NT-proBNP, galectin-3, and apelin were measured in that sample. A total of 209 patients in this cohort were diagnosed with heart failure. In this analysis, galectin-3 was not significant for diagnosis of heart failure but was significant for prognosis in patients with heart failure. For predicting short-term prognosis (60 days, primary end-point all-cause mortality [n = 17]), galectin-3 was the most powerful predictor when compared to NT-proBNP and apelin: an AUC for galectin-3 of 0.74 (P = 0.0001) and an AUC for NT-proBNP of 0.67 (P = 0.009), with the difference being borderline significant (P = 0.05). In multivariate analysis, galectin-3 was the strongest predictor for death within a 60 day follow up period. Nevertheless, this study provides strong support for the exploration of galectin-3 as a biomarker that may predict prognosis, whereas its usefulness in detecting heart failure or adding incremental value (over currently used clinical correlates and NT-proBNP) in the diagnostic work-up of heart failure remains unclear.

[0035] A larger study in patients with chronic heart failure (n = 232), showed that galectin-3 predicts long-term outcome (mean follow-up, 3.4 y; HR, 1.95; 95% CI, 1.24-3.09; P=0.004) (Lok et al., Clin. Res. Cardiol. 99:323-328 (2010)). Because not many other biomarkers of heart failure were measured, it is impossible to value the precise role of galectin-3 in this cohort from this study.

[0036] Determining the level of galectin-3 in a subject typically includes obtaining a biological sample, e.g., plasma, serum, or blood, from the subject. In some embodiments, levels of galectin-3 in the sample can be determined by measuring levels of polypeptide using methods known in the art and/or described herein, e.g., immunoassays, such as enzyme-linked immunosorbent assays (ELISA). One exemplary ELISA kit that is commercial available is the galectin-3 ELISA kit available from EMD Chemicals. Alternatively, levels of galectin-3 mRNA can be measured, again using methods known in the art and/or described herein, e.g., by quantitative PCR or Northern blotting analysis.

[0037] For example, a method as described herein, e.g., evaluating the risk of an ACO in a subject, can include contacting a sample from a subject, e.g., a sample including blood, serum, or plasma, with a binding composition (e.g., an antibody or oligonucleotide probe) that specifically binds to a polypeptide or nucleic acid of galectin-3. The methods

can also include contacting a sample from a control subject, normal subject, or normal tissue or fluid from the test subject, with the binding composition, e.g., to provide a reference level of galectin-3.

**[0038]** An antibody that "binds specifically to" an antigen, binds preferentially to the antigen in a sample containing other proteins. The term "antibody" as used herein refers to an immunoglobulin molecule or immunologically active portion thereof, i.e., an antigen-binding portion. Examples of immunologically active portions of immunoglobulin molecules include F(ab) and F(ab')<sub>2</sub> fragments which can be generated by treating the antibody with an enzyme such as pepsin. The antibody can be polyclonal, monoclonal, recombinant, e.g., a chimeric or humanized, fully human, non-human, e.g., murine, monospecific, or single chain antibody. In some embodiments it has effector function and can fix complement. For the measurement of ST2, as further described below, an antibody produced from the hybridoma deposited at American Type Culture Collection and designated by Patent Deposit Designation PTA-10432 may be used.

**[0039]** An "oligonucleotide probe" (also referred to simply as a "probe") is a nucleic acid that is at least 10, and less than 200 (typically less than about 100 or 50) base pairs in length. A probe that "binds specifically to" a target nucleic acid hybridizes to the target under high stringency conditions. As used herein, the term "hybridizes under high stringency conditions" describes conditions for hybridization and washing. As used herein, high stringency conditions are 0.5 M sodium phosphate, 7% SDS at 65°C, followed by one or more washes at 0.2X SSC, 1% SDS at 65°C. Methods for performing nucleic acid hybridization assays are known to those skilled in the art and can be found in Current Protocols in Molecular Biology, John Wiley & Sons, N.Y. (1989), 6.3.1-6.3.6.

**[0040]** Detection can be facilitated by coupling (e.g., physically linking) the antibody or probe to a detectable substance (e.g., antibody labeling). Examples of detectable substances include various enzymes, prosthetic groups, fluorescent materials, luminescent materials, bioluminescent materials, and radioactive materials. Examples of suitable enzymes include horseradish peroxidase, alkaline phosphatase,  $\beta$ -galactosidase, or acetylcholinesterase; examples of suitable prosthetic group complexes include streptavidin/biotin and avidin/biotin; examples of suitable fluorescent materials include umbelliferone, fluorescein, fluorescein isothiocyanate, rhodamine, dichlorotriazinylamine fluorescein, dansyl chloride, quantum dots, or phycoerythrin; an example of a luminescent material includes luminol; examples of bioluminescent materials include luciferase, luciferin, and aequorin, and examples of suitable radioactive material include <sup>125</sup>I, <sup>131</sup>I, <sup>35</sup>S, or <sup>3</sup>H.

**[0041]** Diagnostic assays can be used with biological matrices such as live cells, cell extracts, cell lysates, fixed cells, cell cultures, bodily fluids, or forensic samples. Conjugated antibodies useful for diagnostic or kit purposes, include antibodies coupled to dyes, isotopes, enzymes, and metals, see, e.g., Le Doussal et al., *New Engl. J. Med.* 146:169-175 (1991); Gibellini et al., *J. Immunol.* 160:3891-3898 (1998); Hsing and Bishop, *New Engl. J. Med.* 162:2804-2811 (1999); and Everts et al., *New Engl. J. Med.* 168:883-889 (2002). Various assay formats exist, such as radioimmunoassays (RIA), enzyme-linked immunosorbent assay (ELISA), and lab on a chip (U.S. Pat. Nos. 6,176,962 and 6,517,234).

**[0042]** Known techniques in biochemistry and molecular biology can be used in the methods described herein (see, e.g., Maniatis et al., *Molecular Cloning, A Laboratory Manual*, Cold Spring Harbor Laboratory Press, Cold Spring Harbor, N.Y. (1982); Sambrook and Russell, *Molecular Cloning*, 3rd ed., Cold Spring Harbor Laboratory Press, Cold Spring Harbor, N.Y. (2001); Wu, *Recombinant DNA*, Vol. 217, Academic Press, San Diego, Calif (1993); and Ausbel et al., *Current Protocols in Molecular Biology*, Vols. 1-4, John Wiley and Sons, Inc. New York, N.Y. (2001)).

**[0043]** Once a level of galectin-3 in a subject or sample has been determined, the level can be compared to a reference level. In some embodiments, e.g., where the level of galectin-3 is determined using an ELISA, the reference level will represent a threshold level, above which the subject is identified as having an increased risk of an ACO, is selected for continued treatment on an inpatient basis, is selected for participation in a clinical study, or is selected for therapeutic treatment (as described herein). The reference level chosen may depend on the methodology (e.g., the particular antibody or ELISA kit) used to measure the levels of galectin-3.

**[0044]** Non-limiting threshold levels of galectin-3 may represent the median level of galectin-3 in particular patient populations, e.g., subjects with a BMI of less than 25, subjects with normal renal function, subjects without high risk cardiovascular disease, subjects with a BMI between 25 and 30, subjects with a BMI greater than 30, subjects with an elevated BMI, subjects with renal insufficiency, healthy men, healthy women, and healthy children.

**[0045]** As noted above, a threshold level of galectin-3 may vary depending on the methodology used to measure the levels of galectin-3. For example, a threshold level of galectin-3 measured using the ELISA kit from Bender Medsystems, Vienna, Austria may be between 1.0 to 3.0 ng/mL, 2.0 to 4.0 ng/mL, 3.0 to 5.0 ng/mL, 4.0 to 6.0 ng/mL, 5.0 to 7.0 ng/mL, 6.0 to 8.0 ng/mL, 7.0 to 9.0 ng/mL, 1.0 to 5.0 ng/mL, 5.0 to 9.0 ng/mL, 7.0 to 11.0 ng/mL, or 9.0 to 13.0 ng/mL. Additional non-limiting examples of galectin-3 threshold levels include: 1.0 ng/mL, 1.1 ng/mL, 1.2 ng/mL, 1.3 ng/mL, 1.4 ng/mL, 1.5 ng/mL, 1.6 ng/mL, 1.7 ng/mL, 1.8 ng/mL, 1.9 ng/mL, 2.0 ng/mL, 2.1 ng/mL, 2.2 ng/mL, 2.3 ng/mL, 2.4 ng/mL, 2.5 ng/mL, 2.6 ng/mL, 2.7 ng/mL, 2.8 ng/mL, 2.9 ng/mL, 3.0 ng/mL, 3.1 ng/mL, 3.2 ng/mL, 3.3 ng/mL, 3.4 ng/mL, 3.5 ng/mL, 3.6 ng/mL, 3.7 ng/mL, 3.8 ng/mL, 3.9 ng/mL, 4.0 ng/mL, 4.1 ng/mL, 4.2 ng/mL, 4.3 ng/mL, 4.4 ng/mL, 4.5 ng/mL, 4.6 ng/mL, 4.7 ng/mL, 5.0 ng/mL, 5.2 ng/mL, 5.4 ng/mL, 5.6 ng/mL, 5.8 ng/mL, 6.0 ng/mL, 6.2 ng/mL, 6.4 ng/mL, 6.6 ng/mL, 6.8 ng/mL, 7.0 ng/mL, 7.2 ng/mL, 7.4 ng/mL, 7.6 ng/mL, 7.8 ng/mL, 8.0 ng/mL, 8.2 ng/mL, 8.4 ng/mL, 8.6 ng/mL, 8.8 ng/mL, and 9.0 ng/mL.

**[0046]** A threshold level of galectin-3 measured using the ELISA kit from BG Medicine, Inc. include: greater than 25.9 ng/mL, 17.8 ng/mL to 25.9 ng/mL, less than 17.8 ng/mL, 9 ng/mL, 10.0 ng/mL, 11.0 ng/mL, 12.0 ng/mL, 13.0 ng/mL, 14.0 ng/mL, 15.0 ng/mL, 16.0 ng/mL, 17.0 ng/mL, 18.0 ng/mL, 19.0 ng/mL, 20 ng/mL, 21 ng/mL, 22 ng/mL, 23 ng/mL, 24 ng/mL, 25 ng/mL, and 26 ng/mL.

**[0047]** Additional threshold values are known (e.g., Sharma et al., *Circulation* 110:3121-3128, (2004) and de Boer et al., *Eur. J. Heart Failure* 11:811-817 (2009)) and can readily be determined by one skilled in the art. A threshold value of galectin-3 may reflect the level of galectin-3 just below the level of galectin-3 observed in a subject presenting with one or more disease phenotypes (e.g., presenting with one or more symptoms of a disease state, such as cardiac disease (e.g., heart failure, coronary artery disease, cardiovascular disease, acute coronary syndrome, and angina), renal insufficiency, stroke, and hypertension).

**[0048]** Additional examples of a reference level of galectin-3 is a level of galectin-3 before or after onset of one or more (e.g., two, three, four, or five) disease (e.g., cardiac disease (e.g., heart failure, coronary artery disease, cardiovascular disease, acute coronary syndrome, and angina), renal insufficiency, stroke, or hypertension) symptoms; a level of galectin-3 before or after diagnosis with disease (e.g., cardiac disease (e.g., heart failure, coronary artery disease, cardiovascular disease, acute coronary syndrome, and angina), renal insufficiency, stroke, or hypertension); a level of galectin-3 before or after therapeutic treatment for a disease ((e.g., cardiac disease (e.g., heart failure, coronary artery disease, cardiovascular disease, acute coronary syndrome, and angina), renal insufficiency, stroke, or hypertension); or a level of galectin-3 at a different time point during therapeutic treatment (e.g., inpatient or outpatient treatment) for a disease (e.g., cardiac disease (e.g., heart failure, coronary artery disease, cardiovascular disease, acute coronary syndrome, and angina), renal insufficiency, or hypertension); or before and after a cardiac event (e.g., a myocardial infarction).

**[0049]** In some embodiments, the level of galectin-3 is determined once, e.g., at presentation. In some embodiments, the level of galectin-3 is determined at one or more of 2, 4, 6, 8, 12, 18, and/or 24 hours, and/or 1-7 days after the onset of symptoms.

**[0050]** In some embodiments, the level of galectin-3 is determined more than once; in some embodiments, the higher measurement can be used. In embodiments where the level of galectin-3 is determined more than once, the highest level can be used, or the change in levels (e.g., a ratio of two levels of galectin-3) can be determined and used.

**[0051]** In some embodiments, the ratio of two galectin-3 levels in a subject is compared to a reference level that is a ratio of galectin-3 levels measured in a subject (e.g., any of the control subjects described herein or the same subject), for example, a reference level may be a ratio of the levels of galectin-3 before and after onset of one or more (e.g., two, three, four, or five) disease (e.g., cardiac disease (e.g., heart failure, coronary artery disease, cardiovascular disease, acute coronary syndrome, and angina), renal insufficiency, stroke, or hypertension) symptoms; a ratio of the levels of galectin-3 before and after diagnosis with disease (e.g., cardiac disease (e.g., heart failure, coronary artery disease, cardiovascular disease, acute coronary syndrome, and angina), renal insufficiency, stroke, or hypertension); a ratio of the levels of galectin-3 before and after therapeutic treatment for a disease ((e.g., cardiac disease (e.g., heart failure, coronary artery disease, cardiovascular disease, acute coronary syndrome, and angina), renal insufficiency, stroke, or hypertension); a ratio of the galectin-3 levels at two different time points during therapeutic treatment (e.g., inpatient or outpatient treatment) for a disease (e.g., cardiac disease (e.g., heart failure, coronary artery disease, cardiovascular disease, acute coronary syndrome, and angina), renal insufficiency, stroke, or hypertension); or a ratio of the galectin-3 levels before and after a cardiac event (e.g., a myocardial infarction).

**[0052]** Levels of galectin-3 can also be determined multiple times to evaluate a subject's response to a treatment. For example, a level of galectin-3 taken after administration of a treatment, e.g., one or more doses or rounds of a treatment, can be compared to levels of galectin-3 before the treatment was initiated, e.g., a baseline level, or at an early time point in ongoing treatment. The change in galectin-3 levels would indicate whether the treatment was effective; e.g., a reduction in galectin-3 levels would indicate that the treatment was effective.

## ST2

**[0053]** The ST2 gene is a member of the interleukin-1 receptor family, whose protein product exists both as a transmembrane form, as well as a soluble receptor that is detectable in serum (Kieser et al., *FEBS Lett.* 372(2-3):189-93 (1995); Kumar et al., *J. Biol. Chem.* 270(46):27905-13 (1995); Yanagisawa et al., *FEBS Lett.* 302(1):51-3 (1992); Kuroiwa et al., *Hybridoma* 19(2):151-9 (2000)). ST2 was recently described to be markedly up-regulated in an experimental model of heart failure (Weinberg et al., *Circulation* 106(23):2961-6 (2002)), and preliminary results suggest that ST2 concentrations may be elevated in those with chronic severe HF (Weinberg et al., *Circulation* 107(5):721-6 (2003)) as well as in those with acute myocardial infarction (MI) (Shimpo et al., *Circulation* 109(18):2186-90 (2004)).

**[0054]** The transmembrane form of ST2 is thought to play a role in modulating responses of T helper type 2 cells (Lohning et al., *Proc. Natl. Acad. Sci. U.S.A.* 95(12):6930-6935 (1998); Schmitz et al., *Immunity* 23(5):479-90 (2005)), and may play a role in development of tolerance in states of severe or chronic inflammation (Brint et al., *Nat. Immunol.*

5(4):373-9 (2004)), while the soluble form of ST2 is up-regulated in growth stimulated fibroblasts (Yanagisawa et al., 1992, supra). Experimental data suggest that the ST2 gene is markedly up-regulated in states of myocyte stretch (Weinberg et al., 2002, supra) in a manner analogous to the induction of the BNP gene (Bruneau et al., *Cardiovasc. Res.* 28(10):1519-25 (1994)).

5 **[0055]** Tominaga, *FEBS Lett.* 258:301-304 (1989), isolated murine genes that were specifically expressed by growth stimulation in BALB/c-3T3 cells; they termed one of these genes St2 (for Growth Stimulation-Expressed Gene 2). The St2 gene encodes two protein products: ST2 (IL1RL1), which is a soluble secreted form; and ST2L, a transmembrane receptor form that is very similar to the interleukin-1 receptors. The HUGO Nomenclature Committee designated the human homolog of ST2, the cloning of which was described in Tominaga et al., *Biochim. Biophys. Acta.* 1171:215-218  
10 (1992), as Interleukin 1 Receptor-Like 1 (IL1RL1). The two terms are used interchangeably herein.

**[0056]** The mRNA sequence of the shorter, soluble isoform of human ST2 can be found at GenBank Acc. No. NM\_003856.2, and the polypeptide sequence is at GenBank Acc. No. NP\_003847.2; the mRNA sequence for the longer form of human ST2 is at GenBank Acc. No. NM\_016232.4; the polypeptide sequence is at GenBank Acc. No. NP\_057316.3. Additional information is available in the public databases at GeneID: 9173, MIM ID # 601203, and  
15 UniGene No. Hs.66. In general, in the methods described herein, the soluble form of ST2 polypeptide is measured. Non-limiting examples of soluble ST2 protein include proteins containing a sequence at least 90% identical (e.g., at least 95%, 96%, 97%, 98%, 99%, or 100% identical) to the sequence of NCBI Accession Nos. NP\_003847.2. Non-limiting examples of soluble ST2 nucleic acids include nucleic acids containing a sequence at least 90% identical (e.g., at least 95%, 96%, 97%, 98%, 99%, or 100% identical) to the sequence of NCBI Accession Nos. NM\_003856.2.

20 **[0057]** Methods for detecting and measuring ST2 are known in the art, e.g., as described in U.S. Pat. Pub. Nos. 2003/0124624, 2004/0048286, and 2005/0130136, the entire contents of which are incorporated herein by reference. Kits for measuring ST2 polypeptide are also commercially available, e.g., the ST2 ELISA Kit manufactured by Medical & Biological Laboratories Co., Ltd. (MBL International Corp., Woburn, MA), no. 7638. In addition, devices for measuring  
25 ST2 and other biomarkers are described in U.S. Pat. Pub. No. 2005/0250156.

**[0058]** Levels of ST2 protein can also be measured using the antibodies produced from the hybridoma deposited at American Type Culture Collection and designated by Patent Deposit Designation PTA-10432, or any of the antibodies described in WO 2011/127412 and U.S. Patent Application Publication No. 2011/0256635 (herein incorporated by  
reference).

**[0059]** Elevated concentrations of ST2 are markedly prognostic for death, with a dramatic divergence in survival curves for those with elevated ST2 soon after presentation, regardless of the underlying diagnosis. As one example, there is a dramatic relationship between elevations of ST2 and the risk of mortality within four years following presentation with  
30 dyspnea. The relationship between ST2 and death in dyspneic patients was independent of diagnosis, and superseded all other biomarker predictors of mortality in this setting, including other markers of inflammation, myonecrosis, renal dysfunction, and most notably NT-proBNP, a marker recently described as having value for predicting death in this  
35 population (Januzzi et al., *Arch. Intern. Med.* 166(3):315-320 (2006)). Indeed, most of the mortality in the study was concentrated among subjects with elevated ST2 levels at presentation; however, the combination of elevated ST2 and NT-proBNP was associated with the highest rates of death within one year.

**[0060]** In some embodiments, the level of ST2 is determined once, e.g., at presentation. In some embodiments, the level of ST2 is determined at one or more of 2, 4, 6, 8, 12, 18, and/or 24 hours, and/or 1-7 days after the onset of symptoms.

40 **[0061]** In some embodiments, the level of ST2 is determined more than once; in some embodiments, the higher measurement can be used. In embodiments where the level of ST2 is determined more than once, the highest level can be used, or the change in levels (e.g., a ratio of two levels of ST2) can be determined and used.

**[0062]** Levels of ST2 can also be determined multiple times to evaluate a subject's response to a treatment. For example, a level of ST2 taken after administration of a treatment, e.g., one or more doses or rounds of a treatment, can  
45 be compared to levels of ST2 before the treatment was initiated, e.g., a baseline level, or at an early time point in ongoing treatment. The change in ST2 levels would indicate whether the treatment was effective; e.g., a reduction in ST2 levels would indicate that the treatment was effective.

**[0063]** In some embodiments, the methods include determining the identity of the nucleotide sequence at RefSNP ID: rs1041973.

50 **[0064]** Once a level of ST2 has been determined in a subject, the level may be compared to a reference level. In some embodiments, e.g., where the level of ST2 is determined using an ELISA, the reference level will represent a threshold level, above which the subject is identified as having an increased risk of an ACO, selected for continued treatment on an inpatient basis, selected for participation in a clinical study, or selected for therapeutic treatment (as described herein). The reference level chosen may depend on the methodology (e.g., the particular antibody or ELISA kit) used to measure  
55 the levels of ST2. Reference levels are known in the art and may readily be determined by one skilled in the art.

**[0065]** Non-limiting threshold levels of ST2 may represent the median level of ST2 in particular patient populations, e.g., subjects with a BMI of less than 25, subjects with normal renal function, subjects without cardiovascular disease, subjects with a BMI between 25 and 30, subjects with a BMI greater than 30, subjects with an elevated BMI, subjects

**EP 3 605 104 A1**

with renal insufficiency, healthy men, healthy women, and healthy children. For example a threshold value for ST2 may fall within the range of about 1.0 to 10 ng/mL, 5.0 ng/mL to 10 ng/mL, about 10.0 ng/mL to 20.0 ng/mL, about 10.0 ng/mL to 15.0 ng/mL, about 15.0 ng/mL to 20.0 ng/mL, about 20.0 ng/ml to 40 ng/mL, about 20 ng/mL to 30 ng/mL, about 20 ng/mL to 25 ng/mL, about 25 ng/mL to 30 ng/mL, about 30 ng/mL to about 40 ng/mL, about 30 ng/mL to 35 ng/mL, about 35 ng/mL to 40 ng/mL, about 40 ng/mL to about 60 ng/mL, about 40 ng/mL to about 50 ng/mL, and about 50 ng/mL to about 60 ng/mL.

**[0066]** In some embodiments, the threshold value for ST2 in men and women may be any value listed in the Table 1. For example, the threshold value of ST2 in men may be 17.0 ng/mL, 18.0 ng/mL, 19.0 ng/mL, 20.0 ng/mL, 21.0 ng/mL, 22.0 ng/mL, 23.0 ng/mL, 24.0 ng/mL, 25.0 ng/mL, 26.0 ng/mL, 27.0 ng/mL, 28.0 ng/mL, 29.0 ng/mL, 30.0 ng/mL, 31.0 ng/mL, 32.0 ng/mL, 33.0 ng/mL, 34.0 ng/mL, 35.0 ng/mL, 36.0 ng/mL, 37.0 ng/mL, 38.0 ng/mL, 39.0 ng/mL, 40.0 ng/mL, 41.0 ng/mL, 42.0 ng/mL, 43.0 ng/mL, 44.0 ng/mL, 45.0 ng/mL, 46.0 ng/mL, 47.0 ng/mL, 48.0 ng/mL, 49.0 ng/mL, and 50.0 ng/mL. Exemplary threshold values of ST2 in women may be 12.0 ng/mL, 13.0 ng/mL, 14.0 ng/mL, 15.0 ng/mL, 16.0 ng/mL, 17.0 ng/mL, 18.0 ng/mL, 19.0 ng/mL, 20.0 ng/mL, 21.0 ng/mL, 22.0 ng/mL, 23.0 ng/mL, 24.0 ng/mL, 25.0 ng/mL, 26.0 ng/mL, 27.0 ng/mL, 28.0 ng/mL, 29.0 ng/mL, 30.0 ng/mL, 31.0 ng/mL, 32.0 ng/mL, 33.0 ng/mL, 34.0 ng/mL, 35.0 ng/mL, 36.0 ng/mL, 37.0 ng/mL, 38.0 ng/mL, 39.0 ng/mL, and 40.0 ng/mL.

**Table 1. Serum ST2 Concentrations in Males and Females**

Percentiles	ST2 (ng/mL)		
	Combined	Male	Female
2.5	8.0	8.6	7.3
25	14.5	17.6	12.4
50	18.8	23.6	16.2
75	25.3	30.6	19.9
90	34.3	37.2	23.7
95	37.9	45.4	29.0
97.5	45.6	48.5	33.1
99	50.2	52.7	39.9

**[0067]** As noted above, a threshold level of ST2 may vary depending on the methodology used to measure the levels of ST2. For example, if an antibody produced from the hybridoma deposited at American Type Culture Collection, designated with Patent Deposit Deposition PTA-10432 is used to determine a ST2 level, non-limiting threshold values of ST2 may include: below 20 ng/mL, 5 ng/mL to 15 ng/mL, 5.0 ng/mL to 10 ng/mL, 10 ng/mL to 20 ng/mL, 10 ng/mL to 15 ng/mL, 14.5 ng/mL to 25.3 ng/mL, 15 ng/mL to 25 ng/mL, 15 ng/mL to 20 ng/mL, 18.0 ng/mL to 20.0 ng/mL, 18.1 ng/mL to 19.9 ng/mL, 20 ng/mL to 30 ng/mL, 20 ng/mL to 25 ng/mL, 25 ng/mL to 35 ng/mL, 25 ng/mL to 30 ng/mL, 30 ng/mL to 40 ng/mL, 30 ng/mL to 35 ng/mL, 35 ng/mL to 45 ng/mL, 35 ng/mL to 40 ng/ml, and 40 ng/mL to 45 ng/mL. Additional ST2 reference values that may be used when using the antibody produced from the hybridoma designated PTA-10432 is used to determine a ST2 level include: for women, 12.4 ng/mL to 19.9 ng/mL, 12.0 ng/mL to 20 ng/mL, 15.3 ng/mL to 17.4 ng/mL, 15.0 to 17.0 ng/mL, below 20 ng/mL, and below 18 ng/mL; and for men, less than 31.0 ng/mL, less than 26.0 ng/mL, 17.6 ng/mL to 30.6 ng/mL, 17.0 ng/mL to 30.0 ng/mL, 21.3 ng/mL to 25.1 ng/mL, and 21.0 ng/mL to 25.0 ng/mL. Additional non-limiting threshold values that may be used when a ST2 level is measured using the antibody produced from the hybridoma designated PTA-10432 include: 10 ng/mL, 11 ng/mL, 12 ng/mL, 13 ng/mL, 14 ng/mL, 15 ng/mL, 16 ng/mL, 17 ng/mL, 18 ng/mL, 19 ng/mL, 20 ng/mL, 21 ng/mL, 22 ng/mL, 23 ng/mL, 24 ng/mL, 25 ng/mL, 26 ng/mL, 27 ng/mL, 28 ng/mL, 29 ng/mL, 30 ng/mL, or 31 ng/mL.

**[0068]** In additional non-limiting examples, when a ST2 level is measured the ST2 ELISA Kit (MBL International Corp., Woburn, MA), the threshold levels of ST2 include: 0.1 ng/mL to 0.6 ng/mL, 0.2 ng/mL to 0.6 ng/mL, 0.2 ng/mL to 0.5 ng/mL, 0.3 ng/mL to 0.5 ng/mL, 0.2 ng/mL to 0.3 ng/mL, 0.3 ng/mL to 0.4 ng/mL, and 0.4 ng/mL to 0.5 ng/mL. Additional non-limiting threshold values when using the ST2 ELISA Kit (MBL International Corp.) to measure a ST2 level include: 0.17 ng/mL, 0.18 ng/mL, 0.19 ng/mL, 0.20 ng/mL, 0.21 ng/mL, 0.22 ng/mL, 0.23 ng/mL, 0.24 ng/mL, 0.25 ng/mL, 0.26 ng/mL, 0.27 ng/mL, 0.28 ng/mL, or 0.29 ng/mL of blood, serum, or plasma.

**[0069]** In some embodiments, the ratio of two ST2 levels in a subject is compared to a reference level that is a ratio of ST2 levels measured in a subject (e.g., any of the control subjects described herein or the same subject), for example, a reference level may be a ratio of the levels of ST2 before and after onset of one or more (e.g., two, three, four, or five) disease (e.g., cardiac disease (e.g., heart failure, coronary artery disease, cardiovascular disease, acute coronary

syndrome, and angina), renal insufficiency, stroke, or hypertension) symptoms; a ratio of the levels of ST2 before and after diagnosis with disease (e.g., cardiac disease (e.g., heart failure, coronary artery disease, cardiovascular disease, acute coronary syndrome, and angina), renal insufficiency, stroke, or hypertension); a ratio of the levels of ST2 before and after therapeutic treatment for a disease ((e.g., cardiac disease (e.g., heart failure, coronary artery disease, cardiovascular disease, acute coronary syndrome, and angina), renal insufficiency, stroke, or hypertension); or a ratio of the ST2 levels before and after a cardiac event (e.g., a myocardial infarction).

### Methods of Evaluating the Risk of ACO

**[0070]** Methods of evaluating the risk of an ACO in a subject are provided. In a clinical setting, patients may present with a combination of ambiguous symptoms, such that a physician or health care professional has difficulty in diagnosing the subject. In such situations, it is difficult for the physician to determine whether the subject has an increased risk of later experiencing an adverse clinical outcome. Provided are methods of evaluating the risk of an adverse clinical outcome in a subject requiring the steps of determining a level of ST2 in a biological sample from the subject and determining a level of galectin-2 in a biological sample from the subject.

**[0071]** An adverse clinical outcome (ACO) may be an increase (e.g., by one, two, three, or four) in the number, severity, or frequency of one or more (e.g., at least two, three, or four) symptoms in a subject, death, or treatment that is necessitated by the increase (e.g., by one, two, three, or four) in the number, severity, or frequency of one or more (e.g., at least two, three, or four) symptoms in a subject. An ACO may be the rehospitalization, recurrence of one or more (e.g., at least two, three, or four) physical symptoms associated with a disease state, an increase in the severity of one or more (e.g., at least two, three, or four) physical symptoms associated with a disease state, an increase in the frequency of one or more (e.g., at least two, three, or four) physical symptoms associated with a disease state, mortality, admission to a health care facility, organ transplant (e.g., heart transplant), or surgery (e.g., heart surgery). For example, the ACO may be an increase in the number, severity, duration, or frequency of one or more (e.g., at least two, three, or four) symptoms associated with angina, cardiovascular disease, or heart failure. For patients presenting with cardiovascular disease, the ACO may be, for example, rehospitalization or admission for cardiovascular disease or mortality.

**[0072]** The above methods may be performed on a subject presenting with one or more (e.g., at least two, three, or four) symptoms in a health care facility (e.g., hospital, such as in the emergency room). The method may be performed by a physician, a laboratory technician, a physician's assistant, or a nurse. A level of ST2 and galectin-3 may be measured in a biological sample from a patient within 14 days of the presentation of the patient to a health care facility (e.g., within 12 days, 10 days, 8 days, 7 days, 6 days, 5 days, 4 days, 3 days, 2 days, 36 hours, 24 hours, 20 hours, 16 hours, 12 hours, 10 hours, 8 hours, 6 hours, 4 hours, or 2 hours). The levels of ST2 and galectin-3 may also be measured in a biological sample from a subject that is already hospitalized or under medical supervision (e.g., periodic check-ups or in an assisted care facility). The levels of ST2 and galectin-3 may also be measured in a biological sample that has been previously collected from a subject.

**[0073]** Two different levels of ST2 and/or galectin-3 may be used to calculate a ratio which may then be compared to a reference level (e.g., any of the reference ratios described above). For example, a ratio of the levels of ST2 and/or galectin-3 before and after onset of one or more (e.g., two, three, four, or five) disease (e.g., cardiac disease (e.g., heart failure, coronary artery disease, cardiovascular disease, acute coronary syndrome, and angina), renal insufficiency, stroke, or hypertension) symptoms; a ratio of the levels of ST2 and/or galectin-3 before and after diagnosis with disease (e.g., cardiac disease (e.g., heart failure, coronary artery disease, cardiovascular disease, acute coronary syndrome, and angina), renal insufficiency, stroke, or hypertension); a ratio of the levels of ST2 and/or galectin-3 before and after therapeutic treatment for a disease ((e.g., cardiac disease (e.g., heart failure, coronary artery disease, cardiovascular disease, acute coronary syndrome, and angina), renal insufficiency, or hypertension); a ratio of the levels of ST2 and/or galectin-3 at two different time points during therapeutic treatment (e.g., inpatient or outpatient treatment) for a disease (e.g., cardiac disease (e.g., heart failure, coronary artery disease, cardiovascular disease, acute coronary syndrome, and angina), renal insufficiency, stroke, or hypertension); or a ratio of the ST2 and/or galectin-3 levels before and after a cardiac event (e.g., a myocardial infarction) may be determined and compared to a reference value.

**[0074]** The subject may have been previously diagnosed with a cardiac disease (e.g., heart failure, heart attack, coronary artery disease, cardiovascular disease, acute coronary syndrome, and angina), inflammation, stroke, renal failure, obesity, high cholesterol, and dyslipidemia. The subject may also not have been previously diagnosed as having a disease (e.g., a cardiac disease (e.g., heart failure, heart attack, coronary artery disease, cardiovascular disease, acute coronary syndrome, and angina), inflammation, stroke, renal failure, obesity, high cholesterol, and dyslipidemia). In some embodiments of the methods described herein, the subject may present with one or more ambiguous symptoms (e.g., shortness of breath, dizziness, discomfort, and nausea). The subject may have a BMI of between 25-29, a BMI of

greater than or equal to 30, an elevated BMI, or have renal insufficiency.

**[0075]** The level of ST2 and galectin-3 may be measured in any biological sample obtained from the subject. Non-limiting biological samples that may be used in the methods described herein include blood, serum, and plasma. The biological sample used to measure ST2 and the biological sample used to measure galectin-3 may be gathered from the subject at the same time. The biological sample may be frozen or transported prior to determining the level of ST2 or galectin-3 present in the sample. Preferably, the biological sample used to determine the level of ST2 or galectin-3 is serum.

**[0076]** Following the determination of a level of ST2 in a biological sample from the subject and the determination of a level of galectin-3 in a biological sample from the subject, the risk of adverse clinical outcome is indicated by comparing the subject's levels of ST2 and galectin-3 to reference levels of ST2 and galectin-3. For example, the presence of an elevated level of ST2 (relative to a reference level of ST2) or the presence of an elevated level of galectin-3 (relative to a reference level of galectin-3) indicates an increased risk (e.g., an increased risk of at least 10%, 15%, 20%, 25%, 30%, 35%, 40%, 45%, 50%, 55%, 60%, 65%, 70%, 75%, 80%, 85%, 90%, 95%, 100%, 110%, 120%, 130%, 140%, 150%, 160%, 170%, 180%, 190%, or 200%) of an ACO. In some embodiments, the presence of both an elevated level of ST2 (relative to a reference level of ST2) and an elevated level of galectin-3 (relative to a reference level of galectin-3) indicates a greatly increased risk (e.g., an increased risk of at least 25%, 30%, 35%, 40%, 45%, 50%, 55%, 60%, 65%, 70%, 75%, 80%, 85%, 90%, 95%, 100%, 120%, 140%, 160%, 180%, 200%, 220%, 240%, 260%, 280%, or 300%) of an ACO. In some embodiments, a non-elevated level of ST2 and a non-elevated level of galectin-3 indicates a decreased (e.g., a decreased risk of at least 10%, 15%, 20%, 25%, 30%, 35%, 40%, 45%, 50%, 55%, 60%, 65%, 70%, 75%, or 80%) risk of an ACO.

**[0077]** In additional examples, the presence of an elevated ratio of ST2 levels (relative to a reference ratio of ST2 levels) or the presence of an elevated ratio of galectin-3 levels (relative to a reference ratio of galectin-3 levels) indicates an increased risk (e.g., an increased risk of at least 10%, 15%, 20%, 25%, 30%, 35%, 40%, 45%, 50%, 55%, 60%, 65%, 70%, 75%, 80%, 85%, 90%, 95%, 100%, 110%, 120%, 130%, 140%, 150%, 160%, 170%, 180%, 190%, or 200%) of an ACO. In some embodiments, the presence of both an elevated ratio of ST2 levels (relative to a reference ratio of ST2 levels) and an elevated ratio of galectin-3 levels (relative to a reference ratio of galectin-3 levels) indicates a greatly increased risk (e.g., an increased risk of at least 25%, 30%, 35%, 40%, 45%, 50%, 55%, 60%, 65%, 70%, 75%, 80%, 85%, 90%, 95%, 100%, 120%, 140%, 160%, 180%, 200%, 220%, 240%, 260%, 280%, or 300%) of an ACO. In some embodiments, a non-elevated ratio of ST2 levels (relative to a reference ratio of ST2 levels) and a non-elevated ratio of galectin-3 levels (relative to a reference ratio of galectin-3 levels) indicates a decreased risk (e.g., a decreased risk of at least 10%, 15%, 20%, 25%, 30%, 35%, 40%, 45%, 50%, 55%, 60%, 65%, 70%, 75%, or 80%) of an ACO.

**[0078]** Any of the above described reference levels for ST2 or galectin-3 may be used in these methods. Any of the above described techniques for determining the level of ST2 or galectin-3 may be used in these methods.

**[0079]** The above methods may be used to determine the risk of an ACO within 1 year and within 30 days of the time at which the biological sample was obtained from the subject.

#### **Methods for Deciding to Discharge or Continue Treatment on an Inpatient Basis**

**[0080]** Also provided are methods for deciding whether to discharge or initiate, terminate, or continue treating a subject on an inpatient basis including the steps of determining a level of ST2 in a biological sample, and determining a level of galectin-3 in a biological sample from the subject. This method may be performed by a health care professional (e.g., a physician, a physician's assistant, a nurse, or a laboratory technician).

**[0081]** Subjects often present to health care professionals with ambiguous symptoms (e.g., shortness of breath, dizziness, nausea, or discomfort) that are difficult to diagnose. Often a health care professional has to decide whether to discharge the subject or whether to continue to treat the subject on an inpatient basis (e.g., begin hospitalization, continue hospitalization, or admit to an assisted care facility). This method may be performed when a subject presents himself or herself to a health care professional at a health care facility. This method may also be performed on a subject who has already been admitted to a health care facility (e.g., a hospital or an assisted care facility).

**[0082]** The method may be performed on subjects that have cardiac disease (e.g., heart failure, coronary artery disease, cardiovascular disease, acute coronary syndrome, and angina), renal insufficiency, stroke, inflammation, or hypertension, or on subjects that present with one or more of the following symptoms: shortness of breath, heart palpitations, increased heart rate, weakness, dizziness, nausea, sweating, chest discomfort or pressure, chest pain, arm pain, fullness, indigestion, sweating, wheezing, sleep apnea, or anxiety. The method may also be performed on patients with a BMI of 25-30, a BMI of greater than 30, or an elevated BMI.

**[0083]** The level of ST2 and the level of galectin-3 may be measured in any of the biological samples described above. The levels of ST2 and galectin-3 may be measured using any of the methods described above and compared to any of the reference levels described above.

**[0084]** Following the determination of a level of ST2 in a biological sample from the subject and the determination of

a level of galectin-3 in a biological sample from the subject, the subject's levels of ST2 and galectin-3 relative to reference levels of ST2 and galectin-3 is used to determine whether the subject should be discharged, should receive continued treatment (e.g., treatment on an inpatient basis) or whether treatment should be initiated or terminated. For example, the presence of an elevated level of ST2 (relative to a reference level of ST2) or the presence of an elevated level of galectin-3 (relative to a reference level of galectin-3) indicates that the subject should receive continued treatment (e.g., treatment on an inpatient basis) or that treatment should be initiated. In some embodiments of the methods described herein, the presence of both an elevated level of ST2 and an elevated level of galectin-3 (relative to control levels) strongly indicates that the subject should receive continued treatment (e.g., treatment on an inpatient basis) or that treatment should be initiated. In additional examples, the presence of a non-elevated level of ST2 (relative to a reference level of ST2) and the presence of a non-elevated level of galectin-3 (relative to a reference level of galectin-3) indicates that the subject should be discharged, receive treatment on an outpatient basis, or that treatment should be terminated.

**[0085]** Two different levels of ST2 and/or galectin-3 may be used to calculate a ratio which may then be compared to a reference level (e.g., a reference ratio as described above). For example, a ratio of the levels of ST2 and/or galectin-3 before and after onset of one or more (e.g., two, three, four, or five) disease (e.g., cardiac disease (e.g., heart failure, coronary artery disease, cardiovascular disease, acute coronary syndrome, and angina), renal insufficiency, stroke, or hypertension) symptoms; a ratio of the levels of ST2 and/or galectin-3 before and after diagnosis with disease (e.g., cardiac disease (e.g., heart failure, coronary artery disease, cardiovascular disease, acute coronary syndrome, and angina), renal insufficiency, stroke, or hypertension); a ratio of the levels of ST2 and/or galectin-3 before and after therapeutic treatment for a disease ((e.g., cardiac disease (e.g., heart failure, coronary artery disease, cardiovascular disease, acute coronary syndrome, and angina), renal insufficiency, stroke, or hypertension); a ratio of the levels of ST2 and/or galectin-3 at two different time points during therapeutic treatment (e.g., inpatient or outpatient treatment) for a disease (e.g., cardiac disease (e.g., heart failure, coronary artery disease, cardiovascular disease, acute coronary syndrome, and angina), renal insufficiency, stroke, or hypertension); or a ratio of the ST2 and/or galectin-3 levels before and after a cardiac event (e.g., a myocardial infarction) may be determined and compared to a reference value.

**[0086]** In additional examples, the presence of an elevated ratio of ST2 levels (relative to a reference ratio of ST2 levels) or the presence of an elevated ratio of galectin-3 levels (relative to a reference ratio of galectin-3 levels) indicates that the subject should receive continued treatment (e.g., treatment on an inpatient basis) or that treatment should be initiated. In some embodiments of the methods described herein, the presence of both an elevated ratio of ST2 levels (relative to a reference ratio of ST2 levels) and an elevated ratio of galectin-3 levels (relative to a reference ratio of galectin-3 levels) strongly indicates that the subject should receive continued treatment (e.g., treatment on an inpatient basis) or that treatment should be initiated. In some embodiments, a non-elevated ratio of ST2 levels (relative to a reference ratio of ST2 levels) and a non-elevated ratio of galectin-3 levels (relative to a reference ratio of galectin-3 levels) indicates that the subject should be discharged or that treatment should be terminated.

**[0087]** Continued treatment on an inpatient basis may mean new admission into a health care facility (e.g., a hospital or assisted care facility), continued admission in a health care facility (e.g., a hospital or assisted care facility), or frequent (e.g., daily, weekly, biweekly, or monthly) consistent visits to a health care center (e.g., a clinic or a hospital). The subject may receive one or more (e.g., at least two, three, four, or five) pharmaceutical agents during the continued treatment or may be tested periodically for changes in the levels of ST2 and/or galectin-3 in a biological sample from the subject. A decrease in a subject's ST2 and/or galectin-3 level relative to a reference sample (determined by subsequent testing) may later indicate that the subject may be discharged.

### Methods for Selecting a Subject for Participation in a Clinical Study

**[0088]** Also provided are methods for selecting a subject for participation in a clinical study that include the steps of determining a level of ST2 in a biological sample in a subject and determining a level of galectin-3 in a biological sample in a subject.

**[0089]** Non-limiting examples of clinical studies include studies of cardiac disease (e.g., heart failure, heart attack, coronary artery disease, cardiovascular disease, acute coronary syndrome, and angina), inflammation, stroke, renal failure, obesity, high cholesterol, and dyslipidemia. The clinical studies may also be used to study the effect of treatment of one or more (e.g., two, three, or four) pharmaceutical agents (e.g., nitrates, calcium channel blockers, diuretics, thrombolytic agents, digitalis, renin-angiotensin-aldosterone system (RAAS) modulating agents (e.g., beta-adrenergic blocking agents, angiotensin-converting enzyme inhibitors, aldosterone antagonists, renin inhibitors, and angiotensin II receptor blockers), and cholesterol-lowering agents (e.g., a statin)) on a subject.

**[0090]** The clinical studies may be performed by health care professionals (e.g., physicians, physician's assistants, nurses, phlebotomists, or laboratory technicians) in a health care facility (e.g., a hospital, a clinic, or a research center). The biological samples may be obtained from subjects present with one or more (e.g., at least two, three, four, or five) symptoms of a disease state (e.g., cardiovascular disease, angina, or heart failure), subjects that are admitted in a hospital, or subjects who are asymptomatic.

**[0091]** The level of ST2 and the level of galectin-3 may be measured in any of the biological samples described above. The levels of ST2 and galectin-3 may be measured using any of the methods described above and compared to any of the reference levels described above.

**[0092]** Following the determination of a level of ST2 in a biological sample from the subject and the determination of a level of galectin-3 in a biological sample from the subject, a subject is selected for participation in a clinical study based on the comparison of subject's levels of ST2 and galectin-3 to reference levels of ST2 and galectin-3. For example, the subject is selected for participation in a clinical study if the subject has an elevated level of ST2 (relative to a reference level of ST2) or an elevated level of galectin-3 (relative to a reference level of galectin-3). In some embodiments of the methods described herein, the subject is strongly selected for participation in a clinical study if the subject has both an elevated level of ST2 (relative to a reference level of ST2) and an elevated level of galectin-3 (relative to a reference level of galectin-3). In some embodiments, the subject is excluded from participation in a clinical study if the subject has both a non-elevated level of ST2 (relative to a reference level of ST2) and a non-elevated level of galectin-3 (relative to a reference level of galectin-3).

**[0093]** In another embodiment, a subject with a level of galectin-3 that is lower than a reference level of galectin-3 (e.g., a subject having an elevated level of ST2 compared to a reference level and a decreased level of galectin-3 relative to a reference level) may be selected for participation in a clinical study (e.g., a study of the effect of one or more (e.g., at least two, three, or four) statins in a subject (e.g., a subject with a cardiac disease (e.g., heart failure, heart attack, coronary artery disease, cardiovascular disease, acute coronary syndrome, and angina), inflammation, stroke, renal failure, obesity, high cholesterol, and/or dyslipidemia).

**[0094]** As described above, two different levels of ST2 and/or galectin-3 may be used to calculate a ratio which may then be compared to a reference level (e.g., a reference ratio as described above). For example, a ratio of the levels of ST2 and/or galectin-3 before and after onset of one or more (e.g., two, three, four, or five) disease (e.g., a cardiac disease (e.g., heart failure, heart attack, coronary artery disease, cardiovascular disease, acute coronary syndrome, and angina), inflammation, stroke, renal failure, obesity, high cholesterol, and dyslipidemia), renal insufficiency, and hypertension) symptoms; a ratio of the levels of ST2 and/or galectin-3 before and after diagnosis with disease (e.g., a cardiac disease (e.g., heart failure, heart attack, coronary artery disease, cardiovascular disease, acute coronary syndrome, and angina), inflammation, stroke, renal failure, obesity, high cholesterol, and dyslipidemia); a ratio of the levels of ST2 and/or galectin-3 before and after therapeutic treatment for a disease (e.g., a cardiac disease (e.g., heart failure, heart attack, coronary artery disease, cardiovascular disease, acute coronary syndrome, and angina), inflammation, stroke, renal failure, obesity, high cholesterol, and dyslipidemia); a ratio of the levels of ST2 and/or galectin-3 at two different time points during therapeutic treatment (e.g., inpatient or outpatient treatment) for a disease (e.g., a cardiac disease (e.g., heart failure, heart attack, coronary artery disease, cardiovascular disease, acute coronary syndrome, and angina), inflammation, stroke, renal failure, obesity, high cholesterol, and dyslipidemia); or a ratio of the ST2 and/or galectin-3 levels before and after a cardiac event (e.g., a myocardial infarction) may be determined and compared to a reference value.

**[0095]** In some examples of the methods described herein, a subject is selected for participation in a clinical study if the subject has an elevated ratio of ST2 levels (relative to a reference ratio of ST2 levels) or an elevated ratio of galectin-3 levels (relative to a reference ratio of galectin-3 levels). In some examples of the methods described herein, a subject is strongly selected for participation in a clinical study if the subject has an elevated ratio of ST2 levels (relative to a reference ratio of ST2 levels) and an elevated ratio of galectin-3 levels (relative to a reference ratio of galectin-3 levels). In some embodiments, a subject is excluded from participation in a clinical study if the subject has a non-elevated ratio of ST2 levels (relative to a reference ratio of ST2 levels) and a non-elevated ratio of galectin-3 levels (relative to a reference level of galectin-3 levels).

**[0096]** Additional factors may further indicate that the subject should be included in a clinical study. These additional factors include prior diagnosis with cardiovascular disease, angina, heart attack, heart failure, renal failure, inflammation, or stroke, or presentation of one or more (e.g., two, three, or four) of the following symptoms: shortness of breath, heart palpitations, increased heart rate, weakness, dizziness, nausea, sweating, chest discomfort or pressure, chest pain, arm pain, fullness, indigestion, sweating, wheezing, sleep apnea, and anxiety. Additional factors include a BMI of 25-30, a BMI of greater than 30, an elevated BMI, or continued therapy on one or more (e.g., at least two, three, four, or five) pharmaceutical agents (e.g., nitrates, calcium channel blockers, diuretics, thrombolytic agents, digitalis, renin-angiotensin-aldosterone system (RAAS) modulating agents (e.g., beta-adrenergic blocking agents, angiotensin-converting enzyme inhibitors, aldosterone antagonists, renin inhibitors, and angiotensin II receptor blockers), and cholesterol-lowering agents (e.g., a statin)).

#### **Methods for Selecting a Therapeutic Treatment for a Subject**

**[0097]** Also provided are methods for selecting a treatment for a subject requiring the steps of determining a level of ST2 in a biological sample from the subject and determining a level of galectin-3 in a biological sample from the subject.

**[0098]** This method may be performed on subjects that present clinically (e.g., diagnosed) with one or more (e.g., at

least two, three, four, or five) symptoms of a disease (e.g., a cardiac disease (e.g., heart failure, heart attack, coronary artery disease, cardiovascular disease, acute coronary syndrome, and angina), inflammation, stroke, renal failure, obesity, high cholesterol, and dyslipidemia). The method may also be performed on subjects that present with one or more (e.g., two, three, or four) of the following symptoms: shortness of breath, heart palpitations, increased heart rate, weakness, dizziness, nausea, sweating, chest discomfort or pressure, chest pain, arm pain, fullness, indigestion, sweating, wheezing, sleep apnea, and anxiety. The subject may have been previously diagnosed one or more (e.g., two, three, four, or five) of the following conditions: a cardiac disease (e.g., heart failure, heart attack, coronary artery disease, cardiovascular disease, acute coronary syndrome, and angina), inflammation, stroke, renal failure, obesity, high cholesterol, and dyslipidemia, or the subject may not have been previously diagnosed with a disease. The subject may have been previously admitted to a health care facility and previously discharged, or may be a patient admitted in a health care facility (e.g., hospital or assisted care facility). The methods may be performed by a health care professional (e.g., a physician, a physician's assistant, a nurse, or a laboratory technician) in a health care facility (e.g., a hospital, clinic, or assisted care facility).

**[0099]** The level of ST2 and the level of galectin-3 may be measured in any of the biological samples described above. The levels of ST2 and galectin-3 may be measured using any of the methods described above and compared to any of the reference levels described above.

**[0100]** Following the determination of a level of ST2 in a biological sample from the subject and the determination of a level of galectin-3 in a biological sample from the subject, the subject's levels of ST2 and galectin-3 relative to reference levels of ST2 and galectin-3 is used to select a treatment for the subject. For example, the presence of an elevated level of ST2 (relative to a reference level of ST2) or the presence of an elevated level of galectin-3 (relative to a reference level of galectin-3) is used to select a treatment for the subject. In some embodiments of the methods described herein, the presence of both an elevated level of ST2 and an elevated level of galectin-3 (relative to control levels) is predominantly (strongly) used to select the therapeutic treatment for the subject. In some embodiments of the methods described herein, the presence of both a non-elevated level of ST2 and a non-elevated level of galectin-3 (relative to control levels) is used to select a therapeutic treatment for the subject.

**[0101]** As described above, two different levels of ST2 and/or galectin-3 may be used to calculate a ratio which may then be compared to a reference level (e.g., a reference ratio as described above). For example, a ratio of the levels of ST2 and/or galectin-3 before and after onset of one or more (e.g., two, three, four, or five) disease (e.g., a cardiac disease (e.g., heart failure, heart attack, coronary artery disease, cardiovascular disease, acute coronary syndrome, and angina), inflammation, stroke, renal failure, obesity, high cholesterol, and dyslipidemia) symptoms; a ratio of the levels of ST2 and/or galectin-3 before and after diagnosis with disease (e.g., a cardiac disease (e.g., heart failure, heart attack, coronary artery disease, cardiovascular disease, acute coronary syndrome, and angina), inflammation, stroke, renal failure, obesity, high cholesterol, and dyslipidemia); a ratio of the levels of ST2 and/or galectin-3 before and after therapeutic treatment for a disease (e.g., a cardiac disease (e.g., heart failure, heart attack, coronary artery disease, cardiovascular disease, acute coronary syndrome, and angina), inflammation, stroke, renal failure, obesity, high cholesterol, and dyslipidemia); a ratio of the levels of ST2 and/or galectin-3 at two different time points during therapeutic treatment (e.g., inpatient or outpatient treatment) for a disease (e.g., a cardiac disease (e.g., heart failure, heart attack, coronary artery disease, cardiovascular disease, acute coronary syndrome, and angina), inflammation, stroke, renal failure, obesity, high cholesterol, and dyslipidemia); or a ratio of the ST2 and/or galectin-3 levels before and after a cardiac event (e.g., a myocardial infarction) may be determined and compared to a reference value.

**[0102]** In some examples of the methods described herein, the presence of an elevated ratio of ST2 levels (relative to a reference ratio of ST2 levels) or the presence of an elevated ratio of galectin-3 levels (relative to a reference ratio of galectin-3 levels) is used to select a treatment for a subject. In some examples of the methods described herein, the presence of both an elevated ratio of ST2 levels (relative to a reference ratio of ST2 levels) and an elevated ratio of galectin-3 levels (relative to a reference ratio of galectin-3 levels) is strongly used to select a treatment for a subject. In some embodiments, the presence of a non-elevated ratio of ST2 levels (relative to a reference ratio of ST2 levels) and the presence of a non-elevated ratio of galectin-3 levels (relative to a reference level of galectin-3 levels) is used to select a treatment for a subject.

**[0103]** Additional factors may further be used to select a therapeutic treatment for the subject. These additional factors include prior diagnosis with one or more (e.g., two, three, four, or five) of the following conditions: cardiovascular disease, angina, heart attack, heart failure, renal failure, inflammation, and stroke, and/or presentation of one or more (e.g., two, three, or four) of the following symptoms: shortness of breath, heart palpitations, increased heart rate, weakness, dizziness, nausea, sweating, chest discomfort or pressure, chest pain, arm pain, fullness, indigestion, sweating, wheezing, sleep apnea, or anxiety. Additional factors include a BMI of 25-30, a BMI of greater than 30, an elevated BMI, or continued therapy on one or more (e.g., at least two, three, four, or five) pharmaceutical agents (e.g., nitrates, calcium channel blockers, diuretics, thrombolytic agents, digitalis, renin-angiotensin-aldosterone system (RAAS) modulating agents (e.g., beta-adrenergic blocking agents, angiotensin-converting enzyme inhibitors, aldosterone antagonists, renin inhibitors, and angiotensin II receptor blockers), and cholesterol-lowering agents (e.g., a statin)). Examples of these pharmaceutical

agents are well known in the art.

**[0104]** The therapeutic treatment may be the administration of one or more (e.g., two, three, or four) pharmaceutical agents to the subject and/or the performance of a medical procedure on the body of the subject (e.g., surgery, such as organ transplant or heart surgery). Non-limiting examples of pharmaceutical agents that may be administered to a subject include nitrates, calcium channel blockers, diuretics, thrombolytic agents, digitalis, renin-angiotensin-aldosterone system (RAAS) modulating agents (e.g., beta-adrenergic blocking agents, angiotensin-converting enzyme inhibitors, aldosterone antagonists, renin inhibitors, and angiotensin II receptor blockers), and cholesterol-lowering agents (e.g., a statin). In another example, the therapeutic treatment may be an adjustment (e.g., an increase or decrease) in the dose, duration, or frequency of one or more (e.g., at least two, three, or four) pharmaceutical agents that a subject may be taking, the administration of one or more (e.g., at least two, three, or four) new pharmaceutical agents to the subject, or the removal of one or more (e.g., at least two, three, or four) pharmaceutical agents from the subject's treatment plan.

**[0105]** These methods may be repeated over time (e.g., weekly, biweekly, monthly, once every two months, once every six months, once a year) to select a different therapeutic treatment for the subject.

#### **Additional Markers**

**[0106]** Some embodiments of all of the above methods, may further include determining the level of one or more (e.g., at least two, three, four, or four) additional markers in a biological sample from the subject. The additional markers may be selected from the group of: proANP, NT-proANP, ANP, proBNP, NT-proBNP, BNP, troponin, CRP, creatinine, Blood Urea Nitrogen (BUN), liver function enzymes, albumin, and bacterial endotoxin. The one or more additional markers can be measured in any of the biological samples described above. The presence of an increased level (e.g., at least 10%, 15%, 20%, 25%, 30%, 35%, 40%, 45%, 50%, 55%, 60%, 65%, 70%, 75%, 80%, 85%, 90%, 95%, 100%, 110%, 120%, 130%, 140%, 150%, 160%, 170%, 180%, 190%, 200%, 210%, 220%, 230%, 240%, 250%, 260%, 270%, 280%, 290%, or 300%) of one or more (e.g., at least two, three, or four) of proANP, NT-proANP, ANP, proBNP, NT-proBNP, BNP, troponin, CRP, creatinine, Blood Urea Nitrogen (BUN), liver function enzymes, albumin, and bacterial endotoxin in a subject compared to a reference level for each of these markers may further indicate that the subject has an increased risk of an ACO, the subject should receive continued treatment (e.g., treatment on an inpatient basis) or that treatment should be initiated or terminated, the subject should be selected for participation in a clinical study, or the subject should be selected for treatment. The reference levels of these additional markers may be a threshold value or may be the level of these markers in a patient population, e.g., subjects with a BMI of less than 25, subjects with normal renal function, subjects without cardiovascular disease, subjects with a BMI between 25 and 30, subjects with a BMI greater than 30, subject with an elevated BMI, subjects with renal insufficiency, healthy men, healthy women, and healthy children. Preferably, the above methods further include determining the level of BNP.

**[0107]** Methods for determining the levels of these additional markers are known in the art. Commercial kits for determining these additional markers are available.

#### **Kits**

**[0108]** Also provided are kits containing an antibody that specifically binds to ST2, an antibody that specifically binds to galectin-3, and instructions for using the kit (e.g., the antibodies in the kit) to perform any of the methods described herein. The antibody that specifically binds ST2 and the antibody that specifically binds to galectin-3 may be polyclonal, monoclonal, recombinant, e.g., a chimeric or humanized, fully human, non-human, e.g., murine, monospecific, or single chain antibody. Any of the kits described herein may also be provided as an ELISA assay (e.g., may further include one or more secondary antibodies and/or a substrate for detection). For example, any of the kits described herein may include an antibody produced from the hybridoma deposited at American Type Culture Collection and designated by Patent Deposit Designation PTA-10432. Additional examples of antibodies that specifically bind to ST2 are described in WO 2011/127412 and U.S. Patent Application Publication No. 2011/0256635 (herein incorporated by reference).

**[0109]** Any of the kits described herein may also include one or more (e.g., two, three, four, or five) additional antibodies for one or more (e.g., two, three, four, or five) additional markers selected from the group of: proANP, NT-proANP, ANP, proBNP, NT-proBNP, BNP, troponin, CRP, creatinine, liver function enzymes, albumin, and bacterial endotoxin. Antibodies for ST2, galectin-3, proANP, NT-proANP, ANP, proBNP, NT-proBNP, BNP, troponin, CRP, creatinine, liver function enzymes, albumin, and bacterial endotoxin are commercially available.

**[0110]** The invention is further described in the following example, which does not limit the scope of the invention described in the claims.

#### **EXAMPLE**

**[0111]** It has been reported that circulating concentrations of both the interleukin-1 receptor like 1 family member ST2

and galectin-3 are elevated in patients with heart failure (HF) and are independently prognostic. Experiments were performed to investigate the utility of ST2 measurement in patients with elevated concentrations of galectin-3.

[0112] The subjects used in this Example took part in the ProBNP Investigation of Dyspnea in the Emergency Department (PRIDE) Study, a prospective, blinded study of 599 dyspneic subjects presenting to the ED of the Massachusetts General Hospital, which was performed for the purpose of validating the diagnostic and prognostic use of NT-proBNP testing. The results of the PRIDE study were recently reported (Januzzi et al., Am. J. Cardiol. 95(8):948-954 (2005)).

[0113] The gold standard for the diagnosis of acute HF was based on the impression of reviewing physicians, blinded to NT-proBNP values, who had all available information from presentation through a 60-day follow-up period; for the few patients in whom a diagnosis was uncertain, the reviewers were instructed to utilize the guidelines as reported by the Framingham Heart Study (McKee et al., N. Engl. J. Med. 285(26):1441-1446 (1971)).

[0114] As reported, 209 subjects (35%) in the PRIDE study were adjudicated to have dyspnea due to acute destabilized HF, of whom 17 had mild (Class II) symptoms by the New York Heart Association (NYHA) classification, 80 had moderate (Class III) symptoms, and 112 had severe (Class IV symptoms).

[0115] At the end of one year, the managing physician for each patient was contacted for the purposes of ascertainment of vital status. As reported, follow-up at one year was complete in 597 subjects overall.

[0116] Blood collected at the time of presentation was later analyzed for concentrations of ST2, using an enzyme-linked immunosorbent assay (Critical Diagnostics, San Diego), as described herein. This assay utilizes monoclonal antibodies to human ST2 for both capture and detection, and had an inter-assay coefficient of variation of <10% in the present analysis. Galectin-3 was analyzed using a commercially available enzyme-linked immunosorbent assay kit (Bender Medsystems, Vienna, Austria) and was measured on a Victor 2 plate reader (Perkin Elmer, Turku, Finland). Calibration of the assay was performed according to the manufacturer's protocol. Values were normalized to a standard curve. The intra-assay and inter-assay variances for galectin-3 were 5.6% and 8.6%, respectively. The blood used for the present study had been previously subjected to a single freeze-thaw cycle.

*Distribution of analyte values*

[0117] In this cohort of 209 patients with heart failure galectin-3 values were produced from 200 patients and soluble ST2 values were produced from 204 patients. Both analytes showed a non-normal distribution so subsequent risk analysis models will be based on either median values, a value corresponding to the upper percentile of normal or as log (natural log) transformed, continuous variables (Table 2). As shown in Table 1, a concentration for soluble ST2 of 35 ng/mL is above the 90th percentile of normal.

**Table 2: Analyte Median and IQR values**

	<b>N</b>	<b>Median (ng/mL)</b>	<b>25 - 75 P</b>	<b>Normal Distr.</b>
<b>Galectin-3</b>	200	9.2	7.4 - 12.0	<0.0001
<b>ST2</b>	204	42.7	26.9-78.7	<0.0001

*Risk Analysis*

[0118] In this study cohort both analytes, soluble ST2 and galectin-3, were significant predictors of risk of mortality within 1 year as evaluated in a Cox proportional hazards regression model with each analyte used as a log transformed, continuous variable (Tables 3A and 3B). In this analysis, soluble ST2 has a higher (stronger) hazard ratio (HR), but both are statistically significant.

**Table 3A: Univariate Cox HR Model; Mortality Within 1 Year**

<b>Covariate</b>	<b>P</b>	<b>HR</b>	<b>95% CI of HR</b>
<b>Ln ST2</b>	<0.0001	2.12	1.58 to 2.85
<b>Ln Galectin-3</b>	0.0249	1.78	1.08 to 2.94

**Table 3B: Univariate Cox HR Model; Mortality Within 4 Years**

<b>Covariate</b>	<b>P</b>	<b>HR</b>	<b>95% CI of HR</b>
<b>Ln ST2</b>	0.0001	1.53	1.23 to 1.91
<b>Ln Galectin-3</b>	0.0089	1.63	1.13 to 2.36

[0119] In a multivariate Cox proportional hazards regression model with each analyte used as a log transformed, continuous variable both analytes are significant for risk of mortality within 4 years, however galectin-3 is no longer statistically significant for risk of mortality within 1 year, while soluble ST2 remains strongly predictive (Tables 4A and 4B).

**Table 4A: Multivariate Cox HR Model; Mortality Within 1 Year**

Covariate	P	HR	95% CI of HR
Ln ST2	<0.0001	2.07	1.54 to 2.79
Ln Galectin-3	0.0818	1.63	0.94 to 2.81

**Table 4B: Multivariate Cox HR Model; Mortality Within 4 Years**

Covariate	P	HR	95% CI of HR
Ln ST2	0.0006	1.49	1.19 to 1.86
Ln Galectin-3	0.0321	1.52	1.04 to 2.23

[0120] Both analytes were also tested for significance to predict risk in a 30 day follow up period. As was observed for the longer 1-year follow up period, both analytes are significant predictors of all-cause mortality in a univariate Cox proportional hazards regression model with each analyte used as a log transformed, continuous variable (Table 5).

**Table 5: Univariate Cox HR Model; Mortality Within 30 Days**

Covariate	P	HR	95% CI of HR
Ln ST2	0.0001	3.50	1.84 to 6.65
Ln Galectin-3	0.0030	3.41	1.52 to 7.61

[0121] In the shorter follow up model, galectin-3 retains significance when soluble ST2 is also included in the model (Table 6).

**Table 6: Multivariate Cox HR Model; Mortality Within 30 Days**

Covariate	P	HR	95% CI of HR
Ln ST2	0.0003	3.27	1.73 to 6.20
Ln Galectin-3	0.0148	3.34	1.27 to 8.77

[0122] Each analyte was also evaluated for risk of all-cause mortality within 1 year and 4 years by Kaplan-Meier (K-M) analysis using the cohort median value for each. As shown in Figures 1A and 1B, when analyzed by the median concentration value galectin-3 is not a significant predictor of all-cause mortality risk within 1 year but does reach significance over 4 years. However, as shown in Figures 2A and 2B, soluble ST2 is a strongly significant predictor of all-cause mortality risk within both 1 year and 4 years.

[0123] ST2 was also evaluated by K-M analysis using the lower concentration of 35 ng/mL (Figure 2C). As shown in Figure 2C, soluble ST2 is a strongly significant predictor of mortality within 4 years.

[0124] To determine whether soluble ST2 adds predictive value in galectin-3 heart failure patients a subset of patients with galectin-3 concentrations greater than or equal to the cohort median concentration of 9.2 ng/mL were tested with soluble ST2. Table 7 shows the results from univariate Cox proportional hazards regression models with soluble ST2 used as a log transformed, continuous variable for assessment of all-cause mortality risk within 1 year and within 30 days. Soluble ST2 is strongly predictive in both time frames in galectin-3 heart failure patients.

**Table 7: ST2 additive in galectin-3 HF patients (N=98 patients)**

Covariate	P	HR	95% CI of HR
Ln ST2 (1 year)	0.0010	1.96	1.32 to 2.93
Ln ST2 (30 days)	0.0029	3.25	1.50 to 7.04

[0125] The opposite is not completely true however (see Tables 8A and 8B). In the subset of soluble ST2 heart failure patients, patients with soluble ST2 concentrations greater than or equal to the cohort median concentration of 42.7 ng/mL, or at the lower soluble ST2 concentration of 35 ng/mL, galectin-3 is not a significant predictor of all-cause mortality within 1 year, but does reach statistical significance for risk within 30 days as evaluated by Cox proportional hazards

regression models (Tables 8A and 8B).

**Table 8A: Galectin-3 additive to ST2 HF patients (ST2 $\geq$ median), N=98**

Covariate	P	HR	95% CI of HR
Ln Galectin-3 (1 year)	0.2251	1.59	0.75 to 3.36
Ln Galectin-3 (30 days)	0.0214	4.10	1.24 to 13.53

**Table 8B: Galectin-3 additive to ST2 HF patients (ST2 $\geq$ 35 ng/mL), N=122**

Covariate	P	HR	95% CI of HR
Ln Galectin-3 (1 year)	0.4332	1.26	0.71 to 2.26
Ln Galectin-3 (30 days)	0.0467	2.44	1.02 to 5.86

[0126] These results are also illustrated in Figure 3, and summarized in Table 9, where a K-M curve analysis of this cohort when the two analytes are combined (log rank p=0.0011). In this analysis in patients with concentrations below the median for both analytes the lowest risk profile is observed (line 1). When soluble ST2 is below median and galectin-3 is  $\geq$  median risk increases modestly (line 2). When galectin-3 is below median and soluble ST2 is  $\geq$  median risk increases significantly (line 3). And in patients with concentrations  $\geq$  median for both analytes risk is the greatest.

**Table 9: Summary of K-M Analysis Shown in Figure 3**

Factor/Bin	1	2	3	4
N	62	43	45	57
N decedant	8	11	17	24
% decedant	12.9%	25.6%	37.8%	42.1%

[0127] A number of embodiments of the invention have been described. Nevertheless, it will be understood that various modifications may be made without departing from the spirit and scope of the invention. Accordingly, other embodiments are within the scope of the following claims.

[0128] Further features of the invention are set out in the following clauses:

1. A method for evaluating the risk of an adverse clinical outcome (ACO) in a subject, the method comprising:

- a) determining a level of soluble ST2 in a biological sample from the subject; and
- b) determining a level of galectin-3 in a biological sample from the subject,

wherein the subject's levels of soluble ST2 and galectin-3 relative to reference levels of soluble ST2 and galectin-3 indicate the subjects's risk of an ACO.

2. A method for deciding whether to discharge or continue treating a subject on an inpatient basis, comprising the steps of:

- a) determining a level of soluble ST2 in a biological sample from the subject; and
- b) determining a level of galectin-3 in a biological sample from the subject,

wherein the subject's levels of soluble ST2 and galectin-3 relative to reference levels of soluble ST2 and galectin-3 determine whether the subject should be discharged or receive continued treatment on an inpatient basis.

3. A method of selecting a subject for participation in a clinical study, comprising the steps of:

- a) determining a level of soluble ST2 in a biological sample from the subject;
- b) determining a level of galectin-3 in a biological sample from the subject, and
- c) selecting the subject for participation in a clinical study if the subject's levels of soluble ST2 and galectin-3 relative to reference levels of soluble ST2 and galectin-3 indicate that the subject should be selected for participation in a clinical study.

4. A method for selecting a therapeutic treatment for a subject comprising the steps of:

- a) determining a level of soluble ST2 in a biological sample from the subject; and
- b) determining a level of galectin-3 in a biological sample from the subject,

wherein the subject's levels of soluble ST2 and galectin-3 relative to reference levels of soluble ST2 and galectin-3 are used to select a therapeutic treatment for the subject.

5. The method of clause 1, wherein the presence of an elevated level of soluble ST2 or the presence of an elevated level of galectin-3 indicates an increased risk of an ACO, and the presence of both an elevated level of soluble ST2 and an elevated level of galectin-3 indicates a greatly increased risk of an ACO.

6. The method of clause 2, wherein the presence of an elevated level of soluble ST2 or the presence of an elevated level of galectin-3 indicates that the subject should receive continued treatment on an inpatient basis, and the presence of both an elevated soluble ST2 and an elevated level of galectin-3 strongly indicates that the subject should receive continued treatment on an inpatient basis.

7. The method of clause 3, wherein the presence of an elevated level of soluble ST2 or the presence of an elevated level of galectin-3 indicates that the subject should be selected for participation in a clinical study, and the presence of both an elevated level of soluble ST2 and an elevated level of galectin-3 strongly indicates that the subject should be selected for participation in a clinical study.

8. The method of clause 4, wherein the presence of an elevated level of soluble ST2 or the presence of an elevated level of galectin-3 is used to select the therapeutic treatment for the subject, and the presence of both an elevated level of soluble ST2 and an elevated level of galectin-3 is predominantly used to select the therapeutic treatment for the subject.

9. The method of clause 1, wherein the ACO is a rehospitalization, recurrence of one or more physical symptoms associated with a disease state, an increase in the severity of one or more physical symptoms associated with a disease state, an increase in the frequency of one or more physical symptoms associated with a disease state, mortality, admission to a health care facility, or organ transplant.

10. The method of clause 9, wherein the disease state is angina, cardiovascular disease, and heart failure.

11. The method of clause 9, wherein the rehospitalization or admission is for cardiovascular disease.

12. The method of clause 9, wherein the mortality is mortality due to CVD.

13. The method of any one of clauses 1-4, wherein the subject has been diagnosed with heart failure.

14. The method of clause 1, wherein the risk of an ACO is within 1 year.

15. The method of clause 14, wherein the risk of an ACO is within 30 days.

16. The method of any one of clauses 1-4, wherein the sample comprises serum, blood, or plasma.

17. The method of clause 16, wherein the sample is serum.

18. The method of any one of clauses 1-4, wherein the sample in step (a) and the sample in step (b) are obtained from the subject at the same time.

19. The method of any one of clauses 1-4, wherein the subject has a BMI of 25-29, a BMI of  $\geq 30$ , or renal insufficiency.

20. The method of clause 4, wherein the therapeutic treatment is selected from the group consisting of: nitrates, calcium channel blockers, diuretics, thrombolytic agents, digitalis, renin-angiotensin-aldosterone system (RAAS) modulating agents, and cholesterol-lowering agents.

21. The method of clause 20, wherein the cholesterol-lowering agent is a statin.

**EP 3 605 104 A1**

22. The method of any one of clauses 1-4, wherein the reference level of soluble ST2 is a level of soluble ST2 in a subject that does not have high risk cardiovascular disease.

5 23. The method of any one of clauses 1-4, wherein the reference level of galectin-3 is a level of galectin-3 in a subject that does not have high risk cardiovascular disease.

24. The method of any one of clauses 1-4, wherein the reference level of soluble ST2 or the reference level of galectin-3 is a threshold level of soluble ST2 or galectin-3.

10 25. The method of any one of clauses 1-4, wherein the method further comprises determining the level of one or more additional markers in the subject.

15 26. The method of clause 25, wherein the one or more additional markers are selected from the group consisting of: proANP, NT-proANP, ANP, proBNP, NT-proBNP, BNP, troponin, CRP, creatinine, Blood Urea Nitrogen (BUN), liver function enzymes, albumin, and bacterial endotoxin.

27. The method of any one of clauses 1-26, wherein the subject is human.

20 28. A kit comprising:

- i) an antibody that specifically binds to soluble ST2;
- ii) an antibody that specifically binds to galectin-3; and
- iii) instructions for using the kit in the method of any one of clauses 1-27.

25

30

35

40

45

50

55

EP 3 605 104 A1

SEQUENCE LISTING

<110> Critical Care Diagnostics, Inc.

5 <120> METHODS PREDICTING RISK OF AN ADVERSE  
CLINICAL OUTCOME

<130> 20060-0018W01

10 <150> 61/453,782

<151> 2011-03-17

<160> 6

<170> FastSEQ for Windows Version 4.0

15 <210> 1

<211> 328

<212> PRT

<213> Homo Sapiens

20 <400> 1

Met	Gly	Phe	Trp	Ile	Leu	Ala	Ile	Leu	Thr	Ile	Leu	Met	Tyr	Ser	Thr
1				5					10					15	
Ala	Ala	Lys	Phe	Ser	Lys	Gln	Ser	Trp	Gly	Leu	Glu	Asn	Glu	Ala	Leu
			20					25					30		
Ile	Val	Arg	Cys	Pro	Arg	Gln	Gly	Lys	Pro	Ser	Tyr	Thr	Val	Asp	Trp
		35					40					45			
Tyr	Tyr	Ser	Gln	Thr	Asn	Lys	Ser	Ile	Pro	Thr	Gln	Glu	Arg	Asn	Arg
	50					55					60				
Val	Phe	Ala	Ser	Gly	Gln	Leu	Leu	Lys	Phe	Leu	Pro	Ala	Ala	Val	Ala
65					70					75					80
Asp	Ser	Gly	Ile	Tyr	Thr	Cys	Ile	Val	Arg	Ser	Pro	Thr	Phe	Asn	Arg
				85					90					95	
Thr	Gly	Tyr	Ala	Asn	Val	Thr	Ile	Tyr	Lys	Lys	Gln	Ser	Asp	Cys	Asn
			100					105					110		
Val	Pro	Asp	Tyr	Leu	Met	Tyr	Ser	Thr	Val	Ser	Gly	Ser	Glu	Lys	Asn
		115					120					125			
Ser	Lys	Ile	Tyr	Cys	Pro	Thr	Ile	Asp	Leu	Tyr	Asn	Trp	Thr	Ala	Pro
	130					135					140				
Leu	Glu	Trp	Phe	Lys	Asn	Cys	Gln	Ala	Leu	Gln	Gly	Ser	Arg	Tyr	Arg
145					150					155					160
Ala	His	Lys	Ser	Phe	Leu	Val	Ile	Asp	Asn	Val	Met	Thr	Glu	Asp	Ala
				165					170					175	
Gly	Asp	Tyr	Thr	Cys	Lys	Phe	Ile	His	Asn	Glu	Asn	Gly	Ala	Asn	Tyr
			180					185					190		
Ser	Val	Thr	Ala	Thr	Arg	Ser	Phe	Thr	Val	Lys	Asp	Glu	Gln	Gly	Phe
		195					200					205			
Ser	Leu	Phe	Pro	Val	Ile	Gly	Ala	Pro	Ala	Gln	Asn	Glu	Ile	Lys	Glu
	210					215					220				
Val	Glu	Ile	Gly	Lys	Asn	Ala	Asn	Leu	Thr	Cys	Ser	Ala	Cys	Phe	Gly
225					230					235					240
Lys	Gly	Thr	Gln	Phe	Leu	Ala	Ala	Val	Leu	Trp	Gln	Leu	Asn	Gly	Thr
				245					250					255	
Lys	Ile	Thr	Asp	Phe	Gly	Glu	Pro	Arg	Ile	Gln	Gln	Glu	Glu	Gly	Gln
			260					265					270		
Asn	Gln	Ser	Phe	Ser	Asn	Gly	Leu	Ala	Cys	Leu	Asp	Met	Val	Leu	Arg
		275					280					285			
Ile	Ala	Asp	Val	Lys	Glu	Glu	Asp	Leu	Leu	Leu	Gln	Tyr	Asp	Cys	Leu
	290					295					300				
Ala	Leu	Asn	Leu	His	Gly	Leu	Arg	Arg	His	Thr	Val	Arg	Leu	Ser	Arg
305					310						315				320

EP 3 605 104 A1

Lys Asn Pro Ser Lys Glu Cys Phe  
325

5 <210> 2  
<211> 2542  
<212> DNA  
<213> Homo sapiens

10 <400> 2  
gaggaggagac ctacaaagac tggaaactat tcttagctcc gtcactgact ccaagttcat 60  
cccctctgtc tttcagtttg gttgagatat aggtactct tcccaactca gtcttgaaga 120  
gtatcaccaa ctgcctcatg tgtggtgacc ttcactgtcg tatgccagtg actcatctgg 180  
agtaatctca acaacgagtt accaatactt gctcttgatt gataaacaga atgggggttt 240  
ggatcttagc aattctcaca attctcatgt attccacagc agcaaagttt agtaaacaaat 300  
15 catggggcct ggaaaatgag gctttaattg taagatgtcc tagacaagga aaacctagtt 360  
acaccgtgga ttggtattac tcacaaacaa acaaaagtat tcccactcag gaaagaaatc 420  
gtgtgtttgc ctcaggccaa cttctgaagt ttctaccagc tgcagttgct gattctggta 480  
tttataacctg tattgtcaga agtcccacat tcaataggac tggatatgcg aatgtcacca 540  
tatataaaaa acaatcagat tgcaatgttc cagattattt gatgtattca acagtatctg 600  
gatcagaaaa aaattccaaa atttattgtc ctaccattga cctctacaac tggacagcac 660  
20 ctcttgagtg gtttaagaat tgtcaggctc ttcaaggatc aaggtacagg ggcgacaagt 720  
catttttggg cattgataat gtgatgactg aggacgcagg tgattacacc tgtaaattta 780  
tacacaatga aatggagcc aattatagtg tgacggcgac caggtccttc acggtcaagg 840  
atgagcaagg cttttctctg tttccagtaa tccggagcccc tgcacaaaat gaaataaagg 900  
aagtggaaat tggaaaaaac gcaaacctaa cttgctctgc ttgttttgga aaaggcactc 960  
25 agttcttggc tgccgtcctg tggcagctta atggaacaaa aattacagac tttggtgaac 1020  
caagaattca acaagaggaa gggcaaaatc aaagtttcag caatgggctg gcttgtctag 1080  
acatggtttt aagaatagct gacgtgaagg aagaggattt attgctgcag tacgactgac 1140  
tggccctgaa tttgcatggc ttgagaaggc acaccgtaag actaagtagg aaaaatccaa 1200  
gtaaggagtg tttctgagac tttgatcacc tgaactttct cttagcaagt taagcagaat 1260  
ggagtgtggt tccaagagat ccatcaagac aatgggaatg gcctgtgcca taaaatgtgc 1320  
30 ttctcttctt cgggatggtt tttgctgtct gatctttgta gactgttcct gtttgcctggg 1380  
agcttctctg ctgcttaaat tgttcgtcct cccccactcc ctcctatcgt tggtttgtct 1440  
agaacactca gctgcttctt tggatcctct tgttttctaa ctttatgaac tccctctgtg 1500  
tcatgtatg tgaaaggaaa tgcaccaaca accgtaaact gaacgtgttc ttttgtgctc 1560  
ttttataact tgcattacat gttgtaagca tgggtccgttc tatacctttt tctggtcata 1620  
atgaacactc attttgtag cgaggggtgt aaagtgaaca aaaaggggaa gtatcaaact 1680  
35 actgccattt cagtgaagaa atcctaggtg ctactttata ataagacatt tgtaggcca 1740  
ttcttgcatt gatataaaga aatacctgag actgggtgat ttatatgaaa agaggtttaa 1800  
ttggctcaca gttctgcagg ctgtatggga agcatggcgg catctgcttc tggggacacc 1860  
tcaggagctt tactcatggc agaaggcaaa gcaaaaggcag gcacttcaca cagtaaaagc 1920  
aggagcgaga gagaggtgcc aactgaaac agccagatct catgagaagt cactcactat 1980  
40 tgcaggaca gcatcaaaga cagtgtgcta aaccattcat gatgaactca ccccatgat 2040  
ccaatcacct cccaccaggc tccacctcga atactgggga ttaccattca ccatgagatt 2100  
tgggcaggaa cacagaccca aaccatacca cacacattat cattgttaaa ctttgtaaaag 2160  
tatttaagggt acatggaaca cacgggaagt ctggtagctc agcccatttc tttattgcat 2220  
ctgttattca ccatgtaatt caggtaccac gtattccagg gagcctttct tggccctcag 2280  
45 tttgcagtat acacactttc caagtactct tgtagcatcc tgtttgtatc atagcactgg 2340  
tcacattgcc ttacctaatt ctgtttgaca gtctgctcaa cacgactgca agctccatga 2400  
gggcaggagc atcatctctt ccatctttgg gtcccttagtg caatacctgg cagctagcca 2460  
gtgctcagct aaatatttgt tgactgaata aatgaatgca caaccaaaaa aaaaaaaaaa 2520  
aaaaaaaaaa aaaaaaaaaa aa 2542

50 <210> 3  
<211> 200  
<212> PRT  
<213> Homo sapiens

55 <400> 3  
Met Ala Asp Asn Phe Ser Leu His Asp Ala Leu Ser Gly Ser Gly Asn  
1 5 10 15  
Pro Asn Pro Gln Gly Trp Pro Gly Ala Trp Gly Asn Gln Pro Ala Gly

EP 3 605 104 A1

				20						25				30			
	Ala	Gly	Gly	Tyr	Pro	Gly	Ala	Ser	Tyr	Pro	Gly	Ala	Tyr	Pro	Gly	Gln	
			35					40					45				
5	Ala	Pro	Pro	Gly	Ala	Tyr	Pro	Gly	Gln	Ala	Pro	Pro	Gly	Ala	Tyr	Pro	
			50					55					60				
	Gly	Ala	Pro	Gly	Ala	Tyr	Pro	Gly	Ala	Pro	Ala	Pro	Gly	Val	Tyr	Pro	
	65					70					75				80		
	Gly	Pro	Pro	Ser	Gly	Pro	Gly	Ala	Tyr	Pro	Ser	Ser	Gly	Gln	Pro	Ser	
				85						90					95		
10	Ala	Thr	Gly	Ala	Tyr	Pro	Ala	Thr	Gly	Pro	Tyr	Gly	Ala	Pro	Ala	Gly	
				100					105					110			
	Pro	Leu	Ile	Val	Pro	Tyr	Asn	Leu	Pro	Leu	Pro	Gly	Gly	Val	Val	Pro	
				115				120						125			
	Arg	Met	Leu	Ile	Thr	Ile	Leu	Gly	Thr	Val	Lys	Pro	Asn	Ala	Asn	Arg	
	130						135					140					
15	Ile	Ala	Leu	Asp	Phe	Gln	Arg	Gly	Asn	Asp	Val	Ala	Phe	His	Phe	Asn	
	145					150					155				160		
	Pro	Arg	Phe	Asn	Glu	Asn	Asn	Arg	Arg	Val	Ile	Val	Cys	Thr	Tyr	Met	
				165						170					175		
	Cys	Lys	Gly	Phe	Met	Phe	Thr	Val	Ser	Glu	Asn	Phe	Tyr	Ile	His	Gln	
				180					185					190			
20	Tyr	Pro	Ser	Cys	Lys	Ser	Ser	Thr									
			195					200									
	<210> 4																
	<211> 250																
25	<212> PRT																
	<213> Homo sapiens																
	<400> 4																
30	Met	Ala	Asp	Asn	Phe	Ser	Leu	His	Asp	Ala	Leu	Ser	Gly	Ser	Gly	Asn	
	1				5				10						15		
	Pro	Asn	Pro	Gln	Gly	Trp	Pro	Gly	Ala	Trp	Gly	Asn	Gln	Pro	Ala	Gly	
				20					25					30			
	Ala	Gly	Gly	Tyr	Pro	Gly	Ala	Ser	Tyr	Pro	Gly	Ala	Tyr	Pro	Gly	Gln	
				35				40					45				
35	Ala	Pro	Pro	Gly	Ala	Tyr	Pro	Gly	Gln	Ala	Pro	Pro	Gly	Ala	Tyr	Pro	
				50				55					60				
	Gly	Ala	Pro	Gly	Ala	Tyr	Pro	Gly	Ala	Pro	Ala	Pro	Gly	Val	Tyr	Pro	
	65					70					75				80		
	Gly	Pro	Pro	Ser	Gly	Pro	Gly	Ala	Tyr	Pro	Ser	Ser	Gly	Gln	Pro	Ser	
				85						90					95		
40	Ala	Thr	Gly	Ala	Tyr	Pro	Ala	Thr	Gly	Pro	Tyr	Gly	Ala	Pro	Ala	Gly	
				100					105					110			
	Pro	Leu	Ile	Val	Pro	Tyr	Asn	Leu	Pro	Leu	Pro	Gly	Gly	Val	Val	Pro	
				115				120						125			
	Arg	Met	Leu	Ile	Thr	Ile	Leu	Gly	Thr	Val	Lys	Pro	Asn	Ala	Asn	Arg	
	130						135					140					
45	Ile	Ala	Leu	Asp	Phe	Gln	Arg	Gly	Asn	Asp	Val	Ala	Phe	His	Phe	Asn	
	145					150					155				160		
	Pro	Arg	Phe	Asn	Glu	Asn	Asn	Arg	Arg	Val	Ile	Val	Cys	Asn	Thr	Lys	
				165						170					175		
	Leu	Asp	Asn	Asn	Trp	Gly	Arg	Glu	Glu	Arg	Gln	Ser	Val	Phe	Pro	Phe	
				180					185					190			
50	Glu	Ser	Gly	Lys	Pro	Phe	Lys	Ile	Gln	Val	Leu	Val	Glu	Pro	Asp	His	
				195				200						205			
	Phe	Lys	Val	Ala	Val	Asn	Asp	Ala	His	Leu	Leu	Gln	Tyr	Asn	His	Arg	
	210						215						220				
	Val	Lys	Lys	Leu	Asn	Glu	Ile	Ser	Lys	Leu	Gly	Ile	Ser	Gly	Asp	Ile	
	225					230					235				240		
55	Asp	Leu	Thr	Ser	Ala	Ser	Tyr	Thr	Met	Ile							
				245						250							

<210> 5  
 <211> 744  
 <212> DNA  
 <213> Homo sapiens

5

<400> 5  
 gagtatttga ggctcggagc caccgccccg ccggcgcccc cagcacctcc tcgccagcag 60  
 ccgtccggag ccagccaacg agcggaaaat ggcagacaat ttttcgctcc atgatgcgctt 120  
 atctgggtct ggaaacccaa accctcaagg atggcctggc gcatggggga accagcctgc 180  
 10 tggggcaggg ggctaccagc gggcttcccta tcttggggcc taccctgggc aggaccccc 240  
 aggggcttat cctggacagc cacctccagg cgcctaccct ggagcacctg gagcttatcc 300  
 cggagcacct gcacctggag tctaccagc gccaccagc ggccctgggg cctaccatc 360  
 ttctggacag ccaagtgcc aaggagccta ccctgccact ggccctatg gcgcccctgc 420  
 tgggccactg attgtgcctt ataacctgcc tttgcctggg ggagtgggtc ctcgcatgct 480  
 15 gataacaatt ctgggcacgg tgaagcccaa tgcaaacaga attgctttag atttccaaag 540  
 agggaatgat gttgccttcc actttaacct acgcttcaat gagaacaaca ggagagtcac 600  
 tgtttgcaat tacatgtgta aaggtttcat gttcactgtg agtgaaaatt tttacattca 660  
 tcaatatccc tcttctaagt catctactta ataatatta cagtgaatta cctgtctcaa 720  
 tatgtcaaaa aaaaaaaaaa aaaa 744

20

<210> 6  
 <211> 1017  
 <212> DNA  
 <213> Homo sapiens

25

<400> 6  
 gagtatttga ggctcggagc caccgccccg ccggcgcccc cagcacctcc tcgccagcag 60  
 ccgtccggag ccagccaacg agcggaaaat ggcagacaat ttttcgctcc atgatgcgctt 120  
 atctgggtct ggaaacccaa accctcaagg atggcctggc gcatggggga accagcctgc 180  
 30 tggggcaggg ggctaccagc gggcttcccta tcttggggcc taccctgggc aggaccccc 240  
 aggggcttat cctggacagc cacctccagg cgcctaccct ggagcacctg gagcttatcc 300  
 cggagcacct gcacctggag tctaccagc gccaccagc ggccctgggg cctaccatc 360  
 ttctggacag ccaagtgcc aaggagccta ccctgccact ggccctatg gcgcccctgc 420  
 tgggccactg attgtgcctt ataacctgcc tttgcctggg ggagtgggtc ctcgcatgct 480  
 gataacaatt ctgggcacgg tgaagcccaa tgcaaacaga attgctttag atttccaaag 540  
 agggaatgat gttgccttcc actttaacct acgcttcaat gagaacaaca ggagagtcac 600  
 35 tgtttgcaat acaaagctgg ataataactg ggggaaggaa gaaagacagt cggttttccc 660  
 atttgaagt gggaaacat tcaaaataca agtactggtt gaacctgacc acttcaaggt 720  
 tgcagtgaat gatgctcact tgttgcagta caatcatcgg gttaaaaaac tcaatgaaat 780  
 cagcaaactg ggaatttctg gtgacataga cctcaccagt gcttcatata ccatgatata 840  
 atctgaaagg ggcagattaa aaaaaaaaaa agaactctaa ccttacatgt gtaaaggttt 900  
 40 catgttcact gtgagtgaaa atttttacat tcatcaatat ccctcttgta agtcatctac 960  
 ttaataaata ttacagtgaa ttacctgtct caatatgtca aaaaaaaaaa aaaaaa 1017

45

**Claims**

1. A method for selecting a therapeutic treatment for a subject having heart failure comprising the steps of:

50

- (a) performing an assay to determine a level of galectin-3 in a biological sample from a subject having heart failure;
- (b) comparing the level of galectin-3 in the biological sample of (a) to a reference level of galectin-3;
- (c) identifying a subject having an elevated level of galectin-3 in the biological sample of (a) as compared to the reference level of galectin-3;
- (d) performing an assay to determine the level of soluble ST2 in a biological sample from the identified subject;
- (e) comparing the level of soluble ST2 in the biological sample of (d) to a reference level of soluble ST2; and
- (f) selecting inpatient treatment for an identified subject having an elevated level of soluble ST2 in the biological sample of (d) as compared to the reference level of soluble ST2, or selecting outpatient treatment for an identified subject having a non-elevated level of soluble ST2 in the biological sample of (d) as compared to the reference level of soluble ST2.

55

## EP 3 605 104 A1

2. A method for selecting a therapeutic treatment for a subject having heart failure comprising the steps of:
  - (a) identifying a subject having an heart failure and an elevated level of galectin-3 as compared to the reference level of galectin-3;
  - (b) performing an assay to determine the level of soluble ST2 in a biological sample from the identified subject;
  - (c) comparing the level of soluble ST2 in the biological sample to a reference level of soluble ST2; and
  - (d) selecting inpatient treatment for an identified subject having an elevated level of soluble ST2 in the biological sample as compared to the reference level of soluble ST2, or selecting outpatient treatment for an identified subject having a non-elevated level of soluble ST2 in the biological sample as compared to the reference level of soluble ST2.
3. The method of claims 1 or 2, wherein the biological sample comprises serum, blood, or plasma.
4. The method of any of claims 1-3, wherein the biological sample of (a) and the biological sample of (d) are obtained from the subject at the same time.
5. The method of any of claims 1-4, wherein the subject has a BMI of 25-29, a BMI of  $\geq 30$ , or renal insufficiency.
6. The method of any of claims 1-5, wherein the outpatient treatment comprises administration of a therapeutic agent selected from the group consisting of: nitrates, calcium channel blockers, diuretics, thrombolytic agents, digitalis, renin-angiotensin-aldosterone system (RAAS) modulating agents, and cholesterol-lowering agents.
7. The method of claim 6, wherein the cholesterol-lowering agent is a statin.
8. The method of any of claims 1-7, wherein the reference level of soluble ST2 is a level of soluble ST2 in a subject that does not have high risk cardiovascular disease.
9. The method of any of claims 1-8, wherein the reference level of galectin-3 is a level of galectin-3 in a subject that does not have high risk cardiovascular disease.
10. The method of any of claims 1-9, wherein the reference level of soluble ST2 or the reference level of galectin-3 is a threshold level of soluble ST2 or galectin-3.
11. The method of any of claims 1-10, wherein the method further comprises determining the level of one or more additional markers in the subject.
12. The method of claim 11, wherein the one or more additional markers are selected from the group consisting of: proANP, NT-proANP, ANP, proBNP, NT-proBNP, BNP, troponin, CRP, creatinine, Blood Urea Nitrogen (BUN), liver function enzymes, albumin, and bacterial endotoxin.
13. The method of any of claims 1-12, wherein the subject is human.
14. The method of any of claims 1-13, wherein inpatient treatment is selected for an identified subject having an elevated level of soluble ST2 as compared to the reference level of soluble ST2.
15. The method of any of claims 1-14, wherein outpatient treatment is selected for an identified subject having a non-elevated level of soluble ST2 as compared to the reference level of soluble ST2.

Figure 1A: Galectin-3 K-M Analysis for 1 Year (log rank p=0.1122)

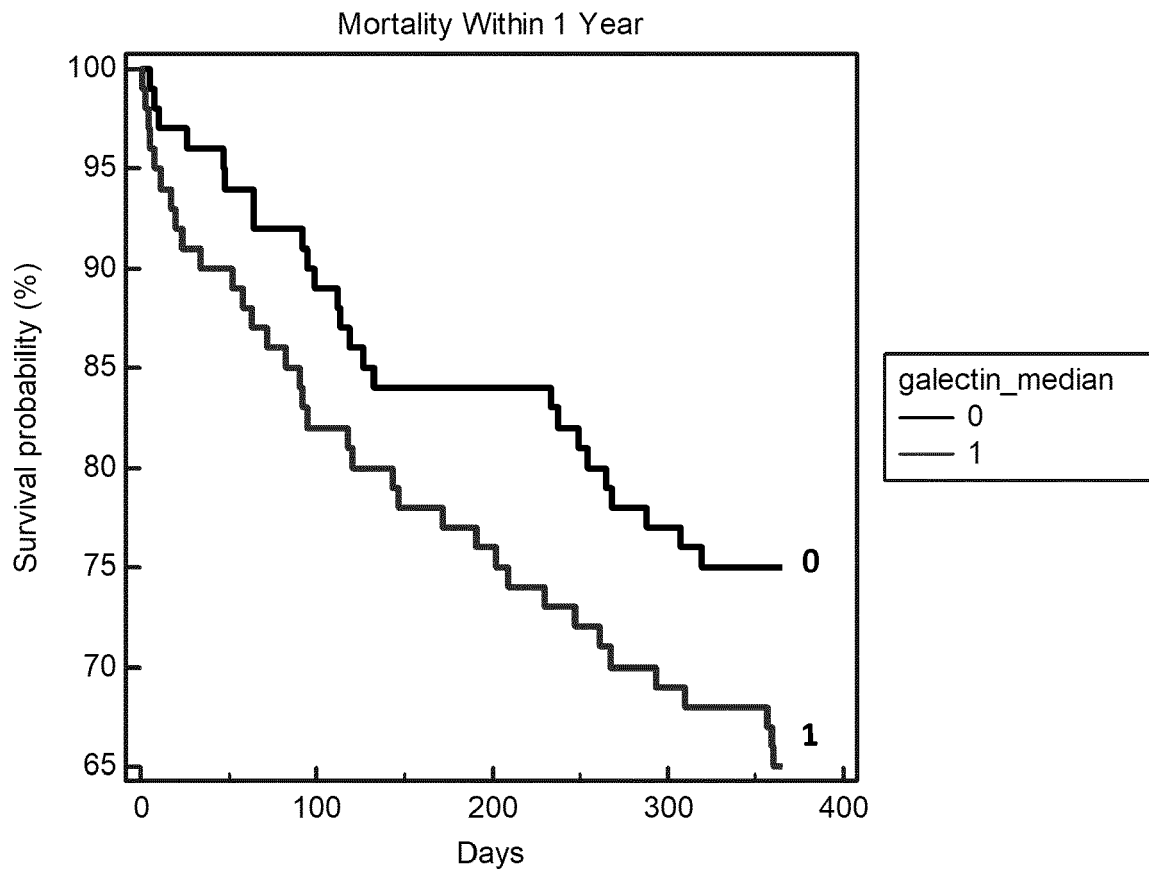


Figure 1B: Galectin-3 K-M Analysis for 4 Years (log rank p=0.020)

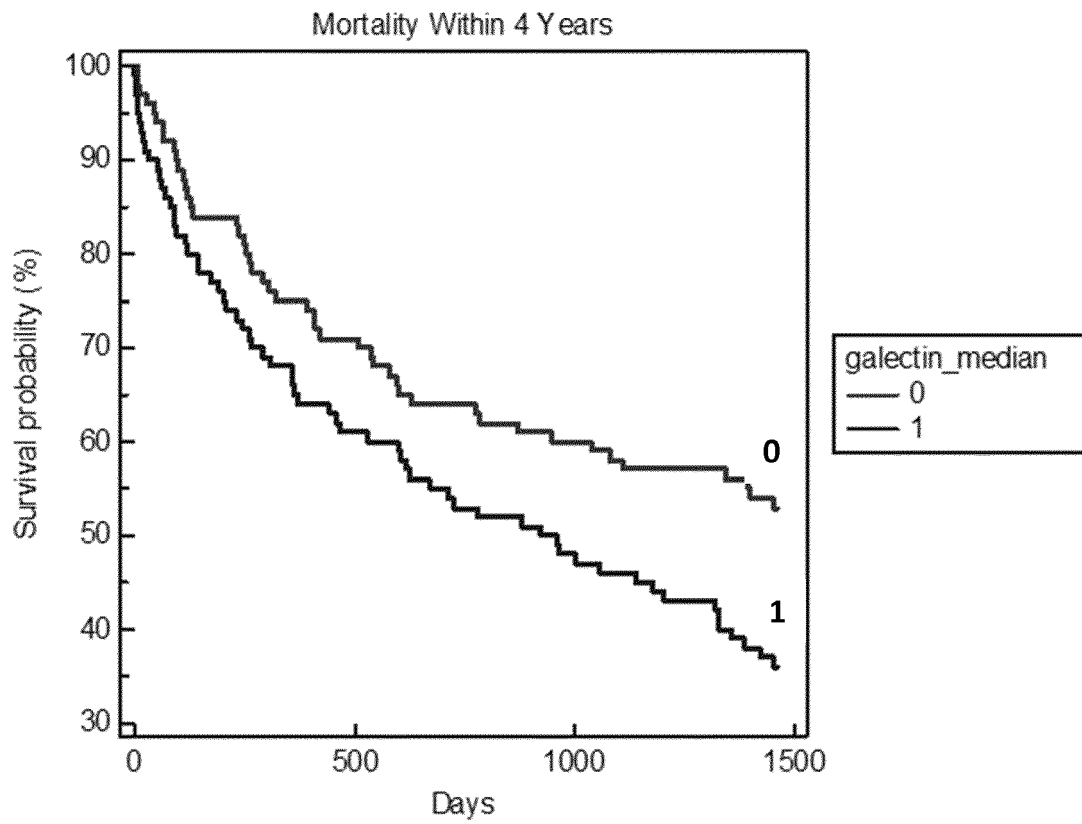


Figure 2A: ST2 K-M Analysis for 1 year (log rank p=0.0003)

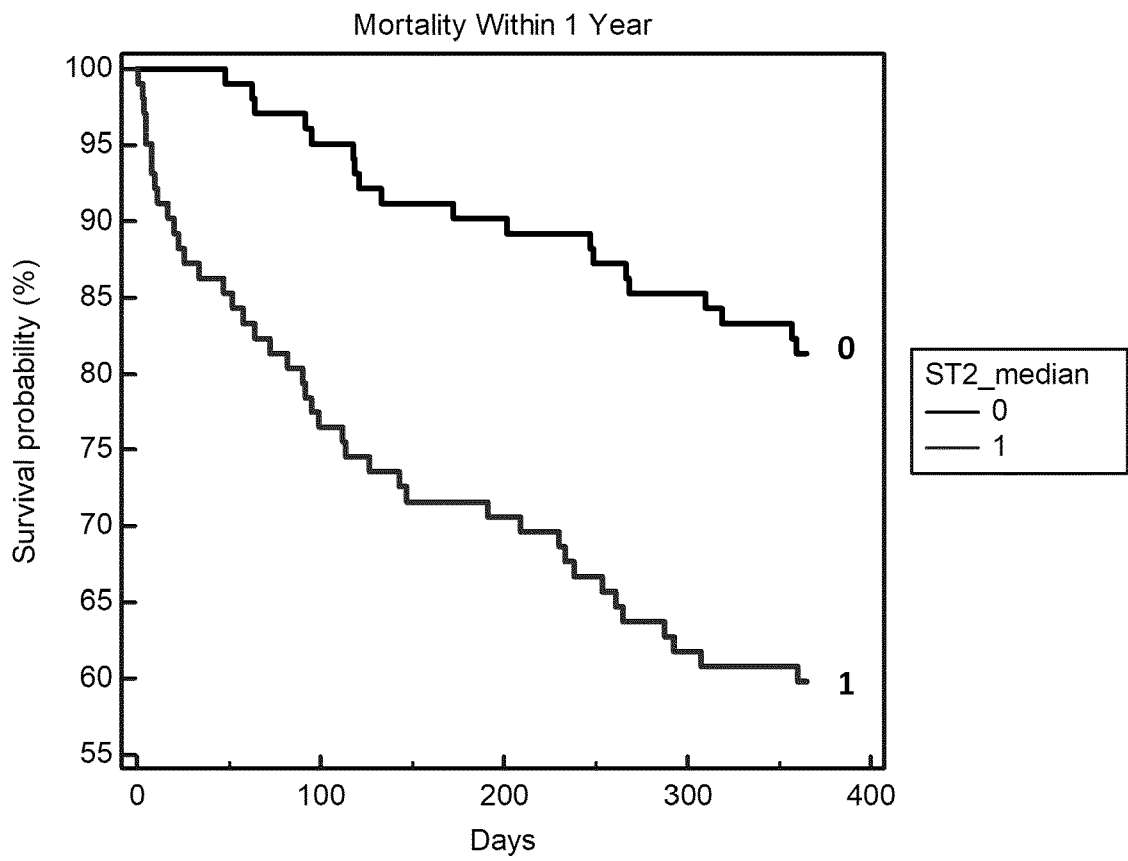


Figure 2B: ST2 K-M Analysis for 4 years (log rank p=0.0022)

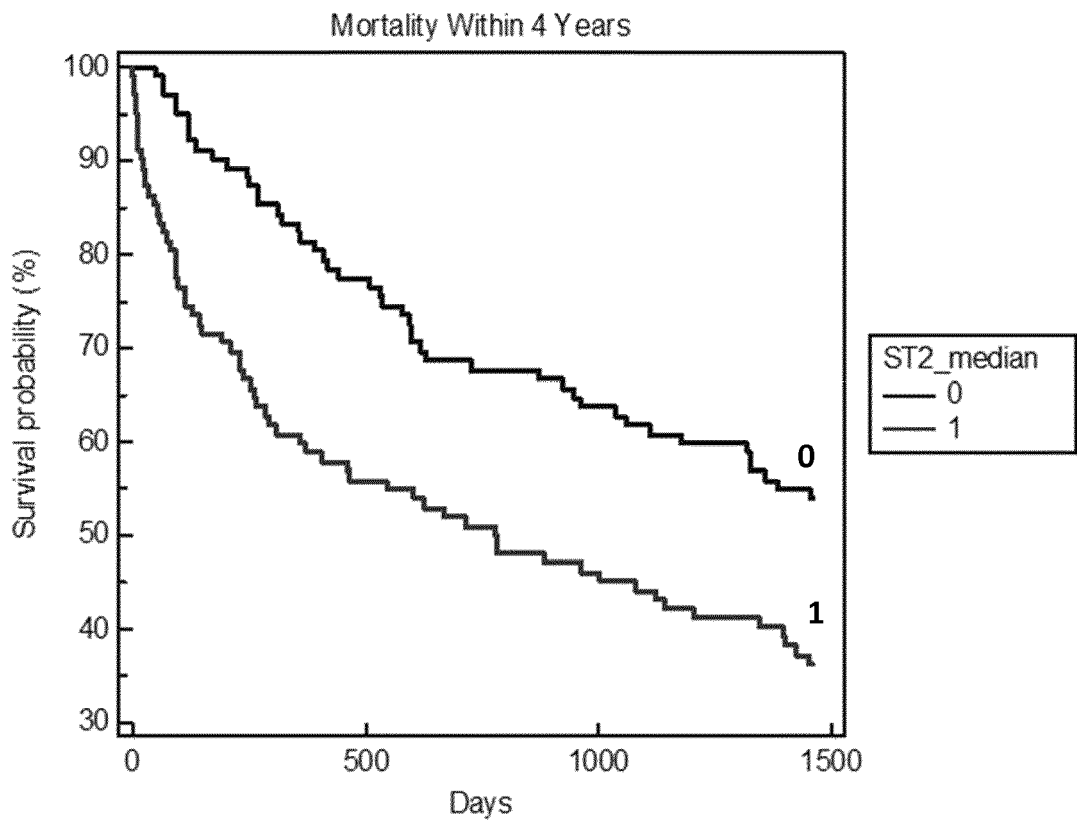


Figure 2C: ST2 K-M Analysis for 4 years at 35 ng/mL (log rank p=0.0025)

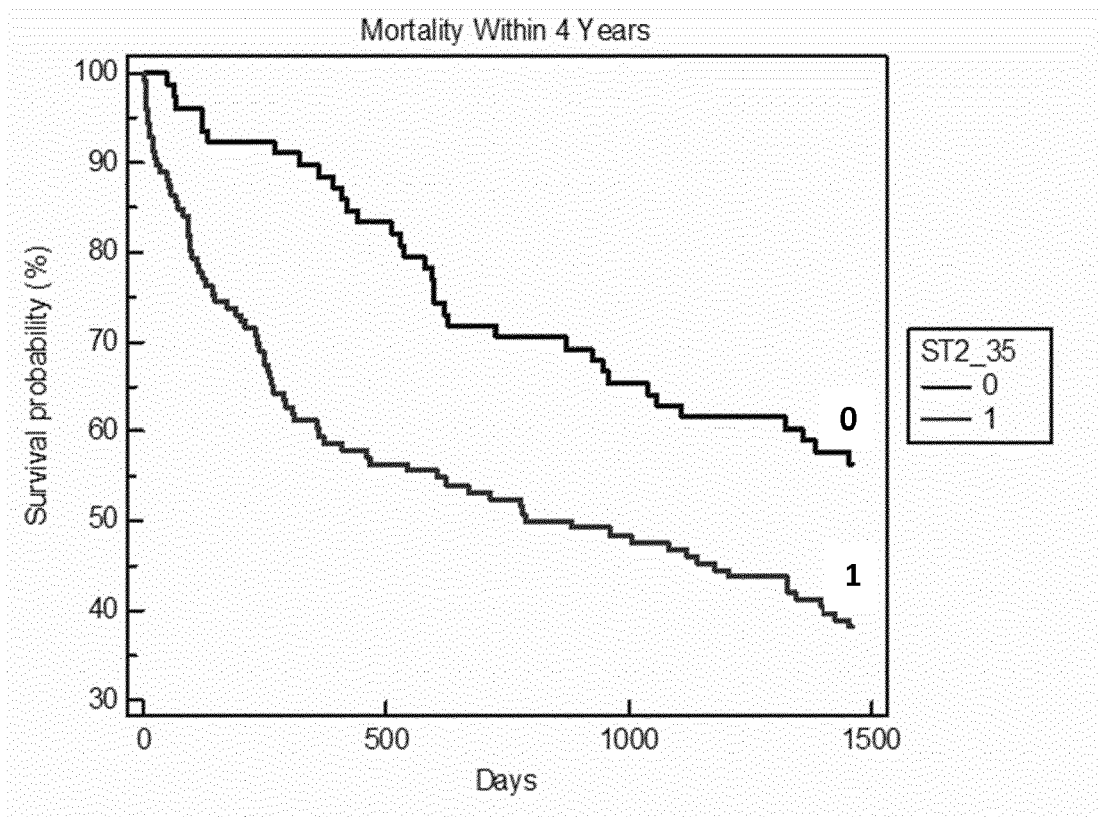
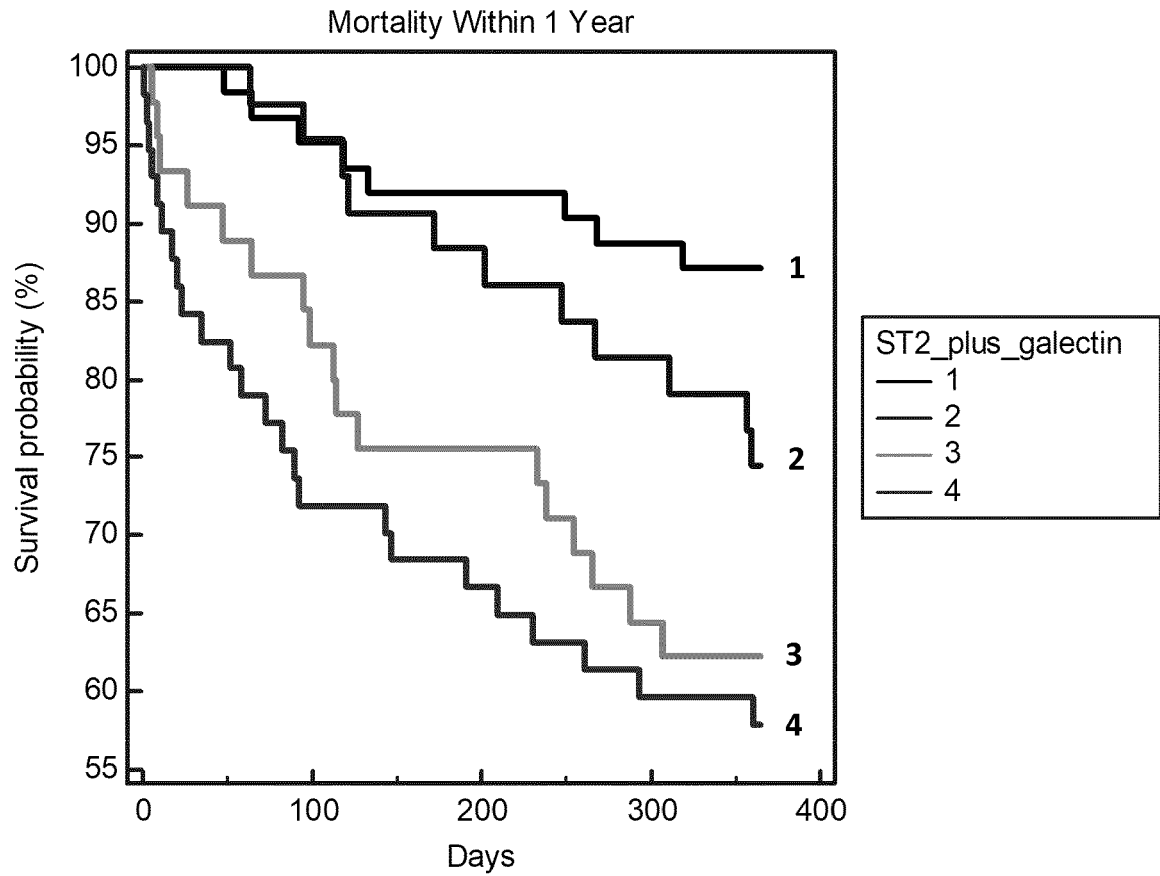


Figure 3: K-M Analysis of ST2 plus Galectin-3



4=both  $\geq$ median, 3=ST2 $\geq$ median, galectin-3 $<$ median, 2=ST2 $<$ median, galectin-3 $\geq$ median, 1=both  $<$ median



EUROPEAN SEARCH REPORT

Application Number  
EP 19 19 0278

5

10

15

20

25

30

35

40

45

50

55

DOCUMENTS CONSIDERED TO BE RELEVANT			
Category	Citation of document with indication, where appropriate, of relevant passages	Relevant to claim	CLASSIFICATION OF THE APPLICATION (IPC)
Y	JAMES L JANUZZI ET AL: "Importance of Biomarkers for Long-Term Mortality Prediction in Acutely Dyspneic Patients", CLINICAL CHEMISTRY, vol. 56, no. 12, 4 October 2010 (2010-10-04), pages 1814-1821, XP055130850, DOI: 10.1373/clinchem.2010.146506 * the whole document *	1-15	INV. G01N33/68 G01N33/53 A61P9/00
Y	REHMAN S U ET AL: "Independent and incremental prognostic value of multimarker testing in acute dyspnea: Results from the ProBNP Investigation of Dyspnea in the Emergency Department (PRIDE) study", CLINICA CHIMICA ACTA, ELSEVIER BV, AMSTERDAM, NL, vol. 392, no. 1-2, 1 June 2008 (2008-06-01), pages 41-45, XP022637367, ISSN: 0009-8981, DOI: 10.1016/J.CCA.2008.03.002 [retrieved on 2008-03-13] * the whole document *	1-15	
The present search report has been drawn up for all claims			TECHNICAL FIELDS SEARCHED (IPC)
			G01N
Place of search		Date of completion of the search	Examiner
Munich		7 October 2019	Bayer, Martin
CATEGORY OF CITED DOCUMENTS			
X : particularly relevant if taken alone Y : particularly relevant if combined with another document of the same category A : technological background O : non-written disclosure P : intermediate document		T : theory or principle underlying the invention E : earlier patent document, but published on, or after the filing date D : document cited in the application L : document cited for other reasons & : member of the same patent family, corresponding document	

EPO FORM 1503 03.02 (P04C01)



EUROPEAN SEARCH REPORT

Application Number  
EP 19 19 0278

5

10

15

20

25

30

35

40

45

50

55

DOCUMENTS CONSIDERED TO BE RELEVANT			
Category	Citation of document with indication, where appropriate, of relevant passages	Relevant to claim	CLASSIFICATION OF THE APPLICATION (IPC)
Y	Shanmugam Uthamalingam ET AL: "Heart Failure Novel Applications of Cardiac Biomarkers in Heart Failure Novel Applications of Established Cardiac Biomarkers-Natriuretic Peptides", 1 January 2009 (2009-01-01), XP055130806, Retrieved from the Internet: URL:http://www.radcliffecardiology.com/sites/www.touchcardiology.com/files/private/articles/9709/pdf/januzzi0.pdf [retrieved on 2014-07-22] * the whole document *	1-15	
Y	WO 2007/127749 A2 (CRITICAL CARE DIAGNOSTICS INC [US]; SNIDER JAMES V [US]; JACOBSON SVEN) 8 November 2007 (2007-11-08) * claims 1-52 * * example 9 *	1-15	
The present search report has been drawn up for all claims			TECHNICAL FIELDS SEARCHED (IPC)
Place of search Munich		Date of completion of the search 7 October 2019	Examiner Bayer, Martin
CATEGORY OF CITED DOCUMENTS X : particularly relevant if taken alone Y : particularly relevant if combined with another document of the same category A : technological background O : non-written disclosure P : intermediate document		T : theory or principle underlying the invention E : earlier patent document, but published on, or after the filing date D : document cited in the application L : document cited for other reasons & : member of the same patent family, corresponding document	

1  
EPO FORM 1503 03.82 (P04C01)

ANNEX TO THE EUROPEAN SEARCH REPORT  
ON EUROPEAN PATENT APPLICATION NO.

EP 19 19 0278

5 This annex lists the patent family members relating to the patent documents cited in the above-mentioned European search report.  
The members are as contained in the European Patent Office EDP file on  
The European Patent Office is in no way liable for these particulars which are merely given for the purpose of information.

07-10-2019

Patent document cited in search report	Publication date	Patent family member(s)	Publication date
WO 2007127749 A2	08-11-2007	AT 476657 T	15-08-2010
		AT 527544 T	15-10-2011
		AU 2007244927 A1	08-11-2007
		CA 2650201 A1	08-11-2007
		DK 2241888 T3	30-01-2012
		DK 2386860 T3	09-02-2015
		DK 2848938 T3	13-11-2017
		EP 2010912 A2	07-01-2009
		EP 2241888 A2	20-10-2010
		EP 2386860 A2	16-11-2011
		EP 2848938 A1	18-03-2015
		EP 3255432 A1	13-12-2017
		ES 2351623 T3	08-02-2011
		ES 2378314 T3	11-04-2012
		ES 2529618 T3	23-02-2015
		ES 2646142 T3	12-12-2017
		HK 1164443 A1	25-09-2015
		HK 1208724 A1	11-03-2016
		JP 5383480 B2	08-01-2014
		JP 5806165 B2	10-11-2015
		JP 6214604 B2	18-10-2017
		JP 2009534691 A	24-09-2009
		JP 2012181200 A	20-09-2012
		JP 2016001193 A	07-01-2016
		JP 2017215347 A	07-12-2017
		PL 2848938 T3	28-02-2018
		US 2007248981 A1	25-10-2007
		US 2011262941 A1	27-10-2011
		US 2012040381 A1	16-02-2012
		US 2014045200 A1	13-02-2014
		US 2017131294 A1	11-05-2017
		US 2019041403 A1	07-02-2019
		WO 2007127749 A2	08-11-2007
-----			

## REFERENCES CITED IN THE DESCRIPTION

This list of references cited by the applicant is for the reader's convenience only. It does not form part of the European patent document. Even though great care has been taken in compiling the references, errors or omissions cannot be excluded and the EPO disclaims all liability in this regard.

## Patent documents cited in the description

- US 6176962 B [0041]
- US 6517234 B [0041]
- US 20030124624 A [0057]
- US 20040048286 A [0057]
- US 20050130136 A [0057]
- US 20050250156 A [0057]
- WO 2011127412 A [0058] [0108]
- US 20110256635 [0058] [0108]

## Non-patent literature cited in the description

- SHARMA et al. *Circulation*, 2004, vol. 110, 3121-3128 [0032] [0047]
- DE BOER et al. *Eur. J. Heart Failure*, 2009, vol. 11, 811-817 [0032] [0047]
- YANG et al. *Expert Rev. Mol. Med.*, 2008, vol. 13, e17-e39 [0032]
- JESSUP et al. *Circulation*, 2009, vol. 48, 1217-1224 [0033]
- VAN KIMMENADE et al. *J. Am. Coll. Cardiol.*, 2006, vol. 48, 1217-1224 [0034]
- LOK et al. *Clin. Res. Cardiol.*, 2010, vol. 99, 323-328 [0035]
- Current Protocols in Molecular Biology. John Wiley & Sons, 1989, 6.3.1-6.3.6 [0039]
- LE DOUSSAL et al. *New Engl. J. Med.*, 1991, vol. 146, 169-175 [0041]
- GIBELLINI et al. *J. Immunol.*, 1998, vol. 160, 3891-3898 [0041]
- HSING ; BISHOP. *New Engl. J. Med.*, 1999, vol. 162, 2804-2811 [0041]
- EVERTS et al. *New Engl. J. Med.*, 2002, vol. 168, 883-889 [0041]
- MANIATIS et al. *Molecular Cloning, A Laboratory Manual*. Cold Spring Harbor Laboratory Press, 1982 [0042]
- SAMBROOK ; RUSSELL. *Molecular Cloning*. Cold Spring Harbor Laboratory Press, 2001 [0042]
- WU. *Recombinant DNA*. Academic Press, 1993, vol. 217 [0042]
- AUSBEL et al. *Current Protocols in Molecular Biology*. John Wiley and Sons, Inc, 2001, 1-4 [0042]
- KIESER et al. *FEBS Lett.*, 1995, vol. 372 (2-3), 189-93 [0053]
- KUMAR et al. *J. Biol. Chem.*, 1995, vol. 270 (46) [0053]
- YANAGISAWA et al. *FEBS Lett.*, 1992, vol. 302 (1), 51-3 [0053]
- KUROIWA et al. *Hybridoma*, 2000, vol. 19 (2), 151-9 [0053]
- WEINBERG et al. *Circulation*, 2002, vol. 106 (23), 2961-6 [0053]
- WEINBERG et al. *Circulation*, 2003, vol. 107 (5), 721-6 [0053]
- SHIMPO et al. *Circulation*, 2004, vol. 109 (18), 2186-90 [0053]
- LOHNING et al. *Proc. Natl. Acad. Sci. U.S.A.*, 1998, vol. 95 (12), 6930-6935 [0054]
- SCHMITZ et al. *Immunity*, 2005, vol. 23 (5), 479-90 [0054]
- BRINT et al. *Nat. Immunol.*, 2004, vol. 5 (4), 373-9 [0054]
- BRUNEAU et al. *Cardiovasc. Res.*, 1994, vol. 28 (10), 1519-25 [0054]
- TOMINAGA. *FEBS Lett.*, 1989, vol. 258, 301-304 [0055]
- TOMINAGA et al. *Biochim. Biophys. Acta*, 1992, vol. 1171, 215-218 [0055]
- JANUZZI et al. *Arch. Intern. Med.*, 2006, vol. 166 (3), 315-320 [0059]
- JANUZZI et al. *Am. J. Cardiol.*, 2005, vol. 95 (8), 948-954 [0112]
- MCKEE et al. *N. Engl. J. Med.*, 1971, vol. 285 (26), 1441-1446 [0113]

专利名称(译)	预测阴性临床结果风险的过程		
公开(公告)号	<a href="#">EP3605104A1</a>	公开(公告)日	2020-02-05
申请号	EP2019190278	申请日	2012-03-16
[标]申请(专利权)人(译)	重症监护诊断股份有限公司		
申请(专利权)人(译)	急救诊断, INC.		
当前申请(专利权)人(译)	急救诊断, INC.		
[标]发明人	SNIDER JAMES V		
发明人	SNIDER, JAMES V		
IPC分类号	G01N33/68 G01N33/53 A61P9/00		
CPC分类号	G01N33/53 G01N33/6869 G01N33/6893 G01N2333/4724 G01N2800/32 G01N2800/52 G01N2800/54 G01N2800/56 A61P9/00 C07K14/47 C07K14/4726 C07K14/715 G01N33/68 G01N2333/7155 G01N2800/325 G01N2800/50		
代理机构(译)	WILLIAMS, 加雷思·欧文		
审查员(译)	BAYER, MARTIN		
优先权	61/453782 2011-03-17 US PCT/US2012/029500 2012-03-16 WO		
外部链接	<a href="#">Espacenet</a>		

摘要(译)

提供了用于评估受试者中不良临床结果的风险, 决定是出院还是继续治疗受试者(例如, 基于住院治疗), 或者开始或终止治疗, 选择受试者参加临床的方法。研究, 以及选择一种针对受试者的治疗方法, 包括确定受试者的生物样品中ST2的水平以及测定受试者的生物样品中半乳糖凝集素3的水平。还提供了试剂盒, 其包括与ST2特异性结合的抗体和与galectin-3特异性结合的抗体。

Figure 1A: Galectin-3 K-M Analysis for 1 Year (log rank p=0.1122)

