



(11) **EP 2 119 778 A1**

(12) **EUROPEAN PATENT APPLICATION**
published in accordance with Art. 153(4) EPC

(43) Date of publication:
18.11.2009 Bulletin 2009/47

(21) Application number: **08712039.0**

(22) Date of filing: **27.02.2008**

(51) Int Cl.:
C12N 15/09 (2006.01) **A61K 38/00** (2006.01)
A61P 35/00 (2006.01) **A61P 35/02** (2006.01)
A61P 43/00 (2006.01) **C07K 14/82** (2006.01)
C07K 16/32 (2006.01) **C12N 15/00** (2006.01)
C12Q 1/02 (2006.01) **G01N 33/53** (2006.01)

(86) International application number:
PCT/JP2008/053417

(87) International publication number:
WO 2008/105462 (04.09.2008 Gazette 2008/36)

(84) Designated Contracting States:
**AT BE BG CH CY CZ DE DK EE ES FI FR GB GR
HR HU IE IS IT LI LT LU LV MC MT NL NO PL PT
RO SE SI SK TR**

(30) Priority: **27.02.2007 JP 2007047317**

(71) Applicant: **International Institute of Cancer
Immunology, Inc.
Suita-shi, Osaka 564-0053 (JP)**

(72) Inventor: **SUGIYAMA, Haruo
Suita-shi
Osaka 565-0871 (JP)**

(74) Representative: **Helbing, Jörg
Patentanwälte
von Kreisler Selting Werner
Bahnhofsvorplatz 1
Deichmannhaus am Dom
50667 Köln (DE)**

(54) **METHOD FOR ACTIVATION OF HELPER T CELL AND COMPOSITION FOR USE IN THE METHOD**

(57) Disclosed are: a method for activating a helper T cell, which comprises the step of adding a WT1 peptide to an antigen-presenting cell to activate the helper T cell, wherein the WT1 peptide is capable of binding to any one selected from an HLA-DRB1*1501 molecule, an HLA-DPB1*0901 molecule and an HLA-DPB1*0501 mol-

ecule; a composition for use in the method; a therapeutic and/or prophylactic method for cancer by activating a helper T cell; a pharmaceutical composition for use in the therapeutic and/or prophylactic method; and others.

EP 2 119 778 A1

Description

Technical Field

5 **[0001]** The present invention relates to a method for the activation of a helper T cell, comprising adding a WT1 peptide to an antigen-presenting cell, and thereby activating the helper T cell, wherein the WT1 peptide has an ability to any one of an HLA-DRB1*1501 molecule, HLA-DPB1*0901 molecule and HLA-DPB1*0501 molecule and a composition for the same, a pharmaceutical composition for the treatment and/or prevention of a cancer by activating a helper T cell and the like.

10

Background

15 **[0002]** WT1 gene (Wilms' tumor 1 gene) was identified as a gene responsible for Wilms tumor which is a renal cancer in children (Non-Patent Documents 1 and 2). WT1 is a transcription factor having a zinc finger structure. At the beginning, the WT1 gene was considered to be a tumor suppressor gene. However, subsequent studies (Non-Patent Documents 3, 4, 5 and 6) showed that the WT1 gene rather functions as an oncogene in hematopoietic tumors and solid cancers.

20 **[0003]** It was shown that a WT1 peptide-specific T-lymphocyte (CTL) can be induced by in vitro stimulating a peripheral blood mononuclear cell with a WT1 peptide, and such a CTL damages a cancer cell such as a hematopoietic tumor cell and solid cancer cell which endogenously expresses WT1. The CTL recognizes the WT1 peptide as the form of the complex in which the WT1 peptide binds to an MHC class I molecule. Therefore, such a WT1 peptide is different depending on the subtypes of MHC class I (Patent Document 1, Non-Patent Document 7, and Patent Documents 2, 3 and 4).

25 **[0004]** The existence of a helper T cell specific for an cancer antigen is important to induce a CTL effectively (Non-Patent Document 8). The helper T cell is induced and activated by the recognition of a complex of an MHC class II molecule and an antigen peptide on an antigen-presenting cell. The activated helper T cell produces a cytokine such as IL-2, IL-4, IL-5, IL-6 or interferon to help the growth, differentiation or maturation of a B cell. The activated helper T cell also has a function to facilitate the growth, differentiation or maturation of other T cell subsets (for example, Tc and TD cell). Thus, the activated helper T cell has a function to activate an immune system by facilitating the growth or activation of a B cell or T cell. Therefore, enhancing a function of a helper T cell through an MHC class II-binding antigen peptide (a helper peptide) in a cancer immunotherapy to increase the effect of a cancer vaccine is considered to be useful (Non-Patent Document 9). Only a peptide binding to an HLA-DRB1*0401 molecule (Non-Patent Document 10), a peptide binding to an HLA-DRB1*0405 molecule and a peptide binding to an HLA-DRB1*1502 molecule (Patent Document 5) were found as a helper peptide of WT1 to date. Therefore, there is a need to find peptides each binding to an HLA-DRB1*1501, HLA-DPB1*0901 or HLA-DPB1*0501 molecule.

35 **[0005]** Furthermore, it was shown that among the helper peptides, there is a promiscuous helper peptide which can bind to multiple MHC class II molecules, and induce helper T cells (Non-Patent Documents 11 and 12). However, it was very difficult to identify a promiscuous helper peptide which binds to three or more types of MHC class II molecules and exerts a sufficient effect.

40

Patent Document 1: WO 2003/106682

Patent Document 2: WO 2005/095598

Patent Document 3: WO 2007/097358

Patent Document 4: International Patent Application No. PCT/JP2007/074146

Patent Document 5: WO 2005/045027

45

Non-Patent Document 1: Daniel A. Haber et al., Cell. 1990 Jun 29;61(7):1257-69.

Non-Patent Document 2: Call KM et al., Cell. 1990 Feb 9;60(3):509-20.

Non-Patent Document 3: Menke AL et al., Int Rev Cytol. 1998;181:151-212. Review.

Non-Patent Document 4: Yamagami T et al., Blood. 1996 Apr 1;87(7):2878-84.

Non-Patent Document 5: Inoue K et al., Blood. 1998 Apr 15;91(8):2969-76.

50

Non-Patent Document 6: Tsuboi A et al., Leuk Res. 1999 May;23(5):499-505.

Non-Patent Document 7: Oka Y et al., Immunogenetics. 2000 Feb;51(2):99-107.

Non-Patent Document 8: Gao FG et al., Cancer Res. 2002 Nov 15; 62 (22) : 6438-41.

Non-Patent Document 9: Zeng G, J Immunother. 2001 May;24(3):195-204

Non-Patent Document 10: Knights AJ et al., Cancer Immunol Immunother. 2002 Jul;51(5):271-81.

55

Non-Patent Document 11: Sotiriadou R et al., Br J Cancer. 2001 Nov 16;85(10):1527-34.

Non-Patent Document 12: Hural JA et al., J Immunol. 2002 Jul 1;169(1):557-65.

Disclosure of Invention

Problems to be Solved by the Invention

5 **[0006]** The problems to be solved by the present invention are to provide to a method for the activation of a helper T cell with a WT1 peptide which has an ability to bind to an HLA-DRB1*1501 molecule, HLA-DPB1*0901 molecule or HLA-DPB1*0501 molecule and a composition for the same, as well as a pharmaceutical composition for the treatment and/or prevention of a cancer by activating a helper T cell and the like.

10 Means to Solve the Problems

[0007] As a result of intensive studies in view of the situation as described above, the present inventor has found that among WT1 peptides which bind to an HLA-DRB1*0405 molecule and HLA-DRB1*1502 molecule, a WT1 peptide having an amino acid sequence: Lys Arg Tyr Phe Lys Leu Ser His Leu Gln Met His Ser Arg Lys His also binds to an HLA-DRB1*1501 molecule, HLA-DPB1*0901 molecule and HLA-DPB1*0501 molecule. Thus, the present invention has been completed.

[0008] The present invention provides:

20 (1) a method for the activation of a helper T cell, comprising adding a WT1 peptide to an antigen-presenting cell, and thereby activating the helper T cell, wherein the WT1 peptide has an ability to bind to any one of an HLA-DRB1*1501 molecule, HLA-DPB1*0901 molecule and HLA-DPB1*0501 molecule;

(2) the method according to (1), wherein the WT1 peptide has an ability to bind to at least two of an HLA-DRB1*1501 molecule, HLA-DPB1*0901 molecule and HLA-DPB1*0501 molecule;

25 (3) the method according to (1) or (2), wherein the WT1 peptide further has an ability to bind to an HLA-DRB1*0405 molecule and/or HLA-DRB1*1502 molecule;

(4) the method according to any one of (1)-(3), wherein the WT1 peptide has an ability to bind to an HLA-DRB1*1501 molecule, HLA-DPB1*0901 molecule, HLA-DPB1*0501 molecule, HLA-DRB1*0405 molecule and HLA-DRB1*1502 molecule;

30 (5) the method according to any one of (1)-(4), wherein the WT1 peptide is a peptide comprising an amino acid sequence: Lys Arg Tyr Phe Lys Leu Ser His Leu Gln Met His Ser Arg Lys His (SEQ ID No: 2);

(6) the method according to any one of (1)-(5), wherein the addition of the WT1 peptide to the antigen-presenting cell is practiced by the addition of the WT1 peptide, the addition of an expression vector comprising the polynucleotide encoding the WT1 peptide or the addition of a cell including the expression vector;

35 (7) a composition for activating a helper T cell by the addition of a WT1 peptide to an antigen-presenting cell, comprising the WT1 peptide, wherein the WT1 peptide has an ability to bind to any one of an HLA-DRB1*1501 molecule, HLA-DPB1*0901 molecule and HLA-DPB1*0501 molecule;

(8) a method for the treatment or prevention of a cancer in a subject, comprising adding a WT1 peptide to an antigen-presenting cell, and thereby activating a helper T cell, wherein the WT1 peptide has an ability to bind to any one of an HLA-DRB1*1501 molecule, HLA-DPB1*0901 molecule and HLA-DPB1*0501 molecule;

40 (9) a pharmaceutical composition for the treatment or prevention of a cancer by activating a helper T cell by the addition of a WT1 peptide to an antigen-presenting cell, comprising the WT1 peptide, wherein the WT1 peptide has an ability to bind to any one of an HLA-DRB1*1501 molecule, HLA-DPB1*0901 molecule and HLA-DPB1*0501 molecule;

45 (10) an antibody binding specifically to a WT1 peptide, wherein the WT1 peptide has an ability to bind to any one of an HLA-DRB1*1501 molecule, HLA-DPB1*0901 molecule and HLA-DPB1*0501 molecule;

(11) a method for the determination of the presence or amount of a WT1 peptide in any one of an HLA-DRB1*1501-positive, HLA-DPB1*0901-positive and HLA-DPB1*0501-positive subject, comprising:

50 (a) reacting an anti-WT1 antibody with a sample from the subject; and

(b) determining the presence or amount of the anti-WT1 antibody binding specifically to the WT1 peptide contained in the sample;

55 (12) a method for the treatment or prevention of a cancer, comprising adding a WT1 peptide to an antigen-presenting cell, and thereby activating a helper T cell, and administering the activated helper T cell to a subject, wherein the WT1 peptide has an ability to bind to an HLA-DRB1*1501 molecule, HLA-DPB1*0901 molecule or HLA-DPB1*0501 molecule;

(13) a pharmaceutical composition for the treatment or prevention of a cancer, comprising a helper T cell activated with a WT1 peptide, wherein the WT1 peptide has an ability to bind to any one of an HLA-DRB1*1501 molecule,

EP 2 119 778 A1

HLA-DPB1*0901 molecule and HLA-DPB1*0501 molecule;

(14) a method for the determination of the presence or amount of a WT1-specific helper T cell in any one of an HLA-DRB1*1501-positive, HLA-DPB1*0901-positive and HLA-DPB1*0501-positive subject, comprising:

- 5 (a) reacting a complex of a WT1 peptide and an HLA-DRB1*1501 molecule, HLA-DPB1*0901 molecule or HLA-DPB1*0501 molecule with a sample from the subject; and
(b) determining the presence or amount of a helper T cell recognizing the complex contained in the sample; and

10 (15) a method for the determination of the presence or amount of a WT1-specific helper T cell in an HLA-DRB1*1501-positive, HLA-DPB1*0901-positive, HLA-DPB1*0501-positive, HLA-DRB1*0405-positive or HLA-DRB1*1502-positive subject, comprising:

- 15 (a) stimulating a peripheral blood mononuclear cell, invasive lymphocyte, tumor cell, cell in ascitic fluid, cell in pleural fluid, cell in cerebrospinal fluid, bone marrow cell or lymph node cell with a WT1 peptide; and
(b) determining the production of a cytokine or the reaction of the helper T cell,

wherein a presence or an increase in the amount of the production of the cytokine or the reaction of the helper T cell indicates the presence or amount of the WT1-specific helper T cell.

20 Effects of the Invention

[0009] The present invention provides a method for the activation of a helper T cell with a WT1 peptide which binds to an HLA-DRB1*1501 molecule, HLA-DPB1*0901 molecule, HLA-DPB1*0501 molecule, HLA-DRB1*0405 molecule, and HLA-DRB1*1502 molecule and a composition for the same, as well as a pharmaceutical composition for the treatment and/or prevention of a cancer by activating a helper T cell, and the like. Therefore, it is possible to activate in vivo and in vitro a helper T cell in the subject having any of such MHC class II molecules, treat and prevent a cancer and the like. Because about 90 % of Japanese people are covered by the five types of MHC class II subclasses, helper T cells can be activated to treat and/or prevent a cancer in a very wide range of subjects.

30 Brief Description of Drawings

[0010] Fig. 1 is a graph which represents the amount of IFN- γ produced by TA28.1 cell. In the figure, a longitudinal axe represents concentration of IFN- γ (pg/ml). The graphs correspond to "the case of culturing peripheral blood mononuclear cells from an HLA-DRB1*1501-positive subject in the absence of the WT1 peptide", "the case of culturing TA28.1 cells in the presence of the WT1 peptide (black)", "the case of culturing peripheral blood mononuclear cells from an HLA-DRB1*1501-negative subject in the absence of the WT1 peptide", "the case of culturing peripheral blood mononuclear cells from an HLA-DRB1*1501-negative subject in the presence of the WT1 peptide" starting from the left, respectively.

Fig. 2 is a graph which represents the amounts of IFN- γ , IL-4 and IL-10 produced by TA28.1 cell. In the figure, a longitudinal axe represents concentration (pg/ml). The graphs correspond the values of IFN- γ , IL-4 and IL-10 starting from the left.

Fig. 3 is a graph which represents the amounts of IFN- γ , IL-4 and IL-10 produced by E15.2 cell. In the figure, a longitudinal axe represents concentration (pg/ml). The graphs correspond to the values of IFN- γ , IL-4 and IL-10 starting from the left.

Fig. 4 represents the productions of IFN- γ and IL-17 by HLA-DPB1*0501/*0501-positive mononuclear cells. In the figure, a horizontal axe represents IFN- γ , and a longitudinal axe represents IL-17. Fig. 4a represents the cells without stimulating with the WT1 peptide, and Fig. 4b represents the cells stimulated with the WT1 peptide.

Fig. 5 is a graph which represents the growth of TA28.1 cells. In the figure, a longitudinal axe represents cpm ($\times 10^4$). The graphs correspond to "the case of coculturing TA28.1 cells with peripheral blood mononuclear cells without pulsing with a WT1 peptide", "the case of coculturing TA28.1 cells with peripheral blood mononuclear cells pulsed with a WT1 peptide (black)", "the case of culturing TA28.1 cells with peripheral blood mononuclear cells pulsed with a WT1 peptide in the presence of an anti-MHC class I antibody", "the case of coculturing TA28.1 cells with peripheral blood mononuclear cells pulsed with a WT1 peptide in the presence of an anti-HLA-DR antibody (shaded)", "the case of coculturing TA28.1 cells with peripheral blood mononuclear cells pulsed with a WT1 peptide in the presence of an anti-HLA-DQ antibody", "the case of coculturing TA28.1 cells with peripheral blood mononuclear cells pulsed with a WT1 peptide in the presence of an anti-HLA-DP antibody" starting from the left, respectively.

Fig. 6 is a graph which represents the growth of E15.2 cells. In the figure, a longitudinal axe represents cpm ($\times 10^4$). The graphs correspond to "the case of coculturing E15.2 cells with peripheral blood mononuclear cells from an HLA-DPB1*0901-positive subject without pulsing with a WT1 peptide", "the case of coculturing E15.2 cells with peripheral blood mononuclear cells from an HLA-DPB1*0901-positive subject pulsed with a WT1 peptide (black)", "the cases of

coculturing E15.2 cells with peripheral blood mononuclear cells from an HLA-DPB1*0901-negative subject without pulsing with a WT1 peptide", "the case of coculturing E15.2 cells with peripheral blood mononuclear cells from an HLA-DPB1*0901-negative subject pulsed with a WT1 peptide" starting from the left, respectively.

Fig. 7 is a graph which represents the growth of E15.2 cells. In the figure, a longitudinal axe represents cpm. The graphs correspond to "the case of coculturing E15.2 cells with peripheral blood mononuclear cells without pulsing with a WT1 peptide", "the case of coculturing E15.2 cells with peripheral blood mononuclear cells pulsed with a WT1 peptide (black)", "the case of coculturing E15.2 cells with peripheral blood mononuclear cells pulsed with a WT1 peptide in the presence of an anti-MHC class I antibody", "the case of coculturing E15.2 cells with peripheral blood mononuclear cells pulsed with a WT1 peptide in the presence of an anti-HLA-DR antibody", "the case of coculturing E15.2 cells with peripheral blood mononuclear cells pulsed with a WT1 peptide in the presence of an anti-HLA-DQ antibody", and "the case of coculturing E15.2 cells with peripheral blood mononuclear cells pulsed with a WT1 peptide in the presence of an anti-HLA-DP antibody (shaded)" starting from the left, respectively.

Fig. 8 is a graph which represents the growth of HLA-DPB1*0501/*0501-positive mononuclear cells. In the figure, a longitudinal axe represents cpm. The graphs correspond to "the case without stimulation with a WT1 peptide" and "the case with stimulation with a WT1 peptide" starting from the left, respectively.

Fig. 9 represents that the growth of HLA-DPB1*0501/*0501-positive mononuclear cells is suppressed by anti-HLA-DP antibodies. In the figure, a longitudinal axe represents cpm. The graphs correspond to "the case without stimulation with a WT1 peptide", "the case with stimulation with a control peptide from HIV", "the case with stimulation with a WT1 peptide", "the case with stimulation with a WT1 peptide in the presence of an anti-HLA-DR antibody", "the case with stimulation with a WT1 peptide in the presence of an anti-HLA-DQ antibody" and "the case with stimulation with a WT1 peptide in the presence of an anti-HLA-DP antibody" starting from the left, respectively.

Fig. 10 is a graph which represents the growth of E15.2 cell in the cases of using various concentration of a WT1 peptide. In the figure, a longitudinal axe represents cpm ($\times 10^4$), and a horizontal axe represents the concentration of the WT1 peptide.

Best Mode for Carrying Out the Invention

[0011] In one aspect, the present invention relates to a method for the activation of a helper T cell, comprising adding a WT1 peptide to an antigen-presenting cell, and thereby activating the helper T cell, wherein the WT1 peptide has an ability to bind to any one of an HLA-DRB1*1501 molecule, HLA-DPB1*0901 molecule and HLA-DPB1*0501 molecule. In the present invention, the WT1 peptide refers a peptide consisting of a part of the amino acid sequence of human WT1 protein shown in SEQ ID No: 1, a peptide which has a substitution, modification, or deletion of one to several amino acids in the amino acid sequence, and has an ability to bind to any one of an HLA-DRB1*1501 molecule, HLA-DPB1*0901 molecule and HLA-DPB1*0501 molecule, or a peptide in which various substances such as an amino acid, a peptide or an analog thereof may be attached at the N-terminus and/or the C-terminus of the peptide. The substance can be processed, for example, by an enzyme in a living body or through a process such as intracellular processing, and finally the WT1 peptide becomes the form which can bind to any one of an HLA-DRB1*1501 molecule, HLA-DPB1*0901 molecule and HLA-DPB1*0501 molecule. The substance may be a substance that modulates the solubility of the WT1 peptide of the present invention, or increases its stability (resistance to protease, etc.). Alternatively, it may be a substance that delivers the WT1 peptide of the present invention specifically, for example, to a given tissue or organ, or increases the efficiency of uptake by an antigen-presenting cell or the like. Alternatively, it may be a WT1 peptide which is restricted to the same type of an MHC class I molecule as that of a subject from which an antigen-presenting cell is derived.

[0012] The WT1 peptide of the present invention has an ability to bind to any one of an HLA-DRB1*1501 molecule, HLA-DPB1*0901 molecule and HLA-DPB1*0501 molecule. Thus, the WT1 peptide may be a peptide which has an ability to bind to at least two of an HLA-DRB1*1501 molecule, HLA-DPB1*0901 molecule and HLA-DPB1*0501 molecule, or a peptide that has an ability to bind to an HLA-DRB1*1501 molecule and/or HLA-DPB1*0901 molecule and/or HLA-DPB1*0501 molecule, and an HLA class II molecule other than the molecules, for example, a peptide which has an ability to bind to an HLA-DRB1*1501 molecule, HLA-DRB1*0405 molecule and/or HLA-DRB1*1502 molecule, a peptide which has an ability to bind to an HLA-DPB1*0901 molecule, HLA-DRB1*0405 molecule and/or HLA-DRB1*1502 molecule, a peptide which has an ability to bind to an HLA-DPB1*0501 molecule, HLA-DRB1*0405 molecule and/or HLA-DRB1*1502 molecule, or a peptide which has an ability to bind to an HLA-DRB1*1501 molecule, HLA-DPB1*0901 molecule, HLA-DPB1*0501 molecule, HLA-DRB1*0405 molecule and/or HLA-DRB1*1502 molecule. Because a WT1 peptide having an amino acid sequence: Lys Arg Tyr Phe Lys Leu Ser His Leu Gln Met His Ser Arg Lys His (SEQ ID No: 2) has an ability to bind to an HLA-DRB1*1501 molecule, an HLA-DPB1*0901 molecule, an HLA-DPB1*0501 molecule, an HLA-DRB1*0405 molecule and an HLA-DRB1*1502 molecule, the WT1 peptide having such an amino acid sequence is preferable. In general, an MHC class II-binding peptide consists of 10-25 amino acids. Therefore, the WT1 peptide preferably has an amino acid sequence consisting of 10-25 amino acids.

[0013] The WT1 peptide of the present invention can be synthesized by methods generally used in the art or modifi-

cations thereof. Such methods are described, for example, in Peptide Synthesis, Interscience, New York, 1966; The Proteins, Vol 2, Academic Press Inc., New York, 1976; Peptide-Gosei, Maruzen Co., Ltd., 1975; Peptide-Gosei No Kiso To Jikken, Maruzen Co., Ltd., 1985; and Iyakuin No Kaihatsu (Zoku), Vol. 14, Peptide-Gosei, Hirokawa - Book store, 1991.

5 **[0014]** The WT1 peptide of the present invention can also be prepared using genetic engineering techniques based on the information about the nucleotide sequence that encodes the WT1 peptide. Such genetic engineering techniques are well known to a person skilled in the art.

10 **[0015]** The antigen-presenting cell refers to a cell such as a dendritic cell which can present the WT1 peptide together with a MHC class II molecule to a helper T cell or the like. Thus, a subject from which the antigen-presenting cell is derived must have the same subclass of MHC class II (for example, HLA-DRB1*1501, HLA-DPB1*0901, HLA-DPB1*0501, HLA-DRB1*0405 or HLA-DRB1*1502) as that to which the added WT1 peptide binds.

15 **[0016]** In general, a helper T cell is activated by the recognition of an antigen peptide through an MHC class II molecule on the surface of an antigen-presenting cell by TCR-CD3 complex on the surface of the T cell, and the stimulation of an integrin on the surface of the T cell by an integrin ligand on the surface of the antigen-presenting cell. In the present invention, the activation of the helper T cell encompasses not only the activation of the helper T cell but also the induction and growth of the helper T cell. As described above, the activated helper T cell has a function to activate an immune system by increasing the induction, growth or activation of a B cell or T cell. Thus, the method for the activation of a helper T cell of the present invention can be used as an adjuvant therapy in the treatment of a cancer or the like. Alternatively, the helper T cell activated in vitro using the method of the present invention can be used to treat or prevent a cancer or the like, or can be used as an adjuvant therapy in the same. The activation of the helper T cell can be determined by measuring the amount of the production or secretion of a cytokine such as an interferon and an interleukin, and the like.

20 **[0017]** The addition of the WT1 peptide to the antigen-presenting cell may be practiced directly by the addition of the WT1 peptide, or indirectly by the addition of an expression vector comprising a polynucleotide encoding the WT1 peptide or the addition of a cell comprising the expression vector. The expression vector comprising the polynucleotide encoding the WT1 peptide, and the cell comprising the expression vector can be produced by the method well known to the person skilled in the art.

25 **[0018]** In another aspect, the present invention relates to a composition for activating a helper T cell by the addition of a WT1 peptide to an antigen-presenting cell, comprising the WT1 peptide, wherein the WT1 peptide has an ability to bind to any one of an HLA-DRB1*1501 molecule, HLA-DPB1*0901 molecule and HLA-DPB1*0501 molecule. When the composition of the present invention is administered to an HLA-DRB1*1501, HLA-DPB1*0901 or HLA-DPB1*0501-positive subject, an immune system in the subject is activated by the activation of the helper T cell in the subject. The WT1 gene is expressed at high levels in various cancers and tumors including hematopoietic tumors such as leukemia, myelodysplastic syndrome, multiple myeloma or malignant lymphoma, and solid cancers such as gastric cancer, colon cancer, lung cancer, breast cancer, germ cell cancer, hepatic cancer, skin cancer, bladder cancer, prostate cancer, uterine cancer, cervical cancer or ovarian cancer. Therefore, the composition of the present invention can be used as an adjuvant therapy in the treatment or prevention of a cancer. Alternatively, the helper T cell activated using the composition of the present invention can be used, for example, as an adjuvant in the treatment of a cancer.

30 **[0019]** As described above, the WT1 peptide of the present invention may be a peptide which has an ability to bind to at least two of an HLA-DRB1*1501 molecule, HLA-DPB1*0901 molecule and HLA-DPB1*0501 molecule, or a peptide which has an ability to bind to an HLA-DRB1*1501 molecule and/or HLA-DPB1*0901 molecule and/or HLA-DPB1*0501 molecule, and an MHC class II molecule other than them. Thus, as long as the antigen-presenting cell is derived from a subject positive for an MHC class II subclass to which the WT1 peptide of the present invention can bind, the effect of activating the helper T cell of the composition of the present invention can result.

35 **[0020]** The composition of the present invention may comprise in addition to the WT1 peptide, for example, a carrier, an excipient, an additive or the like. Because the WT1 peptide comprised in the composition of the present invention activate the helper peptide specifically to the WT1 peptide, the composition may comprise an MHC class I-restricted WT1 peptide, or it may be used with the peptide.

40 **[0021]** The method for using the composition of the present invention can be appropriately selected depending on conditions such as the desired activation of the helper T cell, the state of the antigen-presenting cell. Examples of such methods include, but are not limited to, intradermal administration, subcutaneous administration, intramuscular administration, intravenous administration, nasal administration and oral administration, and the addition to a culture medium of the antigen-presenting cell. The amount of the WT1 peptide comprised in the composition of the present invention, as well as the form, the number of times of use and the like of the composition of the present invention can be appropriately selected depending on conditions such as the desired activation of the helper T cell, the state of the antigen-presenting cell.

45 **[0022]** In a further aspect, the present invention relates to a composition for activating a helper T cell by the addition of a WT1 peptide to an antigen-presenting cell, comprising an expression vector comprising a polynucleotide encoding the WT1 peptide or a cell comprising the expression vector, wherein the WT1 peptide has an ability to bind to any one

of an HLA-DRB1*1501 molecule, HLA-DPB1*0901 molecule and HLA-DPB1*0501 molecule. The expression vector comprising the polynucleotide encoding the WT1 peptide and the cell comprising the expression vector are described above.

5 [0023] In another aspect, the present invention relate to use of an expression vector comprising a polynucleotide encoding a WT1 peptide, or a cell comprising the expression vector for the manufacture of the composition.

[0024] In a further aspect, the present invention relates to a kit for activating a helper T cell by the addition of a WT1 peptide to an antigen-presenting cell, comprising the WT1 peptide, wherein the WT1 peptide has an ability to bind to any one of an HLA-DRB1*1501 molecule, HLA-DPB1*0901 molecule and HLA-DPB1*0501 molecule. Preferably, the kit is used in the method for the activation of a helper T cell. The kit of the present invention may comprise in addition to the WT1 peptide, for example, a means of obtaining an antigen-presenting cell, a means to determine a helper T cell activity or the like. In general, an instruction manual is attached to the kit. By using the kit of the present invention, helper T cells can be induced efficiently.

10 [0025] In another aspect, the present invention relates to a kit for activating a helper T cell by the addition of a WT1 peptide to an antigen-presenting cell, comprising an expression vector comprising a polynucleotide encoding a WT1 peptide, or a cell comprising the expression vector, wherein the WT1 peptide has an ability to bind to any one of an HLA-DRB1*1501 molecule, HLA-DPB1*0901 molecule and HLA-DPB1*0501 molecule.

[0026] In another aspect, the present invention relates to a method for the treatment or prevention of a cancer in a subject, comprising adding a WT1 peptide to an antigen-presenting cell, and thereby activating a helper T cell, wherein the WT1 peptide has an ability to bind to any one of an HLA-DRB1*1501 molecule, HLA-DPB1*0901 molecule and HLA-DPB1*0501 molecule. The method of the present invention is a method in which an immune system in the subject is activated by the activation of a helper T cell, and a cancer in the subject is treated or prevented. The addition of the WT1 peptide to the antigen-presenting cell may be practiced directly by the addition of the WT1 peptide, or indirectly by the addition of an expression vector comprising a polynucleotide encoding the WT1 peptide or the addition of a cell comprising the expression vector.

25 [0027] As described above, the helper T cell recognizes the complex of any one of MHC class II molecules, particularly an HLA-DRB1*1501 molecule, HLA-DPB1*0901 molecule or HLA-DPB1*0501 molecule and the WT1 peptide. Therefore, the subject is a subject having an MHC class II molecule to which the WT1 peptide binds, for example, HLA-DRB1*1501-positive, HLA-DPB1*0901-positive or HLA-DPB1*0501-positive subject. As described above, the WT1 peptide of the present invention may be a peptide which has an ability to bind to at least two of an HLA-DRB1*1501 molecule, HLA-DPB1*0901 molecule and HLA-DPB1*0501 molecule, or a peptide which has an ability to bind to an HLA-DRB1*1501 molecule and/or HLA-DPB1*0901 molecule and/or HLA-DPB1*0501 molecule, and an MHC class II molecule other than them. Thus, in such a case, it is possible to treat or prevent a cancer in a subject positive for an MHC class II subclass to which the WT1 peptide of the present invention can bind. The cancer to be treated or prevented may be any one, and examples thereof include hematopoietic tumors such as leukemia, myelodysplastic syndrome, multiple myeloma or malignant lymphoma, and solid cancers such as gastric cancer, colon cancer, lung cancer, breast cancer, germ cell cancer, hepatic cancer, skin cancer, bladder cancer, prostate cancer, uterine cancer, cervical cancer or ovarian cancer. Furthermore, the method of the present invention may be used with a method for the treatment or prevention of a cancer with an MHC class I molecule-restricted WT1 peptide or a pharmaceutical composition for the same.

30 [0028] In another aspect, the present invention relates to a pharmaceutical composition for the treatment or prevention of a cancer in a subject by activating a helper T cell by the addition of a WT1 peptide to an antigen-presenting cell, comprising the WT1 peptide, wherein the WT1 peptide has an ability to bind to any one of an HLA-DRB1*1501 molecule, HLA-DPB1*0901 molecule and HLA-DPB1*0501 molecule. The WT1 gene is expressed at high levels in various cancers and tumors including hematopoietic tumors such as leukemia, myelodysplastic syndrome, multiple myeloma or malignant lymphoma, and solid cancers such as gastric cancer, colon cancer, lung cancer, breast cancer, germ cell cancer, hepatic cancer, skin cancer, bladder cancer, prostate cancer, uterine cancer, cervical cancer or ovarian cancer. Therefore, the pharmaceutical composition of the present invention can be used for the treatment or prevention of a cancer.

35 [0029] As described above, the WT1 peptide of the present invention may be a peptide which has an ability to bind to at least two of an HLA-DRB1*1501 molecule, HLA-DPB1*0901 molecule and HLA-DPB1*0501 molecule, or a peptide which has an ability to bind to an HLA-DRB1*1501 molecule and/or HLA-DPB1*0901 molecule and/or HLA-DPB1*0501 molecule, and an MHC class II molecule other than them. Thus, as long as the antigen-presenting cell is derived from a subject positive for an MHC class II subclass to which the WT1 peptide of the present invention can bind, the pharmaceutical composition of the present invention can be used to treat or prevent a cancer.

40 [0030] When the pharmaceutical composition of the present invention is administered to, for example, an HLA-DRB1*1501-positive, HLA-DPB1*0901-positive or HLA-DPB1*0501-positive subject, an immune system in a subject can be activated by the activation of the helper T cell by the WT1 peptide comprised in the pharmaceutical composition, thereby treating or preventing a cancer. Thus, the pharmaceutical composition of the present invention may be used together with the method for the treatment or prevention of a cancer or the pharmaceutical composition for the same.

45 [0031] The pharmaceutical composition of the present invention may comprise in addition to the WT1 peptide as an

active ingredient, for example, a carrier, an excipient or the like. The WT1 peptide comprised in the pharmaceutical composition of the present invention binds to an MHC class II molecule on the surface of an antigen-presenting cell and activates a helper T cell. Therefore, the pharmaceutical composition of the present invention may further comprise an activator, growth factor, inducer or the like of the helper T cell, or may comprise an MHC class I-restricted WT1 peptide.

5 [0032] The method for administering the pharmaceutical composition of the present invention can be appropriately selected depending on conditions such as the type of disease, the condition of the subject or target site. Examples of such methods include, but are not limited to, intradermal administration, subcutaneous administration, intramuscular administration, intravenous administration, nasal administration and oral administration. The amount of the peptide comprised in the pharmaceutical composition of the present invention, as well as the dosage form, the number of times of the administration and the like of the pharmaceutical composition of the present invention can be appropriately selected depending on conditions such as the type of disease, the condition of the subject or the target site. The single dose of the peptide is usually, 0.0001 mg - 1000 mg, preferably, 0.001 mg - 1000 mg.

10 [0033] In a further aspect, the present invention relates to a pharmaceutical composition for the treatment or prevention of a cancer in a subject by activating a helper T cell by the addition of a WT1 peptide to an antigen-presenting cell, comprising an expression vector comprising a polynucleotide encoding the WT1 peptide, or a cell comprising the expression vector, wherein the WT1 peptide has an ability to bind to any one of an HLA-DRB1*1501 molecule, HLA-DPB1*0901 molecule and HLA-DPB1*0501 molecule.

15 [0034] In a further aspect, the present invention relates to use of a WT1 peptide, an expression vector comprising a polynucleotide encoding the WT1 peptide, or a cell comprising the expression vector for the manufacture of the pharmaceutical composition.

20 [0035] In another aspect, the present invention relates to an antibody binding specifically to a WT1 peptide, wherein the WT1 peptide has an ability to bind to any one of an HLA-DRB1*1501 molecule, an HLA-DPB1*0901 molecule and HLA-DPB1*0501 molecule. The antibody of the present invention can be prepared by the means or method known to the person skilled in the art. The antibody of the present invention can be used for the diagnosis of various cancers, prognosis thereof or the like.

25 [0036] In another aspect, the present invention relates to a method for the determination of the presence or amount of a WT1 peptide in an HLA-DRB1*1501-positive, HLA-DPB1*0901-positive or HLA-DPB1*0501-positive subject, comprising:

- 30 (a) reacting an anti-WT1 antibody with a sample from the subject; and
(b) determining the presence or amount of the anti-WT1 antibody binding specifically to the WT1 peptide contained in the sample. For example, it is possible to diagnose a cancer, prognosis thereof or the like by incubating the anti-WT1 antibody with a sample from an HLA-DRB1*1501-positive, HLA-DPB1*0901-positive or HLA-DPB1*0501-positive subject, or administering the anti-WT1 antibody to an HLA-DRB1*1501-positive, HLA-DPB1*0901-positive or HLA-DPB1*0501-positive subject, and determining, for example, the position, site or amount thereof. The anti-WT1 antibody of the present invention refers to an antibody which can specifically recognize the WT1 peptide of the present invention. The anti-WT1 antibody may be a monoclonal antibody or polyclonal antibody. The anti-WT1 antibody may be labeled. A known label such as a fluorescent label or a radioactive label can be used as a label. By labeling it, the presence or amount of the WT1 peptide can be determined readily and rapidly.

40 [0037] In another aspect, the present invention relates to a kit for the determination of the presence or amount of a WT1 peptide comprising the anti-WT1 antibody as an essential component.

45 [0038] Furthermore, in the determination of the presence or amount of the WT1 peptide, when the WT1 peptide has an ability to bind to an HLA-DRB1*0405 molecule and/or HLA-DRB1*1502 molecule, it is possible to determine the presence or amount of the WT1 peptide in a subject with such an MHC class II subclass.

50 [0039] In another aspect, the present invention relates to a pharmaceutical composition for the treatment or prevention of a cancer, comprising a helper T cell activated with a WT1 peptide, wherein the WT1 peptide has an ability to bind to any one of an HLA-DRB1*1501 molecule, HLA-DPB1*0901 molecule and HLA-DPB1*0501 molecule. The cancer is treated or prevented by the induction, growth or activation of a B cell or T cell by the activated helper T cell. Thus, the pharmaceutical composition of the present invention in this aspect may be used together with another method for the treatment or prevention of a cancer or pharmaceutical composition for the same. The activation of the helper T cell with the WT1 peptide encompasses not only the direct activation with the WT1 peptide but also indirect activation with an expression vector comprising a polynucleotide encoding the WT1 peptide or a cell comprising the expression vector.

55 [0040] The pharmaceutical composition of the present invention may comprise in addition to the activated helper T cell as an active ingredient, for example, a carrier, an excipient or the like. The method for administering the pharmaceutical composition of the present invention can be appropriately selected depending on conditions such as the type of disease, the condition of the subject or the target site. Examples of such methods include, but are not limited to, intradermal administration, subcutaneous administration, intramuscular administration, intravenous administration, nasal adminis-

tration and oral administration. The amount of the helper T cell comprised in the pharmaceutical composition of the present invention, as well as the dosage form, the number of times of the administration and the like of the pharmaceutical composition of the present invention can be appropriately selected depending on a condition such as the type of disease, the condition of the subject or the target site.

[0041] In another aspect, the present invention relates to a method for the treatment or prevention of a cancer, comprising adding a WT1 peptide to an antigen-presenting cell, and thereby activating a helper T cell, and administering the activated helper T cell to a subject, wherein the WT1 peptide has an ability to bind to any one of an HLA-DRB1*1501 molecule, HLA-DPB1*0901 molecule and HLA-DPB1*0501 molecule.

[0042] In another aspect, the present invention relates to use of a WT1 peptide for the manufacture of the pharmaceutical composition comprising an activated helper T cell.

[0043] In a further aspect, the present invention relates to a method for the determining the presence or amount of a WT1-specific helper T cell in any one of an HLA-DRB1*1501-positive, HLA-DPB1*0901-positive and HLA-DPB1*0501-positive subject, comprising:

(a) reacting a complex of a WT1 peptide and an HLA-DRB1*1501 molecule, HLA-DPB1*0901 molecule or HLA-DPB1*0501 molecule with a sample from the subject; and

(b) determining the presence or amount of a helper T cell recognizing the complex contained in the sample. The sample from the subject may be any one as long as there is a possibility that it contains a lymphocyte. Examples of the samples include body fluid such as blood or lymph and a tissue. The complex of a WT1 peptide and an HLA-DRB1*1501 molecule, HLA-DPB1*0901 molecule or HLA-DPB1*0501 molecule may be prepared, for example, as a tetramer or pentamer using a method known to a person skilled in the art such as biotin-streptavidin method. The presence or amount of the helper T cell recognizing such a complex can be measured by a method known to a person skilled in the art. In this aspect of the present invention, the complex may be labeled. A known label such as a fluorescent label or a radioactive label can be used as a label. By labeling it, the presence or amount of the helper T cell can be rapidly or readily determined. The method of the present invention in this aspect can be used to diagnose a cancer, prognosis thereof or the like.

[0044] Thus, the present invention also provides a composition for the determination of the presence or amount of a helper T cell in any one of an HLA-DRB1*1501-positive, HLA-DPB1*0901-positive and HLA-DPB1*0501-positive subject, comprising a complex of a WT1 peptide and an HLA-DRB1*1501 molecule, HLA-DPB1*0901 molecule or HLA-DPB1*0501 molecule.

[0045] Furthermore, the present invention provides a kit for the determination of the presence or amount of a helper T cell in an HLA-DRB1*1501-positive, HLA-DPB1*0901-positive or HLA-DPB1*0501-positive subject, comprising a complex of a WT1 peptide and an HLA-DRB1*1501 molecule, HLA-DPB1*0901 molecule or HLA-DPB1*0501 molecule.

[0046] Furthermore, in the determination of the presence or amount of the helper T cell, when the WT1 peptide has an ability to an HLA-DRB1*0405 molecule and/or HLA-DRB1*1502 molecule in the determination of the presence or amount of the helper T cell, it is possible to determine the presence or amount of the helper T cell in a subject with such an MHC class II subclass. In such a case, a complex of a WT1 peptide and a MHC class II molecule to which the WT1 peptide binds is used.

[0047] In a further aspect, the present invention relates to a method for the obtainment of a helper T cell using a complex of a WT1 peptide and an HLA-DRB1*1501 molecule, HLA-DPB1*0901 molecule or HLA-DPB1*0501 molecule, comprising:

(a) reacting a sample with the complex; and

(b) obtaining a helper T cell recognizing the complex contained in the sample. The complex is described above. The sample may be any one as long as there is a possibility that it contains a lymphocyte. Examples of the samples include a sample from a subject such as blood, and a cell culture. The helper T cell recognizing the complex can be obtained using a method known to a person skilled in the art such as FACS or MACS. The present invention allows to culture the obtained helper T cell and use it for the treatment or prevention of various cancers.

[0048] Thus, the present invention also relates to a helper T cell which is obtainable by a method for obtaining a helper T cell using a complex of a WT1 peptide and an HLA-DRB1*1501 molecule, HLA-DPB1*0901 molecule or HLA-DPB1*0501 molecule.

[0049] Furthermore, the present invention relates to a kit for obtaining a helper T cell, comprising a complex of a WT1 peptide and an HLA-DRB1*1501 molecule, HLA-DPB1*0901 molecule or HLA-DPB1*0501 molecule.

[0050] Furthermore, in obtaining the helper T cell, when the WT1 peptide has an ability to bind to an HLA-DRB1*0405 molecule and/or HLA-DRB1*1502 molecule, it is possible to obtain a helper T cell recognizing a complex of such an MHC class II subclass and a WT1 peptide. In such a case, the complex of the WT1 peptide and an MHC class II molecule

to which it binds is used.

[0051] In another aspect, the present invention relates to a method for the determination of the presence or amount of a WT1-specific helper T cell in an HLA-DRB1*1501-positive, HLA-DPB1*0901-positive, HLA-DPB1*0501-positive, HLA-DRB1*0405-positive or HLA-DRB1*1502-positive subject, comprising:

- (a) stimulating a peripheral blood mononuclear cell, invasive lymphocyte, tumor cell, cell in ascitic fluid, cell in pleural fluid, cell in cerebrospinal fluid, bone marrow cell or lymph node cell with a WT1 peptide; and
- (b) determining the production of a cytokine or the reaction of the helper T cell,

wherein a presence or an increase in the amount of the production of the cytokine or the reaction of the helper T cell indicates the presence or amount of the WT1-specific helper T cell. The cells such as the peripheral blood mononuclear cell, invasive lymphocyte, tumor cell, cell in ascitic fluid, cell in pleural fluid, cell in cerebrospinal fluid, bone marrow cell and lymph node cell used in the method of the present invention may be derived from a healthy subject or a cancer patient. By using the cells from a healthy subject, it is possible to determine whether or not the subject is suffering from a cancer, whether or not the subject has the predisposition thereof or the like. By using the cells from a cancer patient, it is possible to predict whether or not WT1-immunotherapy has an effect on the cancer patient or the like. The stimulation of the cells with the WT1 peptide may be practiced in vitro or in vivo. Because of easiness, in vitro stimulation is preferable. The presence of the production of the cytokine or the reaction of the helper T cell, or the amount of the production of the cytokine or the reaction of the helper T cell can be determined by a known method.

[0052] The following examples illustrate the present invention in more detail, but are not to be construed to limit the scope thereof.

Examples

1. Preparation of antigen-presenting cell

[0053] Peripheral blood mononuclear cells (PBMCs) were separated from peripheral blood that had been collected from a healthy donor (HLA-DRB1*1501-positive, HLA-DPB1*0901-positive or HLA-DPB1*0501-positive). The PBMCs were seeded to a 6-well plastic plate at the density of 1×10^7 cells/well in 1% AB serum (Nabi, Miami, FL), X-VIVO 15 medium (Cambrex), and cultured for 2 hours. After the culture, suspension cells were removed, and the remaining adherent cells were cultured in 1000 IU/ml IL-4 (PeproTech), 1000 IU/ml GM-CSF (PeproTech), 1% AB serum and X-VIVO 15 medium. On day 2 and day 4, the medium was changed, and IL-4 and GM-CSF were added. On day 6, 100 IU/ml TNF- α was added to mature antigen-presenting cells.

2. Induction of WT1 peptide-specific CD4-positive T cell

[0054] CD4-positive T cells were separated from blood derived from the same donor using RosetteSep for the separation of CD4-positive T cells (StemCell). The CD4-positive T cells (3×10^6 cells) were added to each well of a 24-well plate. They were stimulated with autologous antigen-presenting cells (3×10^5 cells) that had been pulsed with 20 μ g/ml WT1 peptide (SEQ ID No: 2), and irradiated with 25 Gy of radiation. On next day after the stimulation, 20 IU/ml IL-2 was added. Likewise, the stimulated CD4-positive T cells were stimulated using the antigen-presenting cells pulsed with 20 μ g/ml WT1 peptide every other week. Furthermore, the medium was changed to the medium containing IL-2 every other day after second stimulation. The CD4-positive T cells induced by total three times of stimulation (HLA-DRB1*1501 and HLA-DPB1*0901-positive T cells were defined as TA28.1 cell and E15.2 cell, respectively) were used for experiments below.

3. Measurement of IFN- γ

[0055] TA28.1 cells and peripheral blood mononuclear cells from a subject from which the TA28.1 cells were derived were cultured in the presence of 20 μ g/ml WT1 peptide for 24 hours. After the culture, the amount of IFN- γ in the supernatant was quantified using ELISA kit. As a control, a peripheral blood mononuclear cell from an HLA-DRB1*1501-negative subject was used. The results are shown in Fig. 1. It was confirmed that TA28.1 cell recognizes the WT1 peptide specifically to an HLA-DRB1*1501 molecule to increase the produced amount of IFN- γ (that is, activation).

[0056] Furthermore, it was confirmed that TA28.1 cell and E15.2 cell do not produce IL-4 and IL-10 using ELISA kit. The results are shown in Figs. 2 and 3. It was confirmed that TA28.1 and E15.2 cell are Th1 cells.

[0057] HLA-DPB1*0501/*0501-positive mononuclear cells were used to perform the following experiments. The cells were suspended to X-VIVO (1% AB serum), and 20 μ g/ml WT1 peptide, 10 μ g/ml Brefeldin A and 0.5 μ g/ml CD28/49d were added. They were incubated at 37°C with 5% CO₂ for 4 hours. As a control, a cell incubated without the addition

of a WT1 peptide was used. After washing with buffer, an anti-CD3-perCP antibody and an anti-CD4-APC antibody were added, and they were incubated at 4°C for 30 minutes. After washing with buffer, the cells were fixed and permeabilized using BD Cytofix/Cytoperm (4°C, 20 minutes). After washing with BD perm/wash buffer, an anti-INF- γ -FITC (BD, clone: B27) and anti-IL-17-PE (eBioscience, clone: eBio64DEC17) were added, and they were incubated at 4°C for 30 minutes. After washing with buffer, cells were analyzed with FACS Aria. The results are shown in Fig. 4. It was confirmed that an HLA-DPB1*0501-positive mononuclear cells grow, and produces IFN- γ and IL-17.

4. Growth assay

[0058] The growth assay was performed by [³H]-thymidine incorporation method. TA28.1 cells (3 x 10⁴ cells) and peripheral blood mononuclear cells (HLA-DRB1*1501-positive; 1 x 10⁵ cells) that had been pulsed with the WT1 peptides and irradiated were cocultured in a 96-well plate. After coculturing for 80 hours, 37kBq/well [³H]-thymidine (Amersham Biosciences) was added. They were incubated for another 16 hours, and measured using β -scintillation counter. The measurements were represented as count/minute (cpm). As a control, a peripheral blood mononuclear cell without pulsing with a peptide was used. Furthermore, in order to confirm that the activation signal is specific for an HLA-DRB1*1501 molecule, an anti-MHC class I antibody, anti-HLA-DR antibody, anti-HLA-DQ antibody and anti-HLA-DP antibody were used. The results are shown in Fig. 5. It was confirmed that TA28.1 cells were activated by a signal through the WT1 peptide and HLA-DRB1*1501, and grown. It was further confirmed that the growth was specific for HLA-DRB1*1501, because it was suppressed by the anti-HLA-DR antibody.

[0059] Likewise, E15.2 cells were used to perform the growth assay. As an additional control, the peripheral blood mononuclear cells from an HLA-DPB1*0901-negative subject were used. The results are shown in Figs. 6 and 7. It was confirmed that E15.2 cells were activated by a signal through the WT1 peptide and HLA-DPB1*0901, and grown. It was further confirmed that the growth is specific for HLA-DPB1*0901, because it is suppressed by the anti-HLA-DP antibody.

[0060] Furthermore, HLA-DPB1*0501/*0501-positive mononuclear cells were used to perform the growth assay. As a control, a peripheral blood mononuclear cell from an HLA-DPB1*0501-negative subject was also used. The results are shown in Figs. 8 and 9. It was confirmed that an HLA-DPB1*0501/*0501-positive mononuclear cells were activated by a signal through the WT1 peptide and HLA-DPB1*0501, and grown. It was further confirmed that the growth is specific for HLA-DPB1*0501, because it is suppressed by the anti-HLA-DP antibody.

[0061] Furthermore, the growth assay of the E15.2 cells was performed with various concentrations of the WT1 peptide. The concentration of the used WT1 peptide was 0.08, 0.4, 2, 10, 50, 100 or 150 μ g/ml. The results are shown in Fig. 10. It was confirmed that the WT1 peptides grow the E15.2 cells in a concentration-dependent manner.

Industrial Applicability

[0062] The present invention provides a method for the activation of a helper T cell with a WT1 peptide which has an ability to bind to an HLA-DRB1*1501 molecule, HLA-DPB1*0901 molecule or HLA-DPB1*0501 molecule and a composition for the same, as well as a pharmaceutical composition for the treatment and/or prevention of a cancer by activating a helper T cell and the like. Therefore, the present invention can be used in the fields of medicine and the like, for example, in the fields of development and preparation of a pharmaceutical composition for the prevention or treatment of various hematopoietic tumors and solid cancers that express WT1 gene at high levels.

EP 2 119 778 A1

SEQUENCE LISTING

5 <110> International Institute of Cancer Immunology, Inc.
 <120> Method for Activation of Helper T Cell and Composition for Use in the Method
 <130> 668070
 10 <150> JP 2007-047317
 <151> 2007-02-27
 <160> 2
 15 <170> PatentIn version 3.2
 <210> 1
 <211> 449
 <212> PRT
 20 <213> Homo sapiens
 <400> 1
 Met Gly Ser Asp Val Arg Asp Leu Asn Ala Leu Leu Pro Ala Val Pro
 1 5 10 15
 25 Ser Leu Gly Gly Gly Gly Gly Cys Ala Leu Pro Val Ser Gly Ala Ala
 20 25 30
 Gln Trp Ala Pro Val Leu Asp Phe Ala Pro Pro Gly Ala Ser Ala Tyr
 35 40 45
 30 Gly Ser Leu Gly Gly Pro Ala Pro Pro Pro Ala Pro Pro Pro Pro
 50 55 60
 35 Pro Pro Pro Pro His Ser Phe Ile Lys Gln Glu Pro Ser Trp Gly Gly
 65 70 75 80
 Ala Glu Pro His Glu Glu Gln Cys Leu Ser Ala Phe Thr Val His Phe
 85 90 95
 40 Ser Gly Gln Phe Thr Gly Thr Ala Gly Ala Cys Arg Tyr Gly Pro Phe
 100 105 110
 Gly Pro Pro Pro Pro Ser Gln Ala Ser Ser Gly Gln Ala Arg Met Phe
 115 120 125
 45 Pro Asn Ala Pro Tyr Leu Pro Ser Cys Leu Glu Ser Gln Pro Ala Ile
 130 135 140
 Arg Asn Gln Gly Tyr Ser Thr Val Thr Phe Asp Gly Thr Pro Ser Tyr
 145 150 155 160
 50 Gly His Thr Pro Ser His His Ala Ala Gln Phe Pro Asn His Ser Phe
 165 170 175
 Lys His Glu Asp Pro Met Gly Gln Gln Gly Ser Leu Gly Glu Gln Gln
 180 185 190
 55 Tyr Ser Val Pro Pro Pro Val Tyr Gly Cys His Thr Pro Thr Asp Ser
 195 200 205

EP 2 119 778 A1

Cys Thr Gly Ser Gln Ala Leu Leu Leu Arg Thr Pro Tyr Ser Ser Asp
 210 215 220
 5 Asn Leu Tyr Gln Met Thr Ser Gln Leu Glu Cys Met Thr Trp Asn Gln
 225 230 235 240
 Met Asn Leu Gly Ala Thr Leu Lys Gly Val Ala Ala Gly Ser Ser Ser
 245 250 255
 10 Ser Val Lys Trp Thr Glu Gly Gln Ser Asn His Ser Thr Gly Tyr Glu
 260 265 270
 Ser Asp Asn His Thr Thr Pro Ile Leu Cys Gly Ala Gln Tyr Arg Ile
 275 280 285
 15 His Thr His Gly Val Phe Arg Gly Ile Gln Asp Val Arg Arg Val Pro
 290 295 300
 Gly Val Ala Pro Thr Leu Val Arg Ser Ala Ser Glu Thr Ser Glu Lys
 305 310 315 320
 20 Arg Pro Phe Met Cys Ala Tyr Pro Gly Cys Asn Lys Arg Tyr Phe Lys
 325 330 335
 Leu Ser His Leu Gln Met His Ser Arg Lys His Thr Gly Glu Lys Pro
 340 345 350
 25 Tyr Gln Cys Asp Phe Lys Asp Cys Glu Arg Arg Phe Ser Arg Ser Asp
 355 360 365
 Gln Leu Lys Arg His Gln Arg Arg His Thr Gly Val Lys Pro Phe Gln
 370 375 380
 Cys Lys Thr Cys Gln Arg Lys Phe Ser Arg Ser Asp His Leu Lys Thr
 385 390 395 400
 35 His Thr Arg Thr His Thr Gly Lys Thr Ser Glu Lys Pro Phe Ser Cys
 405 410 415
 Arg Trp Pro Ser Cys Gln Lys Lys Phe Ala Arg Ser Asp Glu Leu Val
 420 425 430
 40 Arg His His Asn Met His Gln Arg Asn Met Thr Lys Leu Gln Leu Ala
 435 440 445
 Leu
 45
 <210> 2
 <211> 16
 <212> PRT
 50 <213> Homo sapiens
 <400> 2
 Lys Arg Tyr Phe Lys Leu Ser His Leu Gln Met His Ser Arg Lys His
 1 5 10 15
 55

EP 2 119 778 A1

SEQUENCE LISTING

<110> Osaka University
 5 <120> Method and pharmaceutical composition for activating helper
 T cell
 <130> 668070
 <150> JP 2007-047317
 10 <151> 2007-02-27

 <160> 2
 <170> Patent In version 3.2
 15 <210> 1
 <211> 449
 <212> PRT
 <213> Homo sapiens

 <400> 1
 20 Met Gly Ser Asp Val Arg Asp Leu Asn Ala Leu Leu Pro Ala Val Pro
 1 5 10
 Ser Leu Gly Gly Gly Gly Gly Cys Ala Leu Pro Val Ser Gly Ala Ala
 20 25 30
 25 Gln Trp Ala Pro Val Leu Asp Phe Ala Pro Pro Gly Ala Ser Ala Tyr
 35 40 45
 Gly Ser Leu Gly Gly Pro Ala Pro Pro Ala Pro Pro Pro Pro
 50 55 60
 30 Pro Pro Pro Pro His Ser Phe Ile Lys Gln Gu Pro Ser Trp Gly Gly
 65 70 75 80
 Ala Gu Pro His Gu Gu Gln Cys Leu Ser Ala Phe Thr Val His Phe
 85 90 95
 35 Ser Gly Gln Phe Thr Gly Thr Ala Gly Ala Cys Arg Tyr Gly Pro Phe
 100 105 110
 Gly Pro Pro Pro Pro Ser Gln Ala Ser Ser Gly Gln Ala Arg Met Phe
 115 120 125
 40 Pro Asn Ala Pro Tyr Leu Pro Ser Cys Leu Gu Ser Gln Pro Ala Ile
 130 135 140
 Arg Asn Gln Gly Tyr Ser Thr Val Thr Phe Asp Gly Thr Pro Ser Tyr
 145 150 155 160
 45 Gly His Thr Pro Ser His His Ala Ala Gln Phe Pro Asn His Ser Phe
 165 170 175
 Lys His Gu Asp Pro Met Gly Gln Gln Gly Ser Leu Gly Gu Gln Gln
 180 185 190
 50 Tyr Ser Val Pro Pro Pro Val Tyr Gly Cys His Thr Pro Thr Asp Ser
 195 200 205
 Cys Thr Gly Ser Gln Ala Leu Leu Leu Arg Thr Pro Tyr Ser Ser Asp
 210 215 220
 55 Asn Leu Tyr Gln Met Thr Ser Gln Leu Gu Cys Met Thr Trp Asn Gln
 225 230 235 240

EP 2 119 778 A1

Met Asn Leu Gly Ala Thr Leu Lys Gly Val Ala Ala Gly Ser Ser Ser
 245 250 255
 5 Ser Val Lys Trp Thr Gu Gly Gn Ser Asn His Ser Thr Gly Tyr Gu
 260 265 270
 Ser Asp Asn His Thr Thr Pro Ile Leu Cys Gly Ala Gn Tyr Arg Ile
 275 280 285
 10 His Thr His Gly Val Phe Arg Gly Ile Gn Asp Val Arg Arg Val Pro
 290 295 300
 Gly Val Ala Pro Thr Leu Val Arg Ser Ala Ser Gu Thr Ser Gu Lys
 305 310 315 320
 15 Arg Pro Phe Met Cys Ala Tyr Pro Gly Cys Asn Lys Arg Tyr Phe Lys
 325 330 335
 Leu Ser His Leu Gn Met His Ser Arg Lys His Thr Gly Gu Lys Pro
 340 345 350
 20 Tyr Gn Cys Asp Phe Lys Asp Cys Gu Arg Arg Phe Ser Arg Ser Asp
 355 360 365
 Gn Leu Lys Arg His Gn Arg Arg His Thr Gly Val Lys Pro Phe Gn
 370 375 380
 25 Cys Lys Thr Cys Gn Arg Lys Phe Ser Arg Ser Asp His Leu Lys Thr
 385 390 395 400
 His Thr Arg Thr His Thr Gly Lys Thr Ser Gu Lys Pro Phe Ser Cys
 405 410 415
 30 Arg Trp Pro Ser Cys Gn Lys Lys Phe Ala Arg Ser Asp Gu Leu Val
 420 425 430
 Arg His His Asn Met His Gn Arg Asn Met Thr Lys Leu Gn Leu Ala
 435 440 445
 35 Leu
 <210> 2
 <211> 16
 <212> PRT
 40 <213> Homo sapiens
 <400> 2
 Lys Arg Tyr Phe Lys Leu Ser His Leu Gn Met His Ser Arg Lys His
 1 5 10 15
 45

Claims

- 50
1. A method for the activation of a helper T cell, comprising adding a WT1 peptide to an antigen-presenting cell, and thereby activating the helper T cell, wherein the WT1 peptide has an ability to bind to any one of an HLA-DRB1*1501 molecule, HLA-DPB1*0901 molecule and HLA-DPB1*0501 molecule.
 - 55 2. The method according to claim 1, wherein the WT1 peptide has an ability to bind to at least two of an HLA-DRB1*1501 molecule, HLA-DPB1*0901 molecule and HLA-DPB1*0501 molecule.
 3. The method according to claim 1 or 2, wherein the WT1 peptide further has an ability to bind to an HLA-DRB1*0405

molecule and/or HLA-DRB1*1502 molecule.

- 5
4. The method according to any one of claims 1-3, wherein the WT1 peptide has an ability to bind to an HLA-DRB1*1501 molecule, HLA-DPB1*0901 molecule, HLA-DPB1*0501 molecule, HLA-DRB1*0405 molecule and HLA-DRB1*1502 molecule.
- 10
5. The method according to any one of claims 1-4, wherein the WT1 peptide is a peptide comprising an amino acid sequence: Lys Arg Tyr Phe Lys Leu Ser His Leu Gln Met His Ser Arg Lys His (SEQ ID No: 2).
- 15
6. The method according to any one of claims 1-5, wherein the addition of the WT1 peptide to the antigen-presenting cell is practiced by the addition of the WT1 peptide, the addition of an expression vector comprising the polynucleotide encoding the WT1 peptide or the addition of a cell including the expression vector.
- 20
7. A composition for activating a helper T cell by the addition of a WT1 peptide to an antigen-presenting cell, comprising the WT1 peptide, wherein the WT1 peptide has an ability to bind to any one of an HLA-DRB1*1501 molecule, HLA-DPB1*0901 molecule and HLA-DPB1*0501 molecule.
- 25
8. A method for the treatment or prevention of a cancer in a subject, comprising adding a WT1 peptide to an antigen-presenting cell, and thereby activating a helper T cell, wherein the WT1 peptide has an ability to bind to any one of an HLA-DRB1*1501 molecule, HLA-DPB1*0901 molecule and HLA-DPB1*0501 molecule.
- 30
9. A pharmaceutical composition for the treatment or prevention of a cancer by activating a helper T cell by the addition of a WT1 peptide to an antigen-presenting cell, comprising the WT1 peptide, wherein the WT1 peptide has an ability to bind to any one of an HLA-DRB1*1501 molecule, HLA-DPB1*0901 molecule and HLA-DPB1*0501 molecule.
- 35
10. An antibody binding specifically to a WT1 peptide, wherein the WT1 peptide has an ability to bind to any one of an HLA-DRB1*1501 molecule, HLA-DPB1*0901 molecule and HLA-DPB1*0501 molecule.
- 40
11. A method for the determination of the presence or amount of a WT1 peptide in any one of an HLA-DRB1*1501-positive, HLA-DPB1*0901-positive and HLA-DPB1*0501-positive subject, comprising:
- (a) reacting an anti-WT1 antibody with a sample from the subject; and
- (b) determining the presence or amount of the anti-WT1 antibody binding specifically to the WT1 peptide contained in the sample.
- 45
12. A method for the treatment or prevention of a cancer, comprising adding a WT1 peptide to an antigen-presenting cell, and thereby activating a helper T cell, and administering the activated helper T cell to a subject, wherein the WT1 peptide has an ability to bind to an HLA-DRB1*1501 molecule, HLA-DPB1*0901 molecule or HLA-DPB1*0501 molecule.
- 50
13. A pharmaceutical composition for the treatment or prevention of a cancer, comprising a helper T cell activated with a WT1 peptide, wherein the WT1 peptide has an ability to bind to any one of an HLA-DRB1*1501 molecule, HLA-DPB1*0901 molecule and HLA-DPB1*0501 molecule.
- 55
14. A method for the determination of the presence or amount of a WT1-specific helper T cell in any one of an HLA-DRB1*1501-positive, HLA-DPB1*0901-positive and HLA-DPB1*0501-positive subject, comprising:
- (a) reacting a complex of a WT1 peptide and an HLA-DRB1*1501 molecule, HLA-DPB1*0901 molecule or HLA-DPB1*0501 molecule with a sample from the subject; and
- (b) determining the presence or amount of a helper T cell recognizing the complex contained in the sample.
15. A method for the determination of the presence or amount of a WT1-specific helper T cell in an HLA-DRB1*1501-positive, HLA-DPB1*0901-positive, HLA-DPB1*0501-positive, HLA-DRB1*0405-positive or HLA-DRB1*1502-positive subject, comprising:
- (a) stimulating a peripheral blood mononuclear cell, invasive lymphocyte, tumor cell, cell in ascitic fluid, cell in pleural fluid, cell in cerebrospinal fluid, bone marrow cell or lymph node cell with a WT1 peptide; and
- (b) determining the production of a cytokine or the reaction of the helper T cell,

EP 2 119 778 A1

wherein a presence or an increase in the amount of the production of the cytokine or the reaction of the helper T cell indicates the presence or amount of the WT1-specific helper T cell.

5

10

15

20

25

30

35

40

45

50

55

Fig. 1

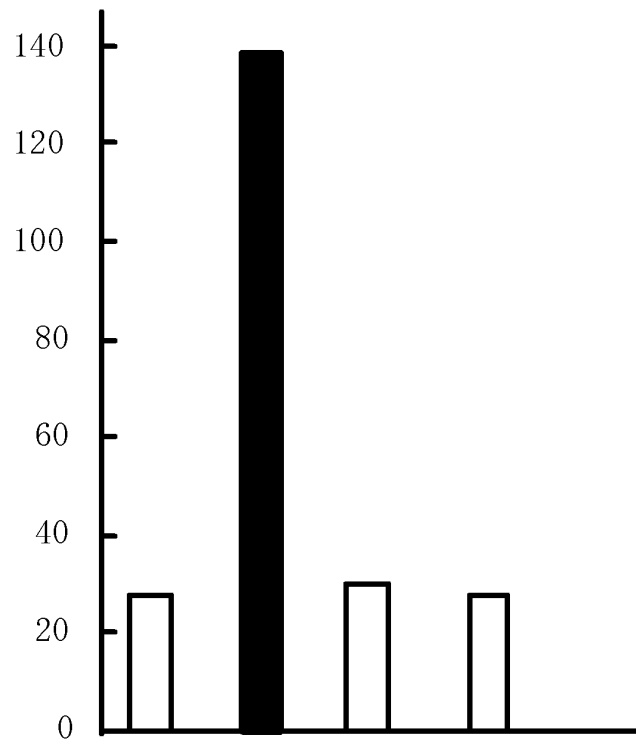


Fig. 2

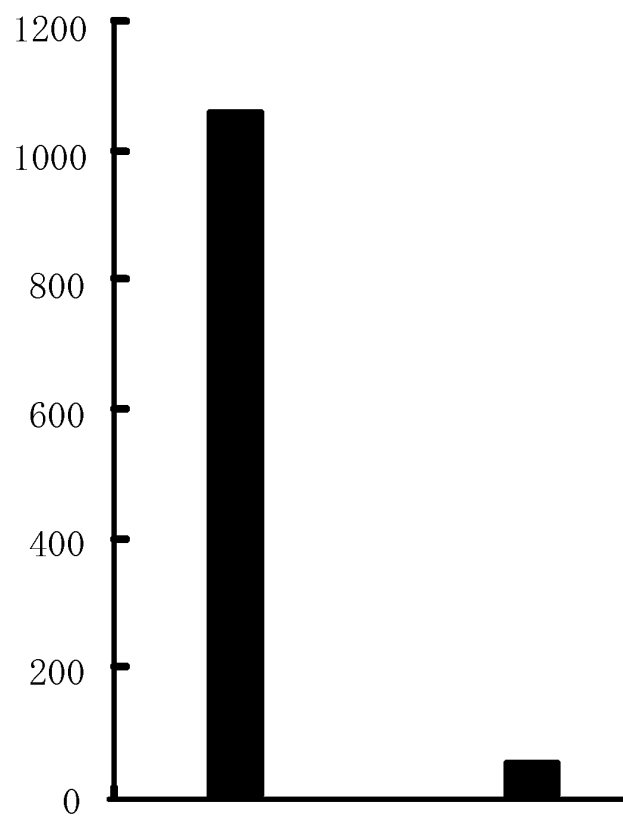


Fig. 3

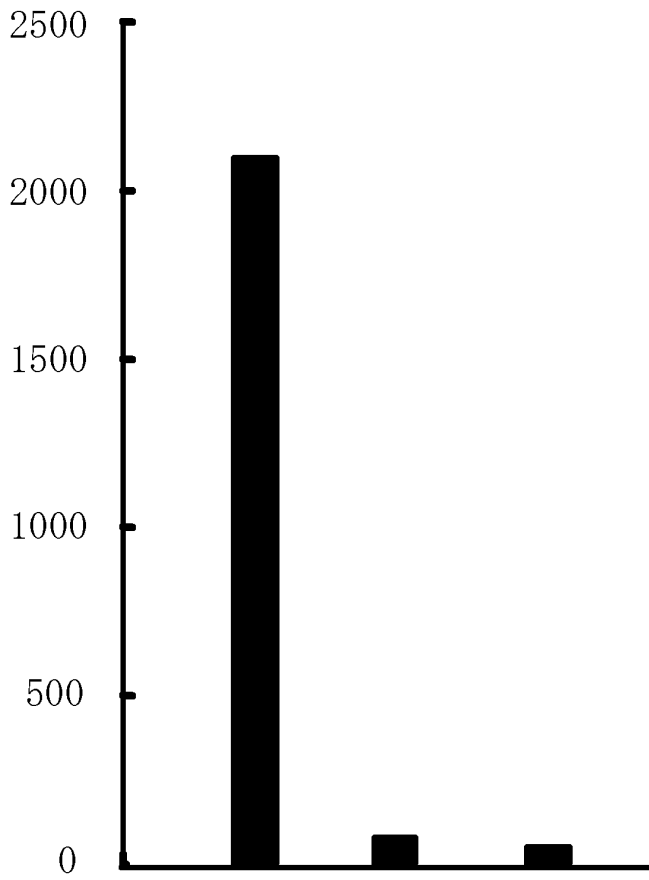


Fig. 4

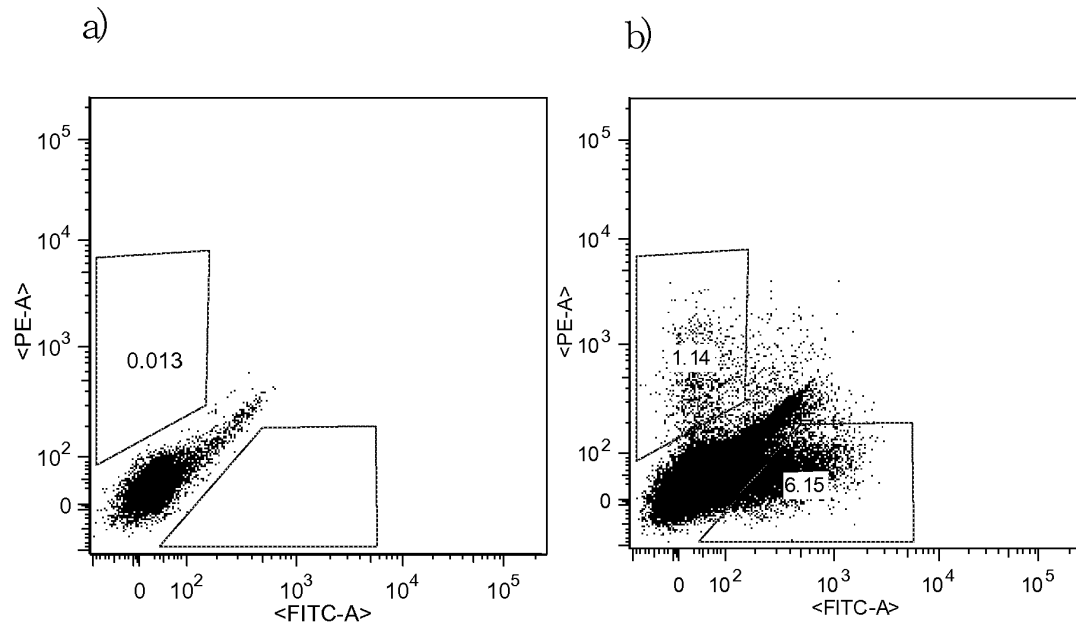


Fig. 5

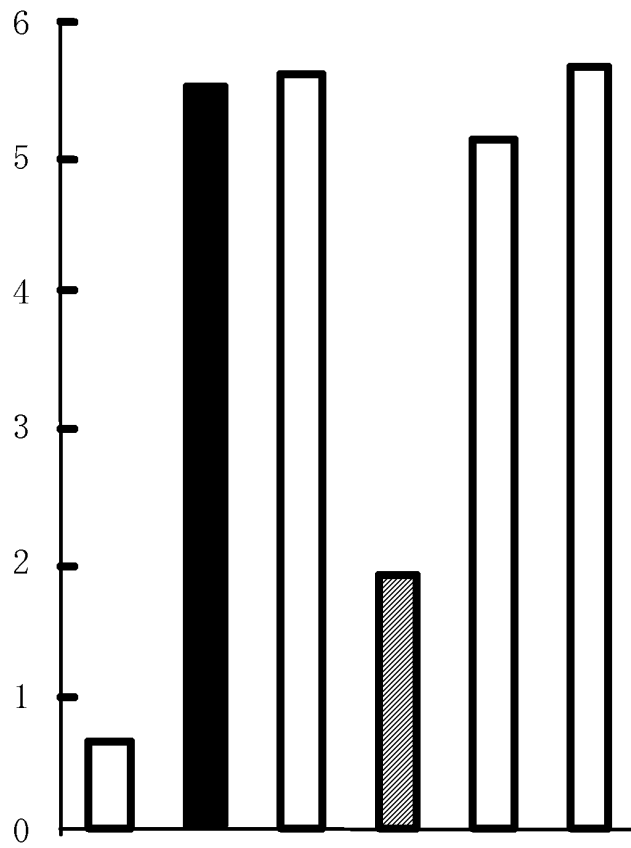


Fig. 6

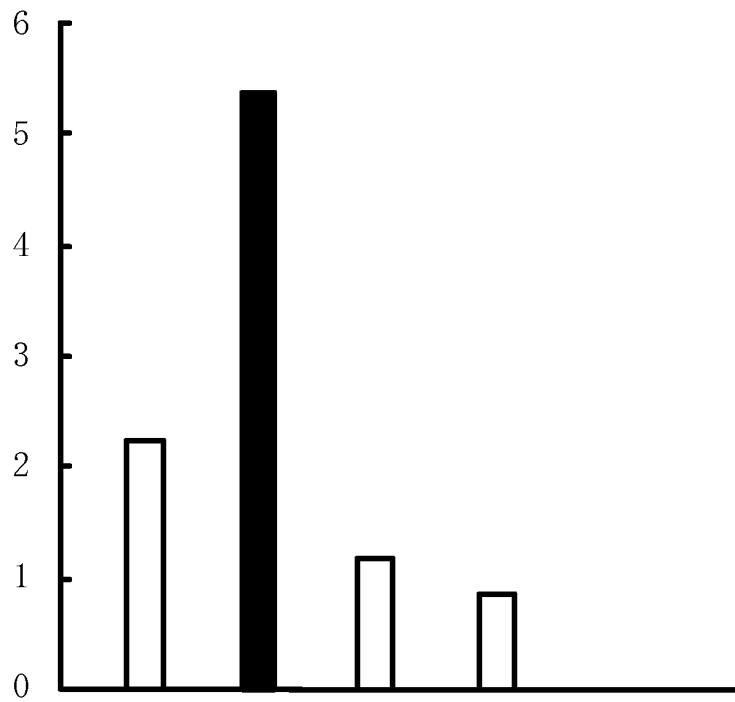


Fig. 7

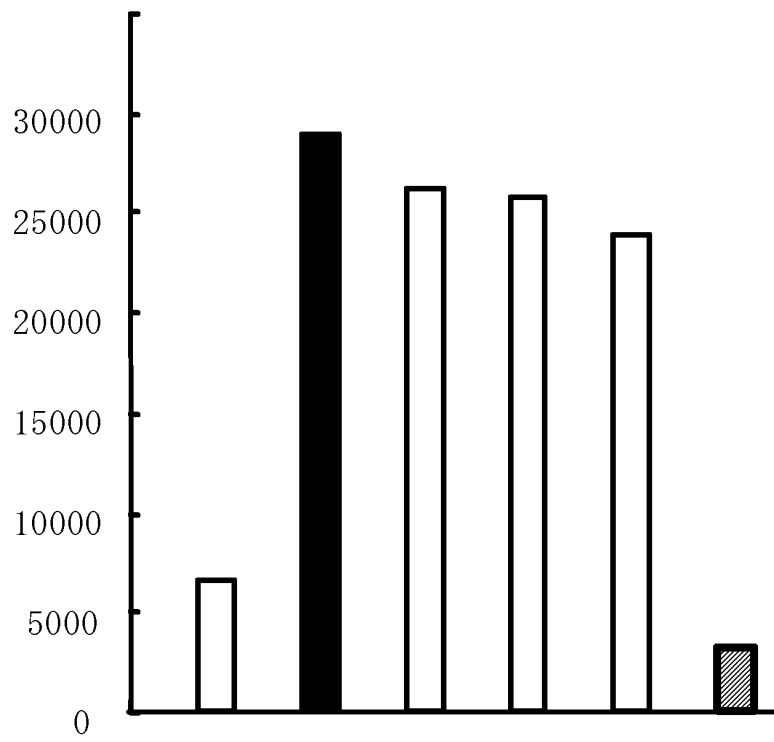


Fig. 8

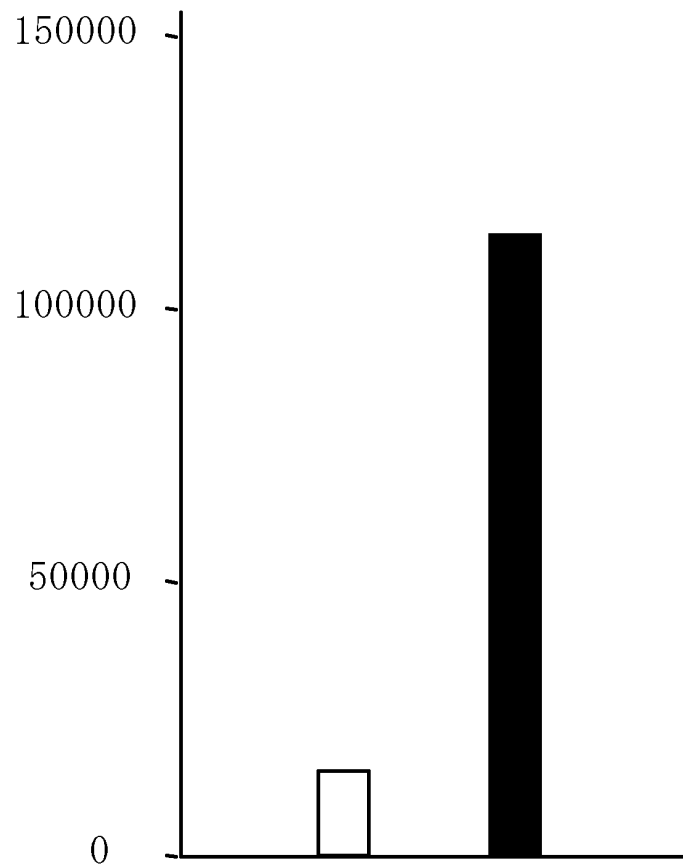


Fig. 9

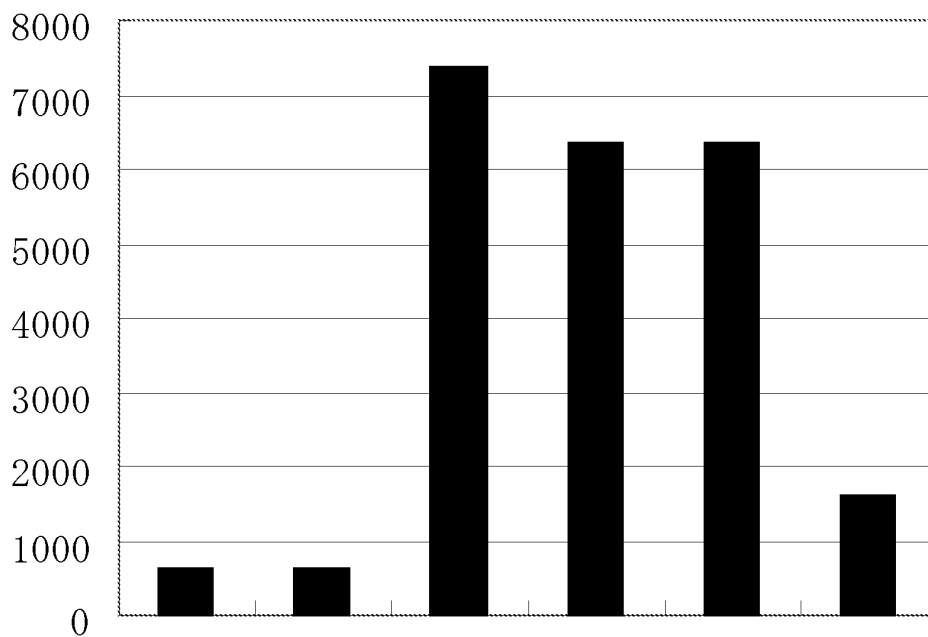
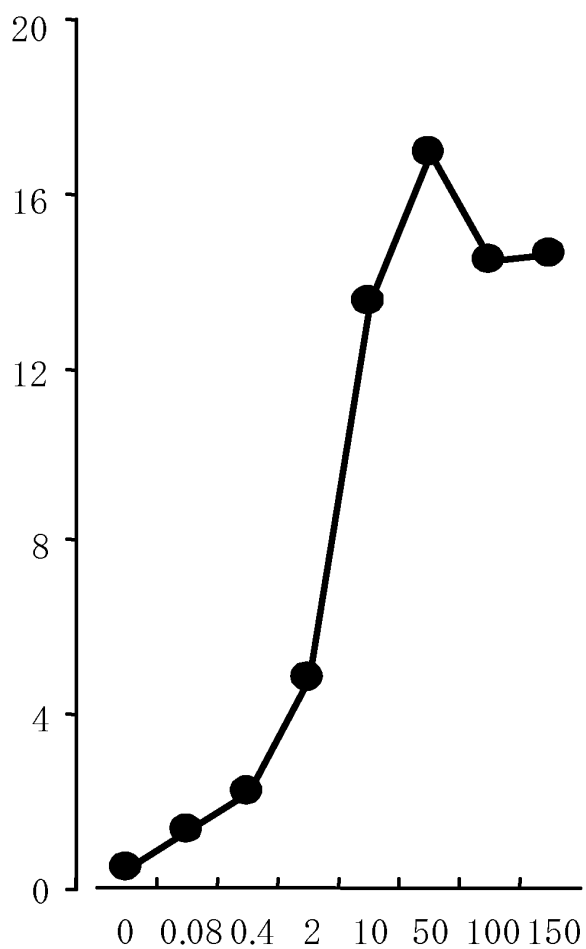


Fig. 10



INTERNATIONAL SEARCH REPORT

International application No.

PCT/JP2008/053417

A. CLASSIFICATION OF SUBJECT MATTER C12N15/09(2006.01)i, A61K38/00(2006.01)i, A61P35/00(2006.01)i, A61P35/02(2006.01)i, A61P43/00(2006.01)i, C07K14/82(2006.01)i, C07K16/32(2006.01)i, C12N15/00(2006.01)i, C12Q1/02(2006.01)i, G01N33/53(2006.01)i According to International Patent Classification (IPC) or to both national classification and IPC		
B. FIELDS SEARCHED		
Minimum documentation searched (classification system followed by classification symbols) C12N15/09, A61K38/00, A61P35/00, A61P35/02, A61P43/00, C07K14/82, C07K16/32, C12N15/00, C12Q1/02, G01N33/53		
Documentation searched other than minimum documentation to the extent that such documents are included in the fields searched		
Electronic data base consulted during the international search (name of data base and, where practicable, search terms used) BIOSIS/MEDLINE/WPIDS (STN), PubMed, JSTPlus (JDreamII), JMEDPlus (JDreamII), JST7580 (JDreamII)		
C. DOCUMENTS CONSIDERED TO BE RELEVANT		
Category*	Citation of document, with indication, where appropriate, of the relevant passages	Relevant to claim No.
X	WO 2005/045027 A1 (SUGIYAMA, Haruo), 19 May, 2005 (19.05.05), Full text & EP 1696027 A1	1-7, 9-11, 13-15
A	SOTIRIADOU, R. et al, Peptide HER2(776-788) represents a naturally processed broad MHC class II-restricted T cell epitope, Br. J. Cancer, 2001, Vol.85, No.10, pp.1527-1534	1-7, 9-11, 13-15
A	HURAL, J.A. et al, Identification of naturally processed CD4 T cell epitopes from the prostate-specific antigen kallikrein 4 using peptide-based in vitro stimulation, J. Immunol., 2002, Vol.169, No.1, pp.557-565	1-7, 9-11, 13-15
<input type="checkbox"/> Further documents are listed in the continuation of Box C. <input type="checkbox"/> See patent family annex.		
* Special categories of cited documents: "A" document defining the general state of the art which is not considered to be of particular relevance "E" earlier application or patent but published on or after the international filing date "L" document which may throw doubts on priority claim(s) or which is cited to establish the publication date of another citation or other special reason (as specified) "O" document referring to an oral disclosure, use, exhibition or other means "P" document published prior to the international filing date but later than the priority date claimed "T" later document published after the international filing date or priority date and not in conflict with the application but cited to understand the principle or theory underlying the invention "X" document of particular relevance; the claimed invention cannot be considered novel or cannot be considered to involve an inventive step when the document is taken alone "Y" document of particular relevance; the claimed invention cannot be considered to involve an inventive step when the document is combined with one or more other such documents, such combination being obvious to a person skilled in the art "&" document member of the same patent family		
Date of the actual completion of the international search 23 April, 2008 (23.04.08)		Date of mailing of the international search report 13 May, 2008 (13.05.08)
Name and mailing address of the ISA/ Japanese Patent Office		Authorized officer
Facsimile No.		Telephone No.

INTERNATIONAL SEARCH REPORT

International application No.

PCT/JP2008/053417

Box No. II Observations where certain claims were found unsearchable (Continuation of item 2 of first sheet)

This international search report has not been established in respect of certain claims under Article 17(2)(a) for the following reasons:

1. Claims Nos.: 8, 12
because they relate to subject matter not required to be searched by this Authority, namely:
The inventions in claims 8 and 12 pertain to methods for treatment of cancer and methods for treatment of the human body by therapy, thus relate to a subject matter which this International Searching Authority is not required to search.
2. Claims Nos.:
because they relate to parts of the international application that do not comply with the prescribed requirements to such an extent that no meaningful international search can be carried out, specifically:
3. Claims Nos.:
because they are dependent claims and are not drafted in accordance with the second and third sentences of Rule 6.4(a).

Box No. III Observations where unity of invention is lacking (Continuation of item 3 of first sheet)

This International Searching Authority found multiple inventions in this international application, as follows:

1. As all required additional search fees were timely paid by the applicant, this international search report covers all searchable claims.
2. As all searchable claims could be searched without effort justifying additional fees, this Authority did not invite payment of additional fees.
3. As only some of the required additional search fees were timely paid by the applicant, this international search report covers only those claims for which fees were paid, specifically claims Nos.:
4. No required additional search fees were timely paid by the applicant. Consequently, this international search report is restricted to the invention first mentioned in the claims; it is covered by claims Nos.:

Remark on Protest
the

- The additional search fees were accompanied by the applicant's protest and, where applicable, payment of a protest fee.
- The additional search fees were accompanied by the applicant's protest but the applicable protest fee was not paid within the time limit specified in the invitation.

REFERENCES CITED IN THE DESCRIPTION

This list of references cited by the applicant is for the reader's convenience only. It does not form part of the European patent document. Even though great care has been taken in compiling the references, errors or omissions cannot be excluded and the EPO disclaims all liability in this regard.

Patent documents cited in the description

- WO 2003106682 A [0005]
- WO 2005095598 A [0005]
- WO 2007097358 A [0005]
- JP 2007074146 W [0005]
- WO 2005045027 A [0005]

Non-patent literature cited in the description

- **Daniel A. Haber et al.** *Cell*, 29 June 1990, vol. 61 (7), 1257-69 [0005]
- **Call KM et al.** *Cell*, 09 February 1990, vol. 60 (3), 509-20 [0005]
- **Menke AL et al.** *Int Rev Cytol.*, 1998, vol. 181, 151-212 [0005]
- **Yamagami T et al.** *Blood*, 01 April 1996, vol. 87 (7), 2878-84 [0005]
- **Inoue K et al.** *Blood*, 15 April 1998, vol. 91 (8), 2969-76 [0005]
- **Tsuboi A et al.** *Leuk Res.*, May 1999, vol. 23 (5), 499-505 [0005]
- **Oka Y et al.** *Immunogenetics*, February 2000, vol. 51 (2), 99-107 [0005]
- **Gao FG et al.** *Cancer Res.*, 15 November 2002, vol. 62 (22), 6438-41 [0005]
- **Zeng G.** *J Immunother.*, May 2001, vol. 24 (3), 195-204 [0005]
- **Knights AJ et al.** *Cancer Immunol Immunother.*, July 2002, vol. 51 (5), 271-81 [0005]
- **Sotiriadou R et al.** *Br J Cancer*, 16 November 2001, vol. 85 (10), 1527-34 [0005]
- **Hural JA et al.** *J Immunol.*, 01 July 2002, vol. 169 (1), 557-65 [0005]
- Peptide Synthesis. Interscience, 1966 [0013]
- The Proteins. Academic Press Inc, 1976, vol. 2 [0013]
- Peptide-Gosei. Maruzen Co., Ltd, 1975 [0013]
- Peptide-Gosei No Kiso To Jikken. Maruzen Co., Ltd, 1985 [0013]
- Iyaku Hin No Kaihatsu (Zoku). Peptide-Gosei, Hirokawa. Book store, 1991, vol. 14 [0013]

专利名称(译)	辅助t细胞的活化方法和用于该方法的组合物		
公开(公告)号	EP2119778A1	公开(公告)日	2009-11-18
申请号	EP2008712039	申请日	2008-02-27
[标]申请(专利权)人(译)	株式会社癌免疫研究所		
申请(专利权)人(译)	国际学院癌症免疫, Inc.的.		
当前申请(专利权)人(译)	国际学院癌症免疫, Inc.的.		
[标]发明人	SUGIYAMA HARUO		
发明人	SUGIYAMA, HARUO		
IPC分类号	C12N15/09 A61K38/00 A61P35/00 A61P35/02 A61P43/00 C07K14/82 C07K16/32 C12N15/00 C12Q1/02 G01N33/53 A61K39/00 C07K7/08 C07K14/47 C12N5/0783 C12N5/10 C12Q1/04 G01N33/50		
CPC分类号	A61K38/00 A61K39/0011 A61K2039/55516 A61P35/00 A61P35/02 A61P37/04 A61P43/00 C07K14/4748 G01N33/505 C12N5/0636 A61K39/001153		
优先权	2007047317 2007-02-27 JP		
其他公开文献	EP2119778B1 EP2119778A4		
外部链接	Espacenet		

摘要(译)

公开了一种激活辅助性T细胞的方法,其包括将WT1肽添加至抗原呈递细胞以激活辅助性T细胞的步骤,其中WT1肽能够结合选自HLA-的任何一种。DRB1 * 1501分子,HLA-DPB1 * 0901分子和HLA-DPB1 * 0501分子;用于该方法的组合物;通过激活辅助T细胞治疗和/或预防癌症的方法;用于治疗 and/或预防方法的药物组合物;和别的。

```

SEQUENCE LISTING
<110> International Institute of Cancer Immunology, Inc.
<120> Method for Activation of Helper T Cell and Composition for Use in the
Method
<130> 668070
<150> JP 2007-047317
<151> 2007-02-27
<160> 2
<170> PatentIn version 3.2
<210> 1
<211> 449
<212> PRT
<213> Homo sapiens
<400> 1
Met Gly Ser Asp Val Arg Asp Leu Asn Ala Leu Leu Pro Ala Val Pro
1 5 10 15
Ser Leu Gly Gly Gly Gly Cys Ala Leu Pro Val Ser Gly Ala Ala
20 25
Gln Trp Ala Pro Val Leu Asp Phe Ala Pro Pro Gly Ala Ser Ala Tyr
35 40 45
Gly Ser Leu Gly Gly Pro Ala Pro Pro Ala Pro Pro Pro Pro
50 55 60
Pro Pro Pro Pro His Ser Phe Ile Lys Gln Glu Pro Ser Trp Gly Gly
65 70 75 80
Ala Glu Pro His Glu Glu Gln Cys Leu Ser Ala Phe Thr Val His Phe
85 90 95
Ser Gly Gln Phe Thr Gly Thr Ala Gly Ala Cys Arg Tyr Gly Pro Phe
100 105
Gly Pro Pro Pro Ser Gln Ala Ser Ser Gly Gln Ala Arg Met Phe
110 115
Pro Asn Ala Pro Tyr Leu Pro Ser Cys Leu Glu Ser Gln Pro Ala Ile
120 125 130 135 140
Arg Asn Gln Gly Tyr Ser Thr Val Thr Phe Asp Gly Thr Pro Ser Tyr
145 150 155
Gly His Thr Pro Ser His His Ala Ala Gln Phe Pro Asn His Ser Phe
160 165 170 175
Lys His Glu Asp Pro Met Gly Gln Gln Gly Ser Leu Gly Glu Gln Gln
180 185 190
Tyr Ser Val Pro Pro Pro Val Tyr Gly Cys His Thr Pro Thr Asp Ser
195 200 205

```