



(12) **EUROPEAN PATENT APPLICATION**

(43) Date of publication:
03.08.2016 Bulletin 2016/31

(51) Int Cl.:
C07K 16/28 (2006.01) **C07K 16/18** (2006.01)
C07K 16/46 (2006.01) **G01N 33/53** (2006.01)
C12N 5/12 (2006.01) **G01N 33/15** (2006.01)

(21) Application number: **15200589.8**

(22) Date of filing: **08.04.2011**

(84) Designated Contracting States:
AL AT BE BG CH CY CZ DE DK EE ES FI FR GB GR HR HU IE IS IT LI LT LU LV MC MK MT NL NO PL PT RO RS SE SI SK SM TR

(72) Inventor: **SNIDER, James**
San Diego, CA 92109 (US)

(30) Priority: **09.04.2010 US 322578 P**
18.05.2010 US 345837 P

(74) Representative: **Williams, Gareth Owen**
Marks & Clerk LLP
62-68 Hills Road
Cambridge CB2 1LA (GB)

(62) Document number(s) of the earlier application(s) in accordance with Art. 76 EPC:
11766825.1 / 2 556 090

Remarks:

- This application was filed on 16-12-2015 as a divisional application to the application mentioned under INID code 62.
- Claims filed after the date of filing of the application/after the date of receipt of the divisional application (Rule 68(4) EPC).

(71) Applicant: **Critical Care Diagnostics, Inc.**
San Diego, California 92109 (US)

(54) **SOLUBLE HUMAN ST-2 ANTIBODIES AND ASSAYS**

(57) Provided herein are antibodies and antigen-binding antibody fragments that bind to human soluble Growth Stimulation-Expressed Gene 2 (ST2) pro-

tein, kits containing these antibodies and antibody fragments, and methods of using these antibodies and antibody fragments.

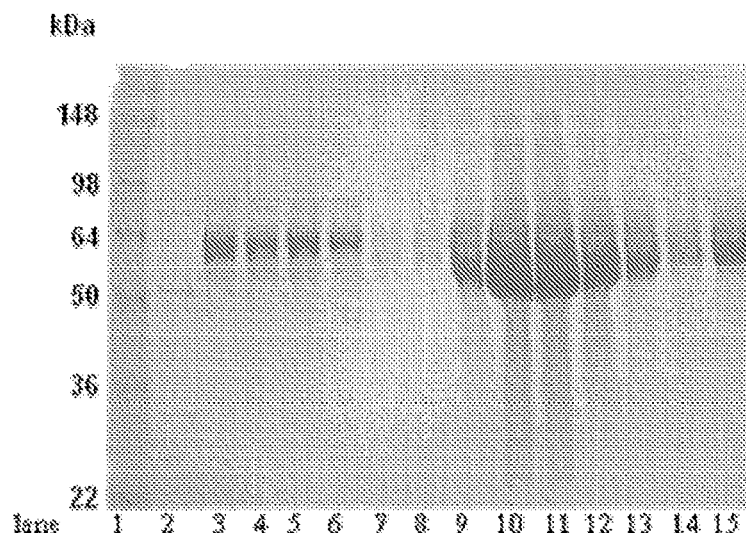


Figure 1

Description**CROSS-REFERENCE TO RELATED APPLICATIONS**

[0001] This application claims priority to United States provisional application 61/322,578, filed April 9, 2010, and United States provisional application 61/345,837, filed May 18, 2010, the contents of each of which are incorporated herein by reference in their entirety.

TECHNICAL FIELD

[0002] Described herein are antibodies and antigen-binding fragments of antibodies that bind to human soluble Growth Stimulation-Expressed Gene 2 (ST2) protein, kits containing these antibodies and antibody fragments, and assays using these antibodies and antibody fragments.

BACKGROUND

[0003] ST2 is an interleukin-1 receptor family member with transmembrane (ST2L) and soluble isoforms (sST2 or soluble ST2) (Iwahana et al., Eur. J. Biochem. 264:397-406, 1999). Recently published articles describe the current knowledge on the relationship of ST2 to inflammatory diseases (Arend et al., Immunol. Rev. 223:20-38, 2008; Kakkar et al., Nat. Rev. Drug Discov. 7:827-840, 2008; Hayakawa et al., J. Biol. Chem. 282:26369-26380, 2007; Trajkovic et al., Cytokine Growth Factor Rev. 15:87-95, 2004). Circulating concentrations of human soluble ST2 are elevated in patients suffering from various disorders associated with an abnormal type-2 T helper cell (Th2) response, including systemic lupus erythematosus and asthma, as well as in inflammatory conditions that are mainly independent of a Th2 response, such as septic shock or trauma (Trajkovic et al., Cytokine Growth Factor Rev. 15:87-95, 2004; Brunner et al., Intensive Care Med. 30:1468-1473, 2004). Furthermore, interleukin-33/ST2L signaling represents a crucial cardioprotective mechanism in case of mechanical overload (Seki et al., Circulation Heart Fail. 2:684-691, 2009; Kakkar et al., Nat. Rev. Drug Discov. 7:827-40, 2008; Sanada et al., J. Clin. Invest. 117:1538-1549, 2007). An elevation in human soluble ST2 is also predictive of worse prognosis in patients with heart failure (HF) and those with myocardial infarction (Kakkar et al., Nat. Rev. Drug Discov. 7:827-40, 2008; Weinberg et al., Circulation 107:721-726, 2003; Shimpo et al., Circulation 109:2186-2190, 2004; Januzzi et al., J. Am. Coll. Cardiol. 50:607-613, 2007; Mueller et al., Clin. Chem. 54:752-756, 2008; Rehman et al., J. Am. Coll. Cardiol. 52:1458-65, 2008; Sabatine et al., Circulation 117:1936-1944, 2008). Elevated levels of human soluble ST2 are also predictive for death of a subject within one year (see, for example, WO 07/127749). Taken together, human soluble ST2 has been implicated in certain inflammatory diseases and the cardioprotective paracrine system, and is a predictive marker for prognosis in patients with heart failure and for death of a subject within one year.

SUMMARY

[0004] The present invention is based, at least in part, on the development of new antibodies specific for human soluble ST2 protein. These antibodies and antigen-binding fragments thereof are useful, e.g., for the quantitation of human soluble ST2 proteins in biological samples (e.g., clinical samples), for predicting the risk of death within one year in a subject, for determining whether to discharge or to initiate or continue therapeutic treatment (e.g., inpatient treatment) of a subject, and for selecting a subject for participation in a clinical study. Provided herein are these antibodies and antigen-binding fragments thereof, kits containing these antibodies and antibody fragments, and various methods of using these antibodies and antibody fragments.

[0005] Provided herein are isolated antibodies and antigen-binding fragments thereof that are, or bind competitively with, an antibody produced from the hybridomas deposited at the American Type Culture Collection (ATCC) and designated by Patent Deposit Designation PTA-10431 and PTA 10432. In some embodiments, the antibody or fragment thereof does not bind competitively with either or both of a D066-3 or a D067-3 antibody (MBL International) (described in U.S. Patent No. 7,087,396), or has a K_D for binding to human soluble ST2 equal to or less than 1.51×10^{-9} M. In some embodiments, the antibody or fragment thereof has a K_D for binding to human soluble ST2 equal to or less than 8.59×10^{-10} M. In some embodiments, the antibody or fragment thereof is chimeric or is humanized. In some embodiments, the fragment is selected from the group of: a Fab fragment, a $F(ab')_2$ fragment, and a scFv fragment. In some embodiments, the antibody or fragment thereof is glycosylated. In some embodiments, the antibody or fragment thereof contains one or more complementary determining regions of the light or heavy chain of the antibody produced by the hybridoma deposited at the ATCC and designated by the Patent Deposit Designation PTA-10431 or PTA-10432. In some embodiments, the antibody is an antibody produced by the hybridoma deposited at the ATCC and designed by the Patent Deposit Designation PTA-10431, or an antigen-binding fragment thereof, or an antibody produced by the hybridoma

deposited at the ATCC and designated by the Patent Deposit Designation PTA-10432, or an antigen-binding fragment thereof.

[0006] Also provided are isolated antibodies and antigen-binding fragments thereof that specifically bind to human soluble ST2, wherein the antibodies and antigen-binding fragments thereof were produced by a process that includes immunizing a non-human mammal (e.g., mouse, rat, rabbit, goat, cow, pig, monkey, or horse) with a recombinant human soluble ST2 isolated from a human cell (e.g., a human fibroblast, neuronal, epithelial, or endothelial cell, an embryonic or adult cell, especially a human embryonic kidney cell). In some embodiments, the recombinant human soluble ST2 isolated is fully glycosylated, i.e., has substantially the same glycosylation as a native endogenous human soluble ST2 present in human serum. In some embodiments of all of the antibodies and fragments described herein, the antibody or fragment thereof is labeled.

[0007] Also provided are cells of the hybridoma deposited at the ATCC and designated by the Patent Deposit Designation PTA-10431 and cells of the hybridoma deposited at the ATCC and designated by the Patent Deposit Designation PTA-10432.

[0008] Also provided are methods of quantitating a level of human soluble ST2 in a sample from a subject. The methods include contacting the sample with at least one antibody or fragment thereof described herein, and detecting binding of the antibody or fragment thereof to human soluble ST2. In some embodiments, the method includes the use of at least two different antibodies or fragments thereof described herein.

[0009] Also provided are methods of predicting the risk of death within one year in a subject. The methods include obtaining a sample from a subject and determining the level of human soluble ST2 using at least one antibody or fragment thereof described herein, where an elevated level of human soluble ST2 in the sample compared to a reference level of human soluble ST2 indicates that the subject has an increased risk of death within one year (e.g., increased risk of death within one year relative to a subject (e.g., a subject having the same disease) that has decreased level or substantially the same level of human soluble ST2 relative to the same control), and a decreased level or substantially the same level of human soluble ST2 indicates that the subject has a decreased risk of death within one year (e.g., a decreased risk of death within one year relative to a subject (e.g., a subject having the same disease) that has an increased level or substantially the same level of human soluble ST2 relative to the same control).

[0010] Also provided are methods of determining whether to discharge an inpatient or to initiate or continue treatment of a subject on an inpatient basis including obtaining a sample from a subject and determining the level of human soluble ST2 in the sample using at least one antibody or fragment described herein, where an elevated level of human soluble ST2 in the sample compared to a reference level of human soluble ST2 indicates that inpatient treatment should be initiated or continued, and a decreased or an equal level of human soluble ST2 indicates that the subject should be considered for discharge. In some embodiments, the subject has at least one or more of the following symptoms: chest pain or discomfort, shortness of breath, nausea, vomiting, eructation, sweating, palpitations, lightheadedness, fatigue, and fainting.

[0011] Also provided are methods of selecting a subject for participation in a clinical study including obtaining a sample from a subject, determining the level of human soluble ST2 in the sample using at least one antibody or fragment thereof described herein, and selecting the subject for participation in a clinical study if the subject's level of human soluble ST2 relative to a reference level of human soluble ST2 indicates that the subject should be selected for participation in a clinical study. In some embodiments, the presence of an elevated level of human soluble ST2 indicates that the subject should be selected for participation in a clinical study.

[0012] Also provided are methods for selecting a therapeutic treatment for a subject including determining a level of human soluble ST2 in a biological sample from the subject using at least one antibody or fragment thereof described herein, wherein the subject's level of human soluble ST2 relative to a reference level of human soluble ST2 is used to select a therapeutic treatment for the subject. In some embodiments, the presence of an elevated level of human soluble ST2 is used to select the therapeutic treatment for the subject.

[0013] In some embodiments of any of the methods described herein, the subject is undiagnosed or is not presenting with two or more (e.g., at least three, four, or five) symptoms of a disease state; the subject has been diagnosed as having a disease (e.g., heart failure, coronary artery disease, cardiovascular disease, acute coronary syndrome, renal insufficiency, stroke, or any of the diseases described herein); or the subject has one or more of: hypertriglyceridemia, hypercholesterolemia, hypertension, and a body mass index of ≥ 30 . In some embodiments of any of the methods described herein, the determining is performed using at least two antibodies or fragments thereof described herein.

[0014] In some embodiments of any of the methods described herein, the reference level of human soluble ST2 is a threshold level of human soluble ST2. In some embodiments, the threshold level is an average level of human soluble ST2 in a healthy patient population (e.g., a healthy male patient population or a healthy female patient population). In some embodiments of any of the methods described herein, the reference level is a level of human soluble ST2 present in a sample of a subject not presenting with two or more symptoms of disease, a subject not diagnosed as having a disease, or a subject not identified as being at risk for developing a disease.

[0015] In any of the methods described herein, the subject has not been diagnosed as having a disease (e.g., heart

failure, coronary artery disease, cardiovascular disease, acute coronary artery disease, acute coronary syndrome, renal insufficiency, or stroke, or any of the diseases described herein). In any of the methods described herein, the sample contains blood, serum, or plasma. Any of the antibodies and fragments thereof described herein can be used in any of methods described herein.

[0016] Also provided are methods of diagnosing a disease in a subject including obtaining a sample from a subject, determining a level of human soluble ST2 in the sample using at least one antibody or fragment thereof described herein and a level of at least one additional marker, wherein an elevated level of human soluble ST2 in the sample compared to a reference level of human soluble ST2 and an altered level of the at least one additional marker relative to a reference level of the at least one additional marker, indicate that the subject has the disease (e.g., cardiovascular disease, a pulmonary disease, sepsis, Kawasaki disease, or a Th2-associated disease, or any of the other diseases described herein).

[0017] Also provided are methods for determining whether, a subject has a normal human soluble ST2 level (and thus is likely to be free from severe disease, e.g., cardiovascular disease, and a normal risk of death or hospitalization, e.g., within one year) including obtaining a sample from a subject and determining the level of human soluble ST2 in the sample, wherein the subject is determined to have a normal human soluble ST2 level if the level of human soluble ST2 falls in a specific range (e.g., between about 14.5 to about 25.3 ng/mL, or between about 18.1 to about 19.9 ng/mL). In some embodiments, a male subject is determined to have a normal human soluble ST2 level if the level of human soluble ST2 is between any range listed in Table 9. In some embodiments, a female subject is determined to have a normal human soluble ST2 if the level of human soluble ST2 is between any range listed in Table 9.

[0018] Also provided are kits containing at least one (e.g., two, three, four, or five) of the antibodies or antigen-binding fragments thereof described herein. Some embodiments of these kits contain two antibodies or antigen-binding fragments thereof described herein. In some embodiments of these kits, at least one of the antibodies or fragments thereof has a K_D for binding to human soluble ST2 (e.g., recombinant human soluble ST2) equal to or less than 8.59×10^{-10} M. In some embodiments, the kit is provided as an enzyme-linked immunosorbent assay (ELISA). In some embodiments, the kit further contains a recombinant human soluble ST2 isolated from a human cell (e.g., a human embryonic kidney cell). In some embodiments, the recombinant human soluble ST2 is fully glycosylated.

[0019] By the term "soluble ST2" is meant a soluble protein containing a sequence at least 90% identical (e.g., at least 95%, 96%, 97%, 98%, 99%, or 100% identical) to NCBI Accession No. NP_003847.2 (SEQ ID NO: 1) or a nucleic acid containing a sequence at least 90% identical (e.g., at least 95%, 96%, 97%, 98%, 99%, or 100% identical) to NCBI Accession No. NM_003856.2 (SEQ ID NO: 2).

[0020] By the term "elevated" or "elevation" is meant a difference, e.g., a statistically significant difference (e.g., an increase) in a determined or measured level (e.g., a human soluble ST2 protein level) compared to a reference level (e.g., a level of human soluble ST2 in a subject not having a disease, a subject not presenting with two or more symptoms of a disease, or a subject not identified as being at risk of developing a disease, or a threshold level of human soluble ST2). In some embodiments, the reference is a threshold level, and any level above that is considered "elevated." Additional reference levels of human soluble ST2 are described herein.

[0021] By the term "health care facility" is meant a location where a subject can receive medical care from a health care professional (e.g., a nurse, a physician, or a physician's assistant). Non-limiting examples of health care facilities include hospitals, clinics, and assisted care facilities (e.g., a nursing home).

[0022] By the term "inpatient" is meant a subject that is admitted to a medical care facility (e.g., a hospital or an assisted care facility).

[0023] By the term "inpatient treatment" is meant the monitoring and/or medical treatment of a subject that is admitted to a health care facility (e.g., a hospital or assisted care facility). For example, a subject receiving inpatient treatment may be administered one or more therapeutic agents by a health care professional or may undergo a medical procedure (e.g., surgery (e.g., organ transplant, heart bypass surgery), angioplasty, imaging (e.g., magnetic resonance imaging, ultrasound imaging, and computer tomography scanning)). In other examples, one or more marker of a disease or the severity of the condition can be periodically measured by a health care professional to assess the severity or progression of disease or the subject's condition.

[0024] By the term "reference level" is meant a threshold level or a level in a control subject or control patient population. A reference level will depend on the assay performed and can be determined by one of ordinary skill in the art. A reference level can be a baseline level or a level in the same patient measured at an earlier or later point in time. Some non-limiting examples of reference levels of human soluble ST2 include the level of human soluble ST2 in a subject that: has not been diagnosed as having a disease; does not present with at least two or more symptoms of a disease; does not have high risk CVD; does not have renal failure; does not have hypertriglyceridemia, hypercholesterolemia, hypertension, and/or a body mass index of < 30 (e.g., a BMI under 25); is not at risk of developing a disease; and/or does not suffer from a disease associated with increased ST2 levels (e.g., cardiovascular disease, a pulmonary disease, sepsis, Kawasaki disease, or a Th2-associated disease, or any of the other diseases described herein). Additional control patient populations are described herein. Additional examples of reference levels of human soluble ST2 are threshold levels of

human soluble ST2. Reference levels of human soluble ST2 can be determined using methods known in the art; some exemplary levels are described herein.

[0025] In some embodiments, a ratio of two human soluble ST2 levels in a subject is calculated. The reference ratio can be compared to a reference ratio of human soluble ST2 levels measured in a subject (e.g., any of the control subjects described herein or the same subject), for example, a reference ratio can be a ratio of the levels of human soluble ST2 before and after onset of a disease (e.g., cardiac disease (e.g., heart failure, coronary artery disease, cardiovascular disease, acute coronary syndrome, and angina), renal insufficiency, or stroke, or any of the other diseases associated with increased human soluble ST2 levels as described herein) symptoms; a ratio of the levels of human soluble ST2 before and after diagnosis with disease (e.g., cardiac disease (e.g., heart failure, coronary artery disease, cardiovascular disease, acute coronary syndrome, and angina), renal insufficiency, or stroke, or any of the other diseases described herein); a ratio of the levels of ST2 before and after therapeutic treatment for a disease ((e.g., cardiac disease (e.g., heart failure, coronary artery disease, cardiovascular disease, acute coronary syndrome, and angina), renal insufficiency, or stroke, or any of the other diseases described herein); a ratio of the human soluble ST2 levels at two different time points during therapeutic treatment (e.g., inpatient or outpatient treatment) for a disease (e.g., cardiac disease (e.g., heart failure, coronary artery disease, cardiovascular disease, acute coronary syndrome, and angina), renal insufficiency, or stroke, or any of the other diseases described herein); or a ratio of the human soluble ST2 levels before and after a cardiac event (e.g., a myocardial infarction).

[0026] In some embodiments, the ratio of the levels of human soluble ST2 measured in a subject can be compared to a threshold reference ratio. Reference ratios of human soluble ST2 can be determined using methods known in the art; reference ratios of human soluble ST2 can be calculated using the data described herein. For example, reference ratio of human soluble ST2 may be between about 0.7 and about 1.1, or about 1.

[0027] By the term "therapeutic treatment" or "treatment" is meant the administration of one or more pharmaceutical agents to a subject or the performance of a medical procedure on the body of a subject (e.g., surgery, such as organ transplant or heart surgery). Non-limiting examples of pharmaceutical agents that can be administered to a subject include nitrates, calcium channel blockers, diuretics, thrombolytic agents, digitalis, renin-angiotensin-aldosterone system (RAAS) modulating agents (e.g., beta-adrenergic blocking agents, angiotensin-converting enzyme inhibitors, aldosterone antagonists, renin inhibitors, and angiotensin II receptor blockers), and cholesterol-lowering agents (e.g., a statin). The term therapeutic treatment also includes an adjustment (e.g., increase or decrease) in the dose or frequency of one or more pharmaceutical agents that a subject can be taking, the administration of one or more new pharmaceutical agents to the subject, or the removal of one or more pharmaceutical agents from the subject's treatment plan.

[0028] As used herein, a "subject" is a mammal, e.g., a human.

[0029] As used herein, a "biological sample" includes one or more of blood, serum, plasma, urine, and body tissue. Generally, a biological sample is a sample containing serum, blood, or plasma.

[0030] As used herein, the term "antibody" refers to a protein that generally contains heavy chain polypeptides and light chain polypeptides. Antigen recognition and binding occurs within the variable regions of the heavy and light chains. Single domain antibodies having one heavy chain and one light chain, and heavy chain antibodies devoid of light chains, are also known. A given antibody comprises one of five different types of heavy chains, called alpha, delta, epsilon, gamma, and mu, the categorization of which is based on the amino acid sequence of the heavy chain constant region. These different types of heavy chains give rise to five classes of antibodies, IgA (including IgA1 and IgA2), IgD, IgE, IgG (IgG1, IgG2, IgG3, and IgG4) and IgM, respectively. A given antibody also comprises one of two types of light chains, called kappa or lambda, the categorization of which is based on the amino acid sequence of the light chain constant domains. IgG, IgD, and IgE antibodies generally contain two identical heavy chains and two identical light chains and two antigen combining domains, each composed of a heavy chain variable region (VH) and a light chain variable region (VL). Generally IgA antibodies are composed of two monomers, each monomer composed of two heavy chains and two light chains (as for IgG, IgD, and IgE antibodies). In this way the IgA molecule has four antigen binding domains, each again composed of a VH and a VL. Certain IgA antibodies are monomeric in that they are composed of two heavy chains and two light chains. Secreted IgM antibodies are generally composed of five monomers, each monomer composed of two heavy chains and two light chains (as for IgG and IgE antibodies). In this way the secreted IgM molecule has ten antigen-binding domains, each again composed of a VH and a VL. A cell surface form of IgM also exists and this has a two heavy chain/two light chain structure similar to IgG, IgD, and IgE antibodies.

[0031] As used herein, the term "chimeric antibody" refers to an antibody that has been engineered to comprise at least one human constant region. For example, one or all (e.g., one, two, or three) of the variable regions of the light chain(s) and/or one or all (e.g., one, two, or three) of the variable regions the heavy chain(s) of a mouse antibody (e.g., a mouse monoclonal antibody) can each be joined to a human constant region, such as, without limitation an IgG1 human constant region. Chimeric antibodies are typically less immunogenic to humans, relative to non-chimeric antibodies, and thus offer therapeutic benefits in certain situations. Those skilled in the art will be aware of chimeric antibodies, and will also be aware of suitable techniques for their generation. See, for example, U.S. Patent Nos. 4,816,567; 4,978,775; 4,975,369; and U.S. Pat. No. 4,816,397.

[0032] As used herein, the term "fully human antibodies" are antibodies or antigen binding fragments of antibodies that contain only human-derived amino acid sequences. For example, a fully human antibody may be produced from a human B-cell or a human hybridoma cell. In additional embodiments, the antibody may be produced from a transgenic animal that contains the locus for a human heavy chain immunoglobulin and a human light chain immunoglobulin, or contains a nucleic acid that encodes the heavy and light chains of a specific human antibody.

[0033] "Complementarity-determining region" or "CDR" as the terms are used herein refer to short polypeptide sequences within the variable region of both heavy and light chain polypeptides that are primarily responsible for mediating specific antigen recognition. CDRs have been described by Kabat, et al., J. Biol. Chem. 252, 6609-6616, 1977; Chothia et al., J. Mol. Biol. 196:901-917, 1987; and MacCallum et al., J. Mol. Biol. 262:732-745, 1996. There are three CDRs (termed CDR1, CDR2, and CDR3) within each VL and each VH.

[0034] "Fragment" or "antibody fragment" as the terms are used herein refer to a polypeptide derived from an antibody polypeptide molecule (e.g., an antibody heavy and/or light chain polypeptide) that does not comprise a full-length antibody polypeptide, but that still comprises at least a portion of a full-length antibody polypeptide that is capable of binding to an antigen. Antibody fragments can comprise a cleaved portion of a full length antibody polypeptide, although the term is not limited to such cleaved fragments. Antibody fragments can include, for example, Fab fragments, F(ab')₂ fragments, scFv (single-chain Fv) fragments, linear antibodies, monospecific or multispecific antibody fragments such as bispecific, trispecific, and multispecific antibodies (e.g., diabodies, triabodies, tetrabodies), minibodies, chelating recombinant antibodies, tribodies or bibodies, intrabodies, nanobodies, small modular immunopharmaceuticals (SMIP), binding-domain immunoglobulin fusion proteins, camelized antibodies, and VHH containing antibodies. Additional examples of antigen-binding antibody fragment's are known in the art.

[0035] "Framework region" as the term is used herein refers to amino acid sequences within the variable region of both heavy and light chain polypeptides that are not CDR sequences, and are primarily responsible for maintaining correct positioning of the CDR sequences to permit antigen binding. Although the framework regions themselves typically do not directly participate in antigen binding, as is known in the art, certain residues within the framework regions of certain antibodies can directly participate in antigen binding or can affect the ability of one or more amino acids in CDRs to interact with antigen.

[0036] "Humanized antibody" as the term is used herein refers to an antibody that has been engineered to comprise one or more human framework regions in the variable region together with non-human (e.g., mouse, rat, or hamster) complementarity-determining regions (CDRs) of the heavy and/or light chain. In some embodiments, a humanized antibody comprises sequences that are entirely human except for the CDR regions. Humanized antibodies are typically less immunogenic to humans, relative to non-humanized antibodies, and thus offer therapeutic benefits in certain situations. Humanized antibodies are known in the art, and suitable techniques for generating humanized antibodies are also known. See for example, Hwang et al., Methods 36:35, 2005; Queen et al., Proc. Natl. Acad. Sci. U.S.A. 86:10029-10033, 1989; Jones et al., Nature 321:522-25, 1986; Riechmann et al., Nature 332:323-27, 1988; Verhoeven et al., Science 239:1534-36, 1988; Orlandi et al., Proc. Natl. Acad. Sci. U.S.A. 86:3833-3837, 1989; U.S. Patent Nos. 5,225,539; 5,530,101; 5,585,089; 5,693,761; 5,693,762; and 6,180,370; and WO 90/07861.

[0037] As used herein, the term "Th2-associated disease" refers to a disease associated with an abnormal type-2 T helper cell (Th2) response.

[0038] As used herein, the term "cardiovascular disease" refers to a disorder of the heart and blood vessels, and includes disorders of the arteries, veins, arterioles, venules, and capillaries.

[0039] As used herein, the term "pulmonary disease" refers to a disorder of the lungs.

[0040] By the term "additional marker" is meant a protein, nucleic acid, lipid, or carbohydrate, or a combination (e.g., two or more) thereof, that is diagnostic of the presence of a particular disease. The methods described herein for diagnosing a subject as having a disease can include detecting a level of soluble human ST2 and at least one additional marker in a sample from the subject. Several additional markers useful for the diagnosis of disease are known in the art (e.g., proANP, NT-proANP, ANP, proBNP, NT-proBNP, BNP, troponin, CRP, creatinine, Blood Urea Nitrogen (BUN), liver function enzymes, albumin, and bacterial endotoxin; and those markers described in U.S. Patent Application Nos.: 2007/0248981; 2011/0053170; 2010/0009356; 2010/0055683; 2009/0264779; each of which is hereby incorporated by reference).

[0041] By the term "hypertriglyceridemia" is meant a triglyceride level that is greater than or equal to 180 ng/mL (e.g., greater than or equal to 200 ng/mL).

[0042] By the term "hypercholesterolemia" is meant an increased level of at least one form of cholesterol or total cholesterol in a subject. For example, a subject with hypercholesterolemia can have a high density lipoprotein (HDL) level of ≥ 40 mg/dL (e.g., ≥ 50 mg/dL or ≥ 60 mg/mL), a low density lipoprotein (LDL) level of ≥ 130 mg/dL (e.g., ≥ 160 mg/dL or ≥ 200 mg/dL), and/or a total cholesterol level of ≥ 200 mg/dL (e.g., 240 mg/dL).

[0043] By the term "hypertension" is meant an increased level of systolic and/or diastolic blood pressure. For example, a subject with hypertension can have a systolic blood pressure that is ≥ 120 mmHg (e.g., ≥ 140 mmHg or ≥ 160 mmHg) and/or a diastolic blood pressure that is ≥ 80 mmHg (e.g., ≥ 90 mmHg or ≥ 100 mmHg).

[0044] By the term "healthy subject" is meant a subject that does not have a disease (e.g., cardiovascular disease or pulmonary disease). For example, a healthy subject has not been diagnosed as having a disease and is not presenting with one or more (e.g., two, three, four, or five) symptoms of a disease state.

[0045] By "risk of death" is meant the risk of death in a subject from a disease or complications associated with a disease compared to a reference population (e.g., a healthy control population). The term risk of death as used herein excludes intentional or accidental death, e.g., death by blunt or crushing trauma, such as a car accident.

[0046] Unless otherwise defined, all technical and scientific terms used herein have the same meaning as commonly understood by one of ordinary skill in the art to which this invention belongs. Methods and materials are described herein for use in the present invention. Other suitable methods and materials known in the art can also be used. The materials, methods, and examples are illustrative only and not intended to be limiting. All publications, patent applications, patents, sequences, database entries, and other references mentioned herein are incorporated by reference in their entirety. In case of conflict, the present specification, including definitions, will control.

[0047] Other features and advantages of the invention will be apparent from the following detailed description and figures, and from the claims.

DESCRIPTION OF DRAWINGS

[0048]

FIG. 1 is an image showing the results of SDS-PAGE gel analysis of fractions from the recombinant human soluble ST2 protein purification. Lanes (10 μ L per sample lane) are as follows: 1 - MWM (5 μ L); 2 - His ladder (3 μ L); 3 - untransfected negative control; 4 - supernatant before purification; 5 - column flow through; 6 - binding buffer wash 1; 7 - 5 mM wash 2; 8 - 5 mM wash 3; 9 - 200 mM eluate fraction 2; 10 - 200 mM eluate fraction 3; 11 - 200 mM eluate fraction 4; 12 - 200 mM eluate fraction 5; 13 - 200 mM eluate fraction 6; 14 - 200 mM eluate fraction 7; and 15 - 0.3 μ g soluble ST2.

FIG. 2 shows a Western blot of purification fractions detecting the histidine tag in the recombinant human soluble ST2 protein. Lanes (10 μ L per lane) are as follows: 1 - MWM (5 μ L); 2 - His ladder (3 μ L); 3 - supernatant before purification; 4 - column flow through; 5 - binding buffer wash 1; 6 - binding buffer wash 2; 7 - 5 mM wash 2; 8 - 5 mM wash 3; 9 - 200 mM eluate fraction 2; 10 - 200 mM eluate fraction 3; 11 - 200 mM eluate fraction 4; 12 - 200 mM eluate fraction 5; 13 - 200 mM eluate fraction 6; 14 - 200 mM eluate fraction 7; and 15 - 0.3 μ g soluble ST2.

FIGs. 3A-3C show a Coomassie gel (FIG. 3A) and two Western blots of purified recombinant soluble ST2 comparing anti-ST2 commercial antibody D066 (MBL International) (FIG. 3B) with the hexa-histidine antibody (FIG. 3C). Lanes (10 μ L/sample lane) are as follows: 1 - MWM; 2 - His ladder; 3 - Serum ST2-His 1000 ng; 4 - Serum ST2-His 500 ng; 5 - Serum ST2-His 200 ng; 6 - Serum ST2-His 100 ng; 7 - Serum ST2-His 50 ng; 8 - Serum-free ST2-His 1000 ng; 9 - Serum-free ST2-His 500 ng; 10 - Serum-free ST2-His 200 ng; 11 - Serum-free ST2-His 100 ng; and 12 - Serum-free ST2-His 50 ng.

FIG. 4 is a line graph showing the results of an antigen sensitivity assessment of the 7E4 and 9F8 antibodies.

FIG. 5 is a line graph showing the results of an antigen sensitivity assessment of the 7E4 and 9F8 antibodies. The 7E4 and 9F8 antibodies were coated into individual wells of a 96-well plate at concentrations ranging from 5 μ g/mL to 0 and tested against a single concentration of biotin-conjugated recombinant soluble ST2.

FIG. 6 is a line graph showing the results of testing for their ability to be used together in a monoclonal antibody sandwich enzyme immunoassay (EIA) configuration, wherein either the 7E4 or the 9F8 antibody was biotinylated.

FIGs. 7A-7F are six graphs showing the results of surface plasmon resonance (SPR) analysis of antibody-antigen complex formation. FIG. 7A shows SPR analysis of antibody 9F8 (L1). FIG. 7B shows SPR analysis of antibody 7E4 (L2). FIG. 7C shows SPR analysis of antibody 11A7 (L3). FIG. 7D shows SPR analysis of antibody D066 (L4). FIG. 7E shows SPR analysis of antibody D067 (L5). FIG. 7F shows SPR analysis of an irrelevant antibody (L6).

FIGs. 8A-8F are six graphs showing the results of SPR analysis of antibody-antigen complex formation. FIG. 8A shows SPR analysis of antibody 9F8 (L1). FIG. 8B shows the SPR analysis of antibody 7E4 (L2). FIG. 8C shows SPR analysis of antibody 11A7 (L3). FIG. 8D shows SPR analysis of antibody 15D6 (L4). FIG. 8E shows SPR analysis of antibody D066 (L5). FIG. 8F shows SPR analysis of antibody D067 (L6).

FIG. 9 is a box-whisker plot showing human soluble ST2 concentrations by anticoagulant tube type.

FIG. 10 is a histogram showing human soluble ST2 concentration distribution of normal healthy donors.

FIG. 11 is a box-whisker plot showing human soluble ST2 concentrations as a function of gender and age in normal healthy donors.

DETAILED DESCRIPTION

[0049] Described herein are antibodies and antigen-binding fragments thereof that specifically bind to human soluble

ST2, kits containing these antibodies and fragments, and methods of using these antibodies and fragments.

ST2

[0050] The ST2 gene is a member of the interleukin-1 receptor family whose protein product exists both as a transmembrane form as well as a soluble receptor that is detectable in serum (Kieser et al., FEBS Lett. 372(2-3):189-193, 1995; Kumar et al., J. Biol. Chem. 270(46):27905-27913, 1995; Yanagisawa et al., FEBS Lett. 302(1):51-53, 1992; Kuroiwa et al., Hybridoma 19(2):151-159, 2000). Soluble ST2 was described to be markedly up-regulated in an experimental model of heart failure (Weinberg et al., Circulation 106(23):2961-2966, 2002), and data suggest that human soluble ST2 concentrations are also elevated in those with chronic severe heart failure (Weinberg et al., Circulation 107(5):721-726, 2003), as well as in those with acute myocardial infarction (Shimpo et al., Circulation 109(18):2186-2190, 2004).

[0051] Without wishing to be bound by theory, the transmembrane form of ST2 is thought to play a role in modulating responses of T helper type 2 cells (Lohning et al., Proc. Natl. Acad. Sci. U.S.A. 95(12):6930-6935, 1998; Schmitz et al., Immunity 23(5):479-490, 2005), and may play a role in development of tolerance in states of severe or chronic inflammation (Brint et al., Nat. Immunol. 5(4):373-379, 2004), while the soluble form of ST2 is up-regulated in growth stimulated fibroblasts (Yanagisawa et al., 1992, *supra*). Experimental data suggest that the ST2 gene is markedly up-regulated in states of cardiomyocyte stretch (Weinberg et al., 2002, *supra*) in a manner analogous to the induction of the BNP gene (Bruneau et al., Cardiovasc. Res. 28(10):1519-1525, 1994).

[0052] Tominaga et al. (FEBS Lett. 258:301-304, 1989) isolated murine genes that were specifically expressed by growth stimulation in BALB/c-3T3 cells. Haga et al. (Eur. J. Biochem. 270:163-170, 2003) describes that the ST2 gene was named on the basis of its induction by growth stimulation. The ST2 gene encodes two protein products: ST2 or sST2 which is a soluble secreted form, and ST2L, a transmembrane receptor form that is very similar to the interleukin-1 receptors. The HUGO Nomenclature Committee designated the human homolog of ST2, the cloning of which was described in Tominaga et al., Biochim. Biophys. Acta. 1171:215-218, 1992, as Interleukin 1 Receptor-Like 1 (IL1RL1). The two terms are used interchangeably herein.

[0053] The mRNA sequence of the shorter, soluble isoform of human ST2 can be found at GenBank Acc. No. NM_003856.2 (SEQ ID NO: 2), and the polypeptide sequence is at GenBank Acc. No. NP_0038472 (SEQ ID NO: 1). The mRNA sequence for the longer form of human ST2 is at GenBank Acc. No. NM_016232.4 (SEQ ID NO: 4), and the polypeptide sequence is at GenBank Acc. No. NP_057316.3 (SEQ ID NO: 3). Additional information is available in the public databases at GeneID: 9173, MIM ID # 601203, and UniGene No. Hs.66. In general, in the methods described herein, the human soluble form of ST2 polypeptide is measured.

Antibodies and Antigen-Binding Antibody Fragments

[0054] Provided herein are isolated antibodies and antigen-binding fragments thereof that bind human soluble ST2. The provided antibodies and fragments thereof can bind competitively with an antibody produced by the hybridoma deposited at the ATCC and designated by the Patent Deposit Designation PTA-10431 or PTA-10432 (corresponding to the 7E4 and the 9F8 antibodies, respectively). In some embodiments, the antibody or fragment does not bind competitively with D066-3 and D067-3 antibody (MBL International)(described in U.S. Patent No. 7,087,396), and has a K_D for binding to human soluble ST2 equal to or less than 1.51×10^{-9} M. In some embodiments, the antibody or fragment has a K_D for binding to human soluble ST2 equal to or less than 8.59×10^{-10} M. Methods for determining the affinity (K_D) of an antibody or fragment for binding to human soluble ST2 are described herein (e.g., surface plasmon resonance) and additional methods are known in the art. Also provided are the 7E4 and 9F8 monoclonal antibodies, produced by the methods described herein, and antigen-binding fragments thereof.

[0055] As used herein, the phrase "binds competitively" refers to the situation whereby binding of one antibody or antibody fragment to a given antigen decreases binding of a second antibody or antibody fragment to that same antigen. In some embodiments, an antibody or fragment binds competitively with another antibody or fragment when the two antibodies or fragments bind substantially the same epitope present on a given antigen (e.g., human soluble human ST2). As is shown in more detail in the Examples below, each of the antibodies produced by the hybridomas designated by Patent Deposit Designations PTA-10431 and PTA-10432 recognizes an epitope that is different from various other antibodies that were tested (e.g., D066-3 and D067-3 antibodies from MBL International), and thus does not bind competitively with those test antibodies. In some embodiments, an antibody or fragment described herein binds an epitope on human soluble ST2 that is recognized by an antibody produced by the hybridoma designated by Patent Deposit Designation PTA-10431 or PTA-10432. Methods for determining whether two different antibodies or fragments bind competitively are described herein and art known in the art (e.g., competitive enzyme-linked immunosorbent assays).

[0056] In some embodiments, the antibodies or fragments bind or show improved binding to an epitope present in recombinant human soluble ST2 protein that is produced from a human cell (e.g., a human fibroblast, epithelial, en-

dothelial, or neuronal cell, an embryonic or adult cell, or a human embryonic kidney cell, e.g., HEK293) that is not present in a recombinant human soluble ST2 produced in a non-human cell type. In some embodiments, the antibodies or fragments bind or show improved binding to an epitope present in a fully glycosylated human soluble ST2 protein (e.g., a human soluble ST2 protein isolated from human cells) that is not present in a recombinant human soluble ST2 protein that is not glycosylated or is mis- or under-glycosylated (e.g., is not fully glycosylated or is glycosylated in a pattern (e.g., number, position, and/or type of sugar(s)) that is not present in the native human soluble ST2 present in a human, e.g., in human serum). In some embodiments, the antibodies and antibody fragments bind to native human soluble ST2 better (e.g., with increased affinity) relative to other commercial available antibodies.

[0057] In some embodiments, the antibody is a monoclonal antibody produced by the hybridoma deposited at the ATCC and designated by Patent Deposit Designation PTA-10431 (the 7E4 antibody), or is an antigen-binding fragment of the antibody produced by the hybridoma deposited at the ATCC and designated by the Patent Deposit Designation PTA-10431 (fragments of the 7E4 antibody). In some embodiments, the antibody is a monoclonal antibody produced by the hybridoma deposited at the ATCC and designated by Patent Deposit Designation PTA-10432 (the 9F8 antibody), or is an antigen-binding fragment of the antibody produced by the hybridoma deposited at the ATCC and designated by the Patent Deposit Designation PTA-10432 (fragments of the 9F8 antibody). Combinations of two or more of the antibodies or fragments described herein (e.g., two or more of a 7E4 antibody, 7E4 antibody fragments, 9F8 antibody, and 9F8 antibody fragments) are useful in any of the methods described herein.

[0058] The human soluble ST2-binding monoclonal antibodies produced by the hybridomas designated by Patent Deposit Designation PTA-10431 and Patent Deposit Designation PTA-10432 were each generated by immunizing a non-human mammal with a recombinant human soluble ST2 isolated from human embryonic kidney (HEK)-293 cells. Human soluble ST2 has a significant amount/number of post-translational modifications. Based on its amino acid sequence, human soluble ST2 has a predicted molecular weight of about 36 kDa. However, the native protein has a molecular weight of about 58 kDa, due to the presence of post-translation modifications. As is known in the art, such post-translational modifications can have an effect on the ability of an antibody or antibody fragment to bind a given protein. Thus, as described in more detail in the Examples section below, the human soluble ST2-binding monoclonal antibodies produced by the hybridomas designated by Patent Deposit Designation PTA-10431 has a higher affinity for native human soluble ST2 than do other antibodies, and therefore is useful as diagnostic and other reagents.

[0059] In some embodiments, an antibody or fragment described herein comprises the heavy and/or light chain (or a fragment thereof) of the antibody produced by the hybridoma designated by Patent Deposit Designation PTA-10431 and/or PTA-10432. In some embodiments, an antibody or fragment described herein comprises the heavy and/or light chain variable region (or a fragment thereof) of the antibody produced by the hybridoma designated by Patent Deposit Designation PTA-10431 and/or PTA-10432.

[0060] As is known in the art, an antibody's specificity towards a given antigen is mediated by the heavy and light chain variable regions. In particular, the specificity of an antibody towards a given antigen is primarily determined by short sequences within the heavy and light chain variable regions called complementarity determining regions, or CDRs. In some embodiments, an antibody or fragment described herein contains one or more (e.g., one, two, three, four, five, or six) CDRs of the light and/or heavy chain of the antibody produced by the hybridoma designated by Patent Deposit Designation PTA-10431 and/or PTA-10432. In some embodiments, an antibody or fragment described herein comprises each of the CDRs of the heavy chain of the antibody produced by the hybridoma designated by Patent Deposit Designation PTA-10431 or PTA-10432. In some embodiments, an antibody or fragment described herein comprises each of the CDRs of the light chain of the antibody produced by the hybridoma designated by Patent Deposit Designation PTA-10431 or PTA-10432. In some embodiments, an antibody or fragment described herein comprises each of the CDRs of the antibody (all of the heavy and light chain CDRs) produced by the hybridoma designated by Patent Deposit Designation PTA-10431 or PTA-10432.

[0061] Also provided are isolated antibodies and antigen-binding antibody fragments that specifically bind to human soluble ST2 that are produced by a process that includes immunizing a non-human mammal with a recombinant human soluble ST2 isolated from a kidney cell (e.g., a human kidney cell, an embryonic kidney cell, and a human embryonic kidney cell). In some embodiments, the recombinant human soluble ST2 is fully glycosylated or contains all the post-translational modifications present in the native soluble ST2 protein.

[0062] In some embodiments, an antibody or fragment described herein is chimeric in that it comprises at least one human constant region. For example, the constant regions of the antibodies produced by the hybridoma designated by Patent Deposit Designation PTA-10431 or PTA-10432 can be replaced with a human constant region. Chimeric antibodies are typically less immunogenic to humans, relative to non-chimeric antibodies, and thus offer therapeutic benefits in certain situations. In some embodiments, a chimeric antibody described herein comprises an IgG1 constant region. Those skilled in the art will be aware of a variety of human constant regions. Methods for making chimeric antibodies are known in the art.

[0063] In some embodiments, an antibody or fragment described herein is humanized in that it comprises at least one human framework region. For example, one or more (e.g., one, two, three, four, five, or six) framework regions of the

antibodies produced by the hybridoma designated by Patent Deposit Designation PTA-10431 or PTA-10432, can be replaced with one or more (e.g., one, two, three, four, five, or six) human framework regions. Humanized antibodies are typically less immunogenic to humans, relative to non-humanized antibodies, and thus offer therapeutic benefits in certain situations. Those skilled in the art will be aware of a variety of human framework regions. Methods for producing humanized antibodies are known in the art.

[0064] For example, CDR homology-based methods can be used for humanization (see, e.g., Hwang et al., *Methods* 36:35, 2005). These methods generally involve substitution of non-human CDRs into a human variable domain framework based on similarly structured non-human and human CDRs, rather than similarly structured non-human and human frameworks. The similarity of the non-human and human CDRs is generally determined by identifying human genes of the same chain type (light or heavy) that have the same combination of canonical CDR structures as the non-human (e.g., mouse) binding molecules and thus retain three-dimensional conformation of CDR peptide backbones. Secondly, for each of the candidate variable genes with matching canonical structures, residue to residue homology between the non-human and candidate human CDRs is evaluated. Finally, to generate a humanized binding molecule, CDR residues of the chosen human candidate CDR not already identical to the non-human CDR are converted to the non-human (e.g., mouse) sequence. In some embodiments, no mutations of the human framework are introduced into the humanized binding molecule.

[0065] In some embodiments, the substitution of non-human CDRs into a human variable domain framework is based on the retention of the correct spatial orientation of the non-human variable domain framework by identifying human variable domain frameworks that will retain the same conformation as the non-human variable domain frameworks from which the CDRs were derived. In some embodiments, this is achieved by obtaining the human variable domains from human binding molecules whose framework sequences exhibit a high degree of sequence identity with the non-human variable framework domains from which the CDRs were derived. See, for example, Kettleborough et al., *Protein Engineering* 4:773, 1991; Kolbinger et al., *Protein Engineering* 6:971, 1993; and WO 92/22653.

[0066] In some embodiments, an antibody or fragment described herein is monospecific in that it recognizes only a single epitope. Monospecific antibodies are known in the art (see, for example, WO/9639858). In some embodiments, an antibody or fragment described herein is bispecific in that it recognizes more than one epitope (e.g., two epitopes). Bispecific antibodies are known in the art (see, for example, U.S. Patent Application Publication No. 2009/0162360). In some embodiments, monospecific or bispecific antibodies or fragments described herein bind the epitope recognized by an antibody or antibody fragment having the CDRs of the monoclonal antibody produced by the hybridoma designated by Patent Deposit Designation PTA-10431 or PTA-10432. In some embodiments, a bispecific antibody or fragment binds human soluble ST2, as well as a different non-ST2 polypeptide. In some embodiments, a bispecific antibody or fragment binds two different epitopes of human soluble ST2. In some embodiments, an antibody or fragment described herein is divalent (see, for example, WO/1999/064460). For a further description of other types of antibodies and fragments that can include one or more of the CDRs of the monoclonal antibodies produced by the hybridomas designated by Patent Deposit Designation PTA-10431 or PTA-10432, see US Patent Application Publication No. 20070105199 and WO/2007/059782.

[0067] In some embodiments, a fragment (e.g., an antigen-binding fragment) is derived from a whole antibody molecule, e.g., a monoclonal antibody. The antibody can be, for example, cleaved on the carboxy-terminal side of its hinge region (e.g., with pepsin) to generate a $F(ab')_2$ fragment, or on the amino-terminal side of its hinge region (e.g., with papain) to generate Fab fragments. In some embodiments, an antigen-binding fragment described herein is a Fab fragment, a $F(ab')_2$ fragment, a scFv fragment, a linear antibody, a multispecific antibody fragment such as a bi-specific, a tri-specific, or a multi-specific antibody (e.g., a diabody, a triabody, or a tetraabody), a minibody, a chelating recombinant antibody, an intrabody, a nanobody, a small modular immunopharmaceutical (SMIP), a binding-domain immunoglobulin fusion protein, a camelid antibody, or a V_{HH} containing antibody. Methods for producing these fragments are known in the art.

[0068] In some embodiments, a human soluble ST2-binding antibody or an antigen-binding antibody fragment described herein contains a polypeptide having one or more amino acid substitutions, deletions, or insertions as compared to the heavy and/or light chain of the antibody produced by the hybridoma designated by Patent Deposit Designation PTA-10431 or PTA-10432. Substitutions, deletions, or insertions can be introduced by standard techniques, such as site-directed mutagenesis or PCR-mediated mutagenesis, of a nucleic acid molecule encoding a polypeptide comprising the heavy and/or light chain of the antibody produced by the hybridoma designated by Patent Deposit Designation PTA-10431 or PTA-10432 (e.g., or a nucleic acid encoding one or more (e.g., one, two, or three) of the CDR regions of the heavy or light chain). In some embodiments, conservative amino acid substitutions are made at one or more positions. A "conservative amino acid substitution" is one in which the amino acid residue is replaced with an amino acid residue having a similar side chain. Families of amino acid residues having similar side chains have been defined in the art, including basic side chains (e.g., lysine, arginine, histidine), acidic side chains (e.g., aspartic acid, glutamic acid), uncharged polar side chains (e.g., glycine, asparagine, glutamine, serine, threonine, tyrosine, cysteine), nonpolar side chains (e.g., alanine, valine, leucine, isoleucine, proline, phenylalanine, methionine, tryptophan), beta-branched side chains (e.g., threonine, valine, isoleucine), and aromatic side chains (e.g., tyrosine, phenylalanine, tryptophan; histidine).

Thus, an amino acid residue in a polypeptide of an anti-human soluble ST2 antibody or a human soluble ST2-binding antibody fragment can be replaced with another amino acid residue from the same side chain family.

[0069] In some embodiments, a human soluble ST2-binding antibody or a human soluble ST2-binding antibody fragment described herein comprises an amino acid sequence that is at least 90% identical, at least 95%, 96%, 97%, 98%, 99%, or 100% identical to the heavy and/or light chain of the antibody produced by the hybridoma designated by Patent Deposit Designation PTA-10431 or PTA-10432 (e.g., or at least 90%, 95%, 96%, 97%, 98%, 99%, or 100% identical to at least one (e.g., one, two, or three) CDR of the heavy or light chain of the antibody produced by the hybridoma designated by Patent Deposit Designation PTA-10431 or PTA-10432). For example, a human soluble ST2-binding antibody or a human soluble ST2-binding antibody fragment described herein may contain one or more CDRs that contain one or more amino acid substitutions, deletions, or insertions in the corresponding CDR sequence found in a heavy or light chain of the antibody produced by the hybridoma designated by Patent Deposit Designation PTA-10431 or PTA-10432.

[0070] In some embodiments, compositions described herein contain two or more different human soluble ST2-binding antibodies or human soluble ST2-binding antibody fragments described herein. For example, a composition described herein can contain antibodies produced by each of the hybridomas designated by Patent Deposit Designation PTA-10431 and PTA-10432. As described in more detail in the Examples section below, such a combination of antibodies exhibits increased affinity for the ST2 antigen as compared to either antibody individually, and as compared to other commercially available antibodies. Such compositions containing the antibodies or antigen-binding fragments described herein will be useful in a variety of methods, e.g., diagnostic methods. In some embodiments, the compositions described herein contain two or more different ST2-binding fragments (e.g., Fab fragments, F(ab)₂ fragments, or scFv fragments), such as fragments derived from antibodies produced by the hybridomas designated by Patent Deposit Designation PTA-10431 or PTA-10432.

[0071] In any of the above methods, the antibody or antibody fragment can be glycosylated or labeled. For example, antibodies and antibody fragments can be labeled with a detectable substance including, but not limited to, various enzymes, prosthetic groups, fluorescent materials, luminescent materials, bioluminescent materials, and radioactive materials. Examples of suitable enzymes include horseradish peroxidase, alkaline phosphatase, β -galactosidase, or acetylcholinesterase; examples of suitable prosthetic group complexes include streptavidin/biotin and avidin/biotin; examples of suitable fluorescent materials include umbelliferone, fluorescein, fluorescein isothiocyanate, rhodamine, dichlorotriazinylamine fluorescein, dansyl chloride, quantum dots, or phycoerythrin; an example of a luminescent material includes luminol; examples of bioluminescent materials include luciferase, luciferin, and aequorin, and examples of suitable radioactive material include ¹²⁵I, ¹³¹I, ³⁵S, or ³H.

Hybridomas

[0072] Also provided herein are novel hybridomas that produce antibodies that bind human soluble ST2. As is known the art, the term "hybridoma" refers to a cell that is produced by the fusion of an antibody-producing lymphocyte and a non-antibody-producing cancer cell, usually a myeloma or lymphoma. After fusion, hybridomas proliferate and produce the specific monoclonal antibody that was originally produced by the fused lymphocyte. In some embodiments, the hybridoma provided is a hybridoma deposited at the ATCC and designated by Patent Deposit Designation PTA-10431 or PTA-10432. In some embodiments, individual cells, harvested cells, and cultures containing cells that are derived from the hybridoma deposited at the ATCC and designated by Patent Deposit Designation PTA-10431 or PTA-10432 are also provided.

Methods of Using the Provided Antibodies and Fragments

[0073] One or more of any of the antibodies or antibody fragments described herein can be used in methods for quantitating a level of human soluble ST2 in a sample, e.g., a sample from a subject, especially for predicting the risk of death within a year, determining whether to discharge or to initiate or continue treatment of a subject on an inpatient basis, selecting a subject for participation in a clinical study, diagnosing a subject as having a disease, or identifying a subject at risk of developing a disease.

Methods of Quantitating a Level of Human Soluble ST2

[0074] Provided herein are methods for determining a level of human soluble ST2 in a sample from a subject including contacting the sample with at least one antibody or antibody fragment described herein; and detecting the binding of the antibody or fragment to human soluble ST2. In some embodiments, at least two (e.g., two, three, or four) antibodies or antibody fragment described herein are used to determine a level of human soluble ST2 in a sample from a subject. In some embodiments, the subject is undiagnosed or is not presenting with one or more (e.g., two, three, or four)

symptoms of a disease. In some embodiments, the subject has been diagnosed as having a disease associated with elevated levels of ST2 (e.g., heart failure, coronary artery disease, cardiovascular disease, acute coronary syndrome, renal insufficiency, stroke, or any of the other diseases described herein). In some embodiments, the subject has one or more (e.g., two, three, or four) of: hypertriglyceridemia, hypercholesterolemia, hypertension, renal insufficiency, and a body mass index of ≥ 30 . In some embodiments, the sample contains blood, serum, or plasma.

[0075] In some embodiments, the sample can be collected from the subject by a health care professional (e.g., a phlebotomist, a physician, a nurse, a physician's assistant, or a laboratory technician). The sample can be stored (e.g., at $\leq 4^\circ\text{C}$, $\leq 0^\circ\text{C}$, or -80°C) for a period of time before the sample is contacted with at least one antibody or fragment described herein, and the binding of the antibody or fragment is detected. Methods for contacting a biological sample with an antibody or antibody fragment and detecting the binding of the antibody or fragment are described herein and additional methods are known in the art. The quantitation can also include control experiments for detecting the binding of the at least one antibody or antibody fragment described herein to a recombinant purified human soluble ST2 (e.g., a recombinant human soluble ST2 isolated from human embryonic kidney cells).

[0076] In some embodiments, the level of human soluble ST2 in a normal or healthy subject is quantitated. A normal or healthy subject is a subject that does not suffer from an ST2-associated condition (e.g., a ST2-associated condition as described herein), is undiagnosed as having a disease (e.g., any of the diseases described herein), and does not present with two or more (e.g., two, three, or four) symptoms of a disease. Normal or healthy subjects can be confirmed by any of a variety of techniques known in the art, including without limitation, by biomarker screening or physical examination (e.g., by external manifestation of the absence of two or more symptoms associated with an ST2-associated condition or any other disease described herein). For example, normal or healthy subjects can be screened for the absence of occult CVD or inflammatory disease by screening for low levels of one or more markers including, but not limited to, brain natriuretic peptide (BNP), procalcitonin (PCT), C-reactive protein (CRP), and interleukin-6 (IL-6). Those skilled in the art will be aware of other suitable markers for determining that a normal or healthy subject does not exhibit occult CVD or inflammatory disease, or any of the other diseases described herein.

[0077] Quantitation of human soluble ST2 levels in a sample from a subject (e.g., a normal or healthy subject) is useful in a variety of circumstances. In some embodiments, human soluble ST2 levels of subjects (e.g., normal or healthy subjects, subjects having an increased risk of developing a disease, subjects diagnosed with disease, or subjects presenting with two or more symptoms of a disease) can be quantitated at periodic intervals, e.g., daily, weekly, biweekly, monthly, bimonthly, annually, etc., or at a periodic physical examination. Any of a variety of techniques known to those skilled in the art, including those described herein, can be used to quantitate human soluble ST2 levels in a subject using the antibodies and antigen-binding fragments of antibodies described herein.

[0078] In some embodiments, the level of human soluble ST2 in a control subject (e.g., a normal or healthy subject) is quantitated to arrive at a reference level for use in determining that a subject does not have an ST2-associated condition, is at risk of developing a disease, or is at risk of death within one year. For example, human soluble ST2 levels in a subject that does not suffer from a disease, such as, without limitation, a cardiovascular disease, heart failure, coronary artery disease, acute coronary syndrome, renal insufficiency, stroke, a pulmonary disease, sepsis, Kawasaki disease, or a Th2-associated disease, or any other disease described herein, can be quantitated to arrive at a human soluble ST2 reference level.

[0079] In some embodiments, at least one of any of the antibodies or antigen-binding fragments disclosed herein can be used in quantitating human soluble ST2 levels in a subject (e.g., a normal or healthy subject). For example, human soluble ST2 levels in a subject (e.g., a normal or healthy subject) can be quantitated in immunoassays using at least one of any antibody or antigen-binding fragment described herein (e.g., an antibody or fragment that binds competitively with an antibody produced a hybridoma deposited at the ATCC and is designated by Patent Deposit Designation PTA-10431 or PTA-104312, or both).

[0080] In some embodiments, the level of human soluble ST2 in a sample is quantitated to ensure reproducibility of routine performance, reference ranges, clinical cutoffs, and the like. For example, the levels of human soluble ST2 in two or more samples, e.g., reference samples, can be quantitated and the coefficient of variation ("CV") between the human soluble ST2 levels of the two or more samples can be assessed. Additionally or alternatively, the level of human soluble ST2 in the sample (or subject) can be quantitated two or more separate times (e.g., using different batches of a reference sample, or different samples taken from the same subject), and the CV between the human soluble ST2 levels can be determined. In some embodiments, the CV between human soluble ST2 levels is less than 20%, e.g., less than 19%, 18%, 17%, 16%, 15%, 14%, 13%, 12%, 11%, 10%, 9%, 8%, 7%, 6%, 5%, 4%, 3%, 2%, 1%, or less.

[0081] In some embodiments, methods are provided for determining whether a subject has a normal human soluble ST2 level. Determining whether a subject has a normal human soluble ST2 level is useful in a variety of circumstances. In some embodiments, methods for determining whether a subject has a normal human soluble ST2 level comprise assaying the level of human soluble ST2 in a sample from the subject (e.g., any of the samples described above such as, without limitation, samples containing blood, serum, or plasma), wherein the subject is determined to have a normal human soluble ST2 level if the level of human soluble ST2 in the sample is found to be substantially similar to the known

normal or median human soluble ST2 level, or if the level of human soluble ST2 in the sample falls within a certain range, e.g., around a known normal or median human soluble ST2 level (e.g., the 95% confidence interval or the interquartile range, or any of the ranges listed in Table 9). For example, a subject can be determined to have a normal human soluble ST2 level if a sample from the subject is assayed, and the level of human soluble ST2 in the sample is found to be within the 95% confidence interval around a known normal or median human soluble ST2 level, e.g., a median level in a normal or healthy subject. Additionally or alternatively, a subject can be determined to have a normal human soluble ST2 level if a sample from the subject is assayed, and the level of human soluble ST2 in the sample is found to be within the interquartile range around a known normal or median human soluble ST2 level.

[0082] In some embodiments, a subject is determined to have a normal human soluble ST2 level if the human soluble ST2 level in a sample from the subject is about 18.8 ng/mL. In some embodiments, a subject is determined to have a normal human soluble ST2 level if the human soluble ST2 level in a sample is within a range of about 14.5 to about 25.3 ng/mL. In some embodiments, a subject is determined to have a normal human soluble ST2 level if the human soluble ST2 level in a sample is within a range of about 18.1 to about 19.9 ng/mL.

[0083] In some embodiments, a female subject is determined to have a normal human soluble ST2 level if the human soluble ST2 level in a sample from the subject is about 16.2 ng/mL. In some embodiments, a female is determined to have a normal human soluble ST2 level if the human soluble ST2 level in a sample is within any of the ranges listed in Table 9.

[0084] In some embodiments, a male subject is determined to have a normal human soluble ST2 level if the human soluble ST2 level in a sample from the subject is about 23.6 ng/mL. In some embodiments, a male is determined to have a normal human soluble ST2 level if the human soluble ST2 level in a sample is within any of the ranges listed in Table 9.

[0085] In some embodiments, the subject (e.g., male or female subject) is determined to have a normal soluble ST2 level if the human soluble ST2 level in a sample from the subject is below a threshold (e.g., 25.3 ng/mL, or 19.9 ng/mL (for females) or 30.6 ng/mL (for males)).

[0086] The term "about" or "substantially the same" as used in reference to a value or range of human soluble ST2 levels (e.g., a range of normal human soluble ST2 levels) in a subject refers to an interval around the reference value or range, e.g., a value or range that one of skill in the art would consider equivalent to the reference value or range (e.g., any of the ranges listed in Table 9) for the purpose of assessing human soluble ST2 levels (e.g., normal human soluble ST2 levels or human soluble ST2 levels in a group of patients having a disease or presenting with two or more disease symptoms). As used herein, a value or range of human soluble ST2 levels (e.g., normal human soluble ST2 levels) is "about" a reference value or range when it is within $\pm 25\%$ of the reference value or range, e.g., $\pm 20\%$, $\pm 15\%$, $\pm 10\%$, $\pm 9\%$, $\pm 8\%$, $\pm 7\%$, $\pm 6\%$, $\pm 5\%$, $\pm 4\%$, $\pm 3\%$, $\pm 2\%$, or $\pm 1\%$ of the value or range.

[0087] In some embodiments, at least one or two of any of the antibodies or antigen-binding fragments described herein can be used in determining whether a subject has a normal human soluble ST2 level, a level of human soluble ST2 that is correlated with a disease, or a level of human soluble ST2 that is correlated with an increased risk of developing a disease or an increased risk of death within one year.

Methods of Predicting the Risk of Mortality Within One Year

[0088] Also provided are methods of predicting the risk of mortality in a subject within one year that include obtaining a sample from a subject and determining the level of human soluble ST2 in the sample using at least one antibody or antibody fragment described herein. An elevated level or substantially the same level of human soluble ST2 in the sample compared to a reference level of human soluble ST2 indicates that the subject has an increased risk of death within one year (e.g., an increased risk of death within one year compared to subjects (e.g., subjects having or diagnosed with same disease) having a decreased level of human soluble ST2 in the sample compared to the same reference level of ST2). A decreased level of human soluble ST2 in the sample compared to a reference level of human soluble ST2 indicates that the subject has a lower risk of death within one year (e.g., a lower risk of death compared to subjects (e.g., subjects having or diagnosed with the same disease) having an elevated level or substantially the same level of human soluble ST2 in the sample compared to the same reference level of human soluble ST2). The level of risk of death within one year determined by the methods described herein will depend on the disease state.

[0089] In some embodiments the subject is undiagnosed or is not presenting with one or more (e.g., two, three, four, or five) symptoms of a disease. In some embodiments, the subject has been diagnosed as having a disease (e.g., heart failure, coronary artery disease, cardiovascular disease, acute coronary syndrome, renal insufficiency, or stroke, or any of the diseases described herein). In some embodiments, the subject has one or more (e.g., one, two, three, or four) of: hypertriglyceridemia, hypercholesterolemia, hypertension, and a body mass index of ≥ 30 . In some embodiments, the determining is performed using at least one (e.g., two, three, four, or five) antibodies or fragments described herein.

[0090] In some embodiments, the reference level of human soluble ST2 is a threshold level of human soluble ST2 (e.g., a median level of human soluble ST2 or a percentile (e.g., 75th, 80th, 85th, 90th, or 95th percentile, or any of the ranges or concentrations listed in Table 9) of the median level of human soluble ST2 in a healthy patient population,

e.g., a healthy male patient population or a healthy female patient population). In some embodiments, the reference level can be a level of human soluble ST2 present in a sample of a subject not presenting with one or more symptoms of a disease associated with increased levels of ST2. In some embodiments, the reference level can be a level of human soluble ST2 present in a sample of a subject not diagnosed as having a disease (e.g., heart failure, coronary artery disease, cardiovascular disease, acute coronary syndrome, renal insufficiency, stroke, or any of the diseases described herein) or a subject identified as not being at risk of developing a disease (e.g., any of the diseases described herein). Additional reference levels can be determined by those skilled in the art.

[0091] In some embodiments, the human soluble ST2 reference level is between about 30 ng/mL to about 35 ng/mL. In some embodiments, where the subject has heart failure, the human soluble ST2 reference level is between about 30 ng/mL to about 35 ng/mL. In some embodiments, the human soluble ST2 reference level is about 35 ng/mL or about 60 ng/mL.

[0092] In some embodiments, the sample contains blood, serum, or plasma. The sample can be obtained and the determination of the level of human soluble ST2 using at least one antibody or fragment described herein can be performed as described herein.

Methods of Determining Whether to Discharge or to Initiate or Continue Treatment of a Subject on an Inpatient Basis

[0093] Also provided are methods of determining whether to discharge or to initiate or continue treatment of a subject on an inpatient basis including obtaining a sample from a subject, and determining the level of human soluble ST2 in the sample using at least one (e.g., two) antibody or antibody fragment described herein, where an elevated level of human soluble ST2 in the sample compared to a reference level of human soluble ST2 indicates that inpatient treatment (e.g., hospitalization or admittance into an assisted-care facility) of the subject should be initiated or continued, and a decreased or an equal level of human soluble ST2 in the sample compared to a reference level of human soluble ST2 in the sample indicates that the subject should be discharged. The method can be performed several times for the same subject in order to determine whether inpatient treatment should be continued (e.g., performed once every week, twice a week, three times a week, one a month, twice a month, three times a month, and four times a month).

[0094] In some embodiments, the subject is undiagnosed, is not presenting with two or more symptoms of a disease state, or has not been identified as being at risk of developing a disease (e.g., any of the diseases described herein). In some embodiments, the subject has been diagnosed as having a disease (e.g., heart failure, coronary artery disease, cardiovascular disease, acute coronary syndrome, renal insufficiency, or stroke, or any of the diseases described herein), presents with one or more symptoms of a disease (e.g., any of the diseases described herein), or has been identified as being at risk of developing a disease (e.g., any of the diseases described herein). In some embodiments, the subject has one or more (e.g., one, two, three, or four) of: hypertriglyceridemia, hypercholesterolemia, hypertension, and a body mass index of ≥ 30 . In some embodiments, the subject has not been diagnosed as having heart failure, coronary artery disease, cardiovascular disease, acute coronary syndrome, renal insufficiency, or stroke, or any of the diseases described herein. In some embodiments, the determination of the level of human soluble ST2 is performed using at least two antibodies or antibody fragments described herein.

[0095] In some embodiments, the reference levels of human soluble ST2 can be any of the reference levels described herein. Additional human soluble ST2 reference levels can be determined by those skilled in the art. In some embodiments, the sample contains blood, serum, or plasma. The sample can be obtained and the determination of the level of human soluble ST2 using at least one antibody or fragment described herein can be performed as described herein.

Methods of Selecting a Subject for Participation in a Clinical Study

[0096] Also provided are methods for selecting a subject for participation in a clinical study. These methods include obtaining a sample from a subject, determining the level of human soluble ST2 in the sample using at least one antibody or antibody fragment described herein, and selecting the subject for participation in a clinical study if the subject's level of human soluble ST2 relative to a reference level of human soluble ST2 indicates that the subject should be selected for participation in a clinical study. In some embodiments, the presence of an elevated level of human soluble ST2 indicates that the subject should be selected for participation in a clinical study. In some embodiments, the presence of an elevated level of human soluble ST2 indicates that the subject should be excluded from participation in a clinical study.

[0097] In some embodiments, the subject is undiagnosed, is not presenting with one or more symptoms of a disease (e.g., any of the diseases described herein), or has not been identified as being at risk of developing a disease (e.g., any of the diseases described herein). In some embodiments, the subject has been diagnosed as having a disease (e.g., heart failure, coronary artery disease, cardiovascular disease, acute coronary syndrome, renal insufficiency, or stroke, or any of the diseases described herein), presents with one or more symptoms of a disease (e.g., any of the diseases described herein), or has been identified as being at low risk of developing a disease (e.g., any of the diseases

described herein). In some embodiments, the subject has one or more (e.g., one, two, three, or four) of: hypertriglyceridemia, hypercholesterolemia, hypertension, and a body mass index of ≥ 30 . In some embodiments, the determining is performed using at least two antibodies or fragments described herein.

[0098] In some embodiments, the reference levels of human soluble ST2 can be any of the reference levels described herein. Additional human soluble ST2 reference levels can be determined by those skilled in the art. In some embodiments, the sample contains blood, serum, or plasma. The sample can be obtained and the determination of the level of human soluble ST2 using at least one antibody or fragment described herein can be performed as described above.

Methods of Selecting a Treatment

[0099] Also provided are methods of selecting a therapeutic treatment for a subject including obtaining a sample from a subject and determining a level of human soluble ST2 in the sample using at least one of the antibodies and fragments described herein, wherein an elevated level of human soluble ST2 in the sample relative to a reference human soluble ST2 level indicates that the subject should be provided a specific therapeutic treatment. For example, the specific treatment can be selected from the group of: nitrates, calcium channel blockers, diuretics, thrombolytic agents, digitalis, renin-angiotensin-aldosterone system (RAAS) modulating agents (e.g., beta-adrenergic blocking agents (e.g., alprenolol, bucindolol, carteolol, carvedilol, labetalol, nadolol, penbutolol, pindolol, propranolol, sotalol, timolol, cebutolol, atenolol, betaxolol, bisoprolol, celiprolol, esmolol, metoprolol, and nebivolol), angiotensin-converting enzyme inhibitors (e.g., benazepril, captopril, enalapril, fosinopril, lisinopril, moexipril, perindopril, quinapril, ramipril, andtrandolapril), aldosterone antagonists (e.g., spironolactone, eplerenone, canrenone (canrenoate potassium), prorenone (prrenoate potassium), and mexrenone (mexrenoate potassium)), renin inhibitors (e.g., aliskiren, remikiren, and enalkiren), and angiotensin II receptor blockers (e.g., valsartan, telmisartan, losartan, irbesartan, and olmesartan)), and cholesterol-lowering agents (e.g., a statin). Additional methods for treatment are also known in the art, e.g., Braunwald's Heart Disease: A Textbook of Cardiovascular Medicine, Single Volume, 9th Edition. The specific treatment can also be the administration of at least one or more new therapeutic agents to the subject, an alteration (e.g., increase or decrease) in the frequency, dosage, or length of administration of one or more therapeutic agents to the subject, or the removal of at least one or more therapeutic agents from the patient's treatment regime. The treatment can also be inpatient care of the subject (e.g., admittance or re-admittance of the subject to a hospital (e.g., an intensive care or critical care unit) or an assisted-care facility). In some embodiments, the treatment is surgery (e.g., organ or tissue transplant or angioplasty).

[0100] In some embodiments, the reference levels of human soluble ST2 can be any of the reference levels described herein. Additional human soluble ST2 reference levels can be determined by those skilled in the art. In some embodiments, the sample contains blood, serum, or plasma. The sample can be obtained and the determination of the level of human soluble ST2 using at least one antibody or fragment described herein can be performed as described above.

Methods of Diagnosing a Subject

[0101] The methods described herein are useful in a wide variety of clinical contexts. For example, such methods can be used for general population screening, including screening by doctors, e.g., in hospitals and outpatient clinics, as well as the emergency room.

[0102] In some embodiments, the methods described herein are useful for determining the likelihood of the presence of a disease in a subject. Increased levels of human soluble ST2 are often associated with the presence of certain diseases such as, without limitation, cardiovascular diseases, pulmonary diseases, sepsis, Kawasaki disease, and Th2-associated diseases, and any of the other diseases described herein.

[0103] A Th2-associated disease is a disease associated with an abnormal type-2 T helper cell (Th2) response. A Th2-associated disease is characterized by several factors, including without limitation, the presence of TNF-alpha, IL-4, -5, -6, 10 and -13, but not IFN-gamma (Robinson, J. Allergy Clin. Immunol. 92:313, 1993). CD4+ T-cells are classified according to the cytokines that they secrete. Th2 cells secrete large amounts of interleukin-4 (IL-4), IL-5, and IL-13, which promote antibody production by B-cells and collagen synthesis by fibroblasts, whereas Th1 cells secrete large amounts of interferon- γ and associated proinflammatory cytokines. Th1-type and Th2-type cytokines can cross-regulate each other's responses. An imbalance of Th1/Th2 responses is thought to contribute to the pathogenesis of various infections, allergic responses, and autoimmune diseases. Certain exemplary Th2-associated diseases include, without limitation, systemic lupus erythematosus and asthma, as well as inflammatory conditions that are mainly independent of a Th2 response, such as septic shock or trauma (Trajkovic et al., Cytokine Growth Factor Rev. 15:87-95, 2004; Brunner et al., Intensive Care Med. 30:1468-1473, 2004). Other exemplary Th2-associated diseases include preeclampsia and multiple sclerosis. In some embodiments, a Th2-associated disease is an autoimmune disease. An autoimmune disease typically results when the subject's immune system is activated against one or more components (cells, tissues, or cell/tissue-free molecules) of the subject and attacks that subject's own normal organs, tissues, or cells. Exemplary autoimmune diseases include, but are not limited to, adrenergic drug resistance, alopecia areata, ankylosing spondylitis,

antiphospholipid syndrome, autoimmune Addison's disease, autoimmune diseases of the adrenal gland, allergic encephalomyelitis, autoimmune hemolytic anemia, autoimmune hepatitis, autoimmune inflammatory eye disease, autoimmune neonatal thrombocytopenia, autoimmune neutropenia, autoimmune oophoritis and orchitis, autoimmune thrombocytopenia, autoimmune thyroiditis, Behcet's disease, bullous pemphigoid, cardiomyopathy, cardiomyopathy syndrome, celiac sprue-dermatitis, chronic active hepatitis, chronic fatigue immune dysfunction syndrome (CFIDS), chronic inflammatory demyelinating polyneuropathy, Churg-Strauss syndrome, cicatricial pemphigoid, CREST syndrome, cold agglutinin disease, Crohn's disease, dense deposit disease, diseases associated with effects from organ transplantation, discoid lupus, essential mixed cryoglobulinemia, fibromyalgia-fibromyositis, glomerulonephritis (e.g., IgA nephropathy), gluten-sensitive enteropathy, Goodpasture's syndrome, graft vs. host disease (GVHD), Graves' disease (including e.g., Graves thyroiditis and Graves ophthalmopathy), Guillain-Barre, hyperthyroidism (i.e., Hashimoto's thyroiditis), idiopathic pulmonary fibrosis, idiopathic Addison's disease, idiopathic thrombocytopenia purpura (ITP), IgA neuropathy, Insulin Resistance Syndrome, juvenile arthritis, lichen planus, lupus erythematosus, Meniere's disease, Metabolic Syndrome, mixed connective tissue disease, multiple sclerosis, Myasthenia Gravis, myocarditis, diabetes (e.g., Type I diabetes or Type II diabetes), neuritis, other endocrine gland failure, pemphigus vulgaris, pernicious anemia, polyarteritis nodosa, polychondritis, Polyendocrinopathies, polyglandular syndromes, polymyalgia rheumatica, polymyositis and dermatomyositis, post-myocardial infarction, primary agammaglobulinemia, primary biliary cirrhosis, psoriasis, psoriatic arthritis, Raynaud's phenomenon, relapsing polychondritis, Reiter's syndrome, rheumatic heart disease, rheumatoid arthritis, sarcoidosis, scleroderma, Sjogren's syndrome, stiff-man syndrome, systemic lupus erythematosus, Takayasu arteritis, temporal arteritis/giant cell arteritis, ulcerative colitis, urticaria, uveitis, uveitis ophthalmia, vasculitides, such as dermatitis herpetiformis vasculitis, vitiligo, and Wegener's granulomatosis.

[0104] A cardiovascular disease is a disorder of the heart and blood vessels, and includes disorders of the arteries, veins, arterioles, venules, and capillaries. Cardiovascular diseases diagnosed by a method described herein can include, without limitation, congestive heart failure (HF), acute coronary artery disease (CAD), arrhythmia, asymmetric septal hypertrophy (e.g., left ventricular hypertrophy with resultant diastolic dysfunction), cardiomyopathy, valvular dysfunction, pericarditis, atherosclerosis, and acute myocardial infarction (MI).

[0105] A pulmonary disease is a disorder of the lungs. Pulmonary diseases diagnosed by methods described herein can include, without limitation, chronic obstructive pulmonary disease (COPD), asthma, pneumonia, pneumothorax, pulmonary embolism, advanced respiratory distress syndrome (ARDS), pleural effusion, metastatic disease, pulmonary edema, gastroesophageal reflux disease with aspiration, interstitial fibrosis, pneumoconiosis, granulomatous disease, collagen vascular disease, and restrictive lung disease.

[0106] If the subject has an elevated level of human soluble ST2, e.g., as compared to a reference level, a decision to treat the subject aggressively can be made, and the subject can be, e.g., admitted to a hospital for treatment as an inpatient, e.g., in a hospital (e.g., an acute or critical care department) or assisted-care facility. Determining whether a subject has a disease such as cardiovascular disease, or pulmonary disease, sepsis, Kawasaki disease, or a Th2-associated disease, or any of the diseases described herein, is desirable in a variety of situations. For example, portable test kits could allow emergency medical personnel to evaluate a subject in the field, to determine whether they should be transported to the emergency department. Moreover, triage decisions, e.g., in an emergency department or other clinical setting, can also be made based on information provided by a method described herein. Those patients exhibiting increased human soluble ST2 levels can be prioritized over those with lower levels.

[0107] In some embodiments, the level of human soluble ST2 is determined once, e.g., at the time the subject is suspected of having a disease (e.g., upon presentation to a medical professional or health care facility). In some embodiments, the level of human soluble ST2 is determined at one or more of 2, 4, 6, 8, 12, 18, and/or 24 hours, and/or 1-7 days or more after the time the subject is suspected of having a disease (e.g., upon presentation to a medical profession or health care facility).

[0108] In some embodiments, the level of human soluble ST2 is determined more than once. In some embodiments where the level of human soluble ST2 is determined more than once, the highest level can be used, or the change in levels can be determined and used. Levels of human soluble ST2 can also be determined multiple times to evaluate a subject's response to a treatment. For example, a level of human soluble ST2 taken after administration of a treatment, e.g., one or more doses or rounds of a treatment, can be compared to levels of human soluble ST2 before the treatment was initiated, e.g., a baseline level. The change in human soluble ST2 levels would indicate whether the treatment was effective; e.g., a reduction in human soluble ST2 levels would indicate that the treatment was effective.

[0109] In some embodiments, the level of human soluble ST2 in a subject is assayed and compared to a human soluble ST2 reference level. Any of a variety of techniques known to those skilled in the art can be used to assay human soluble ST2 levels in a subject. Exemplary assay methods include, without limitation, methods known in the art such as quantitative PCR or Northern blot analysis. In some embodiments, the level of human soluble ST2 in a subject is assayed using immunoassays such as enzyme-linked immunosorbent assays (ELISA). For example, in some embodiments an antibody or antigen-binding fragment thereof described herein is contacted with a sample from the subject. A sample can comprise or be derived from any of a variety of cells or tissues of a subject. For example, a sample can include one

or more of blood, serum, or plasma. Binding of the antibody or antibody fragment is then detected and optionally quantified, and levels of the protein are determined based on levels of antibody or antibody fragment binding. In some embodiments, a sample contains substantially no ST2L form of the ST2 protein, such that all or the majority of ST2 in the sample detected according to methods disclosed herein is human soluble ST2. In some embodiments, a sample contains no detectable ST2L, such that the only detectable ST2 in a sample is human soluble ST2. In some embodiments, a sample containing substantially no ST2L, or no detectable ST2L, is a serum or blood sample. In some embodiments, human soluble ST2 levels in a subject are assayed in immunoassays using at least one antibody or antigen-binding fragment described herein.

[0110] As described in more detail in the Examples section below, antibody compositions comprising antibodies produced by the hybridoma deposited at the ATCC and designated by Patent Deposit Designations PTA-10431 exhibits increased affinity for the human soluble ST2 antigen as compared to other commercially available antibodies. Such antibodies can be used in accordance with methods described herein.

[0111] The methods described herein are useful in determining that a subject does not have an ST2-associated condition. An ST2-associated condition is a condition that is associated with elevated levels of ST2. Certain exemplary ST2-associated conditions include, without limitation, cardiovascular disease, pulmonary disease, sepsis, Kawasaki disease, and Th2-associated diseases. ST2-associated conditions are generally serious and aggressive treatment is often indicated. Subjects exhibiting certain non-specific symptoms may or may not have an ST2-associated condition (e.g., cardiovascular disease, pulmonary disease, sepsis, Kawasaki disease, or a Th2-associated disease). Non-specific symptoms include, but are not limited to, chest pain or discomfort, shortness of breath, nausea, vomiting, eructation, sweating, palpitations, lightheadedness, fatigue, and fainting. Each symptom can have varied etiology.

[0112] In some embodiments, the methods described herein are useful in risk stratification, e.g., determining that a subject has a low-severity or low-risk form of an ST2-associated condition. For example, certain subjects having a cardiovascular disease (e.g., myocardial infarction or heart failure) are at low risk of adverse outcome, such as death or a recurring cardiac event, and also exhibit a lower concentration of human soluble ST2 than is observed in other subjects having a cardiovascular disease with a higher risk of adverse outcome. Such subjects can be considered to have a "low-severity" or "low-risk" form of an ST2-related cardiovascular condition. In both high-risk and low-risk populations, however, higher concentrations of human soluble ST2 are observed than are observed in subjects that do not have an ST-2 associated condition. Subjects having a low-severity form of an ST2-related condition typically have human soluble ST2 concentrations greater than a reference human soluble ST2 level (e.g., the median human soluble ST2 concentration of healthy or normal individuals), while subjects having a high-severity form of an ST2-related condition subjects typically have human soluble ST2 concentrations greater than the 80th percentile of a reference human soluble ST2 level (e.g., human soluble ST2 concentrations observed in healthy or normal individuals). Determining that a subject exhibiting certain non-specific symptoms does not have, or has a low-severity form of, an ST2-associated condition can result in improved diagnosis and/or more effective treatment decisions, e.g., such a subject may not require aggressive treatment. For example, patients with elevated human soluble ST2 concentrations following acute myocardial infarction exhibited more cardiac remodeling (increased fibrosis) than patients with low human soluble ST2 concentrations, and eplerenone differentially attenuated cardiac remodeling in subjects that exhibited high human soluble ST2 concentrations (Weir et al., J. Am. Coll. Cardiol. 55:243-250, 2010). Thus, human soluble ST2 concentrations can be used to identify patients who should receive different, possibly non-standard, inpatient, or more aggressive treatment.

Chest Pain

[0113] Chest pain is the chief complaint in about 1 to 2 percent of outpatient visits, and although the cause is often non-cardiac, heart disease remains the leading cause of death in the United States. Therefore, distinguishing between serious and benign causes of chest pain is crucial. The methods described herein are useful in making this determination.

[0114] A subject presenting to the emergency department with chest pain may have esophageal pain, an ulcer, acute lung problems such as pulmonary embolus (PE) (potentially fatal), rupturing or dissecting aneurysm (highly lethal), gall bladder attack, pericarditis (inflammation of the sack around the heart), angina pectoris (cardiac pain without damage), or a myocardial infarction (potentially fatal). A precise diagnosis can be difficult to make immediately, but the decision whether to admit the subject or to treat the subject aggressively should generally be made immediately. If the methods described herein indicate that the subject has an elevated soluble ST2 level, e.g., suffers from an ST2-associated condition, the decision can be made to treat the subject aggressively, e.g., to prevent a potentially adverse outcome that would result from a lack of treatment. Additional information about treatment and diagnosis of chest pain can be found, e.g., in Cayley (Am. Fam. Phys. 72(10):2012-2028, 2005).

Dyspnea

[0115] Dyspnea, or shortness of breath (also defined as abnormal or uncomfortable breathing), is a common symptom

of subjects on presentation to the emergency department. The differential diagnosis for dyspnea includes four general categories: (1) cardiac, (2) pulmonary, (3) mixed cardiac or pulmonary, and (4) non-cardiac or non-pulmonary.

[0116] Cardiac causes of dyspnea include right, left, or biventricular congestive heart failure with resultant systolic dysfunction, coronary artery disease, recent or remote myocardial infarction, cardiomyopathy, valvular dysfunction, left ventricular hypertrophy with resultant diastolic dysfunction, asymmetric septal hypertrophy, pericarditis, and arrhythmias.

[0117] Pulmonary causes include obstructive (e.g., chronic obstructive pulmonary disease (COPD) and asthma) and restrictive processes (e.g., extrapulmonary causes such as obesity, spine, or chest wall deformities, and intrinsic pulmonary pathology, such as interstitial fibrosis, pneumoconiosis, granulomatous disease, or collagen vascular disease). Mixed cardiac and pulmonary disorders include COPD with pulmonary hypertension and cor pulmonale, deconditioning, pulmonary emboli, ARDS, and trauma. Non-cardiac or non-pulmonary disorders include metabolic conditions such as anemia, diabetic ketoacidosis, and other, less common, causes of metabolic acidosis, pain in the chest wall or elsewhere in the body, and neuromuscular disorders such as multiple sclerosis and muscular dystrophy. Obstructive rhinolaryngeal problems include nasal obstruction due to polyps or septal deviation, enlarged tonsils, and supraglottic or subglottic airway stricture.

[0118] Dyspnea can also present as a somatic manifestation of psychiatric disorders, e.g., an anxiety disorder, with resultant hyperventilation. Additional information regarding the evaluation and treatment of dyspnea can be found, e.g., in Morgan and Hodge, *Am. Fam. Phys.* 57(4):711-718, 1998.

[0119] Any of the antibodies or antigen-binding fragments disclosed herein can be used in determining that a subject does not have an ST2-associated condition. In some embodiments, the level of human soluble ST2 in a subject is assayed (e.g., by any of the methods described above) and compared to a human soluble ST2 reference level. If the level of human soluble ST2 in a subject is similar to the human soluble ST2 reference level, it can be determined that the subject has a very low likelihood of having an ST2-associated condition. A level of human soluble ST2 in a subject is "similar to" a human soluble ST2 reference level when the two levels are sufficiently close in range such that the subject is not likely to have an ST2-associated condition. Generally, a level of human soluble ST2 in a subject is "similar to" a human soluble ST2 reference level when the two levels are within about 25% of each other, e.g., within about 25%, 20%, 15%, 10%, 5%, or lower. Those skilled in the art will be able to determine suitable human soluble ST2 reference levels for the ST2-associated condition at issue. Those skilled in the art will also be aware of normal variations in such human soluble ST2 levels, and upon reading the present disclosure, will be able to determine whether a determined human soluble ST2 level is similar to a human soluble ST2 reference level.

[0120] In some embodiments, the level of human soluble ST2 is determined once, e.g., at the time the subject is suspected of having an ST2-associated condition. In some embodiments, the level of human soluble ST2 is determined at one or more of 2, 4, 6, 8, 12, 18, and/or 24 hours, and/or 1-7 days after the time the subject is suspected of having an ST2-associated condition. In some embodiments, the level of human soluble ST2 is determined more than once, e.g., to confirm or check the level of human soluble ST2 determined in the first assay.

[0121] In some embodiments, the human soluble ST2-binding antibodies and antigen-binding fragments thereof described herein can be used in one or more methods described in U.S. Patent Application Publication Nos. US 2007/0248981, US 2009/0264779, US 2009/0305265, and US 2010/0009356, and PCT Application Publication No. WO2007/131031.

[0122] In some embodiments, methods of diagnosing a disease in a subject include obtaining a sample from a subject, determining a level of human soluble ST2 in the sample using at least one antibody or fragment described herein and a level of at least one (e.g., two, three, four, or five) additional marker, wherein an elevated level of human soluble ST2 in the sample compared to a reference level of human soluble ST2 and an altered (e.g., increased or decreased) level of the at least one additional marker relative to a reference level of the at least one (e.g., two, three, four, or five) additional marker, indicate that the subject has the disease (e.g., cardiovascular disease, a pulmonary disease, sepsis, Kawasaki disease, or a Th2-associated disease, or any other disease described herein). A reference level of the at least one additional marker can be the level of the marker in a subject not diagnosed as having the disease, the level of the marker in a subject not presenting with two or more symptoms of the disease, a subject not at risk of developing the disease, or level in the same subject at an earlier point in time. Additional markers are known in the art and methods for determining reference levels of additional markers can be determined by those skilled in the art.

[0123] In some embodiments, the reference levels of human soluble ST2 can be any of the reference levels described herein. Additional human soluble ST2 reference levels can be determined by those skilled in the art. In some embodiments, the sample contains blood, serum, or plasma. The sample can be obtained and the determination of the level of human soluble ST2 using at least one antibody or fragment described herein can be performed as described above.

Therapeutic Methods

[0124] In some embodiments, an ST2-binding antibody or antigen-binding fragment thereof is administered to a subject to treat any of a variety of diseases or conditions (e.g., any of the diseases described herein). For example, human

soluble ST2 levels are elevated in subjects having diseases, such as, without limitation, cardiovascular disease, pulmonary disease, sepsis, Kawasaki disease, and/or Th2-associated diseases. Any of the human soluble ST2-binding antibodies or antigen-binding fragments thereof, as well as modified antibodies or antigen-binding fragments based on such antibodies or fragments (e.g., human, chimeric or humanized antibodies or fragments), can be used to treat such diseases or conditions.

[0125] In some embodiments, a subject is administered an antibody or antigen-binding fragment thereof that binds competitively with an antibody produced by a hybridoma deposited at the ATCC and designated by Patent Deposit Designation PTA-10431 or PTA-104312, or both. In some embodiments, a subject is administered an antibody or antigen-binding fragment described herein that is human, chimeric, or humanized. As is known in the art, such human, chimeric, or humanized antibodies and fragments are typically less immunogenic relative to non-human, non-chimeric, or non-humanized antibodies. Thus, such human, chimeric, or humanized antibodies and fragments offer therapeutic benefits such as, without limitation, decreased incidence of side effects, tolerance to increased doses, and improved pharmacokinetic and/or pharmacodynamic properties. In some embodiments, a human, chimeric, or humanized antibody or fragment to be administered to a subject is derived from an antibody produced a hybridoma deposited at the ATCC and designated by Patent Deposit Designation PTA-10431 or PTA-104312, or both. For example, the heavy and/or light chain variable regions of such antibodies can be joined to a human constant region or fragment thereof to create a chimeric antibody or fragment. Alternatively, or one or more CDRs (e.g., each of the CDRs) of such antibodies can be inserted into one or more human framework regions to create a humanized antibody or fragment.

[0126] In some embodiments, an anti-human soluble ST2 antibody or human soluble ST2-binding antibody fragment is administered to a subject directly. An anti-human soluble ST2 antibody or fragment can be administered in an amount effective, at dosages and for periods of time necessary to achieve the desired result. For example, a therapeutically active amount of antibody or fragment can vary according to factors such as the disease state, age, sex, and weight of the subject, and the ability of the antibody or fragment to elicit a desired response in the subject. Dosage regimens can be adjusted to provide the optimum therapeutic response. For example, several divided doses can be administered daily or the dose can be proportionally reduced as indicated by the exigencies of the therapeutic situation. Those skilled in the art will be aware of dosages and dosing regimens suitable for administration of an anti-human soluble ST2 antibody or fragment to a subject. See e.g., Physicians' Desk Reference, 63rd edition, Thomson Reuters, November 30, 2008.

[0127] Anti-human soluble ST2 antibodies or human soluble ST2-binding antibody fragments described herein can be formulated for delivery by any available route including, but not limited to parenteral (e.g., intravenous), intradermal, subcutaneous, oral, nasal, bronchial, ophthalmic, transdermal (topical), transmucosal, rectal, and vaginal routes. Antibodies or fragments can include a delivery agent (e.g., a cationic polymer, peptide molecular transporter, surfactant, etc.) in combination with a pharmaceutically acceptable carrier. As used herein the term "pharmaceutically acceptable carrier" includes solvents, dispersion media, coatings, antibacterial and antifungal agents, isotonic and absorption delaying agents, and the like, compatible with pharmaceutical administration. Supplementary active compounds can also be incorporated into pharmaceutical formulations that contain an antibody or antigen-binding fragment thereof as described herein.

Kits

[0128] Also provided herein are kits that include a reagent comprising at least one (e.g., at least two, three, four, or five) anti-human soluble ST2 antibody or antigen-binding fragment described herein. Kits are generally comprised of the following major elements: packaging, reagents comprising binding compositions as described above, optionally a control, and instructions. Packaging can be a box-like structure for holding a vial (or number of vials) containing said binding compositions, a vial (or number of vials) containing a control, and instructions for use in a method described herein. Individuals skilled in the art can readily modify the packaging to suit individual needs.

[0129] In some embodiments, a kit provided herein can contain at least one (e.g., at least two, three, four, or five) of any of the antibodies or antigen-binding fragments described herein. For example, a kit can contain at least one (e.g., at least two, three, four, or five) antibody or antigen-binding fragment thereof that binds competitively with an antibody produced a hybridoma deposited at the ATCC and designated by Patent Deposit Designation PTA-10431 or PTA-104312, or both.

[0130] In some embodiments, a kit provided herein contains at least one (e.g., at least two, three, four, or five) anti-human soluble ST2 antibodies or antigen-binding fragments described herein, and one or more reagents for detecting binding of the antibody or antigen-binding fragment to human soluble ST2. For example, the kit can be designed for use in a chemiluminescent microparticle immunoassay (CMIA), such as the ARCHITECT assays from Abbot Diagnostics (Abbott Park, IL), and thus can contain paramagnetic microparticles coated with anti-BNP antibodies, and paramagnetic microparticles coated with anti-human soluble ST2 antibodies. These microparticles are contacted with a sample, and the human soluble ST2 present in the sample can bind to the coated microparticles. Optionally, the sample can be split into at least two aliquots, and each type of microparticle can be contacted with a separate aliquot. After washing, anti-

human soluble ST2 acridinium-labeled conjugate can be added to create a reaction mixture in the second step. Following another wash cycle pre-trigger and trigger solutions are added to the reaction mixture. The resulting chemiluminescent reaction is measured, e.g., using the ARCHITECT i System optics (Abbot Diagnostics, Abbott Park, Illinois). A direct relationship exists between the amount of human soluble ST2 in the sample and the chemiluminescence detected.

[0131] In some embodiments, kit provided herein contain at least one (e.g., at least two, three, four, or five) anti-human soluble ST2 antibodies or antigen-binding fragments described herein, and one or more solid phase immunoassay components for detecting human soluble ST2 via solid phase analysis. Solid phase immunoassays employ a solid support to which one member of a ligand-receptor pair, e.g., an antibody or antigen-binding fragment thereof, is bound. Non-limiting examples of solid supports include plates, tubes, beads of polystyrene, and various porous materials such as, e.g., nylon, nitrocellulose, cellulose acetate, and glass fibers. See e.g., U.S. Pat. Nos. 4,703,017; 4,743,560; and 5,073,484. In some embodiments, a kit comprises components for a solid phase immunoassay, in which a solid phase-bound antibody or antigen-binding fragment thereof (e.g., an anti-human soluble ST2 antibody or antigen-binding fragment thereof) is contacted with a sample containing an analyte of interest (e.g., human soluble ST2), after which the solid phase is washed to remove unbound material.

[0132] In some embodiments, a kit contains components for a flow-through solid phase immunoassay. Flow-through solid phase immunoassays obviate the need for incubation and washing steps associated with other types of solid phase immunoassays. A variety of flow-through solid phase immunoassays are known in the art. For example, U.S. Patent No. 4,632,901, discloses a flow-through immunoassay device wherein an antibody (specific to a target antigen analyte) is bound to a porous membrane or filter to which a liquid sample is added. As the liquid flows through the membrane, target analyte binds to the antibody. The addition of sample is followed by addition of labeled antibody. The visual detection of labeled antibody provides an indication of the presence of target antigen analyte in the sample. Moreover, U.S. Pat. No. 5,229,073, describes a semiquantitative competitive immunoassay lateral flow method that employs a plurality of capture zones or lines containing immobilized antibodies for measuring plasma lipoprotein levels. Additional examples of lateral-flow tests for detecting analytes are disclosed in U.S. Pat. Nos. 4,168,146; 4,366,241; 4,703,017; 4,855,240; 4,861,711; and 5,120,643; European Patent No. 0296724; WO 97/06439; and WO 98/36278. Those skilled in the art will be aware of other suitable solid phase immunoassay methods and devices, and will be able to employ one or more of the anti-human soluble ST2 antibodies and antigen-binding fragments described herein in such methods and devices.

[0133] In some embodiments, other methods of detection can be used, e.g., colorimetric assays, radioimmunoassays, or chemiluminescent assays. Sandwich assays can be used as well, e.g., using two monoclonal antibodies, one labeled with iodine 125 and the other adsorbed onto beads, e.g., as used in the IRMA-BNP2 kit from CISBIO International (France) and the ShionoRIA BNP or ANP kits (SHIONOGI USA Inc.).

[0134] Kits as provided herein can be used in accordance with any of the methods (e.g., diagnostic methods) described above. For example, kits containing at least one (e.g., at least two, three, four, or five) anti-human soluble ST2 antibody or antigen-binding fragment thereof described herein can be used to determine the level of human soluble ST2 in a sample. Moreover, kits containing at least one (e.g., at least two, three, four, or five) anti-human soluble ST2 antibody or antigen-binding fragment thereof can be used to determine a human soluble ST2 reference level. Those skilled in the art will be aware of other suitable uses for kits provided herein, and will be able to employ the kits for such uses.

[0135] In some embodiments of the kits, at least one (e.g., one, two, three, or four) of the antibodies or fragments has a K_D for binding to human soluble ST2 equal to or less than 8.59×10^{-10} M. In some embodiments of the kits, the kit is provided as an enzyme-linked immunosorbent assay. Some embodiments of the kits further contain a recombinant human soluble ST2 isolated from a human cell (e.g., a human embryonic kidney cell). Some embodiments of the kits further contain a fully glycosylated human soluble ST2 (e.g., present in a cell extract or provided as an isolated protein).

EXAMPLES

[0136] The invention is further described in the following examples, which do not limit the scope of the invention described in the claims.

Example 1: Production and Characterization of Anti-ST2 Monoclonal Antibodies

[0137] Monoclonal antibodies to the human soluble ST2 (sST2) protein were produced by immunizing mice with recombinant protein produced from the human cDNA sequence for sST2.

[0138] Antigen Production and Confirmation: A human sST2 cDNA clone, GeneBank Accession Number NM_003856.2, was purchased from Origene Technologies, Inc. of Rockville, MD. Using standard PCR techniques, this clone was used as the source sequence to create an expression vector including the entire human soluble ST2 sequence with a hexa-histidine purification tag incorporated in the amino-terminus region of the protein. Integrity of the expression clone was confirmed by DNA sequencing. Recombinant protein was produced by transient transfection and expression

in human embryonic kidney cells (HEK293). Recombinant human soluble ST2 protein was purified by passing cell lysate over a metal chelate column specifically binding the histidine purification tag incorporated into the expressed protein. Purification of recombinant human soluble ST2 was confirmed by Coomassie stained polyacrylamide gel and by Western blot analysis using both commercially available anti-ST2 antibodies (monoclonal antibody D067 obtained from MBL International) as well as anti-His tag antibodies. See, FIGs 1, 2, and 3A-3C. The protein itself has a molecular weight of 36 kD, based on the amino acid sequence, and it was shown by Kuroiwa et al. (Biochem. Biophys. Res. Comm. 284:1104-1108, 2001), that the native protein in human serum has a molecular weight of ~58 kD. The purified recombinant protein produced from this expression system had the appropriate molecular weight of ~58 kD for a fully glycosylated protein and was appropriately recognized by commercially available anti-ST2 antibodies. Quantification was performed by Bradford total protein assay.

[0139] Hybridoma and Monoclonal Antibody Production: Monoclonal antibodies were produced by immunizing mice with recombinant protein produced as described above. Three-Balb/c mice were immunized as follows:

T1	20 µg/animal with CFA (complete Freund's Adjuvant)
T1 + 3 days	20 µg/animal with IFA (incomplete Freund's Adjuvant)
T1 + 6 days	20 µg/animal in Saline
T1 + 9 days	20 µg/animal in Saline

[0140] After the final immunization antibody titer was determined from a tail bleed from each animal. The animal with the highest antibody titer was used for splenic fusion and hybridoma establishment. After establishing the hybridomas as stable cell cultures in 96-well plates, they were screened for binding to the recombinant human soluble ST2 protein and to a generic protein containing a hexa-his purification tag to eliminate hybridomas specific to this tag. Two hybridomas were selected for additional characterization and product development: 7E4 and 9F8. Both monoclonal antibodies were tested for sensitivity to the recombinant human soluble ST2 antigen by coating individual wells of 96-well microtiter plates with consistent quantities of each antibody, 9F8 and 7E4, then tested against 3-fold serial dilutions of biotin-conjugated recombinant human soluble ST2, concentration range of 300 to 0.41 ng/mL (see FIG. 4.)

[0141] The two antibodies illustrate comparable analyte sensitivity with a very strong absorbance value, ~1.0, observed at the lowest analyte concentration tested, 0.41 ng/mL. Additionally, both antibodies were coated into individual wells of a 96-well plate at concentrations ranging from 5 µg/ml to 0 and tested against a single concentration of biotin-conjugated recombinant human soluble ST2 (see FIG. 5). Both antibodies exhibit significant sensitivity at a concentration of ≥1.25 µg/ml with antibody 9F8 illustrating slightly greater sensitivity.

[0142] The 9F8 and 7E4 antibodies were also tested for their ability to be used together in a monoclonal antibody sandwich enzyme immunoassay (EIA) configuration. Each monoclonal antibody was coated in individual wells of a 96-well microtiter plate at a constant concentration and assayed against a 3-fold serial dilution range of human soluble sST2 concentrations, from 10 ng/ml to 0.01 ng/ml, using the other monoclonal antibody conjugated with biotin for detection of the complex. As shown in FIG. 6, both antibody combinations result in comparable sensitivity and readily detect as little as 0.01 ng/mL human soluble ST2.

[0143] Additional analysis using surface plasmon resonance (SPR) confirmed that antibodies 9F8 and 7E4 each recognize unique epitopes and epitopes that are different than are recognized by the commercially available antibodies D066 and D067, the monoclonal antibodies used by MBL International Corporation (MBL) in their ELISA. FIG. 7 illustrates the results of a SPR analysis of antibodies 9F8, 7E4, a third novel anti-human soluble ST2 antibody included for reference (11A7), both monoclonal antibodies commercially available from MBL (D066 and D067), plus an irrelevant antibody for baseline determination. An individual SPR chip was prepared with a coating for each monoclonal antibody. Recombinant human soluble ST2 was flowed across the chip and allowed to bind. Then the test monoclonal antibodies were flowed across the first antibody-human soluble ST2 complex to assess whether the second antibody could also bind to the complex through the human soluble ST2 protein. Only secondary antibodies that recognize a different epitope than the primary antibody will bind to the complex.

[0144] The results of the SPR analysis are shown in FIGs 7A-F.

[0145] Graph A1 (FIG. 7A): When antibody 9F8 (A1) was used as the primary capture antibody, each test antibody demonstrated at least a minimal measurable signal. Test antibody 7E4 (L2) had the highest signal, the irrelevant antibody (L6) had the lowest signal. The conclusion from this graph is that antibody 9F8 recognized a different epitope than any of the test antibodies and that the 9F8-7E4 pair provided the strongest overall binding.

[0146] Graph A2 (FIG. 7B): When antibody 7E4 (A2) was used as the primary capture antibody test antibody, 9F8 (L1) showed very good binding, the irrelevant antibody showed no measurable signal and the remaining test antibodies showed a low, but measurable, signal. The conclusion from this graph is that antibody 7E4 recognizes a different epitope than any of the test antibodies and that the 9F8-7E4 pair provided the strongest overall binding.

[0147] Graph A3 (FIG. 7C): When novel antibody 11A7 (A3) was used as the primary capture antibody test antibody,

9F8 (L1) showed very good binding, the irrelevant antibody showed no measurable signal and the remaining test antibodies showed a low, but measurable, signal. These results were almost identical to the results generated using antibody 7E4 as the capture antibody.

[0148] Graph A4 (FIG. 7D): When MBL antibody D066 (A4) was used as the primary capture antibody test antibody, 9F8 (L1) showed very good binding, followed in binding strength by antibody 7E4 (L2). The irrelevant antibody showed no measurable signal and the remaining test antibodies showed a low but measurable signal. The conclusion from this graph is that antibody D066 recognized a different epitope than any of the test antibodies, and that it formed a binding pair with the second MBL antibody, D067, but with much lower binding affinity than the 9F8-7E4 pair.

[0149] Graph A5 (FIG. 7E): When MBL antibody D067 (A5) was used as the primary capture antibody test antibody, 9F8 (L1) showed very good binding, followed in binding strength by antibodies 7E4 (L2) and D066 (L4). The irrelevant antibody showed no measurable signal and antibody 11A7 showed very low signal. The conclusion from this graph is that antibody D067 recognized a different epitope than any of the test antibodies, and that it formed a binding pair with the second MBL antibody, D066, but with much lower binding affinity than the 9F8-7E4 pair.

[0150] Graph A6 (FIG. 7F): When the irrelevant antibody was used as the primary test antibody there was no measurable signal generated from any of the test antibodies, confirming the specificity of the antibodies tested for affinity to human soluble ST2.

[0151] This analysis confirmed that the novel anti-human soluble ST2 monoclonal antibodies 9F8 and 7E4 recognized different epitopes than either of the MBL monoclonal antibodies D066 and D067. Further, this analysis also confirmed that the 9F8-7E4 pair had a higher binding affinity than the D066-D067 pair.

[0152] This increased binding affinity observed for the 9F8-7E4 pair was confirmed in head to head comparison of the two monoclonal antibody pairs in testing human plasma samples. In the experiment summarized in Table 1, the MBL ELISA comprised of the antibody pair D066-D067 was compared to the novel 9F8-7E4 antibody pair. Four (4) plasma samples were tested in a 2-fold dilution series, a matched pair of EDTA plasma and heparin plasma from a low human soluble ST2 concentration donor, and both EDTA plasma and heparin plasma samples from an elevated human soluble ST2 concentration donor were used.

Table 1: Comparison of Sensitivity of D066-D067 and 9F8-7E4 with Human Plasma Samples

	LS EDTA		LS heparin		HS EDTA		HS heparin	
dilution factor	D066-D0667	9F8-7E4	D066-D067	9F8-7E4	D066-D067	9F8-7E4	D066-D067	9F8-7E4
2	0.27	EUL	ND	EUL	0.86	EUL	0.29	EUL
4	0.45	19.7	ND	22.7	1.20	EUL	0.53	EUL
8	ND	20.4	ND	22.3	1.65	EUL	1.14	EUL
16	ND	21.6	ND	23.6	2.40	EUL	1.95	EUL
32	ND	23.5	ND	26.6	3.89	158.1	ND	134.0
64	ND	23.5	ND	26.6	ND	154.9	ND	136.3
128	ND	24.3	ND	27.3	ND	172.1	ND	152.4
256	ND	23.9	ND	30.4	ND	189.3	ND	160.8
mean	0.36	22.4		25.6	2.00	168.6	0.98	145.9
CV	37%	8.1%		11.4%	60%	9.3%	76%	8.8%
LS = low sST2 concentration sample, HS = high sST2 concentration sample, ND = not detected, EUL = exceeds upper limit of detection								

[0153] The results in Table 1 were generated by using each assay optimized for its individual performance with results reported in ng/mL based on the calibrator optimized for each antibody pair. The mass amounts reported here do not match as the calibrator proteins were not normalized to each other but were quantified independently. As shown in Table 1 the detection limit for the D066-D067 pair was the 1:4 dilution of the LS EDTA sample, and with poor precision, while the 9F8-7E4 pair was able to accurately measure down to a 1:256 dilution with good precision, CV <10%. This sensitivity difference is consistent when the HS EDTA plasma sample was tested. Also of note, the D066-D067 pair was not able to detect even the least dilute LS heparin plasma sample, and with the HS samples the heparin plasma sample had much lower signal than the EDTA plasma sample with the D066-D067 pair, indicating a sensitivity or inhibition of this antibody pair by heparin. The 9F8-7E4 pair did not exhibit this heparin sensitivity and maintained good precision, low

CV, in both the low and high human soluble ST2 concentration test plasma samples.

Example 2: EIA Characterization for 9F8-7E4 monoclonal antibody pair

[0154] The characteristics of the 9F8-7E4 monoclonal antibody pair were analyzed in an enzyme immunoassay (EIA).

[0155] Functional Sensitivity (limit of quantitation): The functional sensitivity limit was determined by assaying various concentrations of diluted calibrator in replicates of 20. In addition to the buffer blank, concentrations of calibrator tested included 0.0625, 0.125, and 0.25 ng/mL. Functional sensitivity is defined as the lowest concentration resulting in a CV \leq 20%. As shown in the following Table 2, all concentrations tested met this criteria with the lowest concentration tested being 0.0625 ng/mL.

Table 2: Functional Sensitivity Analysis Summary

ST2(ng/mL)	Mean A ₄₅₀	Std Dev	CV%
0.0	0.137	0.020	14. %
0.065	0.222	0.038	17. %
0.125	0.297	0.011	3.7%
0.25	0.471	0.026	5.5%

[0156] SPR was also used to determine the affinity of four antibodies produced by the methods described herein (9F8, 7E4, 11A7, and 15D06), and two antibodies produced by MBL International (D066-3 and D067-3). Each experiment was performed by detecting the binding of the following concentrations of the recombinant human soluble ST2 protein used to prepare the 9F8 and 7E4 antibodies described herein: 50 nM, 25 nM, 12.5 nM, 6.25 nM, 3.25 nM, and 0 nM. The data of these experiments are shown in Figures 8A-8F. The calculated K_D of each antibody for binding to recombinant human soluble ST2 isolated from human embryonic kidney cells is shown in Table 3.

Table 3. The K_D of binding of each antibody for human soluble ST2.

mAb	K _D (M)
9F8	8.59E-10
7E4	1.51E-09
11A7	2.72E-09
15D6	1.32E-09
D066	4.58E-09
D067	1.24E-09

[0157] Precision: Precision evaluation of the assay was performed according to the Clinical and Laboratory Standards Institute (CLSI) guideline Evaluation of Precision Performance of Quantitative Measurement Methods: Approved Guideline-Second Edition. (InVitro Diagnostics) EP5-A2. Three pooled patient plasma samples were aliquoted into twenty 1.5-mL plastic tubes for each concentration level and frozen at -80 °C. These samples were analyzed in duplicate in one run per day for 20 days within 2 months of blood collection. Within-run and total analytical imprecision (CV_A) was calculated with the CLSI single-run precision evaluation test. The assay had a within-run CV_A of 2.4% and a total CV_A of 4.0% at a mean concentration of 11 ng/mL (pool 1, low), a within-run CV_A of 2.0% and a total CV_A of 3.9% at a mean concentration of 87 ng/mL (pool 2, medium), and a within-run CV_A of 2.2% and a total CV_A of 3.9% at a mean concentration of 140 ng/mL (pool 3, high). See Table 4.

Table 4: Precision Analysis Summary

Pool	Mean (ng/ml)	Within run CV	Total CV
low	10.56	2.42%	3.96%
Medium	87.00	2.31%	3.87%
high	140.05	2.24%	3.86%

[0158] The assay does not exhibit any precision bias through the tested concentration range.

[0159] Interfering Substances (Sensitivity to Anticoagulant) Evaluation: In thirty apparently healthy volunteers, plasma samples were drawn in the most common tube types: serum, EDTA plasma, citrate plasma, and heparin plasma. Analysis was performed immediately following normal centrifugation and processing of the samples in a single human soluble ST2 analysis kit. The volunteers consisted of 9 males and 21 females with ages of 22-66 years. The results from this analysis are summarized in Table 5. As noted in Table 5, the median value for the citrate tube was slightly lower than for the other tube types, which is not unexpected as citrate tubes have a small volume of liquid anticoagulant in the tube that introduces a modest dilution of the collected sample relative to the other tube types that do not influence the sample volume. To test the consistency of measurements, each plasma tube type was compared to the serum tube. Each comparison resulted in a highly significant R^2 value, ranging from 0.849 to 0.964. Thus, with the exception of modest dilution in citrate tubes which may influence normal concentration measurements, there was no measured bias by tube type.

Table 5: Summary of Anticoagulant Test Results

Patient ID	Age	Gender	sST2 (ng/ml)			
			Serum	Citrate Plasma	EDTA Plasma	Heparin Plasma
1	24	F	7.4	13.7	6.3	3.9
2	26	F	5.7	7.3	7.2	8.8
3	62	M	7.9	6.6	8.0	4.3
4	45	F	6.8	5.2	6.3	6.7
5	41	F	5.3	4.3	5.5	5.3
6	53	M	6.3	5.3	7.3	7.9
7	56	F	2.5	2.4	3.3	3.2
8	50	F	6.4	4.8	5.8	6.5
9	44	F	7.7	5.1	5.6	N/A
10	63	F	4.9	3.7	5.1	4.9
11	66	M	7.4	5.1	6.8	7.4
12	57	F	9.1	6.9	7.9	8.8
13	59	F	5.0	4.3	4.2	4.2
14	52	F	6.0	4.5	5.8	6.4
15	58	M	20.6	17.7	19.5	17.1
16	22	F	6.0	2.8	5.3	6.6
17	49	F	13.7	12.4	12.7	11.9
18	29	F	5.2	4.8	5.2	7.9
19	35	F	3.9	3.2	3.5	3.4
20	24	F	8.2	6.5	7.3	7.1
21	50	F	13.1	11.2	11.6	11.7
22	54	F	10.9	7.5	9.7	9.7
23	49	M	18.9	14.0	17.9	18.6
24	53	M	15.4	12.5	16.7	13.0
25	64	M	7.3	N/A	5.1	6.0
26	51	M	15.1	11.4	14.0	14.5
27	27	M	19.4	18.4	18.3	21.7
28	22	F	9.0	7.6	7.4	8.2

(continued)

Patient ID	Age	Gender	sST2 (ng/ml)			
			Serum	Citrate Plasma	EDTA Plasma	Heparin Plasma
29	56	F	2.7	2.5	3.3	2.8
30	52	F	4.8	3.8	5.5	5.5
sST2 (ng/ml) by tube type: median			7.3	5.3	6.5	7.1
correlation with serum value: Rsq				0.849	0.964	0.89

[0160] Normal Concentration Reference Interval Determination: A cohort comprised of 490 donors, self-described as healthy with no known serious illness nor currently being treated for any serious illness, equally distributed between the genders and with age representation from 18 to 84 years, were recruited for this analysis.

[0161] Table 6 provides a summary of the number of individuals in each age group and by gender for this healthy reference range cohort, and FIG. 10 is a histogram of the human soluble ST2 concentration distribution. In FIG. 10, the bars represent the actual data and the vertical lines inside the bars represent a theoretical normal distribution. The distribution of concentrations in these healthy individuals was non-normal. Table 7 compares human soluble ST2 concentrations as a function of gender. In this normal, healthy population, the median concentration in males was significantly greater than in females (Kruskal-Wallis test; $p < 0.0001$).

Table 6: Healthy Reference Range Cohort

	Number of individuals per age decade						
	<30	30-39	40-49	50-59	60-69	>70	total
Female	61	35	53	39	38	19	245
Male	65	47	40	41	31	21	245
Total	126	82	93	80	69	40	490

Table 7: Comparison of reference groups by median values by gender

	Median (ng/mL)	95% CI	IQR
Male	23.6	21.3-25.1	17.6-30.6
Female	16.2	15.3-17.4	12.4-19.9

[0162] Stratifying human soluble ST2 concentrations by age revealed that there were no significant differences across these groups, FIG. 11 (Kruskal-Wallis test; males $p = 0.501$, females $p = 0.056$). Thus, gender-specific reference values as well as entire group values were calculated using a non-parametric percentile method (90% single-sided). These results are summarized in Table 8.

Table 8: CCD Healthy Reference Group Summary

Parameter/Group	Entire Group	Male	Female
N	490	245	245
Mean sST2 (ng/mL)	20.9	24.9	16.9
Median sST2 (ng/mL)	18.8	23.6	16.2
95% confidence interval of median	18.1 - 19.9	21.3-25.1	15.3-17.4
Interquartile range	14.5-25.3	17.6-30.6	12.4-19.9
Upper Limit: 90% (95% CI)	34.4 (32.4-35.8)	37.4 (35.5-41.1)	23.7 (22.2-25.9)

[0163] Table 9 lists the human soluble ST2 concentration at several specific thresholds.

Table 9: sST2 Concentrations at Specific Thresholds US Self-Reported Healthy Cohort

	Entire Cohort		Male		Female	
Percentiles	ST2 (ng/mL)	95% CI	ST2 (ng/mL)	95% CI	ST2 (ng/mL)	95% CI
2.5	8.0	7.1 to 8.6	8.6	7.7 to 11.8	7.3	5.5 to 8.4
5	9.3	8.4 to 10.2	11.8	8.6 to 12.7	8.5	7.3 to 9.4
10	11.5	10.3 to 11.9	13.7	12.2 to 14.8	10.2	9.0 to 11.2
25	14.5	13.7 to 15.2	17.6	16.8 to 18.7	12.4	11.9 to 13.5
median	18.8	18.2 to 19.9	23.6	21.3 to 25.1	16.2	15.4 to 17.4
75	25.3	23.8 to 26.9	30.6	28.7 to 33.3	19.9	18.8 to 20.8
90	34.3	32.4 to 35.6	37.2	35.5 to 40.9	23.7	22.2 to 25.8
95	37.9	35.9 to 41.3	45.4	39.4 to 48.6	29.0	24.6 to 33.2
97.5	45.6	40.1 to 48.7	48.5	45.8 to 58.5	33.1	29.6 to 39.9

[0164] Human Soluble ST2 Concentrations in Fasting versus Non-Fasting Status: A plasma sample was drawn from twenty-five patients (19 males and 6 females) with various disease states (8 of them with type 2 diabetes mellitus) after an overnight fasting period at 7:00 a.m. The patients thereafter had a standardized breakfast (730 kcal for patients without diabetes and 522 kcal for those with diabetes). A second blood draw for human soluble ST2 determination was at 11:00 a.m. Afterwards, all patients had a standardized lunch (800 kcal for patients without diabetes, and 716 kcal for those with diabetes). The third and final blood draw was at 2:00 p.m. Mean human soluble ST2 concentrations of the 25 individuals were calculated for all three time points. Paired t-tests were used to determine whether there was a difference between the non-fasting human soluble ST2 plasma concentrations (i.e., blood withdrawal at 11:00 a.m. and 2:00 p.m.) compared with the respective fasting values (i.e., blood withdrawal at 7:00 a.m.). The relative change of human soluble ST2 concentrations in time course was compared with the RCV to estimate the effect of food on the analyte concentration.

[0165] The mean fasting human soluble ST2 concentration was 18 U/mL (median, 17 U/mL; range 9-26 U/mL) at 7:00 a.m., the mean human soluble ST2 concentration after breakfast was 19 U/mL (median, 18 U/mL; range, 11-28 U/mL; $p=0.025$ for comparison with fasting ST2) at 11:00 a.m., and the mean human soluble ST2 concentration after lunch was 18 U/mL (median, 18 U/mL; range, 10-28 U/mL; $p=0.014$ for comparison with fasting human soluble ST2) at 2:00 p.m. Mean human soluble ST2 concentrations at 11:00 a.m. and 2:00 p.m. were thus <5% higher than the mean fasting value obtained at 7:00 a.m.

[0166] Comparison of Normal Human Soluble ST2 Concentrations and Disease State Concentrations: Concentrations of human soluble ST2 were distinctly higher in patients with heart failure than in normal, healthy individuals. In the following analysis, the normal concentration as determined from the 490 healthy donors was compared to various distinct populations; 528 healthy volunteers confirmed by biomarker screening to be absent of occult cardiovascular disease (CVD) or inflammatory disease (screened by BNP, PCT, CRP, and IL-6), 709 patients diagnosed with acute heart failure, 1159 patients diagnosed with chronic, stable heart failure, 190 patients diagnosed with pulmonary arterial hypertension (PAH), 48 patients diagnosed with asthma, 223 diagnosed with asthma or COPD, 58 diagnosed with pulmonary embolism (PE), 119 diagnosed with pneumonia (PNA), 109 diagnosed with advanced respiratory disease syndrome (ARDS), 50 juveniles diagnosed with Kawasaki disease (KD), and 15 diagnosed with sepsis. Table 10 lists the median values, 95% confidence interval, and interquartile range (IQR) for human soluble ST2 concentrations in each group.

Table 10: sST2 Concentrations by Disease Status

Disease State	N	Median sST2 (ng/mL)	95% CI	IQR
Normal	490	18.8	18.1 - 19.9	14.5-25.3
Biomarker confirmed healthy	528	11.1	10.4 - 11.7	7.5 - 16.6
Chronic heart failure	1159	27.4	26.3 - 29.0	19.3 - 43.0
Acute heart failure	709	59.8	55.5-63.4	36.1 - 97.2

(continued)

<u>Disease State</u>	<u>N</u>	<u>Median sST2 (ng/mL)</u>	<u>95% CI</u>	<u>IQR</u>
Pulmonary Arterial Hypertension (PAH)	190	31.7		22.1 - 51.7
Kawasaki disease	50	34.2	25.2 - 51.6	19.7 - 72.5
ARDS	109	662.0	481.5 - 1031.7	290.8 - 1846
Asthma	48	46.4	33.1 - 81.5	29.4 - 97.8
Pulmonary embolism	58	43.5	34.9 - 70.2	27.2 - 94.3
COPD/Asthma	223	62.8	55.5 - 73.1	40.2 - 126.2
Pneumonia	119	69.4	57.2 - 79.6	39.9 - 118.9
Sepsis	15	745	283-3178	325 - 2772

[0167] Comparison of Human Soluble ST2 Concentrations and Risk of Death at 1 Year: Concentrations of human soluble ST2 were also measured in blood samples from the PRIDE cohort (Junuzzi et al., J. Am. Coll. Cardiol. 50:607-613, 2007). Of the 599 subjects in the original PRIDE cohort, 586 had blood sample available for measurement of human soluble ST2 using the methods described above. The samples used were EDTA plasma aliquots frozen at -80°C. Receiver operating characteristic plots (ROC) plots with death at one year as the reference standard were analyzed and the areas under the curve (AUC) were compared according to the method by Hanley et al. (Radiology 148:839-843, 1983) to determine the capability of the assay for prediction of 1-year all-cause mortality in the PRIDE cohort.

[0168] In these experiments, the median concentrations for the entire cohort were 27 ng/mL (range, <2-393 ng/mL) for the assay. In this cohort, non-parametric correlation analysis revealed a correlation coefficient (r_s) of 0.955 (95%CI, 0.947-0.962; $p < 0.001$) for both methods. Of the 586 patients, 92 (16%) individuals had died at one year and 494 (84%) survived. The ROC curve analyses demonstrate an AUC of 0.803 (95% CI, 0.768-0.834) by the assay for predicting death at 1 year.

OTHER EMBODIMENTS

[0169] It is to be understood that while the invention has been described in conjunction with the detailed description thereof, the foregoing description is intended to illustrate and not limit the scope of the invention, which is defined by the scope of the appended claims. Other aspects, advantages, and modifications are within the scope of the following claims.

[0170] Further aspects of the invention are described in the following numbered clauses.

1. An isolated antibody or antigen-binding fragment thereof, wherein the antibody or fragment thereof is produced by a hybridoma deposited at the American Type Culture Collection (ATTC) and designated by Patent Deposit Designation PTA- 10431 or PTA- 10432.

2. The antibody or fragment of clause 1, wherein the antibody or fragment thereof is chimeric.

3. The antibody or fragment of clause 1, wherein the antibody or fragment thereof is humanized.

4. The antibody or fragment of any of the above clauses, wherein the fragment is selected from the group consisting of: a Fab fragment, a F(ab')₂ fragment, and a scFv fragment.

5. The antibody or fragment of any of the above clauses, wherein the antibody or fragment thereof is glycosylated.

6. The antibody or fragment of any of the above clauses, wherein the antibody or fragment thereof comprises one or more of the complementary determining regions of the light or heavy chain of the antibody produced by the hybridoma deposited at the ATTC and designated by the Patent Deposit Designation PTA-10431 or PTA-10432.

7. The antibody or fragment of any of the above clauses, wherein the antibody is the antibody produced by the hybridoma deposited at the ATTC and designated by the Patent Deposit Designation PTA-10431, or is an antigen-binding fragment of the antibody produced by the hybridoma deposited at the ATTC and designated by the Patent Deposit Designation PTA- 10431.

8. The antibody or fragment of any of clauses 1-6, wherein the antibody is the antibody produced by the hybridoma deposited at the ATTC and designated by the Patent Deposit Designation PTA-10432, or is an antigen-binding fragment of the antibody produced by the hybridoma deposited at the ATTC and designated by the Patent Deposit Designation PTA-10432.

9. A hybridoma selected from the group consisting of: the hybridoma deposited at the American Type Culture Collection (ATCC) and designated by the Patent Deposit Designation PTA-10431 and the hybridoma deposited at the ATCC and designated by the Patent Deposit Designation PTA-10432.

10. A method of quantitating a level of human soluble ST2 in a sample from a subject, the method comprising:

contacting the sample with at least one antibody or fragment thereof of clauses 1-8; and

detecting binding of the antibody or fragment thereof to human soluble ST2.

11. The method of clause 10, wherein the method comprises the use of at least two different antibodies or fragments thereof of clauses 1-8.

12. A method of predicting the risk of death within one year in a subject, the method comprising:

obtaining a sample from a subject; and

determining the level of human soluble ST2 in the sample using at least one antibody or fragment thereof of clauses 1-8;

wherein an elevated level of human soluble ST2 in the sample compared to a reference level of human soluble ST2 indicates that the subject has an increased risk of death within one year, and a decreased or an equal level of human soluble ST2 in the sample compared to a reference level of human soluble ST2 indicates that the subject has a decreased risk of death within one year.

13. A method of determining whether to discharge or to initiate or continue treatment of a subject on an inpatient basis, the method comprising:

obtaining a sample from a subject; and

determining the level of human soluble ST2 in the sample using at least one antibody or fragment thereof of clauses 1-8;

wherein an elevated level of human soluble ST2 in the sample compared to a reference level of human soluble ST2 indicates that inpatient treatment of the subject should be initiated or continued, and a decreased or an equal level of human soluble ST2 in the sample compared to a reference level of human soluble ST2 in the sample indicates that the subject should be discharged.

14. A method of selecting a subject for participation in a clinical study, the method comprising:

obtaining a sample from a subject;

determining the level of human soluble ST2 in the sample using at least one antibody or fragment thereof of clauses 1-8; and

selecting the subject for participation in a clinical study if the subject's level of human soluble ST2 relative to a reference level of human soluble ST2 indicates that the subject should be selected for participation in a clinical study.

15. The method of clause 14, wherein the presence of an elevated level of human soluble ST2 indicates that the subject should be selected for participation in a clinical study.

16. The method of any of clauses 10-15, wherein the subject is undiagnosed or is not presenting with two or more

symptoms of a disease.

17. The method of clause 10-15, wherein the subject has been diagnosed as having a disease.

18. The method of clause 17, wherein the disease is selected from the group consisting of: heart failure, coronary artery disease, cardiovascular disease, acute coronary syndrome, renal insufficiency, and stroke.

19. The method of clauses 10-15, wherein the subject has been identified as being at risk of developing a disease.

20. The method of any of clauses 10-19, wherein the subject has one or more of: hypertriglyceridemia, hypercholesterolemia, hypertension, and a body mass index of ≥ 30 .

21. The method of any of clauses 12-20, wherein the determining is performed using at least two antibodies or fragments thereof of clauses 1-8.

22. The method of any of clauses 12-21, wherein the reference level of human soluble ST2 is a threshold level of human soluble ST2.

23. The method of clause 22, wherein the threshold level of human soluble ST2 is an average level of human soluble ST2 in a healthy patient population.

24. The method of clause 23, wherein the healthy patient population is a healthy male patient population.

25. The method of clause 23, wherein the healthy patient population is a healthy female patient population.

26. The method of any of clauses 12-21, wherein the reference level is a level of human soluble ST2 present in a sample of a subject not presenting with two or more symptoms of a disease.

27. The method of any of clauses 12-21, wherein the reference level is a level of human soluble ST2 present in a sample of a subject not diagnosed as having a disease.

28. The method of clause 27, wherein the disease is selected from the group consisting of: heart failure, coronary artery disease, cardiovascular disease, acute coronary syndrome, renal insufficiency, and stroke.

29. The method of any of clauses 10-28, wherein the sample comprises blood, serum, or plasma.

30. The method of clause 12, wherein the subject has at least one or more of the following symptoms: chest pain or discomfort, shortness of breath, nausea, vomiting, eructation, sweating, palpitations, lightheadedness, fatigue, and fainting.

31. A kit comprising at least one antibody or antigen-binding fragment thereof of clauses 1-8.

32. The kit of clause 31, wherein the kit contains two antibodies or antigen-binding fragments thereof.

33. The kit of clause 31 or 32, wherein at least one of the antibodies or fragments has a K_D for binding to human soluble ST2 equal to or less than 8.59×10^{-10} M.

34. The kit of any of clauses 31-33, wherein the kit is provided as an enzyme-linked immunosorbent assay.

35. The kit of any of clauses 31-34, further comprising a recombinant human soluble ST2 isolated from a human cell.

36. The kit of clause 35, wherein the human cell is a human embryonic kidney cell.

EP 3 050 901 A1

SEQUENCE LISTING

<110> Critical Care Diagnostics, Inc.

<120> SOLUBLE HUMAN ST-2 ANTIBODIES AND ASSAYS

<130> PC927693EPA

<150> US 61/345,837

<151> 2010-05-18

<150> US 61/322,578

<151> 2010-04-09

<160> 4

<170> FastSEQ for Windows Version 4.0

<210> 1

<211> 328

<212> PRT

<213> Homo sapiens

<400> 1

Met	Gly	Phe	Trp	Ile	Leu	Ala	Ile	Leu	Thr	Ile	Leu	Met	Tyr	Ser	Thr
1				5					10					15	
Ala	Ala	Lys	Phe	Ser	Lys	Gln	Ser	Trp	Gly	Leu	Glu	Asn	Glu	Ala	Leu
		20						25					30		
Ile	Val	Arg	Cys	Pro	Arg	Gln	Gly	Lys	Pro	Ser	Tyr	Thr	Val	Asp	Trp
		35					40					45			
Tyr	Tyr	Ser	Gln	Thr	Asn	Lys	Ser	Ile	Pro	Thr	Gln	Glu	Arg	Asn	Arg
	50				55						60				
Val	Phe	Ala	Ser	Gly	Gln	Leu	Leu	Lys	Phe	Leu	Pro	Ala	Ala	Val	Ala
65					70					75				80	
Asp	Ser	Gly	Ile	Tyr	Thr	Cys	Ile	Val	Arg	Ser	Pro	Thr	Phe	Asn	Arg
			85						90					95	
Thr	Gly	Tyr	Ala	Asn	Val	Thr	Ile	Tyr	Lys	Lys	Gln	Ser	Asp	Cys	Asn
			100					105					110		
Val	Pro	Asp	Tyr	Leu	Met	Tyr	Ser	Thr	Val	Ser	Gly	Ser	Glu	Lys	Asn
		115					120					125			
Ser	Lys	Ile	Tyr	Cys	Pro	Thr	Ile	Asp	Leu	Tyr	Asn	Trp	Thr	Ala	Pro
	130					135					140				
Leu	Glu	Trp	Phe	Lys	Asn	Cys	Gln	Ala	Leu	Gln	Gly	Ser	Arg	Tyr	Arg
145					150					155				160	
Ala	His	Lys	Ser	Phe	Leu	Val	Ile	Asp	Asn	Val	Met	Thr	Glu	Asp	Ala
			165						170					175	
Gly	Asp	Tyr	Thr	Cys	Lys	Phe	Ile	His	Asn	Glu	Asn	Gly	Ala	Asn	Tyr
		180						185					190		
Ser	Val	Thr	Ala	Thr	Arg	Ser	Phe	Thr	Val	Lys	Asp	Glu	Gln	Gly	Phe
		195					200					205			
Ser	Leu	Phe	Pro	Val	Ile	Gly	Ala	Pro	Ala	Gln	Asn	Glu	Ile	Lys	Glu
	210					215					220				
Val	Glu	Ile	Gly	Lys	Asn	Ala	Asn	Leu	Thr	Cys	Ser	Ala	Cys	Phe	Gly
225					230					235				240	
Lys	Gly	Thr	Gln	Phe	Leu	Ala	Ala	Val	Leu	Trp	Gln	Leu	Asn	Gly	Thr
			245						250					255	
Lys	Ile	Thr	Asp	Phe	Gly	Glu	Pro	Arg	Ile	Gln	Gln	Glu	Glu	Gly	Gln
		260						265					270		
Asn	Gln	Ser	Phe	Ser	Asn	Gly	Leu	Ala	Cys	Leu	Asp	Met	Val	Leu	Arg
		275					280					285			
Ile	Ala	Asp	Val	Lys	Glu	Glu	Asp	Leu	Leu	Leu	Gln	Tyr	Asp	Cys	Leu

EP 3 050 901 A1

	290		295		300
	Ala Leu Asn Leu His Gly Leu Arg Arg His Thr Val Arg Leu Ser Arg				
	305		310		315
	Lys Asn Pro Ser Lys Glu Cys Phe				320
		325			

5

<210> 2
 <211> 2542
 <212> DNA
 <213> Homo sapiens

10

<400> 2

	gaggaggggac	ctacaaagac	tggaaactat	tcttagctcc	gtcactgact	ccaagttcat	60
	cccctctgtc	tttcagtttg	gttgagatat	aggctactct	tcccaactca	gtcttgaaga	120
15	gtatcaccaa	ctgcctcatg	tgtggtgacc	ttcactgtcg	tatgccagtg	actcatctgg	180
	agtaatctca	acaacgagtt	accaatactt	gctcttgatt	gataaacaga	atgggggtttt	240
	ggatcttagc	aattctcaca	attctcatgt	attccacagc	agcaaagttt	agtaaacaat	300
	catggggcct	ggaaaatgag	gctttaattg	taagatgtcc	tagacaagga	aaacctagtt	360
	acaccgtgga	ttggtattac	tcacaaacaa	acaaaagtat	tcccactcag	gaaagaaatc	420
	gtgtgtttgc	ctcaggccaa	cttctgaagt	ttctaccagc	tgcaagttgt	gattctggta	480
20	tttataacctg	tattgtcaga	agtcccacat	tcaataggac	tggatatgcg	aattgtcacca	540
	tatataaaaa	acaatcagat	tgcaatgttc	cagattattt	gatgtattca	acagtatctg	600
	gatcagaaaa	aaattccaaa	atattattgtc	ctaccattga	cctctacaac	tggacagcac	660
	ctcttgagtg	gtttaagaat	tgtcaggctc	ttcaaggatc	aaggtagcag	gcgcacaagt	720
	catttttggg	cattgataat	gtgatgactg	aggacgcagg	tgattacacc	tgtaaattta	780
25	tacacaatga	aaatggagcc	aattatagtg	tgacggcgac	cagggtccttc	acggtcaagg	840
	atgagcaagg	cttttctctg	tttccagtaa	tccggagcccc	tgcaaaaaat	gaaataaagg	900
	aagtggaaat	tggaaaaaac	gcaaacctaa	cttgctctgc	ttgttttgga	aaaggcactc	960
	agttcttggc	tgccgtcctg	tggcagctta	atggaacaaa	aattacagac	tttgggtgaac	1020
	caagaattca	acaagaggaa	gggcaaaatc	aaagtttcag	caatgggctg	gcttgtctag	1080
	acatggtttt	aagaatagct	gacgtgaagg	aagaggattt	attgctgcag	tacgactgtc	1140
30	tggccctgaa	tttgcatggc	ttgagaaggc	acaccgtaag	actaagtagg	aaaaatccaa	1200
	gtaaggagtg	tttctgagac	tttgatcacc	tgaactttct	ctagcaagtg	taagcagaat	1260
	ggagtgtggt	tccaagagat	ccatcaagac	aatgggaatg	gcctgtgcc	taaaatgtgc	1320
	ttctcttctt	cgggatgttg	tttgctgtct	gactgttctt	gactgttctt	gtttgtctgg	1380
	agttctctct	ctgcttaaat	tgttcgtcct	ccccactcc	ctcctatcgt	tggtttgtct	1440
	agaacactca	gctgcttctt	tggtcatcct	tgttttctaa	ctttatgaac	tccctctgtg	1500
35	tactgtatg	tgaaggaaa	tgccaaca	accgtaaaact	gaacgtgttc	ttttgtgtct	1560
	ttttataact	tgcattacat	gttgtaagca	tggtccgttc	tatacctttt	tctgggtcata	1620
	atgaacactc	attttgtag	cgagggtggt	aaagtgaaca	aaaaggggaa	gtatcaaact	1680
	actgccattt	cagtgaagaa	atcctaggtg	ctactttata	ataagacatt	tgttaggcca	1740
	ttcttgcatt	gatataaaga	aatacctgag	actgggtgat	ttatatgaaa	agagggttaa	1800
40	ttggctcaca	gttctgcagg	ctgtatggga	agcatggcgg	catctgcttc	tggggacacc	1860
	tcaggagctt	tactcatggc	agaaggcaaa	gcaaaggcag	gcacttcaca	cagtaaaagc	1920
	aggagcgaga	gagaggtgcc	acactgaaac	agccagatct	catgagaagt	cactcactat	1980
	tgaaggaca	gcatcaaaga	gatggtgcta	aaccattcat	gatgaactca	cccccatgat	2040
	ccaatcacct	cccaccaggc	tccacctcga	atactgggga	ttaccattca	gcatgagatt	2100
	tgggcaggaa	cacagaccca	aaccatacca	cacacattat	cattgttaaa	ctttgtaaag	2160
45	tattttaagg	acatggaaca	cacgggaagt	ctggtagctc	agcccatttc	tttattgcat	2220
	ctgttattca	ccatgtaatt	caggtaccac	gtattccagg	gagcctttct	tggccctcag	2280
	tttgcagtat	acacactttc	caagtactct	tgtagcatcc	tgtttgtatc	atagcactgg	2340
	tcacattgcc	ttacctaaat	ctgtttgaca	gtctgctcaa	cacgactgca	agctccatga	2400
	gggcaggggac	atcatctctt	ccatctttgg	gtccttagtg	caatacctgg	cagctagcca	2460
50	gtgctcagct	aaatatttgt	tgactgaata	aatgaatgca	caaccaaaaa	aaaaaaaaaa	2520
	aaaaaaaaaa	aaaaaaaaaa	aa				2542

55

<210> 3
 <211> 556
 <212> PRT
 <213> Homo sapiens

<400> 3

EP 3 050 901 A1

	Met	Gly	Phe	Trp	Ile	Leu	Ala	Ile	Leu	Thr	Ile	Leu	Met	Tyr	Ser	Thr
	1				5					10					15	
	Ala	Ala	Lys	Phe	Ser	Lys	Gln	Ser	Trp	Gly	Leu	Glu	Asn	Glu	Ala	Leu
			20						25					30		
5	Ile	Val	Arg	Cys	Pro	Arg	Gln	Gly	Lys	Pro	Ser	Tyr	Thr	Val	Asp	Trp
			35					40					45			
	Tyr	Tyr	Ser	Gln	Thr	Asn	Lys	Ser	Ile	Pro	Thr	Gln	Glu	Arg	Asn	Arg
		50				55						60				
	Val	Phe	Ala	Ser	Gly	Gln	Leu	Leu	Lys	Phe	Leu	Pro	Ala	Ala	Val	Ala
	65					70					75					80
10	Asp	Ser	Gly	Ile	Tyr	Thr	Cys	Ile	Val	Arg	Ser	Pro	Thr	Phe	Asn	Arg
				85						90					95	
	Thr	Gly	Tyr	Ala	Asn	Val	Thr	Ile	Tyr	Lys	Lys	Gln	Ser	Asp	Cys	Asn
				100					105					110		
	Val	Pro	Asp	Tyr	Leu	Met	Tyr	Ser	Thr	Val	Ser	Gly	Ser	Glu	Lys	Asn
			115					120					125			
15	Ser	Lys	Ile	Tyr	Cys	Pro	Thr	Ile	Asp	Leu	Tyr	Asn	Trp	Thr	Ala	Pro
		130					135					140				
	Leu	Glu	Trp	Phe	Lys	Asn	Cys	Gln	Ala	Leu	Gln	Gly	Ser	Arg	Tyr	Arg
	145					150					155					160
20	Ala	His	Lys	Ser	Phe	Leu	Val	Ile	Asp	Asn	Val	Met	Thr	Glu	Asp	Ala
					165					170					175	
	Gly	Asp	Tyr	Thr	Cys	Lys	Phe	Ile	His	Asn	Glu	Asn	Gly	Ala	Asn	Tyr
				180					185					190		
	Ser	Val	Thr	Ala	Thr	Arg	Ser	Phe	Thr	Val	Lys	Asp	Glu	Gln	Gly	Phe
			195					200					205			
25	Ser	Leu	Phe	Pro	Val	Ile	Gly	Ala	Pro	Ala	Gln	Asn	Glu	Ile	Lys	Glu
		210					215					220				
	Val	Glu	Ile	Gly	Lys	Asn	Ala	Asn	Leu	Thr	Cys	Ser	Ala	Cys	Phe	Gly
	225					230					235					240
	Lys	Gly	Thr	Gln	Phe	Leu	Ala	Ala	Val	Leu	Trp	Gln	Leu	Asn	Gly	Thr
					245					250					255	
30	Lys	Ile	Thr	Asp	Phe	Gly	Glu	Pro	Arg	Ile	Gln	Gln	Glu	Glu	Gly	Gln
				260					265					270		
	Asn	Gln	Ser	Phe	Ser	Asn	Gly	Leu	Ala	Cys	Leu	Asp	Met	Val	Leu	Arg
			275					280					285			
	Ile	Ala	Asp	Val	Lys	Glu	Glu	Asp	Leu	Leu	Leu	Gln	Tyr	Asp	Cys	Leu
		290					295					300				
35	Ala	Leu	Asn	Leu	His	Gly	Leu	Arg	Arg	His	Thr	Val	Arg	Leu	Ser	Arg
	305					310					315					320
	Lys	Asn	Pro	Ile	Asp	His	His	Ser	Ile	Tyr	Cys	Ile	Ile	Ala	Val	Cys
					325					330					335	
	Ser	Val	Phe	Leu	Met	Leu	Ile	Asn	Val	Leu	Val	Ile	Ile	Leu	Lys	Met
				340					345					350		
40	Phe	Trp	Ile	Glu	Ala	Thr	Leu	Leu	Trp	Arg	Asp	Ile	Ala	Lys	Pro	Tyr
			355					360					365			
	Lys	Thr	Arg	Asn	Asp	Gly	Lys	Leu	Tyr	Asp	Ala	Tyr	Val	Val	Tyr	Pro
		370				375						380				
45	Arg	Asn	Tyr	Lys	Ser	Ser	Thr	Asp	Gly	Ala	Ser	Arg	Val	Glu	His	Phe
	385					390					395					400
	Val	His	Gln	Ile	Leu	Pro	Asp	Val	Leu	Glu	Asn	Lys	Cys	Gly	Tyr	Thr
					405					410					415	
	Leu	Cys	Ile	Tyr	Gly	Arg	Asp	Met	Leu	Pro	Gly	Glu	Asp	Val	Val	Thr
				420				425					430			
50	Ala	Val	Glu	Thr	Asn	Ile	Arg	Lys	Ser	Arg	Arg	His	Ile	Phe	Ile	Leu
			435					440					445			
	Thr	Pro	Gln	Ile	Thr	His	Asn	Lys	Glu	Phe	Ala	Tyr	Glu	Gln	Glu	Val
		450					455					460				
	Ala	Leu	His	Cys	Ala	Leu	Ile	Gln	Asn	Asp	Ala	Lys	Val	Ile	Leu	Ile
	465					470					475					480
55	Glu	Met	Glu	Ala	Leu	Ser	Glu	Leu	Asp	Met	Leu	Gln	Ala	Glu	Ala	Leu
					485					490					495	
	Gln	Asp	Ser	Leu	Gln	His	Leu	Met	Lys	Val	Gln	Gly	Thr	Ile	Lys	Trp

500 505 510
 Arg Glu Asp His Ile Ala Asn Lys Arg Ser Leu Asn Ser Lys Phe Trp
 515 520 525
 5 Lys His Val Arg Tyr Gln Met Pro Val Pro Ser Lys Ile Pro Arg Lys
 530 535 540
 Ala Ser Ser Leu Thr Pro Leu Ala Ala Gln Lys Gln
 545 550 555

10 <210> 4
 <211> 2058
 <212> DNA
 <213> Homo sapiens

15 <400> 4
 aaagagagggc tggctgttgt atttagtaaa gctataaagc tgtaagagaa attggccttc 60
 tgagttgtga aactgtgggc agaaagttga ggaagaaaga actcaagtac aacccaatga 120
 ggttgagata taggctactc ttcccaactc agtcttgaag agtatcacca actgcctcat 180
 gtgtggtgac cttcactgtc gtatgccagt gactcatctg gagtaatctc aacaacgagt 240
 20 taccaatact tgctcttgat tgataaacag aatgggggtt tggatcttag caattctcac 300
 aattctcatg tattccacag cagcaaagtt tagtaaacaa tcatggggcc tggaaaatga 360
 ggctttaatt gtaagatgtc ctagacaagg aaaacctagt tacaccgtgg attggtatta 420
 ctcacaaaca aacaaaagta ttcccactca ggaaagaaat cgtgtgtttg cctcaggcca 480
 acttctgaag tttctaccag ctgcagttgc tgattctggt atttatacct gtattgtcag 540
 aagtcccaca ttcaatagga ctggatatgc gaatgtcacc atatataaaa aacaatcaga 600
 25 ttgcaatggt ccagattatt tgatgtattc aacagtatct ggatcagaaa aaaattccaa 660
 aattttattgt cctaccattg acctctacaa ctggacagca cctcttgagt ggtttaagaa 720
 ttgtcaggct cttcaaggat caaggtacag ggcgacacaag tcatttttgg tcattgataa 780
 tgtgatgact gaggacgcag gtgattacac ctgtaaatat atacacaatg aaaatggagc 840
 caattatagt gtgacggcga ccaggtcctt cacggtcaag gatgagcaag gcttttctct 900
 30 gtttccagta atcggagccc ctgcacaaaa tgaaataaag gaagtggaaa ttggaaaaaa 960
 cgcaaaccta acttgctctg cttgttttgg aaaaggcact cagttcttgg ctgccgtcct 1020
 gtggcagctt aatggaacaa aaattacaga ctttgggtgaa ccaagaattc aacaagagga 1080
 agggcaaaat caaagtttca gcaatgggct ggcttgtcta gacatggttt taagaatagc 1140
 tgacgtgaag gaagaggatt tattgtctgca gtacgactgt ctggccctga atttgcattg 1200
 35 cttgagaagg cacaccgtaa gactaagtag gaaaaatcca attgatcatc atagcatcta 1260
 ctgcataatt gcagtatgta gtgtattttt aatgctaata aatgtcctgg ttatcatcct 1320
 aaaaatgttc tggattgagg ccactctgct ctggagagac atagctaaac cttacaagac 1380
 taggaatgat ggaagctct atgatgttta tgttgtctac ccacggaact acaaatccag 1440
 tacagatggg gccagtcgtg tagagcactt tgttcaccag attctgcctg atgttcttga 1500
 aaataaatgt ggctatacct tatgcattta tgggagagat atgctacctg gagaagatgt 1560
 40 agtcaactgca gtggaaacca acatacgaaa gagcaggcgg cacattttca tcctgacccc 1620
 tcagatcact cacaataagg agtttgcta cgagcaggag gttgccctgc actgtgccct 1680
 catccagaac gacgccaagg tgatacttat tgagatggag gctctgagcg agctggacat 1740
 gctgcaggct gaggcgcttc aggactccct ccagcatctt atgaaagtac aggggaccat 1800
 caagtggagg gaggaccaca ttgccaataa aagggtccctg aattctaaat tctggaagca 1860
 45 cgtgaggtac caaatgcctg tgccaagcaa aattcccaga aaggcctcta gtttgactcc 1920
 cttggctgcc cagaagcaat agtgccctgct gtgatgtgca aaggcatctg agtttgaagc 1980
 tttcctgact tctcctagct ggcttatgcc cctgcactga agtgtgagga gcaggaatat 2040
 taaagggatt caggcctc 2058

Claims

1. A method of predicting the risk of death within one year in a subject, the method comprising:

obtaining a sample comprising blood, serum, or plasma from a subject;
 determining the level of human soluble Growth Stimulation-Expressed Gene 2 (ST2) in the sample using an isolated antibody produced by the hybridoma deposited at the American Type Culture Collection (ATCC) and designated by Patent Deposit Designation PTA-10431, or an antigen-binding fragment of an antibody produced

by the hybridoma deposited at the ATCC and designated by Patent Deposit Designation PTA-10431; and identifying a subject having an elevated level of human soluble ST2 in the sample compared to a threshold level of human soluble ST2 as having an increased risk of death within one year, or identifying a subject having a decreased or an equal level of human soluble ST2 in the sample compared to the reference level of human soluble ST2 as having a decreased risk of death within one year.

2. The method of claim 1, wherein the antigen-binding fragment has a K_D for binding to human soluble ST2 equal to or less than 1.51×10^{-9} M.

3. A method of predicting the risk of death within one year in a subject, the method comprising:

obtaining a sample comprising blood, serum, or plasma from a subject;
determining the level of human soluble Growth Stimulation-Expressed Gene 2 (ST2) in the sample using an isolated antibody produced by the hybridoma deposited at the American Type Culture Collection (ATCC) and designated by Patent Deposit Designation PTA-10432, or an antigen-binding fragment of an antibody produced by the hybridoma deposited at the ATCC and designated by Patent Deposit Designation PTA-10432; and identifying a subject having an elevated level of human soluble ST2 in the sample compared to a threshold level of human soluble ST2 as having an increased risk of death within one year, or identifying a subject having a decreased or an equal level of human soluble ST2 in the sample compared to the reference level of human soluble ST2 as having a decreased risk of death within one year.

4. The method of claim 3, wherein the antigen-binding fragment has a K_D for binding to human soluble ST2 equal to or less than 8.59×10^{-10} M.

5. The method of claim 1 or 3, wherein the step of determining the level of human soluble ST2 in the sample comprises the use of the isolated antibody.

6. The method of claim 5, wherein the antibody is labelled.

7. The method of claim 1 or 3, wherein the step of determining the level of human soluble ST2 in the sample comprises the use of the antigen-binding fragment.

8. The method of claim 7, wherein the antigen-binding fragment is labelled.

9. The method of claim 7, wherein the antigen-binding fragment is selected from the group consisting of: a Fab fragment, a $F(ab')_2$ fragment, and a scFv fragment.

10. The method of claim 1 or 3, wherein the subject is a male and the reference level of human soluble ST2 is 37.4 ng/mL.

11. The method of claim 1 or 3, wherein the subject is a female and the reference level of human soluble ST2 is 23.7 ng/mL.

12. The method of claim 1 or 3, wherein the subject is undiagnosed.

13. The method of claim 1 or 3, wherein the subject has been diagnosed as having a cardiovascular disease.

14. The method of claim 1 or 3, wherein the cardiovascular disease is heart failure, coronary artery disease, myocardial infarction, arrhythmia, asymmetric septal hypertrophy, cardiomyopathy, valvular dysfunction, pericarditis, or acute coronary syndrome.

15. The method of claim 1 or 3, wherein the subject has hypertriglyceridemia, hypercholesterolemia, hypertension, renal insufficiency, or a body mass index of ≥ 30 .

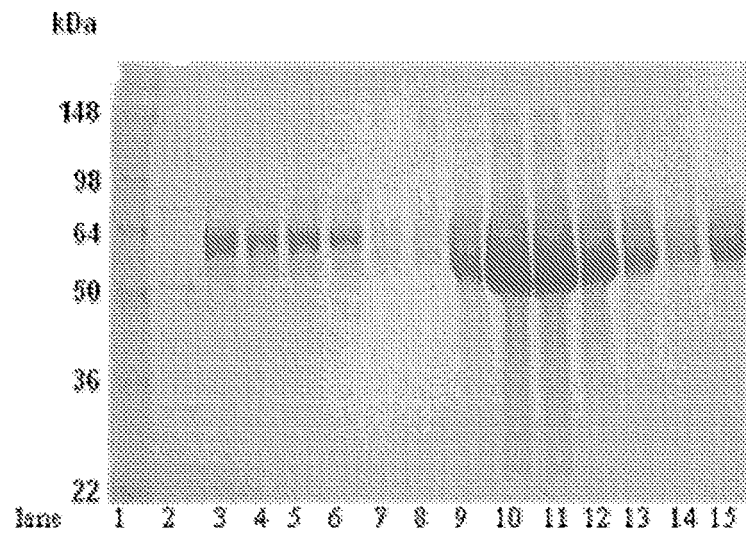


Figure 1

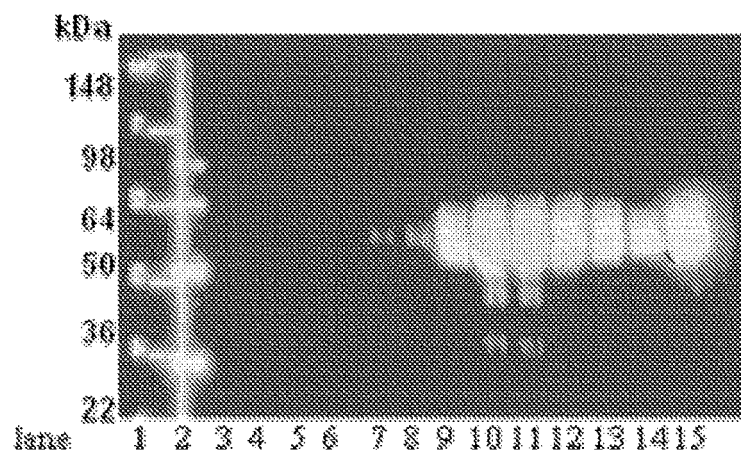


Figure 2

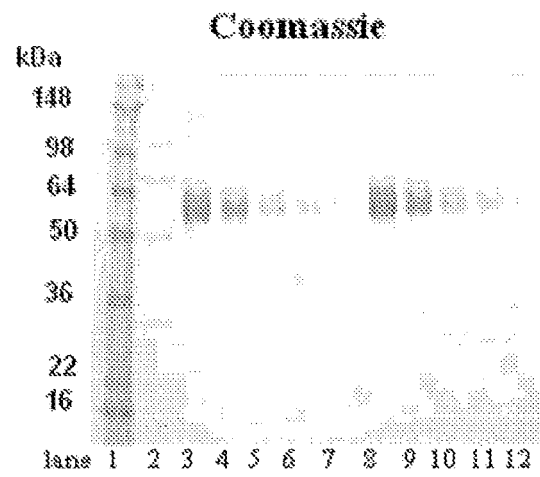


Figure 3A

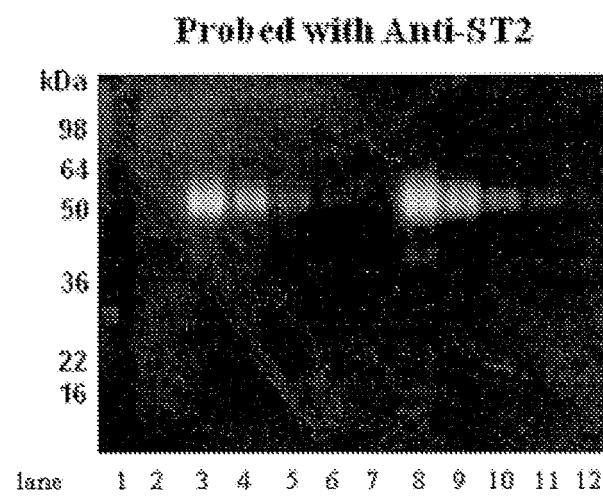


Figure 3B

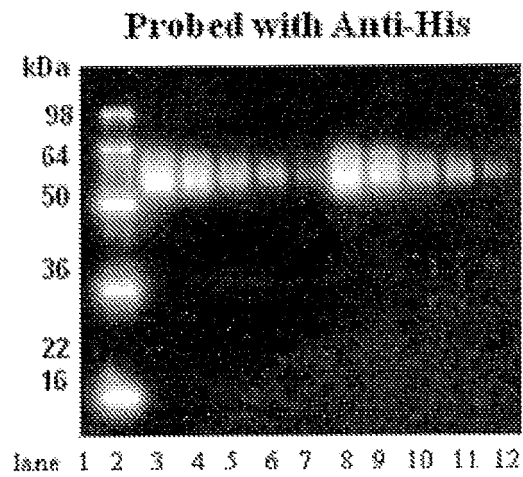


Figure 3C

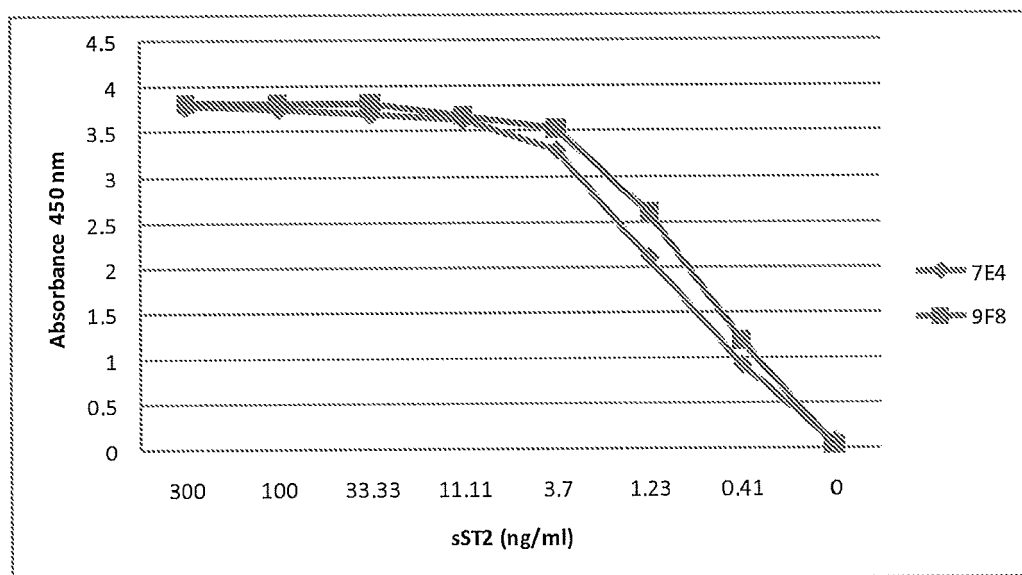


Figure 4

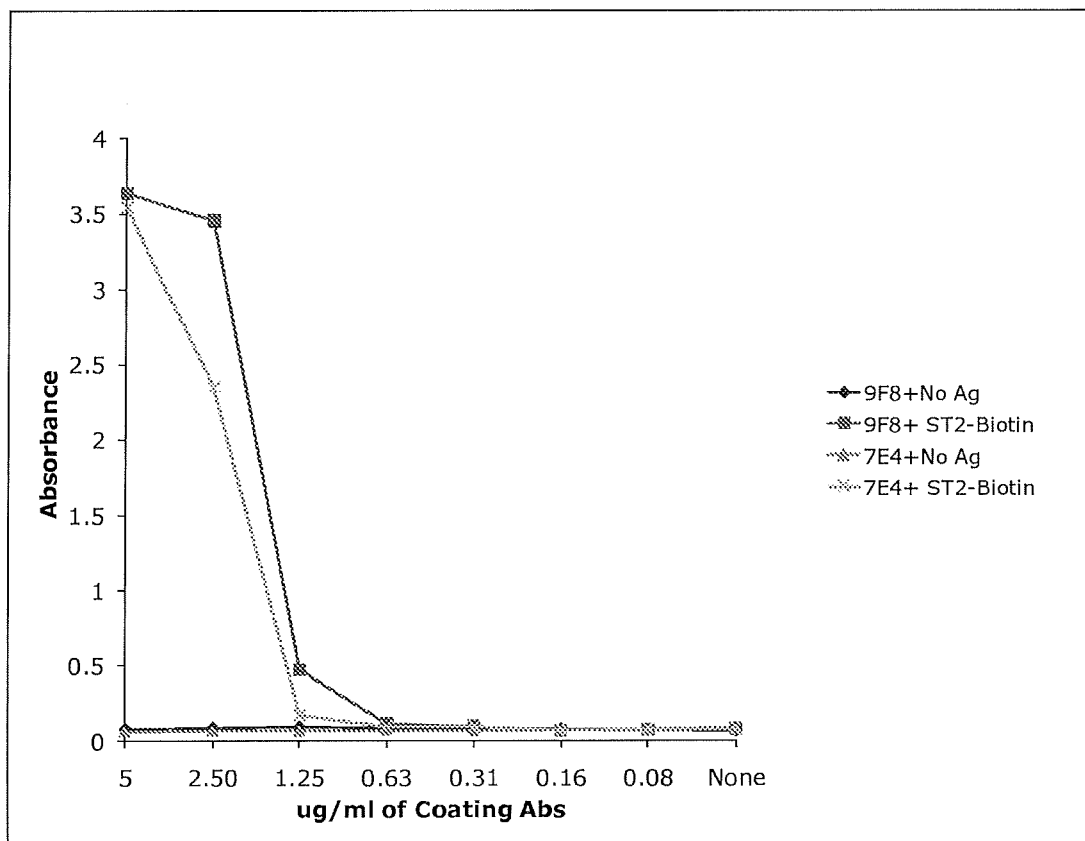


Figure 5

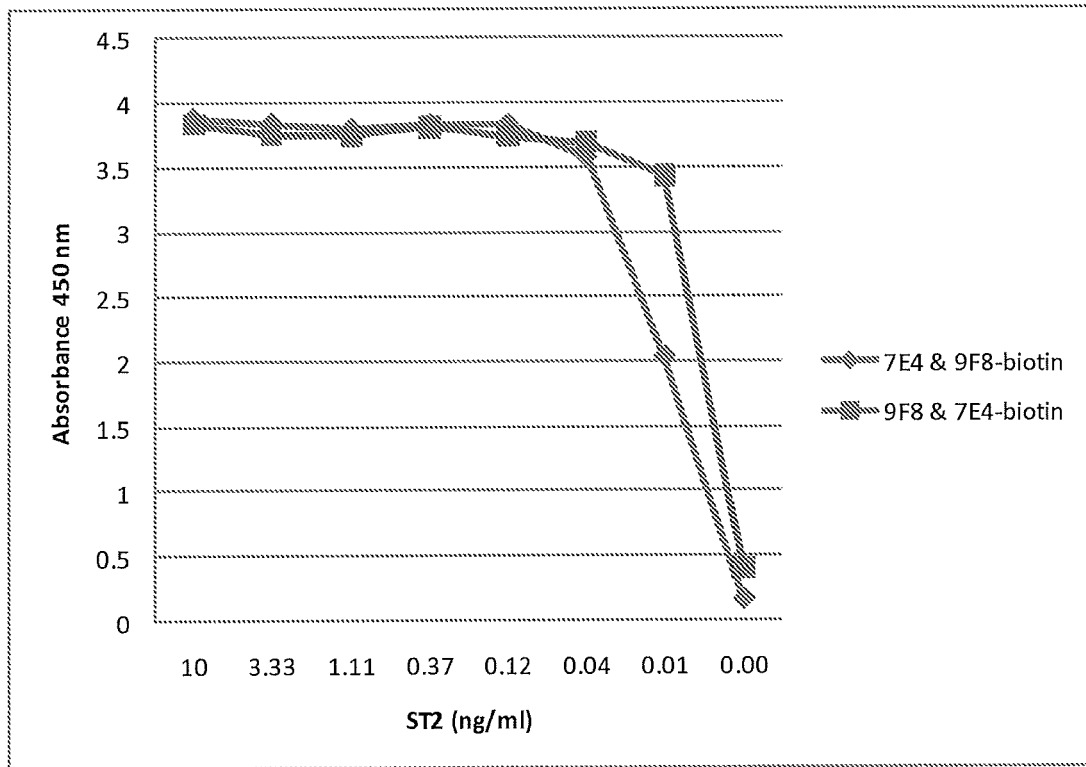


Figure 6

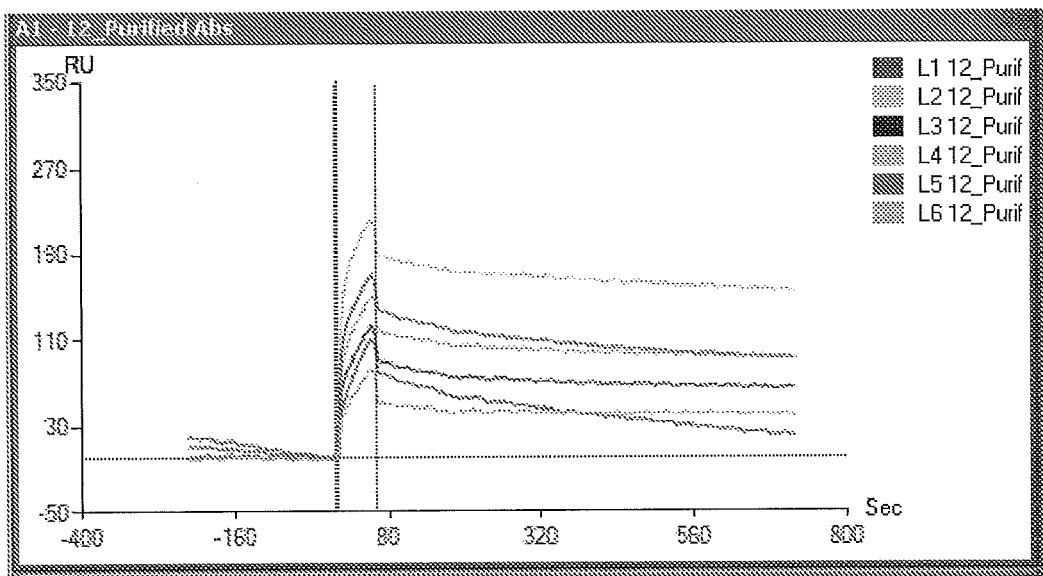


Figure 7A

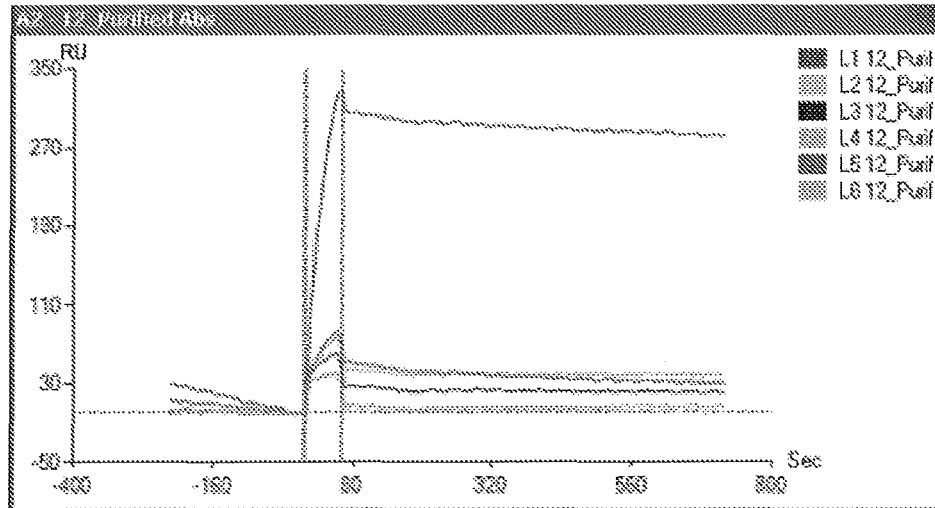


Figure 7B

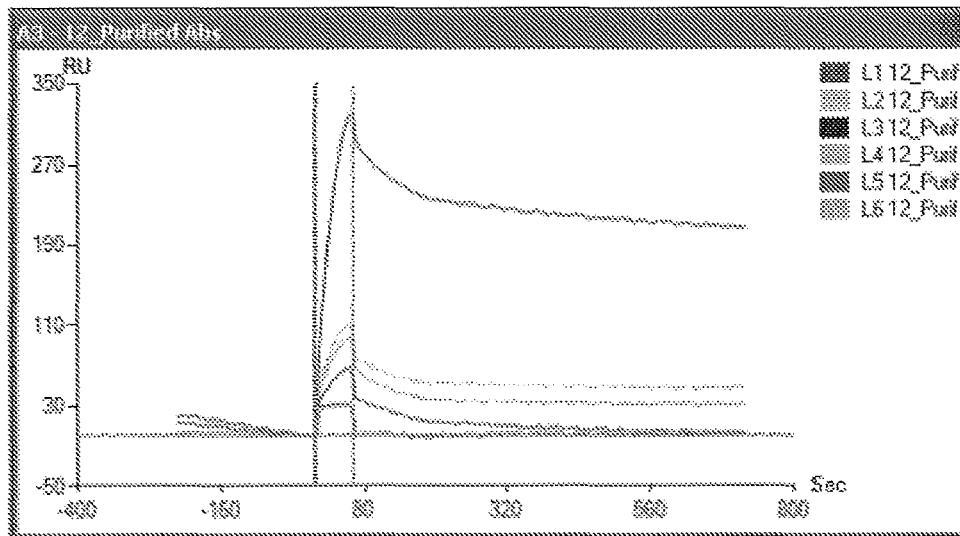


Figure 7C

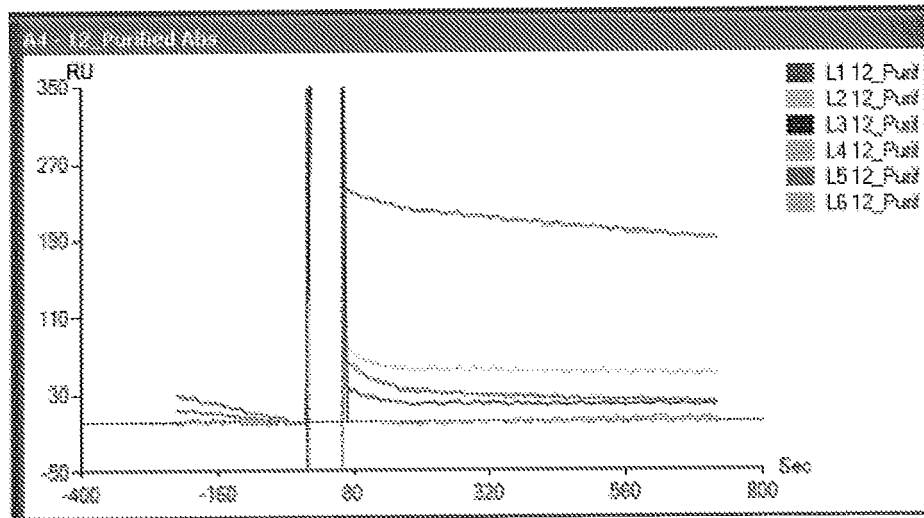


Figure 7D

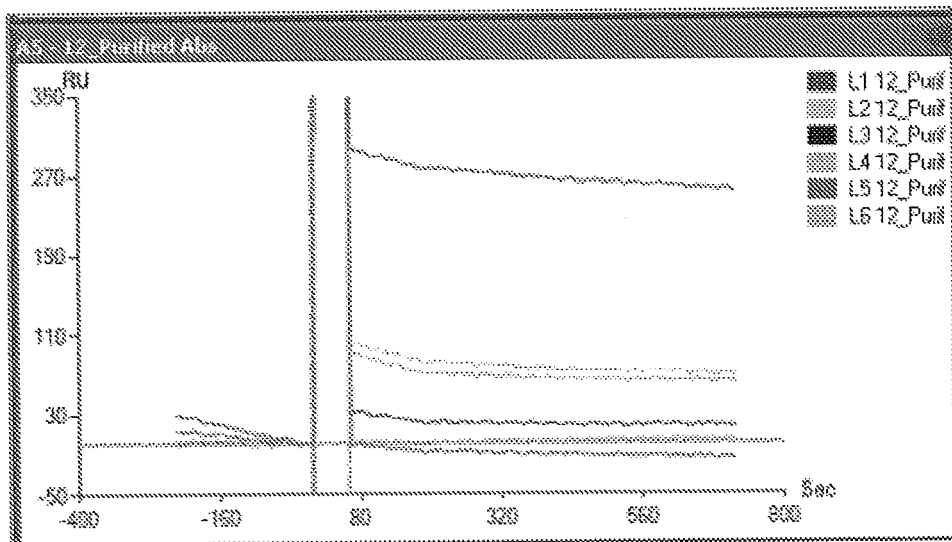


Figure 7E

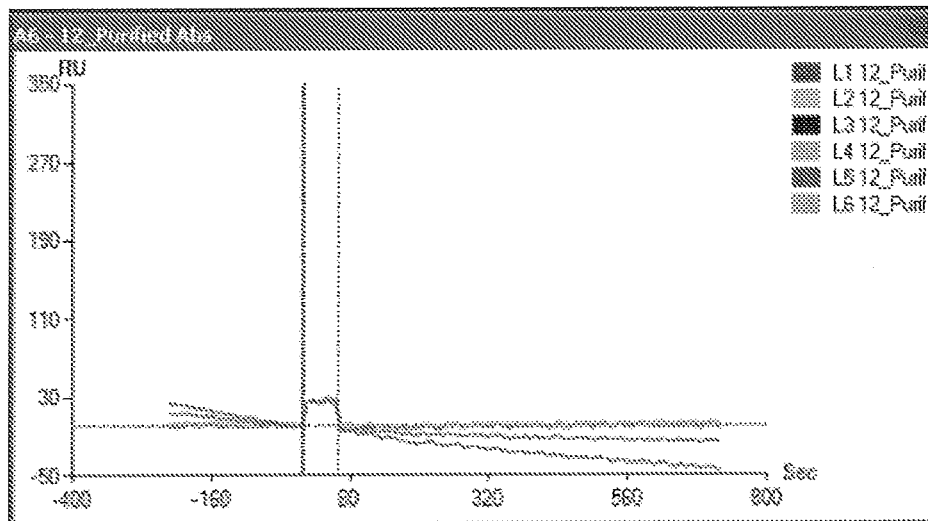


Figure 7F

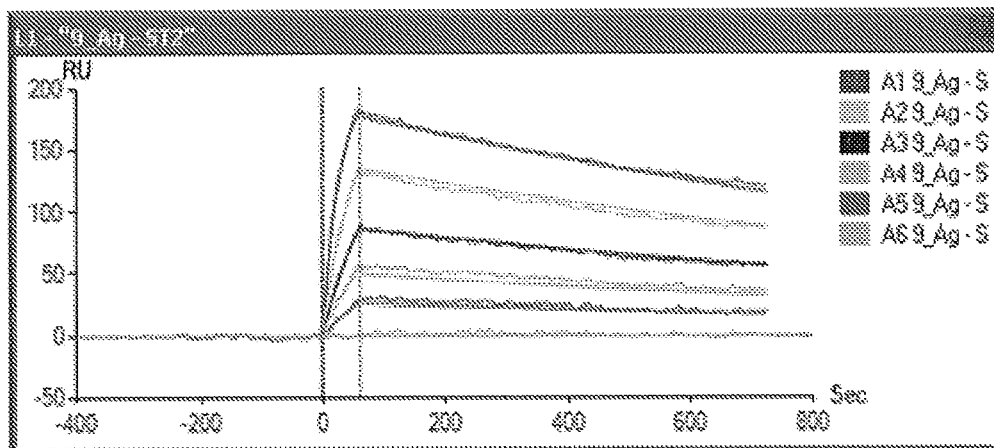


Figure 8A

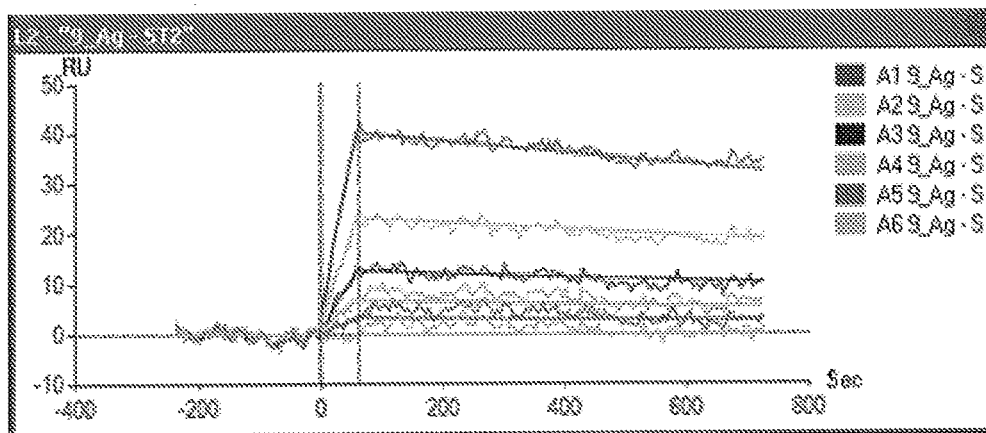


Figure 8B

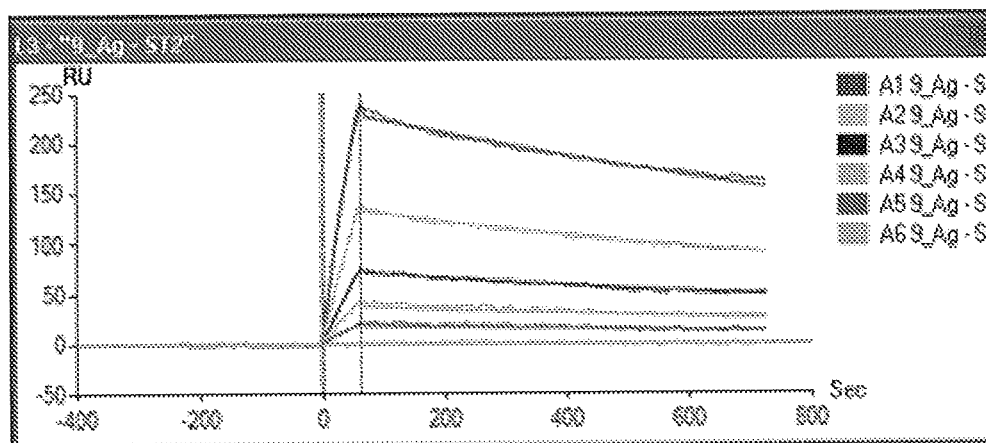


Figure 8C

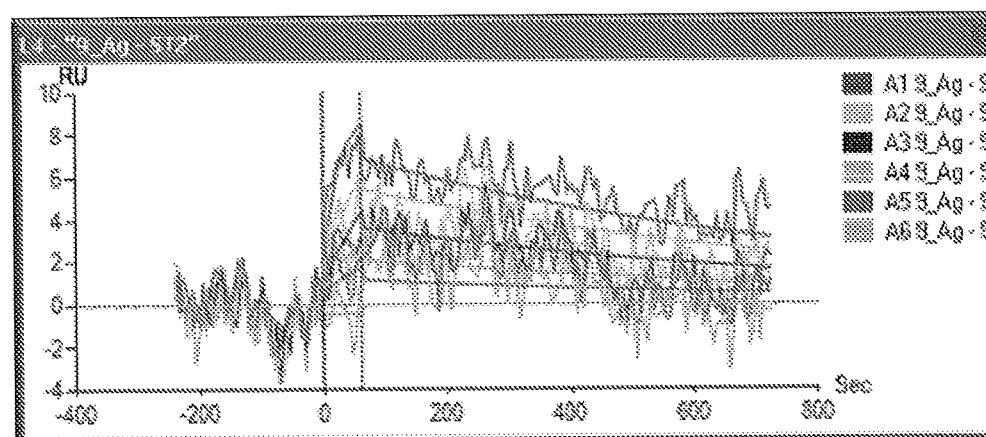


Figure 8D

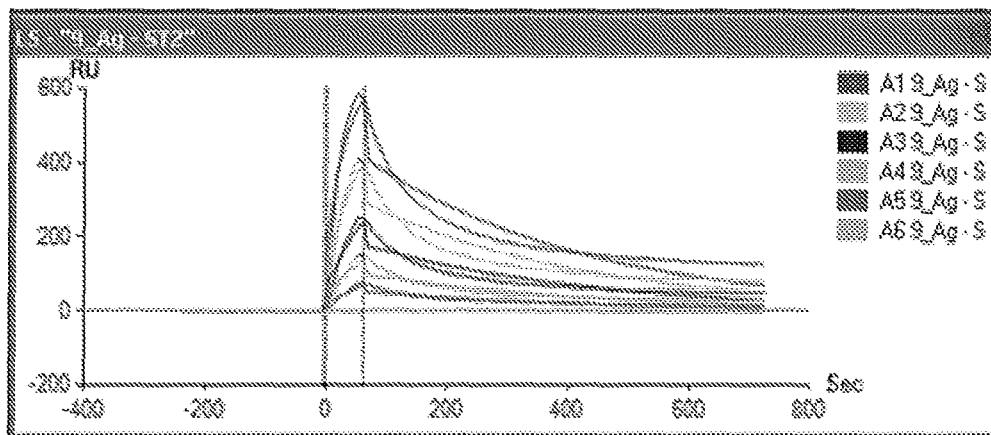


Figure 8E

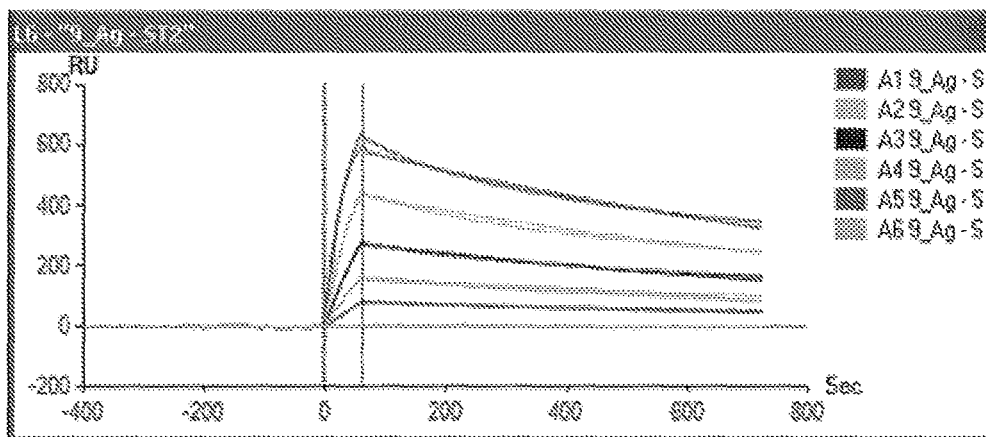


Figure 8F

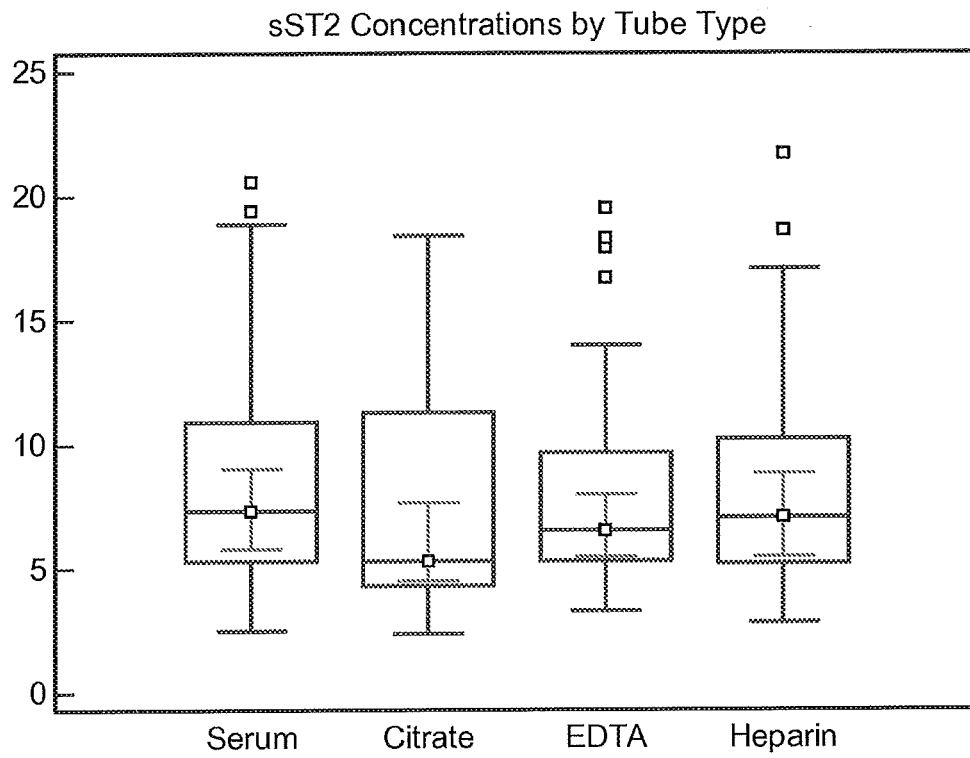


Figure 9

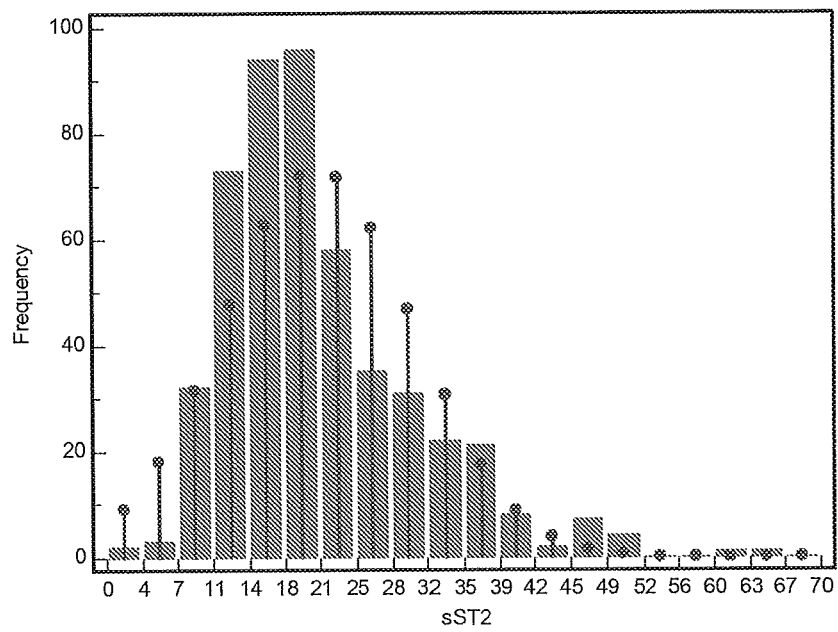


Figure 10

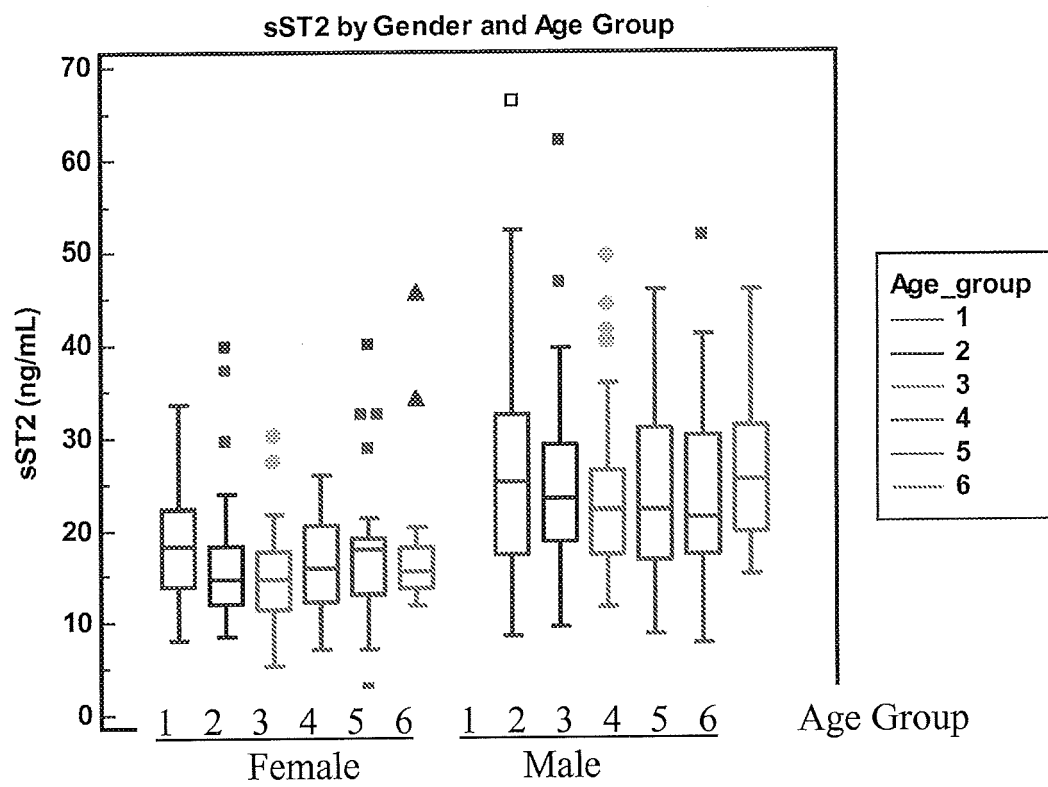


Figure 11



EUROPEAN SEARCH REPORT

Application Number
EP 15 20 0589

5

10

15

20

25

30

35

40

45

50

55

DOCUMENTS CONSIDERED TO BE RELEVANT			
Category	Citation of document with indication, where appropriate, of relevant passages	Relevant to claim	CLASSIFICATION OF THE APPLICATION (IPC)
X	WO 99/34217 A1 (UNIV GLASGOW [GB]; LIEW FOO YEW [GB]; XU DAMO [GB]) 8 July 1999 (1999-07-08) * page 14, line 4 - line 10; claims 1-23; example 4 *	1,2,5-15	INV. C07K16/28 C07K16/18 C07K16/46 G01N33/53 C12N5/12 G01N33/15
X	SHIMPO MASAHISA ET AL: "Serum levels of the interleukin-1 receptor family member ST2 predict mortality and clinical outcome in acute myocardial infarction", CIRCULATION, LIPPINCOTT WILLIAMS & WILKINS, US, vol. 109, no. 18, 11 May 2004 (2004-05-11), pages 2186-2190, XP002523097, ISSN: 0009-7322, DOI: 10.1161/01.CIR.0000127958.21003.5A * page 1469, right-hand column, last paragraph - page 1470, left-hand column, paragraph 1 *	1,2,5-15	
A	R&D Systems: "human ST/IL-1 R4, Duo ELISA, DY523", 4 November 2009 (2009-11-04), 4 November 2009 (2009-11-04), pages 1-6, XP002700256, Retrieved from the Internet: URL:http://www.rndsystems.com/Products/DY523 [retrieved on 2013-07-01] * page 5; table 1 *	3,4	
X	R&D Systems: "human ST/IL-1 R4, Duo ELISA, DY523", 4 November 2009 (2009-11-04), 4 November 2009 (2009-11-04), pages 1-6, XP002700256, Retrieved from the Internet: URL:http://www.rndsystems.com/Products/DY523 [retrieved on 2013-07-01] * page 5; table 1 *	1-15	TECHNICAL FIELDS SEARCHED (IPC) C07K G01N
The present search report has been drawn up for all claims			
Place of search The Hague		Date of completion of the search 14 April 2016	Examiner Siaterli, Maria
<p>CATEGORY OF CITED DOCUMENTS</p> <p>X : particularly relevant if taken alone Y : particularly relevant if combined with another document of the same category A : technological background O : non-written disclosure P : intermediate document</p> <p>T : theory or principle underlying the invention E : earlier patent document, but published on, or after the filing date D : document cited in the application L : document cited for other reasons & : member of the same patent family, corresponding document</p>			

EPO FORM 1503 03/02 (P04C01)



EUROPEAN SEARCH REPORT

Application Number
EP 15 20 0589

5

10

15

20

25

30

35

40

45

50

55

DOCUMENTS CONSIDERED TO BE RELEVANT			
Category	Citation of document with indication, where appropriate, of relevant passages	Relevant to claim	CLASSIFICATION OF THE APPLICATION (IPC)
X	R&D systems: "Human ST2/IL-1 R4 Antibody Monoclonal Mouse IgG1 Clone # 97203 Catalog Number: MAB523", 1 August 2009 (2009-08-01), 18 April 2011 (2011-04-18), pages 1-2, XP002700257, Retrieved from the Internet: URL:http://www.rndsystems.com/pdf/mab523.pdf [retrieved on 2013-07-01] * page 1, paragraph 4 *	1,2,5-15	TECHNICAL FIELDS SEARCHED (IPC)
X	YOSHIDA K ET AL: "Studies on natural ST2 gene products in the human leukemic cell line UT-7 using monoclonal antihuman ST2 antibodies", HYBRIDOMA, LIEBERT, NEW YORK, NY, US, vol. 14, no. 5, 1 October 1995 (1995-10-01), pages 419-427, XP002101452, ISSN: 0272-457X * page 420, right-hand column, paragraph 3 - page 421, left-hand column, paragraph 1 *	1,2,5-15	
X A	US 7 087 396 B2 (TOMINAGA SHIN-ICHI [JP] ET AL) 8 August 2006 (2006-08-08) * abstract * * column 14, paragraph 59 - paragraph 62; claims 1-8; examples 1,3.2 * ----- -/-	1,2,5-15 3,4	
The present search report has been drawn up for all claims			
Place of search The Hague		Date of completion of the search 14 April 2016	Examiner Siaterli, Maria
CATEGORY OF CITED DOCUMENTS X : particularly relevant if taken alone Y : particularly relevant if combined with another document of the same category A : technological background O : non-written disclosure P : intermediate document T : theory or principle underlying the invention E : earlier patent document, but published on, or after the filing date D : document cited in the application L : document cited for other reasons & : member of the same patent family, corresponding document			

EPO FORM 1503 03/82 (P04C01)



EUROPEAN SEARCH REPORT

Application Number
EP 15 20 0589

5

10

15

20

25

30

35

40

45

50

55

DOCUMENTS CONSIDERED TO BE RELEVANT			
Category	Citation of document with indication, where appropriate, of relevant passages	Relevant to claim	CLASSIFICATION OF THE APPLICATION (IPC)
T	<p>MUELLER THOMAS ET AL: "Comparison of plasma concentrations of soluble ST2 measured by three different commercially available assays: The MBL ST2 assay, the Presage ST2 assay, and the R&D ST2 assay", CLINICA CHIMICA ACTA, ELSEVIER BV, AMSTERDAM, NL, vol. 413, no. 19, 20 June 2012 (2012-06-20), pages 1493-1494, XP028934342, ISSN: 0009-8981, DOI: 10.1016/J.CCA.2012.06.021</p> <p>* page 1493, left-hand column, paragraph 4 - right-hand column, paragraph 1 *</p> <p>-----</p>	1-15	
			TECHNICAL FIELDS SEARCHED (IPC)
The present search report has been drawn up for all claims			
Place of search		Date of completion of the search	Examiner
The Hague		14 April 2016	Siaterli, Maria
<p>CATEGORY OF CITED DOCUMENTS</p> <p>X : particularly relevant if taken alone Y : particularly relevant if combined with another document of the same category A : technological background O : non-written disclosure P : intermediate document</p> <p>T : theory or principle underlying the invention E : earlier patent document, but published on, or after the filing date D : document cited in the application L : document cited for other reasons</p> <p>..... & : member of the same patent family, corresponding document</p>			

EPO FORM 1503 03/02 (P04C01)

**ANNEX TO THE EUROPEAN SEARCH REPORT
ON EUROPEAN PATENT APPLICATION NO.**

EP 15 20 0589

5

This annex lists the patent family members relating to the patent documents cited in the above-mentioned European search report.
The members are as contained in the European Patent Office EDP file on
The European Patent Office is in no way liable for these particulars which are merely given for the purpose of information.

14-04-2016

10

Patent document cited in search report	Publication date	Patent family member(s)	Publication date
WO 9934217 A1	08-07-1999	AU 1975099 A WO 9934217 A1	19-07-1999 08-07-1999

US 7087396 B2	08-08-2006	AU 1887101 A US 2003124624 A1 WO 0170817 A1	03-10-2001 03-07-2003 27-09-2001

15

20

25

30

35

40

45

50

55

EPO FORM P0459

For more details about this annex : see Official Journal of the European Patent Office, No. 12/82

REFERENCES CITED IN THE DESCRIPTION

This list of references cited by the applicant is for the reader's convenience only. It does not form part of the European patent document. Even though great care has been taken in compiling the references, errors or omissions cannot be excluded and the EPO disclaims all liability in this regard.

Patent documents cited in the description

- US 61322578 B [0001]
- US 61345837 B [0001]
- WO 07127749 A [0003]
- US 7087396 B [0005] [0054]
- US 4816567 A [0031]
- US 4978775 A [0031]
- US 4975369 A [0031]
- US 4816397 A [0031]
- US 5225539 A [0036]
- US 5530101 A [0036]
- US 5585089 A [0036]
- US 5693761 A [0036]
- US 5693762 A [0036]
- US 6180370 B [0036]
- WO 9007861 A [0036]
- US 20070248981 A [0040] [0121]
- US 20110053170 A [0040]
- US 20100009356 A [0040] [0121]
- US 20100055683 A [0040]
- US 20090264779 A [0040] [0121]
- WO 9222653 A [0065]
- WO 9639858 A [0066]
- US 20090162360 A [0066]
- WO 1999064460 A [0066]
- US 20070105199 A [0066]
- WO 2007059782 A [0066]
- US 20090305265 A [0121]
- WO 2007131031 PCT [0121]
- US 4703017 A [0131] [0132]
- US 4743560 A [0131]
- US 5073484 A [0131]
- US 4632901 A [0132]
- US 5229073 A [0132]
- US 4168146 A [0132]
- US 4366241 A [0132]
- US 4855240 A [0132]
- US 4861711 A [0132]
- US 5120643 A [0132]
- EP 0296724 A [0132]
- WO 9706439 A [0132]
- WO 9836278 A [0132]

Non-patent literature cited in the description

- IWAHANA et al. *Eur. J. Biochem.*, 1999, vol. 264, 397-406 [0003]
- AREND et al. *Immunol. Rev.*, 2008, vol. 223, 20-38 [0003]
- KAKKAR et al. *Nat. Rev. Drug Discov*, 2008, vol. 7, 827-840 [0003]
- HAYAKAWA et al. *J. Biol. Chem.*, 2007, vol. 282, 26369-26380 [0003]
- TRAJKOVIC et al. *Cytokine Growth Factor Rev.*, 2004, vol. 15, 87-95 [0003] [0103]
- BRUNNER et al. *Intensive Care Med.*, 2004, vol. 30, 1468-1473 [0003] [0103]
- SEKI et al. *Circulation Heart Fail.*, 2009, vol. 2, 684-691 [0003]
- KAKKAR et al. *Nat. Rev. Drug Discov.*, 2008, vol. 7, 827-840 [0003]
- SANADA et al. *J. Clin. Invest.*, 2007, vol. 117, 1538-1549 [0003]
- WEINBERG et al. *Circulation*, 2003, vol. 107, 721-726 [0003]
- SHIMPO et al. *Circulation*, 2004, vol. 109, 2186-2190 [0003]
- JANUZZI et al. *J. Am. Coll. Cardiol.*, 2007, vol. 50, 607-613 [0003]
- MUELLER et al. *Clin. Chem.*, 2008, vol. 54, 752-756 [0003]
- REHMAN et al. *J. Am. Coll. Cardiol.*, 2008, vol. 52, 1458-65 [0003]
- SABATINE et al. *Circulation*, 2008, vol. 117, 1936-1944 [0003]
- KABAT et al. *J. Biol. Chem.*, 1977, vol. 252, 6609-6616 [0033]
- CHOTHIA et al. *J. Mol. Biol.*, 1987, vol. 196, 901-917 [0033]
- MACCALLUM et al. *J. Mol. Biol.*, 1996, vol. 262, 732-745 [0033]
- HWANG et al. *Methods*, 2005, vol. 36, 35 [0036] [0064]
- QUEEN et al. *Proc. Natl. Acad. Sci. U.S.A.*, 1989, vol. 86, 10029-10033 [0036]
- JONES et al. *Nature*, 1986, vol. 321, 522-25 [0036]
- RIECHMANN et al. *Nature*, 1988, vol. 332, 323-27 [0036]
- VERHOEYEN et al. *Science*, 1988, vol. 239, 1534-36 [0036]
- ORLANDI et al. *Proc. Natl. Acad. Sci. U.S.A.*, 1989, vol. 86, 3833-3837 [0036]

- **KIESER et al.** *FEBS Lett.*, 1995, vol. 372 (2-3), 189-193 [0050]
- **KUMAR et al.** *J. Biol. Chem.*, 1995, vol. 270 (46), 27905-27913 [0050]
- **YANAGISAWA et al.** *FEBS Lett.*, 1992, vol. 302 (1), 51-53 [0050]
- **KUROIWA et al.** *Hybridoma*, 2000, vol. 19 (2), 151-159 [0050]
- **WEINBERG et al.** *Circulation*, 2002, vol. 106 (23), 2961-2966 [0050]
- **WEINBERG et al.** *Circulation*, 2003, vol. 107 (5), 721-726 [0050]
- **SHIMPO et al.** *Circulation*, 2004, vol. 109 (18), 2186-2190 [0050]
- **LOHNING et al.** *Proc. Natl. Acad. Sci. U.S.A.*, 1998, vol. 95 (12), 6930-6935 [0051]
- **SCHMITZ et al.** *Immunity*, 2005, vol. 23 (5), 479-490 [0051]
- **BRINT et al.** *Nat. Immunol.*, 2004, vol. 5 (4), 373-379 [0051]
- **BRUNEAU et al.** *Cardiovasc. Res.*, 1994, vol. 28 (10), 1519-1525 [0051]
- **TOMINAGA et al.** *FEBS Lett.*, 1989, vol. 258, 301-304 [0052]
- **HAGA et al.** *Eur. J. Biochem.*, 2003, vol. 270, 163-170 [0052]
- **TOMINAGA et al.** *Biochim. Biophys. Acta*, 1992, vol. 1171, 215-218 [0052]
- **KETTLEBOROUGH et al.** *Protein Engineering*, 1991, vol. 4, 773 [0065]
- **KOLBINGER et al.** *Protein Engineering*, 1993, vol. 6, 971 [0065]
- **ROBINSON.** *J. Allergy Clin. Immunol.*, 1993, vol. 92, 313 [0103]
- **WEIR et al.** *J. Am. Coll. Cardiol.*, 2010, vol. 55, 243-250 [0112]
- **CAYLEY.** *Am. Fam. Phys.*, 2005, vol. 72 (10), 2012-2028 [0114]
- **MORGAN ; HODGE.** *Am. Fam. Phys.*, 1998, vol. 57 (4), 711-718 [0118]
- **THOMSON REUTERS.** Physicians' Desk Reference. 30 November 2008 [0126]
- **KUROIWA et al.** *Biochem. Biophys. Res. Comm.*, 2001, vol. 284, 1104-1108 [0138]
- **JUNUZZI et al.** *J. Am. Coll. Cardiol.*, 2007, vol. 50, 607-613 [0167]
- **HANLEY et al.** *Radiology*, 1983, vol. 148, 839-843 [0167]

专利名称(译)	可溶性人st-2抗体和测定		
公开(公告)号	EP3050901A1	公开(公告)日	2016-08-03
申请号	EP2015200589	申请日	2011-04-08
[标]申请(专利权)人(译)	重症监护诊断股份有限公司		
申请(专利权)人(译)	急救诊断，INC.		
当前申请(专利权)人(译)	急救诊断，INC.		
[标]发明人	SNIDER JAMES		
发明人	SNIDER, JAMES		
IPC分类号	C07K16/28 C07K16/18 C07K16/46 G01N33/53 C12N5/12 G01N33/15		
CPC分类号	A61K39/39533 A61P1/08 A61P13/12 C07K16/2866 C07K2317/92 G01N33/6869 G01N2333/545 G01N2800/52 G01N2800/56 C07K2317/14 C07K2317/24		
代理机构(译)	WILLIAMS，加雷思·欧文		
优先权	61/322578 2010-04-09 US 61/345837 2010-05-18 US PCT/US2011/031801 2011-04-08 WO		
其他公开文献	EP3050901B1		
外部链接	Espacenet		

摘要(译)

本文提供了结合人可溶性生长刺激表达基因2 (ST2) 蛋白的抗体和结合抗原的抗体片段，含有这些抗体和抗体片段的试剂盒，以及使用这些抗体和抗体片段的方法。

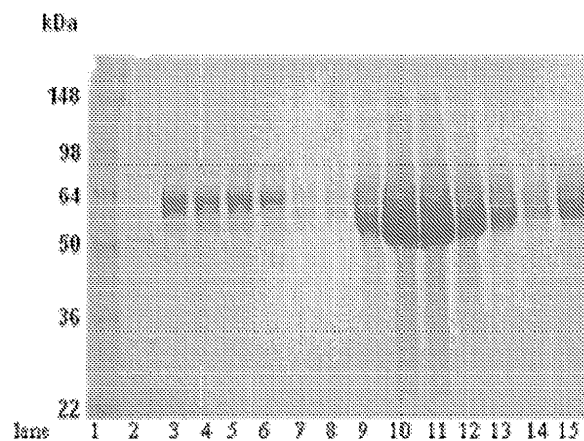


Figure 1