



## TWEAK RECEPTOR

### FIELD OF THE INVENTION

The present invention relates to the discovery of the functional TWEAK receptor (TWEAKR) for the TWEAK protein. More particularly, the invention relates to the use of TWEAKR agonists and antagonists in methods of treatment, and to screening methods based on TWEAKR and the TWEAK-TWEAKR interaction.

### BACKGROUND

Angiogenesis is a multi-step developmental process that results in the formation of new blood vessels off of existing vessels. This spatially and temporally regulated process involves loosening of matrix contacts and support cell interactions in the existing vessels by proteases, followed by coordinated movement, morphological alteration, and proliferation of the smooth muscle and endothelial cells of the existing vessel. The nascent cells then extend into the target tissue followed by cell-cell interactions in which the endothelial cells form tubes which the smooth muscle cells surround. In a coordinated fashion, extracellular matrix proteins of the vessel are secreted and periendothelial support cells are recruited to support and maintain structural integrity (see, *e.g.*, Daniel *et al.*, Ann. Rev. Physiol. 2000(62):649, 2000). Angiogenesis plays important roles in both normal and pathological physiology.

Under normal physiological conditions, angiogenesis is involved in fetal and embryonic development, wound healing, organ regeneration, and female reproductive remodeling processes including formation of the endometrium, corpus luteum, and placenta. Angiogenesis is stringently regulated under normal conditions, especially in adult animals, and perturbation of the regulatory controls can lead to pathological angiogenesis.

Pathological angiogenesis has been implicated in the manifestation and/or progression of inflammatory diseases, certain eye disorders, and cancer. In particular, several lines of evidence support the concept that angiogenesis is essential for the growth and persistence of solid tumors and their metastases (see, *e.g.*, Folkman, N. Engl. J. Med. 285:1182, 1971; Folkman *et al.*, Nature 339:58, 1989; Kim *et al.*, Nature 362:841, 1993; Hori *et al.*, Cancer Res., 51:6180, 1991). Angiogenesis inhibitors are therefore useful for the prevention (*e.g.*, treatment of premalignant conditions), intervention (*e.g.*, treatment

of small tumors), and regression (*e.g.*, treatment of large tumors) of cancers (see, *e.g.*, Bergers *et al.*, Science 284:808, 1999).

The TWEAK protein, which has also been called TREPA and Apo3L, is a member of the tumor necrosis factor (TNF) family and is expressed in a wide variety of human tissues (Chicheportiche *et al.*, J. Biol. Chem., 272(51):32401, 1997; see also Wiley, PCT Publication No. WO 98/35061, 13 August 1998). Like most TNF family members, TWEAK is a Type II membrane protein with an extracellular C-terminal domain. Although TWEAK was originally described as a weak inducer of apoptosis, this induction of cell death was later shown to be indirect (Schneider *et al.*, Eur. J. Immunol. 29:1785, 1999).

Lynch *et al.* demonstrated that TWEAK directly induces endothelial cell proliferation and angiogenesis (J. Biol. Chem., 274(13):8455, 1999). Picomolar concentrations of recombinant soluble TWEAK induce proliferation in multiple endothelial cell lines and in aortic smooth muscle cells, and reduce the requirement for serum and growth factors in culture. Moreover, TWEAK induces a strong angiogenic response in a rat corneal pocket assay. Since TNF family members initiate biological responses by signaling through members of the TNF receptor family, there has been great interest in identifying and characterizing a TWEAKR.

Marsters *et al.* reported that TWEAK binds to and signals through a death-domain containing receptor known variously as DR3, Apo3, WSL-1, TRAMP, or LARD (Marsters *et al.*, Current Biology 8(9):525, 1998). Schneider *et al.*, however, showed that TWEAK binds to and signals in Kym-1 cells but that Kym-1 cells do not express the receptor DR3 (Schneider *et al.*, Eur. J. Immunol. 29:1785, 1999). These results suggest the existence of a yet to be identified TWEAK receptor.

Because TWEAK induces angiogenesis *in vivo*, there is a particular need to identify the major functional TWEAKR. Once identified, TWEAKR may be used to screen for and develop TWEAKR agonists and antagonists for the modulation of angiogenesis and the treatment of human disease.

There is a need for additional compositions and methods of modulating angiogenesis for the prevention, abrogation, and mitigation of disease.

### **SUMMARY OF THE INVENTION**

The present invention is based upon the identification and biological characterization of the major functional TWEAK receptor (TWEAKR). As described

below, cDNA encoding the TWEAKR was molecularly cloned from a human endothelial cell expression library.

Although DNA and deduced amino acid sequences corresponding to the TWEAKR identified herein have been reported (see, *e.g.*, Kato *et al.*, PCT Publication No. WO 98/55508, 10 December 1998 and Incyte, PCT Publication No. WO 99/61471, 02 December 1999), it was not heretofore appreciated that these sequences encode a receptor for TWEAK or that the encoded polypeptide, fragments, agonists, or antagonists thereof can be used to modulating angiogenesis. Similarly, investigators have recently claimed methods of making and using TWEAKR antagonists to treat immunological disorders, but without identifying the major TWEAKR or its role in angiogenesis (Rennert, PCT Publication No. WO 00/42073, 20 July 2000). These deficiencies have been addressed, as described herein, by identification of the major TWEAKR and characterization of its biological activities. The identification of TWEAKR has led to the development of compositions for the modulation of angiogenesis, and also provides screening tools for the identification of diagnostics and therapeutics.

In one aspect, the present invention provides a polypeptide consisting of: a) SEQ ID NO:23, b) SEQ ID NO:28, c) SEQ ID NO:29, d) SEQ ID NO:30, e) a plurality of sequences, wherein each sequence is independently selected from sequences a)-d), f) e) and one or more linker sequences, g) a sequence selected from the group consisting of a), b), c), d), e), and f), and further comprising a multimerization domain, or h) a sequence selected from the group consisting of a), b), c), d), e), f), and g), and further comprising at least one sequence of amino acids that is not identical to a subsequence of contiguous amino acids found within SEQ ID NO:4, wherein said polypeptide binds to human TWEAK. In one embodiment, said multimerization domain is selected from the group consisting of an Fc domain and a leucine zipper. In another embodiment, said polypeptide does not comprise a subsequence of contiguous amino acids that is identical to the subsequence of contiguous amino acids from residue 36 to residue 67 of SEQ ID NO:4. In another embodiment, said polypeptide consists of: a) SEQ ID NO:23, b) SEQ ID NO:28, c) SEQ ID NO:29, or d) SEQ ID NO:30.

In another aspect, the present invention provides a polynucleotide comprising a sequence encoding said polypeptide. In one embodiment, the invention provides a plasmid comprising said polynucleotide. In another embodiment, said plasmid is an expression vector.

In another aspect, the present invention provides a cell comprising said plasmid. In one embodiment, said cell comprises said expression vector. In another embodiment, the present invention provides a method of making a polypeptide, comprising incubating said cell under conditions that allow said expression vector to express said polypeptide.

5 In another aspect, the present invention provides a pharmaceutical composition comprising said polypeptide and an excipient or diluent.

In another aspect, the present invention provides a method of inhibiting binding of TWEAK to a TWEAK receptor in a subject in need of such treatment comprising administering to said subject an inhibition-effective amount of said polypeptide. In one  
10 embodiment, said subject is a human. In another embodiment, said subject has a disease or condition mediated by angiogenesis. In another embodiment, said disease or condition is characterized by ocular neovascularization. In another embodiment, said disease or condition is a malignant or metastatic condition. In another embodiment, said malignant or metastatic condition is a solid tumor. In another embodiment, said method further  
15 comprises treating the subject with radiation. In another embodiment, said method further comprises treating said subject with a second chemotherapeutic agent. In another embodiment, said second chemotherapeutic agent is selected from the group consisting of alkylating agents, antimetabolites, vinca alkaloids and other plant-derived chemotherapeutics, nitrosoureas, antitumor antibiotics, antitumor enzymes, topoisomerase  
20 inhibitors, platinum analogs, adrenocortical suppressants, hormones, hormone agonists, hormone antagonists, antibodies, immunotherapeutics, blood cell factors, radiotherapeutics, and biological response modifiers. In another embodiment, said second chemotherapeutic agent is selected from the group consisting of cisplatin, cyclophosphamide, mechlorethamine, melphalan, bleomycin, carboplatin, fluorouracil, 5-fluorodeoxyuridine, methotrexate, taxol, asparaginase, vincristine, and vinblastine, lymphokines, cytokines, interleukins, interferons, alpha interferon, beta interferon, delta  
25 interferon, TNF, chlorambucil, busulfan, carmustine, lomustine, semustine, streptozocin, dacarbazine, cytarabine, mercaptopurine, thioguanine, vindesine, etoposide, teniposide, dactinomycin, daunorubicin, doxorubicin, plicamycin, mitomycin, L-asparaginase,  
30 hydroxyurea, methylhydrazine, mitotane, tamoxifen, and fluoxymesterone. In another embodiment, said second chemotherapeutic agent is selected from the group consisting of Flt3 ligand, CD40 ligand, interleukin-2, interleukin-12, 4-1BB ligand, anti-4-1BB antibodies, TNF antagonists and TNF receptor antagonists, TRAIL, CD148 agonists, VEGF antagonists, VEGF receptor antagonists, and Tek antagonists.

In another aspect, the present invention provides an isolated antibody that binds specifically to a mature form of the TWEAK receptor and to a polypeptide consisting of the sequence of SEQ ID NO:28. In one embodiment, said antibody binds specifically to a polypeptide consisting of the sequence of SEQ ID NO:29. In another embodiment, said antibody binds specifically to a polypeptide consisting of residues 28 to 80 of SEQ ID NO:4. In another embodiment, said antibody inhibits angiogenesis. In another embodiment, said antibody promotes angiogenesis. In another embodiment, said antibody is conjugated to a radioisotope, a plant-derived toxin, a fungus-derived toxin, a bacterial-derived toxin, ricin A, or diphtheria toxin. In another embodiment, said antibody is conjugated to a detectable marker. In another embodiment, said detectable marker is a radioisotope, antigenic, or colorimetric. In another embodiment, said antibody is selected from the group consisting of: a) an intact human antibody; b) a human antibody fragment; c) an intact chimeric antibody; d) a chimeric antibody fragment; e) an intact humanized antibody; f) a humanized antibody fragment; g) a Fab fragment; h) an Fv fragment; i) an F(ab')<sub>2</sub> fragment; and j) a single chain antibody.

In another aspect, the present invention provides a nucleic acid comprising a sequence encoding: a) a heavy chain of an antibody, b) a heavy chain variable region of an antibody, c) a light chain of an antibody, d) a light chain variable region of an antibody, e) a) and c), or f) b) and d), wherein each of said antibodies in a)-f) is said antibody. In one embodiment, the present invention provides a plasmid comprising said nucleic acid. In another embodiment, said plasmid is an expression vector.

In another aspect, the present invention provides a cell comprising said plasmid. In one embodiment, the invention provides a cell comprising said expression vector. In another embodiment, the present invention provides a method of making an antibody, or an antibody derivative, comprising incubating said cell under conditions that allow said expression vector to express said antibody or antibody derivative. In another embodiment, said cell is a mammalian cell. In another embodiment, said mammalian cell is a Chinese Hamster Ovary cell.

In another aspect, the present invention provides a method of inhibiting binding of TWEAK to a TWEAK receptor in a subject in need of such treatment comprising administering to said subject an inhibition-effective amount of said antibody. In one embodiment, said subject is a human. In another embodiment, said subject has a disease or condition mediated by angiogenesis. In another embodiment, said disease or condition is characterized by ocular neovascularization. In another embodiment, said disease or

condition is a malignant or metastatic condition. In another embodiment, said malignant or metastatic condition is a solid tumor. In another embodiment, said method further comprises treating the subject with radiation. In another embodiment, said method further comprises treating the subject with a second chemotherapeutic agent. In another embodiment, said second chemotherapeutic agent is selected from the group consisting of alkylating agents, antimetabolites, vinca alkaloids and other plant-derived chemotherapeutics, nitrosoureas, antitumor antibiotics, antitumor enzymes, topoisomerase inhibitors, platinum analogs, adrenocortical suppressants, hormones, hormone agonists, hormone antagonists, antibodies, immunotherapeutics, blood cell factors, radiotherapeutics, and biological response modifiers. In another embodiment, said second chemotherapeutic agent is selected from the group consisting of cisplatin, cyclophosphamide, mechlorethamine, melphalan, bleomycin, carboplatin, fluorouracil, 5-fluorodeoxyuridine, methotrexate, taxol, asparaginase, vincristine, and vinblastine, lymphokines, cytokines, interleukins, interferons, alpha interferon, beta interferon, delta interferon, TNF, chlorambucil, busulfan, carmustine, lomustine, semustine, streptozocin, dacarbazine, cytarabine, mercaptopurine, thioguanine, vindesine, etoposide, teniposide, dactinomycin, daunorubicin, doxorubicin, plicamycin, mitomycin, L-asparaginase, hydroxyurea, methylhydrazine, mitotane, tamoxifen, and fluoxymesterone. In another embodiment, said second chemotherapeutic agent is selected from the group consisting of Flt3 ligand, CD40 ligand, interleukin-2, interleukin-12, 4-1BB ligand, anti-4-1BB antibodies, TNF antagonists and TNF receptor antagonists, TRAIL, CD148 agonists, VEGF antagonists, VEGF receptor antagonists, and Tek antagonists. In another embodiment, the present invention provides a method of promoting angiogenesis in a subject in need of such treatment comprising administering to said subject an angiogenesis promoting-effective amount of said antibody. In another embodiment, said subject has an ischemic condition, and said method treats said ischemic condition. In another embodiment, said ischemic condition is ischemia of the heart, liver, or brain. In another embodiment, said subject has a wound, and said method treats said wound. In another embodiment, said subject has organ damage, and said method treats said organ damage. In another embodiment, said subject has coronary or peripheral atherosclerosis, and said method treats said coronary or peripheral atherosclerosis.

#### **BRIEF DESCRIPTION OF THE DRAWINGS**

Figure 1A shows a sequence alignment of the human and murine TWEAKR polypeptide sequences. The top sequence is the murine TWEAKR polypeptide (SEQ ID NO:5), and the bottom sequence is the human TWEAKR polypeptide (SEQ ID NO:4).

Figure 1B shows the primary amino acid sequence of TweakR showing major features. The leader sequence is underlined. The arrow indicates the predicted site of cleavage of the leader sequence. The region of TNF family receptor homology is shown in bold. The predicted transmembrane region is doubly underlined. The putative c TRAF binding motif in the cytoplasmic domain is boxed.

Figure 2 shows the effect of TWEAKR-Fc on PMA-induced HRMEC wound closure.

Figure 3 shows the effect of TWEAKR-Fc on EGF-induced HRMEC wound closure.

Figure 4 shows the effect of human TWEAKR-Fc on TWEAK-induced (100 ng/ml) HUVEC proliferation.

Figure 5 shows the effect of human TWEAKR-Fc on FGF-2-induced (10 ng/ml) HUVEC proliferation.

Figure 6 collectively shows a scatchard analysis of TWEAK-TWEAKR interaction. CV-1 cells transfected with human full-length TWEAK mixed 1:30 with Raji cells and incubated with various concentrations of <sup>125</sup>I-labeled TWEAKR-Fc. A) Shows scatchard representation of specific binding. B) Plot of competitive inhibition of unlabeled vs. <sup>125</sup>I-labeled TWEAKR-Fc.

Figure 7 collectively shows that human TWEAKR-Fc inhibits PMA- or EGF-stimulated endothelial cell migration *in vitro*. A, Shows that TWEAKR-Fc inhibited the PMA-stimulated migration rate to baseline at concentrations greater than or equal to 1.5 μg/ml, whereas huIgG at similar concentrations did not effect migration. Neither huIgG nor TweakR-Fc increased or decreased the basal migration rate when added to the cultures alone. B, Human TweakR-Fc inhibits EGF-induced endothelial cell migration. TweakR-Fc inhibited EGF-stimulated migration to basal levels at 5 μg/ml. Partial inhibition of EGF-induced migration was also observed at huTweakR/Fc concentrations of 500 ng/ml and 1.5 μg/ml.

## **DETAILED DESCRIPTION OF THE INVENTION**

The present invention is directed to TWEAKR and methods for identifying and using agonists and antagonists of TWEAKR. The invention provides methods of screening for agonists and antagonists and for treating diseases or conditions mediated by angiogenesis.

5

#### Abbreviations and Terminology Used in the Specification

"**4-1BB**" and "**4-1BB ligand**" (4-1BB-L) are polypeptides described, *inter alia*, in U.S. Patent No. 5,674,704, including soluble forms thereof.

10 "**CD40 ligand**" (CD40L) is a polypeptide described, *inter alia*, in U.S. Patent No. 5,716,805, including soluble forms thereof.

"**Flt3L**" is Flt3 ligand, a polypeptide described, *inter alia*, in U.S. Patent No. 5,554,512, including soluble forms thereof.

"**RTKs**" are receptor tyrosine kinases.

15 "**Tek**," which has also been called Tie2 and ork, is an RTK that is predominantly expressed in vascular endothelium. The molecular cloning of human Tek (ork) has been described by Ziegler, U.S. Patent No. 5,447,860. "**Tek antagonists**" are described, *inter alia*, in Cerretti *et al.*, PCT Publication No. WO 00/75323, 14 December 2000.

20 "**TRAIL**" is TNF-related apoptosis-inducing ligand, a type II transmembrane polypeptide in the TNF family described, *inter alia*, in U.S. Patent No. 5,763,223, including soluble forms thereof.

"**VEGF**" is vascular endothelial growth factor, also known as VPF or vascular permeability factor.

#### Soluble TWEAKR Polypeptides

25 As described in the examples below, the native human TWEAKR cDNA has a sequence as set forth in SEQ ID NO:3, which encodes a 129 residue polypeptide (SEQ ID NO:4). Several distinct regions can be discerned within the TWEAKR polypeptides of the invention (see, *e.g.*, Figure 1). A leader sequence, also called a signal peptide, is present in these polypeptides. The leader sequence present in the full-length TWEAKR  
30 polypeptide of the invention is predicted to include amino acids 1-27 of SEQ ID NO:4. The signal peptide cleavage site for TWEAKR polypeptide can be predicted using a computer algorithm. However, one of skill in the art will recognize that the cleavage site of the signal sequence may vary depending upon a number of factors including the organism in which the polypeptide is expressed. Accordingly, the N-terminus of a mature

form of a TWEAKR polypeptide of the invention may vary by about 2 to 5 amino acids. Thus, a mature form of a TWEAKR polypeptide of the invention may include at its N-terminus amino acid 22, 23, 24, 25, 26, 27, 28, 29, 30, 31, or 32 of SEQ ID NO:4. Accordingly, a mature form of a TWEAKR polypeptide includes amino acids 23, 24, 25, 26, 27, 28, 29, 30, 31, 32 or 33 to about amino acid 129 (or, in the case of a soluble polypeptide, an amino acid between 68 and 80) of SEQ ID NO:4. The extracellular region of a TWEAKR polypeptide is located at about amino acids 28 to 80 of SEQ ID NO:4. The transmembrane region for the TWEAKR polypeptide is located at about amino acids 81 to 100 of SEQ ID NO:4. The intracellular region is located at about amino acids 101 to 129 of SEQ ID NO:4. A putative TWEAKR sequence has also been reported by Kato *et al.*, PCT Publication No. WO 98/55508, 10 December 1998 and by Incyte, PCT Publication No. WO 99/61471, 2 December 1999. As used herein, "TWEAKR" includes polypeptides having these sequences, and in particular comprising amino acids 28 to  $x_1$  of SEQ ID NO:4, wherein  $x_1$  is an amino acid from 68 to 80 of SEQ ID NO:4, as well as naturally occurring variants thereof.

The invention provides both full-length and mature forms of TWEAKR polypeptides. Full-length polypeptides are those having the complete primary amino acid sequence of the polypeptide as initially translated (see, *e.g.*, SEQ ID NO:4). The amino acid sequences of full-length polypeptides can be obtained, for example, by translation of the complete open reading frame ("ORF") of a cDNA molecule (see, *e.g.*, SEQ ID NO:3). An example of a full length TWEAKR polypeptide of the invention comprises a sequence as set forth in SEQ ID NO:4 from amino acid 1 to amino acid 129. Such a full length polypeptide is contemplated to include, for example, the signal peptide comprising amino acid 1 to about amino acid 27 of SEQ ID NO:4.

The "mature form" of a polypeptide refers to a polypeptide that has undergone post-translational processing steps, if any, such as, for example, cleavage of the signal sequence or proteolytic cleavage to remove a prodomain. Multiple mature forms of a particular full-length polypeptide may be produced, for example, by imprecise cleavage of the signal sequence, or by differential regulation of proteases that cleave the polypeptide. The mature form(s) of such polypeptide may be obtained by expression, in a suitable mammalian cell or other host cell, of a polynucleotide that encodes the full-length polypeptide. The sequence of the mature form of the polypeptide may also be determinable from the amino acid sequence of the full-length form, through identification of signal sequences or protease cleavage sites (*e.g.*, a protease cleavage site is predicted

between the Gly-Glu residues at positions 27 and 28 of SEQ ID NO:4). An example of a mature form of a TWEAKR polypeptide of the invention comprises a sequence as set forth in SEQ ID NO:4 from about amino acid 28 to amino acid 129.

5 In another aspect of the invention, fragments of TWEAKR polypeptides are provided. Such fragments include, for example, the various domains identified above (e.g., the signal sequence domain, the extracellular domain, the transmembrane domain, and the cytoplasmic or intracellular domain). Such domains find use in recombinant DNA techniques (e.g., creation of fusion proteins and the like). Of particular interest is the extracellular domain of TWEAKR from about amino acid 28 to amino acid 68 to 80  
10 of SEQ ID NO:4. The extracellular domain of TWEAKR comprises a soluble TWEAKR amino acid sequence. Also included in the invention are fragments of the extracellular domain that retain a biological activity of TWEAKR. For example, a biological activity associated with a TWEAKR extracellular domain or fragment thereof includes the ability to bind to TWEAK.

15 In one aspect of the invention, a soluble TWEAKR fragment is used as a TWEAKR antagonist to inhibit angiogenesis and/or to inhibit the binding of TWEAK ligand to TWEAKR. A TWEAKR fragment preferably comprises the extracellular domain of TWEAKR or a portion thereof as described herein such that the fragment comprises a soluble TWEAKR amino acid sequence. Accordingly, a TWEAKR  
20 antagonist includes, for example, a soluble portion of the TWEAKR molecule, preferably a portion of the extracellular domain of TWEAKR, either alone, fused, or conjugated to one or more other molecules or polypeptides (e.g., an Fc, leucine zipper polypeptide, or a peptide linker). For example, the invention provides compositions and fusion proteins that comprise at least one soluble TWEAKR polypeptide domain (e.g., the extracellular  
25 domain).

Soluble polypeptides are capable of being secreted from the cells in which they are expressed. The use of soluble forms of polypeptides is advantageous for certain applications. Purification of the polypeptides from recombinant host cells is facilitated since the polypeptides are secreted, and soluble proteins are generally suited for  
30 parenteral administration. A secreted soluble polypeptide may be identified (and distinguished from its non-soluble membrane-bound counterparts) by separating intact cells which express the desired polypeptide from the culture medium, e.g., by centrifugation, and assaying the medium (supernatant) for the presence of the desired polypeptide. The presence of the desired polypeptide in the medium indicates that the

polypeptide was secreted from the cells and thus is a soluble form of the polypeptide. Soluble polypeptides may be prepared by any of a number of conventional techniques. A polynucleotide encoding a desired soluble polypeptide may be subcloned into an expression vector for production of the polypeptide, or the desired encoding  
5 polynucleotide or soluble polypeptide may be chemically synthesized. Examples of a nucleic acid molecule encoding a soluble TWEAKR polypeptide comprises about nucleotides 134 to 256, 134 to 262, 134 to 289, and 134 to 292 of SEQ ID NO:3. In one embodiment, D-amino acids are substituted for the naturally occurring L-amino acids. D-amino acids provide improved stability under *in vivo* conditions. In addition,  
10 the size of the extracellular domain or soluble polypeptide sequence of the invention it may be advantageous to synthesize the polypeptide using D-amino acids. It will be recognized that the polypeptide of the invention can be synthesized such that the polypeptide comprises a combination of L- and D-amino acids.

Soluble TWEAKR polypeptides comprise all or part of the TWEAKR  
15 extracellular domain, but generally lack the transmembrane domain that would cause retention of the polypeptide at the cell surface. Soluble polypeptides may include part of the transmembrane domain or all or part of the cytoplasmic domain so long as the polypeptide is secreted from the cell in which it is produced. Soluble TWEAKR polypeptides advantageously comprise a native or heterologous signal peptide when  
20 initially synthesized, to promote secretion from the cell, but the signal sequence is cleaved upon secretion. The term "TWEAKR extracellular domain" is intended to encompass all or part of the native TWEAKR extracellular domain, as well as related forms including but not limited to: (a) fragments, (b) variants, (c) derivatives, and (d) fusion polypeptides. The ability of these related forms to inhibit angiogenesis or other  
25 TWEAKR-mediated responses may be determined *in vitro* or *in vivo*, using methods such as those exemplified below or using other assays known in the art. Examples of soluble TWEAKR polypeptides are provided below. In some embodiments of the present invention a multimeric form of a soluble TWEAKR polypeptide ("soluble TWEAKR multimer") is used as an antagonist to block the binding of TWEAK to TWEAKR, to  
30 inhibit angiogenesis or other TWEAKR-mediated responses.

Soluble TWEAKR multimers are covalently-linked or non-covalently-linked multimers, including dimers, trimers, or higher multimers. Multimers may be linked by disulfide bonds formed between cysteine residues on different soluble TWEAKR polypeptides. One embodiment of the invention is directed to multimers comprising

multiple soluble TWEAKR polypeptides joined via covalent or non-covalent interactions between peptide moieties fused to the soluble TWEAKR polypeptides. Such peptides may be peptide linkers (spacers), or peptides that have the property of promoting multimerization. In one embodiment peptide linkers are fused to the C-terminal end of a first soluble TWEAKR molecule and the N-terminal end of a second soluble TWEAKR molecule. This structure may be repeated multiple times such that at least one, preferably 2, 3, 4, or more soluble TWEAKR polypeptides are linked to one another via peptide linkers at their respective termini. For example, a polypeptide of the invention comprises a sequence  $Z_1-X-Z_2$ , wherein  $Z_1$  and  $Z_2$  are each individually a polypeptide consisting of amino acid 28 to  $x_1$  of SEQ ID NO:4, wherein  $x_1$  is an amino acid from about 68 to 80 of SEQ ID NO:4 and X is a peptide linker. In another embodiment, the polypeptide comprises  $Z_1-X-Z_2(-X-Z)_n$ , wherein 'n' is any integer, but is preferably 1 or 2. In a further embodiment, the peptide linkers should be of sufficient length to allow the soluble TWEAKR polypeptide to form bonds with adjacent soluble TWEAKR polypeptides. Examples of peptide linkers include --Gly-Gly--, GGGGS (SEQ ID NO:10) (GGGGS)<sub>n</sub> (SEQ ID NO:11), GKSSGSGSESKS (SEQ ID NO:12), GSTSGSGKSSEGKG (SEQ ID NO:13), GSTSGSGKSSEGS GSTKG (SEQ ID NO:14), GSTSGSGKPGSGEGSTKG (SEQ ID NO:15), or EGKSSGSGSESKEF (SEQ ID NO:16). Linking moieties are described, for example, in Huston *et al.*, PNAS 85:5879-5883, 1988; Whitlow *et al.*, Protein Engineering 6:989-995, 1993; and Newton *et al.*, Biochemistry 35:545-553, 1996. Other suitable peptide linkers are those described in U.S. Patents 4,751,180 and 4,935,233, which are hereby incorporated by reference. A polynucleotide encoding a desired peptide linker can be inserted between, and in the same reading frame as, a polynucleotide encoding a soluble TWEAKR polypeptide, using any suitable conventional technique. In particular embodiments, a fusion polypeptide comprises from two to four soluble TWEAKR polypeptides separated by peptide linkers.

In some embodiments, a soluble TWEAKR multimer is prepared using polypeptides derived from immunoglobulins. Preparation of fusion proteins comprising certain heterologous polypeptides fused to various portions of antibody-derived polypeptides (including the Fc domain) has been described, e.g., by Ashkenazi *et al.* (Proc. Natl. Acad. Sci. USA 88:10535, 1991); Byrn *et al.* (Nature 344:677, 1990); and Hollenbaugh and Aruffo ("Construction of Immunoglobulin Fusion Proteins", in *Current Protocols in Immunology*, Suppl. 4, pages 10.19.1-10.19.11, 1992).

One preferred embodiment of the present invention is directed to a TWEAKR-Fc dimer comprising two fusion proteins created by fusing a soluble TWEAKR to an Fc polypeptide. A gene fusion encoding the TWEAKR-Fc fusion protein is inserted into an appropriate expression vector. TWEAKR-Fc fusion proteins are expressed in host cells transformed with the recombinant expression vector, and allowed to assemble much like antibody molecules, whereupon interchain disulfide bonds form between the Fc moieties to yield divalent soluble TWEAKR. The term "Fc polypeptide" as used herein includes native and mutein forms of polypeptides derived from the Fc region of an antibody. Truncated forms of such polypeptides containing the hinge region that promotes dimerization are also included.

One suitable Fc polypeptide, described in PCT application WO 93/10151, is a single chain polypeptide extending from the N-terminal hinge region to the native C-terminus of the Fc region of a human IgG1 antibody. Another useful Fc polypeptide is the Fc mutein described in U.S. Patent 5,457,035 and by Baum *et al.*, EMBO J. 13:3992, 1994. The amino acid sequence of this mutein is identical to that of the native Fc sequence presented in WO 93/10151, except that amino acid 19 has been changed from Leu to Ala, amino acid 20 has been changed from Leu to Glu, and amino acid 22 has been changed from Gly to Ala. The mutein exhibits reduced affinity for Fc receptors. Fusion polypeptides comprising Fc moieties, and multimers formed therefrom, offer an advantage of facile purification by affinity chromatography over Protein A or Protein G columns, and Fc fusion polypeptides may provide a longer *in vivo* half life, which is useful in therapeutic applications, than unmodified polypeptides.

In other embodiments, a soluble TWEAKR polypeptide may be substituted for the variable portion of an antibody heavy or light chain. If fusion proteins are made with both heavy and light chains of an antibody, it is possible to form a soluble TWEAKR multimer with as many as four soluble TWEAKR polypeptides.

Another method for preparing soluble TWEAKR multimers involves use of a leucine zipper domain. Leucine zipper domains are peptides that promote multimerization of the proteins in which they are found. Leucine zippers were originally identified in several DNA-binding proteins (Landschulz *et al.*, Science 240:1759, 1988), and have since been found in a variety of different proteins. Among the known leucine zippers are naturally occurring peptides and derivatives thereof that dimerize or trimerize. Examples of leucine zipper domains suitable for producing soluble multimeric proteins are described in PCT application WO 94/10308, and the leucine zipper derived from lung

surfactant protein D (SPD) described in Hoppe *et al.* FEBS Lett. 344:191, 1994. The use of a modified leucine zipper that allows for stable trimerization of a heterologous protein fused thereto is described in Fanslow *et al.*, Semin. Immunol. 6:267, 1994. Recombinant fusion proteins comprising a soluble TWEAKR polypeptide fused to a leucine zipper peptide are expressed in suitable host cells, and the soluble TWEAKR multimer that forms is recovered from the culture supernatant.

For some applications, the soluble TWEAKR multimers of the present invention are believed to provide certain advantages over the use of monomeric forms. Fc fusion polypeptides, for example, typically exhibit an increased *in vivo* half-life as compared to an unmodified polypeptide.

The present invention encompasses the use of various forms of soluble TWEAKR multimers that retain the ability to inhibit angiogenesis or other TWEAKR-mediated responses. The term "soluble TWEAKR multimer" is intended to encompass multimers containing all or part of the native TWEAKR extracellular domain, as well as related forms including, but not limited to, multimers of: (a) fragments, (b) variants, (c) derivatives, and (d) fusion polypeptides of soluble TWEAKR. The ability of these related forms to inhibit angiogenesis or other TWEAKR-mediated responses may be determined *in vitro* or *in vivo*, using methods such as those exemplified in the examples or using other assays known in the art.

Among the soluble TWEAKR polypeptides and soluble TWEAKR multimers useful in practicing the present invention are TWEAKR variants that retain the ability to bind ligand (*e.g.*, TWEAK) and/or inhibit angiogenesis or other TWEAKR-mediated responses. Such TWEAKR variants include polypeptides that are substantially homologous to native TWEAKR, but which have an amino acid sequence different from that of a native TWEAKR because of one or more deletions, insertions or substitutions. Particular embodiments include, but are not limited to, TWEAKR polypeptides that comprise from one to ten deletions, insertions or substitutions of amino acid residues, when compared to a native TWEAKR sequence. Included as variants of TWEAKR polypeptides are those variants that are naturally occurring, such as allelic forms and alternatively spliced forms, as well as variants that have been constructed by modifying the amino acid sequence of a TWEAKR polypeptide or the nucleotide sequence of a nucleic acid encoding a TWEAKR polypeptide.

Generally, substitutions for one or more amino acids present in the native polypeptide should be made conservatively. Examples of conservative substitutions

include substitution of amino acids outside of the active domain(s), and substitution of amino acids that do not alter the secondary and/or tertiary structure of TWEAKR. Additional examples include substituting one aliphatic residue for another, such as Ile, Val, Leu, or Ala for one another, or substitutions of one polar residue for another, such as between Lys and Arg; Glu and Asp; or Gln and Asn, or substitutions of one aromatic residue for another, such as Phe, Trp, or Tyr for one another. Other such conservative substitutions, for example, substitutions of entire regions having similar hydrophobicity characteristics, are known in the art.

In some preferred embodiments, the TWEAKR variant is at least about 70% identical in amino acid sequence to the amino acid sequence of native TWEAKR; in some preferred embodiments, the TWEAKR variant is at least about 80% identical in amino acid sequence to the amino acid sequence of native TWEAKR. In some more preferred embodiments, the TWEAKR variant is at least about 90% identical in amino acid sequence to the amino acid sequence of native TWEAKR; in some more preferred embodiments, the TWEAKR variant is at least about 95% identical in amino acid sequence to the amino acid sequence of native TWEAKR. In some most preferred embodiments, the TWEAKR variant is at least about 98% identical in amino acid sequence to the amino acid sequence of native TWEAKR; in some most preferred embodiments, the TWEAKR variant is at least about 99% identical in amino acid sequence to the amino acid sequence of native TWEAKR. Percent identity, in the case of both polypeptides and nucleic acids, may be determined by visual inspection. Percent identity may also be determined using the alignment method of Needleman and Wunsch (J. Mol. Biol. 48:443, 1970) as revised by Smith and Waterman (Adv. Appl. Math 2:482, 1981). Preferably, percent identity is determined by using a computer program, for example, the GAP computer program version 10.x available from the Genetics Computer Group (GCG; Madison, WI, see also Devereux *et al.*, Nucl. Acids Res. 12:387, 1984). The preferred default parameters for the GAP program include: (1) a unary comparison matrix (containing a value of 1 for identities and 0 for non-identities) for nucleotides, and the weighted comparison matrix of Gribskov and Burgess, Nucl. Acids Res. 14:6745, 1986, as described by Schwartz and Dayhoff, eds., *Atlas of Protein Sequence and Structure*, National Biomedical Research Foundation, pp. 353-358, 1979 for amino acids; (2) a penalty of 30 (amino acids) or 50 (nucleotides) for each gap and an additional 1 (amino acids) or 3 (nucleotides) penalty for each symbol in each gap; (3) no penalty for end gaps; and (4) no maximum penalty for long gaps. Other programs used by one

skilled in the art of sequence comparison may also be used. For fragments of TWEAKR, the percent identity is calculated based on that portion of TWEAKR that is present in the fragment.

The present invention further encompasses the use of soluble TWEAKR polypeptides with or without associated native-pattern glycosylation. TWEAKR expressed in yeast or mammalian expression systems (e.g., COS-1 or COS-7 cells) may be similar to or significantly different from a native TWEAKR polypeptide in molecular weight and glycosylation pattern, depending upon the choice of expression system. Expression of TWEAKR polypeptides in bacterial expression systems, such as *E. coli*, provides non-glycosylated molecules. Different host cells may also process polypeptides differentially, resulting in heterogeneous mixtures of polypeptides with variable N- or C-termini.

The primary amino acid structure of soluble TWEAKR polypeptides may be modified to create derivatives by forming covalent or aggregative conjugates with other chemical moieties, such as glycosyl groups, lipids, phosphate, acetyl groups and the like. Covalent derivatives of TWEAKR may be prepared by linking particular functional groups to TWEAKR amino acid side chains or at the N-terminus or C-terminus of a TWEAKR polypeptide. In addition, TWEAKR can be complexed with polyethylene glycol (PEG), metal ions, or incorporated into polymeric compounds such as polyacetic acid, polyglycolic acid, hydrogels, dextran, and the like, or incorporated into liposomes, microemulsions, micelles, unilamellar or multilamellar vesicles, erythrocyte ghosts or spheroblasts. Such compositions will influence the physical state, solubility, stability, rate of *in vivo* release, and rate of *in vivo* clearance, and are thus chosen according to the intended application.

Fusion polypeptides of soluble TWEAKR that are useful in practicing the invention also include covalent or aggregative conjugates of a TWEAKR polypeptide with other polypeptides added to provide novel polyfunctional entities.

### TWEAKR Antibodies

One aspect of the present invention relates to the antigenic epitopes of the TWEAKR extracellular domain. Such epitopes are useful for raising antibodies, and in particular the blocking monoclonal antibodies described in more detail below. Such epitopes or variants thereof can be produced using techniques well known in the art such

as solid-phase synthesis, chemical or enzymatic cleavage of a polypeptide, or using recombinant DNA technology.

The claimed invention encompasses compositions and uses of antibodies that are immunoreactive with TWEAKR polypeptides. Such antibodies "bind specifically" to TWEAKR polypeptides, meaning that they bind via antigen-binding sites of the antibody as compared to non-specific binding interactions. The terms "antibody" and "antibodies" are used herein in their broadest sense, and include, without limitation, intact monoclonal and polyclonal antibodies as well as fragments such as Fv, Fab, and F(ab')<sub>2</sub> fragments, single-chain antibodies such as scFv, and various chain combinations. The antibodies of the present invention are preferably humanized, and more preferably human. The antibodies may be prepared using a variety of well-known methods including, without limitation, immunization of animals having native or transgenic immune repertoires, phage display, hybridoma and recombinant cell culture, and transgenic plant and animal bioreactors.

Both polyclonal and monoclonal antibodies may be prepared by conventional techniques. See, for example, *Monoclonal Antibodies, Hybridomas: A New Dimension in Biological Analyses*, Kennet *et al.* (eds.), Plenum Press, New York (1980); and *Antibodies: A Laboratory Manual*, Harlow and Land (eds.), Cold Spring Harbor Laboratory Press, Cold Spring Harbor, NY, (1988).

Hybridoma cell lines that produce monoclonal antibodies specific for the polypeptides of the invention are also contemplated herein. Such hybridomas may be produced and identified by conventional techniques. One method for producing such a hybridoma cell line comprises immunizing an animal with a polypeptide, harvesting spleen cells from the immunized animal, fusing said spleen cells to a myeloma cell line, thereby generating hybridoma cells, and identifying a hybridoma cell line that produces a monoclonal antibody that binds the polypeptide. The monoclonal antibodies produced by hybridomas may be recovered by conventional techniques.

The monoclonal antibodies of the present invention include chimeric antibodies, *e.g.*, "humanized" versions of antibodies originally produced in mice or other non-human species. A humanized antibody is an engineered antibody that typically comprises the variable region of a non-human (*e.g.*, murine) antibody, or at least complementarity determining regions (CDRs) thereof, and the remaining immunoglobulin portions derived from a human antibody. Procedures for the production of chimeric and further engineered monoclonal antibodies include those described in Riechmann *et al.* (Nature

332:323, 1988), Liu *et al.* (PNAS 84:3439, 1987), Larrick *et al.* (Bio/Technology 7:934, 1989), and Winter and Harris (TIPS 14:139, May, 1993). Such humanized antibodies may be prepared by known techniques and offer the advantage of reduced immunogenicity when the antibodies are administered to humans.

5           Procedures that have been developed for generating human antibodies in non-human animals may be employed in producing antibodies of the present invention. The antibodies may be partially human or preferably completely human. For example, transgenic mice into which genetic material encoding one or more human immunoglobulin chains has been introduced may be employed. Such mice may be  
10           genetically altered in a variety of ways. The genetic manipulation may result in human immunoglobulin polypeptide chains replacing endogenous immunoglobulin chains in at least some, and preferably virtually all, antibodies produced by the animal upon immunization.

          Mice in which one or more endogenous immunoglobulin genes have been  
15           inactivated by various means have been prepared and are commercially available from, for example, Medarex Inc. (Princeton, NJ) and Abgenix Inc. (Fremont, CA). Human immunoglobulin genes have been introduced into the mice to replace the inactivated mouse genes. Antibodies produced in the animals incorporate human immunoglobulin polypeptide chains encoded by the human genetic material introduced into the animal.  
20           Examples of techniques for the production and use of such transgenic animals to make antibodies (which are sometimes called "transgenic antibodies") are described in U.S. Patent Nos. 5,814,318, 5,569,825, and 5,545,806, which are incorporated by reference herein.

#### 25           Inhibitory Antisense, Ribozyme, and Triple Helix Approaches

          Modulation of angiogenesis in a tissue or group of cells may also be ameliorated by decreasing the level of TWEAKR gene expression and/or TWEAKR-ligand interaction by using TWEAKR or ligand gene sequences in conjunction with well-known antisense, gene "knock-out," ribozyme and/or triple helix methods to decrease the level of  
30           TWEAKR or ligand gene expression. Among the compounds that may exhibit the ability to modulate the activity, expression or synthesis of the TWEAKR or a ligand gene, including the ability to modulate angiogenesis, are antisense, ribozyme, and triple helix molecules. Such molecules may be designed to reduce or inhibit either unimpaired, or if

appropriate, mutant target gene activity. Techniques for the production and use of such molecules are known to those of skill in the art.

#### Recombinant Production of TWEAKR Polypeptides

5 TWEAKR polypeptides, including soluble TWEAKR polypeptides, fragments, and fusion polypeptides, used in the present invention may be prepared using a recombinant expression system. Host cells transformed with a recombinant expression vector or a polynucleotide encoding a TWEAKR polypeptide, soluble TWEAKR polypeptide, or fusion polypeptide ("recombinant host cells") are cultured under  
10 conditions that promote expression of TWEAKR molecule and the TWEAKR molecule is recovered. TWEAKR polypeptides can also be produced in transgenic plants or animals, or by chemical synthesis.

#### TWEAKR Nucleic Acids

15 The invention encompasses nucleic acid molecules (*i.e.*, polynucleotides) encoding a TWEAKR polypeptide used in the invention, including: (a) nucleic acids that encode residues from about 28 to  $x_1$  ( $x_1$  is residue 68, 69, 70, 71, 72, 73, 74, 75, 76, 77, 78, 79 or 80) of SEQ ID NO:4 and fragments thereof that bind TWEAK; (b) nucleic acids that are at least 70%, 80%, 90%, 95%, 98%, or 99% identical to a nucleic acid of (a), and  
20 which encode a polypeptide capable of binding TWEAK; and (c) nucleic acids that hybridize at moderate stringency to a nucleic acid of (a), and which encode a polypeptide capable of binding TWEAK.

Due to degeneracy of the genetic code, there can be considerable variation in nucleotide sequences encoding the same amino acid sequence. Included as embodiments  
25 of the invention are nucleic acid sequences capable of hybridizing under moderately stringent conditions (*e.g.*, prewashing solution of 5 X SSC, 0.5% SDS, 1.0 mM EDTA (pH 8.0) and hybridization conditions of 50°C, 5 X SSC, overnight) to the DNA sequences encoding TWEAKR. The skilled artisan can determine additional combinations of salt and temperature that constitute moderate hybridization stringency  
30 (see also, Sambrook, *Molecular Cloning: A Laboratory Manual*, Cold Spring Harbor Laboratory Press, 1989; Maniatis, *Molecular Cloning: A Laboratory Manual*, Cold Spring Harbor Laboratory Press, 1982; and Ausubel, *Current Protocols in Molecular Biology*, Wiley and Sons, 1989 and later versions, which are incorporated herein by

reference). Conditions of higher stringency include higher temperatures for hybridization and post-hybridization washes, and/or lower salt concentration. Percent identity of nucleic acids may be determined using the methods described above for polypeptides, e.g., by methods including visual inspection and/or the use of computer programs such as GAP.

Any suitable expression system may be employed for the production of recombinant TWEAKR. Recombinant expression vectors include nucleic acids (e.g., DNA or RNA) encoding a TWEAKR polypeptide operably linked to suitable transcriptional and translational regulatory nucleotide sequences, such as those derived from a mammalian, microbial, viral, or insect gene. A TWEAKR nucleic acid molecule and a regulatory sequence are operably linked when the regulatory sequence functionally relates to the TWEAKR nucleic acid molecule. Thus, a regulatory sequence such as a promoter is operably linked to a TWEAKR nucleic acid molecule if the promoter controls the transcription of the TWEAKR nucleic acid molecule. Examples of regulatory sequences include transcriptional promoters, operators, or enhancers, an mRNA ribosomal binding site, internal ribosome entry sites (IRES), and appropriate sequences which control transcription and translation initiation and termination. A sequence encoding an appropriate signal peptide (native or heterologous) can be incorporated into expression vectors. A DNA sequence for a signal peptide (referred to by a variety of names including secretory leader, leader peptide, or leader) may be fused in frame to the TWEAKR sequence so that the TWEAKR polypeptide is initially translated as a fusion protein comprising the signal peptide. A signal peptide that is functional in the intended host cells promotes extracellular secretion of the TWEAKR polypeptide. The signal peptide is cleaved from the TWEAKR polypeptide upon secretion of TWEAKR from the cell.

Suitable host cells for expression of TWEAKR polypeptides include prokaryotes, yeast, and higher eukaryotic cells, including insect and mammalian cells. Appropriate cloning and expression vectors for use with bacterial, fungal, yeast, insect, and mammalian cellular hosts are described, for example, in Pouwels *et al. Cloning Vectors: A Laboratory Manual*, Elsevier, New York, 1985.

Prokaryotes include gram negative or gram positive organisms, for example, *E. coli* or *Bacilli*. Suitable prokaryotic host cells for transformation include, for example, *E. coli*, *Bacillus subtilis*, *Salmonella typhimurium*, and various other species within the genera *Pseudomonas*, *Streptomyces*, and *Staphylococcus*. In a prokaryotic host cell, such

as *E. coli*, TWEAKR polypeptides may include an N-terminal methionine residue to facilitate expression of the recombinant polypeptide in the prokaryotic host cell. The N-terminal Met may be cleaved from the expressed recombinant polypeptide.

5 Expression vectors for use in prokaryotic host cells generally comprise one or more phenotypic selectable marker gene(s). A phenotypic selectable marker gene is, for example, a gene encoding a protein that confers antibiotic resistance or that supplies an autotrophic requirement. Examples of useful expression vectors for prokaryotic host cells include those derived from commercially available plasmids such as the cloning vector pBR322 (ATCC 37017). pBR322 contains genes for ampicillin and tetracycline  
10 resistance and thus provides simple means for identifying transformed cells. An appropriate promoter and a TWEAKR DNA sequence are inserted into the pBR322 vector. Other commercially available vectors include, for example, pKK223-3 (Pharmacia Fine Chemicals, Uppsala, Sweden) and pGEM1 (Promega Biotech, Madison, WI, USA).

15 Promoter sequences commonly used for recombinant prokaryotic host cell expression vectors include  $\beta$ -lactamase (penicillinase), lactose promoter system (Chang *et al.*, Nature 275:615, 1978; Goeddel *et al.*, Nature 281:544, 1979), tryptophan (trp) promoter system (Goeddel *et al.*, Nucl. Acids Res. 8:4057, 1980; EP-A-36776) and tac promoter (Maniatis, *Molecular Cloning: A Laboratory Manual*, Cold Spring Harbor  
20 Laboratory, p. 412, 1982). A particularly useful prokaryotic host cell expression system employs a phage  $\lambda$  P<sub>L</sub> promoter and a cI857ts thermolabile repressor sequence. Plasmid vectors available from the American Type Culture Collection which incorporate derivatives of the  $\lambda$  P<sub>L</sub> promoter include plasmid pHUB2 (resident in *E. coli* strain JMB9, ATCC 37092) and pPLc28 (resident in *E. coli* RR1, ATCC 53082).

25 The stability of TWEAKR lends itself to expression in prokaryotic systems. For example, TweakR ligand binding domain will spontaneously re-fold into an active conformation even after being reduced and boiled in SDS loading buffer.

TWEAKR polypeptides may also be expressed in yeast host cells, preferably from the *Saccharomyces* genus (*e.g.*, *S. cerevisiae*). Other genera of yeast, such as *Pichia* or  
30 *Kluyveromyces*, may also be employed. Yeast vectors will often contain an origin of replication sequence from a 2 $\mu$  yeast plasmid, an autonomously replicating sequence (ARS), a promoter region, sequences for polyadenylation, sequences for transcription termination, and a selectable marker gene. Suitable promoter sequences for yeast vectors

include, among others, promoters for metallothionein, 3-phosphoglycerate kinase (Hitzeman *et al.*, J. Biol. Chem. 255:2073, 1980) or other glycolytic enzymes (Hess *et al.*, J. Adv. Enzyme Reg. 7:149, 1968; Holland *et al.*, Biochem. 17:4900, 1978), such as enolase, glyceraldehyde-3-phosphate dehydrogenase, hexokinase, pyruvate decarboxylase, phosphofructokinase, glucose-6-phosphate isomerase, 3-phosphoglycerate mutase, pyruvate kinase, triosephosphate isomerase, phospho-glucose isomerase, and glucokinase. Other suitable vectors and promoters for use in yeast expression are further described in Hitzeman, EPA-73,657. Another alternative is the glucose-repressible ADH2 promoter described by Russell *et al.* (J. Biol. Chem. 258:2674, 1982) and Beier *et al.* (Nature 300:724, 1982). Shuttle vectors replicable in both yeast and *E. coli* may be constructed by inserting DNA sequences from pBR322 for selection and replication in *E. coli* (Amp<sup>r</sup> gene and origin of replication) into the above-described yeast vectors.

The yeast  $\alpha$ -factor leader sequence may be employed to direct secretion of recombinant polypeptides. The  $\alpha$ -factor leader sequence is often inserted between the promoter sequence and the structural gene sequence. See, e.g., Kurjan *et al.*, Cell 30:933, 1982; Bitter *et al.*, Proc. Natl. Acad. Sci. USA 81:5330, 1984. Other leader sequences suitable for facilitating secretion of recombinant polypeptides from yeast hosts are known to those of skill in the art. A leader sequence may be modified near its 3' end to contain one or more restriction sites. This will facilitate fusion of the leader sequence to the structural gene.

Yeast transformation protocols are known to those of skill in the art. One such protocol is described by Hinnen *et al.*, Proc. Natl. Acad. Sci. USA 75:1929, 1978. The Hinnen *et al.* protocol selects for Trp<sup>+</sup> transformants in a selective medium, wherein the selective medium consists of 0.67% yeast nitrogen base, 0.5% casamino acids, 2% glucose, 10  $\mu$ g/ml adenine and 20  $\mu$ g/ml uracil.

Yeast host cells transformed by vectors containing an ADH2 promoter sequence may be grown for inducing expression in a "rich" medium. An example of a rich medium is one consisting of 1% yeast extract, 2% peptone, and 1% glucose supplemented with 80  $\mu$ g/ml adenine and 80  $\mu$ g/ml uracil. Derepression of the ADH2 promoter occurs when glucose is exhausted from the medium.

Insect host cell culture systems also may be employed to express recombinant TWEAKR polypeptides, including soluble TWEAKR polypeptides. Baculovirus

systems for production of heterologous polypeptides in insect cells are reviewed by Luckow and Summers, *Bio/Technology* 6:47, 1988.

Mammalian cells are typically used as host cells. Examples of suitable mammalian host cell lines include the COS-7 line of monkey kidney cells (ATCC CRL 1651) (Gluzman *et al.*, *Cell* 23:175, 1981), L cells, C127 cells, 3T3 cells (ATCC CCL 163), Chinese hamster ovary (CHO) cells, HeLa cells, and BHK (ATCC CRL 10) cell lines, and the CV1/EBNA cell line derived from the African green monkey kidney cell line CV1 (ATCC CCL 70) as described by McMahan *et al.* (*EMBO J.* 10:2821, 1991). For the production of therapeutic polypeptides it is particularly advantageous to use a mammalian host cell line which has been adapted to grow in media that does not contain animal proteins.

Established methods for introducing DNA into mammalian cells have been described (Kaufman, R.J., *Large Scale Mammalian Cell Culture*, 1990, pp. 15-69). Additional protocols using commercially available reagents, such as Lipofectamine (Gibco/BRL) or Lipofectamine-Plus, can be used to transfect cells (Felgner *et al.*, *Proc. Natl. Acad. Sci. USA* 84:7413, 1987). In addition, electroporation can be used to transfect mammalian cells using conventional procedures, such as those in Sambrook *et al. Molecular Cloning: A Laboratory Manual*, 2 ed. Vol. 1-3, Cold Spring Harbor Laboratory Press, 1989. Selection of stable transformants can be performed using methods known in the art, such as, for example, resistance to cytotoxic drugs. Kaufman *et al.*, *Meth. in Enzymology* 185:487, 1990, describes several selection schemes, such as dihydrofolate reductase (DHFR) resistance. A suitable host strain for DHFR selection can be CHO strain DX-B11, which is deficient in DHFR (Urlaub and Chasin, *Proc. Natl. Acad. Sci. USA* 77:4216, 1980). A plasmid expressing the DHFR cDNA can be introduced into strain DX-B11, and only cells that contain the plasmid can grow in the appropriate selective media. Other examples of selectable markers that can be incorporated into an expression vector include cDNAs conferring resistance to antibiotics, such as G418 and hygromycin B. Cells harboring the vector can be selected on the basis of resistance to these compounds.

Transcriptional and translational control sequences for mammalian host cell expression vectors can be excised from viral genomes. Commonly used promoter sequences and enhancer sequences are derived from polyoma virus, adenovirus 2, simian virus 40 (SV40), and human cytomegalovirus. DNA sequences derived from the SV40 viral genome, for example, SV40 origin, early and late promoter, enhancer, splice, and

polyadenylation sites can be used to provide other genetic elements for expression of a structural gene sequence in a mammalian host cell. Viral early and late promoters are particularly useful because both are easily obtained from a viral genome as a fragment, which can also contain a viral origin of replication (Fiers *et al.*, Nature 273:113, 1978; 5 Kaufman, Meth. in Enzymology, 1990). Smaller or larger SV40 fragments can also be used, provided the approximately 250 bp sequence extending from the *Hind* III site toward the *Bgl* I site located in the SV40 viral origin of replication site is included.

Additional control sequences shown to improve expression of heterologous genes from mammalian expression vectors include such elements as the expression augmenting 10 sequence element (EASE) derived from CHO cells (Morris *et al.*, *Animal Cell Technology*, 1997, pp. 529-534) and the tripartite leader (TPL) and VA gene RNAs from Adenovirus 2 (Gingeras *et al.*, J. Biol. Chem. 257:13475, 1982). The internal ribosome entry site (IRES) sequences of viral origin allows dicistronic mRNAs to be translated efficiently (Oh and Sarnow, Current Opinion in Genetics and Development 3:295, 1993; 15 Ramesh *et al.*, Nucleic Acids Research 24:2697, 1996). Expression of a heterologous cDNA as part of a dicistronic mRNA followed by the gene for a selectable marker (*e.g.* DHFR) has been shown to improve transfectability of the host and expression of the heterologous cDNA (Kaufman, Meth. in Enzymology, 1990). Exemplary expression vectors that employ dicistronic mRNAs are pTR-DC/GFP described by Mosser *et al.*, 20 *Biotechniques* 22:150, 1997, and p2A5I described by Morris *et al.*, *Animal Cell Technology*, 1997, pp. 529-534.

A useful high expression vector, pCAVNOT, has been described by Mosley *et al.*, Cell 59:335, 1989. Other expression vectors for use in mammalian host cells can be constructed as disclosed by Okayama and Berg (Mol. Cell. Biol. 3:280, 1983). A useful 25 system for stable high level expression of mammalian cDNAs in C127 murine mammary epithelial cells can be constructed substantially as described by Cosman *et al.* (Mol. Immunol. 23:935, 1986). A useful high expression vector, PMLSV N1/N4, described by Cosman *et al.*, Nature 312:768, 1984, has been deposited as ATCC 39890. Additional useful mammalian expression vectors are known in the art.

30 Regarding signal peptides that may be employed in producing TWEAKR polypeptides, the native TWEAKR signal peptide may be used or it may be replaced by a heterologous signal peptide or leader sequence, if desired. The choice of signal peptide or leader may depend on factors such as the type of host cells in which the recombinant TWEAKR is to be produced. Examples of heterologous signal peptides that are

functional in mammalian host cells include the signal sequence for interleukin-7 (IL-7) described in United States Patent 4,965,195, the signal sequence for interleukin-2 receptor described in Cosman *et al.*, Nature 312:768, 1984; the interleukin-4 receptor signal peptide described in EP 367,566; the type I interleukin-1 receptor signal peptide described in U.S. Patent 4,968,607; and the type II interleukin-1 receptor signal peptide described in EP 460,846.

Using the techniques of recombinant DNA including mutagenesis, directed evolution, and the polymerase chain reaction (PCR) (see, *e.g.*, U.S. Patents 6,171,820 and 6,238,884), the skilled artisan can produce DNA sequences that encode TWEAKR polypeptides comprising various additions or substitutions of amino acid residues or sequences, or deletions of terminal or internal residues or sequences, including TWEAKR fragments, variants, derivatives, and fusion polypeptides.

Transgenic animals, including mice, goats, sheep, and pigs, transgenic plants, including tobacco, tomato, legumes, grasses, and grains, and transgenic algae may also be used as bioreactors for the production of TWEAKR polypeptides, including soluble TWEAKR polypeptides. In the case of transgenic animals, it is particularly advantageous to construct a chimeric DNA including a TWEAKR coding sequence operably linked to cis-acting regulatory sequences that promote expression of the soluble TWEAKR in milk and/or other body fluids (see, *e.g.*, U.S. Patent No. 5,843,705; U.S. Patent No. 5,880,327). In the case of transgenic plants it is particularly advantageous to produce TWEAKR in a particular cell type, tissue, or organ (see, *e.g.*, U.S. Patent No. 5,639,947; U.S. Patent No. 5,889,189).

The skilled artisan will recognize that the procedure for purifying expressed soluble TWEAKR polypeptides will vary according to the host system employed, and whether or not the recombinant polypeptide is secreted. Soluble TWEAKR polypeptides may be purified using methods known in the art, including one or more concentration, salting-out, ion exchange, hydrophobic interaction, affinity purification, HPLC, or size exclusion chromatography steps. Fusion polypeptides comprising Fc moieties (and multimers formed therefrom) offer the advantage of facile purification by affinity chromatography over Protein A or Protein G columns.

#### Methods of Treatment

Described below are methods and compositions employing the TWEAK receptor or ligand, or the genes encoding the TWEAK receptor or ligand, to promote or suppress

angiogenesis in a subject, a target tissue, or a group of cells. The terms "treat," "treating," "treatment," "therapy," "therapeutic," and the like are intended to include preventative therapy, prophylactic therapy, ameliorative therapy, and curative therapy. By "subject" is meant any mammal (*e.g.*, bovine, equine, porcine, canine, feline, and primates), but preferably is a human.

The disclosed polypeptides, compositions, and methods are used to inhibit angiogenesis, modulate cell migration and/or proliferation, or other TWEAKR-mediated responses in a subject in need of such treatment. The term "TWEAKR-mediated response" includes any cellular, physiological, or other biological response that is caused at least in part by the binding of TWEAK ligand to TWEAKR, or which may be inhibited or suppressed, in whole or in part, by blocking TWEAK from binding to TWEAKR. The treatment is advantageously administered in order to prevent the onset or the recurrence of a disease or condition mediated by angiogenesis, or to treat a subject that has a disease or condition mediated by angiogenesis. Diseases and conditions mediated by angiogenesis include but are not limited to ocular disorders, malignant and metastatic conditions, and inflammatory diseases. In some instances stimulation of a TWEAK-TWEAKR response may be beneficial (*e.g.*, during tissue or wound repair). Accordingly, administration of TWEAK or TWEAKR in such tissue or cells may be used to promote wound repair.

Among the ocular disorders that can be treated according to the present invention are eye diseases characterized by ocular neovascularization including, but not limited to, diabetic retinopathy (a major complication of diabetes), retinopathy of prematurity (this devastating eye condition, that frequently leads to chronic vision problems and carries a high risk of blindness, is a severe complication during the care of premature infants), neovascular glaucoma, retinoblastoma, retrolental fibroplasia, rubeosis, uveitis, macular degeneration, and corneal graft neovascularization. Other eye inflammatory diseases, ocular tumors, and diseases associated with choroidal or iris neovascularization can also be treated according to the present invention.

The present invention can also be used to treat cell proliferative disorders, including malignant and metastatic conditions such as solid tumors. Solid tumors include both primary and metastatic sarcomas and carcinomas.

The present invention can also be used to treat inflammatory diseases including, but not limited to, arthritis, rheumatism, and psoriasis.

Other diseases and conditions that can be treated according to the present invention include benign tumors and preneoplastic conditions, myocardial angiogenesis, hemophilic joints, scleroderma, vascular adhesions, atherosclerotic plaque neovascularization, telangiectasia, and wound granulation.

5 Disease states that are angiogenic-dependent include coronary or peripheral atherosclerosis and ischemia of any tissue or organ, including the heart, liver, brain, and the like. These types of diseases can be treated by compositions that promote angiogenesis.

10 In addition to polypeptides comprising a fragment of TWEAKR extracellular domain, soluble TWEAKR multimers, and antibodies that bind to the TWEAKR extracellular domain, other forms of TWEAKR antagonists can also be administered to achieve a therapeutic effect. Examples of other forms of TWEAKR antagonists include other antibodies such as antibodies against TWEAK, antisense nucleic acids, ribozymes, muteins, aptamers, and small molecules directed against TWEAKR or against TWEAK.

15 The methods according to the present invention can be tested in *in vivo* animal models to confirm the desired prophylactic or therapeutic activity, as well as to determine the optimal therapeutic dosage, prior to administration to humans.

20 The amount of a particular TWEAKR antagonist that will be effective in a particular method of treatment depends upon age, type and severity of the condition to be treated, body weight, desired duration of treatment, method of administration, and other parameters. Effective dosages are determined by a physician or other qualified medical professional. Typical effective dosages are about 0.01 mg/kg to about 100 mg/kg body weight. In some preferred embodiments the dosage is about 0.1-50 mg/kg; in some preferred embodiments the dosage is about 0.5-10 mg/kg. The dosage for local  
25 administration is typically lower than for systemic administration. In some embodiments a single administration is sufficient; in some embodiments the TWEAKR antagonist is administered as multiple doses over one or more days.

30 The TWEAKR antagonists are typically administered in the form of a pharmaceutical composition comprising one or more pharmacologically acceptable carriers. Pharmaceutically acceptable carriers include diluents, fillers, adjuvants, excipients, and vehicles that are pharmaceutically acceptable for the route of administration, and may be aqueous or oleaginous suspensions formulated using suitable dispersing, wetting, and suspending agents.

Pharmaceutically acceptable carriers are generally sterile and free of pyrogenic agents, and may include water, oils, solvents, salts, sugars and other carbohydrates, emulsifying agents, buffering agents, antimicrobial agents, and chelating agents. The particular pharmaceutically acceptable carrier and the ratio of active compound to carrier are determined by the solubility and chemical properties of the composition, the mode of administration, and standard pharmaceutical practice.

The compositions as described herein may be contained in a vial, bottle, tube, syringe inhaler or other container for single or multiple administrations. Such containers may be made of glass or a polymer material such as polypropylene, polyethylene, or polyvinylchloride, for example. Preferred containers may include a seal or other closure system, such as a rubber stopper that may be penetrated by a needle in order to withdraw a single dose and then re-seal upon removal of the needle. All such containers for injectable liquids, lyophilized formulations, reconstituted lyophilized formulations or reconstitutable powders for injection known in the art or for the administration of aerosolized compositions are contemplated for use in the presently disclosed compositions and methods.

The TWEAKR antagonists are administered to the subject in a manner appropriate to the indication. Thus, for example, a TWEAKR antagonist, or a pharmaceutical composition thereof, may be administered by intravenous, transdermal, intradermal, intraperitoneal, intramuscular, intranasal, epidural, oral, topical, subcutaneous, intracavity, sustained release from implants, peristaltic routes, or by any other suitable technique. Parenteral administration is preferred.

In certain embodiments of the claimed invention, the treatment further comprises treating a subject with one or more additional agents such as additional chemotherapeutic agents. The additional chemotherapeutic agent(s) may be administered prior to, concurrently with, or following the administration of the TWEAKR antagonist. The use of more than one chemotherapeutic agent is particularly advantageous when the subject that is being treated has a solid tumor. In some embodiments of the claimed invention, the treatment further comprises treating the subject with radiation. Radiation, including brachytherapy and teletherapy, may be administered prior to, concurrently with, or following the administration of the second chemotherapeutic agent(s) and/or TWEAKR antagonist.

When the subject that is being treated has a solid tumor, the method preferably includes the administration of, in addition to a TWEAKR antagonist, one or more

chemotherapeutic agents selected from the group consisting of alkylating agents, antimetabolites, vinca alkaloids and other plant-derived chemotherapeutics, nitrosoureas, antitumor antibiotics, antitumor enzymes, topoisomerase inhibitors, platinum analogs, adrenocortical suppressants, hormones, hormone agonists and antagonists, antibodies, immunotherapeutics, blood cell factors, radiotherapeutics, and biological response modifiers.

In some preferred embodiments the method includes administration of, in addition to a TWEAKR antagonist, one or more chemotherapeutic agents selected from the group consisting of cisplatin, cyclophosphamide, mechlorethamine, melphalan, bleomycin, carboplatin, fluorouracil, 5-fluorodeoxyuridine, methotrexate, taxol, asparaginase, vincristine, and vinblastine, lymphokines and cytokines such as interleukins, interferons (including alpha, beta, or delta), and TNF, chlorambucil, busulfan, carmustine, lomustine, semustine, streptozocin, dacarbazine, cytarabine, mercaptopurine, thioguanine, vindesine, etoposide, teniposide, dactinomycin, daunorubicin, doxorubicin, bleomycin, plicamycin, mitomycin, L-asparaginase, hydroxyurea, methylhydrazine, mitotane, tamoxifen, and fluoxymesterone.

In some preferred embodiments the method includes administration of, in addition to a TWEAKR antagonist, one or more chemotherapeutic agents, including various soluble forms thereof, selected from the group consisting of Flt3 ligand, CD40 ligand, interleukin-2, interleukin-12, 4-1BB ligand, anti-4-1BB antibodies, TNF antagonists and TNF receptor antagonists, TRAIL, VEGF antagonists, VEGF receptor (including VEGF-R1 and VEGF-R2, also known as Flt1 and Flk1 or KDR) antagonists, Tek antagonists, and CD148 (also referred to as DEP-1, ECRTF, and PTPRJ, see Takahashi *et al.*, J. Am. Soc. Nephrol. 10:2135-45, 1999) agonists. In some preferred embodiments the TWEAKR antagonists of the invention are used as a component of, or in combination with, "metronomic therapy," such as that described by Browder *et al.* and Klement *et al.* (Cancer Research 60:1878, 2000; J. Clin. Invest. 105(8):R15, 2000; see also Barinaga, Science 288:245, 2000).

The polypeptides, compositions, and methods of the present invention may be used as a first line treatment, for the treatment of residual disease following primary therapy, or as an adjunct to other therapies including chemotherapy, surgery, radiation, and other therapeutic methods known in the art.

When the nucleic acid sequences of the present invention are delivered according to the methods disclosed herein, it is advantageous to use a delivery mechanism so that

the sequences will be incorporated into a cell for expression. Delivery systems that may advantageously be employed in the contemplated methods include the use of, for example, viral delivery systems such as retroviral and adenoviral vectors, as well as non-viral delivery systems. Such delivery systems are well known by those skilled in the art.

5

### Methods of Screening

TWEAKR as described herein may be used in a variety of methods of screening to isolate, for example, TWEAKR agonists and antagonists. TWEAKR agonists are compounds that promote the biological activity of TWEAKR and TWEAKR antagonists are compounds that inhibit the biological activity of TWEAKR. Compounds identified via the following screening assays can be used in compositions and methods for modulating angiogenesis to treat a variety of disease states. The present invention provides methods of screening for compounds that (1) modulate TWEAKR or ligand gene expression in a target tissue or cell, (2) modulate the TWEAKR-ligand interaction to regulate angiogenesis; (3) bind to the TWEAKR or ligand to influence angiogenesis; or (4) interfere with or regulate the bound TWEAKR-ligand complex's influence on downstream events such as angiogenesis. Accordingly, the polypeptides, and fragments thereof, of the invention can be used to regulate, influence, and modulate (*i.e.*, increase or decrease) a biological activity associated with interaction of TWEAK or TWEAKR with its cognate.

15  
20

The present invention contemplates the use of assays that are designed to identify compounds that modulate the activity of a TWEAKR or ligand gene (*e.g.*, modulate the level of TWEAKR or TWEAK gene expression and/or modulate the level of TWEAKR or TWEAK gene product activity). Assays may additionally be utilized that identify compounds that bind to TWEAKR or TWEAK gene regulatory sequences (*e.g.*, promoter sequences; see *e.g.*, Platt, J. Biol. Chem. 269, 28558-28562, 1994), and that may modulate the level of TWEAKR or TWEAK gene expression.

25

Such an assay may involve, for example, the use of a control system, in which transcription and translation of the TWEAKR or ligand gene occurs, in comparison to a system including a test agent suspected of influencing normal transcription or translation of a TWEAKR or ligand gene. For example, one could determine the rate of TWEAKR RNA produced by cardiac cells, and use this to determine if a test agent influences that rate. To assess the influence of a test agent suspected to influence this normal rate of transcription, one would first determine the rate of TWEAKR RNA production in a

30

cardiac cell culture by, for example, Northern Blotting. One could then administer the test agent to a cardiac cell culture under otherwise identical conditions as the control culture. The rate of TWEAKR RNA in the culture treated with the test agent could be determined by, for example, Northern Blotting, and compared to the rate of TWEAKR RNA produced by the control culture cells. An increase in the TWEAKR RNA in the cells contacted with the test agent relative to control cells is indicative of a stimulator of TWEAKR gene transcription in cardiac cells, while a decrease is indicative of an inhibitor of TWEAKR gene transcription in cardiac cells.

There are a variety of other methods that can be used to determine the level of TWEAKR or ligand gene expression as well, and may further be used in assays to determine the influence of a test agent on the level of TWEAKR or ligand gene expression. For example, RNA from a cell type or tissue known, or suspected, to express the TWEAK receptor or ligand gene, such as cardiac tissue, may be isolated and tested utilizing hybridization or PCR techniques. The isolated cells can be derived from cell culture or from a subject. The analysis of cells taken from culture may be a necessary step in the assessment of cells to be used as part of a cell-based gene therapy technique or, alternatively, to test the effect of compounds on the expression of the TWEAK receptor or ligand gene. Such analyses may reveal both quantitative and qualitative aspects of the expression pattern of the TWEAK receptor or ligand gene, including activation or inactivation of TWEAKR or ligand gene expression.

In one embodiment of such a detection scheme, a cDNA molecule is synthesized from an RNA molecule of interest (e.g., by reverse transcription of the RNA molecule into cDNA). A sequence within the cDNA is then used as the template for a nucleic acid amplification reaction, such as a PCR amplification reaction, or the like. The nucleic acid reagents used as synthesis initiation reagents (e.g., primers) in the reverse transcription and nucleic acid amplification steps of this method are chosen from among the TWEAKR or ligand gene nucleic acid segments described above. The preferred lengths of such nucleic acid reagents are at least 9-30 nucleotides. For detection of the amplified product, the nucleic acid amplification may be performed using radioactively or non-radioactively labeled nucleotides. Alternatively, enough amplified product may be made such that the product may be visualized by standard ethidium bromide staining or by utilizing any other suitable nucleic acid staining method.

Additionally, it is possible to perform such TWEAKR or ligand gene expression assays "in situ," i.e., directly upon tissue sections (fixed and/or frozen) of subject tissue

obtained from biopsies or resections, such that no nucleic acid purification is necessary. TWEAKR or ligand gene nucleic acid segments described above can be used as probes and/or primers for such *in situ* procedures (see, for example, Nuovo, G. J., 1992, "PCR *In situ* Hybridization: Protocols And Applications," Raven Press, NY).

5           Compounds identified via assays such as those described herein may be useful, for example, in modulating angiogenesis influenced by TWEAKR or TWEAKR-ligand interaction. Such methods of stimulating or inhibiting TWEAK- or TWEAKR-influenced angiogenesis are discussed herein.

10           Alternatively, assay systems may be designed to identify compounds capable of binding the TWEAKR or ligand polypeptide of the invention and thereby influencing angiogenesis resulting from this interaction. Compounds identified may be useful, for example, in modulating the vascularization of target tissues or cells, may be utilized in screens for identifying compounds that disrupt normal TWEAKR-ligand interactions, or may in themselves disrupt such interactions.

15           The principle of the assays used to identify compounds that bind to the TWEAK receptor or ligand involves preparing a reaction mixture of the TWEAK receptor or ligand and the test agent under conditions and for a time sufficient to allow the two components to interact or bind, thus forming a complex that can be removed and/or detected in the reaction mixture. These assays can be conducted in a variety of ways. For  
20           example, one method to conduct such an assay screening for compounds that bind to the TWEAK receptor, would involve anchoring the TWEAK receptor or the test substance onto a solid phase and detecting TWEAKR/test agent complexes anchored on the solid phase at the end of the reaction. In one embodiment of such a method, the TWEAK receptor may be anchored onto a solid surface, and the test agent, which is not anchored,  
25           may be labeled, either directly or indirectly. Alternatively, these same methods could be used to screen for test agents that bind to the TWEAK ligand rather than receptor.

          In practice, microtiter plates may conveniently be utilized as the solid phase. The anchored component may be immobilized by non-covalent or covalent attachments. Non-covalent attachment may be accomplished by simply coating the solid surface with a  
30           solution of the protein and drying. Alternatively, an immobilized antibody, preferably a monoclonal antibody, specific for the protein to be immobilized may be used to anchor the protein to the solid surface. The surfaces may be prepared in advance and stored.

          In order to conduct the assay, the non-immobilized component is added to the coated surface containing the anchored component. After the reaction is complete,

unreacted components are removed (*e.g.*, by washing) under conditions such that any complexes formed will remain immobilized on the solid surface. The detection of complexes anchored on the solid surface can be accomplished in a number of ways. Where the previously non-immobilized component is pre-labeled, the detection of label immobilized on the surface indicates that complexes were formed. Where the previously non-immobilized component is not pre-labeled, an indirect label can be used to detect complexes anchored on the surface; *e.g.*, using a labeled antibody specific for the previously non-immobilized component (the antibody, in turn, may be directly labeled or indirectly labeled with a labeled anti-Ig antibody).

Alternatively, a reaction can be conducted in a liquid phase, the reaction products separated from unreacted components, and complexes detected; *e.g.*, using an immobilized antibody specific for the TWEAK receptor or ligand or the test agent to anchor any complexes formed in solution, and a labeled antibody specific for the other component of the possible complex to detect anchored complexes.

Those compounds identified as binding agents for either the TWEAK receptor or the TWEAK ligand may further be assessed for their ability to interfere with TWEAKR-ligand interaction, as described below, and thereby suppress or promote angiogenesis resulting from TWEAKR-ligand interaction. Such compounds may then be used therapeutically to stimulate or inhibit angiogenesis.

The TWEAKR and ligand polypeptides of the present invention may also be used in a screening assay to identify compounds and small molecules which specifically interact with the disclosed TWEAK receptor or ligand to either inhibit (antagonize) or enhance (agonize) interaction between these molecules. Thus, for example, polypeptides of the invention may be used to identify antagonists and agonists from cells, cell-free preparations, chemical libraries, and natural product mixtures. The antagonists and agonists may be natural or modified substrates, ligands, enzymes, receptors, and the like, of the polypeptides of the instant invention, or may be structural or functional mimetics of the polypeptides. Potential antagonists of the TWEAKR-ligand interaction of the instant invention may include small molecules, polypeptides, peptides, peptidomimetics, and antibodies that bind to and occupy a binding site of the polypeptides, causing them to be unavailable to interact and therefore preventing their normal ability to modulate angiogenesis. Other potential antagonists are antisense molecules that may hybridize to mRNA *in vivo* and block translation of the mRNA into the polypeptides of the instant invention. Potential agonists include small molecules, polypeptides, peptides,

peptidomimetics, and antibodies that bind to the instant TWEAKR and TWEAK polypeptides and influence angiogenesis as caused by the disclosed interactions of the TWEAKR and TWEAK polypeptides of the instant invention.

5 Small molecule agonists and antagonists are usually less than 10K molecular weight and may possess a number of physiochemical and pharmacological properties that enhance cell penetration, resist degradation and prolong their physiological half-lives. (Gibbs, "Pharmaceutical Research in Molecular Oncology," *Cell*, Vol. 79, 1994). Antibodies, which include intact molecules as well as fragments such as Fab and F(ab')<sub>2</sub> fragments, may be used to bind to and inhibit the polypeptides of the instant invention by  
10 blocking the commencement of a signaling cascade. It is preferable that the antibodies are humanized, and more preferable that the antibodies are human. The antibodies of the present invention may be prepared by any of a variety of well-known methods. Alternatively, antibodies may bind to and activate the polypeptides of the instant by mimicking the interaction of a polypeptide of the invention with its cognate. One of skill  
15 in the art using the assay methods and techniques herein can determine whether an antibody is an antagonist or agonist.

Specific screening methods are known in the art and many are extensively incorporated in high throughput test systems so that large numbers of test agents can be screened within a short amount of time. The assays can be performed in a variety of  
20 formats, including protein-protein binding assays, biochemical screening assays, immunoassays, cell based assays, and the like. These assay formats are well known in the art. The screening assays of the present invention are amenable to screening of chemical libraries and are suitable for the identification of small molecule drug candidates, antibodies, peptides and other antagonists and agonists.

25 One embodiment of a method for identifying molecules which antagonize or inhibit TWEAKR-ligand interaction involves adding a candidate molecule to a medium which contains cells that express the polypeptides of the instant invention; changing the conditions of said medium so that, but for the presence of the candidate molecule, the polypeptides would interact; and observing the binding and inhibition of angiogenesis.  
30 Binding of the TWEAK receptor and ligand can be determined according to competitive binding assays outlined above, and well known in the art. The angiogenic effect of this binding can be determined *via* cell proliferation assays such as, for example, cell density assays, corneal pocket assays, or other cell proliferation assays that are also well-known in the art. The activity of the cells contacted with the candidate molecule may then be

5 compared with the identical cells, which were not contacted, and agonists and antagonists of the TWEAK polypeptide interactions of the instant invention may be identified. The measurement of biological activity may be performed by a number of well-known methods such as measuring the amount of protein present (*e.g.* an Enzyme-Linked  
5 Immunosorbent Assay (ELISA)), production of cytokines (*e.g.*, IL-8 and IL-6; see, *e.g.*, Saas *et al.*, *Glia* 32(1):102-7, 2000), or of the protein's activity. A decrease in biological stimulation or activation would indicate an antagonist. An increase would indicate an agonist.

10 Screening assays can further be designed to find molecules that mimic the biological activity resulting from the TWEAKR and/or TWEAK polypeptide interactions of the instant invention. Molecules which mimic the biological activity of a polypeptide may be useful for enhancing the biological activity of the polypeptide. To identify compounds for therapeutically active agents that mimic the biological activity of a polypeptide, it must first be determined whether a candidate molecule binds to the  
15 polypeptide. A binding candidate molecule is then added to a biological assay to determine its biological effects. The biological effects of the candidate molecule are then compared to those of the polypeptide.

20 Additionally, complex formation within reaction mixtures containing the test agent and normal TWEAKR or ligand gene protein may also be compared to complex formation within reaction mixtures containing the test agent and a mutant TWEAKR or ligand gene protein. This comparison may be important in those cases wherein it is desirable to identify compounds that disrupt interactions of mutant but not normal TWEAKR or ligand gene proteins.

25 The assay for compounds that interfere with the interaction of the TWEAKR or ligand gene products and binding partners can be conducted in a heterogeneous or homogeneous format. Heterogeneous assays involve anchoring either TWEAKR or ligand gene product or the binding partner onto a solid phase and detecting complexes anchored on the solid phase at the end of the reaction. In homogeneous assays, the entire reaction is carried out in a liquid phase. In either approach, the order of addition of  
30 reactants can be varied to obtain different information about the compounds being tested. For example, test agents that interfere with the interaction between the TWEAKR or ligand gene products and the binding partners, *e.g.*, by competition, can be identified by conducting the reaction in the presence of the test substance; *e.g.*, by adding the test substance to the reaction mixture prior to or simultaneously with the TWEAKR and

ligand gene products. Alternatively, test agents that disrupt preformed complexes, *e.g.*, compounds with higher binding constants that displace one of the components from the complex, can be tested by adding the test agent to the reaction mixture after complexes have been formed.

5 In a particular embodiment, the TWEAKR or ligand gene product can be prepared for immobilization using recombinant DNA techniques. For example, the TWEAKR or ligand coding region can be fused to a glutathione-S-transferase (GST) gene using a fusion vector, such as pGEX-5X-1, in such a manner that its binding activity is maintained in the resulting fusion protein. The interactive binding partner can be purified  
10 and used to raise a monoclonal antibody, using methods routinely practiced in the art. This antibody can be labeled with the radioactive isotope  $^{125}\text{I}$ , for example, by methods routinely practiced in the art. In a heterogeneous assay, *e.g.*, the GST-TWEAKR or ligand fusion protein can be anchored to glutathione-agarose beads. The TWEAKR or ligand gene product can then be added in the presence or absence of the test agent in a  
15 manner that allows interaction and binding to occur. At the end of the reaction period, unbound material can be washed away, and the labeled monoclonal antibody can be added to the system and allowed to bind to the complexed components. The interaction between the TWEAKR and ligand gene products can be detected by measuring the amount of radioactivity that remains associated with the glutathione-agarose beads. A  
20 successful inhibition of the interaction by the test agent will result in a decrease in measured radioactivity.

Alternatively, a GST-TWEAKR gene fusion protein and TWEAK ligand gene product (or *vice versa*) can be mixed together in liquid in the absence of the solid glutathione-agarose beads. The test agent can be added either during or after the species  
25 is allowed to interact. This mixture can then be added to the glutathione-agarose beads and unbound material is washed away. Again the extent of inhibition of the TWEAKR-ligand gene product interaction can be detected by adding the labeled antibody and measuring the radioactivity associated with the beads.

In another embodiment of the invention, these same techniques can be employed  
30 using peptide fragments that correspond to the binding domains of the TWEAKR and/or ligand protein, in place of one or both of the full-length proteins. Any number of methods routinely practiced in the art can be used to identify and isolate the binding sites. These methods include, but are not limited to, mutagenesis of the gene encoding one of the proteins and screening for disruption of binding in a co-immunoprecipitation assay.

Compensating mutations in the gene encoding the second species in the complex can then be selected. Sequence analysis of the genes encoding the respective proteins will reveal the mutations that correspond to the region of the protein involved in interactive binding. Alternatively, one protein can be anchored to a solid surface using methods described above, and allowed to interact with and bind to its labeled binding partner, which has been treated with a proteolytic enzyme, such as trypsin. After washing, a short, labeled peptide comprising the binding domain may remain associated with the solid material, which can be isolated and identified by amino acid sequencing. Also, once the gene coding for the segments can be engineered to express peptide fragments of the protein, which can then be tested for binding activity and purified or synthesized.

As an example, and not by way of limitation, a TWEAKR or ligand gene product can be anchored to a solid material, as described above, by making a GST-TWEAKR or ligand fusion protein and allowing it to bind to glutathione agarose beads. The interactive binding partner obtained can be labeled with a radioactive isotope, such as  $^{35}\text{S}$ , and cleaved with a proteolytic enzyme such as trypsin. Cleavage products can then be added to the anchored GST-TWEAKR fusion protein or TWEAK ligand fusion protein and allowed to bind. After washing away unbound peptides, labeled bound material, representing the binding partner binding domain, can be eluted, purified, and analyzed for amino acid sequence by well-known methods. Peptides so identified can be produced synthetically or fused to appropriate facilitative proteins using recombinant DNA technology.

The TWEAKR-ligand interactions of the invention, *in vivo*, initiate a cascade of events that either stimulate or suppress angiogenesis in a target group of cells or tissues. Molecules, such as nucleic acid molecules, proteins, or small molecules may, in turn, influence this cascade. Compounds that disrupt the TWEAKR-ligand interaction may be useful in regulating angiogenesis.

The basic principle of the assay systems used to identify compounds that interfere with the angiogenic or anti-angiogenic effect of TWEAKR-ligand interaction involves preparing a reaction mixture containing the TWEAK receptor and ligand under conditions and for a time sufficient to allow the two to interact or bind, thus forming a complex. In order to test a compound for inhibitory activity of the effect of this interaction, the reaction mixture is prepared in the presence and absence of the test agent. The test agent may be initially included in the reaction mixture, or may be added at a time subsequent to the addition of the TWEAKR-ligand complex. Control reaction mixtures are incubated

without the test agent or with a placebo. The inhibition or potentiation of any effect of the TWEAKR complex on vascularization is then detected. Normal angiogenic response in the control reaction, but not in the reaction mixture containing the test agent, indicates that the compound interferes with the cascade of events initiated by the TWEAKR-ligand interaction. Enhanced angiogenesis in the test agents-containing culture indicates a stimulator of the TWEAKR-ligand complex effect.

In another embodiment, the techniques of rational drug design can be used to develop TWEAKR binding agents (e.g., agonist or antagonists of TWEAKR). The goal of rational drug design is to produce structural analogs of biologically active polypeptides of interest or of small molecules with which they interact, e.g., substrates, binding agents, inhibitors, agonists, antagonists, and the like. The methods provided herein can be used to fashion or identify agents which are more active or stable forms of the polypeptide or which enhance or interfere with the function of a polypeptide *in vivo* (Hodgson J Biotechnology 9:19-21, 1991, incorporated herein by reference). In one approach, the three-dimensional structure of a TWEAKR polypeptide of the invention, a ligand or binding partner, or of a polypeptide-binding partner complex, is determined by x-ray crystallography, by nuclear magnetic resonance, or by computer homology modeling or, most typically, by a combination of these approaches. Both the shape and charges of the polypeptide are ascertained to elucidate the structure and to determine active site(s) or sites of interaction of the molecule. Relevant structural information is used to design analogous molecules, to identify efficient inhibitors, or to identify small molecules that may bind to a polypeptide of the invention. Useful examples of rational drug design may include molecules which have improved activity or stability as shown by Braxton and Wells (Biochemistry 31:7796-7801, 1992) or which act as inhibitors, agonists, or antagonists of native peptides as shown by Athauda *et al.* (J Biochem 113:742-746, 1993), incorporated herein by reference. The use of TWEAKR or TWEAK polypeptide structural information in molecular modeling software systems provides for the design of inhibitors or binding agents useful in modulating TWEAKR-TWEAK interactions or biological activity. A particular method of the invention comprises analyzing the three dimensional structure of TWEAK or TWEAKR polypeptides for likely binding/interaction sites of substrates or ligands, synthesizing a new molecule that incorporates a predictive reactive site, and assaying the new molecule as described further herein. Examples of algorithms, software, and methods for modeling substrates or binding agents based upon the three-dimensional structure of a protein are described in

PCT publication WO107579A2, entitled "METHODS AND COMPOSITIONS FOR DETERMINING ENZYMATIC ACTIVITY," the disclosure of which is incorporated herein.

5

## EXAMPLES

The following examples are intended to illustrate particular embodiments and not to limit the scope of the invention.

### EXAMPLE 1

#### Identification of the TWEAK Receptor

10

##### Expression Cloning of TWEAKR cDNA

To clone TWEAKR cDNA, an expression vector encoding a growth hormone leader, a leucine zipper multimerization domain, and the C-terminal extracellular domain of human TWEAK (see Chicheportiche *et al.*, J. Biol. Chem. 272(51):32401, 1997) was constructed. This expression vector, which was named pDC409-LZ-TWEAK, comprised the DNA sequence SEQ ID NO:1 and encoded the polypeptide SEQ ID NO:2. pDC409-LZ-TWEAK conditioned supernatants were produced by transient transfection into CV1-EBNA cells. These supernatants were incubated with magnetic beads coated with polyclonal goat anti-mouse antibody that had previously been incubated with a mouse monoclonal antibody against the leucine zipper. Control beads were produced by mixing the coated beads with supernatants from cells transfected with empty vector.

20

A monolayer of COS cells grown in a T175 flask was transfected with 15 µg of DNA pools of complexity of 100,000 from a human umbilical vein endothelial cell (HUVEC) cDNA expression library. After 2 days these cells were lifted from the flask, and incubated in 1.5 mls of binding media plus 5% non-fat dried milk for 3 hours at 4°C on a rotator wheel. Cells were pre-cleared by adding control beads and rotated at 4°C for an additional 45 minutes after which bead bound cells were removed with a magnet. Pre-clearing was repeated 2-3 times, then TWEAK coated beads were added to the cells and rotated 30 minutes at 4°C. Cells binding the TWEAK beads were separated by use of a magnet and washed 4x in phosphate buffered saline (PBS). Plasmid DNA was extracted from these cells by lysing in 0.1% SDS, and electroporating the supernatants in DH101B cells. Colonies were grown overnight on ampicillin selective media. Transformants were pooled and used as a source of plasmid DNA for a further round of panning. After 2 rounds of panning, positive clones were picked from the resulting pool based on their ability to bind TWEAK using a slide binding protocol. Slide binding was performed as

30

described more fully below, with the exception that TWEAKR positive slides were detected by incubation with TWEAKR conditioned supernatants followed by incubation with <sup>125</sup>I-labeled M15 anti-leucine zipper.

The human TWEAK receptor (also called TWEAKR) cDNA was determined to have the sequence SEQ ID NO:3, which encodes a 129 residue polypeptide (SEQ ID NO:4). Examination of the sequence predicts a polypeptide having an approximately 80 amino acid extracellular domain (residues 1-80 of SEQ ID NO:4, including the signal peptide, amino acids 1-27), an approximately 20 amino acid transmembrane domain (residues 81-100 of SEQ ID NO:4), and an approximately 29 amino acid intracellular domain (residues 101-129 of SEQ ID NO:4). TWEAKR is the smallest known TNF receptor family member. It has a single cysteine-rich repeat region in the extracellular domain, as compared to the 3-4 repeats of other TNF receptor family members. The TWEAKR polypeptide was previously described as a transmembrane protein encoded by a human liver cDNA clone (WO 98/55508, see also WO 99/61471), but had not been identified as the TWEAK receptor. A murine homolog, the FGF-inducible Fn14 (Meighan-Mantha *et al.*, J. Biol. Chem. 274(46):33166, 1999), is approximately 82% identical to the human protein, as shown by the alignment in Figure 1.

The newly identified TWEAK receptor was tested side by side with DR3 (which had been identified as the TWEAK receptor by Marsters *et al.*, Current Biology 8:525, 1998) for the ability to bind to TWEAK.

#### TWEAKR Binds to TWEAK

Slides of COS cells were transfected with expression vectors containing TWEAKR, DR3, or vector without insert (control). After two days the cells were incubated with concentrated supernatants from CV-1 cells transfected with a vector encoding the leucine zipper TWEAK extracellular domain fusion protein. One hour later the cells were washed and probed with an <sup>125</sup>I labeled antibody against the leucine-zipper domain. The slides were washed, fixed, and autoradiography was performed using x-ray film. The TWEAKR transfected cells bound significant amounts of TWEAK. TWEAK did not bind to the cells transfected with DR3 or the control cells. This experiment confirmed that the TWEAKR polypeptide identified in part A above, rather than DR3, is the major receptor for TWEAK. After discovery of the functional TWEAK receptor, other investigators also reported that DR3 is not the major receptor for TWEAK

(Kaptein *et al.*, FEBS Lett., 485(2-3):135, 2000). The TWEAK-TWEAKR binding interaction was further characterized by Scatchard analysis.

CV-1 cells were transfected with human full length TWEAK and mixed 1:30 with Raji cells, which do not express TWEAK. The cells were incubated with serial dilutions of <sup>125</sup>I labeled human TWEAKR-Fc for 2 hours at 4°C. Free and bound probe was separated by microfuging the samples through a phalate oil mixture in plastic tubes. Supernatants and pellets were gamma-counted. Scatchard analyses of TWEAK ligand binding the TWEAK receptor showed a binding affinity constant (K<sub>a</sub>) of approximately 4.5 x 10<sup>8</sup> M<sup>-1</sup>.

#### The TWEAK Receptor is Strongly Expressed in Cardiac Tissue

To determine the expression pattern of the TWEAK receptor, Northern blot analyses were performed. Human multiple tissue northern blots were purchased from Clontech (Palo Alto, CA) and probed with <sup>32</sup>P labeled random primed DNA from the TWEAKR coding region. The blots were washed and autoradiography was performed using x-ray film. Results showed that in the adult TWEAKR is strongly expressed in heart, placenta, and some skeletal muscle samples. Strong expression in heart tissue further supports the utility of TWEAKR in the diagnosis and treatment of cardiac disease. In contrast to the adult, the fetal tissues expressed TWEAKR more ubiquitously; TWEAKR transcripts were seen in the lung and liver.

### EXAMPLE 2

#### **Preparation of TWEAKR Antagonists and Agonists**

Because TWEAK induces angiogenesis, TWEAKR agonists (such as agonistic antibodies) may be used to promote angiogenesis and TWEAKR antagonists (such as soluble receptors and antagonistic antibodies) may be used to inhibit angiogenesis.

#### Recombinant Production of Soluble TWEAKR-Fc Fusion Polypeptides

To construct a nucleic acid encoding the TWEAKR extracellular domain fused to Fc, a nucleic acid encoding the N-terminal 79 amino acids from TWEAKR, including the leader (signal peptide), was joined to a nucleic acid encoding an Fc portion from human IgG1. Sequences for this construct are shown as SEQ ID NO:6 and 8 (nucleic acid) and SEQ ID NO:7 and 9 (amino acid). In SEQ ID NO:7 and 9, residues 1-27 are the predicted signal peptide (predicted to be cleaved upon secretion from the cell; the actual

cleavage site was identified by N-terminal sequence analysis, see below), residues 28-79 and 28-70 of SEQ ID NO:7 and 9, respectively, are from the cysteine-rich TWEAKR extracellular domain, residues 80-81 and 71-72 of SEQ ID NO:7 and 9, respectively, are from a BglII cloning site, and the remainder is the Fc portion. Upon insertion into a mammalian expression vector, and expression in and secretion from a mammalian host cells, these construct produced a polypeptide designated TWEAKR-Fc (SEQ ID NO:7) and TWEAKR-Fc $\Delta$ 9 (SEQ ID NO:9). N-terminal sequence analysis determined that the secreted polypeptides designated TWEAKR-Fc and TWEAKR-Fc $\Delta$ 9 had an N-terminus corresponding to residue 28 (Glu) of SEQ ID NO:7 and 9, respectively. Anti-angiogenic activity of TWEAKR-Fc was demonstrated using assays such as those described in the following examples. An analogous Fc-fusion construct was prepared using the murine TWEAKR extracellular domain.

The extracellular domain of human TWEAKR was expressed in *E. coli* as a leucine zipper dimer fusion protein. A cDNA was constructed with the aid of PCR to place an initiator Met residue next to TWEAKR DNA encoding amino acids Glu28 to Trp79. In addition, cDNA sequences were added that encoded Flag and the leucine zipper dimer at the C-terminal end. The cDNA was then ligated into an *E. coli* expression vector. The vector was designed to express recombinant protein upon induction in *E. coli*. Several promoters or transcriptional control units can be used including the T<sub>7</sub> promoter, the P<sub>L</sub> promoter, and the *Tac* promoter. A number of commercially available vectors are known in the art.

*E. coli* cells containing the TWEAKR-Flag-LeuZip2 were cultured and induced for expression. After several hours, *E. coli* cells were collected and lysed to release intracellular proteins. The *E. coli* lysate was fractionated on SDS-PAGE and Western blotted for the Flag antigen. A specific Flag reactive band was seen at approximately 12.5 kDa, the expected size of the TWEAKR-Flag-LeuZip2. Additional blots were probed with TWEAK and bands visualized with an anti-TWEAK antibody. The same 12.5 kDa band was visualized indicating the *E. coli*-expressed TWEAKR is able to bind its ligand.

#### Production of Antibodies that Bind the TWEAKR Extracellular Domain

BALB/c mice are immunized with TWEAKR extracellular domain and spleen cells are collected and used to prepare hybridomas using standard procedures.

Hybridoma supernatants are screened, using ELISA, for the ability to bind TWEAKR. Positives are cloned two times, to insure monoclonality, then isotyped and reassayed for reactivity to TWEAKR. Antibodies and antibody derivatives are also prepared using transgenic mice that express human immunoglobulins and through the use of phage display. The resulting antibodies are tested in assays such as those described in the examples below, to characterize their ability to modulate the TWEAK-TWEAKR interaction, TWEAKR signaling, angiogenesis, and other downstream biological activities.

Agonistic antibodies are used to promote TWEAK-induced biological activities such as angiogenesis, and antagonistic antibodies are used to inhibit TWEAK-induced biological activities such as angiogenesis. For some applications, the activity of antagonistic antibodies is augmented by conjugation to a radioisotope, to a plant-, fungus-, or bacterial-derived cytotoxin such as ricin A or diphtheria toxin, or to another chemical poison. And because of the restricted tissue distribution of TWEAKR, antibodies that bind to TWEAKR are particularly useful as targeting agents for imaging or delivering therapeutics to the vasculature. Antibodies that bind TWEAKR can be used, for example, to target a detectable label or chemotherapeutic to the mural cells (pericytes and vascular smooth muscle cells). Detectable labels may include radioisotopes, chemiluminescent and fluorescent compounds, and enzymes. These techniques are useful, for example, in the diagnosis, staging, and treatment of neoplasms.

### EXAMPLE 3

#### Activity of TWEAKR-Fc In a Wound Closure Assay

A planar endothelial cell migration (wound closure) assay was used to quantitate the inhibition of angiogenesis by TWEAKR-Fc *in vitro*. In this assay, endothelial cell migration is measured as the rate of closure of a circular wound in a cultured cell monolayer. The rate of wound closure is linear, and is dynamically regulated by agents that stimulate and inhibit angiogenesis *in vivo*.

Primary human renal microvascular endothelial cells (HRMEC) were isolated, cultured, and used at the third passage after thawing, as described in Martin *et al.*, *In vitro Cell Dev Biol* 33:261, 1997. Replicate circular lesions, "wounds," (600-800 micron diameter) were generated in confluent HRMEC monolayers using a silicon-tipped drill press. At the time of wounding the medium (Dulbecco's Modified eagle Medium (DMEM) + 1% bovine serum albumin (BSA)) was supplemented with 20 ng/ml PMA

(phorbol-12-myristate-13-acetate), EGF (4 ng/ml), and 0.150 to 5  $\mu$ g/ml TWEAKR-Fc, or a combination of 40 ng/ml EGF and 0.150 to 5  $\mu$ g/ml TWEAKR-Fc. As a control for TWEAKR-Fc indicated samples received 5  $\mu$ g/ml IgG-Fc. The residual wound area was measured as a function of time (0-12 hours) using a microscope and image analysis software (Bioquant, Nashville, TN). The relative migration rate was calculated for each agent and combination of agents by linear regression of residual wound area plotted over time. The results are shown in Figures 2-3.

Compared to huIgG or media+BSA, TWEAKR-Fc inhibited PMA-induced endothelial migration in a dose responsive manner, reducing the rate of migration to unstimulated levels at 1.5 to 5  $\mu$ g/ml (Figure 2). Neither huIgG nor TWEAKR-Fc inhibited basal (uninduced) migration. When HRMEC migration was induced by EGF, TWEAKR-Fc inhibited endothelial migration in a dose-dependent manner, reducing the rate of migration to unstimulated levels at 5  $\mu$ g/ml (Figure 3).

#### EXAMPLE 4

##### Activity of TWEAKR-Fc In a Corneal Pocket Assay

A mouse corneal pocket assay was used to quantitate the inhibition of angiogenesis by TWEAKR-Fc *in vivo*. In this assay, agents to be tested for angiogenic or anti-angiogenic activity are immobilized in a slow release form in a hydron pellet, which is implanted into micropockets created in the corneal epithelium of anesthetized mice. Vascularization is measured as the appearance, density, and extent of vessel ingrowth from the vascularized corneal limbus into the normally avascular cornea.

Hydron pellets, as described in Kenyon *et al.*, Invest Ophthalmol. & Visual Science 37:1625, 1996, incorporated sucralfate with basic fibroblast growth factor (bFGF) (90 ng/pellet), bFGF and IgG (14  $\mu$ g/pellet, control), or bFGF and TWEAKR-Fc (14  $\mu$ g). The pellets were surgically implanted into corneal stromal micropockets created by micro-dissection 1 mm medial to the lateral corneal limbus of 6-8 week old male C57BL mice. After five days, at the peak of neovascular response to bFGF, the corneas were photographed, using a Zeiss slit lamp, at an incipient angle of 35-50 degrees from the polar axis in the meridian containing the pellet. Images were digitized and processed by subtractive color filters (Adobe Photoshop 4.0) to delineate established microvessels by hemoglobin content. Image analysis software (Bioquant, Nashville, TN) was used to calculate the fraction of the corneal image that was vascularized, the vessel density within the vascularized area, and the vessel density within the total cornea.

As shown in Table 1, TWEAKR-Fc (100 pmol) inhibited bFGF (3 pmol)-induced corneal angiogenesis, reducing the vascular density to 50% of that induced by FGF alone or FGF+IgG. In addition to reducing vascular area, local administration of TWEAKR-Fc significantly inhibited FGF induced vessel density (imaged on hemoglobin) by 70% compared to the vessel density in the presence of the control protein IgG-Fc.

**Table 1**  
**Effect of TWEAKR-Fc on FGF-induced Angiogenesis**  
**in the Mouse Corneal Pocket Assay**

Treatment	Greater than 50% Reduction in Number and Length of Vessels n/total n (%)
FGF alone	0/2 (0%)
FGF+IgG	0/2 (0%)
FGF+TWEAKR-Fc	6/9 (67%)

**EXAMPLE 5**  
**Qualitative TRAF Binding to the TWEAK Receptor (TWEAKR)**  
**Cytoplasmic Domain**

Members of the TRAF family are intra-cellular signaling molecules. Several members of the TRAF family are known to associate with members of the TNF receptor family in order to initiate a signaling cascade that activates the NF-kappa-B pathway, resulting in cell activation and proliferation. A qualitative *in vitro* binding assay was performed to test whether members of the TRAF family of intra-cellular signaling molecules bind to the cytoplasmic domain of TWEAKR and to learn, therefore, whether the small cytoplasmic domain of TWEAKR is capable of mediating a signal into the cell via the TRAF pathway.

A GST fusion vector consisting of the C-terminal 29 amino acids of TWEAKR fused to glutathione S-transferase was created by sub-cloning the appropriate insert into the pGEX-4T (Amersham Pharmacia Biotech) vector at the BamHI and NotI sites. The product from this vector was expressed in *E. coli* and bound to sepharose beads as described by Galibert *et al.*, J. Biol. Chem. 273(51):34120, 1998. Similarly constructed beads coated with RANK cytoplasmic domain-GST fusion proteins were used as a positive control, and beads coated with GST alone were used as a negative control. <sup>35</sup>S-methionine/cysteine labeled TRAF proteins were produced in reticulocyte lysates

(TNT-coupled Reticulocyte Lysate Systems, Promega) according to the manufacturer's protocol. Reticulocyte lysates containing the labeled TRAF molecules were first pre-cleared using the control beads followed incubation with the indicated fusion protein coated beads in binding buffer (50 mM HEPES [pH 7.4], 250 mM NaCl, 0.25% (v/v) Nonidet P-40, 10% glycerol, 2 mM EDTA) at 4°C for 2 hours. After washing 4x with binding buffer bound TRAF molecules eluted from the beads in SDS-loading buffer, separated by SDS-PAGE, dried and exposed to X-ray film.

Binding above background levels was seen with TRAFS 1,2 and 3. No binding above background levels was seen with TRAFS 4,5, and 6. The ability of TWEAKR to bind to TRAFs 1,2, and 3 demonstrates that TWEAKR is capable of inducing a signal to the cell via the TRAF pathway, and therefore transmitting a proliferative signal into the host cell. This experiment provides further evidence that TWEAKR is the functional receptor for TWEAK. It also illustrates a further means by which signaling can be inhibited: by disrupting the TRAF-TWEAKR interaction with a small molecule, or by use of a dominant negative variant of the TRAF molecule.

### EXAMPLE 6

#### Activity of TWEAKR-Fc in an Endothelial Cell Proliferation Assay

An endothelial cell proliferation assay was used to quantitate the inhibition of bFGF or TWEAK induced-proliferation by TWEAKR-Fc *in vitro*. In this assay, endothelial cell proliferation is measured after 4 days of cell growth in microtiter wells using a cell-labeling molecule called calcein AM. Esterases expressed by the cells cleave the calcein and cause it to fluoresce when excited at 485 nm. Uncleaved calcein does not fluoresce. The amount of fluorescence is directly related to the number of endothelial cells in the culture well. Endothelial cell proliferation is often regulated by agents that stimulate and/or inhibit angiogenesis *in vivo*.

Primary HUVEC (human umbilical vein endothelial cells) were obtained from a commercial source (Clonetics, Walkersville, MD), cultured, and used at passage 2 to 7. Replicate cultures were set up by adding 3000 HUVEC to each microtiter well in endothelial cell basal media (EBM, an endothelial cell basal media that contains no growth factors or serum and is based on the media formulations developed by Dr. Richard Ham at the University of Colorado, Clonetics) plus 0.05% FBS (fetal bovine serum). At the time of culture initiation FGF-2 (fibroblast growth factor-2, 10 ng/ml) or human TWEAK (100 ng/ml) was added to the cultures in the presence of human IgG (huIgG,

control) or human TWEAKR-Fc at concentrations ranging from 0.08  $\mu\text{g/ml}$  to 20  $\mu\text{g/ml}$  (0.25 to 20  $\mu\text{g/ml}$  for TWEAK-induced and 0.08 to 6.7  $\mu\text{g/ml}$  for FGF-2-induced). The HUVEC containing cultures were incubated for 4 days at 37°C, 5% CO<sub>2</sub>. On the fourth day of culture 4  $\mu\text{M}$  calcein-AM was added to the cultures and 2 hours later the wells were evaluated for fluorescence. The results, expressed as the average fluorescence (485-530 nm) counts for replicate wells plus or minus the SEM, are shown in Figures 4 and 5.

TWEAKR-Fc specifically inhibited TWEAK-induced HUVEC proliferation in a dose-dependent manner when compared to huIgG, which did not effect TWEAK-induced proliferation (Figure 4). In addition, TWEAKR-Fc inhibited the basal proliferation of HUVEC observed during culture in EBM plus 0.05% FBS, as compared to huIgG, which did not. Interestingly, TWEAKR-Fc also inhibited FGF-2 mediated HUVEC proliferation at concentrations of greater than 2  $\mu\text{g/ml}$ , as compared to huIgG, which did not effect the FGF-2 induced HUVEC proliferative response (Figure 5). These results show that TWEAKR-Fc inhibits HUVEC proliferation induced by the addition of exogenous recombinant human TWEAK. That TWEAKR-Fc partially inhibits serum-induced HUVEC-proliferation indicates HUVEC produce endogenous TWEAK that promotes growth/survival of the EC (endothelial cell) via the TWEAKR. TWEAKR-Fc attenuation of FGF-2 induced proliferation indicates that at least part of the EC response to FGF-2 is dependent on endogenous TWEAK/TWEAKR interaction.

In another set of experiments to examine the effects of TWEAKR on proliferation of HUVEC cells a construct was made that fused a synthetic FLAG octapeptide epitope onto the N-terminal extracellular domain of TWEAKR (FLAG-TWEAKR). The resulting protein was expressed by transient transfection in HUVEC and incubated with cross-linked anti-FLAG monoclonal antibody. Cross-linking the receptor in this manner avoids background from the endogenous TWEAKR expressed by HUVEC. Proliferation was measured by BrdU uptake. Lipid mediated transfection of HUVEC with FLAG-TWEAKR resulted in expression of recombinant FLAG-TWEAKR on the cell surface by 36 hours post transfection. *In vitro* culture of FLAG-TWEAKR expressing HUVEC with the complex of M2 anti-FLAG and goat anti-mouse IgG increased BrdU incorporation 3-fold over the level of BrdU incorporation observed by culturing FLAG-TWEAKR expression cells with goat anti-mouse IgG alone. Cultures of FLAG-TWEAKR expressing HUVEC with the complex of M2 anti-FLAG and goat anti-IgG increased BrdU incorporation 6-fold over the level of BrdU incorporation

observed by culturing vector-only transfected HUVEC with the cross-linking complex. Incubation with the cross-linking complex did not alter BrdU incorporation in vector alone transfected HUVEC. As an additional control, cells transfected with the FLAG construct that were not exposed to anti-FLAG also showed decreased BrdU uptake relative those that were exposed to crosslinked anti-FLAG. This data provides additional evidence that despite the small size of TWEAKR, TWEAKR is capable of initiating a proliferative signal in human endothelial cells.

### EXAMPLE 7

#### Inhibition of Neovascularization by TWEAKR-Fc in a Murine Transplant Model

Survival of heterotopically transplanted cardiac tissue from one mouse donor to the ear skin of another genetically similar mouse requires adequate neovascularization by the transplanted heart and the surrounding tissue, to promote survival and energy for cardiac muscle function. Inadequate vasculature at the site of transplant causes excessive ischemia to the heart, tissue damage, and failure of the tissue to engraft. Agents that antagonize the angiopoietins and endothelial specific factors involved in endothelial cell migration and vessel formation can decrease angiogenesis at the site of transplant, thereby limiting graft tissue function and ultimately engraftment itself.

The following studies were carried out, utilizing a murine heterotopic cardiac isograft model, in order to demonstrate the antagonistic effects of TWEAKR-Fc on neovascularization. In all experiments, female BALB/c ( $\approx 12$  weeks of age) recipients received neonatal heart grafts from donor mice of the same strain.

#### TWEAKR-Fc dose titration

In the described experiments, the donor heart tissue was engrafted into the left ear pinnae of the recipient on day 0 and the mice were divided into treatment groups. The control group received human IgG (Hu IgG,  $400\mu\text{g}/\text{day}$ ) while the other treatment groups human TWEAKR-Fc at a dose of  $400\mu\text{g}/\text{day}$  or  $150\mu\text{g}/\text{day}$ . All treatments (proteins administered by intraperitoneal injection) began on day 0 and continued for four consecutive days. The functionality of the grafts was determined by monitoring visible pulsatile activity on days 7 and 12 post-engraftment. Table 2 shows the experimental results.

**Table 2**  
**Functional Heart Isoengraftment Following Dose Titration with TweakR/Fc**

Treatment	Day 7	Day 12	N=
Hu IgG 400 µg	100*	100	3
HuTWEAKR-Fc 150 µg	100	100	5
HuTWEAKR-Fc 400 µg	40	80	5

\* all results are reported as percent of mice with pulsatile heart grafts

5

Administration of TWEAKR-Fc to isograft-bearing mice caused a significant, dose-dependent, delay in cardiac isoengraftment. Sixty percent of TWEAKR-Fc-treated mice at the 400 ug/day dose, failed to exhibit pulsatile activity on day 7 post transplant as compared to huIgG control, where no effect on isoengraftment was observed. At this  
 10 dose, TWEAKR-Fc administration caused permanent engraftment failure in one fifth of the mice compared to huIgG control where no effect on engraftment was observed. While a dose of 400µg of huTWEAKR-Fc showed a significant anti-angiogenic effect, a 150 ug dose of TWEAKR-Fc did not show measurable activity in this model.

15

### EXAMPLE 8 Regulation of TWEAKR mRNA Expression in Vascular Smooth Muscle Cells (SMC)

Rat aortic SMC were serum-starved and then treated with FGF for various lengths of time. RNA was isolated and TWEAKR mRNA levels were examined by Northern  
 20 Blot hybridization. A single TWEAKR transcript of ≈1.2 kb in size was detected in SMC. TWEAKR mRNA expression was transiently induced following FGF addition, with maximal levels detected at 2 hours post stimulation. Serum-starved SMC were also treated for 4 hours with various agents (e.g., phorbol ester, polypeptide growth factors, peptide hormones) and then a Northern blot was performed to determine whether  
 25 TWEAKR gene expression could be induced by multiple distinct growth promoters. TWEAKR mRNA levels were significantly elevated following PMA, FBS, PDGF-BB, EGF, FGF or Ang II treatment of rat SMC. TGF-beta1, IGF-1 and alpha-thrombin treatment had only a slight stimulatory effect. These results indicate that WEAKR is a growth factor-regulated gene in vascular SMC.

30

### EXAMPLE 9

#### Chromosome mapping

The gene corresponding to a TWEAKR polypeptide is mapped using PCR-based mapping strategies. Initial human chromosomal assignments are made using TWEAKR-specific PCR primers and a BIOS Somatic Cell Hybrid PCRable DNA kit from BIOS Laboratories (New Haven, CT), following the manufacturer's instructions. More detailed mapping is performed using a Genebridge 4 Radiation Hybrid Panel (Research Genetics, Huntsville, AL; described in Walter *et al.*, Nature Genetics 7:22-28, 1994). Data from this analysis is then submitted electronically to the MIT Radiation Hybrid Mapper (URL: <http://www-genome.wi.mit.edu/cgi-bin/contig/rhmapper.pl>) following the instructions contained therein. This analysis yields specific genetic marker names which, when submitted electronically to the NCBI Genemap browser ([www.ncbi.nlm.nih.gov/cgi-bin/Entrez/map\\_search?chr=hum\\_chr.inf&query](http://www.ncbi.nlm.nih.gov/cgi-bin/Entrez/map_search?chr=hum_chr.inf&query)), yield the specific chromosome interval.

### EXAMPLE 10

#### TWEAKR Stability

Ligand blots were generated by running either TweakR-Fc or RP-Fc as a control on a standard SDS-PAGE and blotted onto nitrocellulose. The separate samples were prepared by with and without the addition of reducing agent (DTT) and with and without heating at 100°C to denature the proteins. This blot was probed with TWEAK-leucine zipper conditioned supernatants followed by <sup>125</sup>I labeled M15 anti-leucine zipper. The results showed that all TweakR-Fc samples strongly bound TWEAK while the RP-Fc samples did not. This shows that TweakR ligand binding domain will spontaneously re-fold into an active conformation even after being reduced and boiled in SDS loading buffer.

### EXAMPLE 11

#### Treatment of Tumors with TWEAKR Antagonists

TWEAKR antagonists, including antibodies and TWEAKR-Fc, are tested in animal models of solid tumors. The effect of the TWEAKR antagonists is determined by measuring tumor frequency and tumor growth.

The relevant disclosures of publications cited herein are specifically incorporated by reference. The examples presented above are not intended to be exhaustive or to limit the scope of the invention. The skilled artisan will understand that variations and

modifications and variations are possible in light of the above teachings, and such modifications and variations are intended to be within the scope of the invention.

**EXAMPLE 12**  
**Identification of a TWEAK Binding Domain**

5 The three-dimensional structure of TWEAKR was modeled on the crystal structure of the extracellular domain of the Tumor Necrosis Factor Receptor family member p55 (Naismith *et al.*, Structure 4:1251-62, 1996; Research Collaboratory for Structural Bioinformatics Protein Data Bank Identification Number 1ext (Berman *et al.*, 10 Nucl Acids Res. 28:235-42, 2000)). The conserved extracellular TWEAKR cysteines best align with the cysteines in the second domain of p55. This resulted in the following alignment (conserved cysteines in bold and underlined):

```

15 TWEAKR      EQAPGTAP-----CSRGS-SWSAD-LDKCMDCASCRARP-HSDF--CL-
p55          NDCPGPGQDTCRECESGSFTASENHLRHCLSCSKCRKEMGQVEISSCTV

TWEAKR      ----GCAAAPPAPFRLW      (SEQ ID NO:17)
p55          DRDTVCGCRK-NQYRHYW      (SEQ ID NO:18)
    
```

20 The structure was then modeled using the Modeler software package (Blundell, J Mol Biol. 234:779-815, 1993; Fiser *et al.*, Protein Science 9:1753-73, 2000; Marti-Renom *et al.*, Ann Rev Biophys Biomol Struct. 29:291-325, 2000) from Accelrys Inc. (San Diego, CA). Conserved cysteine residues in the family were forced to align as shown above. The alignment and the resulting structure indicate that disulfide bonds 25 form between residues Cys36-Cys49, Cys52-Cys64, and Cys55-Cys67. The presence of a disulfide bond between residues Cys36 and Cys49 was confirmed by LC/MS. The model also predicted that residues 36 to 68 help maintain secondary structural conformation. Thus, amino acid residues 36-68 of the human TWEAKR constitute a putative TWEAK binding domain.

30 The sequence of soluble huTWEAKR was aligned to domain 2 of DR5 where the domains of DR5 were defined as follows:

```

DR5 Domains
Domain 1:
35 PQQKRSSPSEGLCPPGHHSIEDGRDCI      (SEQ ID NO:20)
Domain 2:
SCKYGQDYSTHWNDLLFCLRCTRCDSEVELSPCTTTRNTVCQ      (SEQ ID NO:21)
Domain 3:
CEEGETFREEDSPEMCRKCRGTGCPRGMVKVGDCTPWSDIECVHKESGD      (SEQ ID NO:22)
40
    
```

The sequence of a soluble huTWEAKR fragment was superimposed on the three dimensional structure of DR5 in complex with its ligand TRAIL. The TWEAKR residues

predicted to be within 4.5 angstroms of TRAIL ligand, and therefore predicted to be important for ligand binding, were determined and are shown below in bold, underlined font:

5 MARGSLRRLR RLLVLGLWLA LLRSVAGEQA PGTAPCSRGS SWSADLDKCM **DCASCRARPH**  
 SDFCLGCAA PPAPFRLLP ILGGALSLTF VLGLLSGFLV WRCRRREKF TTPIEETGGE  
 GCPAVALIQ (SEQ ID NO:4)

Thus, TWEAK is predicted to bind to a polypeptide comprising the sequence:

10 CX<sub>12</sub>CXDCASCRA<sup>P</sup>X<sub>4</sub>CX<sub>2</sub>C (SEQ ID NO:30)

**EXAMPLE 13**

**Identification of a TWEAK Receptor Epitope Bound by Inhibiting and Inducing Antibodies**

15 Antagonistic and agonistic functional anti-huTWEAKR antibodies and antibody derivatives were tested for binding to fragments of the TWEAKR extracellular domain by competitive inhibition of TWEAK binding. For dissection of the antigenic epitope of TWEAKR, various biotin conjugated TWEAKR peptides were synthesized. Each peptide was allowed to fold and form disulfide bonds. The peptides were analyzed by mass spectrometry and HPLC. To dissect the role of Cys residues important for TWEAK or anti-huTWEAKR antibody binding to the receptor, Cys residues were replaced with amino-butyric acid ("Abu"), whose methyl group mimics the hydrophobicity of the thiol group, as shown in the following sequences:

TWEAKR(34-68): APCSRGSSWSADLDKCMDCASCRARPHSDFCLGCA (SEQ ID NO:23)  
 30 TWEAKR(28-68) $\Delta$ 4,6: EQAPGTAPCSRGSWSADLDKCMDCAS[Abu]RARPHSDFCLG[Abu]A (SEQ ID NO:24)  
 TWEAKR(28-68) $\Delta$ 3,5: EQAPGTAPCSRGSWSADLDKCMD[Abu]ASCARPHSDF[Abu]LGC (SEQ ID NO:25)  
 35 TWEAKR(50-66)<sub>b</sub>: MDCAS[Abu]RARPHSDFCLG (C3-C5) (SEQ ID NO:26)  
 TWEAKR(54-74): SCRARPHSDF[Abu]LGCAAAPPAP (C4-C6) (SEQ ID NO:27)

40 Anti-huTWEAKR antibody and TWEAK binding to the soluble biotin labeled TWEAKR.Fc and biotin-labeled TWEAKR peptides were compared using a plate based binding assay.

A significant number of anti-huTWEAKR antibodies bound equally well to huTWEAKR(28-70).Fc and to huTWEAKR(28-79).Fc. (where the numbers in parentheses indicate the range of huTWEAKR amino acid residues in the fragment, and

the initiating methionine is considered the first residue). Competition assays showed that some anti-huTWEAKR antibodies bound to TWEAKR(28-68).

Two antibodies were identified that each either potently inhibited TWEAKR signaling in the presence of TWEAK, or potently induced TWEAKR signaling in the absence of TWEAK, depending of the type of antibody or derivative of the antibody that was used. Each of these antibodies bound to TWEAKR(34-68) but not to TWEAKR(28-68) $\Delta$ 3,5 or TWEAKR(28-68) $\Delta$ 4,6. Thus, residues within TWEAKR(34-68), including the third, fourth, fifth, and sixth conserved cysteine residues, are part of the epitope recognized by these antibodies. Examples of such potential sequences include:

CX<sub>12</sub>CX<sub>2</sub>CX<sub>2</sub>CX<sub>8</sub>CX<sub>2</sub>C (SEQ ID NO:28)

CSRGX<sub>8</sub>KCMDCASCRA<sub>1</sub>PX<sub>4</sub>CX<sub>2</sub>C (SEQ ID NO:29)

Using methods known in the art or described herein, antibodies or antibody derivatives against a polypeptide consisting of or comprising one of these sequences, or a fragment or derivative thereof, are made. Optionally, the antibodies or antibody derivatives are further tested, using methods known in the art or taught herein, for the ability to inhibit TWEAKR signaling in the presence of TWEAK, to induce TWEAKR signaling in the absence of TWEAK, or to increase TWEAKR signaling in the presence of TWEAK.

## CLAIMS

What is claimed is:

1. A polypeptide consisting of:
  - a) SEQ ID NO:23,
  - b) SEQ ID NO:28,
  - c) SEQ ID NO:29,
  - d) SEQ ID NO:30,
  - e) a plurality of sequences, wherein each sequence is independently selected from sequences a)-d),
  - f) e) and one or more linker sequences,
  - g) a sequence selected from the group consisting of a), b), c), d), e), and f), and further comprising a multimerization domain, or
  - h) a sequence selected from the group consisting of a), b), c), d), e), f), and g), and further comprising at least one sequence of amino acids that is not identical to a subsequence of contiguous amino acids found within SEQ ID NO:4, wherein said polypeptide binds to human TWEAK.
2. The polypeptide of Claim 1, wherein said multimerization domain is selected from the group consisting of an Fc domain and a leucine zipper.
3. The polypeptide of Claim 1 wherein said polypeptide does not comprise a subsequence of contiguous amino acids that is identical to the subsequence of contiguous amino acids from residue 36 to residue 67 of SEQ ID NO:4.
4. The polypeptide of Claim 1, wherein said polypeptide consists of:
  - a) SEQ ID NO:23,
  - b) SEQ ID NO:28,
  - c) SEQ ID NO:29, or
  - d) SEQ ID NO:30.
5. A polynucleotide comprising a sequence encoding said polypeptide of Claim 1.
6. A plasmid comprising said polynucleotide of Claim 5.

7. The plasmid of Claim 6, wherein said plasmid is an expression vector.
8. A cell comprising said plasmid of Claim 6.
9. A cell comprising said expression vector of Claim 7.
10. A method of making a polypeptide, comprising incubating said cell of Claim 9 under conditions that allow said expression vector to express said polypeptide.
11. A pharmaceutical composition comprising said polypeptide of Claim 1 and an excipient or diluent.
12. A method of inhibiting binding of TWEAK to a TWEAK receptor in a subject in need of such treatment comprising administering to said subject an inhibition-effective amount of said polypeptide of Claim 1.
13. The method of Claim 12 wherein said subject is a human.
14. The method of Claim 13 wherein said subject has a disease or condition mediated by angiogenesis.
15. The method of Claim 14 wherein said disease or condition is characterized by ocular neovascularization.
16. The method of Claim 14 wherein said disease or condition is a malignant or metastatic condition.
17. The method of Claim 16 wherein said malignant or metastatic condition is a solid tumor.
18. The method of Claim 16 wherein said method further comprises treating the subject with radiation.

19. The method of Claim 16 wherein said method further comprises treating said subject with a second chemotherapeutic agent.

20. The method of Claim 19 wherein said second chemotherapeutic agent is selected from the group consisting of alkylating agents, antimetabolites, vinca alkaloids and other plant-derived chemotherapeutics, nitrosoureas, antitumor antibiotics, antitumor enzymes, topoisomerase inhibitors, platinum analogs, adrenocortical suppressants, hormones, hormone agonists, hormone antagonists, antibodies, immunotherapeutics, blood cell factors, radiotherapeutics, and biological response modifiers.

21. The method of Claim 19 wherein said second chemotherapeutic agent is selected from the group consisting of cisplatin, cyclophosphamide, mechlorethamine, melphalan, bleomycin, carboplatin, fluorouracil, 5-fluorodeoxyuridine, methotrexate, taxol, asparaginase, vincristine, and vinblastine, lymphokines, cytokines, interleukins, interferons, alpha interferon, beta interferon, delta interferon, TNF, chlorambucil, busulfan, carmustine, lomustine, semustine, streptozocin, dacarbazine, cytarabine, mercaptopurine, thioguanine, vindesine, etoposide, teniposide, dactinomycin, daunorubicin, doxorubicin, plicamycin, mitomycin, L-asparaginase, hydroxyurea, methylhydrazine, mitotane, tamoxifen, and fluoxymesterone.

22. The method of Claim 19 wherein said second chemotherapeutic agent is selected from the group consisting of Flt3 ligand, CD40 ligand, interleukin-2, interleukin-12, 4-1BB ligand, anti-4-1BB antibodies, TNF antagonists and TNF receptor antagonists, TRAIL, CD148 agonists, VEGF antagonists, VEGF receptor antagonists, and Tek antagonists.

23. An isolated antibody that binds specifically to a mature form of the TWEAK receptor and to a polypeptide consisting of the sequence of SEQ ID NO:28.

24. The isolated antibody of Claim 23 wherein said antibody binds specifically to a polypeptide consisting of the sequence of SEQ ID NO:29.

25. The isolated antibody of Claim 23 wherein said antibody binds specifically to a polypeptide consisting of residues 28 to 80 of SEQ ID NO:4.

26. The isolated antibody of Claim 23, wherein said antibody inhibits angiogenesis.
27. The isolated antibody of Claim 23, wherein said antibody promotes angiogenesis.
28. The isolated antibody of Claim 23 wherein said antibody is conjugated to a radioisotope, a plant-derived toxin, a fungus-derived toxin, a bacterial-derived toxin, ricin A, or diphtheria toxin.
29. The isolated antibody of Claim 23, wherein said antibody is conjugated to a detectable marker.
30. The isolated antibody of Claim 29, wherein said detectable marker is a radioisotope, antigenic, or colorimetric.
31. The isolated antibody of Claim 23, wherein said antibody is selected from the group consisting of:
  - a) an intact human antibody;
  - b) a human antibody fragment;
  - c) an intact chimeric antibody;
  - d) a chimeric antibody fragment;
  - e) an intact humanized antibody;
  - f) a humanized antibody fragment;
  - g) a Fab fragment;
  - h) an Fv fragment;
  - i) an F(ab')<sub>2</sub> fragment; and
  - j) a single chain antibody.
32. A nucleic acid comprising a sequence encoding:
  - a) a heavy chain of an antibody,
  - b) a heavy chain variable region of an antibody,
  - c) a light chain of an antibody,
  - d) a light chain variable region of an antibody,
  - e) a) and c), or

- f) b) and d),  
wherein each of said antibodies in a)-f) is said antibody of Claim 21.
33. A plasmid comprising said nucleic acid of Claim 32.
34. The plasmid of Claim 33, wherein said plasmid is an expression vector.
35. A cell comprising said plasmid of Claim 33.
36. A cell comprising said expression vector of Claim 34.
37. A method of making an antibody, or an antibody derivative, comprising incubating said cell of Claim 32 under conditions that allow said expression vector to express said antibody or antibody derivative.
38. The method of Claim 37, wherein said cell is a mammalian cell.
39. The method of Claim 38, wherein said mammalian cell is a Chinese Hamster Ovary cell.
40. A method of inhibiting binding of TWEAK to a TWEAK receptor in a subject in need of such treatment comprising administering to said subject an inhibition-effective amount of said antibody of Claim 23.
41. The method of Claim 40 wherein said subject is a human.
42. The method of Claim 40 wherein said subject has a disease or condition mediated by angiogenesis.
43. The method of Claim 42 wherein said disease or condition is characterized by ocular neovascularization.
44. The method of Claim 42 wherein said disease or condition is a malignant or metastatic condition.

45. The method of Claim 44 wherein said malignant or metastatic condition is a solid tumor.

46. The method of Claim 44 wherein said method further comprises treating the subject with radiation.

47. The method of Claim 38 wherein said method further comprises treating the subject with a second chemotherapeutic agent.

48. The method of Claim 47 wherein said second chemotherapeutic agent is selected from the group consisting of alkylating agents, antimetabolites, vinca alkaloids and other plant-derived chemotherapeutics, nitrosoureas, antitumor antibiotics, antitumor enzymes, topoisomerase inhibitors, platinum analogs, adrenocortical suppressants, hormones, hormone agonists, hormone antagonists, antibodies, immunotherapeutics, blood cell factors, radiotherapeutics, and biological response modifiers.

49. The method of Claim 47 wherein said second chemotherapeutic agent is selected from the group consisting of cisplatin, cyclophosphamide, mechlorethamine, melphalan, bleomycin, carboplatin, fluorouracil, 5-fluorodeoxyuridine, methotrexate, taxol, asparaginase, vincristine, and vinblastine, lymphokines, cytokines, interleukins, interferons, alpha interferon, beta interferon, delta interferon, TNF, chlorambucil, busulfan, carmustine, lomustine, semustine, streptozocin, dacarbazine, cytarabine, mercaptopurine, thioguanine, vindesine, etoposide, teniposide, dactinomycin, daunorubicin, doxorubicin, plicamycin, mitomycin, L-asparaginase, hydroxyurea, methylhydrazine, mitotane, tamoxifen, and fluoxymesterone.

50. The method of Claim 47 wherein said second chemotherapeutic agent is selected from the group consisting of Flt3 ligand, CD40 ligand, interleukin-2, interleukin-12, 4-1BB ligand, anti-4-1BB antibodies, TNF antagonists and TNF receptor antagonists, TRAIL, CD148 agonists, VEGF antagonists, VEGF receptor antagonists, and Tek antagonists.

51. A method of promoting angiogenesis in a subject in need of such treatment comprising administering to said subject an angiogenesis promoting-effective amount of said antibody of Claim 27.
52. The method of Claim 51 wherein said subject has an ischemic condition, and said method treats said ischemic condition.
53. The method of Claim 52 wherein said ischemic condition is ischemia of the heart, liver, or brain.
54. The method of Claim 51 wherein said subject has a wound, and said method treats said wound.
55. The method of Claim 51 wherein said subject has organ damage, and said method treats said organ damage.
56. The method of Claim 51 wherein said subject has coronary or peripheral atherosclerosis, and said method treats said coronary or peripheral atherosclerosis.

```

1 MAPGWRSLPOILVLGFLVLMRAAGEQAPGTSPCSSGSSWSADLCKM 50
  || | | | :||| | |:. |||||.|| | |||||
1 MARGSLRRLRLVLGLWLLRSVAGEQAPGTAPCSRGSWSADLCKM 50
  . . . . .
51 DCASCPARPHSDFCLGCAAAPPAHFRLLPILGGALSLLVLLVSSFLV 100
  |||| | ||||| ||||| ||||| ||||| || |. | |||
51 DCASCRARPHSDFCLGCAAAPPAFRLLPILGGALSITFVGLLGGFLV 100
  . . .
101 WRRRREKFTTPIEETGGEGCPGVALIQ 129
  ||||| ||||| ||||| |||||
101 WRRRREKFTTPIEETGGEGCPAVALIQ 129

```

FIG. 1A

MARGSLRRLL RLLVGLWLA LLRSVAGEQA  
 PGTAPCSRGS SWSADLDKCM DCASCRARPH  
SDFCLGCAA PPAFRLWLP ILGALSITF  
VLGLSGFLV WRRCRREKEF TPIEETGGE  
 GCPAVALIQ

Leader Cysteine Transmembrane

FIG. 1B

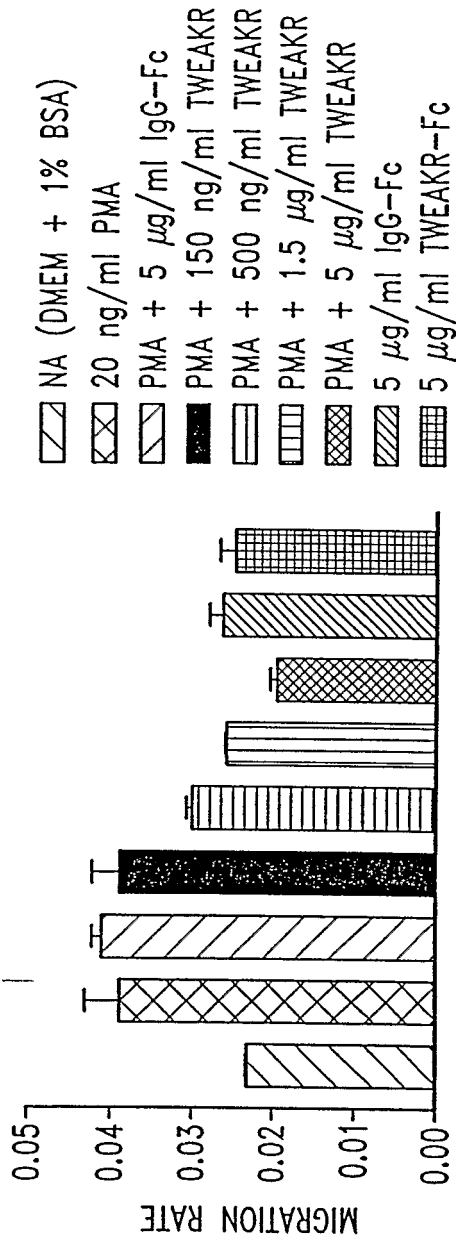


FIG. 2

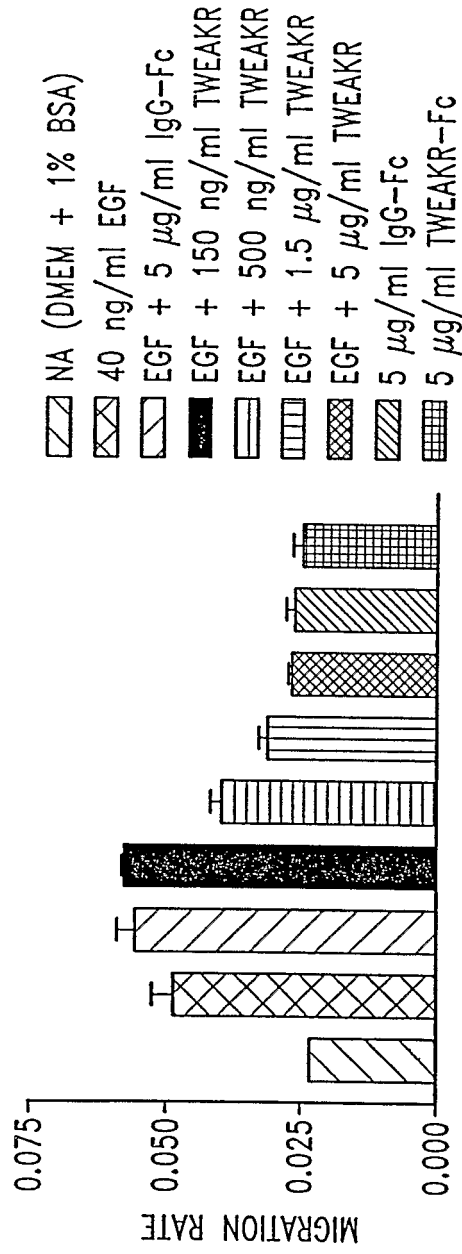


FIG. 3

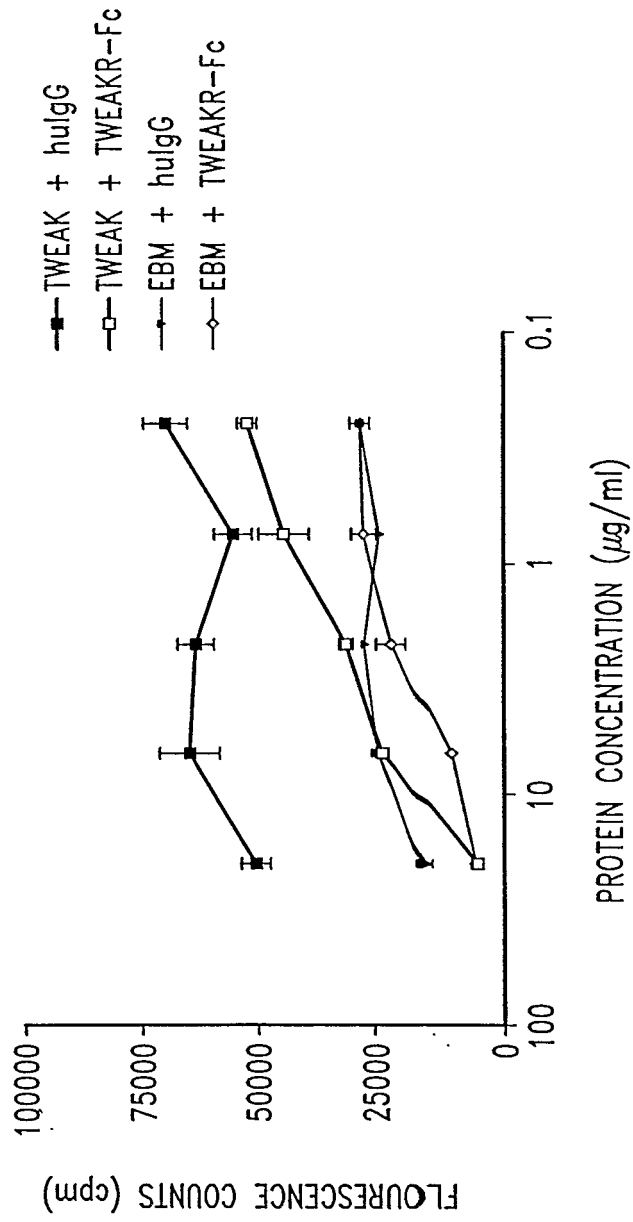


FIG. 4

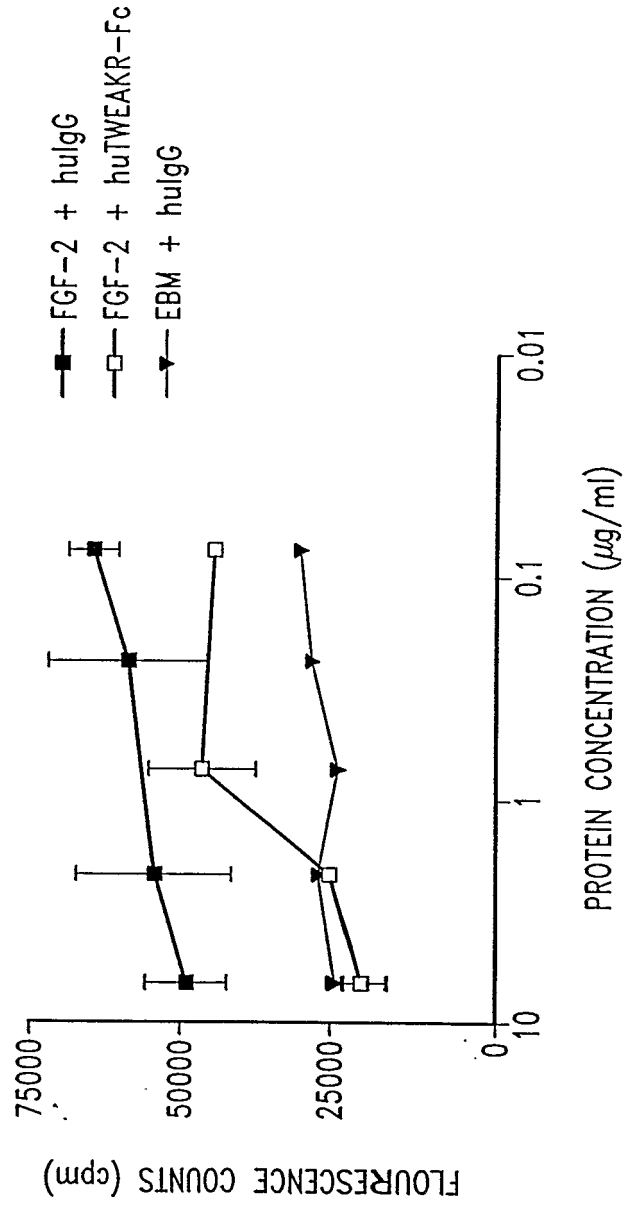
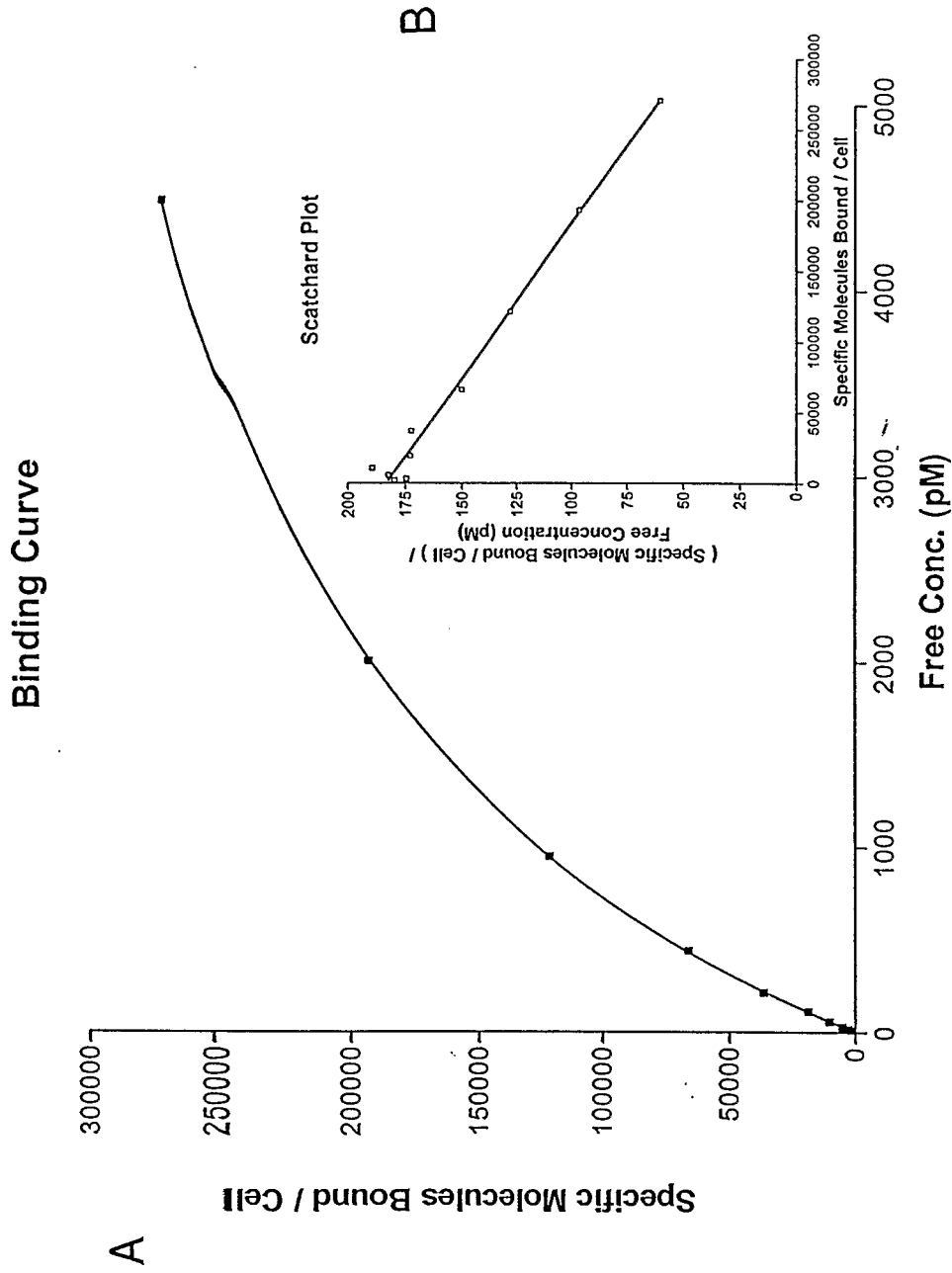


FIG. 5



**FIG. 6**

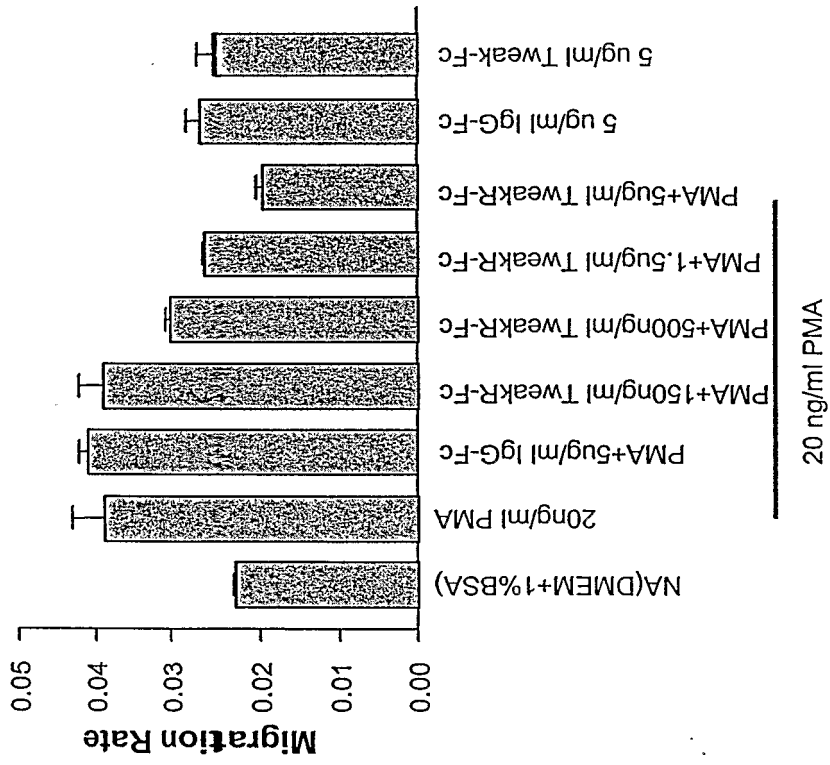


FIG. 7A

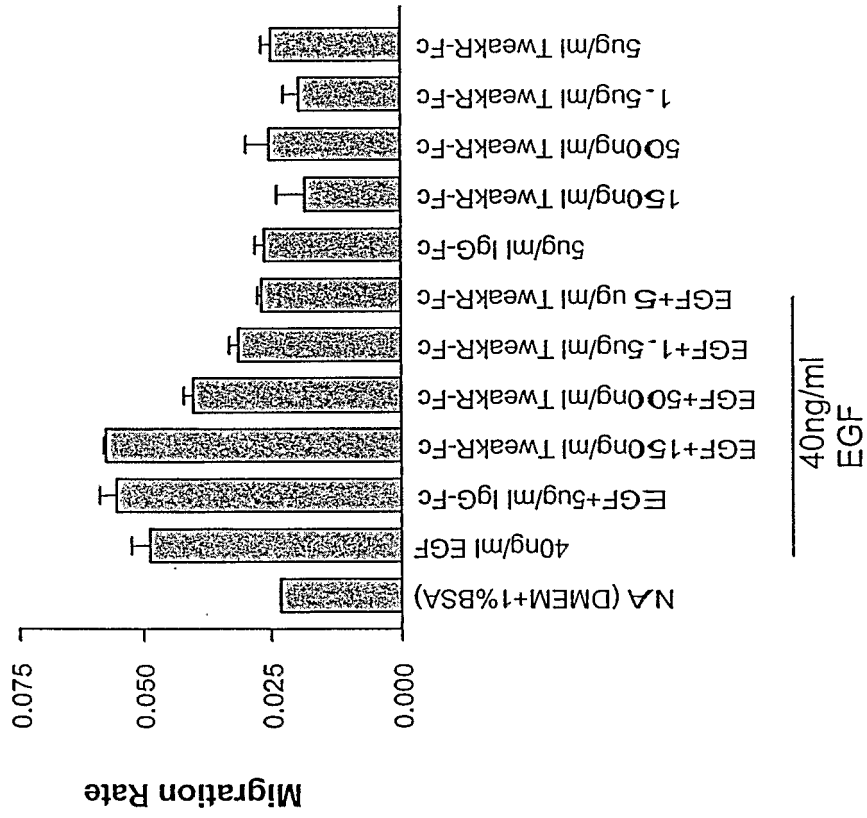


FIG. 7B

SEQUENCE LISTING

<110> Immunex Corporation  
KIM, Kristin M.  
WILEY, Steven R.  
KETCHEM, Randal R.  
FANSLOW III, William C.

<120> TWEAK RECEPTOR

<130> 2968-F(WO)

<140> --to be assigned--

<141> 2005-10-19

<150> 10/971,250

<151> 2004-10-22

<150> 10/862,109

<151> 2004-06-04

<150> 10/754,847

<151> 2004-01-08

<150> 09/883,777

<151> 2001-06-18

<150> 09/742,454

<151> 2000-12-19

<150> PCT/US00/34755

<151> 2000-12-19

<150> 60/203,347

<151> 2000-05-10

<150> 60/172,878

<151> 1999-12-20

<160> 30

<170> PatentIn version 3.2

<210> 1

<211> 898

<212> DNA

<213> Artificial sequence

<220>

<223> TWEAK fusion protein construct

<220>

<221> CDS

<222> (52)..(873)

<400> 1

tctcgagggc cacgcgttta aacgtcgagg tacctatccc gggccgccac c atg gct  
Met Ala  
1

aca ggc tcc cgg acg tcc ctg ctc ctg gct ttt ggc ctg ctc tgc ctg 105  
 Thr Gly Ser Arg Thr Ser Leu Leu Leu Ala Phe Gly Leu Leu Cys Leu  
 5 10 15

ccc tgg ctt caa gag ggc agt gca act agt tct gac cgt atg aaa cag 153  
 Pro Trp Leu Gln Glu Gly Ser Ala Thr Ser Ser Asp Arg Met Lys Gln  
 20 25 30

ata gag gat aag atc gaa gag atc cta agt aag att tat cat ata gag 201  
 Ile Glu Asp Lys Ile Glu Glu Ile Leu Ser Lys Ile Tyr His Ile Glu  
 35 40 45 50

aat gaa atc gcc cgt atc aaa aag ctg att ggc gag cgg act aga tct 249  
 Asn Glu Ile Ala Arg Ile Lys Lys Leu Ile Gly Glu Arg Thr Arg Ser  
 55 60 65

agt ttg ggg agc cgg gca tgc ctg tcc gcc cag gag cct gcc cag gag 297  
 Ser Leu Gly Ser Arg Ala Ser Leu Ser Ala Gln Glu Pro Ala Gln Glu  
 70 75 80

gag ctg gtg gca gag gag gac cag gac ccg tgc gaa ctg aat ccc cag 345  
 Glu Leu Val Ala Glu Glu Asp Gln Asp Pro Ser Glu Leu Asn Pro Gln  
 85 90 95

aca gaa gaa agc cag gat cct gcg cct ttc ctg aac cga cta gtt cgg 393  
 Thr Glu Glu Ser Gln Asp Pro Ala Pro Phe Leu Asn Arg Leu Val Arg  
 100 105 110

cct cgc aga agt gca cct aaa ggc cgg aaa aca cgg gct cga aga gcg 441  
 Pro Arg Arg Ser Ala Pro Lys Gly Arg Lys Thr Arg Ala Arg Arg Ala  
 115 120 125 130

atc gca gcc cat tat gaa gtt cat cca cga cct gga cag gac gga gcg 489  
 Ile Ala Ala His Tyr Glu Val His Pro Arg Pro Gly Gln Asp Gly Ala  
 135 140 145

cag gca ggt gtg gac ggg aca gtg agt ggc tgg gag gaa gcc aga atc 537  
 Gln Ala Gly Val Asp Gly Thr Val Ser Gly Trp Glu Glu Ala Arg Ile  
 150 155 160

aac agc tcc agc cct ctg cgc tac aac cgc cag atc ggg gag ttt ata 585  
 Asn Ser Ser Ser Pro Leu Arg Tyr Asn Arg Gln Ile Gly Glu Phe Ile  
 165 170 175

gtc acc cgg gct ggg ctc tac tac ctg tac tgt cag gtg cac ttt gat 633  
 Val Thr Arg Ala Gly Leu Tyr Tyr Leu Tyr Cys Gln Val His Phe Asp  
 180 185 190

gag ggg aag gct gtc tac ctg aag ctg gac ttg ctg gtg gat ggt gtg 681  
 Glu Gly Lys Ala Val Tyr Leu Lys Leu Asp Leu Leu Val Asp Gly Val  
 195 200 205 210

ctg gcc ctg cgc tgc ctg gag gaa ttc tca gcc act gcg gcc agt tcc 729  
 Leu Ala Leu Arg Cys Leu Glu Glu Phe Ser Ala Thr Ala Ala Ser Ser  
 215 220 225

ctc ggg ccc cag ctc cgc ctc tgc cag gtg tct ggg ctg ttg gcc ctg 777  
 Leu Gly Pro Gln Leu Arg Leu Cys Gln Val Ser Gly Leu Leu Ala Leu  
 230 235 240

cgg cca ggg tcc tcc ctg cgg atc cgc acc ctc ccc tgg gcc cat ctc 825  
 Arg Pro Gly Ser Ser Leu Arg Ile Arg Thr Leu Pro Trp Ala His Leu  
 245 250 255

aag gct gcc ccc ttc ctc acc tac ttc gga ctc ttc cag gtt cac tga 873  
 Lys Ala Ala Pro Phe Leu Thr Tyr Phe Gly Leu Phe Gln Val His  
 260 265 270

gcggccgcgg atctgtttaa actag 898

<210> 2  
 <211> 273  
 <212> PRT  
 <213> Artificial sequence

<220>  
 <223> Synthetic Construct

<400> 2

Met Ala Thr Gly Ser Arg Thr Ser Leu Leu Leu Ala Phe Gly Leu Leu  
 1 5 10 15

Cys Leu Pro Trp Leu Gln Glu Gly Ser Ala Thr Ser Ser Asp Arg Met  
 20 25 30

Lys Gln Ile Glu Asp Lys Ile Glu Glu Ile Leu Ser Lys Ile Tyr His  
 35 40 45

Ile Glu Asn Glu Ile Ala Arg Ile Lys Lys Leu Ile Gly Glu Arg Thr  
 50 55 60

Arg Ser Ser Leu Gly Ser Arg Ala Ser Leu Ser Ala Gln Glu Pro Ala  
 65 70 75 80

Gln Glu Glu Leu Val Ala Glu Glu Asp Gln Asp Pro Ser Glu Leu Asn  
 85 90 95

Pro Gln Thr Glu Glu Ser Gln Asp Pro Ala Pro Phe Leu Asn Arg Leu  
 100 105 110

Val Arg Pro Arg Arg Ser Ala Pro Lys Gly Arg Lys Thr Arg Ala Arg  
 115 120 125

Arg Ala Ile Ala Ala His Tyr Glu Val His Pro Arg Pro Gly Gln Asp  
 130 135 140

Gly Ala Gln Ala Gly Val Asp Gly Thr Val Ser Gly Trp Glu Glu Ala  
 145 150 155 160

Arg Ile Asn Ser Ser Ser Pro Leu Arg Tyr Asn Arg Gln Ile Gly Glu  
 165 170 175

Phe Ile Val Thr Arg Ala Gly Leu Tyr Tyr Leu Tyr Cys Gln Val His  
 180 185 190

Phe Asp Glu Gly Lys Ala Val Tyr Leu Lys Leu Asp Leu Leu Val Asp  
 195 200 205

Gly Val Leu Ala Leu Arg Cys Leu Glu Glu Phe Ser Ala Thr Ala Ala  
 210 215 220

Ser Ser Leu Gly Pro Gln Leu Arg Leu Cys Gln Val Ser Gly Leu Leu  
 225 230 235 240

Ala Leu Arg Pro Gly Ser Ser Leu Arg Ile Arg Thr Leu Pro Trp Ala  
 245 250 255

His Leu Lys Ala Ala Pro Phe Leu Thr Tyr Phe Gly Leu Phe Gln Val  
 260 265 270

His

<210> 3  
 <211> 868  
 <212> DNA  
 <213> homo sapiens

<220>  
 <221> CDS  
 <222> (53)..(442)

<400> 3  
 gcttgaattc aataactata acggtcctaa ggtagcgaag aggacgtgca ct atg gct 58  
 Met Ala  
 1

cgg ggc tcg ctg cgc cgg ttg ctg cgg ctc ctc gtg ctg ggg ctc tgg 106  
 Arg Gly Ser Leu Arg Arg Leu Leu Arg Leu Leu Val Leu Gly Leu Trp  
 5 10 15

ctg gcg ttg ctg cgc tcc gtg gcc ggg gag caa gcg cca ggc acc gcc 154  
 Leu Ala Leu Leu Arg Ser Val Ala Gly Glu Gln Ala Pro Gly Thr Ala  
 20 25 30

ccc tgc tcc cgc ggc agc tcc tgg agc gcg gac ctg gac aag tgc atg 202  
 Pro Cys Ser Arg Gly Ser Ser Trp Ser Ala Asp Leu Asp Lys Cys Met  
 35 40 45 50

gac tgc gcg tct tgc agg gcg cga ccg cac agc gac ttc tgc ctg ggc 250  
 Asp Cys Ala Ser Cys Arg Ala Arg Pro His Ser Asp Phe Cys Leu Gly  
 55 60 65

tgc gct gca gca cct cct gcc ccc ttc cgg ctg ctt tgg ccc atc ctt 298  
 Cys Ala Ala Ala Pro Pro Ala Pro Phe Arg Leu Leu Trp Pro Ile Leu  
 70 75 80

ggg ggc gct ctg agc ctg acc ttc gtg ctg ggg ctg ctt tct ggc ttt 346  
 Gly Gly Ala Leu Ser Leu Thr Phe Val Leu Gly Leu Leu Ser Gly Phe  
 85 90 95

ttg gtc tgg aga cga tgc cgc agg aga gag aag ttc acc acc ccc ata 394  
 Leu Val Trp Arg Arg Cys Arg Arg Arg Glu Lys Phe Thr Thr Pro Ile  
 100 105 110

gag gag acc ggc gga gag ggc tgc cca gct gtg gcg ctg atc cag tga 442  
 Glu Glu Thr Gly Gly Glu Gly Cys Pro Ala Val Ala Leu Ile Gln  
 115 120 125

caatgtgccc cctgccagcc ggggctcgcc cactcatcat tcattcatcc attctagagc 502

cagtctctgc ctcccagacg cggcggggagc caagctcctc caaccacaag ggggggtgggg 562

ggcgggtgaat cacctctgag gcctgggccc aggggtcagg ggaaccttcc aagggtgctg 622

gttgccctgc ctctggctcc agaacagaaa gggagcctca cgctgggtca caaaaacag 682

ctgacactga ctaaggaact gcagcatttg cacaggggag gggggtgccc tccttcctag 742

aggccctggg ggccaggctg acttgggggg cagacttgac actaggcccc actcactcag 802

atgtcctgaa attccaccac gggggtcacc ctgggggggtt agggacctat ttttaacact 862

agaggg 868

<210> 4  
 <211> 129  
 <212> PRT  
 <213> homo sapiens

<400> 4

Met Ala Arg Gly Ser Leu Arg Arg Leu Leu Arg Leu Leu Val Leu Gly  
 1 5 10 15

Leu Trp Leu Ala Leu Leu Arg Ser Val Ala Gly Glu Gln Ala Pro Gly  
 20 25 30

Thr Ala Pro Cys Ser Arg Gly Ser Ser Trp Ser Ala Asp Leu Asp Lys  
 35 40 45

Cys Met Asp Cys Ala Ser Cys Arg Ala Arg Pro His Ser Asp Phe Cys  
 50 55 60

Leu Gly Cys Ala Ala Ala Pro Pro Ala Pro Phe Arg Leu Leu Trp Pro  
 65 70 75 80

Ile Leu Gly Gly Ala Leu Ser Leu Thr Phe Val Leu Gly Leu Leu Ser  
 85 90 95

Gly Phe Leu Val Trp Arg Arg Cys Arg Arg Arg Glu Lys Phe Thr Thr  
 100 105 110

Pro Ile Glu Glu Thr Gly Gly Glu Gly Cys Pro Ala Val Ala Leu Ile  
 115 120 125

Gln

<210> 5  
 <211> 129  
 <212> PRT  
 <213> Mus sp.

<400> 5

Met Ala Pro Gly Trp Pro Arg Ser Leu Pro Gln Ile Leu Val Leu Gly  
 1 5 10 15

Phe Gly Leu Val Leu Met Arg Ala Ala Ala Gly Glu Gln Ala Pro Gly  
 20 25 30

Thr Ser Pro Cys Ser Ser Gly Ser Ser Trp Ser Ala Asp Leu Asp Lys  
 35 40 45

Cys Met Asp Cys Ala Ser Cys Pro Ala Arg Pro His Ser Asp Phe Cys  
 50 55 60

Leu Gly Cys Ala Ala Ala Pro Pro Ala His Phe Arg Leu Leu Trp Pro  
 65 70 75 80

Ile Leu Gly Gly Ala Leu Ser Leu Val Leu Val Leu Ala Leu Val Ser  
 85 90 95

Ser Phe Leu Val Trp Arg Arg Cys Arg Arg Arg Glu Lys Phe Thr Thr  
 100 105 110

Pro Ile Glu Glu Thr Gly Gly Glu Gly Cys Pro Gly Val Ala Leu Ile  
 115 120 125

Gln

<210> 6  
 <211> 932  
 <212> DNA  
 <213> Artificial Sequence

<220>  
 <223> Human TWEAK receptor fusion protein construct

<220>  
 <221> CDS  
 <222> (1)..(930)

<400> 6

atg gct cgg ggc tcg ctg cgc cgg ttg ctg cgg ctc ctc gtg ctg ggg	48
Met Ala Arg Gly Ser Leu Arg Arg Leu Leu Arg Leu Leu Val Leu Gly	
1 5 10 15	
ctc tgg ctg gcg ttg ctg cgc tcc gtg gcc ggg gag caa gcg cca ggc	96
Leu Trp Leu Ala Leu Leu Arg Ser Val Ala Gly Glu Gln Ala Pro Gly	
20 25 30	
acc gcc ccc tgc tcc cgc ggc agc tcc tgg agc gcg gac ctg gac aag	144
Thr Ala Pro Cys Ser Arg Gly Ser Ser Trp Ser Ala Asp Leu Asp Lys	
35 40 45	
tgc atg gac tgc gcg tct tgc agg gcg cga ccg cac agc gac ttc tgc	192
Cys Met Asp Cys Ala Ser Cys Arg Ala Arg Pro His Ser Asp Phe Cys	
50 55 60	
ctg ggc tgc gct gca gca cct cct gcc ccc ttc cgg ctg ctt tgg aga	240
Leu Gly Cys Ala Ala Ala Pro Pro Ala Pro Phe Arg Leu Leu Trp Arg	
65 70 75 80	
tct tgt gac aaa act cac aca tgc cca ccg tgc cca gca cct gaa gcc	288
Ser Cys Asp Lys Thr His Thr Cys Pro Pro Cys Pro Ala Pro Glu Ala	
85 90 95	
gag ggc gcg ccg tca gtc ttc ctc ttc ccc cca aaa ccc aag gac acc	336
Glu Gly Ala Pro Ser Val Phe Leu Phe Pro Pro Lys Pro Lys Asp Thr	
100 105 110	
ctc atg atc tcc cgg acc cct gag gtc aca tgc gtg gtg gtg gac gtg	384
Leu Met Ile Ser Arg Thr Pro Glu Val Thr Cys Val Val Val Asp Val	
115 120 125	
agc cac gaa gac cct gag gtc aag ttc aac tgg tac gtg gac ggc gtg	432
Ser His Glu Asp Pro Glu Val Lys Phe Asn Trp Tyr Val Asp Gly Val	
130 135 140	
gag gtg cat aat gcc aag aca aag ccg cgg gag gag cag tac aac agc	480
Glu Val His Asn Ala Lys Thr Lys Pro Arg Glu Glu Gln Tyr Asn Ser	
145 150 155 160	
acg tac cgt gtg gtc agc gtc ctc acc gtc ctg cac cag gac tgg ctg	528
Thr Tyr Arg Val Val Ser Val Leu Thr Val Leu His Gln Asp Trp Leu	
165 170 175	

aat ggc aag gag tac aag tgc aag gtc tcc aac aaa gcc ctc cca gcc 576  
 Asn Gly Lys Glu Tyr Lys Cys Lys Val Ser Asn Lys Ala Leu Pro Ala  
 180 185 190

ccc atc gag aaa acc atc tcc aaa gcc aaa ggg cag ccc cga gaa cca 624  
 Pro Ile Glu Lys Thr Ile Ser Lys Ala Lys Gly Gln Pro Arg Glu Pro  
 195 200 205

cag gtg tac acc ctg ccc cca tcc cgg gag gag atg acc aag aac cag 672  
 Gln Val Tyr Thr Leu Pro Pro Ser Arg Glu Glu Met Thr Lys Asn Gln  
 210 215 220

gtc agc ctg acc tgc ctg gtc aaa ggc ttc tat ccc agc gac atc gcc 720  
 Val Ser Leu Thr Cys Leu Val Lys Gly Phe Tyr Pro Ser Asp Ile Ala  
 225 230 235 240

gtg gag tgg gag agc aat ggg cag ccg gag aac aac tac aag acc acg 768  
 Val Glu Trp Glu Ser Asn Gly Gln Pro Glu Asn Asn Tyr Lys Thr Thr  
 245 250 255

cct ccc gtg ctg gac tcc gac ggc tcc ttc ttc ctc tat agc aag ctc 816  
 Pro Pro Val Leu Asp Ser Asp Gly Ser Phe Phe Leu Tyr Ser Lys Leu  
 260 265 270

acc gtg gac aag agc agg tgg cag cag ggg aac gtc ttc tca tgc tcc 864  
 Thr Val Asp Lys Ser Arg Trp Gln Gln Gly Asn Val Phe Ser Cys Ser  
 275 280 285

gtg atg cat gag gct ctg cac aac cac tac acg cag aag agc ctc tcc 912  
 Val Met His Glu Ala Leu His Asn His Tyr Thr Gln Lys Ser Leu Ser  
 290 295 300

ctg tct ccg ggt aaa tga ac 932  
 Leu Ser Pro Gly Lys  
 305

<210> 7  
 <211> 309  
 <212> PRT  
 <213> Artificial Sequence  
 <220>  
 <223> Synthetic Construct  
 <400> 7

Met Ala Arg Gly Ser Leu Arg Arg Leu Leu Arg Leu Leu Val Leu Gly  
 1 5 10 15

Leu Trp Leu Ala Leu Leu Arg Ser Val Ala Gly Glu Gln Ala Pro Gly  
 20 25 30

Thr Ala Pro Cys Ser Arg Gly Ser Ser Trp Ser Ala Asp Leu Asp Lys  
 35 40 45

Cys Met Asp Cys Ala Ser Cys Arg Ala Arg Pro His Ser Asp Phe Cys  
 50 55 60

Leu Gly Cys Ala Ala Ala Pro Pro Ala Pro Phe Arg Leu Leu Trp Arg  
65 70 75 80

Ser Cys Asp Lys Thr His Thr Cys Pro Pro Cys Pro Ala Pro Glu Ala  
85 90 95

Glu Gly Ala Pro Ser Val Phe Leu Phe Pro Pro Lys Pro Lys Asp Thr  
100 105 110

Leu Met Ile Ser Arg Thr Pro Glu Val Thr Cys Val Val Val Asp Val  
115 120 125

Ser His Glu Asp Pro Glu Val Lys Phe Asn Trp Tyr Val Asp Gly Val  
130 135 140

Glu Val His Asn Ala Lys Thr Lys Pro Arg Glu Glu Gln Tyr Asn Ser  
145 150 155 160

Thr Tyr Arg Val Val Ser Val Leu Thr Val Leu His Gln Asp Trp Leu  
165 170 175

Asn Gly Lys Glu Tyr Lys Cys Lys Val Ser Asn Lys Ala Leu Pro Ala  
180 185 190

Pro Ile Glu Lys Thr Ile Ser Lys Ala Lys Gly Gln Pro Arg Glu Pro  
195 200 205

Gln Val Tyr Thr Leu Pro Pro Ser Arg Glu Glu Met Thr Lys Asn Gln  
210 215 220

Val Ser Leu Thr Cys Leu Val Lys Gly Phe Tyr Pro Ser Asp Ile Ala  
225 230 235 240

Val Glu Trp Glu Ser Asn Gly Gln Pro Glu Asn Asn Tyr Lys Thr Thr  
245 250 255

Pro Pro Val Leu Asp Ser Asp Gly Ser Phe Phe Leu Tyr Ser Lys Leu  
260 265 270

Thr Val Asp Lys Ser Arg Trp Gln Gln Gly Asn Val Phe Ser Cys Ser  
275 280 285

Val Met His Glu Ala Leu His Asn His Tyr Thr Gln Lys Ser Leu Ser  
290 295 300



gtc ctg cac cag gac tgg ctg aat ggc aag gag tac aag tgc aag gtc 528  
 Val Leu His Gln Asp Trp Leu Asn Gly Lys Glu Tyr Lys Cys Lys Val  
 165 170 175

tcc aac aaa gcc ctc cca gcc ccc atc gag aaa acc atc tcc aaa gcc 576  
 Ser Asn Lys Ala Leu Pro Ala Pro Ile Glu Lys Thr Ile Ser Lys Ala  
 180 185 190

aaa ggg cag ccc cga gaa cca cag gtg tac acc ctg ccc cca tcc cgg 624  
 Lys Gly Gln Pro Arg Glu Pro Gln Val Tyr Thr Leu Pro Pro Ser Arg  
 195 200 205

gag gag atg acc aag aac cag gtc agc ctg acc tgc ctg gtc aaa ggc 672  
 Glu Glu Met Thr Lys Asn Gln Val Ser Leu Thr Cys Leu Val Lys Gly  
 210 215 220

ttc tat ccc agc gac atc gcc gtg gag tgg gag agc aat ggg cag ccg 720  
 Phe Tyr Pro Ser Asp Ile Ala Val Glu Trp Glu Ser Asn Gly Gln Pro  
 225 230 235 240

gag aac aac tac aag acc acg cct ccc gtg ctg gac tcc gac ggc tcc 768  
 Glu Asn Asn Tyr Lys Thr Thr Pro Pro Val Leu Asp Ser Asp Gly Ser  
 245 250 255

ttc ttc ctc tat agc aag ctc acc gtg gac aag agc agg tgg cag cag 816  
 Phe Phe Leu Tyr Ser Lys Leu Thr Val Asp Lys Ser Arg Trp Gln Gln  
 260 265 270

ggg aac gtc ttc tca tgc tcc gtg atg cat gag gct ctg cac aac cac 864  
 Gly Asn Val Phe Ser Cys Ser Val Met His Glu Ala Leu His Asn His  
 275 280 285

tac acg cag aag agc ctc tcc ctg tct ccg ggt aaa tga ac 905  
 Tyr Thr Gln Lys Ser Leu Ser Leu Ser Pro Gly Lys  
 290 295 300

<210> 9  
 <211> 300  
 <212> PRT  
 <213> Artificial sequence

<220>  
 <223> Synthetic Construct

<400> 9

Met Ala Arg Gly Ser Leu Arg Arg Leu Leu Arg Leu Leu Val Leu Gly  
 1 5 10 15

Leu Trp Leu Ala Leu Leu Arg Ser Val Ala Gly Glu Gln Ala Pro Gly  
 20 25 30

Thr Ala Pro Cys Ser Arg Gly Ser Ser Trp Ser Ala Asp Leu Asp Lys  
 35 40 45

Cys Met Asp Cys Ala Ser Cys Arg Ala Arg Pro His Ser Asp Phe Cys  
 50 55 60

Leu Gly Cys Ala Ala Ala Arg Ser Cys Asp Lys Thr His Thr Cys Pro  
65 70 75 80

Pro Cys Pro Ala Pro Glu Ala Glu Gly Ala Pro Ser Val Phe Leu Phe  
85 90 95

Pro Pro Lys Pro Lys Asp Thr Leu Met Ile Ser Arg Thr Pro Glu Val  
100 105 110

Thr Cys Val Val Val Asp Val Ser His Glu Asp Pro Glu Val Lys Phe  
115 120 125

Asn Trp Tyr Val Asp Gly Val Glu Val His Asn Ala Lys Thr Lys Pro  
130 135 140

Arg Glu Glu Gln Tyr Asn Ser Thr Tyr Arg Val Val Ser Val Leu Thr  
145 150 155 160

Val Leu His Gln Asp Trp Leu Asn Gly Lys Glu Tyr Lys Cys Lys Val  
165 170 175

Ser Asn Lys Ala Leu Pro Ala Pro Ile Glu Lys Thr Ile Ser Lys Ala  
180 185 190

Lys Gly Gln Pro Arg Glu Pro Gln Val Tyr Thr Leu Pro Pro Ser Arg  
195 200 205

Glu Glu Met Thr Lys Asn Gln Val Ser Leu Thr Cys Leu Val Lys Gly  
210 215 220

Phe Tyr Pro Ser Asp Ile Ala Val Glu Trp Glu Ser Asn Gly Gln Pro  
225 230 235 240

Glu Asn Asn Tyr Lys Thr Thr Pro Pro Val Leu Asp Ser Asp Gly Ser  
245 250 255

Phe Phe Leu Tyr Ser Lys Leu Thr Val Asp Lys Ser Arg Trp Gln Gln  
260 265 270

Gly Asn Val Phe Ser Cys Ser Val Met His Glu Ala Leu His Asn His  
275 280 285

Tyr Thr Gln Lys Ser Leu Ser Leu Ser Pro Gly Lys  
290 295 300

<210> 10  
 <211> 5  
 <212> PRT  
 <213> Artificial sequence

<220>  
 <223> Linker Moiety

<400> 10

Gly Gly Gly Gly Ser  
 1 5

<210> 11  
 <211> 6  
 <212> PRT  
 <213> Artificial sequence

<220>  
 <223> Linker Moiety

<220>  
 <221> MISC\_FEATURE  
 <222> (6)..(6)  
 <223> Xaa is one or more repeats of GGGGS

<400> 11

Gly Gly Gly Gly Ser Xaa  
 1 5

<210> 12  
 <211> 12  
 <212> PRT  
 <213> Artificial sequence

<220>  
 <223> Linker Moiety

<400> 12

Gly Lys Ser Ser Gly Ser Gly Ser Glu Ser Lys Ser  
 1 5 10

<210> 13  
 <211> 14  
 <212> PRT  
 <213> Artificial sequence

<220>  
 <223> Linker Moiety

<400> 13

Gly Ser Thr Ser Gly Ser Gly Lys Ser Ser Glu Gly Lys Gly  
 1 5 10

<210> 14  
<211> 16  
<212> PRT  
<213> Artificial sequence

<220>  
<223> Linker Moiety

<400> 14

Gly Ser Thr Ser Gly Ser Gly Lys Ser Ser Glu Gly Ser Gly Ser Thr  
1 5 10 15

<210> 15  
<211> 16  
<212> PRT  
<213> Artificial sequence

<220>  
<223> Linker Moiety

<400> 15

Gly Ser Thr Ser Gly Ser Gly Lys Pro Gly Ser Gly Glu Gly Ser Thr  
1 5 10 15

<210> 16  
<211> 14  
<212> PRT  
<213> Artificial sequence

<220>  
<223> Linker Moiety

<400> 16

Glu Gly Lys Ser Ser Gly Ser Gly Ser Glu Ser Lys Glu Phe  
1 5 10

<210> 17  
<211> 52  
<212> PRT  
<213> Artificial

<220>  
<223> TweakR fragment

<400> 17

Glu Gln Ala Pro Gly Thr Ala Pro Cys Ser Arg Gly Ser Ser Trp Ser  
1 5 10 15

Ala Asp Leu Asp Lys Cys Met Asp Cys Ala Ser Cys Arg Ala Arg Pro  
20 25 30

His Ser Asp Phe Cys Leu Gly Cys Ala Ala Ala Pro Pro Ala Pro Phe  
35 40 45

Arg Leu Leu Trp  
50

<210> 18  
<211> 67  
<212> PRT  
<213> Artificial

<220>  
<223> TweakR fragment

<400> 18

Asn Asp Cys Pro Gly Pro Gly Gln Asp Thr Asp Cys Arg Glu Cys Glu  
1 5 10 15

Ser Gly Ser Phe Thr Ala Ser Glu Asn His Leu Arg His Cys Leu Ser  
20 25 30

Cys Ser Lys Cys Arg Lys Glu Met Gly Gln Val Glu Ile Ser Ser Cys  
35 40 45

Thr Val Asp Arg Asp Thr Val Cys Gly Cys Arg Lys Asn Gln Tyr Arg  
50 55 60

His Tyr Trp  
65

<210> 19  
<211> 117  
<212> PRT  
<213> Artificial

<220>  
<223> DR5 fragment

<400> 19

Pro Gln Gln Lys Arg Ser Ser Pro Ser Glu Gly Leu Cys Pro Pro Gly  
1 5 10 15

His His Ile Ser Glu Asp Gly Arg Asp Cys Ile Ser Cys Lys Tyr Gly  
20 25 30

Gln Asp Tyr Ser Thr His Trp Asn Asp Leu Leu Phe Cys Leu Arg Cys  
35 40 45

Thr Arg Cys Asp Ser Gly Glu Val Glu Leu Ser Pro Cys Thr Thr Thr  
 50 55 60

Arg Asn Thr Val Cys Gln Cys Glu Glu Gly Thr Phe Arg Glu Glu Asp  
 65 70 75 80

Ser Pro Glu Met Cys Arg Lys Cys Arg Thr Gly Cys Pro Arg Gly Met  
 85 90 95

Val Lys Val Gly Asp Cys Thr Pro Trp Ser Asp Ile Glu Cys Val His  
 100 105 110

Lys Glu Ser Gly Asp  
 115

<210> 20  
 <211> 27  
 <212> PRT  
 <213> Artificial

<220>  
 <223> DR5 Domain 1

<400> 20

Pro Gln Gln Lys Arg Ser Ser Pro Ser Glu Gly Leu Cys Pro Pro Gly  
 1 5 10 15

His His Ile Ser Glu Asp Gly Arg Asp Cys Ile  
 20 25

<210> 21  
 <211> 43  
 <212> PRT  
 <213> Artificial

<220>  
 <223> DR5 Domain 2

<400> 21

Ser Cys Lys Tyr Gly Gln Asp Tyr Ser Thr His Trp Asn Asp Leu Leu  
 1 5 10 15

Phe Cys Leu Arg Cys Thr Arg Cys Asp Ser Gly Glu Val Glu Leu Ser  
 20 25 30

Pro Cys Thr Thr Thr Arg Asn Thr Val Cys Gln  
 35 40

<210> 22  
 <211> 47  
 <212> PRT  
 <213> Artificial

<220>  
 <223> DR5 Domain 3

<400> 22

Cys Glu Glu Gly Thr Phe Arg Glu Glu Asp Ser Pro Glu Met Cys Arg  
 1 5 10 15

Lys Cys Arg Thr Gly Cys Pro Arg Gly Met Val Lys Val Gly Asp Cys  
 20 25 30

Thr Pro Trp Ser Asp Ile Glu Cys Val His Lys Glu Ser Gly Asp  
 35 40 45

<210> 23  
 <211> 35  
 <212> PRT  
 <213> Artificial

<220>  
 <223> TweakR(34-68)

<400> 23

Ala Pro Cys Ser Arg Gly Ser Ser Trp Ser Ala Asp Leu Asp Lys Cys  
 1 5 10 15

Met Asp Cys Ala Ser Cys Arg Ala Arg Pro His Ser Asp Phe Cys Leu  
 20 25 30

Gly Cys Ala  
 35

<210> 24  
 <211> 41  
 <212> PRT  
 <213> Artificial

<220>  
 <223> TweakR(28-68) Delta 4,6

<220>  
 <221> MISC\_FEATURE  
 <222> (28)..(28)  
 <223> Xaa is amino butyric acid

<220>  
 <221> MISC\_FEATURE  
 <222> (40)..(40)

<223> Xaa is amino butyric acid

<400> 24

Glu Gln Ala Pro Gly Thr Ala Pro Cys Ser Arg Gly Ser Ser Trp Ser  
 1 5 10 15

Ala Asp Leu Asp Lys Cys Met Asp Cys Ala Ser Xaa Arg Ala Arg Pro  
 20 25 30

His Ser Asp Phe Cys Leu Gly Xaa Ala  
 35 40

<210> 25

<211> 40

<212> PRT

<213> Artificial

<220>

<223> TweakR(28-68) Delta 3,5

<220>

<221> MISC\_FEATURE

<222> (25)..(25)

<223> Xaa is amino butyric acid

<220>

<221> MISC\_FEATURE

<222> (37)..(37)

<223> Xaa is amino butyric acid

<400> 25

Glu Gln Ala Pro Gly Thr Ala Pro Cys Ser Arg Gly Ser Ser Trp Ser  
 1 5 10 15

Ala Asp Leu Asp Lys Cys Met Asp Xaa Ala Ser Cys Arg Ala Arg Pro  
 20 25 30

His Ser Asp Phe Xaa Leu Gly Cys  
 35 40

<210> 26

<211> 17

<212> PRT

<213> Artificial

<220>

<223> TweakR(50-66)b

<220>

<221> MISC\_FEATURE

<222> (6)..(6)

<223> Xaa is amino butyric acid

<400> 26

Met	Asp	Cys	Ala	Ser	Xaa	Arg	Ala	Arg	Pro	His	Ser	Asp	Phe	Cys	Leu
1				5					10					15	

Gly

<210> 27

<211> 21

<212> PRT

<213> Artificial

<220>

<223> TweakR(54-74)

<220>

<221> MISC\_FEATURE

<222> (11)..(11)

<223> Xaa is amino butyric acid

<400> 27

Ser	Cys	Arg	Ala	Arg	Pro	His	Ser	Asp	Phe	Xaa	Leu	Gly	Cys	Ala	Ala
1				5					10					15	

Ala	Pro	Pro	Ala	Pro
			20	

<210> 28

<211> 32

<212> PRT

<213> Artificial

<220>

<223> TweakR Consensus Sequence

<220>

<221> MISC\_FEATURE

<222> (2)..(13)

<223> Xaa is any amino acid

<220>

<221> MISC\_FEATURE

<222> (15)..(16)

<223> Xaa is any amino acid

<220>

<221> MISC\_FEATURE

<222> (18)..(19)

<223> Xaa is any amino acid

<220>

<221> MISC\_FEATURE  
<222> (21)..(28)  
<223> Xaa is any amino acid

<220>  
<221> MISC\_FEATURE  
<222> (30)..(31)  
<223> Xaa is any amino acid

<400> 28

Cys Xaa Xaa Xaa Xaa Xaa Xaa Xaa Xaa Xaa Xaa Xaa Xaa Cys Xaa Xaa  
1 5 10 15

Cys Xaa Xaa Cys Xaa Xaa Xaa Xaa Xaa Xaa Xaa Xaa Cys Xaa Xaa Cys  
20 25 30

<210> 29  
<211> 32  
<212> PRT  
<213> Artificial

<220>  
<223> TweakR Consensus Sequence

<220>  
<221> MISC\_FEATURE  
<222> (5)..(12)  
<223> Xaa is any amino acid

<220>  
<221> MISC\_FEATURE  
<222> (23)..(23)  
<223> Xaa is any amino acid

<220>  
<221> MISC\_FEATURE  
<222> (25)..(28)  
<223> Xaa is any amino acid

<220>  
<221> MISC\_FEATURE  
<222> (30)..(31)  
<223> Xaa is any amino acid

<400> 29

Cys Ser Arg Gly Xaa Xaa Xaa Xaa Xaa Xaa Xaa Xaa Lys Cys Met Asp  
1 5 10 15

Cys Ala Ser Cys Arg Ala Xaa Pro Xaa Xaa Xaa Xaa Cys Xaa Xaa Cys  
20 25 30

<210> 30  
<211> 32  
<212> PRT

<213> Artificial

<220>

<223> Putative TWEAK binding sequence

<220>

<221> MISC\_FEATURE

<222> (2)..(13)

<223> Xaa is any amino acid

<220>

<221> MISC\_FEATURE

<222> (15)..(15)

<223> Xaa is any amino acid

<220>

<221> MISC\_FEATURE

<222> (23)..(23)

<223> Xaa is any amino acid

<220>

<221> MISC\_FEATURE

<222> (25)..(28)

<223> Xaa is any amino acid

<220>

<221> MISC\_FEATURE

<222> (30)..(31)

<223> Xaa is any amino acid

<400> 30

Cys	Xaa	Xaa	Xaa	Xaa	Xaa	Xaa	Xaa	Xaa	Xaa	Xaa	Xaa	Xaa	Cys	Xaa	Asp
1				5				10						15	

Cys	Ala	Ser	Cys	Arg	Ala	Xaa	Pro	Xaa	Xaa	Xaa	Xaa	Cys	Xaa	Xaa	Cys
			20				25						30		

INTERNATIONAL SEARCH REPORT

International application No  
PCT/US2005/037582

A. CLASSIFICATION OF SUBJECT MATTER  
C07K14/705 A61K38/17 A61K39/395 C07K16/28 C12N15/12  
A61P35/00

According to International Patent Classification (IPC) or to both national classification and IPC

B. FIELDS SEARCHED

Minimum documentation searched (classification system followed by classification symbols)  
C07K

Documentation searched other than minimum documentation to the extent that such documents are included in the fields searched

Electronic data base consulted during the international search (name of data base and, where practical, search terms used)  
EPO-Internal, EMBASE, BIOSIS, PAJ, WPI Data

C. DOCUMENTS CONSIDERED TO BE RELEVANT

Category*	Citation of document, with indication, where appropriate, of the relevant passages	Relevant to claim No.
X	WO 01/45730 A (IMMUNEX CORPORATION; WILEY, STEVEN, R) 28 June 2001 (2001-06-28) Whole document. In particular p.23-24.	1-56
X	WILEY S ET AL: "TWEAK, a member of the TNF superfamily, is a multifunctional cytokine that binds the TweakR/Fn14 receptor" CYTOKINE AND GROWTH FACTOR REVIEWS, OXFORD, GB, vol. 14, 2003, pages 241-249, XP002356994 ISSN: 1359-6101 Whole document, in particular p.244	1-56

Further documents are listed in the continuation of Box C.

See patent family annex.

\* Special categories of cited documents:

- \*A\* document defining the general state of the art which is not considered to be of particular relevance
- \*E\* earlier document but published on or after the international filing date
- \*L\* document which may throw doubts on priority claim(s) or which is cited to establish the publication date of another citation or other special reason (as specified)
- \*O\* document referring to an oral disclosure, use, exhibition or other means
- \*P\* document published prior to the international filing date but later than the priority date claimed

- \*T\* later document published after the international filing date or priority date and not in conflict with the application but cited to understand the principle or theory underlying the invention
- \*X\* document of particular relevance; the claimed invention cannot be considered novel or cannot be considered to involve an inventive step when the document is taken alone
- \*Y\* document of particular relevance; the claimed invention cannot be considered to involve an inventive step when the document is combined with one or more other such documents, such combination being obvious to a person skilled in the art.
- \*&\* document member of the same patent family

Date of the actual completion of the international search  8 March 2006	Date of mailing of the international search report  15/03/2006
---	--

Name and mailing address of the ISA/ European Patent Office, P.B. 5818 Patentlaan 2 NL - 2280 HV Rijswijk Tel. (+31-70) 340-2040, Tx. 31 651 epo nl, Fax: (+31-70) 340-3016	Authorized officer  Roscoe, R
---	-------------------------------------

INTERNATIONAL SEARCH REPORT

International application No  
 .../US2005/037582

(Continuation). DOCUMENTS CONSIDERED TO BE RELEVANT		
Category*	Citation of document, with indication, where appropriate, of the relevant passages	Relevant to claim No.
X	<p>NAKAYAMA M ET AL: "Fibroblast growth factor-inducible 14 mediates multiple pathways of TWEAK-induced cell death"                      JOURNAL OF IMMUNOLOGY, THE WILLIAMS AND WILKINS CO. BALTIMORE, US,                      vol. 170, no. 1, 2003, pages 341-348,                      XP002356992                      ISSN: 0022-1767                      the whole document</p> <p style="text-align: center;">-----</p>	23-39
X	<p>NAKAYAMA M ET AL: "Characterization of murine TWEAK and its receptor (Fn14) by monoclonal antibodies"                      BIOCHEMICAL AND BIOPHYSICAL RESEARCH COMMUNICATIONS, ACADEMIC PRESS INC.                      ORLANDO, FL, US,                      vol. 306, no. 4,                      11 July 2003 (2003-07-11), pages 819-825,                      XP004432093                      ISSN: 0006-291X                      the whole document</p> <p style="text-align: center;">-----</p>	23-39
X	<p>WO 02/22166 A (BIOGEN, INC; BROWNING, JEFFREY; BURKLY, LINDA; JAKUBOWSKI, ANIELA; ZHE) 21 March 2002 (2002-03-21)                      the whole document</p> <p style="text-align: center;">-----</p>	23-39

# INTERNATIONAL SEARCH REPORT

International application No.  
PCT/US2005/037582

## Box II Observations where certain claims were found unsearchable (Continuation of item 2 of first sheet)

This International Search Report has not been established in respect of certain claims under Article 17(2)(a) for the following reasons:

1.  Claims Nos.: —  
because they relate to subject matter not required to be searched by this Authority, namely:  

Although claims 40-56 are directed to a method of treatment of the human/animal body, the search has been carried out and based on the alleged effects of the compound/composition.
2.  Claims Nos.:  
because they relate to parts of the International Application that do not comply with the prescribed requirements to such an extent that no meaningful International Search can be carried out, specifically:
3.  Claims Nos.:  
because they are dependent claims and are not drafted in accordance with the second and third sentences of Rule 6.4(a).

## Box III Observations where unity of invention is lacking (Continuation of item 3 of first sheet)

This International Searching Authority found multiple inventions in this international application, as follows:

1.  As all required additional search fees were timely paid by the applicant, this International Search Report covers all searchable claims.
2.  As all searchable claims could be searched without effort justifying an additional fee, this Authority did not invite payment of any additional fee.
3.  As only some of the required additional search fees were timely paid by the applicant, this International Search Report covers only those claims for which fees were paid, specifically claims Nos.:
4.  No required additional search fees were timely paid by the applicant. Consequently, this International Search Report is restricted to the invention first mentioned in the claims; it is covered by claims Nos.:

### Remark on Protest

- The additional search fees were accompanied by the applicant's protest.
- No protest accompanied the payment of additional search fees.

# INTERNATIONAL SEARCH REPORT

Information on patent family members

International application No PCT/US2005/037582
---

Patent document cited in search report	A	Publication date	Patent family member(s)	Publication date
WO 0145730	A	28-06-2001	AU 782067 B2	30-06-2005
			AU 2731501 A	03-07-2001
			CA 2394015 A1	28-06-2001
			EP 1239869 A2	18-09-2002
			JP 2003517829 T	03-06-2003
			NZ 520171 A	29-07-2005
WO 0222166	A	21-03-2002	AU 8901901 A	26-03-2002
			CA 2422095 A1	21-03-2002
			EP 1317283 A2	11-06-2003
			JP 2004508415 T	18-03-2004
			NZ 525140 A	28-10-2005

专利名称(译)	调整受体		
公开(公告)号	<a href="#">EP1802656A1</a>	公开(公告)日	2007-07-04
申请号	EP2005818225	申请日	2005-10-19
[标]申请(专利权)人(译)	株式会社Immunex公司		
申请(专利权)人(译)	株式会社Immunex公司		
当前申请(专利权)人(译)	株式会社Immunex公司		
[标]发明人	KIM KRISTINE M WILEY STEVEN R KETCHEM RANDAL R FANSLOW III WILLIAM C		
发明人	KIM, KRISTINE M. WILEY, STEVEN R. KETCHEM, RANDAL R. FANSLOW III, WILLIAM C.		
IPC分类号	C07K14/705 A61K38/17 A61K39/395 C07K16/28 C12N15/12 A61P35/00 G01N33/50 A61K31/7088 A61K38/00 A61K45/00 A61K48/00 A61P9/00 A61P9/10 A61P9/14 A61P17/02 A61P37/06 C07K14/715 C12N1/15 C12N1/19 C12N1/21 C12N5/10 C12N15/09 C12P21/02 C12Q1/02 G01N33/15 G01N33/53 G01N33/566		
CPC分类号	A61K38/00 A61P17/02 C07K14/705 C07K14/70575 C07K14/70578 C07K16/2878 C07K2319/00 C07K2319/30 C07K2319/73 A61K39/3955		
优先权	10/971250 2004-10-22 US		
外部链接	<a href="#">Espacenet</a>		

#### 摘要(译)

本发明提供了TWEAK受体和鉴定和使用TWEAK受体的激动剂和拮抗剂的方法。特别地，本发明提供了筛选激动剂和拮抗剂以及治疗由血管生成介导的疾病或病症的方法，例如实体瘤和心脏或外周组织的血管缺陷。