



(11)

EP 2 035 585 B1

(12) **EUROPEAN PATENT SPECIFICATION**

(45) Date of publication and mention of the grant of the patent:
01.01.2014 Bulletin 2014/01

(21) Application number: **07809212.9**

(22) Date of filing: **25.05.2007**

(51) Int Cl.:
C12Q 1/70 ^(2006.01) **C12Q 1/10** ^(2006.01)
C12Q 1/02 ^(2006.01) **G01N 33/53** ^(2006.01)
G01N 33/555 ^(2006.01) **C12P 21/00** ^(2006.01)
A01N 63/00 ^(2006.01) **A01N 63/02** ^(2006.01)
A01N 63/04 ^(2006.01) **A61K 39/12** ^(2006.01)
A61K 39/125 ^(2006.01) **A61K 39/40** ^(2006.01)

(86) International application number:
PCT/US2007/012617

(87) International publication number:
WO 2007/145806 (21.12.2007 Gazette 2007/51)

(54) **METHODS FOR REGULATING COMPLEMENT CASCADE PROTEINS USING ASTROVIRUS COAT PROTEIN AND DERIVATIVES THEREOF**

VERFAHREN ZUR REGULIERUNG KOMPLEMENTÄRER KASKADENPROTEINE MITTELS ASTROVIRUS-HÜLLPROTEIN UND DERIVATEN DAVON

PROCEDES DE REGULATION DE PROTEINES DE LA CASCADE DU COMPLEMENT EN UTILISANT UNE PROTEINE D'ENVELOPPE ASTROVIRALE ET SES DERIVES

(84) Designated Contracting States:
AT BE BG CH CY CZ DE DK EE ES FI FR GB GR HU IE IS IT LI LT LU LV MC MT NL PL PT RO SE SI SK TR

(30) Priority: **15.06.2006 US 813685 P**

(43) Date of publication of application:
18.03.2009 Bulletin 2009/12

(73) Proprietor: **Eastern Virginia Medical School Norfolk, VA 23507 (US)**

(72) Inventors:
• **KRISHNA, Neel, K. Norfolk, VA 23508 (US)**
• **CUNNION, Kenji Norfolk, VA (US)**

(74) Representative: **Lee, Nicholas John et al Kilburn & Strode LLP 20 Red Lion Street London WC1R 4PJ (GB)**

(56) References cited:
WO-A1-00/43027 WO-A1-94/26902
WO-A1-99/44625 WO-A1-2005/023296
WO-A2-2005/023195 US-B1- 6 696 562
US-B1- 6 696 562

- **FAVOREEL HERMAN W ET AL: "Virus complement evasion strategies." JOURNAL OF GENERAL VIROLOGY, vol. 84, no. 1, January 2003 (2003-01), pages 1-15, XP002597301 ISSN: 0022-1317**
- **HAIR P S ET AL: "Human astrovirus coat protein binds C1q and MBL and inhibits the classical and lectin pathways of complement activation" MOLECULAR IMMUNOLOGY, PERGAMON, GB, vol. 47, no. 4, 1 January 2010 (2010-01-01), pages 792-798, XP026823535 ISSN: 0161-5890 [retrieved on 2009-11-06]**
- **Anonymous: "Research Could Lead to Way to Halt Deadly Immune Response" Google for astrovirus, complement 10 February 2010 (2010-02-10), XP002597302 Retrieved from the Internet: URL: <http://www.sciencedaily.com/releases/2010/02/100209183127.htm> [retrieved on 2010-08-19]**
- **KRISHNA N K ET AL: "Human astrovirus coat protein: A novel C1 Inhibitor" CURRENT TOPICS IN COMPLEMENT II; [ADVANCES IN EXPERIMENTAL MEDICINE AND BIOLOGY], NEW YORK : SPRINGER SCIENCE+BUSINESS MEDIA, US LNKD- DOI: 10.1007/978-0-387-78952-1_17, vol. 632, 1 January 2008 (2008-01-01), pages 237-251, XP008125823 ISBN: 978-0-387-78951-4 [retrieved on 2008-09-18]**

Note: Within nine months of the publication of the mention of the grant of the European patent in the European Patent Bulletin, any person may give notice to the European Patent Office of opposition to that patent, in accordance with the Implementing Regulations. Notice of opposition shall not be deemed to have been filed until the opposition fee has been paid. (Art. 99(1) European Patent Convention).

EP 2 035 585 B1

- **BONAPARTE R.S. ET AL.:** 'Human Astrovirus Coat protein Inhibits Serum Complement Activation via C1, the First Component of the Classical Pathway' J. VIROL. vol. 82, no. 2, January 2008, pages 817 - 727, XP008101043
- **BASS D.M. ET AL.:** 'Proteolytic Processing of the Astrovirus Capsid' J. VIROL. vol. 74, no. 4, February 2000, pages 1810 - 1814, XP008101045
- **CABALLEROS. ET AL.:** 'Structural Requirements of Astrovirus Virus-Like particles Assembled in Insect Cells' J. VIROL. vol. 78, no. 23, December 2004, pages 13285 - 13292, XP008101044

DescriptionFIELD OF THE INVENTION

5 **[0001]** The invention relates to compositions for use in a method to treat and prevent complement-mediated tissue damage, and to *in vitro* methods of regulating complement cascade.

BACKGROUND OF THE INVENTION

10 **[0002]** Astroviruses are small, non-enveloped icosahedral viruses with a single-stranded, messenger-sense RNA genome and are known to infect both mammals and birds. They are estimated to cause 2-17% of children's diarrheal illness worldwide. Astroviral infection can be especially devastating for children with malnutrition, intestinal parasites, or both. Even in developed western countries human astrovirus (HAstV) causes a significant economic loss due to parents taking time off from work to care for sick children. This trend of economic loss is likely to worsen as increasing numbers of mothers enter the workforce. Prevention or treatment of astrovirus infection in children would have a significant economic impact on physician and emergency department visits and lost workdays. In poultry farming, turkey astrovirus has a major economic impact on the turkey farming industry. In particular, turkey astroviruses cause a rapidly fatal viremic sepsis in young turkeys suggestive of overwhelming immunologic cascade that likely involves, and may be driven by, the complement system. Veterinary therapeutics designed to prevent or mitigate the damage of turkey astrovirus would be a significant development for this industry.

20 **[0003]** There is a great need for complement inhibitors. Currently, no anti-complement therapies are approved for use in humans, despite the known morbidity and mortality associated with complement dysregulation in many disease processes, including such autoimmune diseases as systemic lupus erythematosus, myasthenia gravis, and multiple sclerosis. The impact of complement-mediated tissue injury in such a diverse array of diseases has driven the development of many complement inhibitors with an estimated market of between \$2-4 billion annually. For a review on complement therapeutics as of 2003, please see the review article by B.P. Morgan and C.L. Harris entitled, "Complement therapeutics; history and current progress" (B.P Morgan and C.L. Harris, 2003. *Molec. Immunol.* 40, 159-170). The astrovirus coat protein appears to have extremely strong effects on the complement system, suggesting that the 'active' portion of the protein may have clinical utility in decreasing tissue damage from complement-mediated diseases. There are currently no commercially available anti-complement specific immunomodulators. There is some evidence that IVIg (intravenous immunoglobulin) in high doses has anti-complement effects that may explain its utility in some autoimmune diseases. IVIg is extremely expensive and has safety concerns because it is derived from the blood of hundreds of donors.

25 **[0004]** Current candidate compounds for anti-complement therapeutics have the significant disadvantage of acting too broadly, or in some cases are not viable due to toxicity. For example, the most powerful anti-complement substance known to date, cobra venom factor (CVF), is capable of virtually depleting all C3 in the plasma by acting as a stable C3 convertase (C3bBb). However, CVF is essentially untenable as a therapy due to the uncontrolled complement activation that results in a prolonged period of decompensation and vulnerability to overwhelming infection in some experimental models (Younger, J.G. et al., 2001. *J. Appl. Physiol.* 90, 2289-2295). Antibody response to the CVF would likely also make the therapeutic benefit of this compound too short-lived to be ultimately useful in the treatment of chronic disease. The ideal anti-complement therapeutic method would be as effective in complement depletion as CVF but less toxic and less antigenic when administered to the host. Astrovirus coat proteins and derivatives thereof are capable of regulating complement cascade proteins to an extent comparable with CVF, and thereby are useful for treatment or prevention of complement-mediated tissue damage and mitigation of complement related diseases.

SUMMARY OF THE INVENTION

45 **[0005]** In one aspect, the invention provides an *in vitro* method for regulating complement cascade proteins using Astroviridae family coat protein(s) and/or component(s) of the astrovirus coat protein, wherein said component is either purified from wild type virus or recombinantly produced; is a region or modification of the astrovirus coat protein, the region or modification of the astrovirus coat protein being an isolated coat subunit, or a truncation or deletion mutant, a chimeric protein, a fusion protein, or other protein containing elements of the astrovirus coat protein; and is capable of either (i) decreasing lysis of red blood cells in response to normal human serum or (ii) binding to complement factor Clq. The coat protein and/or component may inhibit the classical complement pathway or the alternative complement pathway. The astrovirus coat protein or derivative may inhibit the lytic process of the classical complement pathway by regulating classical pathway proteins.

55 Alternatively, the coat protein or derivative may inhibit the lytic process triggered by the alternative complement pathway by regulating alternative complement pathway proteins. The coat protein and/or component may inhibit activation of the terminal pathway of the complement cascade, inhibit the formation of complement peptide iC3b, inhibit the formation of

complement peptide complex C3 convertase, complement peptides C3b, C5a, C5b, or the complex of peptides known in the art as the Membrane Attack Complex, or MAC, inhibit the lysis of red blood cells in a standard RBC lysis assay using normal human serum or Factor B depleted serum or bind to complement C1.

A person of skill in the art will recognize that testing the inhibition of the complement pathway may be achieved through well-known standard assays. In one embodiment of the invention, the assay involves using normal human serum to test lysis of sensitized red blood cells. In another embodiment of the invention, the assay involves using Factor B depleted serum in order to confine the results of the assay to testing for inhibition of the classical pathway. In a preferred embodiment of this invention, the astrovirus coat protein binds to a component of the complement peptide C1.

[0006] The coat protein and/or component may be displayed on a viral-like particle. A non-infectious virus-like particle (VLP) may regulate the activity of complement proteins. In one embodiment, multiple copies of the astrovirus coat protein and/or component are expressed on the outer surface of the particle, typically through recombinant expression of the viral coat protein in the absence of other non-structural viral genes. In another embodiment, the VLP is produced from another virus, for example Flock House virus, which displays the complement-regulating portion of the astrovirus coat protein on its surface. The method further discloses the use of peptides derived from astrovirus coat proteins for the regulation of complement and treatment of complement-related disease.

[0007] The astrovirus coat protein and/or component may be purified from wildtype astrovirus virions or coat proteins thereof. Using standard viral purification techniques, wildtype astrovirus particles may be purified and used for further analysis and testing for complement regulating, inhibiting, or depleting ability.

[0008] Alternatively, the coat protein and/or component may be produced by recombinant technology coat protein or derivatives. A person of ordinary skill will recognize that there are many options for the production of recombinant proteins, and these methods may be adapted without undue experimentation for the purpose of producing large quantities of viral coat proteins. In a preferred embodiment of the invention, the recombinant astrovirus protein and/or component is produced in a baculovirus system. In another embodiment, the recombinant protein is produced in *E. coli*. In still further embodiments, the proteins are produced in yeast cells. In each of these cases, recombinant coat proteins thus produced are harvested from the producer cells and purified by standard protein techniques. A skilled artisan will appreciate that a wide range of eukaryotic expression systems, including mammalian cells, is available for recombinant production of proteins. A suggested reference for recombinant molecular techniques is Sambrook et al., *Molecular Cloning: A Laboratory Manual*, 3rd Ed., Cold Spring Harbor Laboratory Press (2001).

Similar references are well known to those in the art and readily available for explanations of routine recombinant molecular biology protocols.

[0009] The coat protein and/or component may be produced by recombinant technology and include regions of a second protein fused thereto. Such a fusion or chimeric protein may be used to regulate complement and decrease complement-related tissue damage at a specific target site in the recipient by linking the coat protein to an antibody or antibody fragment. The coat component may be a peptide.

[0010] In another aspect, the invention is directed to an astrovirus coat protein and/or component of the astrovirus coat protein for use in an *in vivo* method of inhibiting complement-mediated tissue damage, wherein said component is either purified from wild type virus or recombinantly produced; is a region or modification of the astrovirus coat protein, the region or modification of the astrovirus coat protein being an isolated coat subunit, or a truncation or deletion mutant, a chimeric protein, a fusion protein, or other protein containing elements of the astrovirus coat protein; and is capable of either (i) decreasing lysis of red blood cells in response to normal human serum or (ii) binding to complement factor C1q. Complement-mediated tissue damage is frequently associated with autoimmune and other diseases with inflammatory pathologies. Astrovirus coat protein or derivatives may be useful in the treatment of rheumatoid arthritis, systemic lupus erythematosus, multiple sclerosis, myasthenia gravis, autoimmune hemolytic anemia, membranoproliferative glomerulonephritis, serum sickness, Adult Respiratory Distress Syndrome, ischemia-reperfusion injury (for example, stroke or myocardial infarction), allo- or xeno- transplantation (including hyperacute rejection and Graft Versus Host Disease), Alzheimer's Disease, burn injuries, hemodialysis damage, cardiopulmonary bypass damage, Paroxysmal Nocturnal Hemoglobinuria, and other diseases associated with complement-mediated tissue damage. Further uses include veterinary application to treat animal diseases, such as turkey astrovirus infection.

[0011] In another aspect, the invention is directed to astrovirus particles, coat protein, and/or component of the astrovirus coat protein for use in a method of treating hereditary angioedema (HAE), wherein said component is either purified from wild type virus or recombinantly produced; is a region or modification of the astrovirus coat protein, the region or modification of the astrovirus coat protein being an isolated coat subunit, or a truncation or deletion mutant, a chimeric protein, a fusion protein, or other protein containing elements of the astrovirus coat protein; and is capable of either (i) decreasing lysis of red blood cells in response to normal human serum or (ii) binding to complement factor C1q.

Disclosed herein are methods for isolating and purifying astrovirus coat protein by producing coat protein or derivatives thereof or VLPs to generate a vaccine against astrovirus infection in humans or animals.

[0012] Also disclosed are pharmaceutical compositions comprising at least one astrovirus coat protein or derivatives thereof, and one or more pharmaceutically acceptable carriers, diluents, or excipients. The composition may comprise

a therapeutically effective amount of the astrovirus coat protein or derivatives thereof. The composition may comprise at least one other active ingredient effective in treating at least one disease associated with complement-mediated tissue damage.

[0013] Also disclosed is a method of preventing or treating a disease associated with complement-mediated tissue damage comprising administering the pharmaceutical compositions disclosed herein to an animal in need thereof. The pharmaceutical composition may be administered as the sole active pharmaceutical agent. It may be used in combination with one or more additional therapeutic or prophylactic agents for preventing or treating the disease in question. The method may comprise administering the pharmaceutical composition before, concurrently, and/or after, one or more additional therapeutic or prophylactic agents effective in treating at least one disease associated with complement-mediated tissue damage.

[0014] Unless otherwise defined, all technical and scientific terms used herein have the same meaning as commonly understood by one of ordinary skill in the art. Although methods and materials similar or equivalent to those described herein can be used in the practice or testing of the present invention, suitable methods and materials are described below. In addition, the materials, methods, and examples are illustrative only and not intended to be limiting.

[0015] Other features and advantages of the invention will be apparent from the detailed description, drawings, and from the claims.

BRIEF DESCRIPTION OF THE FIGURES

[0016] **Table 1** is a listing of astrovirus family members with fully sequenced coat protein genes. Samples in bold indicate coat protein sequences identified in this study; both a unique identifier and the GenBank accession number are provided for each isolate. Abbreviations: HAstV, human astrovirus; FAstV, feline astrovirus; MAstV, mink astrovirus; PAstV, porcine astrovirus; OAstV, ovine astrovirus; ANV, avian nephritis virus; TAstV, turkey astrovirus.

[0017] **Table 2** summarizes the results of RBC lysis assays on HAstV serotypes 1-4.

[0018] **Figure 1** is an overview of the three pathways of complement activation. The main protein factors and their effector functions are indicated.

[0019] **Figure 2** is a graph depicting the results of the RBC assay on HAstV-1 coat protein. (n=3).

[0020] **Figure 3** is a graph depicting the results of the RBC assay on HAstV-1 virions. (n=5).

[0021] **Figure 4** is a graph depicting the results of the RBC assay on uninfected cell culture medium. (n=3).

[0022] **Figure 5** is a graph depicting the suppressive activity of HAstV-1 virions on RBC lysis.

[0023] **Figure 6** is a graph illustrating the comparative time course of RBC lysis of CVF and HAstV-1. (n=3 to 5).

[0024] **Figure 7** is a graph depicting the results of the RBC assay used to test inhibition of the classical complement activation pathway by HAstV-1 virions and CVF. (n=3).

[0025] **Figure 8** is a graph depicting the results of the RBC assay used to test inhibition of the classical complement activation pathway by HAstV-1 coat protein compared to NHS (n=3).

[0026] **Figure 9** is a graph depicting the results of the RBC assay used to test inhibition of the alternative complement activation pathway by HAstV-1 virions, uninfected cell culture medium and CVF. (n=3 to 5).

[0027] **Figure 10** is a graph depicting the results of the RBC assay used to test inhibition of the alternative complement activation pathway by HAstV-1 virions (n=3).

[0028] **Figure 11A** is an image of the 7.5% SDS-PAGE gel loaded with C1q, C1r, and C1s, and run in non-reducing conditions with Coomassie blue staining.

[0029] **Figure 11B** is an image of a nitrocellulose blot transferred from a 7.5% SDS-PAGE gel loaded with C1q, C1r, and C1s, run in non-reducing conditions and probed with wildtype HAstV-1 coat protein.

[0030] **Figure 12A-E** are collectively a series of illustrative panels indicating that HAstV-1 coat protein binds complement protein C1q.

[0031] **Figure 12A** is an image of an immunoblot using partially purified complement factor C1 and purified complement factors C2, C3, and C4 loaded into a non-reducing 7.5% SDS-PAGE gel (without boiling), electrophoresed, transferred to nitrocellulose, probed with HAstV-1 coat protein, and incubated with a primary antibody against HAstV-1 virions and an HRP-conjugated secondary antibody.

[0032] **Figure 12B** is an image of the same immunoblotting procedure in **Fig. 12A** without using the HAstV-1 coat protein probe.

[0033] **Figure 12C** is an image of an immunoblot using BSA, C1, C1q, C1r, and C1s loaded into a reducing buffer, boiled, electrophoresed on a 12% SDS-PAGE gel, and subsequently incubated with HAstV-1 coat protein and visualized as in **Fig. 12A**.

[0034] **Figure 12D** is an image of the same blot depicted in **Fig. 12C** after stripping and reblotting with polyclonal antibodies to C1q, C1r, and C1s.

[0035] **Figure 12E** is an image of a duplicate blot of the experiment in **Fig. 12C** without using the HAstV-1 coat protein probe.

[0036] Figure 13A-E are images of SDS-PAGE gels (A, C, and E) and immunoblots (B and D) from experiments analyzing HAstV-1 coat protein purification procedure and demonstrating the spontaneous oligomerization by the coat protein.

[0037] Figure 14A is an image of an immunoblot showing a comparison of iC3b production in NHS alone, NHS plus HAstV-1 coat protein or NHS plus CVF.

[0038] Figure 14B is a graph depicting the results of an ELISA quantifying the amount of iC3b (in ng/mL) produced, in NHS alone, NHS plus HAstV-1 coat protein or NHS plus CVF.

[0039] Figure 14C is a graph depicting the results of an ELISA quantifying the amount of SC5b-9 (in ng/mL) produced in NHS alone, NHS plus HAstV-1 coat protein or NHS plus CVF.

[0040] Figure 15A is a graph depicting the reversal of HAstV-1 coat protein inhibition of complement lysis by the addition of exogenous C1 protein in an RBC lysis assay.

[0041] Figure 15B is a graph depicting the results of an ELISA for quantifying C3 (in ng/mL) deposition on zymosan in samples with NHS alone, NHS plus HAstV-1 coat protein (with or without the addition of exogenous C1), or NHS plus CVF (with or without the addition of exogenous C1).

DETAILED DESCRIPTION OF THE INVENTION

[0042] The present invention provides *in vitro* methods for regulating complement cascade proteins through the use of coat protein and/or components thereof from the viral *Astroviridae* family. This invention has multiple uses and advantages. Astrovirus coat proteins may be used to treat complement-mediated diseases or reduce complement-mediated tissue damage in a variety of pathologies in both humans and animals.

The astrovirus coat protein

[0043] For a review of the current knowledge concerning astrovirus capsid biology, please refer to the review entitled "Identification of structural domains involved in astrovirus capsid biology" (*Viral Immunology* 18(1): 17-26, 2005). Briefly, the *Astroviridae* constitute a family of non-enveloped, icosahedral viruses with a single-stranded, messenger-sense RNA genome. These viruses infect mammals and birds and are a significant cause of gastroenteritis in young children as well as disease in other animals and avian species, including a fatal viremic sepsis in turkeys. Herein disclosed is a method for an *in vitro* assembly system in which large quantities of the coat protein (and coat protein deletion mutants) can be purified using a recombinant baculovirus expression system in insect cells. Other recombinant techniques are also contemplated for the production of coat protein or derivatives. Infectious astrovirus, such as HAstV-1 or other virions produced in mammalian tissue culture, may also be used.

The complement system

[0044] The complement system comprises a group of related plasma proteins that, when activated, generates an extremely destructive immunologic cascade. The complement system combats infection by a wide variety of methods including lysis of bacteria and infected cells by pore formation (i.e., formation of the Membrane Attack Complex or "MAC"), opsonization (immune-tagging) leading to ingestion and destruction by white blood cells, activation of white blood cells, directing white blood cells to the site of infection, stimulating B-lymphocyte responses, and antibody generation. The complement system is activated by three known pathways: the classical pathway, the alternative pathway, and the mannan-binding lectin pathway (see **Fig. 1**). Each results in a cascade of protein-protein reactions amplifying in an exponential manner that culminate in an extremely robust immune response. While complement is a vital host defense against pathogenic organisms such as bacteria and some enveloped viruses, its unchecked activation can cause devastating host cell damage. Host tissue damage mediated by complement has been implicated in a wide variety of diseases including autoimmune pathologies such as: rheumatoid arthritis, systemic lupus erythematosus, multiple sclerosis, myasthenia gravis, autoimmune hemolytic anemia, membranoproliferative glomerulonephritis, and serum sickness. It has also been identified as contributing to the pathogenesis of the following diseases: Adult Respiratory Distress Syndrome (ARDS), stroke (ischemia-reperfusion injury), myocardial infarction (ischemia-reperfusion injury), allo- and xenotransplantation (hyperacute rejection & graft versus host disease), Alzheimer's disease, bum injuries, hemodialysis damage, cardiopulmonary bypass damage, and Paroxysmal Nocturnal Hemoglobinuria.

[0045] Accordingly, the present invention relates to coat proteins and/or components thereof from the *Astroviridae* family of viruses for use in a method to mitigate the tissue damage associated with complement cascade proteins. Although not intending to be bound by any particular mechanistic theory, the coat proteins may deplete or inhibit either the classical complement pathway, typically initiated by antibody binding to an antigen followed by the C1 protein and fragments thereof, or the alternative pathway, typically initiated by the C3 protein and fragments thereof.

[0046] As used herein, the term "astrovirus" refers to any member of the *Astroviridae* family, including but not limited

EP 2 035 585 B1

to mammalian astrovirus species such as bovine, feline, human, ovine, porcine, and mink astrovirus, or avian species including chicken, turkey, and duck astrovirus (Table 1).

[0047] WO 99/44625 discloses a method of inhibiting complement activation using small pox inhibitor of complement enzymes (SPICE).

5

10

15

20

25

30

35

40

45

50

55

Identifier ^a	Host/Serotype ^b	Sequence Length		Location
		Nucleotide	Amino acid	
L23513	HAstV-1	2364	788	UK
S68561	HAstV-1	2361	787	UK
NC_001943	HAstV-1	2361	787	UK
AY720892	HAstV-1	2364	788	Germany
001-EF138823	HAstV-1	2364	788	CA, USA
002-EF138824	HAstV-1	2370	790	OH, USA
003-EF138825	HAstV-1	2364	788	OH, USA
004-EF138826	HAstV-1	2364	788	OH, USA
L06802	HAstV-2	2391	797	UK
005-EF138827	HAstV-2	2400	800	CA, USA
AF141381	HAstV-3	2385	795	Germany
AF117209	HAstV-3	2385	795	USA
006-EF138828	HAstV-3	2385	795	CA, USA
007-EF138829	HAstV-3	2385	795	OH, USA
DQ070852	HAstV-4	2316	772	Brazil
AB025801	HAstV-4	2316	772	Japan
AB025802	HAstV-4	2316	772	Japan
AB025803	HAstV-4	2316	772	Japan
AB025804	HAstV-4	2316	772	Japan
AB025805	HAstV-4	2316	772	Japan
AB025806	HAstV-4	2316	772	Japan
AB025807	HAstV-4	2316	772	Japan
AB025808	HAstV-4	2316	772	Japan
AB025809	HAstV-4	2316	772	Japan
AB025810	HAstV-4	2316	772	Japan
AB025811	HAstV-4	2316	772	Japan
AB025812	HAstV-4	2316	772	Japan
AY720891	HAstV-4	2316	772	Germany
DQ344027	HAstV-4	2316	772	China
Z33883	HAstV-4	2316	772	UK
DQ028633	HAstV-5	2352	784	Brazil
AB037273	HAstV-5	2352	784	Japan
AB037274	HAstV-5	2352	784	Japan
U15136	HAstV-5	2352	784	UK
AB013618	HAstV-6	2337	779	Japan
AB031030	HAstV-6	2337	779	Japan
AB031031	HAstV-6	2337	779	Japan
Z46658	HAstV-6	2337	779	UK
Y08632	HAstV-7	2376	792	Norway
AF248738	HAstV-7	2376	792	South Africa
Z66541	HAstV-8	2349	783	UK
AF260508	HAstV-8	2349	783	Mexico
008-EF138830	HAstV-8	2349	783	OH, USA
009-EF138831	HAstV-8	2349	783	OH, USA
AF056197	FAstV	2451	817	UK

(continued)

	Identifier ^a	Host/Serotype ^b	Sequence Length		Location
			Nucleotide	Amino acid	
5	NC_004579	MAstV	2328	776	Sweden
	AB037272	PAstV	2331	777	Japan
	Y15938	PAstV	2352	784	Japan
	NC_002469	OAstV	2289	763	Scotland
10	NC_003790	ANV	2052	684	Japan
	AB046864	ANV-2	2040	680	Japan
	AY769615	TAstV-2	2166	722	USA
	NC_005790	TAstV-2	2175	725	USA
15	AY769616	TAstV-3	2175	725	USA
	NC_002470	TAstV	2016	672	USA

[0048] The term "coat protein" refers to components of the astrovirus capsid, including but not limited to intact or assembled astrovirus protein coat or subunits thereof, precursor proteins, epitopes, monomers, dimers, trimers, oligomers, polypeptides, or peptides.

[0049] The term "derivative" refers to components of the astrovirus coat protein, either purified from wildtype virus or recombinantly produced, which are partial regions or modifications of the astrovirus coat protein such as isolated coat subunits, truncation or deletion mutants, substitution mutants, chimeric proteins, fusion proteins, or other proteins containing elements of the astrovirus coat in whole or part, in which the derivative is capable of regulating complement cascade protein activity.

[0050] The terms "complement cascade" and "complement protein" refer to complement proteins C1-C9 and subunits thereof, including but not limited to C1q, C1r, C1s, C4a, C4b, C2a, C2b, C3a, C3b, Factor B, Ba, Bb, C3 convertase, C5 convertase, D, Properdin, C5a, C5b, C6, C7, C8, C9, or combinations thereof in the classical, alternative, or mannan-binding lectin complement pathway as would be appreciated by one of skill in the art,

[0051] The term "inhibition" refers to the reduction in the biological function of an enzyme, protein, peptide, factor, byproduct, or derivative thereof either individually or in complexes; reduction in the quantity of a biological protein, peptide, or derivative thereof whether *in vivo* or *in vitro*; or interruption of a biological chain of events, cascade, or pathway known to comprise a related series of biological or chemical reactions. The term inhibition may thus be used, for example, to describe the reduction of quantity of a single component of the complement cascade compared to a control sample, a reduction in the rate or total amount of formation of a component or complex of components, or the reduction of the overall activity of a complex process or series of biological reactions leading to such outcomes as cell lysis, formation of convertase enzymes, formation of complement-derived membrane attack complexes, inflammation, or inflammatory disease. In an *in vitro* assay, the term "inhibition" may refer to the measurable reduction of some biological or chemical event, but the person of ordinary skill in the art will appreciate that the measurable reduction need not be total to be "inhibitory."

Production of Viral Coat Protein

[0052] Numerous sources for the production or isolation of astrovirus coat protein and derivatives thereof are well understood in the art. Examples of viral coat protein purification techniques include the use of sucrose gradient sedimentation as well as separation columns, which may purify viral particles based on size exclusion, affinity binding, ion exchange, hydrophobic interaction (H.IC), or other means. In some cases, modified coat proteins or derivative proteins may be difficult to purify to homogeneity using a column. In these circumstances, the artisan of ordinary skill will appreciate that alternative methods of purification, such as electrophoresis followed by elution and recovery from the gel is an alternative means for preparation of purified viral coat proteins.

[0053] In the invention, it is contemplated that recombinant technology may be employed to produce astroviral coat proteins. A recombinant baculovirus may be used for *in vitro* viral coat protein production. *Sf9*, *Sf21*, or *TinilHigh5* insect cells are commonly used in this technique to generate baculovirus stocks, which subsequently are used to infect producer cells, which in turn generate the recombinant coat protein. Using such a technique or a variation thereof allows for the large-scale production of both wildtype astrovirus, coat protein in addition to recombinant mutants, chimeric proteins, fusion proteins, and virus-like particles. Provided herein by way of example *infra* are methods for the production and purification of HAstV-1 (Newcastle) full length coat protein Ac_1-787, deletion mutant Ac_1-415, and deletion mutant Ac_416-787. Other variations of coat protein mutants may similarly be produced and purified in a similar fashion.

[0054] The term "virus like particles" (VLP) refers to non-infectious viral particles or capsids, which may be produced by recombinant means or through the use of chimeric technology in conjunction with VLP from other viruses that display astrovirus coat protein epitopes or regions in a polyvalent manner on the particle surface.

[0055] As used herein, the term "chimeric" or "fusion" coat protein is intended to include any recombinant protein capable of inhibiting or depleting complement cascade factors which includes a constituent polypeptide, component, or region of the astrovirus coat protein in addition to at least one region from a second polypeptide or protein, such as an antibody or antibody fragment.

[0056] The production of recombinant astrovirus coat proteins or derivatives thereof may take place in *E. coli* cells using standard recombinant genetic techniques as will be appreciated by one of skill in art. Astrovirus coat peptides, polypeptides, regions, or whole proteins thus produced are then subsequently purified on a sucrose gradient, column or similar apparatus as discussed *supra*. It will be recognized by one of ordinary skill in the art that production of recombinant proteins is readily adaptable to other systems, such as yeast cells, which likewise involves the introduction of recombinant DNA into host cells followed by propagation, lysis, and purification of the protein of interest.

Inhibition of complement-mediated lysis by astrovirus coat protein

[0057] The invention disclosed herein demonstrates by way of example that the coat protein of *Astroviridae* family member HAstV-1 is as effective as CVF in inhibiting complement-mediated cell lysis. Given the structural similarities between members of the *Astroviridae* family, coat protein or derivatives thereof from other mammalian strains of astrovirus, such as human strains HAstV-2 through HAstV-8, bovine, porcine, ovine, feline, mink and poultry strains such as chicken, turkey, and duck astrovirus are contemplated herein as also having anti-complement activity. **Table 1** provides a non-limiting list of fully sequenced astrovirus family members to date.

[0058] In order to compare the complement-depleting or inhibiting activity of HAstV-1 or other astrovirus coat protein to CVF, it is informative to test the astrovirus coat protein in a series of cell lysis experiments as described in the examples *infra*. Red blood cells are a sensitive and specific method for testing serum complement activation by measuring red blood cell lysis. Measurement of the percentage of lysed cells in the assay is therefore a proximal measurement of complement activation in the experimental sample, typically normal human serum (NHS). The method disclosed herein for inhibiting complement mediated lysis is comparably in efficacy to CVF, the strongest complement-depleting substance in nature. The inhibition of complement-mediated lysis of RBCs applies not only to purified coat protein, but also to intact HAstV-1 virions. Accordingly, intact astrovirus virions or virus-like particles may be used to deplete complement cascade proteins from the plasma. Although HAstV-1 virions and purified coat protein demonstrate similar levels of complement suppression when compared to CVF, the data presented here demonstrates that astrovirus virions and coat protein act to suppress serum complement activity through an inhibition mechanism as opposed to activation and subsequent depletion of complement factors exhibited by CVF.

[0059] It is important to note that wildtype astrovirus coat protein often oligomerizes into trimers (and possibly other higher order oligomers) in the buffer in which the coat protein is stored. Thus, it is contemplated that, the coat protein in the red blood cell assays for complement-mediated lysis may be a dimer, a trimer, or a higher-ordered oligomer. The coat protein may precipitate when exposed to calcium ions, an effect which occurs to a lower extent with magnesium and not at all with EDTA/NaCl. It is contemplated that these observations may be indicative of early viral-like particle assembly, as many icosahedral capsids require calcium ions for assembly. The RBC lysis assays described herein contain calcium ions (150 micromolar) and would therefore be consistent with the observed self-assembly of the coat protein subunits.

Interactions between protein coat subunits and complement components

[0060] An important area of investigation for the optimization of using the disclosure herein is to identify interactions between specific complement components and astrovirus coat proteins. This may be achieved, for example, through the use of a modified viral overlay blot, described by way of example *infra*., which generally involves electrophoretic gel separation of complement proteins followed by transfer to a membrane and probing with purified coat protein. Several caveats should be noted in this approach. First, the artisan of ordinary skill will appreciate that while complement proteins C2, C3, and C4 are readily available as highly purified preparations, the C1 protein complex is much more difficult to purify owing to the fact that it is a very labile complex and falls apart easily. As a result, other serum proteins are usually present in C1 preparations. However, C1 preparations that are free of other complement factors such as C2, C3, C4, and C5, and routine batch testing with anti-complement antibodies is generally sufficient to prevent most cross-contamination with other complement factors.

[0061] While C1q, a complex molecule, separates into several fragments during electrophoresis, C1r and C1s run as homodimers in non-reducing gels. Binding of the astrovirus coat protein in these assays may be specific to homodimers; one of ordinary skill will realize that the same protein preparations run under reducing conditions may not reflect binding

at all, either because the coat protein is incapable of binding the monomer or because the concentration of the monomer in the preparation is below detectable levels.

Formulation and Administration

5

[0062] Disclosed herein are pharmaceutical compositions comprising at least one astrovirus coat protein or derivatives thereof, and one or more pharmaceutically acceptable carriers, diluents, or excipients. Pharmaceutically acceptable carriers, excipients, or stabilizers are nontoxic to recipients at the dosages and concentrations employed. They can be solid, semi-solid, or liquid. Thus, the pharmaceutical compositions of the present invention can be in the form of tablets,

10

[0063] Some examples of pharmaceutically acceptable carriers, diluents, or excipients include lactose, dextrose, sucrose, sorbitol, mannitol, starches, gum acacia, calcium phosphate, alginates, tragacanth, gelatin, calcium silicate, microcrystalline cellulose, polyvinylpyrrolidone, cellulose, sterile water, syrup, and methyl cellulose. The pharmaceutical compositions can be formulated so as to provide quick, sustained or delayed release of the active ingredient after administration by employing procedures known in the art.

15

[0064] The pharmaceutical compositions are prepared by mixing the astrovirus coat protein or derivatives having the appropriate degree of purity with pharmaceutically acceptable carriers, diluents, or excipients. Examples of formulations and methods for preparing such formulations are well known in the art. See, e.g., Remington's Pharmaceutical Sciences, 18th edition (1995).

20

[0065] The pharmaceutical compositions are useful as a prophylactic and therapeutic agent for various disorders and diseases as set forth above. The composition may comprise a therapeutically effective amount of the astrovirus coat protein or derivatives thereof. The composition may comprise at least one other active ingredient effective in treating at least one disease associated with complement-mediated tissue damage. The term "therapeutically effective amount," as used herein, refers to the total amount of each active component that is sufficient to show a meaningful patient benefit.

25

[0066] The therapeutically effective amount of the astrovirus coat proteins or derivatives vary depending on such factors as the condition being treated, the severity of the condition, the time of administration, the route of administration, the rate of excretion of the compound employed, the duration of treatment, the co-therapy involved, and the age, gender, weight, and condition of the patient, etc. Determining therapeutically effective amount is well within the skill of a practicing physician. Accordingly, it may be necessary for the therapist to titer the dosage and modify the route of administration as required to obtain the maximal therapeutic effect.

30

[0067] Under such guidelines, the effective daily dose generally is within the range of from about 0.001 to about 100 milligrams per kilogram of body weight, preferably about 0.01-50 mg/kg, more preferably about 0.1-20 mg/kg. This can be achieved through a 1-6 times daily dosing regimen. Alternatively, optimal treatment can be achieved through sustained release at a less frequent dosing regimen.

35

[0068] Pharmaceutical formulations may be adapted for administration by any appropriate route, for example by the oral, nasal, topical (including buccal, sublingual, or transdermal), or parenteral (including subcutaneous, intracutaneous, intramuscular, intraarticular, intraperitoneal, intrasynovial, intrasternal, intrathecal, intralesional, intravenous, or intradermal injections or infusions) route. For human administration, the formulations preferably meet sterility, pyrogenicity, general safety, and purity as required by FDA Office and Biologics standards.

40

Combination Therapies

[0069] The present invention also provides an astrovirus coat protein and/or component thereof for use in an *in vivo* method of inhibiting complement-mediated tissue damage. While the protein and/or component thereof can be administered as the sole active pharmaceutical agent, they can also be used in combination with one or more additional therapeutic or prophylactic agents that are effective for preventing or treating a disease associated with the complement-mediated tissue damage. The protein and/or component thereof may be administered before, concurrently, and/or after, one or more additional therapeutic or prophylactic agents effective in treating at least one disease associated with complement-mediated tissue damage.

45

[0070] For example, the protein and/or component thereof can be used to treat rheumatoid arthritis, either alone or in combination with a non-steroidal anti-inflammatory agent (NSAID), corticosteroid, or a disease modifying anti-rheumatic drug (DMARD).

50

[0071] Examples of NSAID include Salicylates (such as Aspirin, Amoxiciprin, Benorilate, Choline magnesium salicylate, Diflunisal, Faislamine, Methyl salicylate, Magnesium Salicylate, and Salicyl salicylate (salsalate)), Arylalkanoic acids (such as Diclofenac, Aceclofenac, Acemetacin, Bromfenac, Etodolac, Indometacin, Ketorolac, Nabumetone, Sulindac, and Tolmeti), 2-Arylpropionic acids (such as Ibuprofen, Carprofen, Fenbufen, Fenoprofen, Flurbiprofen, Ketoprofen, Loxoprofen, Naproxen, Tiaprofenic acid, and Suprofen), *N*-Arylanthranilic acids (such as Mefenamic acid and Meclofenamic acid), Pyrazolidine derivatives (such as Phenylbutazone, Azapropazone, Metamizole, Oxyphenbutazone,

55

and Sulfinprazone), Oxicams (such as Piroxicam, Lomoxicam, Meloxicam, and Tenoxicam), COX-2 Inhibitors (such as Etoricoxib, Lumiracoxib, and Parecoxib), Sulphonanilides such as Nimesulide, and others such as Licofelone and Omega-3 Fatty Acids.

[0072] Examples of corticosteroid include triamcinolone (Aristocort®), cortisone (Cortone® Acetate Tablets), dexamethasone (Decadron® Elixir), prednisone (Delmsone®), and methylprednisolone (Medrol®),

[0073] Examples of DMARD include methotrexate (Rheumatrex®), leflunomide (Arava®), etanercept (Enbrel®), infliximab (Remicade®), adalimumab (Humira®), anakinra (Kineret®), sulfasalazine (Azulfidine EN-Tabs®), antitnalarials, gold salts, d-penicillamine, cyclosporin A, cyclophosphamide and azathioprine.

[0074] Soliris™ (eculizumab) is a humanized anti-C5 monoclonal antibody. It has been approved by the FDA for the treatment of the rare form of hemolytic anemia, paroxysmal nocturnal hemoglobinuria. In one embodiment, the compositions of the present invention can be used in combination with Soliris™ in treating paroxysmal nocturnal hemoglobinuria, heart disease, pulmonary diseases, autoimmune diseases, asthma, as well as the ancillary care of transplant.

[0075] The compositions of the present invention can be administered with the additional agent(s) in combination therapy, either jointly or separately, or by combining the pharmaceutical compositions and the additional agent(s) into one composition. Dosage administration and adjustment is done to achieve maximal management of the conditions to be treated. For example, both the compositions and the additional agent(s) are usually present at dosage levels of between about 10 and about 150%, more preferably, between about 10 and about 80% of the dosage normally administered in a monotherapy regimen.

[0076] Hereditary angioedema (HAE) is a very rare genetic disorder caused by reduced levels or non-functional C1-inhibitor. C1-inhibitor naturally regulates C1 activation and treatment of acute edema in these patients requires substantial infusion of C1-inhibitor or plasma transfusion. Because astrovirus coat protein functionally blocks C1 activation, this would be a potential therapy and would fill a therapeutic need because C1-inhibitor has to be purified from human sera from multiple subjects and therefore has the potential to be contaminated with human bloodborne pathogens. Therapeutic administration of astrovirus coat protein or a derivative thereof may potentially be used to inhibit C1 either in adjunct therapy with C1-inhibitor or as a stand-alone therapeutic treatment.

EXAMPLES

[0077] The invention is further illustrated by the following examples. The examples are provided for illustrative purposes only. They are not to be construed as limiting the scope or content of the invention in any way.

Example 1 Cell lines and viruses

[0078] For baculovirus production of astrovirus coat protein, *Spodoptera Frugiperda* cells (line IPLB-Sf21) (Vaughn, J.L. et al., 1977. In vitro. 13, 213-217) were propagated in TC100 medium supplemented with 10% heat-inactivated FBS as described previously (Scheneemann, A. et al., 1993. J. Virol. 67, 2756-2763). Virus stocks of the recombinant baculoviruses encoding the wildtype HAstV-1 coat protein gene and deletion mutants were prepared by infecting Sf21 cells at a multiplicity of infection (MOI) of 1 in cell growth medium and allowing the infection to proceed for 5 to 7 days. Following the infection period, cell debris was removed in a low speed spin and virus contained in the medium was

titered by plaque assay and stored at 4°C.

[0079] For propagation of infectious astrovirus particles, CaCo-2 cells (J. Fogh and G. Trempe, 1975. New human tumor cell lines. In: Fogh J (ed) Human tumor cell lines in vitro. Plenum, New York, pp 115-159) were propagated in minimum essential medium with 10-20% heat-inactivated FBS according to instructions (ATCC). A cell-adapted strain of HAstV-1 (Oxford) (kindly provided by Dr. D. K. Mitchell, Eastern Virginia Medical School, Norfolk, Virginia, USA) was propagated in CaCo-2 cells (Willcocks, MM. et al., 1990. Arch. Virol. 113:73-81). Briefly, cell monolayers in minimum essential medium lacking FBS were infected with a viral inoculum containing 10 µg/ml of trypsin type IX (Sigma) and virus was allowed to adhere for 1 h at 37°C. The inoculum was removed and medium containing 2 µg/ml of trypsin was added; cells were then incubated for approximately 48 hours at 37°C. Following incubation, viral suspensions were released from the cells by 3 cycles of freeze/thaw. Cell debris was then removed in a low speed spin and the supernatant containing virus was aliquoted and stored at -80°C. Cell-adapted strains of HAstV types 2-7, previously propagated as above, were provided by Dr. D. K. Mitchell.

Example 2 Real-Time Reverse Transcription PCR

[0080] To quantify HAstV stocks, a real-time PCR method was developed. To isolate total RNA, 40 µL of CaCo-2 cells lysates infected with HAstV-1 were diluted 1:5 in 1 × minimum essential medium. RNA was then extracted using Trizol (Invitrogen) per manufacturer's instructions. Following isolation, RNA was treated with DNaseI (Promega) for 30 min at 37°C and the enzyme was then inactivated at 65°C for 10 min. RNA was stored at -80°C.

[0081] One-step real-time RT-PCR was performed using the iCycler IQ™ system (Bio-Rad). The real-time RT-PCR reaction was assembled using the Superscript III Platinum Syber Green® 1-Step qRT-PCR kit (Invitrogen). Briefly, a reaction mixture was made, containing 12.5 µL 2x Syber® Green RT-PCR Reaction Mix, 0.5 µL each of 10 µM forward primer ORF1a-F1 and reverse primer ORF1a-R1 (targeting a conserved portion of the serine protease gene of the HAstVs, 200 nM final concentration), 0.5 µL iScript Reverse Transcriptase for One-Step RT PCR, 6.0 µL sterile water and 5.0 µL of the total RNA (isolated as described above). cDNA synthesis was achieved by incubating the reaction for 10 min at 50°C, followed by inactivation of iScript RT at 95°C for 5 min. PCR cycling and detection included 45 cycles of incubation at 95°C for 10 sec, 55°C for 30 sec, and 72°C for 30 sec, respectively. For the melt curve, samples were incubated at 95°C for 1 min, 57°C for 1 min, followed by 80 cycles of incubation for 10 sec, starting at 57 °C, and increasing at 0.5 °C increments with each successive cycle. To generate a standard curve, an RNA standard was prepared by T7-mediated *in vitro* transcription (Ambion) of a genome-length cDNA clone (pAV1C) for HAstV-1 (U. Geigenmüller, et al. 1997. J. Virol. 71, 1713-1717.). The RNA standard was serially diluted from 10¹⁰ to 10⁰ and the standard curve was established by plotting the threshold cycle vs. log starting copy number for each dilution. Log starting copy number of the viral RNA contained in the CaCo-2 cell lysate was then extrapolated from the equation of the standard curve line, $Y = mX + b$, where $Y = \text{threshold cycle } (C_T)$, $m = \text{slope of the standard curve line}$, $X = \text{log starting copy number}$, $b = Y\text{-intercept or threshold fluorescence value}$.

Example 3 Construction of Recombinant Baculoviruses

[0082] Recombinant baculoviruses containing full-length (Ac_1-787) and deletion mutants (Ac_1-415 and Ac_416-787) of the HAstV-1 (Newcastle) coat protein gene were generated with the BacPAK baculovirus expression system kit (Clontech). To this end, the DNA fragment encoding the cDNA of the coat protein (kindly provided by Dr. M. J. Carter, University of Surrey, England) (Willcocks, 1994) was amplified by PCR with *Pfu* polymerase (Stratagene) and primers harboring *Bam*HI and *Xba*I restriction sites at the 5' and 3' end of the PCR product, respectively. Primers were designed to amplify the entire capsid gene coding region (aa 1-787) or the gene segments corresponding to aa 1-415 and aa 416-787. Each PCR product was then purified by agarose gel electrophoresis and the Gene clean II kit (Qbiogene), digested with *Bam*HI and *Xba*I, and separately ligated into a *Bam*HI/*Xba*I-digested transfer vector pBacPAK9. Following transformation of JM109 competent cells (Promega), plasmid DNA was isolated from several clones for each construct and the presence of the inserted DNA was determined by diagnostic restriction endonuclease mapping. Positive clones harboring the various coat protein gene constructs were then completely sequenced across the inserted DNA using Big Dye Terminator Sequencing Kit v 3.1 in an automated sequencing instrument (Applied Biosystems).

[0083] Generation of the recombinant baculovirus was carried out according to the manufacturer's protocols (Clontech). Briefly, transfer vector pBacPAK9, containing the HAstV-1 coat protein constructs were individually mixed with *Bsu*36I-linearized BacPAK6 baculovirus DNA and transfected into *Sf21* cells. Three days post transfection, cell supernatants were harvested and putative recombinant viruses were isolated by plaquing the supernatants once on *Sf21* cell monolayers. Individual plaque isolates were amplified and titered following confirmation of the presence and expression of the inserted gene by immunoblot analysis of the infected cell lysates (Dong XF et al., 1998. J. Virol. 72, 6024-6033) using a rabbit polyclonal antibody to HAstV-1 particles (kindly provided by Dr. D. M. Bass, Stanford University, USA) (D. M. Bass and U. Upadhyayula. 1997. J. Virol. 71, 8666-8671) and a horseradish peroxidase-conjugated goat anti-rabbit IgG secondary antibody (Pierce). Signal detection by enhanced chemiluminescence was performed on a Versadoc instrument (Bio-Rad).

Example 4 Recombinant Protein Synthesis and Isolation

[0084] *Sf21* cells (2×10^8) in a 50 ml conical vial were infected with the recombinant baculoviruses at a MOI of 5 per cell. After 1 h at room temperature with rocking, the infected cells were transferred to a spinner flask containing cell growth medium plus antibiotics. The spinner flasks were then allowed to stir at 27°C. Five days post infection, cells were pelleted in a low speed spin and the medium was discarded. Cell pellets were then frozen at -20° C until needed.

[0085] The following protocol was developed to purify soluble coat protein from Ac_1-787 and Ac_1-415 infected cells. Unless otherwise indicated, all the following steps were carried out at 4°C with pre-chilled buffers and protease inhibitors (B.D. Pharmingen). Six frozen pellets were each resuspended in 2 volumes of TNE (50 mM Tris [pH 7.0], 0.1 M NaCl, 10 mM EDTA) buffer and lysed by 3 cycles of freeze/thaw. Lysates were centrifuged for 10 min at $13,300 \times g$, and the supernatant was discarded. The pellets, which contain aggregates of the coat protein, were each resuspended in 1 ml of TNE buffer containing 2% NP-40 and incubated on ice for 30 min. The resulting suspension was centrifuged at $13,300 \times g$ for 5 min, and the supernatant was discarded. Each pellet was resuspended in 1 ml of TNM (50 mM Tris [pH 7.0], 0.1 M NaCl, 20 mM MgSO₄) buffer plus 2 µl of 10 mg/ml DNaseI (Sigma), incubated 30 min at room temperature and centrifuged for 5 min at $13,000 \times g$, after which the supernatant was discarded. The pellets were each resuspended in 1 ml of TNE buffer using a pipette tip. The individual aliquots were pooled into 2 tubes at this point and pelleted through

a 1 ml 30% (wt/vol) sucrose cushion in TNE buffer at $234,000 \times g$ in a SW50. 1Tri rotor (Beckman) for 1 h at 4°C. The supernatant was discarded and the pellet was then resuspended with a syringe and needle in 1 ml of dissociation buffer (100 mM Tris [pH 9.0], 0.5 M NaCl, 100 mM urea, 10 mM EDTA, 5 mM DTT) and frozen overnight at -20°C. The next day, the solubilized protein was centrifuged at $13,300 \times g$ for 10 min and 500 μ l of the supernatant was loaded onto two 5-25% (wt/vol) sucrose gradient made in dissociation buffer lacking protease inhibitors and spun at $274,000 \times g$ in a SW41Ti rotor (Beckman) for 16 h at 4°C. After centrifugation, the coat protein was harvested by fractionation on an ISCO gradient fractionator at 0.75 ml/min and 0.5 min/fraction. Fractions containing coat protein (typically fractions 6-12) were pooled and dialyzed against 100 mM Tris [pH 7.0], 500 mM NaCl, 10 mM EDTA overnight at 4°C. Samples were then concentrated (Amicon), aliquoted and stored at -80°C.

[0086] A different method was developed to purify soluble coat protein from Ac_416-787 infected cells. Unlike Ac_1-787 and Ac_1-415, recombinant protein from Ac_416-787 cells was soluble and could not be purified as above. To this end, frozen pellets of Ac_416-787 infected cells were resuspended in 2 volumes of TNE buffer and lysed by 3 cycles of freeze/thaw. Lysates were centrifuged for 10 min at $13,300 \times g$, and the supernatant was collected. Aliquots of the supernatant were run on a 12% SDS-PAGE gel and the band corresponding to the recombinant protein was excised and eluted from the gel into TNE buffer. The protein was then stored at 4°C.

Example 5 HAstV-1 coat protein displays potent complement activity

[0087] The initial experiment that demonstrated coat protein activity on complement is shown in **Fig. 2**. In this assay, red blood cells (RBCs) are sensitized with antibody and incubated with normal human serum (NHS) causing lysis by complement activation (**Fig. 2**, NHS column). BSA (bovine serum albumin) is a negative control protein without complement effects and shows an equivalent amount of RBC lysis compared to NHS alone (**Fig. 2**, BSA+NHS column). Cobra venom factor (CVF) is a powerful activator of complement that causes depletion of complement components, thus inhibiting lysis of the RBCs; here CVF is used as a positive control (**Fig. 2**, CVF+NHS column). When increasing amounts of HAstV-1 coat protein was added to NHS, a dose response in RBC lysis was demonstrated indicating decreased complement activity. 1 μ g of coat protein had a negligible effect whereas 8 μ g exhibited >75% decreased RBC lysis by NHS (**Fig. 2**, last 4 columns on the right of graph). The fact that the coat protein inhibited RBC lysis to a similar degree as CVF is striking given that CVF is considered the most potent complement-depleting compound found in nature. Similar results are shown in Fig. 10, which illustrates an independent set of experiments (mean values for each are presented, n=4) using modified amounts of HAstV-1 coat protein from 12.2 μ g to 19.4 μ g added to NHS in the experimental samples. BSA and CVF controls, likewise, gave virtually identical results to those in **Fig. 2**.

Example 6 HAstV-1 virions also display potent complement activity

[0088] While the HAstV-1 coat protein had complement activity, additional experiments were conducted to determine whether authentic, infectious HAstV-1 virions also strongly affected complement activity. To this end, varying amounts of virus in cell culture medium were added to NHS (**Fig. 3**). As expected, NHS alone completely lysed the RBCs, whereas CVF blocked lysis strongly. As more virus was added to NHS, a dose response was seen with 70 μ l of the virus inhibiting lysis to the same extent as CVF. At 85 and 100 μ l of virus, inhibition of RBC lysis surpassed that of CVF. As a control, NHS was incubated with equivalent amounts of uninfected tissue culture medium to show that this activity was virus specific (**Fig. 4**). Thus, both coat protein and whole virus demonstrated potent effects on the complement system. The data in **Fig. 3** and **Fig. 4** are presented side-by-side in **Fig. 5**, with viral genome copy number ($\times 10^8$) added to the axis.

Example 7 HAstV-1 virions and CVF display similar kinetics in the RBC lysis assay

[0089] To characterize the kinetics of activity of the astrovirus virions in the RBC lysis assay, a time course comparing HAstV-1 virions and CVF was conducted. HAstV-1 particles and CVF were incubated from 0 to 60 minutes in the presence of 2% NHS. At 0, 5, 15, 30 and 60 minutes, aliquots were removed and exposed to the sensitized RBCs (mean values are presented, n=3 to 5 for each sample). As shown in **Fig. 6**, both CVF and the virus showed similar kinetics in the inhibition of RBC lysis. The 60 minute time point suggests that the virus may have a stronger effect than CVF at this concentration as suggested above in **Fig. 3** and **Fig. 5**. While this assay does not identify the complement factor(s) with which the coat protein/virus may interact, the data suggests that the coat protein/virus may activate and possibly deplete complement components in a similar fashion to CVF. Alternatively, the coat protein or virus may inhibit the formation of downstream complement complexes necessary for lysis of target cells.

Example 8 HAstV-1 virions affect the classical and alternative pathways

[0090] Three pathways exist for the complement system, the classical (primarily activated by antigen:antibody inter-

actions, mannan-binding lectin (binds specific polysaccharides on pathogen surfaces) and alternative (neither antibody nor lectin dependent) pathways (**Fig. 1**). As depicted in **Fig. 7**, the astrovirus virions specifically interact with the classical pathway leading to diminished activity as measured using Factor B depleted sera in the RBC lysis assay. Factor B is essential for alternative pathway activation allowing specific testing of classical pathway activation (**Fig. 7**, factor B depleted sera column). As with CVF, astrovirus particles inhibited RBC lysis in the absence of factor B indicating that this virus specifically blocks or depletes the classical pathway (**Fig. 7**). Similar results were obtained with HAstV-1 coat protein as illustrated in **Fig. 8** (mean values presented, n=4). Taken together, these results indicate that HAstV-1 coat protein suppresses serum complement more effectively using factor B-depleted serum versus NHS, suggesting that HAstV-1 coat protein acts more strongly on the classical pathway than the alternative pathway. It is possible that the lectin pathway may also activate under these conditions.

[0091] While HAstV-1 coat protein has dramatic ramifications for the classical pathway, HAstV-1 virions affect the alternative pathway to a lesser extent. As demonstrated in **Fig. 9**, in an assay to test for alternative pathway activation, NHS lyses rabbit RBCs as expected (NHS column). When CVF is added to NHS, lysis is significantly diminished (NHS + CVF column). In the presence of virus, lysis of cells is modestly affected (NHS + virus column). As a negative control, NHS in the presence of cell culture medium did not affect lysis as expected (NHS + media column). While this assay is set up to detect alternative pathway activation (i.e., the RBCs are not sensitized with antibody), the presence of astrovirus antibodies in NHS could potentially activate the classical pathway. To confirm that these findings were specific to the alternative pathway, C2 depleted serum (C2D) was utilized in the place of NHS (**Fig. 9**). By depleting NHS of C2 in this assay, the classical pathway and lectin pathways are blocked and any RBC lysis is due exclusively to alternative pathway activity. As expected, C2D in the absence or presence of cell culture medium lysed RBCs (C2D and C2D + media column). Both CVF and virus showed similar levels of inhibition of RBC lysis in this assay. These results demonstrate that HAstV-1 virions inhibit the alternative pathway to a lesser extent than the classical pathway and it is possible that the viral coat protein functions to block both pathways by completely different mechanisms. To further test for alternative pathway utilization, C2D sera was incubated with rabbit RBCs alone in Mg-EGTA-GVBS buffer or with 89 μg of purified HAstV-1 coat protein (n=3 for each). The results, depicted in **Fig. 10**, demonstrate that while HAstV-1 coat protein does in fact inhibit the alternative complement pathway as with virus (**Fig. 9**), the effect is minimal in comparison to the inhibitory effect on the classical pathway as illustrated above in **Fig. 7** and **Fig. 8**. Again, the data demonstrates that while some alternative pathway inhibition is observable, the effect of astrovirus virions and coat protein is more significantly inhibitory of the classical pathway than the alternative pathway.

Example 9 Overlay Blot Assay

[0092] To ascertain whether HAstV-1 coat protein binds to specific complement factors, we utilized a modified virus overlay protein binding assay (VOPBA) approach (Borrow and Oldstone, 1992). To this end, 1 or 3 μg of purified complement factors C1, C1q, C1r, C1s, C2, C3 and C4 (Comptech) were mixed with 1 \times PBS and an equal volume of 2 \times SDS sample buffer lacking reducing agents and loaded onto a 7.5% SDS-PAGE gel. Following electrophoresis at 150V for 1h, proteins were transferred to nitrocellulose and blocked in 5% NFDM-PBS-0.001% Tween-20 for 1h at room temperature. Purified WT coat protein was then added (~10-20 μg) to the blot and allowed to incubate for 1h, after which the blot was washed extensively with PBS-0.001% Tween-20. The rest of the procedure was carried out as for a standard immunoblot as described above.

[0093] An approximately 59 kDa band was detected in the C1 preparation. It is contemplated that other preparations of complement proteins may interact with wildtype astrovirus coat protein or derivatives under conditions differing from those exemplified here. In order to further investigate the binding of HAstV-1 coat protein to complement protein C1, the blotting protocol was repeated with purified C1 complex components C1q, C1r, and C1s. Total protein staining with Coomassie blue is depicted in **Fig. 11A**, while results for the blotting experiment are depicted in **Fig. 11B**. The result suggests that HAstV-1 wildtype coat protein interacts with a C1q band in the 50-60 kDa range, and the C1r component binds just above 80 kDa. However, subsequent experiments demonstrated that the 80 kDa band was an artifact caused by the primary antibody to HAstV-1 virions non-specifically interacting with the C1r homodimer in the absence of the coat protein probe. As the data in **Fig. 12C** indicates (see below), the coat protein binds specifically to C1q.

[0094] Further experiments confirmed the initial finding that HAstV-1 coat protein binds C1q in an overlay blot assay. In **Fig. 12A**, purified complement factors C1, C2, C3 and C4 (Comptech) were mixed with 1 \times PBS and an equal volume of 2 \times SDS sample buffer lacking reducing agents and loaded onto a 7.5% SDS-PAGE gel without boiling the samples. Following electrophoresis at 150V for 1h, proteins were transferred to nitrocellulose and blocked in 5% NFDM-PBS-0.001% Tween-20 for 1h at room temperature. Purified coat protein was then added (~10 μg) to the blot and allowed to incubate for 1h, after which the blot was washed extensively with PBS-0.001% Tween-20. The rest of the procedure was carried out as for a standard immunoblot using primary antibody to HAstV-1 virions and an appropriate HRP-conjugated secondary antibody. In **Fig. 12B**, the same experiment was performed as in **Fig. 12A** above, except no coat protein probe was utilized. In **Fig. 12C**, 3 μg of BSA, C1, C1q, C1r and C1s were mixed with 1 \times PBS and an equal

volume of $2 \times$ SDS sample buffer containing reducing agents, boiled and loaded onto a 12% SDS-PAGE gel. The overlay blotting was then carried out as in **Fig. 12A**. In **Fig. 12D**, the overlay blot in **Fig. 12C** was stripped with Restore Western blot stripping buffer (Pierce) according to the manufacturer's guidelines and probed with polyclonal antibodies to C1q, C1r and C1s (Santa Cruz) followed by the appropriate HRP-conjugated secondary antibody. **Fig. 12E** represents a duplicate blot as in **Fig. 12C** except no coat protein probe was utilized.

[0095] The above experiments demonstrate that the coat protein binds to something in C1 that migrates at about 59kDa. Because these samples were not boiled or reduced and the C1 preparation purchased from Comptech is contaminated with other serum proteins, further experiments were necessary to rule out the possibility that the coat protein was binding to something other than a C1 constituent, e.g., C1q, C1r, or C1s. The three highly purified C1 components, boiled and reduced, were run on a gel and the experiment was repeated. This time, an approximately 34-kDa band was detected in both the C1 and C1q lane. A 34-kDa band is consistent with the C chain of the C1q protein. C1q, when fully oxidized and reduced, breaks into three separate chains: chain A runs at 27.5 kDa, chain B runs at 31.6 kDa, and chain C runs at 34 kDa (Cooper, N.R., 1985. *Adv. Immunol.* 37, 151-216 6). The overlay blot was stripped and probed with antibody to C1q, C1r, and C1s. When the previous blot was aligned to the re-probed blot, the band in the overlay corresponded to the C1q C chain. The 59 kDa band seen in **Fig. 12A** probably represents one of the doublet bands seen in the C1q lane in **Fig. 12D**. This doublet is most likely a C-C chain and A-B chain dimer, which has been reported (Cooper, N.R., 1985. *Adv. Immunol.* 37, 151-216) to run at 54 kDa and 69 kDa, respectively. The sum of these experiments is that astrovirus coat protein interacts with a C1q chain in this in vitro binding assay.

Example 10 Other HAstV serotypes suppress hemolytic complement activity.

[0096] To determine whether HAstV serotypes other than the type 1 exhibit the same effects on complement activity, equivalent amounts cell lysates infected with serotypes 1 - 4 (2.92×10^8 genome copies each) were analyzed in the RBC lysis assay with all four serotypes demonstrating comparable levels of hemolysis inhibition (**Table 2**). These findings suggest that the complement suppressing effect reported here is a conserved property of the HAstVs.

TABLE 2. RBC lysis assay on HAstV serotypes 1-4

HAstV serotype ^a	Inhibition of hemolysis (%) ^b	SE
1	86.3	2.38
2	84.3	3.14
3	86.3	3.14
4	87.0	0.47

^a 2.92×10^8 genome copies from infected cell lysates were utilized for each serotype tested.
^b $n = 3$

Example 11 Analysis of recombinant coat protein oligomerization

[0097] SDS-PAGE and immunoblot analysis of the HAstV-1 coat protein purification procedure and demonstration of spontaneous oligomerization by the coat protein. As illustrated in **Fig. 13A**, aliquots of the first 18 fractions from the sucrose gradient ultracentrifugation step of the purification procedure were analyzed on 7.5% SDS-PAGE gels. The gels were then stained with Coomassie blue. Fraction numbers are located at the top of the gels and the arrows indicate the direction of sedimentation from the top to bottom of the gradient. The migration of the 87 kDa coat protein (CP) is indicated. In **Fig. 13B**, immunoblot analysis of the same gradient fractions utilizing an antibody to HAstV-1 virions. **Fig. 13C** illustrates a 7.5% SDS-PAGE analysis of the coat protein containing fraction at each stage of the purification procedure as analyzed by Coomassie blue staining and **Fig. 13D** represents the immunoblot of the same gel. In **Fig. 13E**, aliquots of sucrose-purified coat protein were either boiled or not boiled in the presence of 2-mercaptoethanol and run on a 7.5% SDS-PAGE gel. The gel was then stained with Coomassie blue. The boiled protein migrates at approximately 87 kDa, the expected mass of the uncleaved coat protein precursor (monomer, M) whereas the unboiled sample migrates above 250 kDa possibly representing a trimer (T) which would be postulated to run at 261 kDa. For all gels and blots, the molecular weight markers (in kDa) are indicated.

Example 12 HAstV-1 coat protein inhibits iC3b formation and activation of the terminal pathway

[0098] Antibody sensitized sheep RBCs were incubated with NHS alone, with 1 μ g CVF or with 76 μ g of purified HAstV-1 coat protein (CP) for 3 hours at 37° C. As represented in **Fig. 14A**, aliquots of each reaction were boiled and

reduced, run on a SDS-PAGE gel, transferred to nitrocellulose and probed with a polyclonal antibody to C3. Positive controls for C3 alpha (114 kDa) and beta (75 kDa) chain along with the two iC3b products (65 kDa and 42 kDa) are indicated. These results demonstrate that NHS in the presence of HAstV-1 coat protein does not generate significant amounts of iC3b. The presence of iC3b is an indication of C3 convertase formation, i.e. activation of either the classical, alternative or mannose-binding lectin pathways. In **Fig. 14B**, an iC3b ELISA was performed on the samples using a monoclonal antibody to iC3b. The absorbance of the supernatants was read in a spectrophotometer at 405 nm. A standard curve was utilized to determine the values of iC3b (ng/ml). Data are means of four independent experiments. Error bars denote standard errors of the means. These results further confirm that NHS in the presence of coat protein does not generate significant amounts of iC3b. The observation that even less iC3b is generated with the addition of coat protein than with the addition of NHS alone is remarkable as NHS normally produces iC3b spontaneously, a process known as "tickover." Aliquots of the same 3 samples were subject to a SC5b-9 ELISA using a monoclonal antibody to SC5b-9. The absorbance of the supernatants was read in a spectrophotometer at 405 nm. A standard curve was utilized to determine the values of SC5b-9 (ng/ml), as illustrated in **Fig. 14C**. Data are means of four independent experiments. Error bars denote standard errors of the means. The ELISA data in **Fig. 14C** demonstrates that the terminal complement complex (known alternatively as the membrane attack complex or "MAC") is completely inhibited from formation in the presence of astrovirus coat protein. These observations taken as a whole indicate that astrovirus coat protein inhibits the complement system, a distinct mechanism from complement depletion as mediated by CVF. The fact that coat protein can inhibit the system upstream of C3 is significant as this prevents the formation of the C3a and C5a anaphylatoxins as well as MAC formation. Prevention of those products of the complement cascade greatly enhance the therapeutic value of the coat proteins because they fail to activate the cascade, unlike CVF.

Example 13 Exogenous C1 reverses the inhibition of hemolytic activity and deposition of C3 on zymosan by HAstV-1

[0099] In order to further define the role of C1 in the inhibition of complement-mediated lysis by HAstV-1, HAstV-1 inhibition of hemolytic activity was tested for reversibility by the addition of exogenous C1. NHS was incubated with 47 μ g coat protein (CP) or 1 μ g CVF for 1 hour at 37°C. 47 μ g of CP was used to achieve approximately 50% RBC lysis. After the incubation, 10 μ l of C1 (~1 mg/ml) or 10 μ l BSA (1 mg/ml) was added back to the indicated samples as shown in **Fig. 15A**. Simultaneously, RBCs were added to all samples. Heme lysis was standardized to 100% for NHS alone. "HI-NHS" indicates the use heat inactivated NHS. Data from the RBC lysis assay are means of results from four independent experiments. Error bars denote standard errors of the means. In **Fig. 15B**, 20 μ l of NHS was added to either (i) 50 μ l GVBS-- buffer and incubated alone, (ii) with 67 μ g (50 μ l) coat protein, or with 1 μ g CVF in 49 μ l of GVBS++ buffer. All volumes were brought up to 1 ml using GVBS++ buffer and incubated for 1 hour at 37°C. After incubation, 15 μ l C1 (~1 mg/ml) was added to the indicated samples and subsequently 25 μ l zymosan was added to all samples. After a 10 minute incubation at 37 °C, the samples were washed twice in GVBS++ buffer and treated with 30 μ l of 25 mM methylamine for 1 hour in a 37°C water bath before being spun down and the supernatant collected. A C3 ELISA was performed on the samples using a polyclonal antibody to C3. The absorbance of the supernatants was read in a spectrophotometer at 405 nm. A standard curve was utilized to determine the values of C3 (ng/ml). Data is presented as the mean values of four independent experiments. Error bars denote standard errors of the means.

[0100] In **Fig. 15A**, the amount of HAstV-1 coat protein was titrated to an amount necessary to achieve 50% RBC lysis. When C1 protein was added back to the mixture, the hemolytic activity was completely restored. In contrast, restoration of hemolytic activity by adding back BSA, CVF, or heat-inactivated NHS does not occur. In **Fig. 15B**, the C1 add-back data presented in **Fig. 15A** was confirmed using a different approach. In this experiment, NHS is added to zymosan, which activates serum complement and leads to the deposition of C3 on the zymosan. Methylamine is then used to strip the C3 off the zymogen and the C3 levels are assayed by ELISA. In the presence of the coat protein, there is very little C3 deposition, as expected. When C1 is added back, more C3 is present, indicating that the effect of the coat protein is overcome. Adding C1 to CVF, conversely, has no significant effect. The sum of the experiments illustrated in **Figs. 15A** and **15B** indicate that HAstV-1 coat protein inhibits the classical pathway of complement activation through interaction with the C1 complex.

Claims

1. An *in vitro* method for regulating complement cascade proteins using Astroviridae family coat protein(s) and/or component(s) of the astrovirus coat protein, wherein said component is either purified from wild type virus or recombinantly produced; is a region or modification of the astrovirus coat protein, the region or modification of the astrovirus coat protein being an isolated coat subunit, or a truncation or deletion mutant, a chimeric protein, a fusion protein, or other protein containing elements of the astrovirus coat protein; and is capable of either (i) decreasing lysis of red blood cells in response to normal human serum or (ii) binding to complement factor C1q.

EP 2 035 585 B1

2. The method of claim 1, wherein the coat protein and/or component inhibits the classical complement pathway or the alternative complement pathway.
3. The method of claim 1 or claim 2, wherein the coat protein and/or component is displayed on a viral-like particle.
4. The method of claim 1 or claim 2, wherein the astrovirus coat protein and/or component is purified from wildtype virus or is produced by recombinant technology.
5. The method of claim 4, wherein the coat protein and/or component is produced by recombinant technology and is produced in a recombinant protein expression method from a group consisting of: a baculovirus system, *E. coli* cells, and yeast cells.
6. The method of claim 4, wherein the coat protein and/or component is produced by recombinant technology and is a chimeric protein or a fusion protein.
7. The method of any preceding claim, wherein the coat component is a peptide.
8. The method of any preceding claim, wherein the astrovirus coat protein and/or component inhibits activation of the terminal pathway of the complement cascade, inhibits the formation of complement peptide iC3b, inhibits the formation of the complement peptide complex C3 convertase, inhibits the formation of complement peptide C5a or C5b, inhibits the formation of complement peptides known in the art as the membrane attack complex (MAC) on target cells, inhibits the lysis of red blood cells in a standard RBC lysis assay using normal human serum, inhibits the lysis of red blood cells in a standard RBC lysis assay using Factor B depicted serum, or binds to complement protein C1.
9. An astrovirus coat protein and/or component of the astrovirus coat protein for use in an *in vivo* method of inhibiting complement-mediated tissue damage, wherein said component is either purified from wild type virus or recombinantly produced; is a region or modification of the astrovirus coat protein, the region or modification of the astrovirus coat protein being an isolated coat subunit, or a truncation or deletion mutant, a chimeric protein, a fusion protein, or other protein containing elements of the astrovirus coat protein; and is capable of either (i) decreasing lysis of red blood cells in response to normal human serum or (ii) binding to complement factor C1q.
10. The protein and/or component according to claim 9 for use in the method of claim 9, wherein the tissue damage is related to rheumatoid arthritis, systemic lupus erythematosus, multiple sclerosis, myasthenia gravis, autoimmune hemolytic anemia, membranoproliferative glomerulonephritis, serum sickness, turkey astrovirus infection, Adult Respiratory Distress Syndrome, ischemia-reperfusion injury, allo- or xenotransplantation, Alzheimer's Disease, bum injuries, hemodialysis damage, cardiopulmonary bypass damage, or to Paroxysmal Nocturnal Hemoglobinuria.
11. The protein and/or component according to claim 10 for use in the method of claim 10, wherein the tissue damage is related to ischemia-reperfusion injury resulting from stroke, or from myocardial infarction.
12. The protein and/or component according to claim 10 for use in the method of claim 10, wherein the tissue damage is related to allo- or xeno-transplantation and the tissue injury is further the result of hyperacute rejection, or graft versus host disease (GVHD).
13. The protein and/or component according to claim 9 or claim 10 for use in the method of claim 9 or claim 10, which is for administration with at least one other active ingredient effective in treating a disease associated with the complement-mediated tissue damage.
14. The protein and/or component according to claim 9 for use in the method of claim 13 when dependent on claim 9, wherein the at least one other active ingredient is selected from the group consisting of a non-steroidal anti-inflammatory agent, a corticosteroid, or a disease modifying anti-rheumatic drug.
15. The protein and/or component according to claim 9 for use in the method of claim 13 when dependent on claim 9, wherein the at least one other active ingredient is eculizumab.
16. Astrovirus particles, coat protein, and/or component of the astrovirus coat protein for use in a method of treating hereditary angioedema (HAE), wherein said component is either purified from wild type virus or recombinantly

produced; is a region or modification of the astrovirus coat protein, the region or modification of the astrovirus coat protein being an isolated coat subunit, or a truncation or deletion mutant, a chimeric protein, a fusion protein, or other protein containing elements of the astrovirus coat protein; and is capable of either (i) decreasing lysis of red blood cells in response to normal human serum or (ii) binding to complement factor C1q.

5

Patentansprüche

1. In-Vitro-Verfahren zum Regulieren von Komplementkaskadenproteinen unter Verwendung von Hüllprotein(en) der Astroviridae-Familie und/oder einer oder mehrerer Komponente(n) des Astrovirus-Hüllproteins, wobei die Komponente entweder aus Wildtyp-Virus gereinigt oder rekombinant produziert wird; eine Region oder Modifizierung des Astrovirus-Hüllproteins, wobei die Region oder Modifizierung des Astrovirus-Hüllproteins eine isolierte Hüllenuntereinheit ist, oder eine Trunkierungs- oder Deletationsmutante, ein chimäres Protein, ein Fusionsprotein oder anderes Protein, das Elemente des Astrovirus-Hüllproteins enthält, ist; und imstande ist, entweder (i) die Lyse von roten Blutkörperchen als Reaktion auf normales Humanserum zu verringern oder (ii) an Komplementfaktor C1q zu binden.
2. Verfahren nach Anspruch 1, wobei das Hüllprotein und/oder die Komponente den klassischen Komplementpfad oder den alternativen Komplementpfad hemmt.
3. Verfahren nach Anspruch 1 oder Anspruch 2, wobei das Hüllprotein und/oder die Komponente auf einem virusähnlichen Partikel präsentiert wird.
4. Verfahren nach Anspruch 1 oder Anspruch 2, wobei das Astrovirus-Hüllprotein und/oder die Komponente aus Wildtyp-Virus gereinigt ist oder durch rekombinante Technologie produziert wird.
5. Verfahren nach Anspruch 4, wobei das Hüllprotein und/oder die Komponente durch rekombinante Technologie produziert wird und in einem rekombinanten Proteinexpressionsverfahren aus einer Gruppe bestehend aus einem Baculovirus-System, E. coli-Zellen und Hefezellen produziert wird.
6. Verfahren nach Anspruch 4, wobei das Hüllprotein und/oder die Komponente durch rekombinante Technologie produziert wird und ein chimäres Protein oder ein Fusionsprotein ist.
7. Verfahren nach einem vorangehenden Anspruch, wobei die Hüllkomponente ein Peptid ist.
8. Verfahren nach einem vorangehenden Anspruch, wobei das Astrovirus-Hüllprotein und/oder die Komponente die Aktivierung des terminalen Weges der Komplementkaskade hemmt, die Bildung von Komplementpeptid iC3b hemmt, die Bildung der Komplementpeptidkomplex C3-Convertase hemmt, die Bildung des Komplementpeptids C5a oder C5b hemmt, die Bildung von Komplementpeptiden, die in der Technik als Membranangriffskomplex (MAC) bekannt sind, auf Zielzellen hemmt, die Lyse von roten Blutkörperchen in einem Standard-RBC-Lysetest unter Verwendung von normalem Humanserum hemmt, die Lyse von roten Blutkörperchen in einem Standard-RBC-Lysetest unter Verwendung von Faktor B-abgebildetem Serum hemmt oder an Komplementprotein C1 bindet.
9. Astrovirus-Hüllprotein und/oder Komponente des Astrovirus-Hüllproteins zur Verwendung in einem In-Vivo-Verfahren zur Hemmung einer komplementvermittelten Gewebeschädigung, wobei die Komponente entweder aus Wildtyp-Virus gereinigt oder rekombinant produziert wird; eine Region oder Modifizierung des Astrovirus-Hüllproteins, wobei die Region oder Modifizierung des Astrovirus-Hüllproteins eine isolierte Hüllenuntereinheit ist, oder eine Trunkierungs- oder Deletationsmutante, ein chimäres Protein, ein Fusionsprotein oder anderes Protein, das Elemente des Astrovirus-Hüllproteins enthält, ist; und imstande ist, entweder (i) die Lyse von roten Blutkörperchen als Reaktion auf normales Humanserum zu verringern oder (ii) an Komplementfaktor C1q zu binden.
10. Protein und/oder Komponente nach Anspruch 9 zur Verwendung in dem Verfahren nach Anspruch 9, wobei der Gewebeschaden mit rheumatoider Arthritis, systemischem Lupus erythematodes, multipler Sklerose, Myasthenie gravis, autoimmuner hämolytischer Anämie, membranproliferativer Glomerulonephritis, Serumkrankheit, Puten-Astrovirusinfektion, Atemnotsyndrom des Erwachsenen, Ischämie-Reperfusionsschaden, Allo- oder Xenotransplantation, Alzheimer-Krankheit, Verbrennungen, Hämodialyseschaden, kardiopulmonalem Bypass-Schaden oder paroxysmaler nächtlicher Hämoglobinurie zusammenhängt.

55

EP 2 035 585 B1

11. Protein und/oder Komponente nach Anspruch 10 zur Verwendung in dem Verfahren nach Anspruch 10, wobei der Gewebeschaden mit Ischämie-Reperfusionsschädigung infolge eines Schlaganfalls oder eines Myokardinfarkts zusammenhängt.
- 5 12. Protein und/oder Komponente nach Anspruch 10 zur Verwendung in dem Verfahren nach Anspruch 10, wobei der Gewebeschaden mit Allo- oder Xenotransplantation zusammenhängt und die Gewebeverletzung ferner das Ergebnis einer hyperakuten Abstoßung oder Transplantat-gegen-Wirt-Reaktion ("Graft-versus-Host-Disease", GVHD) ist.
- 10 13. Protein und/oder Komponente nach Anspruch 9 oder Anspruch 10 zur Verwendung in dem Verfahren nach Anspruch 9 oder Anspruch 10, das bzw. die zur Verabreichung mit mindestens einem anderen Wirkstoff dient, der in der Behandlung einer Krankheit wirksam ist, die mit dem komplementvermittelten Gewebeschaden verbunden ist.
- 15 14. Protein und/oder Komponente nach Anspruch 9 zur Verwendung in dem Verfahren nach Anspruch 13, wenn abhängig von Anspruch 9, wobei der mindestens eine Wirkstoff ausgewählt ist aus der Gruppe bestehend aus einem nichtsteroidalen Antiphlogistikum, einem Kortikosteroid oder einem krankheitsmodifizierenden antirheumatischen Arzneimittel.
- 20 15. Protein und/oder Komponente nach Anspruch 9 zur Verwendung in dem Verfahren nach Anspruch 13, wenn abhängig von Anspruch 9, wobei der mindestens eine Wirkstoff Eculizumab ist.
- 25 16. Astrovirus-Partikel, Hüllprotein und/oder Komponente des Astrovirus-Hüllproteins zur Verwendung in einem Verfahren zur Behandlung des hereditären Angioödems (HAE), wobei die entweder aus Wildtyp-Virus gereinigt oder rekombinant produziert wird; eine Region oder Modifizierung des Astrovirus-Hüllproteins, wobei die Region oder Modifizierung des Astrovirus-Hüllproteins eine isolierte Hülleneinheit ist, oder eine Trunkierungs- oder Deletionsmutante, ein chimäres Protein, ein Fusionsprotein oder anderes Protein, das Elemente des Astrovirus-Hüllproteins enthält, ist; und imstande ist, entweder (i) die Lyse von roten Blutkörperchen als Reaktion auf normales Humanserum zu verringern oder (ii) an Komplementfaktor C1q zu binden.

30 **Revendications**

- 35 1. Procédé *in vitro* pour réguler des protéines de cascade de complément en utilisant une ou des protéine(s) d'enveloppe de la famille Astroviridae et/ou un ou plusieurs composant(s) de la protéine d'enveloppe d'astrovirus, dans lequel ledit composant est ou purifié à partir d'un virus de type sauvage ou produit de manière recombinante ; est une région ou une modification de la protéine d'enveloppe d'astrovirus, la région ou modification de la protéine d'enveloppe d'astrovirus étant une sous-unité d'enveloppe isolée, ou un mutant de troncation ou de délétion, une protéine chimérique, une protéine de fusion, ou une autre protéine contenant des éléments de la protéine d'enveloppe d'astrovirus ; et est susceptible ou de (i) diminuer la lyse des globules rouges en réponse à du sérum humain normal ou de (ii) se lier au facteur de complément C1q.
- 40 2. Procédé selon la revendication 1, dans lequel la protéine et/ou le composant d'enveloppe inhibe la voie classique de complément ou la voie alternative de complément.
- 45 3. Procédé selon la revendication 1 ou la revendication 2, dans lequel la protéine et/ou le composant d'enveloppe sont exprimés sur une particule de type viral.
- 50 4. Procédé selon la revendication 1 ou la revendication 2, dans lequel la protéine et/ou le composant d'enveloppe d'astrovirus sont purifiés à partir de virus de type sauvage ou sont produits par une technologie recombinante.
- 55 5. Procédé selon la revendication 4, dans lequel la protéine et/ou le composant d'enveloppe sont produits par une technologie recombinante et sont produits dans un procédé d'expression de protéine recombinante provenant d'un groupe constitué de : un système de baculovirus, des cellules d'*E. coli*, et des cellules de levure.
6. Procédé selon la revendication 4, dans lequel la protéine et/ou le composant d'enveloppe sont produits par une technologie recombinante et sont une protéine chimérique ou une protéine de fusion.
7. Procédé selon l'une quelconque des revendications précédentes, dans lequel le composant d'enveloppe est un peptide.

- 5 8. Procédé selon l'une quelconque des revendications précédentes, dans lequel la protéine et/ou le composant d'enveloppe d'astrovirus inhibent l'activation de la voie terminale de la cascade de complément, inhibent la formation du peptide de complément iC3b, inhibent la formation du complexe de peptide de complément C3 convertase, inhibent la formation du peptide de complément C5a ou C5b, inhibent la formation de peptides de complément connus dans la technique en tant que complexe d'attaque de membrane (MAC) sur des cellules cibles, inhibent la lyse des globules rouges dans un dosage standard de lyse des globules rouges en utilisant du sérum humain normal, inhibent la lyse des globules rouges dans un dosage standard de lyse des globules rouges en utilisant du sérum représenté par le Facteur B, ou se lient à la protéine de complément Cl.
- 10 9. Protéine d'enveloppe d'astrovirus et/ou composant de la protéine d'enveloppe d'astrovirus destinés à être utilisés dans un procédé *in vivo* d'inhibition d'un dommage tissulaire médié par un complément, où ledit composant est ou purifié à partir d'un virus de type sauvage ou produit de manière recombinante ; est une région ou une modification de la protéine d'enveloppe d'astrovirus, la région ou modification de la protéine d'enveloppe d'astrovirus étant une sous-unité d'enveloppe isolée, ou un mutant de troncation ou de délétion, une protéine chimérique, une protéine de fusion, ou une autre protéine contenant des éléments de la protéine d'enveloppe d'astrovirus ; et est susceptible ou de (i) diminuer la lyse des globules rouges en réponse à du sérum humain normal ou de (ii) se lier au facteur de complément Clq.
- 15 10. Protéine et/ou composant selon la revendication 9 destinés à être utilisés dans le procédé selon la revendication 9, où le dommage tissulaire se rapporte à la polyarthrite rhumatoïde, au lupus érythémateux disséminé, à la sclérose en plaques, à la myasthénie grave, à l'anémie hémolytique auto-immune, à la glomérulonéphrite membrano-proliférative, à une maladie du sérum, à une infection par un astrovirus de dinde, à un syndrome de détresse respiratoire adulte, à une lésion d'ischémie-reperfusion, à une alio- ou xénotransplantation, à la maladie d'Alzheimer, à des blessures par brûlure, à une lésion d'hémodialyse, à une lésion de pontage cardiopulmonaire, ou à une hémoglobinurie paroxystique nocturne.
- 20 11. Protéine et/ou composant selon la revendication 10 destinés à être utilisés dans le procédé selon la revendication 10, où le dommage tissulaire se rapporte à une lésion d'ischémie-reperfusion résultant d'un accident cérébrovasculaire, ou d'un infarctus du myocarde.
- 25 12. Protéine et/ou composant selon la revendication 10 destinés à être utilisés dans le procédé selon la revendication 10, dans lequel le dommage tissulaire se rapporte à une alio- ou xénotransplantation et le traumatisme tissulaire est en outre le résultat d'un rejet hyperaigu, ou d'une réaction de greffe contre l'hôte (GVHD).
- 30 13. Protéine et/ou composant selon la revendication 9 ou la revendication 10 destinés à être utilisés dans le procédé selon la revendication 9 ou la revendication 10, qui est destiné à une administration avec au moins un autre principe actif efficace dans le traitement d'une maladie associée au dommage tissulaire médié par un complément.
- 35 14. Protéine et/ou composant selon la revendication 9 destinés à être utilisés dans le procédé selon la revendication 13 lorsqu'il dépend de la revendication 9, où l'au moins un autre principe actif est choisi dans le groupe constitué d'un agent anti-inflammatoire non stéroïde, un corticostéroïde, ou un médicament antirhumatisme modifiant la maladie.
- 40 15. Protéine et/ou composant selon la revendication 9 destinés à être utilisés dans le procédé selon la revendication 13 lorsqu'il dépend de la revendication 9, où l'au moins un autre principe actif est l'éculizumab.
- 45 16. Particules d'astrovirus, protéine d'enveloppe, et/ou composant de la protéine d'enveloppe d'astrovirus utilisables dans un procédé de traitement le l'angioedème héréditaire (HAE), où ledit composant est ou purifié à partir d'un virus de type sauvage ou produit de manière recombinante ; est une région ou une modification de la protéine d'enveloppe d'astrovirus, la région ou modification de la protéine d'enveloppe d'astrovirus étant une sous-unité d'enveloppe isolée, ou un mutant de troncation ou de délétion, une protéine chimérique, une protéine de fusion, ou une autre protéine contenant des éléments de la protéine d'enveloppe d'astrovirus ; et est susceptible ou de (i) diminuer la lyse des globules rouges en réponse à du sérum humain normal ou de (ii) se lier au facteur de complément Clq.
- 50 55

Figure 1

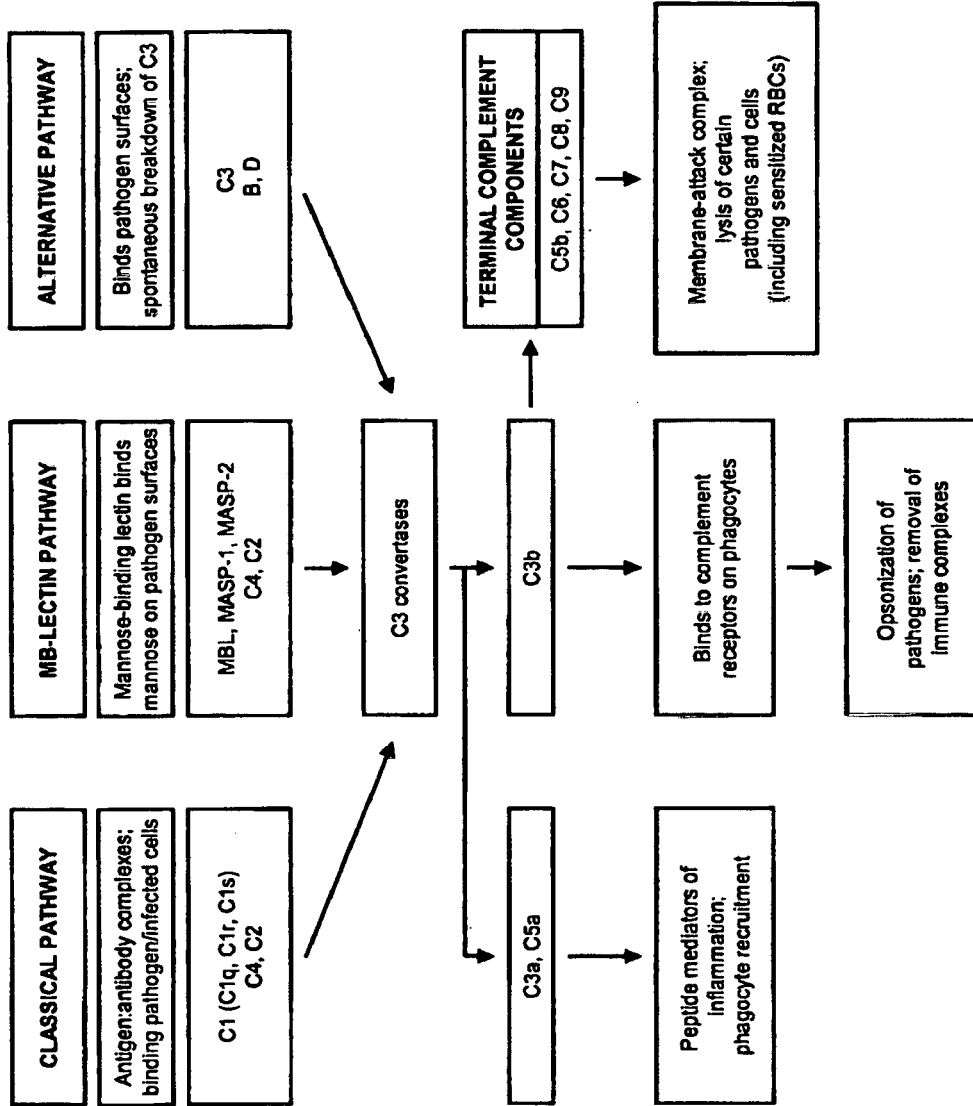


Figure 2

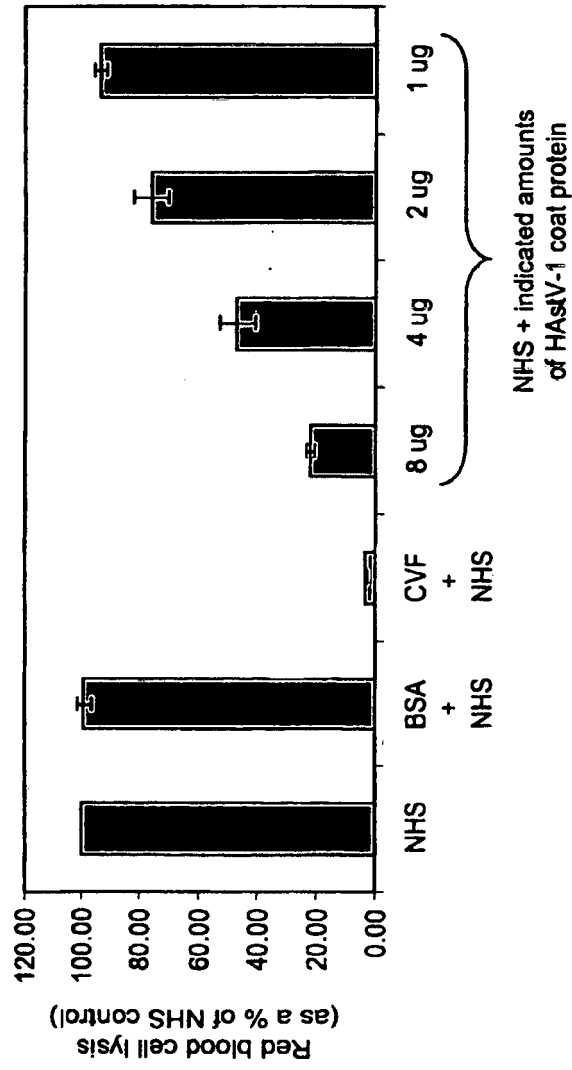


Figure 3

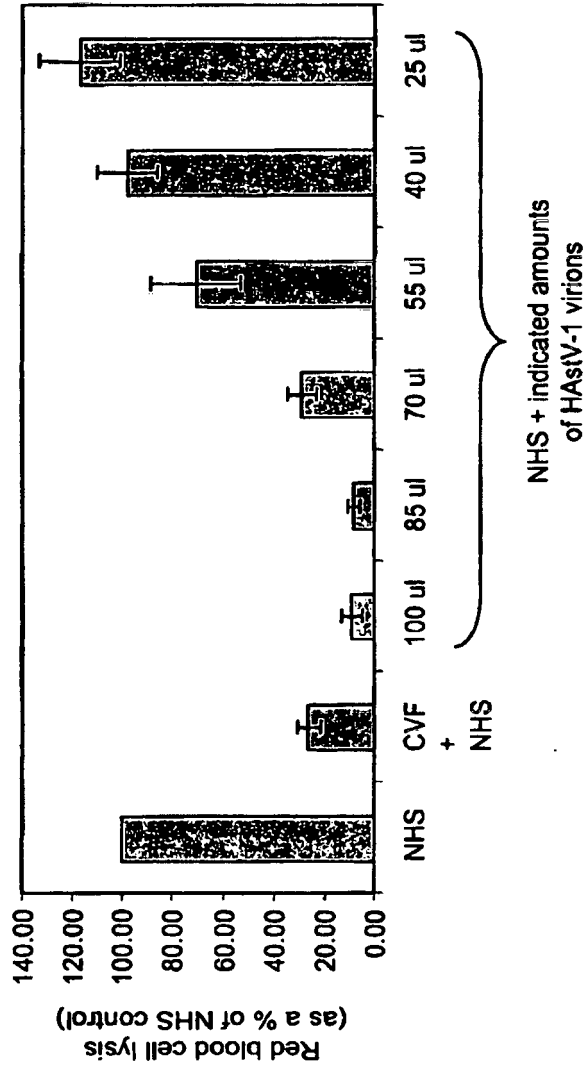


Figure 4

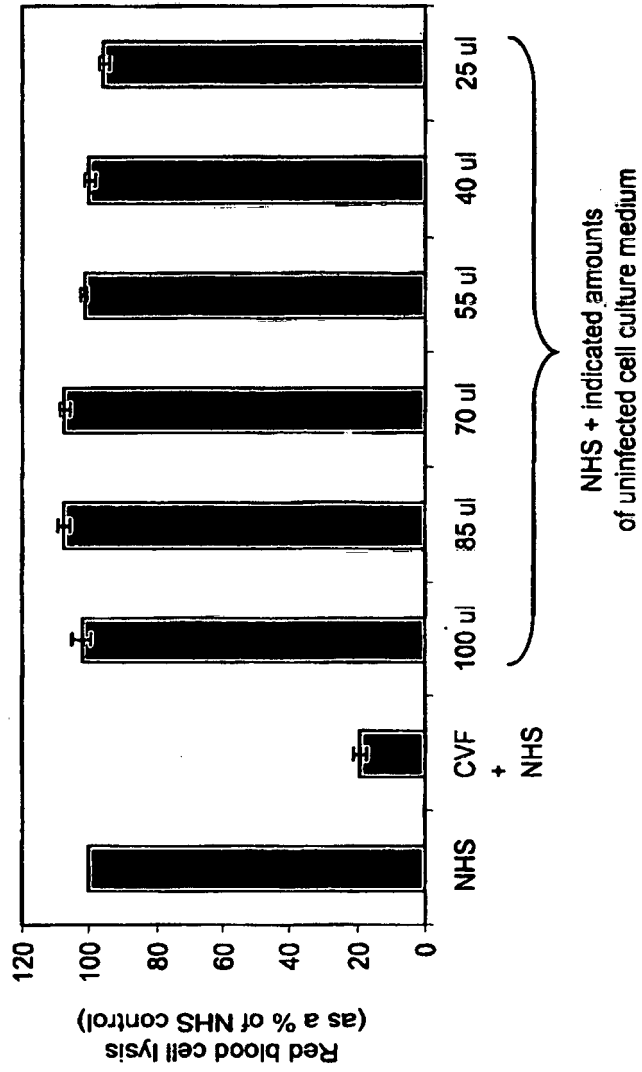


Figure 5

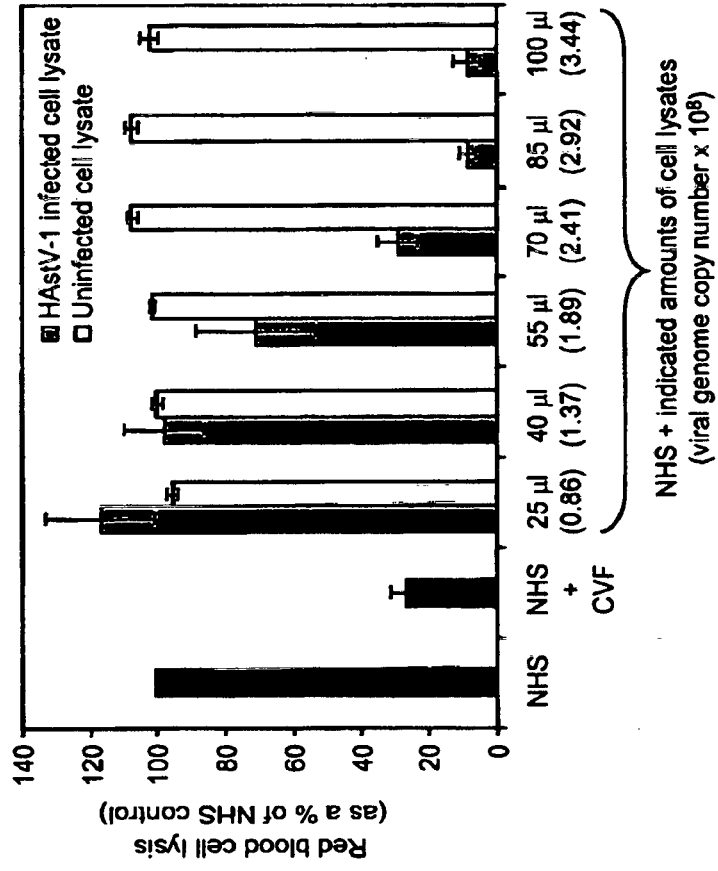


Figure 6

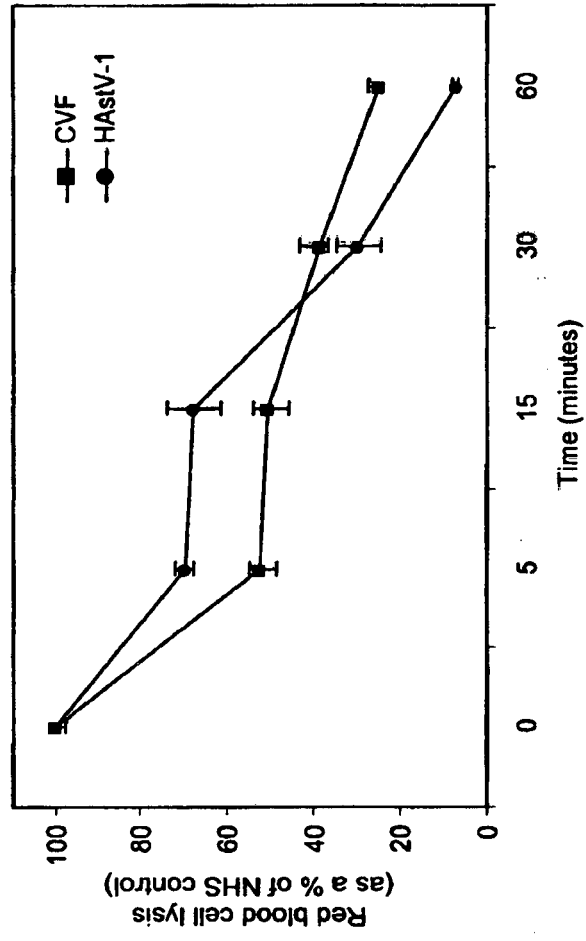


Figure 7

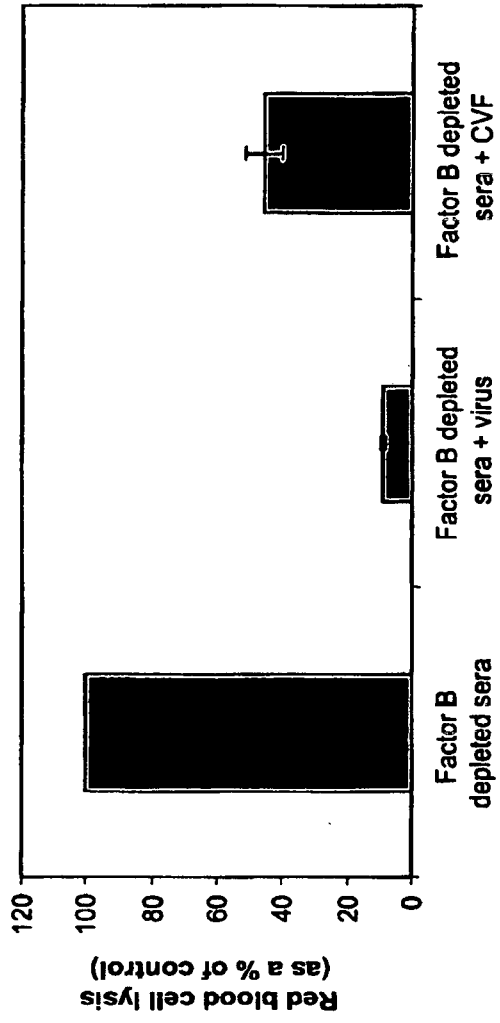


Figure 8

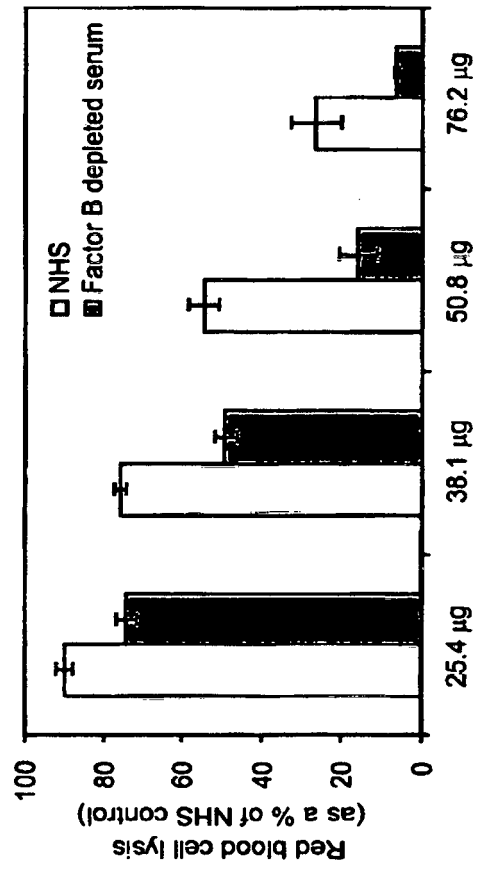


Figure 9

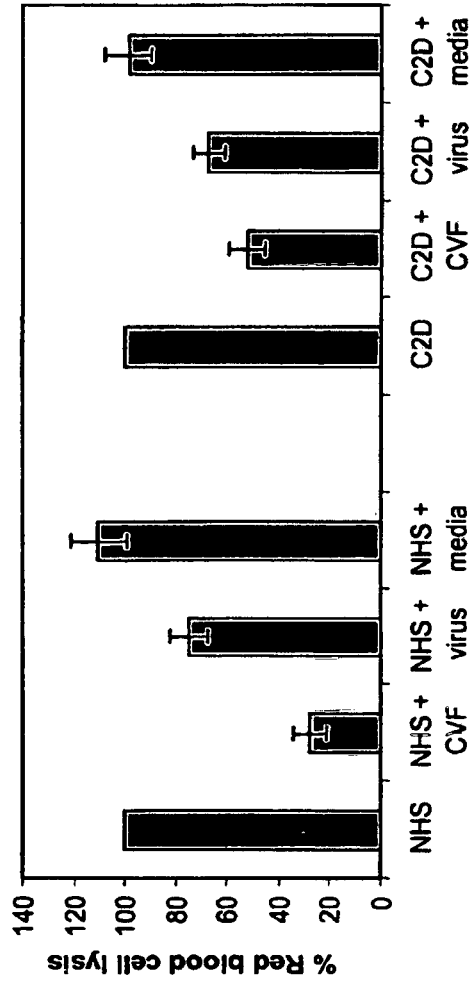


Figure 10

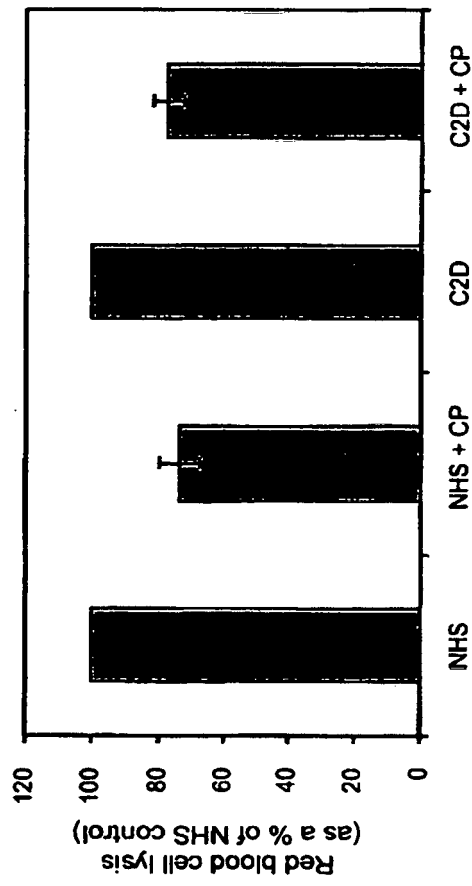


Figure 11

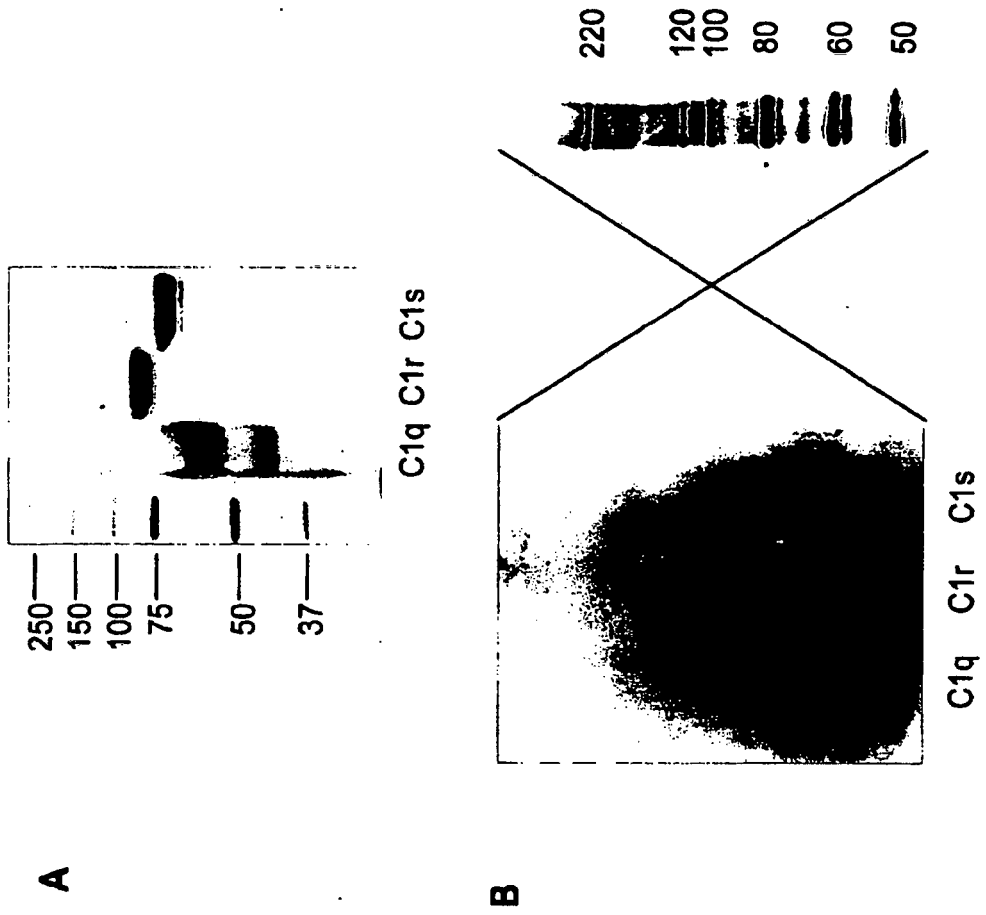
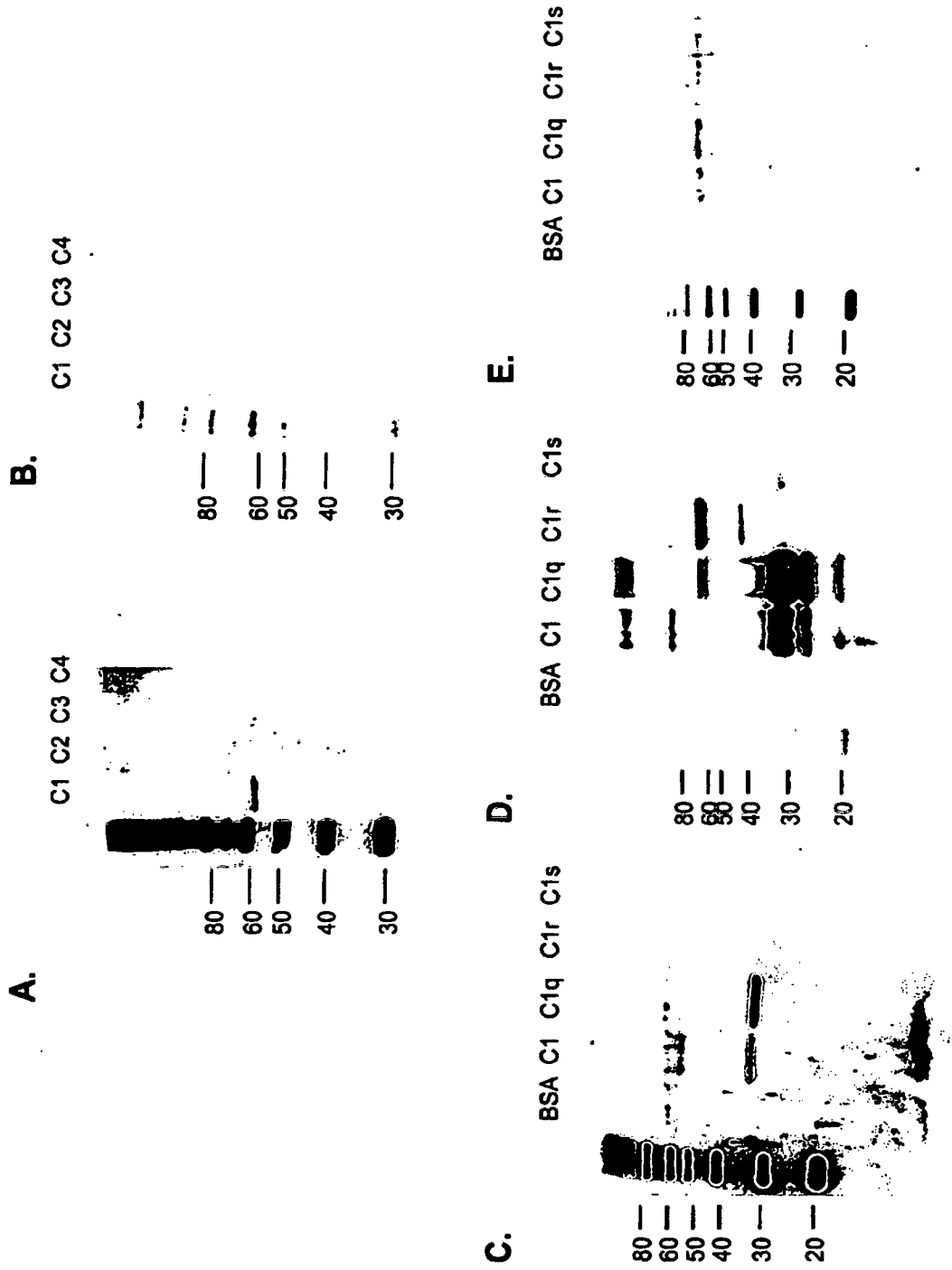


Figure 12



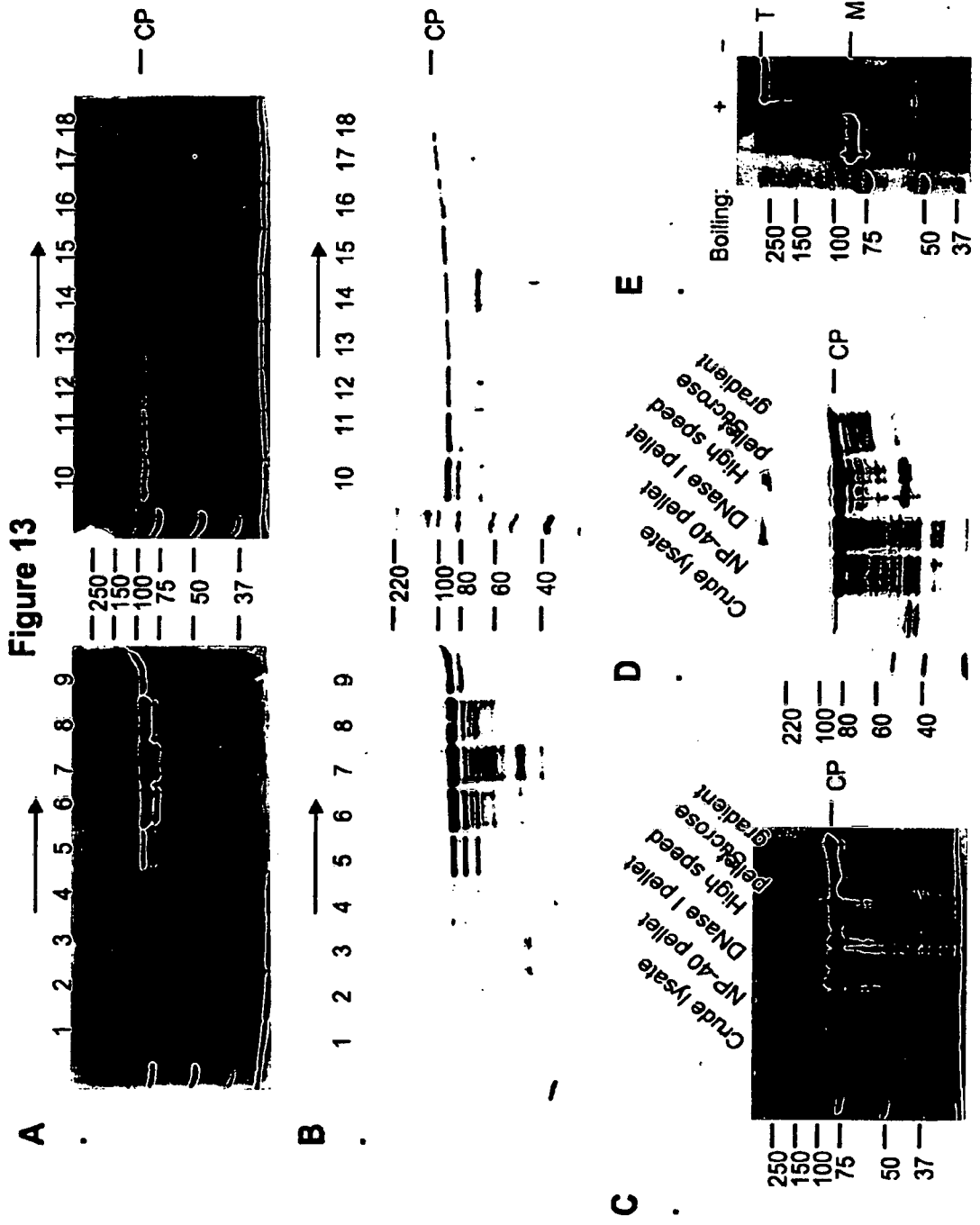


Figure 14

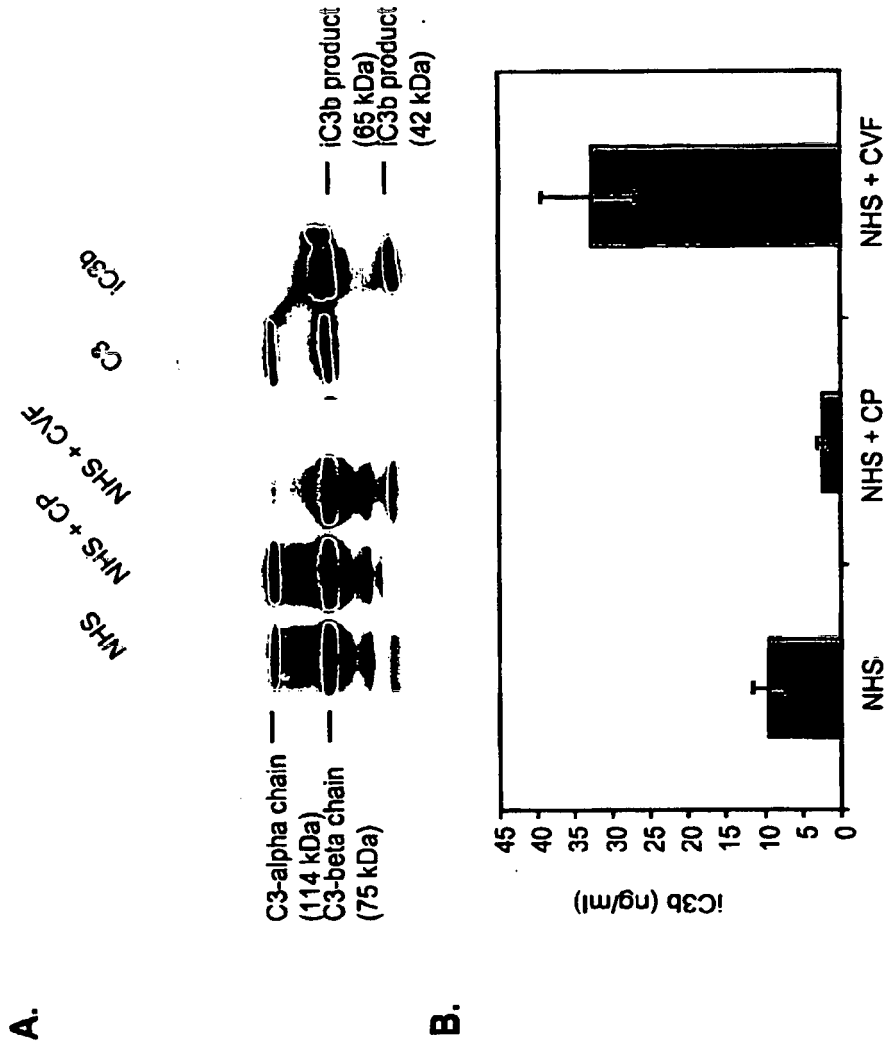


Figure 14

C.

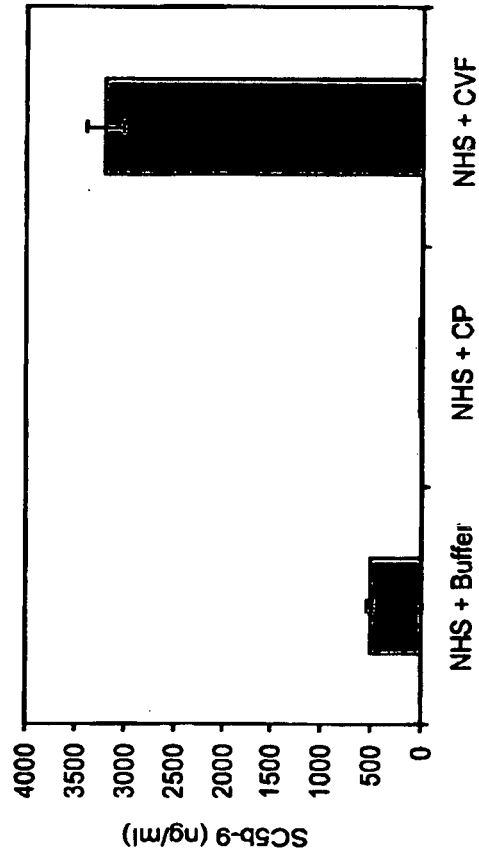
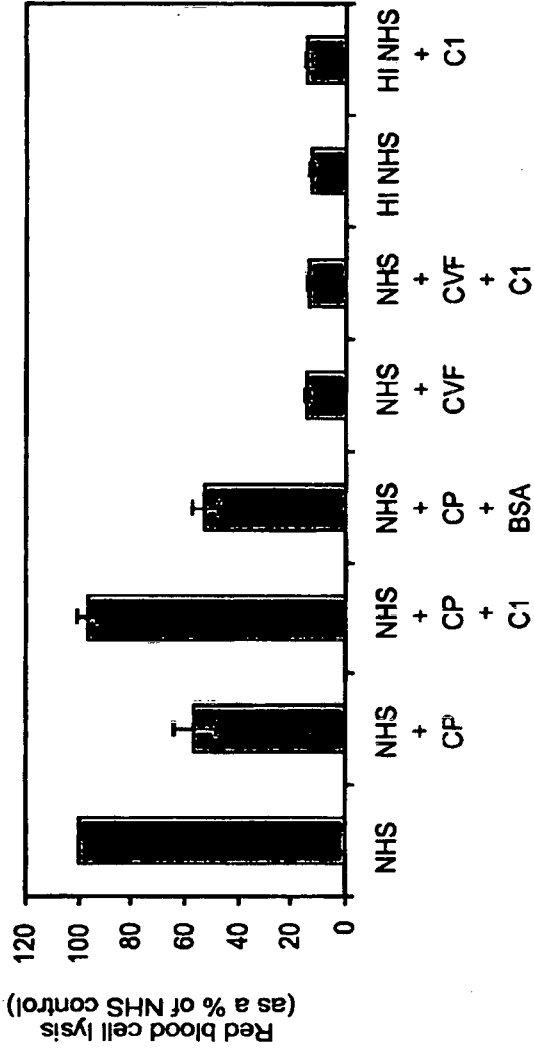
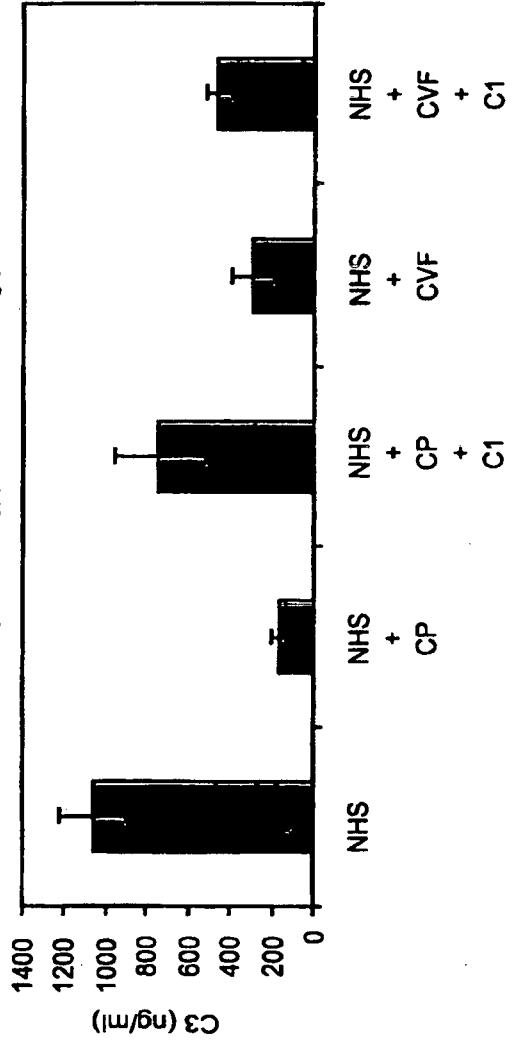


Figure 15

A.



B.



REFERENCES CITED IN THE DESCRIPTION

This list of references cited by the applicant is for the reader's convenience only. It does not form part of the European patent document. Even though great care has been taken in compiling the references, errors or omissions cannot be excluded and the EPO disclaims all liability in this regard.

Patent documents cited in the description

- WO 9944625 A [0047]

Non-patent literature cited in the description

- **B.P. MORGAN ; C.L. HARRIS ; B.P MORGAN ; C.L. HARRIS.** Complement therapeutics; history and current progress. *Molec. Immunol.*, 2003, vol. 40, 159-170 [0003]
- **YOUNGER, J.G. et al.** *J. Appl. Physiol.*, 2001, vol. 90, 2289-2295 [0004]
- **SAMBROOK et al.** *Molecular Cloning: A Laboratory Manual.* Cold Spring Harbor Laboratory Press, 2001 [0008]
- Identification of structural domains involved in astrovirus capsid biology. *Viral Immunology*, 2005, vol. 18 (1), 17-26 [0043]
- Remington's Pharmaceutical Sciences. 1995 [0064]
- **VAUGHN, J.L et al.** *In vitro*, 1977, vol. 13, 213-217 [0078]
- **SCHENEEMANN, A. et al.** *J. Virol.*, 1993, vol. 67, 2756-2763 [0078]
- New human tumor cell lines. **J. FOGH ; G. TREMPE.** Human tumor cell lines in vitro. Plenum, 1975, 115-159 [0079]
- **WILLCOCKS, MM. et al.** *Arch. Virol.*, 1990, vol. 113, 73-81 [0079]
- **U. GEIGENMÜLLER et al.** *J. Virol.*, 1997, vol. 71, 1713-1717 [0081]
- **DONG XF et al.** *J. Virol.*, 1998, vol. 72, 6024-6033 [0083]
- **D. M. BASS ; U. UPADHYAYULA.** *J. Virol.*, 1997, vol. 71, 8666-8671 [0083]
- **COOPER, N.R.** *Adv. Immunol.*, 1985, vol. 37, 151-216 6 [0095]
- **COOPER, N.R.** *Adv. Immunol.*, 1985, vol. 37, 151-216 [0095]

专利名称(译)	使用星状病毒外壳蛋白及其衍生物调节补体级联蛋白的方法		
公开(公告)号	EP2035585B1	公开(公告)日	2014-01-01
申请号	EP2007809212	申请日	2007-05-25
[标]申请(专利权)人(译)	东弗吉尼亚医学院		
申请(专利权)人(译)	东弗吉尼亚医学院		
当前申请(专利权)人(译)	东弗吉尼亚医学院		
[标]发明人	KRISHNA NEEL K CUNNION KENJI		
发明人	KRISHNA, NEEL, K. CUNNION, KENJI		
IPC分类号	C12Q1/70 C12Q1/10 C12Q1/02 G01N33/53 G01N33/555 C12P21/00 A01N63/00 A01N63/02 A01N63/04 A61K39/12 A61K39/125 A61K39/40 A61K39/00		
CPC分类号	A61K38/00 A61K39/00 A61K2039/5258 A61P11/00 A61P13/12 A61P17/02 A61P19/02 A61P19/04 A61P21/04 A61P25/00 A61P25/28 A61P29/00 C07K14/005 C12N2770/12022 C12N2770/12032 C12N2770/12033		
代理机构(译)	LEE , NICHOLAS JOHN		
优先权	60/813685 2006-06-15 US		
其他公开文献	EP2035585A2 EP2035585A4		
外部链接	Espacenet		

摘要(译)

本发明提供了通过耗尽补体蛋白的功能活性的血浆来调节补体级联反应，从而减少或消除补体介导的细胞裂解的方法。本发明提供了治疗使用来自Astroviridae病毒家族的外壳蛋白及其衍生物治疗补体介导的细胞裂解和炎症肽介质的方法。本发明提供了治疗补体介导的疾病的星状病毒科的外壳蛋白及其衍生物的治疗用途的方法。本文描述了方法，其中由经典或替代补体途径触发的补体级联防止由于在施用星状病毒外壳蛋白或衍生物后血清中一种或多种补体成分的抑制或消耗而影响细胞裂解和炎症。

