



(11) **EP 2 913 673 A1**

(12) **EUROPEAN PATENT APPLICATION**

(43) Date of publication:
02.09.2015 Bulletin 2015/36

(51) Int Cl.:
G01N 33/574 ^(2006.01) **C07K 14/81** ^(2006.01)
C07K 16/30 ^(2006.01) **C07K 16/40** ^(2006.01)
C07K 16/18 ^(2006.01) **A61K 39/00** ^(2006.01)

(21) Application number: **14179937.9**

(22) Date of filing: **29.08.2002**

(84) Designated Contracting States:
**AT BE BG CH CY CZ DE DK EE ES FI FR GB GR
IE IT LI LU MC NL PT SE SK TR**

(30) Priority: **29.08.2001 US 316537 P**

(62) Document number(s) of the earlier application(s) in
accordance with Art. 76 EPC:
02797648.9 / 1 421 388

(27) Previously filed application:
29.08.2002 PCT/EP02/09653

(71) Applicant: **PACIFIC NORTHWEST RESEARCH
INSTITUTE
Seattle, WA 98122 (US)**

(72) Inventors:
• **Schummer, Michel
Seattle, WA Washington 98112 (US)**

- **Hellstrom, Ingegerd
Seattle, WA Washington 98105 (US)**
- **Hellstrom, Karl, Erik
Seattle, WA Washington 98105 (US)**
- **Ledbetter, Jeffrey, A
Seattle, WA Washington 98177 (US)**
- **Hayden-Ledbetter, Martha
Shoreline, WA Washington 98177 (US)**

(74) Representative: **Armstrong, Iain Cheshire
HGF Limited
4th Floor, Merchant Exchange
17-19 Whitworth Street West
Manchester M1 5WG (GB)**

Remarks:

This application was filed on 05-08-2014 as a
divisional application to the application mentioned
under INID code 62.

(54) **Diagnosis of ovarian carcinoma**

(57) Provided are methods of screening for the presence of ovarian carcinoma in a subject. The methods involved contacting a blood, serum, or plasma sample from the subject with an antibody specific for the polypeptide of SEQ ID NO:11. This allows determination of the presence in the biological sample of a molecule that naturally occurs in soluble form, and has an antigenic determinant that is reactive with the antibody. This, in turn,

allows detection of the presence of a malignant condition in the subject. The antibody may be a monoclonal antibody, such as a murine monoclonal antibody. Detection of the binding of the antibody to the antigenic determinant may be effected via spectrophotometric detection of a product of an enzyme reaction, for example via enzyme linked immunosorbent assay (ELISA). The subject may have an early stage of ovarian cancer.

EP 2 913 673 A1

Description

TECHNICAL FIELD

5 **[0001]** The present invention relates generally to malignant conditions such as cancer, and in particular to methods and compositions for diagnosing certain carcinomas such as ovarian carcinoma.

BACKGROUND OF THE INVENTION

10 **[0002]** Cancer includes a broad range of diseases, affecting approximately one in four individuals worldwide. The severity of the adverse impact of cancer is profound, influencing medical policy and procedure as well as society generally. Because a hallmark of many types of cancer is rapid and unregulated proliferation of malignant cells, an overarching problem in improving approaches to cancer is the need for early detection and diagnosis. Numerous attempts have been made to develop accurate and reliable criteria for diagnosing the presence of a malignant condition. In particular, efforts
15 have been directed to the use of serologically defined antigenic markers known as tumor associated antigens, which are either uniquely expressed by cancer cells or are present at markedly higher levels in subjects having a malignant condition.

20 **[0003]** However, due to the high heterogeneity of tumor associated antigen expression, for example the extreme diversity of carcinoma antigens, there is a need for additional tumor markers that are useful in cancer diagnosis. Many monoclonal antibodies reactive with carcinoma associated antigens are known (see, e.g., Papsidero, 1985 Semin. Surg. Oncol. 1:171, Allum et al., 1986 Surg. Ann, 18:41). These and other described monoclonal antibodies bind to a variety of different carcinoma associated antigens including glycoproteins, glycolipids and mucins (see, e.g., Fink et al., 1984 Prog. Clin. Pathol. 9:121; U.S. Patent No. 4,737,579; U.S. Patent No. 4,753,894; U.S. Patent No. 4,579,827; U.S. Patent No. 4,713,352). Many such monoclonal antibodies recognize tumor associated antigens that exhibit restricted expression
25 on some but not other tumors originating in a given cell lineage or tissue type.

30 **[0004]** There are only relatively few examples of tumor associated antigens that appear to be useful for identifying a particular type of malignancy. Monoclonal antibody B72.3, for example, specifically binds to a high molecular mass ($>10^6$ Da) tumor-associated mucin antigen that is selectively expressed on a number of different carcinomas, including most if not all ovarian carcinomas and an overwhelming majority of non-small cell lung carcinomas, colon carcinomas and breast carcinomas (see, e.g., Johnston, 1987 Acta Cytol. 1:537; U.S. 4,612,282). Nevertheless, detection of cell-associated tumor markers such as the mucin antigen recognized by B72.3 following surgical resection of a tumor may be of limited usefulness for diagnostic screening, in which early detection of a malignant condition prior to accumulation of substantial tumor mass is preferred.

35 **[0005]** An alternative to the diagnosis of a particular type of cancer by screening surgically resected specimens for tumor associated antigens, where invasive surgery is usually indicated only after detection of an accumulated tumor mass, would be to provide compositions and methods for detecting such antigens in samples obtained from subjects by non-invasive or minimally invasive procedures. In ovarian and other carcinomas, for example, there are currently a number of soluble tumor associated antigens that are detectable in samples of readily obtained biological fluids such as serum or mucosal secretions. One such marker is CA125, a carcinoma associated antigen that is also shed into the
40 bloodstream, where it is detectable in serum (e.g., Bast et al., 1983 N. Eng. J. Med. 309:883; Lloyd et al., 1997 Int. J. Canc. 71:842). CA125 levels in serum and other biological fluids have been measured along with levels of other markers, for example, carcinoembryonic antigen (CEA), squamous cell carcinoma antigen (SCC), tissue polypeptide specific antigen (TPS), sialyl TN mucin (STN) and placental alkaline phosphatase (PLAP), in efforts to provide diagnostic and/or prognostic profiles of ovarian and other carcinomas (e.g., Sarandakou et al., 1997 Acta Oncol. 36:755; Sarandakou et al., 1998 Eur. J. Gynaecol. Oncol. 19:73; Meier et al., 1997 Anticanc. Res. 17(4B):2945; Kudoh et al., 1999 Gynecol. Obstet. Invest. 47:52; Ind et al., 1997 Br. J. Obstet. Gynaecol. 104:1024; Bell et al. 1998 Br. J. Obstet. Gynaecol. 105:1136; Cioffi et al., 1997 Tumori 83:594; Meier et al. 1997 Anticanc. Res. 17(4B):2949; Meier et al., 1997 Anticanc. Res. 17(4B):3019).

45 **[0006]** Elevated levels of serum CA125 alone or in combination with other known indicators, however, do not provide a definitive diagnosis of malignancy, or of a particular malignancy such as ovarian carcinoma. For example, elevated CA125, CEA and SCC in vaginal fluid and serum correlate most strongly with inflammation in benign gynecological diseases, relative to cervical cancer and genital tract cancers (e.g., Moore et al., 1998 Infect. Dis. Obstet. Gynecol. 6:182; Sarandakou et al., 1997 Acta Oncol. 36:755). As another example, elevated serum CA125 may also accompany neuroblastoma (e.g., Hirokawa et al., 1998 Surg. Today 28:349), while elevated CEA and SCC, among others, may
50 accompany colorectal cancer (Gebauer et al., 1997 Anticanc. Res. 17(4B):2939). Another marker, the differentiation antigen mesothelin, is expressed on the surfaces of normal mesothelial cells and also on certain cancer cells, including epithelial ovarian tumors and mesotheliomas. Compositions and methods pertaining to mesothelin (Chang et al., 1992 Canc. Res. 52:181; Chang et al., 1992 Int. J. Canc. 50:373; Chang et al., 1992 Int. J. Canc. 51:548; Chang et al., 1996

Proc. Nat. Acad. Sci. USA 93:136; Chowdhury et al., 1998 Proc. Nat. Acad. Sci. USA 95:669; Yamaguchi et al., 1994 J. Biol. Chem. 269:805; Kojima et al., 1995 J. Biol. Chem. 270:21984) and structurally related mesothelin related antigen (MRA; see, e.g., Scholler et al., 1999 Proc. Nat. Acad. Sci. USA 96:11531) are known in the art, including uses in cancer detection and therapies as described in WO 00/50900 and in U.S. Application No. 09/513,597. Thus the compelling need for additional markers to be used, including markers useful in multi-factor diagnostic screening, is apparent. (See, e.g., Sarandakou et al., 1998; Kudoh et al., 1999; Ind et al., 1997.)

[0007] As described in greater detail below, such additional markers might be usefully provided from within the "four-disulfide core" family of proteins, which comprises a heterogeneous group of small acid- and heat-stable molecules of divergent function and which includes human epididymal four-disulfide core protein, or "HE4" (Kirchhoff et al., 1991 Biol. Reprod. 45:350-357; Wang et al., 1999 Gene 229:101; Schummer et al., 1999 Gene 238:375). The conserved spacing of eight core cysteine residues in the amino acid sequences of four-disulfide core family member polypeptides is thought to direct the folding of these molecules into a compact and stable structure. Many of the members of the four-disulfide core family are protease inhibitors; however, for some family members, including HE4, no function has yet been definitively identified. Other members of the four-disulfide core family of proteins include Wp-protein, SLP-1, and ps20, and additional members of the four-disulfide core family of proteins have been isolated from several species. These proteins share several properties, including their small size and their heat- and acid-stable structure, which is stabilized by the four-disulfide core. These proteins are made by secretory cells, and are found in mucous secretions such as seminal plasma, milk, parotid, and cervical secretions.

[0008] The prototype molecule of the four-disulfide core family, Wp-protein, is also known as the whey phosphoprotein, and has been cloned (Dandekar et al., 1982 Proc. Natl. Acad. Sci. USA 79: 3987-3991). Whey phosphoprotein is expressed in milk at approximately 1-2 mg/ml, but is not expressed by breast carcinomas, where the gene is hypermethylated. No inhibitory activity towards proteases has been found for whey phosphoprotein. However, overexpression of the gene in transgenic animals impairs development of mammary alveolar cells (Burdon et al, 1991 Mechanisms Dev. 36: 67-74), suggesting an important role for this protein during lactation. The secretory leukocyte protease inhibitor (SLP-1), another four-disulfide core family protein, was cloned from human cervix uteri, but is also present in other mucus secretions including seminal plasma and parotid secretions (Heinzel et al, 1986 Eur. J. Biochem. 160: 61-67). SLP-1 is a two domain protein of 12 kDa that is a potent inhibitor of trypsin, chymotrypsin, elastase, and cathepsin G. The crystal structure of SLP-1 complexed with chymotrypsin has been published (Grutter et al, 1988 EMBO J. 7: 345-351). These data showed that SLP-1 domains can work independently and simultaneously to inhibit different proteases, and identified a small (8 amino acids) active site in domain two that binds to chymotrypsin.

[0009] Elafin is a single domain protein member of the four-disulfide core family that was isolated from human psoriatic skin to determine the amino acid sequence of this polypeptide (Wiedow et al, 1990 J. Biol. Chem. 265: 14791-14795). Elafin is a potent inhibitor of elastase, but does not exhibit apparent inhibitory activity toward other proteases such as trypsin, chymotrypsin, cathepsin G or plasmin. The amino acid sequence of elafin shows 38% homology with the C-terminal region (domain 1) of SLP-1. The gene encoding the ps20 protein was recently isolated from smooth muscle, and the ps20 protein was expressed by transfection of the gene into mammalian cells (Larsen et al, 1998 J. Biol. Chem. 273: 4574-4584). ps20 was found to inhibit growth of carcinoma cells, and ps20 has been referred to as a growth inhibitor; however, no direct functional activity such as inhibition of proteases has been described so far for this protein.

[0010] As noted above, no protease inhibitory activity has been identified for HE4, which was initially identified in epididymal epithelial cells, although other small acid and heat stable proteinase inhibitors have been characterized from seminal plasma, and are thought to play a role in fertility by binding to spermatozoa and regulating the interaction of spermatozoa with the extracellular matrices of the egg (Fitz et al., in Proteases and Biological Controls, Reich, E., Rifkin, D., Shaw, E. (eds.), 1975 Cold Spring Harbor Laboratory Press, Cold Spring Harbor, NY, pp. 737-766; Saling, 1989 Oxf. Rev. Reprod. Biol. 11: 339-388). HE4 cDNA was first isolated from human epididymis (Kirchhoff et al., 1991 Biol. Reprod. 45:350-357), and HE4 cDNA was later detected with high frequency in cDNA libraries constructed from ovarian carcinomas (Wang et al., 1999 Gene 229:101; Schummer et al., 1999 Gene 238:375).

[0011] For reasons given above, clearly there is a need for improved diagnostic markers and therapeutic targets for the detection and treatment of malignant conditions, such as carcinomas. The compositions and methods of the present invention overcome these limitations of the prior art by providing a method of screening for the presence of a malignant condition using antibodies specific for HE4 and/or HE4-related antigens to detect polypeptides that naturally occur in soluble form and/or on cell surfaces, and offer other related advantages.

SUMMARY OF THE INVENTION

[0012] The present invention is directed to compositions and methods useful in screening for the presence of a malignant condition in a subject. In particular, the invention relates to the unexpected finding that soluble and cell surface forms of HE4 polypeptides referred to herein as HE4a, or HE4a molecules naturally occurring in soluble form and having an antigenic determinant reactive with at least one antibody that is specific for an HE4a polypeptide, can be detected

in a biological sample from a subject.

[0013] It is one aspect of the invention to provide a method of screening for the presence of a malignant condition in a subject comprising contacting a biological sample from a subject with at least one antibody specific for a HE4a antigen polypeptide to determine the presence in the biological sample of a molecule naturally occurring in soluble form in the sample, or occurring as a cell surface molecule in certain embodiments wherein the sample comprises at least one cell from the subject, the molecule having an antigenic determinant that is reactive with the at least one antibody, under conditions and for a time sufficient to detect binding of the antibody to the antigenic determinant, and therefrom detecting the presence of a malignant condition. In some embodiments the biological sample is blood, serum, serosal fluid, plasma, lymph, urine, cerebrospinal fluid, saliva, a mucosal secretion, a vaginal secretion, ascites fluid, pleural fluid, pericardial fluid, peritoneal fluid, abdominal fluid, culture medium, conditioned culture medium or lavage fluid.

[0014] In certain other embodiments, the HE4a antigen polypeptide comprises a polypeptide having the amino acid sequence set forth in any one of SEQ ID NOS:5, 7, 9 or 11, or a fragment or derivative thereof. In another embodiment the HE4a antigen polypeptide variant is a splice variant. In certain embodiments of the invention, the antibody comprises a polyclonal antibody, and in other embodiments the antibody comprises an affinity purified antibody. In particularly preferred embodiments the antibody comprises a monoclonal antibody. In another embodiment the antibody comprises a recombinant antibody and in another embodiment the antibody comprises a chimeric antibody. In another embodiment, the antibody comprises a humanized antibody. In another embodiment, the antibody comprises a single chain antibody.

[0015] In some embodiments of the invention, detection of binding of the antibody to an antigenic determinant comprises detection of a radionuclide. In other embodiments, detection of binding of the antibody to an antigenic determinant comprises detection of a fluorophore. In another embodiment, detection of binding of the antibody to an antigenic determinant comprises detection of a binding event between an avidin molecule and a biotin molecule and in another embodiment detection of binding of the antibody to an antigenic determinant comprises detection of a binding event between a streptavidin molecule and a biotin molecule. In certain embodiments detection of binding of the antibody to an antigenic determinant comprises spectrophotometric detection of a product of an enzyme reaction. In some embodiments of the invention, the at least one antibody is detectably labeled, while in certain other embodiments the at least one antibody is not detectably labeled and detection of binding of the antibody to an antigenic determinant is indirect.

[0016] According to certain embodiments of the invention, the malignant condition may be adenocarcinoma, mesothelioma, ovarian carcinoma, pancreatic carcinoma or non-small cell lung carcinoma.

[0017] It is another aspect of the invention to provide a method of screening for the presence of a malignant condition in a subject comprising contacting a biological sample from a subject with at least one antibody to determine the presence in the biological sample of a molecule selected from the group consisting of (i) a molecule naturally occurring in soluble form in the sample, and (ii) a cell surface molecule wherein the sample comprises a cell from the subject, the molecule having an antigenic determinant that is reactive with the at least one antibody, the antigen combining site of which competitively inhibits the immunospecific binding of a monoclonal antibody that is 2H5, 3D8 or 4H4, under conditions and for a time sufficient to detect binding of the antibody to the antigenic determinant, and therefrom detecting the presence of a malignant condition.

[0018] Another aspect of the invention provides a method of screening for the presence of a malignant condition in a subject comprising contacting a biological sample from a subject with at least one antibody to determine the presence in the biological sample of a molecule selected from the group consisting of (i) a molecule naturally occurring in soluble form in the sample, and (ii) a cell surface molecule wherein the sample comprises a cell from the subject, the molecule having an antigenic determinant that is reactive with the antibody, the antigen combining site of which competitively inhibits the immunospecific binding of monoclonal antibody 3D8, under conditions and for a time sufficient to detect binding of the antibody to the antigenic determinant, and therefrom detecting the presence of a malignant condition.

[0019] Still another aspect of the invention provides a method of screening for the presence of a malignant condition in a subject comprising contacting a biological sample from a subject with at least one antibody specific for a HE4a antigen polypeptide to determine the presence in the biological sample of a molecule selected from the group consisting of (i) a molecule naturally occurring in soluble form in the sample, and (ii) a cell surface molecule wherein the sample comprises a cell from the subject, the molecule having an antigenic determinant that is reactive with the antibody, under conditions and for a time sufficient to detect binding of the at least one antibody to the antigenic determinant, wherein the at least one antibody immunospecifically binds to HE4a antigen, and therefrom detecting the presence of a malignant condition. In certain embodiments, the HE4a antigen is also immunospecifically reactive with monoclonal antibody 3D8, 2H5 or 4H4.

[0020] Turning to another aspect, the invention provides a method of screening for the presence of a malignant condition in a subject comprising contacting a biological sample from a subject with at least one antibody specific for a HE4a antigen polypeptide to determine the presence in the biological sample of a molecule selected from the group consisting of (i) a molecule naturally occurring in soluble form in the sample, and (ii) a cell surface molecule wherein the sample comprises a cell from the subject, the molecule having an antigenic determinant that is reactive with the at least one antibody, the antigen combining site of which competitively inhibits the immunospecific binding of a monoclonal

antibody that is 2H5 or 4H4, under conditions and for a time sufficient to detect binding of the antibody to the antigenic determinant, wherein the at least one antibody immunospecifically binds to HE4a antigen, and therefrom detecting the presence of a malignant condition. In certain embodiments the mesothelin related antigen is also immunospecifically reactive with monoclonal antibody 3D8.

[0021] Turning to another aspect, the invention provides a method of screening for the presence of a malignant condition in a subject comprising contacting a biological sample from a subject with at least one immobilized first antibody specific for a HE4a antigen polypeptide to determine the presence in the biological sample of a molecule naturally occurring in soluble form in the sample, under conditions and for a time sufficient to specifically bind the at least one immobilized first antibody to the HE4a antigen polypeptide and thereby form an immune complex; removing constituents of the sample that do not specifically bind to the at least one immobilized first antibody; and contacting the immune complex with at least one second antibody specific for a HE4a antigen polypeptide, wherein the antigen combining site of the at least one second antibody does not competitively inhibit the antigen combining site of the at least one immobilized first antibody, under conditions and for a time sufficient to detect specific binding of the at least one second antibody to the HE4a antigen polypeptide, and therefrom detecting the presence of a malignant condition.

[0022] In yet another aspect the invention provides a method of screening for the presence of a malignant condition in a subject comprising contacting a biological sample from a subject with at least one immobilized first antibody specific for a HE4a antigen polypeptide to determine the presence in the biological sample of a molecule naturally occurring in soluble form in the sample, wherein the antigen combining site of the at least one first antibody competitively inhibits the immunospecific binding of monoclonal antibody 3D8 under conditions and for a time sufficient to specifically bind the at least one immobilized first antibody to the HE4a antigen polypeptide and thereby form an immune complex; removing constituents of the sample that do not specifically bind to the at least one immobilized first antibody; and contacting the immune complex with at least one second antibody specific for a HE4a antigen polypeptide, wherein the antigen combining site of the at least one second antibody does not competitively inhibit the immunospecific binding of monoclonal antibody 2H5, under conditions and for a time sufficient to detect specific binding of the at least one second antibody to the HE4a antigen polypeptide, and therefrom detecting the presence of a malignant condition.

[0023] In another aspect, the invention provides a method of screening for the presence of a malignant condition in a subject comprising contacting a biological sample from a subject with at least one immobilized first antibody specific for a HE4a antigen polypeptide to determine the presence in the biological sample of a molecule naturally occurring in soluble form in the sample, wherein the antigen combining site of the at least one first antibody competitively inhibits the immunospecific binding of monoclonal antibody 3D8 under conditions and for a time sufficient to specifically bind the at least one immobilized first antibody to the HE4a antigen polypeptide and thereby form an immune complex; removing constituents of the sample that do not specifically bind to the at least one immobilized first antibody; and contacting the immune complex with at least one second antibody specific for a HE4a antigen polypeptide, wherein the antigen combining site of the at least one second antibody does not competitively inhibit the immunospecific binding of monoclonal antibody 4H4, under conditions and for a time sufficient to detect specific binding of the at least one second antibody to the mesothelin related antigen polypeptide, and therefrom detecting the presence of a malignant condition.

[0024] In certain embodiments the subject invention method further comprises determining the presence in the sample of at least one soluble marker of a malignant condition, wherein the marker is a mesothelin related antigen, carcinoembryonic antigen, CA125, sialyl TN, squamous cell carcinoma antigen, tissue polypeptide antigen, or placental alkaline phosphatase.

[0025] It is another aspect of the invention to provide a method of screening for the presence of a malignant condition in a subject comprising contacting each of (i) a first biological sample from a first subject suspected of having a malignant condition, and (ii) a second biological sample from a second subject known to be free of a malignant condition, with at least one antibody specific for a HE4a antigen polypeptide to determine the presence in each of the first and second biological samples of a molecule selected from the group consisting of (i) a molecule naturally occurring in soluble form in the sample, and (ii) a cell surface molecule wherein the first and second biological samples each comprise, respectively, a cell from the first and second subjects, the molecule having an antigenic determinant that is reactive with the at least one antibody, under conditions and for a time sufficient to detect binding of the antibody to the antigenic determinant, and comparing a level of detectable binding of the antibody to the antigenic determinant in the first biological sample to a level of detectable binding of the antibody to the antigenic determinant in the second biological sample, and therefrom detecting the presence of a malignant condition.

[0026] In another aspect, the invention provides a method of screening for the presence of a malignant condition in a subject comprising detecting in a biological sample from the subject the presence of an antibody that immunospecifically binds to a HE4a antigen polypeptide. In certain embodiments the mesothelin related antigen polypeptide comprises a polypeptide having the amino acid sequence set forth in any one of SEQ ID NOS:5, 7, 11 or 13.

[0027] Turning to another aspect, the invention provides an antibody specific for a HE4a antigen polypeptide, comprising a monoclonal immunoglobulin variable region that specifically binds to a HE4a antigen polypeptide comprising the amino acid sequence set forth in any one of SEQ ID NOS:5, 7, 11 or 13. In certain embodiments the antibody is a

fusion protein, while in certain other embodiments the antibody is a single chain antibody. In certain other embodiments, the HE4a antigen polypeptide further comprises a glycosylated polypeptide. In another embodiment, the antibody specifically binds to a HE4a antigen polypeptide sequence set forth in SEQ ID NO:11 but does not specifically bind to a polypeptide sequence set forth in SEQ ID NO:9, or the antibody specifically binds to both the HE4a antigen polypeptide sequence set forth in SEQ ID NO:11 and to the polypeptide sequence set forth in SEQ ID NO:9. In certain embodiments the antibody is monoclonal antibody 2H5, 3D8 or 4H4.

[0028] In still another aspect, the invention provides a method of screening for the presence of a malignant condition in a subject comprising contacting a biological sample from a subject with a detectably labeled HE4a polypeptide, under conditions and for a time sufficient to detect binding to the HE4a polypeptide of an antibody naturally occurring in soluble form in the sample, and therefrom detecting the presence of a malignant condition.

[0029] Turning to another aspect, the invention provides an isolated nucleic acid molecule that is a nucleic acid molecule encoding a HE4a antigen polypeptide, the polypeptide comprising an amino acid sequence set forth in SEQ ID NOS:5, 7, 11 or 13; or that is a nucleic acid molecule that encodes a HE4a antigen polypeptide or fusion protein or that is capable of hybridizing to such a nucleic acid molecule encoding a HE4a antigen under moderately stringent conditions, wherein the isolated nucleic acid molecule is not a nucleic acid molecule consisting of the nucleotide sequence set forth in SEQ ID NO:9. In certain embodiments the invention provides an antisense oligonucleotide comprising at least 15 consecutive nucleotides complementary to the nucleic acid molecule encoding a HE4a antigen polypeptide.

[0030] In other embodiments, the present invention provides a fusion protein comprising a polypeptide sequence fused to a HE4a antigen polypeptide. In certain further embodiments, the fusion domain is an immunoglobulin or a variant or fragment thereof. In certain further embodiments, the polypeptide sequence fused to a HE4a antigen polypeptide is cleavable by a protease. In another embodiment, the polypeptide sequence is an affinity tag polypeptide having affinity for a ligand.

[0031] In other embodiments, the invention provides a recombinant expression construct comprising at least one promoter operably linked to a nucleic acid molecule encoding a HE4a antigen polypeptide as described above. In certain embodiments the promoter is a regulated promoter and in certain other embodiments the HE4a antigen polypeptide is expressed as a fusion protein with a polypeptide product of a second nucleic acid sequence. In a further embodiment the polypeptide product of the second nucleic acid sequence is an immunoglobulin constant region. In another embodiment the expression construct is a recombinant viral expression construct. According to other embodiments, the invention provides a host cell comprising a recombinant expression construct as provided herein. In one embodiment the host cell is a prokaryotic cell and in another embodiment the host cell is a eukaryotic cell.

[0032] In another aspect, the invention provides a method of producing a recombinant HE4a antigen polypeptide by culturing a host cell comprising a recombinant expression construct comprising at least one promoter operably linked to a nucleic acid molecule encoding a HE4a antigen polypeptide as provided herein. In certain embodiments the promoter is a regulated promoter. In another embodiment the invention provides a method of producing a recombinant HE4a antigen polypeptide, by culturing a host cell infected with the recombinant viral expression construct as provided herein for expression of recombinant HE4a antigen polypeptide.

[0033] The present invention also provides, in another embodiment, a method for detecting HE4a expression in a sample by contacting an antisense oligonucleotide as described above with a sample comprising a nucleic acid sequence encoding a HE4a polypeptide having the amino acid sequence set forth in SEQ ID NO:11, or a fragment or variant thereof; and detecting in the sample an amount of HE4a polypeptide-encoding nucleic acid that hybridizes to the antisense oligonucleotide, and therefrom detecting HE4a expression in the sample. In another embodiment the amount of HE4a polypeptide-encoding nucleic acid that hybridizes to the antisense oligonucleotide is determined using polymerase chain reaction. In another embodiment the amount of HE4a polypeptide-encoding nucleic acid that hybridizes to the antisense oligonucleotide is determined using a hybridization assay. In another embodiment the sample comprises an RNA or cDNA preparation.

[0034] According to certain other embodiments of the present invention, there is provided a method for treating a malignant condition, comprising administering to a patient in need thereof a composition comprising an antibody specific for a HE4a antigen polypeptide, the antibody comprising a monoclonal immunoglobulin variable region that specifically binds to a HE4a antigen polypeptide having an amino acid sequence set forth in SEQ ID NO: 11. In another embodiment the invention provides a method for treating a malignant condition, comprising administering to a patient in need thereof a composition comprising a HE4a polypeptide having an amino acid sequence set forth in SEQ ID NO:11, or a fragment thereof. In certain further embodiments the composition induces production in the patient of an antibody that is capable of specifically binding to a HE4a polypeptide having an amino acid sequence set forth in SEQ ID NO:11, or a fragment thereof, and in certain other further embodiments the composition induces in the patient a T lymphocyte that is capable of specifically recognizing a HE4a polypeptide having an amino acid sequence set forth in SEQ ID NO: 11, or a fragment thereof. According to certain other embodiments, compositions and methods are provided that alter (e.g., increase or decrease in a statistically significant manner relative to an appropriate control) conception, contraception and/or fertility, comprising administering a HE4a polypeptide or fragment or variant thereof (including a fusion protein), or administering

a composition comprising an immunoglobulin variable region that specifically binds to a HE4a polypeptide or fragment or variant thereof.

[0035] These and other aspects of the present invention will become evident upon reference to the following detailed description and attached drawings. In addition, various references are set forth herein which describe in more detail certain aspects of this invention, and are therefore incorporated by reference in their entireties.

BRIEF DESCRIPTION OF THE DRAWINGS

[0036]

Figure 1 shows real-time PCR detection of HE4a encoding cDNA in a panel of human samples.

Figure 2 shows western blot analysis of expressed HE4a fusion proteins.

Figure 3 depicts detection of antibodies reactive with HE4a-mIg fusion protein in sera from two immune mice (1605 and 1734) by ELISA.

Figure 4 depicts representative results of screening hybridoma supernatants and detection of HE4a-specific hybridoma antibodies using ELISA.

Figure 5 shows detection of HE4a-hIgG fusion protein by double-determinant sandwich ELISA using immobilized HE4a-specific monoclonal antibody 3D8 as the capture reagent and biotinylated HE4a-specific monoclonal antibody 2H5 as the detection reagent. Also shown is detection of soluble HE4a in supernatant fluid from ovarian carcinoma cell line 4007 (Δ).

Figure 6 shows detection by sandwich ELISA of HE4a antigen in serially diluted ascites fluid from an ovarian carcinoma patient.

DETAILED DESCRIPTION OF THE INVENTION

[0037] The present invention pertains in part to the discovery of HE4a, a new member of the "four-disulfide core" family of proteins as described herein, which exhibits a sequence that is highly similar to, but distinct from, HE4 (Kirchhoff et al., 1991 Biol. Reproduct. 45:350-357). As described herein, HE4a (and not HE4) is most unexpectedly shown to be overexpressed in certain malignancies, for example in ovarian carcinomas, as well as in a number of other human tissues, in marked contrast to the restricted expression pattern of HE4 in human epididymal epithelial cells (Kirchhoff et al., 1991). The present invention also pertains in part to surprising advantages that derive from compositions and methods described herein, which provide detection of cell surface and/or soluble forms of certain gene products referred to herein as HE4a polypeptides that occur naturally in subjects, including elevated levels of such polypeptides in subjects having certain carcinomas (e.g., ovarian carcinomas). The invention therefore provides useful compositions and methods for the detection and diagnosis of a malignant condition in a subject by specific detection of such cell surface and/or soluble HE4a polypeptides.

[0038] As described in detail below, certain embodiments of the invention relate to HE4a polypeptides, which include soluble and cell surface forms of HE4a and HE4 polypeptides, including HE4 and HE4a polypeptide antigens and fusion proteins. In certain other embodiments, the invention relates to fragments, derivatives and/or analogs of HE4a polypeptides. Briefly, according to certain embodiments of the present invention, there is provided a method of screening for the presence of a malignant condition in a subject by contacting a biological sample from the subject with an antibody specific for a human HE4a polypeptide. The complete amino acid and nucleic acid coding sequences of HE4a polypeptides and HE4a-Ig fusion proteins are disclosed herein, including the surprising observation that a nucleic acid molecule derived from ovarian carcinoma cDNA encodes an expressed product having a sequence distinct from HE4 as described by Kirchhoff et al. (1991), and the further unexpected observation that whereas HE4 expression as disclosed by Kirchhoff et al. is limited to epididymal epithelial cells, HE4a expression according to the present disclosure is readily detectable in ovarian carcinomas.

[0039] As described herein, monoclonal antibodies that specifically recognize HE4a polypeptides are provided, such that those having ordinary skill in the art may routinely and without undue experimentation immunize a host and screen for HE4a polypeptide-specific antibody production using the present teachings along with methodologies well known in the art. For example, construction of recombinant HE4a expression vectors and host cells, including recombinant HE4a fusion proteins, is described herein and provides HE4a-specific antibodies.

[0040] From the physicochemical and immunochemical properties of HE4a polypeptides disclosed herein, and using the presently disclosed nucleic acid sequences encoding HE4a, a person having ordinary skill in the art may also prepare a recombinant HE4a polypeptide that can be used to produce and characterize specific antibodies according to well known methodologies. HE4a polypeptides can be expressed in mammalian cells, yeast, bacteria, or other cells under the control of appropriate promoters. Cell-free translation systems can also be employed to produce such proteins using RNAs derived from the HE4a polypeptide DNA coding regions disclosed herein. Appropriate cloning and expression

vectors for use with prokaryotic and eukaryotic hosts are described by Sambrook et al., *Molecular Cloning: A Laboratory Manual*, Second Edition, Cold Spring Harbor, NY, (1989). In preferred embodiments of the invention, HE4a polypeptides are expressed in mammalian cells.

[0041] The nucleic acids of the present invention may be in the form of RNA or in the form of DNA, which DNA includes cDNA, genomic DNA, and synthetic DNA. The DNA may be double-stranded or single-stranded, and if single stranded may be the coding strand or non-coding (anti-sense) strand. A coding sequence which encodes an HE4a polypeptide for use according to the invention may be identical to the coding sequences provided in SEQ ID NOS:3, 4, 6, 10 or 12 or may be a different coding sequence, which, as a result of the redundancy or degeneracy of the genetic code, encodes the same HE4a polypeptide as, for example, the cDNAs of SEQ ID NOS:10 and 12. The present invention therefore provides an isolated nucleic acid molecule that encodes a HE4a antigen polypeptide having the amino acid sequence of SEQ ID NOS:5, 7, 11 or 13, or a nucleic acid molecule capable of hybridizing to such an HE4a polypeptide-encoding nucleic acid, or a nucleic acid molecule having a sequence complementary thereto.

[0042] Variants preferably exhibit at least about 70% identity, more preferably at least about 80%-85% identity and most preferably at least about 90%, 92%, 94%, 95%, 96%, 97%, 98% or 99% identity to a polynucleotide sequence that encodes a native HE4a antigen polypeptide or a portion thereof, such as, for example, the nucleic acid sequences set forth in SEQ ID NOS:10 and 12. The percent identity may be readily determined by comparing sequences using computer algorithms well known to those of ordinary skill in the art, such as Align or the BLAST algorithm (Altschul, J. Mol. Biol. 219:555-565, 1991; Henikoff and Henikoff, Proc. Natl. Acad. Sci. USA 89:10915-10919, 1992), which is available at the NCBI website (<http://www.ncbi.nlm.nih.gov/cgi-bin/BLAST>). Default parameters may be used.

[0043] Certain variants are substantially homologous to a native gene. Such polynucleotide variants are capable of hybridizing under moderately stringent conditions to a naturally occurring DNA or RNA sequence encoding a native HE4a antigen (or a complementary sequence). Suitable moderately stringent conditions include, for example, the following steps or their equivalent: prewashing in a solution of 5 X SSC, 0.5% SDS, 1.0 mM EDTA (pH 8.0); hybridizing at 50°C-65°C, 5 X SSC, overnight; followed by washing twice at 65°C for 20 minutes with each of 2X, 0.5X and 0.2X SSC containing 0.1% SDS. For additional stringency, conditions may include, for example, a wash in 0.1X SSC and 0.1% SDS at 60 °C for 15 minutes, or the equivalent. A person having ordinary skill in the art will readily appreciate the parameters that may be varied as a routine matter to create appropriately stringent hybridization conditions that are in some way selective for a particular nucleic acid of interest, and will further appreciate that such conditions may be a function, *inter alia*, of the particular nucleic acid sequences involved in the hybridization, such as, for example, those disclosed herein as SEQ ID NOS:10 and 12, which encode HE4a polypeptides. See also, e.g., Ausubel et al., *Current Protocols in Molecular Biology*, Greene Publishing, 1995, regarding selection of nucleic acid hybridization conditions.

[0044] The nucleic acids which encode HE4a polypeptides, for example the human HE4a polypeptides having the amino acid sequences of SEQ ID NO:11 or any other HE4a polypeptides for use according to the invention, may include, but are not limited to: only the coding sequence for the HE4a polypeptide; the coding sequence for the HE4a polypeptide and additional coding sequence; the coding sequence for the HE4a polypeptide (and optionally additional coding sequence) and non-coding sequence, such as introns or non-coding sequences 5' and/or 3' of the coding sequence for the HE4a polypeptide, which for example may further include but need not be limited to one or more regulatory nucleic acid sequences that may be a regulated or regulatable promoter, enhancer, other transcription regulatory sequence, repressor binding sequence, translation regulatory sequence or any other regulatory nucleic acid sequence. Thus, the term "nucleic acid encoding an HE4a polypeptide" encompasses a nucleic acid which includes only coding sequence for the polypeptide as well as a nucleic acid which includes additional coding and/or non-coding sequence(s).

[0045] The present invention further relates to variants of the herein described nucleic acids which encode for fragments, analogs and derivatives of an HE4a polypeptide, for example the human HE4a polypeptides having the deduced amino acid sequence of SEQ ID NO:11. The variants of the nucleic acids encoding HE4a may be naturally occurring allelic variants of the nucleic acids or non-naturally occurring variants. As is known in the art, an allelic variant is an alternate form of a nucleic acid sequence which may have at least one of a substitution, a deletion or an addition of one or more nucleotides, any of which does not substantially alter the function of the encoded HE4a polypeptide. Thus, for example, the present invention includes nucleic acids encoding the same HE4a polypeptides as shown in SEQ ID NOS:5, 7 or 11, as well as variants of such nucleic acids, which variants may encode a fragment, derivative or analog of any of these polypeptides.

[0046] Variants and derivatives of HE4a may be obtained by mutations of nucleotide sequences encoding HE4a polypeptides. Alterations of the native amino acid sequence may be accomplished by any of a number of conventional methods. Mutations can be introduced at particular loci by synthesizing oligonucleotides containing a mutant sequence, flanked by restriction sites enabling ligation to fragments of the native sequence. Following ligation, the resulting reconstructed sequence encodes an analog having the desired amino acid insertion, substitution, or deletion.

[0047] Alternatively, oligonucleotide-directed site-specific mutagenesis procedures can be employed to provide an altered gene wherein predetermined codons can be altered by substitution, deletion or insertion. Exemplary methods of making such alterations are disclosed by Walder et al. (Gene 42:133, 1986); Bauer et al. (Gene 37:73, 1985); Craik

(BioTechniques, January 1985, 12-19); Smith et al. (Genetic Engineering: Principles and Methods, Plenum Press, 1981); Kunkel (Proc. Natl. Acad. Sci. USA 82:488, 1985); Kunkel et al. (Methods in Enzymol. 154:367, 1987); and U.S. Patent Nos. 4,518,584 and 4,737,462.

[0048] Identification of nucleic acid molecules for use as antisense agents, which includes antisense oligonucleotides and ribozymes specific for nucleic acid sequences encoding HE4a polypeptides or variants or fragments thereof; and of DNA oligonucleotides encoding HE4a genes for targeted delivery for genetic therapy, involve methods well known in the art. For example, the desirable properties, lengths and other characteristics of such oligonucleotides are well known. In certain preferred embodiments such an antisense oligonucleotide comprises at least 15-30 consecutive nucleotides complementary to an isolated nucleic acid molecule encoding an HE4a polypeptide as provided herein, and in certain other preferred embodiments such an antisense oligonucleotide may comprise at least 31-50, 51-75, 76-125 or more consecutive nucleotides complementary to an isolated nucleic acid molecule encoding an HE4a polypeptide as provided herein. Antisense oligonucleotides are typically designed to resist degradation by endogenous nucleolytic enzymes by using such linkages as: phosphorothioate, methylphosphonate, sulfone, sulfate, ketyl, phosphorodithioate, phosphoramidate, phosphate esters, and other such linkages (see, e.g., Agrwal et al., Tetrahedron Lett. 28:3539-3542 (1987); Miller et al., J. Am. Chem. Soc. 93:6657-6665 (1971); Stec et al., Tetrahedron Lett. 26:2191-2194 (1985); Moody et al., Nucl. Acids Res. 12:4769-4782 (1989); Uznanski et al., Nucl. Acids Res. (1989); Letsinger et al., Tetrahedron 40:137-143 (1984); Eckstein, Annu. Rev. Biochem. 54:367-402 (1985); Eckstein, Trends Biol. Sci. 14:97-100 (1989); Stein In: Oligodeoxynucleotides. Antisense Inhibitors of Gene Expression, Cohen, Ed, Macmillan Press, London, pp. 97-117 (1989); Jager et al., Biochemistry 27:7237-7246 (1988)).

[0049] Antisense nucleotides are oligonucleotides that bind in a sequence-specific manner to nucleic acids, such as mRNA or DNA. When bound to mRNA that has complementary sequences, antisense prevents translation of the mRNA (see, e.g., U.S. Patent No. 5,168,053 to Altman et al.; U.S. Patent No. 5,190,931 to Inouye, U.S. Patent No. 5,135,917 to Burch; U.S. Patent No. 5,087,617 to Smith and Clusel et al. (1993) Nucl. Acids Res. 21:3405-3411, which describes dumbbell antisense oligonucleotides). Triplex molecules refer to single DNA strands that bind duplex DNA forming a colinear triplex molecule, thereby preventing transcription (see, e.g., U.S. Patent No. 5,176,996 to Hogan et al., which describes methods for making synthetic oligonucleotides that bind to target sites on duplex DNA).

[0050] According to this embodiment of the invention, particularly useful antisense nucleotides and triplex molecules are molecules that are complementary to or bind the sense strand of DNA or mRNA that encodes an HE4a polypeptide such that inhibition of translation of mRNA encoding the HE4a polypeptide is effected.

[0051] A ribozyme is an RNA molecule that specifically cleaves RNA substrates, such as mRNA, resulting in specific inhibition or interference with cellular gene expression. There are at least five known classes of ribozymes involved in the cleavage and/or ligation of RNA chains. Ribozymes can be targeted to any RNA transcript and can catalytically cleave such transcripts (see, e.g., U.S. Patent No. 5,272,262; U.S. Patent No. 5,144,019; and U.S. Patent Nos. 5,168,053, 5,180,818, 5,116,742 and 5,093,246 to Cech et al.). According to certain embodiments of the invention, any such HE4a mRNA-specific ribozyme, or a nucleic acid encoding such a ribozyme, may be delivered to a host cell to effect inhibition of HE4a gene expression. Ribozymes, and the like may therefore be delivered to the host cells by DNA encoding the ribozyme linked to a eukaryotic promoter, such as a eukaryotic viral promoter, such that upon introduction into the nucleus, the ribozyme will be directly transcribed.

[0052] Equivalent DNA constructs that encode various additions or substitutions of amino acid residues or sequences, or deletions of terminal or internal residues or sequences not needed for biological activity are also encompassed by the invention. For example, sequences encoding Cys residues that are not essential for biological activity can be altered to cause the Cys residues to be deleted or replaced with other amino acids, preventing formation of incorrect intramolecular disulfide bridges upon renaturation. Other equivalents can be prepared by modification of adjacent dibasic amino acid residues to enhance expression in yeast systems in which KEX2 protease activity is present. EP 212,914 discloses the use of site-specific mutagenesis to inactivate KEX2 protease processing sites in a protein. KEX2 protease processing sites are inactivated by deleting, adding or substituting residues to alter Arg-Arg, Arg-Lys, and Lys-Arg pairs to eliminate the occurrence of these adjacent basic residues. Lys-Lys pairings are considerably less susceptible to KEX2 cleavage, and conversion of Arg-Lys or Lys-Arg to Lys-Lys represents a conservative and preferred approach to inactivating KEX2 sites.

[0053] The appropriate DNA sequence(s) may be inserted into any of a number of well known vectors appropriate for the selected host cell by a variety of procedures.

[0054] In general, the DNA sequence is inserted into an appropriate restriction endonuclease site(s) by procedures known in the art. Standard techniques for cloning, DNA isolation, amplification and purification, for enzymatic reactions involving DNA ligase, DNA polymerase, restriction endonucleases and the like, and various separation techniques are those known and commonly employed by those skilled in the art. A number of standard techniques are described, for example, in Ausubel et al. (1993 Current Protocols in Molecular Biology, Greene Publ. Assoc. Inc. & John Wiley & Sons, Inc., Boston, MA); Sambrook et al. (1989 Molecular Cloning, Second Ed., Cold Spring Harbor Laboratory, Plainview, NY); and elsewhere.

[0055] Examples of mammalian expression systems include the COS-7 lines of monkey kidney fibroblasts, described by Gluzman, Cell 23:175 (1981), and other cell lines capable of expressing a compatible vector, for example, the C127, 3T3, CHO, HeLa and BHK cell lines. Mammalian expression vectors will comprise an origin of replication, a suitable promoter and enhancer, and also any necessary ribosome binding sites, polyadenylation site, splice donor and acceptor sites, transcriptional termination sequences, and 5' flanking nontranscribed sequences. DNA sequences derived, for example, from SV40 splice and polyadenylation sites may be used to provide the required nontranscribed genetic elements. Introduction of the construct into the host cell can be effected by a variety of methods with which those skilled in the art will be familiar, including but not limited to, for example, calcium phosphate transfection, DEAE-Dextran mediated transfection, or electroporation (Davis et al., 1986 Basic Methods in Molecular Biology).

[0056] The present invention further relates to HE4a polypeptides and in particular to methods for detecting a malignant condition. In a preferred embodiment, malignancy is detected by determining the presence in a biological sample of a naturally occurring soluble molecule, or in a sample comprising a cell the presence of a cell surface molecule, having an antigenic determinant reactive with at least one antibody specific for a HE4a polypeptide. In another preferred embodiment, malignancy is detected by determining the presence in a biological sample of at least one naturally occurring HE4a polypeptide. As provided herein, a "HE4a antigen polypeptide" or "HE4a polypeptide" includes any polypeptide having an amino acid sequence of SEQ ID NO: 11, including any fragment, derivative or analog thereof, and also includes any polypeptide encoded by a nucleic acid molecule comprising SEQ ID NO:10 or 12, or by a nucleic acid molecule capable of hybridizing to a nucleic acid molecule of SEQ ID NO:10 or 12, or a fragment, derivative or analog thereof. Certain preferred embodiments of the present invention contemplate compositions and methods directed to HE4a sequences as provided herein (e.g., SEQ ID NOS:10-13) but which expressly exclude, on the basis of differences in structure, function and/or cell type expression or tissue distribution, or the like (including antibody-defined detectable epitopes and also including oligonucleotide-defined hybridization detection), HE4 sequences disclosed in Kirchoff et al. (e.g., 1991 Biol. Reproduct. 45:350; SEQ ID NOS:8-9).

[0057] The HE4a polypeptide of the invention may be an unmodified polypeptide or may be a polypeptide that has been posttranslationally modified, for example by glycosylation, phosphorylation, fatty acylation including glycosylphosphatidylinositol anchor modification or the like, phospholipase cleavage such as phosphatidylinositol-specific phospholipase c mediated hydrolysis or the like, protease cleavage, dephosphorylation or any other type of protein posttranslational modification such as a modification involving formation or cleavage of a covalent chemical bond.

[0058] The terms "fragment," "derivative" and "analog" when referring to HE4a polypeptides, HE4a antigen polypeptides or HE4a fusion proteins, refers to any HE4a polypeptide that retains essentially the same biological function and/or activity as such polypeptide. Thus, an analog may include a HE4a antigen polypeptide isoform such as a differentially posttranslationally modified HE4a polypeptide or a variant such as a splice variant. As is well known in the art, a "splice variant" includes variant or alternative forms of a polypeptide that arise from the differential intracellular processing of an RNA transcript. For example, two distinct mRNA species may be splice variants of one another where they differ only by the inclusion of all or a portion of a sequence corresponding to a particular exon in one mRNA species and its absence from the other species. As those familiar with the art will appreciate, other structural relationships can exist between mRNA species that would be generally regarded as splice variants. A HE4a polypeptide further includes a proprotein which can be activated by cleavage of the proprotein portion to produce an active HE4a polypeptide.

[0059] Biological functions and/or activities of fragments, derivatives and analogs of HE4a polypeptides or of HE4a antigen polypeptides include, but need not be limited to, the use of such polypeptides as markers in a method of screening for the presence of a malignant condition in a subject as disclosed herein. For example, by detecting in a sample from the subject a molecule naturally occurring in soluble form and having an antigenic determinant that is reactive with at least one antibody specific for a HE4a polypeptide, one skilled in the art may be monitoring a biological function and/or activity of an HE4a polypeptide. Further, it should be noted that in certain embodiments the subject invention method of screening is directed to comparing relative quantities, levels and/or amounts of a detectable molecule naturally occurring in soluble form and having an antigenic determinant that is reactive with at least one antibody specific for a HE4a polypeptide in each of (i) a first biological sample from a first subject suspected of having a malignant condition, and (ii) a second biological sample from a second subject known to be free of a malignant condition. Accordingly, the relative quantitative presence of a HE4a polypeptide in a biological sample may be a biological function and/or activity of a HE4a polypeptide, although such function and/or activity should not be so limited.

[0060] A fragment, derivative or analog of a HE4a polypeptide may be (i) one in which one or more of the amino acid residues are substituted with a conserved or non-conserved amino acid residue (preferably a conserved amino acid residue); (ii) one in which additional amino acids are fused to the HE4a polypeptide, including amino acids that may be employed for purification of the HE4a polypeptide or a proprotein sequence; or (iii) a truncated HE4a polypeptide. Such fragments, derivatives and analogs are deemed to be within the scope of those skilled in the art from the teachings herein.

[0061] A truncated HE4a polypeptide may be any HE4a polypeptide molecule that comprises less than a full length version of the HE4a polypeptide. Truncated molecules provided by the present invention may include truncated biological polymers, and in preferred embodiments of the invention such truncated molecules may be truncated nucleic acid

molecules or truncated polypeptides. Truncated nucleic acid molecules have less than the full length nucleotide sequence of a known or described nucleic acid molecule, where such a known or described nucleic acid molecule may be a naturally occurring, a synthetic or a recombinant nucleic acid molecule, so long as one skilled in the art would regard it as a full length molecule. Thus, for example, truncated nucleic acid molecules that correspond to a gene sequence contain less than the full length gene where the gene comprises coding and non-coding sequences, promoters, enhancers and other regulatory sequences, flanking sequences and the like, and other functional and non-functional sequences that are recognized as part of the gene. In another example, truncated nucleic acid molecules that correspond to a mRNA sequence contain less than the full length mRNA transcript, which may include various translated and non-translated regions as well as other functional and non-functional sequences. In other preferred embodiments, truncated molecules are polypeptides that comprise less than the full length amino acid sequence of a particular protein.

[0062] As used herein "deletion" has its common meaning as understood by those familiar with the art, and may refer to molecules that lack one or more of a portion of a sequence from either terminus or from a non-terminal region, relative to a corresponding full length molecule, for example, as in the case of truncated molecules provided herein. Truncated molecules that are linear biological polymers such as nucleic acid molecules or polypeptides may have one or more of a deletion from either terminus of the molecule or a deletion from a non-terminal region of the molecule, where such deletions may be deletions of 1-1500 contiguous nucleotide or amino acid residues, preferably 1-500 contiguous nucleotide or amino acid residues and more preferably 1-300 contiguous nucleotide or amino acid residues.

[0063] As known in the art "similarity" between two polypeptides is determined by comparing the amino acid sequence and conserved amino acid substitutes thereto of the polypeptide to the sequence of a second polypeptide. Similarity between two polypeptide or nucleotide sequences, or even the percent identity, may be readily determined by comparing sequences using computer algorithms well known to those of ordinary skill in the art, such as the BLAST algorithm (Altschul, J. Mol. Biol. 219:555-565, 1991; Henikoff and Henikoff, Proc. Natl. Acad. Sci. USA 89:10915-10919, 1992), which is available at the NCBI website (<http://www.ncbi.nlm.nih.gov/cgi-bin/BLAST>). Default parameters may be used. Examples of other useful computer algorithms are those used in programs such as Align and FASTA, which may be accessed, for example, at the Genestream internet website of the Institut de Genetique Humaine, Montpellier, France (www2.igh.cnrs.fr/home.eng.html) and used with default parameters. Fragments or portions of the polypeptides of the present invention may be employed for producing the corresponding full-length polypeptide by peptide synthesis; therefore, the fragments may be employed as intermediates for producing the full-length polypeptides.

[0064] The term "isolated" means that the material is removed from its original environment (e.g., the natural environment if it is naturally occurring). For example, a naturally occurring polypeptide or polynucleotide present in a living animal is not isolated, but the same polypeptide or polynucleotide, separated from some or all of the co-existing materials in the natural system, is isolated. Such polypeptides or polynucleotides could be part of a composition, and still be isolated in that such composition is not part of its natural environment.

[0065] Affinity techniques are particularly useful in the context of isolating HE4a polypeptides for use according to the methods of the present invention, and may include any method that exploits a specific binding interaction with a HE4a polypeptide to effect a separation. For example, because HE4a polypeptides may contain covalently attached oligosaccharide moieties (see, e.g., Fig. 2 as described in the Examples), an affinity technique such as binding of a HE4a polypeptide to a suitable immobilized lectin under conditions that permit carbohydrate binding by the lectin may be a particularly useful affinity technique. Other useful affinity techniques include immunological techniques for isolating a HE4a polypeptide, which techniques rely on specific binding interaction between antibody combining sites for antigen and antigenic determinants present in the complexes. Immunological techniques include, but need not be limited to, immunoaffinity chromatography, immunoprecipitation, solid phase immunoabsorption or other immunoaffinity methods. For these and other useful affinity techniques, see, for example, Scopes, R.K., Protein Purification: Principles and Practice, 1987, Springer-Verlag, NY; Weir, D.M., Handbook of Experimental Immunology, 1986, Blackwell Scientific, Boston; and Hermanson, G.T. et al., Immobilized Affinity Ligand Techniques, 1992, Academic Press, Inc., California; which are hereby incorporated by reference in their entireties, for details regarding techniques for isolating and characterizing complexes, including affinity techniques.

[0066] As described herein, the invention provides a fusion protein comprising a polypeptide fused to a HE4a. Such HE4a fusion proteins are encoded by nucleic acids that have the HE4a coding sequence fused in frame to an additional coding sequence to provide for expression of a HE4a polypeptide sequence fused to an additional functional or non-functional polypeptide sequence that permits, for example by way of illustration and not limitation, detection, isolation and/or purification of the HE4a fusion protein. Such HE4a fusion proteins may permit detection, isolation and/or purification of the HE4a fusion protein by protein-protein affinity, metal affinity or charge affinity-based polypeptide purification, or by specific protease cleavage of a fusion protein containing a fusion sequence that is cleavable by a protease such that the HE4a polypeptide is separable from the fusion protein.

[0067] Thus, HE4a fusion proteins may comprise affinity tag polypeptide sequences, which refers to polypeptides or peptides added to HE4a to facilitate detection and isolation of the HE4a via a specific affinity interaction with a ligand. The ligand may be any molecule, receptor, counterreceptor, antibody or the like with which the affinity tag may interact

through a specific binding interaction as provided herein. Such peptides include, for example, poly-His or the antigenic identification peptides described in U.S. Patent No. 5,011,912 and in Hopp et al., (1988 Bio/Technology 6:1204), or the XPRESS™ epitope tag (Invitrogen, Carlsbad, CA). The affinity sequence may be a hexa-histidine tag as supplied, for example, by a pBAD/His (Invitrogen) or a pQE-9 vector to provide for purification of the mature polypeptide fused to the marker in the case of a bacterial host, or, for example, the affinity sequence may be a hemagglutinin (HA) tag when a mammalian host, e.g., COS-7 cells, is used. The HA tag corresponds to an antibody defined epitope derived from the influenza hemagglutinin protein (Wilson et al., 1984 Cell 37:767).

[0068] HE4a fusion proteins may, in particularly preferred embodiments and as described in greater detail below, further comprise immunoglobulin constant region polypeptides added to HE4a to facilitate detection, isolation and/or localization of HE4a. The immunoglobulin constant region polypeptide preferably is fused to the C-terminus of a HE4a polypeptide. According to non-limiting theory, inclusion of immunoglobulin (Ig) constant region domains in HE4a fusion proteins as provided herein may offer advantages, for example, those associated with the immunogenic/non-immunogenic properties of particular Ig regions when used in particular hosts (i.e., "self" vs. "non-self"), or those which facilitate isolation and/or detection of a fusion protein. These and other advantages of Ig fusion proteins will be appreciated by those familiar with the art, based on the present disclosure. General preparation of fusion proteins comprising heterologous polypeptides fused to various portions of antibody-derived polypeptides (including the Fc domain) has been described, e.g., by Ashkenazi et al. (PNAS USA 88:10535, 1991) and Byrn et al. (Nature 344:677, 1990). A gene fusion encoding the HE4a:Fc fusion protein is inserted into an appropriate expression vector. In certain embodiments of the invention, HE4a:Fc fusion proteins may be allowed to assemble much like antibody molecules, whereupon interchain disulfide bonds form between Fc polypeptides, yielding dimeric HE4a fusion proteins.

[0069] HE4a fusion proteins having specific binding affinities for pre-selected antigens by virtue of fusion polypeptides comprising immunoglobulin V-region domains encoded by DNA sequences linked in-frame to sequences encoding HE4a are also within the scope of the invention, including variants and fragments thereof as provided herein. General strategies for the construction of fusion proteins having immunoglobulin V-region fusion polypeptides are disclosed, for example, in EP 0318554; U.S. 5,132,405; U.S. 5,091,513; and U.S. 5,476,786.

[0070] The nucleic acid of the present invention may also encode a fusion protein comprising a HE4a polypeptide fused to other polypeptides having desirable affinity properties, for example an enzyme such as glutathione-S-transferase. As another example, HE4a fusion proteins may also comprise a HE4a polypeptide fused to a *Staphylococcus aureus* protein A polypeptide; protein A encoding nucleic acids and their use in constructing fusion proteins having affinity for immunoglobulin constant regions are disclosed generally, for example, in U.S. Patent 5,100,788. Other useful affinity polypeptides for construction of HE4a fusion proteins may include streptavidin fusion proteins, as disclosed, for example, in WO 89/03422; U.S. 5,489,528; U.S. 5,672,691; WO 93/24631; U.S. 5,168,049; U.S. 5,272,254 and elsewhere, and avidin fusion proteins (see, e.g., EP 511,747). As provided herein and in the cited references, HE4a polypeptide sequences may be fused to fusion polypeptide sequences that may be full length fusion polypeptides and that may alternatively be variants or fragments thereof.

[0071] The present invention also contemplates HE4a fusion proteins that contain polypeptide sequences that direct the fusion protein to the cell nucleus, to reside in the lumen of the endoplasmic reticulum (ER), to be secreted from a cell via the classical ER-Golgi secretory pathway (see, e.g., von Heijne, J. Membrane Biol. 115:195-201, 1990), to be incorporated into the plasma membrane, to associate with a specific cytoplasmic component including the cytoplasmic domain of a transmembrane cell surface receptor or to be directed to a particular subcellular location by any of a variety of known intracellular protein sorting mechanisms with which those skilled in the art will be familiar (See, e.g., Rothman, Nature 372:55-63, 1994, Adrani et al., 1998 J. Biol. Chem. 273:10317, and references cited therein.). Accordingly, these and related embodiments are encompassed by the instant compositions and methods directed to targeting a polypeptide of interest to a predefined intracellular, membrane or extracellular localization.

[0072] The present invention also relates to vectors and to constructs that include nucleic acids of the present invention, and in particular to "recombinant expression constructs" that include any nucleic acids encoding HE4a polypeptides according to the invention as provided above; to host cells which are genetically engineered with vectors and/or constructs of the invention and to the production of HE4a polypeptides and fusion proteins of the invention, or fragments or variants thereof, by recombinant techniques. HE4a proteins can be expressed in mammalian cells, yeast, bacteria, or other cells under the control of appropriate promoters. Cell-free translation systems can also be employed to produce such proteins using RNAs derived from the DNA constructs of the present invention. Appropriate cloning and expression vectors for use with prokaryotic and eukaryotic hosts are described, for example, by Sambrook, et al., Molecular Cloning: A Laboratory Manual, Second Edition, Cold Spring Harbor, New York, (1989).

[0073] Generally, recombinant expression vectors will include origins of replication and selectable markers permitting transformation of the host cell, e.g., the ampicillin resistance gene of *E. coli* and *S. cerevisiae* TRP1 gene, and a promoter derived from a highly-expressed gene to direct transcription of a downstream structural sequence. Such promoters can be derived from operons encoding glycolytic enzymes such as 3-phosphoglycerate kinase (PGK), α -factor, acid phosphatase, or heat shock proteins, among others. The heterologous structural sequence is assembled in appropriate phase

with translation initiation and termination sequences. Optionally, the heterologous sequence can encode a fusion protein including an N-terminal identification peptide imparting desired characteristics, *e.g.*, stabilization or simplified purification of expressed recombinant product.

[0074] Useful expression constructs for bacterial use are constructed by inserting into an expression vector a structural DNA sequence encoding a desired protein together with suitable translation initiation and termination signals in operable reading phase with a functional promoter. The construct may comprise one or more phenotypic selectable markers and an origin of replication to ensure maintenance of the vector construct and, if desirable, to provide amplification within the host. Suitable prokaryotic hosts for transformation include *E. coli*, *Bacillus subtilis*, *Salmonella typhimurium* and various species within the genera *Pseudomonas*, *Streptomyces*, and *Staphylococcus*, although others may also be employed as a matter of choice. Any other plasmid or vector may be used as long as they are replicable and viable in the host.

[0075] As a representative but non-limiting example, useful expression vectors for bacterial use can comprise a selectable marker and bacterial origin of replication derived from commercially available plasmids comprising genetic elements of the well known cloning vector pBR322 (ATCC 37017). Such commercial vectors include, for example, pKK223-3 (Pharmacia Fine Chemicals, Uppsala, Sweden) and GEM1 (Promega Biotec, Madison, Wisconsin, USA). These pBR322 "backbone" sections are combined with an appropriate promoter and the structural sequence to be expressed.

[0076] Following transformation of a suitable host strain and growth of the host strain to an appropriate cell density, the selected promoter, if it is a regulated promoter as provided herein, is induced by appropriate means (*e.g.*, temperature shift or chemical induction) and cells are cultured for an additional period. Cells are typically harvested by centrifugation, disrupted by physical or chemical means, and the resulting crude extract retained for further purification. Microbial cells employed in expression of proteins can be disrupted by any convenient method, including freeze-thaw cycling, sonication, mechanical disruption, or use of cell lysing agents; such methods are well known to those skilled in the art.

[0077] Thus, for example, the nucleic acids of the invention as provided herein may be included in any one of a variety of expression vector constructs as a recombinant expression construct for expressing a HE4a polypeptide. Such vectors and constructs include chromosomal, nonchromosomal and synthetic DNA sequences, *e.g.*, derivatives of SV40; bacterial plasmids; phage DNA; baculovirus; yeast plasmids; vectors derived from combinations of plasmids and phage DNA, viral DNA, such as vaccinia, adenovirus, fowl pox virus, and pseudorabies. However, any other vector may be used for preparation of a recombinant expression construct as long as it is replicable and viable in the host.

[0078] The appropriate DNA sequence(s) may be inserted into the vector by a variety of procedures. In general, the DNA sequence is inserted into an appropriate restriction endonuclease site(s) by procedures known in the art. Standard techniques for cloning, DNA isolation, amplification and purification, for enzymatic reactions involving DNA ligase, DNA polymerase, restriction endonucleases and the like, and various separation techniques are those known and commonly employed by those skilled in the art. A number of standard techniques are described, for example, in Ausubel et al. (1993 Current Protocols in Molecular Biology, Greene Publ. Assoc. Inc. & John Wiley & Sons, Inc., Boston, MA); Sambrook et al. (1989 Molecular Cloning, Second Ed., Cold Spring Harbor Laboratory, Plainview, NY); Maniatis et al. (1982 Molecular Cloning, Cold Spring Harbor Laboratory, Plainview, NY); and elsewhere.

[0079] The DNA sequence in the expression vector is operatively linked to at least one appropriate expression control sequences (*e.g.*, a promoter or a regulated promoter) to direct mRNA synthesis. Representative examples of such expression control sequences include LTR or SV40 promoter, the *E. coli lac* or *trp*, the phage lambda P_L promoter and other promoters known to control expression of genes in prokaryotic or eukaryotic cells or their viruses. Promoter regions can be selected from any desired gene using CAT (chloramphenicol transferase) vectors or other vectors with selectable markers. Two appropriate vectors are pKK232-8 and pCM7. Particular named bacterial promoters include *lacI*, *lacZ*, T3, T7, *gpt*, lambda P_R, P_L and *trp*. Eukaryotic promoters include CMV immediate early, HSV thymidine kinase, early and late SV40, LTRs from retrovirus, and mouse metallothionein-I. Selection of the appropriate vector and promoter is well within the level of ordinary skill in the art, and preparation of certain particularly preferred recombinant expression constructs comprising at least one promoter or regulated promoter operably linked to a nucleic acid encoding a HE4a polypeptide is described herein.

[0080] As noted above, in certain embodiments the vector may be a viral vector such as a retroviral vector. For example, retroviruses from which the retroviral plasmid vectors may be derived include, but are not limited to, Moloney Murine Leukemia Virus, spleen necrosis virus, retroviruses such as Rous Sarcoma Virus, Harvey Sarcoma virus, avian leukosis virus, gibbon ape leukemia virus, human immunodeficiency virus, adenovirus, Myeloproliferative Sarcoma Virus, and mammary tumor virus.

[0081] The viral vector includes one or more promoters. Suitable promoters which may be employed include, but are not limited to, the retroviral LTR; the SV40 promoter; and the human cytomegalovirus (CMV) promoter described in Miller, et al., Biotechniques 7:980-990 (1989), or any other promoter (*e.g.*, cellular promoters such as eukaryotic cellular promoters including, but not limited to, the histone, pol III, and β -actin promoters). Other viral promoters which may be employed include, but are not limited to, adenovirus promoters, thymidine kinase (TK) promoters, and B 19 parvovirus

promoters. The selection of a suitable promoter will be apparent to those skilled in the art from the teachings contained herein, and may be from among either regulated promoters or promoters as described above.

[0082] The retroviral plasmid vector is employed to transduce packaging cell lines to form producer cell lines. Examples of packaging cells which may be transfected include, but are not limited to, the PE501, PA317, ψ -2, ψ -AM, PA12, T19-14X, VT-19-17-H2, ψ CRE, ψ CRIP, GP+E-86, GP+envAm12, and DAN cell lines as described in Miller, Human Gene Therapy, 1:5-14 (1990), which is incorporated herein by reference in its entirety. The vector may transduce the packaging cells through any means known in the art. Such means include, but are not limited to, electroporation, the use of liposomes, and calcium phosphate precipitation. In one alternative, the retroviral plasmid vector may be encapsulated into a liposome, or coupled to a lipid, and then administered to a host.

[0083] The producer cell line generates infectious retroviral vector particles which include the nucleic acid sequence(s) encoding the HE4a polypeptides or fusion proteins. Such retroviral vector particles then may be employed, to transduce eukaryotic cells, either *in vitro* or *in vivo*. The transduced eukaryotic cells will express the nucleic acid sequence(s) encoding the HE4a polypeptide or fusion protein. Eukaryotic cells which may be transduced include, but are not limited to, embryonic stem cells, embryonic carcinoma cells, as well as hematopoietic stem cells, hepatocytes, fibroblasts, myoblasts, keratinocytes, endothelial cells, bronchial epithelial cells and various other culture-adapted cell lines.

[0084] As another example of an embodiment of the invention in which a viral vector is used to prepare the recombinant HE4a expression construct, in one preferred embodiment, host cells transduced by a recombinant viral construct directing the expression of HE4a polypeptides or fusion proteins may produce viral particles containing expressed HE4a polypeptides or fusion proteins that are derived from portions of a host cell membrane incorporated by the viral particles during viral budding. In another preferred embodiment, HE4a encoding nucleic acid sequences are cloned into a baculovirus shuttle vector, which is then recombined with a baculovirus to generate a recombinant baculovirus expression construct that is used to infect, for example, Sf9 host cells, as described in Baculovirus Expression Protocols, Methods in Molecular Biology Vol. 39, C. D. Richardson, Editor, Human Press, Totowa, NJ, 1995; Piwnicka-Worms, "Expression of Proteins in Insect Cells Using Baculoviral Vectors," Section II in Chapter 16 in: Short Protocols in Molecular Biology, 2nd Ed., Ausubel et al., eds., John Wiley & Sons, New York, New York, 1992, pages 16-32 to 16-48.

[0085] In another aspect, the present invention relates to host cells containing the above described recombinant HE4a expression constructs. Host cells are genetically engineered (transduced, transformed or transfected) with the vectors and/or expression constructs of this invention which may be, for example, a cloning vector, a shuttle vector or an expression construct. The vector or construct may be, for example, in the form of a plasmid, a viral particle, a phage, etc. The engineered host cells can be cultured in conventional nutrient media modified as appropriate for activating promoters, selecting transformants or amplifying particular genes such as genes encoding HE4a polypeptides or HE4a fusion proteins. The culture conditions for particular host cells selected for expression, such as temperature, pH and the like, will be readily apparent to the ordinarily skilled artisan.

[0086] The host cell can be a higher eukaryotic cell, such as a mammalian cell, or a lower eukaryotic cell, such as a yeast cell, or the host cell can be a prokaryotic cell, such as a bacterial cell. Representative examples of appropriate host cells according to the present invention include, but need not be limited to, bacterial cells, such as *E. coli*, *Streptomyces*, *Salmonella typhimurium*; fungal cells, such as yeast; insect cells, such as *Drosophila* S2 and *Spodoptera* Sf9; animal cells, such as CHO, COS or 293 cells; adenoviruses; plant cells, or any suitable cell already adapted to *in vitro* propagation or so established *de novo*. The selection of an appropriate host is deemed to be within the scope of those skilled in the art from the teachings herein.

[0087] Various mammalian cell culture systems can also be employed to express recombinant protein. The invention is therefore directed in part to a method of producing a recombinant HE4a polypeptide, by culturing a host cell comprising a recombinant expression construct that comprises at least one promoter operably linked to a nucleic acid sequence encoding a HE4a. In certain embodiments, the promoter may be a regulated promoter as provided herein, for example a tetracycline-repressible promoter. In certain embodiments the recombinant expression construct is a recombinant viral expression construct as provided herein. Examples of mammalian expression systems include the COS-7 lines of monkey kidney fibroblasts, described by Gluzman, Cell 23:175 (1981), and other cell lines capable of expressing a compatible vector, for example, the C127, 3T3, CHO, HeLa and BHK cell lines. Mammalian expression vectors will comprise an origin of replication, a suitable promoter and enhancer, and also any necessary ribosome binding sites, polyadenylation site, splice donor and acceptor sites, transcriptional termination sequences, and 5' flanking nontranscribed sequences, for example as described herein regarding the preparation of MRA expression constructs. DNA sequences derived from the SV40 splice, and polyadenylation sites may be used to provide the required nontranscribed genetic elements. Introduction of the construct into the host cell can be effected by a variety of methods with which those skilled in the art will be familiar, including but not limited to, for example, calcium phosphate transfection, DEAE-Dextran mediated transfection, or electroporation (Davis et al., 1986 Basic Methods in Molecular Biology).

[0088] The expressed recombinant HE4a antigen polypeptides (or HE4a polypeptides), or fusion proteins derived therefrom, may be useful as immunogens in the form of intact host cells; intact organelles such as cell membranes, intracellular vesicles or other cellular organelles; or disrupted cell preparations including but not limited to cell homoge-

nates or lysates, uni- and multilamellar membrane vesicles or other preparations. Alternatively, expressed recombinant mesothelin related antigen polypeptides (or mesothelin polypeptides) or fusion proteins can be recovered and purified from recombinant cell cultures by methods including ammonium sulfate or ethanol precipitation, acid extraction, anion or cation exchange chromatography, phosphocellulose chromatography, hydrophobic interaction chromatography, affinity chromatography including immunoaffinity chromatography, hydroxylapatite chromatography and lectin chromatography. Protein refolding steps can be used, as necessary, in completing configuration of the mature protein. Finally, high performance liquid chromatography (HPLC) can be employed for final purification steps. Expressed recombinant HE4a antigen polypeptides (or HE4a polypeptides) or fusion proteins may also be useful as target antigens in any of a number of assay configurations for routine antibody screening, which can be readily performed by those having ordinary skill in the art.

[0089] The HE4a antigen polypeptide (or HE4a polypeptide) that is an immunogen for the production of a specific antibody to be used in the method of the present invention may thus be a naturally purified product, or a product of chemical synthetic procedures, or produced by recombinant techniques from a prokaryotic or, preferably, a eukaryotic host. Depending upon the host employed in a recombinant production procedure, the polypeptides of the present invention may be glycosylated or otherwise posttranslationally modified as known in the art and as provided herein.

[0090] According to the present invention, a soluble human HE4a antigen polypeptide (or HE4a polypeptide) may be detected in a biological sample from a subject or biological source. Biological samples may be provided by obtaining a blood sample, biopsy specimen, tissue explant, organ culture, biological fluid or any other tissue or cell preparation from a subject or a biological source. The subject or biological source may be a human or non-human animal, a primary cell culture or culture adapted cell line including but not limited to genetically engineered cell lines that may contain chromosomally integrated or episomal recombinant nucleic acid sequences, immortalized or immortalizable cell lines, somatic cell hybrid cell lines, differentiated or differentiable cell lines, transformed cell lines and the like. In certain preferred embodiments of the invention, the subject or biological source may be suspected of having or being at risk for having a malignant condition, which in certain further preferred embodiments may be an ovarian cancer such as ovarian carcinoma, and in certain other preferred embodiments of the invention the subject or biological source may be known to be free of a risk or presence of such disease.

[0091] In certain preferred embodiments the biological sample comprises at least one cell from a subject or biological source, and in certain other preferred embodiments the biological sample is a biological fluid containing a soluble human mesothelin related antigen polypeptide. Biological fluids are typically liquids at physiological temperatures and may include naturally occurring fluids present in, withdrawn from, expressed or otherwise extracted from a subject or biological source. Certain biological fluids derive from particular tissues, organs or localized regions and certain other biological fluids may be more globally or systemically situated in a subject or biological source. Examples of biological fluids include blood, serum and serosal fluids, plasma, lymph, urine, cerebrospinal fluid, saliva, mucosal secretions of the secretory tissues and organs, vaginal secretions, ascites fluids such as those associated with non-solid tumors, fluids of the pleural, pericardial, peritoneal, abdominal and other body cavities, and the like. Biological fluids may also include liquid solutions contacted with a subject or biological source, for example, cell and organ culture medium including cell or organ conditioned medium, lavage fluids and the like. In certain highly preferred embodiments the biological sample is serum, and in certain other highly preferred embodiments the biological sample is plasma. In other preferred embodiments the biological sample is a cell-free liquid solution.

[0092] In certain other preferred embodiments the biological sample comprises an intact cell, and in certain other preferred embodiments the biological sample comprises a cell extract containing a nucleic acid sequence encoding a HE4a antigen polypeptide having the amino acid sequence set forth in SEQ ID NOS:11 or 13, or a fragment or variant thereof.

[0093] A "molecule naturally occurring in soluble form" in a sample may be a soluble protein, polypeptide, peptide, amino acid, or derivative thereof; a lipid, fatty acid or the like, or derivative thereof; a carbohydrate, saccharide or the like or derivative thereof, a nucleic acid, nucleotide, nucleoside, purine, pyrimidine or related molecule, or derivative thereof, or the like; or any combination thereof such as, for example, a glycoprotein, a glycolipid, a lipoprotein, a proteolipid, or any other biological molecule that is a soluble or cell-free constituent of a biological sample as provided herein. A "molecule naturally occurring in soluble form" further refers to a molecule that is in solution or present in a biological sample, including a biological fluid as provided herein, and that is not bound to the surface of an intact cell. For example, a molecule naturally occurring in soluble form may include but need not be limited to a solute; a component of a macromolecular complex; a material that is shed, secreted or exported from a cell; a colloid; a microparticle or nanoparticle or other fine suspension particle; or the like.

[0094] The presence of a malignant condition in a subject refers to the presence of dysplastic, cancerous and/or transformed cells in the subject, including, for example neoplastic, tumor, non-contact inhibited or oncogenically transformed cells, or the like. By way of illustration and not limitation, in the context of the present invention a malignant condition may refer further to the presence in a subject of cancer cells that are capable of secreting, shedding, exporting or releasing a HE4a antigen polypeptide (or a HE4a polypeptide) in such a manner that elevated levels of such a

polypeptide are detectable in a biological sample from the subject. In preferred embodiments, for example, such cancer cells are malignant epithelial cells such as carcinoma cells, and in particularly preferred embodiments such cancer cells are malignant mesothelioma cells, which are transformed variants of squamous cell epithelial or mesothelial cells that are found, for example, lining pleural, pericardial, peritoneal, abdominal and other body cavities.

[0095] In the most preferred embodiments of the invention, tumor cells, the presence of which signifies the presence of a malignant condition, are ovarian carcinoma cells, including primary and metastatic ovarian carcinoma cells. Criteria for classifying a malignancy as ovarian carcinoma are well known in the art (see, e.g., Bell et al., 1998 Br. J. Obstet. Gynaecol. 105:1136; Meier et al., 1997 Anticancer Res. 17(4B):3019; Meier et al. 1997 Anticancer Res. 17(4B):2949; Cioffi et al., 1997 Tumori 83:594; and references cited therein) as are the establishment and characterization of human ovarian carcinoma cell lines from primary and metastatic tumors (e.g., OVCAR-3, Amer. Type Culture Collection, Manassas, VA; Yuan et al., 1997 Gynecol. Oncol. 66:378). In other embodiments, the malignant condition may be mesothelioma, pancreatic carcinoma, non-small cell lung carcinoma or another form of cancer, including any of the various carcinomas such as squamous cell carcinomas and adenocarcinomas, and also including sarcomas and hematologic malignancies (e.g., leukemias, lymphomas, myelomas, etc.). Classification of these and other malignant conditions is known to those having familiarity with the art, and the present disclosure provides determination of the presence of a HE4a polypeptide in such a malignant condition without undue experimentation.

[0096] As provided herein, the method of screening for the presence of a malignant condition in a subject may feature the use of an antibody specific for a HE4a antigen polypeptide or an antibody specific for a HE4a polypeptide.

[0097] Antibodies that are specific for a HE4a antigen polypeptide (or a HE4a polypeptide) are readily generated as monoclonal antibodies or as polyclonal antisera, or may be produced as genetically engineered immunoglobulins (Ig) that are designed to have desirable properties using methods well known in the art. For example, by way of illustration and not limitation, antibodies may include recombinant IgGs, chimeric fusion proteins having immunoglobulin derived sequences or "humanized" antibodies (see, e.g., U.S. Patent Nos. 5,693,762; 5,585,089; 4,816,567; 5,225,539; 5,530,101; and references cited therein) that may all be used for detection of a human HE4a polypeptide according to the invention. Such antibodies may be prepared as provided herein, including by immunization with HE4a polypeptides as described below. For example, as provided herein, nucleic acid sequences encoding HE4a polypeptides are disclosed, such that those skilled in the art may routinely prepare these polypeptides for use as immunogens. For instance, monoclonal antibodies such as 2H5, 3D8 and 4H4, which are described in greater detail below, may be used to practice certain methods according to the present invention.

[0098] The term "antibodies" includes polyclonal antibodies, monoclonal antibodies, fragments thereof such as $F(ab')_2$, and Fab fragments, as well as any naturally occurring or recombinantly produced binding partners, which are molecules that specifically bind a HE4a polypeptide. Antibodies are defined to be "immunospecific" or specifically binding if they bind HE4a polypeptide with a K_a of greater than or equal to about 10^4 M^{-1} , preferably of greater than or equal to about 10^5 M^{-1} , more preferably of greater than or equal to about 10^6 M^{-1} and still more preferably of greater than or equal to about 10^7 M^{-1} . Affinities of binding partners or antibodies can be readily determined using conventional techniques, for example those described by Scatchard et al., Ann. N.Y. Acad. Sci. 51:660 (1949). Determination of other proteins as binding partners of a HE4a polypeptide can be performed using any of a number of known methods for identifying and obtaining proteins that specifically interact with other proteins or polypeptides, for example, a yeast two-hybrid screening system such as that described in U.S. Patent No. 5,283,173 and U.S. Patent No. 5,468,614, or the equivalent. The present invention also includes the use of a HE4a polypeptide, and peptides based on the amino acid sequence of a HE4a polypeptide, to prepare binding partners and antibodies that specifically bind to a HE4a polypeptide.

[0099] Antibodies may generally be prepared by any of a variety of techniques known to those of ordinary skill in the art (see, e.g., Harlow and Lane, Antibodies: A Laboratory Manual, Cold Spring Harbor Laboratory, 1988). In one such technique, an immunogen comprising a HE4a polypeptide, for example a cell having a HE4a polypeptide on its surface or an isolated HE4a polypeptide is initially injected into a suitable animal (e.g., mice, rats, rabbits, sheep and goats), preferably according to a predetermined schedule incorporating one or more booster immunizations, and the animals are bled periodically. Polyclonal antibodies specific for the HE4a polypeptide may then be purified from such antisera by, for example, affinity chromatography using the polypeptide coupled to a suitable solid support.

[0100] Monoclonal antibodies specific for HE4a polypeptides or variants thereof may be prepared, for example, using the technique of Kohler and Milstein (1976 Eur. J. Immunol. 6:511-519), and improvements thereto. Briefly, these methods involve the preparation of immortal cell lines capable of producing antibodies having the desired specificity (*i.e.*, reactivity with the mesothelin polypeptide of interest). Such cell lines may be produced, for example, from spleen cells obtained from an animal immunized as described above. The spleen cells are then immortalized by, for example, fusion with a myeloma cell fusion partner, preferably one that is syngeneic with the immunized animal. For example, the spleen cells and myeloma cells may be combined with a membrane fusion promoting agent such as polyethylene glycol or a nonionic detergent for a few minutes, and then plated at low density on a selective medium that supports the growth of hybrid cells, but not myeloma cells. A preferred selection technique uses HAT (hypoxanthine, aminopterin, thymidine) selection. After a sufficient time, usually about 1 to 2 weeks, colonies of hybrids are observed. Single colonies are selected and

tested for binding activity against the polypeptide. Hybridomas having high reactivity and specificity are preferred. Hybridomas that generate monoclonal antibodies that specifically bind to HE4a polypeptides are contemplated by the present invention.

[0101] Monoclonal antibodies may be isolated from the supernatants of growing hybridoma colonies. In addition, various techniques may be employed to enhance the yield, such as injection of the hybridoma cell line into the peritoneal cavity of a suitable vertebrate host, such as a mouse. Monoclonal antibodies may then be harvested from the ascites fluid or the blood. Contaminants may be removed from the antibodies by conventional techniques, such as chromatography, gel filtration, precipitation, and extraction. For example, antibodies may be purified by chromatography on immobilized Protein G or Protein A using standard techniques.

[0102] Within certain embodiments, the use of antigen-binding fragments of antibodies may be preferred. Such fragments include Fab fragments, which may be prepared using standard techniques (e.g., by digestion with papain to yield Fab and Fc fragments). The Fab and Fc fragments may be separated by affinity chromatography (e.g., on immobilized protein A columns), using standard techniques. See, e.g., Weir, D.M., Handbook of Experimental Immunology, 1986, Blackwell Scientific, Boston.

[0103] Multifunctional fusion proteins having specific binding affinities for pre-selected antigens by virtue of immunoglobulin V-region domains encoded by DNA sequences linked in-frame to sequences encoding various effector proteins are known in the art, for example, as disclosed in EP-B1-0318554, U.S. Patent No. 5,132,405, U.S. Patent No. 5,091,513 and U.S. Patent No. 5,476,786. Such effector proteins include polypeptide domains that may be used to detect binding of the fusion protein by any of a variety of techniques with which those skilled in the art will be familiar, including but not limited to a biotin mimetic sequence (see, e.g., Luo et al., 1998 J. Biotechnol. 65:225 and references cited therein), direct covalent modification with a detectable labeling moiety, non-covalent binding to a specific labeled reporter molecule, enzymatic modification of a detectable substrate or immobilization (covalent or non-covalent) on a solid-phase support.

[0104] Single chain antibodies for use in the present invention may also be generated and selected by a method such as phage display (see, e.g., U.S. Patent No. 5,223,409; Schlebusch et al., 1997 Hybridoma 16:47; and references cited therein). Briefly, in this method, DNA sequences are inserted into the gene III or gene VIII gene of a filamentous phage, such as M13. Several vectors with multicloning sites have been developed for insertion (McLafferty et al., Gene 128:29-36, 1993; Scott and Smith, Science 249:386-390, 1990; Smith and Scott, Methods Enzymol. 217:228-257, 1993). The inserted DNA sequences may be randomly generated or may be variants of a known binding domain for binding to a HE4a polypeptide. Single chain antibodies may readily be generated using this method. Generally, the inserts encode from 6 to 20 amino acids. The peptide encoded by the inserted sequence is displayed on the surface of the bacteriophage. Bacteriophage expressing a binding domain for a HE4a polypeptide are selected by binding to an immobilized HE4a polypeptide, for example a recombinant polypeptide prepared using methods well known in the art and nucleic acid coding sequences as disclosed herein. Unbound phage are removed by a wash, typically containing 10 mM Tris, 1 mM EDTA, and without salt or with a low salt concentration. Bound phage are eluted with a salt containing buffer, for example. The NaCl concentration is increased in a step-wise fashion until all the phage are eluted. Typically, phage binding with higher affinity will be released by higher salt concentrations. Eluted phage are propagated in the bacteria host. Further rounds of selection may be performed to select for a few phage binding with high affinity. The DNA sequence of the insert in the binding phage is then determined. Once the predicted amino acid sequence of the binding peptide is known, a sufficient peptide for use herein as an antibody specific for a HE4a polypeptide may be made either by recombinant means or synthetically. Recombinant means are used when the antibody is produced as a fusion protein. The peptide may also be generated as a tandem array of two or more similar or dissimilar peptides, in order to maximize affinity or binding.

[0105] To detect an antigenic determinant reactive with an antibody specific for a HE4a polypeptide, the detection reagent is typically an antibody, which may be prepared as described herein. There are a variety of assay formats known to those of ordinary skill in the art for using an antibody to detect a polypeptide in a sample, including but not limited to enzyme linked immunosorbent assay (ELISA), radioimmunoassay (RIA), immunofluorimetry, immunoprecipitation, equilibrium dialysis, immunodiffusion and other techniques. See, e.g., Harlow and Lane, Antibodies: A Laboratory Manual, Cold Spring Harbor Laboratory, 1988; Weir, D.M., Handbook of Experimental Immunology, 1986, Blackwell Scientific, Boston. For example, the assay may be performed in a Western blot format, wherein a protein preparation from the biological sample is submitted to gel electrophoresis, transferred to a suitable membrane and allowed to react with the antibody. The presence of the antibody on the membrane may then be detected using a suitable detection reagent, as is well known in the art and described below.

[0106] In another embodiment, the assay involves the use of an antibody immobilized on a solid support to bind to the target HE4a polypeptide and remove it from the remainder of the sample. The bound HE4a polypeptide may then be detected using a second antibody reactive with a distinct HE4a polypeptide antigenic determinant, for example, a reagent that contains a detectable reporter moiety. As a non-limiting example, according to this embodiment the immobilized antibody and the second antibody which recognize distinct antigenic determinants may be any two of the monoclonal antibodies described herein selected from the monoclonal antibodies 2H5, 3D8 and 4H4. Alternatively, a com-

petitive assay may be utilized, in which a HE4a polypeptide is labeled with a detectable reporter moiety and allowed to bind to the immobilized HE4a polypeptide specific antibody after incubation of the immobilized antibody with the sample. The extent to which components of the sample inhibit the binding of the labeled polypeptide to the antibody is indicative of the reactivity of the sample with the immobilized antibody, and as a result, indicative of the level of HE4a in the sample.

[0107] The solid support may be any material known to those of ordinary skill in the art to which the antibody may be attached, such as a test well in a microtiter plate, a nitrocellulose filter or another suitable membrane. Alternatively, the support may be a bead or disc, such as glass, fiberglass, latex or a plastic such as polystyrene or polyvinylchloride. The antibody may be immobilized on the solid support using a variety of techniques known to those in the art, which are amply described in the patent and scientific literature.

[0108] In certain preferred embodiments, the assay for detection of HE4a antigen polypeptide in a sample is a two-antibody sandwich assay. This assay may be performed by first contacting a HE4a polypeptide-specific antibody (e.g., a monoclonal antibody such as 2H5, 3D8 or 4H4) that has been immobilized on a solid support, commonly the well of a microtiter plate, with the biological sample, such that a soluble molecule naturally occurring in the sample and having an antigenic determinant that is reactive with the antibody is allowed to bind to the immobilized antibody (e.g., a 30 minute incubation time at room temperature is generally sufficient) to form an antigen-antibody complex or an immune complex. Unbound constituents of the sample are then removed from the immobilized immune complexes. Next, a second antibody specific for a HE4a antigen polypeptide is added, wherein the antigen combining site of the second antibody does not competitively inhibit binding of the antigen combining site of the immobilized first antibody to a HE4a polypeptide (e.g., a monoclonal antibody such as 2H5, 3D8 or 4H4 that is not the same as the monoclonal antibody immobilized on the solid support). The second antibody may be detectably labeled as provided herein, such that it may be directly detected. Alternatively, the second antibody may be indirectly detected through the use of a detectably labeled secondary (or "second stage") anti-antibody, or by using a specific detection reagent as provided herein. The subject invention method is not limited to any particular detection procedure, as those having familiarity with immunoassays will appreciate that there are numerous reagents and configurations for immunologically detecting a particular antigen (e.g., a mesothelin polypeptide) in a two-antibody sandwich immunoassay.

[0109] In certain preferred embodiments of the invention using the two-antibody sandwich assay described above, the first, immobilized antibody specific for a HE4a antigen polypeptide is a polyclonal antibody and the second antibody specific for a HE4a antigen polypeptide is a polyclonal antibody. In certain other embodiments of the invention the first, immobilized antibody specific for a HE4a antigen polypeptide is a monoclonal antibody and the second antibody specific for a HE4a antigen polypeptide is a polyclonal antibody. In certain other embodiments of the invention the first, immobilized antibody specific for a HE4a antigen polypeptide is a polyclonal antibody and the second antibody specific for a HE4a antigen polypeptide is a monoclonal antibody. In certain other highly preferred embodiments of the invention the first, immobilized antibody specific for a HE4a antigen polypeptide is a monoclonal antibody and the second antibody specific for a HE4a antigen polypeptide is a monoclonal antibody. For example, in these embodiments it should be noted that monoclonal antibodies 2H5, 3D8 and 4H4 as provided herein recognize distinct and non-competitive antigenic determinants (e.g., epitopes) on HE4a polypeptides, such that any pairwise combination of these monoclonal antibodies may be employed. In other preferred embodiments of the invention the first, immobilized antibody specific for a HE4a antigen polypeptide and/or the second antibody specific for a HE4a antigen polypeptide may be any of the kinds of antibodies known in the art and referred to herein, for example by way of illustration and not limitation, Fab fragments, F(ab')₂ fragments, immunoglobulin V-region fusion proteins or single chain antibodies. Those familiar with the art will appreciate that the present invention encompasses the use of other antibody forms, fragments, derivatives and the like in the methods disclosed and claimed herein.

[0110] In certain particularly preferred embodiments, the second antibody may contain a detectable reporter moiety or label such as an enzyme, dye, radionuclide, luminescent group, fluorescent group or biotin, or the like. The amount of the second antibody that remains bound to the solid support is then determined using a method appropriate for the specific detectable reporter moiety or label. For radioactive groups, scintillation counting or autoradiographic methods are generally appropriate. Antibody-enzyme conjugates may be prepared using a variety of coupling techniques (for review see, e.g., Scouten, W.H., *Methods in Enzymology* 135:30-65, 1987). Spectroscopic methods may be used to detect dyes (including, for example, colorimetric products of enzyme reactions), luminescent groups and fluorescent groups. Biotin may be detected using avidin or streptavidin, coupled to a different reporter group (commonly a radioactive or fluorescent group or an enzyme). Enzyme reporter groups may generally be detected by the addition of substrate (generally for a specific period of time), followed by spectroscopic, spectrophotometric or other analysis of the reaction products. Standards and standard additions may be used to determine the level of mesothelin polypeptide in a sample, using well known techniques.

[0111] In another embodiment, the invention contemplates the use of a HE4a antigen polypeptide as provided herein to screen for the presence of a malignant condition by detection of immunospecifically reactive antibodies in a biological sample from a biological source or subject. According to this embodiment, a HE4a antigen polypeptide (or a fragment or variant thereof including a truncated HE4a antigen polypeptide as provided herein) is detectably labeled and contacted

with a biological sample to detect binding to the HE4a antigen polypeptide of an antibody naturally occurring in soluble form in the sample. For example, the HE4a antigen polypeptide may be labeled biosynthetically by using the sequences disclosed herein in concert with well known methods such as incorporation during *in vitro* translation of a readily detectable (e.g., radioactively labeled) amino acid, or by using other detectable reporter moieties such as those described above.

Without wishing to be bound by theory, this embodiment of the invention contemplates that certain HE4a polypeptides such as the HE4a fusion polypeptides disclosed herein, may provide peptides that are particularly immunogenic and so give rise to specific and detectable antibodies. For example, according to this theory certain HE4a fusion polypeptides may represent "non-self" antigens that provoke an avid immune response, while HE4a polypeptides that lack fusion domains may be viewed by the immune system as more resembling "self" antigens that do not readily elicit humoral or cell-mediated immunity.

[0112] As noted above, the present invention pertains in part to the surprising finding that soluble forms of HE4a antigen polypeptides occur naturally in subjects, including elevated levels of such soluble HE4a polypeptides in subjects having certain carcinomas.

[0113] A method of screening for the presence of a malignant condition according to the present invention may be further enhanced by the detection of more than one tumor associated marker in a biological sample from a subject. Accordingly, in certain embodiments the present invention provides a method of screening that, in addition to detecting reactivity of a naturally occurring soluble sample component with an antibody specific for a HE4a antigen polypeptide, also includes detection of at least one additional soluble marker of a malignant condition using established methods as known in the art and provided herein. As noted above, there are currently a number of soluble tumor associated antigens that are detectable in samples of readily obtained biological fluids. For example, certain embodiments of the invention relate to human mesothelin polypeptides, which include polypeptides such as the novel soluble mesothelin related antigen (MRA) polypeptide described in Scholler et al. (1999 Proc. Nat. Acad. Sci. USA 96:11531) and as also described in U.S. Application No. 09/513,597.

[0114] As provided herein, a "mesothelin polypeptide" is a soluble polypeptide having an amino acid sequence that includes the peptide:

EVEKTACPSGKKAREIDES SEQ ID NO: 14

and further having at least one antigenic determinant reactive with at least one antibody having an antigen combining site that competitively inhibits the immunospecific binding of MAb K-1 (Chang et al., 1996 Proc. Nat. Acad. Sci. USA 93:136; MAb K-1 is available from, e.g., Signet Laboratories, Inc., Dedham, MA) or of monoclonal antibodies OV569, 4H3, 3G3 or 1A6 as provided in U.S.A.N. 09/513,597.

[0115] Thus, these additional soluble tumor associated antigens for use according to the present invention may include, but need not be limited to, mesothelin and mesothelin related antigen, CEA, CA125, sialyl TN, SCC, TPS and PLAP, (see e.g., Bast et al., 1983 N. Eng. J. Med. 309:883; Lloyd et al., 1997 Int. J. Canc. 71:842; Sarandakou et al., 1997 Acta Oncol. 36:755; Sarandakou et al., 1998 Eur. J. Gynaecol. Oncol. 19:73; Meier et al., 1997 Anticanc. Res. 17(4B):2945; Kudoh et al., 1999 Gynecol. Obstet. Invest. 47:52; Ind et al., 1997 Br. J. Obstet. Gynaecol. 104:1024; Bell et al. 1998 Br. J. Obstet. Gynaecol. 105:1136; Cioffi et al., 1997 Tumori 83:594; Meier et al. 1997 Anticanc. Res. 17(4B):2949; Meier et al., 1997 Anticanc. Res. 17(4B):3019) and may further include any known marker the presence of which in a biological sample may be correlated with the presence of at least one malignant condition, as provided herein.

[0116] Alternatively, nucleic acid sequences encoding HE4a polypeptides may be detected, using standard hybridization and/or polymerase chain reaction (PCR) techniques. Suitable probes and primers may be designed by those of ordinary skill in the art based on the HE4a cDNA sequences provided herein. Assays may generally be performed using any of a variety of samples obtained from a biological source, such as eukaryotic cells, bacteria, viruses, extracts prepared from such organisms and fluids found within living organisms.

[0117] The following Examples are offered by way of illustration and not by way of limitation.

EXAMPLES

EXAMPLE 1

REAL-TIME PCR DETECTION OF HE4A EXPRESSION IN HUMAN SAMPLES

[0118] One hundred and fifty-eight human tissue biopsies, or RNA samples from biopsies, were obtained according to the procedures approved by the institutional review boards of the University of Washington, Swedish Hospital and Fred Hutchinson Cancer Research Center, all of Seattle, Washington. Samples from normal tissues (adrenal gland, bone marrow, brain, colon, endometrium, stomach, heart, kidney, liver, lung, lung, mammary gland, skeletal muscle, skeletal muscle, myometrium, peripheral nerve, peripheral blood lymphocyte preparations, salivary gland, skin, small

intestine, spinal cord, spleen, spleen, trachea, thymus, uterus, peripheral blood lymphocyte culture, and 40 normal ovaries), from benign ovarian lesions (13 serous cystadenomas), from 2 ovarian tumors of borderline malignancy, from 3 stage I mucinous ovarian carcinomas, 3 stage I serous ovarian carcinomas, 37 stage III serous ovarian carcinomas, 7 stage IV serous ovarian carcinomas, 6 samples of tissue from metastatic ovarian carcinoma, and 2 tubes from women with ovarian cancers were included. All tissue samples were obtained from women prior to therapy, and a portion of each tumor was immediately placed in liquid nitrogen, with the remainder of the specimen submitted for routine histology. Only those samples which on histopathologic examination were found to be composed of more than 80% tumor cells, and which were without necrosis, were used for hybridization and real time PCR experiments. RNA from an ovarian surface epithelial culture (OSE, obtained from B. Karlan, Cedars Sinai Hospital, Los Angeles, CA), and three additional OSE samples (obtained from R. Hernandez, University of Washington, Seattle, WA) were also included. In all, 151 (94 non-malignant tissues and 57 cancers) were reserved for realtime quantitative PCR confirmation of overexpression of genes of interest, including HE4a as described below.

[0119] Real-time quantitative PCR was performed as follows. The HE4 real-time PCR primers were:

AGCAGAGAAGACTGGCGTGT (forward) [SEQ ID NO: 15]
and

GAAAGGGAGAAGCTGTGGTCA (reverse) [SEQ ID NO:16].

[0120] These primers generated a PCR product of 427 bp length. Total RNA was reverse transcribed using oligo-dT primer and Superscript II Reverse Transcriptase (Life Technologies, Inc., Bethesda, MD) as specified by the manufacturer. Real-time quantitative PCR was performed using an ABI7700 machine (PE Biosystems, Foster City, CA) and the SYBR-Green protocol. Five duplicates of a 2-fold serial dilution of a white blood cell cDNA preparation served as a template for the amplification of the standard (S31iii125, which in previous experiments was demonstrated to be universally expressed in normal and malignant tissues, see Schummer et al., 1999 Gene 1999).

[0121] GenBank accession number: U61734, forward primer:

CGACGCTTCTTCAAGGCCAA, SEQ ID NO: 17
reverse primer: ATGGAAGCCCAAGCTGCTGA SEQ ID NO: 18.

[0122] The negative controls consisted of total RNA from an ovarian carcinoma which was reverse transcribed without the enzyme and one well containing all components of the PCR without any template. All runs were performed in duplicate. Each run was analyzed on an agarose gel for the presence of a single PCR band to eliminate artifactual bands. The results for each 96-well plate were analyzed using software (Sequence Detector™) provided by the manufacturer of the PCR machine; this analysis permits determination of expression levels of a nucleic acid sequence of interest (HE4a) relative to the standard.

[0123] The expression values, as shown in Figure 1, were depicted in arbitrary units relative to the internal standard and did not reflect absolute quantities of mRNA molecules in standard units of measure. Based on the amplitude of the mean HE4a expression levels and comparison of these values to those of other known genes (notably beta actin as a highly expressed gene), Figure 1 shows that transcripts encoding HE4a were expressed at moderate-to-high relative levels.

EXAMPLE 2

CLONING AND EXPRESSION OF NUCLEIC ACID SEQUENCES ENCODING HE4A

[0124] Amplification of HE4a fusion construct cDNA from high throughput HE4a cDNA clone: The cDNA sequence for HE4 (SEQ ID NO:8) as originally published by Kirchoff et al., (1991) was deposited in GenBank Accession # X63187 and provided the basis for oligonucleotide primer design to clone cDNA encoding HE4a (SEQ ID NO:10), as described herein. The cDNA for HE4a, identified and isolated as a differentially expressed gene product using high throughput cDNA arrays, was cloned in pSPORT as an 840 base pair fragment. This cDNA was used as template in PCR reactions to amplify HE4a in a form appropriate for creating synthetic fusion protein genes, as described in this Example.

[0125] A portion of the HE4 coding sequence (SEQ ID NO:8) appeared to encode a presumed secretory signal peptide; therefore, this native leader peptide was used in initial constructs to preserve as much of the molecule's structure as possible. In addition, because HE4a was relatively small and the sequence did not contain any unusual structural features such as transmembrane domains or cytoplasmic targeting sequences, a fusion protein was designed that incorporated the complete HE4a gene product fused to the human IgG1 Fc domain. Primers were designed that encoded appropriate restriction sites for cloning and created the necessary in-frame fusions of protein domains for the final construct. The 5'

primer (SEQ ID NO:1, or HE4-5') was a 39-mer that included a HindIII site, a Kozak sequence to improve expression adjacent to the first ATG, and a portion of the HE4a leader peptide based on the previously published HE4 sequence. The 3' primer (SEQ ID NO:2, or HE4-3'-1) was a 36-mer that included an in-frame BamHI site for fusion to the human -lg tail cDNA, with the 3' end of the HE4 coding sequence truncated just before the STOP codon. PCR amplification reactions were performed using these two primers at 50 pmol and 1 ng HE4/pSPORT plasmid as template. Fifty microliter reactions also included 2.5 units (0.5 ml) ExTaq DNA polymerase (TaKaRa Shuzo Biomedical, Otsu, Shiga, Japan), diluted buffers and nucleotides according to package insert directions. Reactions were amplified for 30 cycles, with an amplification profile of 94°C, 30 seconds, 60°C, 30 seconds, and 72°C, 30 seconds. PCR products of the expected size (approximately 400 base pairs) for the full length HE4 were obtained.

[0126] These fragments were restriction digested, purified, and ligated into the appropriately digested mammalian expression plasmid already containing the human IgG1 insert. Ligation products were transformed into DH5a bacterial cells and transformants screened for the presence of HE4-hlgG1 fusion gene inserts. Plasmid DNA from several isolates was then sequenced using the BigDye Terminator Cycle Sequencing Kit (PE Biosystems, Foster City, CA) on an ABI Prism 310 (PE Biosystems) sequencer. In addition, plasmid DNA from these isolates was also transfected by DEAE-Dextran transient transfections of COS7 cells as described (Hayden et al., 1994 Ther. Immunol. 1:3). Culture supernatants were harvested after 72 h and screened by immunoprecipitation with protein A-agarose, reducing SDS-PAGE electrophoresis, and Western blotting (Figure 2). Western blots were probed using a goat anti-human IgG conjugate at 1:5000, followed by ECL development.

[0127] Results from the sequence analysis indicated that the HE4a coding sequence obtained (SEQ ID NO:10) and the deduced amino acid sequence (SEQ ID NO: 11) differed from the published HE4 coding (SEQ ID NO:8) and translated (SEQ ID NO:9) sequences at several positions. Sequences were therefore also obtained from cDNAs derived from normal human epididymis and from several tumor cell lines and primary tumor RNA, and the HE4a coding sequence as set forth in SEQ ID NO:10, and the deduced encoded amino acid sequence set forth in SEQ ID NO:11, were confirmed.

[0128] Cloning HE4 cDNA from Tumor Cell Lines: RNA was prepared from several ovarian tumor cell lines, including 4007 and OVCAR3 (see, e.g., Hellstrom et al., 2001 *Canc. Res.* 61:2420), using Trizol (Life Technologies, Gaithersburg, MD) according to the manufacturer's instructions. cDNA was prepared using 1-3 µg RNA, random hexamers, and Superscript II Reverse Transcriptase (Life Technologies) according to manufacturer's directions. HE4 cDNA was PCR amplified from the random primed cDNA in 50 µl reactions containing 1 µg cDNA, 2.5 units (0.5 ml) ExTaq DNA polymerase (TaKaRa Shuzo Biomedical, Otsu, Shiga, Japan), diluted buffers and nucleotides according to insert directions, and HE4-5' and HE4-3'-1 specific primers. Reactions were amplified for 30 cycles, with an amplification profile of 94°C, 30 seconds, 60°C, 30 seconds, and 72°C, 30 seconds. The HE4-5' and HE4-3'-1 oligonucleotides were again used for PCR amplification of HE4 from the tumor derived cDNAs. PCR products of the expected size for the full length HE4 were obtained and the fragments were cloned into pT-AdvanTAge vectors (Clontech, Palo Alto, CA) for sequence analysis. Clones with inserts were sequenced as described above, and the PCR fragments from the tumor RNA samples were found to encode HE4a sequence identical to the original clones described above; these HE4a sequences differed from the published sequence for HE4 (Kirchhoff et al., 1991). Similarly, HE4a coding sequence was obtained from normal epididymis (SEQ ID NO:10) and from primary tumor tissue cDNAs (SEQ ID NO:12), and thus matched the new HE4a sequence described above but differed from the HE4 sequence (SEQ ID NO:8) of Kirchhoff et al. (1991).

[0129] Production of HE4Ig fusion protein. The HE4-hlgG1 cDNA construct (SEQ ID NO:7) was inserted as a HindIII-XbaI fragment into the multiple cloning site of the mammalian expression vector pD18, a derivative of pCDNA 3 as described previously (Hayden et al., 1996 *Tissue Antigens* 48: 242). Constructs initially were transfected by DEAE-Dextran transient transfections as described (Hayden, et al., 1994 *Ther. Immunol.* 1: 3). Plasmid DNA from several isolates was prepared and used to transiently transfect COS7 cells. Culture supernatants were harvested after 72 h and screened by immunoprecipitation with protein A-agarose, reducing SDS-PAGE electrophoresis, and Western blotting (Figure 2).

[0130] CHO-DG44 cells (Urlaub et al. 1986 *Somat. Cell. Mol. Genet.* 12: 55) were used to construct stable lines expressing high levels of the fusion proteins of interest. Stable CHO lines expressing HE4Ig were created by high copy electroporation in the pD18 vector (Hayden et al., 1996 *Tissue Antigens* 48: 242; Barsoum, 1990 *DNA Cell Biol.* 9: 293) and selection of methotrexate-resistant clones by limiting dilution in Excell 302 CHO media (JRH Biosciences, Denver, PA) containing recombinant insulin (Life Technologies, Gaithersburg, MD), sodium pyruvate (Irvine Scientific, Santa Ana, CA), glutamine (Irvine Scientific), 2X non-essential amino acids for MEM (Irvine Scientific) and 100 nM methotrexate (Sigma, St. Louis, MO). Culture supernatants from resistant clones were then assayed by IgG sandwich ELISA to screen for high producing lines. Spent supernatants were harvested from large-scale cultures and HE4Ig was purified by protein A affinity chromatography over a 2-ml protein A-agarose (Repligen, Cambridge, MA) column. Fusion protein was eluted from the column as 0.8-ml fractions in 0.1 M citrate buffer (pH 2.7), and neutralized using 100 µl of 1 M Tris base (pH 10.5). Eluted fractions were assayed for absorbance at 280 nm, and fractions containing fusion protein were pooled, dialyzed overnight in several liters of PBS (pH 7.4), and filter sterilized through 0.2-µm syringe filter units (Millipore, Bedford, MA).

[0131] Stable transfectants were used to produce enough protein for immunization of BALB/c mice. Mice were initially injected intraperitoneally (IP) with 10 micrograms of purified HE4-hlgG1 fusion protein at 4 week intervals. After a primary injection and two boosts using this immunization protocol, mice were subsequently injected with 10 µg protein plus TiterMax Gold adjuvant IP and then SC for two more boosts prior to harvest of spleens. Hybridomas were made by

fusing spleen cells from immunized mice with the myeloma partner P3-X63-Ag8-653.

[0132] Western analysis of HE4Ig fusion proteins. Protein samples were resolved by SDS-PAGE electrophoresis on a 10% Tris/Bis NOVEX gel (Invitrogen, San Diego CA), and transferred by semi-dry blotting onto PVDF membranes (Millipore). The membranes were blocked to prevent nonspecific antibody binding by incubation in 5% nonfat dry milk (Carnation) in PBS/0.25% NP-40 or TBS-T (50 mM Tris HCl, pH 7.6, 0.15 M NaCl, and 0.05% Tween-20) overnight at 4° C. The membranes were incubated with HRP-goat anti-human IgG (1/10,000) or with HRP-Streptavidin (1:5000) (Caltag) in TBS-T for 1 h at room temperature or 4°C, with gentle agitation. After two rinses and four washes with TBST, the membrane was incubated in ECL™ (Amersham, Little Chalfont, UK) reagent for 60 s and exposure to autoradiography film for visualization of the bands (Figure 2). Fusion protein samples were harvested from culture supernatants or from protein A eluates of purified samples and protein A precipitated using 50 µl protein A agarose (Repligen, Cambridge, MA). Immunoprecipitates were washed and resuspended in SDS-PAGE reducing sample loading buffer, boiled, then resolved by SDS-PAGE electrophoresis on a 10% Tris/Bis NOVEX gel (Invitrogen, San Diego CA), and transferred by semi-dry blotting onto PVDF membranes (Millipore). The membranes were blocked to prevent nonspecific antibody binding by incubation in 5% nonfat dry milk (Carnation) in PBS/0.25% NP-40 or TBS-T (50 mM Tris HCl, pH 7.6, 0.15 M NaCl, and 0.05% Tween-20) from 1 hour to overnight at 4° C. The membranes were incubated with HRP-goat anti-human IgG (1/10,000), washed in TBS-T, and exposed to ECL™ (Amersham, Little Chalfont, UK) reagent for 60 s. ECL-blots were then exposed to autoradiography film for visualization of the bands. Figure 2, Lane 1 contained immunoprecipitated samples from supernatant of CTLA4-hlgG1 transfected COS7 cells, Lanes 3 and 4 contained HE4-hlgG1 fusion protein culture supernatants, and Lane 5 contained mock transfected COS supernatant. The HE4-hlgG1 fusion protein runs at an apparent Mr of approximately 48 kDa on reduced gels or Western blots, larger than the 39 kDa expected based on the predicted amino acid sequence, suggesting that the molecule was glycosylated.

[0133] Construction and Expression of HE4-mIgG2a Fusion Proteins: A similar construction to the HE4-hlgG1 fusion gene was also made, but substituting the murine -IgG2a domain for the human IgG Fc fragment. The alternate tail was used so that immunizations of mice would not be affected by immunogenicity of the human Ig tail fusion domain. Existing cDNA clones of the mIgG2a tail were out of frame with respect to the HE4a clone described above, so the -mIgG2a cassette was reamplified from such plasmids to create an in-frame fusion domain. The forward, sense primer used was mIgG2aBAMIF:

5'-gtgtcggatccgagccagagggcccaatcaag-3' [SEQ ID NO:19],
while the reverse, antisense primer was designated mIgG2a3'Xba+S:
5'-gtgttttctagattatcattaccggagtcgggagaagctc-3' [SEQ ID NO:20].

[0134] The template used contained murine CTLA4 fused to the murine IgG2a Fc domain, but with the restriction site at the fusion junction out of frame with respect to the codon spacing. The new oligonucleotides created a frameshift, altering the reading frame at the BamHI site so that the fusion gene with HE4 would result in expression of a complete HE4-mIgG2a fusion protein. PCR products were amplified, subcloned, and processed as described for the human fusion genes. Molecules were subcloned into the pD18 mammalian expression vector, stable CHO clones generated, and fusion protein expressed as described above for the HE4-human IgG1 fusion proteins.

EXAMPLE 3

MONOCLONAL ANTIBODIES SPECIFIC FOR HE4A

[0135] Generation of anti-HE4a Mabs. In initial experiments, several BALB/c mice were immunized with HE4a-hlgG fusion proteins prepared as described above, with and without adjuvant. Although high antibody titers were seen in these mice, the antibodies were not specific for HE4a, since equally high titers were seen against a control fusion protein having the hlgG tail (CTLA4-hlg fusion). Therefore, HE4a-mIgG fusion protein was used for immunization. Figure 3 illustrates the results from two immunizations that led to high titered antibodies against HE4a in two BALB/c mice (1605 and 1734) that were each twice immunized with HE4a-mIgG plus adjuvant (TiterMax®, CytRx Corp., Norcross, GA) according to the manufacturer's instructions, given subcutaneously in the tail. HE4a-specific hybridomas were prepared by standard methodologies using spleen cells from mice exhibiting high HE4a-specific antibody titers. Figure 4 shows the initial testing, by ELISA, of hybridomas made by using spleen cells from mouse 1605 (whose serum data are shown in Fig. 3). Three wells displayed high reactivity against HE4a-hlg. Three hybridomas, 2H5, 3D8 and 4H4, were subsequently isolated from these wells following cloning by limiting dilution. Hybridomas 2H5 and 3D8 were found to identify

different epitopes according to competition assays.

[0136] Construction and application of an ELISA for tumor diagnosis. A double determinant ("sandwich") ELISA was constructed, using a similar approach as that employed to make an ELISA which measures mesothelin/MPF and related antigens in serum and other fluids (Scholler et al., Proc. Natl. Acad. Sci. USA 96, 11531, 1999) using the two MAbs 2H5 and 3D8 referred to above. Figure 5 shows an example of a standard curve, prepared by using HE4a-hIgG diluted in DMEM culture medium. As illustrated in the figure, a signal was detected at the 1 ng level of HE4a-hIgG. Fig. 5 also shows that undiluted culture medium from an ovarian carcinoma line (4007) gave a detectable signal. Figure 6 shows that ascites fluid from a patient (designated OV50) diagnosed with ovarian carcinoma contained HE4a antigen which was still detectable at the highest dilution tested (1:1280).

[0137] The initial HE4a ELISA was improved by establishing the optimal amounts of the two antibodies used. One of these antibodies, 2H5, was biotinylated and the other antibody, 3D8 was immobilized by permitting it to become bound to the bottom of the test plate; the respective doses of the two monoclonal antibodies for the assay were 2.5 and 100 µg/ml. Except for the different MAbs and doses of the MAbs being used, as just noted, the assay methods were identical to those described for mesothelin/MPF and related molecules (Scholler et al., 1999 Proc. Natl. Acad. Sci. USA 96:11531).

[0138] Preliminary testing of sera from patients with ovarian carcinoma and a variety of controls indicated that the HE4a protein was elevated in a significant fraction of patients with ovarian carcinoma, including patients with early disease, and not in control sera for which the background is very low. In a study using the above described sandwich ELISA assay and coded serum samples from approximately 400 patients (provided by Swedish Hospital, Seattle, WA), all samples from patients diagnosed with ovarian cancer were correctly scored as positive by the HE4a ELISA, which further predicted no false positives. It is therefore contemplated, without wishing to be bound by theory, that assaying for HE4a protein in sera and other body fluids may thereby provide a clinically beneficial complement to existing diagnostic assays for ovarian carcinoma (such as CA125). Furthermore, although the ELISA has so far been investigated with respect to its ability to aid the diagnosis of ovarian carcinoma, it should be equally applicable to any tumor that overexpresses the HE4a encoded antigen. The same ELISA, or a modification of it, should also be applicable for studies of HE4-related molecules, if future studies will identify such.

[0139] Expression of HE4 protein at the cell surface. Studies performed with flow cytometry, using ovarian carcinoma cell lines with a B cell line as a negative control, showed that the HE4a encoded antigen was expressed at the cell surface among some ovarian carcinomas. The cell lines used and the flow cytometry technique employed have been previously described (Hellstrom et al., 2001 Cancer Res. 61, 2420). For example, 93% of OVCAR 3 cells were positive, as were 71% of cells from ovarian cancer line 4010 and 38% of cells from ovarian cancer line HE50OV, while less than 20% of cells were positive from another 10 ovarian carcinoma lines tested. This suggested that HE4a antigen at the cell surface may, according to non-limiting theory, provide a target for immunotherapeutic strategies such as HE4a specific antibody-mediated and/or HE4a-specific T-cell mediated therapies.

EXAMPLE 4

PROPHYLACTIC AND THERAPEUTIC VACCINES TARGETING HE4A EPITOPES

[0140] Detection of the amplification of HE4a-encoding nucleic acid sequences and/or of HE4a overexpression in certain tumors (particularly malignant ovarian tumors) is performed employing the compositions and methods described above, and HE4a expression levels are compared to those in normal tissues. The increased occurrence of HE4a-specific monoclonal antibody-defined epitopes in tumors provides for the identification of HE4a epitopes that are used as targets for prophylactic or preventive vaccines with applicability in cancer therapy; such vaccines may also usefully alter (e.g., increase or decrease in a statistically significant manner relative to a suitable control) fertilization (which may in certain embodiments be reflected by demonstration of HE4a protease-inhibitory or protease-enhancing activity using well known assays for protease inhibition by members of the four-disulfide core family, such as Slp-1). A large variety of approaches to make vaccines has been identified and described in many review articles (e.g., by Hellstrom and Hellstrom, In Handbook in Experimental Pharmacology, vol. "Vaccines", Springer, Heidelberg, p. 463, 1999). These include, but are not restricted to, the use of proteins, fusion proteins and peptides, DNA plasmids, recombinant viruses, anti-idiotypic antibodies, dendritic cells pulsed with peptide epitopes in vitro, and anti-idiotypic antibodies. The vaccines may be used alone or in combinations with adjuvants, and/or lymphokines, such as GMCSF. According to non-limiting theory, detection of circulating soluble HE4a proteins as described above would not be expected to interfere with the use of vaccines inducing T cell-mediated immunity, since the T cells recognize epitopes presented in the context of MHC molecules on cell surfaces but do not react to circulating antigen or immune complexes.

[0141] From the foregoing, it will be appreciated that, although specific embodiments of the invention have been described herein for purposes of illustration, various modifications may be made without deviating from the spirit and scope of the invention. Accordingly, the invention is not limited except as by the appended claims.

[0142] In the present specification "comprises" means "includes or consists of" and "comprising" means "including or

consisting of".

[0143] The features disclosed in the foregoing description, or the following claims, or the accompanying drawings, expressed in their specific forms or in terms of a means for performing the disclosed function, or a method or process for attaining the disclosed result, as appropriate, may, separately, or in any combination of such features, be utilised for realising the invention in diverse forms thereof.

5

10

15

20

25

30

35

40

45

50

55

SEQUENCE LISTING

5 <110> Pacific Northwest Research Institute
 Schummer, Michel
 Hellstrom, Ingegerd
 Hellstrom, Karl Erik
 Ledbetter, Jeffrey A.
 Hayden-Ledbetter, Martha
 10
 <120> DIAGNOSIS OF CARCINOMAS
 15
 <130> 730033.412PC
 <140> PCT
 <141> 2002-08-27
 <160> 20
 20
 <170> FastSEQ for Windows Version 4.0
 <210> 1
 <211> 39
 25 <212> DNA
 <213> Artificial Sequence
 <220>
 <223> 5' PCR primer for HE4 coding region. Native
 30 secretory signal peptide included. HindIII site and
 Kozak consensus sequence upstream of ATG
 <400> 1
 35 gttgttaagc ttgccgccat gcctgcttgt cgcctaggc 39
 <210> 2
 <211> 36
 <212> DNA
 40 <213> Artificial Sequence
 <220>
 <223> 3' antisense PCR primer for HE4 coding region STOP
 codon deleted/substitute in-frame BamHI
 45 restriction site for cloning
 <400> 2
 50 gttgttggat ccgaaattgg gagtgacaca ggacac 36
 <210> 3
 <211> 390
 <212> DNA
 <213> Homo sapiens
 55
 <400> 3

EP 2 913 673 A1

```

aagcttgccg ccatgcctgc ttgtgccta ggcccgtag ccgcccgcct cctcctcagc      60
ctgctgctgt tcggcttcac cctagtctca ggcacaggag cagagaagac tggcgtgtgc      120
cccagctcc aggtgacca gaactgcacg caagagtgcg tctcggacag cgaatgcgcc      180
5 gacaacctca agtgctgcag cgcgggctgt gccaccttct gctctctgcc caatgataag      240
gagggttcct gccccaggt gaacattaac tttcccagc tcggcctctg tcgggaccag      300
tgccaggtgg acagccagtg tcctggccag atgaaatgct gccgcaatgg ctgtgggaag      360
gtgtcctgtg tcactcccaa tttcggatcc                                     390

<210> 4
10 <211> 1077
    <212> DNA
    <213> Homo sapiens

<400> 4
15 atgcctgctt gtcgcctagg cccgctagec gccgcctcc tcctcagcct gctgctgttc      60
   ggcttcaccc tagtctcagg cacaggagca gagaagactg gcgtgtgccc cgagctccag      120
   gctgaccaga actgcacgca agagtgcgtc tcggacagcg aatgcgccga caacctcaag      180
   tgetgcagcg cgggctgtgc caccttctgc tctctgccc atgataagga gggttcctgc      240
   ccccaggtga acattaactt tcccagctc ggctctgtc gggaccagtg ccaggtggac      300
20 agccagtgtc ctggccagat gaaatgctgc cgcaatggct gtgggaaggt gtcctgtgtc      360
   actcccaatt tcggtaccga gcccaaact tgtgacaaaa ctcacacatg cccaccgtgc      420
   ccagcacctg aactcctggg gggaccgtca gtcttctct tcccccaaa acccaaggac      480
   accctcatga tctcccggac cctgagggtc acatgcgtgg tgggtggacgt gagccacgaa      540
   gacctgagg tcaagttcaa ctggtacgtg gacggcgtgg aggtgcataa tgccaagaca      600
25 aagccgcggg aggagcagta caacagcag taccgtgtgg tcagcgtcct caccgtcctg      660
   caccaggact ggctgaatgg caaggagtac aagtgcagg tctccaacaa agccctccca      720
   gcccccatcg agaaaacaat ctccaaagcc aaagggcagc cccgagaacc acaggtgtac      780
   accctgcccc catcccggga tgagctgacc aagaaccagg tcagcctgac ctgcctggtc      840
   aaaggcttct atcccagcga catcgcctg gagtgggaga gcaatgggca gccggagaac      900
30 aactacaaga ccacgcctcc cgtgctggac tccgacggct ccttcttct ctacagcaag      960
   ctacaccgtg acaagagcag gtggcagcag ggaacgtct tctcatgctc cgtgatgcat      1020
   gaggtctgtc acaaccacta cagcagaag agcctctccc tgtctccggg taaatga      1077

<210> 5
35 <211> 358
    <212> PRT
    <213> Homo sapiens

<400> 5
40 Met Pro Ala Cys Arg Leu Gly Pro Leu Ala Ala Ala Leu Leu Leu Ser
   1      5      10      15
   Leu Leu Leu Phe Gly Phe Thr Leu Val Ser Gly Thr Gly Ala Glu Lys
   20      25      30
   Thr Gly Val Cys Pro Glu Leu Gln Ala Asp Gln Asn Cys Thr Gln Glu
   35      40      45
45 Cys Val Ser Asp Ser Glu Cys Ala Asp Asn Leu Lys Cys Cys Ser Ala
   50      55      60
   Gly Cys Ala Thr Phe Cys Ser Leu Pro Asn Asp Lys Glu Gly Ser Cys
   65      70      75      80
   Pro Gln Val Asn Ile Asn Phe Pro Gln Leu Gly Leu Cys Arg Asp Gln
   85      90      95
50 Cys Gln Val Asp Ser Gln Cys Pro Gly Gln Met Lys Cys Cys Arg Asn
   100      105      110
   Gly Cys Gly Lys Val Ser Cys Val Thr Pro Asn Phe Gly Ser Glu Pro
   115      120      125
55 Lys Ser Cys Asp Lys Thr His Thr Cys Pro Pro Cys Pro Ala Pro Glu
   130      135      140
   Leu Leu Gly Gly Pro Ser Val Phe Leu Phe Pro Pro Lys Pro Lys Asp

```

EP 2 913 673 A1

	145		150		155		160									
	Thr	Leu	Met	Ile	Ser	Arg	Thr	Pro	Glu	Val	Thr	Cys	Val	Val	Val	Asp
					165				170						175	
5	Val	Ser	His	Glu	Asp	Pro	Glu	Val	Lys	Phe	Asn	Trp	Tyr	Val	Asp	Gly
				180					185					190		
	Val	Glu	Val	His	Asn	Ala	Lys	Thr	Lys	Pro	Arg	Glu	Glu	Gln	Tyr	Asn
			195				200					205				
	Ser	Thr	Tyr	Arg	Val	Val	Ser	Val	Leu	Thr	Val	Leu	His	Gln	Asp	Trp
		210					215				220					
10	Leu	Asn	Gly	Lys	Glu	Tyr	Lys	Cys	Lys	Val	Ser	Asn	Lys	Ala	Leu	Pro
	225					230					235				240	
	Ala	Pro	Ile	Glu	Lys	Thr	Ile	Ser	Lys	Ala	Lys	Gly	Gln	Pro	Arg	Glu
				245					250					255		
	Pro	Gln	Val	Tyr	Thr	Leu	Pro	Pro	Ser	Arg	Asp	Glu	Leu	Thr	Lys	Asn
15				260					265					270		
	Gln	Val	Ser	Leu	Thr	Cys	Leu	Val	Lys	Gly	Phe	Tyr	Pro	Ser	Asp	Ile
			275				280						285			
	Ala	Val	Glu	Trp	Glu	Ser	Asn	Gly	Gln	Pro	Glu	Asn	Asn	Tyr	Lys	Thr
		290				295					300					
20	Thr	Pro	Pro	Val	Leu	Asp	Ser	Asp	Gly	Ser	Phe	Phe	Leu	Tyr	Ser	Lys
	305					310					315				320	
	Leu	Thr	Val	Asp	Lys	Ser	Arg	Trp	Gln	Gln	Gly	Asn	Val	Phe	Ser	Cys
				325					330					335		
	Ser	Val	Met	His	Glu	Ala	Leu	His	Asn	His	Tyr	Thr	Gln	Lys	Ser	Leu
			340					345					350			
25	Ser	Leu	Ser	Pro	Gly	Lys										
			355													

<210> 6

<211> 1098

<212> DNA

<213> Artificial Sequence

<220>

<223> Human-Mouse synthetic fusion gene

<400> 6

	aagcttgccg	ccatgcctgc	ttgtcgcccta	ggcccgcctag	ccgcgcgcct	cctcctcage	60
40	ctgctgctgt	tccgcttcac	cctagtctca	ggcacaggag	cagagaagac	tggcgtgtgc	120
	cccagactcc	aggctgacca	gaactgcacg	caagagtgcg	tctcggacag	cgaatgcgcc	180
	gacaacctca	agtgcctgcg	cgcggtgtgt	gccaccttct	gtctctctgcc	caatgataag	240
	gaggggttct	gcccccaggt	gaacattaac	tttccccagc	tccgcctctg	tccgggaccag	300
	tgccagggtg	acagccagtg	tcctggccag	atgaaatgct	gccgcaatgg	ctgtgggaag	360
45	gtgtcctgtg	tcactcccaa	tttcggatcc	gagcccagag	ggcccacaa	caagccctgt	420
	cctccatgca	aatgcccagc	accgaattca	gctggtacct	catcctctct	catcttccct	480
	ccaaagatca	aggatgtact	catgatctcc	ctgagcccca	tagtcacatg	tgtggtggtg	540
	gatgtgagcg	aggatgaccc	agatgtccag	atcagctgg	ttgtgaacaa	cgtggaagta	600
	cacacagctc	agacacaaac	ccatagagag	gattacaaca	gtactctccg	ggtggtcagt	660
	gccctcccca	tccagcacca	ggactggatg	agtggcaagg	agttcaaagt	caaggtcaac	720
50	aacaaagacc	tcccagcgcc	catcgagaga	accatctcaa	aacccaaagg	gtcagtaaga	780
	gctccacagg	tatatgtctt	gcctccacca	gaagaagaga	tgactaagaa	acaggtcact	840
	ctgacctgca	tggtcacaga	cttcattgct	gaagacattt	acgtggagtg	gaccaacaac	900
	gggaaaacag	agctaaacta	caagaacact	gaaccagtcc	tggactctga	tggttcttac	960
	ttcatgtaca	gcaagctgag	agtggaaaag	aagaactggg	tggaaagaaa	tagctactcc	1020
55	tgttcagtgg	tccacgaggg	tctgcacaat	caccacacga	ctaagagctt	ctcccggact	1080
	ccgggtaaat	gatctaga					1098

<210> 7
 <211> 359
 <212> PRT
 <213> Artificial Sequence

<220>
 <223> Human-Mouse fusion protein

<400> 7

Met	Pro	Ala	Cys	Arg	Leu	Gly	Pro	Leu	Ala	Ala	Ala	Leu	Leu	Leu	Ser
1				5					10					15	
Leu	Leu	Leu	Phe	Gly	Phe	Thr	Leu	Val	Ser	Gly	Thr	Gly	Ala	Glu	Lys
			20					25					30		
Thr	Gly	Val	Cys	Pro	Glu	Leu	Gln	Ala	Asp	Gln	Asn	Cys	Thr	Gln	Glu
		35					40					45			
Cys	Val	Ser	Asp	Ser	Glu	Cys	Ala	Asp	Asn	Leu	Lys	Cys	Cys	Ser	Ala
	50					55					60				
Gly	Cys	Ala	Thr	Phe	Cys	Ser	Leu	Pro	Asn	Asp	Lys	Glu	Gly	Ser	Cys
65					70					75					80
Pro	Gln	Val	Asn	Ile	Asn	Phe	Pro	Gln	Leu	Gly	Leu	Cys	Arg	Asp	Gln
			85						90					95	
Cys	Gln	Val	Asp	Ser	Gln	Cys	Pro	Gly	Gln	Met	Lys	Cys	Cys	Arg	Asn
			100					105					110		
Gly	Cys	Gly	Lys	Val	Ser	Cys	Val	Thr	Pro	Asn	Phe	Gly	Ser	Glu	Pro
		115					120					125			
Arg	Gly	Pro	Thr	Ile	Lys	Pro	Cys	Pro	Pro	Cys	Lys	Cys	Pro	Ala	Pro
	130					135					140				
Asn	Ser	Ala	Gly	Thr	Ser	Ser	Val	Phe	Ile	Phe	Pro	Pro	Lys	Ile	Lys
145					150					155					160
Asp	Val	Leu	Met	Ile	Ser	Leu	Ser	Pro	Ile	Val	Thr	Cys	Val	Val	Val
			165						170					175	
Asp	Val	Ser	Glu	Asp	Asp	Pro	Asp	Val	Gln	Ile	Ser	Trp	Phe	Val	Asn
			180					185					190		
Asn	Val	Glu	Val	His	Thr	Ala	Gln	Thr	Gln	Thr	His	Arg	Glu	Asp	Tyr
	195						200					205			
Asn	Ser	Thr	Leu	Arg	Val	Val	Ser	Ala	Leu	Pro	Ile	Gln	His	Gln	Asp
	210					215					220				
Trp	Met	Ser	Gly	Lys	Glu	Phe	Lys	Cys	Lys	Val	Asn	Asn	Lys	Asp	Leu
225					230					235					240
Pro	Ala	Pro	Ile	Glu	Arg	Thr	Ile	Ser	Lys	Pro	Lys	Gly	Ser	Val	Arg
			245						250					255	
Ala	Pro	Gln	Val	Tyr	Val	Leu	Pro	Pro	Pro	Glu	Glu	Glu	Met	Thr	Lys
			260						265				270		
Lys	Gln	Val	Thr	Leu	Thr	Cys	Met	Val	Thr	Asp	Phe	Met	Pro	Glu	Asp
		275					280					285			
Ile	Tyr	Val	Glu	Trp	Thr	Asn	Asn	Gly	Lys	Thr	Glu	Leu	Asn	Tyr	Lys
	290					295					300				
Asn	Thr	Glu	Pro	Val	Leu	Asp	Ser	Asp	Gly	Ser	Tyr	Phe	Met	Tyr	Ser
305					310					315					320
Lys	Leu	Arg	Val	Glu	Lys	Lys	Asn	Trp	Val	Glu	Arg	Asn	Ser	Tyr	Ser
			325						330					335	
Cys	Ser	Val	Val	His	Glu	Gly	Leu	His	Asn	His	His	Thr	Thr	Lys	Ser
			340					345					350		
Phe	Ser	Arg	Thr	Pro	Gly	Lys									
		355													

<210> 8
 <211> 583
 <212> DNA

5 <213> Homo sapiens

<400> 8
 cccctgcacc ccgcccggca tagcaccatg cctgcttgtc gcctaggccc gctagccgcc 60
 gccctcctcc tcagcctgct gctgttcggc ttcaccctag tctcaggcac aggagcagag 120
 10 aagactggcg tgtgccccga gctccaggct gaccagaact gcacgcaaga gtgcgtctcg 180
 gacagcgaat gcgccgacaa cctcaagtgc tgcagcgcgg gctgtgccac cttctgcctt 240
 ctctgccccca atgataagga gggttcctgc ccccagggtga acattaaactt tccccagctc 300
 ggctctgtgc gggaccagtgc ccagggtggac acgcagtgtc ctggccagat gaaatgctgc 360
 cgcaatggct gtgggaaggt gtctgtgtgc actcccaatt tctgaggtcc agccaccacc 420
 15 aggtgagca gtgaggagag aaagtttctg cctggccctg catctggttc cagccacact 480
 gccctcccct ttttcgggac tctgtattcc ctcttggggg gaccacagct tctccctttc 540
 ccaaccaata aagtaaccac tttcagcaaa aaaaaaaaaa aaa 583

<210> 9
 <211> 125
 <212> PRT
 <213> Homo sapiens

<400> 9
 25 Met Pro Ala Cys Arg Leu Gly Pro Leu Ala Ala Ala Leu Leu Leu Ser
 1 5 10 15
 Leu Leu Leu Phe Gly Phe Thr Leu Val Ser Gly Thr Gly Ala Glu Lys
 20 25 30
 Thr Gly Val Cys Pro Glu Leu Gln Ala Asp Gln Asn Cys Thr Gln Glu
 35 40 45
 30 Cys Val Ser Asp Ser Glu Cys Ala Asp Asn Leu Lys Cys Cys Ser Ala
 50 55 60
 Gly Cys Ala Thr Phe Cys Leu Leu Cys Pro Asn Asp Lys Glu Gly Ser
 65 70 75 80
 Cys Pro Gln Val Asn Ile Asn Phe Pro Gln Leu Gly Leu Cys Arg Asp
 85 90 95
 35 Gln Cys Gln Val Asp Thr Gln Cys Pro Gly Gln Met Lys Cys Cys Arg
 100 105 110
 Asn Gly Cys Gly Lys Val Ser Cys Val Thr Pro Asn Phe
 115 120 125

40 <210> 10
 <211> 486
 <212> DNA
 <213> Homo sapiens

45 <400> 10
 tgagagaaag ccgcccgcacc ccgcccggca tagcaccatg cctgcttgtc gcctaggccc 60
 gctagccgcc gccctcctcc tcagcctgct gctgttcggc ttcaccctag tctcaggcac 120
 aggagcagag aagactggcg tgtgccccga gctccaggct gaccagaact gcacgcaaga 180
 50 gtgcgtctcg gacagcgaat gcgccgacaa cctcaagtgc tgcagcgcgg gctgtgccac 240
 cttctgctct ctgcccgaat ataaggaggg ttctgtcccc cagggtgaaca ttaactttcc 300
 ccagctcggc ctctgtcggg accagtgcc ggtggacagc cagtgtctctg gccagatgaa 360
 atgctgccgc aatggctgtg ggaaggtgtc ctgtgtcact cccaatttct gagctccggc 420
 caccaccagg ctgagcagtg aagatagaaa gtttctgcct ggccctgcag cgtgttacag 480
 cccacc 486

55 <210> 11

EP 2 913 673 A1

<211> 124
<212> PRT
<213> Homo sapiens

5 <400> 11
Met Pro Ala Cys Arg Leu Gly Pro Leu Ala Ala Ala Leu Leu Leu Ser
1 5 10 15
Leu Leu Leu Phe Gly Phe Thr Leu Val Ser Gly Thr Gly Ala Glu Lys
20 25 30
10 Thr Gly Val Cys Pro Glu Leu Gln Ala Asp Gln Asn Cys Thr Gln Glu
35 40 45
Cys Val Ser Asp Ser Glu Cys Ala Asp Asn Leu Lys Cys Cys Ser Ala
50 55 60
Gly Cys Ala Thr Phe Cys Ser Leu Pro Asn Asp Lys Glu Gly Ser Cys
15 65 70 75 80
Pro Gln Val Asn Ile Asn Phe Pro Gln Leu Gly Leu Cys Arg Asp Gln
85 90 95
Cys Gln Val Asp Ser Gln Cys Pro Gly Gln Met Lys Cys Cys Arg Asn
100 105 110
20 Gly Cys Gly Lys Val Ser Cys Val Thr Pro Asn Phe
115 120

<210> 12
<211> 374
<212> DNA
25 <213> Homo sapiens

<400> 12
ccatgcctgc ttgtgcctca ggcccgcctag ccgcccgcct cctcctcagc ctgctgctgt 60
tcggcttcac cctagtctca ggcacaggag cagagaagac tggcgtgtgc cccgagctcc 120
30 aggctgacca gaactgcacg caagagtgcg tctcggacag cgaatgcgcc gacaacctca 180
agtgtgtcag cgcggtgtgt gccaccttct gctctctgcc caatgataag gagggttcct 240
gccccaggt gaacattaac tttccccagc tcggcctctg tcgggaccag tgccaggtgg 300
acagccagtg tcctggccag atgaaatgct gccgcaatgg ctgtgggaag gtgtcctgtg 360
tcactcccaa tttc 374

<210> 13
<211> 124
<212> PRT
40 <213> Homo sapiens

<400> 13
Met Pro Ala Cys Arg Leu Gly Pro Leu Ala Ala Ala Leu Leu Leu Ser
1 5 10 15
Leu Leu Leu Phe Gly Phe Thr Leu Val Ser Gly Thr Gly Ala Glu Lys
20 25 30
45 Thr Gly Val Cys Pro Glu Leu Gln Ala Asp Gln Asn Cys Thr Gln Glu
35 40 45
Cys Val Ser Asp Ser Glu Cys Ala Asp Asn Leu Lys Cys Cys Ser Ala
50 55 60
Gly Cys Ala Thr Phe Cys Ser Leu Pro Asn Asp Lys Glu Gly Ser Cys
50 65 70 75 80
Pro Gln Val Asn Ile Asn Phe Pro Gln Leu Gly Leu Cys Arg Asp Gln
85 90 95
Cys Gln Val Asp Ser Gln Cys Pro Gly Gln Met Lys Cys Cys Arg Asn
100 105 110
55 Gly Cys Gly Lys Val Ser Cys Val Thr Pro Asn Phe
115 120

<210> 14
 <211> 19
 <212> PRT
 5 <213> Homo sapiens

 <400> 14
 Glu Val Glu Lys Thr Ala Cys Pro Ser Gly Lys Lys Ala Arg Glu Ile
 1 5 10 15
 10 Asp Glu Ser

 <210> 15
 <211> 20
 <212> DNA
 15 <213> Artificial Sequence

 <220>
 <223> Forward HE4 real-time PCR primer

 20 <400> 15
 agcagagaag actggcgtgt 20

 <210> 16
 <211> 21
 <212> DNA
 25 <213> Artificial Sequence

 <220>
 <223> Reverse HE4 real-time PCR primer

 30 <400> 16
 gaaagggaga agctgtggtc a 21

 <210> 17
 <211> 20
 35 <212> DNA
 <213> Artificial Sequence

 <220>
 <223> Forward primer

 40 <400> 17
 cgacgcttct tcaaggccaa 20

 <210> 18
 <211> 20
 45 <212> DNA
 <213> Artificial Sequence

 <220>
 <223> Reverse primer

 50 <400> 18
 atggaagccc aagctgctga 20

 <210> 19
 55 <211> 36

<212> DNA
 <213> Artificial Sequence

<220>

<223> Forward sense primer

<400> 19

gttggtcggat ccgagcccag agggcccaca atcaag

36

<210> 20

<211> 43

<212> DNA

<213> Artificial Sequence

<220>

<223> Reverse anti- sense primer

<400> 20

gttgtttcta gattatcatt taccgggagt ccggggagaag etc

43

Claims

1. A method of screening for the presence of an ovarian carcinoma in a subject comprising:

contacting a biological sample from a subject with at least one antibody specific for an antigen polypeptide comprising the amino acid sequence set forth in SEQ ID NO:11 to determine the presence in said biological sample of a molecule naturally occurring in soluble form in said sample and having an antigenic determinant that is reactive with said at least one antibody, under conditions and for a time sufficient to detect binding of said antibody to said antigenic determinant, and therefrom detecting the presence of a malignant condition

characterised in that the biological sample is selected from the group consisting of: a blood sample; a serum sample; and a plasma sample.

2. A method according to claim 1, wherein the antigen polypeptide consists of the amino acid sequence set forth in SEQ ID NO:11.

3. A method according to claim 1, wherein the antibody is a monoclonal antibody.

4. A method according to claim 3 wherein the antibody is a murine monoclonal antibody.

5. A method according to claim 1, wherein detection of binding of the antibody to an antigenic determinant comprises spectrophotometric detection of a product of an enzyme reaction.

6. A method according to claim 1, wherein detection of the binding of the antibody to the antigenic determinant is achieved by an enzyme linked immunosorbent assay (ELISA).

7. A method according to claim 1, wherein the subject has an early stage of ovarian carcinoma.

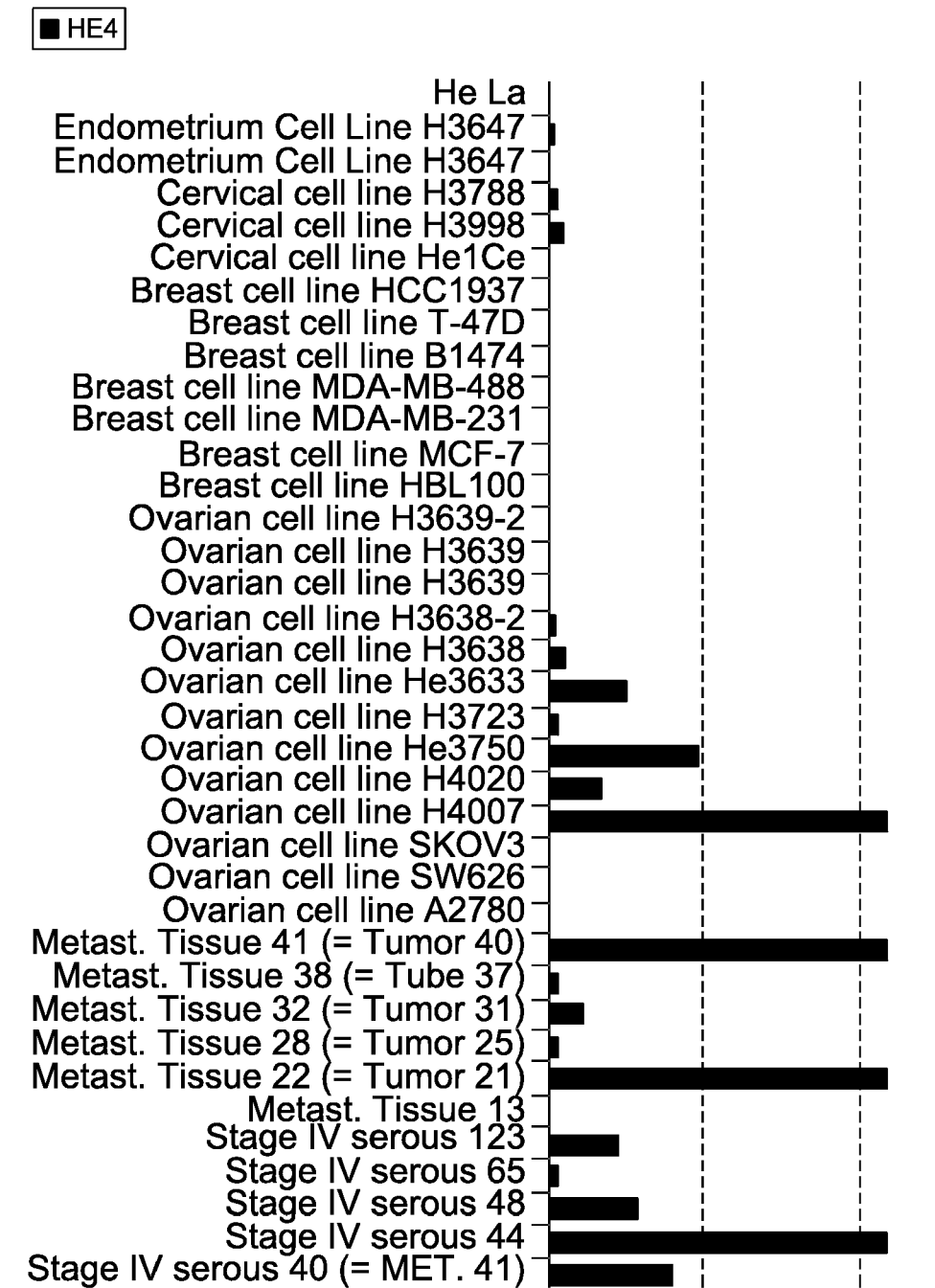


FIG. 1A-1

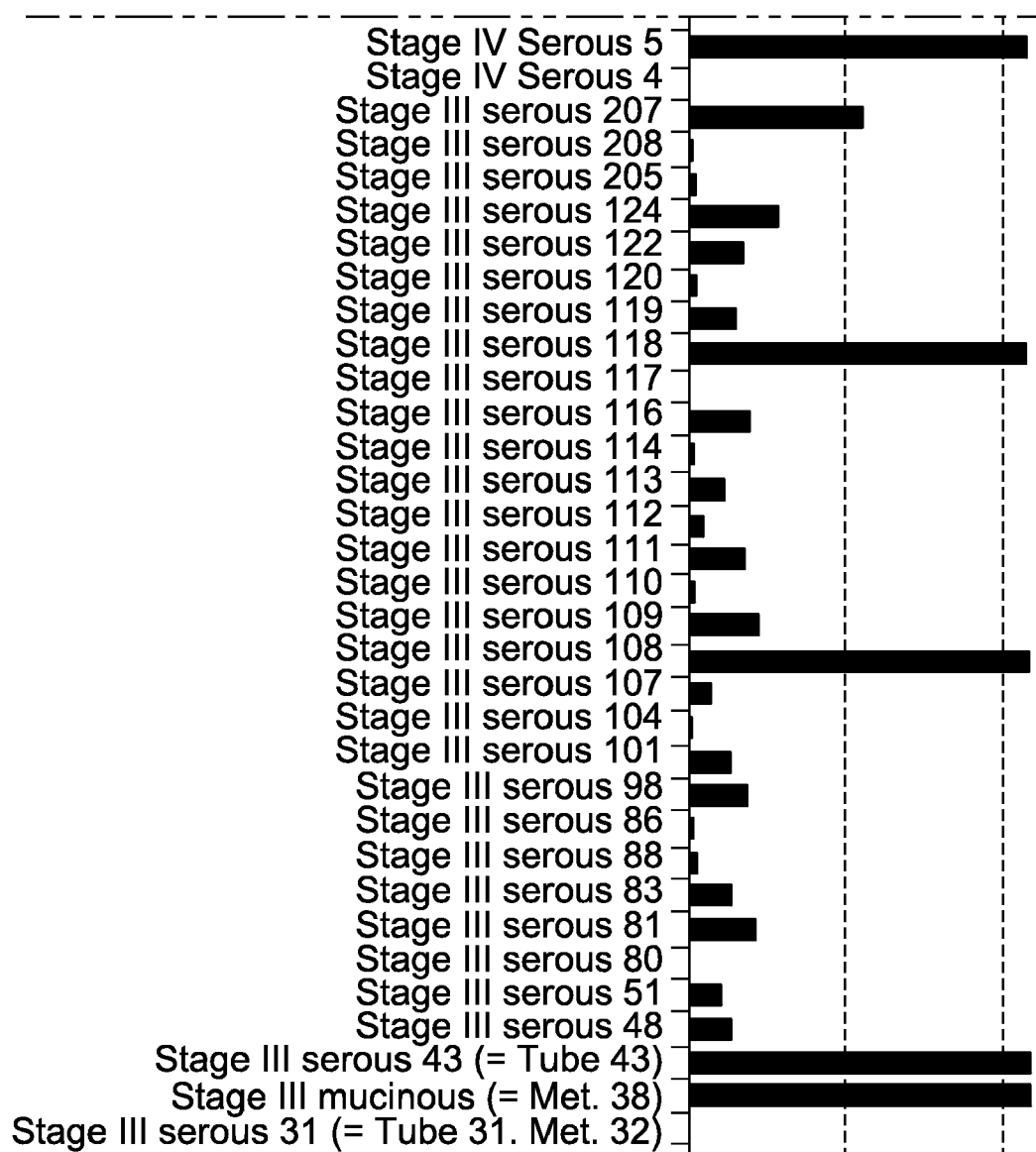


FIG. 1A-2

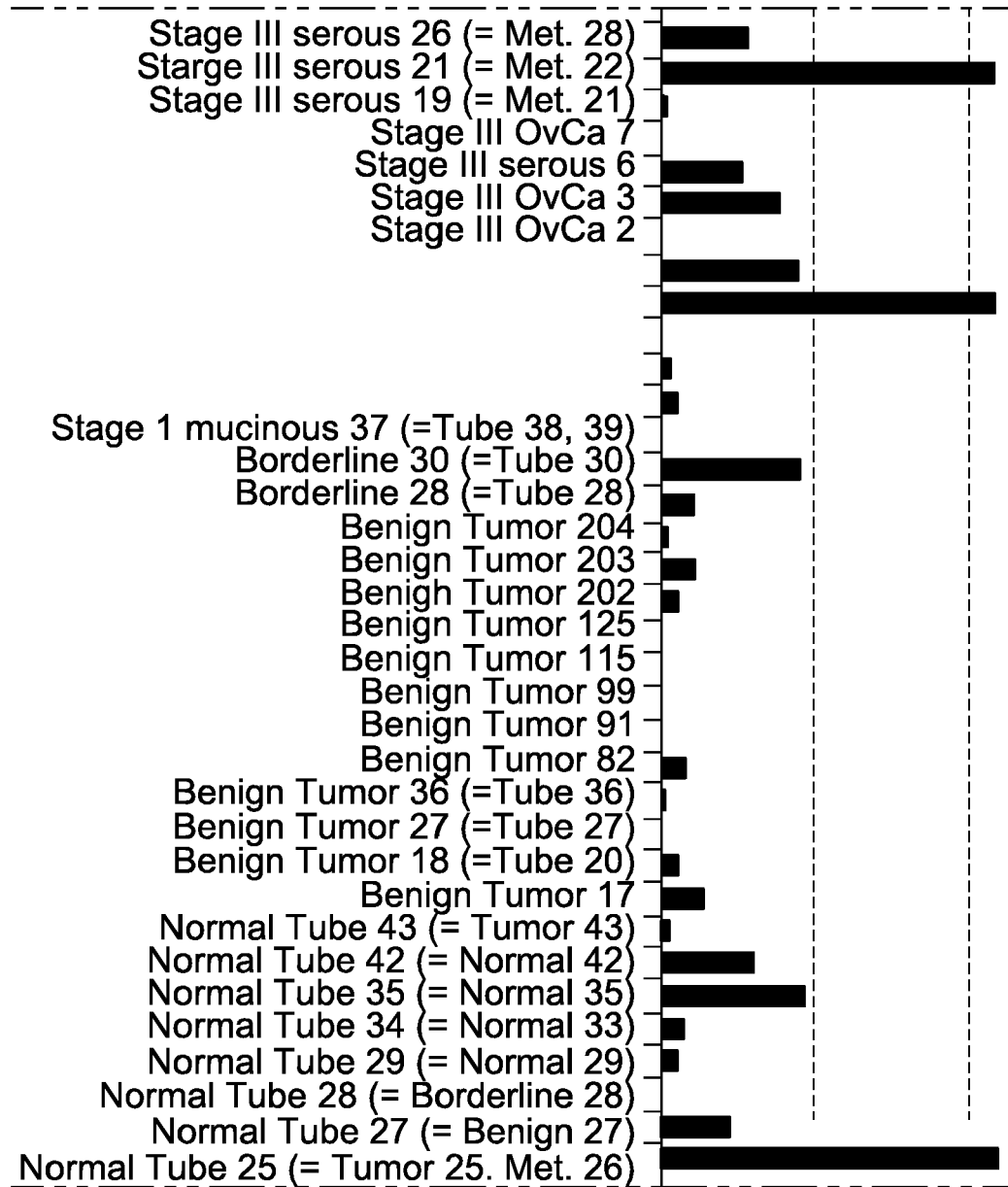


FIG. 1A-3

Normal BowelWall 21 (= Tumor 19)			
Normal Tube 20 (= Benign 18)			
Normal Ovary 121			
Normal Ovary 106			
Normal Ovary 105			
Normal Ovary 103			
Normal Ovary 100			
Normal Ovary 97			
Normal Ovary 96			
Normal Ovary 95			
Normal Ovary 94			
Normal Ovary 92			
Normal Ovary 90			
Normal Ovary 89			
Normal Ovary 88			
Normal Ovary 87			
Normal Ovary 85			
Normal Ovary 84			
Normal Ovary 83			
Normal Ovary 82			
Normal Ovary 81			
Normal Ovary 64			
Normal Ovary 58			
Normal Ovary 57			
Normal Ovary 56			
Normal Ovary 54			
Normal Ovary 53			
Normal Ovary 52			
Normal Ovary 50			
Normal Ovary 49			
Normal Ovary 47			
Normal Ovary 45			
Normal Ovary 41 (= Tube 42)			
Normal Ovary 39 (= Tube 39)			
Normal Ovary 33 (= Tube 33)			
Normal Ovary 29 (= Tube 29)			
Normal Ovary 22 (= Tube 23)			

FIG. 1B-1

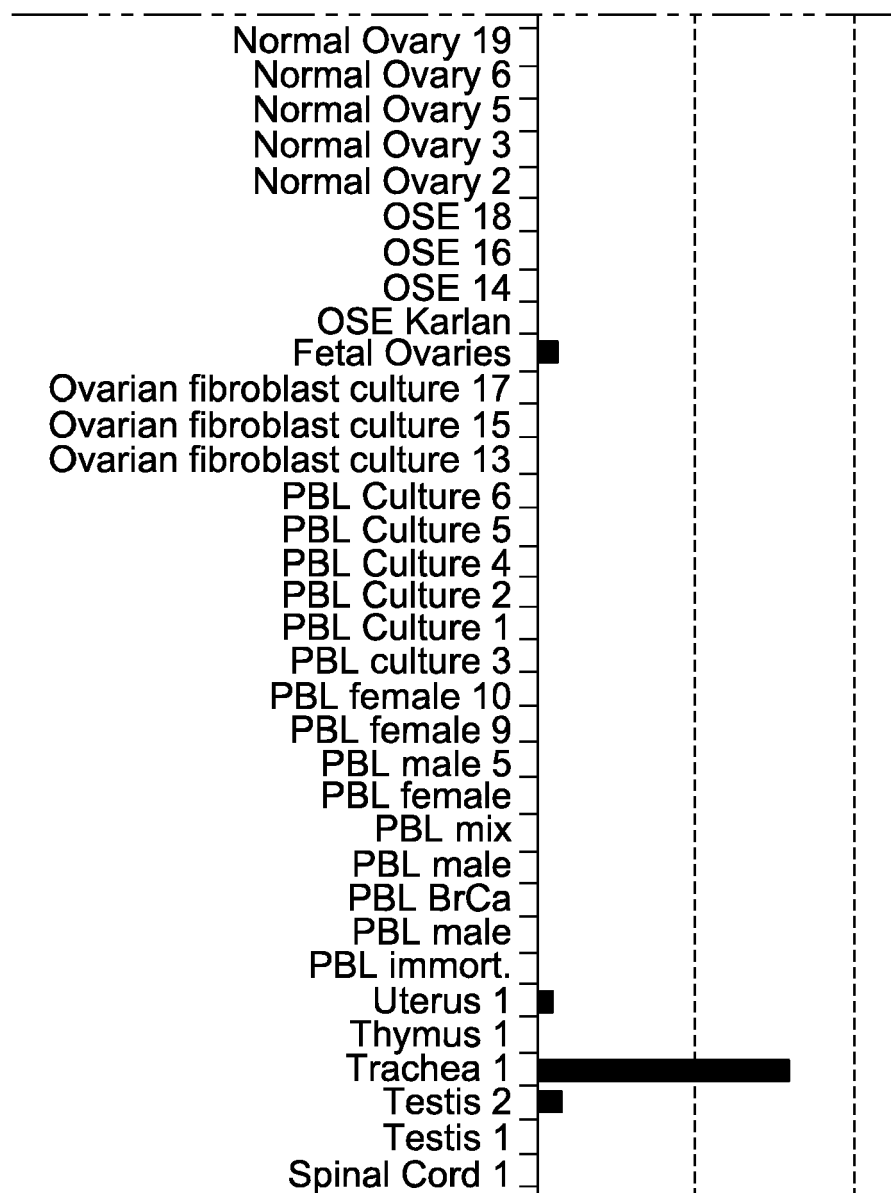


FIG. 1B-2

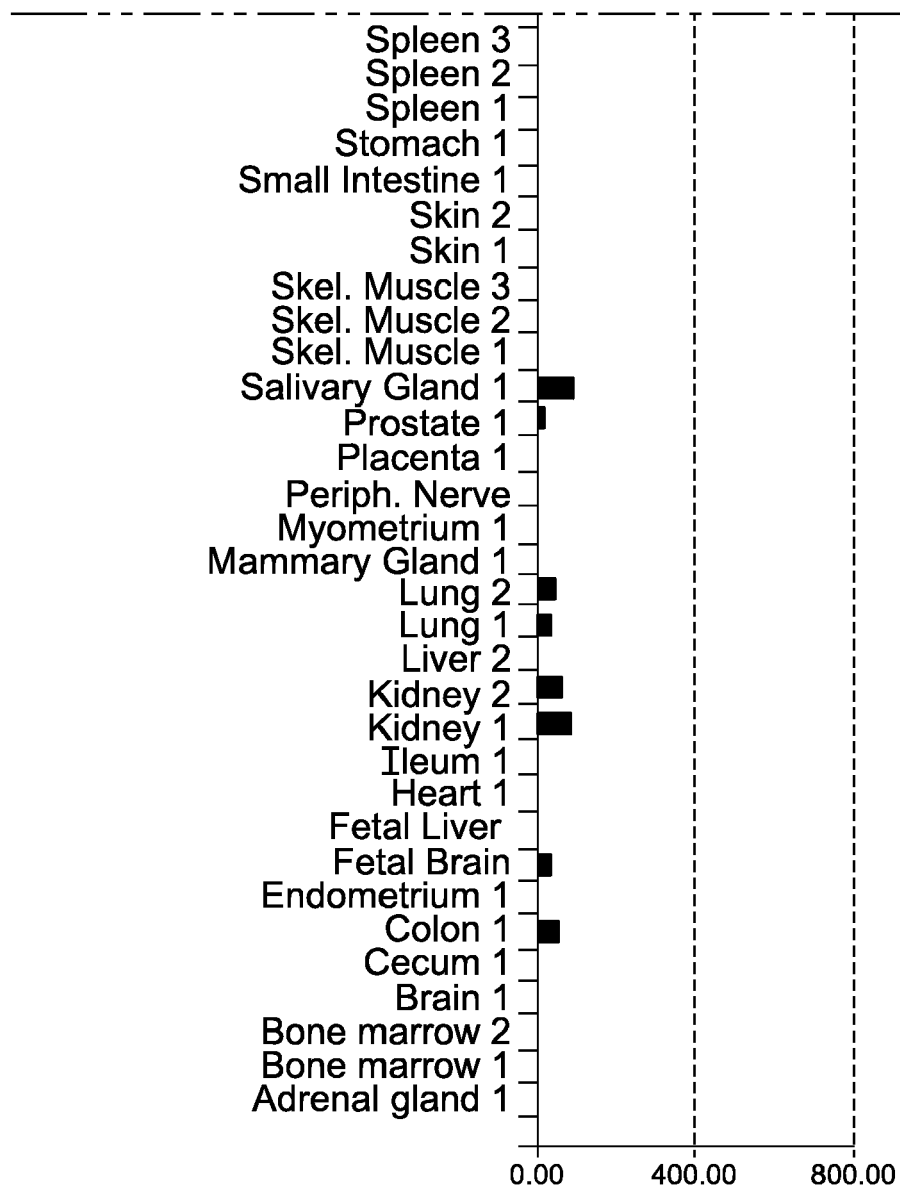


FIG. 1B-3

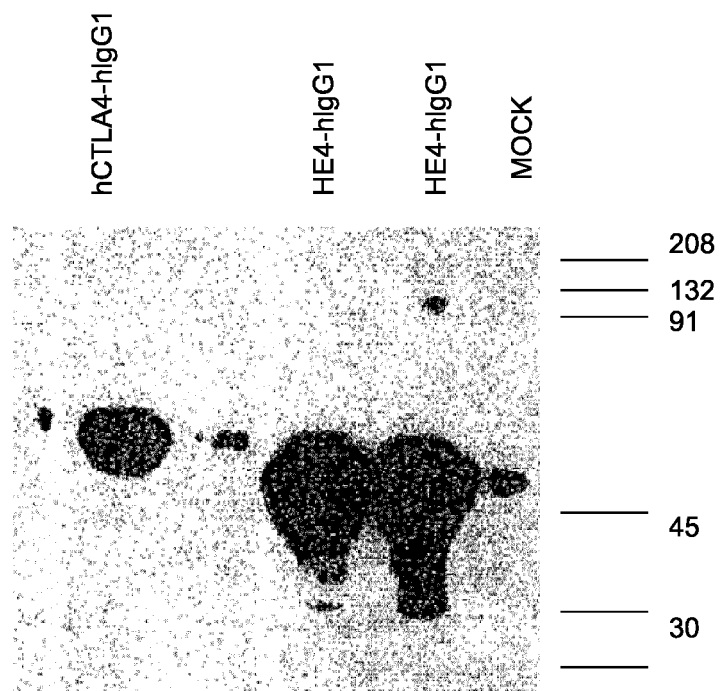


FIG. 2

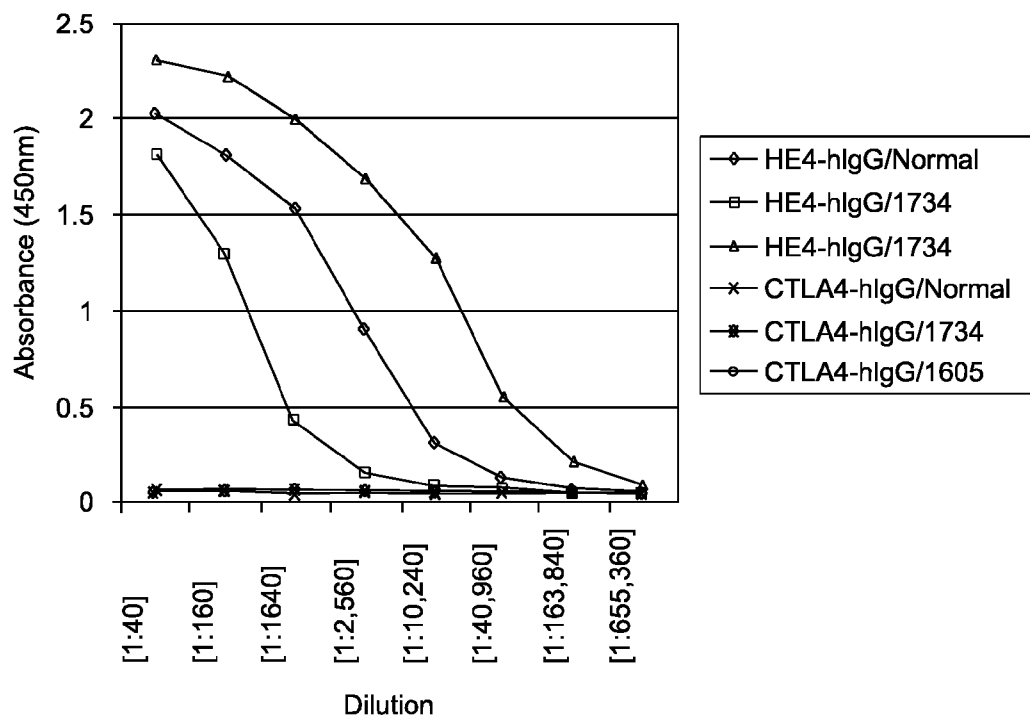


FIG. 3

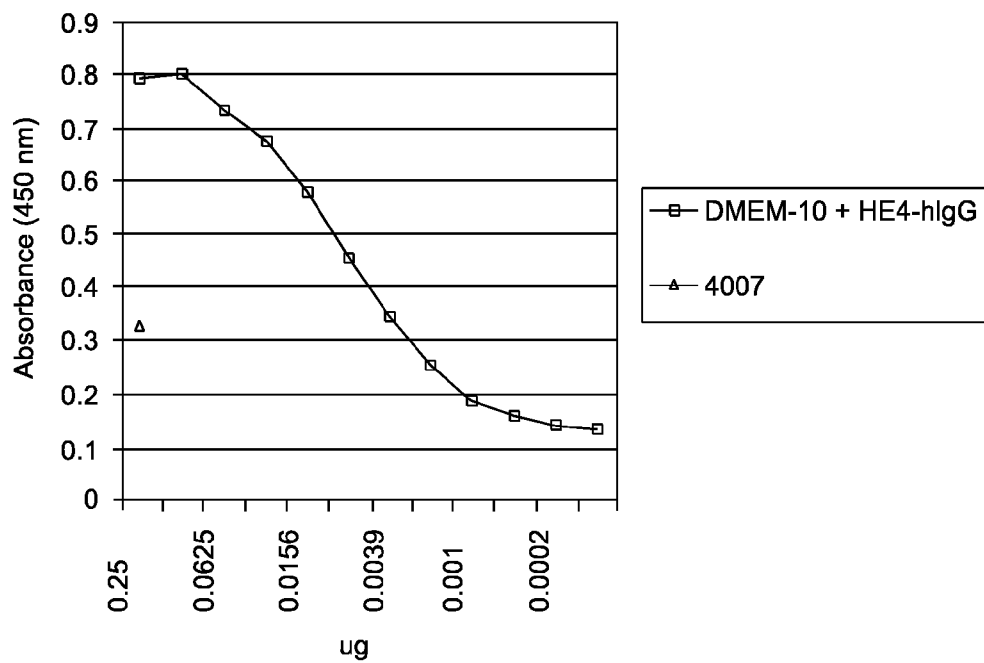


FIG. 5

Plate 1	1	2	3	4	5	6	7	8	9	10	11	12
A	0.181	0.130	0.192	0.140	0.159	0.135	0.130	0.164	0.139	0.108	0.142	0.138
B	0.160	0.129	0.133	0.144	0.144	0.121	0.136	0.130	0.131	0.120	0.138	0.150
C	0.147	0.146	0.130	0.158	0.135	0.142	0.139	0.121	0.130	0.113	0.118	0.146
D	0.200	0.141	0.145	0.158	0.149	0.114	0.165	0.148	0.129	0.140	0.130	0.167
E	0.175	0.130	0.143	0.111	0.132	0.129	0.140	0.143	0.126	0.134	0.139	0.172
F	0.154	0.122	0.133	0.133	0.135	0.144	0.161	0.132	0.117	0.121	0.118	0.182
G	0.180	0.166	0.147	0.143	0.133	0.126	0.167	0.125	0.149	0.142	0.138	0.156
H	0.178	0.152	0.160	0.149	0.163	0.142	0.166	0.168	0.144	0.125	0.140	0.166

Plate 2	1	2	3	4	5	6	7	8	9	10	11	12
A	0.173	0.141	0.156	0.152	0.111	0.145	0.159	0.250	0.111	0.119	0.129	0.146
B	0.158	0.129	0.128	0.124	0.135	0.108	0.112	0.154	0.138	0.101	0.103	0.135
C	0.096	0.160	0.125	0.104	0.102	0.165	0.105	0.135	0.123	0.096	0.097	0.107
D	0.099	0.101	0.115	0.121	0.104	0.101	0.123	0.123	0.117	0.127	0.115	0.137
E	0.108	0.130	0.143	0.101	0.113	0.118	0.140	0.107	0.097	0.136	0.102	0.131
F	0.086	0.118	0.137	0.116	0.113	0.128	0.101	0.111	0.120	0.113	0.087	0.129
G	0.108	0.094	0.127	0.130	0.147	0.132	0.118	0.114	0.123	0.114	0.110	0.119
* H	0.108	0.121	0.133	0.130	1.087	0.139	0.107	0.116	0.124	0.106	0.138	0.143

2H5

Plate 3	1	2	3	4	5	6	7	8	9	10	11	12
A	0.152	0.166	0.126	0.153	0.128	0.122	0.138	0.116	0.140	0.092	0.119	0.172
B	0.153	0.110	0.103	0.132	0.115	0.103	0.185	0.102	0.142	0.101	0.098	0.108
C	0.135	0.113	0.108	0.118	0.105	0.156	0.129	0.090	0.106	0.120	0.105	0.122
* D	0.133	0.121	0.137	0.112	0.126	0.130	0.148	1.044	0.116	0.133	0.127	0.130
E	0.117	0.123	0.137	0.132	0.132	0.096	0.119	0.132	0.102	0.112	0.098	0.105
F	0.118	0.125	0.121	0.128	0.133	0.114	0.109	0.111	0.113	0.084	0.108	0.143
G	0.147	0.139	0.131	0.121	0.108	0.097	0.137	0.118	0.106	0.132	0.101	0.110
H	0.155	0.116	0.193	0.105	0.144	0.128	0.125	0.102	0.149	0.129	0.128	0.116

3D8

FIG.4-1

Plate 4		1	2	3	4	5	6	7	8	9	10	11	12
A		0.128	0.121	0.110	0.134	0.126	0.157	0.120	0.134	0.137	0.098	0.064	0.120
B		0.153	0.126	0.114	0.116	0.156	0.172	0.117	0.133	0.137	0.086	0.131	0.142
C		0.115	0.150	0.111	0.121	0.106	0.102	0.115	0.114	0.118	0.090	0.104	0.135
D		0.114	0.130	0.124	0.092	0.087	0.109	0.133	0.099	0.112	0.122	0.117	0.132
E		0.114	0.124	0.110	0.127	0.093	0.108	0.108	0.104	0.107	0.111	0.134	0.155
F		0.122	0.127	0.117	0.122	0.145	0.129	0.121	0.109	0.104	0.152	0.105	0.143
G		0.121	0.118	0.127	0.127	0.119	0.124	0.104	0.120	0.121	0.109	0.133	0.119
* H		0.133	0.134	0.152	1.054	0.127	0.110	0.133	0.112	0.126	0.092	0.127	0.099

4H4

Plate 5		1	2	3	4	5	6	7	8	9	10	11	12
A		0.101	0.109	0.144	0.005	0.031	0.039	0.037	0.047	0.043	0.038	0.042	0.048
B		0.111	0.129	0.109	0.997	0.025	0.032	0.043	0.038	0.037	0.039	0.040	0.042
C		0.119	0.121	0.093	0.979	0.024	0.040	0.038	0.037	0.042	0.040	0.052	0.046
D		0.116	0.102	0.125	0.035	0.027	0.035	0.040	0.038	0.042	0.038	0.040	0.044
E		0.120	0.092	0.101	0.986	0.027	0.032	0.036	0.035	0.041	0.037	0.038	0.038
F		0.105	0.116	0.110	0.748	0.025	0.037	0.044	0.036	0.035	0.037	0.044	0.050
G		0.122	0.108	0.114	0.961	0.022	0.040	0.041	0.041	0.041	0.037	0.043	0.049
H		0.135	0.101	0.167	0.037	0.030	0.032	0.031	0.036	0.036	0.041	0.041	0.061

FIG.4-2

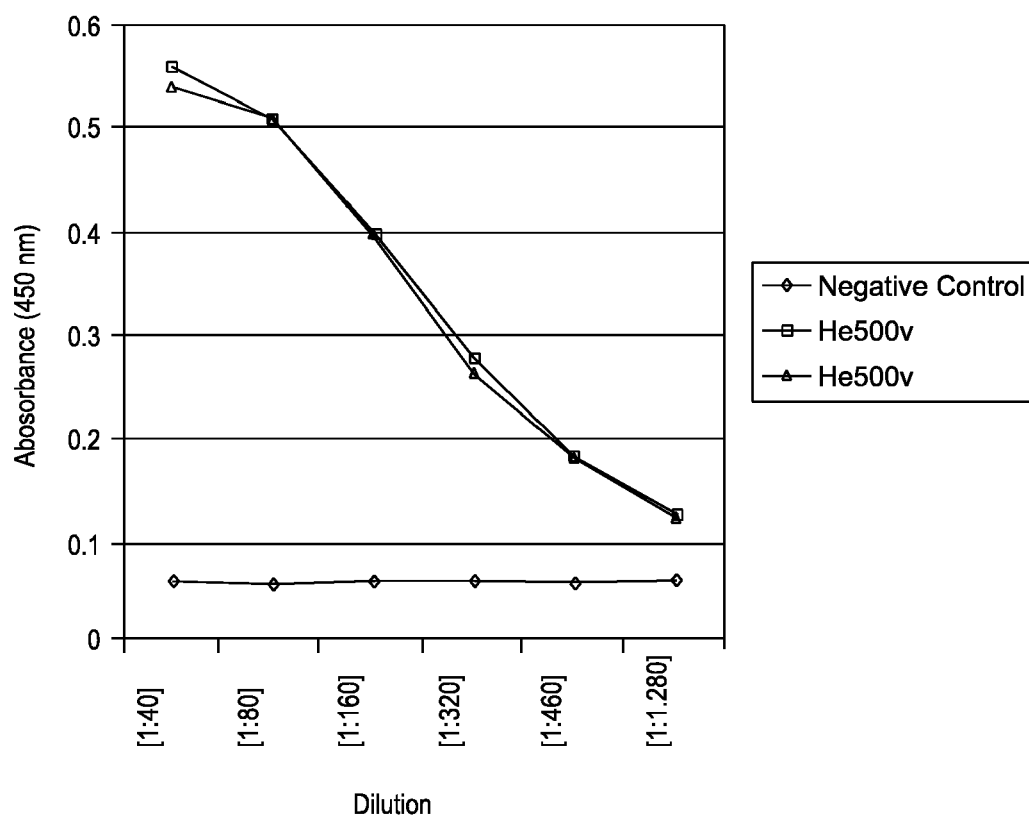


FIG. 6



EUROPEAN SEARCH REPORT

Application Number
EP 14 17 9937

DOCUMENTS CONSIDERED TO BE RELEVANT			
Category	Citation of document with indication, where appropriate, of relevant passages	Relevant to claim	CLASSIFICATION OF THE APPLICATION (IPC)
X	WO 01/59064 A (HUMAN GENOME SCIENCES, INC.) 16 August 2001 (2001-08-16) * abstract * * paragraphs [0156], [0166], [0175], [0182] - [0186], [0209], [0221], [0274], [0311], [0369] - [0406] * * paragraphs [0572] - [0574], [0695], [0711], [0578], [0581] - [0583] * * claims 1-24 * * SEQ ID NO: 2802 and SEQ ID NO: 2803 are 100% identical to SEQ ID NO: 11 in the application. *	1-7	INV. G01N33/574 C07K14/81 C07K16/30 C07K16/40 C07K16/18 ADD. A61K39/00
X	----- SCHMANDT R. ET AL.: "Differential expression of the secreted protease inhibitor, HE4, in epithelial ovarian cancer.", GYNECOL. ONCOL., vol. 80, no. 2, February 2001 (2001-02), page 319, XP009012136, * the whole document *	1-7	TECHNICAL FIELDS SEARCHED (IPC)
X,D	----- SCHUMMER M. ET AL.: "Comparative hybridization of an array of 21 500 ovarian cDNAs for the discovery of genes overexpressed in ovarian carcinomas.", GENE, vol. 238, 1999, pages 375-385, XP002243823, * abstract * * page 375, column 2, last paragraph - page 376, column 1, paragraph 1 * ----- -/--	1-7	G01N C07K
The present search report has been drawn up for all claims			
Place of search Munich		Date of completion of the search 7 May 2015	Examiner Giry, Murielle
CATEGORY OF CITED DOCUMENTS X : particularly relevant if taken alone Y : particularly relevant if combined with another document of the same category A : technological background O : non-written disclosure P : intermediate document		T : theory or principle underlying the invention E : earlier patent document, but published on, or after the filing date D : document cited in the application L : document cited for other reasons ----- & : member of the same patent family, corresponding document	

EPO FORM 1503 03.82 (P04C01)



EUROPEAN SEARCH REPORT

 Application Number
EP 14 17 9937

5

10

15

20

25

30

35

40

45

50

55

DOCUMENTS CONSIDERED TO BE RELEVANT				
Category	Citation of document with indication, where appropriate, of relevant passages	Relevant to claim	CLASSIFICATION OF THE APPLICATION (IPC)	
A	WO 01/16354 A1 (GENE LOGIC, INC. [US]) 8 March 2001 (2001-03-08) * abstract * * claims 1-16 * * page 12, line 13 - line 21 * * page 20, line 27 - page 21, line 2 * * SEQ ID NO: 2 is 100% identical to SEQ ID NOs: 11 and SEQ ID NO: 13 defining HE4a in the application. * -----	1-7		
A	EP 1 033 401 A (GENSET) 6 September 2000 (2000-09-06) * abstract * * examples 21,33,49 * * paragraph [0515] * * claims 44-46 * * SEQ ID NO: 7864 is 100% identical to SEQ ID NOs: 11 and 13 in the application. * -----	1-7		
A,D	WO 00/50900 A (PACIFIC NORTHWEST RESEARCH INSTITUTE) 31 August 2000 (2000-08-31) * abstract * * claims 1-68 *	1-7		TECHNICAL FIELDS SEARCHED (IPC)
X,P	BINGLE L. ET AL.: "The putative ovarian tumour marker gene HE4 (WFDC2), is expressed in normal tissues and undergoes complex alternative splicing to yield multiple protein isoforms.", ONCOGENE, vol. 21, no. 17, 18 April 2002 (2002-04-18), pages 2768-2773, XP009012121, * the whole document * ----- -/--	1-7		
The present search report has been drawn up for all claims				
Place of search Munich		Date of completion of the search 7 May 2015	Examiner Giry, Murielle	
CATEGORY OF CITED DOCUMENTS X : particularly relevant if taken alone Y : particularly relevant if combined with another document of the same category A : technological background O : non-written disclosure P : intermediate document		T : theory or principle underlying the invention E : earlier patent document, but published on, or after the filing date D : document cited in the application L : document cited for other reasons & : member of the same patent family, corresponding document		

EPO FORM 1503 03.82 (P04C01)



EUROPEAN SEARCH REPORT

Application Number
EP 14 17 9937

DOCUMENTS CONSIDERED TO BE RELEVANT			
Category	Citation of document with indication, where appropriate, of relevant passages	Relevant to claim	CLASSIFICATION OF THE APPLICATION (IPC)
T	<p>HELLSTRÖM I. ET AL.: "The HE4 (WFDC2) protein is a biomarker for ovarian carcinoma", CANCER RES., vol. 63, no. 13, 1 July 2003 (2003-07-01), pages 3695-3700, XP002290876, * the whole document *</p> <p>-----</p>	1-7	
			TECHNICAL FIELDS SEARCHED (IPC)
The present search report has been drawn up for all claims			
Place of search Munich		Date of completion of the search 7 May 2015	Examiner Giry, Murielle
CATEGORY OF CITED DOCUMENTS		<p>T : theory or principle underlying the invention E : earlier patent document, but published on, or after the filing date D : document cited in the application L : document cited for other reasons</p> <p>& : member of the same patent family, corresponding document</p>	
<p>X : particularly relevant if taken alone Y : particularly relevant if combined with another document of the same category A : technological background O : non-written disclosure P : intermediate document</p>			

EPO FORM 1503 03.82 (P04C01)

**ANNEX TO THE EUROPEAN SEARCH REPORT
ON EUROPEAN PATENT APPLICATION NO.**

EP 14 17 9937

This annex lists the patent family members relating to the patent documents cited in the above-mentioned European search report.
The members are as contained in the European Patent Office EDP file on
The European Patent Office is in no way liable for these particulars which are merely given for the purpose of information.

07-05-2015

Patent document cited in search report	Publication date	Patent family member(s)	Publication date
WO 0159064 A	16-08-2001	AU 4140501 A	07-08-2001
		AU 4140601 A	07-08-2001
		AU 4140701 A	07-08-2001
		AU 4140801 A	07-08-2001
		AU 4140901 A	07-08-2001
		AU 4141001 A	07-08-2001
		AU 4141101 A	20-08-2001
		AU 4141201 A	07-08-2001
		AU 4141301 A	07-08-2001
		AU 4141401 A	07-08-2001
		AU 4141501 A	07-08-2001
		AU 4141601 A	07-08-2001
		AU 4141701 A	07-08-2001
		AU 4141801 A	07-08-2001
		AU 4313701 A	14-08-2001
		AU 5077001 A	07-08-2001
		CA 2392398 A1	02-08-2001
		CA 2392422 A1	02-08-2001
		CA 2392428 A1	02-08-2001
		CA 2392438 A1	02-08-2001
		CA 2392450 A1	16-08-2001
		CA 2392751 A1	02-08-2001
		CA 2392757 A1	02-08-2001
		CA 2393002 A1	02-08-2001
		CA 2393618 A1	02-08-2001
		CA 2393652 A1	02-08-2001
		CA 2393912 A1	02-08-2001
		CA 2394039 A1	02-08-2001
		CA 2394841 A1	02-08-2001
		CA 2395178 A1	02-08-2001
		CA 2395295 A1	02-08-2001
		CA 2395398 A1	02-08-2001
		CA 2395403 A1	02-08-2001
		CA 2395654 A1	02-08-2001
		CA 2395666 A1	02-08-2001
		CA 2395671 A1	02-08-2001
		CA 2395693 A1	02-08-2001
		CA 2395699 A1	02-08-2001
		CA 2395724 A1	02-08-2001
		CA 2395729 A1	02-08-2001
		CA 2395734 A1	02-08-2001
		CA 2395738 A1	02-08-2002
		CA 2395787 A1	02-08-2001
		CA 2395816 A1	02-08-2001
		CA 2395827 A1	02-08-2001
		CA 2395849 A1	02-08-2001

EPO FORM P0459

For more details about this annex : see Official Journal of the European Patent Office, No. 12/82

**ANNEX TO THE EUROPEAN SEARCH REPORT
ON EUROPEAN PATENT APPLICATION NO.**

EP 14 17 9937

This annex lists the patent family members relating to the patent documents cited in the above-mentioned European search report.
The members are as contained in the European Patent Office EDP file on
The European Patent Office is in no way liable for these particulars which are merely given for the purpose of information.

07-05-2015

Patent document cited in search report	Publication date	Patent family member(s)	Publication date
		CA 2395858 A1	02-08-2001
		CA 2395872 A1	02-08-2001
		CA 2395885 A1	02-08-2001
		CA 2397407 A1	02-08-2001
		CA 2397839 A1	02-08-2001
		CA 2398411 A1	02-08-2001
		CA 2398877 A1	09-08-2001
		WO 0154473 A2	02-08-2001
		WO 0154474 A2	02-08-2001
		WO 0154733 A1	02-08-2001
		WO 0155163 A1	02-08-2001
		WO 0155173 A2	02-08-2001
		WO 0155200 A1	02-08-2001
		WO 0155201 A1	02-08-2001
		WO 0155202 A1	02-08-2001
		WO 0155203 A1	02-08-2001
		WO 0155204 A1	02-08-2001
		WO 0155205 A1	02-08-2001
		WO 0155206 A1	02-08-2001
		WO 0155207 A1	02-08-2001
		WO 0155208 A1	02-08-2001
		WO 0155301 A2	02-08-2001
		WO 0155302 A2	02-08-2001
		WO 0155303 A2	02-08-2001
		WO 0155304 A2	02-08-2001
		WO 0155307 A2	02-08-2001
		WO 0155308 A2	02-08-2001
		WO 0155309 A2	02-08-2001
		WO 0155310 A2	02-08-2001
		WO 0155311 A2	02-08-2001
		WO 0155312 A2	02-08-2001
		WO 0155314 A2	02-08-2001
		WO 0155315 A2	02-08-2001
		WO 0155316 A2	02-08-2001
		WO 0155318 A2	02-08-2001
		WO 0155319 A2	02-08-2001
		WO 0155320 A2	02-08-2001
		WO 0155321 A2	02-08-2001
		WO 0155322 A2	02-08-2001
		WO 0155323 A2	02-08-2001
		WO 0155324 A2	02-08-2001
		WO 0155325 A2	02-08-2001
		WO 0155327 A2	02-08-2001
		WO 0155328 A2	02-08-2001
		WO 0155343 A1	02-08-2001
		WO 0155350 A1	02-08-2001

EPO FORM P0459

For more details about this annex : see Official Journal of the European Patent Office, No. 12/82

**ANNEX TO THE EUROPEAN SEARCH REPORT
ON EUROPEAN PATENT APPLICATION NO.**

EP 14 17 9937

This annex lists the patent family members relating to the patent documents cited in the above-mentioned European search report.
The members are as contained in the European Patent Office EDP file on
The European Patent Office is in no way liable for these particulars which are merely given for the purpose of information.

07-05-2015

Patent document cited in search report	Publication date	Patent family member(s)	Publication date
		WO 0155355 A1	02-08-2001
		WO 0155364 A2	02-08-2001
		WO 0155367 A1	02-08-2001
		WO 0155368 A1	02-08-2001
		WO 0155387 A1	02-08-2001
		WO 0155447 A1	02-08-2001
		WO 0155448 A1	02-08-2001
		WO 0157182 A2	09-08-2001
		WO 0159064 A2	16-08-2001

WO 0116354 A1	08-03-2001	AU 7347300 A	26-03-2001
		WO 0116354 A1	08-03-2001

EP 1033401 A	06-09-2000	CA 2296792 A1	26-08-2000
		EP 1033401 A2	06-09-2000
		JP 2001269182 A	02-10-2001

WO 0050900 A	31-08-2000	AT 328280 T	15-06-2006
		AU 3007200 A	14-09-2000
		CA 2369433 A1	31-08-2000
		DE 60028361 T2	10-05-2007
		EP 1169645 A2	09-01-2002
		ES 2269105 T3	01-04-2007
		JP 4813661 B2	09-11-2011
		JP 2002538434 A	12-11-2002
		JP 2010096774 A	30-04-2010
		JP 2011206062 A	20-10-2011
		WO 0050900 A2	31-08-2000

REFERENCES CITED IN THE DESCRIPTION

This list of references cited by the applicant is for the reader's convenience only. It does not form part of the European patent document. Even though great care has been taken in compiling the references, errors or omissions cannot be excluded and the EPO disclaims all liability in this regard.

Patent documents cited in the description

- US 4737579 A [0003]
- US 4753894 A [0003]
- US 4579827 A [0003]
- US 4713352 A [0003]
- US 4612282 A [0004]
- WO 0050900 A [0006]
- US 513597 A [0006] [0113]
- US 4518584 A [0047]
- US 4737462 A [0047]
- US 5168053 A, Altman [0049] [0051]
- US 5190931 A, Inouye [0049]
- US 5135917 A, Burch [0049]
- US 5087617 A, Smith [0049]
- US 5176996 A, Hogan [0049]
- US 5272262 A [0051]
- US 5144019 A [0051]
- US 5180818 A [0051]
- US 5116742 A [0051]
- US 5093246 A, Cech [0051]
- EP 212914 A [0052]
- US 5011912 A [0067]
- EP 0318554 A [0069]
- US 5132405 A [0069] [0103]
- US 5091513 A [0069] [0103]
- US 5476786 A [0069] [0103]
- US 5100788 A [0070]
- WO 8903422 A [0070]
- US 5489528 A [0070]
- US 5672691 A [0070]
- WO 9324631 A [0070]
- US 5168049 A [0070]
- US 5272254 A [0070]
- EP 511747 A [0070]
- US 5693762 A [0097]
- US 5585089 A [0097]
- US 4816567 A [0097]
- US 5225539 A [0097]
- US 5530101 A [0097]
- US 5283173 A [0098]
- US 5468614 A [0098]
- EP 0318554 B1 [0103]
- US 5223409 A [0104]
- US 09513597 B [0114]

Non-patent literature cited in the description

- PAPSIDERO. *Semin. Surg. Oncol.*, 1986, vol. 1, 171 [0003]
- ALLUM et al. *Surg. Ann*, 1986, vol. 18, 41 [0003]
- FINK et al. *Prog. Clin. Pathol.*, 1984, vol. 9, 121 [0003]
- JOHNSTON. *Acta Cytol.*, 1987, vol. 1, 537 [0004]
- BAST et al. *N. Eng. J. Med.*, 1983, vol. 309, 883 [0005] [0115]
- LLOYD et al. *Int. J. Canc.*, 1997, vol. 71, 842 [0005] [0115]
- SARANDAKOU et al. *Acta Oncol.*, 1997, vol. 36, 755 [0005] [0006] [0115]
- SARANDAKOU et al. *Eur. J. Gynaecol. Oncol.*, 1998, vol. 19, 73 [0005] [0115]
- MEIER et al. *Anticanc. Res.*, 1997, vol. 17 (4B), 2945 [0005] [0115]
- KUDOH et al. *Gynecol. Obstet. Invest.*, 1999, vol. 47, 52 [0005] [0115]
- IND et al. *Br. J. Obstet. Gynaecol.*, 1997, vol. 104, 1024 [0005] [0115]
- BELL et al. *Br. J. Obstet. Gynaecol.*, 1998, vol. 105, 1136 [0005] [0095] [0115]
- CIOFFI et al. *Tumori*, 1997, vol. 83, 594 [0005] [0095] [0115]
- MEIER et al. *Anticanc. Res.*, 1997, vol. 17 (4B), 2949 [0005] [0115]
- MEIER et al. *Anticanc. Res.*, 1997, vol. 17 (4B), 3019 [0005] [0115]
- MOORE et al. *Infect. Dis. Obstet. Gynecol.*, 1998, vol. 6, 182 [0006]
- HIROKAWA et al. *Surg. Today*, 1998, vol. 28, 349 [0006]
- GEBAUER et al. *Anticanc. Res.*, 1997, vol. 17 (4B), 2939 [0006]
- CHANG et al. *Canc. Res.*, 1992, vol. 52, 181 [0006]
- CHANG et al. *Int. J. Canc.*, 1992, vol. 50, 373 [0006]
- CHANG et al. *Int. J. Canc.*, 1992, vol. 51, 548 [0006]
- CHANG et al. *Proc. Nat. Acad. Sci. USA*, 1996, vol. 93, 136 [0006] [0114]
- CHOWDHURY et al. *Proc. Nat. Acad. Sci. USA*, 1998, vol. 95, 669 [0006]
- YAMAGUCHI et al. *J. Biol. Chem.*, 1994, vol. 269, 805 [0006]
- KOJIMA et al. *J. Biol. Chem.*, 1995, vol. 270, 21984 [0006]

- **SCHOLLER et al.** *Proc. Natl. Acad. Sci. USA*, 1999, vol. 96, 11531 [0006] [0113]
- **KIRCHHOFF et al.** *Biol. Reprod.*, 1991, vol. 45, 350-357 [0007] [0010]
- **WANG et al.** *Gene*, 1999, vol. 229, 101 [0007] [0010]
- **SCHUMMER et al.** *Gene*, 1999, vol. 238, 375 [0007] [0010]
- **DANDEKAR et al.** *Proc. Natl. Acad. Sci. USA*, 1982, vol. 79, 3987-3991 [0008]
- **BURDON et al.** *Mechanisms Dev.*, 1991, vol. 36, 67-74 [0008]
- **HEINZEL et al.** *Eur. J. Biochem.*, 1986, vol. 160, 61-67 [0008]
- **GRUTTER et al.** *EMBO J.*, 1988, vol. 7, 345-351 [0008]
- **WIEDOW et al.** *J. Biol. Chem.*, 1990, vol. 265, 14791-14795 [0009]
- **LARSEN et al.** *J. Biol. Chem.*, 1998, vol. 273, 4574-4584 [0009]
- **FITZ et al.** *Proteases and Biological Controls*. Cold Spring Harbor Laboratory Press, 1975, 737-766 [0010]
- **SALING.** *Oxf. Rev. Reprod. Biol.*, 1989, vol. 11, 339-388 [0010]
- **KIRCHHOFF et al.** *Biol. Reproduct.*, 1991, vol. 45, 350-357 [0037]
- **SAMBROOK et al.** *Molecular Cloning: A Laboratory Manual*. Cold Spring Harbor, 1999 [0040]
- **ALTSCHUL.** *J. Mol. Biol.*, 1991, vol. 219, 555-565 [0042] [0063]
- **HENIKOFF ; HENIKOFF.** *Proc. Natl. Acad. Sci. USA*, 1992, vol. 89, 10915-10919 [0042] [0063]
- **AUSUBEL et al.** *Current Protocols in Molecular Biology*. Greene Publishing, 1995 [0043]
- **WALDER et al.** *Gene*, 1986, vol. 42, 133 [0047]
- **BAUER et al.** *Gene*, 1985, vol. 37, 73 [0047]
- **CRAIK.** *BioTechniques*, January 1985, 12-19 [0047]
- **SMITH et al.** *Genetic Engineering: Principles and Methods*. Plenum Press, 1981 [0047]
- **KUNKEL.** *Proc. Natl. Acad. Sci. USA*, 1985, vol. 82, 488 [0047]
- **KUNKEL et al.** *Methods in Enzymol.*, 1987, vol. 154, 367 [0047]
- **AGRWAL et al.** *Tetrahedron Lett.*, 1987, vol. 28, 3539-3542 [0048]
- **MILLER et al.** *J. Am. Chem. Soc.*, 1971, vol. 93, 6657-6665 [0048]
- **STEC et al.** *Tetrahedron Lett.*, 1995, vol. 26, 2191-2194 [0048]
- **MOODY et al.** *Nucl. Acids Res.*, 1989, vol. 12, 4769-4782 [0048]
- **UZNANSKI et al.** *Nucl. Acids Res.*, 1989 [0048]
- **LETSINGER et al.** *Tetrahedron*, 1984, vol. 40, 137-143 [0048]
- **ECKSTEIN.** *Annu. Rev. Biochem.*, 1985, vol. 54, 367-402 [0048]
- **ECKSTEIN.** *Trends Biol. Sci.*, 1989, vol. 14, 97-100 [0048]
- **STEIN.** *Oligodeoxynucleotides. Antisense Inhibitors of Gene Expression*. Macmillan Press, 1989, 97-117 [0048]
- **JAGER et al.** *Biochemistry*, 1988, vol. 27, 7237-7246 [0048]
- **CLUSEL et al.** *Nucl. Acids Res.*, 1993, vol. 21, 3405-3411 [0049]
- **AUSUBEL et al.** *Current Protocols in Molecular Biology*. Greene Publ. Assoc. Inc. & John Wiley & Sons, Inc, 1993 [0054] [0078]
- **SAMBROOK et al.** *Molecular Cloning*. Cold Spring Harbor Laboratory, 1989 [0054] [0078]
- **GLUZMAN.** *Cell*, 1981, vol. 23, 175 [0055] [0087]
- **DAVIS et al.** *Basic Methods in Molecular Biology*, 1986 [0055] [0087]
- **KIRCHHOFF et al.** *Biol. Reproduct.*, 1991, vol. 45, 350 [0056]
- **SCOPES, R.K.** *Protein Purification: Principles and Practice*. Springer-Verlag, 1987 [0065]
- **WEIR, D.M.** *Handbook of Experimental Immunology*. Blackwell Scientific, 1986 [0065] [0102] [0105]
- **HERMANSON, G.T. et al.** *Immobilized Affinity Ligand and Techniques*. Academic Press, Inc, 1992 [0065]
- **HOPP et al.** *Biol/Technology*, 1988, vol. 6, 1204 [0067]
- **WILSON et al.** *Cell*, 1984, vol. 37, 767 [0067]
- **ASHKENAZI et al.** *PNAS USA*, 1991, vol. 88, 10535 [0068]
- **BYRN et al.** *Nature*, 1990, vol. 344, 677 [0068]
- **VON HEIJNE.** *J. Membrane Biol.*, 1990, vol. 115, 195-201 [0071]
- **ROTHMAN.** *Nature*, 1994, vol. 372, 55-63 [0071]
- **ADRANI et al.** *J. Biol. Chem.*, 1998, vol. 273, 10317 [0071]
- **SAMBROOK et al.** *Molecular Cloning: A Laboratory Manual*. Cold Spring Harbor, 1989 [0072]
- **MANIATIS et al.** *Molecular Cloning*. Cold Spring Harbor Laboratory, 1982 [0078]
- **MILLER et al.** *Biotechniques*, 1989, vol. 7, 980-990 [0081]
- **MILLER.** *Human Gene Therapy*, 1990, vol. 1, 5-14 [0082]
- *Baculovirus Expression Protocols. Methods in Molecular Biology*. Human Press, 1995, vol. 39 [0084]
- *Expression of Proteins in Insect Cells Using Baculoviral Vectors.* **PIWNICA-WORMS et al.** *Short Protocols in Molecular Biology*. John Wiley & Sons, 1992, 16-32, 16-48 [0084]
- **MEIER et al.** *Anticancer Res.*, 1997, vol. 17 (4B), 3019 [0095]
- **MEIER et al.** *Anticancer Res.*, 1997, vol. 17 (4B), 2949 [0095]
- **YUAN et al.** *Gynecol. Oncol.*, 1997, vol. 66, 378 [0095]
- **SCATCHARD et al.** *Ann. N.Y. Acad. Sci.*, 1949, vol. 51, 660 [0098]
- **HARLOW ; LANE.** *Antibodies: A Laboratory Manual*. Cold Spring Harbor Laboratory, 1988 [0099] [0105]

- **KOHLER ; MILSTEIN.** *Eur. J. Immunol.*, 1976, vol. 6, 511-519 [0100]
- **LUO et al.** *J. Biotechnol.*, 1998, vol. 65, 225 [0103]
- **SCHLEBUSCH et al.** *Hybridoma*, 1997, vol. 16, 47 [0104]
- **MCLAFFERTY et al.** *Gene*, 1993, vol. 128, 29-36 [0104]
- **SCOTT ; SMITH.** *Science*, 1990, vol. 249, 386-390 [0104]
- **SMITH ; SCOTT.** *Methods Enzymol.*, 1993, vol. 217, 228-257 [0104]
- **SCOUTEN, W.H.** *Methods in Enzymology*, 1987, vol. 135, 30-65 [0110]
- **SCHUMMER et al.** *Gene*, 1999 [0120]
- **HAYDEN et al.** *Ther. Immunol.*, 1994, vol. 1, 3 [0126] [0129]
- **HAYDEN et al.** *Tissue Antigens*, 1996, vol. 48, 242 [0129] [0130]
- **URLAUB et al.** *Somat. Cell. Mol. Genet.*, 1986, vol. 12, 55 [0130]
- **BARSOUM.** *DNA Cell Biol.*, 1990, vol. 9, 293 [0130]
- **SCHOLLER et al.** *Proc. Natl. Acad. Sci. USA*, 1999, vol. 96, 11531 [0136] [0137]
- **HELLSTROM et al.** *Cancer Res.*, 2001, vol. 61, 2420 [0139]
- Vaccines. **HELLSTROM ; HELLSTROM.** Handbook in Experimental Pharmacology. Springer, 1999, 463 [0140]

专利名称(译)	卵巢癌的诊断		
公开(公告)号	EP2913673A1	公开(公告)日	2015-09-02
申请号	EP2014179937	申请日	2002-08-29
[标]申请(专利权)人(译)	西北太平洋RES INST		
申请(专利权)人(译)	西北太平洋研究所		
当前申请(专利权)人(译)	西北太平洋研究所		
[标]发明人	SCHUMMER MICHEL HELLSTROM INGEGERD HELLSTROM KARL ERIK LEDBETTER JEFFREY A HAYDEN LEDBETTER MARTHA		
发明人	SCHUMMER, MICHEL HELLSTROM, INGEGERD HELLSTROM, KARL, ERIK LEDBETTER, JEFFREY, A HAYDEN-LEDBETTER, MARTHA		
IPC分类号	G01N33/574 C07K14/81 C07K16/30 C07K16/40 C07K16/18 A61K39/00 G01N33/53 A61K38/00 A61K39/395 A61P1/18 A61P15/00 A61P35/00 A61P43/00 C07K14/82 C07K16/32 C07K19/00 C12N1/15 C12N1/19 C12N1/21 C12N5/10 C12N15/09 C12P21/02 C12P21/08 G01N33/577		
CPC分类号	A61K2039/505 A61P1/18 A61P15/00 A61P35/00 A61P35/02 A61P43/00 C07K14/811 C07K16/18 C07K16/30 C07K16/3069 C07K16/40 C07K2319/00 C07K2319/30 G01N33/57449 G01N33/57488 G01N2333/705		
优先权	60/316537 2001-08-29 US		
其他公开文献	EP2913673B1		
外部链接	Espacenet		

摘要(译)

提供了筛选受试者中卵巢癌的存在的方法。该方法涉及使来自受试者的血液，血清或血浆样品与对SEQ ID NO：11的多肽特异的抗体接触。这允许确定天然以可溶形式存在的分子在生物样品中的存在，并且具有与抗体反应的抗原决定簇。这反过来允许检测受试者中恶性病症的存在。抗体可以是单克隆抗体，例如鼠单克隆抗体。检测抗体与抗原决定簇的结合可以通过酶反应产物的分光光度检测来实现，例如通过酶联免疫吸附测定 (ELISA)。受试者可能患有卵巢癌的早期阶段。

```

SEQUENCE LISTING
<110> Pacific Northwest Research Institute
Schummer, Michel
Hellstrom, Ingegerd
Hellstrom, Karl Erik
Ledbetter, Jeffrey A.
Hayden-Ledbetter, Martha
<120> DIAGNOSIS OF CARCINOMAS
<130> 730033.412PC
<140> PCT
<141> 2002-08-27
<160> 20
<170> FastSEQ for Windows Version 4.0
<210> 1
<211> 39
<212> DNA
<213> Artificial Sequence
<220>
<223> 5' PCR primer for HE4 coding region.Native
secretory signal peptide included.HindIII site and
Kozak consensus sequence upstream of ATG
<400> 1
gtttttaagc ttgcgcgcac gctgtcttgt cgcctagga 39
<210> 2
<211> 36
<212> DNA
<213> Artificial Sequence
<220>
<223> 3' antisense PCR primer for HE4 coding region STOP
codon deleted/substitute in-frame BamHI
restriction site for cloning
<400> 2
gtttgttgga cggaaattgg gaggacaca ggacac 36
<210> 3
<211> 390
<212> DNA
<213> Homo sapiens
<400> 3

```