

(19)



(11)

**EP 2 855 663 B1**

(12)

**EUROPEAN PATENT SPECIFICATION**

(45) Date of publication and mention of the grant of the patent:  
**27.06.2018 Bulletin 2018/26**

(51) Int Cl.:  
**B01D 25/02** <sup>(2006.01)</sup>      **B01D 39/16** <sup>(2006.01)</sup>  
**B01L 3/00** <sup>(2006.01)</sup>      **B01D 29/00** <sup>(2006.01)</sup>  
**G01N 1/40** <sup>(2006.01)</sup>      **G01N 33/50** <sup>(2006.01)</sup>  
**G01N 33/574** <sup>(2006.01)</sup>

(21) Application number: **13797578.5**

(22) Date of filing: **31.05.2013**

(86) International application number:  
**PCT/US2013/043610**

(87) International publication number:  
**WO 2013/181532 (05.12.2013 Gazette 2013/49)**

(54) **CAPTURE, IDENTIFICATION AND USE OF A NEW BIOMARKER OF SOLID TUMORS IN BODY FLUIDS**

ERFASSUNG, IDENTIFIZIERUNG UND VERWENDUNG NEUER BIOMARKER FÜR FESTE TUMORE IN KÖRPERFLÜSSIGKEITEN

CAPTURE, IDENTIFICATION ET UTILISATION D'UN NOUVEAU BIOMARQUEUR DE TUMEURS SOLIDES DANS DES LIQUIDES ORGANIQUES

(84) Designated Contracting States:  
**AL AT BE BG CH CY CZ DE DK EE ES FI FR GB GR HR HU IE IS IT LI LT LU LV MC MK MT NL NO PL PT RO RS SE SI SK SM TR**

**WO-A1-2011/139445 AU-A1- 2013 267 253**  
**CA-A1- 2 874 691 US-A1- 2006 178 833**  
**US-A1- 2014 315 295**

(30) Priority: **01.06.2012 US 201261654636 P**  
**05.03.2013 US 201361773026 P**  
**15.03.2013 US 201361787863 P**

- **MATH P.G. LEERS ET AL: "Circulating PSA-Containing Macrophages as a Possible Target for the Detection of Prostate Cancer", AMERICAN JOURNAL OF CLINICAL PATHOLOGY, vol. 129, no. 4, 1 April 2008 (2008-04-01) , pages 649-656, XP055249226, US ISSN: 0002-9173, DOI: 10.1309/THWWRU8L42U5H9PB**
- **BERNARD CAILLOU ET AL: "Tumor-Associated Macrophages (TAMs) Form an Interconnected Cellular Supportive Network in Anaplastic Thyroid Carcinoma", PLOS ONE, vol. 6, no. 7, 21 July 2011 (2011-07-21), page e22567, XP055249079, DOI: 10.1371/journal.pone.0022567**
- **ZHENG-PIN WANG ET AL: "Identification and characterization of circulating prostate carcinoma cells", CANCER., vol. 88, no. 12, 15 June 2000 (2000-06-15) , pages 2787-2795, XP055249458, US ISSN: 0008-543X, DOI: 10.1002/1097-0142(20000615)88:12<2787::AID-CNCR18>3.0.CO;2-2**

(43) Date of publication of application:  
**08.04.2015 Bulletin 2015/15**

(73) Proprietor: **Creatv Microtech, Inc.**  
**Potomac, MD 20854 (US)**

(72) Inventors:  
 • **ADAMS, Daniel**  
**Kensington**  
**Maryland 20895 (US)**  
 • **TANG, Cha-Mei**  
**Potomac**  
**Maryland 20854 (US)**

(74) Representative: **Dehns**  
**St. Brides House**  
**10 Salisbury Square**  
**London EC4Y 8JD (GB)**

(56) References cited:  
**WO-A1-2011/002649 WO-A1-2011/002649**

Note: Within nine months of the publication of the mention of the grant of the European patent in the European Patent Bulletin, any person may give notice to the European Patent Office of opposition to that patent, in accordance with the Implementing Regulations. Notice of opposition shall not be deemed to have been filed until the opposition fee has been paid. (Art. 99(1) European Patent Convention).

**EP 2 855 663 B1**

- BICHENG ZHANG ET AL: "Alternatively activated RAW264.7 macrophages enhance tumor lymphangiogenesis in mouse lung adenocarcinoma", JOURNAL OF CELLULAR BIOCHEMISTRY, vol. 107, no. 1, 1 May 2009 (2009-05-01), pages 134-143, XP055249137, US ISSN: 0730-2312, DOI: 10.1002/jcb.22110
- E Dorothé ET AL: "Tumor-associated leukemia inhibitory factor and IL-6 skew monocyte differentiation into tumor-associated macrophage-like cells", , 15 December 2007 (2007-12-15), XP055249144, DOI: 10.1182/blood-2007-02- Retrieved from the Internet:  
URL:<http://www.bloodjournal.org/content/110/13/4319.full.pdf> [retrieved on 2016-02-10]
- TERESA MORGAN ET AL: "Molecular Profiling of Giant Cell Tumor of Bone and the Osteoclastic Localization of Ligand for Receptor Activator of Nuclear Factor [kappa]B", AMERICAN JOURNAL OF PATHOLOGY., vol. 167, no. 1, 1 July 2005 (2005-07-01), pages 117-128, XP055249271, US ISSN: 0002-9440, DOI: 10.1016/S0002-9440(10)62959-8
- DANIEL L. ADAMS ET AL: "Circulating giant macrophages as a potential biomarker of solid tumors", PROCEEDINGS OF THE NATIONAL ACADEMY OF SCIENCES, vol. 111, no. 9, 18 February 2014 (2014-02-18), pages 3514-3519, XP055248775, US ISSN: 0027-8424, DOI: 10.1073/pnas.1320198111
- FABER ET AL.: 'Activated macrophages containing tumor marker in colon carcinoma: immunohistochemical proof of a concept.' TUMOR BIOL. vol. 33, no. 2, 02 December 2011, pages 435 - 441, XP055180527
- KROMBACH ET AL.: 'Cell Size of Alveolar Macrophages: An Interspecies Comparison.' ENVIRONMENTAL HEALTH PERSPECTIVES vol. 105, no. 5, September 1997, pages 1261 - 1263, XP008154494
- SCHMID ET AL.: 'Myeloid cell trafficking and tumor angiogenesis' CANCER LETT vol. 250, no. 1, May 2007, pages 1 - 8, XP022008333

**Description****CROSS-REFERENCE TO RELATED APPLICATIONS**

5 **[0001]** This application claims benefit of U.S. Provisional Patent Application No. 61/654,636, filed June 1, 2012, U.S. Provisional Patent Application No. 61/773026, filed March 5, 2013, and U.S. Provisional Patent Application No. 61/787863, filed March 15, 2013.

**BACKGROUND**

10 **Field of the Invention**

**[0002]** The present invention relates generally to identification of a biomarker in blood that can be used for detection of solid tumors and to monitor efficacy of chemotherapy and radiation therapy treatments. The present invention also relates to the use of the biomarker in combination with circulating tumor cells, free plasma and serum DNA cancer markers, cancer-associated protein markers and other biomarkers.

**Related Art**

20 **[0003]** When tumor cells break away from primary solid tumors, they penetrate into the blood or lymphatic circulation, and ultimately leave the blood stream and enter other organ or tissue to form metastasis. 90% of cancer-related deaths are caused by the metastatic process. The most common metastatic sites are the lung, liver, bone and brain. Tumor cells found in the circulation are called circulating tumor cells (CTCs). Many research publications and clinical trials show that CTCs have clinical utility (i) by providing prognostic survival and cancer recurrence information by counting the number of cells in the blood stream, and (ii) by providing treatment information by looking at protein expressions, gene mutations and translocations in the CTCs. However, CTCs cannot be found consistently, even in stage IV patients.

25 **[0004]** Some medical conditions may be diagnosed by detecting the presence of certain types of cells in bodily fluid. In particular, cells indicative or characteristic of certain medical conditions may be larger and/or less flexible than other cells found in certain bodily fluids. Accordingly, by collecting such larger and/or less flexible cells from a liquid sample of a bodily fluid, it may be possible to diagnose a medical condition based on the cells collected. WO2011/002649 teaches that tumour-related microparticles have been shown to correlate with CTC count and therefore provide an alternative means to assess metastatic disease. Leers et al (Am J Clin Pathol 2008;129:649-656) discloses that circulating macrophages containing prostate-specific antigen are a possible target for the detection of prostate cancer. Caillou et al (PLoS ONE 2011;6:e22567) investigated increased density of tumour-associated macrophages in anaplastic thyroid cancers. Wang et al (Cancer 2000;88:2787-2795) characterized circulating prostate carcinoma cells isolated from the peripheral blood.

**SUMMARY**

40 **[0005]** The present invention is directed to and discloses a type of cell with special characteristics that is found in the blood of cancer patients. The cell type, termed "circulating Cancer Associated Macrophage-Like cell" (CAML), is described herein and shown to be associated with the presence of solid tumors in a patient. This cell type is shown by data presented herein to have clinical utility in that it can be used as a biomarker for a variety of medical applications. This cell type has been found consistently in the peripheral blood of stage I to stage IV cancer of epithelial origin by micro filtration using precision microfilters.

45 **[0006]** CAMLs can be used as a biomarker to provide a diagnosis of cancer, in particular, an early detection of cancer, an early detection of cancer recurrence, and a determination of cancer mutation. CAMLs can also be used as a biomarker in determining appropriate courses of therapy, in particular, the cells can be used in a rapid determination of effectiveness of chemotherapy and radiation therapy treatment response.

50 **[0007]** CAMLS may be used independently as a cancer marker, and CAMLS can be used together with CTCs, free DNAs, proteins and other biomarkers in body fluids to provide a more complete understanding of the patient's disease.

55 **[0008]** More specifically, and in a first embodiment, the present invention is directed to methods of screening a subject for cancer, comprising detecting circulating cancer associated macrophage-like cells (CAMLs) in a blood sample from a subject, wherein said CAML cell has the following characteristics: (a) large atypical nucleus having a size of about 14-64  $\mu\text{m}$ ; (b) cell size ranging from about 20 microns to about 300 microns; and (c) morphological shape selected from the group consisting of spindle, tadpole, round, oblong and amorphous. In particular aspects, when CAMLs are detected in the blood sample, the subject is identified as potentially having a carcinoma or solid tumor. In other aspects, when CAMLs are detected in the biological sample, the subject is identified as having a carcinoma or solid tumor. In certain

aspects, the methods encompassed by this embodiment also include detecting circulating tumor cells (CTCs) in the blood sample. In particular aspects of this first embodiment, the subject is a subject suspected of having cancer.

5 [0009] In a second embodiment, the present invention is directed to methods for diagnosing cancer in a subject, comprising detecting CAMLs in a blood sample from a subject, wherein when CAMLs are detected in the blood sample, the subject is diagnosed with cancer, and wherein said CAML cell has the following characteristics: (a) large atypical nucleus having a size of about 14-64  $\mu\text{m}$ ; (b) cell size ranging from about 20 microns to about 300 microns; and (c) morphological shape selected from the group consisting of spindle, tadpole, round, oblong and amorphous. In certain aspects, the methods encompassed by this embodiment also include detecting CTCs in the blood sample, wherein when CAMLs and CTCs are detected in the blood sample, the subject is diagnosed with cancer.

10 [0010] In a third embodiment, the present invention is directed to methods for detecting recurrence of cancer in a subject, comprising detecting CAMLs in a blood sample from a subject previously treated for cancer, wherein when CAMLs are detected in the blood sample, recurrence of cancer is detected, and wherein said CAML cell has the following characteristics: (a) large atypical nucleus having a size of about 14-64  $\mu\text{m}$ ; (b) cell size ranging from about 20 microns to about 300 microns; and (c) morphological shape selected from the group consisting of spindle, tadpole, round, oblong and amorphous. In certain aspects, the methods encompassed by this embodiment also include detecting CTCs in the blood sample, wherein when CAMLs and CTCs are detected in the blood sample, recurrence of cancer is detected.

15 [0011] In a fourth embodiment, the present invention is directed to methods for confirming a diagnosis of cancer in a subject, comprising detecting CAMLs in a blood sample from a subject diagnosed with cancer, wherein when CAMLs are detected in the blood sample, a diagnosis of cancer is confirmed in the subject, and wherein said CAML cell has the following characteristics: (a) large atypical nucleus having a size of about 14-64  $\mu\text{m}$ ; (b) cell size ranging from about 20 microns to about 300 microns; and (c) morphological shape selected from the group consisting of spindle, tadpole, round, oblong and amorphous. In certain aspects, the methods encompassed by this embodiment also include detecting CTCs in the blood sample, wherein when CAMLs and CTCs are detected in the blood sample, a diagnosis of cancer is confirmed in the subject. In particular aspects, the initial cancer diagnosis is via mammography, PSA test, or presence of CA125.

20 In a particular aspect, the subject is suspected of having cancer.

25 [0012] In aspects of the first through fourth embodiments, CAMLs are detected using one or more means selected from the group consisting of size exclusion methodology, red blood cell lysis, FICOLL, a microfluidic chip, and flow cytometry, or a combination thereof. In particular aspects, the size exclusion methodology comprises use of a microfilter. Suitable microfilters can have a variety of pore sizes and shapes. Microfilters having pores of about 7-8 microns in size are acceptable, and include round and rectangular pore shapes. Microfilters having round pores of about 7-8 microns in size are especially optimal when polymeric microfilters are used. In a preferred aspect, the microfilter has precision pore geometry and uniform pore distribution.

30 [0013] In certain aspects of the first through fourth embodiments, CAMLs and CTCs are simultaneously detected using a microfilter having a pore size of about 7-8 microns. Suitable microfilters can have a variety of pore sizes and shapes. Microfilters having pores of about 7-8 microns in size are acceptable, and include round and rectangular pore shapes. Microfilters having round pores of about 7-8 microns in size are especially optimal when polymeric microfilters are used. In a preferred aspect, the microfilter has precision pore geometry and uniform pore distribution.

35 [0014] In certain aspects of the first through fourth embodiments, CAMLs are detected using a microfluidic chip based on physical size-based sorting, hydrodynamic size-based sorting, grouping, trapping, immunocapture, concentrating large cells, or eliminating small cells based on size.

40 [0015] In certain aspects of the first through fourth embodiments, CAMLs are detected using a CellSieve™ low-pressure microfiltration assay.

45 [0016] In aspects of the first through fourth embodiments, the blood sample is peripheral blood. Also disclosed herein are methods wherein the biological sample is one or more selected from the group consisting of lymph nodes, bone marrow, cerebral spinal fluid, tissue, and urine. In other aspects, the blood is antecubital-vein blood, inferior-vena-cava blood or jugular-vein blood.

[0017] In aspects of the first through fourth embodiments, the cancer is one or more of a solid tumor, Stage I cancer, Stage II cancer, Stage III cancer, Stage IV cancer, epithelial cell cancer, breast cancer, prostate cancer, lung cancer, pancreatic cancer, and colorectal cancer.

50 [0018] In a fifth embodiment, the present invention is directed to methods for monitoring efficacy of a cancer treatment, comprising (a) determining the number of CAMLs in a blood sample from a subject before cancer treatment, and (b) comparing the number of CAMLs determined in (a) to a number of CAMLs determined from a similar blood sample from the same subject at one or more time points after treatment. In certain aspects, the methods further comprise (c) determining the number of CTCs in the blood sample of (a), and (d) comparing the number of CTCs determined in (c) to a number of CTCs determined from the blood sample of (b), and wherein said CAML cell has the following characteristics: (a) large atypical nucleus having a size of about 14-64  $\mu\text{m}$ ; (b) cell size ranging from about 20 microns to about 300 microns; and (c) morphological shape selected from the group consisting of spindle, tadpole, round, oblong and amorphous.

[0019] In aspects of the fifth embodiment, a change in the number of CAMLs is an indication of treatment efficacy, where the change is an increase or a decrease in the number of CAMLs.

[0020] In aspects of the fifth embodiment, the cancer treatment is chemotherapy or radiation therapy.

[0021] In aspects of the fifth embodiment, the number of CAMLs is determined using one or more means selected from the group consisting of size exclusion methodology, red blood cell lysis, FICOLL, a microfluidic chip, and flow cytometry, or a combination thereof. In a particular aspect, the size exclusion methodology comprises use of a microfilter. Suitable microfilters can have a variety of pore sizes and shapes. Microfilters having pores of about 7-8 microns in size are acceptable, and include round and rectangular pore shapes. Microfilters having round pores of about 7-8 microns in size are especially optimal when polymeric microfilters are used. In a preferred aspect, the microfilter has precision pore geometry and uniform pore distribution. In a particular aspect, the number of CAMLs is determined using a microfluidic chip based on physical size-based sorting, hydrodynamic size-based sorting, grouping, trapping, immunocapture, concentrating large cells, or eliminating small cells based on size. In a particular aspect, the number of CAMLs is determined using a CellSieve™ low-pressure microfiltration assay.

[0022] In certain aspects of the fifth embodiment, the numbers of CAMLs and CTCs are determined simultaneously using a microfilter having a pore size of about 7 to 8 microns. Suitable microfilters can have a variety of pore sizes and shapes. Microfilters having pores of about 7-8 microns in size are acceptable, and include round and rectangular pore shapes. Microfilters having round pores of about 7-8 microns in size are especially optimal when polymeric microfilters are used. In a preferred aspect, the microfilter has precision pore geometry and uniform pore distribution.

[0023] In aspects of the fifth embodiment, the blood sample is peripheral blood. Also disclosed herein are methods wherein the biological sample is one or more selected from the group consisting of lymph nodes, bone marrow, cerebral spinal fluid, tissue, and urine. In other aspects, the blood is antecubital-vein blood, inferior-vena-cava blood or jugular-vein blood

[0024] In aspects of the fifth embodiment, the cancer is one or more of a solid tumor, Stage I cancer, Stage II cancer, Stage III cancer, Stage IV cancer, epithelial cell cancer, breast cancer, prostate cancer, lung cancer, pancreatic cancer, and colorectal cancer.

[0025] In a sixth embodiment, the present invention is directed to an isolated circulating cancer associated macrophage-like cell (CAML), wherein the cell has the following characteristics: (a) large atypical nucleus having a size of about 14-64 μm; (b) cell size ranging from about 20 micron to about 300 microns; and (c) morphological shape selected from the group consisting of spindle, tadpole, round, oblong, and amorphous. In one aspect of this embodiment, the cell has one or more or each of the following additional characteristics: (d) expression of one or more of cytokeratin 8, 18 and 19, wherein the cytokeratin is diffused, or associated with vacuoles and/or ingested material; (e) CD45 positive phenotype; (f) expression of diffuse EpCAM with nearly uniform distribution; (g) expression of one or more markers of a primary tumor; (h) expression of monocytic CD11C and CD14 markers; and (i) expression of endothelial CD146, CD202b, and CD31 markers. In a particular aspect, the cell has each of the additional characteristics (f)-(i).

[0026] Also disclosed herein is an isolated pathologically-definable circulating tumor cell (CTC), wherein the cell has one or more of the following characteristics: (a) cancer-like nucleus; (b) expression of one or more of cytokeratin 8, 18 and 19, and wherein the cytokeratins have filamentous pattern; and (c) CD45 negative phenotype.

[0027] Also disclosed herein is an isolated apoptotic circulating tumor cell (CTC), wherein the cell has one or more of the following characteristics: (a) cancer-like nucleus; (b) expression of one or more of cytokeratin 8, 18 and 19, and wherein the cytokeratin is fragmented in the form of spots; and (c) CD45 negative phenotype.

## BRIEF DESCRIPTION OF THE DRAWINGS

[0028] A more complete appreciation of the present invention and many of the attendant advantages thereof will be readily obtained as the same becomes better understood by reference to the following detailed description when considered in connection with the accompanying drawings, wherein:

FIGS. 1A-1D shows circulating tumor cells found in blood of cancer patients. The merged color images are generated by DAPI (blue), CK 8, 18 & 19 (green), EpCAM (red) and CD45 (violet).

FIGS. 2A-2D shows apoptotic circulating tumor cells found in blood of cancer patients. The merged color images are generated by DAPI (blue), CK 8, 18 & 19 (green), EpCAM (red) and CD45 (violet).

FIG. 3 shows a circulating cancer associated macrophage-like cell (CAML) found in the blood of cancer patients. This merged color image is generated by DAPI (blue), CK 8, 18 & 19 (green), EpCAM (red) and CD45 (violet).

FIG. 4 shows a circulating cancer associated macrophage-like cell found in the blood of cancer patients. This merged image color is generated by DAPI (blue), CK 8, 18 & 19 (green), EpCAM (red) and CD45 (violet).

## EP 2 855 663 B1

FIG. 5 shows a circulating cancer associated macrophage-like cell found in the blood of cancer patients. This merged color image is generated by DAPI (blue), CK 8, 18 & 19 (green), EpCAM (red) and CD45 violet).

5 FIG. 6 shows a circulating cancer associated macrophage-like cell found in the blood of cancer patients. This merged color image is generated by DAPI (blue), CK 8, 18 & 19 (green), EpCAM (red) and CD45 (violet).

10 FIGS. 7A-7I show a gallery of circulating cancer associated macrophage-like cells found in the blood of cancer patients. The merged color images are generated by DAPI (blue), CK 8, 18 & 19 (green), EpCAM (red) and CD45 (violet).

15 FIGS. 8A-8I show the expression of separate CK 8, 18, 19, EpCAM and CD45, and the nucleus, and the merged color image of each of the cells in FIG. 7. FIGS. 8B, 8C and 8D are from breast cancer patients. FIGS. 8A, 8F and 8G are from pancreatic cancer patients. FIGS. 8E, 8H and 8I are from prostate cancer patients. The merged color images are generated by DAPI (blue), CK 8, 18 & 19 (green), EpCAM (red) and CD45 (violet).

FIG. 9 is whisker plot of cytoplasmic diameters of white blood cells (WBCs), circulating tumor cells (CTCs) and circulating cancer associated macrophage-like cells (CAMLs).

20 FIG. 10 is a comparison of presence of circulating tumor cells (CTCs) captured by CellSearch® and pathologically-definable CTCs isolated by CellSieve™ microfiltration and circulating cancer associated macrophage-like cells (CAMLs) isolated at the same time by CellSieve™ microfiltration.

25 FIG. 11 is a plot of the number of circulating cancer associated macrophage-like cells (CAMLs) found in the circulation of breast, prostate, and pancreatic cancer patients in different stages of cancer.

FIG. 12 is plot of number of CAMLs and CTCs found in the prostate cancer patient samples.

FIG. 13 is plot of number of CAMLs and CTCs found in the pancreatic cancer patient samples.

30 FIG. 14 is plot of number of CAMLs and CTCs found in the breast cancer patient samples.

FIG. 15 is a plot of the number of circulating cancer associated macrophage-like cells (CAMLs) found in the circulation of breast, prostate, pancreatic and lung cancer patients in different stages of cancer.

35 FIGS. 16A and 16B are plots of number of CAMLs and CTCs found in the prostate cancer patient samples, respectively.

40 FIGS. 17A and 17B are plot of number of CAMLs and CTCs found in the pancreatic cancer patient samples, respectively.

FIGS. 18A and 18B are plot of number of CAMLs and CTCs found in the breast cancer patient samples, respectively.

FIG. 19 is plot of number of CAMLs and CTCs found in the lung cancer patients.

45 FIG. 20 is plot of number of CAMLs and CTCs found in the colorectal cancer patients.

FIG. 21 is an example of a CAML from a pancreatic cancer patient also stained for PDX-1.

50 FIG. 22 is an example of a CAML from a prostate cancer patient also stained for PSMA.

FIGS. 23A-B show H&E staining of CAMLs. Two representative CAMLs cells (A) and (B) are shown under a light microscope. The blocked arrow is a round vacuole located within the cytoplasm of the CAML. Open arrows show the individual nuclei and subsequent polynuclear nature of the CAMLs.

55 FIG. 24A is a plot of the number of circulating cancer associated macrophage-like cells (CAMLs) in breast cancer patients with no treatment, and hormone treatment or chemotherapy and radiation therapy.

FIG. 24B is a plot of the number of circulating cancer associated macrophage-like cells (CAMLs) in pancreatic

cancer patients with no treatment, and chemotherapy and radiation therapy.

FIG. 25A shows a CTC associated with a CAML.

5 FIG. 25B shows a CTC bound to a CAML.

FIG. 25C shows a CTC bound to a CAML with membrane fusing.

10 FIG. 25D shows a CAML that engulfed a CK positive cell.

FIG. 26A shows examples of CAML from breast cancer patient stained for CD11c, CD14 and TIE-2.

FIG. 26B shows examples of CAML from pancreatic cancer patient stained for CD11c, CD14 and TIE-2.

15 FIG. 26C shows examples of CAML from breast cancer patient stained for CD11c, CD14 and CD146.

FIG. 26D shows examples of CAML from pancreatic cancer patient stained for CD11c, CD14 and CD146.

## DETAILED DESCRIPTION

20 **[0029]** The matters defined in the description such as a detailed construction and elements are nothing but the ones provided to assist in a comprehensive understanding of the invention. Accordingly, those of ordinary skill in the art will recognize that various changes and modifications of the embodiments described herein can be made.

25 **[0030]** Cancer is the most feared illness in the world, affecting all populations and ethnicities in all countries. In the United States alone, there are more than 10 million cancer patients, with 1.5 million new cancer cases and almost 0.6 million deaths per year. Cancer death worldwide is estimated to be about 8 million annually, of which 3 million occur in developed countries where patients have available treatment.

30 **[0031]** Ideally there is a biomarker that can (i) provide early detection of all carcinomas, especially for at risk groups such as smokers for lung cancer, (ii) confirm other indications of cancer, such as high PSA for prostate cancer, and/or (iii) provide early detection of recurrence of cancer.

**[0032]** Oncologists need to know how best to treat newly diagnosed cancer patients. The current testing standard is a tissue biopsy, which is used to determine the cancer subtype, because therapeutic drugs are frequently effective only for specific subtypes. The biopsy method varies by location, but is invasive and can be risky.

35 **[0033]** To monitor treatment, oncologists need to know how well the drug is working for the patient, whether the dose should be adjusted, and whether the disease is spreading or in remission. The common methods for answering these questions are x-ray computed tomography (CT) scans and magnetic resonance imaging (MRIs), both of which are expensive. Additionally, these methods cannot provide the necessary information until the tumor size has changed perceptibly.

40 **[0034]** Ninety percent of cancer patients die from metastasis, not from the primary tumor. The metastatic process involves tumor cells that break free of the primary carcinomas (solid tumors of epithelial cells) and enter the blood stream. These breakaway cancer cells are known as circulating tumor cells (CTCs). CTCs have the potential to be useful as a tool to determine therapy, monitor treatment, determine recurrence and provide prognostic information of survival. However, CTCs cannot be consistently collected from the blood even in stage III and IV cancers.

45 **[0035]** In this disclosure, a cell type is presented that is consistently found in the blood of carcinoma patients from stage I-IV. These cells are macrophage-like cells that contain the same tumor markers as the primary tumor and they are termed circulating Cancer Associated Macrophage-Like cells (CAMLs) herein.

50 **[0036]** CTCs and CAMLs can be found from the same patient sample at the same time by size exclusion methods, such as by microfiltration methods. Microfilters can be formed with pores big enough to let all red blood cells and majority of white blood cells through and retain larger cells such as CTCs and CAMLs. Size exclusion methods have also been implemented by microfluidic chips.

**[0037]** CAMLs have many clinical utilities when used alone. Furthermore, CAMLs can be combined with other markers such as CTCs, free DNA in blood and free proteins in blood to further improve sensitivity and specificity of a diagnosis. This is especially true for CAMLs and CTCs because they can be isolated and identified at the same time.

### 55 *Circulating Tumor Cells*

**[0038]** The CTCs express a number of cytokeratins (CKs). CK 8, 18, & 19 are the most commonly used in diagnostics, but surveying need not be limited to these three. The surface of solid tumor CTCs usually express epithelial cell adhesion

molecule (EpCAM). However, this expression is not uniform or consistent. CTCs should not express any CD45, because it is a white blood cell marker. In assays to identify tumor associated cells, such as CTCs and CAMLs, it is sufficient to use antibody against CK 8, 18, or 19, or antibody against CD45 or DAPI. Combining the presence of staining with morphology, pathologically-definable CTCs, apoptotic CTCs and CAMLs can be identified.

5 [0039] FIGS. 1A-1D show four examples of pathologically-definable CTCs. A pathologically-definable CTC is identified by the following characteristics:

- They have a "cancer-like" nucleus stained by DAPI. The exception is when the cell is in division; the nucleus is condensed.
- 10 • They express at least CK 8, 18 and 19. The cytokeratins have a filamentous pattern.
- They lack CD45 expression. *To avoid missing low expressing CD45 cells, long exposure is used during image acquisition.*

15 [0040] A pathologically-definable CTC as used in the present invention thus includes those CTCs having one, two or three of the following characteristics: (a) cancer-like nucleus; (b) expression of one or more of cytokeratin 8, 18 and 19, and wherein the cytokeratins have filamentous pattern; and (c) CD45 negative phenotype.

[0041] FIG. 1A shows a pathologically-definable prostate cancer CTC expressing well-defined EpCAM and FIG. 1B shows a pathologically-definable prostate cancer CTC expressing very low or no EpCAM. FIG. 1C shows a pathologically-definable breast cancer CTC expressing well-defined EpCAM and FIG. 1D shows a pathologically-definable breast cancer CTC expressing very low or no EpCAM.

20 [0042] FIGS. 2A-2D show examples of apoptotic CTCs. An apoptotic CTC is identified by the following characteristics:

- They have a cancerous nucleus.
- They express at least CK 8, 18 and 19; the cytokeratins are not filamented, but appear fragmented in the form of spots.
- 25 • They do not express CD45.

[0043] An apoptotic CTC as used in the present invention thus includes those CTCs having one, two or three of the following characteristics: (a) cancer-like nucleus; (b) expression of one or more of cytokeratin 8, 18 and 19, and wherein the cytokeratin is fragmented in the form of spots; and (c) CD45 negative phenotype.

30 [0044] FIGS. 2A and 2B show apoptotic breast cancer CTCs expressing very low or no EpCAM at early and mid stages of apoptosis, respectively. FIGS. 2C and 2D show prostate cancer CTCs at mid stage of apoptosis expressing high and low EpCAM, respectively.

### ***Circulating Cancer Associated Macrophage-like Cells (CAMLs)***

35 [0045] In the same patient samples, another type of cell was identified. This cell type has been termed a CAML. CAMLs have the following characteristics:

- CAMLs have a large atypical nucleus; multiple individual nuclei can be found in CAMLs, though enlarged fused nucleoli approximately 14  $\mu$ m to approximately 65  $\mu$ m are common.
- 40 • CAMLs may express at least CK 8, 18 or 19, and the CK is diffused, or associated with vacuoles and/or ingested material. CK is nearly uniform throughout the whole cell.
- CAMLs are most of the time CD45 positive.
- CAMLs are large, approximately 20 micron to approximately 300 micron in size.
- 45 • CAMLs come in five distinct morphological shapes (spindle, tadpole, round, oblong, or amorphous).

Further analysis of CAMLs shows they also have the follow characteristics:

- If CAML express EpCAM, EpCAM is diffused, or associated with vacuoles and/or ingested material, and nearly uniform throughout the whole cell, but not all CAML express EpCAM, because some tumors express very low or no EpCAM.
- 50 • CAML express markers associated with the markers of the tumor origin; e.g., if the tumor is of prostate cancer origin and expresses PSMA, then CAML from this patient also expresses PSMA. Another example, if the primary tumor is of pancreatic origin and expresses PDX-1, then CAML from this patient also expresses PDX-1.
- 55 • CAMLs express monocytic markers (e.g. CD11c, CD14) and endothelial markers (e.g. CD146, CD202b, CD31). CAMLs also have the ability to bind Fc fragments.

[0046] CAMLs of the present invention thus includes those CAMLs having the following characteristics: (a) large

atypical nucleus having a size of about 14-64  $\mu\text{m}$ ; (b) cell size ranging from about 20 micron to about 300 microns; and (c) morphological shape selected from the group consisting of spindle, tadpole, round, oblong, and amorphous. CAMLs of the present invention also include those CAMLs having one, two, three, four, five or six of the following additional characteristics: (d) expression of one or more of cytokeratin 8, 18, 19, wherein the cytokeratin is diffused, or associated with vacuoles and/or ingested material; (e) CD45 positive phenotype; (f) expression of diffuse EpCAM with nearly uniform distribution; (g) expression of one or more markers of a primary tumor; (h) expression of monocytic CD11C and CD14 markers; and (i) expression of endothelial CD146, CD202b, and CD31 markers. In a particular aspect, CAMLs of the present invention have each of the additional characteristics (f)-(i).

**[0047]** Images of CAMLs from a breast cancer patient are shown in FIGS. 3-5 and CAMLs from a prostate cancer patient are shown in FIG. 6. FIG. 7 contains a collage of CAMLs showing the five different CAML morphologies and signal variation from separate prostate, breast and pancreatic patient samples: (7A) pancreatic, (7B) breast, (7C) breast, (7D) breast (7E) prostate, (7F) pancreatic, (7G) pancreatic, (7H) prostate, and (7I) prostate. Examples of morphology variants are as follows: amorphous (7A), oblong (7B and 7G), spindle (3, 5, 6, 7C, 7F and 7I), round (7D) and tadpole (4, 7E & 7H). Color differences occur from varying degrees of protein expression from antibody reaction to EpCAM, cytokeratin and CD45. The expression of markers of each of the CAMLs in FIGS. 7A-I are shown in detail in FIGS. 8A-I.

**[0048]** FIG. 9 shows the whisker plot of cytoplasmic diameters of white blood cells (WBC), CTCs and CAMLs. The median size differences, and ranges, between WBC, CTCs and CAMLs captured on the microfilter from prostate, breast, and pancreatic (n=25 white blood cells, n=25 CAMLs and n=25 CTCs). Diameters were measured using the distance between the two longest points on the cell using Zen 2011 measurement software. The median value of white blood cells was 12.4  $\mu\text{m}$ , CTCs was 18.8  $\mu\text{m}$  and CAMLs was 43.5  $\mu\text{m}$ .

#### ***Diagnostic Methods of Using CAMLs and CTCs***

**[0049]** As suggested above, the unique characteristics of the CAMLs and CTCs described herein make them well-suited for use in clinical methodology including methods of screening and diagnosis diseases such as cancer, and in the monitoring of disease progression.

**[0050]** The invention is thus directed, in a first embodiment, to methods of screening a subject for cancer, comprising detecting circulating cancer associated macrophage-like cells (CAMLs) in a blood sample from a subject, wherein said CAML cell has the following characteristics: (a) large atypical nucleus having a size of about 14-64  $\mu\text{m}$ ; (b) cell size ranging from about 20 microns to about 300 microns; and (c) morphological shape selected from the group consisting of spindle, tadpole, round, oblong and amorphous. In particular aspects, when CAMLs are detected in the blood sample, the subject is identified as potentially having a carcinoma or solid tumor. In other aspects, when CAMLs are detected in the blood sample, the subject is identified as having a carcinoma or solid tumor. In certain aspects, the methods encompassed by this embodiment also include detecting circulating tumor cells (CTCs) in the blood sample. In particular aspects of this first embodiment, the subject is a subject suspected of having cancer.

**[0051]** In a second embodiment, the invention is directed to methods for diagnosing cancer in a subject, comprising detecting CAMLs in a blood sample from a subject, wherein when CAMLs are detected in the blood sample, the subject is diagnosed with cancer, and wherein said CAML cell has the following characteristics: (a) large atypical nucleus having a size of about 14-64  $\mu\text{m}$ ; (b) cell size ranging from about 20 microns to about 300 microns; and (c) morphological shape selected from the group consisting of spindle, tadpole, round, oblong and amorphous. In certain aspects, the methods encompassed by this embodiment also include detecting CTCs in the blood sample, wherein when CAMLs and CTCs are detected in the blood sample, the subject is diagnosed with cancer.

**[0052]** In a third embodiment, the invention is directed to methods for detecting recurrence of cancer in a subject, comprising detecting CAMLs in a blood sample from a subject previously treated for cancer, wherein when CAMLs are detected in the blood sample, recurrence of cancer is detected, and wherein said CAML cell has the following characteristics: (a) large atypical nucleus having a size of about 14-64  $\mu\text{m}$ ; (b) cell size ranging from about 20 microns to about 300 microns; and (c) morphological shape selected from the group consisting of spindle, tadpole, round, oblong and amorphous. In certain aspects, the methods encompassed by this embodiment also include detecting CTCs in the blood sample, wherein when CAMLs and CTCs are detected in the blood sample, recurrence of cancer is detected.

**[0053]** In a fourth embodiment, the invention is directed to methods for confirming a diagnosis of cancer in a subject, comprising detecting CAMLs in a blood sample from a subject diagnosed with cancer, wherein when CAMLs are detected in the blood sample, a diagnosis of cancer is confirmed in the subject, and wherein said CAML cell has the following characteristics: (a) large atypical nucleus having a size of about 14-64  $\mu\text{m}$ ; (b) cell size ranging from about 20 microns to about 300 microns; and (c) morphological shape selected from the group consisting of spindle, tadpole, round, oblong and amorphous. In certain aspects, the methods encompassed by this embodiment also include detecting CTCs in the blood sample, wherein when CAMLs and CTCs are detected in the blood sample, a diagnosis of cancer is confirmed in the subject. In particular aspects, the initial cancer diagnosis is via mammography, PSA test, or presence of CA125. In a particular aspect, the subject is suspected of having cancer.

**[0054]** In each of these embodiments, CAMLs are detected using appropriate means which include, but are not limited to, one or more of size exclusion methodology, red blood cell lysis, FICOLL, a microfluidic chip, and flow cytometry, or a combination thereof. When size exclusion methodology is utilized, it may comprise the use of a microfilter. Suitable microfilters can have a variety of pore sizes and shapes. Microfilters having pores of about 7-8 microns in size are acceptable, and include round and rectangular pore shapes. Microfilters having round pores of about 7-8 microns in size are especially optimal when polymeric microfilters are used. In a preferred aspect, the microfilter has precision pore geometry and uniform pore distribution.

**[0055]** Alternatively, CAMLs may be detected using a microfluidic chip based on means that include, but are not limited to, physical size-based sorting, hydrodynamic size-based sorting, grouping, trapping, immunocapture, concentrating large cells, or eliminating small cells based on size.

**[0056]** In each of these embodiments, CTCs may also be detected along with CAMLs. Such detection may be simultaneously or sequential detection, and can utilize the same or different means. For example, simultaneous detection using a microfilter having a pore size that selects for both cell types may be used. Suitable microfilters can have a variety of pore sizes and shapes. Microfilters having pores of about 7-8 microns in size are acceptable, and include round and rectangular pore shapes. Microfilters having round pores of about 7-8 microns in size are especially optimal when polymeric microfilters are used. In a preferred aspect, the microfilter has precision pore geometry and uniform pore distribution.

**[0057]** The methods disclosed herein may be practiced using any biological sample suspected of containing CTCs and/or CAMLs. Suitable biological samples include, but are not limited to, one or more selected from the group consisting of lymph nodes, bone marrow, cerebral spinal fluid, tissue, and urine. The methods of the invention are practiced using a blood sample. In a preferred aspect, the sample is peripheral blood. In other aspects, the blood is antecubital-vein blood, inferior-vena-cava blood or jugular-vein blood.

**[0058]** The skilled artisan will appreciate that the methods provided in these embodiments are not limited to particular forms or types of cancer and that they may be practiced in association with a wide variety of cancers. Exemplary cancers include, but are not limited to, solid tumors, Stage I cancer, Stage II cancer, Stage III cancer, Stage IV cancer, epithelial cell cancer, breast cancer, prostate cancer, lung cancer, pancreatic cancer, and colorectal cancer.

#### ***Monitoring Treatment Efficacy Using CAMLs and CTCs***

**[0059]** As suggested above, the unique characteristics of the CAMLs and CTCs described herein also make them well-suited for use in monitoring the effectiveness of disease treatments.

**[0060]** The present invention is thus directed, in a fifth embodiment, to methods for monitoring efficacy of a cancer treatment, comprising:

(a) determining the number of CAMLs in a blood sample from a subject before cancer treatment, and

(b) comparing the number of CAMLs determined in (a) to a number of CAMLs determined from a similar blood sample from the same subject at one or more time points after treatment.

**[0061]** Given the prognostic capabilities associated with CTCs, the methods of this embodiment may further include the following additional steps:

(c) determining the number of CTCs in the blood sample of (a), and

(d) comparing the number of CTCs determined in (c) to a number of CTCs determined from the blood sample of (b), and wherein said CAML cell has the following characteristics: (a) large atypical nucleus having a size of about 14-64  $\mu\text{m}$ ; (b) cell size ranging from about 20 microns to about 300 microns; and (c) morphological shape selected from the group consisting of spindle, tadpole, round, oblong and amorphous.

**[0062]** The skilled artisan will understand that a change in the number of CAMLs and/or CTCs will be an indication of treatment efficacy, where the change may be an increase or a decrease in the number of CAMLs and/or CTCs.

**[0063]** The particular cancer treatment is not limited by this method, but will generally comprise chemotherapy and/or radiation therapy.

**[0064]** These methods can be practiced by determining number of CAMLs using one or more means selected from the group consisting of size exclusion methodology, red blood cell lysis, FICOLL, a microfluidic chip, and flow cytometry, or a combination thereof. When size exclusion methodology is used, it may comprise use of a microfilter. Suitable microfilters can have a variety of pore sizes and shapes. Microfilters having pores of about 7-8 microns in size are acceptable, and include round and rectangular pore shapes. Microfilters having round pores of about 7-8 microns in

size are especially optimal when polymeric microfilters are used. In a preferred aspect, the microfilter has precision pore geometry and uniform pore distribution. In a particular aspect, the number of CAMLs is determined using a microfluidic chip based on means that include, but are not limited to, physical size-based sorting, hydrodynamic size-based sorting, grouping, trapping, immunocapture, concentrating large cells, or eliminating small cells based on size. In another particular aspect, the number of CAMLs is determined using a CellSieve™ low-pressure microfiltration assay.

[0065] When both are monitored, the numbers of CAMLs and CTCs may be determined sequential or simultaneously using the same means or different means. For example, simultaneous detection using a microfilter having a pore size that selects for both cell types may be used. Suitable microfilters can have a variety of pore sizes and shapes. Microfilters having pores of about 7-8 microns in size are acceptable, and include round and rectangular pore shapes. Microfilters having round pores of about 7-8 microns in size are especially optimal when polymeric microfilters are used. In a preferred aspect, the microfilter has precision pore geometry and uniform pore distribution.

[0066] The methods disclosed herein may be practiced using any biological sample suspected of containing CTCs and/or CAMLs. Suitable biological samples include, but are not limited to, one or more selected from the group consisting of lymph nodes, bone marrow, cerebral spinal fluid, tissue, and urine. The methods of the invention are practiced using a blood sample. In a preferred aspect, the sample is peripheral blood. In other aspects, the blood is antecubital-vein blood, inferior-vena-cava blood or jugular-vein blood

[0067] The skilled artisan will appreciate that the methods provided in this embodiment are not limited to particular forms or types of cancer and that they may be practiced in association with a wide variety of cancers. Exemplary cancers include, but are not limited to, solid tumors, Stage I cancer, Stage II cancer, Stage III cancer, Stage IV cancer, epithelial cell cancer, breast cancer, prostate cancer, lung cancer, pancreatic cancer, and colorectal cancer.

### ***Discussions of the biology and clinical results of CAMLs***

[0068] Tumor-associated macrophages (TAMs) are specialized differentiated macrophages found within most tumors, which can be used as prognostic indicators of either tumor invasiveness or tumor suppression. TAMs, recruited to the stroma from circulating monocytes, are required for tumor cell intravasation, migration, extravasation, and angiogenesis. Tumors attract monocytes via chemoattractants (MCP-1, CCL-2). In turn TAMs secrete cytokines, chemokines and growth factors (e.g. MMP-1, CXCL12) which stimulate tumor cells with the potential to become circulating tumor cells (CTCs). TAMs and tumor cells then migrate via the lymphatic system, or intravasate across intra-tumor capillary barriers into the peripheral circulation.

[0069] Pathological evidence detailing the initial dissemination steps of CTCs via a metastatic cascade remains inconclusive. Typically, a cancer cell dissemination cascade requires 3 steps: CTC separation from the tumor, movement away from the parent mass, and migration into the circulatory system. Though various theories explain select aspects of this cascade (endothelial progenitor cells, cancer mesenchymal stem cells, hybrid cancer cells, etc.), none completely explain all three processes. Recently, *in vivo* studies have shown that circulating monocytic cells are intricately involved in tumor cell invasiveness, motility, and metastatic potential. Interactions between myeloid lineage cells and tumor cells have been documented in patients and modeled in mice suggesting a pathway for intravasation, but the mechanism for the final dissemination step is yet to be established.

[0070] Here we describe the existence of CAMLs, a highly differentiated giant circulating (macrophage-like) cell isolated from the peripheral blood of breast, prostate, and pancreatic cancer patients, which we hypothesize could be a disseminated TAM (DTAM). We isolated this cell type using CellSieve™ microfilter (Creatv MicroTech) with precision pore dimensions and uniform distribution. CellSieve™ microfiltration of 7.5 ml of whole peripheral blood are performed under low pressure without damaging cells, allowing for histological identification of cellular morphology. We define this giant cell as a circulating Cancer Associated Macrophage-Like cell (CAML), as it exhibits a CD14+ expression, vacuoles of phagocytosed material, and found exclusively in cancer patients (FIGS. 3-7, and Table 1). We propose that this cell population, not found in healthy individuals, could serve as a robust cellular biomarker of a previously undefined innate immune response to cancer aggressiveness, and monitor chemotherapy- and radiation therapy-induced responses. Observations of these giant cells interacting with CTCs while in circulation supports evidence that a patient's innate immune response has an observable effect on the migration of CTCs. The TIE-2 positive markers expressed by these macrophages suggest a role of CAML as cellular initiators of neovascularization within tumor metastases. We have uncovered supporting *in vivo* evidence that CAMLs may play an associated role in the migration of CTCs in circulation.

[0071] Giant fused macrophages are a poorly understood cell found in a multitude of tissues. They are hybrids of multinucleated cells originating from myeloid lineage involved in numerous physiological and pathological processes, including phagocytosis of foreign and necrotic tissue, tissue reabsorption, and inflammation. We find that CAMLs are giant cells presenting with enlarged nuclei, CD45+ and exhibit diffused cytoplasmic staining characteristic of epithelial cells: cytokeratin 8, 18, 19, and epithelial cell adhesion molecule (EpCAM) (FIGS. 3-8). Multiple individual nuclei can be found in CAMLs, though large fused nucleoli (14-64 μm diameter) are common (FIGS. 3-8). CAML cytoplasm, defined by a cytokeratin border, range from 21-300 μm in length and is found on the filter with five distinct morphological

phenotypes (spindle, tadpole, round, oblong, or amorphous) (FIGS. 3-8).

**[0072]** Although identification of these cells is straightforward due to their extreme size, large nuclear profile, and cytoplasmic signature, they have highly heterogeneous phenotypes. The expression of cytokeratin, EpCAM and CD45 all vary from lack of expression to very intense expression (FIGS. 8A-8H). This heterogeneity is further indicated in the five cell structures, the size ranges, and the various nuclear profiles (FIGS. 8A-8H). High marker expression heterogeneity implies CAMLs represent either different stages along pathways of differentiation or are the product of nonspecific cellular engulfment with varying cell types. This is unsurprising as macrophages are a highly plastic cell type capable of differentiating into numerous cell phenotypes.

**[0073]** Recognizing that CAMLs could serve as an independent prognostic indicator of cancer progression, similar to CTC enumeration, we compared the number of CAMLs and CTCs using the CellSieve™ low-pressure microfiltration assay (Creatv MicroTech, Inc) and the CellSearch® Circulating Tumor Cell test (Veridex, LLC). CTCs have been a challenge to isolate due to their rarity and limited occurrence (10-50%) in cancer patients with metastatic disease. TAM enumeration and phenotyping could have prognostic utility, but currently lacks sequential testing, tracking primary to metastatic progression, as this would require numerous invasive tumor biopsies. Enumeration of CTCs enriched by CellSearch® and CellSieve™ systems were directly compared to the enumeration of CAMLs isolated by CellSieve™ using blood from 29 cancer patients (FIG. 10). While CellSearch® uses EpCAM antibodies to enrich CTCs, CellSieve™ uses size exclusion. Both technologies phenotypically identify CTCs utilizing an antibody panel of anti-cytokeratin 8, 18, and 19, DAPI nuclear stain and absence of anti-CD45. Employing a CTC count of  $\geq 1$ , the sensitivity of the CellSieve™ system was 72% [21 of 29 patients; breast=15/21 (71%), prostate=6/8 (75%)], while that of the CellSearch® system was 58% [15 of 29 patients; breast=9/21 (43%), prostate=6/8 (75%)]. CAML capture was positive in 97% (28 of 29) of samples tested (FIG. 10). Interestingly, the only CAML negative sample was a breast cancer patient being treated with bisphosphonates, a class of drugs, which inhibit formation of osteoclasts, a giant myeloid cell of the bone composed of fused cells. Thus, as the specificity of CAMLs is 100% for the samples tested, presence of CAML may provide a method for non-invasive sequential testing for use as a prognostic indicator of metastatic disease for a broad range of cancer patients.

**[0074]** To assess the sensitivity and specificity of CAMLs for applicability as a prognostic indication of metastatic disease, we examined samples from early to late stage cancer patients, and healthy subjects. Samples from 76 patients were run on CellSieve™ microfilters. The stage distribution included, Stage I (n=8), Stage II (n=9), Stage III (n=13), Stage IV (n=24), unknown stage (n=22) across three cancers: breast (n=29), pancreatic (n=27), and prostate (n=20) (Table S1). We included newly diagnosed and untreated patients (n=36) as well as patients undergoing non-surgical therapies (n=40) (Table 1). The study included healthy subjects (n=30), including two with benign disease, one fibroadenoma and one basal cell carcinoma. No CAMLs were found in this control group (Table 1). CAMLs were found in 97% (36 of 37) cancer patients with Stage III/IV cancer, 77% (13 of 17) of Stage I/II, and 93% (71 of 76) of all patients regardless of cancer type (FIG. 11). CAMLs were found in 85% (prostate) (FIG. 12), 93% (pancreatic) (FIG. 13), and 97% (breast) (FIG. 14) of the patients. CAMLs in prostate cancer samples were slightly lower in number, possibly due to the fact that 6 of 20 prostate patients were stage I. Although CTC analysis on microfilters provided an overall positivity of 54% across all patients tested, CAMLs provided 93% sensitivity across the same cohort (FIGS. 12-14 and Table 1). Though further study of patients with various illnesses must be assessed, these findings demonstrate that the presence CAMLs could provide a robust and widely applicable assessment of cancer status.

**Table 1.** Summary of healthy subjects, CAML patient data and CTC patient data separated by stage, cancer type and therapy type. CTCs are found in a small percent of Stage I and II patients, while CAMLs are found in many stage I-IV patients. CTC numbers between the patients is highly variable with a standard deviation (SD) of >300%. CAMLs have a much lower SD, 110%, and whose numbers seem to correlate with stage and treatment.

Subject	No. of patients	CAML positive (%)	Mean CAML ± SD	Median CAML	CAML range	CTC positive (%)	Mean CTC ± SD	Median CTC	CTC range
Healthy Normals	28	0	0 ± 0	0	0-0	0	0 ± 0	0	0-0
Nonmalignant	2	0	0 ± 0	0	0-0	0	0 ± 0	0	0-0
Stage I	8	63	10.8 ± 20.9	3	0-61	38	4.6 ± 11.9	0	0-34
Stage II	9	89	8.0 ± 9.6	3	0-28	22	1.6 ± 3.1	0	0-28
Stage III	13	100	15.8 ± 12.5	9.5	2-43	62	13.3 ± 30.2	3.5	0-108
Stage IV	24	96	21.3 ± 23.8	8	0-82	75	57.2 ± 172.4	3	0-682
Unknown	22	95	6.2 ± 4.5	5.5	0-20	45	4.8 ± 17.5	0	
Cancer Type	76	93	13.4 ± 17.4	6	0-82	54	22.5 ± 100.3	1	0-682
Breast (IBC)	14	93	24.9 ± 24.0	23.5	0-82	71	11.4 ± 28.1	3	0-108
Breast (IDC)	8	100	15.9 ± 16.1	10.5	1-41	100	9.0 ± 17.0	3.5	Jan-51
Breast (unknown)	7	100	15.0 ± 14.2	8	2-32	71	106.3 ± 254.2	5	0-682
Prostate	20	85	9.0 ± 14.3	3	0-64	35	3.3 ± 7.9	0	0-34
Pancreatic	27	93	9.5 ± 14.5	5	0-72	41	24.8 ± 106.5	0	0-541
Therapy Type	76								
No treatment	36	86	4.4 ± 4.0	3.5	0-19	42	20.2 ± 92.0	0	0-541
Hormone	13	92	11.8 ± 16.7	8	0-64	69	6.2 ± 9.6	3	0-34
Chemotherapy	24	100	26.2 ± 21.9	27	2-82	58	8.9 ± 22.6	2	0-108
Unknown	3	100	26.3 ± 11.6	25	13-34	100	229.3 ± 392.0	4	2-682

[0075] As more samples were collected, additional CAML data was obtained. FIG. 15 presents CAML counts for 122 patients with staging information for breast, pancreatic, prostate and non-small cell lung cancer (NSCLC). For Stage I, one pancreatic cancer patient and six prostate cancer patients did not have any CAMLs. For Stage II, one pancreatic cancer patient and one prostate cancer patient did not have any CAMLs. For Stage IV, one breast cancer patient, one lung cancer patient and three pancreatic cancer patients did not have any CAMLs.

[0076] FIGS. 16A and 16B present numbers of CAMLs and CTCs from prostate cancer patient data obtained to date, respectively. Staging information was not known for all patients. The percentage of prostate cancer patients with CAMLs was 81% (30/37) (FIG. 16A), where 13 are known as Stage I. The percentage of prostate cancer patients with pathologically-definable CTCs was 32% (12/37) (FIG. 16B).

[0077] FIGS. 17A and 17B present numbers of CAMLs and CTCs from pancreatic cancer patient data obtained to date, respectively. Staging information was not known for all patients. The percentage of pancreatic cancer patients with CAMLs was 93% (71/76) (FIG. 17A), where 11 were known as Stage I. Two samples had pathologically-definable CTCs larger than 80. Samples No. 13 and 53 had 83 and 541 pathologically-definable CTCs, respectively. The percentage of prostate cancer patients with pathologically-definable CTCs was 23% (18/76) (FIG. 17B).

[0078] FIGS. 18A and 18B present numbers of CAMLs and CTCs from breast cancer patient data obtained to date, respectively. Staging information was not known for all patients. The percentage of breast cancer patients with CAMLs was 97% (36/37) (FIG. 18A), where only one was known as Stage I. One Stage IV patient did not have any CAML because she was taking the bisphosphonates. Four samples had pathologically-definable CTCs larger than 110. Samples No. 17, 27 and 30 had 978, 682 and 707 pathologically-definable CTCs, respectively. The percentage of breast cancer patients with pathologically-definable CTCs was 84% (31/37) (FIG. 18B).

[0079] FIG. 19 presents numbers of CAMLs and CTCs from NSCLC patient data obtained to date. Staging information was not known for all patients. The percentage of NSCLC patients with CAMLs was 88% (7/8). The percentage of NSCLC patients with pathologically-definable CTCs was 38% (3/8).

[0080] FIG. 20 presents numbers of CAMLs and CTCs from colorectal cancer patient data obtained to date. All the patients were Stage IV. The percentage of colorectal cancer patients with CAMLs was 100% (4/4) for this small sample size. The percentage of colorectal cancer patients with pathologically-definable CTCs was 25% (1/4).

[0081] In all these data, the CAMLs were found in much larger number of the patients than CTCs.

[0082] Though further study of patients with various illnesses must be assessed, these findings demonstrate that the presence CAMLs provides a robust and widely applicable assessment of cancer status for carcinomas.

[0083] We propose that CAML represents a specialized TAM initiating at the site of tumor and disseminating into circulation. This would be consistent with previous publications characterizing TAMs at the primary tumor site, as well as the observations that CAMLs appear CD14+, have engulfed epithelial tissue, and occur exclusively in cancer patients. To understand the origin of CAMLs, we looked at whether they arise from circulating monocytes or directly from DTAMs. As TAMs and monocytes would both present with similar protein markers, we assessed the presence of engulfed organ-specific markers, Pancreatic Duodenal Homeobox-1 (PDX-1) for pancreatic patients or Prostate-Specific Membrane Antigen (PSMA) for prostate patients. PDX-1 is a differentiation and development marker found in adult endocrine organs, namely pancreatic cells. PSMA is a membrane glycoprotein, which is highly expressed in prostate cells. After isolating and enumerating CAMLs, we re-stained pre-identified CAML samples with PSMA or PDX-1. A PDX-1 positive reaction was seen in all CAMLs from pancreatic samples (FIG. 21), while PSMA was found in all CAMLs from prostate samples (FIG. 22). While possible that cellular fusion or ingestion of debris occurred away from the tumor site, the high concentration of markers coupled with the scarcity of tumor debris in circulation make this unlikely. Instead, we interpret this suite of biomarker staining as evidence that CAMLs are a subtype of DTAMs, and that staining occurred from phagocytosed necrotic debris, or engulfed neoplastic cells from the tumor site.

**Table 2.** Cell markers used to analyze the CAMLs. (+) Positive in the majority of cell types; (-) negative in the majority of cell types; (+/-) cell populations heterogenous for this marker and may be positive or negative; (\*) found only in cells from pancreatic cancer patients; (‡) found only in cells from prostate cancer patients; (♦) a small subset population on monocytes are positive for this marker; (o) monocytes are a subpopulation of white blood cells and will express these markers.

Cell Type	PDX-1	PSMA	CD11c	CD14	CD146	TIE-2 (C202b)	Cytokeratin 8,18 & 19	EpCAM (CD326)	CD45 (LCA)
CCAMLC	+(*)	+(‡)	+	+/-	+/-	+/-	+	+	+/-
Breast CTC				-			+	+/-	-
Prostate CTC	-	+	-	-	-	-	+	+/-	-
Pancreas CTC	+	-	-	-	-	-	+	+/-	-

(continued)

	Cell Type	PDX-1	PSMA	CD11c	CD14	CD146	TIE-2 (C202b)	Cytokeratin 8,18 & 19	EpCAM (CD326)	CD45 (LCA)
5	<b>Epithelial Cell</b>	-	-	-	-	-	-	+	+	-
	<b>Monocyte</b>	-	-	+	+	-(♦)	-(♦)	-	-	+
	<b>Endothelial Cell</b>	-	-	-	-	+	+	+	-	-
10	<b>White Blood Cell</b>	-	-	-(○)	-(○)	-	-	-	-	+

**[0084]** FIG. 23 shows H & E Staining of CAMLs. Samples from breast cancer patients were identified by fluorescent DAPI and cytokeratin stains. Filters were then re-stained by Hematoxylin and by Eosin Y. Two representative CAMLs cells are shown under a light microscope. The blocked arrow is a round vacuole located within the cytoplasm of the CAML. Open arrows show the individual nuclei and subsequent polynuclear nature of the CAMLs **(A)** An oval shaped CAMLs that has 3 visible nuclei and a vacuole **(B)** Round shaped CAML that has 5 visible nuclei.

**[0085]** To further test whether CAMLs are a DTAM subtype, we compared therapy regimes and temporal changes in the number of CAMLs in relation to cancer progression and stability. We hypothesized that if CAMLs are associated with phagocytosis of cellular debris due to cytotoxicity at the tumor site, i.e. derived from TAMs, then patients not chemo-responsive or undergoing only hormone therapy would not produce additional cellular debris and thus would have no change in CAML numbers. Conversely, patients that are responsive to chemotherapy would have an increase in CAMLs. Analysis of therapeutic regimes showed that only chemotherapy, not hormonal nor non-therapy was associated with an increase in CAML levels in breast cancer patients (FIG. 24A) and pancreatic cancer patients (FIG. 24B). For Pancreatic cancer patients, CAMLs for chemotherapy average is 16.4 CAMLs, and for no therapy is 4.1. We find that non-treated and hormone treated patients, who should show little change in tumor size, have low numbers of CAMLs <0.4-0.6/mL blood (FIGS. 24A-B). Conversely, if a chemotherapeutic regime was in use, CAML numbers increased to 3.9/mL. These data suggest that CAMLs may provide a sensitive representation of phagocytosis at the tumor site that could quantify a cell-specific immune response to the extent of cellular debris caused by chemotherapy.

**[0086]** CTCs originate at a tumor site, circulate in peripheral blood, and have the ability to seed metastatic sites. However, the pathway for CTC detachment and invasion into the circulatory system is a complex process. We analyzed CAMLs isolated from patient samples for evidence of a CTC/CAML interaction. CTCs were found bound to CAMLs in 3 of 72 patients, all in metastatic disease (FIGS. 25A-25C). In addition, three instances of CAMLs were found with engulfed cells that appeared to have a neoplastic/CTC phenotype (FIG. 25D). Representing 7% of patients, the observed interaction of a dual pair CTC and CAML is indicative of two possibilities. First, these cells attached while in circulation, implying that CAMLs are an active immune response to cancer cells in blood. Second, these cells bind at the primary tumor and disseminated together into circulation, implying a similar pathway of intravasation. In either case, this pairing of cells suggests that CAMLs may play a role in the immune response to cancer cell migration in the peripheral blood of cancer patients.

**[0087]** Circulating monocytes have the ability to enter any tissue compartment of the body, including lymph nodes, bone marrow, most organs, and even cross the blood brain barrier. Angiogenic Endothelial Progenitor Cells (EPCs) with neovascular potential are capable of being derived from macrophages, and TIE-2+ (CD202b) macrophages are intricately involved in tumor vascularization. Recent *in vitro* and mouse *in vivo* experiments have shown that EPCs derived from CD14+/CD11c+ monocytes differentiate into CD146+/TIE-2+ endothelial cells capable of pro-angiogenic activity. As CAMLs presented with an EPC-like spindle phenotype, we analyzed CAMLs for evidence of this pathway. After identifying CAML positive samples, we stained CAMLs with panels of monocytic markers, CD11c and CD14, as well as angiogenic endothelial markers, CD146 or TIE-2 (FIGS. 26A-26D). We observed CAMLs positive for both monocytic and endothelial markers. The monocytic marker CD11c was the most reactive, found in all CAMLs stained, while a secondary monocytic marker CD14 was the least reactive, at times negative. The pro-angiogenic marker (TIE-2) and endothelial marker (CD146) stained positive in CAMLs, but staining intensity was intermittent. The endothelial/monocytic overlap findings are not surprising, as circulating monocytes have high morphological and marker heterogeneity. Even today there is great debate over the mononuclear phagocytic system for classification as endothelial cells, bone marrow-derived cells and monocytic cell express overlapping markers and have similar developmental pathways. Nevertheless, the presence of CD146, or TIE-2, on CD14 positive cells indicates a specialized pro-angiogenic macrophage capable of neovascular potential.

**[0088]** Although many studies have focused on dissemination of CTCs, TAMs may be involved in seeding, proliferation and neovascularization of metastases. While previous studies provide evidence for vascular infiltration of tumor cells

through macrophage assistance, our results now also supply evidence of macrophage interaction with tumor cells in the circulation. We hypothesize that CAMLs originating at the primary tumor disseminate into the circulation. We also show that CAMLs bind to and migrate through the circulation attached to CTCs, possibly disseminating in conjunction. Finally, we describe pro-angiogenic TIE-2/CD146-expressing CAMLs, indicating the ability to neovascularize a metastatic microenvironment. These data provide clinical evidence that pro-angiogenic cells migrate bound to CTCs, suggesting a link between intravasation, migration and extravasation of CTCs.

### **Capture of CAMLS and CTCs**

**[0089]** Cells larger and/or less flexible than other cells present in a bodily fluid may be collected by filtering the bodily fluid. For example, targeted cells indicative of a condition may be collected by passing a bodily fluid through a filter having openings that are too small for the target cells to pass through, but large enough for other cells to pass through. Once collected, any number of analyses of the target cells may be performed. Such analyses may include, for example, identifying, counting, characterizing expressions of markers, obtaining molecular analysis, and/or culturing the collected cells.

**[0090]** CAMLs, pathologically-definable CTCs, and apoptotic CTCs are larger than red blood cells and most white blood cells. Using a precision microfilter that has precision pore size and pore distribution has been shown to provide high capture efficiency and low standard of deviation. CellSieve™ microfilters (Creatv MicroTech) are one example of precision microfilters. CellSieve™ microfilters are transparent and nonfluorescent making them ideal for microscope imaging analysis. Pore sizes of 7-8 microns eliminated all the red blood cells and 99.99% of the white blood cells. Methods to fabricate microfilters producing uniform pore size and distribution are described in WO 2011/139445, and WO 2013/078409. Microfilters made by a track etch method have randomly located pores that can overlap resulting in effectively large pores. They might lose some CAMLs and CTCs.

**[0091]** Many other methods exist for captures of CTCs. Some can also be adopted to capture CAMLs. They generally break-down into the following categories:

- Since CAMLs are large compared with majority of blood cells, any size based method is suitable for capturing CAMLs. Microfilters are ideal for capture of CAMLs and CTCs. Microfluidic chips technologies that sort, select, group, trapping, concentrates large cells or eliminate small cells by size are also suitable.
- Immunocapture use ferrofluids, magnetic beads, microfluidic chips, etc, coated with antibody for selection of CAMLs, or elimination of other cells.
- Red blood cell lysis can also be used for collecting CAMLs. The resultant sample volume requires plating on multiple glass slides.
- FICOLL.
- Flow cytometry.
- A variety of microfluidic chip utilizing a variety of biological and physical principles.

### **Summary of Clinical Utilities**

**[0092]** These results support the idea that CAMLs provide a robust indicator of cancer presence.

**[0093]** The sensitivity and specificity of the utility of CAMLs can be further improved in combination with simultaneous detection of CTCs.

**[0094]** Cancer screening is a strategy used in a population to identify an unrecognised disease in individuals without signs or symptoms, with pre-symptomatic or unrecognised symptomatic disease. As such, screening tests are somewhat unique in that they are performed on persons apparently in good health. A screening test is not a diagnostic test. Diagnostic testing is a procedure performed to confirm, or determine the presence of disease in an individual suspected of having the disease.

**[0095]** CAMLs can be used as a cancer diagnostic to provide additional non-invasive diagnostics to confirm other screening techniques, such as mammography, PSA and CA125.

**[0096]** Since CAMLs can be found in stage I and II of cancer, CAMLs can be used as screening for early detection of carcinomas of epithelial origin especially for high risk patients for lung, pancreatic, colorectal and other cancers that does not have early detection methods. Specificity of the type of cancer can be determined by staining for various cancer site specific markers. Some examples are (i) use antibody against PSMA to specifically identifying prostate cancer, (ii)

use antibody against PDX-1 to specifically identifying lung cancer, (iii) antibody against CA125 for ovarian cancer, and (iv) clorotoxin to identify glioma.

**[0097]** Similarly CAMLs can be used to determine early recurrence of cancer when the cancer was under remission. Currently CT and MRI are used to monitor the patient's tumor, requiring the tumor to change in size substantially to notice the difference. Patients can therefore lose valuable time in beginning treatment when only subtle size changes occur. CAMLs, alone or in combination with CTCs, can provide early detection of return of cancer. Non-invasive blood test of CAMLs and CTCs is much lower in cost than CT and MRI.

**[0098]** The capability of tracking CAMLs provides a novel opportunity to routinely monitor necrosis and chemotherapy or radiation therapy response. If the chemotherapy is not working, the CAMLs number will not increase. This can be used in parallel with CTC detection. If the treatment is working, the number of pathologically-definable CTCs will decrease and number of apoptotic CTCs will increase. However, CTCs cannot always be detected. If CTCs are detected at the same time as CAMLs, the sensitivity and specificity can be improved. For many cancers there are large array of chemotherapy agents. If the patient is not responding to one type of chemotherapy, the patient can quickly switch to another.

**[0099]** The CAMLs can also potentially be used to determine cancer subtyping or gene mutations, translocations or amplification. There are a number of cancerous nuclei in each CAMLs. Thus, molecular analysis of the nucleus for genetic mutation, genetic defects, gene translocations can provide information to determine treatments. There are drugs that specifically target certain gene mutations, translocation or amplifications. CAMLs can be used along or in parallel with CTCs for molecular analysis.

**[0100]** Circulating monocytes have the ability to enter any tissue compartment of the body, including lymph nodes, bone marrow, most organs, and even cross the blood brain barrier. The detection of CAMLs are not limited to blood, but also can be found in lymph nodes, bone marrow, cerebral spinal fluid, most organs, and urine.

**[0101]** The volume of blood typically used for detection of CTCs is 7.5 mL. Larger volumes of blood will provide more sensitivity and consistency, but smaller volumes such as 3.5 mL may be sufficient. For many CTC detection methods, larger volumes of blood are not practical for a variety of reasons. However, microfiltration of blood to capture CTCs and/or CAMLs allows more flexibility to increase the sample size. Blood volumes of 50 mL have been shown to be successfully screened using CellSieve™ microfilters with 160,000 pores. The recommended volume of blood to capture CAMLs would be 7.5 ml or greater.

## Claims

1. A method of screening a subject for cancer, comprising detecting circulating Cancer Associated Macrophage-Like cells (CAMLs) in a blood sample from a subject, wherein said CAML cell has the following characteristics:

- (a) large atypical nucleus having a size of about 14-64  $\mu\text{m}$ ;
- (b) cell size ranging from about 20 microns to about 300 microns; and
- (c) morphological shape selected from the group consisting of spindle, tadpole, round, oblong, and amorphous.

2. The method of claim 1, wherein when CAMLs are detected in the blood sample, the subject is identified as potentially having or having a carcinoma or solid tumor.

3. The method of claim 1 or claim 2, further comprising detecting circulating tumor cells (CTCs) in the blood sample.

4. A method for diagnosing cancer in a subject, comprising detecting CAMLs in a blood sample from a subject, wherein when CAMLs are detected in the blood sample, the subject is diagnosed with cancer, and wherein said CAML cell has the following characteristics:

- (a) large atypical nucleus having a size of about 14-64  $\mu\text{m}$ ;
- (b) cell size ranging from about 20 microns to about 300 microns; and
- (c) morphological shape selected from the group consisting of spindle, tadpole, round, oblong, and amorphous.

5. A method for detecting recurrence of cancer in a subject, comprising detecting CAMLs in a blood sample from a subject previously treated for cancer, wherein when CAMLs are detected in the blood sample, recurrence of cancer is detected, and wherein said CAML cell has the following characteristics:

- (a) large atypical nucleus having a size of about 14-64  $\mu\text{m}$ ;
- (b) cell size ranging from about 20 microns to about 300 microns; and
- (c) morphological shape selected from the group consisting of spindle, tadpole, round, oblong, and amorphous.

6. A method for confirming a diagnosis of cancer in a subject, comprising detecting CAMLs in a blood sample from a subject diagnosed with cancer, wherein when CAMLs are detected in the blood sample, a diagnosis of cancer is confirmed in the subject, and wherein said CAML cell has the following characteristics:
- 5 (a) large atypical nucleus having a size of about 14-64  $\mu\text{m}$ ;  
(b) cell size ranging from about 20 microns to about 300 microns; and  
(c) morphological shape selected from the group consisting of spindle, tadpole, round, oblong, and amorphous.
7. The method of claim 4, claim 5 or claim 6, further comprising detecting CTCs in the blood sample, wherein when CAMLs and CTCs are detected in the blood sample, the subject is diagnosed with cancer, or recurrence of cancer is detected, or a diagnosis of cancer is confirmed in the subject.
8. The method of claim 6 or 7, wherein the initial cancer diagnosis was via mammography, PSA test, or presence of CA125.
- 15 9. The method of claim 1 or 4, wherein the subject is a subject suspected of having cancer.
10. A method for monitoring efficacy of a cancer treatment, comprising (a) determining the number of CAMLs in a blood sample from a subject before cancer treatment, and (b) comparing the number of CAMLs determined in (a) to a number of CAMLs determined from a similar blood sample from the same subject at one or more time points after treatment, said method optionally further comprising (c) determining the number of CTCs in the biological sample of (a), and (d) comparing the number of CTCs determined in (c) to a number of CTCs determined from the biological sample of (b), and wherein said CAML cell has the following characteristics:
- 20 (a) large atypical nucleus having a size of about 14-64  $\mu\text{m}$ ;  
(b) cell size ranging from about 20 microns to about 300 microns; and  
(c) morphological shape selected from the group consisting of spindle, tadpole, round, oblong, and amorphous.
- 25 11. The method of claim 10, wherein a change in the form of an increase or a decrease in the number of CAMLs is an indication of treatment efficacy, preferably wherein the cancer treatment is chemotherapy or radiation therapy.
- 30 12. The method of any one of claims 1 to 11, wherein said CAML cell has expression of the monocytic marker CD14.
13. The method of any one of claims 1 to 12, wherein said CAML cell has one or more or each of the following additional characteristics:
- 35 (d) expression of one or more of cytokeratin 8, 18 and 19, wherein the cytokeratin is diffused, or associated with vacuoles and/or ingested material; and/or
- 40 optionally wherein the cell has one or more or each of the following additional characteristics:
- (e) CD45 positive phenotype;  
(f) expression of diffuse EpCAM with nearly uniform distribution;  
(g) expression of one or more markers of a primary tumor;  
45 (h) expression of monocytic CD11C and CD14 markers; and  
(i) expression of endothelial CD146, CD202b, and CD31 markers.
14. The method of any one of claims 1 to 13, wherein CAMLs are detected using one or more means selected from the group consisting of size exclusion methodology, red blood cell lysis, FICOLL, a microfluidic chip, and flow cytometry, or a combination thereof, preferably wherein the size exclusion methodology comprises use of a microfilter; or preferably wherein CAMLs are detected using a microfluidic chip based on physical size-based sorting, hydrodynamic size-based sorting, grouping, trapping, immunocapture, concentrating large cells, or eliminating small cells based on size; or wherein CAMLs are detected using a CellSieve™ low-pressure microfiltration assay.
- 55 15. The method of claim 3 or claim 7 or claim 10, wherein CAMLs and CTCs are simultaneously detected using a microfilter having a pore size of about 7-8 microns, preferably wherein the microfilter has precision pore geometry and uniform pore distribution.

16. The method of any one of claims 1 to 15, wherein the blood sample is peripheral blood.
17. The method of any one of claims 1 to 16, wherein the cancer is selected from the group consisting of a solid tumor, Stage I cancer, Stage II cancer, Stage III cancer, Stage IV cancer, an epithelial cell cancer, breast cancer, prostate cancer, lung cancer, pancreatic cancer and colorectal cancer.
18. An isolated circulating Cancer Associated Macrophage-Like cell (CAML), wherein the cell has the following characteristics:
- (a) large atypical nucleus having a size of about 14-64  $\mu\text{m}$ ;  
(b) cell size ranging from about 20 microns to about 300 microns; and  
(c) morphological shape selected from the group consisting of spindle, tadpole, round, oblong, and amorphous.
19. The isolated cell of claim 18, wherein the cell has expression of the monocytic marker CD14.
20. The isolated cell of claim 18 or claim 19, wherein the cell has one or more or each of the following additional characteristics:

(d) expression of one or more of cytokeratin 8, 18 and 19, wherein the cytokeratin is diffused, or associated with vacuoles and/or ingested material; and/or

optionally wherein the cell has one or more or each of the following additional characteristics:

- (e) CD45 positive phenotype;  
(f) expression of diffuse EpCAM with nearly uniform distribution;  
(g) expression of one or more markers of a primary tumor;  
(h) expression of monocytic CD11C and CD14 markers; and  
(i) expression of endothelial CD146, CD202b, and CD31 markers.

## Patentansprüche

1. Verfahren zum Screening eines Patienten auf Krebs, umfassend das Detektieren zirkulierender, Krebs assoziierter Makrophagen-ähnlicher Zellen (CAMLs) in einer Blutprobe von einem Patienten, wobei die CAML Zelle die folgenden Eigenschaften aufweist:
- (a) großer atypischer Kern mit einer Größe von etwa 14 bis 64  $\mu\text{m}$ ;  
(b) Zellgröße im Bereich von etwa 20 Mikrometer bis etwa 300 Mikrometer; und  
(c) morphologische Form, ausgewählt aus der Gruppe bestehend aus Spindel, Kaulquappe, rund, länglich und amorph.
2. Verfahren nach Anspruch 1, wobei, wenn CAMLs in der Blutprobe detektiert werden, der Proband als potentiell aufweisend oder ein Karzinom oder einen soliden Tumor aufweisend identifiziert wird.
3. Verfahren nach Anspruch 1 oder Anspruch 2, weiter umfassend den Nachweis von zirkulierenden Tumorzellen (CTCs) in der Blutprobe.
4. Verfahren zum Diagnostizieren von Krebs in einem Probanden, umfassend das Detektieren von CAMLs in einer Blutprobe von einem Probanden, wobei, wenn CAMLs in der Blutprobe detektiert werden, der Proband mit Krebs diagnostiziert wird, und wobei die CAML Zelle die folgenden Eigenschaften aufweist:
- (a) einen großen atypischen Kern mit einer Größe von etwa 14 bis 64  $\mu\text{m}$ ;  
(b) eine Zellgröße im Bereich von etwa 20 Mikrometer bis etwa 300 Mikrometer; und  
(c) eine morphologische Form, ausgewählt aus der Gruppe bestehend aus Spindel, Kaulquappe, rund, länglich und amorph.
5. Verfahren zum Detektieren eines Wiederauftretens von Krebs in einem Probanden, umfassend das Detektieren von CAMLs in einer Blutprobe von einem zuvor gegen Krebs behandelten Probanden, wobei, wenn CAMLs in der

## EP 2 855 663 B1

Blutprobe detektiert werden, ein Wiederauftreten von Krebs detektiert wird, und wobei die CAML Zelle die folgenden Eigenschaften aufweist:

- 5 (a) einen großen atypischen Kern mit einer Größe von etwa 14 bis 64  $\mu\text{m}$ ;  
(b) eine Zellgröße im Bereich von etwa 20 Mikrometer bis etwa 300 Mikrometer; und  
(c) eine morphologische Form, ausgewählt aus der Gruppe bestehend aus Spindel, Kaulquappe, rund, länglich und amorph.
- 10 **6.** Verfahren zum Bestätigen einer Krebsdiagnose bei einem Probanden, umfassend das Detektieren von CAMLs in einer Blutprobe von einem mit Krebs diagnostizierten Probanden, wobei, wenn CAMLs in der Blutprobe detektiert werden, eine Diagnose von Krebs bei dem Probanden bestätigt wird, und wobei die CAML Zelle die folgenden Eigenschaften aufweist:
- 15 (a) einen großen atypischen Kern mit einer Größe von etwa 14 bis 64  $\mu\text{m}$ ;  
(b) eine Zellgröße im Bereich von etwa 20 Mikrometer bis etwa 300 Mikrometer; und  
(c) eine morphologische Form, ausgewählt aus der Gruppe bestehend aus Spindel, Kaulquappe, rund, länglich und amorph.
- 20 **7.** Verfahren nach Anspruch 4, Anspruch 5 oder Anspruch 6, weiter umfassend das Detektieren von CTCs in der Blutprobe, wobei, wenn CAMLs und CTCs in der Blutprobe detektiert werden, der Proband mit Krebs diagnostiziert wird oder ein Wiederauftreten von Krebs detektiert wird, oder eine Diagnose von Krebs in dem Probanden bestätigt wird.
- 25 **8.** Verfahren nach Anspruch 6 oder 7, wobei die anfängliche Krebsdiagnose über Mammographie, PSA-Test oder Anwesenheit von CA125 erfolgte.
- 9.** Verfahren nach Anspruch 1 oder 4, wobei der Proband ein Proband ist, der im Verdacht steht, Krebs zu haben.
- 30 **10.** Verfahren zum Überwachen der Wirksamkeit einer Krebsbehandlung, umfassend (a) Bestimmen der Anzahl von CAMLs in einer Blutprobe von einem Probanden vor der Krebsbehandlung und (b) Vergleichen der Anzahl von CAMLs, die in (a) bestimmt wurden, mit einer Anzahl von CAMLs, die bestimmt wurden aus einer ähnlichen Blutprobe von demselben Probanden zu einem oder mehreren Zeitpunkten nach der Behandlung, wobei das Verfahren gegebenenfalls weiter umfasst: (c) Bestimmen der Anzahl von CTCs in der biologischen Probe von (a), und (d),  
35 Vergleichen der Anzahl von CTCs, die bestimmt wurden in (c) für eine Anzahl von CTCs, die bestimmt wurden aus der biologischen Probe von (b), und wobei die CAML Zelle die folgenden Eigenschaften aufweist:
- (a) einen großen atypischen Kern mit einer Größe von etwa 14 bis 64  $\mu\text{m}$ ;  
(b) eine Zellgröße im Bereich von etwa 20 Mikrometer bis etwa 300 Mikrometer; und  
40 (c) eine morphologische Form, ausgewählt aus der Gruppe bestehend aus Spindel, Kaulquappe, rund, länglich und amorph.
- 11.** Verfahren nach Anspruch 10, wobei eine Veränderung in der Form eines Anstiegs oder einer Abnahme der Anzahl von CAMLs ein Hinweis auf eine Behandlungswirksamkeit ist, wobei die Krebsbehandlung vorzugsweise eine Chemo- oder Strahlentherapie ist.  
45
- 12.** Verfahren nach einem der Ansprüche 1 bis 11, wobei die CAML Zelle eine Expression des monozytischen Markers CD14 aufweist.
- 50 **13.** Verfahren nach einem der Ansprüche 1 bis 12, wobei die CAML Zelle eine oder mehrere oder jede der folgenden zusätzlichen Eigenschaften aufweist:
- (d) Expression von einem oder mehreren Zytokeratin 8, 18 und 19, wobei das Zytokeratin diffundiert oder mit Vakuolen und/oder aufgenommenem Material assoziiert ist; und/oder
- 55 wobei gegebenenfalls die Zelle eine oder mehrere oder jede der folgenden zusätzlichen Eigenschaften aufweist:
- (e) einen CD45-positiven Phänotyp;  
(f) Expression von diffusem EpCAM mit nahezu gleichmäßiger Verteilung;

## EP 2 855 663 B1

- (g) Expression eines oder mehrerer Marker eines Primärtumors;
- (h) Expression von monozytären CD11C und CD14 Markern; und
- (i) Expression von endothelialen CD146, CD202b und CD31 Markern.

- 5 14. Verfahren nach einem der Ansprüche 1 bis 13, wobei CAMLs detektiert werden unter Verwendung von einem oder mehreren Mitteln, ausgewählt aus der Gruppe bestehend aus Größenausschlussverfahren, Lyse von roten Blutkörpern, FICOLL, einem Mikrofluidchip und Durchflusszytometrie, oder einer Kombination davon, wobei die Größenausschlussmethode vorzugsweise die Verwendung eines Mikrofilters umfasst;
- 10 oder wobei vorzugsweise CAMLs detektiert werden unter Verwendung eines Mikrofluidchips basierend auf Sortierung, basierend auf physikalischer Größe, hydrodynamischer größenbasierter Sortierung, Gruppierung, Trapping, Immunocapture, Konzentration großer Zellen, oder Eliminierung kleiner Zellen basierend auf der Größe; oder wobei CAMLs unter Verwendung eines CellSieve™-Niederdruck-Mikrofiltrationsassays nachgewiesen werden.
- 15 15. Verfahren nach Anspruch 3 oder Anspruch 7 oder Anspruch 10, wobei CAMLs und CTCs gleichzeitig unter Verwendung eines Mikrofilters mit einer Porengröße von etwa 7 bis 8 Mikron nachgewiesen werden, wobei vorzugsweise der Mikrofilter eine genaue Porengeometrie und eine gleichmäßige Porenverteilung aufweist.
16. Verfahren nach einem der Ansprüche 1 bis 15, wobei die Blutprobe peripheres Blut ist.
- 20 17. Verfahren nach einem der Ansprüche 1 bis 16, wobei der Krebs ausgewählt ist aus der Gruppe bestehend aus einem soliden Tumor, Stadium I Krebs, Stadium II Krebs, Stadium III Krebs, Stadium IV Krebs, einem epithelialen Zellkrebs, Brustkrebs, Prostatakrebs, Lungenkrebs, Bauchspeicheldrüsenkrebs und Darmkrebs.
- 25 18. Eine isolierte zirkulierende Krebs assoziierte Makrophagen-ähnliche Zelle (CAML), wobei die Zelle die folgenden Eigenschaften aufweist:
- (a) einen großen atypischen Zellkern mit einer Größe von etwa 14 bis 64  $\mu\text{m}$ ;
  - (b) eine Zellgröße im Bereich von etwa 20 Mikrometer bis etwa 300 Mikrometer; und
  - (c) eine morphologische Form, ausgewählt aus der Gruppe bestehend aus Spindel, Kaulquappe, rund, länglich
- 30 und amorph.
19. Isolierte Zelle nach Anspruch 18, wobei die Zelle eine Expression des Monozytenmarkers CD14 aufweist.
- 35 20. Isolierte Zelle nach Anspruch 18 oder Anspruch 19, wobei die Zelle eine oder mehrere oder jede der folgenden zusätzlichen Eigenschaften aufweist:
- (d) Expression von einem oder mehreren Zytokeratin 8, 18 und 19, wobei das Zytokeratin diffundiert oder mit Vakuolen und/oder aufgenommenem Material assoziiert ist; und/oder wobei gegebenenfalls die Zelle eine oder mehrere oder jede der folgenden zusätzlichen Eigenschaften aufweist:
- 40
- (e) CD45-positiver Phänotyp;
  - (f) Expression von diffusem EpCAM mit nahezu gleichmäßiger Verteilung;
  - (g) Expression eines oder mehrerer Marker(n) eines Primärtumors;
  - (h) Expression von monozytären CD11C und CD14 Markern; und
  - (i) Expression von endothelialen CD146, CD202b und CD31 Markern.
- 45

### Revendications

- 50 1. Procédé de dépistage du cancer chez un sujet, comprenant la détection de cellules de type macrophage associées au cancer en circulation (CAML) dans un échantillon de sang du patient, dans lequel ladite cellule CAML a les caractéristiques suivantes :
- (a) un grand noyau atypique ayant une taille d'environ 14 à 64  $\mu\text{m}$  ;
  - (b) une taille de cellule variant d'environ 20 microns à environ 300 microns ; et
  - (c) une forme morphologique choisie dans le groupe consistant en fuseau, têtard, ronde, oblongue, et amorphe.
- 55
2. Procédé selon la revendication 1, dans lequel lorsque des CAML sont détectées dans l'échantillon de sang, le sujet

## EP 2 855 663 B1

est identifié comme ayant potentiellement ou ayant un carcinome ou une tumeur solide.

3. Procédé selon la revendication 1 ou la revendication 2, comprenant en outre la détection de cellules tumorales en circulation (CTC) dans l'échantillon de sang.
- 5  
4. Procédé de diagnostic du cancer chez un sujet, comprenant la détection de CAML dans un échantillon de sang du sujet, dans lequel lorsque des CAML sont détectées dans l'échantillon de sang, le sujet est diagnostiqué avec un cancer, et dans lequel ladite cellule CAML a les caractéristiques suivantes :
  - 10 (a) un grand noyau atypique ayant une taille d'environ 14 à 64  $\mu\text{m}$  ;
  - (b) une taille de cellule variant d'environ 20 microns à environ 300 microns ; et
  - (c) une forme morphologique choisie dans le groupe consistant en fuseau, têtard, ronde, oblongue, et amorphe.
- 15  
5. Procédé de détection de la récurrence d'un cancer chez un sujet, comprenant la détection de CAML dans un échantillon de sang d'un sujet antérieurement traité pour le cancer, dans lequel lorsque des CAML sont détectées dans l'échantillon de sang, une récurrence du cancer est détectée, et dans lequel ladite cellule CAML a les caractéristiques suivantes :
  - 20 (a) un grand noyau atypique ayant une taille d'environ 14 à 64  $\mu\text{m}$  ;
  - (b) une taille de cellule variant d'environ 20 microns à environ 300 microns ; et
  - (c) une forme morphologique choisie dans le groupe consistant en fuseau, têtard, ronde, oblongue, et amorphe.
- 25  
6. Procédé de confirmation d'un diagnostic du cancer chez un sujet, comprenant la détection de CAML dans un échantillon de sang d'un sujet diagnostiqué avec le cancer, dans lequel lorsque des CAML sont détectées dans l'échantillon de sang, un diagnostic du cancer est confirmé chez le sujet, et dans lequel ladite cellule CAML a les caractéristiques suivantes :
  - 30 (a) un grand noyau atypique ayant une taille d'environ 14 à 64  $\mu\text{m}$  ;
  - (b) une taille de cellule variant d'environ 20 microns à environ 300 microns ; et
  - (c) une forme morphologique choisie dans le groupe consistant en fuseau, têtard, ronde, oblongue, et amorphe.
- 35  
7. Procédé selon la revendication 4, la revendication 5 ou la revendication 6, comprenant en outre la détection de CTC dans l'échantillon de sang, dans lequel lorsque des CAML et des CTC sont détectées dans l'échantillon de sang, le sujet est diagnostiqué avec le cancer, ou la récurrence du cancer est détectée, ou un diagnostic du cancer est confirmé chez le sujet.
8. Procédé selon la revendication 6 ou 7, dans lequel un diagnostic du cancer initial s'est fait par mammographie, examen de l'antigène spécifique de la prostate, ou présence de CA125.
- 40  
9. Procédé selon la revendication 1 ou 4, dans lequel le sujet est un sujet suspecté d'être atteint du cancer.
- 45  
10. Procédé de contrôle de l'efficacité d'un traitement du cancer, comprenant (a) la détermination du nombre de CAML dans un échantillon de sang d'un sujet avant traitement du cancer, et (b) comparaison du nombre de CAML déterminé en (a) à un nombre de CAML déterminé à partir d'un échantillon de sang similaire du même sujet à un ou plusieurs instants après traitement, ledit procédé comprenant en outre facultativement (c) la détermination du nombre de CTC dans l'échantillon biologique de (a), et (d) la comparaison du nombre de CTC déterminées dans (c) à un nombre de CTC déterminées à partir de l'échantillon biologique de (b), et dans lequel ladite cellule CAML a les caractéristiques suivantes :
  - 50 (a) un grand noyau atypique ayant une taille d'environ 14 à 64  $\mu\text{m}$  ;
  - (b) une taille de cellule variant d'environ 20 microns à environ 300 microns ; et
  - (c) une forme morphologique choisie dans le groupe consistant en fuseau, têtard, ronde, oblongue, et amorphe.
- 55  
11. Procédé selon la revendication 10, dans lequel un changement sous la forme d'une augmentation ou d'une diminution du nombre de CAML est une indication d'une efficacité du traitement, de préférence dans lequel le traitement du cancer est une chimiothérapie ou une radiothérapie.
12. Procédé selon l'une quelconque des revendications 1 à 11, dans lequel ladite cellule CAML a une expression du

marqueur monocytaire CD14.

- 5  
13. Procédé selon l'une quelconque des revendications 1 à 12, dans lequel ladite cellule CAML a une ou plusieurs ou chacune des caractéristiques additionnelles suivantes :

(d) expression d'une ou plusieurs parmi cytokératine 8, 18 et 19, dans lequel la cytokératine est diffusée, ou associée à des vacuoles et/ou de la matière ingérée ; et/ou

10 facultativement dans lequel la cellule a une ou plusieurs ou chacune des caractéristiques additionnelles suivantes :

- 15  
(e) phénotype positif à CD45 ;  
(f) expression d'EpCAM diffuse avec répartition presque uniforme ;  
(g) expression d'un ou plusieurs marqueurs d'une tumeur primaire ;  
(h) expression de marqueurs CD11C et CD14 monocytaires ; et  
(i) expression de marqueurs CD146, CD202b, et CD31 endothéliaux.

- 20  
14. Procédé selon l'une quelconque des revendications 1 à 13, dans lequel des CAML sont détectées à l'aide d'un ou plusieurs moyens choisis dans le groupe composé par une méthodologie d'exclusion stérique, une lyse en globules rouges, FICOLL, une puce microfluidique, et une cytométrie en flux, ou une de leur combinaison, de préférence dans lequel la méthodologie d'exclusion stérique comprend l'utilisation d'un microfiltre ;  
ou de préférence dans lequel des CAML sont détectées à l'aide d'une puce microfluidique basée sur un tri à base de taille physique, un tri à base de taille hydrodynamique, un regroupement, un piégeage, une immunocapture, la concentration de grandes cellules, ou l'élimination de petites cellules basée sur la taille ; ou  
dans lequel des CAML sont détectées à l'aide d'un dosage de microfiltration basse pression CellSieve™.

- 25  
15. Procédé selon la revendication 3 ou la revendication 7 ou la revendication 10, dans lequel des CAML et CTC sont simultanément détectées à l'aide d'un microfiltre ayant une taille de pore d'environ 7 à 8 microns, de préférence dans lequel le microfiltre a une géométrie de pore de précision et une répartition de pore uniforme.

- 30  
16. Procédé selon l'une quelconque des revendications 1 à 15, dans lequel l'échantillon de sang est du sang périphérique.

- 35  
17. Procédé selon l'une quelconque des revendications 1 à 16, dans lequel le cancer est choisi dans le groupe composé par une tumeur solide, un cancer de stade I, un cancer de stade II, un cancer de stade III, un cancer de stade IV, et un cancer de cellules épithéliales, un cancer du sein, un cancer de la prostate, un cancer du poumon, un cancer du pancréas et un cancer colorectal.

- 40  
18. Cellule de type macrophage associée à un cancer en circulation (CAML) isolée, dans laquelle la cellule a les caractéristiques suivantes :

- (a) un grand noyau atypique ayant une taille d'environ 14 à 64  $\mu\text{m}$  ;  
(b) une taille de cellule variant d'environ 20 microns à environ 300 microns ; et  
(c) une forme morphologique choisie dans le groupe consistant en fuseau, têtard, ronde, oblongue, et amorphe.

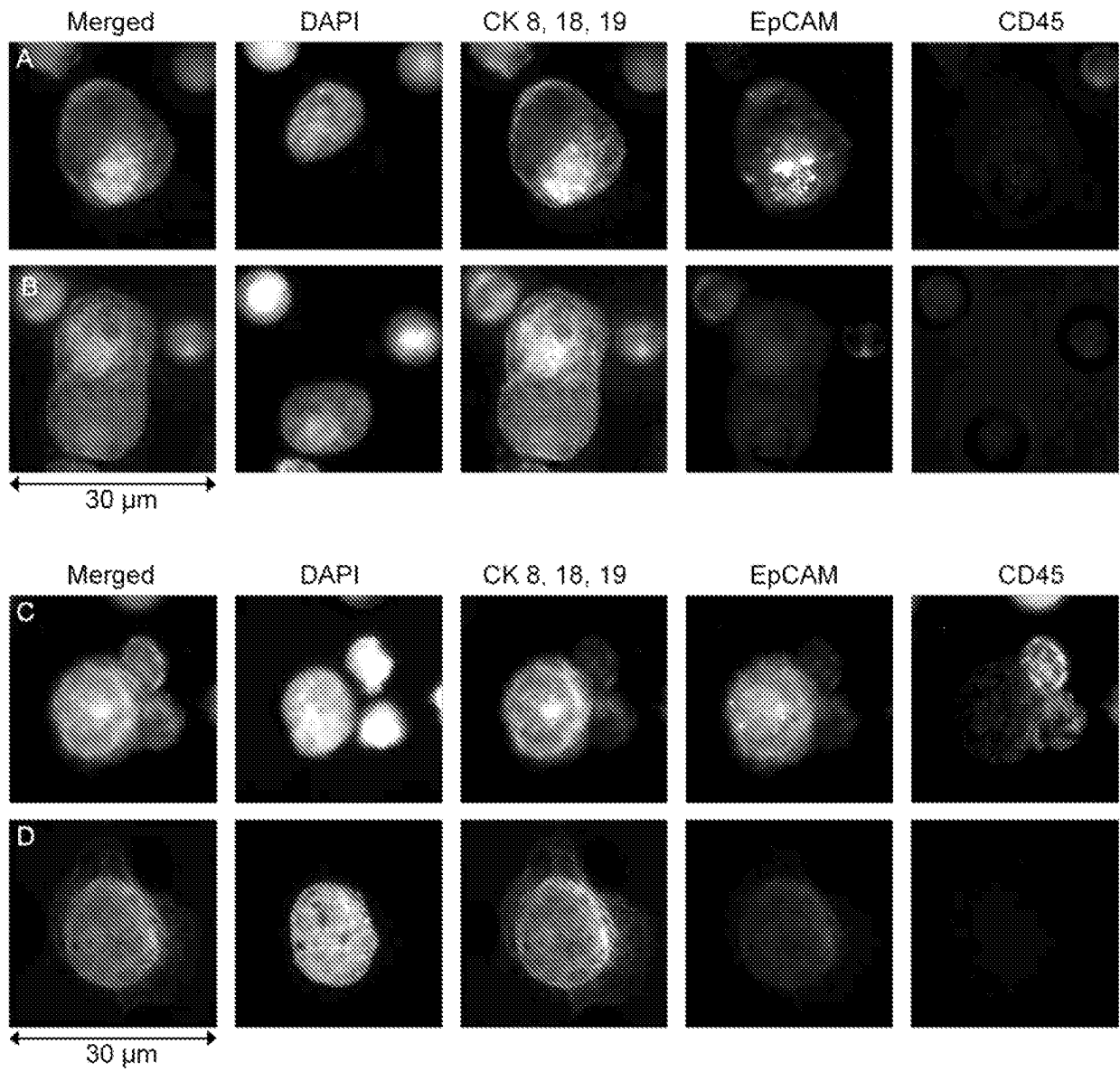
- 45  
19. Cellule isolée selon la revendication 18, dans laquelle la cellule a une expression du marqueur monocytaire CD14.

20. Cellule isolée selon la revendication 18 ou la revendication 19, dans laquelle la cellule a une ou plusieurs ou chacune des caractéristiques additionnelles suivantes :

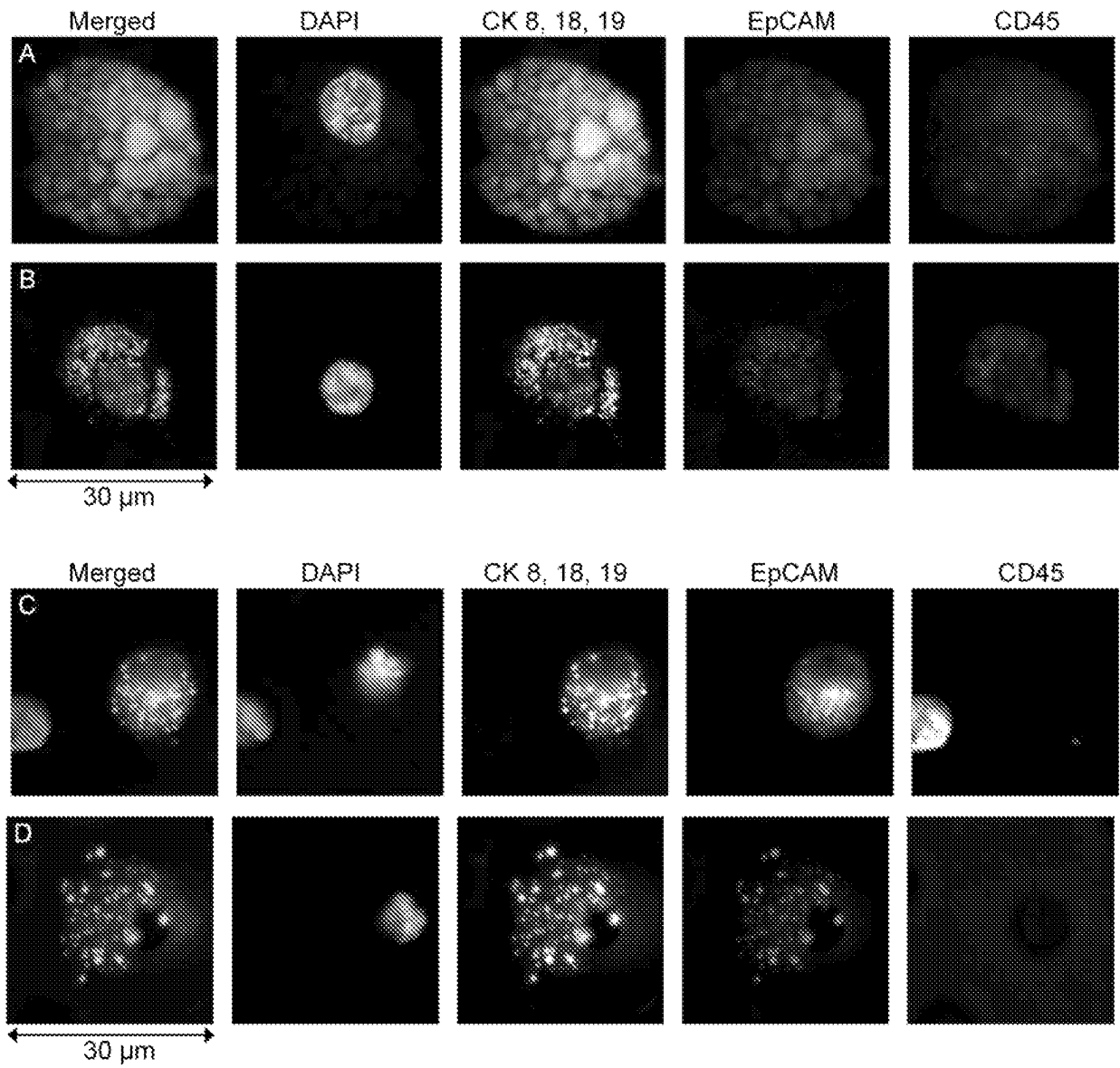
50 (d) expression d'une ou plusieurs parmi cytokératine 8, 18 et 19, dans laquelle la cytokératine est diffusée, ou associée à des vacuoles et/ou de la matière ingérée ; et/ou

facultativement dans laquelle la cellule a une ou plusieurs ou chacune des caractéristiques additionnelles suivantes :

- 55 (e) phénotype positif à CD45 ;  
(f) expression d'EpCAM diffuse avec répartition presque uniforme ;  
(g) expression d'un ou plusieurs marqueurs d'une tumeur primaire ;  
(h) expression de marqueurs CD11C et CD14 monocytaires ; et  
(i) expression de marqueurs CD146, CD202b, et CD31 endothéliaux.



**FIG. 1**



**FIG. 2**

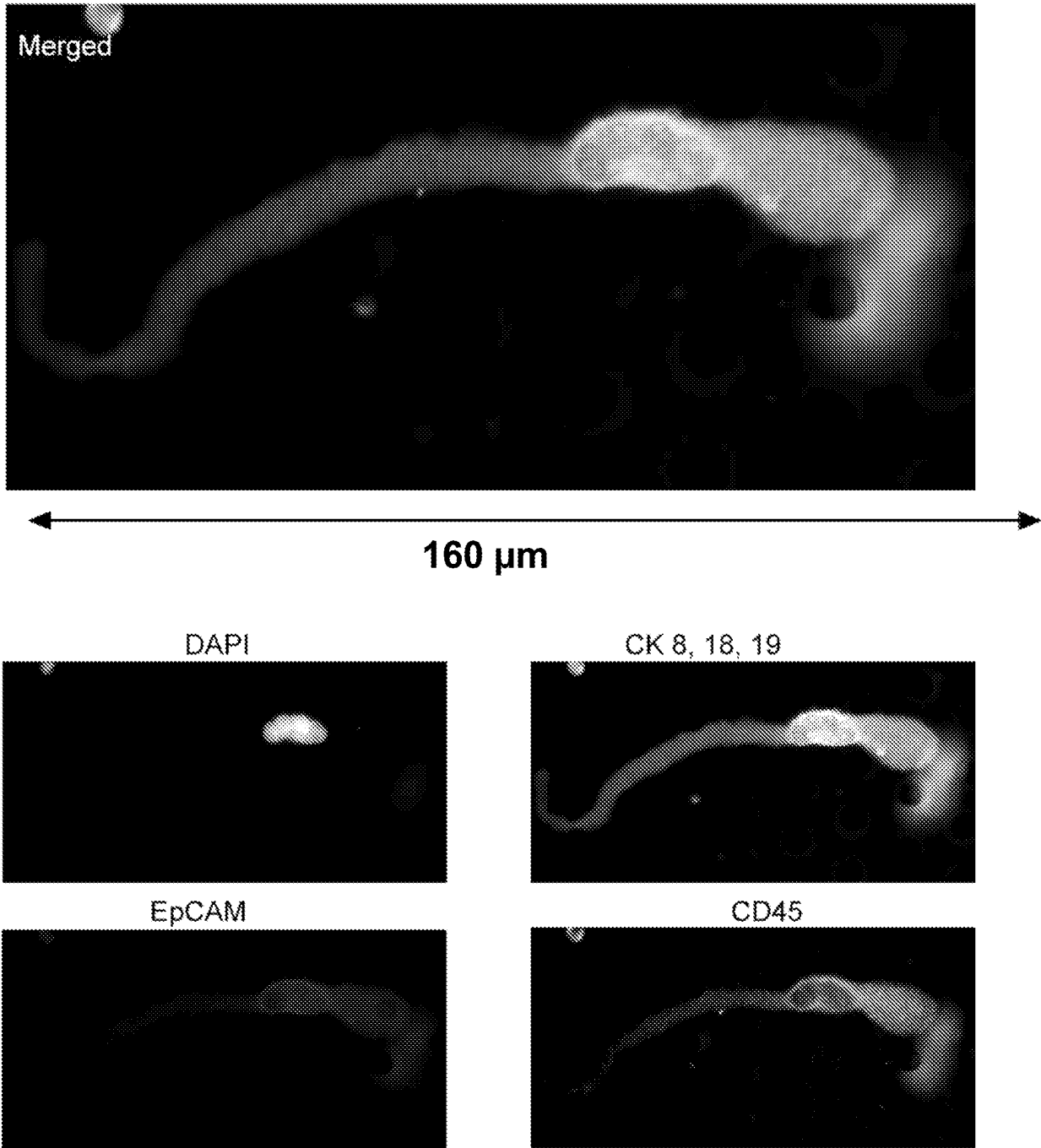
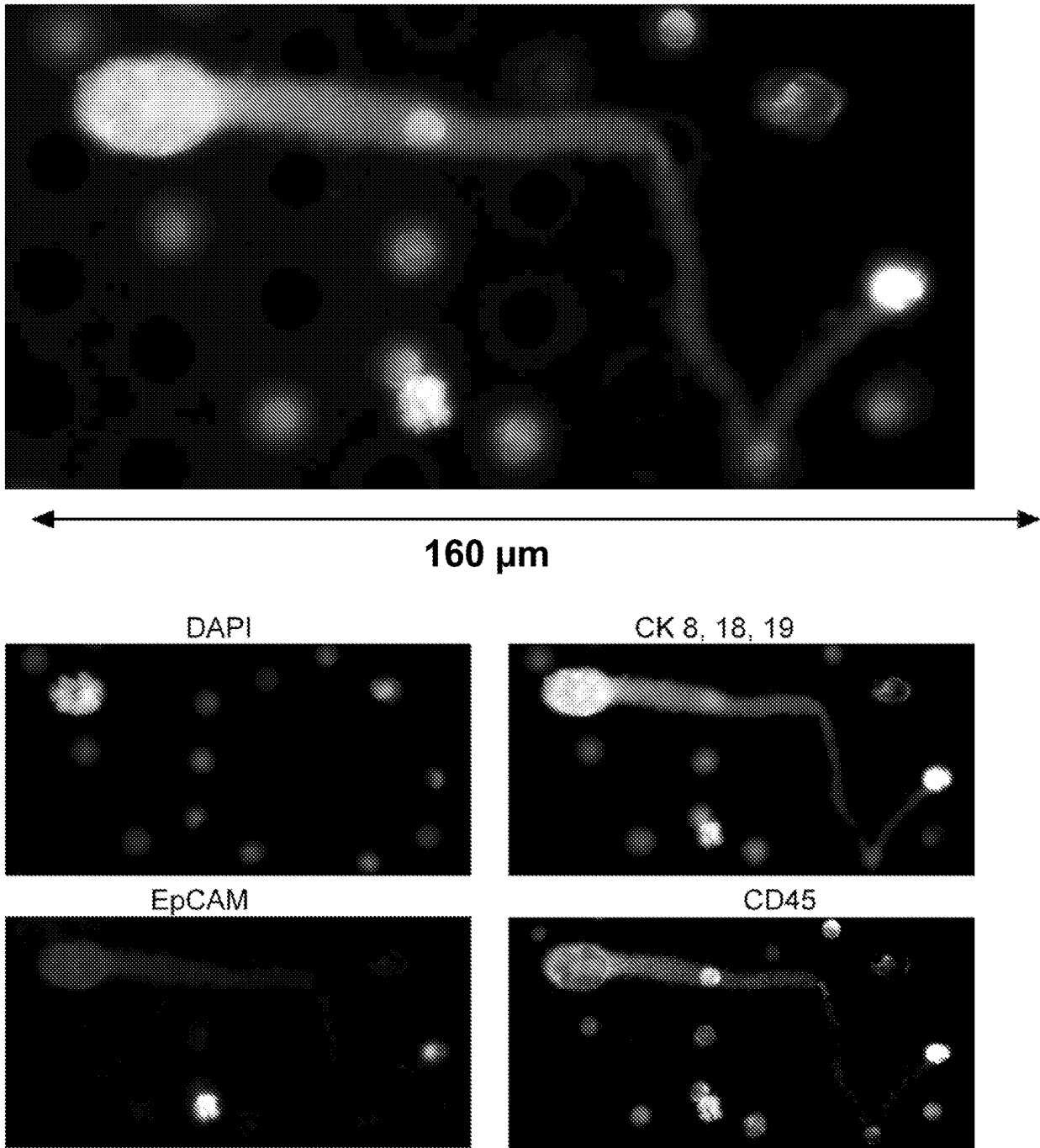
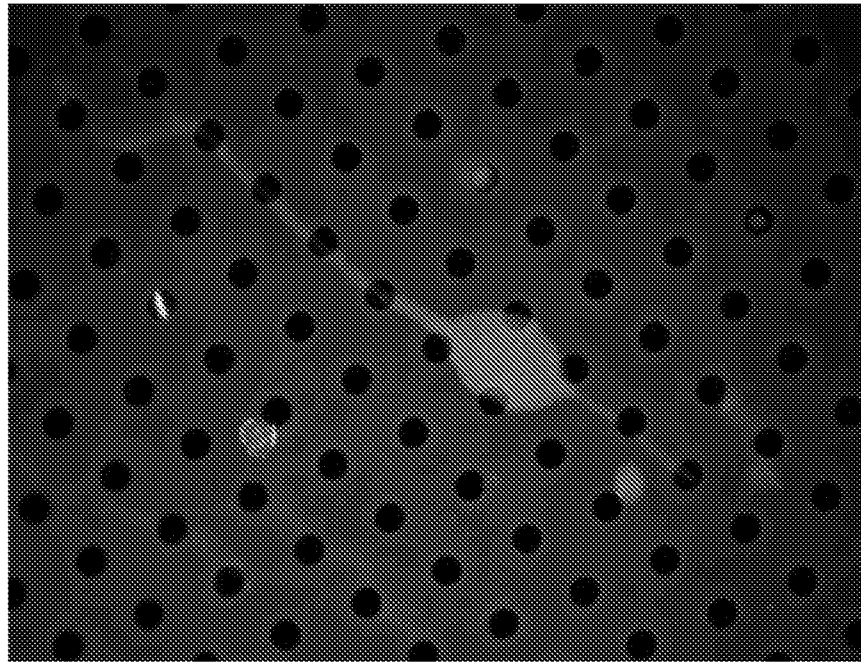


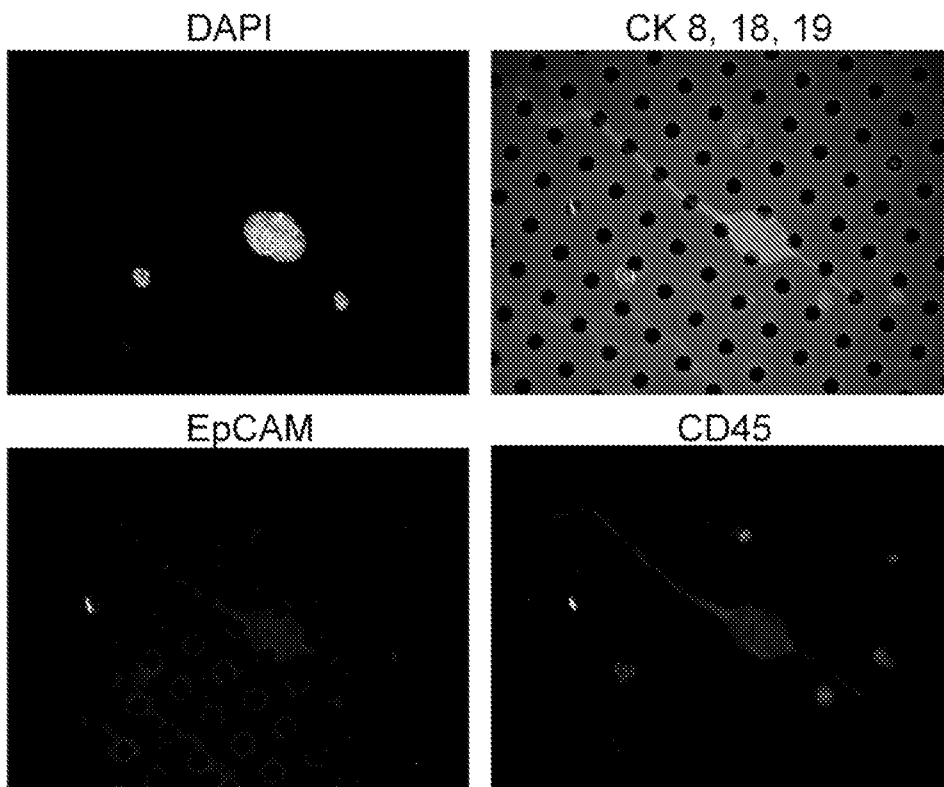
FIG. 3



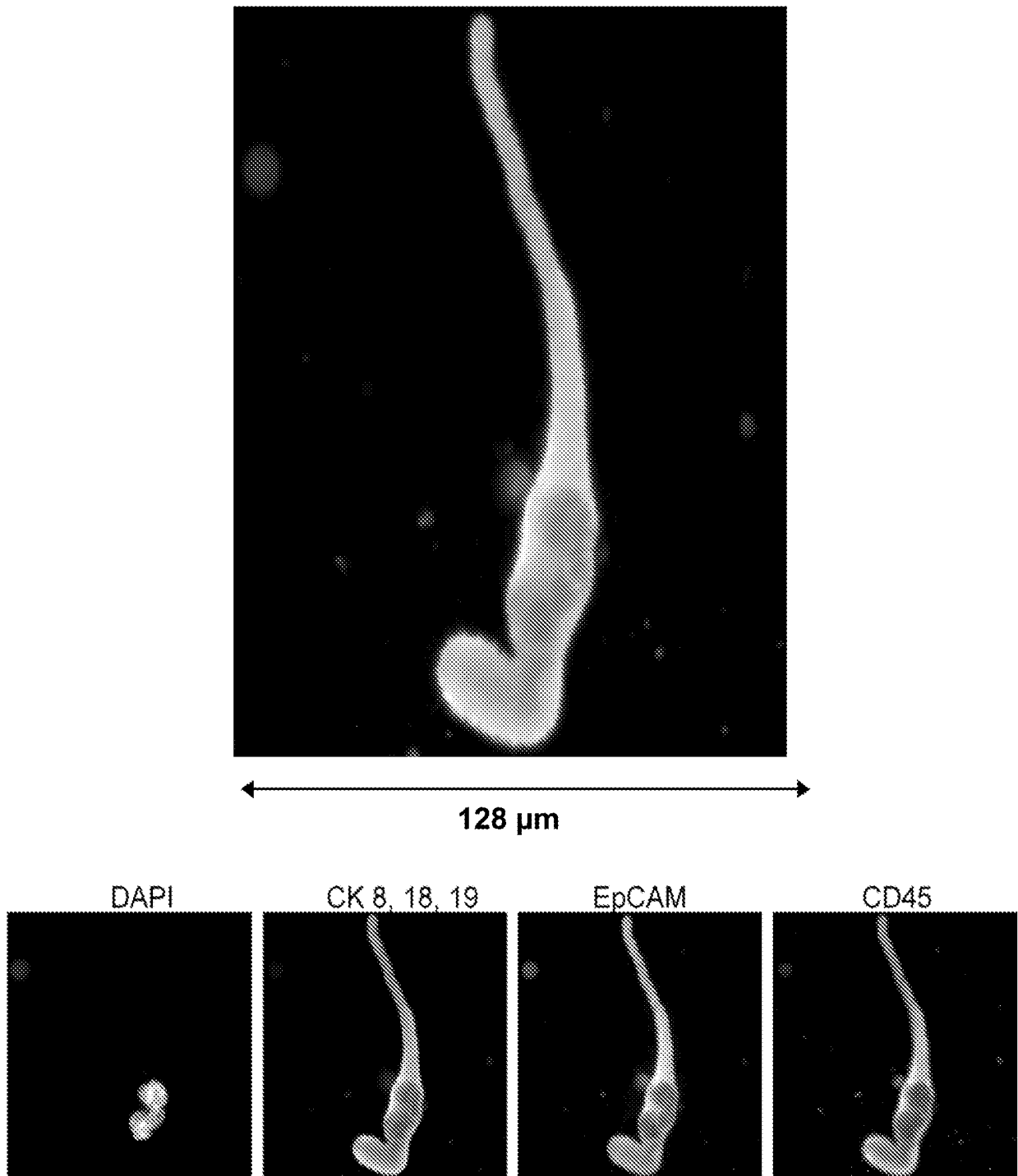
**FIG. 4**



← 220 μm →



**FIG. 5**



**FIG. 6**

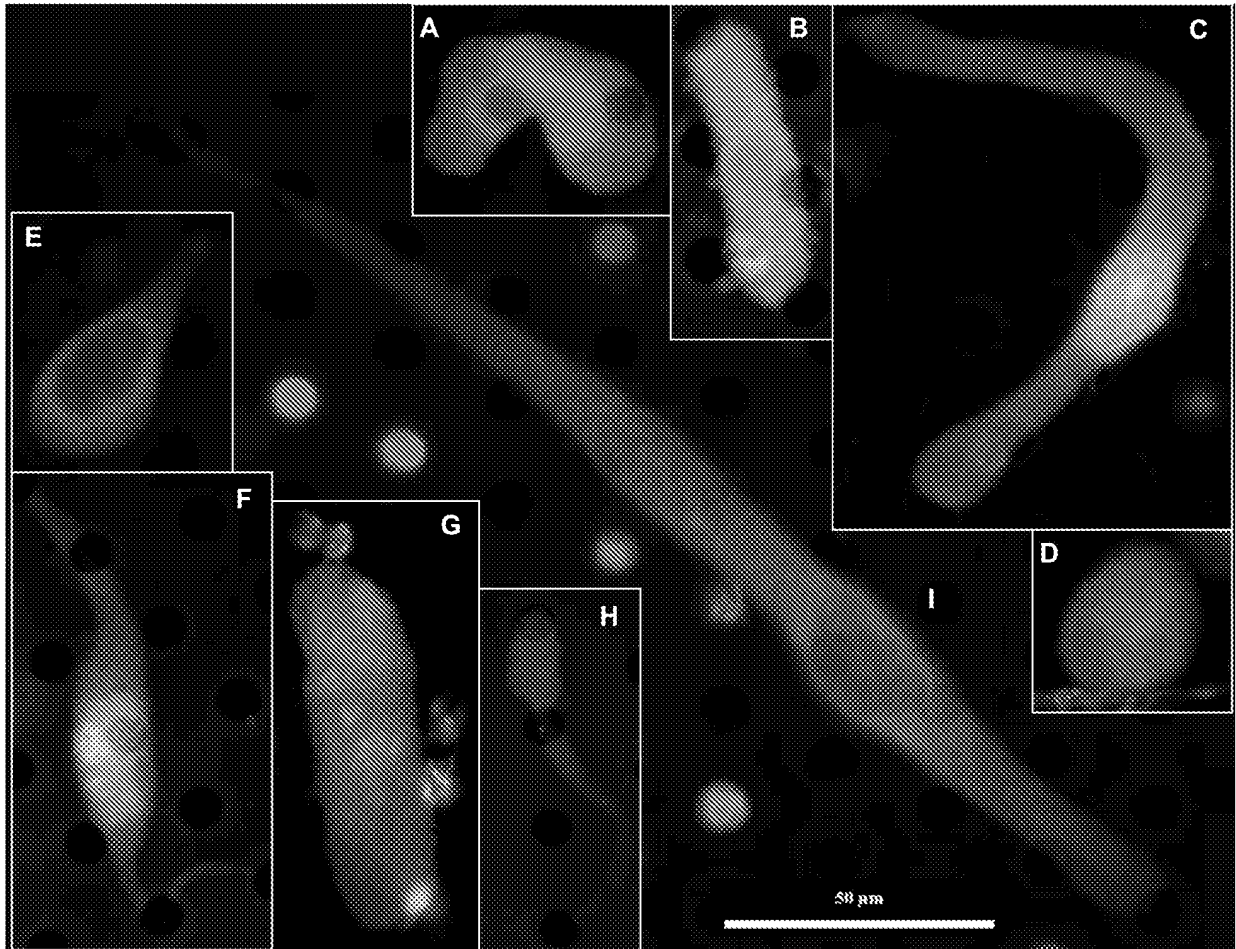
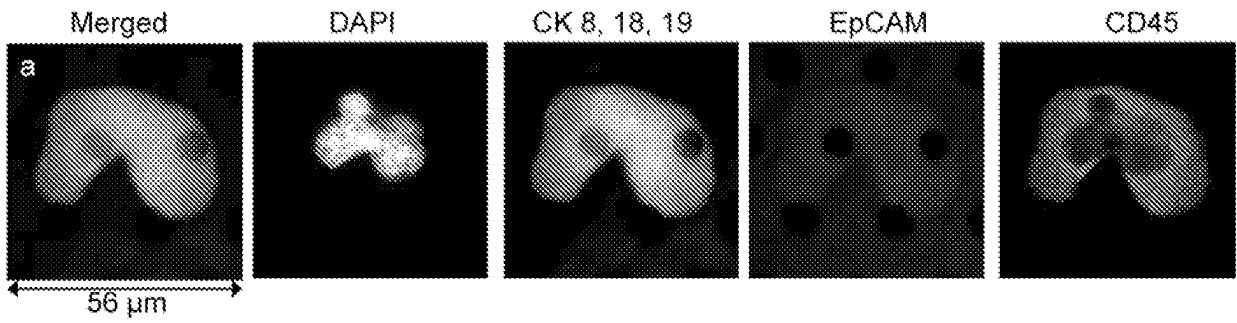
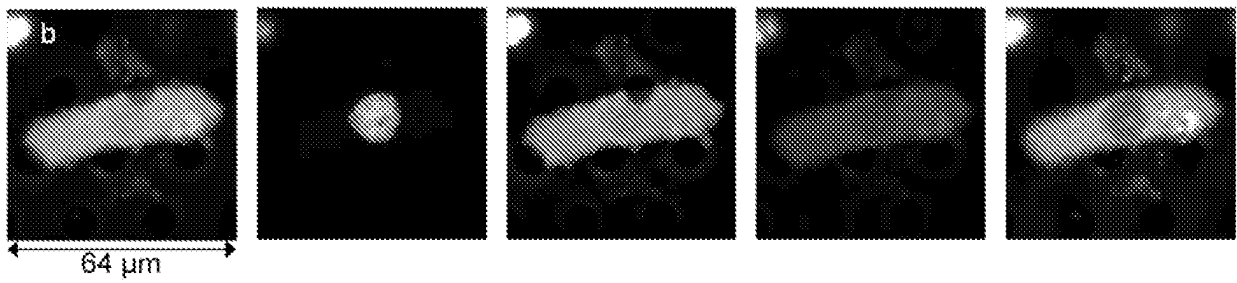


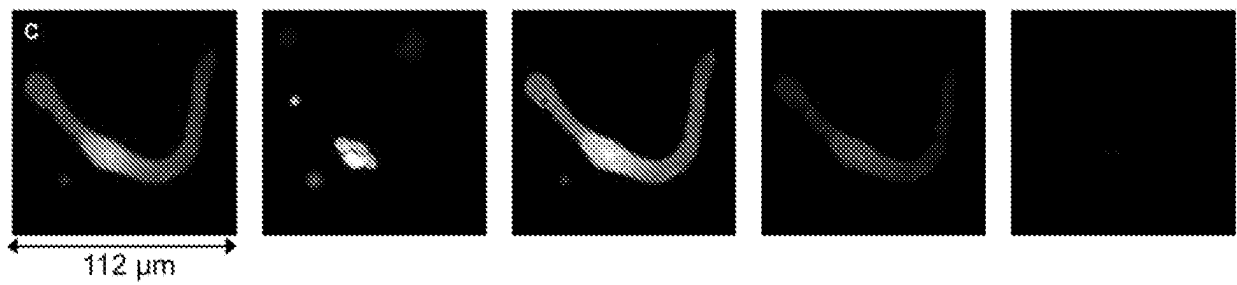
FIG. 7



(A)

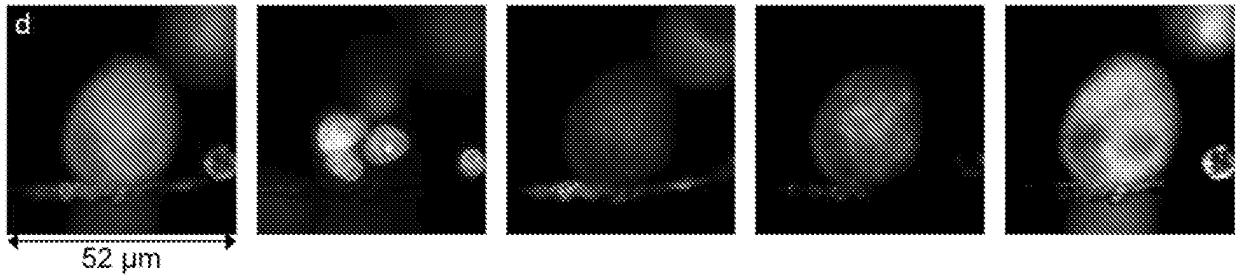


(B)

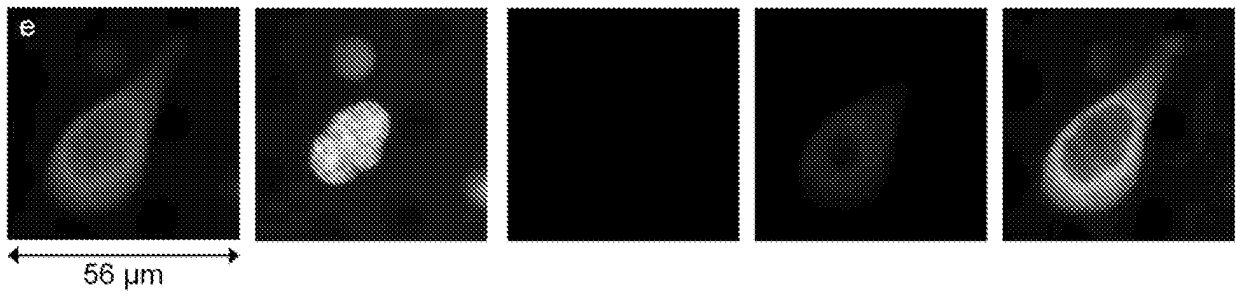


(C)

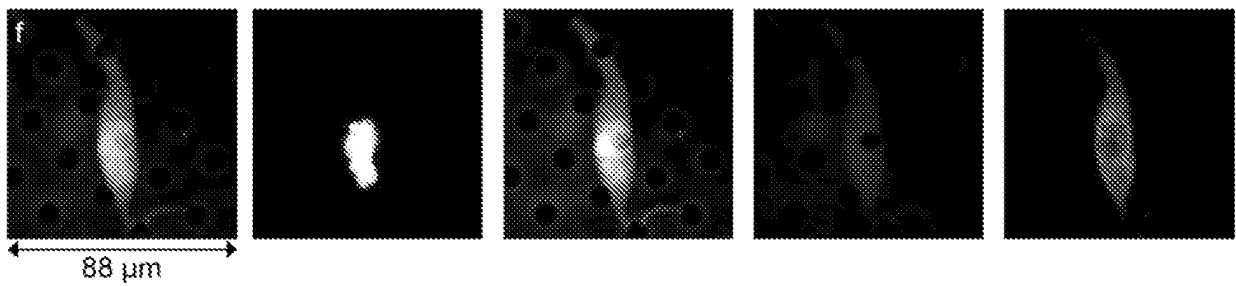
FIGS. 8A-8C



(D)



(E)



(F)

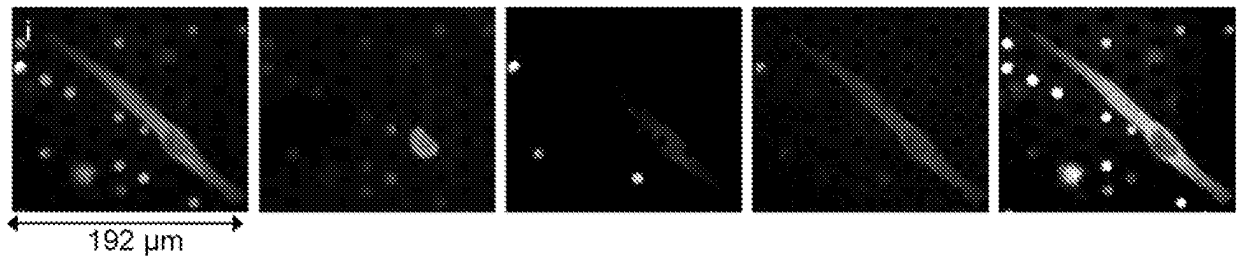
FIGS. 8D-8F



(G)



(H)



(I)

**FIGS. 8G-8I**

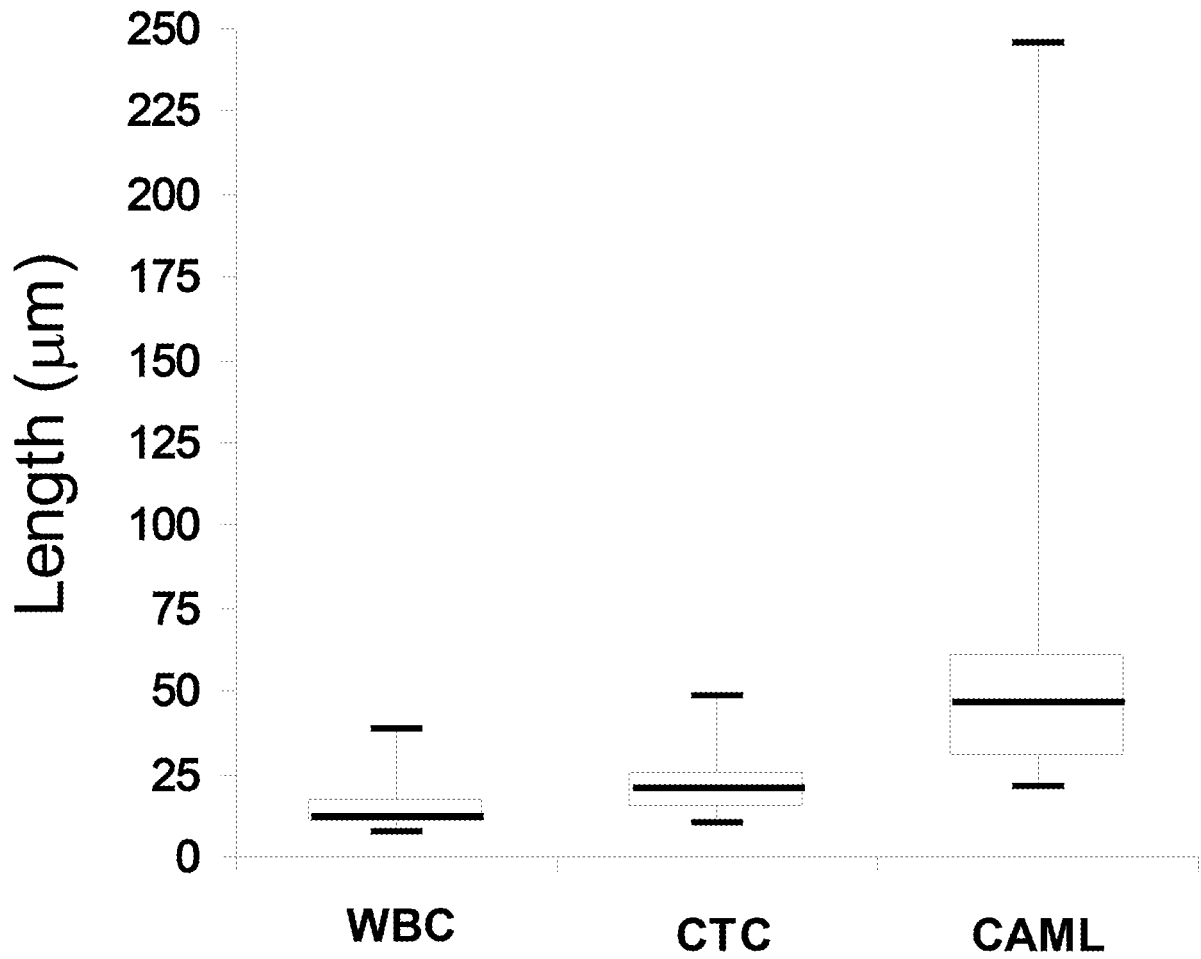
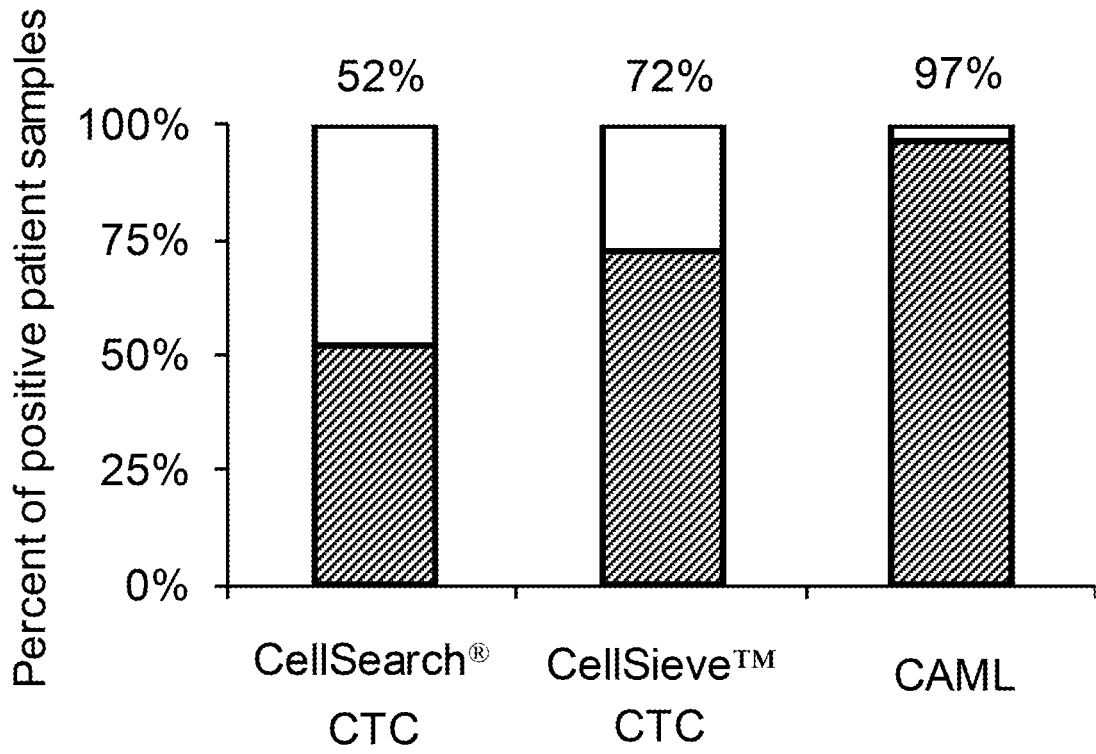
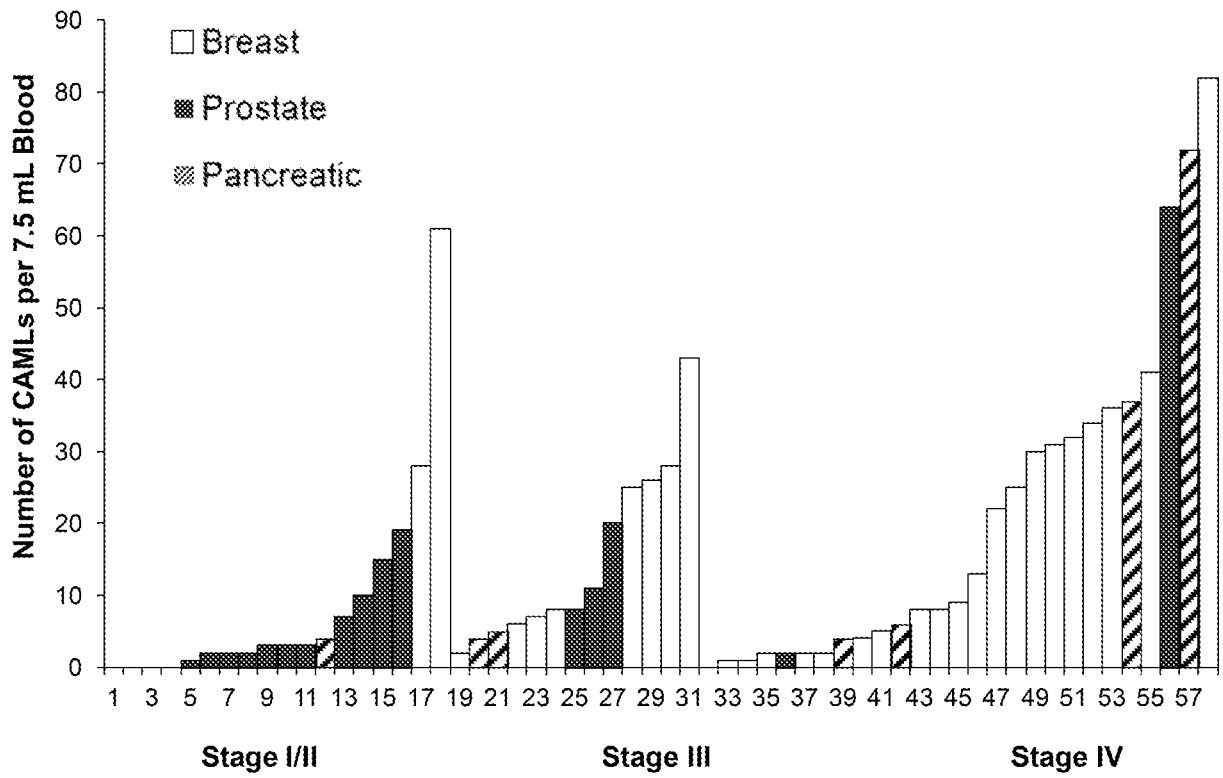
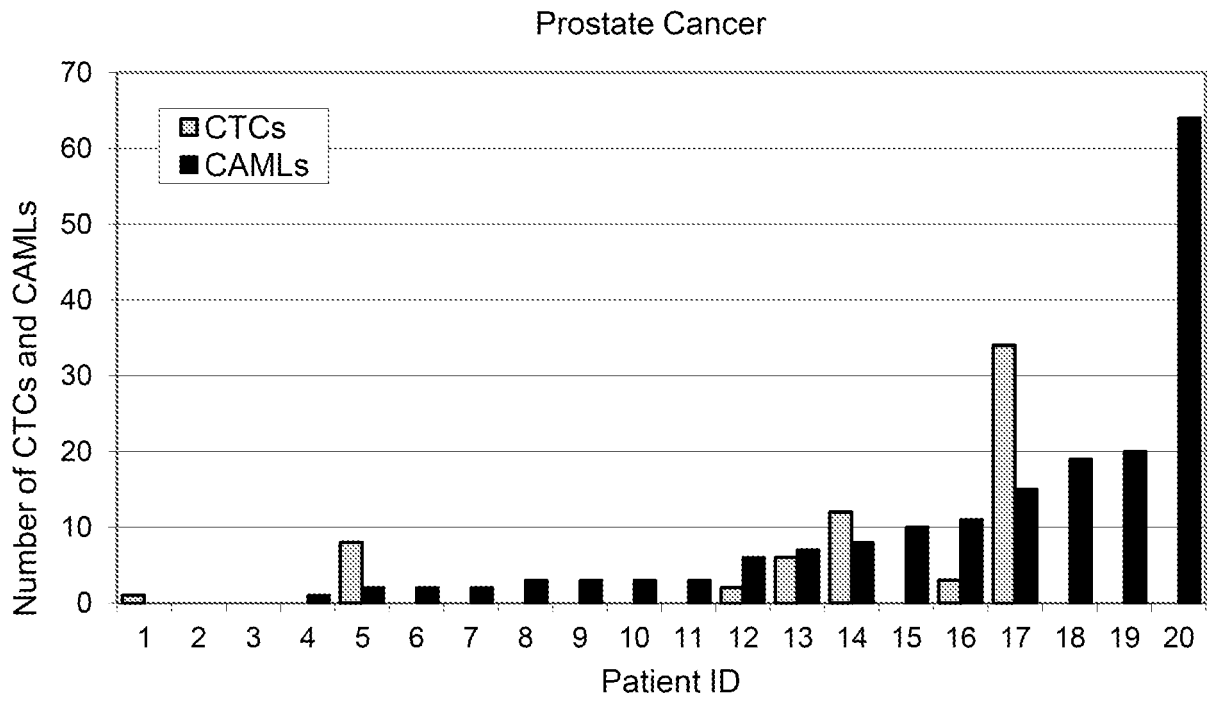


FIG. 9



**FIG. 10**





**FIG. 12**

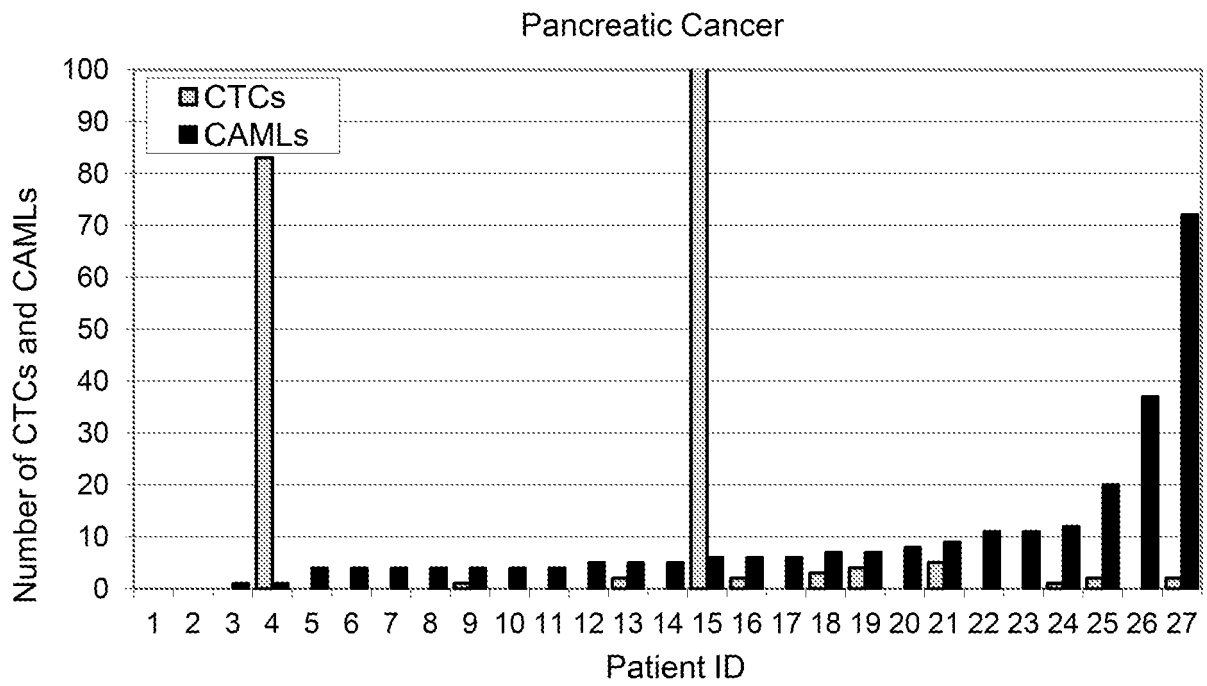
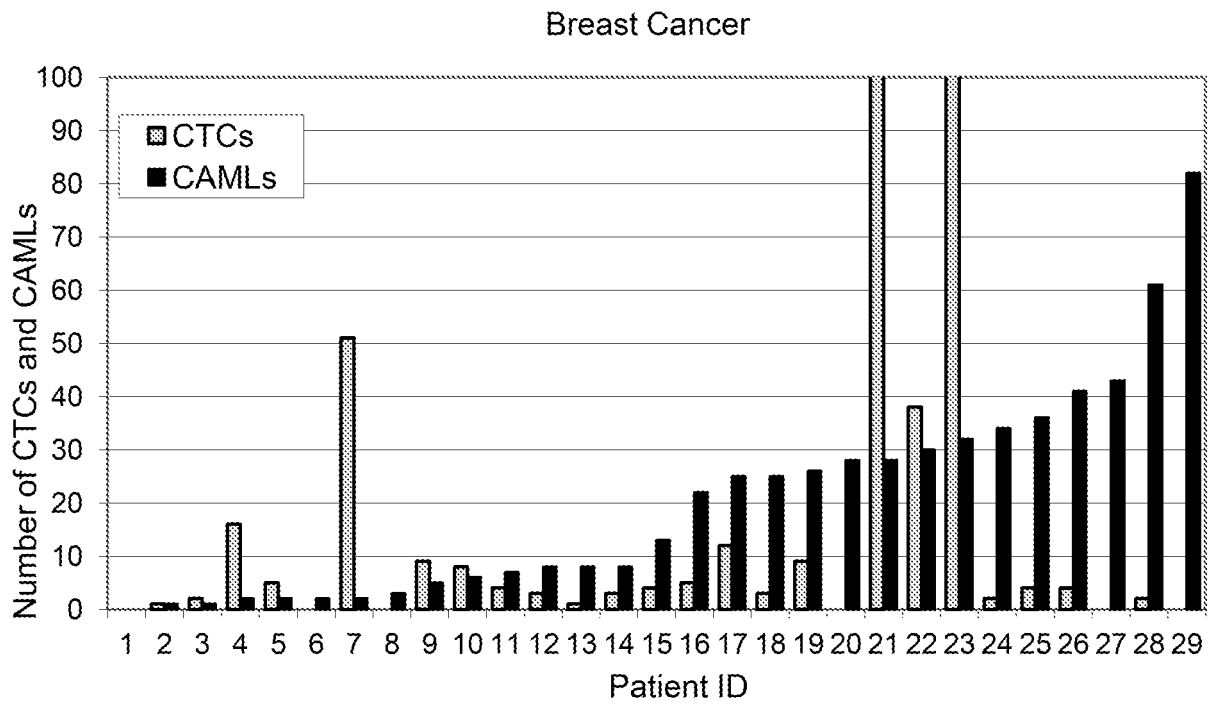


FIG. 13



**FIG. 14**

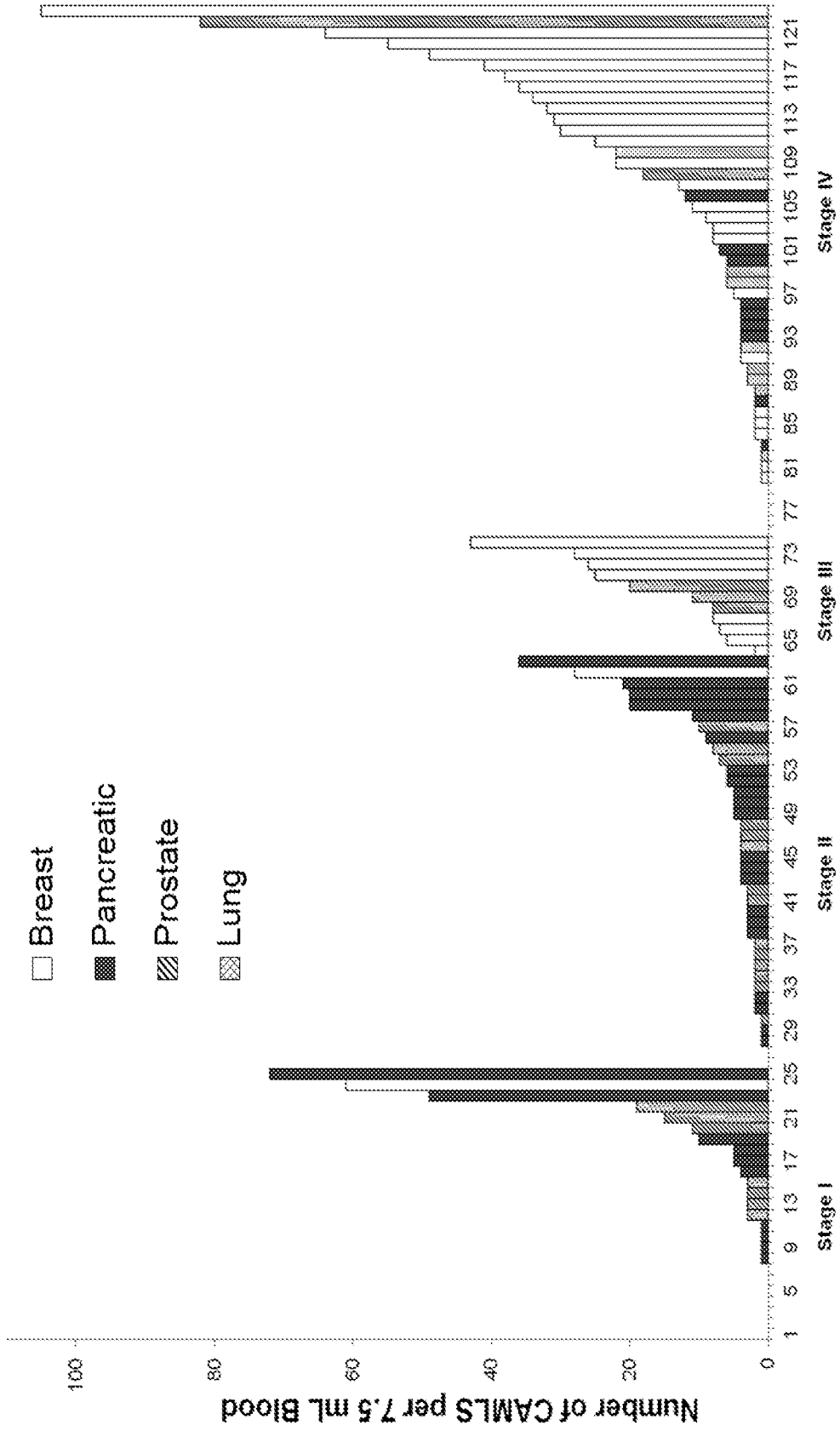


FIG. 15

Prostate Cancer

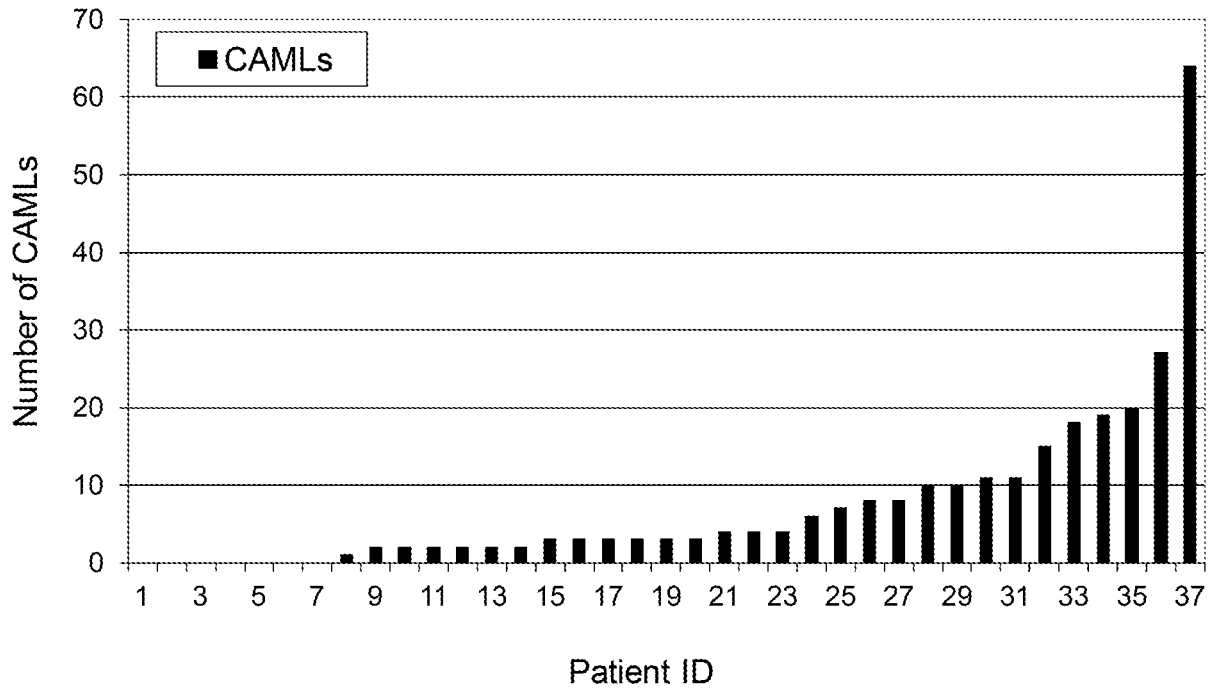


FIG. 16A

Prostate Cancer

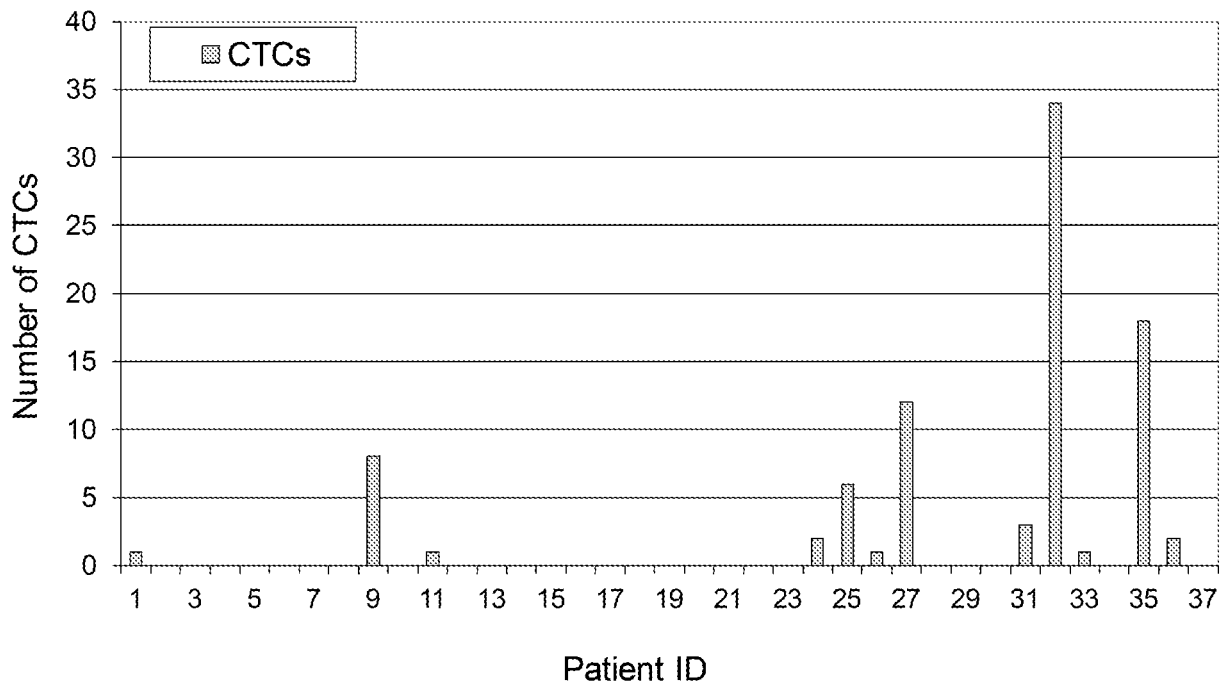


FIG. 16B

Pancreatic Cancer

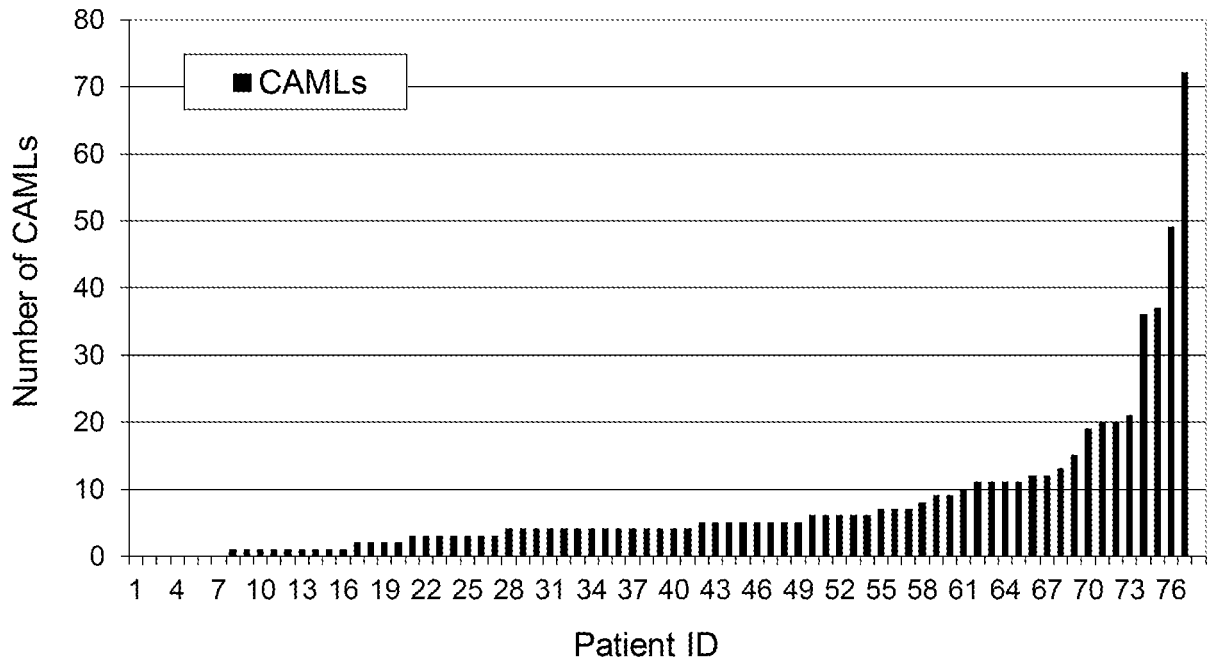


FIG. 17A

Pancreatic Cancer

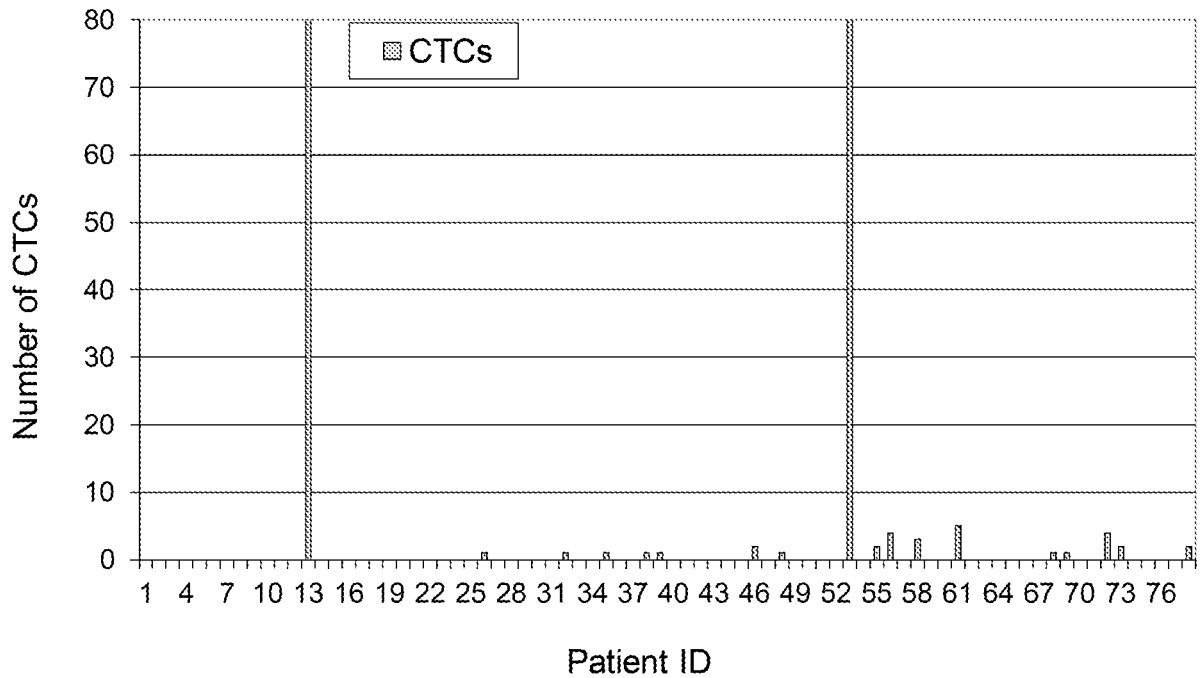


FIG. 17B

Breast Cancer

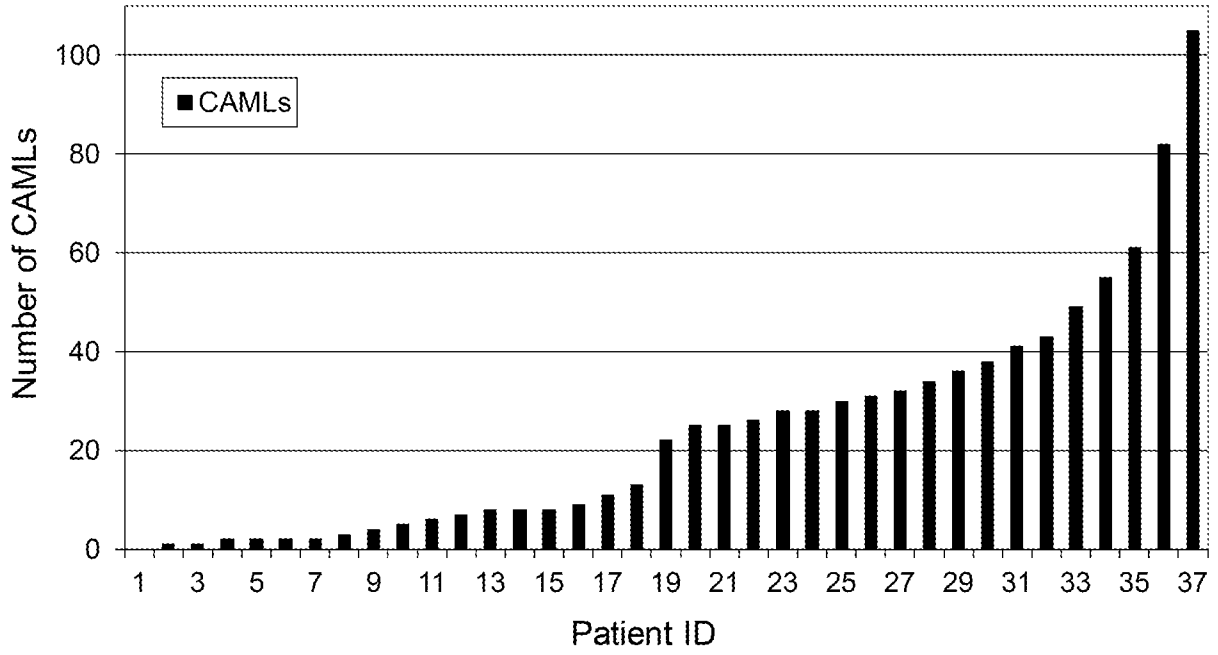


FIG. 18A

Breast Cancer

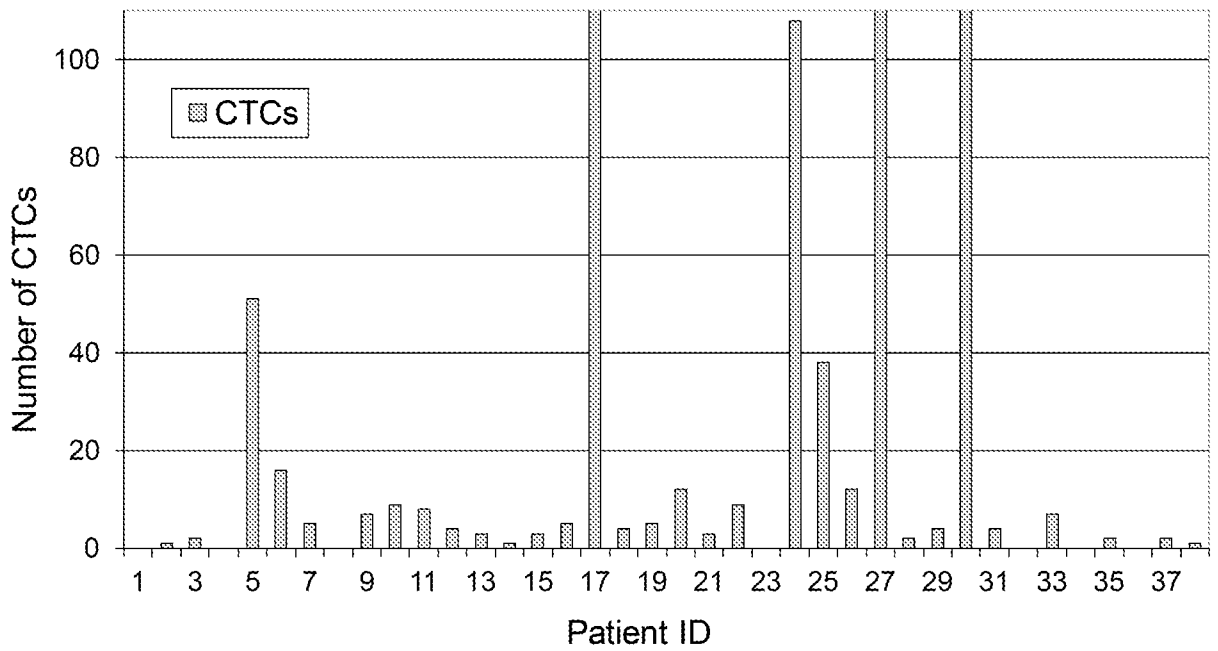
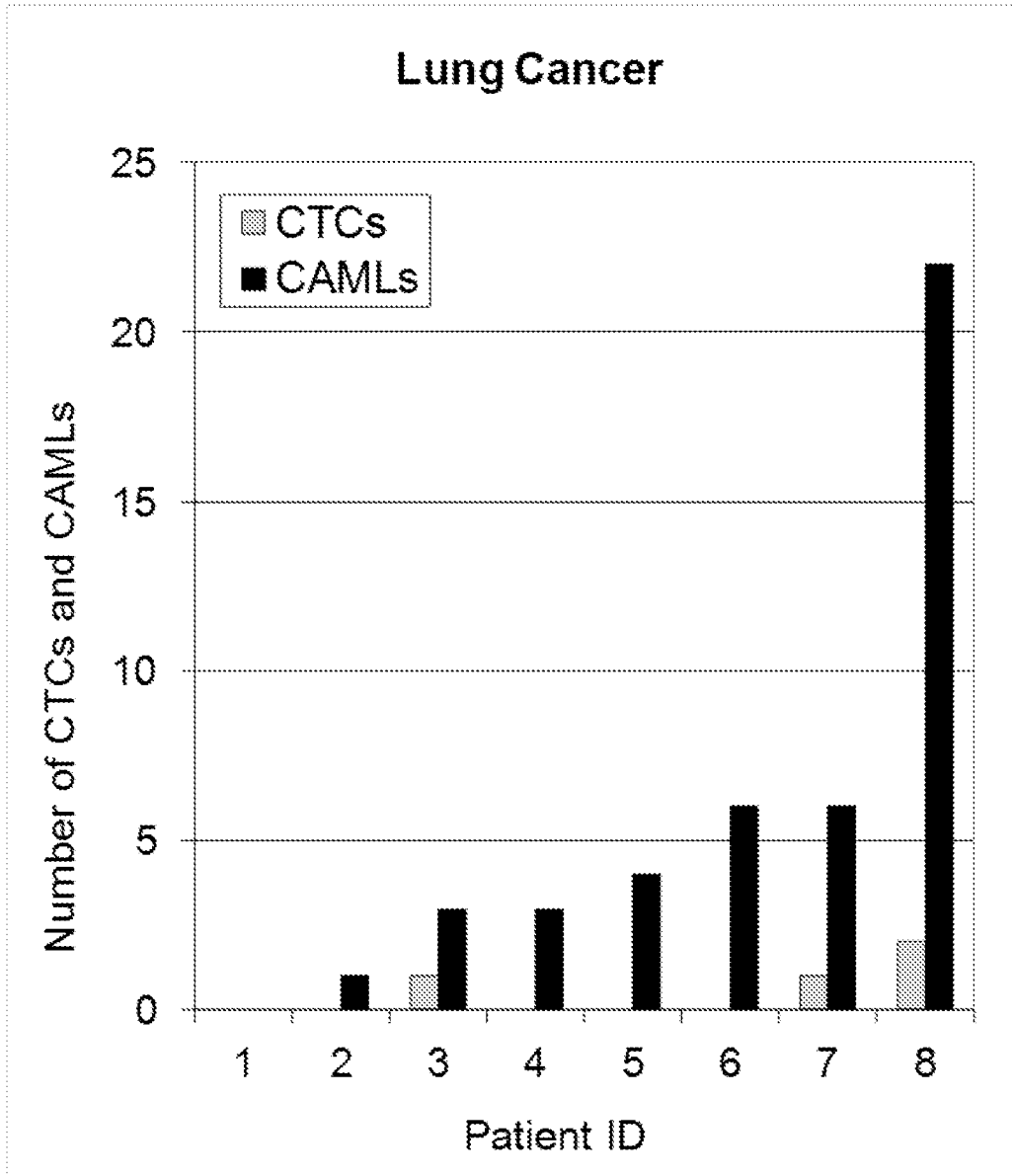
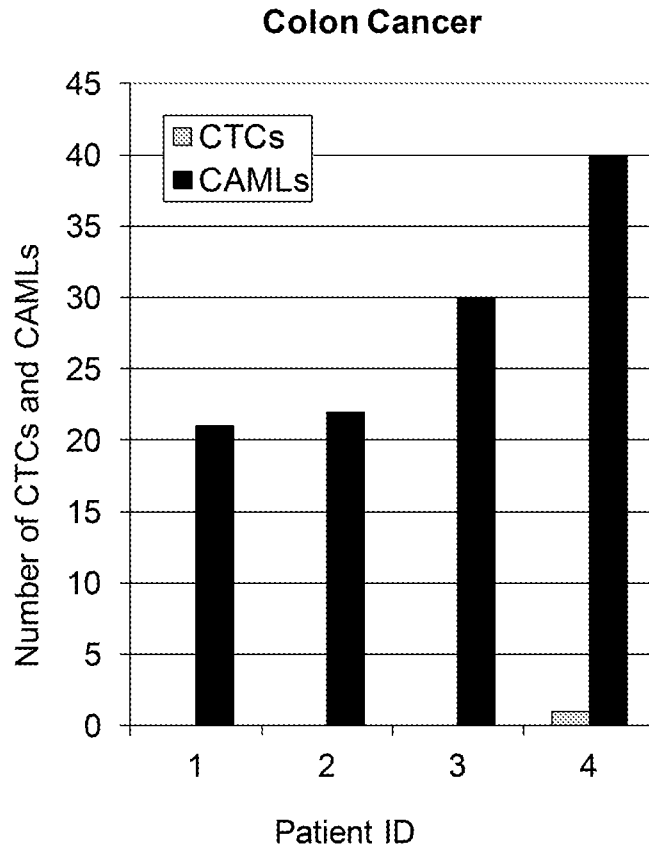


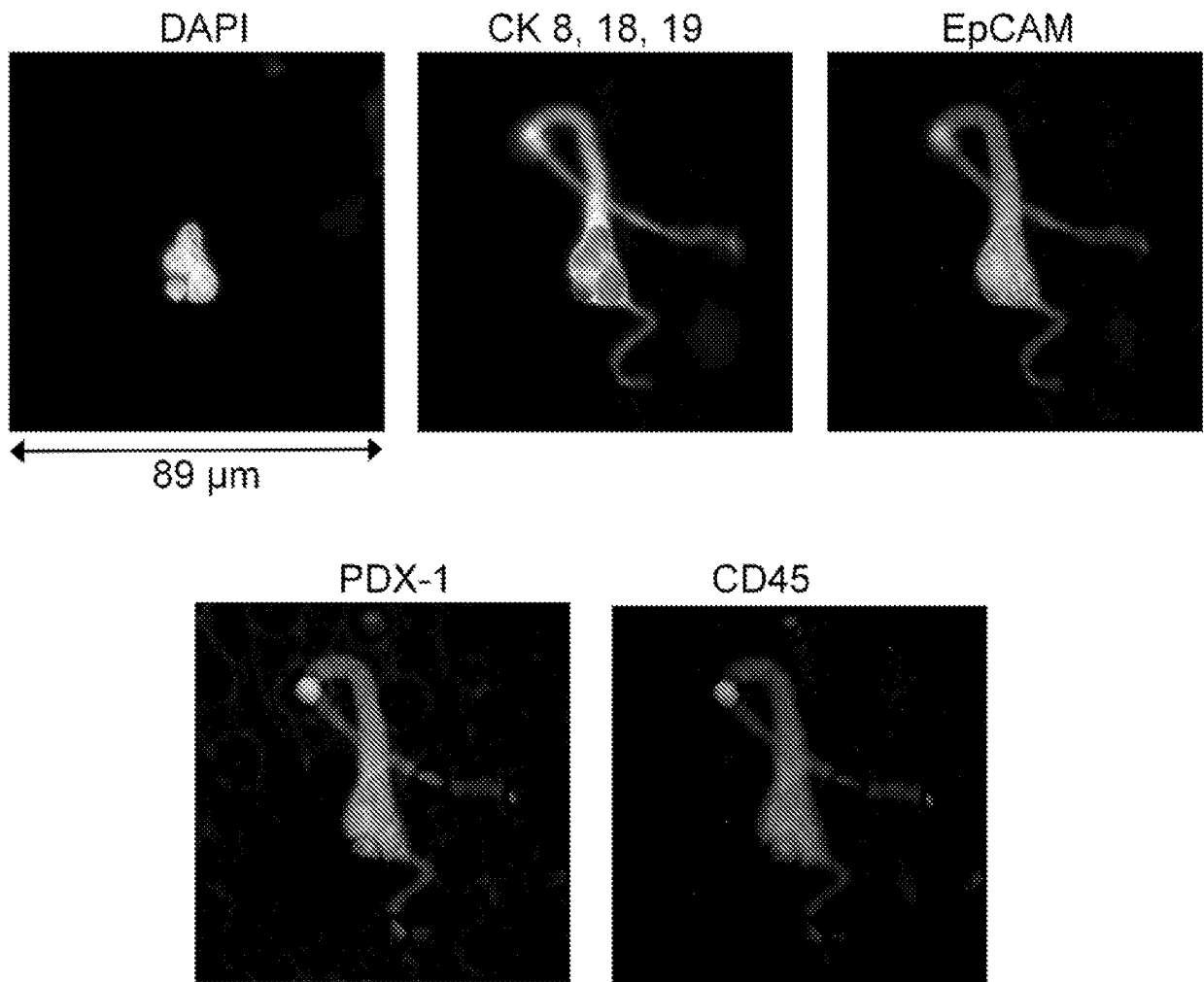
FIG. 18B



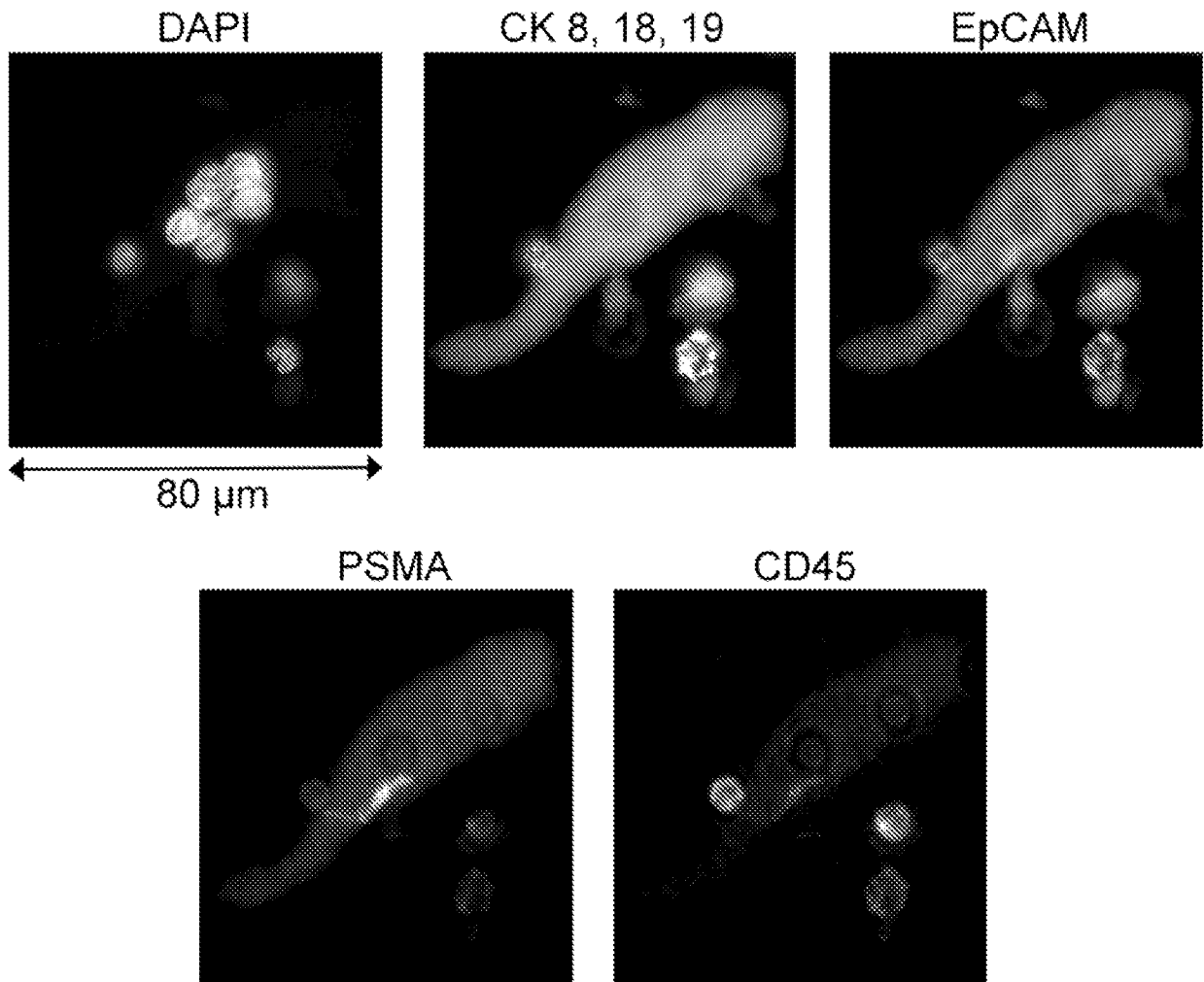
**FIG. 19**



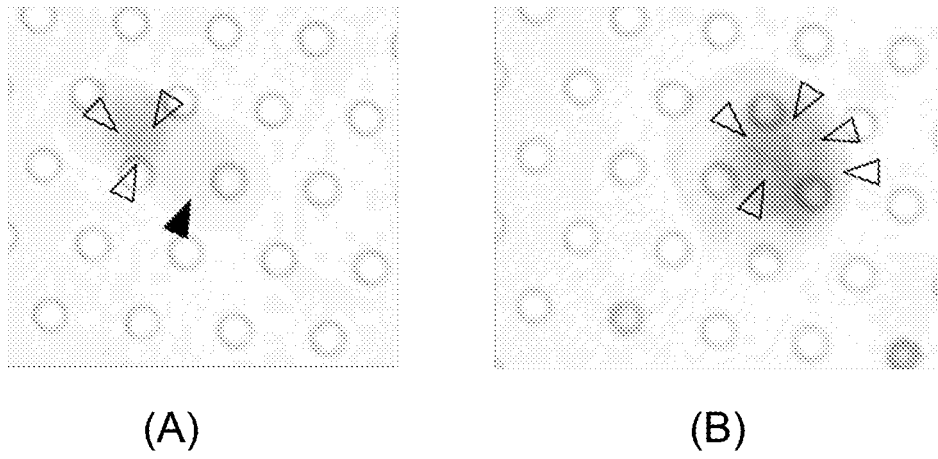
**FIG. 20**



**FIG. 21**



**FIG. 22**



**FIG. 23**

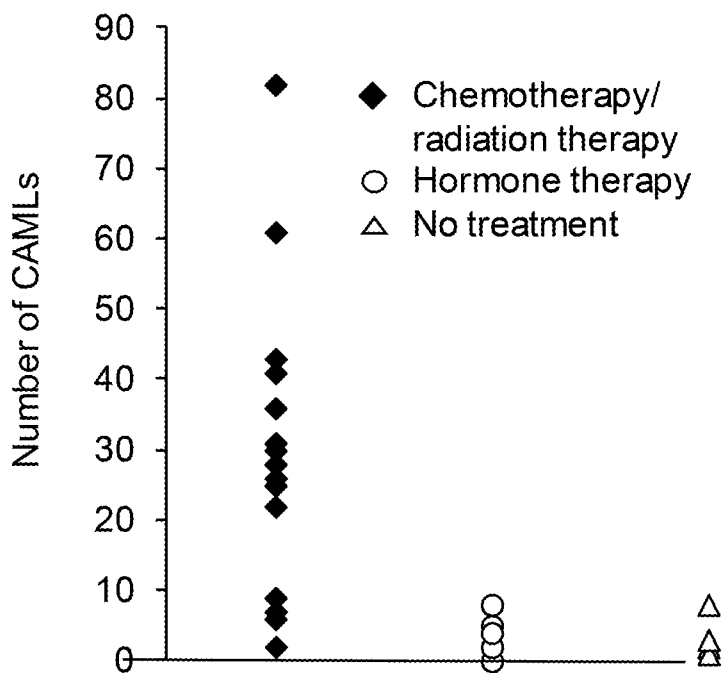


FIG. 24A

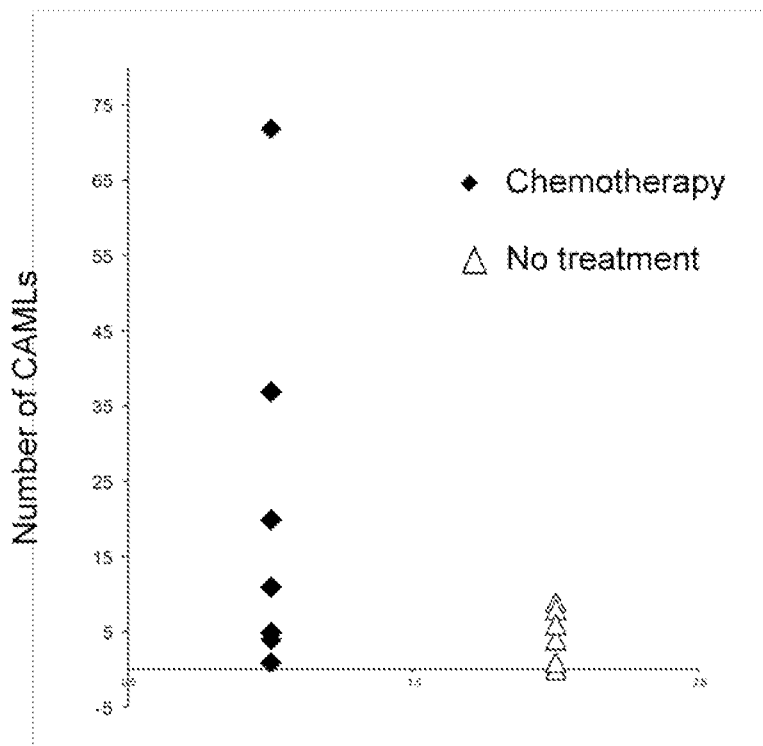


FIG. 24B

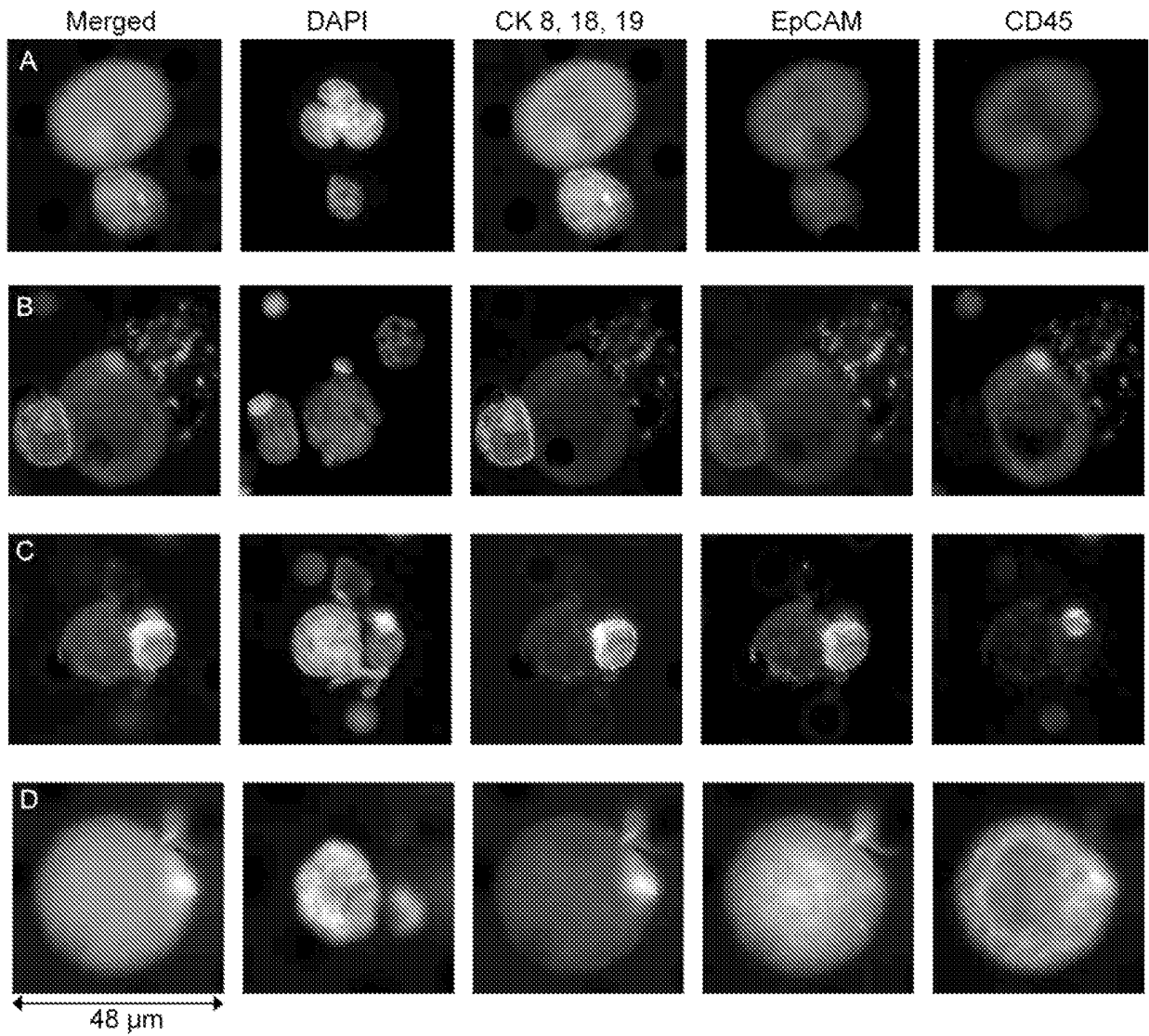


FIG. 25

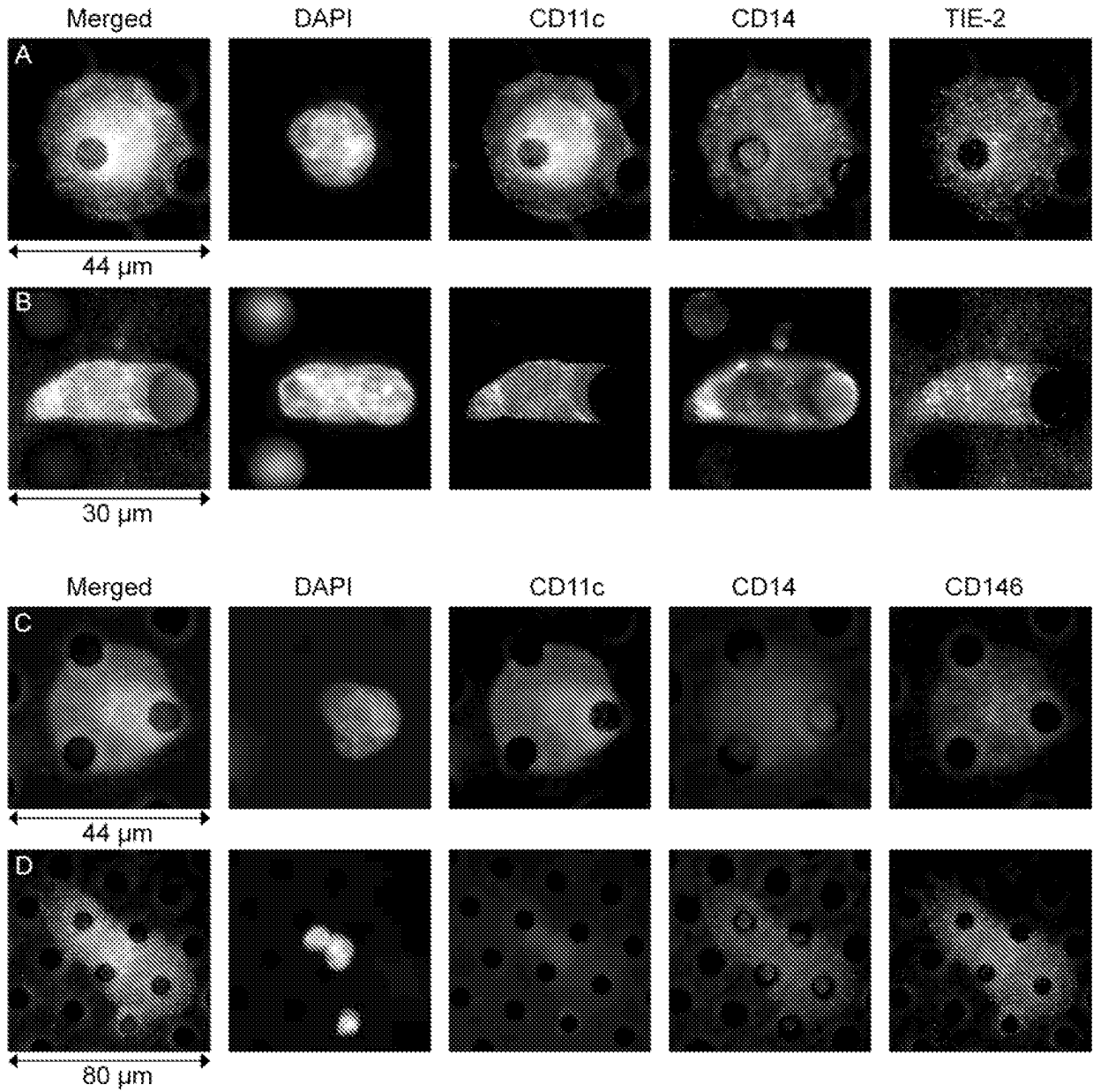


FIG. 26

**REFERENCES CITED IN THE DESCRIPTION**

*This list of references cited by the applicant is for the reader's convenience only. It does not form part of the European patent document. Even though great care has been taken in compiling the references, errors or omissions cannot be excluded and the EPO disclaims all liability in this regard.*

**Patent documents cited in the description**

- US 61654636 A [0001]
- US 61773026 A [0001]
- US 61787863 A [0001]
- WO 2011002649 A [0004]
- WO 2011139445 A [0090]
- WO 2013078409 A [0090]

**Non-patent literature cited in the description**

- **LEERS et al.** *Am J Clin Pathol*, 2008, vol. 129, 649-656 [0004]
- **CAILLOU et al.** *PLoS ONE*, 2011, vol. 6, e22567 [0004]
- **WANG et al.** *Cancer*, 2000, vol. 88, 2787-2795 [0004]

专利名称(译)	捕获，鉴定和使用体液中的实体肿瘤的新生物标志物		
公开(公告)号	<a href="#">EP2855663A4</a>	公开(公告)日	2016-04-06
申请号	EP2013797578	申请日	2013-05-31
申请(专利权)人(译)	CREATV MICROTECH INC.		
当前申请(专利权)人(译)	CREATV MICROTECH公司		
[标]发明人	ADAMS DANIEL TANG CHA MEI MAKAROVA OLGA ZHU PEIXUAN LI SHUHONG AMSTUTZ PLATTE		
发明人	ADAMS, DANIEL TANG, CHA-MEI MAKAROVA, OLGA ZHU, PEIXUAN LI, SHUHONG AMSTUTZ, PLATTE		
IPC分类号	C12N5/00 C12Q1/68 G01N33/53 G01N33/574 B01D25/02 B01D29/00 B01D39/16 B01L3/00 G01N1/40 G01N33/50		
CPC分类号	G01N33/5091 G01N33/57488 G01N2800/52		
代理机构(译)	OWEN , DEBORAH JANE		
优先权	61/773026 2013-03-05 US 61/787863 2013-03-15 US 61/654636 2012-06-01 US		
其他公开文献	EP2855663B1 EP2855663A1		
外部链接	<a href="#">Espacenet</a>		

#### 摘要(译)

在血液中鉴定出新的实体瘤敏感细胞生物标志物。该生物标志物可用于确定癌的存在，快速确定治疗反应，早期检测癌症，早期检测癌症复发，并可用于确定治疗。