



(12) **EUROPEAN PATENT APPLICATION**

(43) Date of publication:
10.06.2009 Bulletin 2009/24

(51) Int Cl.:
G01N 33/53 (2006.01)

(21) Application number: **09001228.7**

(22) Date of filing: **30.09.2003**

(84) Designated Contracting States:
AT BE BG CH CY CZ DE DK EE ES FI FR GB GR HU IE IT LI LU MC NL PT RO SE SI SK TR

- **Samoylov, Alexandre M.**
Auburn, AL 36830 (US)
- **Pustovsky, Oleg M.**
Auburn, AL 36832 (US)

(30) Priority: **30.09.2002 US 415108 P**

(62) Document number(s) of the earlier application(s) in accordance with Art. 76 EPC:
03777535.0 / 1 556 694

(74) Representative: **Bentham, Andrew**
J.A. Kemp & Co.
14 South Square
Gray's Inn
London WC1R 5JJ (GB)

(71) Applicant: **Auburn University**
Auburn, AL 36849-5176 (US)

Remarks:

This application was filed on 29-01-2009 as a divisional application to the application mentioned under INID code 62.

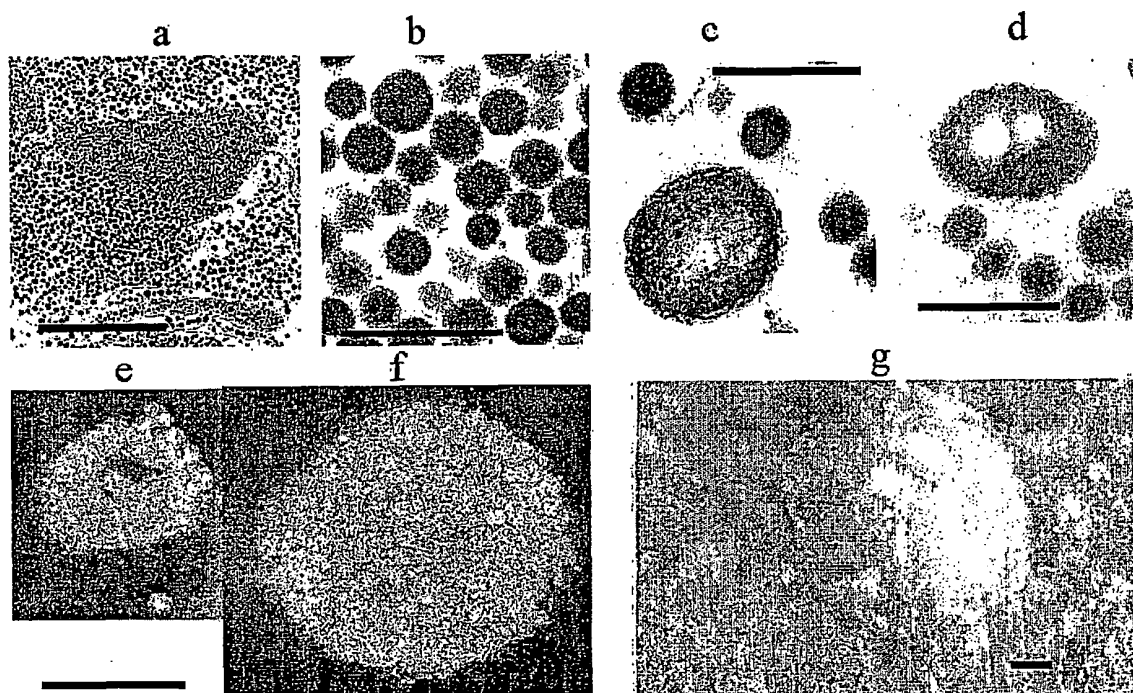
(72) Inventors:

- **Vodyanoy, Vitaly J.**
Auburn, AL 36830 (US)

(54) **Method of isolation and self-assembly of small protein particles from blood and other biological materials**

(57) An isolated proteon nucleation center (PNC) comprising a metal cluster.

Figure 1



Description

FIELD OF THE INVENTION

5 **[0001]** The present invention relates generally to compositions and methods for the isolation and manipulation of misfolded proteins and their nucleation centers.

BACKGROUND OF THE INVENTION

10 **[0002]** There are many disorders that are thought to arise from the same general mechanism based upon misfolding and aggregation of underlying proteins, including prion-related disorders, neurodegenerative diseases, and several systemic disorders. See, for example, Schluter et al. (1986) PNAS 83:6137-6141; Kannan et al (1988) J. Biol. Chem. 263:3766-13773; Carrell and Lomas (1997) Lancet 350:134-138; Carrell and Gooptu (1998) Curr. Op. Struc. Biol. 8: 799-809; Soto (2001) FEBSLetters 498,:204-207; Jaikaran and Clark (2001) Biochimica et Biophysica Acta 1537: 179-203; Ursini et al. (2002) Trends Mol. Med 8:370-374; and Davis et al. (2002) Lancet 359:2242-2247.

15 **[0003]** One of the suggested mechanisms of protein aggregation is seeded polymerization, in which initial seeds nucleate the deposition of monomers. For example, aggregates of denatured hemoglobin called Heinz bodies were found in aged erythrocytes. See Schluter *et al.* (*Supra*). Further, Kannan *et al.* (*Supra*) described a protein aggregation from sickle erythrocytes that is mostly composed of globin. Particles resembling those described by Enderlein (1925) Bakterien-Cylogenie (Verlag de Gnyrter & Co, Berlin), were isolated from the blood of cancer patients and determined to be composed of mainly denatured hemoglobin (Gerner (1997) Blut. Curr. Onkol. 7:6P12).

20 **[0004]** Aggregated proteins associated with disorders are found in other biological materials, as well. For example, proteinaceous particles isolated from brain were identified as causing scrapie (Prusiner (1982) Science 216:136-144). Since then, these particles and their structure have represented important areas of study (Prusiner (1991) Science 252: 1515-1522; Wille et al. (2002) Biophysical J. 82:825; Wille et al. (2002) PNAS 99:3563-3568; Geschwind et al. (2002) Neurology 58:A135-A135; Dyson et al. (2002) Biophysical J. 82:824), and methods for the sensitive detection of prion-related disorders using ultrasound have been developed. See Saborio (2001) Nature 411:810-813. Recently, micrometer-sized particles were identified in the cerebrospinal fluid of patients with schizophrenia (Wetterberg et al. (2002) Neurosci Lett. 329:91-5). Accordingly, new compositions and methods for the formation, isolation, and detection of misfolded, aggregated proteins are required.

BRIEF SUMMARY OF THE INVENTION

35 **[0005]** Compositions and methods for the isolation and manipulation of misfolded, or partially misfolded, proteins present in blood and other biological materials are provided. In one aspect of the invention, the compositions, hereinafter termed "proteons," are comprised of misfolded proteins. Also provided are compositions and methods for the isolation and manipulation of proteon nucleation centers (PNCs), upon which the proteons of the present invention form. The PNCs are comprised of metallic nanoclusters.

40 **[0006]** Proteons can be visualized by microscopy of biological materials, for example fluids such as blood samples of mammals and homogenates of vegetable matter. As proteons are comprised of misfolded proteins, detection of proteons and identification of the proteins can be used to diagnose and measure progression of disease states. For example, proteons isolated and purified from blood and blood plasma lack detectable nucleic acids, but contain two major polypeptide populations with high homology to the alpha chain of hemoglobin.

45 **[0007]** Accordingly, methods for the amplification and detection of misfolded protein in a biological sample are provided. Additionally, methods for the clearance of misfolded protein from a sample of biological material are provided. The method can be manipulated by subjecting the sample to heat or pressure, or by carrying out various numbers of seeding steps. Methods for amplification include heat and pressure treatment of a sample. Likewise, subjecting a biological sample to or treating it with metal clusters increases the concentration of proteons.

50 **[0008]** While the present invention is not bound to any particular mode of action, it is believed that proteons are formed by a mechanism involving the reversible polymerization and aggregation of proteins, particularly misfolded proteins, on a nucleation center. For convenience, the nucleation centers are referred to as "proteon nucleation centers" or "PNCs."

[0009] The PNCs of the invention are unexpectedly pro-apoptotic when added to cultured animal cells. Accordingly, pro-apoptotic compositions and methods for their production are also provided herein.

55 BRIEF DESCRIPTION OF THE SEVERAL VIEWS OF THE DRAWING(S)

[0010] Figure1 shows various electron micrographs of proteons in thin sections. Transmission electron microscopy (TEM) was used to prepare electron microscopy of type 1 proteons. See Fig. 1A and Fig. 1B. Also shown are TEM of

type 2 proteons. See Fig. 1C and Fig. 1D. TEM of negatively stained type 2 proteons are shown in Fig. 1E and Fig. 1F. A electron micrograph of a type 2 proteon prepared using scanning electron microscopy (SEM) is shown in Fig. 1G. Scale bars (in microns): Fig. 1A: 5; Fig 1B-1F: 0.5; Fig. 1G: 1.

5 [0011] Figure 2 shows proliferation of proteons. Proteons in purified water and blood plasma incubated at 37°C in an atmosphere of ambient air, showing the number of proteons visible in the dark-field microscope as a function of time. See Fig. 2A. Proteons and plasma were incubated in tissue culture media. ■, • - proteons and plasma in culture growth medium, respectively; ▲, ▼ - D5648 and D6429 growth medium, respectively. The insert shows a linear fit of the experimental data to the logistic equation $\ln(L/N-1)=k(T_{1/2}-t)$, where L = maximal number of proteons, N = number of proteons at time t, and $T_{1/2}$ = time when $N=L/2$ (Jarman, 1970). See Fig. 2B. Assembly and disassembly of proteons in the presence of urea is shown in Fig. 2C. After the proteons were assembled in the presence of urea, the urea was then removed from the suspension of proteons by dialysis. Cyclic amplification of proteons in plasma is shown in Fig. 2D. The first sample was incubated for 15 minutes at 65°C and normal pressure. Treated samples of 5 μ L were serially introduced into untreated sample and subjected to a heat cycle, up to 6 cycles.

15 [0012] Figure 3 shows characterization of Cu nanoparticles using TEM, with a-Fe particles shown for comparison. A BF image showing clusters of crystalline, metallic Cu nanoparticles is shown in Fig. 3A. A BF image of the amorphous matrix is shown in Fig. 3B. A SAD pattern identifying the nanoparticles in Fig. 3A as an FCC phase with a lattice parameter of approximately 360 pm and a random crystallographic orientation is shown in Fig. 3C. Centered DF image prepared using a portion of the {111}FCC ring is shown in Fig. 3D. The nanoparticles appear bright, on a dark background, indicating that the {111}FCC diffraction maxima originated from the nanoparticles and not the matrix (since the Cu particles are randomly oriented, many of the particles are out of contrast). The inset shows clumped and individual a-Fe particles (DF from a portion of the {110}BCC ring). Scale bars shown in Figs. A, B, and D represent 50 nm. Scale bars in the insert represent 20 nm.

20 [0013] Figure 4 shows the effect of PNC on cell viability. Fig. 4A shows the viability of cultured cells after 20 hours of exposure to PNC obtained from the shark blood at different concentrations of PNC/ml.: (1) - 1.7×10^{11} ; (2) - 9.1×10^{10} ; (3) - 9.9×10^9 ; (4) - 0. (F98, RG2 - rat and mouse brain glioma cells, respectively, CTX - rat transfected astrocytes). Fig. 4B shows dark-field photomicrographs of the mouse rat glioma cells. Figs. 4B1 and 4B2 show cells before and after exposure to 7.7×10^{11} PNC/ml, respectively. Fig. 4B3 shows cells after exposure to 1.0 μ M staurosporine. 4 - Fluorescence photomicrograph of RG2 glioma cell exposed to 7.7×10^{11} PNC/ml for 20 h and stained with Annexin V and propidium iodide (400X). Fig 4C shows viability of RG2 glioma cultured cells after 20 hours of exposure to PNC obtained from the blue shark (*Prionace*) (■), hound dog, (•), human (▲), and New Zealand white rabbit (Harland Sprague Dawley) (▼) blood at different concentrations. $R=0.95$, $p<0.0001$.

DETAILED DESCRIPTION OF THE INVENTION

35 [0014] The present invention now will be described more fully hereinafter with reference to the accompanying drawings, in which some, but not all embodiments of the invention are shown. Indeed, the invention may be embodied in many different forms and should not be construed as limited to the embodiments set forth herein; rather, these embodiments are provided so that this disclosure will satisfy applicable legal requirements.

40 [0015] Compositions and methods for identifying and characterizing disease states are provided. The compositions comprise misfolded proteins and misfolded proteins aggregated on a nucleation center. The aggregated proteins are referred to herein as proteons. The nucleation centers are referred to as proteon nucleation centers (PNCs).

Definitaons

45 [0016] By "proteons" are intended protein bodies, generally on the order of a few tens of nanometers up to several microns across, comprised of misfolded or partially misfolded proteins surrounding a PNC. In one aspect of the invention, proteons can be isolated from blood, including human, bovine, horse, pig, cat, dog, fish, rabbit, and rat blood. In another aspect of the invention, proteons can be isolated from plasma, including human, bovine, horse, pig, cat, dog, fish, rabbit and rat plasma.

50 [0017] By "PNC" is intended the metallic nucleation centers isolated as described herein. In one aspect of the invention, PNCs can be isolated from the blood, including human, bovine, horse, pig, cat, dog, fish, rabbit, and rat blood. In another aspect of the invention, PNCs can be isolated from plasma, including human, bovine, horse, pig, cat, dog, fish, rabbit, and rat plasma.

55 [0018] By "plasma" is intended the supernatant produced by the centrifugation of blood or other suspension of biological material.

[0019] By "seeding" is intended adding an amount of either a PNC or proteon to a biological sample.

[0020] The proteons of the invention can be identified and quantified in biological samples. Such samples include serum, blood, other bodily fluids, tissue including brain, other organ tissue, and the like. To identify the proteons in tissue,

the tissue is homogenized in a fluid or liquid.

[0021] Proteons can be isolated from biological samples of any mammal including but not limited to human, primate, bovine, cattle, horse, sheep, pig, cat, dog, rabbit, rat, deer, ox, mouse, and the like. They can also be detected in samples from fish, chicken, turkey, duck, and the like.

[0022] As indicated, proteons are comprised of misfolded proteins. In one aspect, the proteon compositions of the invention show an apple-green birefringence when stained with congo-red. This staining pattern is analogous to that obtained with prions and other amyloid proteins, all of which are included in the class of congophilic proteins. See Kelly (1996) *Curr. Opin. Struct. Biol.* 6:11-17. These proteins are associated with various disorders or disease states. Thus, the identification of proteons comprised of such proteins is indicative of a disorder or disease state. Likewise, the number of proteons in a sample comprised of such proteins is predictive of the progression of the disease. That is, the number of proteons in a sample correlates with progression of a disease state. Therefore, quantification of proteons in a sample is useful for determining or diagnosing the stage of disease or disorder and can help in planning treatments or therapies for the disease. Examples of disorders involving misfolded proteins and the relevant proteins that can be utilized in the methods of the present invention are set forth in Table 1, below. The disorders associated with congophilic proteins are set forth in Table 2, below.

[0023] It is recognized that for proper diagnosis, proteons must not only be identified, but also the misfolded protein in the proteon must be identified. Methods for protein purification and identification include antibody binding, amino acid sequencing, and the like.

Table 1. Conformational diseases. See Carrel and Lomas (1997) *Lancet* 350:134-138; Carrell and Gooptu (1998) (1998) *Curr. Op. Struc. Biol.* 8:799-809.; Soto (2001) *FEBS Letters* 498:204-207; Jaikaran and Clark (2001); Ursini et al. (2002) *Trends Mol. Med.* 8:370-374; Kannan et al. (1988) *J. Biol. Chem.* 263:13766-13773; Schluter and Drenckhahn (1986) *PNAS* 83:6137-6141; Gerner et al. (2002); Davis et al. (2002) *Lancet* 359:2242-2247; Fernandez et al. (2001) *Atherosclerosis* 158, 103-111(atherosclerosis); Papalexis et al. (2001) *Mol. Biochem. Parasitology* 115: 77-86; Esievo et al. (1984) *Veterinary Parasitology* 15:181-185; Igoe et al. (2002) *Clin. Microb. Newsletter* 24:69-70; Kreidl et al. (2002) *J. Am. Coll. Surgeons* 194:387; Beckers (2001) *Netherlands J. Med* 58:204-207 (autoimmune diseases); Ismeno et al. (1999) *Int'l J. Cardiology* 69:179-183; Klibansky et al. (1966) *Toxicon* 3:213-216; Seibert et al. (2003) *Toxicon* 41:831-839; Szabo et al. (2002) *Thrombosis Research* 107:357-363; Kaioumova et al. (2001) *Chemosphere* 43:801-805.

Protein	Disease
Hemoglobin	Sickle cell anemia and aggregates
	Heinz bodies in aged erythrocytes
	Unstable hemoglobin inclusion body hemolysis
	Drug induced inclusion body hemolysis
	Aggregates regulate apoptosis in cancer patients
	Atherosclerosis
	Malaria
	Infections
	Auto-immune disorders
	Toxic reactions
Internal bleedings	

EP 2 068 147 A1

(continued)

Protein	Disease
5 Prion protein	Creutzfeld-Jacob disease (CJD) New variant CJD Bovine spongiform encephalopathy (BSE) Gerstmann-Straussler-Scheinker disease Fatal familial insomnia Kuru
10 15 β -amyloid	Alzheimer's disease Down's syndrome Familial Alzheimer's
20 α -Synuclein	Parkinson's disease, Lewy bodies
Tau protein	Frontotemporal dementia, Pick bodies
25 30 35 Serpins	α_1 -antitrypsin deficiency - cirrhosis - emphysema Antithrombin deficiency - thrombosis C ₁ -inhibitor deficiency - angioedema
Neuroserpin	Neurodegenerative disease, Collins bodies
40 Glutamate repeats	Inherited neurodegenerative disorders Huntington's disease
Amylin	Diabetes type II
SOD	Amyotrophic lateral sclerosis
ApoB	Atherosclerosis
45 CFTR protein	Cystic fibrosis
Immunoglobulin	Systemic amyloid light chain amyloidosis
Amyloid light chain	Nodular amyloidosis
50 Serum amyloid A	Reactive systemic amyloid A amyloidoses Chronic inflammatory disease
55 Transthyretin	Senile systemic amyloidosis Familial amyloid neuropathy Familial cardiac amyloid

(continued)

Protein	Disease
β_2 -microglobulin	Hemodialysis amyloidosis Prostatic amyloid
Apolipoprotein AI	Familial amyloid polyneuropathy Familial visceral amyloid
Cystatin C	Hereditary (Icelandic) cerebral angiopathy
Lysozyme	Familial visceral amyloidosis

Table 2. Congophilic disorders. See Kelly (1996) *Curr. Opin. Struct. Biol.* 6:11-17.

Disorder Acronym	Disorder	Protein Involved
CJD	Spongiform encephalopathies	Prion protein fragments
APP	Alzheimer	Beta protein fragment 1-40/43
HRA	Hemodialysis-Related Amyloidosis	Beta-2 microglobin*
PSA	Primary Systematic Amyloidosis	Immunoglobulin light chain and fragments
SAA 1	Secondary Systematic Amyloidosis	Serum amyloid A 78 residue rragment
FAP I**	Familial Amyloid Polyneuropathy I	Transthyretin fragments, 50+ alleles
FAP III	Familiar Amyloid Polyneuropathy III	Apolipoprotein A-1 fragments
CAA	Cerebral Amyloid Angiopathy	Cystatin A minus 10 residues
FHSA	Finnish Hereditary Systemic Amyloidosis	Gelsolin 71 residue
IAPP	Type II Diabetes	Islet amyloid polypeptide fragment
ILA	Injection-Localized Amyloidosis	Insulin
CAL	Medullary Thyroid Carcinoma	Calcitonin fragments
ANF	Atrial Amyloidosis	Atrial natriuretic factor
NNSA	Non-Neuropathic Systemic Amylodosis	Lysozyme and fragments
HRA	Hereditary Renal Amyloidosis	Fibrinogen fragments
* Homologous to immunoglobm, thus a predicted paralogous disease.		
** Also called senile systemic amyloidosis, prealbumin is synonymous with transthyretin. See mad-cow.org/congo.html (the prefix "www" is required).		

[0024] Immunohistochemical assays have been developed for the proteins listed in Tables 1 and 2. See, e.g., Hardt et al. (2000) *J. Comp. Path.* 122:43-53 (antibodies for the detection of the prion protein, PrP). However, many of these proteins are only abundant in the late stages of the disease and may be undetectable utilizing standard assay techniques. Thus, in one embodiment, the methods of the present invention may be combined with an immunochemical assay for the protein or proteins selected from Tables 1 and 2. These proteins, or their functional derivatives, may be detectably labeled with any appropriate marker such as a radioisotope, an enzyme, a fluorescent label, a paramagnetic label, or a free radical linked to an antibody capable of binding these proteins.

[0025] Methods of making and detecting such detectably labeled antibodies or their functional derivatives are well known to those of ordinary skill in the art, and are described in more detail below. See, for example, Klein (1982) *Immunology: The Science of Self-Nonself Discrimination* (John Wiley & Sons, New York 1982); Kennett et al. (1980) *Monoclonal Antibodies and Hybridomas: A New Dimension in Biological Analyses*, (Plenum Press, New York; Campbell (1984) *Monoclonal Antibody Technology, Laboratory Techniques in Biochemistry and Molecular Biology*, Volume 13, ed. Burdon et al. (Elsevier, Amsterdam; and Eisen (1980) in *Microbiology*, ed. Davis et al. 3d ed.; Harper & Row, Philadelphia. Methods for the generation of polyclonal antibodies are known, as are techniques for the generation of monoclonal antibodies See, e.g., Kohler and Milstein (1975) *Nature* 256:495-497.

[0026] Assay techniques useful in the present invention include, but are not limited to, assays comprising incubating a biological sample from a subject suspected of having such a condition in the presence of a detectably labeled binding molecule (e.g., antibody) capable of identifying the relevant protein, and detecting the binding molecule which is bound in a sample. See, e.g., Work et al. (1978) *Laboratory Techniques and Biochemistry in Molecular Biology* (North Holland Publishing Company, NY).

[0027] Alternatively, the proteins contained in a particular sample of proteons can be identified by screening against a panel of phage antibodies in which the displayed peptide is a domain of the antibody molecule that includes the site that binds antigen. Phage-antibody libraries can be constructed including billions of clones, displaying billions of antibodies with different antigen specificities. For a review of this technique, see Petrenko and Vodyanoy (2003) *J. Micro. Meth.* 53:253- 262.

[0028] The presence of proteons themselves can be detected and quantitated by darkfield microscopy. Under high-resolution dark-field microscopy proteons are visualized as bright spherical shapes. Techniques for dark-field microscopy are known in the art. See, e.g., Bradbury and Bracegirdle (1998), *Introduction to Light Microscopy* (Microscopy Handbooks, No 42), 2d ed.; (Springer Verlag). In particular, proteons are small, ball-like bodies of different sizes, estimated in the range of 50-250 nm. By contrast, healthy erythrocytes appear as bright void circles of about 7 microns diameter in the dark-field view, whereas neutrophils are roughly 7-15 microns. When a blood sample becomes aged, the morphology and number of the proteons change, with some estimated to be 500 nm in diameter. Some appear attached to the internal surface of the erythrocyte membrane. Proteons are found in fresh blood of species including human, bovine, horse, pig, cat, dog, fish, rabbit, and rat blood.

[0029] Dark-field microscopy of proteons can be confirmed by transmission electron microscopy (TEM) and scanning electron microscopy (SEM) methodology. Techniques for electron microscopy are known in the art. See, e.g., Slayter and Slayter (1992) *Light and Electron Microscopy*, (Cambridge University Press).

[0030] Proteons can be isolated from blood or plasma, i.e., the supernatant produced by centrifuging a biological material. In one embodiment, proteons can be formed by incubating plasma at 37°C under sterile conditions over a thirteen day period. At the end of this period, the numbers of proteons observed under dark-field light microscopy are greatly increased.

[0031] In another embodiment, large numbers of proteons are produced by subjecting plasma to 120°C at 20 psi for two hours. The visible number of proteons is amplified by subjecting plasma to a single step of elevated temperature.

[0032] Efficiency of proteon production is enhanced by taking a small portion of an amplified sample, adding it to an untreated sample, and heating the untreated sample. These steps can be repeated a number of times, each iteration yielding an increased quantity of proteons. Accordingly, by dividing the sample into a number of subsamples, subjecting the first subsample to heat or pressure, then aliquoting a small amount of the proteons from the first subsample into the second subsample and carrying out the heating step, a greater concentration of proteons can be produced from the second subsample than was produced from the first subsample. These seeding steps can be repeated multiple times until, after several iterations, the concentration of proteons produced per volume of sample eventually plateaus.

[0033] Typically, the first two cycles result in a small but significant increase of proteon population, whereas the third cycle brings about a dramatic increase in the number of proteons. Generally, the next three cycles result in saturation of the proteon population.

[0034] In one embodiment, a test sample containing a small amount of misfolded proteins is subjected to a single heating step. The amplified proteons are quantitated by dark-field microscopy and verified by immunofluorescent techniques to detect the misfolded protein.

[0035] In another embodiment, a small amount of seeds such as the PNCs described above can be added to a test sample to increase the sensitivity of the single step methods. Roughly 5×10^{13} PNC/ml are produced by initial filtration of plasma through a 5 kD filter. This concentration then can be increased by a factor of roughly 100 by evaporation. Thus, in one aspect, addition of 5 ml of 5×10^{13} PNC/ml to a 1 ml sample increases the concentration of PNC in a sample by 2.5×10^{11} PNC/ml. This concentration is increased by a factor of 100 if pre-concentrated PNC are added. If the initial concentration of PNC varies from 10^8 to 10^{11} PNC/ml, the sensitivity can be increased by a factor of between 250 to 250,000.

[0036] In another embodiment, the first step amplification described above is carried out, then a small portion of amplified sample is introduced into the untreated sample and subjected to heat again. Then, the small portion of the second amplified sample is added to the third untreated sample, heated, and so on. The number of cycles depends on the initial concentration of misfolded proteins. Suitable numbers of cycles include 1, 2, 3, 4, 5, 6, 7, 8, 9, 10, 15, 20, 25 or more.

[0037] In one embodiment, the detection and identification can be done as a single-step method. Apparatus for subjecting a sample to heat and/or pressure are recognized in the art and include without limitation, PCR thermocyclers, autoclaves, etc.

[0038] As will be recognized by one of skill in the art, both the single- and multiple-step methods can be manipulated by varying the temperature, pressure, or temporal parameters. Suitable temperatures include 37, 40, 45, 50, 55, 60, 65,

70, 75, 80, 85, 90, 95, 100, 105, 110, 115, or 120 °C. Suitable pressures include ambient pressure, as well as 14,15,16,17,18,19, 20,21,22,23,24, or 25 psi. Suitable times of treatment include 1, 5,10,15, 20, 5, 30, 25, 40, 45, 50, 55, 60, 65, 70, 75, 80, 85, 90, 95, 100, 105, 110, 115, and 120 minutes.

[0039] In another embodiment, these methods can be utilized to clear misfolded proteins from a biological sample such as blood. Because low temperatures can be utilized with long time periods, this can be accomplished without damaging the biological sample.

[0040] In another embodiment, these methods can detect misfolded proteins involved in congophilic disorders. See Kelly (1996) *Curr. Op. Struc. Biol.* 6:11-17; Kelly (1996) 8:101-106. For instance, there is a demonstrated structural homology between prion and hemoglobin proteins. Korth et al. (1997) *Nature* 390:74-77. There is evidence that prions are present in lymphoid organs and blood. See, e.g., Brown et al. (2001) *J. Lab. Clin. Med.* 137:5-13; Aguzzi (2000) *Lab. Clin. Med.* 137:5-13; Aguzzi (2001) *Nature Medicine* 7:289-290; Wadsworth et al. (2001) *Lancet* 358:171-180. Accordingly, the methods of the present invention can be utilized for amplification of a congophilic protein, thus allowing early detection of disorders related to these proteins.

[0041] PNC of roughly 1-2 nm and containing about 40 - 300 atoms play an important role in capturing hemoglobin released into blood plasma. While released hemoglobin is normally captured by protein haptoglobin and endocytosed by macrophages, released hemoglobin can be collected by PNCs. Roughly 7×10^{13} PNC are present in each milliliter of human blood, while only 0.003% of the whole pool of PNC is normally linked to proteins and made into proteons. However, a proteon of medium size of 160 nm can collect about 100,000 protein molecules of similar size to hemoglobin. Thus, the strong protein scavenging properties of metal nanoparticles allow them to collect proteins including misfolded hemoglobin (Kristiansen et al. (2001) *Nature* 409:198).

[0042] Thus, in another embodiment, the present methods can be utilized for amplification of proteins involved in intravascular hemolysis and resulting in aggregation of hemoglobin, including, without limitation, sickle cell anemia, atherosclerosis, malaria, infections and their complications, auto-immune disorders, internal bleedings and intravascular hemolysis due to internal prosthetic devices, and toxic reactions. See Kannan et al. (1988) *J. Biol. Chem.* 263: 13766-13773; Schluter and Drenckhahn (1986) *PNAS* 83:6137-6141 (sickle cell); Fernandez et al. (2001) *Atherosclerosis* 158, 103-111(atherosclerosis); Papalexis et al. (2001) *Mol. Biochem. Parasitology* 115:77-86; Esievo et al. (1984) *Veterinary Parasitology* 15:181-185; Igoe et al. (2002) *Clin. Microb. Newsletter* 24:69-70; Kreidl et al. (2002) *J. Am. Coll. Surgeons* 194:387; Beckers (2001) *Netherlands J. Med.* 58:204-207 (autoimmune diseases); Ismeno et al. (1999) *Int'l J. Cardiology* 69:179-183; Klibansky et al. (1966) *Toxicon* 3:213-216; Seibert et al. (2003) *Toxicon* 41:831-839; Szabo et al. (2002) *Thrombosis Research* 107:357-363; Kaioumova et al. (2001) *Chemosphere* 43:801-805.

[0043] Using standard techniques, samples for single-step or cyclic amplification can be prepared from homogenates of small tissue fragments, or from biological fluids such as blood, cerebrospinal, lymph, etc. Techniques for the preparation of tissue homogenates and biological fluids from such sources are known. See Sambrook et al. (1989) *Molecular Cloning -A Laboratory Manual*, Vols. 1-3 (2d ed; Cold Spring Harbour Laboratory Press, Plainview, NY); and Ausubel et al., eds. (1994) *Current Protocols in Molecular Biology*, (Greene Publishing Associates, Inc. and John Wiley & Sons, Inc.).

[0044] PNCs can be produced from plasma by filtration through an ultrafiltration membrane. In one embodiment, plasma is filtered consecutively through a 30 kD and a 5 kD Centricon™ filter from Millipore before heat treatment. The centrifuge filtration is carried out using an initial volume of 80 ml centrifuged at 3,500 g for 20 minutes, 20°C.

[0045] Filtration of plasma before heat treatment abolishes proteon formation in the retentate. However, recombination of the fractions results in the resumption of proteon formation, and the number of proteons formed is dependent upon the amount of filtrate added back to the retentate. Thus, the PNCs are present in the filtrate.

[0046] Adsorption spectra of the filtrate reveals the presence of metals, including copper, zinc, and iron, indicating that PNCs comprise metals. The filtrate was precipitated with 1.2 mM $MgSO_4$ and TEM studies were carried out. Such procedures are known in the art. See, e.g., Shindo and Oikawa, *Analytical Electron Microscopy for Materials Science*, Springer-Verlag (2002). It was found that the precipitated extract contained crystalline metallic nanoparticles of roughly 1-2 nm diameter. Selected area diffraction patterns were consistent with the presence of face centered cubic (FCC) or body centered cubic (BCC) metals or solid-solution alloys such as FCC copper and BCC iron.

[0047] For a review of metal clusters, see Aiken and Finke (1998) *J. Mol. Cat. A: Chem.* 145:1-44; Gonzalez-Moraga (1993) *Cluster Chemistry* (Springer-Verlag, New York, NY). High symmetry is one of the main characteristics of metal clusters (Gonzalez-Moraga (1993) (*Supra*). In addition, metal clusters bind proteins. See Broun et al. (2002) *J. Mol. Biol.* 321:341-353; Liu and Xu (2002) *J. Inorganic Biochem.* 88:77-86. Thus, in one embodiment, the PNCs of the invention are characterized by small size, a few nm or smaller. Additionally, the PNCs are present in large quantities, about 10^{12} - 10^{13} PNC/cm³ of blood or tissue, are abundant, present binding sites and strong affinity to proteins, exhibit variability to bind different proteins, and resist extreme physical and biochemical conditions.

[0048] To test the effects of PNCs isolated from the filtrate upon living cells, various amounts of PNCs obtained by ultrafiltration and sterilized by autoclaving were incubated for four hours with various animal cells in tissue culture. Significant effects upon cell viability were observed. For instance, rat and mouse glioma cells demonstrated marked signs of cell death, as assessed both microscopically and by MTT assay. Accordingly, the PNCs of the invention comprise

a novel reagent for use in inducing apoptosis, as well as a process for its production. In one embodiment, aliquots from 1 to 40 μl containing about 1×10^{12} to 4×10^{13} PNCs were added to 100 μl wells of 96-well ELISA plate. Such compounds and processes are of great usefulness to those of skill in the art. See, e.g., United States Patent Nos. 5,344,926 to Murakata et al., titled "Process for producing staurosporine derivatives"; 4,973,552 to Schroeder et al., titled "Staurosporine fermentation process"; and 6,518,032 to Fritz et al., titled "Rapid methods for identifying modifiers of cellular apoptosis activity."

[0049] This invention is further illustrated by the following examples that should not be construed as limiting.

EXPERIMENTAL

EXAMPLE 1: Production of Proteons from Blood and Analysis by Microscopy

[0050] A 30 μl sample of freshly drawn full blood from a healthy human male was obtained and diluted in 1000 μl of purified water (Direct QTM, Millipore™, 17 MOhm) in a 1.5-ml plastic vial, and centrifuged at 2200 g (6000 rpm) to obtain plasma. An additional aliquot of the blood was taken and prepared for optical dark-field microscopy. The plasma was transferred to a 4-ml glass vial with a plastic cap and a teflon liner. An aliquot of plasma was again retained for dark-field microscopy. The vial and contents were subjected to heating at a temperature of 120°C and 20 psi of pressure for two hours. An aliquot of the heat-treated plasma was prepared for dark-field microscopy.

[0051] Each aliquot retained for microscopy was analyzed by dark-field microscopy using an Olympus™ microscope fitted with a 100W mercury lamp, a polarizer, and a Naessens dark-field condenser (COSE Corp., Canada).

[0052] After analysis, the fresh full blood sample was found to contain approximately 3×10^8 proteons/ml, whereas the diluted sample contained roughly 9×10^6 proteons/ml. The treated sample contained an estimated 3×10^{11} proteons/ml, a five-order of magnitude increase. Adjusted for the initial dilution of the blood sample, each milliliter of blood yielded roughly 1×10^{13} proteons. Thus, within two hours, the number of proteons increased by approximately 5 orders of magnitude. Assuming exponential growth, then the number of proteons (N) at any given moment of time (t) can be described by the equation:

$$N = N_0 e^{bt} \quad (1)$$

where N_0 is the initial number of particles, and b is the growth coefficient. If N , N_0 , and t are substituted with the experimental values found in the above experiment, one can estimate that the growth coefficient (b) for this case is equal to 5.2 1/hour, and the proteon population is doubled every 8 minutes.

[0053] As a control, a suspension of phospholipids and cholesterol was subjected to the same protocol used for the blood sample. However, no structures resembling proteons were observed under dark-field microscopy.

[0054] Electron microscopy analysis was also carried out on samples obtained before and after heat treatment. Transmission electron microscope (TEM) images obtained from pre- and post-heat-treatment samples reveal small proteons appearing as dark discs with a rough and fibrous appearance. An analysis of the TEM images revealed the size distribution of this characteristic small proteon to reach a maximum about 150 nm.

[0055] Another characteristic form of proteon was observed, a coconut-shaped particle of about 1-5 microns with a structure resembling one or more nuclei and a cell-like appearance. The nuclei look very similar to the small proteons described above. A cross-sectional view of a larger proteon reveals a very distinctive external membrane-like structure. This membrane-like structure, however, looks very different from the bacterial wall or the mammalian cell membrane, appearing as a curly fibrous shell of 10-12 nm thick. Some fiber-like structures and a few nuclei are visible inside the proteon. Images obtained by scanning electron microscopy (SEM) confirm the presence of both small and large characteristic proteons.

EXAMPLE 2: Chemical Composition of Proteons

Energy Dispersive Spectroscopy Analysis

[0056] The chemical composition was determined by energy dispersive X-ray spectroscopy using a JEOL JSM-840 SEM system using standard procedures for identifying and quantifying elemental composition. Such procedures are known in the art. See, e.g., Shindo and Oikawa (2002) Analytical Electron Microscopy for Materials Science (Springer-Verlag).

[0057] A sample of proteons suspended in distilled water was deposited on the aluminum SEM mount and dried in a

EP 2 068 147 A1

vacuum for 24 hours. The X-ray spectra were obtained with an electron beam size of 200 nm at 80 kV for 90 s. Spectra revealed that the proteons were composed of carbon, oxygen, nitrogen, and sulfur, and the presence of potassium, sodium, chloride, silicon, and copper was also detected. The presence of carbon, nitrogen, and sulfur was confirmed by analytical chemical analysis (Leco Corporation, Michigan, USA). Notably phosphorus, a necessary element of DNA, was never detected in the proteon samples. On the other hand, all the elements needed for amino acids and proteins are available.

Amino acid composition

[0058] Free amino acid composition of samples before and after heat and highpressure treatment were determined (LPSA, University of Arizona, Tucson, Arizona). See Table 3.

Table 3. Amino acid composition (pmol/50 ul)

No	Amino acid	Control*	Proteons
1	O-Phosphoserine	98.731	39.878
2	Taurine	191.790	227.739
3	O-Phosphoethanolamine	17.980	15.318
4	Urea	220.811	62.573
5	Aspartic Acid	137.212	123.086
6	Threonine	365.225	214.981
7	Serine	385.160	314.039
8	Asparagine	-----	95.908
9	Glutamic Acid	483.645	229.149
10	Glutamine	287.073	3.920
11	Glycine	985.419	922.430
12	Alanine	443.165	448.792
13	Citrulline	81.803	-----
14	Valine	188.720	236.126
15	Cystine	4.799	6.367
16	Methionine	-----	77.583
17	L-Cystathio-nine	12.301	16.417
18	Isoleucine	82.836	76.302
19	Leucine	121.941	139.060
20	Tyrosine	68.636	75.682
21	Phenylalanine	104.921	79.904
22	γ-Amino-butiric Acid	-----	108.022
23	Etanolamine	36.578	35.605
24	L-Ornithine	53.341	23.004
25	Lysine	226.033	208.597
26	Histidine	75.954	103.043
27	Arginine	273.221	166.512
* Pre-heat and high-pressure treatment plasma.			

Protein concentration

[0059] The quantitative analysis of proteins in the proteon samples was carried out by two different protein assays obtained from BIO-RAD™ Laboratories and SIGMA™ according to the manufacturers' protocols. Samples of blood as described in the Example 1 were exposed to different temperatures and pressures. Results of the experiments are shown in Table 4.

Table 4. Protein concentrations in proteon samples.

Sample, Condition	BIO-RAD, Protein concentration, $\mu\text{g/ml}$	SIGMA, Protein concentration, $\mu\text{g/ml}$
Plasma, control, 25°C	0.67 ± 0.05	0.85 ± 0.2
Plasma, 56°C, normal pressure, 10 min	0.72 ± 0.04	0.98 ± 0.2
Plasma, 80°C, normal pressure, 10 min	0.68 ± 0.04	1.0 ± 0.2
Proteons, 120°C, 20 psi, 2 hours	0.71 ± 0.04	1.7 ± 0.2

[0060] Gel electrophoresis of plasma and two major protein components of plasma, albumin and hemoglobin, treated with 120°C heat and 20 psi pressure produce obvious bands of 66,200 D and 14,400 D. These are shared with albumin and hemoglobin, respectively. After the treatment, the albumin has two weak bands of 14,400 D and ~8,000 D, which coincide with the same bands of proteons. The treated hemoglobin conserved only the 8,000 D band. Proteons filtered through a 100 kD filter conserved the 14,400 and ~8,000 bands, while proteons washed from the filter contain practically all bands of plain proteons, indicating that misfolded albumin and hemoglobin may be present in proteons. The confirmation of this fact may be obtained from the immunoblotting analysis.

[0061] Proteons from rabbit blood were disassembled by sodium dodecyl sulfate (SDS), a negatively charged detergent. The fragments of proteins were electrophoresed down and made distinctive bands in the polyacrylamide gel. The proteins were identified by N-terminal amino acid sequencing, yielding the partial sequence VLSPA(D/E)(E/K)TN(A/I) that shows 100% homology with the rabbit alpha chain of hemoglobin. Amino acid analysis showed that proteons are enriched by hydrophilic negatively charged amino acids, glutamic and aspartic acids. Proteons stained with congo-red show an apple-green birefringence with polarizing light indicating the anisotropic alignment of the dye molecules.

[0062] Congo-red staining is indicative of a common structural feature shared by many amyloids. Specifically, they are stabilized in part by anti-parallel beta sheet extensions from one monomer to another. It is believed that the dye binds to inter-monomer clefts between anti-parallel beta edge strands. See Kelly (1996) *Curr. Op. Struc. Biol.* 6:11-17; Kelly (1996) *Curr. Op. Struc. Biol.* 8:101-106. One protein belonging to the congophilic family is the prion protein associated with the prion diseases. A structural homology between prion and hemoglobin proteins has been demonstrated (Korth et al. (1997) *Nature* 390:74-77). In particular, two prion PrP(121-231) molecules could be superimposed with two β subunits of the crystal lattice of sickle cell hemoglobin 1HBS. The superposition included the backbone atoms of residues 145-154, 179-189, and 201-217 of the helices 1, 2, and 3 of PrP(121-231) and of residues 5-14, 106-116, and 125-141 of the helices 1, 6, and 7 of hemoglobin S.

Absence of DNA in proteons

[0063] An aliquot of blood pre- and post-treatment (see Example 1) was purified using the DNeasy Tissue Kit™ (Qiagen) according to the manufacturer's standard protocols for animal blood and bacteria. After final elution, samples were loaded on 1 % agarose gel. DNA bands were visualized with ethidium bromide. DNA was detected in pre-treatment sample and undetected in the post-treatment sample.

[0064] Similar results were obtained using a High Pure PCR Template Preparation Kit™ from Roche for isolation of Nucleic Acids followed by fluorometric quantitation of double-stranded DNA using the PicoGreen dsDNA Quantitation Reagent™ from Molecular Probes and a TECAN Spectrafluor Plus equipped with DeltaSOFT software for detecting fluorescence (excitation at 485 nm and emission at 535 nm). See Table 4.

Table 5. Fluorometric quantitation of DNA in blood and proteons.

Sample	DNA concentration, $\mu\text{g/ml}$
Blood	45.1

(continued)

Sample	DNA concentration, $\mu\text{g/ml}$
Blood after dilution and centrifugation	3.0
Proteons, freshly prepared	0.033
Proteons, 3 months old	< 0.001

EXAMPLE 3: Controlled Growth of Proteons

[0065] Two identical sets of samples were prepared for this experiment, in which the growth of proteons incubated at 37°C in an atmosphere of ambient air was compared with the growth of proteons incubated in an atmosphere of 5% CO₂. Each set included the following numbered groups:

Group 1. Three ml of freshly prepared proteons (as described in Example 1).

Group 2. Three ml of plasma after dilution and centrifugation (as described in Example 1).

Group 3. Ten μl of freshly prepared proteons added to 3 ml of D6429 tissue culture media (Sigma) with 10% FBS (HyClone).

Group 4. Ten μl of freshly prepared proteons added to 3 ml of D5648 tissue culture media (Sigma) with 10% FBS (HyClone).

Group 5. Ten μl of freshly prepared plasma added to 3 ml of D6429 tissue culture media (Sigma) with 10% FBS (HyClone).

Group 6. Ten μl of freshly prepared plasma added to 3 ml of D5648 tissue culture media (Sigma) with 10% FBS (HyClone).

[0066] The experiment was run in duplicate. Uninoculated media were used as a control. Samples were analyzed by dark-field and scanning electron microscopy at the time points of 0, 2, 4, 8, and 13 days.

[0067] Optical observation of proteons was performed with an Olympus™ microscope fitted with a 100-W mercury lamp illumination source, a polarizer, a Naessens dark-field condenser (COSE Corp., Canada) and a 100x objective (oil, NA 1.4). The dark-field images were directed to a DEI-470T Optronics CCD Video Camera System™ (Optronics Engineering, CA) utilizing the methods described in Vodyanoy et al. (1994) Langmuir 10:1354-1357. A direct count of proteons was used to determine their concentrations in liquid samples, and Image Pro™ (Creative Software, Inc.) was used to quantify the number of proteons.

[0068] The number of proteons incubated at 37°C in an atmosphere of ambient air (Group 1) measured by dark-field microscope did not change significantly ($p < 0.01$) during 13 days (Fig. 2A, line 1). The plasma at the same conditions (Group 2) showed a very small increase in population of proteons within 8 days of incubation, but the number increased dramatically and reached the number of proteons in group 1 after 13 days of incubation (Fig. 2A, line 2). Proteons and plasma in tissue culture media (Group 3 and 4, respectively) exhibited the same growth curves and reached the same number of proteons after 13 days of incubation (Fig. 2B). The culture media alone incubated at the same conditions showed no proteons (Fig. 2B, bottom line). No significant ($p < 0.01$) effect of CO₂ was observed.

EXAMPLE 4: Reversibility of Construction and Deconstruction of Proteons *In Vitro*

[0069] Plasma was prepared as described in Example 1. The samples of plasma were combined with the guanidine hydrochloride or urea to a final concentration of 0, 0.01, 0.1, 1, 4, and 8 M, respectively. These chaotropic compounds are known to unfold and denature proteins.

[0070] Samples were subjected to heat of 120°C and pressure of 20 psi. In the samples to which no chaotropic compounds were added, the numbers of proteons observed by dark-field microscopy was normally high. The number of proteons decreased as the concentration of chaotropic compounds was increased (Fig. 2C).

[0071] Samples of proteons grown at the suppressive presence of 8 M Urea were subjected to dialysis using a Pierce Slide-A-Lyser 10K™ (20h, 5 L, 20°C) according to the manufacturer's instructions. The number of proteons found by dark-field microscope increased significantly. Samples of plasma treated with 120°C heat and 20 psi pressure and urea

at concentrations of 0.01-8 M were taken. Polyacrylamide gel electrophoresis was carried out on each sample with a 4-20 % Tris-HCl Ready Gel™, Bio-Rad according to the manufacturer's protocol. The control (proteons without chaotropic compounds) showed two characteristic bands of 14,400 and about 8,000 D. The experimental samples (proteons in the presence of a chaotropic compound) displayed a diffuse distribution of proteins or fragments of proteins with no sharp bands of proteins of the high molecular mass range. As the concentration of urea increased, the intensity of the diffusion staining decreased, and almost fully disappeared at the 8 M concentration of urea. The proteon sample displays a 14,400 D band that coincides with a similar band found in plasma. When guanidine hydrochloride or urea was added to proteons produced without the chaotropic compounds, heat of 120°C and pressure of 20 psi resulted also in a great reduction of number of proteons visible by dark-field microscopy. Dialysis of these samples restored the population of the proteons. Gel electrophoresis of proteons and plasma treated with 120°C heat and 20 psi pressure at the presence of urea, and then dialyzed, reveals two bands of 14,400 and about 8,000 D in all samples, including those before and after dialysis.

EXAMPLE 5: Effect of Ultrafiltration on Proteon Formation

[0072] PNCs were removed from blood plasma by filtering the plasma through 5 kD Centricon™ filters from Millipore according to the manufacturer's protocol. The protein level in the retentate was quantitated and compared to that of unfiltered plasma. Assay kits were obtained from BIO-RAD Laboratories, and quantitative studies were carried out according to the manufacturer's instructions. The amount of protein in the filtered plasma was the same as that measured in the non-filtered sample. No protein was detected in the filtrate. After filtration, proteons could not be produced until the filtered fraction was returned to the plasma. The number of proteons was dependent on the amount of filtrate returned to the retentate. Addition of 10 mM of the chelating agent, ethylene diamine tetra acetate (EDTA), known to form strong complexes with metals, also prevented the formation of proteons. Adsorption spectra of the filtrate, determined by energy dispersive x-ray spectroscopy (EDS) and inductively coupled plasma- atomic emission spectrometry (GTW Analytical Services, TN), revealed the presence of metals, including Cu, Zn, and Fe.

EXAMPLE 6: Analysis of PNCs

[0073] To characterize the nature of the PNC nanoparticles, transmission electron microscopy (TEM) was utilized. Transmission electron microscopy (TEM) was performed using a JEOL JEM 2010 instrument, operated at 200 kV. Brightfield (BF) imaging was used to provide an overview of the microstructure of the sample. Features of interest were characterized by selected area diffraction (SAD) and nanobeam diffraction (NBD), with the latter set up to produce a narrow (< 50 nm diameter), yet near-parallel beam, so that SAD-like patterns were produced. Dark-field (DF) imaging was employed to determine which microstructural features gave rise to the diffraction maxima. The composition of microstructural features was determined (qualitatively) by means of energy dispersive x-ray spectroscopy (EDS). This work employed an Oxford Instruments' ultra-thin window (UTW) detector, attached to the JEM 2010, together with an Oxford Instruments' ISIS analyzer.

[0074] Scanning electron micrographs were obtained using a JEPL JSM-840 SEM system. Plasma from rabbit blood was filtered consecutively through a 30 kD and a 5 kD Centricon™ filter from Millipore before heat treatment. PNCs were precipitated from the filtrate by 1.2 mM MgSO₄ at pH 11.3 and transferred onto 400 mesh Ni/carbon grids (Electron Microscopy Sciences). Proteon samples for TEM were fixed with 3% glutaraldehyde, dehydrated with ethanol, and embedded in Durcupan ASM resin (Fluka).

[0075] The bulk of the blood precipitate from rabbit plasma was amorphous. However, this extract was found to contain crystalline metallic nanoparticles, with diameters of around 1- 2 nm and above. SAD patterns originating from different regions of the samples were consistent with the presence of both face centered cubic (FCC) and body centered cubic (BCC) metals (or possibly solid-solution alloys), with lattice parameters (a_0) of approximately 360 and 290 pm respectively. These combinations of Bravais lattice and a_0 are close to those of FCC copper ($a_0 = 361.50$ pm (International Centre Diffraction Data (2001), Powder Diffraction File, ICDD, Newtown Square, PA)) and BCC α -iron ("ferrite", $a_0 = 286.64$ pm (International Centre Diffraction Data (2001)), Powder Diffraction File, ICDD, Newtown Square, PA)), respectively. Furthermore, both copper and iron were encountered in EDS spectra acquired from the regions containing the nanoparticles. Centered DF imaging demonstrated that the diffraction maxima in these patterns originated from the nanoparticles. When viewed in BF, the metallic nanoparticles were very difficult to distinguish from the amorphous background in most regions of the samples. Hence, such particles could easily have been overlooked in the BF imaging techniques used conventionally for biological electron microscopy.

[0076] The observed crystallography of non-clumped nanoparticles was that of metallic iron and copper, rather than of salts of these metals. Furthermore, the diffraction patterns encountered in this work were not produced by an organometallic structure. The production of even nanometer-sized metallic particles implies the assembly of a significant number of metal atoms. For example, a 1 nm diameter Cu particle has the same volume as around 10 Cu, or 20 α -Fe, unit cells. FCC metals have 4 atoms per unit cell and BCC metals 2 atoms per cell, indicating a particle containing around

40 atoms in both cases (similarly, a 3 nm diameter particle would contain over 1,000 atoms).

[0077] Individual metallic nanoparticles had a random crystallographic orientation. Thus, in cases where the particles had become clumped (in some cases, this appeared to involve flocculation, in others some of the particles had sintered together), a polycrystalline aggregate was produced. In contrast, within a number of relatively large (around 10 nm diameter or above) clumps of particles, significant (~5-10 nm wide) regions were encountered with a constant crystallographic orientation. However, none of the clumps was a true single crystal. Some of these relatively large clumps contained a number of, as yet unidentified, second phases in addition to α -Fe and Cu.

[0078] Both Cu and Fe form stable oxides (for example the Gibbs free energy of formation of even the relatively low stability CuO phase is around -127 kJ mol^{-1} at 300 K). See Brandes. and Brook (1992) *Smithells Metals Reference Book* (7th ed., Butterworth-Heinenmann, Oxford, UK). Furthermore, the initial stages of oxidation of these metals are rapid, even at room temperature. For example, logarithmic oxidation of initially bare iron, at an oxygen partial pressure of only 10 mPa, results in the growth of around 2 nm of oxide, after less than 20 minutes at 300 K. See Kruger, J and Yolken (1964), cited by Lawless. (1974) *Rep. Prog. Phys.* 37(2):231-316. The presence of non-noble metallic nanoparticles implies that the surrounding organic matrix has either impeded oxygen access to the metallic particles and/or has a significant reducing effect.

[0079] Many of the nanoparticles survived coarsening. The surface energy of the particles provides a driving force for larger particles to cannibalize smaller particles (the surface area to volume ratio for a 1-nm particle is $6 \times 10^9 \text{ m}^{-1}$ and this drops by an order of magnitude for a 10-nm particle). Metallic materials have relatively high solid-vapor interfacial energies (γ_{sv}) and those for copper and α -iron are around the middle of the range for metallic materials (at ~ 2.2 and 3.2 J m^{-2} , respectively; Murr (1975) *Interfacial Phenomena in Metals and Alloys* (Addison-Wesley; reprinted by TechBooks, Herdon, VA)). Thus unless the metal - organic matrix interface has an interfacial energy (γ_{SM}) that is such that $\gamma_{SM} \ll \gamma_{SV}$, there would remain a significant thermodynamic driving force for coarsening. Given the kinetics of coarsening, if all that were present were the metallic nanoparticles, room-temperature coarsening would occur at a negligible rate (solid-state sintering involves bulk diffusion, interfacial diffusion, free surface diffusion and evaporation and re-condensation, all of which would be very slow for Cu or α -Fe at room temperature). See Ashby (1974), *Acta Metallurgica* 22(3):275-289. See also, Swinkels and Ashby (1981) *Acta Metallurgica* 29(2):259-281. Although the presence of the organic liquid matrix raises possibilities for mass transport, it appears that the matrix did not provide a path for the rapid transfer of metal atoms since many of the nanoparticles of served in the present work remained extremely fine.

EXAMPLE 7: *In Vitro* Effect of PNC on Cultured Cells

[0080] The impact of PNCs upon viability of various cultured cells was investigated using the tetrazolium salt (MTT) cell proliferation assay. RG2 (mouse brain glioma), F98 (rat brain glioma), Hs683 (human brain glioma), CTX TNA2 (rat transfected astrocyte), H9c2[2-1] (rat heart myocardium), 27FR (rat skin fibroblast), and SVGp12 (human brain astroglia) cells were obtained from American Type Culture Collection (ATCC™) and maintained as recommended by ATCC. MTT cell proliferation assays are commercially available. See, e.g., MTT Cell Proliferation Assay from ATCC™.

[0081] Cells were plated in D5648 (Sigma™) + 10 % FCS (HyClone™) in polystyrene 96-well plates at a density 3×10^3 cells per well. Twenty-four hours after plating, the medium was replaced with DMEM with either staurosporine (100 μl , 1 μM) or PNC (aliquots, 100 μl , 5×10^9 - 3×10^{11} PNC/ml). PNCs were isolated from blood obtained from shark, dog, and rabbit using the ultrafiltration protocol described in Example 5. PNCs were autoclaved at 120°C and 20 psi for 15 minutes before adding to the cell cultures.

[0082] After 20 hours of treatment, a 20- μl aliquot of tetrazolium salt (MTT, 5 mg/ml in PBS) was added to the wells, and interaction was allowed to proceed for 4 hours at 37 °C. MTT was reduced in metabolically active cells to form purple formazan crystals, which were dissolved by DMSO and quantified by a plate reader (BioRad™). For each cell type, a linear relationship between cell number and absorbance is established, enabling accurate, straightforward quantification of changes in proliferation.

[0083] In two trials, the effect of PNCs on RG2 cells was studied utilizing the following protocol:

Day 1. Plate out RG2 cells at a density of 3×10^3 cells/well in D5648 + 10% FCS and incubate overnight.

Staurosporine (Sigma S5921), 100 μg , FW 466.5. Dissolve 100 μg staurosporine into 214.3 μl

DMSO to equal a 1 mM stock solution. Store at -200°C . Dilute stock 1:10 in media to equal 0.1 mM or 100 μM stock. Dilute as follows:

466.5 gm/ 1 liter = 1 M

100 gm/0.214L = 1M

Dilute stock 1:10 10 μl stock + 90 μl MEM

100 μg / 2.143 ml = 100 μM (frozen stock)

- use 10 μl /well = 1 μM

EP 2 068 147 A1

Day 2. Remove media and add DMEM + 1% FCS (100 µl/well). TX put on late afternoon.
Add staurosporine, autoclaved shark PNC, and either 10%, 1%, or 0% FCS treatments to cells and incubate overnight.

[0084] The results of this study are shown in Tables 6 and 7, below. (Ab. Av. = Absorbance at 550 nm; St. Dv. = Standard Deviation)

Shark 3	Shark Seeds--autoclaved												staurosporine			
	10% FCS	10% FCS	10% FCS	10% FCS	1% FCS	1% FCS	1% FCS	1% FCS	0% FCS	0% FCS	0% FCS	0% FCS	10% FCS	10% FCS	1% FCS	0% FCS
	no tx	20 µl	10 µl	1 µl	no tx	20 µl	10 µl	1 µl	no tx	20 µl	10 µl	1 µl	1 µM	water r 20 µl	water r 20 µl	water r 20 µl
	0.53 3	0.29 8	0.40 4	0.48 2	0.73 1	0.40 8	0.49 6	0.70 7	0.86 6	0.43 2	0.73 9	0.82 7	0.40 6	0.43 6	0.72 6	0.97 1
	0.54 2	0.31 6	0.41 4	0.46 5	0.75 3	0.43 3	0.54 4	0.72 4	0.89 1	0.46 4	0.65 3	0.89 5	0.41 1	0.46 2	0.70 1	0.74 1
	0.57 7	0.37 4	0.42 5	0.52 6	0.74 6	0.39 4	0.53 3	0.60 5	0.69 5	0.46 3	0.71 3	0.91 8	0.39 9	0.39 4	0.67 6	0.79 6
	0.51 6	0.36 9	0.40 9	0.46 7	0.63 3	0.36 5	0.59 6	0.63 3	0.93 7	0.42 9	0.61 8	0.83 3				
	0.5 1	0.32 1	0.43 1	0.46 6	0.68 4	0.41 1	0.57 1	0.61 2	0.79 9	0.46 3	0.63 8	0.78 8				
		0.36 2	0.41 4		0.69 3	0.41 9	0.54 1		0.90 9	0.47 9	0.67 7					
		0.28 5	0.37 3		0.63 6	0.38 4	0.57 3		0.92 8	0.45 2	0.57 7					
		0.29 7	0.39 3		0.63 7	0.43 1	0.52 9		0.94 9	0.55 1	0.57 4					
Ab. Av	0.53 36	0.32 775	0.40 7875	0.48 12	0.68 8375	0.40 5625	0.54 7875	0.65 62	0.87 175	0.46 6625	0.64 8625	0.85 06	0.40 5333	0.43 0667	0.70 1	0.83 3667
St. Dv.	0.02 9126	0.03 5568	0.01 8349	0.02 5994	0.04 9494	0.02 3482	0.03 1197	0.05 543	0.08 5951	0.03 8049	0.05 9625	0.05 5599	0.00 6028	0.03 4312	0.02 5	0.12 1533

Table 7. MTT assay, RG2 cells in 1% FCS, with shark, rabbit and dogs 1 and 2 seeds, autoclaved.

no tx	20 μ l	10 μ l	1 μ l	20 μ l	10 μ l	1 μ l	20 μ l	10 μ l	1 μ l	20 μ l	10 μ l	1 μ l	20 μ l	10 μ l	1 μ l	stauro
	Shark Seeds			Dog 1 seeds			Dog 2 seeds			Rabbit seeds			1 % FCS			
	0.64	0.342	0.447	0.664	0.675	0.773	0.658	0.555	0.595	0.687	0.503	0.62	0.73	0.108		
	0.69	0.344	0.616	0.596	0.633	0.705	0.598	0.568	0.642	0.541	0.582	0.577	0.67	0.095		
	0.66	0.373	0.407	0.595	0.527	0.662	0.712	0.543	0.65	0.601	0.476	0.607	0.58	0.093		
	0.67	0.322	0.499	0.676	0.57	0.613	0.625	0.529	0.648	0.534	0.512	0.6	0.64			
	0.67			0.626	0.63	0.63	0.625	0.561	0.53	0.66	0.585	0.564	0.64			
				0.634	0.728	0.675	0.639	0.526	0.638	0.623	0.584	0.604	0.61			
				0.689	0.6	0.703	0.688	0.498	0.593	0.644	0.565	0.519	0.63			
				0.596	0.719	0.629	0.61	0.566	0.658	0.559	0.536	0.554	0.64			
Ab	0.67	0.345	0.492	0.634	0.635	0.673	0.644	0.543	0.619	0.606	0.54	0.580	0.64	0.0986		
Av.	08	25	25	5	25	75	375	25	25	125	2875	625	7125	6667		
St.	0.01	0.020	0.090	0.038	0.070	0.052	0.039	0.024	0.043	0.057	0.04	0.033	0.04	0.0081		
Dv.	981	99801	69132	09761	1503	6843	2316	29432	7288	1375	2340	7297	3129	4453		
	7	6	6	9	5	7	8	6	7	2	2	6	2			

[0085] Similar studies were carried out comparing the effect of shark PNCs with staurosporine. See Tables 8-10, below. A significant decrease in cell viability was observed for cultured cells incubated with PNCs for 20 hours (Fig. 4A). The viability of the rat and mouse glioma cells declined by 90% and 75%, respectively, while the viability of the rat astrocytes decreased by only 25% at the same conditions. Post-exposure morphological observations of cells under optical dark-field microscope showed signs of cell death. Cells were shrunk and rounded, nuclei were condensed and showed budding of cell bodies (Fig. 4B-2). Cell damage produced by the shark PNCs compares well with the injury made by 1 μ M of staurosporine (a potent apoptosis-inducing reagent) (Fig. 4B-3). A significant effect on cell viability was also observed with Hs683 (human brain glioma), H9c2[2-1] (rat heart myocardium), 27FR (rat skin fibroblast), and SVGp12 (human brain astroglia) cells. Proteons and PNCs obtained from the blood plasma of healthy dog and rabbit also significantly affected the viability of the cultured mammalian cells.

[0086] Fig. 4C shows the viability of RG2 glioma cells exposed to PNCs from different sources. It takes about 1×10^{12} PNC/ml to fully suppress these glioma cells. This concentration accounts for not more than 10% of the full concentration of PNCs in a healthy animal.

Table 8. MTT assay on various cell lines with shark seeds and 0% FCS

	RG2				Fibroblast				Myocard				CTX astrocytes				SVG astrocytes				F98 glioma			
	No tx	1 μl	10μl	20 μl	No tx	1 μl	10μl	20 μl	No tx	1 μl	10μl	20 μl	No tx	1 μl	10μl	20 μl	No tx	1 μl	10μl	20 μl	No tx	1 μl	10μl	20 μl
Plate 1	1.075	0.964	0.856	0.597	0.658	0.503	0.505	0.342	0.509	0.452	0.496	0.376	0.622	0.596	0.555	0.429	0.678	0.688	0.441	0.275	1.045	0.914	0.367	0.213
0% FCS	1.169	1.014	0.791	0.496	0.603	0.517	0.541	0.36	0.462	0.373	0.471	0.382	0.603	0.589	0.559	0.489	0.681	0.585	0.439	0.275	0.977	0.697	0.444	0.16
	1.103	1.016	0.688	0.523	0.558	0.556	0.492	0.375	0.494	0.438	0.462	0.33	0.59	0.645	0.561	0.396	0.676	0.587	0.462	0.251	0.966	0.643	0.415	0.196
	1.084	1.082	0.739	0.55	0.556	0.569	0.432	0.382	0.449	0.446	0.513	0.309	0.565	0.633	0.534	0.456	0.656	0.667	0.363	0.244	1.064	0.73	0.504	0.172
Ab. Av.	1.10775	1.019	0.7685	0.5415	0.59375	0.53625	0.515	0.36475	0.4785	0.4272	0.4855	0.3492	0.595	0.6075	0.552	0.4272	0.6727	0.6317	0.4262	0.2615	1.013	0.746	0.4325	0.1852
St. Dv.	0.0424	0.0484	0.0719	0.0430	0.0480	0.0312	0.0695	0.0177	0.0277	0.0366	0.0233	0.0354	0.0239	0.0254	0.0129	0.0385	0.0113	0.0535	0.0434	0.0161	0.0487	0.0176	0.0572	0.0237

Table 9. MTT assay on various cell lines with shark seeds and 1% FCS

	RG2				Fibroblast				Myocard				CTX astrocytes				SVG astrocytes				F98 glioma			
	No tx	1 μl	10μl	20 μl	No tx	1 μl	10μl	20 μl	No tx	1 μl	10μl	20 μl	No tx	1 μl	10μl	20 μl	No tx	1 μl	10μl	20 μl	No tx	1 μl	10μl	20 μl
Plate 2	0.839	0.606	0.536	0.36	0.503	0.44	0.507	0.307	0.404	0.43	0.317	0.317	0.521	0.501	0.501	0.355	0.602	0.509	0.352	0.248	0.746	0.687	0.376	0.137
	0.734	0.551	0.723	0.419	0.475	0.452	0.34	0.316	0.43	0.444	0.349	0.326	0.507	0.564	0.426	0.415	0.597	0.496	0.37	0.238	0.971	0.571	0.324	0.154
	0.665	0.595	0.551	0.435	0.465	0.518	0.51	0.298	0.408	0.466	0.326	0.29	0.542	0.587	0.434	0.387	0.534	0.488	0.401	0.246	0.91	0.67	0.83	0.141
	0.723	0.656	0.564	0.445	0.457	0.547	0.308	0.371	0.425	0.458	0.321	0.377	0.538	0.641	0.439	0.471	0.48	0.547	0.394	0.26	0.864	0.521	0.309	0.139
Ab. Av.	0.74025	0.602	0.5935	0.41475	0.475	0.48925	0.39975	0.323	0.4167	0.4495	0.3282	0.3272	0.527	0.567	0.465	0.407	0.5532	0.51792	0.3792	0.248	0.727	0.497	0.255	0.1427
St. Dv.	0.0724	0.0431	0.0870	0.0380	0.0200	0.0515	0.0865	0.0328	0.0126	0.0158	0.0143	0.0367	0.0161	0.0573	0.0371	0.0492	0.0578	0.0261	0.0225	0.0090	0.0951	0.0534	0.0395	0.0076

5
10
15
20
25
30
35
40
45
50
55

Table 10. MTT assay on various cell lines with Staurosporine

Saurosp	RG2	RG2	Fibro	Fibro	Fibro	Myocard	myocard	CTX astro	CTX astro	SVG astro	SVG astro	F98 glioma	F98 glioma
	100 nm												
Shark 7	0.305	0.12	0.257	0.168	0.402	0.154	0.252	0.212	0.128	0.067	0.136	0.108	0.108
	0.301	0.119	0.275	0.166	0.373	0.151	0.518	0.122	0.12	0.066	0.138	0.108	0.108
Plate 3	0.279	0.119	0.275	0.171	0.172	0.159	0.533	0.118	0.128	0.067	0.12	0.109	0.109
1% FCS	0.272	0.149	0.296	0.171	0.185	0.176	0.21	0.126	0.136	0.068	0.139	0.109	0.109
Ab. Av.	0.28925	0.12675	0.27575	0.169	0.283	0.16	0.37825	0.1445	0.128	0.067	0.13325	0.1085	0.1085
St. Dv.	0.016215	0.014841	0.015945	0.002449	0.121362	0.011165	0.171002	0.045118	0.006532	0.000816	0.008921	0.000577	0.000577

EXAMPLE 8: Cyclic Amplification of Proteons

[0087] A progressively increased number of proteons can be produced from plasma subjected to increasing temperatures. To examine a method of cyclic amplification, seven 1 ml samples of plasma were prepared for cyclic amplification. After the initial number of proteons was quantitated by a dark-field microscope, the first sample was incubated for 15 minutes at 65°C and normal pressure. Five μ l of the treated first sample was introduced to seed the untreated second sample, and the second sample was incubated for 15 minutes at 65°C and normal pressure. This step was repeated: 5 μ l of the second amplified sample was added to the third untreated sample. This process was repeated up to 6 cycles. A control series was run by adding of five μ l of purified water (instead of seeds) to 1 ml of untreated plasma.

[0088] The first two cycles resulted in a small but significant ($p < 0.001$) increase of proteon population, whereas the third cycle brought about a dramatic increase in the number of proteons. The next three cycles resulted in saturation of the proteon population. In contrast, the control samples showed no dramatic increase of the proteon population. See Figure 2.

EXAMPLE 9: Comparison with other biological particles

[0089] Experiments were carried out to compare the proteons obtained by the procedure described in the Example 1 with the nanobacteria isolated from blood by Kajander et al. (1996) Mol. Biol. Cell 7:3007-3007 using the Nanocapture ELISA™, an Enzyme-Linked Immunosorbent Assay, for detection of nanobacterial antigens (Nanobac OY, Finland). The nanobacteria included in the Nanocapture ELISA were used as a positive control. The Microplate Manager 4.01 Bio-Rad was used to obtain the results of the ELISA. The assay procedure was carried out following the manufacturer's recommendations. The reaction was considered to be positive when the absorbance was significantly higher than the level of noise. Results of interaction of antibodies grown against nanobacteria with proteons and plasma are summarized in Table 11.

Table 11. Interaction of antibodies specific to nanobacteria with proteons and plasma.

No	Sample	Condition	Reaction
1	Proteons, human 1	Freshly prepared at 120°C and 20 psi, 2h	-
2	Proteons, human 2	Freshly prepared at 120°C and 20 psi, 2h	-
3	Proteons, rabbit	Freshly prepared at 120°C and 20 psi, 2h	-
4	Proteons, human 1	Incubated 13 days, 37°C after preparation	-
5	Plasma, human	Freshly prepared	-
6	Plasma, human 1	Incubated 13 days, 37°C	-
7	Proteons, human 1, in D5648 ^a	Incubated 13 days, 37°C	+
8	Proteons human 1, in D6429 ^b	Incubated 13 days, 37°C	+
9	Plasma, human 1, in D5648 ^a	Incubated 13 days, 37°C	+
10	Plasma, human 1, in D6429 ^b	Incubated 13 days, 37°C	+
11	Proteons, human 1, in D5648 ^a	Incubated 13 days, 37 °C	+
12	Proteons human 1, in D6429 ^b	Incubated 13 days, 37°C; 5% CO ₂ -95% air	+
13	Plasma, human 1, in D5648 ^a	Incubated 13 days, 37°C; 5% CO ₂ -95% air	+
14	Plasma, human 1, in D6429 ^b	Incubated 13 days, 37°C; 5% CO ₂ -95% air	+
15	Proteons, human 1, in D5648 ^a	Incubated 13 days, 37°C; 5% CO ₂ -95% air	+
	D5648 ^a	Incubated 13 days, 37 °C	+
	D6429 ^b	Incubated 13 days, 37°C	+
16	D6429 ^b	Freshly prepared	-
17	Water ^c	Freshly prepared	-
18	Broth ^d	120°C and 20 psi, 2 h	-

(continued)

No	Sample	Condition	Reaction
	Nanobacteria		+
^a D5648 tissue culture media (Sigma) with 10% FBS (HyClone). ^b D6429 tissue culture media (Sigma) with 10% FBS (HyClone). ^c Purified water (Direct QTM, Millipore, 17 MOhm) ^d LB-Medium (BIO 101, Inc.; 10 g Trypton-B, 5 g yeast extract-B, 10 h NaCl in 1 L of water).			

[0090] Nanobacteria gave a positive signal, while all freshly prepared proteons showed no interaction. Proteons incubated in cell culture media for 13 days, at 37°C (with and without CO₂) show a positive reaction. However, the culture media alone incubated for 13 days, at 37°C also gave a positive reaction, while freshly prepared culture media was negative, indicating that nanobacteria antigen appeared from the culture media during the incubation.

[0091] Many modifications and other embodiments of the inventions set forth herein will come to mind to one skilled in the art to which these inventions pertain having the benefit of the teachings presented in the foregoing descriptions and the associated drawings. Therefore, it is to be understood that the inventions are not to be limited to the specific embodiments disclosed and that modifications and other embodiments are intended to be included within the scope of the appended claims. Although specific terms are employed herein, they are used in a generic and descriptive sense only and not for purposes of limitation.

[0092] All publications and patent applications mentioned in the specification are indicative of the level of those skilled in the art to which this invention pertains. All publications and patent applications are herein incorporated by reference to the same extent as if each individual publication or patent application was specifically and individually indicated to be incorporated by reference.

[0093] Those skilled in the art will recognize, or be able to ascertain using no more than routine experimentation, many equivalents to the specific embodiments of the invention described herein. Such equivalents are intended to be encompassed by the following claims.

[0094] The invention provides a method for the cyclic amplification of proteons in a biological sample comprising:

- a) centrifuging said biological sample until a supernatant is formed;
- b) dividing said supernatant into a plurality of subsamples; and
- c) heating a subsample for a period of time.

[0095] The method may further comprise the steps of :

- a) obtaining an aliquot of said heated subsample;
- b) placing said aliquot into an unheated subsample;
- c) heating the subsample of 2b) for a period of time; and
- d) repeating steps 2a) -2c) with aliquots taken from the most recently heated subsample for a predetermined number of cycles.

[0096] The subsamples may be 1 ml and the aliquot may be 5 µl.

[0097] The period of time for each cycle may be two hours, one hour or 15 minutes.

[0098] The temperature may be 45°C, 50°C or, 65°C.

[0099] The number of cycles may be 20, 10 or 6.

[0100] Steps 2a) - 2c) may be repeated for a predetermined number of cycles until the number of proteons obtained in each heated subsample no longer increases, wherein the number of proteons in the subsample in which the number of proteons no longer increase is indicative of the amount of misfolded proteins present in the biological sample.

[0101] The invention provides a method for the detection of a disorder selected from Table 1 or Table 2, comprising:

- a) centrifuging a biological sample until a supernatant is formed;
- b) dividing said supernatant into a plurality of subsamples;
- c) heating a subsample for a period of time.
- d) obtaining an aliquot of said heated subsample;
- e) placing said aliquot into an unheated subsample;
- f) heating the subsample of e) for a period of time; and
- g) repeating steps d-f with aliquots taken from the most recently heated subsample for a number of cycles;

wherein the proteons produced from the most recently heated subsample are further contacted with an antibody that binds to a protein selected from Table 1 or Table 2,
wherein the binding of said antibody is indicative of a disorder related to said protein.

5

Claims

1. An isolated proteon nucleation center (PNC) comprising a metal cluster.

10

2. A process for the purification of the PNC of claim 1 from a biological sample, comprising:

- a) centrifuging said biological sample until a supernatant is formed;
- b) filtering said supernatant through a 5,000kD nominal molecular weight limit ultrafiltration membrane; and
- e) collecting the filtrate.

15

3. A PNC product produced by the process of claim 2.

4. The isolated PNC of claim 1, wherein said metal cluster is selected from the group consisting of copper, iron, magnesium and zinc.

20

5. A method for inducing apoptosis in cells, comprising contacting a cell culture with at least one isolated PNC of claim 1.

6. A method for clearing misfolded proteins form blood comprising contacting a sample of blood with the PNC of claim 1.

25

30

35

40

45

50

55

Figure 1

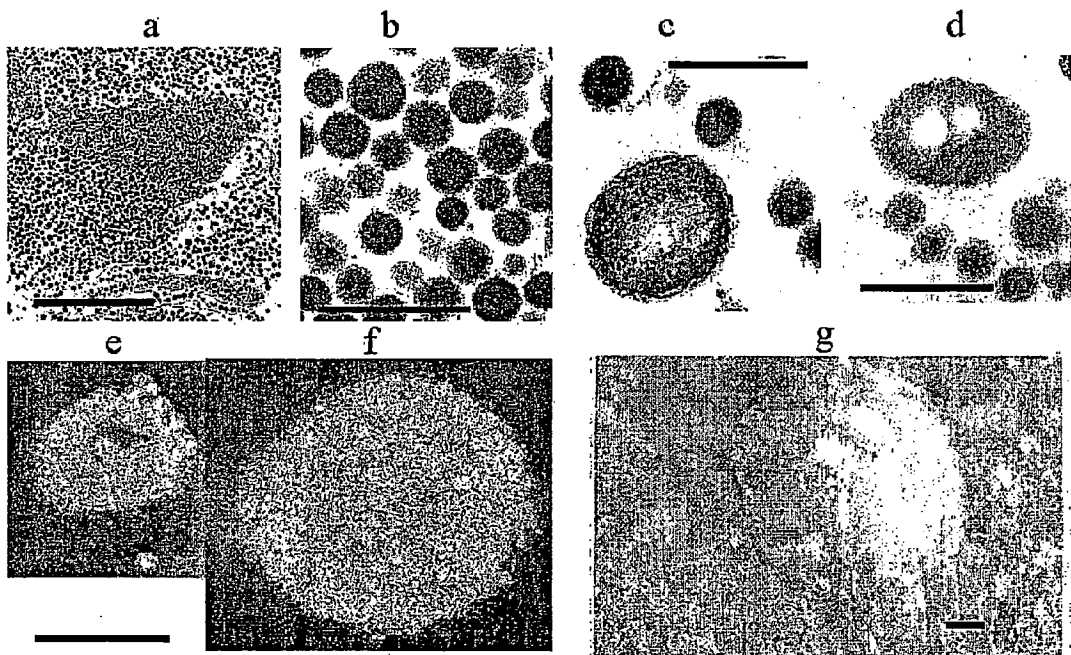


Figure 2

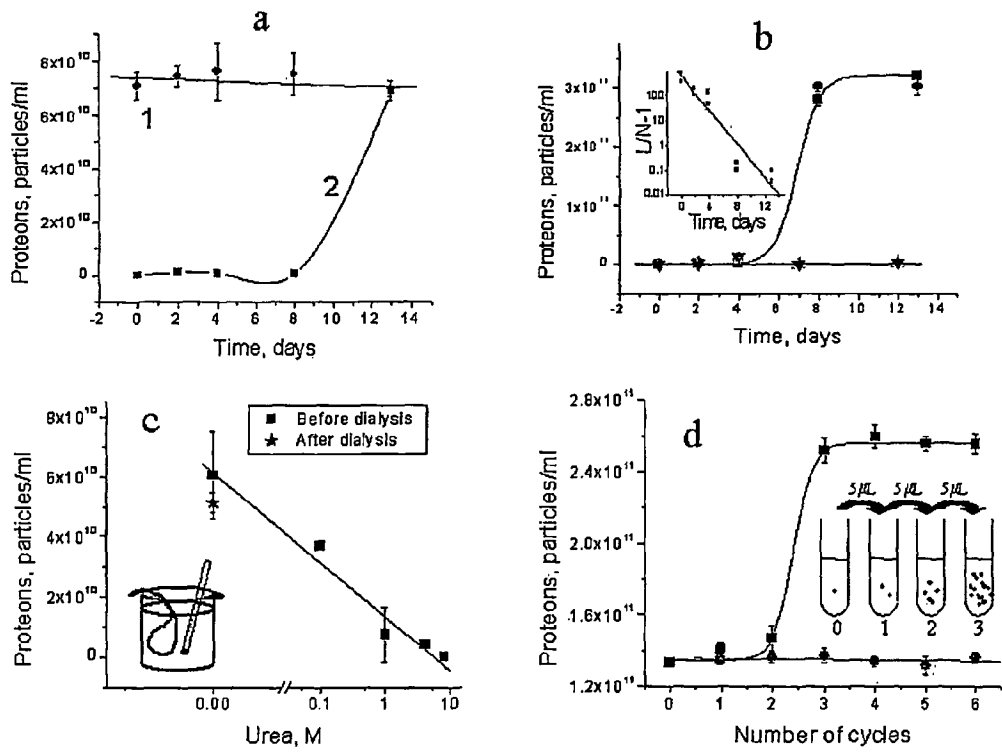


Figure 3

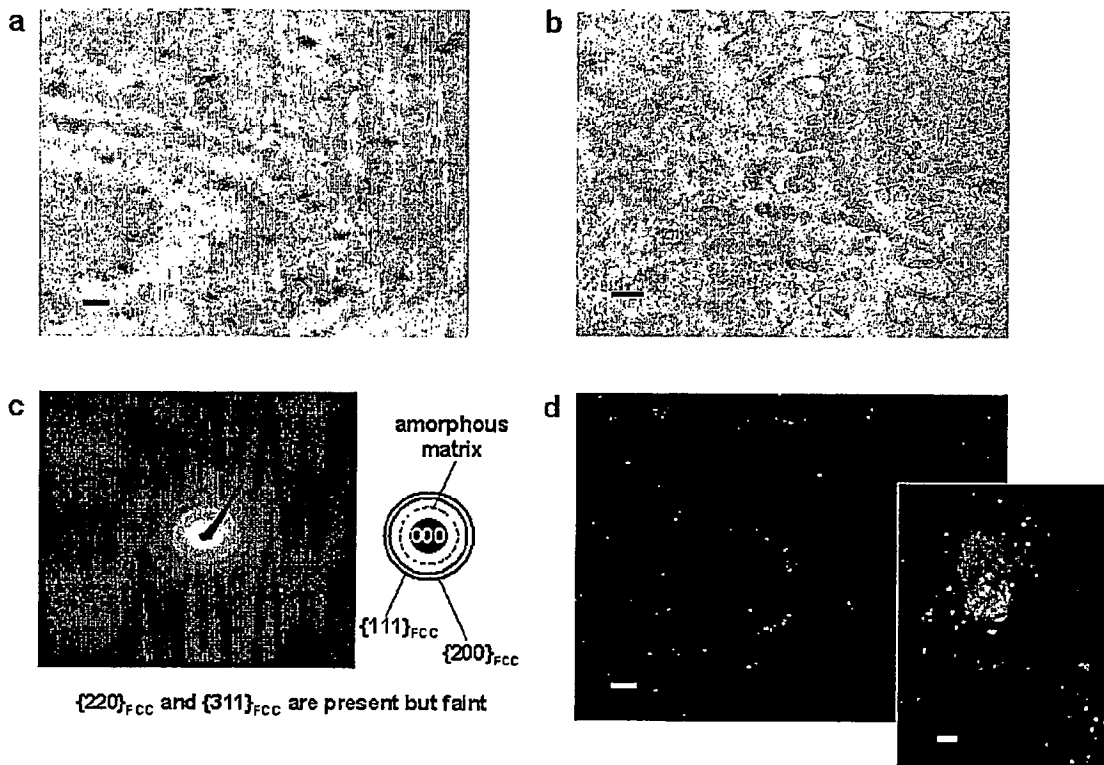
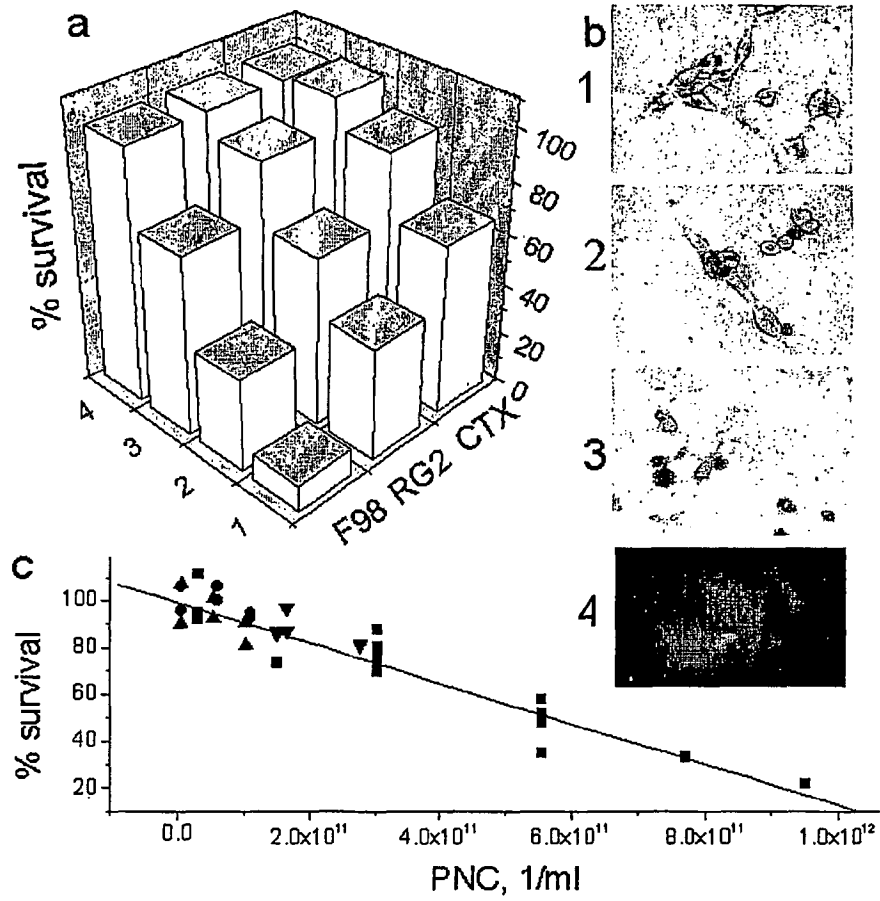


Figure 4





EUROPEAN SEARCH REPORT

Application Number
EP 09 00 1228

DOCUMENTS CONSIDERED TO BE RELEVANT			
Category	Citation of document with indication, where appropriate, of relevant passages	Relevant to claim	CLASSIFICATION OF THE APPLICATION (IPC)
X	RATABOUL F ET AL: "Synthesis and characterization of monodisperse zinc and zinc oxide nanoparticles from the organometallic precursor [Zn(C6H11)2]" JOURNAL OF ORGANOMETALLIC CHEMISTRY, ELSEVIER-SEQUOIA S.A. LAUSANNE, CH, vol. 643-644, 1 February 2002 (2002-02-01), pages 307-312, XP004339588 ISSN: 0022-328X * the whole document *	1,4	INV. G01N33/53
X	RIVAS J ET AL: "FIRST STEPS TOWARDS TAILORING FINE ANDULTRAFINE IRON PARTICLES USING MICROEMULSIONS" IEEE TRANSACTIONS ON MAGNETICS, IEEE SERVICE CENTER, NEW YORK, NY, US, vol. 29, no. 6, 1 November 1993 (1993-11-01), pages 2655-2657, XP000432289 ISSN: 0018-9464 * the whole document *	1,4	
X	KAPOOR S ET AL: "Laser-induced fragmentation and melting of cadmium and copper nanoparticles" MATERIALS RESEARCH BULLETIN, ELSEVIER, KIDLINGTON, GB, vol. 35, no. 13, October 2000 (2000-10), pages 2071-2079, XP004229970 ISSN: 0025-5408 * the whole document *	1,4	
The present search report has been drawn up for all claims			TECHNICAL FIELDS SEARCHED (IPC) G01N
6	Place of search Munich	Date of completion of the search 15 April 2009	Examiner Friedrich, Christof
CATEGORY OF CITED DOCUMENTS		T : theory or principle underlying the invention E : earlier patent document, but published on, or after the filing date D : document cited in the application L : document cited for other reasons & : member of the same patent family, corresponding document	
X : particularly relevant if taken alone Y : particularly relevant if combined with another document of the same category A : technological background O : non-written disclosure P : intermediate document			

EPC FORM 1503 03.82 (P04C01)



EUROPEAN SEARCH REPORT

Application Number
EP 09 00 1228

DOCUMENTS CONSIDERED TO BE RELEVANT			
Category	Citation of document with indication, where appropriate, of relevant passages	Relevant to claim	CLASSIFICATION OF THE APPLICATION (IPC)
X	YEADON ET AL.: "In-situ observations of classical grain growth mechanisms during sintering of copper nanoparticles on (001) copper" APPLIED PHYSICS LETTERS, AIP, AMERICAN INSTITUTE OF PHYSICS, MELVILLE, NY, US, vol. 71, no. 12, 22 September 1997 (1997-09-22), page 1631, XP012018629 ISSN: 0003-6951 * the whole document *	1,4	TECHNICAL FIELDS SEARCHED (IPC)
X	RAHMAN QAMAR ET AL: "Evidence that ultrafine titanium dioxide induces micronuclei and apoptosis in Syrian hamster embryo fibroblasts" ENVIRONMENTAL HEALTH PERSPECTIVES, vol. 110, no. 8, August 2002 (2002-08), pages 797-800, XP002523297 ISSN: 0091-6765 * figure 5 *	1,5	
X	WO 96/37282 A (AKZO NOBEL NV [NL]; ROETTGER HENNING [DE]; WECHS FRIEDBERT [DE]) 28 November 1996 (1996-11-28) * abstract; claim 16 *	2,3	
6 The present search report has been drawn up for all claims			
Place of search Munich		Date of completion of the search 15 April 2009	Examiner Friedrich, Christof
CATEGORY OF CITED DOCUMENTS X : particularly relevant if taken alone Y : particularly relevant if combined with another document of the same category A : technological background O : non-written disclosure P : intermediate document		T : theory or principle underlying the invention E : earlier patent document, but published on, or after the filing date D : document cited in the application L : document cited for other reasons & : member of the same patent family, corresponding document	

EPO FORM 1503, 03.02 (P04C01)



Application Number

EP 09 00 1228

CLAIMS INCURRING FEES

The present European patent application comprised at the time of filing claims for which payment was due.

- Only part of the claims have been paid within the prescribed time limit. The present European search report has been drawn up for those claims for which no payment was due and for those claims for which claims fees have been paid, namely claim(s):
- No claims fees have been paid within the prescribed time limit. The present European search report has been drawn up for those claims for which no payment was due.

LACK OF UNITY OF INVENTION

The Search Division considers that the present European patent application does not comply with the requirements of unity of invention and relates to several inventions or groups of inventions, namely:

see sheet B

- All further search fees have been paid within the fixed time limit. The present European search report has been drawn up for all claims.
- As all searchable claims could be searched without effort justifying an additional fee, the Search Division did not invite payment of any additional fee.
- Only part of the further search fees have been paid within the fixed time limit. The present European search report has been drawn up for those parts of the European patent application which relate to the inventions in respect of which search fees have been paid, namely claims:
- None of the further search fees have been paid within the fixed time limit. The present European search report has been drawn up for those parts of the European patent application which relate to the invention first mentioned in the claims, namely claims:
- The present supplementary European search report has been drawn up for those parts of the European patent application which relate to the invention first mentioned in the claims (Rule 164 (1) EPC).



**LACK OF UNITY OF INVENTION
SHEET B**

Application Number
EP 09 00 1228

The Search Division considers that the present European patent application does not comply with the requirements of unity of invention and relates to several inventions or groups of inventions, namely:

1. claims: 1, 4

PNC comprising metal cluster.

2. claims: 2-3

Centrifugation and filtration of biological samples.

3. claim: 5

Induction of apoptosis with metal clusters.

4. claim: 6

Clearing misfolded proteins from blood with metal clusters.

**ANNEX TO THE EUROPEAN SEARCH REPORT
ON EUROPEAN PATENT APPLICATION NO.**

EP 09 00 1228

This annex lists the patent family members relating to the patent documents cited in the above-mentioned European search report. The members are as contained in the European Patent Office EDP file on
The European Patent Office is in no way liable for these particulars which are merely given for the purpose of information.

15-04-2009

Patent document cited in search report	Publication date	Patent family member(s)	Publication date
WO 9637282	A	28-11-1996	
		AU 693362 B2	25-06-1998
		AU 5693396 A	11-12-1996
		CN 1185119 A	17-06-1998
		DE 19518624 C1	21-11-1996
		EA 300 B1	29-04-1999
		EP 0828553 A1	18-03-1998
		ES 2160817 T3	16-11-2001
		JP 11506387 T	08-06-1999
		US 5919370 A	06-07-1999

REFERENCES CITED IN THE DESCRIPTION

This list of references cited by the applicant is for the reader's convenience only. It does not form part of the European patent document. Even though great care has been taken in compiling the references, errors or omissions cannot be excluded and the EPO disclaims all liability in this regard.

Patent documents cited in the description

- US 5344926 A, Murakata [0048]
- US 4973552 A, Schroeder [0048]
- US 6518032 B, Fritz [0048]

Non-patent literature cited in the description

- Schluter et al. *PNAS*, 1986, vol. 83, 6137-6141 [0002]
- Kannan et al. *J. Biol. Chem.*, 1988, vol. 263, 3766-13773 [0002]
- Carrell ; Lomas. *Lancet*, 1997, vol. 350, 134-138 [0002]
- Carrell ; Gooptu. *Curr. Op. Struc. Biol.*, 1998, vol. 8, 799-809 [0002]
- Soto. *FEBS Letters*, 2001, vol. 498, 204-207 [0002]
- Jaikaran ; Clark. *Biochimica et Biophysica Acta*, 2001, vol. 1537, 179-203 [0002]
- Ursini et al. *Trends Mol. Med*, 2002, vol. 8, 370-374 [0002]
- Davis et al. *Lancet*, 2002, vol. 359, 2242-2247 [0002]
- Enderlein. *Bakterien-Cyclogenie*. Verlag de Gnryter & Co, 1925 [0003]
- Gerner. *Blut. Curr. Onkol.*, 1997, vol. 7, 6, 12 [0003]
- Prusiner. *Science*, 1982, vol. 216, 136-144 [0004]
- Prusiner. *Science*, 1991, vol. 252, 1515-1522 [0004]
- Wille et al. *Biophysical J.*, 2002, vol. 82, 825 [0004]
- Wille et al. *PNAS*, 2002, vol. 99, 3563-3568 [0004]
- Geschwind et al. *Neurology*, 2002, vol. 58, A135-A135 [0004]
- Dyson et al. *Biophysical J.*, 2002, vol. 82, 824 [0004]
- Saborio. *Nature*, 2001, vol. 411, 810-813 [0004]
- Wetterberg et al. *Neurosci Lett.*, 2002, vol. 329, 91-5 [0004]
- Kelly. *Curr. Opin. Struct. Biol.*, 1996, vol. 6, 11-17 [0022]
- Hardt et al. *J. Comp. Path.*, 2000, vol. 122, 43-53 [0024]
- Klein. *Immunology: The Science of Self-Nonself Discrimination*. John Wiley & Sons, 1982 [0025]
- Kennett et al. *Monoclonal Antibodies and Hybridomas: A New Dimension in Biological Analyses*. Plenum Press, 1984 [0025]
- *Monoclonal Antibody Technology, Laboratory Techniques in Biochemistry and Molecular Biology*. Elsevier, 1980, vol. 13 [0025]
- *Microbiology* [0025]
- Kohler ; Milstein. *Nature*, 1975, vol. 256, 495-497 [0025]
- Work et al. *Laboratory Techniques and Biochemistry in Molecular Biology*. North Holland Publishing Company, 1978 [0026]
- Petrenko ; Vodyanoy. *J. Micro. Meth.*, 2003, vol. 53, 253-262 [0027]
- Bradbury ; Bracegirdle. *Introduction to Light Microscopy (Microscopy Handbooks, No 42)*. Springer Verlag, 1998 [0028]
- Slayter ; Slayter. *Light and Electron Microscopy*. Cambridge University Press, 1992 [0029]
- Kelly. *Curr. Op. Struc. Biol.*, 1996, vol. 6, 11-17 [0040] [0062]
- Kelly. *CURR. OP. STRUC. BIOL.*, 1996, vol. 8, 101-106 [0040]
- Korth et al. *Nature*, 1997, vol. 390, 74-77 [0040] [0062]
- Brown et al. *J. Lab. Clin. Med.*, 2001, vol. 137, 5-13 [0040]
- Aguzzi. *Lab. Clin. Med.*, 2000, vol. 137, 5-13 [0040]
- Aguzzi. *Nature Medicine*, 2001, vol. 7, 289-290 [0040]
- Wadsworth et al. *Lancet*, 2001, vol. 358, 171-180 [0040]
- Kristiansen et al. *Nature*, 2001, vol. 409, 198 [0041]
- Kannan et al. *J. Biol. Chem.*, 1988, vol. 263, 13766-13773 [0042]
- Schluter ; Drenckhahn. *PNAS*, 1986, vol. 83, 6137-6141 [0042]
- Fernandez et al. *Atherosclerosis*, 2001, vol. 158, 103-111 [0042]
- Papalexis et al. *Mol. Biochem. Parasitology*, vol. 115, 77-86 [0042]
- Esievo et al. *Veterinary Parasitology*, 1984, vol. 15, 181-185 [0042]
- Igoe et al. *Clin. Microb. Newsletter*, 2002, vol. 24, 69-70 [0042]
- Kreidl. *J. Am. Coll. Surgeons*, 2002, vol. 194, 387 [0042]
- Beckers. *Netherlands J. Med*, 2001, vol. 58, 204-207 [0042]
- Ismeno et al. *Int'l J. Cardiology*, 1999, vol. 69, 179-183 [0042]

EP 2 068 147 A1

- **Klibansky et al.** *Toxicon*, 1966, vol. 3, 213-216 [0042]
- **Seibert et al.** *Toxicon*, 2003, vol. 41, 831-839 [0042]
- **Szabo et al.** *Thrombosis Research*, 2002, vol. 107, 357-363 [0042]
- **Kaioumova et al.** *Chemosphere*, 2001, vol. 43, 801-805 [0042]
- **Sambrook et al.** *Molecular Cloning -A Laboratory Manual*. Cold Spring Harbour Laboratory Press, 1989, vol. 1-3 [0043]
- *Current Protocols in Molecular Biology*. Greene Publishing Associates, Inc. and John Wiley & Sons, Inc, 1994 [0043]
- **Oikawa.** *Analytical Electron Microscopy for Materials Science*. Springer-Verlag, 2002 [0046]
- **Aiken ; Finke.** *J. Mol. Cat. A: Chem.*, 1998, vol. 145, 1-44 [0047]
- **Gonzalez-Moraga.** *Cluster Chemistry*. Springer-Verlag, 1993 [0047]
- **Broun et al.** *J. Mol. Biol.*, 2002, vol. 321, 341-353 [0047]
- **Liu ; Xu.** *J. Inorganic Biochem.*, 2002, vol. 88, 77-86 [0047]
- **Shindo ; Oikawa.** *Analytical Electron Microscopy for Materials Science*. Springer-Verlag, 2002 [0056]
- **Kelly.** *Curr. Op. Struc. Biol.*, 1996, vol. 8, 101-106 [0062]
- **Vodyanoy et al.** *Langmuir*, 1994, vol. 10, 1354-1357 [0067]
- **Brandes ; Brook.** *Smithells Metals Reference Book*. 1992 [0078]
- **Lawless.** *Rep. Prog. Phys.*, 1974, vol. 37 (2), 231-316 [0078]
- **Murr.** *Interfacial Phenomena in Metals and Alloys*. Addison-Wesley, 1975 [0079]
- **Ashby.** *Acta Metallurgica*, 1974, vol. 22 (3), 275-289 [0079]
- **Swinkels ; Ashby.** *Acta Metallurgica*, 1981, vol. 29 (2), 259-281 [0079]
- **Kajander et al.** *Mol. Biol. Cell*, 1996, vol. 7, 3007-3007 [0089]

专利名称(译)	从血液和其他生物材料中分离和自组装小蛋白质颗粒的方法		
公开(公告)号	EP2068147A1	公开(公告)日	2009-06-10
申请号	EP2009001228	申请日	2003-09-30
[标]申请(专利权)人(译)	美国·奥本大学		
申请(专利权)人(译)	奥本大学		
当前申请(专利权)人(译)	奥本大学		
[标]发明人	VODYANOY VITAL J SAMOYLOV ALEXANDRE M PUSTOVYY OLEG M		
发明人	VODYANOY, VITALY J. SAMOYLOV, ALEXANDRE M. PUSTOVYY, OLEG M.		
IPC分类号	G01N33/53 A61K C07K14/00 C12P21/06 G01N33/50		
CPC分类号	G01N33/5002		
优先权	60/415108 2002-09-30 US		
外部链接	Espacenet		

摘要(译)

包含金属簇的分离的蛋白质成核中心 (PNC) 。

Figure 1

