

(19)



(11)

EP 1 904 657 B1

(12)

EUROPEAN PATENT SPECIFICATION

(45) Date of publication and mention of the grant of the patent:
25.05.2011 Bulletin 2011/21

(51) Int Cl.:
C12Q 1/68^(2006.01) G01N 33/53^(2006.01)
G01N 33/00^(2006.01)

(21) Application number: **06772657.0**

(86) International application number:
PCT/US2006/022427

(22) Date of filing: **08.06.2006**

(87) International publication number:
WO 2006/133399 (14.12.2006 Gazette 2006/50)

(54) **METHOD FOR PREDICTING IMMUNE RESPONSE TO NEOPLASTIC DISEASE BASED ON mRNA EXPRESSION PROFILE IN NEOPLASTIC CELLS AND STIMULATED LEUKOCYTES**

VERFAHREN ZUR VORHERSAGE EINER IMMUNANTWORT AUF EINE TUMORERKRANKUNG AUF DER GRUNDLAGE EINES MRNA-EXPRESSIONSPROFILS IN TUMORZELLEN UND STIMULIERTEN LEUKOZYTEN

MÉTHODE PERMETTANT DE PRÉDIRE LA RÉPONSE IMMUNITAIRE À UNE MALADIE NÉOPLASTIQUE SUR LA BASE DU PROFIL D'EXPRESSION DE L'ARNM DANS DES CELLULES NÉOPLASTIQUES ET DES LEUCOCYTES STIMULÉS

(84) Designated Contracting States:
AT BE BG CH CY CZ DE DK EE ES FI FR GB GR HU IE IS IT LI LT LU LV MC NL PL PT RO SE SI SK TR

(30) Priority: **08.06.2005 US 688744 P**
11.11.2005 US 735508 P

(43) Date of publication of application:
02.04.2008 Bulletin 2008/14

(60) Divisional application:
08008370.2 / 1 964 931

(73) Proprietors:
 • **HITACHI CHEMICAL RESEARCH CENTER, INC. Irvine, CA 92617 (US)**
 • **Hitachi Chemical Co., Ltd. Tokyo 163-0449 (JP)**

(72) Inventor: **MITSUHASHI, Masato Irvine, California 92614 (US)**

(74) Representative: **Elsy, David et al Withers & Rogers LLP Goldings House 2 Hays Lane London SE1 2HW (GB)**

(56) References cited:
WO-A-2006/116721

- **STRÄTER JÖRN ET AL: "Expression of TRAIL and TRAIL receptors in colon carcinoma: TRAIL-R1 is an independent prognostic parameter." CLINICAL CANCER RESEARCH : AN OFFICIAL JOURNAL OF THE AMERICAN ASSOCIATION FOR CANCER RESEARCH DEC 2002, vol. 8, no. 12, December 2002 (2002-12), pages 3734-3740, XP002504441 ISSN: 1078-0432**
- **SPIERINGS DIANA C J ET AL: "Expression of TRAIL and TRAIL death receptors in stage III non-small cell lung cancer tumors" CLINICAL CANCER RESEARCH, THE AMERICAN ASSOCIATION FOR CANCER RESEARCH, US, vol. 9, no. 9, 15 August 2003 (2003-08-15), pages 3397-3405, XP002469336 ISSN: 1078-0432**
- **MIN YOUNG JOO ET AL: "Prognostic significance of Fas (CD95) and TRAIL receptors (DR4/DR5) expression in acute myelogenous leukemia." LEUKEMIA RESEARCH, vol. 28, no. 4, April 2004 (2004-04), pages 359-365, XP002504442 ISSN: 0145-2126**
- **YOUNES ET AL.: 'Clinical Implications of the Tumor Necrosis Factor Family in Benign and Malignant Hematologic Disorders' CANCER vol. 98, no. 3, August 2003, pages 458 - 467, XP003000698**
- **YOUNES ET AL.: 'Emerging Applications of the Tumor Necrosis Factor Family of Ligands and Receptors in Cancer Therapy' J. CLIN. ONCOL. vol. 2, no. 1, September 2003, pages 3526 - 3534, XP003000699**

Note: Within nine months of the publication of the mention of the grant of the European patent in the European Patent Bulletin, any person may give notice to the European Patent Office of opposition to that patent, in accordance with the Implementing Regulations. Notice of opposition shall not be deemed to have been filed until the opposition fee has been paid. (Art. 99(1) European Patent Convention).

EP 1 904 657 B1

- **AGGARWAL ET AL.: 'The role of TNF and its Family Members in Inflammation and Cancer: Lessons from Gene Deletion' CURR. DRUG TARGETS INFLAMM. ALLERGY vol. 1, no. 4, December 2002, pages 327 - 341, XP008073463**

Description

BACKGROUND OF THE INVENTION

5 Field of the Invention

10 [0001] The present invention relates to a method for predicting the immune response in a mammal to neoplastic disease based on the expression profile of tumor necrosis factor receptor (TNF-R) superfamily mRNA in neoplastic tissue, and of tumor necrosis factor (TNF) superfamily mRNA in circulating leukocytes. In the method, samples of neoplastic tissue are obtained and the TNF-R superfamily subtype mRNAs expressed in those tissues are assessed. Furthermore, whole blood of the mammal is subjected to a stimulus that activates T-cells in the blood and the TNF superfamily subtype mRNAs that exhibit a significant change in expression level in response to the stimulus are identified. Individuals that exhibit a change in expression level in TNF superfamily subtypes that correlate with the TNF-R superfamily subtypes expressed in their tumor tissue are determined to have a likely lesser severity of prognosis for their disease.

15 Description of the Related Art

20 [0002] Different modalities of cancer therapies may be compared to varying types of uses of force in society. Chemotherapy is like the widespread use of military force in a city; the overwhelming power of the weapons involved may cause collateral damage to civilians. In contrast, leukocytes in circulating peripheral blood, which are the primary killers of cancer cells in the human body, are like police officers patrolling city streets who deal with street crime. Likewise, when leukocytes encounter cancer cells in the body, these cells are the initial responders to the cancer targets. Leukocytes are classified into many classes and subclasses based on morphological analysis and characterization of cell surface markers using flow cytometry or immunohistochemical staining techniques. These classes and subclasses are like identifying police officers by their uniforms and identification badges. The number of leukocytes per mm³ of peripheral blood corresponds to the number of officers in the city.

25 [0003] When a police officer encounters street criminals, he must deal with them with the weapons he has at hand. But police officers are not always carrying appropriate weaponry. Similarly, cytotoxic T-cells are not always provided with the proper anti-tumor factors to combat specific cancer cells. Cytotoxic T-cells recognize cancer cells via IgG Fc receptors (FcR γ), when the cancer cells are coated with IgG. This process is termed antibody-dependent cell-mediated cytotoxicity (ADCC). In fact, IgG is frequently recognized around cancer margins by staining with anti-human IgG (see, for example, Richman AV, Immunofluorescence studies of benign and malignant human mammary tissue, J. Natl. Cancer Inst. 1976;57:263-7, and Koneval T, et al., Demonstration of immunoglobulin in tumor and marginal tissues of squamous cell carcinomas of the head and neck, J. Natl. Cancer Inst. 1977;59:1089-97). Infiltration of mononuclear leukocytes into cancer lesions is also found in many cases. The FcR γ on the surface of cytotoxic T-cells are like a bag containing an assortment of weapons that a police officer carries. Different types of FcR γ , such as CD16, CD32, and CD64 correspond to different types of bags. Cudgels are an initial weapon, and are held ready to attack at any time. In cytotoxic T-cells, the cudgel corresponds to perforin (see Nakanishi et al., Perforin expression in lymphocytes infiltrated to human colorectal cancer, Br. J. Cancer 1991;64:239-42), which is pre-synthesized and stored in the cytosol of cytotoxic T-cells, and immediately released upon FcR γ activation. Other presynthesized "cudgels" ready for use include granzymes, proteases related to the digestive enzymes trypsin and chymotrypsin, which may act to trigger apoptosis in the target cell.

30 [0004] Officers also carry more powerful guns, which may correspond to tumor necrosis factors (TNF) in cytotoxic T-cells. Usually, the "bullets" in the cellular context (TNF subtypes) are not loaded in the gun, and are synthesized and released from cytotoxic T-cells only upon Fc receptor activation. TNF is capable of inducing apoptosis by interacting with specific TNF receptors present on the surface of target cells. In order to maintain killing activities against a broad spectrum of target cells, different types of TNF ligands exist (as part of a TNF superfamily, abbreviated to TNFSF). According to GenBank and UniGene information (<http://www.ncbi.nlm.nih.gov>), the human TNF superfamily encompasses up to TNF superfamily 18, with some missing numbers (16 and 17) and multiple sequences within the same number (13A and 13B), for a total of 17 human members. For the corresponding TNF receptors (the TNF-R superfamily: abbreviated to TNFRSF), the human TNF-R superfamily encompasses up to TNF-R superfamily subtype 21. Although TNF/TNF-R superfamily subtype interactions are not strictly specific, each ligand generally reacts with a specific receptor, as shown in Table 1, and over 300 different TNF superfamily subtype TNF-R superfamily combinations exist.

35 Table I. List of GenBank UniGene entry of TNFRSF and TNFSF mRNA.

| TNFRSF (UniGene #) | Corresponding TNFSF (UniGene #) |
|--------------------|---------------------------------|
| 1A (Hs.279594) | 2 (Hs.241570) |

EP 1 904 657 B1

(continued)

| | TNFRSF (UniGene #) | Corresponding TNFSF (UniGene #) |
|----|--------------------|---------------------------------|
| | 1B (Hs.256278) | 2 (Hs.241570) |
| 5 | 3 (Hs. 1116) | 1 (Hs.36) |
| | | 3 (Hs.376208) |
| | 4 (Hs.129780) | 4 (Hs.181097) |
| | 5 (Hs.472860) | 5 (Hs.652) |
| 10 | 6 (Hs.244139) | 6 (Hs.2007) |
| | 7 (Hs.355307) | 7 (Hs.501497) |
| | 8 (Hs.1314) | 8 (Hs.494901) |
| | 9 (Hs.193418) | 9 (Hs.1524) |
| | 10A (Hs.401745) | 10 (Hs.478275) |
| 15 | 10B (Hs.521456) | 10 (Hs.478275) |
| | 10C (Hs.119684) | 10 (Hs.478275) |
| | 10C (Hs. 119684) | 10 (Hs.478275) |
| | 10D (Hs.213467) | 10 (Hs.478275) |
| 20 | 11A (Hs.204044) | 11 (Hs.333791) |
| | 11B (Hs.81791) | 11 (Hs.333791) |
| | 12A (Hs.355899) | 12 (NM003809)* |
| | 14 (Hs.512898) | 14 (Hs.129708) |
| | 17 (Hs.2556) | 13 (Hs.54673) |
| 25 | | 13B (Hs.525157) |
| | 18 (Hs.212680) | 18 (Hs.248197) |
| | 25 (Hs.462529) | 15 (Hs.241382) |

*:GeneBank accession number (no UniGene entry was found).

30 **[0005]** The complete eradication of cancers may happen when the appropriate TNF superfamily subtype is released from infiltrating cytotoxic T-cells. The rare cases of miracle survivors of cancers may be those in which the TNF superfamily subtype TNF-R superfamily subtype combination is perfect.

35 **[0006]** Antibody-dependent cell-mediated cytotoxicity (ADCC) is another mechanism involved in the cytolytic function of leukocytes in conjunction with antibodies (see Perussia et al., Assays for antibody-dependent cell-mediated cytotoxicity (ADCC) and reverse ADCC (redirected cytotoxicity) in human natural killer cells *Methods Mol Biol.* 2000;121:179-92). Once the Fab portion of IgG binds to the target cells, the Fc portion of IgG activates Fc receptors on the leukocytes, followed by activation of these leukocytes to attack target cells. Although ADCC has been studied for many years, the conditions in *in vitro* experiments involving ADCC is dependent on the ratio between effector cytotoxic T-cells and target cells in a pure cell system suspended in an artificial solution. Moreover, because cytolysis was generally quantitated by the release of isotope (chromium-51) from the target cells, it was not known whether the observed cytolysis happens via perforin or TNF. It is also not known which TNF superfamily subtypes are involved in ADCC.

40 **[0007]** Finally, a further important mechanism by which leukocytes combat cancer is the release of chemokines to recruit more leukocytes to the disease site. Many such cytokines have been discovered. Although correlations have not been established between specific chemokines and specific populations of recruited leukocytes, the phenomenon of chemokine release and leukocyte recruitment is important in combating cancer. An analogy might be made here to policemen confronted with a gang of criminals, who radio back to headquarters for more reinforcements.

45 **[0008]** In sum, although complicated cellular mechanisms are required to educate appropriate subsets of leukocytes to be able to recognize specific cancer markers, and appropriate chemotactic factors should be released to attract these mature leukocytes to the lesion, actual cancer killing happens in two distinct ways. Immediate cancer killing takes place by the release of perforin from these leukocytes, followed by slow and sustained induction of apoptosis via the synthesis and release of TNF (see Vujanovic, Role of TNF family ligands in antitumor activity of natural killer cells, *Int. Rev. Immunol.* 2001 Jun;20(3-4):415-37). TNF induces apoptosis via binding to the specific receptors on the target cell surface. This means that leukocytes must release specific TNF ligand(s) corresponding to the receptors present on the cancer cells. Although the usefulness of TNF/TNF receptor ratios as predictors of disease outcome has been considered (see McDermott, TNF and TNFR biology in health and disease, *Cell. Mol. Biol. (Noisy-le-grand).* 2001 Jun;47(4):619-35), little is known about the profile of TNF receptors in cancer cells and induction of ligands in leukocytes, nor is it known how appropriate populations of leukocytes are recruited.

[0009] Sträter J. et al (Clinical Cancer Research: an official journal of the American Association for Cancer Research (2002), 8 (12) pages 38734-3740) discloses the expression of TRAIL and trail receptors in: carcinoma. Younes et al (Cancer (2003), 98 pages 458-467) reviews the clinical implications of the TNF family in benign and malignant hematologic disorders.

5

SUMMARY OF THE INVENTION

[0010] If a pathological specimen shows IgG deposition around cancer margins, this means that the patient is at least capable of raising cancer-recognizing IgG. If the infiltration of mononuclear leukocytes exists at the margin of the cancer mass, this means that the patient's leukocytes are somehow attracted toward the cancer lesion, probably due to the release of chemotactic factors (C3a, C5a, C567) (see Becker, The relationship of the chemotactic behavior of the complement-derived factors C3a C5a and C567 and a bacterial chemotactic factor to their ability to activate the proesterase 1 of rabbit polymorphonuclear leukocytes, J. Exp. Med. 1972;135:376-87) during complement activation of cancer-bound IgG. The type of TNF-R superfamily subtypes expressed on the surface of cancer cells can be identified by, for example, immunostaining (if antibodies are available), in-situ hybridization, or in-situ PCR (sequences are available from GenBank). Identification of the TNF superfamily subtypes expressed in infiltrating mononuclear cells is difficult to interpret, because Fc γ may not be activated yet. Since leukocytes in peripheral blood are like reserve police officers, a supply of appropriately and fully equipped cytotoxic T-cells in peripheral blood is a critical first step for the battle against cancer. Thus, this method makes it possible to predict anti-cancer immunity in each patient by quantitating the inducibility of the appropriate TNF superfamily subtypes in peripheral blood leukocytes.

10

15

20

[0011] Accordingly, an embodiment of the present invention provides a method of determining the likely severity of prognosis for a neoplastic disease in a mammal, comprising: determining a level of mRNA expression of a plurality of tumor necrosis factor (TNF) superfamily subtypes in a first sample of whole blood from the mammal; exposing a second sample of whole blood of the mammal to a stimulus that activates T-cells in the whole blood; determining a level of mRNA expression of the plurality of tumor necrosis factor (TNF) superfamily subtypes in the second sample; identifying subtypes that exhibit a significant change in mRNA.

25

[0012] expression level in said whole blood between the first and second samples; and determining a likely lesser severity of prognosis when the identified subtypes of TNF superfamily correspond to specific tumor necrosis factor receptor (TNF-R) superfamily subtypes expressed in neoplastic cells of the mammal.

30

[0013] In a further aspect, the TNF-R superfamily subtypes expressed in the neoplastic tissue are selected from the group consisting of TNF-R superfamily subtypes 1A, 3, 12A, and 14. In another aspect, the TNF-R superfamily subtypes expressed in the neoplastic tissue are identified. In a further aspect, the TNF-R superfamily subtypes expressed in the neoplastic tissue are identified by a method selected from the group consisting of immunostaining, in situ hybridization, in situ polymerase chain reaction, and in vitro polymerase chain reaction.

35

[0014] In a further aspect, exposing whole blood includes addition of heparin. In another aspect, the stimulus is selected from the group consisting of heat-aggregated human IgG and anti-human α/β T-cell receptor monoclonal IgG. In a further aspect, the tumor necrosis factor receptor superfamily subtypes expressed by diseased cells are selected from the group consisting of TNF-R superfamily subtypes 1A, 1B, 3, 4, 5, 6, 7, 8, 9, 10A, 10B, 10C, 10D, 11A, 11B, 12A, 14, 17, 18, and 25. In another aspect, the tumor necrosis factor superfamily mRNA subtypes expressed in said exposed whole blood are selected from the group consisting of TNF superfamily subtypes 1, 2, 3, 4, 5, 6, 7, 8, 9, 10, 11, 12, 13, 13B, 14, 15, and 18.

40

[0015] In another aspect, the method further comprises determining a level of mRNA expression of a plurality of chemokines in a first sample of whole blood from the mammal; exposing a second sample of whole blood of the mammal to a stimulus that activates T-cells in the whole blood; determining a level of mRNA expression of the plurality of chemokines in the second sample; and determining a likely lesser severity of prognosis when chemokines that exhibit a significant change in mRNA expression level in the whole blood between said first and second samples are identified. In a further aspect, the chemokines are selected from the group consisting of CCL1, CCL2, CCL3, CCL4, CCL5, CCL6, CCL7, CCL8, CCL9, CCL10, CCL11, CCL12, CCL13, CCL14, CCL15, CCL16, CCL17, CCL18, CCL19, CCL20, CCL21, CCL22, CCL23, CCL24, CCL25, CCL26, CCL27, CCL28, CXCL1, CXCL2, CXCL3, CXCL4, CXCL5, CXCL6, CXCL7, CXCL9, CXCL10, CXCL11, CXCL12, CXCL13, CXCL14, CXCL16, IL1B, IL5, IL6, IL8, IL12A, IL12B, IL15, and IL16.

45

50

[0016] A further embodiment of the invention provides a method of determining the likely utility of a dietary component for treating neoplastic disease in a mammal, comprising: obtaining a first sample of whole blood of the mammal; exposing a second sample of whole blood of the mammal to the dietary component; exposing the first and second samples of whole blood of the mammal to a stimulus that activates T-cells in the whole blood; determining a level of mRNA expression of a plurality of tumor necrosis factor (TNF) superfamily subtypes in the first and second samples of whole blood from the mammal; identifying subtypes that exhibit a significant change in mRNA expression level in said whole blood between said first and second samples; and determining that the dietary component likely has utility for treating the neoplastic disease when the identified subtypes of TNF superfamily correspond to specific TNF-R superfamily subtypes expressed

55

in neoplastic cells of the mammal.

[0017] In a further aspect, the first sample is exposed to a control stimulus before the exposure to the stimulus that activates T-cells in the whole blood. In another aspect, TNF-R superfamily subtypes expressed in neoplastic tissue are selected from the group consisting of TNF-R superfamily subtypes 1A, 3, 12A, and 14. In a further aspect, TNF-R superfamily subtypes expressed in the neoplastic tissue are identified. In another aspect, TNF-R superfamily subtypes expressed in neoplastic tissue are identified by a method selected from the group consisting of immunostaining, in situ hybridization, in situ polymerase chain reaction, and in vitro polymerase chain reaction.

BRIEF DESCRIPTION OF THE DRAWINGS

[0018]

Figure 1A shows the results of an analysis of TNF superfamily mRNAs induced in peripheral blood leukocytes after exposure of whole blood to heat-aggregated IgG (HAG).

Figure 1B shows the results of a repetition of the analysis of Figure 1A.

Figure 2 shows the results of an analysis of TNF-R superfamily mRNAs expressed in tissue samples taken from various adenocarcinomas and squamous cell carcinomas.

Figure 3 shows the results of an analysis of TNF superfamily mRNAs induced in peripheral blood leukocytes after exposure of whole blood to anti-human T-cell receptor (TCR) monoclonal antibody.

Figure 4A shows the results of an analysis of the dose response and kinetics when peripheral blood leukocytes are exposed to anti-TCR antibody and TNF superfamily subtype 2 mRNA expression is quantified.

Figure 4B shows the results of an analysis of the kinetics when peripheral blood leukocytes are exposed to anti-TCR antibody and TNF superfamily subtype 2 mRNA expression is quantified.

Figure 5A shows the results of an analysis of the dose response and kinetics when peripheral blood leukocytes are exposed to HAG and TNF superfamily subtype 15 mRNA expression is quantified.

Figure 5B shows the results of an analysis of the kinetics when peripheral blood leukocytes are exposed to HAG and TNF superfamily subtype 15 mRNA expression is quantified.

Figure 6 shows the results of a repetition of the analysis of Figure 5 with respect to several TNF superfamily subtype mRNAs and control mRNA.

Figure 7 shows the results of an analysis of TNF superfamily mRNAs induced in peripheral blood leukocytes after exposure of whole blood to HAG.

Figure 8 shows the chemokine primer sequences employed in Embodiment 4. Figure 9 shows the results of an analysis of chemokine mRNAs induced in peripheral blood leukocytes after exposure of whole blood to HAG.

Figure 10 shows the results of an analysis of TNF superfamily subtype 3 mRNA induced in peripheral blood leukocytes after exposure to HAG of whole blood aliquots previously stimulated with either a dietary supplement or a control stimulus.

DETAILED DESCRIPTION OF THE PREFERRED EMBODIMENT

Quantitation of mRNA

[0019] The present inventors have developed a unique technology known as the Hem(A)⁺ system that is capable of quantitating minute changes of gene expression in whole blood leukocytes. This technology is described in detail in United States Patent Application, Serial No. 10/796,298, and International Patent Application Serial No. PCT/US2004/036309 (see also Mitsuhashi, Absolute quantitation of mRNA in human blood leukocytes as a model for phenotypic gene expression-based diagnostics, Clin Chem, 52:4 (2006)).

[0020] In the quantitation technique, whole blood is applied to 96-well filterplates to trap leukocytes. Lysis buffer containing both synthetic external control RNA and specific reverse primers is added to the filterplates, and cell lysates are transferred to oligo(dT)-immobilized microplates for hybridization. The cDNA is then synthesized in the oligo(dT)-immobilized microplates from these primer sites. The solution, which contains specific reverse primer-primed cDNA, is used for real-time PCR. The plate containing oligo(dT)-primed immobilized cDNA may be stored as a cDNA bank.

[0021] In more detail, the assay procedure consists of 3 major steps: (a) leukocyte isolation and lysis on filterplates; (b) mRNA isolation, reverse primer hybridization, and cDNA synthesis in oligo(dT)-immobilized microplates; and (c) real-time quantitative PCR. Custom 96-well filterplates may be manufactured, for example by Whatman or Pall, by assembly with leukocyte reduction membranes (Leukosorb; Pall). These filterplates are placed over collection plates, and 150 μ L of 5 mmol/L Tris (pH 7.4) is applied to wet the filter membranes. After centrifugation at 120g for 1 min at 4 °C to remove the Tris solution from the membranes, 50 μ L of well-mixed whole blood sample is applied to each well and immediately centrifuged at 120g for 2 min at 4 °C. The wells are then washed once with 300 μ L of phosphate-buffered saline. After

centrifugation at 2000g for 5 min at 4 °C to remove the saline solution, 60 µL of stock lysis buffer [5 g/L N-lauroylsarcosine, 4X standard saline citrate, 10 mmol/L Tris-HCl (pH 7.4), 1 mmol/L EDTA, 1 mL/L IGEPAL CA-630 (substitute of NP-40), 1.79 mol/L guanidine thiocyanate (all from Sigma)], supplemented with 1 mL/L 2-mercaptoethanol (Bio-Rad), 0.5 g/L proteinase K (Pierce), 0.1 g/L salmon sperm DNA (5 Prime Eppendorf/Brinkman), 0.1 g/L Escherichia coli tRNA (Sigma), 5 nmol/L each of the specific reverse primers, and 10⁹ molecules/L of synthetic RNA34 (as external control), are added to each well of the filterplates. The plates are then incubated at 37 °C for 10 min, placed over oligo(dT)-immobilized microplates (GenePlate; RNAture), and centrifuged at 2000g for 5 min at 4 °C. After overnight storage at 4 °C, the microplates are washed 3 times with 100 µL of plain lysis buffer and then 3 times with 150 µL of wash buffer [0.5 mol/L NaCl, 10 mmol/L Tris (pH 7.4) 1 mmol/L EDTA] at 4 °C.

[0022] cDNA can be synthesized directly in each well by addition of 30 µL of buffer containing 1 x reverse transcription buffer [50 mM KCl, 10 mM Tris-HCl (pH 8.3), 5.5 mM MgCl₂, 1 mL/L Tween 20], 1.25 mM of each deoxynucleoside triphosphate, 4 units of rRNasin, and 80 U of MMLV reverse transcriptase (Promega; without primers) and incubation at 37 °C for 2 h. From each 30-µL reaction, 4 µL of cDNA is transferred directly to 384-well PCR plates, and 5 µL of TaqMan universal master mixture (Applied Biosystems) and 1 µL of oligonucleotide cocktail (5 µM each of the forward and reverse primers, and 1-2 µM TaqMan probe) are added. PCR may be carried out in a PRISM 7900HT (Applied Biosystems), with 1 cycle of 95 °C for 10 min followed by 45 cycles of 95 °C for 30 s, 55 °C for 30 s, and 60 °C for 1 min. Each gene is amplified in separate wells. The cycle threshold (Ct), i.e., the cycle at which certain amounts of PCR products (based on fluorescence) are generated, is determined with analytical software (SDS; Applied Biosystems).

[0023] To construct calibration curves for quantification, long synthetic DNA oligonucleotides containing sequences of the forward and reverse primers and TaqMan probes are synthesized for each target. The TaqMan probe for control RNA34, for example, is CCAAGGCCAGCCCTCACACA (SEQ ID No. 1). Alternatively, SYBRGreen PCR may be employed. Each oligonucleotide may be purified by HPLC to a purity of >95%. Each PCR contains 10-10⁶ molecules/well of these template oligonucleotides. The calibration curve for control RNA34 generated by DNA oligonucleotides may be used to convert the Ct values of the samples to molecules/PCR well (4 µL of cDNA), which are then multiplied by 7.5 (30 divided by 4) to obtain molecules/sample (30 µL of cDNA). The percentage recovery of RNA34 is obtained by dividing these values by the amounts of RNA34 in the original 60 µL of lysis buffer (6 x 10⁵ = 10⁷ /mL x 60 µL). For native mRNA, the molecules/PCR well are determined as described above with the respective calibration curves, and then these values are converted to molecules per microliter of blood by multiplying by 7.5 (30 divided by 4), dividing by the percentage recovery of RNA34 in each sample, and dividing by the volume of blood added to each well of the filterplates (usually 50 µL). The mean (SD) is calculated from triplicate aliquots of whole blood and the Student t-test may be used for statistical analyses.

[0024] In embodiments, the expression profile of TNF receptor superfamily (TNFRSF) mRNA was characterized among various cancer specimens by using the mRNA quantitation system (Hem(A)⁺) described above. Then the inducibility of TNF superfamily (TNFSF) mRNA was quantitated by stimulating heparinized whole blood with mouse anti-human T cell receptor monoclonal antibody or heat-aggregated IgG as *ex vivo* models of cytotoxic T-cell mediated reaction and antibody dependent cell cytotoxicity (ADCC), respectively. Significant induction or reduction in the expression levels was calculated using statistical methods well known in the art; a p value of 0.05 or less was employed. The substantial individual-to-individual variation shown indicates that embodiments of the present invention may be employed in laying the groundwork for individualized cancer immunotherapy.

Embodiment 1

[0025] The mRNA quantitation method described above was employed to quantitate all types of TNF superfamily mRNA, both with and without *ex vivo* stimulation using heat-aggregated IgG (HAG), which was employed as a model of immune complex stimulation (see Ostreiko et al., Production and characterization of heat-aggregated IgG complexes with predetermined molecular masses: light-scattering study, Immunol Lett. 1987;15:311-6). The immune complex is formed when IgG molecules bound to a target cell bind with high avidity to Fc receptors on a leukocyte, causing cross-linking of the Fc receptors and generation of a leukocyte activation signal.

[0026] Triplicate aliquots of 50 µL each of heparinized whole blood was incubated with 200 µg/mL HAG at 37 °C for 2 hours. Then blood samples were applied to 96-well filterplates to trap leukocytes, and cell lysates were transferred to 96-well oligo(dT)-immobilized microplates for isolation of poly(A)⁺ mRNA as described above. cDNA was synthesized on the microplates and was used for real-time polymerase chain reaction (PCR) in 384-well plates by monitoring SYBR Green fluorescence (see Morrison et al., Quantification of low-copy transcripts by continuous SYBR Green I monitoring during amplification, Biotechniques 1998;24:954-8, 960, 96). In brief, SYBR Green PCR was conducted by diluting cDNA 3-4 fold in water, and transferring 4 µL cDNA solution directly to 384-well PCR plates, to which 5 µL of a master mix (BioRad, Hercules, CA) and 1 µL of oligonucleotide cocktail (15 µM each of forward and reverse primer) were applied, and conducting PCR in PRISM 7900HT (ABI), with one cycle of 95 °C for 10 min followed by 45 cycles of 95 °C for 30 sec and 60 °C for 1 min. Each gene was amplified in separate wells. The Ct was determined by analytical software (SDS,

ABI). The PCR conditions were carefully optimized, so that a single appropriate peak was detected on melting curve analysis without any primer dimers. To validate the assay conditions, synthetic RNA34 was spiked into the lysis buffer, and this RNA34 was also quantitated by real time PCR. The sequence specificity of primers was confirmed by blast analysis (<http://www.ncbi.nlm.nih.gov/BLAST>). The Ct was set equal to the PCR cycle where certain amounts of PCR products were generated, and delta Ct (ΔCt) was also calculated by subtracting the Ct values of the un-stimulated samples from those of the stimulated samples. Since Ct is a log scale, 1 ΔCt means double or one half in quantity, and a negative ΔCt indicates an increase in expression.

[0027] The results are shown in Figures 1A and 1B. In the Figures, TNFSF mRNAs (1-18) and spiked control RNA34 were quantitated by SYBR Green real time PCR. ΔCt values of 3, 2, 1, 0, -1, -2, and -3 indicate 1/8, 1/4, 1/2, 0, 2, 4, 8 fold increases, respectively. In Figure 1A, each symbol is the mean value from each individual. The O symbol indicates a significant increase ($p < 0.05$), while the Δ symbol indicates a significant decrease ($p < 0.05$), and X indicates no change. Figure 1B shows the results of repeating the analysis twice in 2 consecutive days using the same individuals. The symbols are the mean \pm standard deviation from each individual. \bullet : TNFSF-2 (TNF α), \blacktriangle : TNFSF-8, \blacklozenge : TNFSF-15, respectively. The solid line is the line where two data sets are identical. The dotted lines indicate $\pm 0.5 \Delta Ct$.

[0028] This technique was capable of detecting basal levels of all members of TNF superfamily mRNA in blood leukocytes. As shown in Figure 1A, significant induction of TNF superfamily mRNA was identified when whole blood was exposed to HAG. Although large individual-to-individual variation exists, the dominant TNF superfamily mRNAs were TNF superfamily subtypes 2 (TNF α), 8, and 15. These mRNAs exhibited a HAG-induced response in, respectively, 80% (12/15), 73% (11/15), and 60% (9/15) of the tested individuals. TNF superfamily subtypes 1, 3, 4, 6 (i.e., FasL), 7, 9, 10 (i.e., TRAIL), 14, and 18 mRNAs exhibited a HAG-induced response in at least one tested individual. TNF superfamily subtypes 5, 11, 12, 13, and 13B mRNAs exhibited no HAG-induced response in any of the tested individuals. At least one of TNF superfamily subtypes 2, 8 and 15 was induced by HAG exposure in every tested individual. For example, three individuals that exhibited no HAG-induced TNF superfamily subtype 2 response all exhibited a subtype 15 response, whereas six individuals that exhibited no HAG-induced subtype 15 response exhibited a subtype 2 response. Four individuals in which TNF superfamily subtype 8 exhibited no HAG-induced response did exhibit a response in either subtype 2 or subtype 15. The ΔCt of the control, spiked RNA34, was all within ± 0.5 , as shown in Figure 1A. In order to further validate these experiments, blood samples were obtained from the same individuals twice in 2 consecutive days. As shown in Figure 1B, the values for TNF superfamily subtypes 2, 8, 15 and RNA34 were reproducible within ± 0.5 standard deviation. The variation within triplicate whole blood aliquots in each sample was also less than 0.5 ΔCt (Figure 1B, X-Y bar in each symbol).

[0029] This method may be applied in the following manner in an embodiment. Specimens of cancers removed from mammalian patients undergoing surgical removal or biopsy are analyzed for IgG deposition, infiltration of mononuclear leukocytes, and the type of TNF-R superfamily subtypes expressed on cancer cells. Blood samples are then obtained from the same individuals, and subjected to analysis to determine which types of TNF superfamily mRNA are induced by HAG stimulation and to what degree. Individuals are classified into a group in which the induced TNF superfamily and the expressed TNF-R match and a group in which they do not match. The results of a comparison of clinical outcomes in the 2 groups will reveal that the matching group exhibits a lesser severity of prognosis. If the cancer mass is small, such as with early invisible metastatic lesions, appropriate TNF superfamily-mediated immune system attack may be sufficient to prevent cancer relapse. The clinical outcomes compared should thus include the length of remission, and frequency of relapse (metastasis).

Embodiment 2

[0030] DNA sequences of TNF-R superfamily and TNF superfamily mRNA were downloaded from GenBank, as shown in Table 1, and the primer sequences shown in Table 2 below were designed by Primer Express (Applied Biosystems) and HYBsimulator (RNAture). These sequences were designed at common regions among multiple transcripts if such variants exist. No amplification happened without cDNA (no primer dimer), and a single peak was detected at melting curve analysis.

Table 2: Primer sequences used

| Target mRNA | Forward | Reverse |
|-------------|--------------------------------------|---|
| TNFRSF-1A | CCTGCCAGGAGAAACAGAACA (SEQ ID No. 2) | GGAGACACACTCGTTTTCTCTTAGAA (SEQ ID No. 3) |
| TNFRSF-1B | CAAGCCAGCTCCACAATGG (SEQ ID No. 4) | TGACCGAAAGGCACATTCT (SEQ ID No. 5) |

EP 1 904 657 B1

(continued)

| Target mRNA | Forward | Reverse |
|---------------|--|--|
| 5 TNFRSF-3 | CCTCCCGGGCTCTCTACAC (SEQ ID No. 6) | TCATGGGTGATAAATTGGTTCCT (SEQ ID No. 7) |
| TNFRSF-4 | ACGACGTGGTCAGCTCCAA (SEQ ID No. 8) | GCGGCAGACTGTGCCTGTGT (SEQ ID No. 9) |
| TNFRSF-5 | GGCCAAGAAGCCAACCAATA (SEQ ID No. 10) | GAAGATCGTCGGGAAAATTGAT (SEQ ID No. 11) |
| 10 TNFRSF-6 | TGGCATCAACTTCATGGAAAGA (SEQ ID No. 12) | GCAAGAGTACAAAGATTGGCTTTTT (SEQ ID No. 13) |
| TNFRSF-7 | CTGCAGAGCCTTGTCGTTACAG (SEQ ID No. 14) | GCTCCGGTTTTCGGTAATCC (SEQ ID No. 15) |
| 15 TNFRSF-8 | GGTTGAGGCAGCAAACAGATG (SEQ ID No. 16) | GCCTGGTGGTTAAGGTCTGATG (SEQ ID No. 17) |
| TNFRSF-9 | CGTCGACTGCGTTGCTCTT (SEQ ID No. 18) | TTCTGCCCCGTTTAAACAACAG (SEQ ID No. 19) |
| TNFRSF-10A | TGAGGACAATGCTCACAACGA (SEQ ID No. 20) | TTGCTGCTCAGAGACGAAAGTG (SEQ ID No. 21) |
| 20 TNFRSF-10B | CTGAGACAGTGCTTCGATGACTTT (SEQ ID No. 22) | CCATGAGGCCCAACTTCT (SEQ ID No. 23) |
| TNFRSF-10C | GGAAGTGTAGCAGGTGCCCTAGT (SEQ ID No. 24) | ACCAAATTCTTCAACACACTGGATAT (SEQ ID No. 25) |
| 25 TNFRSF-10D | ATGGACTTACGAGGGTTCGACTTAG (SEQ ID No. 26) | GGAAAAGAGATGTACAGCCTACAGTAGTAAGC (SEQ ID No. 27) |
| TNFRSF-11A | GGAAACAGTAACTCCACGTTTCATCT (SEQ ID No. 28) | GCGAGGTCTGGCTGACGTA (SEQ ID No. 29) |
| TNFRSF-11B | TGCAAACCCAGTGACCAGATC (SEQ ID No. 30) | AAGGTGTCTTGGTCGCCATT (SEQ ID No. 31) |
| 30 TNFRSF-12A | CGCTGATCCAGTGACAATGTG (SEQ ID No. 32) | GCGTCTGGGAGGCAGAGA (SEQ ID No. 33) |
| TNFRSF-14 | CAGGGAGCCTCGTCATCGT (SEQ ID No. 34) | CACCCCTTGGCTTTCTTCTTT (SEQ ID No. 35) |
| 35 TNFRSF-17 | GGAGGAAGGCGCAACCAT (SEQ ID No. 36) | GCAGCTGGCAGGCTCTTG (SEQ ID No. 37) |
| TNFRSF-18 | AGTTTTGGCTTCCAGTGTATCGA (SEQ ID No. 38) | GCAGTCTGTCCAAGGTTTGCA (SEQ ID No. 39) |
| 40 TNFRSF-25 | CCTGCTCGCCCCTATCG (SEQ ID No. 40) | TTCACCCCTCTCGACATTC (SEQ ID No. 41) |
| TNFSF-1 | CAGCTATCCACCCACACAGATG (SEQ ID No. 42) | CGAAGGCTCCAAAGAAGACAGT (SEQ ID No. 43) |
| TNFSF-2 | CGAAGGCTCCAAAGAAGACAGT (SEQ ID No. 44) | CAGGGCAATGATCCCAAAGT (SEQ ID No. 45) |
| 45 TNFSF-3 | AGGGTGTACGTCAACATCAGTCA (SEQ ID No. 46) | CACGGCCCCAAAGAAGGT (SEQ ID No. 47) |
| TNFSF-4 | GCCCCTCTTCCAACCTGAAGAA (SEQ ID No. 48) | GGTATTGTCAGTGGTCACATTCAAG (SEQ ID No. 49) |
| TNFSF-5 | CCACAGTTCCGCCAAACCT (SEQ ID No. 50) | CACCTGGTTGCAATTCAATACTC (SEQ ID No. 51) |
| 50 TNFSF-6 | TGGCAGCATCTTCACTTCTA AATG (SEQ ID No. 52) | GAAATGAGTCCCCAAAACAT CTCT (SEQ ID No. 53) |
| TNFSF-7 | CACACTCTGCACCAACCTCACT (SEQ ID No. 54) | TGCACTCCAAAGAAGGTCTCATC (SEQ ID No. 55) |
| 55 TNFSF-8 | ACCACCATATCAGTCAATGTGGAT (SEQ ID No. 56) | GAAGATGGACAACACATTCTCAAGA (SEQ ID No. 57) |

(continued)

| Target mRNA | Forward | Reverse |
|-------------|---|--|
| 5 TNFSF-9 | AGCTACAAAGAGGACACGAAGGA (SEQ ID No. 58) | CGCAGCTCTAGTTGAAAGAAGACA (SEQ ID No. 59) |
| TNFSF-10 | GGGAATATTTGAGCTTAAGGAAAATG (SEQ ID No. 60) | AAAAGGCCCCGAAAAAACTG (SEQ ID No. 61) |
| TNFSF-12 | TACTGTCAGGTGCACTTTGATGAG (SEQ ID No. 62) | CGCAGTGGCTGAGAATTCCT (SEQ ID No. 63) |
| 10 TNFSF-13 | ATATGGTGTCCGAATCCAGGAT (SEQ ID No. 64) | CCTGACCCATGGTGAAAGTCA (SEQ ID No. 65) |
| TNFSF-13B | ATGCCTGAAACACTACCCAATAATT (SEQ ID No. 66) | GCAAGTTGGAGTTCATCTCCTTCT (SEQ ID No. 67) |
| 15 TNFSF-14 | CGTCCGTGTGCTGGATGA (SEQ ID No. 68) | CATGAAAGCCCGAAGTAAGAC (SEQ ID No. 69) |
| TNFSF-15 | TGCGAAGTAGGTAGCAACTGGTT (SEQ ID No. 70) | CCATTAGCTTGTCCCCTTCTTG (SEQ ID No. 71) |
| TNFSF-18 | CGGCTGTATAAAAAACAAAGACATGAT (SEQ ID No. 72) | TCCCCAACATGCAATTCATAAG (SEQ ID No. 73) |
| 20 RNA34 | AGCCCCCTCACTCCCAA (SEQ ID No. 74) | GGGTGCTGTGCTTCTGTGAAC (SEQ ID No. 75) |

25 **[0031]** The quantity of each mRNA was determined by the method described above as modified below. In brief, approximately 125 mg of frozen cancer specimens were mixed with 1 mL lysis buffer supplemented with 1% 2-mercaptoethanol (Bio Rad), 0.5 mg/mL, proteinase K (Pierce), 0.1 mg/mL salmon sperm DNA (5 Prime Eppendorf/Brinkmann), 0.1 mg/mL, *E. coli* tRNA (Sigma), 10 mM each of specific reverse TNF-R superfamily subtype primers, and 10⁷ molecules/mL of synthetic RNA34 as an external control, and homogenized by Polytron (Brinkmann). Seventy μ L of these lysates were applied to oligo(dT)-immobilized microplate (GenePlate, RNature) for mRNA purification. Following overnight incubation at 4°C, the microplates were washed with 100 μ L plain lysis buffer 3 times, and then with 150 μ L wash buffer (0.5 mol/L NaCl, 10 mmol/L Tris, pH 7.4, 1 mmol/L EDTA) 3 times at 4°C. The cDNA was directly synthesized in each well by adding 30 μ L buffer containing 1x RT-buffer (50 mmol/L KCl, 10 mmol/L Tris-HCl, pH 8.3, 5.5 mmol/L MgCl₂, no dithiothreitol), 1.25 mmol/L each of dNTP, 4 units rRNasin, and 80 units of MMLV reverse transcriptase (Promega) (without primers), and incubation at 37°C for 2 hours. 100 μ L of water was added to these 30 μ L of cDNA, and 4 μ L cDNA were transferred to 384-well PCR plates, to which 5 μ L iTaq SYBR master mix (BioRad) and 1 μ L primer cocktail (10 μ mol/L each of forward and reverse primer) were applied, and PCR was conducted in a PRISM 7900HT (Applied Biosystems), with one cycle of 95°C for 10 min followed by 45 cycles of 95°C for 30 sec, and 60°C for 1 min. Each gene was amplified in separate wells. The cycle threshold (Ct), which was the cycle of PCR to generate certain amounts of PCR products (fluorescence), was determined using analytical software (SDS, Applied Biosystems). No amplification was confirmed without cDNA (no primer dimers), and a single peak was detected at melting curve analysis. In order to compare multiple samples among 20 different mRNAs, each Ct was subtracted by the Ct of TNFRSF1A from the same sample (Δ Ct, Y-axis). The positive Ct means lower expression than TNFRSF1A, and 1 Δ Ct means one half of expression. Each symbol represents the mean value from single specimen. The left-hand side ($\circ\blacklozenge$) of each column in Figure 2 shows the results from samples of adenocarcinoma including colon, liver, stomach, uterus, and 3 cases of breast cancer (\blacklozenge), and melanoma. The right-hand side (Δ) shows the results from squamous cell carcinoma, including lung, pharynx, tongue and cervical cancer samples.

45 **[0032]** As for the analysis of the induction of TNF superfamily mRNA in heparinized whole blood by anti-human T cell receptor (TCR) monoclonal antibody, the results of which are shown in Figure 3, sixty μ L of whole blood was stimulated at 37°C for only 2 hours in triplicate with 5 μ g/mL anti-TCR α/β or control IgG. Fifty μ L of blood samples were applied to filterplate to trap leukocytes followed by lysis in the membranes by adding lysis buffer, as described above. The purification of poly(A)⁺ mRNA, cDNA synthesis, and real time PCR were conducted as described above. The Δ Ct was calculated by subtracting the Ct values of control IgG from the Ct of anti-TCR α/β . Each symbol represents the mean Δ Ct from triplicate blood aliquots of single individual. Synthetic RNA34 spiked into the lysis buffer was also quantitated to validate each assay as an external control.

55 **[0033]** The cycle threshold (Ct), which was the cycle of PCR to generate certain amounts of PCR products (fluorescence), was determined using analytical software (SDS, Applied Biosystems). Although DNA chip technology (see Schena et al, Quantitative monitoring of gene expression patterns with a complementary DNA microarray, Science 1995; 270:467-70) is capable of analyzing many genes simultaneously, it lacks the capability of exact quantitation, and generally

requires more than 3 folds increases as meaningful results. In contrast, the DNA quantitation technology described above provides more accurate quantitation by considering mRNA recovery and cDNA synthesis efficiency in each sample, and as small as 150% (1.5-fold) changes can be detected with statistical significance. Thus, each mRNA was analyzed by SYBR Green real time PCR (see Morrison et al., Quantification of low-copy transcripts by continuous SYBR Green I monitoring during amplification, *Biotechniques* 1998 Jun;24(6):954-8, 960, 962) individually from each cDNA prepared by this method, as described above.

[0034] Figure 2 shows the results of TNF-R superfamily mRNA expression in various cancers (colon, breast, liver, stomach, uterus, melanoma, lung, pharynx, tongue, and cervix). In order to compare multiple samples among 20 different mRNAs, the Ct of TNF-R superfamily subtype 1A from the same sample was subtracted from each observed Ct (Δ Ct, Y-axis). A positive Ct value means a lower level of expression than TNFR superfamily subtype 1A, and 1 Δ Ct means one-half the level of expression. As shown in Fig. 2, almost all cancer tissues expressed high levels of TNF-R superfamily subtypes 1A, 3, 12A, and 14. This indicates that if cancer-infiltrating leukocytes are capable of producing TNF superfamily subtype 1 (i.e., lymphotoxin) (corresponding to TNF-R superfamily subtype 3), TNF superfamily subtype 2 (i.e., TNF α) (corresponding to TNF-R superfamily subtypes 1A and 1B), TNF superfamily subtype 12 (corresponding to TNF-R superfamily subtype 12A), TNF superfamily subtype 14 (corresponding to TNF-R superfamily subtype 14) or a combination of these ligands at infiltrating sites, any of these types of cancers may be eradicated. Although the expression levels of TNF-R superfamily subtypes 4, 5, 8, 9, 11A and 11B, and 17 were very low in the assessed samples (Fig. 2), the possibility that other samples may express these receptor subtypes cannot be ruled out. Accordingly, the inducibility of TNF superfamily subtype 4 (corresponding to TNF-R superfamily subtype 4), TNF superfamily subtype 5 (i.e., CD40 ligand) (corresponding to TNF-R superfamily subtype 5), TNF superfamily subtype 8 (i.e., CD30 ligand) (for TNF-R superfamily subtype 8), and TNF superfamily subtypes 13 and 13B (corresponding to TNF-R superfamily subtype 17) in leukocytes may also be important for cancer immunotherapy. Although huge individual-to-individual variation exists, the inducibility in leukocytes of TNF superfamily subtype 6 (i.e., Fas ligand) (for TNF-R superfamily subtype 6), TNF superfamily subtype 7 (i.e., CD27 ligand) (for TNF-R superfamily subtype 7), TNF superfamily subtype 11 (for TNF-R superfamily subtypes 11A and 11B), TNF superfamily subtype 18 (for TNF-R superfamily subtype 18), and TNF superfamily subtype 15 (i.e., ligand of DR3) (for TNF-R superfamily subtype 25) may be important for cancers in which expression levels of the corresponding receptors are high. Although TNF-R superfamily subtype 10A mRNA exhibited high expression in cancers, the mRNA expression of decoy receptor TNF-R superfamily subtype 10B (see Sheridan et al., Control of TRAIL-induced apoptosis by a family of signaling and decoy receptors, *Science* 1997 Aug 8;277(5327):818-21 and Pan et al., An antagonist decoy receptor and a death domain-containing receptor for TRAIL, *Science* 1997 Aug 8;277(5327):815-8) was higher than TNF-R superfamily subtype 10A. Nevertheless, TNF-R superfamily subtype 10 (i.e., TRAIL) may still be a useful target for therapy of some cancers. There is no major difference between adenocarcinoma/melanoma (shown on the left-hand side of each column in Figure 2) and squamous cell carcinoma (shown on the right-hand side of each column in the Figure).

[0035] The T-cell receptor (TCR) is the cell surface molecule of cytotoxic T cells that recognizes specific foreign non-self molecules. The TCR's role in the initial steps of antigen presentation, as well as cancer killing, is well known (see, e.g., Mani-Chouaib, Antitumor cytotoxic T-lymphocyte response in human lung carcinoma: identification of a tumor-associated antigen, *Immunol Rev.* 2002 Oct;188:114-21). Although typical experiments in cellular immunology employ pure systems using isolated cells suspended in an artificial solution, the mRNA assay employed in the present embodiments permits the identification of changes in various mRNA levels after *ex vivo* stimulation of whole blood. Because the latter is more physiological than the former pure system, the present embodiments employ a simulation of TCR-target molecule interactions in whole blood, where cell-to-cell and cell-to-plasma interactions exist.

[0036] Since whole blood contains not only cytotoxic T cells, but also other types of leukocytes, the TCR was stimulated specifically by anti-human α/β TCR mouse monoclonal IgG1 k ("anti-TCR," obtainable from BioLegend). As a control, the same concentrations of purified mouse IgG1 k (also obtainable from BioLegend) were also used. 60 μ L of whole blood was stimulated at 37°C for only 2 hours in triplicate with 5 μ g/mL anti-TCR or control IgG. The dose and incubation time were determined by preliminary analysis of the effect of anti-TCR antibody on TNFSF mRNA expression in peripheral blood leukocytes, the results of which are shown in Figure 4A and 4B. With respect to dose response and kinetics, as shown in Figure 4A, triplicate aliquots of 60 μ L each of heparinized whole blood was mixed with PBS (○), 10 (■) or 1 (◆) μ g/mL mouse anti-human α/β TCR IgG1k, or 10 () or 1 (0) μ g/mL purified mouse IgG1k, and incubated at 37°C for 0-7 hours. Then TNFSF-2 mRNA was quantitated as described above. With respect to kinetics, as shown in Figure 4B, the Δ Ct of TNFSF-2 (●), TNFSF-5 (○), TNFSF-6 (Δ), TNFSF-9 (), and TNFSF-14 (▲) were calculated by subtracting the Ct values of control IgG therefrom. Each data was the mean \pm standard deviation from triplicate aliquots of whole blood. The Δ Ct was calculated by subtracting the Ct values obtained using control IgG from the Ct values obtained using anti-TCR.

[0037] As shown in Fig. 3, anti-TCR stimulation specifically induced TNF superfamily subtypes 2, 5, 6, 9, 10, and 14. The results of TNF superfamily subtypes 2 and 14 are particularly interesting, because the mRNA expression levels of these receptors were high in all types of cancers (see Fig. 2). Simultaneous activation of multiple TNF/TNF-R superfamily

subtype-related cascades may prevent resistance mechanisms of cancer cells, similarly to combination chemotherapy. The results obtained with control synthetic RNA34 spiked into the lysis buffer showed very small changes, less than $\pm 0.3 \Delta Ct$ (RNA34 in Fig. 3), suggesting that the assay system is reliable. More importantly, the TCR responses exhibited substantial individual-to-individual variation, and 6 out of 9 (66%) and 5 out of 9 (56%) individuals failed to show anti-TCR-mediated induction of TNF superfamily subtypes 2 and 14, respectively. Furthermore, the individuals who showed negative TNF superfamily subtype 2 responses also showed negative TNF superfamily subtype 14 responses. However, these individuals did show other positive TNF superfamily ligands.

Embodiment 3

[0038] In this embodiment, as in Embodiment 1, heat-aggregated human IgG (HAG), which is used widely as a model of the immune complex as found in ADCC, was used to stimulate the Fc receptors of leukocytes in whole blood. In brief, human IgG (Sigma) was suspended in PBS at 20 mg/mL and heated at 63 °C for 20 min. Sixty μL of whole blood was stimulated at 37 °C for only 2-4 hours in triplicate with 200 $\mu\text{g/mL}$ HAG or control phosphate-buffered saline (PBS). The dose of HAG and incubation time were determined by preliminary analysis, as shown in Figures 5 and 6.

[0039] Figure 5A shows the results of an analysis of the dose response. Triplicate aliquots of 60 μL each of heparinized whole blood were mixed with various concentrations of human IgG (\circ), or HAG (\bullet) and incubated at 37 °C for 2 hours. Figure 5B shows the results of an analysis of kinetics. Triplicate aliquots of 60 μL each of heparinized whole blood was mixed with PBS (\circ), or 200 mg/mL HAG (\bullet) and incubated at 37 °C for 0-12 hours. TNFSF-15 mRNA was then quantitated. Each data was the mean \pm standard deviation from triplicate aliquots of whole blood.

[0040] Figure 6 shows the results of an analysis of reproducibility. Blood was drawn from the same individuals within 1-3 days, and HAG-induced TNFSF mRNA and control RNA34 was quantitated. The symbols indicate \circ : RNA34, \bullet : TNFSF-2, \blacklozenge : TNFSF-8, and \blacktriangle : TNFSF-15, respectively. Each data was the mean \pm standard deviation from triplicate aliquots of whole blood. The solid line is the line where two data are identical. The dotted lines indicate $\pm 0.5 \Delta Ct$.

[0041] As shown in Fig. 7, HAG mainly induced expression of TNF superfamily subtypes 2, 8, 14, 15, and 18. The induction of TNF superfamily subtype 15 was higher than that of the TNF superfamily subtypes obtained with anti-TCR stimulation (Fig. 3). Moreover, HAG responses exhibited substantial individual-to-individual variation. Some individuals expressed TNF superfamily subtype 15 alone, and others expressed TNF superfamily subtypes 2 and 8 without TNF superfamily subtype 15 responses. Interestingly, all individuals showed at least 1 TNF superfamily response. The results of control RNA34 spiked into the lysis buffer showed very small changes of less than $\pm 0.6 \Delta Ct$ (RNA34 in Fig. 3), suggesting that the assay system is reliable. In order to test the reproducibility of the assay, blood was drawn from the same individuals twice within 1-3 days. However, the results were very similar, with ΔCt differences of less than 0.5 (Fig. 6). Among nine individuals whose blood was tested independently using HAG and anti-TCR stimulation, the TNF superfamily subtype 15 expression response induced by HAG stimulation did not correlate with the TNF superfamily subtypes 2 and 14 expression response induced by anti-TCR stimulation.

Embodiment 4

[0042] In this embodiment, whole blood from several individuals was subjected to HAG stimulation, and the changes in the mRNA levels of a group of chemokines were assessed in the same manner as described in Embodiment 1. RNA34 and CD4 mRNA were employed as controls. The forward and reverse primer sequences for the assayed chemokine mRNAs are shown in Figure 8.

[0043] The results of the analysis are shown in Figure 9. In the Figure, the circles indicate individuals in which the particular chemokine mRNA level was significantly induced by HAG stimulation. Triangles indicate a significant reduction in the mRNA level after stimulus, while X symbols indicate no significant change. As can be seen from Figure 9, the responses were varied among individuals, although there were points of commonality: for example, all of the tested individuals showed significant induction of CCL-3 and -20; CXCL-1, -2, and -3; and IL-8 and -1B.

[0044] These results indicate that it will be possible to identify the likelihood that a cancer patient will be able to recruit more leukocytes to the diseased area, and if a connection is established between specific chemokines and specific leukocyte populations, data such as that shown in Figure 9 could be used to assess the likelihood of recruiting leukocyte populations capable of effectively combating the tumor, based on TNF/TNF-R matching analysis between the leukocyte population recruited and the tumor cells.

Embodiment 5

[0045] In this embodiment, the effects of various dietary components such as supplements on the HAG-induced changes in TNF superfamily subtype 3 mRNA levels were assessed. "Dietary components" refers to any compound or substance that may be ingested by a mammal, while "dietary supplements" indicates those beneficial dietary components,

such as vitamins and natural extracts, that are used to supplement the diet of mammals, as well as other chemical compounds such as pharmaceuticals. As such, "dietary component" is broader and subsumes "dietary supplements" within it. The dietary components employed were: vitamin A (10 nM, final concentration), genistein (soy) (100 nM), curcumin (spice tumeric) (100 nM), and quercetin (plant pigments flavonoids) (100 nM). All of these dietary components have reported effects on the immune system or cancer or both. Vitamin A is known to stimulate the immune system. Genistein has been found in some studies to have anticarcinogenic activity; possible mechanisms of action include upregulation of apoptosis, inhibition of angiogenesis, inhibition of DNA topoisomerase II and inhibition of protein tyrosine kinases. Curcumin has proapoptotic effects in neoplastic cells and interferes with the activity of the transcription factor NF- κ B, which is often highly overexpressed in such cells. Quercetin has been shown to boost natural killer cell activity in rats and to inhibit degranulation of mast cells, basophils and neutrophils. In this embodiment, phosphate-buffered saline was employed as a control.

[0046] Heparinized whole blood was pre-incubated with various dietary supplements at 37 °C for 1 hour (at the blood concentrations described above), then stimulated with 1.2 μ L of heat-aggregated IgG for four hours. The blood was then incubated at 37 °C for 2 hours. The level of TNF superfamily subtype 3 mRNA was then assessed using the method described in Embodiment 1. The primer sequences are given in Table 2 above. TNF superfamily subtype 3 is also known as lymphotoxin-alpha (LT alpha), tumor necrosis factor-beta (TNF-beta), and lymphotoxin-beta (LT beta). Secreted LT alpha assembles as a soluble homotrimer, LT alpha 3. Secreted LT alpha also complexes with the membrane-associated LT beta to generate two types of heterotrimers, LTalpha 1/beta and LT alpha 2/beta 1. Subtype 3 is expressed by activated naive CD4 cells, unpolarized IL-2-secreting effectors, and Th1 effectors, and subtype 3-specific receptors are expressed by some tumor cells.

[0047] The results are shown in Figure 10. In Figure 10, the open circles indicate TNF superfamily subtype 3 values obtained using a PBS control, while closed circles indicate subtype 3 values obtained when using the HAG stimulus. Basal levels of subtype 3 mRNA were unchanged by pretreatment with dietary supplements (open circles). However, the results indicate that HAG caused a significant ($p=0.03$) induction of TNF superfamily subtype 3 expression in blood exposed to quercetin. If this individual also had tumor cells expressing the appropriate TNF-R subtype (subtype 3), an increase in the expression of this gene may increase apoptosis of the tumor cells, so that quercetin would be a good candidate for inclusion in a diet having anti-cancer properties for this individual. The Y-axis values in Figure 10 show the cycle threshold (Ct). Each symbol is the mean \pm S.D. from triplicate aliquots of 50 mL heparinized whole blood.

[0048] One of skill in the art will appreciate that it would also be possible to screen pharmaceuticals and other chemical compounds for similar effects on the expression of particular TNF superfamily subtypes or chemokines, so that the system of the present embodiment may be broadly employed to screen for substances useful in mounting an immune response to cancer in a particular individual.

[0049] Cancer infiltrating leukocytes are often observed in surgically removed tissue specimens by pathological examinations. However, these findings are not always an unambiguous good sign for patients: cancer progressions sometimes occur even when leukocyte infiltration exists. Pathologists are often puzzled when this occurs. The present embodiments provide a further refinement of this technique: matching TNF-R superfamily subtypes in cancer cells and TNF superfamily subtypes in infiltrating leukocytes may be a good prognostic sign, particularly when chemokine induction is also demonstrated. Pathological analyses of infiltrating leukocytes are difficult to interpret, because we do not know whether each leukocyte encounters cancer cells and whether the TNF superfamily cascade is activated or not. Quantitated base line TNF superfamily mRNA levels are also difficult to interpret. Instead, the embodiments of the present invention employ an analysis of functional changes in the expression of TNF superfamily mRNA subtypes after anti-TCR or HAG stimulation. Since infiltrating leukocytes come from the blood stream, the *ex vivo* functional assays of the present embodiments will be useful tools for the analysis of immune functions not only in cancer patients, but also in patients suffering from other diseases such as autoimmune diseases, inflammation, transplantation, etc., in terms of diagnostics, therapeutic monitoring, prognostic markers, and identification of effective immunomodulatory drugs, monoclonal antibody-based medicines, gene therapies and vaccines. The assay is simple and physiological (2-4 hours incubation of whole blood without isolation of leukocytes), accurate with meaningful statistical analysis (triplicate aliquots of whole blood as starting materials), and sensitive (60 μ L whole blood is enough for all 17 TNF superfamily subtype mRNA quantitations). Due to an extremely small variation in the mRNA data among triplicate aliquots of whole blood, the assay permits the identification of significant changes in gene expression as small as 0.5-1.0 Δ Ct in many cases, which is far better than DNA chip-based methodologies or conventional real time PCR. The number of NK cells or cytotoxic T-cells can be quantitated by flow cytometric analysis or immunohistochemical staining, where each cell population is identified by specific cell surface markers. However, it is unclear whether these marker-positive cells really have the expected function at the time of the analysis. Although the method of the present embodiments does not identify a specific cell population with the stimulation responses of each TNF superfamily subtype mRNA, it shows the function as a whole, which is useful for the understanding of individual people. The wide individual variations obtained may lead to the discovery of the specific genetic makeup of individuals. Although the TNF superfamily response showed good reproducibility within 1-3 days (Fig. 6), it can also changes over a long period of time as well as by administration of dietary

supplements and exercise, suggesting the involvement of non-genetic factors. Thus, the methods of the present embodiments represent an advance toward future individualized cancer immunotherapies.

[0050] Such individualized cancer immunotherapies will be based on increasing the expression of the appropriate TNF superfamily subtypes in blood leukocytes, as well as recruiting subtype-specific leukocytes via appropriate chemokine signaling. The system and method of the embodiments described above will be useful in drug screening, validation, and clinical trials. Moreover, the same system can be applicable to autoimmune diseases, where inhibition of appropriate TNF superfamily will be the drug target.

[0051] An abundant supply of appropriately equipped police officers in the city is only meaningful when they are dispatched to the crime scene. If an officer encounters a group of criminals, his or her primary job is to call help to bring more colleagues to the scene rather than to try to arrest them alone. For cytotoxic T-cells, this action may correspond to the release of chemotactic factors, such as CCL and CXCL chemokines, and interleukins (ILs) (sequences are available from GenBank and UniGene). Thus, monitoring HAG inducibility of CCLs, CXCLs, and in peripheral blood leukocyte is also important. Like a police dispatcher, an oncologist may be able to orchestrate each patient's own immune cells by monitoring their supply in peripheral blood.

Claims

1. A method of determining the likely severity of prognosis for a neoplastic disease in a mammal, comprising:

determining a level of mRNA expression of a plurality of tumor necrosis factor (TNF) superfamily subtypes in a first sample of whole blood from the mammal;
 exposing a second sample of whole blood of the mammal to a stimulus that activates leukocytes in the whole blood;
 determining a level of mRNA expression of the plurality of tumor necrosis factor (TNF) superfamily subtypes in the second sample;
 identifying subtypes that exhibit a significant change in mRNA expression level in said whole blood between said first and second samples; and
 determining a likely lesser severity of prognosis when the identified subtypes of TNF superfamily correspond to specific tumor necrosis factor receptor (TNF-R) superfamily subtypes expressed in neoplastic cells of the mammal.

2. The method of claim 1, wherein TNF-R superfamily subtypes expressed in the neoplastic cells are identified.

3. The method of claim 2, wherein TNF-R superfamily subtypes expressed in the neoplastic cells are identified by a method selected from the group consisting of immunostaining, *in situ* hybridization, *in situ* polymerase chain reaction, and *in vitro* polymerase chain reaction.

4. The method of any one of claims 1-3, wherein exposing the second sample of whole blood includes addition of heparin.

5. The method of any one of claims 1-4, wherein the stimulus is selected from the group consisting of heat-aggregated human IgG and anti-human α/β T-cell receptor monoclonal IgG.

6. The method of any one of claims 1-5, wherein the tumor necrosis factor receptor superfamily subtypes expressed by diseased cells are selected from the group consisting of TNF-R superfamily subtypes 1A, 1B, 3, 4, 5, 6, 7, 8, 9, 10A, 10B, 10C, 10D, 11A, 11B, 12A, 14, 17, 18, and 25.

7. The method of any one of claims 1-6, wherein the tumor necrosis factor superfamily subtypes expressed in said exposed whole blood are selected from the group consisting of TNF superfamily subtypes 1, 2, 3, 4, 5, 6, 7, 8, 9, 10, 11, 12, 13, 13B, 14, 15, and 18.

8. The method of determining the likely severity of prognosis for a neoplastic disease in a mammal of claim 1, further comprising:

determining a level of mRNA expression of a plurality of chemokines in a first sample of whole blood from the mammal;
 exposing a second sample of whole blood of the mammal to a stimulus that activates leukocytes in the whole blood;

determining a level of mRNA expression of the plurality of chemokines in the second sample;
determining a likely lesser severity of prognosis when chemokines that exhibit a significant change in mRNA expression level in said whole blood between said third and fourth samples are identified.

- 5 9. The method of claim 8, wherein said chemokines are selected from CCL1, CCL2, CCL3, CCL4, CCL5, CCL6, CCL7, CCL8, CCL9, CCL10, CCL11, CCL12, CCL13, CCL14, CCL15, CCL16, CCL17, CCL18, CCL19, CCL20, CCL21, CCL22, CCL23, CCL24, CCL25, CCL26, CCL27, CCL28, CXCL1, CXCL2, CXCL3, CXCL4, CXCL5, CXCL6, CXCL7, CXCL9, CXCL10, CXCL11, CXCL12, CXCL13, CXCL14, CXCL16, IL1B, IL5, IL6, IL8, IL12A, IL12B, IL15, and IL16.
- 10 10. A method of determining the likely utility of a dietary component for treating neoplastic disease in a mammal, comprising:
- obtaining a first sample of whole blood of the mammal;
exposing a second sample of whole blood of the mammal to the dietary component;
15 exposing the first and second samples of whole blood of the mammal to a stimulus that activates leukocytes in the whole blood;
determining a level of mRNA expression of a plurality of tumor necrosis factor (TNF) superfamily subtypes in the first and second samples of whole blood from the mammal;
identifying subtypes that exhibit a significant change in mRNA expression level in said whole blood between
20 said first and second samples; and
determining that the dietary component likely has utility for treating the neoplastic disease when the identified subtypes of TNF superfamily correspond to specific TNF-R superfamily subtypes expressed in neoplastic cells of the mammal.
- 25 11. The method of claim 10, wherein the first sample is exposed to a control stimulus before the exposure to the stimulus that activates leukocytes in the whole blood.
12. The method of claim 10 or 11, wherein TNF-R superfamily subtypes expressed in the neoplastic cells are selected from TNF-R superfamily subtypes 1A, 3, 12A, and 14.
- 30 13. The method of any one of claims 10 to 12, wherein TNF-R superfamily subtypes expressed in the neoplastic cells are identified.
14. The method of claim 13, wherein TNF-R superfamily subtypes expressed in the neoplastic cells are identified by a
35 method selected from the group consisting of immunostaining, *in situ* hybridization, *in situ* polymerase chain reaction, and *in vitro* polymerase chain reaction.

Patentansprüche

- 40 1. Verfahren zur Feststellung der wahrscheinlichen Schwere der Prognose bei einer neoplastischen Erkrankung bei einem Säugetier, umfassend:
- Ermitteln eines mRNA-Expressionsspiegels einer Mehrzahl von Tumornekrosefaktor (TNF)-Superfamilie-Subtypen in einer ersten Vollblutprobe des betreffenden Säugetiers,
45 Inkontaktbringen einer zweiten Vollblutprobe des Säugetiers mit einem Stimulus, der Leukozyten im Vollblut aktiviert,
Ermitteln eines mRNA-Expressionsspiegels der Mehrzahl von Tumornekrosefaktor (TNF)-Superfamilie-Subtypen in der zweiten Probe,
50 Identifizieren von Subtypen, bei denen eine signifikante Änderung des mRNA-Expressionsspiegels im Vollblut beim Vergleich der ersten und der zweiten Probe vorliegt, und
Feststellung, dass die Prognose wahrscheinlich weniger schwerwiegend ist, wenn die identifizierten Subtypen der TNF-Superfamilie speziellen Tumornekrosefaktor-Rezeptor (TNF-R)-Superfamilie-Subtypen entsprechen, die in neoplastischen Zellen des Säugetiers exprimiert sind.
- 55 2. Verfahren nach Anspruch 1, wobei in den neoplastischen Zellen exprimierte TNF-R-Superfamilie-Subtypen identifiziert werden.

EP 1 904 657 B1

3. Verfahren nach Anspruch 2, wobei in den neoplastischen Zellen exprimierte TNF-R-Superfamilie-Subtypen mit einem Verfahren identifiziert werden, das aus der Immunanfärbung, In-situ-Hybridisierung, In-situ-Polymerasekettenreaktion (PCR) und In-vitro-Polymerasekettenreaktion (PCR) bestehenden Gruppe ausgewählt ist.
- 5 4. Verfahren nach einem der Ansprüche 1-3, wobei das Inkontaktbringen der zweiten Vollblutprobe die Zugabe von Heparin beinhaltet.
5. Verfahren nach einem der Ansprüche 1-4, wobei der Stimulus aus der Gruppe ausgewählt ist, die aus hitzeaggregiertem Human-IgG und monoklonalem IgG gegen humanen α/β T-Zellrezeptor besteht.
- 10 6. Verfahren nach einem der Ansprüche 1-5, wobei die von erkrankten Zellen exprimierten Tumornekrosefaktor-Rezeptor-Superfamilie-Subtypen aus der Gruppe ausgewählt sind, die aus den TNF-R-Superfamilie-Subtypen 1A, 1B, 3, 4, 5, 6, 7, 8, 9, 10A, 10B, 10C, 10D, 11A, 11B, 12A, 14, 17, 18 und 25 besteht.
- 15 7. Verfahren nach einem der Ansprüche 1-6, wobei die im exponierten Vollblut exprimierten Tumornekrosefaktor-Superfamilie-Subtypen aus der Gruppe ausgewählt sind, die aus den TNF-Superfamilie-Subtypen 1, 2, 3, 4, 5, 6, 7, 8, 9, 10, 11, 12, 13, 13B, 14, 15 und 18 besteht.
- 20 8. Verfahren zur Feststellung der wahrscheinlichen Schwere der Prognose bei einer neoplastischen Erkrankung bei einem Säugetier nach Anspruch 1, darüber hinaus umfassend:

Ermitteln eines mRNA-Expressionsspiegels einer Mehrzahl von Chemokinen in einer ersten Vollblutprobe des Säugetiers,
Inkontaktbringen einer zweiten Vollblutprobe des Säugetiers mit einem Stimulus, der Leukozyten im Vollblut aktiviert,
25 Ermitteln eines mRNA-Expressionsspiegels der Mehrzahl von Chemokinen in der zweiten Probe,
Feststellung einer wahrscheinlich geringeren Schwere der Prognose, wenn die Chemokine mit einer signifikanten Änderung des mRNA-Expressionsspiegels im Vollblut beim Vergleich der dritten und vierten Probe identifiziert werden.
- 30 9. Verfahren nach Anspruch 8, wobei die Chemokine aus CCL1, CCL2, CCL3, CCL4, CCL5, CCL6, CCL7, CCL8, CCL9, CCL10, CCL11, CCL12, CCL13, CCL14, CCL15, CCL16, CCL17, CCL18, CCL19, CCL20, CCL21, CCL22, CCL23, CCL24, CCL25, CCL26, CCL27, CCL28, CXCL1, CXCL2, CXCL3, CXCL4, CXCL5, CXCL6, CXCL7, CXCL9, CXCL10, CXCL11, CXCL12, CXCL13, CXCL14, CXCL16, IL1B, IL5, IL6, IL8, IL12A, IL12B, IL15 und IL16 ausgewählt sind.
- 35 10. Verfahren zur Feststellung der wahrscheinlichen Anwendbarkeit eines Ernährungsbestandteils zur Behandlung von neoplastischen Erkrankungen bei einem Säugetier, umfassend:

Abnehmen einer ersten Vollblutprobe des Säugetiers,
Inkontaktbringen einer zweiten Vollblutprobe des Säugetiers mit dem Ernährungsbestandteil,
Inkontaktbringen der ersten und zweiten Vollblutprobe des Säugetiers mit einem Stimulus, der Leukozyten im Vollblut aktiviert,
40 Ermitteln eines mRNA-Expressionsspiegels einer Mehrzahl von Tumornekrosefaktor (TNF)-Superfamilie-Subtypen in der ersten und zweiten Vollblutprobe des Säugetiers,
45 Identifizieren von Subtypen, bei denen eine signifikante Änderung des mRNA-Expressionsspiegels im Vollblut beim Vergleich der ersten und der zweiten Probe vorliegt; und
Feststellung, dass der Ernährungsbestandteil wahrscheinlich eine Anwendbarkeit zur Behandlung der neoplastischen Erkrankung besitzt, wenn die identifizierten TNF-Superfamilie-Subtypen bestimmten, in neoplastischen Zellen des Säugetiers exprimierten TNF-R-Superfamilie-Subtypen entsprechen.
- 50 11. Verfahren nach Anspruch 10, wobei die erste Probe vor dem Inkontaktbringen mit dem Stimulus, der Leukozyten im Vollblut aktiviert, mit einem Kontrollstimulus in Kontakt gebracht wird.
- 55 12. Verfahren nach Anspruch 10 oder 11, wobei die in neoplastischen Zellen exprimierten TNF-R-Superfamilie-Subtypen aus TNF-R-Superfamilie-Subtypen 1A, 3, 12A und 14 ausgewählt sind.
13. Verfahren nach einem der Ansprüche 10 bis 12, wobei in den neoplastischen Zellen exprimierte TNF-R-Superfamilie-

Subtypen identifiziert werden.

- 5 14. Verfahren nach Anspruch 13, wobei in den neoplastischen Zellen exprimierte TNF-R-Superfamilie-Subtypen mit einem Verfahren identifiziert werden, das aus der Immunanfärbung, In-situ-Hybridisierung, In-situ-Polymerasekettenreaktion (PCR) und In-vitro-Polymerasekettenreaktion (PCR) bestehenden Gruppe ausgewählt ist.

Revendications

- 10 1. Procédé pour déterminer la gravité probable du pronostic d'une affection néoplasique chez un mammifère comprenant les étapes consistant à :
- 15 - déterminer le niveau d'expression de l'ARNm d'un ensemble de sous-types de la superfamille du facteur de nécrose tumorale (TNF) dans un premier échantillon du sang total du mammifère,
 - exposer un second échantillon du sang total du mammifère à un stimulus qui active les leucocytes dans le sang total,
 - déterminer le niveau d'expression de l'ARNm de l'ensemble de sous-types de la superfamille du facteur de nécrose tumorale (TNF) dans le second échantillon,
 - 20 - identifier les sous-types qui présentent une modification significative du niveau d'expression de l'ARNm dans le sang total entre le premier et le second échantillon, et
 - déterminer une gravité de pronostic probablement inférieure lorsque les sous-types de la superfamille du TNF identifiés correspondent aux sous-types de la superfamille du récepteur du facteur de nécrose tumorale (TNF-R) spécifique exprimés dans les cellules néoplasiques du mammifère.
- 25 2. Procédé conforme à la revendication 1, selon lequel les sous-types de la superfamille du TNF-R exprimés dans les cellules néoplasiques sont identifiés.
- 30 3. Procédé conforme à la revendication 2, selon lequel les sous-types de la superfamille du TNF-R exprimés dans les cellules néoplasiques, sont identifiés par un procédé choisi dans le groupe constitué par l'immunocoloration, l'hybridation *in situ*, la réaction en chaîne par polymérase *in situ* et la réaction en chaîne par polymérase *in vitro*.
- 35 4. Procédé conforme à l'une quelconque des revendications 1 à 3, selon lequel l'étape d'exposition du second échantillon du sang total, comporte l'addition d'héparine.
- 40 5. Procédé conforme à l'une quelconque des revendications 1 à 4, selon lequel le stimulus est choisi dans le groupe formé par l'IgG humaine agrégée par la chaleur et l'IgG monoclonale anti-récepteur des cellules T α/β .
- 45 6. Procédé conforme à l'une quelconque des revendications 1 à 5, selon lequel les sous-types de la superfamille du récepteur du facteur de nécrose tumorale exprimés par les cellules affectées, sont choisis dans le groupe formé par les sous-types de la superfamille du TNF-R 1A, 1B, 3, 4, 5, 6, 7, 8, 9, 10A, 10B, 10C, 10D, 11A, 11B, 12A, 14, 17, 18, et 25.
- 50 7. Procédé conforme à l'une quelconque des revendications 1 à 6, selon lequel les sous-types de la superfamille du facteur de nécrose tumorale exprimés dans le sang total exposé, sont choisis dans le groupe formé par les sous-types de la superfamille du TNF 1, 2, 3, 4, 5, 6, 7, 8, 9, 10, 11, 12, 13, 13B, 14, 15, et 18.
- 55 8. Procédé pour déterminer la gravité probable du pronostic d'une affection néoplasique chez un mammifère conforme à la revendication 1, comprenant en outre les étapes consistant à :

EP 1 904 657 B1

- déterminer le niveau d'expression de l'ARNm d'un ensemble de chémokines dans un premier échantillon du sang total du mammifère,
- exposer un second échantillon du sang total du mammifère à un stimulus qui active les leucocytes dans le sang total,
- déterminer le niveau d'expression de l'ARNm de l'ensemble de chémokines dans le second échantillon,
- déterminer une gravité de pronostic probablement inférieure lorsque des chémokines qui présentent une modification significative du niveau d'expression de l'ARNm dans le sang total entre le troisième et le quatrième échantillon, sont identifiés.

5

- 10 **9.** Procédé conforme à la revendication 8, selon lequel les chémokines sont choisies parmi les chémokines suivantes:

15

CCL1, CCL2, CCL3, CCL4, CCL5, CCL6, CCL7, CCL8, CCL9, CCL10, CCL11, CCL12, CCL13, CCL14, CCL15, CCL16, CCL17, CCL18, CCL19, CCL20, CCL21, CCL22, CCL23, CCL24, CCL25, CCL26, CCL27, CCL28, CXCL1, CXCL2, CXCL3, CXCL4, CXCL5, CXCL6, CXCL7, CXCL9, CXCL10, CXCL11, CXCL12, CXCL13, CXCL14, CXCL16, IL1B, IL5, IL6, IL8, IL12A, IL12B, IL15, et IL16.

20

- 10.** Procédé de détermination de l'utilité probable d'un composé alimentaire pour le traitement d'une affection néoplasique chez un mammifère comprenant les étapes consistant à :

25

- se procurer un premier échantillon du sang total du mammifère,
- exposer un second échantillon du sang total du mammifère au composé alimentaire,
- exposer le premier et le second échantillon du sang total du mammifère à un stimulus qui active les leucocytes dans le sang total,
- déterminer le niveau d'expression de l'ARNm d'un ensemble de sous-types de la superfamille du facteur de nécrose tumorale (TNF) dans le premier et le second échantillon du sang total du mammifère,
- identifier les sous-types qui présentent une modification significative du niveau d'expression de l'ARNm dans le sang total entre le premier et le second échantillon, et
- déterminer que le composé diététique a probablement une utilité pour le traitement de l'affection néoplasique lorsque les sous-types de la superfamille du TNF identifiés correspondent aux sous-types de la superfamille du TNF-R spécifique exprimés dans les cellules néoplasiques du mammifère.

30

35

- 11.** Procédé conforme à la revendication 10, selon lequel

le premier échantillon est exposé à un stimulus de contrôle avant son exposition au stimulus qui active les leucocytes dans le sang total.

40

- 12.** Procédé conforme à la revendication 10 ou 11, selon lequel

les sous-types de la superfamille du TNF-R exprimés dans les cellules néoplasiques, sont choisis parmi les sous-types de la superfamille du TNF-R 1A, 3, 12A, et 14.

45

- 13.** Procédé conforme à l'une quelconque des revendications 10 à 12, selon lequel

les sous-types de la superfamille du TNF-R exprimés dans les cellules néoplasiques sont identifiés.

50

- 14.** Procédé conforme à la revendication 13, selon lequel

les sous-types de la superfamille du TNF-R exprimés dans les cellules néoplasiques, sont identifiés par un procédé choisi dans le groupe formé par l'immunocoloration, l'hybridation *in situ*, la réaction en chaîne par polymérase *in situ* et la réaction en chaîne par polymérase *in vitro*.

55

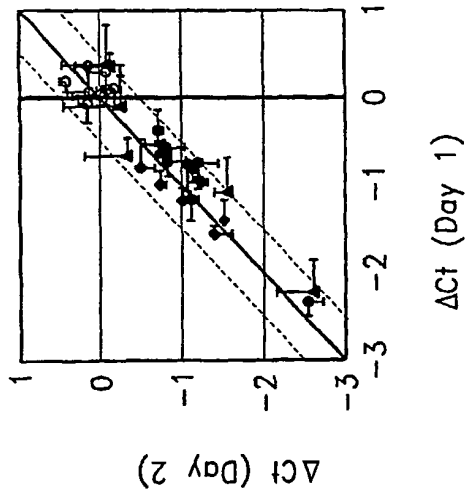


FIG. 1B

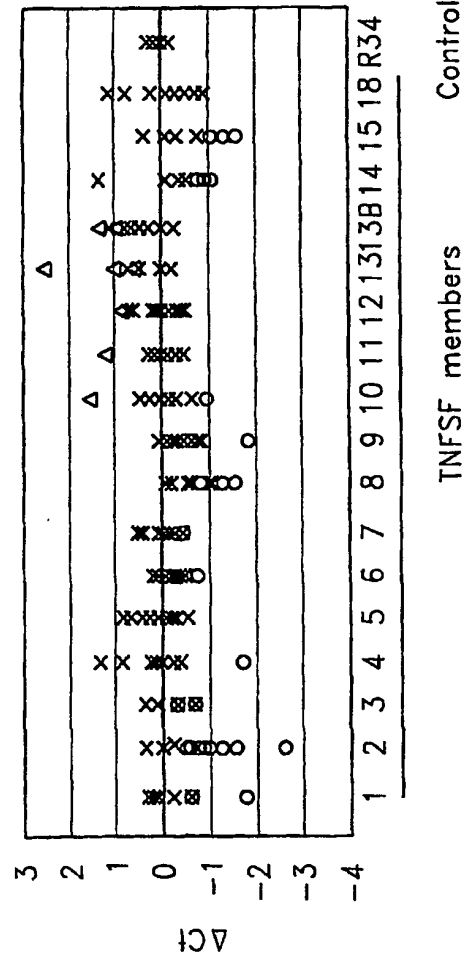
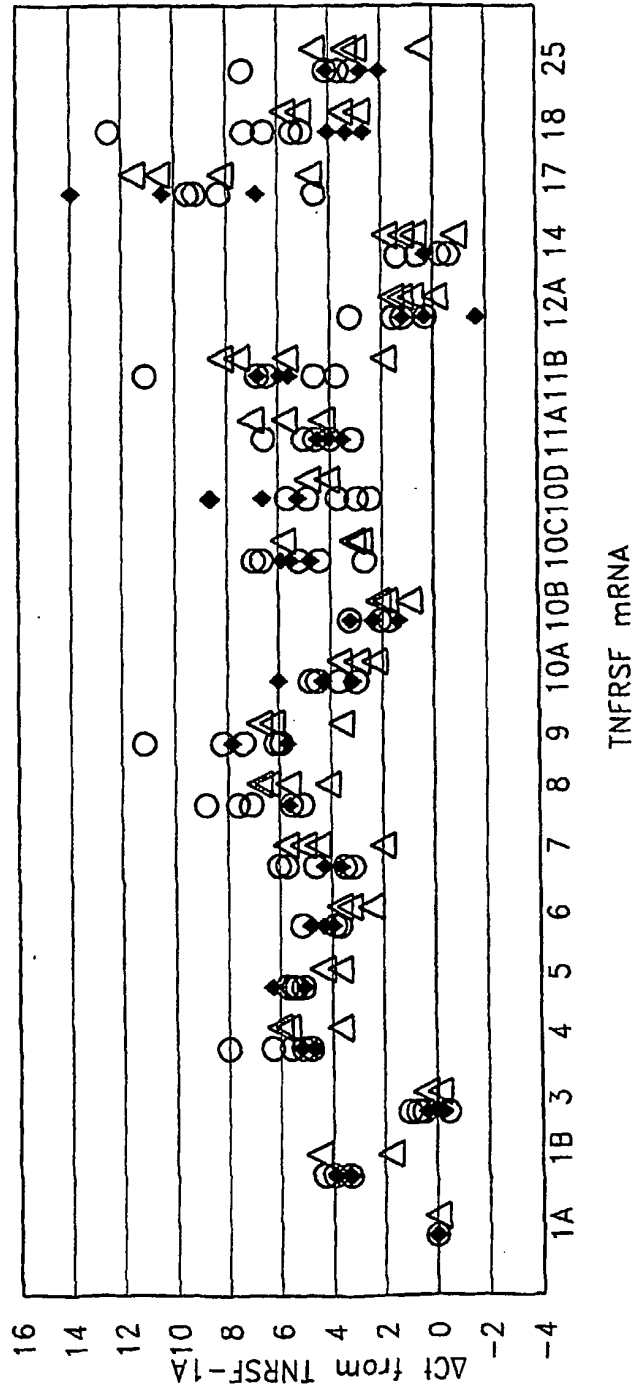


FIG. 1A



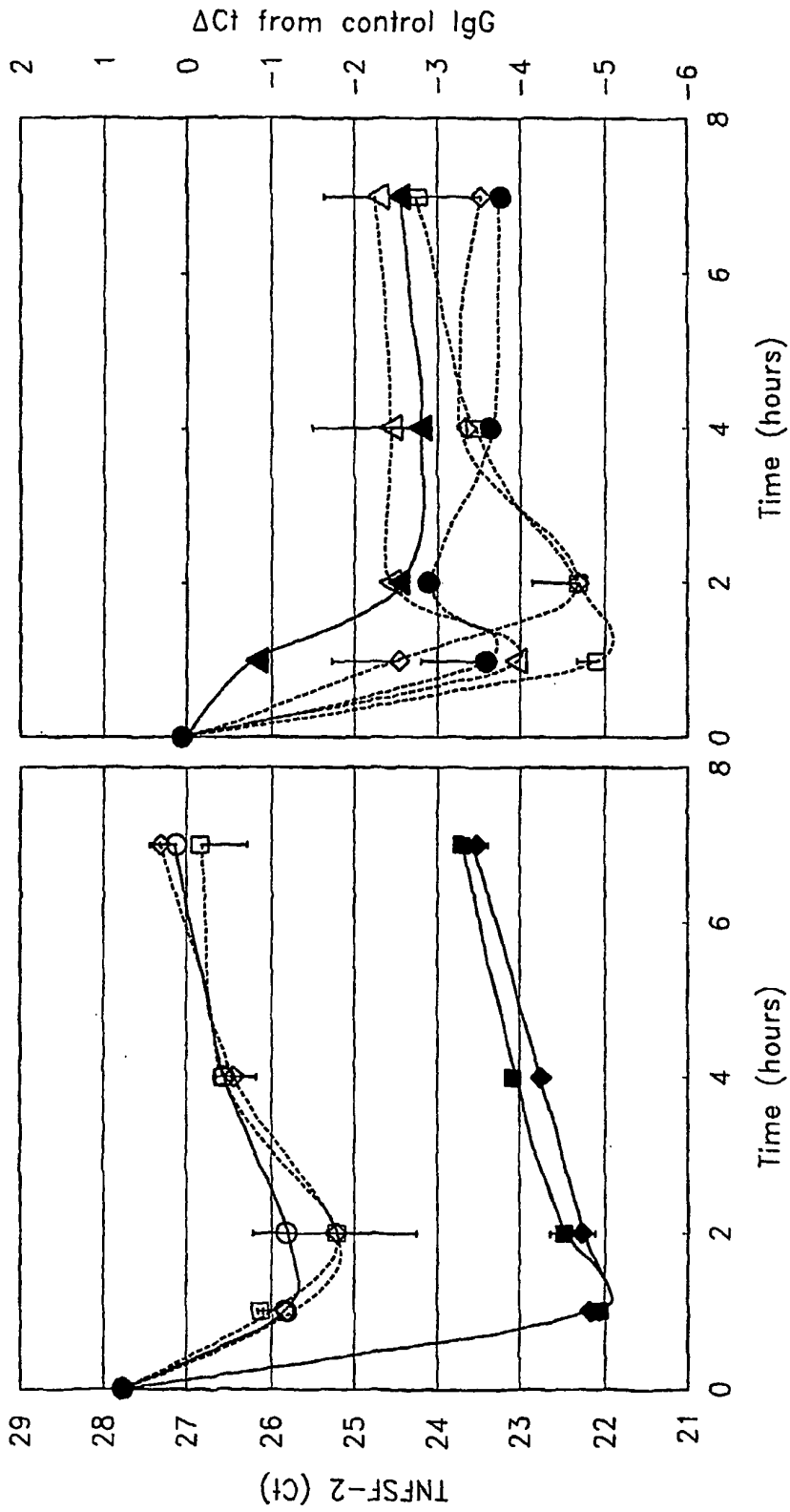


FIG. 4B

FIG. 4A

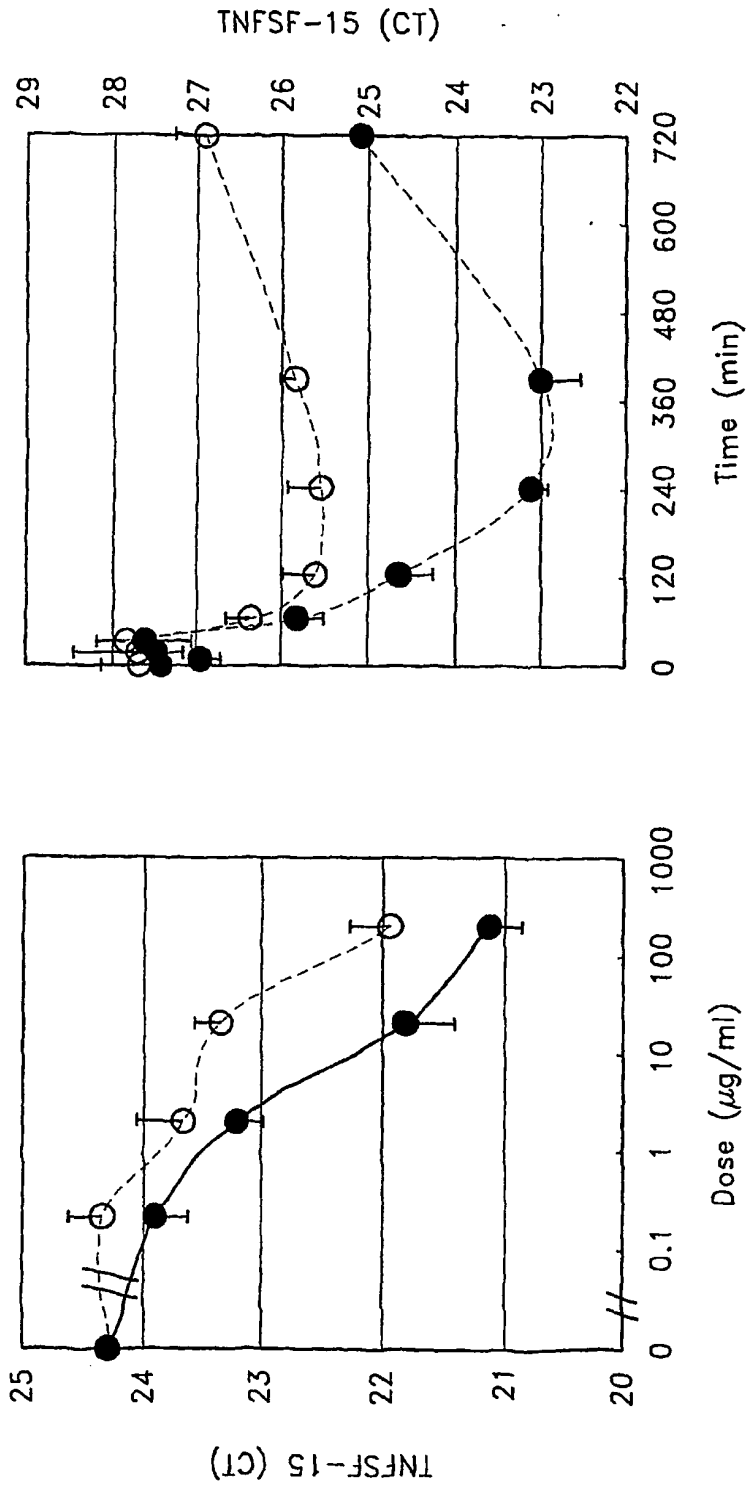


FIG. 5B

FIG. 5A

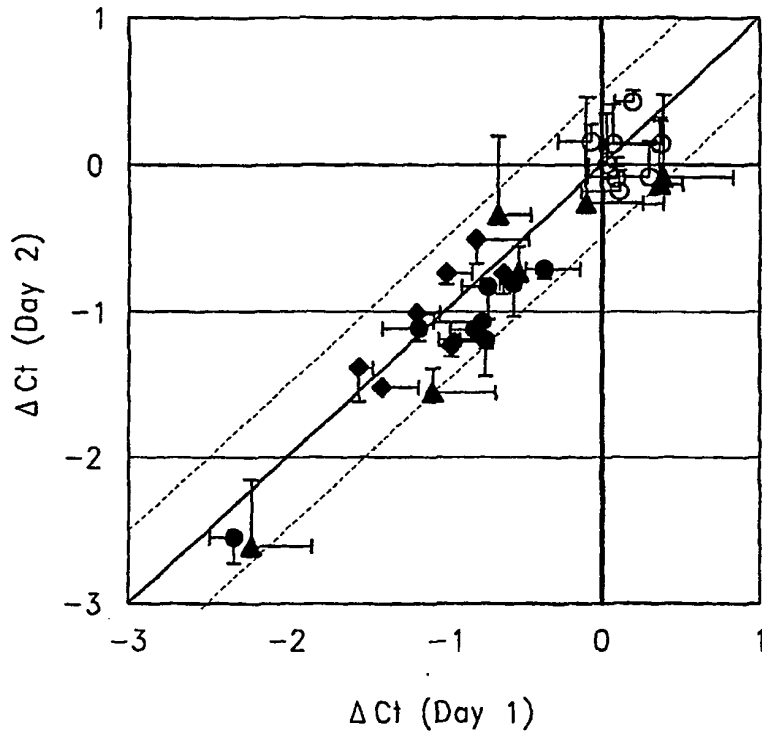


FIG. 6

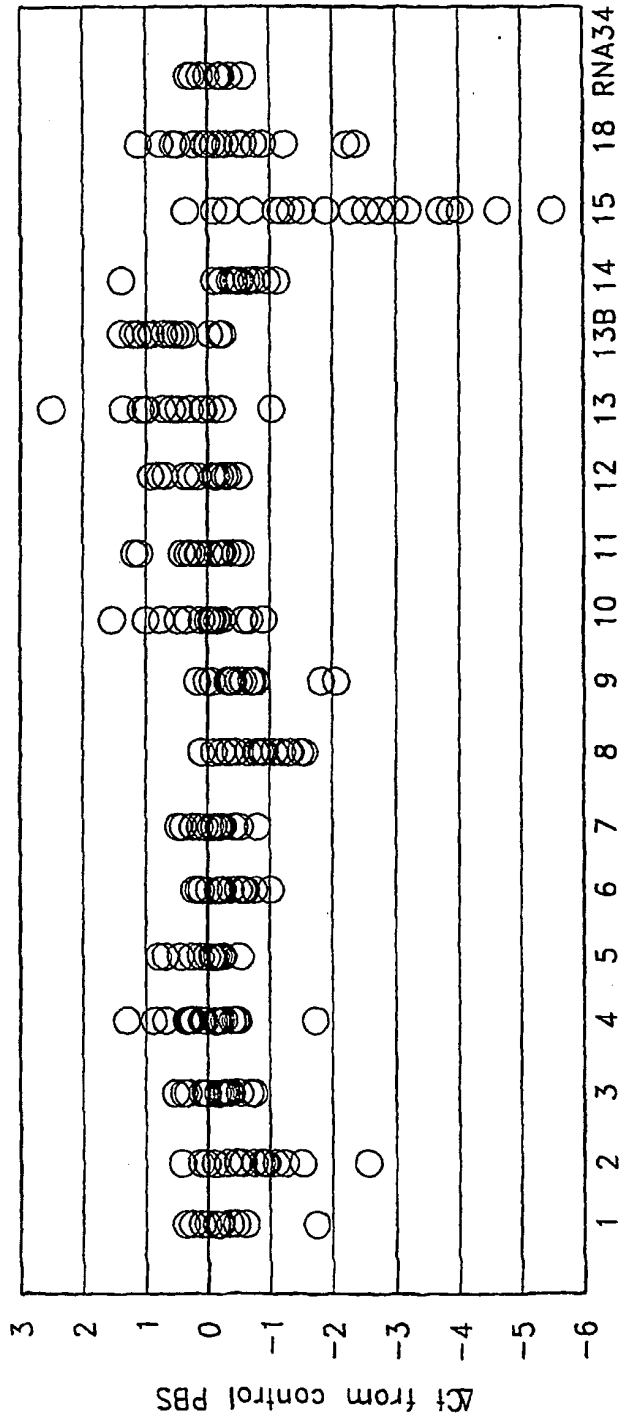


FIG. 7

EP 1 904 657 B1

| | | | |
|--------|--------|------------------------------|------------------|
| CCL-1 | MM282: | GGCCTGCGCCTTGGA | (SEQ ID No. 76) |
| | MM283: | GGGCAGTGCCTCAGCATTT | (SEQ ID No. 77) |
| CCL-2 | MM284: | CCATTGTGGCCAAGGAGATC | (SEQ ID No. 78) |
| | MM285: | TGTCCAGGTGGTCCATGGA | (SEQ ID No. 79) |
| CCL-3 | MM286: | ACAGAATTTTCATAGCTGACTACTTTGA | (SEQ ID No. 80) |
| | MM287: | TCGCTTGGTTAGGAAGATGACA | (SEQ ID No. 81) |
| CCL-4 | MM288: | GGTATTCCAAACCAAAAGAAGCA | (SEQ ID No. 82) |
| | MM289: | G TTCAGTTC CAGGTCATACACGTACT | (SEQ ID No. 83) |
| CCL-5 | MM290: | AGTCGTCTTTGTACCCGAAA | (SEQ ID No. 84) |
| | MM291: | AGCTCATCTCCAAAGAGTTGATGTAC | (SEQ ID No. 85) |
| CCL-7 | MM292: | TGTGCTGACCCACACAGA | (SEQ ID No. 86) |
| | MM293: | GCTTTGGAGTTTGGGTTTTCTTG | (SEQ ID No. 87) |
| CCL-8 | MM294: | AGAGCTACACAAGAATCACCAACATC | (SEQ ID No. 88) |
| | MM295: | AGACCTCCTTGCCCCGTTT | (SEQ ID No. 89) |
| CCL-11 | MM296: | CCCAGAAAGCTGTGATCTTCAA | (SEQ ID No. 90) |
| | MM297: | TCCTGCACCCACTTCTTCTTG | (SEQ ID No. 91) |
| CCL-13 | MM298: | CCAAACTGGGCAAGGAGATCT | (SEQ ID No. 92) |
| | MM299: | GGCCAGGTGTTTCATATAATTCT | (SEQ ID No. 93) |
| CCL-14 | MM300: | TGCTTCACCTACCTACCTACAAGATC | (SEQ ID No. 94) |
| | MM301: | GACAATCCGGGCTTGGA | (SEQ ID No. 95) |
| CCL-15 | MM302: | CCAAGCCAGGTGTATATTCTCT | (SEQ ID No. 96) |
| | MM303: | TGAGTAGGGCTTCAGCTTTTCA | (SEQ ID No. 97) |
| CCL-16 | MM304: | CAAGGATCCCAACCTACCTTTG | (SEQ ID No. 98) |
| | MM305: | GGTTGACCATTCTTTGCTGTAATAATT | (SEQ ID No. 99) |
| CCL-17 | MM306: | GGCAGGGCCATCTGTTC | (SEQ ID No. 100) |
| | MM307: | TCTCAAGGCTTTCAGGTATTTAA | (SEQ ID No. 101) |
| CCL-18 | MM308: | CAGATTCACAAAAGTTTCATAGTTGAC | (SEQ ID No. 102) |
| | MM309: | CCGCCTCTCTTGGTTAGG | (SEQ ID No. 103) |
| CCL-19 | MM310: | CTGCTGTAGTGTTCACCACACTGA | (SEQ ID No. 104) |
| | MM311: | CAGTCTCTGGATGATGCGTTCT | (SEQ ID No. 105) |
| CCL-20 | MM312: | ATACACAGACCGTATTCTTCATCCTAA | (SEQ ID No. 106) |
| | MM313: | TGAAAGATGATAGCATTGATGTCACA | (SEQ ID No. 107) |
| CCL-21 | MM314: | CGCTCTCAGGCAGAGCTATGT | (SEQ ID No. 108) |
| | MM315: | CTTGTCAGATGCTGCATCAG | (SEQ ID No. 109) |
| CCL-22 | MM316: | GCGCGTGGTGAAACACTTC | (SEQ ID No. 110) |
| | MM317: | ATCGGCACAGATCTCCTTATCC | (SEQ ID No. 111) |
| CCL-23 | MM318: | CGAAGCATCCCGTGTTCACT | (SEQ ID No. 112) |
| | MM319: | GATGACACCCGGCTTGGA | (SEQ ID No. 113) |
| CCL-24 | MM320: | CAGGAGTGATCTTCACCACCAA | (SEQ ID No. 114) |
| | MM321: | GGCGTCCAGGTCTTCATGT | (SEQ ID No. 115) |
| CCL-25 | MM322: | GCGCGCTGGACTTACC | (SEQ ID No. 116) |
| | MM323: | GTAGAATATCGCAGCAGGCAGAT | (SEQ ID No. 117) |
| CCL-26 | MM324: | CTGCTTCCAATACAGCCACAAG | (SEQ ID No. 118) |
| | MM325: | GAGCAGCTGTTACTGGTGAATTCA | (SEQ ID No. 119) |
| CCL-27 | MM326: | CGTGCTTACCTGGCTCAA | (SEQ ID No. 120) |
| | MM327: | GGTGCTCAAACCACTGTGACA | (SEQ ID No. 121) |
| CCL-28 | MM328: | GGAAATGTTTGCCACAGGAAGA | (SEQ ID No. 122) |
| | MM329: | TGTTTCGTGTTTCCCTGATG | (SEQ ID No. 123) |

FIG 8A

EP 1 904 657 B1

| | | | |
|---------|--------|-------------------------------|------------------|
| CXCL-1 | MM330: | CCACTGCGCCCAAACC | (SEQ ID No. 124) |
| | MM331: | GCAGATTGAGGCAAGCTTT | (SEQ ID No. 125) |
| CXCL-2 | MM332: | CCCCTGGCCACTGAACTG | (SEQ ID No. 126) |
| | MM333: | TGGATGTTCTTGAGGTGAATTCC | (SEQ ID No. 127) |
| CXCL-3 | MM334: | GGAATTCACCTCAAGAACATCCA | (SEQ ID No. 128) |
| | MM335: | GTGGCTATGACTTCGGTTTGG | (SEQ ID No. 129) |
| CXCL-4 | MM336: | CCGTCCAGGCACATCAC | (SEQ ID No. 130) |
| | MM337: | GCAAATTTTCCTTCCATTCTTCA | (SEQ ID No. 131) |
| CXCL-5 | MM338: | AGAGCTGCGTTGCGTTTGT | (SEQ ID No. 132) |
| | MM339: | TGGCGAACACTTGCAGATTACT | (SEQ ID No. 133) |
| CXCL-6 | MM340: | CAGAGCTGCGTTGCACTTGT | (SEQ ID No. 134) |
| | MM341: | ACACCTGCAGTTTACCAATCGTT | (SEQ ID No. 135) |
| CXCL-7 | MM342: | TCTGGAATTCATCCCAAAAACA | (SEQ ID No. 136) |
| | MM343: | ACTTCGACTTGGTTGCAATGG | (SEQ ID No. 137) |
| CXCL-9 | MM344: | CCACCTACAATCCTTGAAAGACCTT | (SEQ ID No. 138) |
| | MM345: | CAGTGTAGCAATGATTTCAATTTTCTC | (SEQ ID No. 139) |
| CXCL-10 | MM346: | TCCACGTGTTGAGATCATTGC | (SEQ ID No. 140) |
| | MM347: | TCTTGATGGCCTTCGATTCTG | (SEQ ID No. 141) |
| CXCL-11 | MM348: | AGGACGCTGTCTTTGCATAGG | (SEQ ID No. 142) |
| | MM349: | GCATCGTTGCCTTTATTTTCTTTC | (SEQ ID No. 143) |
| CXCL-12 | MM350: | TGCCAGAGCCAACGTCAAG | (SEQ ID No. 144) |
| | MM351: | CAGCCGGGCTACAATCTGA | (SEQ ID No. 145) |
| CXCL-13 | MM352: | GACGCTCATTGATCGAATTCA | (SEQ ID No. 146) |
| | MM353: | TTCTTCCAGACTATGATTTCTTTTCTTG | (SEQ ID No. 147) |
| CXCL-14 | MM354: | AAGCTGGAAATGAAGCCAAAGT | (SEQ ID No. 148) |
| | MM355: | ACACGCTCTTGGTGGTGATG | (SEQ ID No. 149) |
| CXCL-16 | MM356: | CCCACAGCCAGGACATCAG | (SEQ ID No. 150) |
| | MM357: | CTTGACACAGCACATAGGAAAGG | (SEQ ID No. 151) |
| IL-8 | MM358: | TGCTAAAGAACTTAGATGTCAGTGCAT | (SEQ ID No. 152) |
| | MM359: | TGGTCCACTCTCAATCACTCTCA | (SEQ ID No. 153) |
| IL-5 | MM360: | GCTCTTGGAGCTGCCTACGT | (SEQ ID No. 154) |
| | MM361: | AAGGTCTCTTTCACCAATGCACTT | (SEQ ID No. 155) |
| IL-6 | MM362: | TCATCACTGGTCTTTTGGAGTTTG | (SEQ ID No. 156) |
| | MM363: | TCTGCACAGCTCTGGCTTGT | (SEQ ID No. 157) |
| IL-12A | MM364: | GCAGGCCCTGAATTTCAACA | (SEQ ID No. 158) |
| | MM365: | GAAGTATGCAGAGCTTGATTTTAGTTTTA | (SEQ ID No. 159) |
| IL-12B | MM366: | CGGTCATCTGCCGCAA | (SEQ ID No. 160) |
| | MM367: | CCCATTCGCT CCAAGATGAG | (SEQ ID No. 161) |
| IL-15 | MM368: | TGAAGTGCTTCTCTTGGAGTTACA | (SEQ ID No. 162) |
| | MM369: | CATCCCATTAGAAGACAAACTGTTG | (SEQ ID No. 163) |
| IL-16c | MM370: | AAAACCTCTTGGGAAGCATGAG | (SEQ ID No. 164) |
| | MM371: | GGGACCCCGAGGACAGTACT | (SEQ ID No. 165) |
| IL-1B | MM372: | GAAGATGGAAAAGCGATTTGTCTT | (SEQ ID No. 166) |
| | MM373: | GGGCATGTTTTCTGCTTGAGA | (SEQ ID No. 167) |

FIG 8B

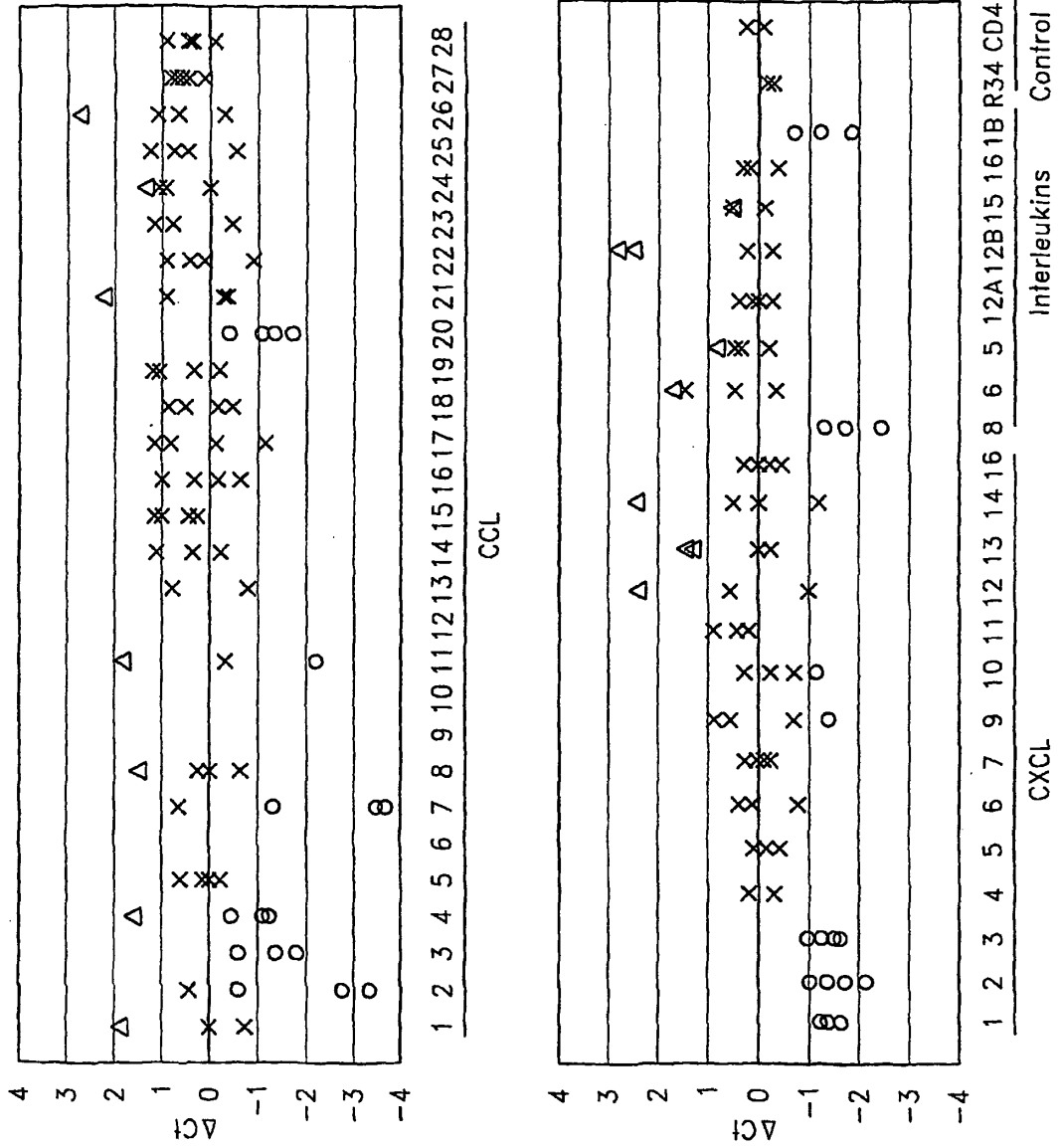


FIG. 9

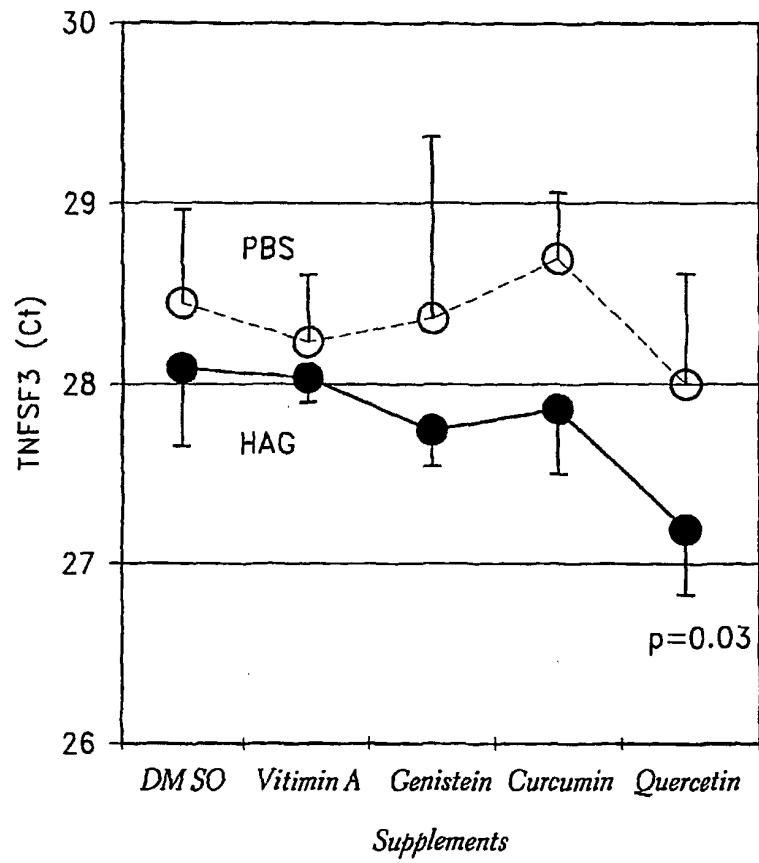


FIG. 10

REFERENCES CITED IN THE DESCRIPTION

This list of references cited by the applicant is for the reader's convenience only. It does not form part of the European patent document. Even though great care has been taken in compiling the references, errors or omissions cannot be excluded and the EPO disclaims all liability in this regard.

Patent documents cited in the description

- US 10796298 B [0019]
- US 2004036309 W [0019]

Non-patent literature cited in the description

- **Richman AV.** Immunofluorescence studies of benign and malignant human mammary tissue. *J. Natl. Cancer Inst.*, 1976, vol. 57, 263-7 [0003]
- **Koneval T et al.** Demonstration of immunoglobulin in tumor and marginal tissues of squamous cell carcinomas of the head and neck. *J. Natl. Cancer Inst.*, 1977, vol. 59, 1089-97 [0003]
- **Nakanishi et al.** Perforin expression in lymphocytes infiltrated to human colorectal cancer. *Br. J. Cancer*, 1991, vol. 64, 239-42 [0003]
- **Perussia et al.** Assays for antibody-dependent cell-mediated cytotoxicity (ADCC) and reverse ADCC (redirected cytotoxicity) in human natural killer cells. *Methods Mol Biol.*, 2000, vol. 121, 179-92 [0006]
- **Vujanovic.** Role of TNF family ligands in antitumor activity of natural killer cells. *Int. Rev. Immunol.*, June 2001, vol. 20 (3-4), 415-37 [0008]
- **McDermott, TNF.** TNFR biology in health and disease, *Cell. Mol. Biol. (Noisy-le-grand)*., June 2001, vol. 47 (4), 619-35 [0008]
- **Sträter J. et al.** *Clinical Cancer Research: an official journal of the American Association for Cancer Research*, 2002, vol. 8 (12), 38734-3740 [0009]
- **Younes et al.** *Cancer*, 2003, vol. 98, 458-467 [0009]
- **Becker.** The relationship of the chemotactic behavior of the complement-derived factors C3a C5a and C567 and a bacterial chemotactic factor to their ability to activate the proesterase 1 of rabbit polymorphonuclear leukocytes. *J. Exp. Med.*, 1972, vol. 135, 376-87 [0010]
- **Mitsubishi.** Absolute quantitation of mRNA in human blood leukocytes as a model for phenotypic gene expression-based diagnostics. *Clin Chem*, 2006, vol. 52, 4 [0019]
- **Ostreiko et al.** Production and characterization of heat-aggregated IgG complexes with predetermined molecular masses: light-scattering study. *Immunol Lett.*, 1987, vol. 15, 311-6 [0025]
- **Morrison et al.** Quantification of low-copy transcripts by continuous SYBR Green I monitoring during amplification. *Biotechniques*, 1998, vol. 24, 954-8960, 96 [0026]
- **Schena et al.** Quantitative monitoring of gene expression patterns with a complementary DNA microarray. *Science*, 1995, vol. 270, 467-70 [0033]
- **Morrison et al.** Quantification of low-copy transcripts by continuous SYBR Green I monitoring during amplification. *Biotechniques*, June 1998, vol. 24 (6), 954-8960, 962 [0033]
- **Sheridan et al.** Control of TRAIL-induced apoptosis by a family of signaling and decoy receptors. *Science*, 08 August 1997, vol. 277 (5327), 818-21 [0034]
- **Pan et al.** An antagonist decoy receptor and a death domain-containing receptor for TRAIL. *Science*, 08 August 1997, vol. 277 (5327), 815-8 [0034]
- **Mani-Chouaib.** Antitumor cytotoxic T-lymphocyte response in human lung carcinoma: identification of a tumor-associated antigen. *Immunol Rev.*, October 2002, vol. 188, 114-21 [0035]

| | | | |
|----------------|---|---------|------------|
| 专利名称(译) | 基于肿瘤细胞和刺激的白细胞中mRNA表达谱预测肿瘤疾病免疫应答的方法 | | |
| 公开(公告)号 | EP1904657B1 | 公开(公告)日 | 2011-05-25 |
| 申请号 | EP2006772657 | 申请日 | 2006-06-08 |
| [标]申请(专利权)人(译) | 日立化成研究中心公司 日立化成工业株式会社 | | |
| 申请(专利权)人(译) | 日立化成研究中心, INC. HITACHI CHEMICAL CO., LTD. | | |
| 当前申请(专利权)人(译) | 日立化成研究中心, INC. HITACHI CHEMICAL CO., LTD. | | |
| [标]发明人 | MITSUHASHI MASATO | | |
| 发明人 | MITSUHASHI, MASATO | | |
| IPC分类号 | C12Q1/68 G01N33/53 G01N33/00 | | |
| CPC分类号 | G01N33/505 C12Q1/6806 C12Q1/6886 C12Q2600/118 C12Q2600/158 G01N33/574 | | |
| 代理机构(译) | ELSY, DAVID | | |
| 优先权 | 60/735508 2005-11-11 US 60/688744 2005-06-08 US | | |
| 其他公开文献 | EP1904657A4 EP1904657A1 | | |
| 外部链接 | Espacenet | | |

摘要(译)

肿瘤坏死因子 (TNF) 能够通过与其癌细胞表面上的特异性TNF受体相互作用来诱导细胞凋亡。因为TNF配体和受体的多个成员存在于每个超家族中, 所以存在超过300种不同的配体 - 受体组合。活化的血液白细胞产生TNF作为对癌症的免疫应答的一部分, 以及产生趋化因子以吸引其他白细胞到达该位点。公开了一种方法, 当全血暴露于热聚集的IgG或抗T细胞受体抗体作为免疫系统相互作用的模型时, 检测血液白细胞中各种TNF超家族亚型和趋化因子mRNA的显著诱导。在TNF亚型和诱导的趋化因子中观察到显著的个体间变异。由于外周血白细胞是抗癌免疫细胞的供应, 因此血液中适当的TNF配体和趋化因子的离体诱导能力的定量将在个体化的癌症免疫疗法中 useful。如果肿瘤块很小, 例如早期隐形转移灶, 则适当的TNF攻击可能足以预防复发。

