



(11) **EP 1 624 305 B1**

(12) **EUROPEAN PATENT SPECIFICATION**

(45) Date of publication and mention of the grant of the patent:
23.06.2010 Bulletin 2010/25

(21) Application number: **04727740.5**

(22) Date of filing: **15.04.2004**

(51) Int Cl.:
G01N 33/53 (2006.01) G01N 33/574 (2006.01)

(86) International application number:
PCT/JP2004/005412

(87) International publication number:
WO 2004/097414 (11.11.2004 Gazette 2004/46)

(54) **METHODS FOR MEASURING THE INSULIN RECEPTOR ALPHA SUBUNIT**

MESSVERFAHREN FÜR INSULINREZEPTOR-ALPHA-UNTEREINHEIT

PROCEDES DE MESURE DE SOUS-UNITES ALPHA DU RECEPTEUR D'INSULINE

(84) Designated Contracting States:
DE FR GB

(30) Priority: **25.04.2003 JP 2003121955**
26.12.2003 JP 2003433303

(43) Date of publication of application:
08.02.2006 Bulletin 2006/06

(73) Proprietors:

- **Ebina, Yousuke**
Tokushima-shi,
Tokushima 770-8073 (JP)
- **Obata, Toshiyuki**
Tokushima-shi,
Tokushima 770-8006 (JP)
- **Medical and Biological Laboratories Co., Ltd.**
Nagoya-shi,
Aichi 460-0002 (JP)

(72) Inventors:

- **EBINA, Yousuke**
Tokushima-shi, Tokushima 770-8073 (JP)
- **OBATA, Toshiyuki**
Tokushima-shi, Tokushima 770-8006 (JP)
- **OKAMOTO, Eiji,**
MEDICAL AND BIOLOGICAL LAB. CO, LTD
Nagano 396-0002 (JP)

(74) Representative: **Winckels, Johannes Hubertus F.**
Vereenigde
Johan de Wittlaan 7
2517 JR Den Haag (NL)

(56) References cited:
JP-A- 8 103 280 JP-A- 2003 337 131

- **SCHAEFER ERIK M ET AL: "A new transgenic mouse model of chronic hyperglycemia" DIABETES, vol. 43, no. 1, 1994, pages 143-153, XP008081711 ISSN: 0012-1797**
- **PEZZINO V ET AL: "IDENTIFICATION AND INITIAL CHARACTERIZATION OF INSULIN RECEPTOR-LIKE IMMUNOREACTIVITY IN HUMAN PLASMA" JOURNAL OF CLINICAL ENDOCRINOLOGY AND METABOLISM, vol. 74, no. 5, 1992, pages 1116-1121, XP002444326 ISSN: 0021-972X**
- **APOSTOLOPOULOU CATHERINE A ET AL: "Expression of Insulin Receptor (a-subunit) Mab in FNA biopsies of thyroid nodules" ACTA CYTOLOGICA, vol. 46, no. 1 Supplement, January 2002 (2002-01), page 84, XP008081712 & 14TH INTERNATIONAL CONGRESS OF CYTOLOGY; AMSTERDAM, NETHERLANDS; MAY 27-31, 2001 ISSN: 0001-5547**
- **NAESER PETER: "Insulin receptors in human ocular tissues: Immunohistochemical demonstration in normal and diabetic eyes" UPSALA JOURNAL OF MEDICAL SCIENCES, vol. 102, no. 1, 1997, pages 35-40, XP008081709 ISSN: 0300-9734**
- **SESTI G ET AL: "Peptide-based radioimmunoassay for the two isoforms of the human insulin receptor" DIABETOLOGIA, vol. 38, no. 4, 1995, pages 445-453, XP008081713 ISSN: 0012-186X**
- **HEFFETZ D ET AL: "RECEPTOR AGGREGATION IS NECESSARY FOR ACTIVATION OF THE SOLUBLE INSULIN RECEPTOR KINASE" JOURNAL OF BIOLOGICAL CHEMISTRY, vol. 261, no. 2, 1986, pages 889-894, XP002444330 ISSN: 0021-9258**

Note: Within nine months of the publication of the mention of the grant of the European patent in the European Patent Bulletin, any person may give notice to the European Patent Office of opposition to that patent, in accordance with the Implementing Regulations. Notice of opposition shall not be deemed to have been filed until the opposition fee has been paid. (Art. 99(1) European Patent Convention).

EP 1 624 305 B1

- ROSENZWEIG S A ET AL: "IDENTIFICATION OF RETINAL INSULIN RECEPTOR USING SITE-SPECIFIC ANTIBODIES TO A CARBOXYL-TERMINAL PEPTIDE OF THE HUMAN INSULIN RECEPTOR ALPHA-SUBUNIT UP-REGULATION OF NEURONAL INSULIN RECEPTORS IN DIABETES" JOURNAL OF BIOLOGICAL CHEMISTRY, vol. 265, no. 29, 1990, pages 18030-18034, XP002444331 ISSN: 0021-9258
- FRITTITTA LUCIA ET AL: "Structural and functional studies of insulin receptors in human breast cancer" BREAST CANCER RESEARCH AND TREATMENT, vol. 25, no. 1, 1993, pages 73-82, XP008081708 ISSN: 0167-6806
- NAKAMURA S ET AL: "LOCALIZATION AND SYNTHESIS OF AN INSULIN-BINDING REGION ON HUMAN INSULIN RECEPTOR" JOURNAL OF PROTEIN CHEMISTRY, vol. 9, no. 2, 1990, pages 229-234, XP008081714 ISSN: 0277-8033
- KANEZAKI, Y.: 'Injection of the insulin receptor subunit increases blood glucose levels in mice' BIOCHEMICAL AND BIOPHYSICAL RESEARCH COMMUNICATIONS vol. 309, 2003, pages 572 - 577, XP004453637
- KIKUCHI, K. ET AL.: 'Saibo Seicho Inshi Receptor to Gan Idenshi Sanbutsu (II) Insulin Receptor' PROTEIN, NUCLEIC ACID AND ENZYME vol. 30, no. 13, 1985, pages 1388 - 1393, XP002986801
- "Current protocols in Molecular Biology, volume 2." 1987, JOHN WILEY & SONS, INC. , USA * Unit 11.2 *
- LI MING ET AL: "Decreased insulin receptor (IR) autophosphorylation in fibroblasts from patients with PCOS: Effects of serine kinase inhibitors and IR activators" JOURNAL OF CLINICAL ENDOCRINOLOGY AND METABOLISM, vol. 87, no. 9, 2002, pages 4088-4093, USA
- IVAN ROITT ET AL: "IMMUNOLOGY, SECOND EDITION" 1989, CHURCHILL LIVINGSTONE , LONDON - NEW YORK * Pages 25.5 - 25.6, Chapter: Radioimmunoassay and enzyme-linked immunosorbent assay. *

DescriptionTechnical Field

5 **[0001]** The present invention relates to methods for measuring a free insulin receptor α -subunit in blood. The present invention also relates to methods for diagnosing diabetes and cancer.

Background Art

10 **[0002]** Insulin is a hormone that plays an important role in the metabolic regulation of glucose, an energy source for living organisms. Produced in pancreatic Langerhans β cells, insulin acts on cells carrying insulin receptors and promotes the uptake of glucose by these cells. The blood-sugar level in the body is maintained within an appropriate range by the function of insulin. Diabetes is one of the pathological conditions caused by insufficient insulin function due to some cause.

15 **[0003]** Major causes of insufficient insulin function include abnormal insulin secretion and decreased sensitivity to insulin. The former is called type 1 diabetes mellitus. Since responsiveness to insulin is maintained in type 1 diabetes mellitus, blood sugar level can be controlled by administering insulin. Type 1 diabetes mellitus is also called insulin-dependent diabetes mellitus (IDDM), and is the main cause of juvenile diabetes.

20 **[0004]** On the other hand, the latter is called type 2 diabetes mellitus. Type 2 diabetes mellitus is also called non-insulin dependent diabetes mellitus (NIDDM), and is the type of diabetes frequently found in adults. In Japan, 95% of diabetes patients are said to have type 2 diabetes mellitus. Since the body's responsiveness to insulin is decreased in these patients, even an insulin administration cannot regulate the blood sugar level. Type 2 diabetes mellitus is thought to develop due to several genetic defects and environmental factors such as obesity, stress, and aging. At present, approximately 7,400,000 type 2 diabetes patients are said to exist in Japan, and the number is increasing with the aging of the population. The number of patients is even predicted to be as many as 16,200,000, when including prediabetes patients. Therefore, the diagnosis and treatment of type 2 diabetes mellitus is an important research issue for the modern society.

25 **[0005]** To date, the causative gene of type 2 diabetes mellitus has not been revealed. Presumed candidate genes are genes of factors involved in the mechanism of insulin action, or genes of factors involved in insulin secretion. Factors thought to be involved in insulin action are:

30 insulin receptor,
insulin receptor substrate-1 (IRS-1),
glucose transporter type 4, etc.

35 **[0006]** Genes of factors predicted to be involved in insulin secretion are:

40 glucose transporter type 2,
glucokinase,
mitochondrial genes, etc.

[0007] For insulin to act on a target cell, it must bind to the insulin receptor present on the target cell membrane. Furthermore, there are many reports of insulin resistance in the early stage of type 2 diabetes (Non-Patent Document 1/Taylor, S. I. Diabetes 41:1473-1490, 1992). In view of these facts, the relationship between insulin receptor abnormalities and diabetes has also been examined. If abnormalities are present in insulin receptor function, strong insulin resistance will arise, resulting in severe diabetes.

45 **[0008]** Recently, many insulin receptor abnormalities have been discovered by researchers including the present inventors, and it is becoming evident that test results and symptoms of patients vary depending on the type of mutation (Non-Patent Document 2/ M. Taira et al., Science 245:63-66, 1989; Non-Patent Document 3/ F. Shimada et al., Lancet. 335:1179-1181, 1990). This suggests that a part of the pathogenesis of type 2 diabetes mellitus may be defects in the insulin receptor gene. The present inventors have actually identified one of the polymorphisms that allow genetic diagnosis of type 2 diabetes mellitus, and have already filed a patent application (Patent Document 1/ Unexamined Published Japanese Patent Application No. (JP-A) Hei 8-103280).

50 **[0009]** Insulin receptors are heterotetrameric receptor proteins composed of two subunits, α and β . The α -subunit is present outside the cell and the β -subunit penetrates the cell membrane. The α -subunit is linked to the extracellular domain of the β -subunit via an SS bond through an SH group in a cysteine residue on the C-terminal side thereof.

55 **[0010]** When insulin binds to the α -subunit, a tyrosine residue in the intracellular domain of the β -subunit is autophosphorylated, and the insulin signal is transmitted to the cell. After binding with insulin, the insulin receptor present in the cell membrane is then taken into the cell by endocytosis (the half-life of the receptor is seven hours). The number of

insulin receptors decrease with the increase of insulin concentration. This is called down regulation.

[0011] In the polymorphism of insulin receptor found by the present inventors, Thr at position 831 in the β -subunit is mutated to Ala (IRA831). Insulin receptor dysfunction caused by this amino acid substitution has not been confirmed. However, genetic statistics indicated that there is a strong relation between IRA831 and type 2 diabetes mellitus.

[0012] Disorders due to receptor abnormalities or the presence of free receptors in blood have recently been reported for some diseases (Non-Patent Document 4/ Frode, T.S., Tenconi, P., Debiassi, M.R., Medeiros, Y.S., "Tumour necrosis factor-alpha, interleukin-2 soluble receptor and different inflammatory parameters in patients with rheumatoid arthritis." *Mediators Inflamm.* 2002 Dec; 11(6): 345-9; Non-Patent Document 5/ Baron, A.T., Cora, E.M., Lafky, J.M., Boardman, C.H., Buenafe, M.C., Rademaker, A., Liu, D., Fishman, D.A., Podratz, K.C., Maihle, N.J., "Soluble Epidermal Growth Factor Receptor (sEGFR/sErbB1) as a potential Risk, Screening, and Diagnostic Serum Biomarker of Epithelial Ovarian Cancer." *Cancer Epidemiol Biomarkers Prev.*, 2003 Feb; 12(2): 103-13; Non-Patent Document 6/ Beguin, Y. "Soluble transferrin receptor for the evaluation of erythropoiesis and iron status." *Clin. Chem. Acta.*, 2003 Mar; 329(1-2): 9-22). Furthermore, hyperglycemia and hyperinsulinemia have been observed in transgenic mice that release the insulin receptor α -subunit into the blood (Non-Patent Document 7/ ERIK M. SCHAEFER et al. *DIABETES* vol. 43, 143-153; 1994). Pezzino et al., *Journal of Clinical Endocrinology and Metabolism*, 1992, refer to the identification of an insulin receptor-derived material via RIA, which was isolated from plasma and devoid of insulin-responsive tyrosine kinase activity. Apostolopoulou et al., *Acta cytological*, no. 1 Supplement, 2002, describe the immunocytochemical detection of the insulin receptor α -subunit in thyroid FNA biopsies, and Naeser, *Upsala J. Med. Sci.*, 1997, disclose the detection of α - and β -subunits of the insulin receptor in the retina using monoclonal antibodies, wherein the staining reaction for the receptor is reduced in diabetes. Also Rosenzweig et al., *Journal of Biological Chemistry*, 1990, describes the detection of retinal insulin receptors using polyclonal antibodies, wherein two classes of insulin receptor α -subunits were identified, and Heffetz and Zick, *Journal of Biological Chemistry*, 1986, use polyclonal antibodies to investigate the relevance of insulin receptor aggregation for activation of soluble insulin receptor kinase. Li et al., *Journal of Endocrinology and Metabolism*, 2002, studied insulin resistance in patients with ovary syndrome and suggest that a decrease in insulin receptor autophosphorylation is a significant component of the resistance.

[0013] Suitable assays for the detection of insulin receptors are RIA and ELISA, respectively, using anti-insulin receptor antibodies (see Sesti et al., *Diabetologia*, 1995, and "Current protocols in Molecular Biology", 1987). However, in humans, the presence of free insulin receptors in blood has not been reported.

[0014] Substances whose levels in biological samples change with disease states are often useful as diagnostic markers for the diseases. For example, substances in biological samples that can be used as cancer indicators are called tumor markers. When a cancer is present, tumor marker levels in these biological samples change significantly compared to those in healthy subjects. Therefore, based on the measured value of tumor markers, it is possible to estimate the possibility of cancer in the subject. Usually, definite diagnosis of the presence or absence of cancer using only tumor markers is considered difficult. However, measurement of tumor markers is considered effective in screening for test subjects who require more advanced and detailed cancer tests.

[0015] Among tumor markers, there are some whose measured levels change in correlation with the size and progression of the cancer. Such tumor markers are useful as indicators for observing therapeutic effects on cancer.

[0016] Many tumor markers have been reported so far. Generally, tumor markers are often substances that originally exist in normal tissues. Even in healthy people, the measured level of tumor markers may change due to physiological conditions and diseases other than cancer. Therefore, subjects who do not have cancer may be judged as positive, i.e., "false-positive". Conversely, tumor markers of subjects who should be diagnosed as having cancer may remain within a normal range. In this case, subjects who should be positive are determined as negative, i.e., "false-negative".

[0017] Positive or negative judgments are made based on the relationship between the measured tumor marker levels and the cutoff values. More specifically, when using a tumor marker with a measured value that is significantly high in cancer patients, cancer is suspected if the measured value is greater than or equal to a certain value (cutoff value). Generally, if a cutoff value is set high, false-negative will increase and false-positives will decrease. Conversely, lowering the cutoff value decreases false-negatives, but increases false-positives. Since the increase in false-negatives means that some cancers would go undetected, keeping it to a minimum is preferable. On the other hand, increase in false-positives will lead to advanced tests on subjects who do not need such. Therefore, tumor markers that can keep false-negatives and false-positives within an acceptable range are considered more practical.

[0018] Permissible false positives and false negatives vary depending on the level of difficulty of the diagnosis, presence or absence of a therapeutic method, or the number of patients of a cancer. In addition, an important criterion is whether or not other tumor markers that should be used for comparison are known. When confirming therapeutic effects or monitoring recurrence in patients known to have cancer, tumor markers are continuously monitored. In such applications, the response characteristics of the marker to cancer are given more weight than the issue of false negativeness or false positiveness. Based on such criteria, several tumor markers have been put to practical use. Examples of currently widely-used tumor markers are as follows:

AFP (liver cancer, kidney cancer, cancer of the digestive system)

CEA (liver cancer, kidney cancer, cancer of the digestive system)

CA19-9 (pancreatic cancer, biliary tract cancer, colon cancer)

CA125 (ovarian cancer)

PSA (prostate cancer)

NSE (small-cell lung cancer)

CYFRA (lung cancer -squamous cell carcinoma-)

Some of these tumor markers have been practically applied for specific types of cancers, and others have been recognized as tumor markers for a relatively wide variety of cancers. For example, NSE, CYFRA, or such are tumor markers for specific types of cancers. On the other hand, AFP, CEA, or such are tumor markers that are positive in a relatively wide variety of cancers.

[0019] Tumor markers having low specificity to cancer types and which are applicable as tumor markers for a variety of cancers are particularly referred to as "broad-spectrum tumor markers". Broad-spectrum tumor markers are more advantageous than markers specific to a certain cancer type in that they can be utilized to detect or assess therapeutic effects on a broad range of cancer types. The usability of known broad-spectrum tumor markers such as AFP or CEA as tumor markers has been acknowledged for certain cancer types such as cancers of the liver, digestive system, and kidney. However, their usefulness as tumor markers is not always recognized in other cancer types. Therefore, provision of tumor markers that can cover cancer types that are difficult to diagnose with known tumor markers would be useful.

[0020] As mentioned above, presence of free receptors in blood has been reported in some diseases (Non-Patent Documents 4-6). Transgenic mice that release the insulin receptor α -subunit into the blood have also been confirmed to exhibit hyperglycemia or hyperinsulinaemia (Non-Patent Document 7). However, in humans, there are no reports that suggest a relationship between cancer and free insulin receptors in blood. The finding that correlated the insulin receptor α -subunit to cancer is the work of a group at Genentech and Memorial Sloan Kettering Cancer Center in the United States, in February 1985, who cloned the human insulin receptor gene, determined the complete amino acid sequence, and analyzed the amino acid sequence to reveal homologies with the epidermal growth factor (EGF) receptor and the protein of cancer gene src.

Disclosure of the Invention

[0021] An objective of the present invention is to provide methods for measuring free insulin receptor α -subunit present in blood and methods for diagnosing diabetes and cancer.

[0022] The present inventors continued to study causes hindering insulin function. As a result, the insulin receptor α -subunit existing in the blood in a free form was revealed to hinder insulin action and cause hyperglycemia. The present inventors thought it necessary to establish a system for measuring the insulin receptor α -subunit in order to advance analyses on the relationship between diabetes and free insulin receptor α -subunit in the living body. Consequently, the present inventors established methods for measuring the free α -subunit in blood, and completed the invention. More specifically, the present invention relates to the following methods

[1] A method for diagnosing diabetes, wherein the method comprises the steps of:

- (a) measuring the amount of a free insulin receptor α -subunit in a blood sample of a subject;
- (b) comparing the amount of the free insulin receptor α -subunit with that of a control; and
- (c) determining the subject to have diabetes when the amount of free insulin receptor α -subunit in the blood sample of the subject is greater than that of the control.

[2] The method for diagnosis of [1] wherein the blood sample is a serum sample, a plasma sample, or a hemolytic sample.

[3] The method for diagnosis of [1] wherein the amount of the free insulin receptor α -subunit is measured by the method comprising the steps of

- (1) contacting a blood sample with a first antibody that recognizes the insulin receptor α -subunit and is bound to a solid phase or comprises a label that can be bound to a solid phase;
- (2) detecting binding of said antibody to the insulin receptor α -subunit present in blood through detecting the insulin receptor α -subunit bound to the first antibody by binding a second antibody recognizing the insulin receptor α -subunit; and
- (3) determining the amount of free insulin receptor α -subunit in blood based on the level of binding detected

between said antibody and subunit.

[4] A method for diagnosing cancer, wherein the method comprises the steps of:

- (a) measuring the amount of a free insulin receptor α -subunit in a blood sample of a subject;
- (b) comparing the amount of the free insulin receptor α -subunit with that of a control; and
- (c) determining the subject to have cancer when the amount of free insulin receptor α -subunit in the blood sample of the subject is greater than that of the control.

[5] The method of [4] wherein the blood sample is a serum sample, a plasma sample, or a hemolytic sample.

[6] The method for diagnosis of [5] wherein the amount of the free insulin receptor α -subunit is measured by the method comprising the steps of

- (1) contacting a blood sample with a first antibody that recognizes the insulin receptor α -subunit and is bound to a solid phase or comprises a label that can be bound to a solid phase;
- (2) detecting binding of said antibody to the insulin receptor α -subunit present in blood through detecting the insulin receptor α -subunit bound to the first antibody by binding a second antibody recognizing the insulin receptor α -subunit; and
- (3) determining the amount of free insulin receptor α -subunit in blood based on the level of binding detected between said antibody and subunit.

[7] Use of an antibody in diagnosing cancer or diabetes recognizing a peptide comprising the amino acid sequence of an insulin receptor α -subunit for measuring free insulin receptor α -subunit in a blood sample.

[0023] In the present invention, the term "free" means that the molecule is dispersed in blood. Insulin receptors are proteins typically localized on cell membrane surfaces. Furthermore, it has been shown that insulin receptors are highly expressed in skeletal muscles, adipose tissues, liver, brain, and such. In other words, marked expression of the insulin receptor is not observed in blood cells such as lymphocytes. Therefore, it was unknown whether a free insulin receptor α -subunit exists in blood. It was the present inventors who revealed that a free insulin receptor subunit is indeed present in blood.

[0024] A method for measuring the insulin receptor was known (Human insulin receptor radioimmunoassay: applicability to insulin-resistant state. *Am. J. Physiol.* 257 (Endocrinol. Metab. 20) E451-E457, 1989). However, the existence of free insulin receptor α -subunit in blood was not known, and methods for measuring were not established. There is only one document indicating the possibility of the presence of the α -subunit in blood (*J. Clin. Endocrinol. Metab.* 1992 May; 74(5):1116-21).

[0025] In the present invention, the insulin receptor α -subunit present in blood can be measured by its binding to an antibody that recognizes the insulin receptor α -subunit. Antibodies used in the present invention that recognize the insulin receptor α -subunit can be obtained by known methods. In the present invention, the amount of insulin receptor α -subunit can be measured as concentration in a sample. Needless to say, concentration means the amount per unit volume of the sample.

[0026] Antibodies necessary for the present invention can be obtained, for example, by using recombinant insulin receptors as an immunogen. The present inventors demonstrated that the insulin receptor α -subunit could be secreted outside of the cell by using cDNAs encoding amino acid sequences as described below. Secretory polypeptides that can be obtained in this manner, fragments thereof, and such may be utilized as immunogens for obtaining the antibodies of the present invention.

[0027] For example, secretory polypeptides comprising the amino acid sequence described in SEQ ID NO: 2, or fragments thereof are useful as antigens for obtaining the antibodies of the present invention. These polypeptides can be obtained by transforming suitable hosts with vectors that harbor cDNA of a known insulin receptor α -subunit or the nucleotide sequence of SEQ ID NO: 1 (or fragments thereof) in an expressible manner. Polynucleotides comprising the nucleotide sequence of SEQ ID NO: 1 encodes the amino acid sequences constituting the region of the signal peptide (-27 to -1), α -subunit (1-735), and a part of the β -subunit (736-926) in the human insulin receptor protein. The numbers in parenthesis indicate the position of each region in SEQ ID NO: 2.

[0028] DNA comprising the necessary nucleotide sequence can be cloned using mRNA prepared from tissues where the insulin receptor α -subunit is expressed. Alternatively, DNA comprising the nucleotide sequence shown in SEQ ID NO: 1 can be obtained by modifying a known nucleotide sequence of the cDNA of an insulin receptor α -subunit. Recombinant insulin receptor α -subunits expressed in this manner are preferred as immunogens for obtaining antibodies to be used in this invention.

[0029] Antibodies to be used for measuring the insulin receptor α -subunit can be obtained by using polynucleotides that hybridize under stringent conditions with the DNA comprising the nucleotide sequence of SEQ ID NO: 1 and encode a secretory polypeptide immunologically equivalent to the insulin receptor α -subunit, or polynucleotides that have 90% or greater homology with the nucleotide sequence of SEQ ID NO: 1 and encode a secretory polypeptide having immunologically equivalent to the insulin receptor α -subunit, to acquire immunogenic polypeptides.

[0030] Alternatively, domain peptides of the insulin receptor α -subunit can be used as an immunogen. Domain peptides used as an immunogen can be easily synthesized using a peptide synthesizer. Synthetic peptides can be prepared as immunogens by linking them to carrier proteins.

[0031] The maleimidobenzoyl-N-hydrosuccinimide method (hereinafter abbreviated as the MBS method) and such are generally used to link synthetic peptides to carrier proteins. Specifically, a cysteine is introduced into a synthetic peptide, and the peptide is cross-linked to KLH by the MBS method through the cysteine's SH group. The cysteine residue may be introduced at the N terminus or C terminus of the synthesized peptide. As carrier proteins, a suitable protein other than KLH, such as bovine serum albumin may be used. KLH is one of the preferred carrier proteins because of its high immunogenicity.

[0032] Immunogens obtained in this manner are mixed with suitable adjuvants, and used to immunize animals. Known adjuvants include Freund's complete adjuvant (FCA) and incomplete adjuvant. The immunization is repeated with appropriate intervals until an increase in antibody titer is confirmed. There are no particular limitations on the animals to be immunized in the present invention. Specifically, mice, rats, rabbits, or such animals commonly used for immunization may be used.

[0033] When obtaining the antibodies as monoclonal antibodies, animals that are advantageous for producing them may be used. For example, in mice, many myeloma cell lines for cell fusion are known, and techniques capable of establishing hybridomas with a high probability have already been developed. Therefore, mice are one of the preferable animals for immunization.

[0034] Furthermore, immune treatment is not limited to *in vivo* treatment. Methods for immunologically sensitizing cultured immunocompetent cells *in vitro* can also be employed. Antibody-producing cells obtained by these methods are transformed and cloned. The method for transforming antibody-producing cells to obtain monoclonal antibodies is not limited to cell fusion. For example, methods for obtaining transformants that can be cloned via virus infection are known.

[0035] Hybridomas that produce monoclonal antibodies to be used for the present invention can be screened based on their reactivities to various antigens. Specifically, antibody-producing cells are first selected by using, as an indicator, their binding activities toward the insulin receptor α -subunit or its domain peptides that were used as antigens. Positive clones selected by this screening are subcloned as necessary.

[0036] After culturing the established hybridomas under suitable conditions, produced antibodies are collected to yield monoclonal antibodies to be used in the present invention. When the hybridomas are homohybridomas, they can be cultured *in vivo* by inoculating them intraperitoneally to syngeneic animals. In this case, monoclonal antibodies are collected as peritoneal fluid. When heterohybridomas are used, they can be cultured *in vivo* using nude mice as a host.

[0037] *In vivo* cultures, as well as cultures outside the body in appropriate culture environments are generally conducted. For example, basal media such as RPMI 1640 and DMEM are generally used as the media for hybridomas. Animal serum and such additives can be added to these media to maintain the antibody producing ability at a high level. When hybridomas are cultured outside of the body, monoclonal antibodies can be collected as a culture supernatant. The culture supernatant can be collected by separating it from cells after culturing, or, when using a culturing apparatus that applies hollow fibers, it can be continuously collected while culturing.

[0038] Monoclonal antibodies collected as peritoneal fluid or culture supernatants are prepared into monoclonal antibodies used in the present invention by separating the immunoglobulin fraction by saturated ammonium sulfate precipitation followed by purification steps including gel filtration and ion exchange chromatography. In addition, if the monoclonal antibodies are IgGs, purification methods based on affinity chromatography with a protein A or protein G column are effective.

[0039] On the other hand, to obtain the antibodies used in the present invention as polyclonal antibodies, blood is drawn from individuals whose antibody titer has increased after immunization, and the sera are separated to obtain anti-sera. Immunoglobulins are purified from anti-sera by known methods to prepare the antibodies to be used in the present invention. If immunoaffinity chromatography using insulin receptor α -subunit as a ligand is used in combination with immunoglobulin purification, insulin receptor α -subunit-specific antibodies can be obtained.

[0040] The following commercially available antibodies can be used in combination in the measurements of the present invention. Examples of the monoclonal antibodies include anti-human insulin receptor alpha-subunit (Neomarker MS632) (LabVision), anti-human insulin receptor alpha-subunit (IMO365) (Immunotech), and MAB1138 (Chemicon) antibodies. Anti-human insulin receptor alpha-subunit (rabbit) H-78 (Santa Cruz) antibodies and such may be used as the polyclonal antibodies.

[0041] When antibodies against the insulin receptor α -subunit contact the insulin receptor α -subunit, the antibodies bind to the antigenic determinants (epitopes) that the antibodies recognize thorough the antigen-antibody reaction. The

binding of antibodies to antigens can be detected by various immunoassay principles. Immunoassays can be broadly categorized into heterogeneous analysis methods and homogeneous analysis methods. To keep the sensitivities and specificities of immunoassays at a high level, monoclonal antibodies are preferably used. The present invention's methods for measuring the insulin receptor α -subunit using a variety of immunoassay formats will be described in detail.

5 [0042] First, the method for measuring the insulin receptor α -subunit using heterogeneous immunoassays will be described. In heterogeneous immunoassays, mechanisms for separately detecting insulin receptor α -subunit-bound and -unbound antibodies are required.

10 [0043] To facilitate the separation, immobilized reagents are generally used. For example, first, a solid phase onto which antibodies recognizing insulin receptor α -subunit has been immobilized is prepared (immobilized antibody). The insulin receptor α -subunit is bound to this, and then reacted with a labeled second antibody.

[0044] When the solid phase is separated from the liquid phase and then washed as necessary, an amount of second antibody proportional to the concentration of insulin receptor α -subunit remains on the solid phase. If the second antibody is labeled, the insulin receptor α -subunit can be quantified by measuring the signal originating from this label.

15 [0045] Any method may be used to bind the antibodies to the solid phase. For example, antibodies can be physically adsorbed to hydrophobic materials such as polystyrene. Alternatively, antibodies can be chemically bound to a variety of materials having functional groups on their surfaces. Furthermore, antibodies labeled with a binding ligand thereof can be bound to a solid phase by trapping the ligand with its binding partner. Combination of a binding ligand and its binding partner includes the avidin-biotin combination or such. The solid phase and antibodies can be conjugated at the same time when reacting the second antibody, or after this reaction.

20 [0046] Similarly, labeling of the second antibody does not have to be direct. More specifically, indirect labeling using binding reactions such as antibodies against antibodies, or avidin to biotin, is also possible.

[0047] The concentration of insulin receptor α -subunit in a sample is determined based on the signal intensities measured for standard samples whose insulin receptor α -subunit concentrations are known.

25 [0048] The immobilized antibodies and the second antibodies used for the heterogeneous immunoassays mentioned above may be any, as long as they recognize an insulin receptor α -subunit, or fragments comprising the antigen-binding site. Therefore, monoclonal antibodies, polyclonal antibodies, or a mixture or combination of both may be used. When both antibodies are monoclonal antibodies, combining monoclonal antibodies recognizing different epitopes is preferred.

30 [0049] Since the antigen to be measured is sandwiched by antibodies, such heterogeneous immunoassays are called sandwich methods. As sandwich methods excel in measurement sensitivity and reproducibility, they are one of the preferred principles of measurement in the present invention.

35 [0050] The principles of competitive inhibition reactions can be applied to the heterogeneous immunoassays. More specifically, these are immunoassays based on the phenomenon that the insulin receptor α -subunit in a sample competitively inhibits the binding between an antibody and the insulin receptor α -subunit of a known concentration. The insulin receptor α -subunit concentration in the sample can be determined by labeling the insulin receptor α -subunit of known concentration and measuring the amount of the insulin receptor α -subunit that reacted (or did not react) with the antibody.

40 [0051] A competitive reaction system is established by simultaneously reacting, with antibodies, antigens of a known concentration and antigens in a sample. Furthermore, analyses by an inhibitory reaction system are possible when antibodies are reacted with antigens of a known concentration after reacting with antigens in the sample. In both types of reaction systems, reaction systems that are superior in operability can be constructed by preparing either the antibodies or the antigens of known concentration (used as reagent components) as labeled components, and the other as the immobilized reagents.

45 [0052] The labeling components used in such heterogeneous immunoassays include radioisotopes, fluorescent substances, light-emitting substances, substances having enzymatic activity, macroscopically observable substances, and magnetically observable substances. Specific examples of these labeling substances are shown below.

Substances having enzymatic activity:

50 peroxidase, glucose oxidase,

alkaline phosphatase, lactate dehydrogenase,

urease, catalase, amylase, etc.

55 Fluorescent substances:

fluorescein isothiocyanate,

tetramethylrhodamine isothiocyanate,

substituted rhodamine isothiocyanate,
dichlorotriazine isothiocyanate, etc.

Radioisotopes:

tritium,
 ^{125}I ,
 ^{181}I , etc.

[0053] Of these, enzymes or such non-radioactive labels are among advantageous labels in terms of safety, operability, sensitivity, and such. Enzymatic labels can be linked to antibodies or to an insulin receptor α -subunit by known methods such as the periodate method, or maleimide method.

[0054] As the solid phase, beads, inner walls of a container, fine particles, porous carriers, magnetic particles, or such are used. Solids that have been fabricated using materials such as polystyrene, polycarbonate, polyvinyltoluene, polypropylene, polyethylene, polyvinyl chloride, nylon, polymethacrylate, latex, gelatin, agarose, glass, metal, ceramic, or such can be used for these solid phases. Solid materials to whose surface functional groups for chemically binding antibodies and such have been introduced are known. Known linking methods including chemical bonding such as poly-L-lysine or glutaraldehyde treatment, or physical adsorption can be applied for solid phases and antibodies (or antigens).

[0055] Although the steps of separating the solid phase from the liquid phase as well as washing steps are required in all heterogeneous immunoassays exemplified herein, these steps can easily be performed using immunochromatography, which is a variation of the sandwich method.

[0056] More specifically, antibodies to be immobilized are fixed onto porous carriers capable of transporting a sample solution by capillary action. Then a mixture of a sample comprising the insulin receptor α -subunit and labeled antibodies is migrated through this by capillary action. During this migration, the insulin receptor α -subunit reacts with the labeled antibodies, and when it comes into contact with the immobilized antibodies, is trapped at that position. Labeled antibodies that have not reacted with the insulin receptor α -subunit pass through without being trapped on the immobilized antibodies.

[0057] As a result, presence of the insulin receptor α -subunit can be detected using as an indicator the signals of the labeled antibodies remaining at the position of the immobilized antibodies. If the labeled antibodies are preloaded on the upstream in the porous carrier, all reactions will be initiated and completed by simply dropping the sample solution, resulting in the construction of an extremely convenient reaction system. In immunochromatography, labeled components that can be distinguished macroscopically, such as colored particles, can be combined to construct an analytical device that does not even need a special reader.

[0058] Next, homogeneous immunoassays will be described. In contrast to the heterogeneous immunoassay method that requires separation of the reaction solution as described above, the insulin receptor α -subunit can also be measured by homogeneous analysis methods. Using the homogeneous analysis method, antigen-antibody reaction products can be detected without separating them from the reaction solution.

[0059] A representative homogeneous analysis method is an immunoprecipitation reaction in which antigenic substances are quantitatively analyzed by examining precipitates produced following the antigen-antibody reaction. Polyclonal antibodies are generally used for the immunoprecipitation reaction. When applying monoclonal antibodies, multiple types of monoclonal antibodies that bind to different epitopes of the insulin receptor α -subunit are preferably used. The products of precipitation reaction associated with the immunological reaction can be macroscopically observed, or they can be converted to numerical data by optical measurements.

[0060] In contrast to these immunoassay methods utilizing the formation of immunological complexes in liquid phase, methods that perform the reaction in gels are also known. Such examples include Ouchterlony test, SRID method, and immunoelectrophoresis. In these methods of analysis based on reactions in gels, clear precipitation lines can be observed by using multiple types of monoclonal antibodies.

[0061] Immunological particle agglutination reaction, which uses as an indicator the agglutination of antibody-sensitized fine particles by antigens, is a common homogeneous analysis method. As in the aforementioned immunoprecipitation reaction, polyclonal antibodies or a combination of multiple types of monoclonal antibodies can be used in this method. Fine particles can be sensitized with antibodies through sensitization with a mixture of antibodies, or they can be prepared by mixing particles that have been separately sensitized with each type of antibody. Fine particles obtained in this manner gives matrix-like reaction products upon contact with the insulin receptor α -subunit. The reaction products can be detected as particle aggregates. Particle aggregation may be macroscopically observed, or may be converted into numerical data through optical measurements.

[0062] Immunoassay methods based on energy transfer and enzyme channeling are known as examples of homogeneous immunoassays. In methods utilizing energy transfer, different optical labels that have donor/acceptor relationships are linked to each of a plurality of antibodies recognizing adjacent epitopes on an antigen. When immunological reactions take place, the donor and acceptor come closer to each other and energy transfer occurs, resulting in signal

extinction or signals such as changes in fluorescence wavelength. On the other hand, enzyme channeling utilizes a combination of enzymes, which are related in that the reaction product of one enzyme is the substrate of the other, as a label for a plurality of antibodies bound to adjacent epitopes. When the enzymes come close to each other due to immunological reactions, the enzyme reactions are enhanced; therefore their binding can be detected as a change in enzyme reaction rates.

[0063] The present invention also provides reagents that comprise antibodies recognizing the insulin receptor α -subunit and that are used for measuring free insulin receptor α -subunit in blood. The presence of free insulin receptor α -subunits in blood is a novel finding made by the present inventors. Therefore, the usefulness of antibodies recognizing the insulin receptor α -subunit as reagents for measuring the free insulin receptor α -subunit in the blood is also a novel discovery. Depending on the assay format, antibodies that constitute the measuring reagent of the present invention can be labeled or bound to a solid phase.

[0064] The above-exemplified labeled antibodies (or antigens) and immobilized antibodies (or antigens) that are necessary for the each immunoassay method can be prepared as kits by combining them with an insulin receptor α -subunit standard with a predetermined concentration, a buffer for dilution or washing, and such.

[0065] Blood samples are used for the present invention's methods for measuring the insulin receptor α -subunit. Blood samples include whole blood and serum or plasma separated from whole blood. Whole blood can also be used as an analysis sample after disrupting blood cell components. Furthermore, blood samples can be diluted as necessary.

[0066] The presence of free-form insulin receptor α -subunits in blood is a novel finding made by the present inventors. The insulin receptor α -subunits in the blood are also found in healthy individuals. However, in experiments using mice, administration of the insulin receptor α -subunit into blood caused hyperglycemia and increase in the amount of insulin secretion. Therefore, insulin receptor α -subunits in blood are important as a risk factor for diabetes (type 2 diabetes mellitus), or as an exacerbation factor of type 2 diabetes mellitus. In addition, the information obtained by measuring the free insulin receptor α -subunit in blood in living bodies would be useful for evaluating the risk of diabetes in subjects.

[0067] The present inventors showed that a free form of the insulin receptor α -subunit exists in blood. To measure the free form of the insulin receptor α -subunit by an immunoassay, antibodies recognizing the subunit are necessary. Additionally needed are antigens that are usable as a standard sample and have an antibody reactivity that is similar to that of free insulin receptor α -subunit in the living body. The present invention provides polynucleotides useful for producing insulin receptor α -subunits, which can be used as immunogens for obtaining such antibodies, or as standard samples.

[0068] More specifically, the present invention relates to a polynucleotide described in any one of the following (a) to (d), and polypeptides encoded by the polynucleotides.

(a) a polynucleotide comprising the nucleotide sequence of SEQ ID NO: 1

(b) a polynucleotide encoding the amino acid sequence of SEQ ID NO: 2

(c) a polynucleotide that hybridizes with a DNA comprising the nucleotide sequence of SEQ ID NO: 1 under stringent conditions and encodes a secretory polypeptide that is immunologically equivalent to the insulin receptor α -subunit.

(d) a polynucleotide that has 90% or more homology to the nucleotide sequence of SEQ ID NO: 1 and encodes a secretory polypeptide that is immunologically equivalent to the insulin receptor α -subunit.

[0069] The polynucleotide comprising the nucleotide sequence of SEQ ID NO: 1 described in (a) encodes amino acid sequences constituting each of the regions described below in the human insulin receptor gene. The position of each of these regions in SEQ ID NO: 2 is shown within parenthesis. Furthermore, the amino acid sequence encoded by the nucleotide sequence of SEQ ID NO: 1 is shown by an underline in Fig. 2.

signal peptide (-27 to 1);

α -subunit (1 to 735); and

a part of the β -subunit (736 to 926)

[0070] Those skilled in the art can synthesize such polynucleotides based on the nucleotide sequence shown in SEQ ID NO: 1. Alternatively necessary nucleotide sequences can be obtained from the cDNA of known insulin receptors. For example, in the Examples, a polynucleotide comprising the nucleotide sequence of SEQ ID NO: 1 was obtained by digesting the human insulin receptor gene using restriction enzyme SspI.

[0071] The present inventors discovered that when an amino acid sequence in which part of the β -subunit is added to the human insulin receptor α -subunit is expressed, the expression product is efficiently secreted to the outside of the cell. In general, receptor molecules expressed on the cell membrane is difficult to purify because removal of cell membrane components becomes an obstacle. In other cases, the removal of cell membrane components disable the maintenance of the receptor molecule structure. Therefore, expressing the receptor molecule as a secretory protein is a useful production technique.

[0072] An objective of the present invention is to produce polypeptides useful as standard samples of the free form of the insulin receptor α -subunit or as immunogens. Recombinant proteins secreted outside the cell can be regarded as free molecules having the same existence form as in living bodies. That is, compared to cell membrane receptor molecules extracted from tissues, the polypeptides of this invention that are expressed as secretory proteins are preferred as standard samples or immunogens.

[0073] The polynucleotide of the present invention includes the aforementioned polynucleotide of (c) or (d). In the present invention, immunological equivalence can be determined based on reactivity with antibodies. More specifically, when the reactivity of antibodies against the free insulin receptor α -subunit in the blood is absorbed by a certain protein, this protein can be said to be immunologically equivalent to the free insulin receptor α -subunit in blood. Furthermore, when a certain protein is expressed in suitable host cells, and if that protein is secreted into the culture supernatant of the cells, that protein can be proved to be a secretory protein. Typically, when the insulin receptor gene is expressed in transformants, the receptor molecule is localized on the cell membrane due to the function of the transmembrane domain of the β -subunit, and detecting the α -subunit in the culture supernatant is difficult.

[0074] There are no particular limitations on the number of amino acids that are mutated in the protein that is immunologically equivalent to the insulin receptor α -subunit, as long as the immunological equivalence is maintained. Regarding the insulin receptor α -subunit, the number of amino acids to be mutated is usually 100 amino acids or less, preferably 50 amino acids or less, more preferably 30 amino acids or less, and even more preferably 10 amino acids or less. Furthermore, there are no limitations on the site of mutation as long as the immunological equivalence is maintained.

[0075] Amino acid mutations may be artificial or naturally-occurring mutations. When substituting amino acids, conservative substitution may be utilized. Generally, to maintain protein function, the amino acid used for the substitution preferably has characteristics similar to those of the amino acid before substitution. This type of amino acid residue substitution is called conservative substitution.

[0076] For example, Ala, Val, Leu, Ile, Pro, Met, Phe, and Trp are all categorized as non-polar amino acids, and have characteristics similar to each other. Examples of uncharged amino acids include Gly, Ser, Thr, Cys, Tyr, Asn, and Gln. Examples of acidic amino acids include Asp and Glu. Furthermore, basic amino acids include Lys, Arg, and His. Amino acids that constitute each of these groups respectively have characteristics similar to each other. Therefore, the substitution with another amino acid within the same group is likely to maintain the function of the protein.

[0077] Such proteins can be obtained by introducing mutations to the nucleotide sequence of SEQ ID NO: 1. Techniques for introducing mutations into a gene comprising a known nucleotide sequence are well known. Alternatively, a protein comprising a desired amino acid sequence can be prepared by chemical synthesis.

[0078] As another method for isolating the aforementioned immunologically equivalent protein, hybridization screening can be utilized. For example, those skilled in the art can easily use a polynucleotide comprising the nucleotide sequence of SEQ ID NO: 1, or a fragment thereof to isolate DNAs highly homologous thereto. Subsequent selection of DNAs that encode proteins immunologically equivalent to the polypeptide comprising the amino acid sequence of SEQ ID NO: 2 from thus-isolated DNAs can also be readily carried out by those skilled in the art.

[0079] As described, polypeptides that are encoded by DNAs hybridizing with a DNA comprising the nucleotide sequence of SEQ ID NO: 1 and are immunologically equivalent to the polypeptide comprising the amino acid sequence of SEQ ID NO:2 are also included in the polypeptides of the present invention. Those skilled in the art can appropriately select hybridization stringencies for isolating DNAs encoding the immunologically equivalent polypeptides.

[0080] Specific hybridization conditions include, for example, conditions of 5x SSC, in the absence of formamide, at 25°C. Hybridization is preferably performed under conditions of 6x SSC, 40% formamide, at 25°C; and more preferably under conditions of 5x SSC, 50% formamide, at 40°C. Washing after hybridization is performed for example under conditions of 2x SSC, at 37°C, preferably 1x SSC, at 55°C, and more preferably 1x SSC, at 60°C.

[0081] Instead of hybridization screening, the PCR method using oligonucleotides complementary to a portion of the nucleotide sequence of SEQ ID NO: 1 as primers can be applied to isolate the polynucleotide of this invention.

[0082] Polynucleotides that can be isolated by hybridization screening or PCR, and encode a polypeptide that is immunologically equivalent to the polypeptide comprising the amino acid sequence of SEQ ID NO: 2, are usually highly homologous to the nucleotide sequence of SEQ ID NO: 1. In the present invention, highly homologous means having sequence identity of at least 20% or more, preferably 30% or more, more preferably 40% or more, even more preferably 60% or more, and yet even more preferably 80% or more, throughout the entire polynucleotide and not just a portion thereof. Algorithms for determining nucleotide sequence homology are known (Takashi Miyata et al "Computer-Assisted Genetic Homology Analysis" (Genetic Research Methods I, Tokyo Kagaku-Dojin)).

[0083] The polynucleotides of the present invention can be used, for example, for producing recombinant proteins. *E. coli*, yeast, insect cells, animal cells, and such can be used as hosts for producing the polypeptides of the present invention as recombinant proteins. Suitable vectors are respectively determined according to the host cells. For example, the following expression vectors can be used for each type of host cell.

E. coli: pGEX5X-3 (Pharmacia), and such

yeast: pYES2 (Invitrogen), and such
 insect cells: pVL1392 (Invitrogen), and such
 animal cells: pRc/CMV2 (Invitrogen), and such

5 **[0084]** Methods for introducing these vectors into hosts known by those skilled in the art include biological methods, physical methods, and chemical methods. Biological methods include methods that use virus vectors. Physical methods include electroporation, gene gun, or microinjection. Chemical methods include lipofection, calcium phosphate method, and DEAE-Dextran method.

10 **[0085]** Recombinant proteins produced in hosts can be purified by a discretionary method. Specifically, methods that utilize ion exchange column, affinity column, and such are generally used. The method for expressing recombinant proteins as fusion proteins with GST or 6x His to facilitate detection and purification are also known.

15 **[0086]** The polynucleotides of (a) to (d) described above can all be used to express the insulin receptor α -subunit (or an immunologically equivalent polypeptide) as a secretory protein. The extracellularly secreted insulin receptor α -subunit can be easily collected from the culture supernatant. Alternatively, the culture supernatant can be directly used as a standard sample or an immunogen.

20 **[0087]** For example, standard samples for measuring free insulin receptor α -subunits in blood can be produced as follows. First, the culture supernatant of the aforementioned transformant is collected. The collected culture supernatant, is used as it is, or after purifying the desired expression product, for assaying the expression product amount. When the expression product is purified as a pure protein, the amount of the expression product is determined by measuring the concentration of that protein. Alternatively, if there are any contaminants as in a culture supernatant, the amount of the desired expression product can be determined by isolating the product by various chromatographic techniques or electrophoresis. Once the amount of the expression product is determined, the supernatant or the purified protein can be utilized as a standard sample.

25 **[0088]** The amino acid sequence of SEQ ID NO: 2 is an amino acid sequence derived from a human insulin receptor. When a polypeptide comprising an amino acid sequence different from this amino acid sequence is used as an expression product, the differences in molecular mass can be corrected based on differences in the amino acid sequences of the two.

30 **[0089]** In the present invention, a "standard sample of a certain protein" refers to a sample in which the amount of this protein has been determined in advance. Standard samples can be serially diluted as necessary. Signals are measured for these serially diluted samples by the aforementioned immunoassays. The relationship between the concentrations of the protein in the standard samples and the measured signals can be expressed as a standard curve (or a calibration curve). Based on the standard curve made in this manner, the concentration of the substance to be measured in the sample can be determined from signals obtained from actual test samples. Alternatively, by formulating a regression equation based on the measurement results of the serial dilutions, and by assigning the values measured from the test samples, the concentration of the substance to be measured in the sample can be determined.

35 **[0090]** The present invention is based on the novel finding that the amounts of the insulin receptor α -subunit found in diabetes and cancer patients are significantly high in a blood sample compared to those of healthy individuals. The insulin receptor is a glycoprotein that binds specifically to insulin, with a large molecular mass of approximately 350,000 to 400,000 and having an $\alpha 2\beta 2$ subunit structure (α : molecular mass of 120,000 to 130,000; and β : molecular mass of 90,000). The insulin receptor has not only insulin-binding activity, but also tyrosine-specific protein kinase activity, and is activated upon binding to insulin and transmits signals into cells. Consequently, insulin receptors are usually localized on the cell membrane in insulin target tissues such as muscles. Although it has been shown that insulin receptors are highly expressed in skeletal muscles, adipose tissues, liver, brain, and such, no marked expression of the insulin receptor had been observed in blood cells such as lymphocytes. Therefore, it was unclear whether or not a free insulin receptor is present in blood.

45 **[0091]** In the present invention's methods of diagnosis, the amount of free insulin receptor in a blood sample can be measured by the methods described above. In particular, the sandwich method is one of the preferred measurement principles of the present invention due to its excellent measurement sensitivity and reproducibility. Results of measurements are compared to results from a control. Examples of a control in the present invention include the amount of free insulin receptor determined by measuring blood samples from healthy individuals. Healthy individuals include humans who are known to have no diabetes or cancer. Desirably, healthy individuals refer to humans who are known to have no diseases.

50 **[0092]** In the method of diagnosis of the present invention. Blood samples include blood fractions separated from the blood. Specifically, samples such as serum, plasma, or hemolytic samples that can be obtained by disrupting blood cell components are included in biological samples. Methods for preparing these samples are known. For example, the methods of diagnosis of the present invention can be carried out using blood samples prepared from blood collected from subjects. Furthermore, blood samples may be diluted as necessary.

55 **[0093]** The present invention also provides methods of testing for diabetes or cancer, the methods comprising the steps of (1) measuring a concentration of the free insulin receptor α -subunit in blood samples collected from living bodies,

and (2) comparing the values to that of the control. If the measured value is shown to be significantly higher as a result of the comparison with the control, there is a high probability that the subject has diabetes or cancer.

[0094] For example, as a result of the comparison between the two, if the level of the free insulin receptor α -subunit in the subject is higher than in the healthy individual, the subject is determined to have diabetes or cancer. In order to compare the amount of free insulin receptor α -subunit, a standard value is typically set, for example, based on the above-mentioned amount of free insulin receptor α -subunit in healthy individuals. Based on this standard value, a given range is set as a permissible range. In general, the permissible range is set as ± 2 S.D. to ± 3 S.D. from the standard value. In the present invention, a high measured value as compared to the control serves as an indicator. Therefore, the maximum value of the settled permissible range is used as the criterion for judgment. This value is called a cutoff value.

[0095] In general, techniques for statistically setting the standard value and permissible range based on the value measured for a substance that serves as a marker are known. If the amount of the free insulin receptor α -subunit in a subject shows a value higher than the permissible range (cutoff value), that subject is predicted to have diabetes. When the value is within the permissible range, or is less than the permissible value, there is little possibility of diabetes or cancer.

[0096] Alternatively, whether a subject has risk factors for diabetes or not can be predicted based on the present invention. As indicated in the Examples, the presence of free insulin receptor α -subunit in the blood is a risk factor for diabetes. Therefore, even if the subject does not have diabetes, higher measured value of the free insulin receptor α -subunit in the blood than in the control predicts that the subject has a risk factor for diabetes. Prediction of risk factors is included in the diabetes diagnosis of the present invention.

[0097] In the method of diagnosis of cancer according to the present invention, a subject is determined to have cancer when the amount of free insulin receptor α -subunit in the subject is higher than in healthy individuals. In the present invention, the types of cancer to be diagnosed are not limited. As shown in the Examples, the amount of the free insulin receptor α -subunit marked significantly high values in biological samples of a variety of cancer patients. Therefore, when the method of diagnosis of the present invention determines that there is a possibility of cancer, it indicates that some type of cancer may be present regardless of the organ where it is present. Cancer in the present invention may be in the primary focus or metastatic focus. Furthermore, cancer in the present invention is also not limited to solid cancers. However, preferable cancers include solid cancers. For example, cancers that develop in the lungs, esophagus, pancreas, colon, breast, liver, rectum, or skin can be diagnosed by the present invention.

[0098] The present invention also provides the use of reagents for diagnosing diabetes or cancer, the reagents comprising an antibody that recognizes peptides comprising the amino acid sequence of the insulin receptor α -subunit. The usefulness of the free insulin receptor α -subunit in the blood for diagnosing diabetes or cancer is a novel finding made by the present inventors. The antibodies constituting the diagnosis reagents of this invention can be labeled, or linked to a solid phase, depending on the above-mentioned assay format.

[0099] In the present invention, antibodies that recognize peptides comprising the amino acid sequence of the insulin receptor α -subunit include, for example, antibodies that recognize peptides comprising a continuous amino acid sequence selected from the amino acid sequence of SEQ ID NO: 2. Typically, antibodies are said to recognize antigenic determinants composed of an amino acid sequence of three or more amino acid residues. The preferred length of an amino acid sequence recognized by the antibodies of the present invention is typically three or more, preferably five or more, for example, 7 to 20 amino acid residues. Peptides of eight to nine amino acid residues generally can constitute antigenic determinants unique to the protein.

[0100] Labeled antibodies (or antigens) and immobilized antibodies (or antigens) necessary for various immunoassay methods exemplified in the present description can be prepared as a kit by combining them with the insulin receptor α -subunit standard whose concentration has been examined, a buffer to be used for dilution or washing, and such.

Brief Description of the Drawings

[0101]

Fig. 1 is a diagram showing the relationship between amino acid sequences encoded by the cDNAs used for expressing the insulin receptor α -subunit in CHO cells in the Examples, and the full-length amino acid sequence of the insulin receptor.

Fig. 2 shows the amino acid sequences of each subunit in the amino acid sequence of the insulin receptor precursor protein, and the relationship with the amino acid sequence of the recombinant expressed in the Examples. In the figure, capital letters indicate α -subunit, and the amino acid sequences shown in lower-case letters at the N-terminal and C-terminal side of the α -subunit are those of the signal peptide and β -subunit, respectively. In the amino acid sequence of the β -subunit, the boxed portion is the transmembrane (TM) region. The amino acid sequence encoded by the SspI-digested fragment shown in Fig. 1 is underlined

Fig. 3 is a photograph showing the purification result of the insulin receptor α -subunit using an anti-insulin receptor α -subunit antibody column. The insulin receptor α -subunit adsorbed to the anti-insulin receptor antibody (α -subunit

antibody, Immunotech 0365) column was eluted using sodium borate buffer containing 1.5 M MgCl₂, and the eluate was collected as 200- μ L fractions. From each fraction, 20 μ L was withdrawn and subjected to 7.5% SDS-PAGE and then silver stained.

Fig. 4 is a graph showing the standard curve prepared in the Examples for the insulin receptor α -subunit. In the figure, the vertical axis indicates the absorbance at 450 nm, and the horizontal axis indicates the concentration of the insulin receptor α -subunit (ng/mL) in the sample.

Fig. 5 is a graph showing over-time changes in blood glucose level in mice to which the insulin receptor α -subunit has been administered. In the figure, the vertical axis indicates the blood glucose level (mg/dL), and the horizontal axis indicates the time elapsed (in minutes) where the time of insulin receptor α -subunit administration is set as -10.

Fig. 6 is a graph showing the over-time changes in blood glucose level in mice to which a glucose load has been given 10 minutes after administration of the insulin receptor α -subunit. In the figure, the vertical axis indicates the blood glucose level (mg/dL), and the horizontal axis indicates the time elapsed (in minutes) where the time of insulin receptor α -subunit administration is set as -10.

Fig. 7 is a graph showing the distribution of the measured values of the insulin receptor α -subunit in 70 healthy subjects. In the figure, the vertical axis indicates the frequency (number of people) or the cumulative percentage (%) at each measurement level (ng/mL), and the horizontal axis indicates the concentration of the insulin receptor α -subunit.

Fig. 8 shows the result of a significant difference test on the concentration of the insulin receptor α -subunit in blood (ng/mL) in diabetes patients and healthy individuals.

Fig. 9 shows the distribution of the insulin receptor α -subunit concentration in the sera of various cancer patients and healthy individuals. In the figure, the vertical axis indicates the measured values of the insulin receptor α -subunit concentration in the sera (ng/mL), and the horizontal axis indicates the type of disease (cancer).

Best Mode for Carrying out the Invention

[0102] Hereinafter, the present invention will be described more specifically with reference to Examples.

1. Construction of human insulin receptor α -subunit cDNA

[0103] cDNA for causing secretion of insulin receptor α -subunit into the culture supernatant from CHO cells were constructed. The structures of the cDNAs constructed in the present example are shown in Fig. 1. Each of the cDNAs was obtained by using pcDL1-HIR717 (Ebina et al. Cell. 40, 747-758, 1985) comprising the full-length cDNA (NM_000208) of the human insulin receptor and digesting it at different positions. Each of the cDNAs has the following structures, respectively.

CHO-HIR: insulin receptor α -subunit + β -subunit

CHO-HIR(α): insulin receptor α -subunit alone

CHO-HIR(PstI): α -subunit and amino acids 1 to 150 in the N terminal side of the β -subunit

CHO-HIR(SspI): α -subunit and amino acids 1 to 191 in the N terminal side of the β -subunit

[0104] The β -subunit transmembrane domain is in positions 195 to 217 from the N-terminal side. This means that CHO-HIR(PstI) and CHO-HIR(SspI) both include a portion of the β -subunit, but lack the transmembrane domain. In Fig. 2, the boxed part within the β -subunit amino acid sequence (the C-terminal side part in lower-case letters) corresponds to the transmembrane region.

[0105] Each of the cDNAs was inserted into the animal cell expression vector pCXN2 to obtain expression plasmids of the hIR (human insulin receptor) and its variants. Each restriction enzyme was purchased from Takara (Otsu, Japan) and New England BioLabs (Beverly, MA).

2. Culturing and gene transfer

[0106] Chinese hamster ovary (CHO) cells were cultured in a 5% CO₂ incubator using F-12 Nutrient Mixture (Ham's F-12, Invitrogen, Carlsbad, CA) media. 10 μ g of each expression plasmid obtained in 1 was linearized using the restriction enzyme Scal, and this was introduced into CHO cells by electroporation with 0.5 μ g of blasticidin (pSV2-bsr, Funakoshi, Tokyo, Japan). 24 hours after transfection, the medium was changed to 10 μ g/mL blasticidin-resistant F-12 medium, and two weeks later, the remaining colonies were isolated. Expression of hIR was confirmed by polyacrylamide electrophoresis and Western blotting using anti-IRa antibodies.

3. Purification of the α -subunit

[0107] Clones showing high expression were amplified in F-12 medium containing 10% FCS, and cultured in 150-mm cell culture dishes (Corning). After culturing to 100% confluency, the cells were washed three times with HEPES buffer [20 mM HEPES (pH 7.4), 140 mM NaCl, 5 mM KCl, 2.5 mM MgCl₂, and 1 mM CaCl₂] and the medium was exchanged with 20 mL of serum-free medium (CHO-S-SFM II DPM, Invitrogen) per dish.

[0108] After culturing for four days, the medium was collected, cell components were removed by centrifugation (1,300x g, 10 minutes, 4°C), and then the supernatant was collected. 6 μ L (50% suspension) of wheat germ lectin (WGA) agarose (Amersham) was added per 1 mL of the supernatant, and this was rotated at 4°C for two hours for adsorption. The agarose was washed five times. The first and fifth washes were carried out using HEPES buffer [50 mM HEPES (pH 7.4), 150 mM NaCl, 1% Triton X-100]. The salt concentration of the washing solution for the second to fourth washes was set to 500 mM. The adsorbed protein was eluted using HEPES buffer containing 0.2 M *N*-acetylglucosamine. The eluted sample was added to anti-insulin receptor antibody (α -subunit antibody, Immunotech 0365) column (bed volume; 0.5 mL) and allowed to adsorb while rotating at 4°C for one hour. The column was washed three times with ten times the bed volume of HEPES buffer, and in this case as well, the salt concentration for the second wash was increased to 500 mM. Using sodium borate buffer containing 1.5 M MgCl₂, 200- μ L fractions were collected.

[0109] The degree of purification of the insulin receptor α -subunit in each fraction was evaluated as follows. First, 20 μ L of each fraction was withdrawn and subjected to 7.5% SDS-PAGE and silver staining. A photograph of the stained gel is shown in Fig. 3. A protein having a molecular mass corresponding to the insulin receptor α -subunit was confirmed to be isolated as a nearly pure protein (the band indicated as IR α). The stained gel was scanned with a transmission scanner and evaluated using NIH image software. The protein concentration was determined by the Bradford method using Protein Assay Dye Reagent (BioRad, Hercules, CA) with BSA as the standard.

4. Production of anti-human insulin receptor α -subunit antibodies

[0110] Using the purified human insulin receptor α -subunit, rabbits (Japanese white rabbits, female, 3.5 kg) were immunized subcutaneously (at approximately ten sites, once a week). After five immunizations, a small amount of blood was collected from the ear veins, and the serum was separated to check the antibody titer by ELISA.

[0111] First, human insulin receptor α -subunit was dissolved in 1/100 M physiological phosphate-buffered saline (PBS) to prepare a 0.1 mg/mL solution, and 100 μ L aliquots of this solution was added to Nunc 96-well microplates "Maxisorp". After letting this stand at room temperature (20 to 25°C) for three hours, the solution inside the wells were removed by suction, and 30 μ L of PBS containing 5% bovine serum albumin was added. This was left undisturbed for approximately 18 hours at 4°C, and the unreacted parts in the cups were blocked. After removing the blocking solution, this plate was washed three times with 300 μ L of PBS and used as the plates for ELISA.

[0112] Antiserum diluted with PBS was further diluted to produce a series of dilutions. 100 μ L of the diluted serum was added to each well of the ELISA plate. After leaving this undisturbed at room temperature (20 to 25°C) for one hour, the reaction solution was removed, and then the plate was washed four times with 30 μ L of PBS. Next, 100 μ L of the diluted peroxidase-labeled anti-rabbit IgG (Medical and Biological Laboratories Co., Ltd.) was added. After letting this react while standing at room temperature (20 to 25°C) for one hour, washing was done four times with 30 μ L of PBS.

[0113] 100 μ L of a solution of 3,3',5,5'-tetramethylbenzidine with hydrogen peroxide was added to the washed wells as the chromogenic substrate. After letting this react for a certain length of time, 1 N sulfuric acid was added to stop the reaction, and the absorbance at wavelength of 450 nm was measured. The results of the measurements are shown in the graph of Fig. 4. As is clear from this result, the obtained antiserum exhibited sufficient antibody titer. From rabbits that showed sufficient antibody titer in this manner, 70 mL of blood was collected from the ear veins and approximately 30 mL of antiserum was obtained. Furthermore, from the polyclonal solution obtained in this manner, IgG fraction was purified using a DEAE cellulose column.

5. Preparation of labeled antibodies

[0114] Anti-rabbit IgG monoclonal antibodies (2B9 5 μ g/mL) dissolved in 0.1 M carbonate buffer (pH 8.5) and NHS-LC-BIOTIN (PIERCE, 25 μ g/mL) were mixed and stirred at room temperature for four hours using a stirrer. IgG and NHS-LC-BIOTIN were mixed at a mole ratio of 1:60. After stirring, this solution was dialyzed against physiological phosphate buffered saline (PBS) to obtain biotin-labeled antibodies.

6. Construction of an ELISA system for the human insulin receptor α -subunit

[0115] Anti-human insulin receptor α -subunit antibodies were diluted and prepared to a concentration of 40 μ g/mL to 80 μ g/mL with 0.1 M carbonate buffer (pH 9.6). 100- μ L aliquot of the diluted antibody solution was placed into each well

EP 1 624 305 B1

of a 96-well microplate (NUNC, Immuno Break Apart Modules Maxisorp #473768). The microplate was left to stand overnight in a humid container at 2 to 8°C to bind the antibodies.

[0116] After incubation, the antibody solution was discarded, and the plate was washed twice with PBS. Excess moisture was removed, and blocking solution (PBS containing 1% BSA and 0.1% NaN₃) was added in 200- μ L aliquote per well. Blocking was carried out by placing the microplate in a humid container overnight at 2 to 8°C. After blocking, the blocking solution was discarded and excess moisture was removed. Furthermore, the plates were air-dried, and were stored until use in an aluminum-coated bag with a drying agent.

7. Evaluation of the ELISA system

[0117] The purified human insulin receptor α -subunit was diluted with a sample dilution buffer (20 mM Tris-HCl, 150 mM NaCl, 1% BSA, 10% normal mouse serum, 25 mg/mL MAK33, 0.1% NaN₃, 1% bovine γ -globulin, 0.056% Tween 20, pH 7.5) and used as standards. Samples were two-fold diluted with the sample dilution solution and placed into each well of the antibody-sensitized microplate in 100- μ L aliquots, and this was allowed to react for three hours at room temperature to form antibody-antigen complexes.

[0118] After the reaction, the wells were washed five times with a washing buffer (PBS + 0.05% Tween 20). Excess moisture was removed, then 100- μ L aliquots of the biotin-labeled antibody diluted with the sample dilution buffer was added to each well, and this was allowed to react at room temperature for three hours. After the reaction, the wells were washed five times using the same washing buffer. After removing excess moisture, avidin-labeled peroxidase diluted with avidin HRP dilution buffer (20 mM Tris-HCl, 150 mM NaCl, 1% BSA, 0.15% Proclin, pH 7.5) was added to each well in 100- μ L aliquots, and this was allowed to react at room temperature for three hours. These reactions lead to the formation of an antibody/antigen/biotinylated antibody/avidin-labeled peroxidase complex.

[0119] The reacted wells were washed five times with the washing buffer. After removing excess moisture, 100 μ L of TMB chromogenic substrate (MOSS, TMBH-100) was added per well. After letting this react at room temperature for approximately 20 minutes for colour development, 100 μ L of 1 N sulfuric acid was added per well to stop the colour development. After this, absorbance was measured at wavelength of 450 nm. The concentration of insulin receptor α -subunit in the samples was read from the calibration curve prepared from the absorbance of the standards. The ELISA system constructed as described above was confirmed to be able to measure the insulin receptor α -subunit.

8. Effects of administering the insulin receptor α -subunit

[0120] Eight to ten-week old male mice were fasted for 16 hours and anesthetized using pentobarbital. Next, 100 ng of the purified insulin receptor α -subunit was administered from the cervical vein. The insulin receptor α -subunit was administered in a form dissolved in 50 μ L of physiological saline containing 0.1% BSA. Blood was withdrawn from insulin receptor α -subunit-administered mice at various time points through the tail vein, and the blood sugar level was measured. As a control, 50 μ L of physiological saline containing 0.1% BSA alone was administered to mice in the same manner.

[0121] The results are shown in Fig. 5. The blood sugar level in the control mice gradually decreased due to continued fasting. On the other hand, in mice that received the insulin receptor α -subunit administration into the blood, over-time increase in the blood glucose level was observed. This may have occurred as a result of the binding of the administered insulin receptor α -subunit with insulin, which inhibited insulin action.

9. Effects of insulin receptor α -subunit administration (glucose loading)

[0122] Ten minutes after administering the insulin receptor α -subunit under the same conditions as in 7, glucose (2 g/kg body weight) was administered intraperitoneally. After glucose administration, blood was collected from the tail vein at different time intervals, and the blood sugar levels were measured. As a control, the same amount of glucose was administered to mice that had been given only physiological saline containing 0.1% BSA (50 μ L) by the same method.

[0123] The results are shown in Fig. 6. Abnormal glucose tolerance was confirmed in glucose tolerance tests upon administration of insulin receptor α -subunit. These two results indicate that when the insulin receptor α -subunit exists in blood, it is very likely to act as an exacerbation factor for diabetes through its binding to insulin to inhibit insulin action and increase blood glucose level.

10. Measurement of the insulin receptor α -subunit in the sera of diabetes patients

[0124] Two types of monoclonal antibodies (mice) against the human insulin receptor α -subunit were used to develop a sandwich ELISA system for measuring the insulin receptor α -subunit in blood.

[0125] Following the above-mentioned method, labeled antibodies were produced using monoclonal antibodies. Anti- α -subunit monoclonal antibody (IM0365) (5 μ g/mL) dissolved in 0.1 M carbonate buffer (pH 8.5) and NHS-LC-BIOTIN

(PIERCE, 25 $\mu\text{g}/\text{mL}$) were mixed and stirred at room temperature for four hours using a stirrer. IgG and NHS-LC-BIOTIN were mixed at a mole ratio of 1:60. After stirring, this solution was dialyzed against physiological phosphate buffered saline (PBS) to obtain biotin-labeled antibodies.

[0126] Similarly, monoclonal antibodies were used to prepare a solid phase plate. Anti- α -subunit monoclonal antibody (Neomarker MS632) was dissolved in 0.1 M carbonate buffer (pH 9.6) at a concentration of 10 $\mu\text{g}/\text{mL}$, and 100 μL of this solution per well was used for sensitization at 4°C, overnight. 200 $\mu\text{L}/\text{well}$ of PBS + 1% BSA was added for two-hour blocking at room temperature, then the plate was air-dried, sealed, and stored.

[0127] These antibodies were used to measure the concentration of the insulin receptor α -subunit in a sample according to the measurement conditions described above.

[0128] Among the sera donated by students at University of Tokushima School of Medicine, samples from individuals having a family history of diabetes or having chyle were eliminated, and 70 samples were measured as samples of healthy individuals. From the distribution of the measurements, the tentative cutoff value was set at average value plus 3 SD according to the non-parametric method (Fig. 7). As a result, the cutoff value was determined as 13.3 $\mu\text{g}/\text{mL}$.

[0129] Next, at the University of Tokushima School of Medicine, 168 samples donated by diabetes patients with informed consent were measured (Fig. 8). As a result, the concentrations of insulin receptor α -subunit in the sera of diabetes patients were on average 10.7 $\mu\text{g}/\text{mL}$, the maximum value was 23.3 $\mu\text{g}/\text{mL}$, and a clear difference from healthy individuals was observed.

[0130] In view of the above, the value measured for the insulin receptor α -subunit in the blood was considered useful in the diagnosis of diabetes.

11. Measurement of insulin receptor α -subunit in the sera of cancer patients

[0131] Next, various cancer patient sera purchased from commercial suppliers were used as samples for the measurement of the insulin receptor α -subunit concentrations. The measured patient samples were ten samples each from lung cancer, esophageal cancer, pancreatic cancer, colon cancer, breast cancer, liver cancer, rectal cancer and skin cancer patients. The results of the measurements are shown in Table 1 and Fig. 9. The concentrations of insulin receptor α -subunit in all types of cancers marked significantly higher values than those of healthy individuals. Therefore, measurement of the insulin receptor α -subunit in blood is considered to be useful for diagnosing cancer.

Table 1

	13 ng/mL or more	Percent positive (%)
Lung cancer	20/20	100
Esophageal cancer	10/10	100
Pancreatic cancer	9/10	90
Colon cancer	19/20	95
Breast cancer	9/10	90
Liver cancer	6/10	60
Rectal cancer	10/10	100
Skin cancer	8/10	80
Healthy individuals	0/70	0

SEQUENCE LISTING

[0132]

<110> YOUSUKE, EBINA
TOSHIYUKI, OBATA
MEDICAL AND BIOLOGICAL LABORATORIES CO., LTD.

<120> METHOD FOR DETERMINATION OF INSULIN RECEPTOR ALPHA SUBUNIT

<130> M3-A0301Y1P

EP 1 624 305 B1

<150> JP 2003-121955

<151> 2003-04-25

<150> JP 2003-433303

<151> 2003-12-26

<160> 2

<170> PatentIn version 3.1

<210> 1

<211> 2859

<212> DNA

<213> Homo sapiens

<220>

<221> sig_peptide

<222> (1) .. (81)

<223>

<220>

<221> CDS

<222> (1).. (2859)

<223>

<220>

<221> mat_peptide

<222> (82).. (926)

<223>

<400> 1

EP 1 624 305 B1

atg ggc acc ggg ggc cgg cgg ggg gcg gcg gcc gcg ccg ctg ctg gtg 48
 Met Gly Thr Gly Gly Arg Arg Gly Ala Ala Ala Ala Pro Leu Leu Val
 5 -25 -20 -15

 gcg gtg gcc gcg ctg cta ctg ggc gcc gcg ggc cac ctg tac ccc gga 96
 10 Ala Val Ala Ala Leu Leu Leu Gly Ala Ala Gly His Leu Tyr Pro Gly
 -10 -5 -1 1 5

 gag gtg tgt ccc ggc atg gat atc cgg aac aac ctc act agg ttg cat 144
 15 Glu Val Cys Pro Gly Met Asp Ile Arg Asn Asn Leu Thr Arg Leu His
 10 15 20

 gag ctg gag aat tgc tct gtc atc gaa gga cac ttg cag ata ctc ttg 192
 20 Glu Leu Glu Asn Cys Ser Val Ile Glu Gly His Leu Gln Ile Leu Leu
 25 30 35
 25

 atg ttc aaa acg agg ccc gaa gat ttc cga gac ctc agt ttc ccc aaa 240
 30 Met Phe Lys Thr Arg Pro Glu Asp Phe Arg Asp Leu Ser Phe Pro Lys
 40 45 50

 ctc atc atg atc act gat tac ttg ctg ctc ttc cgg gtc tat ggg ctc 288
 35 Leu Ile Met Ile Thr Asp Tyr Leu Leu Leu Phe Arg Val Tyr Gly Leu
 55 60 65

 gag agc ctg aag gac ctg ttc ccc aac ctc acg gtc atc cgg gga tca 336
 40 Glu Ser Leu Lys Asp Leu Phe Pro Asn Leu Thr Val Ile Arg Gly Ser
 70 75 80 85

 cga ctg ttc ttt aac tac gcg ctg gtc atc ttc gag atg gtt cac ctc 384
 45 Arg Leu Phe Phe Asn Tyr Ala Leu Val Ile Phe Glu Met Val His Leu
 90 95 100
 50

 55

EP 1 624 305 B1

aag gaa ctc ggc ctc tac aac ctg atg aac atc acc cgg ggt tct gtc 432
 Lys Glu Leu Gly Leu Tyr Asn Leu Met Asn Ile Thr Arg Gly Ser Val
 5 105 110 115

cgc atc gag aag aac aat gag ctc tgt tac ttg gcc act atc gac tgg 480
 Arg Ile Glu Lys Asn Asn Glu Leu Cys Tyr Leu Ala Thr Ile Asp Trp
 10 120 125 130

tcc cgt atc ctg gat tcc gtg gag gat aat cac atc gtg ttg aac aaa 528
 Ser Arg Ile Leu Asp Ser Val Glu Asp Asn His Ile Val Leu Asn Lys
 15 135 140 145

gat gac aac gag gag tgt gga gac atc tgt ccg ggt acc gcg aag ggc 576
 Asp Asp Asn Glu Glu Cys Gly Asp Ile Cys Pro Gly Thr Ala Lys Gly
 20 150 155 160 165

aag acc aac tgc ccc gcc acc gtc atc aac ggg cag ttt gtc gaa cga 624
 Lys Thr Asn Cys Pro Ala Thr Val Ile Asn Gly Gln Phe Val Glu Arg
 25 30 170 175 180

tgt tgg act cat agt cac tgc cag aaa gtt tgc ccg acc atc tgt aag 672
 Cys Trp Thr His Ser His Cys Gln Lys Val Cys Pro Thr Ile Cys Lys
 35 185 190 195

tca cac ggc tgc acc gcc gaa ggc ctc tgt tgc cac agc gag tgc ctg 720
 Ser His Gly Cys Thr Ala Glu Gly Leu Cys Cys His Ser Glu Cys Leu
 40 200 205 210

ggc aac tgt tct cag ccc gac gac ccc acc aag tgc gtg gcc tgc cgc 768
 Gly Asn Cys Ser Gln Pro Asp Asp Pro Thr Lys Cys Val Ala Cys Arg
 45 215 220 225

aac ttc tac ctg gac ggc agg tgt gtg gag acc tgc ccg ccc ccg tac 816
 Asn Phe Tyr Leu Asp Gly Arg Cys Val Glu Thr Cys Pro Pro Pro Tyr
 50 55 230 235 240 245

EP 1 624 305 B1

5 gga gag acc ttg gaa att ggg aac tac tcc ttc tat gcc ttg gac aac 1296
 Gly Glu Thr Leu Glu Ile Gly Asn Tyr Ser Phe Tyr Ala Leu Asp Asn
 390 395 400 405

10 cag aac cta agg cag ctc tgg gac tgg agc aaa cac aac ctc acc acc 1344
 Gln Asn Leu Arg Gln Leu Trp Asp Trp Ser Lys His Asn Leu Thr Thr
 410 415 420

15 act cag ggg aaa ctc ttc ttc cac tat aac ccc aaa ctc tgc ttg tca 1392
 Thr Gln Gly Lys Leu Phe Phe His Tyr Asn Pro Lys Leu Cys Leu Ser
 425 430 435

20 gaa atc cac aag atg gaa gaa gtt tca gga acc aag ggg cgc cag gag 1440
 Glu Ile His Lys Met Glu Glu Val Ser Gly Thr Lys Gly Arg Gln Glu
 440 445 450

25 aga aac gac att gcc ctg aag acc aat ggg gac aag gca tcc tgt gaa 1488
 Arg Asn Asp Ile Ala Leu Lys Thr Asn Gly Asp Lys Ala Ser Cys Glu
 30 455 460 465

35 aat gag tta ctt aaa ttt tct tac att cgg aca tct ttt gac aag atc 1536
 Asn Glu Leu Leu Lys Phe Ser Tyr Ile Arg Thr Ser Phe Asp Lys Ile
 470 475 480 485

40 ttg ctg aga tgg gag ccg tac tgg ccc ccc gac ttc cga gac ctc ttg 1584
 Leu Leu Arg Trp Glu Pro Tyr Trp Pro Pro Asp Phe Arg Asp Leu Leu
 490 495 500

45 ggg ttc atg ctg ttc tac aaa gag gcc cct tat cag aat gtg acg gag 1632
 Gly Phe Met Leu Phe Tyr Lys Glu Ala Pro Tyr Gln Asn Val Thr Glu
 50 505 510 515

55 ttc gat ggg cag gat gcg tgt ggt tcc aac agt tgg acg gtg gta gac 1680
 Phe Asp Gly Gln Asp Ala Cys Gly Ser Asn Ser Trp Thr Val Val Asp
 520 525 530

EP 1 624 305 B1

	att gac cca ccc ctg agg tcc aac gac ccc aaa tca cag aac cac cca	1728
5	Ile Asp Pro Pro Leu Arg Ser Asn Asp Pro Lys Ser Gln Asn His Pro	
	535 540 545	
	ggg tgg ctg atg cgg ggt ctc aag ccc tgg acc cag tat gcc atc ttt	1776
10	Gly Trp Leu Met Arg Gly Leu Lys Pro Trp Thr Gln Tyr Ala Ile Phe	
	550 555 560 565	
	gtg aag acc ctg gtc acc ttt tcg gat gaa cgc cgg acc tat ggg gcc	1824
15	Val Lys Thr Leu Val Thr Phe Ser Asp Glu Arg Arg Thr Tyr Gly Ala	
	570 575 580	
20	aag agt gac atc att tat gtc cag aca gat gcc acc aac ccc tct gtg	1872
	Lys Ser Asp Ile Ile Tyr Val Gln Thr Asp Ala Thr Asn Pro Ser Val	
25	585 590 595	
	ccc ctg gat cca atc tca gtg tct aac tca tca tcc cag att att ctg	1920
30	Pro Leu Asp Pro Ile Ser Val Ser Asn Ser Ser Ser Gln Ile Ile Leu	
	600 605 610	
	aag tgg aaa cca ccc tcc gac ccc aat ggc aac atc acc cac tac ctg	1968
35	Lys Trp Lys Pro Pro Ser Asp Pro Asn Gly Asn Ile Thr His Tyr Leu	
	615 620 625	
	gtt ttc tgg gag agg cag gcg gaa gac agt gag ctg ttc gag ctg gat	2016
40	Val Phe Trp Glu Arg Gln Ala Glu Asp Ser Glu Leu Phe Glu Leu Asp	
	630 635 640 645	
45	tat tgc ctc aaa ggg ctg aag ctg ccc tcg agg acc tgg tct cca cca	2064
	Tyr Cys Leu Lys Gly Leu Lys Leu Pro Ser Arg Thr Trp Ser Pro Pro	
	650 655 660	
50	ttc gag tct gaa gat tct cag aag cac aac cag agt gag tat gag gat	2112
	Phe Glu Ser Glu Asp Ser Gln Lys His Asn Gln Ser Glu Tyr Glu Asp	
55	665 670 675	

EP 1 624 305 B1

	tcg gcc ggc gaa tgc tgc tcc tgt cca aag aca gac tct cag atc ctg	2160
5	Ser Ala Gly Glu Cys Cys Ser Cys Pro Lys Thr Asp Ser Gln Ile Leu	
	680 685 690	
	aag gag ctg gag gag tcc tcg ttt agg aag acg ttt gag gat tac ctg	2208
10	Lys Glu Leu Glu Glu Ser Ser Phe Arg Lys Thr Phe Glu Asp Tyr Leu	
	695 700 705	
	cac aac gtg gtt ttc gtc ccc aga aaa acc tct tca ggc act ggt gcc	2256
15	His Asn Val Val Phe Val Pro Arg Lys Thr Ser Ser Gly Thr Gly Ala	
	710 715 720 725	
	gag gac cct agg cca tct cgg aaa cgc agg tcc ctt ggc gat gtt ggg	2304
20	Glu Asp Pro Arg Pro Ser Arg Lys Arg Arg Ser Leu Gly Asp Val Gly	
	730 735 740	
	aat gtg acg gtg gcc gtg ccc acg gtg gca gct ttc ccc aac act tcc	2352
25	Asn Val Thr Val Ala Val Pro Thr Val Ala Ala Phe Pro Asn Thr Ser	
	745 750 755	
	tcg acc agc gtg ccc acg agt ccg gag gag cac agg cct ttt gag aag	2400
30	Ser Thr Ser Val Pro Thr Ser Pro Glu Glu His Arg Pro Phe Glu Lys	
	760 765 770	
	gtg gtg aac aag gag tcg ctg gtc atc tcc ggc ttg cga cac ttc acg	2448
35	Val Val Asn Lys Glu Ser Leu Val Ile Ser Gly Leu Arg His Phe Thr	
	775 780 785	
	ggc tat cgc atc gag ctg cag gct tgc aac cag gac acc cct gag gaa	2496
40	Gly Tyr Arg Ile Glu Leu Gln Ala Cys Asn Gln Asp Thr Pro Glu Glu	
	790 795 800 805	
	cgg tgc agt gtg gca gcc tac gtc agt gcg agg acc atg cct gaa gcc	2544
45	Arg Cys Ser Val Ala Ala Tyr Val Ser Ala Arg Thr Met Pro Glu Ala	
	810 815 820	
50		
55		

EP 1 624 305 B1

aag gct gat gac att gtt ggc cct gtg acg cat gaa atc ttt gag aac 2592
 Lys Ala Asp Asp Ile Val Gly Pro Val Thr His Glu Ile Phe Glu Asn
 5 825 830 835

aac gtc gtc cac ttg atg tgg cag gag ccg aag gag ccc aat ggt ctg 2640
 10 Asn Val Val His Leu Met Trp Gln Glu Pro Lys Glu Pro Asn Gly Leu
 840 845 850

atc gtg ctg tat gaa gtg agt tat cgg cga tat ggt gat gag gag ctg 2688
 15 Ile Val Leu Tyr Glu Val Ser Tyr Arg Arg Tyr Gly Asp Glu Glu Leu
 855 860 865

cat ctc tgc gtc tcc cgc aag cac ttc gct ctg gaa cgg ggc tgc agg 2736
 20 His Leu Cys Val Ser Arg Lys His Phe Ala Leu Glu Arg Gly Cys Arg
 25 870 875 880 885

ctg cgt ggg ctg tca ccg ggg aac tac agc gtg cga atc cgg gcc acc 2784
 30 Leu Arg Gly Leu Ser Pro Gly Asn Tyr Ser Val Arg Ile Arg Ala Thr
 890 895 900

tcc ctt gcg ggc aac ggc tct tgg acg gaa ccc acc tat ttc tac gtg 2832
 35 Ser Leu Ala Gly Asn Gly Ser Trp Thr Glu Pro Thr Tyr Phe Tyr Val
 905 910 915

aca gac tat tta gac gtc ccg tca aat 2859
 40 Thr Asp Tyr Leu Asp Val Pro Ser Asn
 920 925

45 <210> 2
 <211> 953
 <212> PRT
 <213> Homo sapiens

50 <400> 2

55

EP 1 624 305 B1

Met Gly Thr Gly Gly Arg Arg Gly Ala Ala Ala Ala Pro Leu Leu Val
 -25 -20 -15
 5
 Ala Val Ala Ala Leu Leu Leu Gly Ala Ala Gly His Leu Tyr Pro Gly
 -10 -5 -1 1 5
 10
 Glu Val Cys Pro Gly Met Asp Ile Arg Asn Asn Leu Thr Arg Leu His
 10 15 20
 15
 Glu Leu Glu Asn Cys Ser Val Ile Glu Gly His Leu Gln Ile Leu Leu
 25 30 35
 20
 Met Phe Lys Thr Arg Pro Glu Asp Phe Arg Asp Leu Ser Phe Pro Lys
 40 45 50
 25
 Leu Ile Met Ile Thr Asp Tyr Leu Leu Leu Phe Arg Val Tyr Gly Leu
 55 60 65
 30
 Glu Ser Leu Lys Asp Leu Phe Pro Asn Leu Thr Val Ile Arg Gly Ser
 70 75 80 85
 35
 Arg Leu Phe Phe Asn Tyr Ala Leu Val Ile Phe Glu Met Val His Leu
 90 95 100
 40
 Lys Glu Leu Gly Leu Tyr Asn Leu Met Asn Ile Thr Arg Gly Ser Val
 105 110 115
 45
 Arg Ile Glu Lys Asn Asn Glu Leu Cys Tyr Leu Ala Thr Ile Asp Trp
 120 125 130
 50
 Ser Arg Ile Leu Asp Ser Val Glu Asp Asn His Ile Val Leu Asn Lys
 135 140 145
 55
 Asp Asp Asn Glu Glu Cys Gly Asp Ile Cys Pro Gly Thr Ala Lys Gly
 150 155 160 165

EP 1 624 305 B1

Lys Thr Asn Cys Pro Ala Thr Val Ile Asn Gly Gln Phe Val Glu Arg
 170 175 180
 5
 Cys Trp Thr His Ser His Cys Gln Lys Val Cys Pro Thr Ile Cys Lys
 185 190 195
 10
 Ser His Gly Cys Thr Ala Glu Gly Leu Cys Cys His Ser Glu Cys Leu
 200 205 210
 15
 Gly Asn Cys Ser Gln Pro Asp Asp Pro Thr Lys Cys Val Ala Cys Arg
 215 220 225
 20
 Asn Phe Tyr Leu Asp Gly Arg Cys Val Glu Thr Cys Pro Pro Pro Tyr
 230 235 240 245
 25
 Tyr His Phe Gln Asp Trp Arg Cys Val Asn Phe Ser Phe Cys Gln Asp
 250 255 260
 30
 Leu His His Lys Cys Lys Asn Ser Arg Arg Gln Gly Cys His Gln Tyr
 265 270 275
 35
 Val Ile His Asn Asn Lys Cys Ile Pro Glu Cys Pro Ser Gly Tyr Thr
 280 285 290
 40
 Met Asn Ser Ser Asn Leu Leu Cys Thr Pro Cys Leu Gly Pro Cys Pro
 295 300 305
 45
 Lys Val Cys His Leu Leu Glu Gly Glu Lys Thr Ile Asp Ser Val Thr
 310 315 320 325
 50
 Ser Ala Gln Glu Leu Arg Gly Cys Thr Val Ile Asn Gly Ser Leu Ile
 330 335 340
 55
 Ile Asn Ile Arg Gly Gly Asn Asn Leu Ala Ala Glu Leu Glu Ala Asn
 345 350 355

EP 1 624 305 B1

Leu Gly Leu Ile Glu Glu Ile Ser Gly Tyr Leu Lys Ile Arg Arg Ser
 360 365 370
 5
 Tyr Ala Leu Val Ser Leu Ser Phe Phe Arg Lys Leu Arg Leu Ile Arg
 375 380 385
 10
 Gly Glu Thr Leu Glu Ile Gly Asn Tyr Ser Phe Tyr Ala Leu Asp Asn
 390 395 400 405
 15
 Gln Asn Leu Arg Gln Leu Trp Asp Trp Ser Lys His Asn Leu Thr Thr
 410 415 420
 20
 Thr Gln Gly Lys Leu Phe Phe His Tyr Asn Pro Lys Leu Cys Leu Ser
 425 430 435
 25
 Glu Ile His Lys Met Glu Glu Val Ser Gly Thr Lys Gly Arg Gln Glu
 440 445 450
 30
 Arg Asn Asp Ile Ala Leu Lys Thr Asn Gly Asp Lys Ala Ser Cys Glu
 455 460 465
 35
 Asn Glu Leu Leu Lys Phe Ser Tyr Ile Arg Thr Ser Phe Asp Lys Ile
 470 475 480 485
 40
 Leu Leu Arg Trp Glu Pro Tyr Trp Pro Pro Asp Phe Arg Asp Leu Leu
 490 495 500
 45
 Gly Phe Met Leu Phe Tyr Lys Glu Ala Pro Tyr Gln Asn Val Thr Glu
 505 510 515
 50
 Phe Asp Gly Gln Asp Ala Cys Gly Ser Asn Ser Trp Thr Val Val Asp
 520 525 530
 55
 Ile Asp Pro Pro Leu Arg Ser Asn Asp Pro Lys Ser Gln Asn His Pro
 535 540 545

EP 1 624 305 B1

Gly Trp Leu Met Arg Gly Leu Lys Pro Trp Thr Gln Tyr Ala Ile Phe
 550 555 560 565
 5
 Val Lys Thr Leu Val Thr Phe Ser Asp Glu Arg Arg Thr Tyr Gly Ala
 570 575 580
 10
 Lys Ser Asp Ile Ile Tyr Val Gln Thr Asp Ala Thr Asn Pro Ser Val
 585 590 595
 15
 Pro Leu Asp Pro Ile Ser Val Ser Asn Ser Ser Ser Gln Ile Ile Leu
 600 605 610
 20
 Lys Trp Lys Pro Pro Ser Asp Pro Asn Gly Asn Ile Thr His Tyr Leu
 615 620 625
 25
 Val Phe Trp Glu Arg Gln Ala Glu Asp Ser Glu Leu Phe Glu Leu Asp
 630 635 640 645
 30
 Tyr Cys Leu Lys Gly Leu Lys Leu Pro Ser Arg Thr Trp Ser Pro Pro
 650 655 660
 35
 Phe Glu Ser Glu Asp Ser Gln Lys His Asn Gln Ser Glu Tyr Glu Asp
 665 670 675
 40
 Ser Ala Gly Glu Cys Cys Ser Cys Pro Lys Thr Asp Ser Gln Ile Leu
 680 685 690
 45
 Lys Glu Leu Glu Glu Ser Ser Phe Arg Lys Thr Phe Glu Asp Tyr Leu
 695 700 705
 50
 His Asn Val Val Phe Val Pro Arg Lys Thr Ser Ser Gly Thr Gly Ala
 710 715 720 725
 55
 Glu Asp Pro Arg Pro Ser Arg Lys Arg Arg Ser Leu Gly Asp Val Gly
 730 735 740

EP 1 624 305 B1

5 Asn Val Thr Val Ala Val Pro Thr Val Ala Ala Phe Pro Asn Thr Ser
 745 750 755
 Ser Thr Ser Val Pro Thr Ser Pro Glu Glu His Arg Pro Phe Glu Lys
 10 760 765 770
 Val Val Asn Lys Glu Ser Leu Val Ile Ser Gly Leu Arg His Phe Thr
 15 775 780 785
 Gly Tyr Arg Ile Glu Leu Gln Ala Cys Asn Gln Asp Thr Pro Glu Glu
 20 790 795 800 805
 Arg Cys Ser Val Ala Ala Tyr Val Ser Ala Arg Thr Met Pro Glu Ala
 25 810 815 820
 Lys Ala Asp Asp Ile Val Gly Pro Val Thr His Glu Ile Phe Glu Asn
 30 825 830 835
 Asn Val Val His Leu Met Trp Gln Glu Pro Lys Glu Pro Asn Gly Leu
 35 840 845 850
 Ile Val Leu Tyr Glu Val Ser Tyr Arg Arg Tyr Gly Asp Glu Glu Leu
 40 855 860 865
 His Leu Cys Val Ser Arg Lys His Phe Ala Leu Glu Arg Gly Cys Arg
 45 870 875 880 885
 Leu Arg Gly Leu Ser Pro Gly Asn Tyr Ser Val Arg Ile Arg Ala Thr
 50 890 895 900
 Ser Leu Ala Gly Asn Gly Ser Trp Thr Glu Pro Thr Tyr Phe Tyr Val
 55 905 910 915
 Thr Asp Tyr Leu Asp Val Pro Ser Asn
 920 925

Claims

1. A method for diagnosing diabetes, wherein the method comprises the steps of:

- 5 (a) measuring the amount of a free insulin receptor α -subunit in a blood sample of a subject;
(b) comparing the amount of the free insulin receptor α -subunit with that of a control; and
(c) determining the subject to have diabetes when the amount of free insulin receptor α -subunit in the blood sample of the subject is greater than that of the control.

10 2. The method for diagnosis of claim 1, wherein the blood sample is a serum sample, a plasma sample, or a hemolytic sample.

3. The method for diagnosis of claim 1, wherein the amount of the free insulin receptor α -subunit is measured by the method comprising the steps of

- 15 (1) contacting a blood sample with a first antibody that recognizes the insulin receptor α -subunit and is bound to a solid phase or comprises a label that can be bound to a solid phase;
(2) detecting binding of said antibody to the insulin receptor α -subunit present in blood through detecting the insulin receptor α -subunit bound to the first antibody by binding a second antibody recognizing the insulin receptor α -subunit; and
20 (3) determining the amount of free insulin receptor α -subunit in blood based on the level of binding detected between said antibody and subunit.

4. A method for diagnosing cancer, wherein the method comprises the steps of:

- 25 (a) measuring the amount of a free insulin receptor α -subunit in a blood sample of a subject;
(b) comparing the amount of the free insulin receptor α -subunit with that of a control; and
(c) determining the subject to have cancer when the amount of free insulin receptor α -subunit in the blood sample of the subject is greater than that of the control.

5. The method of claim 4, wherein the blood sample is a serum sample, a plasma sample, or a hemolytic sample.

6. The method for diagnosis of claim 5, wherein the amount of the free insulin receptor α -subunit is measured by the method comprising the steps of

- 35 (1) contacting a blood sample with a first antibody that recognizes the insulin receptor α -subunit and is bound to a solid phase or comprises a label that can be bound to a solid phase;
(2) detecting binding of said antibody to the insulin receptor α -subunit present in blood through detecting the insulin receptor α -subunit bound to the first antibody by binding a second antibody recognizing the insulin receptor α -subunit; and
40 (3) determining the amount of free insulin receptor α -subunit in blood based on the level of binding detected between said antibody and subunit.

7. Use of an antibody in diagnosing cancer or diabetes recognizing a peptide comprising the amino acid sequence of an insulin receptor α -subunit for measuring free insulin receptor α -subunit in a blood sample.

45

Patentansprüche

50 1. Verfahren zur Diagnose von Diabetes, wobei das Verfahren die Schritte umfasst:

- (a) Messung der Menge einer freien Insulinrezeptor- α -Untereinheit in einer Blutprobe eines Probanden;
(b) Vergleich der Menge der freien Insulinrezeptor- α -Untereinheit mit der einer Kontrolle; und
55 (c) Stellung der Diabetesdiagnose bei dem Probanden, wenn die Menge freier Insulinrezeptor- α -Untereinheit in der Blutprobe des Probanden größer als die der Kontrolle ist.

2. Diagnoseverfahren nach Anspruch 1, wobei es sich bei der Blutprobe um eine Serumprobe, eine Plasmaprobe oder eine hämolytische Probe handelt.

EP 1 624 305 B1

3. Diagnoseverfahren nach Anspruch 1, wobei die Menge der freien Insulinrezeptor- α -Untereinheit mit dem Verfahren gemessen wird, das die Schritte umfasst

5 (1) Inkontaktbringen einer Blutprobe mit einem ersten Antikörper, der die Insulinrezeptor- α -Untereinheit erkennt und an eine feste Phase gebunden ist oder einen Marker darstellt, der an eine feste Phase gebunden werden kann;

(2) Nachweis der Bindung des Antikörpers an die im Blut vorhandene Insulinrezeptor- α -Untereinheit durch Nachweis der an den ersten Antikörper gebundenen Insulinrezeptor- α -Untereinheit durch Bindung eines zweiten Antikörpers, der die Insulinrezeptor- α -Untereinheit erkennt; und

10 (3) Bestimmung der Menge freier Insulinrezeptor- α -Untereinheit im Blut auf Grundlage des nachgewiesenen Ausmaßes der Bindung zwischen dem Antikörper und der Untereinheit.

4. Verfahren zur Diagnose von Krebs, wobei das Verfahren die Schritte umfasst:

15 (a) Messung der Menge einer freien Insulinrezeptor- α -Untereinheit in einer Blutprobe eines Probanden;

(b) Vergleich der Menge der freien Insulinrezeptor- α -Untereinheit mit der einer Kontrolle; und

(c) Stellung der Krebsdiagnose bei dem Probanden, wenn die Menge freier Insulinrezeptor- α -Untereinheit in der Blutprobe des Probanden größer als die der Kontrolle ist.

- 20 5. Verfahren nach Anspruch 4, wobei es sich bei der Blutprobe um eine Serumprobe, eine Plasmaprobe oder eine hämolytische Probe handelt.

6. Diagnoseverfahren nach Anspruch 5, wobei die Menge der freien Insulinrezeptor- α -Untereinheit mit dem Verfahren gemessen wird, das die Schritte umfasst

25 (1) Inkontaktbringen einer Blutprobe mit einem ersten Antikörper, der die Insulinrezeptor- α -Untereinheit erkennt und an eine feste Phase gebunden ist oder einen Marker darstellt, der an eine feste Phase gebunden werden kann;

30 (2) Nachweis der Bindung des Antikörpers an die im Blut vorhandene Insulinrezeptor- α -Untereinheit durch Nachweis der an den ersten Antikörper gebundenen Insulinrezeptor- α -Untereinheit durch Bindung eines zweiten Antikörpers, der die Insulinrezeptor- α -Untereinheit erkennt; und

(3) Bestimmung der Menge freier Insulinrezeptor- α -Untereinheit im Blut auf Grundlage des nachgewiesenen Ausmaßes der Bindung zwischen dem Antikörper und der Untereinheit.

- 35 7. Verwendung eines Antikörpers bei der Diagnose von Krebs oder Diabetes, der ein Peptid erkennt, das die Aminosäuresequenz einer Insulinrezeptor- α -Untereinheit umfasst, zur Messung der freien Insulinrezeptor- α -Untereinheit in einer Blutprobe.

40 **Revendications**

1. Procédé de diagnostic d'un diabète, lequel procédé comporte les étapes suivantes :

45 a) mesurer la quantité de sous-unité alpha de récepteur d'insuline libre dans un échantillon sanguin d'un sujet ;

b) comparer cette quantité de sous-unité alpha de récepteur d'insuline libre avec celle observée chez un témoin ;

c) et poser que le sujet présente un diabète quand la quantité de sous-unité alpha de récepteur d'insuline libre mesurée dans l'échantillon sanguin du sujet est supérieure à celle observée chez le témoin.

- 50 2. Procédé de diagnostic conforme à la revendication 1, dans lequel l'échantillon sanguin est un échantillon de sérum, un échantillon de plasma ou un échantillon ayant subi une hémolyse.

3. Procédé de diagnostic conforme à la revendication 1, dans lequel on mesure la quantité de sous-unité alpha de récepteur d'insuline libre en effectuant les opérations suivantes :

55 1) mettre l'échantillon sanguin en contact avec un premier anticorps qui reconnaît la sous-unité alpha de récepteur d'insuline et qui est fixé sur une phase solide ou comporte un marqueur qui peut être fixé sur une phase solide ;

2) détecter la liaison de cet anticorps à la sous-unité alpha de récepteur d'insuline présente dans le sang, en

EP 1 624 305 B1

déTECTANT la sous-unité alpha de récepteur d'insuline liée au premier anticorps grâce à la liaison d'un deuxième anticorps reconnaissant la sous-unité alpha de récepteur d'insuline ;

3) et déterminer la quantité de sous-unité alpha de récepteur d'insuline libre dans le sang, en se basant sur le niveau de liaison détecté entre ledit anticorps et ladite sous-unité.

5

4. Procédé de diagnostic d'un cancer, lequel procédé comporte les étapes suivantes :

a) mesurer la quantité de sous-unité alpha de récepteur d'insuline libre dans un échantillon sanguin d'un sujet ;

b) comparer cette quantité de sous-unité alpha de récepteur d'insuline libre avec celle observée chez un témoin ;

10 c) et poser que le sujet présente un cancer quand la quantité de sous-unité alpha de récepteur d'insuline libre mesurée dans l'échantillon sanguin du sujet est supérieure à celle observée chez le témoin.

5. Procédé conforme à la revendication 4, dans lequel l'échantillon sanguin est un échantillon de sérum, un échantillon de plasma ou un échantillon ayant subi une hémolyse.

15

6. Procédé de diagnostic conforme à la revendication 5, dans lequel on mesure la quantité de sous-unité alpha de récepteur d'insuline libre en effectuant les opérations suivantes :

1) mettre l'échantillon sanguin en contact avec un premier anticorps qui reconnaît la sous-unité alpha de récepteur d'insuline et qui est fixé sur une phase solide ou comporte un marqueur qui peut être fixé sur une phase solide ;

20

2) détecter la liaison de cet anticorps à la sous-unité alpha de récepteur d'insuline présente dans le sang, en détectant la sous-unité alpha de récepteur d'insuline liée au premier anticorps grâce à la liaison d'un deuxième anticorps reconnaissant la sous-unité alpha de récepteur d'insuline ;

25

3) et déterminer la quantité de sous-unité alpha de récepteur d'insuline libre dans le sang, en se basant sur le niveau de liaison détecté entre ledit anticorps et ladite sous-unité.

7. Utilisation, dans le diagnostic d'un cancer ou d'un diabète, d'un anticorps qui reconnaît un peptide comprenant la séquence d'acides aminés d'une sous-unité alpha de récepteur d'insuline, pour mesurer la quantité de sous-unité alpha de récepteur d'insuline libre dans un échantillon sanguin.

30

35

40

45

50

55

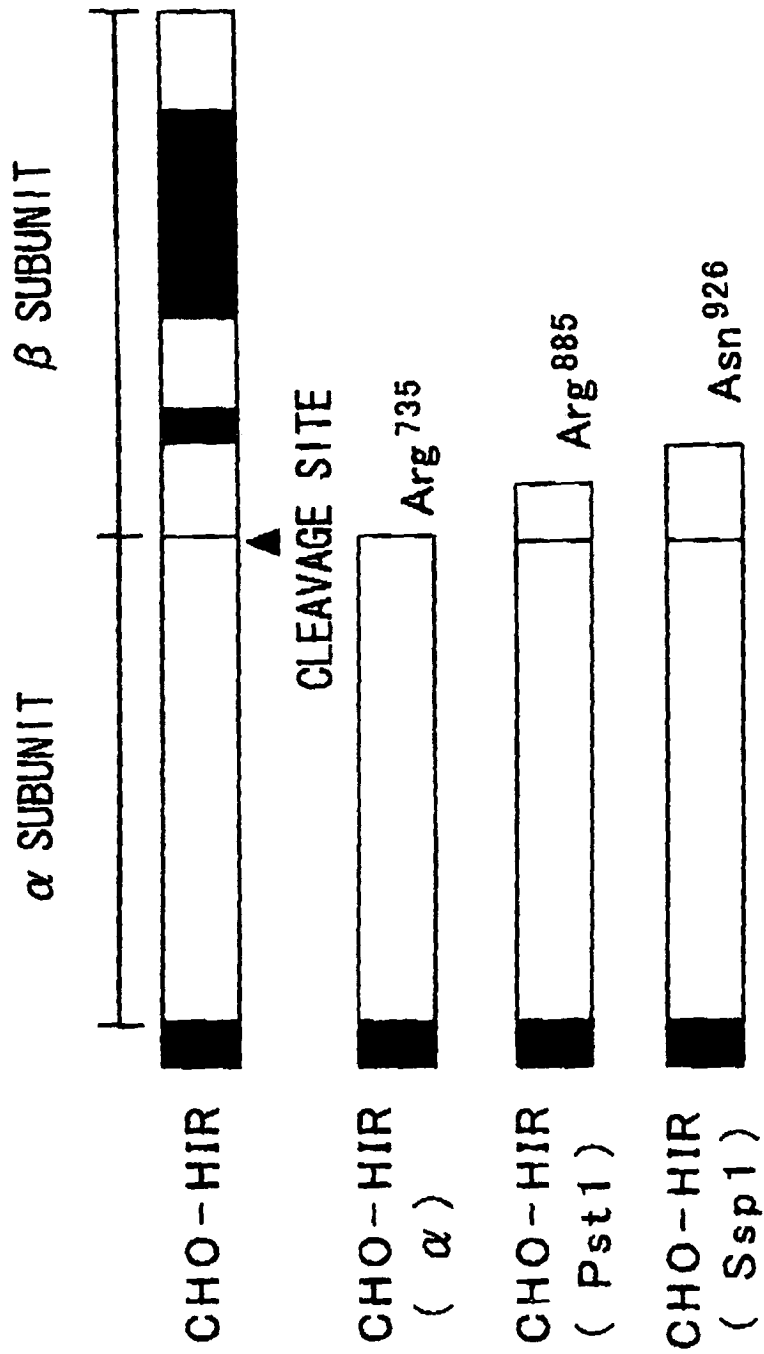


FIG. 1

SIGNAL PEPTIDE
 mgtggrrgaaaapllvavaalllgaagHLYPGEVCPGMDIRNNLTRLHELENCSVIEGHL
 -27 1

OILLMFKTRPEDFRDLSFPKLIMITDYLLLFRVYGLESKDLFPNLTVIRGSRLFFNYAL
VIFEMVHLKELGLYNLMNITRGSVRIEKNNELCYLATIDWSRILDSVEDNHIVLNKDDNE
ECGDICPGTAKGKTNCPATVINGQFVERCWTHSHCQKVCPTICKSHGCTAEGLCCHSECL
GNCSQPDDPTKCVACRNFYLDGRCVETCPPPYHFQDWRCVNFSFCODLHHKCKNSRRQG
CHQYVIHNNKCIPECPSGYTMNSSNLLCTPCLGPCPKVCHLLEGEKTIDSSVTSAQELRGC
TVINGSLIINIRGGNNLAAELEANLGLIEEISGYLKIRRSYALVSLSFFRKLRLIRGETL
EIGNYSFYALDNQNLRQLWDWSKHNLTTQGKLFHYNPKLCLSEIHKMEEVSGTKGRQE
RNDIALKTNGDKASCENELLKFSYIRTSFDKILLRWEFYWPPDFRDLLGFMLFYKEAPYQ
NVTEFDGQDACGSNSWTVVDIDPPLRSNDPKSONHPGWLMRGLKPWTOYAIFVKTLVTFS
DERRTYGAKSDIIYVQTATNPSVPLDPISVSNSSSQIILKWKPPSDPNGNITHYLVFWE
ROAEDSEFELDYCLKGLKLPSRTWSPFFESEDSQKHNOSEYEDSAGECCSCPKTDSOIL
KELEESSFRKTFEDYLHNVVFVPRKTSSGTGAEDPRPSRKRRslgdvgnvtvavptvaaf

736

pntsstsvptspehrpfekvvnkeslvisglrhftgyrielgacnqdtpeercsvaay
sartmpeakaddivgpvtheifennvvhlmwqepkepnglivlyevsyrrygdeelhlc

SspI

srkhfalergcrlrglspgnysvirratslagngswteptyfyvtdyldvpsniakiiig
plifvflfsvvigsiyflrkrqpdgplgplyaasnpeylsasdvfpcsvyvpdewevsr
ekitllrelgqgsfgmvyegnardiikgeaetrvavktvnesaslrerieflneasvmkg
ftchhvvrllgvsvkgqptlvvmelmahgdksylrslrpeaennpgrppptlqemiqma
aeiadgmaylnakkfvhrdlaarncmvahdfcvkigdfgmtrdiyetyrkggkglpv
rwmapeslkdgvfttssdmwsgvvlweitslaeqpyqglsneqvlkfvmdggyldqpdn
cpervtdlmrmcwqfnpkmrptfleivnllkddlhpsfpevsffhseenkapeseleme
fedmenvpldrsshcqreeaggrdggsslgfkrsyeehipythmnggkkngriltlprsn
 ps (SEQ ID NO:2)

FIG. 2

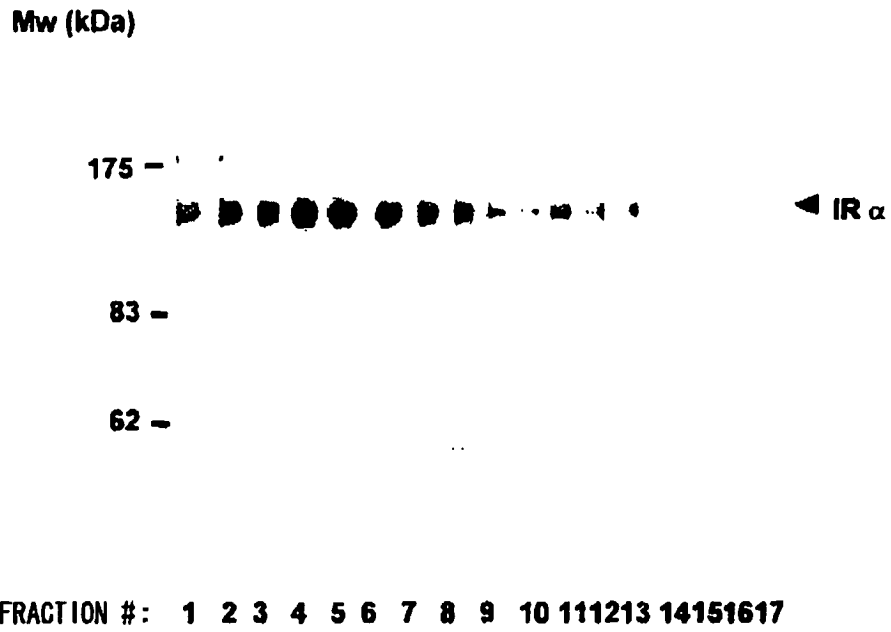


FIG. 3

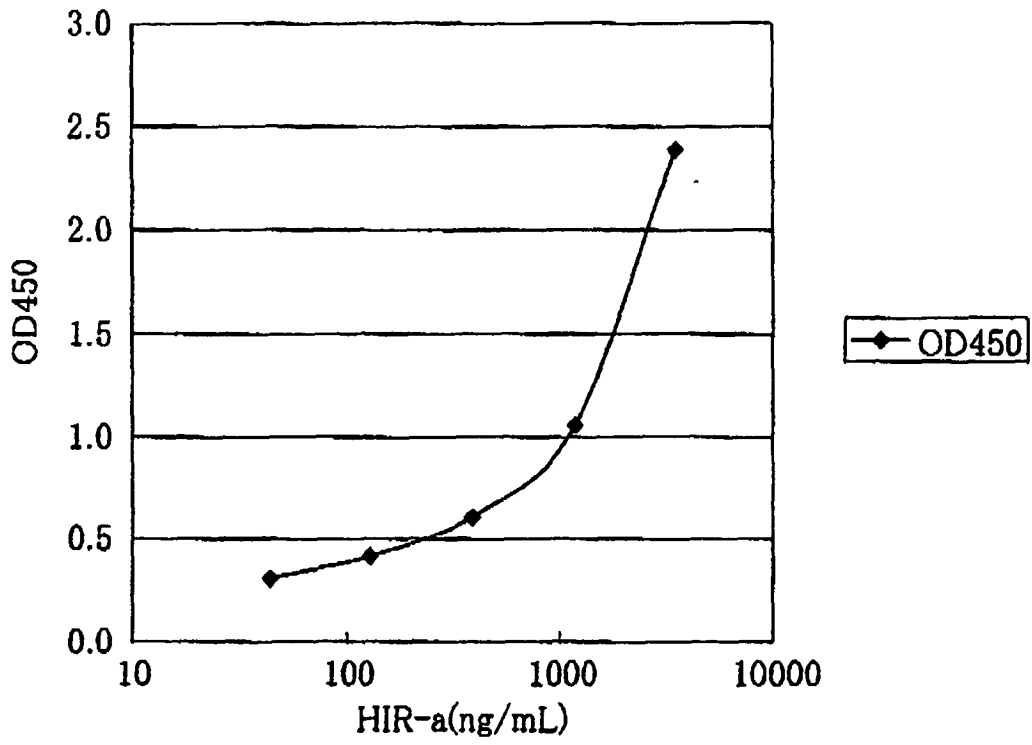


FIG. 4

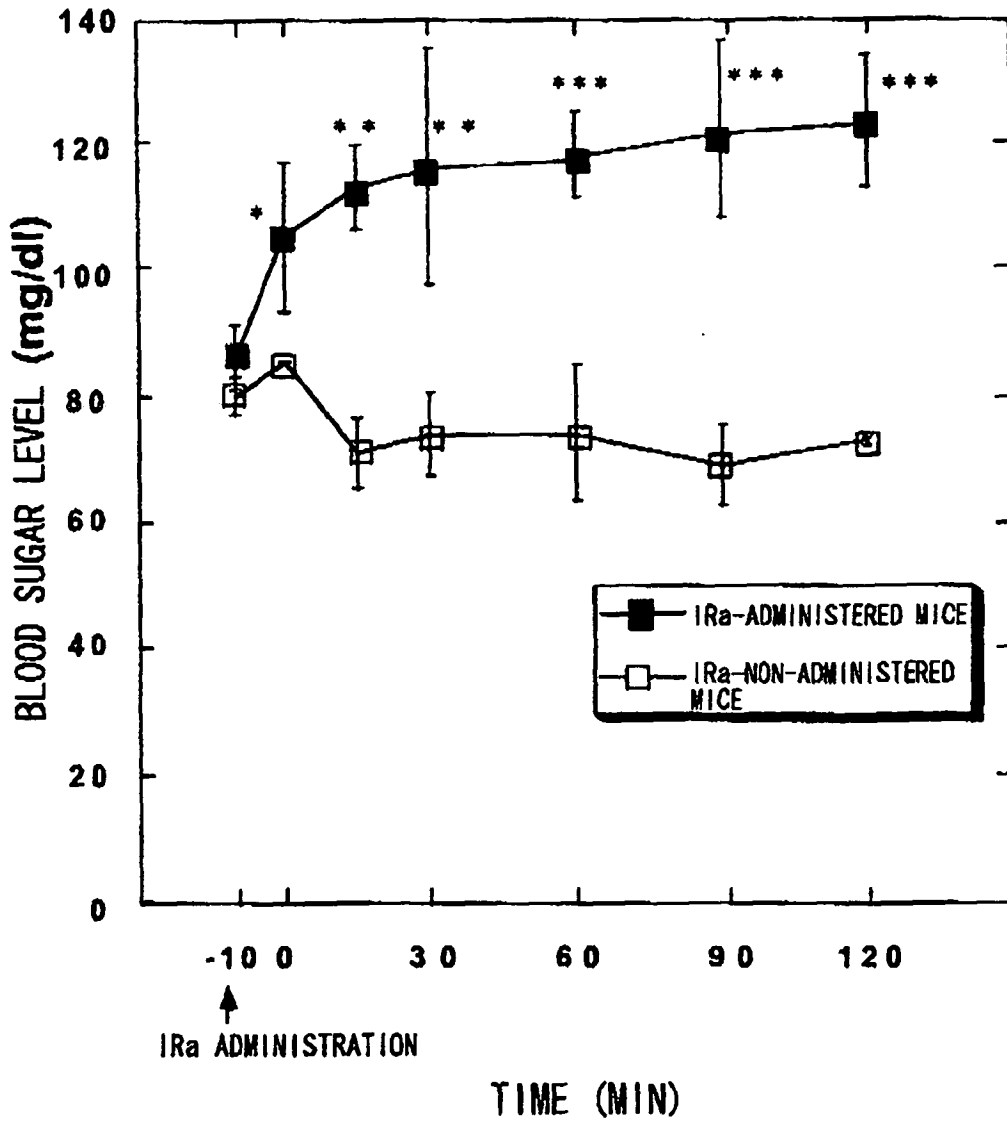


FIG. 5

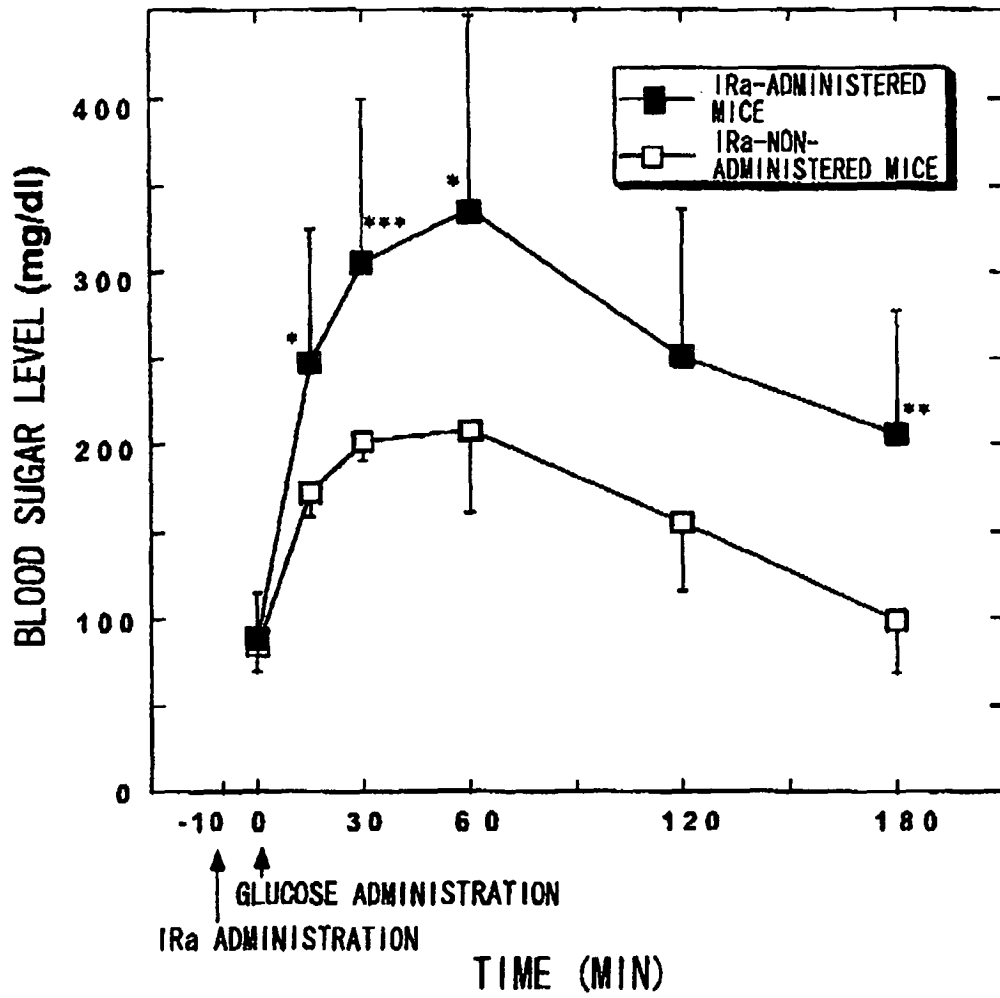


FIG. 6

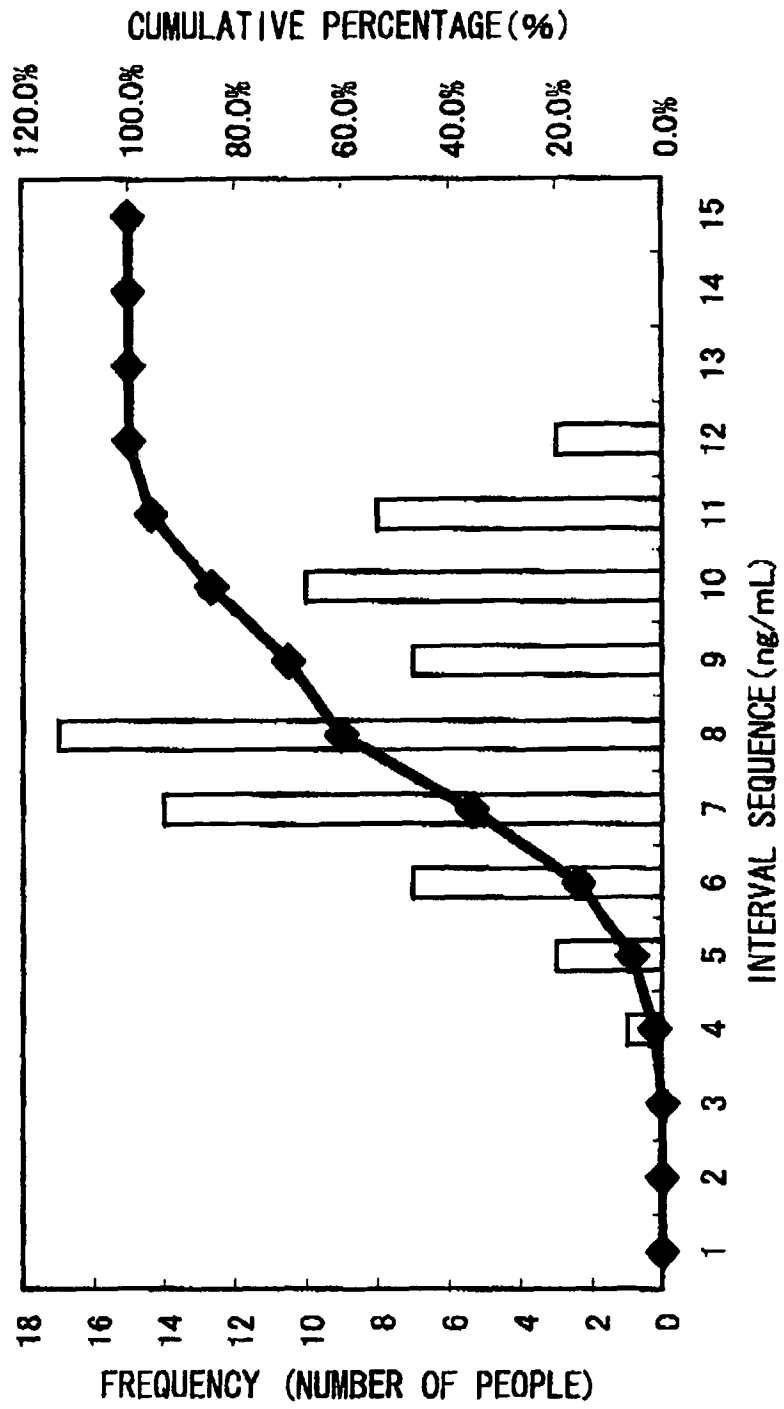


FIG. 7

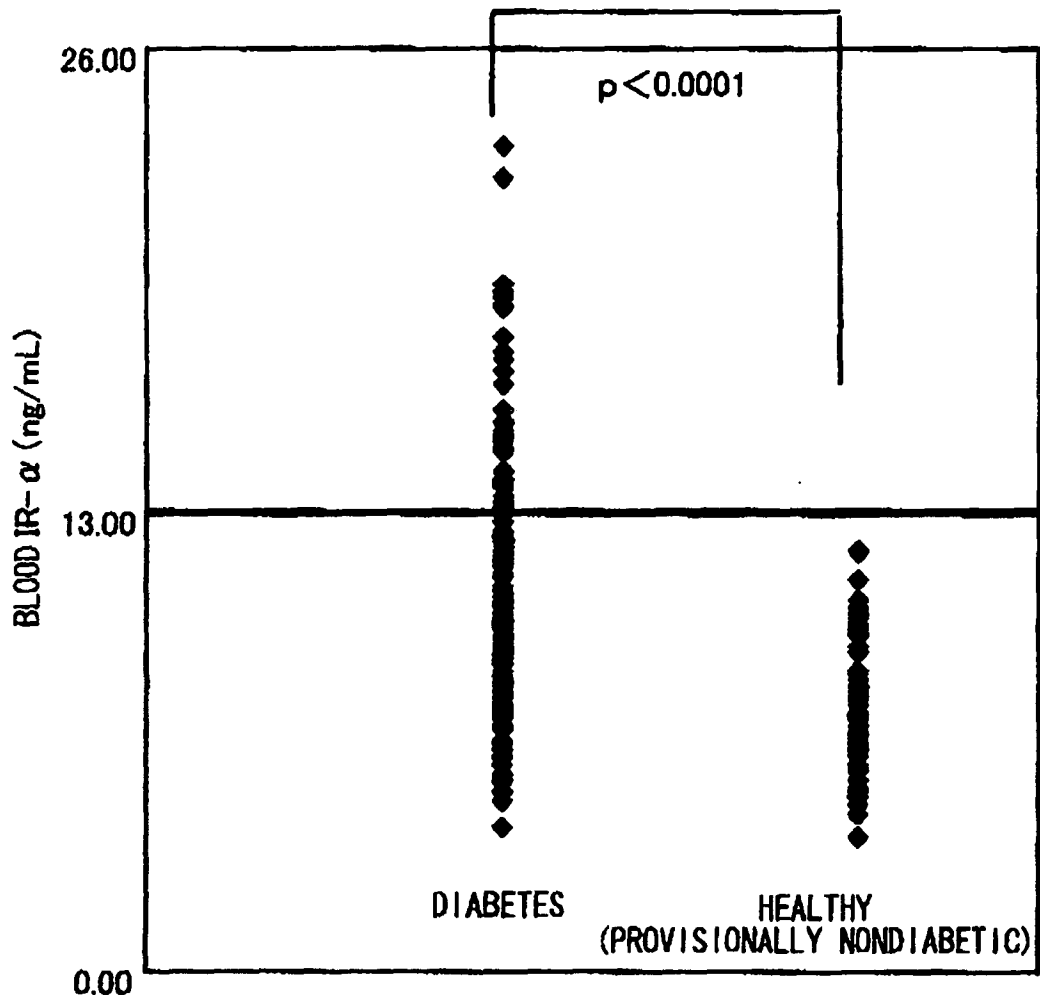


FIG. 8

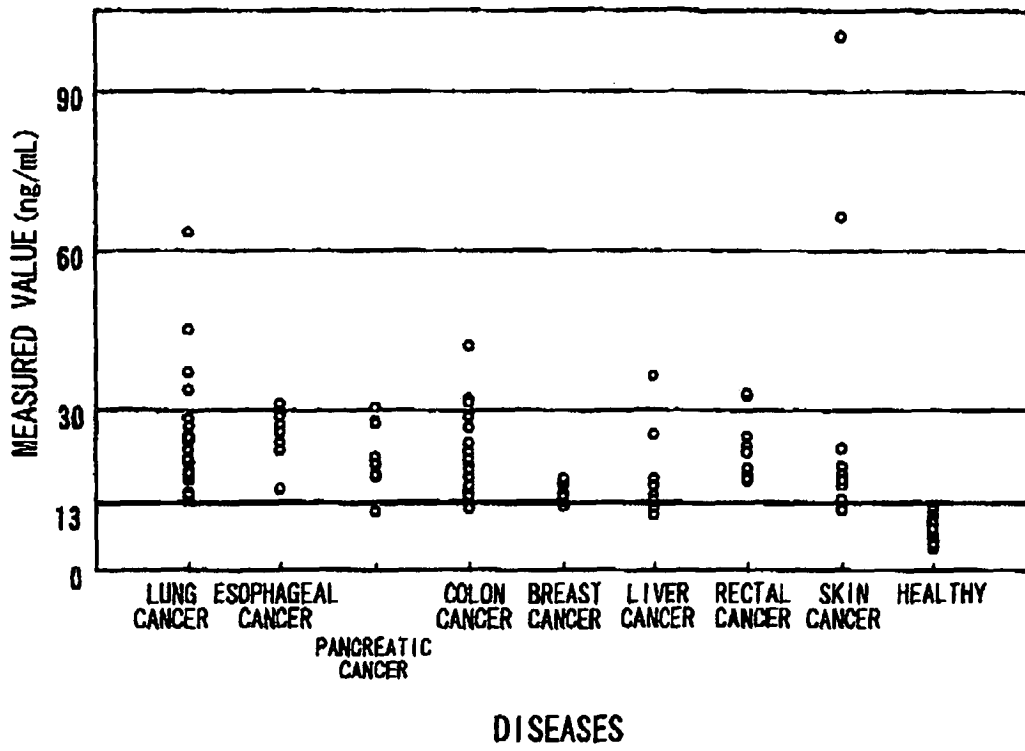


FIG. 9

REFERENCES CITED IN THE DESCRIPTION

This list of references cited by the applicant is for the reader's convenience only. It does not form part of the European patent document. Even though great care has been taken in compiling the references, errors or omissions cannot be excluded and the EPO disclaims all liability in this regard.

Patent documents cited in the description

- JP HEI8103280 A [0008]
- JP 2003121955 A [0132]
- JP 2003433303 A [0132]

Non-patent literature cited in the description

- **Taylor, S. I.** *Diabetes*, 1992, vol. 41, 1473-1490 [0007]
- **M. Taira et al.** *Science*, 1989, vol. 245, 63-66 [0008]
- **F. Shimada et al.** *Lancet*, 1990, vol. 335, 1179-1181 [0008]
- **Frode, T.S. ; Tenconi, P. ; Debiasi, M.R. ; Medeiros, Y.S.** Tumour necrosis factor-alpha, interleukin-2 soluble receptor and different inflammatory parameters in patients with rheumatoid arthritis. *Mediators Inflamm.*, December 2002, vol. 11 (6), 345-9 [0012]
- **Baron, A.T. ; Cora, E.M. ; Lafky, J.M. ; Boardman, C.H. ; Buenafe, M.C. ; Rademaker, A. ; Liu, D. ; Fishman, D.A. ; Podratz, K.C. ; Maihle, N.J.** Soluble Epidermal Growth Factor Receptor (sEGFR/sErbB1) as a potential Risk, Screening, and Diagnostic Serum Biomarker of Epithelial Ovarian Cancer. *Cancer Epidemiol Biomarkers Prev.*, February 2003, vol. 12 (2), 103-13 [0012]
- **Beguín, Y.** Soluble transferrin receptor for the evaluation of erythropoiesis and iron status. *Clin. Chem. Acta.*, March 2003, vol. 329 (1-2), 9-22 [0012]
- **ERIK M. SCHAEFER et al.** *DIABETES*, 1994, vol. 43, 143-153 [0012]
- **Pezzino et al.** *Journal of Clinical Endocrinology and Metabolism*, 1992 [0012]
- **Naeser.** *Uppsala J. Med. Sci.*, 1997 [0012]
- **Rosenzweig et al.** *Journal of Biological Chemistry*, 1990 [0012]
- **Heffetz ; Zick.** *Journal of Biological Chemistry*, 1986 [0012]
- **Li et al.** *Journal of Endocrinology and Metabolism*, 2002 [0012]
- **Sesti et al.** *Diabetologia*, 1995 [0013]
- *Current protocols in Molecular Biology*, 1987 [0013]
- *Am. J. Physiol. 257 (Endocrinol. Metab. 20)*, 1989, vol. 257 (20), E451-E457 [0024]
- *J. Clin. Endocrinol. Metab.*, May 1992, vol. 74 (5), 1116-21 [0024]
- Computer-Assisted Genetic Homology Analysis. **Takashi Miyata et al.** *Genetic Research Methods I.* Tokyo Kagaku-Dojin [0082]
- **Ebina et al.** *Cell*, 1985, vol. 40, 747-758 [0103]

专利名称(译)	测量胰岛素受体α亚基的方法		
公开(公告)号	EP1624305B1	公开(公告)日	2010-06-23
申请号	EP2004727740	申请日	2004-04-15
[标]申请(专利权)人(译)	EBINA洋介 OBATA TOSHIYUKI 株式会社医学生物学研究所		
申请(专利权)人(译)	EBINA, 洋介 OBATA, TOSHIYUKI 医疗生物实验室有限公司		
当前申请(专利权)人(译)	医疗生物实验室有限公司 OBATA, TOSHIYUKI EBINA, 洋介		
[标]发明人	EBINA YOUSUKE OBATA TOSHIYUKI OKAMOTO EIJI MEDICAL AND BIOLOGICAL LAB CO LTD		
发明人	EBINA, YOUSUKE OBATA, TOSHIYUKI OKAMOTO, EIJI, MEDICAL AND BIOLOGICAL LAB. CO, LTD		
IPC分类号	G01N33/53 G01N33/574 C07K16/28 G01N33/68 G01N33/74		
CPC分类号	G01N33/6893 C07K16/2869 G01N33/74 G01N2333/62 G01N2333/72 G01N2800/042		
优先权	2003121955 2003-04-25 JP 2003433303 2003-12-26 JP		
其他公开文献	EP1624305A4 EP1624305A1		
外部链接	Espacenet		

摘要(译)
发现血液中存在游离胰岛素受体α-亚基。此外，提供了测量胰岛素受体α-亚基的方法，该方法包括以下步骤：使血液样品中的胰岛素受体α-亚基与识别胰岛素受体α-亚基的抗体接触，并检测两者之间的结合。测量血液中的游离胰岛素受体α-亚基可用于评估糖尿病的风险因子。此外，本发明的测量方法显示糖尿病或癌症患者的血液中游离胰岛素受体α-亚基的浓度非常高。血液中的游离胰岛素受体α-亚基可用作糖尿病或癌症的标志物。

```

atg ggc acc ggg ggc cgg cgg ggg gcg gcg gcc gcg ccg ctg ctg gtg      48
Met Gly Thr Gly Gly Arg Arg Gly Ala Ala Ala Ala Pro Leu Leu Val
      -25                    -20                    -15

gcg gtg gcc gcg ctg cta ctg ggc gcc gcg ggc cac ctg tac ccc gga      96
Ala Val Ala Ala Leu Leu Leu Gly Ala Ala Gly His Leu Tyr Pro Gly
      -10                    -5                    -1 1 5

gag gtg tgt ccc ggc atg gat atc cgg aac aac ctc act agg ttg cat      144
Glu Val Cys Pro Gly Met Asp Ile Arg Asn Asn Leu Thr Arg Leu His
      10                    15                    20

gag ctg gag aat tgc tct gtc atc gaa gga cac ttg cag ata ctc ttg      192
Glu Leu Glu Asn Cys Ser Val Ile Glu Gly His Leu Gln Ile Leu Leu
      25                    30                    35

atg ttc aaa acg agg ccc gaa gat ttc cga gac ctc agt ttc ccc aaa      240
Met Phe Lys Thr Arg Pro Glu Asp Phe Arg Asp Leu Ser Phe Pro Lys
      40                    45                    50

ctc atc atg atc act gat tac ttg ctg ctc ttc cgg gtc tat ggg ctc      288
Leu Ile Met Ile Thr Asp Tyr Leu Leu Leu Phe Arg Val Tyr Gly Leu
      55                    60                    65

gag agc ctg aag gac ctg ttc ccc aac ctc acg gtc atc cgg gga tca      336
Glu Ser Leu Lys Asp Leu Phe Pro Asn Leu Thr Val Ile Arg Gly Ser
      70                    75                    80                    85

cga ctg ttc ttt aac tac gcg ctg gtc atc ttc gag atg gtt cac ctc      384
Arg Leu Phe Phe Asn Tyr Ala Leu Val Ile Phe Glu Met Val His Leu
      90                    95                    100

```