



(11) **EP 1 664 718 B1**

(12) **EUROPEAN PATENT SPECIFICATION**

(45) Date of publication and mention of the grant of the patent:
09.12.2009 Bulletin 2009/50

(21) Application number: **04783123.5**

(22) Date of filing: **03.09.2004**

(51) Int Cl.:
C12Q 1/68 (2006.01) G01N 33/574 (2006.01)

(86) International application number:
PCT/US2004/028766

(87) International publication number:
WO 2005/026687 (24.03.2005 Gazette 2005/12)

(54) **DIAGNOSIS AND MONITORING OF HEPATOCELLULAR CARCINOMA**

DIAGNOSE UND ÜBERWACHUNG VON HEPATOZELLULÄREM KARZINOM

DIAGNOSTIC ET SURVEILLANCE DU CARCINOME HEPATOCELLULAIRE

(84) Designated Contracting States:
AT BE BG CH CY CZ DE DK EE ES FI FR GB GR HU IE IT LI LU MC NL PL PT RO SE SI SK TR

(30) Priority: **05.09.2003 US 500657 P**

(43) Date of publication of application:
07.06.2006 Bulletin 2006/23

(73) Proprietors:
• **Thomas Jefferson University Philadelphia, PA 19107 (US)**
• **Saint Louis University St. Louis MO 63114 (US)**
• **The United States of America as represented by the Department of Veterans Affairs Washington, DC 20420 (US)**

(72) Inventors:
• **ROMANO, Patrick, R. Doylestown, PA 18901 (US)**
• **BLOCK, Timothy, M. Doylestown, PA 18901 (US)**
• **FIMMEL, Claus, J. Clayton, MO 63105 (US)**
• **NIKOLAEVA, Olga Pipersville, PA 18947 (US)**

(74) Representative: **Ouzman, Beverley Nicola Claire Murgitroyd & Company Scotland House 165-169 Scotland Street Glasgow G5 8PL (GB)**

(56) References cited:
WO-A-03/010336

- **KLADNEY RALEIGH D ET AL: "Expression of GP73, a resident golgi membrane protein, in viral and nonviral liver disease" HEPATOLOGY, vol. 35, no. 6, June 2002 (2002-06), pages 1431-1440, XP002445869 ISSN: 0270-9139**
- **ROMANO PATRICK R ET AL: "GP73, a resident Golgi membrane protein, appears in sera of patients with viral liver disease and hepatocellular cancer." HEPATOLOGY, vol. 38, no. 4 Suppl. 1, October 2003 (2003-10), page 768A, XP004624472 & 54TH ANNUAL MEETING OF THE AMERICAN ASSOCIATION FOR THE STUDY OF LIVER DISEASES; BOSTON, MA, USA; OCTOBER 24-28, 2003 ISSN: 0270-9139**
- **BLOCK T.M. ET AL: 'Use of targeted glycoproteomics to identify serum glycoproteins that correlate with liver cancer in woodchucks and humans.' PNAS. vol. 102, no. 3, January 2005, pages 779 - 784, XP002992310**
- **IFTIKHAR R. ET AL: 'Disease-and Cell-specific expression of GP73 in human Liver disease.' AMERICAN JOURNAL OF GASTROENTEROLOGY. vol. 99, no. 6, June 2004, pages 1087 - 1095, XP002992311**

Note: Within nine months of the publication of the mention of the grant of the European patent in the European Patent Bulletin, any person may give notice to the European Patent Office of opposition to that patent, in accordance with the Implementing Regulations. Notice of opposition shall not be deemed to have been filed until the opposition fee has been paid. (Art. 99(1) European Patent Convention).

EP 1 664 718 B1

Description**Field of the Invention**

5 [0001] The invention relates to the diagnosis of hepatocellular carcinoma (HCC) through detecting biological markers of HCC in the serum, in particular through the detection of GP73 protein in the serum. The invention also relates to the monitoring of subjects for the development of HCC, through evaluation of GP73 levels in the serum.

Background of the Invention

10 [0002] HCC is the fifth-most prevalent cancer in the world. However, because the disease is often refractory to treatment, HCC is the third leading cause of worldwide cancer mortality, with a five-year survival rate following diagnosis of less than five percent.

15 [0003] The major etiology of HCC is chronic infection with either hepatitis B virus (HBV) or hepatitis C virus (HCV). The long latency period between HBV or HCV infection and HCC onset in this high-risk population provides an opportunity for early detection well before the onset of serious disease. Populations at risk for HCC that can therefore be monitored for biomarkers of disease as they become available. Moreover, as more therapeutic options become available, early detection of HCC is important to improving patient prognosis.

20 [0004] Currently, HCC disease status is typically monitored by physical assessment, ultrasound imaging of the liver or analysis of serum for a panel of markers. Since there is a good correlation between elevated levels of alpha fetoprotein (AFP) and the occurrence of HCC; determination of AFP levels is often included as a serum marker of disease. However, AFP as a sole indicator of HCC is of limited value, as this protein is often elevated in the absence of serious disease. Its value in the detection of HCV-associated HCC is even less clear. Nevertheless, even the limited correlation between AFP and HCC underscores the potential of serum as a source of biomarkers of liver disease.

25 [0005] The clinical disposition of HBV and HCV carriers can generally be divided into four clinical categories: inactive, active, cirrhotic and HCC. Although a given category is not necessarily a precursor to the succeeding, HCC may be considered an end stage to the progression of liver disease in an infected subject. To assist in early detection and disease prognosis, the identification of serum molecular markers (polypeptides, glycolipids and proteoglycans), whose abundance correlates with these clinical categories, would be highly desirable.

30 [0006] GP73 is a type II Golgi transmembrane protein that is expressed at high level in the hepatocytes of patients with viral hepatitis (Kladney, et al., 2000, Gene 249, 53-65). GP73 is constitutively expressed in biliary epithelial cells, and minimally expressed in normal hepatocytes. In contrast, livers of patients with giant-cell hepatitis display strong immunoreactivity to GP73 in multinucleated hepatocytes. GP73 mRNA and protein are expressed in highly differentiated HepG2 hepatoma cells after infection with viruses, including adenoviruses. Because GP73 is a Golgi transmembrane protein, it is not expected to exist in significant amounts in the serum, even in subjects with damaged or diseased livers.

35 [0007] Significant increases in whole-organ levels of GP73 have been found in liver disease due to viral causes (HBV, HCV) or nonviral causes (alcohol-induced liver disease, autoimmune hepatitis); see Kladney, et al., 2002, Hepatology 35(6):1431-40. Hepatocyte expression of GP73 is unregulated in diseased livers, regardless of etiology, whereas biliary epithelial cell expression does not change appreciably.

40 [0008] While these reports are interesting, detection of GP73 in liver cells requires the patient to submit to a liver biopsy, which is painful and inconvenient.

[0009] What is needed, therefore, is a simple and quick assay for determining the extent of liver disease and damage caused by hepatitis virus infection. A serum assay for a biomarker of HCC would provide that speed and simplicity.

45 [0010] WO 03/010336 discloses diagnostic markers for HCC, including a 63kD Golgi transmembrane protein deposited under accession No. NM-001518.1.

Summary of the Invention

50 [0011] The presence of elevated levels of GP73 or a polypeptide of 25kDa +/- 5kDa which cross-reacts with a GP73-specific antibody, in the serum of a subject indicates whether the subject is suffering from or has developed HCC. Non-cancerous or pre-cancerous liver disorders do not appear to cause elevated serum levels of GP73.

[0012] The invention thus provides a method of diagnosing HCC in a subject, comprising determining the serum levels of GP73, a polypeptide of 25kDa +/- 5kDa which cross-reacts with a GP73-specific antibody, or both in a subject relative to serum levels of GP73 or the polypeptide in a control. Elevated levels of serum GP73, the polypeptide, or both in a subject indicates that the subject has HCC.

55 [0013] The invention also provides a method of monitoring a subject at risk for developing HCC, comprising determining the serum levels of GP73, a polypeptide of 25kDa +/- 5kDa which cross-reacts with a GP73-specific antibody, or both in the subject for at least two time points. An increase in serum GP73, said polypeptide or both in the subject relative to

earlier time points indicates that the subject has developed HCC.

Abbreviations

5 **[0014]** The following abbreviations are used herein:

AFP: alpha fetoprotein
 ALT: alanine aminotransferase
 ANOVA: analysis of variance
 10 AST: asparagine transaminase
 AUROC: area under a ROC curve
 ECL: enhanced chemiluminescence
 ELISA: enzyme-linked immunosorbent assay
 GST: glutathione-S-transferase
 15 HBV: hepatitis B virus
 HBsAg: HBV surface antigen
 HCC: hepatocellular carcinoma
 HCV: hepatitis C virus
 HIV: human immunodeficiency virus
 20 MELD: model for end stage liver disease score
 RIA: radio immunoassay
 ROC: receiver operating characteristic
 SDS-PAGE: sodium dodecyl sulfate polyacrylamide gel electrophoresis

25 **Brief Description of the Figures**

[0015]

30 Figure 1 is an immunoblot analysis of GP73 in patients infected with HCV. The upper panel, marked "GP73," shows an immunoblot analysis with anti-GP73 rabbit polyclonal antibody against the following: HCC tissue lysates (lanes 1 and 2; 25 μ g/lane); cirrhotic tissue lysate (lanes 3 and 4; 25 μ g/lane); and sera (1 μ l/lane) from the two HCV-infected patients with HCC (lanes 5 and 6). The lower panel, marked "actin," represents the same blot shown in the upper panel, after being stripped and then reprobed for actin as a control for protein loading.

35 Figures 2A and 2B show the results of an immunoblot analysis with anti-GP73 specific antibody against human serum (0.5 μ l) obtained from human subjects as follows: HBV-negative (Group A); HBV carrier with inactive infection (Group B); HBV carrier with active infection (Group C); HBV-associated HCC (Group D); HCV-negative (Group 1); chronic HCV infection (Group 2); HCV-related cirrhosis (Group 3); and HCV-related HCC (Group 4). A number assigned to each study subject for identification purposes is indicated above each lane. Commercially obtained, pooled sera from HCV-, HIV, and HBV-negative subjects (S) were used for normal controls.

40 Figures 3A and 3B show the results of densitometric analyses of the immunoblot images of Figures 2A and 2B.

Figures 4A and 4B show the results of a study measuring GP73 (Fig. 4A) serum levels and α -fetoprotein (AFP) (Fig. 4B) serum levels in patients with HCV-associated liver disease and in control patients. The indicated GP73 levels are normalized to GP73 levels measured in control serum (Sigma). AFP levels are reported as ng/ml of serum. Error bars represent standard error of the mean.

45 Figures 5A and 5B represent Receiver Operating Characteristic (ROC) curves generated based on the data of Figures 4A and 4B. The area under the ROC (AUROC) curves for GP73 and AFP are indicated in the inserts.

Detailed Description of the Invention

50 **[0016]** GP73 is a 400 amino acid type II Golgi membrane protein of unknown function, that has an apparent molecular weight of approximately 73kDa. Kladney et al., 2000, Gene 249, 53-65. The nucleotide and deduced amino acid sequence of GP73 is disclosed in Kladney et al., 2000, supra, and in GenBank record Accession No. AF236056. The full-length GP73 cDNA, which comprises 3042 base pairs and contains a single open reading frame of 1200 base pairs, is represented herein as SEQ ID NO: 1. The amino acid sequence of GP73 is represented herein as SEQ ID NO: 2.

55 **[0017]** It has now been found that appreciable amounts of GP73 and a polypeptide having a molecular weight of approximately 25 kDa + 5 kDa, which cross reacts with a GP73-specific antibody, exist in the sera of individuals with HCC. The skilled artisan would reasonably expect that the polypeptide having a molecular weight of approximately 25 kDa + 5 kDa, which cross reacts with a GP73-specific antibody, is a fragment of GP73. Individuals with no liver disorders

or infections of the liver, or individuals with non-cancerous or pre-cancerous liver disorders, have little or no GP73 or the abovementioned polypeptide in their sera. The appearance of GP73 or the polypeptide of 25kDa +/- 5kDa which cross-reacts with a GP73-specific antibody, in the sera of individuals previously diagnosed with a non-cancerous or pre-cancerous liver disorder indicates that the liver disorder has progressed to the cancerous state. Based on the initial characterization of GP73 as a resident Golgi transmembrane protein, it was not expected that GP73 would be found in the circulation, even in subjects with diseased or damaged livers. Throughout the instant disclosure, any reference to GP73, as a detectable molecular entity, is meant to include the full length GP73 protein and the polypeptide of 25kDa +/- 5kDa which cross-reacts with a GP73-specific antibody.

[0018] The invention thus provides a method of diagnosing HCC in a subject suspected of having HCC. The diagnostic method comprises determining the level of GP73 or a polypeptide of 25kDa +/- 5kDa which cross-reacts with a GP73-specific antibody in a serum sample obtained from the subject, and comparing the GP73 or polypeptide levels in that serum sample to the serum GP73 or polypeptide levels in a control. An elevated level of GP73 or polypeptide in the serum sample from the subject as compared to the control indicates that the subject has HCC.

[0019] An "elevated level" of GP73 in a serum sample from a subject as compared to a control means that the amount of GP73 protein per unit volume or unit mass is greater in the subject's serum sample than in the control. The level of GP73 can be expressed in absolute units of mass of protein per unit volume or unit mass; *e.g.*, as picograms per microliter. The level of GP73 can also be expressed in arbitrary units, such as fluorescence or densitometric units, as determined relative to a control sample. In the Examples below, GP73 levels are expressed in arbitrary densitometric units.

[0020] While any elevated level of GP73 may be predictive of disease in the practice of this invention, preferably, the level of GP73 protein in a subject's serum sample is at least 2-fold, for example at least 3-fold, at least 4-fold, at least 5-fold, at least 6-fold, at least 7-fold, or at least 8-fold greater than the GP73 level in the control.

[0021] As used herein, a "subject" is any animal suspected of having HCC. Preferably, the subject is a mammal; for example an ovine, bovine, porcine, equine, canine, feline, rodent or primate. More preferably, the subject is a rodent, for example a mouse or rat. Even more preferably, the subject is a primate, for example a human. In particularly preferred embodiments, the subject is a human.

[0022] As used herein, a "serum sample" is any biological sample comprising serum. It is understood that a serum sample for use in the present methods can contain other components, in particular blood components. Thus, whole blood samples, or blood samples which have been only partially fractionated or separated but which still contain serum, are considered "serum samples" for purposes of the present invention. One skilled in the art can readily obtain serum samples, for example by using conventional blood drawing techniques. Furthermore, the presence of preservative, anticoagulants or other chemicals in the serum sample should not inhibit the detection of GP73. As used herein, "serum samples" also include controls or control samples.

[0023] As used herein, a "control" or "control sample" refers to one or more serum samples taken from at least one individual who has tested negative for any hepatitis infection, or who does not have HCC or any other liver disorder. Preferably, the control or control serum sample is obtained from at least one individual who has tested negative for any hepatitis infection, and who does not have HCC or any other liver disorder. In particularly preferred embodiments, the control comprises serum samples obtained from a population of individuals who have tested negative for any hepatitis infection and do not have HCC or any other liver disorder. It is understood that when the control comprises multiple serum samples, the serum GP73 level can be expressed as the arithmetic mean, median, mode or other suitable statistical measure of the GP73 level measured in each serum sample. Multiple control serum samples can also be pooled, and the GP73 level of the pooled samples can be determined and compared to the subject's serum sample.

[0024] One skilled in the art can readily obtain control serum samples, for example by conventional blood drawing techniques or by obtaining commercial serum samples which are from individuals who do not have HCC or any liver disorder. Commercial serum samples suitable for use as controls in the present methods can be obtained, for example, from Sigma Chemical Co., St. Louis, MO.

[0025] Any technique suitable for detecting serum GP73 levels can be used with the present methods, such as for example a GP73-specific biomolecular interaction, which includes but is not limited to antibody-based assays, aptamer-based assays, receptor and ligand assays; enzyme activity assays, and allosteric regulator binding assays. Techniques for detecting protein concentrations in a serum sample are within the skill in the art. Preferably, serum GP73 levels are detected by immunoassays such as Western blot analysis, radioimmunoassay (RIA), immunofluorescent assay, chemiluminescent assay, or enzyme-linked immunosorbent assay (ELISA). Immunoassays suitable for use in the present methods are described, for example, U.S. Pat. Nos. 5,976,809; 5,965,379; 5,571,680; 5,279,956; and 6,579,684 .

[0026] Detection of serum GP73 levels by Western blot analysis is described, for example, in Kladney et al., 2002, *Hepatology* 35: 1431-1440 , and in the Examples below.

[0027] The antibody used to detect GP73 levels in serum samples can comprise a polyclonal or monoclonal antibody. The antibody can comprise an intact antibody, or antibody fragments capable of specifically binding GP73 protein. Such fragments include, but are not limited to, Fab and F(ab')₂ fragments. Thus, as used herein, the term "antibody" includes both polyclonal and monoclonal antibodies. The term "antibody" means not only intact antibody molecules, but also

includes fragments thereof which retain antigen binding ability.

[0028] Appropriate polyclonal antibodies can be prepared by immunizing appropriate host animals with GP73 protein and collecting and purifying the antisera according to conventional techniques known to those skilled in the art. Preparation of polyclonal anti-GP73 antibodies is described, for example, in Kladney et al., 2000, *supra*.

[0029] Monoclonal antibodies can be prepared by following the classical technique of Kohler and Milstein, Nature 254: 493-497 (1975), as further elaborated in later works such as Monoclonal Antibodies, - Hybridomas: A New Dimension in Biological Analysis, R. H. Kennet et al., eds., Plenum Press, New York and London (1980) .

[0030] Serum GP73 levels can be detected by aptamer-based assays, which are very similar to antibody-based assays, but with the use of an aptamer instead of an antibody. Additionally, an aptamer-based assay can be broader, in that nucleic acid amplification (e.g., PCR) and detection assays (e.g., hybridization blots) can also be employed in the detection of GP73. An aptamer can be any polynucleotide, generally a RNA or a DNA, which has a useful biological activity in terms of biochemical activity or molecular recognition attributes. Usually, an aptamer has a molecular activity such as having an enzymatic activity or binding to a polypeptide at a specific region (i.e., similar to an epitope for an antibody) of the polypeptide. It is generally known in the art that an aptamer can be made by in vitro selection methods.

[0031] In vitro selection methods include a well known method called systematic evolution of ligands by exponential enrichment (a.k.a. SELEX). Briefly, in vitro selection involves screening a pool of random polynucleotides for a particular polynucleotide that binds to a biomolecule, such as a polypeptide, or has a particular activity that is selectable. Generally, the particular polynucleotide represents a very small fraction of the pool, therefore, a round of amplification, usually via polymerase chain reaction, is employed to increase the representation of potentially useful aptamers. Successive rounds of selection and amplification are employed to exponentially increase the abundance of a particular aptamer. In vitro selection is described in Famulok, M.; Szostak, J. W., In Vitro Selection of Specific Ligand Binding Nucleic Acids, Angew. Chem. 1992,104, 1001. (Angew. Chem. Int. Ed. Engl. 1992, 31, 979-988.); Famulok, M.; Szostak, J. W., Selection of Functional RNA and DNA Molecules from Randomized Sequences, Nucleic Acids and Molecular Biology, Vol 7, F. Eckstein, D. M. J. Lilley, Eds., Springer Verlag, Berlin, 1993, pp. 271; Klug, S.; Famulok, M., All you wanted to know about SELEX; Mol. Biol. Reports 1994, 20, 97-107; and Burgstaller, P.; Famulok, M. Synthetic ribozymes and the first deoxyribozyme; Arsgew. Chem. 1995, 107, 1303-1306 (Angew. Chem. Int. Ed Engl. 1995, 34, 1189-1192), US Patent No. 6,287,765, US Patent No. 6,180,348, US Patent No. 6,001,570, US Patent No. 5,861,588, US Patent No. 5,567,588, US Patent No. 5,475,096, and US Patent No. 5,270,163 .

[0032] Substantially pure GP73, which can be used as an immunogen for raising polyclonal or monoclonal antibodies, or as a substrate for selecting aptamers, can be prepared, for example, by recombinant DNA methods. For example, the cDNA of SEQ ID NO: 1 can be cloned into an expression vector by techniques within the skill in the art. An expression vector comprising sequences encoding GP73 can then be transfected into an appropriate, for example bacterial host, whereupon GP73 is expressed. The expressed GP73 can then be isolated by any suitable technique.

[0033] For example, GP73 protein can be prepared in the form of a bacterially expressed glutathione S-transferase (GST) fusion protein. Such fusion proteins can be prepared using commercially available expression systems, following standard expression protocols, e.g., "Expression and Purification of Glutathione-S-Transferase Fusion Proteins", Supplement 10, unit 16.7, in Current Protocols in Molecular Biology (1990) and Smith and Johnson, Gene 67: 34-40 (1988); Frangioni and Neel, Anal. Biochem. 210: 179-187 (1993) .

[0034] Briefly, DNA encoding for GP73 (e.g., SEQ ID NO: 1) is subcloned into a pGEX2T vector in the correct reading frame and introduced into *E. coli* cells. Transfectants are selected on LB/ampicillin plates after incubation for 12 to 15 hours at 37°C. The selected transfectants are then grown in liquid cultures in growth media containing isopropyl- β -D-thiogalactoside, to induce expression of the GP73 fusion protein. The cells are harvested from the liquid cultures by centrifugation, the bacterial pellet is resuspended and sonicated to lyse the cells.

[0035] To isolate the GST-GP73 fusion protein, the lysate is then contacted with glutathione-agarose beads. The beads, which bind the GST-GP73 fusion protein, are collected by centrifugation and the GST-GP73 fusion protein is eluted. The GST agarose beads are removed by treatment of the fusion protein with thrombin cleavage buffer. The released GP73 protein is recovered and used to raise antibodies as described above.

[0036] Antibodies against GP73 -can also be raised by immunizing appropriate hosts with immunogenic fragments of the whole GP73 protein, particularly peptides corresponding to the carboxy terminus of the molecule. Fragments of GP73 protein can be obtained by chemical or enzymatic cleavage of isolated GP73 protein. Alternatively, GP73 protein fragments can be obtained by chemical synthesis of small (e.g., 7-10 amino acid) subsequences of SEQ ID NO: 2.

[0037] Preferably, an anti-GP73 antibody for use in the present methods comprises a detectable label. The detectable label can be directly attached to the primary anti-GP73 antibody. The detectable label can also be indirectly attached to an anti-GP73 antibody by reacting the anti-GP73 antibody with a secondary antibody, e.g., a goat anti-rabbit IgG, which bears a detectable label.

[0038] The detectable label can comprise, for example, a radionuclide in the case of a radioimmunoassay; a fluorescent moiety in the case of an immunofluorescent assay; a chemiluminescent moiety in the case of a chemiluminescent assay; or an enzyme which cleaves a chromogenic substrate, in the case of an enzyme-linked immunosorbent assay.

[0039] The biomolecular interactions assays for detecting serum GP73 levels typically require only very small serum samples, for example in the order of 0.5 microliters. It is understood, however, that any suitable volume of serum sample can be used in the present methods. It is also understood that the serum sample need not be liquid, but can comprise a dried (*e.g.*, lyophilized) biological sample comprising serum. Any amount of a dried serum sample can be used in the present methods.

[0040] Evaluation of subjects with chronic HBV and HCV infections, including those with cirrhosis of the liver, showed that GP73 levels were not elevated to a statistically significant degree as compared to a control. However, GP73 levels in subjects with HCC were significantly elevated. Thus, elevation in GP73 levels in the serum of a subject who is at risk for HCC is an indication that the subject has developed HCC.

[0041] The invention therefore provides a method of monitoring a subject at risk for HCC, wherein the levels of GP73 in the subject's serum are evaluated over time. As used herein, a subject "at risk for HCC" includes subjects who have not been formally diagnosed with HCC, but who have a familial history of HCC, have contracted an HBV or HCV infection or have liver damage of any etiology which may progress to HCC.

[0042] In the practice of the method, serum samples are obtained from the subject for at least two time points. The level of GP73 in the serum samples are determined and compared to each other. An elevated serum GP73 level in the sample taken at the later time point, relative the sample from the earlier time point, indicates that the subject has developed HCC.

[0043] Preferably, a plurality of serum samples are taken from the subject over the course of several months to several years. For example, serum samples can be taken every 3 months from the time a subject is diagnosed with an HBV or HCV infection, for up to 3, up to 5 or up to 10 years over the course of the viral infection. It is understood that serum samples can be taken at lesser or greater intervals for greater or lesser periods of time.

[0044] An "elevated level" of GP73 in a subject's serum sample taken at a later time point, as compared to the serum GP73 in a subject's serum sample taken at an earlier time point, means that the amount of GP73 protein per unit volume or unit mass is greater in the later serum sample than in the earlier serum sample. The level of GP73 can be expressed in absolute units of mass of protein per unit volume or unit mass, or as arbitrary units, as discussed above.

[0045] Preferably, the level of GP73 protein in the serum sample taken at the later time point is at least 2-fold, for example at least 3-fold, at least 4-fold, at least 5-fold, at least 6-fold, at least 7-fold, at least 8-fold greater than the GP73 level in the serum sample taken at the earlier time point.

[0046] Techniques for obtaining serum samples, and for detecting GP73 levels, are as described above.

[0047] The practice of the invention is illustrated by the following non-limiting examples.

Example 1: Detection of GP73 in serum of hepatocellular carcinoma patients

Serum samples and patient history

[0048] Serum samples were collected with the informed consent of participants and in accordance with procedures approved by the Institutional Review Boards of the Fox Chase Cancer Center, Thomas Jefferson University, and the University of Michigan, where applicable. These samples were used in subsequent examples as well. Two groups of patients were included. A group of HBV-infected and control patients was comprised of 38 male subjects of Chinese ethnic background with a minimum age of 35 years, who resided in the United States at the time of sample collection. Because these patients are from a population where HBV is highly endemic, it is likely that all were infected in infancy or early childhood. HBV infection was established based on HBV surface antigen (HBsAg) positivity and on the detection of HBV-DNA in serum. HBV DNA was detected by a "dot blot" method and has a detection limit of sensitivity of approximately 3×10^5 genome equivalents per ml (Evans et al., 1998, *Cancer Epidemiology, Biomarkers, and Prevention*, 7: 559-565). A group of HCV infected and control patients was drawn from the liver and liver transplant clinics at the University of Michigan Medical Center between September 2001 and May 2002. The diagnosis of HCV infection was established by HCV antibody positivity and the presence of HCV-RNA in serum. Patients with non-viral causes of liver disease and those with multiple disease etiologies were excluded. The presence of chronic hepatitis, cirrhosis, or HCC was established by histological examination of liver biopsy or explant samples. HCC diagnosis was confirmed by ultrasound imaging and biopsy. Liver function tests (ALT or AST) were determined by immunoassay and the upper limit was considered to be 50 IU/ml. Serum was isolated from blood samples immediately after collection, and serum aliquots were stored at -80°C until testing. Blood samples from the HCC subjects were drawn prior to initiation of HCC treatment.

[0049] GP73 expression was then evaluated in serum samples consecutively collected from a larger group of HCV-infected individuals. The diagnosis and histological classification was made as above.

Measuring α -fetoprotein (AFP)

[0050] AFP was measured in the serum samples described above with commercially available immunoassays utilizing

enhanced chemiluminescence at the University of Michigan Hospital Clinical Diagnostic Laboratory. The upper limit of normal was 8 ng/ml AFP. The demographic and laboratory data were obtained for all patients. HCC patients were staged according to the UNOS TNM staging system.

5 Immunoblot analysis and reagents

[0051] Equal volumes of patient sera (0.5 or 1.0 μ l/lane) were separated by SDS-PAGE on 4-20% polyacrylamide gradient gels. For normalization, some gels also included a lane containing 0.5 μ l of serum from a pool of HCV and HBV negative sources (Sigma Inc., St Louis, MO). Following electrophoretic separation, the proteins were transferred to a PVDF membrane by immunoblotting. The membranes were blocked by incubation blocking buffer (1x TBS is 50 mM Tris-HCl, pH 7.6, 150 mM sodium chloride, 5% non-fat dried milk, and 0.1% Tween 20) for 1 hour at room temperature. The blots were incubated overnight with anti-GP73 rabbit polyclonal antibody at a 1:1000 dilution in blocking buffer with gentle rocking at 4°C (Kladney, 2000, Gene, *supra*). The blots were washed 2 times in blocking buffer at room temperature and incubated with horseradish peroxidase conjugated mouse anti-rabbit secondary antibody (1:4000 v/v) at room temperature for 2 hours. The blots were washed 2 times at room temperature in 1 x TBS-T (TBS containing 0.1% Tween 20) and were developed using the ECL Plus chemiluminescent detection system (Amersham Pharmacia Biotech, Arlington Heights, IL).

[0052] Total cell protein lysates from liver tissue of HCV infected HCC samples and HCV infected cirrhotic tissue were prepared as previously described (Kladney et al. 2002, Hepatology 35:1431-1440). Protein concentrations were determined by Bradford Assay (Bio-Rad). Twenty-five μ g of total cell protein lysates from liver tissue of HCV-infected patients with cirrhosis or HCC were fractionated by SDS-PAGE on 4-20% polyacrylamide gradient gels and subjected to immunoblot analysis with anti-GP73 rabbit polyclonal antibodies as described above. These techniques were used in subsequent examples as well.

25 Results

[0053] GP73 levels were compared in HCV-infected patients who also had cirrhosis or HCC. The results are shown in Figure 1. Lanes 1 and 2 are HCC tissue lysates. Lanes 3 and 4 are cirrhotic tissue lysates. Lanes 5 and 6 are sera from the two HCV-infected patients with HCC.

[0054] GP73 was clearly detectable in the sera of the two HCV infected patients (Fig 1. lanes 5 and 6). Further, higher levels of GP73 were detected in cell lysates derived from liver biopsy material of HCV patients with HCC, compared to HCV patients with cirrhosis (Fig. 1, lanes 1-4).

[0055] In addition to a band of approximately 73 kDa (Daltons $\times 10^3$) on the Western blot, which represents a GP73 protein, a band of approximately 25 kDa \pm 5 kDa, which is arguably a fragment of GP73, was detected in sera from patients with HCC and patients with HCV, but not in sera from normal control individuals.

Example 2: Detection of GP73 in serum of hepatocellular carcinoma patients

Methods

[0056] Serum samples were obtained, and immunoblot analyses were performed, as described above. Densitometric analyses of the immunoblots were performed to quantify the amounts of GP73 protein in patient sera, relative to the signal present in the Sigma control serum. The signal for the Sigma control serum was set to a value of 1.0.

[0057] GP73-specific signals from the 73 kDa species were quantified from X-ray film using an AlphaInnotech FluorChem CCD camera with AlphaEase spot densitometry software, and expressed as integrated intensity units relative to the GP73 signal detected in Sigma control serum (lane S on each blot). Values were calculated as the mean of duplicate or triplicate determinations for each serum sample and results.

[0058] Aliquots of human serum (0.5 μ l) were obtained from the following HBV study subjects: HBV-negative (Group A); HBV carrier with inactive infection (Group B); HBV carrier with active infection (Group C); HBV-associated HCC (Group D). Aliquots of human serum (0.5 μ l) were obtained from the following HCV study subjects: HCV-negative (Group 1); chronic HCV infection (Group 2); HCV-related cirrhosis (Group 3); HCV-related HCC (Group 4). Samples were resolved by SDS-PAGE on 4-20% polyacrylamide gradient gels and subjected to immunoblot analysis with anti-GP73 specific antibody. Commercially obtained, pooled sera from HCV-, HIV-, and HBV-negative subjects (S) were used for normal controls. The demographics and serological profiles of control subjects and patients are summarized in Tables 1 (HBV patients) and 2 (HCV patients), below.

Results

[0059] GP73 levels in the sera of HBV-infected patients with or without HCC were compared to GP73 levels in the sera of HCV-infected patients with or without HCC, and to GP73 levels in control subjects. The results are shown in Figures 2A and 2B. The number assigned to each study subject for identification purposes is indicated above each lane.

[0060] High levels of GP73 were present in the sera of 23 of 24 patients with chronic HBV-or HCV-related HCC, but not in healthy individuals without viral hepatitis. Elevated serum levels were also present in a subset of patients with liver cirrhosis without HCC (Figs. 2A and 2B). Low levels of GP73 were detected in the circulation of uninfected individuals, similar to the levels seen in the control serum (S).

[0061] Densitometric analyses of the immunoblots of Figs. 2A and 2B were performed as described above to quantify the amounts of GP73 protein in patient sera, relative to the signal present in the Sigma control serum. The results of the densitometric analyses are shown graphically in Figs. 3A and 3B.

[0062] The statistical analysis of Fig. 3A shows that the only significant difference is between Group D (HCC patients) versus Groups A, B, and C, $p < 0.001$. Statistical analysis of HCV patients and controls, as indicated in Fig. 3B, shows that the only significant difference is between Group 4 (HCC patients) versus Groups 1, 2, and 3, $p < 0.001$.

[0063] A few individuals with HBV- or HCV-associated nonmalignant liver disease had somewhat elevated levels of GP73 in sera, while the highest levels were found in patients with a diagnosis of HCC (Fig. 3A and 3B). Seven of the eight individuals with HBV-associated HCC showed an increase greater than any patient in the other three groups (Fig. 2A, Group D and Fig. 3A). Eleven of sixteen individuals with HCV associated HCC showed GP73 levels higher than any patient in the other groups of that experimental set (Fig. 2B, Group 4, and Fig. 3B).

[0064] Statistical analyses revealed a statistically significant overall increase in serum GP73 levels in patients with HCC, compared to all other diagnostic groups, $p < 0.001$ (Fig. 3). Analysis of variance (ANOVA) according to HBV or HCV infection indicated that this difference was present regardless of the viral agent. For each group, the null hypothesis of no difference between the four subject groups was rejected (for the HBV group, $F = 49.47$, $p < 0.0001$, for the HCV group, $F = 17.51$, $p < 0.0001$). In pairwise tests adjusted for multiple comparisons, the means for each of the groups were compared. In separate analyses of the HBV and HCV datasets, the HCC group differed significantly from each of the other three groups ($p < 0.0001$). However, the three non-HCC groups were not significantly different from one another. Without wishing to be bound by any particular theory, these results indicate that the appearance of high levels of circulating GP73 may be a feature of virus induced hepatocellular cancer, regardless of the viral etiology of hepatitis (HBV or HCV).

Table 1. HBV patient demographics and serological profiles of Group A-D subjects

Group	Diagnosis	serological profile ¹	number and gender of patients ²	age (mean \pm S.D.)
A	HBV-negative	HBsAg - HBV DNA - normal LFTs	7 (7M)	60.1 \pm 5.3
B	HBV carrier, inactive	HBsAg + HBV DNA - normal LFTs	11 (11M)	52.6 \pm 11.4
C	HBV carrier, active	HBsAg + HBV DNA + abnormal LFTs	12 (12M)	55.1 \pm 9.0
D	HBV-HCC	HBsAg +	8 (8M)	57.1 \pm 8.8

¹LFT = liver function test
²M = Male

Table 2. HCV patient demographics and serological profiles of Group 1-4 subjects

Group	Diagnosis	serological profile	number and gender of patients ¹	age (mean \pm S.D.)
1	HCV negative	HCV Ab (-), HCV-RNA (-)	16 (4M,12F)	41 +/- 13
2	HCV chronic	HCV Ab (+), HCV-RNA (+)	16 (7M,9F)	45 +/- 6.5
3	HCV + cirrhosis	HCV Ab (+), HCV-RNA (+)	16 (10M,6F)	49+/-6.6

EP 1 664 718 B1

(continued)

Group	Diagnosis	serological profile	number and gender of patients ¹	age (mean ± S.D.)
4	HCV + HCC	HCV Ab (+), HCV-RNA (+)	16 (14M,2F)	56+/-12.4

¹M = Male, F = Female

Example 3: Comparison of serum GP73 and AFP in detecting HCC

[0065] Based on the results obtained in Example 2, a larger blinded study was performed, focusing on a well-characterized HCV-infected cohort (n=142). The levels of GP73 and AFP were measured in sera from patients with HCV-associated liver disease and control patients. Patient groups and demographics are defined in Table 3.

Table 3. Demographics of the larger cohort of patients with Hepatitis C.

Variable	Normal (n=40)	Chronic Hepatitis (n=35)	Cirrhosis (n=35)	HCC (n=33)	P value
Age	51±9.7	54±6	51±8	51±10	0.14
Gender (M:F)	30:10	20:14	16:9	28:5	0.32
AFP (ng/ml)	2.94±1.6	10.8±23	19.7±38	11788±60359	<0.001
%<20	100	88	77	55	
% 20-200	0	12	23	24	
% >200	0	0	0	21	
ALT (IU/ml)	28.6±9	67±41	112±124	81±49	<0.001#
AST (IU/ml)	22±5	53±36	94±85	109±59	0.003*
Bilirubin (mg/dl)	0.4±0.2	0.5±0.4	0.9±0.6	1.2±0.9	0.13
MELD score	5±0.2	6.1±0.4	7.8±1.8	8.3±2.1	0.03*
TNM State % (I/II/III/IV)	NA	NA	NA	9/12/6/6	

#Group 3 versus 1 and 2. * Group 4 versus 1 and 2. NA = not applicable.

Methods

[0066] Immunoblots and densitometric analyses were performed as described above.

Statistical Analysis

[0067] Log transformation was used on the AFP values to account for the large range of values. The descriptive statistics for AFP and GP73 were compared by box plots and then by ANOVA. Group differences in means were tested by using SAS V 8.01 (SAS Institute, Cary, NC) PROC GLM for analysis of variance, which uses the least-squares method to fit general linear models, for continuous variables. For binary variables, chi-square was utilized to compare groups. To account for multiple comparisons, p-values for individual means within the ANOVAs were adjusted using the Tukey-Kramer test. To determine the optimal cutoff value for GP73 and AFP in the diagnosis of HCC, Receiver Operating Characteristic (ROC) curves were constructed using all possible cutoffs for each assay. The area under the ROC (AUROC) curves were calculated and compared as described previously (Griner et al., 1981, Ann. Intern. Med. 94: 555-600; Metz, 1998, Semin- Nucl. Med. 8:283-298). A bivariate normal distribution for the two markers was assumed. A 2-tailed p value of < 0.05 was used to determine statistical significance. All analyses were performed using SAS (Cary, NC, USA).

[0068] Immunoblot analysis was used to detect and quantify GP73 levels in sera. For statistical analyses, the subjects were separated into four categories, as before: normal controls (uninfected with HBV or HCV), chronic HCV without cirrhosis, chronic HCV with cirrhosis, and chronic HCV with cirrhosis and HCC. The groups are well-matched for age, gender, and ethnicity (see Table 3).

Results

[0069] The results (Fig. 4A) showed a statistically significant elevation of serum GP73 in patients diagnosed with HCC, compared with nonmalignant liver disease or control groups (ANOVA, $p < 0.001$). The frequencies of elevation of GP73 (Fig. 4A) were compared with elevations of AFP in patients from this population (Fig. 4B). AFP levels were determined by standard clinical assays as described above. Although AFP levels generally increased in patients with HCC, no statistically significant difference could be demonstrated in AFP levels between the HCC patients and the other groups in this analysis (ANOVA, $p = 0.292$).

[0070] A ROC curve analysis was also performed to compare the sensitivity and specificity of GP73 and AFP in distinguishing patients with cirrhosis from those with cirrhosis plus HCC in this population of individuals chronically infected with HCV. The data derived for Groups 3 and 4 in Figure 4 were plotted for ROC analysis, and are presented in Figure 5. The ROC curves show that GP73 levels are more predictive than AFP as an indicator of HCC. GP73 has a sensitivity of 0.85 and specificity of 0.65, while AFP is lower in both sensitivity (0.70) and specificity (0.60). Based on the assay used, the optimal cut-off value for GP73 was determined to be 8.4 relative units above the GP73 signal from the control sample, and the optimal cut-off for AFP was 9.9 ng/ml. $P = 0.149$ for the difference between AFP and GP73.

[0071] Without wishing to be bound by any particular theory, these studies indicate that serum GP73 levels may be more predictive than AFP for distinguishing between a clinical diagnosis of HCC and nonmalignant liver disease associated with either HBV or HCV infection.

- Therefore, the present invention should not be limited to any single embodiment, but rather should be construed in breadth and scope in accordance with the recitation of the appended claims.

SEQUENCE LISTING

[0072]

<110> THOMAS JEFFERSON UNIVERSITY
 SAINT LOUIS UNIVERSITY
 THE UNITED STATES OF AMERICA as represented by the DEPARTMENT OF VETERANS AFFAIRS
 Patrick R. Romano
 Timothy M. Block
 Claus J. Fimmel
 Olga Nikolaeva

<120> DIAGNOSIS AND MONITORING OF
 HEPATOCELLULAR CARCINOMA

<130> 08321-141PC1

<150> 60/500,657
 <151> 2003-09-05

<160> 2

<170> FastSEQ for windows version 4.0

<210> 1
 <211> 3042
 <212> DNA
 <213> Homo sapiens

<400> 1

5
 10
 15
 20
 25
 30
 35
 40
 45

```

cggaggcgt gggcgacgg cgcggagccg gccggagctc gaggccggcg gcggcgggag 60
agcgaccgg gcgccctcgt agcggggccc cggatccccg agtggcggcc ggagcctcga 120
aaagagattc tcagcgctga ttttgagatg atgggcttgg gaaacgggcg tcgcagcatg 180
aagtgcggcg ccctcgtgct ggccgcccctg gtggcctgca tcatcgtctt gggcttcaac 240
tactggattg cgagctcccg gagcgtggac ctccagacac ggatcatgga gctggaaggc 300
agggtcggca gggcggtcgc agagagagggc gccgtggagc tgaagaagaa cgagttccag 360
ggagagctgg agaagcagcg ggagcagctt gacaaaatcc agtccagcca caacttccag 420
ctggagagcg tcaacaagct gtaccaggac gaaaaggcgg ttttggtgaa taacatcacc 480
acaggtgaga ggctcatccg agtgctgcaa gaccagttaa agaccctgca gaggaattac 540
ggcaggctgc agcaggatgt cctccagttt cagaagaacc agaccaacct ggagaggaag 600
ttctcctacg acctgagcca gtgcatcaat cagatgaagg aggtgaagga acagtgtag 660
gagcgaatag aagaggtcac caaaaagggg aatgaagctg tagcttccag agacctgagt 720
gaaaacaacg accagagaca gcagctccaa gccctcagtg agcctcagcc caggctgcag 780
gcagcaggcc tgccacacac agaggtgccaa caagggagg gaaacgtgct tggtaacagc 840
aagtcccaga caccagcccc cagttccgaa gtggttttgg attcaaagag acaagttgag 900
aaagaggaaaa ccaatgagat ccagggtgtg aatgaggagc ctgagagggg caggctgccg 960
caggagccag gccgggagca ggtggtgaa cacagacctg taggtggaag aggttccggg 1020
ggagccggag aactgggcca gacccacag gtgcaggctg cctgtcagt gagccaggaa 1080
aatccagaga tggagggccc tgagcgagac cagcttgta tccccgacgg acaggaggag 1140
gagcaggaag ctgccgggga agggagaaac cagcagaaac tgagaggaga agatgactac 1200
aacatgtagt aaaatgaagc agaatctgag acagacaagc aagcagccct ggcaggaat 1260
gacagaaaca tagatgtttt taatgttgaa gatcagaaaa gagacaccat aaatttactt 1320
gatcagcgtg aaaagcggaa tcatacactc tgaattgaac tggaatcaca tatttcacia 1380
cagggccgaa gagatgacta taaaatgttc atgagggact gaatactgaa aactgtgaaa 1440
tgtactaaat aaaatgtaca tctgaagatg attattgtga aattttagta tgcactttgt 1500
gtaggaaaaa atggaatggt cttttaaaca gcttttgggg gggtactttg caagtgtcta 1560
ataaggtgtc acaatttttg gtagttagta tttcgtgaga agttcaacac caaaactgga 1620
acatagtctt ccttcaagtg ttggcgacag cggggcttcc tgattctgga atataacttt 1680
gtgtaaatga acagccacct atagaagagt ccactctgtg tgaaggagag acagagaact 1740
ctgggttccg tcgtcctgtc cacgtgctgt accaagtgtt ggtgccagcc tgttacctgt 1800
tctcactgaa aagtctggct aatgctcttg tgtagtact tctgattctg acaatcaatc 1860
aatcaatgaa ctagagcact gactgttaac acaaactgca ctgcaaagt agcaacagt 1920
ttaagtctaa atacaaagct gttctgtgtg agaattttt aaaaggctac ttgtataata 1980
acccttgtca tttttaatgt acaaaacgct attaagtggc ttagaatttg aacatttgtg 2040
gtctttattt actttgcttc gtgtgtgggc aaagcaacat cttccctaaa tatatattac 2100
caagaaaagc aagaagcaga ttaggttttt gacaaaacaa acaggccaaa agggggctga 2160
cctggagcag agcatggtga gaggcaaggg atgagagggc aagtttgttg tggacagatc 2220
tgtgcctact ttattactgg agtaaaagaa aacaaagttc attgatgtcg aaggatatat 2280

acagtgtagt aaattaggac tgttttagaaa aacaggaata caatggttgt ttttatcata 2340
gtgtacacat ttagcttgtg gtaaatgact cacaaaactg attttaaat caagttaatg 2400
tgaattttga aaattactac ttaatcctaa ttcacaataa caatggcatt aaggtttgac 2460
ttgagttggt tcttagtatt atttatggta aataggctct taccacttgc aaataactgg 2520
ccacatcatt aatgactgac ttcccagtaa ggctctctaa ggggtaagta ggaggatcca 2580
caggatttga gatgctaagg ccccagagat cgtttgatcc aaccctctta ttttcagagg 2640
ggaaaatggg gcctagaagt tacagagcat ctgactgggt cgctggcacc cctggcctca 2700
cacagactcc cgagttagct ggactacagg cacacagtca ctgaagcagg ccctgtttgc 2760
aattcacggt gccacctcca acttaaacat tcttcatatg tgatgtcctt agtcactaag 2820
gttaaacttt cccaccacaga aaaggcaact tagataaaat cttagagtac tttcatactc 2880
ttctaagtcc tcttccagcc tcactttgag tcttccttgg ggttgatagg aattttctct 2940
tgctttctca ataaagtctc tattcatctc atgtttaatt tgtacgcata gaattgctga 3000
gaaataaaat gttctgttca acttaaaaaa aaaaaaaaaa aa 3042
  
```

<210> 2
 <211> 400
 <212> PRT
 <213> Homo sapiens

<400> 2

55

Met Gly Leu Gly Asn Gly Arg Arg Ser Met Lys Ser Pro Pro Leu Val
 1 Ala Ala Leu Val Ala Cys Ile Ile Val Leu Gly Phe Asn Tyr Trp
 5 Ile Ala Ser Ser Arg Ser Val Asp Leu Gln Thr Arg Ile Met Glu Leu
 35 20 40 45
 Glu Gly Arg Val Arg Arg Ala Ala Ala Glu Arg Gly Ala Val Glu Leu
 50 55 60
 Lys Lys Asn Glu Phe Gln Gly Glu Leu Glu Lys Gln Arg Glu Gln Leu
 65 70 75 80
 Asp Lys Ile Gln Ser Ser His Asn Phe Gln Leu Glu Ser Val Asn Lys
 85 90 95
 Leu Tyr Gln Asp Glu Lys Ala Val Leu Val Asn Asn Ile Thr Thr Gly
 100 105 110
 Glu Arg Leu Ile Arg Val Leu Gln Asp Gln Leu Lys Thr Leu Gln Arg
 115 120 125
 Asn Tyr Gly Arg Leu Gln Gln Asp Val Leu Gln Phe Gln Lys Asn Gln
 130 135 140
 Thr Asn Leu Glu Arg Lys Phe Ser Tyr Asp Leu Ser Gln Cys Ile Asn
 145 150 155 160
 Gln Met Lys Glu Val Lys Glu Gln Cys Glu Glu Arg Ile Glu Glu Val
 165 170 175
 Thr Lys Lys Gly Asn Glu Ala Val Ala Ser Arg Asp Leu Ser Glu Asn
 180 185 190
 Asn Asp Gln Arg Gln Gln Leu Gln Ala Leu Ser Glu Pro Gln Pro Arg
 195 200 205
 Leu Gln Ala Ala Gly Leu Pro His Thr Glu Val Pro Gln Gly Lys Gly
 210 215 220
 25 Asn Val Leu Gly Asn Ser Lys Ser Gln Thr Pro Ala Pro Ser Ser Glu
 225 230 235 240
 Val Val Leu Asp Ser Lys Arg Gln Val Glu Lys Glu Glu Thr Asn Glu
 245 250 255
 Ile Gln Val Val Asn Glu Glu Pro Gln Arg Asp Arg Leu Pro Gln Glu
 260 265 270
 30 Pro Gly Arg Glu Gln Val Val Glu Asp Arg Pro Val Gly Gly Arg Gly
 275 280 285
 Phe Gly Gly Ala Gly Glu Leu Gly Gln Thr Pro Gln Val Gln Ala Ala
 290 295 300
 Leu Ser Val Ser Gln Glu Asn Pro Glu Met Glu Gly Pro Glu Arg Asp
 305 310 315 320
 35 Gln Leu Val Ile Pro Asp Gly Gln Glu Glu Gln Glu Ala Ala Gly
 325 330 335
 Glu Gly Arg Asn Gln Gln Lys Leu Arg Gly Glu Asp Asp Tyr Asn Met
 340 345 350
 Asp Glu Asn Glu Ala Glu Ser Glu Thr Asp Lys Gln Ala Ala Leu Ala
 355 360 365
 40 Gly Asn Asp Arg Asn Ile Asp Val Phe Asn Val Glu Asp Gln Lys Arg
 370 375 380
 45 Asp Thr Ile Asn Leu Leu Asp Gln Arg Glu Lys Arg Asn His Thr Leu
 385 390 395 400

Claims

1. A method of diagnosing HCC (hepatocellular carcinoma) in a subject, comprising:

- (1) determining the level of GP73 or a polypeptide of 25 kDa +/-5 kDa which cross reacts with a GP73-specific antibody, in a serum sample obtained from a subject suspected of having HCC; and
- (2) comparing the level of GP73 or said polypeptide in the serum sample to the serum levels of GP73 or said polypeptide in a control, wherein elevated levels of GP73 or said polypeptide in the serum sample relative to the control indicate that the subject has HCC.

2. A method of monitoring a subject at risk for developing HCC (hepatocellular carcinoma), comprising:
determining the levels of GP73 or a polypeptide of 25 kDa +/- 5 kDa which cross reacts with a GP73-specific antibody,
in at least a first serum sample obtained from a subject at a first time point and at least a second serum sample
obtained from the subject at a second time point, wherein an increase in the level of GP73 or said polypeptide in
the second serum sample relative to the level of GP73 or said polypeptide in the first serum sample indicates that
the subject has developed HCC.
3. The method of claim 1 or 2, wherein the level of GP73 or said polypeptide in the serum sample relative to the level
of GP73 or said polypeptide in the control, or the level of GP73 or said polypeptide in the second serum sample
relative to the level in the first serum sample, is elevated at least 2-fold.
4. The method of claim 1 or 2, wherein the level of GP73 or said polypeptide in the serum sample relative to the level
of GP73 or said polypeptide in the control, or the level of GP73 or said polypeptide in the second serum sample
relative to the level in the first serum sample, is elevated at least 3-fold.
5. The method of claim 1 or 2, wherein the level of GP73 or said polypeptide in the serum sample relative to the level
of GP73 or said polypeptide in the control, or the level of GP73 or said polypeptide in the second serum sample
relative to the level in the first serum sample, is elevated at least 6-fold.
6. The method of any preceding claim, wherein the level of GP73 or said polypeptide in a serum sample is detected
by a biomolecular interaction assay.
7. The method of claim 6, wherein the biomolecular interaction assay is an immunoassay.
8. The method of claim 7, wherein the immunoassays is selected from the group consisting of Western blot analysis,
radioimmunoassay (RIA), immunofluorescent assay, chemiluminescent assay, or enzyme-linked immunosorbent
assay (ELISA).
9. The method of any one of claims 1 to 4, wherein the level of GP73 or said polypeptide in a serum sample is detected
by an aptamer.
10. The method of any one of claims 1 to 4, wherein the level of GP73 or said polypeptide in a serum sample is detected
by an antibody.
11. The method of claim 10, wherein the antibody comprises a polyclonal or a monoclonal anti-GP73 antibody.
12. The method of claim 10, wherein the antibody comprises an antibody fragment.

Patentansprüche

1. Ein Verfahren zum Diagnostizieren eines HCC (hepatozellulären Karzinoms) bei einem Patienten, das Folgendes
beinhaltet:
- (1) Bestimmen des Gehalts von GP73 oder eines Polypeptids von 25 kDa +/- 5 kDa, das mit einem GP73-
spezifischen Antikörper kreuzreagiert, in einer Serumprobe, die einem Patienten, welcher im Verdacht steht,
HCC zu haben, entnommen wurde; und
(2) Vergleichen des Gehalts von GP73 oder des Polypeptids in der Serumprobe mit dem Serumgehalt von
GP73 oder des Polypeptids in einer Kontrolle, wobei ein erhöhter Gehalt von GP73 oder des Polypeptids in der
Serumprobe relativ zu der Kontrolle anzeigt, dass der Patient HCC hat.
2. Ein Verfahren zum Überwachen eines Patienten, welcher gefährdet ist, HCC (hepatozelluläres Karzinom) zu ent-
wickeln, das Folgendes beinhaltet:
Bestimmen des Gehalts von GP73 oder eines Polypeptids von 25 kDa +/- 5 kDa, das mit einem GP73-spezifischen
Antikörper kreuzreagiert, in mindestens einer ersten Serumprobe, die einem Patienten zu einem ersten Zeitpunkt
entnommen wurde, und mindestens einer zweiten Serumprobe, die dem Patienten zu einem zweiten Zeitpunkt
entnommen wurde, wobei eine Erhöhung des Gehalts von GP73 oder des Polypeptids in der zweiten Serumprobe
relativ zu dem Gehalt von GP73 oder des Polypeptids in der ersten Serumprobe anzeigt, dass der Patient HCC

entwickelt hat.

- 5
3. Verfahren gemäß Anspruch 1 oder 2, wobei der Gehalt von GP73 oder des Polypeptids in der Serumprobe relativ zu dem Gehalt von GP73 oder des Polypeptids in der Kontrolle oder der Gehalt von GP73 oder des Polypeptids in der zweiten Serumprobe relativ zu dem Gehalt in der ersten Serumprobe mindestens doppelt so hoch ist.
- 10
4. Verfahren gemäß Anspruch 1 oder 2, wobei der Gehalt von GP73 oder des Polypeptids in der Serumprobe relativ zu dem Gehalt von GP73 oder des Polypeptids in der Kontrolle oder der Gehalt von GP73 oder des Polypeptids in der zweiten Serumprobe relativ zu dem Gehalt in der ersten Serumprobe mindestens dreimal so hoch ist.
- 15
5. Verfahren gemäß Anspruch 1 oder 2, wobei der Gehalt von GP73 oder des Polypeptids in der Serumprobe relativ zu dem Gehalt von GP73 oder des Polypeptids in der Kontrolle oder der Gehalt von GP73 oder des Polypeptids in der zweiten Serumprobe relativ zu dem Gehalt in der ersten Serumprobe mindestens sechsmal so hoch ist.
- 20
6. Verfahren gemäß einem der vorhergehenden Ansprüche, wobei der Gehalt von GP73 oder des Polypeptids in einer Serumprobe durch einen Assay biomolekularer Interaktion entdeckt wird.
7. Verfahren gemäß Anspruch 6, wobei der Assay biomolekularer Interaktion ein Immunoassay ist.
- 25
8. Verfahren gemäß Anspruch 7, wobei der Immunoassay aus der Gruppe, die aus Western-Blot-Analyse, Radioimmunoassay (RIA), Immunofluoreszenzassay, Chemilumineszenzassay oder enzymgekoppeltem Immunadsorptionsassay (ELISA) besteht, ausgewählt ist.
- 30
9. Verfahren gemäß einem der Ansprüche 1 bis 4, wobei der Gehalt von GP73 oder des Polypeptids in einer Serumprobe durch ein Aptamer entdeckt wird.
10. Verfahren gemäß einem der Ansprüche 1 bis 4, wobei der Gehalt von GP73 oder des Polypeptids in einer Serumprobe durch einen Antikörper entdeckt wird.
- 35
11. Verfahren gemäß Anspruch 10, wobei der Antikörper einen polyklonalen oder einen monoklonalen Anti-GP73-Antikörper beinhaltet.
12. Verfahren gemäß Anspruch 10, wobei der Antikörper ein Antikörperfragment beinhaltet.

Revendications

1. Une méthode pour diagnostiquer un HCC (carcinome hépatocellulaire) chez un sujet, comprenant :

40 (1) déterminer le niveau de GP73 ou d'un polypeptide de 25 kDa +/- 5 kDa qui réagit de façon croisée avec un anticorps spécifique à GP73, dans un échantillon de sérum obtenu chez un sujet soupçonné d'avoir un HCC ; et
(2) comparer le niveau de GP73 ou dudit polypeptide dans l'échantillon de sérum aux niveaux de sérum de GP73 ou dudit polypeptide dans un témoin, où des niveaux plus élevés de GP73 ou dudit polypeptide dans l'échantillon de sérum relativement au témoin indiquent que le sujet a un HCC.

- 45 2. Une méthode pour surveiller un sujet chez lequel un HCC (carcinome hépatocellulaire) risque de se développer, comprenant :

50 déterminer les niveaux de GP73 ou d'un polypeptide de 25 kDa +/- 5 kDa qui réagit de façon croisée avec un anticorps spécifique de GP73, dans au moins un premier échantillon de sérum obtenu chez un sujet à un premier point dans le temps et au moins un deuxième échantillon de sérum obtenu chez le sujet à un deuxième point dans le temps, où une augmentation du niveau de GP73 ou dudit polypeptide dans le deuxième échantillon de sérum relativement au niveau de GP73 ou dudit polypeptide dans le premier échantillon de sérum indique qu'un HCC s'est développé chez le sujet.

- 55 3. La méthode de la revendication 1 ou de la revendication 2, dans laquelle le niveau de GP73 ou dudit polypeptide dans l'échantillon de sérum relativement au niveau de GP73 ou dudit polypeptide dans le témoin, ou le niveau de GP73 ou dudit polypeptide dans le deuxième échantillon de sérum relativement au niveau dans le premier échantillon

EP 1 664 718 B1

de sérum, est au moins 2 fois plus élevé.

4. La méthode de la revendication 1 ou de la revendication 2, dans laquelle le niveau de GP73 ou dudit polypeptide dans l'échantillon de sérum relativement au niveau de GP73 ou dudit polypeptide dans le témoin, ou le niveau de GP73 ou dudit polypeptide dans le deuxième échantillon de sérum relativement au niveau dans le premier échantillon de sérum, est au moins 3 fois plus élevé.
5. La méthode de la revendication 1 ou de la revendication 2, dans laquelle le niveau de GP73 ou dudit polypeptide dans l'échantillon de sérum relativement au niveau de GP73 ou dudit polypeptide dans le témoin, ou le niveau de GP73 ou dudit polypeptide dans le deuxième échantillon de sérum relativement au niveau dans le premier échantillon de sérum, est au moins 6 fois plus élevé.
6. La méthode de n'importe quelle revendication précédente, dans laquelle le niveau de GP73 ou dudit polypeptide dans un échantillon de sérum est détecté par une analyse des interactions biomoléculaires.
7. La méthode de la revendication 6, dans laquelle l'analyse des interactions biomoléculaires est un immunoessai.
8. La méthode de la revendication 7, dans laquelle l'immunoessai est sélectionné dans le groupe consistant en transfert de Western, dosage radioimmunologique (RIA), dosage immunofluorescent, dosage par chimioluminescence, ou dosage immunoenzymatique (ELISA).
9. La méthode de n'importe laquelle des revendications 1 à 4, dans laquelle le niveau de GP73 ou dudit polypeptide dans un échantillon de sérum est détecté par un aptamère.
10. La méthode de n'importe laquelle des revendications 1 à 4, dans laquelle le niveau de GP73 ou dudit polypeptide dans un échantillon de sérum est détecté par un anticorps.
11. La méthode de la revendication 10, dans laquelle l'anticorps comprend un anticorps anti-GP73 polyclonal ou monoclonal.
12. La méthode de la revendication 10, dans laquelle l'anticorps comprend un fragment d'anticorps.

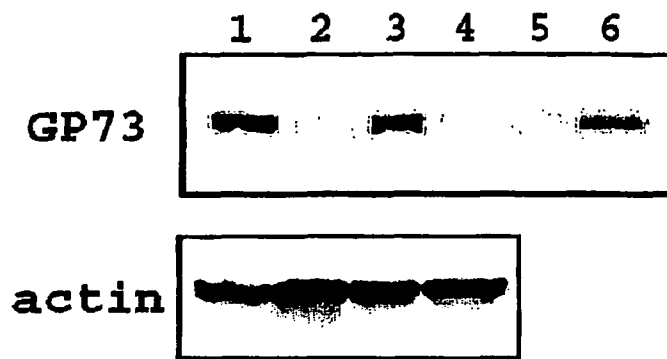


FIG. 1

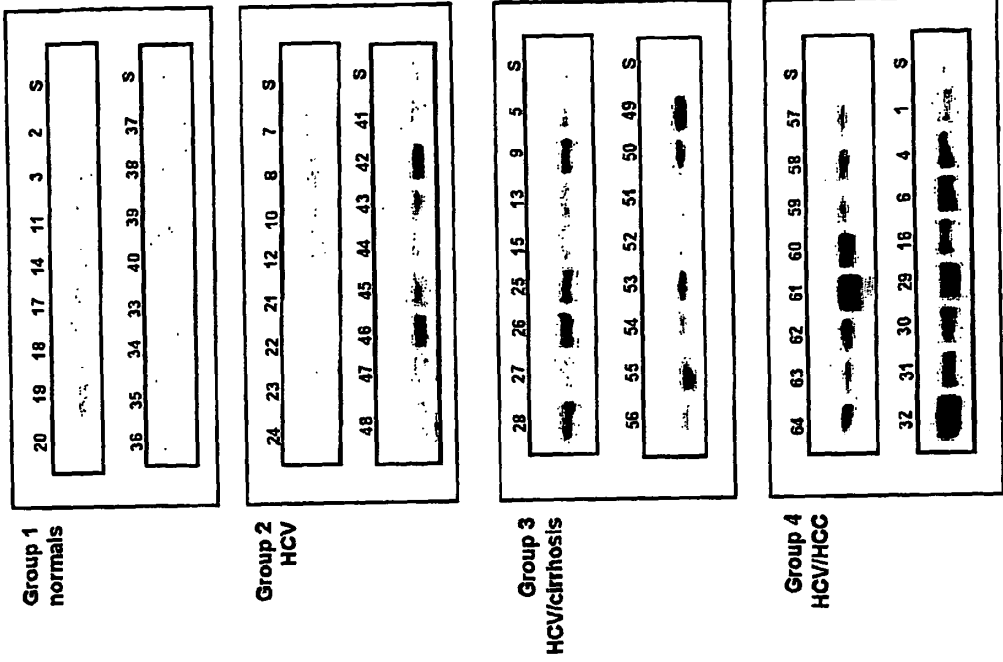


FIG. 2A

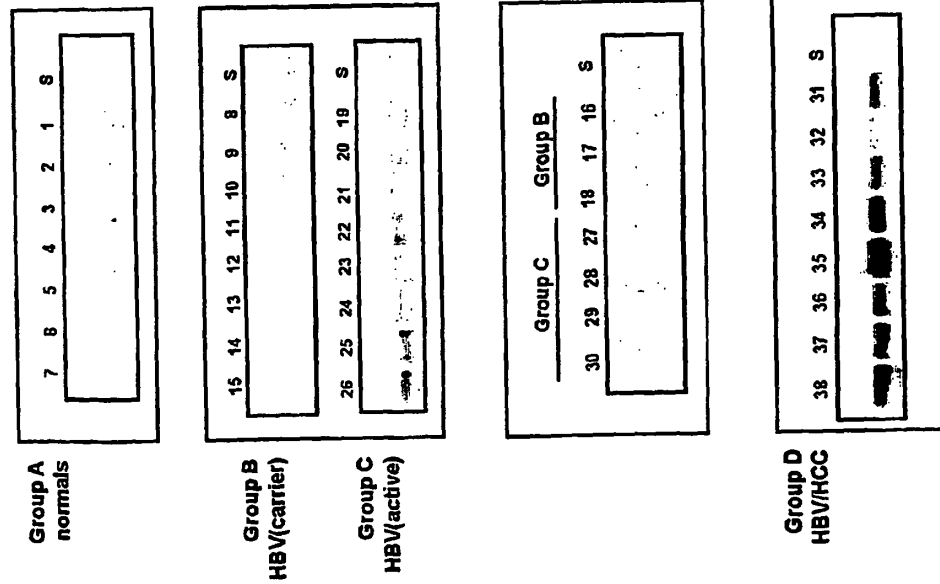


FIG. 2B

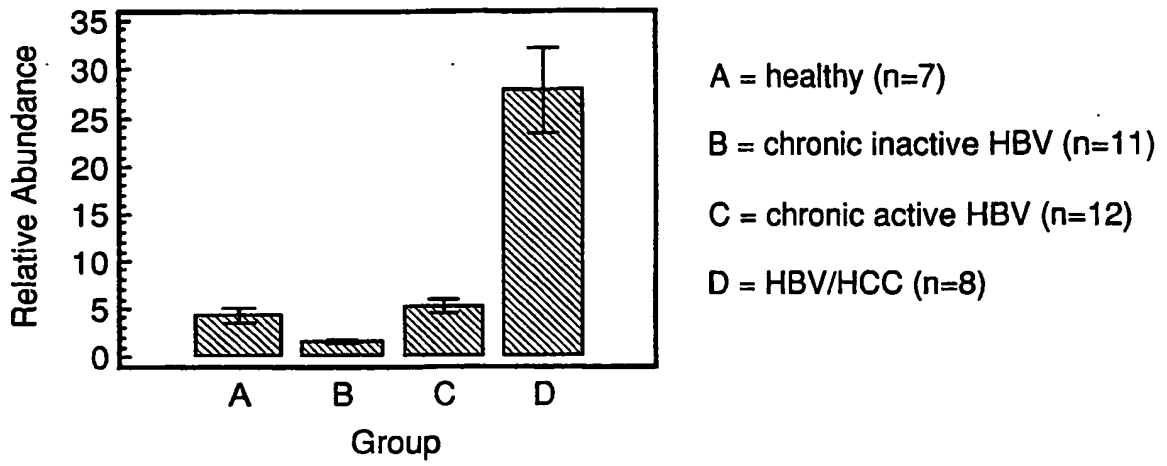


FIG. 3A

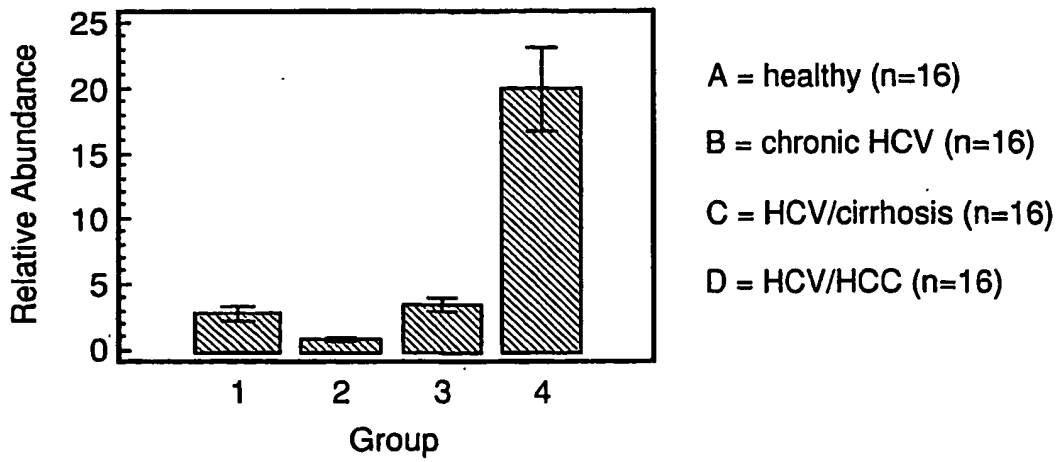


FIG. 3B

GP73

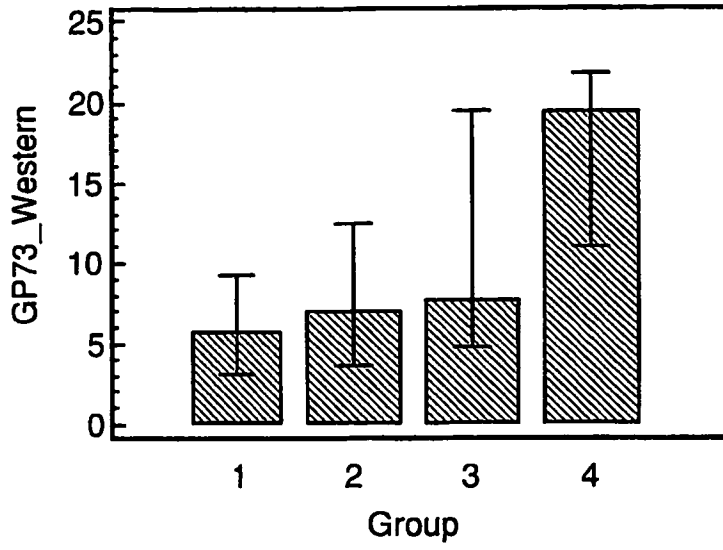


FIG. 4A

AFP

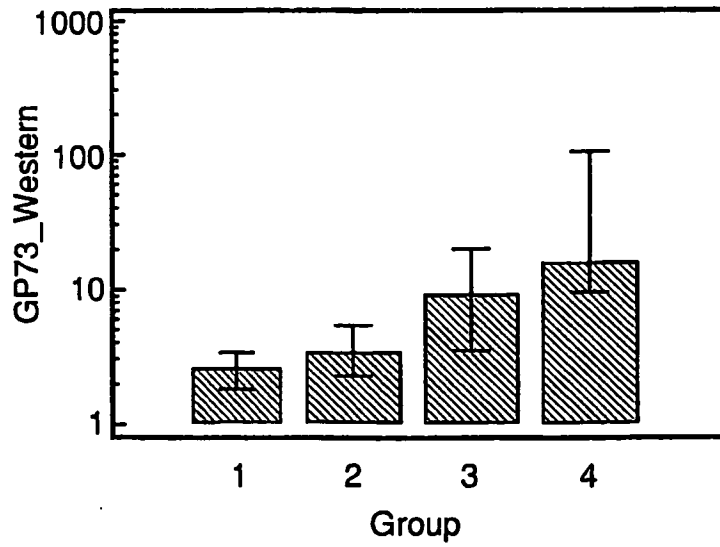


FIG. 4B

GP73

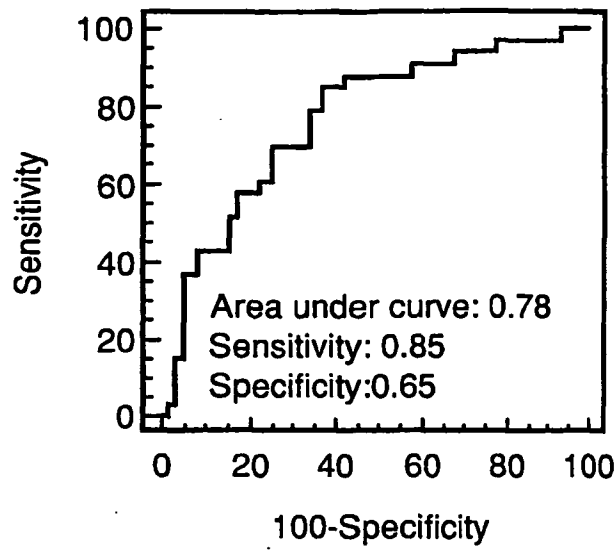


FIG. 5A

AFP

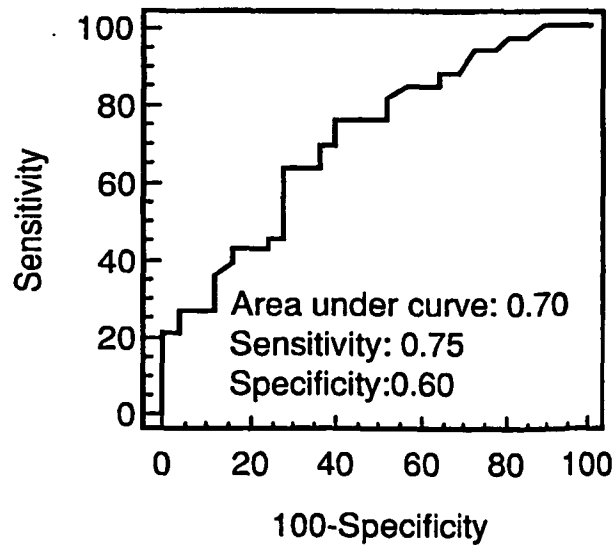


FIG. 5B

REFERENCES CITED IN THE DESCRIPTION

This list of references cited by the applicant is for the reader's convenience only. It does not form part of the European patent document. Even though great care has been taken in compiling the references, errors or omissions cannot be excluded and the EPO disclaims all liability in this regard.

Patent documents cited in the description

- WO 03010336 A [0010]
- US 5976809 A [0025]
- US 5965379 A [0025]
- US 5571680 A [0025]
- US 5279956 A [0025]
- US 6579684 A [0025]
- US 6287765 B [0031]
- US 6180348 B [0031]
- US 6001570 A [0031]
- US 5861588 A [0031]
- US 5567588 A [0031]
- US 5475096 A [0031]
- US 5270163 A [0031]
- US 60500657 B [0072]

Non-patent literature cited in the description

- **Kladney et al.** *Gene*, 2000, vol. 249, 53-65 [0006] [0016]
- **Kladney et al.** *Hepatology*, 2002, vol. 35 (6), 1431-40 [0007]
- **Kladney et al.** *Hepatology*, 2002, vol. 35, 1431-1440 [0026] [0052]
- **Kohler ; Milstein.** *Nature*, 1975, vol. 254, 493-497 [0029]
- Monoclonal Antibodies, -Hybridomas: A New Dimension in Biological Analysis. Plenum Press, 1980 [0029]
- **Famulok, M. ; Szostak, J. W.** Vitro Selection of Specific Ligand Binding Nucleic Acids. *Angew. Chem.*, 1992, vol. 104, 1001 [0031]
- *Angew. Chem. Int. Ed. Engl.*, 1992, vol. 31, 979-988 [0031]
- Selection of Functional RNA and DNA Molecules from Randomized Sequences. **Famulok, M. ; Szostak, J. W.** *Nucleic Acids and Molecular Biology*. Springer Verlag, 1993, vol. 7, 271 [0031]
- **Klug, S. ; Farmulok, M.** All you wanted to know about SELEX. *Mol. Biol. Reports*, 1994, vol. 20, 97-107 [0031]
- **Burgstaller, P. ; Famulok, M.** Synthetic ribozymes and the first deoxyribozyme. *Angew. Chem.*, 1995, vol. 107, 1303-1306 [0031]
- *Angew. Chem. Int. Ed Engl.*, 1995, vol. 34, 1189-1192 [0031]
- Expression and Purification of Glutathione-S-Transferase Fusion Proteins. *Current Protocols in Molecular Biology*, 1990 [0033]
- **Smith ; Johnson.** *Gene*, 1988, vol. 67, 34-40 [0033]
- **Frangioni ; Neel.** *Anal. Biochem.*, 1993, vol. 210, 179-187 [0033]
- **Evans et al.** *Cancer Epidemiology, Biomarkers, and Prevention*, 1998, vol. 7, 559-565 [0048]
- **Kladney.** *Gene*, 2000 [0051]
- **Griner et al.** *Ann. Intern. Med.*, 1981, vol. 94, 555-600 [0067]
- **Metz.** *Semin- Nucl. Med.*, 1998, vol. 8, 283-298 [0067]

专利名称(译)	肝细胞癌的诊断和监测		
公开(公告)号	EP1664718B1	公开(公告)日	2009-12-09
申请号	EP2004783123	申请日	2004-09-03
[标]申请(专利权)人(译)	托马斯杰弗逊大学 圣路易斯大学		
申请(专利权)人(译)	托马斯杰弗逊大学 圣路易斯大学 美洲的美国为代表的退伍军人事务署		
当前申请(专利权)人(译)	圣路易斯大学 美洲的美国为代表的的 托马斯杰弗逊大学		
[标]发明人	ROMANO PATRICK R BLOCK TIMOTHY M FIMMEL CLAUS J NIKOLAEVA OLGA		
发明人	ROMANO, PATRICK, R. BLOCK, TIMOTHY, M. FIMMEL, CLAUS, J. NIKOLAEVA, OLGA		
IPC分类号	C12Q1/68 G01N33/574 G01N G01N33/53 G01N33/537 G01N33/543		
CPC分类号	G01N33/57438		
优先权	60/500657 2003-09-05 US		
其他公开文献	EP1664718A4 EP1664718A2		
外部链接	Espacenet		

摘要(译)	<pre> cggaggcgt gggcgacgg cgcggagccg gccgagctc gaggccggcg gggcgggag 60 agcgaccgg gggcgctcgt agcggggccc cggatcccg agtggcggcc ggagcctcga 120 aaagagattc tcagcgctga ttttgagatg atgggcttgg gaaacggggc tgcgagcatg 180 aagtgcggc cctcgtgct ggcgcgcttg gtggcctgca tcatgctct gggttcaac 240 tacttgattg cgagctcgg gaggctggag ctccagacac ggaatctgga gctggaaggc 300 aggtccgca gggcgctgc agagagggc gccatggagc tgaagaagaa caagtccag 360 ggagagctg agaagcagc ggagcagct gacaaaatc agtccagca caactccag 420 ctggagagcg tcaacaagct gtaccagac gaaaaggcg ttttggtaa taacatcac 480 acaggtgaga ggcctatccg agtgcgtaa gaccagtaa agacctgca gaggaaatc 540 ggcaggctg acgagatgt ccttcagtt cagaagaacc agacctcct ggagaggaag 600 ttctctacg acctgagcca gtgcatcaat cagatgaag aggtgaagga acagtgtgag 660 gagcgaatg aagaaggtcac caaaaaggg aatgaagctg tagctccag agacctgag 720 gaaaaaacg accagagaca gcagctcaa gccctcagtg agcctcagcc caggctgca 780 gcgacaggc tgcacacac agaggtgcca caaggaagg gaaacgtgct tggtaacagc 840 aagtccaga cccagcctc cagtccgaa gtggtrtgg attcaagag acaagttgag 900 aaagagaaa ccaatgagat ccagtggtg aatgaggagc ctgagagga caggctcgg 960 caggagcag gccggagca ggtggtgaa gacagacctg taggtggaag aggtctcgg 1020 ggagcggag aactgggcca gacccacag gtgcaggctg cctgtcagtg gagccagga 1080 aatccagaga tggagggccc tgagcgagac cagctgtca tccccagcgg acagagagag 1140 gagcaggaag ctgcgggga agggagaac cagcaaac tgagaggaaga agatgactac 1200 aacatgagat aaaaatgagc aaaaatctg acagacaagc aagcagcctc ggcaggaat 1260 gacagaaca tagatgttt taatgtgaa gatcagaaaa gagacacat aaaaatctt 1320 gatcagctg aaaaaggaa tcatacact tpaatgaa tggaatcaca tatttcacaa 1380 caggccgaa gagaatgact taaaatgtc atgaggact gaatactgaa aactgtgaa 1440 tgtactaat aaaaatgaca tctgaagatg attattgta aattttagta tgcactttg 1500 gtagaaaaa atggaatggt cttttaaca gctttgggg gggactttg gaagtgtcta 1560 ataaggtgc acaattttg gtatgagta tttcgtgaa agttcaaac caaaaatgga 1620 acatagtct cctcaagtg ttggcagag cggggctcc tgatctgga atataacttt 1680 ggttaataa acagcactc atagaagat ctactctgtg tgaaggag acagaaact 1740 ctgggttccg tgcctctgc cagctgctg accaagtct ggtgcaagc tgttactgt 1800 tctcctgaa agtctggtc aatgctctg tgtatcact tctgattctg acaatcaat 1860 aatcaatgct ctgagcact gactgttaac acaacgtca ctgcaaatg agcaacagct 1920 taagttcaa atacaagct gttctgtgt agaattttt aaaaaggctac tggatataa 1980 acctgtca ttttaagt acaaaagct attaaagtc ttgaaattg acatrtgtg 2040 gtctttttt actttgtctc gttgtgggc aaagcaaat cttccctaaa tatatattc 2100 caagaagaag aagaagcaga ttagtgttt gacaaaaca acaggccaaa agggggcga 2160 cctggagcag agcatggtga gaggcaagg atgagagggc aagttgttg tggacagatc 2220 tgtcctact ttattactgg agtaaaagaa aacaagttc attgatgtcg aaggatata 2280 </pre>
-------	---

血清中GP73水平升高可诊断肝细胞癌。血清GP73水平随时间的增加也可以表明患有该疾病风险的受试者中肝细胞癌的发作。