



US007604595B2

(12) **United States Patent**
Steen et al.

(10) **Patent No.:** **US 7,604,595 B2**
(45) **Date of Patent:** **Oct. 20, 2009**

(54) **METHOD AND SYSTEM FOR PERFORMING
REAL TIME NAVIGATION OF ULTRASOUND
VOLUMETRIC DATA**

5,546,807 A 8/1996 Oxaal et al.
5,562,097 A 10/1996 Yao
5,934,288 A * 8/1999 Avila et al. 600/443
5,964,707 A 10/1999 Fenster et al.
6,048,312 A * 4/2000 Ishrak et al. 600/443

(75) Inventors: **Erik Normann Steen**, Moss (NO);
Rune Torkildsen, Foreidgren (NO);
Ditlef Martens, Bergen (NO)

(Continued)

FOREIGN PATENT DOCUMENTS

(73) Assignee: **General Electric Company**,
Schenectady, NY (US)

WO WO 00/58754 A 10/2000

(Continued)

(*) Notice: Subject to any disclaimer, the term of this
patent is extended or adjusted under 35
U.S.C. 154(b) by 912 days.

OTHER PUBLICATIONS

European Search Report, dated Oct. 12, 2005, Application No.
05253581.2-2305 PCT, Reference No. 158785/10751, issued by the
European Patent Office, 3 pgs.

(21) Appl. No.: **10/926,547**

(22) Filed: **Aug. 26, 2004**

Primary Examiner—Brian Casler

Assistant Examiner—Parikha S Mehta

(65) **Prior Publication Data**

(74) *Attorney, Agent, or Firm*—The Small Patent Law Group;
Dean D. Small

US 2005/0283079 A1 Dec. 22, 2005

Related U.S. Application Data

(57) **ABSTRACT**

(60) Provisional application No. 60/581,675, filed on Jun.
22, 2004.

An ultrasound system is provided that includes a display
processor that accesses data volumes stored in an image
buffer successively to control generation of at least one of 2D
and 3D renderings based on display parameters. The display
processor obtains from the image buffer a first data volume
defined based on first scan parameter values, while a probe
acquires ultrasound information for a second data volume
that is entered into the image buffer. The second data volume
is defined based on second scan parameter values. A naviga-
tion view presents in real time the renderings generated by the
display processor with their corresponding 31) orientation. A
navigator is provided that controls the display of the naviga-
tion view in real time such that, as the user adjusts a display
parameter value to change a view plane, images presented in
the navigation view are updated to reflect the view plane.

(51) **Int. Cl.**
A61B 8/00 (2006.01)

(52) **U.S. Cl.** **600/437**; 600/440; 382/128;
73/596; 367/153

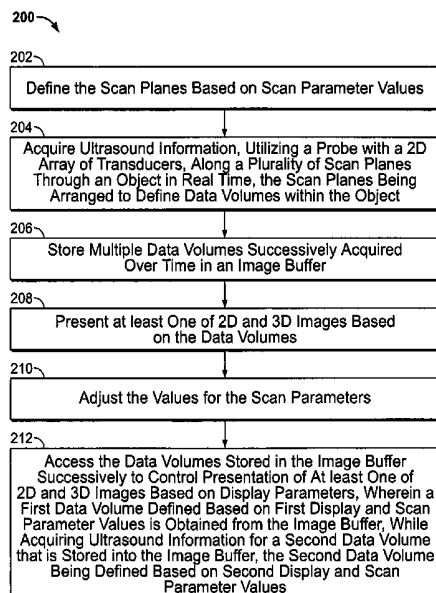
(58) **Field of Classification Search** 600/437,
600/400; 382/128, 276, 277, 285, 305; 345/539,
345/545, 546; 73/596; 367/153–157
See application file for complete search history.

(56) **References Cited**

U.S. PATENT DOCUMENTS

5,315,999 A 5/1994 Kinicki et al.
5,398,691 A 3/1995 Martin et al.

22 Claims, 5 Drawing Sheets



US 7,604,595 B2

Page 2

U.S. PATENT DOCUMENTS

6,186,948 B1 2/2001 Kamiyama et al.
6,241,675 B1 * 6/2001 Smith et al. 600/443
6,245,017 B1 * 6/2001 Hashimoto et al. 600/447
6,276,211 B1 8/2001 Smith
6,413,219 B1 * 7/2002 Avila et al. 600/443
6,488,629 B1 12/2002 Saetre et al.
6,554,770 B1 4/2003 Sumanaweera et al.
6,602,194 B2 * 8/2003 Roundhill et al. 600/443
6,641,536 B2 11/2003 Hossack et al.

6,669,641 B2 12/2003 Poland et al.
6,673,018 B2 1/2004 Friedman
6,733,448 B2 5/2004 Kelly et al.
6,755,788 B2 * 6/2004 Demers et al. 600/447
2003/0220569 A1 11/2003 Dione et al.
2004/0019270 A1 1/2004 Takeuchi

FOREIGN PATENT DOCUMENTS

WO WO 2004/029655 A 4/2004

* cited by examiner

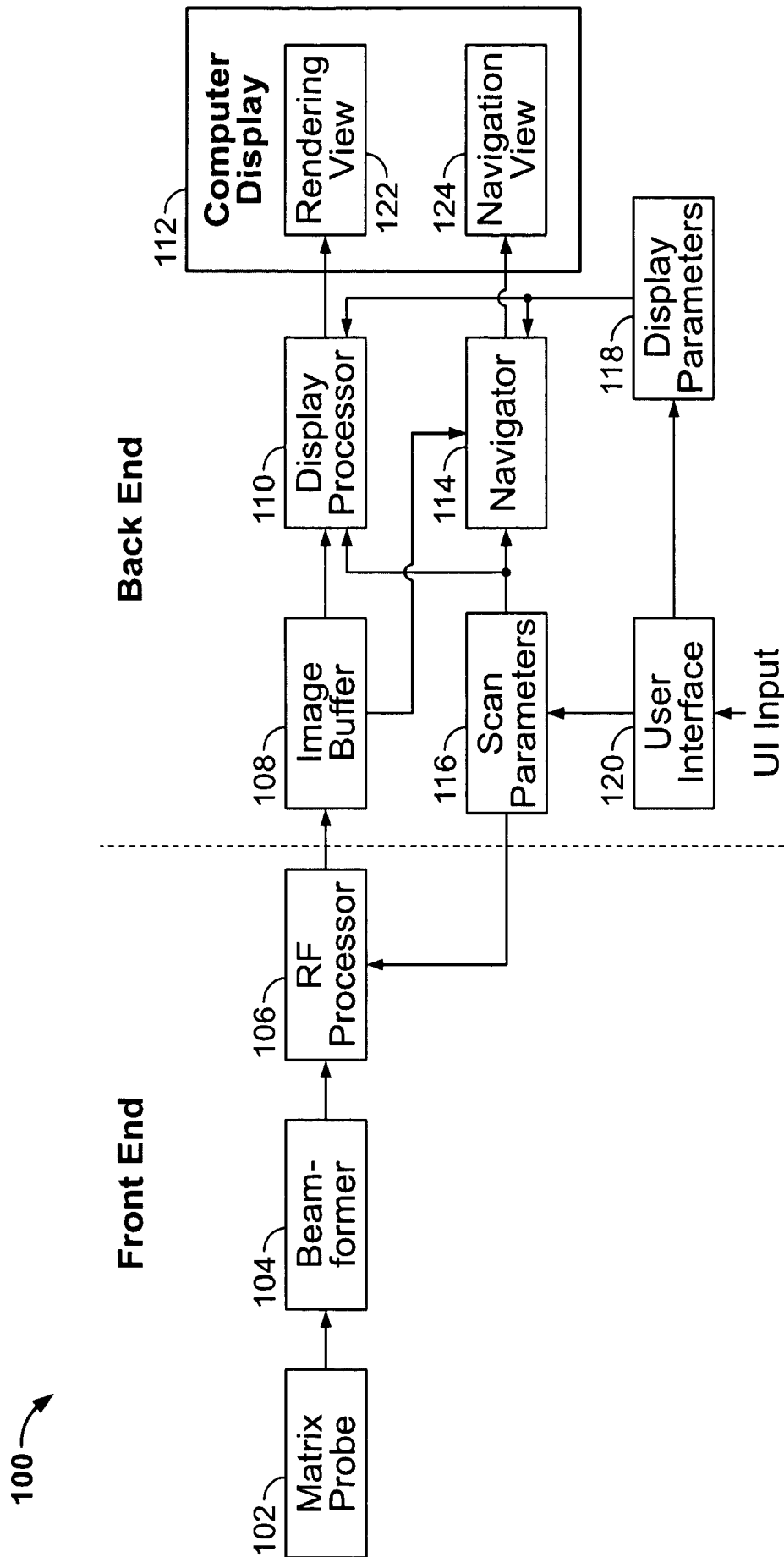


FIG. 1

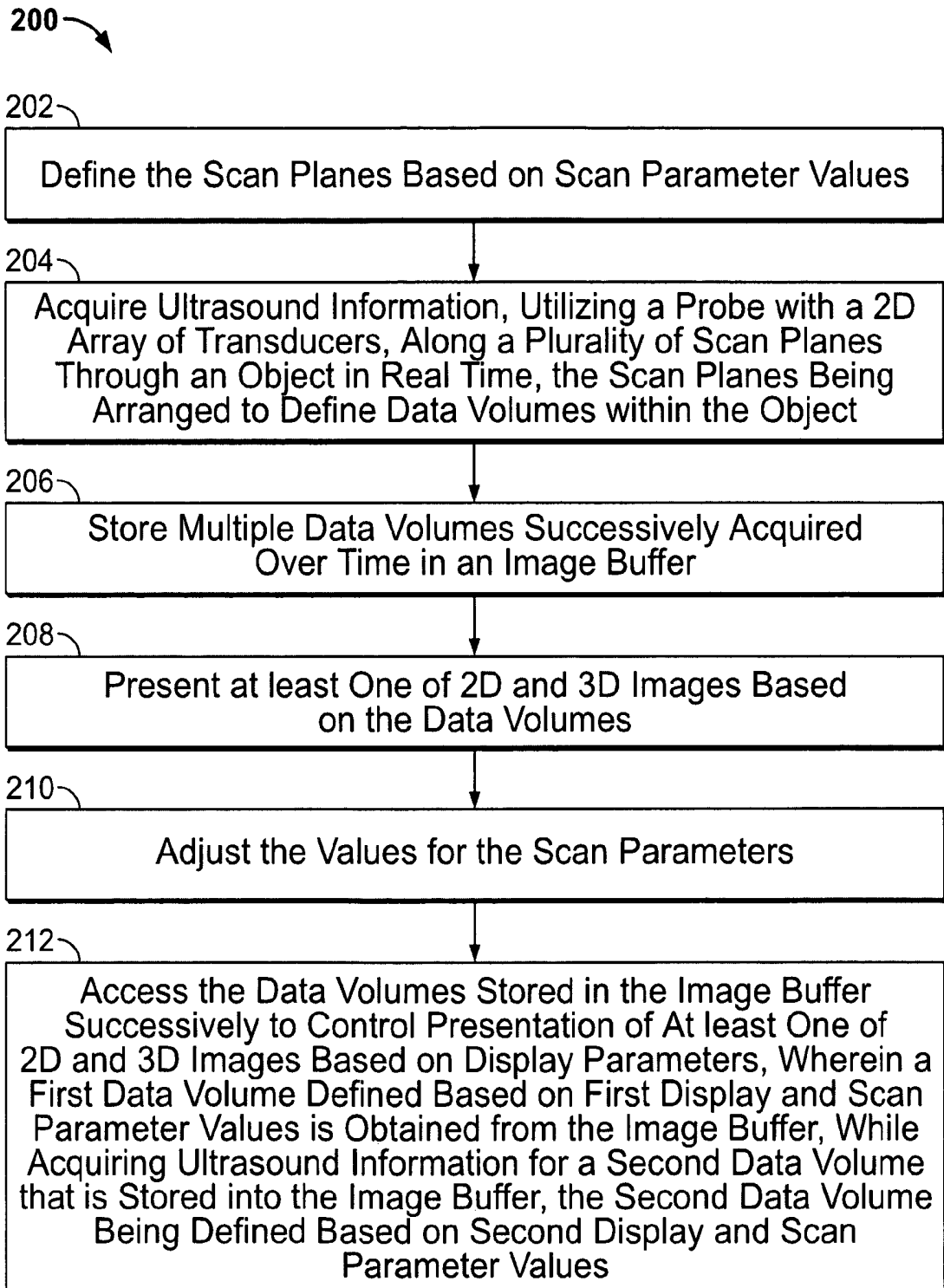


FIG. 2

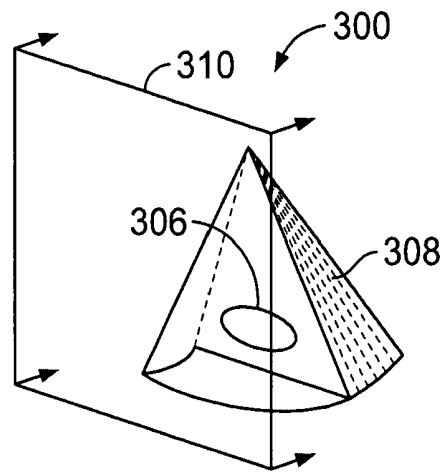


FIG. 3

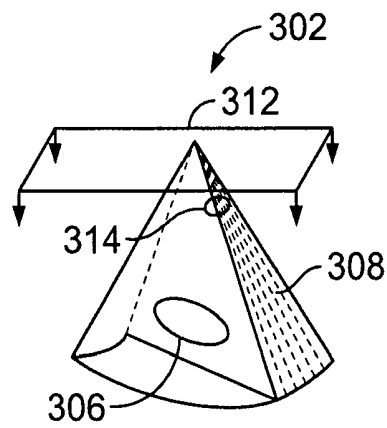


FIG. 4

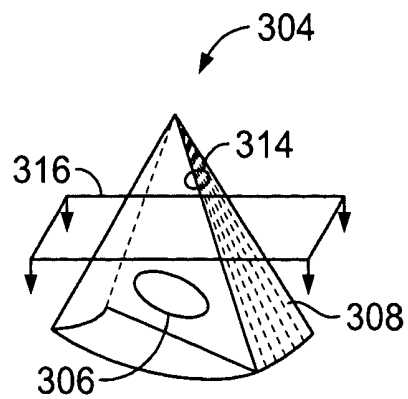
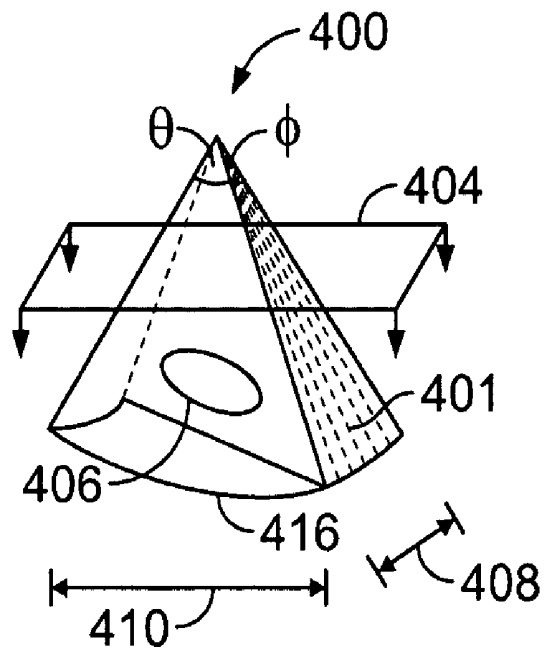
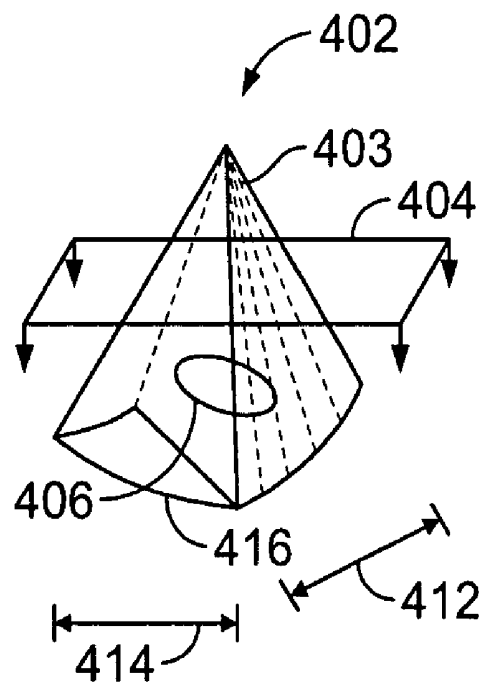
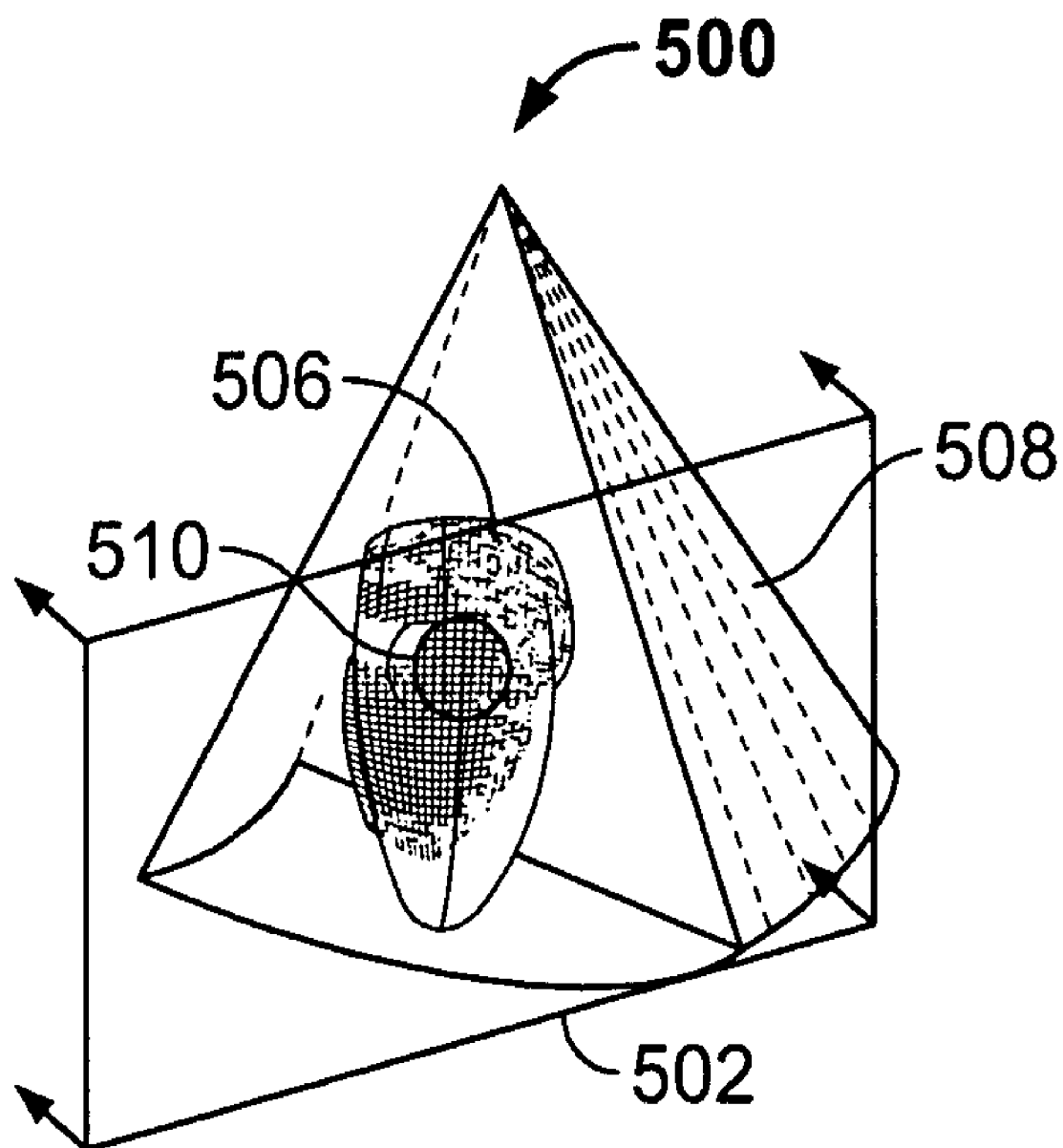


FIG. 5

**FIG. 6****FIG. 7**

**FIG. 8**

1

METHOD AND SYSTEM FOR PERFORMING REAL TIME NAVIGATION OF ULTRASOUND VOLUMETRIC DATA

CROSS REFERENCE TO RELATED APPLICATIONS

This application claims priority to and the benefit of the filing date of U.S. Provisional Application No. 60/581,675 filed on Jun. 22, 2004 and which is hereby incorporated by reference in its entirety.

BACKGROUND OF THE INVENTION

The present invention relates to diagnostic ultrasound methods and systems. In particular, the present invention relates to methods and systems for navigation in ultrasound data.

Numerous ultrasound methods and systems exist for use in medical diagnostics. Various features have been proposed to facilitate patient examination and diagnosis based on ultrasound images of the patient. For example, certain systems offer ultrasound volumetric imaging of an object, e.g. the human heart. To be useful, these systems require a navigator for orienting view planes within the volume data. Typically, the navigation of the view planes must be done after data acquisition.

Heretofore, ultrasound methods and systems were unable to acquire volumetric ultrasound data at the same time as an operator navigates in the volumetric data to generate 2D or 3D rendered images of the object.

A need exists for improved methods and systems that provide real time navigation in ultrasound volumetric data.

BRIEF DESCRIPTION OF THE INVENTION

One embodiment, an ultrasound system is provided that includes a probe having a 2D array of transducers for acquiring ultrasound information along a plurality of scan lines through an object in real time. The scan lines are arranged to define volumetric data corresponding to a volume of interest (VOI) in a subject or patient. One such VOI may include the human heart or some portion of the human heart. The system includes a beamformer configured with scan parameter values that define the scan lines. An image buffer stores multiple data volumes acquired over time that are successively retrieved and processed by a display processor. The display processor accesses the data volumes stored in the image buffer successively to control generation of at least one of 2D and 3D renderings based on display parameters, wherein the display processor obtains from the image buffer a first data volume defined based on first scan parameter values, while the probe acquires ultrasound information for a second data volume that is entered into the image buffer. The second data volume is defined based on second scan parameter values. A navigator is provided that controls the display of the navigation view in real time such that, as the user adjusts a display parameter value to change a view plane, images presented in the navigation view are updated to reflect the view plane. A user interface is provided for adjusting the scan and display parameter values.

In another embodiment, an ultrasound method is provided that acquires ultrasound information, utilizing a 2D array of transducers, along a plurality of scan lines through an object in real time, the scan lines being arranged to define data

2

volumes within the object. The method includes defining the scan lines based on scan parameter values. The method stores multiple data volumes successively acquired over time in an image buffer, and includes adjustment of the values for the scan parameters. At least one of 2D and 3D images is presented based on the data volumes. The method accesses the data volumes stored in the image buffer successively to control presentation of the at least one of 2D and 3D images based on display parameters, wherein a first data volume defined based on first scan parameter values is obtained from the image buffer, while acquiring ultrasound information for a second data volume that is entered into the image buffer, the second data volume being defined based on second scan parameter values.

In yet another embodiment, an ultrasound system is provided that includes a probe having a 2D array of transducers for acquiring ultrasound information along a plurality of scan lines through an object in real time, the scan lines being arranged to define data volumes within the object. A beamformer having scan parameters that define the scan lines is provided, the scan parameters having parameter values. An image buffer stores multiple data volumes successively acquired over time. A display is provided for presenting at least one of 2D and 3D images based on the data volumes. A display processor accesses the data volumes stored in the image buffer successively to control presentation of the at least one of 2D and 3D images based on display parameters. A navigator is also provided that controls display of a navigation view in real time such that, as the user adjusts a display parameter value to change an orientation view, images presented on the display are updated to reflect the orientation view.

BRIEF DESCRIPTION OF THE DRAWINGS

FIG. 1 is a block diagram of an ultrasound system formed in accordance with an embodiment of the present invention.

FIG. 2 is a flowchart of an exemplary method supporting real time navigation of 2D and 3D rendering views produced and displayed from acquired volumetric data.

FIG. 3 is an illustration of a navigation view with a view plane looking into a volume from the left that may be produced by the system of FIG. 1.

FIG. 4 is an illustration of a navigation view with a view plane looking into the volume of FIG. 3 from the top.

FIG. 5 is an illustration of the navigation view of FIG. 4 with the view plane translated downwards.

FIG. 6 is an illustration showing a volume obtained with a selected width and elevation, the width and elevation selected through a user interface of the system of FIG. 1.

FIG. 7 is an illustration showing a changed volume obtained by changing the width and elevation for the volume of FIG. 6.

FIG. 8 is an illustration of a navigation view of a heart as seen from a view plane selected by the user of the system of FIG. 1.

DETAILED DESCRIPTION OF THE INVENTION

FIG. 1 is a block diagram of an ultrasound system 100 formed in accordance with an embodiment of the present invention. The ultrasound system 100 is configurable to acquire volumetric data corresponding to a volume of interest (VOI) in a subject or patient. One such VOI may include the human heart or some portion of the human heart. The ultrasound system 100 is configurable to acquire 3-dimensional (3D) volumes of data, each volume defined by an azimuth

angle and elevation angle. The ultrasound system **100** includes a 2-dimensional (2D) array/matrix probe **102** that under the guidance of a beamformer **104** scans the VOI and acquires volumes of data at a rate of 15-30 volumes/sec, depending on the size of the volume (azimuth angle and elevation angle). The probe **102** receives backscattered echoes from the scanned object within the VOI and generates electrical receive signals that are combined in the beamformer **104** to form each beam/line within each scan plan. Multiple scan plans (differentiated by their elevation angle) combine to form a volume. The beamformer **104** outputs the beam information to an RF processor **106** that converts the beam information into ultrasound imaging data, e.g. B-mode information. The B-mode information generated from the RF processor **106** is stored in an image buffer **108**. The image buffer **108** is a ring buffer that stores each acquired volume at a rate depending upon the size of each volume. Each volume in the image buffer **108** is given a time stamp.

While B-mode information is stored in the image buffer **108**, previously stored B-mode information is retrieved and made available, a volume at a time, to a display processor **110** and a navigator **114**. The display processor **110** and the navigator **114** receive the same set of inputs, e.g. a set of scan parameters **116**, a set of display parameters **118**, and volume data from the image buffer **108** for processing. The image buffer **108** is a ring buffer in that the buffer **108** wraps around on itself. When the last storage location in the buffer **108** is reached, the beginning location in the buffer **108** is next addressed. Volumetric information is retrieved from the buffer **108** by the display processor **110** and the navigator **114** at a rate that prevents overwriting of information in the image buffer **108**.

The display processor **110** processes the volume information retrieved from the image buffer **108** to form a rendering such as, for example, a volume rendering or a slice (cut) plane rendering, that is displayed in a rendering view **122** of a computer display **112**. The rendering view **122** displays an image of the scanned object as would be seen from a desired orientation or view plane (direction of view) as determined by the display parameters **118**. The orientation or view plane from which the rendering view **122** is formed and displayed may be displayed to the user by a navigation view **124** in the computer display **112**. The navigator **114** generates and controls the navigation view **124** that is displayed on the computer display **112**. The navigation view **124** may show a high level view of the scanned object and the orientation or direction of view of the scanned object by positioning the scanned object with respect to a set of planes or slices, such as a set of orthogonal planes or slices that form a Cartesian reference system.

The user through a user interface **120** may change the scan parameters **116** and/or the display parameters **118**. The navigator **114** controls the orientation shown in the navigation view **124** based on the values of the display parameters **118**. When changing the navigation view **124** by changing the display parameters **118**, the display of the rendering view **122** is correspondingly changed to show the scanned object as formed and seen from the new view direction and/or orientation. Thus, the user may navigate and change the direction of view and/or orientation of the scanned object as is displayed in the navigation view **124**, and in so doing, change the view of the scanned object that is displayed in the rendering view **122**. The display of the scanned object shown in rendering view **122** is aligned to agree and correspond with the new view orientation that is shown in the navigation view **124**. Direction of view (the navigation view **124**) may be changed while new volume data is being acquired and stored in the

image buffer **108**. The user is able to navigate in real time the view or perspective being displayed of the scanned object while the object is being scanned. The lag time to see changes made in the display parameters **118** (changes in the viewing direction and/or orientation) update the rendering view **122** and the navigation view **124** depends on the time required to generate new renderings. Unlike changing the scan parameters **116**, changing the display parameters **118** does not affect the configuration of the beamformer **104**.

FIG. **2** is a flowchart **200** of an exemplary method supporting real time navigation of 2D and 3D rendering views **122** produced and displayed in the computer display **112** from acquired volumetric data. At **202**, a plurality of scan planes is defined based on values assigned to the scan parameters **116**. The scan parameters **116** include such variables as, for example, scan depth, width (azimuth angle), elevation angle, number of beams (beam density) in elevation and in azimuth, number of samples/beam, and mode. The user may define the values for the scan parameters **116** through the user interface **120**, such as through the use of a keyboard, trackball, and/or mouse, and may update the scan parameters **116** in real time during the ultrasound scanning. New scan parameter values are provided to the display processor **110** and the navigator **114**. The lag time for seeing the effect of having changed the values of the scan parameters **116** is from 1 to 2 seconds, time being needed to configure the beamformer **104** with the new scan parameters **116**.

At **204**, ultrasound information is acquired by utilizing a probe with a 2D array of transducers to collect scan information along a plurality of scan plans through a scanned object. The scanning is performed in real time in that no manual repositioning of the probe is needed in order to acquire all the scan planes that form a data volume. Each scan plan of the volume is differentiated from another by the elevation angle of the beam lines producing the scan plan. The width of the scan plan is determined by an azimuth angle. A volume of scan data may be produced by varying the elevation angle of the scan to generate a plurality of scan planes through the scanned object at different elevations.

At **206**, multiple data volumes are successively stored as acquired over time in the image buffer **108**. As related for FIG. **1**, the image buffer **108** is a ring buffer with data volumes being extracted and used by the display processor **110** and the navigator **114** while data volumes are being stored in the image buffer **108**.

At **208**, the 2D or 3D rendering view **122** is presented in the computer display **112** as formed by the display processor **110** based on the scanned volume, the scan parameters **116**, and the display parameters **118**. At **210** the user may adjust the scan parameters **116** to obtain a wider or narrower scan of the scanned object, or to obtain a scan with a greater density of beams/lines in a scan plane or the elevation (number of scan planes/per volume).

At **210**, the user adjusts the scan parameters **116** and, as the user makes adjustments, the effects of the adjustments as displayed in the rendering view **122** are presented **208** in the computer display **112**. The effects of the adjustments to the scan parameters **116** may be viewed in about 1 or 2 seconds from having entered the adjustments. The time of 1 or 2 seconds may be needed in order to reconfigure the beamformer **104** with the new scan parameters **116**, acquire and store new volume data in the image buffer **108**, retrieve and process the new volume data from the image buffer **108** by the display processor **110**, and present the updated rendering view **122** in the computer display **112**. When the user is satisfied with the size and quality of display of the scanned

object in the rendering view 122, the user may want to view the scanned object from a different direction and/or orientation.

At 212, data volumes are successively accessed from the image buffer 108, and with the current valuing of the scan parameters 116 and the display parameters 118, the rendering view 122 and the navigation view 124 are displayed in the computer display 112. The navigator 114 uses the display parameters 118 to define the orientation or direction of view (view plane) and to display the view plane as part of the navigation view 124 in the computer display 112. The user may adjust the display parameters 118 through the user interface 120 similarly to how the scan parameters 116 are adjusted. Examples of display parameters may include view direction, rotation translation, tilt, zoom factor, and number of images viewed. Both the display processor 110 and the navigator 114 read the display parameters 118. The navigator 114 produces a view plane or angle of view with a view of the scanned object in the navigation view 124. The rendering view 122 may be an enlarged view of the scanned object in comparison to the scanned object shown in the navigation view 124. The rendering view 122 and the navigation view 124 may each be displayed in a quadrant of the computer display 112.

Real time navigation is obtained by successively accessing data volumes stored in the image buffer 108 and scan parameter values stored in 116 and presenting at least one of 2D and 3D images based on display parameters 118, wherein each image that is displayed is defined based on separate display parameter values stored in display parameters 118.

FIG. 3 is an illustration of a navigation view 300 with a view plane 310 looking into a volume 308 from the left that may be produced by the system 100 of FIG. 1. The navigation view 300 shows an image of a heart valve 306 generated as seen from viewing into a volume 308 from the left. The view plane 310, is shown as a table top with four arrows for legs, and indicates to the user that the image of the heart valve 306 is produced by looking perpendicularly through the view plane 310 (perpendicularly through the table top) into the volume 308. The image of the heart valve 306 may be formed by use of various techniques, such as slice (cut plane) imaging, surface rendering, and the like. The user may change the orientation of the view plane 310 with respect to the volume 308 by rotating and/or translating the view plane 310. For example, the view plane 310 may be reoriented about the volume 308 to obtain a view plane 312 and view of the heart valve 306 as shown in FIG. 4.

FIG. 4 is an illustration of a navigation view 302 with a view plane 312 looking into the volume 308 from the top. A translation and/or rotation of the view plane 310 of FIG. 3 obtains the view plane 312 of FIG. 4. Shown in FIG. 4 is an object 314 between the view plane 312 and the heart valve 306. The view from the view plane 312 includes the object 314 which may obstruct the view of a portion of the heart valve 306. The generated image of the heart valve 306 has the object 314 obstructing the view of the heart valve 306. The obstructed view may be resolved by translating the view plane 312 downward as shown in FIG. 5.

FIG. 5 is an illustration of the navigation view 302 of FIG. 4 with the view plane 312 translated downward. The view plane 312 of navigation view 302 has been lowered down (translated downward) to be closer to the heart valve 306 in FIG. 5. The new view plane 316 is positioned below the obstructing object 314 to result in an image of the heart valve 306 that is no longer obstructed by the object 314. By translating the view plane 312 downward to obtain the view plane 316, the user has eliminated use of the volumetric scan data

that contains the obstructing object 314 in forming the view or image of the heart valve 306. The user may change the values of display parameters 118 through the use of the user interface 120 of FIG. 1 to reorient the view plane 312. Reorientation may result in a view of the heart valve 306 from a different angle and/or without obstructing objects within the view.

FIG. 6 is an illustration 400 showing a volume 401 obtained with a selected width 410 (azimuth angle θ) and elevation 408 (elevation angle ϕ), the width 410 and elevation 408 selected by the user through the user interface 120 of the system 100 of FIG. 1. The volume 401 is determined from the width 410 (the azimuth angle θ) of a scan slice 416 and the elevation 408 (the elevation angle ϕ) for the scan slice 416. FIG. 6 shows a view plane 404 through which an image of a heart valve 406 is defined and displayed. When observing the display of the heart valve 406, the user or sonographer may desire to display more of the heart valve 406 or more area surrounding the heart valve 406, but with the view remaining unchanged. A larger view of the heart valve 406 may be obtained as shown in FIG. 7.

FIG. 7 is an illustration 402 showing a changed volume 403 obtained by changing the width 410 and elevation 408 for the volume 401 of FIG. 6. In FIG. 7, a shortened width 414 and increased elevation 412 through which scan slices 416 are obtained is specified by the user to obtain the changed volume 403. Without changing the view plane 404 of FIG. 6, a larger view of the heart valve 406 is obtained by increasing the volume 403 of the scan.

FIG. 8 is an illustration of a navigation view 500 of a heart 506 as seen from a view plane 502 selected by the user of the system 100 of FIG. 1. The heart 506 is shown with an aortic structure 510 facing the view plane 502. The image of the heart 506 in the navigation view 500 may be generated as a surface rendering. In an alternative embodiment, the image shown of the heart 506 may not be a generic surface model, but instead may be a calibrated model of a heart.

The system 100 may generate a model of a heart constructed from a plurality of polygons and position the heart model in the location of the heart 506. To be useful, the heart model is scaled based on data from the patient. Data may be manually measured or automatically determined to scale the size of the heart model based on actual size of the patient's heart. For example, the actual size of the patient's heart may be determined based on three landmarks in data (e.g. two points on the mitral ring and the aortic output) and apex. The generated heart model is positioned and oriented within the volume 508 according to the landmarks in the volume data. Thus, the navigation view 500 may show a heart 506 that is a calibrated scale model of the patient's heart positioned and oriented correctly within the volume 508. Corresponding to the view plane 502 of the navigation view 500, a rendering view (not shown in the figure) may show 2D or 3D images derived from the ultrasound scan data. The view plane 502 may intersect the heart model.

Exemplary embodiments of diagnostic ultrasound systems and methods are described above in detail. The systems and methods are not limited to the specific embodiments described herein, but rather, components of each system may be utilized independently and separately from other components described herein. Each system component can also be used in combination with other system components.

While the invention has been described in terms of various specific embodiments, those skilled in the art will recognize that the invention can be practiced with modification within the spirit and scope of the claims.

What is claimed is:

1. An ultrasound system, comprising:
 - a probe having a 2D array of transducers acquiring ultrasound information along a plurality of scan lines through an object in real time, said scan lines being arranged to define data volumes within the object;
 - a beamformer having scan parameters that define said scan lines, said scan parameters having parameter values;
 - an image buffer storing multiple data volumes successively acquired over time;
 - a display processor accessing said data volumes stored in said image buffer successively to control generation of at least one of 2D and 3D renderings based on display parameters, wherein said display processor obtains from said image buffer a first data volume defined based on first scan parameter values, while said probe acquires ultrasound information for a second data volume that is entered into said image buffer, said second data volume being defined based on second scan parameter values;
 - a navigation view presenting in real time the said renderings generated by said display processor with their corresponding 3D orientation;
 - a navigator controlling display of said navigation view in real time such that, as the user adjusts a display parameter value to change a view plane, images presented in said navigation view are updated to reflect said view plane; and
 - a user interface configure to adjust said scan and display parameter values.
2. The ultrasound system of claim 1, wherein said user interface permits a user to adjust said scan parameters from said first parameter values to said second parameter values while viewing said at least one of 2D and 3D renderings based on volume data being acquired in real time.
3. The ultrasound system of claim 1, wherein said image buffer simultaneously stores at least one data volume defined by said first parameter values and at least one data volume defined by said second parameter values.
4. The ultrasound system of claim 1, wherein said image buffer is substantially simultaneously accessed by said display processor to read said data volumes from said image buffer and by said beamformer to write said data volumes to said image buffer.
5. The ultrasound system of claim 1, wherein said display presents at least one of volume rendered images, surface rendered images and cut plane images.
6. The ultrasound system of claim 1, further comprising a navigator controlling display of a navigation view indicating at least one of view planes, object models and landmarks relative to the said data volume, said navigation view being defined based on said data volume data, scan and display parameter values.
7. The ultrasound system of claim 1, wherein said probe continues to acquire new data volumes as display parameters values for said display parameters are changed.
8. The ultrasound system of claim 1, wherein a lag time after changing display parameter values before displaying updated images based on new display parameter values is no more than 1/4 second.
9. The ultrasound system of claim 1, wherein a lag time after changing scan parameter values before displaying updated images based on new scan parameter values is no more than 2 seconds.

10. The ultrasound system of claim 1, wherein said image buffer stores a time stamp with each of said data volumes, said time stamp identifying a time at which said data volume was acquired.

11. The ultrasound system of claim 1, wherein said navigation view presenting in real time the said renderings generated by said display processor with their corresponding 3D orientation comprises a visual indicator of a view plane superimposed on a 3D rendering, the visual indicator showing a view perpendicularly through the view plane as displayed in a rendering view and arrows indicating the direction of the view.

12. The ultrasound system of claim 1, wherein said data volumes stored in said image buffer comprise images of a heart and further comprising a navigation view controlled by the navigator and displaying a surface rendering of the heart that is a calibrated scale model of the heart of a patient that is positioned and oriented correctly within the displayed volume,

13. An ultrasound method, comprising:

acquiring ultrasound information, utilizing a 2D array of transducers, along a plurality of scan lines through an object in real time, said scan lines being arranged to define data volumes within the object;

defining said scan lines based on scan parameters having scan parameter values;

storing multiple data volumes successively acquired over time in an image buffer;

adjusting said scan parameter values for said scan parameters;

presenting at least one of 2D and 3D images based on said data volumes; and

accessing said data volumes stored in said image buffer successively to control presentation of said at least one of 2D and 3D images based on display parameters, wherein a first data volume defined based on first scan parameter values is obtained from said image buffer, while acquiring ultrasound information for a second data volume that is entered into said image buffer, said second data volume being defined based on second scan parameter values.

14. The ultrasound method of claim 13, further comprising permitting a user to adjust said scan parameters from said first parameter values to said second parameter values while viewing 2D images being acquired in real time.

15. The ultrasound method of claim 13, further comprising simultaneously storing at least one data volume defined by said first parameter values and at least one data volume defined by said second parameter values.

16. The ultrasound method of claim 13, further comprising substantially simultaneously accessing said image buffer to read said data volumes from said image buffer and writing said data volumes to said image buffer.

17. The ultrasound method of claim 13, further comprising presenting at least one of volume rendered images, surface rendered images and cut plane images.

18. The ultrasound method of claim 13, further comprising controlling display of a navigation view indicating at least one of view planes, object models and landmarks relative to

9

said data volume, said navigation view being defined based on said data volume, scan and display parameter values.

19. The ultrasound method of claim 13, further comprising continuing to acquire new data volumes as display parameters values for said display parameters are changed.

20. The ultrasound method of claim 13, wherein a lag time after changing display parameter values before displaying updated images based on new display parameter values is no more than $\frac{1}{4}$ second.

10

21. The ultrasound method of claim 13, wherein a lag time after changing scan parameter values before displaying updated images based on new scan parameter values is no more than 2 seconds.

22. The ultrasound method of claim 13, further comprising storing a time stamp with each of said data volumes, said time stamp identifying a time at which said data volume was acquired.

* * * * *

UNITED STATES PATENT AND TRADEMARK OFFICE
CERTIFICATE OF CORRECTION

PATENT NO. : 7,604,595 B2
APPLICATION NO. : 10/926547
DATED : October 20, 2009
INVENTOR(S) : Steen et al.

Page 1 of 1

It is certified that error appears in the above-identified patent and that said Letters Patent is hereby corrected as shown below:

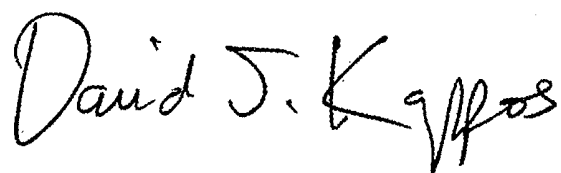
On the Title Page:

The first or sole Notice should read --

Subject to any disclaimer, the term of this patent is extended or adjusted under 35 U.S.C. 154(b) by 1455 days.

Signed and Sealed this

Fifth Day of October, 2010

A handwritten signature in black ink that reads "David J. Kappos". The signature is written in a cursive, flowing style with a large initial 'D' and a stylized 'K'.

David J. Kappos
Director of the United States Patent and Trademark Office

专利名称(译)	用于执行超声体积数据的实时导航的方法和系统		
公开(公告)号	US7604595	公开(公告)日	2009-10-20
申请号	US10/926547	申请日	2004-08-26
[标]申请(专利权)人(译)	STEEN ERIK TORKILDSEN RUNE MARTENS DITLEF		
申请(专利权)人(译)	STEEN ERIK TORKILDSEN RUNE MARTENS DITLEF		
当前申请(专利权)人(译)	通用电气公司		
[标]发明人	STEEN ERIK NORMANN TORKILDSEN RUNE MARTENS DITLEF		
发明人	STEEN, ERIK NORMANN TORKILDSEN, RUNE MARTENS, DITLEF		
IPC分类号	A61B8/00 A61B8/14		
CPC分类号	A61B8/14 A61B8/145 A61B8/4483 A61B8/463 G01S15/8993 A61B8/467 A61B8/483 G01S7/52085 A61B8/466 A61B8/0883 G01S7/52074 A61B8/461		
优先权	60/581675 2004-06-22 US		
其他公开文献	US20050283079A1		
外部链接	Espacenet USPTO		

摘要(译)

提供了一种超声系统，其包括显示处理器，该显示处理器连续地访问存储在图像缓冲器中的数据量，以基于显示参数控制2D和3D渲染中的至少一个的生成。显示处理器从图像缓冲器获得基于第一扫描参数值定义的第一数据量，而探针获取进入图像缓冲器的第二数据量的超声信息。基于第二扫描参数值定义第二数据量。导航视图实时呈现由显示处理器生成的渲染及其对应的31)方向。提供导航器，其实时控制导航视图的显示，使得当用户调整显示参数值以改变视平时，导航视图中呈现的图像被更新以反映视图平面。

