



US008187296B2

(12) **United States Patent**
Kieturakis et al.

(10) **Patent No.:** **US 8,187,296 B2**
(45) **Date of Patent:** **May 29, 2012**

(54) **APPARATUS AND METHOD FOR
DEVELOPING AN ANATOMIC SPACE FOR
LAPAROSCOPIC HERNIA REPAIR AND
PATCH FOR USE THEREWITH**

(75) Inventors: **Maciej J. Kieturakis**, San Carlos, CA
(US); **Kenneth H. Mollenauer**, Santa
Clara, CA (US); **Michelle Y. Monfort**,
Los Gatos, CA (US); **Helmut L. Kayan**,
Redwood City, CA (US)

(73) Assignee: **Tyco Healthcare Group LP**, Mansfield,
MA (US)

(*) Notice: Subject to any disclaimer, the term of this
patent is extended or adjusted under 35
U.S.C. 154(b) by 836 days.

(21) Appl. No.: **11/975,751**

(22) Filed: **Oct. 22, 2007**

(65) **Prior Publication Data**

US 2008/0058853 A1 Mar. 6, 2008

Related U.S. Application Data

(60) Continuation of application No. 11/208,672, filed on
Aug. 22, 2005, now Pat. No. 7,297,153, which is a
continuation of application No. 10/117,765, filed on
Apr. 5, 2002, now Pat. No. 6,953,467, which is a
continuation of application No. 08/861,913, filed on
May 22, 1997, now Pat. No. 6,368,337, which is a
continuation of application No. 08/483,293, filed on
Jun. 7, 1995, now abandoned, which is a division of
application No. 08/124,283, filed on Sep. 20, 1993,
now Pat. No. 5,836,961, which is a
continuation-in-part of application No. 07/893,988,
filed on Jun. 2, 1992, now Pat. No. 6,312,442.

(51) **Int. Cl.**
A61M 29/00

(2006.01)

(52) **U.S. Cl.** **606/190; 606/192**

(58) **Field of Classification Search** 606/190,
606/108, 192; 600/207; 604/264, 270
See application file for complete search history.

(56) **References Cited**

U.S. PATENT DOCUMENTS

1,213,005 A	1/1917	Pillsbury
2,854,983 A	10/1958	Baskin
2,936,760 A	5/1960	Gants
3,039,468 A	6/1962	Price
3,253,594 A	5/1966	Matthews et al.
3,417,745 A	12/1968	Sheldon

(Continued)

FOREIGN PATENT DOCUMENTS

DE 2157727 8/1973

(Continued)

OTHER PUBLICATIONS

Berci, G. "Laparoscopy in General Surgery"; Endoscopy (Appleton-
Century-Crofts, NeW York, 1976); pp. 382-400.

(Continued)

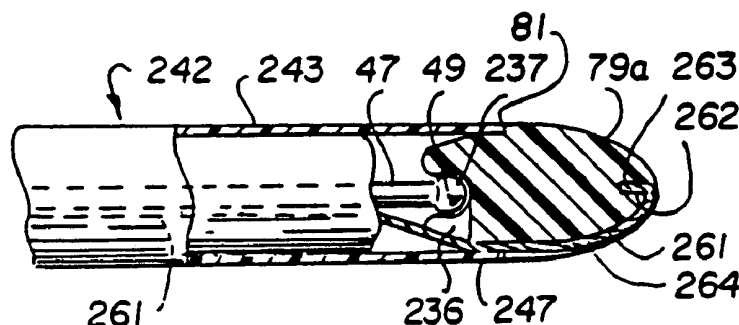
Primary Examiner — Gary Jackson

Assistant Examiner — Jonathan Hollm

(57) **ABSTRACT**

An apparatus for creating an anatomic space in tissue in a
body comprises an introducer and a sheath. The tubular
sheath may surround the introducer, and may have a weak-
ened region along its longitudinal axis. A handle may be
provided on the sheath. The handle may be adapted to be
pulled proximally to separate the weakened region and allow
the sheath to be removed from the introducer. The sheath may
be secured to the introducer via detents or latches on the
handle.

10 Claims, 18 Drawing Sheets



U.S. PATENT DOCUMENTS

3,459,175	A	8/1969	Miller	5,158,545	A	10/1992	Trudell et al.
3,545,443	A	12/1970	Ansari et al.	5,159,925	A	11/1992	Neuwirth et al.
3,774,596	A	11/1973	Cook	5,163,949	A	11/1992	Bonutti
3,800,788	A	4/1974	White	5,176,128	A	1/1993	Andrese
3,863,639	A	2/1975	Kleveland	5,176,649	A	1/1993	Wakabayashi
3,882,852	A	5/1975	Sinnreich	5,176,692	A	1/1993	Wilk et al.
3,915,171	A	10/1975	Shermeta	5,183,463	A	2/1993	Debbas
RE29,207	E	5/1977	Boldac et al.	5,183,465	A	2/1993	Xanthakos et al.
4,077,412	A	3/1978	Moossun	5,188,596	A	2/1993	Condon et al.
4,083,369	A	4/1978	Sinnreich	5,188,630	A *	2/1993	Christoudias 606/1
4,177,814	A	12/1979	Knepshield et al.	5,190,541	A	3/1993	Abele et al.
4,198,981	A	4/1980	Sinnreich	5,195,506	A	3/1993	Hulfish
4,217,889	A	8/1980	Radovan et al.	5,195,507	A	3/1993	Bilweis
4,243,050	A	1/1981	Littleford	5,197,971	A	3/1993	Bonutti
4,276,874	A	7/1981	Wolvek et al.	5,201,742	A	4/1993	Hasson
4,312,353	A	1/1982	Shahbadian	5,201,752	A	4/1993	Brown et al.
4,345,606	A	8/1982	Littleford	5,201,754	A	4/1993	Crittenden et al.
4,411,654	A	10/1983	Boarini	5,209,725	A	5/1993	Roth
4,490,137	A	12/1984	Moukheibir	5,215,526	A	6/1993	Deniega et al.
4,496,345	A	1/1985	Hasson	5,220,928	A	6/1993	Oddsden et al.
4,501,266	A	2/1985	McDaniel	5,222,970	A	6/1993	Reeves
4,555,242	A	11/1985	Saudagar	5,226,429	A	7/1993	Kuzmak
4,574,806	A	3/1986	McCarthy	5,226,890	A	7/1993	Ianniruberto et al.
4,581,025	A	4/1986	Timmermans	5,232,446	A	8/1993	Arney
4,589,868	A	5/1986	Dretler	5,258,026	A	11/1993	Johnson et al.
4,593,682	A	6/1986	Hekele	5,261,888	A	11/1993	Semm
4,596,554	A	6/1986	Dastgeer	5,267,965	A	12/1993	Deniega
4,596,559	A	6/1986	Fleischhacker	5,269,753	A	12/1993	Wilk
4,610,662	A	9/1986	Weikl et al.	5,284,474	A	2/1994	Adair
4,644,936	A	2/1987	Schiff	5,290,249	A	3/1994	Foster et al.
4,651,717	A	3/1987	Jakubczak	5,295,994	A	3/1994	Bonutti
4,654,030	A	3/1987	Moll	5,300,106	A *	4/1994	Dahl et al. 607/119
4,685,447	A	8/1987	Iversen et al.	5,308,327	A	5/1994	Heaven et al.
4,706,670	A	11/1987	Andersen et al.	5,309,896	A	5/1994	Moll et al.
4,738,666	A	4/1988	Fuqua	5,314,443	A	5/1994	Rudnick
4,754,030	A	6/1988	Kaplan et al.	5,318,012	A	6/1994	Wilk
4,769,038	A	9/1988	Bendavid et al.	5,330,497	A	7/1994	Freitas et al.
4,772,266	A	9/1988	Groshong	5,331,975	A	7/1994	Bonutti
4,779,611	A	10/1988	Grooters et al.	5,338,305	A	8/1994	Pyley et al.
4,784,133	A	11/1988	Mackin	5,342,307	A	8/1994	Euteneuer et al.
4,793,348	A *	12/1988	Palmaz 606/194	5,346,504	A	9/1994	Ortiz et al.
4,798,205	A	1/1989	Bonomo et al.	5,359,995	A	11/1994	Sewell, Jr.
4,800,901	A	1/1989	Rosenberg	5,361,752	A	11/1994	Moll et al.
4,802,479	A	2/1989	Haber et al.	5,370,134	A	12/1994	Chin et al.
4,813,429	A	3/1989	Eshel et al.	5,383,889	A	1/1995	Warner et al.
4,840,613	A	6/1989	Balbierz	5,391,178	A	2/1995	Yapor
4,854,316	A	8/1989	Davis	5,397,311	A	3/1995	Walker et al.
4,861,334	A	8/1989	Nawaz	5,402,772	A	4/1995	Moll et al.
4,865,593	A	9/1989	Ogawa et al.	5,407,433	A	4/1995	Loomas
4,869,717	A	9/1989	Adair	5,425,357	A	6/1995	Moll et al.
4,875,468	A	10/1989	Krauter et al.	5,431,173	A	7/1995	Chin et al.
4,888,000	A	12/1989	McQuilkin et al.	5,450,843	A	9/1995	Moll et al.
4,899,729	A	2/1990	Gill et al.	5,454,365	A	10/1995	Bonutti
4,917,668	A	4/1990	Haindl	5,468,248	A	11/1995	Chin et al.
4,927,412	A	5/1990	Menasche	5,496,345	A	3/1996	Kieturakis et al.
4,931,042	A	6/1990	Holmes	5,514,091	A	5/1996	Yoon
4,932,956	A	6/1990	Reddy et al.	5,514,153	A	5/1996	Bonutti
4,955,895	A	9/1990	Sugiyama et al.	5,575,759	A	11/1996	Moll et al.
4,966,583	A	10/1990	Debbas	5,601,589	A	2/1997	Fogarty et al.
4,994,047	A	2/1991	Walker et al.	5,607,443	A	3/1997	Kieturakis et al.
5,002,557	A	3/1991	Hasson	5,667,479	A	9/1997	Kieturakis
5,009,643	A	4/1991	Reich et al.	5,730,748	A	3/1998	Fogarty et al.
5,030,206	A	7/1991	Lander	5,755,693	A	5/1998	Walker et al.
5,030,227	A	7/1991	Rosenbluth et al.	5,797,947	A	8/1998	Mollenauer
5,042,976	A	8/1991	Ishitsu et al.	5,814,060	A	9/1998	Fogarty et al.
5,074,871	A	12/1991	Groshong	5,836,961	A	11/1998	Kieturakis et al.
5,104,383	A	4/1992	Shichman	6,312,442	B1	11/2001	Kieturakis et al.
5,116,318	A	5/1992	Hillstead	6,368,337	B1	4/2002	Kieturakis et al.
5,116,357	A	5/1992	Eberbach				
5,122,122	A	6/1992	Allgood				
5,122,155	A	6/1992	Eberbach				
5,137,512	A	8/1992	Burns et al.				
5,141,494	A	8/1992	Danforth et al.				
5,141,515	A	8/1992	Eberbach				
5,147,302	A	9/1992	Euteneuer et al.				
5,147,316	A	9/1992	Castillenti				
5,147,374	A	9/1992	Fernandez				
5,152,278	A	10/1992	Clayman				

FOREIGN PATENT DOCUMENTS

EP	512456	9/1939
EP	0249456	12/1988
EP	0512465	11/1992
EP	0573 273	A2 12/1993
EP	0769270	A1 4/1997
GB	2024427	4/1983
SU	594960	2/1978
WO	WO 82/03775	11/1982
WO	WO 92/06632	4/1992

WO	WO 92/06638	4/1992
WO	WO 92/19312	11/1992
WO	WO 92/21295	12/1992
WO	WO 97/13464	4/1997
WO	WO 98/40117 A	9/1998
WO	WO 99/12602	3/1999

OTHER PUBLICATIONS

Cinelli, R. "The Inflatable Silastic Bag: A Practical Device That Simplifies Augmentation Mammoplasty"; Division of Plastic Surgery, Dept. of Surgery at the Maimonides Medical Center and Medical Arts Center of New York (Journal of American Society of Plastic & Reconstructive Surgeons, Inc., Oct. 1981) vol. 68; No. 4; pp. 614-615.

Dulucq, J. Treatment of Inguinal Hernias by Installation of a Subperitoneal Prosthetic Patch Using Pre-Peritoneoscopy (With a Video Film), (Translation of French document from Chirurgie, 1992) No. 118; pp. 83-85.

Gazayerli, M.M. "The Gazayerli Endoscopic Retractor Model 1"; (Surgeons Laparoscopy & Endoscopy; 1991) vol. 1; No. 2; pp. 98-100.

Gunning, J.E. "Chapter 2: History of Laparoscopy"; Laparoscopy; (Williams & Wilkins Company, Baltimore, Maryland, 1977) pp. 6-16.

Hayakawa, N. et al. "Laparoscopic Cholecystectomy Using Retraction of the Falciform Ligament"; (Surgical Laparoscopy & Endoscopy; 1991) vol. 1; No. 2; p. 126.

Hodgson, C. et al. "Some Effects of the Peritoneal Insufflation of Carbon Dioxide at Laparoscopy" (Anaesthesia, Jul. 1970) vol. 25; No. 3; pp. 382-390.

Hoffman, H. et al. "Nasal Reconstruction with the Rapidly Expanded Forehead Flap" (Laryngoscope 99, Oct. 1989) pp. 1096-1098.

Kaplan L. et al. "Retroperitoneoscopy in Dogs" (Gastrointestinal Endoscopy, 1979) vol. 25; No. 1; pp. 13-15.

Manders, MD., Ernest K. Expert Report executed Dec. 1, 1997.

Marshall, R. et al. "Circulatory Effects of Carbon Dioxide Insufflation of the Peritoneal Cavity for Laparoscopy" (British Journal of Anaesthesia, 1972) vol. 44; No. 7; pp. 680-684.

Meretyk, S. et al. "Retroperitoneoscopy: Foreign Body Retrieval" (Journal of Urology, Jun. 1992) Vol. 147; No. 6; pp. 1608-1611.

Rigg, MD. Bruce M. "Inflatable Device for Intraoperative Use During Augmentation Mammoplasty" (Reconstructive Surgery, May 1982) p. 898.

Sanchez de Badajoz Chamorro et al. "Endoscopic Cervical Anchorage, New Treatment for Stress Incontinence" (Archivos Espanoles de Urologia, 1988) vol. 41; Issue 2; pp. 2-9.

Sanchez de Badajoz et al. "Stress Incontinence: A New Endoscopic Approach" (Urology, Nov. 1990) vol. 36; No. 5; pp. 403-405.

Sasaki, G. "Intraoperative Sustained Limited Expansion (ISLE) as an Immediate Reconstructive Technique" (Clinics in Plastic Surgery, Jul. 1987) vol. 14; No. 3; pp. 563-573.

Sasaki, G. "Intraoperative Expansion as an Immediate Reconstructive Technique" (Facial Plastic Surgery, Jul. 1988) vol. 5; No. 4; pp. 362-378.

Shafik "Extraperitoneal Laparoscopic Lymphadenectomy in Prostatic Cancer: Preliminary Report of a New Approach" (Journal of Endourology, 1992) vol. 6; No. 2; pp. 113-116.

Voeller, M.D. Guy R., Expert Report executed Dec. 1, 1997.

Wickham, J. and Miller, R. Percutaneous Renal Surgery (Churchill Livingstone, New York, 1983) pp. 17-44.

Wittmoser, R. "Retroperitoneoscopy: A Preliminary Report" ; Endoscopy (Appleton-Century-Crofts, New York, 1976) pp. 760-761.

Zhila, V. "Surgical Interventions on the Kidneys and Ureters Using a Retroperitoneoscope"; Translation of Russian Document from Urology Department of the Kiev State Institute for Physician Advancement of the USSR Ministry of Public Health.

Zucker, K. et al. Surgical Laparoscopy (Quality Medical Publishing, Inc., St. Louis, Missouri, 1991) pp. 25-27; pp. 313-322.

European Search Report for corresponding EP 96945432; date of mailing is Jul. 27, 2009; (3 pages).

* cited by examiner

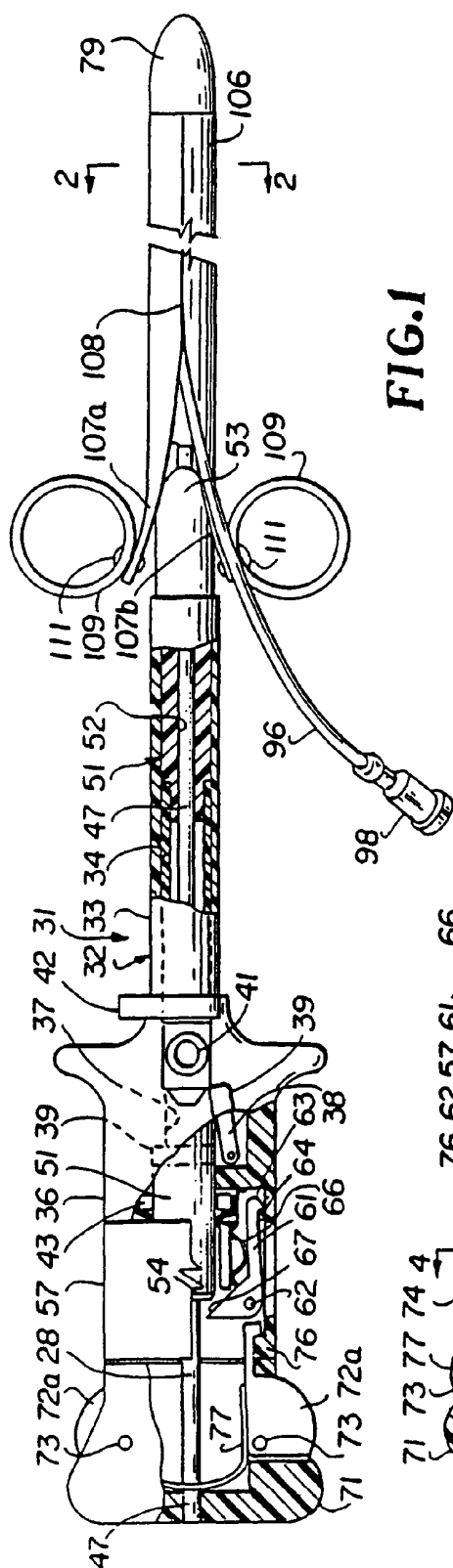


FIG. 1

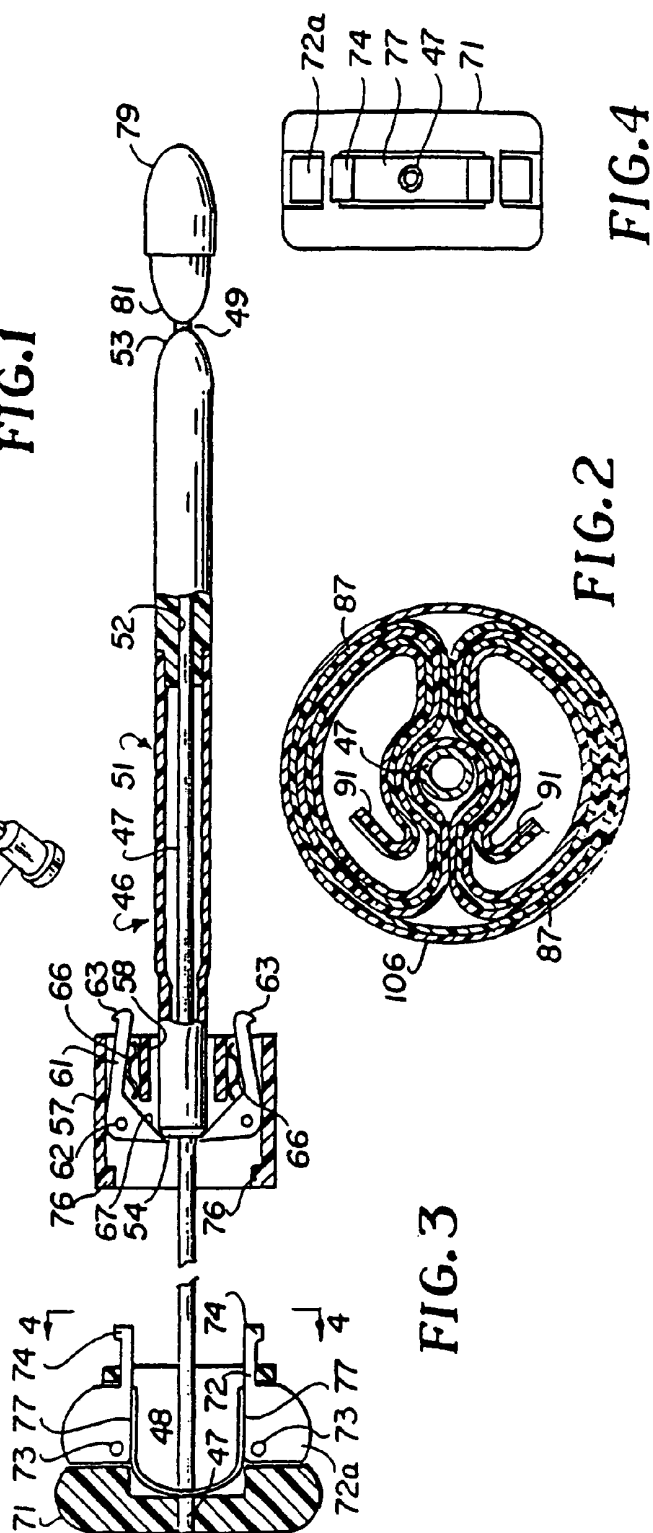


FIG. 2

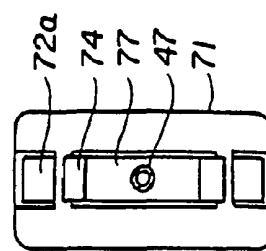


FIG. 3

FIG. 4

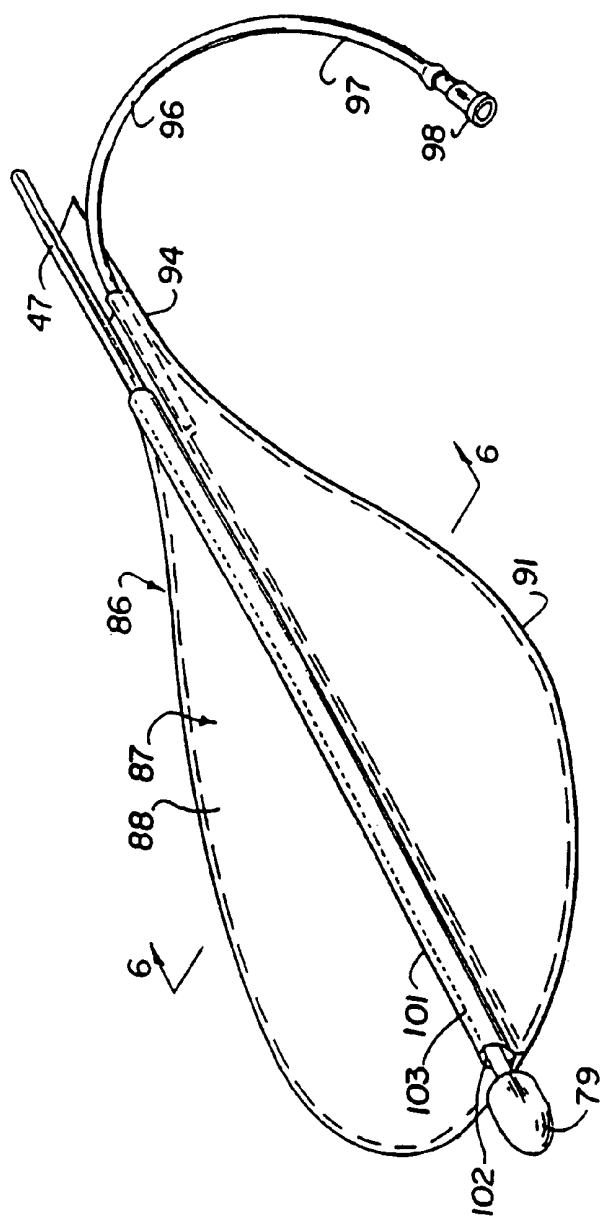


FIG. 5

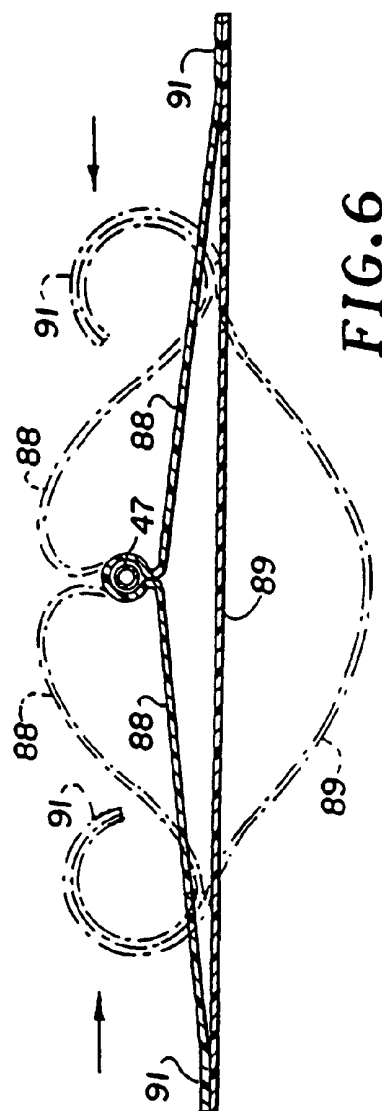
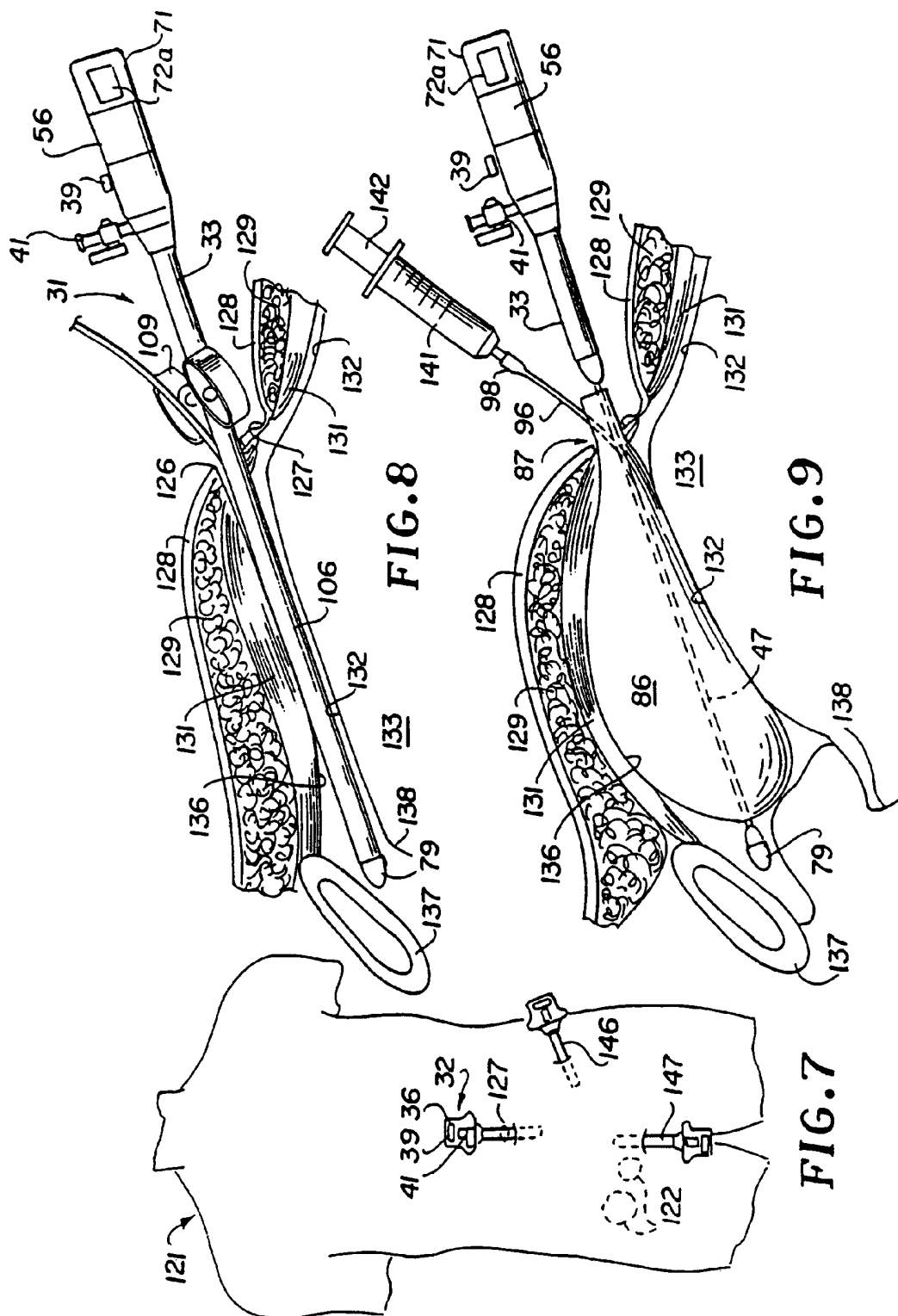


FIG. 6



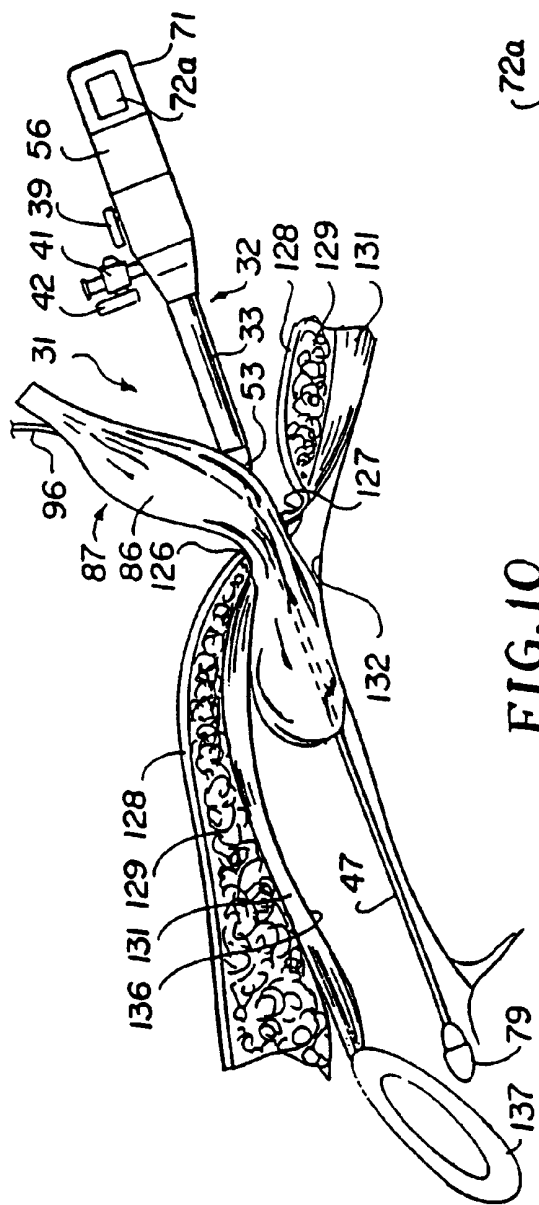


FIG. 10

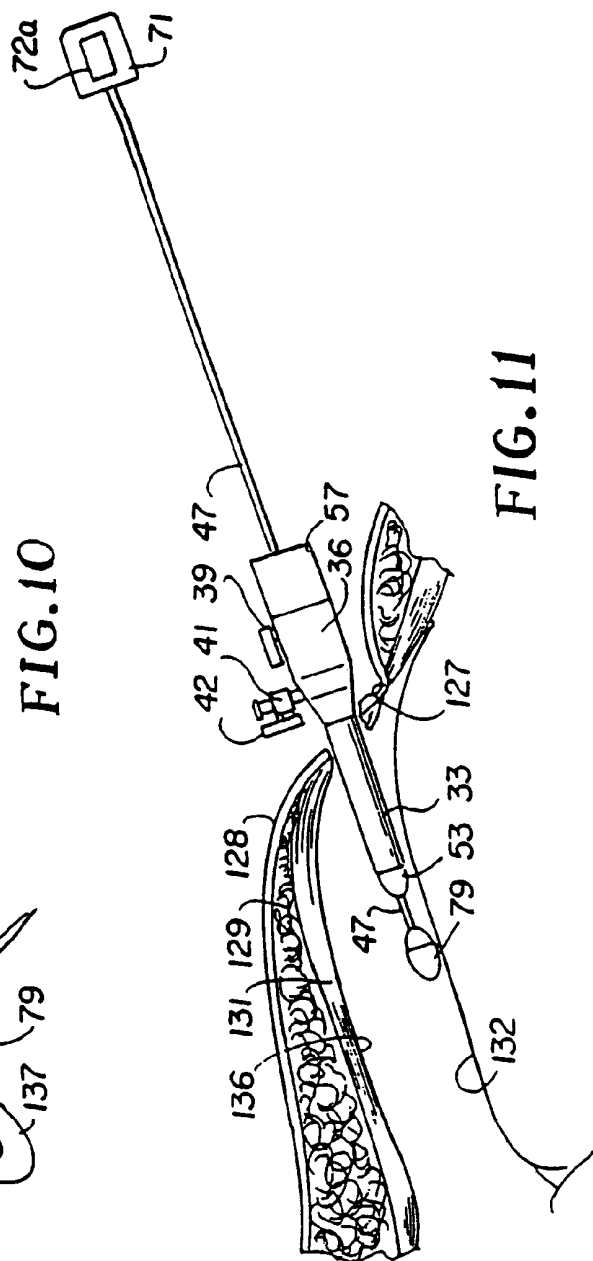


FIG. 11

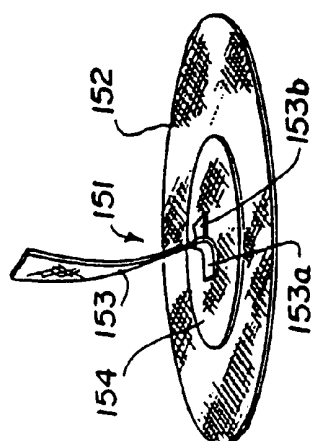


FIG. 12

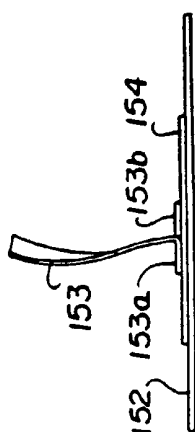


FIG. 13

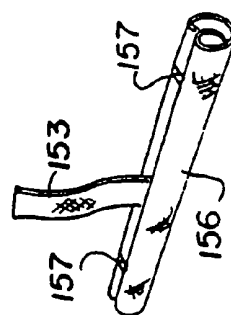


FIG. 14

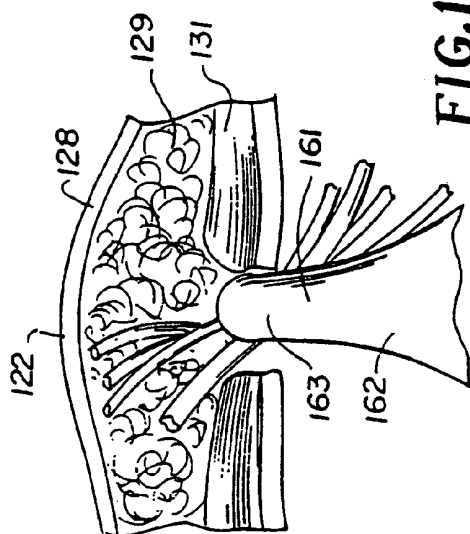


FIG. 15

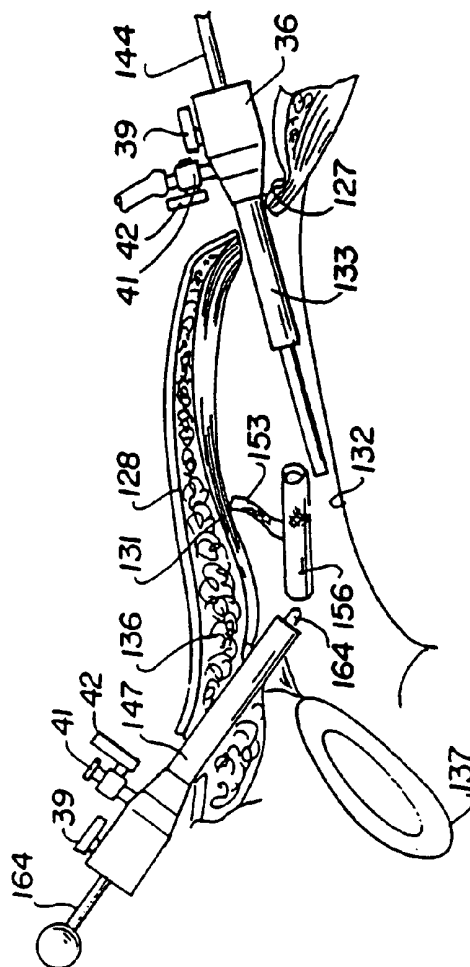


FIG. 16

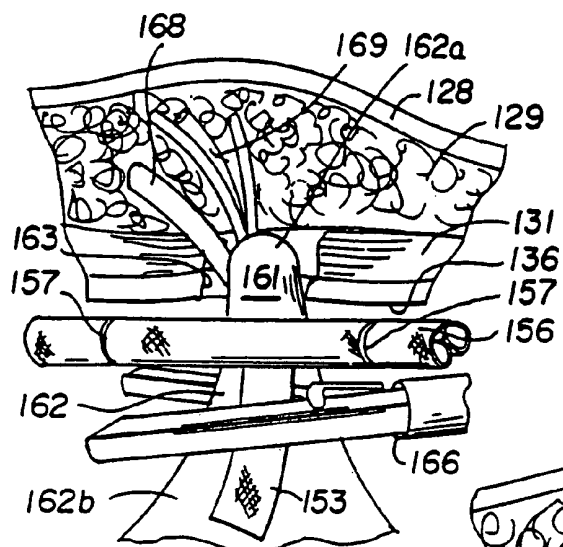


FIG. 17

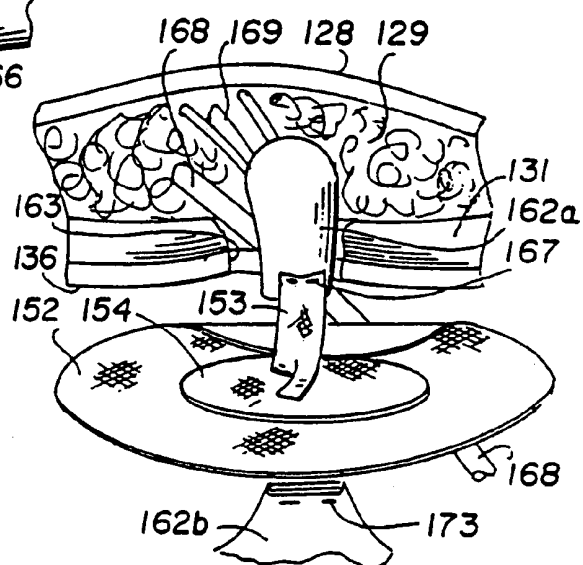


FIG. 18

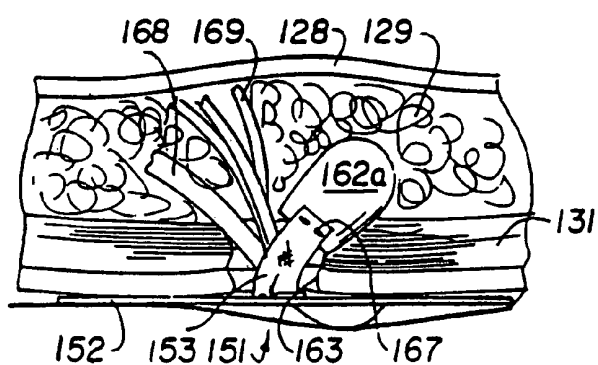


FIG. 19

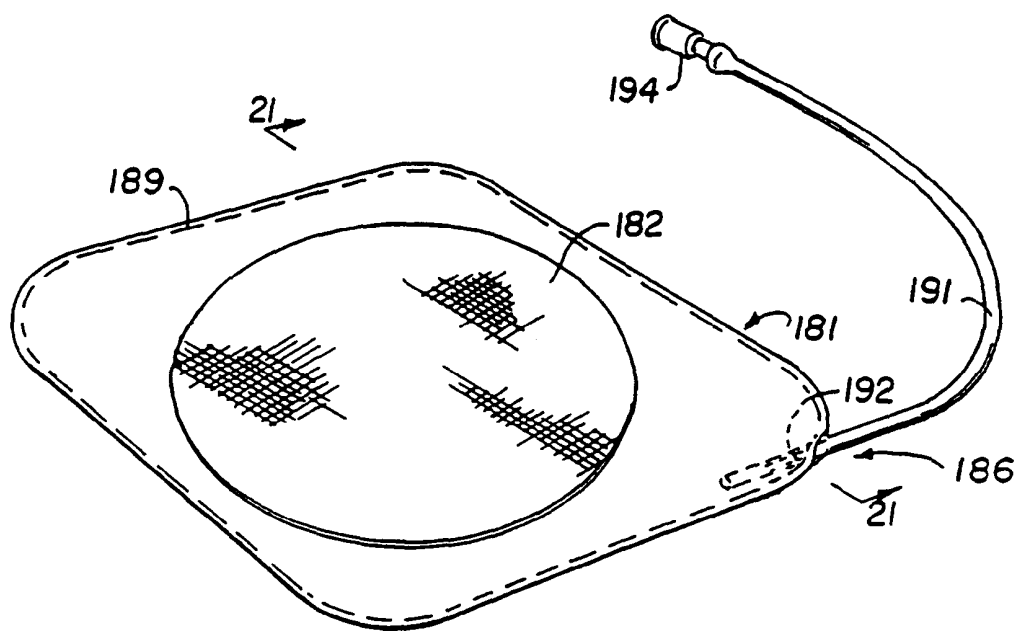


FIG. 20

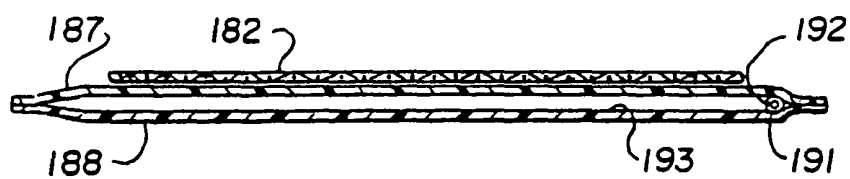


FIG. 21

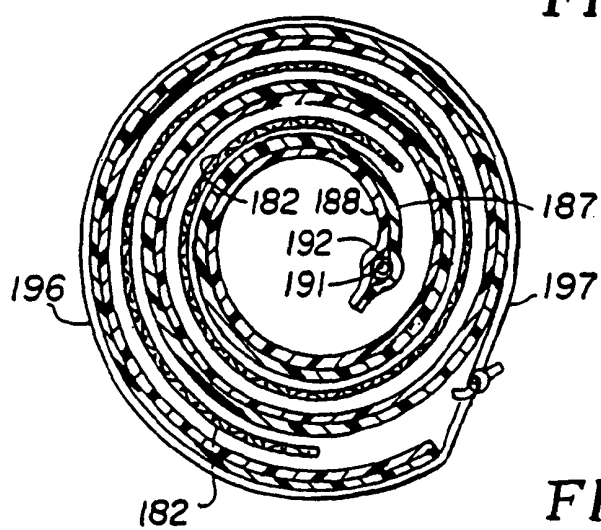
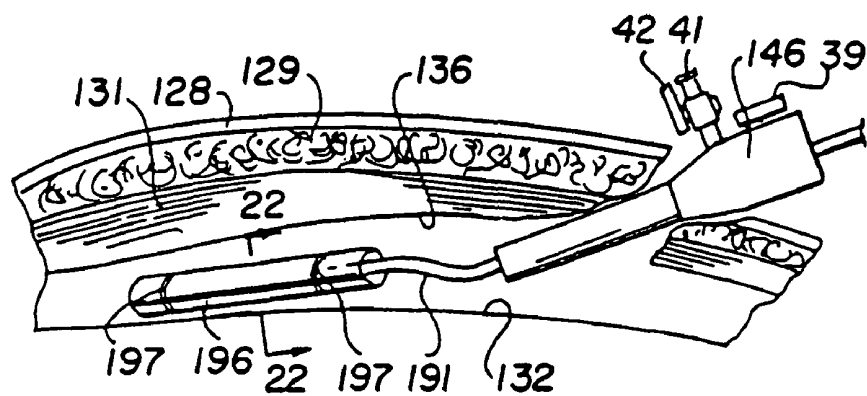
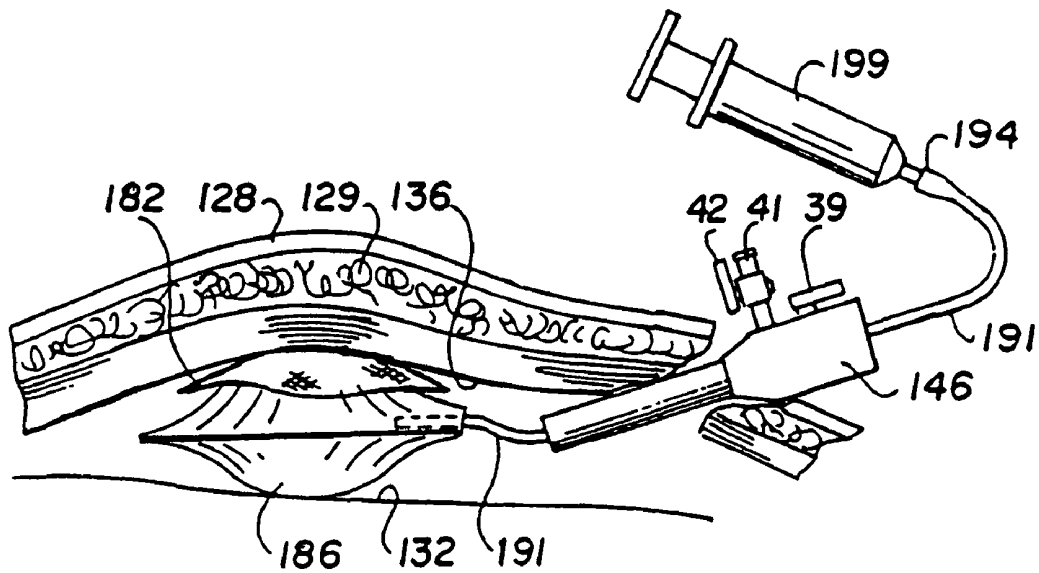


FIG. 22

**FIG. 23****FIG. 24**

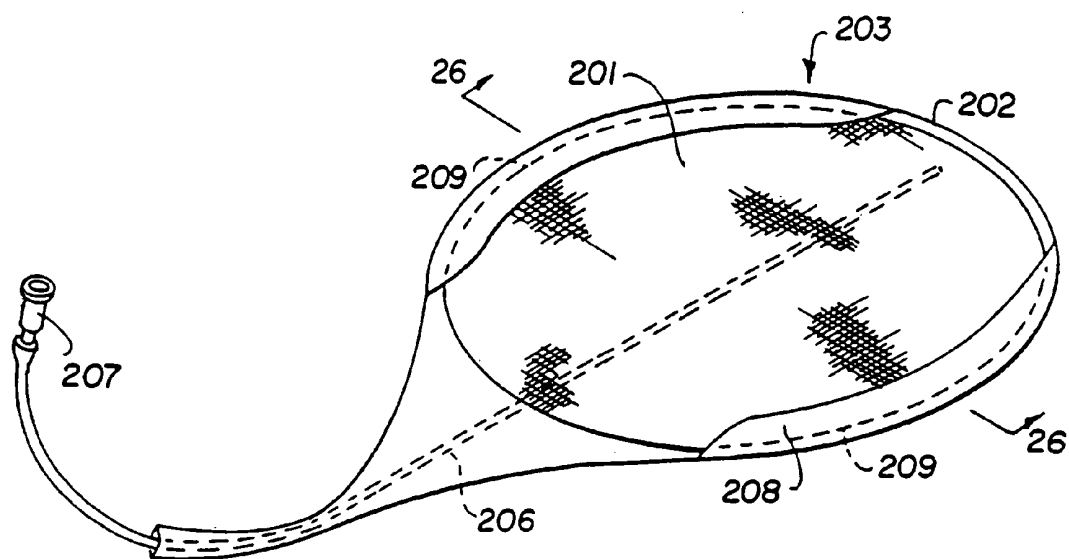


FIG. 25

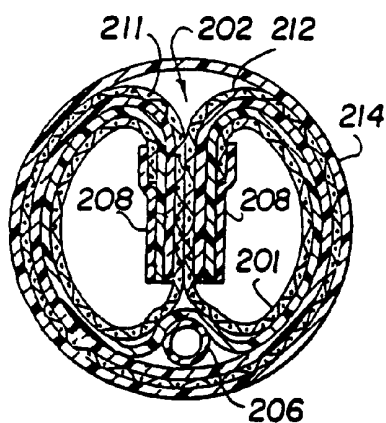


FIG. 26

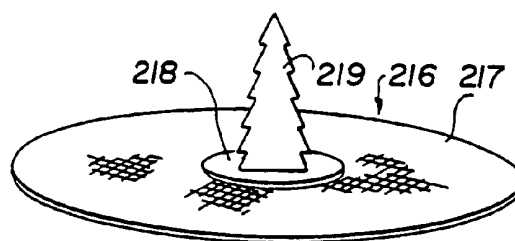


FIG. 27

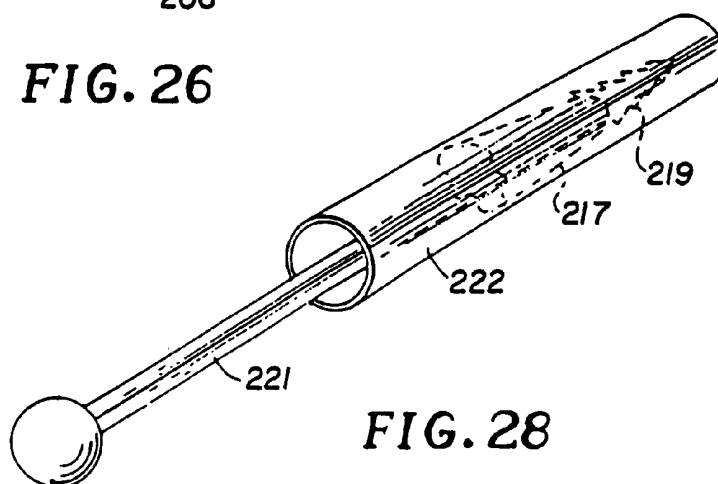


FIG. 28

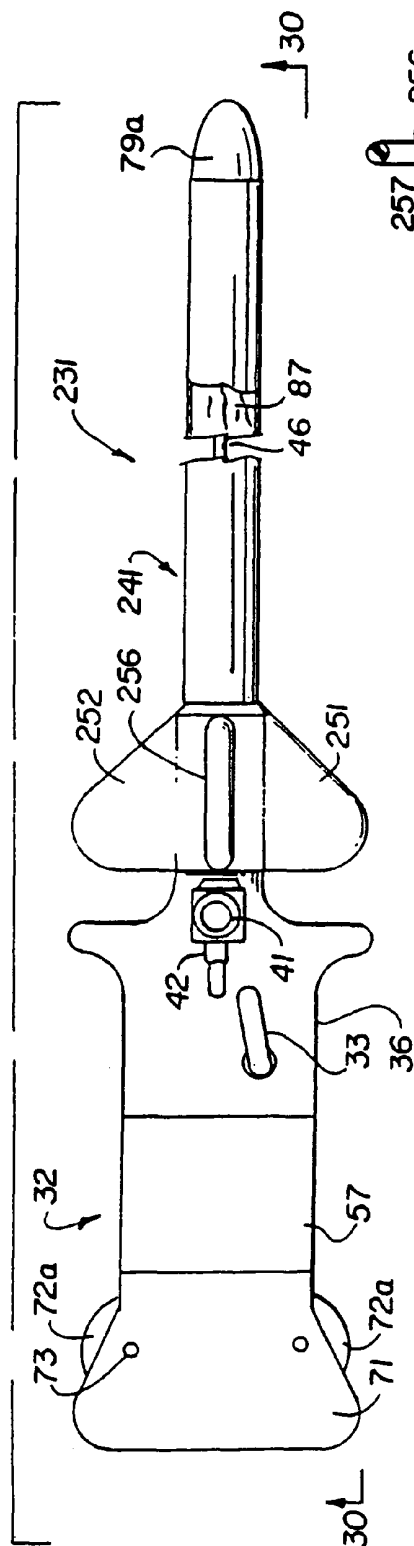


FIG. 29

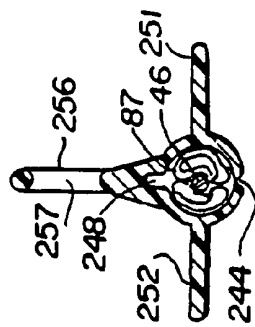


FIG. 31

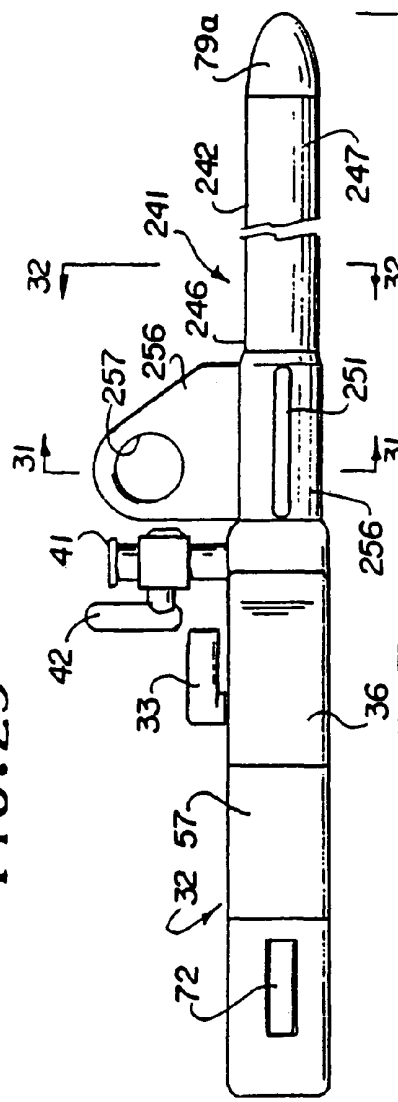


FIG. 30

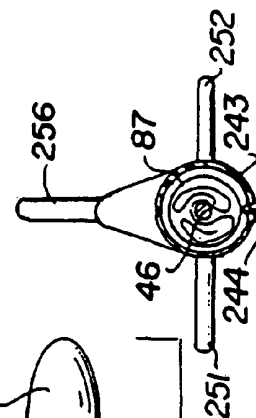


FIG. 32

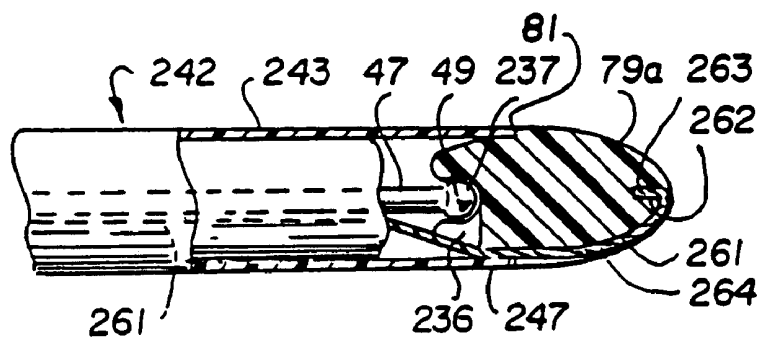


FIG. 33

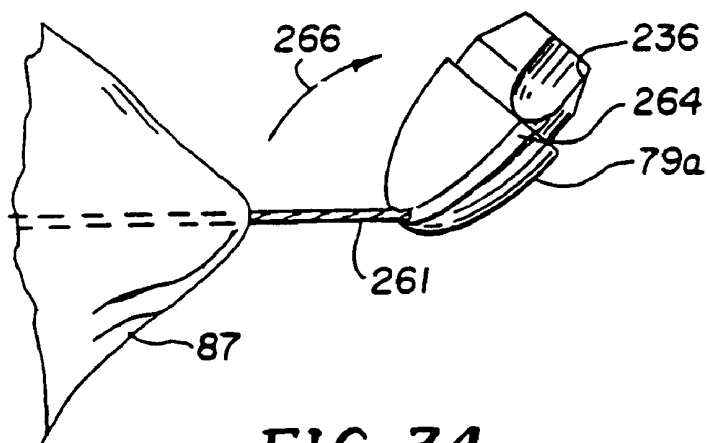


FIG. 34

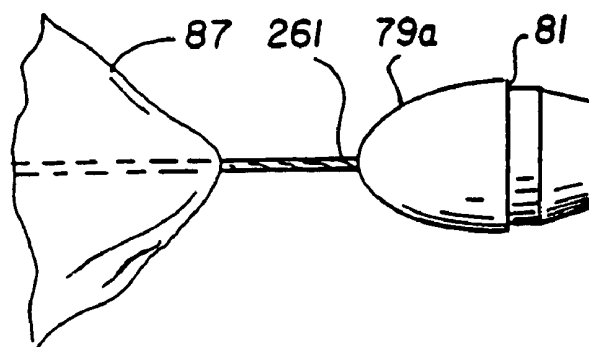


FIG. 35

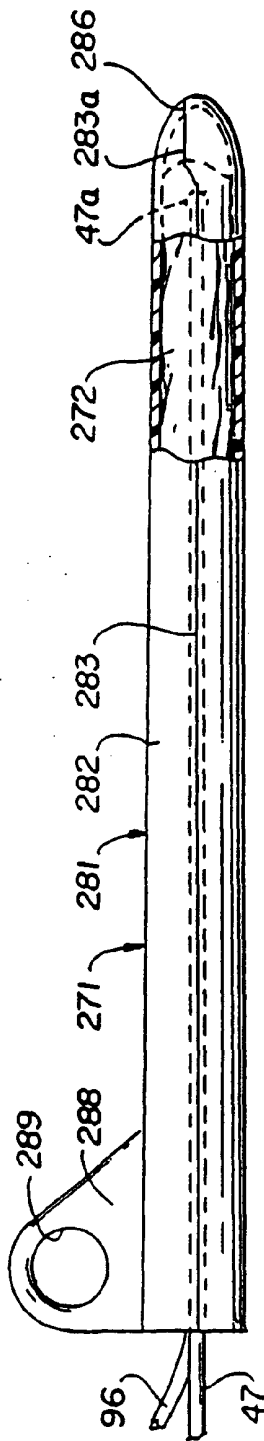


FIG. 36

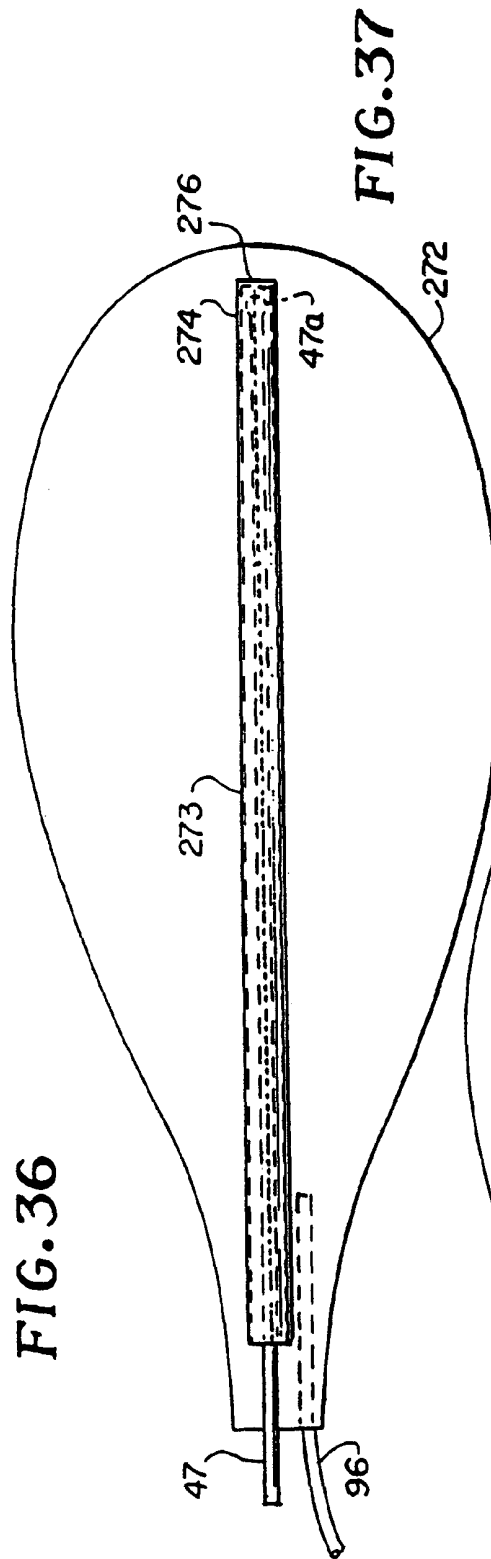


FIG. 37

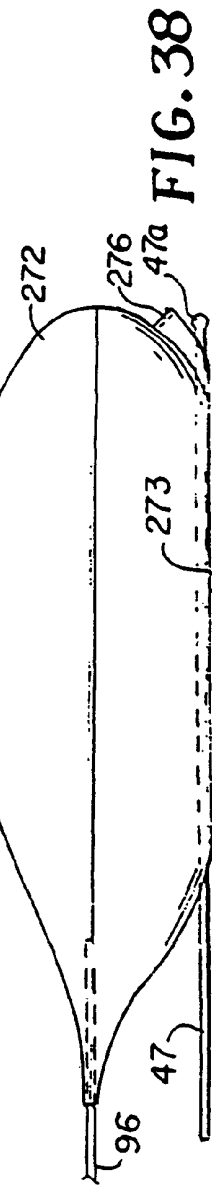


FIG. 38

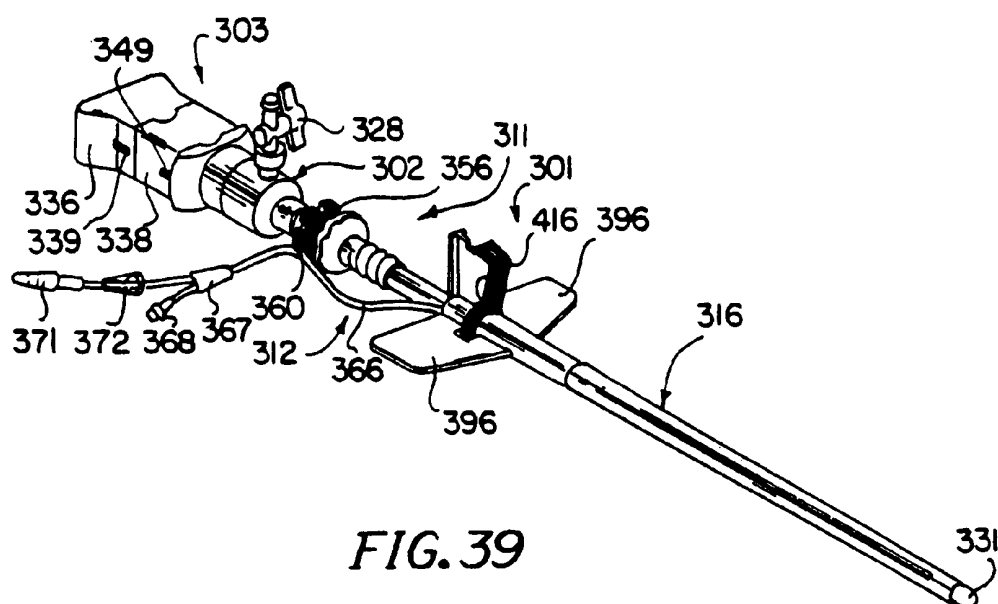


FIG. 39

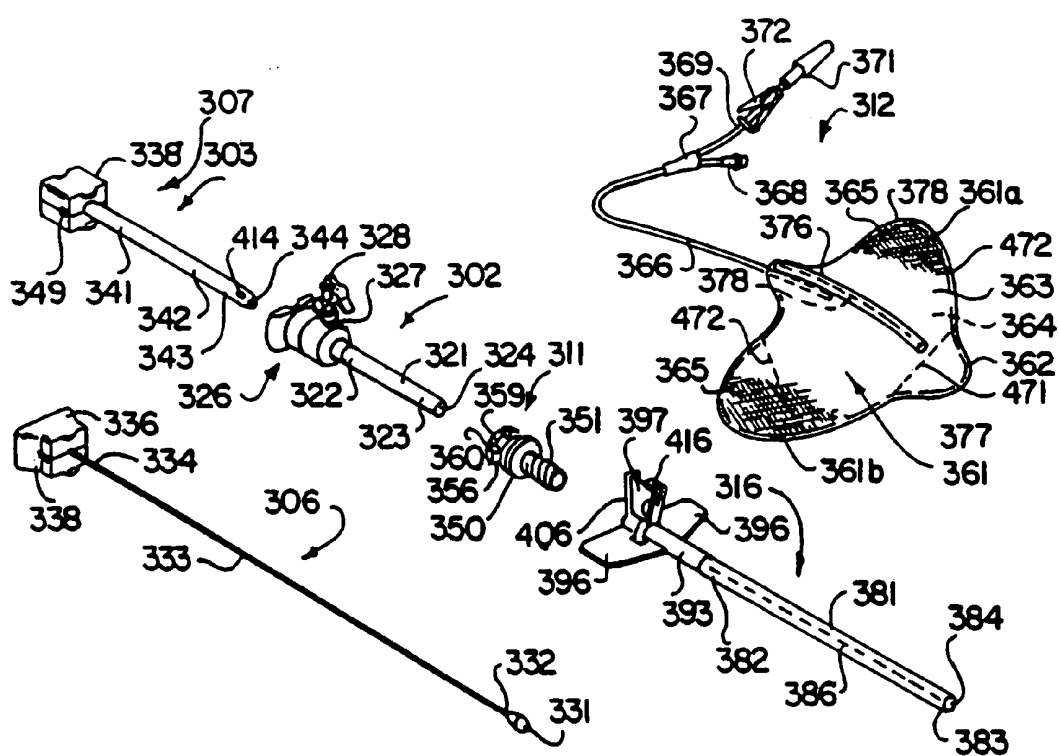


FIG. 40

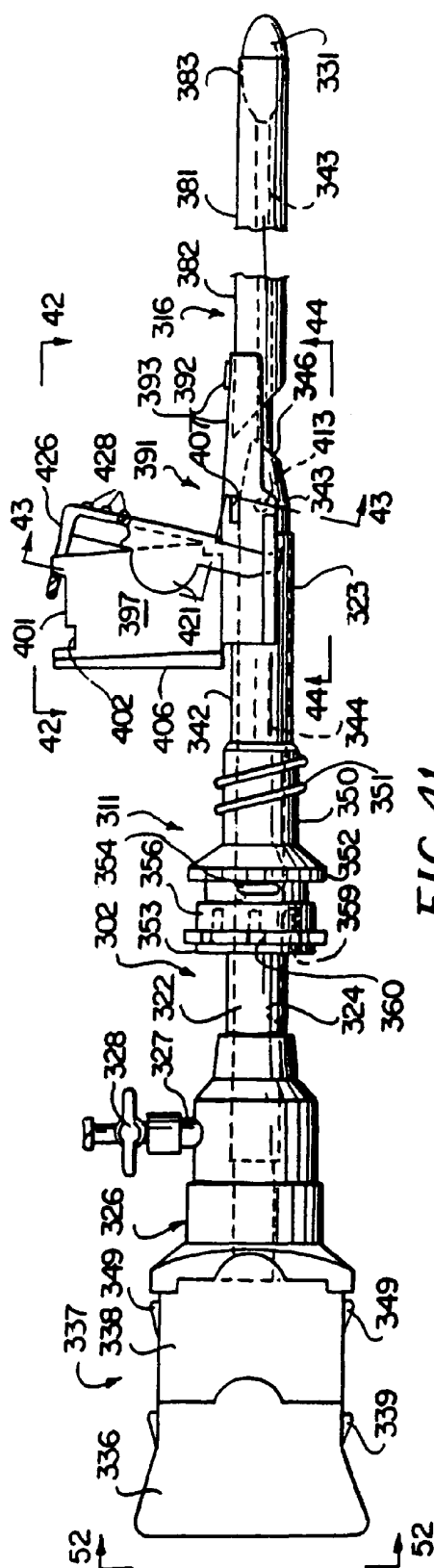


FIG. 41

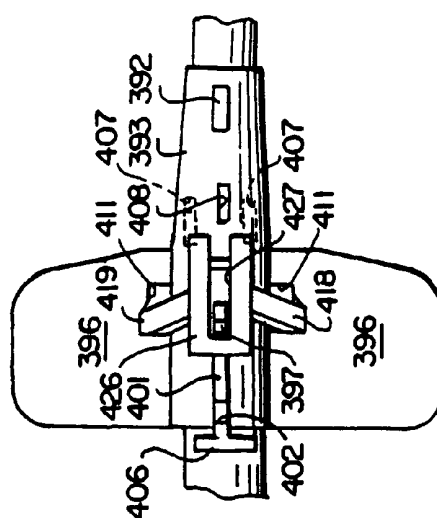


FIG. 42

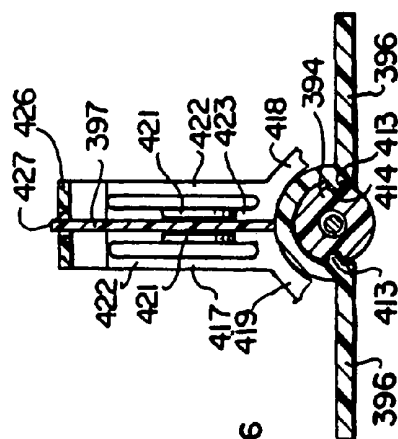


FIG. 43

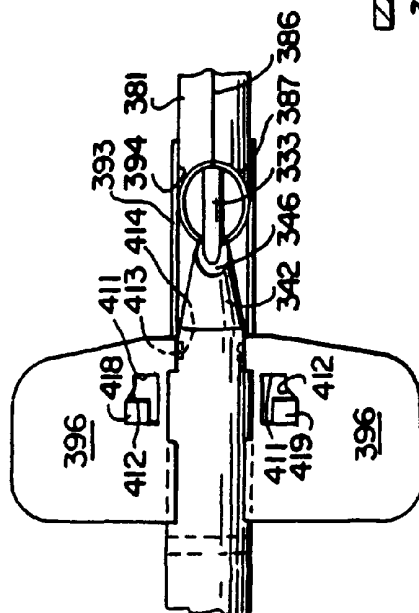


FIG. 44

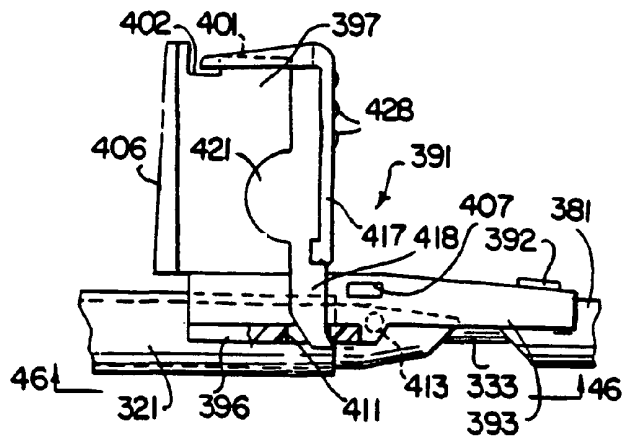


FIG. 45

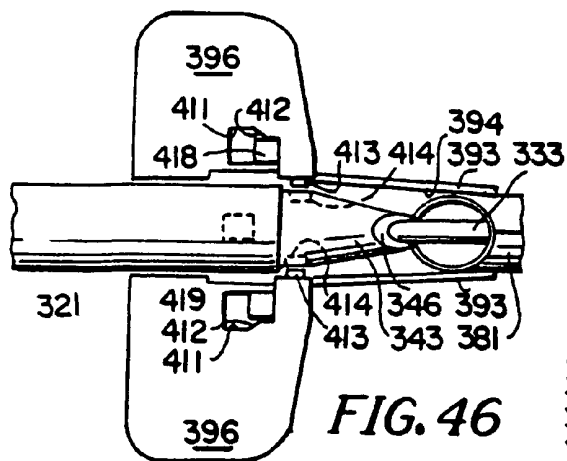


FIG. 46

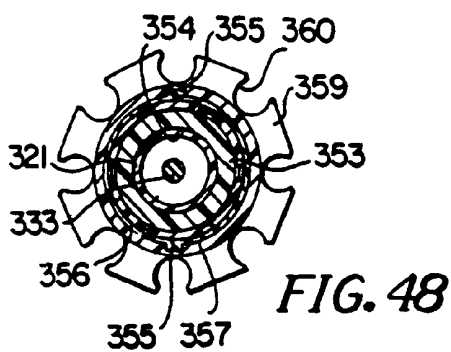


FIG. 48

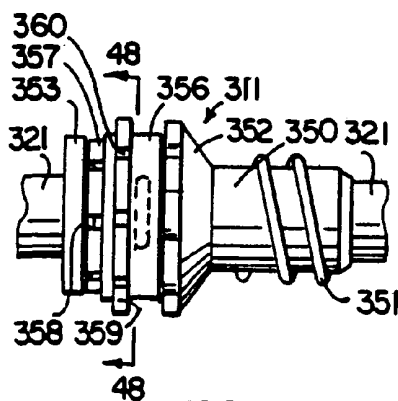


FIG. 47

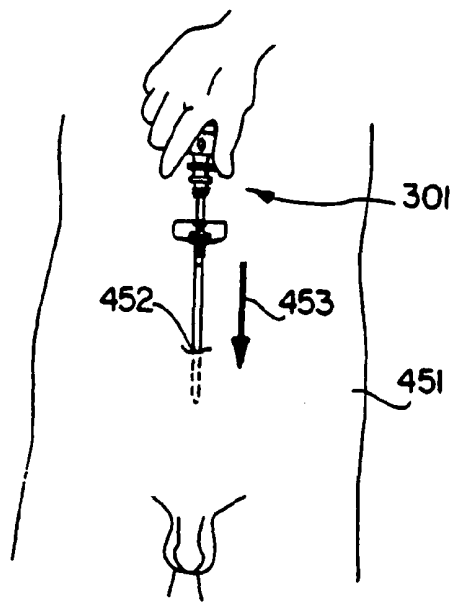


FIG. 49A

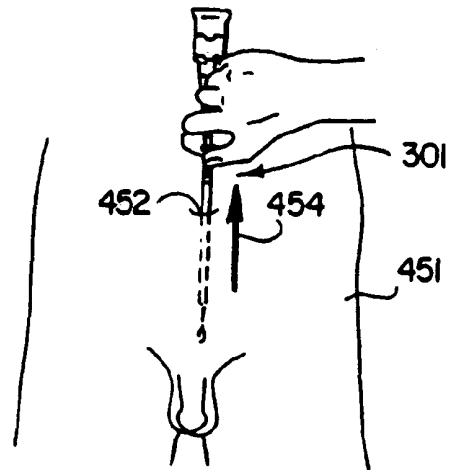


FIG. 49B

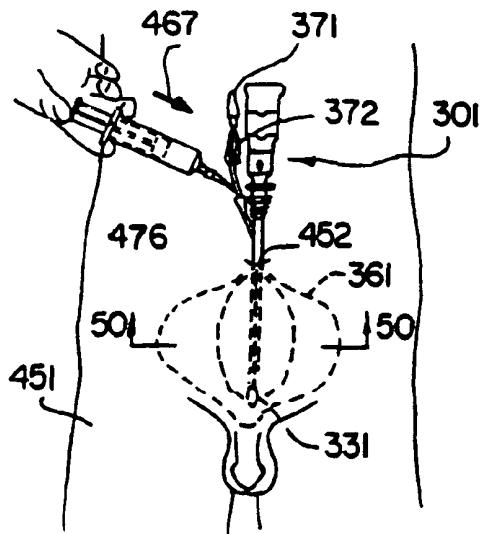


FIG. 49C

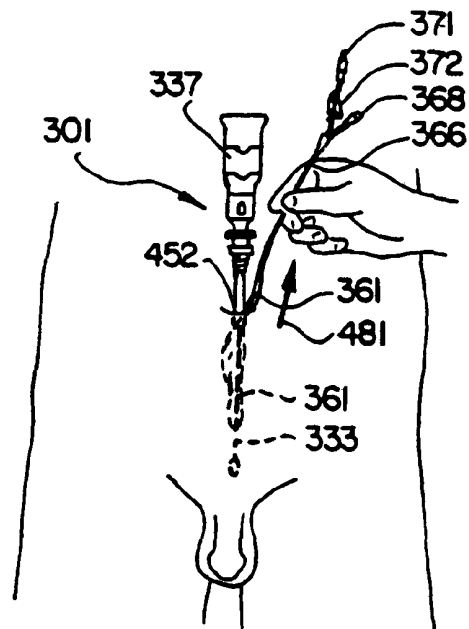


FIG. 49D

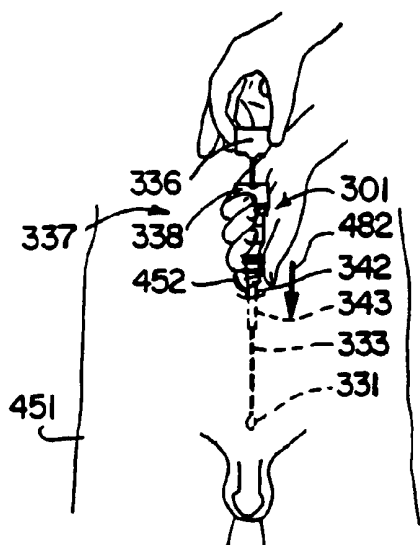


FIG. 49E

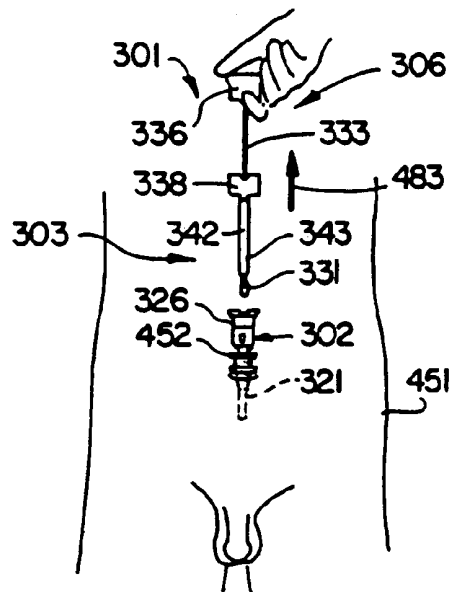


FIG. 49F

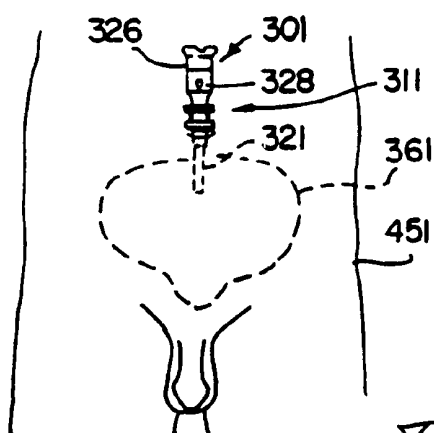


FIG. 49G

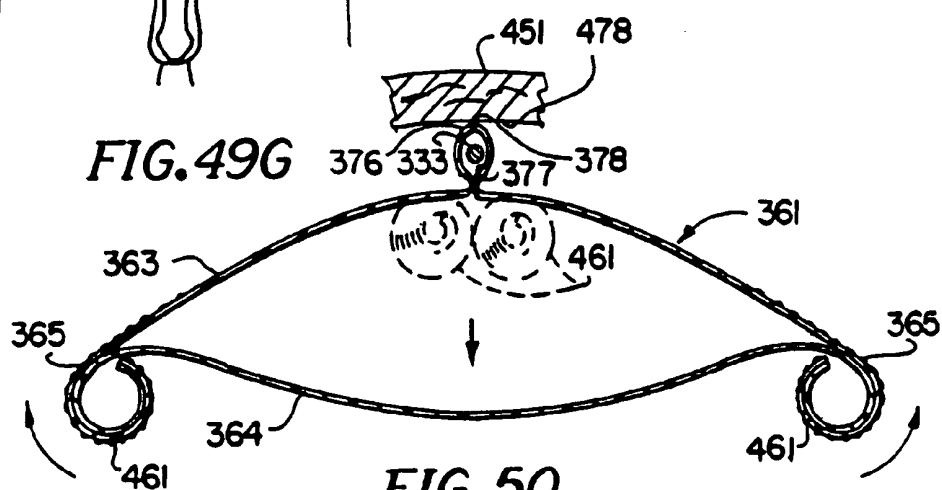
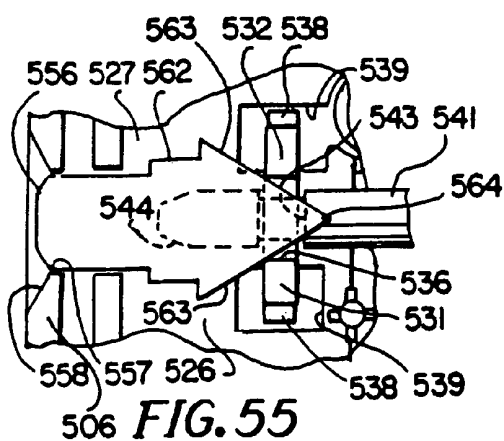
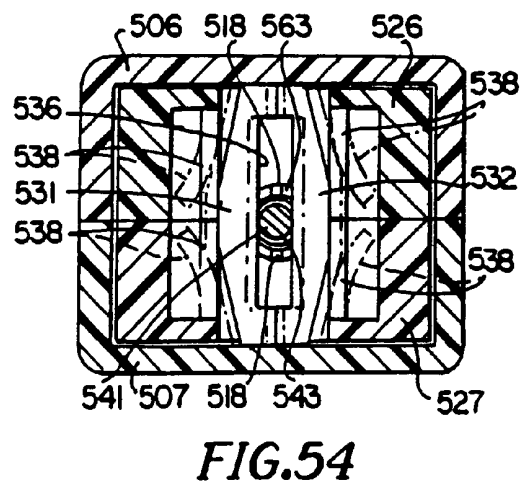
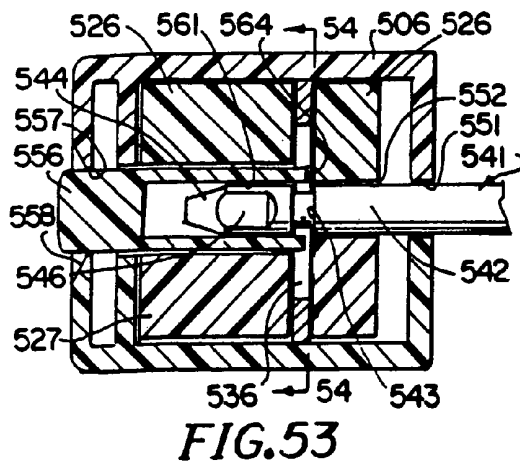
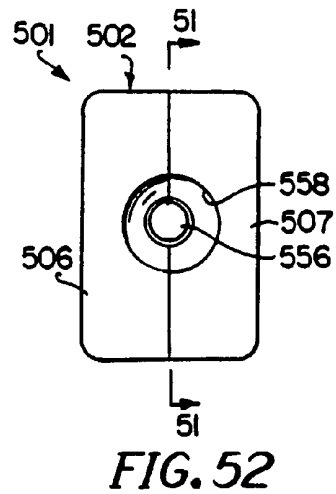
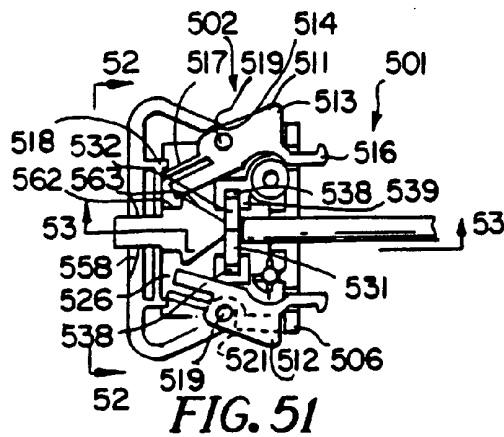


FIG. 50



1

APPARATUS AND METHOD FOR DEVELOPING AN ANATOMIC SPACE FOR LAPAROSCOPIC HERNIA REPAIR AND PATCH FOR USE THEREWITH

CROSS REFERENCE TO RELATED APPLICATIONS

This application is a continuation of U.S. application Ser. No. 11/208,672, filed on Aug. 22, 2005, now U.S. Pat. No. 7,297,153 which is a continuation of U.S. application Ser. No. 10/117,765, filed on Apr. 5, 2002, now U.S. Pat. No. 6,953,467 which is a continuation of U.S. application Ser. No. 08/861,913, filed on May 22, 1997, now U.S. Pat. No. 6,368,337, which is a continuation of U.S. application Ser. No. 08/483,293, filed on Jun. 7, 1995, now abandoned, which is a divisional of U.S. application Ser. No. 08/124,283, filed on Sep. 20, 1993, now U.S. Pat. No. 5,836,961, which is a continuation-in-part of U.S. application Ser. No. 07/893,988, filed on Jun. 2, 1992, now U.S. Pat. No. 6,312,442. The disclosure of each of these prior applications is hereby incorporated by reference in their entirety.

This invention relates to an apparatus and method for developing an anatomic space for laparoscopic hernia repair and a patch for use therewith.

BACKGROUND OF THE INVENTION

In the past, in developing spaces and potential spaces within a body, blunt dissectors or soft-tipped dissectors have been utilized to create a dissected space which is parallel to the plane in which the dissectors are introduced into the body tissue. This often may be in an undesired plane, which can lead to bleeding which may obscure the field of view and make it difficult to identify the body structures. In utilizing such apparatus and methods, attempts have been made to develop anatomic spaces in the anterior, posterior, or lateral to the peritoneum. The same is true for pleural spaces and other anatomic spaces. Procedures that have been performed in such spaces include varicocele dissection, lymph node dissection, sympathectomy, and hernia repair. In the past, the inguinal hernia repair has principally been accomplished by the use of an open procedure which involves an incision in the groin to expose the defect in the inguinal floor, remove the hernial sac, and subsequently suture the ligaments and fascias together to reinforce the weakness in the abdominal wall. Recently, laparoscopic hernia repairs have been attempted by inserting laparoscopic instruments into the abdominal cavity through the peritoneum and then placing a mesh to cover the hernia defect. Hernia repair using this procedure has a number of disadvantages, principally because the mesh used for hernia repair is in direct contact with the structures in the abdominal cavity, as for example the intestines, so that there is a tendency for adhesions to form in between these structures. Such adhesions are known to be responsible for certain occasionally serious complications. Such a procedure is also undesirable because typically the patch is stapled into the peritoneum, which is a very thin unstable layer covering the inner abdomen. Thus, the stapled patch can tear away from the peritoneum or shift its position. Other laparoscopic approaches involve cutting away the peritoneum and stapling it closed. This is time consuming, however, and involves the risk that important anatomic structures may be inadvertently cut. In addition, such a procedure is undesirable because it requires the use of a general anesthesia. There is therefore a

2

need for a new and improved apparatus and method for developing an anatomic space and particularly for accomplishing hernia repair by laparoscopy.

SUMMARY OF THE INVENTION

In general, it is an object of the present invention to provide an apparatus and method for developing an anatomic space.

Another object of the invention is to provide an apparatus and method in which such an anatomic space is developed by applying perpendicular forces to create the anatomic space at the weakest plane to create a more natural, less traumatic and bloodless region in which to work.

Another object of the invention is to provide an apparatus and method to obtain surgical exposure in the preperitoneal space.

Another object of the invention is to provide an apparatus and method to create a preperitoneal working space utilizing a balloon dissector.

Another object of the present invention is to provide an apparatus and method of the above character for developing an anatomic space for laparoscopic hernia repair through the anatomic space.

Another object of the invention is to provide an apparatus and method for decreasing the time and risk associated with creating a preperitoneal working space.

Another object of the present invention is to provide an apparatus and method of the above character for a minimally invasive procedure.

Another object of the invention is to provide an apparatus and method of the above character which can be accomplished without the use of a general anesthesia.

Another object of the invention is to provide an apparatus and method of the above character which can be accomplished with a spinal or epidural anesthesia.

Another object of the invention is to provide an apparatus and method of the above character which provides substantially reduced medical costs and a greatly reduced patient recovery time.

Another object of the invention is to provide an apparatus of the above character which is relatively simple and compact.

Another object of the invention is to provide an apparatus and method of the above character which can be readily utilized by surgeons.

Another object of the invention is to provide a patch for use in the apparatus which is firmly secured during the hernia repair.

Another object of the invention is to provide a balloon which has a modified asymmetric manta ray configuration to aid in providing the desired configuration for the extraperitoneal working space for hernia repair.

Another object of the invention is to provide a balloon dissection apparatus in which has a balloon cover is detachably secured to the obturator so that the balloon dissection device is relatively rigid to permit the balloon dissection apparatus to be grasped by the handle to operate the same during dissection.

Another object of the invention is to provide a balloon dissection apparatus of the above character in which a precise release mechanism is provided for releasing the balloon cover from the obturator so that the surgeon can be assured that the balloon cover has been released before it is removed to release the balloon.

Another object of the invention is to provide a balloon dissection apparatus of the above character in which the guide

rod or obturator remain in place to maintain ready access to the extraperitoneal working space.

Another object of the invention is to provide a balloon dissection apparatus of the above character in which certain of the parts which are to be moved relative to other parts are color coded to aid the surgeon in use of the apparatus.

Another object of the apparatus is to provide a tubular member which is provided with a tip having an inclined surface.

Another object of the invention is to provide a balloon dissection apparatus which is provided with a blunt tip which has a diameter which is less than the diameter of the cannula tube.

Another object of the invention is to provide a balloon dissection apparatus of the above character in which at least a part of the same can be sterilized and reused.

Additional objects and features of the invention will appear from the following description in which the preferred embodiments are set forth in detail in conjunction with the accompanying drawings.

BRIEF DESCRIPTION OF THE DRAWINGS

FIG. 1 is a side elevational view partially in cross-section of a laparoscopic apparatus incorporating the present invention.

FIG. 2 is a cross-sectional view taken along the 2-2 of FIG. 1.

FIG. 3 is a side elevational view partially in cross-section of the tunneling shaft forming a part of the apparatus shown in FIG. 1 after it has been removed from the apparatus shown in FIG. 1.

FIG. 4 is a cross-sectional view taken along the line 4-4 of FIG. 3.

FIG. 5 is an isometric view of the inflatable balloon utilized in the apparatus in FIG. 1 secured to the tunneling rod.

FIG. 6 is a cross-sectional view taken along the line 6-6 of FIG. 5, and showing by dotted lines the manner in which the balloon as it unfolds develops the anatomic space.

FIG. 7 is a partial plan view of a prone human body, showing the lower abdomen showing the manner in which the laparoscopic apparatus of the present invention is utilized for performing a hernia repair through the preperitoneal space.

FIG. 8 is a sagittal view of the lower abdominal cavity of the human being shown in FIG. 7 showing the apparatus of the present invention introduced into the preperitoneal space.

FIG. 9 is a view similar to FIG. 8, but showing the sleeve removed from the apparatus and with the balloon inflated.

FIG. 10 is a sagittal view similar to FIG. 8 showing the balloon deflated and being removed.

FIG. 11 is a sagittal view similar to FIG. 8 showing removal of the tunneling shaft.

FIG. 12 is an isometric view of a patch incorporating the present invention.

FIG. 13 is a side elevational view of the patch shown in FIG. 12.

FIG. 14 is an isometric view showing the patch in FIGS. 12 and 13 in a rolled-up, generally cylindrical configuration.

FIG. 15 is a sagittal view showing the hernia sac of hernia that is to be repaired.

FIG. 16 is a sagittal view showing the introducer through which the rolled-up patch in FIG. 17 has been introduced into the preperitoneal space by an introducer rod.

FIG. 17 is a sagittal view similar to FIG. 16 showing the attachment of the patch to the hernia sac.

FIG. 18 is a sagittal view similar to FIG. 17 showing the dissection of the hernia sac and the unrolling of the patch.

FIG. 19 is a sagittal view showing the patch in place to provide the hernia repair.

FIG. 20 is an isometric view of another embodiment of a balloon with a patch disposed thereon for use with the apparatus of the present invention.

FIG. 21 is a cross-sectional view taken along the line 21-21 of FIG. 20.

FIG. 22 is an enlarged cross-sectional view taken along the line 22-22 of FIG. 23.

FIG. 23 is a sagittal view showing the manner in which the balloon and patch shown in FIG. 20 are disposed in the preperitoneal space.

FIG. 24 is a sagittal view showing the placement of the balloon and the patch of FIG. 20, and the inflation of the balloon in the preperitoneal space.

FIG. 25 is an isometric view of another embodiment of a balloon and patch for use with the apparatus of the present invention.

FIG. 26 is a rolled-up cross-sectional view of the balloon and patch shown in FIG. 25.

FIG. 27 is an isometric view of another embodiment of a patch for use with the apparatus of the present invention.

FIG. 28 is an isometric view of the patch shown in FIG. 27 wrapped in an introducer assembly.

FIG. 29 is a top plan view of another embodiment of laparoscopic apparatus incorporating the present invention.

FIG. 30 is a side elevational view taken along the line 30-30 of FIG. 29.

FIG. 31 is a cross-sectional view taken along the line 31-31 of FIG. 30.

FIG. 32 is a cross-sectional view taken along the line 32-32 of FIG. 30.

FIG. 33 is an enlarged cross-sectional view of the distal extremity of the laparoscopic apparatus shown in FIG. 29.

FIG. 34 is a partial plan view showing the balloon after it has been removed from the laparoscopic apparatus with the obturator tip shifting its position.

FIG. 35 is a plan view of the balloon shown in FIG. 34 as it is being removed from the body of the patient and bringing along with it the obturator tip.

FIG. 36 is a side elevational view of another embodiment of a laparoscopic apparatus incorporating the present invention.

FIG. 37 is a plan view showing the balloon from the apparatus shown in FIG. 36 in an inflated condition and showing the tunneling rod mounted therein being prevented from being advanced beyond the distal extremity of the balloon.

FIG. 38 is a plan view showing the manner in which the balloon is separated from the tunneling rod as it is retracted.

FIG. 39 is an isometric view of a surgical dissector with a cannula incorporating the present invention in an assembled condition.

FIG. 40 is an isometric exploded view of the components of the surgical dissector with cannula shown in FIG. 39.

FIG. 41 is a side elevational view of the assembly shown in FIG. 39.

FIG. 42 is a top plan view looking along the line 42-42 of FIG. 41.

FIG. 43 is a view partly in cross-section taken along the line 43-43 of FIG. 42.

FIG. 44 is a view looking along the line 44-44 of FIG. 41.

FIG. 45 is a partial side elevational view of the assembly shown in FIG. 41 with the clamping mechanism moved to a release position.

FIG. 46 is a view taken along the line 46-46 of FIG. 45.

FIG. 47 is a partial side elevational view of an assembly shown in FIG. 41 with the retaining ring moved to a locked position.

FIG. 48 is a cross-sectional view taken along the line 48-48 of FIG. 47.

FIGS. 49A-49G are cartoons showing use of the surgical dissector shown in FIG. 1 in a laparoscopic hernia procedure.

FIG. 50 is a cross-sectional view taken along the line 50-50 of FIG. 49C.

FIG. 51 is a cross-sectional view taken along the line 51-51 of FIG. 52 showing another embodiment of a balloon dissection apparatus incorporating the present invention.

FIG. 52 is an end elevational view taken along the line 52-52 of FIG. 51.

FIG. 53 is an enlarged cross-sectional view taken along the line 53-53 of FIG. 51.

FIG. 54 is an enlarged cross-sectional view taken along the line 54-54 of FIG. 53.

FIG. 55 is an enlarged cross-sectional view of a portion of the view shown in FIG. 51 showing the latch members moved to permit removal of the guide rod.

DETAILED DESCRIPTION OF THE DRAWINGS

In general, the apparatus of the present invention is used for insertion into a body to create an anatomic space. In one embodiment of the invention, the apparatus is comprised of a tubular introducer member having a bore extending therethrough. A tunneling shaft is slidably mounted in the bore and has proximal and distal extremities including a bullet-shaped tip. A rounded tunneling member is mounted on the distal extremity of the tunneling shaft. An inflatable balloon is provided. Means is provided on the balloon for removably securing the balloon to the tunneling shaft. Means is also provided for forming a balloon inflation lumen for inflating the balloon. The balloon is wrapped on the tunneling shaft. A sleeve substantially encloses the balloon and is carried by the tunneling shaft. The sleeve is provided with a weakened region extending longitudinally thereof, permitting the sleeve to be removed whereby the balloon can be unwrapped and inflated so that it lies generally in a plane. The balloon, as it is being inflated, creates forces generally perpendicular to the plane of the balloon to cause pulling apart of the tissue along a natural plane to provide the anatomic space.

More in particular, as shown in the drawings, the apparatus or device 31 for creating such an anatomic space for use in a laparoscopic procedure (see FIG. 1) includes an introducer sleeve or device 32 which consists of a tubular member 33 formed of a suitable material such as plastic which is provided with a bore 34 extending throughout the length thereof. A handle section 36 is mounted on one end of the tubular member 33 and is also formed of a suitable material such as plastic. It is provided with a bore 37 which is in communication with the bore 33. A flapper valve 38 is mounted within the section 36 and is movable between a position in which it closes off the bore 37 and position out of the way of the bore 37 by a finger operated actuator 39 mounted on the exterior of the section 36. A stopcock 41 is mounted on the section 36 and is in communication with the passage 37. A lever 42 is provided for opening and closing the stopcock 41.

A tunneling shaft assembly 46 is slidably mounted in the bores 37 and 34 of the introducer sleeve 32. The tunneling shaft assembly 46 consists of a tunneling shaft 47 formed of a suitable material such as stainless steel, of a suitable length, as for example 18 inches, and a suitable diameter of approximately 1/8 inch. The tunneling shaft 47 is provided with proximal and distal extremities 48 and 49.

An introducer member 51 is slidably mounted on the tunneling shaft 47 and is formed of a suitable material such as plastic. The introducer member 51 is substantially hollow as

shown and is provided with a bore 52 through which the tunneling shaft 47 extends. The introducer member 51 is provided with a substantially hemispherical tip 53 to form a rounded protrusion or first obturator through which the shaft 47 extends. The introducer member 51 has a length such that when it is introduced into the bore 34 of the introducer sleeve 32, it extends out of the distal extremity of the introducer sleeve 32, as shown particularly in FIG. 1. This diameter of the introducer member 51 is sized so that it can be slidably mounted in the bore 34. The other end of the introducer member 51 is provided with a chamfer 54.

A disk-type seal 43 having a central opening is provided in the section 36 in alignment with the bore 37, and is adapted to permit the introduction of the introducer member 51 therethrough.

The section 36 forms one part of a three-piece handle 56 of the laparoscopic apparatus 31 which is sized so that it is adapted to be grasped by the human hand. As can be seen particularly in FIG. 4, the handle 56 is generally rectangular in cross-section. The handle 56 is provided with an intermediate section 57 which has a bore 58 extending therethrough in registration with the bore 37 and has the same general diameter as the bore 37 so that the introducer member 51 can travel therethrough. The sections of the handle 56 can be characterized as having first, second, and third sections in which section 36 is the first section and intermediate section 57 is the second section. A latch is provided for interconnecting the intermediate section 57 to the first section 36, and consists of a pair of oppositely disposed latches 61 pivotally mounted on the pins 62 in the intermediate section 57. Each of the latches 61 is provided with a latch portion 63 adapted to engage a protrusion 64 provided on the end section 36, and is yieldably urged into engagement therewith by a spring 66. Each of the latches is provided with a cam surface 67 which is adapted to be engaged by the chamfer 54 of the introducer member 51 to cam the latch portion 63 out of engagement with the protrusion 64 to release the intermediate section 57 from the first section for a purpose hereinafter described.

The handle 56 also consists of another end section 71, which can also be characterized as the third section, which is secured to the proximal extremity of the tunneling shaft or rod 47. A pair of latches 72 are provided in the end section 71 and are pivotally mounted on pins 73. The latches 72 are provided with latch portions 74 adapted to engage projections 76 provided in the intermediate section 57. Means is provided for yieldably retaining the latches 72 in engagement with the projections 76 and consists of a U-shaped spring 77 mounted within the end section 71 and engaging the latches 72. The latches 72 are provided with knurled portions 72a which extend outwardly and which are adapted to be grasped by the fingers of the hand so that the latch portions 74 can be moved out of engagement with the projections 76 against the force of the spring 77.

The tunneling shaft assembly 46 also includes a tip 79 which is mounted on the distal extremity of the tunneling shaft 47. As shown, the tip 79 is substantially olive-shaped and can also be called a second obturator. It is provided with a rounded hemispherical surface on its distal extremity which has a maximum diameter which is slightly less than the diameter of the bores 34 and 37 so that it can pass through the introducer sleeve 32. The proximal extremity of the tip 79 is of smaller diameter to provide an annular step 81 in the tip. The proximal extremity of the tip 79 is also hemispherical, as shown. The tip 79 can be formed of a suitable material such as plastic and can be secured to the distal extremity of the tunneling shaft 47 by suitable means such as an adhesive. As hereinafter explained, the tunneling shaft or 47 is movable so

that the tip 79 can be brought into engagement with the hemispherical end 53 of the introducer member 51 for a purpose hereinafter described.

The laparoscopic apparatus 31 also includes a balloon assembly 86 which is shown in FIGS. 2, 5, and 6. As shown in FIG. 5, when the balloon assembly 86 consists of a balloon 87 which in plan, when deflated, has a pear-shaped configuration when viewed in plan. The balloon 87 is preferably formed of a non-elastomeric, medical-grade material of a suitable type such as PVC. Thus, the balloon 87 can be formed of two sheets 88 and 89 of such a material which have their outer margins bonded together by suitable means such as by a heat seal 91 extending around the perimeter of the flat balloon. The balloon 87 is provided with a neck 94 into which a flexible tubular member 96 extends, and is secured therein in a suitable airtight fashion such as by an adhesive. The tubular member 96 is provided with a lumen 97 which is in communication with the interior of the balloon 87 and which can be used for inflating the balloon 87 through a Luer-type fitting 98 mounted on the free end of the tubular member 96.

Means is provided for removably securing the balloon 87 to the tunneling shaft 47, and consists of a sleeve 101 formed of the same material as the balloon 87, and which can be formed integral or separate therefrom and adhered thereto by suitable means such as an adhesive. The sleeve 101 extends longitudinally of the balloon 87 and is disposed generally equidistant from the side margins of the same. The sleeve 101 is provided with a passage 102 extending therethrough which is sized to slidably accommodate the tunneling shaft 47. Means is provided for permitting separation of the balloon 87 from the tunneling shaft 47 by movement sidewise from the axis of the passage 102 and takes the form of longitudinally spaced apart perforations 103 in the sleeve 101 extending longitudinally the length of the sleeve 101. The perforations 103 are spaced close enough together to form a weakened region so that the balloon can be readily separated from the tunneling shaft 47 by separating the plastic sleeve 101 by tearing the plastic between the perforations as hereinafter described.

As shown in FIG. 6, the sleeve 101 is disposed equidistant from the side margins of the balloon 87, permitting the balloon 87 to be inflated as hereinafter described and as also shown by the dotted lines in FIG. 6, to be inflated around the shaft 47. When deflated, the side margins of the balloon 87 can be rolled inwardly toward the shaft 47 as shown by the broken lines in FIG. 6 to permit the same to be folded into a generally cylindrical configuration as shown in FIG. 2, and to be enclosed within a removable sheath 106 carried by the tunneling shaft 47. The removable sheath 106 is formed of a relatively thin-walled tubular member 107 of a suitable material such as Teflon which has a weakened region 108 in its wall extending longitudinally the length thereof. This weakened region 108 can take the form of a slit as shown, or can be a series of perforations or slots formed in the wall, or a combination thereof. The proximal extremity of the tubular member 107 is provided with split-apart or separable end portions 107a and 107b to which are secured finger rings 109 of a suitable material such as plastic and secured thereto by fasteners 111.

Operation and use of the laparoscopic apparatus in performing the method for laparoscopic hernia repair through preperitoneal space may now be briefly described as follows. Let it be assumed that the laparoscopic apparatus 31 has been assembled as shown in FIG. 1. As shown in FIG. 7, let it be assumed that a human patient 121 is in a prone position and has a hernia 122 in the lower abdominal area which he wishes to have repaired. The patient is prepared in an appropriate

manner by administering a suitable anesthesia, as for example a spinal anesthesia, and any other necessary preparation. The surgeon first makes an infraumbilical incision 126 in the skin below the navel or umbilicus 127 and separates the fat 129 and then incises the anterior rectus sheath or fascia 131 in the midline. Care should be taken not to penetrate the peritoneum 132 overlying the abdominal cavity 133 (see FIG. 8).

After the incision 126 has been made in the manner hereinbefore described, the laparoscopic apparatus 31 is then taken by one hand of the surgeon, grasping the handle 56 and utilizing the other hand to facilitate the insertion of the rounded blunt tip 79 into the incision 126. The blunt tip 79 is then caused to enter the slit in the fascia 131 and pass anterior to the peritoneum 132, in between the rectus muscles (laterally) and enters the potential preperitoneal space. The blunt tip 79 is then utilized as a tunneling device by the surgeon using one hand 56 to advance the blunt tip 79 toward the pubic region of the patient while the surgeon places his other hand on the abdomen to feel the apparatus 31 as it is being advanced. The advance of the apparatus 31 is continued until the blunt tip 79 is below the symphysis pubis 137 as shown in FIG. 8, and preferably is disposed between the symphysis pubis 137 and the bladder 138.

After the apparatus 31 has been properly positioned as shown in FIG. 8, the removable sheath 106 is removed by the surgeon using one hand to engage the finger rings 109 which are exterior of the body of the patient and outside of the incision 126. At the same time, the other hand of the surgeon is utilized to stabilize the portion of the apparatus 31 which is within the preperitoneal space. The sheath 106 can be readily withdrawn since it is formed of Teflon and is split or weakened along its length, by pulling it proximally and away from the longitudinal axis of the tubular member 33. As the sheath 106 opens and slips off, it exposes the balloon 87 of the balloon assembly 86. When the sheath 106 is completely removed, a sterile saline solution serving as a balloon inflation medium is introduced into the balloon 87 through the tubular member 96 by connecting a conventional syringe 141 to the Luer fitting 98. The balloon 87 typically can be inflated to a suitable size by introducing 500 cc or less of normal saline solution into the balloon 87 by pressing on the plunger 142. As the balloon 87 is inflated, the balloon 87 progressively unwraps with its side margins rolling outwardly from the center while expanding into a plane to cause progressive separation or dissection of tissue (i.e., 131, 132) along its weakest points by application of forces generally perpendicular to the plane of the balloon 87 to create the preperitoneal or anatomic space. The balloon 87 expands around the tunneling shaft 47 in the manner shown in broken lines in FIG. 6 to achieve the progressive separation until complete inflation is achieved. The surgeon can sense the filling of the balloon 87 by feeling the abdomen of the patient 121 as the balloon 87 is inflated. The balloon 87 serves to open up the preperitoneal space 136 to provide a bloodless space for the procedures hereinafter to be performed. Since the balloon 87 is formed of a non-elastomeric material, it is a volume-limited balloon to prevent over-expansion. Different sizes of balloons can be utilized for different patient sizes. With a smaller balloon 87 it is possible to deflate the balloon 87 and then shift the balloon and again reinflate it to obtain the desired bloodless preperitoneal space.

After the desired bloodless anatomic space or pocket is formed, the balloon 87 is deflated by withdrawing the normal saline solution by withdrawal of the plunger 142 of the syringe 141 or via a hospital vacuum aspirator. After the balloon 87 has been deflated, the balloon assembly 86 can be removed by grasping the handle 56 of the laparoscopic appa-

ratus or device 31 with one hand and using the other hand to grasp the tubular member 96 and the proximal extremity of the balloon 87 and to remove the same through the incision 126, as shown in FIG. 10. As the balloon 87 is being removed, it is progressively separated from the tunneling shaft 47 by causing the sleeve 101 to split apart along the longitudinal perforations 103 provided in the sleeve 101. This makes it possible to separate the balloon 87 from the tunneling shaft 47 without the necessity of removing the tunneling shaft 47 or the introducer sleeve 32.

After the balloon assembly 86 has been removed, the introducer sleeve 32 can be advanced distally over the tunneling shaft 47 so it extends well into the preperitoneal space 136 as shown in FIG. 11. The end section 71 of the handle 56 is then removed by depressing the latches 72 by engaging the portions 72a to disengage the latch portions 74 from the intermediate section 57 of the handle 56. The third section 71 is then withdrawn proximally as shown in FIG. 11 to bring the olive-shaped tip 79 into engagement with the distal tip of the introducer member 51 to cause both the tip 79 and the introducer member 51 to be withdrawn or retracted. As the introducer member 51 is being withdrawn, its chamfer 54 will strike the cam surfaces 67 of the latches 61 to cause them to disengage from the end piece 36 to carry it along with the introducer member 51 and shown in FIG. 2. Thus, it can be seen that the tunneling shaft assembly 46 can be readily removed merely by one motion of the surgeon's hand. Thereafter, a conventional laparoscope 144 (see FIG. 16) can be introduced through the introducer sleeve 32 to permit the surgeon to view the preperitoneal space 136. The dissected preperitoneal space 136 is then insufflated with carbon dioxide through the stopcock 41 to a pressure ranging from 6 to 8 mm of mercury. Thereafter, two additional trocars 146 and 147 are introduced through the abdominal wall into the dissected preperitoneal space 136 in appropriate locations. Thus, as shown in FIG. 7, trocar 146 is introduced into the left side of the abdomen of the patient 121 below the introducer sleeve 32 and the trocar 147 is introduced into the dissected preperitoneal space 136 immediately above the symphysis pubis 137 and directly below the introducer sleeve 32. As can be appreciated, the locations of the trocars 146 and 147 is generally dictated by the location of the hernia 122 to be repaired.

A patch 151 of the present invention to be utilized in the hernia repair procedure is shown in detail in FIGS. 12, 13, and 14. The patch 151 can be characterized as a hernia patch or graft and is made of a suitable plastic mesh such as a Prolene mesh manufactured by Ethicon, Inc. The patch 151 can be of any desired configuration. For example, it can be generally circular as shown and consists of a disk 152 of a suitable diameter, as for example 2 inches. A tail 153 is secured to the disk substantially in the center thereof, in a suitable manner. For example, as shown, the tail 153 can be provided with split portions 153a and 153b which are split apart and offset with respect to each other. The split portions 153a and 153b are secured to a smaller reinforcing disk 154 formed of the same material as disk 152 and secured to the disk 152 by suitable means such as surgical thread (not shown). The tail 153 is formed of the same material as the disk 152 and 154, or it can be formed of a different material, such as Goretex. It can have a size such that it has a width of approximately ½ inch and a length of approximately 1½ inches. As shown particularly in FIG. 14, the side margins of the disk 152 can be rolled inwardly towards the center adjacent the tail 153 to form a cylindrical roll 156 with the tail 153 extending outwardly therefrom. The roll 156 can be maintained in its rolled-up condition by means of sutures 157 disposed adjacent opposite ends of the roll and on opposite sides of the tail 153.

Referring now to FIGS. 15 and 16, conventional laparoscopic instruments are used to repair the hernia 161 by placement of the patch 151. First, the laparoscopic instruments are introduced through the introducer device 32 while being observed through laparoscope 144 to dissect the hernia 161. The hernia neck 162 may be observed as it is entering the internal inguinal ring 163. The repair procedure starts by dissecting the hernia space 161 from the surrounding tissue (spermatic duct and vessels) (see FIG. 15). The process is facilitated by CO₂ pressure impinging on the neck 162 of the hernia sac 161. As soon as this dissection is completed, the roll 156 is pushed into the trocar 147 and advanced through the same by suitable means such as a deployment rod 164 (see FIG. 16) to enter the dissected preperitoneal space 136 as shown in FIG. 16. Alternatively, the roll 156 can be placed in a tubular member (not shown) which can be used to position the roll 156 within the trocar 157. Thereafter, by the deployment rod 164, the roll 156 can be pushed out of the tubular member in the he dissected preperitoneal space 136.

The roll 156, after it is in the preperitoneal space 136, is then manipulated so that its tail 153 is disposed alongside the neck 162 of the hernia sac 161 as shown in FIG. 17. With reference to FIG. 17, a conventional stapling device 166 is then introduced through the trocar 146 to staple the tail 153 to the neck 162. These staples 167 serve to divide the neck 162 of the sac 161 into distal and proximal portions 162a and 162b. As soon as this stapling operation is completed, the two portions 162a and 162b are separated from each other because of the pressure of the insufflation gas to cause the tail 153 of the patch 151 to be pulled upwardly into the inguinal ring to pull with it the disk 152. The sutures 157 are cut apart to permit the disk 152 to unroll and to be placed across the inguinal ring 163 which created the main weakness in the abdominal wall permitting the hernia which is being repaired to occur. The proximal portion 162b of the neck 162 is stapled together by staples 173 as shown in FIG. 18. The proximal portion 162 is then permitted to fold back into the desired anatomical location within the abdomen.

Thereafter, while observing the procedure under the laparoscope, the dissected preperitoneal space 136 can be deflated by permitting the carbon dioxide gas to escape to the atmosphere through the stopcock 41 in the introducer device 32 by operation of the stopcock lever arm 42. As deflation is taking place, the movement of the patch 151 is observed through the laparoscope 144 so that it does not become displaced. When the deflation has been completed, the patch 151 is in a position over the inguinal ring 163 and serves to provide reinforcement to prevent the occurrence of another hernia in that area. The tail 153 is disposed with the inguinal ring 163 and retains the mesh disk 152 so that it surrounds the inguinal ring 163.

After deflation is complete, the trocars 146 and 147, as well as the introducer device 32, can be removed. Small sutures can then be utilized to close the various small openings which have been made in the abdominal wall so that there will be minimal noticeable scars after healing. The scar in the navel or umbilicus typically is nearly invisible.

It has been found that the use of the laparoscopic apparatus 31 in accomplishing the method as hereinbefore set forth provides a procedure in which the pain after the operation is markedly reduced. This is particularly true since the operation does not involve suturing of any ligaments which typically produces the pain. In addition, the recovery time for the patient is greatly accelerated. In the procedure of the present invention, a patient can return to work within a matter of three to five days, rather than in a number of weeks as in a conventional hernia repair procedure. The procedure also has other

advantages. For example, it is not necessary to use a general anesthesia. Another principal advantage of the procedure is that there is no contact of the mesh patch 151 with the intestines of the patient or other intra-abdominal structures, thus greatly reducing the possibility of adhesion formation. In addition, the graft which is formed by the patch 151 is more secure and is positioned in an anatomically correct position. This is because the hernia sac 161 is in exact alignment with the hernia and pulls with it the tail 153 of the graft to ensure that the graft formed by the patch 151 is drawn into the correct position and is maintained in that position to prevent migration. In addition, the graft, by having an additional central disk 154, ensures that additional reinforcement is provided in the proper location in the center where the weakest region in the abdominal wall has occurred. In addition, by such proper centering, the mesh construction of the patch 151 serves to uniformly reinforce the area surrounding the hernia.

Another embodiment of the present invention is shown in FIGS. 20, 21, and 22 with respect to another embodiment of a balloon assembly 181 and another embodiment of a patch or graft 182. The balloon assembly 181 consists of a balloon 186 formed of two sheets 187 and 188 which are rectangular in shape, as for example square as shown in FIG. 20. The sheets 187 and 188 are heat-sealed together at their outer margins as indicated by the broken line 189. A tubular member 191 is provided which has one end sealed into one corner of the balloon 186 as shown in FIG. 20. The tubular member 191 has a lumen 192 which opens into the interior space 193 of the balloon 186. The sheets 187 and 188 are formed of a non-elastomeric material of the type hereinbefore described. A Luer fitting 194 is connected to the free end of the tubular member 191 and is utilized for introducing a saline solution into the balloon 186 for inflating the same.

The graft or patch 182 can have a desired configuration, as for example circular as shown in FIG. 20. It is formed of a non-absorbable synthetic surgical mesh, as for example from polypropylene manufactured by Ethicon Inc. As shown, the mesh patch 182 overlies the sheet 187.

The balloon assembly 181 already made in Ser. No. 324, 519 with the patch 182 thereon can be rolled-up into a roll 196 as shown in FIG. 22 in which the patch or graft 182 is disposed within the roll 196. The roll 196 can be maintained in the roll configuration by sutures 197 wrapped about the same. As shown in FIG. 23, the roll 196 can then be introduced through a side trocar 146 and introduced into the dissected preperitoneal space 136 with the tubular member 191 extending through the trocar 146 and having its Luer fitting 194 disposed outside of the trocar 146. After the roll 196 has been introduced, the sutures 197 can be removed and the balloon 186 can be inflated by introducing a saline solution through the fitting 194 by use of a syringe 199 (see FIG. 24). Before the saline solution is introduced to inflate the balloon 186, the roll 196 is properly positioned so that when it is inflated and begins to unroll, it will unroll in the proper direction so that the graft or patch 182 carried thereby is properly positioned as shown in FIG. 24. After the roll 196 has been completely unrolled, continued inflation of the balloon 186 moves the patch 182 so that it is pressed against the portion of the fascia through which the hernia has occurred as shown in FIG. 24. As soon as the graft 182 has been properly positioned, the balloon 186 is deflated. The trocar 146 is then removed, and thereafter the balloon 186 can be withdrawn through the opening in which the trocar was present. Thereafter, the gas utilized for insufflation can be permitted to discharge through another trocar so that the fascia 131 comes into engagement with the peritoneum 132 with the large-area patch 182 held in

place therebetween. Thereafter, the trocars can be removed in the manner hereinbefore described to complete the procedure.

Another embodiment of a balloon assembly for deploying a large-area patch or graft 201 through a trocar is shown in FIG. 25. The large-area graft 201 shown in FIG. 25 is formed of a mesh material of the type hereinbefore described and has a generally oval-shaped configuration conforming to the general shape of the balloon 202 of the balloon assembly 203. The balloon 202 is constructed of a nonelastomeric material in the manner hereinbefore described. A tubular member 206 is provided for inflating the balloon and has a Luer fitting 207 on the free end thereof. Means is provided for retaining the mesh graft 201 on one side of the balloon and consists of plastic flaps 208 provided on opposite sides of the balloon 202, and secured thereto by a suitable means such as a heat seal along the broken line 209. The inner margins of the flaps 208 are free and are adapted to receive the outer margins of the graft 201 as shown particularly in FIG. 25.

The balloon 202 with the mesh graft 201 thereon can be rolled up into a substantially cylindrical roll 211 by rolling the outer margins of the balloon inwardly on top of the mesh material to provide two rolls 211 and 212 which are brought in adjacent to each other as shown in FIG. 26 with the mesh graft 201 being wrapped up therewith. The two rolls 211 and 212 can then be inserted into a tubular sheath 214. The sheath 214 can then be introduced through a trocar in a manner hereinbefore described and then pushed out of the sheath 214 into the abdominal cavity. The balloon 202 can then be inflated with a saline solution to cause the two rolls 211 and 212 to unroll in opposite directions and then for the balloon 202 to inflate to move the patch 201 carried thereby into engagement with the portion of the fascia having the hernia therein. Thereafter, the balloon 202 can be deflated, the trocar removed, the balloon removed, and the dissected preperitoneal space deflated so that the large mesh graft 201 is disposed between the fascia and the peritoneum and is retained in position therebetween.

Another embodiment of a graft which can be utilized in connection with the present invention is shown in FIG. 27. The patch or graft 216 is constructed in a manner similar to the graft or patch 151 shown in FIGS. 12 and 13, with the exception that it is constructed in a manner so that it can be utilized with a direct hernia rather than an indirect inguinal hernia hereinbefore described. The graft 216 is formed of a sheet of circular mesh in the form of a disk 217 with a reinforcing central disk 218 which has a barbed head 219 secured thereto. The barbed head 219 is formed of a biodegradable material such as polyglycolic acid. The mesh graft 216 can be folded over a deployment rod 221 and introduced into a cylindrical sheath 222 (see FIG. 28) which is sized so that it can be introduced through a conventional trocar, then deployed from the sheath 22 by pushing on the deployment rod 221. After the graft 216 has been deployed into the dissected preperitoneal space 136, it can be positioned in an appropriate manner so that the barb 219 is positioned so that it is in alignment with the inguinal ring whereby upon deflation of the preperitoneal space 136, the barb 219 will extend through the inguinal ring to serve to retain the graft 201 firmly in place.

Another embodiment of a laparoscopic apparatus incorporating the present invention is laparoscopic apparatus 231 as shown in FIGS. 29 through 32. The laparoscopic apparatus 231 includes introducer sleeve or device 32 identical to that hereinbefore described. It also includes a tunneling shaft assembly 46 which is provided with a tunneling shaft or rod 47 and a proximal extremity 49 (see FIG. 32). In the previous

embodiment of the laparoscopic apparatus, the tunneling shaft assembly is provided with an olive-shaped or bullet-shaped tip **79** which was secured to the distal extremity **49** of the tunneling shaft **47**. In the present embodiment of the apparatus shown in FIGS. **29** through **32**, the obturator tip **79a** is detachably mounted on the distal extremity **49** of the tunneling rod **47**. The proximal extremity of the tip **79a** is provided with a slot **236** which extends through one side of the proximal extremity into the central portion of the proximal extremity of the tip **79a**. The slot **236** is adapted to receive the rounded extremity **237** provided on the distal extremity **49** of the tunneling rod **47** (see FIG. **32**). A removable sleeve **241** is provided as a part of a laparoscopic apparatus **231**, and is similar in many respects to the removable sleeve or sheath **106** hereinbefore described. The removable sleeve **241** is formed of a suitable material such as Teflon as hereinbefore described and is provided with a tubular member **242** which is provided with a relatively thin wall **243** that has a weakened portion extending longitudinally thereof in the form of a slit **244** (see FIG. **31**). The tubular member **242** is provided with a proximal extremity **246** and a distal extremity **247**. The proximal extremity **246** has a thicker cross-section than the distal extremity **247**, as shown in FIGS. **31** and **32**. The proximal extremity **246** is provided with a recess **248** formed in the wall which is diametrically opposite the slit **244** that serves as a relief region to permit the movable sleeve **241** to be split apart when it is removed from the balloon.

The proximal extremity **246** is provided with wing-like members **251** and **252** which extend diametrically therefrom, spaced 90° apart from the slit **244**. These outstretched wings **251** and **252** serve to help the physician orient the laparoscopic apparatus **231** as it is being utilized. The proximal extremity **246** is also provided with a handle **256** which is formed integral therewith and which extends radially from the tubular member **242**. The handle **256** is provided with a finger hole **257** extending therethrough through which a finger can be inserted to facilitate pulling the removable sleeve **241** off of the balloon as described in connection with the previous embodiment.

As shown in FIG. **33**, the tip **79a** is detachably mounted in the proximal extremity of the removable sleeve **241** so that the tip **79** can serve as a second obturator during introduction of the laparoscopic apparatus **231** as hereinbefore described. Means is provided for securing the detachable tip **79a** to prevent it from becoming separated from the laparoscopic apparatus **231** and for permitting its withdrawal after the laparoscopic procedure is being completed. As shown in FIGS. **33** and **34**, such means consists of a flexible elongate element **261** in the form of a braided string formed of a suitable fabric such as Nylon, which has one end **262** secured in a slot **263** provided on the distal extremity of the tip **79a** by suitable means, such as an adhesive (not shown). The flexible elongate element **261** extends from the distal extremity of the tip **79a** in a recess **264** opening through the external surfaces of the tip **79a**. The proximal extremity of the flexible elongate element **261** can be secured directly to the balloon **87** or, alternatively, it can extend through the perforated sleeve **101** provided in the balloon along the tunneling shaft so that it extends beyond the proximal extremity of the tunneling shaft.

The use of the laparoscopic apparatus **231** in performing a laparoscopic procedure is substantially identical to that hereinbefore described with the exception that when the removable sleeve **241** is removed from the balloon **87**, the removable sleeve can be pushed forwardly to detach the tip **79a** from the tunneling shaft **47**. The removable sleeve **241** then can be pulled rearwardly to separate it from the balloon along the slit **244**. As soon as this occurs, the tip **79** becomes free of the

sleeve and begins to rotate in the direction of the arrow **266** shown in FIG. **34**. When the balloon has been inflated and has performed its functions as hereinbefore described and it is now desired to remove the balloon **87**, the balloon **87** can be withdrawn in the manner hereinbefore described, and since the tip **79a** is tethered to the balloon **87** itself or flexible elongate element **261** attached thereto extends out proximally of the balloon **87**, the tip **79a** is withdrawn or can be withdrawn with the balloon **87**.

This laparoscopic apparatus **231** with its detachable obturator tip **79a** will be useful in certain applications of the present invention. With the previous laparoscopic apparatus hereinbefore described, there is a possibility that when the obturator tip **79** is withdrawn, critical structures, as for example small arteries, may be inadvertently incised between the tip **79** and the distal extremity of the tubular member **33** of the introducer device **32**. This possibility is eliminated by having the detachable tip **79a**, which is withdrawn when the balloon is withdrawn.

Still another embodiment of the laparoscopic apparatus incorporating the present invention is shown in FIGS. **36**, **37**, and **38**, in which the laparoscopic apparatus **271** consists of a balloon **272** of the type hereinbefore described, which is provided with a perforated sleeve **273** through which the tunneling rod **47** extends. The distal extremity **274** of the sleeve is closed by an end piece **276**. The balloon **272** is wrapped in the manner hereinbefore described around the tunneling shaft **247**. The tunneling shaft or rod **47** is not provided with a tunneling member or second obturator of the type hereinbefore described but its end is rounded as shown by providing a rounded tip **47a**.

The wrapped balloon **272** is enclosed within a removable sleeve **281** which is similar to those hereinbefore described. It is provided with a tubular member **282** that has a weakened region in the form of a slit **283** extending longitudinally the length thereof. The removable sleeve **281** differs from those hereinbefore described in that rather than being open at the end as in previous embodiments, it is provided with a closed-end, bullet-shaped, or olive-shaped tip **286**. The slit **283** is provided with a curved portion **283a** which extends through the bullet-shaped tip **286** so that the sleeve can be peeled off of the balloon **272** in the manner hereinbefore described by pulling on the handle **288** having a finger hole **289** therein. During the time that the removable sleeve **281** is being peeled off or separated from the balloon **272**, the balloon is held in place by the tunneling rod **47** which engages the end **276** of the perforated sleeve **273**. The balloon **272**, after it is inflated, can be separated from the tunneling rod **47** by pulling on the balloon and causing its distal extremity to lift up and to break apart at the perforations and peel away from the rounded extremities **47a** of the tunneling shaft **47** as shown in FIG. **38**. Continued pulling on the balloon **272** will cause it to separate from the tunneling rod **47** so that the balloon **272** can be removed as hereinbefore described. Thus, it can be seen that there has been provided an embodiment of the laparoscopic apparatus of the present invention in which the need for an obturator carried by the distal extremity of the tunneling rod **47** has been eliminated by providing the second obturator as a part of the removable sleeve **281**. In all other respects, the operation and use of the laparoscopic apparatus **271** is similar to that hereinbefore described.

From the foregoing, it can be seen that there has been provided an apparatus and method for developing an anatomic space by the use of a wrapped balloon which, as it is inflated, gradually unwraps to tend to form a plane to cause forces to be created perpendicular to the plane for pulling apart tissue along a natural plane to provide an anatomic

space, thereby providing a dissection in the weakest plane creating a more natural, less traumatic, and bloodless region in which to perform various medical procedures. Such anatomic spaces can be created in various parts of the human body, for example, in the preperitoneal area to provide a space anterior to the peritoneum for hernia repair and for varicocele dissection. Spaces can also be developed lateral to the peritoneum and spaces posterior to the peritoneum for performing medical procedures such as a sympathectomy and a lymph node dissection.

As herein before explained, the apparatus and method is particularly appropriate for performing laparoscopic hernia repair, permitting the use of grafts and patches which can be used for direct and indirect hernias with minimal pain to the patient and with the patient being able to return to work within a few days.

Another embodiment of a laparoscopic apparatus **301** incorporating the present invention is shown in FIGS. **39-48**. The laparoscopic apparatus **301** can also be described as an assembly in the form of a surgical dissector with a cannula which serves as a hand manipulated surgical instrument that can be used during general surgical laparoscopic procedures to dissect the layers of fascia between the skin and the peritoneum as described in conjunction with the previously disclosed embodiments of the invention. The laparoscopic apparatus **301** consists of a cannula **302** with a tunneling device **303** mounted therein. The tunneling device **303** is formed by the combination of an introducer member **307** and the guide rod assembly **306**. The laparoscopic apparatus also includes a skin seal assembly **311**, a balloon assembly **312**, and a balloon cover assembly **316** as shown particularly in FIGS. **39** and **40**.

The cannula **302** consists of a cannula tube **321** formed of a rigid plastic having proximal and distal extremities **322** and **323**. A flow passage **324** extends from the proximal extremity **322** to the distal extremity **323**. A cannula housing or handle **326** is mounted on the proximal extremity by suitable means such by molding it directly thereon. As disclosed in copending application Ser. No. 07/968,201, filed on Oct. 29, 1992, the disclosure of which is hereby incorporated by reference in its entirety, the handle **326** includes first and second valve members (not shown) in which one valve member serves as a duck-bill valve and the other valve member serves as a circular instrument or tool seal. The housing is provided with a Luer-type fitting **327** which is in communication with the interior of the housing outside of the duck-bill valve and is in communication with the passage **324** in the cannula tube **321**.

As described in said copending application Ser. No. 07/968,201, filed on Oct. 29, 1992, the cannula **302** is adapted to receive the tunneling device or blunt obturator device **303** which is generally of the type described hereinbefore in the present application. This device **303** consists of the blunt obturator **306** having a blunt tip **331** which is generally olive-shaped as shown (see FIG. **41**) and is formed of a suitable material such as plastic. The olive-shaped tip **331** is molded on the distal extremity **332** of a rod or a shaft **333** formed of a suitable material such as stainless steel. The blunt tip **331** is sized so that its outside diameter is slightly less than the inside diameter of the cannula tube **321**. The proximal extremity **334** of the rod or shaft **333** has mounted thereon a handle part **336** of a handle assembly **337** which includes a second handle part **338**. The handle parts **336** and **338** are adapted to mate with each other and are detachably connected in a manner described in copending application Ser. No. 07/968,201, filed on Oct. 21, 1992 by the use of latch means (not shown) adapted to be actuated by spring-operated latch members **339** disposed on opposite sides of the handle part **336** and adapted to be engaged by the fingers of the hand holding the handle

assembly **337**. The second handle part **338** forms a part of the introducer device **307** and is mounted on the proximal extremity **341** of a tubular member **342** formed of a suitable material such as plastic. The tubular member **342** is provided with a distal extremity **343** and has a bore **344** extending from the proximal extremity to the distal extremity through an end surface **346** (see FIG. **41**) which is inclined at a suitable angle, as for example, approximately 45° proximally from the horizontal axis of the bore **344**. The bore **344** is sized so it can slidably receive the shaft **333**.

The handle part **338** is provided with latch means (not shown) which is adapted to releasably connect the handle part **338** to the cannula housing **326** and includes latch members **349** disposed on opposite sides of the handle part **338** adapted to be engaged by the fingers of the hand holding the handle assembly **337** to permit the handle part **338** to be separated from the cannula housing **326**.

The skin seal assembly **311** generally can be of the type described in copending application Ser. No. 08/124,333, filed on Sep. 20, 1993, and as described therein consists of a screw body **350** formed of a suitable material such as plastic having a helical thread **351** and a scalloped flange **352**. A resilient insert **353** is disposed in the screw body **351** and is formed of a suitable resilient material such as silicone. The insert **353** is provided with a bore **354** extending therethrough. A collet **357** having slots **358** therein surrounds the insert **353** and is engaged by a collar **356** movable axially of the screw body **351** and is adapted to move the collet to compress the insert **353** to move the insert between a retaining position for the cannula tube **321** extending through the bore **354** to retain the cannula **302** in a desired longitudinal position with respect to the skin seal assembly **311** and a releasing position in which the cannula **302** can be slidably moved longitudinally inwardly or outwardly with respect to the skin seal **311**. The collar **356** is provided with an annular shoulder **359** having circumferentially spaced-apart slots **360** therein which are used for a purpose hereinafter described. As explained in copending application Ser. No. 08/124,333, filed on Sep. 20, 1993, means is provided to restrain rotation of the collar **356** with respect to the collet **357** and includes longitudinally extending keys **355** spaced 180° apart.

The balloon assembly **312** consists of a balloon **361** formed of a non-elastomeric, medical grade plastic material, of a suitable type such as polyurethane. The balloon **361** can be characterized as having an asymmetric manta ray configuration when viewed in plan and is provided with a forwardly extending rounded protuberance **362** which has a width substantially less than that of the balloon **361**. The balloon **361** consists of two sheets of material which can be identified as a first or upper sheet **363** and a second or lower sheet **364** which have been die cut to the desired configuration with their edges bonded together in a suitable manner such as by means of a heat seal to form a balloon which has a generally flat configuration when deflated as shown in FIG. **40**. The upper or outer surface of the first or upper sheet **363** has been roughened in areas **365** as shown in FIG. **40** on the outwardly extending lobe portions **361a** and **361b** for a purpose hereinafter described. The roughening can be accomplished in any suitable manner such as by embossing the plastic material with a pattern having raised portions therein.

Means is provided for inflating the balloon with a suitable medium, as for example, a liquid such as a saline solution and consists of a flexible tube **366** that extends into the balloon between the two sheets **363** and **364** and forms a fluid-tight seal therewith. The interior of the balloon can be inflated and deflated by introduction of the fluid through the tube **366**. The tube **366** is connected to a Y-adaptor **367** which has one leg of

the Y connected to a one-way valve 368 having a Luer fitting and the other leg connected to a tube 369 which is connected to a tapered fitting 371. A conventional pinch off clamp 372 is mounted on the tube 369. The tube 366 is adapted to be releasably retained in the slots 360 of the shoulder 359.

Means is provided for removably securing the balloon 361 to the tunneling rod or shaft 306 and consists of an elongate tubular member or sleeve 376 which extends along the length of the balloon 361 and is disposed on one side of the balloon 361 which can be called the top side generally centrally of the balloon 361. The tubular member 376 is provided with a passage 377 therein through which the tunneling or guide rod or shaft 333 extends. As hereinbefore explained, this tubular member or sleeve 376 can be formed as a separate member which is bonded to the top sheet 363 or alternatively can be formed integral with the top sheet 363 with two heat seals being provided above and below to form the sleeve 376 with the passage 377 therein. The tubular member 376 can be provided with spaced-apart elongate slits or perforations (not shown) extending along a line 378 in the tubular member 376 to facilitate separation of the balloon from the tunneling rod 333 as hereinafter described. With such a construction, it can be seen that the tunneling rod or blunt dissector or obturator 306 overlies the balloon 361 for advantageous features hereinafter described.

The balloon cover assembly 316 consists of a semi-rigid tube 381 formed of a suitable material such as plastic and is provided with proximal and distal extremities 382 and 383. It is provided with a bore 384 (see FIG. 42) which extends from the proximal extremity 382 to the distal extremity 383. The tube 381 is provided with a weakened region in the form of a partial slit 386 extending from the distal extremity 383 to the proximal extremity 382 of the tube 381 on the bottom side of the tube 381 as viewed in FIG. 40 (also see FIG. 42). The tube 381 is provided with a proximal end wall 387 which extends at a suitable angle, as for example 45° proximally with respect to the axis of the bore 384.

The balloon cover assembly 316 also includes a handle 391 which, as shown, can be formed as a separate part and is secured to the proximal extremity 382 of the tube 381 by a metal clip 392. The handle 391 is provided with a tapered body 393 formed of a suitable material such as plastic which as shown in FIGS. 42 and 47 is open on the bottom side to make accessible a longitudinally extending recess 394 which is semi-circular in cross-section. A pair of sideways extending wings 396 are formed integral with the body 393 and lie in a plane which is substantially coincident with the axis of the semi-circular recess 394. As shown, the wings 396 are disposed at the proximal extremity of the body 393.

An upwardly extending fin 397 is formed on the body 393 substantially equidistant from the wings 396 in a direction generally perpendicular to the plane in which the wings 396 lie. The fin 397 is relatively narrow and is provided with an upper surface 378 having notches 401 and 402 therein. A vertically extending wall 406 is formed as a part of the fin 397 and extends generally in a direction which is perpendicular to the plane of the wings 396. The wall 406 extends in a direction at right angles to the fin 397 and has a gradually increasing thickness from the top to the bottom ends of the wall (see FIG. 46). The body 393 is provided with a pair of spaced-apart holes 407 spaced approximately 90° apart and 45° from each side of the fin 397. An elongate slot 408 is formed in the body 393 and is generally in alignment with the fin 397. A pair of camming slots 411 are provided on opposite sides of the body 393 in the wings 396 adjacent the distal extremities of the wings adjacent the body. The camming slots 411 are provided with inclined camming surfaces 412.

The body 393 is provided with a pair of diametrically disposed protrusions 413 which extend into the recess 394 and which are adapted to seat in a pair of diametrically opposed holes 414 provided in the distal extremity of the introducer member 342.

The balloon cover assembly 316 also includes a clamping member 416 which is provided with a central body 417 and a pair of downwardly extending legs 418 and 419 (see FIG. 43) which extend downwardly into the camming slots 411. As shown, the central body 417 is disposed just distal of the fin 397 and is provided with semi-circular guides 421 formed integral with the central body 417 and disposed on opposite sides of the fin 397 in a fulcrum region which is just slightly above the point of commencement of the legs 418 and 419. The central body 417 is provided with longitudinally extending reinforcing ribs 422 (see FIGS. 43 and 45). It is also provided with a proximally extending latch portion 426 which extends generally at right angles to the central body 417. The latch portion 426 is provided with a centrally disposed slot 427 extending substantially the entire length thereof which receives the upper extremity of the fin 397 so that when the clamping member 416 is snapped into place over the body 393, the latch portion 426 is disposed in the notch 401 and cannot clear the uppermost portion of the fin 397. The clamping member 416 as hereinafter described is adapted to be moved between positions in which it is disposed within the notch 401 or alternatively in the notch 402. Laterally extending rounded raised portions 428 are provided on the central body 417 are adapted to be engaged by a finger of the hand when moving the clamping member 416 from the notch 401 to the notch 402.

Operation and use of the surgical balloon dissection apparatus 301 in performing the method for developing an anatomic space for laparoscopic hernia repair in connection with the apparatus shown in FIGS. 39-48 may now be briefly described as follows in conjunction with the cartoons which are shown in FIG. 49a through FIG. 49g. The surgeon in connection with the present method identifies the appropriate fascia layer to be dissected, either by direct visualization of the tissue and/or by manual palpation. Let it be assumed that it is desired to perform a hernia repair on a patient 451 and that it is desired to create an extraperitoneal working space for performing the surgical repair. The surgeon makes a small incision 452 in the skin of the patient in the umbilicus or slightly lateral of the umbilicus. A retractor (not shown) can then be utilized to open up the incision and to move it laterally to either side to locate the rectus muscles that run longitudinally of the body of the patient on both sides of the umbilicus or navel. As soon as the rectus sheath has been located, the incision is made in the rectus sheath through the incision previously made midway between the two sets of the rectus muscles. The surgeon then grasps the laparoscopic or balloon dissection apparatus 301 by using a hand, as for example, his right hand as shown in FIG. 49A to grasp the handle assembly 337 to introduce the blunt end 331 into the incision to engage the anterior wall of the posterior rectus sheath. The balloon dissector 301 is then advanced longitudinally of the patient's body generally parallel to the two sets of rectus muscles as shown by the arrow 453 by using the rectus sheath as a guide to pass the blunt tip 331 to cause separation of tissue and to pass over the arcuate line and transversalis fascia to the level of the symphysis pubis. This can be readily accomplished with the balloon dissector 301 because the balloon cover assembly 316 is latched to and generally rigidly connected to the distal extremity of the introducer member 342 of the introducer device 307 by having the protrusions 413 provided on the tubular cover 381 seated within the holes 414 provided

on the distal extremity of the introducer member **342**. This provides a rigid assembly of the balloon dissector **301** so it can be operated by the surgeon grasping the handle assembly **337** without the need to have the physician grasp by the other hand an intermediate part of the balloon dissector to cause a desired manipulation and steering of the blunt tip **331** as the dissection of the tissue is accomplished as it is advanced.

The travel of the blunt tip **331** to the level of the symphysis pubis can be readily ascertained by the surgeon who can use his hand to palpate the abdominal region of the patient and thereby feel the blunt tip **331** as it is advanced until the blunt tip **331** strikes the symphysis pubis. This can be readily ascertained by the right hand holding the handle assembly **337** feeling the impact of the tip **331** striking the symphysis pubis **468** (see FIG. **50**) which impact is communicated through the rigid structure of the balloon dissector to the handle assembly **337** where it can be felt by the hand of the surgeon. The balloon dissector **301** is then advanced a small additional amount so that the blunt tip **331** drops below the symphysis pubis **468**.

Thereafter, the balloon cover handle **391** is engaged by the same right hand of the physician as shown in FIG. **49B** and the thumb is used to engage the transverse rounded protrusions **428** by moving the upper extremity of the clamping or latching member **416** proximally to cause the latch portion **426** to move into engagement with the notch **402** carried by the fin **397**. As this is occurring, the legs **418** and **419** carried by the central body **417** are moved from the position shown in FIG. **42** to the position shown in FIG. **47** and in doing so engaging the camming surfaces **412** whereby the portions of the wings **396** secured to the body **393** are cammed outwardly so that the protrusions **413** are moved out of engagement with the holes **414**. The direction of movement of the latch or clamping member **416** is indicated by the arrow **454** in FIG. **49B**. As soon as the handle **391** has been released, the handle **391** is moved proximally with two fingers of the hand grasping the wings **396** to pull them upwardly and proximally to cause the balloon cover assembly **316** to be removed. The balloon **361** is held in place by the tunneling shaft or rod **336** and exits through the slit **386** provided at the bottom of the tubular cover **381** which serves as a tear away sheath. The balloon inflation tube **366** is retained in one of the slots **360** in the shoulders **359** so that it does not become entangled in the wings **396** as the balloon cover assembly **316** is removed. This exposes the balloon **361** which has its side margins rolled inwardly in rolls **461** with one being rolled in a counterclockwise direction and the other being rolled in a clockwise direction so that they underlie the tunneling rod **333** as shown in FIG. **50**. Also, to provide optimum dissection as hereinafter described before the rolling up occurs the forwardly extending protuberance **362** can be folded inwardly along a fold line **471** and the sidewardly extending lobe portions also can be folded inwardly along fold lines **472**. To inflate the balloon, the pinch off clamp **372** is closed and a conventional 60 cc syringe **476** containing a saline solution is connected to the one-way valve **368**. The syringe **466** is then operated as shown by the arrow **477** to introduce the saline solution from the syringe **476** into the tubular member **366** and into the interior of the balloon **361** to gradually inflate the same. The one-way check valve **368** ensures that saline solution cannot exit therefrom when the syringe **466** is removed. The syringe **476**, after it has been emptied, can be removed and refilled with a saline solution which is introduced into the balloon in the same manner to cause the side margins of the balloon **461** to unwrap in opposite directions as shown in FIG. **50** on opposite sides of the tunneling rod **333** until they become completely unwrapped. Typically, it may take as many as

approximately ten syringes of saline solution to cause the balloon **361** to completely unwrap and the move into an inflated condition as shown in FIG. **50**. As the balloon is being filled and unwrapping, it continues to separate or dissect tissue overlying the peritoneum to provide an extraperitoneal working space between the transversalis fascia and the rectus muscles.

As hereinbefore described, the balloon **361** in plan has an asymmetric manta ray-like configuration to provide the desired optimum extraperitoneal working space for the hernia repair. The forwardly extending protrusion **362** provided on the balloon **361** as it is inflated dissects distally from the distal extremity of the blunt tip **331** of the guide rod **333** serves to provide good dissection of tissue in the area of Cooper's ligaments and also to dissect laterally around the inguinal rings. By utilizing an asymmetric manta ray-like construction, it is possible to provide a balloon **361** with its wide side margins or lobe portions **361a** and **361b** which when inflated to cause forward movement of the balloon **361** to dissect downwardly around the inguinal rings and to wedge the balloon **361** in place. The forwardly extending protrusion **362** as it is inflated dissects like a small balloon down to the Cooper's ligament. In this way, it is impossible to obtain an extraperitoneal working space **478** which exposes all the desired anatomy at one time before moving off to the hernia sac and to do the final dissection for the hernia repair. By providing such a large extraperitoneal working space it is unnecessary to manually advance the dissection. The balloon has also been shaped to properly match the anatomy in which the procedure is to be formed so as to reduce to a minimum the amount of manual dissection which may be needed. Since the balloon has a particular shape and is formed of a non-elastomeric material, the dissection will occur in the desired locations which would not necessarily be the case if the balloon were formed of an elastomeric material which generally would have a tendency to follow the path of least resistance. Additional assurance is provided for ensuring that dissection will occur in the desired locations with the non-elastomeric balloon of the present invention because the balloon is held in place by the tunneling rod **333** underlying the symphysis pubis **468** as shown in FIG. **50**. Also, by providing roughened areas **365**, these areas frictionally engage overlying tissue so that the lobe portions **361a** and **361b** can serve as anchors to prevent displacement of the balloon **361** after the balloon **361** as it is being inflated.

After the amount of desired tissue dissection has taken place by inflation of the balloon **361** to provide the extraperitoneal working space, the balloon **361** is deflated by connecting the evacuation fitting **371** into an evacuation port (not shown) of an operating room suction system. The pinch clamp **372** is released to open the tube **369** to permit the saline solution which had been introduced into the balloons **361** to be sucked out to completely deflate the balloon from the inflated condition as shown in FIG. **49C**. After the balloon has been deflated, the tubular member **366** can be grasped by the fingers of the hand as shown, and the deflated balloon **361** pulled out through the incision **452** in the direction as shown by the arrow **481** in FIG. **49D**. If necessary, the handle assembly **337** can be held by the other hand. The balloon **361**, as it is being pulled off, has its sleeve **376** separates from the tunneling or guide rod **331** by breaking through the linear perforations lying along the line **378**. The guide rod **331** remains in place to preserve an easy entry into the extraperitoneal space which has been created. The balloon **361** can then be discarded.

After the balloon **361** has been removed, the left hand is used to grasp the lower second handle part **38** with the left

hand while the right hand engages the upper or first handle part 336 of the handle assembly 337. The fingers of the right hand then engage the latch members 339 on opposite sides by the fingers of the hand to release the first part 336 from the second part 338 and to permit the left hand to move the second part 338 in the direction of the arrow 482 shown in FIG. 49E. The second part 338 carries with it the cannula 302 attached thereto and the introducer device 307 which extends therethrough with the skin seal assembly 311 mounted on the cannula tube 321. This advancement over the guide rod 333 is continued until the distal extremity 343 of the introducer member 342 has been advanced into the desired position. As soon as this has been accomplished, the skin seal assembly 311 is slidably advanced on the cannula tube 321 until the skin seal approaches the incision 452. The screw body 351 is then rotated by the fingers of the hand engaging the flange 352 and/or to the shoulder 359 to screw it into the incision 452 and to form a gas tight skin seal with the skin of the patient. As soon as a good skin seal has been established, the introducer device 307 is clamped in a fixed position with respect to the skin seal assembly 311 by pushing generally downwardly on the collar 356 to engage the collet 357 to form a friction grip between the elastomeric insert 353 and the cannula tube 321.

After the cannula 302 is in a fixed in position, the blunt obturator 306 can be removed along with the tunneling device or blunt obturator device 303. This is accomplished merely by continuing to pull upwardly on the handle part 336 with the hand in the direction indicated by the arrow 483 as shown in FIG. 49F. As this pulling motion continues, the blunt tip 331 will engage the distal extremity 343 of the introducer member 342 causing a withdrawal force to be applied to the second handle part 338 to cause it to automatically release from the housing 326. This permits the blunt obturator device 303 to be removed through the cannula tube 321. This is possible because the blunt tip 331 has a diameter which can pass through the interior of the cannula tube 321 and through the valving provided in the housing 326. In withdrawing the guide rod 333 carrying the obturator tip 331, it can be seen that it continues to be guided by the introducer member 342 and thus will remain centered with respect to the cannula tube 321 to avoid any pinching action at the distal end 323 of the cannula tube 321. As soon as the obturator tip 331 strikes the introducer member 342, the handle part 338 is automatically disengaged from the cannula handle 326. The latch parts 349 are substantially buried within the second handle part 338 so they are relatively inaccessible to the surgeon ensuring that he will operate the latch parts 339 carried by the first handle 336 which helps to ensure that the surgeon remove the handle parts 336 and 338 in two stages.

After this has been accomplished, a source of gas such as carbon dioxide is connected to the stop cock valve 328. The stop cock valve 328 is opened to permit the carbon dioxide to inflate the dissected extraperitoneal working space such as indicated by the dotted lines 476 shown in FIG. 49G. The cannula 302 can then be utilized for introducing instruments of various types into the dissected extraperitoneal working space. The inflation gas cannot escape because of the valving provided in the handle 326 of the cannula 302.

Additional cannulae can be introduced in various positions in the abdomen of the patient through which additional surgical instruments can be introduced for performing the surgical procedure to be performed in the extraperitoneal working space. The remainder of the hernia repair procedure to be accomplished in the extraperitoneal working space is substantially the same as hereinbefore described and therefore will not be described in detail. By way of example, let it be assumed that a hernia sac has been formed in the patient, as

for example, by passing down into the scrotum to form a typical indirect hernia. The hernia sac can be pulled out and ligated in a manner hereinbefore described. Thereafter, a piece of mesh as hereinbefore described can be introduced through another site and rolled out over the region through which the sac had previously passed. The mesh can then be stapled in place, as for example along the Cooper's ligament. After the hernia repair has been completed, the extraperitoneal working space can be deflated by opening the stop cock valve 328 and bleeding the CO₂ contained therein to atmosphere to permit the abdominal wall to return to its normal position to help retain the mesh which has been placed in the desired position.

In connection with the formation of the extraperitoneal working space with the apparatus of the present invention, it has been found that it is desirable to have the guide rod 333 be in position in which it overlies the balloon 361, because this helps to ensure that the balloon dissection will occur in appropriate areas because the blunt tip 331 underlying the symphysis pubis is retained in the desired position even during the time that the balloon is unrolling during inflation. Positioning the guide rod 333 in this manner ensures that the balloon 361 will roll out in the opposite directions from the rod and also to help to push the balloon downwardly during inflation.

In order to make the apparatus more user friendly, the parts which are to be moved for operation with respect to other parts have been color coded, as for example they can be colored black with the remaining parts being of another color, such as grey or white. Thus, the clamping or latch member 416 is of a black color because it must be removed to unlatch the balloon cover assembly 316. Similarly, the collar 356 of the skin seal assembly 311 is of a black color because it must be moved to clamp the cannula 302 in a desired position. Similarly, the latch parts 339 and 349 are of black color because they also must be moved to separate the handle parts.

The wings 396 are provided on the balloon cover 316 in addition to serving as means to facilitate grasping of the balloon cover assembly 316 when it is desired to remove the same, as serve to visually indicate the plane in which the balloon 361 of the balloon dissection apparatus 301 causes dissection. Generally this dissection plane is in a plane which is parallel to the plane in which the wings 396 lie.

As hereinbefore explained, the introducer member 342 is provided with an obturator end surface or tip which is inclined at an angle in a direction away from the normal direction of insertion to inhibit any tendency that the tip 35 might hang up on tissue as it is being advanced through the tissue during dissection.

The sizing of the blunt obturator tip 331 so it is smaller than the inner diameter of the cannula tube 321 helps to ensure that tissue will not become entrapped or pinched between the tip 331 and the cannula tube 321. In addition, as hereinbefore described, the obturator tip 331 is tapered in both directions into a smaller dimension from the center to also minimize the possibility of any tissue being entrapped between the tip 331 and the cannula tube 321 and thereby ensuring that a shearing action will not occur.

In conjunction with the foregoing disclosure, it has been assumed that the balloon dissection apparatus hereinbefore described typically would be disposed of after each use. In the event it is desired to economize and it is desired to reutilize at least certain portions of the balloon dissection apparatus after a use in a laparoscopic procedure, another embodiment of a balloon dilatation apparatus 501 incorporating the present invention is shown in FIGS. 51-55. As shown therein, it consists of a handle assembly 502 similar to the handle assembly 337 hereinbefore described which includes a

handle part **503** similar to the handle part **336**. Other parts of the balloon dissection apparatus **501** are not shown because they can be identical to those hereinbefore described. The handle part **503** is provided with two sections **506** and **507** which can be fastened together in a suitable manner such as by ultrasonic bonding or an adhesive. Latch members **511** and **512** are provided on opposite sides of the handle part **503** and are provided with finger portions **513** that are adapted to be engaged by fingers of the hand which extend outwardly through recesses **514** in the sections **506** and **507**. The latch members **511** and **512** are each provided with a latch **516** which is yieldably urged in an outward direction by a yieldable spring member **517** engaging a downwardly depending lip **518** provided within the sections **506** and **507**. The latch members **511** and **512** are pivotally mounted between the sections **506** and **507** by pivot pins **519** formed integrally on the latch members **511** and **512** and extending into bosses **521** provided in the sections **506** and **107** which are formed of a suitable material such as plastic.

First and second inserts **526** and **527** formed of a suitable material such as plastic are mounted in the sections **506** and **507**. First and second latch members **531** and **532** formed of a suitable material such as metal are provided which are seated in recesses **533** and **534** provided in the inserts **526** and **527**. The latch members **531** and **532** are generally U-shaped and are yieldably urged into engagement with each other to form an elongate slot **536** extending therethrough. Upstanding legs **538** formed integral with the inserts **526** and **527** are provided in rectangular spaces **539** in the inserts **526** and **527** so that the upper extremities of the legs **538** can be flexed by movement of the latch members **531** and **532** as shown by dotted lines in FIG. **54**.

A guide rod **541** is provided which is similar to the guide rod **333** with the exception that its distal extremity **542** is also provided with an annular recess **543**. The distal extremity **542** is provided with a chamfer **544** and a pair of opposed flats **546** which extend through the chamfer **544**. The guide rod **541** extends through a hole **551** provided by semicircular recesses formed in the sections **506** and **507** and by a hole **552** formed by semicircular recesses in the inserts **526** and **527**. A larger hole **553** formed by semicircular recesses in the inserts **526** and **527** of a larger diameter than the hole **552** is provided which receives a push-button **556** and extends through a hole **557** also formed by semicircular recesses provided in the sections **506** and **507**. A dish-shaped or concave recess **558** is provided in the sections **506** and **507** and facilitates engaging the push-button **556** by a finger of the hand.

The pushbutton **556** is provided with a bore **561** which is sized so that it can receive the distal extremity **542** of the guide rod **541**. The pushbutton is provided with sideways extending skirts **562** extending 180° with respect to each other and which are provided with distally and inwardly extending camming surfaces **563** which terminate at a tip **564** that is generally V-shaped as shown in FIG. **51**. The tip **564** is formed so that it is adapted to enter into the slot **536** formed by the U-shaped members **531** and **532**. Thus, when the push-button **556** is depressed, the tip **564** will enter the slot **536** in a progressive manner to urge them apart so that the camming surfaces **563** carried thereby engage the U-shaped latch members **531** and **532** in regions just above and below the guide rod **541** so that the guide rod **541** is released by the U-shaped latch members **531** and **532** permitting it to be pulled out of the handle part **503**. Release of the guide rod **541** makes it possible to separate the guide rod **541** from the remainder of the balloon dissection apparatus **501** so that the handle assembly **502** and the other parts carried thereby can be separated from the guide rod. Thereafter, the guide rod **541**, the balloon

361 and the balloon cover assembly **316** can be disposed of. The other parts of the apparatus can be reutilized after appropriate sterilization. In order to ensure that the other parts survive sterilization, it may be desirable to form the plastic reusable parts of a suitable plastic such as a polysulfone.

In connection with the foregoing, it can be seen that by making minor changes in the construction it is possible to save a great number of parts of the balloon dissection apparatus for reuse after sterilization. Only the parts which are most difficult to clean are disposed of after a one-time use.

From the foregoing it can be seen that there has been provided an apparatus and method which is particularly suitable for developing an anatomic space such as an extraperitoneal working space between the abdominal wall and the peritoneum by dissecting tissue with the use of a non-elastomeric balloon. The balloon dissection apparatus has many features facilitating its use in developing such an anatomic space and for particularly developing an extraperitoneal working space for hernia repair.

What is claimed is:

1. A surgical apparatus comprising:

a tubular member having a bore extending therethrough; a tunneling shaft slidably mounted in the bore of the tubular member;

a deflated balloon attached to the tunneling shaft;

a sheath enclosing the balloon;

a blunt tip disposed at a distal end of the tunneling shaft, wherein the sheath holds the blunt tip in position relative to the flexible member; and

a flexible member disposed alongside the tunneling shaft, the flexible member having a distal end coupled to the blunt tip, wherein movement of the sheath allows separation of the blunt tip from the distal end of the tunneling shaft and pivotal movement of the blunt tip about the distal end of the flexible member.

2. The surgical apparatus of claim 1 further including a handle.

3. The surgical apparatus of claim 2, wherein the handle includes a proximal section, a distal section, and an intermediate section therebetween, the distal section attached to the tubular member and having a bore therein in alignment with the bore in the tubular member.

4. The surgical apparatus of claim 1, wherein the sheath includes a weakened region extending longitudinally thereof permitting the sheath to be removed from the balloon.

5. The surgical apparatus of claim 1, wherein a proximal end of the flexible member extends proximally of the tunneling shaft.

6. The surgical apparatus of claim 1, wherein the balloon is releasably attached to the tunneling shaft.

7. The surgical apparatus of claim 1, wherein the blunt tip and the tunneling shaft include corresponding structure configured and dimensioned for mating engagement to facilitate selective attachment of the blunt tip to the tunneling shaft.

8. The surgical apparatus of claim 7, wherein the blunt tip includes a slot that is adapted to receive a rounded extremity provided on the tunneling shaft.

9. The surgical apparatus of claim 1, wherein the blunt tip pivots about the distal end of the flexible member such that a proximal portion of the blunt tip is distal of the distal end of the flexible member.

10. The surgical apparatus of claim 1, wherein the blunt tip pivots about the distal end of the flexible member such that the flexible member becomes aligned with a longitudinal axis defined by the tubular member.

* * * * *

专利名称(译)	用于开发用于腹腔镜疝修补的解剖学空间的装置和方法以及与其一起使用的贴片		
公开(公告)号	US8187296	公开(公告)日	2012-05-29
申请号	US11/975751	申请日	2007-10-22
[标]申请(专利权)人(译)	GNERAL手术INNOVATIONS		
申请(专利权)人(译)	GNERAL外科INNOVATIONS INC.		
当前申请(专利权)人(译)	泰科医疗集团LP		
[标]发明人	KIETURAKIS MACIEJ J MOLLENAUER KENNETH H MONFORT MICHELLE Y KAYAN HELMUT L		
发明人	KIETURAKIS, MACIEJ J. MOLLENAUER, KENNETH H. MONFORT, MICHELLE Y. KAYAN, HELMUT L.		
IPC分类号	A61M29/00 A61B1/00 A61B1/303 A61B1/307 A61B1/31 A61B1/313 A61B17/00 A61B17/02 A61B17/03 A61B17/32 A61B17/34 A61B18/08 A61B19/00 A61F2/00 A61F2/958 A61M25/06 A61M29/02		
CPC分类号	A61B17/0218 A61B17/320016 A61B18/08 A61F2/0063 A61M25/0668 A61M25/1002 A61M29/02 A61B17/3421 A61B17/3439 A61B19/5212 A61B2017/00557 A61B2017/320044 A61B2017/320048 A61B2019/4868 A61F2002/0072 A61B90/361 A61B2090/0813		
审查员(译)	JACKSON , GARY		
其他公开文献	US20080058853A1		
外部链接	Espacenet USPTO		

摘要(译)

一种用于在身体中的组织中产生解剖空间的装置包括导入器和护套。管状护套可以围绕导引器，并且可以沿其纵向轴线具有削弱区域。手柄可以设置在护套上。手柄可以适于被向近侧拉动以分离弱化区域并且允许护套从导引器移除。护套可以通过手柄上的棘爪或门锁固定到导引器。

