



US008893946B2

(12) **United States Patent**
Boudreaux et al.

(10) **Patent No.:** **US 8,893,946 B2**
(45) **Date of Patent:** **Nov. 25, 2014**

(54) **LAPAROSCOPIC TISSUE THICKNESS AND
CLAMP LOAD MEASURING DEVICES**

227/182.1; 33/783, 784, 787, 788, 792,
33/807; 901/33, 34

See application file for complete search history.

(75) Inventors: **Chad P. Boudreaux**, Cincinnati, OH
(US); **Eugene L. Timperman**,
Cincinnati, OH (US); **Leslie M.**
Fugikawa, Cincinnati, OH (US)

(56) **References Cited**

U.S. PATENT DOCUMENTS

2,804,848 A 9/1957 O'Farrell et al.
2,853,074 A 9/1958 Olson

(Continued)

(73) Assignee: **Ethicon Endo-Surgery, Inc.**, Cincinnati,
OH (US)

(*) Notice: Subject to any disclaimer, the term of this
patent is extended or adjusted under 35
U.S.C. 154(b) by 1707 days.

FOREIGN PATENT DOCUMENTS

CA 2458946 A1 3/2003
CA 2512960 A1 1/2006

(Continued)

(21) Appl. No.: **11/729,008**

(22) Filed: **Mar. 28, 2007**

OTHER PUBLICATIONS

(65) **Prior Publication Data**

US 2009/0012556 A1 Jan. 8, 2009

European Search Opinion, Application No. 08251188.2, dated May
7, 2009 (6 pages).

(Continued)

(51) **Int. Cl.**

A61B 17/10 (2006.01)
A61B 5/107 (2006.01)
A61B 17/072 (2006.01)
A61B 17/068 (2006.01)
A61B 17/29 (2006.01)
A61B 19/00 (2006.01)

Primary Examiner — Max Hindenburg

Assistant Examiner — John Pani

(52) **U.S. Cl.**

CPC **A61B 17/07207** (2013.01); **A61B 17/068**
(2013.01); **A61B 17/072** (2013.01); **A61B**
17/29 (2013.01); **A61B 19/46** (2013.01); **A61B**
2017/07214 (2013.01); **A61B 2019/461**
(2013.01); **A61B 2019/464** (2013.01)
USPC **227/175.1**; 600/587; 606/139; 606/205;
606/219; 33/783

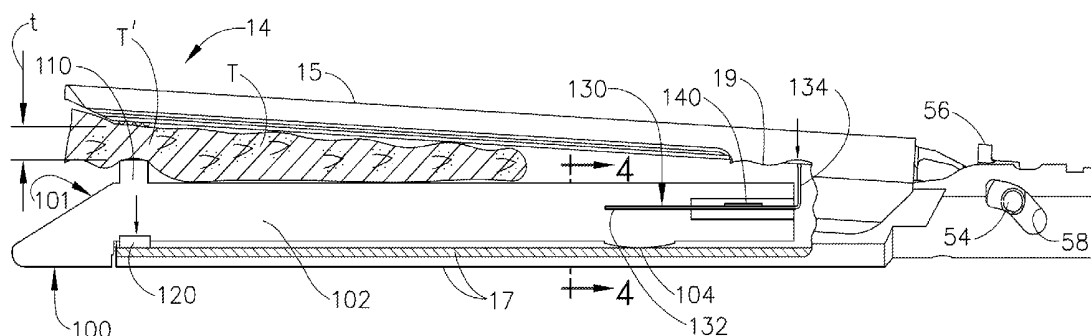
(57) **ABSTRACT**

A surgical instrument having opposed jaws that can be selec-
tively moved between open and closed positions. Various
embodiments include components for measuring the thick-
ness of tissue clamped between the opposed jaws. Some
embodiments are configured to ascertain the amount of com-
pressive force that is being applied to the tissue while the
thickness of the tissue is being determined. The tissue thick-
ness data is displayed on the instrument itself and/or on a
display that is remote from the instrument. The various
embodiments may comprise different types of surgical instru-
ments such as surgical staplers and graspers. A jaw arrange-
ment with jaws shaped to define a cradle that corresponds to
a cross-sectional shape of an object is also disclosed. The
components that generate the thickness data may be electri-
cally or mechanically actuated.

(58) **Field of Classification Search**

USPC 600/300, 546, 547, 550, 561, 562, 563,
600/564, 565, 566, 567, 568, 593, 595;
606/1, 32, 34, 39, 41, 46, 48, 51, 139,
606/142, 213, 215, 219, 220, 221;
227/175.1, 175.2, 175.3, 175.4, 176.1,
227/177.1, 178.1, 179.1, 180.1, 181.1,

17 Claims, 23 Drawing Sheets



(56)

References Cited

U.S. PATENT DOCUMENTS

3,490,675	A	1/1970	Green et al.	5,352,235	A	10/1994	Koros et al.
3,551,987	A	1/1971	Wilkinson	5,352,238	A	10/1994	Green et al.
3,643,851	A	2/1972	Green et al.	5,354,303	A	10/1994	Spaeth et al.
3,662,939	A	5/1972	Bryan	5,358,510	A	10/1994	Luscombe et al.
3,717,294	A	2/1973	Green	5,366,479	A	11/1994	McGarry et al.
3,819,100	A	6/1974	Noiles et al.	5,374,277	A	12/1994	Hassler
4,331,277	A	5/1982	Green	5,379,933	A	1/1995	Green et al.
4,383,634	A	5/1983	Green	5,383,880	A	1/1995	Hooven
4,396,139	A	8/1983	Hall et al.	5,383,888	A	1/1995	Zvenyatsky et al.
4,402,445	A	9/1983	Green	5,383,895	A	1/1995	Holmes et al.
4,415,112	A	11/1983	Green	5,389,098	A	2/1995	Tsuruta et al.
4,429,695	A	2/1984	Green	5,397,324	A	3/1995	Carroll et al.
4,475,679	A	10/1984	Fleury, Jr.	5,405,344	A	4/1995	Williamson et al.
4,489,875	A	12/1984	Crawford et al.	5,413,272	A	5/1995	Green et al.
4,500,024	A	2/1985	DiGiovanni et al.	5,415,334	A	5/1995	Williamson, IV et al.
4,505,273	A	3/1985	Braun et al.	5,417,361	A	5/1995	Williamson, IV
4,505,414	A	3/1985	Filipi	5,425,745	A	6/1995	Green et al.
4,506,671	A	3/1985	Green	5,449,365	A	9/1995	Green et al.
4,522,327	A	6/1985	Korthoff et al.	5,456,401	A	10/1995	Green et al.
4,530,453	A	7/1985	Green	5,474,566	A	12/1995	Alesi et al.
4,566,620	A	1/1986	Green et al.	5,478,354	A	12/1995	Tovey et al.
4,573,622	A	3/1986	Green et al.	5,480,089	A	1/1996	Blewett
4,576,167	A	3/1986	Noiles	5,482,197	A	1/1996	Green et al.
4,580,712	A	4/1986	Green	5,484,095	A	1/1996	Green et al.
4,610,250	A	9/1986	Green	5,484,451	A	1/1996	Akopov et al.
4,610,383	A	9/1986	Rothfuss et al.	5,485,947	A	1/1996	Olson et al.
4,619,262	A	10/1986	Taylor	5,485,952	A	1/1996	Fontayne
4,629,107	A	12/1986	Fedotov et al.	5,487,499	A	1/1996	Sorrentino et al.
4,655,222	A	4/1987	Florez et al.	5,487,500	A	1/1996	Knodel et al.
4,664,305	A	5/1987	Blake, III et al.	5,489,058	A	2/1996	Plyley et al.
4,667,674	A	5/1987	Korthoff et al.	5,497,933	A	3/1996	DeFonzo et al.
4,671,445	A	6/1987	Barker et al.	5,503,320	A	4/1996	Webster et al.
4,715,520	A	12/1987	Roehr, Jr. et al.	5,503,638	A	4/1996	Cooper et al.
4,728,020	A	3/1988	Green et al.	5,509,596	A	4/1996	Green et al.
4,752,024	A	6/1988	Green et al.	5,529,235	A	6/1996	Boiarski et al.
4,754,909	A	7/1988	Barker et al.	5,533,521	A	7/1996	Granger
4,767,044	A	8/1988	Green	5,535,934	A	7/1996	Boiarski et al.
4,805,823	A	2/1989	Rothfuss	5,535,935	A	7/1996	Vidal et al.
4,809,695	A	3/1989	Gwathmey et al.	5,535,937	A	7/1996	Boiarski et al.
4,817,847	A	4/1989	Redtenbacher et al.	5,540,375	A	7/1996	Bolanos et al.
4,819,853	A	4/1989	Green	5,542,594	A	8/1996	McKean et al.
4,821,939	A	4/1989	Green	5,547,117	A	8/1996	Hamblin et al.
4,869,414	A	9/1989	Green et al.	5,549,628	A	8/1996	Cooper et al.
4,869,415	A	9/1989	Fox	5,549,637	A	8/1996	Crainich
4,880,015	A	11/1989	Nierman	5,553,765	A	9/1996	Knodel et al.
4,941,623	A	7/1990	Pruitt	5,554,169	A	9/1996	Green et al.
4,944,443	A	7/1990	Odds et al.	5,558,665	A	9/1996	Kieturakis
5,014,899	A	5/1991	Presty et al.	5,560,530	A	10/1996	Bolanos et al.
5,042,707	A	8/1991	Taheri	5,560,532	A	10/1996	DeFonzo et al.
5,065,929	A	11/1991	Schulze et al.	5,562,239	A	10/1996	Boiarski et al.
5,071,430	A	12/1991	de Salis et al.	5,562,241	A	10/1996	Knodel et al.
5,084,057	A	1/1992	Green et al.	5,562,682	A	10/1996	Oberlin et al.
5,116,349	A	5/1992	Aranyi	5,562,702	A	10/1996	Huitema et al.
5,129,570	A	7/1992	Schulze et al.	5,564,615	A	10/1996	Bishop et al.
5,137,198	A	8/1992	Nobis et al.	5,571,116	A	11/1996	Bolanos et al.
5,139,513	A	8/1992	Segato	5,575,799	A	11/1996	Bolanos et al.
5,158,567	A	10/1992	Green	5,575,803	A	11/1996	Cooper et al.
5,171,247	A	12/1992	Hughett et al.	5,577,654	A	11/1996	Bishop
5,171,249	A	12/1992	Stefanchik et al.	5,579,978	A	12/1996	Green et al.
5,209,747	A	5/1993	Knoepfler	5,580,067	A	12/1996	Hamblin et al.
5,211,649	A	5/1993	Kohler et al.	5,582,611	A	12/1996	Tsuruta et al.
5,221,036	A	6/1993	Takase	5,584,425	A	12/1996	Savage et al.
5,222,975	A	6/1993	Crainich	5,586,711	A	12/1996	Plyley et al.
5,236,440	A	8/1993	Hlavacek	5,588,579	A	12/1996	Schnut et al.
5,246,443	A	9/1993	Mai	5,588,580	A	12/1996	Paul et al.
5,258,009	A	11/1993	Connors	5,588,581	A	12/1996	Conlon et al.
5,282,806	A	2/1994	Haber et al.	5,597,107	A	1/1997	Knodel et al.
5,282,829	A	2/1994	Hermes	5,601,224	A	2/1997	Bishop et al.
5,304,204	A	4/1994	Bregen	5,603,443	A	2/1997	Clark et al.
5,314,424	A	5/1994	Nicholas	5,605,272	A	2/1997	Witt et al.
5,333,422	A	8/1994	Warren et al.	5,605,273	A	2/1997	Hamblin et al.
5,341,724	A	8/1994	Vatel	5,607,094	A	3/1997	Clark et al.
5,342,395	A	8/1994	Jarrett et al.	5,607,095	A	3/1997	Smith et al.
5,342,396	A	8/1994	Cook	5,609,285	A	3/1997	Grant et al.
5,350,400	A	9/1994	Esposito et al.	5,624,452	A	4/1997	Yates
				5,628,446	A	5/1997	Geiste et al.
				5,630,539	A	5/1997	Plyley et al.
				5,630,540	A	5/1997	Blewett
				5,632,432	A	5/1997	Schulze et al.

(56)

References Cited

U.S. PATENT DOCUMENTS

5,632,433	A	5/1997	Grant et al.	5,836,503	A	11/1998	Ehrenfels et al.
5,634,584	A	6/1997	Okorocha et al.	5,839,639	A	11/1998	Sauer et al.
5,636,779	A	6/1997	Palmer	5,855,311	A	1/1999	Hamblin et al.
5,636,780	A	6/1997	Green et al.	5,865,361	A	2/1999	Milliman et al.
5,639,008	A	6/1997	Gallagher et al.	5,868,760	A	2/1999	McGuckin, Jr.
5,645,209	A	7/1997	Green et al.	5,871,135	A	2/1999	Williamson, IV et al.
5,647,526	A	7/1997	Green et al.	5,876,401	A	3/1999	Schulze et al.
5,649,937	A	7/1997	Bito et al.	5,878,937	A	3/1999	Green et al.
5,651,491	A	7/1997	Heaton et al.	5,878,938	A	3/1999	Bittner et al.
5,653,373	A	8/1997	Green et al.	5,893,506	A	4/1999	Powell
5,653,374	A	8/1997	Young et al.	5,894,979	A	4/1999	Powell
5,655,698	A	8/1997	Yoon	5,897,552	A	4/1999	Edwards et al.
5,657,921	A	8/1997	Young et al.	5,901,895	A	5/1999	Heaton et al.
5,662,258	A	9/1997	Knodel et al.	5,906,625	A	5/1999	Bito et al.
5,662,260	A	9/1997	Yoon	5,908,427	A	6/1999	McKean et al.
5,667,527	A	9/1997	Cook	5,911,353	A	6/1999	Bolanos et al.
5,669,544	A	9/1997	Schulze et al.	5,915,616	A	6/1999	Viola et al.
5,673,840	A	10/1997	Schulze et al.	5,918,791	A	7/1999	Sorrentino et al.
5,673,841	A	10/1997	Schulze et al.	5,919,198	A	7/1999	Graves, Jr. et al.
5,673,842	A	10/1997	Bittner et al.	5,938,667	A	8/1999	Peyser et al.
5,678,748	A	10/1997	Plyley et al.	5,941,442	A	8/1999	Geiste et al.
5,680,981	A	10/1997	Mililli et al.	5,951,552	A	9/1999	Long et al.
5,680,982	A	10/1997	Schulze et al.	5,951,574	A	9/1999	Stefanchik et al.
5,680,983	A	10/1997	Plyley et al.	5,954,259	A	9/1999	Viola et al.
5,685,474	A	11/1997	Seeber	5,988,479	A	11/1999	Palmer
5,688,270	A	11/1997	Yates et al.	6,010,054	A	1/2000	Johnson et al.
5,690,269	A	11/1997	Bolanos et al.	6,032,849	A	3/2000	Mastri et al.
5,692,668	A	12/1997	Schulze et al.	6,033,427	A	3/2000	Lee
5,697,543	A	12/1997	Burdorff	6,045,560	A	4/2000	McKean et al.
5,700,270	A	12/1997	Peyser et al.	6,050,472	A	4/2000	Shibata
5,702,408	A	12/1997	Wales et al.	6,083,242	A	7/2000	Cook
5,704,534	A	1/1998	Huitema et al.	6,086,600	A	7/2000	Kortenbach
5,706,997	A	1/1998	Green et al.	6,099,551	A	8/2000	Gabbay
5,706,998	A	1/1998	Plyley et al.	6,102,271	A	8/2000	Longo et al.
5,707,392	A	1/1998	Kortenbach	6,109,500	A	8/2000	Alli et al.
5,709,334	A	1/1998	Sorrentino et al.	6,117,158	A	9/2000	Measamer et al.
5,711,472	A	1/1998	Bryan	6,119,913	A	9/2000	Adams et al.
5,713,505	A	2/1998	Huitema	6,126,058	A	10/2000	Adams et al.
5,715,987	A	2/1998	Kelley et al.	6,131,789	A	10/2000	Schulze et al.
5,715,988	A	2/1998	Palmer	6,155,473	A	12/2000	Tompkins et al.
5,716,366	A	2/1998	Yates	6,156,056	A	12/2000	Kearns et al.
5,718,359	A	2/1998	Palmer et al.	6,162,208	A	12/2000	Hipps
5,718,360	A	2/1998	Green et al.	6,168,605	B1	1/2001	Measamer et al.
5,725,536	A	3/1998	Oberlin et al.	6,171,330	B1	1/2001	Benchetrit
5,725,554	A	3/1998	Simon et al.	6,197,042	B1	3/2001	Ginn et al.
5,728,121	A	3/1998	Bimbo et al.	6,202,914	B1	3/2001	Geiste et al.
5,730,758	A	3/1998	Allgeyer	6,228,084	B1	5/2001	Kirwan, Jr.
5,732,871	A	3/1998	Clark et al.	6,241,139	B1	6/2001	Milliman et al.
5,732,872	A	3/1998	Bolduc et al.	6,241,723	B1	6/2001	Heim et al.
5,735,445	A	4/1998	Vidal et al.	6,250,532	B1	6/2001	Green et al.
5,735,874	A	4/1998	Measamer et al.	6,264,086	B1	7/2001	McGuckin, Jr.
5,743,456	A	4/1998	Jones et al.	6,264,087	B1	7/2001	Whitman
5,752,644	A	5/1998	Bolanos et al.	6,273,897	B1	8/2001	Dallessandro et al.
5,758,814	A	6/1998	Gallagher et al.	6,302,311	B1	10/2001	Adams et al.
5,762,255	A	6/1998	Chrisman et al.	6,315,184	B1	11/2001	Whitman
5,762,256	A	6/1998	Mastri et al.	6,325,810	B1	12/2001	Hamilton et al.
5,779,130	A	7/1998	Alesi et al.	6,330,965	B1	12/2001	Milliman et al.
5,779,131	A	7/1998	Knodel et al.	6,387,113	B1	5/2002	Hawkins et al.
5,779,132	A	7/1998	Knodel et al.	6,387,114	B2	5/2002	Adams
5,782,396	A	7/1998	Mastri et al.	6,406,440	B1	6/2002	Stefanchik
5,782,397	A	7/1998	Koukline	RE37,814	E	8/2002	Allgeyer
5,785,232	A	7/1998	Vidal et al.	6,436,107	B1	8/2002	Wang et al.
5,794,834	A	8/1998	Hamblin et al.	6,443,973	B1	9/2002	Whitman
5,797,536	A	8/1998	Smith et al.	6,482,200	B2	11/2002	Shippert
5,797,537	A	8/1998	Oberlin et al.	6,488,197	B1	12/2002	Whitman
5,797,538	A	8/1998	Heaton et al.	6,491,201	B1	12/2002	Whitman
5,797,959	A	8/1998	Castro et al.	6,494,896	B1	12/2002	D'Alessio et al.
5,799,857	A	9/1998	Robertson et al.	6,503,257	B2	1/2003	Grant et al.
5,807,393	A	9/1998	Williamson, IV et al.	6,505,768	B2	1/2003	Whitman
5,817,119	A	10/1998	Klieman et al.	6,517,565	B1	2/2003	Whitman et al.
5,820,009	A	10/1998	Melling et al.	6,569,171	B2	5/2003	DeGuillebon et al.
5,826,776	A	10/1998	Schulze et al.	6,578,751	B2	6/2003	Hartwick
5,829,662	A	11/1998	Allen et al.	6,588,643	B2	7/2003	Bolduc et al.
5,833,690	A	11/1998	Yates et al.	6,592,597	B2	7/2003	Grant et al.
5,833,695	A	11/1998	Yoon	6,601,749	B2	8/2003	Sullivan et al.
				6,602,252	B2	8/2003	Mollenauer
				6,616,686	B2	9/2003	Coleman et al.
				6,619,529	B2	9/2003	Green et al.
				6,620,166	B1	9/2003	Wenstrom, Jr. et al.

(56)

References Cited

U.S. PATENT DOCUMENTS

6,629,988	B2	10/2003	Weadock	7,121,446	B2	10/2006	Arad et al.
6,644,532	B2	11/2003	Green et al.	7,122,028	B2	10/2006	Looper et al.
6,656,193	B2	12/2003	Grant et al.	7,128,253	B2	10/2006	Mastri et al.
6,669,073	B2	12/2003	Milliman et al.	7,128,254	B2	10/2006	Shelton, IV et al.
6,681,978	B2	1/2004	Geiste et al.	7,140,527	B2	11/2006	Ehrenfels et al.
6,681,979	B2	1/2004	Whitman	7,140,528	B2	11/2006	Shelton, IV
6,682,528	B2	1/2004	Frazier et al.	7,143,923	B2	12/2006	Shelton, IV et al.
6,685,727	B2	2/2004	Fisher et al.	7,143,924	B2	12/2006	Scirica et al.
6,695,199	B2	2/2004	Whitman	7,143,925	B2	12/2006	Shelton, IV et al.
6,698,643	B2	3/2004	Whitman	7,143,926	B2	12/2006	Shelton, IV et al.
6,716,233	B1	4/2004	Whitman	7,147,138	B2	12/2006	Shelton, IV
6,723,087	B2	4/2004	O'Neill et al.	7,159,750	B2	1/2007	Racenet et al.
6,752,768	B2	6/2004	Burdorff et al.	7,160,299	B2	1/2007	Baily
6,755,338	B2	6/2004	Hahnen et al.	7,168,604	B2	1/2007	Milliman et al.
6,767,356	B2	7/2004	Kanner et al.	7,172,104	B2	2/2007	Scirica et al.
6,769,594	B2	8/2004	Orban, III	7,188,758	B2	3/2007	Viola et al.
6,773,438	B1	8/2004	Knodel et al.	7,207,471	B2	4/2007	Heinrich et al.
6,786,382	B1	9/2004	Hoffman	7,207,472	B2	4/2007	Wukusick et al.
6,786,896	B1	9/2004	Madhani et al.	7,210,609	B2	5/2007	Leiboff et
6,793,652	B1	9/2004	Whitman et al.	7,213,736	B2	5/2007	Wales et al.
6,805,273	B2	10/2004	Bilotti et al.	7,220,272	B2	5/2007	Weadock
6,814,741	B2	11/2004	Bowman et al.	7,225,964	B2	6/2007	Mastri et al.
6,817,508	B1	11/2004	Racenet et al.	7,235,089	B1	6/2007	McGuckin, Jr.
6,817,509	B2	11/2004	Geiste et al.	7,238,195	B2	7/2007	Viola
6,821,273	B2	11/2004	Mollenauer	7,241,288	B2	7/2007	Braun
6,830,174	B2	12/2004	Hillstead et al.	7,246,734	B2	7/2007	Shelton, IV
6,835,199	B2	12/2004	McGuckin, Jr. et al.	7,258,262	B2	8/2007	Mastri et al.
6,843,403	B2	1/2005	Whitman	7,278,562	B2	10/2007	Mastri et al.
6,846,307	B2	1/2005	Whitman et al.	7,278,563	B1	10/2007	Green
6,846,308	B2	1/2005	Whitman et al.	7,296,724	B2	11/2007	Green et al.
6,846,309	B2	1/2005	Whitman et al.	7,297,149	B2	11/2007	Vitali et al.
6,849,071	B2	2/2005	Whitman et al.	7,303,106	B2	12/2007	Milliman et al.
RE38,708	E	3/2005	Bolanos et al.	7,303,107	B2	12/2007	Milliman et al.
6,874,669	B2	4/2005	Adams et al.	7,303,108	B2	12/2007	Shelton, IV
6,877,647	B2	4/2005	Green et al.	7,303,556	B2	12/2007	Metzger
6,905,057	B2	6/2005	Swayze et al.	7,328,828	B2	2/2008	Ortiz et al.
6,945,444	B2	9/2005	Gresham et al.	7,328,829	B2	2/2008	Arad et al.
6,953,138	B1	10/2005	Dworak et al.	7,343,920	B2	3/2008	Toby et al.
6,953,139	B2	10/2005	Milliman et al.	7,354,447	B2	4/2008	Shelton, IV et al.
6,959,852	B2	11/2005	Shelton, IV et al.	7,364,061	B2	4/2008	Swayze et al.
6,964,363	B2	11/2005	Wales et al.	7,380,695	B2	6/2008	Doll et al.
6,978,921	B2	12/2005	Shelton, IV et al.	7,380,696	B2	6/2008	Shelton, IV et al.
6,978,922	B2	12/2005	Bilotti et al.	7,396,356	B2	7/2008	Mollenauer
6,981,628	B2	1/2006	Wales	7,398,907	B2	7/2008	Racenet et al.
6,986,451	B1	1/2006	Mastri et al.	7,398,908	B2	7/2008	Holsten et al.
6,988,649	B2	1/2006	Shelton, IV et al.	7,404,508	B2	7/2008	Smith et al.
6,988,650	B2	1/2006	Schwemberger et al.	7,404,509	B2	7/2008	Ortiz et al.
7,000,818	B2	2/2006	Shelton, IV et al.	7,407,075	B2	8/2008	Holsten et al.
7,000,819	B2	2/2006	Swayze et al.	7,407,078	B2	8/2008	Shelton, IV et al.
7,001,408	B2	2/2006	Knodel et al.	7,410,086	B2	8/2008	Ortiz et al.
7,008,435	B2	3/2006	Cummins	7,416,101	B2	8/2008	Shelton, IV et al.
7,032,798	B2	4/2006	Whitman et al.	7,422,136	B1	9/2008	Marczyk
7,032,799	B2	4/2006	Viola et al.	7,422,139	B2	9/2008	Shelton, IV et al.
7,044,352	B2	5/2006	Shelton, IV et al.	7,424,965	B2	9/2008	Racenet et al.
7,044,353	B2	5/2006	Mastri et al.	7,431,188	B1	10/2008	Marczyk
7,048,687	B1	5/2006	Reuss et al.	7,431,189	B2	10/2008	Shelton, IV et al.
7,055,730	B2	6/2006	Ehrenfels et al.	7,431,730	B2	10/2008	Viola
7,055,731	B2	6/2006	Shelton, IV et al.	7,434,715	B2	10/2008	Shelton, IV et al.
7,056,330	B2	6/2006	Gayton	7,434,717	B2	10/2008	Shelton, IV et al.
7,059,508	B2	6/2006	Shelton, IV et al.	7,438,209	B1	10/2008	Hess et al.
7,070,083	B2	7/2006	Jankowski	7,441,684	B2	10/2008	Shelton, IV et al.
7,077,856	B2	7/2006	Whitman	7,441,685	B1	10/2008	Boudreaux
7,080,769	B2	7/2006	Vresh et al.	7,448,525	B2	11/2008	Shelton, IV et al.
7,081,114	B2	7/2006	Rashidi	7,464,846	B2	12/2008	Shelton, IV et al.
7,083,073	B2	8/2006	Yoshie et al.	7,464,847	B2	12/2008	Viola et al.
7,083,075	B2	8/2006	Swayze et al.	7,464,849	B2	12/2008	Shelton, IV et al.
7,090,673	B2	8/2006	Dycus et al.	7,467,740	B2	12/2008	Shelton, IV et al.
7,090,684	B2	8/2006	McGuckin, Jr. et al.	7,472,814	B2	1/2009	Mastri et al.
7,097,089	B2	8/2006	Marczyk	7,472,815	B2	1/2009	Shelton, IV et al.
7,108,695	B2	9/2006	Witt et al.	7,473,253	B2	1/2009	Dycus et al.
7,108,709	B2	9/2006	Cummins	7,490,749	B2	2/2009	Schall et al.
7,111,769	B2	9/2006	Wales et al.	7,494,039	B2	2/2009	Racenet et al.
7,112,214	B2	9/2006	Peterson et al.	7,500,979	B2	3/2009	Hueil et al.
7,114,642	B2	10/2006	Whitman	7,506,790	B2	3/2009	Shelton, IV
7,118,582	B1	10/2006	Wang et al.	7,506,791	B2	3/2009	Omaits et al.
				7,510,107	B2	3/2009	Timm et al.
				7,546,940	B2	6/2009	Milliman et al.
				7,549,564	B2	6/2009	Boudreaux
				7,552,854	B2	6/2009	Wixey et al.

(56)

References Cited

U.S. PATENT DOCUMENTS

7,568,603	B2	8/2009	Shelton, IV et al.	2007/0102452	A1	5/2007	Shelton, IV et al.
7,575,144	B2	8/2009	Ortiz et al.	2007/0102453	A1	5/2007	Morgan et al.
7,631,793	B2	12/2009	Rethy et al.	2007/0102472	A1	5/2007	Shelton, IV
7,641,093	B2	1/2010	Doll et al.	2007/0102473	A1	5/2007	Shelton, IV et al.
7,665,646	B2	2/2010	Prommersberger	2007/0102474	A1	5/2007	Shelton, IV et al.
7,699,204	B2	4/2010	Viola	2007/0106317	A1	5/2007	Shelton, IV et al.
8,079,606	B2	12/2011	Dull et al.	2007/0114261	A1	5/2007	Ortiz et al.
2002/0117534	A1	8/2002	Green et al.	2007/0158385	A1	7/2007	Hueil et al.
2002/0165541	A1	11/2002	Whitman	2007/0170225	A1	7/2007	Shelton, IV et al.
2004/0006372	A1	1/2004	Racenet et al.	2007/0173806	A1	7/2007	Orszulak et al.
2004/0034369	A1	2/2004	Sauer et al.	2007/0173813	A1	7/2007	Odom
2004/0044364	A1	3/2004	DeVries et al.	2007/0175949	A1	8/2007	Shelton, IV et al.
2004/0094597	A1	5/2004	Whitman et al.	2007/0175950	A1	8/2007	Shelton, IV et al.
2004/0108357	A1	6/2004	Milliman et al.	2007/0175951	A1	8/2007	Shelton, IV et al.
2004/0111081	A1	6/2004	Whitman et al.	2007/0175953	A1	8/2007	Shelton, IV et al.
2004/0164123	A1	8/2004	Racenet et al.	2007/0175955	A1	8/2007	Shelton, IV et al.
2004/0167572	A1	8/2004	Roth et al.	2007/0175956	A1	8/2007	Swayze et al.
2004/0173659	A1	9/2004	Green et al.	2007/0175957	A1	8/2007	Shelton, IV et al.
2004/0222268	A1	11/2004	Bilotti et al.	2007/0175958	A1	8/2007	Shelton, IV et al.
2004/0232201	A1	11/2004	Wenchell et al.	2007/0175964	A1	8/2007	Shelton, IV et al.
2004/0243151	A1	12/2004	Demmy et al.	2007/0179476	A1	8/2007	Shelton, IV et al.
2004/0243176	A1	12/2004	Hahnen et al.	2007/0181632	A1	8/2007	Milliman
2004/0254608	A1	12/2004	Huitema et al.	2007/0194079	A1	8/2007	Hueil et al.
2005/0033357	A1	2/2005	Braun	2007/0194080	A1	8/2007	Swayze et al.
2005/0054946	A1	3/2005	Krzyzanowski	2007/0194081	A1	8/2007	Hueil et al.
2005/0059997	A1	3/2005	Bauman et al.	2007/0194082	A1	8/2007	Morgan et al.
2005/0080454	A1	4/2005	Drews et al.	2007/0233053	A1	10/2007	Shelton et al.
2005/0103819	A1	5/2005	Racenet et al.	2007/0246505	A1	10/2007	Pace-Florida et al.
2005/0107824	A1	5/2005	Hillstead et al.	2007/0288044	A1	12/2007	Jinno et al.
2005/0119669	A1	6/2005	Demmy	2007/0295780	A1	12/2007	Shelton et al.
2005/0125009	A1	6/2005	Perry et al.	2008/0029570	A1	2/2008	Shelton et al.
2005/0131390	A1 *	6/2005	Heinrich et al. 606/1	2008/0029573	A1	2/2008	Shelton et al.
2005/0131457	A1	6/2005	Douglas et al.	2008/0029574	A1	2/2008	Shelton et al.
2005/0143759	A1	6/2005	Kelly	2008/0029575	A1	2/2008	Shelton et al.
2005/0171522	A1	8/2005	Christopherson	2008/0029576	A1	2/2008	Shelton et al.
2005/0184121	A1	8/2005	Heinrich	2008/0035701	A1	2/2008	Racenet et al.
2005/0187576	A1	8/2005	Whitman et al.	2008/0041916	A1	2/2008	Milliman et al.
2005/0189397	A1	9/2005	Jankowski	2008/0041917	A1	2/2008	Racenet et al.
2005/0192628	A1	9/2005	Viola	2008/0078800	A1	4/2008	Hess et al.
2005/0216055	A1	9/2005	Scirica et al.	2008/0078801	A1	4/2008	Shelton et al.
2005/0240222	A1	10/2005	Shipp	2008/0078802	A1	4/2008	Hess et al.
2005/0256522	A1 *	11/2005	Francischelli et al. 606/41	2008/0078803	A1	4/2008	Shelton et al.
2005/0263563	A1	12/2005	Racenet et al.	2008/0078804	A1	4/2008	Shelton et al.
2005/0274768	A1	12/2005	Cummins et al.	2008/0078806	A1	4/2008	Omaits et al.
2006/0011699	A1	1/2006	Olson et al.	2008/0078807	A1	4/2008	Hess et al.
2006/0047303	A1	3/2006	Ortiz et al.	2008/0078808	A1	4/2008	Hess et al.
2006/0047307	A1	3/2006	Ortiz et al.	2008/0082115	A1	4/2008	Morgan et al.
2006/0049229	A1	3/2006	Milliman et al.	2008/0082124	A1	4/2008	Hess et al.
2006/0052825	A1	3/2006	Ransick et al.	2008/0082125	A1	4/2008	Murray et al.
2006/0060630	A1	3/2006	Shelton, IV et al.	2008/0082126	A1	4/2008	Murray et al.
2006/0085031	A1	4/2006	Bettuchi	2008/0083813	A1	4/2008	Zemlok et al.
2006/0085033	A1	4/2006	Crisuolo et al.	2008/0140115	A1	6/2008	Stopek
2006/0100643	A1	5/2006	Laufer et al.	2008/0164296	A1	7/2008	Shelton et al.
2006/0108393	A1	5/2006	Heinrich et al.	2008/0167522	A1	7/2008	Giordano et al.
2006/0122636	A1	6/2006	Bailly et al.	2008/0167644	A1	7/2008	Shelton et al.
2006/0149163	A1	7/2006	Hibner et al.	2008/0167670	A1	7/2008	Shelton et al.
2006/0151567	A1	7/2006	Roy	2008/0167671	A1	7/2008	Giordano et al.
2006/0180634	A1	8/2006	Shelton, IV et al.	2008/0167672	A1	7/2008	Giordano et al.
2006/0217729	A1	9/2006	Eskridge et al.	2008/0167736	A1	7/2008	Swayze et al.
2006/0226196	A1	10/2006	Hueil et al.	2008/0169328	A1	7/2008	Shelton
2006/0235469	A1	10/2006	Viola	2008/0169329	A1	7/2008	Shelton et al.
2006/0241655	A1	10/2006	Viola	2008/0169330	A1	7/2008	Shelton et al.
2006/0241692	A1	10/2006	McGuckin, Jr. et al.	2008/0169331	A1	7/2008	Shelton et al.
2006/0273135	A1 *	12/2006	Beetel 227/175.1	2008/0169332	A1	7/2008	Shelton et al.
2006/0278680	A1	12/2006	Viola et al.	2008/0169333	A1	7/2008	Shelton et al.
2006/0278681	A1	12/2006	Viola et al.	2008/0197167	A1	8/2008	Viola et al.
2006/0289602	A1	12/2006	Wales et al.	2008/0210738	A1	9/2008	Shelton et al.
2007/0023476	A1	2/2007	Whitman et al.	2008/0237296	A1	10/2008	Boudreaux et al.
2007/0023477	A1	2/2007	Whitman et al.	2008/0251568	A1	10/2008	Zemlok et al.
2007/0027469	A1	2/2007	Smith et al.	2008/0283570	A1	11/2008	Boyden et al.
2007/0034668	A1	2/2007	Holsten et al.	2008/0290134	A1	11/2008	Bettuchi et al.
2007/0045379	A1	3/2007	Shelton, IV	2008/0296343	A1	12/2008	Schall et al.
2007/0055219	A1	3/2007	Whitman et al.	2008/0296345	A1	12/2008	Shelton, IV et al.
2007/0073341	A1	3/2007	Smith et al.	2008/0296346	A1	12/2008	Shelton, IV et al.
2007/0084897	A1	4/2007	Shelton, IV et al.	2008/0296347	A1	12/2008	Shelton, IV et al.
				2008/0300579	A1	12/2008	Broehl et al.
				2008/0300580	A1	12/2008	Shelton, IV et al.
				2008/0300613	A1	12/2008	Shelton, IV et al.
				2008/0308601	A1	12/2008	Timm et al.

(56)

References Cited

U.S. PATENT DOCUMENTS

2008/0308602 A1 12/2008 Timm et al.
 2008/0308603 A1 12/2008 Shelton et al.
 2008/0308606 A1 12/2008 Timm et al.
 2008/0308607 A1 12/2008 Timm et al.
 2008/0308608 A1 12/2008 Prommersberger
 2008/0314954 A1 12/2008 Boudreaux
 2008/0314955 A1 12/2008 Boudreaux et al.
 2008/0314957 A1 12/2008 Boudreaux
 2008/0314960 A1 12/2008 Marczyk et al.
 2008/0314961 A1 12/2008 Boudreaux et al.
 2008/0314962 A1 12/2008 Boudreaux
 2009/0001121 A1 1/2009 Hess et al.
 2009/0001122 A1 1/2009 Prommersberger et al.
 2009/0001123 A1 1/2009 Morgan et al.
 2009/0001124 A1 1/2009 Hess et al.
 2009/0001125 A1 1/2009 Hess et al.
 2009/0001126 A1 1/2009 Hess et al.
 2009/0001128 A1 1/2009 Weisenburgh, II et al.
 2009/0001130 A1 1/2009 Hess et al.
 2009/0005807 A1 1/2009 Hess et al.
 2009/0005808 A1 1/2009 Hess et al.
 2009/0005809 A1 1/2009 Hess et al.
 2009/0076534 A1 3/2009 Shelton, IV et al.
 2009/0090763 A1 4/2009 Zemlok et al.
 2009/0200355 A1 8/2009 Baxter, III et al.
 2009/0206123 A1 8/2009 Doll et al.
 2009/0206124 A1 8/2009 Hall et al.
 2009/0206125 A1 8/2009 Huitema et al.
 2009/0206126 A1 8/2009 Huitema et al.
 2009/0206128 A1 8/2009 Hueil et al.
 2009/0206129 A1 8/2009 Doll et al.
 2009/0206130 A1 8/2009 Hall et al.
 2009/0206131 A1 8/2009 Weisenburgh, II et al.
 2009/0206132 A1 8/2009 Hueil et al.
 2009/0206133 A1 8/2009 Morgan et al.
 2009/0206134 A1 8/2009 Swayze et al.
 2009/0206135 A1 8/2009 Hall et al.
 2009/0206136 A1 8/2009 Moore et al.
 2009/0206137 A1 8/2009 Hall et al.
 2009/0206138 A1 8/2009 Smith et al.
 2009/0206139 A1 8/2009 Hall et al.
 2009/0206140 A1 8/2009 Scheib et al.
 2009/0206141 A1 8/2009 Huitema et al.
 2009/0206142 A1 8/2009 Huitema et al.
 2009/0206143 A1 8/2009 Huitema et al.
 2009/0206144 A1 8/2009 Doll et al.
 2009/0209946 A1 8/2009 Swayze et al.
 2009/0218384 A1 9/2009 Aranyi
 2009/0242610 A1 10/2009 Shelton, IV et al.
 2009/0255974 A1 10/2009 Viola
 2009/0255975 A1 10/2009 Zemlok et al.
 2009/0255977 A1 10/2009 Zemlok
 2009/0255978 A1 10/2009 Viola et al.
 2009/0265976 A1 10/2009 Mclemore
 2009/0289096 A1 11/2009 Shelton, IV et al.
 2009/0292283 A1 11/2009 Odom
 2010/0032470 A1 2/2010 Hess et al.
 2010/0065605 A1 3/2010 Shelton, IV et al.
 2010/0065609 A1 3/2010 Schwemberger
 2010/0069942 A1 3/2010 Shelton, IV
 2010/0072251 A1 3/2010 Baxter, III et al.
 2010/0072252 A1 3/2010 Baxter, III et al.
 2010/0072253 A1 3/2010 Baxter, III et al.
 2010/0072256 A1 3/2010 Baxter, III et al.
 2010/0076474 A1 3/2010 Yates et al.
 2010/0076475 A1 3/2010 Yates et al.
 2010/0089970 A1 4/2010 Smith et al.
 2010/0089974 A1 4/2010 Shelton, IV
 2010/0096435 A1 4/2010 Fuchs et al.
 2010/0127042 A1 5/2010 Shelton, IV
 2010/0133317 A1 6/2010 Shelton, IV et al.
 2010/0133318 A1 6/2010 Boudreaux
 2010/0179382 A1 7/2010 Shelton, IV et al.
 2010/0181364 A1 7/2010 Shelton, IV et al.
 2010/0193566 A1 8/2010 Scheib et al.

2010/0193567 A1 8/2010 Scheib et al.
 2010/0193568 A1 8/2010 Scheib et al.
 2010/0193569 A1 8/2010 Yates et al.
 2010/0198220 A1 8/2010 Boudreaux et al.
 2010/0213241 A1 8/2010 Bedi
 2010/0222901 A1 9/2010 Swayze et al.
 2010/0224669 A1 9/2010 Shelton, IV et al.
 2010/0237132 A1 9/2010 Measamer et al.
 2010/0243709 A1 9/2010 Hess et al.
 2010/0264193 A1 10/2010 Huang et al.
 2010/0264194 A1 10/2010 Huang et al.
 2010/0294829 A1 11/2010 Giordano et al.

FOREIGN PATENT DOCUMENTS

CA 2514274 A1 1/2006
 DE 9412228 U 9/1994
 DE 19924311 A1 11/2000
 DE 69328576 T2 1/2001
 DE 10314072 A1 10/2004
 EP 0122046 A1 10/1984
 EP 0070230 B1 10/1985
 EP 0033548 B1 5/1986
 EP 0276104 A2 7/1988
 EP 0639349 A2 2/1994
 EP 0324636 B1 3/1994
 EP 0593920 A1 4/1994
 EP 0600182 A2 6/1994
 EP 0630612 A1 12/1994
 EP 0634144 A1 1/1995
 EP 0646356 A2 4/1995
 EP 0646357 A1 4/1995
 EP 0653189 A2 5/1995
 EP 0669104 A1 8/1995
 EP 0511470 B1 10/1995
 EP 0679367 A2 11/1995
 EP 0392547 B1 12/1995
 EP 0685204 A1 12/1995
 EP 0699418 A1 3/1996
 EP 0702937 A1 3/1996
 EP 0705571 A1 4/1996
 EP 0484677 B2 6/1996
 EP 0541987 B1 7/1996
 EP 0667119 B1 7/1996
 EP 0770355 A1 5/1997
 EP 0503662 B1 6/1997
 EP 0578425 B1 9/1997
 EP 0625335 B1 11/1997
 EP 0552423 B1 1/1998
 EP 0592244 B1 1/1998
 EP 0648476 B1 1/1998
 EP 0676173 B1 9/1998
 EP 0603472 B1 11/1998
 EP 0605351 B1 11/1998
 EP 0878169 A1 11/1998
 EP 0879742 A1 11/1998
 EP 0760230 B1 2/1999
 EP 0537572 B1 6/1999
 EP 0552050 B1 5/2000
 EP 1090592 A1 4/2001
 EP 1256318 B1 5/2001
 EP 0908152 B1 1/2002
 EP 0872213 B1 5/2002
 EP 1238634 A2 9/2002
 EP 0656188 B1 1/2003
 EP 0829235 B1 6/2003
 EP 0813843 B1 10/2003
 EP 0741996 B1 2/2004
 EP 0705570 B1 4/2004
 EP 1086713 B1 5/2004
 EP 1426012 A1 6/2004
 EP 0888749 B1 9/2004
 EP 1477119 A1 11/2004
 EP 1479345 A1 11/2004
 EP 1479347 A1 11/2004
 EP 1479348 A1 11/2004
 EP 1520521 A1 4/2005
 EP 1520523 A1 4/2005
 EP 1520525 A1 4/2005

(56)

References Cited

FOREIGN PATENT DOCUMENTS

EP	1522264	A1	4/2005	WO	WO 98/30153	A1	7/1998
EP	1550408	A1	7/2005	WO	WO 99/12483	A1	3/1999
EP	1557129	A1	7/2005	WO	WO 99/15086	A1	4/1999
EP	1064883	B1	8/2005	WO	WO 99/34744	A1	7/1999
EP	1157666	B1	9/2005	WO	WO 99/45849	A1	9/1999
EP	1621138	A2	2/2006	WO	WO 00/24322	A1	5/2000
EP	1621139	A2	2/2006	WO	WO 00/57796	A1	10/2000
EP	1621141	A2	2/2006	WO	WO 00/64365	A1	11/2000
EP	1621145	A2	2/2006	WO	WO 00/72762	A1	12/2000
EP	1621151	A2	2/2006	WO	WO 00/72765	A1	12/2000
EP	1652481	A2	5/2006	WO	WO 01/05702	A1	1/2001
EP	1382303	B1	6/2006	WO	WO 01/10482	A1	2/2001
EP	1045672	B1	8/2006	WO	WO 01/54594	A1	8/2001
EP	1617768	B1	8/2006	WO	WO 01/62158	A2	8/2001
EP	1702567	A2	9/2006	WO	WO 01/62162	A1	8/2001
EP	1129665	B1	11/2006	WO	WO 01/62164	A2	8/2001
EP	1256317	B1	12/2006	WO	WO 01/91646	A1	12/2001
EP	1728473	A1	12/2006	WO	WO 02/07608	A2	1/2002
EP	1728475	A2	12/2006	WO	WO 02/07618	A1	1/2002
EP	1479346	B1	1/2007	WO	WO 02/17799	A1	3/2002
EP	1484024	B1	1/2007	WO	WO 02/19920	A1	3/2002
EP	1754445	A2	2/2007	WO	WO 02/30297	A2	4/2002
EP	1759812	A1	3/2007	WO	WO 02/32322	A2	4/2002
EP	1769756	A1	4/2007	WO	WO 02/43571	A2	6/2002
EP	1769758	A1	4/2007	WO	WO 02/058568	A1	8/2002
EP	1785097	A2	5/2007	WO	WO 02/060328	A1	8/2002
EP	1790293	A2	5/2007	WO	WO 02/067785	A2	9/2002
EP	1800610	A1	6/2007	WO	WO 02/098302	A1	12/2002
EP	1300117	B1	8/2007	WO	WO 03/000138	A2	1/2003
EP	1813199	A1	8/2007	WO	WO 03/001329	A2	1/2003
EP	1813201	A1	8/2007	WO	WO 03/013363	A1	2/2003
EP	1813203	A2	8/2007	WO	WO 03/020106	A2	3/2003
EP	1813207	A1	8/2007	WO	WO 03/020139	A2	3/2003
EP	1813209	A1	8/2007	WO	WO 2003/079909	A3	3/2003
EP	1839596	A1	10/2007	WO	WO 03/030743	A2	4/2003
EP	1402821	B1	12/2007	WO	WO 03/037193	A1	5/2003
EP	1872727	A1	1/2008	WO	WO 03/047436	A3	6/2003
EP	1897502	A1	3/2008	WO	WO 03/057048	A1	7/2003
EP	1702568	B1	7/2008	WO	WO 03/057058	A1	7/2003
EP	1970014	A1	9/2008	WO	WO 03/063694	A1	8/2003
EP	1980213	A2	10/2008	WO	WO 03/077769	A1	9/2003
EP	1759645	B1	11/2008	WO	WO 03/082126	A1	10/2003
EP	1693008	B1	12/2008	WO	WO 03/088845	A2	10/2003
EP	2000102	A2	12/2008	WO	WO 03/090630	A2	11/2003
EP	1749486	B1	3/2009	WO	WO 03/094743	A1	11/2003
EP	2090256	A2	8/2009	WO	WO 03/094745	A1	11/2003
EP	1813206	B1	4/2010	WO	WO 03/094747	A1	11/2003
EP	1769754	B1	6/2010	WO	WO 2003/094746	A1	11/2003
FR	2765794	A	1/1999	WO	WO 03/101313	A1	12/2003
GB	939929	A	10/1963	WO	WO 03/105698	A2	12/2003
GB	1210522	A	10/1970	WO	WO 03/105702	A2	12/2003
GB	2336214	A	10/1999	WO	WO 2004/006980	A2	1/2004
JP	6007357	A	1/1994	WO	WO 2004/028585	A2	4/2004
JP	7051273	A	2/1995	WO	WO 2004/032754	A2	4/2004
JP	8033641	A	2/1996	WO	WO 2004/032760	A2	4/2004
JP	8229050	A	9/1996	WO	WO 2004/032762	A1	4/2004
JP	2000287987	A	10/2000	WO	WO 2004/032763	A2	4/2004
JP	2001286477	A	10/2001	WO	WO 2004/047653	A2	6/2004
JP	2002369820	A	12/2002	WO	WO 2004/049956	A2	6/2004
JP	2005505322	T	2/2005	WO	WO 2004/086987	A1	10/2004
JP	2005103293	A	4/2005	WO	WO 2004/096057	A2	11/2004
RU	2187249	C2	8/2002	WO	WO 2004/105621	A1	12/2004
RU	2225170	C2	3/2004	WO	WO 2004/112618	A2	12/2004
SU	1377053	A1	2/1988	WO	WO 2004/112652	A2	12/2004
SU	1561964	A1	5/1990	WO	WO 2005/027983	A2	3/2005
SU	1722476	A1	3/1992	WO	WO 2005/037329	A2	4/2005
WO	WO 93/08755	A1	5/1993	WO	WO 2005/078892	A1	8/2005
WO	WO 95/18572	A1	7/1995	WO	WO 2005/096954	A2	10/2005
WO	WO 95/23557	A1	9/1995	WO	WO 2005/112808	A1	12/2005
WO	WO 95/29639	A1	11/1995	WO	WO 2005/115251	A2	12/2005
WO	WO 96/22055	A1	7/1996	WO	WO 2006/044490	A2	4/2006
WO	WO 96/35464	A1	11/1996	WO	WO 2006/044581	A2	4/2006
WO	WO 97/34533	A1	9/1997	WO	WO 2006/044810	A2	4/2006
WO	WO 97/39688	A2	10/1997	WO	WO 2006/083748	A1	8/2006
WO	WO 98/17180	A1	4/1998	WO	WO 2006/115958	A1	11/2006
				WO	WO 2006/132992	A1	12/2006
				WO	WO 2007/002180	A2	1/2007
				WO	WO 2007/016290	A2	2/2007
				WO	WO 2007/018898	A2	2/2007

(56)

References Cited

FOREIGN PATENT DOCUMENTS

WO	WO 2007/098220	A2	8/2007
WO	WO 2007/121579	A1	11/2007
WO	WO 2007/137304	A2	11/2007
WO	WO 2007/139734	A2	12/2007
WO	WO 2007/142625	A2	12/2007
WO	WO 2008/039270	A1	4/2008
WO	WO 2008/045383	A2	4/2008

OTHER PUBLICATIONS

Disclosed Anonymously, "Motor-Driven Surgical Stapler Improvements," Research Disclosure Database No. 526041, Published: Feb. 2008.

C.C. Thompson et al., "Peroral Endoscopic Reduction of Dilated Gastrojejunal Anastomosis After Roux-en-Y Gastric Bypass: A Pos-

sible New Option for Patients with Weight Regain," Surg Endosc (2006) vol. 20, pp. 1744-1748.

B.R. Coolman, DVM, MS et al., "Comparison of Skin Staples With Sutures for Anastomosis of the Small Intestine in Dogs," Abstract; <http://www.blackwell-synergy.com/doi/abs/10.1053/jvet.2000.7539?cookieSet=1&journalCode=vsu> which redirects to <http://www3.interscience.wiley.com/journal/119040681/abstract?CRETRY=1&SRETRY=0>; [online] accessed: Sep. 22, 2008 (2 pages).

U.S. Appl. No. 11/821,277, filed Jun. 22, 2007.

U.S. Appl. No. 12/031,368, filed Feb. 14, 2008.

The Sodem Aseptic Battery Transfer Kit, Sodem Systems, 2000, 3 pages.

"Biomedical Coatings," Fort Wayne Metals, Research Products Corporation, obtained online at www.fwmetals.com on Jun. 21, 2010 (1 page).

* cited by examiner

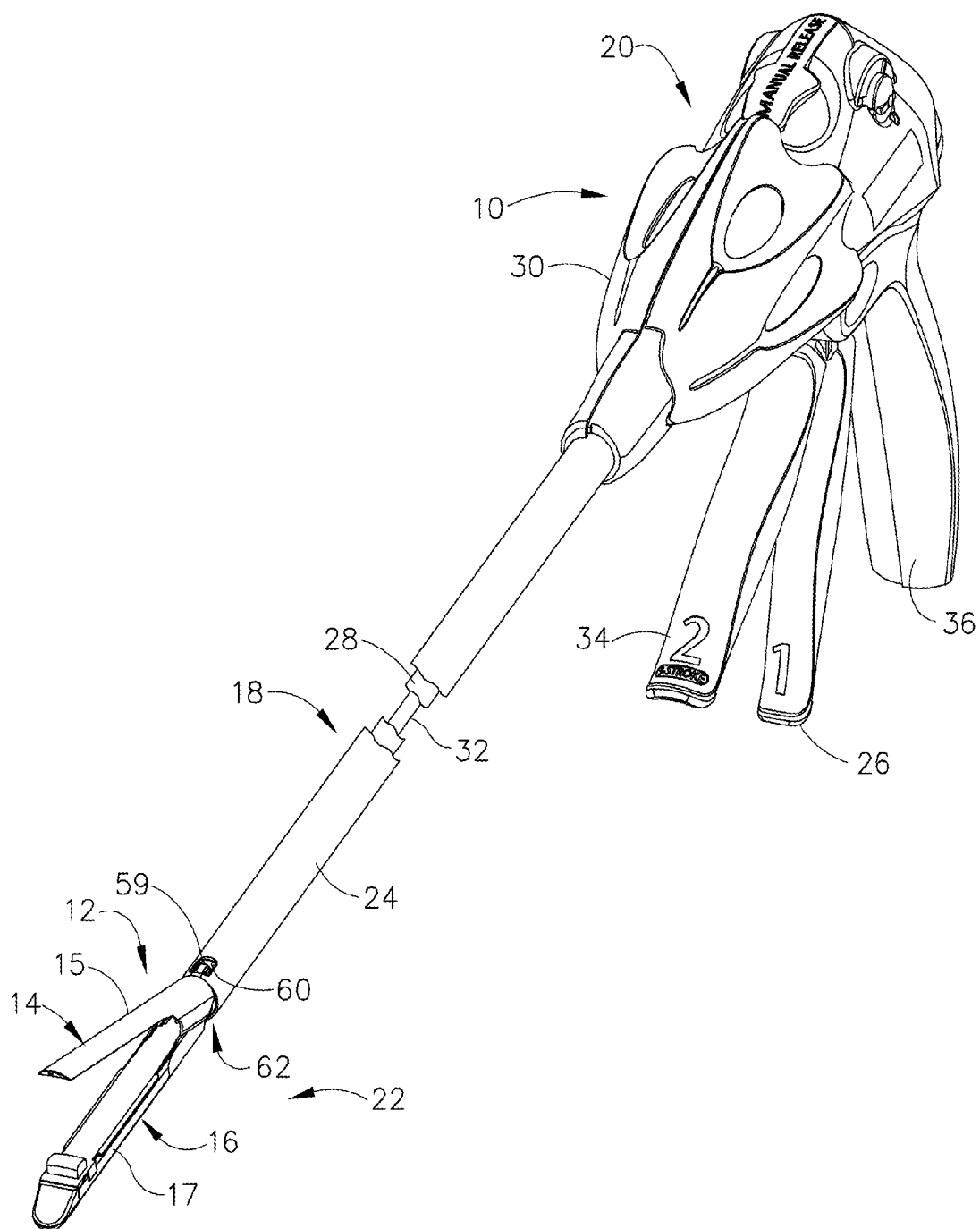
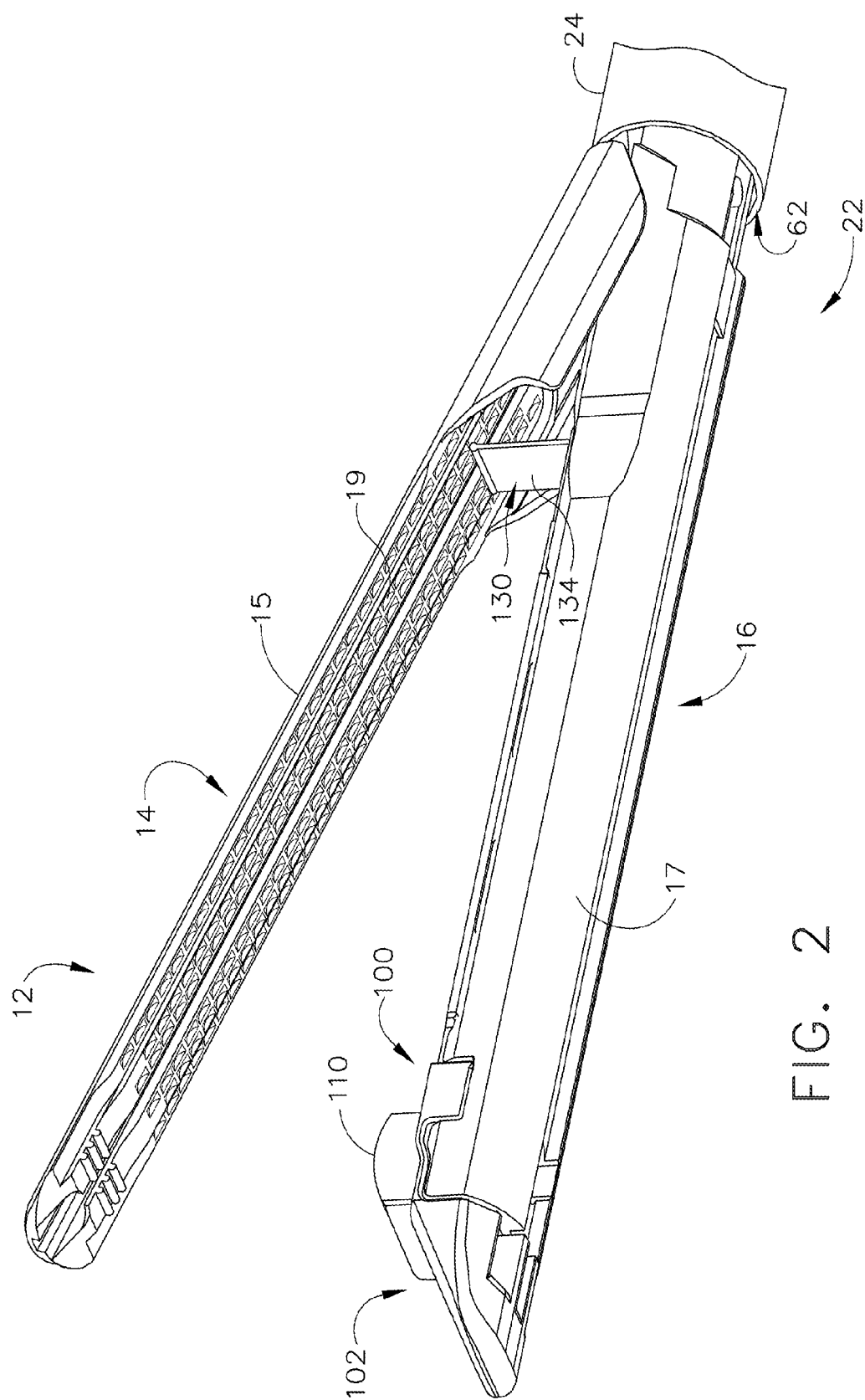
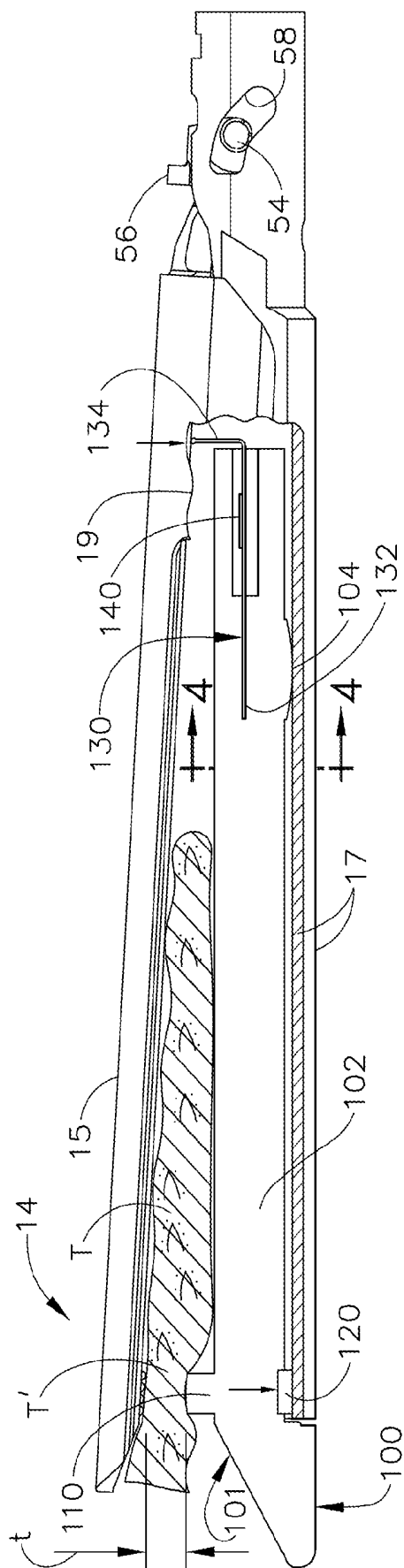


FIG. 1





36

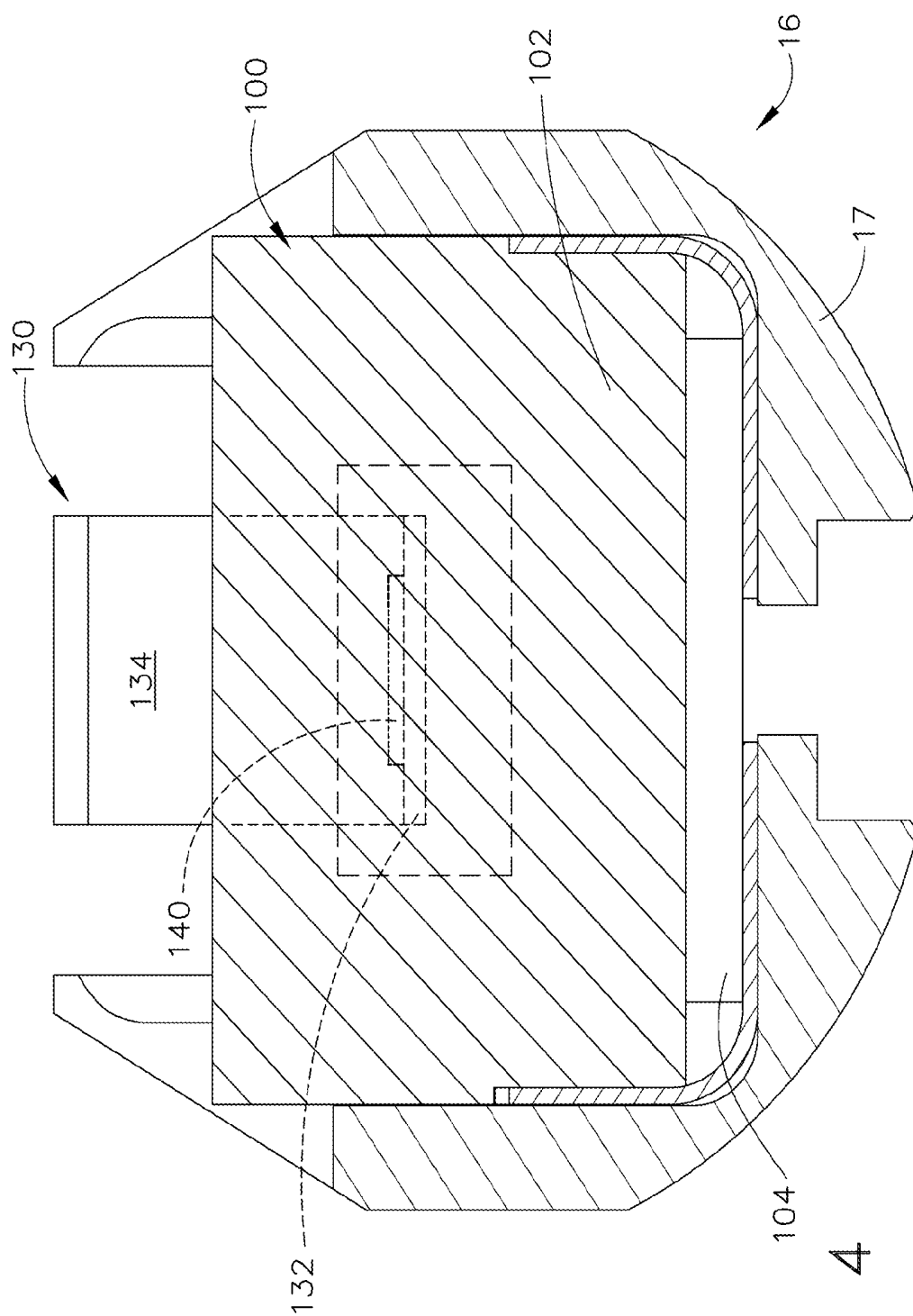


FIG. 4

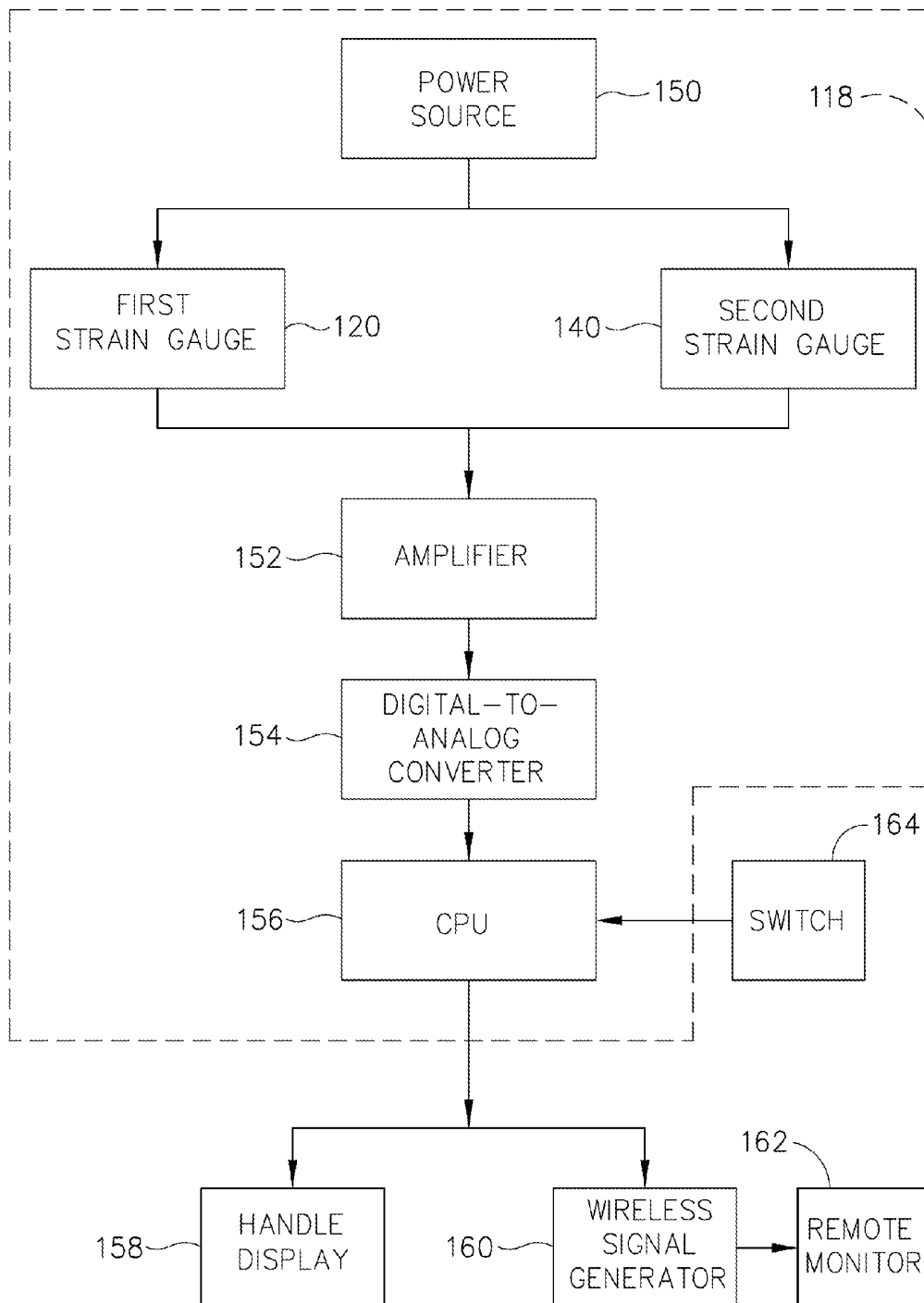


FIG. 5

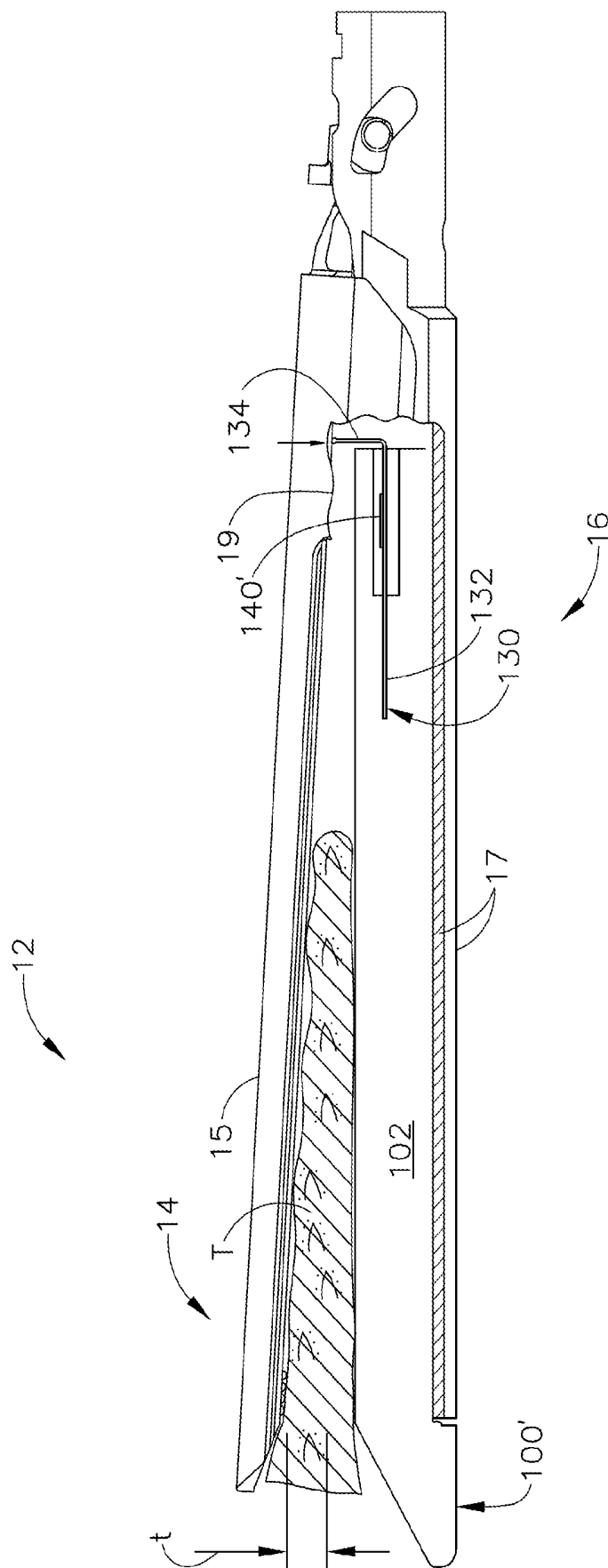
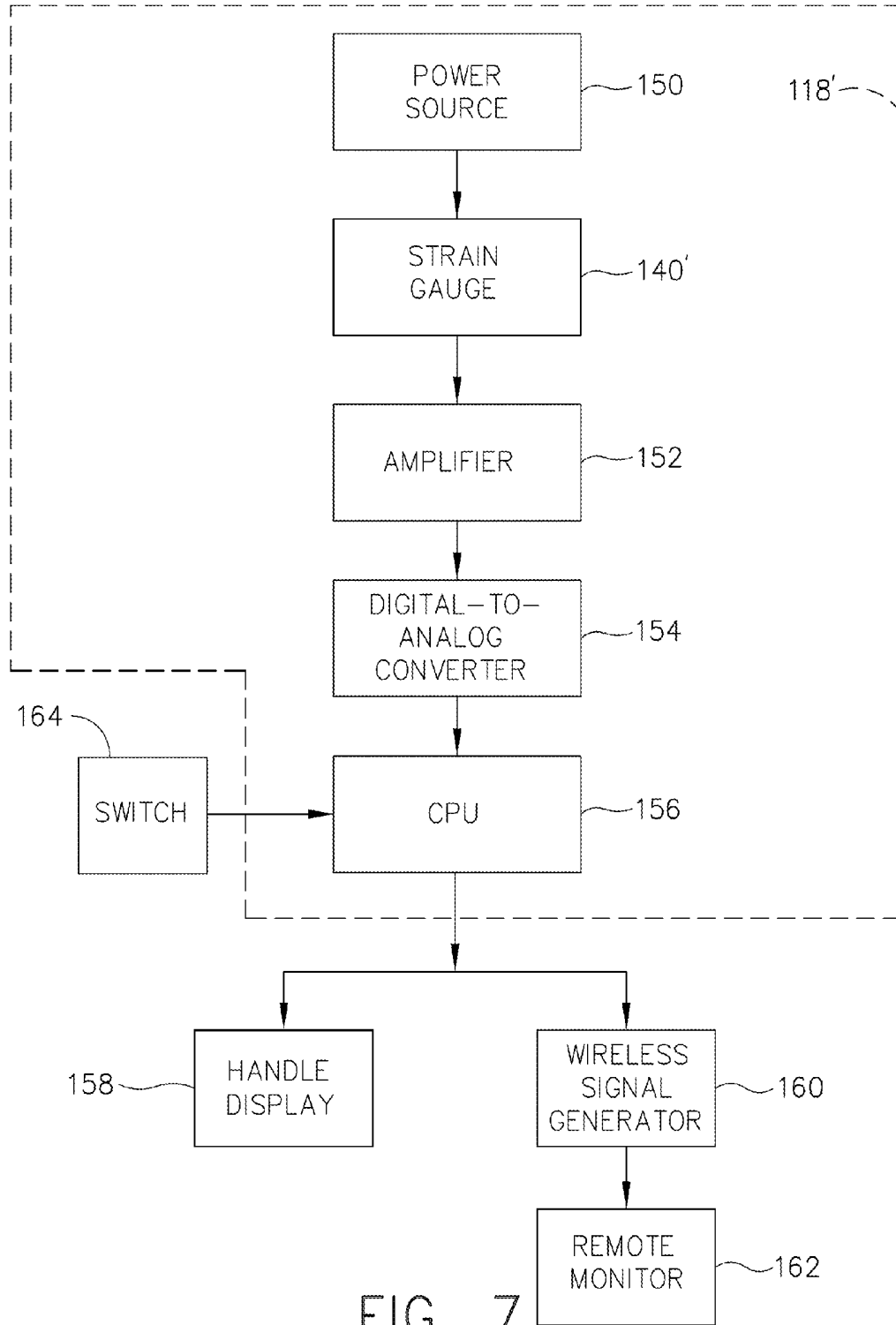


FIG. 6



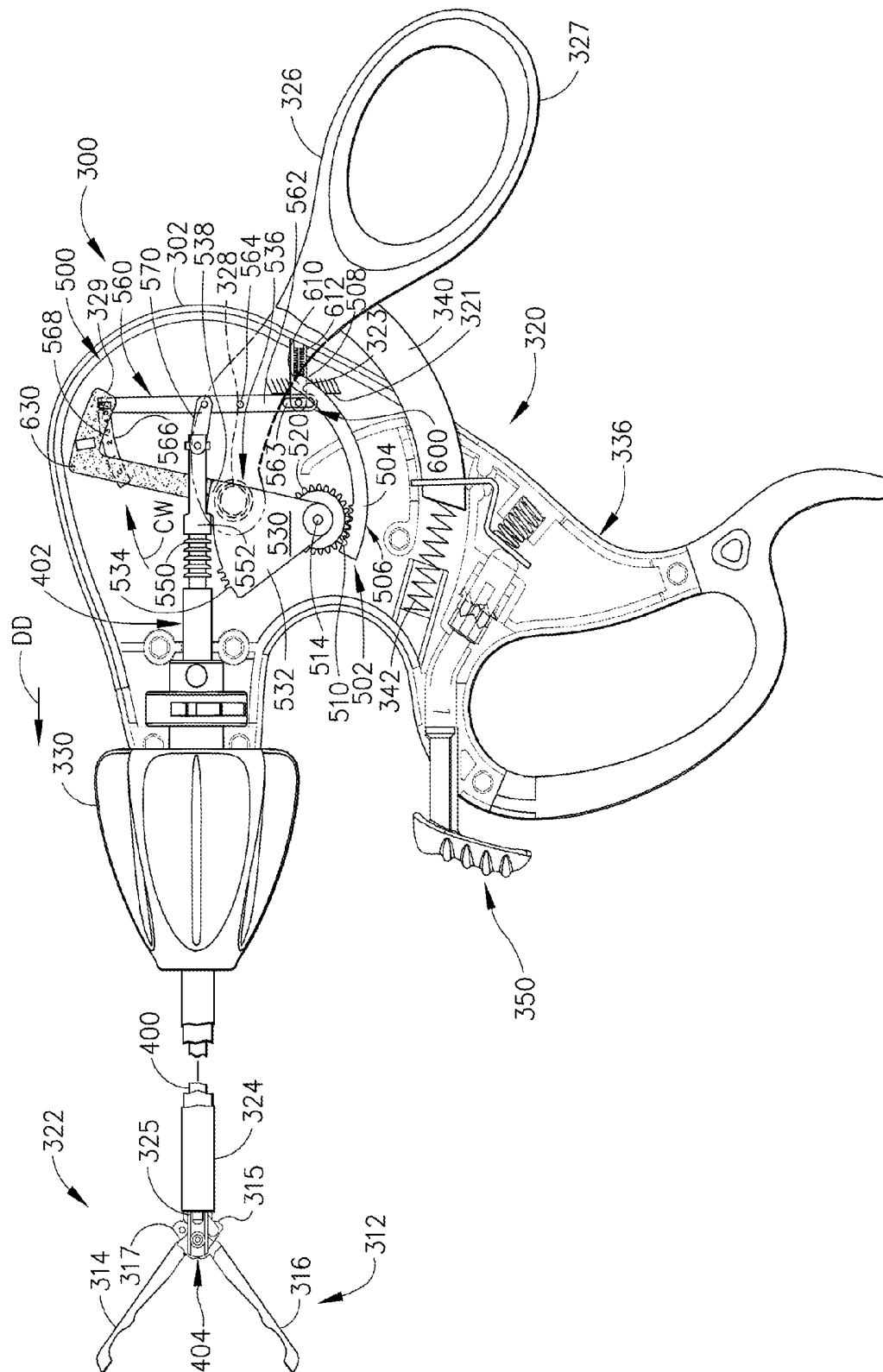


FIG. 8

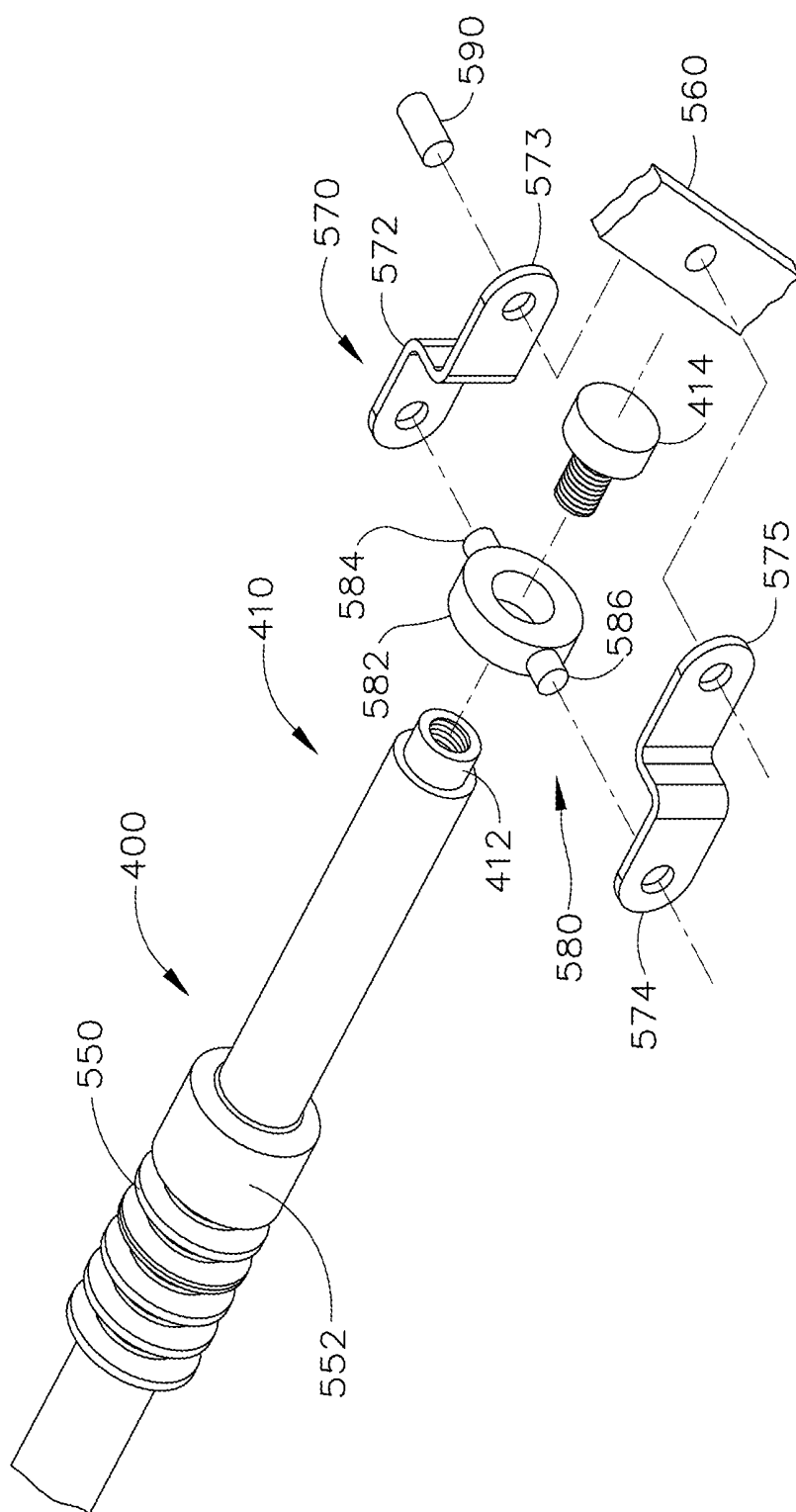
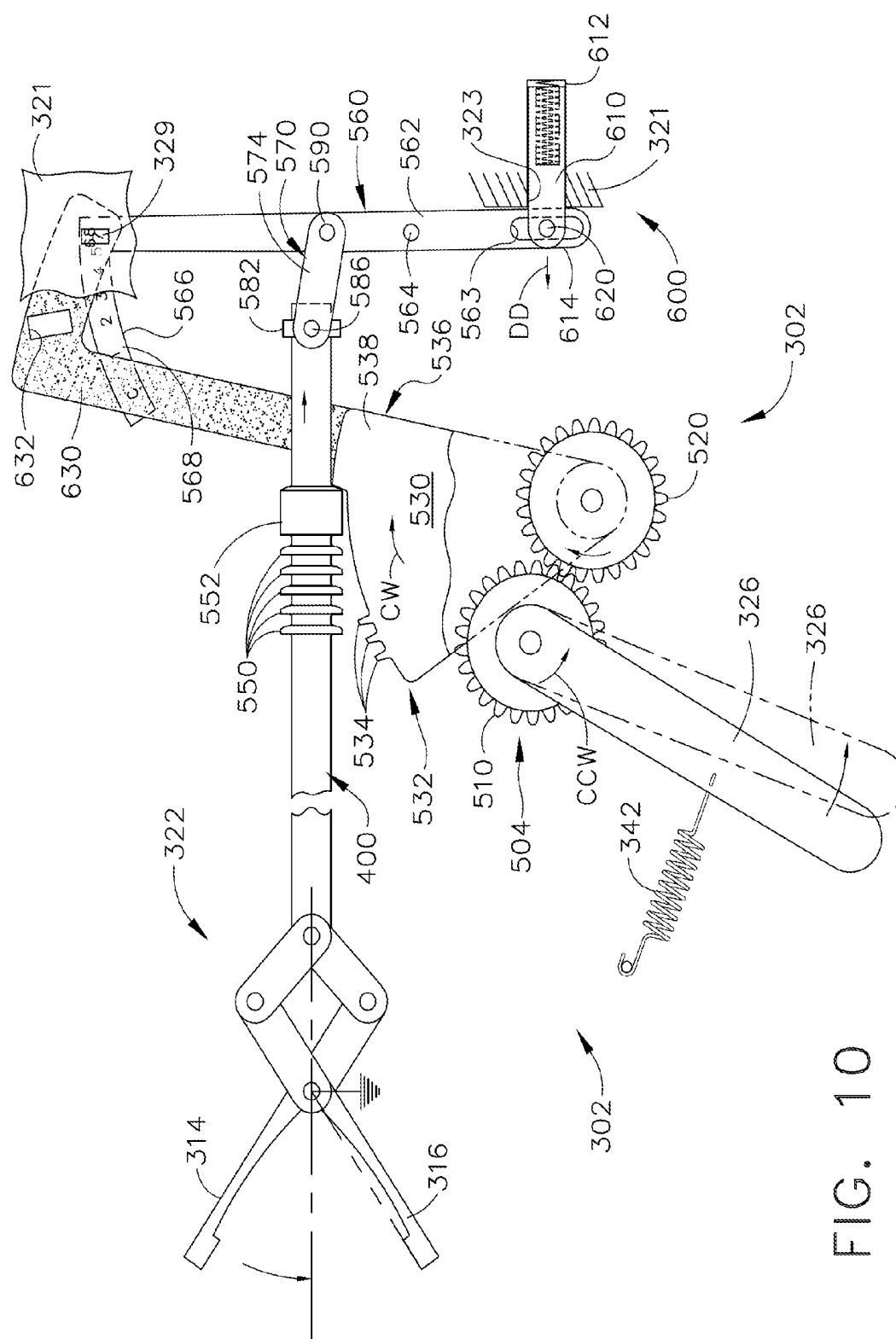
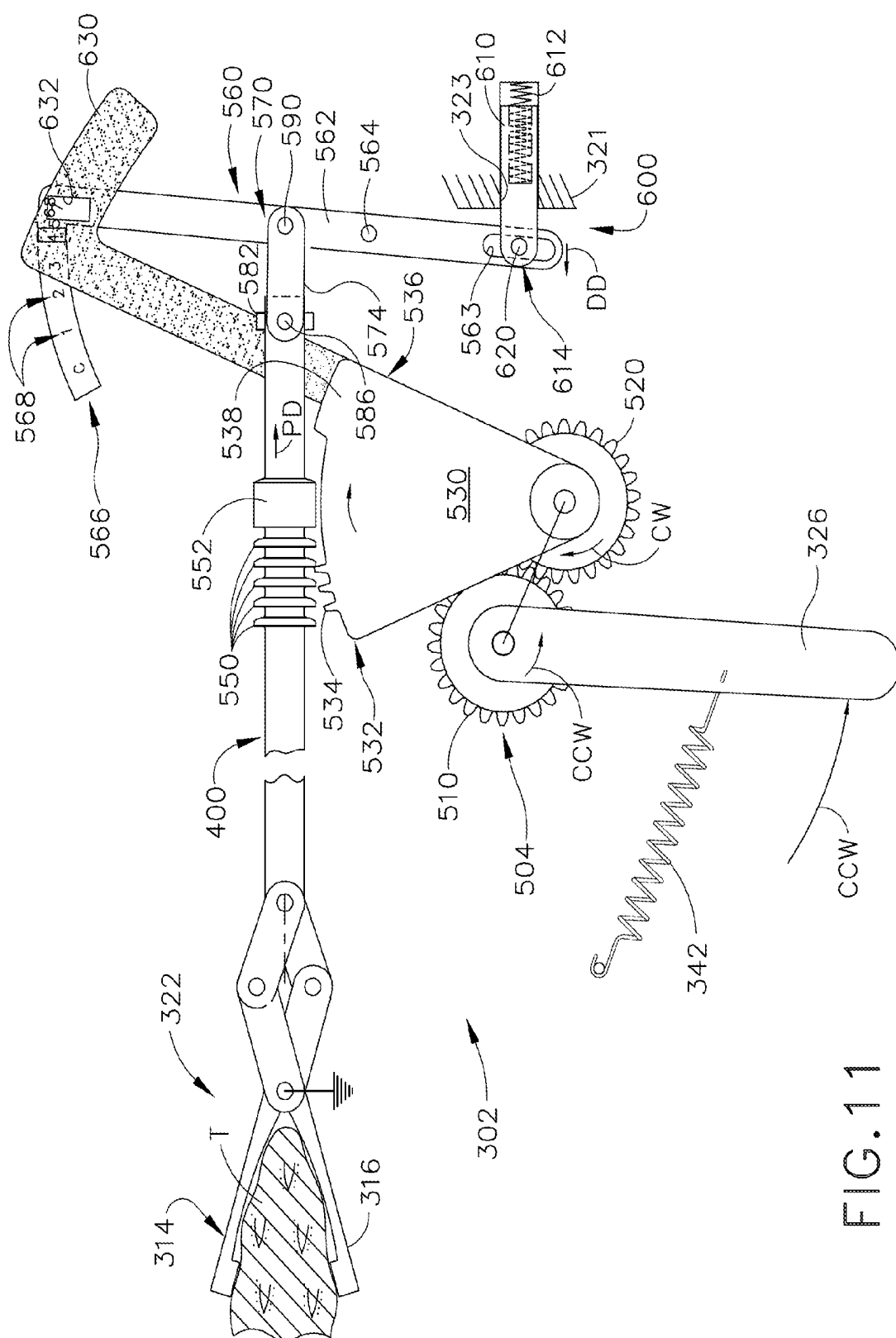


FIG. 9



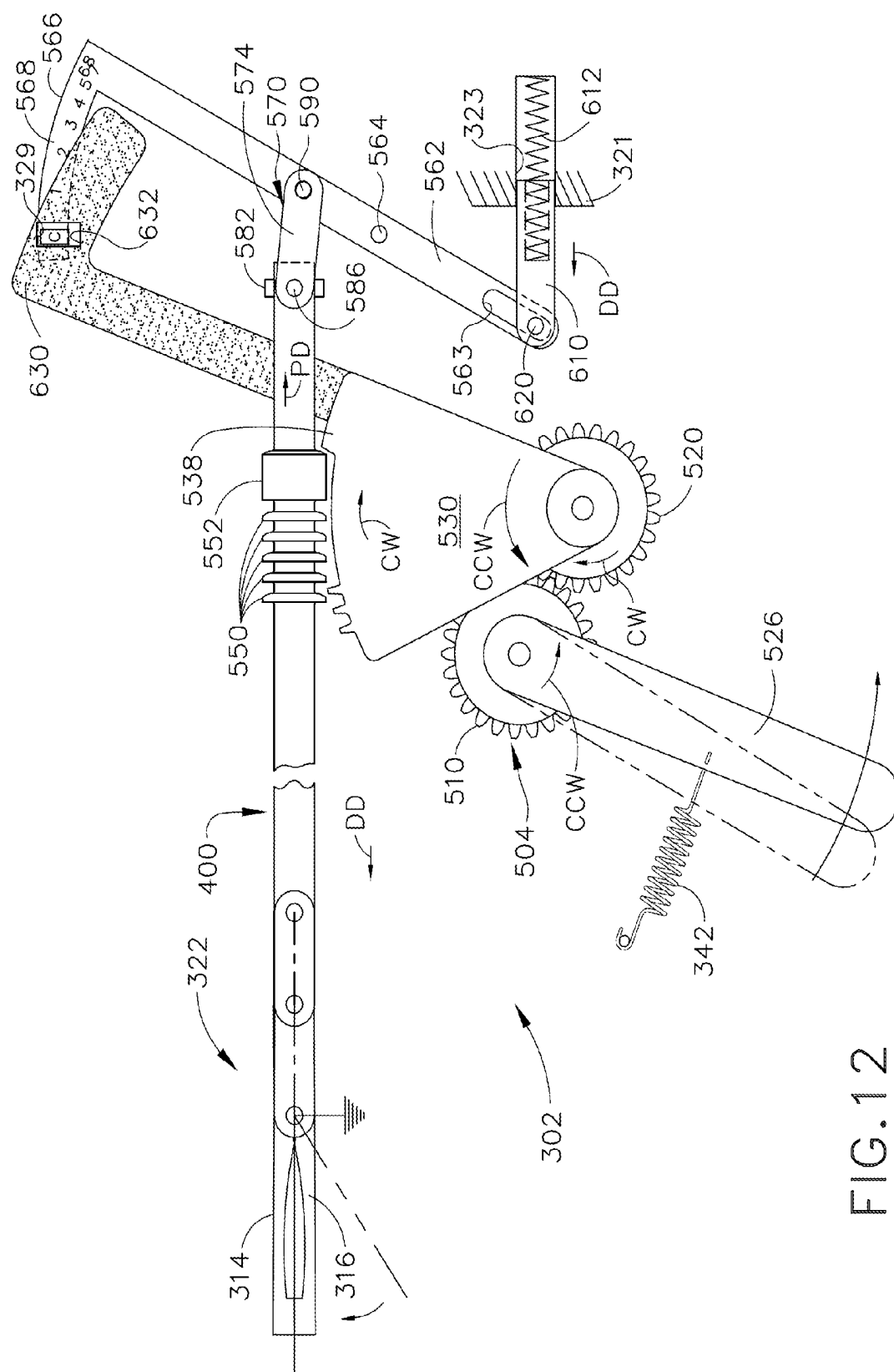
10101









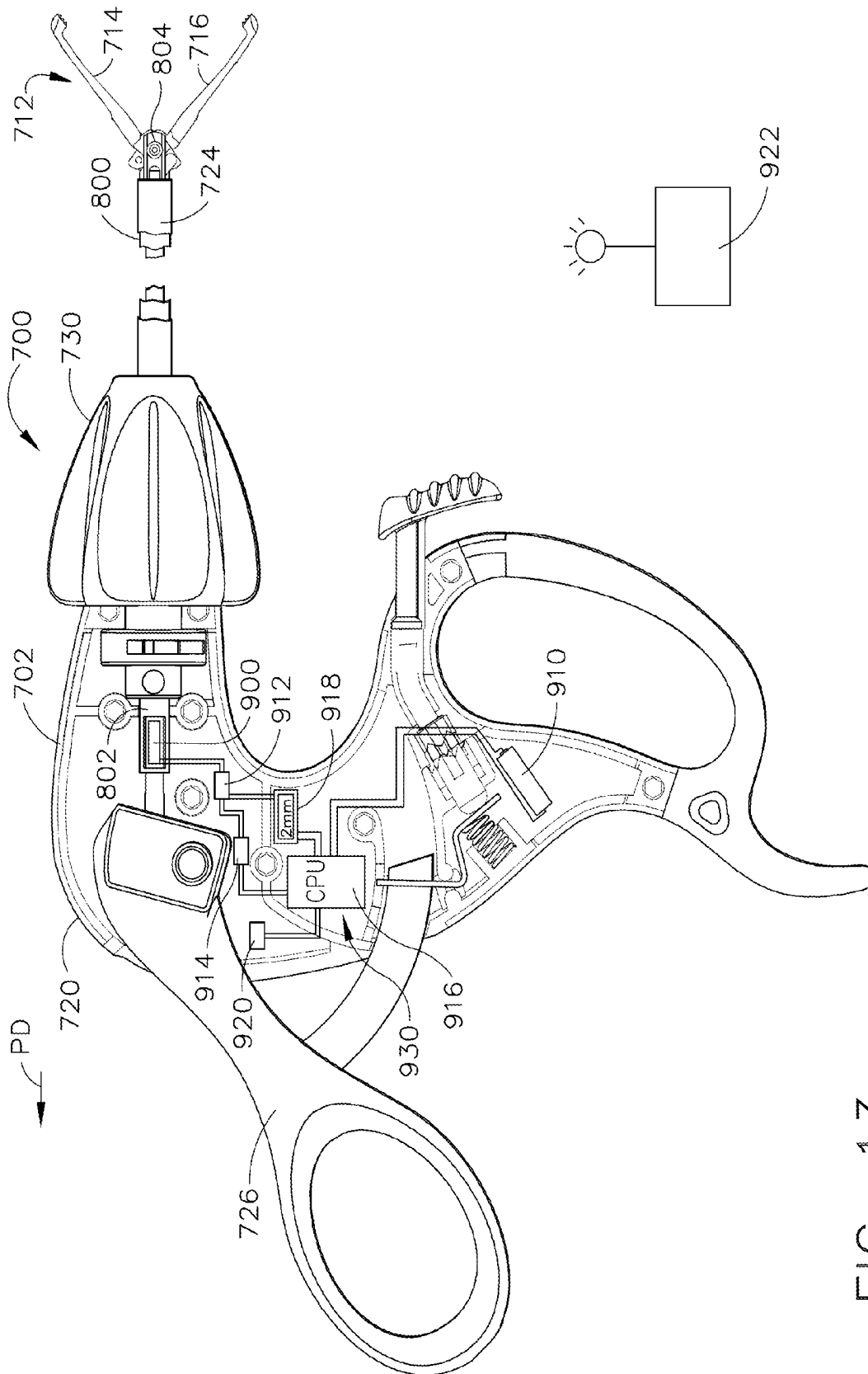


FIG. 13

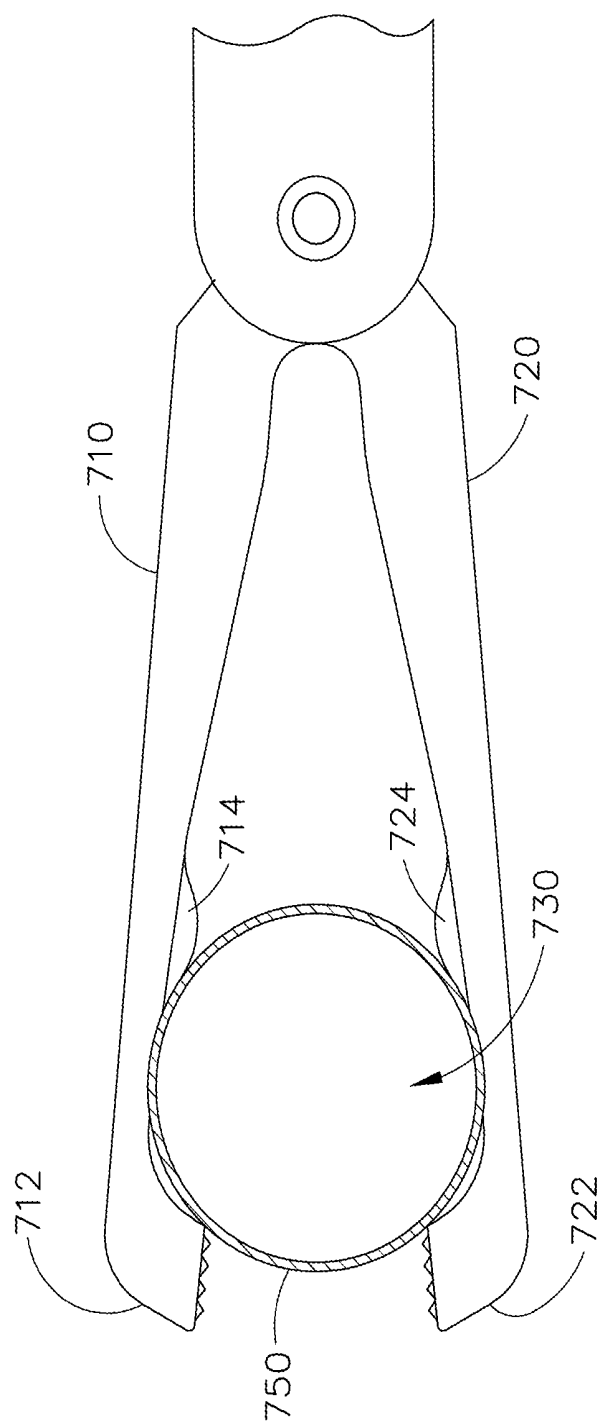


FIG. 14

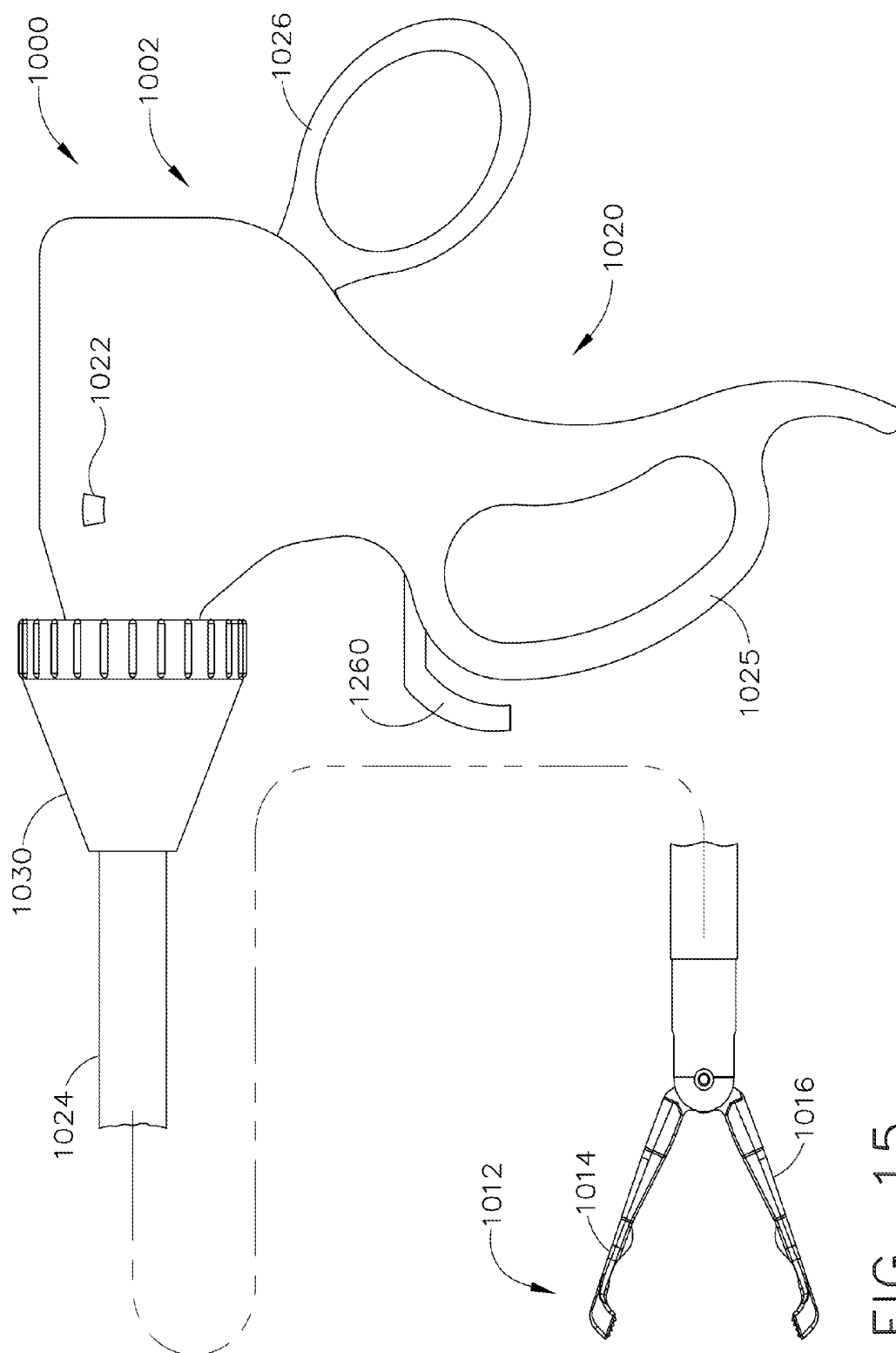


FIG. 15

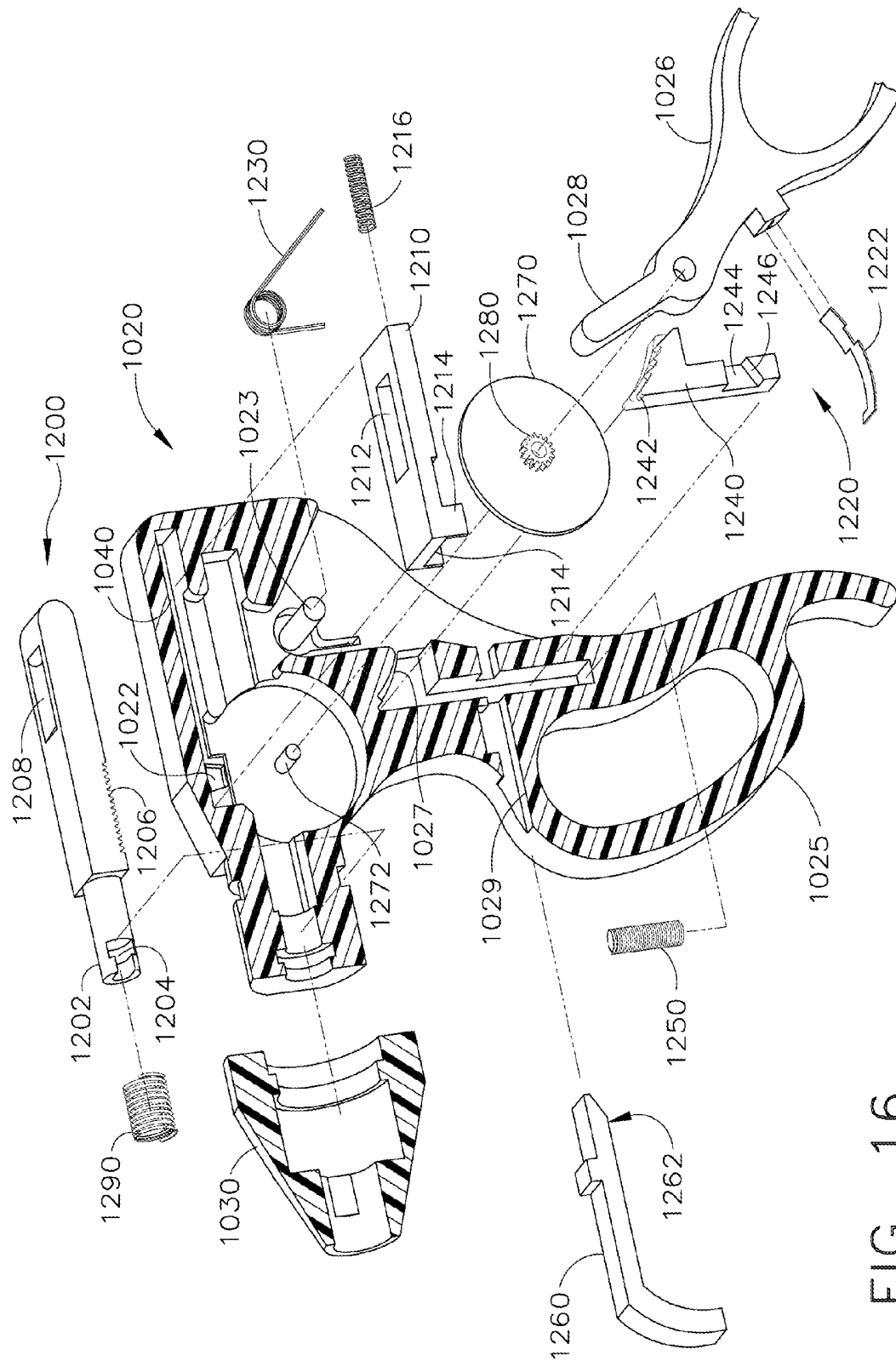
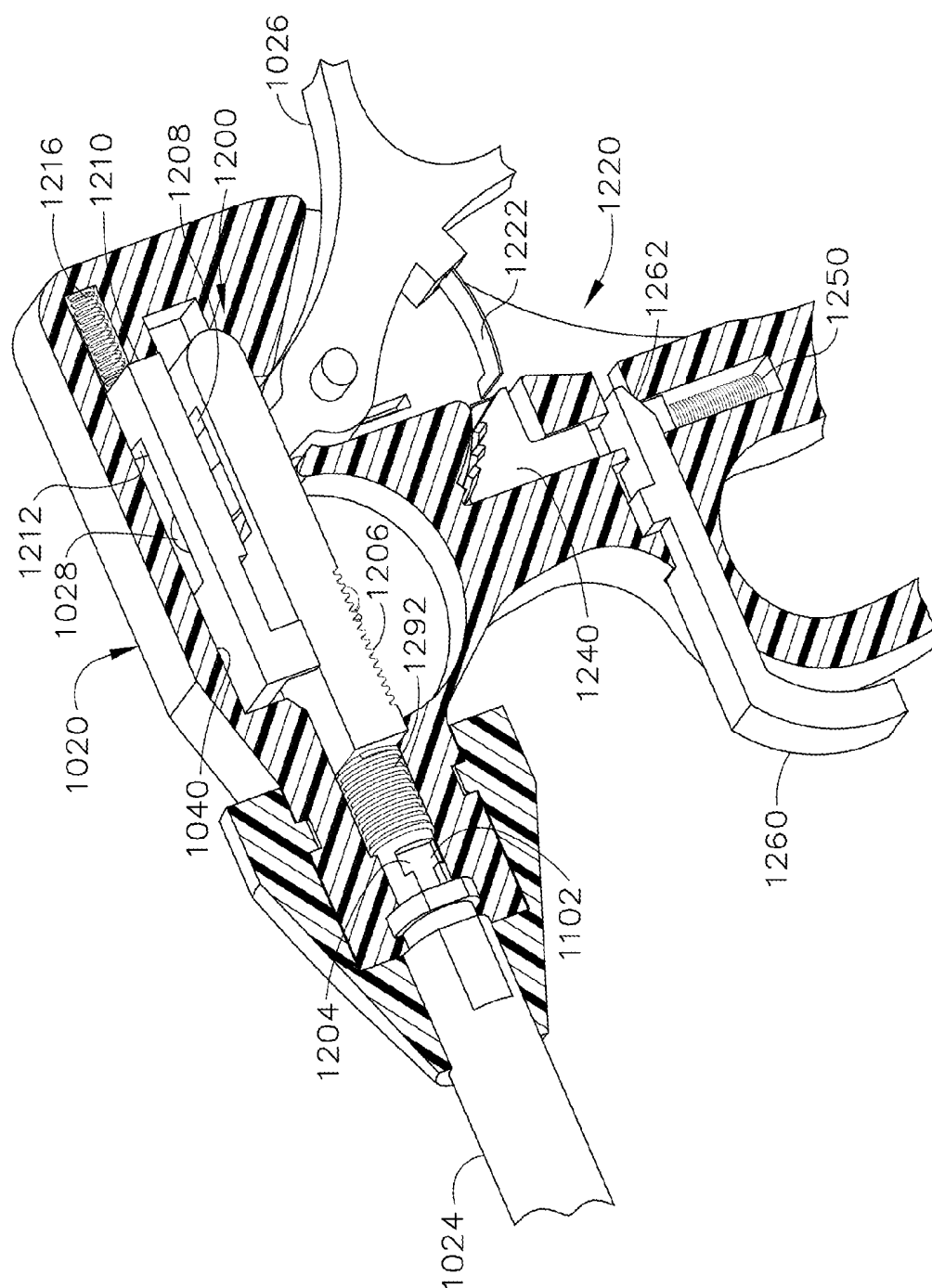
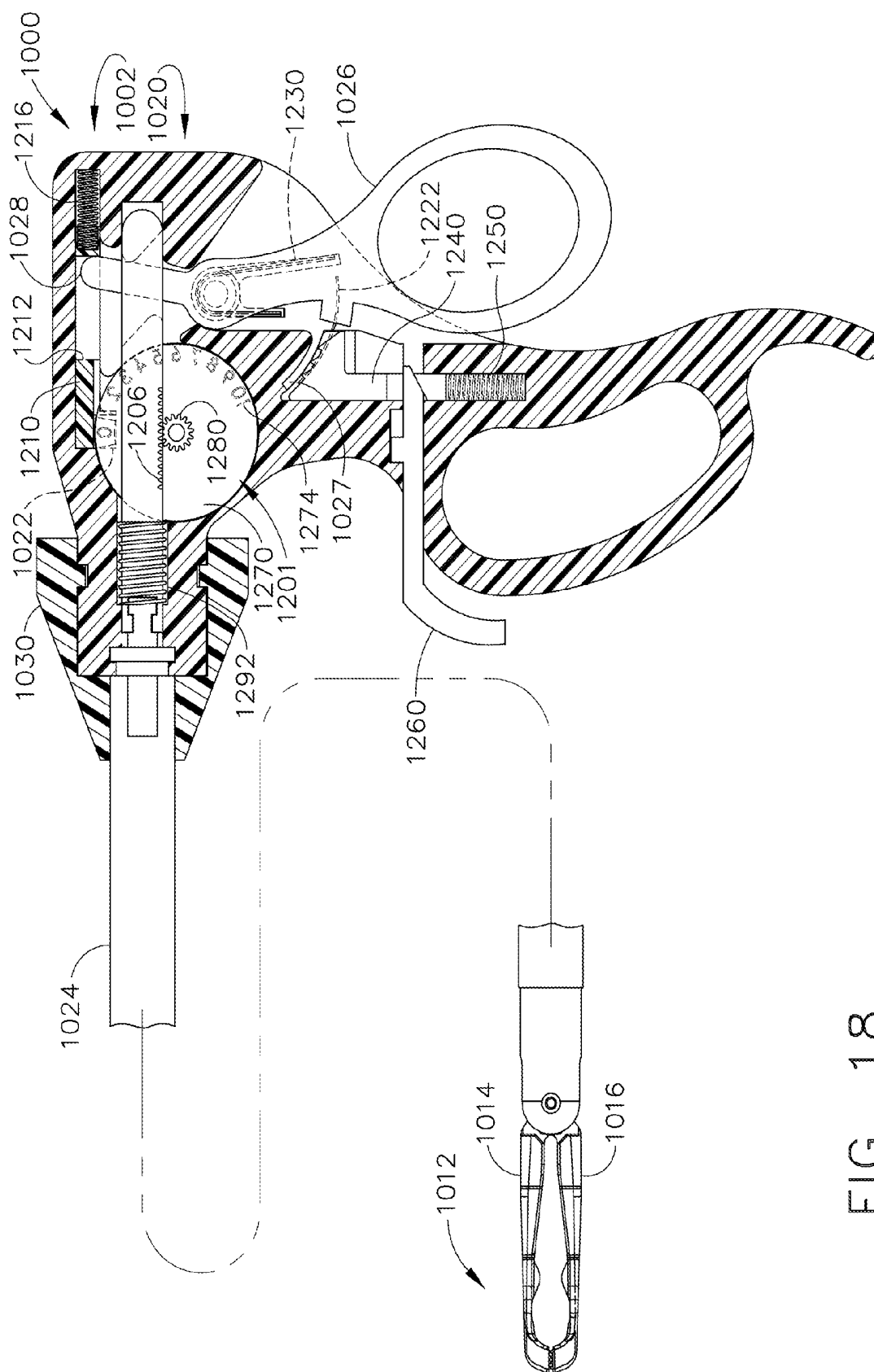


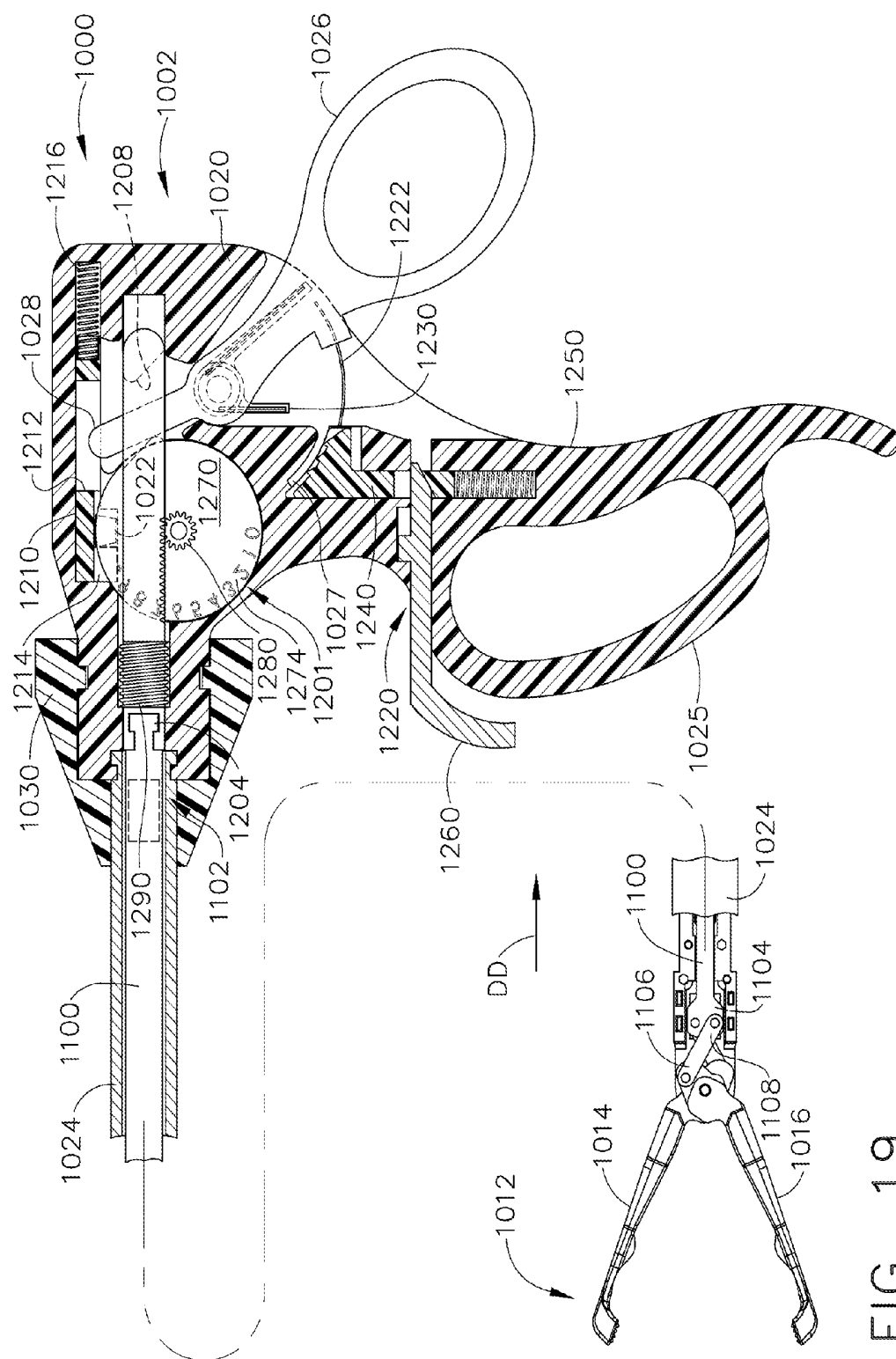
FIG. 16



17



186



၈၆

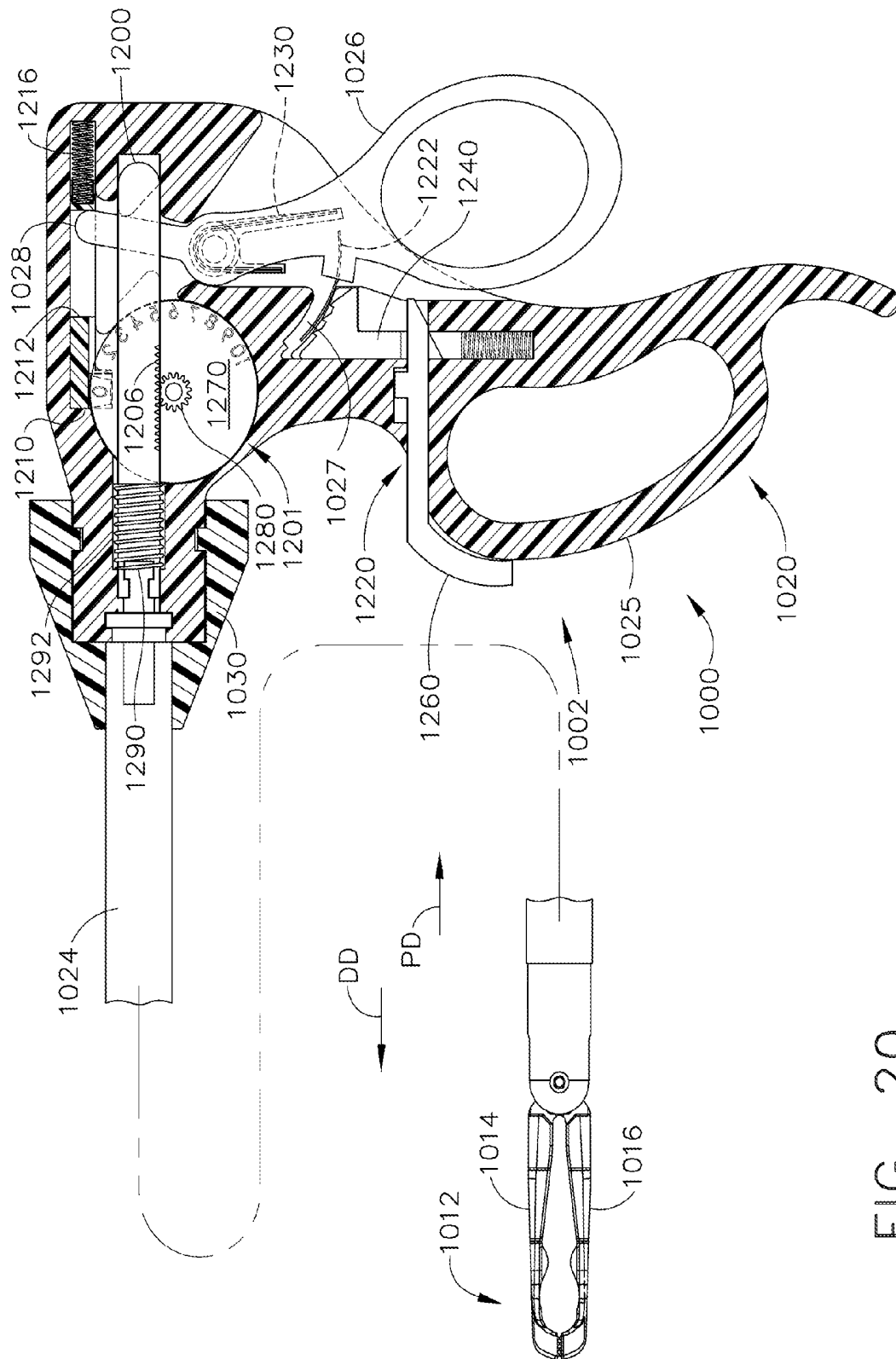


FIG. 20

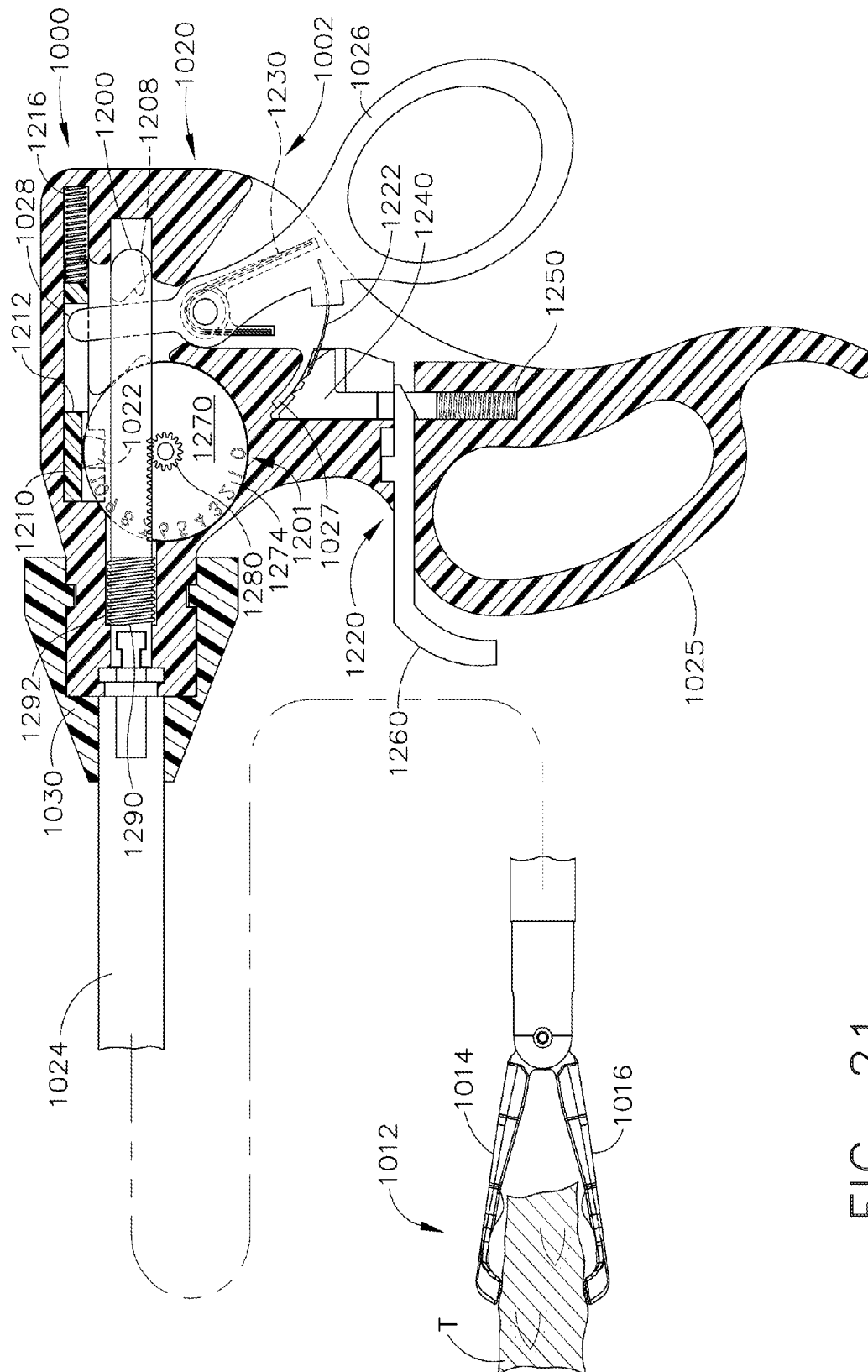


FIG. 21

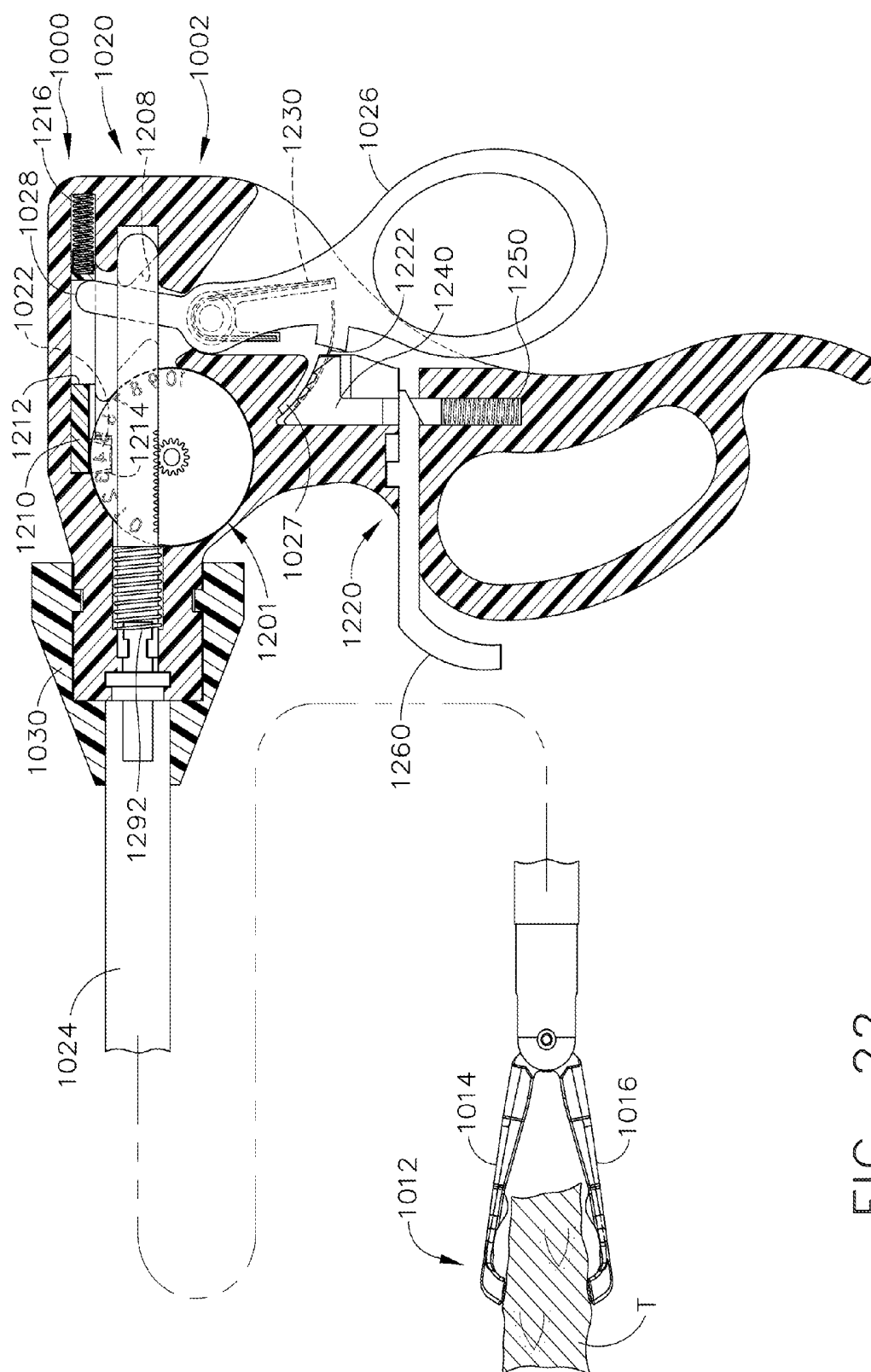


FIG. 22

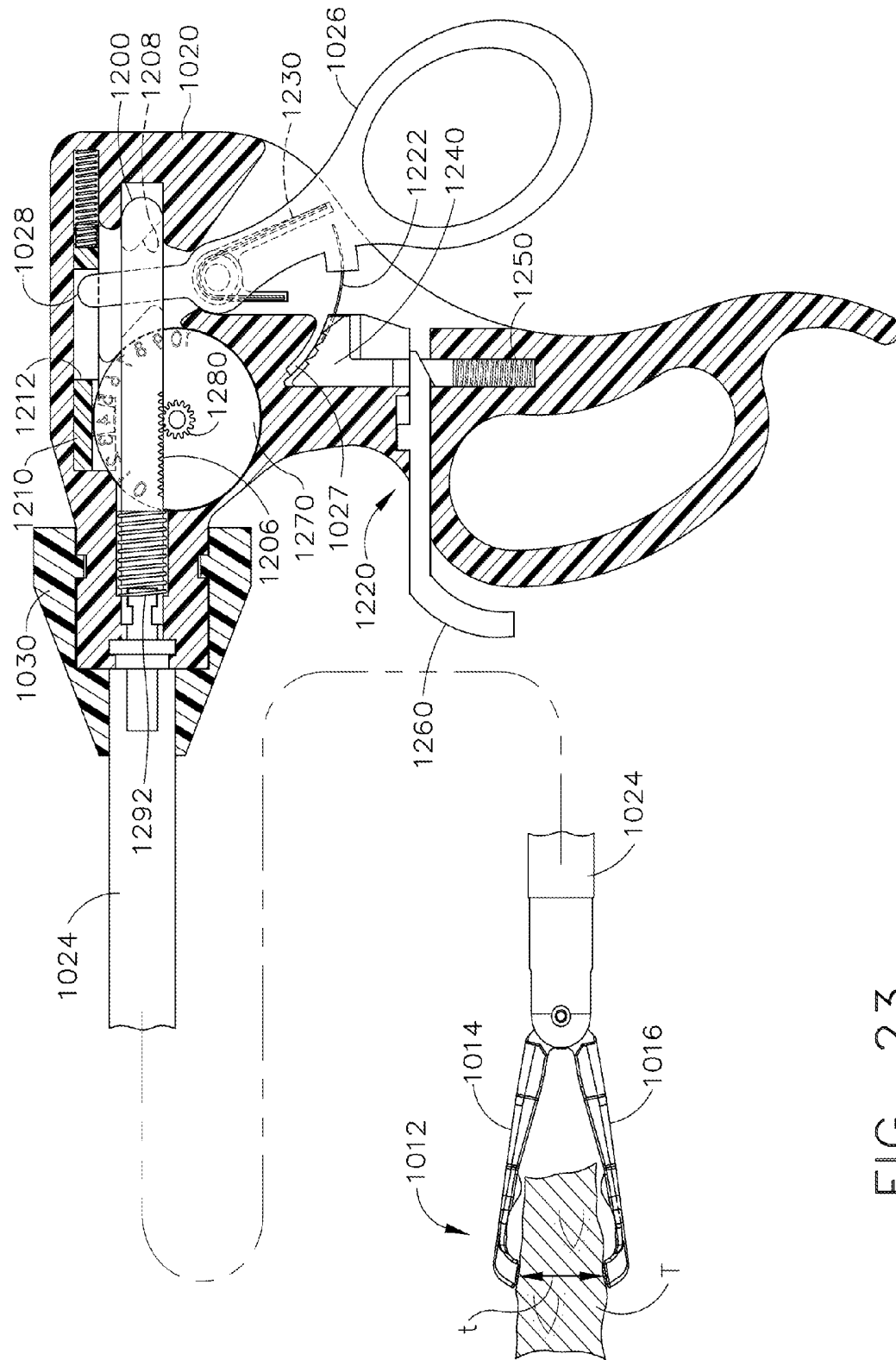


FIG. 23

LAPAROSCOPIC TISSUE THICKNESS AND CLAMP LOAD MEASURING DEVICES

FIELD OF THE INVENTION

The present invention relates in general to laparoscopic and endoscopic surgical instruments and, more particularly, to endoscopic surgical devices and grasping devices configured to enable the surgeon to measure tissue thickness and clamping loads.

BACKGROUND OF THE INVENTION

Endoscopic surgical instruments are often preferred over traditional open surgical devices since a smaller incision tends to reduce the post-operative recovery time and complications. Consequently, significant development has gone into a range of endoscopic surgical instruments that are suitable for precise placement of a distal end effector at a desired surgical site through a cannula of a trocar. These distal end effectors engage the tissue in a number of ways to achieve a diagnostic or therapeutic effect (e.g., endocutter, grasper, cutter, staplers, clip applicator, access device, drug/gene therapy delivery device, and energy device using ultrasound, RF, laser, etc.).

Known surgical staplers include an end effector that simultaneously makes a longitudinal incision in tissue and applies lines of staples on opposing sides of the incision. The end effector includes a pair of cooperating jaw members that, if the instrument is intended for endoscopic or laparoscopic applications, are capable of passing through a cannula passageway. One of the jaw members receives a staple cartridge having at least two laterally spaced rows of staples. The other jaw member defines an anvil having staple-forming pockets aligned with the rows of staples in the cartridge. The instrument commonly includes a plurality of reciprocating wedges which, when driven distally, pass through openings in the staple cartridge and engage drivers supporting the staples to effect the firing of the staples toward the anvil.

When using an endocutter during endoscopic surgery, it is often difficult for the surgeon to determine the thickness of the tissue that they are about to transect. The thickness of the tissue determines the type of cartridge/staple they need in order to properly seal the transection. Often times, the surgeon must make the thickness determination based upon their visual observations of the tissue on a monitor or, if possible, they use their hands to feel the thickness of the tissue.

Another type of device that is commonly employed during laparoscopic surgery is known as a grasper. Such graspers typically have a pair of opposing jaws that are used to grasp tissue or portions of other surgical instruments during the surgical procedure. Such grasping devices, however, also lack means for determining tissue thicknesses. In addition, the jaw arrangements employed by such graspers are often ill-suited to effectively grip and manipulate other surgical instruments used during the operation.

Consequently, a significant need exists for a laparoscopic device that would permit a surgeon to accurately and repeatably measure tissue thickness to enable the surgeon to select a proper staple cartridge to perform a transection. There is a further need for graspers that have tissue thickness measuring capabilities and jaws designed to effectively grasp other surgical instruments therebetween.

The foregoing discussion is intended only to illustrate some of the shortcomings present in the field of the invention at the time, and should not be taken as a disavowal of claim scope.

SUMMARY

In one aspect of the invention, there is provided a surgical instrument that comprises a pair of opposing jaws, wherein at least one jaw is selectively movable relative to the other jaw in response to opening and closing motions applied thereto for selectively clamping tissue therebetween. An output generator is associated with the pair of opposing jaws and is capable of generating tissue thickness data or indicia that represents a thickness of the tissue that is clamped between the pair of opposing jaws. The surgical instrument may further include a display for displaying the tissue thickness data or indicia thereon. In various embodiments, the tissue thickness data or indicia may be displayed on a display located on the surgical instrument itself or it may be displayed on a display located remote from the surgical instrument.

In another general aspect of various embodiments of the present invention there is provided a surgical instrument that comprises a handle assembly and an end effector for performing a surgical operation. The end effector is coupled to the handle assembly and has opposed jaw members for selectively clamping tissue therebetween in response to opening and closing motions applied thereto. A closure drive is supported by the handle assembly and is configured to generate the opening and closing motions for selective application to the end effector. The end effector may include at least one signal generator for generating signals corresponding to a thickness of the tissue clamped between the opposed jaw members. The instrument may further include a signal processor for receiving said signals from the signal generator and calculating the thickness of the tissue. In addition, a display communicates with the signal processor for displaying the tissue thickness thereon.

In still another general aspect of various embodiments of the present invention there is provided a jaw arrangement for a surgical instrument that comprises a first jaw that is operably coupleable to the surgical instrument and has a distal end and a first clamping face and at least one first nodule that is formed on the first clamping face. The arrangement further includes a second jaw that has a distal end and a second clamping face. At least one second nodule is formed on the second clamping face. The second jaw is operably coupleable to the surgical instrument relative to the first jaw such that the first and second distal ends of the first and second jaws, respectively may be selectively moved toward and away from each other upon application of open and closing motions to at least one of the first and second jaws from the surgical instrument such that as the first and second distal ends are moved towards each other, the first and second distal ends and the first and second nodules cooperate to define a cradle area therebetween sized to grippingly support therein an object having a specific cross-sectional shape.

In another aspect of the present invention, there is provided a surgical instrument that may comprise a handle assembly and a pair of opposing jaws that are operably coupled to the handle assembly. The opposing jaws may be selectively movable between open and closed positions for clamping tissue therebetween. The surgical instrument may further include a closure drive that is operably supported by the handle assembly for selectively applying opening and closing motions to the pair of opposing jaws. An output generator may cooperate with the closure drive to display reference indicia that corresponds to a thickness of the tissue clamped between the pair of opposing jaws.

These and other objects and advantages of the present invention shall be made apparent from the accompanying drawings and the description thereof.

BRIEF DESCRIPTION OF THE FIGURES

The accompanying drawings, which are incorporated in and constitute a part of this specification, illustrate embodiments of the invention, and, together with the general description of the invention given above, and the detailed description of the embodiments given below, serve to explain various principles of the present invention.

FIG. 1 is a perspective view of a surgical stapling and severing instrument of various embodiments of the present invention;

FIG. 2 is a left side perspective view of an end effector embodiment of the present invention;

FIG. 3 is a cross-sectional view of the end effector of FIG. 2 with a portion of tissue clamped between the anvil and tissue measurement cartridge;

FIG. 4 is a cross-sectional view of the end effector of FIG. 3 taken along line 4-4 in FIG. 3;

FIG. 5 is a schematic diagram of a strain gauge and operating system arrangement of various embodiments of the present invention;

FIG. 6 is a cross-sectional view of another end effector embodiment of the present invention with tissue clamped between the anvil and the tissue measurement cartridge;

FIG. 7 is a schematic diagram of a strain gauge and operating system arrangement of another embodiment of the present invention;

FIG. 8 is a side elevational view of a grasper embodiment of the present invention with the left hand side of the handle casing removed to show the various components supported within the handle assembly;

FIG. 9 is an exploded assembly view of a portion of the grasper rod arrangement employed in the grasper embodiment depicted in FIG. 8;

FIG. 10 is a schematic view of various components of the grasper embodiment of FIG. 8 with the jaws thereof in an open position;

FIG. 11 is another schematic view of various components of the grasper embodiment of FIG. 8 with the jaws thereof clamping a portion of tissue therebetween;

FIG. 12 is another schematic view of various components of the grasper embodiment of FIG. 8 with the jaws thereof in a fully closed position;

FIG. 13 is a right side elevational view of another grasper embodiment of the present invention;

FIG. 14 is a side elevational view of a jaw arrangement of other embodiments of the present invention;

FIG. 15 is a side view of another surgical instrument embodiment of the present invention;

FIG. 16 is an exploded assembly view of a portion of the surgical instrument of FIG. 15;

FIG. 17 is a cross-sectional view of a handle assembly of the surgical instrument of FIGS. 15 and 16 with some components thereof shown in solid form for clarity;

FIG. 18 is a cross-sectional view of the surgical instrument of FIGS. 15-17 in a fully closed and locked position with some components thereof shown in solid form for clarity;

FIG. 19 is another cross-sectional view of the surgical instrument of FIGS. 15-18 in a fully open position with some components thereof shown in solid form for clarity;

FIG. 20 is another cross-sectional view of the surgical instrument of FIGS. 15-19 in a fully closed position and with the release trigger in a fully depressed position with some components thereof shown in solid form for clarity;

FIG. 21 is another cross-sectional view of the surgical instrument of FIGS. 15-20 in a tissue clamping position with some components thereof shown in solid form for clarity;

FIG. 22 is a cross-sectional view of the surgical instrument of FIGS. 15-21 in a position wherein the clinician is applying excessive clamping force to the tissue with some components thereof shown in solid form for clarity; and

FIG. 23 is another cross-sectional view of the surgical instrument of FIGS. 15-22 in a tissue clamping position wherein the user can read the reference indicia corresponding to a thickness "t" of the tissue clamped thereby.

DETAILED DESCRIPTION

Certain exemplary embodiments will now be described to provide an overall understanding of the principles of the structure, function, manufacture, and use of the devices and methods disclosed herein. One or more examples of these embodiments are illustrated in the accompanying drawings. Those of ordinary skill in the art will understand that the devices and methods specifically described herein and illustrated in the accompanying drawings are non-limiting exemplary embodiments and that the scope of the various embodiments of the present invention is defined solely by the claims. The features illustrated or described in connection with one exemplary embodiment may be combined with the features of other embodiments. Such modifications and variations are intended to be included within the scope of the present invention.

The present invention generally relates to methods and devices for measuring the thickness of tissue to be transected or otherwise manipulated during endoscopic and laparoscopic procedures. In one exemplary embodiment, the measuring device can be employed in connection with an endocutter for transecting and stapling tissue. Such endocutters typically include an end effector with opposing jaws that are adapted to receive the target tissue therebetween. As will be described in connection with one exemplary embodiment, the end effector is attached to a handle assembly by an elongated shaft assembly. The handle assembly is equipped with a closure trigger that enables the surgeon to selectively open and close the end effector jaws. The end effector is also equipped with a firing drive system for driving a knife through the staple cartridge and clamped tissue while also driving the staples housed within the staple cartridge into forming contact with an anvil. Other exemplary embodiments comprise a surgical device that has a pair of opposed jaws for simply manipulating and grasping tissue, other surgical instruments, etc.

As the present Detailed Description proceeds, a person of ordinary skill in the art will appreciate that the surgical instruments described herein can have a variety of configurations, and that one or more of the various tissue measurement features of the various embodiments of the present invention disclosed herein can be successfully used in a variety of different grasping device/end effectors known in the art for grasping/manipulating tissue or other objects. Thus, the term "surgical instrument" as used herein is intended to include any device that has opposed movable jaws that come together to grasp, clamp, cut, dissect, staple, etc.

Turning to the Drawings, wherein like numerals denote like components throughout the several views, FIGS. 1 and 2 depict a surgical stapling and severing instrument 10 that is capable of practicing various unique benefits of the present invention. The surgical stapling and severing instrument 10 incorporates an end effector 12 that has a first jaw 14 and a second jaw 16. In various embodiments, the second jaw 16 may comprise elongate channel 17 and the first jaw may comprise an anvil 15 that is pivotally attached to the elongate channel 17, forming opposing jaws for clamping tissue to be

severed and stapled. Those of ordinary skill in the art will understand that the exemplary endocutter embodiment depicted in the Figures comprises one endocutter version with which various embodiments of the present invention may be successfully employed. However, various embodiments of the present invention may be used in connection with a variety of different endocutter instruments. For example, various embodiments of the present invention may be used in connection with those surgical instruments disclosed in U.S. Pat. No. 6,978,921 to Shelton, I V et al., entitled Surgical Stapling Instrument Incorporating an E-Beam Firing Mechanism, the disclosure of which is herein incorporated by reference.

As can be seen in FIG. 1, the end effector 12 may be coupled to a handle assembly 20 by an elongate shaft assembly 18. An implement portion 22, formed by the end effector 12 and shaft assembly 18, may be advantageously sized for insertion through a trocar or small laparoscopic opening to perform an endoscopic surgical procedure while being controlled by a surgeon grasping the handle assembly 20. The handle assembly 20 may include features that allow separate closure motions and firing motions, lockouts to prevent inadvertent or ill-advised firing of the end effector, as well as enabling multiple firing strokes to effect firing (i.e., severing and stapling) of the end effector 12 while indicating the degree of firing to the surgeon.

To these ends, a closure tube 24 of the shaft assembly 18 may be coupled between a closure trigger 26 (FIG. 1) and the anvil 15 to cause closure of the end effector 12. Within the closure tube 24, a frame 28 may be coupled between the elongate channel 17 and the handle assembly 20 to longitudinally position and support the end effector 12. A rotation knob 30 may be coupled with the frame 28, and both elements may be rotatably coupled to the handle assembly 20. Thus, the surgeon can rotate the end effector 12 by turning the rotation knob 30 which causes rotation of the closure tube 24. The frame 28 extends through the closure tube 24 along with a firing rod 32 which is positioned for longitudinal movement and is operably coupled to a firing trigger 34. In the embodiment depicted in FIG. 1, the closure trigger 26 is distal to a pistol grip 36 of the handle assembly 20 with the firing trigger 34 distal to both the pistol grip 36 and closure trigger 26.

It will be appreciated that the terms "proximal" and "distal" are used herein with reference to a clinician gripping a handle of an instrument. Thus, the end effector 12 is distal with respect to the more proximal handle assembly 20. Analogous terms such as "front" and "back" similarly correspond respectively to distal and proximal. It will be further appreciated that for convenience and clarity, spatial terms such as "vertical", "horizontal", "up" and "down" are used herein with respect to the drawings. However, surgical instruments are used in many orientations and positions, and these terms are not intended to be limiting and absolute.

The present invention is being discussed in terms of endoscopic procedures and apparatus. However, use herein of terms such as "endoscopic", should not be construed to limit the present invention to a surgical stapling and severing instrument for use only in conjunction with an endoscopic tube (i.e., trocar). On the contrary, it is believed that the present invention may find use in any procedure where access is limited to a small incision, including but not limited to laparoscopic procedures, as well as open procedures.

With particular reference to FIG. 3, the anvil 15 is pivotally coupled to the elongate channel 17 by a pair of laterally projecting anvil pivot pins 54 that are proximal to a vertically projecting anvil feature 56 (FIG. 4). The anvil pivot pins 54 translate within kidney shaped openings 58 in the elongate

channel 17 to open and close anvil 15 relative to elongate channel 17. The anvil feature 56 engages a tab 59 (FIG. 1) extending inwardly in a tab aperture 60 on a distal end 62 of the closure tube 24. Thus, when the closure tube 24 moves proximally from its open position, the tab 59 of the closure tube 24 draws the anvil feature 56 proximally, and the anvil pivot pins 54 follow the kidney shaped openings 58 of the elongate channel 17 causing the anvil 15 to simultaneously translate proximally and rotate upward to the open position. When the closure tube 24 moves distally, the tab 59 in the tab aperture 60 releases from the anvil feature 56 and the distal edge 64 pushes on the anvil face 50, closing the anvil 15.

It should be appreciated that, although a nonarticulating shaft assembly 18 is illustrated herein, applications of the present invention may include instruments capable of articulation, such as those described in three commonly owned U.S. patents and two commonly owned U.S. patent applications, the disclosure of each being hereby incorporated by reference in their entirety: (1) U.S. Pat. No. 7,111,769 to Kenneth S. Wales, Douglas B. Hoffman, Frederick E. Shelton I V, and Jeffrey S. Swayze, issued Sep. 26, 2006, entitled "Surgical instrument Incorporating An Articulation Mechanism Having Rotation About the Longitudinal Axis"; (2) U.S. Pat. No. 6,981,628 to Kenneth S. Wales, issued Jan. 3, 2006, entitled "Surgical Instrument With A Lateral-Moving Articulation Control"; (3) U.S. Pat. No. 7,055,731 to Frederick E. Shelton I V, Michael E. Setser, William B. Weisenburgh II, issued Jun. 6, 2006 entitled "Surgical Stapling Instrument Incorporating A Tapered Firing Bar For Increased Flexibility Around The Articulation Joint"; (4) U.S. Patent Publication No. 2005/0006429 entitled "Surgical Stapling Instrument Having Articulation Joint Support Plates For Supporting A Firing Bar", Ser. No. 10/615,971, to Kenneth S. Wales and Joseph Charles Hueil, filed 9 Jul. 2003; and (5) U.S. patent application entitled "Surgical Stapling Instrument Incorporating An Articulation Joint For a Firing Bar Track", Ser. No. 10/615,962, to Brian J. Hemmelgam, filed 9 Jul. 2003. Those of ordinary skill in the art will readily understand, however, that the unique and novel aspects of various features of the present invention may be employed in connection with still other types of articulating surgical instruments without departing from the spirit and scope of the present invention.

With reference to FIGS. 2 and 3, the elongate channel 17 is configured to removably receive a thickness measurement cartridge 100 therein. Thickness measurement cartridge 100 may resemble a conventional staple cartridge. However, thickness measurement cartridge 100 lacks the staples and staple firing drivers and may also differ from a conventional staple cartridge in at least the manners described below. In particular, the body portion 102 of the thickness measurement cartridge 100 may have an upstanding clamping nodule 110 that is formed on a distal end 101 of the cartridge 100. The clamping nodule 110 may be so oriented on the distal end 101 of the cartridge 100 such that when the cartridge 100 is installed in the elongate channel 17, the clamping nodule 110 is located over a first conventional strain gauge 120 that is mounted within the elongate channel 17. The purpose of the first strain gauge 120 will be discussed in further detail below.

As can also be seen in FIGS. 2 and 3, the thickness measurement cartridge 100 may also include a thickness or anvil probe 130 that is mounted within the cartridge body 102. More specifically, as can be seen in FIG. 3, the anvil probe 130 may include a first portion 132 that is mounted within the cartridge body 102 and a second deflectable portion 134 that protrudes upwardly from the cartridge body 102 for contact with the underside 19 of the anvil 15. The anvil probe 130 may be fabricated from metal or other suitable material and may be

associated with a second strain gauge **140** that is mounted in the cartridge body **102**. The first and second strain gauges **120**, **140** may each be coupled to a battery or other source of electrical power **150**, an amplifier **152**, a digital-to-analog converter **154**, a conventional central processing unit "CPU" **156**, and a display unit **158**. The battery **150**, amplifier **152**, the converter **154**, CPU **156** and display unit **158** may be housed within the handle assembly **20**. Each strain gauge may have its own amplifier. The first and second strain gauges **120**, **140** and the source of electrical power **150**, amplifier, **152**, converter **154** and CPU **156** may collectively form an output generator generally designated as **118**. In alternative embodiments, the CPU **156** may also be coupled to a wireless signal generator **160** that transmits the thickness data to a remote (i.e., not supported by the handle assembly **20**) monitor **162**. See FIG. 5. The measurement cartridge **100** may be formed with a pin and socket connection (not shown) to facilitate electrical communication between the second strain gauge **140** and conductors in the elongate channel **17** that extend through the shaft **18** and are ultimately coupled to the CPU **156** and/or source of electrical power **150**.

Operation of a thickness measurement cartridge **100** of various embodiments of the present invention will now be described with reference to FIGS. 1, 3, 4, and 5. Prior to installing a conventional staple cartridge into the elongate channel **17** of the instrument **10**, the surgeon may first install the thickness measurement cartridge **100** into the elongate channel **17**. The thickness measurement cartridge **100** may be fabricated with retention features that are commonly found on conventional staple cartridges to removably retain the thickness measurement cartridge **100** within the elongate channel **17**. When installed, a pin and socket connector or other arrangement may connect the second strain gauge **140** to the source of electrical power **150** and amplifier **152**.

In laparoscopic and endoscopic surgical procedures, a small incision or puncture is made in the patient's body to provide access for a tube or cannula device. Once extended into the patient's body, the cannula allows insertion of various surgical instruments to perform the surgery. After the surgeon has installed the thickness measurement cartridge **100** in the elongate channel **17**, the surgeon may then insert the implement **22** through the cannula (not shown) so that a portion **T** of the tissue "T" to be transected is positioned between the underside **19** of the anvil **15** and the measurement cartridge **100**. See FIG. 3. The surgeon then moves the closure trigger **26** towards the pistol grip **36** to move the closure tube **24** in a known manner to pivot the anvil **15** in a closing direction. As the anvil **15** is pivoted in the closing direction, a portion of the tissue "T" to be transected is clamped between the underside **19** of the anvil **15** and the nodule **110**. As can be most particularly seen in FIGS. 3 and 4, a pivot protrusion **104** may be formed on the underside of the cartridge body **102** to rest on the bottom of the elongate cartridge **17** to thereby enable the cartridge body **102** to pivot thereon.

As the anvil **15** begins to clamp the tissue "T" between the underside **19** of the anvil **15** and the nodule **110**, the first strain gauge **120** is placed under load and may act as a resistor, such that, as the load that is applied to the first strain gauge **120**, the first strain gauge **120** either increases or decreases the amount of resistance to the electricity supplied to it from the source of electrical power **150**. The amplifier **152** amplifies the signal from the first strain gauge **120** and feeds the amplified signal into the digital-to-analog converter **154** that changes raw current into digital data. The digital data is then sent to the CPU **156** which interprets the digital signal and mathematically transforms the data into a first amount of strain or load which is displayed by the handle display **158** and/or is sent to

a wireless signal generator **160** which wirelessly transmits the data to a remote monitor **162**. See FIG. 5. The surgeon continues to close the anvil **15** until the display indicates that the tissue "T" within the first and second jaws **14**, **16** has been clamped under a predetermined amount of clamping load. For example, the predetermined amount of clamping load or force may be eight grams. Such force may not, for example, damage the tissue "T", but may provide a reference point for repeatability purposes.

As the anvil **15** is being closed, the undersurface **19** of the anvil **15** starts to impart a load onto the anvil probe **134** which is conveyed to the second strain gauge **140** located in the cartridge **100**. The amplifier **152** amplifies the output signal from the second strain gauge **140** and feeds the amplified signal into the digital-to-analog converter **154** that changes raw current into digital data. The digital data is then transmitted to the CPU **156** which interprets the digital signal and mathematically transforms the data into a tissue thickness that is displayed on the handle display **158** and/or is transmitted to the wireless signal generator **160** for sending to a remote monitor **162**. After the surgeon has determined the thickness "t" of the tissue to be transected, the implement portion **22** is withdrawn to enable the thickness measurement cartridge **100** to be replaced with the appropriate staple cartridge. The measurement cartridge **100** may then be resterilized for the next procedure or simply disposed of.

In an alternative embodiment as depicted in FIGS. 6 and 7, the measurement cartridge **100'** lacks the nodule and the first strain gauge that was included in the measurement cartridge **100** as described above. This embodiment may only be equipped with a strain gauge **140'**. Thus, in this embodiment, the output generator **118'** may comprise the source of electrical power **150**, the strain gauge **140'**, the amplifier **152**, the converter **154**, and the CPU **156**. Otherwise, cartridge **100'** may be substantially identical to cartridge **100**. FIG. 7 is a schematic drawing of the interface between the strain gauge **140'** and the CPU **156**. In this embodiment, the CPU **156** employs an algorithm that compares the strain values over time and waits until the strain is no longer changing within a desired delta, before it displays the final load reading or calculated tissue thickness "t" on the display. In addition, a switch **164** (mechanically or electrically activated) could be associated with the clamping trigger **26** for detecting the position of the clamping trigger **26**. The switch **164** may communicate with the CPU **156** such that the CPU **156** would not start to process the strain loads until the clamping trigger **26** reached a predetermined position.

FIGS. 8-12 illustrate another surgical instrument **300** in the form of a grasper **302** that may employ various unique and novel features of various embodiments of the present invention. Such graspers **302** are known in the art and, therefore, the known features thereof, will not be discussed in great detail herein beyond what may be needed to fully understand and appreciate various embodiments of the subject invention. Examples of such devices are disclosed in U.S. Pat. No. 6,117,158 to Measamer et al. and U.S. Pat. No. 5,735,874 to Measamer et al., the disclosures of which are herein incorporated by reference.

As can be seen in FIG. 8, the grasper **302** includes an end effector **312** that has a first jaw **314** and a second jaw **316** that are operably mounted to a grasper rod **400** that protrudes distally from a handle assembly **320**. As is known, a proximal portion **402** of the grasper rod **400** may be rotatably supported within the handle assembly **320** and coupled to a rotation knob **330** rotatably supported on the handle assembly **320**. Such arrangement permits the surgeon to rotate the grasper rod **400** (and jaws **314**, **316**) relative to the handle assembly

320. As can also be seen in FIG. 8, the grasper rod 400 extends through a closure tube 324 that also protrudes from the handle assembly 320.

As is known in the art, as the jaws 314 and 316 are pivotally coupled to a distal end 404 of the grasper rod 400 and may be retained in the open position illustrated in FIG. 8 by a spring arrangement (not shown). The jaws 314 and 316 are caused to close when their respective proximal ends 315, 317 are brought into contact with a distal end 325 of the closure tube 324 as the grasper rod 400 is drawn in the proximal direction in response to the actuation of a closure trigger 326 attached to the handle assembly 320. As can be seen in FIG. 8, the closure trigger 326 is pivotally mounted on a pivot rod 328 for selective pivotal travel therearound. The closure trigger 326 has an arcuate follower arm 340 attached thereto that is constrained to pivot along an arcuate path within the handle assembly 320 as the closure trigger 326 is pivoted between the open position shown in FIG. 8 and a closed position wherein the proximal end 327 of the pivot trigger 326 is substantially adjacent to a grip portion 336 of the handle assembly 330. Supported within the handle assembly 320 is a closure spring 342 that is arranged to engage the distal end of the follower arm 340 to bias the closure trigger 326 in the open position. In various embodiments, the grasper 320 may further include a locking trigger assembly 350 for locking the closure trigger 326 and ultimately the jaws 314, 316 in a specific clamping position. The construction and operation of such locking trigger assembly 350 is known in the art and therefore will not be described in detail herein.

As can be seen in FIG. 8, the grasper 302 is provided with an output generator generally designated as 500. In various embodiments, the output generator 500 may include a first gear 502 in the form of an arcuate arm 504 that has a series of gear teeth 510 formed on a distal end 506 thereof. A proximal end 508 is attached to the closure trigger 326. The gear teeth 510 are arranged in meshing engagement with the teeth of a second or closure gear 520 which is nonrotatably coupled to a bell crank 530. The second gear 520 may be rotatably supported on a second pivot rod 514 within the handle housing 320. As can be seen in FIG. 8, a distal end 532 of the bell crank 530 has a series of crank teeth 534 formed thereon and a retainer tab 538 formed on a proximal end 536 thereof. Thus, by pivoting the closure trigger 326 toward the grip portion 330, the bell crank 530 is rotated in a clockwise direction "CW" as shown in FIG. 8.

Also in this embodiment, a series of rings 550 may be formed on a portion of the grasper rod 400. The rings 550 are located on the grasper rod 400 for selective engagement with the crank teeth 534. A lug 552 is also formed adjacent the proximal-most ring 550. As can be seen in FIGS. 8 and 9, the proximal end 410 of the grasper rod 400 may be attached to a reference scale arm 560 by means of a linkage arm assembly 570. As was discussed above, it may be desirable for the surgeon to be able to rotate the grasper rod 400 relative to the handle assembly 320 to facilitate accurate positioning of the jaws 314 and 316. Thus, in various embodiments, the proximal end 410 of the grasper rod 400 may be attached to the linkage arm assembly by a gimble-like joint assembly, generally designated as 580. As shown in FIG. 9, the gimble-like joint assembly 580 may include a collar 582 that has two circumferentially opposed pivot pins 584, 586 protruding therefrom. The collar 584 is received on a shoulder portion 412 of the grasper rod 400 and retained thereon by a screw 414 that threadably engages the proximal end 410 of the grasper rod 400 as shown. Those of ordinary skill in the art

will understand that such arrangement serves to permit the grasper rod 400 to freely rotate within the collar 582 while being attached thereto.

As can also be seen in FIG. 9, the linkage arm assembly 570 may comprise a right linkage arm 572 that is pivotally attached to the right pivot pin 584 and a left linkage arm 574 that is attached to the left pivot pin 586. The proximal end 573 of the right linkage arm 572 and the proximal end 575 of the left linkage arm 574 may be pivotally attached to the scale arm 560 by a pivot pin 590. Thus, such arrangement enables grasper rod 400 to be linked to the scale arm 560 while permitting free rotation of the grasper rod 400 relative thereto. In various embodiments, the lower end 562 of the scale arm 560 may be pivotally coupled to handle case 320 by a pivot pin 564 to enable the scale arm 560 to pivot in sync with the grasper rod 400.

As can be seen in FIG. 8, the lower portion 562 of the scale arm 560 may also be attached to a load applying assembly 600. In various embodiments, the load applying assembly may comprise a pin 610 that is sized to move axially within a cavity 323 formed in the handle case 321. A measurement spring 612 is located within the cavity 323 for biasing the pin 610 in a distal direction "DD". As will be further discussed below, the measurement spring 612 may be sized to apply an 8 gram or other predetermined load to close the jaws 314, 316 when the closure trigger 326 has been pivoted to a certain position. The distal end of the pin 614 may be pivotally coupled to the scale arm 560 by a pin 620 that is received in an elongated slot 563 formed in the bottom end of the scale arm. See FIGS. 10-12. A reference scale 566 may be attached to or formed on the upper end of the scale arm 560 as shown. The reference scale 566 may be provided with reference indicia 568, the purpose of which will be discussed in further detail below. Also in the embodiment depicted in FIG. 8, a shroud 630 may protrude from the bell crank 530. The shroud 630 may have a first reference window 632 therethrough. In addition, a window 329 is also provided through the handle case 321 to enable the surgeon to read the reference indicia 568 on the reference scale 566 that is aligned therewith. See FIG. 10.

The operation of the grasper 302 may be further appreciated from reference to FIGS. 10-12 which schematically illustrate one method of operation. FIG. 10 illustrates the grasper 302 in schematic form with the jaws 314, 316 in the fully open position. When in that position, the closure spring 342 biases the closure trigger 326 away from the grip portion (not illustrated in FIG. 10). The closure spring 342 may be sized relative to the measurement spring 612 such that the closure spring 342 is stronger than the measurement spring 612 to cause the closure trigger 326 to be pivoted to the open position when the grasper 302 is unactuated. In FIG. 10, the closure spring 342 is biasing the closure trigger 326 in the counterclockwise "CCW" direction. As can be seen in FIGS. 8 and 10, when the grasper rod 400 is in the fully opened position, none of the teeth 534 on the bell crank 530 are in engagement with any of the rings 550 on the grasper rod 400 and the retention tab 538 on the bell crank 530 is in contact with the lug 552 on the grasper rod 400. In addition, the end of the shroud 630 extends between the reference scale 566 and the viewing window 329 in the handle case 321 so that the surgeon will only see the shroud 630 when looking through the window 329; no reference indicia 568 would be viewable in the window 329.

FIG. 11 illustrates use of the grasper 302 in schematic form to measure the thickness "t" of the tissue "T". As can be seen in that Figure, the closure trigger 326 has been pulled in the CCW direction against the closing force of the closing spring 342 to cause the bell crank 530 to rotate in the CW direction

to move the retention tab 538 out of engagement with the lug 552 on the grasper rod 400. When the retention tab 538 has been moved out of engagement with lug 552, the grasper rod 400 is caused to move in the proximal direction "PD" by means of scale arm 560. In particular, the lower end 562 of the scale arm 560 is moved in the distal direction by the pin 610 which causes the scale arm 560 to pivot about the pivot pin 564 and pull the grasper rod 400 in the proximal direction "PD". As the measurement spring 612 expands, the position where the pin 610 engages the scale arm 560 in the slot 563 will change—moving further from the pivot rod 564. Thus, as the measurement spring force reduces (resulting from extension of the measurement spring 612), the mechanical advantage of the scale arm 560 would increase to maintain a constant load on the grasper jaws 314, 316. As the grasper rod 400 moves in the proximal direction "PD", it causes the jaws 314 and 316 to close upon the tissue "T". In various embodiments, the measurement spring 612 may be sized such that a predetermined amount of clamping load is applied to the tissue "T". For example, in one exemplary embodiment, the measurement spring 612 is sized such that approximately eight grams of closure load is applied to the tissue "T".

When in the tissue "T" has been clamped between the jaws 314, 316 solely under the clamping load of the measurement spring 612, a corresponding one of the reference indicia 568 will be aligned with the viewing window 329 in the handle case 321. The surgeon can then position the closure trigger 326 to cause the bell crank 530 and shroud 630 to move to a position wherein the viewing window 632 in the shroud 630 is in alignment with the viewing 329 window to permit the surgeon to view the reference indicia 568 through the viewing windows 329, 632 as shown in FIG. 11. When in that position, the bell crank 530 is not influencing the position of the grasping rod 530. The position of the grasping rod 400 is solely controlled by the influence of the measuring spring 612 on the scale arm 560 in the manner described above. Thus, when in that position, the surgeon is viewing the reference indicia 568 associated with the thickness of the tissue "T" as it is clamped between the jaws 314, 316 under that predetermined load. Those of ordinary skill in the art will appreciate that the measurement spring and measurement lever may be constructed/calibrated such that the reference indicia 568 correspond to the thickness of the tissue "T" that is clamped under that load.

FIG. 12 illustrates the position of the various grasper components when the surgeon has completely closed the jaws 314, 316 with no tissue clamped therebetween. As can be seen in that Figure, the surgeon has pulled the closure trigger 326 to the point wherein the measurement spring 612 has biased the scale arm 560 to pull the grasper rod 400 far enough in the proximal direction "PD" to cause the jaws 314, 316 to completely close. When the surgeon releases the closure trigger 326, the closure spring 342, which is stronger than the measurement spring 612, biases the closure trigger 326 to the open position. As the closure trigger 326 rotates to the open position, it causes the bell crank 530 to pivot in the CCW direction in FIG. 12 to bring the retainer tab 538 into engagement with the lug 552 on the grasper rod 400 to drive the grasper rod 400 in the distal direction "DD" until the grasper rod 400 reaches the open position (FIG. 10).

Thus, various embodiments of the grasper 302 may be used in the following manner. The surgeon may initially close the jaws 314, 316 to enable the implement portion 322 to be inserted through the cannula or other opening. After the implement portion 322 has been inserted into the patient, the surgeon may release the closure trigger 326 to permit the jaws 314, 316 to open. The surgeon may then manipulate the

instrument until the target tissue "T" is oriented between the jaws 314, 316. The jaws 314, 316 may then be closed on the target tissue "T" by depressing the closure trigger 326 towards the grip portion 336 of the handle assembly 320. As the surgeon continues to depress the closure trigger 326, he or she can observe the viewing window 329 in the handle assembly 320 until the reference indicia 568 which corresponds to the tissue thickness under a predetermined clamping load is viewable. Further depressing of the closure trigger 326 would further draw the grasper rod 400 in the proximal direction "PD" by virtue of the engagement of the teeth 534 on the bell crank 530 with one or more rings 550 on the grasper rod 400 and thereby apply further clamping force to the tissue "T". In doing so, however, the movement of the bell crank 530 and shroud 630 causes the viewing window 632 in the shroud 630 to move out of alignment with the viewing window 329 in the handle casing 321. Thus, the surgeon is unable to view the reference indicia 568 when the tissue "T" has been placed under a clamping load that is greater than the desired predetermined clamping load. If the surgeon desires to take a thickness reading, he or she simply must start to release the closure trigger 326 until the window 632 in the shroud 630 once again aligns with the window 329 in the handle casing to permit viewing of the reference indicia.

FIG. 13 illustrates another surgical instrument 700 in the form of a grasper 702 that may employ various unique and novel features of various embodiments of the present invention. In this embodiment, a conventional grasper arrangement may be employed. Such grasper 702 may include an end effector 712 that has a first jaw 714 and a second jaw 716 that are operably mounted to a grasper rod 800 that protrudes distally from a handle assembly 720. As is known, a proximal portion 802 of the grasper rod 800 is rotatably supported within the handle assembly 720 and coupled to a rotation knob 730 rotatably supported on the handle assembly 720. Such arrangement permits the surgeon to rotate the grasper rod 800 relative to the handle assembly 720. As can also be seen in FIG. 13, the grasper rod 800 may extend through a closure tube 724 that also protrudes from the handle assembly 720.

As is known in the art, the jaws 714 and 716 may be pivotally coupled to a distal end 804 of the grasper rod 800 and may be retained in the open position illustrated in FIG. 13 by a spring arrangement (not shown). The jaws 714 and 716 are caused to close when their proximal ends 715, 717, respectively are brought into contact with a distal end 725 of the closure tube 724 as the grasper rod 800 is drawn in the proximal direction in response to the actuation of a closure trigger 726 attached to the handle assembly 720. The construction and operation of the closure trigger and its interaction with the grasper rod 800 are known in the art and therefore will not be discussed in detail herein.

In various embodiments, however, a strain gauge 900 may be oriented for interaction with the grasper rod 800 such that as the grasper rod is moved in the proximal direction "PD" by depressing the closure trigger 726, the strain gauge 900 measures the strain on the closure rod 800. As can be seen in FIG. 14, the strain gauge 900 is coupled to a battery or other source of electrical power 910, an amplifier 912, a digital-to-analog converter 914, a conventional central processing unit "CPU" 916, and a display unit 918. In various embodiments, the strain gauge 900, source of electrical power 910, the amplifier 912, converter 914 and CPU 916 may be collectively referred to as an output generator, generally designated as 930. In alternative embodiments, the CPU 916 may also be coupled to a wireless signal generator 920 that transmits the thickness data to a remote monitor 922.

13

In this embodiment, the CPU 916 employs an algorithm that compares the strain values over time and waits until the strain is no longer changing within a given delta for example, less than 1 to 2% variation, before it displays the final load reading or calculated tissue thickness “t” on the display. Such variation may be measured in raw voltage (strain gauge acts as a resistor to modify voltage according to how much it is stressed or pulled or compressed), deflection after the data is translated from voltage to strain, or tissue thickness when the strain is translated into thickness. In addition, a switch (mechanically or electrically activated) could be associated with the clamping trigger for detecting the position of the clamping trigger. The switch 164 may communicate with the CPU 156 such that the CPU 156 would not start to process the strain loads until the closure trigger 26 reached a predetermined position.

Another feature of various embodiments of the present invention is depicted in FIG. 14. In particular, FIG. 14 illustrates jaws 710, 720 that may be used in connection with any of the grasper embodiments described herein or other conventional grasper arrangements wherein it may be advantageous to grasp and manipulate another surgical instrument such as, an endocutter or the like. In the embodiment depicted in FIG. 15, the first jaw 710 may have a clamping face 711 and a distal end 712 that curves downward. The second jaw 720 has a clamping face 721 and a distal end 722 that curves upwardly. A somewhat curved nodule 714 may be formed on the clamping face 711 of the first jaw 710 and another somewhat curved nodule 724 may be formed on the clamping face 721 of the second jaw 720. In this embodiment, the nodules 714, 724 may be so oriented and shaped to cooperate with the respective distal ends 712, 722 of the first and second jaws 710, 720 so as to form a cradle, generally designated as 730, for receiving and supporting a portion of a surgical instrument 750 that has a substantially circular cross-sectional shape. Such arrangement serves to provide a positive support for the surgical instrument 750 within the first and second jaws 710, 720 and enables the surgeon to accurately manipulate the instrument 750 using the grasper. Those of ordinary skill in the art will understand that, in other embodiments of the present invention, the sizes, shapes and numbers of nodules may vary and/or the distal ends of the jaws may have different shapes to better form a cradle that corresponds to the cross-sectional shape of the instrument to be grasped between the jaws. Thus, the scope and protection afforded to these various embodiments should not be limited to use of two nodules having the specific shapes illustrated in FIG. 14.

FIGS. 15-23 illustrate another surgical instrument 1000 in the form of a grasper 1002 that may employ certain unique and novel features of various embodiments of the present invention. In various embodiments, the grasper 1002 may include an end effector 1012 that has a first jaw 1014 and a second jaw 1016 that are operably mounted to a grasper rod 1100 that protrudes distally from a handle assembly 1020. See FIG. 19. The grasper rod 1100 may be axially received within a tube 1024 that may be rotatably affixed to the handle assembly 1020. A rotation knob 1030 may be rotatably affixed to the handle assembly 1020 as shown in FIG. 19 and be attached to the tube 1024 such that rotation of the rotation knob 1030 relative to the handle assembly 1020 may also result in the rotation of the end effector 1012 relative to the handle assembly 1020. The jaws 1014 and 1016 may be pivotally coupled to a distal end 1104 of the grasper rod 1100 by corresponding linkages 1106, 1108. Movement of the grasper rod 1100 in the distal direction “DD” will cause the jaws to 1014, 1016 to pivot closed.

14

In various embodiments, the grasper rod 1100 may be selectively moved by actuation of a closure trigger 1026 that is pivotally supported by the handle assembly 1020. More specifically and with reference to FIGS. 17 and 18, a proximal end 1102 of the grasper rod 1100 may be attached to a calibrated spring slide 1200 housed within the handle assembly 1020. In various embodiments for example, the proximal end 1102 of the grasper rod 1100 may be formed with a T-shaped portion 1103 that is configured to be received in a correspondingly shaped cavity 1204 in a distal end portion 1202 of the calibrated spring slide 1200. The calibrated spring slide 1200 is configured to be movably received in an elongated opening 1040 in the handle assembly 1020 and has an actuator opening 1208 therein for receiving a lever arm 1028 formed on the closure trigger 1026. The lever arm 1028 may also protrude through the actuator opening 1208 into a corresponding opening 1212 in a window slide 1210 that is configured to be slidably supported within a window slide cavity 1040 formed in the handle assembly 1020. The window slide 1210 may have blocking portions 1214 formed thereon that, as will be discussed in further detail below, serve to block corresponding window openings 1022 formed in the handle assembly 1020. Thus, by pivoting the closure trigger 1026 toward the pistol grip portion 1025 of the handle assembly 1020, the lever arm 1028 causes the calibration spring slide 1200 and the window slide 1210 to move in the proximal “PD” direction. In various embodiments, a window slide spring 1216 may be supported by the handle assembly 1020 to bias the window slide 1210 in the distal “DD” direction.

As can also be seen in FIGS. 16-23, the grasper 1002 may also be configured with a releasable lock assembly, generally designated as 1220. In various embodiments, the lock assembly 1220 may comprise a lever lock arm 1222 that is attached to or protrudes from the closure trigger 1026 that is pivotally journaled on a pivot stud 1023 or other member formed on or otherwise attached to the handle assembly 1020. See FIG. 16. A torque spring 1230 may also be journaled on the pivot stud 1023 to apply a biasing force to the closure trigger 1026 to bias the closure trigger 1026 to an open position as illustrated in FIG. 18. In various embodiments, the lever lock arm 1222 may comprise a piece of metal or other suitable material that is attached to the closure trigger 1026 and is configured to extend into a lock cavity 1027 formed in the handle assembly 1020. Extending into the lock cavity 1027 is a lock member 1242 that has a serrated or toothed end 1242 that is configured to selectively engage a portion of the lever lock arm 1222 and retain it within the lock cavity 1027. As shown in FIGS. 16-23, a lock spring 1250 may be supported in the handle assembly 1020 for biasing the lock member 1240 into retaining engagement with a portion of the lever lock arm 1222. To enable the clinician to selectively release the lock member 1240 out of retaining engagement with the lever lock arm 1222, a release trigger 1260 may be provided. In various embodiments, the release trigger 1260 may have a proximal end 1262 portion that is slidably received within a trigger cavity 1029 in the handle assembly. The proximal end 1262 of the release trigger 1260 is also configured to extend into a cavity 1244 formed in the lock member 1240. Depressing the release trigger 1260 toward the pistol grip portion 1025 of the handle assembly 1020 causes the proximal end 1262 of the release trigger 1260 to cooperate with an angled surface 1246 within the cavity 1244 to cause the lock member 1240 to be moved downwardly against the lock spring 1250 to enable the lever lock arm 1222 to be released from the lock cavity 1027. When the lever lock arm 1222 is released, the closure trigger 1026 may pivot to an open position under the influence of the torque spring 1230.

Various embodiments may further include an output generator generally designated as **1201**. In various embodiments, the output generator may include a reference dial **1270** that is rotatably supported on a dial stud **1272** formed or otherwise supported within the handle assembly **1020**. The reference dial **1270** may be provided with reference indicia **1274**, the purpose of which will be discussed in further detail below. In addition, the output generator **1201** may further include drive gear **1280** may be formed or otherwise attached to the reference dial **1270** as shown in FIG. 16. The drive gear **1280** is arranged for meshing engagement with gear teeth **1206** formed on the calibrated spring slide **1204**. Also in various embodiments, the output generator may, for example, include a calibrated spring **1290** provided on the distal end **1202** of the calibrated spring slide **1200** and be received within a corresponding cavity **1292** in the handle housing **1020**. As will be appreciated from the discussion to follow, the output generator **1201** in various embodiments is mechanically actuated or powered. As used herein, the term "mechanically actuated" means that the output generator is actuated without any electrically generated input.

Operation of various embodiments of the grasper **1002** may be understood from reference to FIGS. 18-23. FIG. 18 illustrates the grasper **1002** in a "fully closed" and locked position. When the closure trigger **1026** is in the fully depressed position, the lever arm **1028** is positioned within the lever arm cavity **1208** in the calibrated spring slide **1200** to permit the calibrated spring slide **1200** to slide proximally under the biasing force created by the calibration spring **1292**. As the calibrated spring slide **1200** moves proximally, it drives the reference dial **1270** in a clockwise direction by virtue of the meshing engagement between the teeth **1206** and the drive gear **1280**. In various embodiments, the calibrated spring **1292** may be sized such that the "0" on the reference dial **1270** is aligned with the window **1022** in the handle assembly **1020**. To return to a fully open position (FIG. 19), the clinician depresses the release trigger **1260** as shown in FIG. 23 which releases the lever lock arm **1222** and permits the closure trigger **1026** to return to the open position under the force of the torque spring **1230**. As the closure trigger **1026** moves to the open position, the lever arm portion **1028** pivots in a counterclockwise direction within the opening **1212** in the window slide **1210** thereby permitting the window slide **1210** to be biased in the distal direction by the window slide spring **1216** such that the blocking portions **1214** block the windows **1022** in the handle assembly **1020**. In addition, the lever arm portion **1028** pushes the calibrated spring slide **1200** distally which moves the grasper rod **1100** distally to open the jaws **1014** and **1016**.

When the clinician desires to clamp the tissue "T" between the jaws **1014**, **1016** as shown in FIG. 21, the clinician moves the end effector **1012** into position and depresses the release trigger **1260** to permit the closure trigger **1026** to begin to be depressed. When in that position, the window slide **1210** is positioned in its distal-most position and the blocking portions **1214** thereof do not obscure the windows **1022** in the housing assembly. As the closure trigger **1026** is depressed, the calibrated spring slide **1200** moves proximally which draws the grasper rod **1110** proximally and causes the jaws **1014** and **1016** to clamp the tissue "T" therebetween (FIG. 21). The clinician continues to depress the closure trigger **1026** until the closure trigger has pivoted to a point wherein the lever arm portion **1028** biases the window slide **1210** proximally to a position wherein the blocking portions **1214** block the windows **1022** in the handle assembly **1020**. See FIG. 22. The clinician thereafter slightly releases the closure trigger **1026** to a point wherein the reference indicia **1274** on

the reference dial **1270** is viewable through the windows **1022** in the handle assembly **1020**. See FIG. 23. Those of ordinary skill in the art will appreciate that the reference indicia may be associated with a particular thickness "t" of tissue "T". For example, the number 1 on the reference dial **1270** may represent an approximate tissue thickness of 1 mm; the number 2 may represent an approximate tissue thickness of 2 mm and so on. It will be further understood that such unique and novel arrangement enables the clinician to obtain a thickness measurement of the tissue "T" at a predetermined clamping load (resulting from the calibrated spring **1292**). For example, the calibrated spring **1292** may be sized to apply an approximate clamping load of 8 grams/mm squared when the grasper is positioned to indicate the tissue thickness. If the clinician "over clamps" the tissue, the window slide **1210** moves to a position wherein the blocking portions **1214** block the windows **1022** to thereby prevent the clinician from reading the reference indicia **1274**.

While the present invention has been illustrated by description of several embodiments and while the illustrative embodiments have been described in considerable detail, it is not the intention of the applicant to restrict or in any way limit the scope of the appended claims to such detail. Additional advantages and modifications may readily appear to those skilled in the art. Those of ordinary skill in the art will readily appreciate the different advantages provided by these various embodiments. For example, various embodiments of the present invention enable the surgeon to determine the thickness of the desired target tissue to enable the properly sized implementations (staple cartridges, etc.) to be employed. Various embodiments are also constructed to enable the surgeon to take such tissue thickness measurements under a predetermined compressive load.

While several embodiments of the invention have been described, it should be apparent, however, that various modifications, alterations and adaptations to those embodiments may occur to persons skilled in the art with the attainment of some or all of the advantages of the invention. For example, according to various embodiments, a single component may be replaced by multiple components, and multiple components may be replaced by a single component, to perform a given function or functions. This application is therefore intended to cover all such modifications, alterations and adaptations without departing from the scope and spirit of the disclosed invention as defined by the appended claims.

The devices disclosed herein can be designed to be disposed of after a single use, or they can be designed to be used multiple times. In either case, however, the device can be reconditioned for reuse after at least one use. Reconditioning can include a combination of the steps of disassembly of the device, followed by cleaning or replacement of particular pieces, and subsequent reassembly. In particular, the device can be disassembled, and any number of particular pieces or parts of the device can be selectively replaced or removed in any combination. Upon cleaning and/or replacement of particular parts, the device can be reassembled for subsequent use either at a reconditioning facility, or by a surgical team immediately prior to a surgical procedure. Those of ordinary skill in the art will appreciate that the reconditioning of a device can utilize a variety of different techniques for disassembly, cleaning/replacement, and reassembly. Use of such techniques, and the resulting reconditioned device, are all within the scope of the present application.

Preferably, the invention described herein will be processed before surgery. First a new or used instrument is obtained and, if necessary, cleaned. The instrument can then be sterilized. In one sterilization technique, the instrument is

placed in a closed and sealed container, such as a plastic or TYVEK® bag. The container and instrument are then placed in a field of radiation that can penetrate the container, such as gamma radiation, x-rays, or higher energy electrons. The radiation kills bacteria on the instrument and in the container. The sterilized instrument can then be stored in the sterile container. The sealed container keeps the instrument sterile until it is opened in the medical facility.

Any patent, publication, or other disclosure material, in whole or in part, that is said to be incorporated by reference herein is incorporated herein only to the extent that the incorporated materials does not conflict with existing definitions, statements, or other disclosure material set forth in this disclosure. As such, and to the extent necessary, the disclosure as explicitly set forth herein supersedes any conflicting material incorporated herein by reference. Any material, or portion thereof, that is said to be incorporated by reference herein, but which conflicts with existing definitions, statements, or other disclosure material set forth herein will only be incorporated to the extent that no conflict arises between that incorporated material and the existing disclosure material.

The invention which is intended to be protected is not to be construed as limited to the particular embodiments disclosed. The embodiments are therefore to be regarded as illustrative rather than restrictive. Variations and changes may be made by others without departing from the spirit of the present invention. Accordingly, it is expressly intended that all such equivalents, variations and changes which fall within the spirit and scope of the present invention as defined in the claims be embraced thereby.

What is claimed is:

1. A surgical instrument, comprising:

a pair of opposing jaws, wherein at least one jaw is selectively movable relative to the other jaw in response to opening and closing motions applied to at least one of said opposing jaws for selectively clamping tissue therebetween;

an output generator associated with said pair of opposing jaws, said output generator generating tissue thickness data representing thicknesses of the tissue clamped between said pair of opposing jaws when said opposing jaws are in a plurality of positions between opened and closed;

a probe operably interfacing with said output generator, wherein said probe is configured to operably contact both of the jaws when said pair of opposing jaws are in said plurality of positions such that at said plurality of positions said probe causes said output generator to generate said tissue thickness data; and

a display for displaying said tissue thickness data thereon.

2. The surgical instrument of claim 1 wherein said output generator comprises:

at least one strain gauge for generating a strain signal corresponding to the tissue thickness of the tissue clamped between said pair of opposing jaws; and

a processor communicating with said at least one strain gauge for receiving said strain signal therefrom and generating said tissue thickness data corresponding to said strain signal and communicating said tissue thickness data to said display.

3. The surgical instrument of claim 1 wherein said pair of opposing jaws comprises:

a first jaw sized to removably support a cartridge therein; and

a second jaw movably coupled to said first jaw and being selectively movable between open and closed positions relative to said first jaw in response to application of said

open and closing motions to at least one of said first and second jaws and wherein said output generator comprises:

a measurement cartridge removably supportable in said first jaw;

at least one strain gauge associated with said measurement cartridge for generating a strain signal corresponding to the tissue thickness of tissue clamped between the measurement cartridge and the second jaw; and

a processor communicating with said at least one strain gauge for receiving said strain signals therefrom and calculating said tissue thickness data corresponding to said tissue thickness and communicating said tissue thickness data to said display.

4. The surgical instrument of claim 3 wherein said strain gauge is supported by said measurement cartridge and said probe has a deflectable portion for contact with said second jaw.

5. A surgical instrument comprising:

a handle assembly;

an end effector for performing a surgical operation, said end effector coupled to said handle assembly and having opposed jaw members for selectively clamping tissue therebetween in response to opening and closing motions applied to at least one of said opposing jaw members;

a first signal generator in said end effector for generating first signals corresponding to a thickness of the tissue clamped between said opposed jaw members;

a nodule oriented on said end effector such that said nodule is aligned with the first signal generator;

a probe configured to operably contact both of the jaw members when said pair of opposed jaw members are in a plurality of positions between opened and closed such that at said plurality of positions said probe causes a second signal generator operably interfacing with said probe to generate second tissue thickness signals;

a signal processor for receiving said first and second signals from said first signal generator and said second signal generator and calculating the thickness of the tissue clamped between said opposed jaw members; and

a display communicating with said signal processor for displaying the tissue thickness thereon.

6. The surgical instrument of claim 5 further comprising a measurement cartridge, comprising a cartridge body sized to be removably supported in said end effector and wherein said first signal generator comprises a first strain gauge supported by said cartridge body and configured to communicate with said signal processor when said cartridge body is removably supported in said end effector, said first strain gauge generating first strain signals corresponding to an amount of compressive load applied to the tissue clamped by said end effector.

7. The surgical instrument of claim 6 wherein said second signal generator comprises a second strain gauge supported within said cartridge body and communicating with said signal processor, said second strain gauge generating at least one second strain signal corresponding to a thickness of tissue clamped by said end effector.

8. The surgical instrument of claim 6 wherein said cartridge body is pivotally supported within the end effector.

9. The surgical instrument of claim 8 wherein said opposing jaw members of said end effector comprise:

an elongate channel configured to removably support the cartridge body therein; and

an anvil movably supported relative to the elongate channel.

10. The surgical instrument of claim 9 wherein said elongate channel is configured to operably support a surgical fastener cartridge therein when said cartridge body of the measurement cartridge has been removed from the elongate channel.

5

11. The surgical instrument of claim 10 further comprising:
a closure drive supported by said handle assembly and configured to generate said opening and closing motions for selective application to said end effector; and
a firing drive supported by said handle assembly and configured to selectively generate and apply firing motions to said surgical fastener cartridge operably supported by said elongate channel.

10

12. The surgical instrument of claim 6 wherein said cartridge body includes a tissue clamping surface and wherein said nodule protrudes from said tissue clamping surface.

15

13. The surgical instrument of claim 6 wherein said first signal generator is located distal to said second signal generator.

14. The surgical instrument of claim 5 wherein said tissue thickness data is wirelessly transmitted to said display.

20

15. The surgical instrument of claim 5 wherein said display is supported on said handle assembly.

16. The surgical instrument of claim 5 wherein said display is remote from said handle assembly.

25

17. The surgical instrument of claim 5 further comprising a closure drive supported by said handle assembly and configured to generate said opening and closing motions for selective application to said end effector.

30

* * * * *

专利名称(译)	腹腔镜组织厚度和夹钳负荷测量装置		
公开(公告)号	US8893946	公开(公告)日	2014-11-25
申请号	US11/729008	申请日	2007-03-28
[标]申请(专利权)人(译)	德留克斯Chad P制作 TIMPERMAN EUGENE大号 FUGIKAWA LESLIE中号		
申请(专利权)人(译)	德留克斯Chad P制作 TIMPERMAN EUGENE大号 FUGIKAWA LESLIE中号		
当前申请(专利权)人(译)	爱惜康内镜手术，INC.		
[标]发明人	BOUDREAUX CHAD P TIMPERMAN EUGENE L FUGIKAWA LESLIE M		
发明人	BOUDREAUX, CHAD P. TIMPERMAN, EUGENE L. FUGIKAWA, LESLIE M.		
IPC分类号	A61B19/00 A61B5/107 A61B17/29 A61B17/10 A61B17/068 A61B17/072		
CPC分类号	A61B17/29 A61B2019/461 A61B19/46 A61B2017/07214 A61B17/07207 A61B17/068 A61B2019/464 A61B17/072		
其他公开文献	US20090012556A1		
外部链接	Espacenet USPTO		

摘要(译)

一种具有相对钳口的手术器械，其可以在打开和闭合位置之间选择性地移动。各种实施例包括用于测量夹在相对的钳口之间的组织厚度的部件。一些实施例被配置成确定在确定组织的厚度时施加到组织的压缩力的量。组织厚度数据显示在仪器本身和/或远离仪器的显示器上。各种实施例可包括不同类型的手术器械，例如外科缝合器和抓紧器。还公开了一种钳口装置，其钳口形状形成为了限定了与物体的横截面形状相对应的支架。产生厚度数据的组件可以是电动或机械致动的。

