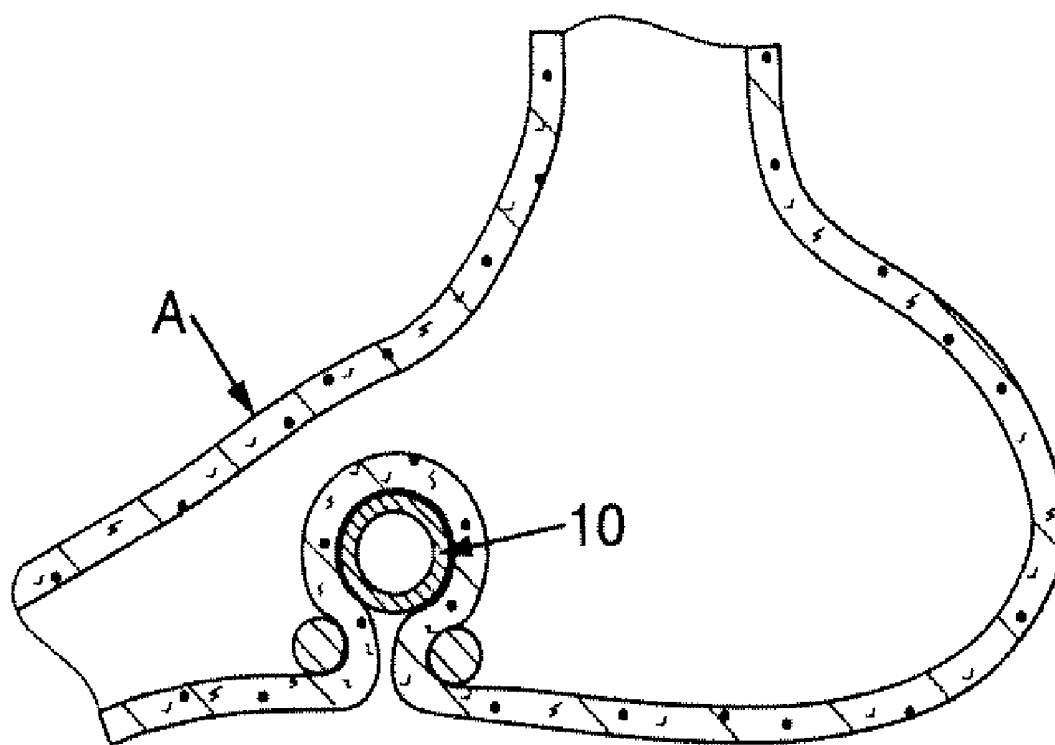


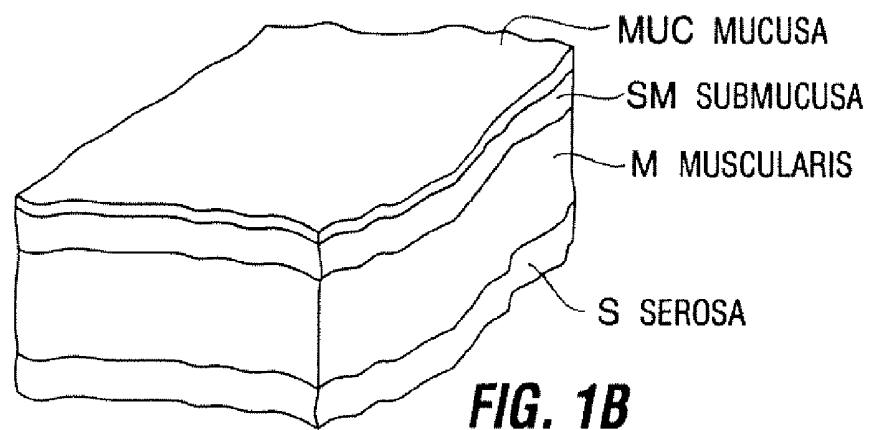
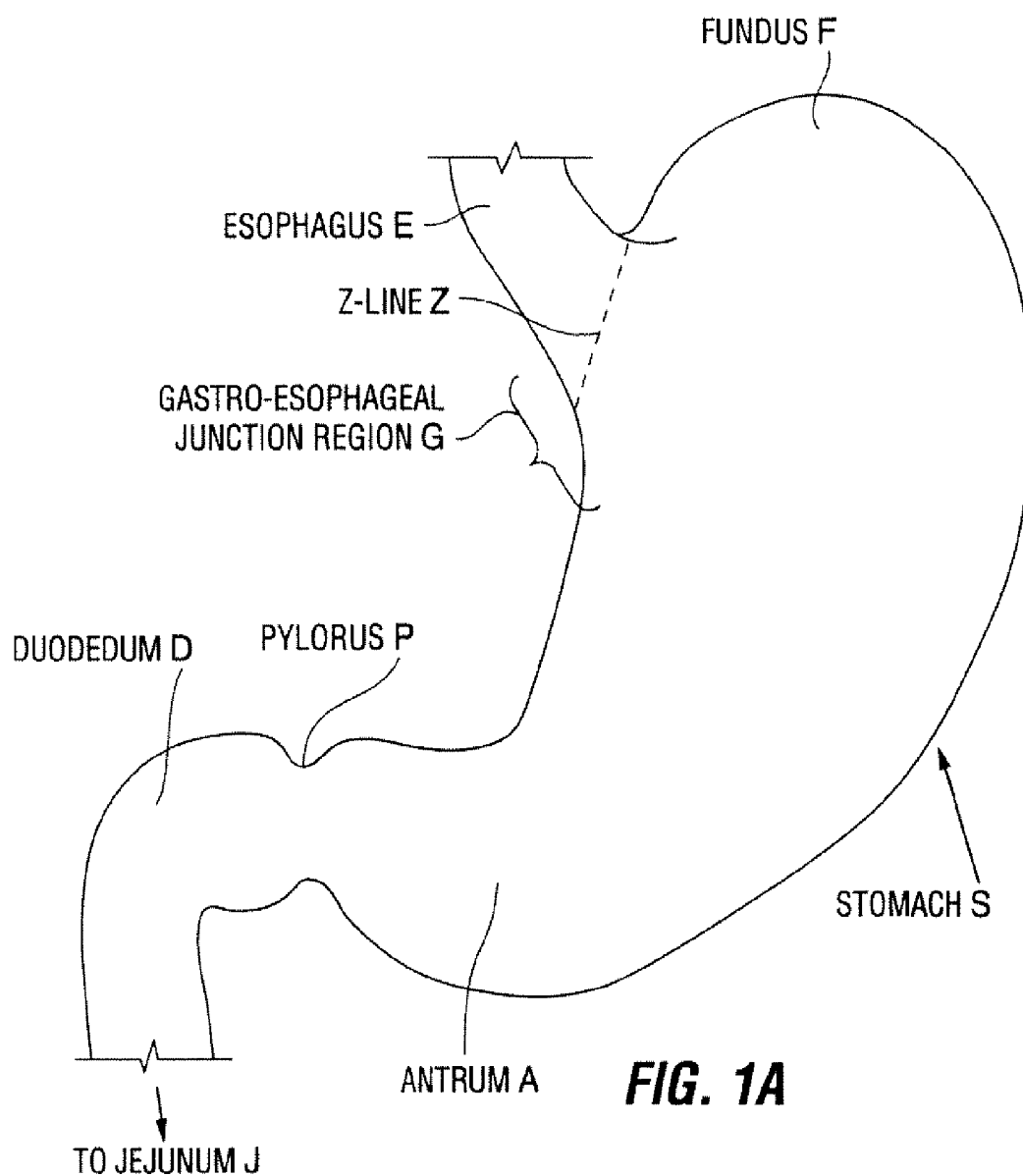


US 20130023727A1

(19) **United States**(12) **Patent Application Publication**
Balbierz et al.(10) **Pub. No.: US 2013/0023727 A1**(43) **Pub. Date: Jan. 24, 2013**(54) **RESTRICTIVE AND/OR OBSTRUCTIVE
IMPLANT FOR INDUCING WEIGHT LOSS**ation of application No. 11/114,400, filed on Apr. 26,
2005, now Pat. No. 7,717,843.(75) Inventors: **Daniel J. Balbierz**, Redwood City, CA
(US); **William L. Athas**, Chapel Hill,
NC (US); **John Lunsford**, San Carlos,
CA (US); **William S. Eubanks, JR.**,
Durham, NC (US); **Kevin van Bladel**,
Livermore, CA (US)(60) Provisional application No. 60/565,378, filed on Apr.
26, 2004.**Publication Classification**(51) **Int. Cl.**
A61F 2/00 (2006.01)(52) **U.S. Cl.** **600/37**(73) Assignee: **Barosense, Inc.**, Redwood City, CA
(US)(21) Appl. No.: **13/551,504**(22) Filed: **Jul. 17, 2012****Related U.S. Application Data**(60) Division of application No. 12/765,177, filed on Apr.
22, 2010, now Pat. No. 8,241,202, which is a continu-(57) **ABSTRACT**

Described herein is a system for inducing weight loss in a patient, which comprises an extragastric space occupier positionable in contact with an exterior surface of a stomach wall to form an inward protrusion of wall into the stomach, and a retention device positionable in contact with the wall to retain the inward protrusion and to thereby capture the extragastric space occupier within the protrusion.





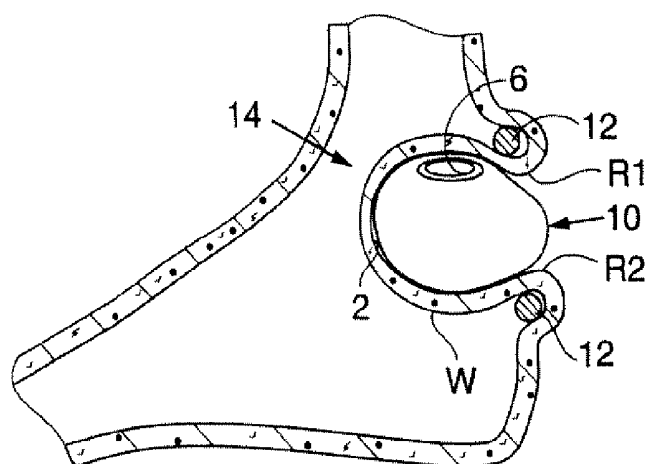


FIG. 2

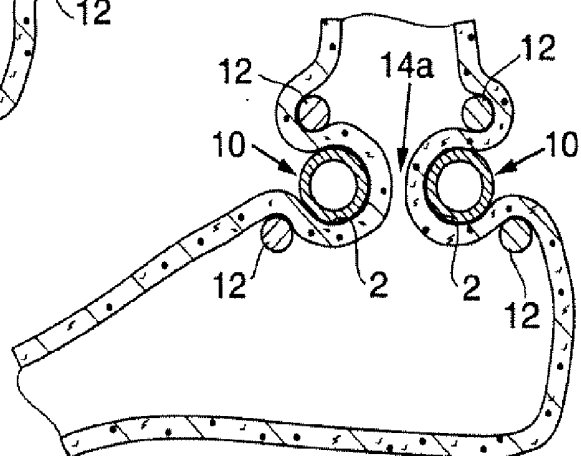


FIG. 3

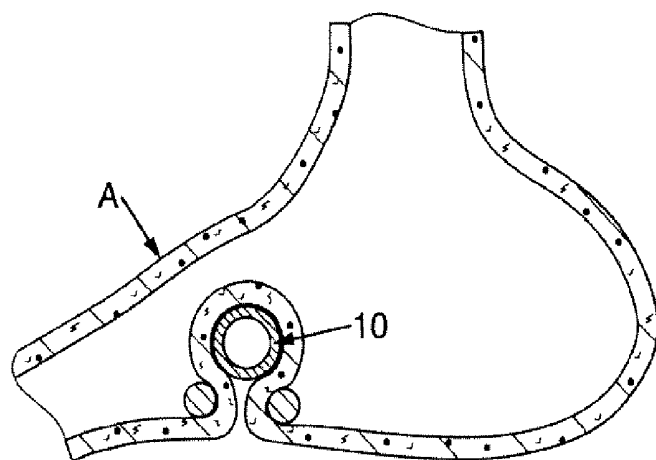


FIG. 4

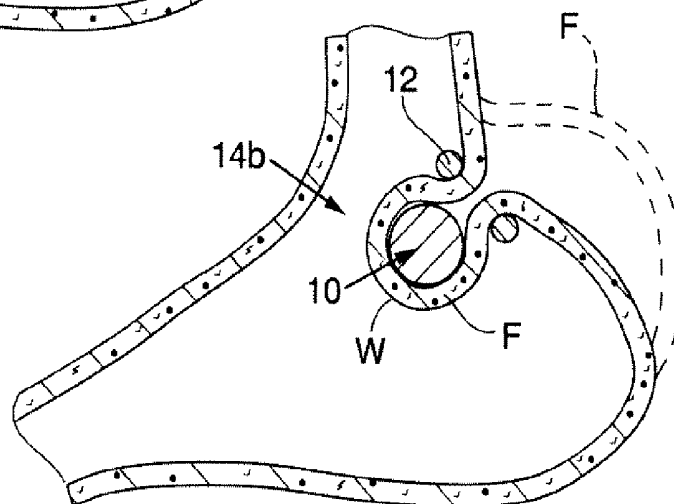


FIG. 5

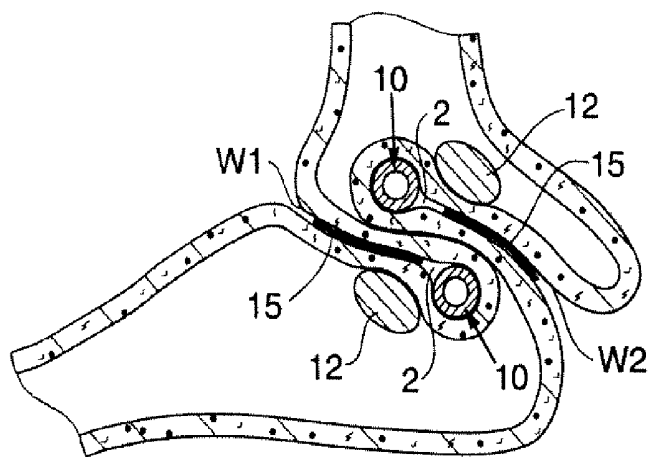


FIG. 6

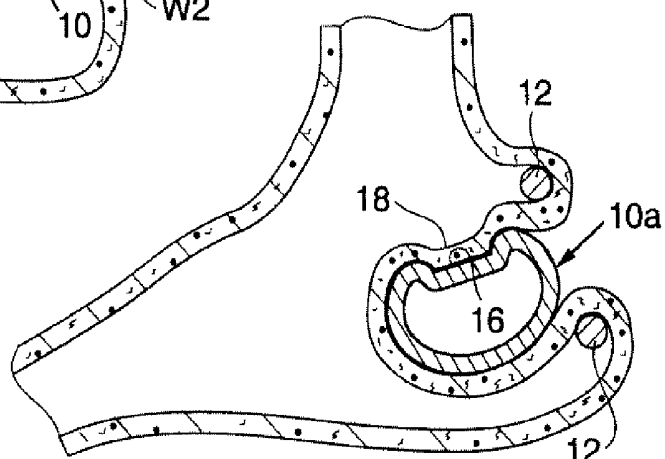


FIG. 7

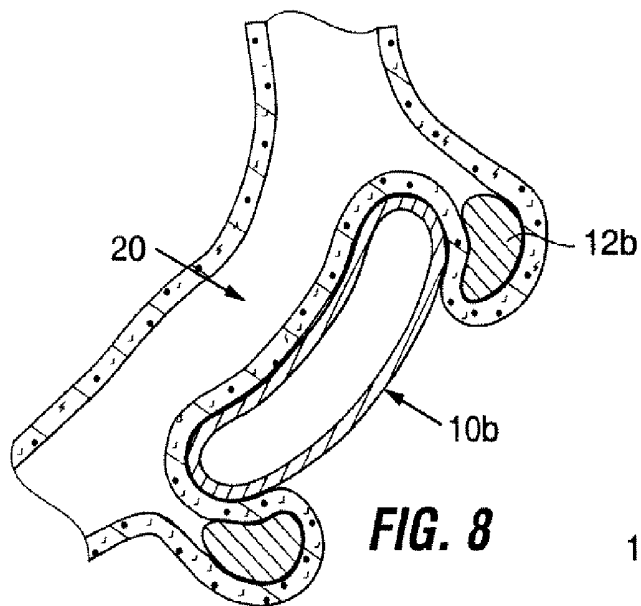


FIG. 8

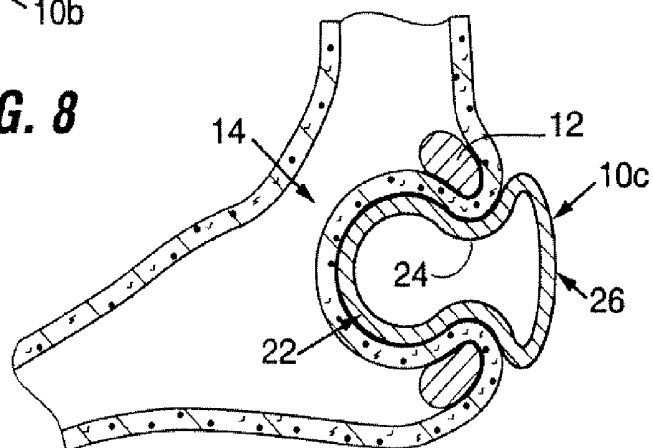


FIG. 9

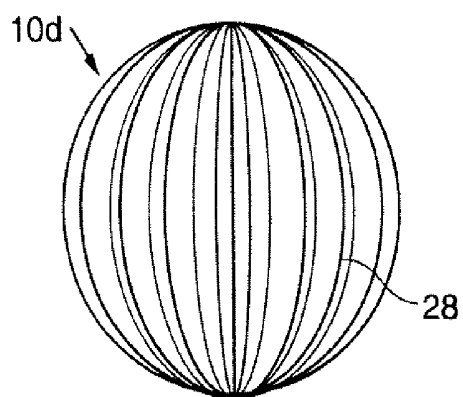


FIG. 10

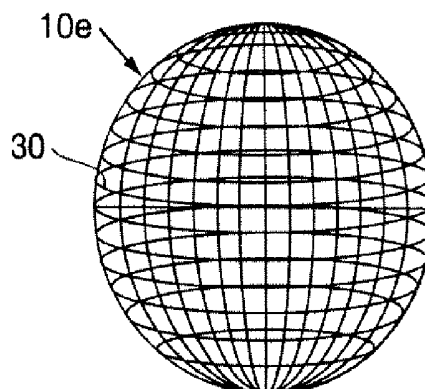


FIG. 11

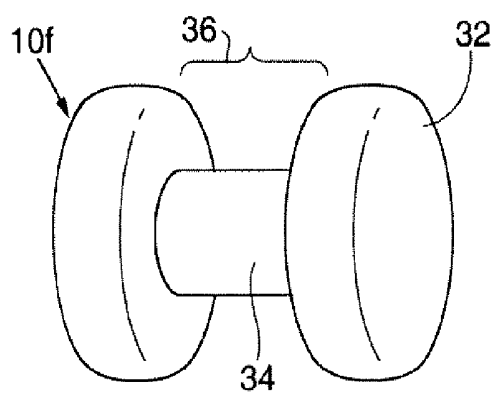


FIG. 12A

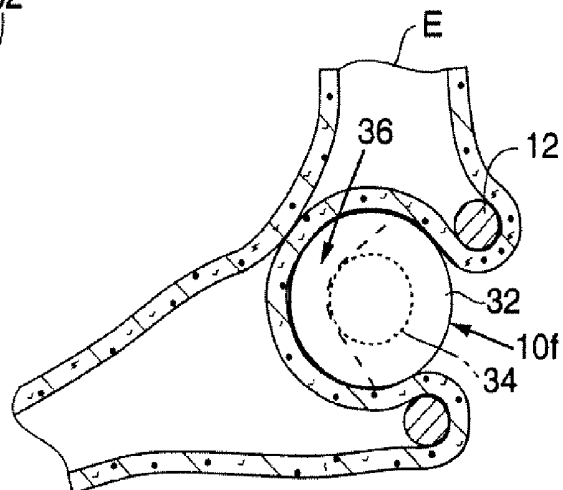


FIG. 12B

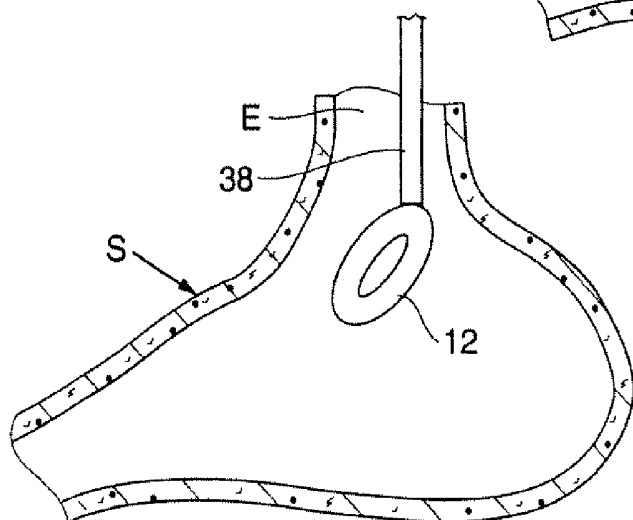


FIG. 13A

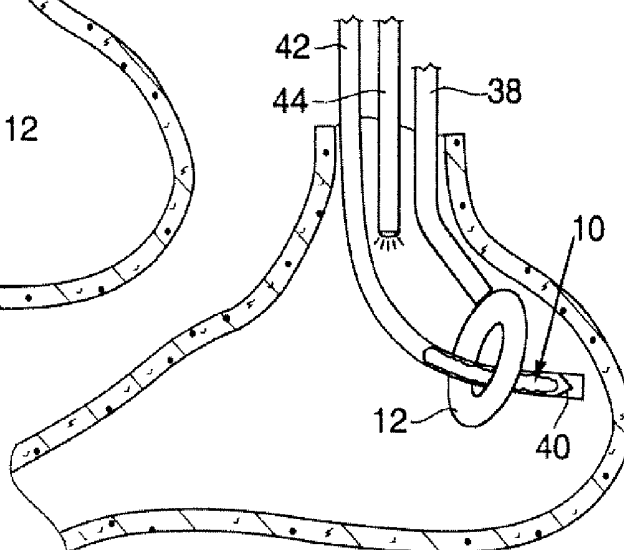


FIG. 13B

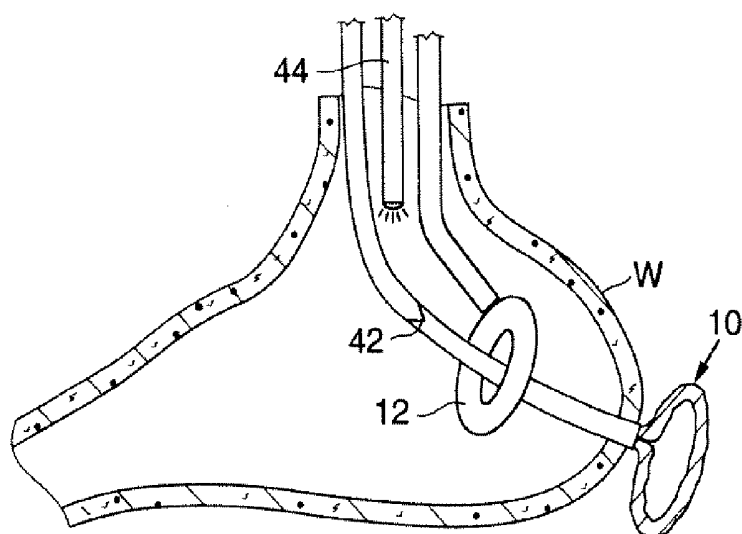


FIG. 13C

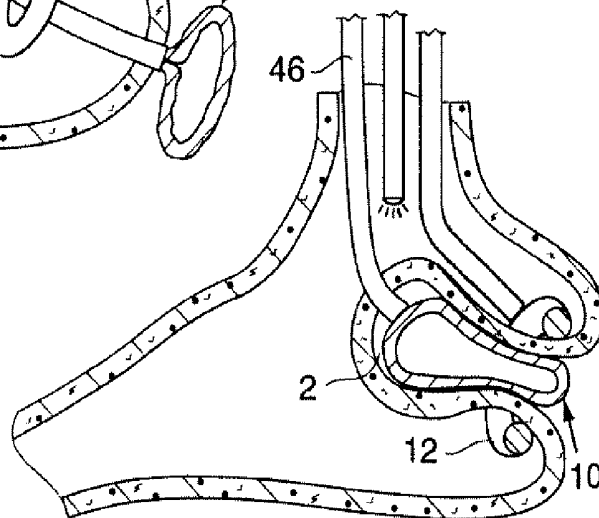


FIG. 13D

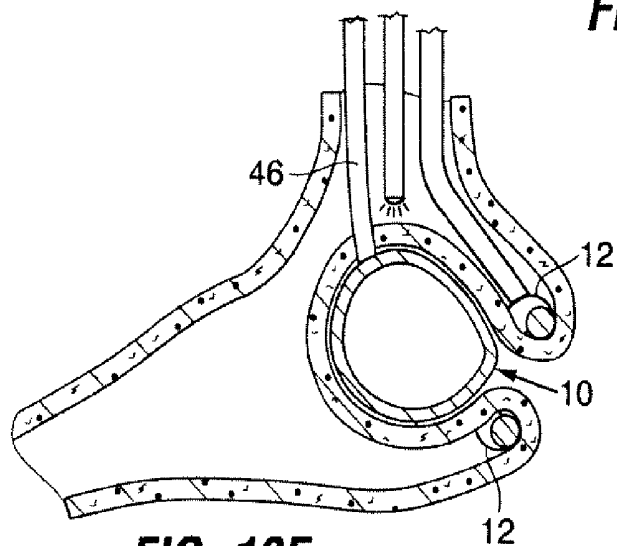


FIG. 13E

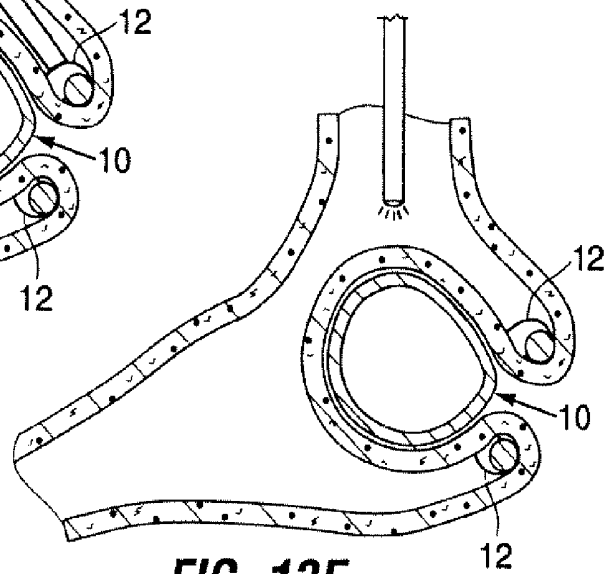
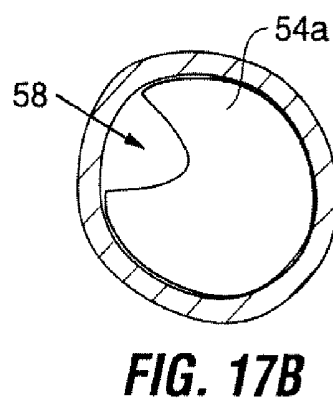
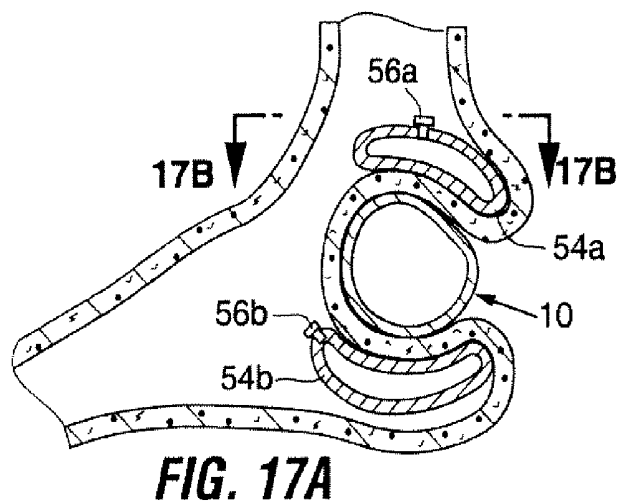
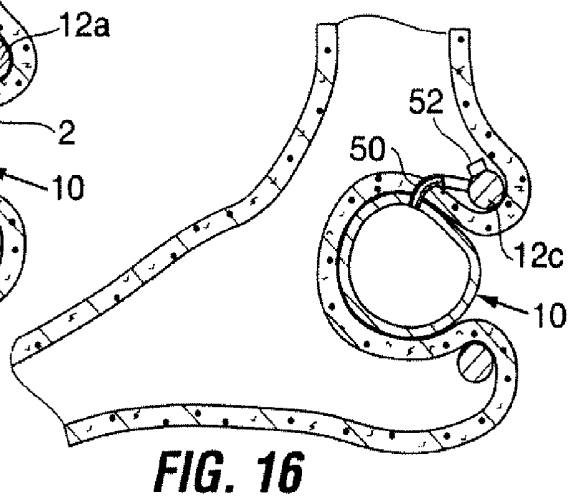
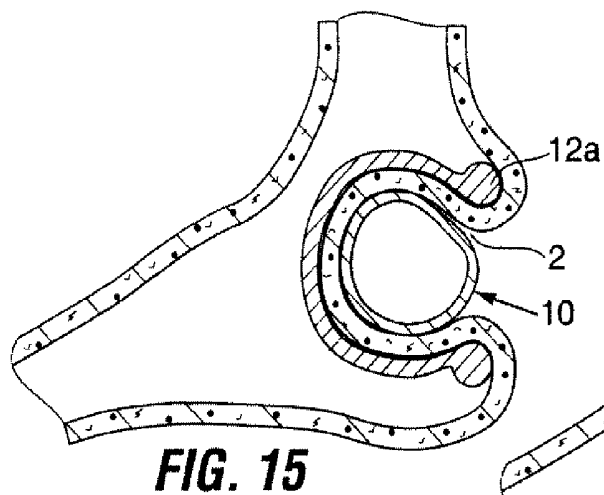
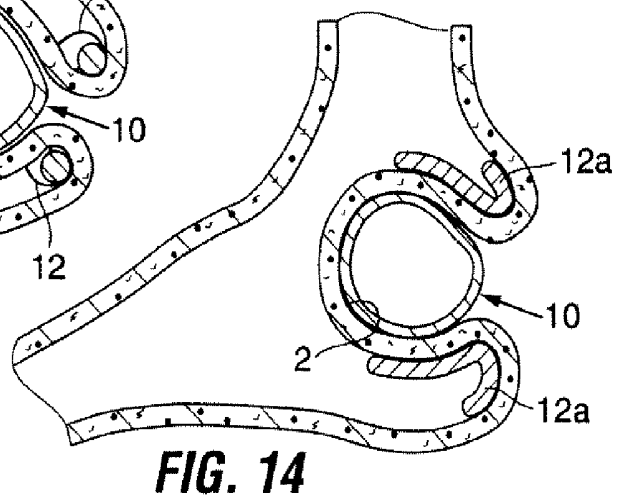
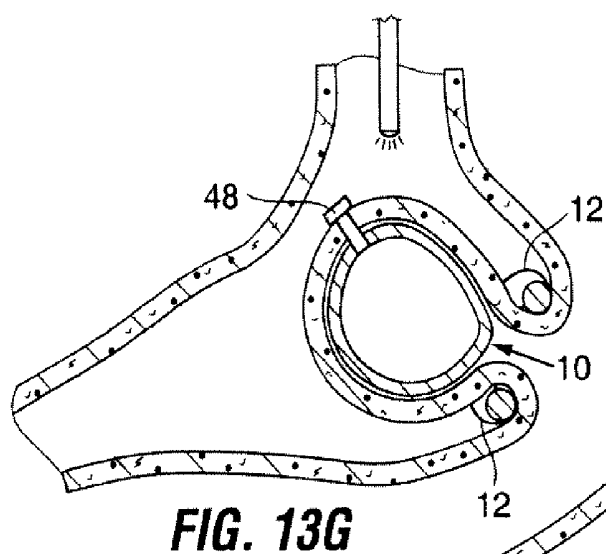


FIG. 13F



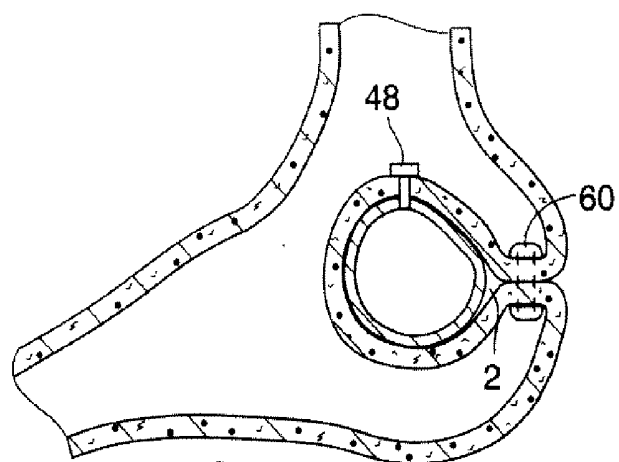


FIG. 18

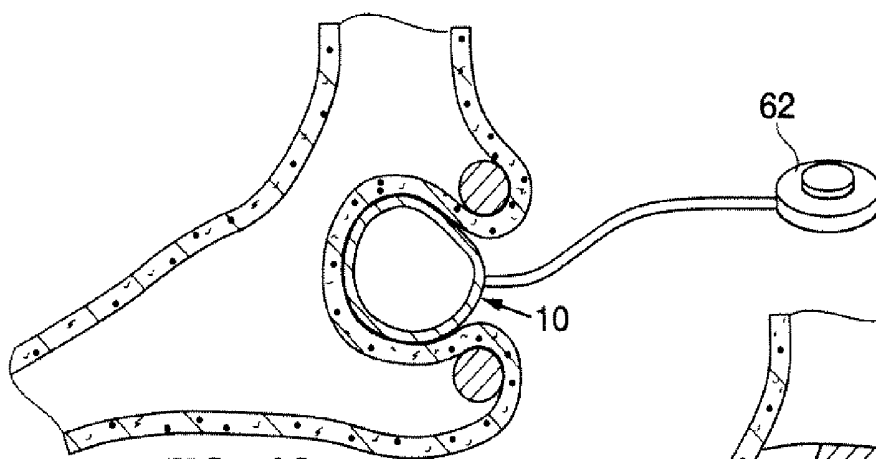


FIG. 19

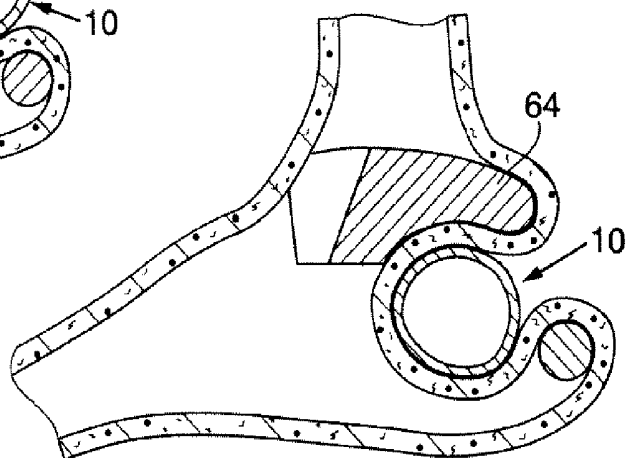


FIG. 20

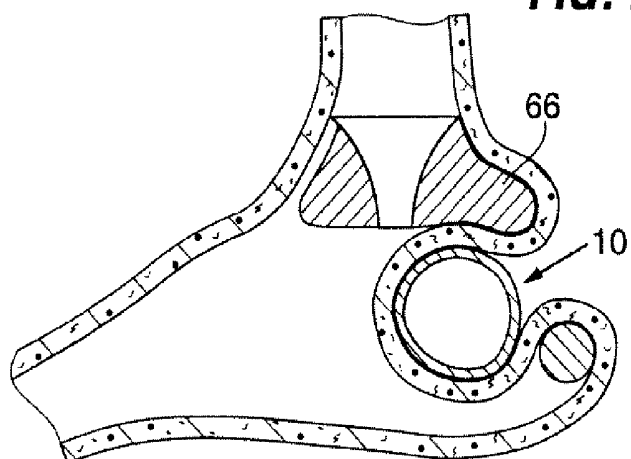


FIG. 21

RESTRICTIVE AND/OR OBSTRUCTIVE IMPLANT FOR INDUCING WEIGHT LOSS

PRIORITY CLAIM

[0001] This application is a divisional of U.S. patent application Ser. No. 12/765,177 filed Apr. 22, 2010, now allowed, which is a continuation of U.S. patent application Ser. No. 11/114,400 filed Apr. 26, 2005, now U.S. Pat. No. 7,717,843 which claims the benefit of U.S. Provisional Patent Application No. 60/565,378 filed Apr. 26, 2004, each of which are incorporated herein by reference in their entirety.

FIELD OF THE INVENTION

[0002] The present invention relates generally to the field of implants for inducing weight loss in patients, and specifically to devices and methods for reducing the effective volume of a patient's stomach and/or creating restrictions to slow passage of food into the stomach.

BACKGROUND OF THE INVENTION

[0003] An anatomical view of a human stomach S and associated features is shown in FIG. 1A. The esophagus E delivers food from the mouth to the proximal portion of the stomach S. The z-line or gastro-esophageal junction Z is the irregularly-shaped border between the thin tissue of the esophagus and the thicker tissue of the stomach wall. The gastro-esophageal junction region G is the region encompassing the distal portion of the esophagus E, the z-line, and the proximal portion of the stomach S.

[0004] Stomach S includes a fundus F at its proximal end and an antrum A at its distal end. Antrum A feeds into the pylorus P which attaches to the duodenum D, the proximal region of the small intestine. Within the pylorus P is a sphincter that prevents backflow of food from the duodenum D into the stomach. The middle region of the small intestine, positioned distally of the duodenum D, is the jejunum J.

[0005] FIG. 1B illustrates the tissue layers forming the stomach wall. The outermost layer is the serosal layer or "serosa" S and the innermost layer, lining the stomach interior, is the mucosal layer or "mucosa" MUC. The submucosa SM and the multi-layer muscularis M lie between the mucosa and the serosa.

[0006] Prior art treatments for obesity range from diet and medication to highly invasive surgical procedures. Some of the more successful surgical procedures are the vertical banded gastroplexy or the proximal gastric pouch with a Roux-en-Y anastomosis. However, known complications are present with each of these procedures. More successful and less invasive options are desired.

[0007] A less invasive prior art treatment for obesity includes implantation of a gastric balloon delivered into the stomach via the esophagus. The balloon is an obstructive device—it prevents overeating by occupying volume within the stomach. Although implantation of a gastric balloon is less invasive than other surgical procedures, gastric balloons can migrate down the GI tract, causing obstruction and thus necessitating removal.

BRIEF DESCRIPTION OF THE DRAWINGS

[0008] FIG. 1A is a schematic illustration of a human stomach and a portion of the small intestine.

[0009] FIG. 1B is a cross-sectional perspective view of a portion of a stomach wall, illustrating the layers of tissue forming the wall.

[0010] FIG. 2 is a cross-section view of a stomach illustrating positioning of an obstructive implant.

[0011] FIG. 3 is a cross-section view of a stomach illustrating positioning of two obstructive implants.

[0012] FIG. 4 is a cross-section view of a stomach illustrating positioning of an obstructive implant in the antral region of the stomach.

[0013] FIG. 5 is a cross-section view of a stomach illustrating positioning of an obstructive implant in the fundal region of the stomach.

[0014] FIG. 6 is a cross-section view of a stomach illustrating alternative positioning of two obstructive implants.

[0015] FIG. 7 is a cross-section view of a stomach illustrating positioning of an irregularly-shaped obstructive implant.

[0016] FIG. 8 is a cross-section view of a stomach illustrating positioning of an elongate obstructive implant.

[0017] FIG. 9 is a cross-section view of a stomach illustrating positioning of an obstructive implant having an alternative shape.

[0018] FIGS. 10-12A are perspective views of alternative configurations for obstructive implants. FIG. 12B illustrates the implant of FIG. 12A positioned in the stomach.

[0019] FIGS. 13A through 13F are a sequence of drawings illustrating endoscopic implantation of an obstructive implant. FIG. 13G is an implantation step that is an alternative to the step shown in FIG. 13F.

[0020] FIG. 14 is a cross-section view of a stomach illustrating use of a force-distributing retention band with an obstructive implant.

[0021] FIG. 15 is a cross-section view of a stomach illustrating use of an alternative force-distributing retention band with an obstructive implant.

[0022] FIGS. 16 through 18 are cross-section views of a stomach illustrating alternate retention methods for obstructive implants.

[0023] FIG. 19 illustrates an obstructive implant having a subcutaneous inflation port.

[0024] FIGS. 20 and 21 illustrate use of obstructive implants to facilitate retention of other obesity-controlling devices within the stomach.

DETAILED DESCRIPTION OF THE DRAWINGS

[0025] Referring to FIG. 2, an obstructive implant 10 includes a body positioned against the exterior of the stomach wall W. The implant occupies stomach volume by causing a portion of the stomach wall W to bulge into the interior volume of the stomach, thus reducing the effective volume of the stomach interior and reducing stomach capacity. Because the implant 10 is positioned outside the stomach, it cannot migrate into the intestinal tract creating obstructions. A retention band 12 is positioned within the stomach encircling a portion of the wall W so as to retain the implant 10 within pocket 2 as shown. The retention band 12 may be a ring that is elastic or inelastic, flexible or fairly rigid. The diameter of the retention band 12 may be adjustable if desired. The retention band 12 is preferably proportioned such that in the event the band becomes free within the stomach, it can pass through the intestinal system without incident. Thus, the retention device is preferably of a size that will not on its own occupy sufficient space within the stomach to create feelings of satiety, but that relies on the extragastric implant 10 to reduce

stomach capacity. Nonetheless, in alternate embodiments the retention band **12** may also perform a space-occupying function, and/or a restrictive and/or obstructive function.

[0026] Various positions for the implant are illustrated in the drawings. Depending on the size and positioning of the implant, it may function as an obstructive device, a restrictive device, or both. In some embodiments, the implant may have an expanded volume in the range of approximately 200-700 cc, sufficient to cause the inwardly-protruding pocket **2** to fill a portion of the stomach, thereby causing the patient to feel full and thus limiting food intake. In FIG. **2**, the implant is positioned to function as an obstructive device (i.e. to occupy space so as to reduce effective stomach volume), but also to create a restriction **14** in the stomach. The restriction **14** is a narrowed region of the stomach, which slows the rate at which food can descend from the esophagus into the stomach. Food may accumulate in the region above the restriction, causing the patient to experience feelings of satiety and thus limiting food intake, and/or limiting the amount of food a patient can consume at one time.

[0027] FIG. **3** shows a pair of implants **10** and a pair of retention bands **12** positioned in the proximal stomach to create a restriction **14a**. This restriction **14a** may also minimize reflux and thus function as treatment for patients suffering from gastro-intestinal reflux disease (GERD).

[0028] FIG. **4** illustrates that the implant **10** may be positioned in the antrum A. It may similarly be positioned at the pylorus P (see FIG. **1A**). Alternatively, the implant **10** may be positioned in the fundus F as shown in FIG. **5** again creating an obstruction as well as an (optional) restriction **14b** in the proximal stomach. The original position of the wall of the fundus F is illustrated in dashed lines.

[0029] FIG. **6** illustrates that a pair of implants **10** may be positioned against regions of stomach wall **W1**, **W2** on opposite sides of the stomach. These implants are retained in their respective pockets **2** using a single retention band **12** encircling both regions of wall **W1**, **W2** to create an obstruction within the stomach and which creates restricted flow paths on opposite sides of the obstruction.

[0030] The configuration illustrated in FIG. **6** is particularly advantageous in that it relies in part on adhesion of the serosal tissue lining the outer surface of the stomach. It has been found that serosal tissue layers can adhere to form relatively strong bonds when held in apposition to one another. Other embodiments including, but not limited to, the FIGS. **2-5**, **7** and **8** embodiments may be modified to allow the retention band to retain regions of serosal tissue into contact with one another such that over time the serosal tissue will adhere as a permanent means for retaining the implant **10**. For example, if such a modification was made to the FIG. **2** embodiment, the regions **R1**, **R2** of stomach wall would be drawn into contact with one other, and retention band **12** would retain that contact until the serosal layers adhered to one another. At that time, the retention band (or other retention devices such as sutures, staples, etc.) could be removed from the stomach, such that no device remained in the stomach interior, and the implant remained in the protrusion formed against the exterior stomach wall. It may be further desirable in such embodiments to inflate the implant during a later procedure performed after the serosal layers have adhered to one another. In such embodiments, inflation may be carried out using a needle introduced into the stomach, used to pierce the stomach wall, and then passed into an inflation port (e.g. such as port **26** of FIG. **2** or valve **48** of FIG.

13G). Alternatively, the balloon may be self-sealing (similar to self-sealing tires), also allowing inflation/deflation of the balloon using a needle that pierces the stomach wall and the balloon.

[0031] A section of reinforcing and/or ingrowth-promoting material **15** (FIG. **6**) may be optionally placed between serosal and/or mucosal tissue layers that are positioned in contact with one another. The material may be a synthetic or non-synthetic mesh, porous material, slotted material, or any other material through which adhesions will form or onto which tissue will grow. Examples include, but are not limited to, polypropylene, materials sold under the trade names Goretex or Dacron, or tissue graft material such as the Surgisis material sold by Wilson Cook Medical, Inc. The material may be treated with tissue-ingrowth promoting substances such as biologics. If such material is used, the adhesions that form between the serosal tissue layers will pass through and/or onto the interstices of the material and serve to reinforce the bond between the tissue layers. The material may further cause some mechanical abrasion of the adjacent tissue, creating additional scar tissue that would further reinforce the strength of the opposed tissue.

[0032] If adhesion of adjacent mucosal tissue surfaces is desired, modification of the interior tissue surface may further be needed in order to optimize adhesion of opposed regions of internal stomach tissue. In particular, it is believed that better adhesion of the interior wall surfaces may be achieved when a portion of the mucosal layer of tissue lining the stomach interior is removed, such that the tissue surfaces sutured in apposition to one another are serosal, sub-mucosal or muscularis layers. It is believed that opposed layers of mucosal tissue do not adhere together as well as opposed layers of serosal, sub-mucosal, or muscularis tissue. Surface modification methods for promoting such tissue adhesion include cutting, ablating (using RF, laser, or chemical ablation) or abrading the mucosal surface within the stomach as indicated by dashed lines. This modification is ideally performed before the folds are placed in apposition. Depending on the depth to which cutting, ablation or abrasion is performed, the sub-mucosal, muscularis, or serosal layer beneath the mucosal layer is exposed. This allows the exposed regions of tissue to be placed in apposition and causes the opposed surfaces to tightly adhere over time.

[0033] Although the implants shown in FIGS. **2-6** are illustrated as being spherical, various other configurations may be used. For example, an alternate implant **10a** shown in FIG. **7** may include a recess **16** along its surface such that the portion of the stomach wall **W** following the contour of recess **16** creates a form of pouch or reservoir **18** in the stomach within which food may accumulate. An elongate implant **10b** of the type shown in FIG. **8** may be used to form an elongate restriction **20** while greatly reducing the effective volume of the stomach. FIG. **9** shows an implant **10c** having a modified hourglass configuration including an obstructive portion **22** that functions to bulge the stomach wall inwardly as described in connection with earlier embodiments. A neck **24** extending from the obstructive portion **22** connects with a base portion **26** that helps to distribute forces imparted against the stomach **W** and prevents tissue erosion and/or migration of the implant. As shown in the figure, the retention band **12** preferably seats against the stomach tissue surrounding the neck **24**.

[0034] Many other shapes beyond those shown in this application may be used for the implant (such as for accom-

modating the shape of the anatomy, or for creating a restriction or obstruction of a particular size/shape), without departing from the scope of the present invention.

[0035] There are likewise many suitable structures and materials useful for the implant. Some structures and materials are shown and described herein, although again many others may be used without exceeding the scope of the present invention.

[0036] For example, the implant may be an elastic or inelastic balloon that is implantable in a deflated state and then inflated within the body using a gas or liquid. A balloon of this type may include a port such as port **26** shown in FIG. **2**. During use an inflation needle may be introduced into the stomach, used to pierce the stomach wall, and then passed into the port **26**. The needle may be used to introduce inflation medium into the balloon, or to deflate the balloon if adjustments in balloon size are needed. Alternatively, the balloon may be self-sealing (along the lines of puncture-proof or self-sealing tires), also allowing inflation/deflation of the balloon using a needle that pierces the stomach wall and the balloon. This latter embodiment is advantageous in that it does not necessitate a particular orientation for the balloon as would be needed to orient an inflation port for receipt of an inflation needle.

[0037] Other configurations besides balloons are also suitable for the implant. The implant **10d** may have fluted walls **28** as shown in FIG. **10**, or it may be formed of a mesh **30** as shown in FIG. **11**. These implants **10d**, **10e** may be self-expanding or they may be provided in a fully expanded form. The implant **10f** of FIG. **12A** includes a pair of plates **32** separated by a neck **34**. When positioned as shown in FIG. **12B**, a portion of the stomach wall **W** caves into the gap **36** between the plates **32**, creating a flow path for food moving from the esophagus **E** into the stomach. The amount of restriction provided by the implant **10f** may be selected by selecting a suitable length or width for the neck **34**.

[0038] The implant need not be a hollow structure, but could instead be entirely solid.

[0039] The implant may be implanted endoscopically using tools passed into the stomach via the esophagus. According to the endoscopic approach, the implant is inserted into the stomach and then passed through an opening formed in the stomach wall. Alternatively, a laparoscopic method may be used to pass the implant into the abdominal cavity through incisions or trocar punctures in the skin. The implant may also be introduced using an open surgical approach. In both the laparoscopic and surgical procedures, the retention band **12** is preferably introduced endoscopically into the stomach.

[0040] FIGS. **13A** through **13F** illustrate one method of positioning an inflatable implant using an endoscopic approach. Referring to FIG. **13A**, retention band **12** is inserted down the esophagus into the stomach using an endoscopic instrument **38**. Next, the implant **10** is passed into the stomach and through the retention band **12** as shown in FIG. **13B**. Implant **10** is preferably compressed within a tubular instrument **40** having a tissue-piercing distal end. The instrument **40** may be telescopically disposed within a tubular sheath **42** to prevent the instrument from inadvertently nicking surrounding tissue. Although not shown, an inflation tube extends through the instrument **40** and sheath **42** and is coupled to an inflation port of the implant. An endoscope **44** is used to monitor the procedure.

[0041] Referring to FIG. **13C**, the tissue-piercing instrument **40** is extended from its sheath and used to pierce through the stomach wall **W** at a desired implant location. The implant **10** is released from the instrument **40** and partially inflated by passing inflation medium through the inflation tube. The tissue-piercing instrument **40** and its sheath **42** may be removed from the stomach, leaving the inflation tube **46** (FIG. **13D**) behind.

[0042] Next, tension is applied to the inflation tube **46** to pull the implant **10** towards the stomach so as to create the pocket **2**. This step draws the implant **10** and the surrounding stomach wall through the retention band **12** as shown in FIG. **13D**. Once a sufficient amount of tissue has been drawn through the retention band, the implant is inflated to the desired size as shown in FIG. **13E**. The inflation tube **46** is detached from the implant **10** and the endoscopic instrument **38** is detached from the retention band **12**, leaving the implant in place as shown in FIG. **13F**. The hole formed in the stomach wall may be closed using sutures or a sealable gel that solidifies when placed into contact with the tissue.

[0043] Referring to FIG. **13G**, it should be noted that the implant may include an inflation valve **48** that is left extending through the stomach wall. The valve **48** allows for post-implant size adjustments by allowing inflation medium to be added to or removed from the balloon using an inflation tube passed through the esophagus and attached to the valve. If removal of the balloon is required, the valve may be grasped using endoscopic instruments to draw the balloon back into the stomach and out the esophagus. The valve may be surrounded by a seal to prevent movement of stomach contents into the abdominal space outside the stomach. A gel of a type that will solidify when placed into contact with the stomach surface may be used for this purpose.

[0044] The retention band **12** may take alternate forms or be replaced altogether using other types of structures that help to capture the implant **10** in the pocket **2** at the implant site. FIG. **14** illustrates that the cross-sectional area of the restrictive band **12a** may be large relative to the size of the implant so as to diffuse the forces imparted on the region of stomach wall captured between the band **12a** and the implant **10** and to thereby prevent erosion of, or damage to, the stomach tissue. FIG. **15** illustrates that a large surface-area retention liner **12b** may alternatively be used so as to distribute forces over a broader surface. Referring to FIG. **16**, the restriction ring **12c** and implant **10** may be coupled together by an inflation tube **50** extending through the stomach wall. A valve **52** is fluidly coupled to the tube **50** and allows for introduction/removal of inflation medium using an inflation needed passed into the stomach. The valve **52** and tube **50** facilitate explantation of the implant using a grasping instrument inserted through the esophagus and into the stomach.

[0045] The retention band itself may be inflatable. Referring to FIG. **17B**, the retention band may include separate inflatable chambers **54a**, **54b** each having an inflation port **56a**, **56b**. The chambers **54a**, **54b** are joined together to form an annular band. The upper chamber **54a** may be shaped to form a channel **58** for passage of food, as shown in FIG. **17B**.

[0046] FIG. **18** illustrates that the retention band may be eliminated entirely. As shown, after the implant **10** is pulled against the stomach wall **W**, stomach tissue adjacent to the pocket **2** can be fastened together using pledgets **60** (or sutures, staples, clips or other means). Over time, a physiological response will cause the regions of serosal tissue held

in contact with one another to bond together, thereby retaining the implant in the pocket 2.

[0047] Referring to FIG. 19, inflatable implant 10 may be tethered to an inflation port 62 positioned within a subcutaneous pocket in the body. If needed following implantation, an inflation needle may be inserted through the patient's skin and into the inflation port 62 to increase or decrease the amount of inflation medium within the implant.

[0048] Referring to FIGS. 20 and 21, it should be noted that while the implant 10 may itself provide restriction and/or obstruction, the implant 10 may also be used to prevent migration of a restrictive and/or obstructive device positioned inside the stomach. For example, device 64 of FIG. 20 or device 66 of FIG. 21 may be positioned in the proximal stomach and seat against the portion of the stomach wall that protrudes inwardly as a result of implant 10.

[0049] Components of the type described herein may be supplied individually or as systems which may include various combinations of components such as implants (e.g. implant 10), retention devices (e.g. band 12), implantation instruments, and/or instructions for use. If included, instructions for use may include instructions instructing a user to implant the implant using methods such as any of those described above. For example, the instructions may instruct the user to create an inward protrusion in the stomach wall such as by positioning an instrument or the implant against an exterior surface of the stomach wall. The instructions may further instruct the user to position the retention device in a manner that at least partially retains the protrusion in the wall and that thus captures implant within the protrusion, externally of the stomach. In some embodiments where a retention band is provided, the instructions for use may instruct the user to encircle a portion of the protrusion in the wall with the retention band. The instructions may instruct the user as to laparoscopic, endoscopic, and/or open surgical approaches such as those described above.

[0050] Various components and methods have been described herein. These embodiments are given by way of example and are not intended to limit the scope of the present invention. It should be appreciated, moreover, that the various features of the embodiments that have been described might be combined in various ways to produce numerous additional embodiments.

What is claimed is:

1. A system for inducing weight loss in a patient, the system comprising:

an extragastric space occupier positionable in contact with an exterior surface of a stomach wall to form an inward protrusion of wall into the stomach; and

a retention device positionable in contact with the wall to retain the inward protrusion and to thereby capture the extragastric space occupier within the protrusion.

2. The system according to claim 1, wherein the extragastric space occupier is proportioned to cause the protrusion to fill a portion of the stomach, thereby causing the patient to feel full.

3. The system according to claim 1, wherein the extragastric space occupier has in expandable within the stomach to an expanded volume in the range of 200-800 cc.

4. The system according to claim 1, wherein the extragastric space occupier is proportioned to cause the protrusion to create a restriction in the stomach that will slow the rate at which food can descend from the esophagus into the stomach.

5. The system according to claim 1, wherein the retention device comprises at least one suture.

6. The system according to claim 1, wherein the retention device comprises at least one staple.

7. The system according to claim 1, wherein the retention device comprises at least one band positionable around the protrusion within the stomach.

8. The system according to claim 7, wherein the band is positionable encircling the protrusion.

9. The system according to claim 7, wherein the band is inflatable.

10. The system according to claim 1, wherein the extragastric space occupier is inflatable.

11. The system according to claim 1, wherein the extragastric space occupier includes an inflation port, and wherein the system includes an inflation needle extendable through the esophagus into the stomach, the inflation needle engageable with the inflation port.

12. The system according to claim 11, wherein the inflation port is extendable through an opening in the stomach wall.

13. The system according to claim 11, wherein the inflation port includes a resealable portion of the extragastric space occupier, and wherein the needle is extendable through the stomach wall into engagement with the inflation port.

14. The system according to claim 1, further including instructions setting forth a method for implanting the system, including the steps of:

positioning the extragastric space occupier into contact with an exterior of a wall of the stomach, causing the wall to protrude inwardly into the stomach; and

coupling a retention device to the stomach so as to retain the inward protrusion and to thereby capture the extragastric space occupier within the protrusion.

15. The system according to claim 14, wherein the instructions set forth that the positioning step includes the step of passing the extragastric space occupier through the esophagus into the stomach, and then passing the extragastric space occupier through an opening formed in the wall of the stomach and into contact with the exterior of the wall.

16. The system according to claim 14, wherein the instructions set forth that the positioning step includes the step of passing the extragastric space occupier laparoscopically into an abdominal cavity and into contact with the exterior of the wall.

17. A method of assisting weight loss in a patient, comprising the steps of:

positioning an extragastric space occupier into contact with an exterior surface of a stomach wall to form an inward protrusion of wall into the stomach; and

placing a retention device in contact with the wall to retain the inward protrusion and to thereby capture the extragastric space occupier within the protrusion.

18. The method of claim 17, wherein the placing step places the retention device into contact with an interior surface of the wall.

19. The method of claim 18, wherein the retention device comprises a band and wherein the placing step includes encircling the protrusion using the band.

20. The method of claim 17, wherein the placing step includes the step of drawing portions of the wall into contact with one another and attaching a retention device to the wall to retain the protrusion.

21. The method of claim 20, wherein the retention device comprises at least one suture or staple.

22. The method of claim **17**, wherein the extragastric space occupier is expandable, and wherein the method includes the step of expanding the space occupier to a volume sufficient to cause the protrusion to fill a portion of the stomach, thereby causing the patient to feel full.

23. The method of claim **22**, wherein the expanding step includes expanding the space occupier to a volume in the range of 200-800 cc.

24. The method of claim **17**, wherein the space occupier is expandable, and wherein the method includes the step of expanding the space occupier to cause the protrusion to create a restriction in the stomach that will slow the rate at which food can descend from the esophagus into the stomach.

25. The method of claim **17**, wherein the space occupier includes an inflation port, and wherein the method includes the step of passing an inflation needle extendable through the esophagus into the stomach, engaging inflation port with the inflation needle, and inflating the space occupier using the inflation needle.

26. The method of claim **25**, wherein the positioning step includes positioning the inflation port to extend an opening in the stomach wall.

27. The method of claim **25**, wherein the inflation port includes a resealable portion of the space occupier, and engaging step includes passing the needle through the stomach wall into engagement with the inflation port.

28. The method of claim **17**, wherein the positioning step includes passing the extragastric space occupier through the esophagus into the stomach, and then passing the extragastric space occupier through an opening formed in the wall of the stomach and into contact with the exterior of the wall.

29. The method of claim **17**, wherein the positioning step includes passing the extragastric space occupier laparoscopically into an abdominal cavity and into contact with the exterior of the wall.

* * * * *

专利名称(译)	用于引起体重减轻的限制性和/或阻塞性植入物		
公开(公告)号	US20130023727A1	公开(公告)日	2013-01-24
申请号	US13/551504	申请日	2012-07-17
[标]申请(专利权)人(译)	BALBIERZ丹尼尔·J· ATHAS WILLIAM大号 伦斯福德JOHN 班克斯JR威廉二世 Bladel的KEVIN VAN		
申请(专利权)人(译)	BALBIERZ, 丹尼尔J. ATHAS, 威廉L. 伦斯福德, JOHN 班克斯, JR., 威廉S. Bladel的, KEVIN VAN		
当前申请(专利权)人(译)	BOSTON SCIENTIFIC SCIMED, INC.		
[标]发明人	BALBIERZ DANIEL J ATHAS WILLIAM L LUNSFORD JOHN EUBANKS JR WILLIAM S BLADEL KEVIN VAN		
发明人	BALBIERZ, DANIEL J. ATHAS, WILLIAM L. LUNSFORD, JOHN EUBANKS, JR., WILLIAM S. BLADEL, KEVIN VAN		
IPC分类号	A61F2/00 A61B17/08 A61B17/12 A61F5/00		
CPC分类号	A61B17/12009 A61B2017/12018 A61F5/0086 A61F5/0036 A61F5/003		
优先权	60/565378 2004-04-26 US		
外部链接	Espacenet USPTO		

摘要(译)

本文描述了一种用于在患者体内引起体重减轻的系统，其包括可定位成与胃壁的外表面接触以形成向内进入胃壁的突出物的胃外空间占用者，以及可定位成与胃接触的保持装置。壁保持向内突出，从而捕获突出内的额外空间占据者。

