



(19) **United States**

(12) **Patent Application Publication** (10) **Pub. No.: US 2004/0024383 A1**

Doyle et al.

(43) **Pub. Date:**

Feb. 5, 2004

(54) **CLUTCH FOR STABILIZING AND ADJUSTING A PROBE IN LAPAROSCOPIC SURGERY**

(22) Filed: **Jul. 31, 2002**

Publication Classification

(76) Inventors: **Mark Doyle**, San Diego, CA (US);
Jimmy Caputo, Carlsbad, CA (US)

(51) **Int. Cl.⁷** **A61B 17/00**

(52) **U.S. Cl.** **606/1; 606/130**

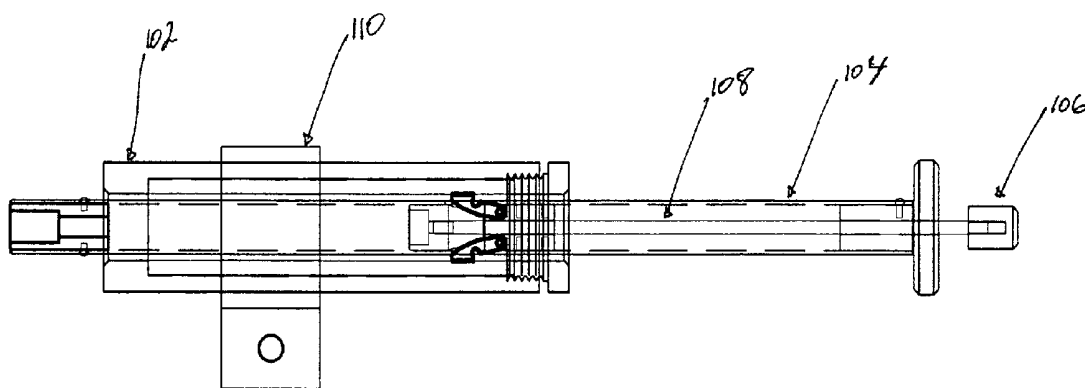
Correspondence Address:

KNOBBE MARTENS OLSON & BEAR LLP
2040 MAIN STREET
FOURTEENTH FLOOR
IRVINE, CA 92614 (US)

(57) **ABSTRACT**

Disclosed is a clutch for a surgical device comprising a housing having an interior wall defining a hollow interior; a shaft, the shaft being capable of moving axially and rotationally within the hollow interior of the housing; at least one clutch element connected with the shaft; and an activator; where the surgical device is a laparoscopic surgical tool.

(21) Appl. No.: **10/211,016**



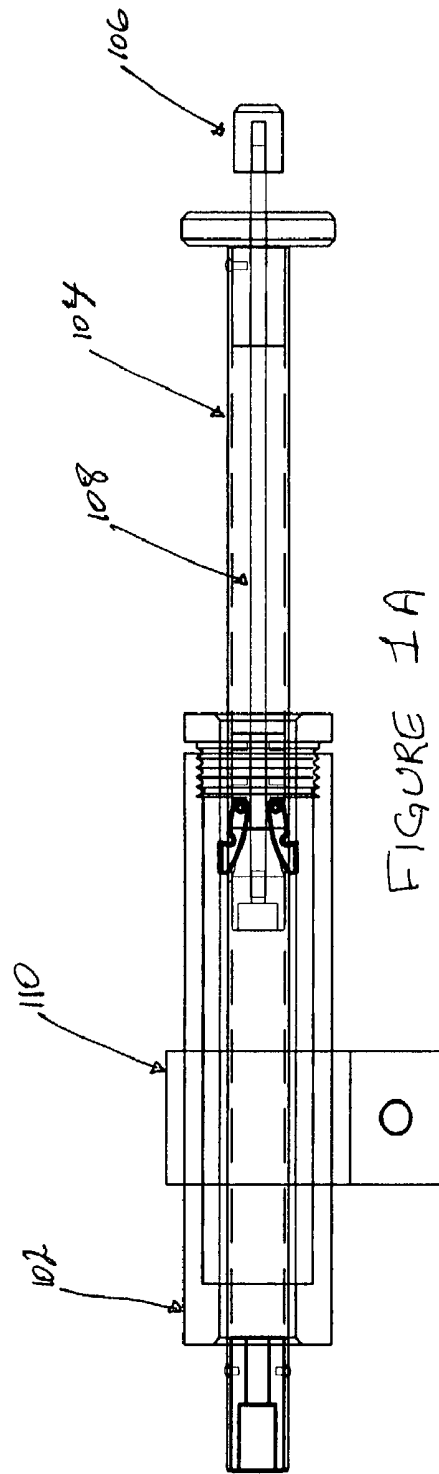


FIGURE 1A

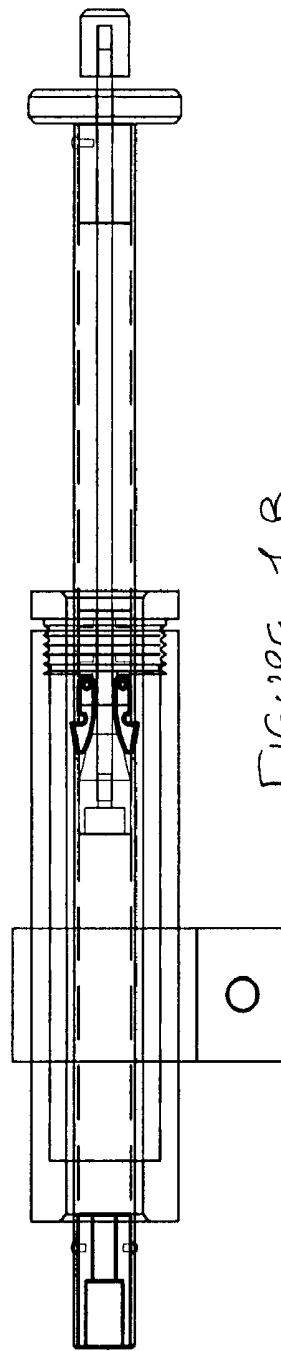


FIGURE 1B

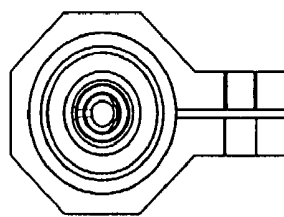


FIGURE 1C

FIGURE 2

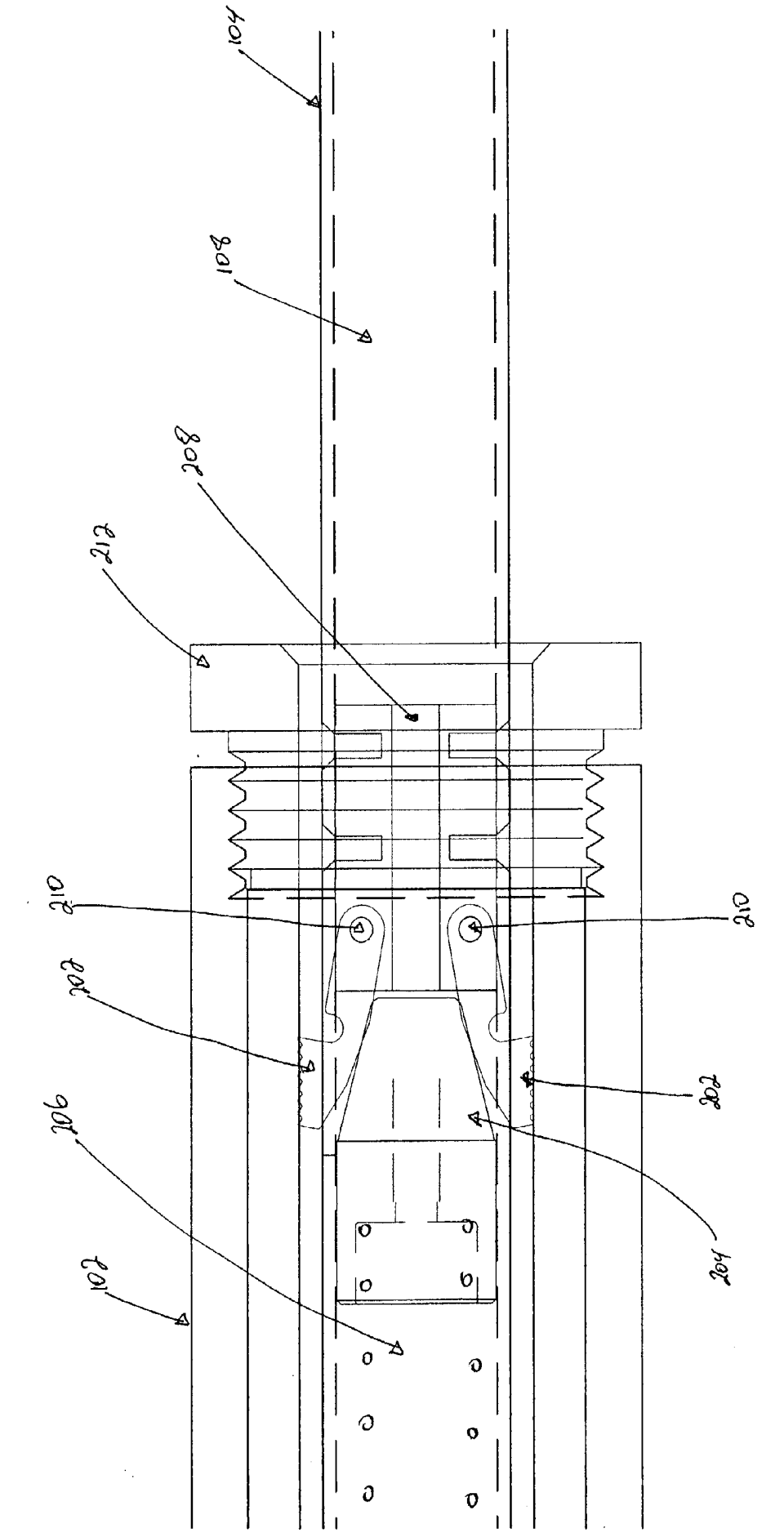
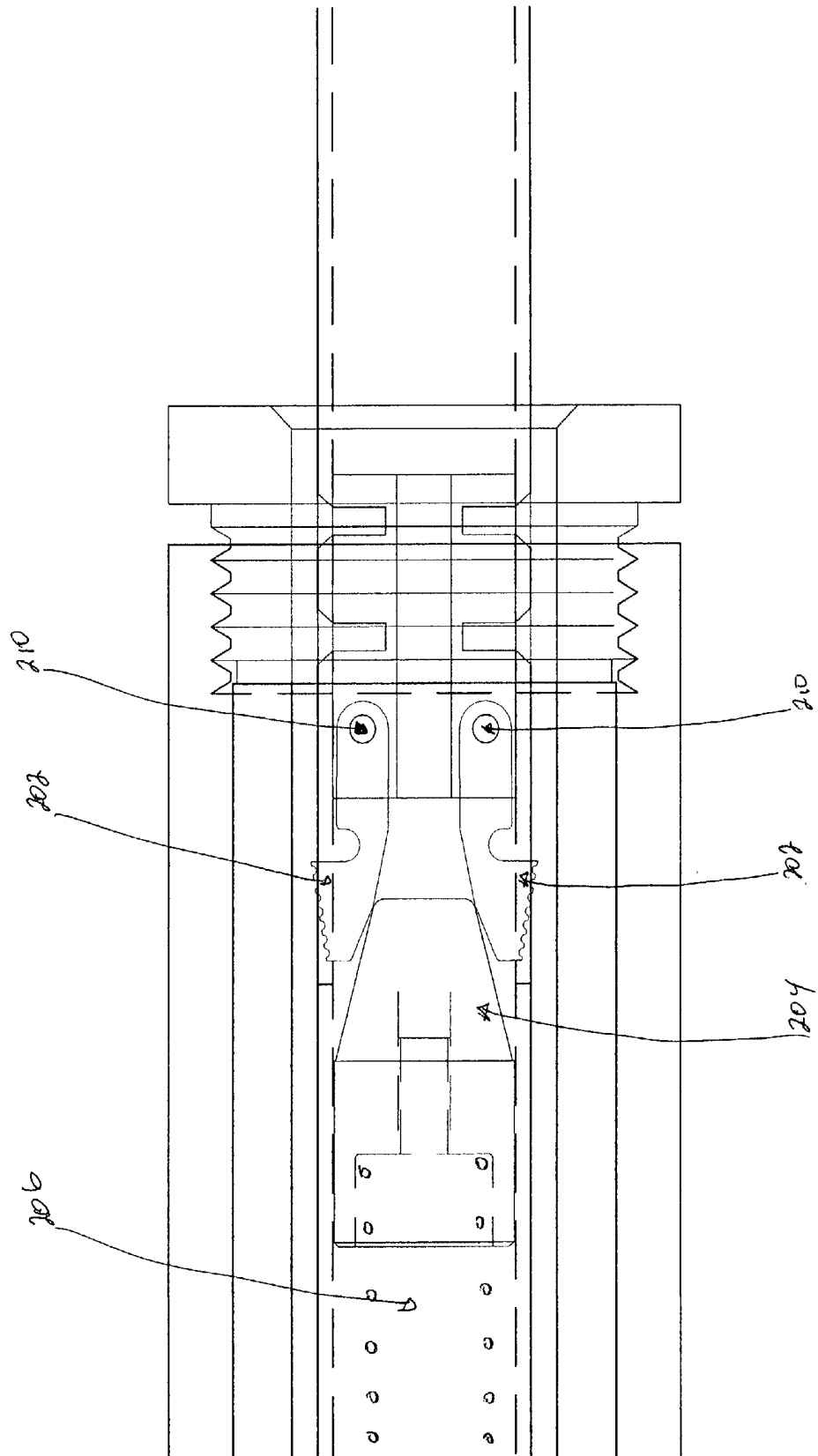


FIGURE 3



CLUTCH FOR STABILIZING AND ADJUSTING A PROBE IN LAPAROSCOPIC SURGERY

FIELD OF THE INVENTION

[0001] The present invention relates to a clutch device to be used for coarse adjustment of the position of a device. In one embodiment, the clutch is used to stabilize and adjust the position of a laparoscopic surgical tool during laparoscopic surgery.

BACKGROUND OF THE INVENTION

[0002] Current laparoscopic surgical tools are limited in accessibility of certain regions of the human body. Existing tools can perform invasive surgery without making a substantial incision, but these tools are incapable of bending within the body to reach, for example, the backside of the human heart. In addition, after being placed in the desired position, current tools are capable of very small movements at the tip of the tool. If the surgeon desires to move the tip a substantial distance, or reposition the tool, the surgeon must move the entire tool, often with both hands, at which point, the surgeon will not be able to operate the tip of the tool during the movement, and the tool will not be in a stable position during the movement.

[0003] Consequently, there exists a need in the art to provide a device by which the surgeon can reposition the surgical tool with only one hand while still operating the tip of the tool with the other hand, and while the device remains stable during and after the movement.

SUMMARY OF THE INVENTION

[0004] Disclosed is a clutch for adjusting the position of a device, comprising a housing having an interior wall defining a hollow interior; a shaft being capable of moving axially and rotationally within the hollow interior of the housing; at least one clutch element connected with the shaft; and an activator; whereby when the activator is disengaged the clutch element is in contact with the interior wall of the housing, preventing the movement of the shaft relative to the housing, and when the activator is engaged, the clutch element is not in contact with the interior wall of the housing, allowing for the movement of the shaft relative to the housing; where the device is connected to the shaft and the movement of the shaft relative to the housing moves at least a distal end of the device.

BRIEF DESCRIPTION OF THE DRAWINGS

[0005] The features, objects and advantages of the present invention will become more apparent from the detailed description set forth below when taken in conjunction with the drawings in which like references identify correspondingly throughout, and wherein:

[0006] **FIG. 1** is an overview of one embodiment of the invention. **FIG. 1A** shows the top view of one embodiment when the clutch element **202** is in contact with the interior wall of the housing **102**, while **FIG. 1B** shows the top view of one embodiment when the clutch element **202** is not in contact with the interior wall of the housing **102**. **FIG. 1C** is the front view of the device.

[0007] **FIG. 2** is an expanded view of **FIG. 1A**, showing the proximal end of the housing **102** along with two clutch elements **202** in contact with the interior wall of the housing **102**.

[0008] **FIG. 3** is an expanded view of **FIG. 1B**, showing the proximal end of the housing **102** along with two clutch elements **202** not in contact with the interior wall of the housing **102**.

DETAILED DESCRIPTION OF THE PREFERRED EMBODIMENTS

[0009] The device of the present invention is a hand-actuated clutch, which is mounted within a translating or rotating shaft. This device can be used to coarsely adjust the position of an instrument, which instrument may be connected to the device of the present invention. In certain embodiments, the instrument attached to the device of the present invention is a laparoscopic surgical tool, such as the one described in the International Publication No. WO 02/07608, published Jan. 31, 2002, by Doyle et al. and entitled "HAND-ACTUATED ARTICULATING SURGICAL TOOL," and U.S. patent application Publication Ser. No. US 2002/00 _____ A1, published _____, 2002, by Doyle et al. and entitled "HAND-ACTUATED ARTICULATING SURGICAL TOOL," both of which are incorporated herein by reference in their entirety, including any drawings.

[0010] The operators of certain instruments, such as the surgical tool described in the above publications, are capable of adjusting the position of the tip of the instruments finely. However, given the position of the instrument and the delicacy of the environment in which they operate, coarse adjustments of the position of the instrument becomes difficult. In addition, the operator of the instrument may wish to operate the instrument with one hand and adjust the position of the instrument with another. For example, a surgeon may wish to make a cut using a scalpel attached to the tip of a laparoscopic surgical tool, which cut is to be longer than the fine adjustment of the tip of the tool can provide. The surgeon would need to operate the scalpel with one hand and make a coarser adjustment of the position of the tip with another to make the cut.

[0011] The device of the present invention provides a clutch apparatus that provides a smooth adjustment of the position of an instrument attached thereto, while providing a stable platform when the adjustment is not being made. In addition, an operator of the device of the present invention can use it to make the necessary adjustments using only one hand. As used herein, the word "instrument" refers to a device, tool, or instrument that is attached to the device of the present invention and whose position or the position of whose tip or whose distal end is being adjusted by the device of the present invention.

[0012] Thus, in one of its myriad of uses, the device of the present invention is useful in aiding surgeons during laparoscopic surgery. The laparoscopic surgical tool can be attached to the device of the present invention using a clamp or a similar tool. The device of the present invention will then provide greater stability for the surgical tool to be used. The clutch device can be clamped to a surgical bed-rail, or any other part of a surgical bed, or a table near a surgical bed, during the surgery and thereby stabilize the surgical tool that is attached to the device of the present invention. The device also eliminates the need for the operator of the surgical tool to hold the tool during operation, freeing both hands of the operator.

[0013] The clutch device of the present invention can rotate and move longitudinally, thus providing both rotational and axial movements. By providing additional degrees of freedom in adjusting the position of the tip of the instrument, the device can act as a third hand for the operator. The operator can place the tip of the instrument near the area of use, and using the fine adjustments of the instrument itself, the operator can perform the function of the instrument. The operator then can move the tip for a greater distance using the device of the present invention with one hand while still operating the tip of the instrument with another hand. This feature, as well as the ability of the clutch device to hold and support the instrument itself, greatly reduces the operator's fatigue.

[0014] In one embodiment, the device of the present invention is used with a hand-actuated laparoscopic surgical tool, which comprises a cannula comprising hydraulic tubings, connecting certain control cylinders of slave cylinders at the distal end of the cannula, and housings for the hydraulic tubings. The distal end of the cannula comprises modular components. The components can be selected from, for example, an extend module, a rotate module, a bend module, and a grasp module. Other modules can also be selected. The cannula is then clamped to the device of the present invention at a point distal to the control portion of the laparoscopic surgical tool, where the control cylinders are located, but proximal to the point of the cannula that is inserted into the patient's body. As described in the International Publication No. WO 02/07608, and U.S. patent application Publication Ser. No. US 2002/00 _____ A1, the extend module of the laparoscopic surgical tool can move the tip of the surgical tool for a short distance. In addition, the rotate and bend modules can reposition or adjust the position of the surgical tip to a certain degree. However, without the benefit of the device of the present invention, if the surgeon is required to make a long incision, or if the surgical tip is to be moved a few inches to reach another section of the body to be operated on, the surgeon will have to remove the laparoscopic surgical tool from the patient's body and reinsert it in another location. Or the surgeon will have to carefully and using both hands manipulate the clamps that attach the surgical tool to the bed or other means of support in order to readjust the position of the tip.

[0015] However, using the device of the present invention, the surgeon can move or rotate the surgical tip with one hand to a much greater degree. The tip can be moved smoothly and the entire tool remains stable during the adjustment of the position. In addition, the surgeon can still operate the various modules of the laparoscopic surgical device with one hand while adjusting the position using the clutch device of the present invention with another hand.

[0016] As used herein, the term "proximal" refers to the portion of the device that is closest to the operator. The most proximal section of the device is the activator **106** shown in FIG. 1. The term "distal" refers to the portion of the device furthest away from the operator and the activator **106**.

[0017] Certain embodiments of the invention will now be described in detail with reference to the figures.

[0018] Housing

[0019] FIGS. 1, 2, and 3 show a clutch apparatus **100** according to the present invention. The apparatus comprises

a housing **102**. The housing **102** is preferably cylindrical; however, it may be of any shape commensurate with the objectives of the apparatus. The housing **102**, thus, may be cylindrical, cubical, or any other shape whose cross section defines a circle, ellipse, or a polyhedron. Common polyhedrons include, but are not limited to, triangles, squares, rectangles, parallelograms, pentagons, hexagons, heptagons, octagons, trapezoids, etc., which may have sides that are of the same or different lengths. The housing **102** may have an outer body of varying, or constant, diameters. Thus, the outer body of the housing **102** may form ridges that make the housing more convenient to handle or to attach to other apparatus, such as a clamp.

[0020] The housing **102** can be made of a number of different materials. Some suitable materials that can form the housing **102** include, but are not limited to, wood, stainless steel, aluminum, ceramic, a polymer, such as plastic, and rubber. If the housing **102** is made of metal, the metal may be in pure form or be present as an alloy.

[0021] The housing **102** comprises a hollow interior. The interior of the housing **102** is of such shape and size to accommodate a shaft **104** to slide therethrough. Preferably, the interior of the housing **102** is cylindrical, i.e., the cross section of the interior defines a circle. However, other embodiments where the cross section of the interior is of a different shape, such as an ellipse or a polyhedron, are also contemplated. The shape of the cross section of the interior of the housing **102** is preferably the same shape as the shape of the cross section of the shaft **104**.

[0022] In some embodiments, the surface of the wall of the interior of the housing **102** is unlined, and therefore, is of the same material as the housing **102** itself. In other embodiments, the interior surface of housing **102** is lined. The lining may be soft or textured. In some embodiments, the lining is made of material into which the clutch element **202** can penetrate. The lining may be made of rubber, low durometer polymer, such as plasticized PVC or polyurethane, textured high durometer polymer or elastomer, such as polyacetals or polycarbonates, and textured metal. In other embodiments, the lining provides small features that correspond to any features on the clutch element **202**, thereby securing the clutch element **202** against the interior wall of the housing **102**.

[0023] The proximal end of the housing **102** may be capped by a cap **212**. Once the cap **212** is in place, the shaft **104** cannot be removed from the housing **102**. The cap **212** may be a screw-cap or it may be a push-cap. In other embodiments, the shaft **104** may be secured to the housing **102** by a retaining ring.

[0024] The housing **102** may be affixed to a stationary object by, for example, a clamp **110**. The stationary object may be a surgical bed, bed rail, a table near a surgical bed, a cart, or the like. The stationary object may also be a positioning arm, to which the cannula of a laparoscopic surgical tool is attached.

[0025] The instrument, whose position is coarsely adjusted by the device of the present invention, e.g., the cannula of a laparoscopic surgical device, is capable of being attached to shaft **104**. In some embodiments, the instrument is attached to the shaft **104**, for example by using a clamp. In other embodiments, the instrument, which may

be a laparoscopic surgical tool, such as the one described in the International Publication No. WO 02/07608, and U.S. patent application Publication Ser. No. US 2002/00 _____ A1, may pass through the shaft **104**.

[0026] Clutch Element

[0027] The device of the present invention further comprises at least one clutch element **202**. At its proximal end, the clutch element **202** is attached to a pin **210**, around which the clutch element **202** is capable of pivoting. The pin **210** and the proximal end of the clutch element **202** are within the shaft **104**. When the clutch element **202** pivots about the pin **210**, the distal end of the clutch element **202** protrudes out of the shaft **104**.

[0028] The distal end of the clutch element **202** can be in contact with the interior wall of the housing **102**. When there is such contact, the shaft **104** is locked within the housing **102**. The distal end of the clutch element **202** may be a flat surface, a sharp point, a ridged surface, or a combination thereof. Thus, the distal end of the clutch element **202** is of such shape and size to provide enough interference with the interior wall of the housing **102** to prevent the shaft from rotating or sliding within the housing.

[0029] In certain embodiments, when the activator **106** is engaged, the clutch element **202** collapses naturally away from the interior wall of the housing **102**. In other embodiments, when the activator **106** is engaged, the clutch element **202** is deflected away from the interior wall of the housing **102** using mechanical means, e.g., a spring or a spring-loaded lever. In still other embodiments, when the activator **106** is engaged, the clutch element **202** is deflected away from the interior wall of the housing **102** using electrical means, e.g., an electromagnet.

[0030] Activator

[0031] The shaft **104** comprises an activator **106**. In some embodiments, the activator **106** is located at the proximal end of the shaft **104**. In other embodiments, the activator **106** is located elsewhere on the shaft **104**, for example, on the side. Preferably, the activator **106** is located in such a location where an operator of the device of the present invention can use the activator and simultaneously slide or rotate the shaft **104** through the housing **102** with only one hand.

[0032] In certain embodiments the activator **106** is capable of exerting mechanical force that can be translated towards the distal part of the shaft **104**, thereby causing cam **204** to move. In some of these embodiments the activator **106** is a button, while in other embodiments the activator **106** is a lever. In still other embodiments, the activator **106** is a switch than can turn an electrical current on or off.

[0033] As discussed below in greater detail, when activator **106** is disengaged, the distal end of clutch element **202** protrudes out of shaft **104** and is in contact with the interior wall of the housing **102**. The contact between the clutch element **202** and the interior wall of the housing **102** prevents shaft **104** from sliding or rotating within the housing **102**, and therefore, is locked to the housing **102** and immobilized. The contact between the clutch element **202** and the interior wall of the housing **102** may be frictional contact or interference contact.

[0034] When activator **106** is engaged, the distal end of clutch element **202** is free to pivot about the pin **210**. At that point, there would be little to no movement-prohibitive contact between the clutch element **202** and the interior wall of the housing **102**, thereby enabling the shaft **104** to slide or rotate within the housing **102**.

[0035] Cam

[0036] In some embodiments, the device of the present invention features a cam **204**. The cam **204** is in its rest position when the activator **106** is disengaged. When the cam **204** is in its rest position, it causes the clutch element **202** to be in contact with the interior wall of the housing **102**. When activator **106** is engaged, the cam **204** moves longitudinally along the shaft **104** towards the distal end of shaft **104**, thereby allowing the clutch element **202** to pivot around the pin **210**.

[0037] Embodiments of the present invention include those in which the cam **204** is held in its rest position by a spring mechanism, by a magnet, by hydraulic pressure, or by using a compressible substance, such as rubber.

[0038] In some embodiments, the engagement of the activator **106** mechanically forces the cam **204** to move from its rest position. When the activator **106** is disengaged, the mechanical force that was holding the cam **204** in its rest position prior to the engagement of the activator **106** moves the cam **204** back to its rest position. Thus, by way of example only, the engagement of activator **106** moves the cam distally against a spring **206**, thereby allowing the clutch element **202** to rotate freely about the pin **210**. Once the activator **106** is disengaged, the spring **206** pushes the cam **204** towards the, proximal end of the shaft and thereby forces the clutch element **202** to move outward and come into contact with the interior wall of the housing **102**.

[0039] In other embodiments, the activator **106** is a switch that turns an electrical current on or off. In certain embodiments the engagement of the activator **106** turns the electrical current on whereas in other embodiments, the engagement of the activator **106** turns the electrical current off.

[0040] In certain embodiments, the cam **204** is held in its resting position by an electromagnet. Engagement of the activator **106** reverses the electric current to the magnet, whereupon the cam **204** is pushed away from its resting position allowing the clutch element **202** to pivot around the pin **210**. Disengagement the activator **106** restores the original current and brings the cam **204** back to its resting position. The electromagnet can be a solenoid, for example.

[0041] In other embodiments, once engaged, the electromagnet moves the cam **204** away from its resting position. Once the electromagnet is disengaged the cam is returned to its resting position by mechanical means, e.g., a spring or hydraulic pressure, etc.

[0042] Certain embodiments of the invention include those in which there is no cam **204** and the clutch element **202** pivots around the pin **210** by electrically induced forces, such as electromagnets.

[0043] Magnetic Clutch

[0044] In certain embodiments, the clutch element **202** does not exist. In these embodiments when the activator **106** is engaged either the shaft **104** or the housing **102**, or both,

are magnetic and, consequently, the shaft **104** does not slide or rotate within the housing **102**. When the activator **106** is engaged, neither the shaft **104** nor the housing **102** is magnetic and the shaft **104** may rotate or slide freely within the housing **102**.

[0045] In these embodiments, either the shaft **104** or the housing **102**, or both, are equipped with an electromagnet that is connected by wire to an electrical power source, such as a battery or an AC source. When the activator **106** is engaged, electrical current flows to the electromagnet and it becomes magnetic. The magnetization of the electromagnet in turn magnetizes the shaft **104** or the housing **102**. When one of the shaft **104** or the housing **102** becomes magnetized, it magnetically attracts the other to the extent that under normal operating conditions, i.e., the amount of force that a surgeon is willing to apply to a surgical tool during a surgical operation, the shaft **104** and the housing **102** do not become separated. They become immobilized with respect to each other.

[0046] When the activator **106** is disengaged, electrical current to the electromagnet is cut off and it no longer is magnetic. Once the electromagnet has become demagnetized, neither the shaft **104** nor the housing **102** are magnetic. At this point, the shaft **104** can slide or rotate through the housing **102**. Thus, the surgeon can disengage the activator **106**, adjust the position of the shaft **104** within the housing **102** to the desired position, then re-engage the activator **106**, after which the shaft **104** remains in its new position indefinitely, or until the surgeon changes the position once again.

CONCLUSION

[0047] Thus, those of skill in the art will appreciate that the devices described herein provide a single hand-actuated clutch for coarse adjustment of the position of certain instruments, such as a laparoscopic surgical tool.

[0048] One skilled in the art will appreciate that these devices are and may be adapted to carry out the objects and obtain the ends and advantages mentioned, as well as those inherent therein. The methods, procedures, and devices described herein are presently representative of preferred embodiments and are exemplary and are not intended as limitations on the scope of the invention. Changes therein and other uses will occur to those skilled in the art which are encompassed within the spirit of the invention and are defined by the scope of the disclosure.

[0049] It will be apparent to one skilled in the art that varying substitutions and modifications may be made to the invention disclosed herein without departing from the scope and spirit of the invention.

[0050] Those skilled in the art recognize that the aspects and embodiments of the invention set forth herein may be practiced separate from each other or in conjunction with each other. Therefore, combinations of separate embodiments are within the scope of the invention as disclosed herein.

[0051] All patents and publications mentioned in the specification are indicative of the levels of those skilled in the art to which the invention pertains. All patents and publications are herein incorporated by reference to the

same extent as if each individual publication was specifically and individually indicated to be incorporated by reference.

[0052] The invention illustratively described herein suitably may be practiced in the absence of any element or elements, limitation or limitations which is not specifically disclosed herein. The terms and expressions which have been employed are used as terms of description and not of limitation, and there is no intention that in the use of such terms and expressions indicates the exclusion of equivalents of the features shown and described or portions thereof. It is recognized that various modifications are possible within the scope of the invention disclosed. Thus, it should be understood that although the present invention has been specifically disclosed by preferred embodiments and optional features, modification and variation of the concepts herein disclosed may be resorted to by those skilled in the art, and that such modifications and variations are considered to be within the scope of this invention as defined by the disclosure.

What is claimed is:

1. A clutch for adjusting the position of an instrument, comprising:

a housing having an interior wall defining a hollow interior;

a shaft, said shaft being capable of moving axially and rotationally within said hollow interior of said housing;

at least one clutch element connected with said shaft; and an activator;

whereby when said activator is disengaged said clutch element is in contact with said interior wall of said housing, preventing the movement of said shaft relative to said housing, and

when said activator is engaged, said clutch element is not in contact with said interior wall of said housing, allowing for the movement of said shaft relative to said housing;

wherein said instrument is connected to said shaft, and said movement of said shaft relative to said housing moves at least a distal end of said instrument.

2. The clutch of claim 1, further comprising a lining covering said interior wall of said housing.

3. The clutch of claim 1, wherein said clutch element is mounted within said shaft.

4. The clutch of claim 1, wherein said activator is normally disengaged and said clutch element is normally in contact with said interior wall of said housing.

5. The clutch of claim 1, wherein said activator is a button.

6. The clutch of claim 1, wherein said activator is a lever.

7. The clutch of claim 1, wherein said activator is an electrically operated activator.

8. The clutch of claim 1, wherein the activator is engaged and said shaft is moved axially and/or rotationally within said hollow interior of said housing simultaneously and using the same hand of an operator.

9. The clutch of claim 4, further comprising a spring mechanism such that when said activator is disengaged, said spring mechanism causes said clutch element to be in contact with said interior wall of said housing.

10. The clutch of claim 1, further comprising a cam in contact with said activator and said at least one clutch element,

whereby the engagement of said activator causes said cam to move longitudinally within said shaft, and

the disengagement of said activator causes said cam to return to a rest position.

11. The clutch of claim 10, wherein in said rest position said cam causes said clutch element to be in contact with said interior wall of said housing.

12. The clutch of claim 10, wherein the engagement of said activator causes an electrical current to move said cam longitudinally within said shaft.

13. The clutch of claim 12, wherein the disengagement of said activator causes an electrical current to return said cam to a rest position.

14. The clutch of claim 12, wherein the disengagement of said activator causes a spring mechanism to return said cam to a rest position.

15. The clutch of claim 10, wherein the engagement of said activator mechanically causes said cam to move longitudinally Within said shaft.

16. The clutch of claim 14, wherein the disengagement of said activator causes a spring mechanism to return said cam to a rest position.

17. The clutch of claim 1, wherein the movement of said shaft causes said clutch element and said activator to move as well.

18. The clutch of claim 1, wherein said housing is cylindrical.

19. The clutch of claim 1, wherein said contact between said clutch element and said interior wall of said housing is frictional contact.

20. The clutch of claim 1, wherein said instrument is a surgical device.

21. The clutch of claim 1, wherein said surgical device is a laparoscopic surgical tool.

* * * * *

专利名称(译)	用于稳定和调整腹腔镜手术探头的离合器		
公开(公告)号	US20040024383A1	公开(公告)日	2004-02-05
申请号	US10/211016	申请日	2002-07-31
[标]申请(专利权)人(译)	多伊尔MARK CAPUTO JIMMY		
申请(专利权)人(译)	多伊尔MARK CAPUTO JIMMY		
当前申请(专利权)人(译)	CAREFUSION 2200 , INC		
[标]发明人	DOYLE MARK CAPUTO JIMMY		
发明人	DOYLE, MARK CAPUTO, JIMMY		
IPC分类号	A61B17/00 A61B19/00		
CPC分类号	A61B2017/00469 A61B19/26 A61B90/50		
其他公开文献	US6805664		
外部链接	Espacenet USPTO		

摘要(译)

本发明公开了一种用于手术装置的离合器，包括壳体，壳体具有限定中空内部的内壁；轴，轴能够在壳体的中空内部轴向和旋转地移动；至少一个离合器元件与轴连接；和一个激活者；其中手术装置是腹腔镜手术工具。

