



(12) **EUROPEAN PATENT APPLICATION**

(43) Date of publication:
06.02.2002 Bulletin 2002/06

(51) Int Cl.⁷: **A61B 17/28**, A61B 17/02,
A61B 19/00

(21) Application number: **01306663.4**

(22) Date of filing: **03.08.2001**

(84) Designated Contracting States:
AT BE CH CY DE DK ES FI FR GB GR IE IT LI LU
MC NL PT SE TR
Designated Extension States:
AL LT LV MK RO SI

(30) Priority: **05.08.2000 US 634608**

(71) Applicant: **HEARTPORT, INC.**
Redwood City, CA 94063 (US)

(72) Inventors:
• **Boyd, Stephen W.**
Redwood City, CA 94062 (US)

• **Rapacki, Alan R.**
San Francisco, CA 94117 (US)
• **Vaska, Matthias**
Palo Alto, CA 94303 (US)
• **Donlon, Brian S.**
Los Altos Hills, CA 94022 (US)
• **Peters, William S.**
Woodside, CA 94062 (US)

(74) Representative: **Fisher, Adrian John**
CARPMAELS & RANSFORD 43 Bloomsbury
Square
London WC1A 2RA (GB)

(54) **Devices and methods for port acces multivessel coronary artery bypass surgery**

(57) Surgical methods and instruments are disclosed for performing port-access or closed-chest coronary artery bypass (CABG) surgery in multivessel coronary artery disease. In contrast to standard open-chest CABG surgery, which requires a median sternotomy or other gross thoracotomy to expose the patient's heart, post-access CABG surgery is performed through small incisions or access ports made through the intercostal spaces between the patient's ribs, resulting in greatly reduced pain and morbidity to the patient. In situ arterial bypass grafts, such as the internal mammary arteries and/or the right gastroepiploic artery, are prepared for grafting by thoracoscopic or laparoscopic takedown techniques. Free grafts, such as a saphenous vein graft or a free arterial graft, can be used to augment the in situ arterial grafts. The graft vessels are anastomosed to the coronary arteries under direct visualization through a cardioscopic microscope inserted through an intercostal access port. Retraction instruments are provided to manipulate the heart within the closed chest of the patient to expose each of the coronary arteries for visualization and anastomosis. Disclosed are a tunneler and an articulated tunneling grasper for rerouting the graft vessels, and a finger-like retractor, a suction cup retractor, a snare retractor and a loop retractor for manipulating the heart. Also disclosed is a port-access topical cooling device for improving myocardial protection during the port-access CABG procedure. An alternate surgical approach using an anterior mediastinotomy is also described.

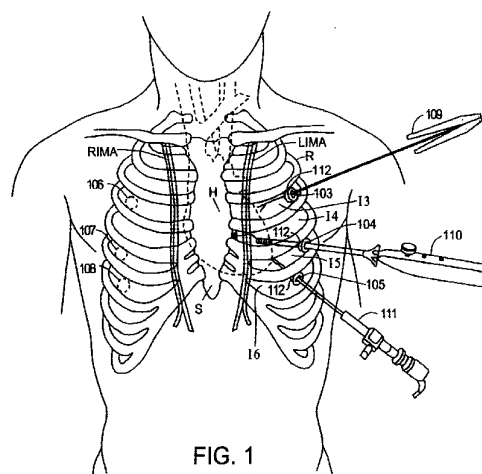


FIG. 1

Description

BACKGROUND OF THE INVENTION

Field of the Invention

[0001] The present invention relates generally to devices and methods for performing thoracoscopic cardiac procedures. More particularly, the present invention relates to devices and methods for performing coronary artery bypass graft (CABG) surgery for multivessel coronary artery disease through port-access or closed-chest thoracoscopic methods.

Background of the Invention

[0002] Coronary artery disease remains the leading cause of morbidity and mortality in Western societies. Coronary artery disease is manifested in a number of ways. For example, disease of the coronary arteries can lead to insufficient blood flow resulting in the discomfort and risks of angina and ischemia. In severe cases, acute blockage of coronary blood flow can result in myocardial infarction, leading to immediate death or damage to the myocardial tissue.

[0003] A number of approaches have been developed for treating coronary artery disease. In less severe cases, it is often sufficient to treat the symptoms with pharmaceuticals and lifestyle modification to lessen the underlying causes of disease. In more severe cases, the coronary blockage(s) can often be treated endovascularly using techniques such as balloon angioplasty, atherectomy, laser ablation, stents, hot tip probes, and the like.

[0004] In cases where pharmaceutical treatment and/or endovascular approaches have failed or are likely to fail, it is often necessary to perform a coronary artery bypass graft procedure using open surgical techniques. Such techniques require that the patient's sternum be opened and the chest be spread apart to provide access to the heart. A source of arterial blood is then connected to a coronary artery downstream from an occlusion while the patient is maintained under cardioplegia and is supported by cardiopulmonary bypass. The source of blood is often the left or right internal mammary artery, and the target coronary artery can be the left anterior descending artery, circumflex artery, right coronary artery or any one of their branches which might be narrowed or occluded.

[0005] While very effective in many cases, the use of open surgery to perform coronary artery bypass grafting is highly traumatic to the patient. The procedure requires immediate postoperative care in an intensive care unit, a total period of hospitalization of seven to ten days, and a recovery period that can be as long as six to eight weeks.

[0006] It would therefore be desirable to provide other, less traumatic methods and techniques for performing

coronary artery bypass grafting. It would be particularly desirable if such techniques did not require opening of the patient's sternum, and might be even more desirable if such techniques could be performed using thoracoscopic methods. Such thoracoscopic methods could decrease morbidity and mortality, cost, and recovery time when compared to conventional open surgical coronary bypass procedures. In addition, such methods could be even more efficacious than open-surgical bypass procedures.

[0007] Copending U.S. patent application Serial No. 08/281,891 describes a method of performing coronary bypass graft surgery for single vessel coronary artery disease using port-access or closed-chest thoracoscopic methods. However, of the over 365,000 open-chest CABG operations performed in 1993, only 5-15% were for single vessel coronary artery disease. For the benefits of thoracoscopic CABG surgery to reach the remainder of the patient population, the procedure must be expanded to address multivessel disease. Treatment of multivessel coronary artery disease involves rerouting multiple conduits to supply blood to the blocked coronary arteries downstream of the blockages. Typical conduits used for CABG surgery in multivessel disease include arterial conduits, such as the left internal mammary artery (LIMA), the right internal mammary artery (RIMA) or the right gastroepiploic artery (RGEA), or venous conduits such as the greater saphenous vein (GSV) or the lesser saphenous vein (LSV). Often a combination of these and other conduits is necessary to achieve complete revascularization of the obstructed coronary arteries. Open-chest approaches to treatment of multivessel coronary artery disease are described in *Alternative Bypass Conduits and Methods for Surgical Coronary Revascularization*, by Grooters and Nishida, Futura Publishing Company, Inc., Armonk, NY, 1994. Other references for standard open-chest methods of coronary artery bypass surgery include: *Cardiac Surgery*, by Kirklin and Barratt Boyes, John Wiley & Sons, Inc. New York, 1993 (2nd Ed.), and *Rob and Smith's Operative Surgery, Cardiac Surgery*, The C V Mosby Co., St Louis, MO, 1983 (4th Ed.).

[0008] A major challenge of thoracoscopic CABG surgery in multivessel disease is the ability to visualize and anastomose all of the coronary arteries through a limited number of access ports in order to minimize the trauma to the patient. This is made more difficult because many of preferred anastomosis sites on the branches of the right coronary artery and the circumflex artery are on the posterior aspect of the heart and therefore are difficult to access and to visualize with the heart in situ. Operating on the heart in situ would require separate access ports for the left coronary artery and each of the right coronary artery and the circumflex artery. Making this many access ports in the patient's chest would undermine the atraumatic aspect of the thoracoscopic approach. In open-chest CABG surgery, this problem is solved by withdrawing the heart from the pericardial sac

and manipulating it to expose the arteries on the posterior aspect. No instruments currently exist for manipulating the heart within the closed chest of the patient, making it difficult to duplicate the close-chest procedure with thoracoscopic techniques. Devices and methods are therefore necessary for manipulating the heart within the patient's closed chest to expose each of the coronary arteries for visualization and anastomosis.

[0009] The additional length of time required for performing multiple anastomoses in multivessel CABG surgery also poses difficulties in terms of myocardial preservation during the lengthy procedure. In open procedures additional myocardial protection can be provided by topical hypothermia of the heart to reduce oxygen demand by the myocardium. The instruments and systems currently available for topical hypothermia in cardiac surgery are not suited for thoracoscopic techniques. New devices and methods are therefore necessary for cooling the heart within the patient's closed chest to extend myocardial preservation during the multivessel CABG procedure.

SUMMARY OF THE INVENTION

[0010] The present invention describes devices and methods for performing port-access or closed-chest CABG surgery to treat multivessel coronary artery disease. All of the major steps of the port-access CABG procedure are performed through small percutaneous access ports to avoid the necessity of a median sternotomy or other gross thoracotomy, as required in prior open-chest approaches. The methods of the present invention include the steps of dissecting one or more conduit vessels, preferably arterial conduits, from their native locations, rerouting the conduit vessels to the heart and grafting the conduit vessels onto the blocked coronary arteries downstream of the blockages.

[0011] Generally, the step of dissecting the conduit vessels from their native locations or the "takedown" is performed through small access ports using endoscopic visualization. In the case of a LIMA or RIMA takedown, the access ports are made into the patient's thoracic cavity through the intercostal spaces and visualization is achieved using a flexible thoracoscope. Rerouting the LIMA involves redirecting the distal end of the LIMA to the desired anastomosis site. The RIMA may be rerouted anteriorly of the heart or it may be tunneled through the transverse sinus to reach the desired anastomosis site. In the case of an RGEA takedown, the access ports are made into the patient's abdomen and visualization is achieved using a laparoscope. Rerouting the RGEA involves tunneling the distal end of the RGEA through a hole in the diaphragm to reach the desired anastomosis site on the heart. If venous grafts, such as the GSV, or other free grafts are used in place of or in addition to the arterial conduits, then the takedown or harvesting of the graft is performed by open or closed surgical techniques as appropriate and the graft is rerouted to the

patient's chest for anastomosis.

[0012] Specialized instruments for facilitating the takedown and rerouting steps are provided as part of the present invention. One instrument provided is a thoracoscopic tunneler for directing an arterial conduit through the transverse sinus or other tunneling path. One embodiment of a tunneler has an elongated shaft with a curved, rigid distal end with a hole through the distal tip for passing a tape or silastic tube through the transverse sinus to retract the pulmonary trunk to facilitate passage of the arterial conduit through the transverse sinus. Another embodiment of a tunneler has an elongated shaft with an articulated distal end with a grasper for reaching through the transverse sinus to grasp the arterial conduit and draw it through the transverse sinus to the desired anastomosis site. The two tunneling instruments may be used separately or in combination. In addition, a specialized thoracoscopic electrosurgical device may be provided to facilitate takedown of the arterial conduits. A suitable thoracoscopic electrosurgical device for this application is described in co-owned, copending patent application, serial number 08/336,359, the entire disclosure of which is hereby incorporated by reference.

[0013] The step of grafting the conduit vessels onto the heart is accomplished under direct visualization using a cardioscopic microscope inserted through a visualization port into the patient's thoracic cavity made through an intercostal space in the anterior wall of the chest. Additional surgical instruments are inserted through auxiliary ports into the patient's thoracic cavity to perform the anastomosis of the conduit vessels to the coronary arteries. The devices and methods of the present invention are devised to minimize the trauma to the patient by making it possible to visualize and access all aspects of the heart from a single centrally located visualization port by manipulating the heart within the patient's closed chest with instruments inserted through the auxiliary access ports or through the takedown ports which remain from the takedown step. Generally, the distal end of each conduit vessel or graft is anastomosed to a coronary artery downstream of a blockage. Additionally, the conduit vessels may be sequentially grafted to more than one coronary artery or branch to form a "skip graft". If free grafts are used an additional step of creating a proximal anastomosis must be performed. The proximal end of the graft may be anastomosed to the ascending aorta or to another of the conduit vessels to form a Y-graft. The step of making the proximal anastomosis may be performed before or after the distal anastomosis, depending on the preferences of the surgeon.

[0014] Specialized instruments are provided for manipulating the heart within the closed chest of the patient to rotate the desired anastomosis site into the visual field of the cardioscopic microscope. The specialized instruments include retractors which can manipulate the heart from outside of the body through one or more of the ac-

cess ports. One embodiment of a retractor has an elongated shaft with a handle at the proximal end and a curved, finger-like manipulator at the distal end. The curved, finger-like manipulator may be covered with an absorbent and/or frictional material to improve its effectiveness at retracting, rotating and manipulating the heart. Another embodiment of a retractor has an elongated tubular shaft with a suction cup-shaped manipulator at the distal end. A vacuum is applied between the suction cup manipulator and the surface of the heart to grip the heart. The distal surface of the suction cup manipulator may have a textured or highly frictional surface to increase the grip on the surface of the heart, especially in a direction tangential to the surface. The retractor can thus be used to retract or rotate the heart in any direction to expose the desired anastomosis site.

[0015] Another aspect of the present invention is to provide myocardial protection to the heart for the duration of the surgical procedure. A first component of the myocardial protection is to provide a means for establishing cardiopulmonary bypass (CPB) without the need for performing a thoracotomy or other grossly invasive procedure. One noninvasive method of establishing CPB involves the insertion of an endoaortic occlusion catheter into the ascending aorta through a percutaneous puncture into a peripheral artery. An inflatable occlusion balloon on the distal end of the catheter is used to partition the ascending aorta between the coronary ostia and the brachiocephalic artery to isolate the heart and coronary arteries from the remainder of the arterial system while it is supported on cardiopulmonary bypass. Cardioplegic solution to temporarily stop the heart from beating may be infused into the coronary arteries through the catheter and/or through a retroperfusion catheter percutaneously inserted in the coronary sinus. This method is more completely described in co-owned, copending patent application, serial number 08/281,891.

[0016] Another relatively noninvasive method of establishing CPB involves using a thoracoscopic cross-clamp to isolate the heart and coronary arteries from the remainder of the arterial system while it is supported on cardiopulmonary bypass. The thoracoscopic cross-clamp is inserted into the patient's thoracic cavity through an access port. Co-owned, copending patent application, serial number 08/173,899, the entire disclosure of which is hereby incorporated by reference, describes a specialized thoracoscopic cross-clamp suitable use with the present invention and a method of its use for isolating the heart and establishing CPB.

[0017] A second component of the myocardial protection is to provide a means for applying topical hypothermia to the heart to reduce oxygen demand by the myocardium while the patient is on cardiopulmonary bypass and particularly while the heart is under cardioplegic arrest. A specialized topical hypothermia system that can be applied thoracoscopically through small access ports into the chest is provided as part of the present inven-

tion. The topical hypothermia system includes a flexible heat exchanger which is collapsible to fit through an access cannula inserted into an intercostal space. The heat exchanger is deployable to an expanded position once it is inside of the thoracic cavity. The heat exchanger is placed in thermal contact with the heart and a cooling fluid is circulated from outside the body through cooling passages within the heat exchanger. The temperature of the heart can be lowered for the duration of the procedure to reduce oxygen demand. The heat exchanger can also be used for warming the heart at the end of the procedure by circulating a warm fluid through the cooling passages.

BRIEF DESCRIPTION OF THE DRAWINGS

[0018]

Fig. 1 shows the takedown step for using the left internal mammary artery (LIMA) or the right internal mammary artery (RIMA) as an arterial bypass conduit.

Fig. 2 shows the tunneling of the RIMA through the transverse sinus.

Fig. 3 shows the laparoscopic takedown of the right gastroepiploic artery (RGEA).

Fig. 4 shows the tunneling of the RGEA through the diaphragm into the thoracic cavity.

Fig. 5 shows the operative ports for performing the anastomosis of the arterial conduits onto the coronary arteries.

Fig. 6 shows a position of the heart for performing an anastomosis to the right coronary artery (RCA) or the posterior descending (PDA) branch.

Fig. 7 shows an alternate position of the heart for performing an anastomosis to the RCA or the PDA.

Fig. 8 shows the position of the heart for performing an anastomosis to the circumflex artery (Cx) or the obtuse marginal (OM) branches.

Fig. 9 shows the position of the heart for performing an anastomosis to the left anterior descending artery (LAD).

Figs. 10-15 show the step-by-step sequence of creating an end-to-side anastomosis.

Fig. 16 shows the heart of the patient with multiple completed bypass grafts.

Figs. 17-18 show the step-by-step sequence of creating a side-to-side anastomosis.

Fig. 19 shows the heart of the patient with sequential anastomoses on a "skip graft".

Fig. 20 shows the heart of the patient with a saphenous vein bypass graft.

FIG. 21 shows the heart of the patient with a Y-graft.

Fig. 22 shows a first embodiment of a tunneler for retracting the pulmonary trunk away from the transverse sinus.

Fig. 23 shows a schematic diagram of a patient's heart with the tunneler of Fig. 22 in use.

Fig. 24 shows a second embodiment of a tunneler having an articulating distal end.

Fig. 25 is an enlarged detail drawing of the multilink articulator on the distal end of the articulating tunneler of Fig. 24.

Fig. 26 shows an embodiment of the articulating tunneler of Fig. 24 with a grasper on the distal end for grasping the RIMA and drawing it through the transverse sinus.

Fig. 27 shows a schematic diagram of a patient's heart with the articulating tunneler of Fig. 26 in use.

Fig. 28 shows a first embodiment of a heart retractor with a finger-like manipulator on the distal end.

Fig. 29 shows an alternate embodiment of a heart retractor having a finger-like manipulator combined with a suction irrigation lumen.

Fig. 30A shows a die-cutting pattern for the covering material to cover the finger-like manipulator of Fig. 28. Fig. 30B shows an enlarged detail drawing of the die-cutting pattern of Fig. 30A.

Fig. 31 shows a cross section of a patient showing the heart retractor of Fig. 28 in use.

Fig. 32 shows the heart retractor of Fig. 28 fixed to the operating table to stabilize the heart.

Fig. 33A shows a side view of a second embodiment of a heart retractor having a suction cup-shaped manipulator on the distal end. Fig. 33B shows a longitudinal cross section of the distal end of the heart retractor of Fig. 33A. Fig. 33C shows a distal end view of the heart retractor of Fig. 33A.

Fig. 34 shows a cross section of a patient showing the heart retractor of Fig. 33 in use.

Fig. 35 shows the heart retractor of Fig. 33 used to rotate the heart to expose the Cx and the OM branches on the left aspect of the heart.

Fig. 36 shows a third embodiment of a heart retractor with a flexible snare on the distal end for manipulating the heart.

Fig. 37 shows the heart retractor of Fig. 36 in a pre-deployed position for insertion through an access cannula.

Fig. 38 shows a cross section of a patient showing the heart retractor of Fig. 36 in use.

Fig. 39 shows a fourth embodiment of a heart retractor for manipulating the heart in a predeployed position for insertion through an access cannula.

Fig. 40 shows the heart retractor of Fig. 39 in a deployed position for manipulating the heart.

Fig. 41 shows a cross section of a patient showing the heart retractor of Fig. 39 in use.

Fig. 42 shows a first embodiment of a topical hypothermia device for cooling a patient's heart to improve myocardial protection during port-access cardiac surgery.

Fig. 43 shows the topical hypothermia device of Fig. 42 in a predeployed position for insertion through an access port.

Fig. 44 shows the topical hypothermia device of Fig.

42 in a deployed position.

Fig. 45 shows the topical hypothermia device of Fig. 42 in use within the chest of a patient.

Fig. 46 shows a second embodiment of a topical hypothermia device for cooling a patient's heart to improve myocardial protection during port-access cardiac surgery.

Fig. 47 shows the topical hypothermia device of Fig. 46 in a deployed position.

Fig. 48 shows a first embodiment of an anterior mediastinotomy approach for performing closed-chest multivessel CABG surgery.

Fig. 49 shows a second embodiment of an anterior mediastinotomy approach for performing closed-chest multivessel CABG surgery.

Fig. 50 shows a top view of a fiberoptically illuminated oval access cannula.

Fig. 51 shows a side view of the fiberoptically illuminated oval access cannula of Fig. 50.

DESCRIPTION OF THE SPECIFIC EMBODIMENTS

The Surgical Method

[0019] Fig. 1 is a schematic view of a patient's thorax illustrating the takedown step of the port-access CABG procedure. The takedown step should be performed while the patient is under general anesthesia, but before the patient has been placed on cardiopulmonary bypass. If the LIMA is to be used as an arterial bypass conduit, a series of access ports are created on the left lateral side of the patient's chest, as shown in Fig. 1. The access ports are created by incising the skin with a scalpel between two of the patient's ribs, then an access cannula with a trocar is pushed through the intercostal space. Preferably, a self-anchoring access cannula with a 10-12 mm internal diameter is used. The placement of the access ports is highly variable, depending on the preferences of the surgeon and the anatomy of the patient which is assessed fluoroscopically before the operation to verify the preferred locations.

[0020] In one preferred embodiment of the method, to allow the takedown of the LIMA, a first access port is placed in the third intercostal space on the left lateral side of the patient's chest, a second access port is placed in the fifth intercostal space, and a third access port is placed in the sixth intercostal space in a slightly more anterior position from the first two. Meanwhile, the left and right bronchi are individually intubated just below the bifurcation of the trachea so that the lungs can be individually ventilated. The left lung is deflated to provide clearance between the lung and the left anterior wall of the thoracic cavity while the patient is ventilated through the right lung. A flexible thoracoscope is inserted through one of the access ports, such as the third access port as shown in Fig. 1. The distal end of the flexible thoracoscopic can be directed toward the anterior wall of the thoracic cavity just to the left of the ster-

num to view the LIMA. Elongated instruments, such as an electrosurgical device and a grasper, are inserted through the remaining ports to dissect the LIMA from the anterior wall of the chest. The LIMA is dissected with an attached pedicle. Side branches of the LIMA are ligated with ligating clips, applied with a thoracoscopic clip applier, as the LIMA is dissected from the surrounding tissue. A length of LIMA of 15-30 cm is dissected from the wall to provide enough length to reach the chosen anastomosis site. When a sufficient length of LIMA has been dissected, two ligating clips are placed side-by-side near the distal end of the LIMA and the vessel is transected between them.

[0021] If the patient's lungs are ventilated by high frequency "jet" ventilation, then the RIMA can also be harvested from the access ports on the left side of the patient's chest, provided the patient's chest has ample space between the heart and the anterior wall of the thoracic cavity. To do this, both lungs are partially deflated while continuing to ventilate, thereby allowing clearance to reach the RIMA from the left side of the chest. After dissecting the mediastinal pleura, the distal end of the thoracoscope is directed toward the anterior wall of the thoracic cavity just to the right of the sternum to view the RIMA and the RIMA is taken down in a similar fashion to the LIMA.

[0022] If conventional ventilation is used, sufficient ventilation cannot be achieved with both lungs partially deflated, so this option is not available. In this case, access ports symmetrical to the left hand ports are placed in the lateral right side of the chest, typically in the third, fifth and sixth intercostal spaces. The right lung is deflated to provide clearance between the lung and the anterior wall of the thoracic cavity while the left lung is ventilated. The flexible thoracoscope is inserted through one of the access ports and instruments, such as the electrosurgical device, graspers and/or a clip applier, are inserted through the remaining ports to dissect the RIMA from the anterior chest wall. A length of 15-30 cm of RIMA with an attached pedicle is dissected from the chest wall to provide enough length to reach the chosen anastomosis site. When a sufficient length of RIMA has been dissected, two ligating clips are placed side-by-side near the distal end of the RIMA and the vessel is transected between them.

[0023] When rerouting the RIMA to the anastomosis site, two paths are possible. The currently preferred path is through the transverse sinus which is a natural passage behind the aorta and the pulmonary artery leading from the right side of the heart to the left side. The RIMA is tunneled through the transverse sinus by passing an instrument, such as the tunneler described below in relation to Fig. 24, through the transverse sinus and drawing the distal end of the RIMA back through the transverse sinus, as shown in Fig. 2. To facilitate the tunneling operation, a tunneler, such as the one described below in relation to Fig. 22, can be used to retract the pulmonary trunk to allow easier passage of the RIMA through

the transverse sinus. The second path for rerouting the RIMA is across the anterior side of the heart. This routing of the RIMA is not currently preferred by most surgeons because the oscillating saw commonly used for doing the sternotomy in redo CABG operations can cause damage to the RIMA if it is placed in an anterior position. However, it is interesting to note that redo CABG will not require the oscillating saw to open the sternotomy if the original CABG operation was done with port-access techniques that do not require a sternotomy. The less traumatic reciprocating saw, commonly used in first time CABG surgery, can be used if a redo operation is necessary because it will be the patient's first sternotomy. As the techniques for port-access CABG surgery advance, the simpler anterior route for the RIMA is likely to become the preferred path.

[0024] If a third arterial conduit is required for complete revascularization of the heart or if either of the internal mammary arteries is not available, then the right gastroepiploic artery (RGEA) is the next choice. Fig. 3 shows the laparoscopic takedown step for the RGEA. A first laparoscopic access port is placed above the umbilicus and a second laparoscopic access port is placed below the diaphragm. A third and fourth access ports may be placed in the left and right side of the abdomen as shown for insertion of instruments. The RGEA is dissected from the greater curvature of the stomach using an electrosurgical device. Ligating clips are placed on branches of the RGEA running toward the omentum. Branches running toward the stomach are preferably ligated with suture. A length of 15-30 cm of RGEA with an attached pedicle is dissected from the stomach to provide enough length to reach the chosen anastomosis site. When a sufficient length of RGEA has been dissected, two ligating clips are placed side-by-side near the distal end of the RGEA and the vessel is transected between them.

[0025] A hole is made through the diaphragm in an appropriate place for reaching the desired anastomosis site using an electrosurgical device. The distal end of the RGEA is tunneled upward through the diaphragm as shown in Fig. 4. In Fig. 4, the rerouted RGEA is shown being anastomosed to the PDA on a heart which has been retracted by the methods described below to expose the posterior aspect of the heart.

[0026] If a venous graft, such as the greater saphenous vein, is needed, a venous takedown procedure can be performed by known techniques to provide a venous conduit. After harvesting, the vein can be prepared for use as a graft outside of the body and inserted into the thoracic cavity through one of the access ports at the appropriate time in the grafting step of the procedure.

[0027] Simultaneously with the takedown step or steps just described, the patient can be prepared for cardiopulmonary bypass by cannulating the femoral artery and the femoral vein using surgical cutdowns or the percutaneous Seldinger technique. Additionally, an endoaortic occlusion catheter may be positioned in the as-

ascending aorta according to the methods described in co-owned, copending patent application serial number 08/281,891. According to the methods described therein, an elongated endoaortic occlusion catheter is introduced into a peripheral artery, such as the femoral artery and advanced into the ascending aorta. When it is time to establish CPB before the grafting step described below, an occlusion balloon on the distal end of the catheter is inflated to occlude the aortic lumen between the coronary ostia and the brachiocephalic artery. Once the balloon is inflated a cardioplegic agent can be infused through a lumen in the catheter into the aortic root and into the coronary arteries to induce cardiac arrest. Alternatively, a thoracoscopic cross-clamp may be introduced through one of the access ports according to the methods described in co-owned, copending patent application serial number 08/173,899, the entire disclosure of which is hereby incorporated by reference. According to the methods described therein, and elongated thoracoscopic cross-clamp is introduced through one of the access ports and, at the appropriate time, clamped around the descending aorta to occlude the aortic lumen. A cardioplegic agent may be introduced antegrade into the aortic root or retrograde through the coronary sinus to induce cardiac arrest. This is in preparation for the grafting step of the method of the present invention which follows.

[0028] At this point in the procedure the pericardium is opened to expose the heart as completely as possible. Using thoracoscopic observation, grasping instruments and cutting instruments, such as knives, scissors and/or an electrosurgical device are inserted through the takedown ports and a vertical slit beginning at or near the aortic reflection and extending to the apex of the heart is made in the pericardium. Thoracoscopic bipolar electrosurgical cutting scissors, such as model 3803 bipolar scissors from Everest Medical Corporation, Minneapolis, MN, have proven to be an effective instrument for performing the pericardiotomy. The pericardium is divided to expose the surface of the heart to view.

[0029] Fig. 5 shows the operative ports for performing the anastomosis of the arterial conduits onto the coronary arteries. A visualization port is placed in the anterior wall of the chest, typically through the fourth intercostal space, about 1-3 cm from the sternum. The precise placement of the visualization port is determined by the position of the heart within the patient's chest. A probe, such as a 22 gauge needle can be inserted percutaneously through the intercostal space while observing the anterior wall of the thoracic cavity through the thoracoscope. When the needle is observed entering the thoracic cavity above the target position, for instance above the LAD when the heart is in its native position, the needle is removed and a trocar is used to create an access port at that position. An access cannula with an internal diameter of 10-12 mm is placed in the access port and the cardioscopic microscope is inserted through the cannula. A cardioscopic microscope, adapted especially

ly for this port-access CABG procedure is available from Karl Zeiss, GmbH, Germany. The presently preferred configuration uses an OPMI® microscope, model MDU or CS, with an NC31 microscope stand, an endoscopic adapter and a Port-Access Stereo Vision Probe. Other types of microscope-based and direct visualization systems which are particularly well-suited for use in the method of the present invention are disclosed in co-owned, copending patent applications Serial No. 08/135, 387, filed October 8, 1993, and Serial No. 08/227,366, filed April 13, 1994, the complete disclosures of which are hereby incorporated herein by reference. With the microscope positioned in the visualization port, the left anterior descending coronary artery (LAD) should be within the field of view of the microscope.

[0030] A number of instrument ports are placed about 3-5 cm from the visualization port to allow proper angulation of the instruments into the field of view of the microscope. Typically, two ports are placed near the sternum in the third and fourth intercostal spaces and two more ports are placed to the left of the visualization port in the third and sixth intercostal spaces. An access cannula with an internal diameter of 5 mm is placed in each of the instrument ports.

[0031] Next the graft vessels, whether arterial or venous conduits, must be prepared for anastomosis. Preferably, the distal ends of the graft vessels are prepared outside of the body by passing the distal end of the graft out through one of the access ports. This simplifies the procedure because the end of the graft can be prepared under direct visualization with magnifying surgical loupes and because standard surgical instruments can be used for preparing the graft rather than thoracoscopic instruments. The LIMA or RIMA can be passed out through one of the thoracic access ports before rerouting or tunneling the vessel. The RGEA can be passed out through one of the abdominal access ports before tunneling the RGEA through the diaphragm. If the graft vessel is too short to reach the exterior of the body through one of the access ports, the following graft vessel preparation procedure can also be carried out within the thoracic cavity using thoracoscopic instruments and techniques. Prior to preparing the graft vessel, the blood flow into the vessel must be stopped by placing an atraumatic clamp on the upstream end of the vessel. An atraumatic thoracoscopic bulldog clamp especially suited for this step of the procedure is described in co-owned, copending patent application serial number 08/265,477.

[0032] The graft vessel should be prepared by first determining the appropriate length of the conduit in order to reach the desired anastomosis site. The distal end of the graft vessel should then be skeletonized by stripping the pedicle away from the artery for 5-10 mm. The distal end of the artery is transected to remove the ligating clip that was previously applied. If desired, Papavarin may be injected into the lumen of the artery to dilate it and

reverse any arterial spasm. Depending on the technique preferred by the surgeon, the distal end of the graft vessel can be slit longitudinally to create a cobra head for the anastomosis. Once prepared, the graft vessel is re-

inserted into the thoracic cavity through the access port. **[0033]** When performing multiple anastomoses, it is preferable to do the most difficult or most difficult to reach anastomosis first. For example, any anastomosis to the RCA or the PDA should be performed first since the most retraction of the heart is necessary. Following that, any anastomosis to the Cx or the OM branches should be performed. Finally, any anastomosis to the LAD can be performed last. The RIMA, RGEA or a vein graft may be used for anastomosis to the RCA or the PDA which are on the posterior aspect of the heart. Typically, the LIMA, RIMA or a vein graft is used when a graft is needed for the Cx or the OM branches because of their location on the left aspect of the heart. The LIMA, or the RIMA if the LIMA has already been used for the Cx, may be used for anastomosis to the LAD which is on the anterior aspect of the heart. Because the manifestations of coronary artery disease are highly variable, the extent of the disease should be assessed fluoroscopically beforehand and the anastomosis sites and the best use of the available conduits strategized carefully. The procedures for anastomosing to each of the major anastomosis sites will now be described. These procedures can be performed in combination to achieve complete revascularization of the heart.

[0034] Fig. 6 shows a first position of the heart for performing an anastomosis to the right coronary artery (RCA) or the posterior descending (PDA) branch. The heart is manipulated from outside of the body using instruments inserted through the instrument ports or the takedown ports in the patient's chest. Using the heart retractor devices described below in connection with Figs. 26 and 27 or any suitable means for manipulating the heart from outside of the body, the heart is rotated approximately 180 degrees to the left of the patient to position the RCA and/or PDA under the microscope in the visualization port. With the heart stabilized in this position, the distal extremity of the conduit vessel is approximated to the chosen anastomosis site and an end-to-side anastomosis is performed. The likely graft vessels for the RCA and the PDA, which include the RIMA and the RGEA, are shown in phantom lines in Fig. 6. After completion of the anastomosis, the heart is rotated back to its native position.

[0035] Fig. 7 shows an alternate position of the heart for performing the anastomosis to the RCA or the PDA. In this variation of the procedure, the heart is rotated approximately 180 degrees about an axis which is at an approximately 45 degree angle to the sagittal axis of the body. Flipped upward this way, the RCA and the PDA are positioned under the microscope in the visualization port. With the heart stabilized in this position, the distal extremity of the conduit vessel is approximated to the chosen anastomosis site and an end-to-side anastomo-

sis is performed. The likely graft vessels for the RCA and the PDA, which include the RIMA and the RGEA, are shown in phantom lines in Fig. 7. After completion of the anastomosis, the heart is rotated back to its native position.

[0036] Fig. 8 shows the position of the heart for performing an anastomosis to the circumflex artery (Cx) or the obtuse marginal (OM) branches. In order to access the Cx or the OM branches which are on the left aspect of the heart or the left posterior aspect of the heart, the heart is rotated toward the right by 45 to 90 degrees using retraction instruments inserted through the access ports. In this position the Cx and/or the OM branches will be positioned under the microscope in the visualization port. With the heart stabilized in this position, the distal extremity of the conduit vessel is approximated to the chosen anastomosis site and an end-to-side anastomosis is performed. The likely graft vessels for the Cx and the OM branches, which include the LIMA and the RIMA, are shown in phantom lines in Fig. 8. After completion of the anastomosis, the heart is rotated back to its native position.

[0037] With the more difficult to reach anastomoses completed and the heart back in its native position, as shown in Fig. 9 the anastomosis to the LAD can now be completed. With the heart in its native position, the LAD will be positioned under the microscope in the visualization port. With the heart stabilized in this position, the distal extremity of the conduit vessel is approximated to the chosen anastomosis site and an end-to-side anastomosis is performed. The likely graft vessels for the LAD, which include the LIMA and the RIMA, are shown in phantom lines in Fig. 9.

[0038] Alternatively to manipulating the heart within the closed chest to expose the different aspects, a second visualization port and instrument ports can be opened on the right side of the chest, as shown by phantom lines XX in Fig. 1, to access the right coronary artery RCA directly. In another alternative approach, right side access ports may be used alone if only the right coronary artery RCA and/or the obtuse marginal OM branches are to be revascularized or if the patient's anatomy favors a right side approach for multivessel revascularization.

[0039] Figs. 10-15 show the step-by-step sequence of creating an end-to-side anastomosis. Referring now to Fig. 10, an incision 95 is made in the wall of the coronary artery CA, where the incision has dimensions selected to match those of the distal end of the internal mammary artery graft IMA. The incision 95 is made by first piercing the arterial wall using the tip of a scalpel (not illustrated). Scissors 96 are then introduced through the penetration and used to axially extend the penetration, as illustrated at 97 in Fig. 11.

[0040] The internal mammary artery IMA can be joined to the extended incision 97 in the coronary artery CA by a variety of techniques, including suturing, laser welding, microstapling, and the like. In a currently pre-

ferred embodiment of the method of the present invention, it is preferred to use a continuous suturing technique as illustrated in Figs. 10-15. A length of suture 98 has needles 100 at either end, which are manipulated using forceps 102 to join the distal end 101 of the internal mammary artery IMA graft to the opening created by the incision 97 in the coronary artery CA, as shown in Figs. 11-15. The instrument designs presently preferred for performing the coronary anastomosis are described in copending application Serial No. 08/194,946, filed February 11, 1994, the entire disclosure of which is hereby incorporated herein by reference. Alternatively, an interrupted suture technique for the anastomosis can be used, as described in Rob and Smith's Operative Surgery, Cardiac Surgery for open-chest CABG surgery.

[0041] The presently preferred suture for port-access CABG surgery is a double-armed suture of 8-10 cm length which was specially developed for this procedure. The suture has a first needle on one end and a second needle on the other end. Preferably, the needles are 3/8 circle curved hardened stainless steel needles with tapered points. The needles are preferably attached to the suture by crimping. Alternatively, the needles may be adhesively bonded to be suture. The preferred suture material is a multifilament, expanded PTFE suture material with a size between 8-0 and 6-0 USP, preferably 7-0 USP. Suitable suture material of this type is available from W. L. Gore, Corporation under the tradename Goretex®. A contrasting color which is highly visible within the thoracic cavity, such as black, blue or white, is preferred for the suture material.

[0042] The configuration of this suture is especially advantageous for use in the port-access surgical CABG procedure. The suture can be inserted into the thoracic cavity through an access port and manipulated using thoracoscopic needle drivers to sew the anastomosis and to tie the suture within the thoracic cavity. Standard sutures, which are normally much longer, are very difficult to manipulate within the closed chest, especially when tying the suture using thoracoscopic instruments. The short length of the suture allows the knots in the suture to be pulled tight within the confines of the thoracic cavity while grasping the needles with the needle drivers. The multifilament, expanded PTFE suture material is much easier to handle and tie within the confines of the thoracic cavity than monofilament suture material which is generally stiffer and harder to handle. Additionally, the multifilament, expanded PTFE suture material has more resistance to damage than monofilament when it is grasped directly by the needle drivers.

[0043] Fig. 16 shows the heart of a patient after completion of a total revascularization for multivessel coronary artery disease using port-access techniques. Three bypass grafts have been made, using the LIMA as a bypass to one of the OM branches of the Cx, the RIMA as a bypass to the LAD, tunneled via the transverse sinus, and the RGEA as a bypass to the PDA, tunneled through the diaphragm.

[0044] A sequential grafting technique or "skip grafting" is useful for achieving total revascularization when the number of significant coronary artery stenoses exceeds the number of available graft conduits. Sequential grafts are created by making a side-to-side anastomosis with a first coronary artery at an intermediate point on the graft vessel, then an end-to-side anastomosis between the distal end of the graft vessel and a second coronary artery. Figs. 17-18 show the step-by-step sequence of creating a side-to-side anastomosis. The side-to-side anastomosis is fashioned in a diamond-shaped manner, placing the graft vessel arteriotomy at right angles to the coronary arteriotomy. Small arteriotomies, 3-4 mm in length, are used and six to eight continuous stitches are placed through the coronary artery and the graft vessel. An interrupted suture technique can also be used. Fig. 19 shows the heart of a patient with a completed sequential graft. The LIMA has been first grafted to the diagonal branch of the left coronary artery using a side-to-side anastomosis, then grafted to the LAD with an end-to-side anastomosis.

[0045] Free grafts using either arterial conduits or venous conduits can be used to augment the in situ arterial grafts. Generally, the proximal end of a free grafts is anastomosed to the ascending aorta to provide an arterial blood source and the distal end of the graft is anastomosed to one of the coronary arteries. A common source of free grafts is the greater saphenous vein. Other conduits used as free grafts include the lesser saphenous vein, the LIMA, the RIMA, the inferior epigastric artery, the splenic artery, the subclavian artery, and others. Fig. 20 shows the heart of a patient with a saphenous vein bypass graft. The proximal anastomosis can be created using suture techniques similar to those described in connection with Figs. 10-15 above with the exception that a thoracoscopic tissue punch would be used to create an aortotomy after the initial incision with a scalpel. Alternatively, the proximal anastomosis can be created using an anastomosis staple device, such as those described in co-owned, copending patent application serial number 08/394,333, the entire disclosure of which is hereby incorporated by reference.

[0046] Free grafts can be combined with in situ grafts or other free grafts to create composite bypass grafts to help achieve total revascularization for multivessel disease. For example, a free graft can be anastomosed to the distal end of an in situ graft like the LIMA or RIMA when there is insufficient length of the graft after take-down. Alternatively, a Y-graft can be created as an alternative to the sequential grafts described above. FIG. 21 shows the heart of a patient with a Y-graft. The Y-graft was created by joining the proximal end of a RIMA free graft to an intermediate point on a LIMA in situ graft with an end-to-side anastomosis, then grafting the distal end of the RIMA to the Cx with an end-to-side anastomosis and grafting the distal end of the LIMA to the LAD. Other conduits including arterial and venous grafts can be combined in various combinations to create compos-

ite grafts.

Instrument Descriptions

[0047] Figs. 22-47 show an armamentarium of instruments for facilitating the port-access multivessel CABG procedure. Fig. 22 shows a first embodiment of a tunneler for retracting the pulmonary artery away from the ascending aorta to facilitate tunneling the RIMA through the transverse sinus. The tunneler has an elongated shaft of sufficient length to reach the great vessels of the heart from the takedown ports in the left lateral side of the chest, typically 15-30 cm in overall length. There is a handle on the proximal end of the shaft. The distal portion of the shaft is curved to facilitate passing the tunneler through the transverse sinus from the left side of the heart. The distal tip of the shaft is rounded to make it atraumatic. There is a hole through the shaft near the distal tip of the tunneler. In use, a silastic tape or elastomeric tube is threaded through the hole and the distal end of the tunneler is inserted through one of the takedown ports. Under thoracoscope observation, the curved distal portion is inserted behind the pulmonary artery and the ascending aorta and passed through the transverse sinus to the right side of the heart, as shown in Fig. 23. When the distal tip of the tunneler emerges on the right side of the heart, a grasper is inserted through one of the access ports, typically one of the takedown ports on the left lateral side of the chest, to grasp one side of the tape. The retractor is withdrawn and the ends of the tape are passed out through the access ports, preferably one of the takedown ports located at the third or fourth intercostal space, and tension is placed on the tape to retract the trunk, thereby widening the transverse sinus. With the pulmonary trunk retracted, a grasping instrument, such as the articulated tunneling grasper of Fig. 26, can more easily be reached through the transverse sinus.

[0048] A basic embodiment of the articulated tunneling grasper is shown in Fig. 24. The articulated tunneling grasper has an elongated tubular shaft with a handle on the proximal end. A multilink articulator is attached to the distal end of the shaft. The multilink articulator is shown in detail in Fig. 25. The multilink articulator has a head which attaches to the distal end of the shaft. Two links are pivotally attached to the head. The first link is a straight link. The proximal end of the first link is pivotally attached to the head. The second link is an L-shaped link with a long leg that is approximately the same length as the first link, and a short leg extending perpendicular from the proximal end of the long leg. The second link is pivotally attached to the head at the proximal end of the long leg. An actuator rod that passes through the tubular shaft connects the end of the short leg with a sliding actuator button on the handle. The first link and the second link cross one another and their distal ends are pivotally attached to a third link. The third link is an L-shaped link with a long leg extending distally,

and a short leg extending perpendicular from the proximal end of the long leg. When the actuator rod is in its neutral position the multilink articulator is in a relatively straight position, as shown in Fig. 24 by solid lines XX.

5 When the actuator rod is moved distally with respect to the head, it pivots the second link counterclockwise, as shown in Fig. 24 by phantom lines XX'. The relative motion of the first and second links, in turn, pivots the third link counterclockwise, as shown. When the actuator rod is moved proximally with respect to the head, it pivots the second link clockwise, as shown in Fig. 24 by phantom lines XX". The relative motion of the first and second links, in turn, pivots the third link clockwise. The distal end of the multilink articulator can thus pivot approximately 90 degrees in either direction.

[0049] Various end effectors can be attached to the distal end of the multilink articulator for performing different tasks. The possible end effectors include a simple hole, as shown in Fig. 24, for placing a tape through the transverse sinus for retracting the pulmonary trunk, or a heart retraction device, such as a suction retractor or finger retractor, as discussed in more detail below, or a grasping mechanism, such as a cable-actuated grasper.

[0050] In one particularly preferred embodiment, shown in Fig. 26, a cable-actuated grasper is mounted on the distal end of the multilink articulator shown in Fig. 24. The grasper has a first and second jaw with grasping surfaces on the facing surfaces of the jaws. At least one of the jaws, and preferably both jaws, are pivotally attached to the distal end of the third link. An actuator cable extends from a control button on the handle, through the tubular shaft, and to a linkage connected to the grasper jaws. The jaws of the grasper can be actuated to open and close using the control button.

[0051] In use, the articulated tunneling grasper is inserted through one of the takedown ports in a straight position. The distal end of the grasper is inserted behind the pulmonary artery and the ascending aorta, and through the transverse sinus, as shown in Fig. 27. The multilink articulator is actuated to assume an appropriate curve to pass easily through the transverse sinus. Once the distal end of the grasper emerges from the transverse sinus on the right side of the heart, as shown in Fig. 27, the multilink actuator can be used to manipulate the grasper closer to the RIMA. Another grasper may be inserted through another access toward to assist with handling the RIMA to the particular grasper. The grasper is opened, then closed to grasp the pedicle of the RIMA so as not to damage the vessel. The tunneling grasper, with the RIMA in its grasp, is withdrawn through the transverse sinus to the left side of the heart. The RIMA has thus been tunneled through the transverse sinus from the right side of the heart to the left side, as discussed above in relation to Fig. 2.

[0052] Tunneling the RIMA through the transverse sinus from the right side of the heart to the left side is the currently preferred path for rerouting the RIMA for attachment to the Cx or the OM branches. Alternatively,

the RIMA can be routed across the anterior side of the heart using the articulated tunneler or another thoracoscopic grasping device. When rerouting a graft vessel, particularly when tunneling through a space such as the transverse sinus, it is important to avoid twisting or kinking the graft vessel. One way to avoid twisting the vessel is to mark a line along the vessel which can serve as an indicator of whether the vessel is straight. For instance, the vessel can be marked by drawing a line along the vessel or on the pedicle with a surgical marker containing a nontoxic ink, such as methylene blue. The vessel is preferably marked before takedown to assure that the vessel is in a straight condition when it is marked. Alternatively, the clips or sutures that are used to ligate side branches of the vessel during takedown can be used as markers to determine if the graft vessel is straight when it is rerouted.

[0053] Fig. 28 shows a first embodiment of a heart retractor with a finger-like manipulator on the distal end for rotating the heart within the closed chest of the patient to expose each of the coronary arteries to be anastomosed. The retractor has an elongated shaft of approximately 15-30 cm with a handle on the proximal end of the shaft. The distal end of the retractor shaft is curved to create a finger-like manipulator. The curved manipulator has a radius of curvature in one preferred embodiment of approximately 4.5 cm. The radius of curvature in other embodiment can range from 3.5-6 cm. The curvature of the finger-like manipulator subtends an arc of approximately 90 to 180 degrees. The finger-like manipulator has an outer diameter of approximately 5-10 mm. The finger-like manipulator is preferably molded of a rigid plastic, such as ABS or nylon. Alternatively, the finger-like manipulator can be made of metal, such as stainless steel. In one particular alternative embodiment, the finger-like manipulator is made of annealed 316 stainless steel which is malleable so that it can be manually bent to the desired curvature. The exterior of the finger-like manipulator is covered with an absorbent and/or high friction material to assist in grasping and manipulating the heart. The covering of the finger-like manipulator extends to the very distal end of the manipulator and covers the rounded distal tip. The preferred material for covering the finger-like manipulator is a nonwoven polyester fabric, embossed with an open mesh pattern. The nonwoven polyester gives the covering absorbancy, while the open mesh pattern improves the friction of the surface. A fabric with a self-sticking adhesive surface is preferred for convenience in assembling the retractor. The currently preferred material for the covering of the finger-like manipulator is a 2.4 oz. nonwoven, embossed polyester medical tape with Wetstick™ adhesive available from Avery Dennison, Specialty Tape Division, Painesville, OH.

[0054] Alternate materials for the covering of the finger-like manipulator include nonembossed, nonwoven fabrics, such as polyester surgical felt. While the absorbancy of these materials is quite acceptable, the friction

of the smooth, nonembossed fabric is less than for embossed materials. Examples of acceptable materials in this category include Fastorb 820 and Exsorb 400 available from Berkshire Corp, Great Barrington, MA or Surgical Felt 6077 or 6079 available from BARD, Vascular Surgery Division, Haverhill, MA. Other materials suitable for covering the finger-like manipulator include woven materials and knit materials made of polyester, cotton or other fibers. These materials also tend to have a lower coefficient of friction for gripping tissue. Another alternate material for the covering of the finger-like manipulator is a composite material, including a first layer of a highly absorbent material, like surgical felt, and a second layer of mesh-like material to increasing the coefficient of friction for gripping the surface of the heart.

[0055] The covering material is preferably die cut in a pattern that easily conforms to the shape of the finger-like manipulator. Fig. 30 shows a die-cutting pattern for the covering material to cover a finger-like manipulator having a radius of curvature of 4.5 cm which subtends 180 degrees of arc, and an outer diameter of 8 mm, such as the one shown in Fig. 28. Fig. 30B shows an enlarged detail drawing of the die-cutting pattern of Fig. 30A. The self-adhesive covering material is cut to this pattern and adhesively bonded to the exterior of the finger-like manipulator.

[0056] The absorbancy, combined with the texture of the covering, gives the retractor a good frictional grip on the surface of the heart. Keeping the interface between the retractor surface and the surface of the heart dry is important for maintaining a good frictional grip. Another preferred embodiment of the retractor, shown in Fig. 29, combines suction irrigation with the retractor to augment the absorbancy of the covering material. In this embodiment, a suction lumen extends through the shaft of the retractor and through the finger-like manipulator. A series of suction holes connect the suction lumen with the surface of the finger-like manipulator on the inner curve of the distal end. A constant or intermittent suction through the holes will keep the covering material dry to improve the frictional grip on the surface of the heart.

[0057] In use, the retractor is typically inserted into the thoracic cavity through one of the takedown ports on the left lateral side of the chest. The curved finger-like manipulator of the retractor is hooked around the apex of the heart, as shown in Fig. 31. The retractor can be used to rotate or translate the position of the heart within the closed chest. For example, the retractor can be used to roll the heart toward the right side of the patient to expose the Cx or the OM branches on the left aspect of the heart to the microscope in the visualization port. This position of the heart is shown in Fig. 7. The retractor can also be used to lift the apex of the heart and flip the heart 180 degrees to expose the RCA or PDA on the posterior aspect of the heart to view. This position of the heart is shown in Fig. 9.

[0058] The retractor can be fixed to the operating table to stabilize the heart in the desired position, as

shown in Fig. 32. A positioning device, such as the Omnitract model XXX or the Mediflex model XXX, is attached to the operating table and bent to the correct position and locked in place. A clamp on the distal end of the positioning device is attached to the proximal end of the retractor to hold it in place and maintain the position of the heart during the course of the grafting step.

[0059] Fig. 33A shows a side view of an embodiment of a suction heart retractor for manipulating the heart within the closed chest of the patient. The retractor has an elongated tubular shaft having a suction cup-shaped manipulator on the distal end. The suction cup-shaped manipulator may be mounted straight on the shaft or it may be mounted at an angle to the shaft. In one particularly preferred embodiment, there is a 45 degree bend near the distal end of the shaft so that the suction cup-shaped manipulator is mounted at a 45 degree angle to the proximal shaft. In either embodiment, the suction cup-shaped manipulator is preferably flexibly mounted to the distal end of the shaft. A vacuum lumen extends through the tubular shaft from the proximal end to the distal end. The distal end of the vacuum lumen is in fluid communication with the interior of the suction cup-shaped manipulator. The proximal end of the vacuum lumen is adapted for attachment to a vacuum source. A fitting for connecting to the vacuum source, such as a barb fitting or luer fitting, may be attached to the proximal end of the tubular shaft, or a flexible extension tube may be attached to the proximal end of the shaft with a fitting at the far end of the extension tube.

[0060] The shaft of the retractor is preferably made of a rigid material that will support the forces required for manipulating the heart without significant deformation. Acceptable materials for the retractor shaft include stainless steel and liquid crystal polymer. To facilitate forming an angled or curved shaft, a mineral filled liquid crystal polymer (e.g. calcium carbonate) is preferred. This material can be heat formed at 350 to 400 degrees F.

[0061] Fig. 33B shows a longitudinal cross section of the distal end of the heart retractor of Fig. 33A, and Fig. 33C shows a distal end view of the heart retractor of Fig. 33A. The suction cup-shaped manipulator has an external diameter of approximately 12 to 50 mm for a surface area of approximately 110 to 1960 mm². The surface area of the suction cup-shaped manipulator allows a firm grip on the surface of the heart when a vacuum is applied to the interior of the suction cup, without causing vacuum damage to the tissue. A valve on the shaft of the retractor allows the surgeon to control the vacuum to turn it on and off. Preferably, the vacuum should be limited to a maximum of 150 mmHg to avoid tissue damage. The suction cup-shaped manipulator is made of a soft, flexible elastomeric material, such as silicone rubber with a hardness of approximately 40 to 80 Shore A durometer. The soft, flexible suction cup-shaped manipulator is designed so that when a vacuum is applied within the suction cup, the suction cup conforms to the

surface of the heart and does not cause deformation of the heart tissue.

[0062] The distal surface of the suction cup-shaped manipulator is textured to create a high friction surface. In one particularly preferred embodiment, the suction cup-shaped manipulator has a pattern of bumps on the distal surface and a circular ridge around the periphery of the suction cup. The bumps in one preferred embodiment have a height of approximately 1 mm with a 120 degree conical end and straight sides. Other geometries for the friction-increasing bumps include conical, cylindrical or hemispherical, as well as other possible geometries. The circular ridge around the periphery has a height of approximately 1-2 mm. The geometry and the pattern of the bumps create a reliable friction grip on the surface of the heart under vacuum without causing any damage to the heart tissue. An alternative embodiment of the retractor has an absorbent high friction material adhesively attached to or cast into the distal surface of the suction cup-shaped manipulator in place of the pattern of bumps. A suitable absorbent high friction material for this application is a nonwoven polyester fabric embossed with an open mesh pattern.

[0063] In use, the distal end of the retractor is inserted through one of the access ports, typically one of the takedown ports in the left lateral side of the patient's chest. The soft, flexible nature of the suction cup-shaped manipulator allows it to be folded or collapsed as it is pushed through the access port. The retractor can be inserted through an access cannula or the cannula can be removed from the access port to facilitate insertion of the suction cup-shaped manipulator directly through the access port. In one preferred embodiment of the method, suction cup-shaped manipulator is placed on the anterior surface of the heart near the apex, as shown in Fig. 34, and a vacuum is applied to grip the surface of the heart. From this position, the retractor can be used to rotate the heart in either direction. In Fig. 35, the retractor has been used to rotate the heart approximately 90 degrees to the right to expose the Cx and the OM branches on the left aspect of the heart to view. The retractor can also be used to rotate the heart 180 degrees to the left to expose the RCA and PDA on the posterior aspect of the heart, as in Fig. 8. In an alternative embodiment of the method, the suction cup-shaped manipulator is placed on the posterior side of the heart near the apex and a vacuum is applied to grip the surface of the heart. Then, the retractor is used to lift and rotate the heart to flip it 180 degrees to expose the RCA and PDA on the posterior aspect of the heart, as in Fig. 7. This retractor can also be fixed to the operating table to stabilize the heart in the desired position similarly to the embodiment of Fig. 32.

[0064] Fig. 36 shows a third retraction device for manipulating the heart within a patient's closed chest. The retraction device has an elongated tubular shaft. The tubular shaft has a right angle bend at the distal end. A first end of a flexible snare is attached to the shaft at the

distal end. The second end of the flexible snare extends through a lumen within the tubular shaft and attaches to a sliding handle at the proximal end. The snare is made of a flexible wire or band. Preferably, the flexible wire or band is covered with a soft, flexible friction material to increase the surface area and to improve the frictional grip on the heart. Suitable materials for the covering of the snare include soft, flexible polymers or elastomers or absorbent, high-friction fabrics. The flexible wire or band of the snare is preferably made of a highly resilient material such as a superelastic nickel/titanium alloy or a spring temper stainless steel or titanium alloy.

[0065] Fig. 37 shows the heart retractor of Fig. 36 in a predeployed position for insertion through an access cannula. When the sliding handle is in a proximal position, the snare forms a small loop, as shown in Fig. 37, which easily deforms to fit through a 10 mm access cannula. When the sliding handle is in a distal position, the snare forms a large loop, as shown in Fig. 36, which is large enough to encircle the heart. The wire is preferably reshaped so that the snare opens up in a loop perpendicular to the axis of the distal segment of the shaft. Fig. 38 shows a cross section of a patient showing the retraction device inserted into the thoracic cavity through one of the access ports with the snare encircling the heart. From this position, the retractor can be used to manipulate the heart to a desired position. For example, the retractor can be used to lift and rotate the heart to flip it 180 degrees to expose the RCA and PDA on the posterior aspect of the heart, as in Fig. 7.

[0066] Fig. 49 shows a fourth retractor device for manipulating the heart within the close chest of a patient in a predeployed position for insertion through an access cannula. The retractor has an elongated tubular shaft with a handle on the proximal end. In a preferred embodiment, the distal end of the shaft has an angled portion at an approximately 0 to 45 degree angle to the proximal portion of the shaft. A flexible band extends through a lumen within the tubular shaft and extends beyond the distal end of the shaft. The distal end of the band is pivotally attached to a distal link. The distal link is, in turn, pivotally attached to a proximal link which, in turn, is pivotally attached to the distal end of the tubular shaft. The proximal end of the band is attached to a sliding actuator button on the handle. When the activator button is in a proximal position, the distal portion of the flexible band is positioned parallel to and in close proximity to be proximal and distal links, as shown in Fig. 39. When the activator button is in a distal position, the distal portion of the flexible band extends from the instant end of the tubular shaft to form a loop together with the proximal and distal links, as shown in Fig. 40. In the illustrative embodiment of Figs. 39 and 40, the handle has a semicircular cassette for storage of the band when the band is in the proximal position. Other embodiment of the retractor could have a circular storage cassette or a linear configuration for storing the retracted band. Preferably, the flexible band is made of a resilient material

such as a spring tempered stainless steel or titanium alloy. The proximal and distal links are also preferably made of a stainless steel or titanium alloy. The surfaces of the flexible band and/or the proximal and distal links facing the inside of the loop are preferably covered with a soft, flexible friction material to improve the frictional grip a the retractor on the heart. Suitable materials for the covering of the snare include soft, flexible polymers or elastomers or absorbent, high-friction fabrics.

[0067] In use, the distal end of the retractor is inserted into the thoracic cavity to one of the access ports, typically one of the takedown ports on the left lateral side of the chest. The actuator button is advanced distally to open the loop large enough to encircle the heart. The loop is passed around the heart from the apex end and tightened gently around the heart, as shown in Fig. 41. A force limiter can be incorporated into the actuating mechanism of the retractor to prevent excessive force on the heart. From this position, the retractor can be used to manipulate the heart to a desired position. For example, the retractor can be used to lift and rotate the heart to flip it 180 degrees to expose the RCA and PDA on the posterior aspect of the heart, as in Fig. 7.

[0068] Figs. 42-45 show a topical hypothermia device which can be used to improve myocardial protection during the port-access multivessel CABG procedure. The topical hypothermia device has a flexible heat exchanger which has at least one fluid passage there-through to circulate a cooling fluid. The flexible heat exchanger is collapsible to a predeployed position which can easily fit through an access port into the chest of the patient. The flexible heat exchanger is attached to the distal end of an elongated tubular shaft. The tubular shaft is preferably made of a rigid material such as stainless steel or a rigid plastic. An inflow lumen extends through the tubular shaft and is fluidly connected to the flexible heat exchanger. A return lumen extends through the tubular shaft parallel to the inflow lumen. The inflow lumen and the return lumen may be formed of extruded plastic tubes which are inserted through the tubular shaft. Alternatively, the lumens may be formed integrally with the tubular shaft by extrusion. The proximal ends of the inflow lumen and the return lumen are adapted for attachment to a circulating pump and a reservoir of cooling fluid, which is preferably a saline solution.

[0069] In the illustrative embodiment of Fig. 42, the flexible heat exchanger is made from two sheets of flexible plastic which are heat sealed or RF sealed together to form a serpentine cooling path through the heat exchanger. Preferred materials for manufacturing the flexible heat exchanger include polyurethane, vinyl, polypropylene, nylon, etc. The flexible heat exchanger, in one preferred embodiment, has a length of 12-18 cm and a width of 7-10 cm. Optionally, the flexible heat exchanger may have a flexible backbone which extends from the distal end of the tubular shaft to the distal edge of the heat exchanger. The flexible backbone may be made from a flexible polymer, elastomer, or a resilient

metal wire, such as spring temper stainless steel or a superelastic nickel/titanium alloy, or a composite of metal and plastic. The flexible heat exchanger is rolled, folded or twisted and placed in an introducer sheath in the predeployed position as shown in Fig. 43. Preferably, the introducer sheath is sized to fit through an access cannula with a 10-12 mm internal diameter.

[0070] In use, the topical hypothermia device is prepared in the predeployed position by first priming the flexible heat exchanger by filling it with cooling fluid and connecting the proximal end of the inflow lumen and the return lumen to the circulating pump and the reservoir of cooling fluid, respectively. The flexible heat exchanger is rolled and covered with the introducer sheath. The topical hypothermia device is inserted through one of the access ports in this predeployed position. The distal end of the introducer sheath is placed under the heart and then withdrawn proximally with respect to the flexible heat exchanger, thereby placing the heat exchanger underneath the heart. Alternatively, the sheath can be withdrawn after the topical hypothermia device is introduced through the access port and the flexible heat exchanger placed under the heart with the help of the flexible backbone. The circulating pump is turned on to force cooling fluid into the flexible heat exchanger and through the cooling passage. The flexible heat exchanger inflates with cooling fluid and spreads out under the heart to make good thermal contact with the myocardium, as shown in Fig. 45. Preferably, the flexible heat exchanger is constructed so that it curves to conform to the exterior of the heart when inflated to the deployed position, as shown in Fig. 44, to create a better thermal contact with the myocardium. Typically, a cooling fluid at 0-4 degrees Celsius is circulated through the heat exchanger with a flow rate of greater than 350 ml/min to rapidly cool the heart.

[0071] In an alternate embodiment of the topical cooling device, the flexible heat exchanger may also be covered with a thermal insulating material, such as surgical felt, to prevent thermal shock to the myocardial tissue. Another way to avoid thermal shock to the myocardial tissue is to use a more moderate temperature for the cooling fluid, with better thermal contact and a higher flow rate to rapidly cool the myocardium without the risk of thermal shock.

[0072] Fig. 46 shows an alternate embodiment of the topical cooling device, which is similar to the embodiment of Fig. 42 except for the construction of the flexible heat exchanger. In this embodiment, the flexible heat exchanger is in the form of a ring made by heat sealing two sheets of plastic together. The cooling fluid enters one side of the ring-shaped heat exchanger and follows a serpentine cooling path through the heat exchanger around to the other side of the ring. A preformed, resilient wire loop is attached around the outside of the ring-shaped heat exchanger to initialize the shape of the heat exchanger during deployment, as shown in Fig. 47.

[0073] The topical cooling device can be used alone

to induce hypothermia cardiac arrest in the patient's heart or the topical cooling device can be used in conjunction with cardioplegic arrest to improve the myocardial protection during the surgical procedure. In addition, the topical cooling device can be used to rewarm the heart after the completion of the surgical procedure by circulating warm fluid through the flexible heat exchanger. In addition to the multivessel CABG procedure of the present invention, the topical cooling device will find utility for improving myocardial protection in any open-chest or closed-chest cardiac surgery.

[0074] Another closely related surgical approach for performing closed-chest multivessel CABG surgery is through an anterior mediastinotomy, that is, through an incision into the mediastinum, the mass of tissues and organs between the lungs that includes the heart. Another term for this surgical approach is a rib-sparing, anterior mini-thoracotomy. There are two ways to perform the anterior mediastinotomy for this approach. The first way is through an intercostal incision 25-50 mm long in the fourth or fifth intercostal space to the left of the sternum, as shown in Fig. 48. The second way is to create a larger access port by removing either the third, fourth or fifth costal cartilage, preferably on the left side of the sternum. When one of the costal cartilages is removed, it creates an access port approximately 50-60 mm square, as shown in Fig. 49. The access port can be held open using a tissue spreader for an access cannula which is oval or square in shape. Actual cutting or removal of ribs is not necessary. The best position for the port may be decided by viewing through the lateral IMA takedown ports in the third or fourth intercostal space and probing with a needle to find the best position and line of sight for the particular anastomosis site. It should be noted that, because the anterior mediastinotomy may cut across the path of the internal mammary artery, it is preferable to make the access port after completion of the IMA takedown.

[0075] A tissue spreader or oval cannula for retraction would be useful to maintain the access channel. Retraction of the ribs should be kept to a minimum in order to reduce the trauma to the patient. For introduction without retraction of the ribs, the oval cannula should have interior dimensions of approximately 12 mm width and 25-50 mm length, and a thin wall of approximately 1 mm thick. For varying degrees of retraction, the width of the oval cannula can be increased anywhere from 12 mm to 25 mm, which should be sufficient for adequate visualization and instrument access. Visualization and instrument insertion can thus be accomplished through a single elongated access port, rather than using separate visualization and instrument ports as in the port-access approach described above. Visualization can be accomplished using a surgical microscope, as described above, or by direct visualization through the access port, with or without magnifying loupes. The cannula should be configured to facilitate retraction of the pedicle through the lumen of the cannula without harm so that

the distal end of the graft vessel can be prepared for anastomosis outside of the body under direct visualization. Therefore, the cannula should have no sharp edges that could harm the graft vessel or pedicle. The insertion length of the cannula should be about 25-50 mm.

[0076] Preferably, illumination means are incorporated into the oval cannula or into the tissue spreader used to maintain the access channel. A light conduction path is incorporated into the wall of the oval cannula or into the blades of the tissue spreader to direct a beam of light distally onto the surgical site. A light source is connected to the light conduction path. The light source can be integrated into the device or an external light source may be connected to the device by an optical cable.

[0077] An exemplary embodiment of an illuminated access device is shown in a top view in Fig. 50 and a side view in Fig. 51. This particular embodiment is an illuminated oval cannula, however the following inventive features can also be incorporated into a blade retractor, tissue spreader, or standard circular access cannula. Optical fibers are embedded into the wall of the oval cannula. The optical fibers terminate at the distal end of the cannula to direct a beam of light distally toward the surgical site. A narrow or diffuse beam of light can be created depending on the arrangement and the numerical aperture of the optical fibers. At the proximal end of the cannula, the optical fibers gather together into an optical connector for connection to an external light source. In one currently preferred embodiment, a multiplicity of small diameter optical fibers are distributed evenly about the periphery of the oval cannula. The wall of the oval cannula can be made of an opaque material to avoid light escaping from the optical fibers from interfering with visualization through the lumen of the cannula. Alternatively, the interior and/or exterior wall of the cannula can be made transparent or translucent to create a diffuse ambient light within or around the cannula.

[0078] Anastomosis between the graft vessel and the coronary artery is performed using instruments inserted through the access port. One advantage of this approach is that the access port is large enough so that the surgeon can insert a finger through the access port or oval cannula to directly palpate the heart, for instance to locate a stenosis in the coronary artery. It may be advantageous to elevate the heart within the thoracic cavity to facilitate palpate the heart and/or performing the anastomosis. A device similar to the topical cooling devices of Figs. 42-47 may be used to elevate the heart within the thoracic cavity by inserting it underneath the heart and inflating it, with or without circulating cooling fluid. The tunneling and retraction devices of Figs. 22-41 can be used through the access port or through the take-down ports to manipulate the heart to expose different aspects of the heart for visualization and anastomosis of multiple coronary arteries according to the methods described above. Alternatively, a second mediastinal access port can be opened on the right side of the chest to access the right coronary artery directly. In another

alternative approach, a right side mediastinal access port may be used alone if only the right coronary artery is to be revascularized or if the patient's anatomy favors a right side approach for multivessel revascularization.

Claims

1. A method of immobilizing tissue during open or closed chest cardiac surgery comprising:

accessing a surface of the heart;
positioning a first member having at least one primary suction port on the surface of the heart;
coupling a first suction source to any primary suction port of the first member;
creating a suction with the first suction source, the created suction then communicated to any primary suction port;
grasping the surface of the heart with the suction in any primary suction port; and
fixing the first member to a stationary object.

2. The method of claim 1 in which the step of accessing a surface of the heart comprises providing access through an intercostal space.

3. The method of claim 1 in which the step of accessing a surface of the heart comprises inserting an endoscope and a cutting instrument through the chest wall and cutting through the pericardium with the cutting instrument.

4. A method of immobilizing tissue during open or closed chest cardiac surgery comprising:

accessing a surface of the heart;
positioning a first member having at least one primary suction port along a first planar surface on the surface of the heart;
coupling a first suction source to at least one primary suction port of the first member;
creating a suction with the first suction source, the created suction then communicated to at least one primary suction port; and
fixing the first member to a stationary object.

5. The method of claim 4 in which the step of accessing a surface of the heart comprises providing access through an intercostal space.

6. The method of claim 4 in which the step of accessing a surface of the heart comprises inserting an endoscope and a cutting instrument through the chest wall and cutting through the pericardium with the cutting instrument.

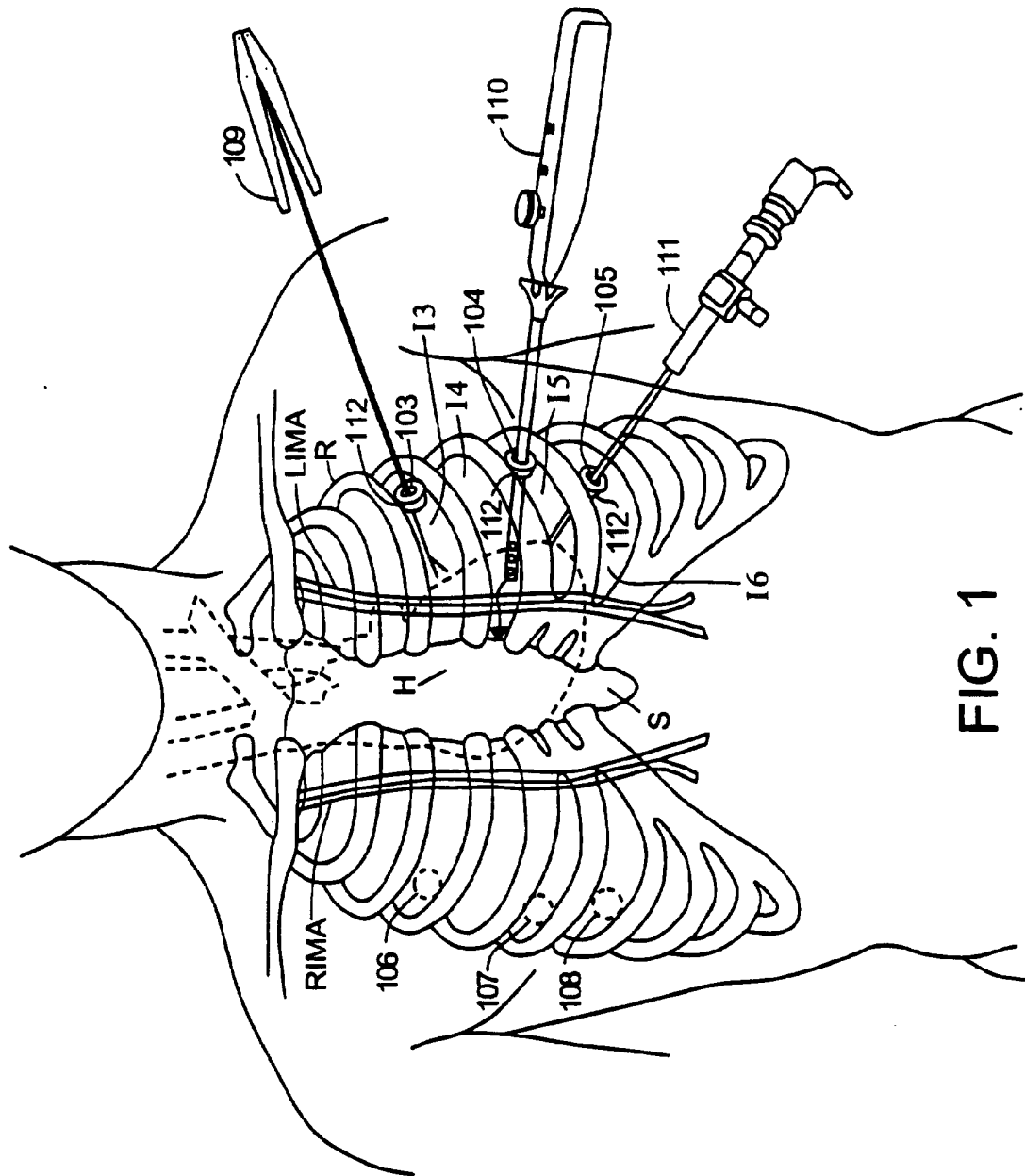


FIG. 1

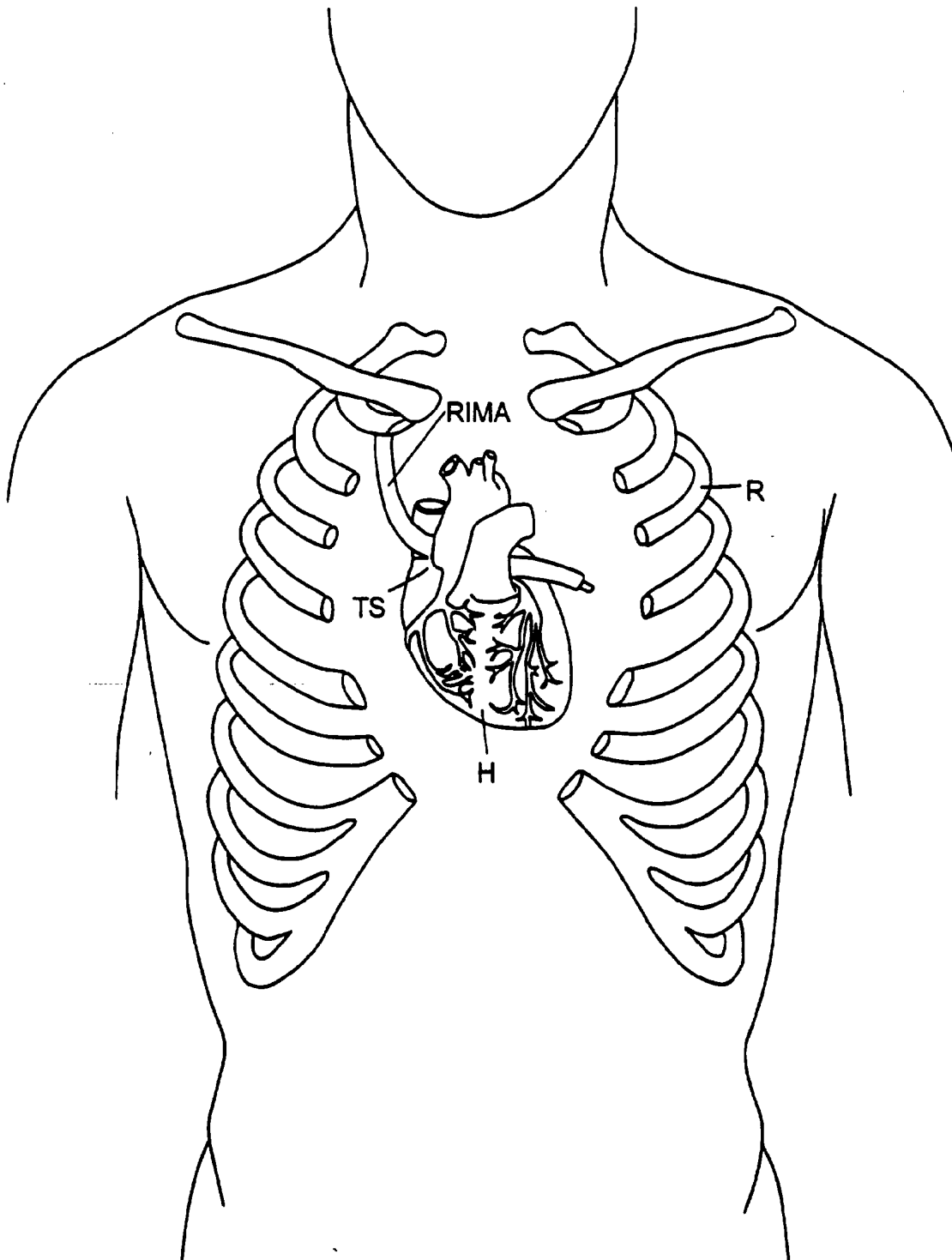


FIG.2

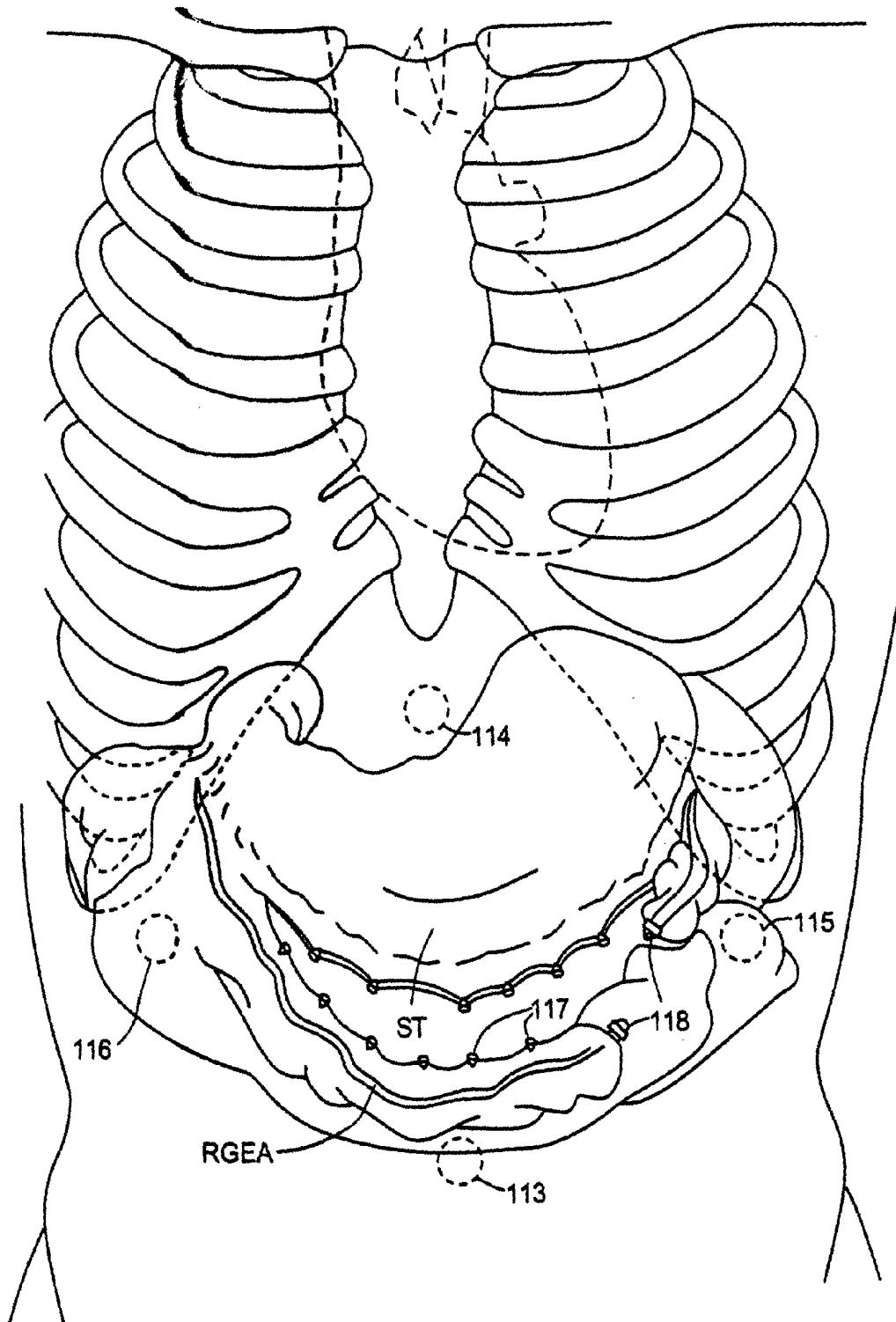


FIG.3

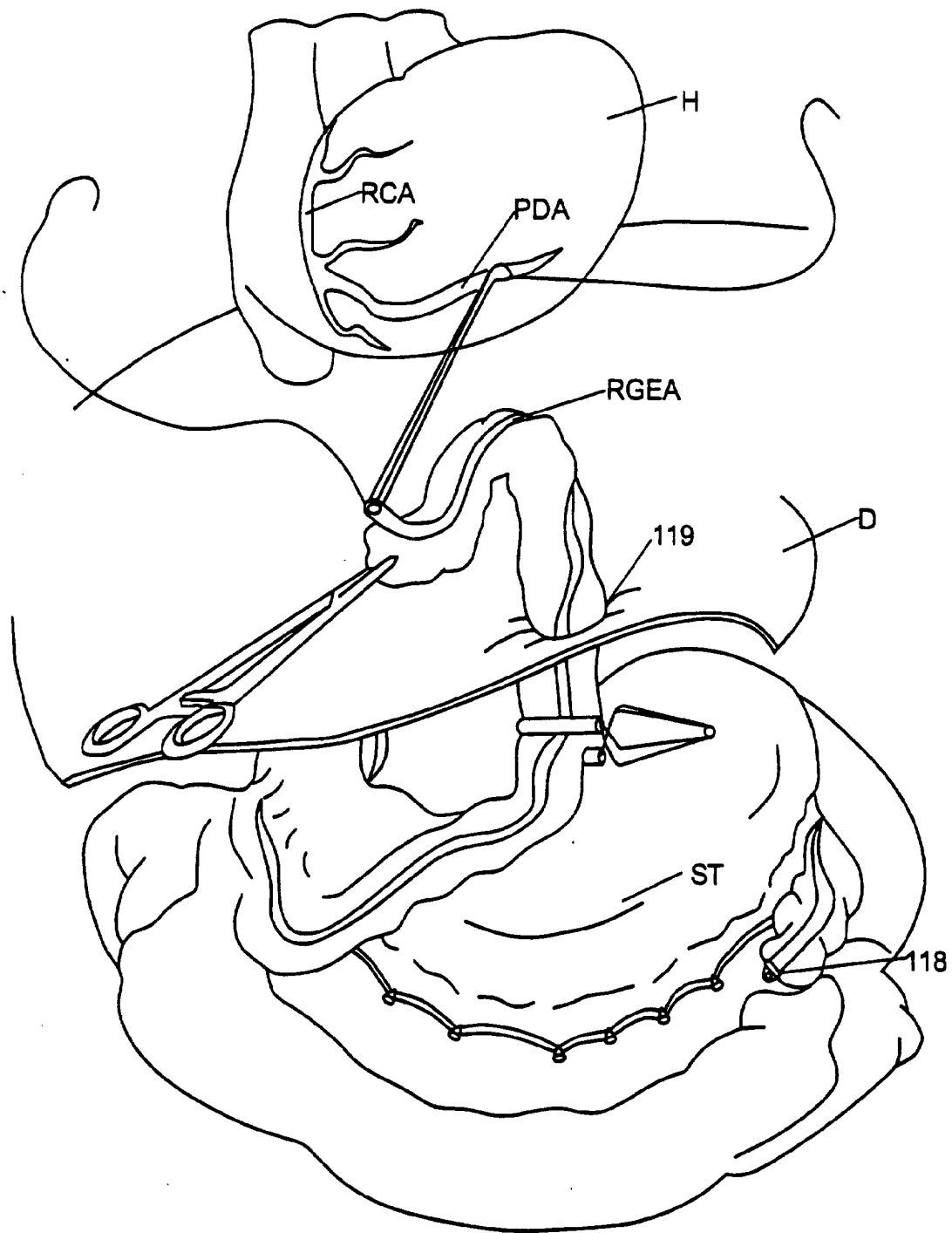


FIG.4

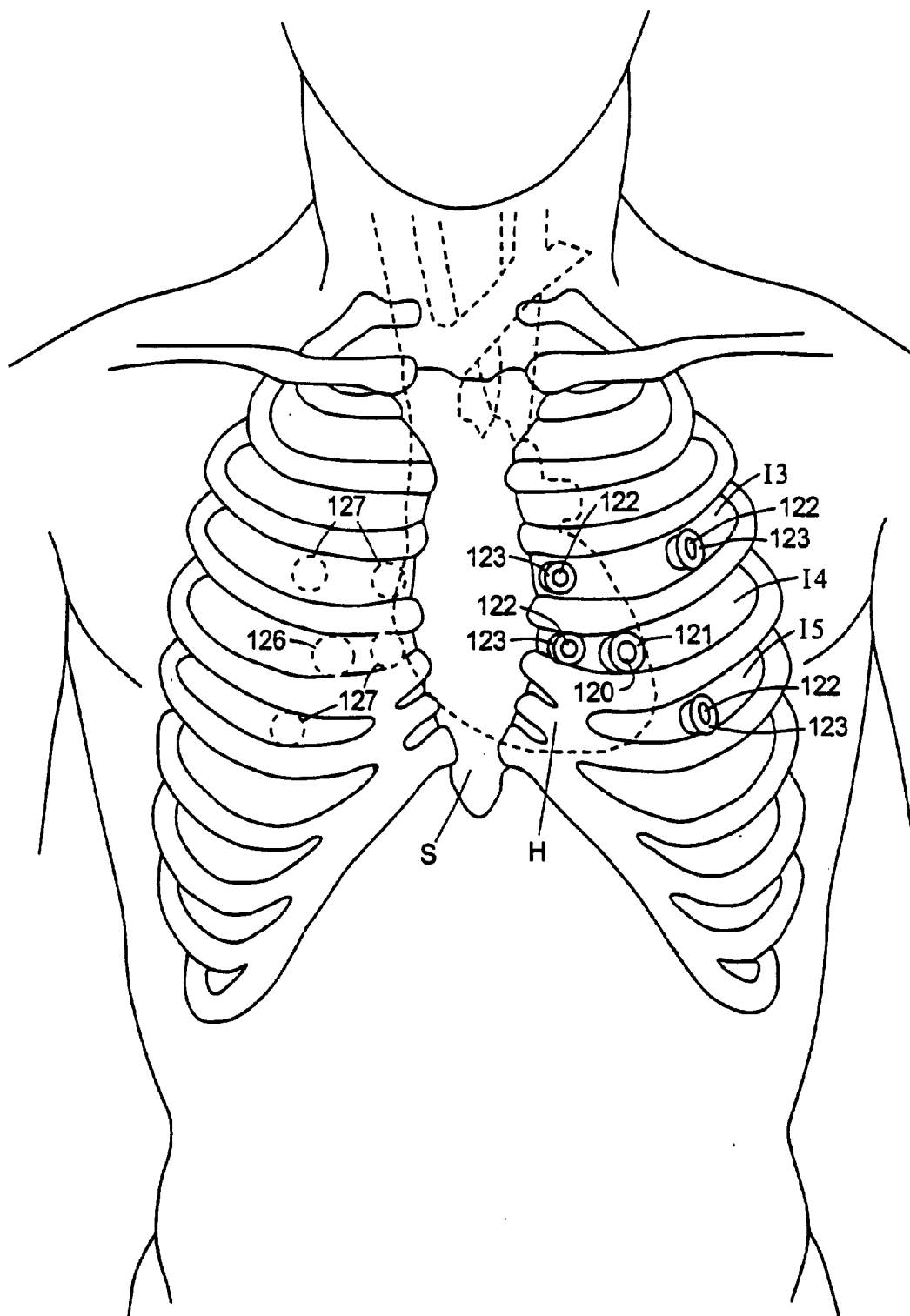


FIG. 5

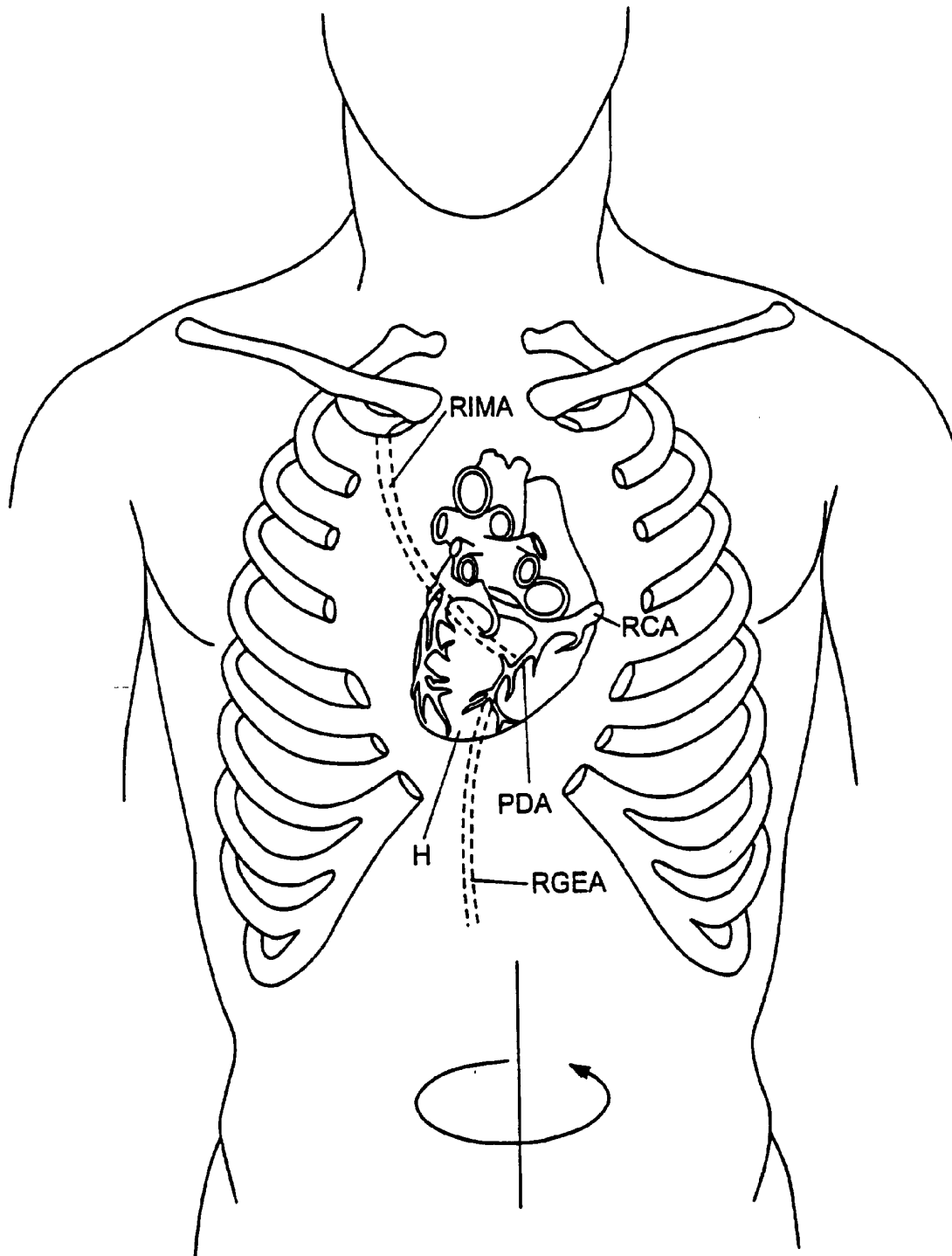


FIG.6

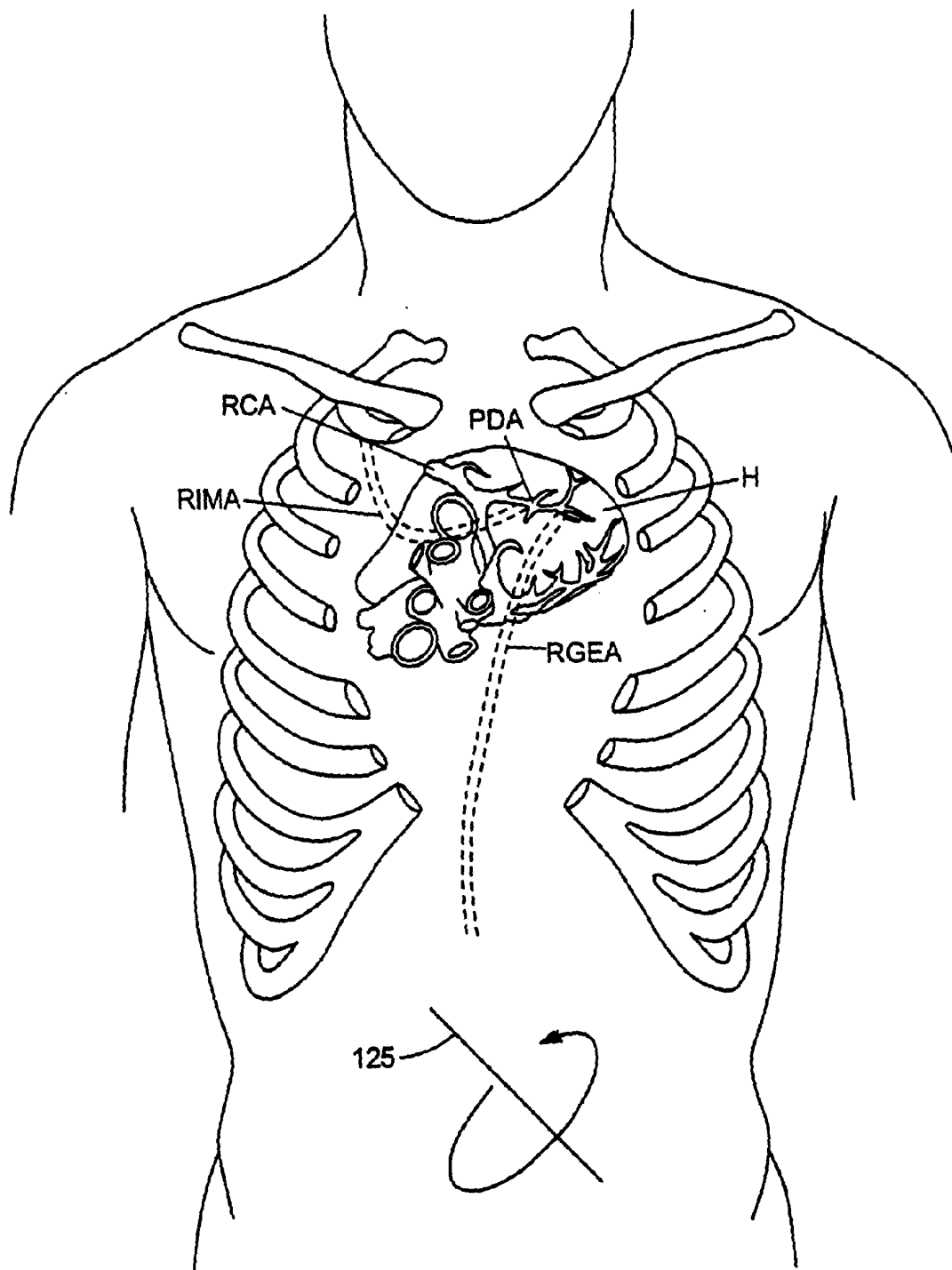


FIG.7

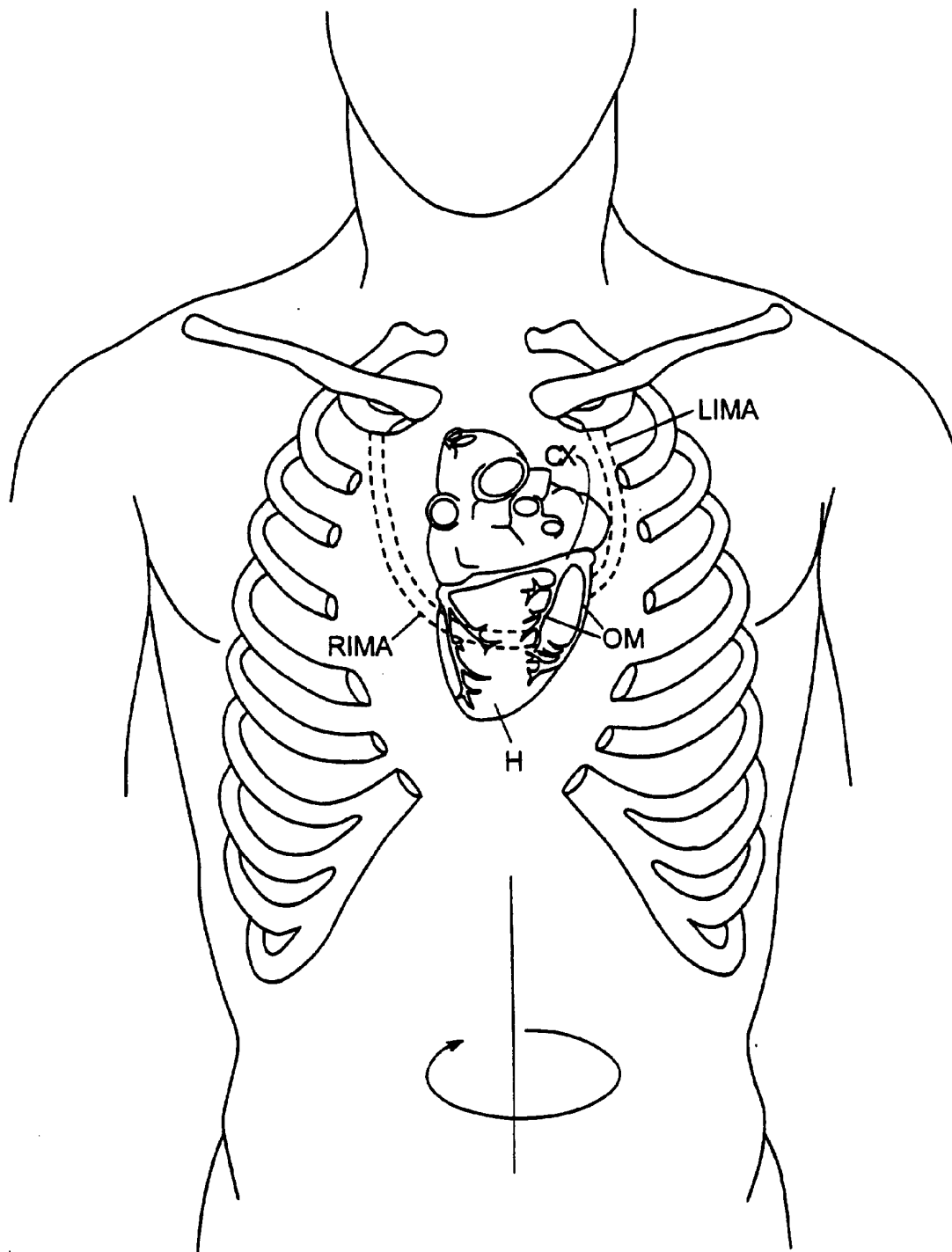


FIG.8

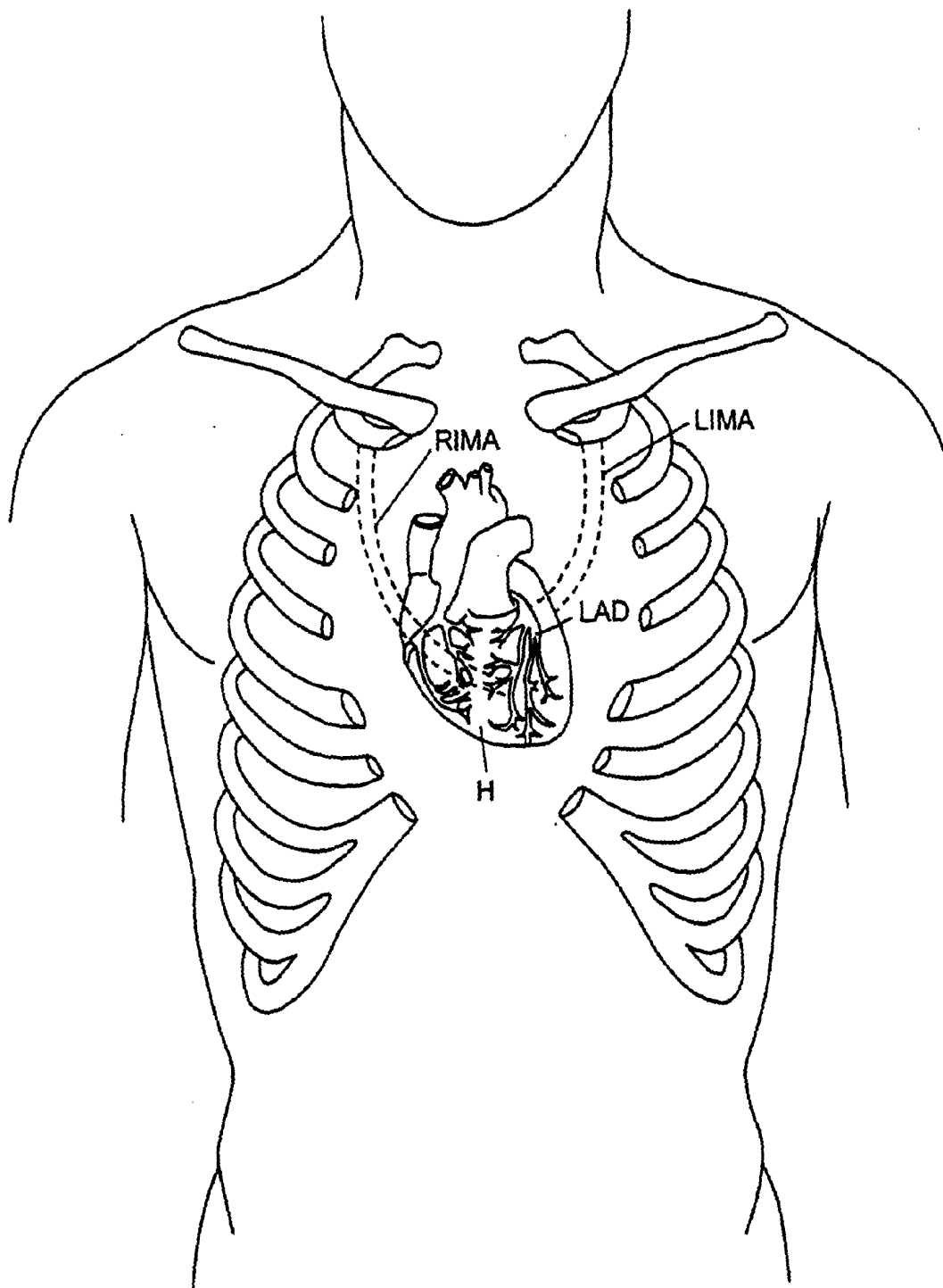


FIG.9

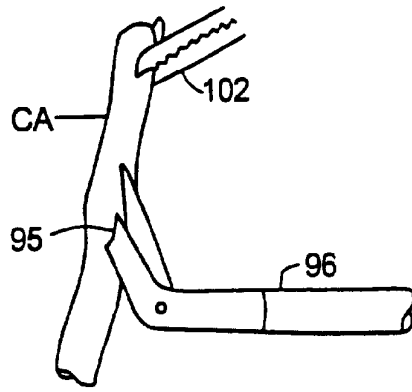


FIG. 10

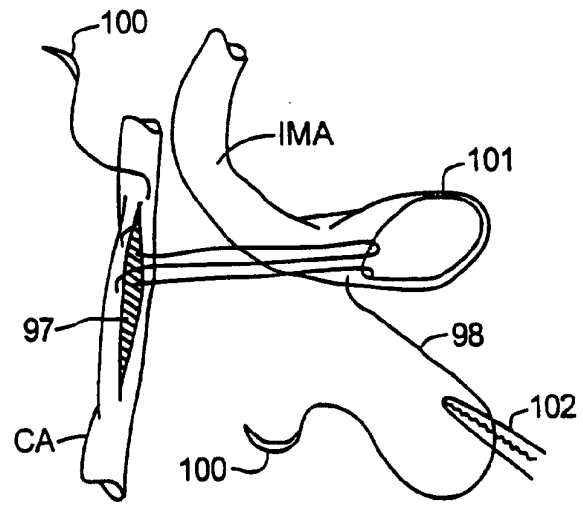


FIG. 11

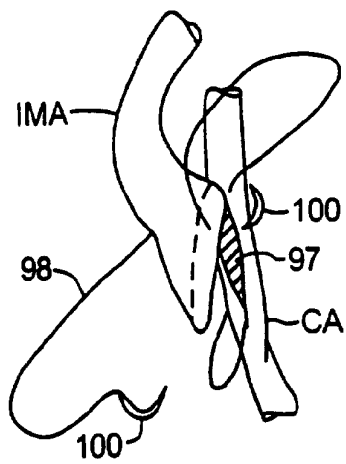


FIG. 12

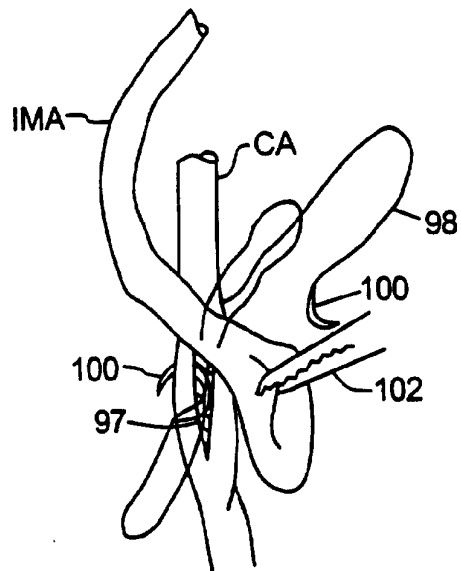


FIG. 13

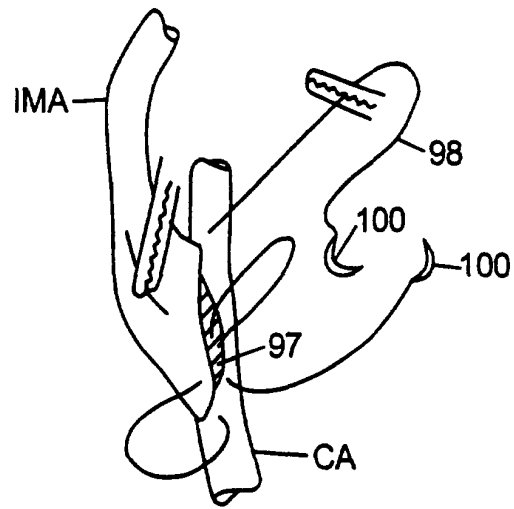


FIG.14

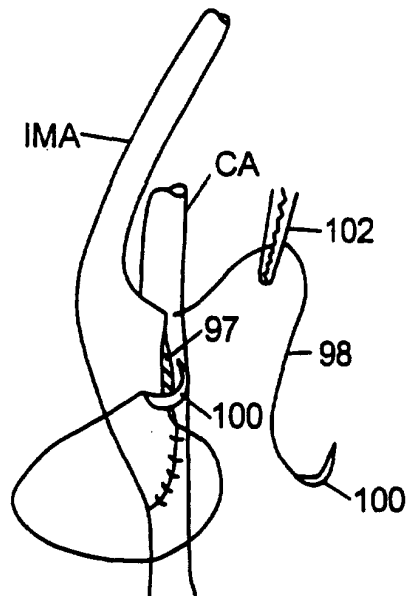


FIG.15

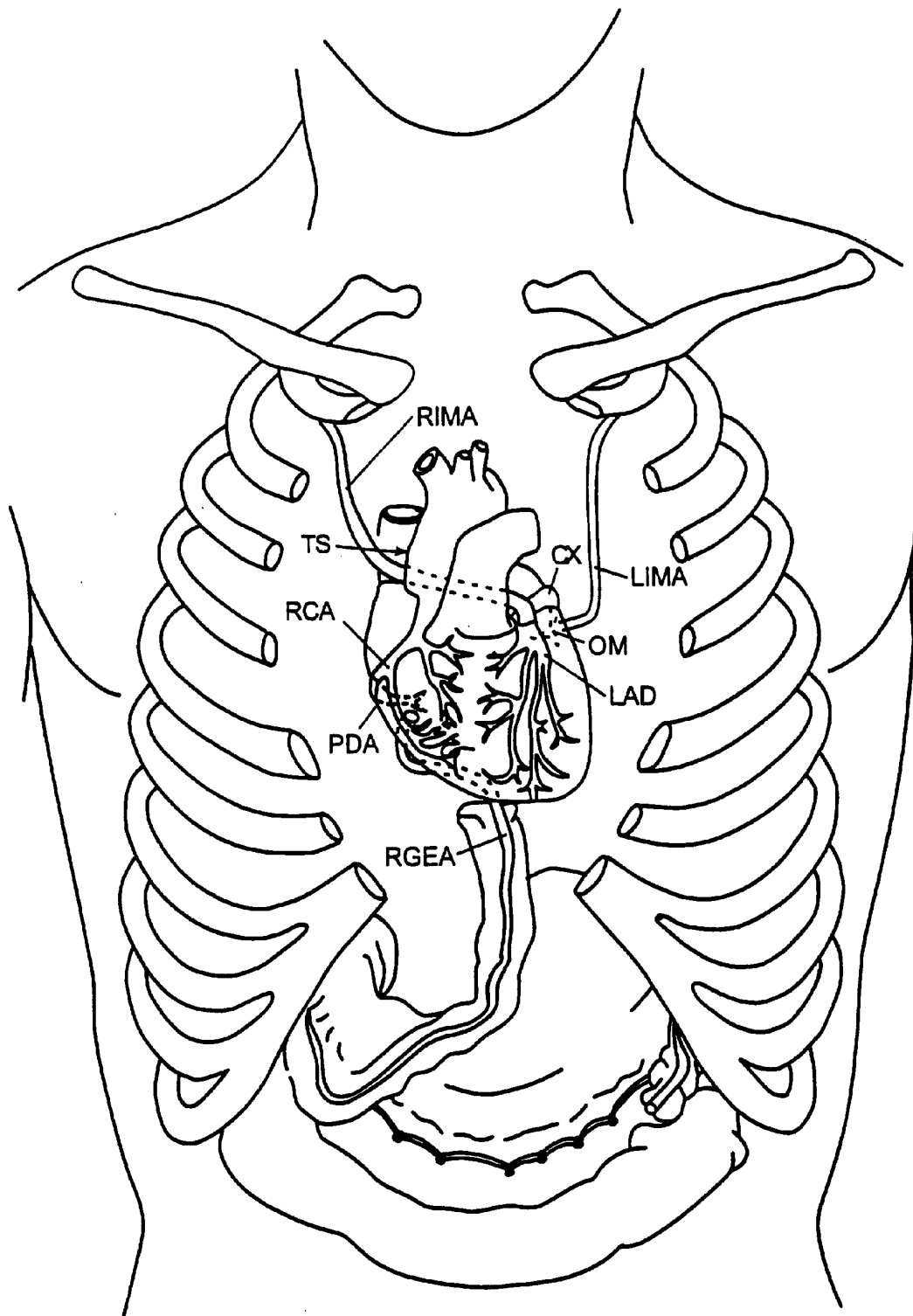


FIG.16

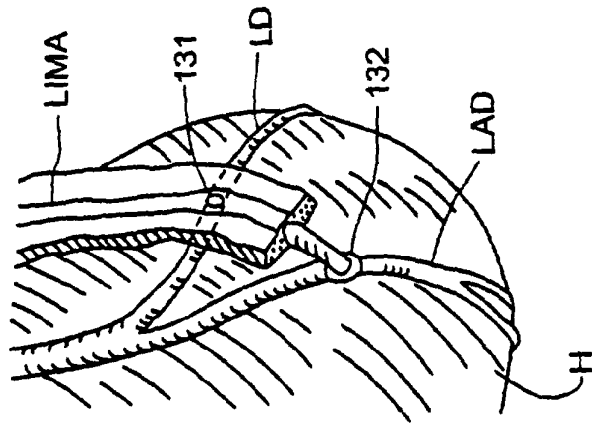


FIG. 19

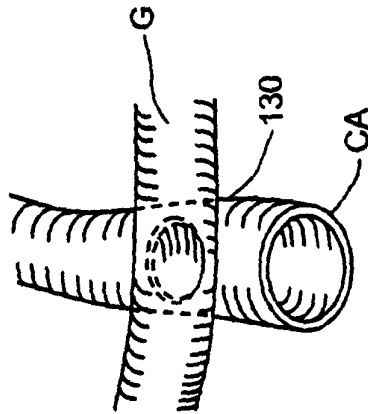


FIG. 18

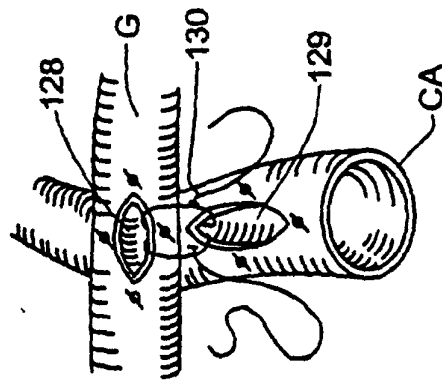


FIG. 17

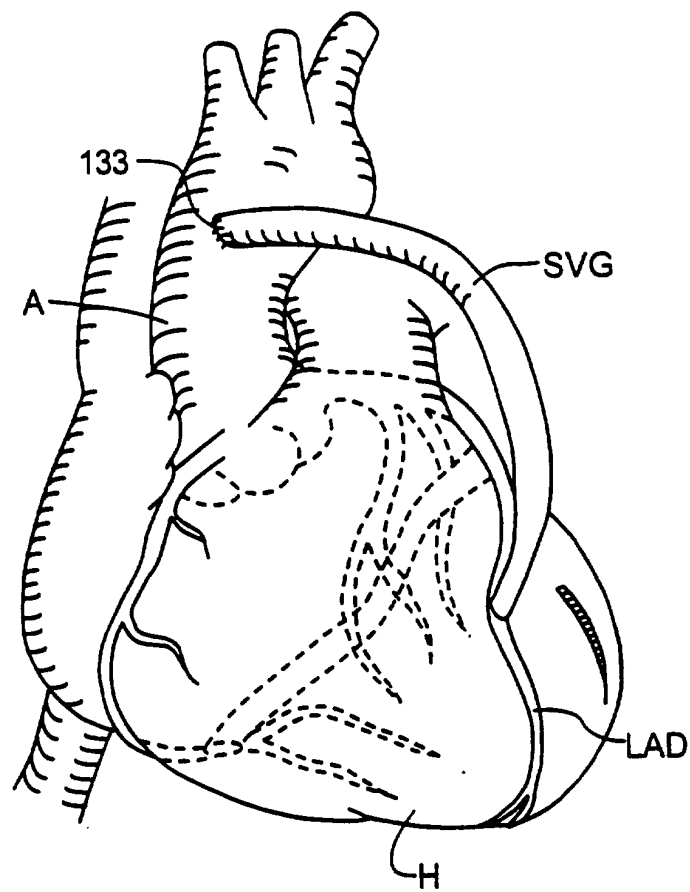


FIG.20

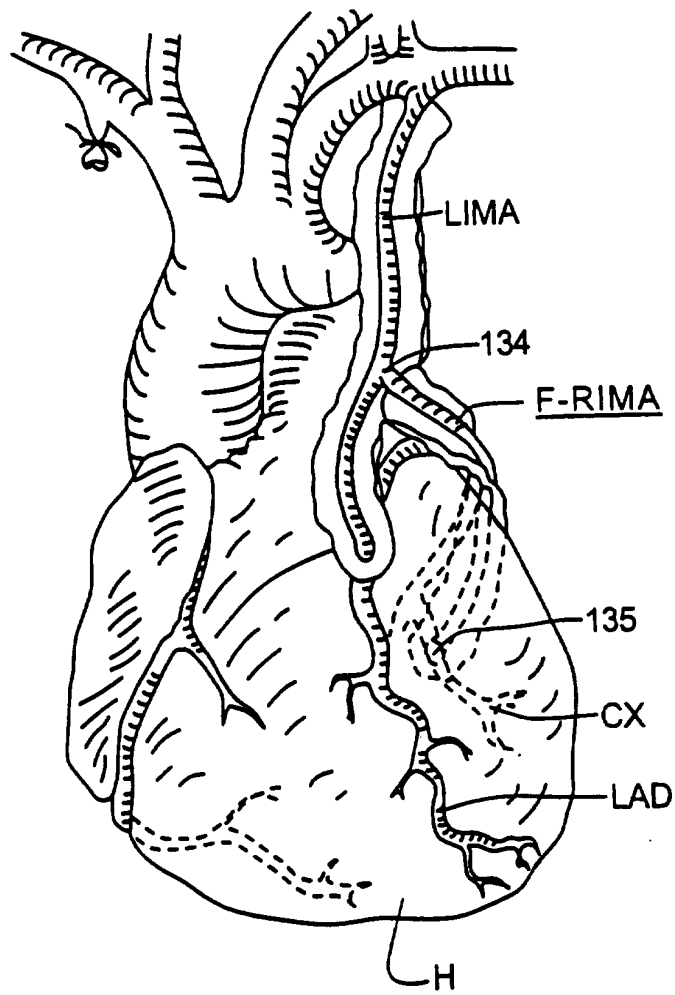


FIG.21

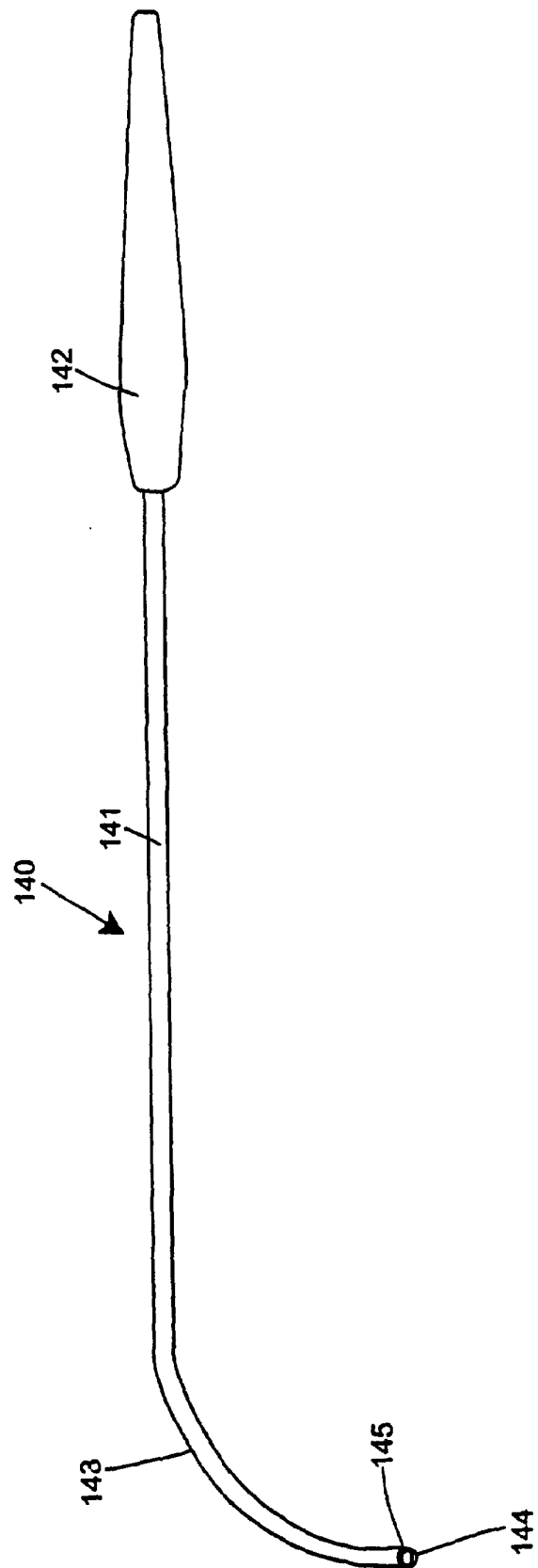


FIG. 22

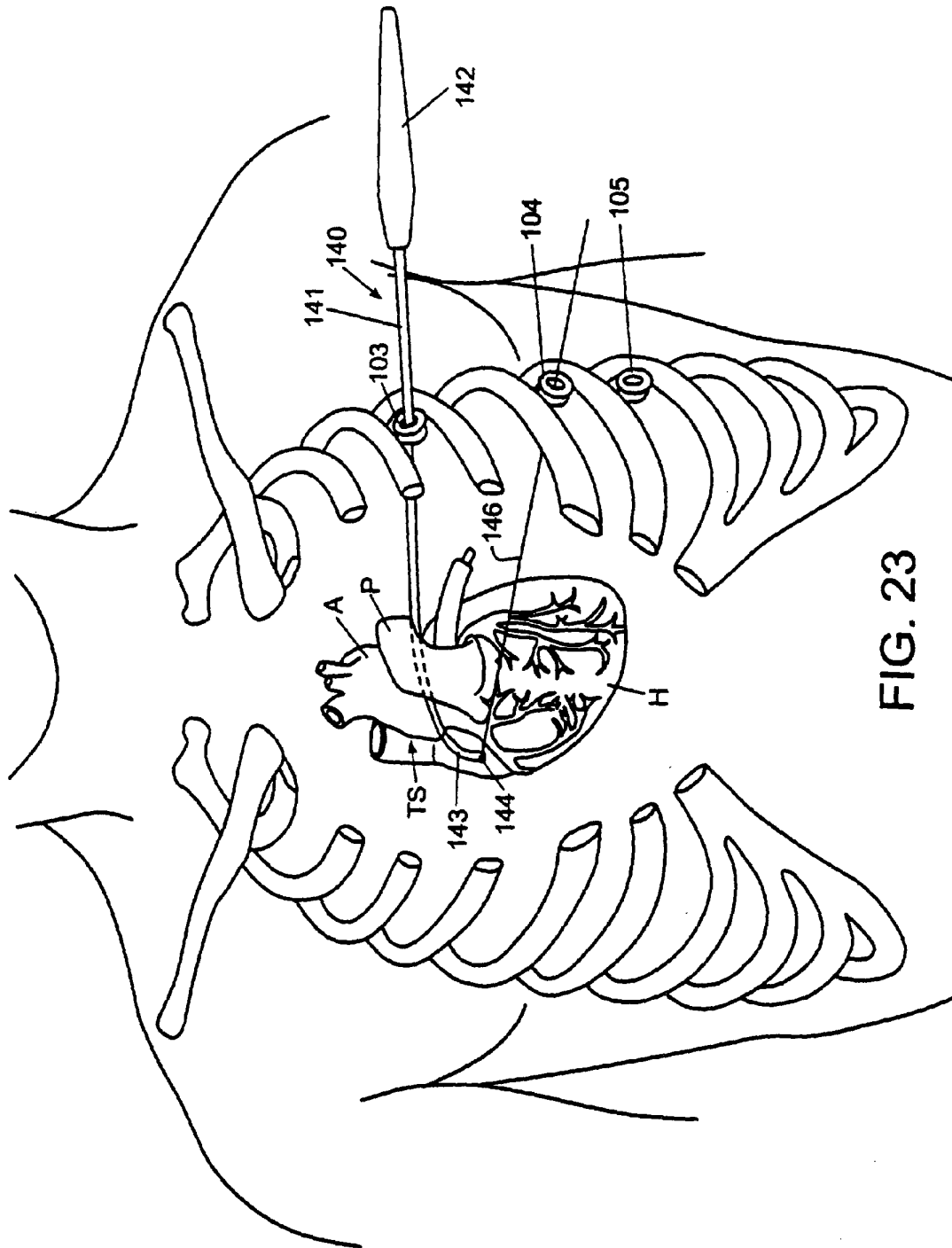


FIG. 23

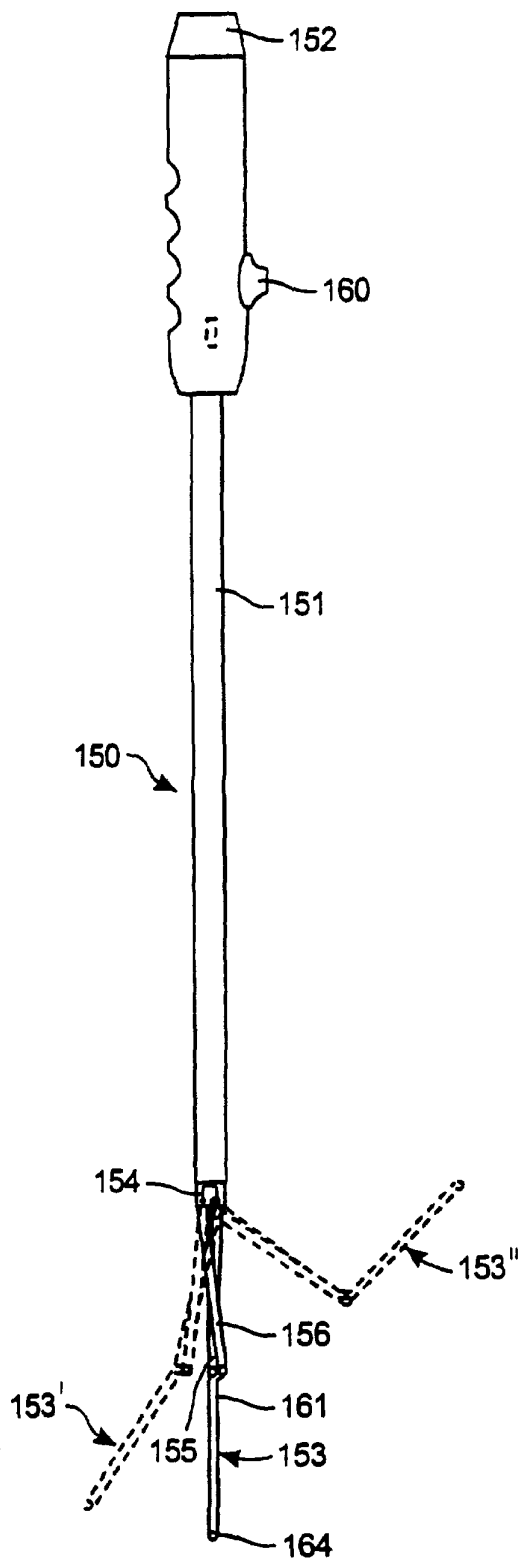


FIG. 24

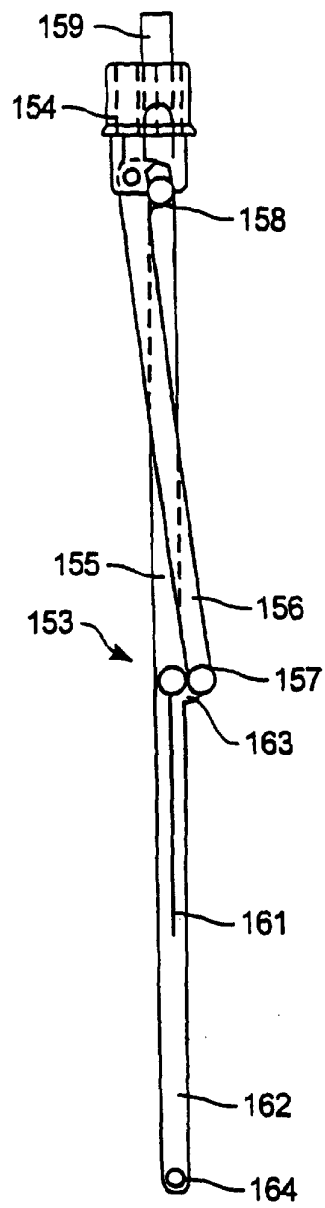


FIG. 25

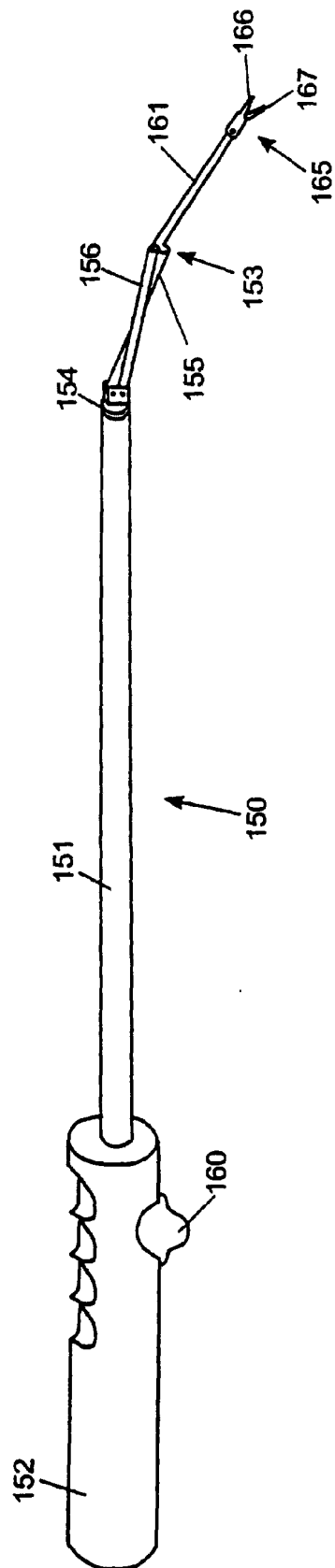


FIG. 26

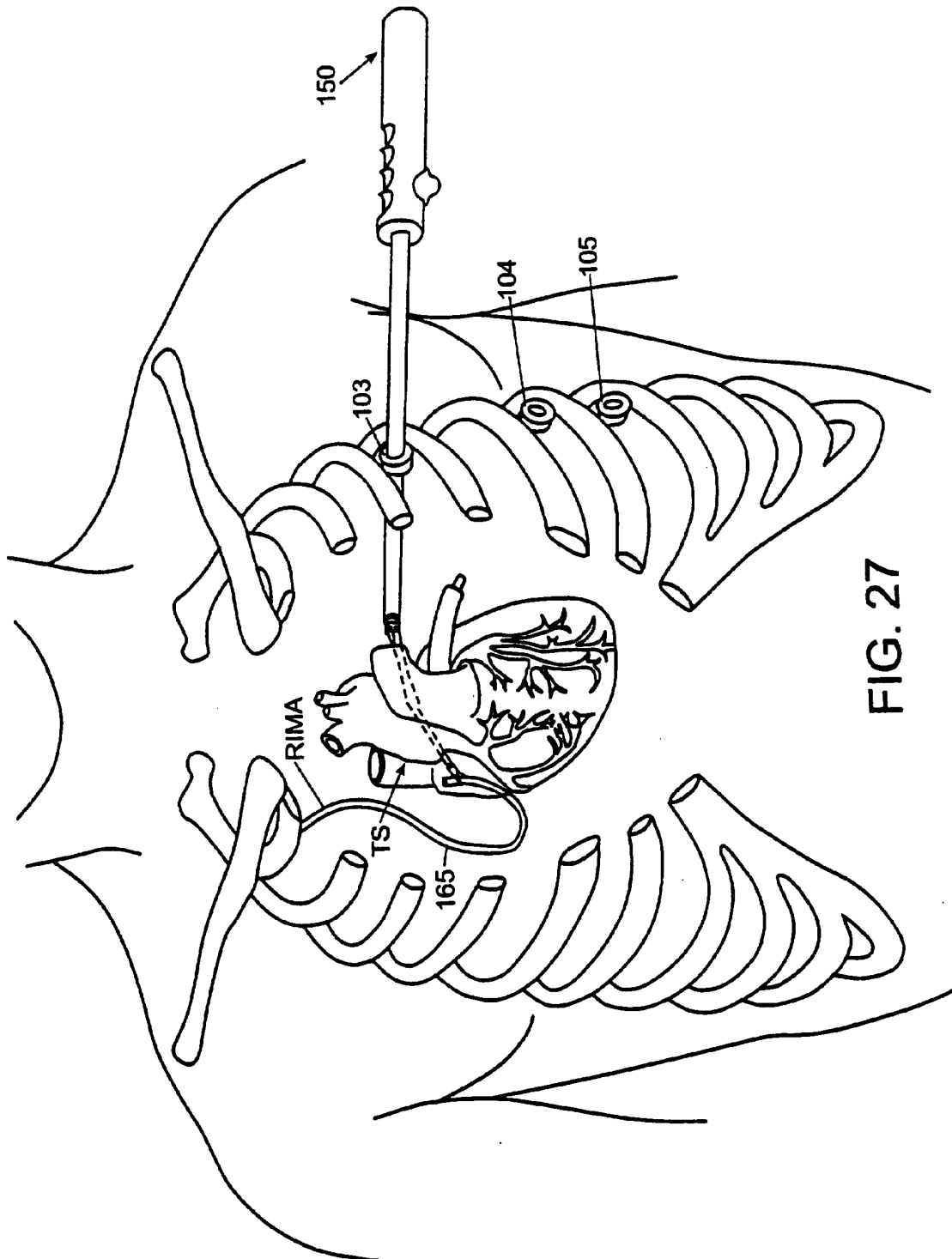


FIG. 27

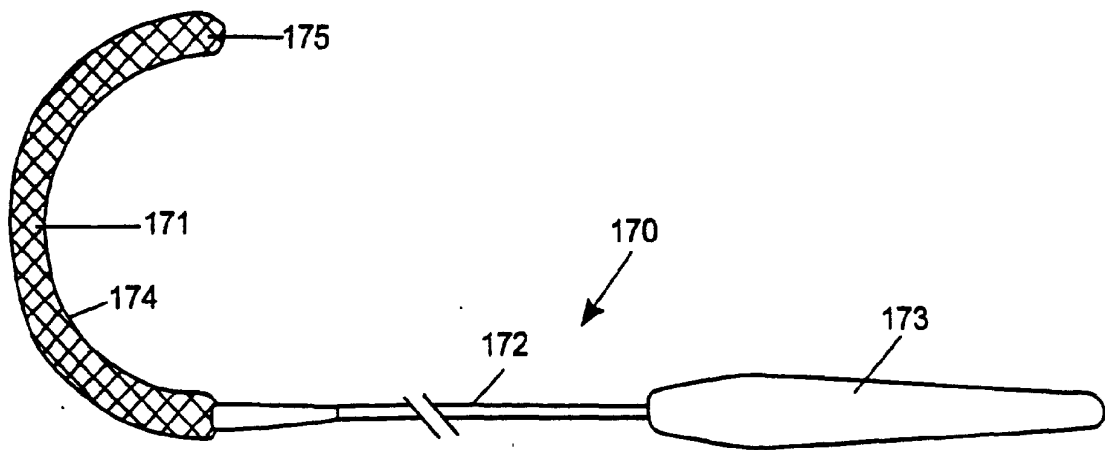


FIG. 28

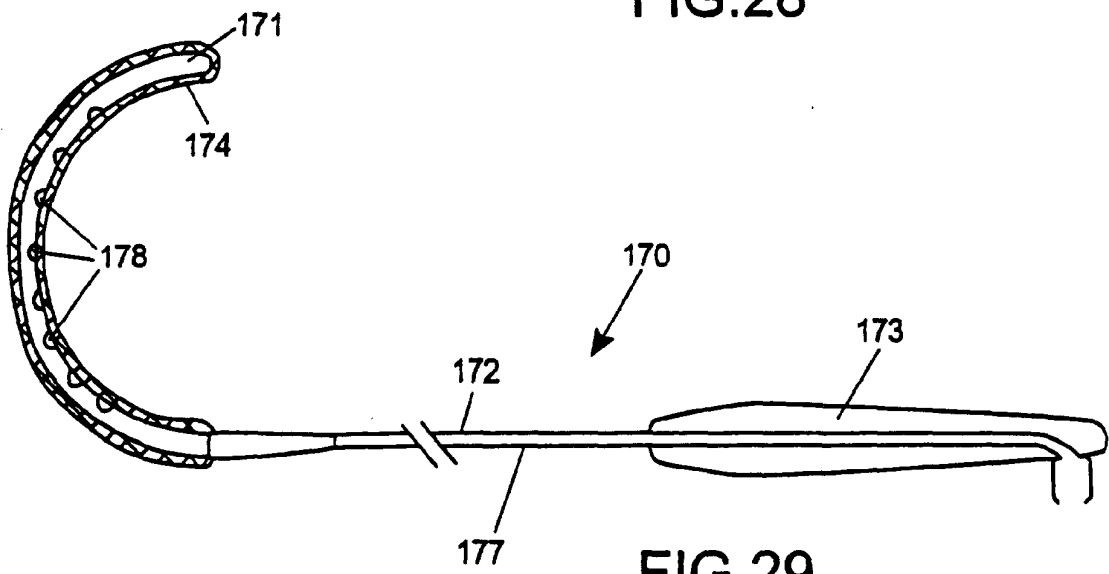


FIG. 29

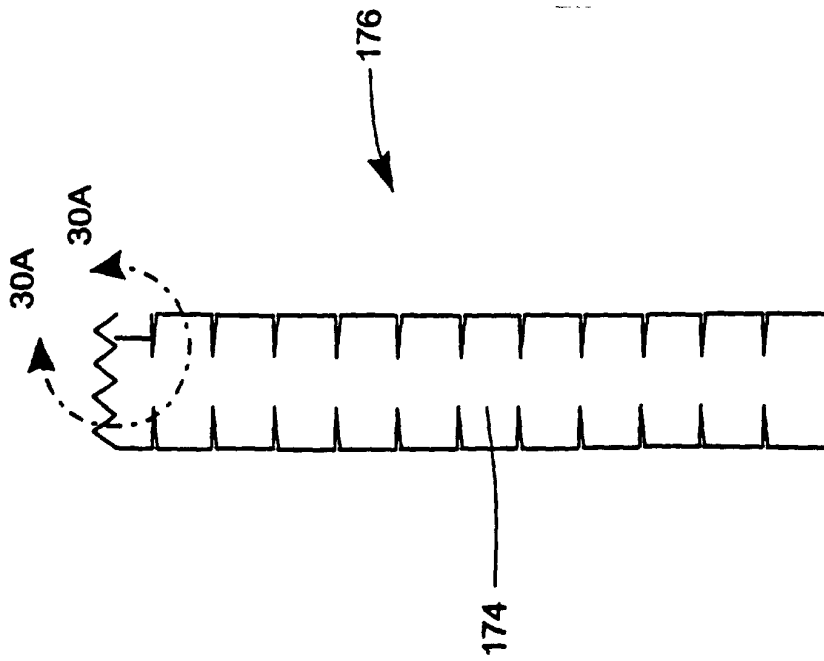


FIG. 30A

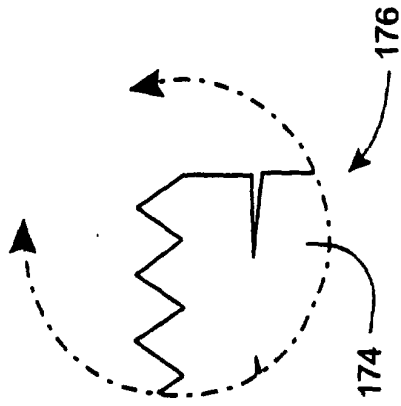


FIG. 30B

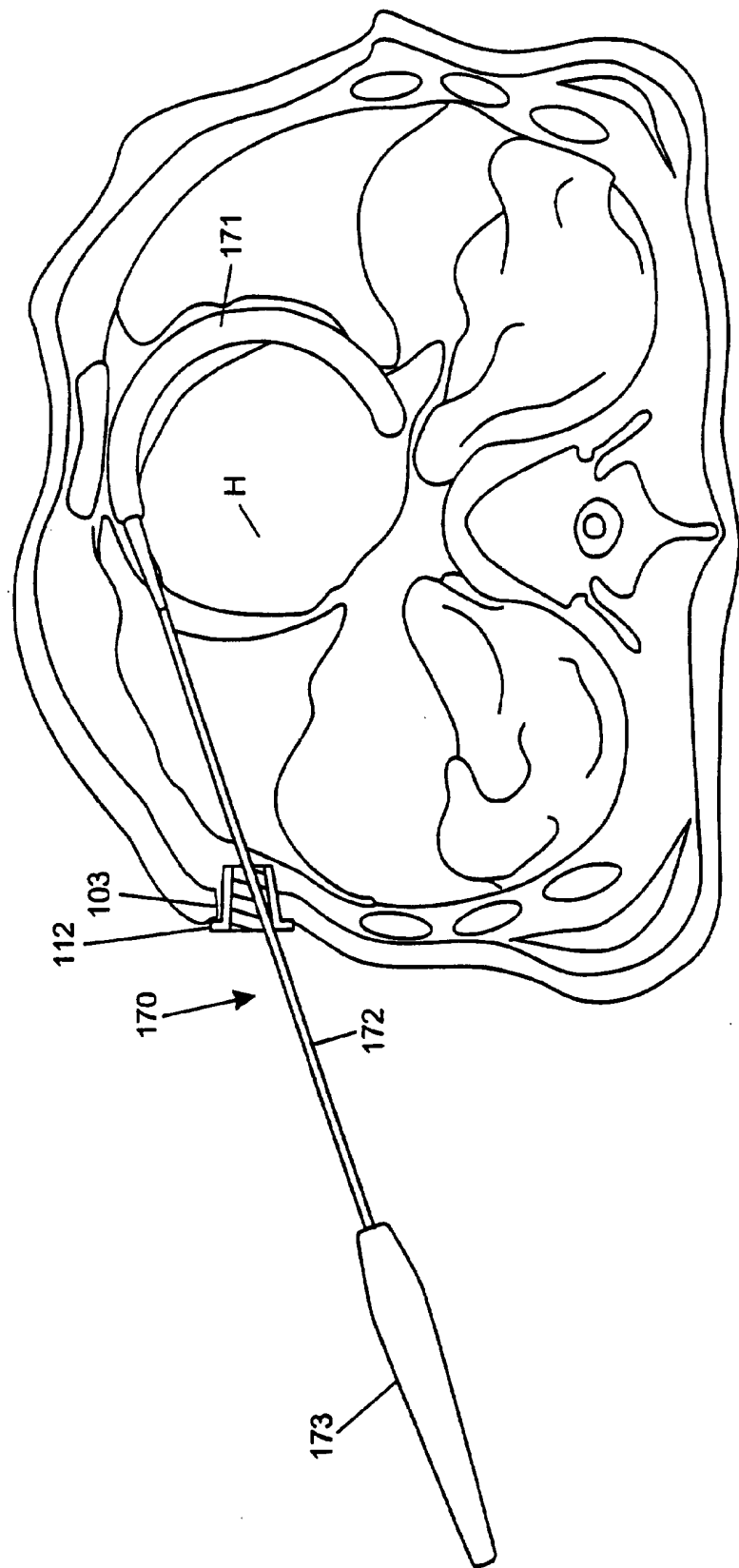
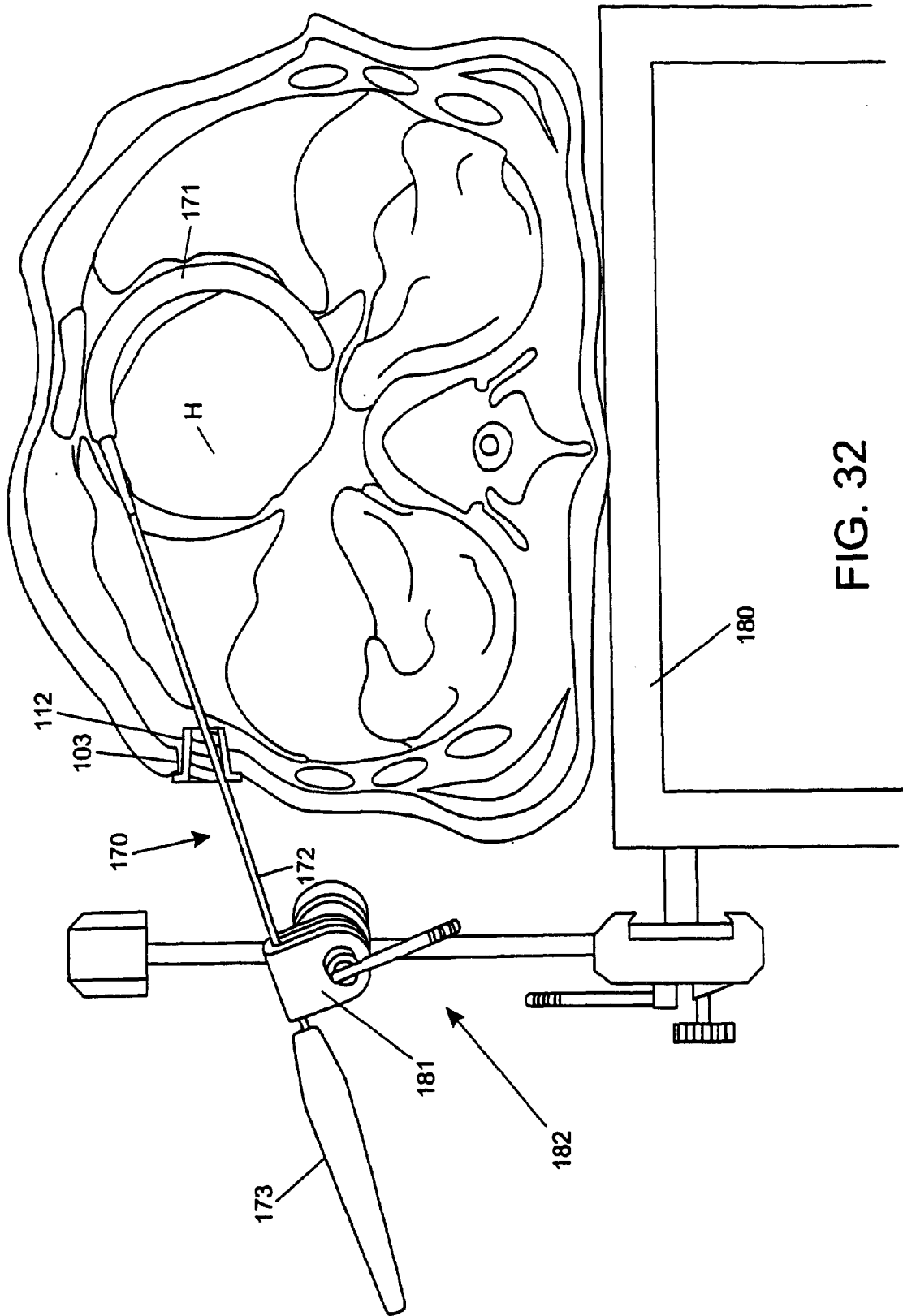
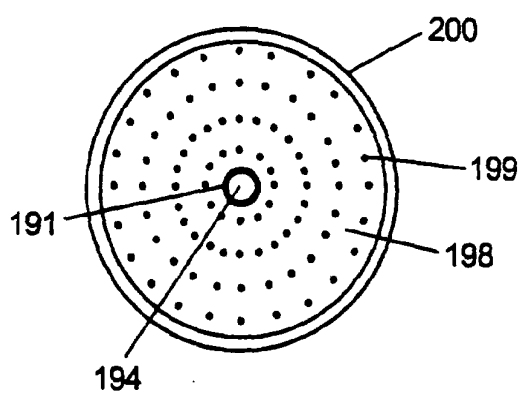
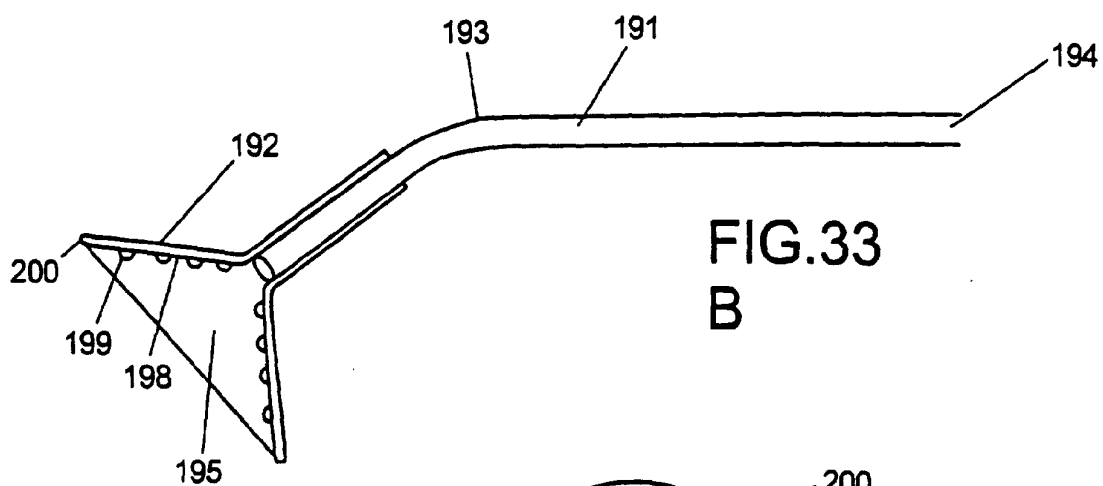
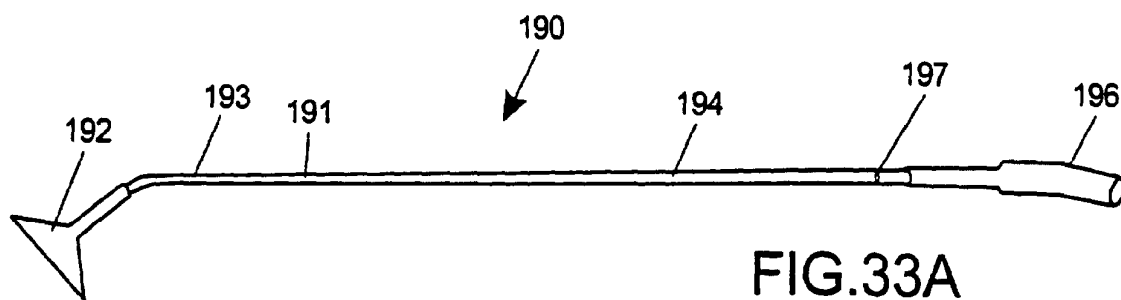


FIG. 31





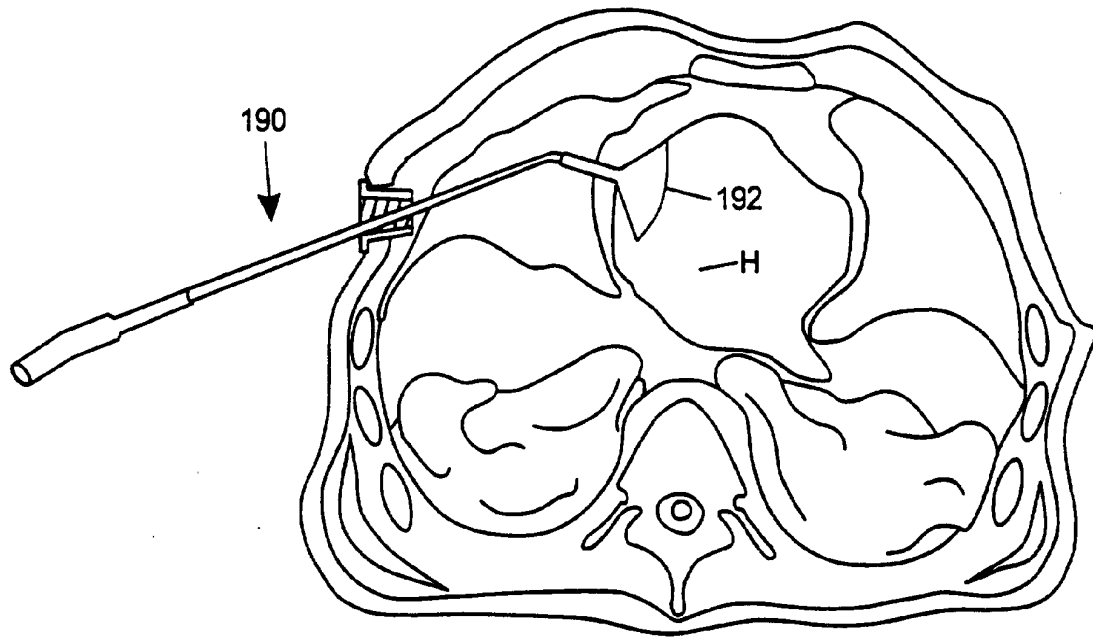


FIG. 34

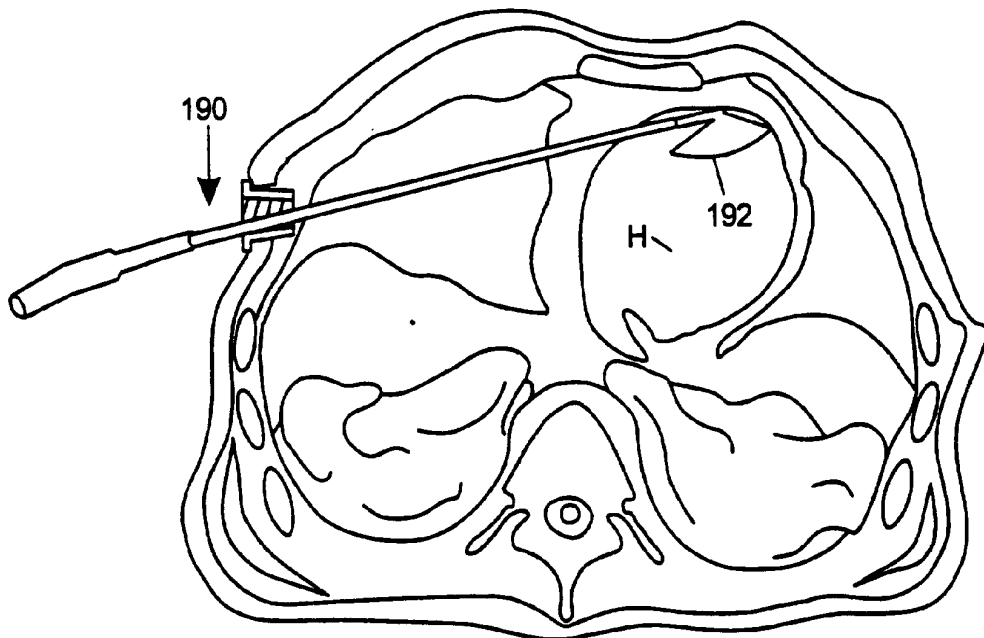
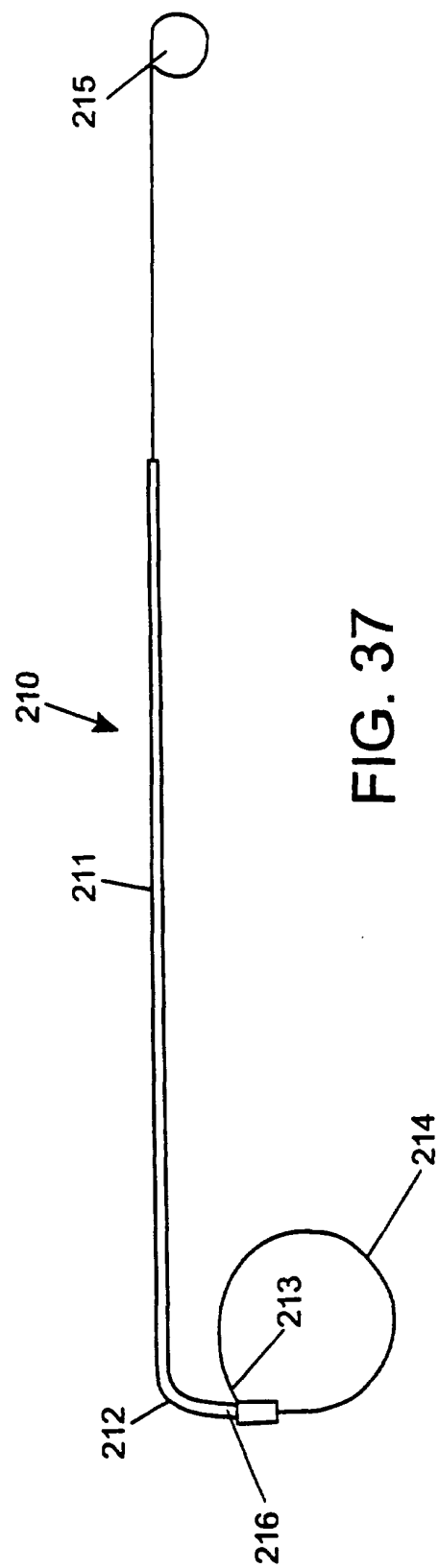
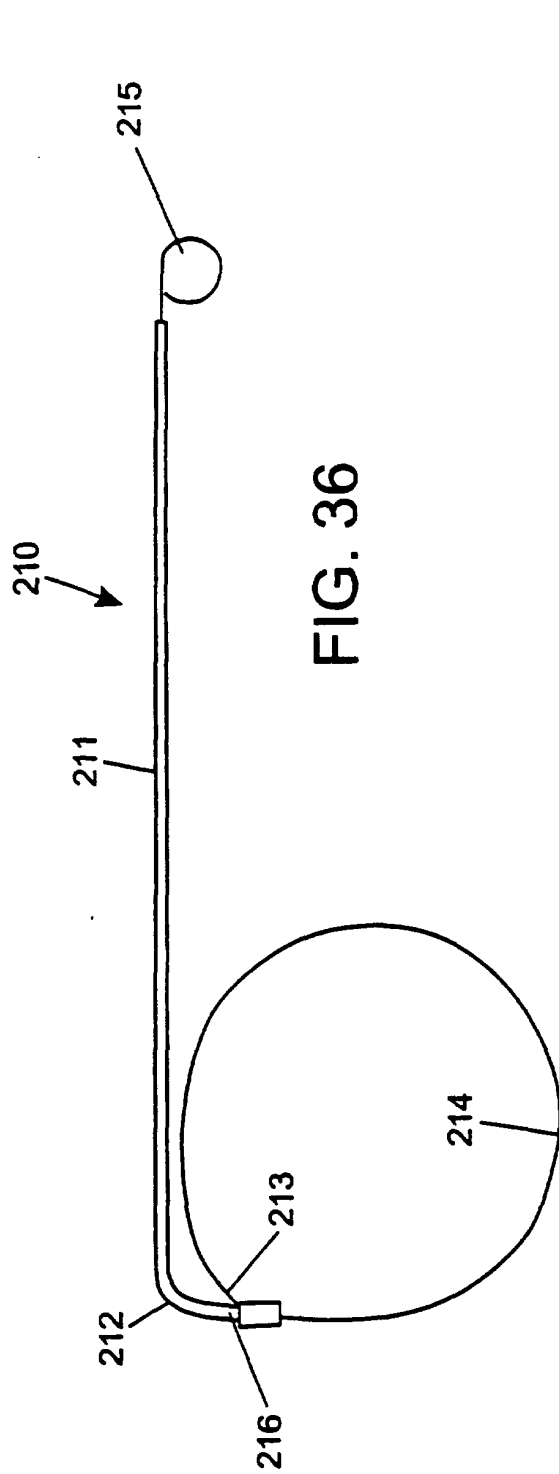


FIG. 35



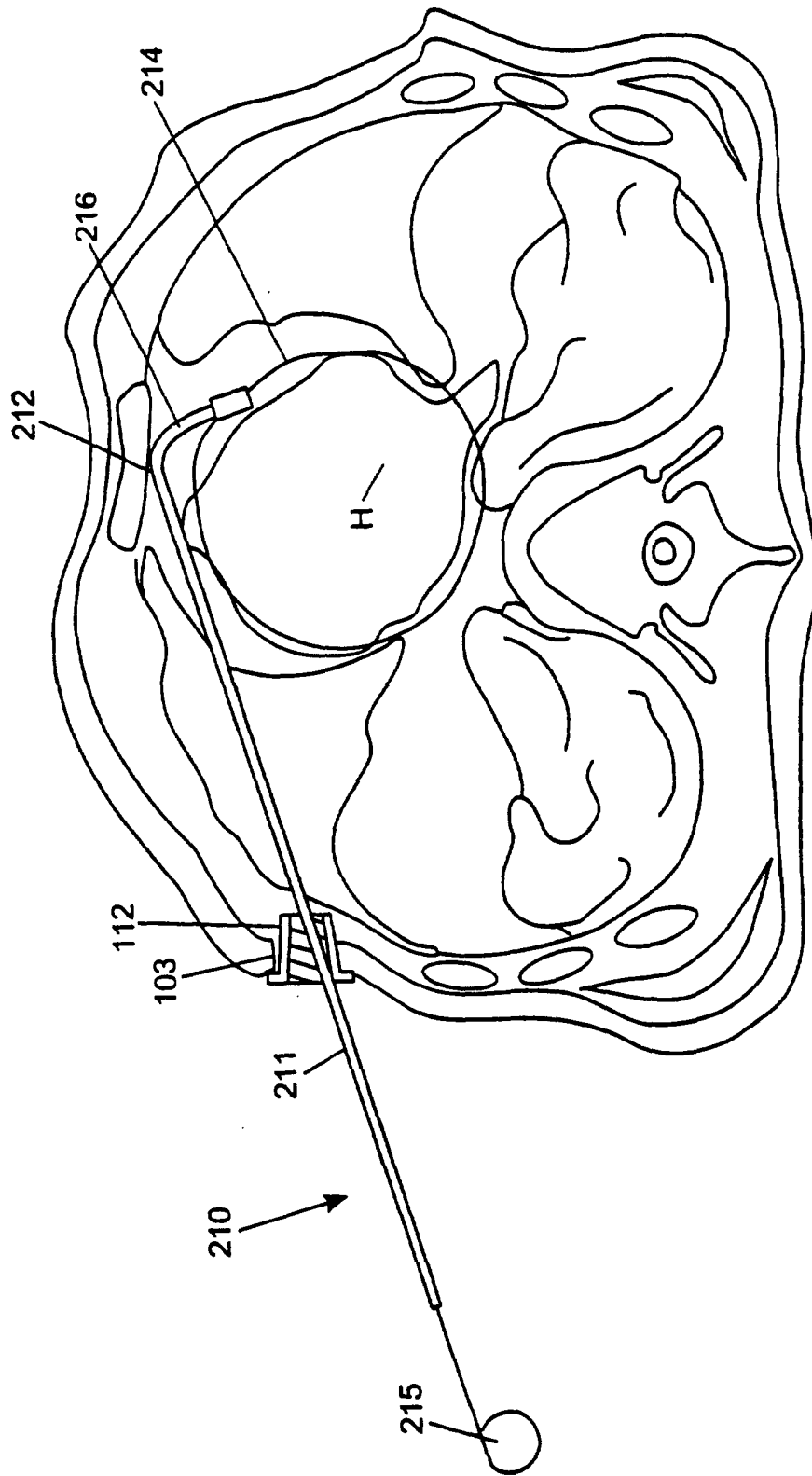


FIG. 38

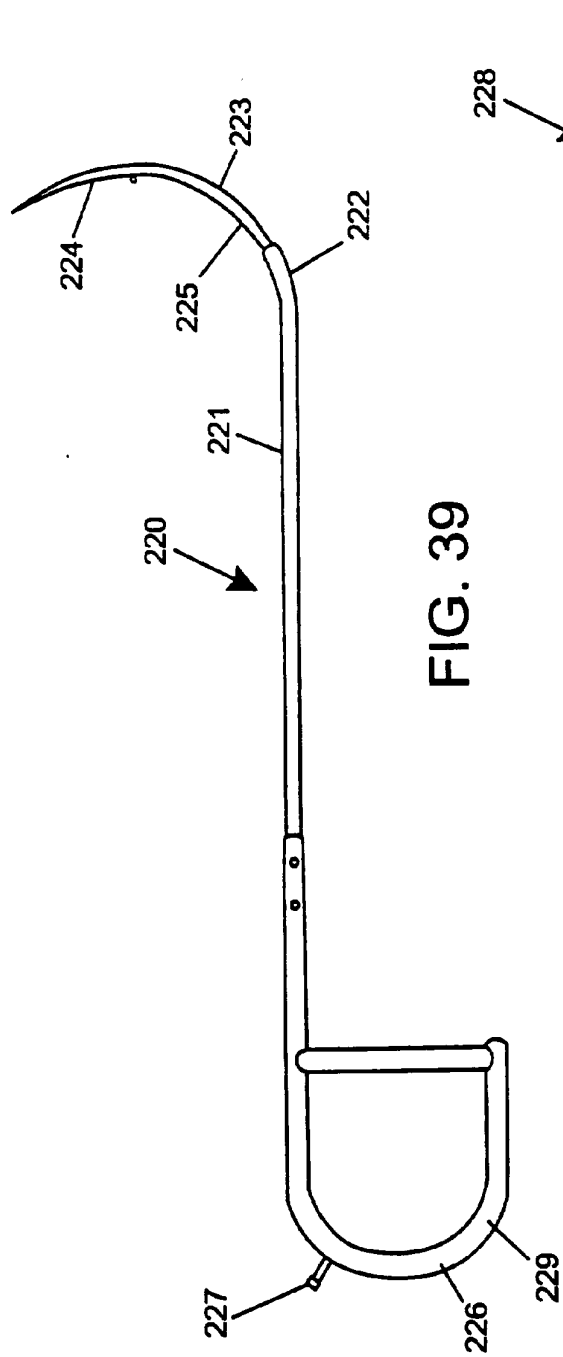


FIG. 39

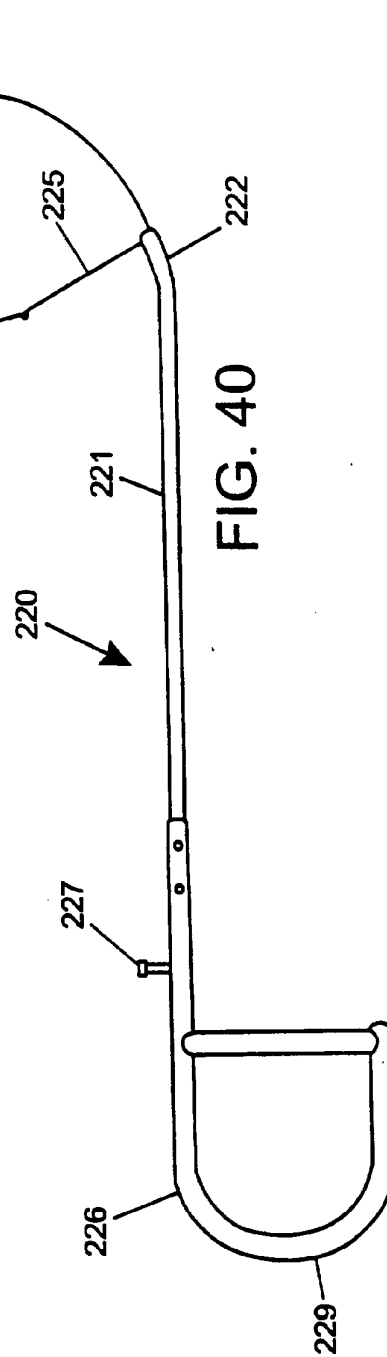


FIG. 40

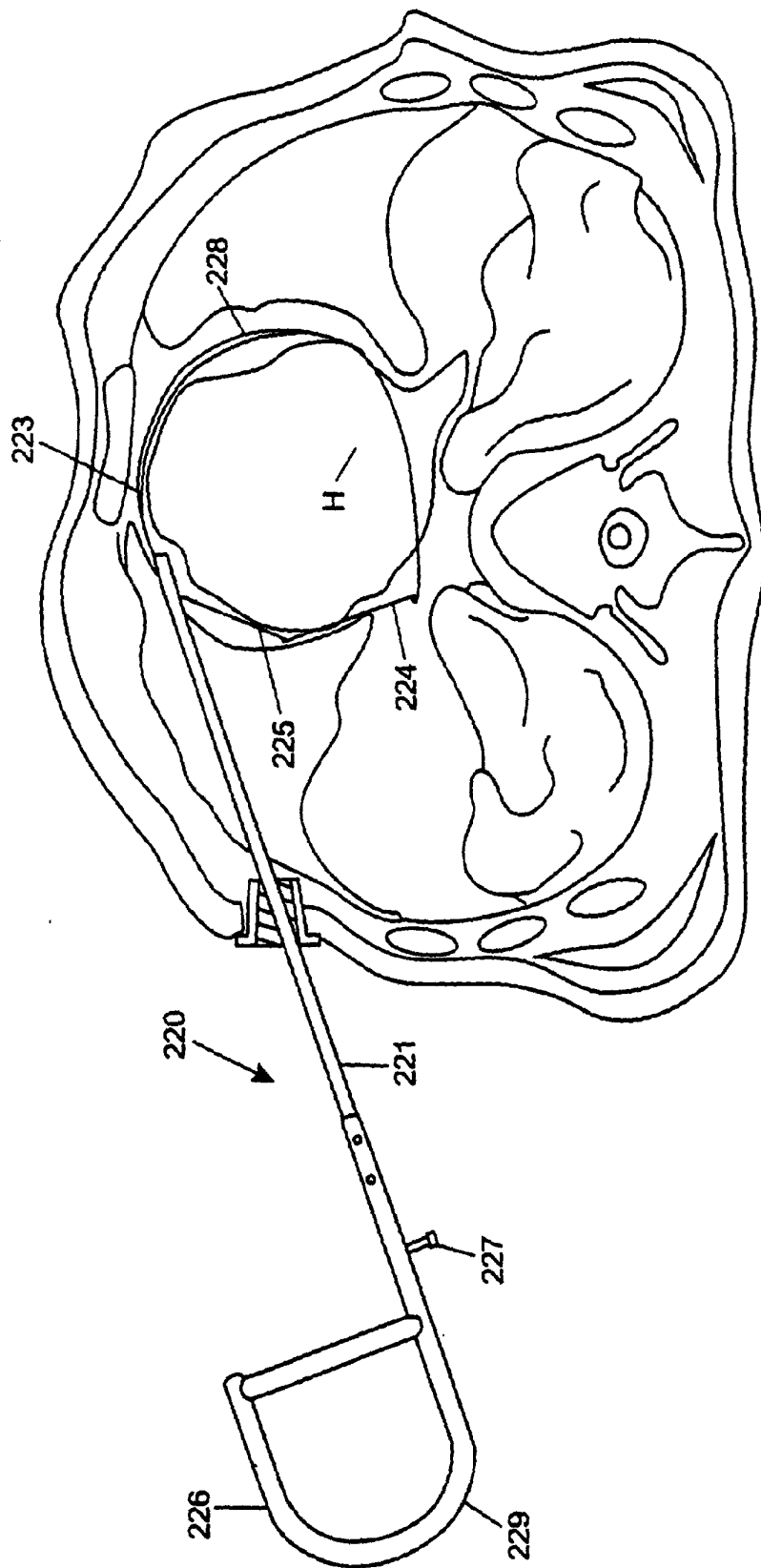
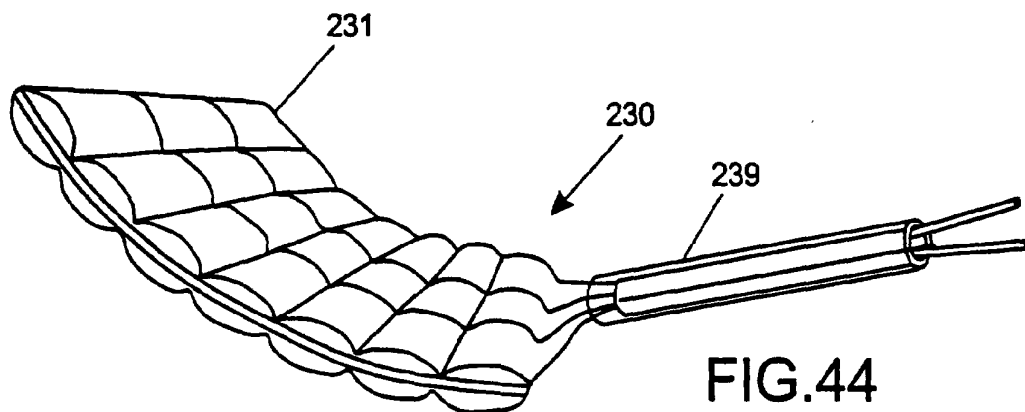
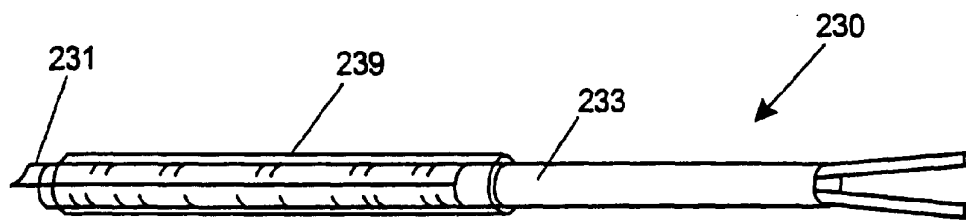
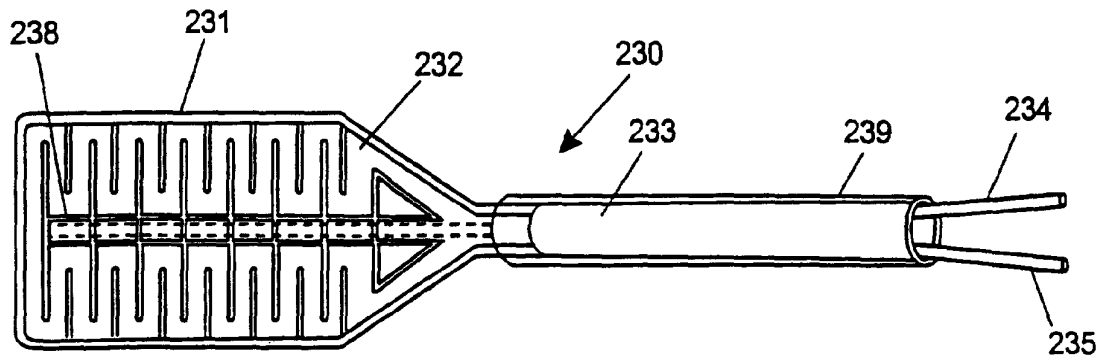


FIG. 41



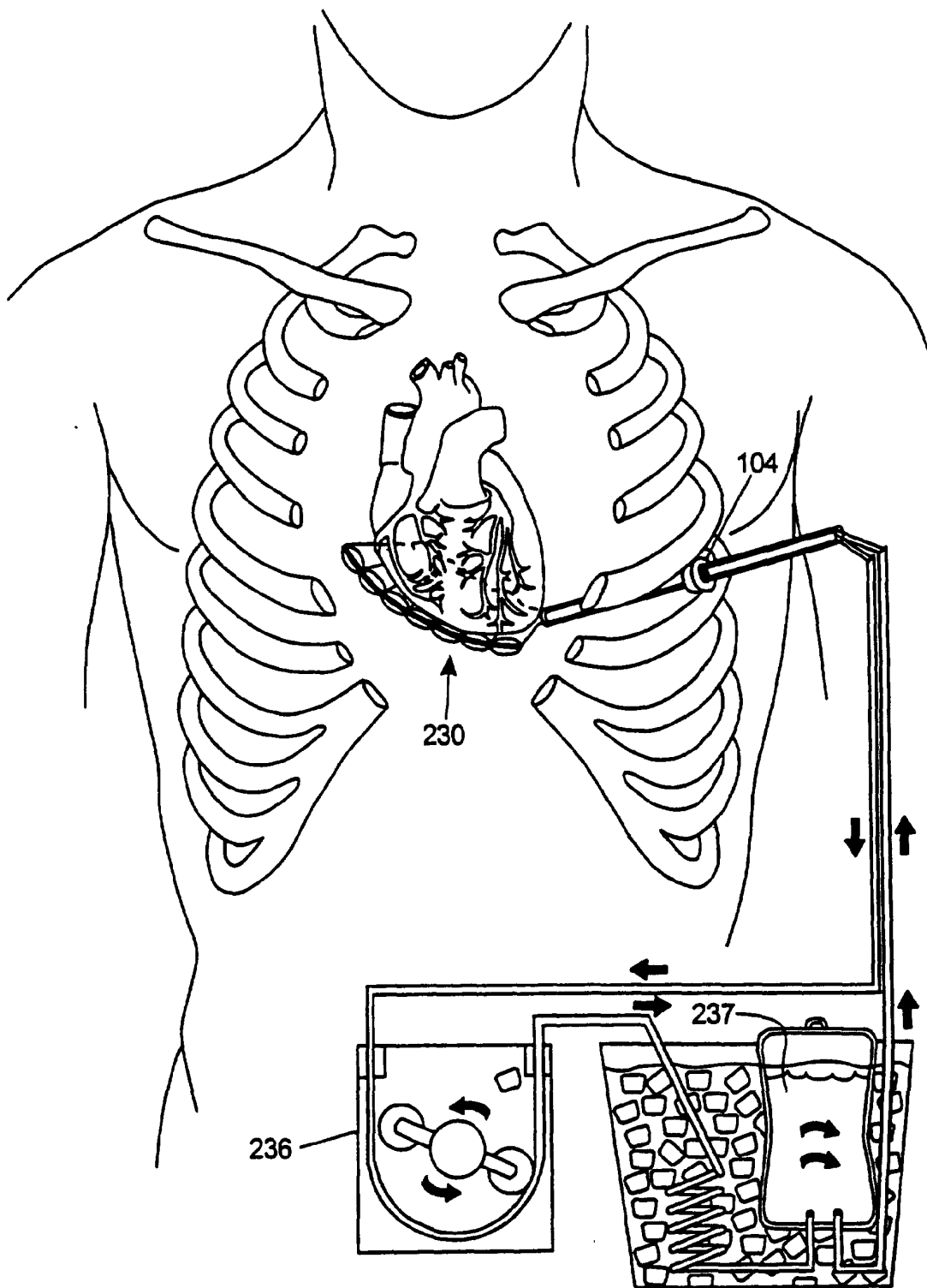


FIG.45

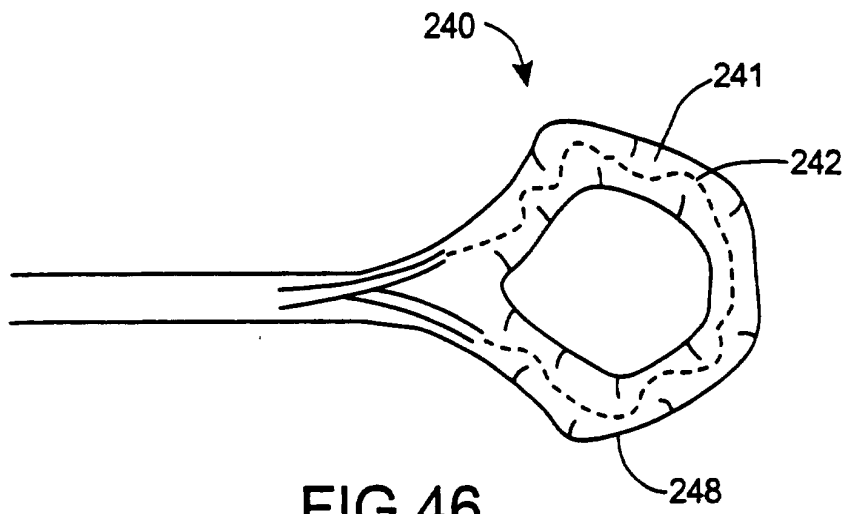


FIG. 46

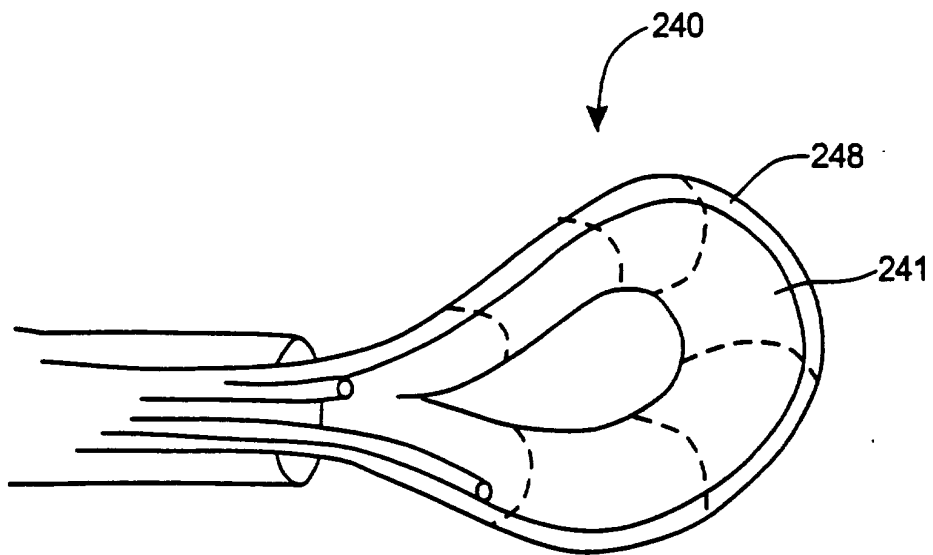


FIG. 47

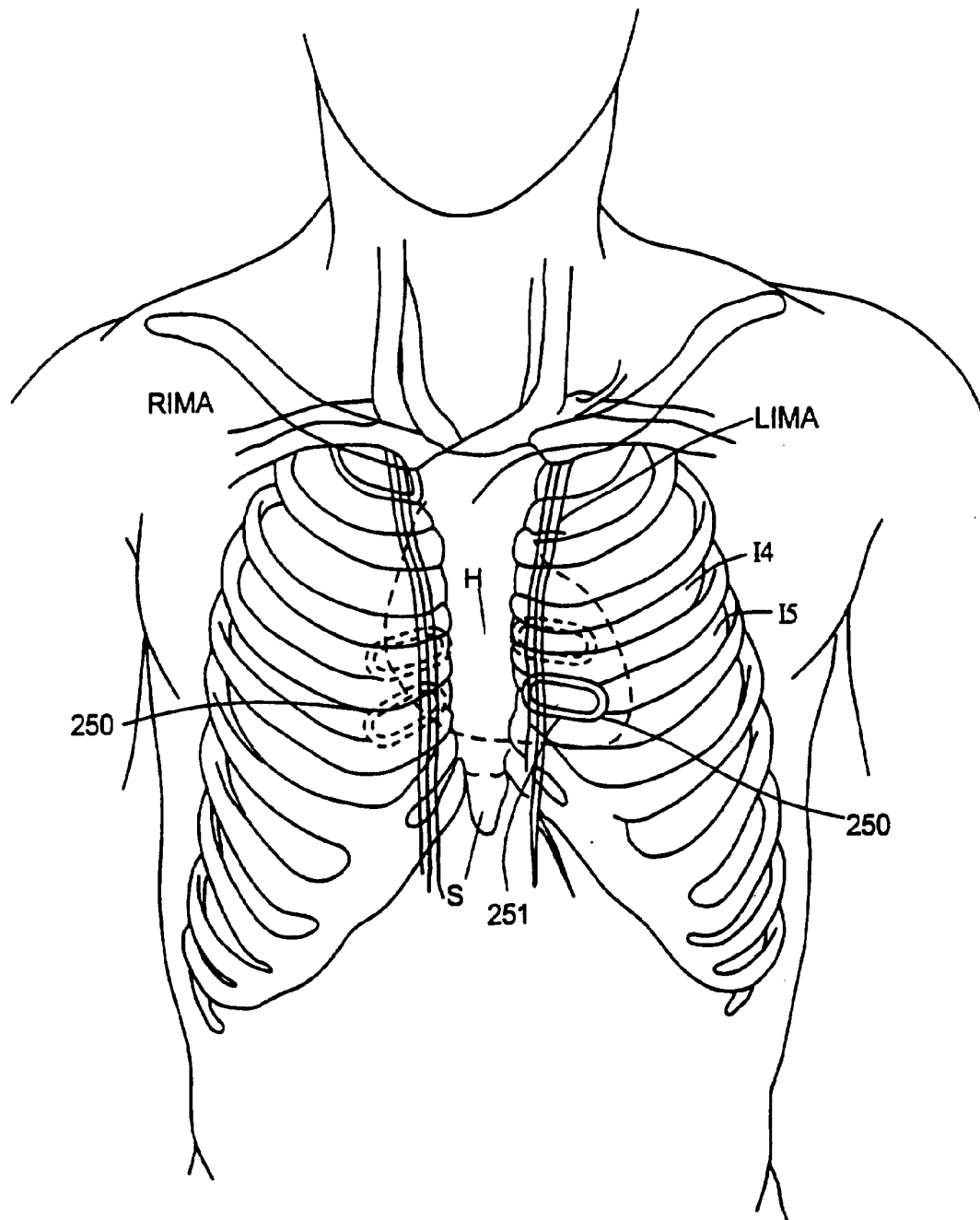


FIG. 48

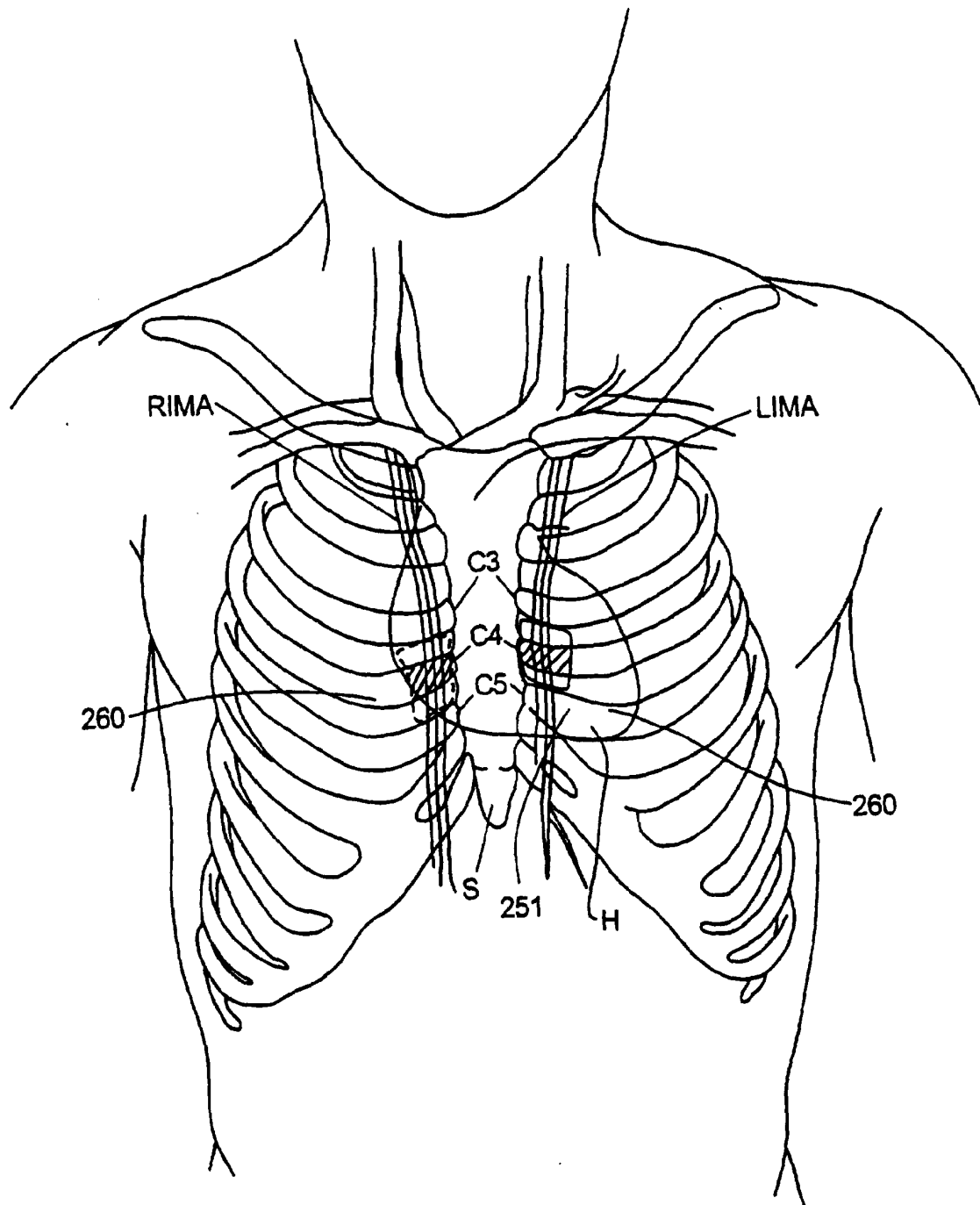
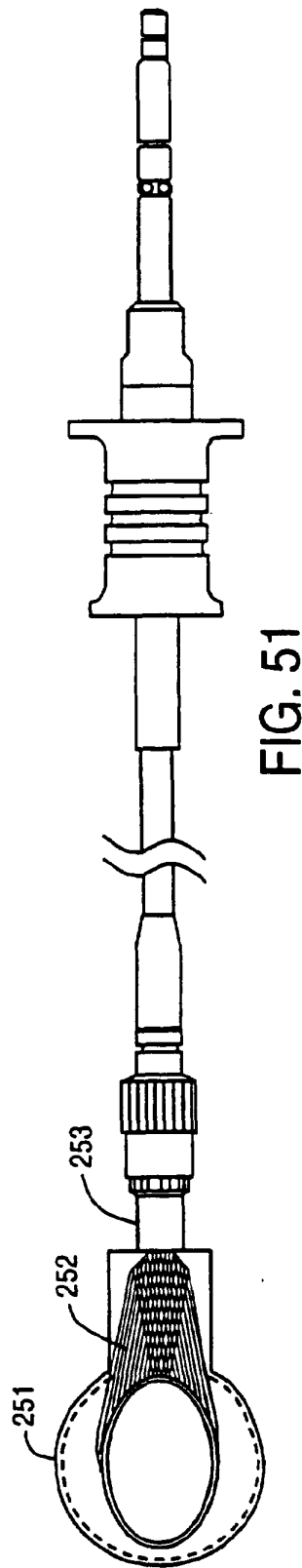
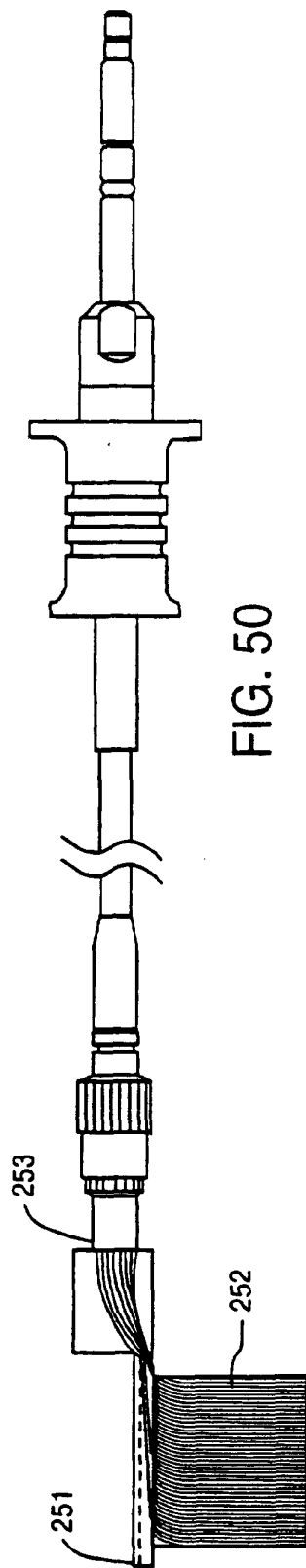


FIG.49





European Patent
Office

PARTIAL EUROPEAN SEARCH REPORT

Application Number

which under Rule 45 of the European Patent Convention shall be considered, for the purposes of subsequent proceedings, as the European search report

EP 01 30 6663

DOCUMENTS CONSIDERED TO BE RELEVANT			
Category	Citation of document with indication, where appropriate, of relevant passages	Relevant to claim	CLASSIFICATION OF THE APPLICATION (Int.Cl.7)
D, A	US 5 799 661 A (BOYD STEPHEN W ET AL) 1 September 1998 (1998-09-01) * the whole document * -----		A61B17/28 A61B17/02 A61B19/00
			TECHNICAL FIELDS SEARCHED (Int.Cl.7)
			A61B
INCOMPLETE SEARCH			
<p>The Search Division considers that the present application, or one or more of its claims, does/do not comply with the EPC to such an extent that a meaningful search into the state of the art cannot be carried out, or can only be carried out partially, for these claims.</p> <p>Claims searched completely :</p> <p>Claims searched incompletely :</p> <p>1-6</p> <p>Claims not searched :</p> <p>Reason for the limitation of the search:</p> <p>Article 52 (4) EPC - Method for treatment of the human or animal body by surgery. The application was only searched with respect to the apparatus used in the method of claims 1-6.</p>			
Place of search		Date of completion of the search	Examiner
BERLIN		13 November 2001	Hansen, S
<p>CATEGORY OF CITED DOCUMENTS</p> <p>X : particularly relevant if taken alone Y : particularly relevant if combined with another document of the same category A : technological background O : non-written disclosure P : intermediate document</p> <p>T : theory or principle underlying the invention E : earlier patent document, but published on, or after the filing date D : document cited in the application L : document cited for other reasons & : member of the same patent family, corresponding document</p>			

EPC FORM 1503 03.82 (P04007)

**ANNEX TO THE EUROPEAN SEARCH REPORT
ON EUROPEAN PATENT APPLICATION NO.**

EP 01 30 6663

This annex lists the patent family members relating to the patent documents cited in the above-mentioned European search report. The members are as contained in the European Patent Office EDP file on
The European Patent Office is in no way liable for these particulars which are merely given for the purpose of information.

13-11-2001

Patent document cited in search report	Publication date	Patent family member(s)	Publication date
US 5799661 A	01-09-1998	US 5735290 A	07-04-1998
		US 5452733 A	26-09-1995
		AU 5962196 A	30-12-1996
		CA 2222326 A1	19-12-1996
		EP 0837712 A1	29-04-1998
		WO 9640354 A1	19-12-1996
		US 6010531 A	04-01-2000
		US 5766151 A	16-06-1998
		US 6029671 A	29-02-2000
		US 6027476 A	22-02-2000
		AU 688303 B2	12-03-1998
		AU 6024594 A	14-09-1994
		CA 2154354 A1	01-09-1994
		EP 0684781 A1	06-12-1995
		JP 8511694 T	10-12-1996
		WO 9418881 A1	01-09-1994
		US 6283127 B1	04-09-2001
		US 5571215 A	05-11-1996
		US 5425705 A	20-06-1995
		US 5569274 A	29-10-1996
		US 5613937 A	25-03-1997
		US 6311693 B1	06-11-2001
		US 5536251 A	16-07-1996
		US 5797960 A	25-08-1998
		US 5713951 A	03-02-1998
		US 5728151 A	17-03-1998
		US 5718725 A	17-02-1998
		US 5682906 A	04-11-1997
		US 5961481 A	05-10-1999
		US 6079414 A	27-06-2000
		US 5814097 A	29-09-1998
		US 5855614 A	05-01-1999
		US 5823956 A	20-10-1998
		US 5829447 A	03-11-1998
		US 6125852 A	03-10-2000
		US 5855210 A	05-01-1999
		US 5814016 A	29-09-1998
		US 5980455 A	09-11-1999
		US 6161543 A	19-12-2000
		US 5972030 A	26-10-1999
		US 5924424 A	20-07-1999

EPO FORM P0459

For more details about this annex : see Official Journal of the European Patent Office, No. 12/82

专利名称(译)	用于端口进入多血管冠状动脉搭桥手术装置和方法		
公开(公告)号	EP1177772A1	公开(公告)日	2002-02-06
申请号	EP2001306663	申请日	2001-08-03
[标]申请(专利权)人(译)	HEARTPORT		
申请(专利权)人(译)	HEARTPORT INC.		
当前申请(专利权)人(译)	HEARTPORT INC.		
[标]发明人	BOYD STEPHEN W RAPACKI ALAN R VASKA MATTHIAS DONLON BRIAN S PETERS WILLIAM S		
发明人	BOYD, STEPHEN W. RAPACKI, ALAN R. VASKA, MATTHIAS DONLON, BRIAN S. PETERS, WILLIAM S.		
IPC分类号	A61B17/00 A61B17/02 A61B17/04 A61B17/11 A61B17/28 A61B17/30 A61B17/34 A61B18/14 A61B19/00 A61F2/24 A61F2/958 A61F7/00 A61F7/10 A61M1/00		
CPC分类号	A61B17/29 A61B17/00234 A61B17/0218 A61B17/2909 A61B18/1492 A61B90/36 A61B2017/00243 A61B2017/00247 A61B2017/0237 A61B2017/0243 A61B2017/047 A61B2017/0472 A61B2017/2901 A61B2017/2905 A61B2017/2912 A61B2017/2927 A61B2017/2932 A61B2017/306 A61B2017/308 A61B2017/3405 A61B2017/3492 A61B2018/00214 A61B2018/00232 A61B2018/00261 A61B2018/00291 A61B2018/00363 A61B2018/00392 A61B2018/00577 A61B2090/306 A61F2/2427 A61F7/10 A61F2007/0001 A61F2007/0054 A61F2007/101 A61M25/1011 A61M39/0247 A61M2025/028 A61M2039/0279 A61M2205/3344 A61M2205/3355 A61M2205/366		
代理机构(译)	FISHER , ADRIAN JOHN		
优先权	09/634608 2000-08-05 US		
外部链接	Espacenet		

摘要(译)

公开了用于在多支冠状动脉疾病中执行端口进入或闭胸冠状动脉旁路 (CABG) 手术的手术方法和器械。与需要正中胸骨切开术或其他大体胸廓切开术以暴露患者心脏的标准开胸CABG手术相比, 通过小切口或通过患者肋骨之间的肋间隙进入的入口进行术后CABG手术, 导致大大减轻了患者的疼痛和发病率。通过胸腔镜或腹腔镜移除技术准备用于移植的原位动脉旁路移植, 例如内乳动脉和/或右胃网膜动脉。自由移植, 例如隐静脉移植或自由动脉移植, 可用于增强原位动脉移植。通过插入肋间入口的心脏显微镜直接观察, 移植血管与冠状动脉吻合。提供回缩器械以操纵患者的闭合胸腔内的心脏以暴露每个冠状动脉以进行可视化和吻合。公开了一种用于重新布置移植管的隧道器和铰接式隧道式抓紧器, 以及用于操纵心脏的指状牵开器, 吸盘牵开器, 圈套器牵开器和环形牵开器。还公开了一种端口接入局部冷却装置, 用于在端口接入CABG手术期间改善心肌保护。还描述了使用前纵隔切开术的替代手术方法。

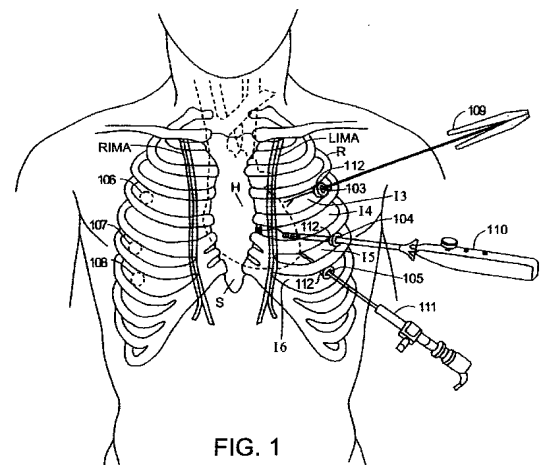


FIG. 1