

(19) World Intellectual Property
Organization
International Bureau



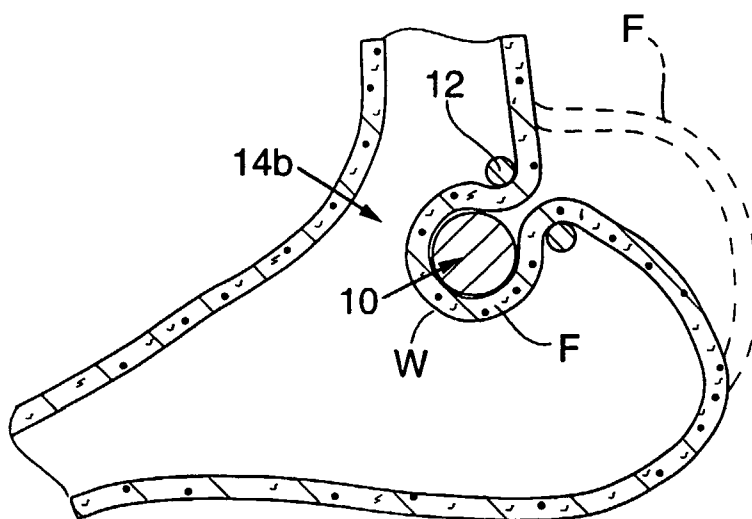
(43) International Publication Date
10 November 2005 (10.11.2005)

PCT

(10) International Publication Number
WO 2005/105003 A1

- (51) International Patent Classification⁷: **A61F 5/00**
- (21) International Application Number:
PCT/US2005/014372
- (22) International Filing Date: 26 April 2005 (26.04.2005)
- (25) Filing Language: English
- (26) Publication Language: English
- (30) Priority Data:
60/565,378 26 April 2004 (26.04.2004) US
- (74) Agents: **FROST, Kathleen, A.** et al.; Stallman & Pollock L.L.P., 353 Sacramento Street, Suite 2200, San Francisco, CA 94111 (US).
- (81) Designated States (*unless otherwise indicated, for every kind of national protection available*): AE, AG, AL, AM, AT, AU, AZ, BA, BB, BG, BR, BW, BY, BZ, CA, CH, CN, CO, CR, CU, CZ, DE, DK, DM, DZ, EC, EE, EG, ES, FI, GB, GD, GE, GH, GM, HR, HU, ID, IL, IN, IS, JP, KE, KG, KM, KP, KR, KZ, LC, LK, LR, LS, LT, LU, LV, MA, MD, MG, MK, MN, MW, MX, MZ, NA, NI, NO, NZ, OM, PG, PH, PL, PT, RO, RU, SC, SD, SE, SG, SK, SL, SM, SY, TJ, TM, TN, TR, TT, TZ, UA, UG, US, UZ, VC, VN, YU, ZA, ZM, ZW.
- (84) Designated States (*unless otherwise indicated, for every kind of regional protection available*): ARIPO (BW, GH, GM, KE, LS, MW, MZ, NA, SD, SL, SZ, TZ, UG, ZM, ZW), Eurasian (AM, AZ, BY, KG, KZ, MD, RU, TJ, TM), European (AT, BE, BG, CH, CY, CZ, DE, DK, EE, ES, FI, FR, GB, GR, HU, IE, IS, IT, LT, LU, MC, NL, PL, PT, RO, SE, SI, SK, TR), OAPI (BF, BJ, CF, CG, CI, CM, GA, GN, GQ, GW, ML, MR, NE, SN, TD, TG).
- (71) Applicant (*for all designated States except US*): **SYNECOR, LLC** [US/US]; 3908 Patriot Drive, Suite 170, Durham, NC 27703 (US).
- (72) Inventors; and
- (75) Inventors/Applicants (*for US only*): **BALBIERZ, Daniel, J.** [US/US]; 973 Cambridge Road, Redwood City, CA 94061 (US). **ATHAS, William, L.** [US/US]; 3501 King Charles Road, Durham, NC 27707 (US). **LUNS福德, John** [US/US]; 123 Leslie Drive, San Carlos, CA 94070 (US). **EUBANKS, William, S.** [US/US]; 3010 Quincemoor Road, Durham, NC 27712 (US). **VAN BLADEL, Kevin**; 1425 Murdell Lane, Livermore, CA 94550 (US).
- Published:**
— *with international search report*
- For two-letter codes and other abbreviations, refer to the "Guidance Notes on Codes and Abbreviations" appearing at the beginning of each regular issue of the PCT Gazette.*

(54) Title: RESTRICTIVE AND/OR OBSTRUCTIVE IMPLANT FOR INDUCING WEIGHT LOSS



(57) Abstract: Described herein is a system for inducing weight loss in a patient, which comprises an extragastric space occupier positionable in contact with an exterior surface of a stomach wall to form an inward protrusion of wall into the stomach, and a retention device positionable in contact with the wall to retain the inward protrusion and to thereby capture the extragastric space occupier within the protrusion.

- 1 -

RESTRICTIVE AND/OR OBSTRUCTIVE IMPLANT FOR INDUCING WEIGHT LOSS

5

FIELD OF THE INVENTION

The present invention relates generally to the field of implants for inducing weight loss in patients, and specifically to devices and methods for reducing the effective volume of a patient's stomach and or creating restrictions to slow passage of food into the stomach.

10

BACKGROUND OF THE INVENTION

An anatomical view of a human stomach S and associated features is shown in Fig. 1A. The esophagus E delivers food from the mouth to the proximal portion of the stomach S. The z-line or gastro-esophageal junction Z is the irregularly-shaped border between the thin tissue of the esophagus and the thicker tissue of the stomach wall. The gastro-esophageal junction region G is the region encompassing the distal portion of the esophagus E, the z-line, and the proximal portion of the stomach S.

15

Stomach S includes a fundus F at its proximal end and an antrum A at its distal end. Antrum A feeds into the pylorus P which attaches to the duodenum D, the proximal region of the small intestine. Within the pylorus P is a sphincter that prevents backflow of food from the duodenum D into the stomach. The middle region of the small intestine, positioned distally of the duodenum D, is the jejunum J.

20

Fig. 1B illustrates the tissue layers forming the stomach wall. The outermost layer is the serosal layer or "serosa" S and the innermost layer, lining the stomach interior, is the mucosal layer or "mucosa" MUC. The submucosa SM and the multi-layer muscularis M lie between the mucosa and the serosa.

25

Prior art treatments for obesity range from diet and medication to highly invasive surgical procedures. Some of the more successful surgical procedures are the vertical banded gastroplexy or the proximal gastric pouch with a Roux-en-Y anastomosis. However, known complications are present with each of these procedures. More successful and less invasive options are desired.

30

A less invasive prior art treatment for obesity includes implantation of a gastric balloon delivered into the stomach via the esophagus. The balloon is an obstructive

- 2 -

device – it prevents overeating by occupying volume within the stomach. Although implantation of a gastric balloon is less invasive than other surgical procedures, gastric balloons can migrate down the GI tract, causing obstruction and thus necessitating removal.

5

BRIEF DESCRIPTION OF THE DRAWINGS

Fig. 1A is a schematic illustration of a human stomach and a portion of the small intestine.

Fig. 1B is a cross-sectional perspective view of a portion of a stomach wall,
10 illustrating the layers of tissue forming the wall.

Fig. 2 is a cross-section view of a stomach illustrating positioning of an obstructive implant.

Fig. 3. is a cross-section view of a stomach illustrating positioning of two obstructive implants.

Fig. 4 is a cross-section view of a stomach illustrating positioning of an
15 obstructive implant in the antral region of the stomach.

Fig. 5 is a cross-section view of a stomach illustrating positioning of an obstructive implant in the fundal region of the stomach.

Fig. 6 is a cross-section view of a stomach illustrating alternative positioning of
20 two obstructive implants

Fig. 7 is a cross-section view of a stomach illustrating positioning of an irregularly-shaped obstructive implant.

Fig. 8 is a cross-section view of a stomach illustrating positioning of an elongate obstructive implant.

Fig. 9. is a cross-section view of a stomach illustrating positioning of an
25 obstructive implant having an alternative shape.

Figs. 10 – 12A are perspective views of alternative configurations for obstructive implants. Fig. 12B illustrates the implant of Fig. 12A positioned in the stomach.

Figs. 13A through 13F are a sequence of drawings illustrating endoscopic
30 implantation of an obstructive implant. Fig. 13G is an implantation step that is an alternative to the step shown in Fig. 13F.

Fig. 14 is a cross-section view of a stomach illustrating use of a force-distributing retention band with an obstructive implant.

- 3 -

Fig. 15 is a cross-section view of a stomach illustrating use of an alternative force-distributing retention band with an obstructive implant.

Figs. 16 through 18 are cross-section views of a stomach illustrating alternate retention methods for obstructive implants.

5 Fig. 19 illustrates an obstructive implant having a subcutaneous inflation port.

Figs. 20 and 21 illustrate use of obstructive implants to facilitate retention of other obesity-controlling devices within the stomach.

DETAILED DESCRIPTION OF THE DRAWINGS

10 Referring to Fig. 2, an obstructive implant 10 includes a body positioned against the exterior of the stomach wall W. The implant occupies stomach volume by causing a portion of the stomach wall W to bulge into the interior volume of the stomach, thus reducing the effective volume of the stomach interior and reducing stomach capacity. Because the implant 10 is positioned outside the stomach, it cannot migrate into the
15 intestinal tract creating obstructions. A retention band 12 is positioned within the stomach encircling a portion of the wall W so as to retain the implant 10 within pocket 2 as shown. The retention band 12 may be a ring that is elastic or inelastic, flexible or fairly rigid. The diameter of the retention band 12 may be adjustable if desired. The retention band 12 is preferably proportioned such that in the event the band becomes free
20 within the stomach, it can pass through the intestinal system without incident. Thus, the retention device is preferably of a size that will not on its own to occupy sufficient space within the stomach to create feelings of satiety, but that relies on the extragastric implant 10 to reduce stomach capacity. Nonetheless, in alternate embodiments the retention band 12 may also perform a space-occupying function, and/or a restrictive and/or obstructive
25 function.

Various positions for the implant are illustrated in the drawings. Depending on the size and positioning of the implant, it may function as an obstructive device, a restrictive device, or both. In some embodiments, the implant may have an expanded volume in the range of approximately 200 – 700 cc, sufficient to cause the inwardly-protruding to fill a
30 portion of the stomach, thereby causing the patient to feel full and thus limiting food intake. In Fig. 2, the implant is positioned to function as an obstructive device (i.e. to occupy space so as to reduce effective stomach volume), but also to create a restriction 14 in the stomach. The restriction 14 is a narrowed region of the stomach, which slows the rate at which food can descend from the esophagus into the stomach. Food may

- 4 -

accumulate in the region above the restriction, causing the patient to experience feelings of satiety and thus limiting food intake, and/or limiting the amount of food a patient can consume at one time.

Fig. 3 shows a pair of implants 10 and a pair of retention bands 12 positioned in the proximal stomach to create a restriction 14a. This restriction 14a may also minimize reflux and thus function as treatment for patients suffering from gastro-intestinal reflux disease (GERD).

Fig. 4 illustrates that the implant 10 may be positioned in the antrum A. It may similarly be positioned at the pylorus P (see Fig. 1A). Alternatively, the implant 10 may be positioned in the fundus F as shown in Fig. 5 again creating an obstruction as well as an (optional) restriction 14b in the proximal stomach. The original position of the wall of the fundus F is illustrated in dashed lines.

Fig. 6 illustrates that a pair of implants 10 may be positioned against regions of stomach wall W1, W2 on opposite sides of the stomach. These implants are retained in their respective pockets 2 using a single retention band 12 encircling both regions of wall W1, W2 to create an obstruction within the stomach and which creates restricted flow paths on opposite sides of the obstruction.

The configuration illustrated in Fig. 6 is particularly advantageous in that it relies in part on adhesion of the serosal tissue lining the outer surface of the stomach. It has been found that serosal tissue layers can adhere to form relatively strong bonds when held in apposition to one another. Other embodiments including, but not limited to, the Fig. 2-5, 7 and 8 embodiments may be modified to allow the retention band to retain regions of serosal tissue into contact with one another such that over time the serosal tissue will adhere as a permanent means for retaining the implant 10. For example, if such a modification was made to the Fig. 2 embodiment, the regions R1, R2 of stomach wall would be drawn into contact with one other, and retention band 12 would retain that contact until the serosal layers adhered to one another. At that time, the retention band (or other retention devices such as sutures, staples, etc.) could be removed from the stomach, such that no device remained in the stomach interior, and the implant remained in the protrusion formed against the exterior stomach wall. It may be further desirable in such embodiments to inflate the implant during a later procedure performed after the serosal layers have adhered to one another. In such embodiments, inflation may be carried out using a needle introduced into the stomach, used to pierce the stomach wall, and then passed into an inflation port (e.g. such as port 26 of Fig. 2 or valve 48 of Fig.

- 5 -

13G). Alternatively, the balloon may be self-sealing (similar to self-sealing tires), also allowing inflation/deflation of the balloon using a needle that pierces the stomach wall and the balloon.

5 A section of reinforcing and/or ingrowth-promoting material 15 (Fig. 6) may be optionally placed between serosal and/or mucosal tissue layers that are positioned in contact with one another. The material may be a synthetic or non-synthetic mesh, porous material, slotted material, or any other material through which adhesions will form or onto which tissue will grow. Examples include, but are not limited to, polypropylene, materials sold under the trade names Goretex or Dacron, or tissue graft material such as
10 the Surgisis material sold by Wilson Cook Medical, Inc. The material may be treated with tissue-ingrowth promoting substances such as biologics. If such material is used, the adhesions that form between the serosal tissue layers will pass through and/or onto the interstices of the material and serve to reinforce the bond between the tissue layers. The material may further cause some mechanical abrasion of the adjacent tissue, creating
15 additional scar tissue that would further reinforce the strength of the opposed tissue.

If adhesion of adjacent mucosal tissue surfaces is desired, modification of the interior tissue surface may further be needed in order to optimize adhesion of opposed regions of internal stomach tissue. In particular, it is believed that better adhesion of the interior wall surfaces may be achieved when a portion of the mucosal layer of tissue
20 lining the stomach interior is removed, such that the tissue surfaces sutured in apposition to one another are serosal, sub-mucosal or muscularis layers. It is believed that opposed layers of mucosal tissue do not adhere together as well as opposed layers of serosal, sub-mucosal, or muscularis tissue. Surface modification methods for promoting such tissue adhesion include cutting, ablating (using RF, laser, or chemical ablation) or abrading the
25 mucosal surface within the stomach as indicated by dashed lines. This modification is ideally performed before the folds are placed in apposition. Depending on the depth to which cutting, ablation or abrasion is performed, the sub-mucosal, muscularis, or serosal layer beneath the mucosal layer is exposed. This allows the exposed regions of tissue to be placed in apposition and causes the opposed surfaces to tightly adhere over time.

30 Although the implants shown in Figs. 2 – 6 are illustrated as being spherical, various other configurations may be used. For example, an alternate implant 10a shown in Fig. 7 may include a recess 16 along its surface such that the portion of the stomach wall W following the contour of recess 16 creates a form of pouch or reservoir 18 in the stomach within which food may accumulate. An elongate implant 10b of the type shown

- 6 -

in Fig. 8 may be used to form an elongate restriction 20 while greatly reducing the effective volume of the stomach. Fig. 9 shows an implant 10c having a modified hourglass configuration including an obstructive portion 22 that functions to bulge the stomach wall inwardly as described in connection with earlier embodiments. A neck 24
5 extending from the obstructive portion 22 connects with a base portion 26 that helps to distribute forces imparted against the stomach W and prevents tissue erosion and/or migration of the implant. As shown in the figure, the retention band 12 preferably seats against the stomach tissue surrounding the neck 24.

Many other shapes beyond those shown in this application may be used for the
10 implant (such as for accommodating the shape of the anatomy, or for creating a restriction or obstruction of a particular size/shape), without departing from the scope of the present invention.

There are likewise many suitable structures and materials useful for the implant. Some structures and materials are shown and described herein, although again many
15 others may be used without exceeding the scope of the present invention.

For example, the implant may be an elastic or inelastic balloon that is implantable in a deflated state and then inflated within the body using a gas or liquid. A balloon of this type may include a port such as port 26 shown in Fig. 2. During use an inflation needle may be introduced into the stomach, used to pierce the stomach wall, and then
20 passed into the port 26. The needle may be used to introduce inflation medium into the balloon, or to deflate the balloon if adjustments in balloon size are needed. Alternatively, the balloon may be self-sealing (along the lines of puncture-proof or self-sealing tires), also allowing inflation/deflation of the balloon using a needle that pierces the stomach wall and the balloon. This latter embodiment is advantageous in that it does not
25 necessitate a particular orientation for the balloon as would be needed to orient an inflation port for receipt of an inflation needle.

Other configurations besides balloons are also suitable for the implant. The implant 10d may have fluted walls 28 as shown in Fig. 10, or it may be formed of a mesh 30 as shown in Fig. 11. These implants 10d, 10e may be self-expanding or they may be
30 provided in a fully expanded form. The implant 10f of Fig. 12A includes a pair of plates 32 separated by a neck 34. When positioned as shown in Fig. 12B, a portion of the stomach wall W caves into the gap 36 between the plates 32, creating a flow path for food moving from the esophagus E into the stomach. The amount of restriction provided by the implant 10f may be selected by selecting a suitable length or width for the neck 34.

- 7 -

The implant need not be a hollow structure, but could instead be entirely solid.

The implant may be implanted endoscopically using tools passed into the stomach via the esophagus. According to the endoscopic approach, the implant is inserted into the stomach and then passed through an opening formed in the stomach wall. Alternatively, a
5 laparoscopic method may be used to pass the implant into the abdominal cavity through incisions or trocar punctures in the skin. The implant may also be introduced using an open surgical approach. In both the laparoscopic and surgical procedures, the retention band 12 is preferably introduced endoscopically into the stomach.

Figs. 13A through 13F illustrate one method of positioning an inflatable implant
10 using an endoscopic approach. Referring to Fig. 13A, retention band 12 is inserted down the esophagus into the stomach using an endoscopic instrument 38. Next, the implant 10 is passed into the stomach and through the retention band 12 as shown in Fig. 13B. Implant 10 is preferably compressed within a tubular instrument 40 having a tissue-piercing distal end. The instrument 40 may be telescopically disposed within a tubular
15 sheath 42 to prevent the instrument from inadvertently nicking surrounding tissue. Although not shown, an inflation tube extends through the instrument 40 and sheath 42 and is coupled to an inflation port of the implant. An endoscope 44 is used to monitor the procedure.

Referring to Fig. 13C, the tissue-piercing instrument 40 is extended from its
20 sheath and used to pierce through the stomach wall W at a desired implant location. The implant 10 is released from the instrument 40 and partially inflated by passing inflation medium through the inflation tube. The tissue-piercing instrument 40 and its sheath 42 may be removed from the stomach, leaving the inflation tube 46 (Fig. 13D) behind.

Next, tension is applied to the inflation tube 46 to pull the implant 10 towards the
25 stomach so as to create the pocket 2. This step draws the implant 10 and the surrounding stomach wall through the retention band 12 as shown in Fig. 13D. Once a sufficient amount of tissue has been drawn through the retention band, the implant is inflated to the desired size as shown in Fig. 13E. The inflation tube 46 is detached from the implant 10 and the endoscopic instrument 38 is detached from the retention band 12, leaving the
30 implant in place as shown in Fig. 13F. The hole formed in the stomach wall may be closed using sutures or a sealable gel that solidifies when placed into contact with the tissue.

Referring to Fig. 13G, it should be noted that the implant may include an inflation valve 48 that is left extending through the stomach wall. The valve 48 allows for post-

- 8 -

implant size adjustments by allowing inflation medium to be added to or removed from the balloon using an inflation tube passed through the esophagus and attached to the valve. If removal of the balloon is required, the valve may be grasped using endoscopic instruments to draw the balloon back into the stomach and out the esophagus. The valve
5 may be surrounded by a seal to prevent movement of stomach contents into the abdominal space outside the stomach. A gel of a type that will solidify when placed into contact with the stomach surface may be used for this purpose.

The retention band 12 may take alternate forms or be replaced altogether using other types of structures that help to capture the implant 10 in the pocket 2 at the implant
10 site. Fig. 14 illustrates that the cross-sectional area of the restrictive band 12a may be large relative to the size of the implant so as to diffuse the forces imparted on the region of stomach wall captured between the band 12a and the implant 10 and to thereby prevent erosion of, or damage to, the stomach tissue. Fig. 15 illustrates that a large surface-area retention liner 12b may alternatively be used so as to distribute forces over a broader
15 surface. Referring to Fig. 16, the restriction ring 12c and implant 10 may be coupled together by an inflation tube 50 extending through the stomach wall. A valve 52 is fluidly coupled to the tube 50 and allows for introduction/removal of inflation medium using an inflation needed passed into the stomach. The valve 52 and tube 50 facilitate explantation of the implant using a grasping instrument inserted through the esophagus
20 and into the stomach.

The retention band itself may be inflatable. Referring to Fig. 17B, the retention band may include separate inflatable chambers 54a, 54b each having an inflation port 56a, 56b. The chambers 54a, 54b are joined together to form an annular band. The upper chamber 54a may be shaped to form a channel 58 for passage of food, as shown in Fig.
25 17B.

Fig. 18 illustrates that the retention band may be eliminated entirely. As shown, after the implant 10 is pulled against the stomach wall W, stomach tissue adjacent to the pocket 2 can be fastened together using pledgets 60 (or sutures, staples, clips or other means). Over time, a physiological response will cause the regions of serosal tissue held
30 in contact with one another to bond together, thereby retaining the implant in the pocket 2.

Referring to Fig. 19, inflatable implant 10 may be tethered to an inflation port 62 positioned within a subcutaneous pocket in the body. If needed following implantation,

- 9 -

an inflation needle may be inserted through the patient's skin and into the inflation port 62 to increase or decrease the amount of inflation medium within the implant.

Referring to Figs. 20 and 21, it should be noted that while the implant 10 may itself provide restriction and/or obstruction, the implant 10 may also be used to prevent migration of a restrictive and/or obstructive device positioned inside the stomach. For example, device 64 of Fig. 20 or device 66 of Fig. 21 may be positioned in the proximal stomach and seat against the portion of the stomach wall that protrudes inwardly as a result of implant 10.

Components of the type described herein may be supplied individually or as systems which may include various combinations of components such as implants (e.g. implant 10), retention devices (e.g. band 12), implantation instruments, and/or instructions for use. If included, instructions for use may include instructions instructing a user to implant the implant using methods such as any of those described above. For example, the instructions may instruct the user to create an inward protrusion in the stomach wall such as by positioning an instrument or the implant against an exterior surface of the stomach wall. The instructions may further instruct the user to position the retention device in a manner that at least partially retains the protrusion in the wall and that thus captures implant within the protrusion, externally of the stomach. In some embodiments where a retention band is provided, the instructions for use may instruct the user to encircle a portion of the protrusion in the wall with the retention band. The instructions may instruct the user as to laparoscopic, endoscopic, and/or open surgical approaches such as those described above.

Various components and methods have been described herein. These embodiments are given by way of example and are not intended to limit the scope of the present invention. It should be appreciated, moreover, that the various features of the embodiments that have been described might be combined in various ways to produce numerous additional embodiments

- 10 -

WHAT IS CLAIMED IS:

1. A system for inducing weight loss in a patient, the system comprising:
an extragastric space occupier positionable in contact with an exterior
surface of a stomach wall to form an inward protrusion of wall into the stomach;
5 and
a retention device positionable in contact with the wall to retain the inward
protrusion and to thereby capture the extragastric space occupier within the
protrusion.
- 10 2. The system according to claim 1, wherein the extragastric space occupier
is proportioned to cause the protrusion to fill a portion of the stomach, thereby causing the
patient to feel full.
3. The system according to claim 1, wherein the extragastric space occupier
15 has in expandable within the stomach to an expanded volume in the range of 200 – 800
cc.
4. The system according to claim 1, wherein the extragastric space occupier
is proportioned to cause the protrusion to create a restriction in the stomach that will slow
20 the rate at which food can descend from the esophagus into the stomach.
5. The system according to claim 1, wherein the retention device comprises
at least one suture.
- 25 6. The system according to claim 1, wherein the retention device comprises
at least one staple.
7. The system according to claim 1, wherein the retention device comprises
at least one band positionable around the protrusion within the stomach.
30
8. The system according to claim 7, wherein the band is positionable
encircling the protrusion.
9. The system according to claim 7, wherein the band is inflatable.

- 11 -

10. The system according to claim 1, wherein the extragastric space occupier is inflatable.

5 11. The system according to claim 1, wherein the extragastric space occupier includes an inflation port, and wherein the system includes an inflation needle extendable through the esophagus into the stomach, the inflation needle engageable with the inflation port.

10 12. The system according to claim 11, wherein the inflation port is extendable through an opening in the stomach wall.

13. The system according to claim 11, wherein the inflation port includes a resealable portion of the extragastric space occupier, and wherein the needle is extendable
15 through the stomach wall into engagement with the inflation port.

14. The system according to claim 1, further including instructions setting forth a method for implanting the system, including the steps of:

positioning the extragastric space occupier into contact with an exterior of
20 a wall of the stomach, causing the wall to protrude inwardly into the stomach;
coupling a retention device to the stomach so as to retain the inward protrusion and to thereby capture the extragastric space occupier within the protrusion.

25 15. The system according to claim 14, wherein the instructions set forth that the positioning step includes the step of passing the extragastric space occupier through the esophagus into the stomach, and then passing the extragastric space occupier through an opening formed in the wall of the stomach and into contact with the exterior of the wall.

30 16. The system according to claim 14, wherein the instructions set forth that the positioning step includes the step of passing the extragastric space occupier laparoscopically into an abdominal cavity and into contact with the exterior of the wall.

- 12 -

17. A method of assisting weight loss in a patient, comprising the steps of:
positioning an extragastric space occupier into contact with an exterior
surface of a stomach wall to form an inward protrusion of wall into the stomach;
and
5 placing a retention device in contact with the wall to retain the inward
protrusion and to thereby capture the extragastric space occupier within the
protrusion.
18. The method of claim 17, wherein the placing step places the retention
10 device into contact with an interior surface of the wall.
19. The method of claim 18, wherein the retention device comprises a band
and wherein the placing step includes encircling the protrusion using the band.
- 15 20. The method of claim 17, wherein the placing step includes the step of
drawing portions of the wall into contact with one another and attaching a retention
device to the wall to retain the protrusion.
21. The method of claim 20, wherein the retention device comprises at least
20 one suture or staple.
22. The method of claim 17, wherein the extragastric space occupier is
expandable, and wherein the method includes the step of expanding the space occupier to
a volume sufficient to cause the protrusion to fill a portion of the stomach, thereby
25 causing the patient to feel full.
23. The method of claim 22, wherein the expanding step includes expanding
the space occupier to a volume in the range of 200 – 800 cc.
- 30 24. The method of claim 17, wherein the space occupier is expandable, and
wherein the method includes the step of expanding the space occupier to cause the
protrusion to create a restriction in the stomach that will slow the rate at which food can
descend from the esophagus into the stomach.

- 13 -

25. The method of claim 17, wherein the space occupier includes an inflation port, and wherein the method includes the step of passing an inflation needle extendable through the esophagus into the stomach, engaging inflation port with the inflation needle, and inflating the space occupier using the inflation needle.

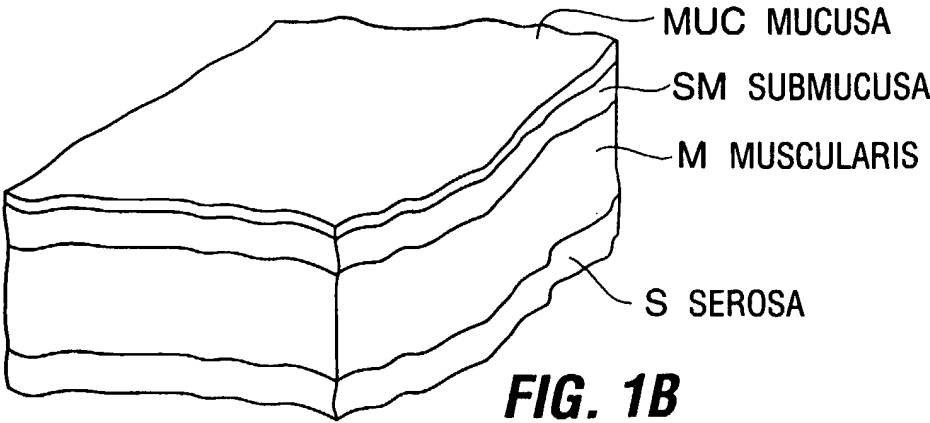
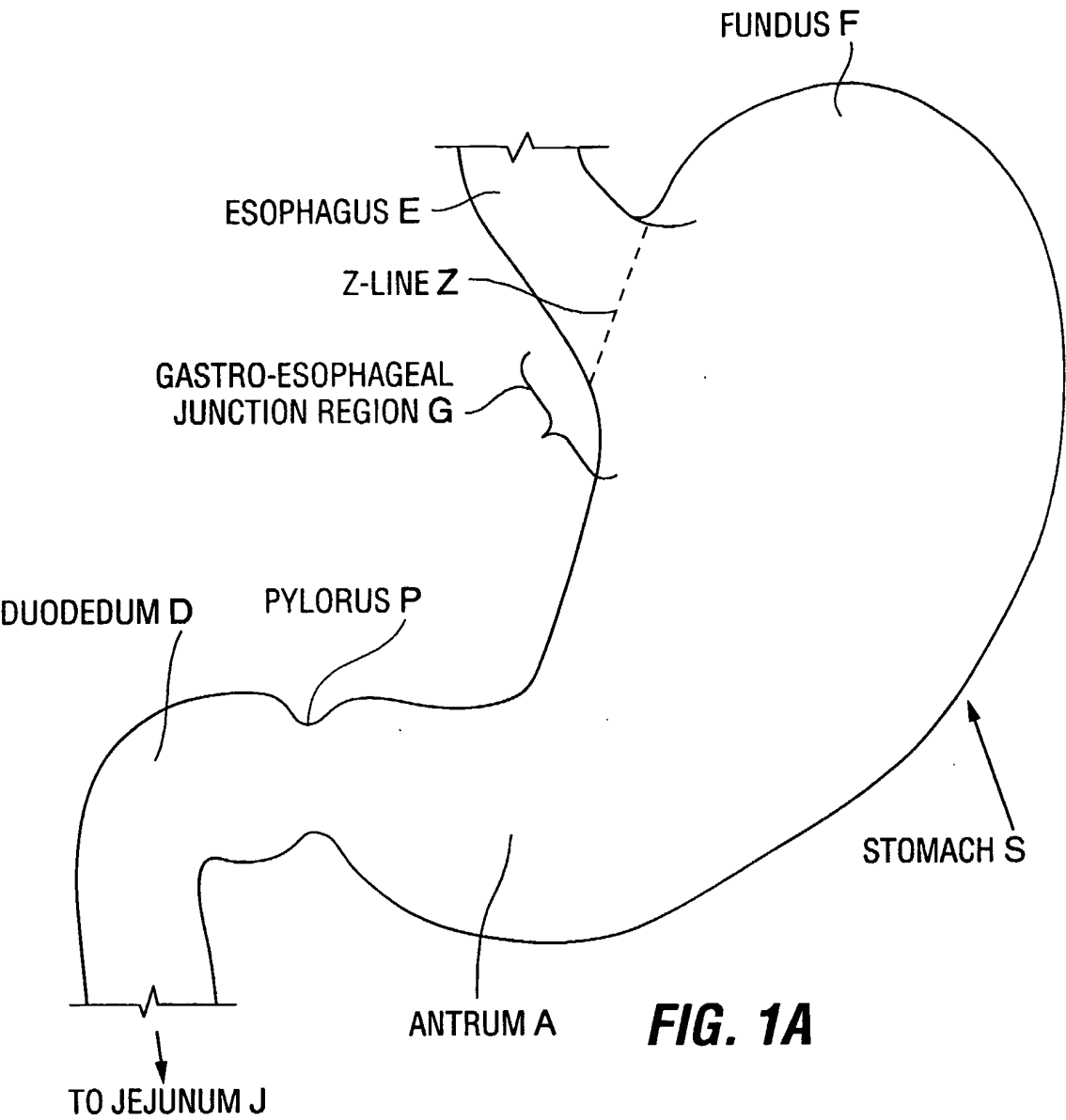
5

26. The method of claim 25, wherein the positioning step includes positioning the inflation port to extend an opening in the stomach wall.

27. The method of claim 25, wherein the inflation port includes a resealable
10 portion of the space occupier, and engaging step includes passing the needle through the stomach wall into engagement with the inflation port.

28. The method of claim 17, wherein the positioning step includes passing the
extragastric space occupier through the esophagus into the stomach, and then passing the
15 extragastric space occupier through an opening formed in the wall of the stomach and into contact with the exterior of the wall.

29. The method of claim 17, wherein the positioning step includes passing the
extragastric space occupier laparoscopically into an abdominal cavity and into contact
20 with the exterior of the wall.



2/7

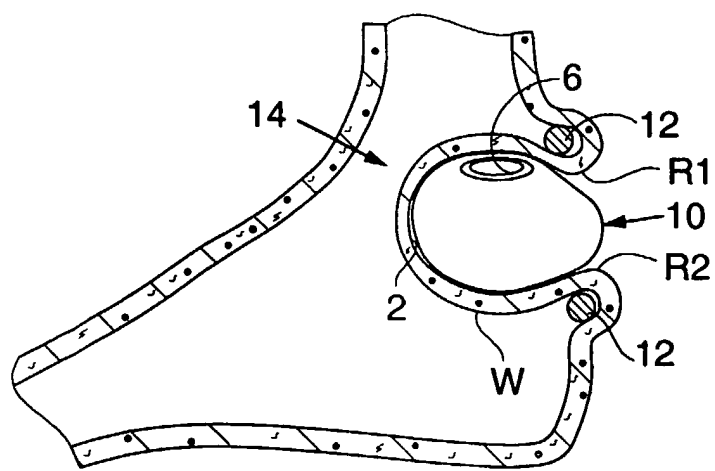


FIG. 2

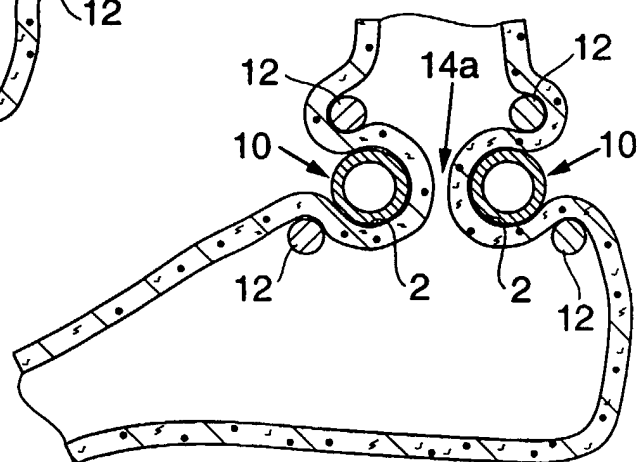


FIG. 3

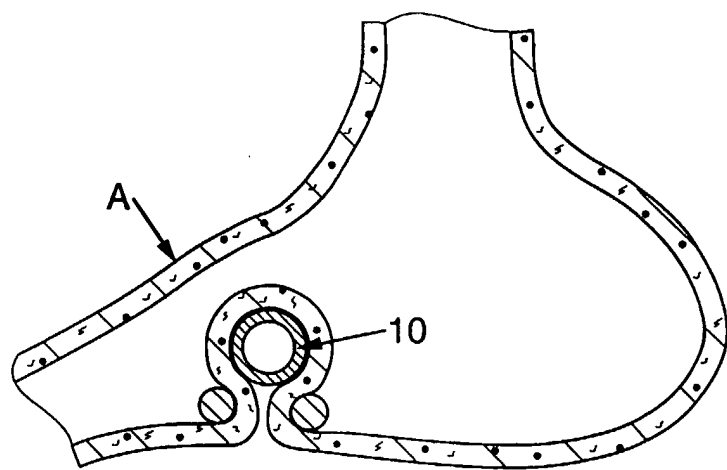


FIG. 4

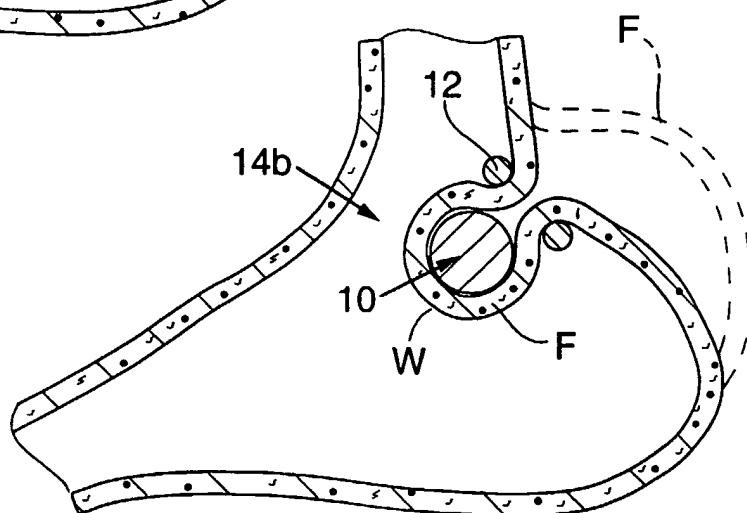


FIG. 5

3/7

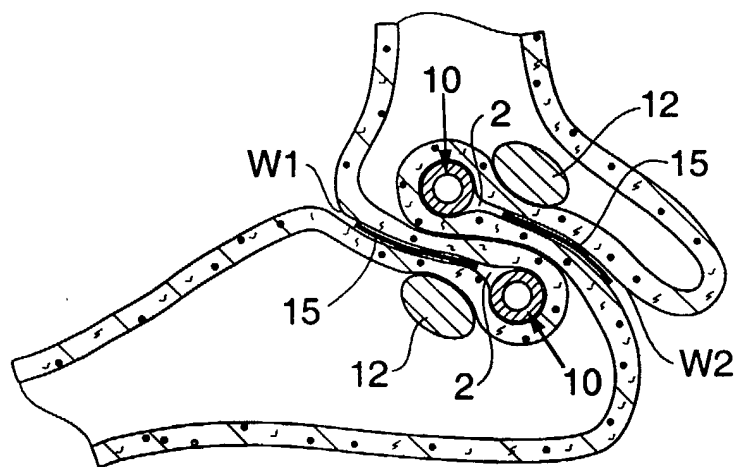


FIG. 6

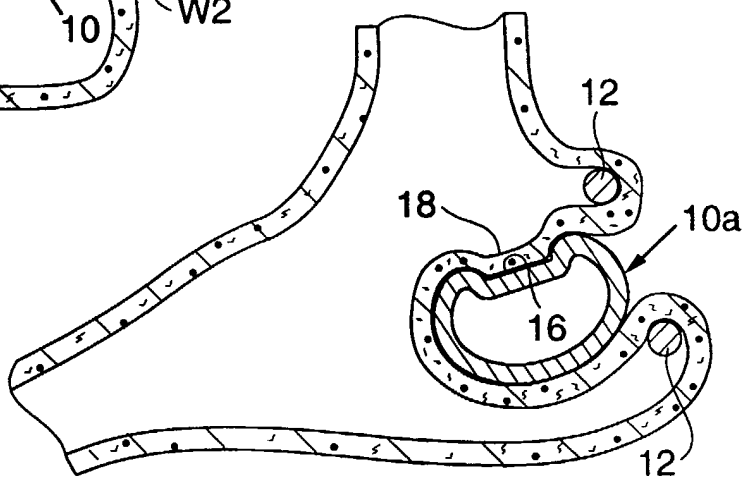


FIG. 7

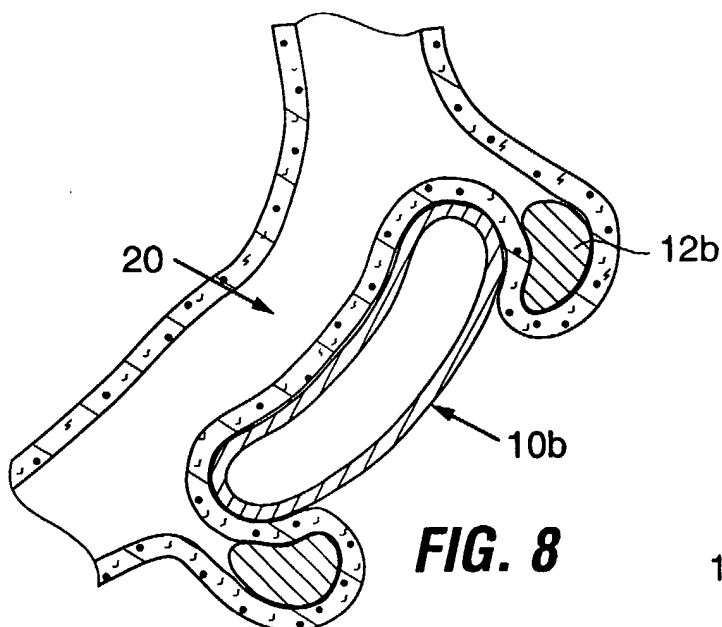


FIG. 8

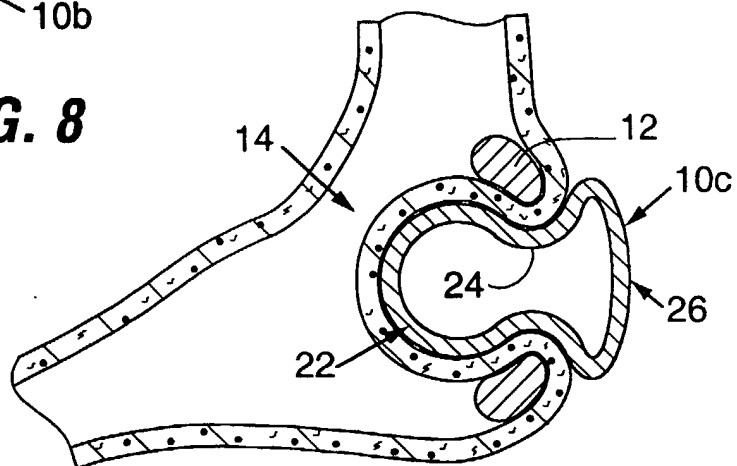


FIG. 9

4/7

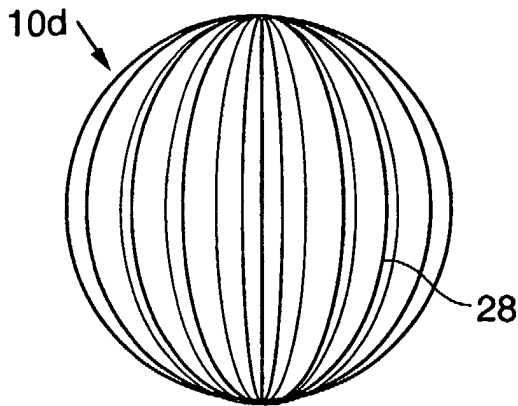


FIG. 10

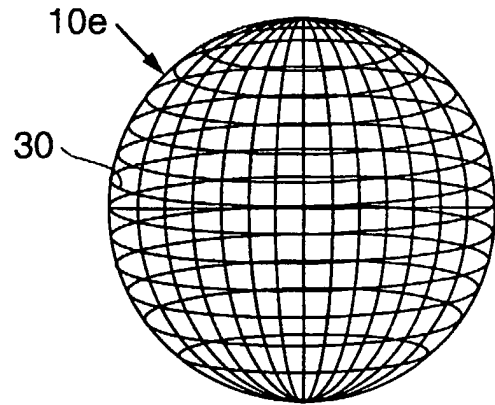


FIG. 11

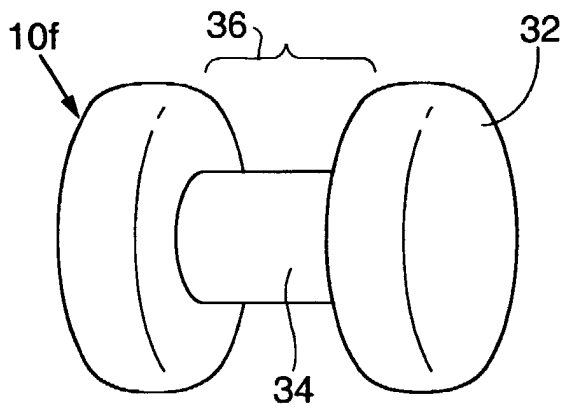


FIG. 12A

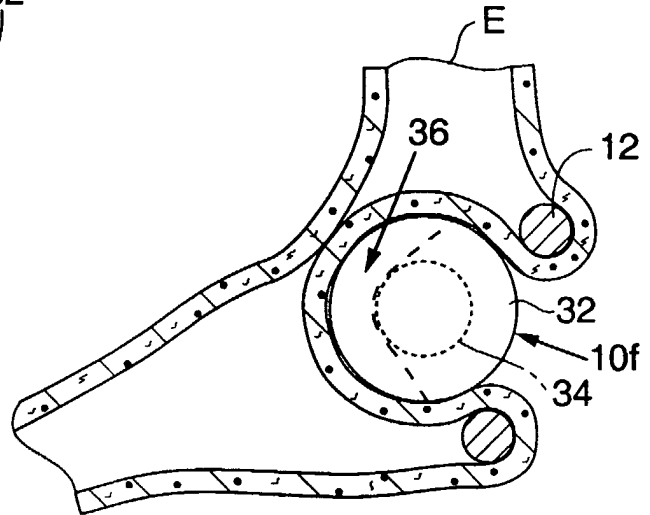


FIG. 12B

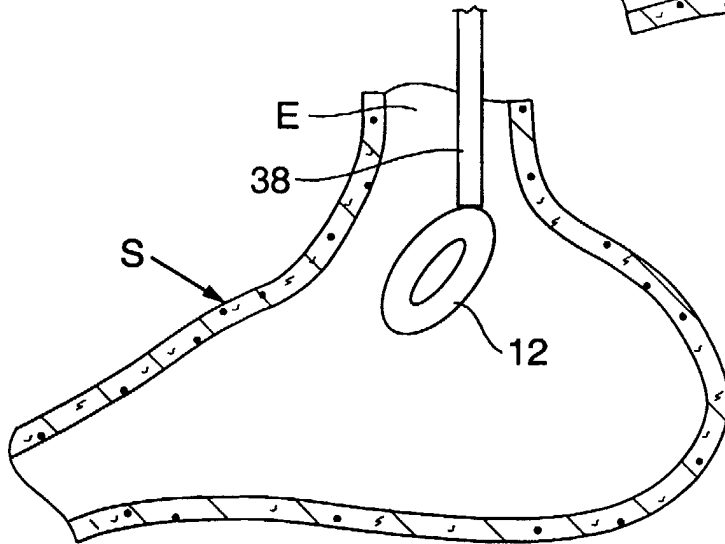


FIG. 13A

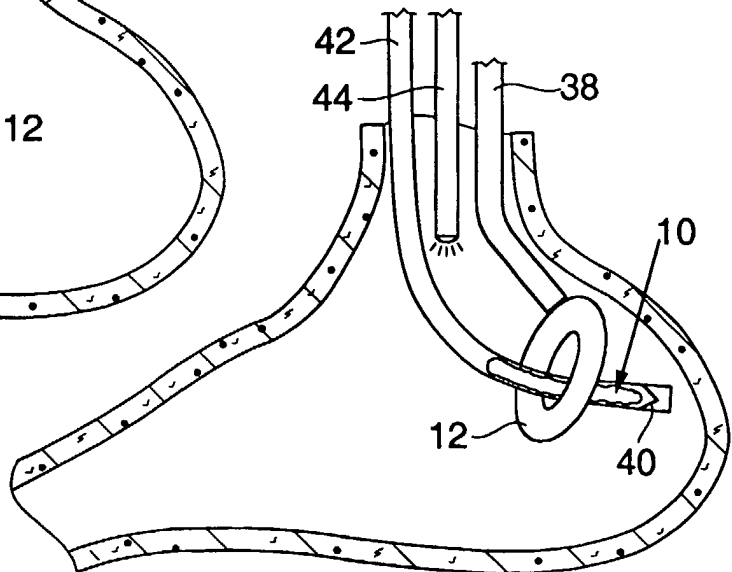


FIG. 13B

5/7

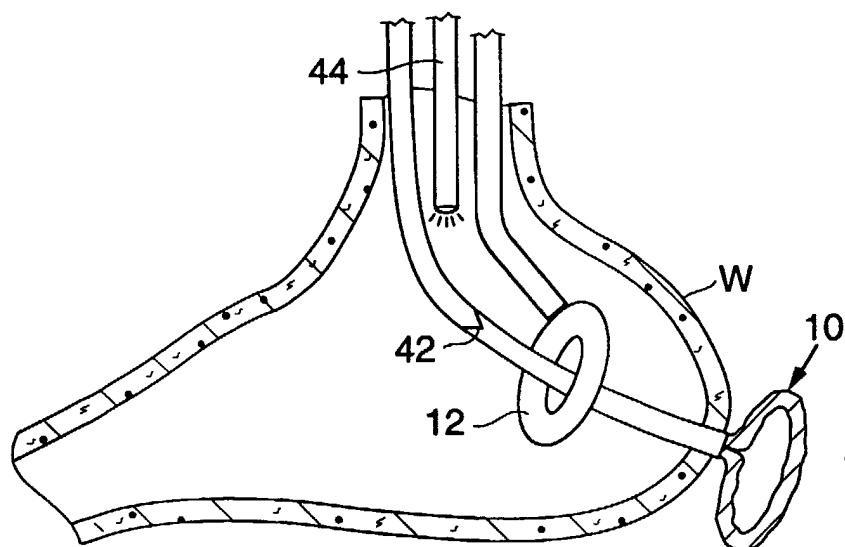


FIG. 13C

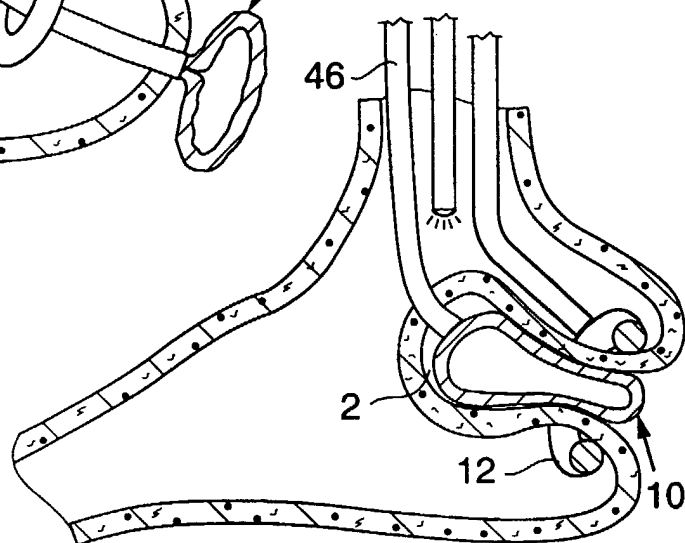


FIG. 13D

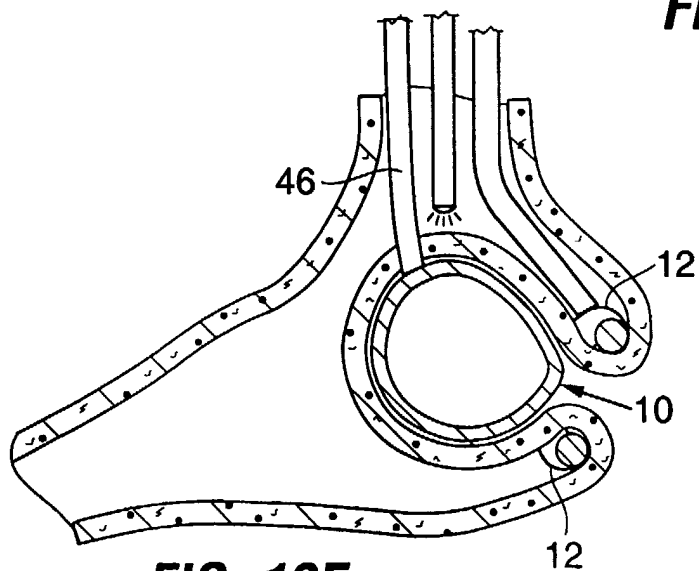


FIG. 13E

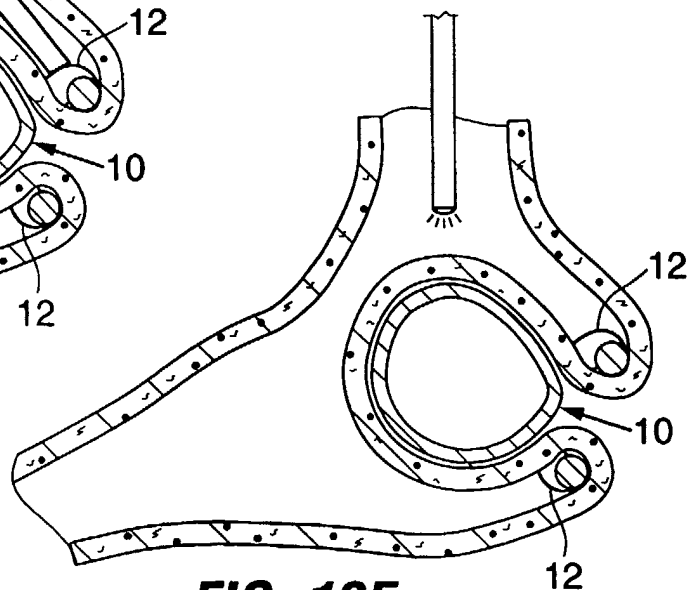


FIG. 13F

6/7

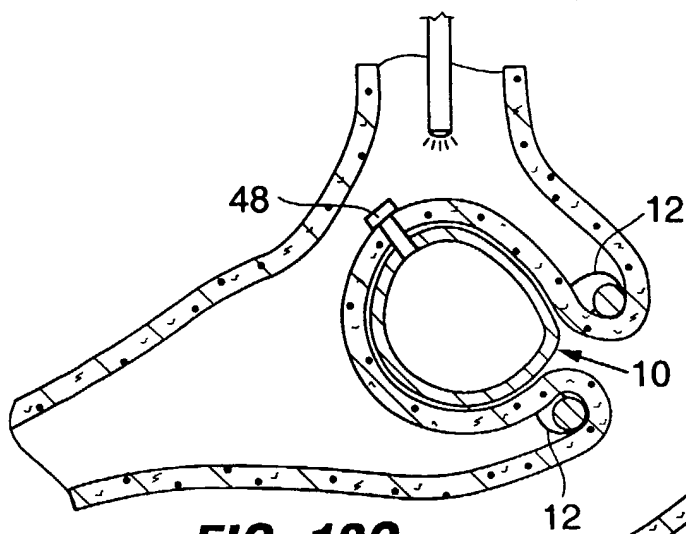


FIG. 13G

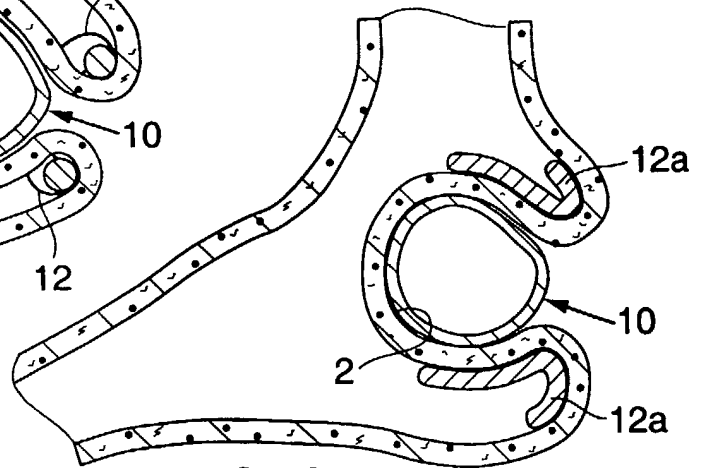


FIG. 14

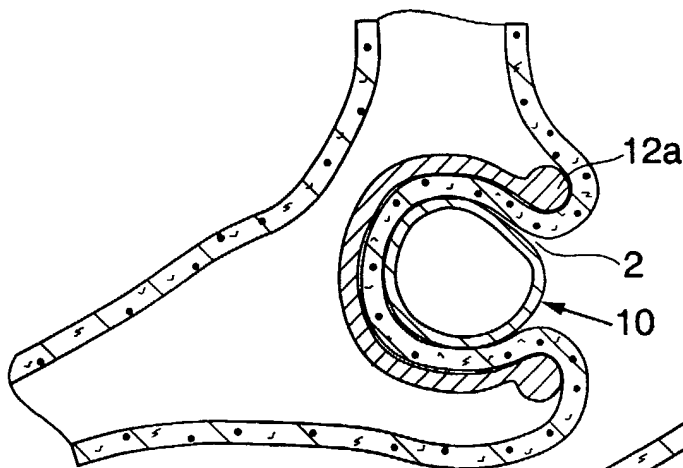


FIG. 15

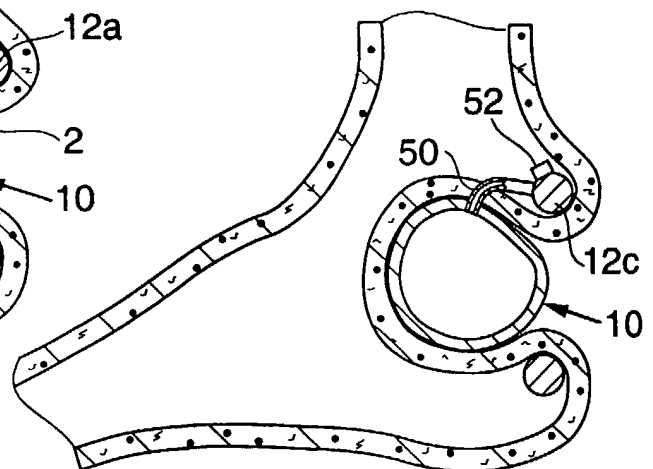


FIG. 16

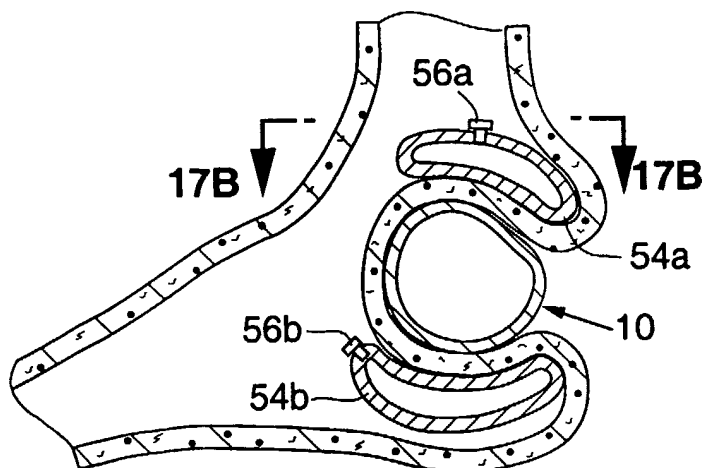


FIG. 17A

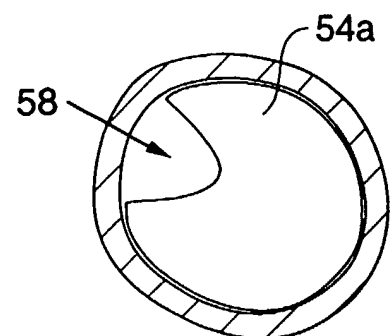


FIG. 17B

7/7

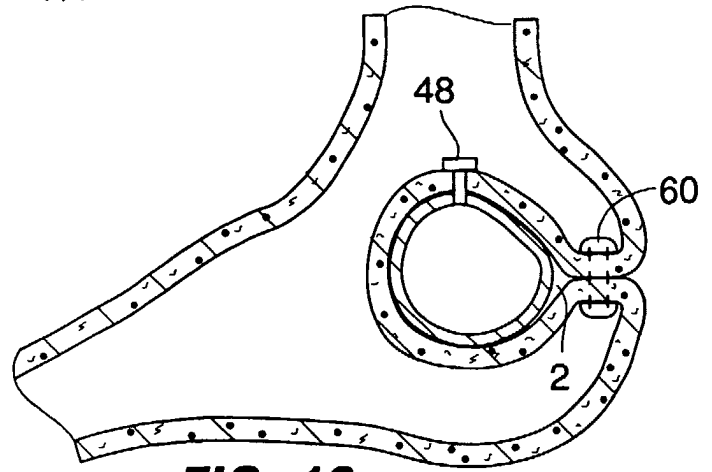


FIG. 18

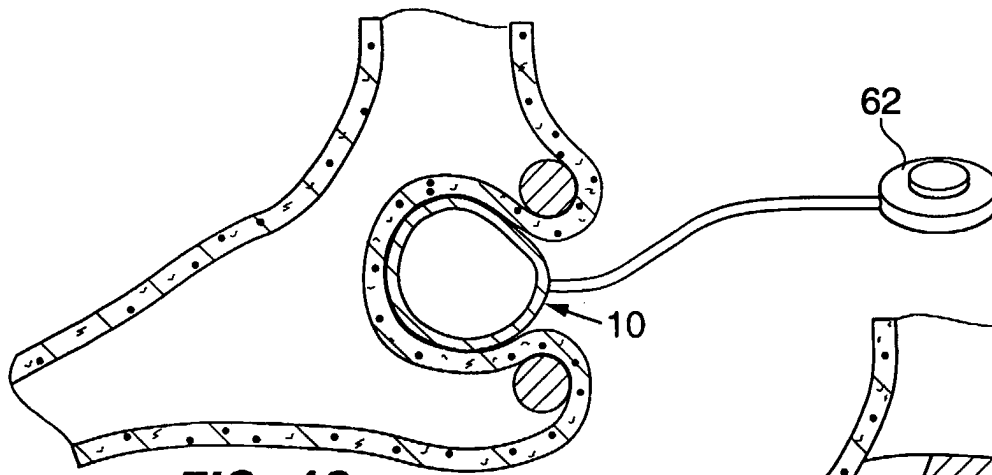


FIG. 19

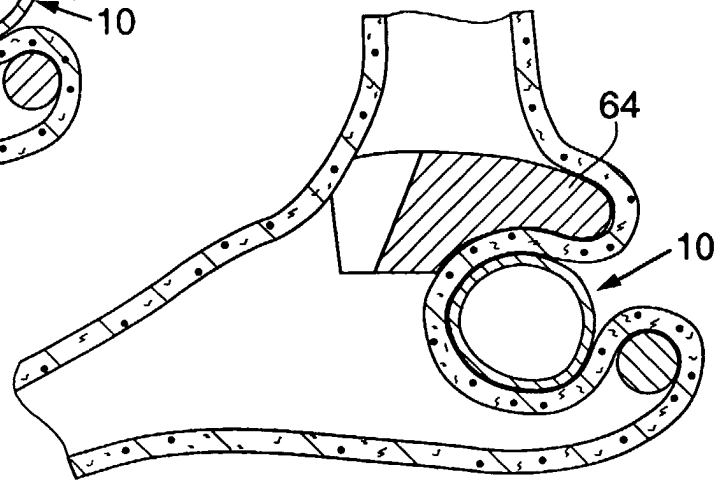


FIG. 20

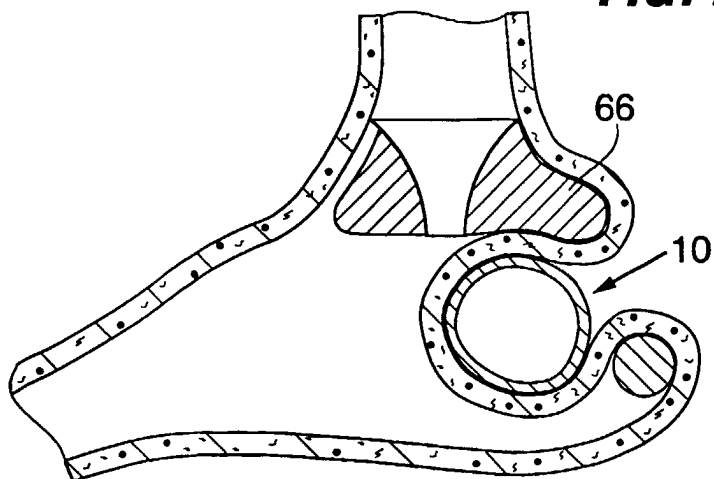


FIG. 21

INTERNATIONAL SEARCH REPORT

International Application No

PCT/US2005/014372

A. CLASSIFICATION OF SUBJECT MATTER

IPC 7 A61F5/00

According to International Patent Classification (IPC) or to both national classification and IPC

B. FIELDS SEARCHED

Minimum documentation searched (classification system followed by classification symbols)

IPC 7 A61F

Documentation searched other than minimum documentation to the extent that such documents are included in the fields searched

Electronic data base consulted during the international search (name of data base and, where practical, search terms used)

EPO-Internal

C. DOCUMENTS CONSIDERED TO BE RELEVANT

Category *	Citation of document, with indication, where appropriate, of the relevant passages	Relevant to claim No.
X	WO 2004/019765 A (SATIETY, INC; GANNOE, JAMES; GERBI, CRAIG) 11 March 2004 (2004-03-11) figures 4,5 paragraph '0052! - paragraph '0056! -----	1-16
A	US 2004/006351 A1 (GANNOE JAMY ET AL) 8 January 2004 (2004-01-08) paragraph '0035! - paragraph '0058! -----	1-16
A	US 2004/024386 A1 (DEEM MARK E ET AL) 5 February 2004 (2004-02-05) paragraph '0087! - paragraph '0159! -----	1-16
P, A	US 2005/080444 A1 (KRAEMER STEFAN J.M ET AL) 14 April 2005 (2005-04-14) paragraph '0030! - paragraph '0043! -----	1-16

☐ Further documents are listed in the continuation of box C.☒ Patent family members are listed in annex.

* Special categories of cited documents:

A document defining the general state of the art which is not considered to be of particular relevance

E earlier document but published on or after the international filing date

L document which may throw doubts on priority claim(s) or which is cited to establish the publication date of another citation or other special reason (as specified)

O document referring to an oral disclosure, use, exhibition or other means

P document published prior to the international filing date but later than the priority date claimed

T later document published after the international filing date or priority date and not in conflict with the application but cited to understand the principle or theory underlying the invention

X document of particular relevance; the claimed invention cannot be considered novel or cannot be considered to involve an inventive step when the document is taken alone

Y document of particular relevance; the claimed invention cannot be considered to involve an inventive step when the document is combined with one or more other such documents, such combination being obvious to a person skilled in the art.

& document member of the same patent family

Date of the actual completion of the international search

22 July 2005

Date of mailing of the international search report

28/07/2005

Name and mailing address of the ISA

European Patent Office, P.B. 5818 Patentlaan 2
NL - 2280 HV Rijswijk
Tel. (+31-70) 340-2040, Tx. 31 651 epo nl,
Fax: (+31-70) 340-3016

Authorized officer

Mary, C

INTERNATIONAL SEARCH REPORT

International application No.
PCT/US2005/014372

Box II Observations where certain claims were found unsearchable (Continuation of item 2 of first sheet)

This International Search Report has not been established in respect of certain claims under Article 17(2)(a) for the following reasons:

1. ☒ Claims Nos.: 17-29
because they relate to subject matter not required to be searched by this Authority, namely:
Rule 39.1(iv) PCT - Method for treatment of the human or animal body by surgery
2. ☐ Claims Nos.:
because they relate to parts of the International Application that do not comply with the prescribed requirements to such an extent that no meaningful International Search can be carried out, specifically:
3. ☐ Claims Nos.:
because they are dependent claims and are not drafted in accordance with the second and third sentences of Rule 6.4(a).

Box III Observations where unity of invention is lacking (Continuation of item 3 of first sheet)

This International Searching Authority found multiple inventions in this international application, as follows:

1. ☐ As all required additional search fees were timely paid by the applicant, this International Search Report covers all searchable claims.
2. ☐ As all searchable claims could be searched without effort justifying an additional fee, this Authority did not invite payment of any additional fee.
3. ☐ As only some of the required additional search fees were timely paid by the applicant, this International Search Report covers only those claims for which fees were paid, specifically claims Nos.:
4. ☐ No required additional search fees were timely paid by the applicant. Consequently, this International Search Report is restricted to the invention first mentioned in the claims; it is covered by claims Nos.:

Remark on Protest

- ☐ The additional search fees were accompanied by the applicant's protest.
- ☐ No protest accompanied the payment of additional search fees.

INTERNATIONAL SEARCH REPORT

Information on patent family members

International Application No

PCT/US2005/014372

Patent document cited in search report	Publication date	Patent family member(s)	Publication date
WO 2004019765 A	11-03-2004	US 2004044353 A1 US 2004044354 A1 AU 2003263029 A1 BR 0313950 A EP 1545311 A2 WO 2004019765 A2	04-03-2004 04-03-2004 19-03-2004 12-07-2005 29-06-2005 11-03-2004
US 2004006351 A1	08-01-2004	AU 2003243707 A1 EP 1534145 A2 WO 2004004542 A2 US 2004215216 A1	23-01-2004 01-06-2005 15-01-2004 28-10-2004
US 2004024386 A1	05-02-2004	US 2002183768 A1 US 2004122452 A1 US 2004122453 A1 BR 0210900 A CA 2448961 A1 EP 1389984 A1 JP 2005515799 T WO 02096327 A2 US 2003065359 A1 US 2003120265 A1 US 2003109892 A1	05-12-2002 24-06-2004 24-06-2004 01-03-2005 05-12-2002 25-02-2004 02-06-2005 05-12-2002 03-04-2003 26-06-2003 12-06-2003
US 2005080444 A1	14-04-2005	WO 2005037072 A2	28-04-2005

专利名称(译)	用于引起体重减轻的限制性和/或阻塞性植入物		
公开(公告)号	EP1740132A1	公开(公告)日	2007-01-10
申请号	EP2005744737	申请日	2005-04-26
[标]申请(专利权)人(译)	辛尼科有限责任公司		
申请(专利权)人(译)	SYNECOR , LLC		
当前申请(专利权)人(译)	SYNECOR , LLC		
[标]发明人	BALBIERZ DANIEL J ATHAS WILLIAM L LUNSFORD JOHN EUBANKS WILLIAM S VAN BLADEL KEVIN		
发明人	BALBIERZ, DANIEL, J. ATHAS, WILLIAM, L. LUNSFORD, JOHN EUBANKS, WILLIAM, S. VAN BLADEL, KEVIN		
IPC分类号	A61F5/00 A61B17/12 A61B17/08		
CPC分类号	A61F5/0086 A61B17/12009 A61B2017/12018 A61F5/003 A61F5/0036		
优先权	60/565378 2004-04-26 US		
其他公开文献	EP1740132B1		
外部链接	Espacenet		

摘要(译)

本文描述了一种用于在患者体内引起体重减轻的系统，其包括可定位成与胃壁的外表面接触以形成向内进入胃壁的突出物的胃外空间占用者，以及可定位成与胃接触的保持装置。壁保持向内突出，从而捕获突出内的额外空间占据者。