

(19) World Intellectual Property Organization
International Bureau



(43) International Publication Date
19 January 2006 (19.01.2006)

PCT

(10) International Publication Number
WO 2006/007374 A1

(51) International Patent Classification⁷: **A61B 1/005**,
G02B 23/24

(21) International Application Number:
PCT/US2005/021174

(22) International Filing Date: 15 June 2005 (15.06.2005)

(25) Filing Language: English

(26) Publication Language: English

(30) Priority Data:
10/869,822 16 June 2004 (16.06.2004) US

(71) Applicant (for all designated States except US): **EVER-EST VIT, INC.** [US/US]; 4619 Jordan Road, Skaneateles Falls, NY 13153 (US).

(72) Inventors; and

(75) Inventors/Applicants (for US only): **KEHOSKIE, Michael, P.** [US/US]; 6743 Swamp Road, Auburn, NY 13021 (US). **KARPEN, Thomas, W.** [US/US]; 3534 Mill Run Terrace, Skaneateles, NY 13152 (US). **KRAUTER, Allan, I.** [US/US]; 2224 West Lake Road, Skaneateles,

New York 13152 (US). **LIA, Raymond, A.** [US/US]; 32 Chedell Place, Auburn, NY 13021 (US). **MORSE, Bradford** [US/US]; 815 Lancaster Avenue, Syracuse, NY 13210 (US). **VON FELTEN, Kenneth** [US/US]; 423 Ferguson Road, Freeville, NY 13068 (US).

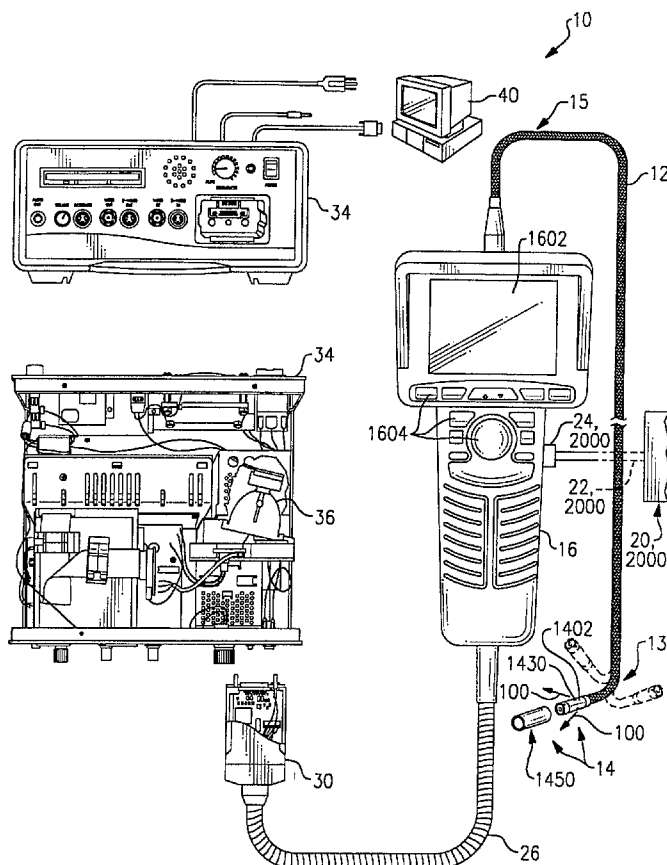
(74) Agent: **BLASIAK, George, S.**; Wall Marjama & Bilinski LLP, 101 South Salina Street, Suite 400, Syracuse, NY 13202 (US).

(81) Designated States (unless otherwise indicated, for every kind of national protection available): AE, AG, AL, AM, AT, AU, AZ, BA, BB, BG, BR, BW, BY, BZ, CA, CH, CN, CO, CR, CU, CZ, DE, DK, DM, DZ, EC, EE, EG, ES, FI, GB, GD, GE, GH, GM, HR, HU, ID, IL, IN, IS, JP, KE, KG, KM, KP, KR, KZ, LC, LK, LR, LS, LT, LU, LV, MA, MD, MG, MK, MN, MW, MX, MZ, NA, NG, NI, NO, NZ, OM, PG, PH, PL, PT, RO, RU, SC, SD, SE, SG, SK, SL, SM, SY, TJ, TM, TN, TR, TT, TZ, UA, UG, US, UZ, VC, VN, YU, ZA, ZM, ZW.

(84) Designated States (unless otherwise indicated, for every kind of regional protection available): ARIPO (BW, GH,

[Continued on next page]

(54) Title: **BORESCOPE COMPRISING FLUID SUPPLY SYSTEM**



(57) Abstract: A borescope device (10) having an insertion tube (12), a camera head assembly (14), and a fluid supply system (20). The camera assembly includes through holes allowing fluid escape. The fluid supply system (20) is controllable to force fluid (100) through the through holes. The fluid supply system (20) may be actuated to cool the camera head assembly (14).

WO 2006/007374 A1



GM, KE, LS, MW, MZ, NA, SD, SL, SZ, TZ, UG, ZM, ZW), Eurasian (AM, AZ, BY, KG, KZ, MD, RU, TJ, TM), European (AT, BE, BG, CH, CY, CZ, DE, DK, EE, ES, FI, FR, GB, GR, HU, IE, IS, IT, LT, LU, MC, NL, PL, PT, RO, SE, SI, SK, TR), OAPI (BF, BJ, CF, CG, CI, CM, GA, GN, GQ, GW, ML, MR, NE, SN, TD, TG).

Published:

— *with international search report*

For two-letter codes and other abbreviations, refer to the "Guidance Notes on Codes and Abbreviations" appearing at the beginning of each regular issue of the PCT Gazette.

Borescope Comprising Fluid Supply System

Field of the Invention

[0001] The invention relates to insertion tube remote viewing devices generally and specifically to insertion tube devices configured for use in specialized operating environments.

Background Of The Prior Art

[0002] A borescope is generally characterized as an elongated insertion tube which can be flexible with a viewing head at its distal or forward end. The borescope can also include a control housing at its proximal end for controlling or steering the forward end. Such a borescope has a bendable tube steering section or articulation section at the distal end adjacent to the viewing head. One or two pairs of control articulation cables extend through the articulation section and then through the remainder of the flexible insertion tube. These cables connect with a steering control in the control section. One or both pairs of these cables are differentially displaced to bend the articulation section. The viewing camera head assembly can thus be remotely oriented to facilitate the inspection of an object. Borescopes are intended for visual inspection of mechanical devices such as jet engines or turbines, where it would be difficult or impossible to examine the device's internal elements directly. If the borescope must be maneuvered into narrow tortuous passageways, the insertion tube must be flexible and must allow corresponding bending and steering. In addition, the pathway to the object can be quite long, and so it is often necessary that the borescope insertion tube be fifteen meters or more in length.

[0003] While several types of borescopes have been proposed, present borescopes have been observed to fail in specialized operating environments such as high temperature, high pressure, and liquid operating environments.

[0004] There is a need for a borescope adapted for use in specialized operating environments.

Summary Of The Invention

[0005] According to its major aspects and broadly stated, the invention is a borescope having a fluid supply system which is especially useful in cooling the borescope.

[0006] In one embodiment, a borescope camera head assembly is provided which has a metal canister and an insulating sleeve. Fluid exit holes or outlet openings are provided in

the canister and the sleeve is configured so that fluid exiting the holes is directed by the sleeve to flow along the thermally conductive outer surface of the canister.

[0007] A fluid supply system of the invention can include a conduit which extends from an air inlet position at a hand piece of the borescope to a position within the borescope's insertion tube. The fluid delivery conduit can also extend from a fluid inlet position in a hand piece entirely through the insertion tube to the camera head assembly.

[0008] The insertion tube of the borescope can be configured to minimize temperature losses by way of temperature conduction along a surface of the insertion tube. In one example of the invention, the insertion tube includes a multilayer insulation layer assembly including a mesh fiberglass layer interposed between two sealing nonporous polytetrafluoroethylene layers. The inclusion of thermally insulative material in the insertion tube, such as a layer having the thermal conductivity of less than $0.50 \text{ BTU-in}/(\text{hr-ft}^2\text{-F}^\circ)$ reduces the entry of heat into the borescope through the insertion tube.

[0009] In another embodiment, the insertion tube is devoid of a fluid sealing layer and includes instead an insulating layer having micropores. The porous insulating layer allows fluid to escape through the walls of the insertion tube so that the insertion tube defines an insulating/cooling boundary layer, wherein the boundary layer reduces the entry of heat into the insertion tube. The porous insulating layer may have a thermal conductivity of less than $2.5 \text{ BTU-in}/(\text{hr-ft}^2\text{-F}^\circ)$.

[0010] An insertion tube according to the invention can have a light reflective outer surface which reflects energy to further discourage the entering of heat into the insertion tube.

Brief Description Of The Drawings

[0011] For a further understanding of these and objects of the invention, reference will be made to the following detailed description of the invention which is to be read in connection with the accompanying drawings, wherein:

[0012] Fig. 1a is a physical layout diagram of a fluid delivering borescope of the invention;

[0013] Fig. 1b is a cross section view of an insertion tube according to the invention;

[0014] Fig. 1c is a cross section view of an umbilical cord according to the invention;

[0015] Fig. 1d is a perspective view of a borescope camera head assembly according to the invention;

[0016] Fig. 1e is a section view of a camera head assembly according to the invention;

- [0017] Fig. 1f is a side view of an articulation cable assembly according to the invention;
- [0018] Fig. 1g is an exploded perspective view of a camera head assembly according to the invention;
- [0019] Fig. 1h is a side view of a camera head assembly illustrating an embodiment of the invention including a bi-metallic valve.
- [0020] Fig. 2 is a block electrical layout diagram of a borescope electrical and control system according to the invention;
- [0021] Figs. 3a, 3b, and 3c are functional schematic diagrams illustrating various fluid supply systems of the invention;
- [0022] Fig. 4 is a side view of an exemplary insertion tube according to the invention;
- [0023] Figs. 5a-5b are side views of exemplary insertion tubes according to the invention;
- [0024] Figs. 5c-5d are cross section views of alternative insertion tubes according to the invention.

Detailed Description Of The Invention

[0025] A borescope 10, according to the invention, is shown in Fig. 1a. Borescope 10 includes flexible insertion tube 12, a camera head assembly 14, and hand piece 16. In accordance with the invention, fluid indicated by flow vectors 100 is forced down a length of insertion tube 12 and flows outwardly about head 1402 of camera head assembly 14 as indicated by fluid flow vectors 100 to cool electrical components of head assembly 14, improving reliability and consistency of performance of the electrical components. Fluid is conveniently supplied to borescope 10 by a fluid supply 20 which, through feed tube 22, is interfaced to connector 24 of hand piece 16. When attached, fluid supply 20, feed tube 22, and connector 24 may be considered part of borescope 10. As will be explained further herein, connector 24 may include a valve 1624 (Fig. 2) for use in regulating the flow of fluid from fluid supply 20. A fluid supply system 2000 of the borescope of Fig. 1a includes fluid supply 20, feed tube 22, and connector 24. Fluid delivered by the fluid supply system can include, for example, a mixture of nitrogen and oxygen (e.g., air), water, nitrogen, carbon dioxide, or inert gases such as helium or argon. The fluid delivered can also comprise a chlorofluorocarbon which changes state while traveling through the borescope 10. Borescope 10 may be part of the remote video inspection system described in U. S. Patent Application

No. 10/768,761 filed January 29, 2004 entitled, "Remote Video Inspection System" incorporated herein by reference.

[0026] Referring to aspects of borescope 10 in further detail, borescope 10 further includes umbilical cord 26, power plug 30 and light box 34. Disposed in light box 34 is a light source 36 which may be e.g., a 50-watt arc lamp, such as a type sold under SOLARC by Welch Allyn, Inc., Lighting Products Division, Skaneateles Falls, New York. Light box 34 may further carry an image processing circuit as will be described herein. Borescope 10 may further be in communication with a desktop monitor 40. Monitor 40 may be in communication with borescope 10 via several communication circuitries of light box 34.

[0027] Light source 36 of light box 34 directs light through umbilical cord 26, through hand piece 16, through insertion tube 12 and outwardly from camera head assembly 14. As seen by umbilical cord cross section view of Fig. 1c, umbilical cord 26 encases and supports fiber optic bundles 102. As seen by insertion tube cross section view Fig. 1b, insertion tube 12 also supports and encases fiber optic bundles 102. Referring to further aspects of umbilical cord 26, umbilical cord 26 further encases and supports wiring cable bundle 104. Part of the wires of wiring cable bundle 104 are branched off within hand piece 16 as is suggested by the electrical block diagram of Fig. 2 which will be discussed later herein. The remainder of the wires of bundle 104 extend through insertion tube 12 as is indicated by bundle 104 of insertion tube cross sectional view of Fig. 1b. Referring to insertion tube 12, insertion tube 12 as best seen in Fig. 1b carries fiber optic bundles 102, cable wiring bundle 104 (including flexible electrical conductors), articulation cable assemblies 106, and working channel 108. Articulation cable assemblies 106 provide for bending of insertion tube at distal end 13. As seen in the detail view of Fig. 1f, articulation cable assemblies 106 can be provided by a stranded cable 1062 encased by an outer spring conduit 1064. Working channel 108 allows manipulation of a tool (e.g., a hook 1481 as seen in Fig. 4, a brush, or a magnet) extending from camera head assembly 14. While borescope 10 having the insertion tube embodiment of Fig. 1b includes fiber optic bundles 102, it will be understood that the illumination system having light source 36 and bundles 102 can be replaced or supplemented by an illumination system comprising light sources such as a plurality of LEDs incorporated in head 14. LEDs in head assembly 14, like image sensor 212 (Fig. 1e) and image signal conditioning circuit 210 (Fig. 2), may be powered by power delivery conductors of bundle 104.

[0028] A functional block electrical layout diagram is shown in Fig. 2. Various electrical circuits are distributed throughout borescope 10. In one typical layout scheme,

borescope 10 includes an image signal conditioning circuit 210, a hand piece control circuit 220 and an image processing circuit 230. Image signal conditioning circuit 210 receives image signal clocking and controls signals from image processing circuit 230 for control of image sensor 212, and conditions analog image signals generated by image sensor 212 so that the signals can be delivered to image processing circuit 230. Image sensor 212 is typically a 2D color solid-state image sensor. Image processing circuit 230 may be partially distributed in power plug 30 and partially distributed in light box 34. Among other functions, image processing circuit 230 receives analog image signals as transmitted by image signal conditioning circuit 210, converts such signals into digital form utilizing an analog-to-digital converter and buffers frames of image data so that frames of image data can be subjected to various processing. The processing which may be performed by image processing circuit 230 can include such processing as single frame storage, measurement determination, and object recognition. Image processing circuit 230 can also perform such functions as overlaying of menu interface selection screens on displayed images, and transmitting output video signals to various displays such as hand piece display 1602 and monitor display 40. In addition to housing image processing circuit 230, power plug 30 and light box 34 also carry various electrical circuitries for delivering electrical power to various components of borescope 10. Electrical communication between the various circuits is provided by signal lines 240, 241, 242, and 243, each of which represents one or more electrical conductors. Signal lines 244, 245 to be discussed further herein also represent one or more electrical conductors.

[0029] Hand piece control circuit 220 (which may also be termed a video probe control circuit), among other functions, receives video signals from image processing circuit 230, and displays such signals on display 1602 of hand piece 16, receives user input and commands input via hand piece controls 1604 and interprets such inputs to perform various operations. One important function of hand piece control circuit 220 is to receive insertion tube control inputs. Hand piece control circuit 220 interprets user inputs to develop control signals for controlling control servomotor 1608 which moves articulation cables 1062 so that a distal end 13 of insertion tube 12 is moved into a desired orientation. Control circuit 220 may also adjust control signals input into fluid supply 20 and or connector 24 as will be explained further herein.

[0030] Image processing circuit 230 and hand piece processing circuit 220 are typically microprocessor based; that is, they are conveniently established utilizing one or a plurality of readily available programmable off-the-shelf microprocessor integrated circuit (IC) chips. Microprocessor IC chips often have on-board volatile and nonvolatile memory

structures and are typically implanted in communication with external volatile and nonvolatile memory devices. Exemplary integrated circuit parts for use in realizing circuit elements of Fig. 2 are listed in Table 1.

TABLE 1

Image Sensor 212	Sony ICX238EKU-E (NTSC) Sony ICX239EKU-E (PAL)
Image Processing Circuit 230	Rockwell Decoder BT829 Rockwell Encoder BT866 Xilinx FPGA Controller XC4020
Control Circuit 220	Hitachi HD64F3642AH

[0031] Figs. 1d and 1e show detailed views of a camera head assembly 14 which is cooled by the present invention. Camera head assembly 14 includes head 1402 and tip 1406. Tip 1406, normally of detachable construction includes various lenses which determine a field of view (e.g., straight view, right angle view, narrow right angle, wide right angle, etc.) while head 1402 carries camera components. More specifically, head 1402 includes metal canister 1410 which encapsulates lens 211, image sensor 212 and IC chip 1414 in which the elements of the aforementioned image signal conditioning circuit 210 are incorporated. The inventors observed that the performance of image sensor 212 and circuit 210 degrades significantly when those components are subjected to higher temperatures such as temperatures above 185° (degrees) Fahrenheit. In the present invention, camera head assembly 14 is configured so that sensitive electrical components within the head 1402 can be cooled. In accordance with the present invention, as best seen in Figs. 3a-3c, head assembly 14 has fluid inlet opening 1420 and fluid outlet openings 1430. In the embodiment of Fig. 3a, a fluid inlet opening 1420 is delimited by the interior circumference of a wall insertion tube 12 which will be explained is of a stacked construction. Fluid outlet openings 1430 of head assembly 14 are formed in the walls of canister 1410. To the end that cooling fluid flowing out of outlet opening 1430 is directed along the outer surface of canister 1410, a sleeve 1450 is provided which is fitted about canister 1410. Sleeve 1450 operates to limit the flow of outlet cooling fluid so that the cooling fluid indicated by vectors 100 has a maximal cooling affect on canister 1410 and, therefore, the electrical components therein. Canister 1410 is heat-conductive so that the interior wall temperature of canister 1410 is substantially equal to

that of the cooled outer walls of canister 1410. In one example, canister 1410 comprises stainless steel and comprises a wall thickness, T_c , of from about 0.005 inches to about 0.010 inches. According to the invention, fluid indicated by vectors fluid flow 100 is also forced in close proximity with electrical components as is indicated by fluid flow vectors 100 as shown in Figs. 1a, 1d, 1h, 3a, 3b, and 3c.

[0032] In one variation of the invention, head 1402 incorporates a thermal sensing element for control of application of fluid about canister 1410. For example, in one embodiment passive temperature responsive bimetallic valves 1433 as shown in Fig. 1h may be disposed at the respective openings 1430 of canister 1410. Such valves are in a normally closed position and automatically open when a temperature exceeds a predetermined level. In certain bimetallic valves, the amount of opening of the valve varies depending on sensed temperature.

[0033] In another embodiment, a thermistor 1434 in Fig. 2 is disposed in or, alternatively, in proximity with image signal condition circuit 210 of head 1402. A temperature indicating signal produced by thermistor 1434 may be in electrical communication with control circuit 220. When the specific integration of Fig. 2 is employed, the temperature information of thermistor 1434 may be sent to image processing circuit 230 via line 240, which routes the information to control circuit 220 via line 242. In response to the temperature indicating signal received from thermistor 1434, control circuit 220 adjusts a fluid control signal input to fluid supply 20 via signal line 244 to adjust the delivery of fluid into head 1402 depending on the temperature of head 1402. A fluid control signal input into fluid supply 20 may open a valve (not shown) of fluid supply 20 to increase a pressure of fluid within insertion tube 12 and head assembly 14 when a temperature sensed by thermistor 1434 exceeds a predetermined value. The control signal input into fluid supply 20 may also adjust a temperature of fluid supplied by fluid supply 20. In the alternative or in addition, control circuit 220 may send to connector 24 via signal line 245 a fluid control signal which controls the opening of connector valve 1624 in response to the temperature indicating signal received from thermistor 1434.

[0034] Rather than incorporating a dedicated thermistor 1434 for sensing temperature of head 1402 and there from regulating fluid characteristics, borescope 10 may sense the temperature of head 1402 by processing of image signals generated by image sensor 212. Borescope can be configured so that image signals output by solid state image sensor 212 include temperature indicating signals. More specifically, the inventors noted that specific noise characteristics are observed in electrical signals generated by image sensor 212 above

certain temperatures. For example, above a certain temperature that depends on system characteristics (e.g., type of image sensor, electrical packaging) unwanted vertical lines appear in a captured frame of image data. Above another certain temperature, an unwanted color shift is exhibited in a captured frame of image data. Accordingly, in a highly useful embodiment of the invention, image processing circuit 230 monitors frames of captured image data for noise characteristics indicative of a temperature in head 1402 exceeding a predetermined level. In response to image processing circuit 230 processing the image signals from image sensor 212 and determining that a temperature of head 1402 has exceeded a certain level, image processing circuit 230 by an appropriate communication to control circuit 220 may adjust fluid control signals transmitted in lines 244 and/or 245 to fluid supply 20 and/or valve 1624. It is understood that control circuit 220 may regulate fluid flow and temperature in the embodiment where temperature is sensed by processing of image data in the same manner that control circuit 220 regulates fluid flow and temperature when temperature is sensed by monitoring a temperature indicating signal from thermistor 1434. That is, regardless of the apparatus used in the sensing of temperature, control circuit 220 may transmit a control signal to fluid supply system 2000 which increases cooling fluid pressure (and, therefore, flow volume) when the temperature of head 1402 requires lowering. Control circuit 220 may also transmit a fluid control signal to fluid supply system 2000 which lowers a temperature of fluid supplied by fluid supply 20 when the temperature of head 1402 requires lowering.

[0035] In another aspect, check valves 1431 are disposed at openings 1430 as is indicated by Fig. 1g. Check valves 1431 allow fluid to escape canister 1410 when insertion tube 12 and/or head 14 are pressurized, but close to seal canister 1410 when tube 12 and/or head 14 are not pressurized.

[0036] Referring to Figs. 3a-3c, several alternative schemes for forcing fluid through borescope 10 are possible. In the embodiment of Fig. 3a, the entire hand piece 16 is substantially pressure sealed. Forms of the term "seal" herein encompass perfect seals (no fluid escape) and structures which, though deviating from a perfect seal, are intended to allow a minimal amount of fluid escape. The joints, seams, and screw holes of hand piece 16 are pressure sealed. The interface 1606 between umbilical cord 26 and hand piece 16 is sealed as is indicated by sealant 120. When fluid is input into a hand piece 16, the fluid, as is indicated by arrows 100, is forced outward through insertion tube 12 and eventually outward about camera head assembly 14 in the manner described with reference to Figs. 1d and 1e. Connector 24 defines a fluid input point in the embodiments of Fig. 3a, 3b, and 3c.

[0037] In the embodiment of Fig. 3b, a conduit 1620 extends from connector 24 to a position 1206 within insertion tube 12 and terminates within insertion tube (at proximal end thereof) in the embodiment shown. Interface 1608 between insertion tube 12 and hand piece 16 is sealed as is indicated by sealant 120. In the embodiment of Fig. 3c, a conduit 1620 extends from connector 24 at hand piece 16 all the way through insertion tube 12 and terminates at camera head assembly 14. In the embodiment of Fig. 3c, fluid entering connector 24 is forced through conduit 1620 to head assembly 14 where the cooling fluid flows in the manner described with reference to Figs. 1d and 1e. The interface 1208 between insertion tube 12 and camera head assembly 14 may be sealed to further encourage flow of coolant about head assembly 14 as is indicated by sealant 120 of Fig. 3c. In yet another embodiment, feed tube 22 is directly interfaced to insertion tube 12 as is shown by dashes in feed tube 22 and fluid supply 25 of Fig. 3c.

[0038] Sealant 120, which is made to conform about bundles 102, bundle 104, working channel 108, and cable assemblies 106 may be provided, for example, by epoxy sealant, or high temperature RTV. Bundles 102 are deleted from the view of Figs. 3b and 3c for simplicity purposes. Epoxy sealants which may be used may be e.g., type EP42HT, EP21TDCHT, EP42a+TND-2TG epoxies. The above epoxies, which all have operating temperatures of 350° (degrees) Fahrenheit or higher, are available from Masterbond, Inc.

[0039] Further aspects of the invention relating to the structure of insertion tube 12 are described with reference to Figs. 4-5d. As seen in Figs. 4-5d, an insertion tube 12, according to the invention, is generally of a multi layer stacked up construction. In a typical prior art insertion tube, an insertion tube comprises polyurethane. The inventors discovered that at higher temperatures, polyurethane melts, damaging or destroying insertion tube 12. The melting point of the polyurethane is typically in the range of 400° (degrees) Fahrenheit. In accordance with the present invention, insertion tube 12 is entirely devoid of polyurethane and entirely devoid of materials having a "low" melting point, e.g., a melting point of less than 400° (degrees) Fahrenheit. That is in one embodiment, layers 1246, 1252, 1254, 1256, 1270 (Fig. 5a) as well as "lines" 102, 104, 106, 108 (Fig. 1b) all have a melting point of at least 400° (degrees) Fahrenheit so that borescope 10 is operational in high temperature conditions.

[0040] The inventors also found that the cooling of head 14 of borescope 10 becomes more challenging as insertion tube 12 becomes longer. Heat enters borescope 10 through insertion tube 12. The amount of heat that enters borescope 10 increases as insertion tube is made longer. In accordance with the invention, in another aspect as will be described herein,

insertion tube 12 may comprise at least one layer that has a thermal conductivity of less than about 0.50 BTU-in/(hr-ft²-F°) e.g., fiberglass, which is available in a form having thermal conductivity of 0.27 BTU-in/(hr-ft²-F°). In another embodiment, insertion tube 12 has at least one thermally insulating layer having a thermal conductivity of less than 2.5 BTU-in/(hr-ft²-F°).

[0041] In the example of Fig. 5a, insertion tube 12 includes an insulation layer assembly 1250. Insulation layer assembly 1250, in the embodiment of Fig. 5a, comprises three layers. First layer 1252 is a nonporous seal layer comprising polytetrafluoroethylene. Second layer 1254 is an insulating layer comprising mesh (porous) fiberglass. Second layer 1254 is substantially thermally insulating. Third layer 1256 is another nonporous polytetrafluoroethylene seal layer. A three layer system can limit conduction through the interior and exterior layers by creating a thermal barrier. Referring to other layers of insertion tube 12, layer 1246 is a monocoil. Layer 1246 increases the crush resistance of insertion tube 12. Layer 1280 is a mesh tungsten layer. Tungsten layer 1280 increases the abrasion resistance and torsional stiffness of insertion tube 12.

[0042] The multi-layer insulation layer assembly may be used in combination with any of the fluid input systems as shown in Figs. 3a-3c.

[0043] Another embodiment of an insertion tube in accordance with the invention is shown in Fig. 5b. In the embodiment of Fig. 5b, the multilayer insulation layer assembly of Fig. 5b is replaced with a single layer insulation assembly devoid of a sealing layer. In the embodiment of Fig. 5b, insulating layer 1260 comprises a porous, non-sealing tube 1260. Layer 1260 may have the structure as shown in Fig. 5b in which micropores 1262 are dispersed throughout. Micropores 1262 may have diameters ranging from about 10 microns to about 100 microns. Micropores 1262 may be nonuniformly sized, and nonuniformly spaced. Micropores 1262 may also be randomly sized and randomly spaced. Micropores 1262 allow cooling fluid indicated by vectors 100 to escape there through. By the action of fluid escaping from micropores 1262, an insulating/cooling boundary layer is formed along the outside surface of insertion tube 12. The insulation/cooling boundary reduces heat entry into insertion tube 12 by way of convection. The insertion tube 12 of Fig. 5b may be used in combination with any of the embodiments of Figs. 3a, 3b, and 3c.

[0044] In a variation of the invention, micropores 1262 are non-uniformly formed throughout the length of insertion tube 12 according to a specific dispersion pattern. In one example, insertion tube 12 is configured so that there is a progressively higher density of

micropores 1262 from proximal end 15 of insertion tube 12 to distal end 13 of insertion tube 12 (Fig. 4). If insertion tube 12 is made to have a progressively higher density of micropores 1262 from proximal end 15 to distal end 13, and the density progression is appropriately designed, fluid escapes from insertion tube 12 uniformly throughout the length of insertion tube 12. Micropore "density" herein refers to the total area consumed by micropores 1262 per unit length. Therefore, a progressively higher density of micropores 1262 can be provided by increasing the number of micropores and/or increasing the average size of the micropores along the length of insertion tube 12. Various examples of the invention are described with reference to Tables 2A-2D.

TABLE 2A

Layer	Material	Trade Name	Thermal Conductivity	Maximum Operating Temperature	Thickness
Monocoil 1246	Stainless Steel		138.8 BTU-in/(hr-ft ² -F°)	2550° F	0.010 in.
Layer 1252	Nonporous Polytetrafluoroethylene	TEFLON	2.08 BTU-in/(hr-ft ² -F°)	500° F	0.010 in.
Layer 1254	Porous Fiberglass	TEFLON	0.27 BTU-in/(hr-ft ² -F°)	1200° F	0.012 in.
Layer 1256	Nonporous Polytetrafluoroethylene	TEFLON	2.08 BTU-in/(hr-ft ² -F°)	500° F	0.010 in.
Layer 1280	Tungsten braid		1130 BTU-in/(hr-ft ² -F°)	6100° F	0.006 in.

The structure summarized in Table 2A is shown in Fig. 5a. The porous fiberglass layer provides a thermal barrier and limits the entry of heat into insertion tube by way of thermal conduction. The polytetrafluoroethylene layers seal the insertion tube, and limit the entry of fluid through the walls of insertion tube 12.

TABLE 2B

Layer	Material	Trade Name	Thermal Conductivity	Maximum Operating Temperature	Thickness
Monocoil 1246	Stainless Steel		138.8 BTU-in/(hr-ft ² -F°)	2550° F	0.010 in.
Layer 1260	Porous Polytetrafluoroethylene	SILKORE		Excellent high temp integrity	0.015 in.
Layer 1280	Tungsten braid		1130 BTU-in/(hr-ft ² -F°)	6100° F	0.006 in.

The structure summarized in Table 2B is shown in Fig. 5b. Pressurized fluid is allowed to escape from the walls insertion tube 12 to provide an insulation/cooling boundary.

TABLE 2C

Layer	Material	Trade Name	Thermal Conductivity	Maximum Operating Temperature	Thickness
Monocoil 1246	Stainless Steel		138.8 BTU-in/(hr-ft ² -F°)	2550° F	0.010 in.
Layer 1262	Nonporous Meta-Phenelyneisophthalamide layers	NOMEX	0.715 BTU-in/(hr-ft ² -F°)	428° F	0.015 in.
Layer 1264	Porous Fiberglass		0.27 BTU-in/(hr-ft ² -F°)	1200° F	0.012 in.
Layer 1266	Nonporous Meta-Phenelyneisophthalamide	NOMEX	0.715 BTU-in/(hr-ft ² -F°)	428° F	0.015 in.
Layer 1280	Tungsten braid		1130 BTU-in/(hr-ft ² -F°)	6100° F	0.006 in.

The structure summarized in Table 2C is shown in Fig. 5c. The structure of Fig. 5c is similar to the structure of Fig. 5a, with the polytetrafluoroethylene layers replaced with meta-phenelyneisophthalamide layers.

TABLE 2D

Layer	Material	Trade Name	Thermal Conductivity	Maximum Operating Temperature	Thickness
Monocoil 1246	Stainless Steel		138.8 BTU-in/(hr-ft ² -F°)	2550° F	0.010 in.
Layer 1268	Nonporous Poly-paraphenylene terephthalamide	KEVLAR	0.277 BTU-in/(hr-ft ² -F°)	797° F	0.015 in.
Layer -in/(hr-ft ² -F°)1270	Porous Fiberglass		0.27 BTU-in/(hr-ft ² -F°)	1200° F	0.012 in.
Layer 1272	Nonporous Poly-paraphenylene terephthalamide	KEVLAR	0.277 BTU-in/(hr-ft ² -F°)	797° F	0.015 in.
Layer 1280	Tungsten braid		1130 BTU-in/(hr-ft ² -F°)	6100° F	0.006 in.

The structure summarized in Table 2D is shown in Fig. 5d. The structure of Fig. 5d is similar to the structure of Fig. 5a with the polytetrafluoroethylene layers replaced with poly-paraphenylene terephthalamide.

[0045] Referring to further aspects of insertion tube 12, in one embodiment insertion tube 12 may have an outer diameter “d,” at (Figs. 5a, 5b) from about 4mm to about 12mm. Tube 12 (Fig. 5a) may have a total thickness (the thickness of stacked up layers 1246, 1280 and intermediate layers) from about 1 mm to about 5 mm in one example.

[0046] Insertion tube 12 can also have a construction in accordance with one or more of the embodiments described in U. S. Patent Application No. 10/763,131 filed January 22, 2004 and entitled, “Inspection Device Insertion Tube” incorporated herein by reference.

[0047] Referring to aspects of fluid supply 20, fluid supply 20 can take on a variety of forms. Fluid supply 20 can be provided, for example, by an air compressor, or an air cylinder. Fluid that is supplied by fluid supply 20 may be, for example, a mixture of nitrogen and oxygen (e.g., air), water, nitrogen, carbon dioxide, or inert gases such as helium or argon. Fluid supply 20 can be a standardly known industrial low pressure compressed air supply. Fluid supply 20 can also be a stand alone commercial compressor (electric or gas) as are known to skilled artisans.

[0048] While the present invention has been particularly shown and described with reference to the preferred mode as illustrated in the drawing, it will be understood by one skilled in the art that various changes in detail may be affected therein without departing from the spirit and scope of the invention as defined by the claims.

We Claim:

1. A borescope for use in the inspection of remotely located objects, said borescope comprising:

(a) a multi-layer insertion tube, said multi-layer insertion tube being of stacked up multi-layer construction and having at least one of a monocoil crush resistant layer and an abrasion resistant layer, said insertion tube having a distal end;

(b) a camera head assembly disposed at a distal end of said insertion tube, said camera head assembly having a two dimensional solid state image sensor and a lens, said two dimensional solid state image sensor generating image information and having performance characteristics that degrade at higher temperatures, said camera head assembly having a canister encapsulating said two-dimensional solid state image sensor, wherein said borescope is configured so that image information generated by said two dimensional solid state image sensor is communicated to an image processing circuit disposed at a position spaced apart from said camera head assembly;

(c) a plurality of articulation cable assemblies, each of said plurality of articulation cable assemblies being encased by and extending through said multi-layer insertion tube, said articulation cables facilitating controlling or steering of said distal end of said multi-layer insertion tube;

(d) a fluid supply system, said fluid supply system having a fluid supply in fluid communication system with at least one of said camera head assembly and said multi-layer insertion tube, said borescope being configured so that said fluid supply system forces cooling fluid through said multi-layer insertion tube to said camera head assembly in order to cool said two dimensional solid state image sensor included in said camera head assembly; and

(e) an illumination assembly projecting light outwardly from said borescope.

2. The borescope of claim 1, wherein said multi-layer insertion tube includes a multi-layer insulating layer assembly.

3. The borescope of claim 1, wherein said multi-layer insertion tube includes a layer having a plurality of micropores formed throughout a length thereof.

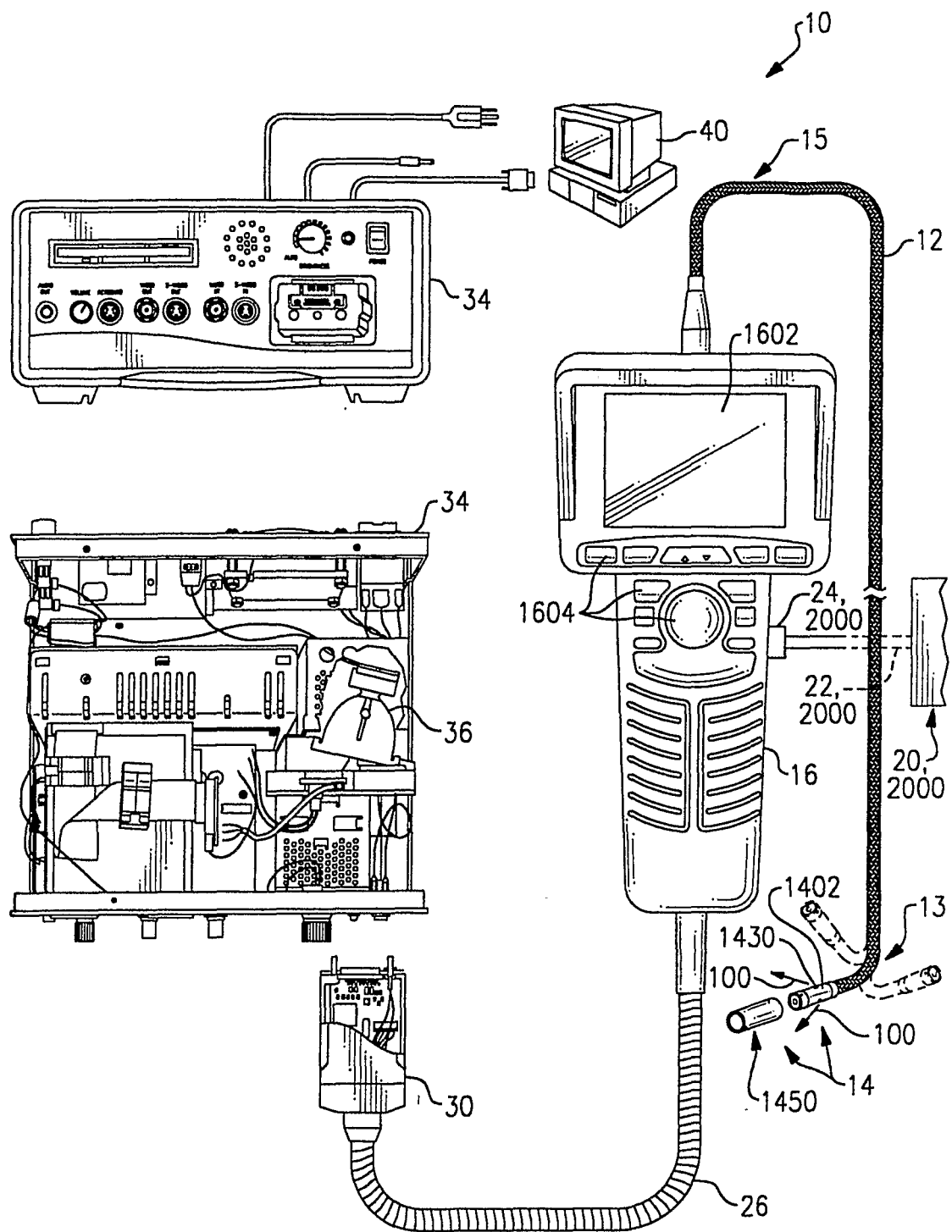
4. The borescope of claim 1, wherein said borescope further includes a hand piece supporting a joystick for use in maneuvering said articulation cable assemblies.

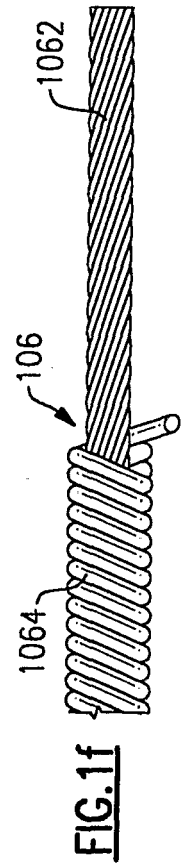
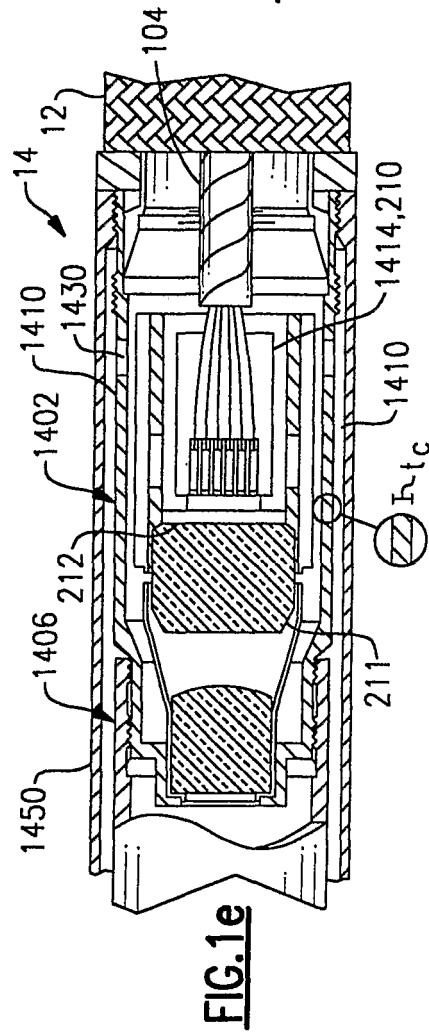
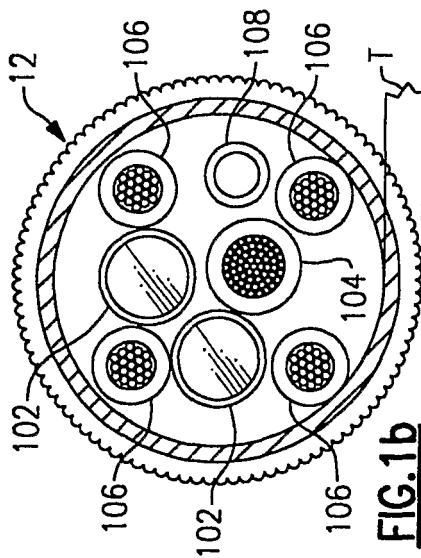
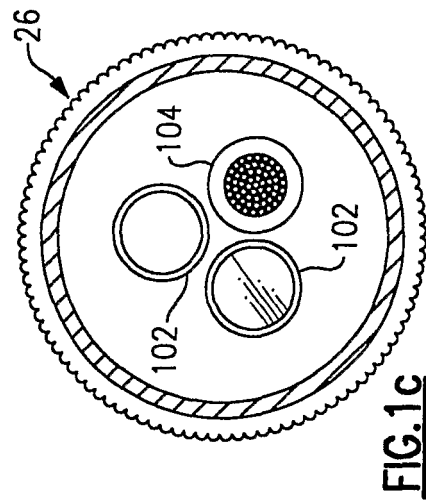
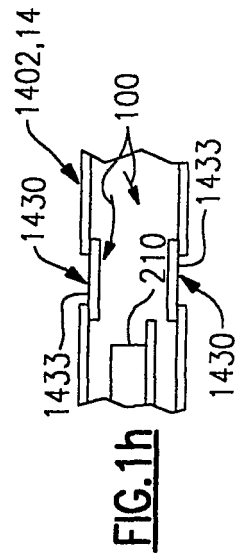
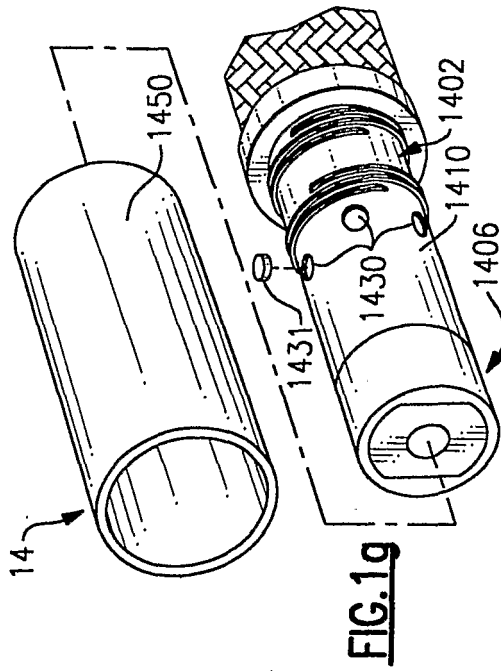
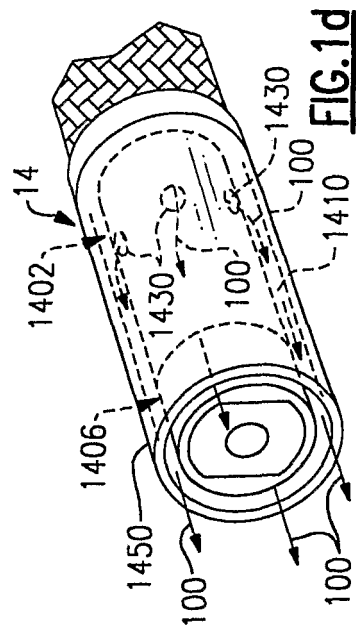
5. The borescope of claim 1, wherein said canister comprises metal, and wherein said canister further includes a hole for allowing cooling fluid supplied by said fluid supply system to escape said canister.
6. The borescope of claim 1, wherein said fluid supply system supplies a mixture of oxygen and nitrogen into said camera head assembly.
7. The borescope of claim 1, wherein said multi-layer insertion tube device further includes a conduit extending from said fluid supply through said multi-layer insertion tube and terminating at said camera head assembly, said conduit carrying said cooling fluid to said camera head assembly.
8. The borescope of claim 1, wherein said canister of said camera head assembly further includes a plurality of holes formed in said canister, and a sleeve disposed about said canister for directing fluid toward external walls of said canister.
9. The borescope of claim 1, wherein said camera head assembly is configured to sense a temperature of fluid within said borescope, and wherein said insertion tube device is configured so that said fluid supply system regulates supplied cooling fluid responding to said sensed temperature of said canister fluid.
10. The borescope of claim 9, wherein said insertion tube device includes a thermistor disposed in said canister for sensing temperature of said fluid within said canister.
11. The borescope of claim 9, wherein said insertion tube device is configured so that said temperature of said canister fluid is sensed by way of processing of image information communicated from said solid state two dimensional image sensor.
12. The borescope of claim 1, wherein said illumination assembly includes at least one LED disposed within said borescope.
13. The borescope of claim 1, wherein said illumination assembly includes at least one fiber optic bundle extending through said multi-layer insertion tube.

14. The borescope of claim 1, further including a working channel encapsulated by and extending through said multi-layer insertion tube, said working channel facilitating manipulation of a tool extending from said camera head assembly.

15. The borescope of claim 1, wherein said borescope includes a cable wiring bundle encased by and extending through said multi-layer insertion tube, said cable wiring bundle including a first electrical wiring bundle, said borescope being configured so that said image information generated by said two dimensional solid state image sensor is communicated to said image processing circuit utilizing said first electrical wiring bundle.

1/6

**FIG. 1a**



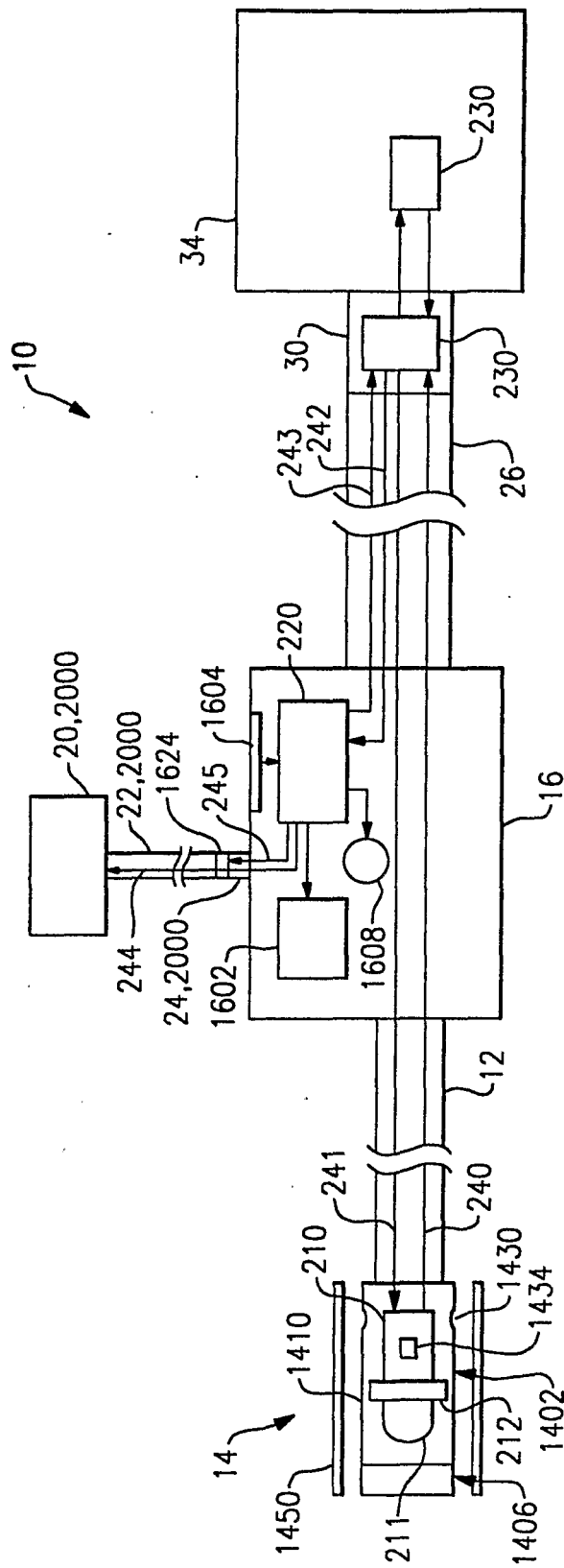


FIG. 2

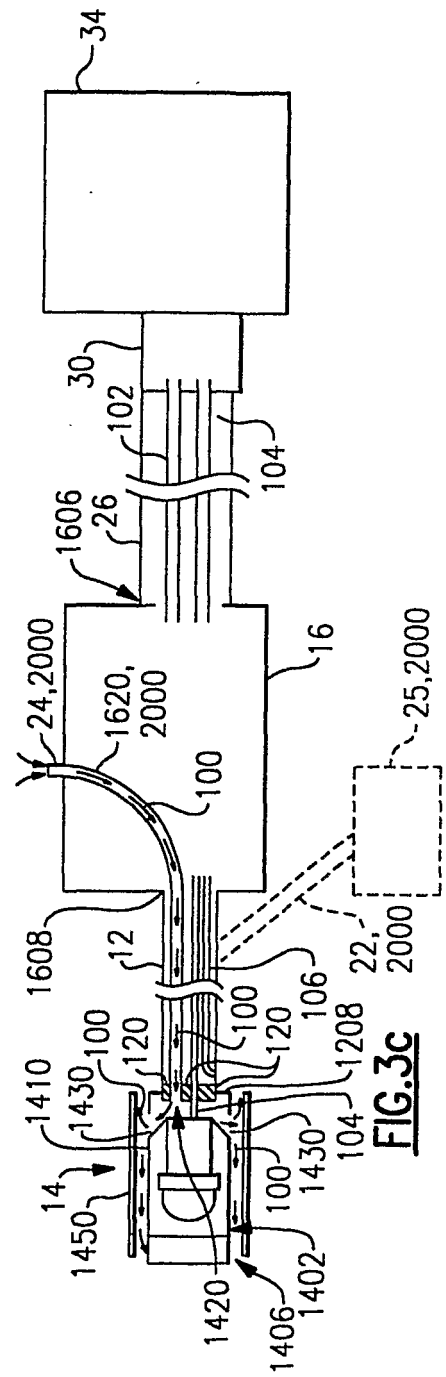
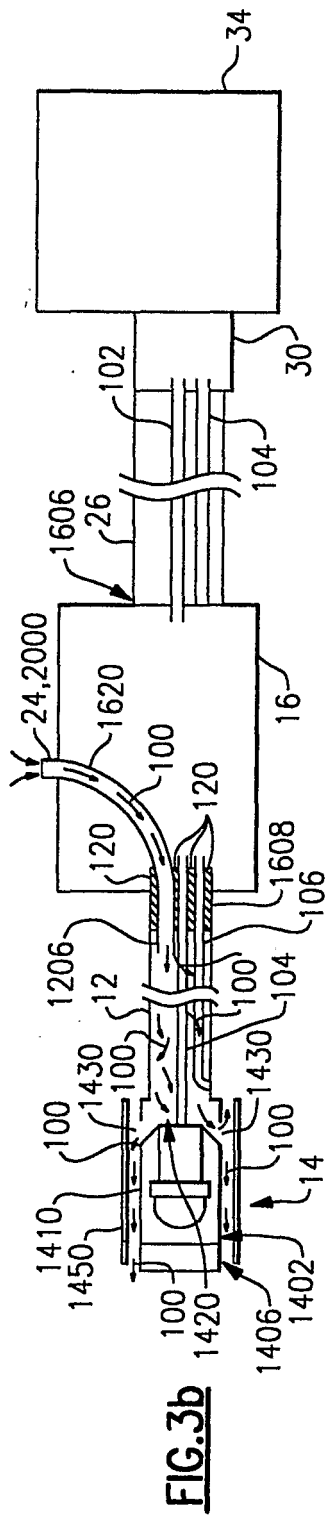
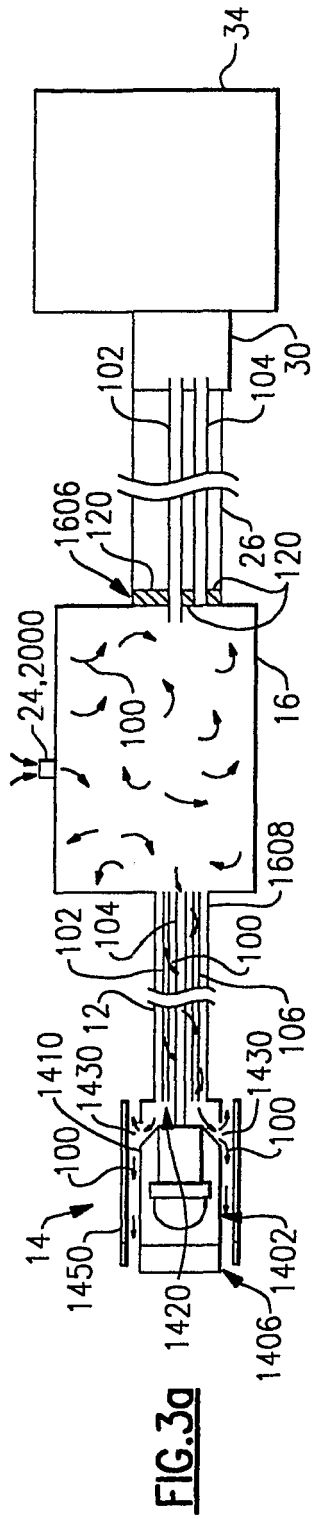
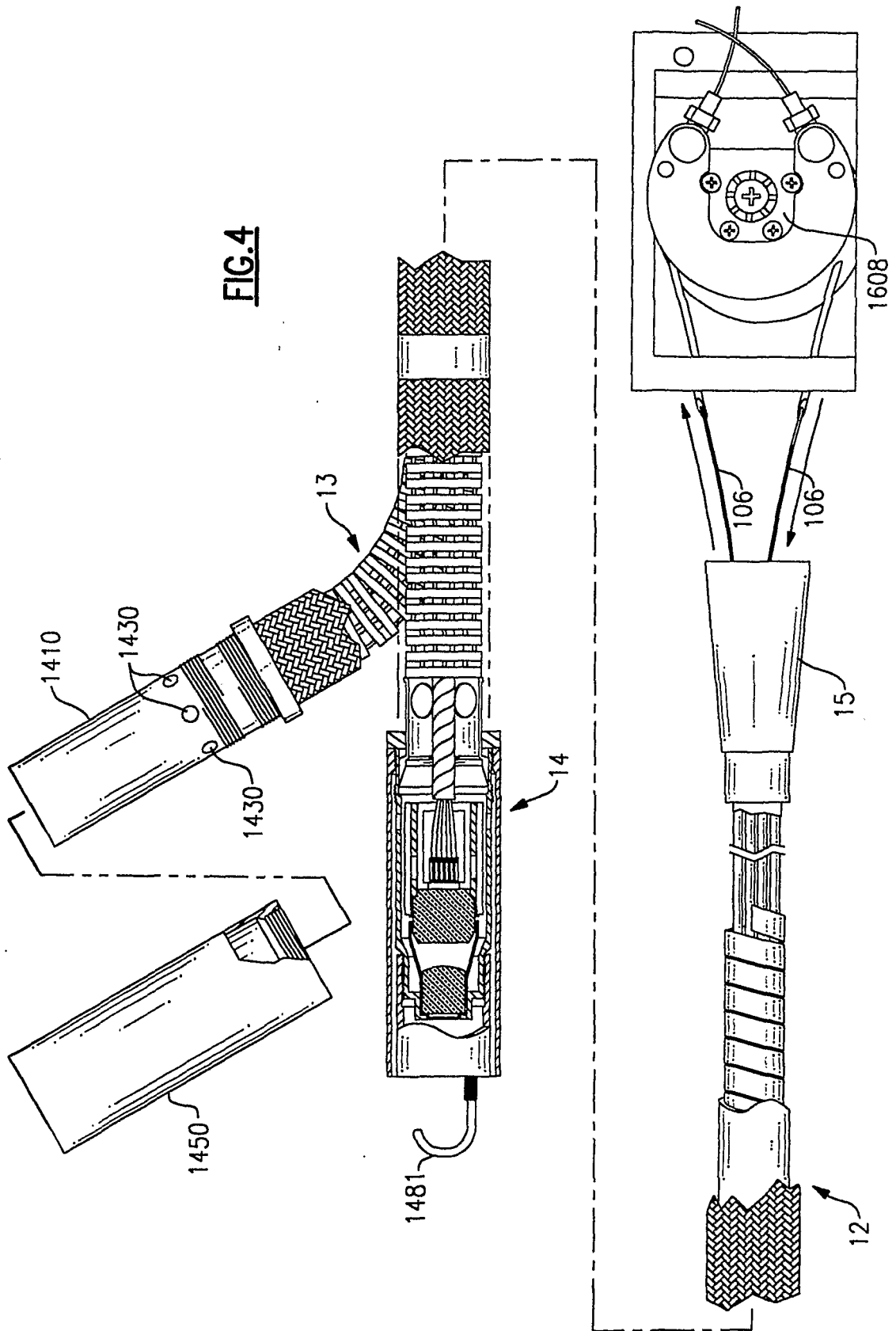
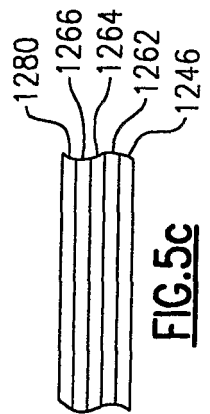
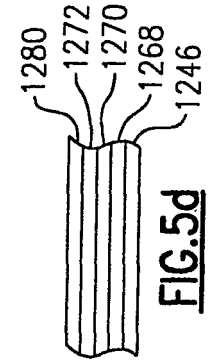
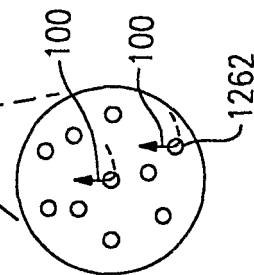
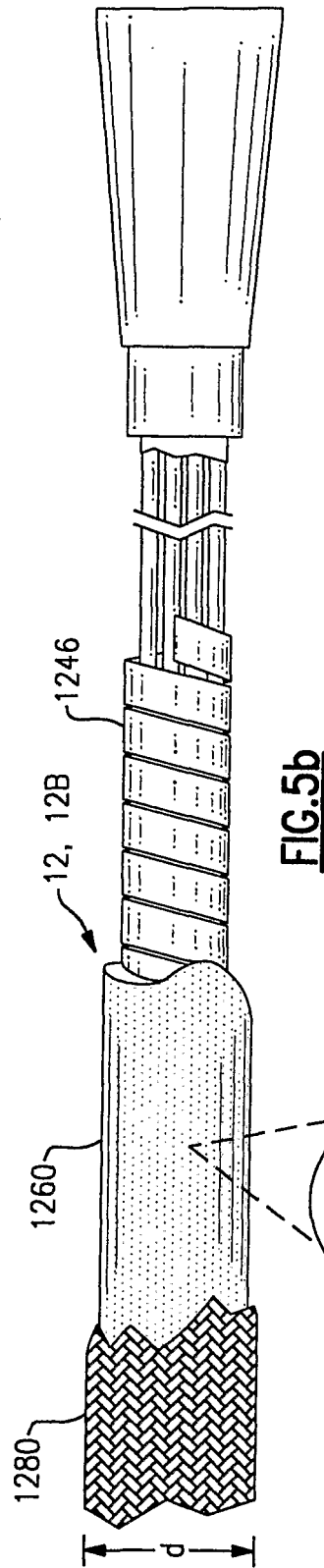
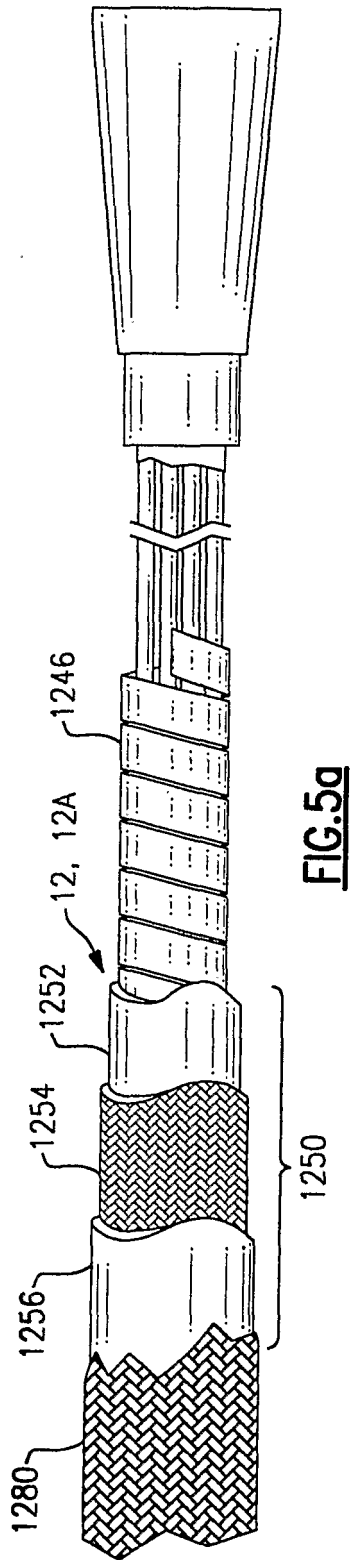


FIG. 4





INTERNATIONAL SEARCH REPORT

International Application No

PCT/US2005/021174

A. CLASSIFICATION OF SUBJECT MATTER

IPC 7 A61B1/005 G02B23/24

According to International Patent Classification (IPC) or to both national classification and IPC

B. FIELDS SEARCHED

Minimum documentation searched (classification system followed by classification symbols)

IPC 7 A61B G02B

Documentation searched other than minimum documentation to the extent that such documents are included in the fields searched

Electronic data base consulted during the international search (name of data base and, where practical, search terms used)

EPO-Internal, WPI Data

C. DOCUMENTS CONSIDERED TO BE RELEVANT

Category *	Citation of document, with indication, where appropriate, of the relevant passages	Relevant to claim No.
Y	US 5 743 731 A (LARES ET AL) 28 April 1998 (1998-04-28) abstract column 6, paragraph 1 - column 7, paragraph 1 column 8, paragraph 2-4 column 9, paragraphs 2,3 figures 3,4,8,9	1-15
Y	US 4 301 790 A (BOL ET AL) 24 November 1981 (1981-11-24) abstract column 3, last paragraph - column 5, last paragraph figures 1-4	13,14
	----- -/--	

☒ Further documents are listed in the continuation of box C.☒ Patent family members are listed in annex.

* Special categories of cited documents:

- *A* document defining the general state of the art which is not considered to be of particular relevance
- *E* earlier document but published on or after the international filing date
- *L* document which may throw doubts on priority claim(s) or which is cited to establish the publication date of another citation or other special reason (as specified)
- *O* document referring to an oral disclosure, use, exhibition or other means
- *P* document published prior to the international filing date but later than the priority date claimed

T later document published after the international filing date or priority date and not in conflict with the application but cited to understand the principle or theory underlying the invention

X document of particular relevance; the claimed invention cannot be considered novel or cannot be considered to involve an inventive step when the document is taken alone

Y document of particular relevance; the claimed invention cannot be considered to involve an inventive step when the document is combined with one or more other such documents, such combination being obvious to a person skilled in the art.

& document member of the same patent family

Date of the actual completion of the international search

27 September 2005

Date of mailing of the international search report

05/10/2005

Name and mailing address of the ISA

European Patent Office, P.B. 5818 Patentlaan 2
NL - 2280 HV Rijswijk
Tel. (+31-70) 340-2040, Tx. 31 651 epo nl,
Fax: (+31-70) 340-3016

Authorized officer

Moroz, A

INTERNATIONAL SEARCH REPORT

International Application No

PCT/US2005/021174

C.(Continuation) DOCUMENTS CONSIDERED TO BE RELEVANT

Category *	Citation of document, with indication, where appropriate, of the relevant passages	Relevant to claim No.
Y	US 5 730 701 A (FURUKAWA ET AL) 24 March 1998 (1998-03-24) column 12, line 40 - column 13, last paragraph figures 17,19,20 -----	1-12,15
P,X	WO 2004/086957 A (SCIMED LIFE SYSTEMS, INC) 14 October 2004 (2004-10-14) page 23, paragraph 2 - page 25, paragraph 2 page 44, last paragraph - page 45, paragraph 1 figures 6c-6i,32 -----	1

INTERNATIONAL SEARCH REPORT

Information on patent family members

International Application No

PCT/US2005/021174

Patent document cited in search report		Publication date	Patent family member(s)		Publication date
US 5743731	A	28-04-1998	NONE		
US 4301790	A	24-11-1981	DE	2835331 A1	14-02-1980
			JP	55026998 A	26-02-1980
US 5730701	A	24-03-1998	NONE		
WO 2004086957	A	14-10-2004	US	2004199052 A1	07-10-2004
			US	2005075538 A1	07-04-2005

专利名称(译)	管道镜包括流体供应系统		
公开(公告)号	EP1761159A1	公开(公告)日	2007-03-14
申请号	EP2005766069	申请日	2005-06-15
[标]申请(专利权)人(译)	EVEREST VIT		
申请(专利权)人(译)	EVEREST VIT , INC.		
当前申请(专利权)人(译)	EVEREST VIT , INC.		
[标]发明人	KEHOSKIE MICHAEL P KARPEN THOMAS W KRAUTER ALLAN I LIA RAYMOND A MORSE BRADFORD VON FELTEN KENNETH		
发明人	KEHOSKIE, MICHAEL, P. KARPEN, THOMAS, W. KRAUTER, ALLAN, I. LIA, RAYMOND, A. MORSE, BRADFORD VON FELTEN, KENNETH		
IPC分类号	A61B1/005 G02B23/24 A61B1/04 A61B1/05 A61B1/12 G01N21/954		
CPC分类号	G02B23/2492 G01N21/954		
优先权	10/869822 2004-06-16 US		
外部链接	Espacenet		

摘要(译)

一种管道镜装置 (10) , 具有插入管 (12) , 摄像头组件 (14) 和流体供应系统 (20) 。相机组件包括允许流体逸出的通孔。流体供应系统 (20) 是可控制的, 以迫使流体 (100) 通过通孔。可致动流体供应系统 (20) 以冷却摄像头组件 (14) 。