

(19) World Intellectual Property
Organization
International Bureau



(43) International Publication Date
23 December 2004 (23.12.2004)

PCT

(10) International Publication Number
WO 2004/110286 A1

(51) International Patent Classification⁷: **A61B 17/34**

(21) International Application Number:
PCT/GB2004/002413

(22) International Filing Date: 7 June 2004 (07.06.2004)

(25) Filing Language: English

(26) Publication Language: English

(30) Priority Data:
0313730.4 13 June 2003 (13.06.2003) GB

(71) Applicant (for all designated States except US): **SURGICAL INNOVATIONS LIMITED** [GB/GB]; Clayton Park, Clayton Wood Rise, Leeds LS16 6RF (GB).

(72) Inventors; and

(75) Inventors/Applicants (for US only): **MORAN, Peter** [GB/GB]; 31 Spring Valley Drive, Bramley, Leeds LS13 4RN (GB). **MORAN, Stuart, Skelton** [GB/GB]; Moor House Farm, Moor Road, Bramhope, Leeds LS16 9HH (GB).

(74) Agent: **BROWNE, Robin, Forsythe;** Urquhart-Dykes & Lord LLP, Tower North Central, Merrion Way, Leeds LS2 8PA (GB).

(81) Designated States (unless otherwise indicated, for every kind of national protection available): AE, AG, AL, AM, AT, AU, AZ, BA, BB, BG, BR, BW, BY, BZ, CA, CH, CN, CO, CR, CU, CZ, DE, DK, DM, DZ, EC, EE, EG, ES, FI, GB, GD, GE, GH, GM, HR, HU, ID, IL, IN, IS, JP, KE, KG, KP, KR, KZ, LC, LK, LR, LS, LT, LU, LV, MA, MD, MG, MK, MN, MW, MX, MZ, NA, NI, NO, NZ, OM, PG, PH, PL, PT, RO, RU, SC, SD, SE, SG, SK, SL, SY, TJ, TM, TN, TR, TT, TZ, UA, UG, US, UZ, VC, VN, YU, ZA, ZM, ZW.

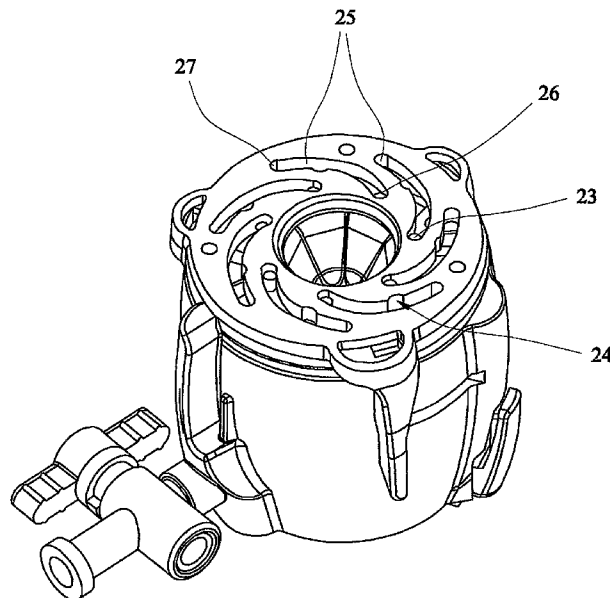
(84) Designated States (unless otherwise indicated, for every kind of regional protection available): ARIPO (BW, GH, GM, KE, LS, MW, MZ, NA, SD, SL, SZ, TZ, UG, ZM, ZW), Eurasian (AM, AZ, BY, KG, KZ, MD, RU, TJ, TM), European (AT, BE, BG, CH, CY, CZ, DE, DK, EE, ES, FI, FR, GB, GR, HU, IE, IT, LU, MC, NL, PL, PT, RO, SE, SI, SK, TR), OAPI (BF, BJ, CF, CG, CI, CM, GA, GN, GQ, GW, ML, MR, NE, SN, TD, TG).

Published:

— with international search report

[Continued on next page]

(54) Title: SURGICAL SEAL



(57) Abstract: A seal for laparoscopic port comprising: a base adapted to engage a cannula, the base including an axial aperture for a surgical instrument, a multiplicity of jaws mounted on the base, the jaws being movable radially with respect to the aperture between an open position wherein a shaft of the surgical instrument may pass freely and a closed position wherein the jaws engage said shaft and provide a restraining force restraining radial movement of the shaft, and an actuator rotatable to urge the jaws to move between said open position and said closed position, wherein the actuator includes a click stop arrangement adapted to provide frictional engagement at a position intermediate the open and closed positions to hold the jaws at the intermediate position.

WO 2004/110286 A1



For two-letter codes and other abbreviations, refer to the "Guidance Notes on Codes and Abbreviations" appearing at the beginning of each regular issue of the PCT Gazette.

SURGICAL SEAL

This invention relates to a seal for use with a surgical instrument to provide a gas tight seal through which the instrument may pass. The invention relates particularly but not exclusively to a seal for a laparoscopic port.

5 WO 01/89397 discloses a surgical seal for a laparoscopic port comprising:
a base adapted to engage a cannula, the base including an axial aperture for a surgical instrument; a multiplicity of jaws mounted on the base, the jaws being movable radially with respect to the aperture between an open position wherein the shaft of the instrument may pass freely and a closed position wherein the jaws engage said shaft to
10 provide a restraining force restraining movement of the shaft; and an actuator rotatable to urge the jaws to move between said open position and said closed position. The disclosure of this specification is incorporated into the present specification by reference.

The jaws of the previously disclosed seal may engage or restrain instruments having shafts of different diameters. The jaws are preferably movable along guides which
15 may comprise channels, tracks or runners. In the preferred embodiment the jaws include a runner adapted to be received in a respective guideway in the actuator, arranged so that rotation of the actuator causes radial movement of the jaws. The guideway comprises an arcuate channel which may have the configuration of a parabolic curve.

The seal also includes a diaphragm adapted to contact the shaft of the surgical
20 instrument and further includes a lip adapted to engage a radially outwardly facing portion of each jaw, so that the diaphragm is forced open as the jaws move to the open position. The aperture of the jaws is continuously adjustable between maximum and minimum positions.

Although continuous variability of the opening of the jaws is beneficial for
25 accommodating a range of surgical instruments and particularly for providing a large aperture for insertion or withdrawal, a fixed intermediate diameter to accommodate and securely engage a commonly used instrument, such as a laparoscope is not provided.

-2-

According to a first aspect of the present invention a seal for a laparoscopic port comprises:

a base adapted to engage a cannula, the base including an axial aperture for a surgical instrument;

5 a multiplicity of jaws mounted on the base, the jaws being movable radially with respect to the aperture between an open position wherein a shaft of the surgical instrument may pass freely and a closed position wherein the jaws engage said shaft and provide a restraining force restraining radial movement of the shaft; and

10 an actuator rotatable to urge the jaws to move between said open position and said closed position;

wherein the actuator includes a click stop arrangement adapted to provide frictional engagement at a position intermediate the open and closed positions to hold the jaws at the intermediate position.

15 The click stop arrangement may comprise a discontinuity, preferably a protrusion, for example a rib or button or a recess for example a detent on the actuator arranged to engage a complementary discontinuity, preferably a detent or protrusion on the base. A captive ball bearing extended by a spring and a complementary socket may be used. However, simple construction with fewer parts is preferred for ease of assembly and sterilisation. A plurality of click stop positions may be provided.

20 Alternatively the click stop arrangement may comprise a protrusion, detent or other formation on the jaw adapted to engage a respective complementary formation on the actuator. Preferably there is a peg, pin or other protrusion on each jaw, and the actuator includes a recess or detent dimensioned to receive and engage the protrusion. A plurality of click stop positions may be provided.

25 Preferably the jaws are biased towards their closed position.

Preferred embodiments include a resilient diaphragm having a central aperture adapted to contact the shaft of a surgical instrument, the diaphragm including a lip, each

-3-

jaw engaging the lip so that the aperture of the diaphragm is forced to open as the jaws move from the closed position towards the open position.

In particularly preferred embodiments a restoring force is provided by the resilient diaphragm. Such an arrangement avoids the need for additional spring or resilient means and ensures that the force applied by each jaw to the shaft of an instrument is the same. This facilitates axial location of the instrument in use.

Furthermore, the restoring force facilitates use of a simple click stop arrangement as it is only necessary to retain the actuator in an open position, because the actuator moves automatically towards the closed position where no manual force is applied to it.

In particularly preferred embodiments each jaw includes:
a follower movable along a respective guide on the actuator,
the guide having inner and outer ends corresponding to open and closed positions of the jaw,
the guide further having an intermediate discontinuity adapted to engage the follower preventing closure of the jaw by providing a closure resisting force greater than said restoring force.

A plurality of discontinuities may be used to provide two or more intermediate click stop positions. The guide may comprise a channel or slot and the follower may comprise a pin, peg or other protrusion. The discontinuity may comprise a recess or detent in the inner surface of the guide into which the protrusion is received and held until manual rotation is applied to the actuator. The recess may be shaped to snugly receive the follower.

Seals in accordance with this invention have the advantage that the jaws and diaphragm may be locked in the fully open position to allow for insertion or removal of articles, but the jaws when released automatically close from the fully open position to the intermediate position. The jaws remain in the intermediate position in the absence of external force from the surgeon. The intermediate position can be selected to allow

-4-

insertion of a standard size shaft without allowing lateral movement of the shaft after insertion. This arrangement avoids the need for manual intervention to set the diameter of the aperture of the jaws during the surgical procedure.

5 The actuator may be arranged so that the jaws are fully opened or closed by rotation through an angle of 30-90°, preferably 30-45° so that a surgeon may open or close the jaws using his fingers but without need for rotation of the wrist. Any convenient number of jaws may be provided, preferably at least five, most preferably seven.

According to a second aspect of the present invention there is provided a method of use of a seal for laparoscopic port as previously described.

10 The seal as previously described allows the diameter of the aperture of the diaphragm to be adjusted and set prior to insertion of an instrument. Although the jaws can be deflected from their minimum closed position by the tip of an instrument as it is inserted, as with prior art devices, it is advantageous that the diameter can be set to a predetermined intermediate and maximum value. This makes insertion of the instrument
15 easier as less force is required. Also, the instrument is held axially during insertion. Alternatively, the jaws can be set to the maximum open position, the instrument inserted and the jaws released so that the jaws engage and drive the shaft of the instrument without need to set the instrument to a particular diameter of shaft.

20 The invention is further described by means of example but not in any limitative sense with reference to the accompanying drawings of which:

Figure 1 is a perspective view of a seal in accordance with the invention.

Figure 2 is a plan view of the seal with the actuator cover removed.

Figure 3 is an elevation and three sections illustrating operation of the invention.

Figure 4 is an enlarged perspective sectional view.

25 Figure 5 is a detail of the sectional view and Figure 6 is an exploded view of a cannular including a seal in accordance with this invention.

-5-

The disclosure of our co-pending WO 01/89397 is referred to. This specification discloses a laparoscopic seal, not having a click stop arrangement. The disclosure of this specification is incorporated into the present specification by reference.

The laparoscopic seal illustrated in the Figures comprises a casing 1 having a rotatable actuator cap 3. Finger grips 4 on the cap facilitate rotation of the latter and a distally extending lever 5 allows the seal to be moved between open and closed positions. Seven radially movable jaws 6 mounted in radial guideways 10 in a carrier plate 9, have proximally extending follower pins or studs 7 which engage sideway channels 25 on the distal surface of the cap 3. The teeth 8 of the jaws 6 cooperate to form an aperture to engage the shaft of the surgical instrument (not shown). When the cap 3 is rotated clockwise the lever 5 engages the protrusion or rib 20, resiliently deforming to pass over the latter to form a click stop end position wherein the jaws are fully opened. A diaphragm 11 is engaged on hook portions on the jaws for example as described with reference to the drawings in WO 01/89397. In this way, the diaphragm is opened as the jaws are opened. The resilient restoring force of the dilated diaphragm urges the jaws into the closed position so that the jaws engage the shaft of an instrument inserted through the seal. The diaphragm 11 also engages the shaft of the instrument forming a gas tight seal. The gasket 11 is received within the distal aperture of carrier plate 9 by a gasket 12. An elastomeric duck billed valve 14 serves to form a conventional fluid type seal when the valve is not in use. The casing 1 may be coupled to a cannula 17 by means of a twist fit arrangement 28. A locking pin 15 driven by spring 16 and an engagement 18 on the cannula form a latch to prevent accidental removal of the valve from the cannula. The cannula has a conventional tip 19 for insertion into the body cavity.

Figure 3 shows three cross-sectional views through the cap 3 illustrating different positions of the jaws followers or pins as the actuator cap 3 rotates.

In Figure 3b the actuator cap is rotated fully clockwise so that the jaws are opened and the followers 21 reach the outermost end of the arcuate channels 25. In this position the lever 5 passes over the blocking rib 20 and abuts the abutment 28. The force required to urge the lever 5 anticlockwise over the rib 20 is greater than the restoring force of the

-6-

resilient diaphragm so that the valve remains open unless the actuator cap is twisted manually.

Figure 3c shows an intermediate position wherein the followers 22 are received in the recesses 24 on the inner surfaces of the arcuate channels 25. When the actuator cap 3 is released manually from the maximum open position as shown in Figure 1b, the restoring force of the resilient diaphragm causes the cap to rotate anticlockwise until the followers 22 are received in the recesses 24. The resilient force of the diaphragm engages the followers 22 within the recesses preventing further closure of the valve. In this intermediate position the valve has a standard diameter, for example, 10 mm to receive a laparoscopic camera or other commonly used instrument. Further manual rotation in the anticlockwise direction urges the followers 22 out of the recesses 25 so that the restoring force of the resilient diaphragm can completely close the jaws as shown in Figure 3d.

The arrangement is shown on a larger scale in Figure 4.

Figure 5 shows a single channel 25 having the recess 24 dimensioned to receive the follower pin 23. The recess 24 has a larger radius on the outer surface to allow easy passage of the follower 23, but has a smaller radius on the inner surface 29 to retain the follower in the absence of manual pressure.

The channel 25 has an exponential curvature to facilitate smooth closing of the valve when it is opened slightly and when the resilient diaphragm is only slightly dilated.

-7-

CLAIMS

1. A seal for laparoscopic port comprising:

a base adapted to engage a cannula, the base including an axial aperture for a surgical instrument;

5 a multiplicity of jaws mounted on the base, the jaws being movable radially with respect to the aperture between an open position wherein a shaft of the surgical instrument may pass freely and a closed position wherein the jaws engage said shaft and provide a restraining force restraining radial movement of the shaft; and

10 an actuator rotatable to urge the jaws to move between said open position and said closed position;

wherein the actuator includes a click stop arrangement adapted to provide frictional engagement at a position intermediate the open and closed positions to hold the jaws at the intermediate position.

2. A seal as claimed in claim 1 wherein the click stop arrangement
15 comprises a discontinuity on the actuator arranged to engage a complementary discontinuity on the base.

3. A seal as claimed in claim 2 wherein the discontinuity comprises a protrusion or recess on the actuator arranged to engage a complementary detent or protrusion on the base.

20 4. A seal as claimed in any preceding claim wherein the click stop arrangement comprises a protrusion or detent on the jaw adapted to engage a complementary formation on the actuator.

25 5. A seal as claimed in claim 4 wherein the click stop arrangement comprises a pin extending from each jaw, the pin being received in a recess in a guide on the actuator.

-8-

6. A seal as claimed in any preceding claim wherein each jaw includes a follower movable along a respective guide on the actuator,

the guide having inner and outer ends corresponding to open and closed positions of the jaw,

5 the guide further having an intermediate discontinuity adapted to engage the follower preventing closure of the jaw by providing a closure resisting force greater than said restoring force.

7. A seal as claimed in claim 5 or 6 wherein the guide is an arcuate channel or slot in the actuator.

10 8. A seal as claimed in claim 7 wherein the channel or slot is parabolic or exponential in shape.

9. A seal as claimed in any of claims 5-8 wherein the recess is located on the radial inner surface of the guide.

15 10. A seal as claimed in any preceding claim wherein the jaws are biased radially inwardly.

11. A seal as claimed in claim 10 wherein the jaws engage a lip of the resilient diaphragm and are biased radially inwardly when the diaphragm is dilated.

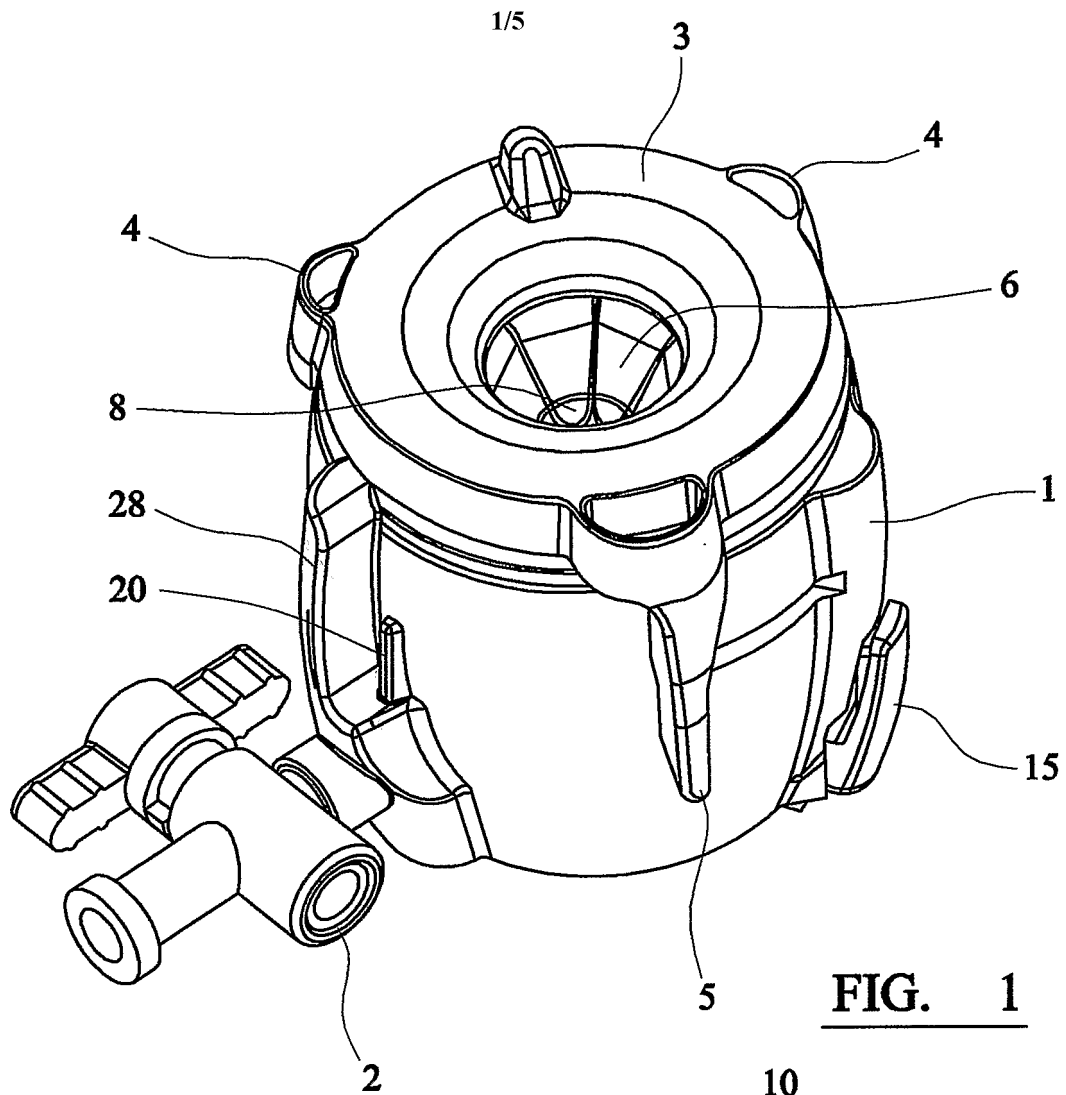


FIG. 1

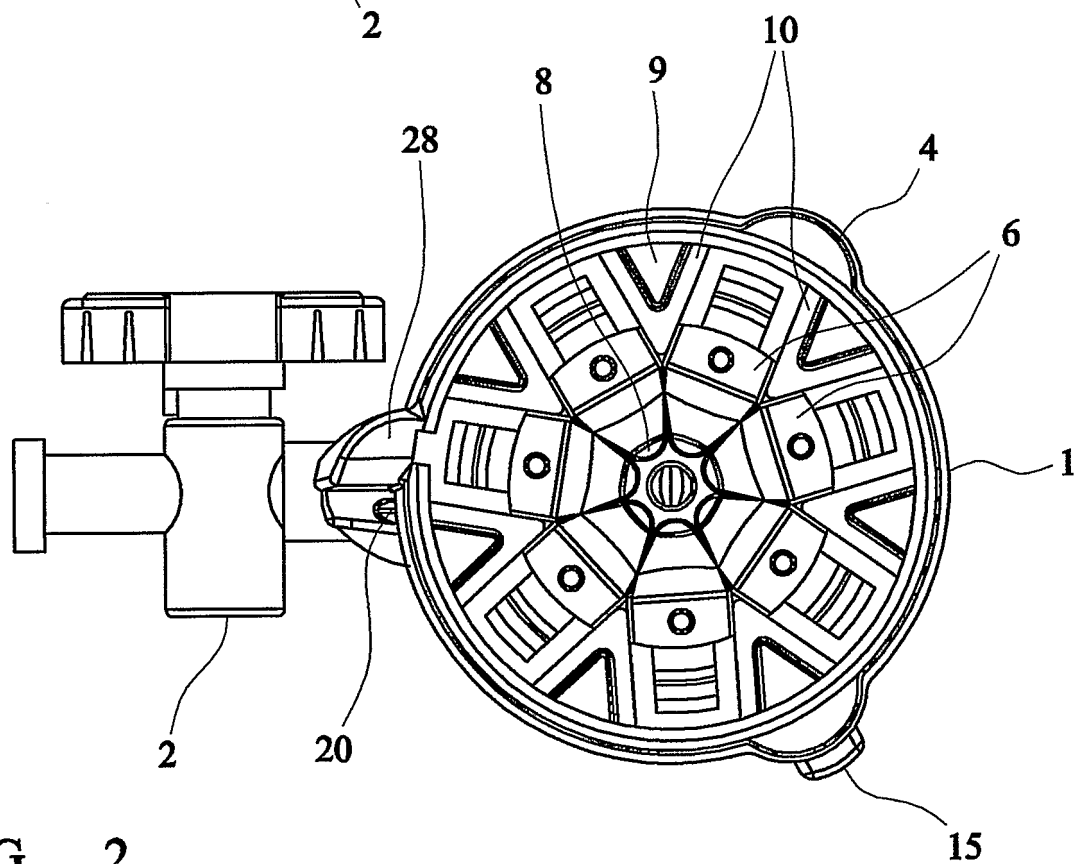


FIG. 2

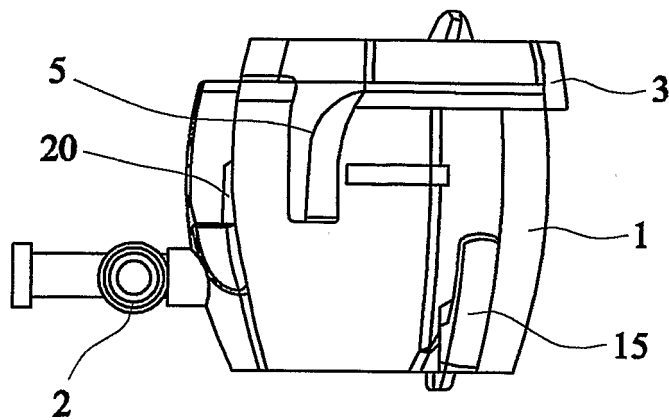


FIG. 3(a)

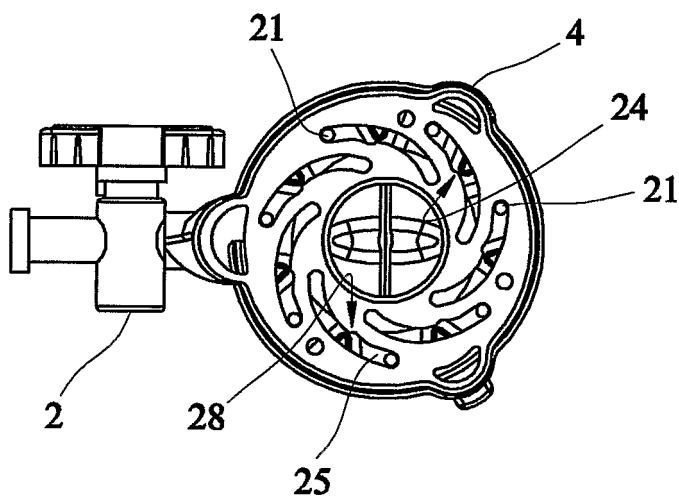


FIG. 3(b)

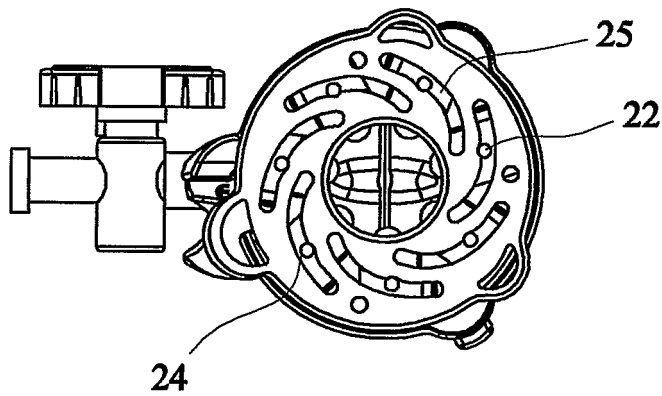


FIG. 3(c)

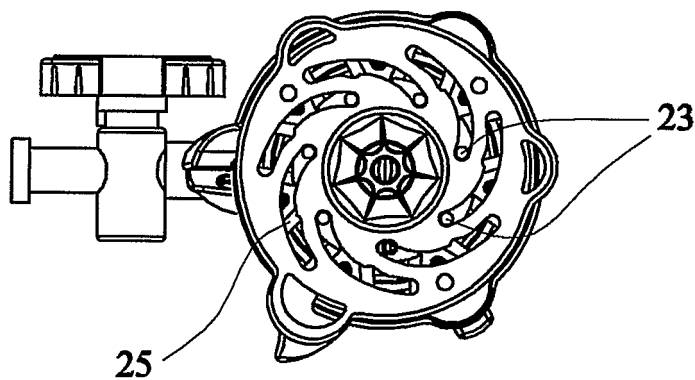


FIG. 3(d)

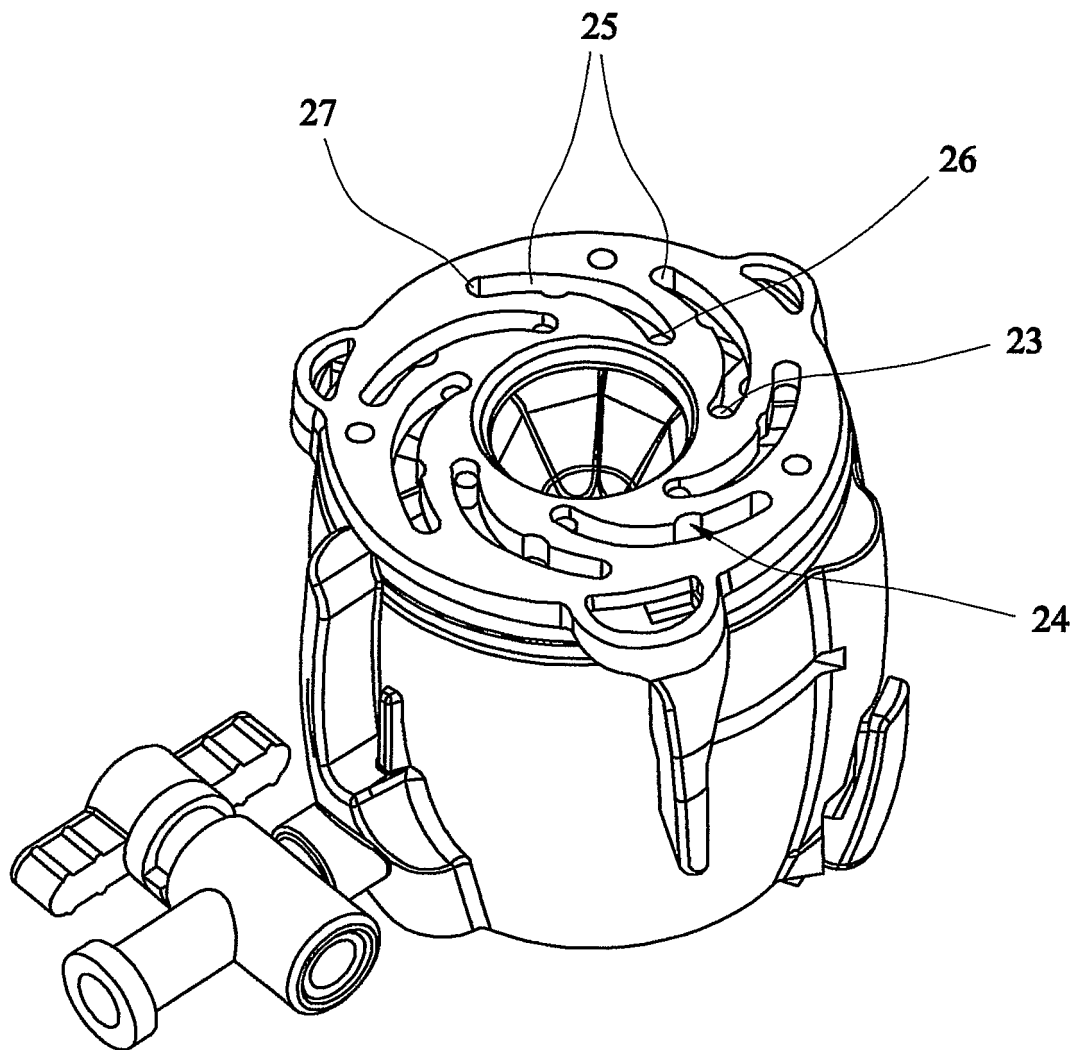


FIG. 4

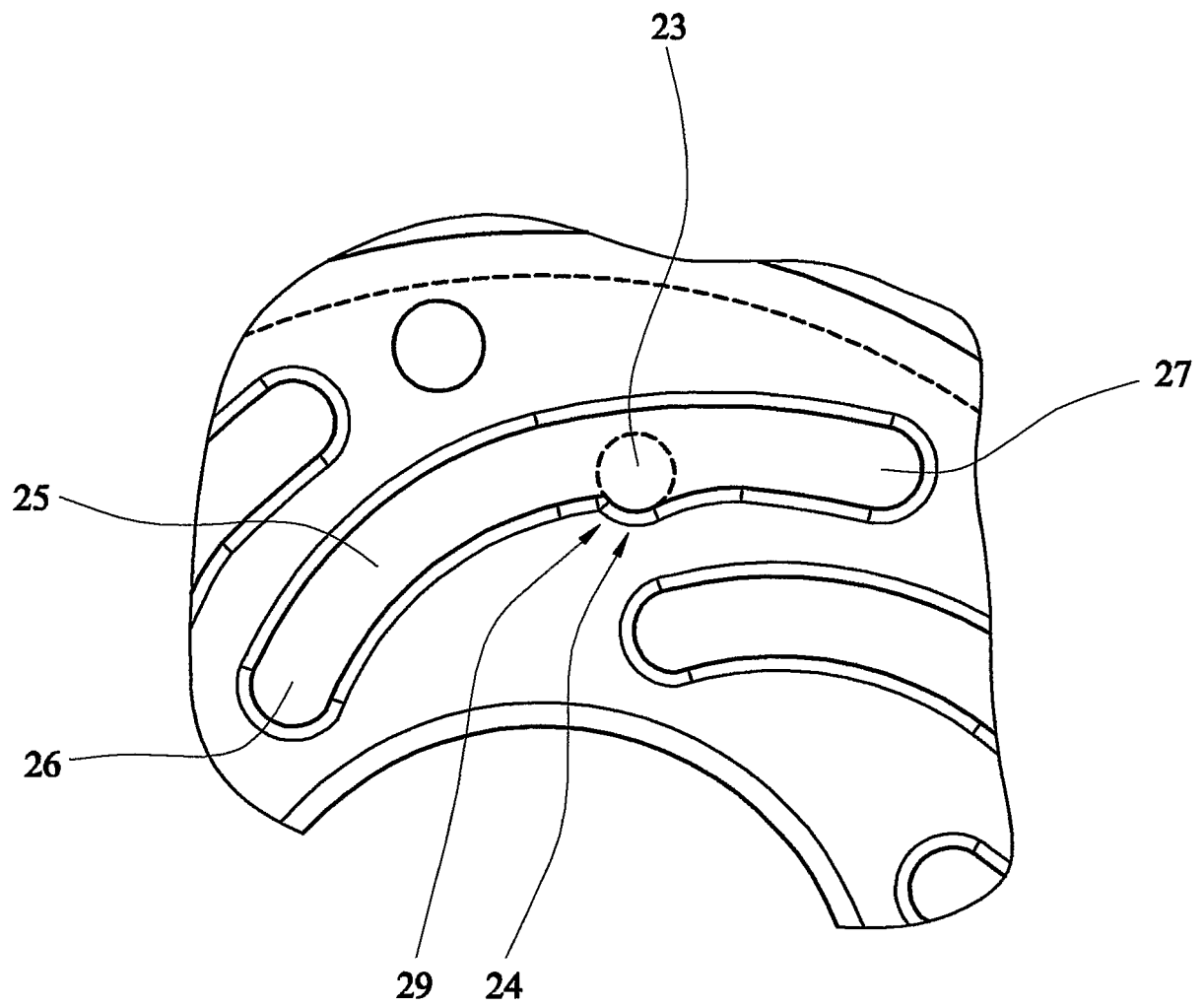


FIG. 5

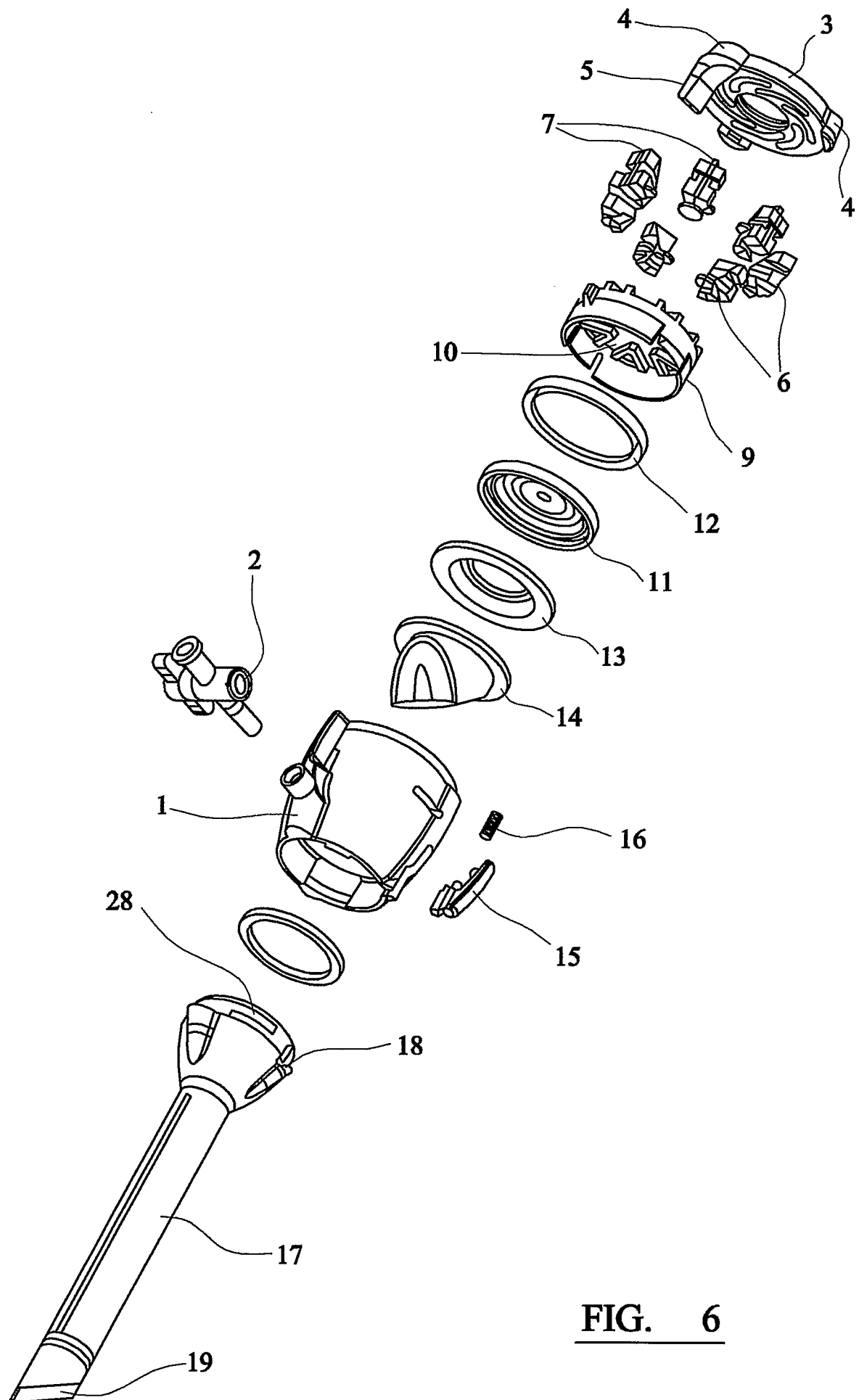


FIG. 6

INTERNATIONAL SEARCH REPORT

ational Application No

/GB2004/002413

A. CLASSIFICATION OF SUBJECT MATTER

IPC 7 A61B17/34

According to International Patent Classification (IPC) or to both national classification and IPC

B. FIELDS SEARCHED

Minimum documentation searched (classification system followed by classification symbols)

IPC 7 A61B

Documentation searched other than minimum documentation to the extent that such documents are included in the fields searched

Electronic data base consulted during the international search (name of data base and, where practical, search terms used)

EPO-Internal

C. DOCUMENTS CONSIDERED TO BE RELEVANT

| Category * | Citation of document, with indication, where appropriate, of the relevant passages | Relevant to claim No. |
|------------|---|-----------------------|
| Y | WO 01/89397 A (MORAN PETER ; ALMOND THOMAS EDWARD (GB); SURGICAL INNOVATIONS LTD (GB)) 29 November 2001 (2001-11-29) cited in the application page 3, line 31 - page 5, line 10; figure 1 | 1-11 |
| Y | WO 01/62167 A (STORZ KARL GMBH & CO KG ; SAUER MICHAEL (DE); DITTRICH HORST (DE); OBE) 30 August 2001 (2001-08-30) page 10, paragraph 6 - page 11, paragraph 1; figures 1-3 page 17, paragraph 3 - page 18, paragraph 2 | 1-11 |
| A | US 5 211 370 A (POWERS RONALD J) 18 May 1993 (1993-05-18) column 2, line 7 - line 36; figures 1-5 | 1 |
| -/-- | | |



Further documents are listed in the continuation of box C.



Patent family members are listed in annex.

* Special categories of cited documents :

A document defining the general state of the art which is not considered to be of particular relevance

E earlier document but published on or after the international filing date

L document which may throw doubts on priority claim(s) or which is cited to establish the publication date of another citation or other special reason (as specified)

O document referring to an oral disclosure, use, exhibition or other means

P document published prior to the international filing date but later than the priority date claimed

T later document published after the international filing date or priority date and not in conflict with the application but cited to understand the principle or theory underlying the invention

X document of particular relevance; the claimed invention cannot be considered novel or cannot be considered to involve an inventive step when the document is taken alone

Y document of particular relevance; the claimed invention cannot be considered to involve an inventive step when the document is combined with one or more other such documents, such combination being obvious to a person skilled in the art.

* & * document member of the same patent family

Date of the actual completion of the international search

14 September 2004

Date of mailing of the international search report

22/09/2004

Name and mailing address of the ISA

European Patent Office, P.B. 5818 Patentlaan 2
NL - 2280 HV Rijswijk
Tel. (+31-70) 340-2040, Tx. 31 651 epo nl,
Fax: (+31-70) 340-3016

Authorized officer

Moers, R

INTERNATIONAL SEARCH REPORT

Additional Application No

/GB2004/002413

C.(Continuation) DOCUMENTS CONSIDERED TO BE RELEVANT

| Category ° | Citation of document, with indication, where appropriate, of the relevant passages | Relevant to claim No. |
|------------|---|-----------------------|
| A | US 3 920 215 A (KNAUF DIETER W) 18 November 1975 (1975-11-18) column 2, line 54 - column 3, line 16; figure 1 ----- | 1 |
| A | US 5 125 915 A (BERRY GAYLORD L ET AL) 30 June 1992 (1992-06-30) column 7, line 1 - line 26 column 9, line 32 - column 10, line 2; figures 1,4 ----- | 1 |
| A | US 5 820 600 A (ORTH MIKE ET AL) 13 October 1998 (1998-10-13) column 9, line 63 - column 10, line 19; figures 5a,b ----- | 1 |
| A | DE 299 06 104 U (BIEBER ROLF DR MED) 17 June 1999 (1999-06-17) page 7, paragraph 2; figures 1,2 ----- | 1 |

INTERNATIONAL SEARCH REPORT

Information on patent family members

International Application No

/GB2004/002413

| Patent document cited in search report | | Publication date | Patent family member(s) | Publication date |
|---|---|---------------------|--|--|
| WO 0189397 | A | 29-11-2001 | AU 6248401 A CA 2411173 A1 EP 1284664 A1 WO 0189397 A1 JP 2003533328 T US 2002072713 A1 | 03-12-2001 29-11-2001 26-02-2003 29-11-2001 11-11-2003 13-06-2002 |
| WO 0162167 | A | 30-08-2001 | DE 10009132 C1 WO 0162167 A1 EP 1171045 A1 US 2004010230 A1 | 25-10-2001 30-08-2001 16-01-2002 15-01-2004 |
| US 5211370 | A | 18-05-1993 | NONE | |
| US 3920215 | A | 18-11-1975 | NONE | |
| US 5125915 | A | 30-06-1992 | AU 7580291 A CA 2027846 A1 EP 0516762 A1 JP 7114813 B JP 5503650 T WO 9112840 A1 | 18-09-1991 03-09-1991 09-12-1992 13-12-1995 17-06-1993 05-09-1991 |
| US 5820600 | A | 13-10-1998 | DE 69720716 D1 DE 69720716 T2 EP 1317909 A1 EP 0904120 A1 JP 2000510731 T WO 9742991 A1 | 15-05-2003 08-04-2004 11-06-2003 31-03-1999 22-08-2000 20-11-1997 |
| DE 29906104 | U | 17-06-1999 | DE 29906104 U1 | 17-06-1999 |

| | | | |
|----------------|--|---------|------------|
| 专利名称(译) | 手术密封 | | |
| 公开(公告)号 | EP1633257A1 | 公开(公告)日 | 2006-03-15 |
| 申请号 | EP2004736229 | 申请日 | 2004-06-07 |
| [标]申请(专利权)人(译) | 应用医疗资源 | | |
| 申请(专利权)人(译) | 应用医疗资源CORPORATION | | |
| 当前申请(专利权)人(译) | 应用医疗资源CORPORATION | | |
| [标]发明人 | MORAN PETER MORAN STUART SKELTON | | |
| 发明人 | MORAN, PETER MORAN, STUART SKELTON | | |
| IPC分类号 | A61B17/34 | | |
| CPC分类号 | A61B17/3462 A61B2017/3464 A61B2017/347 | | |
| 优先权 | 2003013730 2003-06-13 GB | | |
| 外部链接 | Espacenet | | |

摘要(译)

一种用于腹腔镜端口的密封件，包括：适于接合套管的基座，所述基座包括用于手术器械的轴向孔，安装在所述基座上的多个钳口，所述钳口可相对于所述孔径向移动，位于打开位置之间手术器械的轴可以自由地通过并且闭合位置，其中钳口接合所述轴并提供限制轴的径向运动的约束力，以及可旋转的致动器以促使钳口在所述打开位置和所述闭合位置之间移动，其中致动器包括棘爪止动装置，其适于在打开和关闭位置中间的位置处提供摩擦接合，以将钳口保持在中间位置。