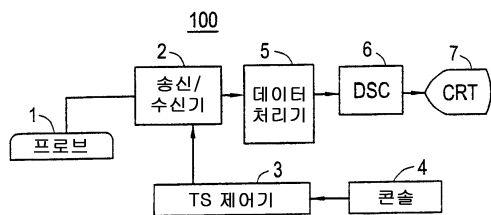


가



(method of ultrasonic imaging)

(ultrasonic diagnostic apparatus)

(blood flow)

s)
가

(bubbles)

(contrast agent)

(high - transmission frame)

(low - transmission frame)

가

(sonic beam)

1

2(a)

(sonic beam)

V

2(b)

가

가

가

1 , , ,

1 , , (flow range)가 , , (tagging) 가 가

가 , 가 .

2 , , ,
1 , .

2 , , .

3 , 2 , ,
가 (heart beat)

3 , ,
(pulsing flow)

4 , 3 , ,
가 (spaced - out)

4 , ,
가 .

5 , , ,

5 , , ,
가 , , (tagging) 가 가 ,

가

6

5

6

7

6

가

7
Ising flow)

(pu

8

7

가

(spaced - out)

가

8

가

9

1

4

5

8

9

가

가

2

10

(probe)

/

10

1

11

10

11 2 .

12 , 11 ,
가

12 3 .

13 , 10 12 ,
가

13 4 .

14 , (probe) ,
/ ,

14 5 .

15 , 14 ,

15 6 .

16 , 15 ,
가

16 7 .

17 , 14 16 ,
가 가

17

8

18

, / ,

18

9

, 가 .

1

2

3 1

4 1 (marking) (no - marking)

5 1

6 1

7 2

8 2

9 2

10 3

11 3

- 1 -

3 1 (100) .

(100) (probe)(1) ,
/ (2) , (3) , 가
(3) (operation console)(4) ,
B- (5) ,
DSC (digital scan converter)(6) , CRT(7) .

4(a) (100) .

()
()

4(b) .

5 (100) .

(, 1) .

6 (100) .

1 (a) , () ()

1 () (b) 가 , 1 .

2 (c) , (a) 가 . 1

5 () (d) , .

1 (100) 6 (d) 가
가 ,

- 2 -

2 3 .

7(a) 2 .

() ()

, .

7(b) .

, .

8 .

2 , , ,
가 , , ,

(, 1) .

9 2 (100) .

1 (a) , ()

1 (b) , 1
() 가 .

2 (c) , (a) 가 ()
1

4 (d) ,
() .

2 가 9 (d) 가 .

- 3 -
3
10(a) 3

3

()

10(b)

3
가

가
(, 1)

11 3

() 가

3

2

(,) 11
가

(57)

1.

(method of ultrasonic imaging) ,

(sonic beam)

(contrast agent)

2.

,
,

1

,
(interposing)

3.

2

,

가

(heart beat)

4.

1

,

가

(spaced - out)

5.

,

(probe)

6.

,

,

,

5

.

7.

6

,

가

.

8.

5

,

가

가

.

9.

,

1

4

5

8

.

10.

(ultrasonic diagnostic apparatus) ,

(probe) ,

/ (transm

ission/reception mean) ,

(transmission strength control mean) ,

(image producing mean)

11.
10 ,

12.
11 ,

가

13.
10 ,

가

14.
,

/ ,

,

15.

14 ,

16.

15 ,

가

17.

14 ,

가

가

18.

,

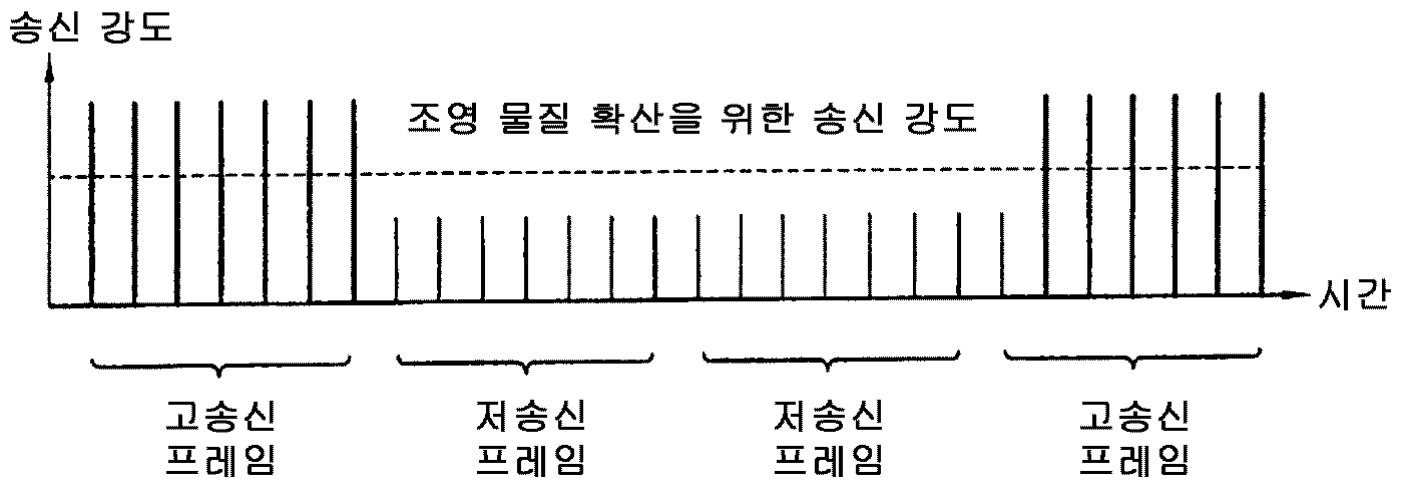
,

/ ,

,

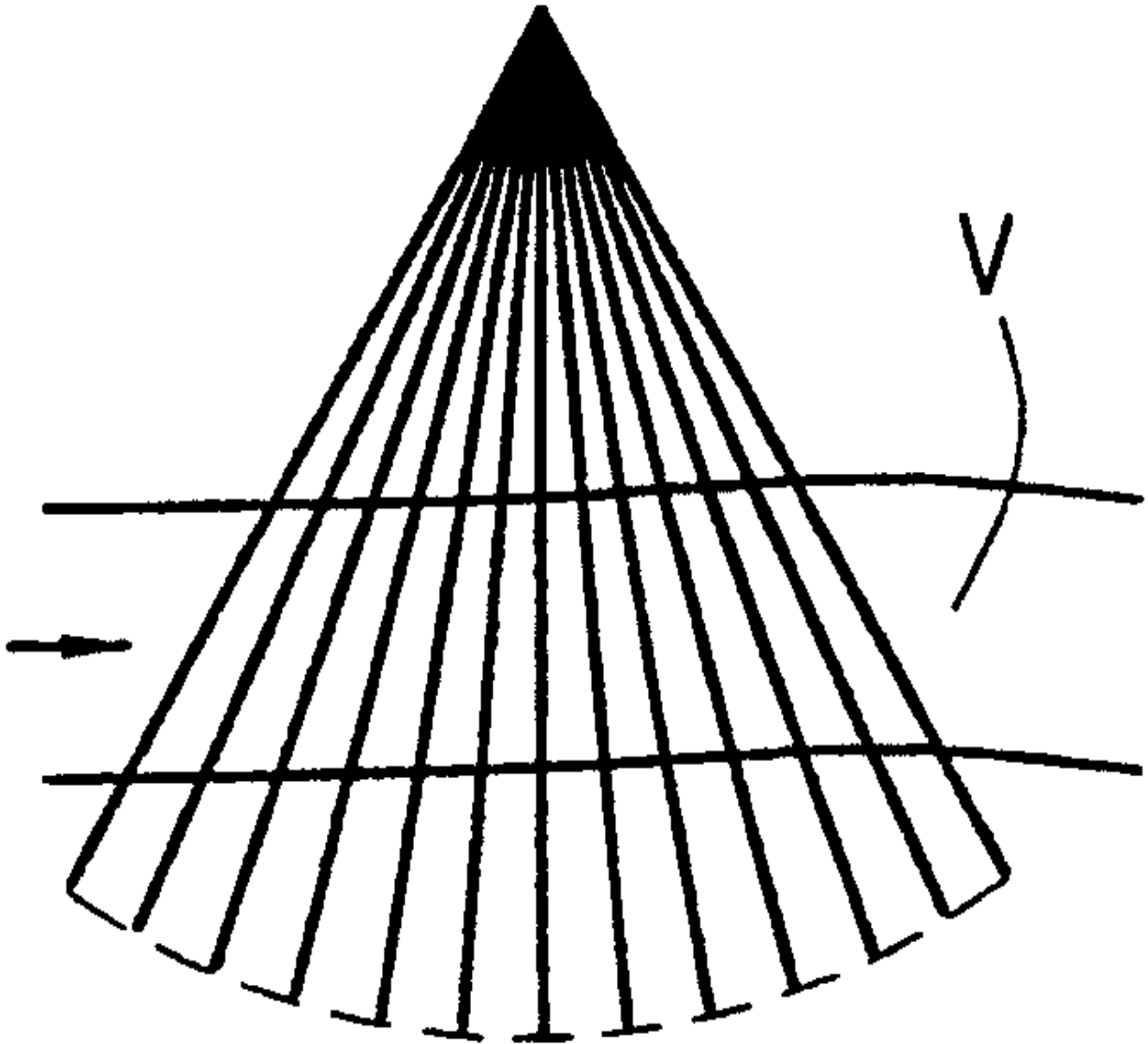
.

(종래기술)¹



2a

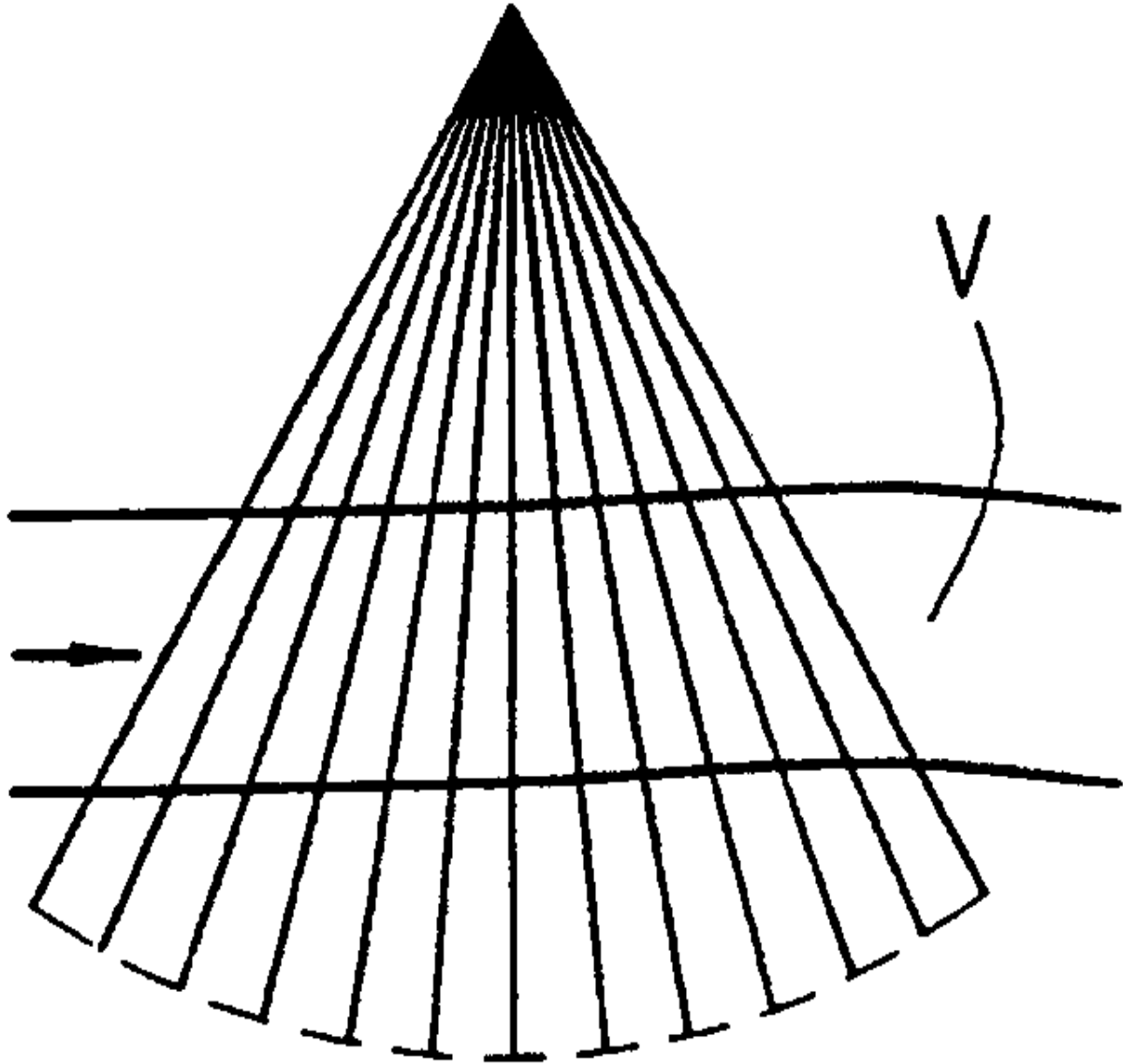
(종래기술)



고송신 프레임

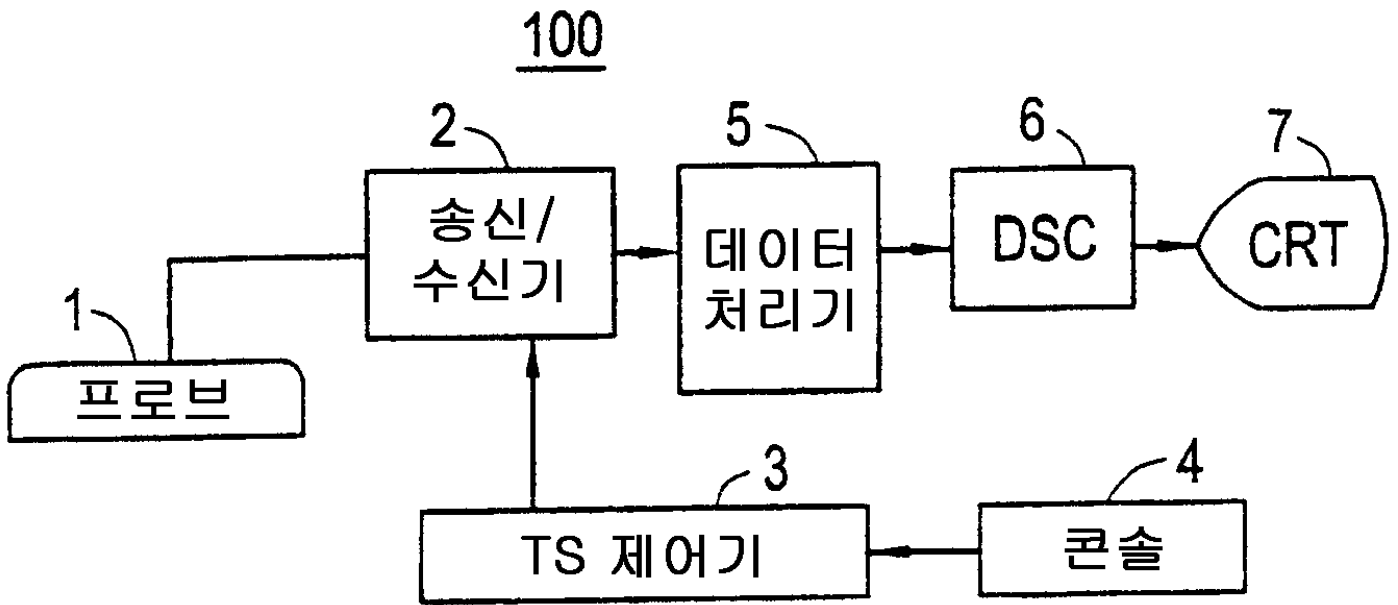
2b

(종래기술)

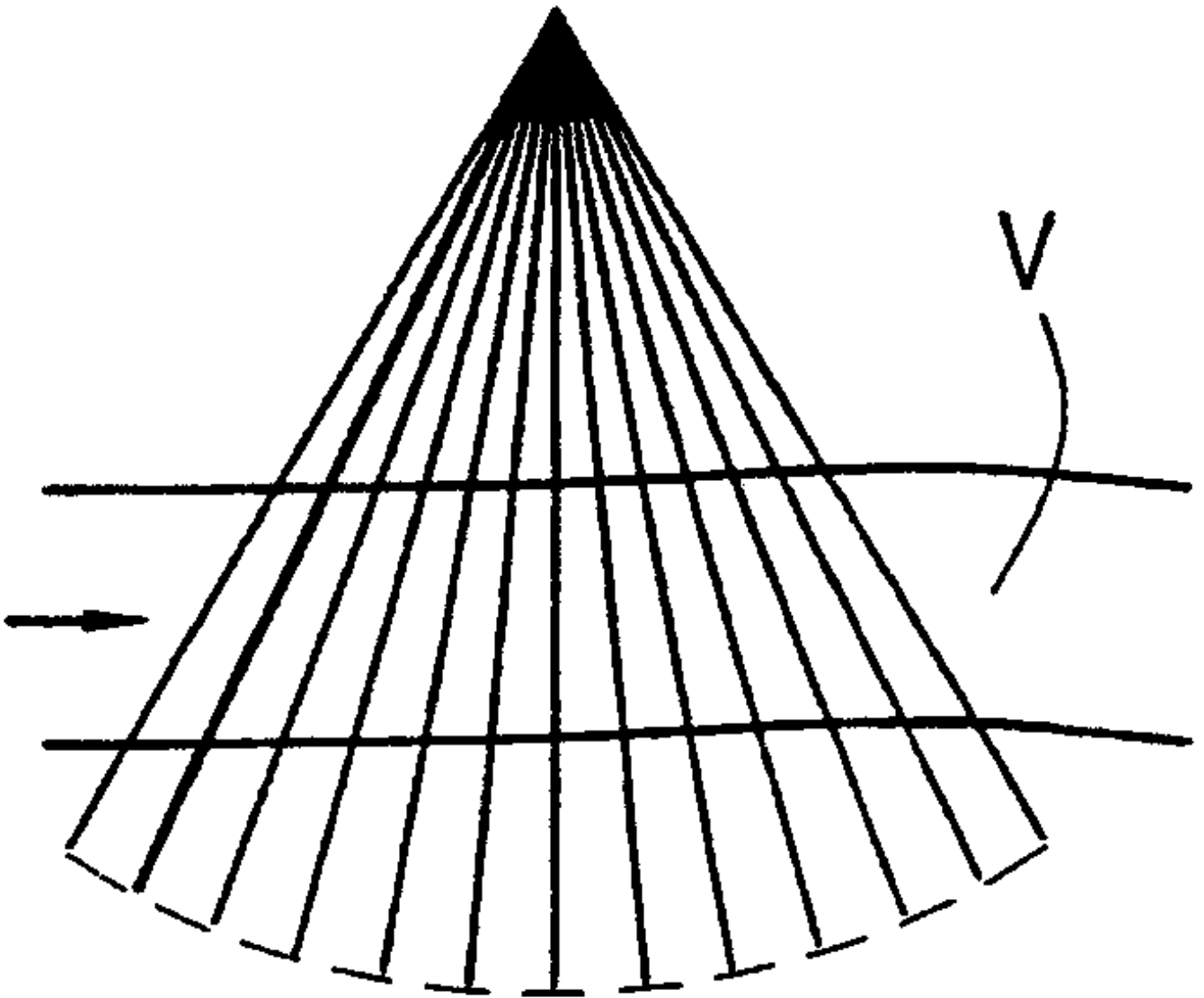


저송신 프레임

3

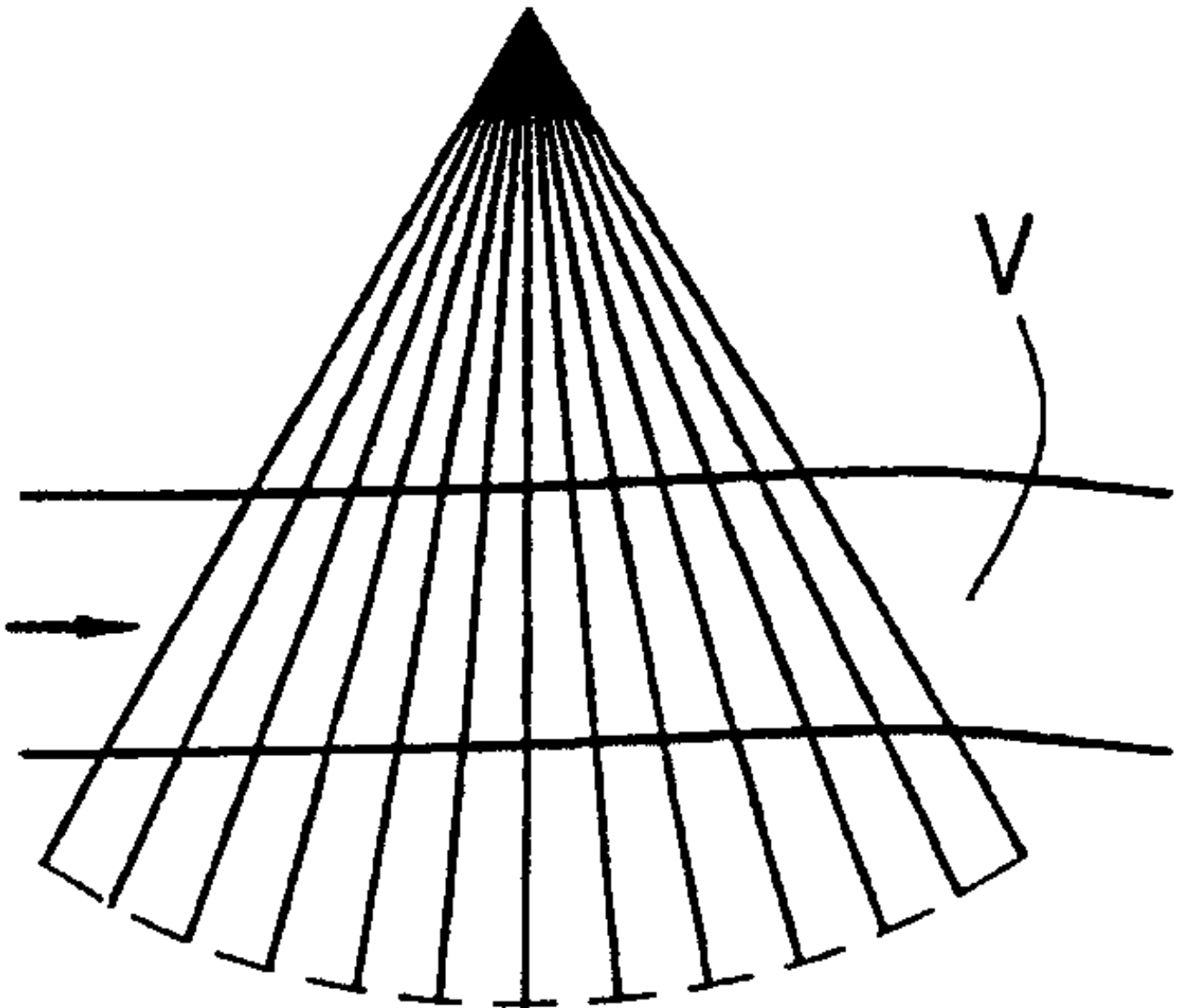


4a



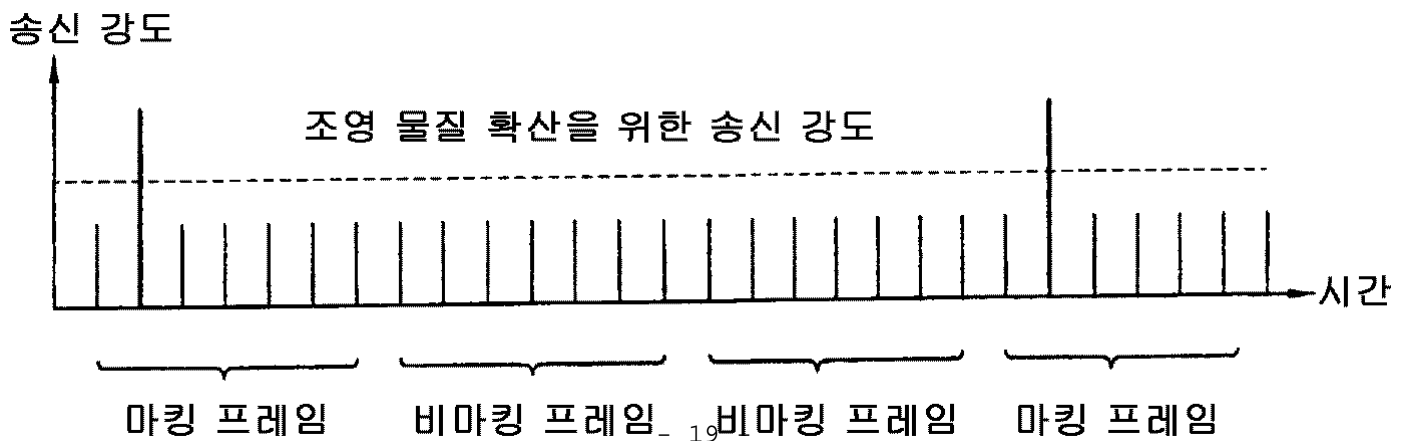
마킹 프레임

4b

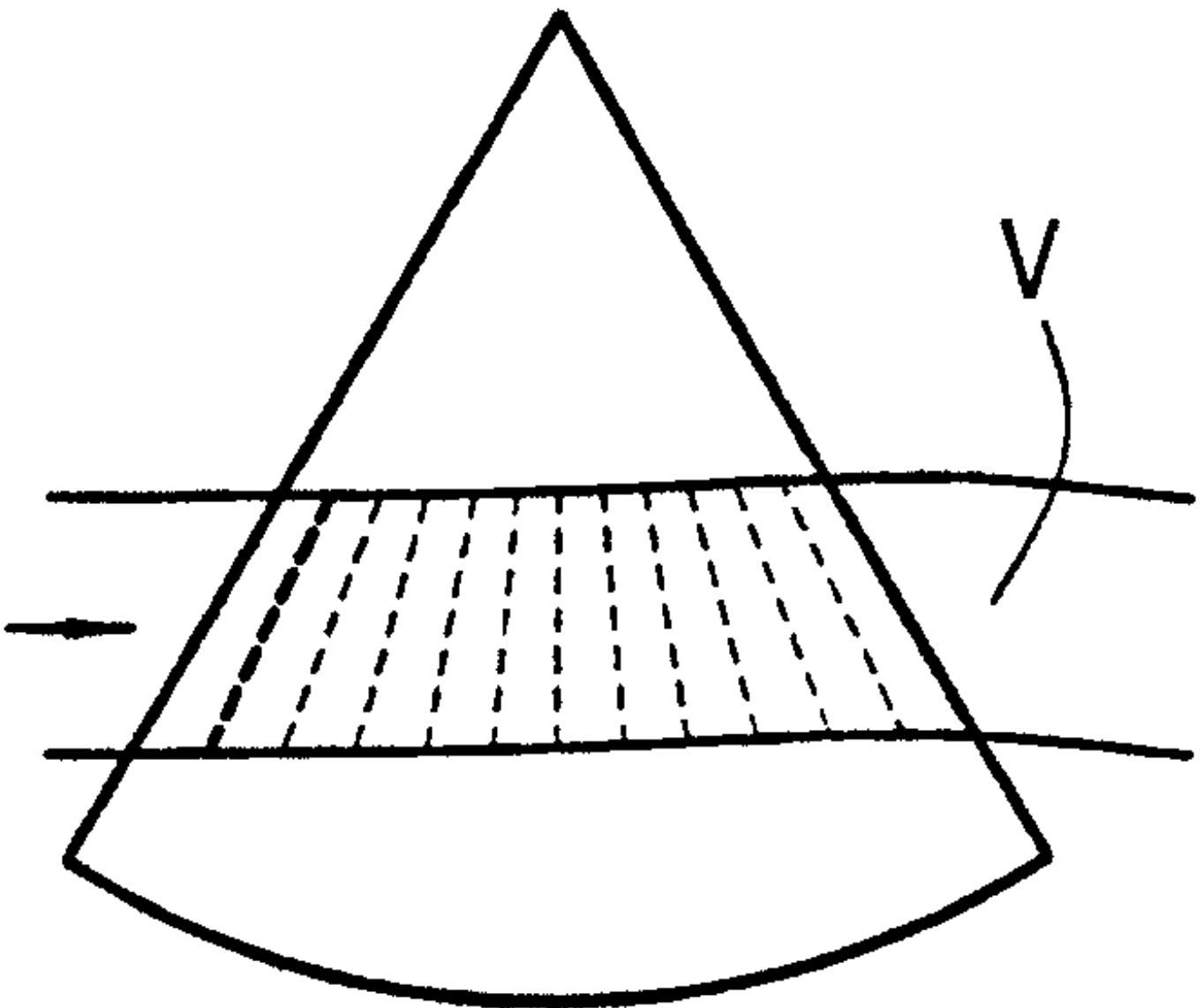


비마킹 프레임

5

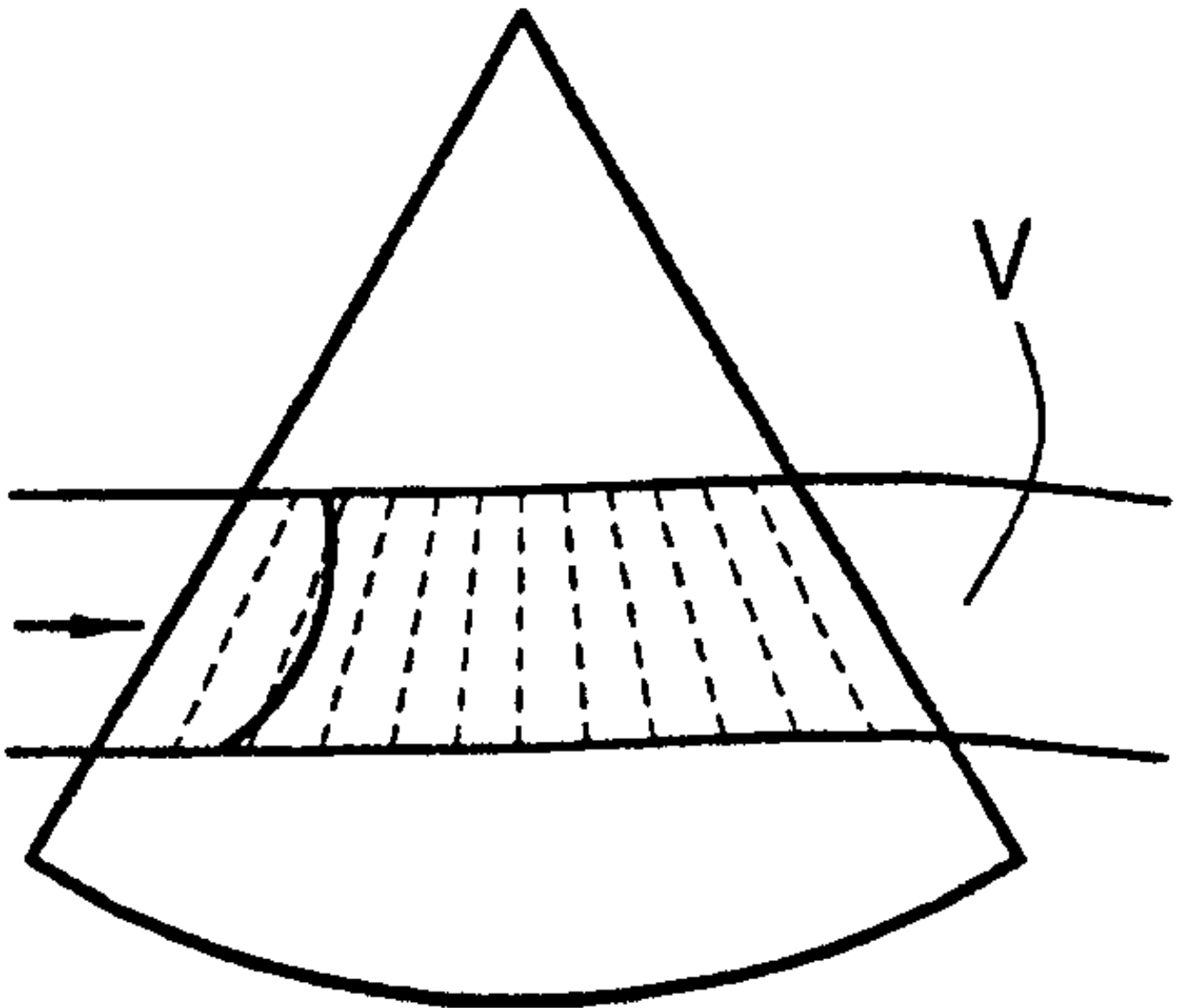


6a



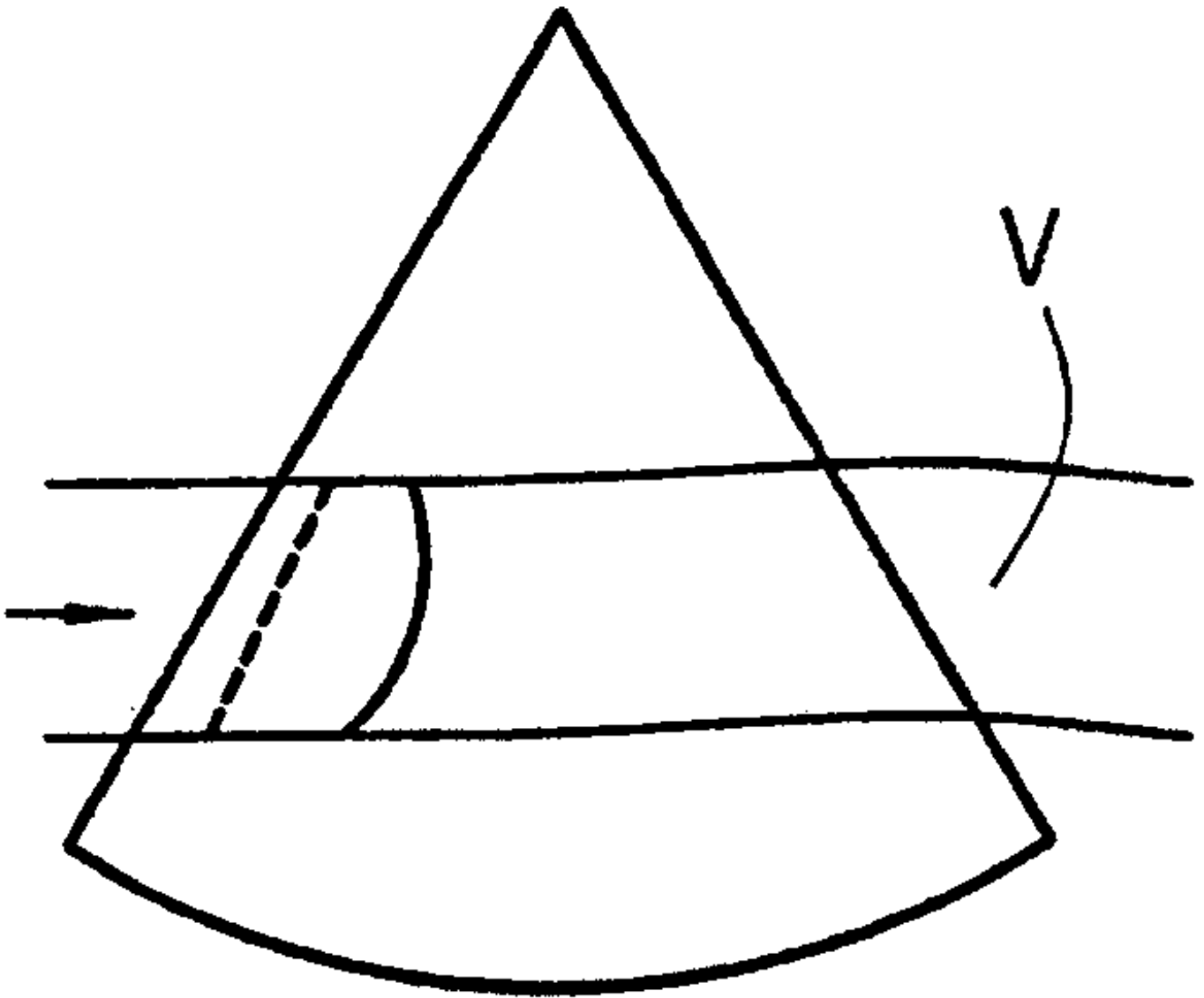
제 1 마킹 프레임

6b



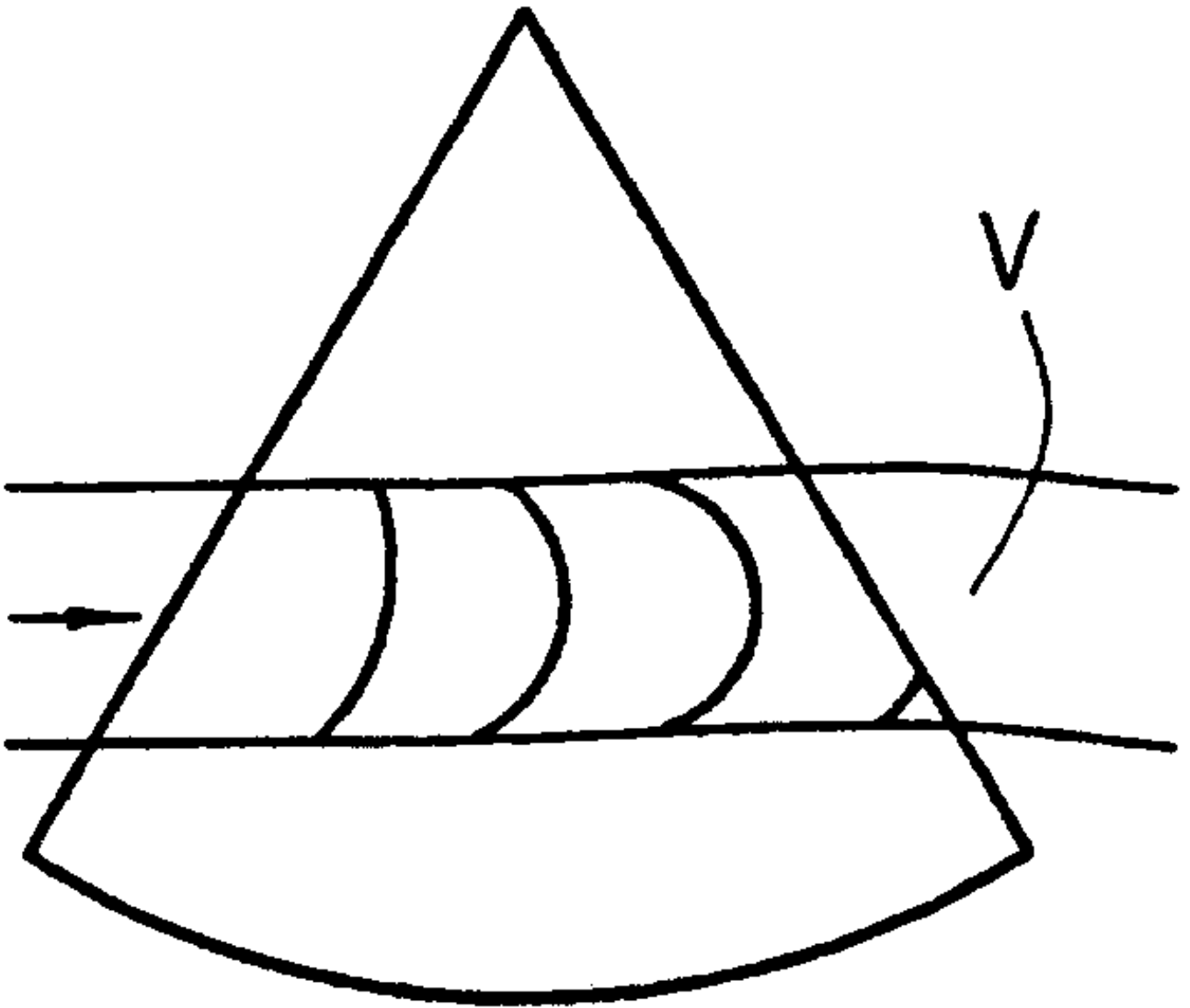
비마킹 프레임

6c

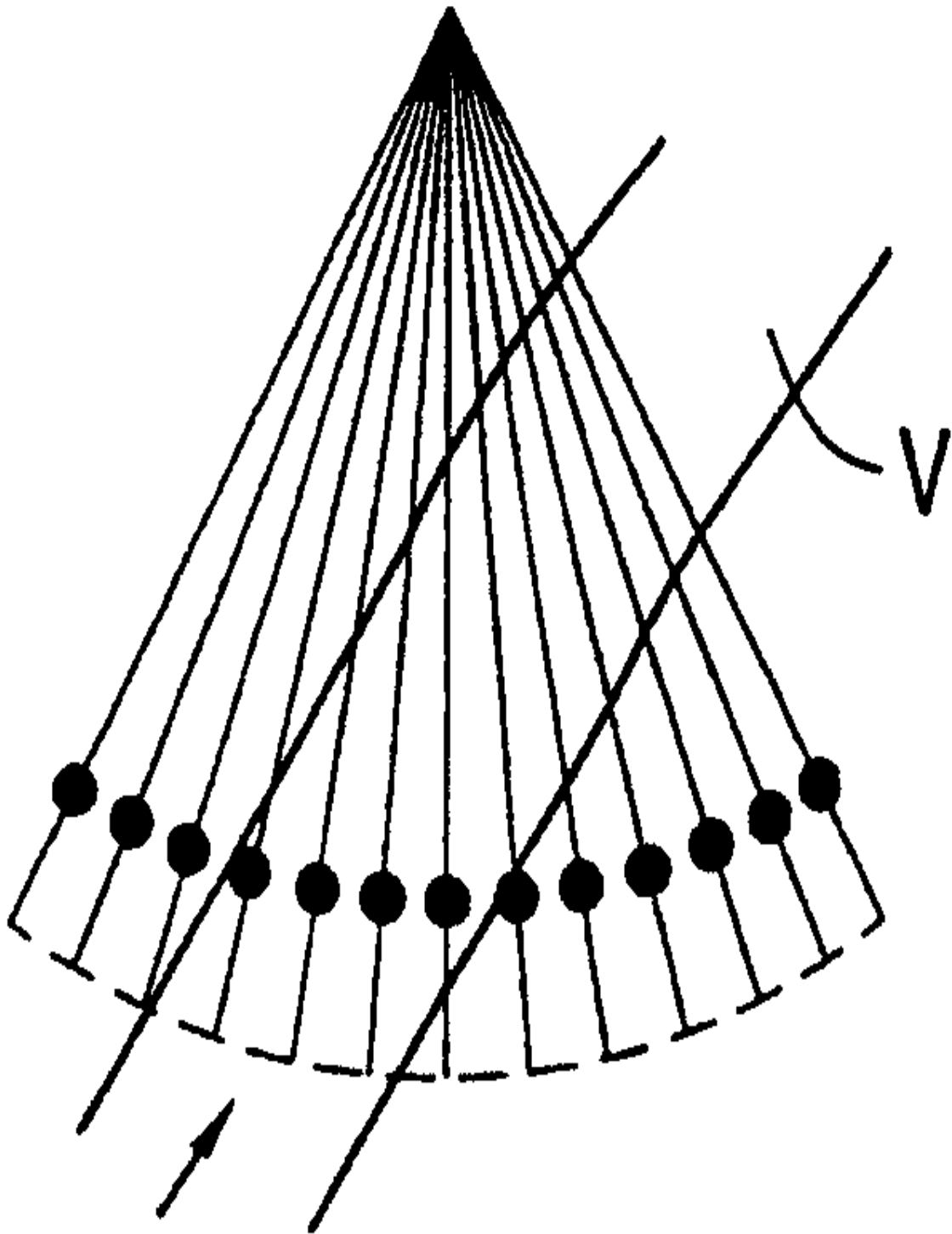


제 2 마킹 프레임

6d

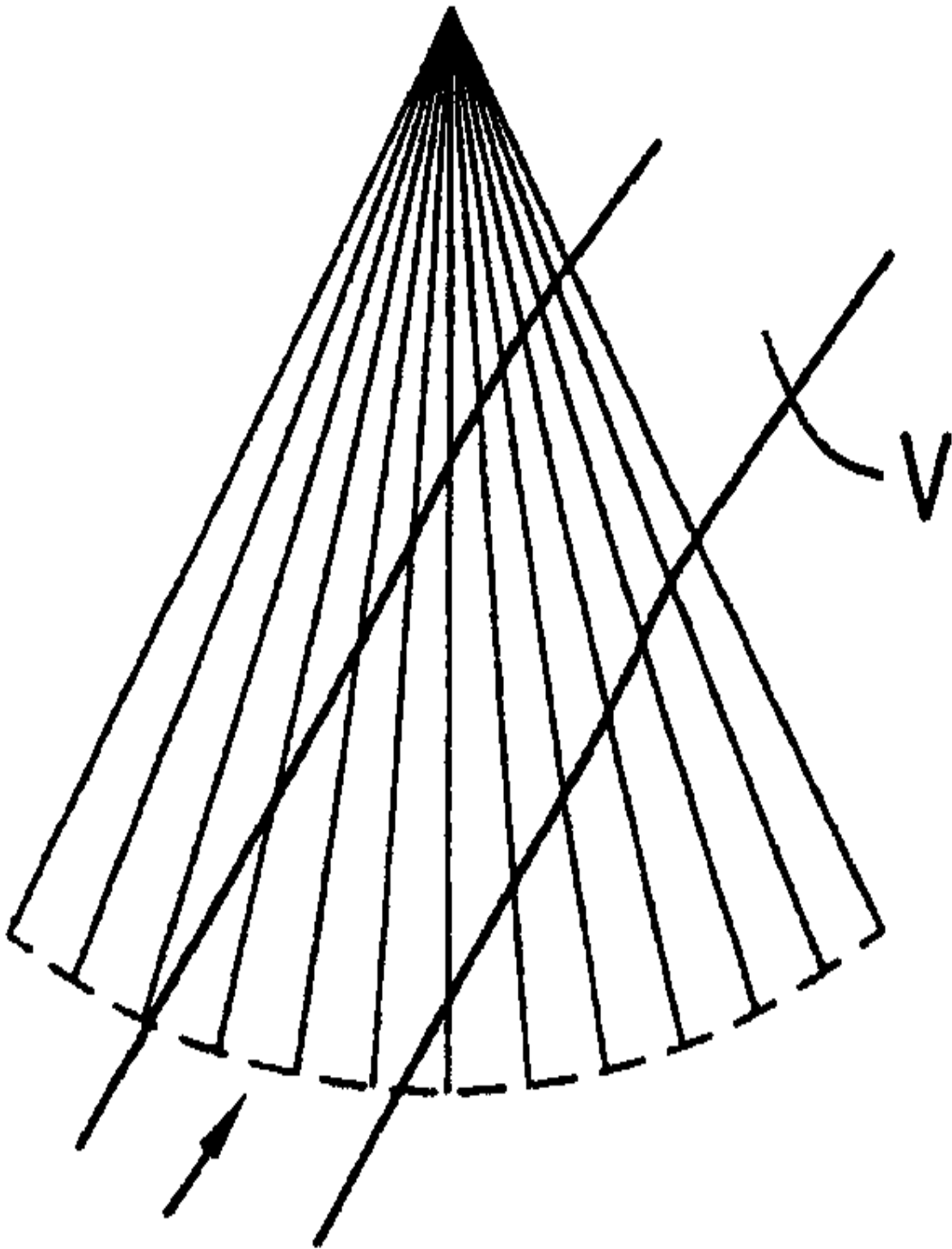


7a



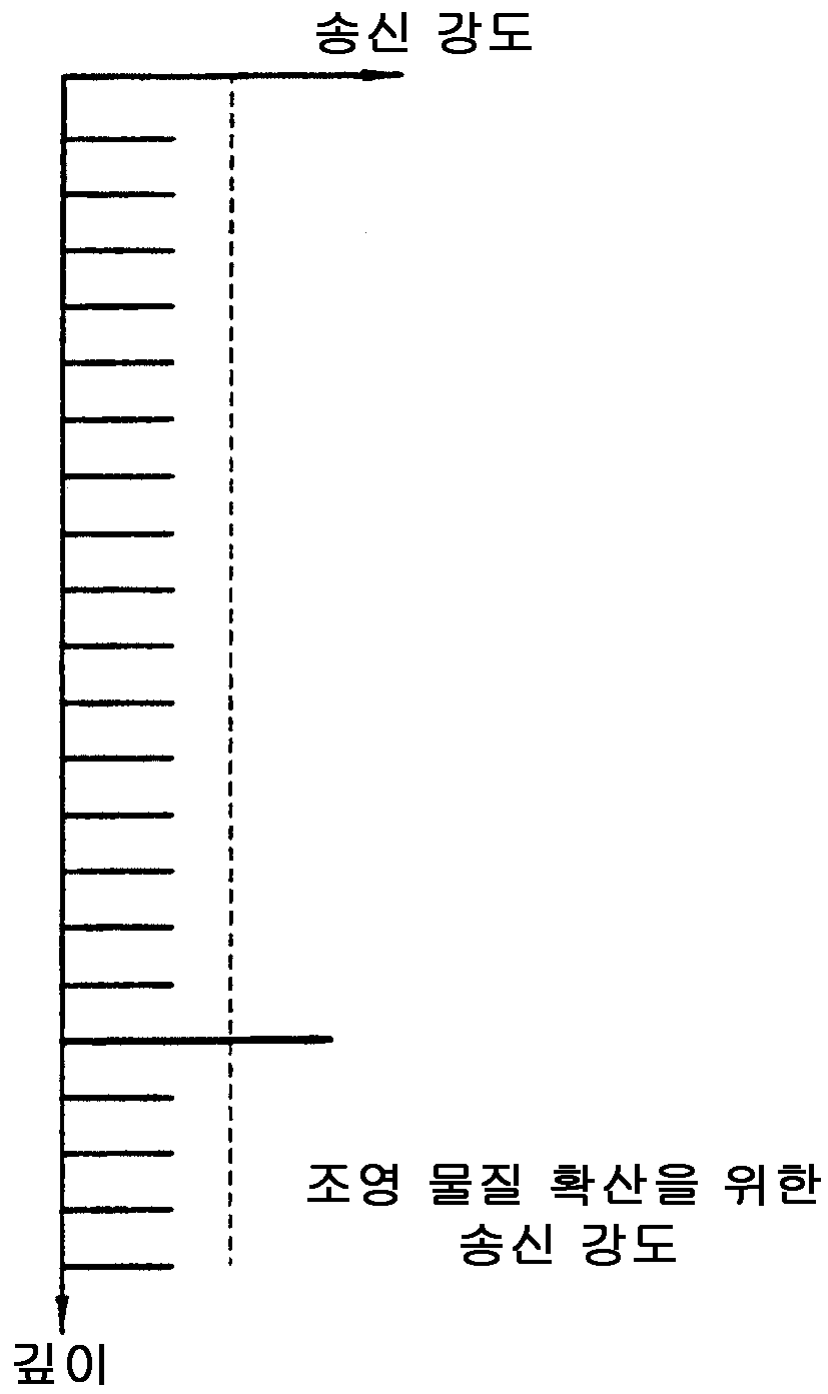
마킹 프레임

7b

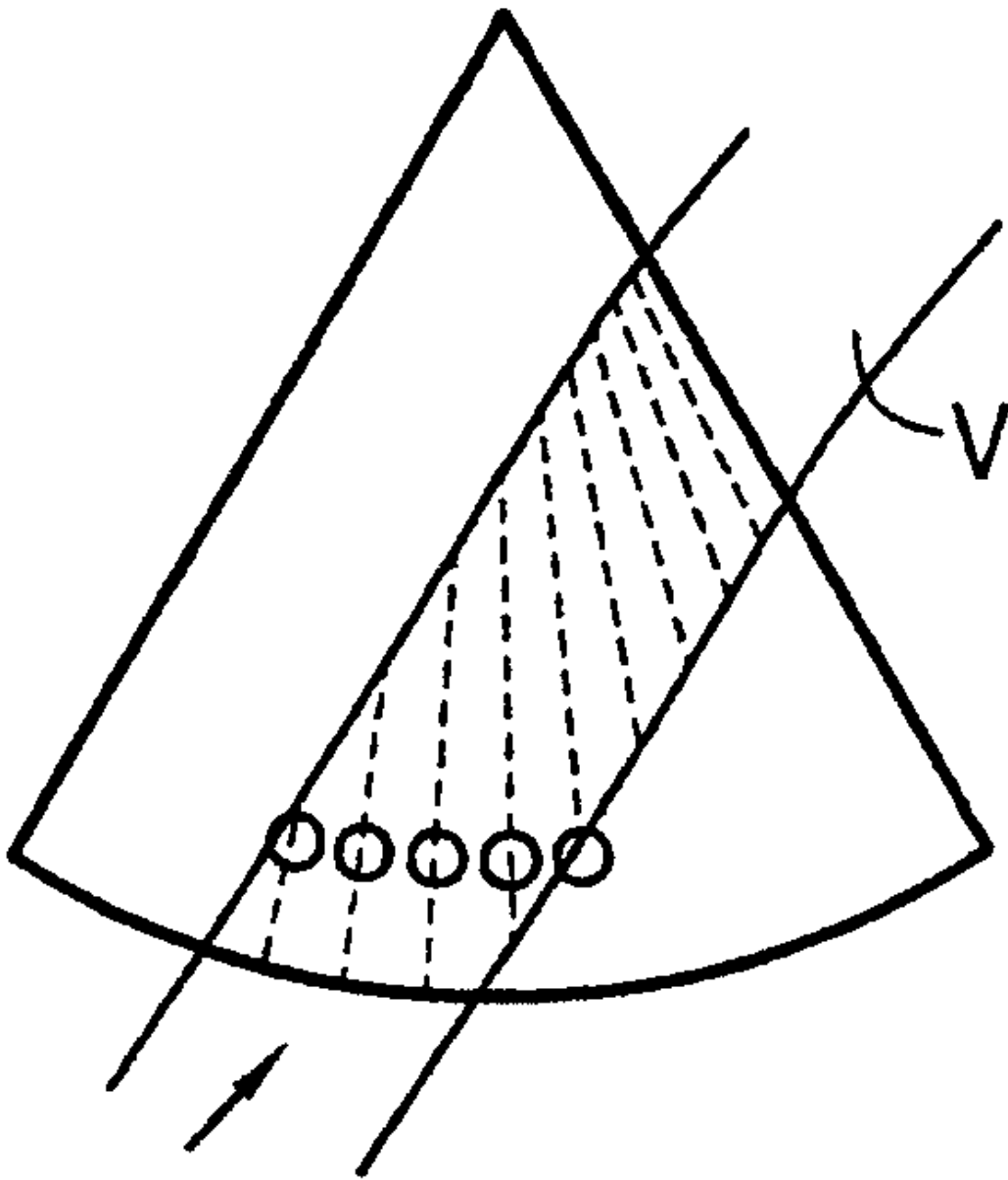


비마킹 프레임

8

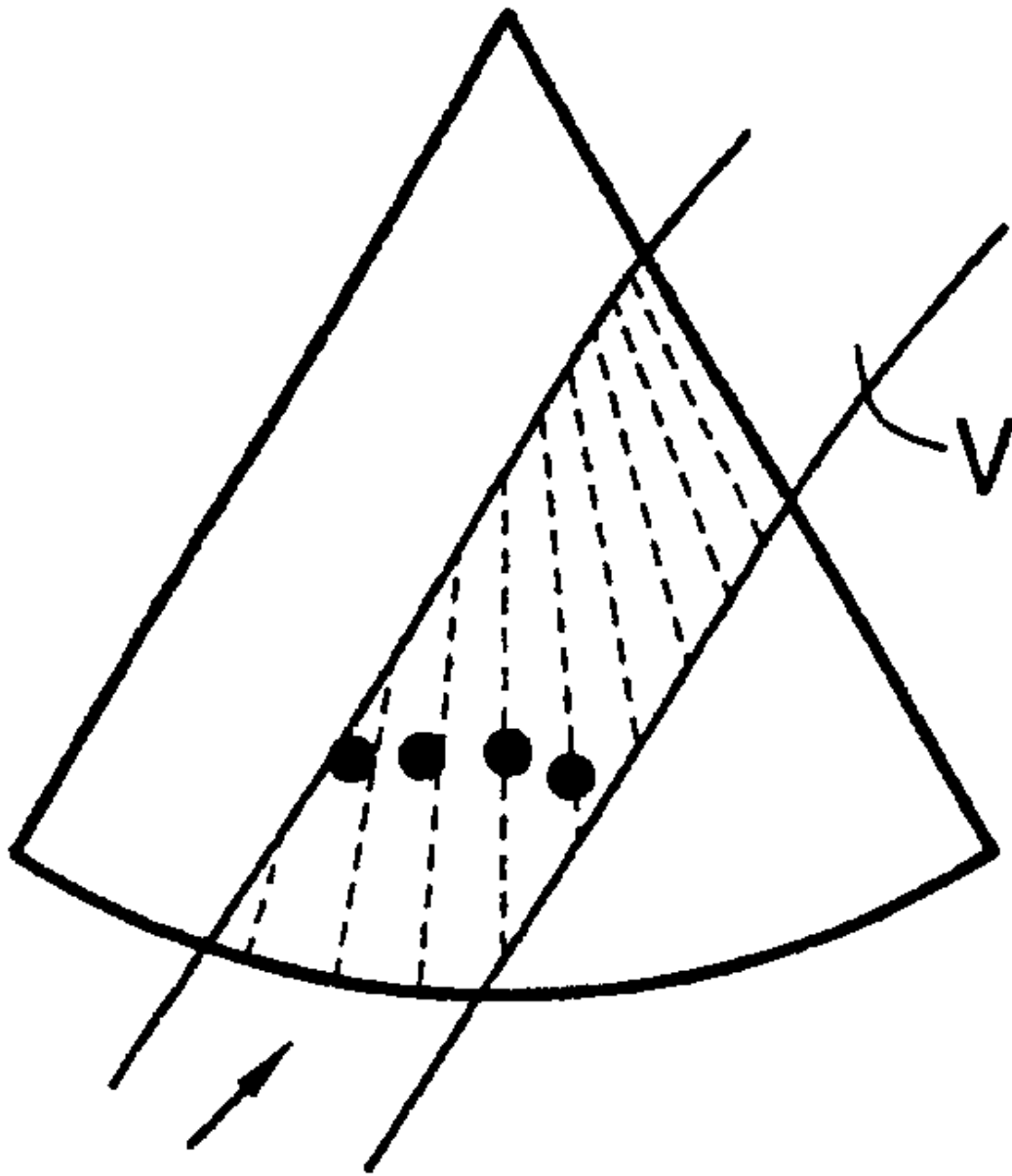


9a



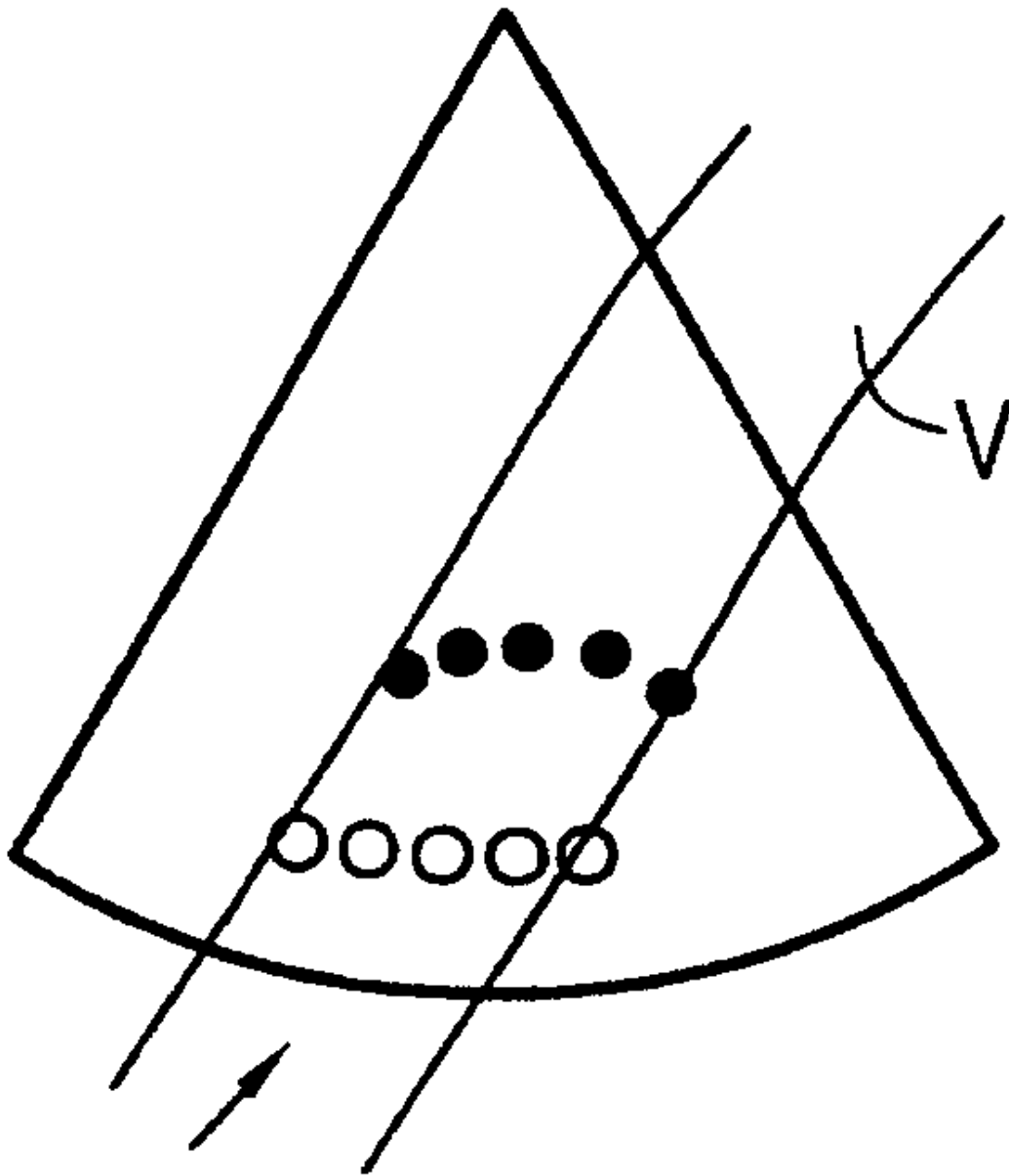
마킹 프레임

9b



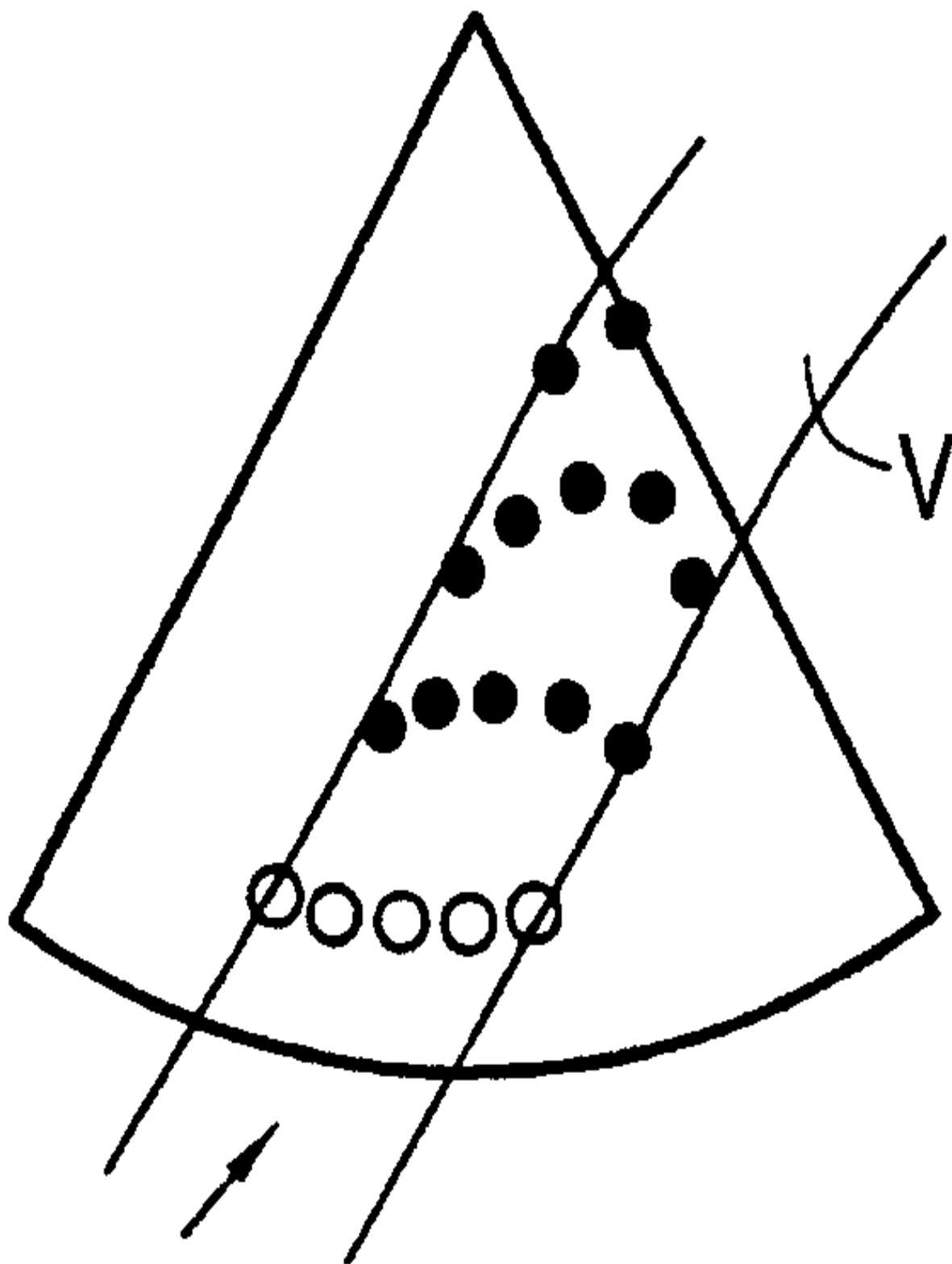
비마킹 프레임

9c

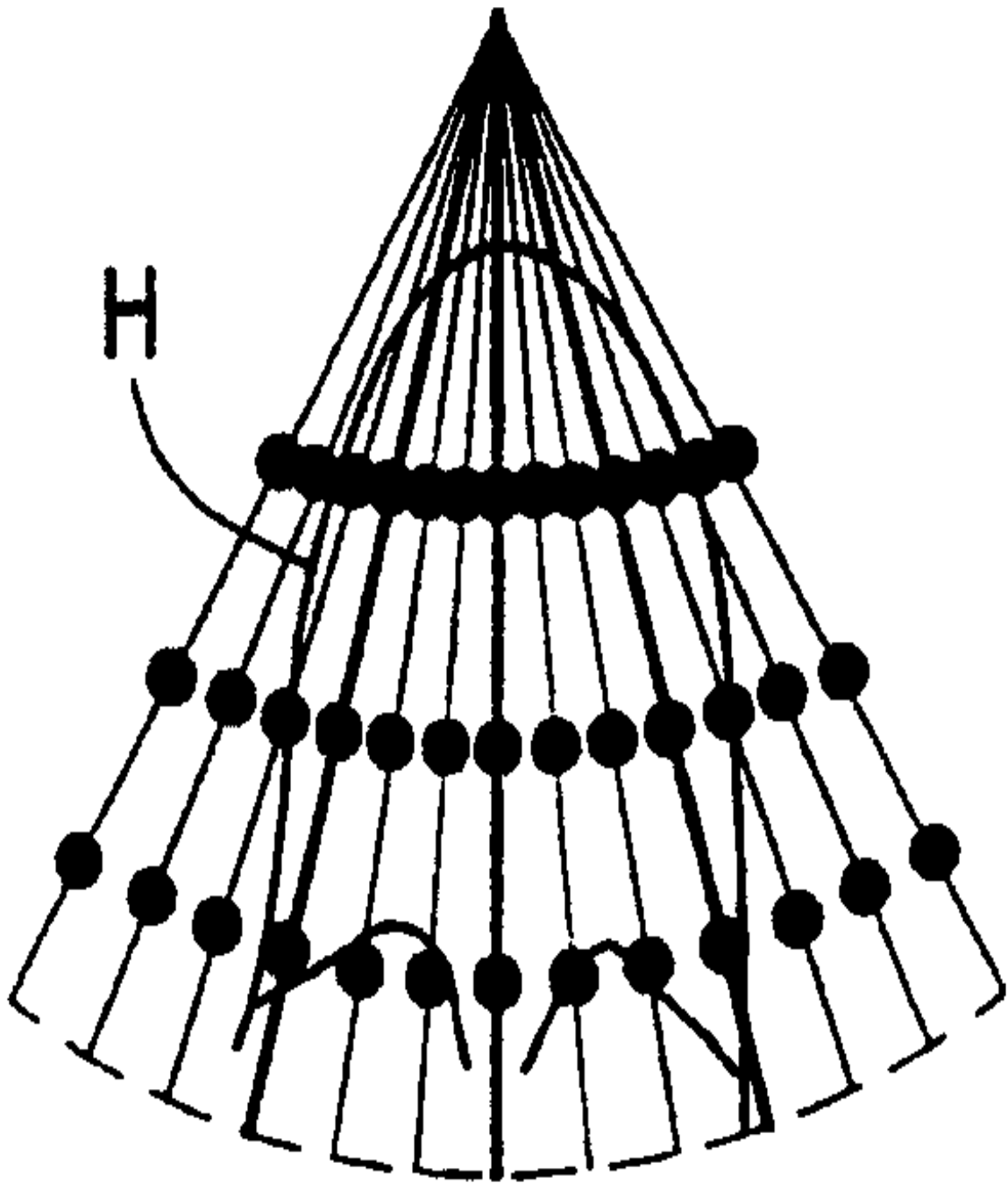


마킹 프레임

9d

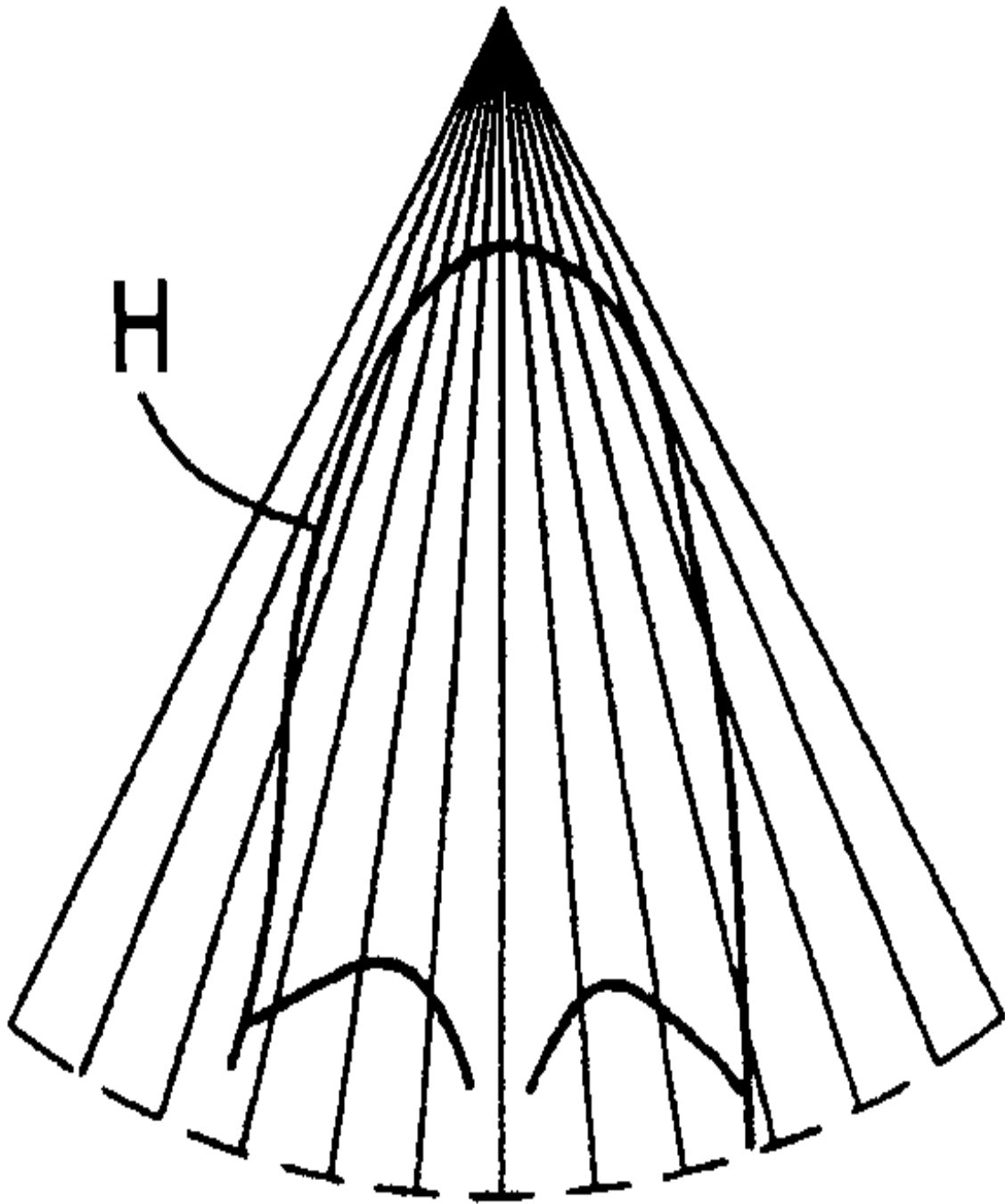


10a



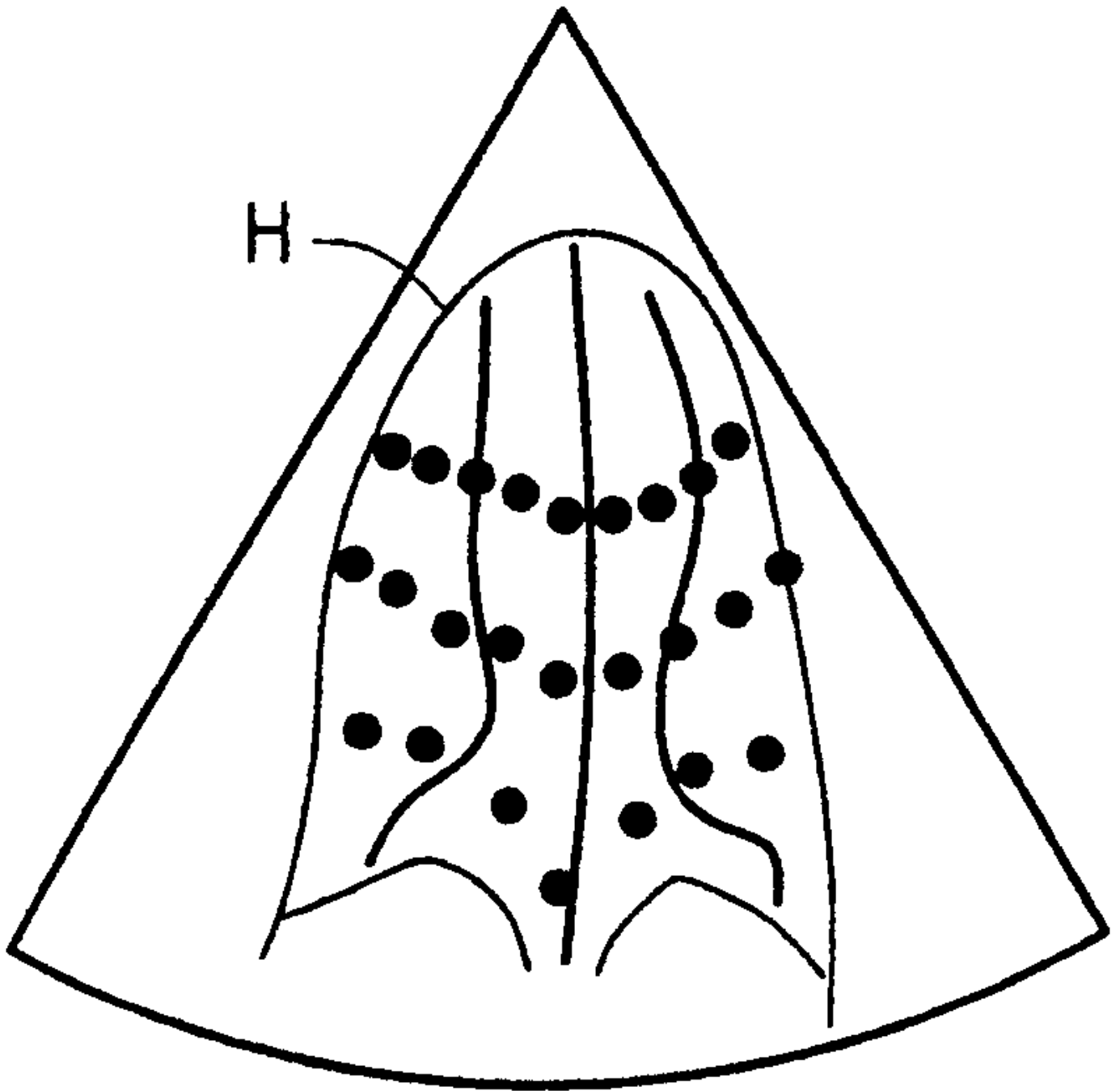
마킹 프레임

10b



비마킹 프레임

11



专利名称(译)	超声波成像方法和超声波诊断装置		
公开(公告)号	KR1020020002497A	公开(公告)日	2002-01-09
申请号	KR1020017014201	申请日	2001-02-23
申请(专利权)人(译)	지이메디컬시스템즈글로벌테크놀로지컴파니엘엘씨		
当前申请(专利权)人(译)	지이메디컬시스템즈글로벌테크놀로지컴파니엘엘씨		
[标]发明人	HASHIMOTO HIROSHI		
发明人	HASHIMOTO,HIROSHI		
IPC分类号	A61B8/00 A61B8/06 A61B8/14 G01S7/52 G01S15/89		
CPC分类号	A61B8/06 A61B8/481 G01S7/52038 G01S7/52041 G01S7/52066 G01S7/52073 G01S15/8979		
代理人(译)	KIM, CHANG SE 张居正, KU SEONG		
优先权	2000063853 2000-03-08 JP		
其他公开文献	KR100742462B1		
外部链接	Espacenet		

摘要(译)

超声诊断设备以能够将对对比材料扩散到形成一帧的大量声束的一部分的强度发射超声，并且以不将对对比材料扩散到其他声束的强度发射超声。从而根据从超声波传输接收的回波信号产生用于标记帧的图像，并且连续地以不使对比材料在整个声束上连续扩散的强度连续发送超声波，使得非图像并且在血流范围在视野内的一段时间之后生成另一个标记帧的图像。重复这样的操作以显示超声图像，由此一次可视化血流的时间变化，它变得可以识别。

