



US008303508B2

(12) **United States Patent**
Wakabayashi et al.

(10) **Patent No.:** **US 8,303,508 B2**
(45) **Date of Patent:** **Nov. 6, 2012**

(54) **ULTRASOUND ENDOSCOPE**

(56) **References Cited**

(75) Inventors: **Katsuhiro Wakabayashi**, Hachioji (JP);
Hideo Adachi, Iruma (JP); **Takanao Fujimura**, Sagamihara (JP); **Yukihiko Sawada**, Yoshikawa (JP); **Akiko Mizunuma**, Hachioji (JP); **Takuya Imahashi**, Kawasaki (JP); **Sunao Sato**, Hachioji (JP)

U.S. PATENT DOCUMENTS

6,149,598	A	11/2000	Tanaka	
6,186,947	B1	2/2001	Ouchi	
6,409,666	B1	6/2002	Ito	
6,461,304	B1 *	10/2002	Tanaka et al.	600/462
2004/0082883	A1 *	4/2004	Kohno	601/2

FOREIGN PATENT DOCUMENTS

JP	7-28867	4/1995
JP	08-131442	5/1996
JP	08-280685	10/1996
JP	2000-041985	2/2000
JP	2001-112760	4/2001
JP	2002-011010	1/2002
JP	2004-350700	12/2004
JP	2005-323886	11/2005
JP	2006-26232	2/2006

(73) Assignee: **Olympus Medical Systems Corp.**, Tokyo (JP)

(*) Notice: Subject to any disclaimer, the term of this patent is extended or adjusted under 35 U.S.C. 154(b) by 474 days.

OTHER PUBLICATIONS

Extended Supplementary European Search Report dated Dec. 11, 2009.

* cited by examiner

(21) Appl. No.: **12/203,795**

(22) Filed: **Sep. 3, 2008**

(65) **Prior Publication Data**

US 2009/0005688 A1 Jan. 1, 2009

Related U.S. Application Data

(63) Continuation of application No. PCT/JP2007/053927, filed on Mar. 1, 2007.

(30) **Foreign Application Priority Data**

Mar. 3, 2006	(JP)	2006-058707
Jun. 8, 2006	(JP)	2006-160192

(51) **Int. Cl.**

A61B 8/12 (2006.01)

(52) **U.S. Cl.** **600/462; 600/463; 600/464; 600/439; 600/101**

(58) **Field of Classification Search** None
See application file for complete search history.

Primary Examiner — Long V. Le

Assistant Examiner — Farshad Negarestan

(74) *Attorney, Agent, or Firm* — Scully, Scott, Murphy & Presser, P.C.

(57) **ABSTRACT**

An ultrasound endoscope has an ultrasound probe which is disposed at a distal end side of a distal end rigid portion configuring a distal end portion out of a flexible tube portion, a bending portion and the distal end rigid portion configuring an insertion portion, and forms an ultrasound scanning surface having a normal line in a direction orthogonal to an endoscope insertion axis L1, and a treatment instrument outlet of a treatment hole in the distal end rigid portion. The ultrasound probe is configured by a plurality of ultrasound transducers arranged in a convex circular arc shape, and a center of curvature of the plurality of ultrasound transducers is disposed at a proximal end side from the treatment instrument outlet.

9 Claims, 11 Drawing Sheets

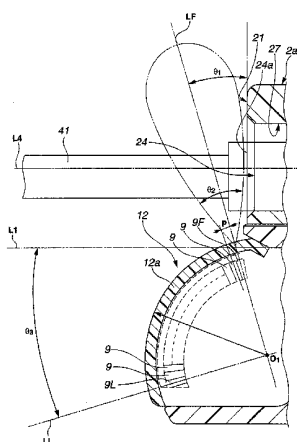


FIG. 1

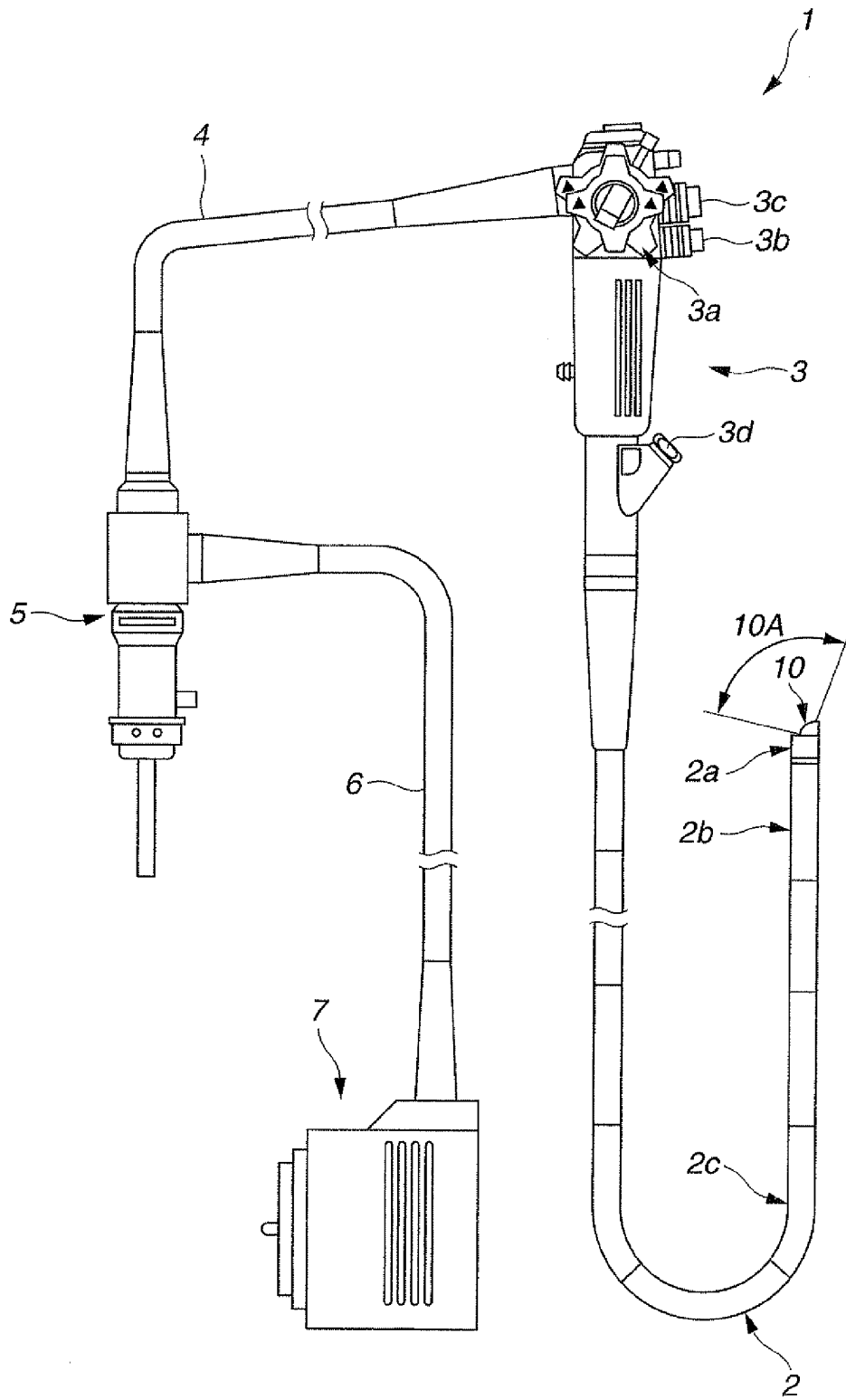


FIG. 2

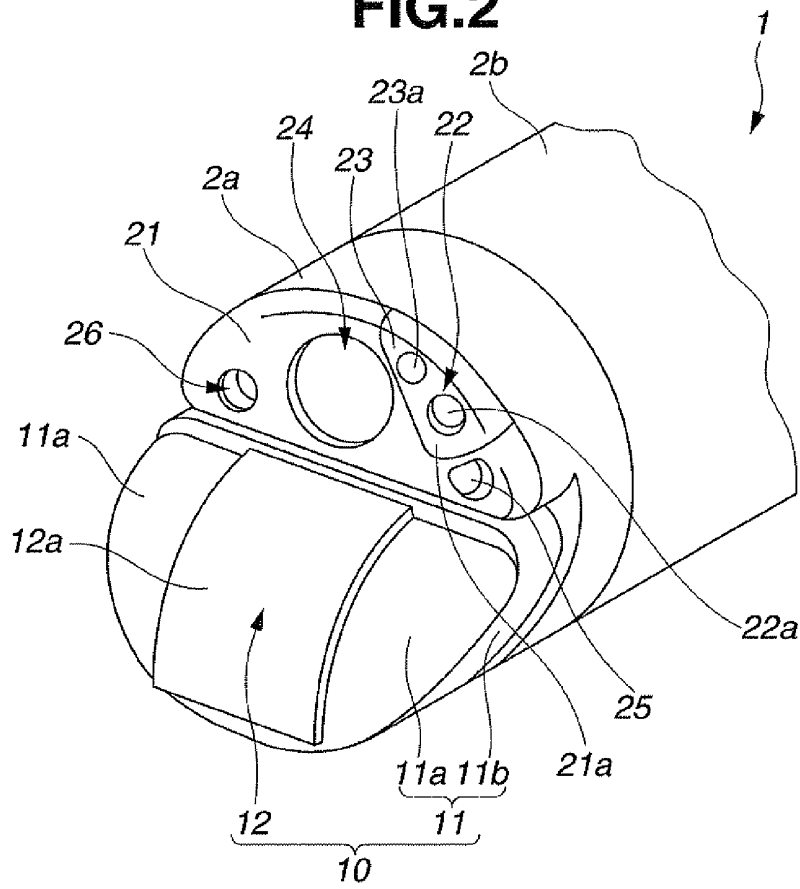


FIG. 3

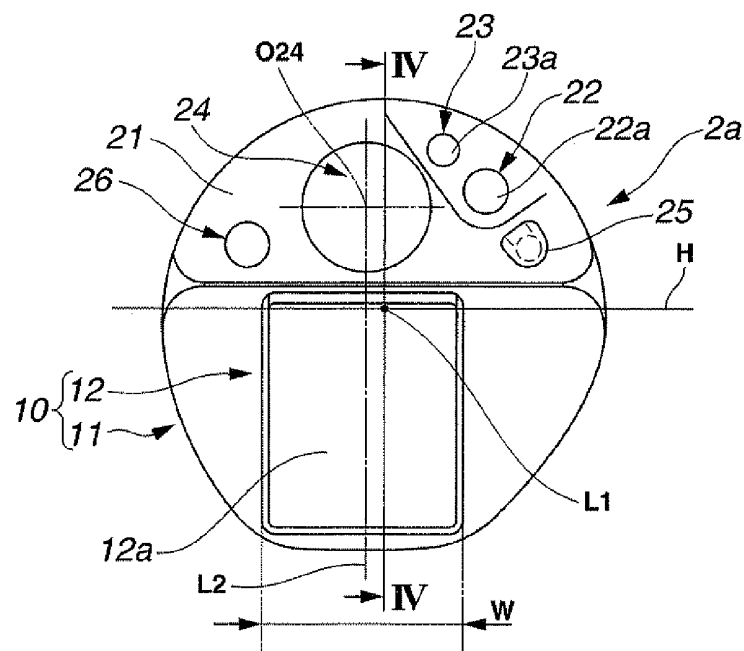


FIG. 4

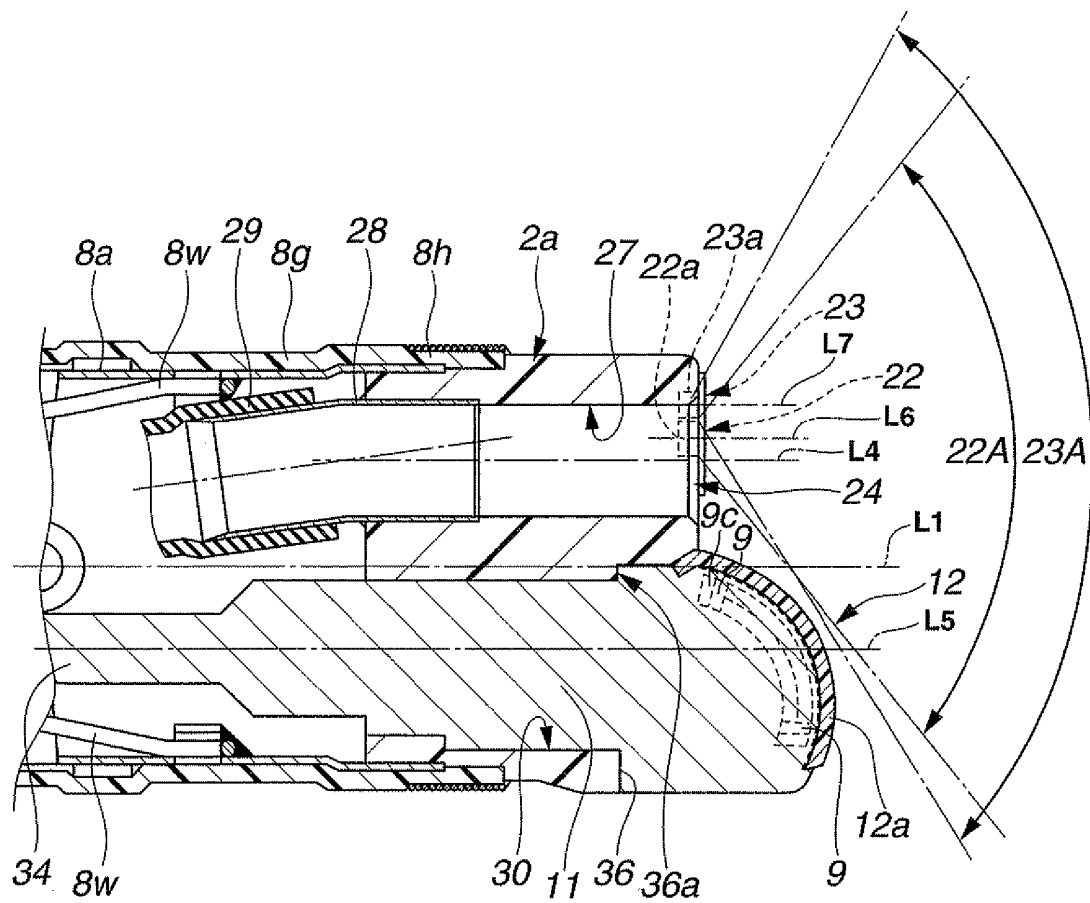


FIG. 5

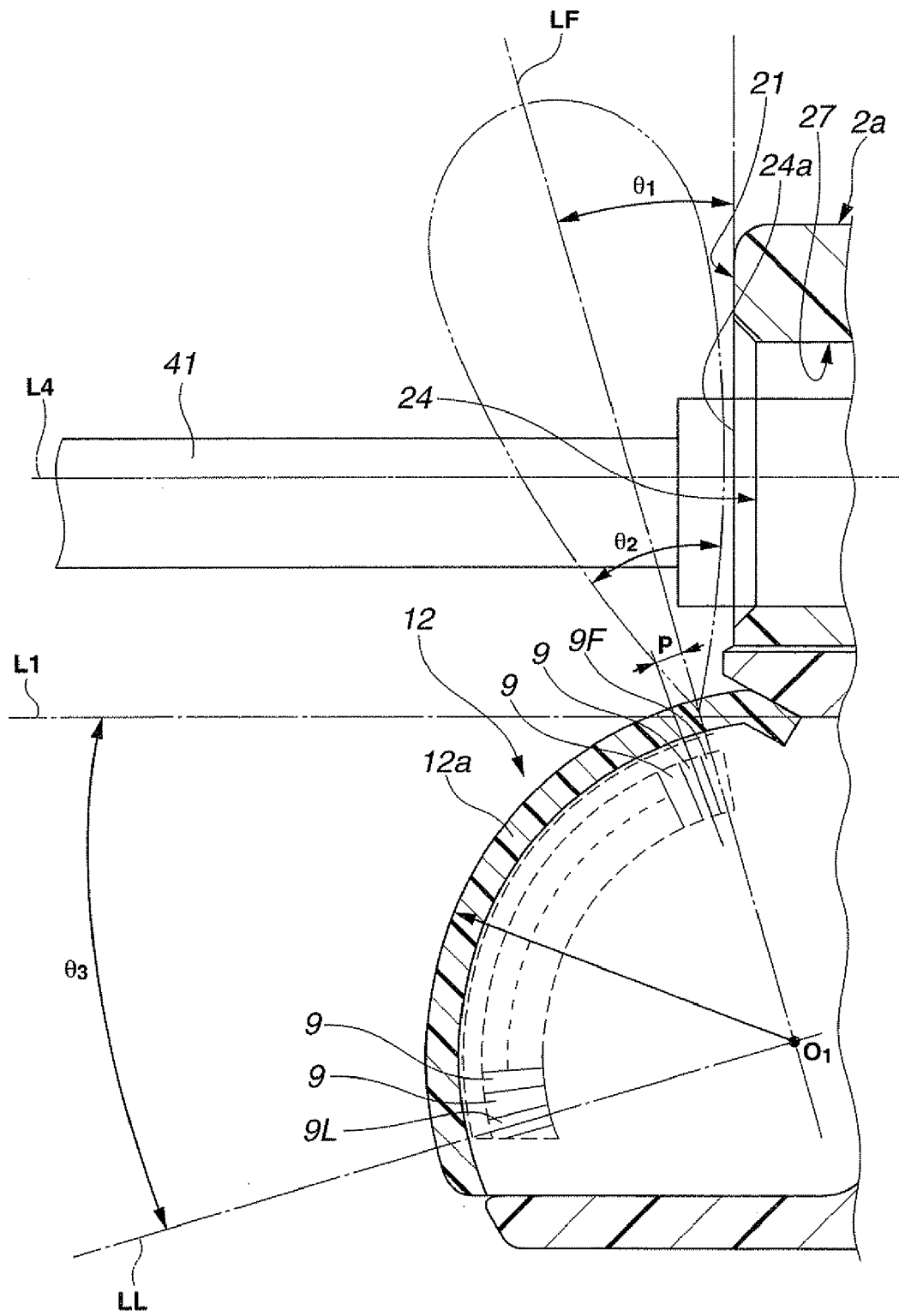


FIG.6

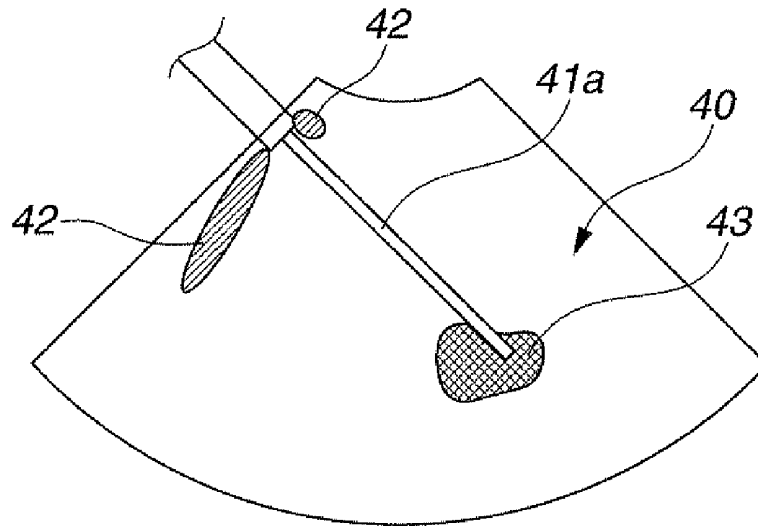


FIG.7

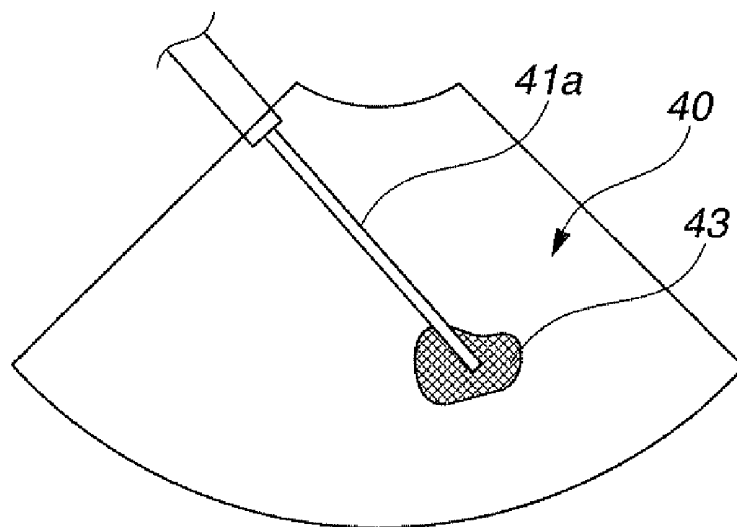


FIG. 8

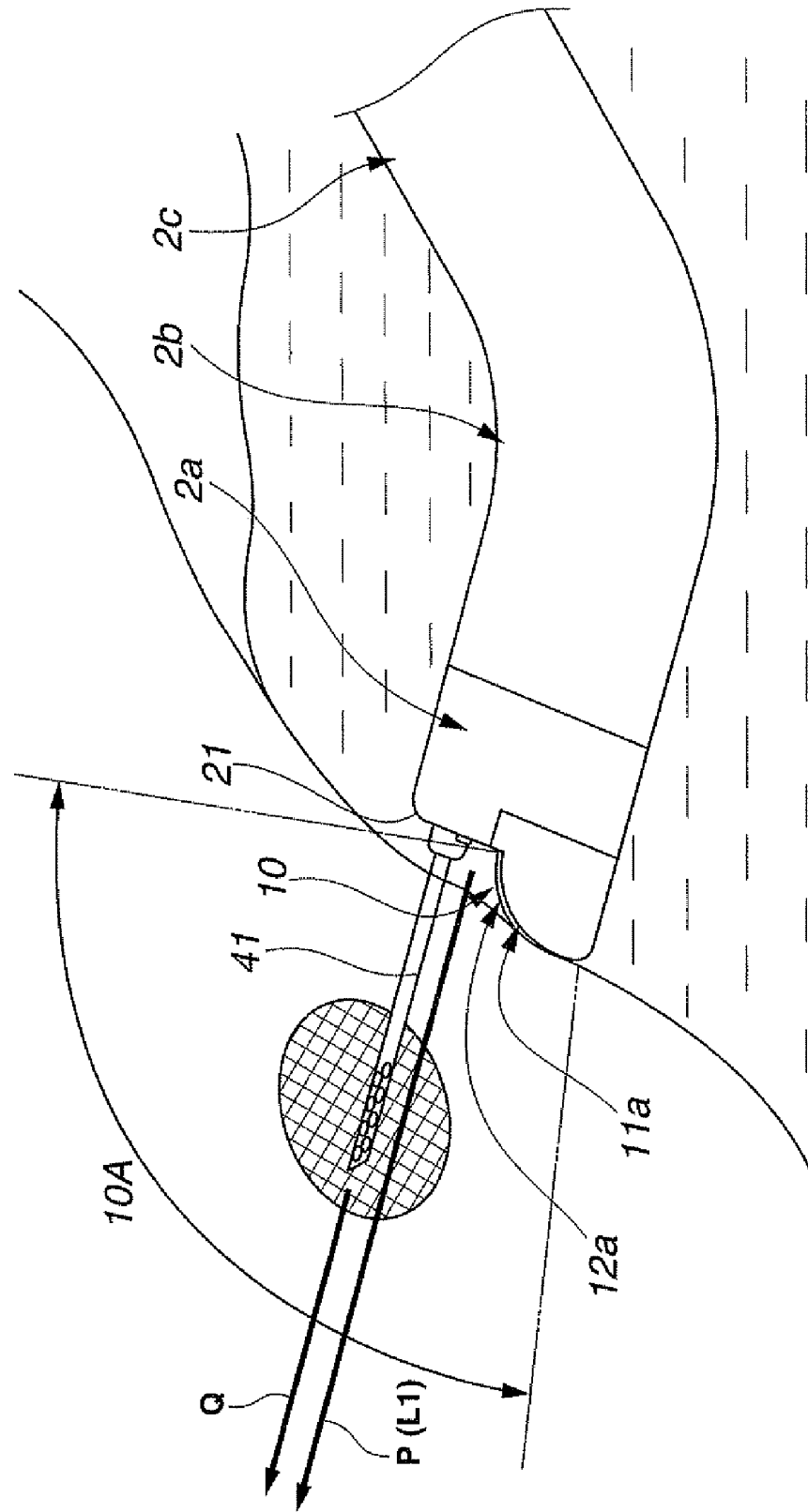


FIG.9

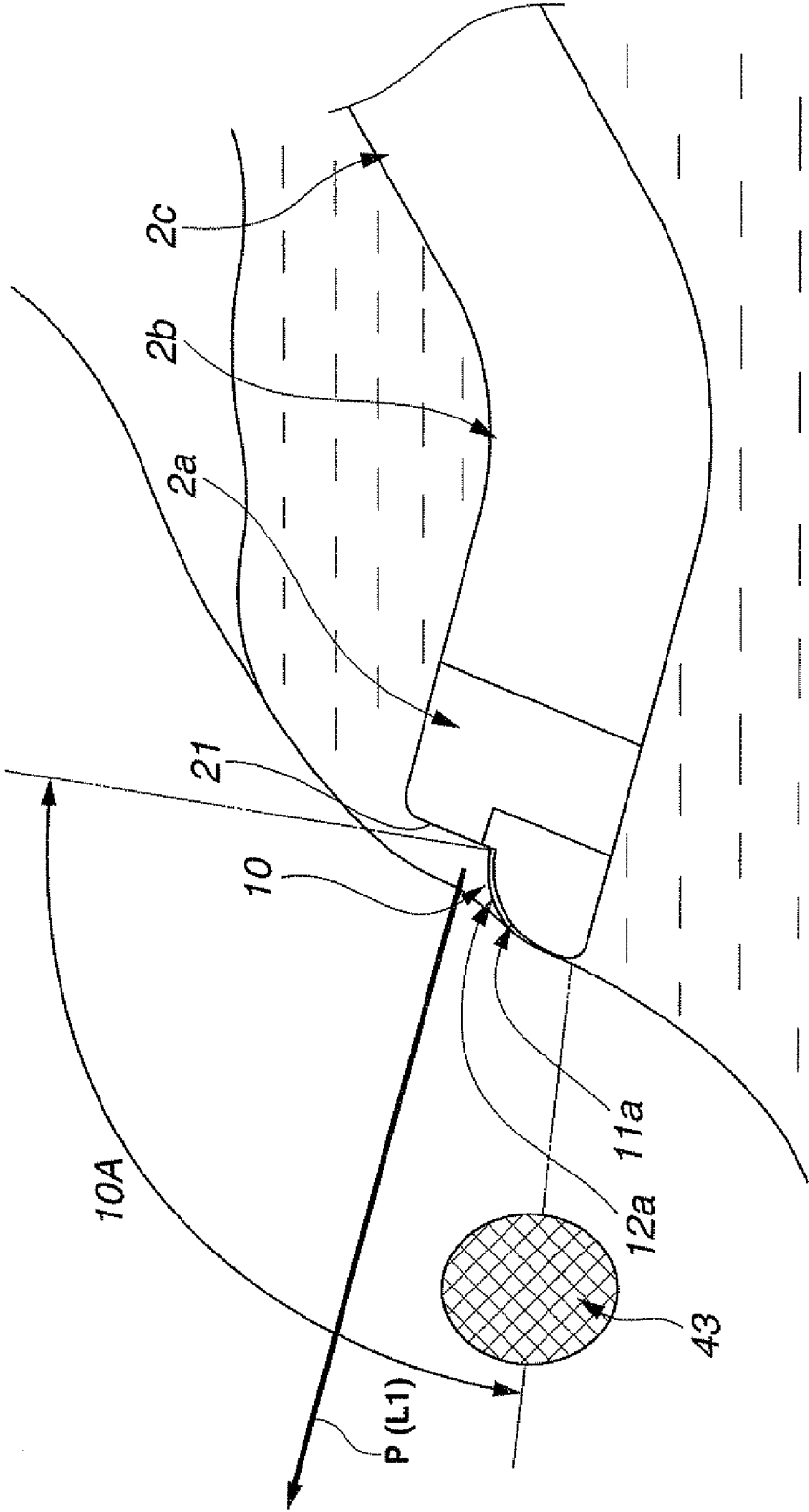


FIG.10

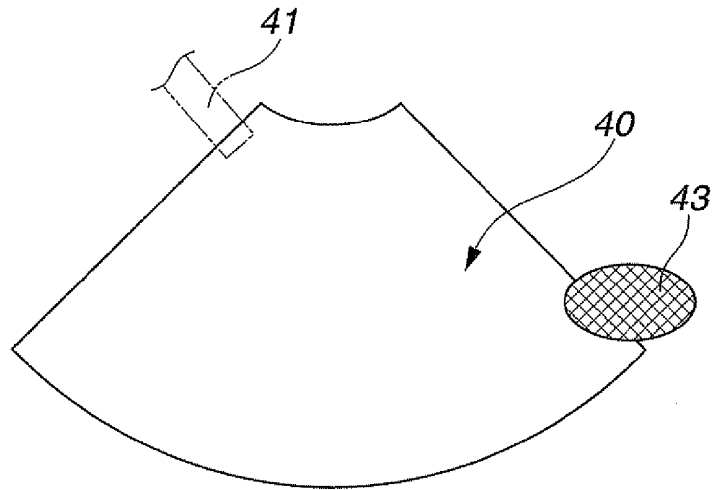


FIG.11

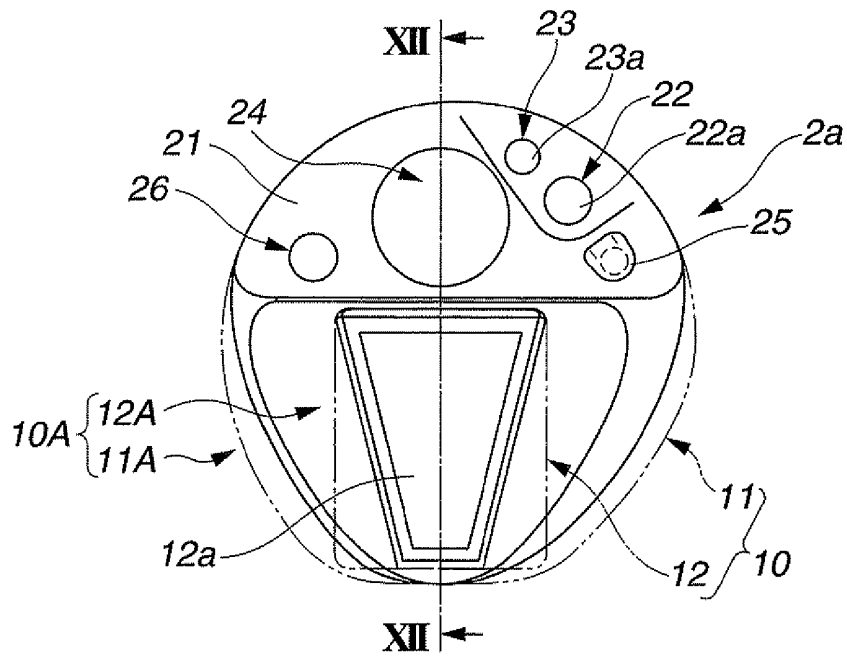


FIG.12

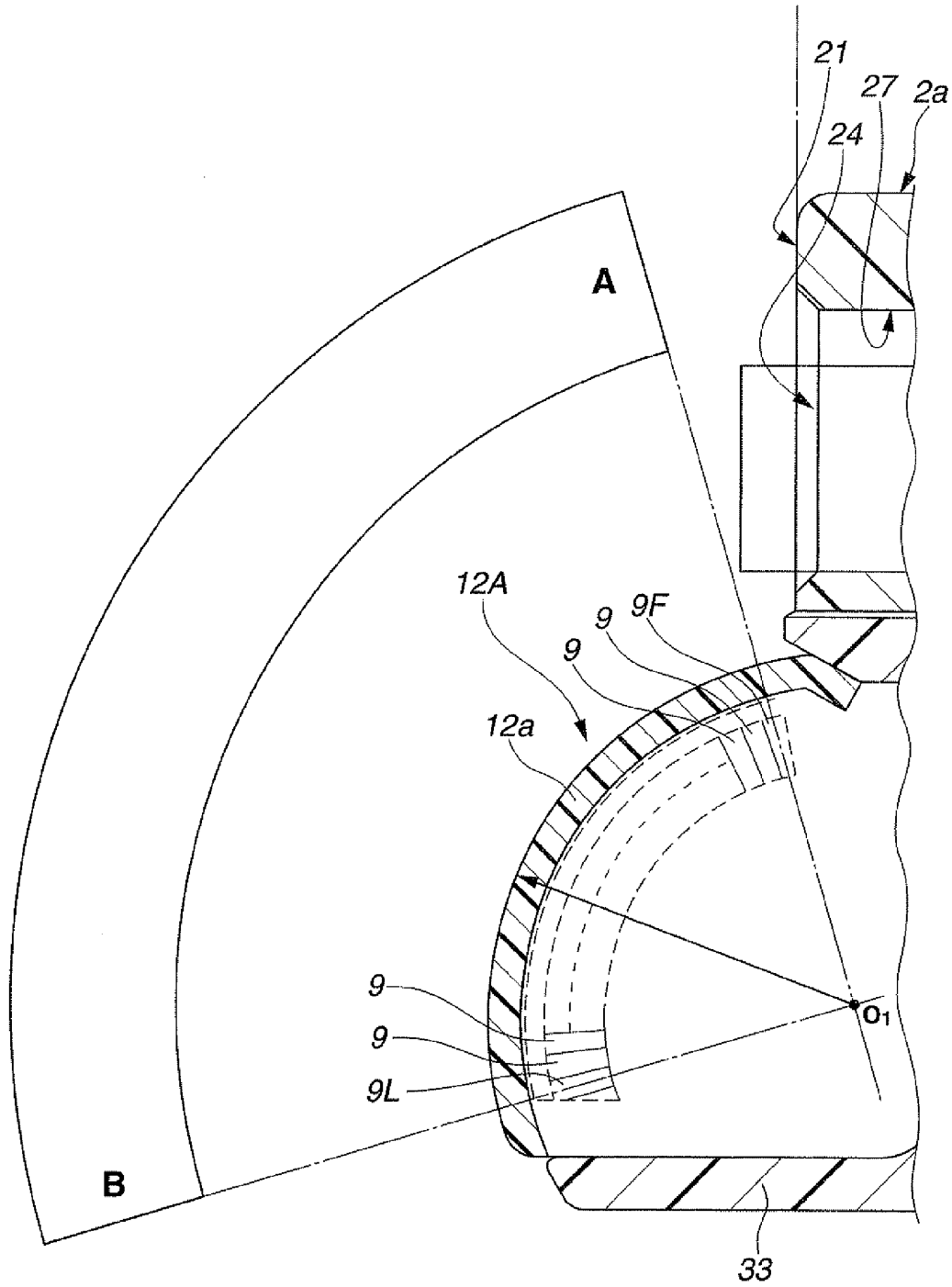


FIG. 13

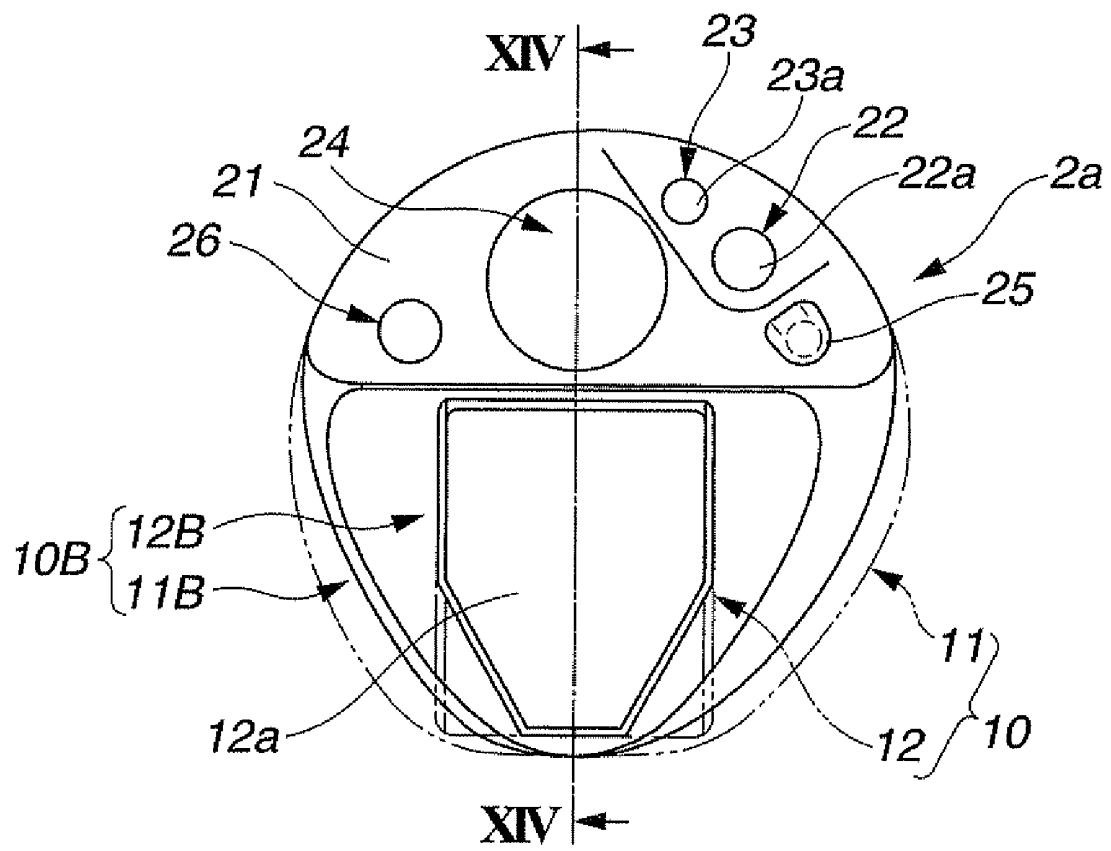
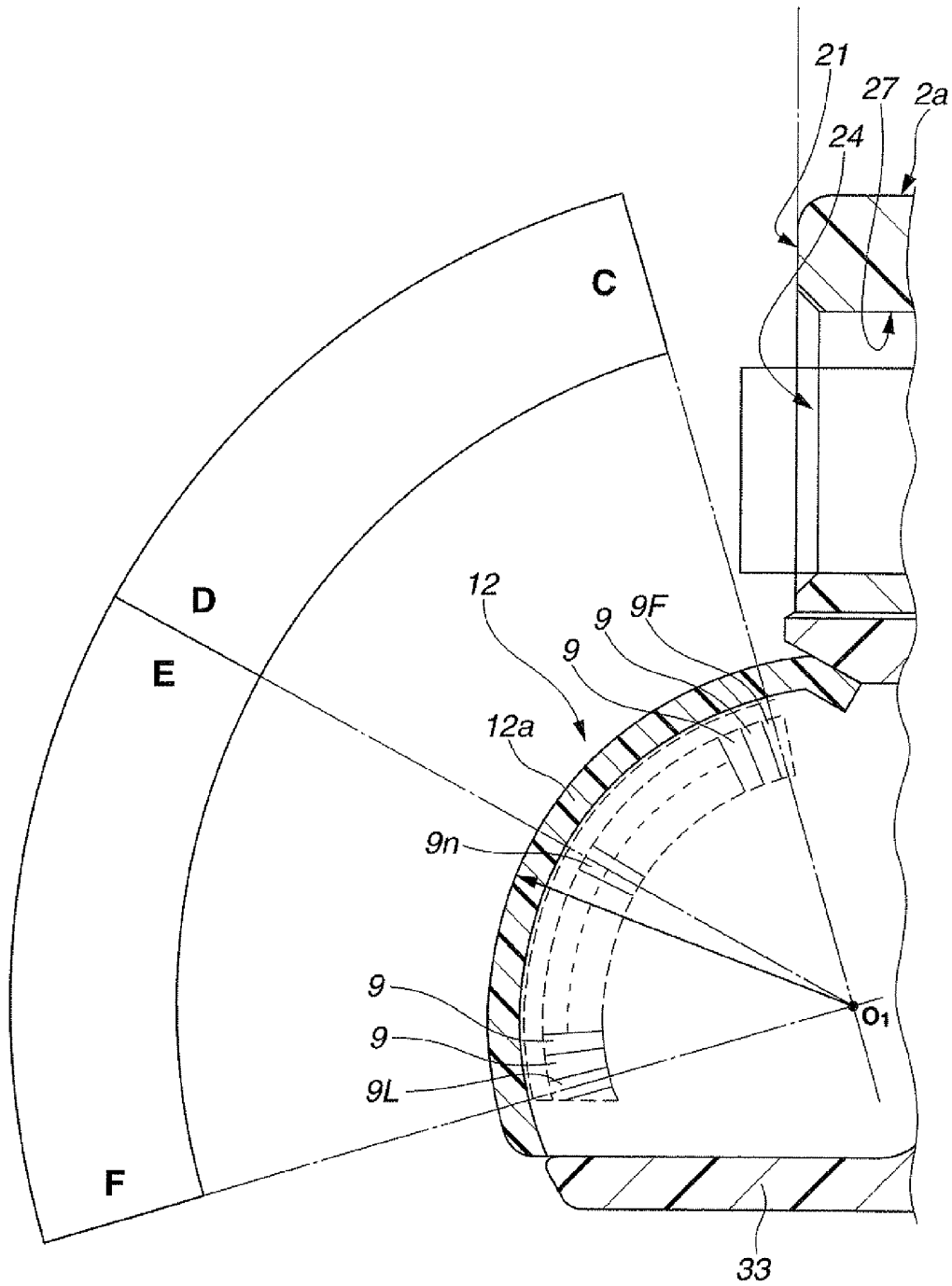


FIG.14



ULTRASOUND ENDOSCOPE

CROSS REFERENCE TO RELATED APPLICATION

This application is a continuation application of PCT/JP2007/053927 filed on Mar. 1, 2007 and claims benefit of Japanese Applications No. 2006-058707 filed in Japan on Mar. 3, 2006, and No. 2006-160192 filed in Japan on Jun. 8, 2006, the entire contents of which are incorporated herein by their reference.

BACKGROUND OF THE INVENTION

1. Field of the Invention

The present invention relates to an ultrasound endoscope having a convex-type ultrasound probe in which an observation optical system, a treatment instrument outlet, and a plurality of ultrasound transducers are arranged at a distal end of an insertion portion of an endoscope.

2. Description of the Related Art

As an endoscope for performing ultrasound observation in a body cavity, or therapy and treatment by using treatment instruments, an ultrasound endoscope having a convex-type ultrasound probe at a distal end of the endoscope is known. The convex-type ultrasound probe is configured by arranging a plurality of ultrasound transducers in a convex circular arc shape.

As the ultrasound endoscopes having convex-type ultrasound probes, the ones disclosed in, for example, Japanese Patent Application Laid-Open Publication No. 8-131442 and Japanese Patent Application Laid-Open Publication No. 2004-350700 (see FIG. 19) are cited. In each of the ultrasound endoscopes, an observation optical system is included at a distal end rigid portion in the vicinity of an ultrasound probe, and the observation optical system has an optical axis in a diagonally forward direction.

In an ultrasound endoscope, such positional relationship as to allow observation of an inside of an observation region as an ultrasound tomography image while visually recognizing the observation region with an observation optical system is essential. In order to confirm the insertion depth or the like of a treatment instrument by an ultrasound tomography image, an ultrasound scanning range with an operation range of the treatment instrument taken into consideration is required.

Therefore, in the case of each of the observation optical systems with diagonally forward views as disclosed in Japanese Patent Application Laid-Open Publication No. 8-131442 and Japanese Patent Application Laid-Open Publication No. 2004-350700, the diagonally forward optical axis and the operation range of the treatment instrument can be contained within the ultrasound scanning range by providing an ultrasound probe at a distal end side of the distal end rigid portion.

However, in the ultrasound endoscope disclosed in Japanese Patent Application Laid-Open Publication No. 8-131442, the structure including the ultrasound probe in addition to the distal end rigid portion makes the rigid length of a so-called endoscope insertion portion.

Further, in the structure of the ultrasound endoscope disclosed in Japanese Patent Application Laid-Open Publication No. 2004-350700, a slope is provided at a distal end rigid portion, and an ultrasound probe is loaded on the slope. In this structure, the distal end rigid length is shorter as compared with the ultrasound endoscope disclosed in the Japanese Patent Application Laid-Open Publication No. 8-131442. However, in order to enable to contain the treatment instru-

ment which is led out from a treatment instrument outlet within the ultrasound scanning range, the ultrasound endoscope disclosed in Japanese Patent Application Laid-Open Publication No. 2004-350700 is provided with an ultrasound probe in a semi-circular shape with an ultrasound scanning range at 180 degrees. In the ultrasound endoscope, the structure including the length which is twice as long as the radius of curvature of the ultrasound probe in addition to the distal end rigid portion makes the distal end rigid length.

SUMMARY OF THE INVENTION

An ultrasound endoscope of the present invention is an ultrasound endoscope having an ultrasound probe portion which is disposed at a distal end side of a distal end rigid portion configuring a distal end portion out of a flexible tube portion, a bending portion and the distal end rigid portion configuring an endoscope insertion portion, and forms an ultrasound scanning surface having a normal line in a direction orthogonal to an endoscope insertion axis, and a treatment instrument outlet of a treatment instrument inserting channel in the distal end rigid portion,

in which the ultrasound probe is configured by a plurality of ultrasound transducers arranged in a convex circular arc shape, and a center of curvature of the plurality of ultrasound transducers is disposed at a proximal end side from the treatment instrument outlet.

BRIEF DESCRIPTION OF THE DRAWINGS

FIG. 1 is a view for explaining a configuration of an ultrasound endoscope;

FIG. 2 is a perspective view for explaining a configuration of a distal end portion of the ultrasound endoscope;

FIG. 3 is a front view of the distal end portion shown in FIG. 2 seen from a front;

FIG. 4 is a sectional view taken along the IV-IV line in FIG. 3;

FIG. 5 is a view for explaining the relationship among an ultrasound probe configured by arranging a plurality of ultrasound transducers, an ultrasound observation region of the ultrasound probe, and a treatment instrument which is led out from a treatment instrument outlet;

FIG. 6 is a view showing an ultrasound image example in which an artifact appears;

FIG. 7 is a view showing an ultrasound image example visualized with the ultrasound probe shown in FIG. 5;

FIG. 8 is a view for explaining relationship between a tissue abutting surface of a nose piece and an acoustic lens surface of the ultrasound probe;

FIG. 9 is a view for explaining a state in which a lesion is present in the vicinity of a boundary of the ultrasound observation region of the ultrasound endoscope;

FIG. 10 is a view showing an ultrasound image in the observation state shown in FIG. 9;

FIG. 11 is a front view of the distal end portion including the ultrasound probe of which elevation width continuously changes, seen from the front;

FIG. 12 is a sectional view taken along the XII-XII line of FIG. 11;

FIG. 13 is a front view of the distal end portion including an ultrasound probe including a portion in which a part of the elevation width continuously changes, seen from the front; and

FIG. 14 is a sectional view taken along the XIV-XIV line of FIG. 13.

DESCRIPTION OF THE PREFERRED EMBODIMENT(S)

Hereinafter, an embodiment of the present invention will be described in detail with reference to the drawings.

With reference to FIGS. 1 to 14, an embodiment of the present invention will be described. As shown in FIG. 1, an ultrasound endoscope (hereinafter, also described as an endoscope) 1 of the present embodiment is configured by including an elongated insertion portion 2 which is inserted into a body cavity, an operation portion 3 provided at a proximal end of the insertion portion 2, and a universal cord 4 extended from a side portion of the operation portion 3. An endoscope connector 5 is provided at the other end of the universal cord 4. An ultrasound cable 6 is extended from a side portion of the endoscope connector 5. An ultrasound connector 7 is provided at the other end of the ultrasound cable 6.

The insertion portion 2 is configured by connecting a distal end rigid portion 2a formed of a rigid member, a bending portion 2b configured to be bendable, and a flexible tube portion 2c which is elongated, has flexibility, and extends from a proximal end of the bending portion 2b to a distal end of the operation portion 3, in sequence from the distal end side. The operation portion 3 is provided with an angle knob 3a for performing a bending operation. Further, the operation portion 3 is provided with an air-supply and water-supply button 3b for performing operations of air supply and water supply, and a suction button 3c for performing suction. Further, the operation portion 3 is provided with a treatment instrument insertion port 3d for introducing a treatment instrument into a body cavity.

Reference numeral 10 denotes an ultrasound unit including an ultrasound probe having a convex ultrasound scanning surface. The ultrasound unit 10 forms an ultrasound scanning range 10A for scanning in a forward direction with respect to the endoscope insertion axis direction.

As shown in FIGS. 2 and 3, the distal end rigid portion 2a of the insertion portion 2 is provided with the ultrasound unit 10 for obtaining acoustic image information by ultrasound. The ultrasound unit 10 is configured by including a nose piece 11 which is a casing, and an ultrasound probe 12. The ultrasound probe 12 is integrally placed in a notch portion formed in a substantially central portion of the nose piece 11. As shown in the drawing, a tissue abutting surface 11a configuring the nose piece 11, and an acoustic lens surface 12a of the ultrasound probe 12 are configured into a shape projected from a distal end surface 21 of the distal end rigid portion 2a.

As shown in FIGS. 4 and 5, the ultrasound probe 12 is configured by, for example, a plurality of ultrasound transducers 9 and the acoustic lens 12a. The plurality of ultrasound transducers 9 are arranged to form a convex circular arc.

Meanwhile, the distal end surface 21 of the distal end rigid portion 2a is provided with an observation window 22a configuring an observation optical system 22, an illumination window 23a configuring an illumination optical system 23, a treatment instrument outlet 24 from which a treatment instrument such as a puncture needle is led out, an air-supply and water-supply nozzle 25 for ejecting a fluid such as water and air toward the observation window 22a, and an auxiliary water-supply channel port 26 for supplying water forward, as shown in FIGS. 2 and 3. Instead of providing the auxiliary water-supply channel port 26, the auxiliary water-supply channel port 26 may be configured as a second treatment instrument outlet.

A center O24 of the treatment instrument outlet 24 is arranged on the same straight line as a center line L2 of the ultrasound probe 12 so that the treatment instrument which is

led out from the treatment instrument outlet 24 is contained within the ultrasound scanning range 10A obtained by the ultrasound probe 12.

The observation window 22a, the illumination window 23a and the air-supply and water-supply nozzle 25 are disposed together, for example, at the right side in the drawing, with respect to the treatment instrument outlet 24, and disposed outside the ultrasound scanning range 10A. Out of the observation window 22a, the illumination window 23a and the air-supply and water-supply nozzle 25, the position of the air-supply and water-supply nozzle 25 is set to be the farthest position from the ultrasound scanning range 10A. Further, in the present embodiment, the disposed positions of the illumination window 23a, the observation window 22a and the air-supply and water-supply nozzle 25 are disposed on one straight line in consideration of the purpose of improving the observation performance and cleaning performance, and reducing the outside diameter dimension of the endoscope distal end portion.

The observation window 22a has an observation visual field range of the observation optical system 22, for which reference should be made to the range of reference numeral and character 22A shown by the dashed line in FIG. 4. The illumination window 23a has an illumination light irradiation range of the illumination optical system 23, for which reference should be made to the range of reference numeral and character 23A shown by the two-dot chain line in FIG. 4. The observation visual field range 22A and the illumination light irradiation range 23A are configured not to contain the ultrasound probe 12 in the ranges.

The observation window 22a, and the illumination window 23a are provided in an observation distal end surface 21a configured to be slightly projected from the distal end surface 21. Further, the auxiliary water-supply channel port 26 is on one surface side at an opposite side from the other surface side, on which the observation window 22a, the illumination window 23a and the air-supply and water-supply nozzle 25 are disposed, with the treatment instrument outlet 24 between the one surface side and the other surface side, and the auxiliary water-supply channel port 26 is disposed outside the ultrasound scanning range 10A. When the auxiliary water-supply channel port 26 is configured as the second treatment instrument outlet, the diameter dimension of the channel is set in accordance with the treatment instrument to be used.

Thereby, manipulation using two treatment instruments can be performed under endoscope observation. Therefore, the configuration of efficiently performing diagnosis and treatment by combining the treatment instrument which is projected from the second treatment instrument outlet and used under endoscope observation and the treatment instrument which is projected from the treatment instrument outlet 24 and used under ultrasound diagnosis can be realized.

As shown in FIG. 4, a distal end bending piece 8a configuring the bending portion 2b is connected and fixed to a proximal end side of the distal end rigid portion 2a. A plurality of bending pieces not illustrated are connected to the distal end bending piece 8a. A straight line connecting a center of the bending portion 2b configured by connecting the bending pieces is an endoscope insertion axis L1.

Distal end portions of vertical and lateral bending wires 8w are fixedly provided at predetermined positions of the distal end bending piece 8a. Accordingly, by an operator properly operating the angle knob 3a, the bending wire 8w corresponding to the operation is pulled or loosened so that the bending portion 2b performs a bending operation. The plurality of bending pieces are covered with a bending rubber 8g. A distal

end portion of the bending rubber **8g** is integrally fixed to the distal end rigid portion **2a** by a winder joining portion **8h**.

The distal end surface **21** of the distal end rigid portion **2a**, and the observation distal end surface **21a** are configured to be orthogonal to the endoscope insertion axis **L1**. In the distal end rigid portion **2a**, a treatment instrument inserting channel hole (hereinafter, abbreviated as a treatment instrument hole) **27** configuring the treatment instrument outlet **24**, and a disposition hole **30** are formed.

The distal end rigid portion **2a** includes a through hole provided with the observation optical system, a through hole provided with the illumination optical system, a through hole for supplying air and water, which supplies a fluid to be ejected from the air-supply and water-supply nozzle **25**, a through hole configuring the auxiliary water-supply channel port **26** and the like though not illustrated, in addition to the holes **27** and **30**.

A center axis **L4** in a longitudinal direction of the treatment instrument hole **27** is formed substantially parallel with the endoscope insertion axis **L1**. A center axis **L5** in a longitudinal direction of the disposition hole **30** is formed substantially parallel with the endoscope insertion axis **L1**. Further, an optical axis **L6** of the observation optical system and an optical axis **L7** of the illumination optical system included in the ultrasound endoscope **1** are also parallel with the endoscope insertion axis **L1**.

Accordingly, the observation optical system included in the ultrasound endoscope **1** of the present embodiment is a so-called direct-viewing type in which the observation visual field is set at a front in a forward direction, in other words, an insertion direction at a forward side of the endoscope insertion axis **L1**.

One end portion of a tube connecting pipe **28** formed by being inclined by a predetermined amount is allowed to communicate with a proximal end side of the treatment instrument hole **27**. One end portion of a channel tube **29** configuring the treatment instrument inserting channel communicates with the other end portion of the tube connecting pipe **28**. The other end portion of the channel tube **29** communicates with the treatment instrument insertion port **3d**.

The treatment instrument which is inserted via the treatment instrument insertion port **3d** smoothly moves inside the channel tube **29**, the tube connecting pipe **28** and the treatment instrument hole **27** and is led outside from the treatment instrument outlet **24**. The treatment instrument which is led outside from the treatment instrument outlet **24** is projected in the forward direction which is the insertion direction of the insertion portion **2** to be parallel with the endoscope insertion axis **L1**.

More specifically, in the state in which a distal end portion of a puncture needle is disposed inside the treatment instrument hole **27**, as the treatment instrument, for example, when a needle tube configuring the puncture needle is projected, the needle tube moves from the treatment instrument outlet **24** toward the front in the forward direction observed through the observation window **22a** to be substantially parallel with the endoscope insertion axis **L1**.

Meanwhile, the disposition hole **30** is provided in the distal end rigid portion **2a**. The ultrasound unit **10** is fitted in the disposition hole **30**, and an abutting surface of the nose piece **11** and a contact surface **36** of the distal end rigid portion **2a** abut on each other, whereby positioning of the ultrasound unit **10** with respect to the disposition hole **30** is performed. From the other end side of the ultrasound unit **10**, an ultrasound cable **34** connected to the ultrasound probe **12** is led out.

An outer shape extending to the distal end from the contact surface **36** of the distal end rigid portion **2a**, that is, a surface shown by reference numeral and character **11b** in FIG. 2 includes an elevation width **W** of the ultrasound probe **12** and the abutting surface **11a**, and is set to have substantially the same dimension as the outside dimension of the distal end of the distal end rigid portion **2a** as shown in FIG. 2.

Therefore, when the ultrasound unit **10** is pushed against a body tissue on the occasion of ultrasound observation, the power of the operator grasping the operation portion **3** in the direction of the endoscope insertion axis **L1** is reliably transmitted to the ultrasound unit **10**. As a result, the tissue abutting surface **11a** and the acoustic lens surface **12a** can be uniformly brought into close contact with the body tissue as shown in FIG. 8. In this manner, the tissue abutting surface **11a** and the acoustic lens surface **12a** of the ultrasound unit **10** are pushed against the body tissue in the stable state, and a favorable ultrasound observation image can be obtained.

The ultrasound probe **12** shown in FIGS. 4 and 5 is configured by arranging a plurality of ultrasound transducers **9** in each of which, for example, a backing material, a piezoelectric transducer, a matching layer and an acoustic lens are stacked in layer. The plurality of ultrasound transducers **9** from a first ultrasound transducer **9F** which is disposed at the position closest to the treatment instrument outlet **24** and irradiates ultrasound to a final ultrasound transducer **9L** which is at the farthest position when counted from the treatment instrument outlet **24** are arranged at predetermined pitches **p**. As shown in FIG. 5, a center of curvature **O1** of the circular arc of the ultrasound probe **12** is configured to be located at a proximal end side from an opening surface **24a** of the treatment instrument outlet **24** provided in the distal end rigid portion **2a**. For the ultrasound transducer **9**, an MUT (Micromachined Ultrasound Transducer) element may be used instead of the piezoelectric element.

By providing the center of curvature **O1** of the circular arc of the ultrasound probe **12** at the proximal end side from the opening surface **24a** of the treatment instrument outlet **24** like this, the distal end rigid length of the endoscope **1** is shortened. Therefore, insertability of the endoscope **1** into a body cavity is improved. Further, since the configuration in which the ultrasound probe **12** is not disposed within the observation visual field range of the endoscope **1** is adopted, the problem that a part of an endoscope image is lost by the ultrasound probe **12** is solved. Further, the ultrasound probe **12** is not within the illumination light irradiation range of the endoscope **1**, and therefore, a part of illumination light is not shielded by the ultrasound probe **12**. Thus, illumination light spreads into the observation visual field range of the endoscope **1**, and a favorable endoscope image can be obtained.

In the ultrasound probe **12**, a direction of a center axis **LF** of a sound ray of the first ultrasound transducer **9F** is set to incline to the distal end side by an angle $\theta 1$ with respect to the distal end surface **21**, with the distal end surface **21** of the distal end rigid portion **2a**, more specifically, the distal end surface **21** including the treatment instrument outlet **24** as the reference.

Further, when the direction of the center axis **LF** of the sound ray of the first ultrasound transducer **9F** is set to incline to the distal end side by the angle $\theta 1$, a spread angle $\theta 2$ of the first ultrasound transducer **9F** is taken into consideration. More specifically, the angle $\theta 1$ is set so that at least a part of the distal end rigid portion **2a** which is made of the material that can reflect ultrasound, for example, a metal or a rigid resin, at least a part of the air-supply and water-supply nozzle **25** or the like does not enter within the spread angle enclosed

by the two-dot chain line in FIG. 5. The angle $\theta 1$ is set to be larger than at least $\theta/2$, that is half the spread angle $\theta 2$.

When the distal end rigid portion $2a$ is within the range of the spread angle, an artifact 42 as shown in FIG. 6 appears. However, according to the configuration of the present embodiment, an artifact does not appear, and a treatment instrument ultrasound image $41a$ is clearly visualized in an ultrasound image 40 as shown in FIG. 7. Namely, the treatment instrument ultrasound image $41a$ until the treatment instrument 41 punctures a lesion 43 from the state in which the treatment instrument 41 is slightly projected from the treatment instrument outlet 24 is clearly visualized in the ultrasound image 40 . By obtaining such favorable visibility, the treatment instrument 41 can be accurately introduced to the lesion 43 .

Meanwhile, a direction of a center axis LL of a sound ray of the final ultrasound transducer $9L$ is set to be parallel with the endoscope insertion axis L1, or to diverge by an angle $\theta 3$ as the center axis LL extends forward.

As a result, when the treatment instrument 41 which is projected from the treatment instrument outlet 24 is projected forward substantially in parallel with the endoscope insertion axis L1, the treatment instrument 41 continues to move in the vicinity of the center of the ultrasound scanning range $10A$. Further, even when the endoscope 1 moves before puncture due to pulsation or the like, and the lesion 43 is present outside the endoscope insertion axis L1 as shown in FIG. 9, for example, the lesion 43 is located at a boarder of the ultrasound scanning range $10A$, whereby the lesion 43 is displayed at an edge in the ultrasound image 40 as shown in FIG. 10.

Namely, even if the relative position of the endoscope 1 and the lesion 43 deviates, the ultrasound scanning range $10A$ is present up to the angle exceeding the endoscope insertion axis L1, and therefore, sight of the lesion 43 can be prevented from being lost. Accordingly, an operator can easily correct the positional deviation of the endoscope 1 and the lesion 43 by performing a manual operation, and introduces the treatment instrument 41 to the lesion 43 after the correction.

In the above described embodiment, the elevation width of the ultrasound probe 12 is set at the dimension W as shown in FIG. 3. In other words, the elevation widths of the plurality of ultrasound transducers 9 configuring the ultrasound probe 12 are uniformly set at the dimension W. On the other hand, in the ultrasound probe $12A$ shown in FIGS. 11 and 12, an elevation width WF of the first ultrasound transducer $9F$ and an elevation width WL of the final ultrasound transducer $9L$ are set at different dimensions.

More specifically, the elevation widths of the ultrasound transducers 9 are set to be continuously and gradually narrower toward the final ultrasound transducer $9L$ from the first ultrasound transducer $9F$, namely, toward B from A in FIG. 12. Accordingly, as shown in FIG. 11, the ultrasound probe $12A$ is formed to be compact as compared with the ultrasound probe 12 of FIG. 3, which is shown by the two-dot chain line in FIG. 11, and formed into a trapezoidal shape seen from the front.

In the ultrasound unit $10A$ configuring the ultrasound probe $12A$ like this, as the elevation width becomes narrower, the ultrasound beam which is irradiated easily diffuses and sensitivity is reduced theoretically.

However, in the present embodiment, by setting the shape of the nose piece $11A$ to be small in accordance with a change of the elevation width of the ultrasound probe $12A$, the nose piece $11A$ becomes small as compared with the outer shape of the nose piece 11 of FIG. 3 shown by the two-dot chain line,

and reduction in the diameter of the distal end portion of the endoscope 1 can be realized. Accordingly, insertability of the endoscope can be improved.

In an ultrasound probe $12B$ with a configuration shown in FIGS. 13 and 14, the first ultrasound transducer $9F$ to the n^{th} ultrasound transducer $9n$ are set to have the same dimensions. Specifically, the elevation width in a range from C to D in FIG. 14 is uniformly set at W. On the other hand, the $(n+1)^{\text{th}}$ ultrasound transducer $9(n+1)$ and the final ultrasound transducer $9L$ differ in elevation width. More specifically, toward the final ultrasound transducer $9L$ from the $(n+1)^{\text{th}}$ ultrasound transducer $9(n+1)$, in other words, toward F from E in FIG. 14, the elevation widths of the ultrasound transducers 9 are set to be gradually narrower. Accordingly, as shown in FIG. 13, the ultrasound probe $12B$ is formed to be compact as compared with the ultrasound probe 12 shown in FIG. 3 shown by the two-dot chain line and formed into the shape of a home base of baseball seen from the front.

Thereby, the nose piece $11B$ is made smaller as compared with the outer shape of the nose piece 11 shown in FIG. 3 shown by the two-dot chain line, and reduction in the diameter of the distal end portion of the endoscope 1 can be realized. Further, in the ultrasound unit $10B$ configuring the ultrasound probe $12B$, the elevation width has the same dimension in the range from A to B, and therefore, an ultrasound image with the similar image quality to the ultrasound unit 10 can be obtained.

The present invention is not limited only to the embodiment described above, but various modifications may be made in the range without departing from the spirit of the invention.

What is claimed is:

1. An ultrasound endoscope having an ultrasound probe portion disposed at a distal end side of a distal end rigid portion configuring a distal end of a flexible tube portion, a bending portion and the distal end rigid portion configuring an endoscope insertion portion, and a treatment instrument outlet formed at a distal surface of the distal end rigid portion, the ultrasound probe comprising:

40 a plurality of ultrasound transducers arranged in a convex circular arc shape, a center of curvature of the plurality of ultrasound transducers being disposed at a position proximal to a line orthogonal to an endoscope insertion axis and contacting a distal surface of the treatment instrument outlet.

2. The ultrasound endoscope according to claim 1, wherein a center axis of a sound ray of a first ultrasound transducer disposed at a position which is the closest to the treatment instrument outlet, out of the plurality of ultrasound transducers, is set to be inclined in a distal end direction by an angle which does not exceed 90 degrees, with respect to the endoscope insertion axis.

3. The ultrasound endoscope according to claim 2, wherein the distal end rigid portion includes a distal end surface which becomes a plane substantially perpendicular to the endoscope insertion axis, at the distal end side, and the treatment instrument outlet is provided in the distal end surface.

4. The ultrasound endoscope according to claim 3, wherein an angle formed by the center axis of the sound ray of the first ultrasound transducer and the endoscope insertion axis is set so as not exceed an angle formed by the distal end surface and the endoscope insertion axis, and the center axis of the sound ray is inclined in the distal end direction from the distal end surface.

5. The ultrasound endoscope according to claim 3, wherein relationship between an angle $\theta 1$ formed by the center axis of the sound ray of the first ultrasound transducer and the distal

9

end surface and a spread angle θ_2 of ultrasound irradiated from the first ultrasound transducer is set to be relationship of at least $\theta_1 > \theta_2/2$.

6. The ultrasound endoscope according to claim 1, wherein a center axis in a longitudinal direction of the treatment instrument inserting channel is set to be substantially parallel with the endoscope insertion axis.

7. The ultrasound endoscope according to claim 1, wherein a center axis of a sound ray of a final ultrasound transducer which is the farthest from the treatment instrument outlet, out of the plurality of ultrasound transducers is set to be substantially parallel with the endoscope insertion axis.

8. The ultrasound endoscope according to claim 1, wherein in the plurality of ultrasound transducers arranged in the

10

circular arc shape, a first sector formed by the circular arc, the center axis of the sound ray of the final ultrasound transducer and the endoscope insertion axis does not overlap with a second sector formed by the circular arc, a center axis of a sound ray oscillated by the first ultrasound transducer and the endoscope insertion axis.

9. The ultrasound endoscope according to claim 1, wherein elevation widths of the plurality of ultrasound transducers arranged in the circular arc shape have the same dimensions, or are narrower at the distal end side than a treatment instrument outlet side.

* * * * *

专利名称(译)	超声内窥镜		
公开(公告)号	US8303508	公开(公告)日	2012-11-06
申请号	US12/203795	申请日	2008-09-03
[标]申请(专利权)人(译)	奥林巴斯医疗株式会社		
申请(专利权)人(译)	奥林巴斯医疗系统股份有限公司.		
当前申请(专利权)人(译)	OLYMPUS CORPORATION		
[标]发明人	WAKABAYASHI KATSUHIRO ADACHI HIDEO FUJIMURA TAKANAO SAWADA YUKIHIKO MIZUNUMA AKIKO IMAHASHI TAKUYA SATO SUNAO		
发明人	WAKABAYASHI, KATSUHIRO ADACHI, HIDEO FUJIMURA, TAKANAO SAWADA, YUKIHIKO MIZUNUMA, AKIKO IMAHASHI, TAKUYA SATO, SUNAO		
IPC分类号	A61B8/12		
CPC分类号	A61B1/00091 A61B1/00096 A61B1/127 A61B8/445 A61B8/0841 A61B8/12 A61B8/4488 A61B8/0833 A61B1/018		
优先权	2006058707 2006-03-03 JP 2006160192 2006-06-08 JP		
其他公开文献	US20090005688A1		
外部链接	Espacenet USPTO		

摘要(译)

超声波内窥镜具有超声波探头，该超声波探头设置在构成柔性管部分的远端部分的远端刚性部分的远端侧，弯曲部分和构成插入部分的远端刚性部分，并且形成超声波扫描表面在与内窥镜插入轴线L1正交的方向上具有法线，并且在远端刚性部分中具有治疗孔的治疗仪器出口。超声波探头由布置成凸圆弧形状的多个超声波换能器构成，并且多个超声波换能器的曲率中心设置在距治疗仪器出口的近端侧。

