



(19) **United States**

(12) **Patent Application Publication** (10) **Pub. No.: US 2006/0287598 A1**

**Lasater et al.**

(43) **Pub. Date: Dec. 21, 2006**

(54) **SYSTEM OF IMPLANTABLE ULTRASONIC EMITTERS FOR PREVENTING RESTENOSIS FOLLOWING A STENT PROCEDURE**

**Publication Classification**

(51) **Int. Cl.**  
*A61B 8/00* (2006.01)  
(52) **U.S. Cl.** ..... **600/439**

(76) Inventors: **Brian J. Lasater**, Wenatchee, WA (US); **Lee J. Mandell**, West Hills, CA (US)

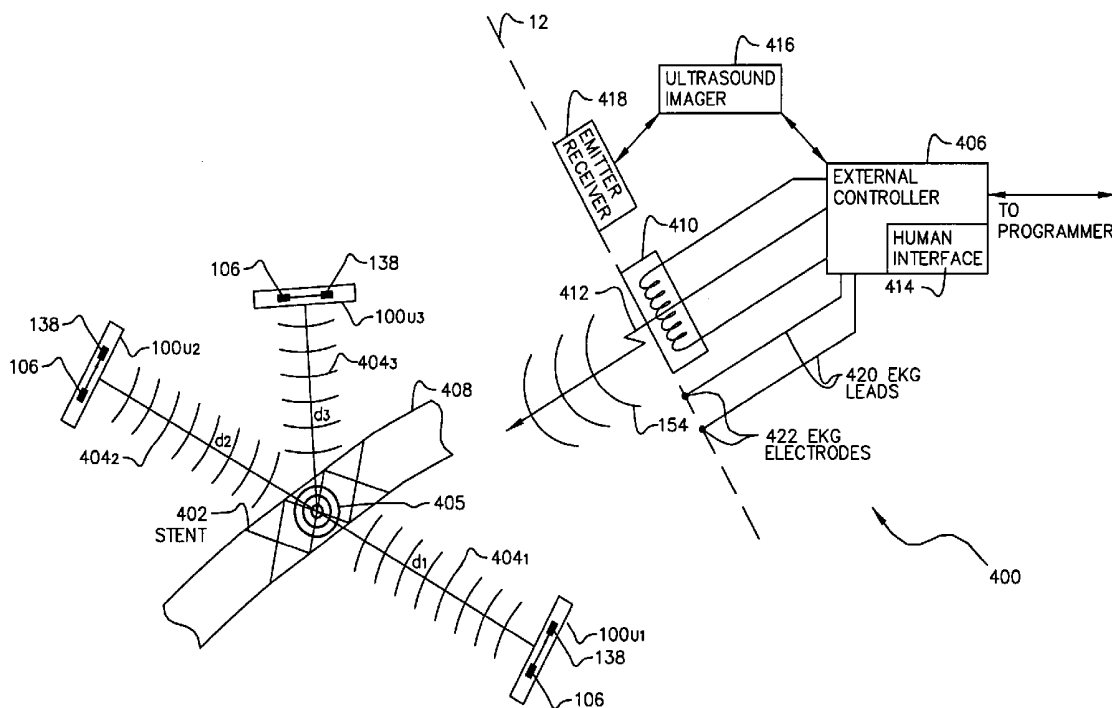
(57) **ABSTRACT**

A system and method that minimizes plaque accumulation on a stent and thereby restenosis that could require a subsequent invasive medical procedure following implantation of the stent in a patient. A plurality of electrically-powered, biocompatible devices, implantable via injection, are positioned within the patient proximate to the stent and under control of a externally-placed controller are commanded to emit ultrasonic waves corresponding to the mechanical resonance of the stent. By controlling the frequency and the relative phases of the ultrasonic waves, the accumulation of plaque on the stent can thus be minimized.

Correspondence Address:  
**ALFRED E. MANN FOUNDATION FOR SCIENTIFIC RESEARCH**  
**PO BOX 905**  
**SANTA CLARITA, CA 91380 (US)**

(21) Appl. No.: **11/158,166**

(22) Filed: **Jun. 20, 2005**





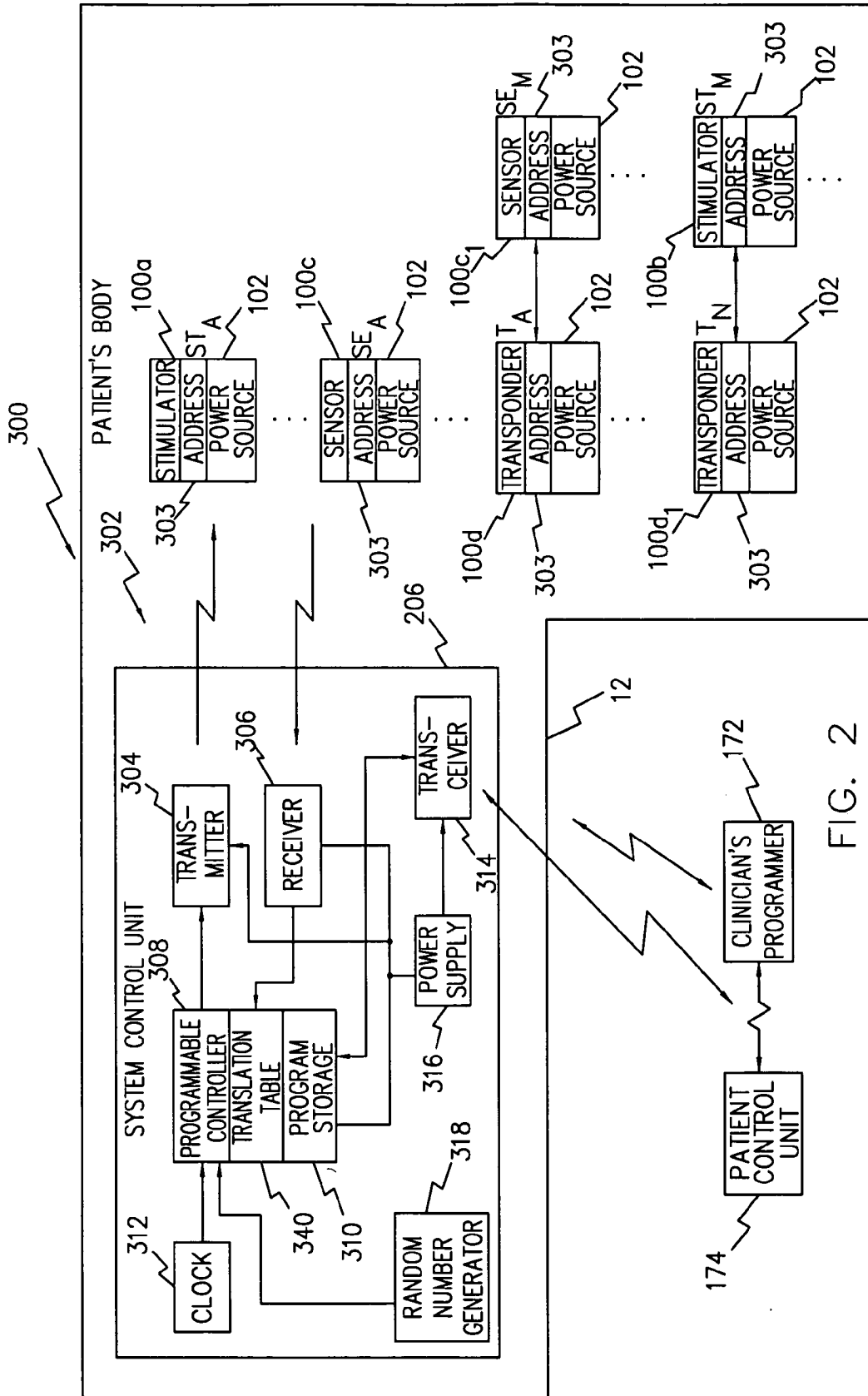


FIG. 2

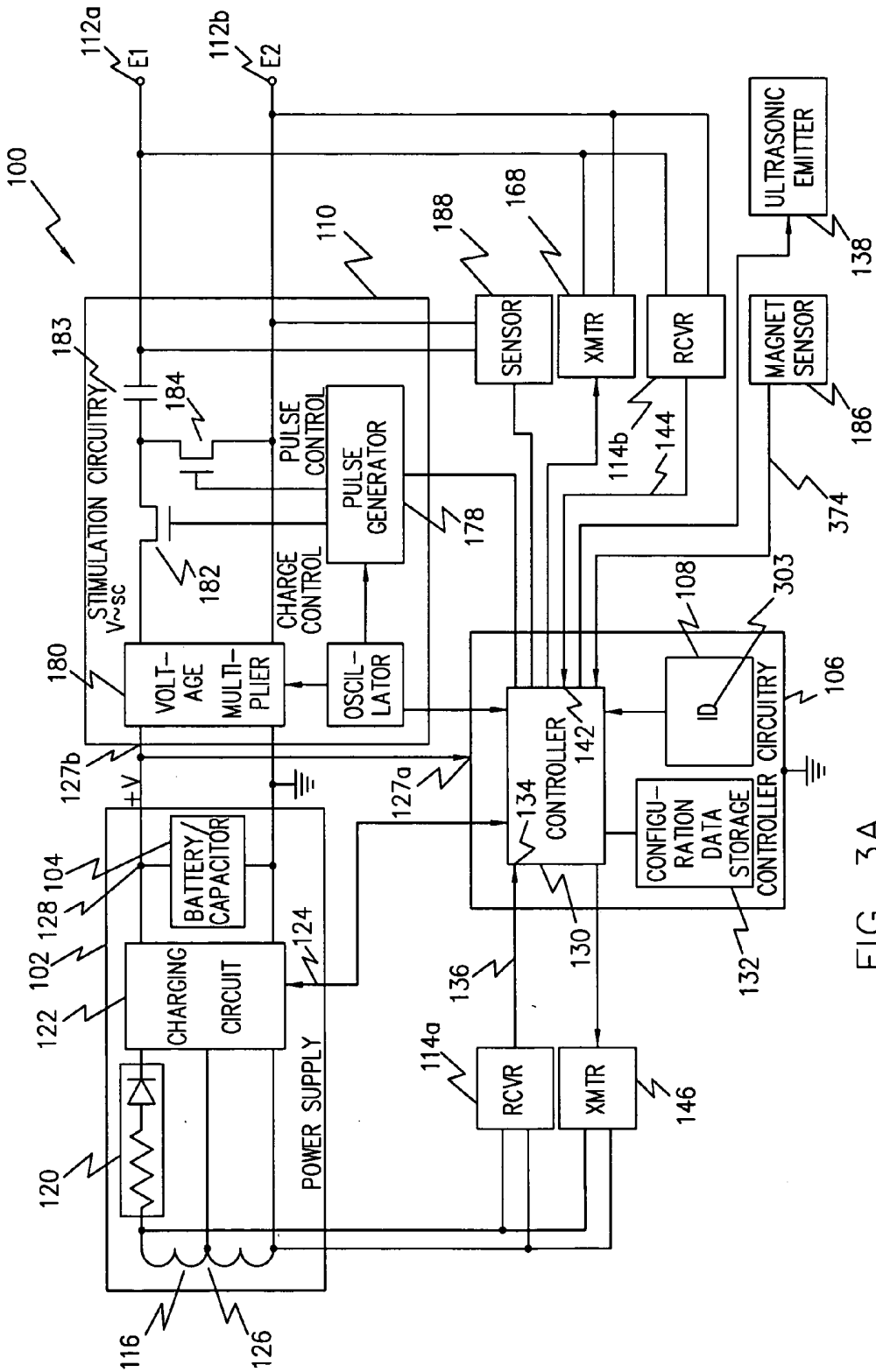


FIG. 3A

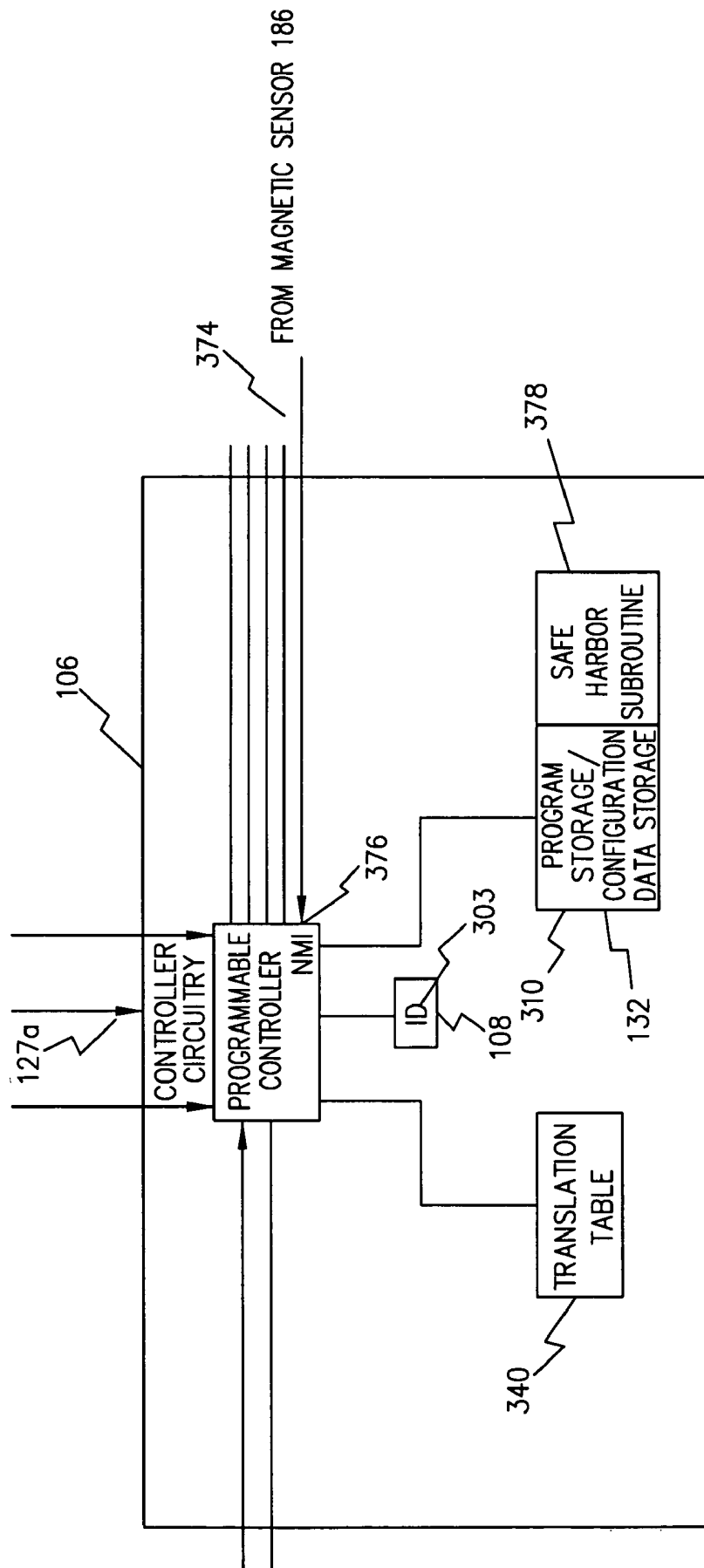
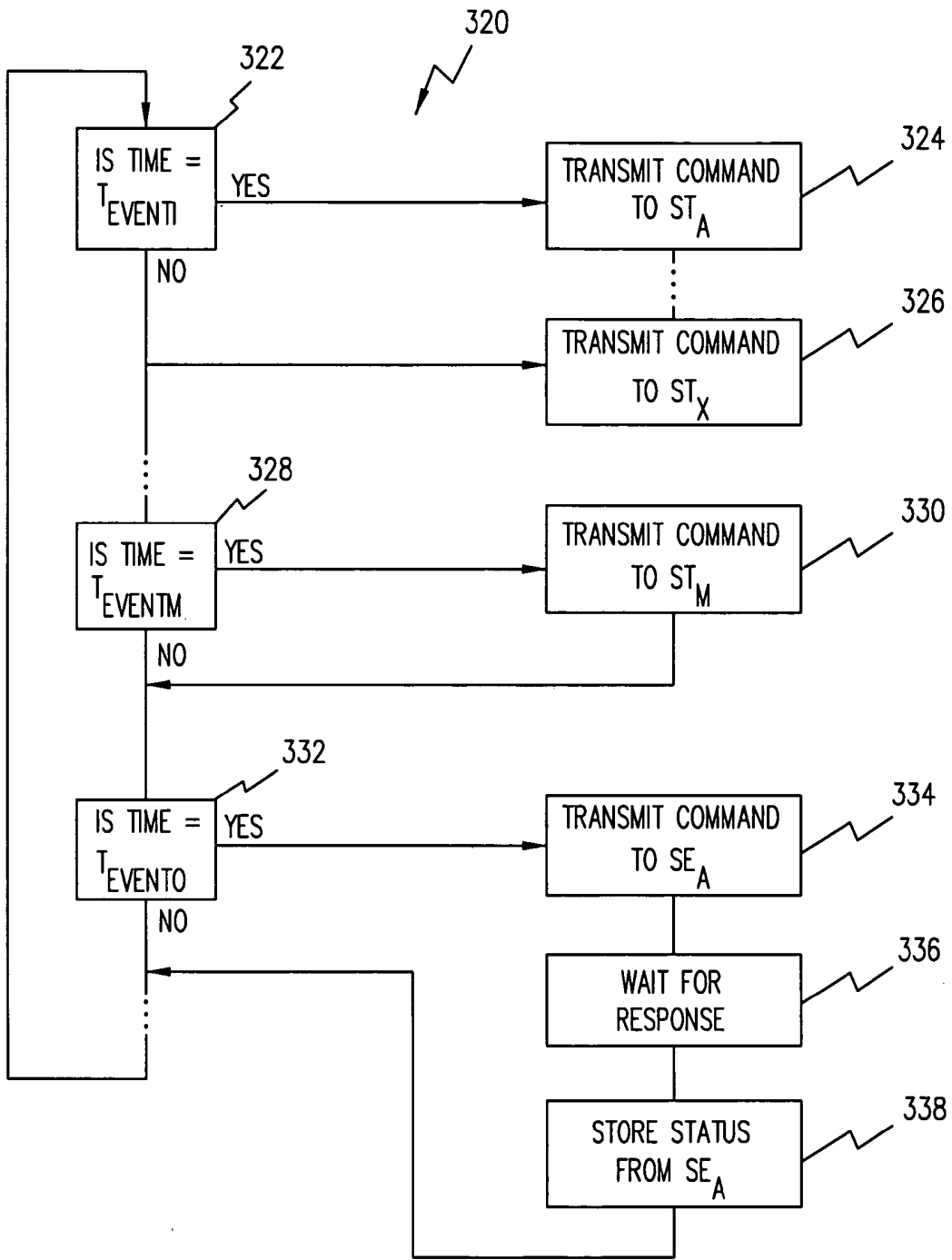
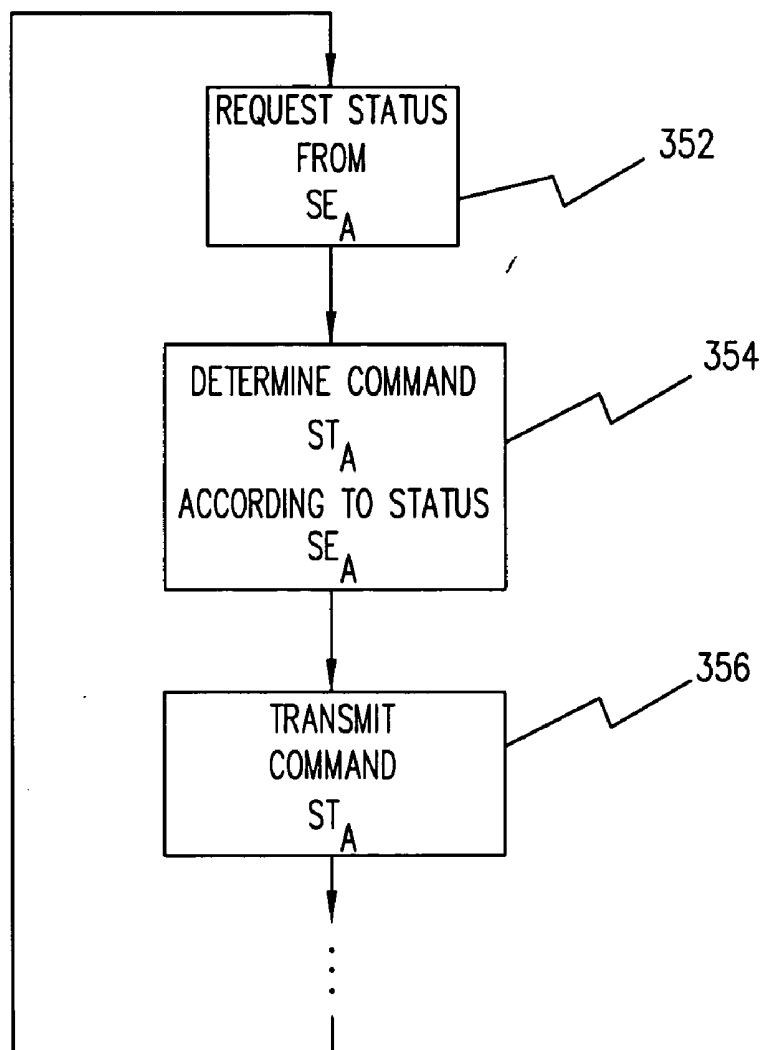


FIG. 3B



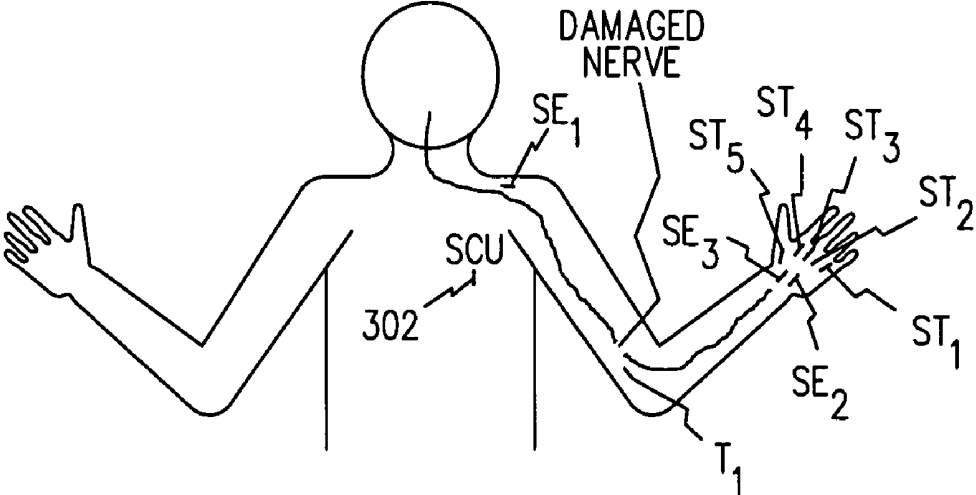
OPEN LOOP CONTROL/MONITOR

FIG. 4



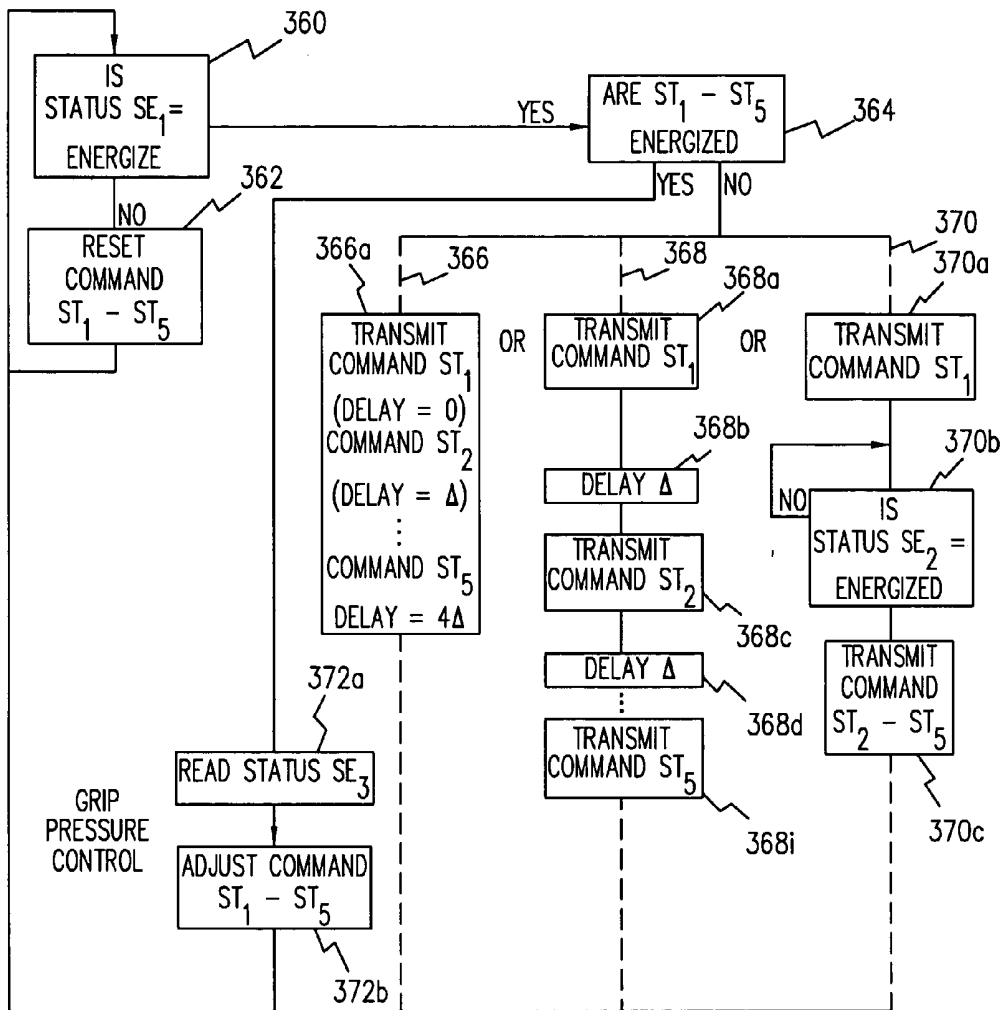
CLOSED LOOP CONTROL

FIG. 5



EXEMPLARY INJURY

FIG. 6



COORDINATED CLOSED LOOP HAND CONTROL

FIG. 7

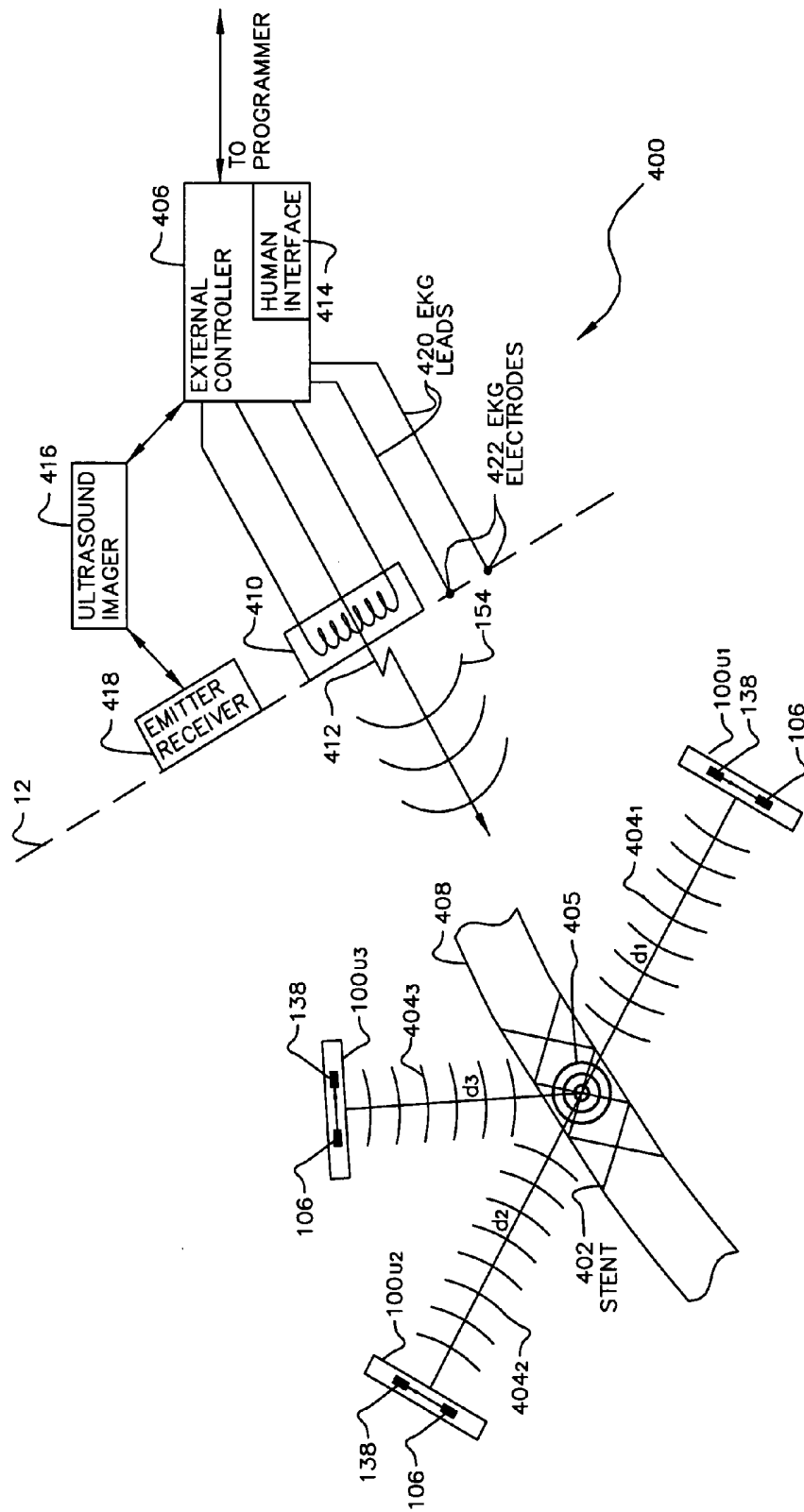


FIG. 8A



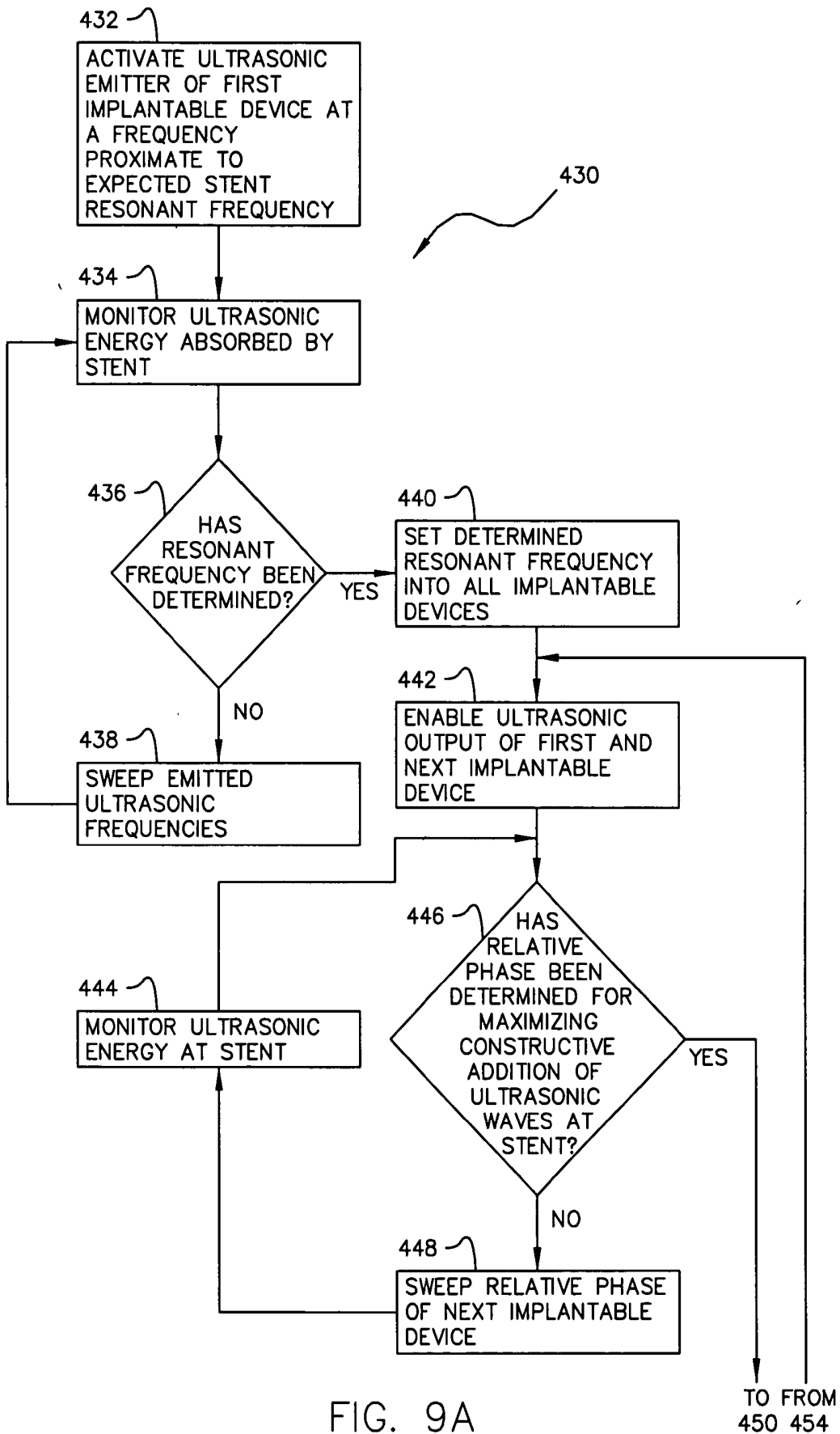


FIG. 9A

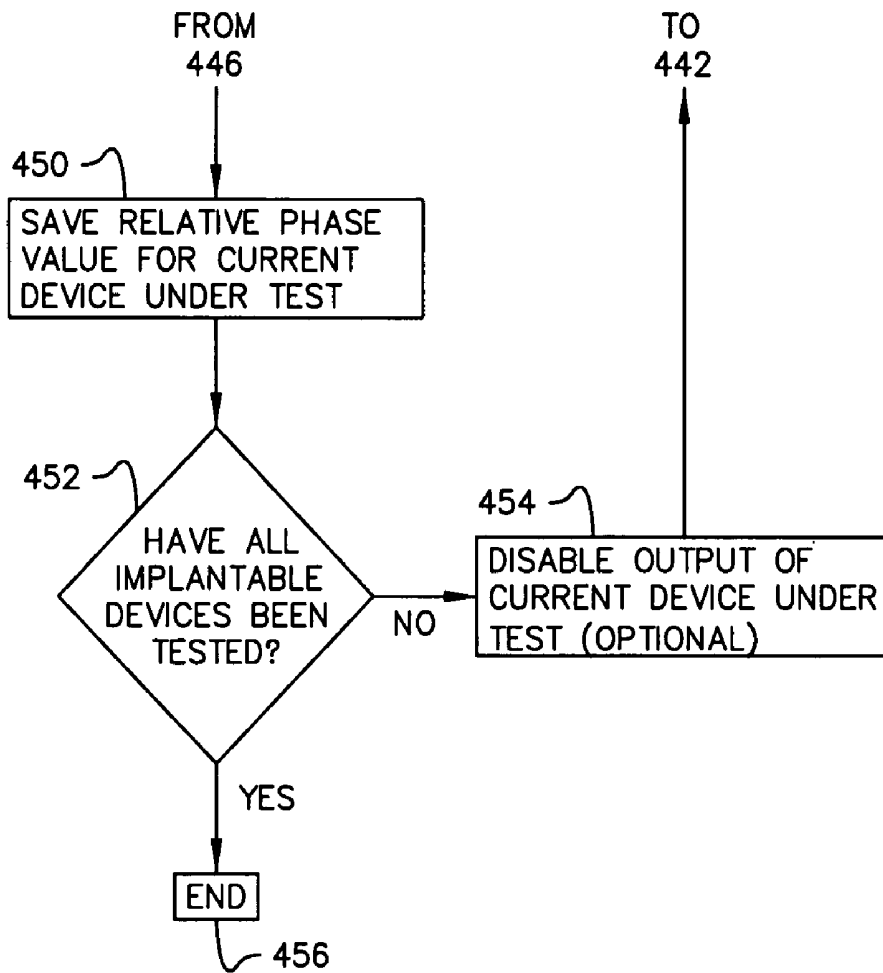


FIG. 9B

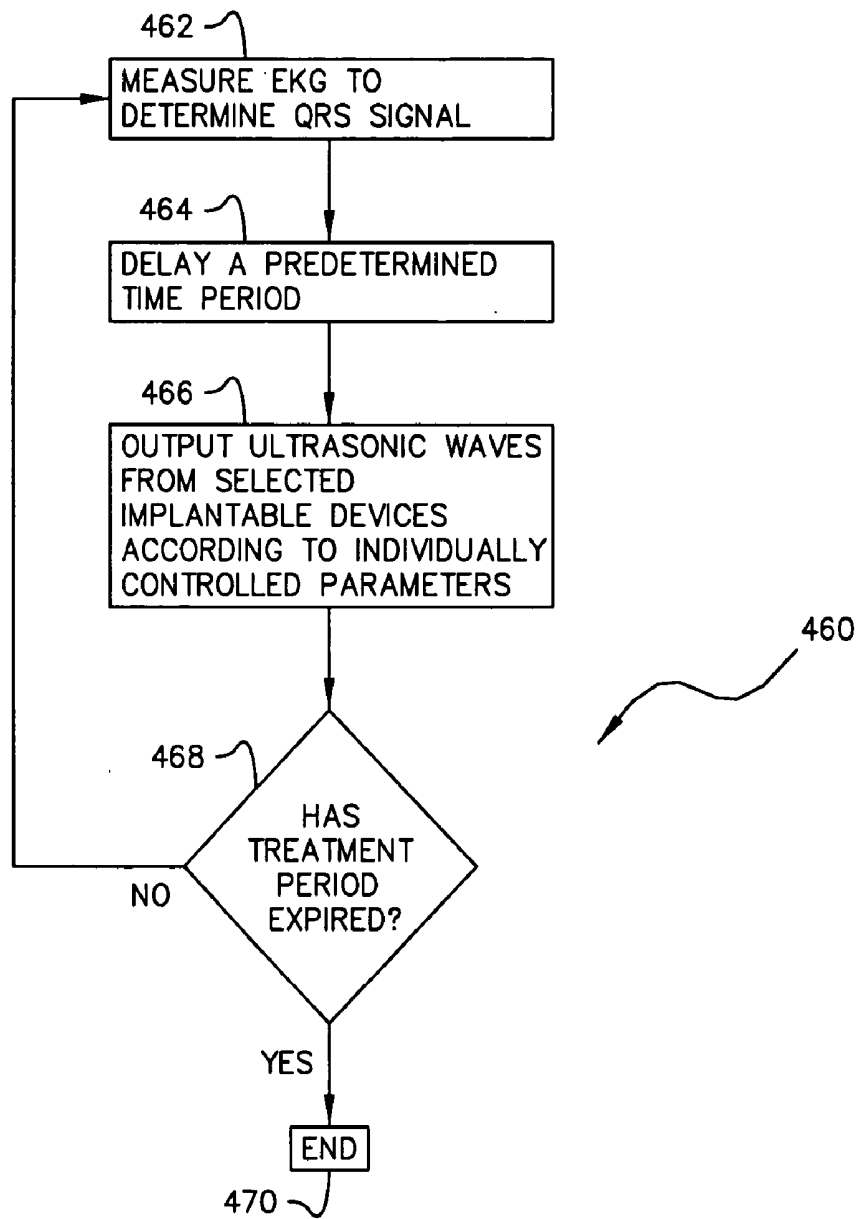


FIG. 10

**SYSTEM OF IMPLANTABLE ULTRASONIC  
EMITTERS FOR PREVENTING RESTENOSIS  
FOLLOWING A STENT PROCEDURE**

**FIELD OF THE INVENTION**

[0001] The present invention is generally directed to systems and methods for preventing restenosis following a stent procedure by using a plurality of implanted biocompatible devices under control of an externally-positioned control device that issues commands to the implanted biocompatible devices to use an electrically controlled signal to cause the biocompatible devices to minimize plaque accumulation on the stent.

**BACKGROUND OF THE INVENTION**

[0002] Blockage of one or more of the arteries providing blood flow to the heart muscle of a patient can cause serious problems, ranging from symptomatic problems, e.g., chest pain, to heart attacks, and potentially death. In the most serious cases, the blocked arteries are bypassed using coronary artery bypass graft surgery (CABG) to enhance the blood flow to the sections of the heart at risk due to the restricted blood flow. While this is a relatively common procedure, it is still a serious invasive surgery that should be avoided if possible. Angioplasty, while still being an invasive procedure, is much less dangerous than bypass surgery and has much shorter recovery times. In angioplasty, a catheter is inserted, typically through the groin, into the blocked or partially blocked artery and a balloon at the distal end of the catheter is inflated to open up the blocked artery and renew blood flow to the heart portions at risk. Reclosure (restenosis) may occur, necessitating a repeat procedure. Alternatively or subsequently, a stent may be used instead or along with angioplasty. A stent is a wire mesh tube that is used to prop open a blocked artery. The stent is initially collapsed around a balloon catheter that is moved into the blocked artery. By inflating the balloon, the stent expands into a locked position and permanently forms a scaffold at the arterial position that previously experienced the blockage. This improves blood flow to the patient's heart and can relieve the symptoms, e.g., chest pain. It is reported that 70-90 percent of such procedures currently use stents. Unfortunately, restenosis may also be a problem with stents. To help to avoid such problems, prescription blood-thinning agents following surgery, e.g., ticlopidine or clopidogrel, are commonly used to avoid complications and aspirin is typically used indefinitely. To further help to avoid such problems, some stents, i.e., drug-eluting stents, include coatings which slowly release a drug, e.g., paclitaxel, sirolimus (also known as rapamycin) to prevent the blood vessel from reclosing. Such drug-eluting stents are known from Boston Scientific, e.g., their TAXUS Express stent, Cordis, e.g., their Cypher Sirolimus-Eluting Coronary Stent (Cypher stent), and the like. While such technologies are reported to be helpful, it is not believed that the problem of restenosis has been fully addressed. Furthermore, there are a finite number of times that a scaffolding procedure may be performed, leaving the patient with little or no remaining options.

**SUMMARY OF THE INVENTION**

[0003] The present invention is generally directed to systems and methods for preventing restenosis following a stent

procedure by using electrically-powered, implanted, biocompatible devices under control of an externally-positioned control device that issues commands to the implanted devices to use an electrically controlled signal to minimize plaque accumulation on the stent. More particularly, such systems are characterized by a plurality of discrete devices, RF or battery powered, configured for implanting within a patient's body via injection, each device being configured to emit an ultrasonic wave at a determined frequency corresponding to the mechanical resonance of the stent.

[0004] Such implanted devices may be configured similarly to the devices described in the commonly owned U.S. Pat. No. 6,164,284 (hereinafter referred to as the '284 patent), incorporated herein by reference in its entirety, and typically comprises a sealed housing suitable for injection into the patient's body. Preferably, implanted devices of the present invention differ from those in the '284 patent in that instead of relying upon the use of an internal battery, e.g., rechargeable, the use of RF powering, e.g., as shown in commonly owned U.S. Pat. Nos. 5,193,539 and 5,193,540 (herein referred to as the '539 and '540 patents) each of which is incorporated herein by reference in their entirety, is used. This implementation is especially preferred due to the periodic use of the treatment described herein.

[0005] In accordance with the present invention, a preferred system for preventing restenosis following placement of a stent in a blood vessel of a patient is comprised of (1) two or more implantable devices suitable for implantation via injection in sites proximate to the stent, wherein each implantable device is electrically powered and configured to emit an ultrasonic wave at a determined frequency in response to an externally-provided command signal that is individually addressable to each of the implantable devices, and (2) an externally-placed control device for providing the addressable command signals to each of the implantable devices to control the relative phase of each of the emitted ultrasonic waves to enable the ultrasonic waves to constructively add to induce mechanical vibrations in the stent to minimize plaque buildup on the stent.

[0006] In a further aspect of embodiments of the present invention, the determined frequency corresponds to the resonant frequency of the stent which may be determined by used of an ultrasound imaging device, preferably automatically via coupling to the externally-placed control device.

[0007] In a still further aspect of the present invention, the relative phase adjustment may be done with the assistance of an ultrasound imaging device, preferably automatically via coupling to the externally-placed control device.

[0008] Finally, embodiments of the present invention may include an EKG sensor, preferably coupled to the externally-placed control device, to determine the relative position of the patient's heart (and accordingly the relative position of the stent to the implantable devices) and to enable the ultrasonic emissions to be optimized at the stent (which is typically implanted within a blood vessel on the patient's heart) when it reaches a prescribed position.

[0009] The novel features of the invention are set forth with particularity in the appended claims. The invention will be best understood from the following description when read in conjunction with the accompanying drawings.

## BRIEF DESCRIPTION OF THE DRAWINGS

[0010] **FIG. 1** is a simplified block diagram of an exemplary system suitable for practicing the present invention, the system being comprised of implanted devices, e.g., microstimulators, microsensors and microtransponders, under control of a system control unit (SCU).

[0011] **FIG. 2** comprises a block diagram of the system of **FIG. 1** showing the functional elements that form the system control unit and implanted microstimulators, microsensors and microtransponders.

[0012] **FIG. 3A** comprises a block diagram of an exemplary implantable device, as shown in U.S. Pat. No. 6,164,284, including a battery for powering the device for a period of time in excess of one hour in response to a command from the system control unit.

[0013] **FIG. 3B** comprises a simplified block diagram of controller circuitry that can be substituted for the controller circuitry of **FIG. 3A**, thus permitting a single device to be configured as a system control unit and/or a microstimulator and/or a microsensor and/or a microtransponder.

[0014] **FIG. 4** shows an exemplary flow chart of the use of an exemplary system in an open loop mode for controlling/monitoring a plurality of implanted devices, e.g., microstimulators, microsensors.

[0015] **FIG. 5** shows a simplified flow chart of the use of closed loop control of a microstimulator by altering commands from the system control unit in response to status data received from a microsensor.

[0016] **FIG. 6** shows an exemplary injury, i.e., a damaged nerve, and the placement of a plurality of implanted devices, i.e., microstimulators, microsensors and a microtransponder under control of the system control unit for "replacing" the damaged nerve.

[0017] **FIG. 7** shows a simplified flow chart of the control of the implanted devices of **FIG. 6** by the system control unit.

[0018] **FIG. 8A** shows an exemplary system of two or more implantable devices located proximate to an implanted stent wherein the implantable devices are periodically commanded to emit ultrasonic waves that constructively add at the implanted stent to minimize plaque accumulation on the stent.

[0019] **FIG. 8B** shows an alternative embodiment of the system of **FIG. 8A** where an additional structure, preferably semi-circular, is placed external to the vein (extravascular) and the ultrasonic waves are focused toward this structure which in turn imparts its received ultrasonic energy to the stent located (intravenous) within the patient's vein.

[0020] **FIGS. 9A and 9B** show an exemplary flow chart of an automated system for determining the selectable parameters, e.g., frequency, phase, and amplitude, of the ultrasonic waves emitted by each of the implantable devices of the present invention under control of an external programmer.

[0021] **FIG. 10** shows an exemplary flow chart of the use of the present invention to provide treatment to a stent to prevent restenosis.

## DETAILED DESCRIPTION OF THE PREFERRED EMBODIMENTS

[0022] The following description is of the best mode presently contemplated for carrying out the invention. This

description is not to be taken in a limiting sense, but is made merely for the purpose of describing the general principles of the invention. The scope of the invention should be determined with reference to the claims.

[0023] The present invention is generally directed to systems and methods for preventing restenosis following a stent procedure by using electrically-powered, implanted, bio-compatible devices under control of an externally-positioned control device that issues commands to the implanted devices to use an electrically controlled signal to minimize plaque accumulation on the stent. More particularly, such systems are characterized by a plurality of discrete devices, RF or battery powered, configured for implanting within a patient's body via injection, each device being configured to emit an ultrasonic wave at a determined frequency corresponding to the mechanical resonance of the stent.

[0024] Such implanted devices may be configured similarly to the devices described in the commonly owned U.S. Pat. No. 6,164,284 (hereinafter referred to as the '284 patent), incorporated herein by reference in its entirety, and typically comprises a sealed housing suitable for injection into the patient's body. Preferably, implanted devices of the present invention differ from those in the '284 patent in that instead of relying upon the use of an internal battery, e.g., rechargeable, the use of RF powering, e.g., as shown in commonly owned U.S. Pat. Nos. 5,193,539 and 5,193,540 (herein referred to as the '539 and '540 patents) each of which is incorporated herein by reference in their entirety, is used. This implementation is especially preferred due to the periodic use of the treatment described herein.

[0025] **FIGS. 1 and 2** show an exemplary system **300** made of implanted devices **100** under control of a system control unit (SCU) **302**, preferably also implanted beneath a patient's skin **12**. As described in the '284 patent, potential implanted devices **100** (see also the block diagram shown in **FIG. 3A**) include stimulators, e.g., **100a** and **100b**, sensors, e.g., **100c**, and transponders, e.g., **100d**. The stimulators, e.g., **100a**, can be remotely programmed to output a sequence of drive pulses to body tissue proximate to its implanted location via attached electrodes. The sensors, e.g., **100c**, can be remotely programmed to sense one or more physiological or biological parameters in the implanted environment of the device, e.g., temperature, glucose level, O<sub>2</sub> content, nerve potential, muscle potential, etc. Transponders, e.g., **100d**, are devices which can be used to extend the interbody communication range between stimulators and sensors and other devices, e.g., a clinician's programmer **172** and the patient control unit **174**. Preferably, these stimulators, sensors and transponders are contained in sealed elongate housings having an axial dimension of less than 60 mm and a lateral dimension of less than 6 mm. Accordingly, such stimulators, sensors and transponders are respectively referred to as microstimulators, microsensors, and microtransponders or referred to in general as implantable stimulator/sensor devices. Such microstimulators and microsensors can thus be positioned beneath the skin **12** within a patient's body using a hypodermic type insertion tool **176**.

[0026] As described in the '284 patent, microstimulators and microsensors are remotely programmed and interrogated via a wireless communication channel, e.g., modulated AC magnetic, sound (i.e., ultrasonic), RF or electric fields,

typically originating from control devices external to the patient's body, e.g., the clinician's programmer 172 or patient control unit 174. Typically, the clinician's programmer 172 is used to program a single continuous or one time pulse sequence into each microstimulator and/or measure a biological parameter from one or more microsensors. Similarly, the patient control unit 174 typically communicates with the implanted devices 100, e.g., microsensors 100c, to monitor biological parameters. In order to distinguish each implanted device over the communication channel, each implanted device is manufactured with a unique address or identification code (ID) 303 specified in address storage circuitry 108 (see FIG. 3A) as described in the '284 patent. Unique is a relative term, e.g., the more bits used to specify the identification code the easier it will be to distinguish one device or, in the case of master devices, one system of devices from another system of devices. Accordingly, as used in this patent application, unique is only intended to specify that the ID 303 is distinguishable from the IDs of other devices that may exist within the same environment.

[0027] By using one or more such implantable devices in conjunction with the SCU 302, the capabilities of such implanted devices can be further expanded. For example, in an open loop mode (described below in reference to FIG. 4), the SCU 302 can be programmed to periodically initiate tasks, e.g., perform real time tasking, such as transmitting commands to microstimulators according to a prescribed treatment regimen or periodically monitor biological parameters to determine a patient's status or the effectiveness of a treatment regimen. Alternatively, in a closed loop mode (described below in reference to FIGS. 5-7), the SCU 302 may periodically interrogate one or more microsensors and accordingly adjust the commands transmitted to one or more microstimulators.

[0028] FIG. 2 shows a system 300 comprised of (1) one or more implantable devices 100 operable to sense and/or stimulate a patient's body parameter in accordance with one or more controllable operating parameters and (2) the SCU 302. The SCU 302 is primarily comprised of (1) a housing 206, preferably sealed and configured for implantation beneath the skin of the patient's body, e.g., as described in the '284 patent in reference to the implanted devices 100, (2) a signal transmitter 304 in the housing 206 for transmitting command signals, (3) a signal receiver 306 in the housing 206 for receiving status signals, and (4) a programmable controller 308, e.g., a microcontroller or state machine, in the housing 206 responsive to received status signals for producing command signals for transmission by the signal transmitter 304 to other implantable devices 100. The sequence of operations of the programmable controller 308 is determined by an instruction list, i.e., a program, stored in program storage 310, coupled to the programmable controller 308. While the program storage 310 can be a nonvolatile memory device, e.g., ROM, manufactured with a program corresponding to a prescribed treatment regimen, it is preferable that at least a portion of the program storage 310 be an alterable form of memory, e.g., RAM, EEPROM, etc., whose contents can be remotely altered as described further below. However, it is additionally preferable that a portion of the program storage 310 be nonvolatile so that a default program is always present. The rate at which the program contained within the program storage 310 is executed is determined by clock/oscillator 312. Additionally, a real time

clock operating in response to clock/oscillator 312 preferably permits tasks to be scheduled at specified times of day.

[0029] The signal transmitter 304 and signal receiver 306 preferably communicate with implanted devices 100 using an RF signal, e.g., a propagated electromagnetic wave, modulated by a command data signal. Alternatively, an audio transducer may be used to generate mechanical vibrations having a carrier frequency modulated by a command data signal. In an exemplary embodiment, a carrier frequency of 100 kHz is used which corresponds to a frequency that freely passes through a typical body's fluids and tissues. However, such sound means that operate at any frequency, e.g., greater than 1 Hz, are also considered to be suitable for a potential communication channel. Alternatively, the signal transmitter 304 and signal receiver 306 can communicate using modulated AC, e.g., magnetic fields.

[0030] The clinician's programmer 172 and/or the patient control unit 174 and/or other external control devices can also communicate with the implanted devices 100, as described in the '284 patent, preferably using a modulated RF or AC magnetic field. Alternatively, such external devices can communicate with the SCU 302 via a transceiver 314 coupled to the programmable controller 308. Since, the signal transmitter 304 and signal receiver 306 may operate using a different communication means, a separate transceiver 314 which operates using an alternative communication means may be used for communicating with external devices. However, a single transmitter 304/receiver 306 can be used in place of transceiver 314 for communicating with the external devices and implanted devices if a common communication channel is used.

[0031] FIG. 3A comprises a block diagram of an exemplary implantable device 100 operable under control of controller circuitry 106 and includes a battery 104, preferably rechargeable, for powering the device for a period of time in excess of one hour and responsive to command signals from a remote master device, e.g., the SCU 302. The controller circuitry 106 is primarily comprised of a controller 130, configuration data storage 132 for prescribing its operation, and address storage circuitry 108 for storing the ID 303 of the device. As described in the '284 patent, the implantable device 100 is preferably configurable to alternatively operate as a microstimulator and/or microsensor and/or microtransponder due to the commonality of most of the circuitry contained within. Such circuitry may be further expanded to permit a common block of circuitry to also perform the functions required for the SCU 302. Accordingly, FIG. 3B shows an alternative implementation of the controller circuitry 106 of FIG. 3A that is suitable for implementing a microstimulator and/or a microsensor and/or a microtransponder and/or the SCU 302. In this implementation, the configuration data storage 132 can be alternatively used as the program storage 310 when the implantable device 100 is used as the SCU 302. In this implementation, XMTR 168 corresponds to the signal transmitter 304 and the RCVR 114b corresponds to the signal receiver 306 (preferably operable via electrodes 112a and 112b operating as an RF antenna) and the RCVR 114a and XMTR 146 correspond to the transceiver 314 (preferably operable via coil 116 for AC magnetic modes of communication).

[0032] Preferably, the contents of the program storage 310, i.e., the software that controls the operation of the

programmable controller 308, can be remotely downloaded, e.g., from the clinician's programmer 172 using data modulated onto an RF signal or an AC magnetic field. In this mode, it is preferable that the contents of the program storage 310 for each SCU 302 be protected from an inadvertent change. Accordingly, the contents of the address storage circuitry 108, i.e., the ID 303, is preferably used as a security code to confirm that the new program storage contents are destined for the SCU 302 receiving the data. This feature is particularly significant if multiple patient's could be physically located, e.g., in adjoining beds, within the communication range of the clinician's programmer 172.

[0033] Preferably, the SCU 302 can operate for an extended period of time, e.g., in excess of one hour, from an internal power supply 316 (see FIG. 2). While a primary battery, i.e., a nonrechargeable battery, is suitable for this function, it is preferable that the power supply 316 include a rechargeable battery, e.g., battery 104 as described in the '284 patent, that can be recharged via an AC magnetic field produced external to the patient's body. Accordingly, power supply 102 of FIG. 3A is the preferred power supply 316 for the SCU 302 as well.

[0034] The battery-powered devices 100 of the '284 patent are preferably configurable to operate in a plurality of operational modes, e.g., via a communicated command signal. In a first operational mode, device 100 is remotely configured to be a microstimulator, e.g., 100a and 100b. In this embodiment (see FIG. 3A), controller 130 commands stimulation circuitry 110 to generate a sequence of drive pulses through electrodes 112 to stimulate tissue, e.g., a nerve or muscle, proximate to the implanted location of the microstimulator, e.g., 100a or 100b. In operation, a programmable pulse generator 178 and voltage multiplier 180 are configured with parameters corresponding to a desired pulse sequence and specifying how much to multiply (or divide) the battery voltage (e.g., by summing charged capacitors or similarly charged battery portions) to generate a desired compliance voltage  $V_c$ . A first FET 182 is periodically energized to store charge into capacitor 183 (in a first direction at a low current flow rate through the body tissue) and a second FET 184 is periodically energized to discharge capacitor 183 in an opposing direction at a higher current flow rate which stimulates a nearby muscle or nerve. Alternatively, electrodes can be selected that will form an equivalent capacitor within the body tissue.

[0035] In a next operational mode, the battery-powered implantable device 100 can be configured to operate as a microsensor, e.g., 100c, that can sense one or more physiological or biological parameters in the implanted environment of the device. In accordance with a preferred mode of operation, the system control unit 302 periodically requests the sensed data from each microsensor 100 using its ID 303 stored in the address storage circuitry 108, and responsively sends command signals to microstimulators, e.g., 100a and 100b, adjusted according to the sensed data. For example, sensor circuitry 188 can be coupled to the electrodes 112 to sense or otherwise used to measure a biological parameter, e.g., temperature, glucose level,  $O_2$  content, voltage, current, impedance, etc., and provide the sensed data to the controller circuitry 106. Preferably, the sensor circuitry 188 includes a programmable bandpass filter and an analog to digital (A/D) converter that can sense and accordingly convert the voltage levels across the electrodes 112 into a digital quantity.

Alternatively, the sensor circuitry 188 can include one or more sense amplifiers to determine if the measured voltage exceeds a threshold voltage value or is within a specified voltage range. Furthermore, the sensor circuitry 188 can be configurable to include integration circuitry to further process the sensed voltage. The operational mode of the voltage sensor circuitry 188 is remotely programmable via the device's communication interface.

[0036] Additionally, the sensing capabilities of a microsensor preferably include the capability to monitor the battery status via path 124 from the charging circuit 122 and can additionally include using an ultrasonic transducer, i.e., emitter/receiver, (not shown) or the coil 116 to respectively measure the ultrasonic, magnetic or propagated RF signal magnitudes (or communication time delays) of signals transmitted between a pair of implanted devices and thus determine the relative locations of these devices. This information can be used to determine the amount of body movement, e.g., the amount that an elbow or finger is bent, and thus form a portion of a closed loop motion control system.

[0037] In another operational mode, the battery-powered implantable device 100 can be configured to operate as a microtransponder, e.g., 100d. In this operational mode, the microtransponder receives (via the aforementioned RCVR 114a using AC magnetic, sonic, RF, or electric communication modes) a first command signal from the SCU 302 and retransmits this signal (preferably after reformatting) to other implanted devices (e.g., microstimulators, microsensors, and/or microtransponders) using the aforementioned XMTR 168 using magnetic, sonic, RF or electric communication modes. While a microtransponder may receive one mode of command signal, e.g., magnetic, it may retransmit the signal in another mode, e.g., RF. For example, clinician's programmer 172 may emit a modulated magnetic signal using a magnetic emitter 190 (see FIG. 1) to program/command the implanted devices 100. However, the magnitude of the emitted signal may not be sufficient to be successfully received by all of the implanted devices 100. As such, a microtransponder 100d may receive the modulated magnetic signal and retransmit it (preferably after reformatting) as a modulated ultrasonic or RF signal which can pass through the body with fewer restrictions. In another exemplary use, the patient control unit 174 may need to monitor a microsensor 100c in a patient's foot. Despite the efficiency of ultrasonic, magnetic and propagated RF communication in a patient's body, such a signal could still be insufficient to pass from a patient's foot to a patient's wrist (the typical location of the patient control unit 174). As such, a microtransponder 100d could be implanted (if needed) in the patient's torso to improve the communication link.

[0038] FIG. 4 shows a block diagram of an exemplary open loop control program, i.e., a task scheduler 320, for controlling/monitoring a body function/parameter. In this process, the programmable controller 308 is responsive to the clock 312 (preferably a crystal controlled oscillator to thus permit real time scheduling) in determining when to perform any of a plurality of tasks. In this exemplary flow chart, the programmable controller 308 first determines in block 322 if it is now at a time designated as  $T_{EVENT1}$  (or at least within a sampling error of that time), e.g., at 1:00 AM. If so, the programmable controller 308 transmits a designated command to microstimulator A ( $ST_A$ ) in block 324. In

this example, the control program continues where commands are sent to a plurality of stimulators and concludes in block 326 where a designated command is sent to microstimulator X ( $ST_X$ ). Such a subprocess, e.g., a subroutine, is typically used when multiple portions of body tissue require stimulation, e.g., stimulating a plurality of muscle groups in a paralyzed limb to avoid atrophy. The task scheduler 320 continues through multiple time event detection blocks until in block 328 it determines whether the time  $T_{EVENTM}$  has arrived. If so, the process continues at block 330 where, in this case, a single command is sent to microstimulator M ( $ST_M$ ). Similarly, in block 332 the task scheduler 320 determines when it is the scheduled time, i.e.,  $T_{EVENTO}$ , to execute a status request from microsensor A ( $SE_A$ ). If so, a subprocess, e.g., a subroutine, commences at block 334 where a command is sent to microsensor A ( $SE_A$ ) to request sensor data and/or specify sensing criteria. Microsensor A ( $SE_A$ ) does not instantaneously respond. Accordingly, the programmable controller 308 waits for a response in block 336. In block 338, the returned sensor status data from microsensor A ( $SE_A$ ) is stored in a portion of the memory, e.g., a volatile portion of the program storage 310, of the programmable controller 308. The task scheduler 320 can be a programmed sequence, i.e., defined in software stored in the program storage 310, or, alternatively, a predefined function controlled by a table of parameters similarly stored in the program storage 310. A similar process may be used where the SCU 302 periodically interrogates each implantable device 100 to determine its battery status.

[0039] FIG. 5 is an exemplary block diagram showing the use of such a system to perform closed loop control of a body function. In block 352, the SCU 302 requests status from microsensor A ( $SE_A$ ). The SCU 302, in block 354, then determines whether the present command given to a microstimulator is satisfactory and, if necessary, determines a new command and transmits the new command to the microstimulator A ( $ST_A$ ) in block 356. For example, if microsensor A ( $SE_A$ ) is reading a voltage corresponding to the degree of contraction resulting from stimulating a muscle, the SCU 302 could transmit a command to microstimulator A ( $ST_A$ ) to adjust the sequence of drive pulses, e.g., in magnitude, duty cycle, etc., and accordingly change the voltage sensed by microsensor A ( $SE_A$ ). Accordingly, closed loop, i.e., feedback, control is accomplished. The characteristics of the feedback (proportional, integral, derivative (PID)) control are preferably program controlled by the SCU 302 according to the control program contained in program storage 310.

[0040] FIG. 6 shows an exemplary injury treatable by such a system 300. In this exemplary injury, the neural pathway has been damaged, e.g., physically or effectively (as a consequence of a stroke or the like) severed, just above the patient's left elbow. The goal of this exemplary system is to bypass the damaged neural pathway to permit the patient to regain control of the left hand. An SCU 302 is implanted within the patient's torso to control a plurality of stimulators,  $ST_1$ - $ST_5$ , implanted proximate to the muscles respectively controlling the patient's thumb and fingers (shown in the patient's hand for simplicity). Additionally, microsensor 1 ( $SE_1$ ) is implanted proximate to an undamaged nerve portion where it can sense a signal generated from the patient's brain when the patient wants hand closure. Optional microsensor 2 ( $SE_2$ ) is implanted in a portion of the patient's hand where it can sense a signal corresponding to stimulation/motion of the patient's pinky finger and

microsensor 3 ( $SE_3$ ) is implanted and configured to measure a signal corresponding to grip pressure generated when the fingers of the patient's hand are closed. Additionally, an optional microtransponder ( $T_1$ ) is shown which can be used to improve the communication between the SCU 302 and the implanted devices.

[0041] FIG. 7 shows an exemplary flow chart for the operation of the SCU 302 in association with the implanted devices in the exemplary system of FIG. 6. In block 360, the SCU 302 interrogates microsensor 1 ( $SE_1$ ) to determine if the patient is requesting actuation of his fingers. If not, a command is transmitted in block 362 to all of the stimulators ( $ST_1$ - $ST_5$ ) to open the patient's hand, i.e., to de-energize the muscles which close the patient's fingers. If microsensor 1 ( $SE_1$ ) senses a signal to actuate the patient's fingers, the SCU 302 determines in block 364 whether the stimulators  $ST_1$ - $ST_5$  are currently energized, i.e., generating a sequence of drive/stimulation pulses. If not, the SCU 302 executes instructions to energize the stimulators. In a first optional path 366, each of the stimulators is simultaneously (subject to formatting and transmission delays) commanded to energize in block 366a. However, the command signal given to each one specifies a different start delay time. Accordingly, there is a stagger between the actuation/closing of each finger.

[0042] In a second optional path 368, the microstimulators are consecutively energized by a delay  $\Delta$ . Thus, microstimulator 1 ( $ST_1$ ) is energized in block 368a, a delay is executed within the SCU 302 in block 368b, and so on for all of the microstimulators. Accordingly, paths 366 and 368 perform essentially the same function. However, in path 366, the interdevice timing is performed by the clocks within each implanted device 100 while in path 368, the SCU 302 is responsible for providing the interdevice timing.

[0043] In path 370, the SCU 302 actuates a first microstimulator ( $ST_1$ ) in block 370a and waits in block 370b for its corresponding muscle to be actuated, as determined by microsensor 2 ( $SE_2$ ), before actuating the remaining stimulators ( $ST_2$ - $ST_5$ ) in block 370c. This implementation could provide more coordinated movements in some situations.

[0044] Once the stimulators have been energized, as determined in block 364, closed loop grip pressure control is performed in blocks 372a and 372b by periodically reading the status of microsensor 3 ( $SE_3$ ) and adjusting the commands given to the stimulators ( $ST_1$ - $ST_5$ ) accordingly. Consequently, this exemplary system has enabled the patient to regain control of his hand including coordinated motion and grip pressure control of the patient's fingers.

[0045] Referring again to FIG. 3A, a magnetic sensor 186 is shown. In the '284 patent, it was shown that such a sensor 186 could be used to disable the operation of an implanted device 100, e.g., to stop or otherwise alter the operation of such devices in an emergency situation, in response to a DC magnetic field, preferably from an externally positioned safety magnet 187 (see FIG. 1). Additionally, it is noted that power to at least some portions of a preferred implantable device may be removed when a magnetic field is sensed and thus power may be conserved. The magnetic sensor 186 can be implemented using various devices. Exemplary of such devices are devices manufactured by Nonvolatile Electronics, Inc. (e.g., their AA, AB, AC, AD, or AG series), Hall effect sensors, magnetoresistive sensors, and subminiature

reed switches. Such miniature devices are configurable to be placed within the housing of the SCU 302 and implantable devices 100. While essentially passive magnetic sensors, e.g., reed switches, are possible, the remaining devices may include active circuitry that consumes power during detection of the DC magnetic field. Accordingly, it is preferred that controller circuitry 302 periodically, e.g., once a second, provide power to the magnetic sensor 186 and sample the magnetic sensor's output signal 374 during that sampling period. Additionally, a magnetoresistive sensor is especially preferred due to its small size that enables its use within the preferred implantable device 100 while conserving the available internal package volume. Furthermore, as described below, such sensors may be used as a proximity sensor which may be used to provide sequencing information to the system controller, e.g., the SCU 302.

[0046] The battery 104 used for powering the implantable device 100 (or SCU 302) is made from appropriate materials so as to preferably provide a power capacity of at least 1 microwatt-hour. Preferably, such a battery, e.g., a Li-I battery, has an energy density of about 240 mw-Hr/cm<sup>3</sup>. The battery voltage V of an exemplary battery is nominally 3.6 volts, which is more than adequate for operating the CMOS circuits preferably used to implement the IC chip(s) 216, and/or other electronic circuitry, within the SCU 302.

[0047] The battery 104 may take many forms, any of which may be used so long as the battery can be made to fit within the small volume available. The battery 104 may be either a primary battery or a rechargeable battery. A primary battery offers the advantage of not requiring a recharging circuit and the disadvantage of not being rechargeable (which means once its energy has been used up, the implanted device no longer functions).

[0048] A preferred system for practicing the present invention is comprised of an implanted SCU 302 and a plurality of implanted devices 100, each of which contains its own rechargeable battery 104. As such, a patient is essentially independent of any external apparatus between battery chargings (which generally occur no more often than once an hour and preferably no more often than once every 24 hours). However, for some treatment regimens, it may be adequate to use a power supply analogous to that described in U.S. Pat. No. 5,324,316 that only provides power while an external AC magnetic field is being provided, e.g., from charger 118. Additionally, it may be desired, e.g., from a cost or flexibility standpoint, to implement the SCU 302 as an external device, e.g., within a watch-shaped housing that can be attached to a patient's wrist in a similar manner to the patient control unit 174.

[0049] The power consumption of the SCU 302 is primarily dependent upon the circuitry implementation, preferably CMOS, the circuitry complexity and the clock speed. For a simple system, a CMOS implemented state machine will be sufficient to provide the required capabilities of the programmable controller 308. However, for more complex systems, e.g., a system where an SCU 302 controls a large number of implanted devices 100 in a closed loop manner, a microcontroller may be required. As the complexity of such microcontrollers increases (along with its transistor count), so does its power consumption. Accordingly, a larger battery having a capacity of 1 to 10 watt-hours is preferred. While a primary battery is possible, it is preferable that a

rechargeable battery be used. Such larger batteries will require a larger volume and accordingly, cannot be placed in the injectable housing described above.

[0050] Since only one SCU is required to implement a system, the battery life of the SCU may be accommodated by increasing the casing size (e.g., increasing at least one dimension to be in excess of 1 inch) for the SCU to accommodate a larger sized battery and either locating a larger SCU 302a (see FIG. 1) external to patient's body or a larger SCU 302b may be surgically implanted.

[0051] Essentially, there have been described two classes of implantable devices 100, a first which is typically referred to as being RF powered, i.e., it does not contain a battery but instead receives all of its operating power from an externally provided AC magnetic field (which field is preferably modulated to additionally wirelessly communicate commands to the implantable devices 100), and a second class which is referred to as battery powered which is powered by an internally provided battery which, in turn, is preferably rechargeable and periodically recharged by a similar externally provided magnetic field (see, for example, commonly assigned U.S. Patent Application Publication No. 2003/0078634, which is incorporated herein by reference in its entirety, which describes recharging environments and techniques for use with such implantable devices) but preferably receives its wireless commands via a modulated RF signal. Thus, in this case, the wireless command signal may be distinct from the wireless charging signal. However, in most other ways, these two classes of implantable devices are similar, e.g., they have similar size restrictions, are suitable for implantation via injection, and can similarly stimulate neural pathways and, thus, they are accordingly generally interchangeable in embodiments of the present invention. Alternatively, embodiments of the present invention may include combinations of RF and battery-powered devices to take advantage of differences, e.g., cost and functional, between both classes of devices.

[0052] FIG. 8A shows an exemplary system 400 of two or more implantable devices 100 located proximate to an implanted stent 402 wherein the implantable devices 100 are periodically commanded to emit ultrasonic waves 404 that are configured to constructively add at the implanted stent 402 to minimize plaque accumulation on the stent 402. The implantable devices 100 are essentially the same as that previously described in relationship to the '284 patent with or without a battery 104 (and thus similar to those devices described in relation to the '539/'540 patents) with the exception that an ultrasonic emitter 138, e.g., a piezoelectric device, and associated driver circuitry is coupled to the controller circuitry 106. The driver circuitry may be considered to be a portion of the controller circuitry 106 or of the ultrasonic emitter 138. The controller circuitry 106, under control of commands from an external controller 406, e.g., patient control unit 174, clinician's programmer 172, an external SCU 302a, etc., is commanded, e.g., in a manner analogous to that described in relation to FIGS. 4-7, to emit the ultrasonic waves 404 having programmable attributes, e.g., amplitude, phase, and frequency, etc., such that the waves 404 can constructively add at a focus location 405 on the stent 402 at the stent's mechanical resonance frequency. The mechanical resonance of the stent 402 is essentially an inherent attribute of the stent 402 (somewhat effected by its environment, i.e., blood flow, blood/tissue density, and sur-

rounding tissue). Accordingly, it is anticipated that an initial estimate of the resonant frequency may be determined from experimentation and may be used in future implantations. Similarly, the initial value for the desired amplitude level may be experimentally determined and then used in future implantations. Theoretically, the relative phases of the ultrasonic waves 404 to allow multiple waves e.g., 404<sub>1</sub>, 404<sub>2</sub>, 404<sub>3</sub>, etc., from two or more implantable devices, e.g., 100<sub>U1</sub>, 100<sub>U2</sub>, 100<sub>U3</sub>, etc., to constructively add at the focus point 405 on the stent 402 may be determined as a function of the selected frequency and their respective distances, e.g., d<sub>1</sub>, d<sub>2</sub>, d<sub>3</sub>, from the stent 402. However, due to the relatively small ultrasonic wavelengths involved, positional discrepancies of the implantable devices 100, and the fact that stent 402 (being located in a vessel 408, for example a blood vessel such as a coronary artery) is moving, it is not anticipated that these phase values may be accurately predetermined.

[0053] The purpose of the present invention is to minimize plaque accumulation on the stent 402 via the use of induced ultrasonic mechanical vibrations. While the risk is slight of an adverse reaction to removing any plaque accumulation from the stent 402 (especially if the present invention is used on a periodic basis, e.g., yearly, biannually) is minimal, it is presently not desired that these induced mechanical vibrations occur without supervision by a medical practitioner. Additionally, since it is presently preferred that this treatment occur periodically under medical supervision, an RF powered implantable device is the presently preferred device, i.e., a device that temporarily stores its operating power received from an externally provided magnetic field 154 that is induced into its internal coil 116 and then into a capacitor 104 used in place of the battery of the '284 patent. External controller 406 is coupled to an external coil 410 that is mounted via a harness (not shown) outside of the patient's body, i.e., skin 12, proximate to the implantation locations of the devices 100 that have been implanted proximate to, preferably surrounding, the stent 402. The external controller 406 preferably generates an alternating magnetic field 154 in coil 410 via an alternating current provided to the coil 410. Additionally, as described in relation to the '539/'540 patents, the alternating magnetic field is preferably amplitude modulated with control data that is addressable to individual implantable devices 100 and functions, e.g., frequency, amplitude, phase, etc., of the implantable devices 100. Alternatively, as described in the '284 patent, the control data may be provided via a modulated RF field 412. Accordingly, while a common external controller 406 is shown for providing power and control information to the implantable devices 100, it is recognized that a first device, e.g., charger 118, may provide power via an alternating magnetic field 154 and a second device, e.g., patient control unit 174, clinician's programmer 172, SCU 302a, etc., may provide the control information via another mode of communication, e.g., a modulated RF field 412. The programmed parameters or programming range may be entered through a human interface 414, e.g., a keyboard/display integral to the controller 406, or may be connected to a programming device, e.g., the clinician's programmer 172, a conventional PC, or the like.

[0054] Various clinical techniques, e.g., use of an ultrasound imager, may be used to confirm and/or maximize the efficacy of treatment with the present invention. Preferably, embodiments of the present invention integrate these tech-

niques with the controller 406. Accordingly, an ultrasonic imager 416 and its associated emitter/receiver 418 may be coupled to the controller 406. By measuring the ultrasonic energy emitted from the stent 402, as an indication of whether the resonance of the stent 402 has been determined and whether the constructive addition of the multiple ultrasonic waves 404 has been maximized, a closed loop algorithm can be executed that alters the parameters programmed into the implantable devices 100 and thus maximize the efficacy of the treatment (and/or determine the extent of the treatment required). Finally, it is noted that relative positions of the implantable devices 100 and the stent 402, typically in a coronary artery 408, change as the patient's heart beats. Accordingly, embodiments of the present invention may additionally include a connection between the controller 406 and two or more EKG leads 420, coupled to two or more EKG electrodes 422. Using the voltage measured between these electrodes 422, a repeatable position of the patient's heart can be determined. Preferably, the ultrasonic imager 416 may make its measurements at this repeatable position and coordinate this information with commands from the controller 406 to the implantable devices 100. Accordingly, ultrasonic pulses at a determined frequency, phase, and amplitude may be provided at the repeatable position of the patient's heart and, consequently, the repeatable position of the stent 402 relative to the implantable devices 100.

[0055] FIGS. 9A and 9B show an exemplary flow chart 430 of an automated system 400 for determining the selectable parameters, e.g., frequency, phase, and amplitude, of the ultrasonic waves 404 emitted by each of the implantable devices 100 of the present invention under control of the external controller/programmer 406. In embodiments of the present invention, the frequency of the emitted ultrasonic waves 404 is preferably the same, corresponding to the determined resonant frequency of the implanted stent 402. The relative phases of the ultrasonic waves 404 may be determined by the following procedure. Typically, the relative phases are different corresponding to the relative distances between the multiple implantable devices 100 and the stent 402. Typically, the amplitude levels programmed into each implanted device 100 are identical but may be programmed differently should that assist in maximizing the constructive addition of the ultrasonic waves 404 emitted from the implanted devices 100 when they reach the stent 402. Alternatively, the amplitude levels may be set according to values selected by the medical practitioner (subject to the maximum output levels of the implantable device 100).

[0056] Initially in block 432, the ultrasonic emitter 138 of a first implantable device, e.g., 100<sub>U1</sub>, is activated by its internal controller 106 under control of the external controller 406. Initially, the frequency is set to a predetermined estimate, e.g., based on experience or a theoretical estimate of the resonant frequency of the stent 402. In block 434, the ultrasonic imager begins monitoring the energy level captured and re-emitted by the stent 402. In block 436, the inquiry is done as to whether the resonant frequency has been found. To make this determination, the emitted ultrasonic frequency is swept through a range of anticipated resonant frequencies in block 438, preferably in incremental steps, and the process iteratively repeats at block 434. Typically, the initial frequency selected in block 432 is below any anticipated resonant frequency and the frequencies incrementally sweep in block 438 upwards. Clearly, the

converse may also occur, i.e., starting at a maximum anticipated frequency and sweeping downwards. Other possibilities also exist, e.g., starting at a predicted frequency with frequency sweeps up and down, etc.

[0057] Additionally, it may be desired to coat the stent with a high Q value material to maximize the mechanical vibration of the stent 402. For example, the stent may be fabricated from a nickel-titanium alloy, such as Nitinol or another shape-memory alloy. It may then be desirable to coat the internal diameter and/or the external diameter with a Titanium 6Al-4V which is known to have a Q value of about 20,000. For comparison purposes, low carbon steel has a Q of about 250, polycarbonate has a Q of about 100 and aluminum has a Q of about 10,000. Therefore, it may be desirable to “adjust” the characteristics of mechanical vibration to optimize the shedding of any plaque reformation. Alternatively, the stent may be coated with a Q attenuator to reduce vibrations to an efficacious level.

[0058] Additionally, it may be desired to leave an existing stent in place and position an extravascular structure 424, e.g., metallic, around the outside circumference of the vein section containing the stent (see FIG. 8B). Thus, when an ultrasonic signal is sent and focused toward the extravascular structure at a focus point 426, the extravascular structure will vibrate and transfer mechanical energy to the intravenous stent, i.e., located within the venous structure. This enables the vibration of the stent by adjacent mechanical vibrations.

[0059] Once the resonant frequency has been determined, this frequency is used for the other implantable devices 100 as well (see block 440).

[0060] Typically, this information is retained in the external programmer 406 and transferred as needed to command the implantable devices 100. The process then continues in block 442 for the next implantable device, e.g., 100<sub>U2</sub>, at the predetermined frequency, i.e., the resonant frequency of the stent 402. However in this case, in blocks 444-448 the relative phase of the ultrasonic wave emitted by the next implantable device 100 is swept through a range of values while the ultrasonic energy absorbed by the stent 402 is monitored to determine when constructive addition of the waves 404 has been maximized. When this point has been reached, this relative phase value is saved in block 450 in the external controller 406.

[0061] In block 452, it is determined whether the relative phase values of all of the associated implantable devices have been determined. If not, the process optionally continues at block 454 where the previously selected implanted device is turned off and the process further continues at block 442 for the next implanted device, e.g., 100<sub>U3</sub>. Finally, all of the relative phase values have been determined in block 452 and the optimizing process concludes in block 456.

[0062] It is preferable that this procedure occur at a known relative physical position of the stent 402 to the implantable devices 100. Since the stent 402 is typically within a coronary artery 408 and thus subject to movement, i.e., beating, of the patient's heart. It is preferable that the patient's EKG measurements are used, e.g., using electrodes 422 and leads 420, to sense the QRS portion of each sensed cardiac signal. By delaying a predetermined period of time

following the ORS signal, the patient's heart will be determined to be in a known relative position. Accordingly, the aforementioned procedure of FIGS. 9A and 9B preferably includes this determination of heart position as a portion of each step, emission or measurement.

[0063] FIG. 10 shows an exemplary flow chart of a procedure 460 which uses the present invention to provide treatment to a stent 402 to prevent restenosis. In block 462, the patient's EKG is measured to determine the patient's heart beat as determined by a measured QRS signal. In block 464, a predetermined delay is used so that the stent 402, typically in the coronary artery 408, will now be in a predetermined relative physical position to the implanted devices 100. This relative physical position corresponds to the values determined in the previously described process of FIGS. 9A and 9B. These predetermined values are then used in block 466 to periodically energize the ultrasonic emitters 138 of each of the implantable devices 100 of the present system. The ultrasonic emission is set for a predetermined period of time, typically less than a heart beat, e.g., before the T wave is emitted from the patient's heart. This is desired since at the next heart beat the relative positions between the stent 402 and the implantable devices 100 will again shift and no longer be optimal. At block 468, it is determined if the prescribed treatment period has been expired. If not, the process continues at block 462 where the patient's next heart beat is sensed. Finally, in block 468, it is determined that there has been sufficient treatment has been provided and the process concludes in block 470. It is anticipated that these procedures will be repeated annually or bi-annually under medical supervision.

[0064] Accordingly, what has been shown are systems and methods for preventing restenosis following a stent procedure by using a plurality of implanted biocompatible devices under control of an externally-positioned control device that issues commands to the implanted devices to use an electrically controlled signal to cause the biocompatible device to minimize plaque accumulation on the stent. While the application has been primarily directed toward stents implanted in blood vessels, e.g., coronary arteries, stents implanted in other body vessels, i.e., ducts, canals, or other tubes that contain or convey a body fluid are also considered to be within the scope of the present invention. For example, certain medical conditions require the prolonged use of a stent within the ureter of a patient. Periodically, these stents require replacement due to buildup, referred to as plaque in this application, on the stent. Accordingly, the present invention is useful with this class of stents as well. Thus, while the invention has been described by means of specific embodiments and applications thereof, it is understood that numerous modifications and variations could be made thereto by those skilled in the art without departing from the spirit and scope of the invention. It is therefore to be understood that within the scope of the claims, the invention may be practiced otherwise than as specifically described herein.

What is claimed is:

1. A system for preventing restenosis following placement of a stent in a vessel of a patient, said system comprising:

two or more implantable devices suitable for implantation via injection in sites proximate to the stent, wherein each said implantable device is electrically powered and configured to emit an ultrasonic wave at a deter-

- mined frequency in response to an externally-provided command signal that is individually addressable to each of said implantable devices; and
- an externally-placed control device for providing said addressable command signals to each of said implantable devices to control the relative phase of each of said emitted ultrasonic waves to enable said ultrasonic waves to constructively add to induce mechanical vibrations in the stent to minimize plaque buildup on the stent.
2. The system of claim 1 wherein said vessel of a patient is a blood vessel.
  3. The system of claim 1 wherein said vessel of a patient is a ureter.
  4. The system of claim 1 wherein the determined frequency is selectable to correspond to the mechanical resonant frequency of the stent.
  5. The system of claim 1 wherein said externally-placed control device additionally includes coupling to two or more EKG leads suitable for placement on the patient to enable said addressable command signals to be synchronized to heart beats of the patient.
  6. The system of claim 1 additionally comprising an ultrasound imaging device for determining the mechanical resonant frequency of the stent in response to said induced mechanical vibrations produced by said ultrasonic waves.
  7. The system of claim 6 wherein said ultrasound imaging device is coupled to said externally-placed control device to automatically determine the mechanical resonant frequency of the stent.
  8. The system of claim 7 wherein said ultrasound imaging device coupled to said externally-placed control device additionally automatically determines the relative phase relationship between the ultrasonic waves emitted by said implantable devices that maximizes the amplitude of mechanical vibrations in the stent.
  9. The system of claim 1 additionally comprising an ultrasound imaging device for determining when the phase relationship between the emitted ultrasonic waves maximizes the amplitude of mechanical vibrations in the stent.
  10. The system of claim 9 wherein said ultrasound imaging device is coupled to said externally-placed control device to automatically determine the relative phase relationship between the ultrasonic waves emitted by said implantable devices that maximizes the amplitude of mechanical vibrations in the stent.
  11. The system of claim 1 wherein said implantable devices are configured to generate an electrical signal for powering said implantable device in response to an externally-provided AC magnetic field.
  12. The system of claim 11 wherein said externally-placed control device additionally produces said externally-provided AC magnetic field.
  13. The system of claim 12 wherein said externally-provided AC magnetic field is amplitude modulated with said externally-provided addressable command signals and each said implantable device includes a receiving portion for responding to said addressable command signals.
  14. The system of claim 13 wherein said command signal includes instructions to determine parameters of said ultrasonic waves selected from the set of the frequency, amplitude, and phase of said ultrasonic waves.
  15. The system of claim 1 wherein said implantable devices are each contained within a sealed elongate housing having an axial dimension of less than 60 mm and a lateral dimension of less than 6 mm.
  16. A method of preventing restenosis following placement of a stent in a vessel of a patient, said method comprising the steps of:
    - implanting two or more implantable devices via injection in sites proximate to the stent, wherein each said implantable device is electrically powered and configured to emit an ultrasonic wave at a determined frequency in response to an externally-provided command signal that is individually addressable to each of said implantable devices;
    - positioning a transducer proximate to said one or more implanted devices, wherein said transducer is coupled to an external controller; and
    - instructing said controller to cause said transducer to emit a command signal to said implanted devices to minimize accumulation of plaque on the implanted stent by controlling parameters of said ultrasonic waves emitted by each of said implanted devices, wherein said parameters are selected from the set of amplitude, frequency, and phase of said emitted ultrasonic waves.
  17. The method of claim 16 additionally comprising the steps of:
    - sensing the EKG of the patient to determine the relative position of the patient's heart; and
    - synchronizing said command signals to said sensed EKG to cause said implantable devices to emit said ultrasonic waves at a predetermined relative position of the patient's heart.
  18. The method of claim 17 additionally comprising the steps of:
    - sensing the ultrasonic energy accumulated by the stent using an ultrasound imager; and
    - causing said command signal to adjust said determined ultrasound frequency emitted by said implantable devices to maximize the sensed ultrasonic energy accumulated by the stent.
  19. The method of claim 16 additionally comprising the steps of:
    - sensing the ultrasonic energy accumulated by the stent using an ultrasound imager; and
    - causing said command signal to adjust said determined ultrasonic frequency emitted by said implantable devices to maximize the sensed ultrasonic energy accumulated by the stent.
  20. The method of claim 19 additionally comprising the step of causing said command signal to adjust the relative phases of the ultrasonic waves emitted by said implantable devices to maximize the sensed ultrasonic energy accumulated by the stent.
  21. The method of claim 16 additionally comprising the steps of:
    - sensing the ultrasonic energy accumulated by the stent using an ultrasound imager; and
    - causing said command signal to adjust the relative phases of the ultrasonic waves emitted by said implantable devices to maximize the sensed ultrasonic energy accumulated by the stent.

22. The method of claim 16 wherein said step of instructing said controller to cause said transducer to emit a command signal to said implantable devices additionally comprises, following placement of the stent in a blood vessel of a patient, the steps of:

- determining the resonant frequency of the stent; and
- determining relative phase offsets between said implantable devices to maximize ultrasonic energy accumulated by the stent.

23. The method of claim 16 additionally comprising the steps of:

implanting an extravascular structure proximate to the stent implanted within a blood vessel of the patient; and wherein

the step of instructing said controller to cause said transducer to emit a command signal to said implantable devices to minimize accumulation of the plaque on the implanted stent additionally comprises the step of focusing said ultrasonic waves toward said extravascular structure which in turn imparts its ultrasonic energy to the implanted stent.

\* \* \* \* \*

专利名称(译)	用于在支架手术后防止再狭窄的可植入超声发射器系统		
公开(公告)号	<a href="#">US20060287598A1</a>	公开(公告)日	2006-12-21
申请号	US11/158166	申请日	2005-06-20
[标]申请(专利权)人(译)	拉萨特BRIAN J 曼德尔LEE J		
申请(专利权)人(译)	拉萨特BRIAN J 曼德尔LEE J		
[标]发明人	LASATER BRIAN J MANDELL LEE J		
发明人	LASATER, BRIAN J. MANDELL, LEE J.		
IPC分类号	A61B8/00 A61F2/86		
CPC分类号	A61B17/22012 A61B2017/22002 A61B8/56 A61F2002/30668 A61F2250/0001 A61F2/86		
其他公开文献	US7857766		
外部链接	<a href="#">Espacenet</a> <a href="#">USPTO</a>		

摘要(译)

一种系统和方法，其最小化支架上的斑块积聚并由此使再狭窄最小化，这可能需要在将支架植入患者体内之后的后续侵入性医疗程序。通过注射可植入的多个电动生物相容性装置定位在靠近支架的患者体内，并且在外部放置的控制器控制下，命令发射对应于支架的机械共振的超声波。通过控制超声波的频率和相对相位，可以使支架上的斑块积聚最小化。

