



US 20180177492A1

(19) **United States**

(12) **Patent Application Publication**
Nagai et al.

(10) **Pub. No.: US 2018/0177492 A1**
(43) **Pub. Date: Jun. 28, 2018**

(54) **ULTRASONIC DIAGNOSTIC SYSTEM**

(71) Applicant: **General Electric Company,**
Schenectady, NY (US)

(72) Inventors: **Saika Nagai,** Tokyo (JP); **Teck Chuan Beh,** Tokyo (JP); **Naohisa Kamiyama,** Tokyo (JP)

(21) Appl. No.: **15/851,072**

(22) Filed: **Dec. 21, 2017**

(30) **Foreign Application Priority Data**

Dec. 27, 2016 (JP) 2016-252412

Publication Classification

(51) **Int. Cl.**
A61B 8/08 (2006.01)
A61B 8/00 (2006.01)

(52) **U.S. Cl.**
CPC *A61B 8/5207* (2013.01); *A61B 8/4494* (2013.01); *A61B 8/4488* (2013.01); *A61B 8/5292* (2013.01); *A61B 8/565* (2013.01); *A61B 8/461* (2013.01); *A61B 8/5246* (2013.01)

(57) **ABSTRACT**

An ultrasonic diagnostic system comprises: a first transceiver for performing transmission/reception of first ultrasound for detecting shear waves generated in a subject by mechanical vibration; a second transceiver for performing transmission/reception of second ultrasound to/from the subject; a computing section for calculating a value of a parameter affecting a frequency of the first ultrasound to be transmitted from the first transceiver based on echo signals obtained by transmission/reception of the second ultrasound; an identifying section for identifying one first transceiver from among a plurality of kinds of first transceivers each having a different frequency of said first ultrasound based on the value of said parameter; and a display device for displaying the first transceiver identified by the identifying section.

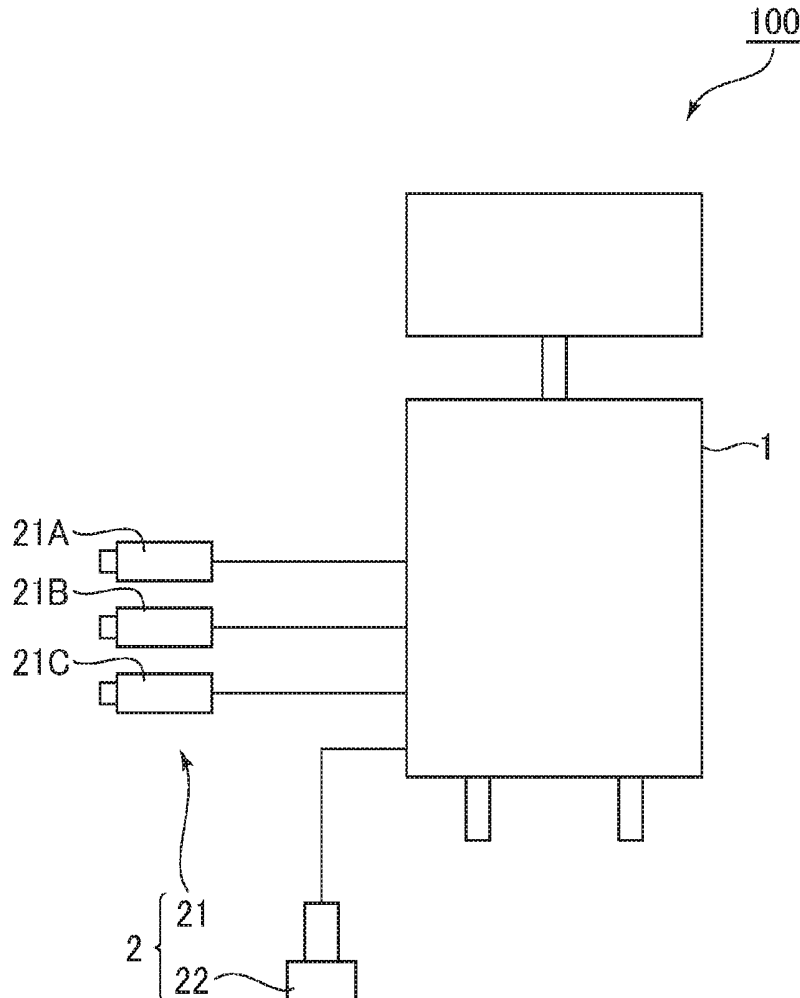


FIG. 1

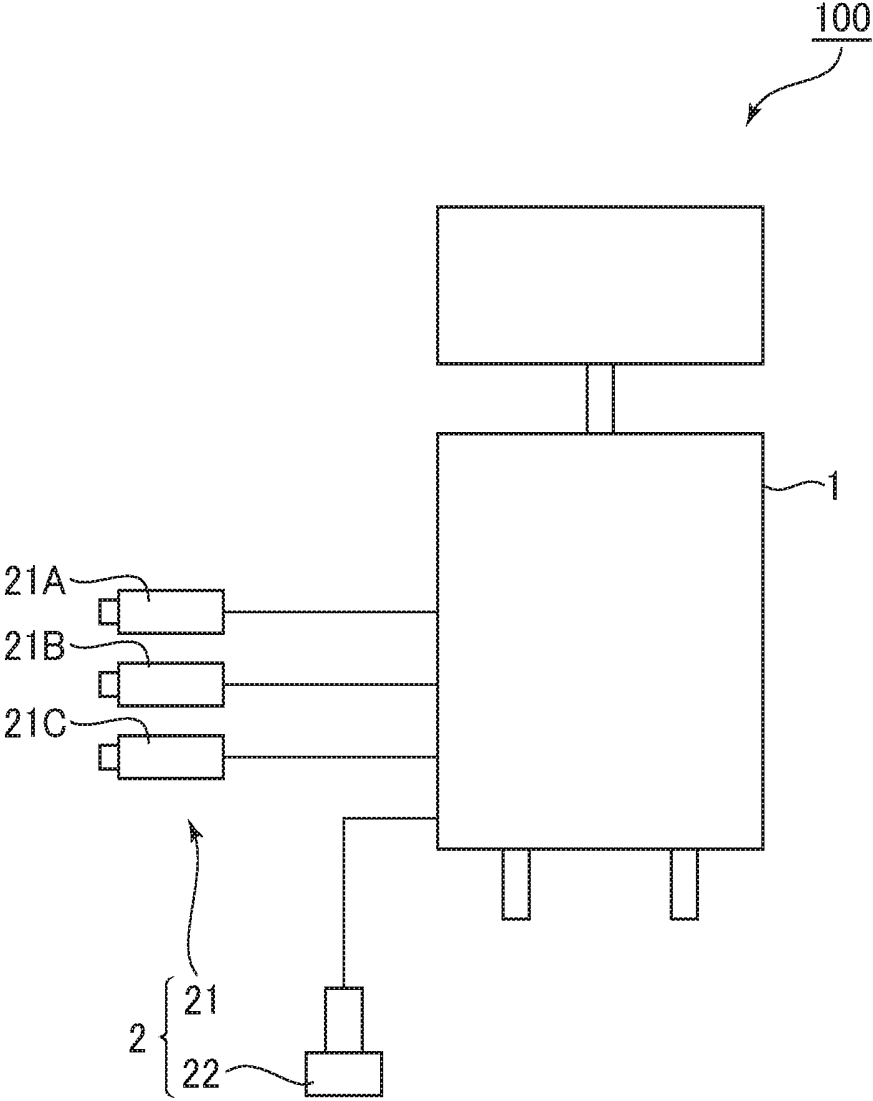


FIG. 2

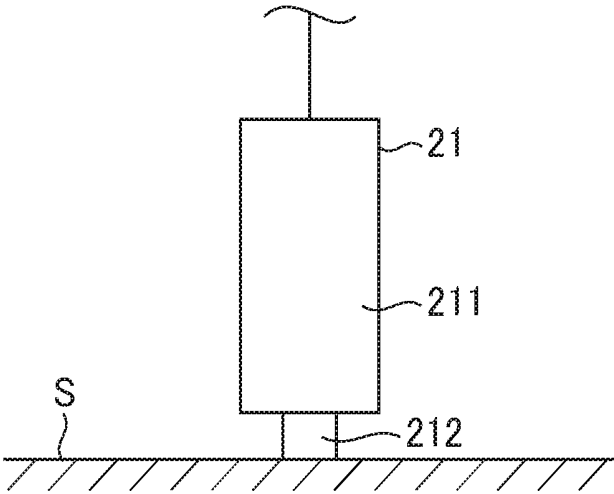


FIG. 3

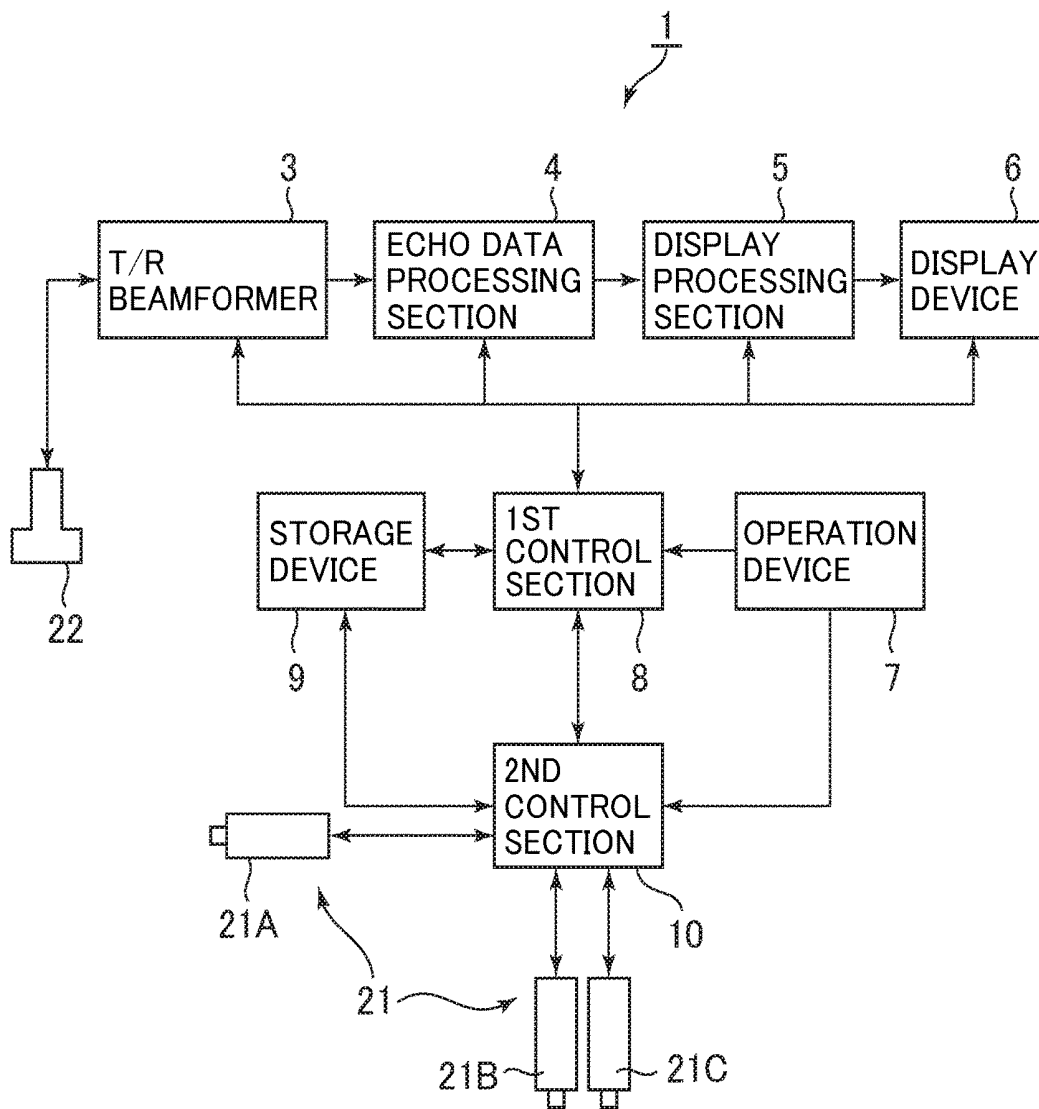


FIG. 4

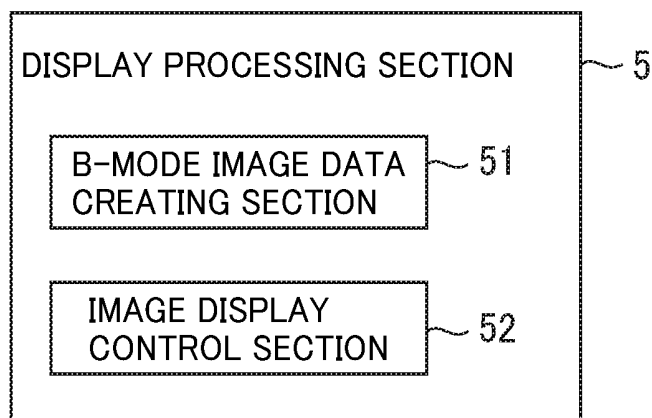


FIG. 5

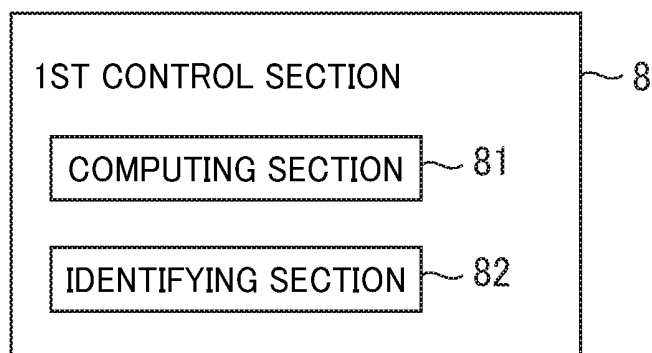


FIG. 6

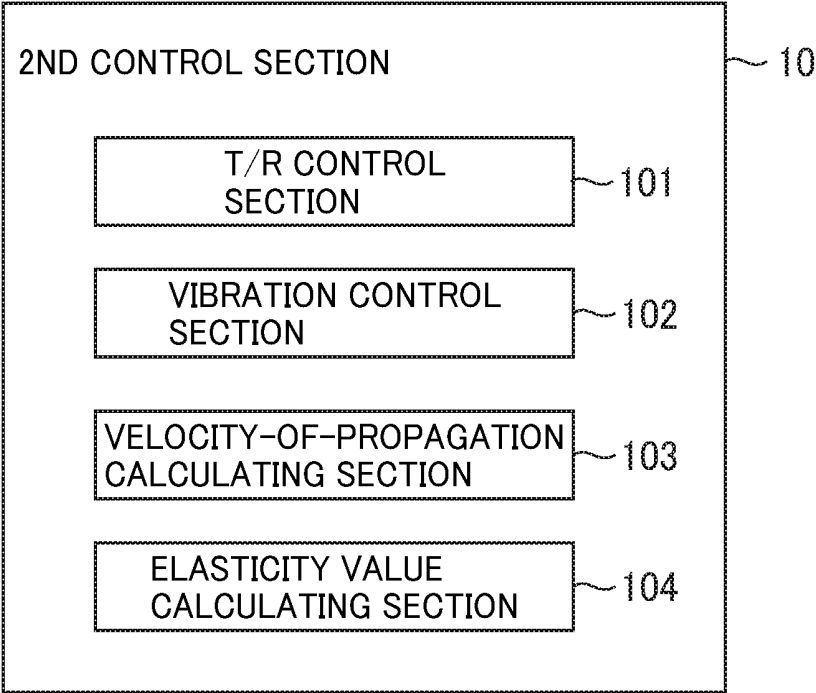


FIG. 7

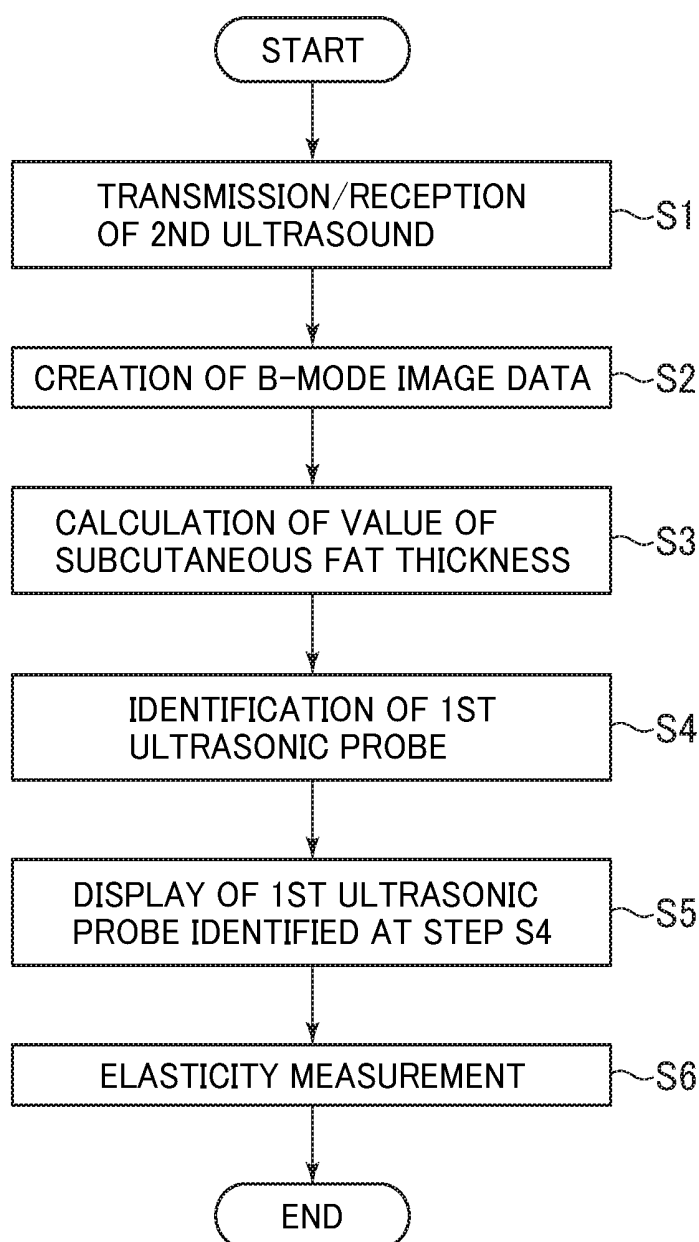


FIG. 8

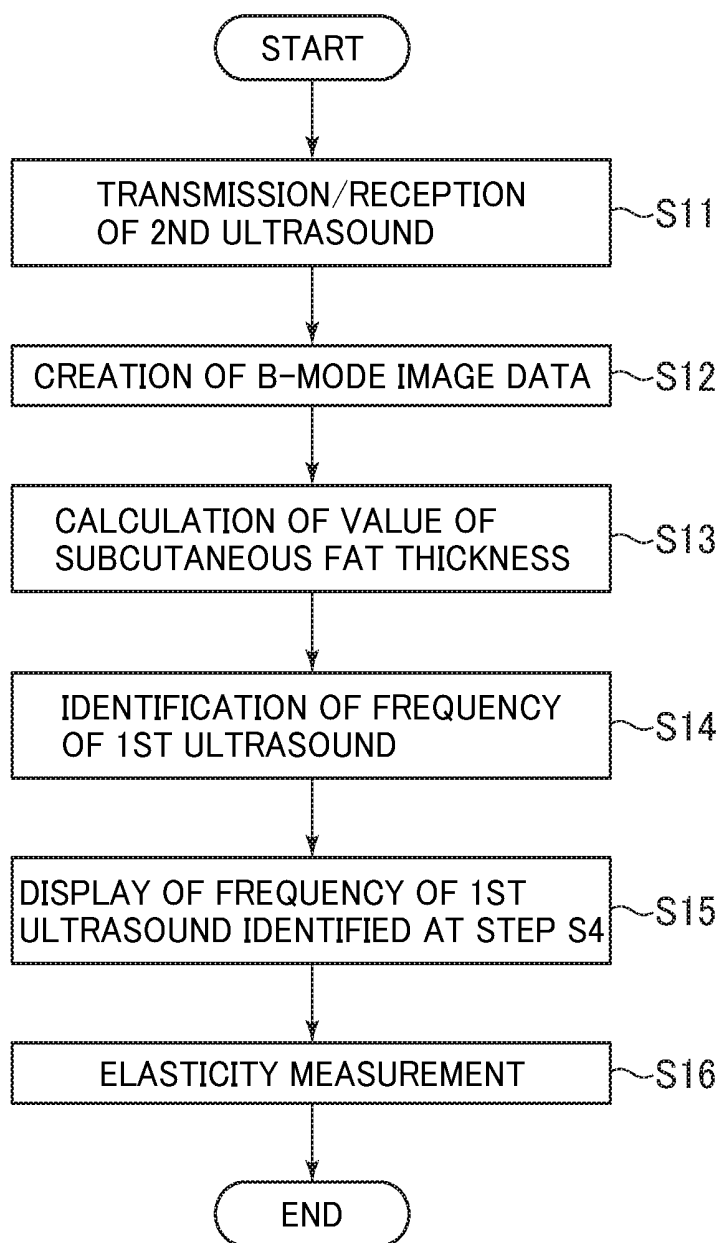


FIG. 9

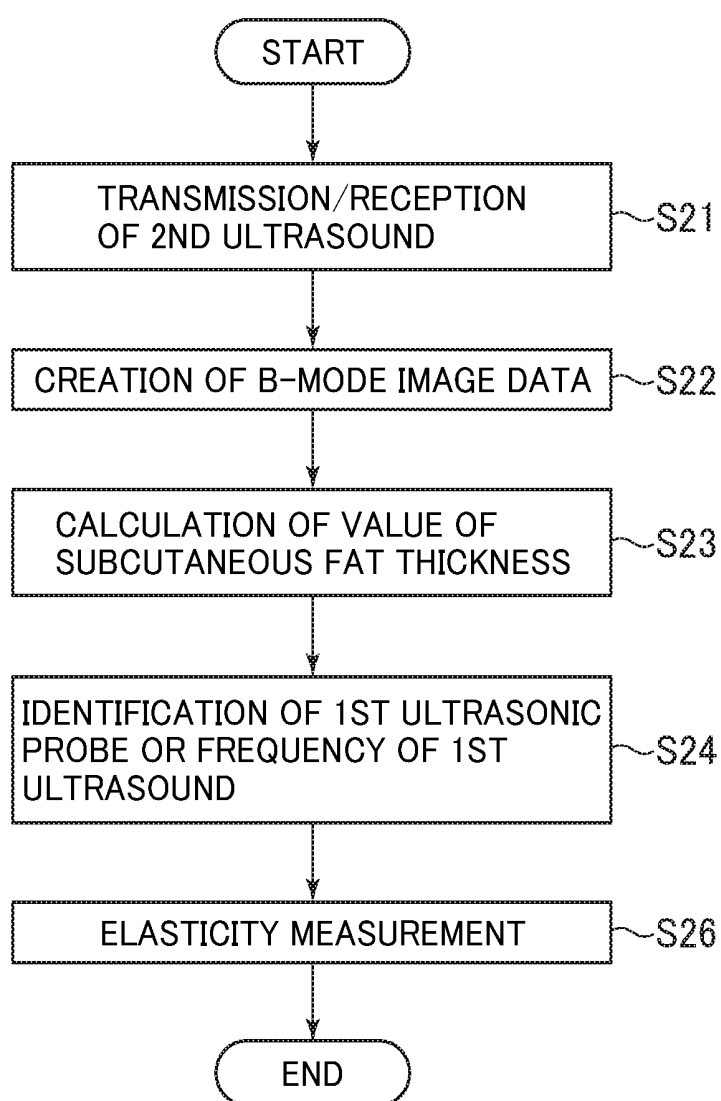


FIG. 10

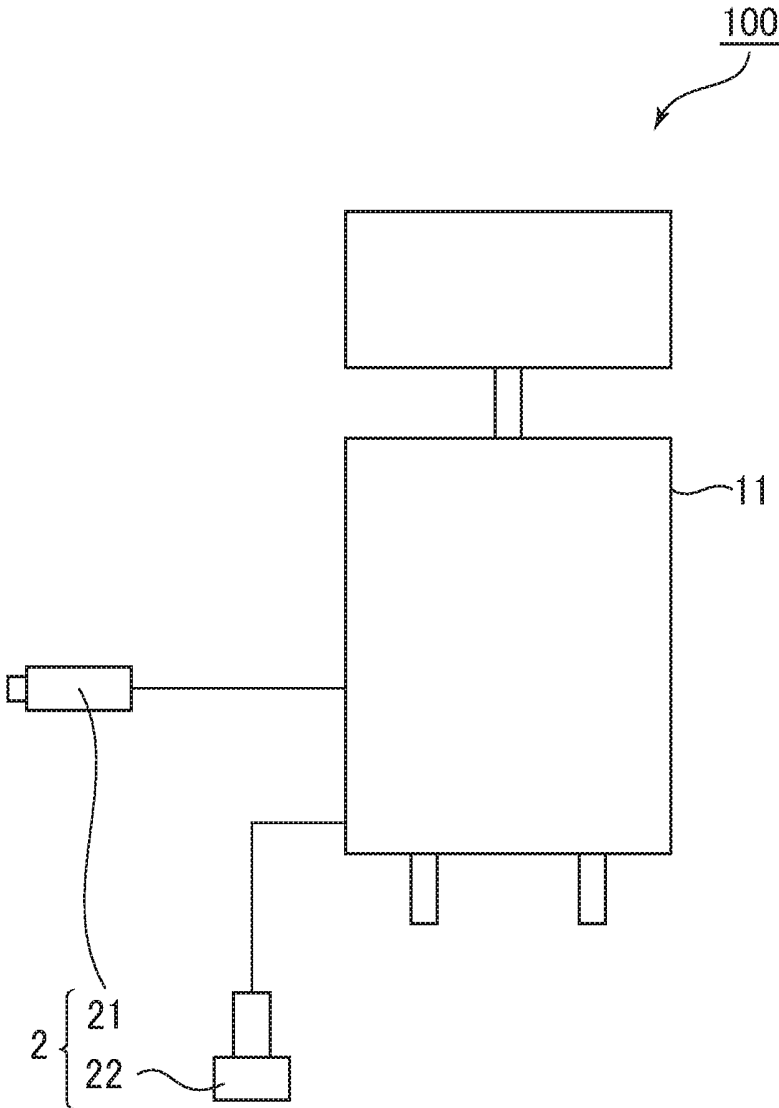


FIG. 11

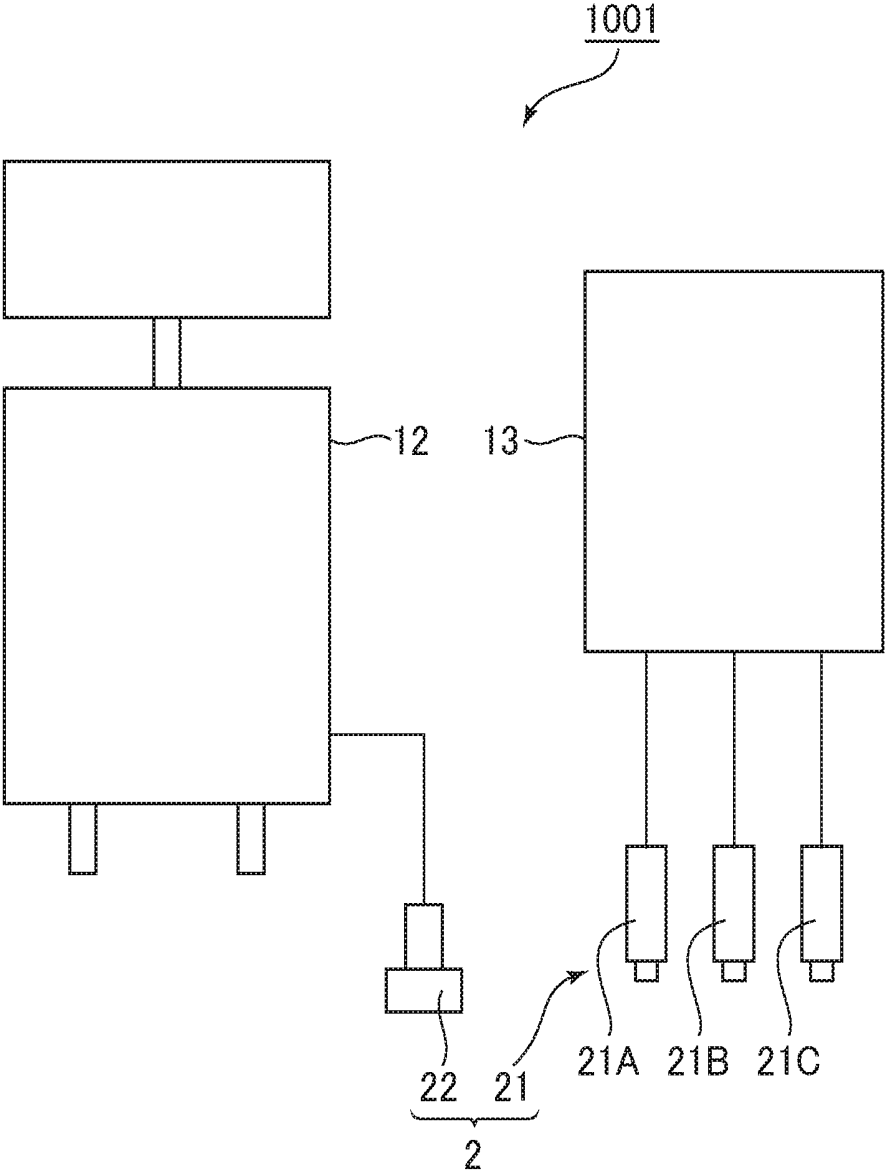


FIG. 12

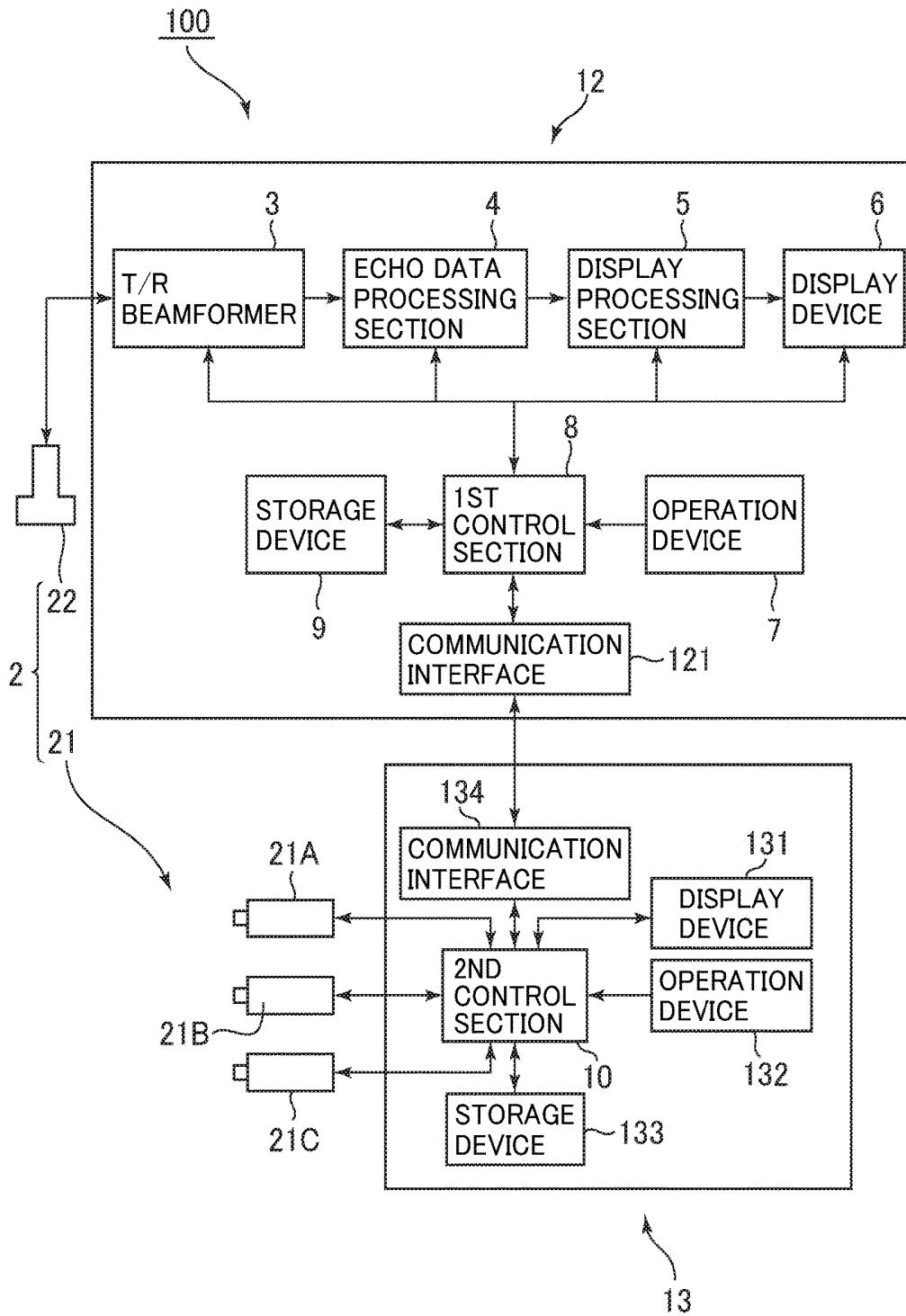


FIG. 13

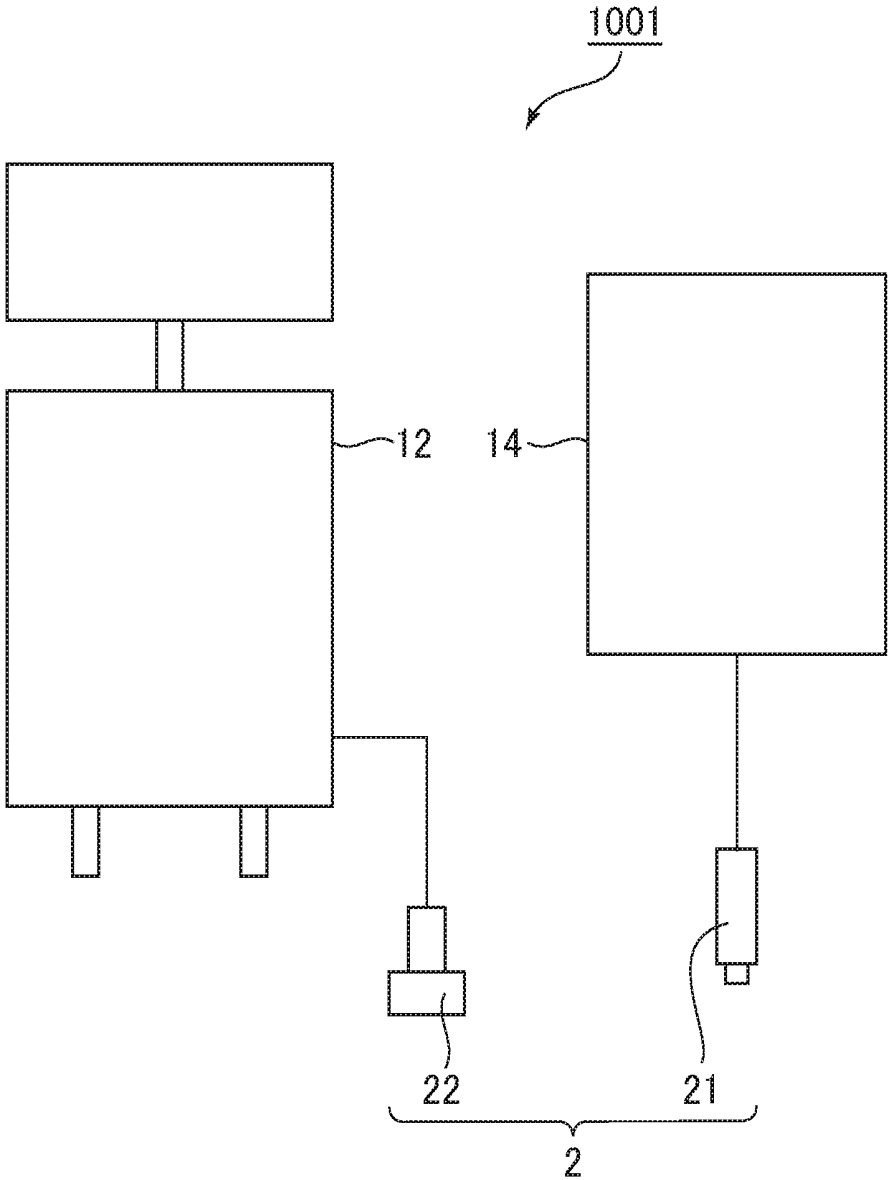


FIG. 14

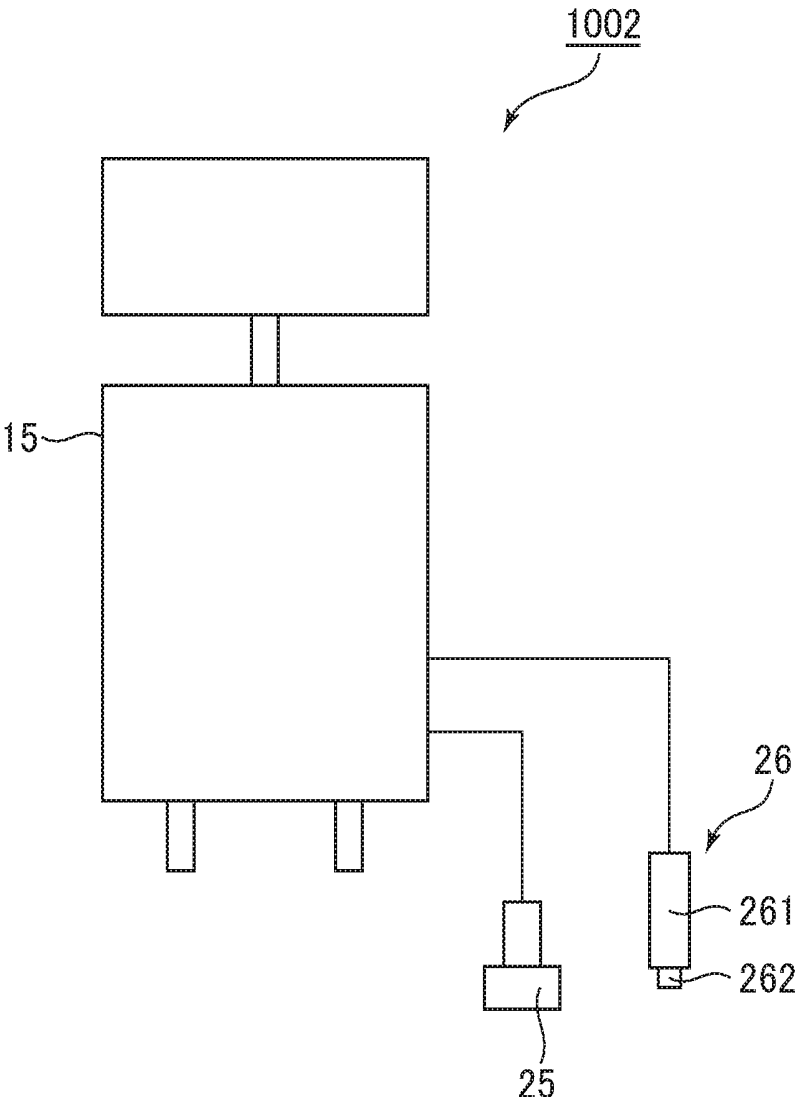


FIG. 15

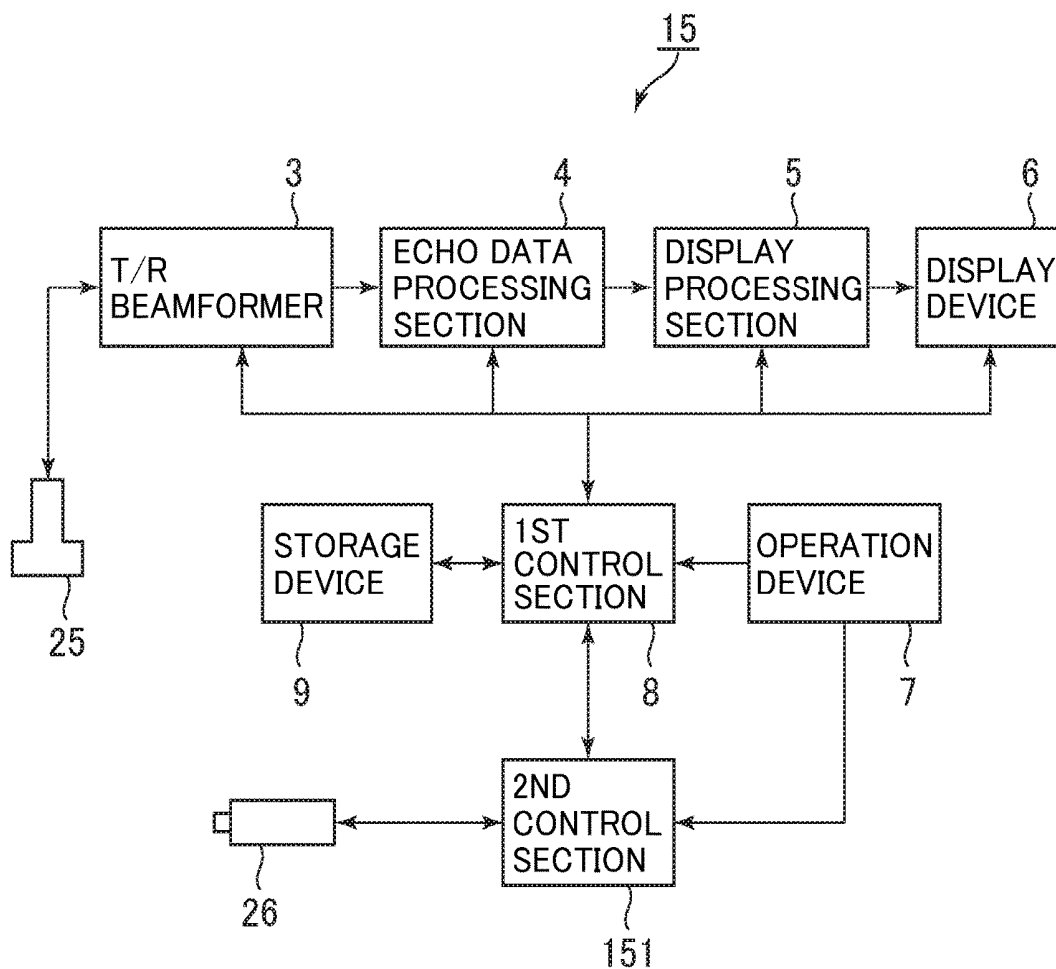


FIG. 16

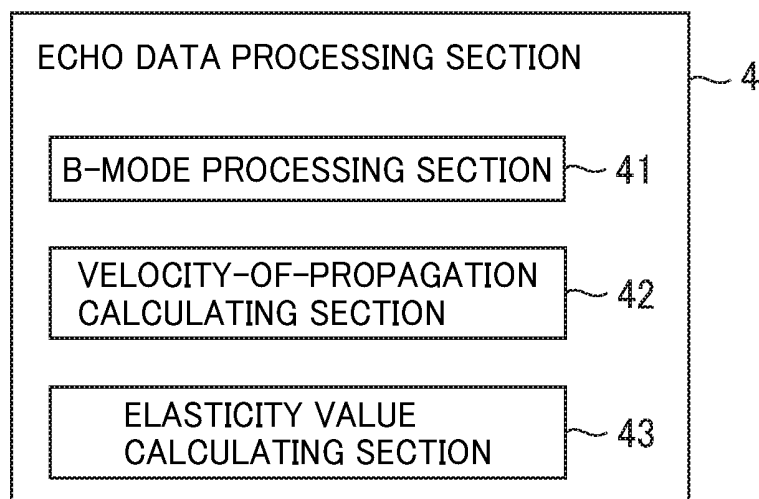


FIG. 17

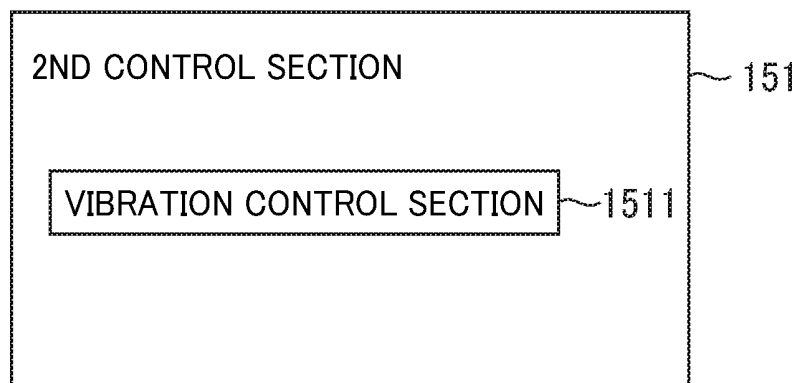


FIG. 18

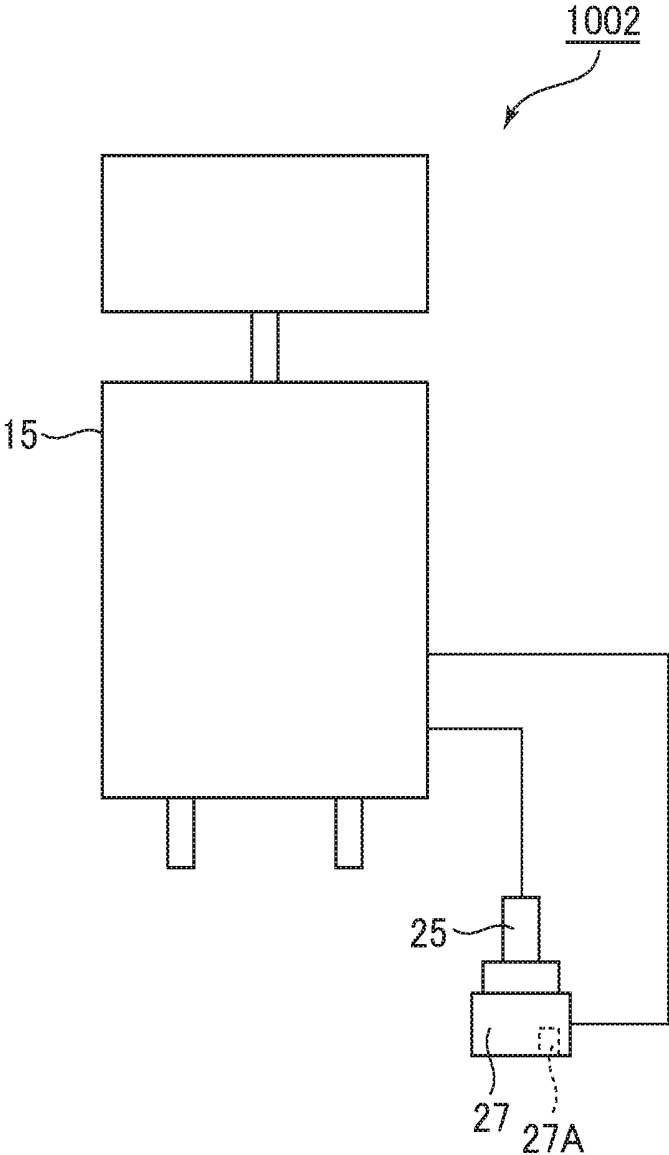


FIG. 19

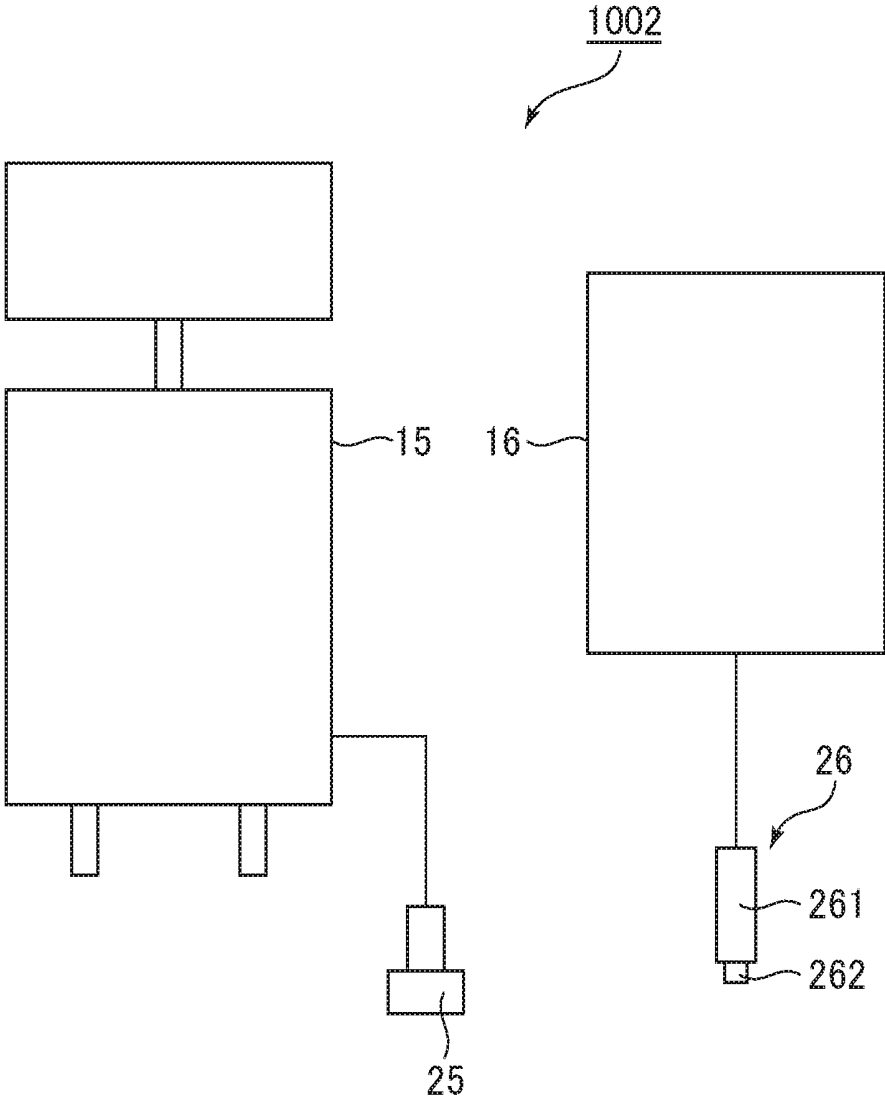


FIG. 20

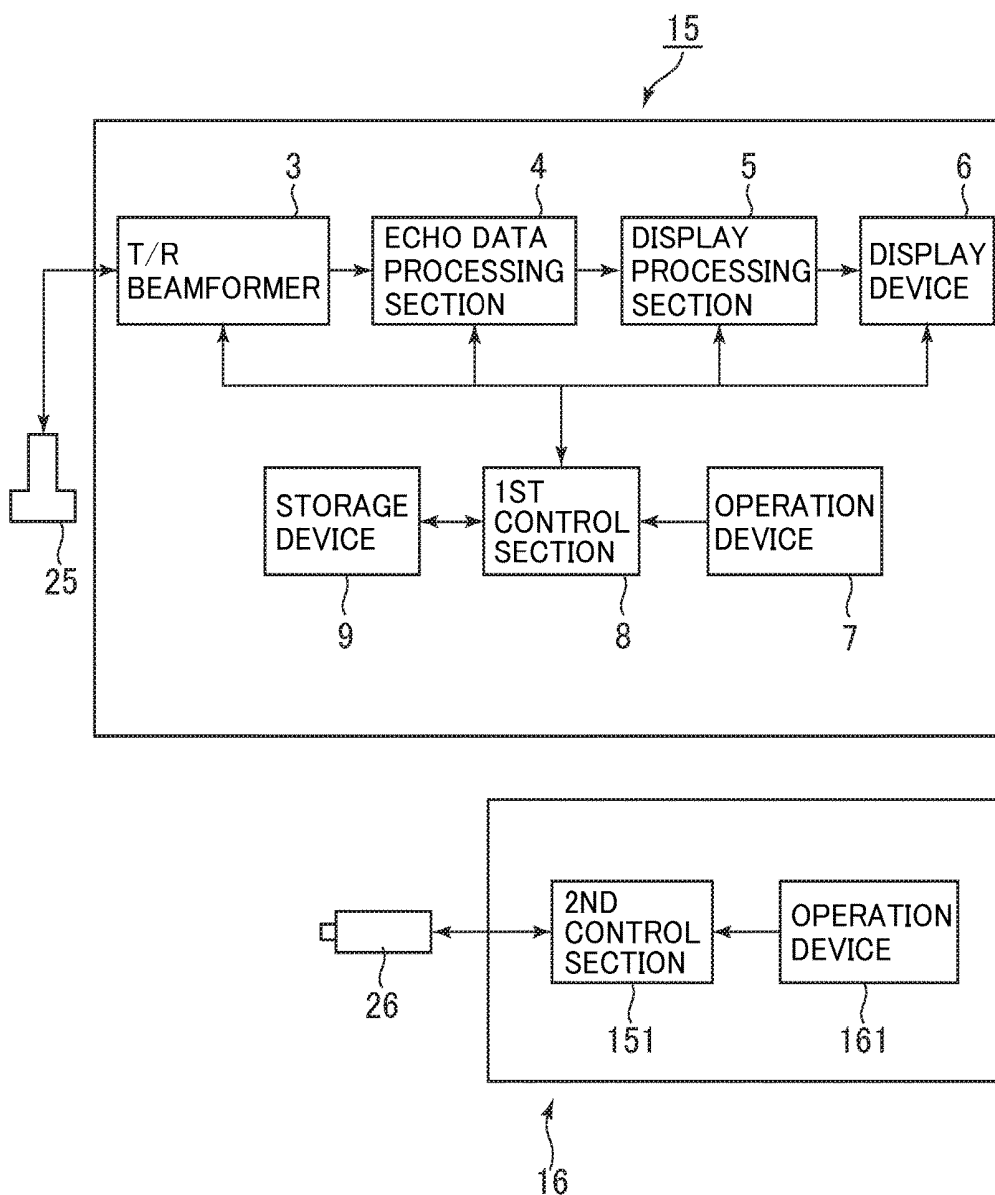


FIG. 21

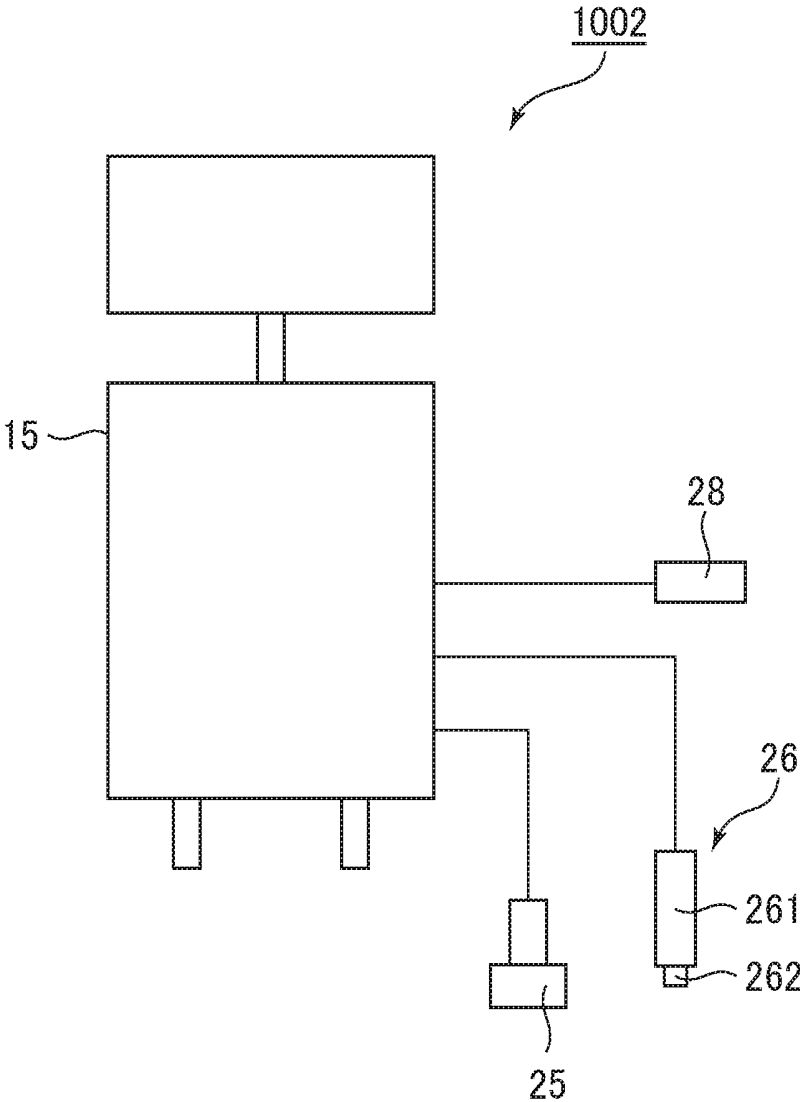


FIG. 22

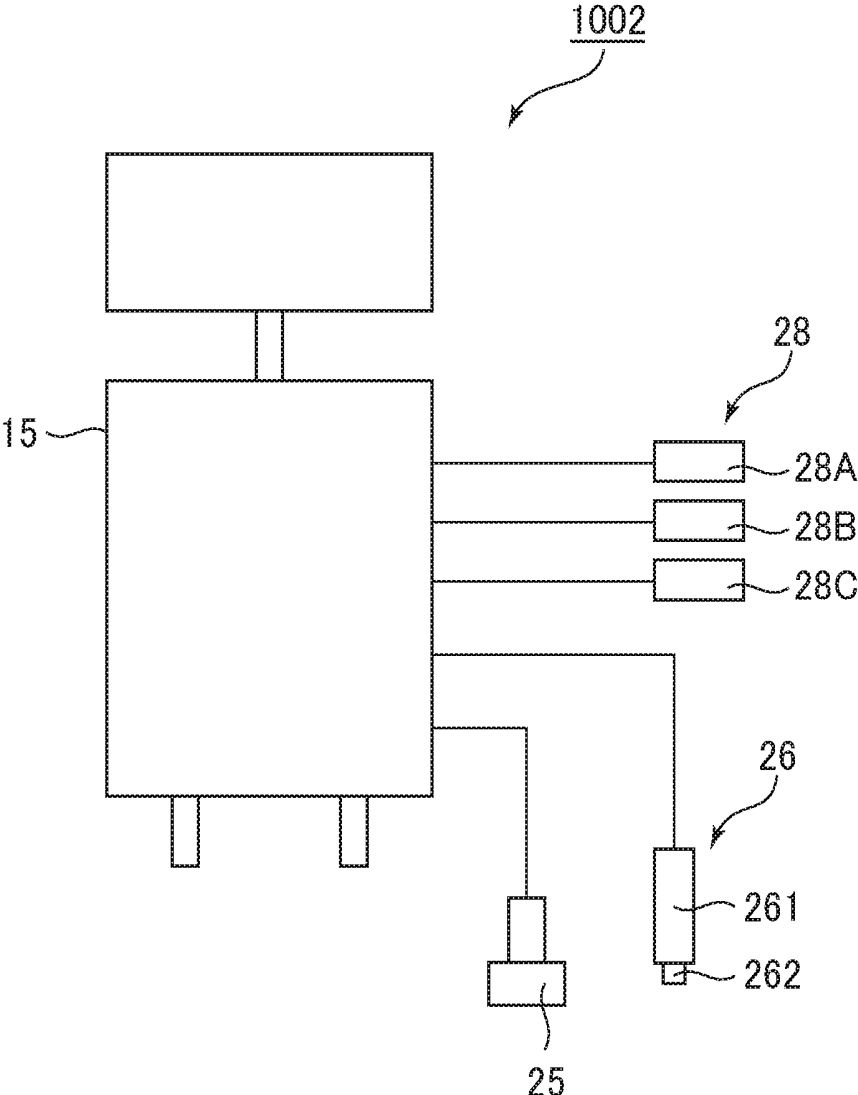


FIG. 23

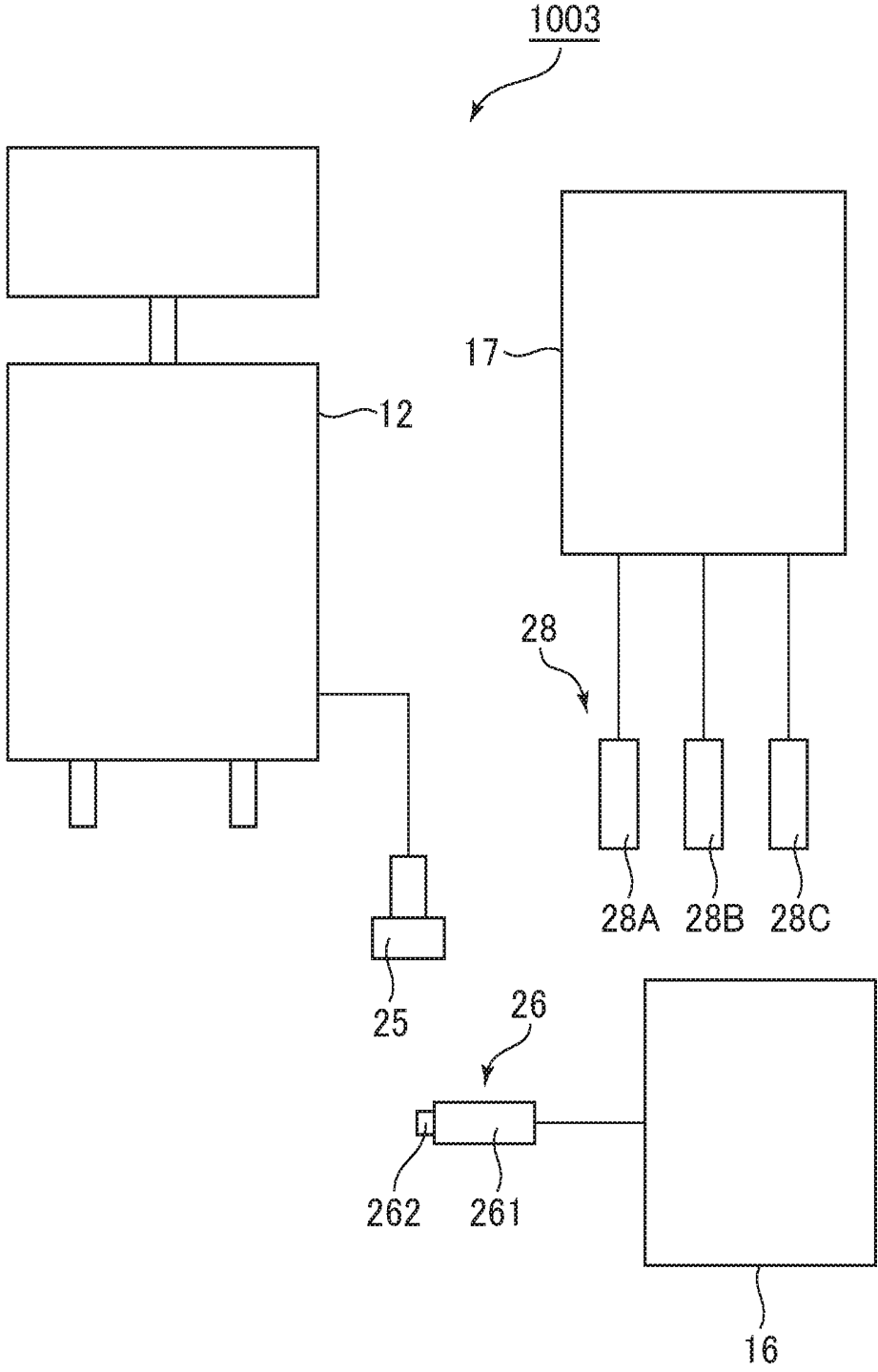


FIG. 24

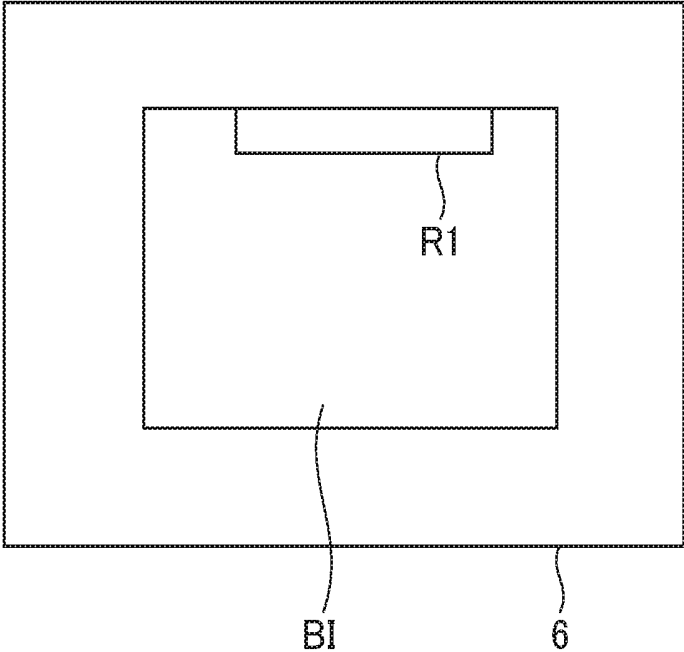


FIG. 25

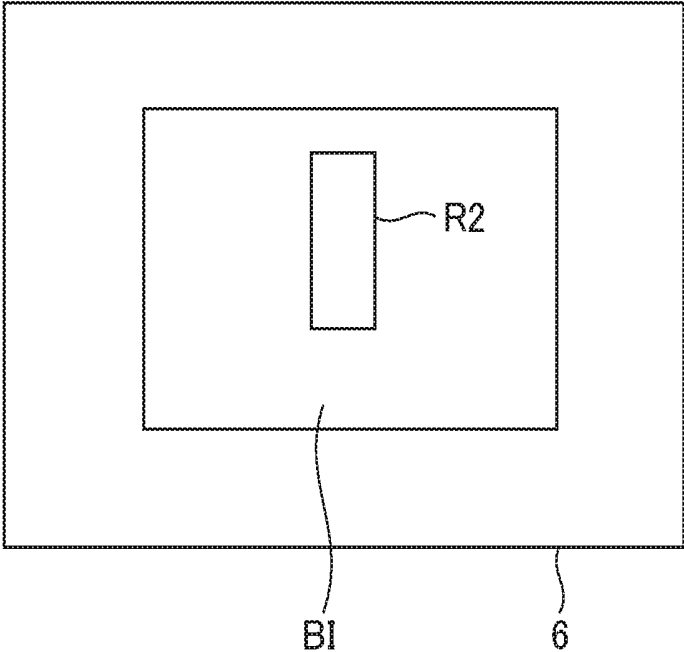
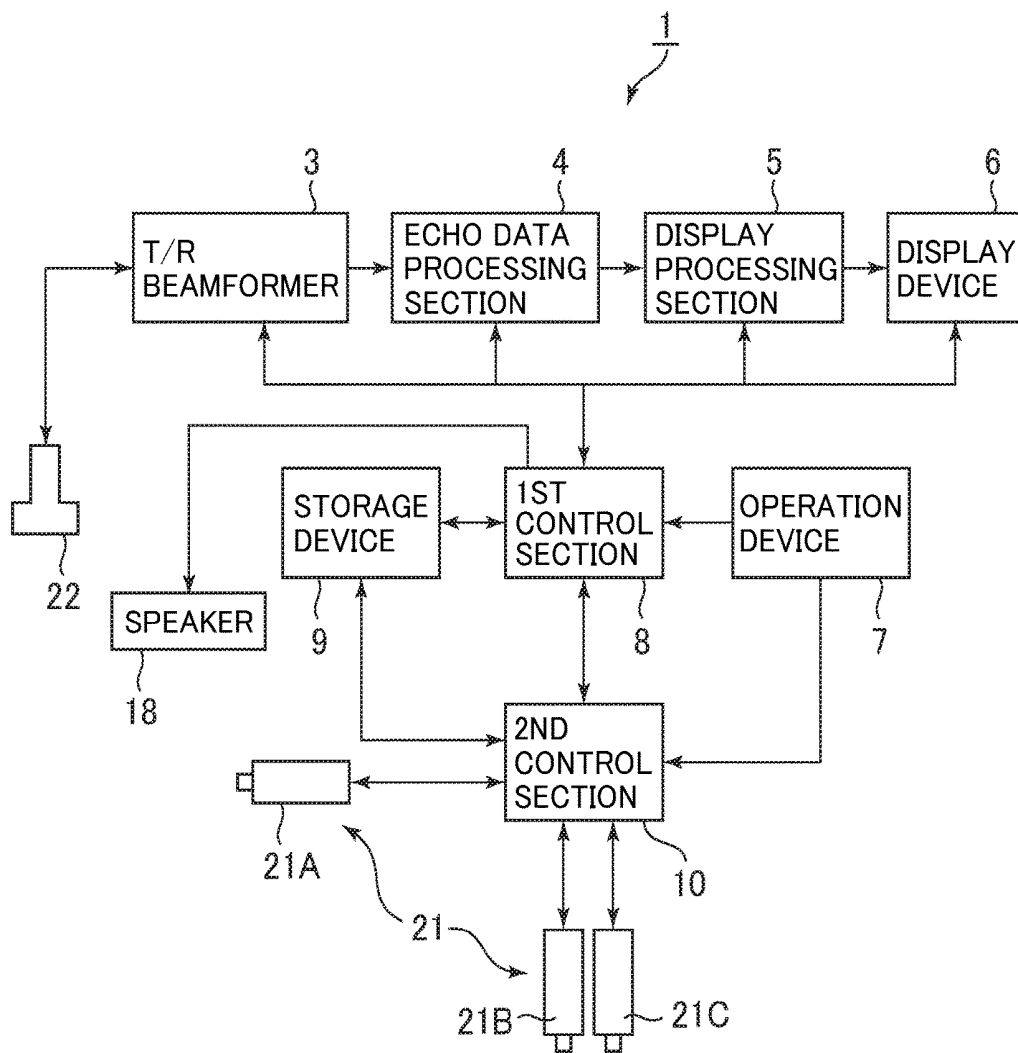


FIG. 26



ULTRASONIC DIAGNOSTIC SYSTEM

FIELD OF THE INVENTION

[0001] This disclosure relates to an ultrasonic diagnostic system for detecting shear waves generated in a subject by applying mechanical vibration to the subject.

BACKGROUND OF THE INVENTION

[0002] In liver diagnosis, for example, there is a technique of quantifying hardness of the liver by applying mechanical vibration to a body surface of a subject, and detecting, by ultrasound, shear waves generated in the subject by the mechanical vibration.

BRIEF DESCRIPTION OF THE INVENTION

[0003] The frequency of the ultrasound for detecting the shear waves described above has the most suitable setting. For example, for subjects having thick subcutaneous fat, it is necessary to use a probe with relatively low frequency for reducing signal attenuation. On the other hand, for subjects having thin subcutaneous fat or pediatric subjects, ultrasound may overpenetrate and signals reflected at the diaphragm behind the liver in unexpected directions may be received, so that it is necessary to use a probe with relatively high frequency. Thus, selection of a suitable frequency is required for acquiring accurate diagnostic information. Accordingly, it is desired to provide an ultrasonic diagnostic system with which a suitable frequency can be easily selected.

[0004] The invention, in one aspect, made for solving the aforementioned problem is an ultrasonic diagnostic system comprising: a vibrator for applying mechanical vibration to a subject; a first transceiver for performing transmission/reception of first ultrasound for detecting shear waves generated in said subject by said mechanical vibration applied by said vibrator; a second transceiver for performing transmission/reception of second ultrasound different from said first ultrasound to/from said subject; a computing section for calculating a value of a parameter affecting a frequency of the first ultrasound to be transmitted from said first transceiver based on echo signals obtained by transmission/reception of said second ultrasound; an identifying section for identifying one first transceiver from among a plurality of kinds of first transceivers each having a different frequency of said first ultrasound or identifying a frequency of the first ultrasound to be transmitted/received at said first transceiver based on the value of said parameter; and a notifying section for notifying an operator of said first transceiver or said frequency identified by said identifying section.

[0005] The invention, in another aspect, is an ultrasonic diagnostic system comprising: a vibrator for applying mechanical vibration to a subject; a transceiver for performing transmission/reception of first ultrasound for detecting shear waves generated in said subject by said mechanical vibration applied by said vibrator and transmission/reception of second ultrasound different from said first ultrasound to/from said subject; a computing section for calculating a value of a parameter affecting a frequency of the first ultrasound to be transmitted from said transceiver based on echo signals obtained by transmission/reception of said second ultrasound; an identifying section for identifying a frequency of the first ultrasound to be transmitted/received

at the transceiver based on the value of said parameter; and a notifying section for notifying an operator of the frequency identified by said identifying section.

[0006] The invention, in another aspect, is an ultrasonic diagnostic system comprising: a vibrator for applying mechanical vibration to a subject; a first transceiver for performing transmission/reception of first ultrasound for detecting shear waves generated in said subject by said mechanical vibration applied by said vibrator; a second transceiver for performing transmission/reception of second ultrasound different from said first ultrasound to/from said subject; a computing section for calculating a value of a parameter affecting a frequency of the first ultrasound to be transmitted from said first transceiver based on echo signals obtained by transmission/reception of said second ultrasound; an identifying section for identifying one first transceiver from among a plurality of kinds of first transceivers each having a different frequency of said first ultrasound or identifying a frequency of the first ultrasound to be transmitted/received at said first transceiver based on the value of said parameter; and a control section for performing transmission/reception of said first ultrasound with said first transceiver identified by said identifying section or with said frequency identified by said identifying section.

[0007] The invention, in another aspect, is an ultrasonic diagnostic system comprising: a vibrator for applying mechanical vibration to a subject; a transceiver for performing transmission/reception of first ultrasound for detecting shear waves generated in said subject by said mechanical vibration applied by said vibrator and transmission/reception of second ultrasound different from said first ultrasound to/from said subject; a computing section for calculating a value of a parameter affecting a frequency of the first ultrasound to be transmitted from said transceiver based on echo signals obtained by transmission/reception of said second ultrasound; an identifying section for identifying a frequency of the first ultrasound to be transmitted/received at the transceiver based on the value of said parameter; and a control section for performing transmission/reception of said first ultrasound with said frequency identified by said identifying section.

[0008] In the invention in the aspects described above, the frequency of the first ultrasound to be transmitted from said first transceiver or said transceiver is a frequency suitable for elasticity measurement on biological tissue in said subject.

[0009] According to the invention in the one aspect described above, a value of a parameter affecting a frequency of the first ultrasound to be transmitted from said first transceiver is calculated based on echo signals obtained by transmission/reception of said second ultrasound, and a first transceiver identified from among a plurality of kinds of first transceivers or a frequency of the first ultrasound is notified based on the value of the parameter, whereby an operator can find out a first transceiver for performing transmission/reception of first ultrasound with suitable frequency or the suitable frequency. A suitable frequency is thus easily selected.

[0010] According to the invention in the other aspect described above, a value of a parameter affecting a frequency of the first ultrasound to be transmitted from said first transceiver is calculated based on echo signals obtained by transmission/reception of said second ultrasound, and the frequency of said first ultrasound is notified based on the

value of the parameter, whereby an operator can find out a suitable frequency. A suitable frequency is thus easily selected.

[0011] According to the invention in the other aspect described above, a value of a parameter affecting a frequency of the first ultrasound to be transmitted from said first transceiver is calculated based on echo signals obtained by transmission/reception of said second ultrasound, and transmission/reception of the first ultrasound is performed with a first transceiver identified by said identifying section or with a frequency identified by said identifying section based on the value of the parameter. A suitable frequency may thus be selected to automatically transmit/receive ultrasound of the frequency.

[0012] According to the invention in the other aspect described above, a value of a parameter affecting a frequency of the first ultrasound to be transmitted from said transceiver is calculated based on echo signals obtained by transmission/reception of said second ultrasound, and transmission/reception of the first ultrasound is performed with a frequency identified by said identifying section based on the value of the parameter. A suitable frequency may thus be selected to automatically transmit/receive ultrasound of the frequency.

BRIEF DESCRIPTION OF THE DRAWINGS

[0013] FIG. 1 is a diagram showing an outline of an exemplary ultrasonic diagnostic apparatus constituting an ultrasonic diagnostic system in a first embodiment of the present invention.

[0014] FIG. 2 is a diagram showing a first ultrasonic probe put against a body surface of a subject.

[0015] FIG. 3 is a block diagram showing a general configuration of the ultrasonic diagnostic apparatus shown in FIG. 1.

[0016] FIG. 4 is a block diagram showing a configuration of a display processing section.

[0017] FIG. 5 is a block diagram showing exemplary functions executed by a first control section in the ultrasonic diagnostic apparatus shown in FIG. 1.

[0018] FIG. 6 is a block diagram showing exemplary functions executed by a second control section in the ultrasonic diagnostic apparatus shown in FIG. 1.

[0019] FIG. 7 is a flow chart showing an operation of the ultrasonic diagnostic apparatus in the first embodiment.

[0020] FIG. 8 is a flow chart showing an operation of the ultrasonic diagnostic apparatus in a first variation of the first embodiment.

[0021] FIG. 9 is a flow chart showing an operation of the ultrasonic diagnostic apparatus in a second variation of the first embodiment.

[0022] FIG. 10 is a diagram showing an outline of a third variation of the ultrasonic diagnostic apparatus constituting the ultrasonic diagnostic system in the first embodiment.

[0023] FIG. 11 is a diagram showing an outline of an exemplary ultrasonic diagnostic system in a second embodiment of the present invention.

[0024] FIG. 12 is a block diagram showing a general configuration of the ultrasonic diagnostic apparatus and measurement apparatus constituting the ultrasonic diagnostic system shown in FIG. 11.

[0025] FIG. 13 is a diagram showing an outline of a third variation of the ultrasonic diagnostic system in the second embodiment of the present invention.

[0026] FIG. 14 is a diagram showing an outline of an exemplary ultrasonic diagnostic apparatus constituting an ultrasonic diagnostic system in a third embodiment of the present invention.

[0027] FIG. 15 is a block diagram showing a general configuration of the ultrasonic diagnostic apparatus shown in FIG. 14.

[0028] FIG. 16 is a block diagram showing a configuration of an echo data processing section in the ultrasonic diagnostic apparatus shown in FIG. 15.

[0029] FIG. 17 is a block diagram showing an exemplary function executed by a second control section in the ultrasonic diagnostic apparatus shown in FIG. 15.

[0030] FIG. 18 is a diagram showing an outline of a second variation of the ultrasonic diagnostic system in the third embodiment.

[0031] FIG. 19 is a diagram showing an outline of a third variation of the ultrasonic diagnostic system in the third embodiment.

[0032] FIG. 20 is a block diagram showing a general configuration of the ultrasonic diagnostic apparatus and vibrator apparatus constituting the ultrasonic diagnostic system shown in FIG. 19.

[0033] FIG. 21 is a diagram showing an outline of a fourth variation of the ultrasonic diagnostic system in the third embodiment of the present invention.

[0034] FIG. 22 is a diagram showing an outline of a fifth variation of the ultrasonic diagnostic system in the third embodiment of the present invention.

[0035] FIG. 23 is a diagram showing an outline of an exemplary ultrasonic diagnostic system in a fourth embodiment of the present invention.

[0036] FIG. 24 is a diagram showing a display device on which a B-mode image is displayed, where the B-mode image has a geometric shape indicating a range for which a value of the subcutaneous fat thickness is to be calculated.

[0037] FIG. 25 is a diagram showing a display device on which a B-mode image is displayed, where the B-mode image has a geometric shape indicating a range for which a velocity-of-propagation is to be calculated.

[0038] FIG. 26 is a block diagram showing a configuration of the ultrasonic diagnostic apparatus comprising a speaker.

DETAILED DESCRIPTION OF THE INVENTION

[0039] Now a first embodiment will be described first. An ultrasonic diagnostic system 100 in the first embodiment shown in FIG. 1 is comprised of an ultrasonic diagnostic apparatus 1. The ultrasonic diagnostic apparatus 1 is connected with a plurality of ultrasonic probes 2. The plurality of ultrasonic probes 2 have first ultrasonic probes 21 and a second ultrasonic probe 22. For the first ultrasonic probes 21, three first ultrasonic probes 21A, 21B, 21C are connected to the ultrasonic diagnostic apparatus 1 in the present embodiment.

[0040] As shown in FIG. 2, a first ultrasonic probe 21 has a main body portion 211, and a vibrator 212 provided at the tip of the main body portion 211 and formed from a cylindrical protrusion. The vibrator 212 is put against a surface S of a subject, and applies mechanical vibration to the surface S. The vibrator 212 is configured to axially reciprocate with respect to the main body portion 211. It is by the axially moving vibrator 212 that mechanical vibration

is applied to the subject. The vibrator **212** is an exemplary embodiment of the vibrator in the present invention.

[0041] The vibrator **212** is provided therein with at least one ultrasonic transducer, although not particularly shown. It is by the ultrasonic vibrator that first ultrasound is transmitted to an object to be measured and echo signals therefrom are received. Based on the echo signals, shear waves generated within biological tissue in the subject by the mechanical vibration by the vibrator **212** are detected, which will be discussed later. The first ultrasonic probe **21** is an exemplary embodiment of the first transceiver in the present invention.

[0042] The frequency of the first ultrasound to be transmitted/received in each of the first ultrasonic probes **21A**, **21B**, **21C** is different from probe to probe. Moreover, the diameter of the vibrator **212** in each of the first ultrasonic probes **21A**, **21B**, **21C** may be different from probe to probe. The diameter of the vibrator **212** may be larger for a lower frequency of the first ultrasound in the first ultrasonic probe **21**.

[0043] The second ultrasonic probe **22** performs transmission/reception of second ultrasound different from the first ultrasound to/from the subject. In the ultrasonic probe **2**, a plurality of ultrasonic transducers are arranged in an azimuthal direction, although not particularly shown. The second ultrasonic probe **22** is an exemplary embodiment of the second transceiver in the present invention. For example, it is by the second ultrasonic probe **22** that ultrasound for producing a B-mode image is transmitted as the second ultrasound, and echo signals therefrom are received.

[0044] A block configuration of the ultrasonic diagnostic apparatus **1** will be described with reference to FIG. **3**. In addition to the aforementioned first ultrasonic probes **21** and second ultrasonic probe **22**, the ultrasonic diagnostic apparatus **1** comprises a transmission/reception (T/R) beamformer **3**, an echo data processing section **4**, a display processing section **5**, a display device **6**, an operation device **7**, a first control section **8**, a storage device **9**, and a second control section **10**. The ultrasonic diagnostic apparatus **1** is configured as a computer.

[0045] The T/R beamformer **3** drives the second ultrasonic probe **22** based on a control signal from the control section **8** to transmit second ultrasound having specific transmit parameters. The T/R beamformer **3** also performs signal processing, such as phased addition processing, on echo signals from the second ultrasound.

[0046] The echo data processing section **4** performs processing for producing an ultrasonic image on echo data output from the T/R beamformer **3**. For example, the echo data processing section **4** performs B-mode processing, such as logarithmic compression processing and envelope detection processing, to create B-mode data.

[0047] The display processing section **5** has a B-mode image data creating section **51** and an image display control section **52**, as shown in FIG. **4**. The B-mode image data creating section **51** scan-converts the B-mode data by a scan converter to create B-mode image data. The B-mode image data creating section **51** is an exemplary embodiment of the creating section in the present invention. The B-mode image data is an example of the data for an ultrasonic image in the present invention.

[0048] The image display control section **52** displays a B-mode image on the display device **6** based on the B-mode

image data. The image display control section **52** also displays text, numbers, etc. on the display device **6**.

[0049] The display device **6** is an LCD (Liquid Crystal Display), an organic EL (Electro-Luminescence) display, or the like. The display device **6** is an exemplary embodiment of the notifying section in the present invention.

[0050] The operation device **7** is a device for accepting an input of a command and information from the user, although not particularly shown. The operation device **7** is configured to include buttons, a keyboard, etc. for accepting an input of a command and information from the operator, and to further include a pointing device, such as a trackball, and the like.

[0051] The first control section **8** is a processor such as a CPU (Central Processing Unit). The processor is constructed from circuitry, or the like. The first control section **8** loads thereon programs stored in the storage device **9** to control several sections in the ultrasonic diagnostic apparatus **1**. For example, the first control section **8** loads thereon programs stored in the storage device **9**, and executes functions of the T/R beamformer **3**, echo data processing section **4**, and display processing section **5** by the loaded programs.

[0052] The first control section **8** may execute all of the functions of the T/R beamformer **3**, all of the functions of the echo data processing section **4**, and all of the functions of the display processing section **5** by the programs, or execute only part of the functions by the programs. In the case that the first control section **8** executes only part of the functions, the remaining functions may be executed by hardware, such as circuitry.

[0053] It should be noted that the functions of the T/R beamformer **3**, echo data processing section **4**, and display processing section **5** may be implemented by hardware, such as circuitry.

[0054] The storage device is an HDD (Hard Disk Drive), semiconductor memory, such as RAM (Random Access Memory) and ROM (Read Only Memory), and the like. The storage device **9** includes cine memory.

[0055] The ultrasonic diagnostic apparatus **1** may have all of the HDD, RAM and ROM as the storage device **9**. The storage device **9** may also be a portable storage medium, such as a CD (Compact Disk) or a DVD (Digital Versatile Disk).

[0056] The programs executed by the first control section **8** are stored in a non-transitory storage medium, such as the HDD or ROM constituting the storage device **9**. The programs may also be stored in a non-transitory storage medium having portability, such as the CD or DVD, constituting the storage device **9**.

[0057] The first control section **8** executes functions of a computing section **81** and an identifying section **82** shown in FIG. **5**. The computing section **81** calculates a value of a parameter affecting the most suitable frequency of the first ultrasound to be transmitted from the first ultrasonic probe **21** based on echo signals obtained by transmission/reception of the second ultrasound. Details thereof will be discussed later. The computing section **81** is an exemplary embodiment of the computing section in the present invention.

[0058] The identifying section **82** identifies one first ultrasonic probe **21** from among the first ultrasonic probes **21A**, **21B**, **21C** or identifies one frequency of the first ultrasound from among a plurality of frequencies of the first ultrasound corresponding to the first ultrasonic probes **21A**, **21B**, **21C** based on the value of the parameter calculated by the computing section **81**. Details thereof will be discussed later.

The identifying section **82** is an exemplary embodiment of the identifying section in the present invention.

[0059] The second control section **10** is a processor such as a CPU (Central Processing Unit). The control section **8** loads thereon programs stored in the storage device **9** to perform several kinds of control. For example, the second control section **10** executes functions of a transmission/reception (T/R) control section **101**, a vibration control section **102**, a velocity-of-propagation calculating section **103**, and an elasticity-value calculating section **104** shown in FIG. 6.

[0060] The T/R control section **101** controls transmission/reception of the first ultrasound by the first ultrasonic probe **21**. The vibration control section **102** controls the operation of the vibrator **212**.

[0061] The velocity-of-propagation calculating section **103** calculates a velocity V (m/sec) of propagation of the shear waves generated by mechanical vibration by the vibrator **212** based on echo signals from the first ultrasound received at the first ultrasonic probe **21**. The velocity-of-propagation calculating section **42** is an exemplary embodiment of the velocity-of-propagation calculating section in the present invention.

[0062] The elasticity-value calculating section **104** calculates an elasticity value E (kPa) based on the velocity V of propagation according to (EQ. 1) below:

$$E=3\rho V^2 \quad (\text{EQ. 1})$$

[0063] In (EQ. 1), ρ denotes the density of the object T to be measured. The elasticity value E is a modulus of elasticity.

[0064] Note that it is not always necessary to calculate the elasticity value E .

[0065] Next, an operation of the ultrasonic diagnostic apparatus **1** in the present embodiment will be described with reference to a flow chart in FIG. 7.

[0066] First, at Step **S1**, the second ultrasonic probe **22** performs transmission/reception of second ultrasound to/from a subject. Next, at Step **S2**, the B-mode image data creating section **S1** creates B-mode image data for the subject based on echo signals from the second ultrasound.

[0067] Next, at Step **S3**, the computing section **81** calculates a value of the parameter described above based on the B-mode image data. In the present embodiment, the value of the parameter is the value of the subcutaneous fat thickness for the subject. The computing section **81** locates subcutaneous fat in the B-mode image according to image processing known in the art based on information corresponding to brightness in the B-mode image data, and calculates a value of the subcutaneous fat thickness.

[0068] The value of the subcutaneous fat thickness may be a statistical value for a plurality of positions in a horizontal direction of the B-mode image. The statistical value is a mean value, a median value, or the like, for example. By using two-dimensional information like the B-mode image data in calculating a value of the subcutaneous fat thickness, a statistical value as described above may be calculated. This gives a more reliable value of the subcutaneous fat thickness.

[0069] Next, at Step **S4**, the identifying section **82** identifies one first ultrasonic probe **21** from among the first ultrasonic probes **21A**, **21B**, **21C** based on the value of the subcutaneous fat thickness obtained at Step **S3**. The identifying section **82** identifies a first ultrasonic probe **21** that

transmits first ultrasound of lower frequency for a greater value of the subcutaneous fat thickness, while it identifies a first ultrasonic probe **21** that transmits first ultrasound of higher frequency for a smaller value of the subcutaneous fat thickness. In general, ultrasound transmitted/received at an ultrasonic probe is ultrasound in a certain frequency band. The frequency for a first ultrasonic probe **21** identified by the identifying section **82** described above is a nominal frequency (or what is generally called central frequency) for the ultrasonic probe of frequencies contained in the frequency band of ultrasound.

[0070] A table defining the relationship between a value of the subcutaneous fat thickness and each of the first ultrasonic probes **21A**, **21B**, **21C** corresponding to the value may be stored in the storage device **9**, and the identifying section **82** may identify a frequency of the first ultrasound referring to the table.

[0071] Next, at Step **S5**, the image display control section **52** displays characters or a geometric shape indicating the first ultrasonic probe **21** identified at Step **S4** on the display device **6**.

[0072] Upon display of the first ultrasonic probe **21** at Step **S5**, the operator uses the displayed first ultrasonic probe **21** to perform elasticity measurement at Step **S6**. Specifically, the operator performs an input at the operation device **7** for selecting the displayed first ultrasonic probe **21**. The operator also puts the vibrator **212** of the first ultrasonic probe **21** against the body surface of the subject. Under these conditions, the vibrator **212** applies mechanical vibration to biological tissue to generate shear waves, and the first ultrasonic probe **21** transmits/receives first ultrasound for detecting the shear waves. The velocity-of-propagation calculating section **103** then calculates a velocity of propagation of the shear waves based on echo signals from the first ultrasound received at the first ultrasonic probe **21**. The calculated velocity of propagation is displayed on the display device **6** by the image display control section **52**. In place of or along with the velocity of propagation, an elasticity value calculated based on the velocity of propagation may be displayed on the display device **6**.

[0073] According to the present embodiment described above, a first ultrasonic probe **21** that transmits first ultrasound of most suitable frequency is displayed, and therefore, the operator can easily find out which of the first ultrasonic probes **21A**, **21B**, **21C** to use for performing elasticity measurement.

[0074] In calculation of a value of the subcutaneous fat thickness for identifying a most suitable first ultrasonic probe **21**, a more reliable value of the subcutaneous fat thickness may be obtained by using B-mode image data, which is two-dimensional information.

[0075] Next, variations of the first embodiment will be described. Now a first variation will be described first. FIG. **8** is a flow chart showing an operation of the ultrasonic diagnostic apparatus in the first variation. Steps **S11** to **S13**, and **S16** shown in FIG. **8** are identical to Steps **S1** to **S3**, and **S6** shown in FIG. **7**, description of which will be omitted. At Step **S14**, the identifying section **82** identifies a frequency of the first ultrasound based on the value of the subcutaneous fat thickness obtained at Step **S13**. The identifying section **82** identifies one frequency from among a frequency $F1$ of the first ultrasound to be transmitted from the first ultrasonic probe **21A**, a frequency $F2$ of the first ultrasound to be transmitted from the first ultrasonic probe **21B**, and a

frequency F3 of the first ultrasound to be transmitted from the first ultrasonic probe 21C. The identifying section 82 identifies a lower frequency for the frequency of the first ultrasound for a greater value of the subcutaneous fat thickness, while it identifies a higher frequency for the frequency of the first ultrasound for a smaller value of the subcutaneous fat thickness. A table defining the relationship between a value of the subcutaneous fat thickness and a value of the frequency corresponding to the value may be stored in the storage device 9, and the identifying section 82 may identify a frequency of the first ultrasound referring to the table.

[0076] Next, at Step S15, the image display control section 52 displays the frequency identified at Step S14 on the display device 6. At Step S16, the operator performs an input at the operation device 7 for selecting a first ultrasonic probe 21 for transmitting first ultrasound of the frequency displayed at Step S15. Then, elasticity measurement is performed in a way similar to Step S5 described earlier. By the frequency of the first ultrasound being displayed, the operator can easily find out which of the first ultrasonic probes 21A, 21B, 21C to use for performing elasticity measurement.

[0077] Next, a second variation will be described. FIG. 9 is a flow chart showing an operation of the ultrasonic diagnostic apparatus in the second variation. Steps S21 to S23 shown in FIG. 8 are identical to Steps S1 to S3 and Steps S11 to S13, description of which will be omitted. At Step S24, the identifying section 82 identifies one first ultrasonic probe 21 from among the first ultrasonic probes 21A, 21B, 21C in a way similar to Step S4, or identifies a frequency of the first ultrasound in a way similar to Step S14.

[0078] Once the first ultrasonic probe 21 or the frequency of the first ultrasound has been identified at Step S24, the flow goes to processing at Step S26. At Step S26, elasticity measurement is performed. In the elasticity measurement at Step S26, the T/R control section 101 transmits first ultrasound by the first ultrasonic probe 21 identified at Step S24. Alternatively, in the case that the frequency of the first ultrasound is identified at Step S24, the first ultrasound is transmitted by a first ultrasonic probe 21 corresponding to the frequency. The T/R control section 101 is an exemplary embodiment of the control section in the present invention.

[0079] The T/R control section 101 may transmit the first ultrasound in response to the operation device 7 accepting an input by the operator, for example.

[0080] The elasticity measurement at Step S26 is identical to that at Steps S6 and S16 except the feature described above.

[0081] According to the second variation, the most suitable first ultrasonic probe 21 may be automatically selected to perform elasticity measurement.

[0082] Next, a third variation will be described. As shown in FIG. 10, an ultrasonic diagnostic apparatus 11 in the third variation is connected with one first ultrasonic probe 21. The first ultrasonic probe 21 is configured to be capable of performing transmission/reception of a plurality of kinds of first ultrasound having different frequencies. The configuration of other components in the ultrasonic diagnostic apparatus 11 is identical to the ultrasonic diagnostic apparatus 1 shown by the block diagram in FIG. 3.

[0083] In the ultrasonic diagnostic apparatus 11, basically the same processing as that of the flow chart shown in FIG.

8, for example, is performed. However, at Step S14, the identifying section 82 identifies one frequency from among three different frequencies F1, F2, F3, for example, for the frequency of the first ultrasound based on the value of the subcutaneous fat thickness obtained at Step S13. It should be noted that identification of one frequency is not limited to that from among three frequencies F1, F2, F3.

[0084] At Step S16, the operator inputs a frequency displayed at Step S15 to the operation device 7. The inputting of a frequency may be an inputting of selection from among preset frequencies. The transmission control section 101 transmits first ultrasound of the frequency input at the operation device 7 by the first ultrasonic probe 21.

[0085] Moreover, basically the same processing as that of the flow chart shown in FIG. 9 may be performed in the ultrasonic diagnostic apparatus 11. However, since the present embodiment has a single first ultrasonic probe 21, the identifying section 82 identifies a frequency of the first ultrasound at Step S24, rather than identifying a first ultrasonic probe 21. At Step S26, the transmission control section 101 transmits first ultrasound of the frequency identified at Step S24 by the first ultrasonic probes 21.

[0086] Next, a second embodiment will be described. For components having identical symbols to those in the first embodiment, identical description to that in the first embodiment will be referred to, detailed description of which will be omitted.

[0087] An ultrasonic diagnostic system 1001 in the second embodiment shown in FIG. 11 is comprised of an ultrasonic diagnostic apparatus 12 and a measurement apparatus 13. The ultrasonic diagnostic apparatus 12 is connected with a second ultrasonic probe 22. The measurement apparatus 13 is connected with first ultrasonic probes 21A, 21B, 21C. The ultrasonic diagnostic apparatus 12 is an exemplary embodiment of the second apparatus in the present invention. The measurement apparatus 13 is an exemplary embodiment of the first apparatus in the present invention.

[0088] In addition to the second ultrasonic probe 22, the ultrasonic diagnostic apparatus 12 comprises, as shown in FIG. 12, the T/R beamformer 3, echo data processing section 4, display processing section 5, display device 6, operation device 7, first control section 8, storage device 9, and a communication interface 121. The measurement apparatus 13 comprises, in addition to the first ultrasonic probes 21A, 21B, 21C, the second control section 10, a display device 131, an operation device 132, a storage device 133, and a communication interface 134. The ultrasonic diagnostic apparatus 12 and measurement apparatus 13 are configured to be capable of communicating signals or the like to each other via the communication interfaces 121, 134.

[0089] Next, an operation of the ultrasonic diagnostic system 1001 in the present embodiment will be described. In the ultrasonic diagnostic system 1001 in the present embodiment, basically the same processing as that of the flow chart shown in FIG. 7 is performed. However, upon display of the characters or geometric shape indicating a first ultrasonic probe 21 on the display device 6 in the ultrasonic diagnostic apparatus 12 at Step S5, the operator performs an input of selecting the displayed first ultrasonic probe 21 at the operation device 132 in the measurement apparatus 13 at Step S6. The elasticity measurement described earlier is then performed.

[0090] It should be noted that in the present embodiment, information indicating the first ultrasonic probe 21 identified

at the identifying section 82 may be transmitted to the measurement apparatus 13, and characters or a geometric shape indicating the first ultrasonic probe 21 may be displayed on the display device 131.

[0091] The ultrasonic diagnostic system 1001 in the present embodiment described above has the same effect as that in the first embodiment.

[0092] Next, variations of the second embodiment will be described. Now a first variation will be described first. The first variation is basically the same as the first variation in the first embodiment, and basically the same processing as that of the flow chart shown in FIG. 8 is performed. However, upon display of the frequency on the display device 6 in the ultrasonic diagnostic apparatus 12 at Step S15, an input of selecting a first ultrasonic probe 21 that transmits first ultrasound of the displayed frequency is performed at the operation device 132 at Step S16.

[0093] It should be noted that information indicating the frequency identified at the identifying section 82 may be transmitted to the measurement apparatus 13, and the frequency may be displayed on the display device 131.

[0094] Next, a second variation will be described. The second variation is basically the same as the second variation of the first embodiment, and basically the same processing as that of the flow chart shown in FIG. 9 is performed. However, at Step S26, a signal indicating a first ultrasonic probe 21 or a signal indicating a frequency of the first ultrasound identified at Step S24 is transmitted from the ultrasonic diagnostic apparatus 12 to the measurement apparatus 13. The T/R control section 101 transmits first ultrasound by the first ultrasonic probe 21 transmitted from the ultrasonic diagnostic apparatus 12. Alternatively, the T/R control section 101 transmits first ultrasound by a first ultrasonic probe 21 corresponding to the frequency transmitted from the ultrasonic diagnostic apparatus 12.

[0095] Next, a third variation will be described. As shown in FIG. 13, a measurement apparatus 14 in the third variation is connected with one first ultrasonic probe 21. The configuration of other components in the measurement apparatus 14 is identical to the measurement apparatus 13 shown by the block diagram in FIG. 12.

[0096] In the ultrasonic diagnostic system 1001 in the third variation, again, the same processing as that of the flow chart shown in FIG. 8 is performed. However, the operator inputs the frequency displayed at Step S15 at the operation device 132 in the measurement apparatus 14. Thus, first ultrasound of the input frequency is transmitted.

[0097] Alternatively, in the ultrasonic diagnostic system 1001 in the third variation, basically the same processing as that of the flow chart shown in FIG. 9 may be performed. However, since the present embodiment has a single first ultrasonic probe 21, the identifying section 82 identifies a frequency of the first ultrasound at Step S24, rather than identifying a first ultrasonic probe 21. At Step S26, a signal indicating the frequency identified at Step S24 is transmitted from the ultrasonic diagnostic apparatus 12 to the measurement apparatus 14. The T/R control section 101 then transmits first ultrasound of the frequency transmitted from the ultrasonic diagnostic apparatus 12 by the first ultrasonic probe 21.

[0098] Next, a third embodiment will be described. For components having identical symbols to those in the first and second embodiments, identical description to that in the

first and second embodiments will be referred to, detailed description of which will be omitted.

[0099] An ultrasonic diagnostic system 1002 in the third embodiment shown in FIG. 14 is comprised of an ultrasonic diagnostic apparatus 15. The ultrasonic diagnostic apparatus 15 is connected with an ultrasonic probe 25 and a vibrator 26. The ultrasonic probe 25 has a plurality of ultrasonic transducers arranged in an azimuthal direction. The ultrasonic probe 25 performs transmission/reception of the first ultrasound and transmission/reception of the second ultrasound to/from a subject. The ultrasonic probe 25 is configured, again in the present embodiment, to be capable of transmitting ultrasound of different frequencies as the first ultrasound. The ultrasonic probe 25 is an exemplary embodiment of the transceiver in the present invention.

[0100] The vibrator 26 has a main body portion 261, and a cylindrical protrusion 262 provided at the tip. The protrusion 262 is configured to axially reciprocate with respect to the main body portion 261. It is by the axially moving protrusion 262 that mechanical vibration is applied to the subject. Shear waves generated within biological tissue in the subject by the mechanical vibration applied by the protrusion 262 are detected by the first ultrasound. The vibrator 26 is an exemplary embodiment of the vibrator in the present invention.

[0101] It should be noted that no ultrasonic transducer is provided in the protrusion 262.

[0102] A block configuration of the ultrasonic diagnostic apparatus 15 will be described with reference to FIG. 15. In addition to the ultrasonic probe 25 and vibrator 26, the ultrasonic diagnostic apparatus 15 comprises the T/R beamformer 3, echo data processing section 4, display processing section 5, display device 6, operation device 7, first control section 8, and storage device 9, as in the ultrasonic diagnostic apparatus 1 in the first embodiment. The ultrasonic diagnostic apparatus 15 also comprises a second control section 151.

[0103] In the present embodiment, the T/R beamformer 3 drives the ultrasonic probe 25 based on a control signal from the first control section 8 to transmit first ultrasound, in addition to second ultrasound. The first ultrasound may be transmitted using a single ultrasonic transducer or a plurality of ultrasonic transducers. The ultrasonic probe 25 is configured to be capable of performing transmission/reception of a plurality of kinds of first ultrasound having different frequencies.

[0104] In the present embodiment, the echo data processing section 4 has a B-mode processing section 41, a velocity-of-propagation calculating section 42, and an elasticity-value calculating section 43, as shown in FIG. 16. The B-mode processing section 41 performs B-mode processing to create B-mode data. The velocity-of-propagation calculating section 42 calculates a velocity of propagation of the shear waves described above based on echo signals from the first ultrasound received at the ultrasonic probe 25, as with the velocity-of-propagation calculating section 103. The elasticity-value calculating section 43 calculates an elasticity value based on the velocity of propagation, as with the elasticity-value calculating section 104.

[0105] The second control section 151 has a vibration control section 1511, as shown in FIG. 17. The vibration control section 1511 controls the operation of the vibrator 26.

[0106] Next, an operation of the ultrasonic diagnostic system 1002 in the present embodiment will be described. In the ultrasonic diagnostic system 1002 in the present embodiment, basically the same processing as that of the flow chart shown in FIG. 8 is performed. However, at Step S11, the ultrasonic probe 25 performs transmission/reception of the second ultrasound.

[0107] Moreover, at Step S14, the identifying section 82 identifies one frequency from among three different frequencies F1, F2, F3, for example, as the frequency for the first ultrasound based on the value of the subcutaneous fat thickness obtained at Step S13. Furthermore, at Step S16, the operator inputs the frequency displayed at Step S15 at the operation device 7, as in the third variation of the first embodiment. The operator also puts the vibrator 26 against the body surface of the subject. Under these conditions, the second control section 151 drives the vibrator 212, which applies mechanical vibration to biological tissue. To the first control section 8 is input a signal indicating that the vibrator 212 is driven from the second control section 151. Once the signal has been input to the first control section 8, it outputs a signal for driving the ultrasonic probe 25 and transmits first ultrasound of the frequency input at the operation device 7 from the ultrasonic probe 25.

[0108] The present embodiment described above, again, has the same effect as those in the first and second embodiments.

[0109] Next, variations of the third embodiment will be described. Now a first variation will be described first. In the first variation, basically the same processing as that of the flow chart shown in FIG. 9 is performed. However, at Step S24, the identifying section 82 identifies a frequency of the first ultrasound. At Step S26, once the operation device 7 has accepted an input by the operator, for example, the second control section 151 drives the vibrator 26. Moreover, upon an input of a signal indicating that the vibrator 26 has been driven from the second control section 151, the first control section 8 outputs a signal for driving the ultrasonic probe 25 to transmit therefrom first ultrasound of the frequency input at the operation device 7. In the present embodiment, the first control section 8 is an exemplary embodiment of the control section in the present invention.

[0110] Next, a second variation will be described. In the ultrasonic diagnostic apparatus 15 in the second variation shown in FIG. 18, a vibrator 27 is attached to the ultrasonic probe 25 in a removable manner. The vibrator 27 has the same configuration as that of an attachment disclosed in Japanese Patent Application KOKAI No. 2015-039583, and it is by an axially moving vibrating section 27A that mechanical vibration is applied to a subject. The vibrating section 27A is controlled by the vibration control section 1511 in the second control section 151.

[0111] The operation of the second variation is similar to that of the third embodiment and that of the first variation of the third embodiment described above, description of which will be omitted.

[0112] Next, a third variation will be described. As shown in FIG. 19, an ultrasonic diagnostic system 1002 in the third variation is comprised of the ultrasonic diagnostic apparatus 15 and a vibration apparatus 16. The vibrator 26 is connected to the vibration apparatus 16, rather than to the ultrasonic diagnostic apparatus 15. In the present embodiment, the vibration apparatus 16 is an exemplary embodiment of the

first apparatus, and the ultrasonic diagnostic apparatus 15 is an exemplary embodiment of the second apparatus.

[0113] The vibration apparatus 16 comprises the aforementioned second control section 151, as shown in FIG. 20. The vibration control section 1511 (FIG. 17) in the second control section 151 controls the operation of the vibrator 26. The vibration apparatus 16 also comprises an operation device 161. Once the operation device 161 has accepted an input by the operator, the vibration control section 1511 drives the vibrator 26.

[0114] It should be noted that the vibration apparatus 16 may comprise a display device and/or a storage device, although not particularly shown.

[0115] When the ultrasonic diagnostic apparatus 15 and vibration apparatus 16 are capable of communication, the vibrator 26 may be configured to be driven by a signal transmitted from the first control section 8.

[0116] The configuration of the ultrasonic diagnostic apparatus 15 is identical to those described earlier.

[0117] The operation of the third variation, again, is similar to that of the third embodiment and that of the first variation of the third variation, description of which will be omitted.

[0118] In the present embodiment, the ultrasonic diagnostic apparatus 15 may be connected with the first ultrasonic probe(s) 21 and second ultrasonic probe 22, in place of the ultrasonic probe 25. As the first ultrasonic probe(s) 21, a plurality of the first ultrasonic probes 21 or a single first ultrasonic probe 21 may be connected.

[0119] Next, a fourth variation will be described. As shown in FIG. 21, in addition to the ultrasonic probe 25, an ultrasonic probe 28 for transmitting first ultrasound is connected to the ultrasonic diagnostic apparatus 15. In the fourth variation, the ultrasonic probe 25 does not perform transmission/reception of the first ultrasound but does perform only transmission/reception of the second ultrasound. In the fourth variation, the ultrasonic probe 25 is an exemplary embodiment of the second transceiver, and the ultrasonic probe 28 is an exemplary embodiment of the first transceiver.

[0120] The ultrasonic probe 28 performs transmission/reception of the first ultrasound based on a control signal from the first control section 8. The ultrasonic probe 28 is configured to be capable of transmitting/receiving a plurality of kinds of first ultrasound having different frequencies.

[0121] The operation of the fourth variation is basically the same as that of the third embodiment and that of the first variation of the third embodiment described above, except that the first ultrasound is transmitted from the ultrasonic probe 28.

[0122] Next, a fifth variation will be described. As shown in FIG. 22, three ultrasonic probes 28A, 28B, 28C may be connected to the ultrasonic diagnostic apparatus 15 as the ultrasonic probes 28. The frequency of the first ultrasound to be transmitted/received by each of the ultrasonic probes 28A, 28B, 28C is different from probe to probe. One ultrasonic probe 28 of the ultrasonic probes 28A, 28B, 28C performs transmission/reception of the first ultrasound based on a control signal from the first control section 8.

[0123] The operation of the fifth variation is basically the same as that of the third embodiment and that of the first variation of the third embodiment described above, except that the first control section 8 drives one ultrasonic probe 28

of the ultrasonic probes **28A**, **28B**, **28C** to perform transmission/reception of the first ultrasound.

[0124] In the fifth variation, basically the same processing as that of the flow chart shown in FIG. 7 may also be performed. In this case, the operator performs an input of selecting one ultrasonic probe **28** of the ultrasonic probes **28A**, **28B**, **28C** at the operation device **7**. Transmission/reception of the first ultrasound is then performed by the selected ultrasonic probe **28**.

[0125] Next, a fourth embodiment will be described. For components having identical symbols to those in the first, second, and third embodiments, identical description to that in the first, second, and third embodiments will be referred to, detailed description of which will be omitted.

[0126] An ultrasonic diagnostic system **1003** in the fourth embodiment shown in FIG. 23 is comprised of the ultrasonic diagnostic apparatus **12**, a measurement apparatus **17**, and the vibration apparatus **16**. The ultrasonic diagnostic apparatus **12** is the one described in the second embodiment, and the vibration apparatus **16** is the one described in the third variation of the third embodiment. The measurement apparatus **17** has basically the same configuration as that of the measurement apparatus **13** described in the second embodiment. However, the measurement apparatus **17** is connected with the ultrasonic probes **28A**, **28B**, **28C**. Moreover, the second control section **10** executes the functions except that of the vibration control section **102**, i.e., the functions of the T/R control section **101**, velocity-of-propagation calculating section **103**, and elasticity-value calculating section **104**.

[0127] In the present embodiment, the ultrasonic diagnostic apparatus **12** is an exemplary embodiment of the third apparatus in the present invention. In the present embodiment, the measurement apparatus **17** is an exemplary embodiment of the second apparatus in the present invention. In the present embodiment, the vibration apparatus **16** is an exemplary embodiment of the first apparatus in the present invention.

[0128] Now an operation of the present embodiment will be described. In the ultrasonic diagnostic system **1003** in the present embodiment, basically the same processing as that of the second embodiment is performed with reference to the flow charts shown in FIGS. 7, 8, and 9. However, the measurement apparatus **17** is used in the present embodiment in place of the measurement apparatus **13** in the second embodiment, and mechanical vibration is applied by the vibrator **26**.

[0129] It should be noted that in the present embodiment, again, there may be a single ultrasonic probe **28**, although not particularly shown.

[0130] While the present invention has been described with reference to the embodiments, it will be easily recognized that the present invention may be practiced with several modifications without changing the spirit and scope thereof. For example, the value of the parameter calculated by the computing section **81** is not limited to the value of the subcutaneous fat thickness. For example, the computing section **81** may calculate the amount of ultrasound attenuation in a subject based on echo signals from the second ultrasound as the value of the parameter described above. In this case, the computing section **81** may calculate a mean value of the amounts of attenuation in a plurality of acoustic lines in a B-mode image, for example, as the amount of ultrasound attenuation. Moreover, the computing section **81** may calculate an amount of attenuation of an echo signal

from the second ultrasound in one acoustic line as the amount of ultrasound attenuation.

[0131] The frequency of the first ultrasound is lower for a greater amount of attenuation calculated by the computing section **81**, while it is higher for a smaller amount of attenuation.

[0132] For example, attenuation in biological tissue is sometimes small in spite of thick subcutaneous fat. Therefore, by the frequency of the first ultrasound determined based on the amount of attenuation as described above, first ultrasound having a suitable frequency may be used in elasticity measurement.

[0133] Moreover, the computing section **81** may calculate a distance from the body surface to the diaphragm of a subject as the value of the parameter described above based on B-mode image data. The computing section **81** calculates a distance from the body surface to the diaphragm of a subject by performing image processing of extracting the diaphragm based on information indicating the brightness of B-mode image data, for example. The frequency of the first ultrasound is higher for a smaller distance calculated by the computing section **81**.

[0134] For example, in the case that the distance from the body surface to the diaphragm of a subject is relatively small, when first ultrasound of lower frequency is transmitted, the first ultrasound may overpenetrate and may be reflected at the diaphragm in unexpected directions. Accordingly, by increasing the frequency of the first ultrasound for a smaller value of the distance calculated by the computing section **81**, the problem of the reflection may be solved.

[0135] Moreover, as shown in FIG. 24, the display image control section **52** may display in a B-mode image BI displayed on the display device **6** a geometric shape **R1** indicating a range for which the value of the subcutaneous fat thickness is to be calculated. In the present embodiment, the geometric shape **R1** is a rectangle. However, the form of the geometric shape **R1** is not limited to a rectangle. The display device **6** is an exemplary embodiment of the display device in the present invention.

[0136] Furthermore, as shown in FIG. 25, the display image control section **52** may display in the B-mode image BI displayed on the display device **6** a geometric shape **R2** indicating a range for which the velocity of propagation is to be calculated by the velocity-of-propagation calculating section **42**. In the present embodiment, again, the geometric shape **R2** is a rectangle. However, the form of the geometric shape **R2** is not limited to a rectangle. The size of the geometric shape **R2** in the depth direction varies with the frequency of the first ultrasound.

[0137] Furthermore, instead of or along with displaying the first ultrasonic probe **21** by characters or a geometric shape or displaying the frequency of the first ultrasound, the first ultrasonic probe **21** or the frequency may be audibly notified by a speaker **18** shown in FIG. 26. In this case, the speaker **18** is an exemplary embodiment of the notifying section in the present invention.

[0138] While a case in which the speaker **18** is provided in the ultrasonic diagnostic apparatus **1** shown in FIG. 1 is illustrated in FIG. 26, it will be easily recognized that the speaker may be provided in any one of the apparatuses described earlier in the other embodiments.

[0139] In addition, the first control section **8**, and second control sections **10**, **151** may be constructed as a single control section.

We claim:

1. An ultrasonic diagnostic system comprising:

a vibrator for applying mechanical vibration to a subject;
a first transceiver for performing transmission/reception of first ultrasound for detecting shear waves generated in said subject by said mechanical vibration applied by said vibrator;

a second transceiver for performing transmission/reception of second ultrasound different from said first ultrasound to/from said subject;

a computing section for calculating a value of a parameter affecting a frequency of the first ultrasound to be transmitted from said first transceiver based on echo signals obtained by transmission/reception of said second ultrasound;

an identifying section for identifying one first transceiver from among a plurality of the first transceivers each having a different frequency of said first ultrasound or identifying a frequency of the first ultrasound to be transmitted/received at said first transceiver based on the value of said parameter; and

a notifying section for notifying an operator of said first transceiver or said frequency identified by said identifying section.

2. An ultrasonic diagnostic system comprising:

a vibrator for applying mechanical vibration to a subject;
a transceiver for performing transmission/reception of first ultrasound for detecting shear waves generated in said subject by said mechanical vibration applied by said vibrator and transmission/reception of second ultrasound different from said first ultrasound to/from said subject;

a computing section for calculating a value of a parameter affecting a frequency of the first ultrasound to be transmitted from said transceiver based on echo signals obtained by transmission/reception of said second ultrasound;

an identifying section for identifying a frequency of the first ultrasound to be transmitted/received at the transceiver based on the value of said parameter; and

a notifying section for notifying an operator of the frequency identified by said identifying section.

3. An ultrasonic diagnostic system comprising:

a vibrator for applying mechanical vibration to a subject;
a first transceiver for performing transmission/reception of first ultrasound for detecting shear waves generated in said subject by said mechanical vibration applied by said vibrator;

a second transceiver for performing transmission/reception of second ultrasound different from said first ultrasound to/from said subject;

a computing section for calculating a value of a parameter affecting a frequency of the first ultrasound to be transmitted from said first transceiver based on echo signals obtained by transmission/reception of said second ultrasound;

an identifying section for identifying one first transceiver from among a plurality of the first transceivers each having a different frequency of said first ultrasound or identifying a frequency of the first ultrasound to be transmitted/received at said first transceiver based on the value of said parameter; and

a control section for performing transmission/reception of said first ultrasound with said first transceiver identified

by said identifying section or with said frequency identified by said identifying section.

4. An ultrasonic diagnostic system comprising:

a vibrator for applying mechanical vibration to a subject;
a transceiver for performing transmission/reception of first ultrasound for detecting shear waves generated in said subject by said mechanical vibration applied by said vibrator and transmission/reception of second ultrasound different from said first ultrasound to/from said subject;

a computing section for calculating a value of a parameter affecting a frequency of the first ultrasound to be transmitted from said transceiver based on echo signals obtained by transmission/reception of said second ultrasound;

an identifying section for identifying a frequency of the first ultrasound to be transmitted/received at the transceiver based on the value of said parameter; and

a control section for performing transmission/reception of said first ultrasound with said frequency identified by said identifying section.

5. The ultrasonic diagnostic system as recited in claim 1, wherein: said system comprises an ultrasonic diagnostic apparatus connected with said vibrator, said first transceiver, and said second transceiver.

6. The ultrasonic diagnostic system as recited in claim 2, wherein: said system comprises an ultrasonic diagnostic apparatus connected with said vibrator and said transceiver.

7. The ultrasonic diagnostic system as recited in claim 1, comprising:

a first apparatus connected with said vibrator and said first transceiver; and

a second apparatus connected with said second transceiver.

8. The ultrasonic diagnostic system as recited in claim 2, comprising:

a first apparatus connected with said vibrator; and

a second apparatus connected with said transceiver.

9. The ultrasonic diagnostic system as recited in claim 1, comprising:

a first apparatus connected with said vibrator;

a second apparatus connected with said first transceiver and said second transceiver.

10. The ultrasonic diagnostic system as recited in claim 1, comprising:

a first apparatus connected with said vibrator;

a second apparatus connected with said first transceiver; and

a third apparatus connected with said second transceiver.

11. The ultrasonic diagnostic system as recited in claim 1, comprising:

a creating section for creating data for an ultrasonic image of said subject based on the echo signals obtained by transmission/reception of said second ultrasound, wherein

said computing section calculates the value of said parameter based on the data for said ultrasonic image.

12. The ultrasonic diagnostic system as recited in claim 1, wherein: the value of said parameter is at least one of a thickness of subcutaneous fat of said subject, an amount of ultrasound attenuation in said subject, and a distance from a body surface to a diaphragm of said subject.

13. The ultrasonic diagnostic system as recited in claim 1, wherein:

the value of said parameter is an amount of attenuation of said first ultrasound, and

said computing section calculates the amount of attenuation of said first ultrasound based on the echo signal obtained by transmission/reception of said second ultrasound for one acoustic line.

14. The ultrasonic diagnostic system as recited in claim **1**, wherein: said vibrator and said first transceiver are configured as a single unit or separate units.

15. The ultrasonic diagnostic system as recited in claim **2**, wherein: said vibrator and said transceiver are configured as a single unit or separate units.

16. The ultrasonic diagnostic system as recited in claim **1**, comprising: a velocity-of-propagation calculating section for calculating a velocity of propagation of said shear waves based on echo signals from said first ultrasound.

17. The ultrasonic diagnostic system as recited in claim **12**, comprising: a display device for displaying an ultrasonic image created based on the echo signals obtained by transmission/reception of said second ultrasound, wherein said display device displays on said ultrasonic image a range for which the value of said subcutaneous fat thickness is to be calculated.

18. The ultrasonic diagnostic system as recited in claim **16**, comprising: a display device for displaying an ultrasonic

image created based on the echo signals obtained by transmission/reception of said second ultrasound, wherein said display device displays on said ultrasonic image a range for which the velocity of propagation is to be calculated by said velocity-of-propagation calculating section.

19. The ultrasonic diagnostic system as recited in claim **1**, comprising:

a plurality of first transceivers as said first transceiver, wherein said first ultrasound transmitted/received at each of said plurality of first transceivers has a different frequency, and

said identifying section identifies one transceiver from among said plurality of first transceivers.

20. The ultrasonic diagnostic system as recited in claim **1**, wherein:

said first transceiver is comprised of one first transceiver capable of transmitting a plurality of kinds of first ultrasound each having a different frequency, and

said identifying section identifies a frequency of one kind of first ultrasound from among said plurality of kinds of first ultrasound that is transmitted/received at said first transceiver.

* * * * *

专利名称(译)	超声波诊断系统		
公开(公告)号	US20180177492A1	公开(公告)日	2018-06-28
申请号	US15/851072	申请日	2017-12-21
[标]申请(专利权)人(译)	通用电气公司		
申请(专利权)人(译)	通用电气公司		
当前申请(专利权)人(译)	通用电气公司		
[标]发明人	NAGAI SAIKA BEH TECK CHUAN KAMIYAMA NAOHISA		
发明人	NAGAI, SAIKA BEH, TECK CHUAN KAMIYAMA, NAOHISA		
IPC分类号	A61B8/08 A61B8/00		
CPC分类号	A61B8/5207 A61B8/4494 A61B8/4488 A61B8/5246 A61B8/565 A61B8/461 A61B8/5292 A61B8/4477 A61B8/485 A61B8/54		
优先权	2016252412 2016-12-27 JP		
外部链接	Espacenet USPTO		

摘要(译)

一种超声波诊断系统，包括：第一收发器，用于执行第一超声波的发送/接收，用于检测由机械振动在对象中产生的剪切波；第二收发器，用于向/从对象执行第二超声波的发送/接收；计算部分，用于基于通过发送/接收第二超声获得的回波信号来计算影响要从第一收发器发送的第一超声的参数的值；识别部分，用于基于所述参数的值从多种第一收发器中识别一个第一收发器，每个所述第一收发器具有不同于所述第一超声的频率；以及显示装置，用于显示由识别部分识别的第一收发信机。

