



US009186123B1

(12) **United States Patent**  
**Dunham et al.**

(10) **Patent No.:** **US 9,186,123 B1**  
(45) **Date of Patent:** **Nov. 17, 2015**

(54) **ULTRASOUND SCANNERS WITH ANISOTROPIC HEAT DISTRIBUTORS FOR ULTRASOUND PROBE**

(75) Inventors: **Paul Dunham**, Bothell, WA (US);  
**Dustin Green**, Carnation, WA (US);  
**Thomas Houck**, Bellevue, WA (US)

(73) Assignee: **FUJIFILM SonoSite, Inc.**, Bothell, WA (US)

(\* ) Notice: Subject to any disclaimer, the term of this patent is extended or adjusted under 35 U.S.C. 154(b) by 544 days.

(21) Appl. No.: **12/862,618**

(22) Filed: **Aug. 24, 2010**

(51) **Int. Cl.**  
**A61B 8/00** (2006.01)

(52) **U.S. Cl.**  
CPC .. **A61B 8/00** (2013.01); **A61B 8/546** (2013.01)

(58) **Field of Classification Search**  
CPC ..... A61B 8/546; A61B 8/00  
USPC ..... 136/203; 324/509; 374/31; 600/459;  
73/865.9  
See application file for complete search history.

(56) **References Cited**

**U.S. PATENT DOCUMENTS**

5,421,203 A	6/1995	Graff et al.	
5,721,463 A	2/1998	Snyder	
6,037,032 A *	3/2000	Klett et al.	428/71
6,217,530 B1	4/2001	Martin et al.	
6,859,984 B2 *	3/2005	Dinet et al.	29/25.35
6,905,466 B2	6/2005	Salgo et al.	
7,314,447 B2 *	1/2008	Park et al.	600/459
7,382,617 B2 *	6/2008	Yu et al.	361/704

7,473,030 B2 *	1/2009	Bruce et al.	374/31
8,033,190 B2 *	10/2011	Renken et al.	73/866.1
2004/0002655 A1 *	1/2004	Bolorforosh et al.	600/459
2005/0075573 A1 *	4/2005	Park et al.	600/459
2007/0152674 A1 *	7/2007	Hubbell	324/509
2007/0167803 A1 *	7/2007	Kaminski et al.	600/459
2007/0276248 A1 *	11/2007	Saito et al.	600/459
2008/0121263 A1 *	5/2008	Schutte et al.	136/203
2009/0069688 A1 *	3/2009	Aono et al.	600/459

**FOREIGN PATENT DOCUMENTS**

WO WO 2007/086180 \* 8/2007 ..... A61B 8/00

**OTHER PUBLICATIONS**

Wirtz et al. "Thermal Management Using "Dry" Phase Change Materials", Proc. Fifteenth IEEE Semiconductor Thermal Measurement and Management Symposium, Mar. 9-11, 1999, San Diego CA, IEEE, pp. 74-82.\*

\* cited by examiner

*Primary Examiner* — Unsu Jung

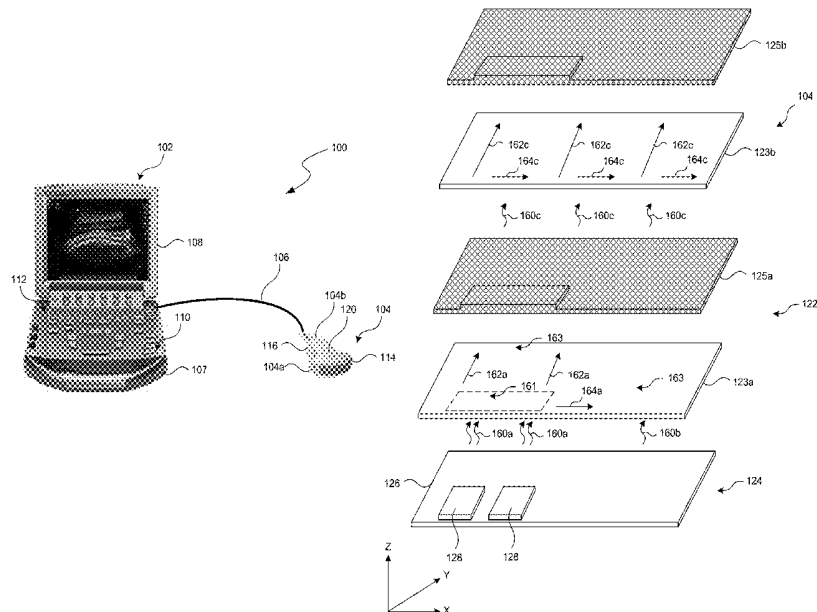
*Assistant Examiner* — Serkan Akar

(74) *Attorney, Agent, or Firm* — Perkins Coie LLP

(57) **ABSTRACT**

Ultrasound scanners with anisotropic heat distributors and associated methods of operation are disclosed herein. In one embodiment, an ultrasound scanner can include a housing having a surface enclosing an internal cavity, an electronic component in the internal cavity of the housing, and a heat distributor between the surface of the housing and the electronic component. The heat distributor is in thermal communication with both the electronic component and the surface of the housing. The heat distributor includes a laminated structure having a conductive layer and a insulative layer stacked one on the other.

**13 Claims, 12 Drawing Sheets**



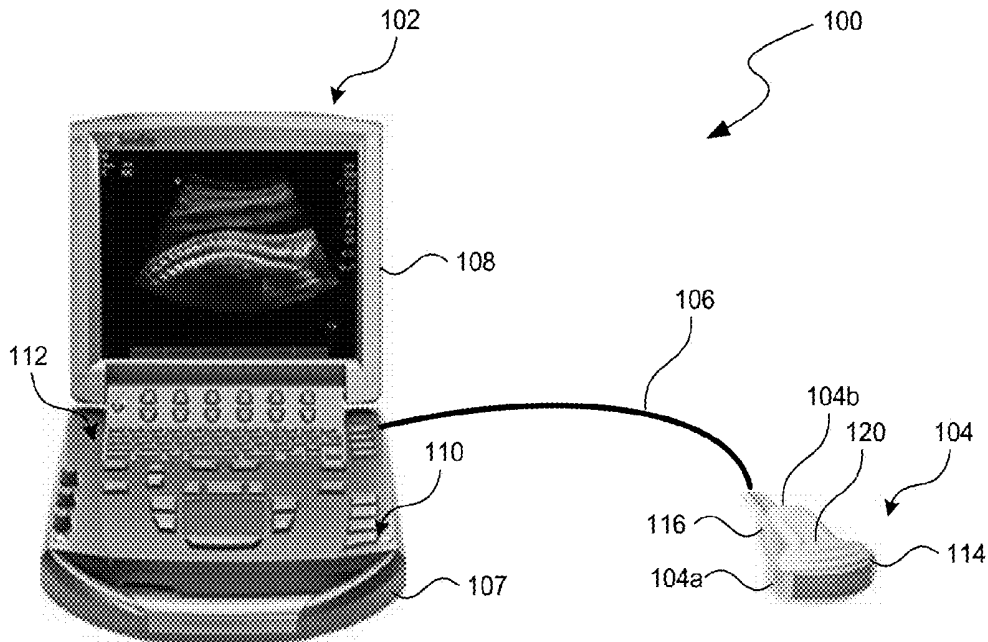


FIG. 1A

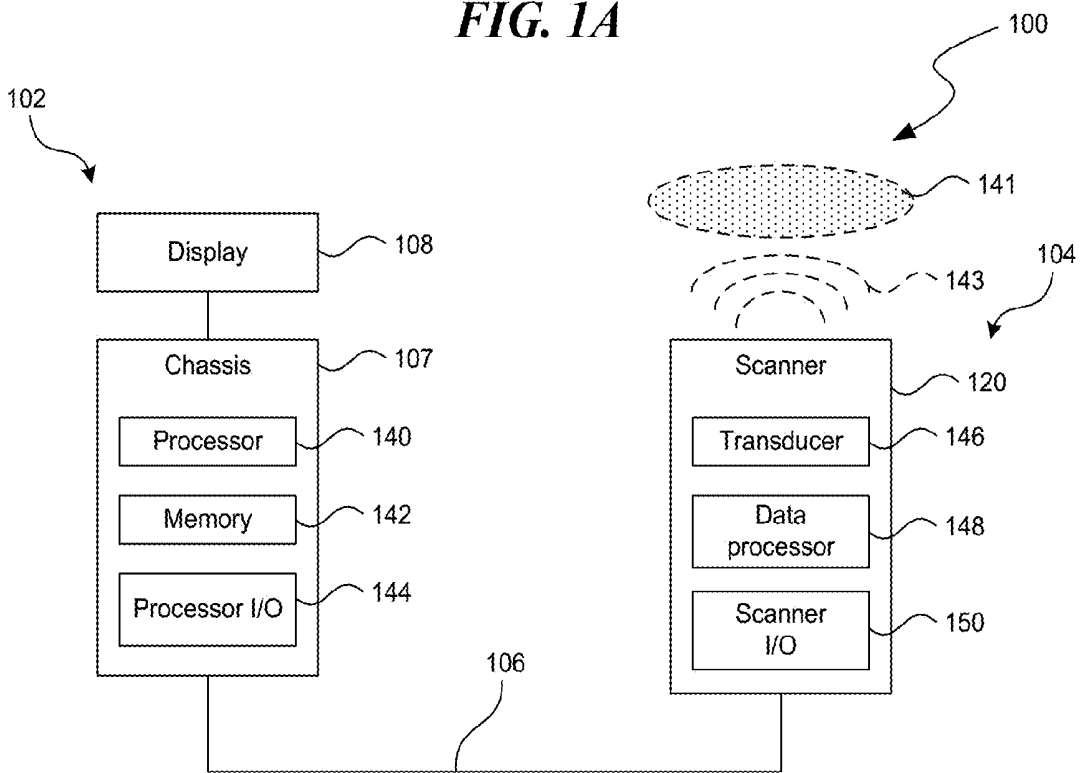


FIG. 1B

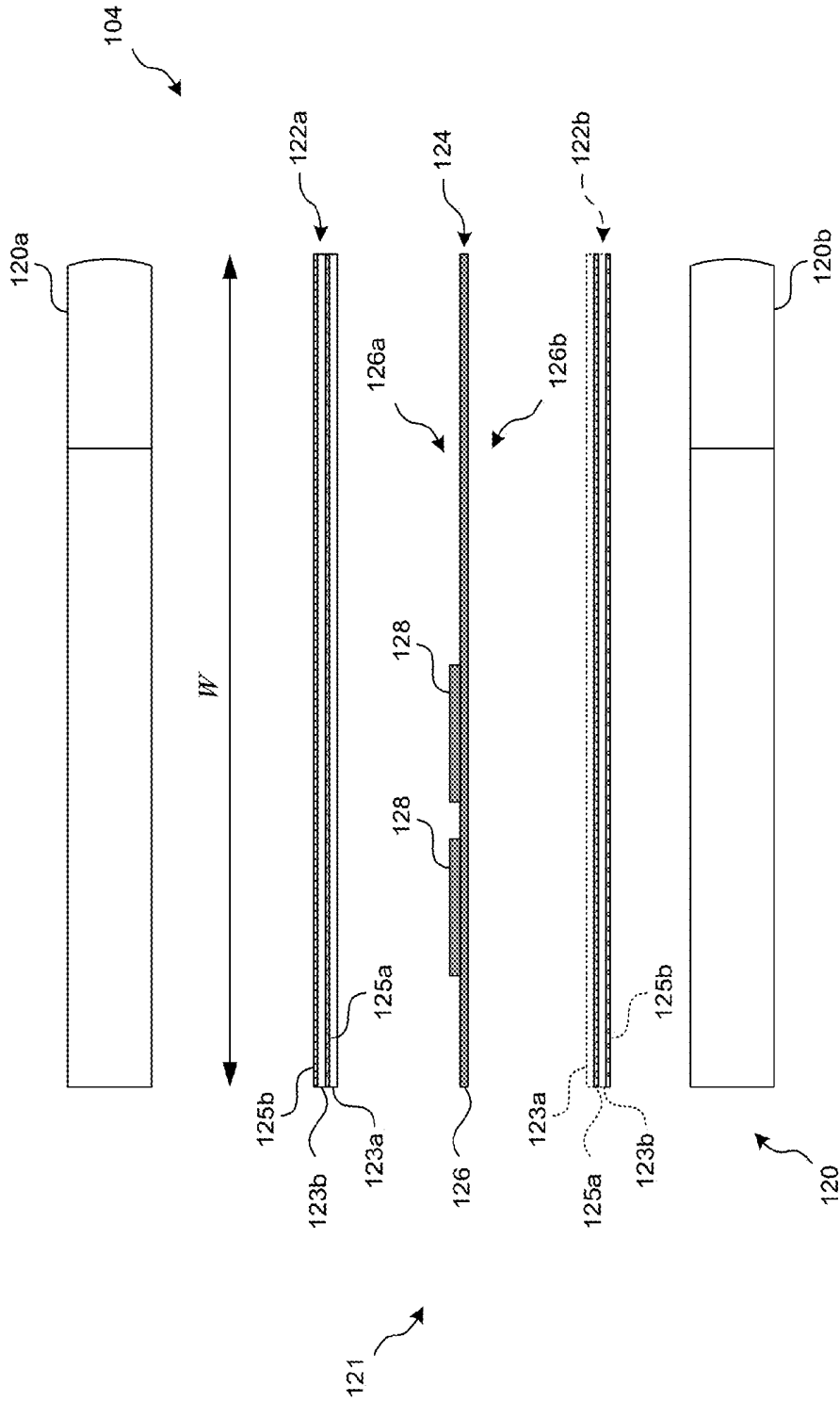


FIG. 2A

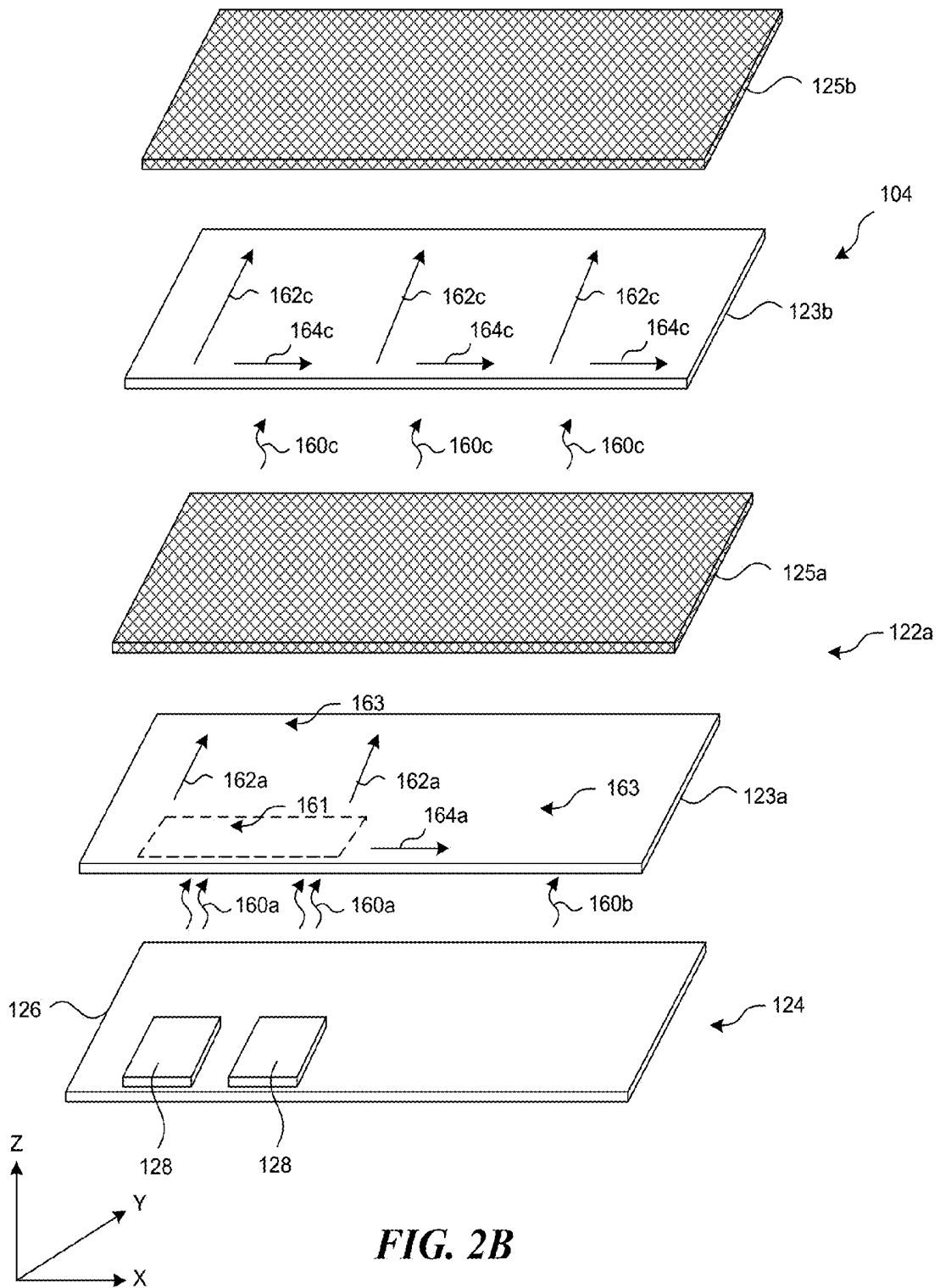


FIG. 2B

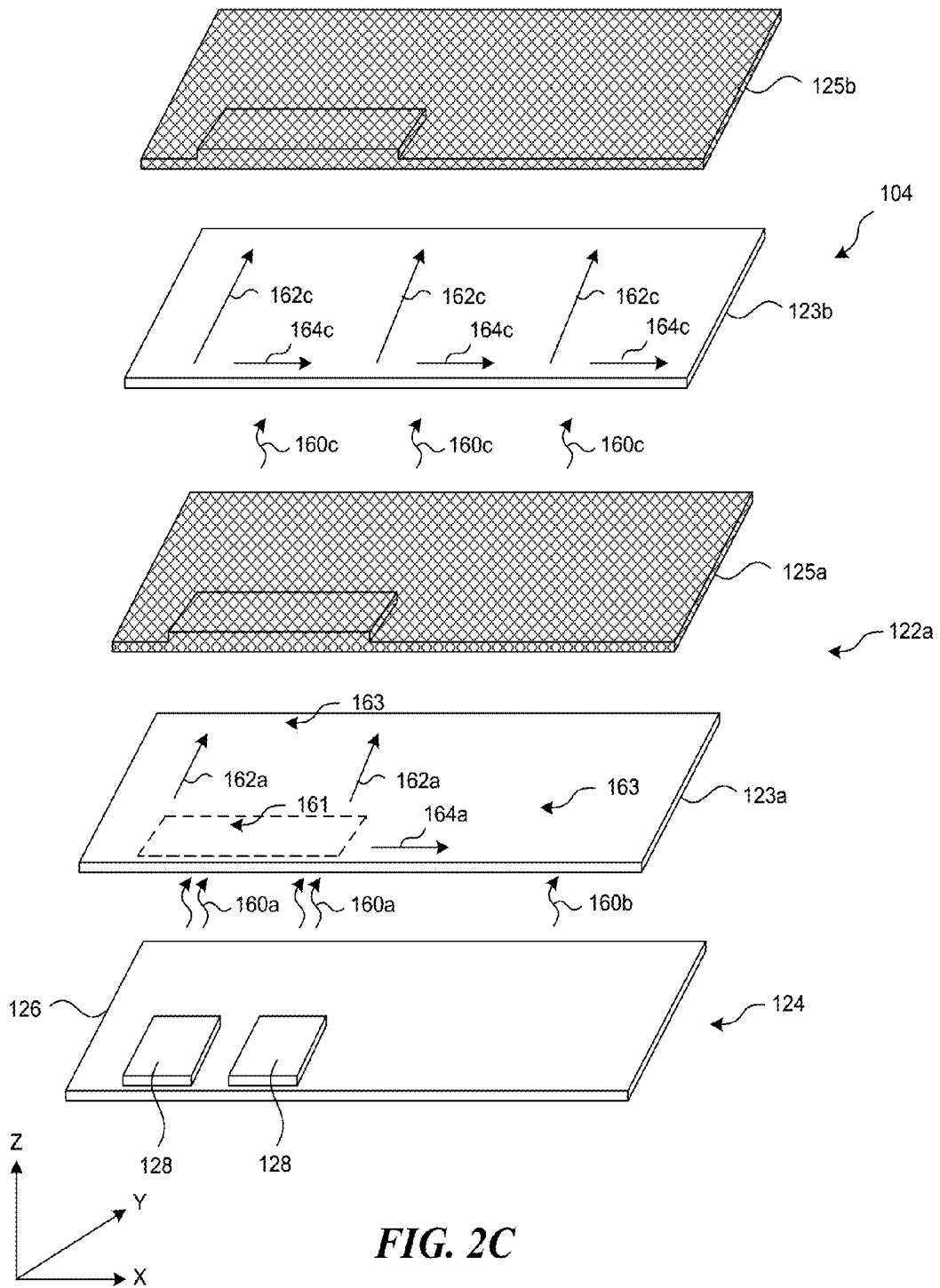


FIG. 2C

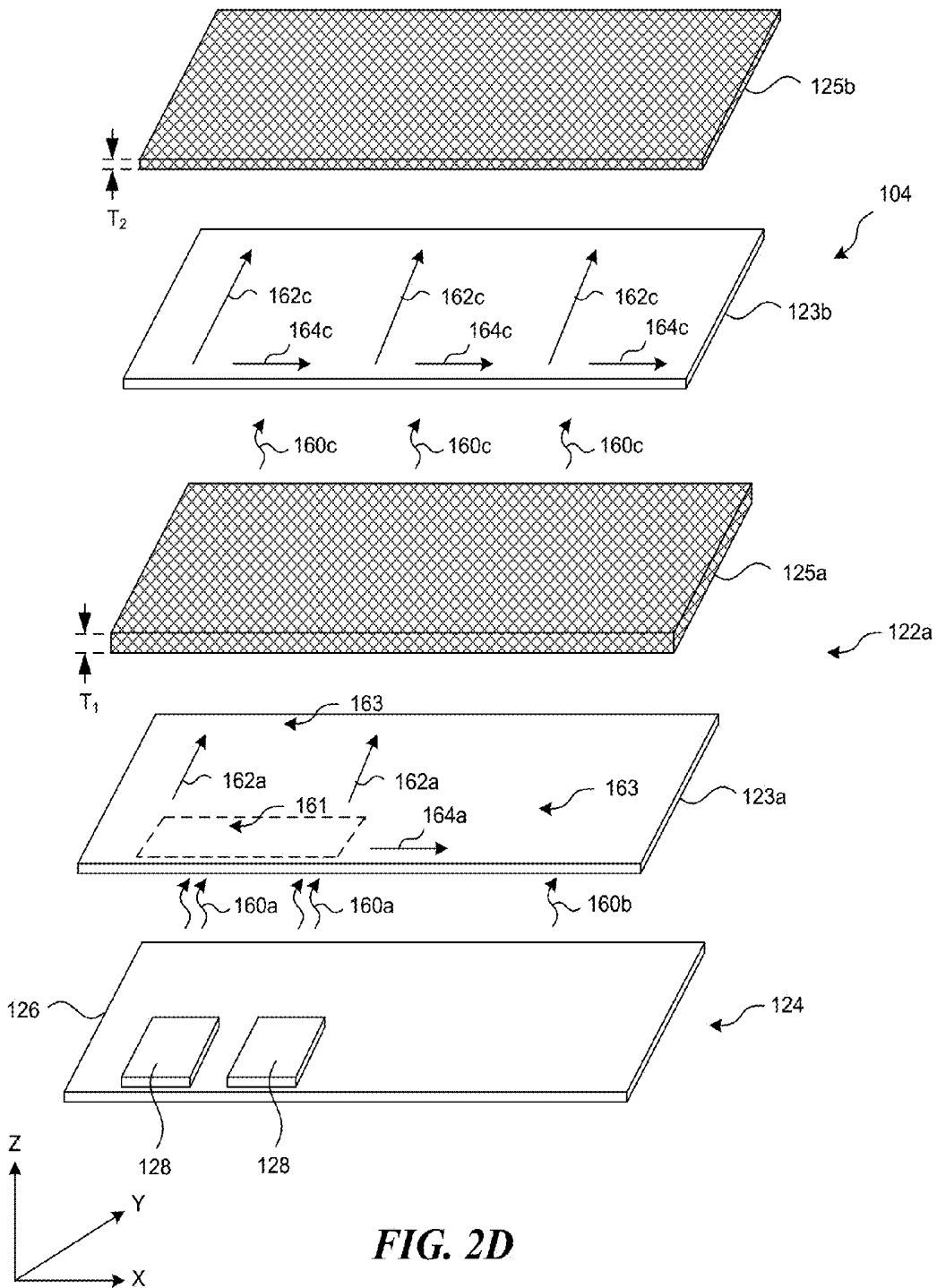
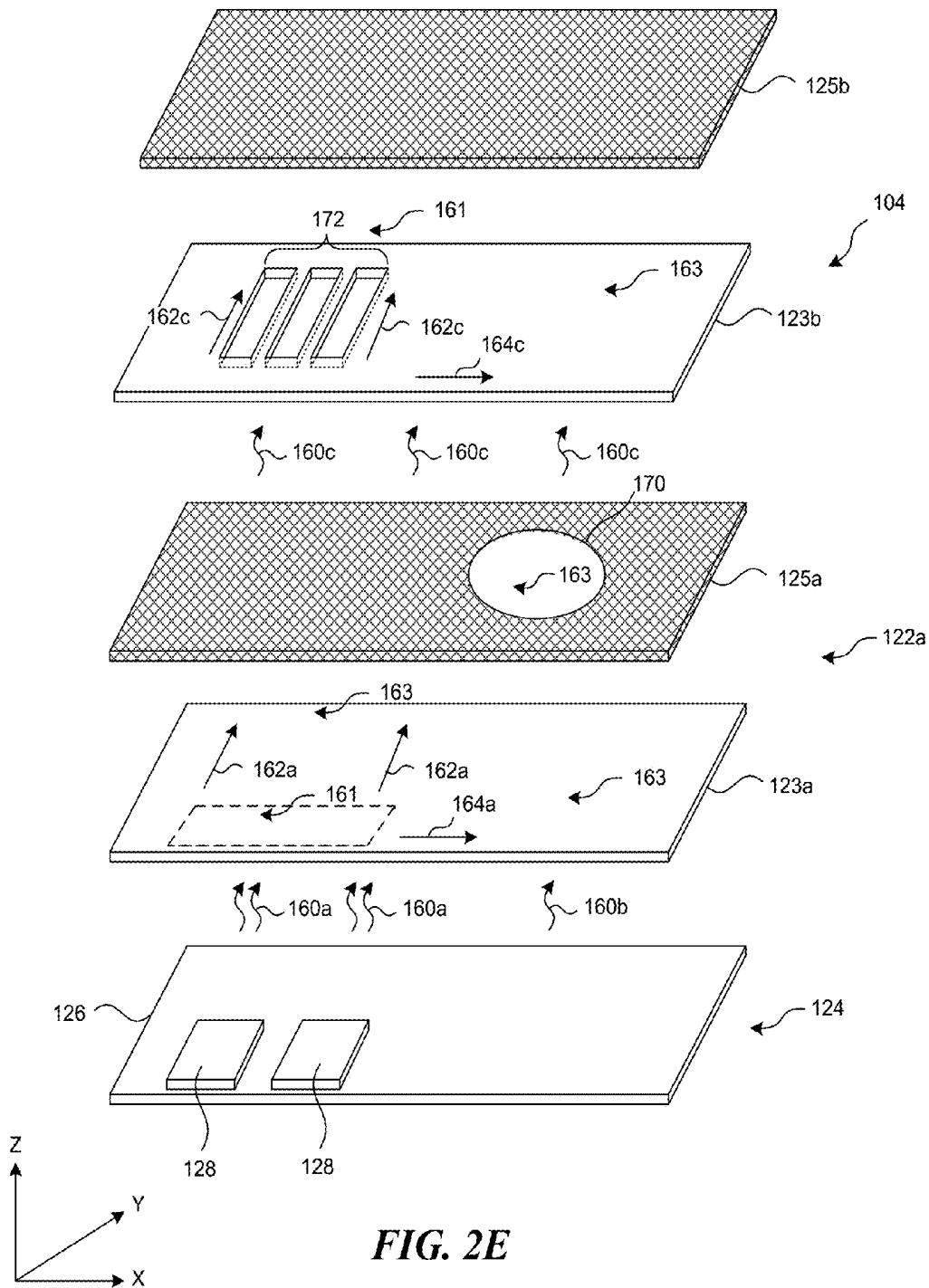
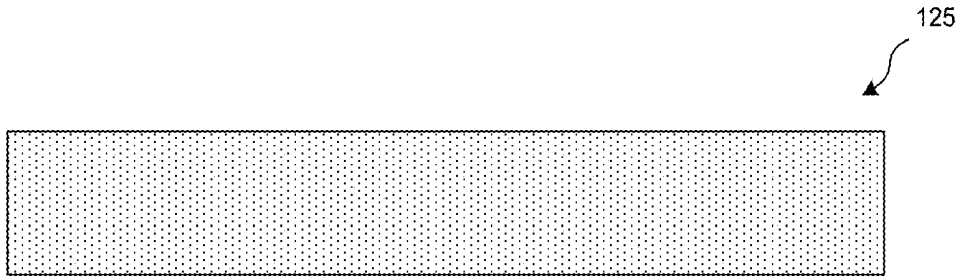
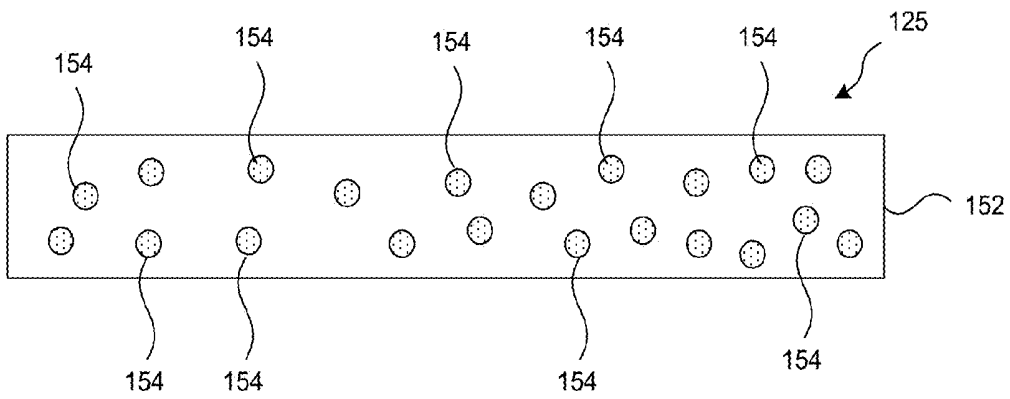


FIG. 2D

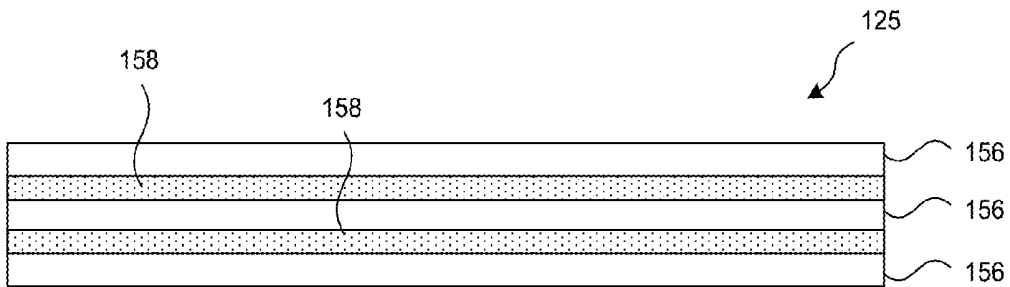




**FIG. 3A**



**FIG. 3B**



**FIG. 3C**

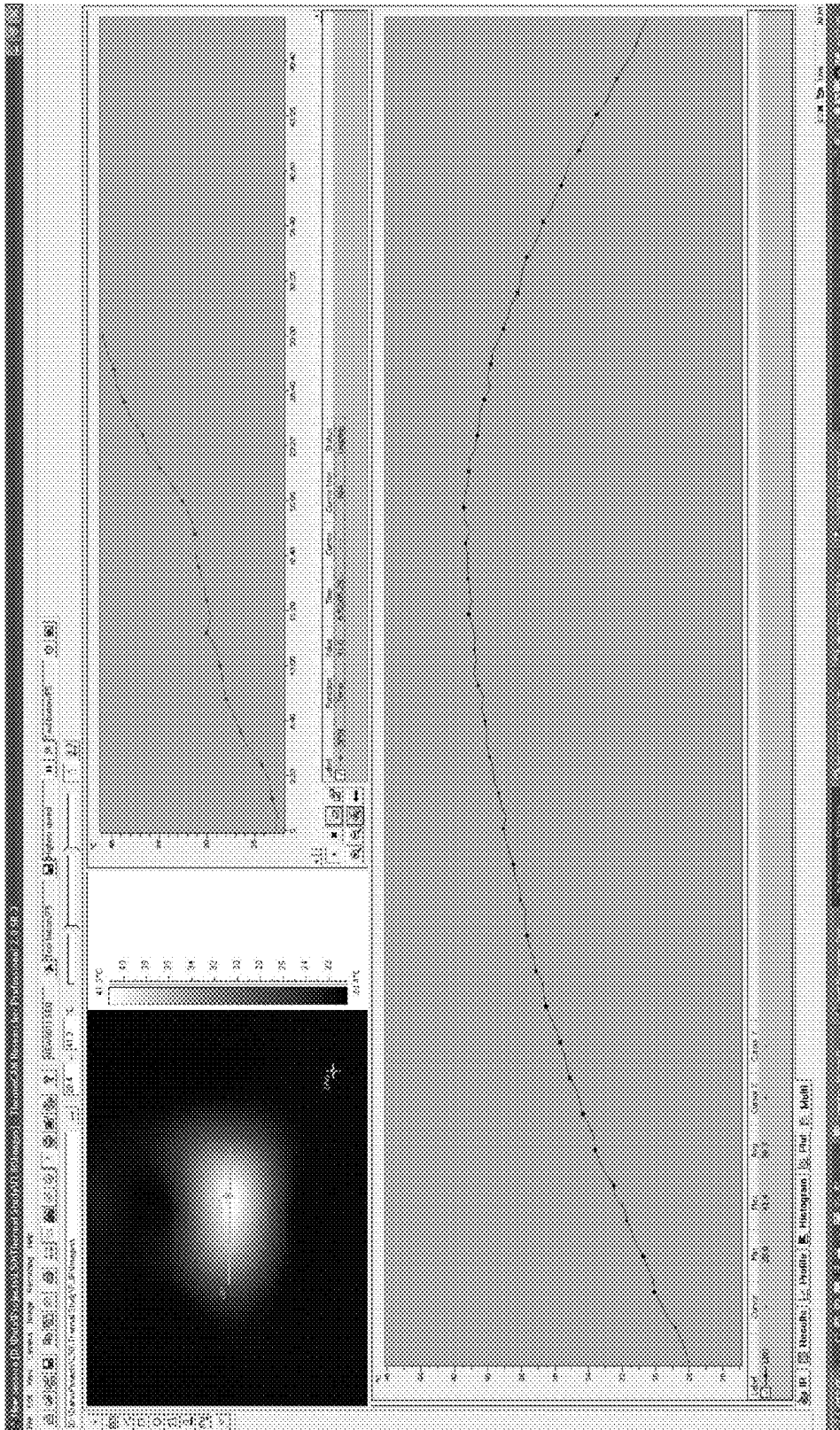


FIG. 4A

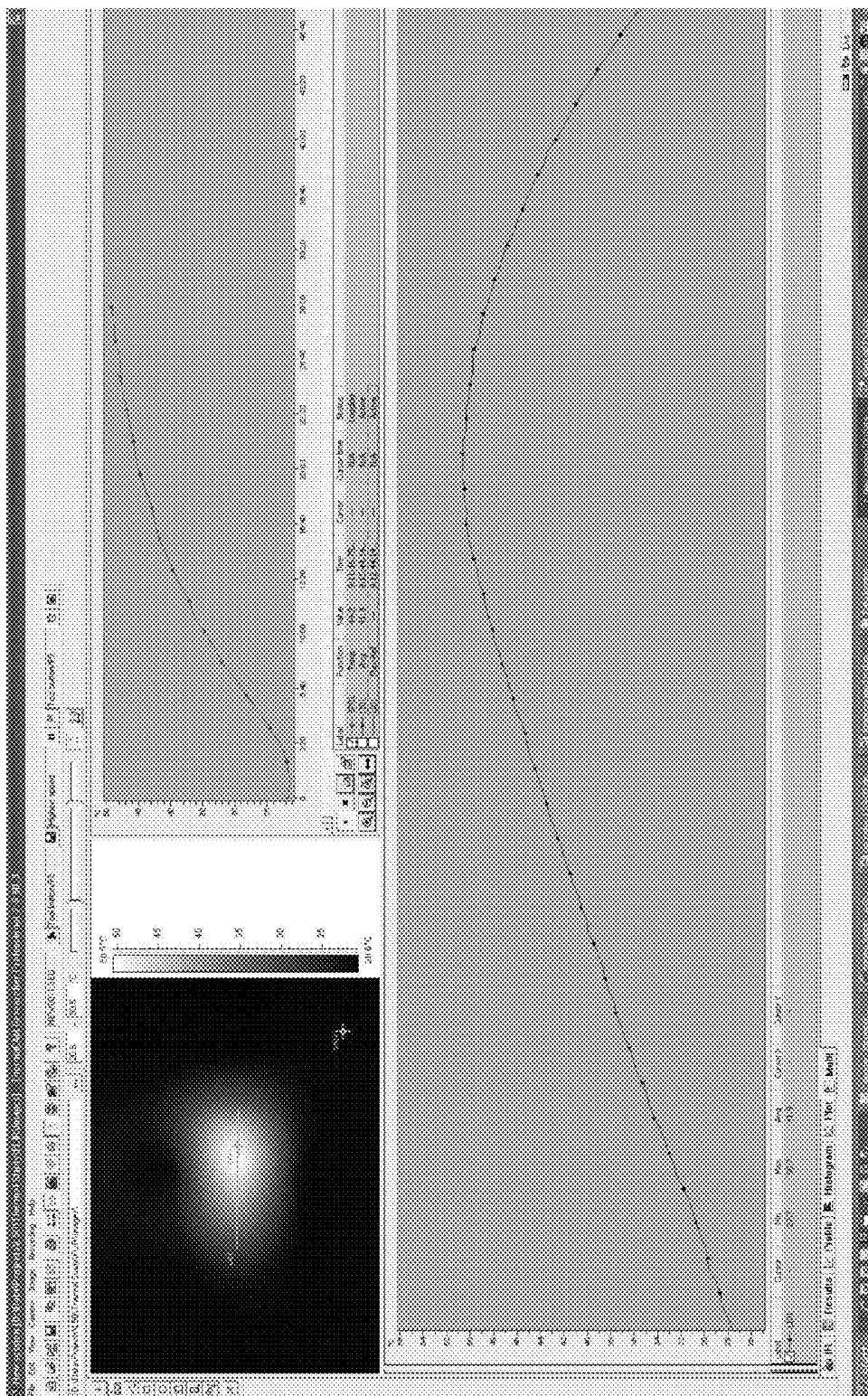


FIG. 4B

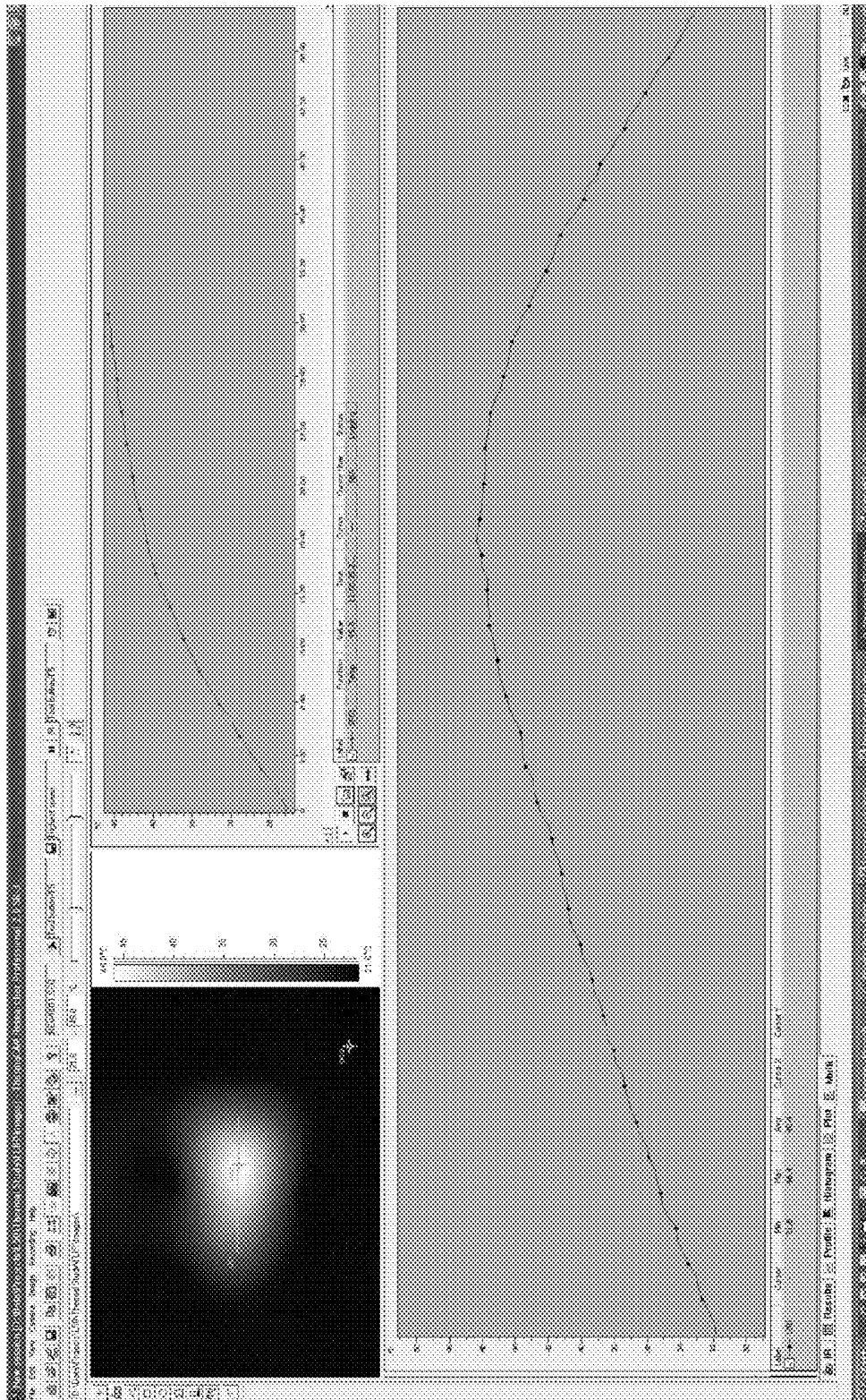


FIG. 4C

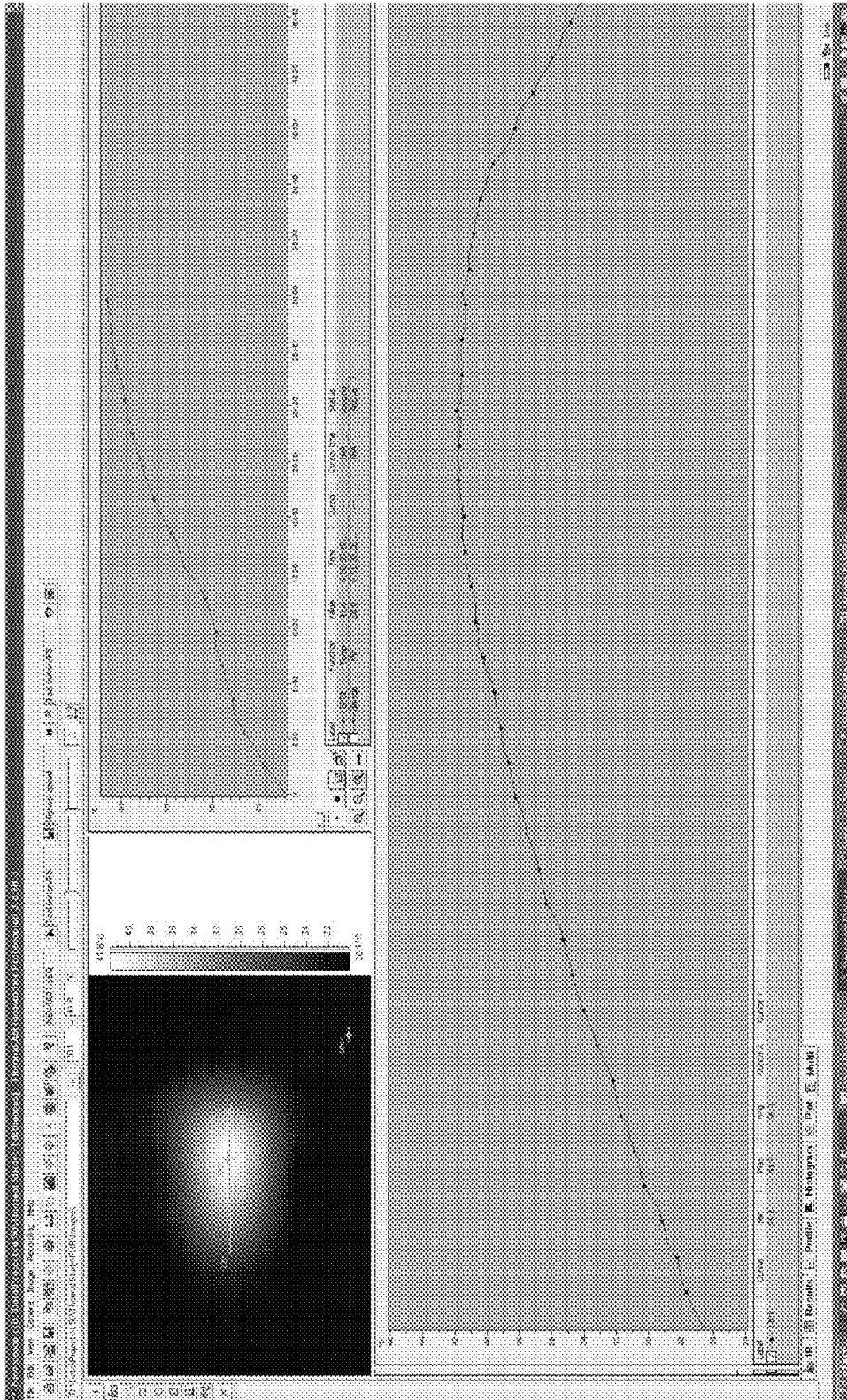


FIG. 4D

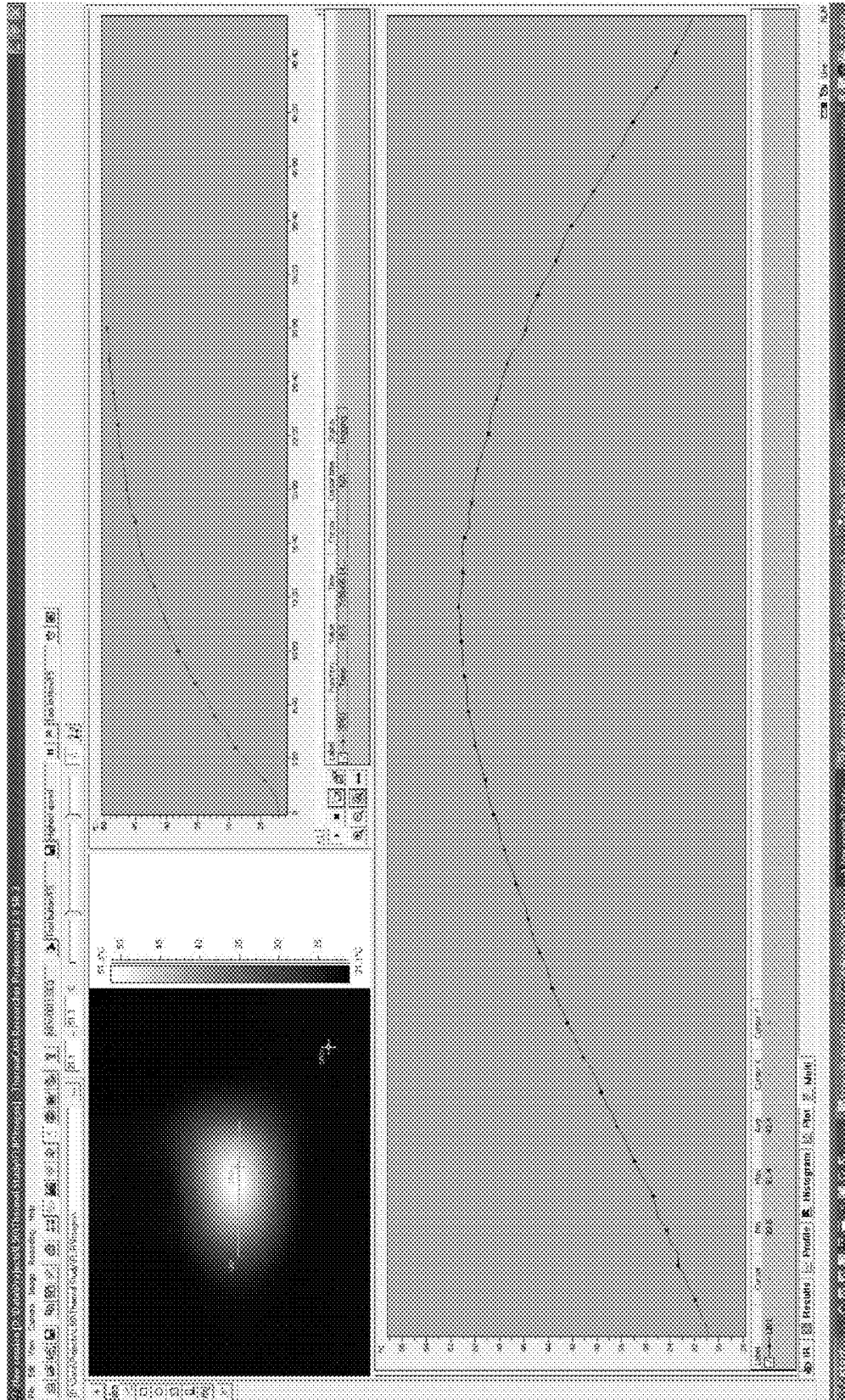


FIG. 4E

# ULTRASOUND SCANNERS WITH ANISOTROPIC HEAT DISTRIBUTORS FOR ULTRASOUND PROBE

## TECHNICAL FIELD

The present application is generally related to ultrasound scanners with anisotropic heat distributors, and associated methods of manufacturing and operating such ultrasound scanners.

## BACKGROUND

Ultrasound imaging systems are widely used today in medicine for visualizing and diagnosing a variety of conditions. For example, ultrasound imaging systems can be used to visualize tendons, muscles, joints, vessels, internal organs, and/or other subcutaneous body structures for detecting possible pathology or lesions. Ultrasound imaging systems are also used in obstetrics to visualize an embryo or a fetus in a mother's uterus.

Ultrasound imaging systems typically include a processing station (e.g., a computer) linked to an ultrasound scanner. During scanning, the ultrasound scanner transmits sound waves into a body structure and detects echoes from the body structure. The ultrasound scanner then transmits data representing the detected echoes to the processing station, in which images of the scanned body structure can be formed, manipulated, and displayed.

Ultrasound scanners may, for example, include an array of separate transducer elements linked independently to the processing station by individual communication wires in a cable. As the number of the transducer elements increases (e.g., for improving image resolution), the number of communication wires in the cable also increases. Such large cables, however, are less flexible than smaller cables and are thus more cumbersome to operate. As a result, cables for high resolution devices with a large number of wires may not be flexible enough to allow ready operation of the ultrasound scanner.

## BRIEF DESCRIPTION OF THE DRAWINGS

FIG. 1A is a perspective view of an ultrasound imaging system in accordance with embodiments of the technology.

FIG. 1B is a schematic logic diagram of the ultrasound imaging system in FIG. 1A.

FIG. 2A is an exploded cross-sectional view of an ultrasound scanner suitable for use in the ultrasound imaging system in FIG. 1A in accordance with embodiments of the technology.

FIGS. 2B-2E are partial and exploded perspective views of the ultrasound scanner in FIG. 2A in accordance with various embodiments of the technology.

FIGS. 3A-3C are cross-sectional views of an insulative layer suitable for use in the ultrasound scanner in FIG. 2A in accordance with embodiments of the technology.

FIGS. 4A-4E are screen prints illustrating experimental results of an ultrasound scanner with anisotropic heat distributors in accordance with embodiments of the technology.

## DETAILED DESCRIPTION

The present technology is directed to ultrasound systems with ultrasound scanners having anisotropic heat distributors, and associated methods of manufacture and operation. As used herein, the term "ultrasound transducer array" generally refers to an array that can (1) generate and transmit sound

waves and (2) receive and evaluate echoes in response to the transmitted sound waves. Ultrasound transducer arrays can be constructed from quartz, gallium orthophosphate, lithium niobate, lithium tantalite, sodium tungstate, and/or other suitable piezoelectric or non-piezoelectric materials. It will be appreciated that several of the details set forth below are provided to describe the following embodiments in a manner sufficient to enable a person skilled in the relevant art to make and use the disclosed embodiments. Several of the details described below, however, may not be necessary to practice certain embodiments of the technology. Additionally, the technology can include other embodiments that are within the scope of the claims but are not described in detail with respect to FIGS. 1A-4E.

FIG. 1A is a perspective view and FIG. 1B is a schematic logic diagram of an ultrasound imaging system 100 in accordance with embodiments of the technology. As shown in FIG. 1A, the ultrasound imaging system 100 can include a processing station 102 coupled to an ultrasound scanner 104 with a communication link 106. In one embodiment, the communication link 106 includes a coaxial or other type of hardwire cable. In other embodiments, the communication link 106 can include a wireless link, an internet link, an intranet link, and/or other suitable communication connection.

As shown in FIG. 1A, the processing station 102 is configured as a mobile device and includes a chassis 107 operatively coupled to a display 108. The chassis 107 can carry one or more buttons 110, a keyboard 112, and/or other suitable input/output components. The display 108 can include a liquid crystal display, a plasma display, and/or another suitable graphic display. In other embodiments, the processing station 102 can also be configured as a handheld device, a cart-mounted device, a fixed-mounted device, or another suitable type of device.

The ultrasound scanner 104 can include a housing 120 with a scan head 114 at a distal end 104a and a hand grip 116 at a proximal end 104b. In the illustrated embodiment, the scan head 114 and the hand grip 116 of the ultrasound scanner 104 form a generally "T" shape. In other embodiments, the scan head 114 and the hand grip 116 can have other suitable geometric configurations based on particular applications. As described in more detail below with reference to FIG. 1B, the ultrasound scanner 104 can further include an ultrasound transducer array at the distal end 104a, electronic data processing components in the housing 120, at least one anisotropic heat distributor associated with housing 120 and the electronic data components, and/or other suitable mechanical or electrical components (not shown in FIG. 1A) in the housing 120.

As shown in FIG. 1B, the processing station 102 can include a logic processor 140, a memory 142 operatively coupled to the processor 140, and a processor input/output component 144. The logic processor 140 can include a micro-processor, a field-programmable gate array, and/or other suitable logic devices. The memory 142 can include volatile and/or nonvolatile computer storage media (e.g., ROM, RAM, magnetic disk storage media, optical storage media, flash memory devices, and/or other suitable computer readable media) configured to store data received from, as well as instructions for, the logic processor 140. The processor input/output component 144 can include device drivers configured to accept input from and provide output to an operator via the keyboard 112 (FIG. 1A), the buttons 110 (FIG. 1A), the display 108, and/or other suitable interfacing components of the processing station 102.

In the embodiment shown in FIG. 1B, the ultrasound scanner 104 includes an ultrasound transducer array 146, a data

processor **148**, and a scanner input/output component **150** operatively coupled to one another within the housing **120**. The transducer array **146** can include an array of individual piezoelectric transducer elements (e.g., **256** lead zirconate titanate elements) and/or other suitable transducer elements. The data processor **148** can include analog/digital (“A/D”) converters, band pass filters, rectifiers, and/or other suitable data processing components that digitize all of the echo data from the individual piezoelectric transducer elements of the transducer array **146** within the housing **120**. The scanner input/output component **150** can include device drivers, transceivers, and/or other suitable components for sending data and receiving instructions to/from the processing station **102**. In other embodiments, the ultrasound scanner **104** can also include a radio transceiver, data storage, and/or other suitable mechanical or electrical components (not shown) in the housing **120**.

Referring to both FIGS. **1A** and **1B**, in operation, an operator (not shown) holds the ultrasound scanner **104** by the hand grip **116** and places the distal end **104a** of the ultrasound scanner **104** proximate to or in contact with a structure to be examined, for example, a body structure **141** of a patient (shown in phantom lines for clarity). The ultrasound transducer array **146** then transmits sound waves **143** into the body structure **141** and detects echoes returning from the body structure **141**. The ultrasound transducer array **146** can then convert the detected echoes into electrical signals representing the detected echoes.

The data processor **148** in the ultrasound scanner **104** receives the electrical signals representing the detected echoes from the ultrasound transducer array **146** and processes the echo signals to generate data representing the detected echoes of all of the individual transducer elements within the housing **120** of the ultrasound scanner **104**. In one embodiment, the data processor **148** can digitize the echo signals into a collection of digital data. In another embodiment, the data processor **148** can digitize and compress the electrical signals in order to reduce the signals to a required bandwidth for transmitting the digitized data. In other embodiments, the data processor **148** can also apply various data compression, optimization and multiplexing techniques, such as for example, time division, code division, and/or otherwise manipulate the digitized data. The data processor **148** can then transmit the generated data to the processing station **102** via the communication link **106**.

Several embodiments of the ultrasound scanner **104** do not require a separate wire in the communication link **106** for each separate transducer element. Unlike conventional ultrasound scanners, several embodiments of the ultrasound scanner **104** can digitize and/or otherwise process the electrical signals representing the detected echoes from all of the separate transducer elements such that the digitized data can be transmitted via fewer coaxial cables (or wireless channels) than the number of separate transducer elements. For example, all of the data from **256** separate transducer elements can be transmitted independently via one coaxial cable, one wireless channel, and/or another suitable single communication channel.

One challenge of processing the data within the housing **120** of the ultrasound scanner **104** in the foregoing fashion is that the data processor **148** can produce a large amount of heat in a short period of time. As a result, localized high-temperature areas (“hot spots”) can occur rather quickly on the surface of the housing **120** at areas superimposed or otherwise juxtaposed to the data processor **148**. The heat generated by the data processor **148** can be uncomfortable, and thus regulations have been published to limit the rate of temperature

increase at the surface of the housing **120**. To meet these regulations, several embodiments of the ultrasound scanner **104** can include a heat distributor configured to (1) preferentially conduct heat in one or more desired directions in the ultrasound scanner **104** to reduce hot spots on the surface of the housing **120** and (2) reduce the rate of temperature increase at the surface of the housing **120** to an acceptable level, as described in more detail below with reference to FIGS. **2A** and **2E**.

FIG. **2A** is an exploded cross-sectional view of the ultrasound scanner **104** having one or more heat distributors in accordance with embodiments of the technology. As shown in FIG. **2A**, the ultrasound scanner **104** can include a first housing portion **120a**, a first heat distributor **122a**, an electronic component **124**, an optional second heat distributor **122b**, and a second housing portion **120b** arranged in series. In the illustrated embodiment, the second heat distributor **122b** is generally similar in structure and function to the first heat distributor **122a**. In other embodiments, the second heat distributor **122b** can have different structures and/or functions than the first heat distributor **122a**. In further embodiments, the second heat distributor **122b** may be omitted, or additional heat distributors (not shown) can be incorporated into the ultrasound transducer **104**.

In the illustrated embodiment, the first and second housing portions **120a** and **120b** are configured to mate vertically with each other to form an internal space **121** or cavity within the housing **120**. The first and second housing portions **120a** and **120b** may be fastened together with an adhesive, a screw, snap-lock fittings, and/or other suitable fasteners. In other embodiments, the first and second housing portions **120a** and **120b** may also mate longitudinally to form the internal space **121** within the housing **120**. In further embodiments, the first and second housing portions **120a** and **120b** may be formed as a unitary piece and/or have other suitable configurations.

The electronic component **124** can include a substrate **126** (e.g., a printed circuit board and/or other suitable substrate structures) and one or more semiconductor devices **128** mounted to the substrate **126**. The semiconductor devices **128** can include A/D converters, memory devices, logic processors, and/or other suitable electronic components of the data processor **148** (FIG. **1B**). In the illustrated embodiment, the semiconductor devices **128** are arranged on a first side **126a** of the substrate **126**. In other embodiments, the electronic component **124** can also include semiconductor devices (not shown) and/or other suitable electrical components on a second side **126b** of the substrate **126** in addition to or in lieu of the semiconductor devices **128** on the first side **126a** of the substrate **126**. In further embodiments, the electronic component **124** can include more than one substrate **126** and/or can have other desired configurations.

The first heat distributor **122a** can include a plurality of conductive layers **123** (identified individually as first and second conductive layers **123a** and **123b**) and a plurality of insulative layers **125** (identified individually as first and second insulative layers **125a** and **125b**) alternately stacked on one another. In certain embodiments, the conductive layers **123** and the insulative layers **125** can be laminated together with an adhesive and/or a fastener (not shown). In other embodiments, the conductive layers **123** and the insulative layers **125** can simply contact one another without any adhesive or fasteners.

In the illustrated embodiment, both the conductive layers **123** and the insulative layers **125** have the same width **W**. In other embodiments, the conductive layers **123** and the insulative layers **125** may have different widths, thicknesses, and/or other structural features. Even though only two conductive

layers **123** and two insulative layers **125** are shown in FIG. 2A, it is understood that the first heat distributor **122a** can include only one conductive layer **123** and/or insulative layer **125**, or any desired number of conductive layers **123** and/or insulative layers **125**.

In certain embodiments, the conductive layers **123** can be generally identical to one another, and/or the insulative layers **125** can be generally identical to one another. In other embodiments, one or more of the conductive layers **123** and/or the insulative layers **125** may be different than the others by individually including different materials, dimensions, structural features, and/or other suitable characteristics. For example, the first conductive layer **123a** may have a first thickness that is different than a second thickness of the second conductive layer **123b**. In another example, the first and second conductive layers **123a** and **123b** can include voids or different structural features, as described in more detail below with reference to FIG. 2E.

The conductive layers **123** can individually include a sheet, plate, slab, foil, and/or other suitable structure constructed from a metal (e.g., copper or aluminum), a metal alloy (e.g., stainless steel), and/or other suitable thermally conductive materials. The conductive layers **123**, for example, can be configured to have a thermal conductivity greater than about 10 W/(m·K). In several embodiments, the conductive layers **123** can be solid structures. In other embodiments, the conductive layers **123** can include apertures, openings, slots, channels, and/or other suitable structural features, as described in more detail below with reference to FIG. 2E.

The insulative layers **125** can individually include a sheet, plate, slab, and/or other suitable structure constructed from a material with a low thermal conductivity. For example, in certain embodiments, the insulative layers **125** can individually include a layer of cotton, clay, epoxy, fiberglass, foam, matrix, and/or other materials with a thermal conductivity less than about 10 W/(m·K). In other embodiments, the insulative layers **125** can also be made of a composite material embedded with or otherwise carrying a phase change material (“PCM”) that can absorb heat and maintain a generally constant temperature for a period of time by undergoing phase change. In further embodiments, the insulative layers **125** can be constructed substantially entirely from a PCM. In yet further embodiments, the insulative layers **125** can also include a thermally conductive area laterally offset from the semiconductor components **128**, or combination of the foregoing configurations, materials, and/or structures. Examples of certain embodiments of the insulative layers **125** are described in more detail below with reference to FIGS. 3A-3C.

FIGS. 2B-2E are exploded perspective views of the first heat distributor **122a** relative to the electronic component **124** in accordance with various embodiments of the technology. In FIGS. 2B-2E, the conductive layers **123** and the insulative layers **125** are separated from one another for purposes of clarity. As shown in FIG. 2B, the semiconductor devices **128** of the electronic component **124** can generate a large heat flux (as indicated by the double arrows **160a**) while other areas of the electronic component **124** do not generate as much heat (as indicated by the single arrow **160b**). This causes a high-temperature area **161** in the first conductive layer **123a** of the first heat distributor **122a** that is generally superimposed with the footprint of the semiconductor devices **128** or other heat generating components of the electronic component **124**. Other areas of the electronic component **124** located laterally with respect to the high-temperature area **161** are relatively low-temperature areas **163**. One of ordinary skill in the art will recognize that the threshold between the high-tempera-

ture and low-temperature areas **161** and **163** may be selected based on particularity of design and/or application.

In operation, the heat flux **160a** at the high temperature area **161** is absorbed and distributed by the first heat distributor **122a**. In the illustrated embodiment, for example, the first conductive layer **123a**, the first insulative layer **125a**, the second conductive layer **123b**, and the second insulative layer **125b** alternate between conducting and absorbing the heat to drive the heat flux laterally relative to a direction normal to the surface of the high-temperature area **161**. The second insulating layer **125b** also insulates the housing **120** from the heat. In other embodiments, the first heat distributor **122a** may be inverted with respect to the electronic component **124** such that the foregoing heat conduction sequence is reversed. In further embodiments, the first heat distributor **122a** can also have other suitable heat conduction arrangements.

Several embodiments of the first heat distributor **122a** can spread out the localized heat flux **160a** from the high-temperature area **161** toward low-temperature areas **163** via anisotropic heat conduction such that the risk of hot spots is at least reduced or eliminated. For example, as shown in FIG. 2B, the first conductive layer **123a** conducts the heat flux **160a** along the Z-axis (e.g., the axis normal to the outer surface of the semiconductor devices **128**), but the first insulating layer **125a** restricts heat flow along the Z-axis. As a result, the heat will preferentially flow laterally through the first conductive layer **123** faster than through the first insulating layer **125a** such that the first conductive layer **123a** preferentially conducts at least a portion of the heat from the high-temperature area **161** toward the low-temperature area **163** along the X- and/or Y-axis (as indicated by the arrows **162a** and **164a**, respectively). The first insulative layer **125a** accordingly provides a thermal barrier for heat conduction farther along the Z-axis toward the second conductive layer **123b**. As a result, the heat flux (as indicated by the arrows **160c**) leaving the first insulative layer **125a** to the second conductive layer **123b** is distributed over a larger surface area than that of the high-temperature area **161**.

The term “anisotropic heat conduction” used herein can thus generally refer to conducting heat from the electronic component **124** at least partially in a lateral direction with respect to the surface of the housing **120** at a first heat transfer rate and conducting heat in a direction normal to the outer surface of the electronic component **124** at a second heat transfer rate different than the first heat transfer rate. The first heat transfer rate is generally greater than the second heat transfer rate. The second conductive layer **123b** and the second insulative layer **125b** can further distribute the heat flux **160c** in a generally similar fashion (as indicated by the arrows **162c** and **164c**).

The distribution of the heat fluxes **160a**, **160b** and **160c** can be influenced by adjusting various parameters of the first heat distributor **122a**. For example, the distribution of the heat fluxes **160a** and **160b** can be influenced by adjusting at least one of (1) a thermal conductivity of the individual insulative layers **125**, (2) a thermal conductivity of the individual conductive layers **123**, (3) a thickness, a width, and/or a length of the insulative layers **125** and the conductive layers **123**, and/or (4) openings and/or thermally conductive/insulative materials aligned with the hotter or cooler areas. For example, in one embodiment, the thickness of the individual insulative layers **125** can be increased from a first thickness (e.g., 2 mm) to a second thickness (e.g., 4 mm) at areas generally aligned with the semiconductor devices **128** (as shown in FIG. 2C) or across their entire area (as shown in FIG. 2D) such that the individual conductive layers **123** can spread out the heat flux farther along the X- and/or Y-axis. In other embodiments,

other suitable characteristics of the first heat distributor **122a** may also be adjusted to achieve a desired heat flux distribution.

The distribution of the heat fluxes **160a**, **160b** and **160c** can also be influenced by incorporating structural features into the conductive layers **123** and/or the insulative layers **125**. For example, as shown in FIG. 2E, the first insulative layer **125a** can include a more conductive region **170** in a low-temperature area **163** generally offset from the semiconductor devices **128**. The conductive region **170** can allow more heat to flow from the first conductive layer **123a** to the second conductive layer **123b** than from other high-temperature areas of the first insulative layer **125a**. As a result, more heat can flow through the low-temperature areas offset from the heat generating components (i.e., the semiconductor devices **128**) to improve the distribution of heat flow. The conductive region **170** can have conductive particles or elements (e.g., metal particles) embedded in the insulating layer **125**.

In another example, which may be combined with the conductive region **170** on the insulation layer **125** or stand on its own, the second conductive layer **123b** can include one or more apertures, channels, slots, or openings **172** in the high-temperature area **161** generally corresponding to the semiconductor devices **128**. The channels or slots **172** can reduce an amount of heat flowing through the high-temperature area **161** of the second conductive layer **123b** and force more heat to flow toward and through the low-temperature area **163**. In other examples, the conductive layers **123** can also include other suitable features that reduce an amount of heat flowing along the Z-axis over the hot areas while increasing the amount of heat flowing along the X- and/or Y-axis to cooler areas.

Several embodiments of the insulative layers **125** can also reduce a rate of temperature increase at the surface of the ultrasound scanner **104** due to their low thermal conductivity. In certain embodiments, the insulative layers **125** can further reduce the rate of temperature increase at the surface of the ultrasound scanner **104** by incorporating a PCM. For example, the first insulative layer **125a** can absorb a portion of the heat flux **160a** with a PCM embedded or otherwise distributed in a foam or other matrix having a low thermal conductivity. As a result, the heat flux **160b** reaching the second conductive layer **123b** can be less than the heat flux **160a** at the first conductive layer **123a**. More specifically, the second insulative layer **125b** can maintain a relatively constant temperature while absorbing the heat fluxes **160a** and **160b** as the PCM changes phase. The phase change of the PCM temporarily reduces the heat flux flowing toward the surface of the housing **120** to allow the conductive layers **123** to distribute more of the heat laterally. The reduced heat flux to the surface of the housing superimposed with the semiconductor components **128** can also result in a low rate of temperature increase at these areas of the surface of the ultrasound scanner **104** during an initial period of operation.

FIGS. 3A-3C are cross-sectional views of one of the insulative layers **125** suitable for use in the ultrasound scanner in FIG. 2A in accordance with embodiments of the technology. As shown in FIG. 3A, one embodiment of the insulative layer **125** can include a solid slab of a PCM. One suitable PCM is a phase change material (Model No. MPCM37-D) provided by Microtek Laboratories, Inc. of Dayton Ohio. In other embodiments, the insulative layer **125** can also include a solid slab of other suitable insulating material. As shown in FIG. 3B, another embodiment of the insulative layer **125** can include a substrate **152** (e.g., an epoxy) or other type of insulative matrix and one or more phase change structures **154** embedded or otherwise distributed in the substrate **152**.

In the illustrated embodiment, the phase change structures **154** are a plurality of spheres distributed generally randomly throughout the substrate **152**. In other embodiments, the phase change structures **154** can also include a plurality of cubes, hemispheres, and/or other suitable structures arranged as an array and/or having other suitable arrangements. As shown in FIG. 3C, another embodiment of the insulative layer **125** can include a plurality of insulative strata **156** (e.g., epoxy layers) alternately laminated with a plurality of phase change strata **158**.

Tests were conducted to examine an ultrasound scanner with a heat distributor generally similar to several embodiments of the first heat distributor **122a** in FIG. 2A. The test results are shown in FIGS. 4A-4E as (1) a color plot of temperature profile (upper left), (2) a temperature versus time chart (upper right), and (3) a temperature versus location chart (lower). In a first test, a heat distributor with two copper foils separated by a slab of a PCM (approximately 0.2" thick, Model No. MPCM37-D provided by Microtek Laboratories, Inc. of Dayton Ohio) was used. The result of the first test is shown in FIG. 4A. In a second test, a heat distributor with only one copper foil (approximately 0.026" thick) was used. The result of the second test is shown in FIG. 4B. In a third test, a heat distributor with five layers of copper foils separated from one another by a layer of cotton gauze was used. The result of the third test is shown in FIG. 4C. In a fourth test, a heat distributor with four layers of copper foils separated by three layers of cotton gauze impregnated with a PCM were used. The result of the fourth test is shown in FIG. 4D. As a comparison, in a fifth test, no heat distributor was used. The result of the fifth test is shown in FIG. 4E. As clearly shown in FIGS. 4A-4E, utilizing embodiments of the heat distributor can more evenly distribute heat across the surface of the housing, and can lower the rate of temperature increase at the surface of the housing.

From the foregoing, it will be appreciated that specific embodiments of the technology have been described herein for purposes of illustration, but that various modifications may be made without deviating from the disclosure. Many of the elements of one embodiment may be combined with other embodiments in addition to or in lieu of the elements of the other embodiments. Accordingly, the disclosure is not limited except as by the appended claims.

We claim:

1. An ultrasound scanner, comprising:
  - an ultrasound probe with a housing having a surface enclosing an internal cavity;
  - a printed circuit board (PCB) in the internal cavity of the housing that includes a plurality of semiconductor devices carried by the printed circuit board (PCB); and
  - a heat distributor between the surface of the housing and the printed circuit board, the heat distributor being in thermal communication with both the semiconductor devices and the surface of the housing, wherein the heat distributor includes a laminated structure having at least two conductive layers including at least a first conductive layer that is thermally coupled to at least one heat producing semiconductor device, a second conductive layer that is thermally coupled to the surface of the housing and an insulative layer disposed between the first and second conductive layers, wherein the insulative layer includes a region that is more heat conductive than a surrounding region of the insulative layer and that is laterally offset from the heat producing semiconductor device to allow heat to flow from the first conductive layer to the second conductive layer of the laminated structure.

2. The ultrasound scanner of claim 1 wherein:  
the second conductive layer includes an opening in an area  
superimposed with the heat producing semiconductor  
device on the PCB.
3. The ultrasound scanner of claim 1 wherein;  
the heat distributor includes a third conductive layer sepa-  
rated from the second conductive layer by a second  
insulative layer;  
wherein the first, second and third conductive layers have a  
thermal conductivity greater than 10 W/(m·K); and  
the first and second insulative layers have a thermal con-  
ductivity less than 10 W/(m·K).
4. The ultrasound scanner of claim 1 wherein:  
the heat distributor includes a third conductive layer sepa-  
rated from the second conductive layer by a second  
insulative layer; and  
wherein at least one of the first and second insulative layers  
includes a phase change material configured to undergo  
a phase change upon absorption of heat.
5. The ultrasound scanner of claim 1 wherein:  
the heat distributor includes a third conductive layer sepa-  
rated from the second conductive layer by a second  
insulative layer; and  
wherein the first and second insulative layers include a  
sheet of a phase change material configured to undergo  
a phase change upon absorption of heat.
6. The ultrasound scanner of claim 1 wherein:  
the first and second conductive layers are separated from  
one another by a plurality of insulative layers; and  
the plurality of insulative layers include a substrate and a  
phase change material embedded in the substrate, the  
phase change material being configured to undergo a  
phase change upon absorption of heat.
7. The ultrasound scanner of claim wherein:  
the second conductive layer includes an opening in an area  
corresponding to the heat producing semiconductor  
device on the PCB.
8. The ultrasound scanner of claim 1, wherein the insula-  
tive layer includes a phase change material.
9. An ultrasound scanner, comprising:  
an ultrasound probe with housing having a surface and a  
wall enclosing an internal cavity;  
an electronic component in the internal cavity of the hous-  
ing, the electronic component having a printed circuit

- board (PCB) that supports one or more semiconductor  
devices with an outer surface; and  
a heat distributor between the surface of the housing and  
the electronic component, the heat distributor including  
at least two conductive layers to conduct heat from heat  
producing semiconductor device at least partially in a  
lateral direction with respect to the surface of the hous-  
ing at a first heat transfer rate and an insulative layer  
positioned between the two conductive layers to conduct  
heat in a direction normal to the outer surface of the heat  
producing semiconductor device at a second heat trans-  
fer rate different than the first heat transfer rate, wherein  
the insulative layer includes a region that is laterally  
offset from the heat producing semiconductor device  
and is more heat conductive than a surrounding region of  
the insulative layer to conduct heat from a first conduc-  
tive layer to a second conductive layer of the two con-  
ductive layers.
10. The ultrasound scanner of claim 9 wherein the insula-  
tive layer includes a phase change material configured to  
undergo a phase change upon absorption of heat.
11. The ultrasound scanner of claim 9 wherein:  
the electronic component includes a high-temperature area  
and a lower-temperature area of the printed circuit  
board;  
wherein the second conductive layer is adjacent the surface  
of the housing and includes an opening in an area cor-  
responding to the high-temperature area of the PCB.
12. The ultrasound scanner of claim 9 wherein:  
the electronic component includes a high-temperature area  
and a lower-temperature area of the printed circuit  
board;  
wherein the second conductive layer is adjacent the surface  
of the housing and includes an opening in an area cor-  
responding to the high-temperature area of the PCB;  
and wherein the insulative layer includes a phase change  
material configured to undergo a phase change upon  
absorption of heat.
13. The ultrasound scanner of claim 9 wherein:  
the electronic component includes a high-temperature area  
and a lower-temperature area;  
and wherein at least one of the two conductive layers  
includes a copper foil; and  
the insulative layer includes a cotton gauze.

\* \* \* \* \*

专利名称(译)	超声波扫描仪，带各向异性热分配器，用于超声探头		
公开(公告)号	<a href="#">US9186123</a>	公开(公告)日	2015-11-17
申请号	US12/862618	申请日	2010-08-24
[标]申请(专利权)人(译)	Dunham保罗 绿色DUSTIN 霍克托马斯		
申请(专利权)人(译)	DUNHAM, PAUL GREEN达斯汀 霍克, 托马斯		
当前申请(专利权)人(译)	FUJIFILM SONOSITE, INC.		
[标]发明人	DUNHAM PAUL GREEN DUSTIN HOUCK THOMAS		
发明人	DUNHAM, PAUL GREEN, DUSTIN HOUCK, THOMAS		
IPC分类号	A61B8/00		
CPC分类号	A61B8/546 A61B8/00 G10K11/004		
代理机构(译)	博钦律师事务所		
审查员(译)	JUNG, UNSU		
外部链接	<a href="#">Espacenet</a> <a href="#">USPTO</a>		

摘要(译)

本文公开了具有各向异性热分配器的超声扫描器和相关的操作方法。在一个实施例中，超声扫描仪可以包括具有包围内部空腔的表面的壳体，位于壳体的内部空腔中的电子部件，以及在壳体的表面和电子部件之间的热分配器。热分配器与电子部件和壳体的表面两者热连通。热分配器包括具有彼此堆叠的导电层和绝缘层的层压结构。

