



(19) **United States**

(12) **Patent Application Publication**  
**MIYAKE**

(10) **Pub. No.: US 2016/0302768 A1**  
(43) **Pub. Date: Oct. 20, 2016**

(54) **ULTRASOUND OBSERVATION APPARATUS**

(52) **U.S. Cl.**

(71) Applicant: **OLYMPUS CORPORATION**, Tokyo (JP)

CPC ..... *A61B 8/481* (2013.01); *A61B 8/12* (2013.01); *A61B 8/54* (2013.01)

(72) Inventor: **Tatsuya MIYAKE**, Tokyo (JP)

(57) **ABSTRACT**

(73) Assignee: **OLYMPUS CORPORATION**, Tokyo (JP)

(21) Appl. No.: **15/196,133**

(22) Filed: **Jun. 29, 2016**

**Related U.S. Application Data**

(63) Continuation of application No. PCT/JP2015/076154, filed on Sep. 15, 2015.

**Foreign Application Priority Data**

Oct. 6, 2014 (JP) ..... 2014-205852

**Publication Classification**

(51) **Int. Cl.**

*A61B 8/08* (2006.01)  
*A61B 8/00* (2006.01)  
*A61B 8/12* (2006.01)

An ultrasound observation apparatus that generates an ultrasound image based on an ultrasound signal obtained by receiving ultrasound reflected by a contrast medium in a target region of a subject to which the contrast medium is administered includes a measuring section configured to measure predetermined measurement items related to administration of the contrast medium, an image quality setting changing section configured to change an image quality setting of the ultrasound image from one to another of a first image quality setting suitable for observing how the contrast medium flows into the target region and a second image quality setting suitable for observing how the contrast medium is retained in the target region, and a control section configured to control setting changing operation by the image quality setting changing section based on a measurement result of the measuring section.

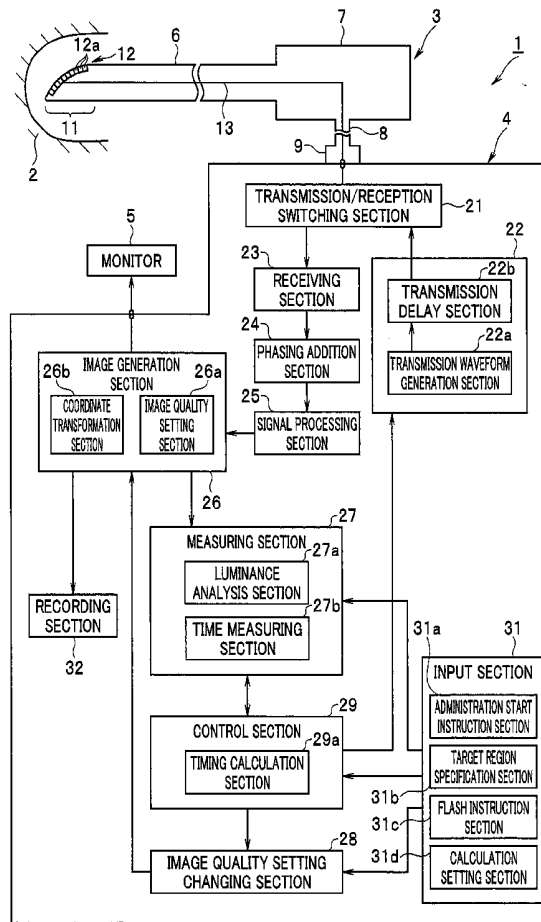


FIG. 1

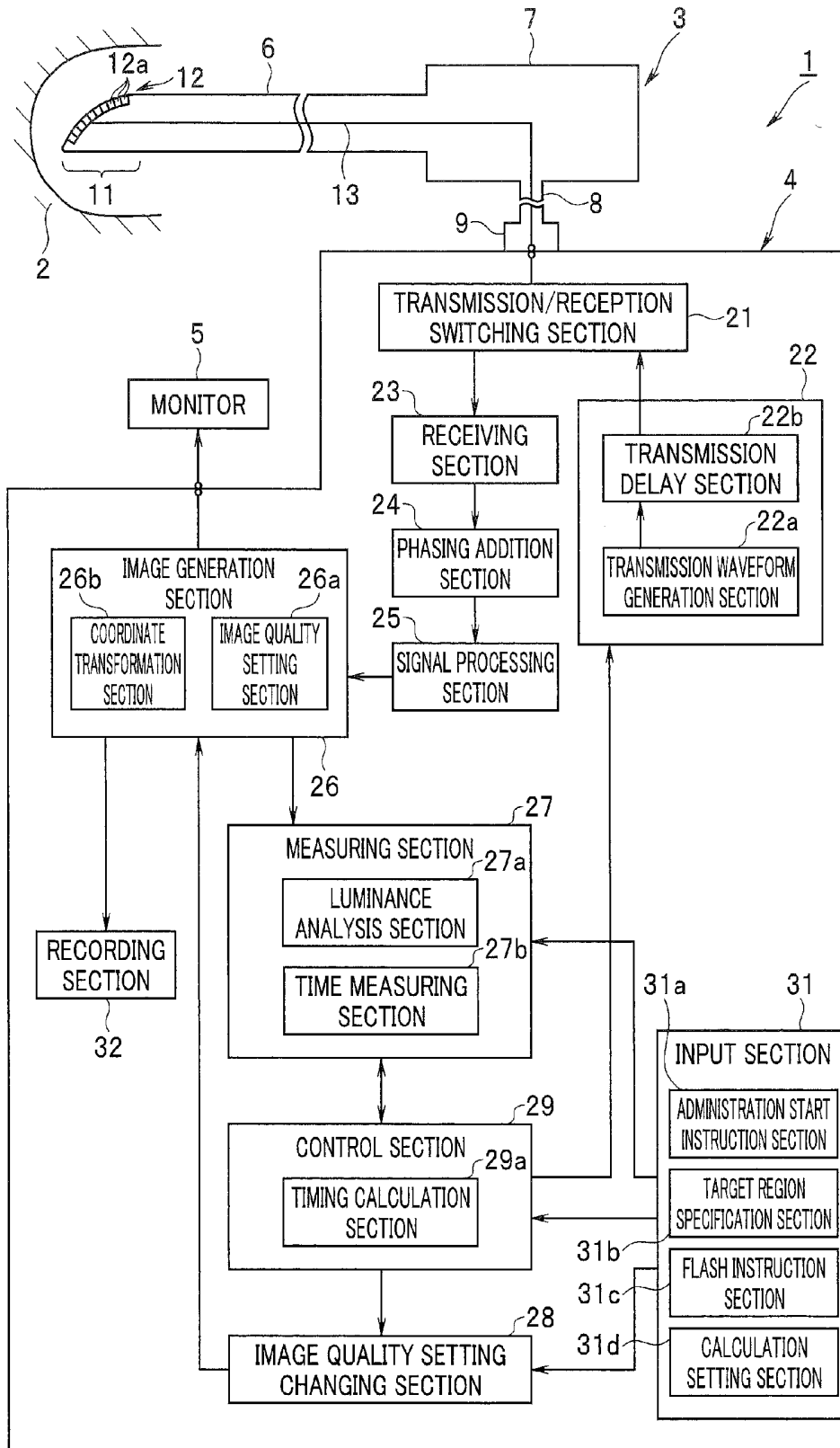


FIG. 2A

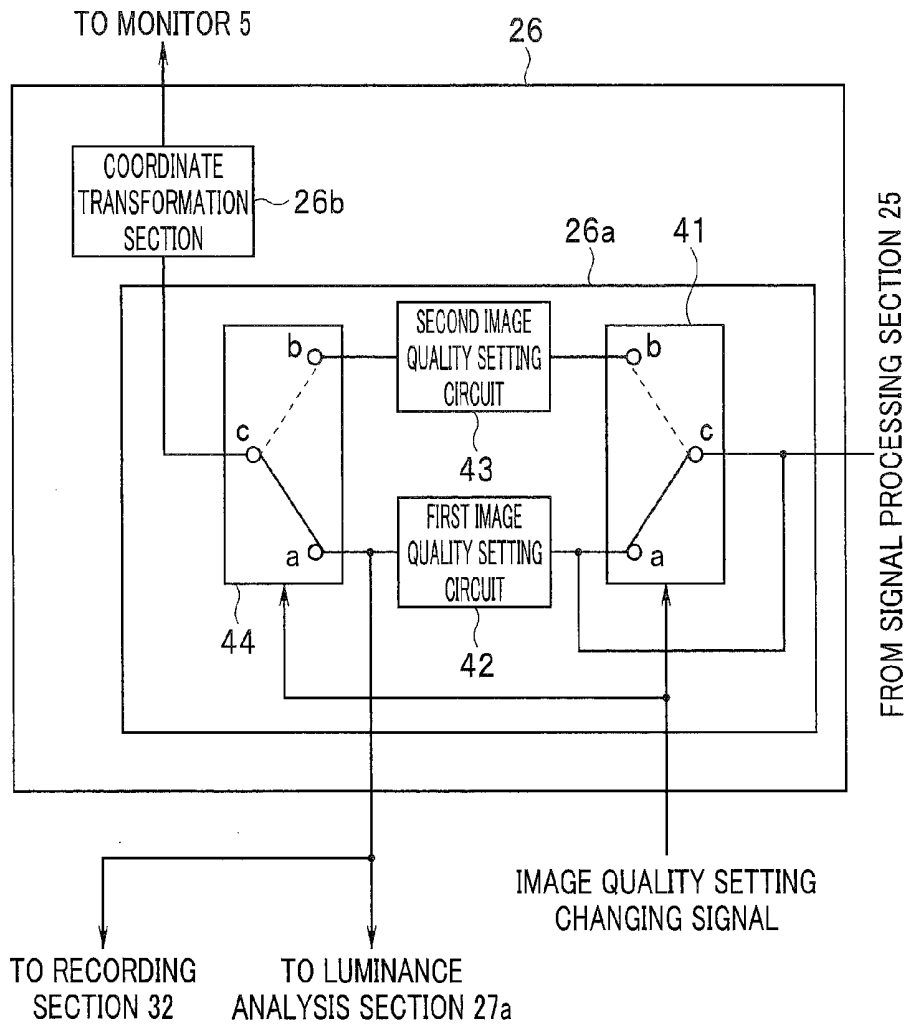
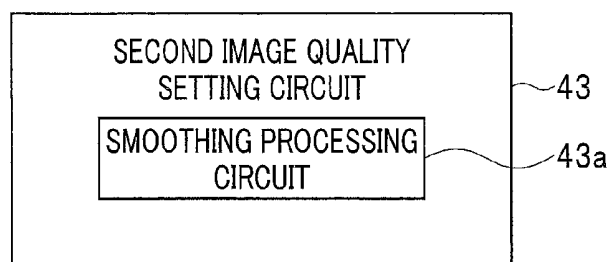
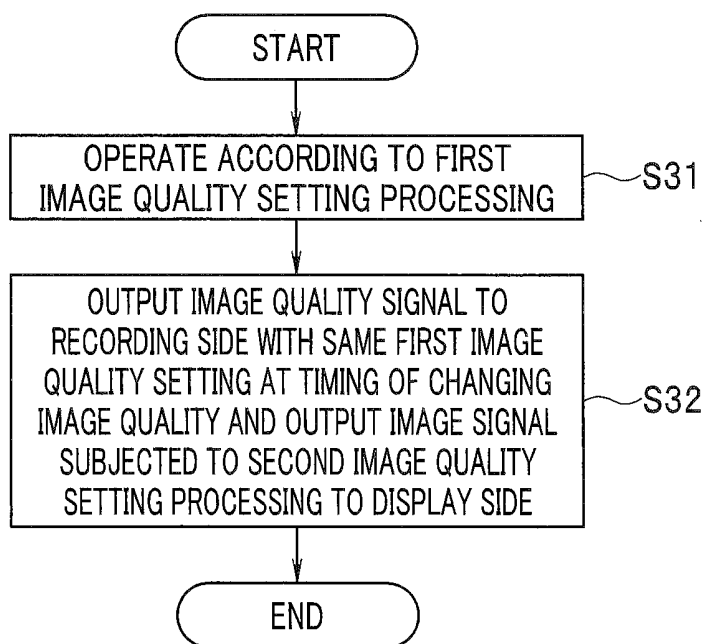


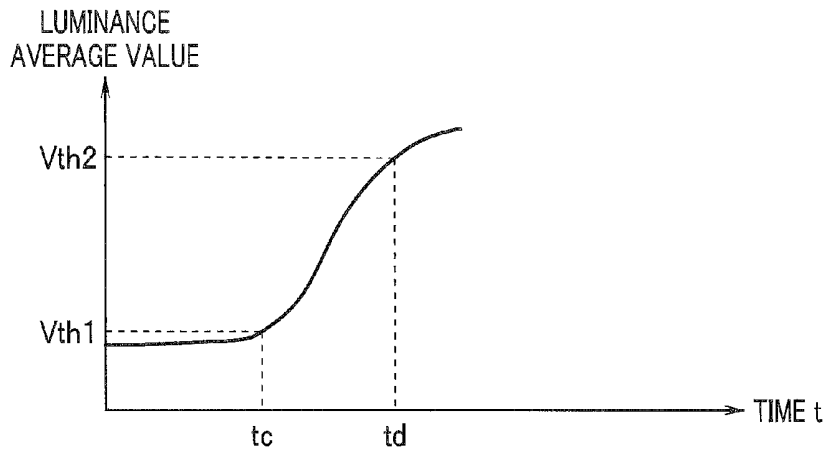
FIG. 2B



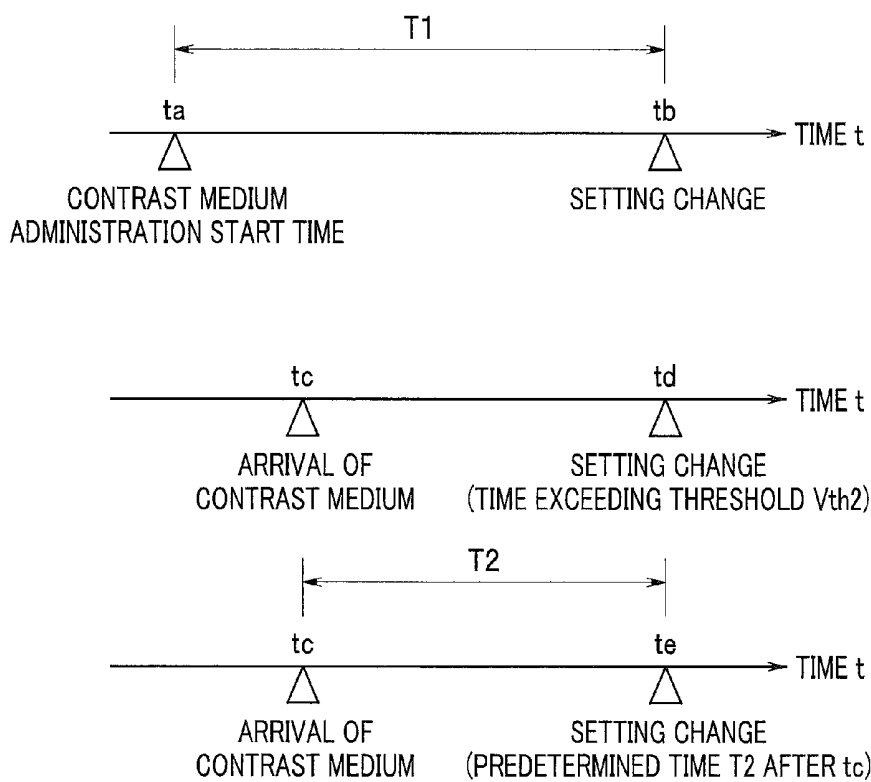
**FIG. 2C**



**FIG. 3**



**FIG. 4**



**FIG. 5**

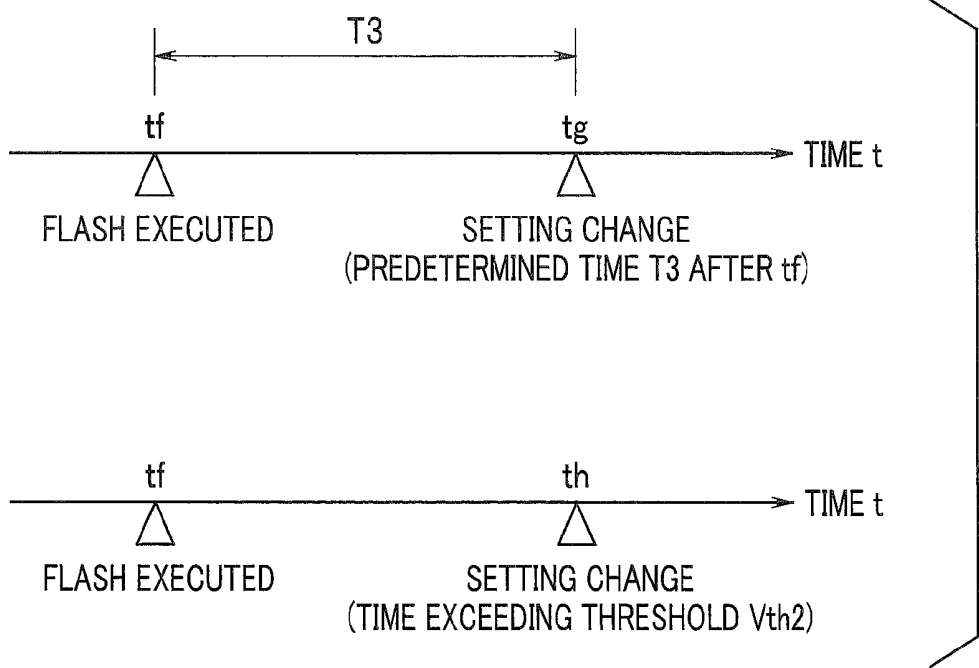


FIG. 6

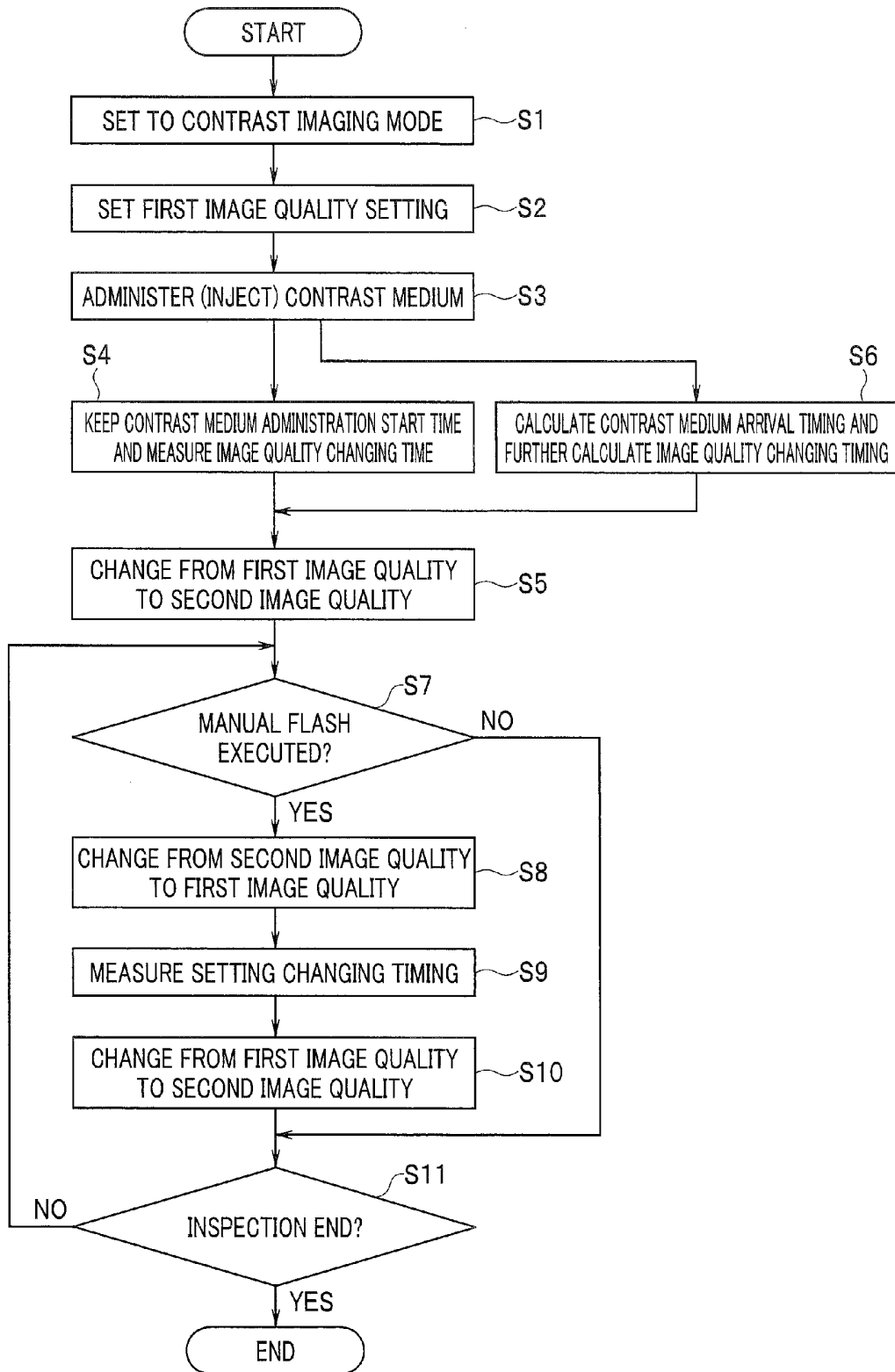
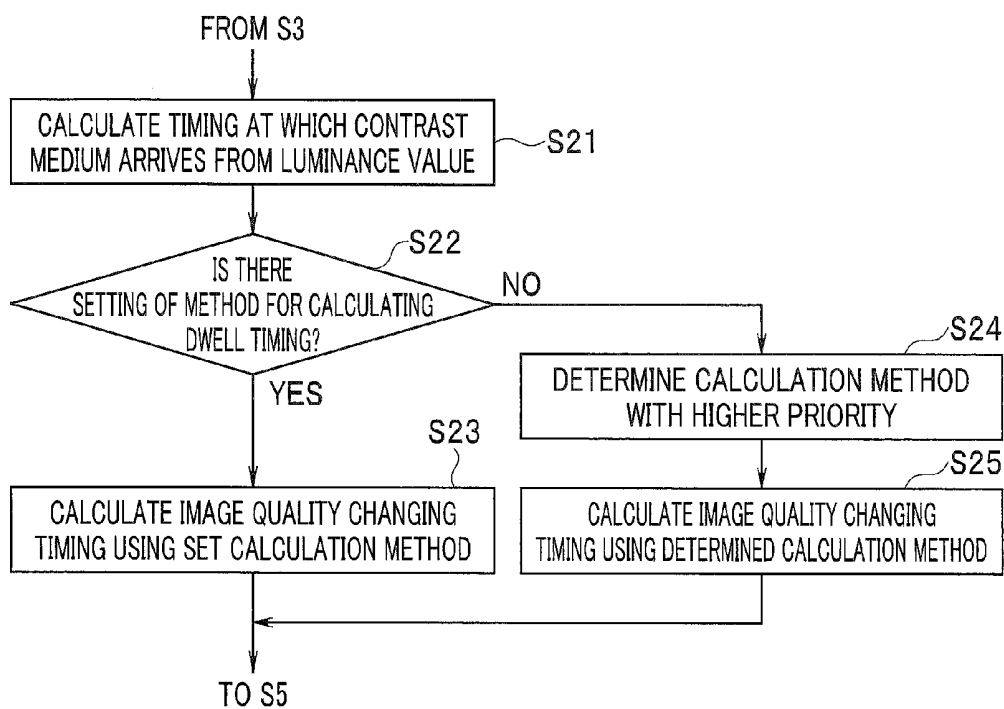


FIG. 7



## ULTRASOUND OBSERVATION APPARATUS

### CROSS REFERENCE TO RELATED APPLICATION

[0001] This application is a continuation application of PCT/JP2015/076154 filed on Sep. 15, 2015, and claims benefit of Japanese Application No. 2014-205852 filed in Japan on Oct. 6, 2014, the entire contents of which are incorporated herein by this reference.

### BACKGROUND OF THE INVENTION

[0002] 1. Field of the Invention

[0003] The present invention relates to an ultrasound observation apparatus that performs ultrasound observation using a contrast medium.

[0004] 2. Description of the Related Art

[0005] In recent years, ultrasound observation apparatuses have been widely used which can acquire acoustic information on an interior of a subject in a non-invasive manner.

[0006] Furthermore, ultrasound observation techniques are also being developed which adopt a contrast imaging mode in which a contrast medium is injected or administered into a subject and movement of the bloodstream is imaged from ultrasound reflected by the contrast medium.

[0007] For example, Japanese Patent Application Laid-Open Publication No. 2011-254963 as a first conventional example discloses contents of an ultrasound observation apparatus that can perform observation using a contrast medium, configured to analyze a retention time period of the contrast medium from luminance information and display an ultrasound image classified using different colors in accordance with the analyzed retention time period to evaluate how the contrast medium is retained.

[0008] Furthermore, Japanese Patent Application Laid-Open Publication No. 2009-28194 as a second conventional example discloses an ultrasound observation apparatus that includes contrast medium inflow start detection means configured to detect inflow timing at which a contrast medium administered to a subject starts flowing into an image pickup region using B mode image information of the image pickup region of the subject and post-processing starting means configured to start post-processing which is done after the contrast medium starts flowing into the image pickup region (target region) in synchronization with the inflow timing, in which the apparatus automatically detects the inflow of the contrast medium into the image pickup region and controls the starting of a timer or the like.

### SUMMARY OF THE INVENTION

[0009] An ultrasound observation apparatus according to an aspect of the present invention is an ultrasound observation apparatus that transmits ultrasound to a subject to which a contrast medium is administered, receives the ultrasound reflected by the contrast medium in a target region of the subject and generates an ultrasound image based on an ultrasound signal obtained from the received ultrasound, the ultrasound observation apparatus including a measuring section configured to measure predetermined measuring items related to administration of the contrast medium, an image quality setting changing section configured to change an image quality setting of the ultrasound image from one to another of a first image quality setting suitable for observing how the contrast medium flows into the target region and a

second image quality setting suitable for observing how the contrast medium is retained in the target region, and a control section configured to control setting changing operation by the image quality setting changing section based on a measurement result of the measuring section.

### BRIEF DESCRIPTION OF THE DRAWINGS

[0010] FIG. 1 is a diagram illustrating a configuration of an ultrasound diagnostic apparatus including an ultrasound observation apparatus according to a first embodiment of the present invention;

[0011] FIG. 2A is a diagram illustrating a configuration of an image quality setting section;

[0012] FIG. 2B is a diagram illustrating a second image quality setting circuit provided with a smoothing processing circuit;

[0013] FIG. 2C is a flowchart illustrating a process by the image quality setting section of changing image quality by software;

[0014] FIG. 3 is a diagram illustrating how luminance analyzed by a luminance analysis section changes;

[0015] FIG. 4 is a diagram illustrating timing of changing image quality after starting administration of a contrast medium;

[0016] FIG. 5 is a diagram illustrating timing of changing image quality after executing a manual flash;

[0017] FIG. 6 is a flowchart illustrating processing according to a first embodiment; and

[0018] FIG. 7 is a flowchart illustrating a detailed process of step S7 in FIG. 6.

### DETAILED DESCRIPTION OF THE PREFERRED EMBODIMENT

[0019] Hereinafter, an embodiment of the present invention will be described with reference to the accompanying drawings.

#### First Embodiment

[0020] As shown in FIG. 1, an ultrasound diagnostic apparatus 1 includes an ultrasound probe 3 inserted into, for example, a body cavity of a subject 2, an ultrasound observation apparatus 4 according to a first embodiment to which the ultrasound probe 3 is detachably connected and a monitor 5 as an ultrasound image display apparatus configured to display an ultrasound image generated by the ultrasound observation apparatus 4. Note that there may also be a configuration in which the ultrasound observation apparatus 4 includes the monitor 5. The ultrasound probe 3 is not limited to one inserted into the subject 2 but may also be an extracorporeal ultrasound probe configured to be attached to the body surface of the subject 2 to acquire acoustic information on an interior of the subject 2.

[0021] The ultrasound probe 3 includes an elongated insertion portion 6, a grasping portion 7 provided at a rear end of the insertion portion 6 and a cable 8 that extends from the grasping portion 7, and a connector 9 at an end of the cable 8 is detachably connected to the ultrasound observation apparatus 4. A plurality of (e.g., M) ultrasound vibration elements 12a are arranged along a convex surface provided on a distal end portion 11 of the insertion portion 6, thus providing an ultrasound transducer 12. The plurality of ultrasound vibration elements 12a that constitute the ultrasound transducer 12 are connected to a transmission/recep-

tion switching section 21 in the ultrasound observation apparatus 4 via a signal cable 13 so that a plurality of (N that satisfies  $N < M$ ) neighboring ultrasound vibration elements via a multiplexer which is not shown are sequentially selected.

[0022] The ultrasound observation apparatus 4 includes a transmitting section 22 configured to generate a transmission signal, apply the generated transmission signal to the plurality of ultrasound vibration elements 12a and transmit ultrasound and a receiving section 23 configured to receive ultrasound by the plurality of ultrasound vibration elements 12a and amplify the received signal converted to an electric signal. The transmission/reception switching section 21 connects the transmitting section 22 to the signal cable 13 for a transmission period during which the transmitting section 22 transmits a transmission signal and connects the receiving section 23 to the signal cable 13 for a reception period after the transmission period.

[0023] The transmitting section 22 includes a transmission waveform generation section 22a configured to generate a transmission signal of a pulsed transmission waveform and a transmission delay section 22b configured to delay the transmission signal of a transmission waveform generated by the transmission waveform generation section, and transmission signals of different phases delayed by the transmission delay section 22b are applied to the above-described plurality of ultrasound vibration elements 12a via the transmission/reception switching section 21.

[0024] With the application of transmission signals of different phases applied to the plurality of ultrasound vibration elements 12a, ultrasound beams transmitted from the plurality of ultrasound vibration elements 12a are caused to converge into a lens shape and propagate through the inside of the subject 2.

[0025] Ultrasound reflected by a part inside the subject 2 where an acoustic impedance changes is received by the plurality of ultrasound vibration elements 12a used for transmission, converted to an electric signal which becomes an ultrasound received signal (simply abbreviated as a "received signal"), inputted to the receiving section 23, and the receiving section 23 performs reception processing such as amplification.

[0026] The ultrasound observation apparatus 4 includes a phasing addition section 24 configured to perform phasing addition on the received signals of the plurality of ultrasound vibration elements 12a outputted from the receiving section 23, a signal processing section 25 configured to perform signal processing such as gain correction, logarithmic compression, detection and contour emphasis, and an image generation section 26 configured to perform image processing on an output signal of the signal processing section 25 by appropriately setting image quality and generating an image signal.

[0027] Furthermore, the ultrasound observation apparatus 4 includes a measuring section 27 configured to measure predetermined measuring items related to administration of a contrast medium on a signal of the image generation section 26 (or an output signal of the signal processing section 25), an image quality setting changing section 28 configured to change an image quality setting of the image generation section 26 and a control section 29 configured to control the change of the image quality setting of the image quality setting changing section 28 based on the measurement result by the measuring section 27.

[0028] Furthermore, the ultrasound observation apparatus 4 includes an input section (or input apparatus) 31 configured of a keyboard or the like to instruct to start administration (or start injection) of a contrast medium and a recording section (or recording apparatus) 32 configured to record TIC analysis data for analyzing a luminance change curve (time intensity curve: hereinafter abbreviated as "TIC") of image data in the target region to be observed from the start of administration of the contrast medium with the same image quality setting (first image quality setting) as that at the start of administration of the contrast medium.

[0029] The above-described image generation section 26 includes an image quality setting section (or image quality setting circuit) 26a configured to be settable to a first image quality setting which is an appropriate or optimum image quality setting in a first observation mode state (or a first observation phase) when observing how the contrast medium flows into a target region as a contrast imaging mode in the case of the starting of administration of the contrast medium, and a second image quality setting which is an appropriate or optimum image quality setting in a second observation mode state (or a second observation phase) when observing how the contrast medium is connected when the first observation mode state is changed to a state in which the contrast medium is retained in a target region and the contrast medium is retained (also referred to as a predetermined retention state), and a coordinate transformation section (or coordinate transformation circuit) 26b configured to perform coordinate transformation on an image signal with image quality set by the image quality setting section 26a.

[0030] The image signal coordinate-transformed by the coordinate transformation section 26b is outputted to the monitor 5 and an ultrasound image of the target region is displayed on a display surface of the monitor 5.

[0031] The measuring section 27 includes a luminance analysis section (or luminance analysis circuit) 27a configured to analyze or measure a luminance value of the image signal of, for example, the image quality setting section 26a of the image generation section 26. Note that the measuring section 27 includes a time measuring section (or time measuring circuit) 27b configured to measure time for calculating timing of changing an image quality setting through only time measurement without using the luminance analysis section 27a when a method for calculating timing of changing an image quality setting through time measurement is selected from the input section 31 as will be described later. In other words, the measuring section 27 measures the above-described luminance value or time as the above-described predetermined measurement items related to administration of the contrast medium.

[0032] The luminance analysis section 27a measures or analyzes at least one of an average value of a luminance value (also called "luminance average value") of an image signal (or image data) in a target region specified or set by, for example, the input section 31, a maximum value of the luminance value, a variance value of the luminance value and a change rate of the luminance value. In other words, in the luminance value as a predetermined measurement item, an average value and a variance value or the like constitute further subdivided measurement items.

[0033] The luminance analysis section 27a outputs the measurement result or analysis result to the control section 29. The control section 29 includes a timing calculation

section (or timing analysis section) **29a** configured to calculate or analyze timing at which the state of the contrast medium changes from arrival to retention in the target region based on the measurement result of the luminance analysis section **27a**, that is, the luminance value measured by the luminance analysis section **27a**.

[0034] That is, the timing calculation section (or timing calculation circuit) **29a** calculates timing at which a first observation mode state at the start of administration of the contrast medium is changed to a second observation mode state in which the contrast medium is retained in a target region as timing of changing the image quality setting from a first image quality setting state as an appropriate image quality setting in the first observation mode state to a second image quality setting state as an appropriate image quality setting in the second observation mode state.

[0035] The control section **29** sends the calculated timing to the image quality setting changing section **28** and controls the image quality setting changing section **28** so as to change the image quality setting section **26a** of the image generation section **26** from the first image quality setting state to the second image quality setting state.

[0036] The input section **31** includes an administration start instruction section **31a** configured to instruct to start administration of the contrast medium, a target region specification section **31b** configured to specify a target region, a flash instruction section **31c** configured to instruct a manual flash (transmission or radiation of high intensity ultrasound with a high acoustic pressure) and a calculation setting section **31d** configured to select or set one from among a plurality of calculation methods (or calculation modes) for calculating timing of changing the image quality setting. Note that the administration start instruction section **31a**, the target region specification section **31b**, the flash instruction section **31c** and the calculation setting section **31d** generate corresponding instruction signals or the like through specific key operations on, for example, a keyboard making up the input section **31**.

[0037] When the calculation method for calculating timing of changing the image quality setting by the calculation setting section **31d** is not selected (set), time measurement by the time measuring section **27b** and measurement (analysis) of a luminance value by the luminance analysis section **27a** may be interlocked with each other according to the presence or absence of an instruction to start administration by the administration start instruction section **31a** as follows.

[0038] When a user such as an operator instructs to start administration of the contrast medium from the administration start instruction section **31a**, the time measuring section **27b** of the measuring section **27** measures an elapsed time period (time passage) from the instruction to start administration of the contrast medium as a starting point and measures timing of changing the image quality setting. Note that when the starting of administration of the contrast medium is instructed, a target region may be specified from the target region specification section **31b**.

[0039] When the calculation method by the luminance analysis section **27a** is selected as the method for calculating timing of changing the image quality setting, the luminance analysis section **27a** starts measuring a luminance value on an image signal of the target region and measures timing of changing the image quality setting. Furthermore, upon receiving a signal for specifying the target region from the

input section **31**, the image quality setting changing section **28** sets the image quality setting section **26a** of the image generation section **26** to a first image quality setting state.

[0040] When the flash instruction section **31c** instructs a manual flash, the control section **29** controls the transmitting section **22** so as to raise an output level from a normal output level of a transmission signal to a flash output level which is a higher output level and bubbles of the contrast medium are destroyed by being irradiated with ultrasound with a higher acoustic pressure. When a set time period elapses, the control section **29** controls the transmitting section **22** so as to restore the output level of the normal transmission signal.

[0041] When the calculation method is set from the calculation setting section **31d**, the measuring section **27** and the control section **29** calculate timing of changing the image quality setting according to the set calculation method.

[0042] In a contrast imaging mode in which administration of the contrast medium is started, the above-described recording section **32** records a chronological luminance value from the initial state as TIC analysis data with the same image quality setting state. In contrast, an image signal outputted to the monitor **5** is set to the first image quality setting state and the second image quality setting state appropriate to the first observation mode state and the second observation mode state respectively.

[0043] FIG. 2A illustrates one configuration example of the image quality setting section **26a**. An image signal from the signal processing section **25** is inputted to a common contact c of a first changeover switch **41** that constitutes the image quality setting section **26a** and is also inputted to a first image quality setting circuit **42** configured to set image quality of the image signal to first image quality. Contacts a and b of the first changeover switch **41** are respectively connected to respective input ends of the first image quality setting circuit **42** and a second image quality setting circuit **43** configured to set image quality of the image signal to second image quality. Respective output ends of the first image quality setting circuit **42** and the second image quality setting circuit **43** are respectively connected to contacts a and b of the second changeover switch **44** and a common contact c is connected to an input end of the coordinate transformation section **26b** and an output end of the coordinate transformation section **26b** is connected to an input end of the monitor **5**. The first changeover switch **41** and the second changeover switch **44** are changed as being interlocked with each other by an image quality setting changeover signal outputted from the image quality setting changing section **28**. Note that the image quality setting changing section **28** outputs the image quality setting changeover signal under the control of the control section **29**.

[0044] For example, the first changeover switch **41** and the second changeover switch **44** are changed by an image quality setting changeover signal in such a way that each common contact c is electrically continuous to each contact a in the first observation mode state in which administration of the contrast medium is started as shown by a solid line and each common contact c is electrically continuous to each contact b in a second observation mode state for observing how the contrast medium is retained as shown by a dotted line.

[0045] Furthermore, the output end of the first image quality setting circuit 42 is connected to the recording section 32 and connected to the luminance analysis section 27a as well.

[0046] With such a configuration, the recording section 32 records an image signal in the first image quality setting state by the first image quality setting circuit 42. Furthermore, the luminance analysis section 27a analyzes a luminance value of the image signal in the first image quality setting state.

[0047] As shown in FIG. 2B, the second image quality setting circuit 43 is provided with a smoothing processing circuit 43a which is constructed of, for example, a median filter or a low-pass filter configured to perform smoothing processing, for which a higher smoothing processing level is set than for the smoothing processing circuit provided for the first image quality setting circuit 42. Alternatively, the function of the smoothing processing circuit is turned OFF in the first image quality setting circuit 42 and the second image quality setting by the second image quality setting circuit 43 satisfies a condition under which a higher smoothing processing level is set than the first image quality setting by the first image quality setting circuit 42.

[0048] Note that instead of the smoothing processing circuit 43a, the second image quality setting circuit 43 may be configured to perform processing that satisfies a condition under which the second image quality setting has a higher frame correlation value than the first image quality setting or has a higher persistence processing level. In other words, compared to the first image quality setting of the first image quality setting circuit 42, the second image quality setting of the second image quality setting circuit 43 satisfies at least one of conditions: having a higher level of smoothing processing, having a higher frame correlation value and having a higher level of persistence processing.

[0049] Note that FIG. 1 illustrates one configuration example and the configuration in FIG. 1 may be changed. For example, in FIG. 1, although the control section 29 and the measuring section 27 are shown as different blocks, the control section 29 may be configured to include the function of the measuring section 27, for example. In FIG. 1, although the image quality setting changing section 28 and the image generation section 26 are shown as different blocks, the image generation section 26 may be configured to include the function of the image quality setting changing section 28, for example, and the image quality setting changing section 28 in the image generation section 26 may be configured to change the image quality setting of the image quality setting section 26a in the image generation section 26 based on a control signal from the control section 29.

[0050] Furthermore, in this case, an image quality setting section 26a as shown in FIG. 2A may be disposed in the image quality setting changing section 28 in the image generation section 26 and the image quality setting changing section 28 may be configured to change an image quality setting of the image quality setting section 26a in the image quality setting changing section 28. In addition, although the control section 29 and the image quality setting changing section 28 are shown as different blocks in the configuration of FIG. 1, the control section 29 may be configured to include the function of the image quality setting changing section 28, for example, and the image quality setting changing section 28 in the control section 29 may be

configured to change the image quality setting of the image quality setting section 26a in the image generation section 26.

[0051] Note that although FIG. 2A illustrates a configuration in which the image quality setting is changed by hardware, the image quality setting may be changed by software as shown in FIG. 2C. FIG. 2C illustrates processing that operates according to first image quality setting processing first, and changes image quality setting processing at timing of changing the image quality setting (change of image quality).

[0052] In first step S31, the image quality setting section 26a operates according to the first image quality setting processing. In this case, an image signal of first image quality generated by the first image quality setting processing is outputted to the display side and the recording side. At timing of changing image quality, as shown in step S32, the image quality setting section 26a outputs the image signal being subjected to the same first image quality setting processing to the recording section 32 side and outputs an image signal of second image quality subjected to the second image quality setting processing to the display side by changing parameter set values and processing contents or the like in the case of the first image quality setting processing.

[0053] Note that even when a manual flash is executed, the image quality setting section 26a operates according to the first image quality setting processing at timing at which the manual flash is executed as shown in step S31 and performs the process in step S32 at subsequent timing of changing image quality.

[0054] FIG. 3 illustrates a characteristic example of a luminance change curve (TIC) when analyzed by the luminance analysis section 27a. Based on the analyzed TIC, the luminance analysis section 27a determines that, for example, timing at which the luminance average value as an average value of the luminance value exceeds the level of a threshold  $V_{th1}$  as a predetermined threshold as a time  $t_c$  of timing at which the contrast medium arrives at the target region. Furthermore, the luminance analysis section 27a determines, for example, timing at which the luminance average value exceeds the level of the threshold  $V_{th1}$  and then further exceeds a threshold  $V_{th2}$  which is higher than the threshold  $V_{th1}$  as a time  $t_d$  of timing at which the contrast medium is retained in the target region.

[0055] Instead of an average value of the luminance value, the luminance analysis section 27a may analyze one of a maximum value of the luminance value, a variance value of the luminance value and a change rate of the luminance value, and may determine that timing at which a predetermined threshold is exceeded is the time  $t_c$  of timing at which the contrast medium arrives at the target region. Then, (the timing calculation section 29a of) the control section 29 controls measurement by the measuring section 27 at the timing (in accordance with the setting of the calculation method by the calculation setting section 31d).

[0056] For example, in the case where time measurement (instead of measurement of a luminance value) is set by the calculation setting section 31d, the time  $t_d$  of timing in a predetermined retention state in which the contrast medium is retained in the target region is measured through time measurement from the time  $t_c$  of the above-described timing. On the other hand, in the case where measurement of a luminance value is set by the calculation setting section 31d,

the time  $t_d$  of timing at which the contrast medium is retained in the target region is calculated (measured) through measurement of the luminance value from the time  $t_c$  of the above-described timing. In the case where the calculation method is not set by the calculation setting section 31d, priority may be set so that the time  $t_d$  of timing at which the contrast medium is retained in the target region is measured through measurement of the luminance value (FIG. 7 illustrates such an operation example).

[0057] Note that one of a maximum value of the luminance value, a variance value of the luminance value and a change rate of the luminance value may be analyzed instead of using an average value of the luminance value also in the case where the timing is determined as the time  $t_d$  of timing at which the contrast medium is retained in the target region through measurement of the luminance value.

[0058] In other words, (the luminance analysis section 27a of) the measuring section 27 may measure at least one of an average value of the luminance value, a maximum value of the luminance value, a variance value of the luminance value and a change rate of the luminance value, and the control section 29 may control the setting change by the image quality setting changing section 28 by assuming that timing at which at least one of an average value of the luminance value, a maximum value of the luminance value, and a variance value of the luminance value exceeds a predetermined threshold or timing at which the change rate of the luminance value falls below a predetermined threshold as a predetermined retention state in which the contrast medium is retained in the target region.

[0059] FIG. 4 is a diagram illustrating a calculation method for calculating timing of changing an image quality setting.

[0060] There are two types of timing of changing an image quality setting in the contrast imaging mode:

[0061] (1) timing at which an observation mode state (observation phase) is changed from the start of administration of the contrast medium, and

[0062] (2) timing at which an observation mode state (observation phase) is changed from execution timing at which a manual flash is executed by the flash instruction section 31c.

[0063] In the case of (1), three calculation methods are available as shown in FIG. 4.

[0064] (A) As shown on a top row in FIG. 4, the image quality setting is changed by determining a time  $t_b$  of timing after a predetermined time period T1 measured from a time  $t_o$  of timing of starting administration of the contrast medium as a time at which the setting of a state in which the contrast medium is retained should be changed (time for setting change).

[0065] (B) As shown on a middle row in FIG. 4, the image quality setting is changed by the luminance analysis section 27a analyzing luminance of the target region from a time  $t_c$  of timing at which the contrast medium arrives at the target region and determining, when the analysis result reaches a threshold, that it is the time to change the setting of a state in which the contrast medium is retained. For example, the image quality setting is changed by determining a time  $t_d$  of timing at which an average value of luminance exceeds the threshold  $V_{th2}$  as a time in a state in which the contrast medium is retained. Note that as described above, the time  $t_d$  of timing at which the image quality setting is changed may be determined by analyzing one of a maximum value of

the luminance, a variance value of the luminance and a change rate value of luminance instead of the average value of luminance.

[0066] (C) As shown on a lowest row in FIG. 4, the image quality setting is changed by determining that a time  $t_o$  of timing a predetermined time period T2 after the time  $t_c$  of timing at which the contrast medium arrives at the target region as a time of changing the setting of a state in which the contrast medium is retained.

[0067] In the case of (2) above, two calculation methods are available as shown in FIG. 5.

[0068] (A) As shown on an upper row in FIG. 5, the image quality setting is changed from a second image quality setting to a first image quality setting at time  $t_f$  of timing at which a manual flash is executed, and the image quality setting is changed from the first image quality setting to the second image quality setting by determining that a time  $t_g$  at timing a predetermined time period T3 later is a time of the setting change of a state in which the contrast medium is retained through time measurement.

[0069] (B) As shown on a lower row in FIG. 5, after changing the image quality setting from the second image quality setting to the first image quality setting at time  $t_f$  of timing at which a manual flash is executed, luminance of the target region is analyzed and the image quality setting is changed from the first image quality setting to the second image quality setting by determining according to the analysis result that at a time  $t_h$  of timing at which the luminance value exceeds the threshold  $V_{th2}$ , a state is set in which the contrast medium is retained.

[0070] In this case, the luminance analysis section 27a analyzes one of an average value of the luminance, a maximum value of the luminance, a variance value of the luminance and a change rate value of the luminance. Note that in the present Description, the respective sections of the transmission/reception switching section 21, the transmitting section 22, the receiving section 23, the phasing addition section 24, the signal processing section 25, the image generation section 26, the measuring section 27, the image quality setting changing section 28 and the control section 29 have substantially the same meanings as those substituted by their respective circuits. For this reason, for example, the control section 29 may be substituted by a control circuit and the same may also apply to the other sections except the control section 29.

[0071] The ultrasound observation apparatus 4 according to the present embodiment is an ultrasound observation apparatus that transmits ultrasound to a subject to which a contrast medium is administered, receives ultrasound reflected by the contrast medium in a target region of the subject and generates an ultrasound image based on an ultrasound signal obtained from the received ultrasound, and includes the measuring section 27 configured to measure predetermined measuring items related to administration of the contrast medium, the image quality setting changing section 28 configured to change an image quality setting of the ultrasound image from one to the other of a first image quality setting suitable for observing how the contrast medium flows into the target region and a second image quality setting suitable for observing how the contrast medium is retained in the target region, and the control section 29 configured to control operation of changing the setting by the image quality setting changing section 28 based on the measurement result of the measuring section

27. The above-described configuration may also be said to be the following configuration.

[0072] The ultrasound observation apparatus 4 according to the present embodiment includes the transmitting section 22 configured to transmit ultrasound to a subject to which a contrast medium is administered, the receiving section 23 configured to receive ultrasound reflected by the contrast medium in a target region of the subject, the image generation section 26 configured to generate an ultrasound image based on an ultrasound signal obtained from the received ultrasound, the measuring section 27 configured to measure predetermined measuring items relating to administration of the contrast medium, the image quality setting changing section 28 configured to change an image quality setting of the ultrasound image from one to the other of a first image quality setting suitable for observing how the contrast medium flows into the target region and a second image quality setting suitable for observing how the contrast medium is retained in the target region, and the control section 29 configured to control operation of changing the setting by the image quality setting changing section 28 based on the measurement result of the measuring section 27.

[0073] Next, a typical operation of the present embodiment will be described with reference to FIG. 6. An operator inserts the ultrasound probe 3 into the subject 2, causes the distal end portion 11 of the insertion portion 6 to come into contact with an inner wall in the subject 2 and sets the ultrasound probe 3 so as to be able to acquire an ultrasound image. Then, as shown in step S1, the operator sets a contrast imaging mode from the input section 31. In this case, as shown in step S2, the image quality setting changing section 28 sets the image quality setting section 26a to a first image quality setting.

[0074] As shown in step S3, the operator administers (injects) the contrast medium into the subject 2.

[0075] When the operator wants to calculate timing of changing an image quality setting through time measurement, the operator instructs to start administration of the contrast medium from the administration start instruction section 31a. Then, as shown in step S4, the control section 29 keeps a time to start administration of the contrast medium. The time measuring section 27b measures the time of changing image quality with the instruction to start administration of the contrast medium as a starting point. As described with reference to FIG. 4, when the time  $t_b$  of timing after the predetermined time period  $T1$  is reached, it is determined that a state is set in which the contrast medium is retained in the target region. As shown in step S5, the time measuring section 27b determines that it is the time to change the setting, sends the determination result to the control section 29, and the control section 29 controls the image quality setting changing section 28 so as to change the image quality setting of the image quality setting section 26a from the first image quality setting to the second image quality setting.

[0076] On the other hand, when the operator wants to calculate (or measure) timing of changing the setting according to the luminance after starting administration of the contrast medium, the operator specifies a calculation method using luminance.

[0077] In step S6, the luminance analysis section 27a measures (calculates) (an arrival) time  $t_c$  of timing at which the contrast medium arrives at the target region as shown in,

for example, FIG. 3 based on the luminance (as a time of timing at which the average luminance value exceeds the threshold  $V_{th1}$ ). The luminance analysis section 27a further measures (calculates) timing of changing the setting in a state in which the contrast medium is retained based on the luminance from the calculated (arrival) time  $t_c$ .

[0078] For example, as shown in FIG. 3, at the time  $t_d$  of timing at which the average luminance value exceeds the threshold  $V_{th2}$ , the luminance analysis section 27a sends the measurement result to the control section 29. Alternatively, a time at timing of changing the setting of the state in which the contrast medium is retained may be measured through time measurement from the time  $t_c$  by the time measuring section 27b and the measurement result may be sent to the control section 29. After the process in step S6, the flow proceeds to the process in step S5.

[0079] As shown in step S5, the control section 29 controls the image quality setting changing section 28 to change the image quality setting of the image quality setting section 26a from the first image quality setting to the second image quality setting.

[0080] At a time at timing of changing the setting of the state in which the contrast medium is retained through temporal measurement or measurement using luminance, since the image quality setting changes from the first image quality setting to the second image quality setting as shown in step S5, the operator can perform observation without effort with appropriate image quality, making it easier to grasp in detail how the contrast medium is connected in the target region in the state in which the contrast medium is retained.

[0081] After step S5, as shown in step S7, the control section 29 monitors flash execution by a manual flash instruction from the flash instruction section 31c of the input section 31.

[0082] When the flash execution is not performed, the flow proceeds to a process in step S11, the control section 29 determines whether or not an instruction to end an inspection is inputted from the input section 31, ends the process in FIG. 6 when an instruction to end an inspection is inputted or returns to the process in step S7 when no instruction to end an inspection is inputted.

[0083] On the other hand, when flash execution is performed in the determination process in step S7, the flow proceeds to a process in step S8, and in step S8, the image quality setting changing section 28 changes the image quality setting of the image quality setting section 26a from the second image quality setting to the first image quality setting. In next step S9, the measuring section 27 measures the timing of changing the setting using the calculation method shown in FIG. 5 (temporally or through a luminance analysis).

[0084] At timing at which it is determined that a state is set in which the contrast medium is retained, the control section 29 controls the image quality setting changing section 28 to change the image quality of the image quality setting section 26a from the first image quality setting to the second image quality setting as shown in step S10. In the present embodiment, since image quality of the image quality setting section 26a is changed from the first image quality setting to the second image quality setting at timing at which it is determined that a state is set in which the contrast medium is retained in this way, the operator can observe without effort how the contrast medium flows into the target region

in detail with appropriate image quality and easy to grasp. After the process in step S10, the flow proceeds to the process in aforementioned step S11.

[0085] FIG. 7 illustrates details of the process in S6. When the calculation method using luminance is specified or selected in step S3, the luminance analysis section 27a calculates the time  $t_c$  of timing at which the contrast medium arrives at the target region through measurement of the luminance value as shown in step S21 and sends the calculation result to the control section 29.

[0086] In next step S22, the control section 29 determines whether or not the calculation setting section 31d sets a selection of a calculation method for calculating timing at which the contrast medium is retained in the target region from the time  $t_c$  of timing at which the contrast medium arrives at the target region (in other words, timing at which the image quality setting is changed) through a calculation using the luminance value or a calculation through time measurement.

[0087] In the case of a determination result where the calculation method is set, in next step S23, the measuring section 27 calculates timing at which the contrast medium is retained in the target region or timing of changing the image quality using the set calculation method. When the measuring section 27 calculates the timing at which the contrast medium is retained in the target region, the measuring section 27 sends the calculation result to the control section 29 and the control section 29 performs control as shown in step S6.

[0088] On the other hand, in the case of a determination result in step S22 showing that the calculation method is not set, the control section 29 determines in step S24 to adopt the calculation method for which high priority is set.

[0089] When the user calculates timing at which the contrast medium is retained in the target region, if the user wants to use one of a luminance value and a time with higher priority than the other in advance, the user inputs information on the priority the user wants from the input section 31 and the inputted information on the priority is stored in a memory or the like that forms a priority information storage section in the control section 29 or the measuring section 27. In step S24, the control section 29 adopts a calculation method with higher priority with reference to the information on the priority stored in the memory or the like.

[0090] In next step S25, the control section 29 controls the measuring section 27 so as to adopt the calculation method with higher priority to calculate timing at which the contrast medium is retained in the target region or timing of changing the image quality. The measuring section 27 adopts the calculation method with higher priority and calculates timing at which the contrast medium is retained in the target region or timing of changing the image quality.

[0091] After calculating timing at which the contrast medium is retained in the target region, the measuring section 27 sends the calculation result to the control section 29 and the control section 29 performs control as shown in step S6.

[0092] According to the present embodiment that operates in this way, it is possible to observe how the contrast medium flows into the target region and how the contrast medium is retained with an appropriate image quality setting respectively.

[0093] Furthermore, by giving an instruction to start administration of the contrast medium, the time measuring

section 27b can calculate timing of changing image quality setting through time measurement, automatically change the image quality setting from the first image quality setting to the second image quality setting, and thereby save time and effort of changeover by the user.

[0094] It is also possible to calculate timing of changing the image quality setting based on a luminance value by the luminance analysis section 27a.

What is claimed is:

1. An ultrasound observation apparatus that transmits ultrasound to a subject to which a contrast medium is administered, receives the ultrasound reflected by the contrast medium in a target region of the subject and generates an ultrasound image based on an ultrasound signal obtained from the received ultrasound, the ultrasound observation apparatus comprising:

a measuring section configured to measure predetermined measuring items related to administration of the contrast medium;

an image quality setting changing section configured to change an image quality setting of the ultrasound image from one to another of a first image quality setting suitable for observing how the contrast medium flows into the target region and a second image quality setting suitable for observing how the contrast medium is retained in the target region; and

a control section configured to control setting changing operation by the image quality setting changing section based on a measurement result of the measuring section.

2. The ultrasound observation apparatus according to claim 1, wherein the control section controls the setting change by the image quality setting changing section based on a measurement result based on a luminance value of the ultrasound image in the target region by the measuring section or a measurement result based on time measurement related to administration of the contrast medium.

3. The ultrasound observation apparatus according to claim 1, wherein compared to the first image quality setting, the second image quality setting satisfies at least one of conditions of having a higher level of smoothing processing, a higher frame correlation value and a higher level of persistence processing.

4. The ultrasound observation apparatus according to claim 3,

wherein the measuring section measures a luminance value of the ultrasound image in the target region, and the control section analyzes a retention state of the contrast medium in the target region based on the luminance value measured in the measuring section and controls the image quality setting changing section so as to change the image quality setting when a predetermined retention state is set.

5. The ultrasound observation apparatus according to claim 3,

wherein the measuring section measures a luminance value of the ultrasound image in the target region, and the control section analyzes timing at which the contrast medium arrives at the target region based on the luminance value measured in the measuring section and controls the image quality setting changing section so as to change the image quality setting when a predetermined time period elapses after the contrast medium arrives at the target region.

6. The ultrasound observation apparatus according to claim 3, further comprising an input section for instructing to start administration of the contrast medium,

wherein the measuring section measures an elapsed time period from the instruction to start administration inputted to the input section as a starting point, and the control section controls the image quality setting changing section so as to change the image quality setting based on the elapsed time period measured by the measuring section.

7. The ultrasound observation apparatus according to claim 3, wherein the control section further controls, when a manual flash is instructed, the setting change of the image quality setting changing section so that the image quality setting becomes the first image quality setting in conjunction with execution of a flash that transmits ultrasound with high intensity in response to the flash instruction.

8. The ultrasound observation apparatus according to claim 3, further comprising a recording section configured to record video data with the first image quality setting as luminance change curve analysis data independently of the setting change of the image quality setting changing section.

9. The ultrasound observation apparatus according to claim 4,

wherein the measuring section measures at least one of an average value of the luminance value, a maximum value of the luminance value, a variance value of the luminance value and a change rate of the luminance value, and

the control section controls the setting change of the image quality setting changing section assuming that timing at which at least one of the average value of the luminance value, the maximum value of the luminance value and the variance value of the luminance value exceeds a predetermined threshold or timing at which the change rate of the luminance value falls below a predetermined threshold corresponds to the predetermined retention state.

10. The ultrasound observation apparatus according to claim 5,

wherein the measuring section measures at least one of an average value of the luminance value, a maximum value of the luminance value, a variance value of the luminance value and a change rate of the luminance value, and

the control section controls measurement by the measuring section assuming timing at which at least one of the average value of the luminance value, the maximum value of the luminance value, the variance value of the

luminance value and the change rate of the luminance value exceeds a predetermined threshold as arrival timing of the contrast medium.

11. The ultrasound observation apparatus according to claim 10, further comprising:

a first image quality setting circuit configured to set the ultrasound image to the first image quality setting and a second image quality setting circuit configured to set the ultrasound image to the second image quality setting, the image quality setting circuits being provided outside or inside the image quality setting changing section; and

a display apparatus configured to display the ultrasound image via one of the first image quality setting circuit and the second image quality setting circuit selected by the image quality setting changing section.

12. The ultrasound observation apparatus according to claim 7, wherein after a setting change of the first image quality setting in conjunction with the execution of the manual flash, the image quality setting changing section changes the first image quality setting to the second image quality setting based on a measurement result by the measuring section.

13. The ultrasound observation apparatus according to claim 10, further comprising an image quality setting circuit provided outside or inside the image quality setting changing section and configured to set the ultrasound image by changing processing contents of the first image quality setting and the second image quality setting.

14. The ultrasound observation apparatus according to claim 1, wherein the measuring section comprises:

a luminance measuring section configured to calculate retention timing at which the contrast medium is retained in the target region from arrival timing at which the contrast medium arrives at the target region through measurement based on the luminance value of the ultrasound image in the target region as the predetermined measurement item;

a time measuring section configured to calculate the retention timing from the arrival timing through time measurement from the arrival timing; and

a priority information storage section configured to store priority information regarding priority given to one of the luminance measuring section and the time measuring section,

wherein the control section calculates the retention timing with reference to the priority information stored in the priority information storage section.

\* \* \* \* \*

专利名称(译)	超声波观察仪器		
公开(公告)号	<a href="#">US20160302768A1</a>	公开(公告)日	2016-10-20
申请号	US15/196133	申请日	2016-06-29
[标]申请(专利权)人(译)	奥林巴斯株式会社		
申请(专利权)人(译)	OLYMPUS CORPORATION		
当前申请(专利权)人(译)	OLYMPUS CORPORATION		
[标]发明人	MIYAKE TATSUYA		
发明人	MIYAKE, TATSUYA		
IPC分类号	A61B8/08 A61B8/00 A61B8/12		
CPC分类号	A61B8/481 A61B8/54 A61B8/12 A61B8/5215 G16H50/20		
优先权	2014205852 2014-10-06 JP		
其他公开文献	US9662092		
外部链接	<a href="#">Espacenet</a> <a href="#">USPTO</a>		

摘要(译)

基于通过接收由施用造影剂的对象的目标区域中的造影剂反射的超声获得的超声信号的超声观察设备包括测量部分，该测量部分被配置为测量与施用相关的预定测量项目图像质量设置改变部分，被配置为将超声图像的图像质量设置从适于观察造影剂如何流入目标区域的第一图像质量设置从一个改变为另一个，以及第二图像质量设置适合于观察造影剂如何被保留在目标区域中的控制部分，以及控制部分，其被配置为基于测量部分的测量结果来控制图像质量设置改变部分的设置改变操作。

