



(19) **United States**

(12) **Patent Application Publication**  
**Kobayashi et al.**

(10) **Pub. No.: US 2006/0058662 A1**  
(43) **Pub. Date: Mar. 16, 2006**

(54) **ULTRASONIC IMAGING APPARATUS AND METHOD FOR ULTRASONIC IMAGING**

(30) **Foreign Application Priority Data**

Aug. 31, 2004 (JP)..... 2004-252669

(75) **Inventors:** Yutaka Kobayashi, Tochigi-ken (JP);  
Takanobu Uchibori, Tochigi-ken (JP);  
Taketoshi Nagai, Tochigi-ken (JP);  
Koichi Sato, Tochigi-ken (JP)

**Publication Classification**

(51) **Int. Cl.**  
*A61B 8/00* (2006.01)  
*A61B 8/14* (2006.01)  
(52) **U.S. Cl.** ..... 600/437

Correspondence Address:  
**OBLON, SPIVAK, MCCLELLAND, MAIER & NEUSTADT, P.C.**  
1940 DUKE STREET  
ALEXANDRIA, VA 22314 (US)

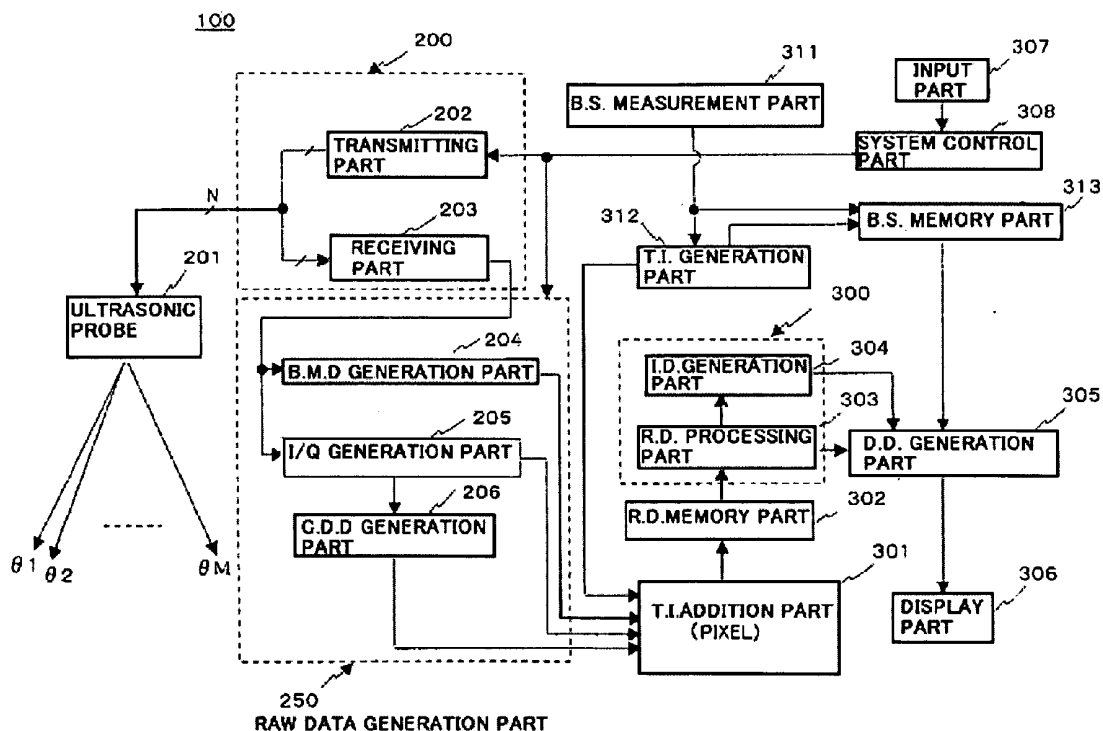
(57) **ABSTRACT**

A ultrasonic imaging apparatus comprises an ultrasonic probe including a plurality of ultrasonic transducers which perform ultrasonic transmission and reception to an object, a transceiver unit configured to obtain an ultrasonic signal from the object by driving the plurality of ultrasonic transducers, an ultrasonic data generation unit configured to generate ultrasonic data based on the ultrasonic signal, a time information generation unit configured to generate time information related to the ultrasonic transmission or reception and a time information addition unit configured to add the time information in a part of pixel data of the ultrasonic data in order to synchronize the Image data with biomedical signal, such as ECG.

(73) **Assignees:** KABUSHIKI KAISHA TOSHIBA, Tokyo (JP); TOSHIBA MEDICAL SYSTEMS CORPORATION, Otawara-shi (JP)

(21) **Appl. No.:** 11/213,875

(22) **Filed:** Aug. 30, 2005



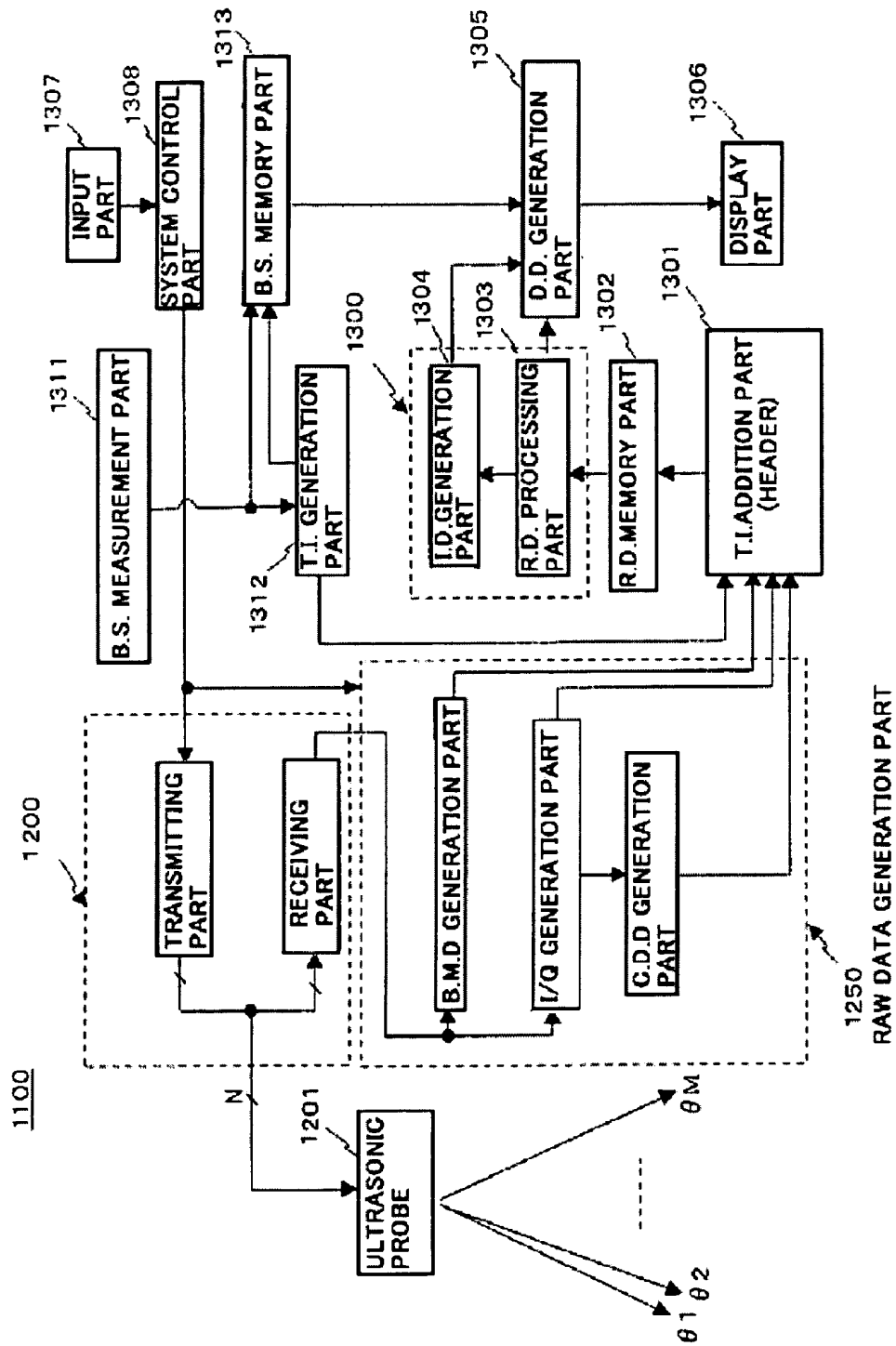


FIG. 1(PRIOR ART)

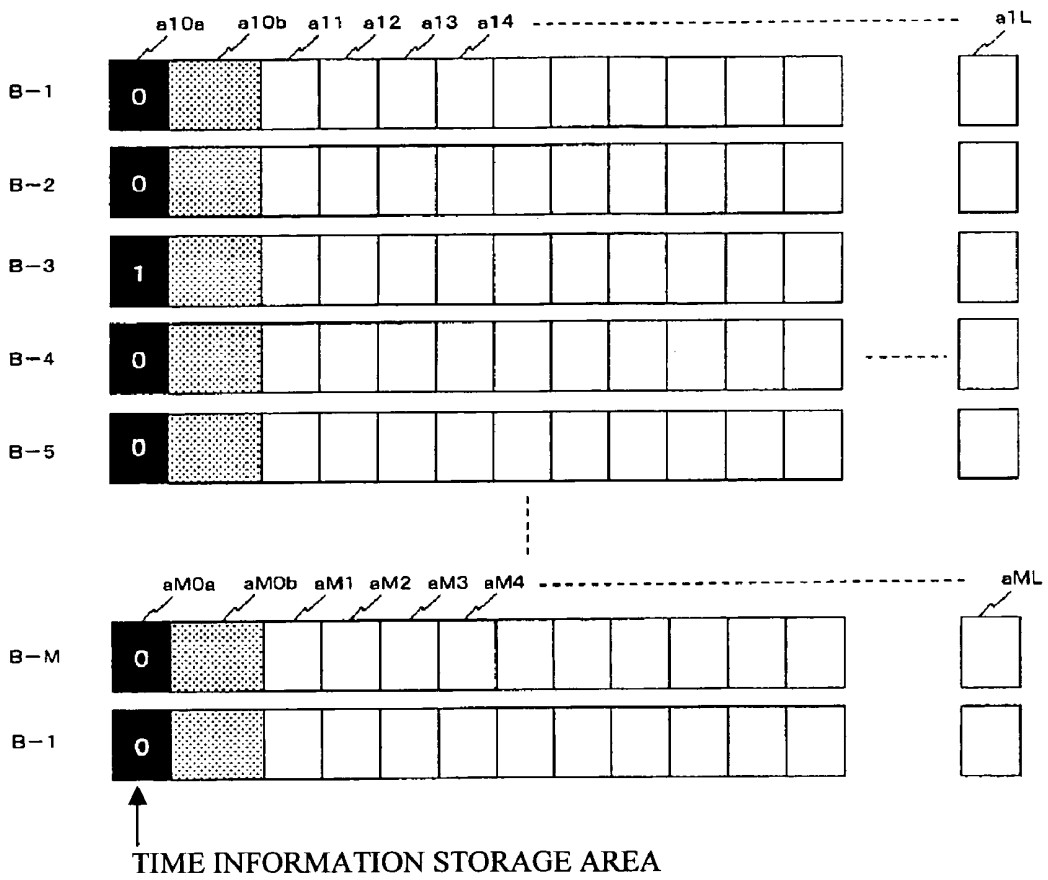


FIG. 2 (PRIOR ART)

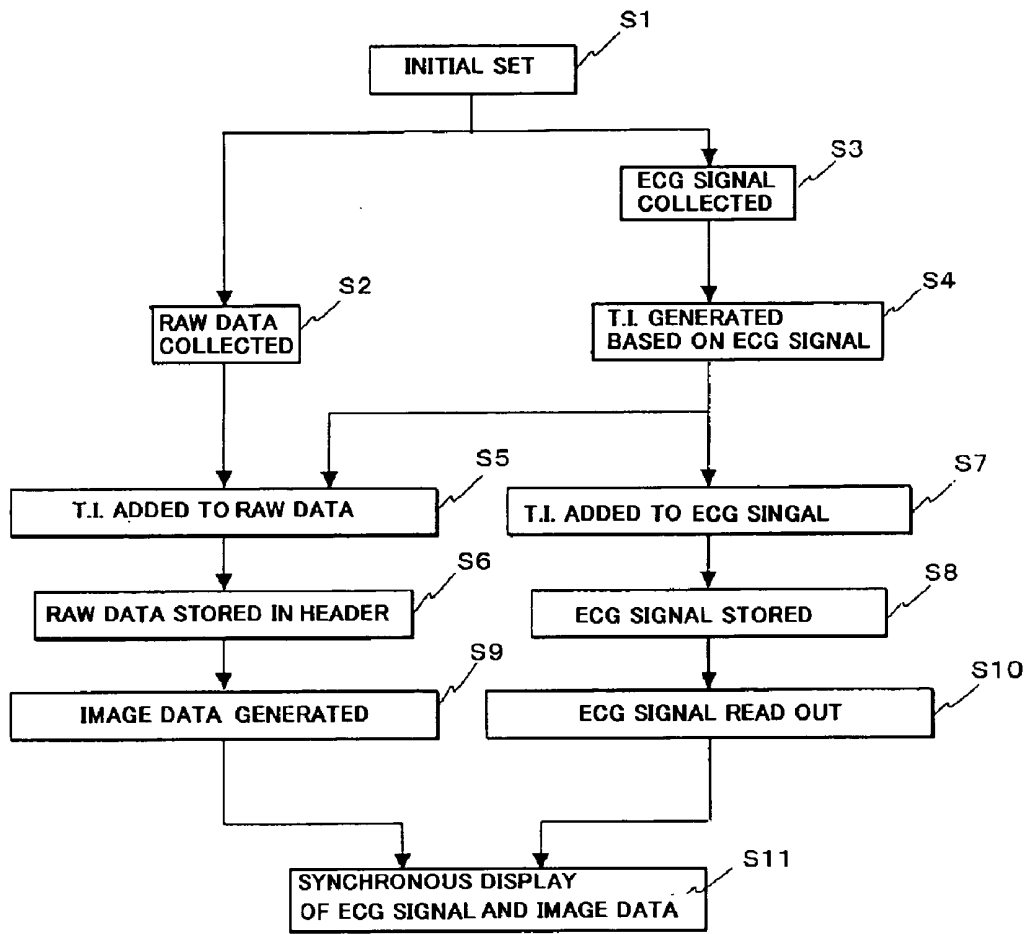


FIG. 3 (PRIOR ART)

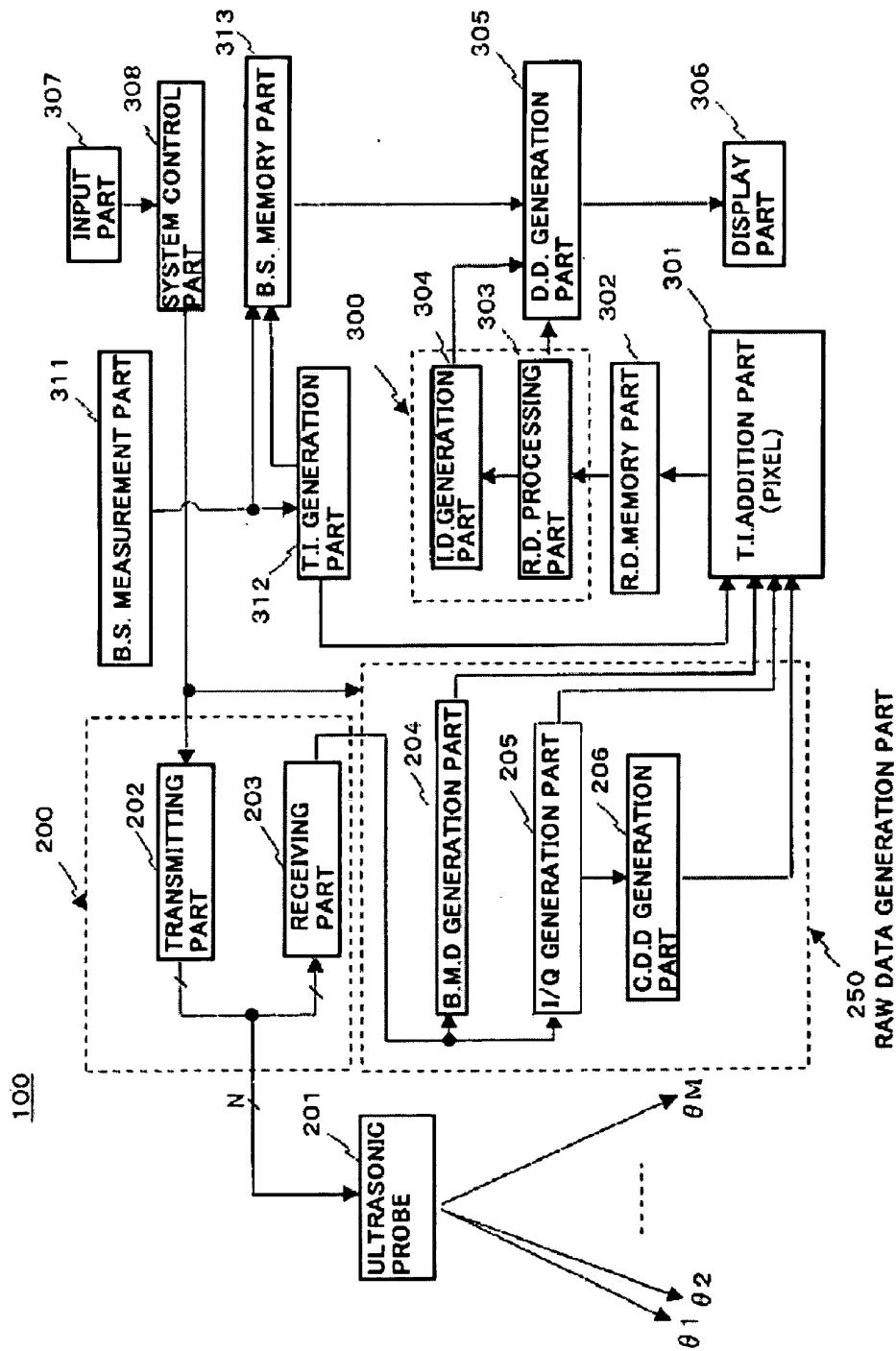


FIG. 4

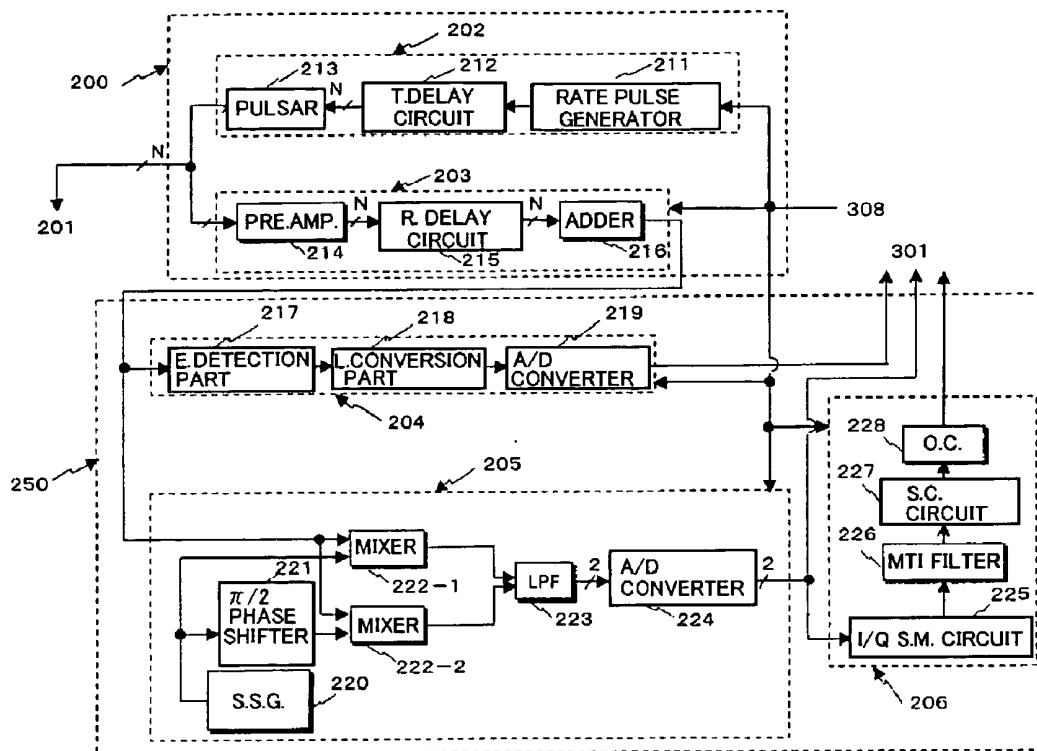


FIG. 5

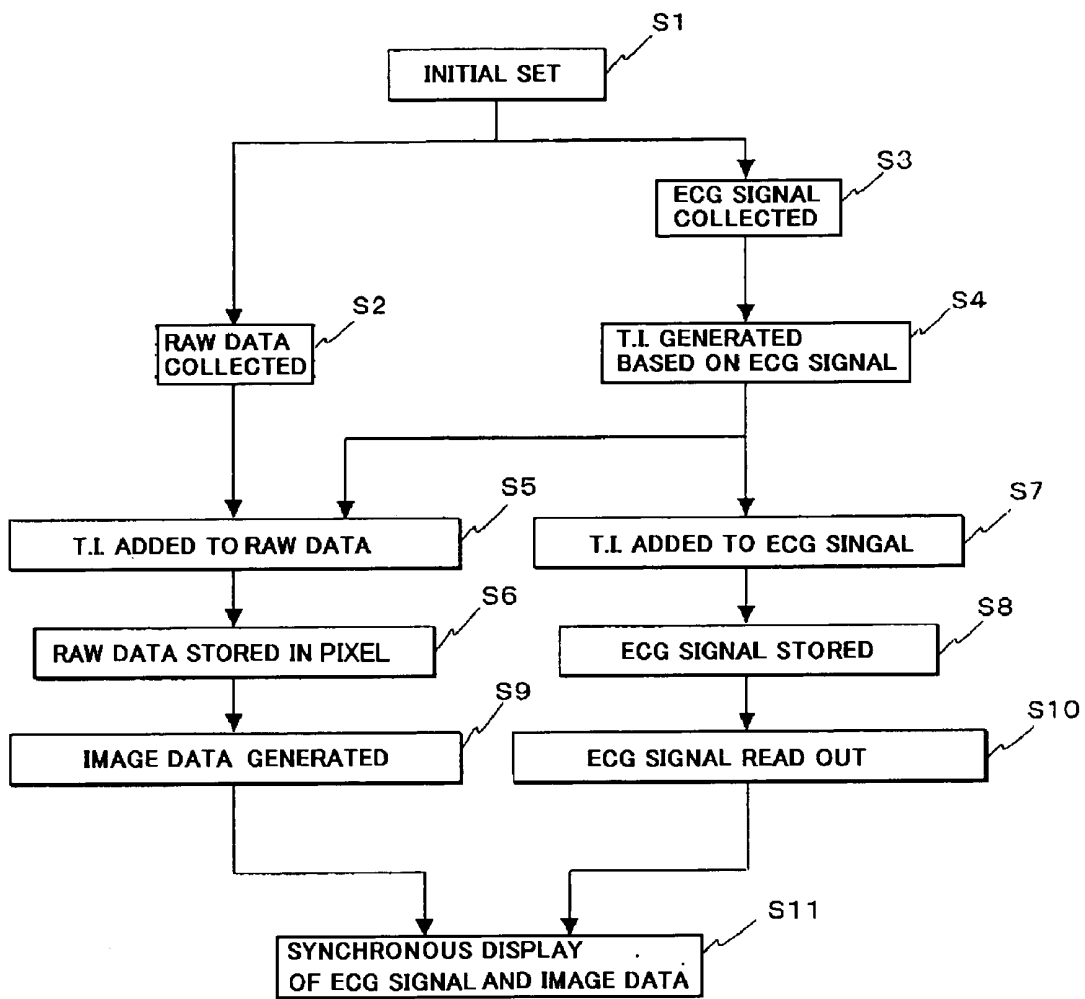


FIG. 6

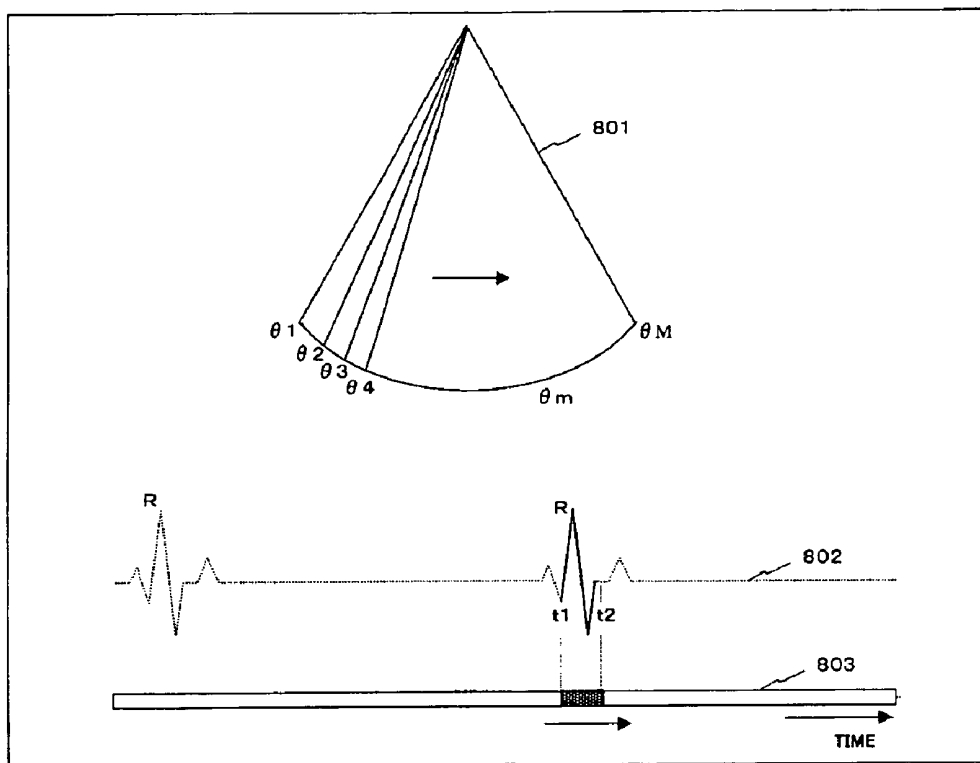


FIG. 7

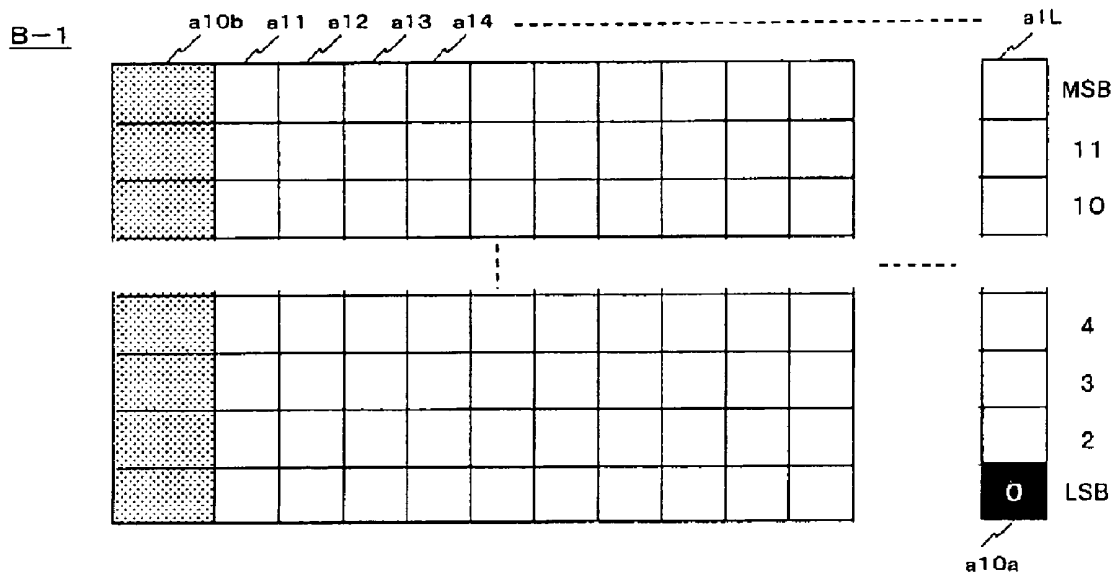


FIG. 8

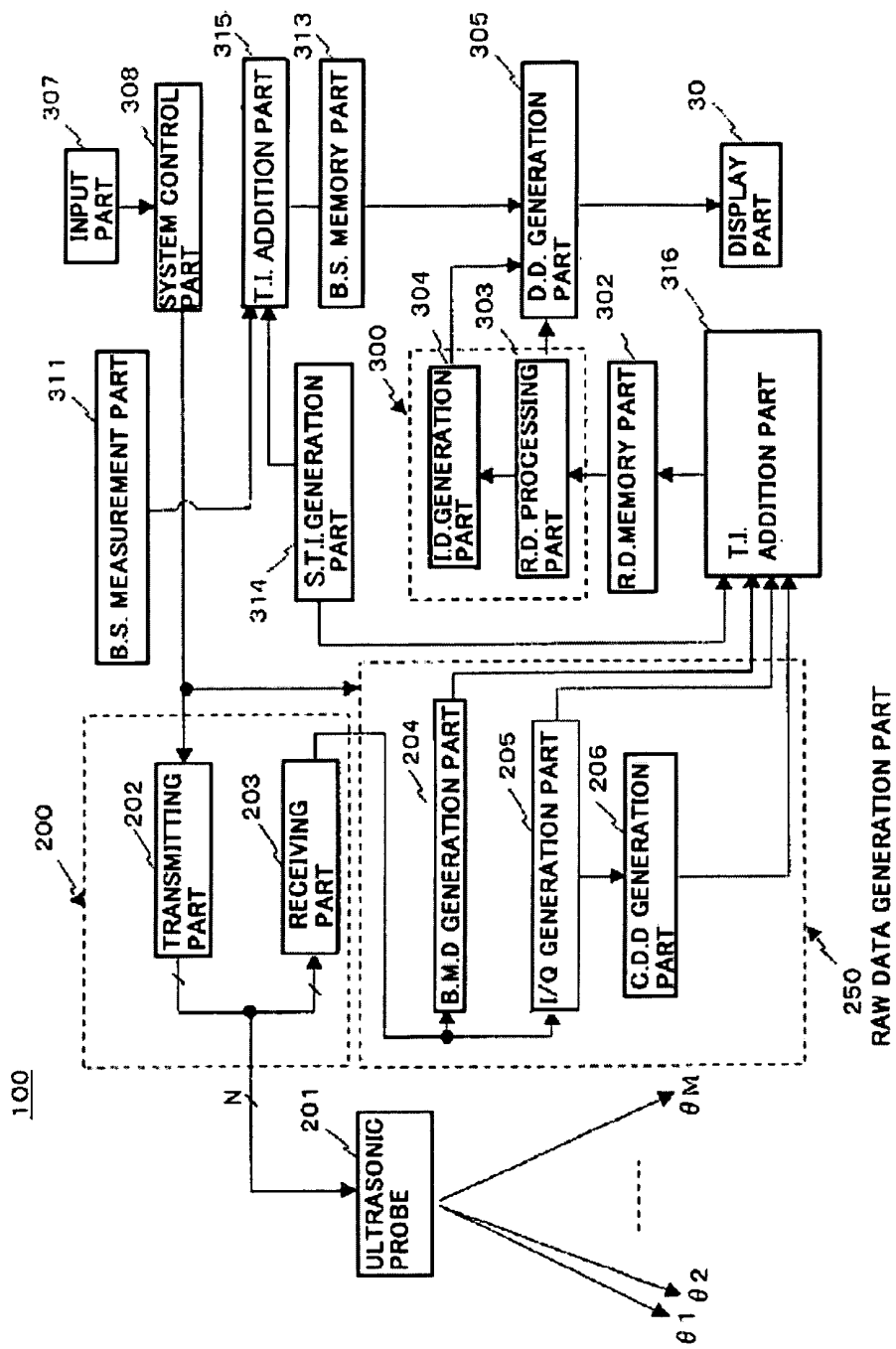


FIG. 9

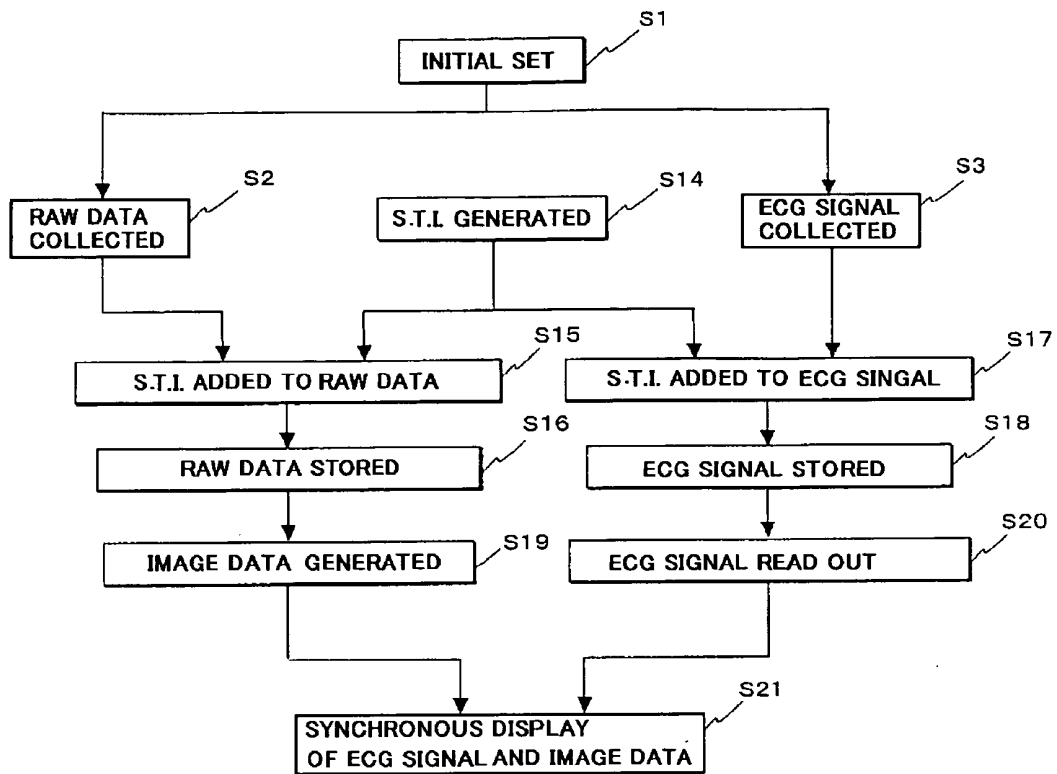


FIG. 10

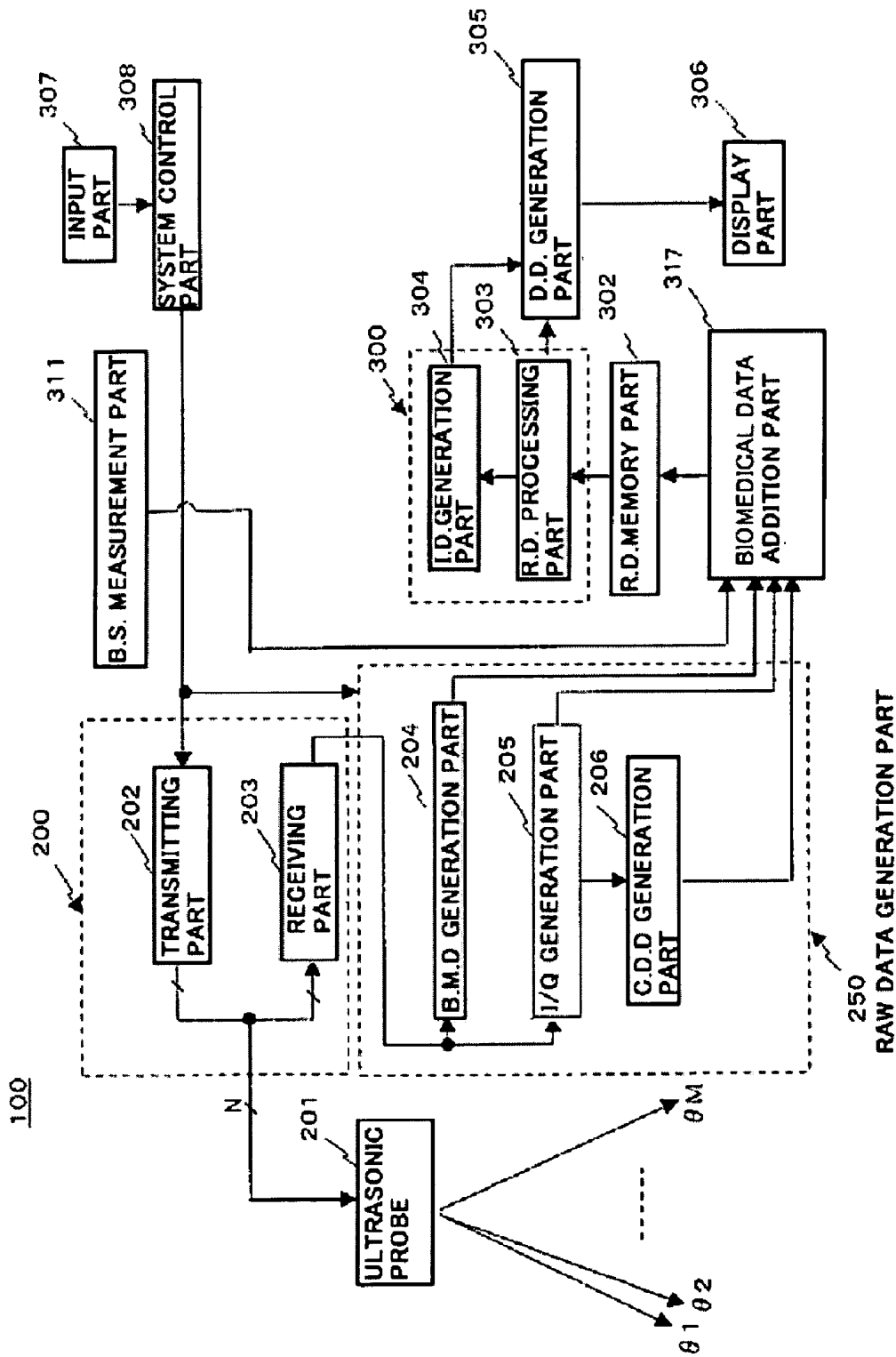


FIG. 11

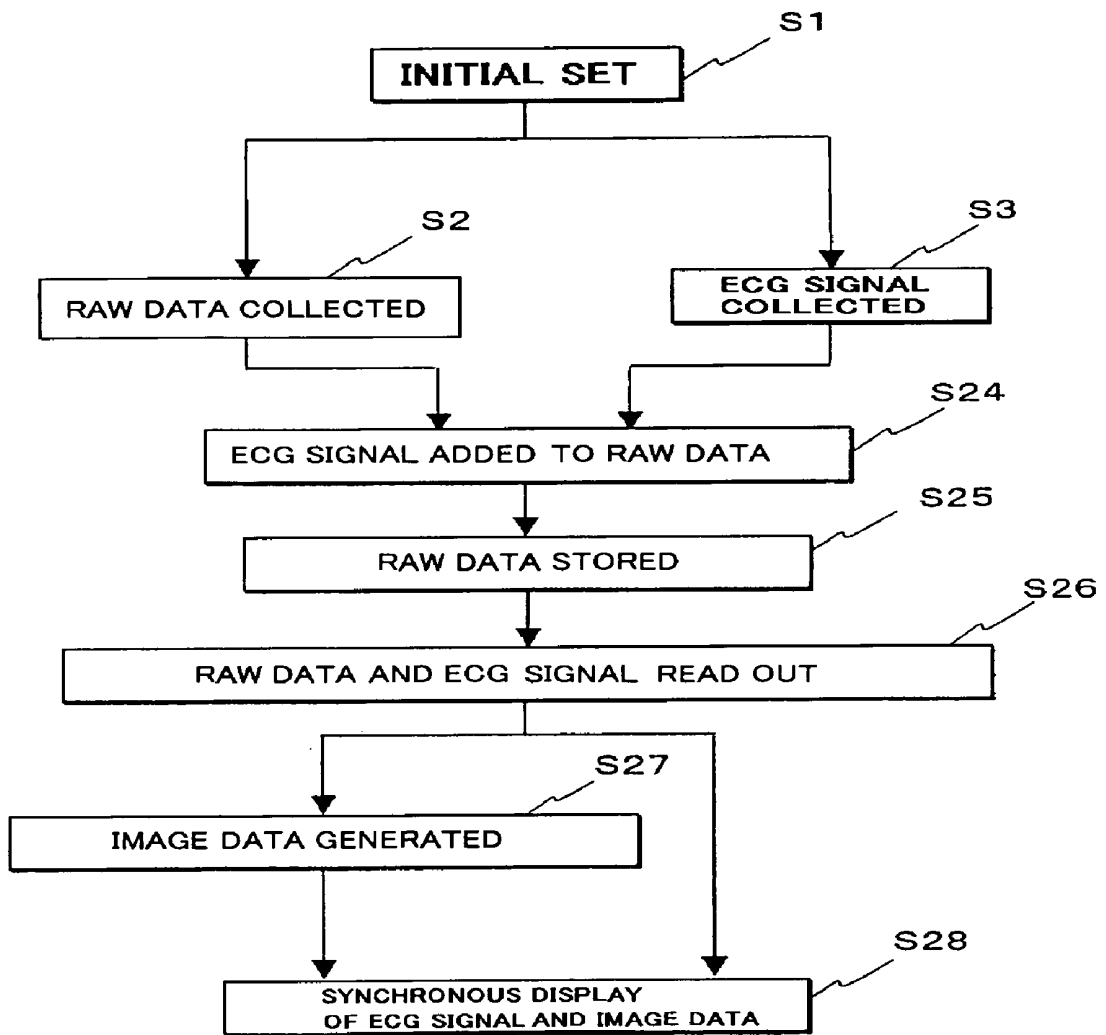


FIG. 12

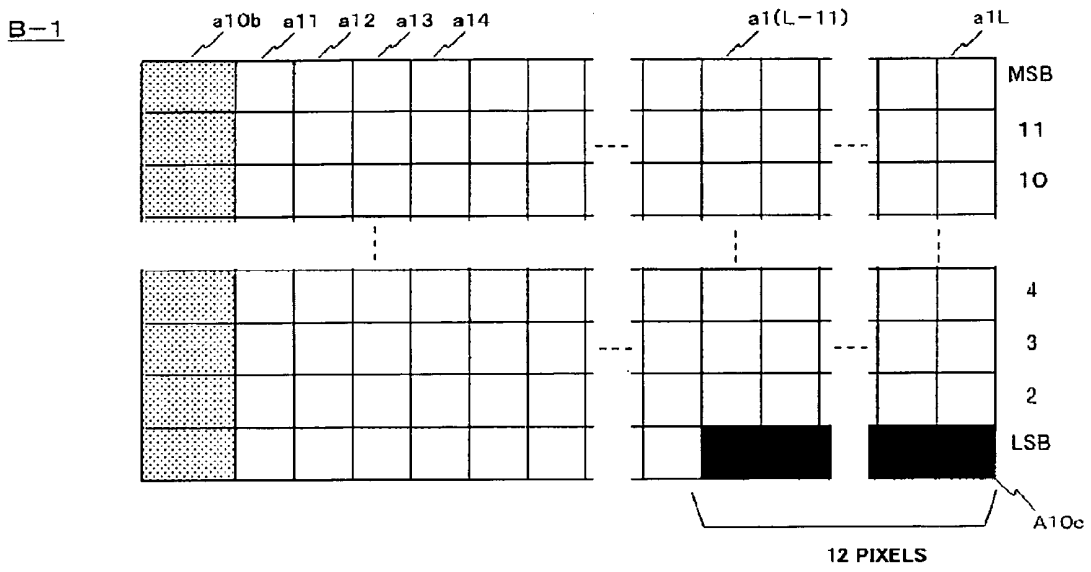


FIG. 13

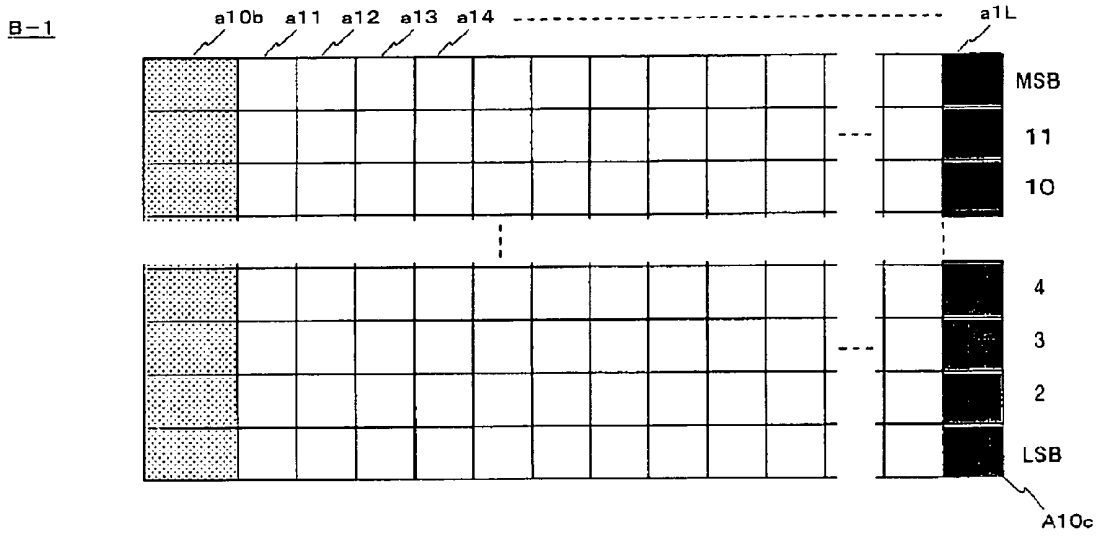


FIG. 14

## ULTRASONIC IMAGING APPARATUS AND METHOD FOR ULTRASONIC IMAGING

### CROSS-REFERENCE TO RELATED APPLICATIONS

[0001] This application is based upon and claims the benefit of priority from prior Japanese Patent Application No. P2004-252669 filed on Aug. 31, 2004, the entire contents of which are incorporated herein by reference.

### FIELD OF THE INVENTION

[0002] The present invention is related to an ultrasonic imaging apparatus and a method for ultrasonic imaging.

### BACKGROUND

[0003] An ultrasonic imaging apparatus transmits an ultrasonic wave generated by an ultrasonic transducer in an ultrasonic probe into a patient, receives a reflective wave produced according to difference of sound impedance of a tissue of the patient with the ultrasonic transducer, and displays an image on a monitor. Since a 2-dimensional image data is easily obtained in real time by easy operation of contacting the ultrasonic probe for a body surface of the patient, this imaging method is widely used for functional diagnosis or morphological diagnosis of internal organs, such as a heart.

[0004] The ultrasonic imaging method in which living body information is obtained according to the reflective wave from the tissue or blood cell of the patient is developed by two big technical developments of an ultrasonic pulse reflective method and an ultrasonic Doppler method, and B-mode image data and Color Doppler image data which are obtained the above methods, respectively, are very important for the ultrasonic imaging.

[0005] In the ultrasonic imaging method, a method for synchronizing the above image data obtained by the transmission-and-reception wave of the ultrasonic wave to the patient with biomedical signal, such as electro cardiographic wave (ECG signal) to display the imaged data and the biomedical signal is conventionally used. Especially, it is useful that the image data and the biomedical signal are displayed simultaneously for seeing a timing of the image data in a cardiovascular diagnosis, for example.

[0006] However, it is difficult that the B mode image data or the Colored Doppler image data is displayed with the ECG signal simultaneously, since it takes longer to make the 2-dimensional image data than to make the ECG signal.

[0007] In order to solve such a problem, a method in which the image data and the ECG signal are synchronized by delaying the ECG signal is disclosed in Japanese Patent Disclosure (Kokai) No. 3-90141.

[0008] As a method for synchronizing medical information obtained from a plurality of medical apparatuses which are connected via a network, Japanese Patent Disclosure (Kokai) No. 11-7428 discloses that internal clocks, each of which is located in the each medical apparatus, are corrected according to a standard time information of a standard clock equipment connected to each apparatus via the network.

[0009] However, in the method disclosed in Japanese Patent Disclosure (Kokai) No. 3-90141, rough time for

making the image data is presumed, the ECG signal is delayed for the rough time, and therefore, sufficient synchronous accuracy is not acquired. Furthermore, this method is for correcting the delay time of the image data to the ECG signal in a predetermined procedure, and it is based on the premise that the image data and the ECG signal are made and displayed in real time. In the method disclosed in Japanese Patent Disclosure (Kokai) No. 11-7428, the synchronous correction is performed to the medical information of the image data which is already made.

[0010] By the way, in a recent ultrasonic imaging apparatus, it is known that ultrasonic data which is an unit of data in each scanning direction used for generation of image data, the unit of data hereinafter called RAW data, is temporally stored in a memory in the apparatus and some days later, various signal processes are performed to the RAW data to make desired image data or analysis data. According to this method, it is possible to perform the signal processing to the RAW data anytime without the patient.

[0011] Thus, a conventional example using the RAW data is shown below. FIG. 1 is a block diagram showing a conventional ultrasonic imaging apparatus, FIG. 2 shows a composition of the RAW data stored in RAW data memory 1302, and FIG. 3 is a flow charts of operation of the ultrasonic imaging apparatus.

[0012] An ultrasonic imaging apparatus 1100 shown in FIG. 1 includes an ultrasonic probe 1201 which performs transmission-and-reception of ultrasonic wave to and from a patient, a transceiver part 1200 which performs transmission of a drive signal and reception of a reflective signal to and from the ultrasonic probe 1201, and a RAW data generation part 1250 which performs signal processing to the received signal of the transceiver part 1200 to generate RAW data, such as B-mode RAW data, I/Q signal and Color Doppler RAW data. Furthermore, the ultrasonic imaging apparatus 1100 includes a time information addition part 1301 which adds time information supplied from a time information generation part 1312 to the RAW data, and a RAW data memory part 1302 which stores the RAW data, with which the time information is added, per a scanning direction (raster).

[0013] Moreover, the ultrasonic imaging apparatus includes a biomedical signal measurement part 1311 which collects a biomedical signal, such as an ECG signal, from the patient, a time information generation part 1312 which generates time information using the biomedical signal, a biomedical signal memory part 1313 which matches and stores the biomedical signal and the time information, and an image data/analysis data generation part 1300 which reads two or more RAW data and generates the image data or the analysis data in a predetermined timing of the biomedical signal based on the time information among the RAW data stored in the RAW data memory part 1302. The ultrasonic imaging apparatus further includes a display data generation part 1305 which combines the image data or the analysis data with the biomedical signal in the predetermined timing and generates display data, a display part 1306 which displays the display data, an input part 1307 which is used for selecting an image data generation mode and for inputting various command signals, and a system control part 1308 which totally controls each above-mentioned part.

[0014] The time information addition part 1301 adds the time information (synchronized signal) which is generated

based on the biomedical signal of the patient by the time information generation part **1312** to each RAW data, in the scanning direction, generated by the RAW data generation part **1250**. The RAW data memory part **1302** sequentially stores the RAW data with which the time information is added.

[0015] FIG. 2 shows the composition of the RAW data stored in the RAW data memory part **1302**. A vertical axis corresponds to an arrangement of the RAW data of the scanning directions  $\theta 1$  to  $\theta M$ , and a horizontal axis corresponds to the scanning direction of the ultrasonic transmission-and-reception wave. For example, in M RAW data B-1 to B-M used for making B-mode image data of one frame, pixels a11 to a1L of RAW data B-1, each of which being 12 bits, are generated by the ultrasonic transmission-and-reception in the first scanning direction  $\theta 1$ . A header of the L pixels includes a time information storage area a10a in which the time information is added and a scanning information storage area a10b in which the information about the scanning directional is stored.

[0016] Similarly, headers of the RAW data B-2 to B-M in the second scanning direction  $\theta 2$  to the Mth scanning direction  $\theta M$  include the time information storage area a20a to aM0a, the scanning information storage area a20b or aM0b, and the RAW data pixels storage area for the B mode image am1 to amL (m=2 to M).

[0017] In the RAW data memory part **1302**, after scanning the RAW data B-1 to B-M in the Mth scanning direction, the RAW data B-1 to B-M for the next B-mode are stored, repeatedly.

[0018] And "1" is added to the time information storage area a30a of the RAW data (for example, RAW data B-3) obtained when an R-wave in the ECG signal of the patient is measured, and "0" is added to other time information storage areas.

[0019] The biomedical signal measurement part **1311** of FIG. 1 measures the ECG signal from the patient, and the measured biomedical signal is changed into a digital signal by an A/D converter. The time information generation part **1312** has a function for generating the time information (synchronized signal), and for example, when the biomedical signal is the ECG signal, the time information generation part **1312** detects the timing of the R-wave in the ECG signal.

[0020] The biomedical signal memory part **1313** matches and stores the biomedical signal supplied from the biomedical signal measurement part **1311** and the time information which the time information generation part **1312** generates based on the biomedical signal.

[0021] The image data/analysis data generation part **1300** reads out one or more RAW data in a predetermined timing among the RAW data stored in the RAW data memory part **1302**, performs data processing to the read out RAW data, and executes a scan conversion to make the image data.

[0022] This image data/analysis data generation part **1300** includes a RAW data processing part **1303** and an image data generation part **1304**. The RAW data processing part **1303** reads out the RAW data in the predetermined timing based on the time information added to the RAW data, and performs data processing, such as image processing or

analyzing of the RAW data for the B-mode image or the Color Doppler image and spectrum analyzing of the I/Q signal. The image data generation part **1304** performs the scan conversion of the B-mode RAW data or the Color Doppler RAW data which are read out by the RAW data processing part **1303** to make the image data.

[0023] The display data generation part **1305** includes an operation circuit and a memory circuit, and the operation circuit reads the biomedical signal in the same timing as the image data supplied from the image data generation part **1304** of the image data/analysis data generation part **1300** or the analysis data supplied from the RAW data processing part **1303**. Subsequently, the display data generation part **1305** generates the display data by combining the image data or the analysis data supplied from the image data/analysis data generation part **1300** with the biomedical signal, and temporally stores the display data in the memory circuit.

[0024] The display part **1306** includes a conversion circuit and a monitor. In the conversion circuit, D/A conversion and television format conversion execute to the display data generated in the display data generation part **1305**, and the converted data is displayed on the monitor, such as CRT or Liquid Crystal Display.

[0025] The input part **1307** includes an input device, such as a keyboard, a trackball and a mouse, and a display panel on a navigational panel. An input of patient information or various command signals, selection of image data generation mode, etc. are performed using the input device and the display panel.

[0026] Moreover, the system control part **1308** includes a CPU and a memory circuit, and various kinds of inputted information and selection information, etc. which are supplied from the input part **1307** are stored in the memory circuit. The CPU controls each part of a whole apparatus, such as the transceiver part **1200**, the RAW data generation part **1250**, the time information addition part **1301**, the image data/analysis data generation part **1300**, the display data generation part **1305**, and the display part **1306**.

[0027] Next, a basic operation of the ultrasonic imaging apparatus **100** and a flow of a synchronous display of the image data and biomedical signal which are obtained by the ultrasonic imaging apparatus **1100** are explained in FIG. 1 through FIG. 3. It is explained below in FIG. 3 that B-mode image data generated from the B-mode RAW data obtained by the ultrasonic transmission-reception to and from the patient and the ECG signal obtained in parallel to the ultrasonic transmission-reception are displayed synchronously.

[0028] Before the ultrasonic wave is transmitted and received to and from the patient, a doctor or a sonography technologist (hereafter called an operator) sets electrodes of the biomedical signal measurement part (electrocardiograph) **1311** at a predetermined position of the patient. Next, the operator inputs the patient information or selects the image data generation mode, such as B-mode image data with the input device of the input part **1307**, and sets a tip part of the ultrasonic probe **1201** at a predetermined position of the patient (Step S1 of FIG. 3). At this time, the inputted or selected information is stored in the memory circuit of the system control part **1308**.

[0029] After the initial setting is completed, the transmission and reception of the ultrasonic pulse are performed to

and from the patient, based on control of the system control part **1308**. The received ultrasonic signal is sent to the B-mode signal generation part of the RAW data generation part **1250**.

[**0030**] The B-mode signal generation part executes an envelope detection, logarithm conversion and A/D conversion to the inputted data to generate B-mode RAW data to be supplied to the time information addition part **1301**. The B-mode RAW data, as shown in **FIG. 2**, includes pixels **a11** to **a1L** and a header, amplitude of the A/D converted signal is stored in the pixels **a11** to **a1L** as 12 bits data, and information about the first scanning direction ( $\theta 1$ ) is stored in the scanning information storage area **a10b** of the header (Step **S2** of **FIG. 3**).

[**0031**] On the other hand, in parallel to the ultrasonic transmission-and-reception in the first scanning direction ( $\theta 1$ ), the biomedical signal measurement part **1311** measures the ECG signal of the patient (Step **S3** of **FIG. 3**), and the acquired ECG signal is supplied to the time information generation part **1312**. The time information generation part **1312** which receives the ECG signal determines whether the timing of the ultrasonic transmission-and-reception corresponds to the R-wave of the ECG signal, generates the time information based on the determination, and sends the time information to the time information addition part **1301** and the biomedical signal memory part **1313**. (Step **S4** of **FIG. 3**).

[**0032**] Subsequently, the time information addition part **1301** adds the time information supplied from the time information generation part **1312** to the time information storage area **a10a** of the B-mode RAW data (B-mode RAW data **B-1** in **FIG. 2**) in the first scanning direction supplied from the B-mode data generation part **1204** of the RAW data generation part **1250** (Step **S5** of **FIG. 3**). In this case, when the timing of the ultrasonic transmission-and-reception does not correspond to the R-wave of the ECG signal, as shown in **FIG. 2**, the time information "0" is added to the time information storage area **a10a** of the RAW data **B-1**. Otherwise, the time information "1" is added. The B-mode RAW data with which the time information is added is stored in the RAW data memory part **1302** (Step **S6** of **FIG. 3**).

[**0033**] The time information is added to the ECG signal data supplied to the biomedical signal memory part **1313**, and the ECG signal data is stored. (Steps **S7** and **S8** of **FIG. 3**).

[**0034**] Similarly, the system control part **1308** performs the ultrasonic transmission-and-reception also in the second scanning direction through the Mth scanning direction, and after the Mth scanning direction, the ultrasonic transmission-and-reception is performed in the first scanning direction through Mth scanning direction repeatedly. Each B-mode RAW data, obtained at this time, with which the time information is added in the time information addition part **1301** is stored in the RAW data memory part **1302**, and the ECG signal obtained in parallel to the generating or the storing of the B-mode RAW data with which the time information is added is stored in the biomedical signal memory part **1313**.

[**0035**] The RAW data processing part **1303** of the image data/analysis data generation part **1300** confirms the time information of the RAW data **B-1**, **B-2**, etc. which are stored

in the RAW data memory part **1302** in **FIG. 2**. When the time information "1" indicating the R wave of the ECG signal is confirmed in the RAW data **B-3**, for example, RAW data is read out one by one on the basis of the RAW data **B-3**. Subsequently, the RAW data processing part **1303** performs image processing to the read out RAW data, and supplies the RAW data to the image data generation part **1304**.

[**0036**] The image data generation part **1304** performs the scanning conversion to one frame of the B-mode RAW data, in a predetermined timing, which is read out by the RAW data processing part **1303**, and generates one frame of the B-mode image data (Step **S9** of **FIG. 3**).

[**0037**] The display data generation part **1305** reads out a series of the ECG signal one by one on the basis of the ECG signal (R-wave) with which the time information "1" is added among the ECG signal stored in the biomedical signal memory part **1313** where the time information is added (Step **S10** of **FIG. 3**). And the display data generation part **1305** combines the B-mode image data supplied from the image data generation part **1304** of the image data/analysis data generation part **1300** with the R-wave of the ECG signal such that the timing of display of the B-mode image data in the third direction  $\theta 3$  is synchronized with the timing of display of the R-wave of the ECG signal and generates display data.

[**0038**] The display part **1306** executes the D/A conversion, the television format conversion to the display data generated in the display data generation part **1305**, generates a display signal and displays the display signal on the monitor (Step **S11** of **FIG. 3**).

[**0039**] According to the above mentioned conventional example, the accuracy may be low since the time information is obtained from the ECG signal, or a large memory space in the header may be required, since the time information is added to the header of the RAW data.

#### SUMMARY

[**0040**] An object of the present invention is to ameliorate at least one of the above-mentioned problems, such as improvement of synchronization of image data or analysis data and an ECG signal or reduction of memory space in a header.

[**0041**] According to one aspect of the present invention, there is provided an ultrasonic imaging apparatus comprises an ultrasonic probe including a plurality of ultrasonic transducers which perform ultrasonic transmission and reception to an object, a transceiver unit configured to obtain an ultrasonic signal from the object by driving the plurality of ultrasonic transducers, an ultrasonic data generation unit configured to generate ultrasonic data based on the ultrasonic signal, a time information generation unit configured to generate time information related to the ultrasonic transmission or reception and a time information addition unit configured to add the time information in a part of pixel data of the ultrasonic data.

[**0042**] According to another aspect of the present invention, there is provided an ultrasonic imaging apparatus comprises an ultrasonic probe including a plurality of ultrasonic transducers which perform ultrasonic transmission and reception to an object, a transceiver unit configured to obtain an ultrasonic signal from the object by driving the plurality

of ultrasonic transducers, an ultrasonic data generation unit configured to generate ultrasonic data based on the ultrasonic signal, a standard time information generation unit configured to generate standard time information, a biomedical signal measurement configured to measure a biomedical signal of the object, a first time information addition unit configured to add the standard time information to the ultrasonic data and a second time information addition unit configured to add the standard time information to biomedical data corresponding to the biomedical signal.

[0043] According to another aspect of the present invention, there is provided an ultrasonic imaging apparatus comprises an ultrasonic probe including a plurality of ultrasonic transducers which perform ultrasonic transmission and reception to an object, a transceiver unit configured to obtain an ultrasonic signal from the object by driving the plurality of ultrasonic transducers, an ultrasonic data generation unit configured to generate ultrasonic data based on the ultrasonic signal, a biomedical signal measurement configured to measure a biomedical signal of the object and a biomedical data addition unit configured to add biomedical data corresponding to the biomedical signal to the ultrasonic data.

[0044] According to another aspect of the present invention, there is provided a method for ultrasonic imaging comprises performing ultrasonic transmission and reception to an object by an ultrasonic probe including a plurality of ultrasonic transducers, obtaining an ultrasonic signal from the object by driving the plurality of ultrasonic transducers, generating ultrasonic data based on the ultrasonic signal, generating time information related to the ultrasonic transmission or reception and adding the time information in a part of pixel data of the ultrasonic data.

[0045] According to another aspect of the present invention, there is provided a method for ultrasonic imaging comprises performing ultrasonic transmission and reception to an object by an ultrasonic probe including a plurality of ultrasonic transducers, obtaining an ultrasonic signal from the object by driving the plurality of ultrasonic transducers, generating ultrasonic data based on the ultrasonic signal, generating standard time information, measuring a biomedical signal of the object, adding the standard time information to the ultrasonic data and adding the standard time information to biomedical data corresponding to the biomedical signal.

[0046] According to another aspect of the present invention, there is provided a method for ultrasonic imaging comprises performing ultrasonic transmission and reception to an object by an ultrasonic probe including a plurality of ultrasonic transducers, obtaining an ultrasonic signal from the object by driving the plurality of ultrasonic transducers, generating ultrasonic data based on the ultrasonic signal, measuring a biomedical signal of the object and adding biomedical data corresponding to the biomedical signal to the ultrasonic data.

[0047] According to another aspect of the present invention, there is provided an ultrasonic imaging apparatus comprises an ultrasonic probe including a plurality of ultrasonic transducers which perform ultrasonic transmission and reception to an object, a transceiver unit configured to obtain an ultrasonic signal from the object by driving the plurality of ultrasonic transducers, an ultrasonic data generation unit configured to generate ultrasonic data based on the ultra-

sonic signal, a biomedical signal measurement configured to measure a biomedical signal of the object and a biomedical data addition unit configured to add biomedical data corresponding to the biomedical signal to the ultrasonic data under a condition where an addition timing of the biomedical signal to the ultrasonic data is adjusted based on a condition of the ultrasonic transmission and reception.

[0048] According to another aspect of the present invention, there is provided a method for ultrasonic imaging comprises performing ultrasonic transmission and reception to an object by an ultrasonic probe including a plurality of ultrasonic transducers, obtaining an ultrasonic signal from the object by driving the plurality of ultrasonic transducers, generating ultrasonic data based on the ultrasonic signal, measuring a biomedical signal of the object and adding biomedical data corresponding to the biomedical signal to the ultrasonic data under a condition where an addition timing of the biomedical signal to the ultrasonic data is adjusted based on a condition of the ultrasonic transmission and reception.

#### BRIEF DESCRIPTION OF THE DRAWINGS

[0049] In the drawings:

[0050] FIG. 1 is a block diagram showing a whole conventional ultrasonic imaging apparatus;

[0051] FIG. 2 is an illustration showing a composition of RAW data with time information is added in the conventional ultrasonic imaging apparatus;

[0052] FIG. 3 is a flow chart showing a procedure of synchronized display of image data and a biomedical signal in the conventional ultrasonic imaging apparatus;

[0053] FIG. 4 is a block diagram showing a whole ultrasonic imaging apparatus in a first embodiment;

[0054] FIG. 5 is a block diagram showing a transceiver part and a RAW data generation part in the first embodiment;

[0055] FIG. 6 is a flow chart showing a procedure of synchronized display of image data and a biomedical signal in the first embodiment;

[0056] FIG. 7 is an illustration showing an example of display of B-mode image data and an ECG signal in the first embodiment;

[0057] FIG. 8 is an illustration showing a composition of RAW data with time information is added in a modification of the first embodiment;

[0058] FIG. 9 is a block diagram showing a whole ultrasonic imaging apparatus in a second embodiment;

[0059] FIG. 10 is a flow chart showing a procedure of synchronized display of image data and a biomedical signal in the second embodiment;

[0060] FIG. 11 is a block diagram showing a whole ultrasonic imaging apparatus in a third embodiment;

[0061] FIG. 12 is a flow chart showing a procedure of synchronized display of image data and a biomedical signal in the third embodiment;

[0062] FIG. 13 is an illustration showing a composition of RAW data with a biomedical signal is added in the third embodiment; and

[0063] FIG. 14 is an illustration showing a composition of RAW data with a biomedical signal is added in the third embodiment.

#### DETAILED DESCRIPTION OF EXEMPLARY EMBODIMENTS

[0064] Hereafter, with reference to drawings, embodiments and modifications are explained. In the above-mentioned conventional example, the time information of the ECG signal supplied from the time information generation part 1312 is stored in the time information storage in the header of the B-mode RAW data, as shown in FIG. 2. On the other hand, in the first embodiment, the time information is added and stored at a part of pixel of the B-mode RAW data.

[0065] With reference to FIG. 4 through FIG. 8, an ultrasonic imaging apparatus in the first embodiment is explained below.

[0066] An ultrasonic imaging apparatus 100 shown in FIG. 4 includes an ultrasonic probe 201 which performs transmission-and-reception of ultrasonic wave to and from a patient, a transceiver part 200 which performs transmission of a drive signal and reception of a reflective signal to and from the ultrasonic probe 201, and a RAW data generation part 250 which performs signal processing to the received signal of the transceiver part 200 to generate RAW data, such as B-mode RAW data, I/Q signal and Color Doppler RAW data.

[0067] Furthermore, the ultrasonic imaging apparatus 100 includes a time information addition part 301 which adds time information supplied from a time information generation part 312 to the RAW data, and a RAW data memory part 302 which stores the RAW data, with which the time information is added, per a scanning direction (raster).

[0068] Moreover, the ultrasonic imaging apparatus 100 includes a biomedical signal measurement part 311 which collects a biomedical signal, such as an ECG signal, from the patient, a time information generation part 312 which generates time information using the biomedical signal, a biomedical signal memory part 313 which matches and stores the biomedical signal and the time information, and an image data/analysis data generation part 300 which reads two or more RAW data and generates the image data or the analysis data in a predetermined timing of the biomedical signal based on the time information among the RAW data stored in the RAW data memory part 302. The ultrasonic imaging apparatus further includes a display data generation part 305 which combines the image data or the analysis data with the biomedical signal in the predetermined timing and generates display data, a display part 306 which displays the display data, an input part 307 which is used for selecting an image data generation mode and for inputting various command signals, and a system control part 308 which totally controls each above-mentioned part.

[0069] The ultrasonic probe 201 which contacts a front of a surface of the patient, transmits and receives the ultrasonic wave includes a plurality of ultrasonic transducers (N pieces) which are located on a tip of the ultrasonic probe 201 and are arranged in one (or two) direction(s). The ultrasonic transducer which is an electro acoustic transducer, for example, changes an electric pulse (drive signal) into an ultrasonic pulse (transmitted ultrasonic wave) at a time of

transmission, and changes an ultrasonic reflective wave (received ultrasonic wave) into an electric signal (received signal) at a time of reception. This ultrasonic probe 201 is small and lightweight, and is connected to the transceiver part 200 through cables of N channels. The ultrasonic probe 201 includes a sector scanning probe, a linear scanning probe, a convex scanning probe, etc. and one probe is arbitrarily selected from these ultrasonic probes according to a diagnostic part, for example. It is explained below that the ultrasonic probe 201 is a sector scanning probe as an example.

[0070] The transceiver part 200 includes an ultrasonic transmitting part 202 which generates the drive signal for generating the transmitted ultrasonic wave, and an ultrasonic receiving part 203 which performs a phase adjusted addition of the received signals of two or more channels obtained from the ultrasonic transducers of the ultrasonic probe 201, as shown in FIG. 5. The ultrasonic transmitting part 202 includes a rate pulse generator 211, a transmitting delay circuit 212, and a pulsar 213. The rate pulse generator 211 supplies a rate pulse which determines a repetition cycle (Tr) of the ultrasonic pulse transmitted to the patient to the transmitting delay circuit 212. The transmitting delay circuit 212 includes the same number (N channels) of independent delay circuits as the number of the ultrasonic transducers used for transmission in the ultrasonic probe 201, and gives delay time for focusing the ultrasonic wave to a desired depth in order to obtain a thin beam width in transmission and delay time for deflecting the ultrasonic wave in a desired direction to the rate pulse to be supplied to the pulsar 213.

[0071] The pulsar 213 includes the same number of independent drive circuits (N channels) as the number of the ultrasonic transducers used for transmission and generates drive pulses for driving N number of the ultrasonic transducers, and the ultrasonic wave is transmitted to the patient.

[0072] The ultrasonic receiving part 203 includes a preamplifier 214 of N channels, a reception delay circuit 215, and an adder 216. The preamplifier 214 amplifies the minute received signal changed into the electric signal by the ultrasonic transducer, and sufficient S/N is obtained. The reception delay circuit 215 gives delay time for focusing the received ultrasonic wave from a desired depth in order to obtain a thin beam width in reception and delay time for deflecting the received ultrasonic wave in a desired direction to output of the preamplifier 214. Thereafter, the output is supplied to the adder 216, and in the adder 216, the received signals of N channels from the ultrasonic transducers are added into one group of signals.

[0073] The RAW data generation part 250 includes a B-mode data generation part 204 which performs signal processing for generating RAW data of B-mode image according to the received signal of the ultrasonic receiving part 203, an I/Q signal generation part 205 which generates an I/Q signal to the above-mentioned received signal, and an Color Doppler data generation part 206 which performs signal processing for generating RAW data of Color Doppler image according to the I/Q signal.

[0074] The B-mode signal generation part 204 includes an envelope detection part 217, a logarithm conversion part 218 and an A/D converter 219. Inputted signal into the B-mode data generation part 204 is processed by the envelope detection part 217 and subsequently by the logarithm con-

version part **218** and a minute signal is emphasized, relatively. An output of the logarithm conversion part **218** is processed by the A/D converter **219** to generate B-mode image data.

[**0075**] The I/Q signal generation part **205** includes a standard signal generator **220**, a  $\pi/2$  phase shifter **221**, mixers **222-1** through **222-2**, two channel low pass filter (LPF) **223** and an A/D converter **224**. And rectangular phase detection is performed to the received signal of the ultrasonic wave, and IQ component of the received signal is detected.

[**0076**] That is, the output signal of the ultrasonic receiving part **203** is inputted into first terminals of mixers **222-1** and **222-2**. A continuous wave output of the standard signal generator **220** has frequency almost equal to a center frequency of the inputted signal, and is synchronized with the rate pulse of the rate pulse generator **211**. The continuous wave is supplied to a second terminal of the mixer **222-1** and the  $\pi/2$  phase shifter **221**. In the  $\pi/2$  phase shifter **221**, a phase of the signal is shifted 90 degrees and is supplied to a second terminal of the mixer **222-2**. The outputs of the mixers **222-1** and **222-2** are supplied to the low pass filter **223**. An additional component of the inputted signal frequency component of the I/Q signal generation part **205** and the output signal frequency component of the standard signal generator is removed, and subtraction component is detected.

[**0077**] Subsequently, the A/D converter **224** samples the output signal of the LPF **223**, namely the analog signal to which the rectangular phase detection is performed, at a predetermined sampling time, and the analog signal is converted into a digital signal.

[**0078**] The Color Doppler data generation part **206** includes an I/Q signal memory circuit **225**, an MTI filter **226**, a self-correlation circuit **227**, and an operation circuit **228**. I component (real number component of the received signal) and Q component (imaginary number component of the received signal) which is obtained in rectangular phase detection to the received signal obtained in two or more times of the continuous ultrasonic transmission-and-reception in the predetermined scanning direction by the I/Q signal generation part **205**, are stored one by one in the I/Q signal memory circuit **225**.

[**0079**] The MTI filter **226** of the Color Doppler data generation part **206** is a digital filter for passing high frequency. The MTI filter **226** removes a reflective component from a fixed reflector, such as an organ, and a Doppler signal component (Tissue Doppler component) which is caused by breath movement or systolic movement, etc.

[**0080**] The self-correlation circuit **227** performs self-correlation processing to the Doppler signal in which a blood flow information is mainly extracted by the MTI filter **226**. The operation circuit **228** calculates an average of velocity value, a distributed value, a power value, etc. of the blood flow in two dimensions based on the self-correlation processing result, and generates Color Doppler data.

[**0081**] In **FIG. 4**, the time information addition part **301** adds the time information (synchronized signal) which is generated by the time information generation part **312** based on the biomedical signal of the patient to a part of pixel of each RAW data which is generated in each scanning direc-

tion by the RAW data generation part **250**. The RAW data memory part **302** stores the RAW data with which the time information is added.

[**0082**] **FIG. 8** is an illustration showing a composition of B-mode RAW data in the first embodiment. For example, each pixel of **a11** to **a1L** of B-mode RAW data **B-1** which is obtained in a first direction  $\theta 1$  is 12 bits, and Least Significant Bit (LSB) of pixel **a1L** in the B-mode RAW data **B-1** is set as the time information storage area **a10a**. That is, the time information "1" or "0" supplied from the time information generation part **312** of **FIG. 4** is stored at the time information storage area **a10a** in the pixel **a1L**.

[**0083**] When the time information is added and stored in a part of pixel as mentioned above, the time information could influence quality of B-mode image data, for example. However, since the time information storage area **a10a** is only LSB, the influence is very small. Furthermore, since the pixel **a1L** is a pixel in which the received signal obtained the deepest portion in the patient is stored, it is unlikely that the pixel stores very important information clinically.

[**0084**] Similarly, the time information is added in the storage areas **a20a** through **aM0a** as parts of pixels of RAW data **B-2** through **B-M** in a second direction  $\theta 2$  through an  $M$ th in a direction  $\theta M$ .

[**0085**] In the RAW data memory part **302**, followed by the RAW data **B-M** in the  $M$ th direction  $\theta M$ , the next B-mode RAW data **B-1** or **B-M** is repeatedly stored.

[**0086**] In the time information storage area **a10a** of the RAW data, such as RAW data **B-3**, when the R-wave of the ECG signal of the patient is detected, "0" is added.

[**0087**] Next, the biomedical signal measurement part **311** of **FIG. 4** measures the biomedical signal, such as the ECG signal, a brain wave, a heartbeat, a blood-pressure waveform, a respiratory waveform, and an impedance waveform, of the patient, and the measured biomedical signal is changed into a digital signal by the A/D converter. On the other hand, the time information generation part **312** has a function for generating time information (synchronized signal) based on the biomedical signal. The time information generation part **312** detects the timing of R-wave in the ECG signal when the biomedical signal is the ECG signal, for example.

[**0088**] Moreover, the biomedical signal memory part **313** matches and stores the biomedical signal supplied from the biomedical signal measurement part **311** and the time information which the time information generation part **312** generates based on the biomedical signal.

[**0089**] On the other hand, the image data/analysis data generation part **300** reads out one or more RAW data in a predetermined timing among RAW data stored in the RAW data memory part **302**, performs data processing to the read out RAW data, and further, performs scanning conversion to generate image data.

[**0090**] The image data/analysis data generation part **300** includes a RAW data-processing part **303** and an image data generation part **304**. The RAW data-processing part **303** reads out the RAW data in a predetermined timing based on the time information added to the RAW data, performs image processing and image analyzing to the B-mode RAW data and the Color Doppler RAW data, and performs data

processing, such as spectrum analyzing to the I/Q signal. The image data generation part **304** performs scan conversion to the B-mode RAW data or the Colored Doppler RAW data, in the predetermined timing, which are read out from the RAW data-processing part **303** to generate image data.

[0091] On the other hand, the display data generation part **305** includes an operation circuit and a memory circuit, and the operation circuit reads the biomedical signal based on the time information in the same timing as the image data supplied from the image data generation part **304** of the image data/analysis data generation part **300** and the various analysis data supplied from the RAW data-processing part **303**. Subsequently, the display data generation part **305** combines the image data or the analysis data supplied from the image data/analysis data generation part **300** with the biomedical signal to generate display data, and the combined data is stored in the memory circuit.

[0092] The display part **306** includes a conversion circuit and a monitor, and the display data generated in the display data generation part **305** is changed into a display signal by the D/A conversion and the television format conversion, and is displayed on the monitor, such as a CRT or a Liquid Crystal Display.

[0093] The input part **307** includes an input device, such as a keyboard, a trackball, and a mouse, etc., and a display panel, on a navigation panel, and patient information and various command signals are inputted or image data generation mode is selected with the input device and the display panel.

[0094] Moreover, the system control part **308** includes a CPU and a memory circuit, and various kinds of inputted or selected information, etc. which are supplied from the input part **307** are stored in the memory circuit. The CPU controls each part of a whole apparatus, such as the transceiver part **200**, the RAW data generation part **250**, the time information addition part **301**, the image data/analysis data generation part **300**, the display data generation part **305**, and the display part **306**.

[0095] Next, a basic operation of the ultrasonic imaging apparatus **100** in the first embodiment and synchronous display of the image data and biomedical signal which are obtained by the ultrasonic imaging apparatus **100** are explained with **FIG. 4** through **FIG. 8**. Although it is explained below that the B-mode image data generated based on the B-mode RAW data in the ultrasonic transmission-and-reception is synchronously displayed with the ECG signal collected in parallel to the ultrasonic transmission-and-reception in **FIG. 6** which is a flow chart, the displayed data may not be limited to the B-mode image data but the Color Doppler image data, Doppler Spectrum data or various analysis data may be used instead of or in addition to the B-mode image data. Instead of the ECG signal, other biomedical signal, such as a blood-pressure waveform may be used.

[0096] Before the ultrasonic wave is transmitted and received to and from the patient, a doctor or a sonography technologist (hereafter called an operator) sets electrodes of the biomedical signal measurement part (electrocardiograph) **311** at a predetermined position of the patient. Next, the operator inputs the patient information or selects the image data generation mode, such as B-mode image data

with the input device of the input part **307**, and sets a tip part of the ultrasonic probe **201** at a predetermined position of the patient (Step S1 of **FIG. 6**). At this time, the inputted or selected information is stored in the memory circuit of the system control part **308**.

[0097] After the initial setting is completed, the system control part **308** supplies transmission and reception control signal to the rate pulse generator **211** of the ultrasonic transmitting part **202**. The rate pulse generator **211** supplies a rate pulse which determines a repetition cycle (Tr) of the ultrasonic pulse transmitted to the patient to the transmitting delay circuit **212**.

[0098] The transmitting delay circuit **212** gives delay time for focusing the ultrasonic wave to a desired depth and delay time for deflecting the ultrasonic wave in a desired direction to the rate pulse to be supplied to the pulsar **213**. The pulsar **213** supplies a drive signal generated by drive of the rate pulse to N ultrasonic transducers in the ultrasonic probe **201** through a cable, and an ultrasonic pulse is transmitted in the  $\theta 1$  direction of the patient.

[0099] A part of ultrasonic pulse transmitted to the patient is reflected in a border plane of organs or a tissue which have different sound impedance. The ultrasonic reflected wave (received ultrasonic wave) is received by the ultrasonic transducer of the ultrasonic probe **201**, and is changed into an electric signal (received signal). The electric signal is amplified by the independent preamplifier **214** of N channels in the ultrasonic receiving part **203**, and is sent to the reception delay circuit **215** of N channels.

[0100] The reception delay circuit **215** gives delay time for focusing the ultrasonic wave from a predetermined depth and delay time for deflecting the received ultrasonic wave in a first direction to the received signal to be sent to the adder **216**. In the adder **216**, the received signals of N channels from the reception delay circuit **215** are added into one group of signals to be sent to the B-mode data generation part **204**.

[0101] The B-mode data generation part **204** performs an envelope detection a logarithm conversion an A/D conversion to the output signal from the adder **216**, and B-mode RAW data is generated to be supplied to the time information addition part **301** (Step S2 of **FIG. 6**).

[0102] In parallel to the ultrasonic transmission-and-reception in the first scanning direction  $\theta 1$ , the biomedical signal measurement part **311** measures the ECG signal of the patient (Step S3 of **FIG. 6**), and the obtained ECG signal is supplied to the time information generation part **312**. The time information generation part **312** which receives the ECG signal determines whether the timing of the ultrasonic transmission-and-reception corresponds to the R-wave of the ECG signal, generates the time information based on the determination, and sends the time information to the time information addition part **1301** and the biomedical signal memory part **1313**. (Step S4 of **FIG. 6**).

[0103] Subsequently, the time information addition part **301** adds the time information supplied from the time information generation part **312** to the time information storage area **10a** of the B-mode RAW data (B-mode RAW data B-1 in **FIG. 8**) in the first scanning direction supplied from the B-mode data generation part **204** of the RAW data generation part **250** (Step S5 of **FIG. 6**). In this case, when

the timing of the ultrasonic transmission-and-reception does not corresponds to the R-wave of the ECG signal, as shown in **FIG. 8**, the time information "0" is added to the time information storage area **a10a** of the RAW data B-1. Otherwise, the time information "1" is added. The B-mode RAW data with which the time information is added is stored in the RAW data memory part **302** (Step **S6** of **FIG. 6**).

[**0104**] The time information is added to the ECG signal data supplied to the biomedical signal memory part **1313**, and the ECG signal data is stored. (Steps **S7** and **S8** of **FIG. 6**).

[**0105**] Similarly, the system control part **308** performs the ultrasonic transmission-and-reception also in the second scanning direction through the Mth scanning direction, and after the Mth scanning direction, the ultrasonic transmission-and-reception is performed in the first scanning direction through Mth scanning direction repeatedly. Each B-mode RAW data, obtained at this time, with which the time information is added in the time information addition part **301**, is stored in the RAW data memory part **302**, and the ECG signal obtained in parallel to the generating or the storing of the B-mode RAW data with which the time information is added is stored in the biomedical signal memory part **313**.

[**0106**] The RAW data processing part **303** of the image data/analysis data generation part **300** confirms the time information of the RAW data B-1, B-2, etc. which are stored in the RAW data memory part **302**. When the time information "1" indicating the R wave of the ECG signal is confirmed in the RAW data B-3, for example, RAW data is read out one by one on the basis of the RAW data B-3. Subsequently, the RAW data processing part **303** performs image processing to the read out RAW data, and supplies the RAW data to the image data generation part **304**.

[**0107**] The image data generation part **304** performs the scanning conversion to one frame of the B-mode RAW data, in a predetermined timing, which is read out by the RAW data processing part **303**, and generates one frame of the B-mode image data (Step **S9** of **FIG. 6**).

[**0108**] The display data generation part **305** reads out a series of the ECG signal one by one on the basis of the ECG signal (R-wave) with which the time information "1" is added among the ECG signal stored in the biomedical signal memory part **313** where the time information is added (Step **S10** of **FIG. 6**) And the display data generation part **305** combines the B-mode image data supplied from the image data generation part **304** of the image data/analysis data generation part **300** with the R-wave of the ECG signal such that the timing of display of the B-mode image data in the third direction  $\theta 3$  is synchronized with the timing of display of the R-wave of the ECG signal and generates display data.

[**0109**] The display part **306** executes the D/A conversion, the television format conversion to the display data generated in the display data generation part **305**, generates a display signal and displays the display signal on the monitor (Step **S11** of **FIG. 6**).

[**0110**] **FIG. 7** shows an exemplary illustration showing the B-mode image data and the ECG signal displayed on the display part **306**. The B-mode image data **801** obtained by sector scanning is displayed with the ECG signal **802** on the same monitor. The ECG signal **802** corresponding to the

timing of the B-mode image data **801**, namely, the timing of **t1** through **t2** when the B-mode RAW data obtained in the first scanning direction  $\theta 1$  through in the Mth scanning direction  $\theta M$  is brightly displayed (Highlight display). A timing bar **803** indicating the **t1** through **t2** of the B-mode image data **801** may be displayed under the ECG signal **802** which is continuously displayed to the timing **t2**.

[**0111**] According to the first embodiment, since the time information is added and stored in the pixel of RAW data, for example, if the header information is deleted like the image data generated after scanning conversion, the time information is not deleted. Therefore, it is possible to perform the synchronous display with the biomedical signal and the image data using the time information in the image data, for example.

[**0112**] Furthermore, since the common time information is added to the RAW data and the biomedical data which are stored, according to the first embodiment, the synchronous display with the image data or analysis data generated even in off-line processing of the RAW data and the biomedical signal can be performed with sufficient accuracy.

[**0113**] Moreover, according to the first embodiment, when the synchronization of the timing may be performed in software process, hardware can be omitted like the conventional example.

[**0114**] In addition, although the time information generation part **312** in the first embodiment generates the time information "1" which shows the timing of R wave of an ECG signal, or "0" otherwise, lapsed time information from the R-wave of the ECG signal may be generated as the time information.

[**0115**] Although the synchronous display with the ECG waveform is explained in the first embodiment as a method for indicating the timing of the B-mode image data, a marker indicating the timing of the R-wave may be displayed instead of the ECG signal waveform.

[**0116**] Next, a second embodiment is explained with reference to **FIG. 9** and **FIG. 10**. In the second embodiment, a common standard time information is added to RAW data and an ECG signal, and the image data and the biomedical information are synchronously displayed based on the standard time information.

[**0117**] **FIG. 9** is a block diagram showing a whole ultrasonic imaging apparatus **110** in the second embodiment. To simplify the explanation, the detailed explanations are omitted by attaching the same reference numbers in **FIG. 9** as illustrated in **FIG. 4**.

[**0118**] The ultrasonic imaging apparatus **110** of **FIG. 9** includes a standard time information generating part **314** which generates standard time data, a time information addition part **316** which adds the standard time data to RAW data supplied from the RAW data generation part **250**, a time information addition part **315** which adds the standard time data to the biomedical signal supplied from the biomedical signal measurement part **311** and a biomedical signal memory part **313** which stores the biomedical signal with which the standard time is added. Furthermore, the ultrasonic imaging apparatus **110** includes the same or the similar functional part as or to that of the first embodiment, such as an ultrasonic probe **201**, a transceiver part **200**, a RAW data

generation part **250**, a RAW data memory part **302**, a image data/analysis data generation part **300**, a display data generation part **305**, a display part **306**, an input part **307**, and a system control part **308**.

[**0119**] Next, an operation of the synchronous display of the image data and the biomedical signal in the second embodiment is explained in a flow chart of **FIG. 10**. The synchronous display of B-mode image data and the ECG signal generated from the B-mode RAW data is explained as an example, but a synchronous display of another data may be used.

[**0120**] An initial set of the apparatus according to the same or the similar process of the first embodiment (Step **S1** of **FIG. 10**), a collection of the B-mode RAW data by transmitting and receiving the ultrasonic wave in a first direction (Step **S2** of **FIG. 10**) and a collection of the ECG signal (Step **S3** of **FIG. 10**) are performed. The B-mode RAW data is supplied to the time information addition part **316** and the ECG signal is supplied to the time information addition part **315**.

[**0121**] Subsequently, the time information addition part **316** adds the standard time information supplied from the standard time information generating part **314** to the time information storage area of the B-mode RAW data (Step **S15** of **FIG. 10**). The B-mode RAW data with which the standard time information is added is stored in the RAW data memory part **302** (Step **S16** of **FIG. 10**). Similarly, the time information addition part **315** adds the standard time information to the ECG signal, and stores the ECG signal in the biomedical signal memory part **313** (Steps **S17** and **S18** of **FIG. 10**).

[**0122**] Subsequently, the system control part **308** performs the ultrasonic transmission-and-reception in a second scanning direction through Mth scanning direction, further, repeats the ultrasonic transmission-and-reception in the first scanning direction through the Mth scanning direction. Each B-mode RAW data is stored in the RAW data memory part **302** with which the standard time information is added in the time information addition part **316**. The ECG signal, collected in parallel to the generation and storage of the B-mode RAW data, with which the standard time information is added is stored in the biomedical signal memory part **313**.

[**0123**] The RAW data-processing part **303** of the image data/analysis data generation part **300** reads out the B-mode RAW data in a predetermined timing based on the standard time information among the B-mode RAW data stored in the RAW data memory part **302**. An image processing is performed to the read out RAW data in the RAW data-processing part **303** and subsequently, the RAW data is supplied to the image data generation part **304**. The image data generation part **304** performs scanning conversion of one frame of the B-mode RAW data which is read out in the predetermined timing by the RAW data-processing part **303**, and generates image data (Step **S19** of **FIG. 10**).

[**0124**] The display data generation part **305** reads out the ECG signal with which the same standard time information as that of the RAW data used for generating the image data as above among the ECG signal stored in the biomedical signal memory part **313** (Step **S20** of **FIG. 10**). The read out ECG signal is combined with the B-mode image data supplied from the image data generation part **304** of the image data/analysis data generation part **300**, and display data is generated.

[**0125**] The display part **306** executes the D/A conversion, the television format conversion to the display data generated in the display data generation part **305**, generates a display signal and displays the display signal on the monitor (Step **S21** of **FIG. 10**).

[**0126**] According to the second embodiment, the common standard time information is added to the RAW data and the biomedical signal when the image data or the analysis data is generated from the RAW data obtained from the patient. Thereby, it is possible to perform the synchronous display of the image data or analysis data generated using this RAW data and the biomedical signal accurately. Moreover, according to the second embodiment, since the R-wave of the ECG signal is not used for determining the timing, for example, the processing for the synchronous display is easy.

[**0127**] In addition, although it is explained that the standard time is added to the header of the RAW data, the standard time information may be added to a pixel of the RAW data instead of the header as well as the first embodiment.

[**0128**] Next, a third embodiment is explained with reference to **FIG. 11** through **FIG. 14**. In the third embodiment, the ECG signal collected in parallel to the generation of the RAW data by the ultrasonic transmission and reception is added to the RAW data, in order to display the image data or the analysis data and the biomedical signal are displayed synchronously.

[**0129**] **FIG. 11** is a block diagram showing a whole ultrasonic imaging apparatus **120** in the third embodiment. To simplify the explanation, the detailed explanations are omitted by attaching the same reference numbers in **FIG. 11** as illustrated in **FIG. 4**.

[**0130**] The ultrasonic imaging apparatus **120** of **FIG. 11** includes a biomedical data addition part **317** which adds biomedical data corresponding to the biomedical signal to the RAW data supplied from the RAW data generation part **250**, and the same or similar parts of the first embodiment, such as an ultrasonic probe **201**, a transceiver part **200** a RAW data generation part **250**, a RAW data memory part **302**, an image data/analysis data generation part **300**, a display data generation part **305**, a display part **306**, an input part **307**, and a system control part **308**.

[**0131**] Next, an operation of the synchronous display of the image data and the biomedical signal in the third embodiment is explained with reference to a flow chart of **FIG. 12**. The synchronous display of B-mode image data and the ECG signal generated from the B-mode RAW data is explained as an example, but a synchronous display of another data may be used.

[**0132**] An initial set of the apparatus according to the same or the similar process of the first or second embodiment (Step **S1** of **FIG. 12**), a collection of the B-mode RAW data by transmitting and receiving the ultrasonic wave in a first direction (Step **S2** of **FIG. 12**) and a collection of the ECG signal (Step **S3** of **FIG. 12**) are performed. The B-mode RAW data and the ECG signal are supplied to the time biomedical data addition part **317**.

[**0133**] The biomedical data addition part **317** changes the ECG signal supplied from the biomedical signal measurement part **311** into the ECG data. The ECG data is stored in

a header or a biomedical signal storage area of pixel of the B-mode RAW data (Step S24 of FIG. 12). If the transmission and reception of the ultrasonic wave and the collection of the ECG signal are performed at substantially the same time, arrival time of the RAW data and the ECG signal to the biomedical data addition part 317 may be different due to difference of signal transfer process. In such a case, in the biomedical data addition part 317, when the ECG data is added to the RAW data, it may be necessary to take into consideration the difference in the arrival time. For example, due to a composition of system, if the ECG signal which is collected at substantially the same time as the transmission and reception of the ultrasonic wave arrives at the biomedical data addition part 317 after a predetermined period delay to the RAW data, it may be necessary to add the biomedical signal to the RAW data which arrives at the biomedical data addition part 317 the predetermined period before. For this reason, a buffer memory which stores the RAW data for more than the predetermined period temporarily is provided. The RAW data which arrives is stored in the buffer memory. If the data of one vector is written in one address in this case, the address of the buffer memory is supposed to have the following time.

$$T1=(1/\text{pulse repetition frequency})/\text{number of transmitting steps}$$

[0134] Number of transmitting steps: Number of transmission necessary for generating one vector (RAW data)

If the ECG signal which is collected at substantially the same time as the RAW data arrives after T2 delay, the ECG signal which arrives at the biomedical data addition part 317 is added to the data in an address which stores past RAW data which arrives T2/T1 before the newest RAW data. When collection interval of the ECG signal is T3, the same ECG data is added to the RAW data in addresses of T3/T1. The B-mode RAW data with which the ECG data is added is stored in the RAW data memory part 302 (Step S25 of FIG. 12).

[0135] The system control part 308 performs the ultrasonic transmission-and-reception also in the second scanning direction through the Mth scanning direction, and after the Mth scanning direction, the ultrasonic transmission-and-reception is performed in the first scanning direction through Mth scanning direction repeatedly. Each B-mode RAW data, obtained at this time, with which the ECG data is added in the biomedical data addition part 317, is stored in the RAW data memory part 302.

[0136] The RAW data-processing part 303 of the image data/analysis data generation part 300 reads out the B-mode RAW data and the ECG data in a predetermined timing among the B-mode RAW data stored in the RAW data memory part 302. The read out B-mode RAW data is supplied to the image data generation part 304, and the read out ECG data is supplied to the display data generation part 305 (Step S26 of FIG. 12). The image data generation part 304 performs the scanning conversion to one frame of the B-mode RAW data, in a predetermined timing, which is read out by the RAW data processing part 303, and generates one frame of the B-mode image data to be supplied to the display data generation part 305 (Step S27 of FIG. 12).

[0137] The display data generation part 305 combines the ECG data supplied from the RAW data processing part 303

and the B-mode image data supplied from the image data generation part 304 to generate display data. The display part 306 executes the D/A conversion, the television format conversion to the display data generated in the display data generation part 305, generates a display signal and displays the display signal on the monitor (Step S28 of FIG. 12).

[0138] FIG. 13 is an illustration showing a composition of the B-mode RAW data in the third embodiment. For example, each pixel of a11 to a1L of B-mode RAW data B-1 which is obtained in a first direction  $\theta 1$  is 12 bits, and LSB pixels of 12 bits of a1 (L-11) through a1 of the B-mode RAW data B-1 is set as biomedical data storage area a10c. That is, the ECG data of 12 bits supplied from the biomedical signal measurement part 311 of FIG. 11 is stored at the biomedical data storage area a10c. In addition, since the biomedical signal storage area a10c mainly includes LSB of each pixel like FIG. 8, the influence to quality of image of the B-mode image data is small.

[0139] FIG. 14 shows a modification of composition of the RAW data, and each pixel a11 through a1L of the B-mode RAW data obtained in the first scanning direction  $\theta 1$  is 12 bits like FIG. 13. Pixels a1L of 12 bits of LSB through MSB of the B-mode RAW data B-1 are set as the biomedical signal storage area a10c. In this case, since the ECG data is stored in all of pixel a1L, it is desired that a blanking processing is performed not to display the pixel a1L when the B-mode image data is displayed. Moreover, the number of pixels of the B-mode RAW data B-1 may be increased from L pieces, and a1 (L+1) may be set as the biomedical signal storage. Moreover, the data may be stored in a header or footer in which other addition information exists.

[0140] According to the third embodiment, the ECG signal obtained in parallel to the collection of the RAW data is added to the RAW data as the ECG data when the image data or the analysis data is generated. Thereby, the synchronous display of the image data or the analysis data and the biomedical signal is easily and precisely performed

[0141] Furthermore, in the third embodiment, since it is not necessary to add the time information to the ECG signal, the apparatus can be simplified.

[0142] Although embodiments and modifications are explained above, the present invention may be not limited to the above embodiments and modifications, and other various modifications may be made. For example, it is explained in the above embodiment that the B-mode image data obtained from the B-mode RAW data is synchronously displayed with the ECG signal, however other biomedical signal may be displayed with other image data or analysis data, such as the Color Doppler image data and the Doppler Spectrum data. Moreover, the above-mentioned biomedical signal may be a brain wave, a heartbeat, a blood-pressure waveform, a respiratory waveform, an impedance waveform, etc.

[0143] Especially, it is suitable to adopt a distributed value pixel with comparatively low operating frequency and importance when the time information or the biomedical signal is added to pixel of the Color Doppler RAW data.

[0144] Moreover, although it is explained in the above embodiments that the RAW data is a unit of data in the scanning direction (namely, vector data), the RAW data may not be limited to such data and the RAW data may be

ultrasonic data before scan conversion. Although it is explained in the above embodiments that the biomedical signal measurement part used for generating the time information is a part of the ultrasonic imaging apparatus, an independent biomedical signal measurement part may be adapted.

[0145] Furthermore, although it is explained in the above embodiments that single image data or single analysis data is displayed with a single biomedical signal, a plurality of image data or analysis data may be displayed with a plurality of biomedical signals.

[0146] In addition, although it is explained in the above embodiments that the transceiver part is an analog type, a digital type may be used. Moreover, although it is explained in the above embodiments that the RAW data is two dimensional, three dimensional data may be used. In order to collect the 3-dimensional RAW data, it is suitable that the ultrasonic probe has ultrasonic transducers which are 2-dimensionally arranged.

What is claimed is:

1. An ultrasonic imaging apparatus, comprising:
  - an ultrasonic probe including a plurality of ultrasonic transducers which perform ultrasonic transmission and reception to an object;
  - a transceiver unit configured to obtain an ultrasonic signal from the object by driving the plurality of ultrasonic transducers;
  - an ultrasonic data generation unit configured to generate ultrasonic data based on the ultrasonic signal;
  - a time information generation unit configured to generate time information related to the ultrasonic transmission or reception; and
  - a time information addition unit configured to add the time information in a part of pixel data of the ultrasonic data.
2. The ultrasonic imaging apparatus according to claim 1, further comprising a biomedical signal measurement unit configured to measure a biomedical signal of the object.
3. The ultrasonic imaging apparatus according to claim 2, further comprising an image/analysis data generation unit configured to generate at least one of image data and analysis data based on the ultrasonic data and the time information.
4. The ultrasonic imaging apparatus according to claim 3, further comprising a display unit configured to synchronously display biomedical data corresponding to the biomedical signal and at least one of the image data and the analysis data based on the time information.
5. The ultrasonic imaging apparatus according to claim 4, wherein the time information generation unit generates the time information based on the biomedical signal.
6. The ultrasonic imaging apparatus according to claim 5, wherein the time information generation unit generates the time information based on a timing of an organ, the timing detected based on the biomedical signal.
7. The ultrasonic imaging apparatus according to claim 5, wherein the time information generation unit generates the time information based on R-wave of an ECG signal collected from the object.
8. The ultrasonic imaging apparatus according to claim 4, wherein the ultrasonic data generation unit generates B-mode data based on the ultrasonic signal.
9. The ultrasonic imaging apparatus according to claim 4, wherein the ultrasonic data generation unit generates Color Doppler data based on the ultrasonic signal.
10. The ultrasonic imaging apparatus according to claim 4, wherein the ultrasonic data generation unit generates Doppler Spectrum data based on the ultrasonic signal.
11. The ultrasonic imaging apparatus according to claim 2, wherein the time information addition unit adds the time information to each data which has smaller volume of data than one frame.
12. The ultrasonic imaging apparatus according to claim 2, wherein the time information addition unit adds the time information to each raster data.
13. An ultrasonic imaging apparatus, comprising:
  - an ultrasonic probe including a plurality of ultrasonic transducers which perform ultrasonic transmission and reception to an object;
  - a transceiver unit configured to obtain an ultrasonic signal from the object by driving the plurality of ultrasonic transducers;
  - an ultrasonic data generation unit configured to generate ultrasonic data based on the ultrasonic signal;
  - a standard time information generation unit configured to generate standard time information;
  - a biomedical signal measurement unit configured to measure a biomedical signal of the object;
  - a first time information addition unit configured to add the standard time information to the ultrasonic data; and
  - a second time information addition unit configured to add the standard time information to biomedical data corresponding to the biomedical signal.
14. The ultrasonic imaging apparatus according to claim 13, further comprising an image/analysis data generation unit configured to generate at least one of image data and analysis data based on the ultrasonic data and the standard time information.
15. The ultrasonic imaging apparatus according to claim 14, further comprising a display unit configured to synchronously display the biomedical data corresponding to the biomedical signal and at least one of the image data and the analysis data based on the standard time information.
16. The ultrasonic imaging apparatus according to claim 15, wherein the biomedical signal measurement measures an ECG signal of the object.
17. The ultrasonic imaging apparatus according to claim 15, wherein the ultrasonic data generation unit generates B-mode data based on the ultrasonic signal.
18. The ultrasonic imaging apparatus according to claim 15, wherein the ultrasonic data generation unit generates Color Doppler data based on the ultrasonic signal.
19. The ultrasonic imaging apparatus according to claim 15, wherein the ultrasonic data generation unit generates Doppler Spectrum data based on the ultrasonic signal.
20. The ultrasonic imaging apparatus according to claim 13, wherein the standard time information addition unit adds the standard time information to each data which has smaller volume of data than one frame.

**21.** The ultrasonic imaging apparatus according to claim 13, wherein the standard time information addition unit adds the standard time information to each raster data.

**22.** The ultrasonic imaging apparatus according to claim 13, wherein the standard time information addition unit adds the standard time information in a header of the ultrasonic data.

**23.** The ultrasonic imaging apparatus according to claim 13, wherein the standard time information addition unit adds the standard time information in part of pixel data of the ultrasonic data.

**24.** An ultrasonic imaging apparatus, comprising:

an ultrasonic probe including a plurality of ultrasonic transducers which perform ultrasonic transmission and reception to an object;

a transceiver unit configured to obtain an ultrasonic signal from the object by driving the plurality of ultrasonic transducers;

an ultrasonic data generation unit configured to generate ultrasonic data based on the ultrasonic signal;

a biomedical signal measurement configured to measure a biomedical signal of the object; and

a biomedical data addition unit configured to add biomedical data corresponding to the biomedical signal to the ultrasonic data.

**25.** The ultrasonic imaging apparatus according to claim 24, further comprising an image/analysis data generation unit configured to generate at least one of image data and analysis data based on the ultrasonic data.

**26.** The ultrasonic imaging apparatus according to claim 25, further comprising a display unit configured to synchronously display the biomedical data corresponding to the biomedical signal and at least one of the image data and the analysis data.

**27.** The ultrasonic imaging apparatus according to claim 26, wherein the biomedical signal measurement measures an ECG signal of the object.

**28.** The ultrasonic imaging apparatus according to claim 26, wherein the ultrasonic data generation unit generates B-mode data based on the ultrasonic signal.

**29.** The ultrasonic imaging apparatus according to claim 26, wherein the ultrasonic data generation unit generates Color Doppler data based on the ultrasonic signal.

**30.** The ultrasonic imaging apparatus according to claim 26, wherein the ultrasonic data generation unit generates Doppler Spectrum data based on the ultrasonic signal.

**31.** The ultrasonic imaging apparatus according to claim 24, wherein the biomedical data addition unit adds the biomedical data in a part of pixel data of the ultrasonic data.

**32.** A method for ultrasonic imaging, comprising:

performing ultrasonic transmission and reception to an object by an ultrasonic probe including a plurality of ultrasonic transducers;

obtaining an ultrasonic signal from the object by driving the plurality of ultrasonic transducers;

generating ultrasonic data based on the ultrasonic signal; generating time information related to the ultrasonic transmission or reception; and

adding the time information in a part of pixel data of the ultrasonic data.

**33.** A method for ultrasonic imaging, comprising:

performing ultrasonic transmission and reception to an object by an ultrasonic probe including a plurality of ultrasonic transducers;

obtaining an ultrasonic signal from the object by driving the plurality of ultrasonic transducers;

generating ultrasonic data based on the ultrasonic signal;

generating standard time information;

measuring a biomedical signal of the object;

adding the standard time information to the ultrasonic data; and

adding the standard time information to biomedical data corresponding to the biomedical signal.

**34.** A method for ultrasonic imaging, comprising:

performing ultrasonic transmission and reception to an object by an ultrasonic probe including a plurality of ultrasonic transducers;

obtaining an ultrasonic signal from the object by driving the plurality of ultrasonic transducers;

generating ultrasonic data based on the ultrasonic signal;

measuring a biomedical signal of the object; and

adding biomedical data corresponding to the biomedical signal to the ultrasonic data.

**35.** An ultrasonic imaging apparatus, comprising:

an ultrasonic probe including a plurality of ultrasonic transducers which perform ultrasonic transmission and reception to an object;

a transceiver unit configured to obtain an ultrasonic signal from the object by driving the plurality of ultrasonic transducers;

an ultrasonic data generation unit configured to generate ultrasonic data based on the ultrasonic signal;

a biomedical signal measurement configured to measure a biomedical signal of the object; and

a biomedical data addition unit configured to add biomedical data corresponding to the biomedical signal to the ultrasonic data under a condition where an addition timing of the biomedical signal to the ultrasonic data is adjusted based on a condition of the ultrasonic transmission and reception.

**36.** The ultrasonic imaging apparatus according to claim 35, wherein the biomedical data addition unit includes a memory configured to temporally store the ultrasonic data.

**37.** A method for ultrasonic imaging, comprising:

performing ultrasonic transmission and reception to an object by an ultrasonic probe including a plurality of ultrasonic transducers;

obtaining an ultrasonic signal from the object by driving the plurality of ultrasonic transducers;

generating ultrasonic data based on the ultrasonic signal;  
measuring a biomedical signal of the object; and  
adding biomedical data corresponding to the biomedical  
signal to the ultrasonic data under a condition where an

addition timing of the biomedical signal to the ultra-  
sonic data is adjusted based on a condition of the  
ultrasonic transmission and reception.

\* \* \* \* \*

专利名称(译)	超声成像设备和超声成像方法		
公开(公告)号	<a href="#">US20060058662A1</a>	公开(公告)日	2006-03-16
申请号	US11/213875	申请日	2005-08-30
[标]申请(专利权)人(译)	株式会社东芝 东芝医疗系统株式会社		
申请(专利权)人(译)	株式会社东芝 东芝医疗系统公司		
当前申请(专利权)人(译)	东芝医疗系统公司		
[标]发明人	KOBAYASHI YUTAKA UCHIBORI TAKANOBU NAGAI TAKETOSHI SATO KOICHI		
发明人	KOBAYASHI, YUTAKA UCHIBORI, TAKANOBU NAGAI, TAKETOSHI SATO, KOICHI		
IPC分类号	A61B8/00 A61B8/14		
CPC分类号	A61B8/463 A61B5/044		
优先权	2004252669 2004-08-31 JP		
其他公开文献	US8241214		
外部链接	<a href="#">Espacenet</a> <a href="#">USPTO</a>		

摘要(译)

一种超声波成像装置，包括：超声波探头，包括：多个超声波换能器，对物体进行超声波发送和接收；收发器单元，被配置为通过驱动多个超声波换能器从物体获得超声波信号；超声波数据生成单元，基于超声波信号生成超声波数据，时间信息生成单元，被配置为生成与超声波发送或接收有关的时间信息；时间信息添加单元，被配置为将时间信息添加到超声波数据的像素数据的一部分中为了使图像数据与生物医学信号（例如 ECG）同步。

